

Quantifying the dust direct radiative effect in the Southwestern United States: findings from multiyear measurements

Alexandra Kuwano¹, Amato Evan¹, Blake Walkowiak¹, and Robert Frouin¹

¹Scripps Institution of Oceanography, University of California San Diego, 9500 Gilman Dr, La Jolla, CA 92093

Abstract. Mineral aerosols (i.e., dust) can affect climate and weather by absorbing and scattering shortwave (SW) and longwave (LW) and longwave radiation in the Earth's atmosphere (the direct radiative effect). It is thought that the dust direct radiative effect is sufficiently strong that the presence of dust can significantly alter surface temperatures, static stability of the atmosphere, and the top of the atmosphere energy balance. Yet despite its importance, understanding of this parameter is so poor that, for example, the sign of the net direct radiative effect at top of the atmosphere (TOA) is unconstrained, and thus it is unknown if changes in dust over time cool or warm Earth's climate. Here we develop and apply new methods to estimate the SW instantaneous shortwave direct effect via observations of aerosols and radiation made over a three-year period in a desert region of the southwestern United States. We US, obtaining a direct effect of -14 ± 1 and -9 ± 6 W m^{-2} at the surface and TOA, respectively. We also generate region-specific dust optical properties via a novel data set of soil mineralogy from the Airborne Visible/Infrared Imaging Spectrometer (AVIRIS) instrument, which are then used to model the SW and LW dust direct radiative effect. From the observations and model output we find that the net dust direct radiative effect, on average, is -6 ± 1 and -2 ± 1 in the shortwave and longwave. Using this modeling method, we obtain an instantaneous shortwave direct effect of -21 ± 7 and -1 ± 7 W m^{-2} at the surface and top of the atmosphere, respectively. Our results suggest that the magnitude of the SW component is about twice that in the LW, underscoring the importance of quantifying the iron oxide content of dusts since these minerals strongly affect dust SW absorptivity. The discrepancy between the model and observational direct effect are due to stronger absorption in the model, which we interpret as too large a soil iron oxide content from AVIRIS. Combining the shortwave observational direct effect with the modeled longwave TOA direct effect of 1 ± 1 W m^{-2} , we obtain an instantaneous TOA net effect of -8 ± 6 W m^{-2} , implying a cooling effect of dust. These findings provide a useful constraint on the dust direct effect in the Southwestern United States.

1 Introduction

Aeolian dust accounts for the majority of aerosol mass in Earth's atmosphere (Gliß et al., 2021) and there are a number of mechanisms by which dust interacts with the Earth's climate system (Kok et al., 2023). For example, dust suspended in Earth's atmosphere directly affects the Earth's energy budget by absorbing and scattering shortwave (SW) radiation, and absorbing, scattering, and emitting longwave (LW) radiation (Sokolik and Toon, 1996). Since dust is an effective ice nucleating particle, it also indirectly affects the Earth's energy budget by altering ice cloud development (DeMott et al., 2003; Sassen et al., 2003; De-

Mott et al., 2010; Rosenfeld et al., 2001). Through absorption of SW and LW radiation dust can alter the atmospheric temperature profile and induce semi-direct effects on the Earth's energy budget (Helmert et al., 2007; Johnson et al., 2004) or perpetuate feedbacks within the Earth's climate system (~~Helmert et al., 2007; Kok et al., 2018~~)([Helmert et al., 2007; Kok et al., 2018, 2023](#))

30 .

Here we focus on improving understanding of the dust direct radiative effect, which is the difference between the net flux in clear-sky (cloud free and dusty) and pristine-sky (cloud and dust free) conditions. In the SW dust typically cools the Earth's surface and top of the atmosphere while in the LW dust typically induces a warming effect (Liao and Seinfeld, 1998). Di Biagio et al. (2020) and Kok et al. (2017) separately used observations to constrain model estimates of the globally averaged direct radiative effect of dust at the top of the atmosphere (TOA), both concluding that the sign of this effect could not be constrained based on available data. As such, it is unknown if dust, via the direct effect, warms or cools Earth's climate. One reason for this uncertainty is that dust microphysical properties vary greatly as a function of space and time, so that modeling dust single scatter properties is highly complex and uncertain (Di Biagio et al., 2019, 2020; Kok et al., 2017; Song et al., 2022).

For example, dust absorptivity is strongly dependent on the concentration of iron oxides in the soils from which the aerosols were emitted (Di Biagio et al., 2019), making this property strongly dependent on source region. Furthermore, there are lingering uncertainties regarding how the dust size distribution evolves over time, with observational studies showing much larger dust particles ~~far~~ [further](#) from source regions than what is predicted by models (Ryder et al., 2018, 2019; van der Does et al., 2018). Such an underestimation of the size distribution can result in an overestimation of the SW cooling by dust (Kok et al., 2017). Additionally, although dust particles are highly aspherical, dust single scatter properties are typically calculated assuming spherical particles, and neglecting those shape characteristics can impact the resultant estimates of its radiative effects (Huang et al., 2023).

Given the challenges associated with modeling the ~~the~~ radiative effects of dust, a number of studies have used observations of radiative fluxes and retrievals of dust physical properties to obtain observation based estimates of dust direct effect in the SW (e.g., Hsu et al., 2000; Di Biagio et al., 2009, 2010; Yang et al., 2009; Kuwano and Evan, 2022) and LW (e.g., Brindley, 2007; Brindley and Russell, 2009; Zhang and Christopher, 2003). Since the main challenge with using observations to estimate the clear-sky SW and LW direct radiative effect of dust is that pristine-sky fluxes can rarely, if at all, be measured, observational methods typically estimate the dust forcing efficiency ([e.g., Satheesh and Ramanathan, 2000](#)), which is the direct effect normalized by aerosol optical depth. However, uncertainties associated with instrumental and retrieval errors, knowledge of the vertical structure of dust ~~and atmospheric temperature~~, and potential correlation between dust and other radiometrically relevant atmospheric constituents, can produce large uncertainties and even biases in the resulting forcing efficiency estimates (Kuwano and Evan, 2022).

In this study we estimate the clear-sky surface, atmospheric, and TOA SW and LW direct radiative effect and forcing efficiency of dust in the Salton Basin, which is a topographic depression in southeastern California where measurements of dust and the atmosphere have been made since 2019 (e.g., Evan et al., 2022c). ~~First~~ [Firstly](#), we develop a modified version of an existing ~~observation-only observational~~ method to estimate the clear-sky dust SW forcing efficiency (~~Kuwano and Evan, 2022~~) ~~in order to calculate the dust SW forcing efficiency~~ and direct radiative effect ([Kuwano and Evan, 2022](#)). We then use novel

hyperspectral measurements of the surface to ~~constrain dust optical~~ estimate dust optical and single scatter properties, which are then used along with additional aerosol and meteorological measurements to simulate the SW and LW dust direct radiative effect and forcing efficiency. We find agreement in the observational and modeled estimates of the direct effect in the SW, which increases our confidence in the methods.

The region of interest contains the Salton Sea, which is a large and shallow body of water ~~located within the terminal basin~~ that is rapidly shrinking due to changes in water management practices (San Diego County Water Authority). There is a growing body of research into the impacts of the shrinking sea on dust emission and the subsequent health effects of exposure (Jones and Fleck, 2020; Parajuli and Zender, 2018). As such, there is need to also improve the understanding of the radiative effects of dust there, which shape potential dust feedbacks onto the local weather and climate.

The remaining portion of this paper is structured as follows. In Sect. 2 we describe the field site, relevant instrumentation, dust identification scheme, and surface soil mineralogy. We then describe and validate the radiative transfer and the linear models used in this study (Sect. 3). In Sect. 4 we present and discuss the dust direct radiative effect and forcing efficiencies obtained from only observations (in the SW) and the output from a radiative transfer model (in the SW and LW). In Sect. 5 we compare our estimates of the SW and LW forcing efficiency and direct radiative effect of dust with similar studies from other regions of the globe. In Sect. 6 we summarize the study and provide suggestions for future work.

2 Data sets and products

Here we describe the in situ and satellite based data sets used in this study. A listing of the instruments, products, measurements and retrievals, and their uncertainties is in Table 1.

2.1 Field site description, instruments, and measurements

The in situ measurements used in this study were generated over the 2020–2022 time period at a field site in southeastern California (33.17° N, 115.86° W, Fig. 1). The field site lies within the Salton Basin, which is a northwest-southeast oriented rift valley that is bounded to the west, north, and south by the Peninsular, Little San Bernadino, and Orocoppio and Chocolate Mountains, respectively. At the sub sea-level center of the Basin is the terminal Salton Sea, a large and shallow ephemeral lake. The region typically receives less than 100 mm of precipitation each year (Stephen and Gorsline, 1975; NCEI). During the summer daytime surface temperatures often reach values greater than 38 C, while winter temperatures are moderately cool and can fall below freezing at night (Ives, 1949; Imperial County Air Pollution Control District, 2018). The morphology of the area includes alluvial fans, sand and sand dunes, dry washes, paleo lakebed, and rock and vegetated surfaces (Imperial Irrigation District, 2016).

In situ measurements presented here were collected over the 2020–2022 time period at a field site that lies approximately 2.5 km west of the Salton Sea’s current western shoreline. The site is immediately east of the Anza desert, and is at the northern and southern edges of the Imperial and Coachella Valleys, respectively (Fig. 1b). Measurements from the site acquired during

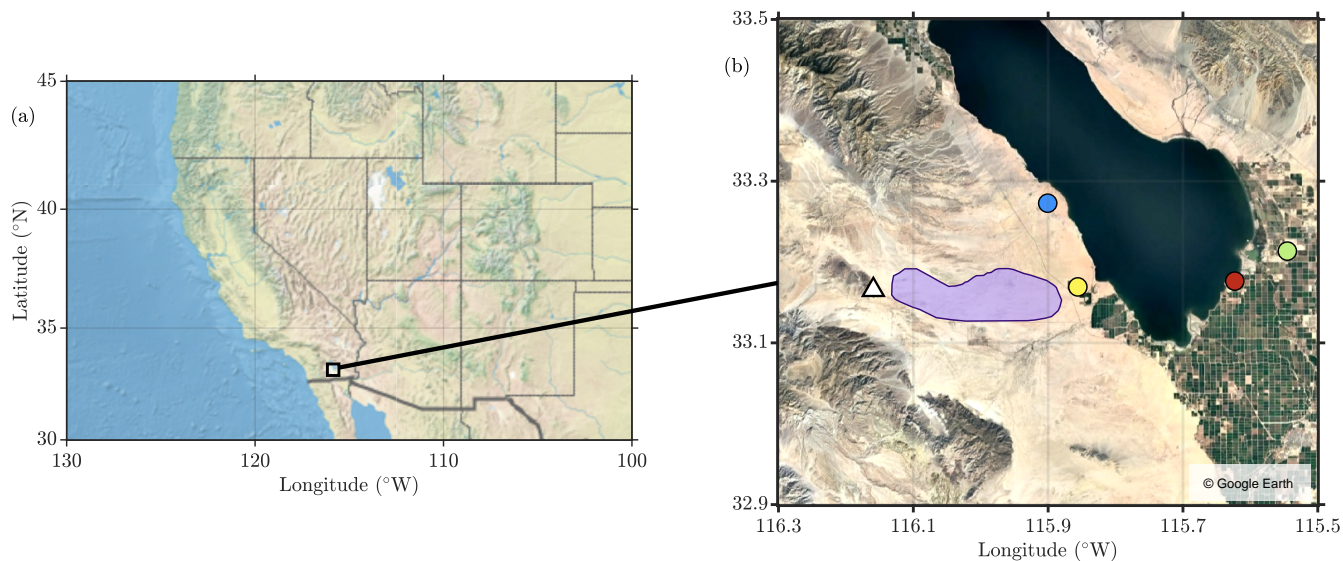


Figure 1. Map of the region of interest. Shown is (a) a map indicating the location of the Salton Basin and its relation to the Western United States and (b) key locations surrounding the Salton Sea. The region enclosed by the purple polygon in (b) was used to generate the surface soil mineralogy for the radiative transfer simulations. Also shown in (b) are the locations of the field site (yellow circle), Roundshot camera (white triangle), and the Salton City, Naval Test Base, Sonny Bono, and Niland-English Road TOEM sites (blue, yellow, red and green circles, respectively). The map shown in (a) is created using Natural Earth via MATLAB and (b) is from Google Earth retrieved 26 August 2023.

dust storms have been used to elucidate their meteorological aspects (Evan et al., 2022b, 2023). A photo of the field site instrumentation is in Fig. 2.

95 2.1.1 Solar and infrared radiometers

We obtained surface LW upward and downward fluxes from Kipp and Zonen CG4 and CGR4 pyrgeometers (1A in Fig. 2). These radiometers measure broadband LW fluxes in the 4.5–42 μm range, are outfitted with Pt-100 thermistors to measure instrument body temperature, and have previously reported relative uncertainties of approximately $\pm 3\%$ (Ramana and Ramanathan, 2006). Longwave fluxes are acquired every second and then averaged over 1 minute intervals. We obtained surface
 100 SW upward and downward fluxes from two Kipp and Zonen CM21 pyranometers (2A in Fig. 2). These radiometers measure broadband SW fluxes in the 0.3–2.8 μm range and exhibit small cosine offsets with a typical maximum relative error of 3% at high solar zenith angle (Zonen, 2004; Ramana and Ramanathan, 2006). Shortwave fluxes are also acquired every second and averaged over 1 minute intervals.

A detailed description of the radiometer calibration is in Appendix B. One of each of the pyranometers and pyrgeometers
 105 were factory calibrated on July 2018 and then February 2023, and the pyranometer and pyrgeometer calibration coefficients for these two dates differed by less than 2% and 3%, respectively. We then cross-calibrated the other pyranometer and py-

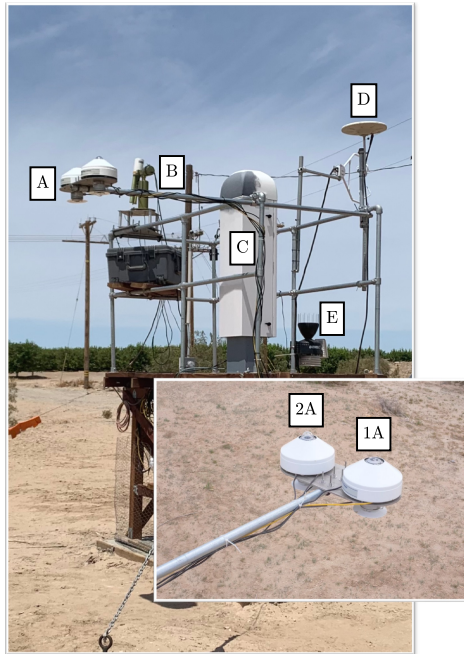


Figure 2. Instrumentation at the field site. Shown are radiometers (A), sun photometer (B), ceilometer (C), GPS antennae (D), and meteorology station (E). The inset panel indicates the upward and downward looking pyrgeometers (1A) and the upward and downward looking pyranometers (2A). Radiometer (1A and 2A) image credit: Scott Polach.

rogeometer during four distinct time periods occurring in 2018, 2021, 2022, and 2023. To do so we placed the instruments side-by-side for time periods ranging from 1–3 weeks and then used linear least square regression to identify the slope of the best-fit line relating the measured voltages, forcing the intercept through zero. For these four time periods the pyranometer and pyrgeometer cross-calibration coefficients differed by up to 2% and 3%, respectively. The factory and cross-calibration coefficients were then applied to the measured voltages by interpolating their values in time, in order to obtain the final LW and SW fluxes. Since the uncertainty in the cross-calibration coefficients were $< 0.3\%$, we assume factory calibration uncertainties of 1% for the pyranometer and 5% for the pyrgeometer as the uncertainty in the radiometer SW and LW fluxes, respectively (Table 1).

115 2.1.2 GPS

We obtained hourly values of total precipitable water P_W retrieved from a Zephyr Geodetic 2 Antenna and Trimble NetR9 GPS receiver (D in Fig. 2), which were processed by SuomiNet (Ware et al., 2000). The relative uncertainty in P_W from the GPS is approximately 10% (Wang et al., 2007; Bevis et al., 1994).

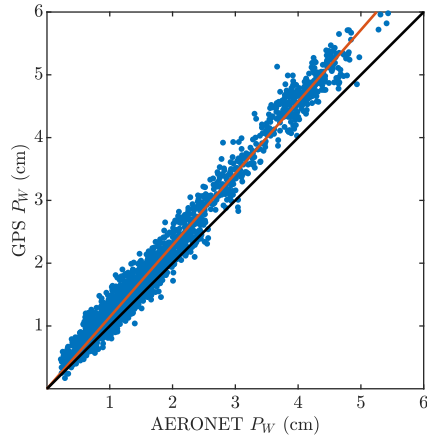


Figure 3. A scatter plot of GPS (vertical axis) and AERONET (horizontal axis) retrievals of P_W (blue) made at the field site, the one-to-one line (black), and the linear least-squares regression line, forced through the origin (red).

2.1.3 Sun photometer

120 At the field site is a NASA Aerosol Robotic Network (AERONET) CIMEL sun photometer (B in Fig. 2). The CIMEL measures sun collimated direct beam irradiance and directional sky radiance at eight spectral bands centered on 1020, 870, 675, 440, 936, 500, 380, and 340 nm (Holben et al., 1998). Direct solar irradiance measurements are made at 5-min intervals. We ~~use~~ obtained data from the AERONET level 1.5 products processed by the version 3 AERONET algorithm, which provides fully automatic cloud screening and instrument anomaly quality controls in near-real time (Giles et al., 2019). We ~~include~~ included 125 dusty observations that were erroneously classified as cloud contaminated using the restoring algorithm described in Evan et al. (2022c). AERONET retrieved aerosol optical depth τ has a reported absolute uncertainty of 0.01 (an approximate 5% relative error for the field site), and P_W has a reported relative uncertainty of approximately 10% (Holben et al., 1998).

Since P_W from the GPS ~~is~~ was not available at all study times we ~~utilize~~ utilized P_W retrievals from AERONET for this analysis. We calibrated the AERONET P_W based on a comparison with retrievals from GPS. Over the 2020–2022 time period 130 we identified more than 6,000 simultaneous retrievals of P_W from these two instruments, which ~~are~~ were correlated at an r-value of 0.99 (p-value < 0.01, Fig. 3). We ~~calibrate~~ calibrated the AERONET P_W against that from the GPS to account for a relative negative bias in AERONET P_W by multiplying the AERONET values by ~~the~~ 1.43, which ~~is~~ was the slope of the best fit line from a linear regression of the GPS P_W on the AERONET P_W , forcing the line through the origin (red line, Fig. 3). The resulting root mean square error in the AERONET P_W is 0.15 cm (10% relative uncertainty).

135 2.1.4 Ceilometer

At the field site is a CL51 Vaisala ceilometer (C in Fig. 2), which is a single lens lidar system that measures attenuated backscatter at a nominal wavelength of 910 nm from the surface to 15 km. The ceilometer generates range corrected backscatter

profiles having temporal and vertical resolutions of 36 s and 10 m, respectively. The Vaisala processing software for the CL51 measurements, BLView, identifies clouds based on the vertical gradient of backscatter profiles. Ceilometers have been used to retrieve the vertical profile of aerosols in the lower atmosphere (Jin et al., 2015; Marcos et al., 2018; Münkel et al., 2007), and the BLView software also retrieves vertical profiles of extinction for the clear-sky atmosphere below heights of 5 km above ground level (AGL). Although details regarding the retrieval process used in BLView are not publicly available, it is possible to approximately reproduce the extinction profile retrievals using typical methods (Fernald, 1984). The CL51 extinction profiles used here ~~have been were~~ calibrated to equivalent 500 nm values using the simultaneous retrievals of aerosol optical depth from the AERONET site (Evan et al., 2022c), such that the AERONET and CL51 retrieved optical depths are identical.

To guard against cloud-contamination in our analysis and results we ~~identify identified~~ all times where the ceilometer’s proprietary software identified a cloud overhead. Since the ceilometer software’s cloud detection algorithm often misidentifies thick dust plumes as clouds, we ~~disceard discarded~~ all detected clouds having a base height less than or equal to 2 km AGL (Evan et al., 2022c). We then ~~assume assumed~~ that the sky is at least partially cloudy if a cloud was detected within a 30-minute window by the ceilometer (Wagner and Kleiss, 2016), and thus ~~do did~~ not include these data in our analysis.

2.1.5 Meteorological measurements

Surface meteorology: A Vantage Pro2 Davis Met Station is also located at the site (E in Fig. 2) and provides measurements of pressure P , temperature T , specific humidity q , and zonal and horizontal wind speed u , v at a height of 2 m, and which are logged at a 1 min resolution. These data are separately processed and available through MesoWest at a nominal resolution of 15 min (Horel et al., 2002).

Radiosondes: We obtained vertical profiles of temperature $T(z)$, pressure $P(z)$, and specific humidity $q(z)$ from 15 radiosondes launched at the field site during the 2020–2022 time period using a Vaisala sounding system (dates and times listed in Table A1). Since these soundings typically extend to heights of 20–25 km, and in order to conduct the radiative transfer simulations, we ~~extend extended~~ these profiles to heights of 32 km using radiosondes from the San Diego sounding station (NKX), and then from 32 to 95 km using a standard mid-latitude summer atmospheric profile (Anderson et al., 1986).

2.2 Satellite data

We ~~utilize collected~~ observations of the TOA SW upward flux and outgoing longwave radiation (OLR), and estimates of the broadband SW surface albedo α from the Clouds and Earth’s Radiant Energy System (CERES) Single Scanner Footprint (SSF) level 2 data product (Loeb et al., 2016; Su et al., 2015a, b). CERES is a space-borne instrument that measures TOA radiance in the SW (0.2–5 μm), window (8–12 μm), and total (0.2–100 μm) spectral intervals at a spatial resolution of approximately 20–25 km. ~~LW Longwave~~ radiance is estimated by taking the difference between the total and SW radiances. Instantaneous CERES SSF measurements are collected along-scan of the CERES footprint as it traverses the Earth’s surface.

We ~~use used~~ daytime CERES SSF level 2 data collected from the NASA Aqua, NASA Terra, National Oceanic and Atmospheric (NOAA) Suomi National Polar-orbiting Partnership (NPP) and NOAA-20 sun-synchronous satellites. The SSF data corresponding to the CERES instruments flying on the NASA satellites include retrievals/products from the Moderate Resolu-

Table 1. Instrumentation and measurements or retrievals used in this study at either the field site (top) or from space-borne platforms (bottom). Uncertainties are indicated for measurements and retrievals that are used to calculate the dust direct radiative effect and forcing efficiency.

Instrument/Product	Measurement/Retrieval	Uncertainty
<i>in situ</i>		
CIMEL Sunphotometer	τ at $0.5\mu\text{m}$	5% (0.01)
	Total precipitable water P_W	10%
	Solar zenith angle θ	
	Fine-mode-fraction f	
Trimble GPS	Total precipitable water P_W	10% (1.5 mm)
CM21 Pyranometers	Surface SW upward and downward flux	1% ($2\text{--}7 \text{ Wm}^{-2}$)
CG4 Pyrgeometer	Surface LW upward flux	5% (28 Wm^{-2})
CGR4 Pyrgeometer	Surface LW downward flux	5% (16 Wm^{-2})
Davis Met Station	2 m T, P, q	
Vaisala Radiosonde	$T(z), P(z), q(z)$	
<i>space-borne</i>		
CERES SSF (L2)	TOA SW upward flux	2% (4 Wm^{-2})
	TOA LW upward flux	1% (3 Wm^{-2})
	Solar zenith angle θ	
	Clear-sky fraction	
	Broadband surface albedo α	10% (0.02)
	Total precipitable water q	10%

tion Imaging Spectroradiometer (MODIS) instruments on those platforms, while those flying on the NOAA satellites include that from Visible Infrared Imaging Radiometer Suite (VIIRS) instruments. This data product also includes footprint-averaged deep blue aerosol optical depth retrievals (Hsu et al., 2013), surface albedo (Rutan et al., 2009), and P_W from the Goddard Earth Observing System Model version 5.4.1 reanalysis (Rienecker et al., 2008).

175 In order to obtain CERES data representative of the conditions over the field site, we ~~limit~~-limited our analysis to footprints having a nadir center-point within approximately 25 km of the field site (Fig. 4). We ~~obtain~~-obtained clear-sky fraction from the CERES level 2 clear/layer/overlap condition percent coverage parameter (Wielicki et al., 1996) and further ~~limit~~-limited our analysis to satellite footprints having clear-sky fraction $\geq 95\%$. We only ~~utilize~~-utilized CERES data if the measurement was generated within 30 min of an AERONET measurement. These constraints resulted in 1,639 CERES level 2 SSF products
180 over the 2020–2022 time period that were considered for our analysis (Fig. 4).

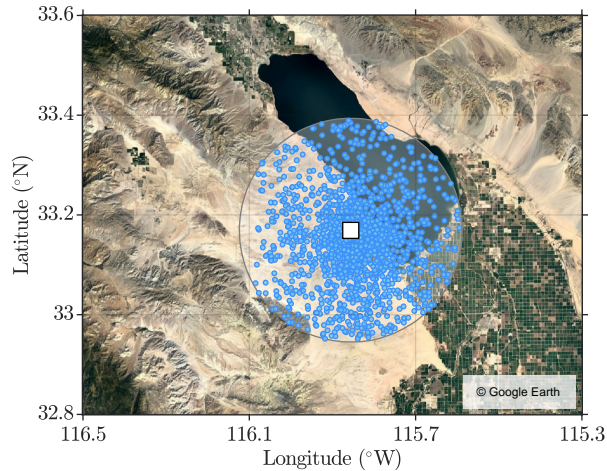


Figure 4. Nadir-looking points of the CERES SSF level 2 data considered in this study. Shown are CERES SSF footprints (blue, closed circles) with centers within approximately 25 km of the field site (white square) during daytime and both dusty and non-dusty conditions. CERES SSF footprints shown here are selected when the CERES clear-sky fraction is greater than or equal to 95% (i.e. cloud free). The map shown is from Google Earth retrieved on 26 August 2023.

2.3 Other data sets

We ~~utilize~~ ~~obtained~~ vertical profiles of temperature and geopotential height over the field site from the Japan Meteorological Agency 55-year reanalysis (JRA-55), which are available at 6-hourly time increments at a 0.5° spatial resolution (Japan Meteorological Agency, Japan, 2013). The JRA-55 reanalysis data ~~is~~ ~~was~~ included in this study because this dataset was
 185 the only reanalysis available from the National Center of Atmospheric Research (NCAR) with a 4DVar data assimilation scheme and through 2019 to 2022. We ~~use~~ ~~used~~ measurements of concentrations of particulate matter having diameter under $10 \mu\text{m}$ (PM_{10}) from tapered element oscillating microbalance (TEOM) instruments at several monitoring sites located around the periphery of the Salton Sea (filled circles in Fig. 1). These data are only available at a 1-hour temporal resolution
 190 from the California Air Resources Board. Lastly, we obtained images of dust storms from a 360° Roundshot web camera that is maintained by the Imperial Irrigation District. The camera lies at an elevation of 300 m and is 28 km west of the field site (filled triangle in Fig. 1). Roundshot images are available at approximate 10 minute intervals during daytime hours via <https://iid.roundshot.com/anza-borrego/#/> and are typically unavailable during July–September.

2.4 Identifying dust storms

Here we describe the method employed to identify dust storms passing over the field site during the daytime hours. Firstly,
 195 potential dust storms were manually and subjectively identified via visual inspection of backscatter profiles from the site ceilometer for the 2020–2022 time period. We typically selected times of potential dust when there ~~is~~ ~~was~~ a strong (> 3 a.u.) and persistent (approximately > 30 min) backscatter signal near the surface that ~~extends~~ ~~extended~~ to heights of 500 m to 3 km,

which is typical of dust storms over the region (e.g. Evan et al., 2022b, 2023). For example, ceilometer profiles for a 24-hour time period beginning at 02:00 UTC on April 22, 2022 indicate the likely presence of dust during this time period, and thus would be flagged as a potential dust storm for further analysis (Fig. 5a). From these potential storms, we ~~assume~~ assumed individual AERONET measurements are made during dusty scenes if the AERONET fine mode fraction is < 0.5 (Evan et al., 2022c) and if PM_{10} from one of the nearby TOEM stations is $\geq 50 \mu\text{g m}^{-3}$ within an hour of the observation (Hoffmann et al., 2008). We note that if fine mode fraction data ~~is missing~~ we substitute ~~was missing~~ we defined a 440–870 nm Angstrom Exponent threshold of ≤ 0.25 as a substitute, which is based on a comparison of fine mode fraction and Angstrom Exponent data for other confirmed dust cases (not shown). These additional criteria ~~limit~~ limited our analysis to clear-sky conditions and daytime data (e.g., mauve boxes in Fig. 5a).

When possible, we additionally ~~confirm~~ confirmed the presence of dust in the region via visual inspection of Roundshot camera imagery (location in Fig. 1), specifically identifying dust in the eastward-looking–towards the field site–direction (e.g., Fig. 5b). Since we have observed days when there was dust at the surface but smoke from regional biomass burning events suspended above the dust layer, we excluded dust events if there was an elevated aerosol layer apparent in the ceilometer backscatter profiles or if inspection of visible satellite imagery for these events showed smoke in the region.

This method to identify dust storms resulted in the identification of approximately 2,215 AERONET observations during which there was a dust storm over the field site during 2020–2022. This number ~~is reduced to~~ was reduced to approximately 1,964 when we also ~~limit~~ limited the data to times when SW and LW radiometer measurements ~~are~~ were available from the field site. We note that there were other dust storms over the site that were not included in this analysis because of intermittent issues with instrumentation (e.g., loss of site power, contamination of instrument optics, etc.), or because dust storms in the region are oftentimes accompanied by cloud cover (e.g. Evan et al., 2023), as such, this estimate does not represent a complete accounting of all dust storms in the area. Of the 1,639 satellite observations that were collocated to the field site, only 43 were made within 30 minutes of an identified clear-sky dust event, and thus ~~are~~ were used in our analysis.

Lastly, most dust events over the field site are associated with strong (e.g., $> 10 \text{ m s}^{-1}$ 10 m wind speeds) westerly winds (Evan, 2019; Evan et al., 2023). For example, for the April 22, 2022 case the 10 m wind speeds and gust measured at the site were westerly and typically 10 and 20 m s^{-1} , respectively (not shown). Furthermore, these ~~dusty air masses~~ strong westerly winds typically originate at altitudes above the mountain ridges that lie to the west of the field site, which have heights of 2–3 km, before they descend along the lee-side mountain slopes, passing over generally uninhabited landscapes. As such, and given the fine mode fraction threshold test required to classify an observation as being acquired during a dust storm, we assume that during dust storms the aerosols over the site are dominated by mineral species, and that other aerosols constitute a negligible fraction of the total burden. ~~While we have no observations to independently verify this assumption, the agreement between the modeled and observed fluxes during these dust events is indirect evidence of its general validity (Sect. 3.1.3).~~

Based on our dust identification scheme, the average τ at the field site and during dust storms is 0.18, with a standard deviation of 0.11 and a maximum retrieved value of 2.0.

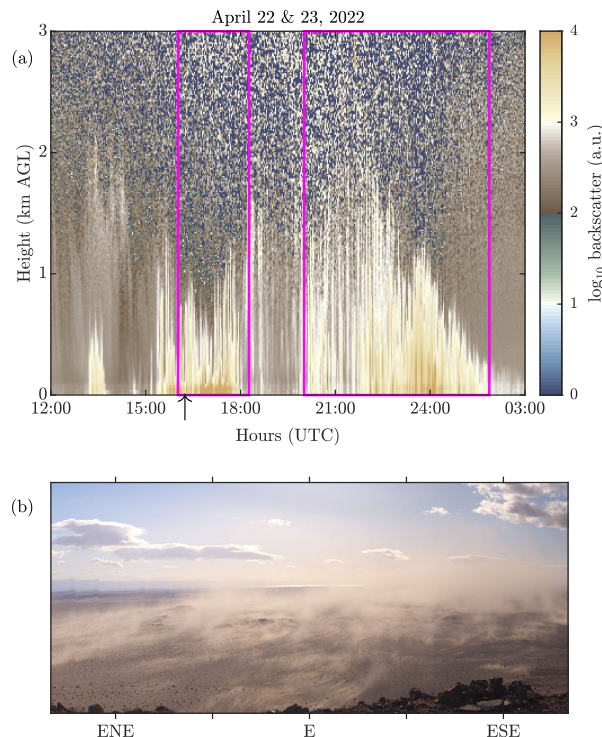


Figure 5. (a) Example of a backscatter profile generated from the site ceilometer during a dust storm on 22 and 23 April 2022. Times enclosed by the magenta lines were identified as being dusty after analysis of additional data sources. (b) Eastward looking Roundshot image captured at 16:00 UTC on this date (black arrow on horizontal axis in (a)). The Roundshot image in (b) can be obtained via <https://iid.roundshot.com/anza-borrego/#/> (accessed 22 September 2022).

2.5 Surface soil mineralogy

In order to calculate the complex refractive index of dust over the field site we ~~estimate~~estimated the average soil mineralogy over the dust emitting regions that are typically upwind (i.e., to the west) of the field site (purple polygon in Fig. 1), which are identified from analysis of satellite imagery of dust outbreaks and eye-witness accounts. Surface soil mineralogy is from The
 235 Airborne Visible/Infrared Imaging Spectrometer - Classic (AVIRIS-C), which is a passive imaging spectrometer that operates in the 0.41–2.45 μm wavelength range and is designed to operate aboard NASA’s Earth Resources 2 aircraft (Chrien et al., 1990). The AVIRIS-C measurements used here were collected over the region in 2018, and from these data the approximate mineral abundance for the following nine minerals are retrieved: calcite, chlorite, dolomite, goethite, gypsum, hematite, illite, kaolinite, and montmorillonite (Thompson et al., 2020). Also retrieved from AVIRIS-C are estimates of the fractional cover of
 240 major land surface types, of which fractional bare soil cover ~~is~~was used here.

3 Models

3.1 Radiative transfer model

In this study we utilize the SW Rapid Radiative Transfer Model (RRTM) version 2.5 (Atmospheric and Environmental Research, 2004) and LW RRTM version 3.3 (Atmospheric and Environmental Research, 2010) from the Atmospheric and Environmental Research (AER) Inc (Mlawer et al., 1997; Mlawer and Clough, 1997, 1998). This version of RRTM is a band transmission model that evaluates radiative transfer at 14 spectral bands ranging from 0.2–12.2 μm and 16 spectral bands from 3.1–1000 μm (Iacono et al., 2008; Clough et al., 2005). The model uses the correlated- k method to treat gaseous absorption. In the SW code, the correlated- k method is applied to the solar source function, which derives the incoming solar flux at the TOA (Mlawer and Clough, 1998). We use 8 streams in the Discrete Ordinate Radiative Transfer (DISORT) to solve radiative transfer for multiple scattering in both the SW and LW spectrum (Iacono et al., 2008). Each SW band uses a present-day solar source function and a spectrally constant broadband surface SW albedo α . Correspondingly each LW band uses a constant broadband LW α of 0.01. We assume a CO_2 mixing ratio of 417 ppm, which is the approximate average atmospheric CO_2 concentration measured at Mauna Loa in mid to late 2021. Other gases that are included in the model are water vapor, nitrogen, ozone, nitrous oxide, methane, oxygen, carbon monoxide, and the halocarbons CCL_4 , CFC112, CFC12, and CFC222. The model assumes Lambertian reflection at the surface. RRTM SW has been extensively validated against the Line-by-line Radiative Transfer Model (LBLRTM), an accurate line-by-line model that is continuously validated against observations; the coefficients used in the correlated- k method are developed via LBLRTM. In the SW, RRTM is in agreement within 1.5 W m^{-2} to LBLRTM (Clough et al., 2005).

For the RRTM simulations, we estimate the dust complex refractive index (CRI) using the surface soil mineralogy described in Sect. 2.5 and the methods described in Walkowiak (2022). Briefly, we first average the mineral abundances over the polygon shown in Fig. 1, weighing each 20 m horizontal resolution AVIRIS-C grid cell by its corresponding bare soil fraction. The retrieved AVIRIS-C soil mineralogy (and uncertainty range) is 7(0-21)% calcite, 3(0-9)% kaolinite, 2(0-5)% goethite, 2(0-8)% montmorillonite, ~~and 0.5% hematite and (0-2)% hematite, and 0.5(0-3)% illite~~, with the abundances of chlorite, dolomite, and gypsum being ~~≤ 0.1~~ $\leq 0.01\%$ (Fig. 6). We assume that the remaining fractional soil abundance is composed of silicate minerals (quartz and feldspar) whose fractional abundance is not retrieved by AVIRIS-C given their relatively flat spectral variation in the visible, with the concentration of the silicates being 85(52-100)%.

~~In order~~ We apply the methods described in Scanza et al. (2015) to generate a ~~CRI from the AVIRIS-C dust~~ CRI from a surface soil mineralogy ~~we first~~. Firstly, we partition the surface mineralogy into clay and silt sizes. ~~To do so we assume,~~ assuming that the fractional surface soil abundance of a mineral m , ~~given by AVIRIS-C,~~ is

$$m = f_c m_c + f_s m_s \quad (1)$$

where m_c and m_s are the soil mineral abundances in the clay and silt sizes, respectively, and f_c and f_s are the fractional abundances of clay and silt in the soil, respectively, which are calculated from the soil probability size distribution in Kok (2011). We ~~also~~ define the ratio of mineral abundance r_m in the clay and silt size ranges as $r_m = m_c/m_s$, which allows us to

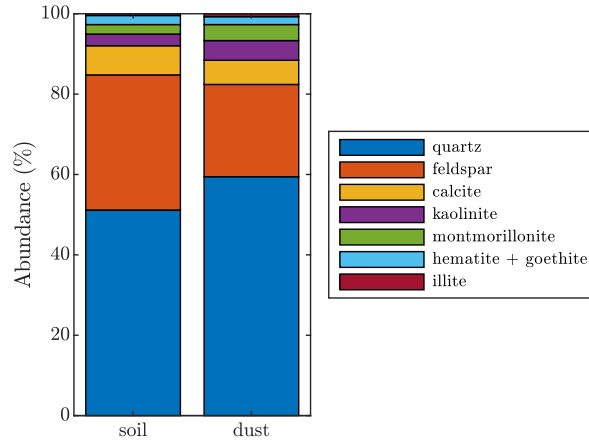


Figure 6. Mineral abundances of the surface soil and dust, based on AVIRIS-C retrieved mineral abundance retrievals averaged over the polygon in Fig. 1.

express m_s and m_c , via Eq. 1, as

$$275 \quad m_s = \frac{m}{f_c r_m + f_s} \frac{m}{f_c r_m + f_s} \quad (2)$$

and

$$m_c = \frac{m - m_s f_s}{f_c} \quad (3)$$

We obtain r_m for each AVIRIS-C mineral ~~from via~~ the clay and silt fractional abundances for the Calcaric Fluvisols soil type in Claquin et al. (1999) and then estimate the fractional contribution of each to the soil clay and silt sizes via Eqs. 2,3. ~~We~~
 280 ~~assume~~ Assuming that the unclassified abundances in the clay and silt sizes are comprised of quartz and feldspar, ~~two abundant~~
~~minerals that are not retrieved by AVIRIS-C due to their relatively uniform optical properties across the solar spectrum. We~~
~~proportionally assign the quartz and feldspar~~ we proportionally assign their fractions within each soil size class via their relative
 abundances for the same soil type (Claquin et al., 1999). For this case, the total soil abundances of quartz and feldspar are 51%
 and 34%, respectively (Fig. 6). We ~~obtained~~ obtain similar results when repeating this process but using the Luvic Yermosols
 285 soil type abundances from Claquin et al. (1999), and using the reported abundances for these two soil types via Journet et al.
 (2014, not shown).

~~Having partitioned the AVIRIS-C soil mineralogy into the silt and clay sizes, we follow the methods described in Seanza et al. (2015)~~
~~in order to generate a corresponding dust mineralogy~~ We then utilize the dust size distribution in Meng et al. (2022) to estimate
~~a corresponding dust mineralogy, which slightly differs to that for the surface soil since minerals in the clay sizes are more~~
 290 ~~abundant in the aerosol than in the surface (although we obtained similar results when using that from Kok (2011)).~~

We utilize a modified version of methods in Song et al. (2023) to estimate a resulting CRI from this dust mineralogy. To
do so, we generate volume averaged dielectric constants for the clay minerals (illite, kaolinite, montmorillonite) and silicates

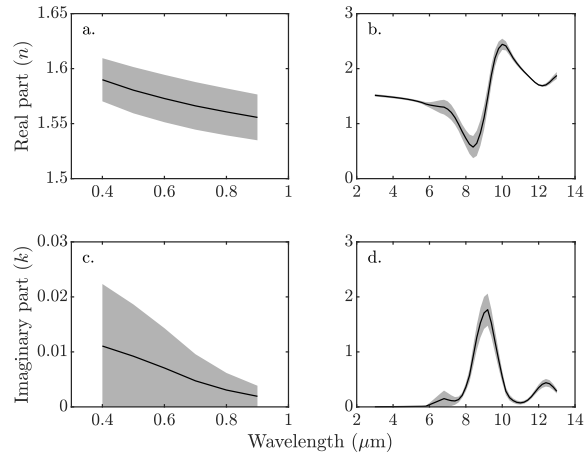


Figure 7. Real part (n) of the complex refractive index calculated from the AVIRIS-C surface soil mineralogy in the (a) solar and (b) infrared, and the imaginary (k) part of the index in the (c) solar and (d) infrared.

(quartz, feldspar), since these clays and the silicates exhibit similar complex indices of refraction. For the iron oxides, we assume that goethite has the same index of refraction as hematite since there is not a goethite index of refraction that spans the short and longwave part of the spectrum (Scanza et al., 2015). Since the fractional abundance of dolomite is approximately zero, the carbonate refractive index is just that of calcite. Gypsum is not considered since the soil abundance of this mineral is also negligible. The complex indices of refraction for the clays, silicates, iron oxide and carbonate mineral are in Fig. C1. We calculate an effective dielectric constant for the aerosol by averaging those for the clays, silicates, carbonate and iron oxide minerals via the Maxwell-Garnett mixing rule, assuming the mineral group with the greatest aerosol abundance (the silicates) is the parent material and then adding the remaining mineral groups as inclusions in order of decreasing volume fraction. The complex index of refraction is then obtained from the resulting effective dielectric value (black lines, Fig. 67). We also follow the methods of Scanza et al. (2015) to estimate a resulting CRI from the dust mineralogy. Here, in the note that we obtain a qualitatively similar CRI when using the Bruggeman mixing method, consistent with Song et al. (2023).

To account for uncertainty in the soil mineralogy retrievals we repeated the above calculation of the complex index of refraction using a Monte Carlo method to sample from the distribution of soil mineralogy values, which was determined using the reported AVIRIS-C uncertainties for each mineral retrieval. The $1-\sigma$ uncertainties in the complex refractive index are represented by the gray shaded regions in Fig. 7.

In the solar part of the spectrum we obtain the characteristically flat a slightly decreasing real part of the refractive index n (Fig. 7a) and an increasing imaginary part of the refractive index, and a pronounced decrease in the imaginary part k for decreasing wavelength to $0.4 \mu\text{m}$ (Fig. 7b), which c) with increasing wavelength. The absorption in the visible is due to the abundance of the iron oxides hematite and goethite oxide (Fig. 6) that absorb solar radiation C1), which has a large imaginary index of refraction at these wavelengths (e.g. Doner et al., 2019). In the longwave Consequently, the uncertainty in the refractive

index in the solar part of the spectrum ~~the peak in~~ is mainly due to that of the iron oxide content; assuming no uncertainty in the goethite and hematite concentrations resulted in refractive indices with almost no uncertainty in k and an order magnitude reduction in uncertainty in n (not shown). Since the reported AVIRIS uncertainty in the iron oxides included a fractional abundance of zero, the resulting uncertainty in k is approximately 100%. The spectral variations in n and k in the shortwave are similar to results obtained by Di Biagio et al. (2019).

In the longwave part of the spectrum the minimum in the 8–10 μm range is due to strong absorption features in quartz, feldspar, kaolinite, and montmorillonite, and these same minerals also contribute to the trough and peak in n at approximately 8.5 μm and the peak at 10 μm , respectively.

(a) Real and (b) imaginary parts of the dust CRI calculated from the AVIRIS-C surface soil mineralogy, over the 0.3–15 μm spectral range.

(Fig. 7b), and the peak in k near 9 μm (Fig. 7d), reflect similar spectral features in the silicates and clay minerals (Fig. C1). Consequently, the longwave uncertainty in the index of refraction is mainly due to uncertainty in the fractional abundance of quartz and feldspar, which was confirmed by setting those uncertainties to zero in the calculation of the refractive indices (not shown). We note that we obtained a qualitatively similar CRI when using a dust size distribution that includes more coarse dust particles (Meng et al., 2022), the longwave refractive indices in Fig. 7b,d are qualitatively similar in spectral structure to those estimated for North American dust by Di Biagio et al. (2017), although here the magnitudes of n and k are larger by factors of 1.5 and when substituting the Maxwell-Garnett mixing method with the Bruggeman or volume mixing methods (Chylek et al., 1988; Bohren and Huffman, 2008), approximately. These relatively large values of n and k in the longwave are due to the relatively high abundance of quartz and feldspar estimated from the AVIRIS retrievals (Fig. 6).

3.1.1 Dust single scatter properties

We obtain dust single scatter properties from the Texas A&M University dust 2020 (TAMUdust2020) version 1.1.0 database of optical properties of irregular aerosol particles (Saito et al., 2021). This database generates single scatter properties of randomly-oriented and irregular-shaped dust particles given a CRI and degree of asphericity by considering ensembles of at least 20 irregular hexahedral particles. We use the previously described dust CRI (Fig. 7) and use the default model dust asphericity, which is consistent with the global mean dust particle aspect ratio reported in Huang et al. (2020).

We estimate the spectrally-resolved extinction coefficient $\beta_e(\lambda)$, single scatter albedo $\omega(\lambda)$, and asymmetry parameter $g(\lambda)$ from the model output and an estimate of assume that the dust particle size distribution changes with height via a power law dependency having a particle size-dependent exponent of $-w_t/\kappa\alpha u_*$ (Shao, 2008), where κ is the Von Karman constant, α is a diffusivity scaling parameter, u_* is the friction velocity, which we assume is 0.4 based on measurements made with a 3-D sonic anemometer at the field site during dust storms (not shown), and w_t is the size-dependent particle terminal velocity, which is proportional to the square of the particle diameter. We then scale the emitted dust size distribution (Meng et al., 2022), using typical in Meng et al. (2022) with height accordingly, and then calculate a dust-layer average using the mean vertical profile of dust from the site ceilometer, which extends to 1.7 km AGL. We then use this layer-mean dust size distribution to

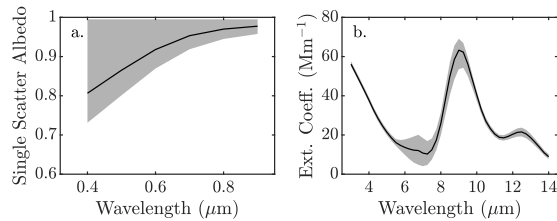


Figure 8. Dust single scatter properties ~~used in RRTM and~~ based on the ~~CRI~~ complex index of refraction derived from AVIRIS-C (Fig. 7). Plotted are the (a) single scatter albedo ~~in the shortwave part of the spectrum, and~~ (b) ~~asymmetry parameter, and (c) the~~ volume extinction ~~over coefficient~~ in the ~~0.3–15 μm spectral range~~ longwave.

~~calculate the spectrally resolved single scatter properties from the TAMUdust2020 model output via standard methods (e.g. Seinfeld and Pandis, 2016). The-~~

350 ~~It is not practical to conduct simulations with the TAMUdust2020 model for each of the dust complex refractive indices generated from the Monte Carlo simulations. However, since the main source of uncertainty in Fig. 7 is from the concentration of iron oxides (i.e., k in Fig. 7c), we conducted two additional simulations with TAMUdust2020 using the imaginary indices of refraction corresponding to the $\pm 1\sigma$ uncertainty in k in the solar part of the spectrum (i.e., the upper and lowermost shaded regions in Figs. 7c,d). We repeated this exercise by also varying n according to the uncertainty shown in Figs. 7a,b, obtaining similar results, which underscores that the uncertainty in the iron oxide content of dust dominates the uncertainty in the resulting single scatter properties exhibit typical characteristics.~~

355 ~~The single scatter properties generated from the TAMUdust2020 output exhibit characteristics typical of dust (e.g. Highwood and Ryder, 2014), including increasing ω . In the shortwave we obtain an increasing single scatter albedo with increasing wavelength, but that the uncertainty is large, with the single scatter albedo having a possible value of 1, corresponding to no solar absorption (Fig. 8a) and scattering in the forward direction. Spectral peaks in the longwave extinction coefficient (Fig. 8b), both in the visible, and decreasing β_e with increasing wavelength, except for a peak in the 8–10 that correspond to those in the absorption spectra (Fig. 7d), with uncertainty in the 6–10 μm spectral range (Fig. 8e) range also similar to that of complex refractive index. These characteristics of the single scatter albedo and extinction coefficient are similar to those presented in~~
 360 ~~studies of dust single scatter properties (Di Biagio et al., 2017; Di Biagio et al., 2019).~~

3.1.2 Radiative transfer model simulations

We ~~conducted~~ ~~conduct~~ RRTM simulations corresponding to the AERONET observations made during the identified dust
 365 storms. For the model simulations we define 107 radiative ~~transfer model~~ levels and specify ~~the~~ vertical profiles of pressure, temperature, and water vapor from reanalysis (Sect. 2.3). We ~~calibrated~~ ~~calibrate~~ the reanalysis water vapor profiles so that the resulting total precipitable water P_w equaled that retrieved from AERONET. For each simulation we ~~specify~~ ~~use~~ the broadband SW albedo given by the site pyranometers, which ranged from 0.23–0.38. ~~We used (not shown). We use~~ a constant broadband

370 LW surface albedo of 0.01, which is an average LW surface emissivity retrieved from the CERES observations used in the study (Fig. 4). We ~~estimated~~estimate the surface temperature for each simulation using the measured upwelling LW flux at the site and the average CERES surface emissivity. We specify the vertical distribution of dust extinction at 500 nm via the calibrated retrievals from the ceilometer. ~~Spectral variability in extinction is estimated from the extinction coefficient output from TAMUdust2020 (Fig. 8c).~~ ~~We conducted~~We conduct a separate set of simulations with aerosol optical depth set to zero in order to quantify the model dust radiative forcing.

375 ~~The contribution of fine dust particles to the size distribution increases with increasing height, so that dust single scatter properties are also a function of height. We re-ran a subset of the RRTM simulations with height specific single scatter properties calculated using a theoretical and size dependent expression for the vertical dust concentration under steady state conditions (Shao, 2008). We obtained similar fluxes when assuming single scatter properties varied with height as for the simulations when we assumed those properties were independent of height (not shown). We interpret this result as reflecting the relatively low vertical extent of most dust advected over the field site, which is typically below 2 km above ground level (AGL). As such, for simplicity we assume that dust single scatter properties are invariant with height in the RRTM simulations.~~We conduct two additional sets of simulations with RRTM using the upper and lower bounds of the dust single scatter albedo (Fig. 8a) to estimate the uncertainty in the calculated fluxes associated with uncertainty in the dust iron oxide content.

385 ~~Lastly, we also conducted a~~We conduct a third set of RRTM simulations corresponding to clear-sky and daytime scenes during which we obtained vertical profiles of pressure, temperature, and moisture from 15 radiosondes launched at the site during the 2020–2022 time period, and on days when dust storms occurred (radiosonde launch times are in Table SA1). These simulations were carried out in a manner identical to those described above except that the model was forced with the sounding profiles rather than reanalysis output.

3.1.3 Radiative transfer model ~~uncertainty~~comparison to observations

390 We assess the uncertainty in simulated SW and LW fluxes via comparison to observations. We characterize the model uncertainty as the bias-corrected root mean square error (RMSE) between modeled and measured net fluxes, since biases in the modeled fluxes do not affect our calculations of the direct radiative effect or forcing efficiency. We begin by evaluating the modeled surface fluxes for the simulations using the radiosonde measurements, which include 13 cases for the SW flux comparisons and 15 cases for the LW flux comparison (for two radiosondes the pyranometers were not operational). There was a
395 -10 and -8 W m^{-2} bias (2% and 5% relative bias) in the modeled net surface SW and LW fluxes, respectively. A comparison of the bias-corrected net SW (Fig. 9a) and LW (Fig. 9b) surface fluxes indicates that the model reasonably reproduces the observed fluxes; the bias-corrected SW and LW RMSE is 6 W m^{-2} (1% relative error) and 4 W m^{-2} (2% relative error), respectively. We note that the differences between the modeled and measured fluxes were not correlated to aerosol optical depth τ , although the small sample size precludes definitive assessment of the impact of dust on model uncertainty. Here we do not
400 compare modeled and satellite-observed TOA fluxes since only two clear-sky satellite measurements were available during the radiosonde launches.

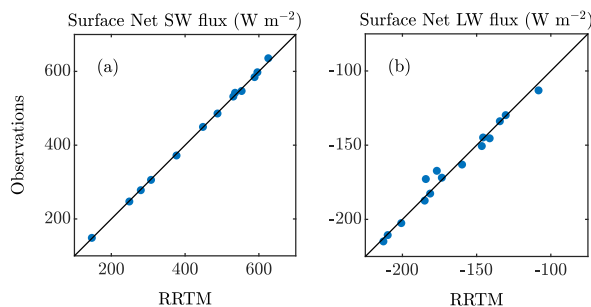


Figure 9. Comparison of measured (vertical axes) and bias-corrected modeled (horizontal axes) surface net radiative flux in the (a) SW and (b) LW during times when radiosondes were launched from the field site. The one-to-one line is also shown (black).

We also estimate the uncertainty in modeled net surface fluxes during dust storms and for times when we do not have measurements from radiosondes, which includes 1,964 and 43 observations at the surface and TOA, respectively. For these cases and in the SW and LW we note good agreement between the modeled and measured fluxes, as evidenced by correlation coefficients of 0.99 and 0.85 for the surface SW and LW flux comparisons (Figs. 10a,b) and 0.97 and 0.93 for the TOA SW and LW flux comparisons (Figs. 10c,d). We note biases in the modeled surface SW and LW fluxes of 4 and 7 W m⁻², and -56 and -21 W m⁻² for the modeled SW and LW fluxes at TOA. The bias-corrected RMSE for the net SW and LW surface fluxes are 17 and 18 W m⁻², and for the net SW and LW TOA fluxes are 26 and 13 W m⁻², both respectively.

It is likely that the model flux RMSE for the cases when radiosondes are available are less than that for time periods when radiosondes were not available because of the better representation of the vertical structure of the atmosphere and because we corrected any obvious errors in the ceilometer extinction profiles for the times radiosondes were launched. Furthermore, it is also likely that the RMSE and biases for the TOA fluxes are larger than those at the surface because the satellite footprints cover a wide area that can span different surface types and atmospheric conditions (Fig. 4). We note that the errors in the modeled fluxes were poorly correlated to the accompanying τ , where r^2 values remained below 0.02 for all the flux comparisons. The relative RMSE values reported in Fig. 10 are used to estimate error in the RRTM output fluxes in subsequent estimation of the dust direct radiative effect and forcing efficiency.

3.2 Linear model and uncertainty

We develop a linear model of net SW flux at the surface S_0 and TOA S_∞ in order to generate observational estimates of the SW dust forcing efficiency and direct radiative effect. ~~To do so~~ The advantage to using such a method to estimate the SW dust forcing efficiency and direct radiative effect is that assumptions about the microphysical and single scatter properties of dust are not required, which are necessary in order to estimate the direct effect via a radiative transfer model (Kuwano and Evan, 2022)

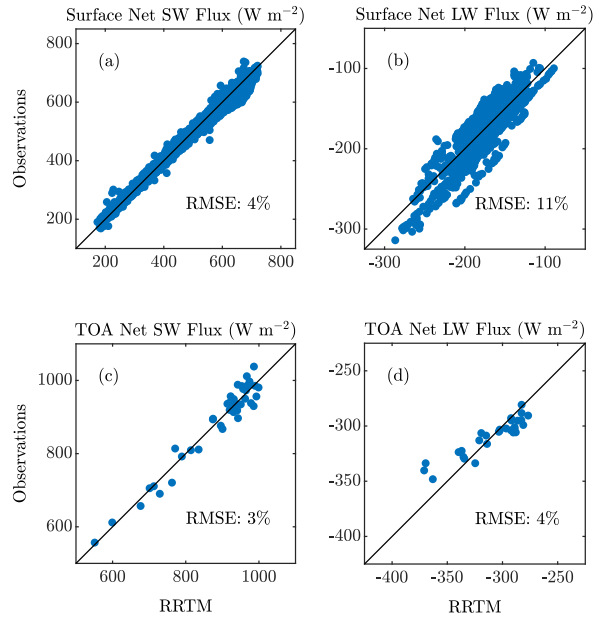


Figure 10. Comparison of measured (vertical axes) and bias-corrected modeled (horizontal axes) surface (top row) and TOA (bottom row) net radiative fluxes in the (a,c) SW and (b,d) LW. The one-to-one black line and the relative modeled flux RMSE is also shown in each plot. We note that the axes for each panel are distinct.

In order to generate observation based estimates the SW dust forcing efficiency and direct radiative effect we assume that these fluxes can be approximated as linear functions of τ , P_w , cosine of the solar zenith angle μ , and surface SW albedo α

$$425 \quad S_0 = \frac{\partial S_0}{\partial \tau} \tau + \frac{\partial S_0}{\partial P_w} P_w + \frac{\partial S_0}{\partial \mu} \mu + \frac{\partial S_0}{\partial \alpha} \alpha + S_0^* \quad (4)$$

and

$$S_\infty = \frac{\partial S_\infty}{\partial \tau} \tau + \frac{\partial S_\infty}{\partial P_w} P_w + \frac{\partial S_\infty}{\partial \mu} \mu + \frac{\partial S_\infty}{\partial \alpha} \alpha + S_\infty^* \quad (5)$$

where the S^* terms are constants representing net fluxes for a pristine and dry atmosphere over a completely absorbing surface with the sun at the horizon, and the $\partial S/\partial$ terms are the sensitivities of the net solar fluxes to the independent variables. These sensitivities and constants can be estimated via multivariate linear regression given measurements of S_0 or S_∞ , P_w , μ , and α .

In order to justify these linear models of solar fluxes and quantify the uncertainty in each, we ~~estimated~~estimate the sensitivity terms and S_* in each using simultaneous measurements of S , τ , α , and P_w from the field site (Eq. 4) and satellites (Eq. 5). These fluxes are the same data as was used to evaluate the RRTM output (Fig. 10a,c), which include approximately 1,964 observations at the surface and 43 observations at TOA. We then ~~calculated~~calculate surface and TOA net solar fluxes via these linear models. A comparison of the measured and modeled fluxes suggests that the linear model is able to reproduce much of the variability in the measured fluxes (Fig. 11). The percent variances of the observations that are explained by the

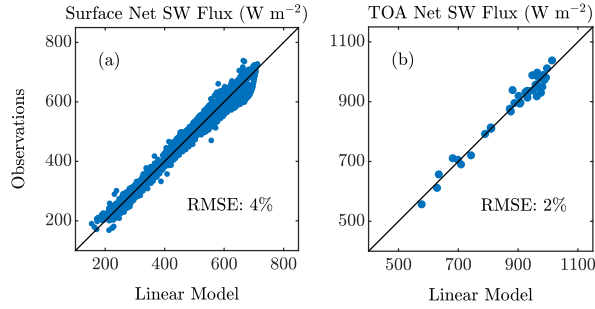


Figure 11. Comparison of observed (vertical axes) and linear modeled (horizontal axes) net SW fluxes at the (a) surface and (b) TOA. Modeled fluxes are estimated via multivariate linear regression (Eqs. 4,5). The one-to-one line is shown in each plot (black) as is the relative RMSE.

linear models (i.e., r^2 -value) and their RMSE are 98% and 20 W m^{-2} (4% relative error) at the surface, and 97% and 20 W m^{-2} (2% relative error) at TOA, both respectively.

4 Results

440 In this section we present and discuss the dust direct radiative effect and forcing efficiencies obtained from the linear (in the SW) and radiative transfer (in the SW and LW) models.

4.1 Observational estimates of the SW instantaneous direct radiative effect and forcing efficiency

We start by estimating the SW dust direct radiative effect and forcing efficiency using only observational data.

4.1.1 Observational methodology

445 This method to estimate the instantaneous dust direct radiative effect and forcing efficiency is a modified version of that described in Kuwano and Evan (2022). Firstly, the clear-sky direct radiative effect of dust ζ is defined as the difference between the net clear F and pristine-sky F_p fluxes,

$$\zeta = F - F_p \quad (6)$$

In the SW part of the spectrum F can be approximated at the surface or TOA via Eqs. 4,5, and pristine sky fluxes are obtained
450 by setting $\tau = 0$ in each. The resultant SW dust direct radiative effect at the surface ζ_0^S and at TOA ζ_∞^S are then

$$\zeta_0^S = \frac{\partial S_0}{\partial \tau} \tau \quad (7)$$

and

$$\zeta_\infty^S = \frac{\partial S_\infty}{\partial \tau} \tau \quad (8)$$

Observational Method (Instantaneous)		
	SW DRE (Wm^{-2})	SW FE ($\text{Wm}^{-2}\tau^{-1}$)
TOA	-9 ± 6	-50 ± 32
Atmosphere	5 ± 6	30 ± 32
Surface	-14 ± 1	-80 ± 3

Figure 12. Surface and satellite based observational estimates of the clear-sky instantaneous SW direct radiative effect (DRE) and forcing efficiency (FE) at the surface, atmosphere, and TOA. The reported uncertainties represent the estimate's 95% confidence intervals.

The dust forcing efficiency η is defined as the direct radiative effect per unit optical depth,

$$\eta = \frac{\zeta}{\tau} \quad (9)$$

and in the SW at the surface or TOA are the sensitivity terms in Eqs. 7 and 8, respectively. The atmospheric **components component** of the direct radiative effect and forcing efficiency are interpreted as the differences between **their-respective-the** TOA and surface values, where uncertainty is obtained by adding the surface and TOA uncertainties in quadrature. **This approach implicitly assumes a horizontally homogeneous atmosphere and surface, which is a limitation of the approach.**

460 We utilize a Monte Carlo approach to quantify the uncertainty in **the** observational estimates of the SW direct radiative effect and forcing efficiency. Specifically, we repeatedly estimate the terms in Eqs. 4 and 5 adding random error to each of the terms derived from gaussian probability distribution functions having a mean of zero and standard deviations equal to the uncertainties indicated in Table 1. The uncertainties reported here represent the 95% confidence interval about the means.

4.1.2 Observational results

465 The instantaneous SW dust direct radiative effect and forcing efficiency generated from surface and satellite measurements are shown in Fig. 12. At the surface the SW direct radiative effect is -15 ± 1 -14 ± 1 W m^{-2} , which corresponds to a forcing efficiency of -84 ± 3 -80 ± 3 $\text{W m}^{-2} \tau^{-1}$, and which suggests surface cooling due to scattering and absorption of dust in the atmosphere. At the TOA the SW direct radiative effect is -9 ± 6 W m^{-2} and the accompanying forcing efficiency is -50 ± 32 $\text{W m}^{-2} \tau^{-1}$, which represents cooling by scattering of sunlight back out to space by dust. The relatively larger uncertainty in
 470 the TOA forcing values as compared to the surface is related to the number of observations available to calculate each; nearly 2,000 at the surface and just over 40 at TOA. The atmospheric direct radiative effect and forcing efficiency are 6 ± 6 5 ± 6 W m^{-2} and 34 ± 32 30 ± 32 $\text{W m}^{-2} \tau^{-1}$, representing heating by dust **mainly** due to absorption **from-by** iron oxides in the aerosols (Fig. 6).

4.2 Model estimates of the SW and LW instantaneous direct radiative effect and forcing efficiency

475 We next estimate ~~the both the SW and LW~~ dust direct radiative effect and forcing efficiency using output from the RRTM simulations (See Sect. 3.1).

4.2.1 Model methodology

The SW and LW dust direct radiative effect is obtained from the differences of the modeled surface or TOA clear and pristine sky fluxes (e.g., Eq. 6). Forcing efficiencies (Eq. 9) are then estimated by regressing τ onto these direct radiative effect values.

480 We ~~estimate uncertainties again using the Monte Carlo technique. To do so we repeat repeat this procedure with output from the RRTM simulations representing the most and least absorbing cases to estimate the uncertainty in the calculations of the direct radiative effect and forcing efficiency adding random error to the model fluxes from a gaussian probability distribution function having mean zero and standard deviation consistent with the errors reported in Fig. 10, and adding random error to τ based on the instrumental uncertainty (Table 1). We report the 95% confidence intervals for each estimate. The atmospheric components model estimates~~ of the direct radiative effect and forcing efficiency, and their associate uncertainties, are obtained in a manner identical to that for the observational estimates. ~~effect. We combined these uncertainties, in quadrature, with the root mean squared errors derived from the comparison to the observational data (Fig. 10).~~

4.2.2 Model results

The instantaneous dust direct radiative effect ~~and forcing efficiency values~~ generated from the radiative transfer model output are shown in Fig. 13. ~~The In general, the modeled SW direct radiative effect values are all within the 95% confidence intervals of their respective observational values suggests much stronger absorption by dust than is implied by the observational results (Fig. 12, -16 ± 1 , 13 ± 1 , and -3 ± 1), with a modeled atmospheric direct effect of 20 W m^{-2} , which is a factor of 4 larger than the 5 W m^{-2} at the surface, atmosphere, and TOA, respectively). The model SW forcing efficiencies at the surface and in the atmosphere are -93 ± 4 and 76 ± 8 derived from the observational estimate. Consequently, the modeled SW TOA direct effect is much smaller in magnitude ($-1 \text{ W m}^{-2} \tau^{-1}$, respectively, and also are in agreement with the observational values. The TOA forcing efficiency is -17 ± 6 than that from observations ($-9 \text{ W m}^{-2} \tau^{-1}$, agreeing to within $5 \text{ W m}^{-2} \tau^{-1}$). The modeled and observed surface direct effects show relatively less disagreement, since the surface forcing is, to first-order, most dependent on extinction, which does not vary as strongly as does the single scatter albedo. These results imply that the soil iron oxide content retrieved from AVIRIS-C may be too large, which is consistent with recent findings that the retrieval algorithm generate too high an iron oxide content at the global scale (P. Brodrick, personal communication). Indeed, the modeled SW direct effect agrees to within 1 W m^{-2} of the observational value. This level of agreement in the model and observation based estimates of the instantaneous SW dust direct radiative effect and forcing efficiency gives confidence in both the derived values and the accuracy of estimates for the least absorbing case (i.e., the upper limit of the radiative transfer model single scatter albedo in Fig. 8a), which corresponds to -14 , -8 , and $+6 \text{ W m}^{-2}$ at the surface, TOA, and in the atmosphere, respectively.~~

	Instantaneous					
	RTM DRE (W m^{-2})			RTM FE ($\text{W m}^{-2} \tau^{-1}$)		
TOA	SW	LW	Net	SW	LW	Net
	-1 ± 7	1 ± 1	0 ± 7	-3 ± 38	3 ± 3	1 ± 38
Atmosphere	20 ± 10	-1 ± 1	19 ± 10	115 ± 56	-4 ± 6	110 ± 56
Surface	-21 ± 7	1 ± 1	-19 ± 7	-117 ± 41	8 ± 4	-110 ± 41

Figure 13. Shown are estimates of the clear-sky instantaneous SW, LW, and net dust direct radiative effect (DRE, left) and forcing efficiency (FE, right) generated from the radiative transfer model (RTM) simulations. The reported uncertainties represent the estimate's 95% confidence intervals.

505 These findings are consistent with other studies that highlight the role of iron oxides in determining the SW dust direct effect (e.g., Li et al., 2021).

In the longwave part of the spectrum, ~~at the surface the the~~ dust direct radiative effect is $3 \pm 1 \text{ W m}^{-2}$, which corresponds to a forcing efficiency of $12 \pm 5 \text{ W m}^{-2} \tau^{-1}$, and which suggests surface warming due to dust absorptivity. At TOA the LW direct radiative effect is small in magnitude, mainly owing to the relatively shallow dust layers that are typical of dust storms passing over the field site (Evan et al., 2023); the average depth of dust storms passing over the field site obtained from the ceilometer is 1.7 km (not shown). We obtain a modest surface and TOA direct effect of $1 \pm 1 \text{ W m}^{-2}$ and the accompanying forcing efficiency is $4 \pm 3 \text{ W m}^{-2} \tau^{-1}$, which represents a near balance of warming via absorption and cooling via scattering. The atmospheric component of the direct radiative effect and forcing efficiency are thus -2 ± 1 , with a resulting atmospheric direct effect of $-1 \pm 1 \text{ W m}^{-2}$ and $-8 \pm 6 \text{ W m}^{-2} \tau^{-1}$, which in this case is likely due to the abundance of quartz, feldspar, montmorillonite, and kaolinite (Fig. 6), which have absorption peaks in the atmospheric window region (not shown). Although the LW forcing efficiencies are approximately equivalent to the direct effect values divided by the mean dust optical depth of 0.18. The relatively smaller uncertainty in the radiative transfer model LW output has been assessed via comparison with observed fluxes (Fig. LW direct effect, when compared to that in the SW, is due to the small uncertainty in the LW extinction coefficient (Fig. 10), we have less confidence in our estimates of the LW direct radiative effect and forcing efficiency than that

510

515

520 for the SW since 1) no credible method exists to independently estimate the LW forcing efficiency from observational data alone, and 2) the relative fractions of quartz and feldspar, which play an important role in determining the LW direct effect, are not constrained by AVIRIS-C.8).

We estimate the instantaneous net dust direct radiative effect and forcing efficiency by summing the SW and LW components (Fig. 13). Since the SW values are all greater in magnitude than those in the LW, the net values all have the same sign as that for the SW, implying that during these daytime conditions the SW effect dominates over that for the LW. At the surface, in the atmosphere, and At TOA, the modeled LW and SW direct effects cancel, although the uncertainty is $\pm 7 \text{ W m}^{-2}$. Thus, the model output is not informative with regards to the climate forcing of dust. The sign of the modeled net direct effect at the TOA

525

530 ~~the net surface and within the atmosphere is constrained by the model, giving values of -19 ± 7 and $19 \pm 10 \text{ W m}^{-2}$. These results are consistent with findings from other studies that the net effect of dust is to warm the atmosphere and cool the surface, potentially increasing atmospheric stability (e.g. Miller et al., 2004). We can alternatively estimate the net dust direct radiative effect is by summing the observed SW and modeled LW values. By doing so we obtain a net direct effect of -14 ± 1 , -12 ± 2 and $-2 \pm 1 \text{ W m}^{-2}$ at the surface, $-8 \pm 6 \text{ W m}^{-2}$, respectively. The corresponding forcing efficiencies are -81 ± 6 , 68 ± 9 and -13 ± 7 at TOA, and $6 \pm 6 \text{ W m}^{-2} \tau^{-1}$. These dust net forcing estimates imply that surface cooling and atmospheric heating represent the largest perturbations to the radiative budget during dust storms, but that they do not exactly balance, resulting in a small, but statistically different from zero, cooling at TOA in the atmosphere. These results would suggest that dust has a net cooling effect at TOA, at least during daytime, with surface cooling and likely atmospheric warming.~~

4.3 Annually averaged dust direct radiative effect

We next estimate an annually and diurnally averaged dust direct radiative effect for clear-sky conditions using the output from RRTM SW and LW based on monthly and 15 minute averaged in situ and reanalysis data. To do so we conducted simulations with RRTM over 24-hour periods corresponding to the fifteenth day of each calendar month, at a 15-minute temporal resolution. We define the vertical structures of pressure $P(z)$ and specific humidity $q(z)$ by averaging over the profiles collected from the radiosondes launched at the field site during dusty conditions (Tables 1 and A1). We then estimate monthly values for each by scaling those profiles by monthly averages of the field site station surface pressure or GPS retrieved P_w , generated for data collected over the 2020–2022 time period. We prescribe the vertical profile of dust extinction based on the ceilometer profiles corresponding to the radiosonde launches, and then scale these by the long-term mean dust optical depth of 0.18. Our data suggests a relatively small diurnal cycle in this value, and additional ~~simulation simulations~~ with RRTM where we prescribe a dust diurnal cycle based on measurements had little effect on the calculated direct effect and forcing efficiency. We estimate 15 minute averaged soil temperature ($z = 0 \text{ m}$) retrieved from observations of LW upward flux and 1 m air temperature in a similar fashion from the site meteorological station. We obtain vertical profiles of temperature directly from the JRA-55 reanalysis on the fifteenth of each month averaged over the 2020–2022 time period. Since the lowest height of the reanalysis air temperature is approximately 60 m AGL, we interpolate temperatures between these heights using the measured 1 m air temperature. We assume constant surface SW and LW albedos. We calculate the annual and diurnally averaged dust direct radiative effect and forcing efficiency directly from the model output. We ~~then assume that the relative uncertainty in these estimates is equivalent to those from the instantaneous values~~ estimate uncertainty in a manner identical to that described for the instantaneous calculations, including repeated RRTM calculations using the more and less absorbing single scatter properties (Fig. 13)–8)

The estimates of the clear-sky annually and diurnally averaged SW, LW, and net ~~(SW + LW)~~ dust direct radiative effect and forcing efficiency, at the surface and TOA and in the atmosphere, are shown in Fig. 14. The largest discrepancy between the instantaneous and diurnally and annually averaged values is in the SW at the surface, with values that are approximately half those from the instantaneous calculations (Fig. 13), which is due to averaging over the nighttime hours when there is no solar insolation. At ~~the~~ TOA we do not see a similar reduction in the SW direct radiative effect or forcing efficiency because of the

	Diurnal & Annual Average					
	RTM DRE (W m^{-2})			RTM FE ($\text{W m}^{-2} \tau^{-1}$)		
	SW	LW	Net	SW	LW	Net
TOA	-2 ± 3	0.3 ± 0.3	-1 ± 3	-9 ± 16	2 ± 2	-7 ± 16
Atmosphere	9 ± 4	-1 ± 1	8 ± 4	48 ± 23	-5 ± 4	43 ± 23
Surface	-10 ± 3	1 ± 1	-9 ± 3	-57 ± 17	6 ± 3	-51 ± 17

Figure 14. Clear-sky annually and diurnally averaged SW, LW, and net direct radiative effect and forcing efficiency of dust at the surface, the TOA, and in the atmosphere, estimated from simulations with a radiative transfer model (RRTM). Uncertainties represent the 95% confidence interval and are based on the uncertainties in the instantaneous values (Fig. 13).

non-linear response in the direct radiative effect to changes in the solar zenith angle associated with the particle asymmetry factor (Fig. 8b); at low solar zenith angle (i.e., the sun is overhead), the direct effect can become positive due to the strong forward scattering of dust. At higher solar zenith angles, when the sun is lower in the sky but the solar insolation is still large, the direct radiative effect is at maximum negative value. The average solar zenith angle corresponding to the instantaneous calculations is 50° , which corresponds to a regime where the direct radiative effect is negative but not at a maximum value, and which happens to be approximately equal to the diurnal average. ~~We note that this non-linearity in the direct effect is far less pronounced at the surface.~~

The model results suggest that over land and close to source regions dust cools the climate, as evidenced by the net direct effect value of -2 ± 1 ~~-1 ± 3~~ W m^{-2} . There is also a net cooling at the surface ~~-6 ± 1~~ ~~-9 ± 3~~ W m^{-2} and warming of the atmosphere ~~4 ± 1~~ ~~8 ± 4~~ W m^{-2} , ~~implying that the presence of dust likely also increases atmospheric stability (Miller et al., 2004).~~ ~~It is important to note that these values.~~ ~~If we again assume that the RRTM simulations corresponding to the less absorbing case are closer to the actual direct effect, then we obtain a SW direct effect of -7 , -5 , and $+2$ W m^{-2} at the surface, TOA, and in the atmosphere. Using those values to obtain a net effect, we estimate a TOA direct effect of -6 W m^{-2} , implying that dust has a cooling effect at TOA.~~

~~We note that the direct effect values in Fig. 14 correspond to $\tau = 0.18$, which is the average, daytime τ during dust storms. In order to estimate the true long-term mean direct radiative effect, for example, we would need to scale these values by the fraction. The actual diurnal and annual averaged direct effect is smaller in magnitude and would be obtained by scaling these estimates by the fractional amount of time that dust is present in the atmosphere and the clear-sky fraction. While the latter can be obtained from satellites, it is difficult to reliably estimate the former since.~~ ~~However,~~ we are unable to detect all dust storms occurring during the 2020–2022 time period do so since we cannot reliably identify dust storms during the nighttime hours, and because we do not identify all dust events passing over the field site. However, ~~we speculate that such averaging would likely lead to a uniform reduction in these values by an order of magnitude~~ the forcing efficiencies also reported in Fig. 14 are, to first-order, independent of τ , and thus are potentially more useful in terms of comparing study results.

We next compare our estimates of the direct radiative effect and forcing efficiency with values from other observational and model studies.

5.1 Instantaneous SW comparisons

We begin by comparing our estimates of the SW instantaneous forcing efficiency with observational values estimated at the TOA over the Sahara (Kuwano and Evan, 2022), and over Lampedusa at the surface (Di Sarra et al., 2013) and at the surface and TOA (Di Biagio et al., 2010, study locations in Fig. 15a). Each of these studies report forcing efficiency values averaged over discrete solar zenith angle ranges, and so for these comparisons we recalculated the forcing efficiency estimated from the field site for those same zenith angle ranges.

The surface SW forcing efficiency calculated from our study over the μ range of $0.34 \leq \mu \leq 0.8$ used in Di Sarra et al. (2013) is -102 ± 9 ~~-125 ± 53~~ $\text{W m}^{-2}\tau^{-1}$, which is ~~just over half~~ approximately two-thirds the value of $-177 \pm 17 \text{ W m}^{-2}\tau^{-1}$ reported in their study (Fig. 15b). Similarly, over the μ range of $0.7 \leq \mu \leq 1$ used in Di Biagio et al. (2010), we obtain a forcing efficiency of -72 ± 3 ~~-98 ± 64~~ $\text{W m}^{-2}\tau^{-1}$, which is less than ~~half two-thirds~~ the value of $-178 \pm 18 \text{ W m}^{-2}\tau^{-1}$ reported in their study (Fig. 15c). We speculate that there are two main reasons for the discrepancies in the surface SW forcing efficiency estimates. Firstly, the Lampedusa studies included surface albedo values corresponding to both land and water covered surfaces, whereas for this study we limited our study region to footprints that were mostly over land (Fig. 4). As the surface albedo decreases the contrast between clear-sky and dusty scenes increases, resulting in a larger (in magnitude) forcing efficiency. Secondly, it is also likely that methodological differences also play a role in the discrepancy. Both studies adopted the methods of Satheesh and Ramanathan (2000) to calculate the forcing efficiency, which is equivalent to neglecting the water vapor P_w , cosine of the solar zenith angle μ , and albedo α terms in Eq. 4. As such, if τ is correlated to these terms the resulting forcing efficiency may be biased (Kuwano and Evan, 2022). Furthermore, the criteria for selecting dust in also different; in these two studies dusty scenes are mainly identified via angstrom exponent thresholds. If we calculate the surface SW forcing efficiency following the methods described in Di Biagio et al. (2010) we obtain a forcing efficiency of $-119 \pm 17 \text{ W m}^{-2}\tau^{-1}$, which is significantly closer to their estimate of -178 ± 18 (not shown). If we also artificially adjust the surface albedo in our calculations to be half the observed value (approximately 0.15 rather than the observed 0.3), then we obtain a SW forcing efficiency of $-145 \pm 21 \text{ W m}^{-2}\tau^{-1}$, which is in agreement with that from Di Biagio et al. (2010). Thus, it is plausible that differences in methodology and environmental characteristics are the main causes of disagreement in the SW forcing efficiency estimates, rather than differences in the actual radiative properties of the dust.

In order to ensure sufficient data for the remaining comparisons discussed in this section, we use output from RRTM to simulate the SW forcing efficiency at the TOA, which is justified given the agreement between our observation and model based estimates of the SW forcing efficiency (Figs. 12,13). ~~The relative~~ Here, we estimate the uncertainty in the RRTM output ~~is assumed to be identical to that in Fig. 13~~ as the difference between repeated RRTM calculations using the more and less absorbing single scatter properties, with the absolute uncertainties shown in the subsequent figures. The instantaneous SW

TOA forcing efficiencies from Di Biagio et al. (2010) and Kuwano and Evan (2022) are -55 ± 13 and $-17 \pm 8 \text{ W m}^{-2}\tau^{-1}$, respectively, whereas we obtain a value of 13 ± 6 $33 \pm 64 \text{ W m}^{-2}\tau^{-1}$ averaged over the solar zenith angle range of roughly 0–
 620 45° (μ from 0.7–1, Fig. 15c). We speculate that, similar to the case for the surface, the disagreement in TOA forcing efficiency is at least in part due to methodological differences. For example, we recalculated the TOA forcing efficiency from Kuwano and Evan (2022) also accounting for variations in surface albedo and μ (e.g., Eq. 8) obtaining a value that was slightly smaller in magnitude ($-12 \text{ W m}^{-2}\tau^{-1}$) and closer to the value obtained here. Within the atmosphere the forcing efficiency from this study, 85 ± 7 $131 \pm 64 \text{ W m}^{-2}\tau^{-1}$, and Di Biagio et al. (2010), $129 \pm 23 \text{ W m}^{-2}\tau^{-1}$, are in better agreement that at the surface
 625 or TOA, ~~although the magnitudes are still statistically different.~~

Overall, the studies compared here agree that the SW forcing efficiency of dust at the surface is negative, and at the TOA is relatively smaller in magnitude and close to zero, resulting in a positive atmospheric forcing efficiency. These characteristics are consistent with weakly absorbing aerosols that have minimal TOA radiative effect, ~~and whose main radiative effect is to~~
 and that increase solar absorption in the atmosphere at the expense of the downwelling solar flux at the surface.

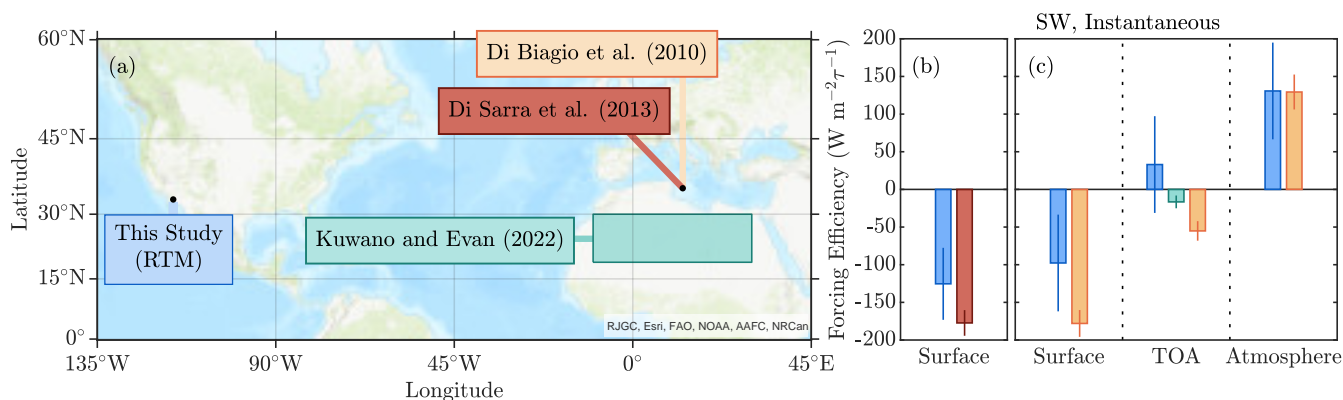


Figure 15. (a) Map of the locations or region used to calculate the SW forcing efficiency of dust in this and three other studies (Di Biagio et al., 2010; Di Sarra et al., 2013; Kuwano and Evan, 2022). The corresponding SW forcing efficiency values at the surface, TOA, and in the atmosphere averaged over the μ intervals (b) 0.34–0.8 and (c) 0.7–1, where colors of the bars are referenced to the colors of the text boxes, and their studies, indicated in (a).

630 5.2 Instantaneous LW comparisons

We next compare our instantaneous LW dust forcing efficiency estimates with those from seven other studies. The locations of all studies compared here are shown in Fig. 16a. Similarly to this study, Hansell et al. (2012) used observations and retrievals to constrain radiative transfer model estimates of the LW direct radiative effect during a 2 week dust storm in Zhangye, China. We then estimated an equivalent forcing efficiency based on their reported mean dust storm optical depth of 0.5. We find
 635 statistical agreement between our estimates of the LW instantaneous forcing efficiency, 12 ± 5 $8 \pm 4 \text{ W m}^{-2}\tau^{-1}$, and that from Hansell et al. (2012), $19 \pm 9 \text{ W m}^{-2}\tau^{-1}$ (Fig. 16b). At the TOA we find that our estimate of 4 ± 3 $3 \pm 3 \text{ W m}^{-2}\tau^{-1}$ is also

in agreement with the value of 10 ± 7 from Hansell et al. (2012), as well as that from Brindley and Russell (2009), 14 ± 10 $\text{W m}^{-2}\tau^{-1}$, corresponding to the Saada, Morocco location (BR09e in Fig. 16a). Otherwise, the other 13 reported values of the TOA instantaneous LW forcing efficiency are all statistically larger than what we report here, with values ranging from 12 (Song et al., 2022) to 36 (Hsu et al., 2000) $\text{W m}^{-2}\tau^{-1}$ (Fig. 16b). The average forcing efficiency from all studies we compare our results to is 20 ± 6 $\text{W m}^{-2}\tau^{-1}$, where we note that the uncertainty is poorly constrained since several studies did not report an uncertainty range. We note that the Hansell et al. (2012) TOA and surface values imply an atmospheric LW forcing efficiency of -5 ± 13 $\text{W m}^{-2}\tau^{-1}$, which agrees with our value of -8 ± 6 $\text{W m}^{-2}\tau^{-1}$.

It is difficult to precisely ascertain the causes of the differences in the LW instantaneous forcing efficiency at TOA. However, the relatively shallow depth of dust over the field site may at least partially explain why our value of the forcing efficiency is smaller than that from these other studies. For example, Hansell et al. (2012) reported an average dust scale height of 3 km during their study, whereas we rarely observed dust layers extending beyond a height of 2 km (e.g., Evan et al., 2023).

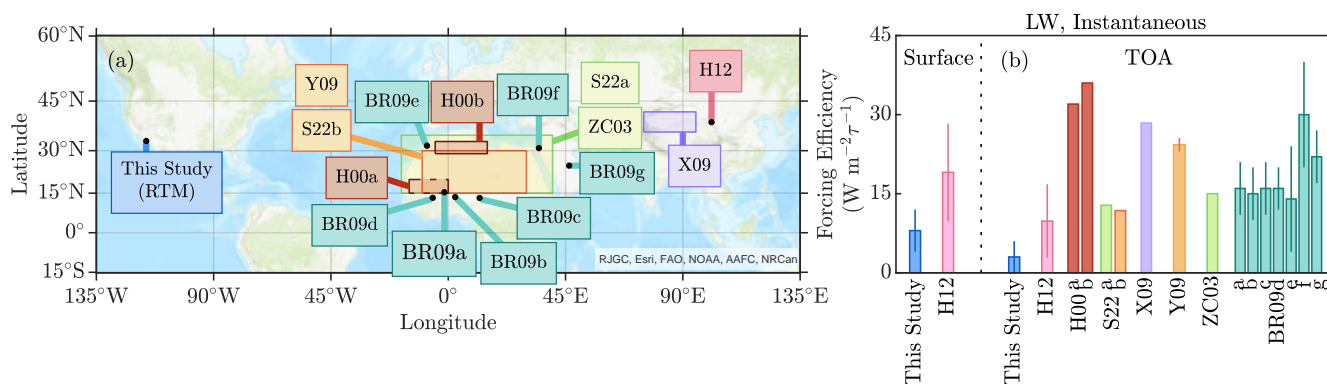


Figure 16. (a) Map of the locations or regions used to calculate the LW forcing efficiency of dust in this and seven other studies: Hansell et al. (2012, H12), Hsu et al. (2000, H00a,b), Song et al. (2022, S22a,b), Xia and Zong (2009, X09), Yang et al. (2009, Y09), Zhang and Christopher (2003, ZC03), and Brindley and Russell (2009, BR09a–g). (b) The corresponding LW forcing efficiency values at the surface and TOA, where colors of the bars are referenced to the colors of the text boxes indicated in (a).

5.3 Comparison of diurnal and annual averaged SW forcing efficiencies

Lastly, we compare estimates of clear-sky diurnally and annually averaged SW forcing efficiency at the surface, TOA, and atmosphere between this and seven other studies (study locations in Figure 17a). The annually and diurnally averaged SW forcing efficiency at the surface estimated from this study is -46 ± 2 $\text{W m}^{-2}\tau^{-1}$ (Fig. 17b, blue) and is statistically similar to the value values of -48 ± 6 and -62 ± 9 $\text{W m}^{-2}\tau^{-1}$ reported by Zhou et al. (2005) for sites with a SW surface albedo of ~ 0.3 (teal bar and "o" in Fig. 17), -74 ± 12 $\text{W m}^{-2}\tau^{-1}$ estimated from Valenzuela et al. (2012), and -59 ± 6 $\text{W m}^{-2}\tau^{-1}$ found in García et al. (2014). The results from Zhou et al. (2005) corresponding to the sites with surface albedos of approximately 0.2, and the other studies shown in Fig. 17 (Di Biagio et al., 2010; Ge et al., 2010; Valenzuela et al., 2012; García et al., 2014)

(Di Biagio et al., 2010; Ge et al., 2010; Di Sarra et al., 2013), all report surface forcing efficiencies that are significantly more negative than what we find, having a multi-study mean value of -75 ± 9 ~~-83 ± 7~~ $\text{W m}^{-2}\tau^{-1}$. We speculate that, similar to the case for the instantaneous forcing efficiency (Fig. 15), at least part of this discrepancy is due to methodological differences.

At the TOA our SW forcing efficiency of -15 ± 6 ~~-9 ± 16~~ $\text{W m}^{-2}\tau^{-1}$ is in agreement with the values of -26 ± 11 and -16 ± 9 $\text{W m}^{-2}\tau^{-1}$ from Zhou et al. (2005) and -17 ± 7 $\text{W m}^{-2}\tau^{-1}$ from Valenzuela et al. (2012) (Fig. 17b). Similar to the instantaneous case, the TOA forcing efficiency from Di Biagio et al. (2010) of -46 ± 6 $\text{W m}^{-2}\tau^{-1}$ is ~~3-folds-5-folds~~ larger in magnitude than what we report. For these same four studies we also calculated the atmospheric forcing. Here we find agreement in our estimate of 32 ± 6 ~~48 ± 23~~ $\text{W m}^{-2}\tau^{-1}$ and those from Zhou et al. (2005) ~~and Di Biagio et al. (2010); Di Biagio et al. (2010), and Valenzuela et al. (2012)~~, which are 36 ± 14 , 32 ± 11 , ~~and~~ 32 ± 7 , ~~and~~ 57 ± 14 $\text{W m}^{-2}\tau^{-1}$, respectively, ~~with the estimate of 57 ± 14 $\text{W m}^{-2}\tau^{-1}$ from Valenzuela et al. (2012) being significantly larger than that estimated from the other studies.~~

When averaging across all studies, we obtain an observation based SW forcing efficiency of -68 ± 8 , -24 ± 8 , and 38 ± 11 $\text{W m}^{-2}\tau^{-1}$ at the surface, TOA, and in the atmosphere, respectively. Based on these values, the SW direct radiative effect at TOA is 3 ± 1 times larger in value than that at the surface, implying that the SW surface cooling by dust is not balanced by the relatively weaker heating in the atmosphere, resulting in a negative direct effect at TOA. These results also underscore the importance of quantifying the iron oxide content in dust, since these minerals drive solar absorption and thus strongly affect the balances in Fig. 17b (Di Biagio et al., 2019). We are not able to generate an equivalent estimate of the annual and diurnally averaged LW forcing efficiency from the studies represented in Fig. 16 since they do not report these values.

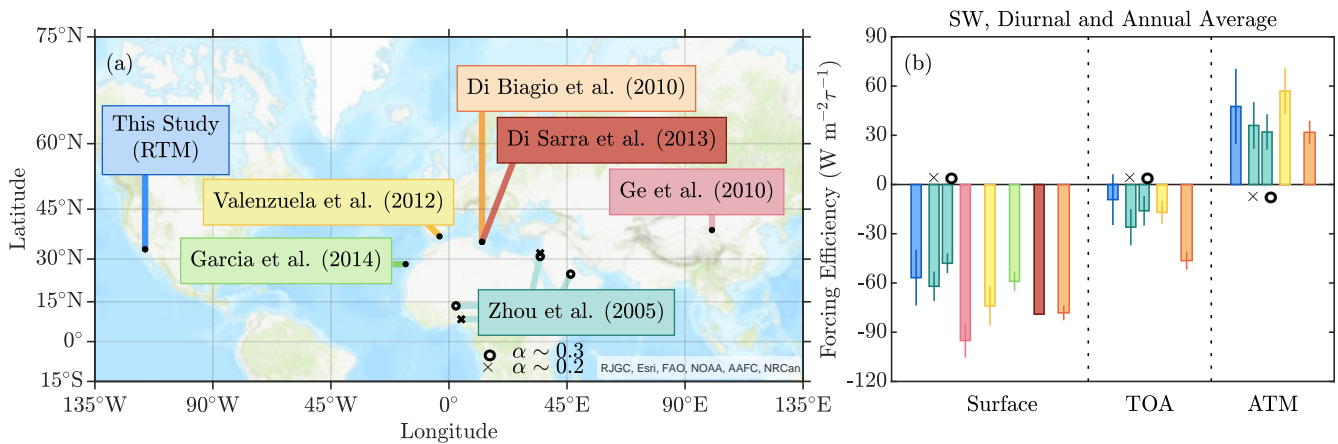


Figure 17. (a) A map of the locations or region used to calculate the diurnally and annually averaged SW forcing efficiency of dust for this and six other studies. (b) The corresponding SW forcing efficiency values at the surface, TOA, and in the atmosphere, where colors of the bars are referenced to the colors of the text boxes, and their studies, indicated in (a).

6 Summary and conclusions

675 In this study we used both observations and model output to generate ~~observation and model based~~ estimates of the dust direct radiative effect in the American Desert Southwest. To do so, radiometric and meteorological measurements were obtained over a 3-year period at a field site located in the northwestern Sonoran Desert (Fig. 1). We developed a novel method to estimate the dust SW forcing efficiency and direct radiative effect via our observations alone ~~;~~ ~~in order to~~ generate new estimates of these values at the surface, TOA, and in the atmosphere (Fig. 12). We generated ~~new~~ estimates of the dust refractive index using
680 surface soil mineralogy products from ~~AVIRIS~~ AVIRIS-C (Figs. 6, 7) and then used these data to model clear-sky fluxes over the field site with RRTM ~~;~~ ~~which we compared to measured fluxes in order to quantify uncertainty in the radiative transfer model~~ (Figs. 9, 10). We then used RRTM to simulate the SW dust direct radiative effect, obtaining agreement between the modeled and observational values within their respective uncertainties (Fig. 13). However, our results also implied that the iron oxide soil content was too high in the AVIRIS-C retrievals, evidenced by the much stronger SW atmospheric absorption in the
685 model. We also used RRTM to quantify the dust forcing efficiency and direct effect in the LW (Fig. 13). ~~Although the sign of the SW dust direct effect is opposite to that in the LW, since the~~ Since the magnitude of the SW direct effect is ~~2–3~~ 6–10 times larger than that in the LW, we obtained a net direct radiative effect of ~~-2 ± 1~~ ~~-1 ± 3~~ $W m^{-2}$ at TOA that is balanced by a surface cooling of ~~-6 ± 1~~ ~~-9 ± 3~~ $W m^{-2}$ and atmospheric heating of ~~4 ± 1~~ ~~8 ± 4~~ $W m^{-2}$ (Fig. 14). However, when combining the observation-based SW direct effect estimates and the RRTM-based LW estimates, we obtain a net direct effect of -8 ± 6
690 $W m^{-2}$, suggesting that, during daytime hours, dust has a net cooling effect.

We compared our estimates of ~~both~~ the instantaneous and diurnally and annually averaged dust forcing ~~efficiency~~ efficiencies with values from a number of other studies that estimated these values over ~~a specific site or region~~ specific locations or regions using in situ measurements and satellite retrievals. We found that in the SW, our observation-based results were more positive at the surface and TOA than those from three other studies (Fig. 15), ~~but additional analysis suggested that methodological~~
695 ~~differences between the studies likely played a significant role in the~~ although methodological differences may contribute to the disagreement. We also expanded this comparison of the model based SW forcing efficiency to annually and diurnally averaged values (Fig. 17). Here we found agreement between our estimates and that from several other studies both at the surface, TOA, and in the atmosphere, although we ~~still~~ found that the magnitude of the SW forcing efficiency from our study was smaller than that from ~~all others~~ a majority the other studies, which at TOA is at least partially explained by the likely too-absorbing
700 dust optical properties in our RRTM simulations. We also compared our estimates of the LW instantaneous direct effect with that from other studies, finding that at the surface and at the TOA our LW forcing efficiency was smaller in magnitude than that from these other studies (Fig. 16). Although it is plausible that methodological differences play a role in differences in the LW forcing efficiencies, the relatively shallow nature of the dust layers advected over the field site (e.g., Fig. 5) relative to that of these other studies is likely a significant underlying cause.

705 In situ and ~~observation based~~ observation-based estimates of the dust direct effect are valuable in terms of understanding how changes in dust concentration affect the radiative energy balance at a local scale. These data are also valuable at the global scale as they provide an observational constraint on estimates of the direct radiative effect from climate models. However,

the apparent sensitivity of the ~~observation-based~~observation-based estimates of the SW direct radiative effect to methodology inhibits the utility of these data as a check on model output. As such, and at least in the SW, our results imply that there is a need to adopt a standardized methodology, or at least a standard set of data to be collected, in order to generate data of maximal utility for evaluating climate-model output. We suggest that the parameters measured and retrieved in Eqs. 4 and 5 represent a reasonable set of data that, in this linear framework, account for variability in factors that affect the estimated direct radiative effect. Additionally, a standardized methodology to identify dust from, for example, sun photometers, would also be useful in terms of comparing results among observational studies. Furthermore, it is plausible that a simulator, much like the satellite simulator used to compare cloud cover from climate models and satellites (Klein and Jakob, 1999), could be developed in order to improve the capacity to evaluate model estimates of the dust direct radiative effect.

Code and data availability. Measurements obtained from the CERES SSF level 2 data product can be obtained from <https://ceres.larc.nasa.gov/data/>. Reanalysis data were acquired from Japan Meteorological Agency (accessed on May 4th, 2023 via <https://rda.ucar.edu/datasets/ds628.0/dataaccess/>). AERONET retrievals can be accessed publicly from the AERONET website (<https://aeronet.gsfc.nasa.gov>). Processed radiosonde data, ceilometer profiles, corrected AERONET aerosol optical depth data, and SW and LW fluxes from the field site are available via the UCSD Library Digital Collection (Evan et al., 2022a). Davis met station data can be publicly accessed from MesoWest station FW7082 Salton City <https://mesowest.utah.edu/>. PM₁₀ data can be accessed from the California Air Resources Board at <https://www.arb.ca.gov/aqmis2/aqdselect.php>. For the calibration procedure we utilize the solarPosition calculator (Mikofski, 2016) from the MATLAB file exchange <https://www.mathworks.com/matlabcentral/fileexchange/58405-solar-position-calculator> (retrieved December 6th, 2022). Dust mineralogy and complex refractive index calculations for this study were done by Blake Walkowiak (Walkowiak, 2022) and scattering properties were obtained from the TAMUdust2020 database (Saito and Yang, 2021) accessed via <https://github.com/masasaito/TAMUdust2020>. The Rapid Radiative Transfer Model in the SW (Atmospheric and Environmental Research, 2004) and LW (Atmospheric and Environmental Research, 2010) can be accessed via http://rtweb.aer.com/rrtm_frame.html.

Appendix A: Radiosonde launches

Shown in Table A1 are the launch dates and times of the radiosondes used to calculate the model fluxes in Fig. 9.

Appendix B: Radiometer calibration

As discussed in Sect. 2.1.1, one pyranometer was factory calibrated prior to (2018) and after (2023) acquisition of data for this project, for which the calibration coefficients differed by 1.5% (10.95 and 11.12 $\mu\text{V W}^{-1} \text{ m}^2$, respectively). We then calibrated the other instrument by placing the two side-by-side in the upward looking direction for time spans ranging from 1–3 weeks either in La Jolla, CA, or at the field site. We filtered the data consistent with the factory calibration of the reference pyranometer, including only using measurements for solar zenith angle < 50 degrees, downward solar flux $> 500 \text{ W m}^{-2}$, and when the relative difference in the fluxes between the instruments was $< 3\%$. We calculated a cross-calibration coefficient as the

Table A1. Days and start times for each sounding considered in RRTM SW and LW.

Date	Time (UTC in UTC (+8 PST/+7 PDT))
22 February 2020	16:59
22 February 2020	18:02
22 February 2020	22:41
29 February 2020	19:23
29 February 2020	21:27
29 February 2020	23:28
28 February 2021	16:05
28 February 2021	18:45
09 March 2021	15:01
09 March 2021	17:59
09 March 2021	19:30
09 March 2021	20:59
09 March 2021	22:30
09 March 2021	23:56
15 February 2022	23:35

slope of the least-squares linear regression of the factory calibrated voltage onto that for the field calibrated instrument, forcing the line through the origin to be consistent with the manufacture’s instructions. The resulting cross-calibration coefficients were 1.08 and 1.09 (Fig. B1), all with uncertainties, defined via the 95% confidence interval in the regression slopes, of 0.01%. The resultant calibration coefficients for the field calibrated instrument (factory calibration coefficient multiplied by the cross-calibration coefficient) were then 10.13, 10.10, 10.10, and 10.24 $\mu\text{V W}^{-1} \text{ m}^2$, corresponding to the 2018, 2021, 2022, and 2023 calibration periods, all having 2σ uncertainties of $\pm 0.001 \mu\text{V W}^{-1} \text{ m}^2$ (0.01% relative uncertainty).

After cross-calibrating the field calibrated pyranometer (Fig. B1) we noted that the resulting surface SW albedo showed an apparent upward shift after September 1, 2021 (Fig. B2a), which immediately followed a cross-calibration activity. Prior to this date the factory calibrated instrument had been oriented in the downward-facing direction (measuring outgoing radiation). However, the instruments had been inadvertently reinstalled after this date such that the factory calibrated instrument was oriented in the upward-facing direction (measuring downwelling radiation). To investigate the source of this apparent bias we examined the measured voltages generated by both instruments during 2020 and 2022 during pristine-sky conditions, which were defined as times when the AERONET retrieved aerosol optical depth was less than 0.05.

A plot of uncalibrated voltages from the factory (measured during 2022) and field (measured during 2020) calibrated pyranometers, which is when they were oriented in the upward looking direction, as a function of the cosine of the solar zenith angle μ , shows the expected approximate linear relationship between solar flux and μ (Fig. B2c). We interpret the ratio of the slopes of the linear least-squares regression lines for these data, both forced through the origin, as the cross-calibration coefficient

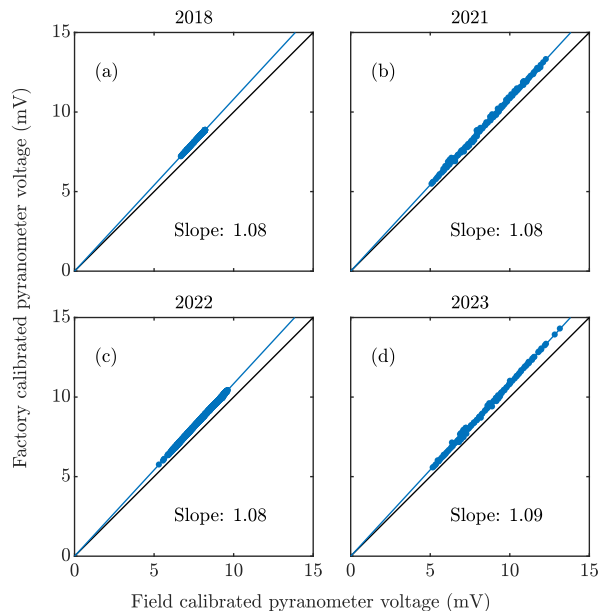


Figure B1. Plotted are voltages (blue filled circles) measured from upward looking mounted pyranometers during cross calibration activities in (a,b) La Jolla, CA and at (c,d) the field site. Voltages from the factor calibrated pyranometer are referenced to the vertical axis, and those from the field calibrated instrument are referenced to the horizontal axis. The linear least-squares regression lines are plotted in each panel, and the slope of the lines are also indicated (the 95% uncertainty in each is 0.01%).

755 (factory slope divided by field slope), which in this case is 1.08 ± 0.003 1.084 ± 0.005 , in agreement with the cross-calibration coefficients in Fig. B1. We note that the uncertainties in these ratios are determined by summing the relative uncertainties in the respective regression slopes in quadrature, which are themselves the 95% confidence intervals in the regression slopes. When we repeated this analysis using the uncalibrated voltages when both instruments were oriented in the downward facing direction we obtained a smaller cross-calibration coefficient of 0.92 ± 0.003 0.920 ± 0.005 (Fig. B2d). Applying the different cross-calibration coefficients to the field calibrated pyranometer depending on the instrument orientation (1.08 – 1.084 prior to 760 September 1, 2021 and 0.92 – 0.920 after this date) resulted in a pristine-sky surface solar albedo time series that no longer showed an apparent bias around this date (Fig. B2b).

Previous work has speculated that pyranometer orientation could impact instrument calibration (Kohsiek et al., 2007), and our results would suggest this is indeed the case, although the cause is not clear. Future work will explore this calibration issue 765 by generating simultaneous measurements from these instruments when both mounted in the upward and then the downward directions. In the meantime, we note that we obtained nearly identical estimates of the dust direct radiative effect and forcing efficiency when using either cross-calibration method (i.e. a constant value or direction-dependent values). As such, we calibrate the field calibrated instrument by interpolating in time the coefficients derived during the cross-calibration periods when both instruments were mounted in the upward-looking position (Fig. B1).

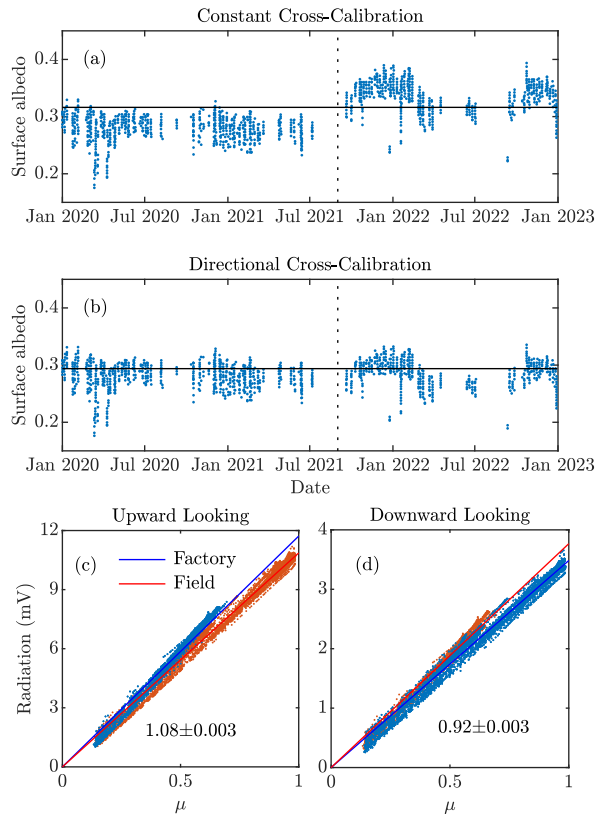


Figure B2. (a,b) Time series of surface shortwave albedo generated from voltage measured by upward and downward looking pyranometers at the field site. In (a) a constant cross-calibration coefficient is applied to the field calibrated instrument, and in (b) the calibration coefficient depends on the orientation of the instrument (upward or downward looking). Also shown are plots of measured voltage as a function of the cosine of the solar zenith angle μ when both instruments are oriented in the (c) upward or (d) downward-looking directions. The specific pyranometer (factory or field calibrated) is indicated in the legend. Also shown in (c,d) are the linear least-squares best fit lines, as well as the ratios of these lines and their respective uncertainties.

770 Turning to the pyrgeometers, one instrument was factory calibrated along with the pyranometer, for which the calibration coefficients differed by 3% (13.11 and $12.72 \mu\text{V W}^{-1} \text{m}^2$, respectively). We then calibrated the second instrument by placing the two side-by-side in the upward looking direction similar to as was done for the pyranometers. We filtered the data according to the same criteria used for the factory calibration, including that the measured net flux was $< -40 \text{ W m}^{-2}$, the difference in the instruments temperature were $< \pm 0.5 \text{ C}$, and that the deviation of the resulting downward longwave flux was $< \pm 5 \text{ W m}^{-2}$.

775 We calculated the cross-calibration coefficient as the slope of the linear least-squares regression of the factory calibrated voltage onto that for the field calibrated instrument, forcing the line through the origin. The resulting cross-calibration coefficients were 1.09 or 1.10 , all with uncertainties, defined via the 95% confidence interval in the regression slopes, of less than 0.02% of the coefficient values (Fig. B3). The resultant calibration coefficients for the field calibrated instrument (factory calibration

coefficient multiplied by the cross-calibration coefficient) were then 12.06, 11.97, and 11.63 $\mu\text{V W}^{-1} \text{m}^2$, corresponding to the 2018, 2021, and 2023 calibration periods, all having 2σ uncertainties of $\pm 0.01 \mu\text{V W}^{-1} \text{m}^2$ (0.12% relative uncertainty).

Appendix C: Mineral Complex Refractive Indices

Shown in Fig. C1 are the complex refractive indices for the individual minerals considered when calculating a dust index of refraction, and the mean refractive indices for the clay and silicate minerals subgroups (black lines).

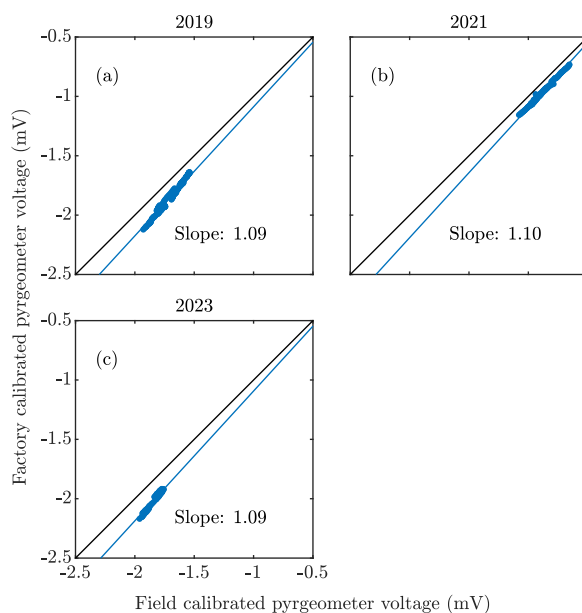


Figure B3. Plotted are voltages (blue filled circles) measured from upward looking mounted pyrgometers during cross calibration activities in (a,b) La Jolla, CA and at (c) the field site. Voltages from the factory calibrated pyrgometer are referenced to the vertical axis, and those from the field calibrated instrument are referenced to the horizontal axis. The linear least-squares regression lines are plotted in each panel, and the slope of the lines and their 95% confidence intervals are also indicated.

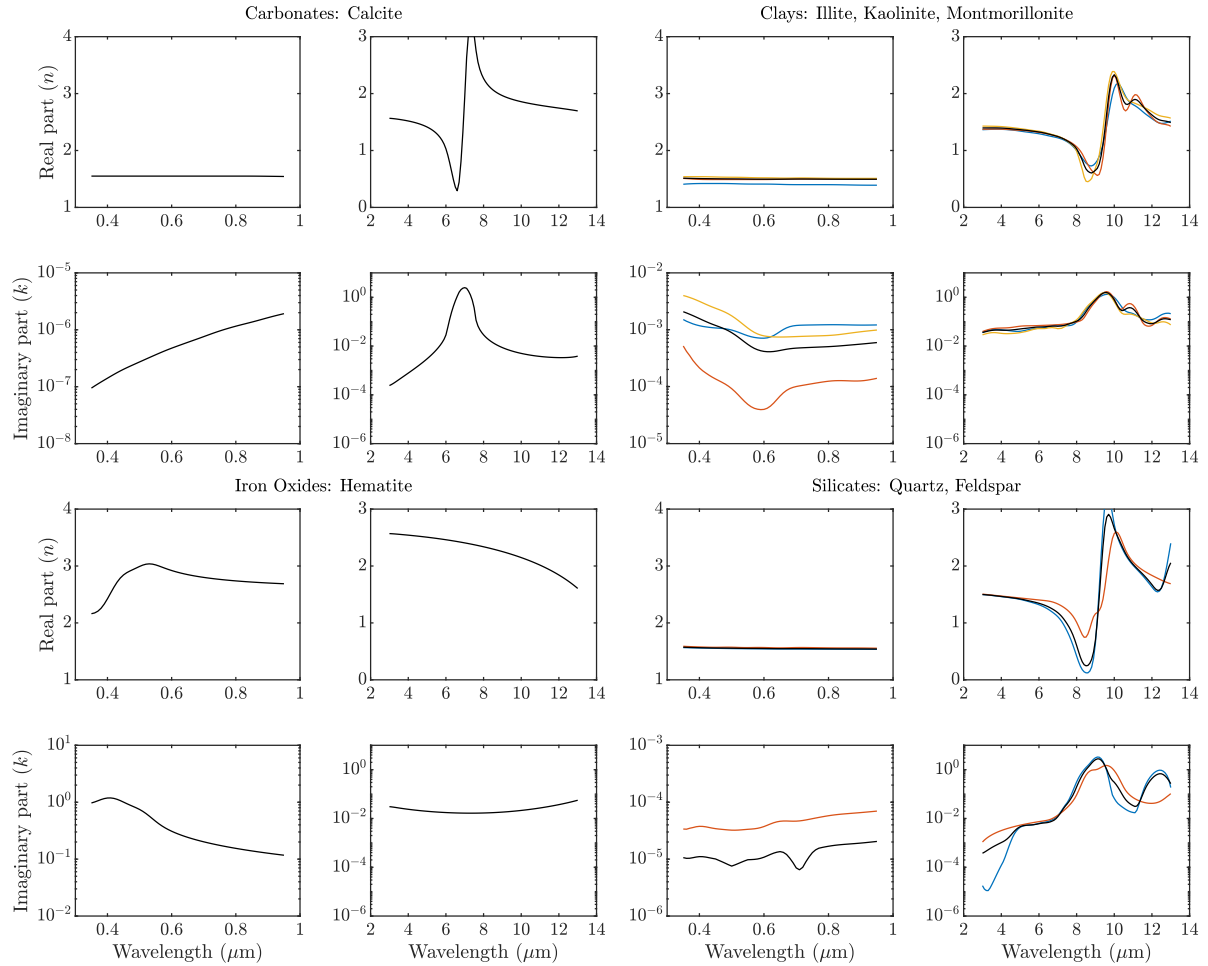


Figure C1. Plotted are the real n and imaginary k indices of refraction, in the shortwave and the longwave parts of the electromagnetic spectrum, for calcite (top-left), hematite (bottom-left), the clay minerals (top-right), consisting of illite (blue), kaolinite (red), and montmorillonite (yellow), and the silicates (bottom-right), consisting of quartz (blue) and feldspar (red). The black lines in the clays and silicates plots represent the volume-averaged means based on the dust abundance of the minerals (Fig. 6)

Author contributions. AK, AE and RF collected the data. AE and AK designed the experiments and co-wrote the manuscript. AK performed
785 the numerical experiments and performed the data analysis. BW and AE generated the refractive indices from AVIRIS data. BW and RF
helped edit the manuscript.

Competing interests. The authors declare that they have no conflict of interest.

Acknowledgements. Funding for this work was provided for by NSF Award AGS-1833173 [and NASA Earth Surface Mineral Dust Source
Investigation \(EMIT\) Science and Applications Team Award 80NSSC24K0864](#). We thank Tyler Barbero, Trinity Robinson, and Sophie
790 Wynn for their contributions towards data collection for the project. [We would like to thank Zhibo Zhang and one anonymous reviewer for
their comments on an earlier version of this manuscript.](#)

References

- Anderson, G. P., Clough, S. A., Kneizys, F., Chetwynd, J. H., and Shettle, E. P.: AFGL atmospheric constituent profiles (0.120 km), Tech. rep., Air Force Geophysics Lab Hanscom AFB MA, 1986.
- 795 Atmospheric and Environmental Research, I.: RRTM_SW, http://rtweb.aer.com/rrtm_frame.html, 2004.
- Atmospheric and Environmental Research, I.: RRTM_LW, http://rtweb.aer.com/rrtm_frame.html, 2010.
- Bevis, M., Businger, S., Chiswell, S., Herring, T. A., Anthes, R. A., Rocken, C., and Ware, R. H.: GPS Meteorology: Mapping Zenith Wet Delays onto Precipitable Water, *Journal of Applied Meteorology* (1988-2005), 33, 379–386, <http://www.jstor.org/stable/26186685>, 1994.
- Bohren, C. F. and Huffman, D. R.: Absorption and scattering of light by small particles, John Wiley & Sons, 2008.
- 800 Brindley, H. E.: Estimating the top-of-atmosphere longwave radiative forcing due to Saharan dust from satellite observations over a west African surface site, *Atmospheric Science Letters*, 8, 74–79, <https://doi.org/https://doi.org/10.1002/asl.155>, 2007.
- Brindley, H. E. and Russell, J. E.: An assessment of Saharan dust loading and the corresponding cloud-free long-wave direct radiative effect from geostationary satellite observations, *Journal of Geophysical Research: Atmospheres*, 114, <https://doi.org/https://doi.org/10.1029/2008JD011635>, 2009.
- 805 Chrien, T. G., Green, R. O., and Eastwood, M. L.: Accuracy of the spectral and radiometric laboratory calibration of the Airborne Visible/Infrared Imaging Spectrometer, in: *Imaging Spectroscopy of the Terrestrial Environment*, vol. 1298, pp. 37–49, SPIE, 1990.
- Chýlek, P., Srivastava, V., Pinnick, R. G., and Wang, R.: Scattering of electromagnetic waves by composite spherical particles: experiment and effective medium approximations, *Applied Optics*, 27, 2396–2404, <https://doi.org/10.1364/AO.27.002396>, 1988.
- Claquin, T., Schulz, M., and Balkanski, Y.: Modeling the mineralogy of atmospheric dust sources, *Journal of Geophysical Research: Atmospheres*, 104, 22 243–22 256, <https://doi.org/10.1029/1999JD900416>, 1999.
- 810 Clough, S. A., Shephard, M. W., Mlawer, E. J., Delamere, J. S., Iacono, M. J., Cady-Pereira, K., Boukabara, S., and Brown, P. D.: Atmospheric radiative transfer modeling: a summary of the AER codes, *Journal of Quantitative Spectroscopy and Radiative Transfer*, 91, 233–244, <https://www.sciencedirect.com/science/article/pii/S0022407304002158>, 2005.
- DeMott, P. J., Cziczo, D. J., Prenni, A. J., Murphy, D. M., Kreidenweis, S. M., Thomson, D. S., Borys, R., and Rogers, D. C.: Measurements of the concentration and composition of nuclei for cirrus formation, *Proceedings of the National Academy of Sciences*, 100, 14 655–14 660, <https://doi.org/10.1073/pnas.2532677100>, 2003.
- DeMott, P. J., Prenni, A. J., Liu, X., Kreidenweis, S. M., Petters, M. D., Twohy, C. H., Richardson, M., Eidhammer, T., and Rogers, D.: Predicting global atmospheric ice nuclei distributions and their impacts on climate, *Proceedings of the National Academy of Sciences*, 107, 11 217–11 222, <https://doi.org/10.1073/pnas.0910818107>, 2010.
- 820 Di Biagio, C., Di Sarra, A., Meloni, D., Monteleone, F., Piacentino, S., and Sferlazzo, D.: Measurements of Mediterranean aerosol radiative forcing and influence of the single scattering albedo, *Journal of Geophysical Research: Atmospheres*, 114, <https://doi.org/10.1029/2008JD011037>, 2009.
- Di Biagio, C., Di Sarra, A., and Meloni, D.: Large atmospheric shortwave radiative forcing by Mediterranean aerosols derived from simultaneous ground-based and spaceborne observations and dependence on the aerosol type and single scattering albedo, *Journal of Geophysical Research: Atmospheres*, 115, <https://doi.org/10.1029/2009JD012697>, 2010.
- 825 Di Biagio, C., Formenti, P., Balkanski, Y., Caponi, L., Cazaunau, M., Pangui, E., Journet, E., Nowak, S., Caquineau, S., Andreae, M. O., Kandler, K., Saeed, T., Piketh, S., Seibert, D., Williams, E., and Doussin, J.-F.: Global scale variability of the mineral dust long-wave

- refractive index: a new dataset of in situ measurements for climate modeling and remote sensing, *Atmospheric Chemistry and Physics*, 17, 1901–1929, <https://doi.org/10.5194/acp-17-1901-2017>, 2017.
- 830 Di Biagio, C., Formenti, P., Balkanski, Y., Caponi, L., Cazaunau, M., Panguì, E., Journet, E., Nowak, S., Andreae, M. O., Kandler, K., Saeed, T., Piketh, S., Seibert, D., Williams, E., and Doussin, J. F.: Complex refractive indices and single-scattering albedo of global dust aerosols in the shortwave spectrum and relationship to size and iron content, *Atmospheric Chemistry and Physics*, 19, 15 503–15 531, <https://doi.org/10.5194/acp-19-15503-2019>, 2019.
- Di Biagio, C., Balkanski, Y., Albani, S., Boucher, O., and Formenti, P.: Direct Radiative Effect by Mineral Dust Aerosols Constrained by New
835 Microphysical and Spectral Optical Data, *Geophysical Research Letters*, 47, e2019GL086 186, <https://doi.org/10.1029/2019GL086186>, 2020.
- Di Sarra, A., Fuà, D., and Meloni, D.: Estimate of surface direct radiative forcing of desert dust from atmospheric modulation of the aerosol optical depth, *Atmospheric Chemistry and Physics*, 13, 5647–5654, <https://doi.org/10.5194/acp-13-5647-2013>, 2013.
- Doner, N., Pargan, A. R., Aygahoglu, A., Liu, F., and Sen, F.: Radiative properties of hematite particles in the UV-visible spectrum, *International Journal of Thermal Sciences*, 139, 79–87, <https://doi.org/10.1016/j.ijthermalsci.2019.02.006>, 2019.
- 840 Evan, A., Kuwano, A., Frouin, R., Barbero, T., Wynn, S., and Robinson, T.: Meteorological and Aerosol Measurements near the Salton Sea, California, UC San Diego Library Digital Collections, <https://doi.org/https://doi.org/10.6075/J0XP7547>, 2022a.
- Evan, A., Porter, W., Clemesha, R., Kuwano, A., and Frouin, R.: Measurements of a Dusty Density Current in the Western Sonoran Desert, *Journal of Geophysical Research: Atmospheres*, 127, e2021JD035 830, <https://doi.org/https://doi.org/10.1029/2021JD035830>, 2022b.
- 845 Evan, A., Walkowiak, B., and Frouin, R.: On the Misclassification of Dust as Cloud at an AERONET Site in the Sonoran Desert, *Journal of Atmospheric and Oceanic Technology*, 39, 181 – 191, <https://doi.org/10.1175/JTECH-D-21-0114.1>, 2022c.
- Evan, A. T.: Downslope Winds and Dust Storms in the Salton Basin, *Monthly Weather Review*, 147, 2387 – 2402, <https://doi.org/10.1175/MWR-D-18-0357.1>, 2019.
- Evan, A. T., Porter, W. C., Clemesha, R., Kuwano, A., and Frouin, R.: Characteristics of Dust Storms Generated by Trapped Waves in the
850 Lee of Mountains, *Journal of the Atmospheric Sciences*, <https://doi.org/10.1175/JAS-D-22-0128.1>, 2023.
- Fernald, F. G.: Analysis of Atmospheric Lidar Observations: Some Comments, *Applied Optics*, 23, 652–653, <https://doi.org/10.1364/AO.23.000652>, 1984.
- García, R., García, O., Cuevas, E., Cachorro, V., Romero-Campos, P., Ramos, R., and De Frutos, A.: Solar radiation measurements compared to simulations at the BSRN Izaña station. Mineral dust radiative forcing and efficiency study, *Journal of Geophysical Research: Atmospheres*, 119, 179–194, 2014.
- 855 Ge, J. M., Su, J., Ackerman, T. P., Fu, Q., Huang, J. P., and Shi, J. S.: Dust aerosol optical properties retrieval and radiative forcing over northwestern China during the 2008 China-U.S. joint field experiment, *Journal of Geophysical Research: Atmospheres*, 115, <https://doi.org/https://doi.org/10.1029/2009JD013263>, 2010.
- Giles, D. M., Sinyuk, A., Sorokin, M. G., Schafer, J. S., Smirnov, A., Slutsker, I., Eck, T. F., Holben, B. N., Lewis, J. R., Campbell, J. R., et al.:
860 Advancements in the Aerosol Robotic Network (AERONET) Version 3 database—automated near-real-time quality control algorithm with improved cloud screening for Sun photometer aerosol optical depth (AOD) measurements, *Atmospheric Measurement Techniques*, 12, 169–209, <https://doi.org/10.5194/amt-12-169-2019>, 2019.
- Gliß, J., Mortier, A., Schulz, M., Andrews, E., Balkanski, Y., Bauer, S. E., Benedictow, A. M., Bian, H., Checa-Garcia, R., Chin, M., Ginoux, P., Griesfeller, J. J., Heckel, A., Kipling, Z., Kirkevåg, A., Kokkola, H., Laj, P., Le Sager, P., Lund, M. T., Myhre, C. L., Matsui, H.,
865 Myhre, G., Neubauer, D., van Noije, T., North, P., Olivie, D. J. L., Rémy, S., Sogacheva, L., Takemura, T., Tsigaridis, K., and Tsyro, S. G.:

- AeroCom phase III multi-model evaluation of the aerosol life cycle and optical properties using ground-and space-based remote sensing as well as surface in situ observations, *Atmospheric Chemistry and Physics*, 21, 87–128, <https://doi.org/10.5194/acp-21-87-2021>, 2021.
- 870 Hansell, R. A., Tsay, S.-C., Hsu, N. C., Ji, Q., Bell, S. W., Holben, B. N., Welton, E. J., Roush, T. L., Zhang, W., Huang, J., Li, Z., and Chen, H.: An assessment of the surface longwave direct radiative effect of airborne dust in Zhangye, China, during the Asian Monsoon Years field experiment (2008), *Journal of Geophysical Research: Atmospheres*, 117, <https://doi.org/https://doi.org/10.1029/2011JD017370>, 2012.
- Helmert, J., Heinold, B., Tegen, I., Hellmuth, O., and Wendisch, M.: On the direct and semidirect effects of Saharan dust over Europe: A modeling study, *Journal of Geophysical Research: Atmospheres*, 112, <https://doi.org/10.1029/2006JD007444>, 2007.
- Highwood, E. J. and Ryder, C. L.: *Radiative Effects of Dust*, pp. 267–286, Springer Netherlands, https://doi.org/10.1007/978-94-017-8978-3_11, 2014.
- 875 Hoffmann, C., Funk, R., Wieland, R., Li, Y., and Sommer, M.: Effects of grazing and topography on dust flux and deposition in the Xilinge grassland, Inner Mongolia, *Journal of Arid Environments*, 72, 792–807, <https://doi.org/https://doi.org/10.1016/j.jaridenv.2007.09.004>, 2008.
- Holben, B., Eck, T., Slutsker, I., Tanré, D., Buis, J., Setzer, A., Vermote, E., Reagan, J., Kaufman, Y., Nakajima, T., Lavenu, F., Jankowiak, I., and Smirnov, A.: AERONET—A Federated Instrument Network and Data Archive for Aerosol Characterization, *Remote Sensing of Environment*, 66, 1–16, [https://doi.org/https://doi.org/10.1016/S0034-4257\(98\)00031-5](https://doi.org/https://doi.org/10.1016/S0034-4257(98)00031-5), 1998.
- 880 Horel, J., Splitt, M., Dunn, L., Pechmann, J., White, B., Ciliberti, C., Lazarus, S., Slemmer, J., Zaff, D., and Burks, J.: Mesowest: Cooperative mesonets in the western United States, *Bulletin of the American Meteorological Society*, 83, 211–225, [https://doi.org/10.1175/1520-0477\(2002\)083<0211:MCMITW>2.3.CO;2](https://doi.org/10.1175/1520-0477(2002)083<0211:MCMITW>2.3.CO;2), 2002.
- Hsu, N. C., Herman, J. R., and Weaver, C.: Determination of radiative forcing of Saharan dust using combined TOMS and ERBE data, *Journal of Geophysical Research: Atmospheres*, 105, 20 649–20 661, <https://doi.org/10.1029/2000JD900150>, 2000.
- 885 Hsu, N. C., Jeong, M.-J., Bettenhausen, C., Sayer, A. M., Hansell, R., Seftor, C. S., Huang, J., and Tsay, S.-C.: Enhanced Deep Blue aerosol retrieval algorithm: The second generation, *Journal of Geophysical Research: Atmospheres*, 118, 9296–9315, <https://doi.org/https://doi.org/10.1002/jgrd.50712>, 2013.
- Huang, Y., Kok, J. F., Kandler, K., Lindqvist, H., Nousiainen, T., Sakai, T., Adebisi, A., and Jokinen, O.: Climate models and remote sensing retrievals neglect substantial desert dust asphericity, *Geophysical Research Letters*, 47, e2019GL086 592, <https://doi.org/10.1029/2019GL086592>, 2020.
- 890 Huang, Y., Kok, J. F., Saito, M., and Muñoz, O.: Single-scattering properties of ellipsoidal dust aerosols constrained by measured dust shape distributions, *Atmospheric Chemistry and Physics*, 23, 2557–2577, <https://doi.org/10.5194/acp-23-2557-2023>, 2023.
- Iacono, M. J., Delamere, J. S., Mlawer, E. J., Shephard, M. W., Clough, S. A., and Collins, W. D.: Radiative forcing by long-lived greenhouse gases: Calculations with the AER radiative transfer models, *Journal of Geophysical Research: Atmospheres*, 113, <https://doi.org/https://doi.org/10.1029/2008JD009944>, 2008.
- Imperial County Air Pollution Control District: Imperial County 2018 Annual Particulate Matter Less than 2.5 Microns in Diameter State Implementation Plan, Tech. rep., CARB and APCD, <https://apcd.imperialcounty.org/wp-content/uploads/2020/01/2018-IC-PM25SIP.pdf>, 2018.
- 900 Imperial Irrigation District: Salton Sea Air Quality Mitigation Program, Tech. rep., Salton Sea Air Quality Team, <https://www.iid.com/Home/ShowDocument?id=11827>, 2016.
- Ives, R. L.: Climate of the Sonoran Desert region, *Annals of the Association of American Geographers*, 39, 143–187, 1949.

- Japan Meteorological Agency, Japan: JRA-55: Japanese 55-year Reanalysis, Daily 3-Hourly and 6-Hourly Data, <https://doi.org/10.5065/D6HH6H41>, 2013.
- 905 Jin, Y., Kai, K., Kawai, K., Nagai, T., Sakai, T., Yamazaki, A., Uchiyama, A., Batdorj, D., Sugimoto, N., and Nishizawa, T.: Ceilometer calibration for retrieval of aerosol optical properties, *Journal of Quantitative Spectroscopy and Radiative Transfer*, 153, 49–56, <https://doi.org/https://doi.org/10.1016/j.jqsrt.2014.10.009>, 2015.
- Johnson, B. T., Shine, K. P., and Forster, P. M.: The semi-direct aerosol effect: Impact of absorbing aerosols on marine stratocumulus, *Quarterly Journal of the Royal Meteorological Society*, 130, 1407–1422, <https://doi.org/https://doi.org/10.1256/qj.03.61>, 2004.
- 910 Jones, B. A. and Fleck, J.: Shrinking lakes, air pollution, and human health: Evidence from California’s Salton Sea, *Science of The Total Environment*, 712, 136 490, <https://doi.org/https://doi.org/10.1016/j.scitotenv.2019.136490>, 2020.
- Journet, E., Balkanski, Y., and Harrison, S. P.: A new data set of soil mineralogy for dust-cycle modeling, *Atmospheric Chemistry and Physics*, 14, 3801–3816, <https://doi.org/10.5194/acp-14-3801-2014>, 2014.
- Klein, S. A. and Jakob, C.: Validation and sensitivities of frontal clouds simulated by the ECMWF model, *Monthly weather review*, 127, 2514–2531, [https://doi.org/10.1175/1520-0493\(1999\)127<2514:VASOFC>2.0.CO;2](https://doi.org/10.1175/1520-0493(1999)127<2514:VASOFC>2.0.CO;2), 1999.
- 915 Kohsiek, W., Liebenthal, C., Foken, T., Vogt, R., Oncley, S. P., Bernhofer, C., and Debruin, H. A.: The Energy Balance Experiment EBEX-2000. Part III: Behaviour and quality of the radiation measurements, *Boundary-Layer Meteorology*, 123, 55–75, <https://doi.org/10.1007/s10546-006-9135-8>, 2007.
- Kok, J. F.: A scaling theory for the size distribution of emitted dust aerosols suggests climate models underestimate the size of the global dust cycle, *Proceedings of the National Academy of Sciences*, 108, 1016–1021, <https://doi.org/10.1073/pnas.1014798108>, 2011.
- 920 Kok, J. F., Ridley, D. A., Zhou, Q., Miller, R. L., Zhao, C., Heald, C. L., Ward, D. S., Albani, S., and Haustein, K.: Smaller desert dust cooling effect estimated from analysis of dust size and abundance, *Nature Geoscience*, 10, 274–278, <https://doi.org/10.1038/NGEO2912>, 2017.
- Kok, J. F., Ward, D. S., Mahowald, N. M., and Evan, A. T.: Global and regional importance of the direct dust-climate feedback, *Nature Communications*, 9, 241, <https://doi.org/10.1038/s41467-017-02620-y>, 2018.
- 925 Kok, J. F., Storelvmo, T., Karydis, V. A., Adebisi, A. A., Mahowald, N. M., Evan, A. T., He, C., and Leung, D. M.: Mineral dust aerosol impacts on global climate and climate change, *Nature Reviews Earth & Environment*, pp. 1–16, <https://doi.org/10.1038/s43017-022-00379-5>, 2023.
- Kuwano, A. and Evan, A.: A Method to Account for the Impact of Water Vapor on Observation-Based Estimates of the Clear-Sky Shortwave Direct Radiative Effect of Mineral Dust, *Journal of Geophysical Research: Atmospheres*, 127, e2022JD036620, <https://doi.org/https://doi.org/10.1029/2022JD036620>, e2022JD036620 2022JD036620, 2022.
- 930 Li, L., Mahowald, N. M., Miller, R. L., Pérez García-Pando, C., Klose, M., Hamilton, D. S., Gonçalves Ageitos, M., Ginoux, P., Balkanski, Y., Green, R. O., Kalashnikova, O., Kok, J. F., Obiso, V., Paynter, D., and Thompson, D. R.: Quantifying the range of the dust direct radiative effect due to source mineralogy uncertainty, *Atmospheric Chemistry and Physics*, 21, 3973–4005, <https://doi.org/10.5194/acp-21-3973-2021>, 2021.
- 935 Liao, H. and Seinfeld, J. H.: Radiative forcing by mineral dust aerosols: Sensitivity to key variables, *Journal of Geophysical Research: Atmospheres*, 103, 31 637–31 645, <https://doi.org/10.1029/1998JD200036>, 1998.
- Loeb, N. G., Manalo-Smith, N., Su, W., Shankar, M., and Thomas, S.: CERES top-of-atmosphere Earth radiation budget climate data record: Accounting for in-orbit changes in instrument calibration, *Remote Sensing*, 8, 182, <https://doi.org/10.3390/rs8030182>, 2016.

- Marcos, C. R., Gómez-Amo, J. L., Peris, C., Pedrós, R., Utrillas, M. P., and Martínez-Lozano, J. A.: Analysis of four years of
940 ceilometer-derived aerosol backscatter profiles in a coastal site of the western Mediterranean, *Atmospheric Research*, 213, 331–345,
<https://doi.org/https://doi.org/10.1016/j.atmosres.2018.06.016>, 2018.
- Meng, J., Huang, Y., Leung, D. M., Li, L., Adebisi, A. A., Ryder, C. L., Mahowald, N. M., and Kok, J. F.: Improved Parameterization for
the Size Distribution of Emitted Dust Aerosols Reduces Model Underestimation of Super Coarse Dust, *Geophysical Research Letters*, 49,
<https://doi.org/https://doi.org/10.1029/2021GL097287>, 2022.
- 945 Mikofski, M.: Solar Position Calculator, [https://urldefense.com/v3/__https://www.mathworks.com/matlabcentral/fileexchange/58405-solar-position-calculator__;!!Mih3wA!DJTFWPku9aF9CseM9IXbKf_UkAc3bTasfphULI27xLCYlyHAc_T9YLMcxOeQD3Al22OR7yeIyP9IeK4\\$](https://urldefense.com/v3/__https://www.mathworks.com/matlabcentral/fileexchange/58405-solar-position-calculator__;!!Mih3wA!DJTFWPku9aF9CseM9IXbKf_UkAc3bTasfphULI27xLCYlyHAc_T9YLMcxOeQD3Al22OR7yeIyP9IeK4$), 2016.
- Miller, R., Perlwitz, J., and Tegen, I.: Feedback upon dust emission by dust radiative forcing through the planetary boundary layer, *Journal
of Geophysical Research: Atmospheres*, 109, <https://doi.org/10.1029/2004JD004912>, 2004.
- 950 Mlawer, E. and Clough, S.: On the extension of rapid radiative transfer model to the shortwave region, in: *Proceedings of the 6th Atmospheric
Radiation Measurement (ARM) Science Team Meeting, US Department of Energy, CONF-9603149, vol. 510, Citeseer, 1997.*
- Mlawer, E. and Clough, S.: Shortwave and longwave enhancements in the rapid radiative transfer model, in: *Proceedings of the 7th atmo-
spheric radiation measurement (arm) science team meeting*, pp. 409–413, Citeseer, 1998.
- Mlawer, E. J., Taubman, S. J., Brown, P. D., Iacono, M. J., and Clough, S. A.: Radiative transfer for inhomogeneous atmospheres:
955 RRTM, a validated correlated-k model for the longwave, *Journal of Geophysical Research: Atmospheres*, 102, 16 663–16 682,
<https://doi.org/https://doi.org/10.1029/97JD00237>, 1997.
- Münkel, C., Eresmaa, N., Räsänen, J., and Karppinen, A.: Retrieval of mixing height and dust concentration with lidar ceilometer, *Boundary-
Layer Meteorology*, 124, 117–128, <https://doi.org/10.1007/s10546-006-9103-3>, 2007.
- NCEI: U.S. Climate Normals, <https://www.ncei.noaa.gov/products/land-based-station/us-climate-normals>.
- 960 Parajuli, S. P. and Zender, C. S.: Projected changes in dust emissions and regional air quality due to the shrinking Salton Sea, *Aeolian
Research*, 33, 82–92, <https://doi.org/https://doi.org/10.1016/j.aeolia.2018.05.004>, 2018.
- Ramana, M. V. and Ramanathan, V.: Abrupt transition from natural to anthropogenic aerosol radiative forcing:
Observations at the ABC-Maldives Climate Observatory, *Journal of Geophysical Research: Atmospheres*, 111,
<https://doi.org/https://doi.org/10.1029/2006JD007063>, 2006.
- 965 Rienecker, M. M., Suarez, M., Todling, R., Bacmeister, J., Takacs, L., Liu, H.-C., Gu, W., Sienkiewicz, M., Koster, R., Gelaro, R., et al.: The
GEOS-5 Data Assimilation System–Documentation of Versions 5.0. 1, 5.1. 0, and 5.2. 0, Tech. rep., 2008.
- Rosenfeld, D., Rudich, Y., and Lahav, R.: Desert dust suppressing precipitation: A possible desertification feedback loop, *Proceedings of the
National Academy of Sciences*, 98, 5975–5980, <https://doi.org/10.1073/pnas.101122798>, 2001.
- Rutan, D., Rose, F., Roman, M., Manalo-Smith, N., Schaaf, C., and Charlock, T.: Development and assessment of broadband surface albedo
970 from Clouds and the Earth’s Radiant Energy System Clouds and Radiation Swath data product, *Journal of Geophysical Research: Atmo-
spheres*, 114, <https://doi.org/10.1029/2008JD010669>, 2009.
- Ryder, C. L., Marengo, F., Brooke, J. K., Estelles, V., Cotton, R., Formenti, P., McQuaid, J. B., Price, H. C., Liu, D., Ausset, P., Rosenberg,
P. D., Taylor, J. W., Choularton, T., Bower, K., Coe, H., Gallagher, M., Crosier, J., Lloyd, G., Highwood, E. J., and Murray, B. J.: Coarse-
mode mineral dust size distributions, composition and optical properties from AER-D aircraft measurements over the tropical eastern
975 Atlantic, *Atmospheric Chemistry and Physics*, 18, 17 225–17 257, <https://doi.org/10.5194/acp-18-17225-2018>, 2018.

- Ryder, C. L., Highwood, E. J., Walser, A., Seibert, P., Philipp, A., and Weinzierl, B.: Coarse and giant particles are ubiquitous in Saharan dust export regions and are radiatively significant over the Sahara, *Atmospheric Chemistry and Physics*, 19, 15 353–15 376, <https://doi.org/10.5194/acp-19-15353-2019>, 2019.
- Saito, M. and Yang, P.: TAMUdust2020, <https://github.com/masasaito/TAMUdust2020#readme>, 2021.
- 980 Saito, M., Yang, P., Ding, J., and Liu, X.: A Comprehensive Database of the Optical Properties of Irregular Aerosol Particles for Radiative Transfer Simulations, *Journal of the Atmospheric Sciences*, 78, 2089 – 2111, <https://doi.org/https://doi.org/10.1175/JAS-D-20-0338.1>, 2021.
- San Diego County Water Authority: Quantification Settlement Agreement, <https://www.sdcwa.org/sites/default/files/qs-a-fs.pdf>.
- Sassen, K., DeMott, P. J., Prospero, J. M., and Poellot, M. R.: Saharan dust storms and indirect aerosol effects on clouds: CRYSTAL-FACE results, *Geophysical Research Letters*, 30, <https://doi.org/10.1029/2003GL017371>, 2003.
- 985 Satheesh, S. and Ramanathan, V.: Large differences in tropical aerosol forcing at the top of the atmosphere and Earth’s surface, *Nature*, 405, 60, <https://doi.org/10.1038/35011039>, 2000.
- Scanza, R. A., Mahowald, N., Ghan, S., Zender, C. S., Kok, J. F., Liu, X., Zhang, Y., and Albani, S.: Modeling dust as component minerals in the Community Atmosphere Model: development of framework and impact on radiative forcing, *Atmospheric Chemistry and Physics*, 15, 537–561, <https://doi.org/10.5194/acp-15-537-2015>, 2015.
- 990 Seinfeld, J. H. and Pandis, S. N.: *Atmospheric chemistry and physics: from air pollution to climate change*, John Wiley & Sons, ISBN 978-0471720188, 2016.
- Shao, Y., ed.: *Dust Transport and Deposition*, pp. 247–301, Springer Netherlands, Dordrecht, ISBN 978-1-4020-8895-7, https://doi.org/10.1007/978-1-4020-8895-7_8, 2008.
- 995 Sokolik, I. N. and Toon, O. B.: Direct radiative forcing by anthropogenic airborne mineral aerosols, *Nature*, 381, 681–683, <https://doi.org/10.1038/381681a0>, 1996.
- Song, Q., Zhang, Z., Yu, H., Kok, J. F., Di Biagio, C., Albani, S., Zheng, J., and Ding, J.: Size-resolved dust direct radiative effect efficiency derived from satellite observations, *Atmospheric Chemistry and Physics*, 22, 13 115–13 135, <https://doi.org/10.5194/acp-22-13115-2022>, 2022.
- 1000 Song, Q., Ginoux, P., Gonçalves Ageitos, M., Miller, R. L., Obiso, V., and Pérez García-Pando, C.: Modeling impacts of dust mineralogy on Earth’s Radiation and Climate, *EGUsphere*, 2023, 1–45, <https://doi.org/10.5194/egusphere-2023-2938>, 2023.
- Stephen, M. F. and Gorsline, D. S.: *Sedimentary aspects of the New River Delta, Salton Sea, Imperial County, California*, pp. 267–282, 1975.
- Su, W., Corbett, J., Eitzen, Z., and Liang, L.: Next-generation angular distribution models for top-of-atmosphere radiative flux calculation from CERES instruments: Methodology, *Atmospheric Measurement Techniques*, 8, 611–632, <https://doi.org/10.5194/amt-8-611-2015>, 2015a.
- 1005 Su, W., Corbett, J., Eitzen, Z., and Liang, L.: Next-generation angular distribution models for top-of-atmosphere radiative flux calculation from CERES instruments: validation, *Atmospheric Measurement Techniques*, 8, 3297–3313, <https://doi.org/10.5194/amt-8-3297-2015>, 2015b.
- Thompson, D. R., Braverman, A., Brodrick, P. G., Candela, A., Carmon, N., Clark, R. N., Connelly, D., Green, R. O., Kokaly, R. F., Li, L., et al.: Quantifying uncertainty for remote spectroscopy of surface composition, *Remote Sensing of Environment*, 247, 111 898, 2020.
- 1010 Valenzuela, A., Olmo, F. J., Lyamani, H., Antón, M., Quirantes, A., and Alados-Arboledas, L.: Aerosol radiative forcing during African desert dust events (2005–2010) over Southeastern Spain, *Atmospheric Chemistry and Physics*, 12, 10 331–10 351, <https://doi.org/10.5194/acp-12-10331-2012>, 2012.

- van der Does, M., Knippertz, P., Zschenderlein, P., Harrison, R. G., and Stuut, J.-B. W.: The mysterious long-range transport of giant mineral dust particles, *Science Advances*, 4, eaau2768, <https://doi.org/10.1126/sciadv.aau2768>, 2018.
- 1015 Wagner, T. J. and Kleiss, J. M.: Error Characteristics of Ceilometer-Based Observations of Cloud Amount, *Journal of Atmospheric and Oceanic Technology*, 33, 1557 – 1567, <https://doi.org/https://doi.org/10.1175/JTECH-D-15-0258.1>, 2016.
- Walkowiak, B.: Estimates of the Direct Radiative Effect of Sonoran Desert Dust from Origin Soil Mineralogy-a Multi-Model Study, Master's thesis, University of California, San Diego, 2022.
- 1020 Wang, J., Zhang, L., Dai, A., Van Hove, T., and Van Baelen, J.: A near-global, 2-hourly data set of atmospheric precipitable water from ground-based GPS measurements, *Journal of Geophysical Research: Atmospheres*, 112, <https://doi.org/https://doi.org/10.1029/2006JD007529>, 2007.
- Ware, R. H., Fulker, D. W., Stein, S. A., Anderson, D. N., Avery, S. K., Clark, R. D., Droegemeier, K. K., Kuettner, J. P., Minster, J. B., and Sorooshian, S.: SuomiNet: A Real-Time National GPS Network for Atmospheric Research and Education, *Bulletin of the American Meteorological Society*, 81, 677 – 694, [https://doi.org/10.1175/1520-0477\(2000\)081<0677:SARNGN>2.3.CO;2](https://doi.org/10.1175/1520-0477(2000)081<0677:SARNGN>2.3.CO;2), 2000.
- 1025 Wielicki, B. A., Barkstrom, B. R., Harrison, E. F., Lee, R. B., Smith, G. L., and Cooper, J. E.: Clouds and the Earth's Radiant Energy System (CERES): An Earth observing system experiment, *Bulletin of the American Meteorological Society*, 77, 853–868, [https://doi.org/10.1175/1520-0477\(1996\)077<0853:CATERE>2.0.CO;2](https://doi.org/10.1175/1520-0477(1996)077<0853:CATERE>2.0.CO;2), 1996.
- Xia, X. and Zong, X.: Shortwave versus longwave direct radiative forcing by Taklimakan dust aerosols, *Geophysical research letters*, 36, 1030 2009.
- Yang, E.-S., Gupta, P., and Christopher, S. A.: Net radiative effect of dust aerosols from satellite measurements over Sahara, *Geophysical Research Letters*, 36, <https://doi.org/10.1029/2009GL039801>, 2009.
- Zhang, J. and Christopher, S. A.: Longwave radiative forcing of Saharan dust aerosols estimated from MODIS, MISR, and CERES observations on Terra, *Geophysical Research Letters*, 30, <https://doi.org/https://doi.org/10.1029/2003GL018479>, 2003.
- 1035 Zhou, M., Yu, H., Dickinson, R., Dubovik, O., and Holben, B.: A normalized description of the direct effect of key aerosol types on solar radiation as estimated from Aerosol Robotic Network aerosols and Moderate Resolution Imaging Spectroradiometer albedos, *Journal of Geophysical Research: Atmospheres*, 110, <https://doi.org/10.1029/2005JD005909>, 2005.
- Zonen, K. .: CM21 Precision Pyranometer Instruction Manual, Kipp & Zonen, <https://www.kippzonen.com/Download/52/CM-21-Pyranometer-Manual>, 2004.