

The Impact of ENSO and NAO Initial Conditions and Anomalies on the Modeled Response to Pinatubo-Sized Volcanic Forcing

Helen Weierbach^{1,2,3}, Allegra N. LeGrande^{4,5}, and Kostas Tsigaridis^{5,4}

¹Earth and Environmental Sciences Area, Lawrence Berkeley National Laboratory, Berkeley, CA, USA

²Tulane University, New Orleans, LA, USA

³Lamont Doherty Earth Observatory, Columbia University, New York, NY, USA

⁴NASA Goddard Institute for Space Studies, New York, NY, USA

⁵Center for Climate Systems Research, Columbia University, New York, NY, USA

Correspondence: Kostas Tsigaridis (kostas.tsigaridis@columbia.edu)

Abstract. Strong, strato-volcanic eruptions are a substantial, intermittent source of natural climate variability. Initial atmospheric and oceanic conditions such as El Niño Southern Oscillation (ENSO) and the North Atlantic Oscillation (NAO) also naturally impact climate on [\[..¹\]](#) interannual time scales. We examine how initial conditions of ENSO and NAO [\[..²\]](#) contribute to the evolution of climate in the period following a Pinatubo-type eruption using a large (81-member) ensemble of model simulations in GISS Model E2.1-G. Simulations are [\[..³\]](#) initialized from sampled conditions of ENSO and NAO using the protocol of the coordinated CMIP6 Volcanic Model Intercomparison Project (VolMIP) – where aerosols are forced with respect to time, latitude, and height. We analyze paired anomalous variations (perturbed - control) to understand changes in global and regional climate responses under positive, negative, and neutral ENSO and NAO conditions. In particular, we find that for paired anomalies there is a high probability of strong (~ 1.5 °C) warming of Northern Eurasia surface air temperature in the first winter after [\[..⁴\]](#) the volcanic eruption for negative NAO ensembles [\[..⁵\]](#) coincident with decreased lower stratospheric temperature at the poles, decreased geopotential height, and strengthening of the stratospheric polar vortex. [\[..⁶\]](#) Climate anomalies (relative to [\[..⁷\]](#) average conditions across the control period,) however, show no mean warming and suggest that the strength of this response is impacted by [\[..⁸\]](#) conditions present in the selected period of the control run. Again using paired anomalies, we also observe that under both + ENSO and - ENSO ensembles [\[..⁹\]](#) sea surface temperature [\[..¹⁰\]](#) decreases in the first post-eruptive Boreal Winter [\[..¹¹\]](#) coinciding with surface cooling from volcanic aerosols. Neutral ENSO ensembles, on the other hand, show variability in their response with no clear trend in post-eruptive warming or cooling. In general,

¹removed: regular

²removed: impact the climate's response to

³removed: sampled from possible initial conditions under

⁴removed: a

⁵removed: with analysis

⁶removed: Historical

⁷removed: climatology)

⁸removed: control conditions

⁹removed: tend to decrease tropical

¹⁰removed: toward baseline conditions

¹¹removed: while neutral-phase ensembles are variable and show no clear response

paired anomalies from unperturbed simulations give insight into the evolution of the climate response to volcanic forcing, ^[..¹²] however, when compared to anomalies from climatological conditions it is clear that paired anomalies are significantly affected by sampled initial conditions occurring at the time of the volcanic eruption.

20 1 Introduction

Strong, explosive volcanic eruptions are an intermittent, natural source of climate variability acting on both inter-annual and decadal scales. Explosive volcanic eruptions eject sulfur dioxide, halogens, ash, and water vapor into the stratosphere, where the particles are converted into sulfate aerosols (LeGrande et al., 2016). The loading of stratospheric aerosols increases aerosol optical depth of the atmosphere (Lacis, 2015), thus imposing a radiative forcing via scattering of shortwave radiation and absorption of longwave radiation in the stratosphere (Zanchettin et al., 2013).

The impact that a strong volcanic eruption makes on the climate system depends on many factors including size, ejection height, and location of the eruption. ^[..¹³] These factors impact the amount, location and dynamics of how aerosols are loaded in the atmosphere ^[..¹⁴] (Timmreck et al., 2010; LeGrande and Anchukaitis, 2015). Mt. Pinatubo is an example of one such strong volcanic eruption which erupted in the Philippines in June 1991, ejecting 18 Tg of SO₂ into the atmosphere at a height of 20 km (Stenchikov et al., 1998). The Mt. Pinatubo eruption ^[..¹⁵] is widely studied as it is one of the largest volcanic eruptions in the last decade ^[..¹⁶], therefore providing well constrained satellite observations to run climate model simulations (McCormick et al., 1995; Bluth et al., 1992; Stenchikov et al., 1998).

The timing of an eruption, including the time of season and initial climate conditions, also impact climate's response to a volcanic eruption by actively influencing the mechanisms involved in the post-eruption decadal climate evolution (Zanchettin et al., 2013). Climate variability such as the El Niño Southern Oscillation System (ENSO) and North Atlantic Oscillation (NAO) continuously cause variations in Earth's climate over time (Philander, 1983; Allan et al., 1996; Timmermann et al., 2018; Hurrell et al., 2003; Wanner et al., 2001). Climate modelling studies have examined how the initial state of these climate conditions impact the climate response to volcanic eruption on interannual to decadal scales; while radiative forcing impacts remained the same, different initial climate states cause substantial variability in surface atmospheric and oceanic conditions (Zanchettin et al., 2013; Pausata et al., 2020). Further climate modelling experiments have thus been designed to capture variability that may occur due to different initial states of the climate system at the time of a modeled volcanic eruption (Zanchettin et al., 2016).

¹²removed: but are significantly impacted by initial climate conditions present

¹³removed: Timing of an eruption also contributes to the climate system's response, with seasonal timing and initial climate conditions at the time of the eruption also influencing the climate response.

¹⁴removed: , significantly impacting how the climate system responds to the perturbation Timmreck et al. (2010); LeGrande and Anchukaitis (2015)

¹⁵removed: has been

¹⁶removed: McCormick et al. (1995); Bluth et al. (1992); Stenchikov et al. (1998). Climate models are frequently used to study this eruption, as aerosols are relatively well constrained using satellite observations of the eruption.

In this study, we analyze the modelled response to a [..¹⁷] 1991 Pinatubo sized eruption [..¹⁸] under the coordinated protocol of the Volcanic Model Intercomparison Project (VolMIP) (Eyring et al., 2016) aiming to understand how initial ENSO and NAO climate conditions can impact the climate response. In particular, we investigate how initial ENSO and NAO conditions, which are sampled for as part of the VolMIP protocol (Zanchettin et al., 2016), impact the response in the ENSO region, and in the northern hemisphere for the first 3 years after the eruption. We also this ensemble to examine the impact of initial climate conditions and initial climate sampling on the aggregate response of the climate condition to volcanic forcing.

2 Relevant Volcanic Climate Responses

2.1 Impact of the Pinatubo eruption on climate

The impact of a Pinatubo sized eruption on the Earth's climate system is significant; previous work has shown that Pinatubo-sized volcanic eruptions decrease radiative flux in the region [40 °N-40 °S] by around -4.3 W m^{-2} at their peak aerosol forcing (Minnis et al., 1993), with radiative effects lasting for about two years after the eruption. In comparison, anthropogenic radiative forcing is estimated to have increased global energy budget by 2.3 W m^{-2} over the industrial period (Myhre et al., 2013), making volcanic forcing a short-lived but substantial source of natural climate variability. The resulting impacts in the climate system, however, last years after volcanic aerosols have been depleted. The direct impacts of volcanic aerosols include cooling of the Earth's surface and warming of the stratosphere (Lacis, 2015). These direct impacts initiate many other changes in the climate system including changes in atmospheric circulation, the hydrological cycle, the cryosphere, and carbon cycle [..¹⁹]

2.2 [..²⁰]

[..²¹]

¹⁷removed: Mt.

¹⁸removed: on Earth in the absence of greenhouse gases to determine the role of initial conditions in the climate response to such a volcanic eruption

¹⁹removed: (Zanchettin et al., 2013).

²⁰removed: Initial Conditions and Volcanic Eruptions

²¹removed: Climate conditions such as the El Niño Southern Oscillation System (ENSO) and North Atlantic Oscillation (NAO) continuously cause variations in Earth's climate over time (Philander, 1983; Allan et al., 1996; Timmermann et al., 2018). Climate modelling studies have examined how these climate conditions, when combined with volcanic eruptions, impact interannual and decadal scale climate, showing that while radiative forcing impacts remained the same, different initial climate states cause substantial variability in surface atmospheric and oceanic conditions (Zanchettin et al., 2013; Pausata et al., 2020). Further climate modelling experiments have thus been designed to capture variability that may occur due to different states of the climate system at the time of a modeled volcanic eruption (Zanchettin et al., 2016). Here, we refer to the states of ENSO and NAO at the time of a prescribed volcanic eruption as "initial conditions" as described by the methodology in the Volcanic Model Intercomparison project (VolMIP, (Zanchettin et al., 2016).

[..²²](Zanchettin et al., 2016). Below we discuss specifically two responses discussed in this manuscript: the response of ENSO, and the [..²³]response of the climate [..²⁴]system in the Northern Hemisphere.

65 2.2 ENSO Response

El Niño Southern Oscillation (ENSO) is an important mode of climate variability which oscillates between positive (El Niño), neutral, and negative (La Niña) phases at time scales of about 2-7 years in the equatorial Pacific Ocean (Predybaylo et al., 2017). During positive (negative) phases, the equatorial Pacific experiences higher (lower) than average sea surface [..²⁵]temperatures. These oceanic changes [..²⁶]are associated with changes in both regional climate and global climate connections.

70 Both observational (direct and proxy-based) and model-based studies have been used to examine how ENSO responds to large volcanic perturbations. Some proxy-based and several modelling studies suggest that large, tropical volcanic eruptions increase the likelihood of an El Niño like, or positive, sea surface temperature anomaly following the eruption (Adams et al., 2003; Predybaylo et al., 2017; Khodri et al., 2017). [..²⁷]

[..²⁸]Predybaylo et al. (2017) and Zambri et al. (2019) additionally studied the robustness of the simulated El Niño anomaly under varying initial conditions at the time of volcanic eruptions. While Predybaylo et al. (2017) found enhanced El Niño like warming for all Mt. Pinatubo simulations except those where eruptions occurred in La Niña years, [..²⁹](Zambri et al., 2019) found a consistent warming of tropical sea surface temperature in the Niño 3.4 region of 0.5-1.0°C in response to the 1783 Laki Eruption in the WACCAM model.

80 Research has also focused on understanding the dynamics of the El Niño anomaly. Suggested mechanisms for this increase in sea surface temperature includes the ocean dynamical thermostat (Clement et al., 1996), which causes advection of warm water through differential cooling, and Walker circulation cells which are caused by post-eruptive

²²removed: The VolMIP community has looked specifically at how these initial conditions can impact the climate response using a multi-model ensemble, finding minor but significant differences in

²³removed: climate response to volcanic forcing under different initial conditions (Zanchettin et al., 2022). Here we focus on how initial states of ENSO and NAO conditions create variability in the response to a Pinatubo-sized eruption in GISS Model E2.1. In particular, we investigate how these initial conditions cause changes in the evolution of the ENSO cycle and the northern hemisphere's first post-eruptive winter using a large ensemble of simulations with a) sampling as defined by the VolMIP protocol (Zanchettin et al., 2016) and b) a randomly sampled ensemble of initial climate conditions. We use these ensembles to examine the impact of initial climate conditions and initial climate sampling on the aggregate

²⁴removed: condition to volcanic forcing. We also further discuss the importance of how climate anomalies are calculated, and demonstrate how the choice of climate anomaly when paired with initial climate conditions, can significantly impact the modelled response to volcanic eruptions

²⁵removed: temperature anomalies

²⁶removed: initiate

²⁷removed: This response is suggested to be particularly robust when the eruption occurs in the Northern Hemisphere due to the eruption shifting the ITCZ southward, thus weakening trade winds in the Tropical Pacific (Pausata et al., 2020). Weakened trade winds then cause El Niño like conditions via the Bjerknes feedback (Bjerknes, 1969).

²⁸removed: Research has also focused on understanding the dynamics of the El Niño anomaly. One suggested mechanism is the ocean dynamical thermostat (Clement et al., 1996), a mechanism which is suggested to cause advection of warm water through differential cooling. A second hypothesis for a post-eruptive El Niño anomaly is post-eruptive land cooling over tropical Africa which initiates warming through the perturbation of Walker circulation cells (Khodri et al., 2017). This mechanism was also shown to cause a sustained 7-year El Niño anomalies in response to soot aerosols from simulated global nuclear war (Coupe et al., 2021).

²⁹removed: Zambri et al. (2019)

cooling over tropical Africa (Khodri et al., 2017). This mechanism was also shown to cause a sustained 7-year El Niño anomalies in response to soot aerosols from simulated global nuclear war (Coupe et al., 2021). Despite several studies supporting El Niño like anomalies, still other observational and modelling studies suggest that there is no statistically significant El Niño like response after several large volcanic eruptions (Dee et al., 2020). These studies [..³⁰] suggest that anomalies found in observational records and model simulations are not statistically significant, and are rather within the range of natural climate variability (Dee et al., 2020). [..³¹]

2.3 Northern Hemisphere Winter Response

The northern hemisphere (NH) experiences a unique response during the first winter after large volcanic eruptions. Many observational (Graf et al., 2007; Christiansen, 2008) and modelling (Timmreck, 2012; Stenchikov et al., 2002) studies have noted a strengthening of the polar vortex the first winter after a large volcanic eruption. This increased polar vortex circulation in the lower stratosphere is closely associated with an enhanced phase of the Arctic Oscillation (AO) and North Atlantic Oscillation (NAO) – two modes of natural climate variability that are separately defined, but closely related in their associated climate impacts including surface temperature patterns (Cohen and Barlow, 2005). Such increased surface air temperature patterns have commonly been observed after large volcanic eruptions such as the 1991 Mt. Pinatubo [..³²] eruption (Robock and Mao, 1995; Kelly et al., 1996). Thus, the unique signature of increased surface air temperature over Eurasia termed "winter warming" has been analyzed in several volcanic modelling studies.

Modelling studies from previous climate model inter-comparison projects [..³³] substantiate post-eruptive winter warming. For example [..³⁴], Zambri and Robock (2016) analyzed an ensemble of CMIP5 simulations finding that most models produce a winter warming signature over the northern hemisphere corresponding with a stronger polar vortex in the lower stratosphere both over historical 1850-2005 simulation period (Zambri and Robock, 2016) and over the last millennium Zambri et al. (2017). Analysis from individual models have also previously supported winter warming corresponding with strengthened polar vortex circulation: for example the NCAR CAM5 AMIP Large Ensemble showed consistent winter warming in response to both the 1982 El [..³⁵] Chinchón and the 1991 Pinatubo eruptions (Coupe and Robock, 2021). This increase in surface temperature is also seen in both observational and global modelling studies (Robock and Mao, 1992; Graft et al., 1993).

Still other studies call the robustness of this modelled result into question. For example, other analysis of CMIP5 models show variation in the prevalence of this response (Timmreck et al., 2016; Driscoll et al., 2012) suggesting that large numbers of ensembles may be required to see a significant strengthening of the polar vortex (Bittner et al., 2016). One proposed cause for inconsistencies in the winter warming response is that the simulated winter warming response in a model is within the range of internal variability (Polvani et al., 2019) and thus is not a robust response to volcanic eruptions. Other studies such as Driscoll

³⁰removed: argue

³¹removed: Here we examine the Pintaubo-sized post-eruptive ENSO response with GISS Model E2.1-G under varying initial conditions of ENSO to determine if the model supports an El Niño like response after volcanic eruptions and or either of the proposed mechanisms.

³²removed: (Robock and Mao, 1995; Kelly et al., 1996), and thus

³³removed: (CMIP)

³⁴removed: (Zambri and Robock, 2016)

³⁵removed: Chinchon and

et al. (2012) and Stenchikov et al. (2006) also find no consistent warming in the northern hemisphere, or strengthening of the polar vortex associated with winter warming.

To better understand why a strengthening of the polar vortex circulation occurs, several studies have proposed mechanisms that link volcanic eruptions with changes in atmospheric circulation [..³⁶] (Robock and Mao, 1995; Robock, 2000; Stenchikov et al., 2002). Despite proposed mechanisms, however, some studies suggest that the prevalence of this response may depend on [..³⁷] aerosol forcing (Toohey et al., 2014), or may be insignificant in comparison to the range of natural variability in climate (Polvani et al., 2019).

[..³⁸]

2.4 [..³⁹]

120 [..⁴⁰]

3 Model Description and Experimental Setup

To investigate the Pinatubo response under different initial conditions we run a large ensemble of simulations with initial conditions sampled using two different sampling schemes. Both sets of simulations are run in accordance with the VolMIP protocol with a pre-industrial atmosphere in GISS Model E2.1.

125 3.1 The Model

All model simulations are run in GISS Model E2.1 (Kelley et al., 2020) (E2-1-G in CMIP6 archive): a climate model with fully coupled ocean-atmosphere dynamics and in correspondence with CMIP6 protocols. GISS Model-E2.1 has a horizontal resolution of 2 [..⁴¹]°latitude by 2.5 [..⁴²]°longitude and 40 vertical layers (which are more [..⁴³] densely layered close to

³⁶removed: Robock and Mao (1995); Robock (2000); Stenchikov et al. (2002)

³⁷removed: aerorol

³⁸removed: Here we also evaluate the robustness of the NH winter response in GISS E2.1-G. Specifically we look at how the modelled response in the northern hemisphere varies in ensembles of different initial conditions, and with different choices of anomalies which include or intentionally exclude internal climate variability.

³⁹removed: VolMIP

⁴⁰removed: The Volcanic Model Intercomparison Project (VolMIP) is part of the coordinated effort within the Model Intercomparison Project of CMIP6 (Eyring et al., 2016) that seeks to assess which climate responses to volcanic eruptions are robustly simulated in state of the art climate models. VolMIP proposes a set of experiments each aiming to systematically quantify the modelled climate response to specific types of volcanic eruptions under a unified methodology to reduce variability between model studies. The 'volc-pinatubo-full' VolMIP experiment addresses interannual variability in the climate response to large Pinatubo-sized volcanic eruptions, including the NH winter mechanisms and ENSO response (Zanchettin et al., 2022). Here, we use the volc-pinatubo-full VolMIP simulations run in GISS Model E2.1 under varying initial conditions to investigate variability in the annual to interannual climate response. We discuss variations in the modelled climate response under different initial condition groups, different choices of climate anomalies, and under different ensemble member sampling schemes.

⁴¹removed: degrees

⁴²removed: degrees

⁴³removed: more

the surface and get progressively coarser going upwards into the stratosphere). All ensembles are run with a fully dynamic mass-converting free surface Russel ocean model (Russell et al., 1995) now referred to as the GISS ocean, denoted 'G' in GISS E2.1-G. The atmosphere is represented with non-interactive (NINT) aerosols. Thus, ozone and other aerosols are pre-determined by CMIP6- specified model inputs.

The ⁴⁴representation of ENSO in GISS E2.1-G ⁴⁵for CMIP6 has improved significantly upon E2 (CMIP5) (Schmidt et al., 2014) on correlated global changes in temperature for all ocean representations (including the GISS ocean used here). The model shows a spectral density of ENSO events peaking at a 5 year period (Kelley et al., 2020) showing a slight bias in frequency, although the relative strength of the ENSO cycle is reasonable. E2.1 also shows a higher than average standard deviation in NAO patterns when compared to observations and other models (Orbe et al., 2020) ⁴⁶translating to larger variability in the NAO⁴⁷.

3.2 Model Simulations and Sampling

After a 6000 year control run ⁴⁸spin-up, 400 years are chosen as sampled based on initial ENSO and NAO conditions as ensemble years. Prior to sampling, control run simulations are run with a pre-industrial atmosphere for a total of 400 years. ⁴⁹Simulations begin in June where the start years are ⁵⁰determined by selecting years with specific ENSO and NAO ⁵¹tendencies at the time of peak forcing defined as ⁵²the average conditions across December (start year), January (start year +1), ⁵³and February (start year+1) as specified by the sampling protocol described in Zanchettin et al. (2016). More details about the sampling protocol and indices for both ENSO and NAO conditions are described by Zanchettin et al. (2016), where we use the Nino 3.4 index to represent ENSO states and a two-box ⁵⁴500 mb geopotential height index to represent NAO (Stephenson et al., 2006). ⁵⁵Sampling The for VolMIP simulations is with the same sampling protocol as for other models from the multi-model ensemble ⁵⁶shown in Zanchettin et al. (2022). While it is important to note that the sampled states are at the time of peak ⁵⁷aerosol forcing rather than at the start of the simulation, we hereafter refer to these climate conditions as initial conditions because they represent the expected climate state in the absence of volcanic forcing. In

⁴⁴removed: current CMIP6 model of

⁴⁵removed: ENSO representation

⁴⁶removed: . Thus we note the model has

⁴⁷removed: , likely linked to the model's increased frequency in ENSO events (Kelley et al., 2020)

⁴⁸removed: spinup

⁴⁹removed: Simulation

⁵⁰removed: sampled

⁵¹removed: tendencies

⁵²removed: DEC(startyear)JAN(startyear

⁵³removed: FEB(startyear

⁵⁴removed: 500mb

⁵⁵removed: The sampled years for the VolMIP simulations in

⁵⁶removed: are

⁵⁷removed: aerorosl

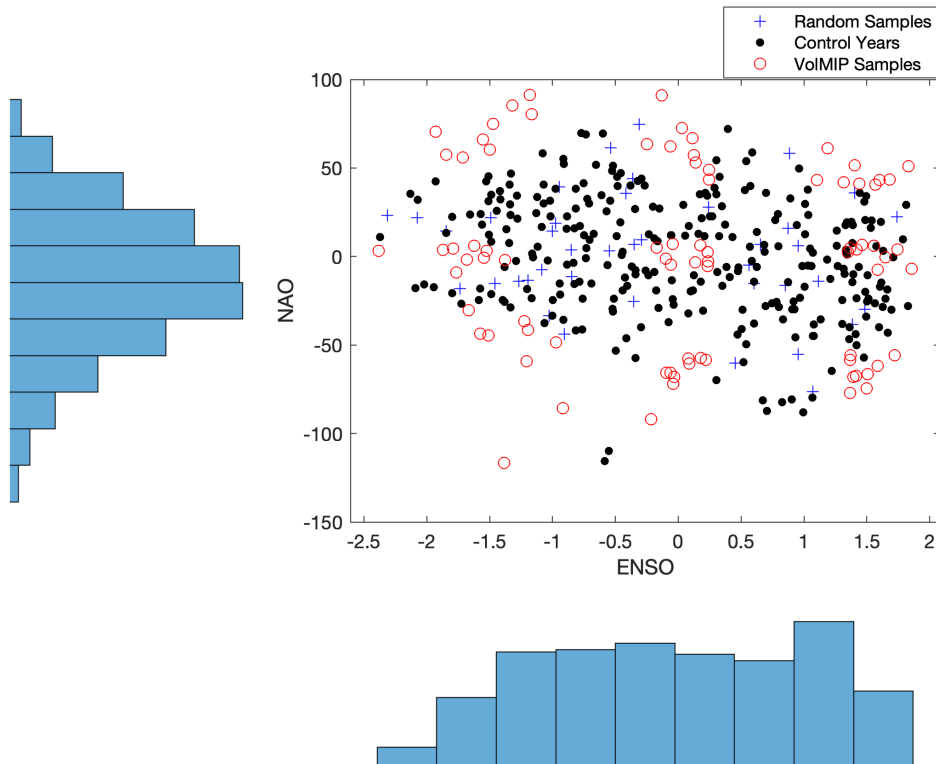


Figure 1. Initial climate conditions for 400 years in the GISS control model run. Each year in the 400 year control is plotted with ENSO (Nino 3.4) index on the x-axis and NAO (z-500) index on the y-axis. VolMIP sampled simulations are denoted by red circles, additional randomly sampled years are blue (+), and all other years in the control run are black dots. Histograms show a distribution of initial conditions within the model control run: ENSO conditions exhibit a positive skew consistent with model biases addressed by Kelley et al. (2020).

total, we sample 9 years from each co-condition (combined [\dots ⁵⁸]cross of 3-conditions of ENSO+ [\dots ⁵⁹]/0/- and 3 conditions of NAO+ /0/- [\dots ⁶⁰]) for a total of 81 VolMIP sampled simulations; each ENSO (and NAO) state thus has 27 members.

In addition to the VolMIP runs sampled from initial conditions, we also sample 50 additional runs randomly from the same control run (henceforth referred to as Random Samples.) From these 50 randomly sampled years, 10 overlap with already sampled VolMIP simulation years. Thus, 40 additional simulations (identical to VolMIP simulations except for random sampling) were also run with NINT (non-interactive, specified aerosols and atmospheric chemistry) atmosphere and the GISS ocean for a total of 121 simulations. Initial conditions in the control run are approximately randomly distributed, and show some skew in ENSO states, but no correlation between ENSO and NAO states (Figure 1).

⁵⁸removed: states of ENSO and NAO, for example

⁵⁹removed: ENSO and

⁶⁰removed: NAO

After ensemble years are selected according to the two sampling schemes (VolMIP and random samples), volcanic simula-
160 tions are run in GISS-E2-1-G in accordance with VolMIP protocol (Zanchettin et al., 2016). Volcanic aerosols are prescribed
based on CMIP6 Pinatubo aerosol [..⁶¹]climatology (Thomason et al., 2018) as a function of height, latitude, and time begin-
ning on the 6th month of the simulation (June) to emulate the 1991 Pinatubo eruption.

3.3 Data Analysis and Anomalies

We examine how the climate response under volcanic conditions differs from control conditions under two different [..⁶²
165]widely used methods to represent the climate anomaly of this type of short-lived climate perturbation. First, we process
results by computing anomalies from the equivalent control period (response = [..⁶³]perturbed – control), hereafter referred
to as "paired anomalies" as defined in Zanchettin et al. (2022). With paired anomaly each ensemble is analyzed as an anomaly
from control conditions with the same initial climate condition, therefore excluding the effect of ongoing unperturbed climate
variability, initial ENSO and NAO state (Pausata et al., 2015). The second approach we examine calculates anomalies
170 from a climatological control period, hereafter "climate anomalies" which instead measure deviation from the control run and
thus include ongoing climate variability. Specifically, we use two definitions of climatological anomalies to best contextualize
our results with other studies. The first climatological anomaly takes the difference between each ensemble member and the
full control including seasonality as defined by Zanchettin et al. (2022). Secondly, for comparison of northern hemisphere
anomalies we additionally calculate a second climate anomaly by subtracting the average condition of the 5 years prior to
175 the selected eruption year as used in other studies examining the climate response to volcanic forcing (Polvani et al., 2019;
Stenchikov et al., 2006; Driscoll et al., 2012). However, in order to discuss responses in the absence of background condition,
we present predominately paired anomalies except where climatological anomalies produce significantly different results.

For analysis of VolMIP sampled simulations (see section 1.2), we compute means not only with all 81 VolMIP ensembles,
but also with subsets of ensembles grouped according to their initial ENSO and NAO ensembles. For example, we look at the
180 ensemble mean of all ensembles that were sampled with positive ENSO initial conditions (+ ENSO) and compare these 27
ensemble members to the 27 sampled ensembles which show neutral (0 ENSO) and negative (- ENSO) conditions. We follow
this same nomenclature for analysis of differences grouped by initial NAO conditions, and thus when discussing the response
of a given group (e.g. - ENSO) we refer to the mean paired anomalous response of that ensemble group unless otherwise noted.

Where applicable, we also test the statistical significance of differences between VolMIP ensemble groups of different ENSO
185 and NAO initial conditions. In these cases, we compare the values from the 27 ensemble members using an ANOVA (analysis
of variance) test and report the [..⁶⁴]corresponding p-value to represent the statistical difference [..⁶⁵]ensemble groups. For
the case of displaying spatial differences in the surface temperature response, we perform a student's t-test between positive

⁶¹removed: climatologies

⁶²removed: anomalies

⁶³removed: perturbed-control

⁶⁴removed: F-value and

⁶⁵removed: between initial condition

and negative NAO ensemble groups, presenting the mean surface temperature response only at model grid cells where the p-value from the t-test between positive NAO and negative NAO groups is < 0.05 .

190 4 Results

For all ensemble members, we find that radiative forcing impacts and surface temperature impacts are consistent with previous observations and modelled studies of 1991 Pinatubo-sized volcanic eruptions (Schmidt et al., 2018), with ensemble mean forcing peaking at -3.27 W m^{-2} the December after the eruption. In comparison to other models in VolMIP, we note that GISS E 2.1 does display a faster increase of radiative anomalies (Zanchettin et al., 2022). However, between our different ensemble members, there is a little variation in the evolution of the radiative response to the prescribed volcanic forcing (see figure S1).

Changes in radiative forcing are also accompanied by a reduction in global surface temperature peaking at -0.35°C the first spring after the eruption. Further analysis of surface temperature anomalies both globally and in the tropics are presented in S2.

4.1 ENSO Response

200 Figure 2 shows the monthly Niño 3.4 Index (filtered to remove the seasonal signal) for positive, negative and neutral VolMIP ensembles with paired anomalies. Positive, neutral and negative ENSO ensemble groups all show negative, La Niña-like sea surface temperature anomalies in the first post-eruptive winter. Negative sea surface temperature anomalies, however, are strongest for +ENSO and 0 ENSO conditions with mean peak decreases of -0.61 and -0.67°C , respectively, consistent with changes in tropical surface temperature. In + ENSO ensembles the sea surface temperature relaxes towards mean temperatures from warmer-than-average conditions. Negative ENSO ensembles show little variation between control and perturbed simulations, suggesting that a cooler-than-average tropical sea surface temperature will be affected little by volcanic perturbations. The lack of a clear ENSO response for La Niña ensembles is consistent with (Predybaylo et al., 2017) where La Niña ensembles showed no significant ENSO anomaly. Unlike results of earlier studies (Pausata et al., 2020; Khodri et al., 2017; Predybaylo et al., 2017) we find no El Niño anomalies in these simulations. Our findings do, however support the idea that ENSO response is dependent on pre-conditioning or ⁶⁶initial conditions in the ⁶⁷Tropical Pacific (McGregor et al., 2020).

We do not differentiate here between Central Pacific and Eastern Pacific El Niño events as in Predybaylo et al. (2017). The small inter-ensemble spread for + ENSO simulations, however, suggests that there is little difference between the two in our model representation. ⁶⁸We additionally perform an equivalent analysis of the relative sea surface temperature (RSST) Niño 3.4 index as proposed by Khodri et al. (2017) and presented in other studies⁶⁹. The RSST Niño 3.4 ⁷⁰anomalies (Figure S4) also show consistent show consistent cooling in the first post-eruptive winter with little difference

⁶⁶removed: initial

⁶⁷removed: tropical pacific

⁶⁸removed: The same figure calculated using the relative Niño

⁶⁹removed: shows a similar pattern in the anomalous Niño 3.4 response and is thus included in Figure S3. Overall, all ensembles show post-eruptive cooling of the tropical pacific in the

⁷⁰removed: region

in the strength of cooling between different initial ENSO conditions. This suggest that in the GISS Model the Nino 3.4 region experiences elevated levels of cooling relative to cooling throughout the tropical region. The RSST Niño 3.4 anomalies on average, also show a slight warm anomaly in the second post-eruptive year, as noted in Zanchettin et al. (2022) where a subset of these ensembles was analyzed with other VolMIP models.

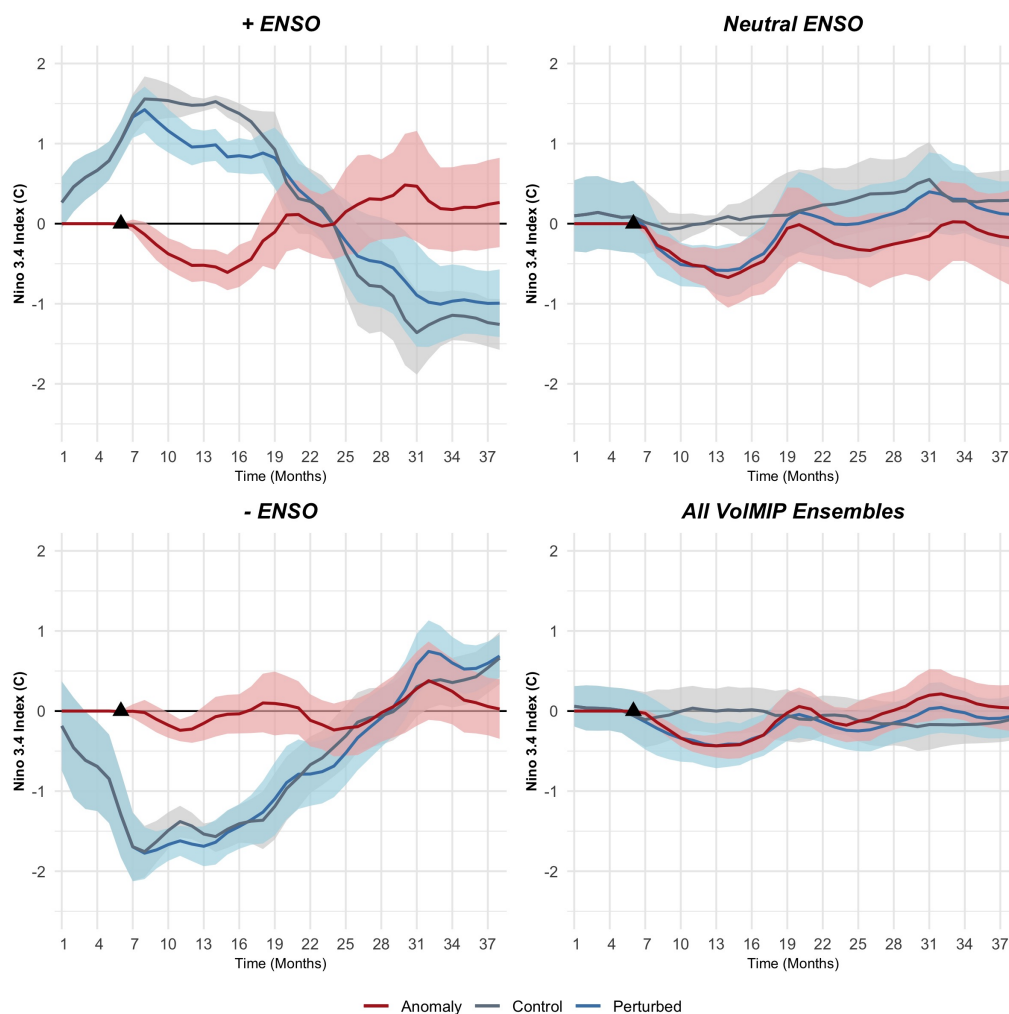


Figure 2. Monthly, [..⁷¹]seasonally de-trended time series of changes in the [..⁷²]monthly Nino 3.4 ENSO [..⁷³]index under different ENSO initial conditions and for the full VolMIP ensemble. Positive and negative ensembles show a relaxation of the index response [..⁷⁴]towards mean climatological sea surface temperature conditions. Red shading shows the 95% confidence interval for the anomalous response from control conditions.

220 4.2 Northern Hemisphere Response

We now turn to the response in the Northern Hemisphere, which has also been widely discussed as responses also vary greatly between model studies. Here, we consider how initial NAO conditions impact the Northern Hemisphere climate response, particularly in the first winter.

4.2.1 NAO Response

225 Figure 3 shows the monthly NAO index (based on 500 mb geopotential height) throughout the 3 year simulation period for positive, neutral and negative NAO groups. Regardless of the initial condition of the NAO^[.75], the NAO relaxes towards mean conditions. For +NAO ensembles, this is shown by a decrease in geopotential height, peaking at 69.7 mb in the February after the eruption. Likewise, -NAO ensembles show increased geopotential height toward mean conditions by an average of 88.5 mb peaking the first February after the eruption. Neutral NAO (0 NAO) ensembles have no statistically ^[.76]significant
230 response, with the confidence interval of these ensembles showing significant variability ^[.77]in mean geopotential height. When looking at groups of specific initial NAO conditions, it is clear that for +NAO and -NAO conditions, the geopotential height is relaxed towards mean conditions^[.78]. When looking at the full 81 member ensemble (Figure 3^[.79]), however, there is a ^[.80]tendency toward positive NAO anomalies in the first post-eruption winter in the model as noted by Zanchettin et al. (2022).

235 These findings suggest that in our simulations, regardless of initial conditions there is a relaxation of extreme positive or negative NAO conditions otherwise present in control runs. For negative NAO ensemble years, this causes an anomalous strengthening of the pressure dipole between the Azores high and Icelandic low regions when eruptions occur under negative NAO conditions. The opposite is true for + NAO simulations, where the dipole between these two pressure systems appears to weaken in comparison to control conditions the first winter after.

240 Given this robust change in pressure in the North Atlantic during the first winter, we continue to discuss how these changes are seen through other polar dynamic pathways.

4.2.2 Polar Dynamic Changes

Modelled changes in the North Atlantic geopotential height dipole (quantified by the NAO index) are accompanied by other changes in zonal winds and atmospheric temperature. Specifically, we find that the polar vortex strength (defined as the zonal
245 mean wind at 10 hPa and 60 ^[.85]°N as in Polvani et al. (2019)) show positive anomalies from control conditions for -NAO

⁷⁵removed: (positive, negative or neutral),

⁷⁶removed: signal in their

⁷⁷removed: along mean geopotential heights

⁷⁸removed: however we do not that when

⁷⁹removed: ,

⁸⁰removed: tendency

⁸⁵removed: °

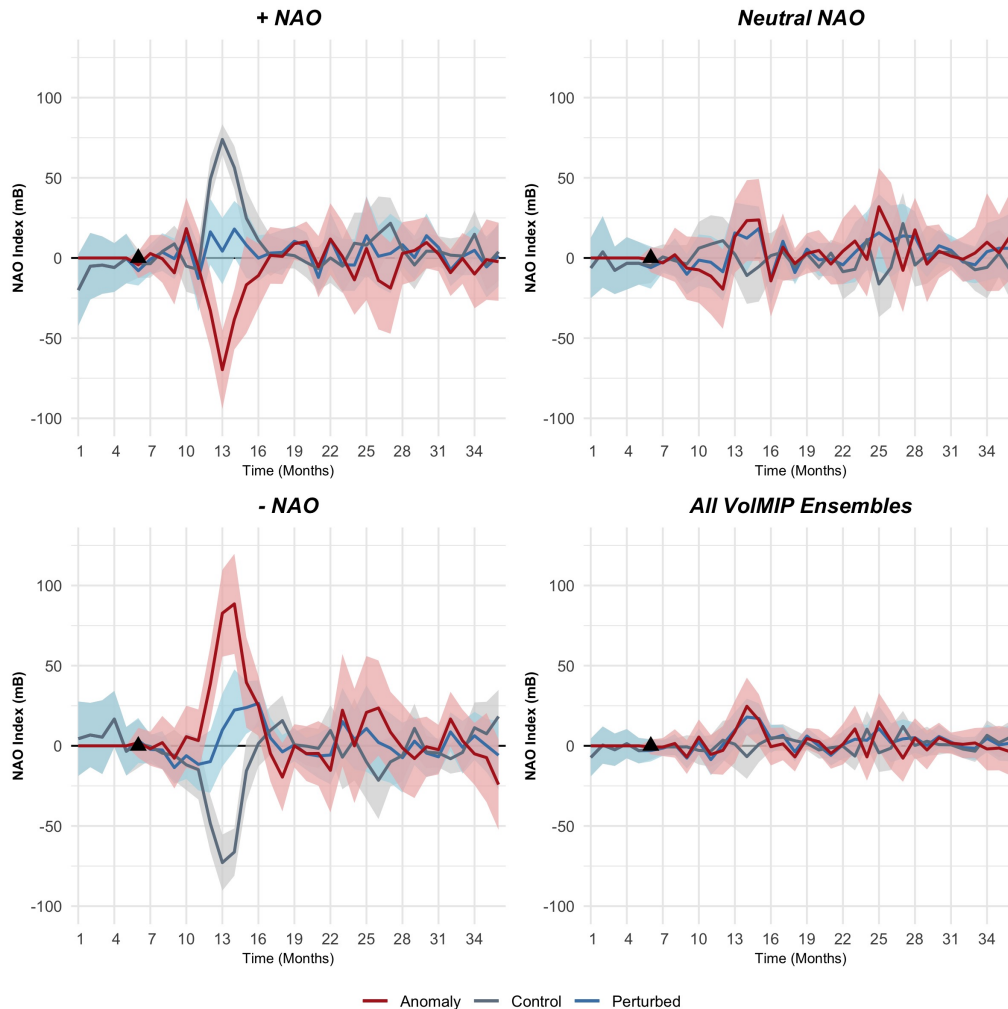


Figure 3. Monthly, [..⁸¹]seasonally de-trended time series of changes in the monthly NAO Index under different NAO initial conditions. Red shading shows the 95% confidence interval for the anomalous response from control conditions. + NAO ensembles show a robust decrease in the NAO index in the first winter ($t=[..⁸²]12-14$), while negative NAO ensembles show a robust increase.

ensembles and negative anomalies for + NAO ensembles (Figure 4). These variations in polar vortex strength between NAO groups are statistically significant with a p-value of $2.15e-12$.

250 These changes in zonal winds are also accompanied changing patterns in 500 mb geopotential height (~ 5.5 km) over the polar region ($60-90^\circ\text{N}$). For negative NAO ensembles, geopotential height decreases by an ensemble average of 100 mb (~ 15.5 km) in the first winter. There are also moderate increases in geopotential height in the Atlantic basin near the Azores ($20-55^\circ\text{N}$; $90^\circ\text{W}-60^\circ\text{E}$), averaging around 50 mb. These changes in pressure and wind are indicative of strengthening of the polar vortex and a positive phase of the NAM. The opposite occurs for + NAO ensembles, consistent with a decrease in the

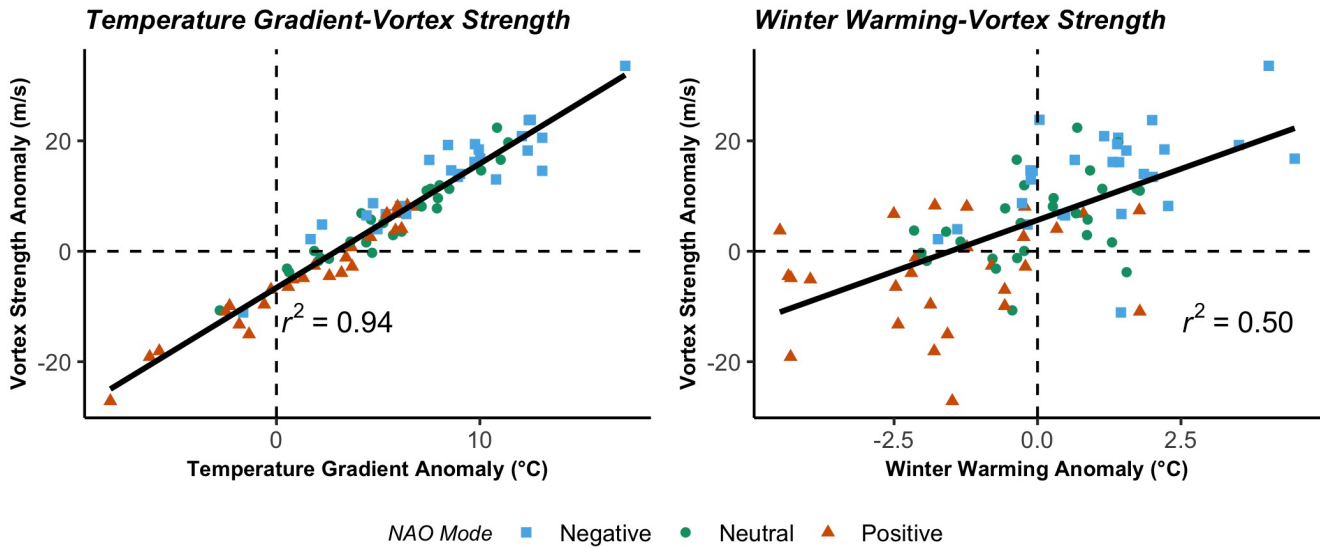


Figure 4. Regressions of the a) [..⁸³] equator-to-pole temperature gradient (temperature at 50 mb at equator-temperature at 50mb at poles) vs. stratospheric polar vortex strength (u_{50} at 61°N) and b) winter warming vs. polar vortex strength, all in the first post-eruptive winter. All 81 VolMIP [..⁸⁴] ensemble members are plotted with shape and color corresponding to the initial NAO phase. R^2 values are displayed for each regression.

strength of the polar vortex and a negative phase of the NAM. Mean changes in geopotential height for each NAO group are presented in Figure S5.

255 4.2.3 Atmospheric Temperature

Analysis of changes in temperature in the lower stratosphere illustrate how volcanic eruptions impact atmospheric temperature under different initial conditions. Specifically, we examine temperature anomalies using [..⁸⁶] the modelled Microwave Sounding Unit temperature metrics in the lower stratosphere (MSU TLS)[..⁸⁷]. The MSU temperature metric is commonly used as a remotely sensed temperature data [..⁸⁸] metric based on height[..⁸⁹], however here we present an equivalent modelled metric in E2.1 (Miller et al.). Figure 5 shows the anomaly in MSU temperature in the lower stratosphere for the first Boreal winter across latitude and time. All ensembles exhibit robust tropical tropospheric warming peaking at 2.5°C, tapering off toward the south pole.

The temperature anomaly north of 60°N, however varies significantly between simulations. + NAO ensembles show an anomalous warming in the stratosphere reaching an average of 2.5 degrees at the north pole. - NAO ensembles show strato-

⁸⁶removed: Microwaved

⁸⁷removed: which are based on

⁸⁸removed: with weighted averaging

⁸⁹removed: Miller et al..

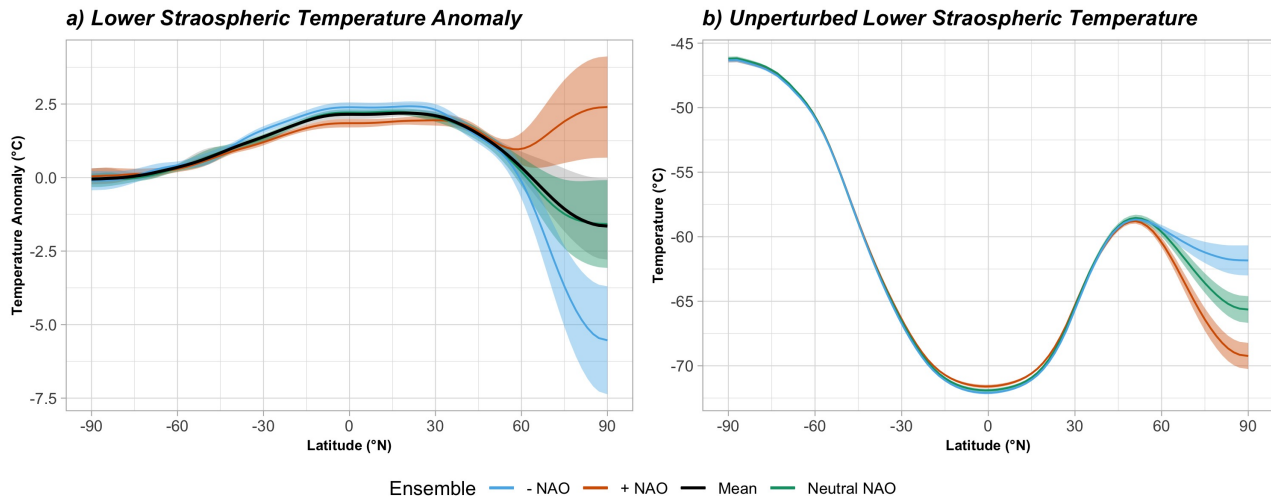


Figure 5. a) The change in lower stratospheric temperature and b) the unperturbed lower stratospheric temperature derived from Microwave Sounding Units in the first winter (December-February) after the eruption. Shading denotes the 95 % confidence interval for each ensemble group. Tropical stratospheric warming occurs for all ensembles, however the high northern latitude response varies greatly between different initial conditions. - NAO ensembles show cooling in the high latitude lower stratosphere while + NAO ensembles show significant warming.

265 spheric cooling anomalies reaching an average of 5.8°C at the pole. Neutral NAO ensembles, again fall in between these extremes falling close to the mean.

For all ensembles, volcanic forcing smooths out meridional temperature gradients in the first winter that are present in control conditions. Thus, - NAO ensemble simulations, which would normally have a weak meridional temperature gradient, increase the high northern latitude gradient in the first winter after the volcanic eruption. The opposite occurs for + NAO ensembles, 270 where higher than average temperature gradients are decreased to mean conditions (Figure S3).

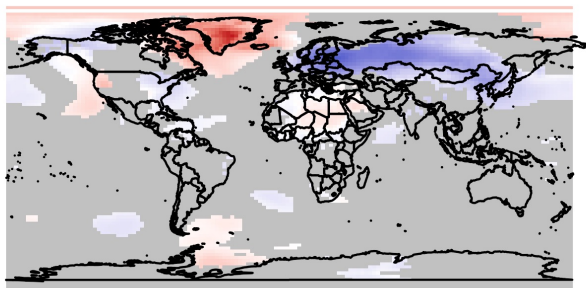
Changes in the polar stratospheric temperature drive the strength of the equator-to-pole temperature difference. - NAO ensembles drive an increase in the equator-to-pole temperature difference driven both by warming of the equatorial lower stratosphere and cooling of the high latitude lower stratosphere. + NAO ensembles, on the other hand show little change in the equator-to-pole temperature difference as both the equatorial and polar lower stratosphere experience warming. Neutral NAO 275 ensembles fall somewhere in the middle with a moderate increase in the equator-to-pole temperature difference. To further investigate if an enhanced equator-to-pole temperature difference correlates with an increased polar vortex circulation, we use a simple regression as done by Polvani et al. (2019) with each of our 81 VolMIP ensembles. Figure 4 shows that changes in the equator-to-pole temperature gradient in the first winter strongly correlates with increased polar vortex strength in the first winter. There is also a correlation between the observed winter warming anomaly and polar vortex strength ($R^2 = 0.40$) 280 indicating that a strengthening of the polar vortex often corresponds with winter warming. The correlation between vortex strength and winter warming is stronger than in Polvani et al. (2019), which could suggest that larger ensembles are required

to find a significant signal but does not suggest that a strengthened polar vortex alone is the cause of observed winter warming. We also note that there is also a significant difference in the equator-to-pole temperature gradient between NAO groups with a p-value of $9.68e-08$.

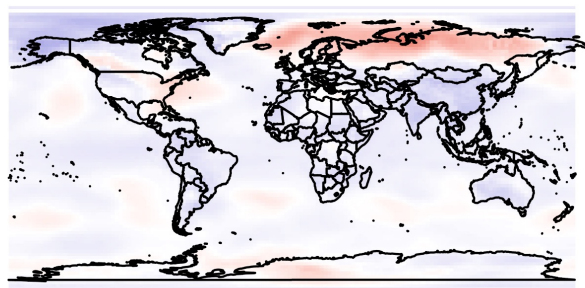
285 4.2.4 Winter Warming

Having discussed dynamic changes in the NH, we now discuss the strength of the winter warming response across different initial conditions. Figure 6 shows the mean surface temperature anomaly in the first Boreal winter (DJF) after the eruption for positive, negative, and neutral ensemble groups. Most areas (where shading is grey) do not experience any robust difference between initial NAO phases. Northern Eurasia and Greenland, however, have significantly different responses between +/- 290 NAO conditions. + NAO ensembles experience cooling over Eurasia and warming over Greenland. - NAO ensembles show the opposite, with significant warming over Eurasia and cooling over Greenland. Neutral NAO ensembles show a weak warming signature similar to - NAO ensembles. The winter warming signature (measured as a mean of 27 ensembles) is strong only for the - NAO group, however we note that both + NAO and -NAO ensembles under perturbed conditions have a trend towards the surface temperature displayed during 0 NAO conditions.

a) Positive NAO



b) Neutral NAO



c) Negative NAO

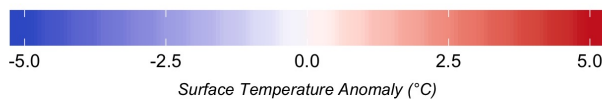
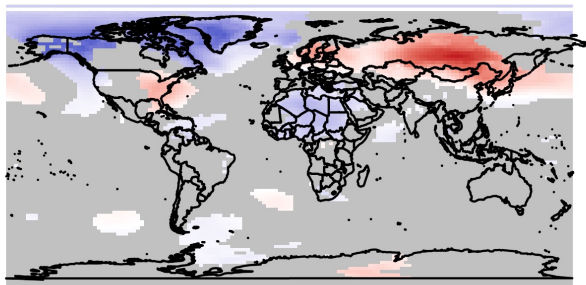


Figure 6. Average surface temperature paired anomaly in the first (DJF) winter after the eruption for positive (top left), neutral (top right) and negative (bottom left) NAO ensembles. Greyed areas for positive and negative ensembles denote confidence below 95% in the difference between positive and negative ensemble groups.

295 While -NAO ensemble group means show a significant winter warming response, we look now at variation within NAO groups. Figure 7 shows a box plot for the winter warming in Eurasia (40-70 °N, 0-150 °W) of simulations grouped by NAO phase, with all VolMIP ensembles, and for the 50 randomly sampled simulations for comparison. For comparison, we also include anomalies from historical conditions for direct comparison with other studies (Polvani et al., 2019; Driscoll et al., 2012).

300 When using paired anomalies - NAO ensembles show mean warming over Eurasia, with few ensembles showing a negative anomaly. + NAO ensembles all experience a cooling temperature anomaly in Eurasia. The neutral group of ensembles has a mean around zero degrees of warming, but is slightly skewed to a positive temperature anomaly. An ANOVA test shows there is a statistically significant value between paired anomaly ensemble groups with different initial NAO conditions in the VolMIP [..⁹⁰]ensembles with a F-statistic value of 22.78 and a p-value of 1.62e-08. Plotting all VolMIP ensembles together shows a large variation in the temperature response due to including all initial conditions together. The randomly sampled runs have a distribution similar to the neutral NAO ensemble groups, suggesting that extreme initial conditions, such as very [..⁹¹]negative NAO or positive NAO phases, are less common in the climate system than in our sample.

Climatological anomalies show no significant forced response, contrary to the paired anomalies for +NAO and -NAO groups. This suggests that paired anomalies are influenced by the sampled conditions in the unperturbed control. These sampled states of NAO are evident as paired anomalies show cooler than average conditions for - NAO ensembles and warmer than average conditions for + NAO ensembles. There is, however, no significant difference between the perturbed (with volcanic forcing) and control (with no volcanic forcing) winter warming response for all ensemble members (All VolMIP and Random Samples) or for neutral NAO ensemble members.

315 In addition to decreasing variability in the response, ensemble groupings also impact the probability of observing warming in the model (when considering anomalies taken from control conditions). Table 1 shows the probability of simulations showing winter warming (calculated using paired anomalies) for varying [..⁹³]initial conditions calculated using the 81 VolMIP runs and the 27-member initial condition groupings. While not all - NAO ensembles show a winter warming response, the probability of observing winter warming increases greatly for [..⁹⁴]negative NAO initial conditions in comparison to neutral and negative conditions when using paired anomalies. The probability for observing a significant winter warming response in any of the 81 VolMIP samples is low (32%). The probability of warming given - NAO initial conditions, however, is higher (60%). Thus, while these simulations still show the large variation in surface temperature responses the first winter after the eruption, initial conditions impact how likely a paired anomalous winter warming response is in a large group of ensembles.

⁹⁰removed: ensembles

⁹¹removed: - NAO or +

⁹³removed: initial

⁹⁴removed: -

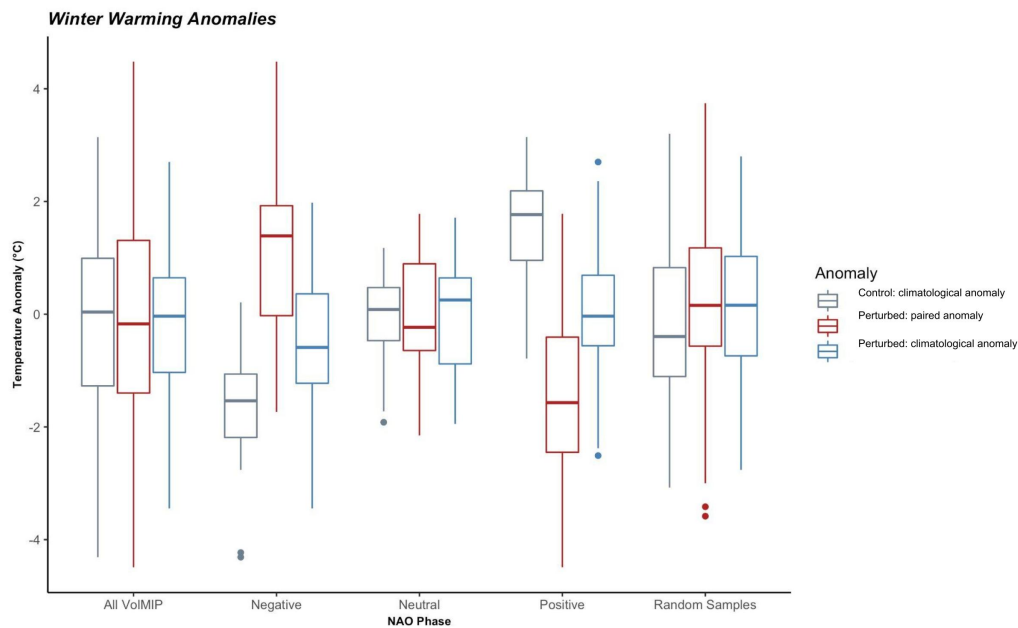


Figure 7. Simulated [..⁹²]boreal winter warming (December-February) response in Eurasia the first year after the eruption for both control (no volcanic forcing) and perturbed (with volcanic forcing) runs. Control anomalies (grey) are taken from the mean winter surface temperature for the five years prior to the eruption. Perturbed anomalies are shown both with anomalies from control conditions (red) and from historical conditions (blue.) Box plots are shown for all 81 simulations (All VolMIP), for each initial condition group (Negative, Neutral, Positive) each with 27 simulations and for all 50 randomly sampled runs (Random Samples).

Table 1. Winter Warming Probabilities

Condition	Percent Probability
$P(\text{Warming})$	32 %
$P(\text{Warming} \mid \text{NAO} +)$	7.4 %
$P(\text{Warming} \mid \text{NAO Neutral})$	22 %
$P(\text{Warming} \mid \text{NAO} -)$	60 %

*Probabilities computed with VolMIP-sampled simulations

5 Summary and Discussion

Initial ENSO conditions [..⁹⁵]lead to significant differences in the Nino 3.4 sea surface temperature anomaly through the first [..⁹⁶]Boreal winter into the springtime after the eruption. The temperature decrease is [..⁹⁷]present in the ensemble

⁹⁵removed: show a statistically significant difference in the tropical

⁹⁶removed: spring

⁹⁷removed: weakest for - ENSO ensembles, which have cooler control conditions. La Niña-like cooling is

mean, but strongest for ensembles with positive and neutral ENSO initial ^[..⁹⁸] conditions. In general, we find no signature of an enhanced El Niño-like anomaly in the first winter, as has been suggested from other studies (Pausata et al., 2020; Khodri et al., 2017; Predybaylo et al., 2017), ^[..⁹⁹] however there is a slight warm anomaly following the initial cooling after the eruption. ^[..¹⁰⁰]

330 The response of the Northern Hemisphere varies significantly between ensembles with different initial NAO conditions both in sign and strength of responses. Winter warming anomalies occur with increased probability for ensembles with - NAO initial conditions with 60% of ensembles showing a warming response in the first winter. This warming response corresponds with an anomalous decrease in polar lower stratospheric temperature in the first winter for - NAO ensembles, causing an increased temperature gradient between the equator and poles. A simple regression shows that positive temperature gradient anomalies
335 are correlated with an increased strength of the stratospheric polar vortex. - NAO ensembles ^[..¹⁰¹] also exhibit decreased geopotential heights and increased westerly zonal wind circulation that are consistent with this strengthening polar vortex ^[..¹⁰²] following the eruption. There is a weak correlation between strengthening of the stratospheric polar vortex and the winter warming response in the first winter ^[..¹⁰³], although this correlation does not suggest the lack of other response pathways. In general, + NAO ensembles show the opposite anomalous patterns from control conditions and neutral ensembles show some
340 weak warming and vortex strengthening anomalies. Thus, while a - NAO phase does not guarantee winter warming resulting from the equator to pole temperature difference, it does highly increase the probability winter warming will occur. These polar dynamic changes also coincide with a smoothing of meridional temperature gradients from control conditions. This response could be model-dependent, or a result of the specific way that the Pinatubo forcing is prescribed in the simulation with non-interactive aerosols.

345 For all simulations, the monthly NAO index in the first winter relaxes towards mean conditions. This means that for both + NAO and - NAO ensembles, there is a sudden anomalous change in pressure in the North Atlantic after the eruption. Thus, the anomalous strengthening of the polar vortex from control conditions could be due to the sudden relaxation of the NAO anomaly in the first winter relative to initial conditions. The strengthening of the stratospheric polar vortex resulting in winter warming thus only occurs when the model would have otherwise experienced weak vortex circulation in the absence of volcanic forcing.
350 The anomalous response is significantly impacted by these extreme initial conditions that were sampled from our control conditions. ^[..¹⁰⁴] To test this impact, we also compare our 27-member NAO +/- ensemble groups to a 50-member randomly sampled ensemble group. The randomly sampled ensemble group shows anomalies most similar to the neutral NAO ensemble group, suggesting that strong anomalies due to extreme NAO initial conditions are less common in a representative sample. While extremely negative phases are most likely to experience winter warming such extremes are less common in the real

⁹⁸removed: condition

⁹⁹removed: in any of our ensembles for the first three years

¹⁰⁰removed: Rather, in the GISS model we find that anomalous sea surface temperature cooling (La Niña like conditions) occurs regardless of initial conditions.

¹⁰¹removed: show

¹⁰²removed: anomaly

¹⁰³removed: . Most, but not all - NAO ensembles experience winter warming as well as a strengthening of the polar vortex,

¹⁰⁴removed: We

355 world, possibly explaining why warming is only sometimes observed in model simulation ensembles. These extremes in initial conditions can contribute significantly to ensemble variation, particularly with a small amount of ensemble members or when ensembles are sampled with a bias in initial conditions.

We ^[..¹⁰⁵]tested the impact of using paired anomalies by comparing our analysis with climatological anomalies ^[..¹⁰⁶]used in other studies (Polvani et al., 2019; Driscoll et al., 2012). These climatological anomalies, which take reference from mean climate conditions, show no statistically significant forced response for our ensemble members. The difference in responses between anomalies demonstrates how the choice of anomalies can significantly impact the modelled response^[..¹⁰⁷], particularly when extreme initial conditions are present as initial climate conditions can significantly influence strength of a given response. For example, when analyzing the winter warming response under varying NAO conditions ^[..¹⁰⁸]ensembles with a strong - NAO condition ^[..¹⁰⁹]in the control run relaxed towards mean NAO conditions under perturbed volcanic aerosol runs. Thus, when using paired anomalies the strength of the winter warming response is biased due to lower mean air temperatures ^[..¹¹⁰]in the control simulation. When using historical anomalies, we see no significant warming response for the same perturbed runs, as air temperatures are typical of the historical-mean climate state (neutral NAO conditions). The difference between the modeled responses under paired and historical anomalies was also highlighted by Zanchettin et al. (2022), where the choice of anomaly was shown to impact some ensemble mean responses^[..¹¹¹].

^[..¹¹²]Here simulations have been constrained to examine the climate response with a protocol that eliminates some sources of variability. In particular, VolMIP compliant simulations used here are run with NINT (non-interactive) aerosols and represent pre-industrial conditions. Thus, they cannot be directly compared to Pinatubo simulations which have industrial greenhouse gases and other constituents in the atmosphere. These runs also do not account for changes in ozone concentration observed after eruptions which may also influence changes in stratospheric circulation (Stenchikov et al., 2002). The NINT atmospheric representation also dictates that aerosols evolve exactly as ^[..¹¹³]prescribed, making aerosols insensitive to states of the stratosphere and troposphere. Other runs with interactive aerosols are necessary to understand if the dynamics of these responses are dependent on the specific ^[..¹¹⁴]prescription of volcanic aerosols.

Further, the current GISS Model E2.1 does not have a realistic representation of some key atmospheric components such as the Quasi Biennial Oscillation (QBO) (Rind et al., 2020) that could also play a role in the observed circulation responses (Stenchikov et al., 2004). Changes in the QBO could also influence the strength of the polar vortex circulation as easterly phases (such as those during the Pinatubo eruption) are likely to cause a decrease in the stratospheric polar circulation (Holton and Tan, 1980). Here we have used the GISS E2.1-G CMIP6 compliant runs, however in a future study, we hope to examine this

¹⁰⁵removed: also compare these paired anomalies

¹⁰⁶removed: as

¹⁰⁷removed: . When analyzing modelling results using paired anomalies, initial

¹⁰⁸removed: , ensembles which in the control run experienced a strongly

¹⁰⁹removed: relaxed towards the mean

¹¹⁰removed: under the control

¹¹¹removed: , but can mitigate the effect of sampling biases.

¹¹²removed: Simulations

¹¹³removed: perscribed

¹¹⁴removed: perscription

response in the new GISS model E2.2[..¹¹⁵]+ which have higher vertical resolution, model top, and a better representation of the QBO.

385 Overall, we find that initial ENSO conditions have a small effect on surface temperature and ENSO response as a cooling, La Niña like, anomaly in the tropical pacific occurs for each ensemble in the first post-eruptive winter. The initial state of the NAO, on the other hand, varies the anomalous response by relaxing initial conditions in the first winter to a neutral NAO phase. If a volcanic eruption occurs during a normally - NAO phase, these changes in turn increase the probability of observing [..¹¹⁶]a winter warming response from control conditions in the first post-eruptive winter. For extremes in initial NAO conditions, 390 changes in the northern hemisphere are the most robust. While often these extremes are uncommon, they likely contribute to inter-ensemble variation and thus uncertainty in predicting the climate’s response to volcanic eruptions. When the forced winter warming is defined as the average of a large ensembles (including all initial conditions), however, the response is insignificant (mean with an ensemble spread around zero). The prevalence and strength of this anomaly is influenced both by extremes in initial conditions, and how anomalies are taken (either [..¹¹⁷]paired or climatological anomalies.)

395 This study highlights the takeaway from Zanchettin et al. (2022) that initial conditions have a significant impact on post-eruptive anomalies. Specifically, our expanded 81-member ensemble shows that in GISS E2.1-G, there is a statistically significant difference in how the northern hemisphere responds to volcanic forcing under different initial conditions of NAO when using paired anomalies. This implies that for future studies using small ensembles, responses such as winter warming may be significantly impacted by extremes in initial NAO conditions, and climatological anomalies should also 400 be explored to show robustness in modeled responses.

6 Conclusions

The climate response to large, Pinatubo-type volcanic eruptions is variable between models, and has here been discussed in GISS Model E2.1-G. We focus on two responses which have been studied both with observational and modelling studies: the ENSO response and Northern Hemisphere response in the first winter. 121 ensembles were run in the GISS E2.1-G model to 405 examine how initial ENSO and NAO conditions impact the modelled climate response. Our experimental setup uses a pre-industrial model with prescribed aerosols, and took anomalies from an equivalent control period run rather than a historical climate period, allowing us to filter out initial climate variability and look only at the response due to volcanic sulfate aerosols. We find that ensembles with different initial NAO conditions have significantly different anomalous climate responses in the first NH winter. In particular, years which would be in + NAO or - NAO conditions are relaxed to mean NAO conditions under 410 volcanic forcing. This creates an anomalous negative and positive winter warming response for +NAO and - NAO ensembles, respectively. Ensembles with different initial ENSO conditions, however, show similar anomalies between different initial phases. Thus, inter-ensemble variation caused by initial conditions is significant particularly when looking at the first NH winter response.

¹¹⁵removed: which has

¹¹⁶removed: an

¹¹⁷removed: from control or historical periods

Data availability. All standard data from the pre-industrial control (piControl) simulations discussed here are publicly available in the
415 CMIP6 archive through multiple nodes of the Earth System Grid Federation. Corresponding volcanic simulations used in this paper were
submitted to the Volcanic Model Intercomparison Project of CMIP6 under the GISS 'volc-pinatubo-full' experiment submission and will
become publicly available as part of the CMIP6 archive by the time of this article's publication. Scripts use for post-processing and analysis
of model runs are located in the NASA Center for Climate Simulation online repository under weierbach_et_al_2023 https://portal.nccs.nasa.gov/datashare/giss-publish/pub/paleoclimate/weierbach_et_al_2023/

420 *Author contributions.* Conceptualization and methodology were done by AL and KT; model runs were performed by KT; Software was
developed by AL, KT, and HW; Analysis and visualization of model runs was performed by HW; HW wrote the manuscript draft; AL, HW,
and KT reviewed and edited the manuscript.

Competing interests. The authors declare that they have no conflict of interest.

Acknowledgements. Resources supporting this work were provided by the NASA High-End Computing (HEC) Program through the NASA
425 Center for Climate Simulation (NCCS) at Goddard Space Flight Center. All thank NASA GISS for institutional support. Thank you to the
National Science Foundation who funded this research under REU Grant number OCE 17-57602 as part of the 2019 Lamont-Doherty Earth
Observatory Summer REU program. [¹¹⁸]

¹¹⁸removed: The authors would also like to thank Clara Orbe and Lorenzo Polvani for their help in analyzing results and contributing key insights from these simulations.

References

- Adams, J. B., Mann, M. E., and Ammann, C. M.: Proxy evidence for an El Niño-like response to volcanic forcing, *Nature*, 426, 274–278, 430 2003.
- Allan, R., Lindesay, J., Parker, D., et al.: El Niño southern oscillation & climatic variability., CSIRO publishing, 1996.
- Bittner, M., Timmreck, C., Schmidt, H., Toohey, M., and Krüger, K.: The impact of wave-mean flow interaction on the Northern Hemisphere polar vortex after tropical volcanic eruptions, *Journal of Geophysical Research: Atmospheres*, 121, 5281–5297, 2016.
- Bjerknes, J.: Atmospheric teleconnections from the equatorial Pacific, *Mon. Wea. Rev.*, 97, 163–172, 1969.
- 435 Bluth, G. J., Doiron, S. D., Schnetzler, C. C., Krueger, A. J., and Walter, L. S.: Global tracking of the SO₂ clouds from the June, 1991 Mount Pinatubo eruptions, *Geophysical Research Letters*, 19, 151–154, 1992.
- Christiansen, B.: Volcanic eruptions, large-scale modes in the Northern Hemisphere, and the El Niño–Southern Oscillation, *Journal of Climate*, 21, 910–922, 2008.
- Clement, A. C., Seager, R., Cane, M. A., and Zebiak, S. E.: An ocean dynamical thermostat, *Journal of Climate*, 9, 2190–2196, 1996.
- 440 Cohen, J. and Barlow, M.: The NAO, the AO, and global warming: How closely related?, *Journal of Climate*, 18, 4498–4513, 2005.
- Coupe, J. and Robock, A.: The influence of stratospheric soot and sulfate aerosols on the Northern Hemisphere wintertime atmospheric circulation, *Journal of Geophysical Research: Atmospheres*, 126, e2020JD034 513, 2021.
- Coupe, J., Stevenson, S., Lovenduski, N. S., Rohr, T., Harrison, C. S., Robock, A., Olivarez, H., Bardeen, C. G., and Toon, O. B.: Nuclear Niño response observed in simulations of nuclear war scenarios, *Communications Earth & Environment*, 2, 18, 2021.
- 445 Dee, S. G., Cobb, K. M., Emile-Geay, J., Ault, T. R., Edwards, R. L., Cheng, H., and Charles, C. D.: No consistent ENSO response to volcanic forcing over the last millennium, *Science*, 367, 1477–1481, 2020.
- Driscoll, S., Bozzo, A., Gray, L. J., Robock, A., and Stenchikov, G.: Coupled Model Intercomparison Project 5 (CMIP5) simulations of climate following volcanic eruptions, *Journal of Geophysical Research: Atmospheres*, 117, 2012.
- Eyring, V., Bony, S., Meehl, G. A., Senior, C. A., Stevens, B., Stouffer, R. J., and Taylor, K. E.: Overview of the Coupled Model Intercomparison Project Phase 6 (CMIP6) experimental design and organization, *Geoscientific Model Development*, 9, 1937–1958, 2016.
- 450 Graf, H.-F., Li, Q., and Giorgetta, M.: Volcanic effects on climate: revisiting the mechanisms, 2007.
- Graft, H., Kirchner, I., Robock, A., and Schult, I.: Pinatubo eruption winter climate effects: Model versus observations, *Climate Dynamics*, 9, 81–93, 1993.
- Holton, J. R. and Tan, H.-C.: The influence of the equatorial quasi-biennial oscillation on the global circulation at 50 mb, *Journal of the Atmospheric Sciences*, 37, 2200–2208, 1980.
- 455 Hurrell, J. W., Kushnir, Y., Ottersen, G., and Visbeck, M.: An overview of the North Atlantic oscillation, *Geophysical Monograph-American Geophysical Union*, 134, 1–36, 2003.
- Kelley, M., Schmidt, G. A., Nazarenko, L. S., Bauer, S. E., Ruedy, R., Russell, G. L., Ackerman, A. S., Aleinov, I., Bauer, M., Bleck, R., et al.: GISS-E2. 1: Configurations and climatology, *Journal of Advances in Modeling Earth Systems*, 12, e2019MS002 025, 2020.
- 460 Kelly, P. M., Jones, P. D., and Pengqun, J.: The spatial response of the climate system to explosive volcanic eruptions, *International Journal of Climatology: A Journal of the Royal Meteorological Society*, 16, 537–550, 1996.
- Khodri, M., Izumo, T., Vialard, J., Janicot, S., Cassou, C., Lengaigne, M., Mignot, J., Gastineau, G., Guilyardi, E., Lebas, N., et al.: Tropical explosive volcanic eruptions can trigger El Niño by cooling tropical Africa, *Nature communications*, 8, 1–13, 2017.
- Lacis, A.: Volcanic aerosol radiative properties, *PAGES Newsletter*, 23, 50–51, 2015.

- 465 LeGrande, A. N. and Anchukaitis, K. J.: Volcanic eruptions and climate, *PAGES Magazine*, 23, 46–47, 2015.
- LeGrande, A. N., Tsigaridis, K., and Bauer, S. E.: Role of atmospheric chemistry in the climate impacts of stratospheric volcanic injections, *Nature Geoscience*, 9, 652–655, 2016.
- McCormick, M. P., Thomason, L. W., and Trepte, C. R.: Atmospheric effects of the Mt Pinatubo eruption, *Nature*, 373, 399–404, 1995.
- McGregor, S., Khodri, M., Maher, N., Ohba, M., Pausata, F. S., and Stevenson, S.: The Effect of Strong Volcanic Eruptions on ENSO, El Niño Southern Oscillation in a Changing Climate, pp. 267–287, 2020.
- 470 Miller, R. L., Schmidt, G. A., Nazarenko, L., Bauer, S. E., Kelley, M., Ruedy, R., Russell, G. L., Ackerman, A., Aleinov, I., Bauer, M., et al.: CMIP6 Historical Simulations (1850-2014) with GISS-E2. 1, *Journal of Advances in Modeling Earth Systems*, p. e2019MS002034.
- Minnis, P., Harrison, E. F., Stowe, L. L., Gibson, G., Denn, F. M., Doelling, D., and Smith, W.: Radiative climate forcing by the Mount Pinatubo eruption, *Science*, 259, 1411–1415, 1993.
- 475 Myhre, G., Shindell, D., Bréon, F.-M., Collins, W., Fuglestedt, J., Huang, J., Koch, D., Lamarque, J.-F., Lee, D., Mendoza, B., Nakajima, T., Robock, A., Stephens, G., Takemura, T., and Zhang, H.: Anthropogenic and Natural Radiative Forcing, p. 659–740, <https://doi.org/10.1017/CBO9781107415324.018>, 2013.
- Orbe, C., Van Roekel, L., Adames, Á. F., Dezfuli, A., Fasullo, J., Gleckler, P. J., Lee, J., Li, W., Nazarenko, L., Schmidt, G. A., et al.: Representation of Modes of Variability in 6 US Climate Models, *Journal of Climate*, 2020.
- 480 Pausata, F. S., Grini, A., Caballero, R., Hannachi, A., and Seland, Ø.: High-latitude volcanic eruptions in the Norwegian Earth System Model: The effect of different initial conditions and of the ensemble size, *Tellus B: Chemical and Physical Meteorology*, 67, 26 728, 2015.
- Pausata, F. S., Zanchettin, D., Karamperidou, C., Caballero, R., and Battisti, D. S.: ITCZ shift and extratropical teleconnections drive ENSO response to volcanic eruptions, *Science Advances*, 6, eaaz5006, 2020.
- Philander, S. G. H.: El Nino southern oscillation phenomena, *Nature*, 302, 295–301, 1983.
- 485 Polvani, L. M., Banerjee, A., and Schmidt, A.: Northern Hemisphere continental winter warming following the 1991 Mt. Pinatubo eruption: reconciling models and observations, *Atmospheric Chemistry and Physics*, 19, 6351–6366, <https://doi.org/10.5194/acp-19-6351-2019>, 2019.
- Predybaylo, E., Stenchikov, G. L., Wittenberg, A. T., and Zeng, F.: Impacts of a Pinatubo-size volcanic eruption on ENSO, *Journal of Geophysical Research: Atmospheres*, 122, 925–947, 2017.
- 490 Rind, D., Orbe, C., Jonas, J., Nazarenko, L., Zhou, T., Kelley, M., Lacis, A., Shindell, D., Faluvegi, G., Romanou, A., et al.: GISS Model E2. 2: A Climate Model Optimized for the Middle Atmosphere—Model Structure, Climatology, Variability, and Climate Sensitivity, *Journal of Geophysical Research: Atmospheres*, 125, e2019JD032 204, 2020.
- Robock, A.: Volcanic eruptions and climate, *Reviews of geophysics*, 38, 191–219, 2000.
- Robock, A. and Mao, J.: Winter warming from large volcanic eruptions, *Geophysical Research Letters*, 19, 2405–2408, 1992.
- 495 Robock, A. and Mao, J.: The volcanic signal in surface temperature observations, *Journal of Climate*, 8, 1086–1103, 1995.
- Russell, G. L., Miller, J. R., and Rind, D.: A coupled atmosphere-ocean model for transient climate change studies, *Atmosphere-ocean*, 33, 683–730, 1995.
- Schmidt, A., Mills, M. J., Ghan, S., Gregory, J. M., Allan, R. P., Andrews, T., Bardeen, C. G., Conley, A., Forster, P. M., Gettelman, A., et al.: Volcanic radiative forcing from 1979 to 2015, *Journal of Geophysical Research: Atmospheres*, 123, 12 491–12 508, 2018.
- 500 Schmidt, G. A., Kelley, M., Nazarenko, L., Ruedy, R., Russell, G. L., Aleinov, I., Bauer, M., Bauer, S. E., Bhat, M. K., Bleck, R., et al.: Configuration and assessment of the GISS ModelE2 contributions to the CMIP5 archive, *Journal of Advances in Modeling Earth Systems*, 6, 141–184, 2014.

- Stenchikov, G., Kirchner, I., Robock, A., Graf, H.-F., Antuña, J. C., Grainger, R. G., Lambert, A., and Thomason, L.: Radiative forcing from the 1991 Mount Pinatubo volcanic eruption, *Journal of Geophysical Research: Atmospheres*, 103, 13 837–13 857, 1998.
- 505 Stenchikov, G., Robock, A., Ramaswamy, V., Schwarzkopf, M. D., Hamilton, K., and Ramachandran, S.: Arctic Oscillation response to the 1991 Mount Pinatubo eruption: Effects of volcanic aerosols and ozone depletion, *Journal of Geophysical Research: Atmospheres*, 107, ACL–28, 2002.
- Stenchikov, G., Hamilton, K., Robock, A., Ramaswamy, V., and Schwarzkopf, M. D.: Arctic oscillation response to the 1991 Pinatubo eruption in the SKYHI general circulation model with a realistic quasi-biennial oscillation, *Journal of Geophysical Research: Atmospheres*, 510 109, 2004.
- Stenchikov, G., Hamilton, K., Stouffer, R. J., Robock, A., Ramaswamy, V., Santer, B., and Graf, H.-F.: Arctic Oscillation response to volcanic eruptions in the IPCC AR4 climate models, *Journal of Geophysical Research: Atmospheres*, 111, 2006.
- Stephenson, D., Pavan, V., Collins, M., Junge, M., Quadrelli, R., et al.: North Atlantic Oscillation response to transient greenhouse gas forcing and the impact on European winter climate: a CMIP2 multi-model assessment, *Climate Dynamics*, 27, 401–420, 2006.
- 515 Thomason, L. W., Ernest, N., Millán, L., Rieger, L., Bourassa, A., Vernier, J.-P., Manney, G., Luo, B., Arfeuille, F., and Peter, T.: A global space-based stratospheric aerosol climatology: 1979–2016, *Earth System Science Data*, 10, 469–492, 2018.
- Timmermann, A., An, S.-I., Kug, J.-S., Jin, F.-F., Cai, W., Capotondi, A., Cobb, K. M., Lengaigne, M., McPhaden, M. J., Stuecker, M. F., et al.: El Niño–southern oscillation complexity, *Nature*, 559, 535–545, 2018.
- Timmreck, C.: Modeling the climatic effects of large explosive volcanic eruptions, *Wiley Interdisciplinary Reviews: Climate Change*, 3, 520 545–564, 2012.
- Timmreck, C., Graf, H.-F., Lorenz, S. J., Niemeier, U., Zanchettin, D., Matei, D., Jungclaus, J. H., and Crowley, T. J.: Aerosol size confines climate response to volcanic super-eruptions, *Geophysical Research Letters*, 37, 2010.
- Timmreck, C., Pohlmann, H., Illing, S., and Kadow, C.: The impact of stratospheric volcanic aerosol on decadal-scale climate predictions, *Geophysical Research Letters*, 43, 834–842, 2016.
- 525 Toohey, M., Krüger, K., Bittner, M., Timmreck, C., and Schmidt, H.: The impact of volcanic aerosol on the Northern Hemisphere stratospheric polar vortex: mechanisms and sensitivity to forcing structure, *Atmospheric Chemistry and Physics*, 14, 13 063–13 079, 2014.
- Wanner, H., Brönnimann, S., Casty, C., Gyalistras, D., Luterbacher, J., Schmutz, C., Stephenson, D. B., and Xoplaki, E.: North Atlantic Oscillation—concepts and studies, *Surveys in geophysics*, 22, 321–381, 2001.
- Zambri, B. and Robock, A.: Winter warming and summer monsoon reduction after volcanic eruptions in Coupled Model Intercomparison Project 5 (CMIP5) simulations, *Geophysical Research Letters*, 43, 10–920, 2016.
- 530 Zambri, B., LeGrande, A. N., Robock, A., and Slawinska, J.: Northern Hemisphere winter warming and summer monsoon reduction after volcanic eruptions over the last millennium, *Journal of Geophysical Research: Atmospheres*, 122, 7971–7989, 2017.
- Zambri, B., Robock, A., Mills, M. J., and Schmidt, A.: Modeling the 1783–1784 Laki eruption in Iceland: 2. Climate impacts, *Journal of Geophysical Research: Atmospheres*, 124, 6770–6790, 2019.
- 535 Zanchettin, D., Bothe, O., Graf, H. F., Lorenz, S. J., Luterbacher, J., Timmreck, C., and Jungclaus, J. H.: Background conditions influence the decadal climate response to strong volcanic eruptions, *Journal of Geophysical Research: Atmospheres*, 118, 4090–4106, 2013.
- Zanchettin, D., Khodri, M., Timmreck, C., Toohey, M., Schmidt, A., Gerber, E. P., Hegerl, G., Robock, A., Pausata, F. S., Ball, W. T., et al.: The Model Intercomparison Project on the climatic response to Volcanic forcing (VolMIP): experimental design and forcing input data for CMIP6, *Geoscientific Model Development*, 9, 2701–2719, 2016.

- 540 Zanchettin, D., Timmreck, C., Khodri, M., Schmidt, A., Toohey, M., Abe, M., Bekki, S., Cole, J., Fang, S.-W., Feng, W., et al.: Effects of forcing differences and initial conditions on inter-model agreement in the VolMIP volc-pinatubo-full experiment, *Geoscientific Model Development*, 15, 2265–2292, 2022.