

The Dependence of Aerosols' Global and Local Precipitation Impacts on Emitting Region

Geeta G. Persad¹

¹Department of Geological Sciences, The University of Texas at Austin, Austin, Texas 78712 USA

5 *Correspondence to:* Geeta G. Persad (geeta.persad@jsg.utexas.edu)

Abstract. The influence of aerosol emissions' geographic distribution on the magnitude and spatial pattern of their precipitation impacts remains poorly understood. In this study, the NCAR CESM1 global climate model is used in coupled atmosphere-slab ocean mode to simulate the global hydrological cycle response to a fixed amount and composition of aerosol emitted from 8 key source regions. The results indicate that the location of aerosol emissions is a strong determinant of both the magnitude and spatial distribution of the hydrological response. The global-mean precipitation response to aerosol emissions is found to vary over a six-fold range depending solely on source location. Mid-latitude sources generate larger global-mean precipitation responses than do tropical and sub-tropical sources, driven largely by the formers' stronger global-mean temperature influence. However, the spatial distribution of precipitation responses to some (largely tropical and sub-tropical) regional emissions are almost entirely localized within the source region, while responses to other (primarily mid-latitude) regional emissions are almost entirely remote. It is proposed that this diversity arises from the differing strength with which each regional emission generates fast precipitation responses that remain largely localized. The findings highlight that tropical regions are particularly susceptible to hydrological cycle change from either local or remote aerosol emissions, encourage greater investigation of the processes controlling localization of the precipitation response to regional aerosols, and demonstrate that the geographic distribution of anthropogenic aerosol emissions must be considered when estimating their hydrological impacts.

1 Introduction

The geographic distribution of anthropogenic aerosol emissions has evolved continuously over the industrial era and is projected to continue to do so. Emissions have transitioned from a locus in Western Europe and North America in the late 19th and early 20th century to South and East Asia in the present-day due to changing patterns of industrialization and air quality regulation (Hoesly et al., 2018). Future projections of aerosol emissions, while highly uncertain (Samset et al., 2019), contemplate new growth of emissions in regions like South America and East Africa as industrialization of these regions accelerates (Lund et al., 2019).

With this redistribution of aerosol emissions comes the potential redistribution of aerosols' impact on the hydrological cycle, which are known to be substantial. Aerosols have been shown to have strong in-situ and remote hydrological cycle impacts via their influence on the dynamics, thermodynamics, and microphysics that control precipitation (Boucher et al.,

2013). AAs' rapid spatiotemporal evolution over the 20th and early 21st century and its effect on the large-scale circulation has been identified as the dominant driver of an observed southward shift in the tropical Pacific rain belt (Allen et al., 2015) and the collapse and recent recovery in Sahel precipitation (Marvel et al., 2020). Observed weakening of the South and East Asian monsoons, meanwhile, has been attributed to both large-scale and local-scale aerosol forcing (Bollasina et al., 2011, 35 2014; B. Dong et al., 2019; Li et al., 2016; Singh et al., 2019).

A range of studies have established that the precipitation response to aerosols is dependent on the spatial distribution of aerosol forcing. The ongoing evolution in the spatial distribution of global aerosol emissions has been associated with an evolution in the spatial pattern of the corresponding global precipitation response (Deser et al., 2020; Kang et al., 2021). A range of studies isolating the response to historical emissions in individual regions or latitude bands have identified common 40 underlying features of this geographic dependence. Multi-model and single-model studies applying both idealized and historical regional aerosol perturbations generally find that higher latitude aerosol sources (Europe, North America) produce a stronger global-mean precipitation response than lower latitude sources (East or South Asia) when normalized by radiative forcing or atmospheric concentration (Kasoar et al., 2018; Liu et al., 2018; Shindell et al., 2012; Westervelt et al., 2018). However, some studies show strongly differing spatial distributions of precipitation response (Ishizaki et al., 2013; Liu et al., 45 2018; Shindell et al., 2012), while others argue that the spatial patterns of response are similar regardless of source region (Kasoar et al., 2018).

Identifying the specific role of emission location in the climate response to aerosol, however, remains difficult based on the existing literature. Previous studies use actual or scaled historical emissions, which are unequal across regions, latitude bands, and/or time periods. Responses can be normalized by emissions, concentrations, or forcing to approximate the role of 50 source location. For example, Shindell et al. (2012) proposed and estimated a set of "Regional Precipitation Potentials" based on their analysis of the response to historical aerosol emissions in separate latitude bands, which quantifies the precipitation response per unit of radiative forcing for aerosol emissions in a given latitude band. However, these approaches assume linearity in the response to different amounts of aerosol. Additionally, existing studies tend to sample the effects of a relatively small subset of regions (generally confined to South and East Asia, North America, and Europe). Given the high uncertainty 55 and potential for growth in aerosol emissions within individual regions outside of this subset (Lund et al., 2019), understanding the relative importance of aerosol emissions from a larger range of regions may be potentially beneficial for near-term climate prediction as well as for fundamental understanding of the climate system response to heterogeneous forcing.

In Persad and Caldeira (2018), we designed a set of simulations in a coupled atmosphere-slab ocean global climate model (GCM) to evaluate the global-scale temperature response to identical aerosols (equal to year 2000 Chinese sulfate, black 60 carbon, and organic carbon emissions) emitted from 8 different regions and found a 14-fold range in the global-mean temperature response due solely to differences in emission source location. By fixing the amount of aerosol based on a historical reference, but varying the source location, the simulations isolate the role of the geographic location of emissions in setting the climate response to aerosols within a quasi-realistic framework. This strategy is analogous to Green's function approaches, in which a climate model is perturbed with an identical anomaly in several different locations one-by-one, that

65 have been used to evaluate radiative feedbacks (Dong et al., 2019; Zhou et al., 2017). In Persad & Caldeira (2018), the
anomaly—i.e. a fixed emission of aerosol—is structured to match the national boundaries along which the policy and
technological shifts that determine aerosol trends typically occur (O’Neill et al., 2015; Rao et al., 2017; Riahi et al., 2017). The
goal is to achieve an experimental set-up that provides fundamental physical insight within a framework that is directly
70 translatable to policy-relevant tools like emulators, emissions metrics, or social cost calculations that scale based on national
emissions. This allows an approach for understanding the importance of aerosols’ geographic distribution to their climate
response that is complementary to the unequal historical emissions or highly idealized forcing experiment designs that have
previously been pursued.

In this study, the simulations from Persad and Caldeira (2018) are analyzed to understand the dependence of the
hydrological cycle response to aerosols on emission source location. Section 2 describes the simulations and analysis
75 techniques used to assess the influence of identical aerosol emissions from different regions on global precipitation. Section 3
presents results assessing impacts on both global-mean precipitation and the spatial distribution of precipitation and explores
a potential theory for why certain source regions produce strongly localized precipitation responses and others do not. Section
4 places the findings in the context of existing understanding, and Section 5 summarizes and explores the implications of the
results in the context of the continuing spatial redistribution of anthropogenic aerosol emissions.

80 **2 Methods**

Simulations designed to test the global climate response to identical aerosol emissions in different source regions are
conducted in the National Center for Atmospheric Research Community Earth System Model version 1.2 (CESM1) using the
Community Atmosphere Model version 5 (CAM5) coupled to the Community Land Model version 4 (CLM4) and a mixed-
layer ocean (Hurrell et al., 2013). The three lognormal mode (MAM3) modal aerosol module is used in CAM5, which allows
85 for interactive transport, growth, internal mixing, and removal of aerosol emissions by the internal physics of the model (Liu
et al., 2012). This version of the model has been shown to produce minimal (<10%) biases in aerosol concentrations and
aerosol radiative forcing compared to more complicated atmospheric chemistry models (Ghan et al., 2012; Liu et al., 2012).
Simulations in CESM1(CAM5) using historical aerosol emissions compare well with observations of spatial and temporal
patterns of aerosol optical depth (AOD), though low biases in AOD are apparent over South and East Asia. CAM5 allows for
90 simulation of aerosol-cloud interactions within the model’s two-moment microphysical parameterization (Liu et al., 2012).
Microphysical aerosol-precipitation interactions are permitted within the stratiform cloud microphysics representation, but are
excluded from the cumulus cloud parameterization (Ghan et al., 2012). The fully coupled CESM1 consistently performs among
the top 10 Fifth Coupled Model Intercomparison Project (CMIP5) generation models in simulation of historical temperature
and precipitation trends and spatial patterns (Koutroulis et al., 2016).

95 The simulation suite consists of a control simulation and 8 perturbation experiments. In the control simulation, year 2000
conditions are imposed for all external and internal forcings, with the exception of non-biomass burning anthropogenic

emissions of black carbon, organic carbon, sulphur dioxide, and sulphate. These are set to 1850 values using CAM5's standard historical emissions fields (Lamarque et al., 2010). In the 8 perturbation experiments, these anthropogenic aerosol emissions fields are modified only within the relevant region to impose an additional total annual emission of black carbon, organic carbon, and sulphate precursor equivalent to China's total year 2000 values (1.61 Tg, 4.03 Tg, and 22.4 Tg, respectively). This is achieved by scaling that region's year 2000 CAM5 standard historical emissions fields at each grid point by a fixed factor such that the total change in anthropogenic aerosol emissions between each of the 8 perturbation experiments and the control is identical. The spatial distribution of the emission perturbation thus follows the realistic year 2000 spatial pattern within a given region (Figure A1). The 8 perturbation regions chosen (Brazil, China, East Asia, India, Indonesia, South Africa, the U.S., and Western Europe) are selected to sample a range of past, present, and projected future major emission source regions as well as a range of climate regimes (e.g. tropical, monsoonal, and extratropical in both hemispheres). A comparable set of simulations are run in atmosphere-only mode with sea surface temperatures (SSTs) and sea ice fixed. Further discussion of simulation characteristics and behaviour can be found in Persad & Caldeira (2018).

The atmosphere-only simulations are used to calculate effective radiative forcing (ERF) and atmospheric absorption and to decompose the fast and slow precipitation responses. ERF is calculated as the change in global-mean top-of-atmosphere energy balance in each of the 8 atmosphere-only perturbation experiments compared to the atmosphere-only control, following the standard fixed SST definition of ERF (Ramaswamy et al., 2018). The fast precipitation response is calculated as the precipitation response within the atmosphere-only simulation. Atmospheric absorption values shown are also calculated within the atmosphere-only simulation. The slow precipitation response is calculated as the residual of the precipitation response in the slab ocean simulations minus the fast precipitation response.

Model output is produced at a nominal 2-degree longitude by latitude resolution. Slab ocean simulations are run for 100 years, and atmosphere-only simulations are run for 60 years. The initial 40 (slab ocean simulations) or 20 (atmosphere-only simulations) years are treated as the transient response (based on analysis of trends in the top-of-atmosphere energy imbalance) and discarded. The simulation design used here, in which a signal from a given perturbation (e.g. a regional aerosol emissions) is characterized by imposing that perturbation as the only modification to a control simulation and running the resulting simulation in repeating annual cycle mode for an extended period, is a standard methodology used across the aerosol-climate interactions literature. Examples include simulations conducted as part of the Precipitation Driver and Response Model Intercomparison Project (PDRMIP) (e.g. L. Liu et al., 2018; Myhre et al., 2016; Samset et al., 2016) with idealized regional aerosol perturbations and within multi-model (Westervelt et al., 2017, 2018) and single-model experiment designs (Kasoar et al., 2018) simulating removal of present-day aerosol emissions in individual regions. In this experiment design, the perturbation signal is characterized as the difference between the long-term mean of the perturbation and control experiments after they have reached quasi-equilibrium, and the effects of internal variability are estimated using the interannual variability between individual years of the simulation.

One concern with this approach, not addressed in prior studies, is that persistent modes of internal variability may emerge within the equilibrium simulations and could be conflated with the perturbation signal. While atmosphere-only

simulations cannot sustain long-term modes of internal variability, this concern may apply to the slab ocean coupled simulations used here. To address this concern, two approaches are applied in this study. First, statistical significance is estimated using either the last 60 years (slab ocean simulations) or 40 years (atmosphere-only) of the simulations as the sample, but effective sample size is adjusted to account for autocorrelation between simulation years following the methodology of (Santer et al., 2000). The 95% confidence level (i.e. 1.96σ) based on year-to-year variability in the difference between the control simulation and each perturbation experiment is provided for all global-mean values and statistical significance for maps is estimated at the 95% confidence level using a two-tailed t test, both using this adjusted effective sample size. Second, the slab ocean coupled experiments are repeated with slightly adjusted initial conditions (initial conditions drawn from a different year of the control simulation), allowing a different trajectory of internal variability to emerge within the equilibrium simulation. Results from this second experiment set are provided in Appendix A and demonstrate that the central findings of the study are unlikely to be the result of persistent modes of internal variability emerging in either equilibrium simulation set, but rather can robustly be assumed to result from the regional aerosol emissions perturbations imposed.

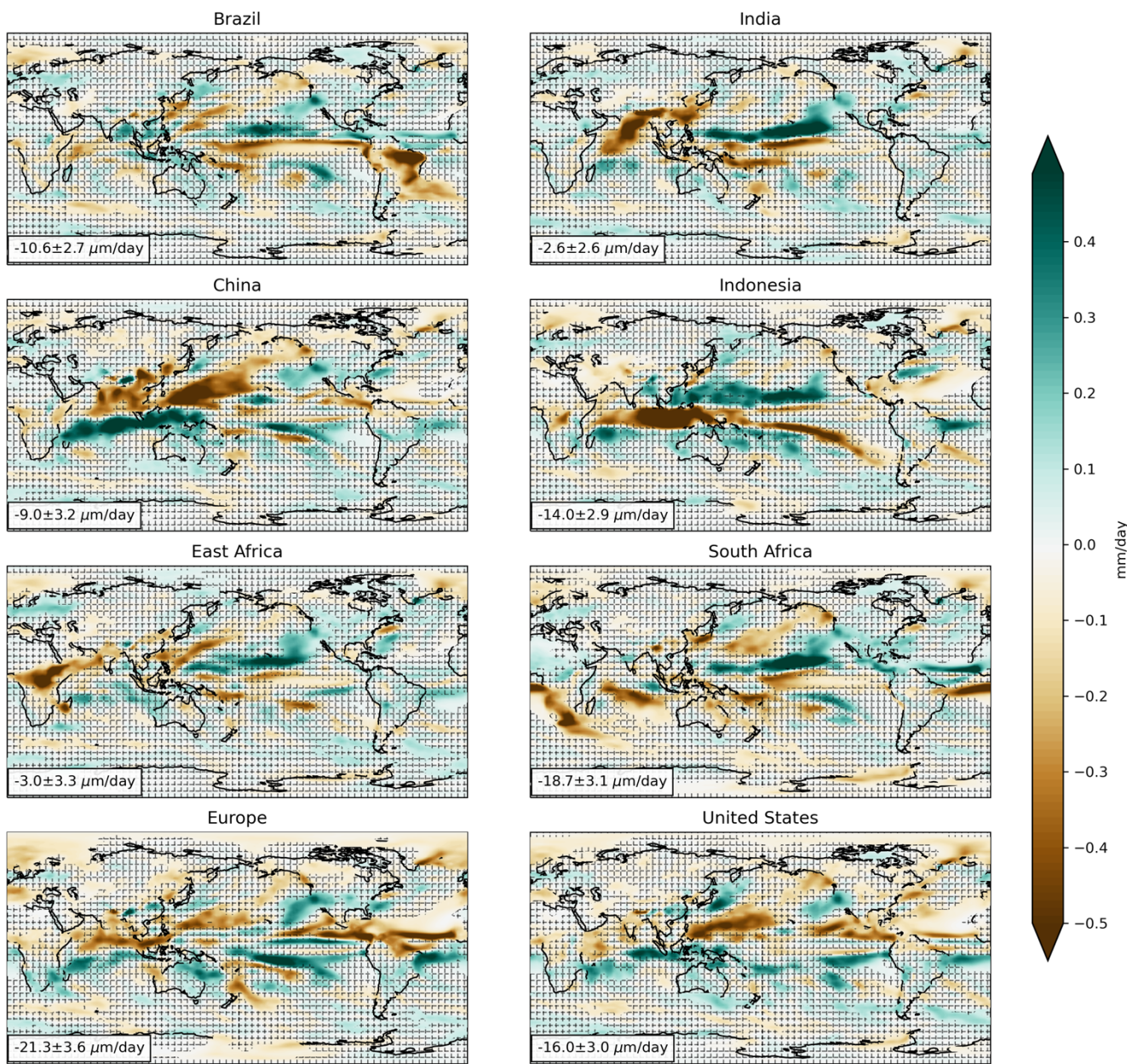
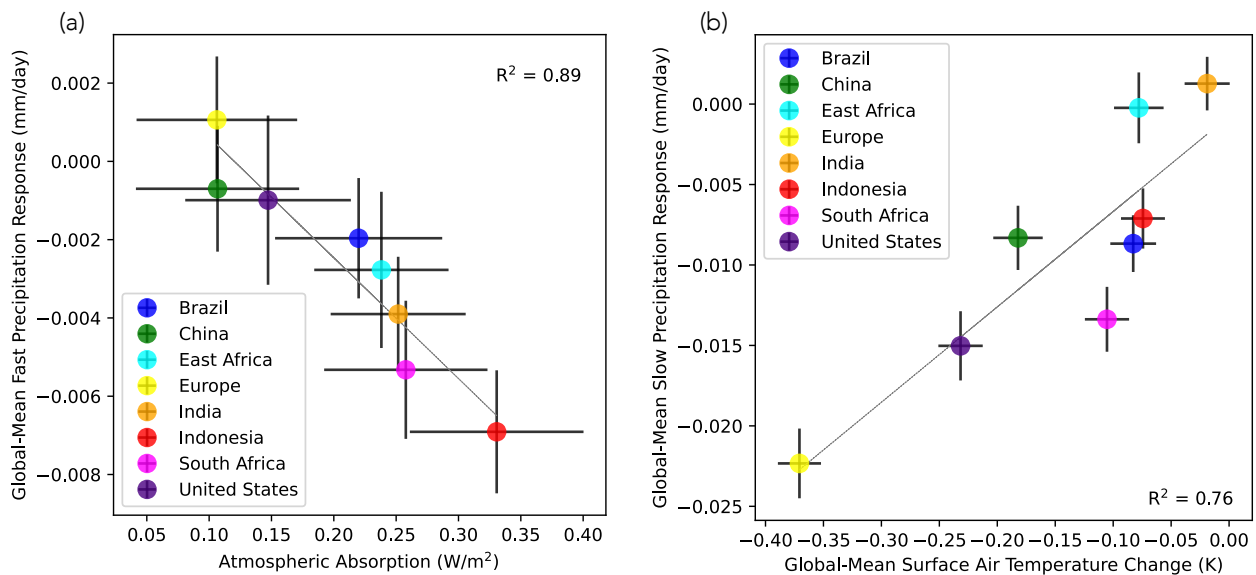


Figure 1. Spatial distribution of the change in precipitation rate (mm/day) due to the addition of an identical amount and composition of aerosol emissions in each of the 8 regions. Gridlines indicates regions where the changes are not statistically significant at the 95% confidence level via a two-sided t test. Global mean precipitation rate change and 95% confidence intervals ($\pm 1.96\sigma$) in $\mu\text{m/day}$ are shown in the bottom left corner of each map.

3.1 Global-mean precipitation response

The results indicate that differences in source location alone can produce a more than six-fold difference in global-mean precipitation response to aerosol emissions (Figure 1, Figure A2). Aerosols from all regions decrease global-mean precipitation. However, Western European emissions produce by far the strongest global-mean precipitation reduction ($-21.3 \pm 3.6 \mu\text{m/day}$ or an approximately 1% decrease)—a full 50% larger than the next strongest precipitation response (to U.S. emissions), while South Asian emissions produce the weakest ($-2.6 \pm 2.6 \mu\text{m/day}$ or $<0.2\%$ decrease). In general, mid-latitude sources (Western Europe, the U.S., China, and South Africa) generate larger global-mean precipitation responses than do the tropical and sub-tropical sources. The global-mean precipitation response to Indian and East African emissions, which constitute the weakest of the precipitation responses, are statistically indistinguishable from zero and from each other in the presence of internal variability. All other global-mean precipitation responses are statistically significant at the 95% confidence level, and thus highly unlikely to arise from internal variability alone. Although the 95% confidence interval in the global-mean response to some regional emissions are overlapping, it is clear that there is statistically significant diversity in the global-mean response to identical aerosol emissions from different regions.



165 **Figure 2.** The total global-mean precipitation response to emissions from each region can be decomposed in the (a) global-mean fast precipitation response (mm/day, y-axis), which is strongly correlated with the global-mean change in atmospheric absorption (W/m^2 , x-axis), and the (b) global-mean slow precipitation response (mm/day, y-axis), which is strongly correlated with the global-mean change in surface temperature (K, x-axis). Error bars provide the 95% confidence interval ($\pm 1.96\sigma$).

170 Global-mean precipitation changes can be separated into a fast (atmosphere-only) portion that scales strongly with the change
in global-mean atmospheric absorption (Figure 2a) and a slow (atmosphere-slab ocean coupled) portion that scales strongly
with the slab ocean coupled change in global mean temperature (Figure 2b, Figure A3). Increased atmospheric absorption of
radiative energy under fixed sea surface temperature conditions enhances atmospheric stability, suppressing evaporation,
convection, and precipitation—producing the so-called “fast” precipitation response (Andrews et al., 2010; Dagan et al., 2019,
175 2021). Once sea surface temperatures are allowed to respond, feedbacks in moist convection and horizontal moist transport
and thermodynamic constraints on precipitation and evaporation result in a slow precipitation response that is estimated as a
2-3% increase in precipitation per degree Kelvin of global-mean warming, regardless of forcing (Samset et al., 2016; Sillmann
et al., 2017). For most emitting regions simulated in this study, the slow precipitation response contributes the majority of the
total precipitation response (Figure 3, Figure A4). The exceptions are East African and Indian emissions, whose total global-
180 mean precipitation response is almost entirely contributed (or, in the case of Indian emissions, outpaced) by the fast
precipitation response, and Indonesian emissions, whose total precipitation response results from roughly equal slow and fast
precipitation responses.

The diversity in the slow precipitation response, which in turn drives the majority of the diversity in the total precipitation
185 response, is largely explained by the divergence in global-mean temperature responses (Figure 2b, Figure A3). Indeed, the
slow precipitation response to regional aerosol perturbations seen here follows the 2-3%/K scaling previously identified in
both fully dynamical ocean and slab ocean coupled set-ups (Held & Soden, 2006; Samset et al., 2016; Sillmann et al., 2017).
This temperature dependence also provides an explanation for the larger total global-mean precipitation responses generated
by higher latitude sources. The temperature response to identical aerosols emitted from these source regions spans a 14-fold
190 range. As detailed in Persad and Caldeira (2018), the differences in global-mean temperature response stem from a combination
of the differing strengths of effective radiative forcing generated by the individual source regions and the different ability of
the forcing to generate climate feedbacks (see Persad and Caldeira (2018), Figure 3b). The higher latitude source regions
generally produce larger effective radiative forcing than the lower latitude sources. Forcing from higher latitude sources, in
turn, is also more effective at generating cloud and sea ice feedbacks that amplify its efficacy at generating temperature change
195 relative to the lower latitude sources (see Persad and Caldeira (2018), Figure 4).

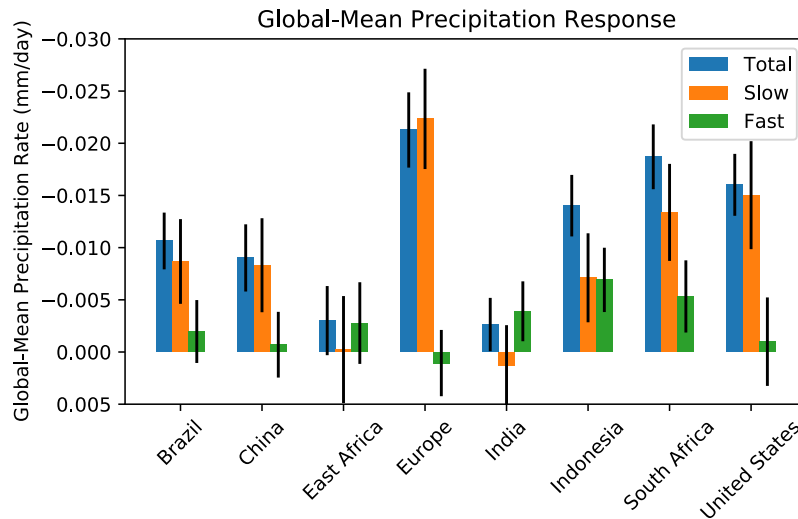
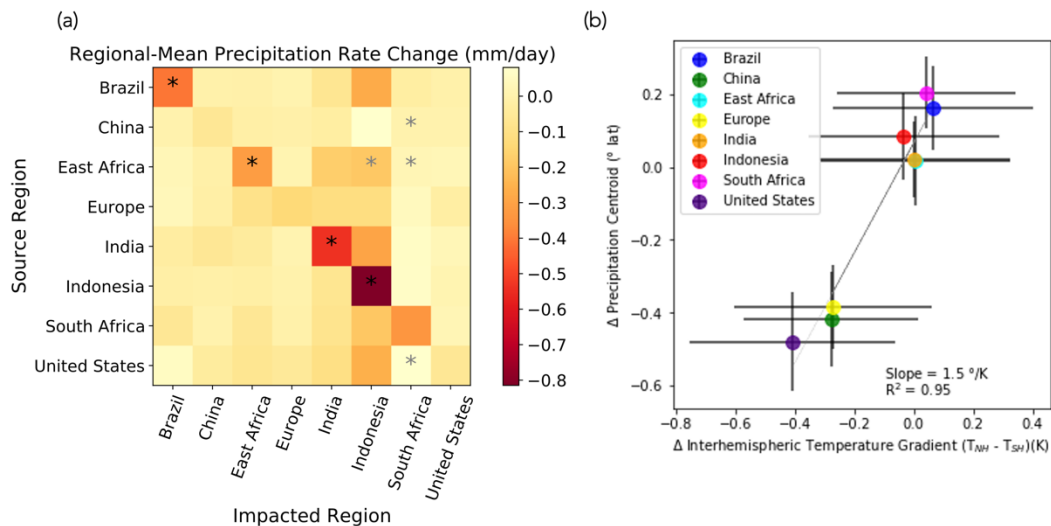


Figure 3. Decomposition of the global-mean total precipitation response (mm/day, blue) to identical emissions from each of the 8 regions into the slow (orange) and fast (green) precipitation response. Error bars provide the 95% confidence interval ($\pm 1.96\sigma$).

200 Emitting regions that demonstrate a substantial or dominant contribution from global-mean fast precipitation responses are those in which the aerosols produce a strong increase in global-mean atmospheric absorption in the atmosphere-only simulations (Figure 3 and Figure 2a). Increased atmospheric absorption in the atmosphere-only simulations may result from direct radiative effects of the aerosols or from thermodynamic or fast dynamical responses in clouds and water vapor. While the amount of emissions is identical across simulations, differences in the depositional environment into which the aerosols are emitted results in varying total atmospheric concentrations in response to each regional emission (Persad & Caldeira, 2018). Emissions from India, East Africa, South Africa, and Brazil sustain the largest steady-state atmospheric burdens of black carbon and organic carbon compared to identical emissions from the other regions (see Persad and Caldeira, 2018, Supplementary Figure 4). This partially explains the relatively high atmospheric absorption rates associated with these regional emissions and, consequently, the relatively large fast precipitation response.

210 3.2 Spatial patterns of precipitation response

The identical emissions from each region also produce differing spatial patterns of global precipitation change. A key difference in the spatial pattern of response is a divergence in whether the regional emission generates a strong in-situ precipitation response. In all cases, precipitation decreases within the emitting region (Figure 1, Figure 4a, Figure A2, Figure A5a). However, emissions from India, East Africa, Indonesia, and Brazil generate strong precipitation responses within source region boundaries, while emissions from Europe, the U.S., and China show only a minimal signature of within-region precipitation change. This signal persists when the precipitation response is normalized by the climatological precipitation (Figure A6), indicating that it is not merely a function of larger climatological precipitation rates across the tropics and sub-tropics.



220 **Figure 4.** (a) Regional-mean changes in precipitation rate (mm/day) in each of the 8 regions (columns) due to emissions from each of the 8
 regions (rows) are shown. (b) Shifts in the location of the intertropical convergence zone, quantified as the change in the meridional centroid
 of zonally averaged precipitation between 20° S and 20° N (° latitude, y-axis), correlate with the change in interhemispheric temperature
 225 gradient, quantified as the differences between Northern Hemisphere and Southern Hemisphere mean surface temperature (K, x-axis). Error
 bars on panel (b) provide the 95% confidence interval ($\pm 1.96\sigma$). Black asterisks on panel (a) indicate regional-mean precipitation changes
 that are significantly different than zero with 95% confidence. Grey asterisks on panel (a) indicate regions with no statistically significant
 230 precipitation response in any grid cell; All others show statistically significant precipitation responses in some grid boxes within the region
 (see Figure 1), although the regional-mean change is not statistically significant.

Further, the maximum precipitation response does not always occur within the aerosol source region. The combination of a
 negligible in-situ precipitation response and strong remote precipitation response to emissions from certain regions means that
 235 aerosols from those source regions impact remote regions more strongly than themselves (Figure 1, Figure 4a). In the case of
 Chinese, Western European, and U.S. emissions, the maximum precipitation decline occurs remote from the source region
 over the tropical oceans, whereas it occurs within the source boundaries for the other regions. In all cases, the maximum
 240 precipitation increases—which are of similar size to the maximum precipitation reductions—are dislocated from the source
 region and are associated with tropical precipitation shifts.

235 The large remote precipitation responses generated by the mid-latitude source regions result from their strong influence on the
 location of the intertropical convergence zone (ITCZ), which arises from their impact on the interhemispheric temperature
 gradient. Figure 4b (Figure A5b) shows the change in the meridional location of the ITCZ centroid—calculated as the center
 of mass of the zonally averaged precipitation between 20°N and 20°S—versus the change in the interhemispheric temperature
 240 gradient—calculated as the difference between the northern and southern hemisphere mean surface temperatures—in response
 to emissions from each of the 8 source regions. Higher latitude sources produce larger interhemispheric temperature gradients
 than lower latitude sources due to their larger total temperature effect, which manifests primarily in the source hemisphere.
 Northern hemisphere mid-latitude sources (Europe, the U.S., and China) produce the largest southward migration of the ITCZ,

associated with their strong preferential cooling of the northern hemisphere. The southern hemisphere mid-latitude source
245 included in these simulations (South Africa), meanwhile, generates a northward migration of the ITCZ centroid consistent with
its preferential cooling of the southern hemisphere. The northern hemisphere lower latitude sources (India and Indonesia)
generate minimal (consistent with zero) shifts in either the interhemispheric temperature gradient or ITCZ centroid.

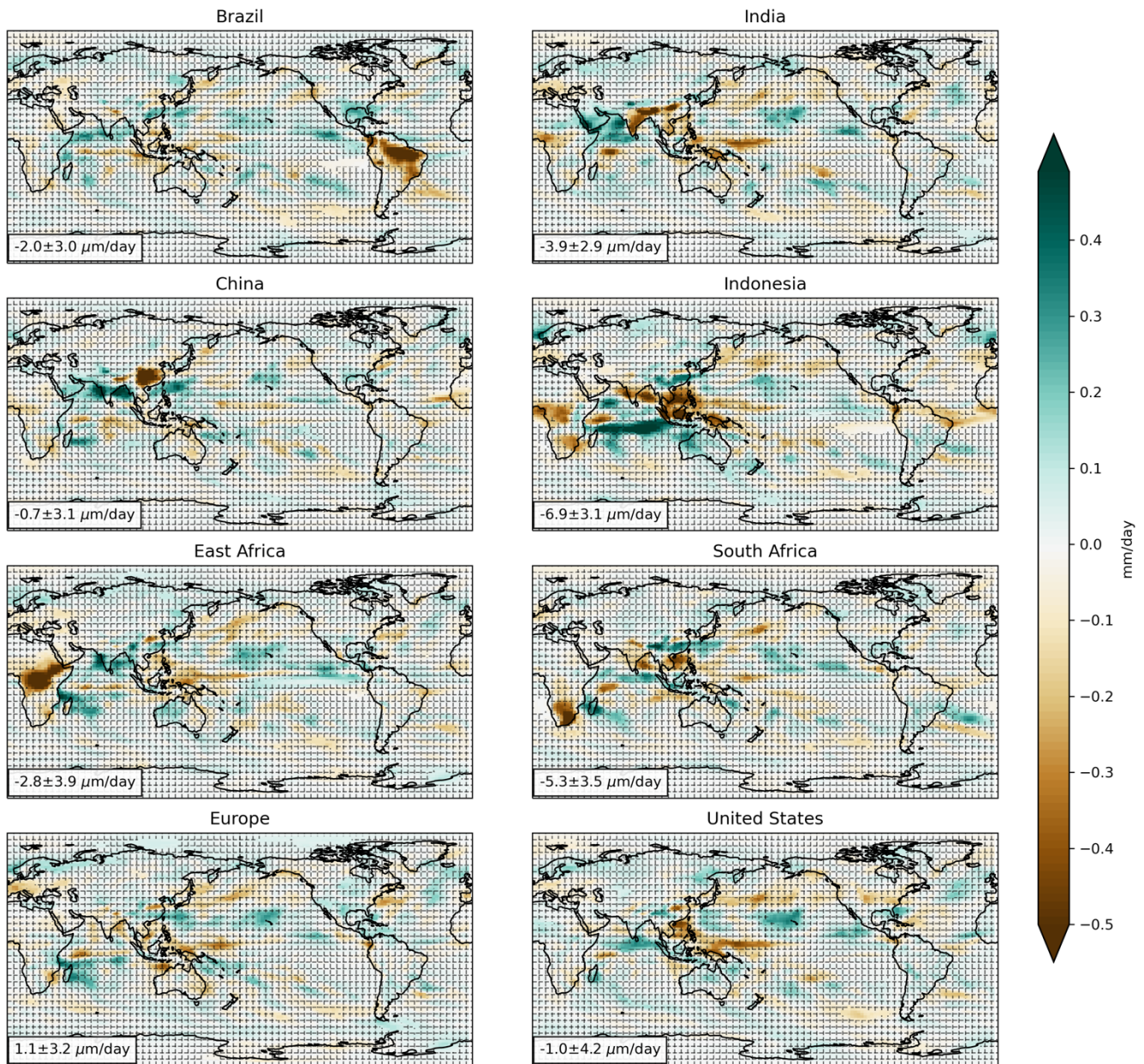
3.3 Potential processes underlying the presence or absence of a local precipitation response

A critical question arising from these results is why aerosol emissions from certain source regions produce a large in-situ
250 precipitation response and others produce only a negligible one. Given the strong in-situ radiative, microphysical, and
thermodynamics effects of aerosols on precipitation (e.g. Dong et al., 2019; Persad et al., 2017; Ramanathan et al., 2001), one
might expect the local response to dominate the precipitation response to regional aerosol emissions even when remote
responses occur. However, these results indicate that for several source regions remote impacts may be more substantial.
Aerosol emissions tend to be controlled by policy and technological decisions made at the national or subnational scale, often
255 motivated by societally immediate and highly localized impacts on air quality (Hoesly et al., 2018; Rao et al., 2017; Riahi et
al., 2017). Thus, it is important to understand whether concomitant impacts on the hydrological cycle will be similarly
concentrated or will be largely borne by others, for which source regions, and driven by what mechanisms.

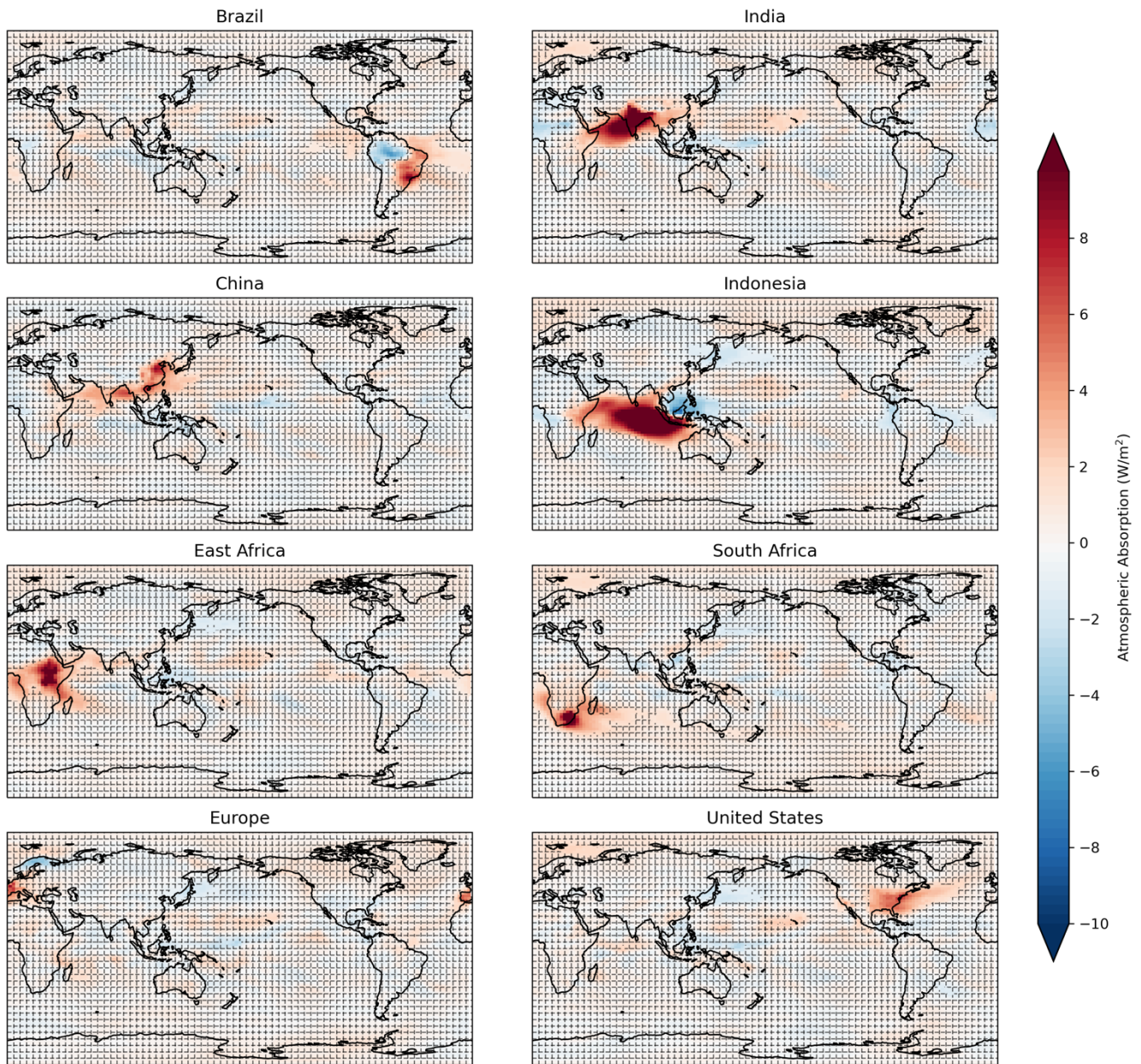
One possibility investigated here is that regions with strongly localized precipitation responses are those for which the fast
260 precipitation response contributes strongly to the total precipitation response. Because the fast precipitation response is largely
the result of in-situ stabilization and suppression of convection, evaporation, and precipitation by atmospheric absorption
(Andrews et al., 2010; Dagan et al., 2021; Samset et al., 2016), it is expected to maximize in the same regions as changes in
atmospheric absorption. The changes in atmospheric absorption may result either 1) from the direct, semi-direct, and indirect
radiative effects of the aerosol, which will be localized within and downwind of the emitting region due to aerosols' short
265 atmospheric lifetime, or 2) from large-scale responses in clouds or water vapor, which are expected to be secondary to radiative
effects when SSTs are fixed (Andrews et al., 2010; Samset et al., 2016). The slow precipitation response, meanwhile, results
largely from the response of the large-scale circulation and moisture transport to sea surface temperature changes, which can
produce large, remote precipitation responses (Andrews et al., 2010). Thus, for emitting regions for which atmospheric
absorption and fast precipitation responses are strong, but slow precipitation responses are weak, the total precipitation
270 response should be localized to the emitting region. Conversely, emitting regions for which atmospheric absorption and the
fast precipitation response are weak, but equilibrium temperature change and the slow precipitation response are strong, should
primarily generate remote precipitation responses.

This theoretical framework is borne out in the spatial patterns of response to the regional emissions imposed in this study. The
275 fast precipitation response follows a similar spatial pattern to the changes in atmospheric absorption (Figure 5, Figure 6) and
tends to be concentrated within and proximal to the emitting region. Some weaker large-scale features are evident, likely

generated by the land surface temperature changes permitted in the fixed SST simulations used to characterize the fast precipitation response (Samset et al., 2016). For all emitting regions, atmospheric absorption increases within and surrounding the emitting region—associated with the radiative effects of the combined sulfate, black carbon, and organic carbon emissions imposed—and atmospheric absorption changes remote from the emitting region are minimal. However, the strength of the atmospheric absorption response differs. The emitting regions generating the strongest localized atmospheric absorption (India, Indonesia, East Africa, South Africa) are also those for which the fast precipitation response dominates (India, East Africa) or substantially contributes to (Indonesia, South Africa) the total precipitation response. These are also the regions in which large in-situ total precipitation responses arise (Figure 4a). Conversely, the regions that exhibit minimal in-situ precipitation responses (the U.S., Europe, and China) are also those whose emissions produce the least atmospheric absorption and the weakest fast precipitation response.



290 **Figure 5.** Spatial distribution of the change in fast precipitation rate (mm/day) due to the addition of an identical amount and composition of aerosol emissions in each of the 8 regions. Gridlines indicates regions where the changes are not statistically significant at the 95% confidence level via a two-sided t test. Global mean fast precipitation rate change and 95% confidence intervals ($\pm 1.96\sigma$) in $\mu\text{m/day}$ are shown in the bottom left corner of each map.



295

Figure 6. Spatial distribution of the change in atmospheric absorption (W/m²) due to the addition of an identical amount and composition of aerosol emissions in each of the 8 regions. Gridlines indicates regions where the changes are not statistically significant at the 95% confidence level via a two-sided *t* test.

These findings highlight that understanding the processes that control the relative contribution of fast versus slow precipitation to the total precipitation response is important for constraining the magnitude and spatial distribution of precipitation response to regional aerosol forcing. In particular, understanding the processes controlling the fast precipitation response, namely atmospheric absorption, may provide an important constraint on the expected prevalence of localized precipitation responses to regional aerosol emissions. The dependence of the atmospheric absorption and fast precipitation response strength on aerosol location seen here aligns with results from highly idealized studies. Dagan et al. (2019) forced an aquaplanet atmospheric general circulation model (ICON) with equivalent, radially symmetric absorbing aerosol optical depth plumes in the deep tropics versus mid latitudes and found higher resulting atmospheric absorption in the deep tropics due to stronger cloud feedbacks. However, the aquaplanet formulation reduces the comparability of the resulting fast precipitation responses with those seen in this study. A follow-on study in the same atmosphere-only model with a realistic land surface found a stronger local fast precipitation reduction over land in response to a tropical scattering AOD plume than to a comparable higher latitude plume, though the use of a purely scattering plume as opposed to the mixed scattering and absorbing aerosols used in this study again limits direct comparison (Dagan et al., 2021). Regardless, the results of this analysis indicate that, particularly for tropical aerosol sources, the resulting amount of atmospheric absorption—and, consequently, the strength of the fast precipitation response—can be a strong determinant of the overall precipitation response. The importance of the atmospheric absorption for the precipitation response is particularly notable, since scattering rather than absorption by the mixed aerosol emissions in this study dominates the temperature and overall radiative response (Figure 2b and Persad and Caldeira (2018)). There are known model biases and limited observational constraints on atmospheric absorption, particularly at the regional scale (Samset et al., 2018). The importance to the hydrological response seen here, however, reinforces the need for improved observations and modeling of the processes that control atmospheric absorption.

The regions that manifest local fast versus slow precipitation responses in the simulations analyzed here also overlap with regions identified in existing studies, including those utilizing Precipitation Driver and Response Model Intercomparison Project simulations (PDRMIP, Myhre et al., 2016). Samset et al. (2018) evaluated the regions for which fast precipitation responses dominate slow precipitation responses for PDRMIP multi-model simulations of idealized global forcings, including 10 times present-day global black carbon emissions and 5 times present-day global sulphate emissions. Although the spatial pattern of imposed perturbation differs from this study (i.e. globally distributed vs. regionally confined perturbations), they also find that the total precipitation response to both global BC and global sulphate are dominated by the fast response over parts of South Asia and most of the African continent. High latitude precipitation responses to these two forcings, meanwhile, are dominated by the slow precipitation response in the multi-model simulations (Samset et al., 2016), though individual models show conflicting results (Zhang et al., 2021). Similar PDRMIP multi-model simulations with regional idealized aerosol

emissions over Asia and Europe (Liu et al., 2018), however, also showed a strong local fast precipitation response to Asian aerosols and almost no fast precipitation response to European aerosols. The appearance of a fast precipitation response in low
335 latitude continental regions in response to both localized and global-scale aerosol forcing and the absence of one at high latitudes thus appears to be a robust feature across models and aerosol perturbation set-ups.

The latitudinal dependence of the strength of the fast precipitation response and consequently the total local precipitation response to a regional aerosol emission may bear the signature of other processes that differentiate between the tropics and
340 extratropics. For example, differences in local energy budget closure and the strength of horizontal energy and moisture gradients between the tropics and extratropics, associated with poleward strengthening of the Coriolis force, have been leveraged to explain the latitudinal dependence of fast precipitation responses to idealized aerosol forcing (Dagan et al., 2019, 2021). The relative role of local- versus large-scale precipitation processes in supplying precipitation to a region may also play
345 a role in its susceptibility to in-situ aerosol forcing. The tropics and extratropics differ strongly in the proportion of total precipitation that is supplied by convective versus large-scale precipitation (Figure A7), though specific patterns are highly model dependent (Dai, 2006; Kysely et al., 2016). To the (imperfect) extent to which these two model-derived flavors of precipitation correspond with precipitation that is controlled by local- versus large-scale processes in the real world (Norris et al., 2021), regions with climatological precipitation dominated by convective (i.e. local-scale) precipitation may be more
350 susceptible to local aerosol forcing. Large-scale precipitation processes, meanwhile, may be relatively insensitive to localized forcing from a regional aerosol emission, since they are more strongly controlled by large-scale moisture and energy gradients (Wang et al., 2021).

The plausibility of this process is hinted at by the fact that regions that exhibit strong in-situ precipitation responses to local aerosol emissions (Figure 1, Figure 4a) are also those whose climatological precipitation is overwhelmingly supplied by
355 convective precipitation (Figure A7). Conversely, the regions that show a negligible local response are those in which climatological precipitation is partly or primarily supplied by large-scale precipitation. Additionally, the local precipitation response is dominated by convective precipitation change in all cases (Figure A8). However, it should be noted that CAM5, like many CMIP5 and CMIP6 generation models, includes aerosol microphysical effects on precipitation in its convective precipitation scheme, but not its large-scale precipitation scheme (Hurrell et al., 2013). Thus, this signal may be largely
360 dependent on parameterization approach. Applying well-established energetic analysis approaches (Dagan et al., 2021; Liu et al., 2018; Ming et al., 2010; Zhang et al., 2021) to more realistic aerosol perturbations in combination with moisture tracking algorithms (Mei et al., 2015) that allow better characterization of precipitation sources could help further clarify the potential role of local versus large-scale precipitation controls in determining the emergence of in-situ precipitation responses to regional aerosols.

365

The greater capability of higher latitude emission sources at generating total global-mean precipitation change also appears to be a robust feature of the response to aerosols. Studies analysing the global-mean precipitation response to removal of present-day aerosols from individual regions find that removal of European or North American emissions generates stronger global-mean precipitation per unit of radiative forcing than removal of South or East Asian emissions (via fully coupled HadGEM3-GA4 simulations in Kasoar et al., 2018; via fully coupled GISS E2, GFDL CM3, and NCAR CESM1 simulations in Westervelt et al., 2018), in line with the findings here. This reinforces the latitudinal dependence in the climate response to heterogeneous regional forcing found in earlier studies (Shindell & Faluvegi, 2009; Shindell et al., 2012) and indicates that it continues to apply as the forcings become more regionalized.

375 Despite the promising alignment of this study's findings with prior single and multi-model work, the single-model, slab-ocean set-up used here for computational tractability may create biases that encourage future multi-model coupled investigation of these questions. The regional aerosol response in the fully coupled NCAR CESM1 model is comparable with results from other contemporary coupled models, such as GFDL CM3, but the ITCZ response to aerosols is somewhat stronger (Westervelt et al., 2018). Ocean dynamical adjustments present in the fully coupled model but not in the slab ocean configuration used
380 here can either damp or amplify the response to aerosols, depending on the spatial pattern of forcing (Kang et al., 2021). In particular, they may damp ITCZ shifts relative to those seen in a slab ocean model (Zhao & Suzuki, 2019). Nevertheless, slab ocean models can provide valuable insights on hydrological cycle responses to anthropogenic forcings when computational efficiency is needed (Held & Soden, 2006; Ming & Ramaswamy, 2009). The strong dependence of the hydrological response to aerosols on regional distribution seen here and in other studies, across perturbation set-ups and models, highlights the
385 importance of continued investment in developing a comprehensive and consensus theory of what drives this dependence.

5 Conclusions

This study identifies a strong dependence of the global-mean precipitation response and its spatial distribution on the geographic location of a given aerosol emission. Coupled atmosphere-slab ocean GCM simulations, in which an identical, quasi-realistic amount and composition of aerosol is separately placed into a range of emitting regions, are used to isolate the
390 importance of source location in determining aerosols' hydrological effects. A six-fold difference in global-mean precipitation response emerges, largely driven by a fourteen-fold difference in global-mean temperature response. This arises from a combination of differing strengths of global-mean radiative forcing generated by each regional emissions and diversity in the efficacy of that radiative forcing at generating cloud and ice albedo feedbacks (Persad & Caldeira, 2018). Major distinctions in the geographic distribution of the precipitation response, particularly the prevalence of local versus remote responses, also
395 arise. Tropical regions, which also tend to have the greatest societal vulnerability to precipitation disruption, are the most susceptible to dynamically-driven precipitation changes generated by both local and remote aerosol emissions, as has been highlighted elsewhere (e.g. Scannell et al., 2019; Westervelt et al., 2018; Zanis et al., 2020). However, these regions are also

the least effective at generating remote precipitation responses. Conversely, mid-latitude emissions sources are highly effective at generating global-mean precipitation change, but these changes occur almost entirely outside of the source region. These results indicate that the time-evolving geographic distribution of global aerosol emissions may have substantial implications for the precipitation stability of vulnerable regions outside of key past or projected emissions hotspots. Building a comprehensive theory of what determines the relative strength of local versus remote hydrological impacts of regional aerosol emission changes will be important to understanding and predicting these trends.

The continuous spatial redistribution of aerosol emissions constitutes an ongoing source of uncertainty and variability in the global hydrological cycle (Deser et al., 2020), and near-term regional aerosol trends may be a major determinant of climate risk over the next several decades (Luo et al., 2020; Samset et al., 2019). Notably, the regions identified in this study to have the strongest global-mean and remote precipitation impacts (Europe and the U.S.) have seen strongly declining aerosol emission since the mid-20th century (Hoesly et al., 2018). Conversely, those with the weakest global-mean but the strongest local precipitation impacts (e.g. India, Indonesia, East Africa) are among those in which emissions could continue to increase substantially through the mid-21st century (Lund et al., 2019). This implies that the future spatial distribution of aerosol emissions may have a lower overall effectiveness at changing global-mean precipitation but may preferentially concentrate precipitation impacts into vulnerable regions. Known nonlinearity in the climate response to simultaneous regional aerosol variations (Herbert et al., 2021) limits the direct application of the regional dependence quantified here to estimate how ongoing spatial redistribution of aerosol emissions will affect global precipitation patterns. However, the strong dependence on source location seen in this study demonstrates that the geographic distribution of aerosol emissions must be accounted for when quantifying the human influence on global precipitation patterns.

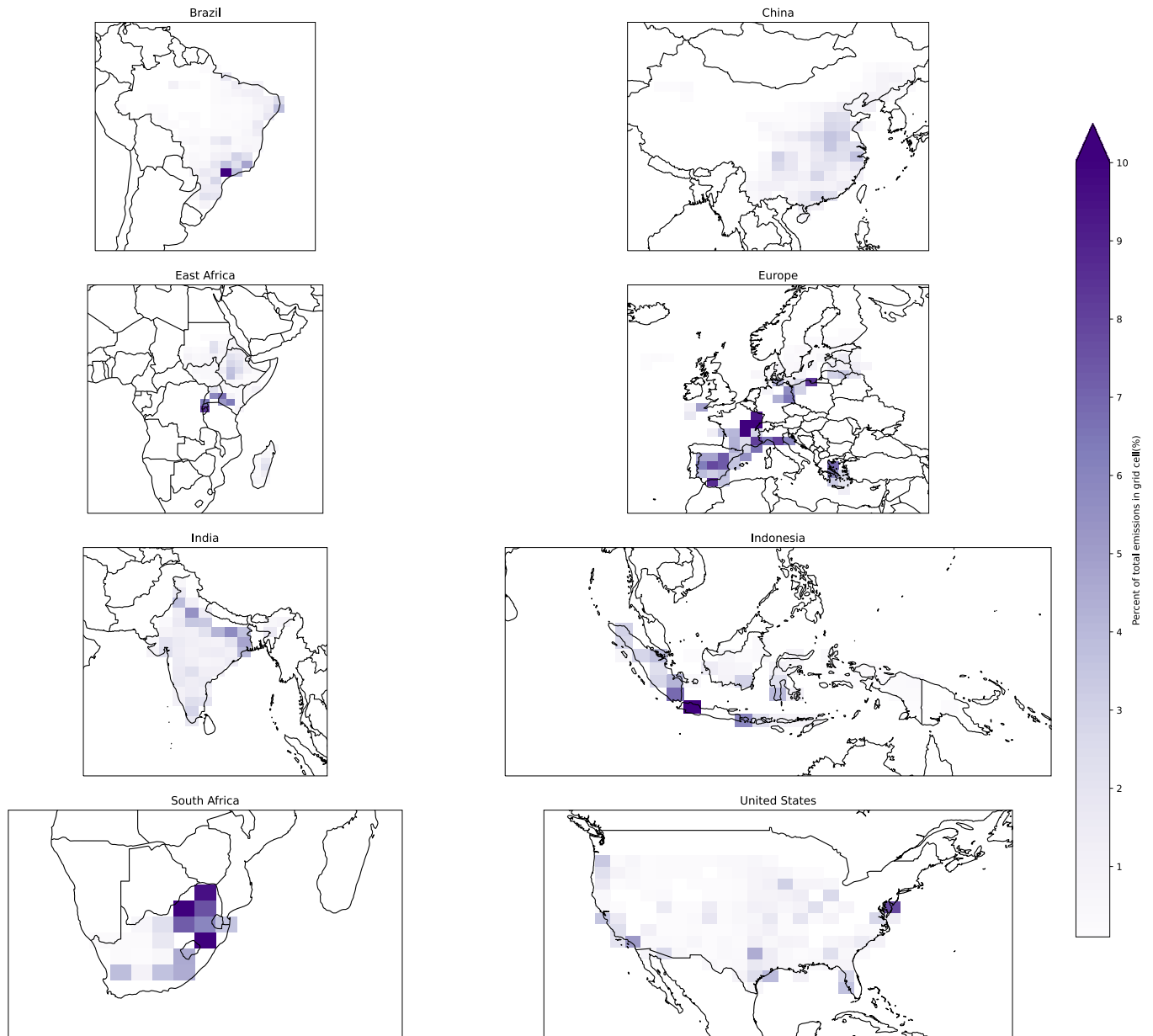


Figure A1. An identical total change in emissions is distributed within each of the 8 perturbation regions according to patterns shown above.

425 Distributions are shown in terms of the percent of the identical total emissions change that occurs within a given model grid cell within the region and follows the year 2000 realistic distribution of emissions within that region.

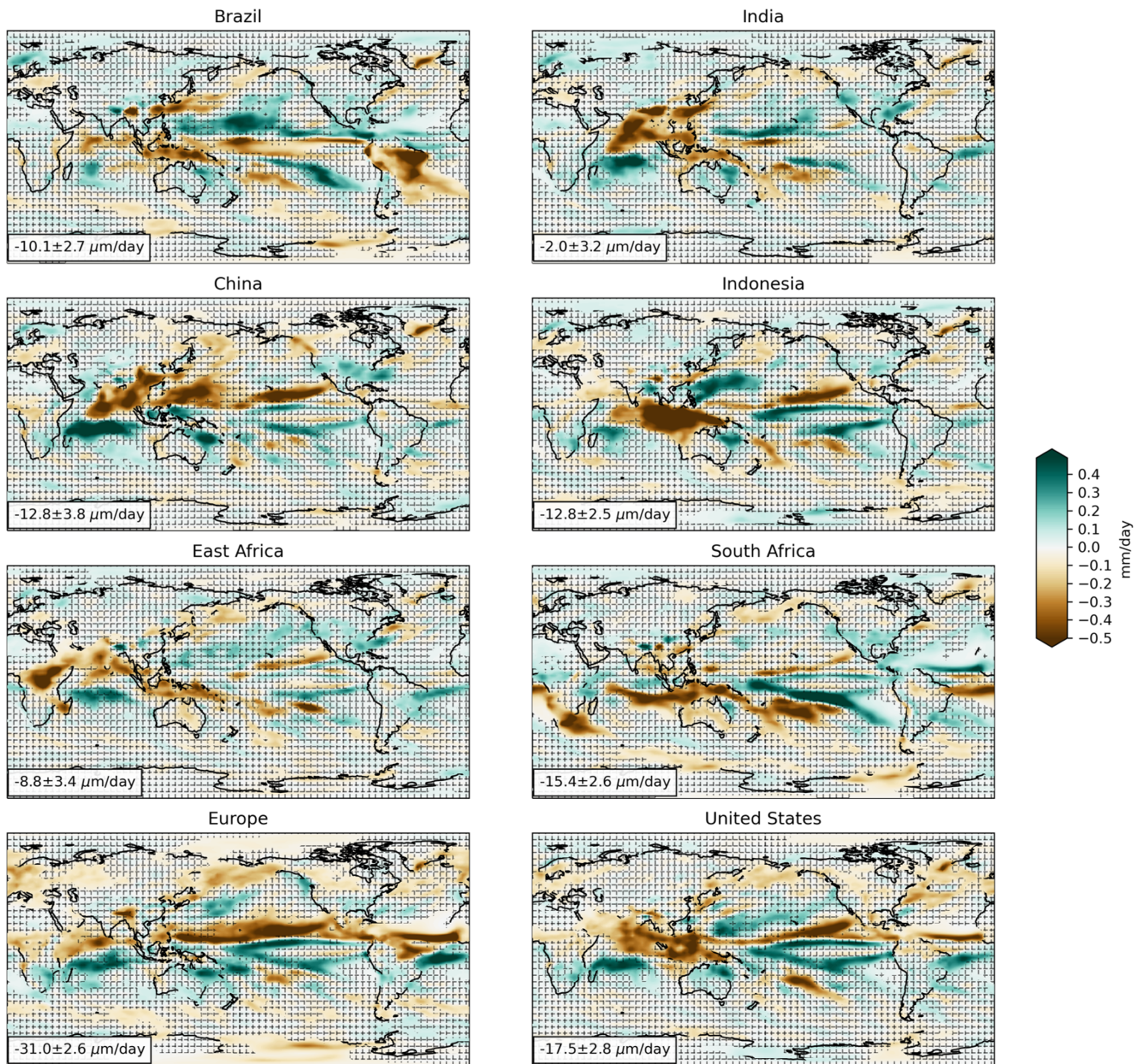
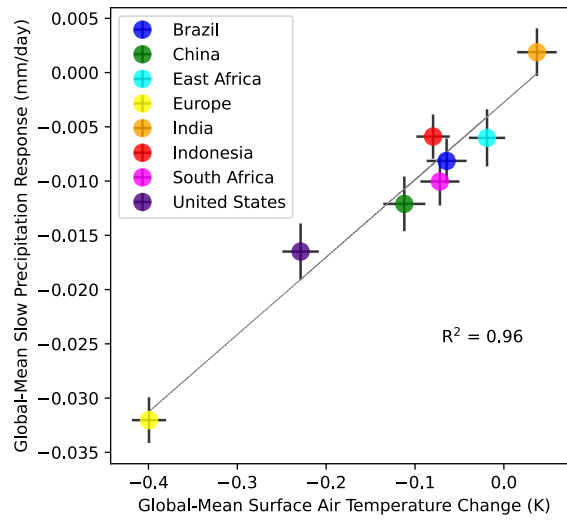


Figure A2. As in Figure 1, but for the second simulation set conducted with adjusted initial conditions (see Section 2).



435 **Figure A3.** As in Figure 2b, but for the second simulation set conducted with adjusted initial conditions (see Section 2).

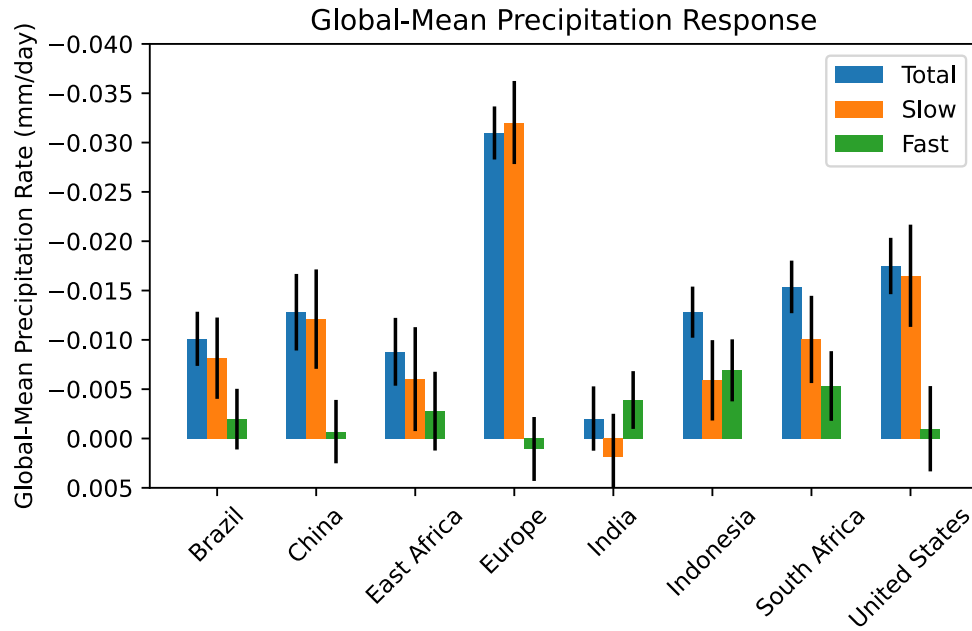
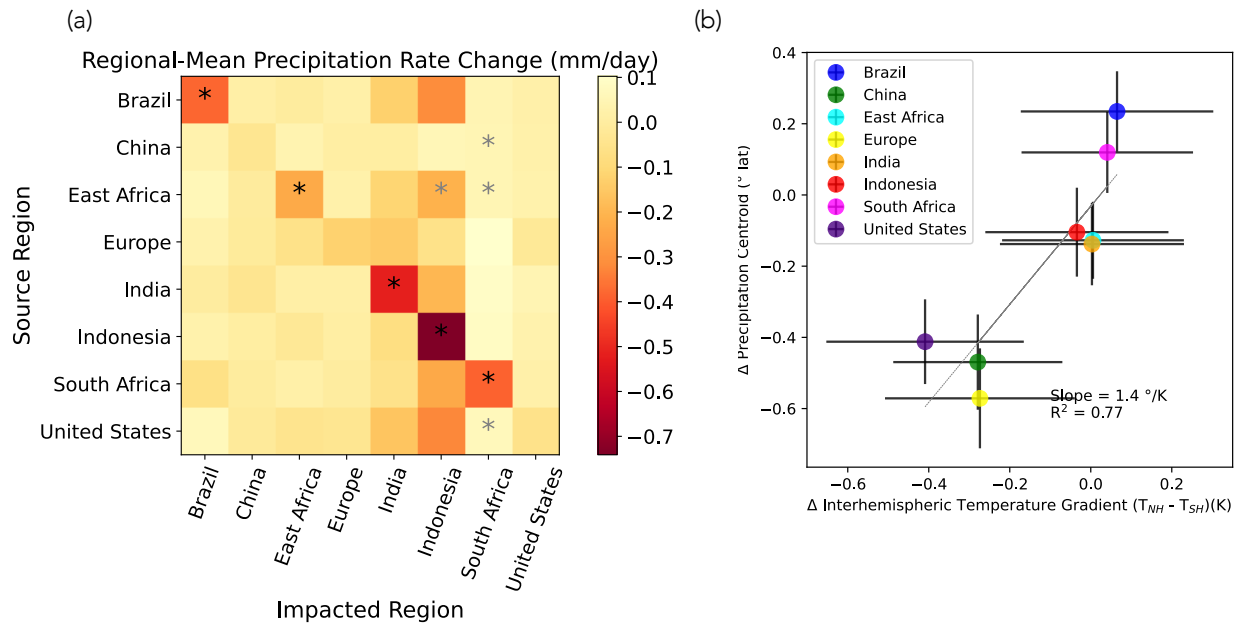
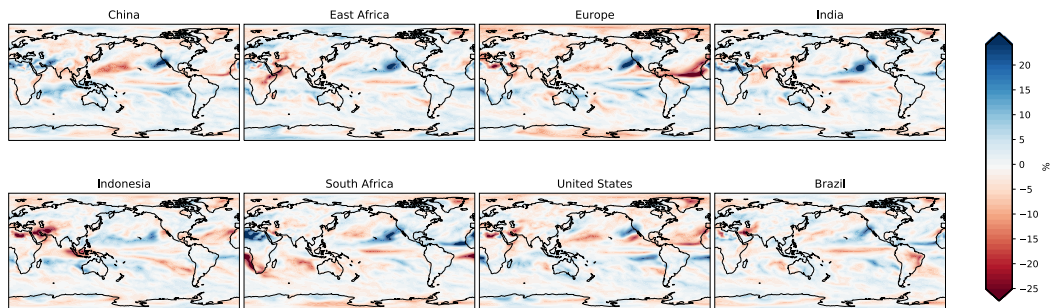


Figure A4. As in Figure 3, but for the second simulation set conducted with adjusted initial conditions (see Section 2).



440 **Figure A5.** As in Figure 4, but for the second simulation set conducted with adjusted initial conditions (see Section 2).



445 **Figure A6.** Annual-mean precipitation responses to identical total aerosol emissions within each of the 8 perturbation regions is given in terms of percent change relative to the climatological precipitation in each grid cell taken from the control simulation.

Percent of total precipitation driven by convective rather than large-scale precipitation

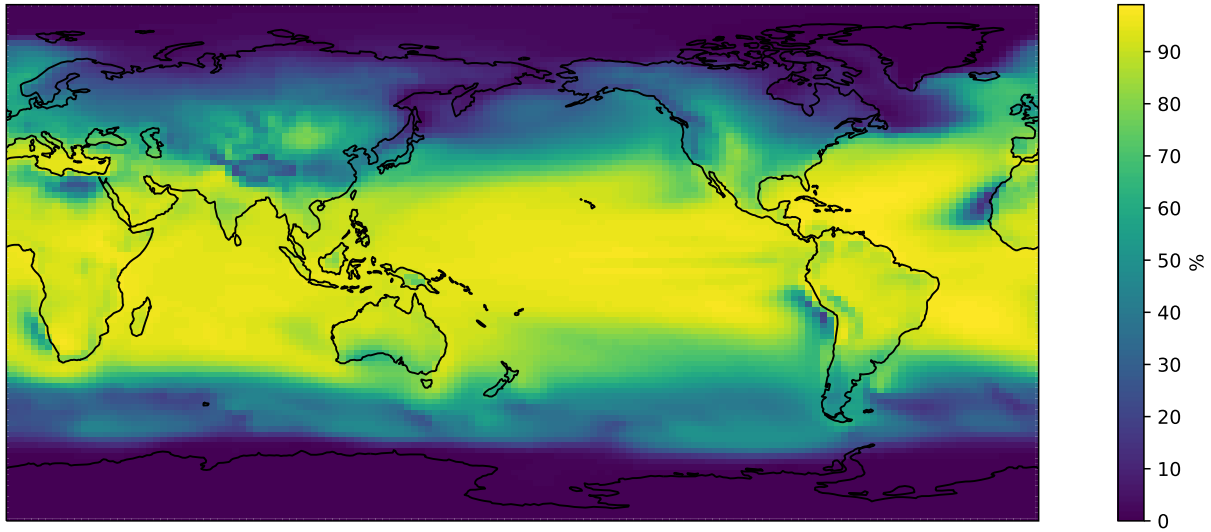
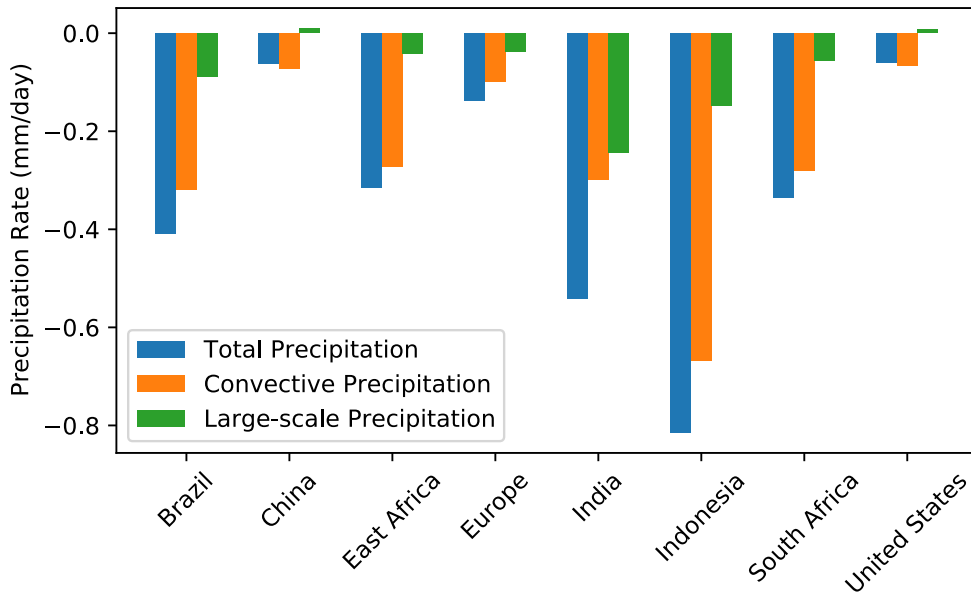


Figure A7. The percent of total precipitation in each grid cell in the control simulation that is derived from convective precipitation as opposed to large-scale precipitation is shown.

Contribution of Precipitation Type to Local Precipitation Change



450 **Figure A8.** The relative contribution of convective precipitation change (mm/day, orange) and large-scale precipitation change (mm/day, green) to the total local precipitation response (mm/day, blue) within each of the 8 perturbation regions in response to emissions within that region are shown.

Code availability

455 The NCAR CESM1.2 model is an open source model and is publicly available at <https://www.cesm.ucar.edu/models/cesm1.2/>.

Data availability

Input emissions data files developed for the perturbation simulations are citeable and available for download via the Texas Data Repository at <https://doi.org/10.18738/T8/Z87COZ>. All output data analysed as part of this study are also citeable and available for download via the Texas Data Repository at <https://doi.org/10.18738/T8/WBNQZE>. All other input data used are
460 available as part of the standard public release of the NCAR CESM1.2 model (see Code availability).

Author contribution

G. G. Persad conceived of the study, conducted the simulations and analysis, and wrote the paper.

Competing interests

The author declares no competing interests.

465 **Acknowledgements**

This material is based upon work supported by the National Science Foundation under Grant No. 1715557.

References

- Allen, R. J., Evan, A. T., & Booth, B. B. B. (2015). Interhemispheric Aerosol Radiative Forcing and Tropical Precipitation Shifts during the Late Twentieth Century. *Journal of Climate*, 28(20), 8219–8246. <https://doi.org/10.1175/JCLI-D-15-0148.1>
- 470
- Andrews, T., Forster, P. M., Boucher, O., Bellouin, N., & Jones, A. (2010). Precipitation, radiative forcing and global temperature change. *Geophysical Research Letters*, 37(14). <https://doi.org/10.1029/2010GL043991>
- Bollasina, M. A., Ming, Y., & Ramaswamy, V. (2011). Anthropogenic Aerosols and the Weakening of the South Asian Summer Monsoon. *Science*, 334(6055), 502–505. <https://doi.org/10.1126/science.1204994>
- 475
- Bollasina, M. A., Ming, Y., Ramaswamy, V., Schwarzkopf, M. D., & Naik, V. (2014). Contribution of local and remote anthropogenic aerosols to the twentieth century weakening of the South Asian Monsoon. *Geophysical Research Letters*, 41(2), 680–687. <https://doi.org/10.1002/2013GL058183>
- Boucher, O., Randall, D., Artaxo, P., Bretherton, C., Feingold, G., Forster, P., Kerminen, V.-M., Kondo, Y., Liao, H., Lohmann, U., & others. (2013). Clouds and aerosols. In *Climate change 2013: The physical science basis. Contribution of Working Group I to the Fifth Assessment Report of the Intergovernmental Panel on Climate Change* (pp. 571–657). Cambridge University Press. http://pubman.mpdl.mpg.de/pubman/item/escidoc:2007900/component/escidoc:2007949/WG1AR5_Ch07SM_FIN_AL.pdf
- 480
- Dagan, G., Stier, P., & Watson-Parris, D. (2019). Contrasting Response of Precipitation to Aerosol Perturbation in the Tropics and Extratropics Explained by Energy Budget Considerations. *Geophysical Research Letters*, 46(13), 7828–7837. <https://doi.org/10.1029/2019GL083479>
- 485
- Dagan, G., Stier, P., & Watson-Parris, D. (2021). An Energetic View on the Geographical Dependence of the Fast Aerosol Radiative Effects on Precipitation. *Journal of Geophysical Research: Atmospheres*, 126(9), e2020JD033045. <https://doi.org/10.1029/2020JD033045>
- 490
- Dai, A. (2006). Precipitation Characteristics in Eighteen Coupled Climate Models. *Journal of Climate*, 19(18), 4605–4630. <https://doi.org/10.1175/JCLI3884.1>

- Deser, C., Phillips, A. S., Simpson, I. R., Rosenbloom, N., Coleman, D., Lehner, F., Pendergrass, A. G., DiNezio, P., & Stevenson, S. (2020). Isolating the Evolving Contributions of Anthropogenic Aerosols and Greenhouse Gases: A New CESM1 Large Ensemble Community Resource. *Journal of Climate*, 33(18), 7835–7858. <https://doi.org/10.1175/JCLI-D-20-0123.1>
- 495
- Dong, B., Wilcox, L. J., Highwood, E. J., & Sutton, R. T. (2019). Impacts of recent decadal changes in Asian aerosols on the East Asian summer monsoon: Roles of aerosol–radiation and aerosol–cloud interactions. *Climate Dynamics*, 53(5), 3235–3256. <https://doi.org/10.1007/s00382-019-04698-0>
- Dong, Y., Proistosescu, C., Armour, K. C., & Battisti, D. S. (2019). Attributing Historical and Future Evolution of Radiative Feedbacks to Regional Warming Patterns using a Green’s Function Approach: The Preeminence of the Western Pacific. *Journal of Climate*, 32(17), 5471–5491. <https://doi.org/10.1175/JCLI-D-18-0843.1>
- 500
- Ghan, S. J., Liu, X., Easter, R. C., Zaveri, R., Rasch, P. J., Yoon, J.-H., & Eaton, B. (2012). Toward a Minimal Representation of Aerosols in Climate Models: Comparative Decomposition of Aerosol Direct, Semidirect, and Indirect Radiative Forcing. *Journal of Climate*, 25(19), 6461–6476. <https://doi.org/10.1175/JCLI-D-11-00650.1>
- 505
- Held, I. M., & Soden, B. J. (2006). Robust responses of the hydrological cycle to global warming. *Journal of Climate*, 19(21), 5686–5699.
- Herbert, R., Wilcox, L. J., Joshi, M., Highwood, E., & Frame, D. (2021). Nonlinear response of Asian summer monsoon precipitation to emission reductions in South and East Asia. *Environmental Research Letters*, 17(1), 014005. <https://doi.org/10.1088/1748-9326/ac3b19>
- 510
- Hoesly, R. M., Smith, S. J., Feng, L., Klimont, Z., Janssens-Maenhout, G., Pitkanen, T., Seibert, J. J., Vu, L., Andres, R. J., Bolt, R. M., Bond, T. C., Dawidowski, L., Kholod, N., Kurokawa, J., Li, M., Liu, L., Lu, Z., Moura, M. C. P., O’Rourke, P. R., & Zhang, Q. (2018). Historical (1750–2014) anthropogenic emissions of reactive gases and aerosols from the Community Emissions Data System (CEDS). *Geoscientific Model Development*, 11(1), 369–408. <https://doi.org/10.5194/gmd-11-369-2018>
- 515
- Hurrell, J. W., Holland, M. M., Gent, P. R., Ghan, S., Kay, J. E., Kushner, P. J., Lamarque, J.-F., Large, W. G., Lawrence, D., Lindsay, K., Lipscomb, W. H., Long, M. C., Mahowald, N., Marsh, D. R., Neale, R. B., Rasch, P., Vavrus, S.,

- Vertenstein, M., Bader, D., ... Marshall, S. (2013). The Community Earth System Model: A Framework for Collaborative Research. *Bulletin of the American Meteorological Society*, 94(9), 1339–1360. <https://doi.org/10.1175/BAMS-D-12-00121.1>
- 520 Ishizaki, Y., Shiogama, H., Emori, S., Yokohata, T., Nozawa, T., Takahashi, K., Ogura, T., Yoshimori, M., & Nagashima, T. (2013). Dependence of Precipitation Scaling Patterns on Emission Scenarios for Representative Concentration Pathways. *Journal of Climate*, 26(22), 8868–8879. <https://doi.org/10.1175/JCLI-D-12-00540.1>
- Kang, S. M., Xie, S.-P., Deser, C., & Xiang, B. (2021). Zonal mean and shift modes of historical climate response to evolving aerosol distribution. *Science Bulletin*. <https://doi.org/10.1016/j.scib.2021.07.013>
- 525 Kasoar, M., Shawki, D., & Voulgarakis, A. (2018). Similar spatial patterns of global climate response to aerosols from different regions. *Npj Climate and Atmospheric Science*, 1(1), 12. <https://doi.org/10.1038/s41612-018-0022-z>
- Koutroulis, A. G., Grillakis, M. G., Tsanis, I. K., & Papadimitriou, L. (2016). Evaluation of precipitation and temperature simulation performance of the CMIP3 and CMIP5 historical experiments. *Climate Dynamics*, 47(5–6), 1881–1898. <https://doi.org/10.1007/s00382-015-2938-x>
- 530 Kyselý, J., Rulfová, Z., Farda, A., & Hanel, M. (2016). Convective and stratiform precipitation characteristics in an ensemble of regional climate model simulations. *Climate Dynamics*, 46(1), 227–243. <https://doi.org/10.1007/s00382-015-2580-7>
- Lamarque, J.-F., Bond, T. C., Eyring, V., Granier, C., Heil, A., Klimont, Z., Lee, D., Liousse, C., Mieville, A., Owen, B., Schultz, M. G., Shindell, D., Smith, S. J., Stehfest, E., Van Aardenne, J., Cooper, O. R., Kainuma, M., Mahowald, N., McConnell, J. R., ... van Vuuren, D. P. (2010). Historical (1850–2000) gridded anthropogenic and biomass burning emissions of reactive gases and aerosols: Methodology and application. *Atmos. Chem. Phys.*, 10(15), 7017–7039. <https://doi.org/10.5194/acp-10-7017-2010>
- 540 Li, Z., Lau, W. K.-M., Ramanathan, V., Wu, G., Ding, Y., Manoj, M. G., Liu, J., Qian, Y., Li, J., Zhou, T., Fan, J., Rosenfeld, D., Ming, Y., Wang, Y., Huang, J., Wang, B., Xu, X., Lee, S.-S., Cribb, M., ... Brasseur, G. P. (2016). Aerosol and monsoon climate interactions over Asia. *Reviews of Geophysics*, 54(4), 866–929. <https://doi.org/10.1002/2015RG000500>

- Liu, L., Shawki, D., Voulgarakis, A., Kasoar, M., Samset, B. H., Myhre, G., Forster, P. M., Hodnebrog, Ø., Sillmann, J., Aalbergsjø, S. G., Boucher, O., Faluvegi, G., Iversen, T., Kirkevåg, A., Lamarque, J.-F., Olivié, D., Richardson, T., Shindell, D., & Takemura, T. (2018). A PDRMIP Multimodel Study on the Impacts of Regional Aerosol Forcings on Global and Regional Precipitation. *Journal of Climate*, *31*(11), 4429–4447. <https://doi.org/10.1175/JCLI-D-17-0439.1>
- Liu, X., Easter, R. C., Ghan, S. J., Zaveri, R., Rasch, P., Shi, X., Lamarque, J.-F., Gettelman, A., Morrison, H., Vitt, F., Conley, A., Park, S., Neale, R., Hannay, C., Ekman, A. M. L., Hess, P., Mahowald, N., Collins, W., Iacono, M. J., ... Mitchell, D. (2012). Toward a minimal representation of aerosols in climate models: Description and evaluation in the Community Atmosphere Model CAM5. *Geosci. Model Dev.*, *5*(3), 709–739. <https://doi.org/10.5194/gmd-5-709-2012>
- Lund, M. T., Myhre, G., & Samset, B. H. (2019). Anthropogenic aerosol forcing under the Shared Socioeconomic Pathways. *Atmospheric Chemistry and Physics*, *19*(22), 13827–13839. <https://doi.org/10.5194/acp-19-13827-2019>
- Luo, F., Wilcox, L., Dong, B., Su, Q., Chen, W., Dunstone, N., Li, S., & Gao, Y. (2020). Projected near-term changes of temperature extremes in Europe and China under different aerosol emissions. *Environmental Research Letters*, *15*(3), 034013. <https://doi.org/10.1088/1748-9326/ab6b34>
- Marvel, K., Biasutti, M., & Bonfils, C. (2020). Fingerprints of external forcings on Sahel rainfall: Aerosols, greenhouse gases, and model-observation discrepancies. *Environmental Research Letters*, *15*(8), 084023. <https://doi.org/10.1088/1748-9326/ab858e>
- Mei, R., Ashfaq, M., Rastogi, D., Leung, L. R., & Dominguez, F. (2015). Dominating Controls for Wetter South Asian Summer Monsoon in the Twenty-First Century. *Journal of Climate*, *28*(8), 3400–3419. <https://doi.org/10.1175/JCLI-D-14-00355.1>
- Ming, Y., & Ramaswamy, V. (2009). Nonlinear Climate and Hydrological Responses to Aerosol Effects. *Journal of Climate*, *22*(6), 1329–1339. <https://doi.org/10.1175/2008JCLI2362.1>
- Ming, Y., Ramaswamy, V., & Persad, G. (2010). Two Opposing Effects of Absorbing Aerosols on Global-Mean Precipitation. *Geophysical Research Letters*, *37*(13). <https://doi.org/10.1029/2010GL042895>

- Myhre, G., Forster, P. M., Samset, B. H., Hodnebrog, Ø., Sillmann, J., Aalbergjø, S. G., Andrews, T., Boucher, O., Faluvegi, G., Fläschner, D., Iversen, T., Kasoar, M., Kharin, V., Kirkevåg, A., Lamarque, J.-F., Olivié, D., Richardson, T. B., Shindell, D., Shine, K. P., ... Zwiers, F. (2016). PDRMIP: A Precipitation Driver and Response Model Intercomparison Project—Protocol and Preliminary Results. *Bulletin of the American Meteorological Society*, 98(6), 1185–1198. <https://doi.org/10.1175/BAMS-D-16-0019.1>
- 570
- Norris, J., Hall, A., Neelin, J. D., Thackeray, C. W., & Chen, D. (2021). Evaluation of the Tail of the Probability Distribution of Daily and Subdaily Precipitation in CMIP6 Models. *Journal of Climate*, 34(7), 2701–2721. <https://doi.org/10.1175/JCLI-D-20-0182.1>
- O’Neill, B. C., Kriegler, E., Ebi, K. L., Kemp-Benedict, E., Riahi, K., Rothman, D. S., van Ruijven, B. J., van Vuuren, D. P., Birkmann, J., Kok, K., Levy, M., & Solecki, W. (2015). The roads ahead: Narratives for shared socioeconomic pathways describing world futures in the 21st century. *Global Environmental Change*. <https://doi.org/10.1016/j.gloenvcha.2015.01.004>
- 575
- Persad, G. G., & Caldeira, K. (2018). Divergent global-scale temperature effects from identical aerosols emitted in different regions. *Nature Communications*, 9(1), 1–9. <https://doi.org/10.1038/s41467-018-05838-6>
- Persad, G. G., Paynter, D. J., Ming, Y., & Ramaswamy, V. (2017). Competing Atmospheric and Surface-Driven Impacts of Absorbing Aerosols on the East Asian Summertime Climate. *Journal of Climate*. <https://doi.org/10.1175/JCLI-D-16-0860.1>
- 580
- Ramanathan, V., Crutzen, P. J., Kiehl, J. T., & Rosenfeld, D. (2001). Aerosols, Climate, and the Hydrological Cycle. *Science*, 294(5549), 2119–2124. <https://doi.org/10.1126/science.1064034>
- Ramaswamy, V., Collins, W., Haywood, J., Lean, J., Mahowald, N., Myhre, G., Naik, V., Shine, K. P., Soden, B., Stenchikov, G., & Storelvmo, T. (2018). Radiative Forcing of Climate: The Historical Evolution of the Radiative Forcing Concept, the Forcing Agents and their Quantification, and Applications. *Meteorological Monographs*, 59, 14.1-14.101. <https://doi.org/10.1175/AMSMONOGRAPHS-D-19-0001.1>
- 585
- Rao, S., Klimont, Z., Smith, S. J., Van Dingenen, R., Dentener, F., Bouwman, L., Riahi, K., Amann, M., Bodirsky, B. L., van Vuuren, D. P., Aleluia Reis, L., Calvin, K., Drouet, L., Fricko, O., Fujimori, S., Gernaat, D., Havlik, P., Harmsen,
- 590

- M., Hasegawa, T., ... Tavoni, M. (2017). Future air pollution in the Shared Socio-economic Pathways. *Global Environmental Change*, 42, 346–358. <https://doi.org/10.1016/j.gloenvcha.2016.05.012>
- 595 Riahi, K., van Vuuren, D. P., Kriegler, E., Edmonds, J., O'Neill, B. C., Fujimori, S., Bauer, N., Calvin, K., Dellink, R., Fricko, O., Lutz, W., Popp, A., Cuaresma, J. C., KC, S., Leimbach, M., Jiang, L., Kram, T., Rao, S., Emmerling, J., ... Tavoni, M. (2017). The Shared Socioeconomic Pathways and their energy, land use, and greenhouse gas emissions implications: An overview. *Global Environmental Change*, 42, 153–168. <https://doi.org/10.1016/j.gloenvcha.2016.05.009>
- Samset, B. H., Lund, M. T., Bollasina, M., Myhre, G., & Wilcox, L. (2019). Emerging Asian aerosol patterns. *Nature Geoscience*, 12(8), Article 8. <https://doi.org/10.1038/s41561-019-0424-5>
- 600 Samset, B. H., Myhre, G., Forster, P. M., Hodnebrog, Ø., Andrews, T., Faluvegi, G., Fläschner, D., Kasoar, M., Kharin, V., Kirkevåg, A., Lamarque, J.-F., Olivieć, D., Richardson, T., Shindell, D., Shine, K. P., Takemura, T., & Voulgarakis, A. (2016). Fast and slow precipitation responses to individual climate forcings: A PDRMIP multimodel study. *Geophysical Research Letters*, 43(6), 2016GL068064. <https://doi.org/10.1002/2016GL068064>
- Samset, B. H., Stjern, C. W., Andrews, E., Kahn, R. A., Myhre, G., Schulz, M., & Schuster, G. L. (2018). Aerosol Absorption: Progress Towards Global and Regional Constraints. *Current Climate Change Reports*, 4(2), 65–83. <https://doi.org/10.1007/s40641-018-0091-4>
- 605 Santer, B. D., Wigley, T. M. L., Boyle, J. S., Gaffen, D. J., Hnilo, J. J., Nychka, D., Parker, D. E., & Taylor, K. E. (2000). Statistical significance of trends and trend differences in layer-average atmospheric temperature time series. *Journal of Geophysical Research: Atmospheres*, 105(D6), 7337–7356. <https://doi.org/10.1029/1999JD901105>
- 610 Scannell, C., Booth, B. B. B., Dunstone, N. J., Rowell, D. P., Bernie, D. J., Kasoar, M., Voulgarakis, A., Wilcox, L. J., Navarro, J. C. A., Seland, Ø., & Paynter, D. J. (2019). The Influence of Remote Aerosol Forcing from Industrialized Economies on the Future Evolution of East and West African Rainfall. *Journal of Climate*, 32(23), 8335–8354. <https://doi.org/10.1175/JCLI-D-18-0716.1>
- Shindell, D., & Faluvegi, G. (2009). Climate response to regional radiative forcing during the twentieth century. *Nature Geoscience*, 2(4), 294–300. <https://doi.org/10.1038/ngeo473>
- 615

- Shindell, D. T., Voulgarakis, A., Faluvegi, G., & Milly, G. (2012). Precipitation response to regional radiative forcing. *Atmos. Chem. Phys.*, *12*(15), 6969–6982. <https://doi.org/10.5194/acp-12-6969-2012>
- Sillmann, J., Stjern, C. W., Myhre, G., & Forster, P. M. (2017). Slow and fast responses of mean and extreme precipitation to different forcing in CMIP5 simulations. *Geophysical Research Letters*, *44*(12), 6383–6390. <https://doi.org/10.1002/2017GL073229>
- 620
- Singh, D., Bollasina, M., Ting, M., & Diffenbaugh, N. S. (2019). Disentangling the influence of local and remote anthropogenic aerosols on South Asian monsoon daily rainfall characteristics. *Climate Dynamics*, *52*(9), 6301–6320. <https://doi.org/10.1007/s00382-018-4512-9>
- Wang, J., Wong, R. K. W., Jun, M., Schumacher, C., Saravanan, R., & Sun, C. (2021). Statistical and machine learning methods applied to the prediction of different tropical rainfall types. *Environmental Research Communications*, *3*(11), 111001. <https://doi.org/10.1088/2515-7620/ac371f>
- 625
- Westervelt, D. M., Conley, A. J., Fiore, A. M., Lamarque, J.-F., Shindell, D., Previdi, M., Faluvegi, G., Correa, G., & Horowitz, L. W. (2017). Multimodel precipitation responses to removal of U.S. sulfur dioxide emissions. *Journal of Geophysical Research: Atmospheres*, *122*(9), 2017JD026756. <https://doi.org/10.1002/2017JD026756>
- 630
- Westervelt, D. M., Conley, A. J., Fiore, A. M., Lamarque, J.-F., Shindell, D. T., Previdi, M., Mascioli, N. R., Faluvegi, G., Correa, G., & Horowitz, L. W. (2018). Connecting regional aerosol emissions reductions to local and remote precipitation responses. *Atmospheric Chemistry and Physics*, *18*(16), 12461–12475. <https://doi.org/10.5194/acp-18-12461-2018>
- Zanis, P., Akritidis, D., Georgoulias, A. K., Allen, R. J., Bauer, S. E., Boucher, O., Cole, J., Johnson, B., Deushi, M., Michou, M., Mulcahy, J., Nabat, P., Oliv  , D., Oshima, N., Sima, A., Schulz, M., Takemura, T., & Tsigaridis, K. (2020). Fast responses on pre-industrial climate from present-day aerosols in a CMIP6 multi-model study. *Atmospheric Chemistry and Physics*, *20*(14), 8381–8404. <https://doi.org/10.5194/acp-20-8381-2020>
- 635
- Zhang, S., Stier, P., & Watson-Parris, D. (2021). On the contribution of fast and slow responses to precipitation changes caused by aerosol perturbations. *Atmospheric Chemistry and Physics*, *21*(13), 10179–10197. [https://doi.org/10.5194/acp-21-](https://doi.org/10.5194/acp-21-10179-2021)
- 640

Zhao, S., & Suzuki, K. (2019). Differing Impacts of Black Carbon and Sulfate Aerosols on Global Precipitation and the ITCZ Location via Atmosphere and Ocean Energy Perturbations. *Journal of Climate*, 32(17), 5567–5582. <https://doi.org/10.1175/JCLI-D-18-0616.1>

645 Zhou, C., Zelinka, M. D., & Klein, S. A. (2017). Analyzing the dependence of global cloud feedback on the spatial pattern of sea surface temperature change with a Green's function approach. *Journal of Advances in Modeling Earth Systems*, 9(5), 2174–2189. <https://doi.org/10.1002/2017MS001096>