

Review of Zhong et al, Satellite-based evaluation of AeroCom model bias in biomass burning regions.

This paper present an evaluation of AeroCom model aerosol optical properties in regions strongly influenced by biomass burning. In line with previous research, large biases are found. Diverse satellite products are used and a valuable comparison of satellite products is included. Furthermore, a useful disentangling of the biases associated with emissions and with lifetime is presented. The paper is well written and has potential to be an important contribution to ACP. I have a number of minor comments which should be addressed before the paper is published.

Response

We sincerely thank the reviewer for the valuable comments. These comments have been carefully addressed during revision. Please find our point-to-point response below and highlighted changes in the revised manuscript.

Minor comments

Models and variables section: More historical context on when the simulations were run and what the differences in model versions are between the experiments would be useful here. Were the model versions the same, or did the models change between the BBE, 2016 and 2019 experiments? I don't think you can expect your readers to be familiar with AeroCom protocols or to go through other AeroCom papers or the Excel sheet supplement, though of course all the details of specific changes from one experiment to the next do not need to be repeated here.

Response

Thank you for the suggestion. The simulation period was stated for each experiment (please see lines 137, 147, 152). Regarding the details of models, we have added the model version information to the updated Table 1. The following sentence were added to provide a better reference.

Lines 132-134: "A total of 18 different models were investigated in our study, with parts of the models participating in multiple experiments with different versions. **Table 1** provides an overview of these models, more details are provided in the **Appendix** and listed references."

Table 1. The details of the AeroCom Phase-III models evaluated in this study.

Model	Experiment ^a	Model version	Lat./Lon./Lev.	Meteo.	Reference
CAM-Oslo	CTRL16	CAM5.3-Oslo	192×288×30	ERA-Interim	Kirkevåg et al., 2018; Seland et al., 2020
	CTRL19	NorESM2 (CAM6-Nor)	192×288×32		
CAM5	BBE	CAM5.3_f19	96×144×30	ERA-Interim	Liu et al., 2012
	CTRL16	CAM5.3_f19			
CAM5-ATRAS	CTRL19	CAM5-ATRAS-v2.0	96×144×30	MERRA2	Matsui, 2017; Matsui and Mahowald, 2017
	BBE	ECHAM6.1-HAM2.2			
ECHAM-HAM	CTRL16	ECHAM6.3-HAM2.3	96×192×47	ERA-Interim	Tegen et al., 2019
	CTRL19	ECHAM6.3-HAM2.3			
ECHAM-SALSA	BBE	ECHAM6-SALSA	96×192×47	ERA-Interim	Kokkola et al., 2018
	CTRL16	ECHAM6-SALSA			
	CTRL19	ECHAM6.3-SALSA2.0			
ECMWF-IFS	BBE	ECMWF-IFS-CY45R1-CAMS	256×512×60	ECMWF-IFS	Rémy et al., 2019
	CTRL16	ECMWF-IFS-CY42R1-CAMS			
	CTRL19	ECMWF-IFS-CY46R1-CAMS			
EMEP	CTRL19	EMEP_rv4_33	360×720×20	ECMWF-IFS	EMEP, 2012
GEOS	CTRL19	GEOS-i33p2	181×360×72	MERRA-2	Colarco et al., 2010
GEOS-Chem	BBE	GEOS-Chem-v9-02	46×72×47	MERRA-2	Bey et al., 2001
	CTRL16	GEOS-Chem-v11-01	91×144×47		
GFDL	BBE	GFDL-AM4p0	180×360×33	NCEP/NCAR	Donner et al., 2011
GISS-MATRIX	BBE	GISS-ModelE2-MATRIX	90×144×40	NCEP/NCAR	Bauer et al., 2008
	CTRL19	GISS-ModelE2p1p1-MATRIX			
GISS-OMA	BBE	GISS-ModelE2-OMA	90×144×40	NCEP/NCAR	Bauer et al., 2020
	CTRL19	GISS-ModelE2p1p1-OMA			
HadGEM3	CTRL16	HadGEM3-GA7.1	144×192×38	ERA-Interim	Bellouin et al., 2013; Mulcahy et al., 2020
IMPACT	CTRL16	IMPACT	96×144×30		Liu et al., 2005
INCA	BBE	INCA	143×144×79	ECMWF	Balkanski et al., 2004; Schulz et al., 2009
	CTRL16	INCA-BCext			
OsloCTM	BBE	OsloCTM2	64×128×60	ECMWF	Myhre et al., 2007; 2009
	CTRL16	OsloCTM3	80×160×60		
	CTRL19	OsloCTM3v1.02	80×160×60		
SPRINTARS	BBE	MIROC5.2-SPRINTARS	320×640×40	ERA-Interim	Takemura et al., 2005
	CTRL16	MIROC5.9.0-SPRINTARS			
	CTRL19	MIROC6-SPRINTARS		ERA5	
TM5	CTRL16	TM5-mp	90×120×34	ERA-Interim	van Noije et al., 2014; 2021
	CTRL19	TM5-mp-r1058			

a. Models participated in one or multiple experiments with either the same or different model versions. The experiments include biomass burning emission (BBE) for 2008, CTRL 2016 (CTRL16) for 2006/2008/2010, and CTRL 2019 (CTRL2019) experiments for 2010.

Even though the size distribution of the model output is not available, the size distributions of the simulated BB emissions inputs are mentioned in the Appendix Table, so it should be possible to infer the impact of these size distributions on lifetime and AOD to some extent. It would be useful to try to do this, and it seems odd to have such a long discussion on hygroscopicity when size is probably more important.

Response

Thank you for the suggestion. It would be indeed nice to have discussions on the impacts of emitted particle size distribution. However, we find the emitted particle size is not the only reason driving changes in ambient particle size (and subsequently in lifetime and MEC), since microphysics in different models (e.g., nucleation, coagulation, etc.) also plays a role. For example, GISS-MATRIX assumes a small size for BB emissions (diameter = 50 nm) but produces very low AE (and high MEC).

Practically, involving discussions regarding emitted size and model processes will significantly increase the size of the paper which is already large. We are currently working on another paper which focuses on the impacts of particle size. The current paper still concentrates on evaluating the bias and diversity of modeled AOD over fire regions.

We also re-wrote the paragraph regarding hygroscopic growth, please see lines 482-496.

Why does the NMB for BBE5 reach up to 19? Isn't it a bit surprising that it ever exceeds 7.5, given BBE1 has a maximum NMB of 1.5? Is this a linear increase (line 372)?

Response

Thank you for the note. The model with the highest NMB was over BONA by GISS-OMA. The non-linearity at high emissions stemmed mainly from two grid boxes with extremely high AOD values (> 20). Given the model was collocated with POLDER-GRASP satellite observation which had a small sampling size over BONA, these extremes led to an abnormally high mean value in BBE5. If we use a median value for regional AOD, we get a rather linear response (please see the following Fig. R1). However, this metric would lead to inconsistency to the overall paper where the normalized mean bias was mostly used. In the revised manuscript, we have removed the value in the caption of Fig. 8 to avoid confusion.

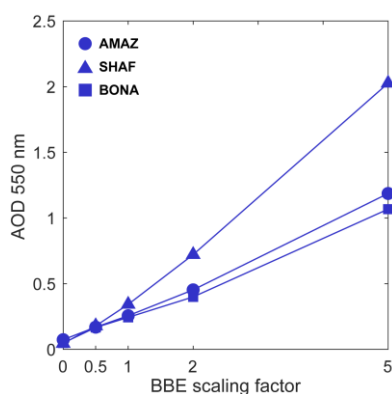


Fig. R1 Modeled median AOD in response to different scaling factors of BBE experiment by GISS-OMA model.

Please note that the NMB is calculated as $AOD_{mo}/AOD_{obs} - 1$, so it is possible to get a NMB higher than 7.5 (since the default $AOD_{mo}/AOD_{obs} = 2.5$). The linear relationship in Fig. 9 is based on the whole model ensemble. An individual model can possibly deviate from such a trend.

Figure 5: I find this figure hard to extract much meaning from – a great deal of the information is lost by just showing charts of the correlations. I did not understand the value of a correlation between spatial correlation and temporal correlation. I think it would be better to have AOD vs time line plots for POLDER and for all of the models, with one subfigure for each region (or similar). Then we could see which part of the season the biases are most apparent in, and where the biases are in the regions. It is surprising the spatial correlation can be so low for some models (GISS and INCA) – perhaps a scatter plot would be useful here of simulated AOD vs POLDER AOD for these models?

Response

Thank you for the suggestions. The temporal correlation was calculated as the correlation coefficients between the modeled and observed time series of AOD averaged for the whole region. The spatial correlation referred to the correlation between model and observations for the grid-boxes with seasonal averaged AOD (please see lines 292-293). Here we would like to use these spatial and temporal correlations (and variations, please see Fig. 7) to investigate the driver of the overall correlations (and bias). We did not show the plots for original model

individually since they might be too messy to present sufficient information. Instead, we added a new plot showing the time-series of AOD for both POLDER-GRASP observations and the model ensemble values (please see Fig. 5).

The low correlations for GISS and INCA in BBE (Fig. 6a) were caused by several grid-boxes with extremely high AOD in the models. If omitting these grid-boxes, the correlations would agree with other models (0.6~0.8). The three models with low correlations in CTRL16 (Fig. 6b) were those using very different emissions (e.g., CMIP5 emissions for 2000 used by CAM-Oslo and IMPACT).

The following sentences were added regarding the new Fig. 5.

Lines 290-291: “In Figure 5, we compared the daily AOD series for the model ensembles with POLDER-GRASP observations. For most models, the underestimations of AOD tended to be exacerbated during the peak of AOD observations.”

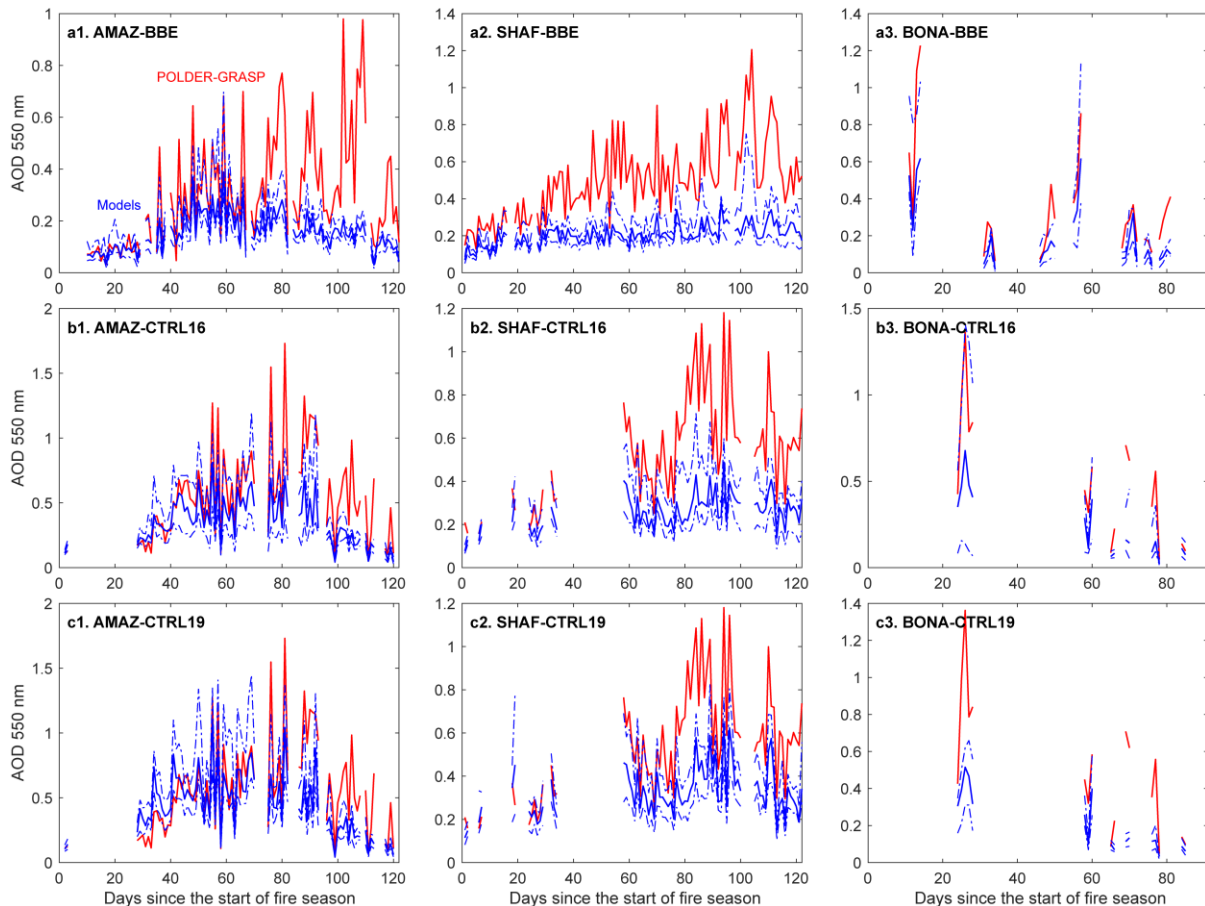


Figure 5. Daily time-series for the AOD for AMAZ (left panels), SHAF (middle panels), and BONA (right panels) in BBE (a), CTRL16 (b), and CTRL19 (c) experiments. All the model data were collocated with POLDER-GRASP during fire seasons. The model results are shown as model ensemble medians (solid lines) together with the interquartile ranges of the model spread (dashed lines). Data are averaged for 2008 in BBE, 2010 for CTRL16, and 2010 for CTRL2019, respectively.

Also, why are the results in subfigures a, b and c so different? What differed between the three experiments to cause this? You comment in the text that the figures are pretty similar, but they look quite different to me.

Response

Thank you for the note. The differences for the same model in different experiments are mainly driven by the input emissions. The GFED3 dataset was used in BBE and the CMIP6 dataset was used in CTRL19. Models in CTRL16 used their preferred emission inventories. Please see lines 136-152 for the clarification. Since diverse emission datasets were used in CTRL16, we found the models in this experiment showed the highest spread. In particular, the models that significantly deviated from others used very different emissions (e.g., CMIP5 emissions for 2000 used by CAM-Oslo and IMPACT, as shown in Fig. 6b).

Here we would like to conclude that even with the possible improvement of emission inventories (e.g., from GFED3 to CMIP6) and models (e.g., updated model versions), the correlations did not show significant improvement for the whole model ensemble (not for individual models which might be improved to a certain extent). This is supported by the t-test on models that participated in multiple experiments ($p > 0.05$). We have revised the relevant sentences as follows:

Lines 299-301: “For the model ensembles, we found there was no significant difference among the three experiments for both spatial and temporal correlations, even though improvements in emission inventories and/or models might occur following the time sequence from BBE to CTRL16 to CTRL19.”

L381-390 this is a nice analysis, should be very useful.

Response

Thank you for the support.

What is the real distinction between section 4 and section 5, before section 5.1? The sections may need more thought.

Response

In section 4, we collocated model data with POLDER-GRASP (i.e., sparsely distributed observation) to evaluate the modeled AOD bias from multiple aspects. In section 5, we mainly focused on understanding the drivers of model diversity which was based on the original model output (without collocations). Investigations on the model diversity provides a way to better understand (and potentially fix) the bias we have observed in section 4.

In revised manuscript, we added a new subtitle to the section before 5.1: ‘**Decomposition of modeled AOD diversity**’.

The following sentences were re-written to clarify the relation with previous section.

Lines 331-334: “As the above model evaluation could not provide sufficient information on the causes of the model biases, we explore the diversities of AOD in this section. Our strategy is to first evaluate the diversity in modeled AOD and the possible drivers that could lead to such variability, and then compare those drivers with available observations to understand the model variability and therefore bias. This practice will also contribute to future model development.”

L450-465: The interesting part here is not so much the negative correlation, which is presumably coded into the models by their parameterizations of Mie theory, but why the models deviate from the Mie curve- presumably due to the mixing of several broad size distributions.

Response

Thank you so much for the suggestion. We have added the following discussion on the possible reasons for the difference between models and our Mie calculations.

Lines 470-473: “Note that many models deviate from our Mie calculation though the Mie theory was applied in those models. Possible causes for such deviations might include, e.g., the aerosol composition (i.e., non-OA components), mixing state for multiple species (e.g., BC), assumptions on the size distribution (e.g., bins, distribution width), and treatment for the mixing of particles with different size distributions.”

L541 I did not see a discussion of the clear-sky assumption in the appendix, and the references given there are mostly generic model description papers, so it would take the reader unfeasibly long to reconstruct what difference the authors are referring to, so please clarify.

Response

Thank you for the suggestion. We added the following sentence to give an example of the model difference in determining ‘clear-sky’ conditions.

Lines 534-536: “However, models have very different treatments of the ‘clear-sky’ assumption. For example, SPRINTARS considers 20% cloud fraction as ‘clear sky’, while GISS-OMA assumes cloud free only for 0% cloudiness.”

Technical corrections

Abstract: "comprise" at line 60 is the wrong word

Response

Thank you. It was revised to ‘contain’.

L240 “proposed” is an odd word here.

Response

Thank you. It was revised to ‘we utilized POLDER-GRASP to ...’.

L240-270 the paragraph is much too long and should be split up, with clearly defined topics introduced in the first sentence of each paragraph. That said, the paragraph from 271 to 274 does not have its own topic and seems to belong with the previous text.

Response

Thank you for your suggestion. We have split the paragraph into 3 smaller ones. Please see lines 240-275. We also rewrote the previous paragraph from 271 to 274 to highlight the relation to previous contents (please see lines 272-275). In addition, we added subtitles to section 3 to make it more readable.

L256 improve sentence

Response

Thank you. The sentence was revised as follows:

Lines 255-256: “which suggested that different satellite products tended to have higher consistency in capturing the spatiotemporal variations than the magnitude of AOD.”

L520 not clear what ‘thoroughly’ means

Response

Thank you. We revised the sentence as follows:

Lines 513-515: “However, we showed that scaling up emissions was not a perfect solution to address model bias as the correlations did not improve significantly, suggesting that the spatial and/or temporal bias still existed.”