

1 **Supplement for “Insights into characteristics and formation**
2 **mechanisms of secondary organic aerosols in Guangzhou urban**
3 **area”**

4 **Miaomiao Zhai^{1,3}, Ye Kuang^{1,3*}, Li Liu^{2,*}, Yao He^{1,3}, Biao Luo^{1,3}, Wanyun Xu⁴,**
5 **Jiangchuan Tao^{1,3}, Yu Zou², Fei Li^{2,5}, Changqin Yin^{2,7}, Chunhui Li², Hanbing**
6 **Xu⁶, Xuejiao Deng²**

7 ¹ Institute for Environmental and Climate Research, Jinan University, Guangzhou,
8 China.

9 ² Key Laboratory of Regional Numerical Weather Prediction, Institute of Tropical and
10 Marine Meteorology, China Meteorological Administration, Guangzhou, 510640,
11 China

12 ³ Guangdong-Hongkong-Macau Joint Laboratory of Collaborative Innovation for
13 Environmental Quality, Guangzhou, China.

14 ⁴ State Key Laboratory of Severe Weather & Key Laboratory for Atmospheric
15 Chemistry, Institute of Atmospheric Composition, Chinese Academy of Meteorological
16 Sciences, Beijing, 100081, China

17 ⁵ Xiamen Key Laboratory of Straits Meteorology, Xiamen Meteorological Bureau,
18 Xiamen, 361012, China

19 ⁶ Experimental Teaching Center, Sun Yat-Sen University, Guangzhou 510275, China

20 ⁷ Shanghai Key Laboratory of Meteorology and Health, Shanghai Meteorological
21 Bureau, Shanghai 200030, China

22 *Correspondence to: Ye Kuang (kuangye@jnu.edu.cn) and Li Liu (liul@gd121.cn)

23

24

25

26

27

28

29

30

31

32

33

34
35
36
37
38
39
40
41
42
43
44
45
46
47
48
49
50
51
52
53
54
55
56
57
58
59
60
61
62
63
64

1. Aerosol liquid water concentration calculation

The size resolved aerosol liquid water content (ALWC) was formulated as the following in which the ALWC was the summation of aerosol water contributed by inorganic aerosols and organic aerosols:

$$ALWC = ALWC_{Inorg} + ALWC_{LOOA} + ALWC_{MOOA}$$

Where the $ALWC_{Inorg}$ was calculated using the ISORROPIA (Kuang et al., 2018) model using reverse mode and metastable with size resolved inorganic aerosol chemical compositions measured by the Q-ACSM as inputs. The SOA factors LOOA and MOOA are treated as hydrophilic components whereas POA factors HOA and COA are treated as hydrophobic components as discussed in Liu et al. (2022). Using the derived κ_{LOOA} and κ_{MOOA} of 0.13 and 0.23 in Liu et al. (2022) due to their similar O/C values, $ALWC_{LOOA}$ and $ALWC_{MOOA}$ was calculated as the following by assuming densities of LOOA and MOOA as 1.2 and 1.4 g/cm³ following Liu et al. (2022):

$$ALWC_{SOA} = \frac{m_{SOA}}{\rho_{SOA}} \times \rho_w \times \frac{\kappa_{SOA}}{\left(\frac{100\%}{RH} - 1\right)}$$

The m_{SOA} is the mass concentrations of SOA factors.

65 2. Supplement Figures for Source Apportionments

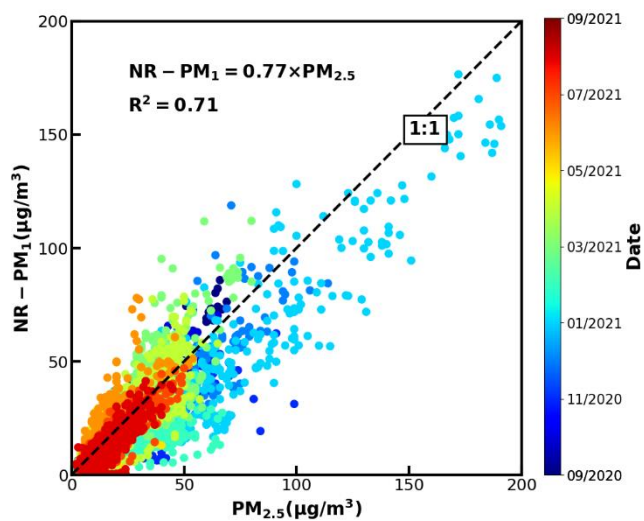


Figure S1. Correlation between NR-PM₁ and PM_{2.5} for the entire year.

66
67

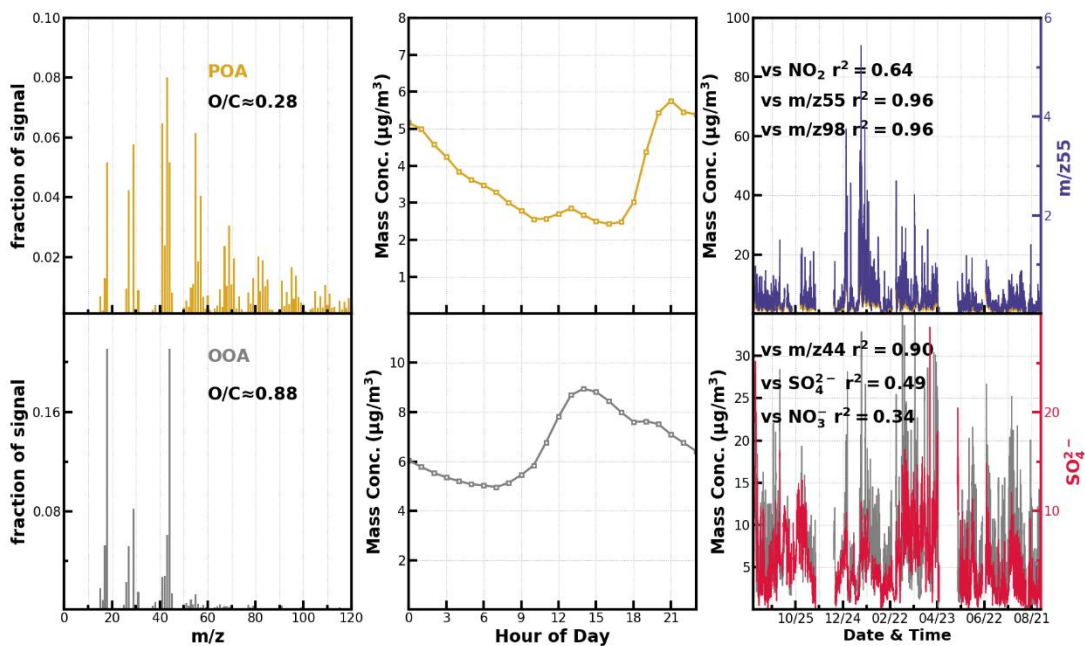


Figure S2. Results from the 2-factor solution of PMF-ACSM for the entire dataset.

68
69
70
71
72
73

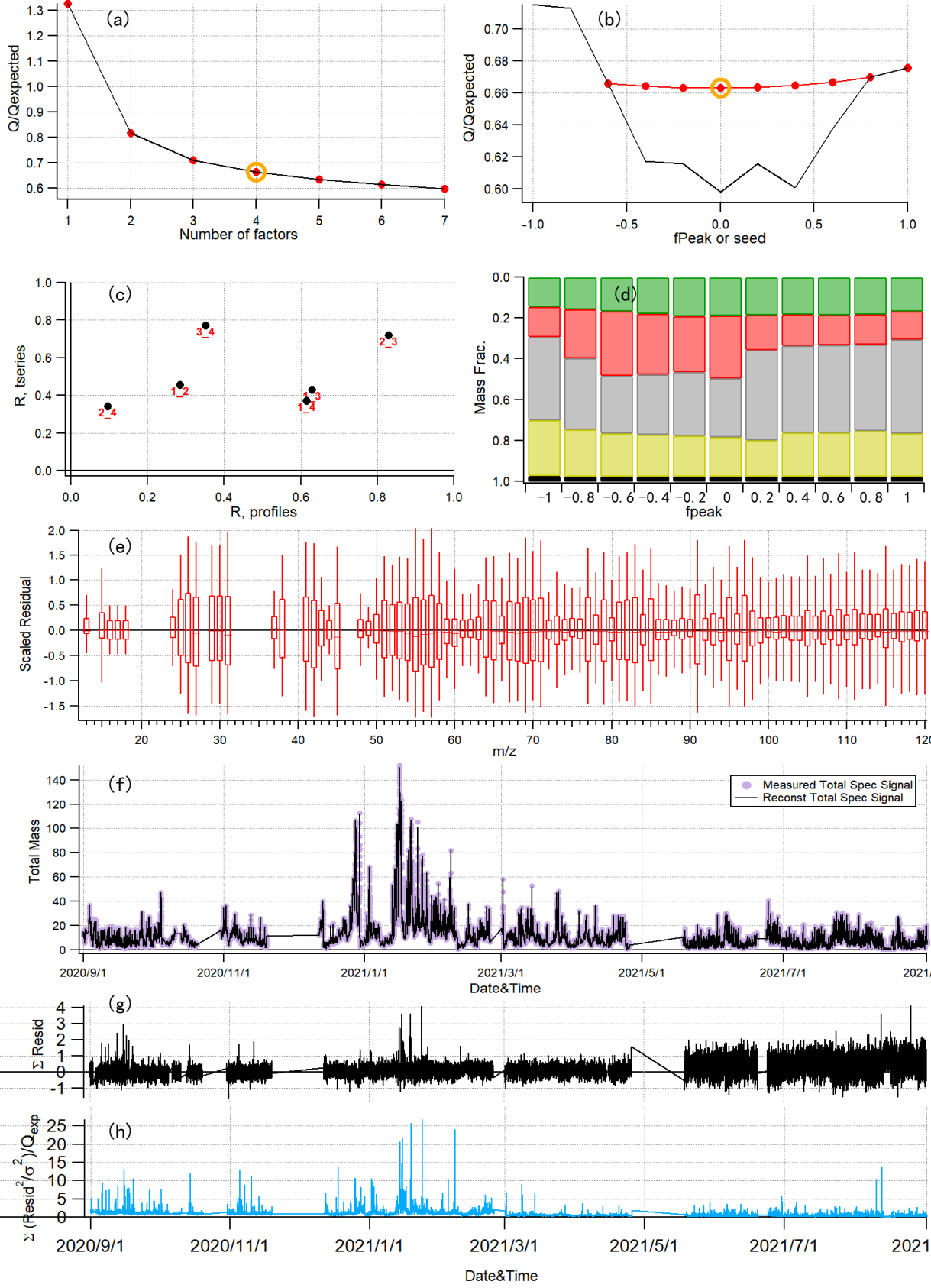


Figure S3. Diagnostic plots of the 4-factor solution in the unconstrained PMF for the entire dataset.

74
75

76

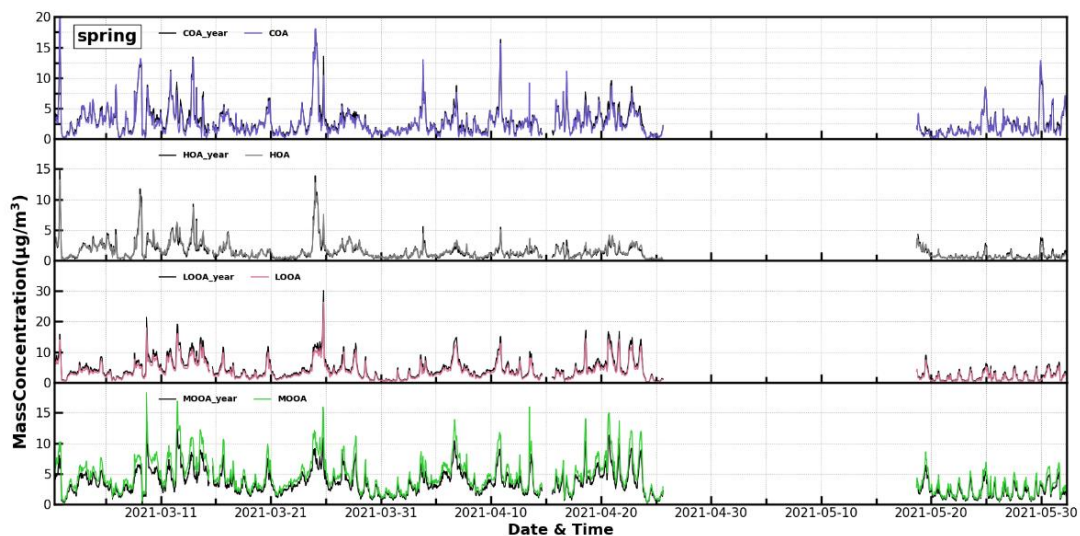


Figure S4. Comparison of time series of ME2-ACSM for the entire dataset in spring and spring dataset.

77

78

79

80

81

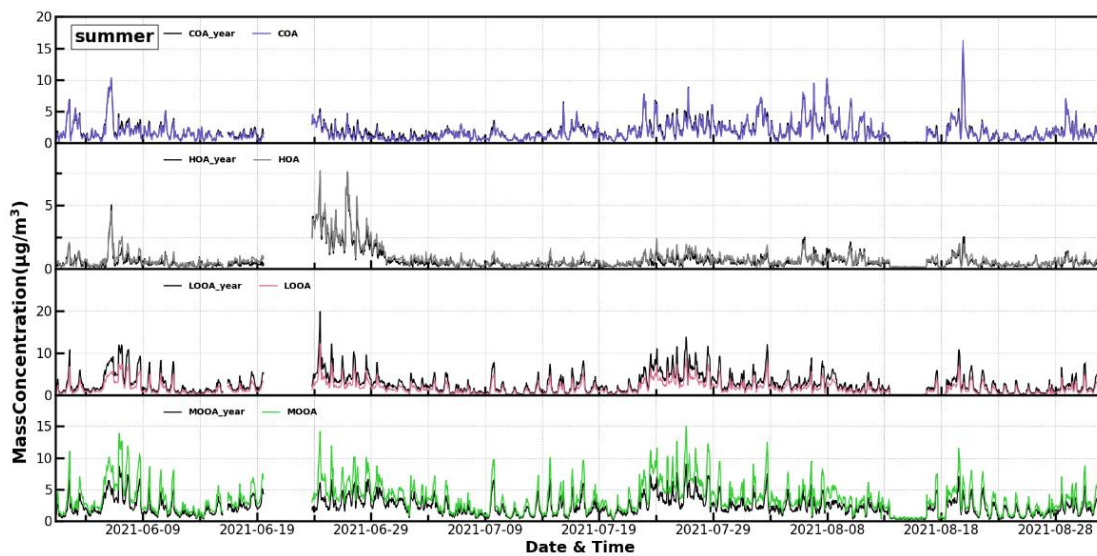


Figure S5. Comparison of time series of ME2-ACSM for the entire dataset in summer and summer dataset.

82

83

84

85

86

87

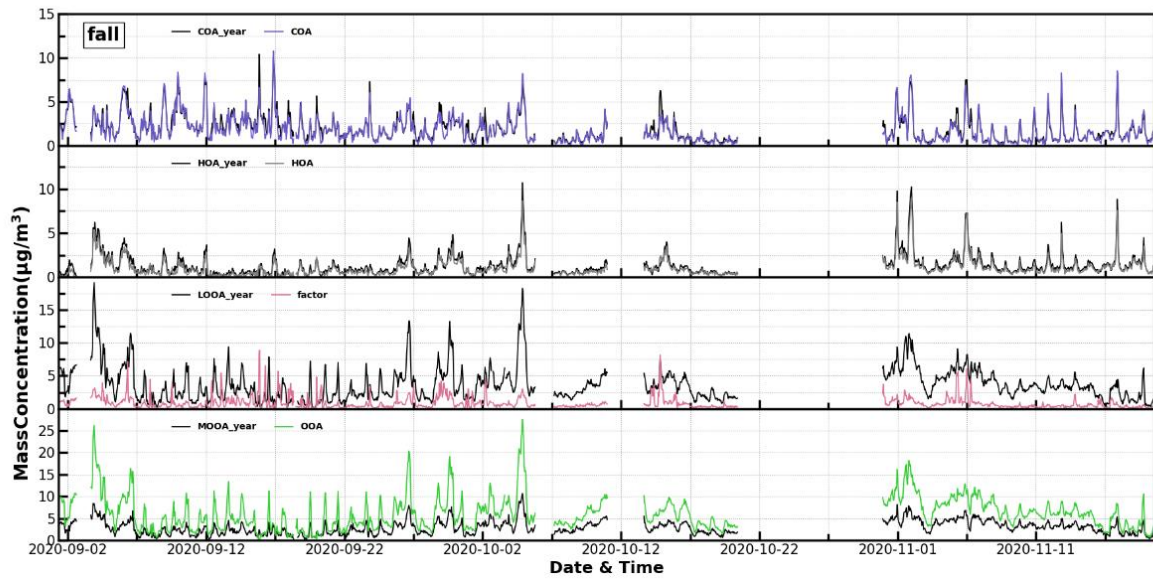


Figure S6. Comparison of time series of ME2-ACSM for the entire dataset in fall and fall dataset.

88

89

90

91

92

93

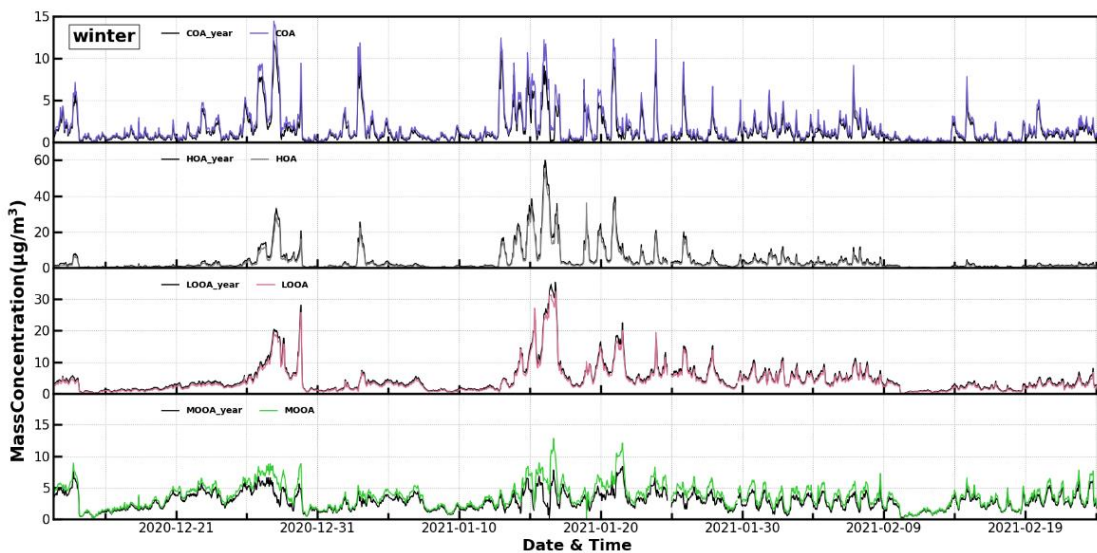


Figure S7. Comparison of time series of ME2-ACSM for the entire dataset in winter and winter dataset.

94

95

96
97
98
99
100
101
102
103
104
105
106
107
108

3. Other supplementary figures

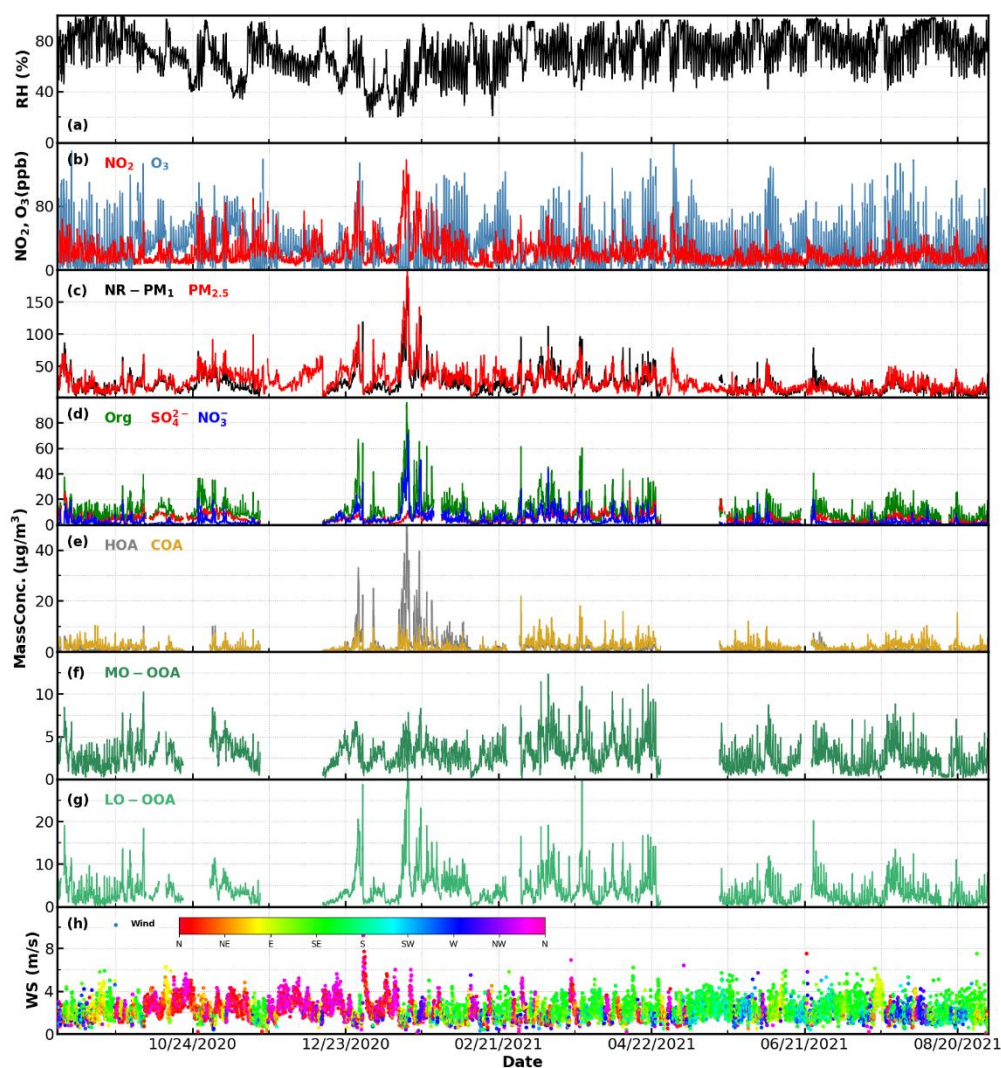


Figure S8. Time series of (a) RH; (b) NO₂ and O₃; hourly average mass concentrations of (c) NR-PM₁ and PM_{2.5}; (d) Organics (Org), sulfate (SO₄²⁻) and nitrate (NO₃⁻) and (e-g) four factors from the ME2-ACSM analysis for the entire year, including HOA, COA, MO-OOA and LO-OOA and (h) wind speed (WS) and wind direction (WD).

109

110

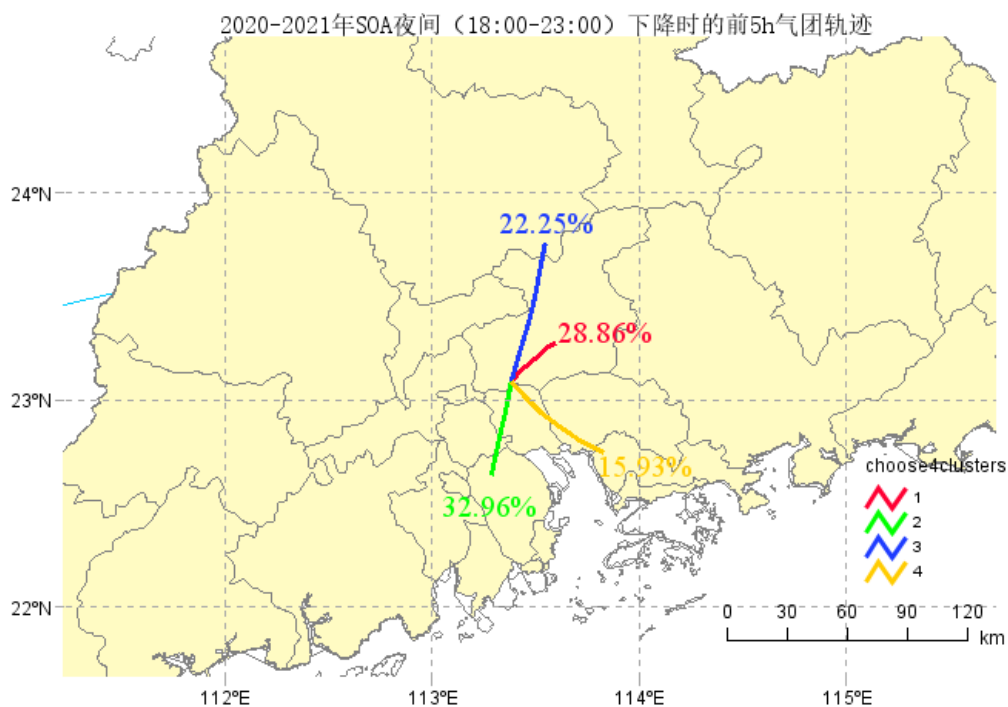


Figure S9. The 5h back trajectories of airflow when SOA decreased at nighttime from 18:00 to 23:00 LT in 2020-2021.

111

112

113

114

115

116

117

118

119

120

121 Kuang, Y., Zhao, C. S., Zhao, G., Tao, J. C., Xu, W., Ma, N., and Bian, Y. X.: A novel method for
122 calculating ambient aerosol liquid water content based on measurements of a humidified
123 nephelometer system, *Atmospheric Measurement Techniques*, 11, 2967-2982, 10.5194/amt-11-
124 2967-2018, 2018.

125 Liu, L., Kuang, Y., Zhai, M., Xue, B., He, Y., Tao, J., Luo, B., Xu, W., Tao, J., Yin, C., Li, F., Xu, H., Deng,
126 T., Deng, X., Tan, H., and Shao, M.: Strong light scattering of highly oxygenated organic aerosols
127 impacts significantly on visibility degradation, *Atmos. Chem. Phys.*, 22, 7713-7726, 10.5194/acp-
128 22-7713-2022, 2022.

129