

Quantified effect of seawater biogeochemistry on the temperature dependence of sea spray aerosol fluxes

Karine Sellegri¹, Theresa Barthelmeß², Jonathan Trueblood¹, Antonia Cristi³, Evelyn Freney¹, Clémence Rose¹, Neill Barr³, Mike Harvey[†], Karl Safi⁴, Stacy Deppeler³, KarenThompson⁴, Wayne Dillon⁵, Anja Engel² and Cliff Law^{3,5}

¹Université Clermont Auvergne, CNRS, Laboratoire de Météorologie Physique (LaMP) F-63000 Clermont-Ferrand, France

²GEOMAR, Helmholtz Centre for Ocean Research Kiel, 24105 Kiel, Germany

15 ³National Institute of Water and Atmospheric Research (NIWA), Wellington, New Zealand

⁴National Institute of Water and Atmospheric Research (NIWA), Hamilton, New Zealand

⁵Department of Marine Science, University of Otago, Dunedin, New Zealand

[†]Deceased

15 *Correspondence to:* Karine Sellegri (karine.sellegri@uca.fr)

Abstract. Future change in sea surface temperature may influence climate via various air-sea feedbacks and pathways. In this study, we investigate the influence of surface seawater biogeochemical composition on the temperature dependence of sea spray number emission fluxes. Dependence of sea spray fluxes was investigated in different water masses (i.e. subantarctic, subtropical and frontal bloom) with contrasting biogeochemical properties across a temperature range from ambient (13-18°C) to 2°C, using seawater circulating in a plunging jet sea spray generator. We observed sea spray total concentration to increase significantly at temperatures below 8 °C, with an average 4-fold increase at 2°C relative to initial concentration at ambient temperatures. This temperature dependence was more pronounced for smaller size sea spray particles (i.e. nucleation and Aitken modes). Moreover, temperature dependence varied with water mass type and so biogeochemical properties. While the sea spray flux at moderate temperatures (8-11°C) was highest in frontal bloom waters, the effect of low temperature on the sea spray flux was highest with subtropical seawaters. The temperature dependence of sea spray flux was also inversely proportional to the seawater cell abundance of the cyanobacterium *Synechococcus*, which facilitated parameterization of temperature dependence of sea spray emission fluxes as a function of *Synechococcus* for future implementation in modelling exercises.

1 Introduction

30 In the open ocean, bursting bubbles generated by breaking waves cause particles to be ejected into the atmosphere, in the form of sea spray aerosols (SSA) that may influence climate either via scattering solar radiation (Schulz et al., 2006; Bates et al., 2006) or by forming cloud droplets (Pierce and Adams, 2006) or ice crystals (Burrows et al. 2013). Recent modelling studies have highlighted large knowledge gaps related to sea spray emissions, particularly with the submicron size and effect of organic

matter (Bian et al., 2019; Regayre et al., 2020). Sea spray emission fluxes mainly depend on wind speed which determines the presence of breaking waves, with a threshold of 4 m s⁻¹ above which sea spray is emitted to the atmosphere. Another important parameter is surface seawater temperature (SST), as the size of bubbles rising to the surface, as well as physical parameters such as the thickness of the breaking bubble films, depend on surface tension, viscosity and density which are all a function of seawater temperature. Also, organic matter in surface seawater influences the bubble bursting process, as organics may alter sea spray mass, number and size, and so affect sea spray cloud condensation nuclei (CCN) properties (Fuentes et al. 2010; Sellegrì et al. 2021). Number based emission fluxes are especially important for cloud formation as the CCN number is more important than mass for cloud properties. Fossum et al. (2018) calculate that for high wind speeds, sea salt number concentrations may contribute 100% of CCN concentrations at realistic marine boundary layer cloud supersaturations in the Southern Ocean.

A number of sea salt aerosol emission parameterizations have been developed but the resulting size-dependant sea spray fluxes range over one order of magnitude or more (de Leeuw et al. 2007, Ovadnevaite et al. 2014), particularly for sizes lower than 150 nm or larger than 1 micron (Grythe et al. 2014). This large discrepancy in sea spray emission flux parameterizations may reflect the different methods used to measure fluxes in ambient air, and also the biophysical properties in different studies. For example, although fluxes are always parameterized as a function of wind speed, they are not always harmonized for a given seawater temperature or biological content, and when they do they show contradicting results.

Using in situ and remote sensing (aerosol optical depth) measurements to constrain a global model, Jaeglé et al. (2011) derived a parametrization with sea spray flux increasing with temperature over the full temperature range investigated (0-30°C). Consistent with these observations Ovadnevaite et al. 2014 report a positive relationship between sea spray mass fluxes and SST, derived from observation of in-situ coastal sea spray aerosol concentrations and meteorological parameters. Also, Grythe et al. 2014 generated a similar positive linear relationship between sea spray mass and SST from a large data set of fixed station and ship-borne aerosol measurements, using sodium and a source receptor approach combined with a model. Lastly, Liu et al. 2021 derive a SST dependence of sea-spray fluxes, expressed as sea spray mass for different wind speed ranges that agree with the previously mentioned trends. In summary, the majority of studies using ambient aerosol mass have identified a positive relationship between SSA and SST.

Laboratory experiments using plunging-jet sea-spray generator enable the study of the sea-spray number flux (as opposed to sea spray mass) temperature dependence over different ranges of sea-spray size and also temperature. Usually, relationships derived from number concentration fluxes measurements in the laboratory, dominated by submicron sea-spray aerosols, differ considerably from those obtained from optical ambient measurements such as those described above. Martensson et al. (2003) provide two different temperature dependences of the sea-spray flux over the SST range 0-25°C: one for submicron sea spray, showing an increase of the flux with decreasing temperature, and one for the supermicron size range of sea spray with increasing flux of sea spray with SST. Similar opposing behaviour between submicron and supermicron particles was reported

by Bowyer et al. 1990. Salter et al. (2014) also found differences in the sea-spray fluxes when considering small and larger sizes of sea spray, but they additionally showed different dependences either side of a temperature threshold of 10°C, i.e. increasing fluxes with increasing SST above 10°C and decreasing fluxes with increasing SST below this limit. Schwier et al. (2017) found an increase in submicron sea-spray fluxes with Mediterranean seawater at temperatures in the 22-29 °C, confirming the results from Salter et al. (2014). Recently, Christiansen et al. (2019) provided a detailed study on the impact of air entrainment and water temperature. Their work confirmed the physical impact of temperature on synthetic seawater with an increase in sub-micrometer sea-spray aerosol with decreasing temperature below 6-10°C, and an increase of sub-micrometer sea-spray aerosol with increasing temperature above this range.

Temperature has an impact on seawater viscosity, density and surface tension, with all these parameters increasing when temperature decreases and also impacts on the evaporation rate of the bubble film. The combination of viscosity, density and surface tension changes may also affect the volume of air entrained in the seawater and the total volume and number of bubbles formed. Thorpe et al., (1992) used a numerical model that showed a significant decrease of the mean bubble concentration with increasing temperature, with a halving for every 10°C for bubbles with radii in the 10-150 µm range. However, Christiansen et al. 2019 reported little change with temperature in air entrainment flows via a plunging jet system over the temperature range -2 to 35°C, and Zabori et al. (2012) did not detect any change with temperature of the bubble size distribution in natural seawater over the range -2 to 10°C.

It appears from the large discrepancies between temperature dependences of the sea-spray flux derived from these different approaches that the factors controlling the SSA fluxes are not fully understood, and so not well conceptualized and represented. In their study, Forestieri et al. (2018) highlight that the seawater temperature sensitivity of SSA produced in plunging jet experiments differ greatly between synthetic and natural seawaters. Unlike experiments using synthetic salt solutions that show a monotonic increase of the sea-spray fluxes with seawater temperature, the dependence of sea-spray fluxes to temperature in natural seawaters showed substantial inconsistencies. The authors hypothesize that biological processes induce variations in the surface-active species in the seawater that drive changes in the sea-spray fluxes.

Surfactants influence the bubble bursting mechanism by decreasing or increasing bubble lifetime and size (Modini et al. 2013, Tyree et al. 2007). The presence of surfactant in seawater can cause a decrease in the average SSA size (Sellegri et al. 2006), and an increase or decrease of the number production flux of particles ejected (Tyree et al. 2007; Zábori, et al. 2012), depending on the type of surfactant. Surfactants in the seawater may originate from phytoplankton exudates in the form of dissolved organic matter (carboxylic acids, lipids, amino acids, carbohydrates, etc.) (Aluwihare and Repeta 1999; Barthelmeß and Engel 2022). Surfactant production has been demonstrated with healthy cells of different phytoplankton groups (Zutic et al, 1981) and also during grazing of heterotrophic flagellates and ciliates on bacteria (Kujawinski et al, 2002). In Sellegri et al. (2021), it was shown that the SSA number production flux was a function of the nanophytoplankton cell abundances in surface seawater, for a given temperature. In the same study, sea-spray production fluxes were related to seawater fatty acid

concentrations, and associated with a change in seawater surface tension. A clear relationship between nanophytoplankton abundance, the release of labile organic matter and surface activity was also recently confirmed by Barthelmeß and Engel (2022). The role that surfactants play in determining seawater surface tension and the resulting bubbles at low temperatures is however unclear and may depend on the nature of the surfactants present. To address these uncertainties we investigate the temperature dependence of sea-spray aerosols generated from natural seawater of contrasting water masses of the South-Western Pacific Ocean under a temperature gradient equivalent to the 25-yr average summer seawater temperature range of the Southern Ocean (Auger et al. 2021) and relate this to the biogeochemical properties of the surface water.

105 **2 Material and Methods**

Measurements were performed during the Sea2Cloud voyage that took place in March 2020 east of New Zealand on board the R/V Tangaroa (Sellegrì et al. 2022). The region east of the New Zealand South Island provides an ideal platform for investigating variability in SSA and its relationship with surface ocean biogeochemistry due to the close proximity of different water masses (Law et al, 2018). The Sea2Cloud voyage occupied frontal water from 17/03/2020 11:00-20 /03/2020 17:00, and then subantarctic water (SAW) until 24/03/2020 4:00, then subtropical waters (STW) until 25/03/2020 8:00, and finally mixed-shelf water to 27/03/2020. The Subtropical Front which runs along 43oS-43.5oS separates subtropical and subantarctic water and is evident year-round in ocean colour images as an area of elevated phytoplankton biomass relative to the low biomass water masses either side.

Sea spray was continuously generated with a plunging jet system, as described in detail in Sellegrì et al. (2023) and previously used in Schwier et al. 2015 and 2017, Trueblood et al. 2021, Freney et al. 2021 and Sellegrì et al. 2021. The system has a capacity of 10L. Given the jet flowrates of 1.2 LPM, this relatively small seawater volume results in low residence time (4 min), so preventing changes in biology or sedimentation of large species that occur in larger chambers (Dall'Osto et al. 2022). The small dimensions of our system also correspond to a short residence time of air in the headspace (12s), preventing potential gas-phase reactions with lab air. The eight plunging jets are equally spaced along the chamber diagonal, and penetrate the seawater volume at a depth of 7 cm, and therefore do not interact with the chamber walls. The sea-spray generation system was operated at near constant jet flow rate, corresponding to an air entrainment rate of 0.75 L min⁻¹. The system reproduces sea-spray size distributions of similar shape to those reported for other plunging jet devices (Fuentes et al. 2010). The system was fed continuously with seawater sampled from a depth of ~6 m by the underway seawater supply. Once a day, the flow-through seawater system of the plunging jet system was switched from seawater directly coming from the ship underway seawater system to cooled seawater that had been stored in a 50 L temperature-controlled reservoir immediately before the temperature experiments start (filling time less than 5 min, Figure 1). Temperature gradients between 2°C and 15°C were applied to the seawater over approximately 1 hour, with an initial decreasing temperature ramp, followed by an increasing temperature ramp. The experiments were stopped when the temperature-controlled reservoir had emptied. These relatively fast

temperature changes were applied so the seawater biology did not have the time to evolve, our goal being to investigate the physical dependence of fluxes to instant biogeochemistry. Temperature experiments were performed every morning around 11 am from 18/03/20 to 26/03/20, with an additional experiment in the afternoon of 26/03/20.

For submicron particles, SSA were taken through a ¼ inch stainless steel line to a 1-m long silica gel diffusion drier followed by an impactor with PM1 diameter cutoff. Particle size distributions were monitored by a differential mobility particle sizer system (DMPS) at 1 LPM, with a separate line to a condensation particle counter (MAGIC CPC, flowrate 0.3 LPM) connected in parallel for validation. The DMPS system was preceded by a soft X-ray aerosol neutralizer (TSI Model 3088) and consisted of a TSI-type custom-built differential mobility analyzer (length 44 cm) operated at a sheath flow rate of 5.0 L/min for selecting particle size range of 10-500 nm across 26 size bins during a 13 min 40s scan and a TSI CPC model 3010. Relative humidity at the inlet was monitored, and kept below 35% at all times. Another short, smooth curvature antistatic Teflon ½ inch line brought the generated SSA to a Waveband Integrated Bioaerosol Sensor (WIBS) for diameters ranging from 500 nm up to 4500 nm.

The flux of SSA was calculated from the SSA total number concentration, as follows:

$$F_{tot} (\# m^{-2} s^{-1}) = \frac{CN_{tot} * Q_{flush}}{S_{tank}} \quad (1)$$

where CN_{tot} is the concentration of SSA measured from the MAGIC CPC, Q_{flush} is the flushing air flowrate inside the tank's headspace, and S_{tank} is the surface of seawater inside the tank. In Sellegri et al. (2021), hereafter referred to as SELL21, the concentration of > 100 nm particles was used as a proxy for CCN concentration. For comparison to SELL21 we also calculated fluxes of SSA larger than 100 nm. The flux of CN_{100} (F_{CN100}) was calculated in a similar manner to Equation (1):

$$F_{CN100} (\# m^{-2} s^{-1}) = \frac{CN_{100} * Q_{flush}}{S_{tank}} \quad (2)$$

where CN_{100} is the concentration of SSA with a diameter larger than 100 nm. Calibration experiments performed following the procedure of Salter et al. (2014), enabled to establish that the air entrainment flowrate in our system is $4.5 L_{air} min^{-1}$ under the jet operational condition (seawater flowrate of $1.25 L min^{-1}$, orifices' diameters, jet distance to seawater surface). Given that, according to Long et al. (2011), the flux of air entrained (F_{ent}) during wave breaking can be related to a wind speed at 10 m (U_{10}) following:

$$F_{ent} = 2 * 10^{-8} U_{10}^{3.74} \quad (3)$$

155 we calculate that our plunging jet system simulated a bubble volume distribution equivalent to that produced at a wind speed of 9 m s⁻¹. For the data acquired with a seawater flowrate that deviated from 1.25 L min⁻¹, fluxes were normalized to the 9 m s⁻¹ equivalent windspeed with the following relationship:

$$F_{normalized} = F_{original} * \frac{1.25^{2.4}}{Q_{sw}^{2.4}} \quad (4)$$

Where Q_{sw} is the seawater flowrate. Equation (4) was obtained by varying Q_{sw} over a short period (less than an hour) and fitting the flux dependence to Q_{sw}. Normalization resulted in less than 30% change in the fluxes for 80% of the data. The seawater surface tension was measured from the ship-board underway seawater line at 08:00, 12:00, 16:00 and 20:00 NZDT using the bubble lifetime method with a Dynotester along a temperature gradient from 2 to 15°C. The temperature gradient for surface tension measurements was achieved on board the ship on fresh seawater samples by first freezing 25 ml seawater sampled in Falcon tubes, with surface tension measured while the sample slowly warmed to ambient temperature; this took less than one hour which limited the time for any seawater biogeochemistry changes to occur. A bias may exist in the surface tension measured here after samples have been frozen, compared to the surface tension of a sample that would have not experienced freezing, due to the impact of freezing on, for example, the rupture of phytoplankton cells releasing organic matter. Future studies should investigate how freezing may impact surface tension.

For the analysis of the seawater biogeochemical properties, discrete water samples were collected from the ship's underway seawater line into an acid-cleaned 10L plastic carboy at 4 hr intervals (00:00, 04:00, 08:00, 12:00, 16:00, 20:00 NZDT). Sample bottles were either processed immediately or stored in the dark in ENGEL portable fridge/freezers units at in situ temperature for the water mass (max. operating temperature: 9°C) and processed within 8 hrs of collection. Sample volumes for filtering were determined from the Ecotriplet fluorescence data noted during sample collection. Seawater aliquots were taken from the carboy for chlorophyll a (Chl-a), macronutrients, Total Organic Carbon (TOC) and microbial community composition (flow cytometry and microscopy), all of which were analyzed on land post-voyage.

For chlorophyll-a analysis, 250 ml of seawater was filtered through 25 mm GF/F filters and the pigment retained on the filters was extracted with 90% acetone and measured by spectrofluorometry using a Varian Cary spectrofluorometer. For macronutrient analysis, 250 ml of seawater was filtered through 25 mm GF/F filters into 250ml plastic bottles, and nutrients (Ammonia, Nitrate and Nitrite, Dissolved Reactive Phosphorus, and Silica) measured on a SEAL AA3 Autoanalyser (Law et al. 2011). The TOC content of samples was analyzed by catalytic oxidation (TOC-VCSH analyser, Shimadzu) after the modified protocol of Sugimura and Suzuki (1988) (Engel and Galgani, 2016). Samples were filled into 20 ml pre-combusted glass ampules (8 h at 500°C), acidified with 20 µl 32% HCl, subsequently sealed and stored at 4°C until the analysis.

For Flow-cytometry, duplicated 1.5 mL seawater samples were preserved with a solution containing 0.5% glutaraldehyde (Naik, S.M. and Anil, 2017), flash frozen and stored at -80°C. Samples were analyzed with a BD FACSCalibur instrument and

185 *Synechococcus* and picoeukaryote cells quantified using Trucount™ beads (Becton Dickinson, Mountain 108 View, CA), as
described in Hall and Safi (2001). Total numbers of heterotrophic bacteria, eukaryotic nanophytoplankton (2-20µm) and
prokaryotic and eukaryotic picophytoplankton (<2 µm) were determined by flow cytometry using a BD Accuri™ C6 Plus
instrument (BD Biosciences). Bacteria samples were stained with Sybr Green II and a minimum of 20,000 bacteria events
190 plankton populations were identified using a SSC vs FL1 plot while the prokaryotic picoplankton (*Synechococcus* sp.)
population was identified using a FL1 vs FL2. For microscopy analysis, 500 ml of seawater was fixed to 1% with Lugol's
iodine solution and phytoplankton community composition and cell numbers for species >5 µm were determined using optical
microscopy, as described in Safi et al. (2007) and references therein.

3 Results and discussion

195 3.1. General feature of the seawaters investigated

The subtropical water north of the Front is warmer and saltier, relative to the colder, fresher, subantarctic water, with lower
dissolved inorganic nutrients, particularly nitrogen and TOC. This variation in physical properties and nutrient availability
results in different biological communities in the three water masses, with the Front characterized by blooms of different
phytoplankton groups in spring and summer (Delizo et al., 2007; Law et al, 2018). Frontal waters contained higher cell
200 abundances of nanophytoplankton (2-20 µm) than any other water masses sampled during the voyage, whereas cell abundances
of the picoplankton (<2 µm) *Synechococcus* were conversely higher in subantarctic and mixed/shelf water relative to frontal
water (Figure 2). Diatom abundance was correlated with nanophytoplankton cell abundances ($R^2=0,57$, $p<0.01$). Differences
in biological communities subsequently influence biogeochemical properties of these water masses resulting in differential
effects upon aerosol precursors (Law et al, 2018; Sellegri et al, 2023; Rocco et al. 2023).

205 3.2. Sea-spray fluxes at moderate ambient temperatures

The SSA flux measured at ambient SST (13-18 °C) for the different seawater types are reported in Figure 2d. We observed
that the SSA flux decreased from biologically-rich frontal waters to subantarctic seawaters that contained lower phytoplankton
abundance, reflected by the nanophytoplankton cell abundance (NanoPhyto) (Fig. 2b and Sellegri et al. 2023). In Sellegri et
al. (2021), a relationship was found between the flux of SSA >100 nm in size with the NanoPhyto. Recently, Dall'Osto et al.
210 (2022) also found increased SSA number production fluxes from nanophytoplankton-rich seawater but did not quantify the
SSA flux-to-nanophytoplankton cell abundance relationship.

Figure 3 presents this relationship between F_{CN100} and NanoPhyto for the Sea2Cloud data in comparison with datasets from
other regions (SELL21). NanoPhyto during Sea2Cloud were higher on average and spanned a larger range (1490 ± 732 cells
 mL^{-1}) than in oligotrophic Mediterranean waters (546 ± 148 cells mL^{-1}) and springtime Arctic waters in which NanoPhyto were

215 almost absent (4.2 ± 4.3 cells mL⁻¹), but were lower than in a nutrient-enriched mesocosm experiment in New Zealand coastal waters (4880 ± 2390 cells mL⁻¹). When combining these five datasets, the F_{CN100} showed a weaker dependence than reported in SELL21 but still confirmed the linear dependence of F_{CN100} on NanoPhyto, with a significant correlation ($R^2 = 0.78$, $p < 0.05$). The coefficients of the revised fit differ only slightly to SELL21 with a greater statistical significance than for the individual datasets ($R^2 = 0.78$ vs 0.31 for the Sea2Cloud dataset). Following the SELL21 approach, the relationship was reformulated
220 with F_{CCN} expressed as a function of both NanoPhyto and $F_{CN100-inorg}$ with $F_{CN100-inorg}$ corresponding to F_{CCN} in the absence of biological activity (i.e. solely inorganic chemical components), and hence shown as the intercept of the y axis (2.41×10^5 m² s⁻¹):

$$F_{CN100} = F_{CN100-inorg} \times (1 + 9.7 \cdot 10^{-3} \times \text{NanoPhyto}) \quad (5)$$

The primary motivation for this reformulation was to allow a simpler implementation of the parameterisation in models that
225 already include the calculation of $F_{CCN-inorg}$. As a reminder, the fluxes used to derive Eq. (5) were normalized to $U_{10} = 9$ m s⁻¹ and SST=15°C. We cannot exclude that the dependence of F_{CCN} on NanoPhyto changes for different wind regimes, but not having this information we assume here that Eq. (1) applies to the calculation of F_{CCN} regardless of U_{10} .

Surface tension of the seawater show large differences between water types for a given temperature at moderate temperatures
>8 °C (Figure 2d). Given that both salinity and temperature influence surface tension, we performed a sensitivity test on the
230 potential impact of salinity on the differences in surface tension observed for different seawater types. Salinity ranges of the different seawater types were 34.2-34.4 g L⁻¹ in SAW, 34.4-34.8 g L⁻¹ in frontal and mixed seawaters, 34.8-35.3 g L⁻¹ in STW and 34.4-34.8 g L⁻¹ in mixed seawaters. We calculate that these salinity ranges correspond to ideal surface tension ranges of seawater at 15°C (Nayar et al. 2014) of 74.500-74.502 nN m⁻¹ in SAW, 74.502-74.514 nN m⁻¹ in frontal and mixed seawaters and 74.514-74.523 nN m⁻¹ in STW. Consequently, there is negligible impact on surface tension within the range
235 of salinities observed. We observe that surface tension is highest for the biologically rich frontal seawaters, and lowest for the STW. This result is somewhat different from the results of Poulain and Barouiba (2018), who suggest that the presence of heterotrophic bacteria and their released surfactants induce the prolongation of lifetime (and therefore lower surface tension). Barthelmeß and Engel (2022) reported a dependence of surfactant release to nanophytoplankton abundance in the Baltic Sea.

Figure 2d also shows that surface tension of the different seawater types at 15°C mostly follow the SSA fluxes at ambient
240 temperature close to 15°C. In our system, increased surface tension corroborates higher SSA number fluxes. Lower surface tension induces higher bubble lifetime and therefore thinner bubble films due to increased drainage and increased evaporation. Upon natural bubble bursting (i.e. if no external force is applied on the bubble film), thinner bubble films may generate a higher number of smaller droplets (Lhuissier and Villermaux, 2012; Poulain and Bourouiba, 2018). In our system, bubbles films are prematurely broken by external forces. These external forces are (1) flushing air flow at the surface of the tank
245 seawater surface (similar to the action of wind) (2) seawater jets continuously splashing over the newly formed bubbles, and

(3) other bubbles reaching the surface where preexisting bubbles are present. Therefore bubbles in our system likely do not reach a critical thickness such as the ones described in Lhuissier and Villermaux 2012 or Poulain and Bourouiba, (2018).

3.3. Temperature dependence of total spray emission fluxes

250 For all low temperature gradient experiments we observed an increase in sea-spray total number fluxes with decreasing temperature in all seawater types (Figure 4a). There was no or little change in sea spray flux with an increasing temperature ramp above 8-10 °C but a sharp, negative correlation of sea spray flux with increasing temp below that threshold. This feature was previously observed by Salter et al. (2014) with inorganic seawater, and also Hultin et al. (2011) using Baltic seawater and a sea spray generation system similar to this study, although Hultin et al. (2011) reported a SSA emission flux increase
255 with decreasing temperature already below 12°C. We now discuss the potential factors that may be at the origin of this SSA flux temperature dependence.

Our experiments were performed with ambient air temperature and therefore relatively constant air temperature and RH of the incoming flushing air. Hence there is likely a change in the evaporation rate of the bubble film when the SST is decreased. However, the lower the SST in comparison to the air temperature above, the lower the evaporation of the film would be.
260 Moreover, film thinning due to evaporation becomes more important relative to film thinning due to drainage only for very thin films (Miguet et al. 2021). In our system it is likely that bubbles films are broken by external forces before they reach these very thin films at which evaporation matters (below 1 micrometer for millimetric bubbles, achieved after a lifetime of several 10s of seconds, Miguet et al. 2021).

265 Results of surface tension measurements as a function of sample temperature during unfreezing are shown in Figure 4b. Surface tension also showed a clear increase with decreasing temperature, therefore with higher surface tension corroborating higher SSA fluxes. However, the temperature dependence of surface tension is relatively monotonous (Figure 4b) while the temperature dependence of the SSA flux is exponential (Figure 4a). Also, the slope of surface tension to temperature does not differ from one sample to the other. This is expected as the Eötvös' equation states that the temperature dependence of the
270 surface tension is the same for almost all liquids. SST-dependance of the evaporation rates should also be the same for all samples. One relevant variable that has varied with temperature in relation to the chemical composition of the solution is viscosity. Viscosity sensitivity to temperature depends not only on the concentration of organics but also on the ionic strength of the solution (pH, salinity), and it also increases exponentially with decreasing temperature (Mallet et al. 2020). An increase of viscosity implies an increase of the characteristic viscous time which leads to the decrease of the bubble film cap thinning rate (drainage) (Miguet et al. 2021). Bubble average lifetimes were found to be very sensitive to viscosity, especially when
275 impurities are present (Miguet et al. 2021). Again, our results would suggest that thicker bubble film caps lead to higher

concentrations of sea spray when bubble are mainly broken by external forces. Observed differences in thermal behaviours between seawater types would possibly be explained by differences in the sensitivity of different organic's viscosity to temperature.

280 In order to decouple the biological impact on SSA fluxes at temperatures in the 8-15 °C range from the influence of lower temperature, we normalized the sea-spray flux at a given temperature (F_T) with the sea-spray flux at 8 °C (F_8). As presented in Figure 4c, this enabled evaluation of the relative increase of the corresponding sea-spray flux with respect to F_8 for a given temperature in the same experiment. The normalization also facilitates comparison of the flux-temperature relationship with those observed in the literature.

285 The best fit for the normalized sea-spray flux temperature dependence is a polynomial fit of the second order of the following form:

$$\frac{F_T}{F_8} = p_1 * T^2 + p_2 * T + p_3 \quad (2)$$

When fitting each daily temperature experiment individually, we obtain a time series of coefficients p_1 p_2 and, as p_1 and p_2 are
290 highly correlated to p_3 , it can be expressed as a function of p_3 in a final relationship:

$$\frac{F_T}{F_8} = p_3 + (0,0382 - 0,243p_3) * T + (0,0138p_3 - 0,02) * T^2 \quad (3)$$

When the fit is performed on all data together, $p_3=4.343$. Therefore, on average, for a temperature of 1 °C, the sea-spray flux is increased by a factor of approximately 4 relative to the flux at 8 °C. This parameterization is only valid for temperatures below 8 °C whereas fluxes can be considered independent of temperature above 15°C.

295 The different sensitivities to temperature of the SSA flux of different seawater types is obviously due to their different biogeochemical properties. The temporal variability of the fitting parameter p_3 of equation (3) can be studied as a function of the seawater biogeochemical properties. We searched for correlations between p_3 and the different phytoplankton communities (including nanophytoplankton, flagellates, diatoms, and dinoflagellates), bacteria or biogeochemical variables (TOC, amino acids and carbohydrates). No relationship was found except a significant anticorrelation with *Synechococcus* cell abundance

300 ($R^2=0,72$, $n=10$, $p< 0.00001$), with the following relationship showing the temperature dependence of SSA as a function of *Synechococcus* cell abundances expressed in cells ml^{-1} :

$$p_3=6.54-2.10^{-5} * Synechococcus \quad (4)$$

The reason for this anticorrelation is not clear. *Synechococcus* spp. is an autotrophic prokaryote (bacterium) which is ubiquitously present throughout oceanic regimes (Zwirgemaier et al., 2007; Six et al., 2021). *Synechococcus* spp. occur at a wide temperature range from 0 to 30°C but favor conditions around 10°C on a global scale (Flombaum et al., 2013). While low temperature can induce stress in *Synechococcus* spp. acclimated at higher temperatures, differences occurring in metabolite production can be only expected over the course of several hours (therefore over longer times than those of our experiments), while lowered temperatures are hypothesized to immediately slow down metabolic rates (Guyet et al., 2020). We therefore expect a relatively stable concentration and composition of organic matter and cell abundance during the temperature ramp experiments. As a consequence, the effect of lowered temperature on SSA fluxes is due to a physical impact of temperature on properties of chemical component already present in the seawater at the beginning of each temperature experiment.

Synechococcus-derived dissolved organic matter (SOM) is released via secretion, natural cell death, viral lysis, and predation (Jiao et al., 2010; Fiore et al., 2015; Xiao et al., 2020) and contributes to the marine dissolved organic matter pool (Jiao et al., 2011; Gontikaki et al., 2013). The presence of *Synechococcus* spp. was reported to increase organic carbon content in SSA particles relative to artificial seawater by a factor of 34 (Moore et al., 2010). Rich in nitrate, the largest proportion of SOM is labile and quickly consumed by heterotrophic bacteria, which release exoenzymes to cleave biopolymers (Christie-Oleza et al., 2015; Zheng et al., 2021). Surfactants released by bacteria may facilitate substrate degradation, however, also replenish the pool of surfactants present in seawater (Sekelsky and Shreve, 1999).

The anticorrelation with *Synechococcus* that we observe could indicate a release of SOM during their decay arising from mortality, viral lysis or predation, rather than secretion (which would be positively related to *Synechococcus* cell abundance). Surfactant release was also anticorrelated to *Synechococcus* abundance in the Baltic Sea, and was interpreted as grazing of nanophytoplankton on *Synechococcus* cells (Barthelmeß and Engel, 2022). In theory, we could thus explain the enhanced SSA flux within the lower temperature regimes by (a) SOM released at the expense of *Synechococcus* cell abundance (release during cell destruction, or b) SOM secreted by *Synechococcus* with higher viscosity than other organic matter types since viscosity prevents drainage and results in larger bubble film thickness and (c) bacterial release of exoenzymes/ surfactants following the destruction of *Synechococcus* spp. cells to facilitate SOM degradation and d) the products of this process i.e. that the surfactant pool is replenished due to cleaved biopolymers from heterotrophic prokaryotes enzymatic activity. Bacterial abundance does not represent their metabolic activity or secretion rate, as bacterial cells can also remain inactive (Lebaron et al., 2001), and so a lack of correlation with bacterial abundance does not necessarily falsify hypothesis (c) and (d). However, we cannot exclude that the observed anticorrelation with *Synechococcus* is coincidental rather than causal and clearly more work is needed to test

these different hypotheses. Next, we investigate if seawater biogeochemistry also influences the size of SSA emissions at low temperatures.

3.4. Size segregated sea-spray fluxes

335 The aerosol size distributions in the 10-4000 nm range, from merged SMPS and WIBS size distributions, were normalized to the total sea-spray concentrations in order to investigate changes in size distribution shape rather than number (studied section 2.3). These were averaged over two different temperature ranges, 2-3 °C and 7-9 °, and fitted with a combination of single lognormal modes (Figures S1 and S2). In the moderate temperature range (7-9°C), we found 4 modes in the submicron range and two modes in the supermicron range that best characterize the sea-spray aerosol, with characteristics summarized in Table 1. These characteristics are very similar to that reported for sea spray generated with the same device using Mediterranean water (Schwier et al. 2017, Sellegri et al. 2021), and also to sea-spray size distributions generated with other jet-based 340 approaches that showed a dominant mode centred around 100 nm (Sellegri et al. 2006, Fuentes et al. 2010; Christiansen et al. 2019). Christiansen et al. 2019 report that the shape of the particle size distributions and mode contributions are only slightly affected by addition of algae. We also find that the variability of the SSA size distributions at moderate temperature is low between samples, as also pointed out by Sellegri et al. (2021) for seawater from various geographical origins.

345

When comparing size distributions in the two temperature ranges (Figure 5), we find that the shape of the size distribution is not preserved at 2-3 °C relative to 7-9 °C. We observe an average 15% decrease of the modal diameters at the low temperatures compared to moderate temperatures which is consistent for all modes (Table 1). Also, the fraction of the smaller particle sizes (nucleation and Aitken modes) relative to the total sea-spray concentration increases at cold temperatures compared to warmer 350 ones, whereas it decreases for the largest sizes. The average ratio of number concentrations of SSA smaller than 50 nm to the total SSA concentration was 0.19 ± 0.03 in the 7-9 °C range, while it was 0.35 ± 0.04 in the 2-3 °C range, indicating that the size distribution variation due to low temperature significantly exceeded the variability of size distributions due to seawater types at moderate temperature.

355 In order to quantify changes of sea-spray concentrations per size range, we calculated modal concentrations by summing particle concentrations in particle size bins within each mode: nucleation mode (11 nm - 15 nm), Aitken mode (20 nm - 44 nm), accumulation mode 1 (68 nm - 142 nm), accumulation mode 2 (267 nm - 430 nm) and coarse mode (710 nm - 4485 nm). The relation to temperature of each modal concentration normalized to its concentration at 8-10 °C was then plotted for each individual mode and linearly fitted over the 3 to 10 °C temperature range for each experiment. A polynomial fit, as with 360 equation (2), could not be obtained and instead a linear fit provided the optimal fit given the small number of data points obtained with a 13 min scanning time necessary for each size distribution. The slope of the linear fit between modal concentration and temperature gives the relative increase of each modal concentration per SST degree, relative to its 8-10 °C

modal concentration. The linear fit was performed for each mode and each daily temperature experiment. Statistics for all experiments are shown Figure 6.

365

We observe that sea-spray concentrations in all modal sizes increased with decreasing temperature, but the sea-spray concentrations in the nucleation mode on average show the largest relative increase, followed by concentrations in the Aitken mode. Small particles are therefore most sensitive to temperature of the ocean surface water. Christiansen et al. (2019) also observed that the relative amount of small (<40 nm) particles increased at the coldest temperatures using synthetic seawater, indicating that this is at least partly due to physical parameters. However, contrary to our observations they observed that larger (>300 nm) particles increased at the lowest temperatures. Using natural seawaters from a fjord in the Arctic, Zabori et al. (2012) found that the ratio of smaller (180 nm) to larger (570 nm) sea-spray particles increased at seawater temperatures colder than 3°C relative to temperatures above 3°C, which is consistent with our observations.

370

375 When a film breaks into a higher number of film drops, those are smaller (Lhuissier and Villermaux 2012; Poulain and Bourouiba, 2018), and therefore a decrease in size is expected from the higher numbers of SSA generated at colder temperatures. Additionally, when the main bubble bursts at the air-sea interface, numerous daughter bubbles of smaller diameter form at the edge of the main bubble (Bird et al. 2010; Millet et al. 2021), which may be the origin of additional drops of smaller sizes ejected to the atmosphere. The formation of daughter bubbles increases with the ratio of density to viscosity, and further with the ratio of viscosity to surface tension. All of these variables increase with decreasing temperature, but it is difficult to quantify how their ratio evolves in the presence of unknown active chemicals.

380

4 Concluding remarks

The significant increase of SSA flux with decreasing temperature that we are reporting here is consistent with observations from laboratory-based experiments on synthetic and natural seawaters (Hultin et al. 2011; Zabori et al. 2012; Salter et al. 2014; Christiansen et al. 2019), but not with the temperature dependence of sea spray fluxes assessed from ambient concentrations (Jaegle et al. 2011; Grythe et al. 2014). The reported temperature dependences from ambient concentrations were performed using either optical depth measurements (Jaegle et al. 2011) or sodium containing particles (Grythe et al. 2014), mostly represented by large accumulation mode particles that do not necessarily follow the same trends as the SSA number concentrations, mostly represented by smaller particles. We do find that larger SSA particle fluxes are not as sensitive to temperature as smaller ones. Also, in ambient air, it is difficult to discriminate between primary sea-spray production and secondary aerosol formation that either forms new particles or grows pre-existing particles, and may also be dependent on temperature. Therefore, the apparent contradiction between laboratory-based and ambient air sea-spray fluxes studies may be due to these two types of studies addressing differing aerosol sizes and processing/mixing states.

390

395 Comparison with results obtained from synthetic seawater in the literature is not straightforward as different conclusions are
obtained in different studies. For example, Forestieri et al. 2018 report a monotonic increase of sea spray with increasing
temperature, while Christiansen et al. (2019) reports a minimum in the sea-spray flux in the range 6-10°C, with both studies
using synthetic sea spray and plunging jet systems, over the same range of temperature. As noted by Forestieri et al. (2018),
variability between repeated experiments in their study (and so between different studies) could result from trace impurities of
400 surfactants in the commercial synthetic salt solutions. Christiansen et al. (2019) also report a baseline TOC content of around
1.2 mg L⁻¹ in a 35 g L⁻¹ sigma sea salt solution, corresponding to <0.003% by mass and also the amount of TOC found in
frontal waters during Sea2Cloud. Moreover, our sample with the lowest temperature dependence (March 18th, high Chl-a and
TOC frontal seawaters) compares well with the temperature dependence flux model from Salter et al. (2014) and with synthetic
seawater reported by Christiansen et al. (2019), while our highest temperature dependence samples (March 23rd and 24th, low
405 Chl-a and TOC subantarctic seawaters) compare well with the temperature dependence experiments performed by Zabori et
al. (2012) using arctic seawaters of different origins (Figure 4c). This indicates that neither Chl-a nor TOC are a good proxy
for predicting the sea-spray flux temperature dependence.

Nanophytoplankton abundance was a major determinant of sea-spray number fluxes for sizes larger than 100 nm at moderate
410 temperatures (SELL21), which was attributed to fatty acid concentration and surface tension effects. This is further supported
in the present study, although the relationship to nanophytoplankton is not as strong as in SELL21. Here we show that the
seawater temperature effect is inversely dependent on another phytoplankton group, the genus *Synechococcus* spp, which, if
not coincidental, could indicate a link to SOM release during decay. However, there is a taxonomic heterogeneity within the
Synechococcus genus and within the picophytoplankton in general. Our results might be specific to *Synechococcus* spp.
415 population of the South-Western Pacific Ocean and further work is required to investigate if the present relationship is
applicable at a larger regional scale. In addition, more work is required to investigate the process by which *Synechococcus* spp.
are related to the release of organic matter that specifically influences SSA flux at low temperature.

The dependence of SSA fluxes on water temperature is highest for nucleation and Aitken mode particles, but remains high for
420 SSA sizes of the 100-200 nm size, which dominate the total SSA flux and are active as CCN. Consequently, this should
influence the seasonal variability of sea-spray particles in cold surface waters such as in the Southern Ocean. It may be also
be relevant with respect to the cool-skin effect at the ocean-atmosphere interface. Average surface cooling by 0.2 K at global
mean wind regimes (6 m sec⁻¹) relative to depths >1cm (Donlon et al., 2002) may occur and may be greater under lower wind
regimes or at night (Donlon et al., 2002, Marmorino and Smith, 2006). As SSA fluxes are generated at this interface they are
425 influenced by the biophysical conditions encountered i.e. often characterized by an enrichment in biosurfactants (Wurl et al.,
2011).

The IPCC report estimates an increase in average ocean surface temperature by 2.5 ° C by 2100, with consequences for marine biology (Bindoff et al. 2019) and future projections for the South-West Pacific also indicate a +2.5oC increase in surface temperature by the end of the century with consequences for marine microbes and biogeochemistry (Law et al, 2018). Ocean warming is expected to expand the distribution range and cell abundance of *Synechococcus* (Morán et al., 2010; Flombaum et al., 2013). Our results indicate that higher ambient temperatures and *Synechococcus* abundance would lead to weaker sea-spray flux number concentrations at low temperatures with a combined effect potentially additive or even synergetic compared to each of these individual effects. However, higher temperatures and an increased release of labile SOM could cause an effect on bacterial metabolism (Piontek et al., 2015) that potentially favours the secretion of biosurfactants by heterotrophic bacteria. Potential changes in the abundance of *Synechococcus spp.* in response to temperature changes associated with climate change, and the resulting impact on CCN fluxes to the atmosphere and cloud formation should be investigated using regional models run under future climate conditions, to account for other climate-sensitive factors that influence sea spray fluxes. The quantification of process-based relationships between seawater biogeochemistry and sea-spray cloud forming properties derived from the present study should enable improved actual simulations of cloud formation over the oceans of the Southern Hemisphere.

Author contribution

KSe and CL designed the Sea2Cloud voyage. KSe designed the experiments with the contribution of NB and MH and KSe and JT carried them out. TB, AC, KSa, SD and WD sampled seawater for biogeochemical analysis and AC, KSa, SD and KT analysed sampled. AE supervised the work of TB. EF and CR contributed to aerosol measurement analysis. KSe prepared the manuscript with contributions from all co-authors.

Acknowledgements

We acknowledge the support and expertise of the Officers and Crew of the R/V Tangaroa. These results are part of a project that received funding from the European Research Council (ERC) under the European Union’s Horizon 2020 research and innovation programme (Grant agreement No. 771369), and was also supported by New Zealand SSIF funding to NIWA in the Ocean-Climate Interactions, and Flows and Productivity, Programmes. The Sea2Cloud project is endorsed by SOLAS.

References

Alpers, W. “Surface Films”. In: Elsevier. Aluwihare, LI et DJ Repeta (1999). “A comparison of the chemical characteristics of oceanic DOM and extracellular DOM produced by marine algae”. In : Marine Ecology Progress Series 186, p105-117, 2019

- 455 Andreae, M. O. (1985). “The Emission of Sulfur to the Remote Atmosphere : Background Paper”. In : The Biogeochemical Cycling of Sulfur and Nitrogen in the Remote Atmosphere. Sous la dir. de James N. Galloway et al. Dordrecht : Springer Netherlands, p. 5-25. isbn : 978-94-009-5476-2. doi : 10.1007/978-94-009-5476-2_2. url : https://doi.org/10.1007/978-94-009-5476-2_2.
- Auger, M., R. Morrow, E. Kestenare, J.-B. Sallée, and R. Cowley: Southern Ocean in-situ temperature trends over 25 years emerge from interannual variability. *Nat. Commun.*, 12, 514, <https://doi.org/10.1038/s41467-020-20781-1>, 2021
- Barthelmeß, T. and Engel, A.: How biogenic polymers control surfactant dynamics in the surface microlayer: Insights from a coastal Baltic Sea study, *Biogeosciences Discuss.* [preprint], <https://doi.org/10.5194/bg-2022-128>, in review, 2022
- 465 Bates, T. S., et al. (2006), Aerosol direct radiative effects over the northwest Atlantic, northwest Pacific, and North Indian Oceans: Estimates based on in-situ chemical and optical measurements and transport modelling, *Atmos. Chem. Phys.*, 6, 1657–1732.
- Bian, H., Froyd, K., Murphy, D. M., Dibb, J., Darmenov, A., Chin, M., Colarco, P. R., da Silva, A., Kucsera, T. L., Schill, G., Yu, H., Bui, P., Dollner, M., Weinzierl, B., and Smirnov, A.: Observationally constrained analysis of sea salt aerosol in the marine atmosphere, *Atmos. Chem. Phys.*, 19, 10773–10785, <https://doi.org/10.5194/acp-19-10773-2019>, 2019.
- Bird, James C et al.. “Daughter bubble cascades produced by folding of ruptured thin films”. *Nature* 465.7299, p. 759-762, 2010.
- 475 Bindoff, Nathaniel L et al. (2019). “Changing ocean, marine ecosystems, and dependent communities”. In : IPCC special report on the ocean and cryosphere in a changing climate, p. 477-587.
- Bowyer, P. A., Woolf, D. K., and Monahan, E. C.: Temperature dependence of the charge and aerosol production associated with a breaking wave in a whitecap simulation tank, *J. Geophys. Res.-Oceans*, 95, 5313–5319, doi:10.1029/JC095iC04p05313, 1990. 16107
- 480 Burrows, S. M., Hoose, C., Pöschl, U., and Lawrence, M. G.: Ice nuclei in marine air: biogenic particles or dust?, *Atmos. Chem. Phys.*, 13, 245–267, <https://doi.org/10.5194/acp-13-245-2013>, 2013.
- Christiansen, Sigurd et al. (2019). “Sea spray aerosol formation : Laboratory results on the role of air entrainment, water temperature, and phytoplankton biomass”. In : *Environmental science & technology* 53.22, p. 13107-13116.

- Christie-Oleza, J. A., Scanlan, D. J., & Armengaud, J. (2015). “You produce while I clean up”, a strategy revealed
485 by exoproteomics during *Synechococcus*-*Roseobacter* interactions. *Proteomics*, 15(20), 3454–3462.
<https://doi.org/10.1002/pmic.201400562>
- Dall’Osto M, Vaqué´ D, Sotomayor-Garcia A, Cabrera-Brufau M, Estrada M, Buchaca T, Soler M, Nunes S,
Zeppenfeld S, van Pinxteren M, Herrmann H, Wex H, Rinaldi M, Paglione M, Beddows DCS, Harrison RM and
490 Berdalet E (2022) Sea Ice Microbiota in the Antarctic Peninsula Modulates Cloud-Relevant Sea Spray Aerosol
Production. *Front. Mar. Sci.* 9:827061. doi: 10.3389/fmars.2022.827061
- de Leeuw, G., E. L. Andreas, M. D. Anguelova, C. W. Fairall, E. R. Lewis, C. D. ODowd, M. Schulz, and S. E.
Schwartz (2011), Production flux of sea spray aerosol, *Rev. Geophys.*, 49(RG2001), 349.
- Delizo, L., Smith, W. O., and Hall, J.: Taxonomic composition and growth rates of phytoplankton assemblages at
the Subtropical Convergence east of New Zealand, *J. Plankton Res.*, 29, 655– 670,
495 <https://doi.org/10.1093/plankt/fbm047>, 2007.
- Donlon, C. J., Minnett, P. J., Gentemann, C., Nightingale, T. J., Barton, I. J., Ward, B., & Murray, M. J. (2002).
Toward improved validation of satellite sea surface skin temperature measurements for climate research. *Journal*
of Climate, 15(4), 353–369. [https://doi.org/10.1175/1520-0442\(2002\)015<0353:TIVOSS>2.0.CO;2](https://doi.org/10.1175/1520-0442(2002)015<0353:TIVOSS>2.0.CO;2)
- Engel, A., & Galgani, L. (2016). The organic sea-surface microlayer in the upwelling region off the coast of Peru
500 and potential implications for air-sea exchange processes. *Biogeosciences*, 13(4), 989–1007.
<https://doi.org/10.5194/bg-13-989-2016>
- Flombaum, P., Gallegos, J.L., Gordillo, R.A., Rincón, J., Zabala, L.L., Jiao, N., Karl, D.M., Li, W.K., Lomas,
M.W., Veneziano, D. and Vera, C.S., 2013. Present and future global distributions of the marine Cyanobacteria
Prochlorococcus and *Synechococcus*. *Proceedings of the National Academy of Sciences*, 110(24), pp.9824-9829.
- 505 Forestieri, SD et al. (2018). “Temperature and composition dependence of sea spray aerosol production”. In :
Geophysical Research Letters 45.14, p. 7218-7225.
- Frenay E., Karine Sellegri, Alessia Nicosia, Jonathan T. Trueblood, Matteo Rinaldi, Leah R. Williams, André S.
H. Prévôt, Melilotus Thyssen, Gérald Grégori, Nils Haëntjens, Julie Dinasquet, Ingrid Obernosterer, France Van-
Wambeke, Anja Engel, Birthe Zäncker, Karine Desboeufs, Eija Asmi, Hilka Timmonen, and Cécile Guieu,
510 *Mediterranean nascent sea spray organic aerosol and relationships with seawater biogeochemistry*, *Atmos. Chem.*
Phys., 21, 10625–10641, <https://doi.org/10.5194/acp-21-10625-2021>, 2021
- Fuentes, E et al. (2009). “Laboratory-generated primary marine aerosol via bubble- bursting and atomization”. In :
Atmospheric Measurement Techniques Discussions 2.5, p. 2281-2320.

- 515 Fuentes, E., Coe, H., Green, D., de Leeuw, G., and McFiggans, G.: On the impacts of phytoplankton-derived organic matter on the properties of the primary marine aerosol – Part 1: Source fluxes, *Atmos. Chem. Phys.*, 10, 9295–9317, <https://doi.org/10.5194/acp-10-9295-2010>, 2010.
- Geider, Richard et Julie La Roche (2002). “Redfield revisited : variability of C : N : P in marine microalgae and its biochemical basis”. In : *European Journal of Phycology* 37.1, p. 1-17.
- 520 Grythe, Henrik et al. (2014). “A review of sea-spray aerosol source functions using a large global set of sea salt aerosol concentration measurements”. In : *Atmospheric Chemistry and Physics* 14.3, p. 1277-1297.
- Hall, J.A. and Safi, K., 2001. The impact of in situ Fe fertilisation on the microbial food web in the Southern Ocean. *Deep Sea Research Part II: Topical Studies in Oceanography*, 48(11-12), pp.2591-2613.
- 525 Hultin, K. A. H., Krejci, R., Pinhassi, J., Gomez-Consarnau, L., Ma^ortensson, E. M., Hagstro^m, A., and Nilsson, E. D.: Aerosol and bacterial emissions from Baltic seawater, *Atmos. Res.*, 99, 1–14, doi:10.1016/j.atmosres.2010.08.018, 2011. 16088, 16106, 16107
- Jaeglé, L et al. (2011). “Global distribution of sea salt aerosols : new constraints from in situ and remote sensing observations”. In : *Atmospheric Chemistry and Physics* 11.7, p. 3137-3157.
- Kujawinski, E.B., Farrington, J.W. and Moffett, J.W., 2002. Evidence for grazing-mediated production of dissolved surface-active material by marine protists. *Marine chemistry*, 77(2-3), pp.133-142.
- 530 Law, C.S., Smith, M., Stevens, C., Abraham, E.R., Ellwood, M., Hill, P., Nodder, S., Peloquin, J., Pickmere, S., Safi, K., Walkington, M., 2011. Did dilution limit the phytoplankton response to iron addition in HNLCLS Sub-Antarctic waters during SAGE? *Deep-Sea Res II*, 58:786–799.
- 535 Law CS, Smith MJ, Harvey MJ, Bell TG, Cravigan LT, Elliott FC, Lawson SJ, Lizotte M, Marriner A, McGregor J, Ristovski Z, Safi KA, Saltzman ES, Vaattovaara P, Walker CF. 2017. Overview and preliminary results of the Surface Ocean Aerosol Production (SOAP) campaign. *Atmospheric Chemistry Physics*, 17(22): 13645--13667, doi: 10.5194/acp-17-13645-2017
- Law CS, Rickard GJ, Mikaloff-Fletcher SE, Pinkerton MH, Behrens E, Chiswell SM, Currie K, 2018. Climate Change projections for the surface ocean around New Zealand, *New Zealand Journal Marine Freshwater Research*, 52:3, 309-335, DOI: 10.1080/00288330.2017.1390772, 2018
- 540 Lebaron, P., Servais, P., Agogué, H., Courties, C., & Joux, F. (2001). Does the High Nucleic Acid Content of Individual Bacterial Cells Allow Us to Discriminate between Active Cells and Inactive Cells in Aquatic Systems? *Applied and Environmental Microbiology*, 67(4), 1775–1782. <https://doi.org/10.1128/AEM.67.4.1775-1782.2001>

- Lhuissier, H. and E. Villermaux, « Bursting bubble aerosols”, *Journal of Fluid Mechanics* , Volume 696, pp. 5 – 44, <https://doi.org/10.1017/jfm.2011.418>, 2012.
- 545 Liu, S. Cheng-Cheng Liu, Karl D. Froyd, Gregory P. Schill, Daniel M. Murphy, T. Paul Bui, Jonathan M. Dean-Day, Bernadett Weinzierl, Maximilian Dollner, Glenn S. Diskin, Gao Chen, and Ru-Shan Gao, Sea spray aerosol concentration modulated by sea surface temperature, *PNAS*, 2021 Vol. 118 No. 9 e2020583118, <https://doi.org/10.1073/pnas.2020583118> , 2021
- 550 Long, MS et al. (2014). “Light-enhanced primary marine aerosol production from biologically productive seawater”. In : *Geophysical Research Letters* 41.7, p. 2661-2670.
- Mahlet A. Woldeyes, Wei Qi, Vladimir I. Razinkov, Eric M. Furst, and Christopher J. Roberts, Temperature Dependence of Protein Solution Viscosity and Protein–Protein Interactions: Insights into the Origins of High-Viscosity Protein Solutions, *Molecular Pharmaceutics* 2020 17 (12), 4473-4482 DOI: 10.1021/acs.molpharmaceut.0c00552
- 555 Marmorino, G. O., & Smith, G. B. (2006). Reduction of surface temperature in ocean slicks. *Geophysical Research Letters*, 33(14), 1–5. <https://doi.org/10.1029/2006GL026502> Marmorino, G. O., & Smith, G. B. (2006). Reduction of surface temperature in ocean slicks. *Geophysical Research Letters*, 33(14), 1–5. <https://doi.org/10.1029/2006GL026502>
- 560 Martensson, E.M., E.D. Nilsoon, G de Leeuw, L.H. Cohen and H.-C. Hansson, “Laboratory simulations and parameterization of the primary marine aerosol production”; *J. Geophys. Res.*, 108, doi: 10.1029/2002JD002263, 2003
- Miguet, J., Rouyer, F. and Rio, E. The Life of a Surface Bubble. *Molecules* 2021, 26, 1317. <https://doi.org/10.3390/molecules26051317>
- 565 Modini, R. L. , L. M. Russell, G. B. Deane, & M. D. Stokes, Effect of soluble surfactant on bubble persistence and bubble-produced aerosol particles, *Journal of Geophysical Research*, **118**, 1388–1400. <https://doi.org/10.1002/jgrd.50186>, (2013).
- 570 Moore, M. J. K., Furutani, H., Roberts, G. C., Moffet, R. C., Gilles, M. K., Palenik, B., & Prather, K. A. (2011). Effect of organic compounds on cloud condensation nuclei (CCN) activity of sea spray aerosol produced by bubble bursting. *Atmospheric Environment*, 45(39), 7462–7469. <https://doi.org/10.1016/j.atmosenv.2011.04.034>
- Morán, X., Lopez-Urrutia, A., Calvo-Díaz, A., and Li, W. K. W. (2010). Increasing importance of small phytoplankton in a warmer ocean. *Glob. Chang. Biol.* 16, 1137–1144. doi: 10.1111/J.1365-2486.2009.01960.X

- 575 Naik, S.M. and Anil, A.C., 2017. Long-term preservation of *Tetraselmis indica* (Chlorodendrophyceae, Chlorophyta) for flow cytometric analysis: Influence of fixative and storage temperature. *Journal of microbiological methods*, 139, pp.123-129.
- Napolitano, Guillermo E et al. (1997). “Fatty acids as trophic markers of phytoplankton blooms in the Bahia Blanca estuary (Buenos Aires, Argentina) and in Trinity Bay (Newfoundland, Canada)”. In : *Biochemical Systematics and Ecology* 25.8, p. 739-755.
- 580 Ecology 25.8, p. 739-755.
- Nayar K. G., D. Panchanathan, G. H. McKinley, J. H. Lienhard; Surface Tension of Seawater. *Journal of Physical and Chemical Reference Data* 1 December 2014; 43 (4): 043103. <https://doi.org/10.1063/1.4899037>
- O’Dowd, Colin D et al. (2004). “Biogenically driven organic contribution to marine aerosol”. In : *Nature* 431.7009, p. 676-680.
- 585 Ovadnevaite, J et al. (2014). “A sea spray aerosol flux parameterization encapsulating wave state”. In : *Atmospheric Chemistry and Physics* 14.4, p. 1837-1852.
- Pierce, J. R., and P. J. Adams (2006), Global evaluation of CCN formation by direct emission of sea salt and growth of ultrafine sea salt, *J. Geophys. Res.*, 111, D06,203, doi:10.1029/2005JD006186.
- Piontek, J., Sperling, M., Nöthig, E. M., & Engel, A. (2015). Multiple environmental changes induce interactive effects on bacterial degradation activity in the arctic ocean. *Limnology and Oceanography*, 60(4), 1392–1410. <https://doi.org/10.1002/lno.10112>
- 590 effects on bacterial degradation activity in the arctic ocean. *Limnology and Oceanography*, 60(4), 1392–1410. <https://doi.org/10.1002/lno.10112>
- Poulain, S and L. Bourouiba, Biosurfactants Change the Thinning of Contaminated Bubbles at Bacteria-Laden Water Interfaces, *Physical review Letters*, 121, 204502, 2018.
- Rocco, Manon, Erin Dunne, Alexia Saint-Macary , Maija Peltola , Theresa Barthelmeß, Neill Barr, Andrew Marriner, Stacy Deppeler , James Harnwell, Anja Engel , Aurélie Colomb, Alfonso Saiz-Lopez , Mike Harvey , Cliff S. Law and Karine Sellegri, Air-Sea fluxes of dimethyl sulphide and methanethiol in the South-West Pacific, <https://doi.org/10.5194/egusphere-2023-516>, 2023.
- Safi, K. A., Brian Griffiths, F., and Hall, J. A.: Microzooplankton composition, biomass and grazing rates along the WOCE SR3 line between Tasmania and Antarctica, *Deep Sea Research Part I: Oceanographic Research Papers*, 54, 1025-1041, 10.1016/j.dsr.2007.05.003, 2007.
- 600 54, 1025-1041, 10.1016/j.dsr.2007.05.003, 2007.
- Salter, Matthew E et al. (2014). “On the seawater temperature dependence of the sea spray aerosol generated by a continuous plunging jet”. In : *Journal of Geophysical Research : Atmospheres* 119.14, p. 9052-9072.

- Schulz, M., et al. (2006), Radiative forcing by aerosols as derived from the AeroCom present-day and pre-industrial simulations, *Atmos. Chem. Phys.*, 6, 5225–5246.
- 605 Schwier, A. N., C. Rose, E. Asmi, A.M. Ebling, W.M. Landing, S. Marro, M.-L. Pedrotti, A. Sallon, F. Iuculano, S. Agusti, A. Tsiola, P. Pitta, J. Louis, C. Guieu, F. Gazeau, and K. Sellegri, Primary marine aerosol emissions from the Mediterranean Sea during pre-bloom and oligotrophic conditions: correlations to seawater chlorophyll-a from a mesocosm study, *Atmo.Chem. Phys.*, 15, 7961-7976, doi:10.5194/acp-15-7961-2015, 2015
- Schwier A.N. , K. Sellegri,, S. Mas, B. Charrière, J. Pey, C. Rose, B. Temime-Roussel, D. Parin, J.-L. Jaffrezo, D. Picard, R. Sempéré, N. Marchand and B. D’Anna, “Primary marine aerosol physical and chemical emissions during a nutriment enrichment experiment in mesocosms of the Mediterranean Sea, *Atmos. Chem. Phys.*, 17, 14645-14660, <https://doi.org/10.5194/acp-17-14645-2017>, 2017
- 610 Andrew M. Sekelsky, Gina S. Shreve , Kinetic model of biosurfactant-enhanced hexadecane biodegradation by *Pseudomonas aeruginosa*, *Biotechnology and bioengineering*, [https://doi.org/10.1002/\(SICI\)1097-0290\(19990520\)63:4<401::AID-BIT3>3.0.CO;2-S](https://doi.org/10.1002/(SICI)1097-0290(19990520)63:4<401::AID-BIT3>3.0.CO;2-S), 2000.
- 615 Sellegri, K et al. (2006). “Surfactants and submicron sea spray generation”. In : *Journal of Geophysical Research : Atmospheres* 111.D22.
- Sellegri Karine, Alessia Nicosia, Evelyn Freney, Julia Uitz, Melilotus Thyssen, Gérald Grégori, Anja Engel, Birthe Zäncker, Nils Haëntjens, Sébastien Mas, David Picard, Alexia Saint-Macary, Maija Peltola, Clémence Rose, Jonathan Trueblood, Dominique Lefevre, Barbara D’Anna, Karine Desboeuf, Nicholas Meskhidze, Cécile Guieu and Cliff S. Law, Surface ocean microbiota determine cloud precursors, *Sci Rep* 11, 281 <https://doi.org/10.1038/s41598-020-78097-5>, 2021
- 620 Sellegri Karine, Mike Harvey, Maija Peltola, Jonathan Trueblood, Alexia Saint-Macary, Theresa Barthelmeß, Manon Rocco, Kathryn A. Moore, Antonia Cristi, Frederic Peyrin, Neill Barr, Laurent Labonnote, Andrew Marriner, John McGregor, Karl Safi, Stacy Deppeler, Stephen Archer, David Picard, Erin Dunne, James Harnwell, Julien Delanoë, Aurélie Colomb, Evelyn Freney, Alfonso Saiz Lopez, Jesús E. Quintanilla-López, Rosa Lebrón-Aguilar, Matteo Rinaldi, Sandra Banson, Clémence Rose, Céline Planche, Romain Joseph, Aurelia Lupascu, Olivier Jourdan, Guillaume Mioche, Gus Olivares, Richard Querel, Adrian McDonald, Graeme Plank, Wayne, Luc Blarel, Jacques Pelon, Franck Donnadieu, Frédéric Tridon, Jean-Luc Baray, Frederic Szczap, Anja Engel, Paul J. DeMott, and Cliff Law, Sea2Cloud: from biogenic emission fluxes to Cloud properties in the South Western Pacific, *Bulletin of the American Meteorological Society, BAMS*, <https://doi.org/10.1175/BAMS-D-21-0063.1>, 2023
- 630 Six, C., Ratin, M., Marie, D., & Corre, E. (2021). Marine Synechococcus picocyanobacteria: Light utilization across latitudes. *Proceedings of the National Academy of Sciences of the United States of America*, 118(38), 1–11. <https://doi.org/10.1073/pnas.2111300118>
- 635

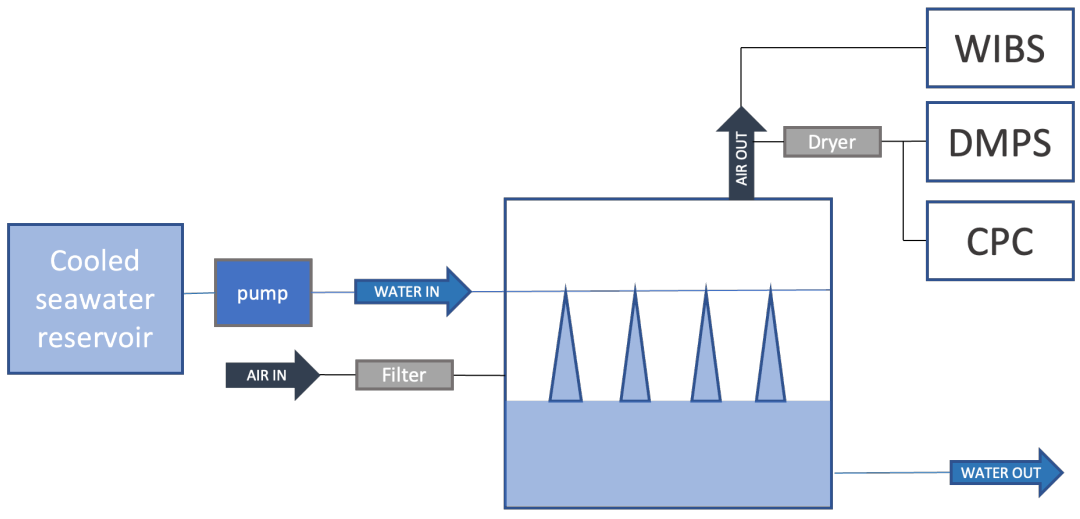
- Sverdrup, HU (1953). "On conditions for the vernal blooming of phytoplankton". In : J. Cons. Int. Explor. Mer 18.3, p. 287-295.
- Thorpe, S. A., Bowyer, P., and Woolf, D. K.: Some factors affecting the size distributions of oceanic bubbles, J. Phys. Oceanogr., 22, 382–389, doi:10.1175/1520-0485(1992)022<0382:SFATSD>2.0.CO;2, 1992. 16105
- 640 Trueblood J.V., Alessia Nicosia, Anja Engel, Birthe Zäncker, Matteo Rinaldi, Evelyn Freney, Melilotus Thyssen, Ingrid Obernosterer, Julie Dinasquet, Franco Belosi, Antonio Tovar-Sánchez, Araceli Rodriguez-Romero, Gianni Santachiara, Cécile Guieu, and Karine Sellegri, A Two-Component Parameterization of Marine Ice Nucleating Particles Based on Seawater Biology and Sea Spray Aerosol Measurements in the Mediterranean Sea, Atmos. Chem. Phys., 21, 4659–4676, <https://doi.org/10.5194/acp-21-4659-2021>, 2021
- 645 Tyree, Corey A et al. (2007). "Foam droplets generated from natural and artificial seawaters". In : Journal of Geophysical Research : Atmospheres 112.D12.
- Wurl, O., Wurl, E., Miller, L., Johnson, K., & Vagle, S. (2011). Formation and global distribution of sea-surface microlayers. Biogeosciences, 8(1), 121–135. <https://doi.org/10.5194/bg-8-121-2011>
- Yoon, YJ et al. (2006). "Statistical characteristics and predictability of particle formation events at Mace Head". In : Journal of Geophysical Research : Atmospheres 111.D13.
- 650 : Journal of Geophysical Research : Atmospheres 111.D13.
- Zábori, Julia, Radovan Krejci et al. (2012). "Wintertime Arctic Ocean sea water properties and primary marine aerosol concentrations". In : Atmospheric Chemistry and Physics 12.21, p. 10405-10421.
- Zábori, Julia, M Matišná et al. (2012). "Artificial primary marine aerosol production : a laboratory study with varying water temperature, salinity, and succinic acid concentration". In : Atmospheric Chemistry and Physics 12.22, p. 10709-10724.
- 655 12.22, p. 10709-10724.
- Zhang, J., Liu, J., Liu, D., Chen, X., Shi, Q., He, C. and Li, G., 2022. Temperature Rise Increases the Bioavailability of Marine Synechococcus-Derived Dissolved Organic Matter. *Frontiers in microbiology*, 13.
- Zheng, Q., Lin, W., Wang, Y., Li, Y., He, C., Shen, Y., Guo, W., Shi, Q., & Jiao, N. (2021). Highly enriched N-containing organic molecules of *Synechococcus* lysates and their rapid transformation by heterotrophic bacteria. *Limnology and Oceanography*, 66(2), 335–348. <https://doi.org/10.1002/lno.11608>
- 660 Limnology and Oceanography, 66(2), 335–348. <https://doi.org/10.1002/lno.11608>
- Žutić, V., Čosović, B., Marčenko, E., Bihari, N. and Kršinić, F., 1981. Surfactant production by marine phytoplankton. *Marine Chemistry*, 10(6), pp.505-520.
- Zwirgmaier, K., Jardillier, L., Ostrowski, M., Mazard, S., Garczarek, L., Vaultot, D., Not, F., Massana, R., Ulloa, O., & Scanlan, D. J. (2008). Global phylogeography of marine *Synechococcus* and *Prochlorococcus* reveals a

665 distinct partitioning of lineages among oceanic biomes. *Environmental Microbiology*, 10(1), 147–161.
<https://doi.org/https://doi.org/10.1111/j.1462-2920.2007.01440.x>

Mode	7-9 °C			2-3°C		
	Dp (nm)	N	σ	Dp	N	σ
Nucleation	10	0,006	1,5	8	0,012	1,5
Aitken	38	0,013	1,6	32	0,019	1,7
Acc1	117	0,027	1,6	108	0,027	1,7
Acc2	290	0,013	1,5	275	0,0115	1,5
Coarse1	1000	0,0095	1,4	850	0,0065	1,4
Coarse 2	2150	0,006	1,4	1800	0,003	1,4

670

Table 1: Geometric mean diameter (Dp), normalized number concentration (N) and standard deviation (σ) of the 6 modes composing the median number size distribution at moderate (7-9°C) and low (2-3°C) SST.



675

Figure 1: Schematics of the experimental set-up used to characterize the temperature dependence of SSA fluxes

680

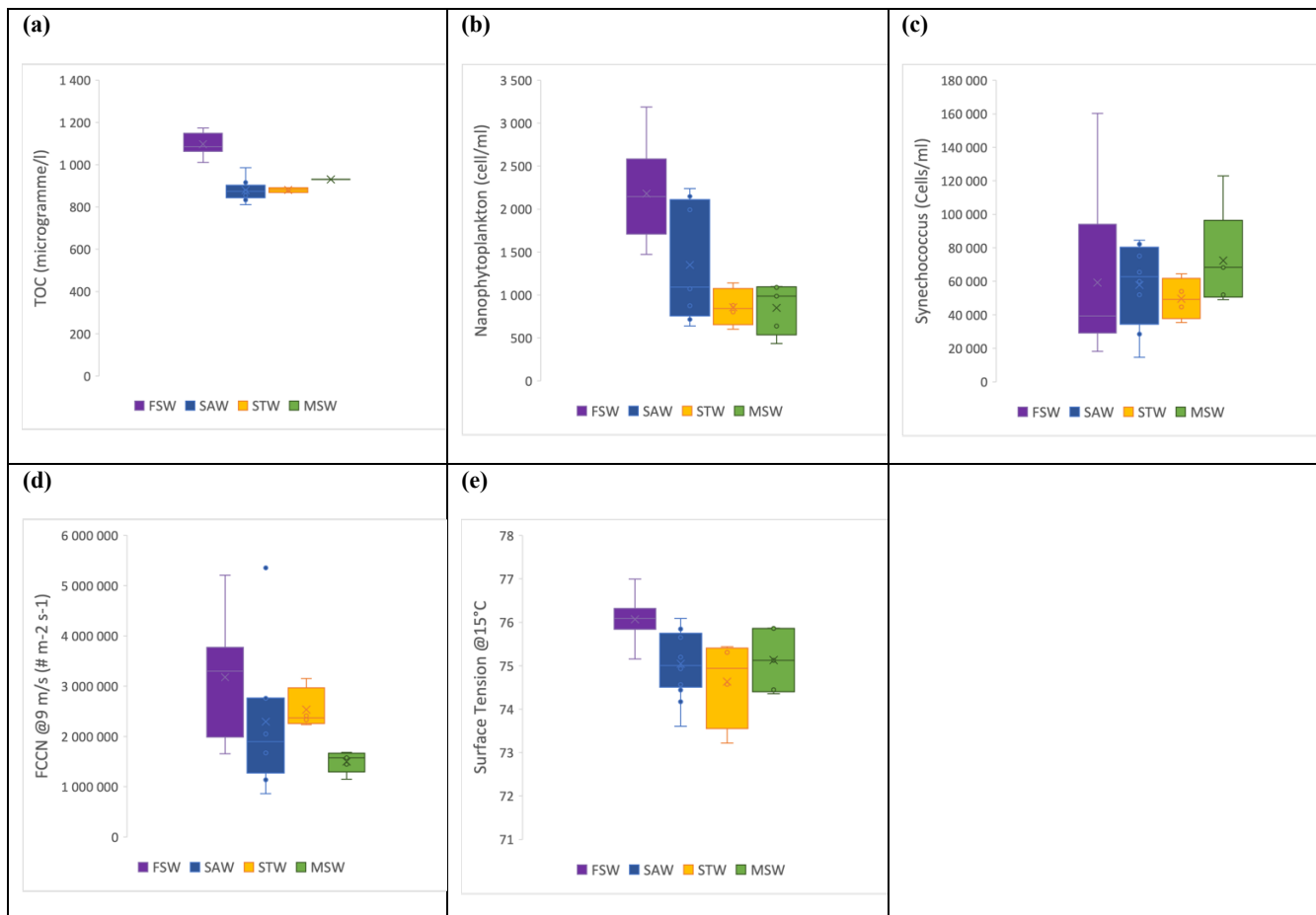
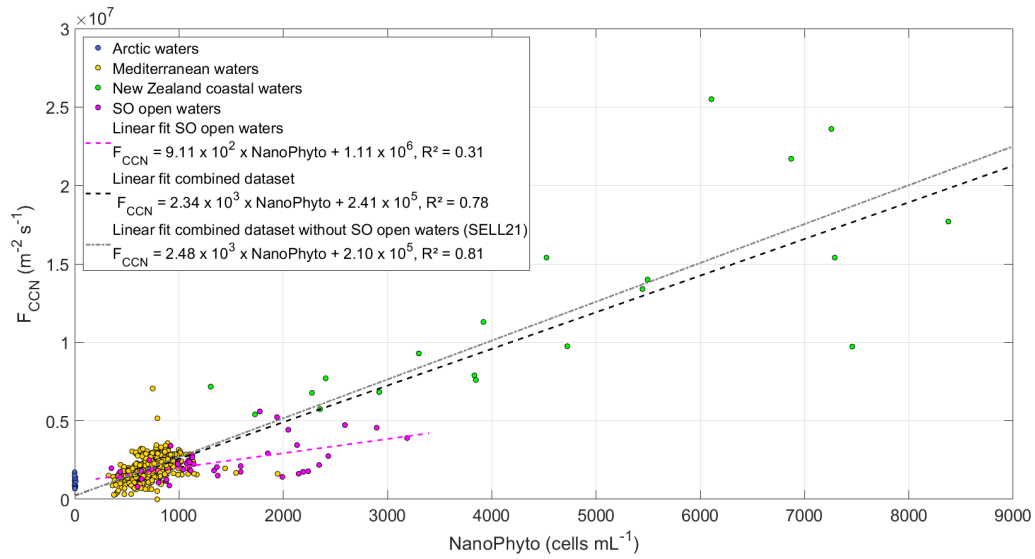


Figure 2: Box-plot for the different seawater types of (a) TOC content, (b) nanophytoplankton (c) Synechococcus cell abundances and (d) surface tension of seawater samples for SST of 15 °C (right axis), and e) Total SSA flux measured at ambient STT (ranging 13-15°C) and normalized for 9 m s⁻¹ (left axis). Colour-shaded areas represent the different water masses, as indicated by the labels in (a), sampled during the Sea2Cloud voyage (Sellegri et al. 2023).

685



690

Figure 3: SSA-derived CCN number fluxes as a function of NanoPhyto (Nanophytoplankton cell abundance) for the four regional datasets (Sea2Cloud data set indicated as SO for Southern Ocean), normalized to an equivalent wind speed of 9 m s^{-1} and SST of 15°C . The linear fit to the Sea2Cloud data and combined dataset are shown with their corresponding equations and R^2 , with the previously reported SELL21 relationship shown for comparison.

695

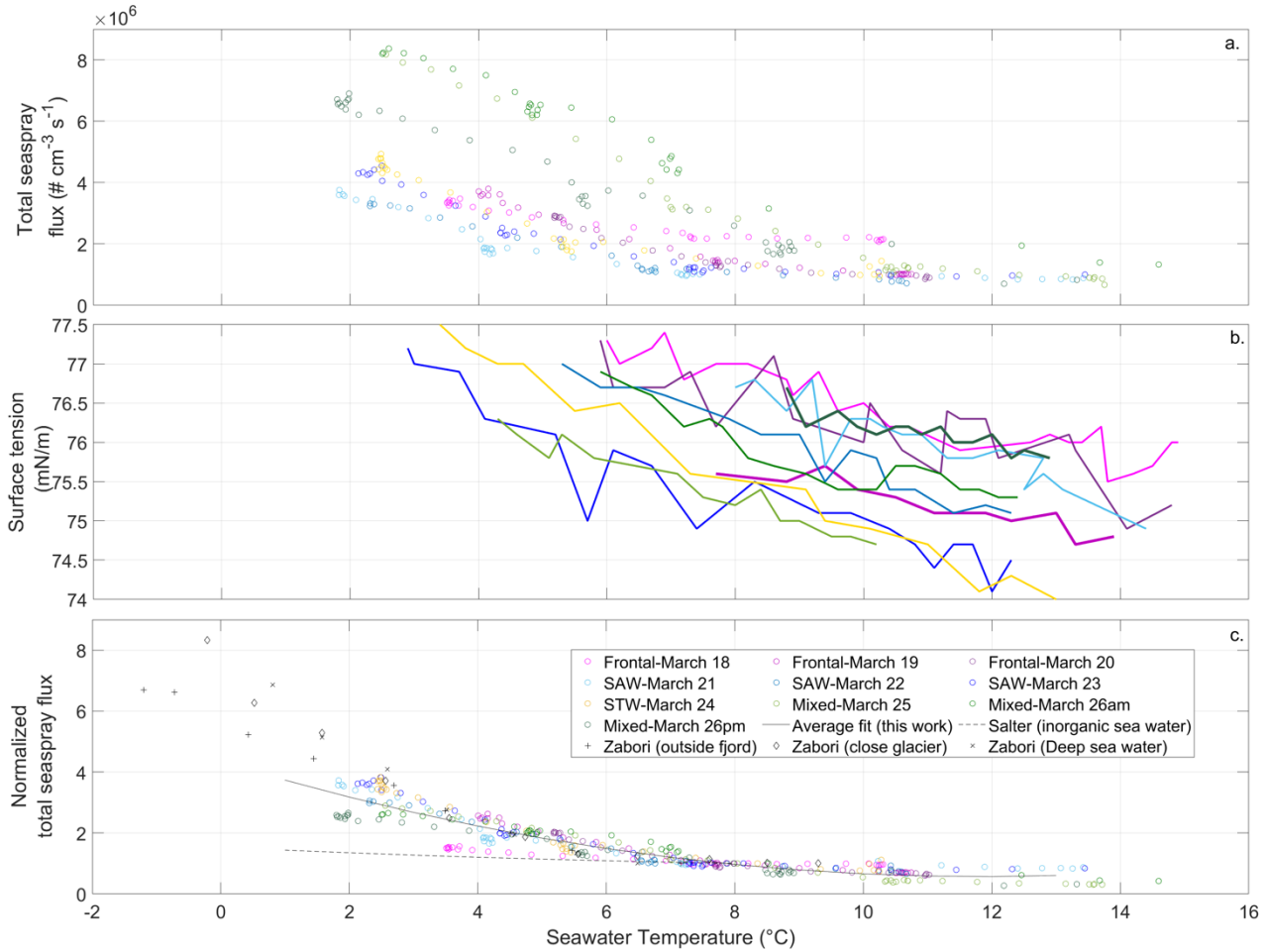
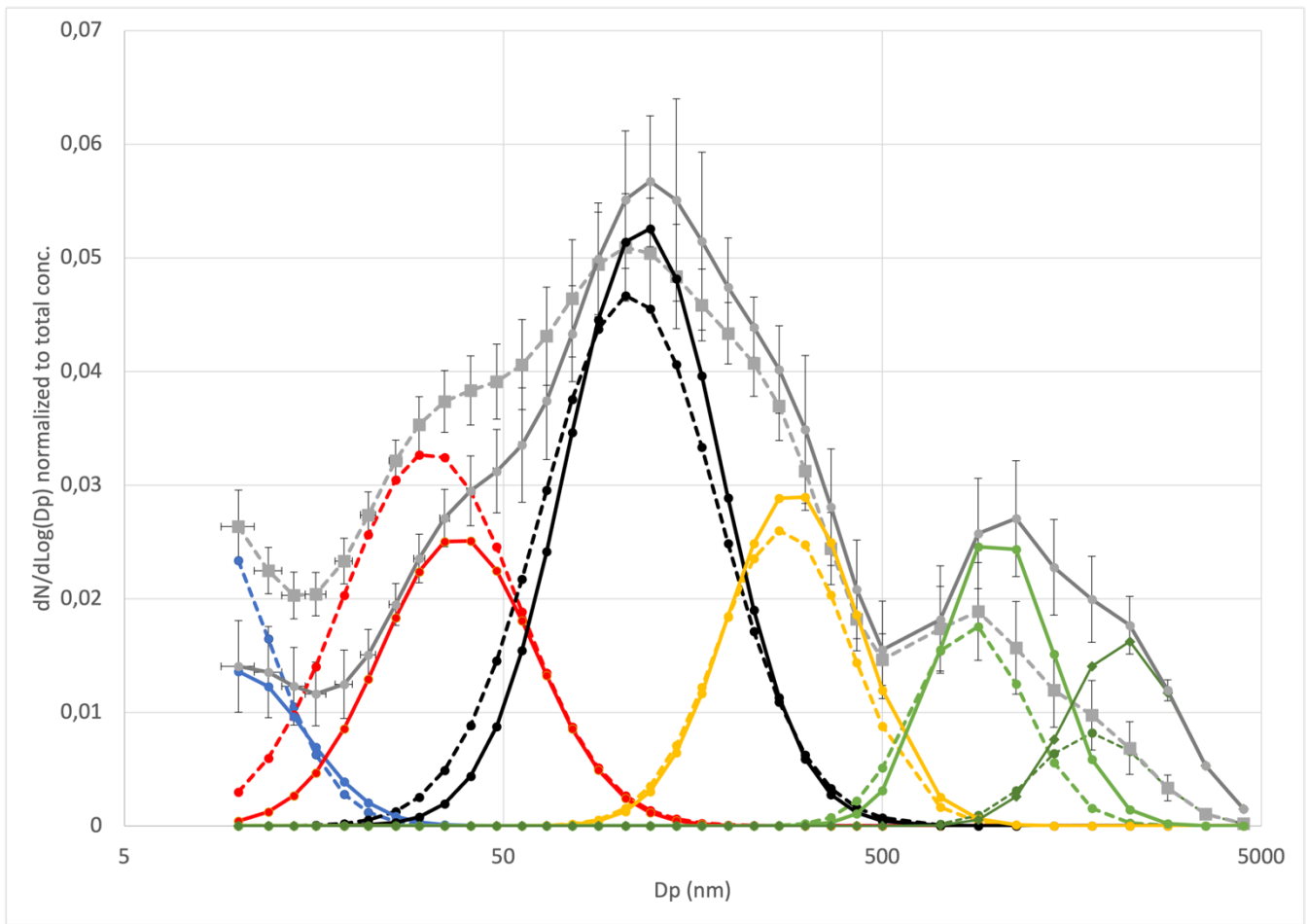
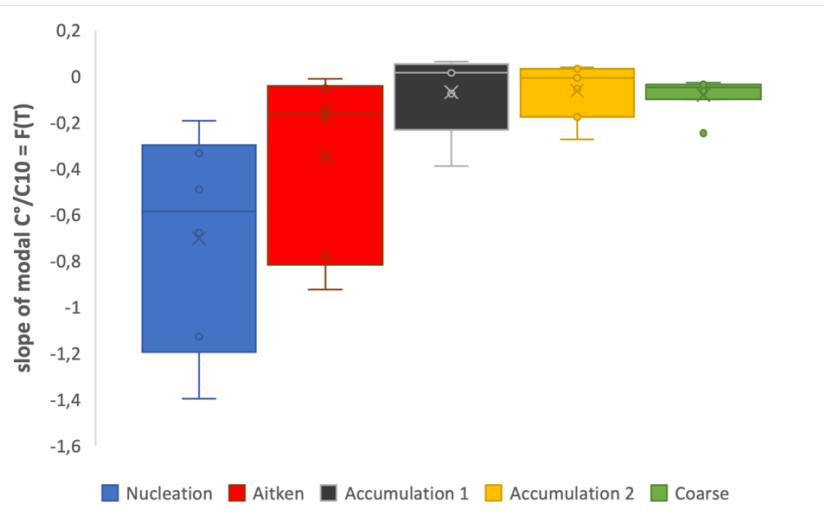


Figure 4: (a) Sea-spray number flux calculated using eq. 1, as a function of seawater temperature during experiments performed in different water types. Colour code corresponds to water type and dates of sampling as in Figure 1. **(b)** Surface tension of the surface seawater sampled at 12:00 LT for different dates and seawater types, measured as a function of seawater temperature. **(c)** Sea-spray number flux normalized to sea-spray flux measured at 8°C (F_T/F_8) as a function of seawater temperature at different dates and comparison to normalized fluxes (F_T/F_8) reported in Salter et al. (2014) for inorganic seawater and Zabori et al. (2012) for natural arctic seawaters.



715 **Figure 5: Average sea-spray size distributions normalized to the total sea-spray concentrations for the temperature range 7 - 9 °C (plain lines) and 2-3 °C (dash lines) reconstructed from their decomposition in a combination of single log-normal (nucleation mode (blue), Aitken mode (red), first accumulation mode (black), second accumulation mode (yellow) and the two coarse modes (light and dark green). Error bars are from standard deviation on the averaged measured size distributions.**



720 **Figure 6: Statistics on the slope of modal sea-spray concentrations normalized to modal concentration at 8-10°C.**