

Erratum: What is the cause(s) of ozone trends in three megacity clusters in eastern China during 2015–2020?

This note aims to correct an error in Figure 7 of Hu et al. (2023). In the version of this article initially published, Figure 7 was erroneously pasted. The interpretation of the results remains unchanged.

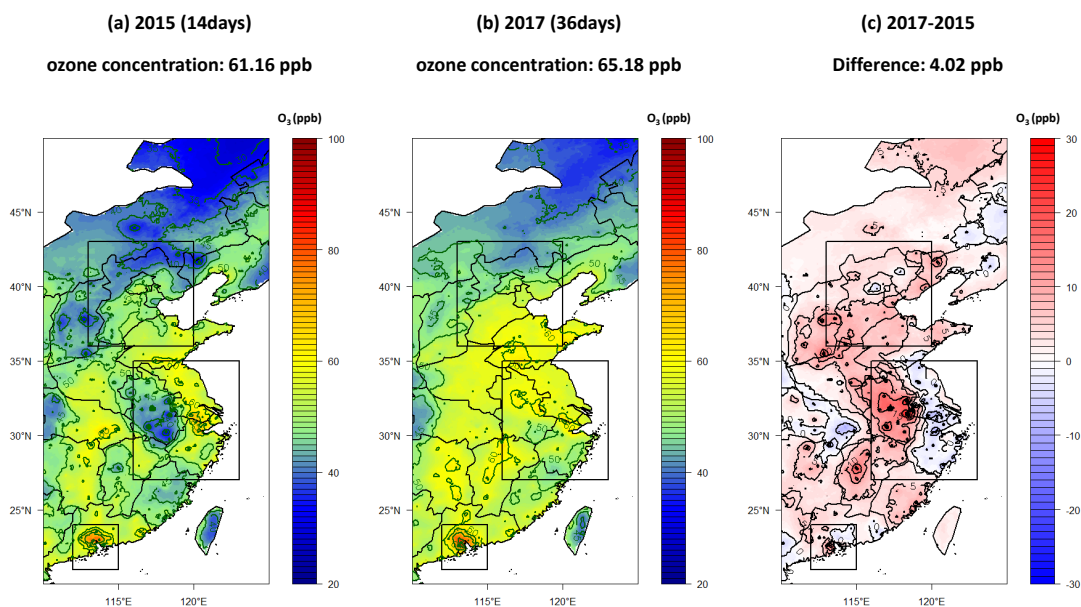


Figure 7. Spatial distribution of mean concentrations of maximum daily 8 hour average O₃ for ozone-exceeding days in PRD in (a) 2015, (b) 2017 and (c) their difference (2017-2015). The top, middle and bottom rectangle boxes denote BTH, YRD and PRD districts, respectively.