

Characterization of size-segregated particles turbulent flux and deposition velocity by eddy correlation method at an Arctic site

Antonio Donateo¹, Gianluca Pappacogli^{1,2}, Daniela Famulari³, Mauro Mazzola⁴, Federico Scoto^{1,2}, Stefano Decesari⁵

5 ¹ Institute of Atmospheric Sciences and Climate (ISAC), National Research Council (CNR), Lecce, 73100, Italy

² Joint Research Center - ENI-CNR Aldo Pontremoli, Lecce, 73100, Italy

³ Institute of BioEconomy (IBE), National Research Council (CNR), Bologna, 40129, Italy

⁴ Institute of Polar Sciences (ISP), National Research Council (CNR), Bologna, 40129, Italy

⁵ Institute of Atmospheric Sciences and Climate (ISAC), National Research Council (CNR), Bologna, 40129, Italy

10 *Correspondence to:* Antonio Donateo (a.donateo@isac.cnr.it)

Abstract. Estimating aerosol depositions on snow and ice surfaces and assessing the aerosol lifecycle in the Arctic region is challenged by the scarce available measurement data for particle surface fluxes. This work aims at assessing the deposition velocity of atmospheric particles at an Arctic site (Ny-Ålesund, Svalbard Islands) over snow, during the melting season and over dry tundra. The measurements were performed using the eddy-covariance method from 15 March to August 2021. The measurement system was based on a condensation particle counter (CPC) for ultrafine particle (UFP, $< 0.25 \mu\text{m}$) fluxes and an Optical Particle Counter (OPC) for evaluating particle size fluxes in the accumulation mode (ACC, $0.25 < dp < 0.7 \mu\text{m}$) and quasi-coarse mode (CRS, $0.8 < dp < 3 \mu\text{m}$). Turbulent fluxes in the ultrafine particle size range resulted prevalently downward especially in summertime. By contrast, particles fluxes in the accumulation and quasi-coarse mode were more frequently positive especially during the colder months, 20 pointing to surface sources of particles from e.g., sea spray, snow sublimation or local pollution. The overall median deposition velocity (V_d^+) values were 0.90, 0.62 and 4.42 mm s^{-1} , for UFP, ACC and CRS, respectively. Deposition velocities were smaller, on average, over the snowpack with median values of 0.73, 0.42 and 3.50 mm s^{-1} . The observed velocities differ of less than 50% respect to previous literature in analogous environments (i.e. ice/snow) in the particles in the size range 0.01-1 μm . At the same time, an agreement with the results of predictive models was 25 found for only a few parameterizations, especially with Slinn (1982), while large biases were found with other models especially in the range 0.3 – 10 μm of particle diameters. Our observations show better fit with the models predicting a minimum deposition velocity for small accumulation mode particle sizes (0.1 - 0.3 μm) rather than for larger ones ($\sim 1 \mu\text{m}$), which could result from an efficient interception of particles over snow surfaces which are rougher than the idealized ones. Finally, a polynomial fit was investigated (for ACC-CRS size range) to describe the deposition velocity 30 observations which properly represents their size-dependence and magnitude. Even if this numerical fit is driven

purely by the data, and not by the underlying chemical-physical processes, it could be very useful for future model parameterizations.

1 Introduction

35 The Arctic region is experiencing rapid climate change in response to the increase of greenhouse gases, aerosols, and other climate drivers and it is warming two to three times faster than the global average (Stjern et al., 2019), as indicated both by observations and climate models (Cowtan and Way, 2014; Hartmann et al., 2013). Although this phenomenon, known as Arctic amplification (Schmale et al., 2021), is mainly driven by changes in anthropogenic greenhouse gases and climate feedbacks, short-lived climate forcers such as methane, tropospheric ozone, and aerosols contribute to the observed environmental change (Arnold et al., 2016; Law et al., 2014; Quinn et al., 2008; Sand et al., 2015; AMAP 2015a-b). The most important factors controlling aerosol climate forcing in the Arctic are the long-range transport of aerosols from mid-latitudes, local sources from both terrestrial and marine emissions, the surface energy budget at high latitudes, the annual cycle of the cryosphere, and atmospheric depositions (Quinn et al., 2008; Willis et al., 2018).

45 Aerosol depositions on uncontaminated snow and ice can be a key factor affecting melting processes (Skiles et al., 2018), because particles can decrease snow/ice albedo directly (as particles can contain light-absorbing materials) or indirectly by affecting ice metamorphism. This phenomenon causes a reinforcing feedback that melts the snow and ice, exposes darker underground leading to further surface warming (di Biagio, 2020, Abbatt et al., 2019). The aerosols lifetime and hence the radiative forcing are strongly influenced by wet and dry deposition processes (e.g., Johnson et al., 2018). Dry deposition is a complex process that is influenced by the microphysical properties of aerosols and their sources, meteorological conditions, and surface morphological characteristics (Donateo and Contini, 2014; Urganian et al., 2022). The particles exchange between the atmosphere and the surface is controlled also by frictional drag and terrain-induced flow modification (Giorgi, 1986; Stull, 1988). Knowing the factors controlling dry deposition allows to estimate the residence time of particles in atmosphere, which governs their transport distance and potential climate effects (Nemitz et al., 2002; Pryor et al., 2008). The accurate quantification of particle deposition rates is a necessary prerequisite for modelling of aerosol cycles, particle size distribution, long-range transport and radiative forcing potential (Wang et al., 2011; Liu et al., 2011; Zhou et al., 2012; Browse et al., 2012; Menegoz et al., 2012; Lee et al., 2013; Eckhardt et al., 2015; Qi et al., 2017;). Despite its importance, however, the size-dependence of deposition rates is poorly understood, and therefore the aerosols atmospheric lifetime remains uncertain (Farmer et al., 2021; Emerson et al., 2020).

60 Many aerosols' properties have been investigated in the Arctic with regards to chemical composition (Quinn et al., 2009; Köllner et al., 2021), total number and mass concentrations (Croft et al., 2016), aerosol optical properties (Ferrero et al., 2019), ability to act as cloud condensation nuclei (Bulatovic et al., 2021), and number and size distribution (Lupi et al., 2016; Song et al., 2022). However, relatively few cases exist of aerosol deposition measurements on snow or iced surfaces, especially using the direct eddy-correlation (EC) method (Farmer et al., 2021). These limitations are mainly due to the logistical challenges of collecting continuous data sets in remote areas (Abbatt et al., 2019) and micrometeorology-based measurement techniques, which require fast and sensitive detectors

for EC (Burba et al., 2022). Dry deposition is typically described by deposition velocity $V_d = -F/C$, where F is a flux and C is concentration of the species of interest. V_d provides a particularly useful metric for comparing results across sites and for modelling particle removal because it is independent of ambient concentration (Farmer et al., 70 2021). Further, the current understanding of Arctic Amplification is limited by a lack of robust model representations of regional Arctic feedback processes with major challenges in representing aerosol sources and sinks processes (Schmale et al., 2021). In particular, to reduce model uncertainty, a deeper knowledge of the dry deposition velocity as a function of particles size is required and, more, an assessment of current deposition models against an observational dataset of aerosol fluxes over the cryosphere is clearly needed (Farmer et al., 2021). Global model skills 75 in simulating the Arctic aerosol behaviour have improved in the last years (Eckhardt et al., 2015; Arnold et al., 2016), however, significant discrepancies remain in our understanding of Arctic aerosol deposition and removal (Saylor et al., 2019; Emerson et al., 2020; IPCC, 2021). Global models generally make use of an aerosol deposition module with a particle size-dependent resistance approach developed for specific deposition surfaces (Slinn, 1982; Wesely and Hicks, 2000). The model developed by Zhang et al. (2001) expanded on the Slinn approach by incorporating simple 80 empirical parameterizations for dry deposition processes. Zhang et al. (2001) also expanded the application of the resistance approach also including ice/snow surfaces. Deposition rates described by Zhang et al. (2001) have been compared to some observations over vegetated surfaces, however the parameters used to tune modern deposition models over cryosphere have not been tested against observations (Khan and Perlinger, 2018).

The principal aim of this work is to measure the particle number fluxes and the related dry deposition velocities for size segregated particles (from ultrafine to quasi-coarse range) at an Arctic site located in the Svalbard Archipelago 85 (Norway). Aiming to characterize the effect of surface properties on dry deposition, we performed continuous observations from the coldest months (on snow surface) to the snow melting period and all through the early summer (snow-free surface). For these three conditions, a parametrization of the deposition velocity as a function of particle diameters will be provided. Finally, a functional parametrization of the deposition velocity on micrometeorological 90 friction velocity has also been obtained.

2 Methodology

2.1 Measurement Site

Aerosol fluxes were measured at the Gruvebadet laboratory located southwest of the village of Ny-Ålesund (78°55'N, 11°56'E) in the archipelago of Svalbard (Norway). The measurement campaign started on 15th March 2021 and lasted 95 until 15th August, for a total of 5 months. The site is characterized by small hills and depressions (height differences below 10 m) whereas the land-cover is characterized by dry tundra or bare soil (Magnani et al., 2022) during summer months, when the snowpack disappears. Ancillary meteorological measurements of air temperature and relative humidity were collected at 5m a.g.l. at the “Amundsen-Nobile Climate Change Tower” (CCT) located about 1 km northwest of the Gruvebadet laboratory (Mazzola et al., 2016).

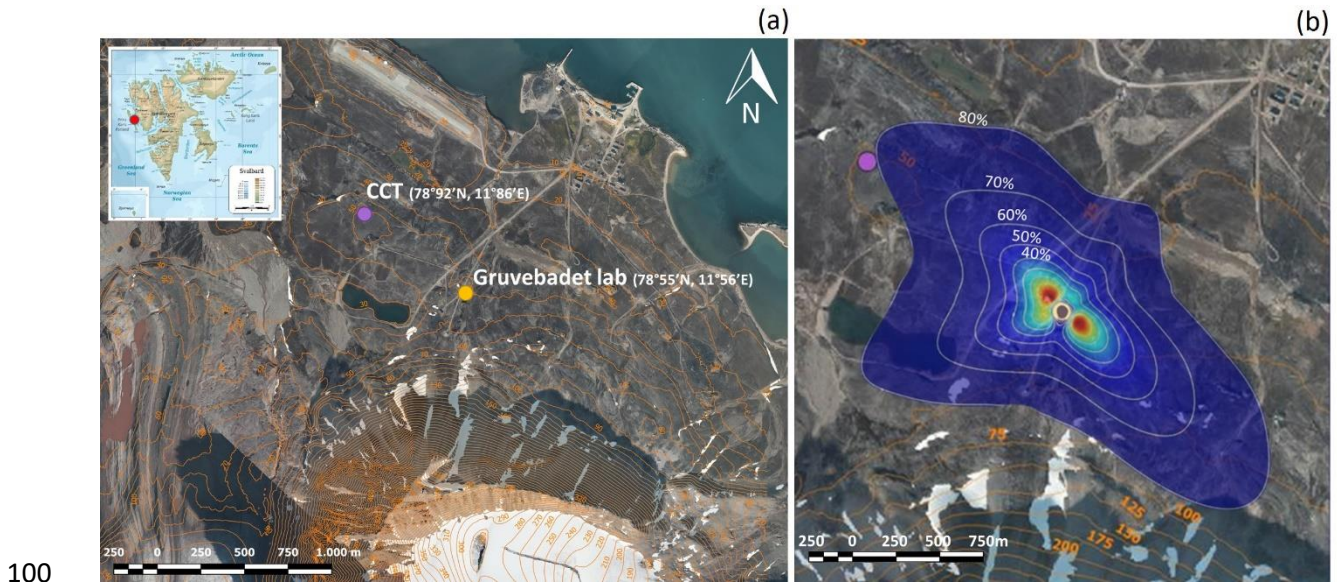


Figure 1. (a) Location map of the study site: Ny-Ålesund (Svalbard, Norway). Purple and gold points indicate the Amundsen-Nobile Climate Change Tower and the Gruvebadet laboratory. Height contours (above sea level) are also presented. © Norwegian Polar Institute, www.npolar.no (accessed on 5/09/2022). In (b) the flux footprint of the EC system is represented (see Section 2.4) with fractions of the total flux originating within the respective contours.

105 **2.2 Instruments**

The measurement system was located on the rooftop of the Gruvebadet laboratory at 9.6 m (a.g.l.) on a pneumatic mast (Fig.S1a,b). Specifically, the EC station included an ultrasonic anemometer (Gill R3, Instruments Ltd., Lymington, UK) with a 100 Hz acquisition frequency, a condensation particle counter (CPC, TSI 3756) measuring the total particle number concentration and an optical particle counter (OPC, 11-D Grimm) measuring in 16 size channels (from 0.25 to 3 μm). In order to measure the particle concentration and fluxes from both CPC and OPC, a maximum acquisition rate of 1 Hz was used. Air was sampled by a unique inlet system for CPC and OPC (Fig.S2). It was placed at a small distance from the sampling volume of the anemometer (about 25 cm). The air sample was driven into the laboratory by a silicon conductive tube 6 m long (internal diameter 26 mm), ending with a steel flow splitter (three-ways) 0.15 m long and 25 mm in diameter, in order to supply the air sample to both the CPC and the OPC. A nominal flow rate of 60 L min^{-1} was applied to the flow splitter for the sampling operation giving a turbulent flow (Reynolds number equal to 4073) and minimizing the temporal distortion of concentration fluctuations. The CPC was connected to the flow splitter by a 0.82 m long silicon conductive tube (6 mm internal diameter) operating at a flow rate of 1.5 L min^{-1} , whereas a portion of 1.2 L min^{-1} was aspirated by the OPC through a 0.80 m long (4 mm internal diameter) tube of the same type. The particle losses of the sampling system were calculated according to the formulation by Hinds (1999) for turbulent flow in the larger section tube (6 m) and according to Baron and Willeke (2001) for the laminar flow inside the two narrow tubes of the inlet system (beyond the flow splitter). The total particle losses amount to 9% (on average - mainly diffusional for smaller particles) for CPC and about 2.3% (on average - mainly gravitational for greater particles) for OPC (Fig.S3). Flux is affected by particle losses at the same way as particle concentration, consequently the deposition velocity should be not affected or marginally overestimated by

110

115

120

125 particle losses being calculated from the ratio of flux on concentration. According to TSI, the D50 of the TSI 3756
 CPC is 2 nm under normal laboratory conditions. Particle penetration curve through the whole sampling system,
 calculated as the product of the penetration factors in the two tubing sections for CPC (Mordas et al., 2008; Kupc et
 al., 2013), shows that D_{50} cut-off diameter (at 50% efficiency) is about 5 nm (Fig.S3). Therefore, the data analysis for
 concentration, fluxes and deposition velocity refers to particles with diameter starting from 5 nm, being particle losses
 130 for smaller diameters too large. Both particle instruments were running together through a specific software, developed
 by our research group, able to synchronize measured data with the anemometer output. Air temperature and relative
 humidity were measured at CCT (5 m a.g.l.) by a conventional thermo-hygrometer (Vaisala, mod. HMP45AC). Ten-
 minutes average physical size distributions above the canopy measured using a Scanning Mobility Particle Sampler
 (SMPS) (TSI, mod. 3034) sampling from the base of the roof (5.5 m a.g.l.) were corrected for particle size-specific
 135 tubing losses and then used to compute the particle number size distributions for each half hour in the size range from
 10 to 470 nm. More details of the size particle distribution measurements which were conducted at Gruebadet
 laboratory are given in Lupi et al. (2016). Precipitation data were measured during the campaign by a laser-optical
 disdrometer Parsivel² (OTT, Messtechnik, Germany) installed on the roof of Gruebadet. The Parsivel can measure
 the size and fall speed of hydrometeors for a comprehensive measurement of all precipitation types (rain, snow, and
 140 hail). The Parsivel disdrometer can measure droplet sizes from 0.25 mm to about 25 mm, with 32 classes of varying
 diameter intervals. The velocity categories range from 0 m s⁻¹ to 22.4 m s⁻¹, with 32 classes of varying intervals.
 Details of the instrument and the measurement technique used to determine the size and velocity of hydrometeors can
 be found in the literature (e.g., Löffler-Mang and Joss, 2000; Battaglia et al., 2010; Tapiador et al., 2010). An automatic
 snow meter station was located close to Gruebadet laboratory at about 100 m SE during the campaign period. It
 145 automatically provides continuous snow data, including near infrared images of the snow-cover area, snow depth,
 internal snow temperature and liquid water content profiles at different depths with a time resolution of 10 minutes.

2.3 Eddy covariance data analysis

The eddy covariance (EC) micrometeorological technique was applied in this work to quantify atmosphere-surface
 150 particles exchange in size dependent mode. The flux is computed as the mean cross-product of the fluctuations of a
 scalar concentration (s') and the vertical component of wind velocity (w'), as $F_s = \overline{w's'}$, where the over-bar indicates
 the average values (Kaimal and Finnigan, 1994; Stull, 1988). Turbulent fluxes were calculated on a 30-min basis using
 a homemade code, developed in Matlab[®] 2018b. In this work, the micrometeorological convention was used,
 according to which upward fluxes are positive, thus corresponding to emissions while downward fluxes (towards the
 155 surface) are negative. EC measurements allow us to calculate the main turbulence characteristics such as the virtual
 sensible heat flux ($H = c_p \rho \overline{w'T_s'}$) (hereafter sensible heat flux), where T_s represents the sonic temperature, $c_p=1005$
 J kg⁻¹K⁻¹ the specific heat at constant pressure, and ρ the air density; the turbulent kinetic energy $TKE = 1/2(\sigma_u^2 +$
 $\sigma_v^2 + \sigma_w^2)$, where $\sigma_{u,v,w}$ is the standard deviation of the wind components; the friction velocity $u_* =$
 $(\overline{u'w'^2} + \overline{v'w'^2})^{1/4}$, where $\overline{u'w'}$ and $\overline{v'w'}$ are the horizontal momentum fluxes. From CPC and OPC measurements
 160 together, a complete characterization of particle number concentration can be obtained, from ultrafine to coarse
 particle size ranges on a whole of 17 size bins. Particle fluxes from particle number concentration were calculated

according to $F_{Ni} = \overline{w'c'_i}$ for each particle size bin (index i). Size-resolved exchange velocities ($V_{ex\ i}$) of aerosol particles were defined according to:

$$V_{ex\ i} = -F_{Ni}/N_i \quad (1)$$

165 namely the turbulent flux of each stage normalized by the respective particle number concentration. The minus sign is to define positive values of deposition velocity (V_d^+) as a transport toward the surface (deposition) and negative values (V_d^-) as a transport into the atmosphere (emission), respectively. Positive and negative fluxes will be treated as two separate processes following uneven distribution of positive and negative fluxes around zero. Separation of upward and downward flux periods or systematic removal periods of positive flux based on other parameters is a
 170 common practice in deposition studies (e.g. Nilsson and Rannik, 2001; Vong et al., 2004; Pryor et al., 2013; Lavi et al., 2013; Emerson et al., 2020). Atmospheric stability is a crucial quantity in characterizing turbulent fluxes pollutant dispersion in the environment, and it is considered in parametrizations of turbulent characteristics and wind profiles (Nordbo et al., 2013). In order to classify the different atmospheric conditions over all measurement period, the atmospheric stability is defined as $\zeta = z/L$, where z is the measurement height and L represents the Obukhov length,
 175 computed as:

$$L = \frac{-u_*^2 \overline{T_s}}{\kappa g w' T_s'} \quad (2)$$

where T_s is the sonic temperature measured by the anemometer. Five stability classes are estimated according to Nordbo et al., (2013) as follows: very unstable ($\zeta < -1$) and unstable ($\zeta < -0.01$), neutral ($-0.01 \leq \zeta \leq 0.01$), stable ($\zeta > 0.01$) and very stable ($\zeta > 1$).

180 2.4 Data pre-processing

Half-hour periods were hard flagged for dropouts, discontinuities caused by power loss, or values outside the absolute limits, and discarded from the dataset. These events resulted in 25% and 24% of data being rejected for the CPC and OPC fluxes, respectively. The OPC measurements were discontinued on July 29th due to technical issues. The raw data were pre-processed by first applying a despiking procedure to eliminate spikes caused, for example, by electronics
 185 issues. Spikes in the 100 Hz (anemometer) and 1 Hz (CPC and OPC) time series were removed from the dataset and replaced by linear interpolation using a procedure described by Vickers and Mahrt (1997). A spike detection algorithm was applied to the raw high-frequency data defining spikes as absolute deviations from the mean of a threshold value, that is 6-fold σ (where σ is the variance of 10 min sub-interval). Using a closed path instrument (i.e., CPC or OPC) with a sampling tube, air sampled by the sonic anemometer takes many seconds to reach the scalar sensor, leading to
 190 a time lag between the vertical wind component fluctuations w' and concentration fluctuations c' . Without correcting for the time delay, vertical wind component fluctuations do not correlate properly with concentration fluctuations, leading to incorrect flux estimation. Such time lag was estimated by means of cross-correlation analysis by moving time series forward, defining the maximum covariance between the vertical component of wind speed and particle number concentration, considering a time window between 3 s and 5 s. This time window was estimated using the
 195 flow rate, tube length and response time (Deventer et al., 2015). A mean time lag of 4.14 s was calculated for CPC

and 3.77 s for OPC (for all size channels) measurements, respectively. The wind data were rotated along the streamline reference system (McMillen, 1988) via three rotations. The first two rotations set a reference system that, for each averaging period, aligns the streamline velocity component with the mean wind velocity vector. The third rotation was performed except when the absolute value of the angle of attack (McMillen, 1988) was greater than 15° (about 3% of total cases). In neutral or stable atmospheric conditions with low wind speed, weak and intermittent turbulence (Sun et al. 2012, Schiavon et al., 2019), the sub-meso motions do not follow surface-layer similarity, but they can still contribute to observed statistics (Vickers and Mahrt 2006; Liang et al., 2014; Mortarini et al., 2016). According to some authors (e.g., Vickers and Mahrt 2003), similarity relationships should be evaluated only after filtering out the contribution from these motions. In this work, the energy contributions related to non-turbulent, sub-meso motions, with time scales often longer than the investigated time window, were removed by a recursive digital filter both for heat and particles fluxes (Falocchi et al., 2018; Pappacogli et al., 2022). The recursive digital filter worked on a different time scale, dependent on atmospheric stability conditions. Ogive analysis (Fig. 2b) was carried out in order to estimate a properly time scale (Metzger and Holmes, 2008). A detailed description of the methodology used for spectral and ogive analysis is reported in Pappacogli et al. (2022). Time scale for unstable atmosphere is 522 s, whereas the value decreases to 350 s and 340 s for neutral and stable conditions, respectively. This filter does not introduce any phase shift or signal amplitude attenuation in the filtered time series. The filtering procedure used two data buffer (1800 s long), before and after the considered 30 min period of investigation. A fundamental assumption of the EC method is that fluctuations are statistically stationary during the chosen averaging time to ensure the calculation of an ensemble average. A stationarity tests as reported by Mahrt (1998) were carried out on sonic temperature and particles concentration fluctuations (Cava et al., 2014; Věčenaj and De Wekker, 2015). A lower detection limit for the fluxes in the sampling system was computed using the method proposed by Langford et al. (2015) and defined at $2.8 \text{ cm}^{-2} \text{ s}^{-1}$ for the CPC and $0.3 \text{ cm}^{-2} \text{ s}^{-1}$ for the OPC. To ensure the study of only particle dry deposition, all data corresponding to a precipitation intensity greater than 0.1 mm h^{-1} for a period greater than 5 min (on the averaging period of 30 min) were also rejected. Error associated to the random and limited statistical counting (relative error, %) was estimated through the approach reported in Deventer et al. (2015) for particle number concentration $\delta(N)$ and fluxes $\delta(w'N')$. The method reported in Fairall (1984) was used for the deposition velocity $\delta(V_d)$ for each size range (Table 1). Obviously, uncertainties due to discrete counting $\delta(N)$ are negligibly small for all stages, by the way increasing from ultrafine to coarse particles (greater than 100%). Hence, also the relative flux uncertainty $\delta(w'N')$ due to limited counting statistics is moderate (on average 9%), and the average exceeds 25% only for the 11th OPC channel. If the counting errors on deposition velocity $\delta(V_d)$ are considered, on first size channel (CPC) it was very low (< 5%). The same error for the first eleven channels of OPC (0.25 μm - 0.80 μm) was on average about 85%, while for the remaining channels (1 μm - 3 μm) it was on average greater than 100% (on average 109%). To lower the associated statistical counting error, especially on deposition velocity, the first nine channels

230 have been pooled together as have the rest of the seven channels (Whitehead et al., 2012; Conte et al., 2018; Donateo et al., 2019).

Table 1. Relative error associated to the random and limited statistical counting for the particle concentration, fluxes, and deposition velocity. Aerodynamic (D_{50}) cut points and the respective geometric mean diameter (D_{gm}) were also reported.

	D_{50} (μm)	D_{gm} (μm)	δ (N) %	δ (w'N') %	δ (V_d) %	
UFP	0.005	0.035	4.52E-06	0.22	3.9	
	0.25	0.26	0.001	4.78	61	
	0.28	0.29	0.002	5.86	68	
	0.3	0.32	0.004	7.38	74	
	0.35	0.37	0.009	7.61	80	
	ACC	0.4	0.42	0.025	5.02	84
		0.45	0.47	0.065	8.59	90
		0.5	0.54	0.14	6.39	93
		0.58	0.61	0.27	5.71	94
		0.65	0.67	0.45	6.30	95
	0.7	0.75	0.72	12.74	98	
CRS	0.8	0.89	1.24	26.67	99	
	1	1.14	2.37	6.07	102	
	1.3	1.44	5.38	9.06	106	
	1.6	1.79	11.47	12.62	109	
	2	2.24	84.49	6.54	112	
	2.5	2.74	> 100	11.98	117	
	3					

235 **Table 2.** Relative error associated to the random and limited statistical counting for the particle concentration, fluxes, and deposition velocity. Aerodynamic (D_{50}) cut points and the respective geometric mean diameter (D_{gm}) were also reported.

	D_{50} (μm)	D_{gm} (μm)	δ (N) %	δ (w'N') %	δ (V_d) %
UFP	0.005	0.035	4.52E-06	0.22	3.9
ACC	0.25	0.42	1.84E-4	0.63	29
CRS	0.8	1.45	0.0167	0.63	41
	3				

240 The previous considerations confirm that it is possible to aggregate the particles into the three size ranges mentioned below: ultrafine (UFP, $5 \text{ nm} < d_p < 0.25 \mu\text{m}$), accumulation (ACC, $0.25 < d_p < 0.7 \mu\text{m}$), and quasi-coarse (CRS, $0.8 < d_p < 3 \mu\text{m}$) mode, the last indicating a particle size range between large accumulation mode and small coarse particles. It is worth noting that UFP particle concentration has been obtained as difference between the total number concentration (CPC measurement) and the OPC total concentration in the size range 0.25-1 μm . The relative counting errors on V_d for these two groups are approximately 29% for ACC and 41% for CRS. This size aggregation is also supported by the correlation analysis of the concentration time series associated with the different size classes. The

resulting correlation shows that all classes in the first and second group have a good temporal correlation (Pearson coefficient > 0.6) with each other. UFP fraction was obtained from the difference between the sum of the first 12 OPC channels (up to $1 \mu\text{m}$) and the total number concentration of the CPC. This subdivision will be useful for studying the characteristics and trends of the particles and their possible correlation with meteorological and micrometeorological parameters.

2.5 Spectral analysis and corrections

The cospectra were computed on the vertical wind speed component and the analysed scalars (sonic temperature, ultrafine, accumulation, and coarse particle concentration) by means of the Fast Fourier Transform (FFT). Figure 2a shows normalized median cospectra (about 1500) of kinematic heat flux, UFP and ACC-CRS particle number flux as a function of a normalized frequency $f_n = fz/u$, where u is the mean wind velocity, z the measurement height and f the sampling frequency. The cospectra were all calculated over one-hour periods. ACC-CRS cospectra were calculated based on the sum of all OPC size channels. The cospectra $Co_{w,x}$, between vertical wind velocity and the scalar x are normalized with the correlation $\overline{w'x'}$. Cospectra calculated for all variables display similar patterns, showing a $-7/3$ decay for frequencies above 10^{-1} , within the universal equilibrium range.

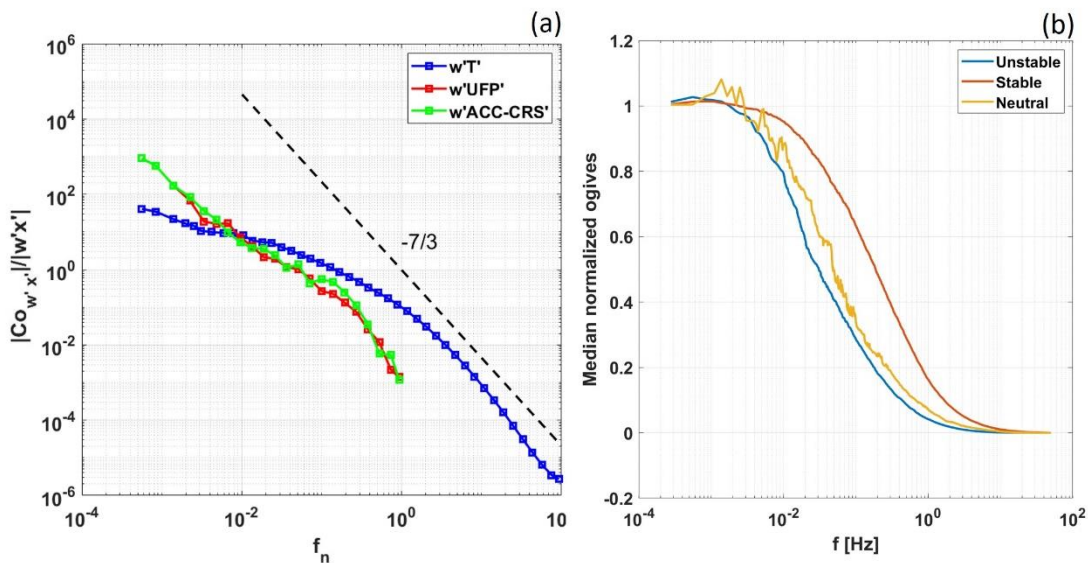


Figure 2. (a) Normalized median cospectra of kinematic heat flux (blue), UFP (red) and ACC-CRS particle flux (green) as a function of f_n . The binned median cospectra (about 1500) were computed from continuous period of 1h. Black dashed line represents the slope theoretically predicted in the inertial subrange (Kolmogorov, 1941); (b) median normalized ogives for kinematic heat flux as a function of natural frequency (Hz) for the three classes of atmospheric stability.

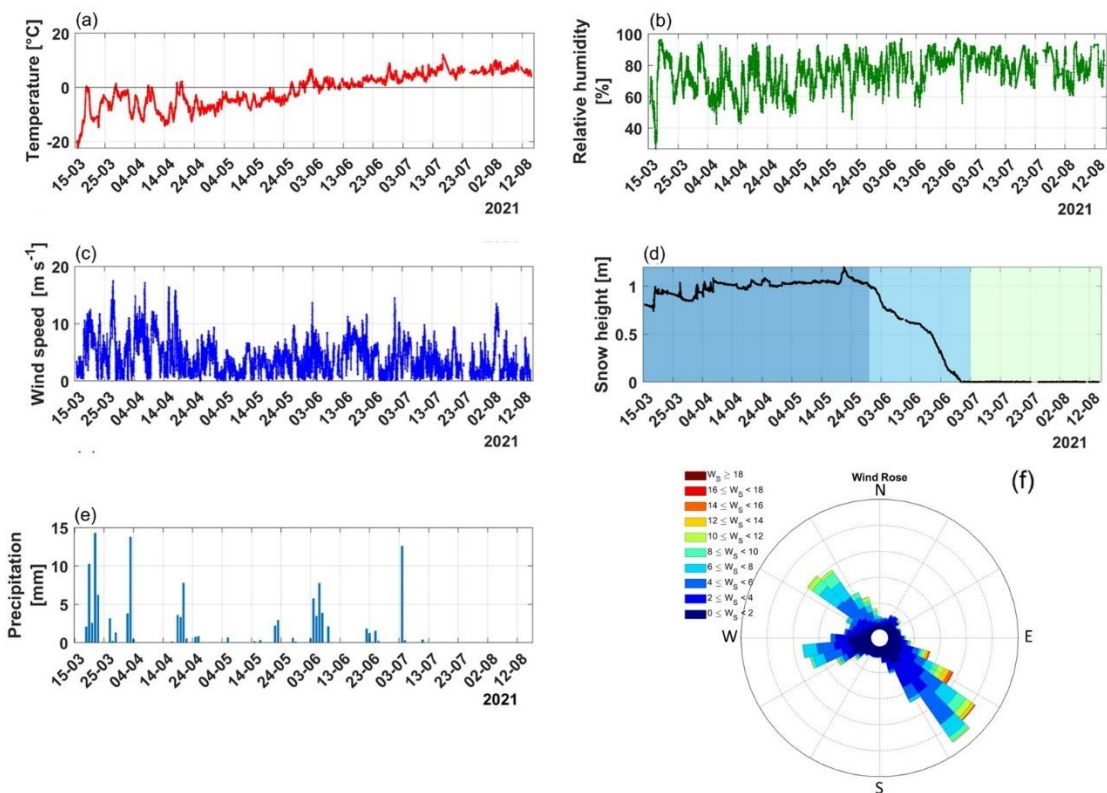
Specifically, kinematic heat flux cospectrum shows a slight slope at the high frequencies whereas tend to level-off in the low-frequency range. Results indicate that the contribution to the correlation between w and particle concentration follow kinematic heat flux trend up to normalized frequencies in the interval 0.5-0.8. Therefore, the system used was generally able to measure concentration fluctuations at frequencies that made a substantial contribution to the vertical turbulent fluxes of particles. Figure 2b shows the normalized median ogives of kinematic heat flux. Comparison of

the ogives for the different atmospheric stability classes (defined below in Section 3.1) shows that the higher frequencies contribution is larger under stable conditions. Indeed, no relevant contribution to kinematic heat flux occurs above 1 Hz (1 s time scale) under unstable conditions, whereas a small turbulence contribution is still present up to about 2 Hz (0.5 s) and 5 Hz (0.2 s) under neutral and stable conditions respectively. Ogives obtained for neutral condition display some irregularities due to the low number of available cases. In Fig.S4 the ogives for the CPC and OPC data, for the whole dataset (with no distinction for stability conditions) were shown. Spectral corrections were applied to the UFP, ACC and CRS particle number fluxes using the theoretical approach described in Aubinet et al. (2012). The first-order time constant of the CPC and OPC measurement systems was determined by estimating the time response (at first order) to a concentration step in a laboratory experiment. The results were $\tau_{\text{CPC}} = 0.77 \pm 0.01$ s and $\tau_{\text{OPC}} = 0.40 \pm 0.03$ s (identical for each size channel). High frequency under sampling of the EC system, due to the relative low frequency response of the CPC and OPC, leads to an error (underestimation) on particles fluxes measurement. It means that the full atmospheric cospectra between the vertical wind velocity and particle concentration can be under sampled at high frequency (Fig. 2a). High frequency losses were corrected following the parametric/in situ approach developed by Horst (1997) and they have been quantified on average in 30% for CPC and 21% for OPC. Spectral correction for the attenuation of the fluctuations during the transport of the aerosol sample in the inlet tube was obtained according to the method reported by Massman and Ibrom (2008). This spectral correction for our measurement system resulted in a very low associated error (lower than 0.01%).

290 **3 Results and Discussion**

3.1 Site Meteorology and Micrometeorology

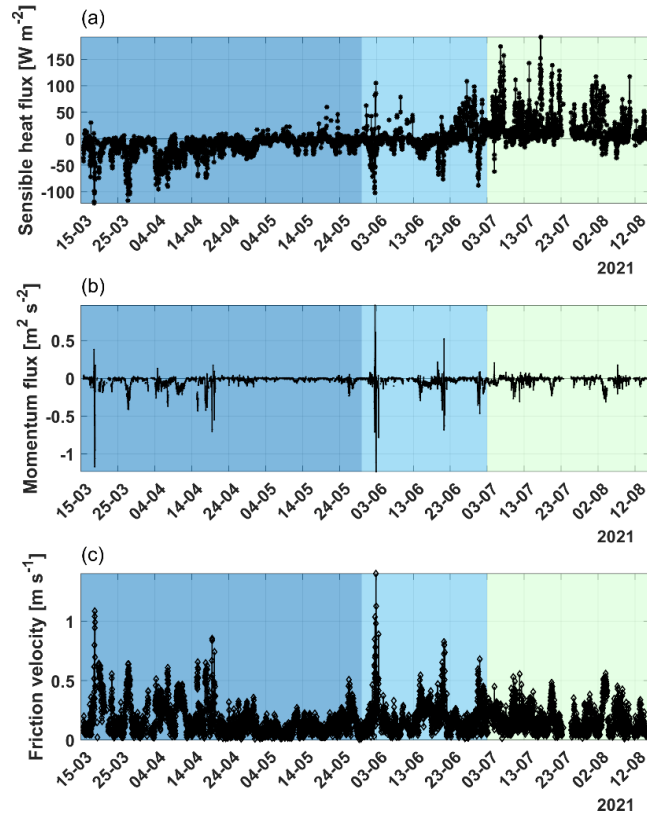
During March and April, the air temperature was on average -7 °C, while during summertime (June-August) the temperature was above 5 °C (Fig. 3a).



295 **Figure 3.** Time series of the principal meteorological variables measured during the campaign in Ny-Ålesund. (a) air temperature (°C), (b) relative humidity (%), (c) wind velocity (m/s), (d) snow depth (m), (e) daily cumulative precipitation (mm), and (f) wind direction (degree N). In (d) panel three colour bands were used to separate the period characterized by snow cover (dark cyan) from melting snow period (cyan) and, finally, snow-free phase (light cyan).

300 Positive temperature values occur approximately at the end of May (29th May), leading to a gradual melting of the snowpack, which reached a maximum height of 1.20 m on 21st May (Fig. 3d). Specifically, the snowpack had an average height of 1 m until 30th May, hereafter named snow cover period (SC). Snow depth decreased gradually for about 8 days due to its compacting processes. Snowpack was on average 0.54 m from 30th May for about a month up to 3rd of July. In this period (hereafter snow melting period, SM), snowpack went through a complete melting until

305 the summer period with the presence of widespread ponds and snow patches in the footprint of the EC system. This period was characterised by positive daily average temperatures. The last period of the measurement campaign, from 3rd of July to 15th August will be referred to as snow-free period (SF), with the surface covered by dry tundra. Relative humidity in general increases from a minimum of 37% during a severe storm in the month of March, up to 82% in July (Fig. 3b).



310

Figure 4. Time series of the principal micrometeorological variables measured during the campaign carried in Ny-Ålesund. (a) sensible heat flux, (b) momentum turbulent flux, and (c) friction velocity u^* . In each panel three colour bands were used to separate the period characterized by snow cover (dark cyan) from melting snow period (cyan) and, finally, snow-free phase (light cyan).

315

320

325

A direct correlation is observed between snow melting and increased relative humidity, even if the latter variable is also strongly influenced by the presence of the Kongsfjorden close to the site. Two prevailing wind directions can be distinguished: one characterised by winds coming from the NW sector for 27 % of the cases and one with winds coming from the SE for 42 % of the cases (Fig. 3f). Indeed, the prevailing wind directions are essentially along the direction of the Kongsfjorden. On the other hand, at mid-end June onwards, wind field shows two components from W-SW and NE (with low winds). The highest wind speeds are measured in the NW direction with an average of 4.9 m s^{-1} , while in the SE direction the average wind speed is about 4.0 m s^{-1} (Fig. 3c). In the measurement period 22 rain days were observed starting from 1st June, with a cumulative precipitation above 2 mm for 9 days. In this period the maximum amount of cumulative rain on daily basis was of 23 mm on 4th June. In the first part of the campaign, until 30th May, 16 days of precipitation were observed, with a peak of snow height (1.20 m) on 20th May.

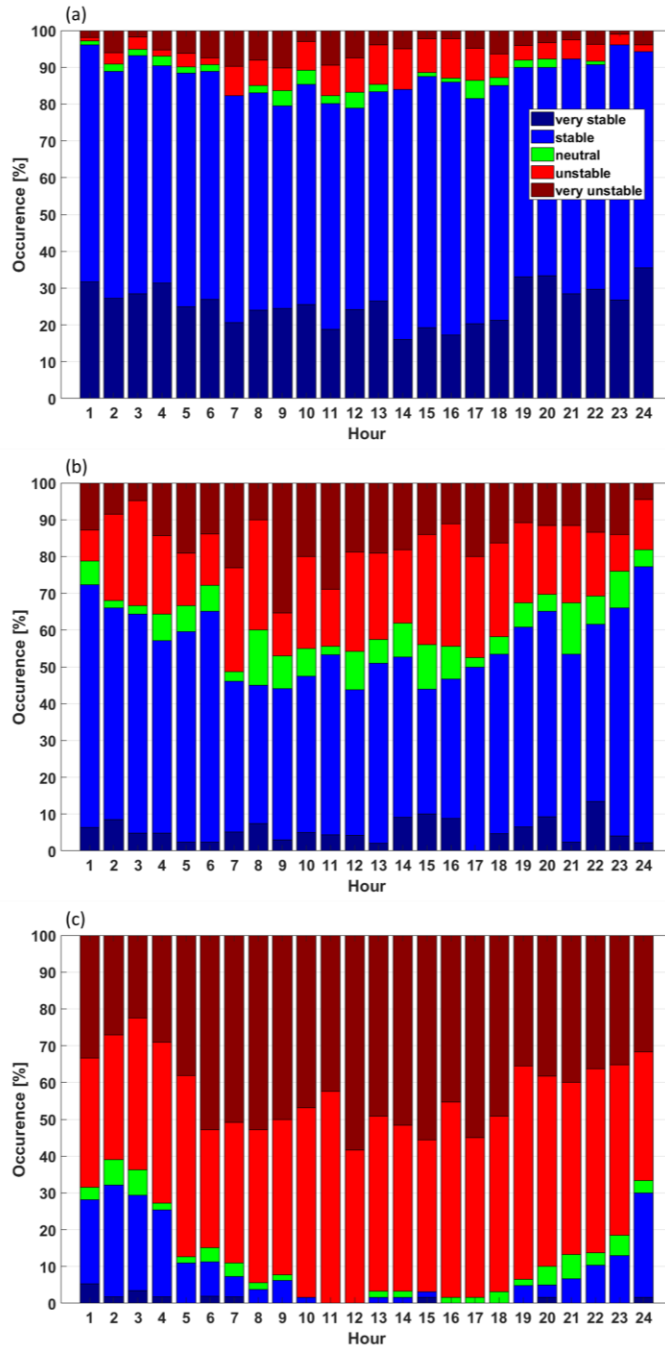


Figure 5. Percentage of atmospheric stability over the daily cycle for (a) snow cover, (b) melting and (c) snow-free period. Stability classes based on threshold values of the stability parameter ζ were defined as: very unstable (dark red, $\zeta < -1$) and unstable (red, $\zeta < -0.01$), neutral (green, $-0.01 \leq \zeta \leq 0.01$), stable (blue, $\zeta > 0.01$) and very stable (dark blue, $\zeta > 1$).

330

The results from this work are completely in line with those reported in (Mazzola et al., 2016) for the data collected at CCT from 2010 to 2016. In the measurement period, sensible heat flux was on average negative (-0.8 W m^{-2}) (Fig. 4a). The results show the presence of a long period with negative energy fluxes (with an average value of -10.7 W m^{-2}) and a minimum around -121 W m^{-2} while snow cover is present and during the snow melting phase, when the atmosphere is warmer than the surface. As the snow melts, positive sensible heat fluxes began to appear, with values

335

of up to 191 W m^{-2} (on half hourly base) in the month of July. This behaviour has also been observed in other measurement campaigns in the Antarctica (Van den Broeke, 2005; Van As et al., 2005) and in the Arctic (Kral et al., 2014) where the snowpack acts as a sink of heat during the winter and spring months. The kinematic momentum flux was typically downward (Fig. 4b) with an average of $-0.034 \text{ m}^2 \text{ s}^{-2}$. However, for about 16% of the data, the direction of the momentum flux showed positive values. A particular event can be observed (Fig.S5) on 2nd June from 14:00 to 18:30, with large positive values of momentum flux (on average $0.40 \text{ m}^2 \text{ s}^{-2}$). This event was characterized by air masses coming from the glacier Brøggerbreen, located W ($250^\circ - 270^\circ$) of our measurement site, with relatively high velocity (on average 8 m s^{-1}). More frequent positive momentum flux events with lower intensity occurred, coinciding with air masses coming from E-SE (from the Kongsfjorden), most likely due to the effect of a very shallow sea breeze swell (Grachev and Fairall, 2001). Figure 4c reports the time series of friction velocity, with a mean value of 0.17 m s^{-1} over the whole measurement period. No specific differences can be noted in the friction velocity behaviour due to the changing in snowpack characteristics. As it can be noted in Fig. 5, stable conditions prevailed during the snow cover period (Fig.5a), with 62% of cases (and 26% very stable), while unstable stratification was more frequent in summer months (Fig.5c) (45% and 43% for unstable and very unstable, respectively). Neutral stratification occurred with a maximum frequency of 7% during the melting period, with no diurnal variability. It is worth noting the difference from a typical daily pattern at mid-latitudes, characterised by a much greater contrast between day and night PBL temperature profile structures, with more unstable conditions during the day and more frequent stable conditions at night.

3.2 Footprint analysis

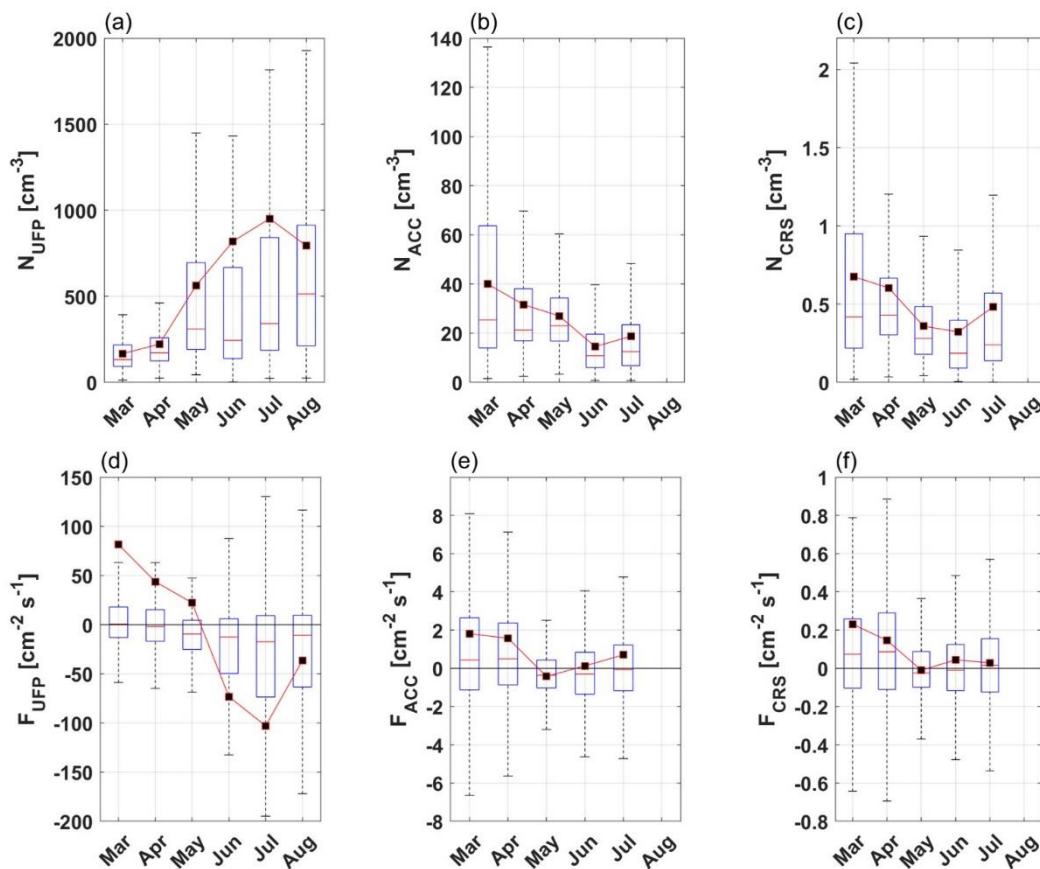
The ratio between wind velocity and friction velocity in atmospheric neutral conditions was used to evaluate the average roughness length z_0 , for the measurement site using a parameterisation based on similarity theory (Toda and Sugita, 2003). The results gave $z_0 = 0.005 \text{ m}$ if the whole measurement period is considered. Separating the period with snow coverage from that without snow, the calculated values were $z_0 = 0.002 \text{ m}$ and $z_0 = 0.004 \text{ m}$, respectively. No significant statistical differences were found exploring the roughness length for different wind sectors. Besides, evaluation by the method reported in Toda and Sugita (2003) gave a null displacement height, considering again all wind directions together. Source area for scalar fluxes have been evaluated using a Lagrangian footprint model by Kljun et al. (2015). Results of flux footprint analysis of the EC system are shown in Fig.1b with fractions of the total flux originating within the respective contours (until 80%). The particle fluxes measured at the rooftop site represented a surface area of about 0.48 km^2 (with respect to the 80% contour line) with a maximum distance of 400 m both in north-west and south-east direction (otherwise 300 m in NE and SW sector). The flux peak contribution was in the wind direction sectors at about 40 m ($\pm 20 \text{ m}$) (Fig. 1). However, the source areas were quite homogeneous for all wind direction sectors around the measurement site, with 100% of snow coverage for the first period of the campaign;

from then onwards, the land cover was largely dry tundra and bedrocks, with about 1% water surfaces (an arctic lake) in the flux footprint (Fig. 1).

3.3 Particle Concentration and Turbulent Fluxes

Average particle number concentration, over the whole measurement period, for UFP (hereafter N_{UFP}) was 595 cm^{-3} (median 238 cm^{-3}), for ACC mode (hereafter N_{ACC}) was 25 cm^{-3} (median 19 cm^{-3}), and for CRS mode (hereafter N_{CRS}) was 0.47 cm^{-3} (median 0.30 cm^{-3}) (Table 3). N_{UFP} increases from March (on average 166 cm^{-3}) to August 2021, reaching its maximum in July (951 cm^{-3}) (Fig. 6a). On the other hand, N_{ACC} and N_{CRS} show a different, anti-correlated behaviour respect to the N_{UFP} (Figs. 6b and 6c). N_{ACC} and N_{CRS} reach the maximum concentration in March with respectively 40 cm^{-3} and 0.67 cm^{-3} , and then they decrease down to a minimum concentration in June (18 cm^{-3} for N_{ACC} and 0.47 cm^{-3} for N_{CRS}). The same behaviour was observed by Croft et al. (2016) at the Mt. Zeppelin observatory. The complete annual cycle is remarkably similar to that observed at Mt. Zeppelin over an earlier 10-year period from 2000 to 2010 (Tunved et al., 2013). The particles size distribution was continuously monitored, combining the SMPS and OPC measurements, from the nanoparticle (4 nm) up to the micro particles ($2.5 \mu\text{m}$) size range. The total size distribution plot (Fig. 7 - black markers) referred to the whole measurement period. This plot shows a two-mode size distribution: with high concentration of particles in the $0.02 - 0.04 \mu\text{m}$ range with a peak at $0.03 \mu\text{m}$ (ultrafine mode) and $0.1 - 0.2 \mu\text{m}$ range with a peak at $0.15 \mu\text{m}$ (accumulation mode). Considering the snow cover period, particle size

385 distribution (red markers) also presented two modes: one peaked at $0.03 \mu\text{m}$ and the other at $0.15 \mu\text{m}$; with respect to the whole period analysis the dominant mode was the accumulation one.



390 **Figure 6.** Upper panels, monthly box plots for (a) N_{UFP} , (b) N_{ACC} and (c) N_{CRS} . Bottom panels, monthly box plots for (d) F_{UFP} , (e) F_{ACC} and (f) F_{CRS} . Continuous red lines represent median values. Boxes represent the 25th and 75th percentile. Whiskers correspond to $\pm 2.7\sigma$ and 99.3% data coverage. In black (square) are the average values for the measured variables.

395 Proceeding towards the melting period and all through the snow-free period, the two-modes size distribution tends to peak in the ultrafine range ($0.02\text{-}0.03 \mu\text{m}$), with an increasing concentration. In particular, during the snow melting, particle concentration in the accumulation mode decreased, while UFP mode significantly increases in this period. Previous studies at the mountain station of Zeppelin observatory (south of Ny-Ålesund) showed that new particle formation events seem to be a rather common phenomenon during the summer season, and this is the result of both the photochemical production of nucleating/condensing species and low condensation sink (Tunved et al., 2013; Ferrero et al., 2016). The particle size distribution pattern from the snow cover to the snow-free period can be explained as follow: during March–May, there is sunlight but also a large deposition aerosol surface due to the presence of long-range transported aerosol (Giardi et al., 2016). On the other hand, during June-August, atmospheric conditions are quite different with high solar insolation and more daylight hours, bringing to new particles production and their growth into a large size (accumulation mode). Further, seasonal effect of nucleation precursors is also related to

400

405 sources: marine biota (the 'phytoplankton blooms') grow in late spring and early summer emitting methane sulphonic acid (MSA), which gives rise to nucleation (Beck et al., 2021).

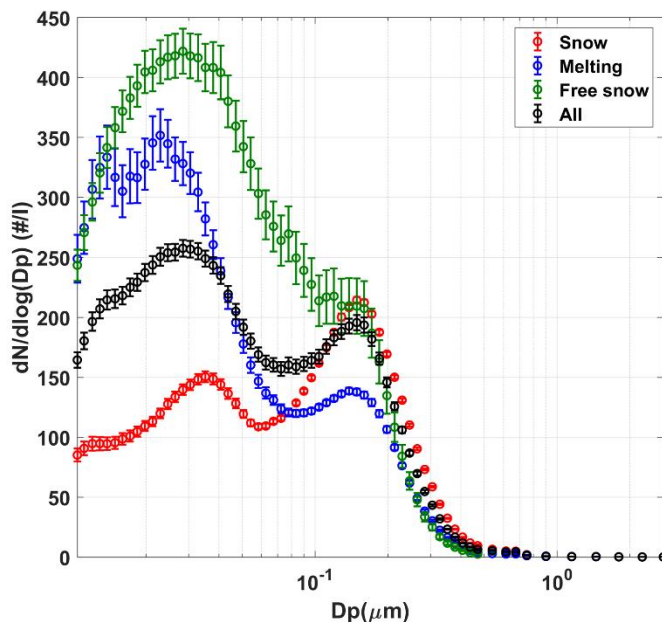


Figure 7. Particle size distribution for the measurement period

410 The turbulent fluxes of ultrafine (F_{UFP}), accumulation (F_{ACC}) and quasi-coarse (F_{CRS}) particles statistics are listed in Table 3 considering the snow cover, melting and -free periods. The average F_{UFP} was $-16.99 \text{ cm}^2 \text{ s}^{-1}$ (median $-8.20 \text{ cm}^2 \text{ s}^{-1}$) over the entire measurement period, specifically, the measurement site behaved, on average, as a deposition area (negative fluxes) for particles in that size range both with and without snowpack (Table 3). The average value of F_{ACC} for the whole period was $0.64 \text{ cm}^2 \text{ s}^{-1}$ (median $-0.15 \text{ cm}^2 \text{ s}^{-1}$), but from snow melting onwards the fluxes became negative in median values, showing a sink behaviour for the measurement site for this size range particles. Finally, 415 the mean of F_{CRS} was $0.07 \text{ cm}^2 \text{ s}^{-1}$ (median $0.03 \text{ cm}^2 \text{ s}^{-1}$) on the whole period. Overall, in median values, quasi-coarse mode fluxes are positive for all periods, even if, on average, these fluxes were very small. However, this net deposition is not a steady feature. In fact, total and size-resolved turbulent fluxes are highly variable both in magnitude and direction (emission and deposition). Turbulent fluxes in ultrafine mode are negative for 63% of the quality-assured cases (Fig. 6d), establishing a deposition behaviour in this size range for the measurement site. Similarly, F_{ACC} are 420 negative in 52% of validated cases, while F_{CRS} is negative for 46% of available good flux cases. The values of F_{UFP} are on median positive ($0.59 \text{ cm}^2 \text{ s}^{-1}$) at the beginning of the measurement period, when ultrafine particle concentration is small, then turn significantly negative (median $-17.3 \text{ cm}^2 \text{ s}^{-1}$) in the summer when concentrations sharply increase (Fig. 6a). If the high summertime concentrations of UFP are due to new-particle formation processes, these do not occur near surface and propagate upward, but rather take place in the full mixing layer, topping at $\leq 500 \text{ m}$ above the 425 ground (Ferrero et al., 2016) with UFP mixing down and deposited to the surface. F_{ACC} and F_{CRS} have generally a very similar monthly behaviour (Figs. 6e and 6f) with a maximum value in the month of April (median $0.50 \text{ cm}^2 \text{ s}^{-1}$ and

0.09 cm² s⁻¹, respectively) and a minimum in the month of May (median -0.35 cm² s⁻¹ and -0.02 cm² s⁻¹, respectively). Although remote Arctic environments are normally considered receptors for pollution transported from mid-latitudes and the seasonal cycle of atmospheric aerosol concentrations witnesses it, at surface level small deposition fluxes can overlap with – and being exceeded by – small emission fluxes of particles. In Ny-Ålesund, emission fluxes of natural aerosols can originate from soil erosion (in the summer) as well as snow resuspension and sublimation: besides, a contribution from the village itself and from shipping (Eckhardt et al, 2013) has been occasionally identified, but not quantified from our measurements. Finally, it is unclear whether a residual sea spray emission can lead to detectable emission fluxes of sea salt particles at ~1 km inland from the coast. Our measurements – relying on fast particle counting – do not provide direct insights to the chemical nature, properties and actual origin of the aerosols associated with either emissions or depositions.

Table 3. Statistical quantities of UFP, ACC and CRS for particle number concentration and their turbulent fluxes for the different phases considered in this work: snow cover, snow melting and snow-free period.

	N _{UFP} (cm ⁻³)			N _{ACC} (cm ⁻³)			N _{CRS} (cm ⁻³)		
	SC	SM	SF	SC	SM	SF	SC	SM	SF
10th prc	80.25	56.59	106.87	10.89	3.98	4.03	0.13	0.05	0.08
mean	347.09	753.76	934.39	31.21	16.20	19.32	0.52	0.33	0.50
std.dev	509.08	1579.9	1421.7	24.71	13.99	18.10	0.54	0.38	0.68
std.err	8.51	40.03	32.80	0.41	0.35	0.54	0.01	0.01	0.02
median	197.20	247.42	410.51	22.13	11.92	12.39	0.36	0.20	0.24
90th prc	750.45	1554.1	2572.4	66.82	34.59	44.66	1.06	0.75	1.12

	F _{UFP} (cm ⁻² s ⁻¹)			F _{ACC} (cm ⁻² s ⁻¹)			F _{CRS} (cm ⁻² s ⁻¹)		
	SC	SM	SF	SC	SM	SF	SC	SM	SF
10th prc	-49.21	-174.0	-319.0	-2.44	-3.10	-2.53	-0.25	-0.30	-0.28
mean	43.80	-65.76	-85.86	0.86	0.04	0.81	0.10	0.03	0.04
std.dev	1230.2	442.0	597.3	6.94	4.86	5.61	0.96	0.53	0.39
std.err	23.53	12.62	15.20	0.13	0.14	0.18	0.02	0.02	0.01
median	-4.58	-11.38	-15.01	0.11	-0.32	-0.08	0.04	-0.01	0.02
90th prc	52.46	30.42	60.61	4.24	2.79	3.83	0.45	0.36	0.40

3.4 Particle deposition velocity V_d

Exchange velocity (V_{ex}) calculated from normalization of the turbulent fluxes (Eq. 1) on the number concentration, in general, as seen in the previous Section 3.3, presents both positive and negative values, representing emission (V_d⁻) and deposition events (V_d⁺). V_{ex} calculated for the measurement campaign resulted on median value 0.34 mm s⁻¹ (IQR₁₀₋₉₀ -2.00 to 2.81 mm s⁻¹) for ultrafine size range, 0.10 mm s⁻¹ (IQR₁₀₋₉₀ -2.02 to 1.53 mm s⁻¹) for the accumulation mode and -1.36 mm s⁻¹ (IQR₁₀₋₉₀ -11.25 to 8.48 mm s⁻¹) for coarse range (Table 4). IQR₁₀₋₉₀ represents the interquartile range from 10th and 90th percentile. Thus, the measurement site acts, on average, as a deposition area for the ultrafine and accumulation particles, while it was a source area for greater size range (quasi-coarse mode). In order to explore

450 the behaviour of deposition events on the measurement site, only positive values of deposition velocity will be taken
in consideration, studying V_d^+ . Median V_d^+ for UFP range was 0.90 mm s^{-1} (IQR₁₀₋₉₀ 0.18 to 3.89 mm s^{-1}), in the ACC
mode median V_d^+ was 0.62 mm s^{-1} (IQR₁₀₋₉₀ 0.16 to 2.38 mm/s) and in the CRS mode V_d^+ was 4.42 mm s^{-1} (IQR₁₀₋₉₀
1.57 to 13.09 mm s^{-1}). Also, in this case V_{ex} and V_d^+ analyses were separated in three periods (with/without snow and
melting). In particular, V_d^+ increases from the snow surface to the snow-free conditions in all size range. It increased
455 from a median value of 0.73 mm s^{-1} (SC) to 1.14 mm s^{-1} (SF) for UFP particles. In the same way, V_d^+ increased from
SC to SF phase with a maximum during SM period for ACC and CRS size range (Table 5).

Table 4. Statistical parameters for exchange (V_{ex}), deposition (V_d^+), emission velocity (V_d^-) and deposition velocity
normalized for the friction velocity (V_d^+/u_*) calculated on the whole measurement period, separating the UFP, ACC
460 and CRS particle size ranges.

V_{ex} (mm s ⁻¹)	UFP	ACC	CRS
D_{gm} (μm)	0.035	0.42	1.45
10th prc.	-2.00	-2.02	-11.25
mean	-0.02	-0.24	-1.33
std.dev	12.53	3.36	12.62
std.err	0.17	0.05	0.19
median	0.34	0.10	-1.36
90th prc.	2.82	1.53	8.48
V_d^+ (mm s ⁻¹)	UFP	ACC	CRS
D_{gm} (μm)	0.035	0.42	1.45
10th prc.	0.18	0.16	1.57
mean	1.99	1.08	6.28
std.dev	5.76	1.55	6.62
std.err	0.10	0.03	0.15
median	0.90	0.62	4.42
90th prc.	3.89	2.38	13.09
V_d^- (mm s ⁻¹)	UFP	ACC	CRS
D_{gm} (μm)	0.035	0.42	1.45
10th prc.	-5.73	-3.70	-15.80
mean	-3.44	-1.68	-8.07
std.dev	18.68	4.12	18.84
std.err	0.41	0.08	0.27
median	-0.87	-0.77	-5.21
90th prc.	-0.13	-0.17	-1.71
V_d^+/u_* (10 ⁻³)	UFP	ACC	CRS
D_{gm} (μm)	0.035	0.42	1.45
10th prc.	1.7	1.5	11.2
mean	14.5	8.8	54.7
std.dev	37.1	32.0	71.4
std.err	0.6	0.7	1.7
median	6.9	5.1	35.9
90th prc.	28.7	18.2	108.9

465 The observed deposition or exchange velocity is in good agreement with previous measurements on snow and ice in the polar regions: however, a comparison with measured deposition velocities in the literature is a challenge because work on ice/snow surfaces is very seldom reported, and often different instruments and methods (such as physical sampling, gradient method, eddy covariance) are used. Measurements reported by Duann et al. (1988) on snow gave an average $V_d^+ = 0.34 \pm 0.14$ mm s⁻¹ for particles in the size range between 0.15 and 0.5 μm (Fig. 8a). In the high

Arctic, Nilsson and Rannik (2001) report a mean deposition velocity $V_d^+ = 1.4 \text{ mm s}^{-1}$ over ice in the nucleation mode and $V_d^+ = 0.51 \text{ mm s}^{-1}$ in the Aitken mode (with a size distribution peaking at about 60-70 nm).

470

Table 5. Statistical parameters for the exchange (V_{ex}), deposition (V_d^+) and emission velocity (V_d^-) and deposition velocity normalized for the friction velocity (V_d^+/u_*) calculated on snow (SC), snow melting (SM) and snow-free (SF) periods, separating the UFP, ACC and CRS particles size range.

$V_{ex} \text{ (mm s}^{-1}\text{)}$	UFP			ACC			CRS		
	SC	SM	SF	SC	SM	SF	SC	SM	SF
10th prc	-2.40	-1.85	-1.54	-1.42	-2.69	-2.92	-9.30	-13.71	-13.12
mean	-0.98	0.95	0.95	-0.33	-0.04	-0.25	-1.85	-0.30	-1.35
std.dev	16.8	6.13	4.24	3.47	3.63	2.60	12.56	13.60	11.38
std.err	0.33	0.18	0.11	0.07	0.10	0.08	0.27	0.41	0.38
median	0.22	0.52	0.48	-0.05	0.27	0.12	-1.54	1.23	-1.15
90th prc	1.85	3.97	3.81	0.88	2.52	2.17	5.87	13.01	10.42

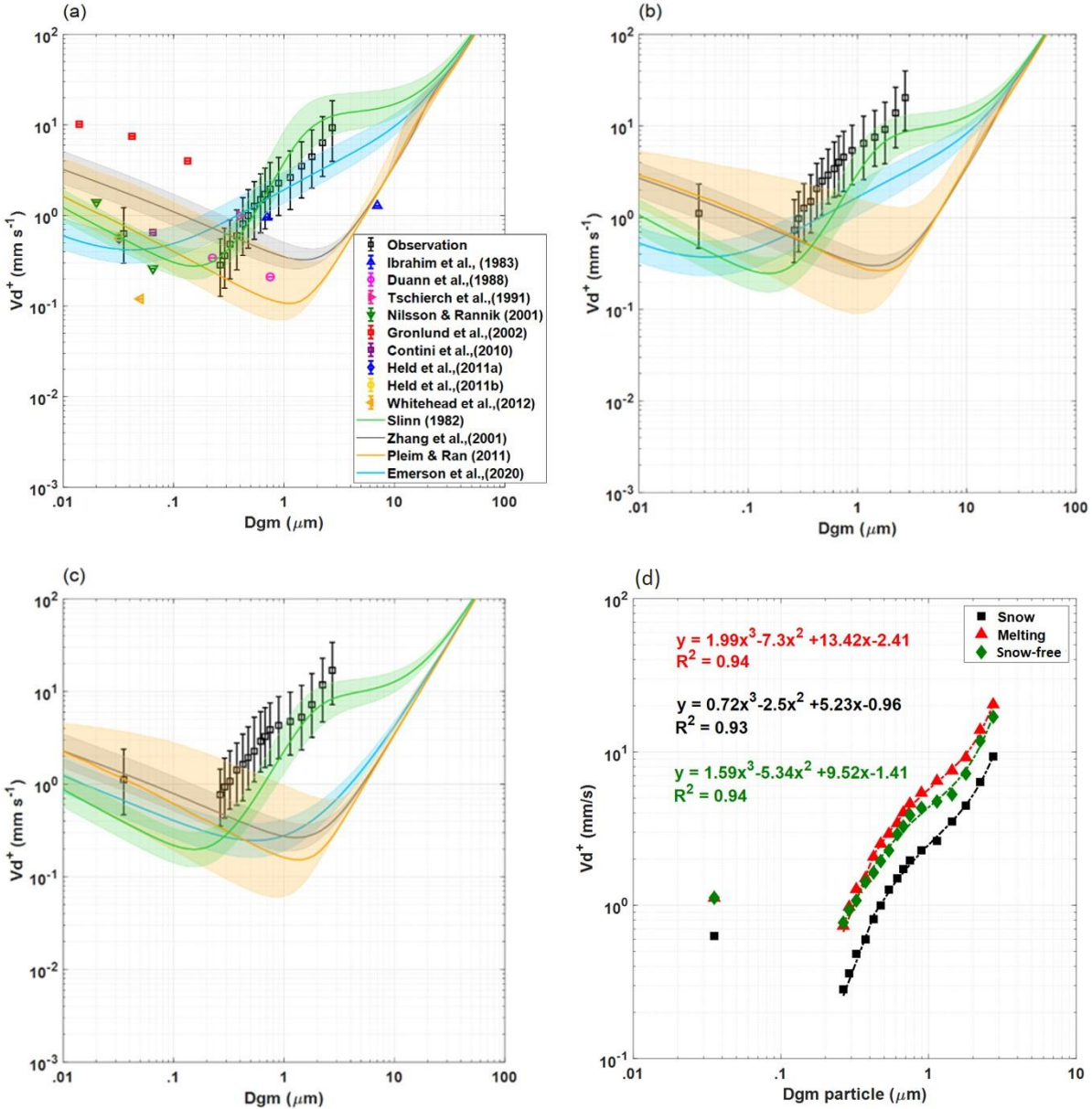
$V_d^+ \text{ (mm s}^{-1}\text{)}$	UFP			ACC			CRS		
	SC	SM	SF	SC	SM	SF	SC	SM	SF
10th prc	0.15	0.20	0.20	0.14	0.23	0.23	1.34	2.31	1.41
mean	1.51	2.56	2.29	0.66	1.63	1.41	4.27	9.16	7.14
std.dev	6.41	6.07	4.17	1.16	1.97	1.48	3.14	9.36	6.61
std.err	0.16	0.21	0.13	0.03	0.07	0.07	0.10	0.39	0.32
median	0.73	1.21	1.14	0.42	1.02	0.94	3.50	6.48	4.82
90th prc	2.62	5.41	5.06	1.29	3.62	3.04	7.91	17.50	16.81

$V_d^- \text{ (mm s}^{-1}\text{)}$	UFP			ACC			CRS		
	SC	SM	SF	SC	SM	SF	SC	SM	SF
10th prc	-6.77	-6.60	-3.82	-2.48	-4.97	-4.67	-12.36	-20.21	-19.42
mean	-4.51	-2.52	-1.73	-1.32	-2.28	-2.05	-6.80	-10.10	-8.87
std.dev	24.69	4.65	2.93	4.54	4.12	2.34	14.92	9.85	9.22
std.err	0.73	0.24	0.13	0.12	0.18	0.11	0.43	0.42	0.42
median	-0.89	-0.91	-0.80	-0.52	-1.13	-1.29	-4.24	-7.40	-5.97
90th prc	-0.13	-0.18	-0.12	-0.14	-0.21	-0.26	-1.57	-2.39	-1.75

$V_d^+/u_* \text{ (10}^{-3}\text{)}$	UFP			ACC			CRS		
	SC	SM	SF	SC	SM	SF	SC	SM	SF
10th prc	1.7	1.7	1.8	1.4	1.7	1.8	11.3	11.1	10.9
mean	12.6	15.8	16.3	7.3	10.0	10.9	44.9	70.8	56.0
std.dev	38.4	43.7	28.0	42.5	11.6	16.1	43.2	102.5	69.5
std.err	1.0	1.6	0.9	1.2	0.5	0.8	1.5	4.5	3.6
median	6.4	7.1	7.4	4.0	6.7	7.0	33.0	45.2	34.7
90th prc	24.0	29.1	36.7	13.3	21.7	23.3	91.0	141.5	116.2

475

Gronlund et al. (2002) reported a median V_d^+ of about 3.3 mm s^{-1} (and an interval between 0.8 and 18.9 mm s^{-1}) over snow for total particles larger than 10 nm . The values reported by this last work are significantly larger than that observed in the present data set. Held et al. (2011.a) observed median V_d^+ values ranging from 0.27 to 0.68 mm s^{-1} during deposition-dominated periods. In Held et al (2011.b) a deposition velocity on the snow surface in the Arctic pack ice ranged from 0.28 to $0.58 (\pm 0.4) \text{ mm s}^{-1}$ by eddy covariance. A fair agreement with observations from Contini et al. (2010) at the Nansen Ice Sheet (Antarctica) over ice/snow, where median $V_{ex} = 0.19 \text{ mm s}^{-1}$ was observed for total particle larger than 10 nm . Further, Contini et al. (2010) observed a median deposition velocity $V_d^+ = 0.65 \text{ mm s}^{-1}$. In the Hudson Bay (Canada), Whitehead et al. (2012) measured a mean V_{ex} of $0.12 \pm 0.11 \text{ mm s}^{-1}$ on sea ice, for particle greater than 2.5 nm . Seasonal differences in deposition have also been observed in the cryosphere with greater values during warmer months (Macdonald et al., 2017), collecting snow samples on average every 4 days at Alert, Nunavut (Arctic Canada). In Ibrahim et al (1983) a deposition velocity between 0.39 and 0.96 mm s^{-1} over snow surface was observed for $0.7 \text{ }\mu\text{m}$ diameter particles using artificial collectors for liquid scintillation counting technique.



490 **Figure 8.** Median V_d^+ as a function of the geometric mean diameter measured during (a) snow cover, (b) melting
 period, and (c) snow-free phase. A comparison with the model predictions is also reported in each panel. Observations
 are shown in symbols, models in lines. Error bars and shaded areas represent the interquartile range. In (a) panel,
 median measured V_d^+ are compared to previous measurements of deposition velocities over snow. (d) Functional fit
 for V_d^+ depending on the geometric mean particle diameter for the different period analysed in this work.

495

Even if the particle sizes range were not exactly the same, the V_{ex} (1 mm s⁻¹) reported by Tschiersch et al. (1991) are
 still comparable with values measured at the closest size range (Fig. 8a). For a more detailed and comprehensive
 review of deposition velocities see Pryor et al. (2008), Whitehead et al. (2012), Saylor et al. (2019); Emerson et al.
 (2020), Farmer et al. (2021). From the graphs in Fig. 8, V_d^+ (median values) increases with particle diameter, and V_d^+
 500 is greater in all size bins during the melting phase with respect to the other periods. This could probably be due to the
 increase of roughness length z_0 as the snow melts (and consequent shallow ponds formation), which leads to an

increased capture of the particles (in all size ranges) by interception and impaction mechanisms. V_d^+ for the snow surface coverage results the lowest. To put our observations into context, deposition velocities observations from previous studies have been plotted in Fig. 8, alongside four models for dry deposition velocity developed by Slinn (1982, S82), Zhang et al., (2001, Z01), Pleim and Ran (2011, PR11) and Emerson et al. (2020, E20). Dry deposition models were based on a custom code (DepoBoxTool) translated in MATLAB (ver. 2018b) from the original form in Python (available at: <https://doi.org/10.5281/zenodo.4749548>, accessed on September 26, 2022) (Shu et al., 2021a; Shu et al., 2021b). Figure 8a shows the deposition velocity measured and predicted during the snow period, whereas Figs. 8b and 8c display the results during melting and snow-free period, respectively. Further, it seems that V_d^+ observed in this work follow the shape of the Slinn model output. As reported by Saylor et al. (2019) for smooth surfaces such as water or snow/ice, models provide a minimum deposition rate for particles in accumulation mode. Data suggest a minimum in the 0.08 – 0.15 μm range, with a strong increase in V_d^+ above 0.25 μm , rather than the gradual decrease predicted by some of the algorithms (i.e Z01, PR11). Our results are in line with the observations of E20 revisiting the importance of interception processes with respect to Brownian diffusion. Apparently, interception can be a significant term of particle loss even over ice/snow surfaces, whose actual structures and fine irregularities contrast with the idealized “smoothness” traditionally assumed for this land type.

The selected deposition velocity models take in input our meteorological and micrometeorological observations (temperature, pressure, relative humidity, L , u_*), situ-specific surface properties (roughness length, canopy height, displacement height, land use category) and particle properties (density and diameter). Note that most model outputs are highly sensitive to canopy structure parameters and friction velocity. It is worth considering, for example, the high sensitivity of PR11 to the value of the convective velocity scale, which can vary significantly with the surface roughness defined for each land use type (Saylor et al., 2019). On the other hand, Z01 produces the widest differences in predicted deposition velocities among land use types, showing weak deposition velocities compared to other models especially in the accumulation and coarse mode. The comparison of predictive models with our observations shows a good agreement, especially with S82, which seems to better fit the data over a broader range of particle diameters, properly predicting a minimum in a diameter range of 0.1 - 0.3 μm , as well as the deposition velocities for accumulation and coarse mode. On the contrary, the Z01 and PR11 models, show the minimum around 1 μm , providing a wide underestimate of the deposition velocity for particles above 0.3 μm . Specifically, during the snow period (Fig. 8a), the considered models well predict deposition rates for particles below 0.1 μm , except for Z01, which overestimates V_d^+ in that range. By contrast, a slight and wide underestimation of V_d^+ above 0.3 μm was observed for E20, Z01, and PR11 parameterizations. During the melting period (Fig. 8b), a good agreement was observed in the 0.03–0.3 μm size range, although slight under prediction was observed for S82 and E20. For particle diameters above 0.3 μm , a wide underestimation occurs for all parameterizations except S82, which shows a good agreement especially in the particle range above 1 μm . Finally, during the snow-free period, an overestimation of the deposition velocity for ultrafine particles was observed in Z01 and PR11, which remained in agreement with measurements up to 0.3 μm particles. Although S82 and E20 models show an underestimation of V_d^+ for ultrafine particles, a good agreement was observed for accumulation and coarse mode, especially for S82. In view of this results, most analysed parameterizations show an underestimation of the deposition velocity greater than an order of magnitude in the range

of 0.2-0.3 μm , except for S82. In general, due to the sensitivity of the models to input parameters, the differences between model outputs and our data should be considered with caution. However, our data clearly show that minimum deposition velocity is reached around 0.1 μm of particle diameter, that V_d^+ values monotonously increase over the particle size interval 0.1 to 10 μm , and our data support the parameterizations in the high range of V_d^+ for this particle size interval.

3.5 Particle deposition velocity parameterization

Regarding the trend of the deposition velocity as a function of particles diameter, V_d^+ can be described by a third order polynomial function of mean geometric diameter in a typical saddle-shaped graph with an increase in magnitude toward the lowest and highest side of the size spectrum and a minimum in the Aitken mode. A robust (bi-square) polynomial fit to our observations (excluding UFP) was computed for the three considered periods, with a resulting goodness of fit R^2 and a root mean square error (RMSE) as reported in Table 6.

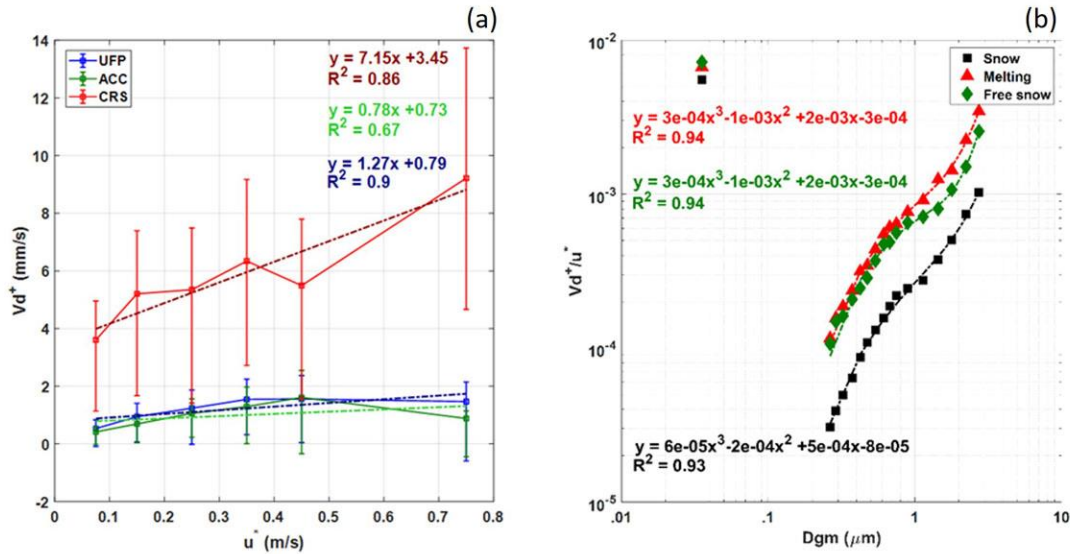
$$V_d^+(D_{gm}) = p_1(D_{gm})^3 + p_2(D_{gm})^2 + p_3(D_{gm}) + p_4 \quad (3)$$

where p-values in (3) denote the polynomial fitting coefficients.

Table 6. Polynomial fit parameters and goodness of fit for each observed curve.

V_d^+	p_1	p_2	p_3	p_4	R^2	RMSE
SC	0.72	-2.5	5.23	-0.96	0.93	4.02
SM	1.99	-7.3	13.42	-2.41	0.94	3.29
SF	1.59	-5.34	9.52	-1.41	0.94	1.93
V_d^+/u^*						
SC	$6 \cdot 10^{-5}$	$-2 \cdot 10^{-4}$	$5 \cdot 10^{-4}$	$-8 \cdot 10^{-5}$	0.93	$2.2 \cdot 10^{-4}$
SM	$3 \cdot 10^{-4}$	$-1 \cdot 10^{-3}$	$2 \cdot 10^{-3}$	$-3 \cdot 10^{-4}$	0.94	$6.7 \cdot 10^{-4}$
SF	$3 \cdot 10^{-4}$	$-1 \cdot 10^{-3}$	$2 \cdot 10^{-3}$	$-3 \cdot 10^{-4}$	0.94	$4.5 \cdot 10^{-4}$

Deposition velocity increased with friction velocity in all size ranges and several studies (Nilsson and Rannik 2001, Pryor et al., 2008, Contini et al., 2010) found a positive correlation between V_d^+ and the friction velocity, in particular for $u_* > 0.1$ m/s the relation can be described linearly. Our data confirm a linear correlation (see Fig. 9a), but the correlation coefficient varies considerably with particle size, with an angular coefficient $m = 1.27$ ($R^2=0.9$) for UFP, $m = 0.78$ ($R^2=0.67$) for ACC and finally, $m = 7.15$ ($R^2=0.86$) for CRS. In this context, a reasonable normalization of the deposition velocity is the ratio $V_n = V_d^+/u_*$ to obtain a better comparability between different studies (Table 5). An analogous fit for normalized V_n resulted in a similar goodness of fit and respective fitting coefficients reported in Table 6, segregated for the presence or not of the snowpack.



565 **Figure 9.** (a) Relation between median V_d^+ and friction velocity for the different size ranges. Vertical bars represent the interquartile range of the deposition velocity within the specific interval of u^* . Friction velocity intervals were selected to optimize the number of data points within each interval and, hence, provide a statistically reliable median deposition velocity. (b) Functional fit for V_d^+ as a function of the geometric mean particles diameter (excluded UFP) for the different period analysed in this work.

570 **4 Conclusions**

Aerosol fluxes were measured in the Arctic site of Ny-Ålesund (West Spitzbergen, Svalbard). The measurement campaign was carried out between March and August 2021. Number concentrations for ultrafine particles increased from March to August, with new-particle formation processes probably contributing to summertime concentrations, boosted by the enhanced biological emissions in warm months. By contrast, number concentration for larger-sized particles shows the maximum concentration in March, during the Arctic haze season, and then decreasing to a minimum concentration in June. Turbulent fluxes in the ultrafine particle size range resulted prevalently downwards especially in summertime when concentrations are highest. Particles fluxes in the accumulation and quasi-coarse mode were positive (upward) during the colder months, indicating that the site behaves on average as a source for particles, even if these fluxes were very small. In the warmer months, particles fluxes were slightly negative, showing that the area in exam acts as a weak sink for particulate in those size ranges. The overall median deposition velocity (V_d^+) values were 0.90, 0.62 and 4.42 mm s^{-1} , for UFP, ACC and CRS, respectively. A more pronounced deposition was observed, on average, during melting and snow-free periods over the whole dimensional range, while the median deposition velocity (V_d^+) with the snowpack was of 0.73, 0.42 and 3.50 mm s^{-1} . Our results indicate a low sensitivity of the saddle-shape of deposition velocity (as a function of the geometric mean diameter) to the surface characteristics, showing a fixed minimum in the range of 0.1 - 0.2 μm and an increase in deposition velocity for particles $> 0.3\mu\text{m}$. Deposition velocity growth is probably due to the increase in roughness length z_0 , due to the emerging of obstacles, such as rocks or irregularities and the bare soil, after melting, that perturb the flow. The observed deposition velocity depends on friction velocity; therefore, it is valuable to normalize deposition velocity with the u_* in order to obtain a

590 better comparison between different measurement sites. The median normalized velocity on the whole period (V_n)
was $6.9 \cdot 10^{-3}$, $5.1 \cdot 10^{-3}$, and $35.9 \cdot 10^{-3}$ for UFP, ACC and CRS, respectively. In general, our observations of deposition
velocities are aligned to previous literature in similar environments (i.e. ice/snow), especially for particles in the size
range 0.01-1 μ m, with a percentage differences lower than 50% of magnitude. The behavior of V_d as a function of
particle diameter resulted well predicted by the Slinn (1982) parameterization. The Slinn-derived models considered
595 in this work provide different predictions with similar land covers (snow, tundra and water ponds) and same
environmental conditions, as reported also by Saylor et al., (2019). However, large discrepancies between modelled
and observed deposition velocities for the accumulation mode were observed for most of the models used (i.e. Z01,
PR11 and E20). The predictions of the available parameterizations generally do not agree with the observations,
especially on snow/ice surfaces, and the discrepancy in deposition velocity values can be as high as two orders of
magnitude. The polynomial parameterization proposed in this study fits our observations and the analyzed models
600 which properly represents the size-dependence and magnitude of deposition velocity. *Even if this numerical fit is
driven purely by the data, and not by the underlying chemical-physical processes, it could be very useful in
implementing new parametrizations* for existing chemical transport models, taking into account the role of turbulence
on dry deposition, which is a process typically neglected in regional and global models. Overall, our findings indicate
that the most common parameterizations for dry depositions in polar areas could contribute significantly to the overall
605 uncertainty in global models simulating SLCFs climate effects (Whaley et al., 2022). The scarce measurements on the
cryosphere, and the consequent large gap in deposition velocity modeling demonstrate the need to improve the
understanding of deposition processes in polar areas.

Data Availability: Data is available upon request.

Author contribution: AD and GP planned the experimental design and guided the research. AD, GP, MM, FS
610 collaborated to data collection and post-processing. AD, GP and DF carried out the analysis presented in this paper
and drafted the manuscript with contributions from all co-authors. AD, GP and DF developed the code used to analyze
the data. AD and SD managed and provided the funding projects. All authors reviewed and edited the manuscript,
cooperating to interpretation of results, wrote, read, commented, and approved the final manuscript.

Competing interests: The authors declare no competing interests.

615 *Financial Support:* This work has been funded and conducted in the framework of the Joint Research Center ENI-
CNR - “Aldo Pontremoli” within the ENI-CNR Joint Research Agreement, WP1 “Impatto delle emissioni in atmosfera
sulla criosfera e sul cambiamento climatico nell’Artico”. Further, this work was partially financed by the Svalbard
Science Forum for the Arctic Field Grant “Aerosol Flux in Arctic” (ALFA) project (RiS ID 11390; NFR contract
310658).

620 *Acknowledgements*

The authors acknowledge Fabio Massimo Grasso (ISAC-CNR) for his help in setting up the instrumental acquisition
system before the measurement campaign. Authors acknowledge the Institute of Polar Science (ISP-CNR) and its staff

for the logistics of the Arctic Station “Dirigibile Italia” in Ny-Ålesund. We would like also to acknowledge dr. Nuncio Murukesh of the Indian Arctic Program for the precipitation data and Rita Traversi of University of Florence for the SMPS data used in this work.

References

Abbatt, J. P. D., Leaitch, W. R., Aliabadi, A. A., Bertram, A. K., Blanchet, J. P., Boivin-Rioux, A., Bozem, H., Burkart, J., Chang, R. Y. W., Charette, J., Chaubey, J. P., Christensen, R. J., Cirisan, A., Collins, D. B., Croft, B., Dionne, J., Evans, G. J., Fletcher, C. G., Galí, M., Ghahremaninezhad, R., Girard, E., Gong, W., Gosselin, M., Gourdal, M., Hanna, S. J., Hayashida, H., Herber, A. B., Hesarakis, S., Hoor, P., Huang, L., Hussherr, R., Irish, V. E., Keita, S. A., Kodros, J. K., Köllner, F., Kolonjari, F., Kunkel, D., Ladino, L. A., Law, K., Levasseur, M., Libois, Q., Liggio, J., Lizotte, M., Macdonald, K. M., Mahmood, R., Martin, R. V., Mason, R. H., Miller, L. A., Moravek, A., Mortenson, E., Mungall, E. L., Murphy, J. G., Namazi, M., Norman, A., O’Neill, N. T., Pierce, J. R., Russell, L. M., Schneider, J., Schulz, H., Sharma, S., Si, m., Staebler, R. M., Steiner, N. S., Thomas, J. L., von Salzen, K., Wentzell, J. J. B., Willis, M. D., Wentworth, G. R., Xu, J., and Yakobi-Hancock, J. D.: Overview paper: New insights into aerosol and climate in the Arctic, *Atmos. Chem. Phys.*, 19, 2527–2560, <https://doi.org/10.5194/acp-19-2527-2019>, 2019

AMAP: Arctic Monitoring and Assessment Programme, Assessment 2015: Black carbon and ozone as Arctic climate forcers. Technical Report, AMAP, Oslo, Norway. 116 pp., www.amap.no, 2015a.

AMAP: Arctic Monitoring and Assessment Programme, Assessment 2015: Methane as an Arctic climate forcer. Technical Report, AMAP, Oslo, Norway. 139 pp., www.amap.no, 2015b.

Arnold, S. R., Law, K. S., Brock, C. A., Thomas, J. L., Starkweather, S. M., von Salzen, K., Stohl, A., Sharma, S., Lund, M. T., Flanner, M. G., Petäjä, T., Tanimoto, H., Gamble, J., Dibb, J. E., Melamed, M., Johnson, N., Fidel, M., Tynkkynen, V. -P., Baklanov, A., Eckhardt, S., Monks, S. A., Browse, J., Bozem, H.: Arctic air pollution: Challenges and opportunities for the next decade, *Elementa: Science of the Anthropocene*, 4, 000104, <https://doi.org/10.12952/journal.elementa.000104>, 2016.

Aubinet, M., Vesala, T., Papale, D., et al.: *Eddy Covariance. A Practical Guide to Measurement and Data Analysis*. Springer Atmospheric Sciences, 2012.

Baron, P. A. and Willeke, K.: *Aerosol Measurement: Principles, Techniques, and Applications*, 2nd ed., John Wiley and Sons, New York, 2001.

Battaglia, A., Rustemeier, E., Tokay, A., Blahak, U., and Simmer, C.: PARSIVEL snow observations: A critical assessment, *J. Atmos. Ocean. Tech.*, 27, 333–344, <https://doi.org/10.1175/2009jtecha1332.1>, 2010.

Beck, L. J., Sarnela, N., Junninen, H., Hoppe, C. J. M., Garmash, O., Bianchi, F., Riva, M., Rose, C., Peräkylä, O., Wimmer, D., Kausiala, O., Jokinen, T., Ahonen, L., Mikkilä, J., Hakala, J., He, X., Kontkanen, J., Wolf, K. K. E., Cappelletti, D., Mazzola, M., Traversi, R., Petroselli, C., Viola, A. P., Vitale, V., Lange, R., Massling, A., Nøjgaard, J. K., Krejci, R., Karlsson, L., Zieger, P., Jang, S., Lee, K., Vakkari, V., Lampilahti, J., Thakur, R. C., Leino, K., Kangasluoma, J., Duplissy, E., Siivola, E., Marbouti, M., Tham, Y. J., Saiz-Lopez, A., Petäjä, T., Ehn, M., Worsnop, D. R., Skov, H., Kulmala, M., Kerminen, V. M., and Sipilä, M.: Differing mechanisms of new particle formation at two Arctic sites, *Geophys. Res. Lett.*, 48, e2020GL091334, <https://doi.org/10.1029/2020GL091334>, 2021.

Browse, J., Carslaw, K. S., Arnold, S. R., Pringle, K., and Boucher, O.: The scavenging processes controlling the seasonal cycle in Arctic sulphate and black carbon aerosol, *Atmos. Chem. Phys.*, 12, 6775–6798, <https://doi.org/10.5194/acp-12-6775-2012>, 2012.

Bulatovic, I., Igel, A. L., Leck, C., Heintzenberg, J., Riipinen, I., and Ekman, A. M. L.: The importance of Aitken mode aerosol particles for cloud sustenance in the summertime high Arctic – a simulation study supported by observational data, *Atmos. Chem. Phys.*, 21, 3871–3897, 2021.

- 675 Burba, G.: Eddy Covariance Method for Scientific, Regulatory, and Commercial Applications. LI-COR Biosciences; Publisher: Lincoln, 473 USA, pp. 702, 2022.
- Cava, D., Donateo, A., and Contini, D.: Combined stationarity index for the estimation of turbulent fluxes of scalars and particles in the atmospheric surface layer, *Agr. Forest Meteorol.*, 194, 88–103.
680 <https://doi.org/10.1016/j.agrformet.2014.03.021>, 2014.
- Conte, M., Donateo, A., and Contini, D.: Characterisation of particle size distributions and corresponding size-segregated turbulent fluxes simultaneously with CO₂ exchange in an urban area, *Sci. Total Environ.*, 1067–1078, 622–623, <https://doi.org/10.1016/j.scitotenv.2017.12.040>, 2018.
685
- Contini, D., Donateo, A., Belosi, F., Grasso, F. M., Santachiara, G., and Prodi F.: Deposition velocity of ultrafine particles measured with the Eddy-Correlation Method over the Nansen Ice Sheet (Antarctica), *J. Geophys. Res.*, 115, D16202, <https://doi.org/10.1029/2009JD013600>, 2010.
- 690 Cowtan, K., and Way, R. G.: Coverage bias in the HadCRUT4 temperature series and its impact on recent temperature trends, *Q. J. Roy. Meteor. Soc.*, 140 (683), 1935–1944, <https://doi.org/10.1002/qj.2297>, 2014.
- Croft, B., Martin, R. V., Leaitch, W. R., Tunved, P., Breider, T. J., D’Andrea, S. D., and Pierce, J. R.: Processes controlling the annual cycle of Arctic aerosol number and size distributions, *Atmos. Chem. Phys.*, 16, 3665–3682,
695 2016.
- Deventer, M. J., Held, A., El-Madany, T.S., Klemm, O.: Size-resolved eddy covariance fluxes of nucleation to accumulation mode aerosol particles over a coniferous forest, *Agr. Forest Meteorol.*, 214–215, 328–340, <https://doi.org/10.1016/j.agrformet.2015.08.261>, 2015.
700
- Di Mauro, B.: A darker cryosphere in a warming world, *Nat. Clim. Change*, 10, 978–982, www.nature.com/natureclimatechange, 2020.
- Donateo, A., Contini, D.: Correlation of dry deposition velocity and friction velocity over different surfaces for PM_{2.5} and particle number concentrations, *Adv. Meteorol.*, 2014, 760393, <https://doi.org/10.1155/2014/760393>, 2014.
705
- Donateo, A., Conte, M., Grasso, F.M., and Contini, D.: Seasonal and diurnal behaviour of size segregated particles fluxes in a suburban area, *Atmos. Environ.*, 219, 117, <https://doi.org/10.1016/j.atmosenv.2019.117052>, 2019.
- 710 Duann, B., Fairall, W., and Thomson, D. W.: Eddy correlation measurements of the dry deposition of particles in wintertime, *J Appl.Meteorol.*, 27, 642–652, 1988.
- Eckhardt, S., Hermansen, O., Grythe, H., Fiebig, M., Stebel, K., Cassiani, M., Baecklund, A., and Stohl, A.: The influence of cruise ship emissions on air pollution in Svalbard – a harbinger of a more polluted Arctic?, *Atmos. Chem. Phys.*, 13, 8401–8409, <https://doi.org/10.5194/acp-13-8401-2013>, 2013.
715
- Eckhardt, S., Quennehen, B., Olivíe, D. J. L., Berntsen, T. K., Cherian, R., Christensen, J. H., Collins, W., Crepinsek, S., Daskalakis, N., Flanner, M., Herber, A., Heyes, C., Hodnebrog, Ø., Huang, L., Kanakidou, M., Klimont, Z., Langner, J., Law, K. S., Lund, M. T., Mahmood, R., Massling, A., Myriokefalitakis, S., Nielsen, I. E., Nøjgaard, J. K., Quaas, J., Quinn, P. K., Raut, J.-C., Rumbold, S. T., Schulz, M., Sharma, S., Skeie, R. B., Skov, H., Uttal, T., von Salzen, K., and Stohl, A.: Current model capabilities for simulating black carbon and sulfate concentrations in the Arctic atmosphere: a multi-model evaluation using a comprehensive measurement data set, *Atmos. Chem. Phys.*, 15, 9413–9433, <https://doi.org/10.5194/acp-15-9413-2015>, 2015.
720
- 725 Emerson, E. W., Hodshire, A. L., De Bolt, H. M., Bilsback, K. R., Pierce, J. R., McMeeking, G. R., and Farmer, D. K.: Revisiting particle dry deposition and its role in radiative effect estimates, *PNAS*, 117:26076–82, 2020.
- Fairall, C.: Interpretation of eddy-correlation measurements of particulate deposition and aerosol flux, *Atmos. Environ.*, 18 (7), 1329–1337, [https://doi.org/10.1016/0004-6981\(84\)90041-6](https://doi.org/10.1016/0004-6981(84)90041-6), 1984.

- 730 Falocchi, M., Giovannini, L., de Franceschi, M., Zardi, D.: A refinement of the McMillen (1988) recursive digital filter for the analysis of atmospheric turbulence, *Bound-Lay. Meteorol.*, 168, 523, <https://doi.org/10.1007/s10546-018-0355-5>, 2018.
- 735 Farmer, D.K., Boedicker, E. K. and DeBolt, H. M.: Dry Deposition of Atmospheric Aerosols: Approaches, Observations, and Mechanisms, *Annu. Rev. Phys. Chem.*, 72:16.1–16.23, 2021.
- 740 Ferrero, L., Cappelletti, D., Busetto, M., Mazzola, M., Lupi, A., Lanconelli, C., Becagli, S., Traversi, R., Caiazzo, L., Giardi, F., Moroni, B., Crocchianti, S., Fierz, M., Močnik, G., Sangiorgi, G., Perrone, M. G., Maturilli, M., Vitale, V., Udisti, R., and Bolzacchini, E.: Vertical profiles of aerosol and black carbon in the Arctic: a seasonal phenomenology along 2 years (2011–2012) of field campaigns, *Atmos. Chem. Phys.*, 16, 12601–12629, <https://doi.org/10.5194/acp-16-12601-2016>, 2016.
- 745 Ferrero, L., Ritter, C., Cappelletti, D., Moroni, B., Močnik, G., Mazzola, M., Lupi, A., Becagli, S., Traversi, R., Cataldi, M., Neuber, R., Vitale, V., Bolzacchini, E.: Aerosol optical properties in the Arctic: The role of aerosol chemistry and dust composition in a closure experiment between Lidar and tethered balloon vertical profiles, *Sci. Total Environ.*, 686, 452–467, 2019.
- 750 Giardi, F., Becagli, S., Traversi, R., Frosini, D., Severi, M., Caiazzo, L., Ancillotti, C., Cappelletti, D., Moroni, B., Grotti, M., Bazzano, A., Lupi, A., Mazzola, M., Vitale, V., Abollino, O., Ferrero, L., Bolzacchini, E., Viola, A., Udisti, R.: Size distribution and ion composition of aerosol collected at Ny-Ålesund in the spring–summer field campaign 2013, *Rend. Fis. Acc. Lincei*, 27 (Suppl1): S47–S58. <https://doi.org/10.1007/s12210-016-0529-3>, 2016.
- 755 Giorgi, F.: A particle dry-deposition parameterization scheme for use in tracer transport models, *J. Geophys Res.*, 91, 9794–9806, 1986.
- Grachev, A. A, Fairall, C. W.: Upward momentum transfer in the marine boundary layer, *J. Phys. Oceanogr.*, 31: 1698–1711, 2001.
- 760 Gronlund, A., Nilsson, D., Koponen, I. K., Virkkula, A., and Hansson, M. E.: Aerosol dry deposition measured with eddy-covariance technique at Wasa and Aboa, Dronning Maud Land, Antarctica. *Ann. Glaciol.*, 35, 355–361, 2002.
- 765 Hartmann, D. L., Tank, A. M. K., Rusticucci, M., Alexander, L. V., Brönnimann, S., Charabi, Y. A. R., Dentener, F. J., Dlugokencky, E. J., Easterling, D. R., Kaplan, A., Soden, B. J., Thorne, P. W., Wild, M., and Zhai, P.: Observations: Atmosphere and surface. In T. F. Stocker, D. Qin, G.-K. Plattner, M. Tignor, S. K. Allen, J. Boschung, A. Nauels, Y. Xia, V. Bex, & P. M. Midgley (Eds.), *Climate change 2013: The physical science basis. Contribution of Working Group I to the Fifth Assessment Report of the Intergovernmental Panel on Climate Change*, (pp. 159–254). Cambridge, United. 2013.
- 770 Held, A., Brooks, I. M., Leck, C., and Tjernström, M.: On the potential contribution of open lead particle emissions to the central Arctic aerosol concentration, *Atmos. Chem. Phys.*, 11, 3093 - 3105, <https://doi.org/10.5194/acp-11-3093-2011>, 2011a.
- 775 Held, A., Orsini, D. A., Vaattovaara, P., Tjernström, M., and Leck, C.: Near-surface profiles of aerosol number concentration and temperature over the Arctic Ocean, *Atmos. Meas. Tech.*, 4(8), 1603–1616, <https://doi.org/10.5194/amt-4-1603-2011>, 2011b.
- 780 Hinds, W.C.: *Aerosol Technology, Properties, Behaviour, and Measurement of Airborne Particles*, second ed. John Wiley and Sons, New York. 1999.
- Horst, T.W.: A simple formula for attenuation of eddy fluxes measured with first order-response scalar sensor. *Boundary-Layer Meteorol.* 82, 219–233, <https://doi.org/10.1023/A:100022913>, 1997.
- 785 Johnson, J. S., Regayre, L. A., Yoshioka, M., Pringle, K. J., Lee, L. A., Sexton, D. M. H., Rostron, J. W., Booth, B. B., and Carslaw, K. S.: The importance of comprehensive parameter sampling and multiple observations for robust

- constraint of aerosol radiative forcing, *Atmos. Chem. Phys.*, 18, 13031–13053, <https://doi.org/10.5194/acp-18-13031-2018>, 2018.
- 790 Kaimal, J. C. and Finnigan, J. J.: *Atmospheric Boundary Layer flows*, Oxford University Press, New York, Oxford, 2nd Edn, 1994.
- Khan, T. R., and Perlinger, J. A.: Evaluation of five dry particle deposition parameterizations for incorporation into atmospheric transport models, *Geosci. Model Dev.*, 10, 3861–3888, 2017. <https://doi.org/10.5194/gmd-10-3861-2017>, 2017.
- 795 Kljun, N., Calanca, P., Rotach, M. W., and Schmid, H. P. A simple two-dimensional parameterisation for Flux Footprint Prediction (FFP), *Geosci. Model Dev.*, 8, 3695–3713, <https://doi.org/10.5194/gmd-8-3695-2015>, 2015.
- 800 Köllner, F., Schneider, J., Willis, M. D., Schulz, H., Kunkel, D., Bozem, H., Hoor, P., Klimach, T., Helleis, F., Burkart, J., Leaitch, W. R., Aliabadi, A. A., Abbatt, J. P. D., Herber, A. B. and Borrmann, S.: Chemical composition and source attribution of sub-micrometre aerosol particles in the summertime Arctic lower troposphere, *Atmos. Chem. Phys.*, 21, 6509–6539, 2021.
- 805 Kolmogorov, A.N.: The local structure of turbulence in incompressible viscous fluid for very large Reynolds number, *Dokl. Akad. Nauk.*, 30, 9–13, 1941.
- Kral, S.T., Sjöblom, A., Nygård, T.: Observations of summer turbulent surface fluxes in a High Arctic fjord, *Q. J. Roy. Meteorol. Soc.*, 140: 666–675, <https://doi.org/10.1002/qj.2167>, 2014.
- 810 Kupc, A., Bischof, O., Tritscher, T., Beeston, M., Krinke, T., and Wagner, P. E.: Laboratory characterization of a new nano-water- based CPC 3788 and performance comparison to an ultrafine butanol-based CPC 3776, *Aerosol Sci. Technol.*, 47 (2), 183–191. <https://doi.org/10.1080/02786826.2012.738317>, 2013.
- 815 Ibrahim, M., Barrie, L. A. and Fanaki, F. H.: An experimental and theoretical investigation of the dry deposition of particles to snow, pine trees and artificial collectors, *Atmos. Environ.*, 17, 781–788, 1983.
- IPCC, 2021: *Climate Change 2021: The Physical Science Basis. Contribution of Working Group I to the Sixth Assessment Report of the Intergovernmental Panel on Climate Change* [Masson-Delmotte, V., P. Zhai, A. Pirani, S.L., Connors, C. Péan, S. Berger, N. Caud, Y. Chen, L. Goldfarb, M.I. Gomis, M. Huang, K. Leitzell, E. Lonnoy, J.B.R. Matthews, T.K. Maycock, T. Waterfield, O. Yelekçi, R. Yu, and B. Zhou (eds.)]. Cambridge University Press.
- 820 Lavi, A., Farmer, D. K., Segre, E., Moise, T., Rotenberg, E., Jimenez, J. L., and Rudich, Y.: Fluxes of fine particles over a semi-arid pine forest: possible effects of a complex terrain, *Aerosol Sci. Technol.*, 47, 906–915. <https://doi.org/10.1080/02786826.2013.800940>, 2013.
- 825 Law, K. S., Stohl, A., Quinn, P. K., Brock, C. A., Burkhart, J. F., Paris, J.-D., Ancellet, G., Singh, H. B., Roiger, A., Schlager, H., Dibb, J., Jacob, D. J., Arnold, S. R., Pelon, J., and Thomas, J. L.: Arctic air pollution: New insights from POLARCAT-IPY, *B. Am. Meteorol. Soc.*, 95(12), 1873–1895. <https://doi.org/10.1175/bams-d-13-00017.1>, 2014.
- 830 Lee, L. A., Pringle, K. J., Reddington, C. L., Mann, G. W., Stier, P., Spracklen, D. V., Pierce, J. R., and Carslaw, K. S.: The magnitude and causes of uncertainty in global model simulations of cloud condensation nuclei, *Atmos. Chem. Phys.*, 13:8879–914, 2013.
- 835 Liang, J., Zhang, L., Wang, Y., Cao, X., Zhang, Q., Wang, H., and Zhang, B.: Turbulence regimes and the validity of similarity theory in the stable boundary layer over complex terrain of the Loess Plateau, China, *J. Geophys. Res.*, 119:6009–6021, 2014.
- 840 Liu, J. F., Fan, S. M., Horowitz, L. W., and Levy, H.: Evaluation of factors controlling long-range transport of black carbon to the Arctic, *J. Geophys. Res.*, 116, D04307. <https://doi.org/10.1029/2010JD015145>, 2011.

- Löffler-Mang, M., and Joss, J.: An optical disdrometer for measuring size and velocity of hydrometeors, *J. Atmos. Ocean. Tech.*, 17, 130–139, [https://doi.org/10.1175/1520-0426\(2000\)017<0130:aodfms>2.0.co;2](https://doi.org/10.1175/1520-0426(2000)017<0130:aodfms>2.0.co;2), 2000.
- 845 Lupi, A., Busetto, M., Becagli, S., Giardi, F., Lanconelli, C., Mazzola, M., Udisti, R., Hansson, H. C., Henning, T., Petkov, B., Ström, J., Krejci, R., Tunved, P., Viola, A. P., and Vitale, V.: Multi-seasonal ultrafine aerosol particle number concentration measurements at the Gruebadet observatory, Ny-Ålesund, Svalbard Islands. *Rendiconti Lincei – Scienze Fisiche e Naturali*, ISSN 2037-4631, 27, 2016.
- 850 Macdonald, K. M., Sharma, S., Toom, D., Chivulescu, A., Hanna, S., Bertram, A. K., Platt, A., Elsasser, M., Huang, L., Tarasick, D., Chellman, N., McConnell, J. R., Bozem, H., Kunkel, D., Lei, Y. D., Evans, G. J., and Abbatt, J. P. D.: Observations of atmospheric chemical deposition to high Arctic snow, *Atmos. Chem. Phys.*, 17, 5775–5788, <https://doi.org/10.5194/acp-17-5775-2017>, 2017.
- 855 Magnani, M., Baneschi, I., Giamberini, M., Raco, B., Provenzale, A.: Microscale drivers of summer CO₂ fluxes in the Svalbard High Arctic tundra, *Sci. Rep.*, 12:763, <https://doi.org/10.1038/s41598-021-04728-0>, 2022.
- Mahrt, L.: Flux sampling errors for aircraft and towers, *J. Atmos. Ocean. Technol.*, 15 (2), 416–429. [https://doi.org/10.1175/1520-0426\(1998\), 1998](https://doi.org/10.1175/1520-0426(1998), 1998).
- 860 Massman, W. J., and Ibrom, A.: Attenuation of concentration fluctuations of water vapor and other trace gases in turbulent tube flow, *Atmos. Chem. Phys.*, 8, 6245–6259, <https://doi.org/10.5194/acp-8-6245-2008>, 2008.
- 865 Mazzola, M., Tampieri, F., Viola, A. P., Lanconelli, C., and Choi, T.: Stable boundary layer vertical scales in the Arctic: observations and analyses at Ny-Ålesund, Svalbard, *Q. J. Roy. Meteorol. Soc.*, 142: 1250–1258, <https://doi.org/10.1002/qj.2727>, 2016.
- McMillen, R. T.: An eddy correlation technique with extended applicability to no simple terrain, *Bound-Lay. Meteorol.*, 43, 231–245, 1988.
- 870 Menegoz, M., Voldoire, A., Teysse, H., Melia, D. S. Y., Peuch, V. H., and Gouttevin, I.: How does the atmospheric variability drive the aerosol residence time in the Arctic region?, *Tellus B*, 64(1), 11596. <https://doi.org/10.3402/tellusb.v64i0.11596>, 2012.
- 875 Metzger, M., and Holmes, H.: Time scales in the unstable atmospheric surface layer, *Bound-Lay. Meteorol.*, 126, 29–50. <https://doi.org/10.1007/s10546-007-9219-0>, 2008.
- 880 Mordas, G., Manninen, H. E., Petäjä, T., Aalto, P. P., Hämeri, K., and Kulmala, M.: On operation of the ultra-fine water-based CPC TSI 3786 and comparison with other TSI models (TSI 3776, TSI 3772, TSI 3025, TSI 3010, TSI 3007), *Aerosol Sci. Technol.*, 42, 152–158. <https://doi.org/10.1080/02786820701846252>, 2008.
- Mortarini, L., Stefanello, M., Degrazia, G., Roberti, D., Trini Castelli, S., and Anfossi, D.: Characterization of wind meandering in low-wind-speed conditions, *Bound-Lay. Meteorol.*, 161(1):165–182, 2016.
- 885 Nemitz, E., Gallagher, M. W., Duyzer, J. H., and Fowler, D.: Micrometeorological measurements of particle deposition velocities to moorland vegetation, *Q. J. Roy. Meteor. Soc.*, 128, 2281–2300, 2002.
- Nilsson, E. D., and Rannik, U.: Turbulent aerosol fluxes over the Arctic ocean 1. Dry deposition over sea and pack ice, *J. Geophys. Res.*, 106(D23), 32125–32137, <https://doi.org/10.1029/2000JD900605>, 2001.
- 890 Nordbo, A., Järvi, L., Haapanala, S., Moilanen, J., and Vesala, T.: Intra-city variation in urban morphology and turbulence structure in Helsinki, Finland. *Boundary-Layer Meteorol.* 146(3), 469–496. <https://doi.org/10.1007/s10546-012-9773-y>, 2013.
- 895 Pappacogli, G., Famulari, D., and Donato, A.: Impact of filtering methods on ultrafine particles turbulent fluxes by eddy covariance, *Atmos. Environ.*, 285, 119237. <https://doi.org/10.1016/j.atmosenv.2022.119237>, 2022.

- Pleim, J., and Ran, L.: Surface flux modeling for air quality applications, *Atmosphere*, 2, 71–302. <https://doi.org/10.3390/atmos2030271>, 2011.
- 900 Pryor, S., Gallagher, M., Sievering, H., Larsen, S. E., Barthelmie, R. J., Birsan, F., Nemitz, E., Rinne, J., Kulmala, M., and Grönholm, T.: A review of measurement and modelling results of particle atmosphere–surface exchange, *Tellus B*, 60, 42–75, 2008.
- 905 Pryor, S.C., Barthelmie, R.J., and Hornsby, K.E.: Size-Resolved particle fluxes and vertical gradients over and in a sparse pine forest, *Aerosol Sci. Technol.*, 47, 1248–1257. <https://doi.org/10.1080/02786826.2013.831974>, 2013.
- Qi, L., Li, Q. B., Li, Y. R., and He, C. L.: Factors controlling black carbon distribution in the Arctic, *Atmos. Chem. Phys.*, 17(2), 1037–1059. <https://doi.org/10.5194/acp-17-1037-2017>, 2017.
- 910 Quinn, P. K., Bates, T. S., Baum, E., Doubleday, N., Fiore, A. M., Flanner, M., Fridlind, A., Garrett, T. J., Koch, D., Menon, S., Shindell, D., Stohl, A., and Warren, S. G.: Short-lived pollutants in the Arctic: Their climate impact and possible mitigation strategies, *Atmos. Chem. Phys.*, 8(6), 1723–1735. <https://doi.org/10.5194/acp-8-1723-2008>, 2008.
- 915 Quinn, P. K., Bates, T. S., Schulz, K., and Shaw, G. E.: Decadal trends in aerosol chemical composition at Barrow, Alaska: 1976–2008, *Atmos. Chem. Phys.*, 9(22), 8883–8888. <https://doi.org/10.5194/acp-9-8883-2009>, 2009.
- 920 Sand, M., Berntsen, T. K., von Salzen, K., Flanner, M. G., Langner, J., and Victor, D. G.: Response of Arctic temperature to changes in emissions of short-lived climate forcers, *Nat. Clim. Change*, 6(3), 286–289. <https://doi.org/10.1038/nclimate2880>, 2015.
- Saylor, R.D., Baker, B.D., Lee, P., Tong, D., Pan, L., and Hicks, B.B.: The particle dry deposition component of total deposition from air quality models: right, wrong or uncertain?, *Tellus B*, 71 (1), 1550324. <https://doi.org/10.1080/16000889.2018.1550324>, 2019.
- 925 Schiavon, M., Tampieri, F., Bosveld, F. C., Mazzola, M., Trini Castelli, S., Viola, A. P., Yagüe, C.: The Share of the Mean Turbulent Kinetic Energy in the Near-Neutral Surface Layer for High and Low Wind Speeds, *Bound-Lay. Meteor.*, 172:81–106. <https://doi.org/10.1007/s10546-019-00435-6>, 2019.
- 930 Schmale, J., Zieger, P., and Ekman, A. M. L.: Aerosols in current and future Arctic climate, *Nat. Clim. Change*, 11, 95–105, www.nature.com/natureclimatechange, 2021.
- 935 Shu, Q., Murphy, B., Pleim, J. E., Schwede, D., Henderson, B. H., Pye, H. O. T., Appel, K. W., Khan, T. R., and Perlinger, J. A.: Particle dry deposition algorithms in CMAQ version 5.3: characterization of critical parameters and land use dependence using DepoBoxTool version 1.0, *Geosci. Model Dev. Discuss.*, [preprint], <https://doi.org/10.5194/gmd-2021-129>, 2021a.
- Shu, Q.: Particle dry deposition algorithms in CMAQ version 5.3: characterization of critical parameters and land use dependence using DepoBoxTool version 1.0. <https://doi.org/10.5281/zenodo.4749548>, 2021b.
- 940 Skiles, S. M., Flanner, M., Cook, J. M., Dumont, M. and Painter, T. H.: Radiative forcing by light-absorbing particles in snow, *Nat. Clim. Change*, 8, 964–971, 2018.
- Slinn, W.: Predictions for particle deposition to vegetative canopies, *Atmos. Environ.*, 16, 1785–1794, 1982.
- 945 Song, C., Becagli, S., Beddows, D. C. S., Brean, J., Browse, J., Dai, Q., Dall’Osto, M., Ferracci, V., Harrison, R. M., Harris, N., Li, W., Jones, A. E., Kirchgäßner, A., Kramawijaya, A. G., Kurganskiy, A., Lupi, A., Mazzola, M., Severi, M., Traversi, R., and Shi, Z.: Understanding Sources and Drivers of Size-Resolved Aerosol in the High Arctic Islands of Svalbard Using a Receptor Model Coupled with Machine Learning, *Environ. Sci. Technol.*, 56, 11189–11198, 2022.
- 950 Stjern, C. W., Lund, M. T., Samset, B.H., Myhre, G., Forster, P. M., Andrews, T., Boucher, O., Faluvegi, G., Fläschner, D., Iversen, T., Kasoar, M., Kharin, V., Kirkevåg, A., Lamarque, J.-F., Olivié, D., Richardson, T., Sand,

- M., Shawki, D., Shindell, D., Smith, C. J., Takemura, T., Voulgarakis, A.: Arctic amplification response to individual climate drivers, *J. Geophys. Res.-Atmos.*, 124, 6698–6717. <https://doi.org/10.1029/2018JD029726>, 2019.
- 955 Stull, R. B.: An introduction to boundary layer meteorology, Kluwer Academic Publishers, Dordrecht, 1988.
- Sun, J., Mahrt, L., Banta, R. M., and Pichugina, Y.L.: Turbulence regimes and turbulence intermittency in the stable boundary layer during cases-99, *J. Atmos. Sci.*, 69(1), 338–351, <https://doi.org/10.1175/JAS-D-11-082.1>, 2012.
- 960 Tapiador, F. J., Checa, R., and de Castro, M.: An experiment to measure the spatial variability of rain drop size distribution using sixteen laser disdrometers, *Geophys. Res. Lett.*, 37, L16803, <https://doi.org/10.1029/2010gl044120>, 2010.
- 965 Toda, M., and Sugita, M.: Single level turbulence measurements to determine roughness parameters of complex terrain, *J. Geophys. Res.*, 108, D12. <https://doi.org/10.1029/2002JD002573>, 4363, 2003.
- Tschiersch J., Frank, G., Hietel, B., Schramel, P., Schulz, F. and Trautner, F.: Aerosol deposition to a snow surface, *J. Aerosol Sci.*, Vol. 22, Suppl. I, pp. 565-568, 1991.
- 970 Tunved, P., Ström, J., and Krejci, R.: Arctic aerosol life cycle: linking aerosol size distributions observed between 2000 and 2010 with air mass transport and precipitation at Zeppelin station, Ny-Ålesund, Svalbard, *Atmos. Chem. Phys.*, 13, 3643–3660, <https://doi.org/10.5194/acp-13-3643-2013>, 2013.
- 975 Urgnani, R., Finco, A., Chiesa, M., Marzuoli, R., Bignotti, L., Riccio, A., Chianese, E., Tirimberio, G., Giovannini, L., Zardi D., Gerosa G.: Size-segregated aerosol fluxes, deposition velocities, and chemical composition in an Alpine valley, *Atmos. Res.*, 268, 105995, <https://doi.org/10.1016/j.atmosres.2021.105995>, 2022.
- Van den Broeke, M.: Strong surface melting preceded collapse of Antarctic Peninsula ice shelf, *Geophys. Res. Lett.*, 32, L12815, <https://doi.org/10.1029/2005GL023247>, 2005.
- 980 Van As, D., Van den Broeke, M., Van de Wal, R.: Daily cycle of the surface layer and energy balance on the high Antarctic Plateau, *Antarct. Sci.*, 17 (1): 121–133, 2005.
- 985 Věčenaj, Z., De Wekker, S.F.J.: Determination of non-stationarity in the surface layer during the T-REX experiment, *Q. J. R. Meteorol. Soc.*, 141 (690), 1560–1571. <https://doi.org/10.1002/qj.2458>, 2015.
- Vickers, D., and Mahrt, L.: Quality Control and Flux Sampling Problems for Tower and Aircraft Data, *J. Atmos. Oceanic Tech.*, 14(3):512–526, [https://doi.org/10.1175/1520-0426\(1997\)014](https://doi.org/10.1175/1520-0426(1997)014), 1997.
- 990 Vickers, D., and Mahrt, L.: The cospectral gap and turbulent flux calculations, *J. Atmos. Oceanic Tech.*, 20:660–672, 2003.
- 995 Vickers, D., and Mahrt, L.: A solution for flux contamination by mesoscale motions with very weak turbulence, *Bound-Lay. Meteorol.*, 118(3):431–447, 2006.
- Vong, R. J., Vickers, D., and Covert, D. S.: Eddy correlation measurements of aerosol deposition to grass, *Tellus B*, 56, 105–117, 2004.
- 1000 Wang, Q., Jacob, D. J., Fisher, J. A., Mao, J., Leibensperger, E. M., Carouge, C. C., Le Sager, P., Kondo, Y., Jimenez, J. L., Cubison, M. J., and Doherty, S. J.: Sources of carbonaceous aerosols and deposited black carbon in the Arctic in winter-spring: Implications for radiative forcing, *Atmos. Chem. Phys.*, 11(23), 12,453–12,473. <https://doi.org/10.5194/acp-11-12453-2011>, 2011.
- 1005 Wesely, M.L. and Hicks, B.B.: A review of the current status of knowledge on dry deposition, *Atmos. Environ.*, 34:2261–82, 2000.

- 1010 Whaley, C. H., Mahmood, R., von Salzen, K., Winter, B., Eckhardt, S., Arnold, S., Beagley, S., Becagli, S., Chien, R.-Y., Christensen, J., Damani, S. M., Dong, X., Eleftheriadis, K., Evangeliou, N., Faluvegi, G., Flanner, M., Fu, J. S., Gauss, M., Giardi, F., Gong, W., Hjorth, J. L., Huang, L., Im, U., Kanaya, Y., Krishnan, S., Klimont, Z., Kühn, T., Langner, J., Law, K. S., Marelle, L., Massling, A., Olivié, D., Onishi, T., Oshima, N., Peng, Y., Plummer, D. A., Popovicheva, O., Pozzoli, L., Raut, J.-C., Sand, M., Saunders, L. N., Schmale, J., Sharma, S., Skeie, R. B., Skov, H., Taketani, F., Thomas, M. A., Traversi, R., Tsigaridis, K., Tsyro, S., Turnock, S., Vitale, V., Walker, K. A., Wang, M., Watson-Parris, D., and Weiss-Gibbons, T.: Model evaluation of short-lived climate forcers for the Arctic Monitoring and Assessment Programme: a multi-species, multi-model study, *Atmos. Chem. Phys.*, 22, 5775–5828, <https://doi.org/10.5194/acp-22-5775-2022>, 2022.
- 1015 Whitehead, J. D., Dorsey, J. R., Gallagher, M. W., Flynn, M. J., Mc Figgans, G., and Carpenter, L. J.: Particle fluxes and condensational uptake over sea ice during COBRA, *J. Geophys. Res.*, 117, D15202. <https://doi.org/10.1029/2012JD017798>, 2012.
- Willis, M. D., Leaitch, W. R., and Abbatt, J. P.: Processes controlling the composition and abundance of Arctic aerosol, *Rev. Geophys.*, 56, 621–671. <https://doi.org/10.1029/2018RG000602>, 2018.
- 1025 Zhang, L. M., Gong, S. L., Padro, J., Barrie, L.: A size-segregated particle dry deposition scheme for an atmospheric aerosol module, *Atmos. Environ.*, 35:549–60, 2001.
- 1030 Zhou, C., Penner, J. E., Flanner, M. G., Bisiaux, M. M., Edwards, R., and McConnell, J. R.: Transport of black carbon to polar regions: Sensitivity and forcing by black carbon, *Geophys. Res. Lett.*, 39, L22804. <https://doi.org/10.1029/2012GL053388>, 2012.