

Convective Organization and 3D Structure of Tropical Cloud Systems deduced from Synergistic A-Train Observations and Machine Learning

Claudia J. Stubenrauch¹, Giulio Mandorli¹, Elisabeth Lemaitre¹

5 ¹Laboratoire de Météorologie Dynamique / Institut Pierre-Simon Laplace, (LMD/IPSL), Sorbonne Université, Ecole Polytechnique, CNRS, Paris, France

Correspondence to: Claudia J. Stubenrauch (claudia.stubenrauch@lmd.ipsl.fr)

Abstract. We are building a 3D description of upper tropospheric (UT) cloud systems in order to study the relation between convection and cirrus anvils. For this purpose we used cloud data from the Atmospheric InfraRed Sounder and the Infrared Atmospheric Sounding Interferometer and atmospheric and surface properties from the meteorological reanalyses ERA-Interim and machine learning techniques. The different artificial neural network models were trained on collocated radar – lidar data from the A-Train in order to add cloud top height, cloud vertical extent, cloud layering, as well as a rain intensity classification (no, light or heavy) to other variables describing the UT cloud systems. The rain intensity classification latter has an accuracy of about 65 to 70% and allows us to build objects of strong precipitation, used to identify convective organization. This rain intensity classification is more efficient to detect large latent heating compared to than cold cloud temperature. In combination with a The cloud system concept analysis allows a process-oriented evaluation of parameterizations in climate models. In agreement with earlier studies, we found that the rain intensity is maximum after the first development of anvils and that deeper convection leads to larger heavy rain areas and a larger detrainment, with a slightly smaller thick anvil emissivity. This kind of analysis can be used for a process-oriented evaluation of convective precipitation parameterizations in climate models. Finally Furthermore we have shown the usefulness of our data to investigate tropical convective organization metrics. A comparison of different tropical convective organization indices and proxies to define convective areas has revealed that all indices show a similar annual cycle in convective organization, in phase with the one of convective core height and, anvil vertical extent, and horizontal detrainment of the mesoscale convective systems and in opposite phase with the one of the ratio of thin cirrus over total anvil size. Differences can be understood by seasonal cycles of size and number of areas in phase for intense precipitation and opposite phase for cold clouds as proxies. The geographical patterns and magnitudes in radiative heating rate inter-annual changes with respect to one specific convective organization index (I_{org}) for the period 2008 to 2018 are similar for both proxies, but slightly larger for rain intensity, and they are similar to the ones related to the El Niño Southern Oscillation. However, since the inter-annual anomalies of the convective organization indices are very small and noisy, it was impossible to find a coherent relationship with those of other tropical mean variables such as surface temperature, thin cirrus area or subsidence area. the time series of the inter-annual anomalies of convective organization depend on the convective organization index.

1 Introduction

35 Upper tropospheric (UT) clouds represent about 60% of the total cloud cover in the deep tropics (e. g. Stubenrauch et al., 2013, 2017). These clouds, when created as anvil outflow from deep convection, often build large systems (e.g. Houze, 2004). The creation and maintenance of these mesoscale convective systems (MCSs) is strongly dependent on the moisture available in the lower troposphere and is influenced by wind shear (e. g. Laing and Fritsch, 2000; Chen et al., 2015; Schiro et al., 2020). Observational and CRM studies (e.g. Del Genio and Kovari, 2002, Posselt et al., 2012) have shown that tropical storm systems
40 over warmer water are denser with more intense precipitation and cover wider areas than those over cooler water. Thin cirrus surround the highest anvils (Protopapadaki et al., 2017), which may be explained by UT humidification originating from deep convection (e.g. Su et al., 2006). Their structure and amount may respond to changing convection induced by climate warming. Organized convection, leading to MCSs and therefore associated to extreme precipitation, is a research subject of high interest, in particular in regard to climate warming, and many results have been published (e. g. Popp and Bony, 2020; Bony et al.,
45 2020, Pendergast et al., 2020; Blaeckberg and Singh, 2022).

The goal of this article is to present a coherent long-term 3D dataset which describes tropical UT cloud systems and which can be used on one hand for a process-oriented evaluation of convective parameterizations in climate models and on the other hand for the study of convective organization.

~~To~~ For the study of the relation between cirrus anvils and convection, we coupled d horizontal and vertical structure of UT
50 clouds, including precipitation and 3D radiative heating. As single datasets are incomplete, we use d their synergy and machine learning (ML) to get a more complete 3D description as well as simultaneous information on precipitation. A cloud system approach makes it possible to link the anvil properties to convection. Furthermore, the horizontal structure of intense rain areas within these cloud systems can be used to derive tropical convective organization indices.

The cross-track scanning Atmospheric Infrared Sounder (AIRS) and the Infrared Atmospheric Sounding Interferometers (IASI),
55 aboard the polar orbiting Aqua and Metop satellites, provide cloud properties (CIRS, Clouds from IR Sounders, Stubenrauch et al., 2017) with a large instantaneous horizontal coverage. These have been used to reconstruct UT cloud systems (Protopapadaki et al., 2017). The good spectral resolution of IR sounders makes them sensitive to cirrus, down to a visible optical depth of 0.1, during daytime and ~~nighttime~~ night-time. The vertical cloud structure is derived by combined radar-lidar measurements of the CloudSat and CALIPSO missions (Stephens et al., 2018), but only along successive narrow nadir tracks
60 separated by about 2500 km. In order to get a more complete instantaneous picture, required for process studies, Stubenrauch et al. (2021) have demonstrated that the radiative heating rate profiles derived along these nadir tracks (CloudSat FLXHR-lidar, Henderson et al., 2013) can be horizontally extended by artificial neural network (ANN) regression models applied on cloud properties retrieved from AIRS and atmospheric and surface properties from meteorological re-analyses from the European Centre for Medium-Range Weather Forecasts (ECMWF). The 15-year time series revealed a connection of the
65 heating by ~~mesoscale convective systems (MCSs)~~ in the upper and middle troposphere and the (low-level) cloud cooling in

the lower atmosphere in the cool regions, with a correlation coefficient equal to 0.72, ~~consolidating supporting~~ the hypothesis of an energetic connection between the convective regions and the subsidence regions.

~~In this~~This article ~~we presents~~ additional variables expanded to the horizontal coverage of AIRS and IASI by machine learning models, trained with collocated CloudSat-lidar retrievals: cloud top height, cloud vertical extent, cloud layering (above and below the clouds identified by CIRS), as well as a precipitation intensity classification (no, light or heavy).

Apart from the conclusions and outlook given in Section 4, the article is divided into two main sections: Section 2 describes the data, methods and evaluation, and Section 3 highlights scientific results which show the applicability of these newly derived variables.

Section 2 ~~includes a description~~first -describes of the collocated data, the neural network development as well as an evaluation of the predictions on the collocated data. ~~and~~In addition, it presents the creation of the 3D dataset containing the construction of the tropical horizontal fields of these additional variables (2.3). Furthermore we present in this section and the cloud system reconstruction (2.4). ~~and~~The last subsection (2.5) gives a short overview of existing metrics on convective organization indices derived from areas with heavy precipitation and proxies for defining the convective objects. Section 3 ~~highlights results which show the applicability of these newly derived variables: comparison~~first shows the coherence of these ML-derived properties, in particular the rain intensity classification, using the complete 3D dataset (section 3.1). Then, in combination with a cloud system analysis, section 3.2 presents -of properties of precipitating and non-precipitating UT clouds, statistical analysis of the behaviour of MCS properties during with respect to their life cycle stage and in respect to their convective depth. Finally weThe last subsection (3.3) explores the annual cycle of tropical convective organization: we compare different proxies for convection and resulting indices of convective organization, by investigating annual cycle and inter-annual variability. The latter is small over the considered time period (2008 – 2018), but we find interesting geographical patterns in changes of the radiative heating rate fields in relation to the tropical convective organization with respect to inter-annual changes in tropical convective organization. Conclusions and an outlook are given in Section 4.

2 Data, Methods and Evaluation

Satellite observations have become a major tool to observe our planet. However, they do not provide instantaneous complete views, because passive remote sensing is not able to provide the vertical structure of clouds and active radar-lidar measurements are only available along very narrow nadir tracks. In order to build a complete 3D cloud dataset, we combine the complementary information from passive and active remote sensing, and we train artificial neural networks over these collocated data. By training neural networks we combine the complementary information from passive and active remote sensing and build a more complete 3D structure of clouds.

95 **2.1 Collocated AIRS – CloudSat-lidar – ERA-Interim data**

The satellite observations used for the training originate from the A-Train constellation (Stephens et al., 2018), with local overpass times around 1:30 AM and 1:30 PM. As input variables for the ANNs we use cloud properties retrieved from AIRS measurements by the CIRS (Clouds from IR Sounders) algorithm (Stubenrauch et al., 2017) and coincident atmospheric and surface properties from meteorological reanalyses ERA-Interim (Dee et al., 2011). CIRS cloud types are defined according to cloud pressure (p_{cld}) and cloud emissivity (ϵ_{cld}) from AIRS-CIRS as: highlevel clouds with $p_{\text{cld}} < 440$ hPa, and further high opaque with $\epsilon_{\text{cld}} > 0.95$, cirrus with $0.95 > \epsilon_{\text{cld}} > 0.5$ and thin cirrus with $0.5 > \epsilon_{\text{cld}} > 0.05$. Midlevel clouds ($440 \text{ hPa} < p_{\text{cld}} < 680 \text{ hPa}$) and lowlevel clouds ($p_{\text{cld}} > 680 \text{ hPa}$) are both separated into two categories: opaque with $\epsilon_{\text{cld}} > 0.5$ and partly cloudy with $\epsilon_{\text{cld}} < 0.5$.

The target variables are products derived from combined radar – lidar measurements from the CloudSat and CALIPSO missions. Cloud top height (z_{top}), cloud vertical extent (DZ , difference between cloud top and cloud base) and number of vertical cloud layers are given by the CloudSat 2B - GEOPROF – lidar dataset (Mace et al., 2009), while the precipitation rate and its quality are given by the 2C – PRECIP-COLUMN dataset (Haynes et al., 2009). From these one can calculate the ‘cloud fuzziness’ as the difference between cloud top height and cloud height retrieved by CIRS (z_{cld}): the larger the vertical path to attain opaqueness the larger is the cloud fuzziness. As z_{cld} corresponds to the height at which the cloud reaches an optical depth of about 0.5 (Stubenrauch et al., 2017), we define a cloud fuzziness indicator as $(z_{\text{top}} - z_{\text{cld}})/DZ$. We collocated these datasets over the period 2007 to 2010, as described in Stubenrauch et al. (2021), and used the latitude band 30N – 30S for the training and application. Input and target variables, as well as derived variables are presented in Table 1.

Table 1: List of input and output variables ~~for~~ regarding the prediction of cloud vertical structure and precipitation rate.

Input

Clouds

CIRS cloud properties and uncertainties $\epsilon_{\text{cld}}, p_{\text{cld}}, T_{\text{cld}}, z_{\text{cld}}, d\epsilon_{\text{cld}}, dp_{\text{cld}}, dT_{\text{cld}}, dz_{\text{cld}}, \chi_{\text{min}}^2$
 cloud spectral emissivity difference $(\epsilon_{\text{cld}}(12\mu\text{m}) - (\epsilon_{\text{cld}}(9\mu\text{m})))$

Atmosphere

AIRS T_{B} at $0.5^\circ \times 0.5^\circ$ $T_{\text{B}}(11.85\mu\text{m}), \sigma(T_{\text{B}}), T_{\text{B}}(7.18 \mu\text{m})$

ERA-Interim atmospheric properties total precipitable water, $p_{\text{tropopause}}$

ERA-Interim relative humidity profile RH (determined from T and water vapour) within 10 layers

Surface

ERA-Interim surface properties $p_{\text{surf}}, T_{\text{surf}}, \text{nb of atm. layers down to } p_{\text{surf}}$

IASI spectral surface emissivity $\epsilon_{\text{surf}}(9, 10, 12\mu\text{m})$ (monthly mean climatology over land)

day-night flag, land-ocean flag

Target / Output

Cloud top height z_{top}

Cloud vertical extent $DZ = z_{\text{top}} - z_{\text{base}}$

Classifications:

Cloud layers below 0 or 1

Cloud layers above 0 or 1

Rain rate 0: no rain, 1: rain rate < 5 mm/hr, 2: rain rate > 5 mm/hr
 Certain rain 0: no, possible or likely rain, 1: certain rain

Variables deduced from target variables

Normalized cloud vertical extent DZ / z_{top}

Cloud fuzziness $(z_{top} - z_{cld}) / DZ$ ~~Cloud types are defined according to cloud pressure (p_{cld}) and cloud emissivity (e_{cld}) from AIRS CIRS as: highlevel clouds with $p_{cld} < 440$ hPa, and further high opaque with $e_{cld} > 0.95$, cirrus with $0.95 > e_{cld} > 0.5$ and thin cirrus with $0.5 > e_{cld} > 0.05$. Midlevel clouds ($440 \text{ hPa} < p_{cld} < 680 \text{ hPa}$) and lowlevel clouds ($p_{cld} > 680 \text{ hPa}$) are both separated into two categories: opaque with $e_{cld} > 0.5$ and partly cloudy with $e_{cld} < 0.5$.~~

2.2 Artificial Neural Network predictions and evaluation

2.2.1 Development of prediction models

We developed artificial neural network (ANN) regression models for cloud top height (z_{top}) and cloud vertical extent (DZ), and classification models for cloud vertical layering and rain intensity (rain rate), separately for high-level clouds and for mid- / low-level clouds. The training was executed separately, over ocean and over land.

The prediction of the rain rate is the most difficult, partly because its distribution is highly skewed with a very large peak at 0 mm/hr. Therefore we only predict a ‘rain rate classification’, with three classes: 0: no rain, 1: small rain rate (> 0 mm/hr and < 5 mm/hr) 2: large rain rate (> 5 mm/hr). The CloudSat 2C-PRECIP-COLUMN data also provide a quality flag, varying between no, possible, likely and certain rain. We transformed this flag into a binary flag with 1 for certain rain and 0 else. Due to the skewedness of the distributions, we introduced class weights for the training, to balance statistics, comparing (0.25, 0.25 and 0.5) and (0.2, 0.3 and 0.5) for the rain rate classification, and (0.5, 0.5) and (0.4, 0.6) for the determination of certain rain. We also tested-investigated a model development separately for three cloud scenes (i) high opaque, ii) cirrus / thin cirrus and iii) mid- / lowlevel clouds) and for two cloud scenes (i) high clouds excluding thin cirrus and ii) mid- / lowlevel clouds), ~~over ocean and over land~~. The samples for the development of these scene type dependent models vary from 4.8 million data points for mid- and low-level clouds over ocean to 94000 data points for opaque high-level clouds over land.

For the regression models, the final ANNs consist of an input layer with the approximately 30 input variables (Table 1), one hidden layer with 64 neurons, one with 32 neurons, one with 16 neurons and one output layer. We used the rectified linear unit (ReLU) layer activation function. ~~For the classification models, we use another~~ The activation function for the output layer is (Sigmoid for binary classification ~~classification~~ and Softmax for multi-classification) for the output layer. Furthermore, we use the Adaptive Moment Estimation (Adam) optimizer with a learning rate of 0.0001 and a batch size of 256. For the training, we use ~~randomly chosen~~ 80% of the dataset chosen at random. The remaining 20% are used for validation. The random data choice is stratified by day-night and by cloud type (section 2.1), in order to have similar statistics in these portions.

As many input variable distributions are not Gaussian, and to avoid outliers, we determined for each variable acceptable minimum and maximum values, adapted to each scene for which the models were trained: ocean or land, high clouds or mid-

/ low-level clouds. Then we normalized the input variables by subtracting the minimum value and then dividing by the difference between maximum and minimum. Before the application of the models, all input variables are first bounded between these minimum and maximum values.

The model parameters are fitted by minimizing a loss function, corresponding to the average of the squared differences (square mean error, SME) for the regression, and corresponding to the cross entropy for the classification, between the predicted and the target value.

2.2.2 Evaluation using collocated data along the narrow nadir tracks

~~For the evaluation we use as metrics~~The ANN models are evaluated using the mean absolute error (MAE) between the predicted and observed target values for the regression and the accuracy for the classification. In order to avoid overfitting, we stop the fitting when the minimum loss does not further improve during twenty iterations (epochs). The accuracy (ratio of correctly classified samples and overall number of samples) for unbalanced datasets provides an overoptimistic estimation of the classifier ability on the majority class, and therefore we present the Matthews correlation coefficient (MCC) in Table 3. MCC produces only a high score if the prediction obtains good results in all of the four confusion matrix categories (true positives, false negatives, true negatives, and false positives), proportionally to both; the size of positive elements and the size of negative elements in the dataset. As MCC ranges from -1 to +1, with MCC = 0 meaning a random result, we use the normalized MCC, $(MCC+1)/2$, which better compares with accuracy, with 0.5 meaning a random result.

Tables 2 and 3 present the uncertainties given by the MAE for the regression models and the normalized MCC for the classification models, separately for different cloud types, over ocean and over land. In the case of vertical extent DZ and the classifications of cloud layering and rain intensity, we compare results for two modeling strategies:

1) Iterative approach, using predicted variables as additional input: We first develop a regression model for the prediction of z_{top} . Then the predicted z_{top} is used as an additional input variable for the prediction of DZ. Finally predicted z_{top} and DZ are used as additional input variables for the classifications of cloud layering, rain rate and certain rain. For z_{top} , DZ and cloud layering the models have been separately developed over high and mid- / lowlevel clouds, while for rain rate and certain rain the training datasets for high clouds have been further divided into Cb and Ci / thin Ci.

2) Using only ML-independent variables as input: We determine each variable independently and don't use predicted variables in the prediction of DZ, cloud layering, rain rate and certain rain. Instead, for the rain rate and certain rain classification we exclude thin cirrus and use slightly different class weights (see above) for balancing the training statistics. For the prediction of cloud layers below, we exclude low-level clouds.

The MAEs and normalized MCCs are very similar for both strategies. The uncertainty of the cloud top height is about 1 km for high- and midlevel clouds (6% and 9%) and about 0.5 km for low-level clouds (20%). The quartiles indicated by the boxes in Figure S1 are about half of the MAEs. The uncertainty of DZ varies from 0.5 km (37%) for low-level clouds to 2.9 km (33%) for Cb. The quartiles of the relative differences between predicted and observed DZ are about 25 to 35%. Mean biases are small (a few meters). The normalized frequency distributions of observed and predicted z_{top} in Figure 1 agree quite well for each of the cloud types (Cb, Ci, thin Ci and mid-/ low-level clouds). It is interesting to note that the features of slightly higher clouds and more midlevel clouds over land than over ocean are also well obtained by the predictions. However, the z_{top} distributions of the predicted values are slightly narrower than the ones of the observations. The normalized frequency distributions of observed and predicted DZ in Figure 1 agree also very well for Ci, thin cirrus and mid-/ low-level clouds, with decreasing DZ ~~with decreasing~~ when cloud emissivity and cloud height decrease. However, the bimodality for Cb, with a large peak around 15 km corresponding to the convective towers and a smaller peak around 6 km, probably corresponding to thick anvils, could not be reproduced. By investigating further, Figure S2 shows that for those Cb for which a DZ < 10 km is predicted, there is no bias, but *when a DZ > 10 km is predicted, corresponding to most of the convective towers, DZ is underestimated on average by about 1.5 km over ocean and by about 2 km over land.* *This systematic bias may be corrected by adding these values to the predicted DZ for those cases.*

The normalized MCCs for the classifications of certain rain, rain rate, and cloud layers additional to the one identified by CIRS are about 0.7. Merely the prediction of rain from thin cirrus is close to random. This is because thin cirrus do not precipitate, and detected rain can only be linked to the clouds underneath, for which the CIRS data do not have any information. Therefore we trained the second model only for Cb and Ci, assuming no rain for thin cirrus. With this assumption we miss about 2% of rainy areas beneath thin cirrus.

Table 2 MAE and relative MAE for the prediction of z_{top} and DZ, over ocean and over land. For DZ, results are shown for predicted z_{top} included and not included as input parameter. Relative MAE refers to strategy 2.

ocean	Cb	Ci	thin Ci	lowlevel	midlevel
z_{top}	0.8 km 4.4 %	1.1 km 6.5 %	0.90 km 5.0 %	0.5 km 18.9 %	0.8 km 8.8 %
DZ	2.9 / <u>2.9</u> km 31 %	2.4 / 2.5km 38 %	1.2 / 1.3 km 32 %	0.5 / 0.6 km 36 %	1.8 / 1.9 km 82 %
land	Cb	Ci	thin Ci	lowlevel	midlevel
z_{top}	0.9 km 5.1 %	1.3 km 7.0 %	1.0 km 5.4 %	0.6 km 21.3 %	0.9 km 21.3 %

220

DZ	3.2 / <u>3.2</u> km 39 %	2.6 / 2.8 km 43 %	1.4 / 1.5 km 37 %	0.7 / 0.8 km 47 %	2.0 / 2.1 km 91 %
-----------	-----------------------------	----------------------	----------------------	----------------------	----------------------

Table 3 Normalized Matthews correlation coefficient for the prediction of rain rate (no, small, large), certain rain, cloud layer above and below, over ocean and over land. Two results are compared: the first include predicted z_{top} and DZ as input parameters, the second does not. Instead, we used the hypotheses of no rain from thin Ci and no clouds underneath low-level clouds.

ocean	Cb	Ci	thin Ci	lowlevel	midlevel
rain rate	0.65 / 0.64	0.69 / 0.70	0.55 / -	0.62 / 0.62	0.68 / 0.67
certain rain	0.68 / 0.68	0.67 / 0.68	0.52 / -	0.55 / 0.57	0.65 / 0.68
cloud layer above	0.64 / 0.67	0.71 / 0.72	0.68 / 0.69	0.69 / 0.71	0.67 / 0.68
cloud layer below	0.54 / 0.55	0.67 / 0.67	0.65 / 0.65	0.56 / -	0.69 / 0.67
land	Cb	Ci	thin Ci	lowlevel	midlevel
rain rate	0.63 / 0.63	0.65 / 0.70	0.52 / -	0.58 / 0.59	0.61 / 0.62
certain rain	0.66 / 0.67	0.64 / 0.70	0.50 / -	0.57 / 0.51	0.64 / 0.60
cloud layer above	0.66 / 0.71	0.74 / 0.74	0.66 / 0.70	0.70 / 0.72	0.67 / 0.70
cloud layer below	0.53 / 0.52	0.65 / 0.65	0.64 / 0.64	0.50 / -	0.66 / 0.69

225

2.3 Construction of ~~tropical horizontal fields~~ the 3D dataset by applying the ML models

230

The results in section 2.2.2 do not clearly show which of both models is performing better. For the prediction of DZ the inclusion of the predicted z_{top} may lead to slightly better results, as the quartiles are slightly smaller (Figure S1). For further investigation we have applied both sets of ANN models to the whole AIRS-CIRS - ERA-Interim dataset over the period 2004 – 2018.

For the construction of the convective organization indices (section 2.5), we have also applied these models on IASI-CIRS – ERA-Interim data, provided at local observation times of 9:30 AM and 9:30 PM. This is possible, because the models use input variables which are available in both datasets.

235

While these new target variables have been obtained from machine learning per AIRS footprint (spatial resolution of 15 km), the final dataset has been gridded to 0.5° latitude x 0.5° longitude. The substructure of this dataset has been kept by averaging over the most frequent cloud scene type; distinguishing between (defined as highlevel clouds or- mid- / lowlevel clouds), clear sky, and by keeping the fraction of coverage by Cb, Ci, thin Ci, mid- / lowlevel clouds and clear sky per grid box. In order to give an information on the rain intensity, we constructed a ‘rain rate indicator’ at footprint resolution by combining both, rain

rate classification and rain quality binary classification, with values of 0 (0 & 0), 1 (0 & 1), 1.5 (1 & 0), 2.5 (1 & 1), 5 (2 & 0) and 7.5 (2 & 1). This rain rate indicator has then been averaged over 0.5° . In addition, we estimated the fractions within 0.5° of no rain and of certain rain as well as of light rain rate and of strong rain rate.

We illustrate the newly gained benefit by presenting in Figure 2 snapshots of the horizontal structure of some of these variables, at a specific day in January, once during a La Niña situation (2008) and once during an El Niño situation (2016), at two local times (1:30AM and 9:30PM). The gaps between orbits (corresponding to about 30% in the tropics) have been iteratively filled by the data closest in time. By using the data which are four hours apart, the data coverage has increased from 70% to 90%. Including also data which are 8 hours apart increases the coverage to 97%, and finally with those 12 hours apart leads to complete coverage. These instantaneous horizontal structures, which are not possible to obtain from CloudSat-lidar data alone (Figure 1 of Stubenrauch et al., 2021), are quite different between La Niña and El Niño: While during the La Niña situation a very large multi-cell convective system evolved over Indonesia, the convective systems are more evenly distributed over the whole tropical band during the El Niño case. The latter can be explained by the shift of warmer SST towards the Central Pacific. The multi-cell convective cluster during the La Niña case shows bands of large DZ and rain rate, while during the El Niño case these are more scattered. The different horizontal structure in precipitating areas over the tropical band between La Niña and El Niño suggests to derive a metrics for convective organization from these data (see Section 2.5). Figure 2 also indicates clouds above and below the CIRS clouds. We observe clouds below the edges of the cirrus anvils and multiple layer clouds in the region of thin cirrus bands. The latter are continued as very thin clouds above low-level clouds. *All in all, these horizontal structures obtained from machine learning seem to be coherent, also those obtained from IASI, which are very similar to those from AIRS.*

When investigating monthly mean anomalies in the time series, we have seen a small artificial peak for the rain rate indicator in March 2014 for the AIRS observations. This peak was larger for the first model than for the second model. Therefore we show in the following all results using the second model which does not include predicted variables as input for the rain rate classification. At the end of this disturbance, most probably evoked by cosmic particles during a solar flare event, the AIRS instrument shut down on 22 March, as its electronic circuit was affected. The instrument was operational again by end of March. No obvious failure is seen in the retrieved cloud variables, but many small areas with strong rain rate appear during this period.

2.4 UT cloud system reconstruction

The cloud system reconstruction (Protopapadaki et al., 2017) is based on two independent variables, p_{cld} and ε_{cld} , over grid cells of 0.5° latitude x 0.5° longitude. This method is different with respect to other mesoscale cloud system analyses based on IR brightness temperature alone (e. g. Machado et al., 1998; Roca et al., 2014). After the filling of data gaps between adjacent orbits (Protopapadaki et al., 2017), UT cloud systems were built from adjacent elements, containing at least 90% UT clouds ($p_{\text{cld}} < 440$ hPa) of similar cloud height (within 6 hPa x $\ln(p_{\text{cld}}/\text{hPa})$, which corresponds to 27 hPa for $p_{\text{cld}} = 100$ hPa

and to 37 hPa for $p_{\text{cld}} = 400$ hPa (within 50 hPa, $p_{\text{cld}} < 440$ hPa). In a next step, the cloud emissivity was used to distinguishes between convective cores ($\epsilon_{\text{cld}} > 0.98$), cirrus anvil ($0.98 > \epsilon_{\text{cld}} > 0.5$) and surrounding thin cirrus ($0.5 > \epsilon_{\text{cld}} > 0.05$). In order to reduce the noise in the determination of the number of convective cores, one searches for grid cells with $\epsilon_{\text{cld}} > 0.98$ within regions of $\epsilon_{\text{cld}} > 0.93$. The convective core fraction within a MCS is then the total number of these grid cells divided by the number of grid cells belonging to the whole system; and the number of convective cells corresponds to the number of regions with $\epsilon_{\text{cld}} > 0.93$ which include at least one grid cell with $\epsilon_{\text{cld}} > 0.98$. Each of these regions with at least one such grid cell counts as a convective core. ~~The original UT cloud system reconstruction was used to study the amount of surrounding thin cirrus as a function of convective depth. In order to maximize the coverage of thin cirrus, a cell was declared to be covered by UT clouds, when it was already covered by 70% of UT clouds. These UT cloud systems cover about 25% of the latitude band between 30N and 30S.~~

~~Since these cloud systems reached very large sizes, in particular over the tropical Warm Pool, we revised the reconstruction by merging only grid cells which contain at least 90% UT clouds and of similar height defined within 6 hPa $\times \ln(p_{\text{cld}}/\text{hPa})$ (corresponding to 27 hPa for $p_{\text{cld}} = 100$ hPa and to 37 hPa for $p_{\text{cld}} = 400$ hPa). In addition, the threshold for defining the regions in which one looks for convective cores has been changed from 0.90 to 0.93. With this definition, the mesoscale UT cloud system coverage is ~~reduced to~~ about 20% within the latitude band 30N - 30S. MCSs with at least one convective core cover 15% of this latitude band, while the coverage of all UT clouds ($p_{\text{cld}} < 440$ hPa) is about 35%.~~

Figure 3 compares the normalized frequency distributions of the ~~cloud top and cloud base height as well as the~~ normalized vertical extent, DZ/z_{top} , of the convective cores, cirrus anvils and surrounding thin cirrus within the MCSs for the 30% warmest (SST > 302 K) and coolest (SST < 300 K) tropical ocean. As expected, this variable is close to 1 for a convective tower, with a peak of the distribution at 0.8 for convective cores, and decreases with the optical depth or emissivity of the anvil parts, with a peak of the distribution at 0.2 for the surrounding thin cirrus. ~~First of all, the cloud top height distributions of all parts are very similar, with a slightly higher top of the convective cores. As expected, the cloud systems reach a much higher top in the warm regions than in the cool regions. For the other two variables, While~~ the distributions of convective cores and of thin cirrus are well separated, ~~with the convective core base height in general smaller than 6 km and DZ/z_{top} larger than 0.6 (filling more than 60% between surface and cloud top).~~ The distribution of the cirrus anvils lies in between. ~~The~~ We observe that the overlapping between cirrus anvils and convective cores is however larger in the cooler ocean regions. This indicates that the convective cores ~~of the systems~~ in these regions are probably less well defined by $\epsilon_{\text{cld}} > 0.98$ than the ones of the MCSs in the warmer regions, which are less high than in the warmer, the latter being more convective regions (e. g. Figure 10 of Stubenrauch et al. 2021), are probably less well defined by $\epsilon_{\text{cld}} > 0.98$ than the ones of the MCSs in the warmer regions. ~~Since we have now the normalized vertical cloud extent from the machine learning, we ~~can~~ use it to improve the definition of convective cores, by adding the condition $DZ/z_{\text{top}} > 0.6$ (cloud filling more than 60% between the surface and cloud top). All grid cells which do not ~~fulfil~~ fulfil the condition $DZ/z_{\text{top}} > 0.6$ are then counted back as cirrus anvil.~~

2.5 Indicators of tropical convective organization

Convective aggregation, which refers to the clustering of convective cells, occurs at multiple spatial scales in the tropics.

305 Organized convection, leading to MCSs and therefore associated to extreme precipitation, is a research subject of high interest, in particular in regard to climate warming. ~~The creation and maintenance of MCSs is strongly dependent on the available moisture in the lower troposphere and is influenced by wind shear.~~ With the spatial resolution of our data we are mainly able to consider the organization of MSCs into large squall lines, hurricanes or super-clusters. This type of organization should be more influenced by the large-scale environment and circulation.

310 There are two main factors that ~~define~~ play a role in estimating the degree of organization ~~for a given dataset~~: the variable used to define convection (section 2.5.1) and the metric used to compute the degree of organization (section 2.5.2).

2.5.1 Definition of convective areas within UT clouds

315 Studies have used cold IR brightness temperatures (e. g. Tobin et al., 2012; Bony et al., 2020) as well as precipitation rate (e. g. Popp and Bony, 2020; Blaeckberg and Singh, 2022) to define convective objects for the determination of convective organization metrics.

In order to estimate the organization of convection, measures of convection without missing data are needed. Since both AIRS and IASI data still show gaps of missing data between the orbits, we have filled these gaps with the measurements that are nearest in time. First we excluded snapshots which have a data coverage in the latitudinal band 30N – 30S less than 68% for AIRS and less than 74% for IASI (as the swath is slightly larger for IASI). This ensures complete orbits. As described in
320 section 2.3, g Gaps between orbits are then iteratively filled by using the observations closest in time. In general with four observations per day we get complete snapshots (coverage larger than 99.5%).

In general, strong vertical updraft, strong precipitation and very cold and optically thick cloud tops indicate deep convective towers (e. g. Machado et al., 1998; Liu and Zipser, 2007; Yuan and Houze, 2010). Cold and optically thick cloud tops can be identified by a threshold in IR brightness temperature, T_B , a measurement available by any radiometer aboard geostationary
325 and polar orbiting satellites over a long time period. However, as this variable depends on both cloud height and emissivity (Figure 2 of Protopapadaki et al., 2017), for $T_B > 230$ K, very cold semi-transparent cirrus may be misidentified as lower opaque clouds, leading to uncertainties in the sizes of the convective areas.

Figure 4 compares latent heating (LH) profiles derived from the precipitation radar measurements of the Tropical Rain Measurement Mission (TRMM) for the same percentile statistics, using ~~the coldest~~ T_B , ~~the largest~~ precipitation intensity (given
330 by ~~a large~~ the ML-ML-deduced rain rate indicator) and ~~the largest~~ horizontal extent of rain within each grid cell of 0.5° (given by the fraction of any precipitation deduced by ML). These LH profiles have been retrieved by the Spectral Latent Heating (SLH) algorithm (Shige et al., 2009) and are averaged over 0.5° . The time interval with the AIRS-CIRS data is within 20 minutes. The same percentile statistics allows to directly compare the efficiency of each variable to identify large latent heating,

an indicator of deep convection. In all cases the LH increases with decreasing T_B , increasing rain rate indicator and increasing horizontal rain coverage per grid cell, showing that ~~all-both~~ variables can be used as proxies for deep convection. Moreover, at fixed percentiles the ~~ML-ML~~-derived rain rate indicator as well as the grid cell rain coverage both lead to a larger LH than T_B . *This means that the ML derived rain rate classification, together with the CIRS identification of UT cloud, is a slightly better proxy for regions of large latent heating than T_B .*

340 2.5.2 Convective organization indices

It is not easy to define suitable organization metrics. The organization index I_{org} (e. g. Tompkins and Semie, 2017) compares a cumulative distribution of nearest-neighbour distance (NNCDF) ~~to the~~ one ~~of the~~-expected by randomly distributed points in the domain. I_{org} lies between 0 and 1, with 0.5 corresponding to randomly distributed objects, ~~and~~- $I_{org} > 0.5$ indicates an organized state. However, Weger et al. (1992), who initially developed this method to study the distribution of cumulus clouds, pointed out that the NNCDF is sensitive to the number of areas and to their size, in particular when the total area is larger than 5 to 15% of the studied domain: In ~~the latter that~~ case, possible merging of the objects leads to an artificial decrease of I_{org} . *When using I_{org} , one has therefore to use a proxy for the definition of convective areas which corresponds to a total area that only covers a small fraction of the ~~area-region~~ to be studied.*

Therefore White et al. (2018) developed the convective organization potential (COP), by assuming that 2D objects that are larger and closer together are more likely to interact with each other in the horizontal plane. It uses the distance between the centers of the objects and radii of equal area circles. Jin et al. (2022) have further developed COP to the area-based convective organization potential (ABCOP) by using the area rather than the radius and by changing the distances between centers to distances between outer boundaries. Furthermore the interaction potentials are computed for only one pair per aggregate and summed up instead of averaged over all pairs. ~~It-ABCOP~~ *is however very sensitive to the total area of the objects* (section 3.3).
The Radar Organization MEtric (ROME) developed by Retsch et al. (2020) considers the average size, proximity and size distribution of the convective objects in a domain and is similar to COP, but like ABCOP it employs the distance between the outer boundaries. ROME defines interactions between pairs by assigning a weight to each pair that decreases with the distance and increases essentially with the area of the larger ~~areaobject~~, adding a contribution of the smaller area, depending on the separation distance. It is given in units of km^2 and lies between the mean area of the objects and twice their mean area. Hence
ROME *is very sensitive to the mean areas of the objects* (section 3.3).

3 Results

~~In this section~~As application examples -we highlight ~~results~~-results from analyses on the ML-derived variables by investigating relationships using this long-term 3D dataset. We particularly concentrate our interest on the ML-derived rain rate indicator. Section 3.1 shows the coherence of this newly derived variable. The cloud system approach enables us to study the behaviour

365 of these ~~variables within~~ MCSs with respect to their life cycle stage and convective depth. ~~This process-oriented analysis~~
~~presented in section 3.2 can be used to evaluate parameterizations in climate models (Stubenrauch et al., 2019). In particular~~
~~In~~
370 ~~section 3.3, we show results concerning mesoscale convective organization. Mesoscale convective organization has been~~
~~identified by larger and higher systems, which also live longer than unorganized systems (e. g. Rossow and Pearl, 2007;~~
~~Takahashi et al., 2021), and they also lead to increases in tropical rainfall (e. g. Tan et al., 2015). We first compare convective~~
~~organization indices~~ ~~the rain rate classification and its horizontal and temporal expansion allow us to derived~~ ~~from objects~~
~~defined by strong rain and by cold cloud temperature indices of tropical convective organization and then to investigate changes~~
~~in geographical patterns of radiative heating with respect to one of these indices (I_{org}). the difference in UT cloud properties~~
~~and their environment between periods of small and large tropical convective organization.~~

3.1 ~~Properties of UT clouds~~ Coherence of ML-derived rain intensity classification

375 First we test the coherence between the ML-derived rain rate classification and the collocated TRMM LH profiles already
presented in section 2.5.1. Figure 5 compares the LH profiles averaged over all UT clouds and over all mid- and low-level
clouds and separately over those with no rain, light rain and heavy rain according to the rain rate classification described in
section 2.3. Indeed, when the rain rate classification indicates no rain, the latent heating from TRMM is very small. The latent
heating is on average about ten (five) times larger for grid cells which include heavy precipitation than the tropical average for
380 UT clouds (mid- and low-level clouds). While latent heating profiles have a peak between 400 and 500 hPa for heavily
precipitating UT clouds, the peak lies around 850 hPa for strongly precipitating mid- and low-level clouds. This ~~shows~~
~~indicates~~ that the ~~ML-ML~~-derived rain rate classification seems to be coherent for UT clouds as well as for lower clouds,
though the noise for the latter may be larger.

Figure 6 compares normalized frequency distributions of $\varepsilon_{\text{clid}}$, z_{top} , ‘cloud fuzziness’, $(z_{\text{top}} - z_{\text{clid}})/\Delta Z$, and normalized vertical
385 extent $\Delta Z/z_{\text{top}}$ of ~~precipitating and non-precipitating, lightly and heavily precipitating~~ UT clouds. ~~Cloud fuzziness increases~~
~~with the difference between cloud top height and the cloud height retrieved by CIRS. The latter corresponds to the height at~~
~~which the cloud reaches an optical depth of about 0.5 (Stubenrauch et al., 2017).~~ From these figures we clearly deduce that
heavily precipitating UT clouds in the tropics have an emissivity close to 1, and are in general higher, have a much less fuzzy
cloud top and have a much larger vertical extent than non-precipitating UT clouds. These results are coherent with expectations
390 and again confirm the quality of the rain rate classification derived by our machine learning procedure.

3.2 Process-oriented behaviour of mesoscale convective systems

395 The cloud system concept described in section 2.4 allows permits to link the convective core and anvil properties ~~and therefore~~
~~a process-oriented evaluation of parameterizations in climate models (Stubenrauch et al., 2019):~~ The fraction of the convective

core area within a cloud system indicates the life cycle stage (e. g. Machado et al., 1998), with a large fraction indicating the developing stage and a decreasing fraction during dissipation. Once the systems have reached maturity, the minimum temperature within a convective core is a proxy for the convective depth.

3.2.1 Behaviour of precipitating areas

According to Takahashi et al. (2021), using a convection-tracking analysis on data from Intergrated Multisatellite Retrievals for GPM (IMERG), the fraction of precipitating cores (adjacent grid cells with a rain rate > 5 mm/hr) within precipitation systems (adjacent grid cells with rain rate > 0.5 mm/hr) first increases and then decreases during the evolution of these systems. The maximum of the strong rain area relative to the whole precipitating area as well as the maximum and average intensity of the precipitation increase with the life time of the systems. This behaviour was also found by Roca et al. (2017).

Our data do not provide the absolute system life time, but the convective core fraction within a system indicates the maturity stage in a normalized life cycle. ~~We also know that the coldest systems have also a tendency to live the longest (e. g. Rossow and Pearl, 2007; Takahashi et al., 2021).~~ Figure 7 presents the statistical evolution during the life cycle of a) the precipitating area relative to the whole MCS area and ba) the strong rain area relative to the precipitating area, within for single core MCSs and b) the precipitating area relative to the whole MCS area. As the rain rate classification was obtained per CIRS footprint, a grid cell of 0.5° x 0.5° can be declared as precipitating by using different thresholds on the fraction of footprints with rain rate > 0 mm/hr. The same applies for grid cells including strong rain. Results using three different thresholds to define the precipitating and strongly precipitating areas are compared. For all thresholds, the precipitating area is very large in the beginning of the life cycles, when the anvil is just developing and then decreases~~systems are precipitating already in the developing stage,~~ while the fraction of strong rain stays constant until the anvil reaches 40% of the system size and only then decreases,~~develops slightly later with a maximum just before reaching maturity,~~ With our coarse spatial resolution we did not see the increase in strong rain after the developing stage, which has been observed by in agreement with Fiolleau and Roca (2013) and Takahashi et al. (2021), using data with better time and space resolution. This means that we miss the very first development of the convective tower itself, as can also be seen in Figure 7c, which presents the evolution of the convective core size and the convective core top height. The latter varies much less than the convective core size, with an average of already 12.8 km for a convective core fraction close to 1. So due to the coarse spatial resolution and considering only high-level clouds, we start to identify the systems when they are already near to their maximum height, which is attained just before the decrease of the heavy rain portion.

The core size increases rapidly and then stays stable until dissipation of the system. We identify MCS maturity by a core fraction between 0.2 and 0.4, because by then the core size has attained its maximum.

Once the convective systems are mature, we can study. ~~During dissipation, relative rain area and strong rain area decrease. The maximum rain area relative to the system area is about 0.45 when only grid cells are considered which are completely covered by rain. The maximum strong rain area relative to the precipitating area within the MCSs is about 0.12, when one considers a strong rain grid cell coverage of at least 0.2. It drops to 0.05 for a threshold of 0.5. To show the behaviour of precipitating areas~~ their properties with respect to their convective depth; Figure 87 ~~also presents for mature MCSs (convective~~

435 core fraction within the system between 0.1 and 0.4, according to Protopapadaki et al., 2017), as a function of the minimum temperature within the convective cores, a) the strong rain area relative to the precipitating area (again considering three thresholds), and b) the volume of the thick anvil ($\epsilon_{\text{cid}} > 0.5$) relative to the volume of the convective core, which is a proxy for detrainment, and the emissivity of the thick anvil and c) the size of the surrounding thin cirrus relative to the total anvil size as well as the 50% warmest surface temperature underneath the MCSs precipitating area relative to the whole MCS area. Again the behaviour is the same for all three thresholds: We deduce that deeper convection clearly leads to 1) larger areas of heavy rain within the precipitating areas, in agreement with earlier studies, 2) to a larger volume detrainment but with a slightly smaller emissivity and 3) to more surrounding thin cirrus while the precipitating areas within the system areas decrease, because the anvils are much larger in these deep convective cloud systems than in less deep convective systems (see next section). From Figure 8 we also conclude that deeper convection occurs in general in the warmer regions of the tropics, as expected.

3.2.2 Behaviour of convective core and anvil properties

445 Figure 8 presents the evolution during the life cycle of convective core and anvil properties: a) core size, b) core top height, c) vertical extent of the thick anvil and d) emissivity of the thick anvil, separately for maritime and continental MCSs. The behaviour is similar, with increasing core size and core top height during the development phase and a decrease in the dissipating stage. Oceanic systems reach slightly larger core sizes and core top heights than continental systems. However, the core size depends on the definition of convective core. Our definition may lead to a larger size than a definition based on strong vertical updraft. While the thick anvil emissivity decreases nearly linearly and has equal values for MCSs over land and over ocean, the thick anvil vertical extent reaches a maximum only after the anvil developed, with a larger extent over ocean than over land in the same development stage. Only towards dissipation the vertical extents are similar.

450 According to Figure 9, properties of mature MCSs (with a convective core fraction between 0.1 and 0.4) differ with convective depth: the relative area of thin cirrus and the ratio of thick anvil volume over convective core volume, the latter gives an indication of detrainment, both increase with convective depth, with similar values over ocean and over land. It is interesting to note that the thick anvils of MCSs with larger convective depth have a slightly smaller emissivity but larger vertical extent than those with smaller convective depth. The latter leads to a larger thick anvil volume, while the first indicates a smaller ice water content.

460 Finally we compare in Figure 10 the MCS properties of those over oceanic regions with the 30% warmest SSTs and those with the 30% coolest SSTs. The warmest oceanic regions in the tropics are the ones where deep convection, given by large core top height, develops, with a larger fraction of strong rain, deeper and larger anvils, but also with a smaller anvil emissivity and more surrounding thin cirrus. The latter have an effect on the radiative heating.

3.3 Tropical convective organization

In this section we demonstrate the usefulness of this new dataset by analyzing the convective organization in the tropics. We explore and compare results using different various metrics of convective organization and, using different proxies for to define convective objects, as described in section 2.5. A spatial resolution of 0.5° relates to an organization of MSCs at a scale which is more linked to the large-scale environment and circulation. We first consider the annual cycle of convective organization and then highlight an application on inter-annual variability.

Figure 11-9 presents the annual cycle of a) I_{org} , b) ROME, and c) COP, of d) the total area and e) mean sizes-area of the convective areas-objects and f) their number-over the tropics. We also compare investigate results using different variables to define these areasobjects, in particular precipitation intensity (given by ML-ML-derived rain rate indicator) of UT clouds ($p_{cld} < 350$ hPa) and cold cloud temperature ($T_{cld} < 230$ K) of opaque clouds ($\epsilon_{cld} > 0.95$). The latter definition is similar to TB < 230 K, but without any contamination of colder thinner Ci. Since ROME is strongly related to the size of the convective areasobjects, we have also computed the annual anomalies of the three indices by using only a constant-2% of areas-with the largest precipitation intensities for constructing the convective objectsy. This corresponds to comparing the indices for a constant total area of convection. A similar approach was undertaken in a study by Blaeckberg and Singh (2022), using the precipitation intensity and ROME as proxies for convection and convective organization, respectively.

All three indices reveal a clear annual cycle of convective organization, with a minimum in April and November and a maximum in July / August and in January / February, though with differences in magnitude and width of the oscillations due to the choice of proxy for convective area. While the amplitude of the annual cycle is the smallest for I_{org} (0.04), the seasonal anomalies of COP are the less sensitive and those of ROME the most sensitive to the choice of proxy. The latter look very similar to those of the mean area of the convective objects (with a correlation coefficient larger than 0.9). Thus the seasonal anomalies of ROME primarily reflect the ones of the mean areas of the convective objects. We also observe in Figure 9e, that the minima and maxima in the annual cycle of the mean area of objects with intensive rain are shifted compared to those with cold opaque cloud. When using a fixed total area of intense precipitation, the magnitude of the seasonal anomalies is much smaller and the shift in behaviour compared to using the proxy of cold opaque clouds disappears.

The annual cycle of the total area of convective objects can be reconstructed by the one of the mean area times the one of the number of the convective objects (Figures 9 d-f): For the latter there are pronounced maxima in January and July. Note that the relative flatness of the seasonal cycle of the total tropical-area of cold cloud objectss can be explained by a nearly opposite seasonal cycle in their mean size and number-of-areas, whereas for intense precipitation their cycles are in phase which then leads to a pronounced cycle in their total area.

The absolute values of the convective organization indices, presented in Figure S3 of the supplement, depend more strongly on the proxy used to define the convective objects: The absolute maximum of COP is the same for all proxies during boreal summer, while for other seasons COP, like I_{org} , is larger when considering precipitation intensity. While ROME primarily

495 reflects the mean area, ABCOP reflects the total area of the convective objects (both with a correlation coefficient larger than 0.8). Whereas the mean area of the convective objects is clearly an indication of meso-scale convective organization, the total area may not be directly linked to convective organization, only perhaps if one considers local regions. I_{org} , only considering the distance between convective objects, seems to add another aspect. I_{org} indicates a more organized convection when precipitation intensity is used instead of cold cloud temperature to identify the convective objects, though the total area of intense precipitation areas is smaller than the one of the cold cloud objects. The difference in the absolute peak values of the I_{org} and COP anomalies between boreal summer and boreal winter may be explained by regional shifts in intense precipitation occurrence, as shown in Figure S4 and in agreement with earlier results (e. g. Berry and Reeder, 2014).

500 In Figure 102 we observe presents the seasonal behaviour annual cycle of MCS properties discussed in the earlier sections: in phase with the one of convective organization for T the core height of the MCSs, the anvil vertical extent (Figure S3), and anvil horizontal detrainment, the latter estimated by the ratio of anvil over convective core size and the vertical extent of the anvil (Figure S5) are in phase with the annual cycle of I_{org} and COP. This shows that in seasons with larger tropical convective organization the MCSs have in general higher cloud tops and larger anvils. T The opposite annual cycle of the fraction of single core MCSs and the ratio of thin cirrus over total anvil size are in opposite phase. The first confirms that convective organization corresponds to multi-core MCSs. The latter may be not directly expected as we have seen that this ratio increases with the height of the MCSs (convective depth). On second thought it In that case the ratio of thin cirrus over total anvil size is smaller, which may be explained by the fact that clustering of convective systems leaves less space for the thin cirrus between them for thin cirrus. The average tropical UT humidity is slightly higher between May and September, this is also the period where the surface temperature underneath the MCSs is largest (Figure S3). It is interesting to note that the minima and maxima annual cycle of the relative subsidence area (clear sky and low-level clouds) are is also in accordance phase with the one of I_{org} and COP. with the ones of convective organization. This then leads to a relation between means that larger heating of the upper and middle tropospheric heating by the more organized MCS and the leads to more cooling of the lower troposphere in the cooler subsidence regions, which has recently been found by Stubenrauch et al. (2021).

515 By comparing the choice of proxies for the definition of convective areas, we observe that the seasonal anomalies of COP are the less sensitive, while those of ROME are the most sensitive. The latter look very similar to those of the mean size of the convective areas (with a correlation coefficient larger than 0.9), and the minima and maxima in the cycle of intensive rain horizontal extent are shifted compared to those of cold opaque cloud horizontal extent. Thus the seasonal anomalies of ROME primarily reflect the ones of the mean areas of convection. When using a fixed area of intense precipitation, the magnitude is much smaller and the shift between the maxima due to the choice of cold clouds or intensive rain disappears.

520 The absolute values of the indices, presented in Figure S4 of the supplement, depend more strongly on the proxy used to define convective areas, but this dependency varies: I_{org} , reflecting the distance between convective areas, is larger over the whole annual cycle when one considers precipitation intensity instead of cold cloud temperature. The absolute maximum of COP is the same for all proxies during boreal summer, while for other seasons COP, like I_{org} , is larger when considering precipitation

intensity. ABCOP reflects the total tropical area, which seems to be more constant over the seasons when cold clouds are considered than when strongly precipitating clouds are selected. For the latter there are pronounced maxima in January and July. Note that the relative flatness of the seasonal cycle of the total tropical area of cold clouds can be explained by an opposite seasonal cycle in mean size and number of areas, while for intense precipitation their cycles are in phase.

530 This difference in seasonal behaviour indicates that the choice of the proxy for the definition of convective areas and of the convective organization metrics plays a non negligible role in the interpretation of results. The seasonal geographical distributions of intense precipitation occurrence (rain rate indicator > 2) in Figure S5 show that the regions of maximal occurrence also vary with season, in agreement with earlier results (e.g. Berry and Reeder, 2014). These may explain the difference in the absolute peak values of convective organization anomaly between boreal summer and boreal winter.

535 Of all the studied indices, ROME and ABCOP have a very high correlation with the mean area and the total area of convective objects, respectively (larger than 0.8). However, these correlations depend on the domain and on the domain's spatial resolution. For the specific domain (30N-30S) and spatial resolution (0.5°) of this analysis, I_{org} is the metric that is less related to these variables, and consequently, it is also the one that contains the additional information on organization. Therefore, we use I_{org} in the following to explore changes of different variables with respect to inter annual convective organization anomalies.

540 Changes in gradients of tropospheric radiative heating relate to changes in atmospheric circulation. We ~~use link the inter-annual anomalies of the~~ 3D radiative heating rate (HR) fields ~~described in of~~ Stubenrauch et al. (2021) ~~and to those of~~ I_{org} ~~computed from convective areas defined once by strong precipitation and once by cold cloud temperature~~ over the period from 2008 to 2018. In order to remove the seasonal dependency, we computed the 121 12-month running mean anomalies for these variables. The geographical distribution of ~~changes in~~ radiative heating ~~change~~ with respect to convective organization ~~change~~ are presented in Figure 113, separately for the upper (~~100-200 hPa~~), mid (~~200-600 hPa~~) and low (~~600-900 hPa~~)-troposphere and for the two proxies to define convective ~~areas~~objects. These geographical maps have been obtained by linear regression per grid cell of the 121 pairs of heating rate and I_{org} anomaly (see examples in Figure S6 in the supplement).

550 The geographical patterns and magnitudes in HR change with respect to change in I_{org} are similar for both proxies, but with slightly larger derivatives for strong precipitation areas. This may be expected as intense precipitation should be a more direct proxy for convection than cold cloud top. In general the derivatives are large because inter-annual changes in I_{org} are very small, as shown in Figure 124. In the upper troposphere we observe increased heating North and South of the equator in the Central Pacific and a decrease over the ~~West Pacific~~Warm Pool, while in the mid and low troposphere there is an increase in heating around the equator over the whole Pacific and Indian ocean, and a decrease in heating over the Warm Pool and in the Atlantic. The HR pattern changes in the convective regions are induced by relative changes of thin cirrus, cirrus and high opaque clouds, which are similar but not identical to the ones related to the El Niño Southern Oscillation (ENSO) during this period (Figure S7), with increasing convection close to the equator and increasing cirrus and thin cirrus around the equator.

Indeed, the correlation between I_{org} and the oceanic Niño index (ONI) is positive (with correlation coefficients of 0.7 and 0.3 for cold cloud temperature and precipitation intensity as proxy, respectively). In the stratocumulus regions off the Western
560 coasts of the Americas and of Australia there seems to be less cooling in the low troposphere, probably due to a recent reduction in low-level clouds, in particular in the NE Pacific, which was found in coincidence with a shift in the phase of the Pacific decadal Oscillation (Loeb et al., 2018, Loeb et al., 2020, Sun et al., 2022). The similarity between the maps obtained with the two selections validates once again the reliability of the rain rate indicator obtained with $ML_{2.5}$ and T_{cl} . The slightly stronger patterns lead to the conclusion that strong precipitation is a slightly better proxy to define convective areas than cold
565 temperature.

~~While~~Whereas the geographical patterns of the derivatives of heating / cooling with respect to I_{org} show a coherent picture, we did not find any correlations between ~~deseasonalized the very small~~ inter-annual anomalies of I_{org} (shown in Figure 124) and the ones of the tropical means of different variables like *surface temperature*, thin cirrus area and subsidence area ~~are much noisier, because inter-annual changes of the tropical means are small.~~ *The correlations depend on the proxies for the definition*
570 *of the convective areas and in particular on the metrics for convective organization.* Already the time series of the inter-annual anomalies of the different indices have a different behaviour as can be seen in Figure S8 in the supplement. We have also investigated tighter thresholds on the variables which define deep convection (like rain rate indicator > 2.5 or $T_{cl} < 210$ K), however we are left with only about 0.5% total area, which increases the noise level. In addition, we found that the results also change when we exclude objects with the size of only one grid cell (not shown), as already pointed out by Jin et al. (2022).
575 Therefore we do not consider it meaningful to use the discussed convective organization indices for an estimation of tropical mean changes with respect to changes in convective organization.

While we have seen that the convective organization indices vary much more seasonally than inter-annually, Figure 13 suggests that the difference of the density distributions of convective core height and strong rain area within the MCSs between April and July or between cool years (2008/11) and warm years (2015/16) is of the same order, with a shift towards higher core height and a longer tail in strong rain area. However, the size distributions of the MCSs are similar. The tail in the mean area of strong precipitation within the MCSs is clearly larger in the case of warmer years. This indicates that a shift in tropical surface temperature changes only a small part of the MCSs, with more extreme values. Such a behavior cannot be identified using a convective organization index computed over the whole tropics.

580

585 4. Conclusions and Outlook

We have presented a methodology to extend spatially and temporally information on the cloud vertical structure and precipitation derived from active lidar and radar measurements of CALIPSO and CloudSat missions. This new approach made use of CIRS data obtained from advanced IR sounder measurements of AIRS and IASI combined with ERA-Interim reanalyses and machine learning technologies using ANN. ~~This synergy brought us one step further to build a complete~~The resulting -3D

590 dataset of UT cloud systems, ~~covering 2008 to 2018, at 0.5° spatial resolution, together with a similarly produced dataset of radiative heating rates (Stubenrauch et al., 2021), which can be used to improve our~~ used for process studies in order to better understanding of the relationship between tropical convection and resulting anvils and how they are impacted by and feed back to climate change.

595 ~~Uncertainties, expressed as maximum absolute error, of cloud top height and cloud vertical extent predicted by ANN regression models with about 30 input variables are about 1 km (0.5 km) and 30% (40%) for UT (low level) clouds, respectively. Classifications of cloud vertical layering (separately clouds above and below) and of precipitation rate (no, light and heavy rain) have~~ Though the uncertainties in the predicted variables and classifications are relative large (with an accuracy, given by the normalized Matthews correlation coefficient, of about 65 to 70% for the rain intensity classification, except for rain rate of low-level clouds for which the accuracy is only about 60%). Nevertheless, this method-new dataset allows to study their
600 ~~horizontal structures of these variables on specific snapshots in time. In order to have~~ For a complete instantaneous coverage, necessary to compute indices of tropical convective organization, the remaining 30% due to gaps between the orbits have been filled iteratively with the four observations per day of AIRS and IASI data, starting with those closest in time (already leading to 90% coverage). ~~These snapshots have been used to compute indices of tropical convective organization. We compared in particular two proxies to define the convective areas: precipitation intensity and cold opaque cloud. We could show~~ have
605 ~~demonstrated~~ demonstrated that the newly developed precipitation intensity classification is slightly more efficient to detect large latent heating and therefore deep convection compared to the cold cloud temperature.

The cloud system approach developed by Protopapadaki et al. (2017) has been slightly modified, ~~leading to smaller cloud systems with less surrounding thin cirrus, as the grid cells belonging to the systems need now to include at least 90% UT clouds (instead of 65%), and~~ the ~~the~~ normalized vertical extent obtained from the ML approach ~~was then~~ has been employed to
610 slightly improve the identification of the convective cores, in particular in the cooler tropical regions. ~~MCSs with at least one convective core cover about 15% of the latitude band 30N to 30S, while the coverage of all UT clouds is about 35%.~~

The cloud system concept allows ~~to link the convective core and anvil properties and therefore~~ a process-oriented evaluation of parameterizations in climate models ~~(Stubenrauch et al., 2019)~~. In agreement with earlier studies (e. g. Schumacher and Houze, 2003; Roca et al., 2014, Takahashi et al., 2021), we found that ~~the rain intensity is maximum after the first development of anvils and that~~ deeper convection leads to larger areas of heavy rain-areas. These results also confirm the quality of the
615 ~~ML-ML-derived precipitation rate classification.~~

With increasing convective depth mature MCSs also show an increase in volume detrainment, ~~given by the ratio of thick anvil volume over convective core volume.~~ While the anvil vertical extent of the thick anvil increases, the average emissivity slightly decreases with convective depth. Deep convection develops in the warmest oceanic regions of the tropics, producing
620 a larger fraction of strong rain, deeper and larger anvils, but also have anvils with a slightly smaller average emissivity and more surrounding thin cirrus. The latter have an effect on the radiative heating.

625 ~~Finally-Moreover~~ we have shown the *usefulness of our new dataset to-by investigating tropical convective organization metrics*. By comparing different organization ~~metrics-indices~~ (I_{org} , COP, ABCOP and ROME) and proxies to define convective ~~areas-objects~~, we have shown that the ~~three~~ indices ~~I_{org} , COP and ROME~~ indicate a similar annual cycle of convective organization. *However, ABCOP and ROME is-are strongly correlated to the total and mean area of the objects, respectively. While the mean area of the objects is certainly an indication of convective organization, their total area at tropical scale seems to be less linked to organization. The index I_{org} , which only considers the distance between convective objects, seems to add another information. The core height of the MCSs and their anvil detrainment are in phase with the annual cycle of I_{org} and COP, as well as the relative subsidence area. This shows also a link between the MCSs and subsidence areas. It is interesting*

630 *to note that the annual cycles of the total area of cold cloud objects and of intense precipitation objects are very different. This can be related to a nearly opposite cycle in their mean size and number for the first, and to a cycle in phase for the latter. Considering the annual cycle of size and numbers of the object areas as well as their total area over the tropics, we observe a pronounced seasonal cycle of the total area of intense precipitation, while the total area of cold clouds in the tropics stays stable over the annual cycle, linked to a seasonal cycle in phase of size and number in the first case and an opposite seasonal cycle*

635 *in the latter. This interesting difference in the behaviour of the two proxies should be further explored in the future. The seasonal cycle of core height of the MCSs, anvil vertical extent and anvil horizontal detrainment is in phase with the one of convective organization, while an opposite cycle of the fraction of single core MCSs confirms that convective organization is strongly linked to multi-core MCSs. In that case the ratio of thin cirrus over total anvil size is smaller, which may be explained by the fact that clustering of convective systems leaves less space between them for thin cirrus. It is also interesting to note*

640 *that the minima and maxima of the relative subsidence area are in accordance with the ones of convective organization.*

Changes in gradients of tropospheric radiative heating relate to changes in atmospheric circulation. The geographical patterns and magnitudes in radiative heating rate ~~inter-annual~~ changes with respect to I_{org} are similar for both proxies, but slightly larger for strong precipitation areas. This may be expected as *intense precipitation should be a more direct proxy for convection than cold cloud top. Furthermore t*

645 *he HR pattern changes are similar to the ones related to ENSO during this period.*

However, the *time series of the inter-annual anomalies of convective organization strongly depend on the convective organization metrics, and correlations between these anomalies and those of the-tropical means of different atmospheric variables do not show consistent results. The tail of the distribution of strong rain areas seems to be more related to warmer tropics than the indices themselves.* Therefore *one has to be careful using only one of these organization indices and proxies*

650 *to study climate change. More detailed studies are necessary to show the behaviour of these indices with spatial resolution and domain size.*

This data base of UT cloud systems, their vertical structure and precipitation areas is being constructed within the framework of the GEWEX (Global Energy and Water Exchanges) Process Evaluation Study on Upper Tropospheric Clouds and

Convection (GEWEX UTCC PROES, ~~<https://gewex-utcc-proes.aeris-data.fr/>~~) to advance our knowledge on the climate
655 feedbacks of UT clouds. It will be made available within this year via <https://gewex-utcc-proes.aeris-data.fr/>. For the future it
will also be interesting to use this dataset for the study of cold pools, using data of Garg et al. (2020).

~~In order to continue this dataset beyond 2018. In general, climate feedback studies are undertaken by climate model
simulations, which rely upon their representation of convection and detrainment. We are now expanding the latent heating
rates from TRMM onto this data base, using similar machine learning techniques. Once the total 3D diabatic heating is
660 available, it will be used together with the information of the UT cloud systems to quantify the dynamical response of the
climate system to the atmospheric heating induced by the anvil cirrus, refining and extending the studies of Li et al. (2013).~~

~~At present~~ we are now preparing a new version of CIRS data, using ERA5 (Hersbach et al., 2020) instead of ERA-Interim
ancillary data ~~in order to have a continuous dataset from 2003 to present~~, and newly calibrated AIRS L1C radiances (Manning
et al., 2019) as input.

665 **Acknowledgements**

This work was supported by the Centre National de la Recherche Scientifique (CNRS), the Centre National d'Etudes Spatiales
(CNES) and the TTL-Xing ANR-17-CE01-0015 project. The authors thank the members of the AIRS, CALIPSO, CloudSat,
IASI and TRMM science teams for their efforts and cooperation in providing the data, as well as the engineers and space
670 agencies who control the data quality. AIRS CIRS and IASI CIRS data have been produced by the French Data Centre AERIS.

The authors also want to thank the two anonymous reviewers for their very constructive comments, which helped to clarify
this manuscript.

Code/Data availability

675 All satellite L2 data used are publicly available and have been downloaded from their official websites. CIRS L2 data are
distributed at <https://cirs.aeris-data.fr> (last access: ~~15-10 January-February 2022~~²¹, CIRS, 2022¹). The TRMM latent heating
rates correspond to Tropical Rainfall Measuring Mission (TRMM) (2018), GPM PR on TRMM Spectral Latent Heating
Profiles L3 1 Day 0.5x0.5 degree V06, Greenbelt, MD, Goddard Earth Sciences Data and Information Services Center (GES
DISC), doi:10.5067/GPM/PR/TRMM/SLH/3A-DAY/06 (last access 15 May 2020). Monthly indices of the oceanic Niño index
680 (ONI) were obtained from NOAA
([https://origin.cpc.ncep.noaa.gov/products/analysis_monitoring/ensostuff/detrend.nino34.ascii .txt](https://origin.cpc.ncep.noaa.gov/products/analysis_monitoring/ensostuff/detrend.nino34.ascii.txt), last access: February
2020, NOAA-ONI, 2020). The ERA-Interim reanalysis dataset was downloaded from the Copernicus Climate Data Store. The
CloudSat-lidar data have been provided by the AERIS ICARE data and services center (<https://www.icare.univ-lille.fr/>).

685 **Author contribution**

CJS developed the concept, improved the ANN method, analysed the cloud system related analysis and wrote the manuscript. GM produced and analysed the long-term dataset, computed and analysed the convective organization metrics and contributed to improvements of the manuscript. EL helped to develop and evaluate the ANN models.

690 **Competing interests**

The authors declare no competing interests.

References

Berry, G., and Reeder, M. J.: Objective Identification of the Intertropical Convergence Zone: Climatology and Trends from the ERA-Interim, *J. Climate*, 27, 1894-1909, <https://doi.org/10.1175/JCLI-D-13-00339.1>, 2014.

Bläckberg, C. P. O., and Singh, M. S.: Increased Large-Scale Convective Aggregation in CMIP5 Projections: Implications for Tropical Precipitation Extremes, *Geophys. Res. Lett.*, 49, e2021GL097295, <https://doi.org/10.1029/2021GL097295>, 2022.

Bony, S., Semie, A., Kramer, R. J., Soden, B., Tompkins, A. M., and Emanuel, K. A.: Observed modulation of the tropical radiation budget by deep convective organization and lower-tropospheric stability, *AGU Advances*, 1, e2019AV000155, <https://doi.org/10.1029/2019AV000155>, 2020.

[Chen, Q., Fan, J., Hagos, S., Gustafson Jr., W. I., and Berg, L. K.: Roles of windshear at different vertical levels: Cloud system organization and properties, *J. Geophys. Res. Atmos.*,120, 6551–6574, <https://doi.org/10.1002/2015JD023253>, 2015.](https://doi.org/10.1002/2015JD023253)

Dee, D. P., Uppala, S. M., Simmons, A. J., Berrisford, P., Poli, P., Kobayashi, S., Andrae, U., Balmaseda, M. A., Balsamo, G., Bauer, P., Bechtold, P., Beljaars, A. C. M., van de Berg, L., Bidlot, J., Bormann, N., Delsol, C., Dragani, R., Fuentes, M., Geer, A. J., Haimberger, L., Healy, S. B., Hersbach, H., Holm, E. V., Isaksen, L., Kallberg, P., Kohler, M., Matricardi, M., McNally, A. P., Monge-Sanz, B. M., Morcrette, J.-J., Park, B.-K., Peubey, C., de Rosnay, P., Tavolato, C., Thepaut, J.-N., and Vitart, F.: The ERA-Interim reanalysis: configuration and performance of the data assimilation system, *Q. J. R. Meteorol. Soc.*, 137, 553–597, <https://doi.org/10.1002/qj.828>, 2011.

Del Genio, A. D., and Kovari, W.: Climatic Properties of Tropical Precipitating Convection under Varying Environmental Conditions, *J. Climate*, 15, 2597-2615, 2002.

Fioleau, T. and Roca, R.: Composite life cycle of tropical mesoscale convective systems from geostationary and low Earth orbit satellite observations: method and sampling considerations. *Q. J. R. Meteorol. Soc.*, 139, 941–953, <https://doi.org/10.1002/qj.2174>, 2013.

[Garg, P., Nesbitt, S. W., Lang, T. J., Priftis, G., Chronis, T., Thayer, J. D., and Hence, D. A.: Identifying and Characterizing Tropical Oceanic Mesoscale Cold Pools using Spaceborne Scatterometer Winds, *J. Geophys. Res. Atmospheres*, 125, e2019JD031812, <https://doi.org/10.1029/2019JD031812>, 2020.](https://doi.org/10.1029/2019JD031812)

- Haynes, J. M., L'Ecuyer, T., Stephens, G. L., Miller, S. D., Mitrescu, C., Wood, N. B., and Tanelli, S.: Rainfall retrieval over the ocean with spaceborne W-band radar, *J. Geophys. Res. Atmospheres*, 114, D00A22, <https://doi.org/10.1029/2008JD009973>, 2009.
- 720 Henderson, D. S., L'Ecuyer, T., Stephens, G. L., Partain, P., and Sekiguchi, M.: A Multisensor Perspective on the Radiative Impacts of Clouds and Aerosols, *J. Appl. Meteor. Climatol.*, 52, 853–871, <https://doi.org/10.1175/JAMC-D-12-025.1>, 2013.
- Hersbach, H., and coauthors: The ERA5 global reanalysis, *Quart. J., Royal Meteor. Soc.*, 146, 1999–2049, <https://doi.org/10.1002/qj.3803>, 2020.
- 725 [Laing, A. G., and Fritsch, J. M.: The Large-Scale Environments of the Global Populations of Mesoscale Convective Complexes, *Month. Weather Rev.*, 128, 2756-2776, \[Li, W., Schumacher, C., and McFarlane, S. A.: Radiative heating of the ISCCP upper level cloud regimes and its impact on the large scale tropical circulation, *J. Geophys. Res. Atmos.*, 118, 592–604, <https://doi.org/10.1002/jgrd.50114>, 2013.\]\(https://doi.org/10.1175/1520-0493\(2000\)128<2756:TLSEOT>2.0.CO;2, 2000.</u></p><p><a href=\)](#)
- 730 Loeb, N. G., Thorsen, T. J., Norris, J. R., Wang, H., and Su, W.: Changes in Earth's energy budget during and after the “pause” in global warming: An observational perspective. *Climate*, 6, 62, <https://doi.org/10.3390/cli6030062>, 2018.
- Loeb, N. G., and Coauthors: New generation of climate models track recent unprecedented changes in Earth's radiation budget observed by CERES. *Geophys. Res. Lett.*, 47, e2019GL086705, <https://doi.org/10.1029/2019GL086705>, 2020
- 735 Mace, G. G., Zhang, Q., Vaughan, M., Marchand, R., Stephens, G., Trepte, C., and Winker, D.: A description of hydrometeor layer occurrence statistics derived from the first year of merged Cloudsat and CALIPSO data. *J. Geophys. Res.*, 114, D00A26, <https://doi.org/10.1029/2007JD009755>, 2009.
- Jin, D., Oreopoulos, L., Lee, D., Tan, J., and Kim, K.-M.: A New Organization Metric for Synoptic Scale Tropical Convective Aggregation, <https://doi.org/10.1029/2022JD036665>, 2022.
- 740 [Laing, A. G., and Fritsch, J. M.: The Large-Scale Environments of the Global Populations of Mesoscale Convective Complexes. *J. Month. Weather Rev.*, 128, 2756-2776, \[Liu, C., Zipser, E. J., and Nesbitt, S. W.: Global Distribution of Tropical Deep Convection: Different Perspectives from TRMM Infrared and Radar Data. *J. Climate*, 20, 489-503, <https://doi.org/10.1175/JCLI4023.1>, 2007.\]\(https://doi.org/10.1175/1520-0493\(2000\)128<2756:TLSEOT>2.0.CO;2, 2000.</u></p><p><a href=\)](#)
- 745 Machado, L.A.T., Rossow, W.B., Guedes, R. L., and Walker, A. W.: Life Cycle Variations of Mesoscale Convective Systems over the Americas. *Mon. Wea. Rev.*, 126, 1630–1654, [https://doi.org/10.1175/1520-0493\(1998\)126<1630:LCVOMC>2.0.CO;2](https://doi.org/10.1175/1520-0493(1998)126<1630:LCVOMC>2.0.CO;2), 1998.
- Manning, E. M., Strow, L. L., and Aumann, H. H.: AIRS version 6.6 and version 7 level-1C products, Proc. SPIE 11127, Earth Observing Systems XXIV, 111271, <https://doi.org/10.1117/12.2529400>, 2019.
- NOAA-ONI: https://origin.cpc.ncep.noaa.gov/products/analysis_monitoring/ensostuff/detrend.nino34.ascii.txt, last access: February 2020.

- 750 Pendergrass, A. G.: Changing degree of convective organization as a mechanism for dynamic changes in extreme precipitation. *Current Climate Change Reports*, 6, 47–54, <https://doi.org/10.1007/s40641-020-00157-9>, 2020.
- Popp, M., Lutsko, N. J., and Bony, S.: The Relationship Between Convective Clustering and Mean Tropical Climate in Aquaplanet Simulations, *J. Advances in Modeling Earth Systems*, 12, e2020MS002070, <https://doi.org/10.1029/2020MS002070>, 2020.
- 755 Posselt D.J., Van Den Heever, S., Stephens, G.L., and Igel, M.R.: Changes in the interaction between tropical convection, radiation, and the large-scale circulation in a warming environment, *J. Climate*, 25, 557-571, DOI: 10.1175/2011JCLI4167.1, 2012.
- Protopapadaki, E.-S., Stubenrauch, C. J., and Feofilov, A. G.: Upper Tropospheric cloud Systems derived from IR Sounders: Properties of Cirrus Anvils in the Tropics, *Atmosph. Chem. Phys.*, 17, 3845-3859, <https://doi.org/10.5194/acp-17-3845-2017>,
760 2017.
- Retsch, M. H., Jakob, C., and Singh, M. S.: Assessing convective organization in tropical radar observations, *J. Geophys. Res. Atm.*, 125, e2019JD031801, <https://doi.org/10.1029/2019JD031801>, 2020.
- Roca, R., Aublanc, J., Chambon, P., Fiolleau, T., and Viltard, N.: Robust Observational Quantification of the Contribution of Mesoscale Convective Systems to Rainfall in the Tropics. *J. Climate*, 27, 4952–4958, 2014.
- 765 Roca, R., Fiolleau, T., and Bouniol, D.: A Simple Model of the Life Cycle of Mesoscale Convective Systems Cloud Shield in the Tropics, *J. Climate*, 30, 4283-4297, <https://doi.org/10.1175/JCLI-D-16-0556.1>, 2017.
- Rossow, W. B., and Pearl, C.: 22-yr survey of tropical convection penetrating into the lower stratosphere. *Geophys. Res. Lett.*, 34, L04803, <https://doi.org/10.1029/2006GL028635>, 2007.
- [Schiro, K. A., Sullivan, S. C., Kuo, Y.-H., Su, H., Gentine, P., Elsaesser, G. S., Jiang, J. H., and Neelin, J. D.: Environmental Controls on Tropical Mesoscale Convective System Precipitation Intensity, J. Atmos. Sci., 77, 4233-4249, https://doi.org/10.1175/JAS-D-20-0111.1, 2020.](https://doi.org/10.1175/JAS-D-20-0111.1)
770
- Schumacher, C., and Houze Jr., R. A.: Stratiform Rain in the Tropics as Seen by the TRMM Precipitation Radar, *J. Climate*, 16, 1739-1756, [https://doi.org/10.1175/1520-0442\(2003\)016<1739:SRITTA>2.0.CO;2](https://doi.org/10.1175/1520-0442(2003)016<1739:SRITTA>2.0.CO;2), 2003.
- Shige, S., Takayabu, Y. N., Kida, S., Tao, W.-K., Zeng, X., Yokoyama, C., and L'Ecuyer, T.: Spectral Retrieval of Latent Heating Profiles from TRMM PR Data. Part IV: Comparisons of Lookup Tables from Two- and Three-Dimensional Cloud-Resolving Model Simulations. *J. Clim.*, 22, 5577-5594. <https://doi.org/10.1175/2009JCLI2919.1>, 2009.
- 775 Stephens, G. L., Winker, D., Pelon, J., Trepte, C., Vane, D. G., Yuhas, C., L'Ecuyer, T., and Lebsock, M.: CloudSat and CALIPSO within the A-Train: Ten Years of Actively Observing the Earth System. *Bull. Amer. Meteorol. Soc.*, 83, 1771-1790, <https://doi.org/10.1175/BAMS-D-16-0324.1>, 2018.
- 780 Stubenrauch, C. J., Rossow, W. B., Kinne, S., Ackerman, S., Cesana, G., Chepfer, H., Di Girolamo, L., Getzewich, B., Guignard, A., Heidinger, A., Maddux, B., Menzel, P., Minnis, P., Pearl, C., Platnick, S., Poulsen, C., Riedi, J., Sun-Mack, S., Walther, A., Winker, D., Zeng, S., Zhao, G.: Assessment of Global Cloud Datasets from Satellites: Project and Database initiated by the GEWEX Radiation Panel, *Bull. Amer. Meteor. Soc.*, <https://doi.org/10.1175/BAMS-D-12-00117.1>, 2013.

- 785 Stubenrauch, C. J., Feofilov, A. G., Protopapadaki, E.-S., and Armante, R.: Cloud climatologies from the InfraRed Sounders
AIRS and IASI: Strengths and Applications, *Atmosph. Chem. Phys.*, 17, 13625-13644, [https://doi.org/10.5194/acp-17-13625-](https://doi.org/10.5194/acp-17-13625-2017)
2017, 2017.
- Stubenrauch, C. J., Bonazzola, M., Protopapadaki, S. E., and Musat, I. : New cloud system metrics to assess bulk ice cloud
schemes in a GCM. *J. Advances in Modeling Earth Systems*, 11, <https://doi.org/10.1029/2019MS001642>, 2019.
- 790 Stubenrauch, C. J., Caria, G., Protopapadaki, S.-E., and Hemmer, F.: The Effect of Tropical Upper Tropospheric Cloud
Systems on Radiative Heating Rate Fields derived from Synergistic A-Train Satellite Observations, *Atmosph. Chem. Phys.*,
21, 1015-1034, <https://doi.org/10.5194/acp-21-1015-2021>, 2021.
- Su, H., Read, W. G., Jiang, J. H., Waters, J. W., Wu, D. J., and Fetzer, E. J.: Enhanced positive water vapor feedback associated
with tropical deep convection: New evidence from Aura MLS, *Geophys. Res. Lett.*, 33, L05709,
<https://doi.org/10.1029/2005GL025505>, 2006.
- 795 Sun, M., Doelling, D. R., Loeb, N. G., Scott, R. C., Wolkins, J., Nguyen, L. T., and Mlynchzak, P.: Clouds and the Earth's
Radiant Energy System (CERES) FluxByCldTyp Edition 4 Data Product, 303-318, *J. Atmos. Ocean. Techn.*, 39,
<https://doi.org/10.1175/JTECH-D-21-0029.1>, 2022.
- Takahashi, H., Lebsock, M., Luo, Z., Masunaga, H., and Wang, C.: Detection and Tracking of Tropical Convective Storms
Based on Globally Gridded Precipitation Measurements: Algorithm and Survey over the Tropics, *J. Appl. Meteor. Clim.*, 60,
800 403-421, <https://doi.org/10.1175/JAMC-D-20-0171.1>, 2021.
- [Tan, J., Jakob, C., Rossow, W.B., and Tselioudis, G.: The role of organized deep convection in explaining observed tropical
rainfall changes. *Nature*, 519, 451-454, <https://doi.org/10.1038/nature14339>, 2015.](https://doi.org/10.1038/nature14339)
- Tobin, I., Bony, S., and Roca, R.: Observational evidence for relationships between the degree of aggregation of deep
convection, water vapor, surface fluxes, and radiation, *J. Climate*, 25, 6885-6904. [https://doi.org/10.1175/JCLI-D-11-](https://doi.org/10.1175/JCLI-D-11-00258.1)
805 00258.1, 2012.
- Tompkins, A. M., and Semie, A. G.: Organization of tropical convection in low vertical wind shears: Role of updraft
entrainment. *J. Advanc. In Modelin Erath Sys.*, 9, 1046-1068, <https://doi.org/10.1002/2016MS000802>, 2017.
- Weger, R. C., Lee, J., Zhu, T., and Welch, R. M.: Clustering, Randomness and Regularity in Cloud Fields: 1. Theoretical
considerations, *J. Geophys. Res.*, 97, 20519-20536, 1992.
- 810 White, B. A., Buchanan, A. M., Birch, C. E., Stier, P., and Pearson, K. J.: Quantifying the Effects of Horizontal Grid Length
and Parameterized Convection on the Degree of Convective Organization Using a Metric of the Potential for Convective
Interaction. *J. Atmos. Sci.*, 75, 425-450, <https://doi.org/10.1175/JAS-D-16-0307.1>, 2018.
- [Yuan, J., and Houze Jr, R. A.: Global Variability of Mesoscale Convective System Anvil Structure from A-Train Satellite
Data, *J. Climate*, 23, 5864-5888, <https://doi.org/10.1175/2010JCLI3671.1>, 2010.](https://doi.org/10.1175/2010JCLI3671.1)

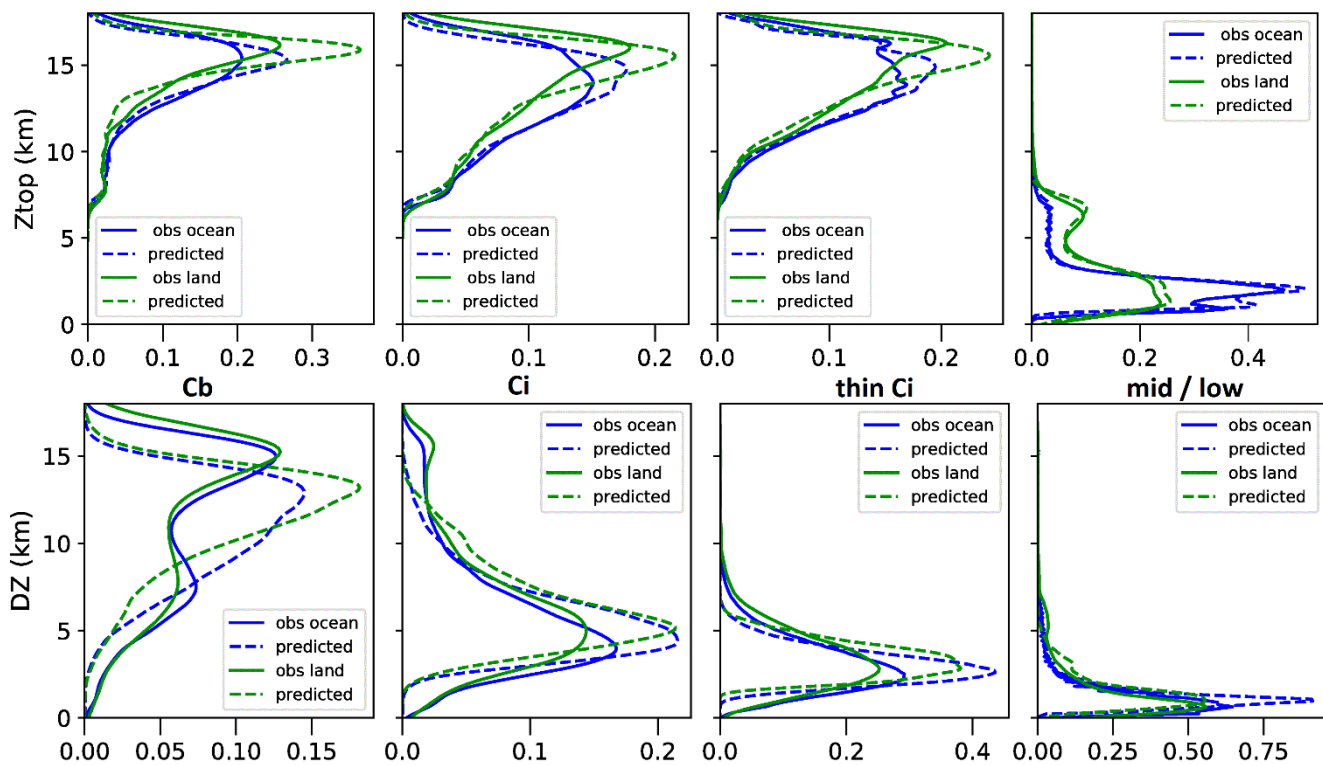


Figure 1: Normalized frequencyDensity distributions of Ztop (above) and DZ (below), separately for Cb, Ci, thin Ci and mid- / lowlevel clouds (identified by CIRS), and separately over ocean and land. The prediction models have been applied to 20% of the collocated data and are compared with the results derived from CloudSat-lidar 2B GEOPROF data (obs).

3 January 2008 (La Niña) 1:30AM / 9:30PM

18 January 2016 (El Niño) 1:30AM / 9:30PM

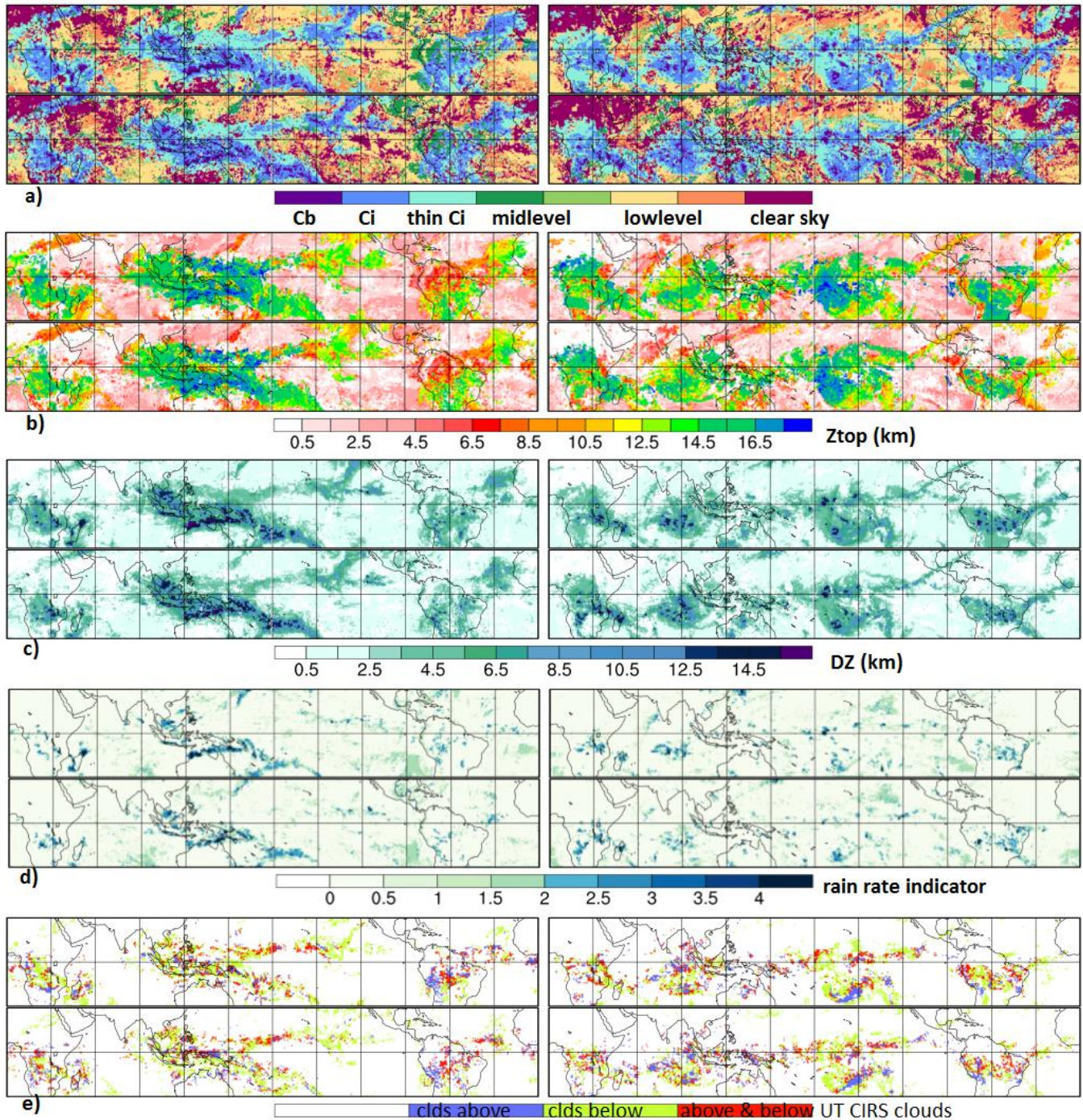
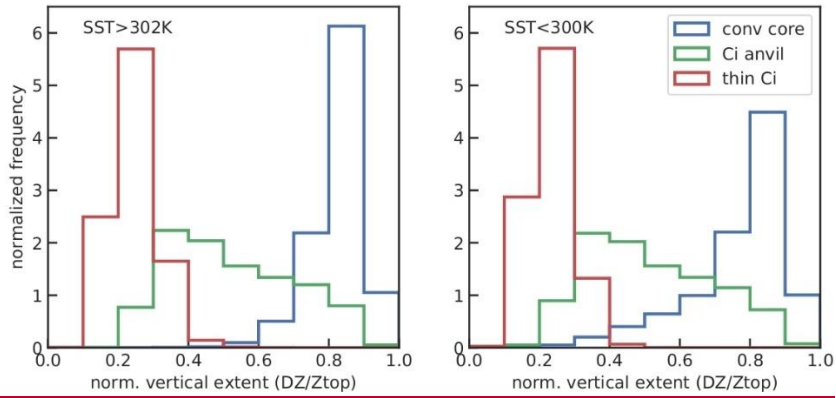
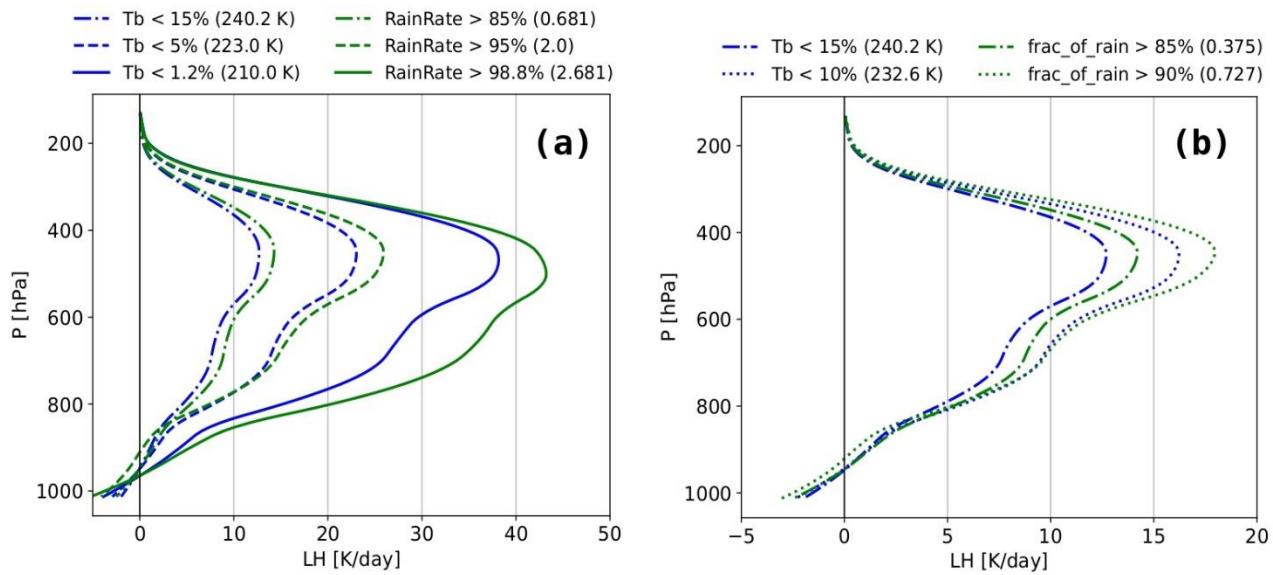


Figure 2: Horizontal structure for one specific day during a La Niña (left) and El Niño situation (right) at 1:30AM and at 9:30PM LT of a) CIRS scene type b) cloud top height z_{top} (km), c) DZ cloud vertical extent(km), d) rain rate indicator and e) cloud layers in addition to the identified UT clouds by CIRS of UT-clouds.

825



830 **Figure 3: Normalized-Density distributions of cloud-top height, cloud-base height and relative-normalized vertical extent (DZ/Ztop) of MCS convective cores, Ci anvils and surrounding thin Ci, separately over the 30% warmest regions (left) and over the 30% coolest regions (right) over ocean. Statistics is for 2008-2018 at 1:30AM and 1:30PM, and distributions are compared over the 30% warmest regions (top) and the 30% coolest regions (bottom) over ocean.**



835 **Figure 4: Comparison of latent heating rate profiles from TRMM (Shige et al., 2009) averaged over the same percentile statistics, using the coldest brightness temperature (T_b), the largest rain rate indicator (right) and the largest spatial extension of rain within a grid cell of 0.5° (left). Since the grid cell precipitation coverage saturates at 1, one can only go down to the 10% largest cover. Statistics of collocated TRMM - AIRS data in the period 2008-2013.**

840

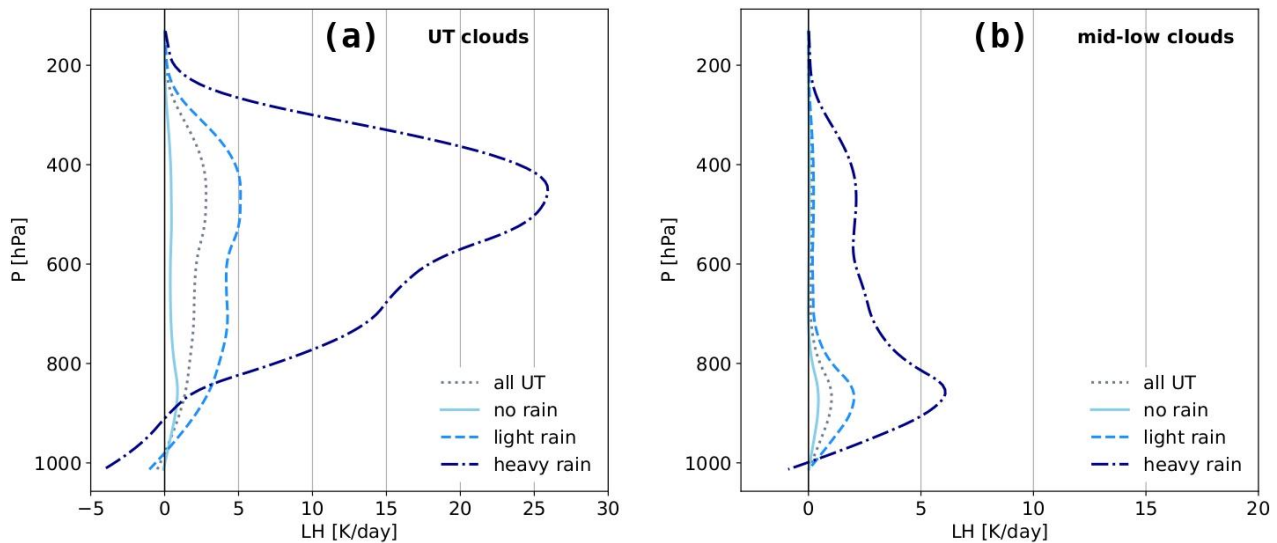
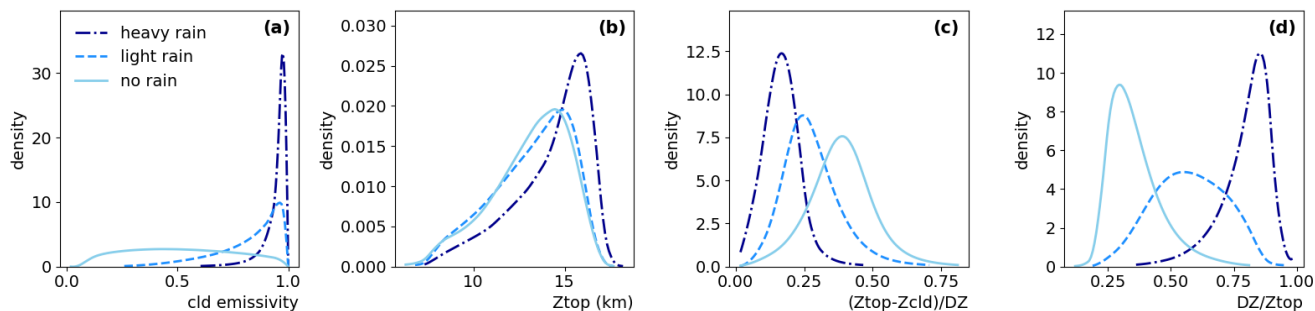


Figure 5: Average latent heating profiles derived from TRMM (Shige et al., 2009) produced averaged by over UT clouds (left) and by over mid- and low-level clouds (right) identified by AIRS, at the local time of 1:30 AM. In addition to the tropical mean are shown means of over non-precipitating, lightly precipitating and heavily precipitating clouds. These precipitation conditions are given by

845 the rain rate indicator classification derived from ML models applied to CloudSat and AIRS-ERA Interim machine learning and trained with CloudSat. Statistics of collocated TRMM-AIRS in the period 2008-2013.



850 **Figure 6: Normalized-Density distributions of a) cloud emissivity, b) cloud top height, c) difference between cloud top and CIRS near-top height, cloud fuzziness, sealed by cloud vertical extent, and d) normalized cloud vertical extent, sealed by cloud top height, for precipitating and non-precipitating, lightly precipitating and heavily precipitating UT clouds. Statistics is for 2008-2015 at 1:30AM.**

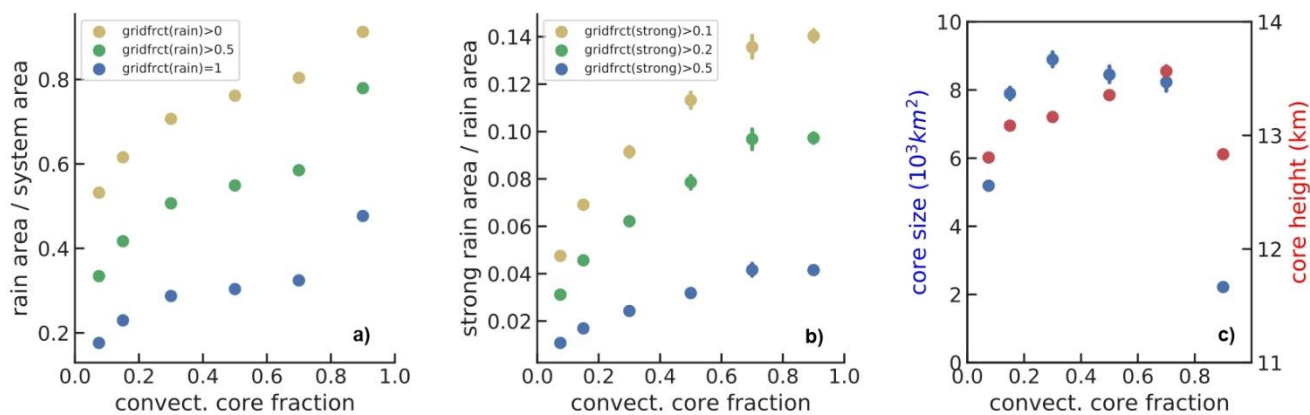
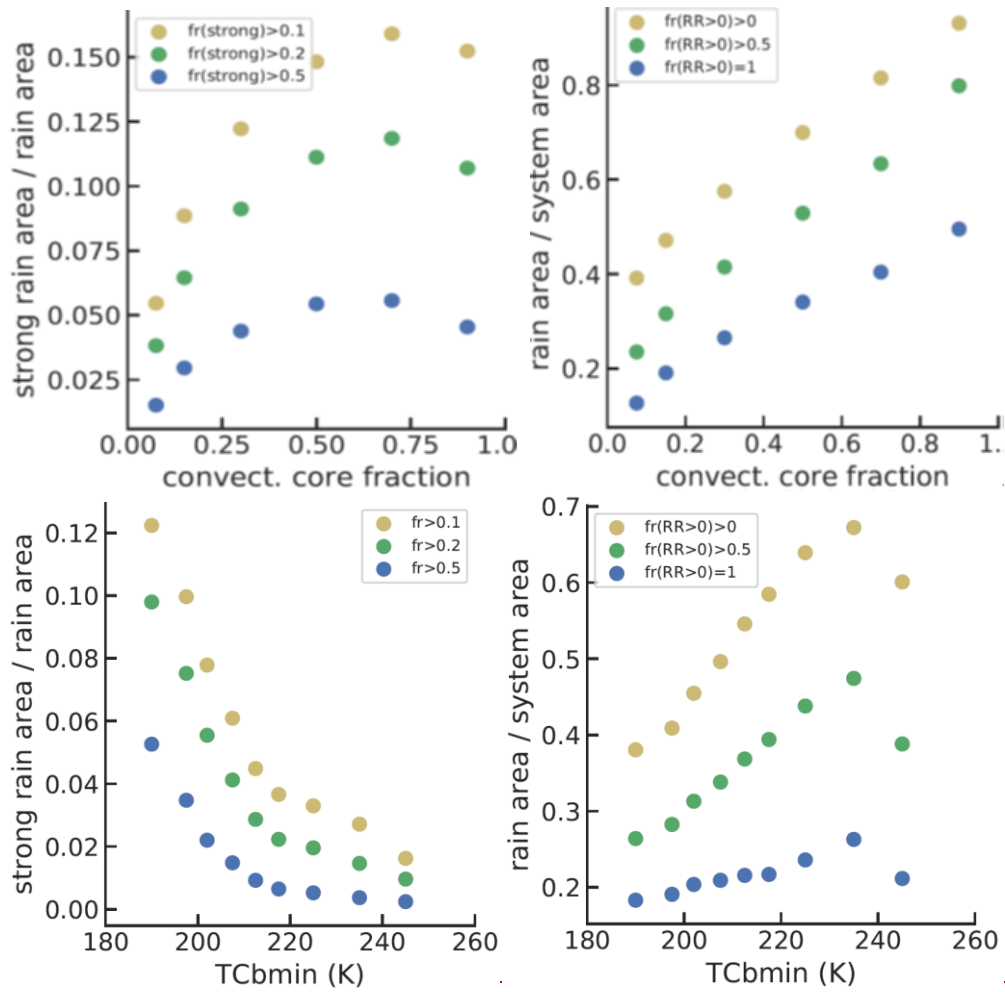


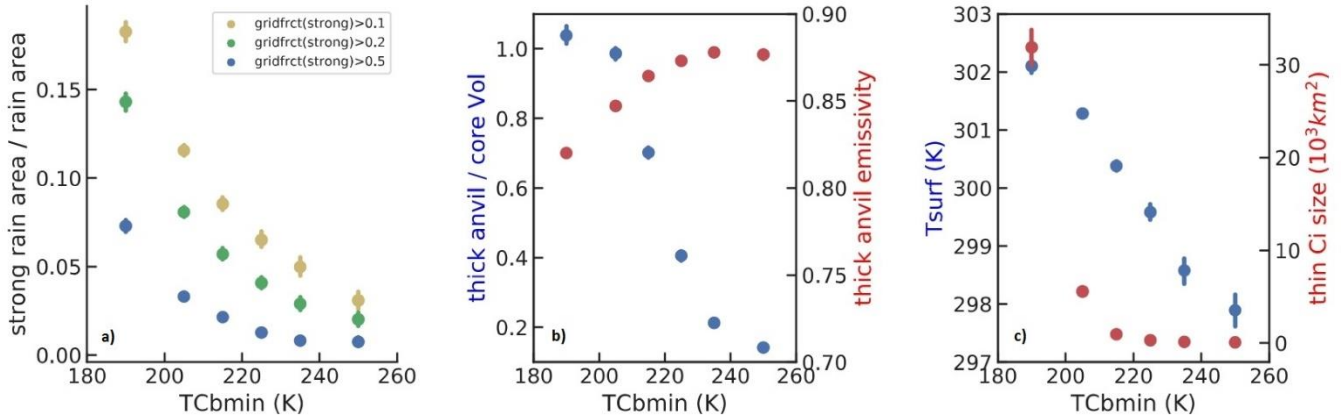
Figure 7: MCS properties as function of their life cycle stage, given by fraction of convective core area within the system (1 corresponds to developing phase, with no anvil and 0.1 to dissipating stage). Only cloud systems with a single convective core are considered: a) ratio of precipitating area over MCS size, b) ratio of strong rain area over precipitating area and c) size and top height of the convective cores. For a) and b) different thresholds on the rain fraction per grid cell are compared. The condition on strong rain also includes the condition that at least 50% of the grid cells are covered by any rain. Statistics combines observations at 1:30AM and 1:30PM, for 2008-2018.



865

870

Figure 7: Ratio of relative strong rain area over precipitating area (left) and fraction of rainy area (right) within single core convective systems as a function of life cycle stage (top), given by decreasing convective core fraction, and within mature convective systems as a function of convective depth (bottom), given by decreasing minimum temperature within the convective cores. The convective cores are defined by cloud emissivity > 0.98 , fraction of Cb within grid cell > 0.2 and $DZ/Z_{top} > 0.6$. Different thresholds on the rain fraction per grid cell to be included into the areas are compared. The condition on strong rain also includes the condition that at least 50% of the grid cells are covered by any rain. Statistics combines observations at



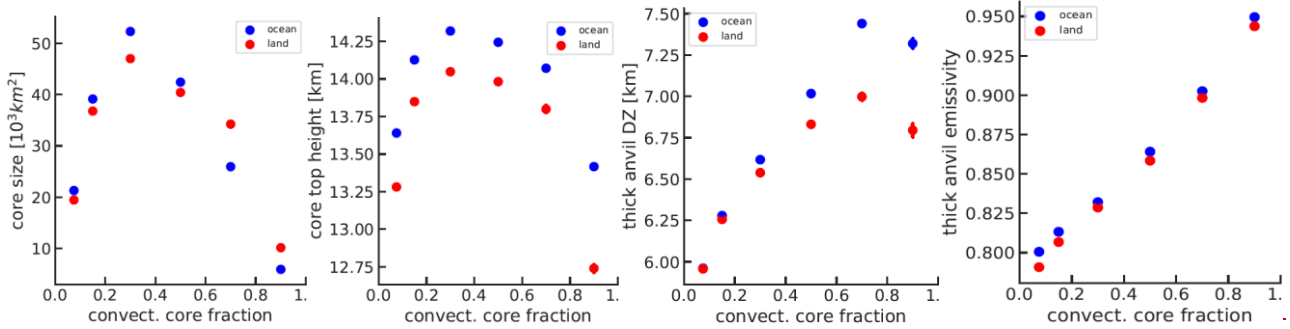
875

Figure 8: Mature MCS system properties as function of their convective depth, given by decreasing minimum temperature within the convective cores: a) ratio of strong rain area over precipitating area, b) volume detrainment and thick anvil emissivity and c) 50% warmest surface temperature underneath the MCSs and ratio of thin cirrus over total anvil area. For a) different thresholds on the fraction of strong rain per grid cell are compared and at least 50% of the grid cells are covered by any rain. Statistics combines observations at 1:30AM and 1:30PM, for 2008-2018.

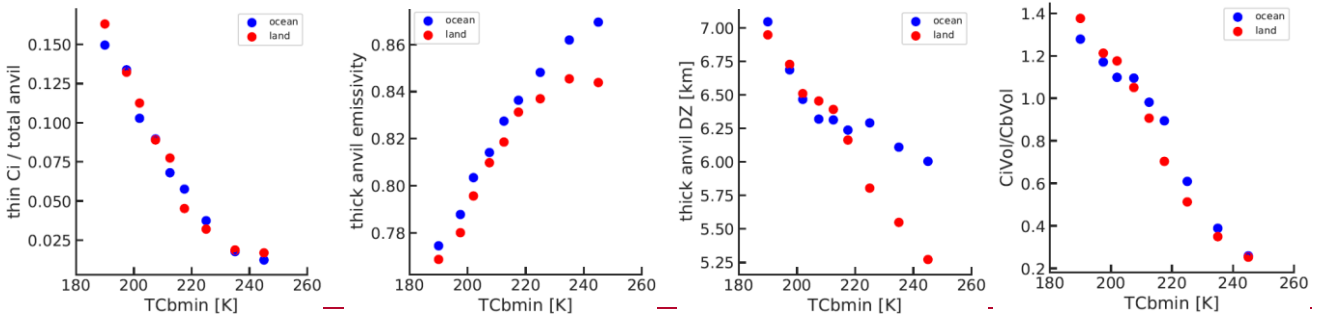
880

Figure 10: Normalized frequency distributions of mature MCS system properties over the 30% warmest and coolest tropical ocean regions. Top panel from left to right: height of convective cores, size of anvils, and ratio of areas with strong over total precipitation; bottom panel from left to right: ratio of areas with thin cirrus over total anvil, thick anvil emissivity, and thick anvil vertical extent. Statistics combines observations at 1:30AM and 1:30PM, for 2008-2018.

885



890 **Figure 8: MCS properties as function of their life cycle stage, given by fraction of convective core area within the system (1 corresponds to developing phase, with no anvil and 0.1 to dissipating stage): size and top height of the convective cores, vertical extent and emissivity of the thick anvils (emissivity > 0.5). Statistics combines observations at 1:30AM and 1:30PM, for 2008-2018.**



895
900 **Figure 9: Mature MCS system properties as function of their convective depth, given by the minimum temperature within the convective cores: ratio of areas with thin cirrus over total anvil, thick anvil emissivity and ratio of strong rain area over rainy area (right) within mature convective systems as a function of convective depth, given by decreasing minimum temperature within the convective cores. The convective cores are defined by cloud emissivity > 0.93, fraction of Cb within grid cell > 0.2 and $DZ/Z_{top} > 0.6$. Different thresholds on the fraction of rain per grid cell to be included into the areas are compared. The condition on strong rain also includes the condition that at least 50 of the grid cells are covered by any rain. Statistics combines observations at 1:30AM and 1:30PM, for 2008-2018.**

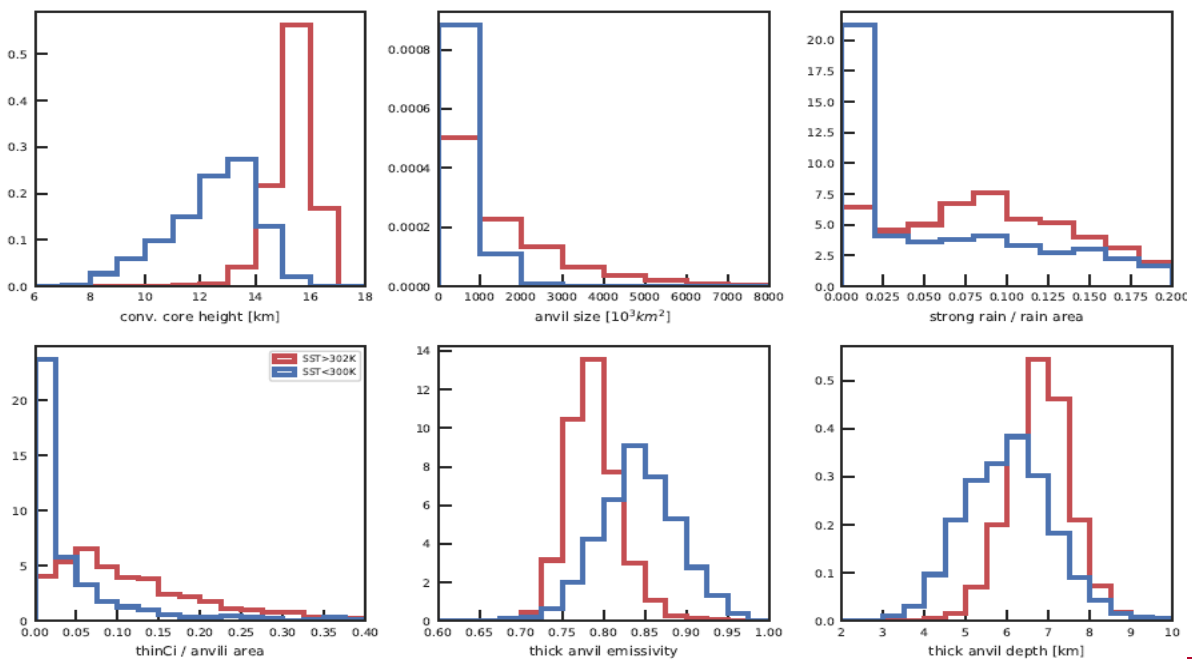
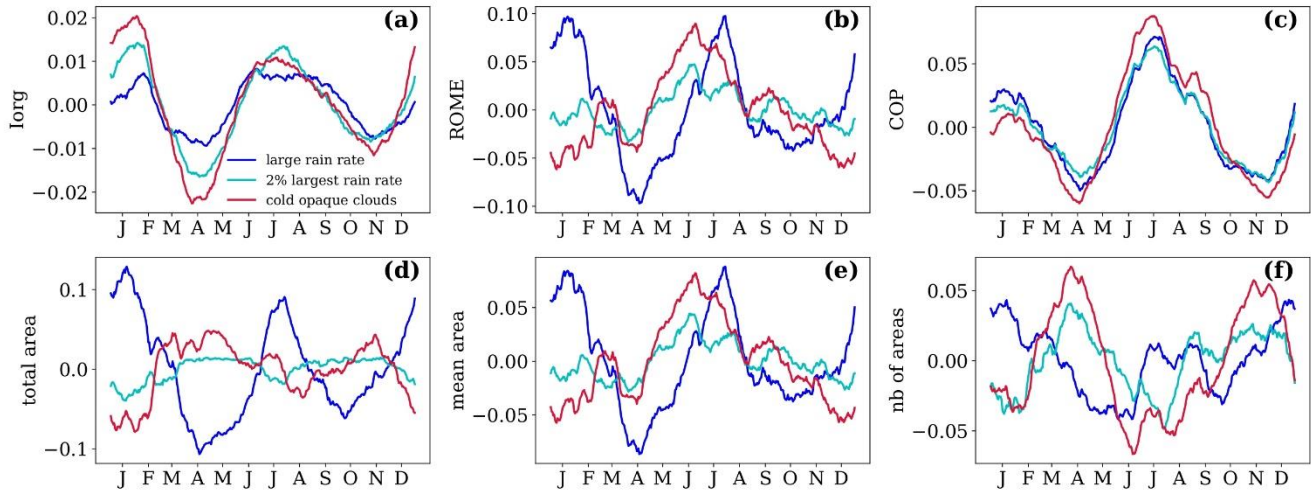


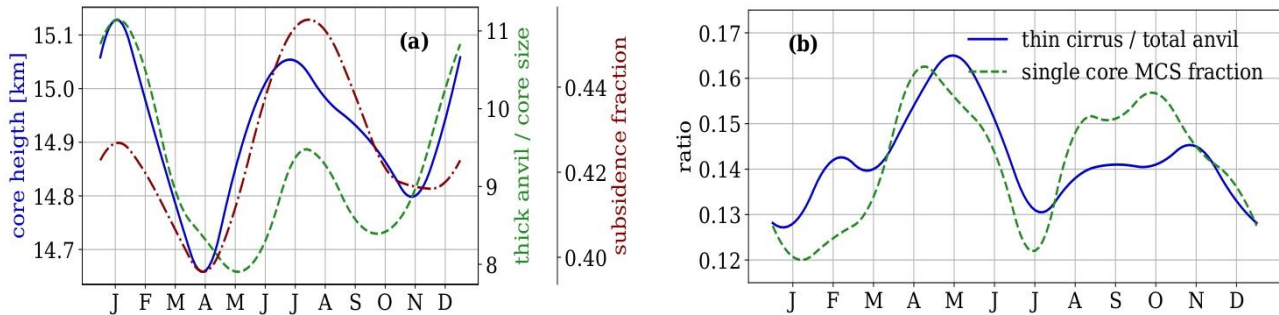
Figure 10: Normalized frequency distributions of mature MCS system properties over the 30% warmest and coolest tropical ocean regions. Top panel from left to right: height of convective cores, size of anvils, and ratio of areas with strong over total precipitation; bottom panel from left to right: ratio of areas with thin cirrus over total anvil, thick anvil emissivity, and thick anvil vertical extent. Statistics combines observations at 1:30AM and 1:30PM, for 2008-2018.



915

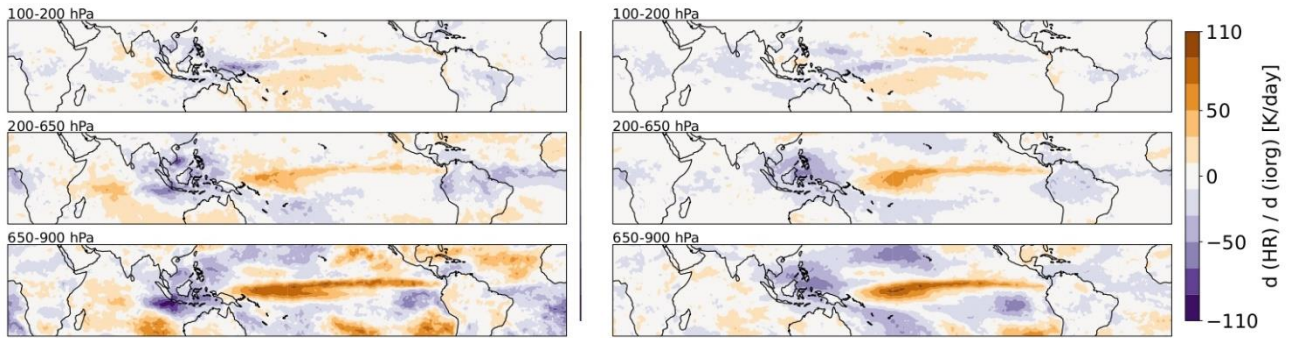
Figure 911: **Relative annual cycle of a) I_{org} , b) ROME, c) COP, d) total area of convective objects, and e) mean convective areas and f) number of convective areas.** These areas are built from grid cells covered by at least 90% UT clouds, with rain rate indicator > 2 (dark blue), $T_{cld} < 230$ K (red) and $\epsilon_{cld} > 0.95$ (red), or using the 2% largest rain rate indicator values (cyan). The latter leads to a constant total area of convection. Monthly statistics of UT clouds averaged over four observation times from 2008 to 2018.

920



925

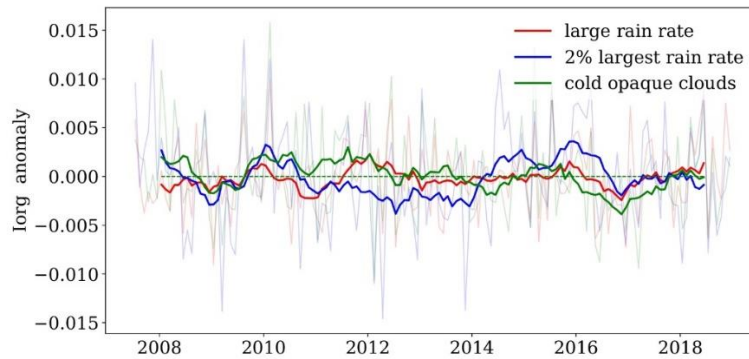
Figure 102: right: Annual cycle of a) MCS core top height (blue), ~~total anvil area over convective core area~~ **horizontal detrainment** (redgreen) and fraction of subsidence area (given by clear sky and low-level clouds) over the tropics (greenred) and b) ~~percentage ratio of~~ **ratio of** thin cirrus over total anvil size (cyanblue) and **fraction** of single core MCSs (redgreen). Monthly statistics averaged over four observation times from 2008 to 2018.



930

Figure 113: Change in radiative heating rates with respect to deseasonalized I_{org} computed from convective areas defined by grid cells with rain indicator > 2 (left) and by grid cells with $T_{cld} < 230$ K and $\epsilon_{cld} > 0.95$ (right). The troposphere is divided into three layers: upper troposphere (100-200 hPa), mid troposphere (200-600 hPa), and low troposphere (600-900 hPa). Monthly statistics from 2008 to 2018.

935



940

Figure 124: Time series of deseasonalized monthly anomalies of I_{org} , using different proxies to define the convective areas. The deseasonalization was done by computing 12-month running means. The monthly anomalies are shown in light grey.

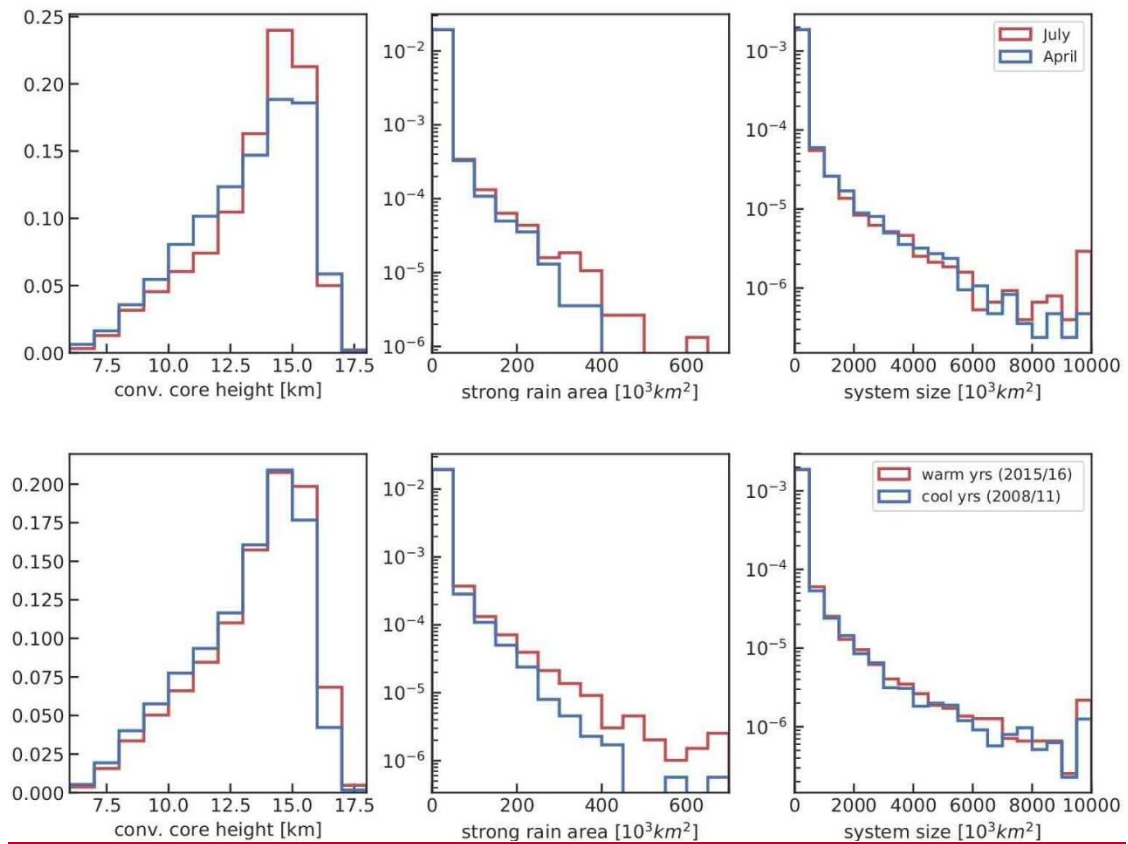


Figure 13: Density distributions of MCS system properties, comparing April and July (top) and cooler and warmer years (bottom): height of convective cores (left), size of areas with strong precipitation (middle) and system size (right). Statistics combines observations at 1:30AM and 1:30PM, for 2008-2018, for MCSs with core fraction > 0.1.

945