

Contribution of regional aerosol nucleation to low-level CCN in an Amazonian deep convective environment: Results from a regionally nested global model

Xuemei Wang¹, Hamish Gordon², Daniel P. Grosvenor¹, Meinrat O. Andreae³, and Ken S. Carslaw¹

¹School of Earth and Environment, University of Leeds, LS2 9JT, Leeds, United Kingdom

²Department of Chemical Engineering and Center for Atmospheric Particle Studies, Carnegie Mellon University, PA 15213, United States

³Biogeochemistry, Multiphase Chemistry, and Particle Chemistry Departments, Max Planck Institute for Chemistry, Mainz, Germany

Correspondence: Ken S. Carslaw (k.s.carslaw@leeds.ac.uk)

Abstract. Global model studies and observations have shown that downward transport of aerosol nucleated in the free troposphere is a major source of cloud condensation nuclei (CCN) to the global boundary layer. In Amazonia, observations show that this downward transport can occur during strong convective activity. However, it is not clear from these studies over what spatial scale this cycle of aerosol formation and downward supply of CCN is occurring. Here, we aim to quantify the extent to which the supply of aerosol to the Amazonian boundary layer is generated from nucleation within a 1000 km regional domain or from aerosol produced further afield, and the effectiveness of the transport by deep convection. We run the atmosphere-only configuration of the HadGEM3 climate model incorporating a 440 km \times 1080 km regional domain over Amazonia with 4 km resolution. Simulations were performed over several diurnal cycles of convection. Below 2 km altitude in the regional domain, our results show that new particle formation within the regional domain accounts for only between 0.2 % and 3.4 % of all Aitken and accumulation mode aerosol particles, whereas nucleation that occurred outside the domain (in the global model) accounts for between 58 % and 81 %. The remaining aerosol is primary in origin. Above 10 km, the regional-domain nucleation accounts for up to 66 % of Aitken and accumulation mode aerosol, but over several days very few of these particles nucleated above 10 km in the regional domain are transported into the boundary layer within the 1000 km region, and in fact very little air is mixed that far down. Rather, particles transported downwards into the boundary layer originated from outside the regional domain and entered the domain at lower altitudes. Our model results show that CCN entering the Amazonian boundary layer are transported downwards gradually over multiple convective cycles on scales much larger than 1000 km. Therefore, on a 1000 km scale in the model (approximately one-third the size of Amazonia), trace gas emission, new particle formation, transport and CCN production do not form a ‘closed loop’ regulated by the biosphere. Rather, on this scale, long-range transport of aerosol is a much more important factor controlling CCN in the boundary layer.

Nucleation, or new particle formation (NPF), is important for aerosol-cloud interactions and thus climate, as the newly formed particles can grow to form cloud condensation nuclei (CCN) that affect cloud droplet number concentrations and cloud properties (Pierce and Adams, 2007; Merikanto et al., 2009; Wang and Penner, 2009; Kazil et al., 2010; Gordon et al., 2016; Dunne et al., 2016; Gordon et al., 2017). Global model studies have shown that NPF contributes around 54 % of the global present-day CCN in the boundary layer (Gordon et al., 2017), and that 35 % of the CCN were formed by NPF in the free and upper troposphere and later transported into the boundary layer (Merikanto et al., 2009). The downward transport can take place in large-scale subsidence in the general circulation such as in the Hadley cell, which is resolved by global models, or in the downdrafts of deep convection, which is a parameterised process in global models. These global-scale studies clearly show that high-altitude NPF contributes to low-level CCN, but the relative roles of these two transport mechanisms for the NPF-aerosol-CCN process is unknown. Here we aim to quantify the effectiveness of convective transport to influence aerosol particles in the boundary layer, inspired by measurements made over Amazonia showing a free-tropospheric source of aerosol into the boundary layer in a convective environment (Wang et al., 2016).

NPF involves inorganic species such as $\text{H}_2\text{SO}_4\text{-H}_2\text{O}$ and $\text{H}_2\text{SO}_4\text{-NH}_3\text{-H}_2\text{O}$ (Weber et al., 1995; Vehkamäki et al., 2002; Kirkby et al., 2011; Dunne et al., 2016) and the oxidation products of volatile organic carbon vapours such as monoterpenes producing HOMs (highly oxygenated molecules) (Kirkby et al., 2016; Tröstl et al., 2016), and isoprene (Schulz et al., 2018). While the oxidation products of isoprene do contribute to secondary organic aerosol in Amazonian upper troposphere (Schulz et al., 2018), isoprene is also found to suppress NPF from monoterpenes (Heinritzi et al., 2020). Previous studies have found that NPF is affected by precursor gas concentrations as well as by temperature and the condensation sink. Low temperatures in the UT usually slow down the chemical reaction of extremely low volatility organic compounds (Simon et al., 2020), but also reduce the vapour pressure of the gas precursors and thereby enhance NPF (Zhao et al., 2020). Yu et al. (2017) also reported that the low-altitude CCN that are generated by NPF from $\text{H}_2\text{SO}_4\text{-H}_2\text{O}$ and organic gas molecules, were changed by 10 %-30 % when the temperature dependence of NPF was added. The condensation sink is also an important factor that affects the production and concentration of particles smaller than 3 nm in diameter (Kulmala et al., 2001a, b; Dal Maso et al., 2002) by modulating the concentration of nucleating and condensing vapours. Here we explore the role of hydrometeors within deep convective clouds as a sink for the condensable gases (Kazil et al., 2011).

In Amazonia, it has been shown that NPF in the boundary layer was rarely observed and thus is insufficient to sustain CCN during the dry-to-wet transition season (Zhou et al., 2002; Krejci et al., 2003; Rissler et al., 2006; Spracklen et al., 2006; Rizzo et al., 2010; Andreae et al., 2018; Wimmer et al., 2018; Rizzo et al., 2018). However, aircraft measurements have shown that strong NPF in the upper troposphere (UT) (from precursor vapours transported upwards by deep convection) can create an abundant supply of small nuclei that, following downward transport and particle growth, could account for some boundary layer CCN (Clarke et al., 1998, 1999a, b; Clarke and Kapustin, 2002; Weigel et al., 2011; Wang et al., 2016; Andreae et al., 2018; Williamson et al., 2019). The upward transport of insoluble biogenic precursor gas has been found in the experimental

study of Kulmala et al. (2006), and the transport process may significantly affect particle nucleation in the upper troposphere. The vertical upward transport efficiency has been further shown to be positively related to biogenic vapour volatility and negatively related to NO_x abundance using 100-m resolution large-eddy simulations (LES), which can resolve the convection and eddies that are important for deep convective transport (Bardakov et al., 2020, 2021, 2022). Upward transport within a relatively short time and domain from the boundary layer to the mid-troposphere was also shown to be efficient in the LES study Bardakov et al. (2022), and it indicates the potential important role of deep convection in transporting precursor gases to the free troposphere and upper troposphere. LES studies found that alpha-pinene, as a subset of monoterpenes, could be rapidly transported from the surface to above 10 km in altitude and the transport efficiency of isoprene was largely suppressed by NO_x due to loss from oxidation (Bardakov et al., 2020, 2021). Bardakov et al. (2022) also showed that downward transport from 7-11 km altitude to the boundary layer was very weak within 2 hours during convection. However, from the observations and this LES modeling study, which simulated two hours of atmospheric evolution, it is still uncertain whether the downward transport on longer timescales will efficiently bring aerosols into the boundary layer.

The CCN concentration at 0.4 % supersaturation in the Amazonian boundary layer is around 185 cm^{-3} in the wet season and 2500 cm^{-3} during the dry season (Andreae, 2009). The total particle concentration is around 300 cm^{-3} in the wet season and 3000 cm^{-3} in the dry season (Andreae, 2009; Pöhlker et al., 2016; Pöhlker et al., 2018). Aircraft measurements show that more than 80 % of the particles were between 20 and 90 nm in diameter in the UT during the dry season, suggesting that they are formed by NPF (Andreae et al., 2018). Particle concentrations exceeding 20000 cm^{-3} were observed above 8 km during the ACRIDICON-CHUVA campaign in September and October 2014. Therefore, it is plausible that this high-altitude aerosol may contribute to the aerosol populations in this region through downward transport in an environment with strong vertical motion.

Andreae et al. (2018) hypothesised that the newly formed aerosol particles in Amazonian UT could be mixed and transported into the lower troposphere and contribute to boundary layer particles. Based on the observations from ACRIDICON-CHUVA in the dry season, they proposed that the organic compounds in UT particles were derived from gas-phase oxidation of insoluble gas precursors which were emitted from the rainforest and transported upwards by deep convection. In the wet season, based on GoAmazon2014/5 observations, Wang et al. (2016) concluded that the rapid vertical transport allowed Aitken mode particles in the lower FT to enter the boundary layer in downdrafts associated with precipitation.

To understand the formation of aerosol and its vertical transport in a convective environment, it is necessary to use a model that resolves cloud motion. Global models have shown that the UT is a major source of CCN in the boundary layer (Merikanto et al., 2009), but the results may only be reliable in regions where aerosol is transported in the types of synoptic-scale circulation that are resolved by the model, such as in the descending branch of the Hadley cell in sub-tropical regions. Deep convection is a regional- to local-scale system. Due to the strong vertical velocities, deep convection can potentially transport particles and vapours upwards and downwards on scales of a few kilometers that are unresolved by a global model (global models parameterize the vertical exchange of trace gases, but they do not resolve coherent updrafts and downdrafts and the associated clouds). Most studies have focused on upward transport. Ekman et al. (2004) used a cloud-resolving model and

found that only small particles (5.84 to 31.0 nm) were transported to the UT by a deep convective updraft, while larger particles were scavenged. Some of the smaller particles eventually grew and served as CCN or ice-nucleating particles (INP). Using an axisymmetric dynamic cloud model Yin et al. (2005) reported that aerosols were transported from the boundary layer to mid-cloud level and contributed to the aerosol mass within the hydrometeors in the deep convection. The analysis of Zhao et al. (2020) of ACRIDICON-CHUVA and GoAmazon2014/5 observations using a regional-scale chemical transport model with a detailed treatment of organic vapours suggested the importance of fast convective transport for low-altitude particles and CCN. However, to understand the spatial scales over which the NPF-aerosol-CCN pathway takes place, i.e. over a large-scale or within a 1000 km regional convective domain, we need to combine a global and regional model to represent both processes.

Inspired by the studies outlined above, we address the following questions:

- (1) How do NPF-deep convection interactions on regional scales affect the vertical distributions of particles in Amazonian tropical rainforest?
- (2) How much does NPF occurring on a regional scale (~ 1000 km) affect the CCN budget of the region? What fraction of CCN is created regionally versus being transported into a region from outside?
- (3) How effective are deep convective clouds at transporting particles downwards to low-levels, and on what spatial and temporal scales is the process occurring?
- (4) How are particles, nucleation and growth rates in the regional domain sensitive to changes in nucleation mechanisms?

The previous studies are well designed and help to understand aerosol sources on global and regional scales. However, to address our questions about the relative importance of regional and global-scale transport we use a model that combines high resolution (to resolve convection) with interactive aerosol microphysics that represents aerosol diameters as low as 3 nm and allows the simulation of NPF and growth. This is accompanied by a broader view from the global model. We simulate 3 days of the ACRIDICON-CHUVA campaign as a case study and investigate the role of deep convection in supporting the UT NPF and the boundary layer aerosols. The simulations are designed to address the link between Amazonian BVOC emissions, NPF and subsequent influence on boundary layer CCN. We do not explore generally how aerosol is transported in a deep convective environment (e.g. Wang et al. (2016)), but specifically whether local BVOC-driven NPF is important.

The sections are organised as follows. Section 2 introduces the observations and models used in our study. The results are analysed in Sect. 3 and the first subsection 3.1 shows the comparisons with the observations. Section 3.2 has an overview of aerosols, gas precursors, nucleation and growth rates in Amazonia, and it briefly explores the sensitivity of them to different nucleation mechanisms, oxidation rates and emission rates. Section 3.3 describes the effects on NPF of adding a contribution to the condensation sink from cloud droplets and ice crystals. Section 3.4 quantifies the contributions of NPF from the global and regional models to aerosols in the 1000 km by 440 km regional domain. Section 3.5 further explores the vertical transport by deep convection in the regional model. We finally discuss and conclude the results in Sect. 4.

2 Methods

2.1 Observations

2.1.1 ACRIDICON-CHUVA campaign

120 Our study is motivated by the measurements made during ACRIDICON-CHUVA (Aerosol, Cloud, Precipitation, and Radiation Interactions and Dynamics of Convective Cloud Systems-Cloud Processes of the Main Precipitation Systems in Brazil: A Contribution to Cloud Resolving Modeling). We also use measurements from the GPM (Global Precipitation Measurement) satellite mission, and monoterpenes observations from aircraft measurements and ATTO (Amazon Tall Tower Observatory) tower (Kuhn et al., 2007; Yáñez-Serrano et al., 2018; Zannoni et al., 2020). The aim of ACRIDICON-CHUVA was to study the

125 relationships between trace gases, particles and radiation in Amazonian convective environment. The campaign included 14 flights from early September until the beginning of October in 2014, centred around Manaus in Brazil (3.1° S, 60.0° W). They measured cloud, aerosol and trace gas properties in forest, urban and marine environments using the HALO aircraft (Wendisch et al., 2016; Andreae et al., 2018); see Fig. 1.

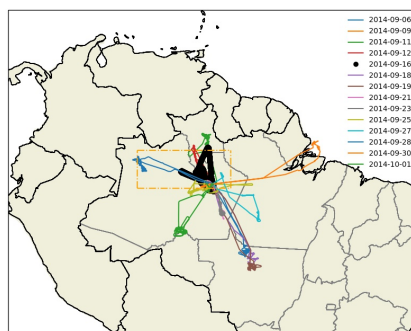


Figure 1. A map of the flight tracks during ACRIDICON-CHUVA. The flight track in black bold is AC11 (on 16 September 2014), and the orange dotted dashed box denotes the regional domain used in this study.

2.1.2 Meteorology

130 The campaign took place during the transition season in Amazonia, which was towards the end of the dry season and the onset of the wet season. General subsidence caused by a northward-shifted ITCZ dominated the dry season during this period, but during the transition in September, moisture advection from the Atlantic Ocean was sufficient to cause the large-scale circulation to shift leading to an increase in rainfall (Li and Fu, 2004). North-easterly and easterly wind dominated this period, bringing in moist air from the South Atlantic Ocean (Martin et al., 2016). The surface temperature was at its highest for the year

135 in September 2014 and moisture started to increase from September onwards. The monthly averages of surface temperature

reached 28 °C and the specific humidity was over 19 g kg⁻¹ (Collow et al., 2016). The UT equivalent potential temperature in September ranged from 60 °C to 80 °C and relative humidity was around 20 % in September and rose to 100 % in early October favouring the development of deep convection (Collow et al., 2016). Warm sea surface temperatures occurred during the campaign (Martin et al., 2016; Andreae et al., 2018).

140 During our simulation period (16 to 18 September 2014), MODIS images show that on 16 September, the sky was partially cloudy with shallow cumulus clouds. A deep convective cell formed to the northeast of Manaus with a large anvil above 12 km in altitude on 17 September. On this day, cloud fraction at the location of our regional domain reached 100 %. A squall line passed Manaus and it extended as far as 240 km to the northwest of Manaus. On 18 September 2014, the sky became partially cloudy and the convective cells were diminished or left the region.

145 **2.1.3 Aerosol measurements**

The measurements of particle number concentrations from ACRIDICON-CHUVA are used in this study. The instruments aboard the HALO aircraft measured aerosol particle concentrations up to around 14 km in altitude, approximately where boundary of the upper troposphere and lower stratosphere locates, and the flight area covered the region of interest (Fig. 2) as well as wider regions of Amazonian basin. Four butanol-based CPCs (condensation particle counters) and a UHSAS
 150 (Ultra-High Sensitivity Aerosol Spectrometer) were used to measure particles of various sizes. The measured particles are split into two size ranges by diameter: those larger than 20 nm dry diameter ($N_{D>20nm}$) and those larger than 90 nm diameter ($N_{D>90nm}$). The $N_{D>20nm}$ data consists of measurements with lower cut-off diameters that vary with pressure because of inlet loss: 9.2 nm at 1000 hPa, 11.2 nm at 500 hPa, and 18.5 nm at 150 hPa (Andreae et al., 2018). $N_{D>90nm}$ was measured using a UHSAS and an OPC (optical particle counter). For a more extensive description of the measurements, see Andreae et al.
 155 (2018).

2.2 Models and simulations

2.2.1 Global and regional model configurations

We use the Hadley Centre Global Environment Model version 3 (HadGEM3), which is based on the Unified Model (UM) framework, and incorporates the United Kingdom Chemistry and Aerosol (UKCA) model. The model includes a regional nest
 160 of configurable spatial resolution that is one-way coupled to the global model, which allows the global model to affect the processes in the regional domain but the regional domain does not affect the global model. The UKCA model was first run at kilometer-scale resolution by Planche et al. (2017) and tested in the one-way nesting configuration by Gordon et al. (2018). The global model is based on GA7.1 (Global Atmosphere v7.1) of UM11.3 with the Even Newer Dynamics for General atmospheric modelling of the environment (ENDGame) dynamics (Wood et al., 2014). In the global model we use the N216
 165 grid (~ 65 km horizontal resolution) with 70 vertical levels up to 80 km altitude. Sea surface temperatures are fixed and the land surface is represented by the JULES model (Walters et al., 2019).

The nested regional domain is centred at (1.5°S, 63°W) and has 4 km horizontal resolution. 4 km resolution can only resolve part of the convection which may limit our understandings of the efficiency of vertical transport because the convective up- and downdrafts may not be fully resolved. Despite this, it allows us to conduct the simulations and investigate the processes that occur in a relatively large region without high computational cost. Li et al. (2018) and Ryu and Kang (2022) have shown that coarser resolutions may generally cause an earlier onset of convection, but the general horizontal distribution of clouds should not be strongly affected. In a test simulation with 1.5 km resolution and a similar domain, we found that the Aitken and accumulation mode concentration profiles were similar to the aerosol in the same region at 4 km resolution. Therefore, 4 km is sufficient to investigate this topic. The domain size is 440 km north-south and 1080 km east-west (Fig. 2) to align approximately with the mean wind direction. There are 70 vertical levels to 40 km altitude, with 63 levels in the lowest 20 km, the region of interest of this study. The residence time of air in the regional domain is determined by horizontal wind speed and is between 20 and 40 hours, which is around half of the total simulation time. The regional model is driven by hourly boundary conditions generated from the global model that provides meteorology (temperature, 3D wind velocity, cloud liquid and ice water, humidity and rain) as well as aerosol and trace gas boundary conditions for the regional model.

Convection is parameterised in the global model and is resolved in the regional model. The resolved convection allows explicit heat transfer and tracer transport, whereas the parameterisation simplifies the transport processes (Fritsch and Chappell, 1980; Gregory and Rowntree, 1990; Stratton et al., 2009; Derbyshire et al., 2011; Walters et al., 2019).

UKCA uses the GLOMAP-mode aerosol scheme which produces, grows, transports, and removes aerosol (Mann et al., 2010, 2014). The two-moment aerosol microphysics scheme has five log-normal modes of variable number and size (but fixed width) to define aerosol size distributions. Four of these are soluble modes comprising nucleation, Aitken, accumulation and coarse size modes. The fifth mode is an insoluble Aitken mode. The simulated aerosol is made up of sulfate, sea-salt, black carbon and organic carbon. UKCA includes organic carbon and black carbon emissions from biomass and fossil fuel burning from the GFED version 3.1 and CMIP5 inventories (Van Der Werf et al., 2003; Kanakidou et al., 2005). UKCA uses monthly averages of SO₂ and DMS from CMIP5 emission inventories in both the global and regional models. The marine source of DMS has been parameterised based on Lana et al. (2011) and land biomass burning (van der Werf et al., 2006; Lamarque et al., 2010; Granier et al., 2011; Diehl et al., 2012); SO₂ comes from volcano eruptions (Andres and Kasgnoc, 1998; Halmer et al., 2002), biomass burning (GFEDv3.1 inventory), bio-fuel burning, fossil-fuel burning and industrial emissions (Cofala et al., 2005). The monoterpene emissions mainly come from the monthly averages of vegetation (Guenther et al., 1995).

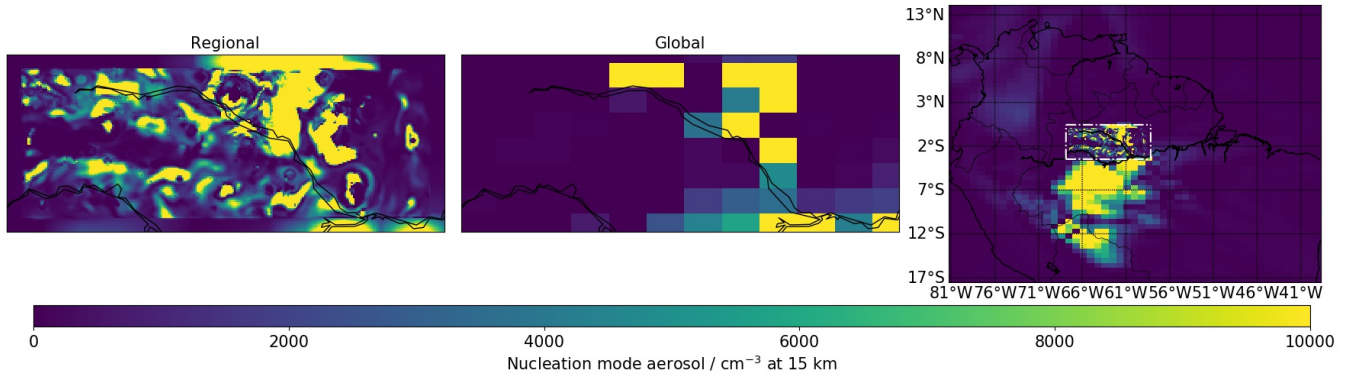


Figure 2. Maps of nucleation mode aerosol number concentrations from the regional (left) and global models (middle) at a height of 15 km and at 15 UTC on 17 September, 2014. The map on the right presents a broader view of South America and shows the location of the regional domain (dotted dashed box).

The global model uses the single-moment cloud microphysics scheme of Wilson and Ballard (1999). It activates aerosol particles following Abdul-Razzak and Ghan (2000) which considers the probability distribution function (PDF) of updraft velocities centred around the large-scale vertical velocity to derive cloud droplet number concentrations for each time step (West et al., 2014). The regional model uses the Cloud-AeroSol Interacting Microphysics (CASIM) model. CASIM is a two-moment cloud microphysics scheme that includes cloud droplets, rain, ice, snow and graupel (Shipway and Hill, 2012; Hill et al., 2015; Grosvenor et al., 2017). All hydrometeor distributions are defined by gamma distributions. CASIM activates aerosol particles to form cloud droplets depending on the mean updraft velocity in the gridbox (Grosvenor et al., 2017; Miltenberger et al., 2018; Field et al., 2023). The droplet number concentrations are prognostic, which means that they are stored at each timestep, but if the model activates more droplets in the new timestep than the previous one, the old number concentration is overwritten (Gordon et al., 2020).

The UKCA and CASIM models are coupled to allow UKCA to pass aerosol particle number and mass to CASIM for activation, with the mass of different chemical components (sea-salt, sulfate, organic carbon and black carbon) used to derive the hygroscopicity for aerosol activation in CASIM (Gordon et al., 2020). CASIM also passes the rates of autoconversion and accretion to UKCA in order to affect the convective scavenging of aerosols by precipitation (Miltenberger et al., 2018).

Aerosol particles are removed by rain formation via collision coalescence of droplets, as well as by rain impaction scavenging. Precipitation removes particles of various sizes determined by a collection efficiency look-up table (Mann et al., 2010; Kipling et al., 2013). In the original version of the model, these processes scavenge only those particles larger than 10 nm in diameter. Here we also investigate the effect of cloud hydrometeors on NPF through their effect on the condensation sink, as described in Sect. 2.2.2.

2.2.2 New particle formation

In the UKCA model, NPF produces new particles at 3 nm in diameter. The schematic diagrams in Fig. 3 show the oxidation, nucleation and particle growth pathways of the binary and biogenic nucleation mechanisms which we use in this study.

Binary sulfuric acid-water and pure biogenic nucleation mechanisms are mainly used in this study. Binary nucleation follows the parameterisation of sulfuric acid-water ($\text{H}_2\text{SO}_4\text{-H}_2\text{O}$) in Vehkamäki et al. (2002). In the UKCA model, the binary nucleation precursor gas H_2SO_4 mainly comes from the oxidation of SO_2 and DMS. It also condenses on to existing aerosols, contributing to their growth.

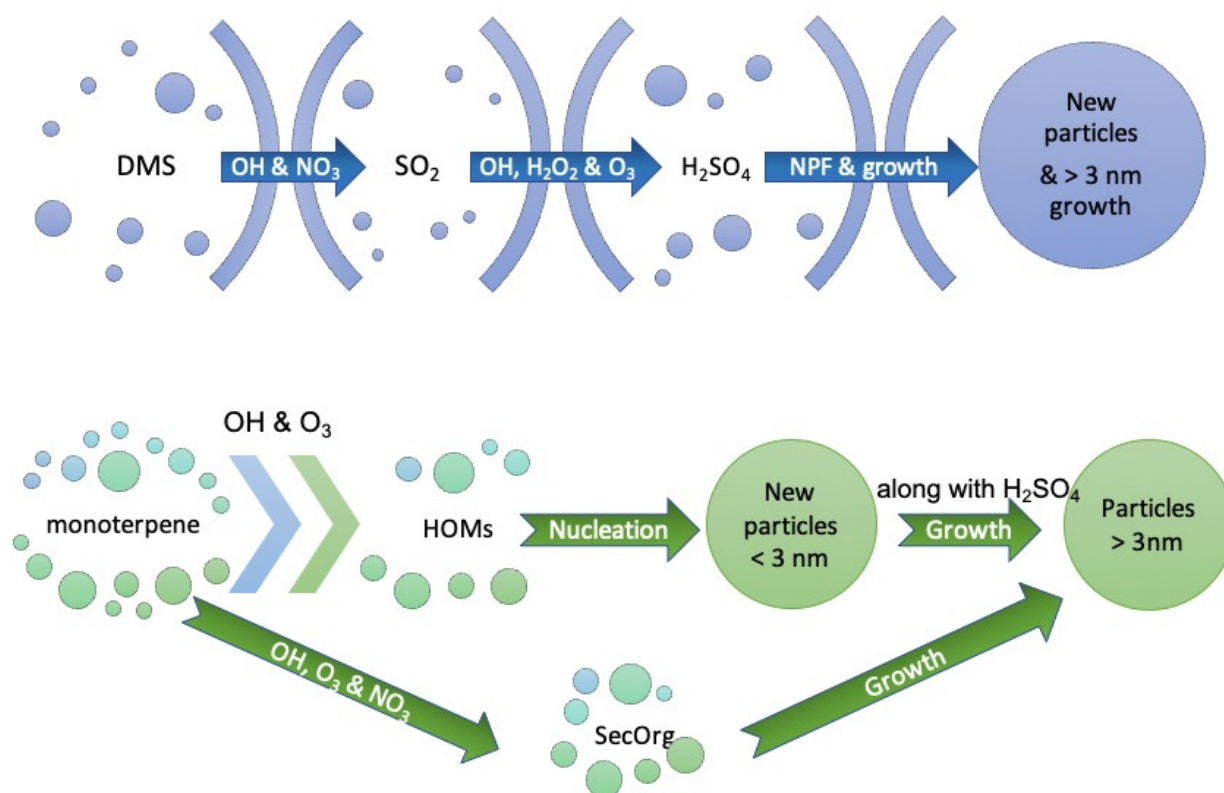


Figure 3. Schematic diagrams showing the oxidation pathways and their roles in NPF and particle growth in the UKCA model for binary nucleation (upper panel) and biogenic nucleation (lower panel).

220 We also added the biogenic nucleation mechanism along with its precursor gas (HOMs) from the parameterisation in Gordon et al. (2016), which was based on the CLOUD chamber experiments (Kirkby et al., 2016). The experiments found and quantified pure biogenic nucleation, which required only HOMs to form new particles (Kirkby et al., 2016), and subsequent growth with oxidised BVOCs and $\text{H}_2\text{SO}_4\text{-H}_2\text{O}$. This mechanism has been applied to several models (Gordon et al., 2016; Zhu et al., 2019; Zhao et al., 2020). Here, we use it to simulate Amazonian NPF, focussing on the environmental conditions for, and the
225 consequences of, new particle formation rather than the chemical mechanism.

In the original UKCA setup, monoterpenes are oxidised to SecOrg (secondary organics) which can grow particles by condensation. With the new parameterisation, monoterpenes are first oxidised to SecOrg, then the rest of the monoterpenes in the environment is used to derive HOM concentrations using the same steady-state approximation as used by Gordon et al. (2016). A simplified (offline) chemistry scheme with prescribed oxidant fields (OH, O_3 , H_2O_2 , HO_2 , and NO_3) is used to reduce computational cost. Here, the oxidants are read in from monthly mean ancillary files generated from a full chemistry simulation
230 (Walters et al., 2017), then OH and HO_2 concentrations are modulated according to the diurnal cycle of solar radiation. The fixed oxidants are not affected by chemical reaction or convection. The chemical reactions and rate constants are summarised in Table 1. In the Amazonian environment, isoprene is another BVOC that significantly affects upper tropospheric aerosol mass (Schulz et al., 2018), but the simplified chemistry scheme does not include isoprene and the related chemistry. This representation of the chemical mechanism is one of many uncertainties associated with biogenic particle formation. Our definition of
235 HOMs is based on the chamber experiment from CLOUD (Ehn et al., 2014; Kirkby et al., 2016; Bianchi et al., 2019) which found that a wide range of highly oxidised organic vapours were able to nucleate particles and that particle growth varies depending upon the volatility of the organic vapours (Tröstl et al., 2016; Stolzenburg et al., 2018). The experiments showed that HOMs can be formed from alpha-pinene, which is a subset of the monoterpenes, by reaction with OH and O_3 . The yields
240 of HOMs from monoterpenes by OH and O_3 are 1.2 and 2.9 %, respectively (Gordon et al., 2016).

Table 1. The chemical reactions in the offline chemistry and the corresponding rate constants.

Reactions	Rate constants
$\text{DMS} + \text{OH} \rightarrow \text{SO}_2$	9.6×10^{-12}
$\text{DMS} + \text{OH} \rightarrow \text{SO}_2 + \text{DMSO}$	3.04×10^{-12}
$\text{DMS} + \text{NO}_3 \rightarrow \text{SO}_2$	1.9×10^{-13}
$\text{DMSO} + \text{OH} \rightarrow \text{SO}_2$	5.8×10^{-11}
$\text{SO}_2 + \text{OH} \rightarrow \text{H}_2\text{SO}_4$	3.0×10^{-31}
$\text{Monoterpene} + \text{OH} \rightarrow \text{SecOrg}$	1.2×10^{-11}
$\text{Monoterpene} + \text{O}_3 \rightarrow \text{SecOrg}$	1.01×10^{-15}
$\text{Monoterpene} + \text{NO}_3 \rightarrow \text{SecOrg}$	1.19×10^{-12}
$\text{HO}_2 + \text{HO}_2 \rightarrow \text{H}_2\text{O}_2$	2.2×10^{-13}
$\text{OH} + \text{H}_2\text{O}_2 \rightarrow \text{H}_2\text{O}$	2.9×10^{-12}

In the UKCA model, HOM concentrations are used to derive the nucleation rate of particles below 1.7 nm in diameter. The pure biogenic nucleation rate at 1.7 nm in our model follows Gordon et al. (2016). It is the sum of neutral and ion-induced nucleation rates and is given by:

$$J_{1.7\text{nm}} = \exp(-(T - 278)/10) \times (A_1 \times ([\text{HOM}]/10^7)^{A_2 + \frac{A_5}{[\text{HOM}]/10^7}} + 400 \times A_3 \times ([\text{HOM}]/10^7)^{A_4 + \frac{A_5}{[\text{HOM}]/10^7}}), \quad (1)$$

245 where $J_{1.7\text{nm}}$ is the nucleation rate in $\text{cm}^{-3} \text{ s}^{-1}$, HOM is the concentration of the pure biogenic nucleation gas precursor in molecules per cm^{-3} , and A_1 – A_5 are constant parameters. Both neutral and charged rates are multiplied by $\exp(-(T - 278)/10)$ to model temperature dependence; we note, however, that this dependence is uncertain and was initially proposed only as a sensitivity study by Gordon et al. (2016). We also assume here a constant value of 400 cm^{-3} for the ion concentration. Particles of 1.7 nm diameter grow to 3 nm, through the condensation of HOM and H_2SO_4 - H_2O based on Kerminen and Kulmala (2002).

250 2.2.3 Simulation details

We run both the global and regional models from 16 to 18 September 2014, which is close to the end of Amazonia dry season and is the time when the ACRIDICON-CHUVA field campaign took place (Wendisch et al., 2016). The global model was spun-up for 15 days (1-15 September 2014) in order to allow the model to initialise the aerosol fields. The spinup was run for most of the simulations that we used in this study. The simulations with changes of nucleation mechanism in the regional model
255 only did not have additional spinup, because their driving global model conditions were based on the spinup from BioOxCCS and BioOxEmCCS simulations (Table 2).

During the 3-day simulation, deep convection usually occurs at 15 UTC (11 LT) and reaches a maximum two hours later. The domain averaged surface rain rate reaches a maximum within an hour after the start of the deep convection. The rain lasts for 5 to 6 hours, then the convective clouds start to dissipate and completely disappear by midnight. During the most vigorous phase,
260 cloud top height reaches a maximum of 20 km in altitude. In the initial stages of cloud development, at below 2 km in altitude, the cloud coverage is around 50 %-70 %. As the clouds deepen, the low-level clouds are transformed into deep clouds within an hour, with the low-level cloud cover being reduced to approximately 10 %. At the same time, mid-level cloud covers around 10 % of the horizontal domain and the high-level cloud fraction reaches 100 %. The onset of the convection in the model is earlier than observed in Amazonia. This early onset may result in an earlier occurrence of new particle formation in the UT.
265 However, because we tested several nucleation mechanisms and hence explored a range of different nucleation rates in order to match the observations, the early convection should not significantly affect our conclusions.

In this paper, we test the binary and pure biogenic nucleation mechanisms and investigate the sensitivity of the particle number concentrations to the nucleation rate, oxidation rate, emission rate and condensation sink. We also study the source and the vertical distribution of the particles in the regional domain. Table 2 shows the name and components of the nucleation mechanisms used for all the simulations in this study. The first five simulations use (1) binary sulfuric acid-water nucleation (denoted as Bn), (2) binary nucleation with the nucleation rate increased by a factor of 10 ($\text{Bn} \times 10$), (3) pure biogenic nucleation from
270

Gordon et al. (2016) (Bio), (4) pure biogenic nucleation with the oxidation rates of monoterpenes reduced by a factor of 10 (BioOx), and (5) reduced monoterpenes oxidation and the monoterpenes emission rate increased by a factor of 10 (BioOxEm).

Table 2. The table of all simulations and the NPF mechanisms. monoterpenes (MT) oxidation÷10 denotes that the oxidation rates of monoterpenes (to secondary organics) are reduced by a factor of 10, and 10×MT emission denotes increasing the monoterpenes emission rate by a factor of 10. CCS = condensation sink from clouds.

	Binary	Biogenic	MT oxidation÷10	10×MT emission	CCS	NPF notes
1. Bn	✓					
2. Bn×10	✓					Bn nuc rate×10
3. Bio		✓				
4. BioOx		✓	✓			
5. BioOxEm		✓	✓	✓		
6. BioOxCCS		✓	✓		✓	
7. BioOxEmCCS		✓	✓	✓	✓	
8. off_allNPF		✓	✓	✓	✓	NPF off everywhere
9. off_regNPF		✓	✓	✓	✓	NPF off in regional
10. off_allNPF_BioOxCCS		✓	✓		✓	NPF off everywhere
11. off_regNPF_BioOxCCS		✓	✓		✓	NPF off in regional
10. NPF_1-4km		✓	✓	✓	✓	NPF 1-4 km only
11. NPF_4-7km		✓	✓	✓	✓	NPF 4-7 km only
12. NPF_7-10km		✓	✓	✓	✓	NPF 7-10 km only
13. NPF_10-13km		✓	✓	✓	✓	NPF 10-13 km only
14. NPF_13-16km		✓	✓	✓	✓	NPF 13-16 km only

The justification for the changes in monoterpenes emissions is that biogenic volatile organic compounds (BVOCs) usually have various species and a wide range of abundances and volatilities, and the rates of BVOC emissions and their oxidation mechanisms are still not well understood despite some progress reported in the literature Sindelarova et al. (2014). Additionally, the oxidation rate of monoterpenes itself has large range of uncertainty (up to 10⁻¹⁰) and the rate even differs by three orders of magnitude with the same oxidant (Kwok and Atkinson, 1995). Our comparisons with observed aerosol (Sect. 3.1) suggest that monoterpenes are oxidised too quickly in the default simulation (Bio) and are not transported to the UT where they could contribute to NPF. Therefore, we reduce the oxidation rates in the UKCA to allow for a longer monoterpenes lifetime so that monoterpenes will be more likely to contribute to NPF (BioOx simulation). We do not increase the oxidation rates because they will drive the simulations away from the observations by producing too few aerosols in the UT. We have some other simulations that used isoprene emission and chemistry, and interactive oxidant fields in UKCA. They also showed that faster oxidation rates of monoterpenes tend to produce fewer aerosol particles.

285 The averaged monoterpenes mixing ratios in the regional domain overestimate the ATTO tower observations at the surface and 75 m by a factor of 2, and by a factor of 1.5 at 155 m (Yáñez-Serrano et al., 2018; Zannoni et al., 2020). In contrast, between 1 and 2.5 km, the simulated monoterpene mixing ratios are around 10 times lower than the aircraft measurements (Kuhn et al., 2007). Detailed comparisons of monoterpenes between observations and oxidants can be found in Supplementary Table A1, and the comparisons of ozone concentrations between the observations and monthly averaged ancillary in Supplementary Table
 290 A2. There are no measurements of monoterpenes available in the UT, but we expect even stronger underestimation there. The insufficient mixing ratios of monoterpenes are likely the cause of the very low nucleation rates ($1.8 \times 10^{-3} \text{ cm}^{-3} \text{ s}^{-1}$) in the UT in our simulations with the default biogenic nucleation scheme and with reduced oxidation rates, such that these simulations cannot reproduce the observed concentrations (Sect. 3.1 and 3.2). For example, our BioOxCCS simulation underestimates the observed particle number concentrations at 12 km by a factor of 8.6. Therefore, for the simulation with reduced oxidation rates,
 295 we also increase the monoterpenes emission rate by a factor of 10 to allow more monoterpenes to be transported to the UT to further enhance NPF (BioOxEm simulation). This is our default simulation for most of the rest of the study to explore the factors controlling NPF and aerosol transport.

In September 2014, strong biomass burning events took place, which led to high condensation sinks and partly explained the reason why no NPF events were observed close to the surface (Andreae et al., 2018). However, our models do not capture
 300 the suppression due to a lack of high-resolution biomass burning emissions and the overestimated monoterpenes emission at surface. Thus, we eliminate NPF below 100 m for all simulations here.

The second set of simulations is designed to examine the effect on NPF of the condensation sink on cloud particles. The default model includes only a sink of vapours and nuclei onto existing aerosol but not onto cloud hydrometeors. We implement an additional condensation sink from cloud droplets and ice crystals, and add the value to the condensation sink from existing
 305 aerosols, which then affects the nucleation rate (Kazil et al., 2011). The cloud hydrometeor condensation sink is defined by assuming a fixed number concentration (100 cm^{-3}) of cloud droplets and ice particles to calculate radii that are fed into the Fuchs and Sutugin (1971) expression $\text{CCS1} = N_d(r_{\text{cloud}} + r_{\text{ice}})$, where CCS1 is the condensation sink with units of m^{-2} , N_d is the number concentration of droplets and ice, and r_{cloud} and r_{ice} are the radii. The equivalent sink with units of s^{-1} is obtained by multiplying by the gas diffusion coefficient $\text{CCS} = 4\pi D_v \times \text{CCS1}$, where D_v is the gas-phase diffusion coefficient of the
 310 vapour.

To understand the source of particles in the regional domain, we ran additional simulations in which nucleation was switched off in both the regional and global models (off_allNPF and off_allNPF_BioOxCCS) and in the regional model only (off_regNPF and off_regNPF_BioOxCCS) based on BioOxEmCCS and BioOxCCS simulations. These simulations allow us to quantify the effect of NPF within the 1080 km by 440 km regional model domain compared to that from outside of the regional domain.

315 A final set of five simulations was performed to understand how particles that are nucleated at a particular altitude are transported vertically and thereby affect aerosol at other altitudes. These simulations are also based upon the BioOxEmCCS sim-

ulation. For these five simulations, we allow NPF at all heights above 100 m in the global model, but only allow NPF in the regional model to occur at certain altitudes (1-4 km, 4-7 km, 7-10 km, 10-13 km and 13-16 km).

3 Results

320 3.1 Model-observation comparison

Figure 4 shows the measured profiles of median particle number concentrations from flight AC11 (16 September 2014) of the ACRIDICON-CHUVA campaign compared to five of the model simulations. All the data in this section are converted to standard temperature (273.15 K) and pressure (10^5 Pa; STP), using Eq. (2).

$$N_{\text{STP}} = \frac{N_{\text{ambient}} \times 10^5 \times T}{p \times 273.15}, \quad (2)$$

325 where N_{STP} is the number concentrations of particles converted to STP, N_{ambient} is the number concentration at the current temperature and pressure, T is temperature in K, and p is the pressure in Pa. We use the data from flight AC11 because the flight track falls well within the regional domain and the date of measurement is within the simulation period. Supplementary Fig. A1 shows the full campaign.

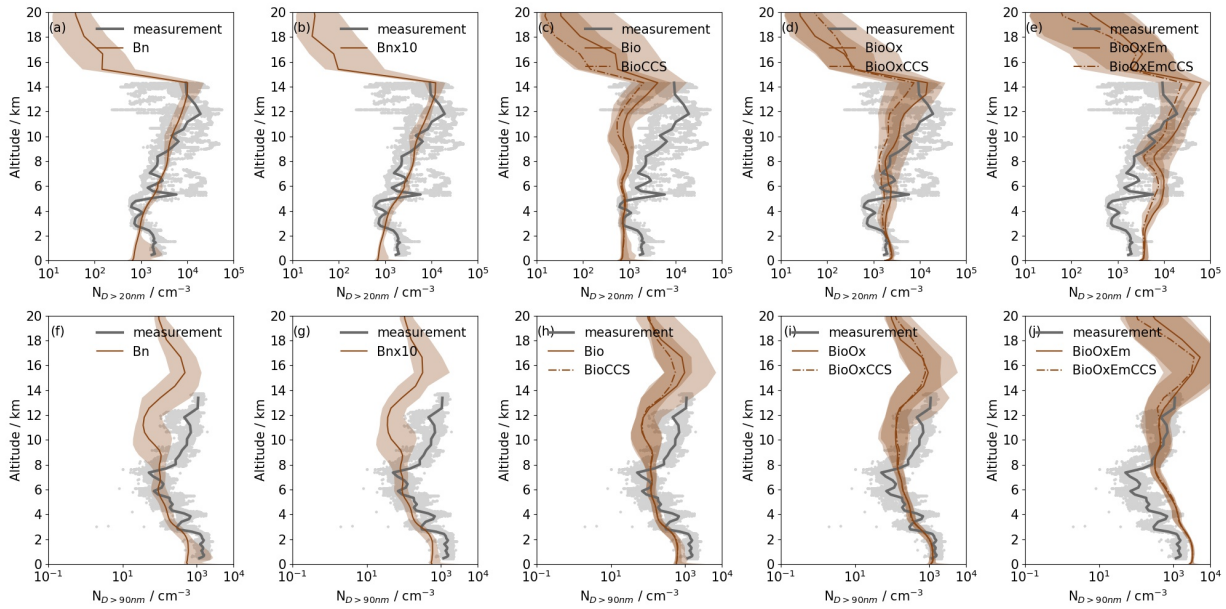


Figure 4. The observed and modelled vertical profiles of median number concentrations of particles with diameters >20 nm ($N_{D>20nm}$, top row) and >90 nm ($N_{D>90nm}$, bottom row). The observations are shown as grey dots and a grey line (repeated for all panels). The grey dots are individual observations from ACRIDICON-CHUVA flight AC11 (16 September 2014) with a time resolution of 1 minute, and the thick grey lines are the medians of the observations binned within the same height ranges as the regional model levels. The modelled results are from the various regional simulations averaged from 0 UTC on 17 September to 23 UTC on 18 September 2014, (a) and (f) Bn, (b) and (g) Bn \times 10, (c) and (h) Bio and BioCCS (dashed line), (d) and (i) BioOx and BioOxCCS (dashed line), and (e) and (j) BioOxEm and BioOxEmCCS (dashed line). The shading represents 2.5 % and 97.5 % percentiles from the modelling results.

Below 3 km in altitude, the observed median $N_{D>20nm}$ is homogeneous with height, with a concentration of around 1600 cm^{-3} .
 330 The median of $N_{D>20nm}$ then increases with altitude to a maximum at 11.8 km with a value of 19000 cm^{-3} . The observed profile of median $N_{D>90nm}$ is also homogeneous with height up until around 2 km and has a similar median concentration to $N_{D>20nm}$ (1400 cm^{-3}), which shows that the observed concentration of small particles is low at these low altitudes. Above 2 km, the observed $N_{D>90nm}$ decreases to around 6-8 km and then increases again with height and reaches around 1100 cm^{-3} at 12.5 km.
 335 In the simulation with the default binary nucleation mechanism (simulation Bn) and in that with a 10 times enhanced nucleation rate (Bn \times 10; Fig. 4 a and b) median number concentrations of $N_{D>20nm}$ are low at the surface, and then increase with height until they reach a maximum (9900 cm^{-3}) at 14 km in altitude where they start to decrease to almost zero at around 15 km in altitude. The two simulations exhibit similar number concentrations until 12 km. Throughout most of the profiles, both simulations reproduce the measurements well with an overall mean difference of -4.6 % (Bn) and 2 % (Bn \times 10). However,
 340 between 10 and 13 km the models underestimate the observations by 46 % for the Bn and 37 % for the Bn \times 10 simulations. The profiles of $N_{D>90nm}$ (Fig. 4 f and g) show the highest concentrations below 2 km where the values are approximately

constant with height (600 cm^{-3}). There is another peak at around 15.5-16 km ($\sim 500 \text{ cm}^{-3}$) in altitude, and the concentrations are much lower between 4 and 13 km ($< 100 \text{ cm}^{-3}$). These two simulations underestimate the observed $N_{D>90\text{nm}}$ by 46 % (Bn) and 47 % (Bn \times 10) when averaged over all altitudes.

345 In the simulations with biogenic nucleation (Bio, BioOx and BioOxEm) the median $N_{D>20\text{nm}}$ have low concentrations from the surface to around 10 km in altitude, where the particle number concentrations significantly increase. The profiles of $N_{D>90\text{nm}}$ have higher concentrations in the boundary layer and UT than at the altitudes in between. The Bio and BioCCS simulations (Fig. 4 c) underestimate the height-averaged observed $N_{D>20\text{nm}}$ (by 52 %) and $N_{D>90\text{nm}}$ (by 36.7 %), suggesting insufficient NPF and particle growth. When we reduce the monoterpenes oxidation rates (BioOx and BioOxCCS; Fig. 4 d), the aerosol number concentrations increase because the reduced oxidation rate enables the longer-lived monoterpenes to be transported to the UT. The BioOx and BioOxCCS simulations therefore match the observed concentrations below 8 km, but still underestimate concentrations above 8 km by an average of 28 % (BioOx) and 50 % (BioOxCCS) for $N_{D>20\text{nm}}$ and 76 % for $N_{D>90\text{nm}}$ in both simulations. With an increased monoterpenes emission rate (BioOxEm and BioOxEmCCS simulations; Fig. 4 e) the model produces significantly higher particle concentrations than in the other simulations, as expected. The BioOxEm simulation 355 overestimates $N_{D>20\text{nm}}$ at all altitudes with an averaged overestimation of a factor of 3 for heights below 14.3 km, and overestimates $N_{D>90\text{nm}}$ below 9 km by an average factor of 3 (Fig. 4 j). Adding the cloud condensation sink (BioOxEmCCS) improves overestimation of $N_{D>20\text{nm}}$ above 9 km and the modelled concentration is reduced to around 30 % compared to the observations. The increased emission rate combined with the cloud condensation sink allows the model to reproduce the UT aerosol number concentrations, but causes too many particles in the lower troposphere, which would increase the supply of 360 aerosol particles to the boundary layer in the model versus the real world. Whether these particles are formed by NPF within the regional model or in the global model is discussed in Sect. 3.4.

The simulations with binary nucleation mechanisms (Bn and Bn \times 10) produce $N_{D>20\text{nm}}$ and $N_{D>90\text{nm}}$ in the UT that are up to 100 times smaller than the three simulations with biogenic nucleation (Bio, BioOx and BioOxEm). The smaller concentrations and variability occur because binary nucleation is determined by the SO_2 gas field that, due to its long lifetime relative to monoterpenes, is more controlled by the global model, whereas biogenic nucleation is controlled more by convective transport, 365 mixing and oxidation in the regional model. We also ran a simulation in which the regional SO_2 emission was removed and the SO_2 profiles were almost identical to the Bn simulation meaning that the SO_2 in the regional domain was hardly affected by the regional-scale processes.

Almost all simulations show peak concentrations of $N_{D>20\text{nm}}$ and $N_{D>90\text{nm}}$ at altitudes higher than the observations. It is 370 possible that the higher altitudes of the peaks in the model are related to relatively deeper convection that transports precursor gases and particles upwards. However, it should also be noted that there are only a few observations to be compared with at high altitudes. Therefore, the modelled results are in general similar to the observations for those altitudes that are important for downward transport to the boundary layer. The modelled extra particles at altitudes higher than 12 km are not relevant to downward transport, and thus, it is also likely that differences in the heights of the peak concentrations would only marginally

375 affect the particle concentration in the boundary layer.

The BioOxEmCCS simulation is chosen as the base model for the rest of this study for two reasons: (1) it matches the observed particle concentrations well in the UT (Sect. 3.1); (2) it includes the suppression of unrealistic NPF inside clouds via the cloud condensation sink. Various factors including oxidation rates, oxidant concentrations, emissions and the condensation sink affect the model performance and these simulations can only give us a limited view of this sensitive environment because they lack
380 the complexity to represent all of the processes that happen in reality. However, the overall reasonable match to observations shows that the chosen model is well suited to addressing the aims of this study.

3.2 Analysis of particle formation and growth

Figure 5 shows vertical profiles of particle concentrations, nucleation and growth rates, and trace gas volume mixing ratios. All the profiles are averaged from 0 UTC on 17 September to 23 UTC on 18 September 2014. For the rest of the paper, ambient
385 particle concentrations are quoted without the conversion to STP as performed for Fig. 4.

The NPF rates at 3 nm in diameter in all five simulations increase with height until 14.3 km, reaching a maximum of $3.5 \text{ cm}^{-3} \text{ s}^{-1}$ in the simulation with the most intensive nucleation (BioOxEm). The binary nucleation rates increase more sharply with height because of the strong temperature dependence of the binary nucleation rate (Vehkamäki et al., 2002). The nucleation rate in the simulation with the biogenic nucleation mechanism is higher in the boundary layer compared to the Bn simulation
390 because of abundant monoterpene, but still, at around $0.03 \text{ cm}^{-3} \text{ s}^{-1}$, too low to produce frequent NPF events. The rate then decreases until 2 km in altitude, where it starts to increase with height until 14 km. When we decrease the monoterpenes oxidation rate and increase the monoterpenes emission rate (from Bio to BioOxEm), the NPF rate increases by up to a factor 160 and growth rates increase by a factor of 11 in the UT because more monoterpenes is transported to the UT. Averaged over all heights, the nucleation rates from these three biogenic simulations are factors of 160 to 200 larger than in the Bn and Bn \times 10
395 simulations.

The growth rate for the biogenic nucleation between 1.7 nm and 3 nm in diameter is driven by the concentrations of the condensable gases. For binary nucleation, which is driven by H_2SO_4 , there is no consideration of the growth rate between 1.7 nm and 3 nm in the model calculations and therefore it is not shown in Fig. 5. The growth rates in the simulations with biogenic nucleation (Bio, BioOx, and BioOxEm) decrease with height because the concentration of HOMs decreases by a
400 factor of around 1000 from the surface to 14 km in all simulations.

The differences in the nucleation and growth rates between the binary and biogenic nucleation mechanisms are generally reflected in the aerosol number concentrations (Fig. 5 c, d, and e). Following the nucleation and growth rates, the nucleation mode aerosol number concentrations are very low below 4 km in all simulations. Above 4 km the concentration increases with height. The differences in nucleation mode aerosol number concentration between the two simulations with binary nucleation
405 are small due to similar nucleation rates, except for those between 10 and 16 km with a maximum enhancement of 73 % for

Bn \times 10 compared to the default Bn simulation. With biogenic nucleation (Bio, BioOx, and BioOxEm), the nucleation mode concentration peaks at around 14 km (25000 cm⁻³). Comparing the simulations with the most intensive nucleation (BioOxEm) to the standard biogenic nucleation simulation (Bio), we find that the 1800 times higher nucleation rate and 10 times higher growth rate result in a factor of 18 higher nucleation mode concentration at 14 km.

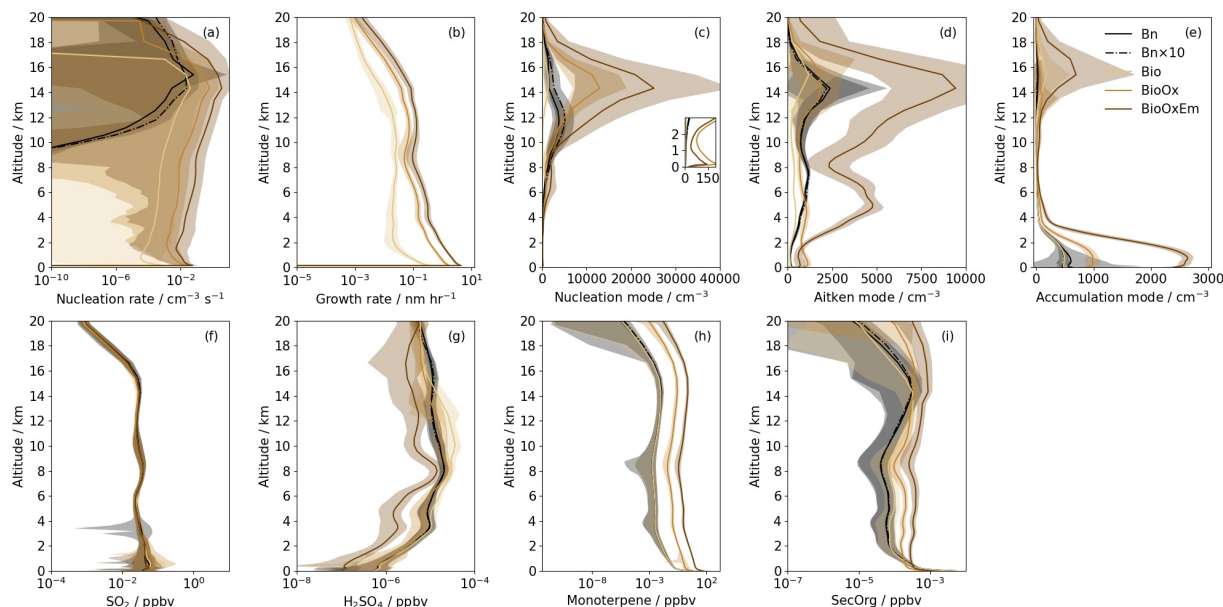


Figure 5. Regional domain- and time-averaged vertical profiles of ambient (a) nucleation rate (up to 3 nm in diameter), (b) growth rate in the biogenic nucleation mechanism (from 1.7 nm to 3 nm), (c) nucleation mode aerosol number concentrations (with the inset figure showing the number at the lowest 3 km), (d) Aitken mode aerosol number concentrations, (e) accumulation mode aerosol number concentrations, (f) SO₂ volume mixing ratios, (g) H₂SO₄ volume mixing ratios, (h) monoterpenes volume mixing ratios, and (i) secondary organic (SecOrg; the oxidation product of monoterpene) volume mixing ratios. The results are from the simulations with binary nucleation (Bn; black solid), binary nucleation with 10 times nucleation rate (Bn \times 10; black dotted dashed), pure biogenic nucleation (Bio; light brown), biogenic nucleation with reduced (\div 10) oxidation rate (BioOx; brown), and biogenic nucleation with reduced oxidation rate and enhanced (\times 10) monoterpenes emission (BioOxEm; dark brown). The shading represents one standard deviation either side of the mean at each height.

410 The Aitken mode profiles in the simulations with binary nucleation mechanisms (Bn and Bn \times 10) have two peaks at around 8
 415 and growth rates at 5 km in any of the three biogenic nucleation simulations. We find that the Aitken mode peaks at 5 km are
 due to transport from outside of the regional domain (i.e., from the global model) from the same altitudes where nucleation
 rate is greater than 0.1 cm⁻³ s⁻¹ (Supplementary Fig. A2 and A3). Whether particles are formed within or outside the regional

domain is investigated in more detail in Sect. 3.4.

420 The accumulation mode aerosol number concentrations are greatest below 2 km (on average between 500-2500 cm^{-3}) in all simulations. They quickly decrease to almost-zero between 6 and 12 km in altitude above which the concentrations increase again to form a peak at around 14-15 km. The BioOxEm simulation has more accumulation mode aerosols below 2 km than the BioOx simulations even though the BioOxEm simulation has fewer Aitken mode particles to grow from in the regional domain. This suggests that the growth from Aitken mode to accumulation mode is enhanced due to enhanced monoterpene emission. It is possible that this leads to a reduction in Aitken mode particles in the boundary layer, but we have not investigated this
425 using the model results. Whether the Aitken mode aerosol particles are formed within this 1000 km region or outside and are then transported into the regional domain is investigated in Sect. 3.4. The peak in accumulation mode number concentration at around 14-15 km is also associated with peaks in nucleation and Aitken mode concentrations, implying that the newly nucleated particles can grow to larger sizes in the UT.

In the boundary layer both the binary and biogenic nucleation mechanisms produce similar particle number concentrations in
430 their default scenarios (Bn and Bio). When we change the monoterpenes oxidation and emission rates (BioOx and BioOxEm), aerosol number concentrations increase by factors of 3-5, especially for Aitken and accumulation mode aerosols. This suggests that the aerosol concentrations are very sensitive to the representation of biogenic nucleation in the boundary layer. Conversely, the lack of binary nucleation in the boundary layer means that the details of the binary nucleation process are not important for the boundary layer.

435 3.3 Cloud condensation sink

The condensation sink suppresses NPF and models often calculate it using the aerosol surface area. We further add a condensation sink due to cloud droplets and ice crystals to suppress in-cloud NPF in the global and regional model domains (Kazil et al., 2011). It is applied to the simulations with biogenic nucleation (BioOx and BioOxEm) to produce the simulations BioOxCCS and BioOxEmCCS. In the UKCA model, the typical aerosol condensation sink varies between 0.003 to around 0.01 s^{-1} over
440 all heights, with a maximum domain average of 0.04 s^{-1} . After adding the condensation sink from cloud droplets and ice crystals, the overall condensation sink is doubled.

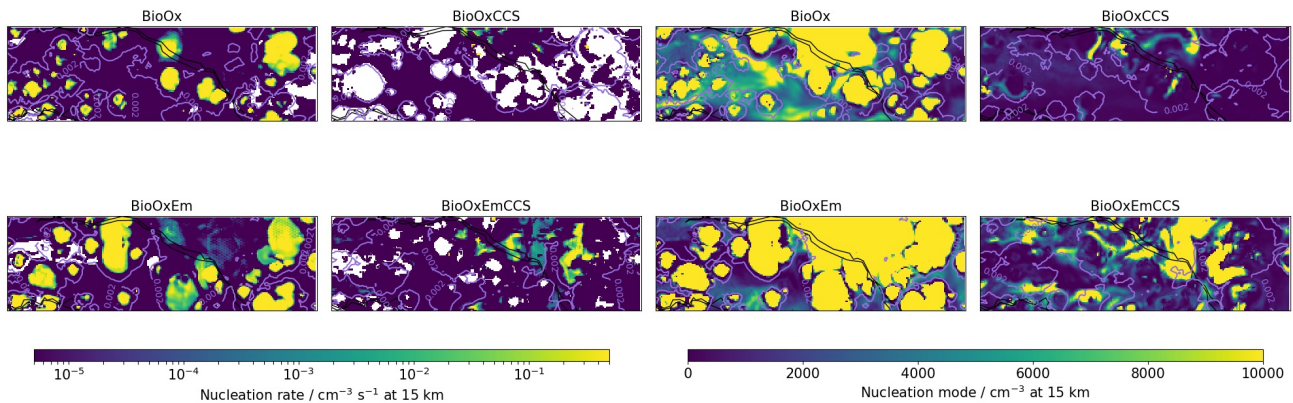


Figure 6. Maps of regional domain nucleation rate (left) and nucleation mode aerosol number concentrations (right) in the simulations BioOx, BioOxCCS, BioOxEm, and BioOxEmCCS at a height of 15 km and at 16 UTC on 17 September 2014. Contours highlight the locations of clouds and are drawn where the cloud water content is equal to 0.002 g kg^{-1} . The white areas in the nucleation rate maps have zero values and cannot be specified by a log-scale plot.

The addition of a cloud condensation sink substantially alters the spatial distribution of the nucleation rates and particle concentrations. Figure 6 shows that adding the cloud condensation sink almost completely suppresses NPF in the cloudy regions, which is evident from the holes in the spatial pattern of nucleation rate with rates lower than $10^{-5} \text{ cm}^{-3} \text{ s}^{-1}$ at 15 km. Consequently the addition of the cloud condensation sink results in lower nucleation and Aitken mode particle concentrations (Fig. 7). NPF continues to occur in the non-cloudy regions because the upward-transported monoterpenes continue to be oxidised after the clouds evaporate, especially in the simulations with reduced oxidation rates. Holes in the NPF spatial distribution also occur in the BioOxEmCCS simulation (with both reduced monoterpenes oxidation and enhanced emissions). However, these empty areas do not cover the full extent of the clouds as they do in the BioOxCCS simulation. In the cloud outflow regions NPF rates reach $1 \text{ cm}^{-3} \text{ s}^{-1}$ in the BioOxEmCCS simulation.

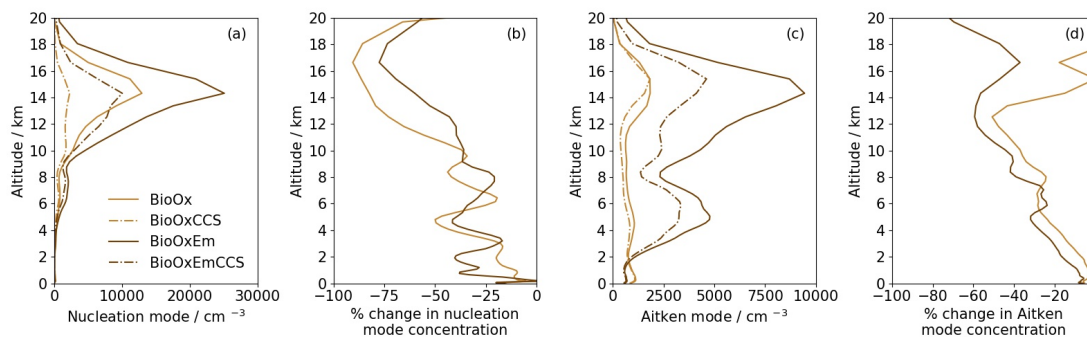


Figure 7. Regional domain averaged profiles from the BioOx, BioOxCCS, BioOxEm, and BioOxEmCCS simulations. Shown are the nucleation and Aitken mode aerosol number concentrations (a and c) and the percentage changes in nucleation and Aitken mode aerosol number concentrations due to the introduction of the cloud condensation sink (b and d).

3.4 Contribution of NPF to low-level regional particles

We now aim to quantify the number of aerosol particles in the regional domain that are formed due to NPF and growth occurring within the regional domain compared to those transported into the domain from the rest of the world. Thus, we
455 examine the simulations where NPF is switched off in both the regional and global domains (off_allNPF) and only in the regional domain (off_regNPF) using the BioOxEmCCS as the baseline simulation. The percentage change is calculated as $100 \times (\text{BioOxEmCCS} - \text{off_XXNPF}) / \text{BioOxEmCCS}$, where off_XXNPF denotes the simulation with either NPF switched off in both models (off_allNPF), or NPF switched off in the regional model (off_regNPF) only. Similar simulations and calculations are applied based on BioOxCCS simulation which does not use increased monoterpene emission rates, and they are
460 off_allNPF_BioOxCCS and off_regNPF_BioOxCCS simulations.

The time series of the aerosol vertical profiles in Fig. 8 show how number concentrations in the nucleation, Aitken and accumulation modes change when nucleation is switched off. The number concentrations of particles of all sizes are often reduced greatly compared to the baseline simulation by switching off NPF regionally and globally. Reductions are smaller when switching off NPF in just the regional model (off_regNPF), particularly below about 14 km. The changes in aerosol
465 number concentrations in the regional model mostly occur between 10 and 18 km. In contrast, the changes in aerosol number concentrations are large at all heights when we switch off nucleation in both models (off_allNPF).

The percentage contribution of NPF to aerosol concentrations varies with the particle size and altitude for both NPF setups (BioOxEmCCS and BioOxCCS; Fig. 9). The larger the particle size, the smaller the influence from NPF occurring in the regional model.

470 In off_allNPF and off_regNPF simulations which are based on BioOxEmCCS simulation, NPF in the regional model has the dominant contribution to the nucleation mode particle concentration for all heights except 3-10 km, with contributions of 80 % - 91 % above 10 km altitude. It demonstrates that the formation of nucleation mode aerosol occurs on relatively short time scales and hence also small spatial scales. These results show that the increased nucleation mode aerosol concentrations seen in the UT in Fig. 5 when switching from the baseline biogenic nucleation (Bio) to the enhanced biogenic nucleation schemes
475 (BioOx and BioOxEm) are mainly caused by additional biogenic NPF within the regional domain rather than outside of it. At 3-10 km, NPF in the regional model contributes to less than 45 % of the nucleation mode concentration, so 55 % is formed in the global model and advected in. At 1 and 2 km altitude, NPF in the regional domain accounts for nearly 100 % of the nucleation mode particle concentration. It again shows that NPF occurs within a short time even at lower altitudes, although Fig. 8 shows that the time- and domain-averaged nucleation mode number concentration below 2 km altitude is less than 200
480 cm^{-3} , nearly 2 orders of magnitude smaller than 14 km altitude.

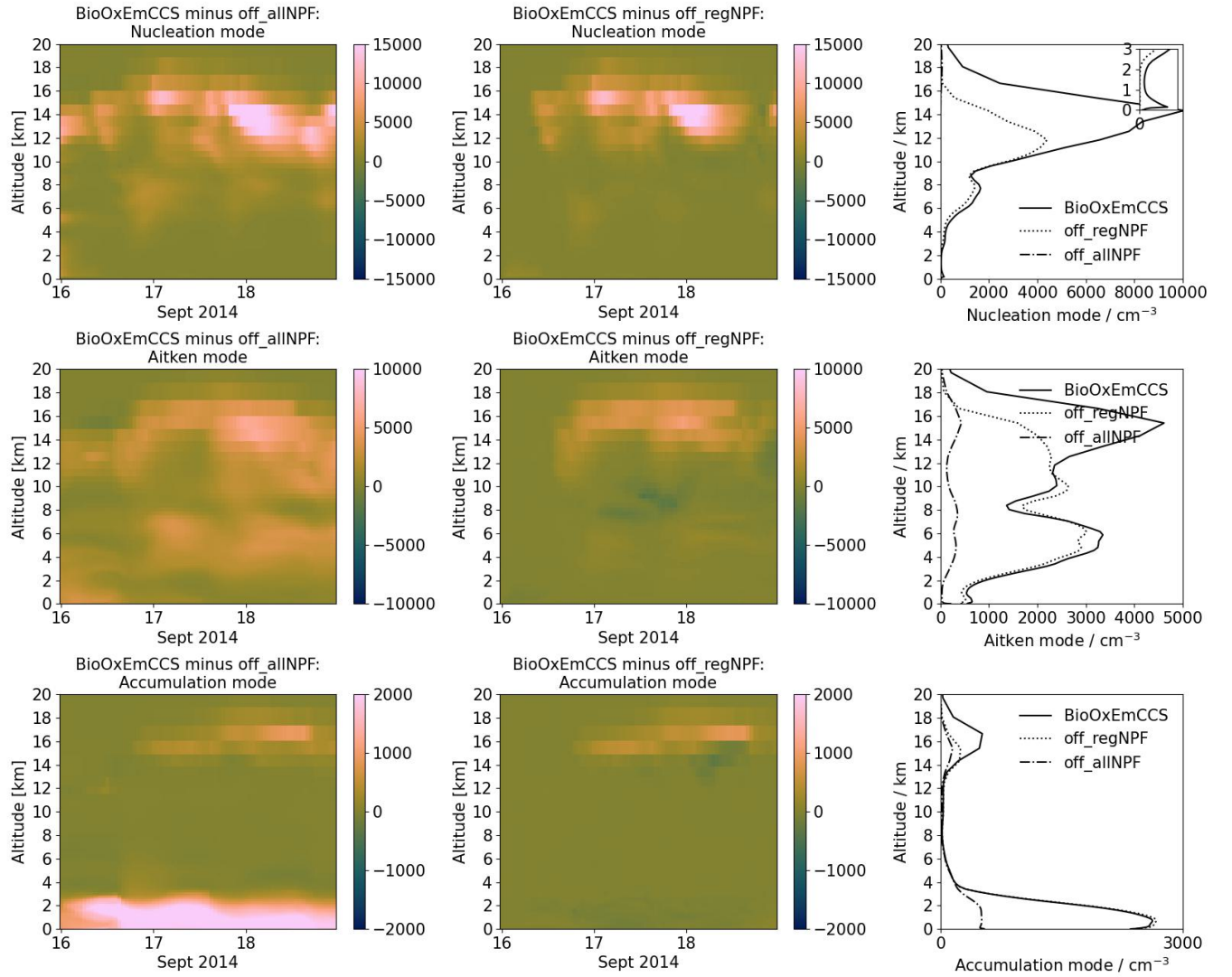


Figure 8. Time series of the regional domain averaged ambient aerosol number concentration profiles in the baseline BioOxEmCCS run minus those from a run in which nucleation is switched off in both the regional and global model (off_allNPF, left column) and minus those in which it is switched off in only the regional model (off_regNPF, middle column). The right column shows the time-averaged profiles and the small panel embedded in the nucleation mode aerosol number concentration profiles (top right) shows details in the lowest 3 km in altitude. Values are shown for the nucleation mode aerosol (upper row), Aitken mode aerosol (middle row), and accumulation mode aerosol (bottom row). Note that the regional domain averaged nucleation mode aerosol number concentrations in the simulation off_allNPF (top right plot) are all zero.

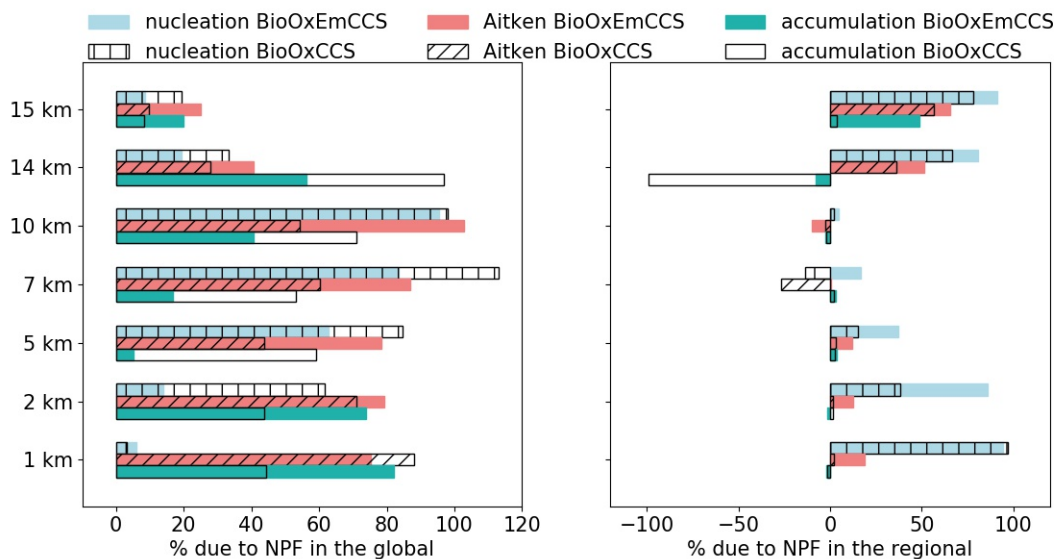


Figure 9. The percentage contribution of NPF to the nucleation, Aitken and accumulation mode aerosol number concentrations from the global model (left) and regional model (right) at various altitudes based on BioOxEmCCS (solid bars) and BioOxCCS (empty bars) simulations.

The effect of advection of nucleation mode aerosol into the regional domain at different altitudes is determined partly by the different vertical profiles in the two domains. Nucleation rates in the global model at 3-10 km are on average 25 times greater than in the regional model in the BioOxEmCCS simulation (Supplementary Fig. A3). The smaller nucleation rate in the regional model is likely due to the higher condensation sink generated by explicit cloud convection, and by the different vertical profiles of trace gases caused by resolved convection. We aim to investigate this in future studies. For example, at around 8 km where the nucleation mode concentration is about a factor of 4 higher than in the regional model, the regional condensation sink is about a factor of 3 higher than in the global model, while the concentrations of monoterpenes are within 10 % (Supplementary Fig. A3). The higher condensation sink results in around 50 times lower nucleation rate in the regional model. These numbers suggest that nucleation rate in the global model is higher than in the regional model in this deep convective environment due to the global model failing to resolve the small-scale spatial variations in trace gases, aerosols and clouds.

The percentage contribution of NPF to the Aitken mode particle concentration in the regional model is also dominant above 14 km in altitude, but is small below that height for the simulations based on BioOxEmCCS simulation. Below 2 km (in the boundary layer), it is around 12 %-19 %. Between 14 and 15 km in altitude, around 51 %-66 % of the domain-averaged Aitken mode concentration is from NPF in the regional domain, and 25 %-41 % is from the global model NPF. The percentages do not sum to 100 % because of the contribution from primary particles. At 5 km, NPF in the regional model accounts for 12 % and outside the regional domain, the global model accounts for 78 % of the Aitken mode concentration. Similarly in BioOxCCS simulation, around 44 % of the Aitken mode concentration at 5 km altitude are formed by NPF in the global model and only

3 % is due to NPF in the regional model. This result supports the arguments that the extra Aitken mode aerosol that we saw in Fig. 5 when switching from BioOx to BioOxEm at 5 km in altitude were due to NPF in the global model (either at 5 km, or at other heights followed by vertical transport). The overall percentage contribution of NPF to Aitken mode aerosol in the regional domain is smaller than that of the nucleation mode aerosol because forming the Aitken mode aerosol requires a longer time and is affected by coagulation and scavenging.

The accumulation mode aerosol is the least dependent on NPF from the regional model. Above 15 km in the simulations based on BioOxEmCCS, the contribution of NPF in the regional domain to the accumulation mode aerosol is 49 % and 20 % is from global model NPF, meaning that the regional model is able to form some accumulation mode aerosol via NPF in the time available in the domain. In Fig. 5 we saw more accumulation mode aerosol below 2 km in altitude as the biogenic nucleation rates were increased (from Bio to BioOx and from BioOx to BioOxEm). Fig. 9 confirms that NPF in the regional domain does not lead to the formation of the additional accumulation mode below 2 km because NPF actually slightly reduces the concentrations, showing that the regionally-formed Aitken mode particles do not grow to accumulation mode sizes at these heights. A few possible explanations for the slight reduction in concentrations due to NPF below 2 km are: that NPF causes the aerosol size distribution to shift to a smaller size as was reported in Sullivan et al. (2018); increased precipitation removes more accumulation mode aerosol (Supplementary Fig. A5 and A6); due to upward transport from the surface to higher altitudes; it could also be caused by the randomness of a different convection field. We further investigate the issue of aerosol vertical transport in Sect. 3.5.

Compared to BioOxEmCCS, BioOxCCS simulation shows a relatively reduced dependence of nucleation and Aitken mode number concentrations on NPF in the regional model at almost all altitudes. Thus, the contribution of NPF in the global model to nucleation mode particles becomes greater in BioOxCCS simulation. However, the percentage contribution of NPF in the global model in BioOxCCS simulation to Aitken mode concentrations is smaller than BioOxEmCCS simulation. The smaller percentage in BioOxCCS simulation is related to the suppressed growth from less monoterpene emissions compared to BioOxEmCCS simulation. The percentage contributions of both global and regional NPF to Aitken mode concentrations are smaller compared to BioOxEmCCS simulation because of generally weaker NPF, and thus the primary emission represents a greater percentage. For accumulation mode, the percentage contributions of NPF in the regional model of BioOxCCS simulation are similar to the BioOxEmCCS simulation, except for 14 km altitude where NPF in the regional model causes an almost 100 % reduction of accumulation mode concentration. It means that with less monoterpene emissions, switching on NPF in the regional model will quickly deplete condensable gases for particle growth at 14 km altitude. Similar to Aitken mode, primary emissions also have a greater percentage concentration to the accumulation mode concentration at 1 and 2 km altitude in BioOxCCS than BioOxEmCCS simulation. At lower altitudes, NPF in the regional model accounts for 1.5 % of the total Aitken and accumulation mode particle concentrations at 2 km altitude and 0.2 % at 1 km altitude in the BioOxCCS simulation, compared to 3.4 % at 2 km and 1.5 % at 1 km in altitude for the BioOxEmCCS simulation. The contribution of total Aitken and accumulation mode concentration in the lowest 2 km altitude from the NPF in the global model is between 58 % and 65 % in BioOxCCS and between 76 % and 81 % in BioOxEmCCS simulation.

Overall, our findings in this section show that in the regional domain below 2 km, Aitken and accumulation mode particles are dominated by NPF occurring outside of the 1000 km regional domain and in our study, these particles come from the global model. It implies that the boundary layer CCN, which influence cloud droplet number concentrations, are originally transported
535 from outside the domain and the particles are more strongly dependent on long-range transport with a smaller monoterpene emission rate.

3.5 Convective transport of particles

Section 3.4 showed that NPF in the regional domain produces only around 1.5-20 % of Aitken mode aerosol in the boundary layer and has a negligible effect on the accumulation mode. Here we aim to understand why these regionally nucleated particles
540 have a weak effect on boundary layer Aitken and accumulation mode particles. We examine five simulations in which NPF in the regional model is only allowed at specific altitudes (1-4 km, 4-7 km, 7-10 km, 10-13 km, and 13-16 km) based on BioOxEmCCS simulation. Percentage differences are calculated using $100 \times (\text{NPF_XXkm} - \text{off_regNPF}) / \text{NPF_XXkm}$, where NPF_XXkm denotes one of the simulations with NPF switched on only between 1-4 km, 4-7 km, 7-10 km, 10-13 km, and 13-16 km.

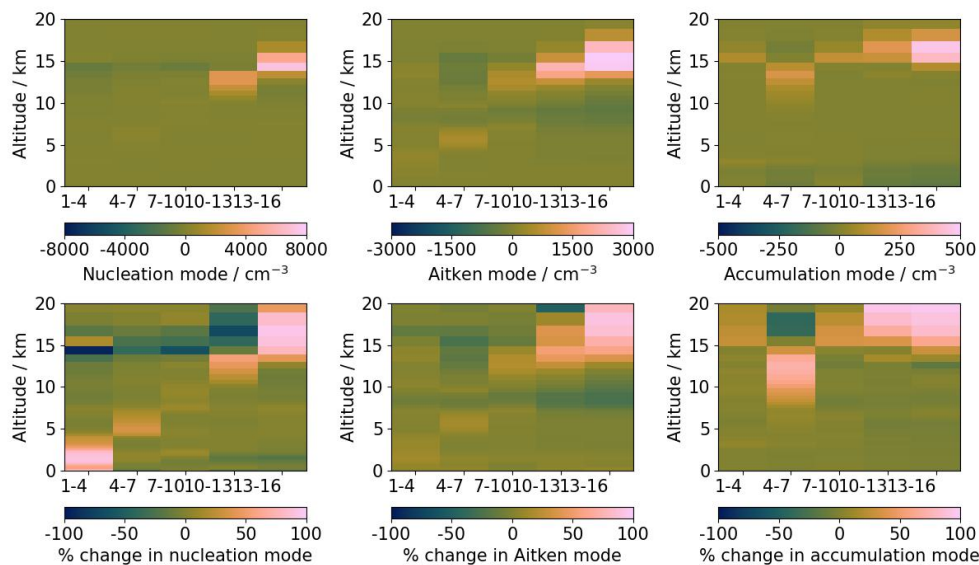


Figure 10. The absolute (upper row) and percentage (lower row) changes of the regional domain averaged profiles of ambient number concentrations of (left column) nucleation mode aerosol, (middle column) Aitken mode aerosol, and (right column) accumulation mode aerosol, between the simulations with NPF switched on at certain altitudes (NPF_1-4km, NPF_4-7km, NPF_7-10km, NPF_10-13km, and NPF_13-16km indicated as altitude ranges in the x-axis labels) and the simulation with no NPF in the regional domain (off_regNPF).

545 Figure 10 shows the absolute and percentage domain-average effects of NPF occurring in these altitude layers. The absolute differences are most significant for the nucleation and Aitken mode above 10 km, and the accumulation mode above 15 km

in altitude. NPF above 10 km (in the UT; NPF_10-13km and NPF_13-16km) perturbs particle concentrations almost entirely at or above the heights where it occurs. For example, in the NPF_13-16km simulation, the nucleation mode concentration changes by around 7200 cm^{-3} (79 %) at these altitudes, the Aitken mode concentration changes by 3900 cm^{-3} (70 %), and accumulation mode concentration changes by 470 cm^{-3} (83 %). It again confirms that the regionally-formed nucleation mode particles grow and coagulate to form Aitken and accumulation mode aerosol within the domain. NPF between 13 and 16 km (NPF_13-16km) contributes to nucleation and Aitken mode particles between 12 and 20 km and to accumulation mode particles between 13 and 20 km. The vertical extent over which the perturbations occur implies that nucleation and Aitken mode particles are transported mostly upwards (but also downwards) from the altitudes where NPF takes place, while the accumulation mode particles in most of the time are only transported upwards.

NPF in the regional model UT contributes very little to particle concentrations below 2 km in the regional domain during the 3-day dry season simulation. The contributions of NPF above 10 km to particles below 2 km are -0.3 cm^{-3} (-0.01 %) for the nucleation mode, 33 cm^{-3} (1.1 %) for Aitken mode and -126 cm^{-3} (-4.2 %) for the accumulation mode. In cloudy downdrafts below 2 km, Aitken mode concentrations resulting from NPF above 10 km occasionally reach a maximum of 100 cm^{-3} (but on average, it only accounts for 0.13 % of the regional-domain concentration of all times) and a maximum of 60 cm^{-3} (on average contributing to 0.08 % of the domain particles) for the accumulation mode. It shows that deep convection can transport some particles that are formed in the regional UT to low altitudes when convective downdrafts are strong. However, these number concentrations have a negligible effect on the domain-mean number concentrations below 2 km because deep convection covers only around 4 % of the domain below 2 km. Thus, even though NPF above 10 km in the regional model can form the Aitken and accumulation mode particles within the domain, the majority of the particles either stay in the UT or leave the domain by horizontal transport. These particles may be transported downwards on larger spatial scales, but not on the scale of $\sim 1000 \text{ km}$ simulated here.

NPF below 10 km produces fewer particles than NPF in the UT. Nucleation mode aerosol number concentration below 2 km in altitude shows positive percentage changes in the simulations NPF_1-4km, NPF_4-7km and NPF_7-10km. The results suggest that the nucleation mode aerosols in the regional domain at lower altitudes (Fig. 9) are primarily formed by NPF at the same heights and a small part of the nucleation mode aerosols are formed by NPF between 3-10 km altitude followed by downward transport. NPF between 7 and 10 km causes a peak in the Aitken mode concentration up to around 590 cm^{-3} (20 %) between 11 and 15 km, while there is no increase in Aitken mode in the 7-10 km height range where NPF is occurring. It shows that Aitken mode particles at 11-15 km are affected by ascent of nucleation mode aerosol from lower altitudes followed by growth to Aitken mode sizes. NPF in all altitude layers contributes to accumulation mode particles in the 10-15.5 km layer, with domain- and time-mean increases as large as 180 cm^{-3} (65 %). In the lowest 2 km altitude, NPF at 7-10 km hardly contributes to any Aitken mode concentration (less than 0.4 % of NPF_7-10km simulation), but the height averaged Aitken mode concentrations increase by 25 cm^{-3} (or 5 %) in the NPF_4-7km and 50 cm^{-3} (or 8 %) in the NPF_1-4km simulation. The results show that the regional domain NPF below the UT can contribute to Aitken and accumulation mode particles in the UT and to a small number of Aitken mode aerosol particles below 2 km in altitude.

The addition of NPF in the regional domain *reduces* the accumulation mode number concentrations below 4 km. The reduction is likely due to enhanced nucleation that competes with particle growth for condensable gases (Sullivan et al., 2018), but these increases could also be due to model randomness.

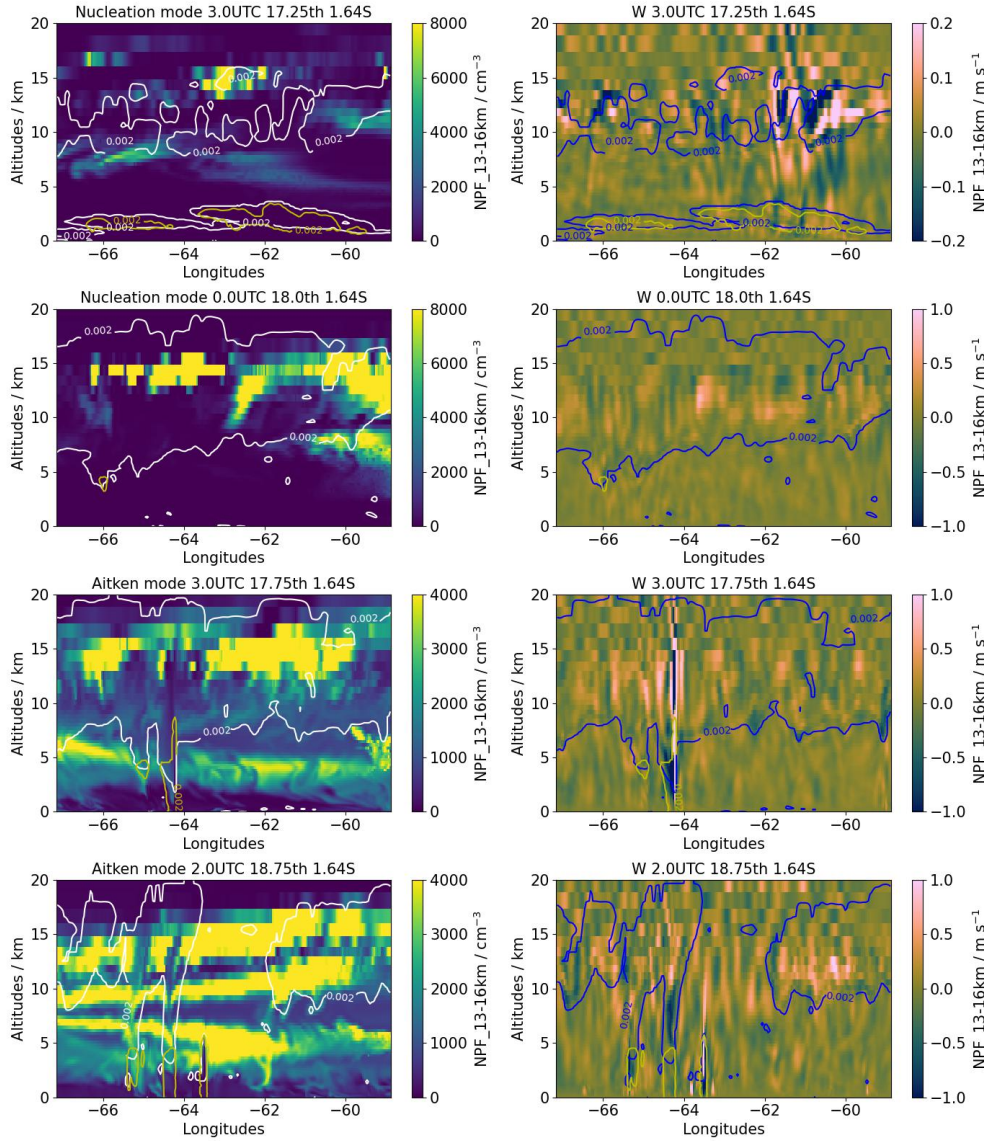


Figure 11. West to east vertical slices at 1.64 S of nucleation mode (first two rows), Aitken mode (lower two rows) number concentrations and the vertical velocity from the NPF_13-16km regional simulation at various times (see panel titles) in order to highlight vertical transport. Easterly winds were dominant. White and blue contours highlight clouds (liquid plus frozen water content = 0.002 g kg^{-1}) and yellow contours denote rain mass mixing ratios of 0.002 g kg^{-1} . Videos of the nucleation, Aitken and accumulation mode aerosol slices can be found in the supplementary.

Figure 11 shows the vertical slices of nucleation mode, Aitken mode particles and vertical velocity that exemplify the vertical transport. A plume of nucleation mode aerosol at 9 UTC on 17 September 2014 descends from around 10 km to 7 km between 64 W and 66 W and quickly exits the regional domain to the west (see videos of vertical transport in supplementary). Similarly, at 0 UTC on 18 September between 62 W and 63 W a ‘finger’ of nucleation mode aerosol extends from the UT down to around 9 km and is then diluted within three hours. The two slices also show clear downward transport of Aitken mode aerosol from around 7 km to below 2 km in altitude between 64 W and 66 W, which is associated with cloud (white contours). The downward motion of Aitken mode aerosol is a potential explanation for the excess accumulation mode seen below 2 km in BioOxEm compared to BioOx in Fig. 5 e (Sect. 3.2), namely that the additional nucleation in BioOxEm leads to more nucleation and Aitken mode aerosols in the global domain, which enters the regional domain below 7 km from the global model and those Aitken mode formed below 7 km within the regional domain, are transported downwards into the boundary layer by convection and then grows to accumulation mode sizes. The Aitken mode aerosol from the global model nucleation are mostly formed above around 2 km in altitude where nucleation rates start to significantly affect aerosol concentrations and grow to accumulation mode as they sink into lower altitudes (Supplementary Fig. A3 and A4).

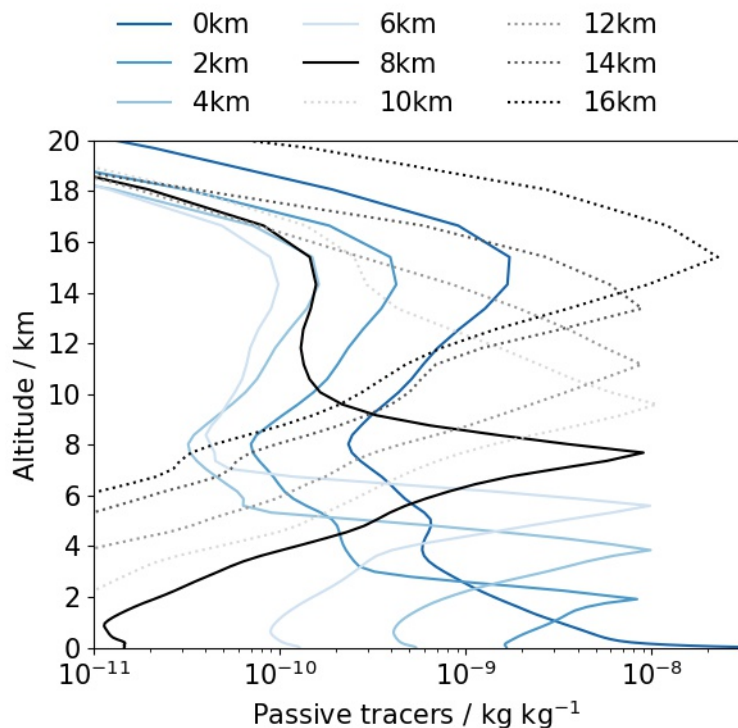


Figure 12. Regional domain averaged profiles of passive tracer mass mixing ratios emitted from 9 different model levels with vertical thicknesses ranging from 16 m at the surface to 2000 m at 16 km (blue and black) in altitudes.

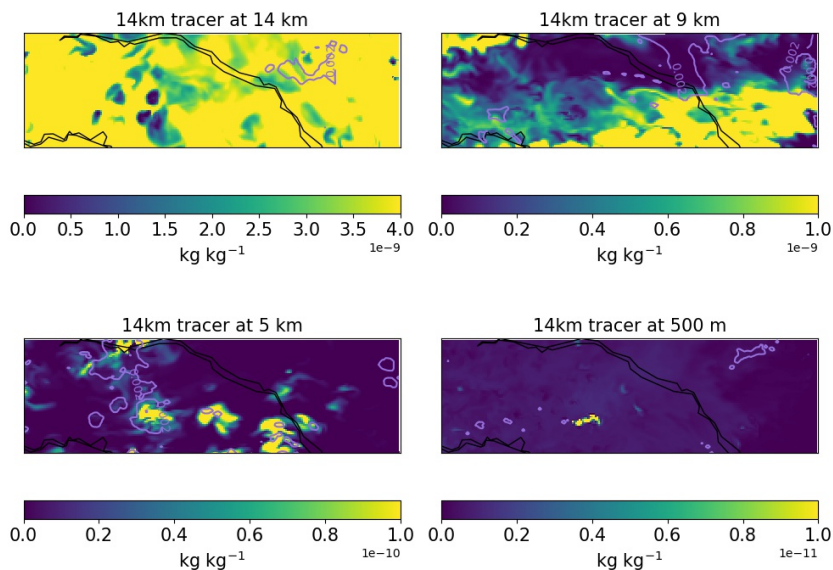


Figure 13. Maps of the mixing ratio of a passive tracer emitted at 13-16 km altitude. Mixing ratios are shown at 14 km, 9 km, 5 km, and 500 m at 21 UTC on 17 September 2014 (47 hours after the first release of the tracer). The upper limits in the four maps are different.

We also implemented transport-only passive tracers in the model to understand the vertical transport efficiency of air in the convective environment. The tracers were emitted within 9 vertical model layers using the same constant emission rate as the default monoterpenes emission rate from CMIP5 inventories with no deposition. Figure 12 shows the domain averaged tracer mixing ratios for the whole simulation period. Figure 13 also shows maps of the instantaneous mixing ratio of the 14 km altitude tracer at different altitudes. The 9 tracers have the largest concentrations where they were emitted, but only those that are emitted below 6 km reach the surface. The tracers emitted at higher altitudes are redistributed both up- and downwards by around 5 km, creating bands with thicknesses between 8 and 10 km. An example can be seen from the maps of tracer that is emitted at 14 km in altitude (Fig. 13). Similar scales of vertical mixing of aerosols can also be seen from global model (Supplementary Fig. A4). We compare the tracer mixing ratios at 9 km, 5 km and 500 m to 14 km in altitude in order to obtain the transport ability. We find that on average less than 5 % of the 14 km tracer reaches an altitude of 9 km, 0.13 % reaches 5 km, and barely any is transported to 500 m in altitude (0.01 %). Consequently, over a 3-day period a convective environment of dimension 1000 km can transport air downward in sufficient quantities to significantly affect the domain mean by at most 5 to 8 km within the regional domain, but the influence is less than a few percent. It again implies that aerosol particles that exist at altitudes lower than 6 km are more likely to be transported to the boundary layer than the particles originated from the UT. The Amazonia in East-West direction is around a factor of 3 of the size of our regional domain. Therefore, if air masses keep the descending motion, the number of particles being transported into the boundary layer would be expected to increase with a greater domain. A regional simulation with a higher resolution would be likely to be more efficient at transporting aerosol vertically but we did not perform such a simulation in this paper in order to keep a reasonably large domain. In contrast, the model exhibits strong upward transport which allows substantial amount of tracers, especially for those emitted below 4 km to

reach 16 km in altitude. Other tracers are transported upward by ~ 0.5 –4 km. Therefore, in the regional domain, the aerosol can be transported upward by as far as 16 km, but downward by at most 8 km.

4 Discussion and Conclusions

We used a global model with a 4 km-resolution nested regional domain (of size 1080 km by 440 km) to study the influence of deep convection on new particle formation (NPF) and the budget of cloud-forming aerosol particles in Amazonian boundary layer.

The regional-scale simulations show that deep convection regulates the vertical distribution of trace gases and aerosol particles by efficiently transporting monoterpenes from the surface to the UT. In the UT, monoterpenes can be oxidised within a few hours, and with low temperature and condensation sink, new particles are efficiently formed. Consistent with observations (Andreae et al., 2018; Williamson et al., 2019) and global model simulations (Pierce and Adams, 2007; Merikanto et al., 2009; Wang and Penner, 2009; Dunne et al., 2016), our regional simulations of a convective environment show that NPF is strongest in the UT, leading to the greatest number concentrations of nucleation and Aitken mode particles (a total of more than 10000 cm^{-3}).

The rate of NPF in the UT is reduced and spatially strongly modulated by the condensation sink of trace gases and nuclei on cloud droplets and ice particles. When this additional ‘cloud condensation sink’ is included in our regional model, mean concentrations of nucleation and Aitken mode particles in the UT are reduced by 50 %. The formation of particles primarily in detraining convective clouds is consistent with several observations (Clarke et al., 1998; Twohy et al., 2002; Andreae et al., 2018; Williamson et al., 2019). This localised cloud sink is straightforward to include in a convection-resolving model, but would be more difficult to include in a global model in which clear and cloudy air parcels in the UT are not explicitly simulated.

The typical vertical profiles of nucleation mode and Aitken mode particles, with peak concentrations in the UT, are created through NPF in the regional model on the timescale of a few days. With typical easterly winds in the area of Amazonia that we studied, the nucleation and Aitken mode particle profiles in the UT are therefore created on spatial scale of a few hundred kilometres as air advects across the rainforest. However, below the UT the environmental conditions required to create the nucleation and Aitken mode profiles are not ideal in the regional domain. The regional influence of NPF on the accumulation mode particle profile is important only at the highest altitudes in the UT (~ 15 km) and is negligible at lower altitudes. Similarly, the influence of regional-domain NPF on Aitken mode aerosols is significant in the UT, but NPF in the regional domain accounts for only between 1.5 % and 20 % of Aitken mode particle concentrations in the boundary layer in the two of our simulations (BioOxCCS and BioOxEmCCS). This weak effect is because of the longer time taken to form the larger particles following NPF, which means that particles formed by NPF above the boundary layer are advected out of the domain before they reach the larger sizes or before they can be transported downwards. The weak contribution of NPF in the regional domain to the boundary layer Aitken and accumulation mode is even more strengthened when there are no extra monoterpenes

in the BioOxCCS simulation compared to BioOxEmCCS simulation.

Below approximately 10 km altitude, the regional model simulations show that nucleation and Aitken mode particles are not substantially affected by NPF in the regional domain on the timescale of 3 days. In our regional domain of size ~ 1000 km aligned with the mean easterly wind, aerosol in the boundary layer is mostly produced outside the region (in the global model) and advected into the domain below 10 km altitude. Consistent with previous global model studies, we find that these advected particles were mostly formed by NPF, but on much larger spatial scales than the 1000 km domain we simulated. Although the regional domain NPF accounts for the majority of nucleation mode concentrations in the lower atmosphere, NPF here is much weaker than above 10 km in altitude, and the results are consistent with observational studies that have shown insufficient boundary layer NPF (Zhou et al., 2002; Krejci et al., 2003; Rissler et al., 2006; Spracklen et al., 2006; Rizzo et al., 2010; Andreae et al., 2018; Wimmer et al., 2018; Rizzo et al., 2018). Zhao et al. (2020) stated that NPF that involved both H_2SO_4 and biogenic vapours with a set of volatilities also produced particle concentrations that compared well to the observations from the ACRIDICON-CHUVA campaign. Including this nucleation mechanism in our study could produce a different profile in this environment, but is unlikely to affect our conclusions on the degree of downwards transport, the amount of growth from nucleation to Aitken mode sizes and hence the impact on boundary layer CCN.

NPF in the 1000 km regional domain is strongest above 10 km altitude, but our simulations show that it can affect particles below this altitude through vertical transport in the deep convective environment. The regional simulations show clear plumes of particles being transported in downdrafts. However, extremely few particles formed above 10 km altitude are transported all the way to the boundary layer (less than 1 %) during the 3 days of our regional simulation with the strongest NPF. Our simulation (BioOxEmCCS simulation) overestimates the particle concentrations in the boundary layer by less than a factor of 3. Therefore, the percentage of particles by convection transport are expected to be greater if the boundary layer has less primary aerosol emissions, but the contribution will still be small. Rather, the simulations show that the regional domain NPF-formed aerosol above 10 km altitude is transported only a few kilometres downwards (to around 8-10 km in altitude), while the aerosol entering the boundary layer originated from altitudes below 7 km. This lower-altitude aerosol was not formed by NPF during the 3-day simulation, but was advected into the regional domain and then transported downwards. Figure 14 shows a sketch of this vertical transport and the idealised profiles of regionally formed nucleation mode and long-range transported Aitken mode aerosol. Although in reality, Aitken mode aerosols are always formed and transported along the 3000 km region, the Aitken mode profiles in the diagram show the movement of an ideal column of air with Aitken mode that travels from east to west. This limited vertical transport, especially for Aitken and accumulation mode that strongly depend on long-range transport, is because the downdraft within one convective cycle in the regional domain is not strong enough to bring a large number of particles from the UT down to the boundary layer, not even for the passive tracers that are not scavenged during vertical transport. These results show that new aerosols that are formed within a 1080 km by 440 km regional domain in the Amazonian dry-to-wet season are not the major source of the boundary layer aerosol particles for such a domain.

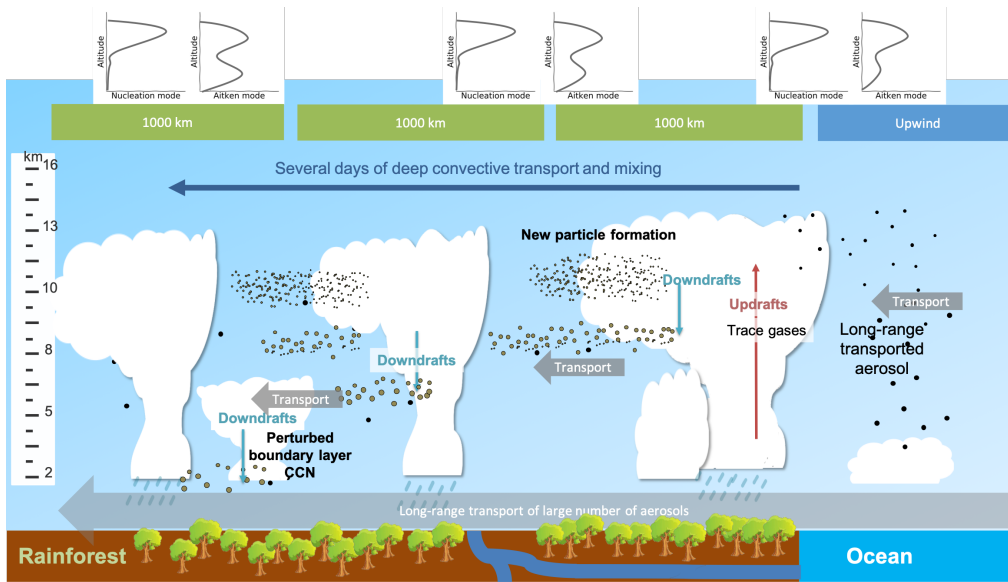


Figure 14. A schematic diagram of downward transport and mixing of aerosols associated with NPF. The nucleation and Aitken mode aerosol profiles in upper panels are example number concentrations in the upwind, within, and in the downwind of the simulated 1000 km by 400 km region.

Our results are similar to those of Clarke et al. (2013), who reported that particles in the free troposphere are likely to be transported from thousands of km away before they finally contribute to boundary layer CCN. The extent of aerosol vertical transport in our simulations is similar to the study of Gerken et al. (2016) who showed that O_3 from 2-7 km altitude may enter the boundary layer during convective storms occurring during GoAmazon2014/5. Other observational studies (Giangrande et al., 2016; Machado et al., 2021) also reported that downdrafts occurred most frequently below the freezing level (10 km) in Amazonia and that the horizontal extent of the downdraft decreased with increasing altitude. Similarly during GoAmazon2014/5, observations in Tang et al. (2016) showed that the air exhibited downward motion between ~ 700 hPa and the surface during the day (10-18 local time), and above ~ 700 hPa during the rest of the day, but these two periods were interrupted by the upward motion, inhibiting the downward motion from the UT to the boundary layer. We do not find any significant increases in particle number concentrations below 2 km associated with convective downdrafts, which is consistent with the analysis of observations during GoAmazon2014/5 and ACRIDICON-CHUVA campaigns (Machado et al., 2021). Wang et al. (2016) reported rapid downward transport of free tropospheric aerosols that could have been formed in the cloud outflow. With ATTO tower data, Franco et al. (2022) found particles smaller than 50 nm to enter the boundary layer that was likely to be caused by gust front downdrafts or rain. Our results also show instantaneous increase of Aitken mode particles up to 100 cm^{-3} associated with cloudy downdraft but only occurs occasionally. However, over the 3-day simulation of the 1000 km domain, these downward transported particles are negligible, making the downward transport efficiency small in our simulations. Instead, NPF that occurs between 1-7 km altitude in the regional domain contributes to a small number of Aitken mode aerosol particles to the lowest 2 km. It means that a small fraction of the Aitken mode aerosols that are formed by NPF

between 1-7 km in altitude in the regional domain can be transported downward to the lower atmosphere within the 3-day simulations, representing an Aitken mode aerosol source from the free troposphere in this region. Hence, we would expect that some of the Aitken mode aerosols that already existed in the free troposphere from the long-range transport in the global model would also add to the boundary layer concentrations after they enter the regional domain as the simulations progressed (Wang et al., 2016). Unfortunately, we did not design and run experiments to quantify the downward transport of Aitken mode aerosol that already existed in the free troposphere.

In the dry-to-wet season transition, NPF in the boundary layer within a 1000 km region has a very limited effect on Aitken mode and accumulation mode particles below 2 km in altitude. Instead, in the wet season when the environment is less polluted, the percentage contribution of convective downdraft from UT to the boundary layer particles are likely to be greater. The small effect of NPF upon boundary layer CCN may be further weakened by strong biomass burning events that took place in September 2014, which would increase the aerosol condensation sink and suppress NPF. These events were not included in our simulations. This additional condensation sink may be less important in the wet season when biomass burning is rarer and the condensation sink is generally lower than the season studied here.

Our results support the conclusion of Andreae et al. (2018) that NPF in the Amazonian UT is sustained by the upward transport of biogenic vapours in deep convection. Our simulations show that very high particle concentrations above 10 km altitude are created within a few days of advection of air over the rainforest. However, our results show that these newly formed particles in the UT do not contribute to boundary layer particles via vertical mixing and transport on the timescale of a few days. Our results agree with Andreae et al. (2018) and Wang et al. (2016) that Aitken mode particles can be transported downwards from the lower free troposphere into the boundary layer, and such downdraft events associated with convection are apparent in the model. However, on the timescale of a few days and a spatial scale of 1000 km, such transport has a small effect on mean particle concentrations in the boundary layer. This is even the case for passive tracers, so transport is the limiting factor, not aerosol microphysics. Although our results are consistent with Andreae et al. (2018) in that NPF in the FT is an important overall source of CCN in Amazonian boundary layer, our results show that these particles are formed on spatial scales much larger than 1000 km, and not necessarily over Amazonia.

Overall, we have high confidence that, during the dry-to-wet transition season, Amazonian rainforest controls aerosol particle concentrations in the UT, and that the observed high concentrations are produced directly within regions of deep convection on the timescale of a few days. We have moderate confidence that particle concentrations below the UT are controlled by processes occurring on much larger scales than 1000 km. Therefore, the concept of a cycle of trace gas vertical transport, particle formation, and subsequent CCN transport into the boundary layer is unlikely to be a ‘closed loop’ over the selected region in Amazonia which is around 1/3 of the forest in East-West direction, but is likely to be strongly influenced by advection of aerosol into this regional domain.

There are some limitations of our simulations that would need to be overcome to confirm our conclusions. In particular, the

length of simulation time, the regional domain size and 4 km resolution may limit the generalisability of our results and our
730 understandings of the regional NPF to CCN link. The 3-day simulation time may only represent a short period of a year, there-
fore, it will not represent other time such as the wet season when the boundary layer is less polluted. The relatively coarse 4
km resolution cannot fully resolve all the cloud-related processes and thus, 4 km resolution may not represent the full details of
the cloud macro structure and microphysics, which may limit the extent of downward transport of aerosol from the UT to the
boundary layer in distinct plumes. Nevertheless, there are thermodynamic limits on the extent to which air can be exchanged
735 in this way. Then, our results that showed the number of vertically transported aerosols can only be interpreted qualitatively.
If the domain were larger, the particles would be allowed to grow and be transported in the domain for a longer time, then
the number of particles enters the boundary layer from UT may experience moderate increases. A domain covering the whole
of Amazonia would be about 2-3 times larger in linear dimension than we used here, which would provide about 2-3 times
longer for vertical mixing assuming the same mean advection speed. This increase alone would not be sufficient to affect our
740 conclusion that Amazonia is not a closed CCN production loop through new particle formation. Such a loop could exist in
regions where air is stagnant over Amazonia or in the wet season with considerably more convection.

Another limitation is that isoprene emission and the corresponding chemistry were not included with the simplified offline
chemistry scheme. The oxidation products of isoprene have been found to contribute to around 20 % of the total secondary
organic aerosol mass (Schulz et al., 2018). Yee et al. (2020) also stated the importance of isoprene in forming preindustrial
745 aerosol sulfate in the environments with high isoprene emissions. Thus, our results on model-observation comparisons in Sect.
3.1 may not well represent the particle compositions in Amazonian environment because we only considered monoterpenes
and it may to some extent limit our understanding of NPF and particle formation in this region.

We strongly recommend that future regional modelling studies of Amazonian particles include a driving global model to fully
capture the long-range transport of aerosol. We also recommend that the regional nests use an increased resolution and domain
750 size; and that more chemical complexity is included. Comparing the wet and dry season would be helpful to gain a complete
picture of the evolution of the particle number concentrations and size distributions in Amazonia.

Data availability. The observations have been obtained from ACRIDICON-CHUVA campaign (Andreae et al., 2018). Raw model data are
available through JASMIN service (<http://www.jasmin.ac.uk/>, last access: 5 October 2022). We have uploaded a subset of simulation data
that were used to produce the figures to Zenodo (<https://zenodo.org/record/7749074#.ZBYAh-zMLtM>).

755 *Video supplement.* The videos to show the vertical transport of nucleation, Aitken and accumulation mode aerosols in the regional model
from the NPF_13-16km simulation can be accessed from below.

<https://drive.google.com/file/d/1DTWCyaevqFDTk5UfkMrxDjArjANq3-TY/view?usp=sharing>

<https://drive.google.com/file/d/19JnwQNFG-NjUETIpcWD620kXGx0bGF0/view?usp=sharing>

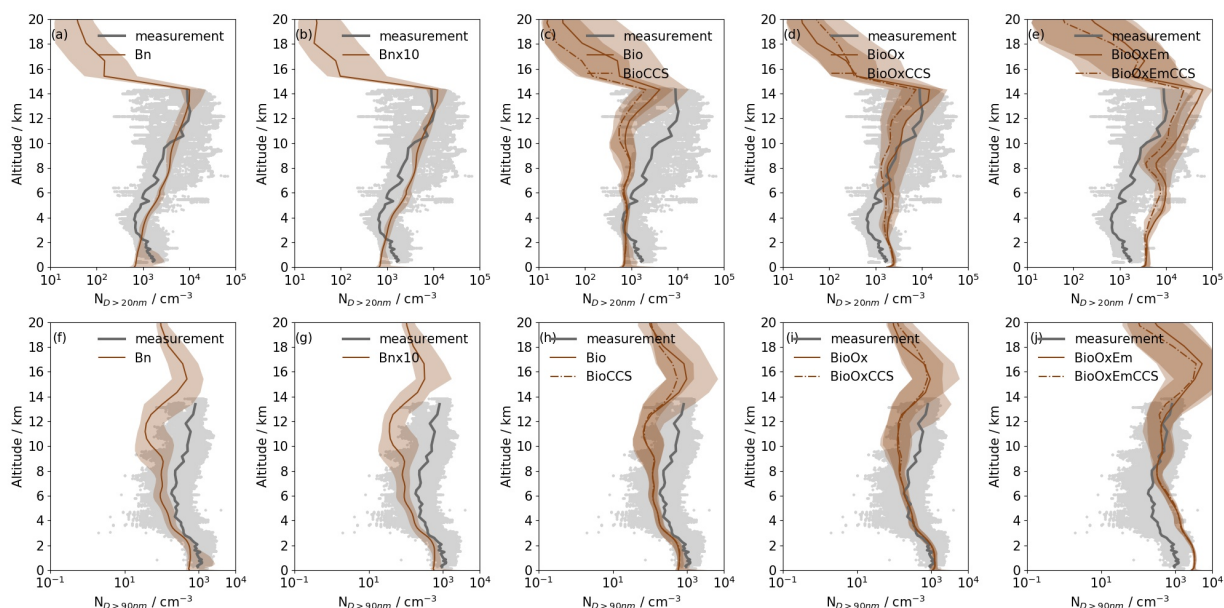


Figure A1. The observed and modelled vertical profiles of median number concentrations of particles with diameters >20 nm ($N_{D>20\text{nm}}$, top row) and >90 nm ($N_{D>90\text{nm}}$, bottom row). The observations are shown in dots and grey line (repeated for all panels), and the modelled results are from the various regional simulations averaged from 0 UTC on 17 September to 23 UTC on 18 September 2014, (a) and (f) Bn, (b) and (g) $\text{Bn} \times 10$, (c) and (h) Bio and BioCCS (dashed line), (d) and (i) BioOx and BioOxCCS (dashed line), and (e) and (j) BioOxEm and BioOxEmCCS (dashed line), corrected to standard temperature and pressure (Eq. 2). The shading represents 2.5 % and 97.5 % percentiles from the modelling results. The grey dots are individual observations from all flights during ACRIDICON-CHUVA with a time resolution of 1 minute, and the thick grey lines are the medians of the observations binned within the same height ranges as the regional model levels.

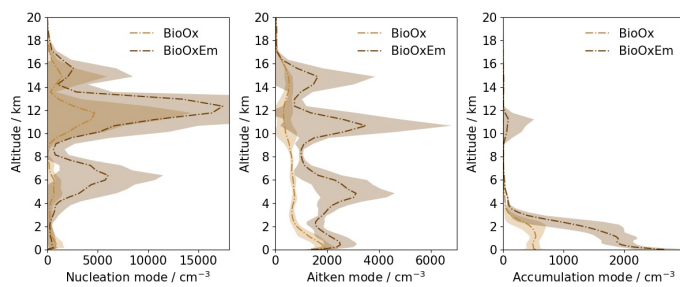


Figure A2. The domain averaged profiles of the nucleation, Aitken and accumulation mode aerosol in the simulations BioOx, and BioOxE from the global model in the upwind (East) of the regional domain.

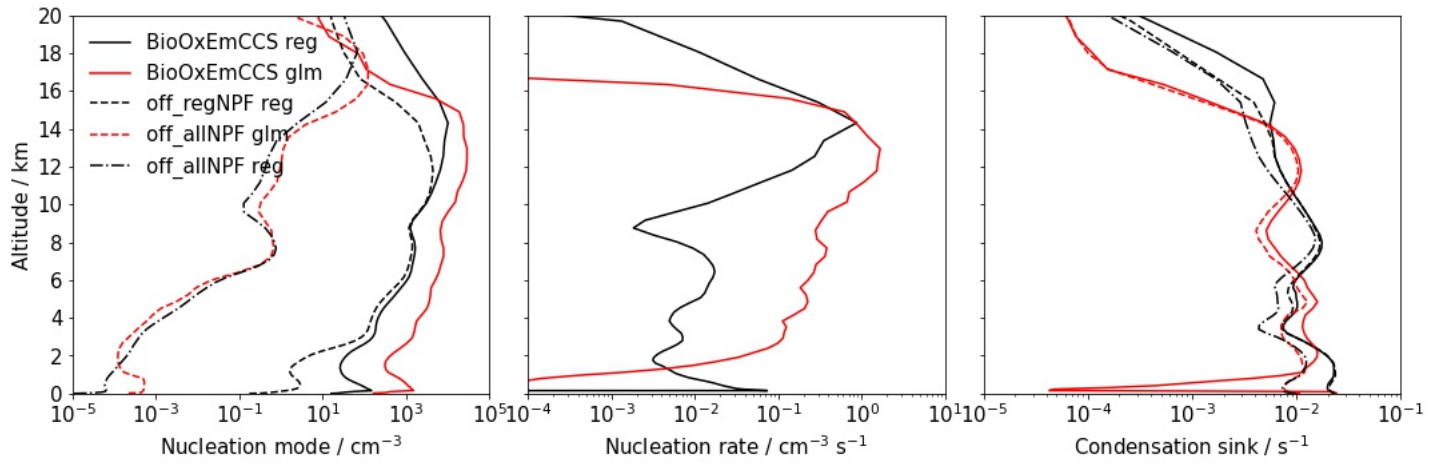


Figure A3. The regional domain averaged profiles of nucleation mode aerosol number concentrations, nucleation rate and condensation sink from the simulations BioOxECCS (solid), off_allNPF (dotted dashed), and off_regNPF (dashed) in the global model (red) and regional model (black).

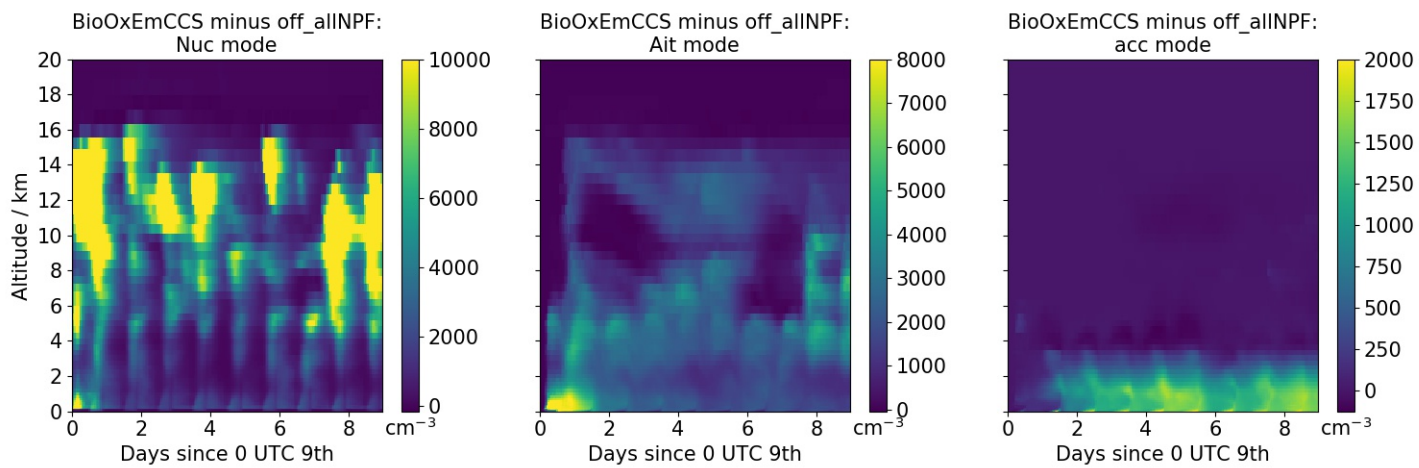


Figure A4. Time series of the global domain averaged aerosol number concentrations at the same location of the regional domain. The number concentrations are the differences between the BioOxEmCCS and off_allNPF simulations.

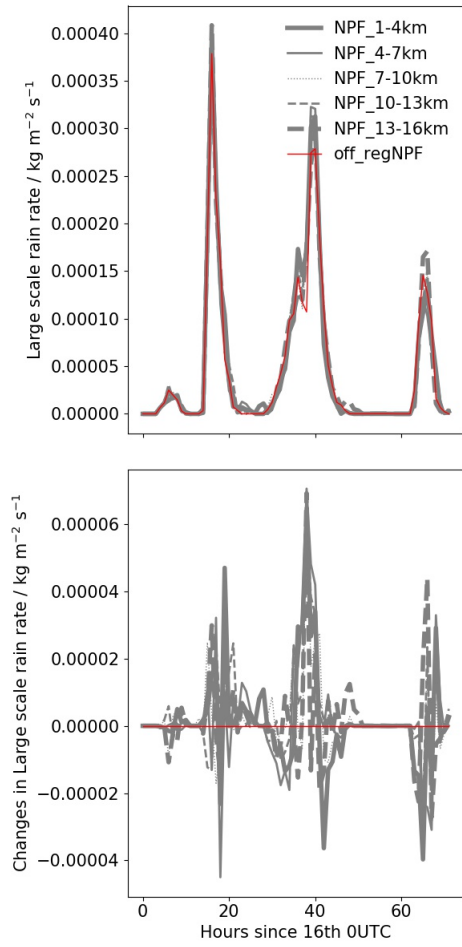


Figure A5. Regional domain averaged time series of large scale rain rate in the simulations NPF_1-4km, NPF_4-7km, NPF_7-10km, NPF_10-13km, NPF_13-16km, and off_regNPF (upper panel), and the differences between NPF switched on and off (NPF_Xkm – off_regNPF; lower panel).

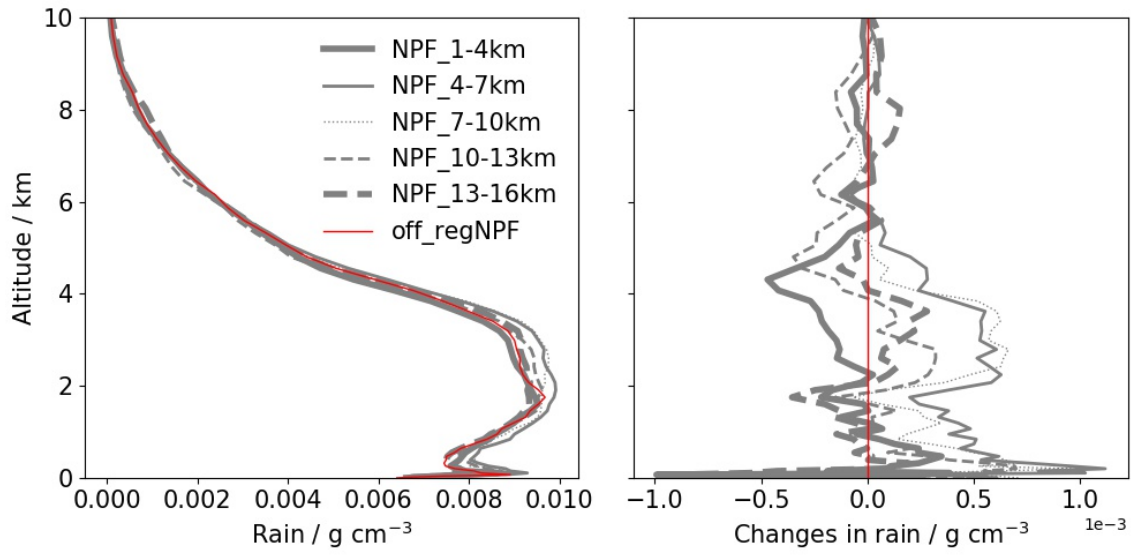


Figure A6. Regional domain averaged profiles of rain water content in the simulations NPF_1-4km, NPF_4-7km, NPF_7-10km, NPF_10-13km, NPF_13-16km, and off_regNPF (left), and the differences between NPF switched on and off in the regional domain (NPF_Xkm – off_regNPF; right).

Table A1. The table of monoterpenes concentrations from the observations and the domain and time averaged monoterpene concentrations in the simulation with default biogenic nucleation (Bio, BioOx, and BioOxEm).

Altitude	Monoterpene at ~24 m in October 2014	Monoterpene at 80 m in dry season in 2017	Monoterpene at 150 m in dry season in 2017	Monoterpene at 1-2.5 km
Monoterpene from ob- served alpha-pinene	0.8 ppbv (ATTO)	0.33 ppbv (ATTO)	0.2 ppbv (ATTO)	0.1-0.4 ppbv (aircraft)
Averaged model result (Bio simulation)	1.6 ppbv (12-20 m)	0.7 ppbv (75 m)	0.3 ppbv (155 m)	0.019 ppbv (1-2.5 km)
Averaged model result (BioOx simulation)	4.2 ppbv (12-20 m)	2.8 ppbv (75 m)	1.8 ppbv (155 m)	0.49 ppbv (1-2.5 km)
Averaged model re- sult (BioOxEm simu- lation)	37.1 ppbv (12-20 m)	23.7 ppbv (75 m)	15.1 ppbv (155 m)	3.94 ppbv (1-2.5 km)

As alpha-pinene contributes to around 50 % of the monoterpene, we doubled the observed alpha-pinene to estimate the monoterpene in Table A1. The observed monoterpene concentration at the surface is from Yáñez-Serrano et al. (2018), and 80 m and 155 m are from Zannoni et al. (2020). The observed monoterpene concentration at 1-2.5km is from Kuhn et al. (2007). In the simulation with the original default biogenic nucleation mechanism, it shows that monoterpenes are overestimated at altitudes lower than 1 km but underestimated above 2.5 km. The adjusted monoterpenes in BioOx simulation overestimate the observations below 2.5 km by factors of around 1-9. The BioOxEm simulation overestimates monoterpenes by a factor of 4-7 and up to a factor of 39 in the model, but such overestimations are reduced as altitude increases until 2.5 km where observations were available.

Table A2. The table of ozone concentrations from the observations and the domain averaged ozone concentrations from the monthly averaged ancillary of UKCA.

Altitude	O ₃ at ~24 m	O ₃ at 53 m	O ₃ at 79 m	O ₃ at 11-13.5 km
Observed	2-9ppbv (ATTO)	5-11 ppbv (ATTO)	6-12 ppbv (ATTO)	25-100 ppbv (aircraft)
UKCA ancillary	17 ppbv (20 m)	18 ppbv (53 m)	18.9 ppbv (100 m)	48-52 ppbv

O₃ in the model is read in from monthly mean ancillary files rather than being calculated online. Table A2 shows the domain
 770 averaged O₃ mixing ratios from the ancillary file. The observed O₃ at 24 m, 53 m, and 79 m are from Andreae et al. (2015), and
 11-13.5 km is from Andreae et al. (2018). O₃ at lower altitude is overestimated by the model but is about the same magnitude
 at 11-13.5 km.

Author contributions. XW, KSC, HG and DPG designed and led this research. The regional configuration of UM-UKCA was provided by
 HG and DPG, and HG also provided the codes for pure biogenic nucleation. MOA calculated and corrected the CPC and UHSAS data from
 775 ACRIDICO-CHUVA campaign. KSC helped make the schematic diagram (Fig. 14) in discussion and conclusion section. XW ran the model
 simulations, analysed the model results, and wrote the paper with insights, comments, and edits from KSC, HG and DPG.

Competing interests. At least one of the (co-)authors is a member of the editorial board of Atmospheric Chemistry and Physics.

Acknowledgements. Our research was funded by the Marie Skłodowska-Curie and was with the CLOUD-MOTION project (grant 764991).
 KSC acknowledges support from Natural Environment Research Council (NERC) grant for The Aerosol-Cloud Uncertainty REduction
 780 project (A-CURE) program (grant NE/P013406/1). DPG was supported by the NERC national capability grant for The North Atlantic Climate
 System Integrated Study (ACSIS) program (grant NE/N018001/1) via NCAS, and by the ADVANCE (Aerosol-cloud-climate interactions
 derived from Degassing VolcANic Eruptions; NE/T006897/1) program. HG acknowledges support from the NASA ROSES program under
 grant number 80NSSC19K0949. MOA is supported by Max Planck Society. The aircraft measurements were from the ACRIDICON-CHUVA
 campaign. We acknowledge the UK Met Office for providing the support for UM-UKCA-CASIM and Monsoon Superco(o)mputing Node
 785 to run the simulations and the JASMIN team with whose platform we processed our modelled data. We thank Ananth Ranjithkumar for
 providing the Fortran codes to output nucleation rate and condensation sink diagnostics. We also thank the rest of the members in the aerosol
 group in the Institute for Climate and Atmospheric Science for the discussions and advice.

References

- Abdul-Razzak, H. and Ghan, S. J.: A parameterization of aerosol activation: 2. Multiple aerosol types, *Journal of Geophysical Research: Atmospheres*, 105, 6837–6844, <https://doi.org/https://doi.org/10.1029/1999JD901161>, 2000.
- 790 Andreae, M., Acevedo, O., Araùjo, A., Artaxo, P., Barbosa, C., Barbosa, H., Brito, J., Carbone, S., Chi, X., Cintra, B., et al.: The Amazon Tall Tower Observatory (ATTO): overview of pilot measurements on ecosystem ecology, meteorology, trace gases, and aerosols, *Atmospheric Chemistry and Physics*, 15, 10 723–10 776, 2015.
- Andreae, M. O.: Correlation between cloud condensation nuclei concentration and aerosol optical thickness in remote and polluted regions, *Atmospheric Chemistry and Physics*, 9, 543–556, <https://doi.org/10.5194/acp-9-543-2009>, <https://acp.copernicus.org/articles/9/543/2009/>, 2009.
- 795 Andreae, M. O., Afchine, A., Albrecht, R., Holanda, B. A., Artaxo, P., Barbosa, H. M., Borrmann, S., Cecchini, M. A., Costa, A., Dollner, M., et al.: Aerosol characteristics and particle production in the upper troposphere over the Amazon Basin, *Atmospheric Chemistry and Physics*, 18, 921–961, <https://doi.org/https://doi.org/10.5194/acp-18-921-2018>, 2018.
- 800 Andres, R. J. and Kasgnoc, A. D.: A time-averaged inventory of subaerial volcanic sulfur emissions, *Journal of Geophysical Research: Atmospheres*, 103, 25 251–25 261, <https://doi.org/https://doi.org/10.1029/98JD02091>, <https://agupubs.onlinelibrary.wiley.com/doi/abs/10.1029/98JD02091>, 1998.
- Bardakov, R., Riipinen, I., Krejci, R., Savre, J., Thornton, J. A., and Ekman, A. M.: A novel framework to study trace gas transport in deep convective clouds, *Journal of Advances in Modeling Earth Systems*, 12, e2019MS001 931, 2020.
- 805 Bardakov, R., Thornton, J., Riipinen, I., Krejci, R., and Ekman, A.: Transport and chemistry of isoprene and its oxidation products in deep convective clouds, *Tellus B: Chemical and Physical Meteorology*, 73, 1979 856, <https://doi.org/http://doi.org/10.1080/16000889.2021.1979856>, 2021.
- Bardakov, R., Krejci, R., Riipinen, I., and Ekman, A. M. L.: The Role of Convective Up- and Downdrafts in the Transport of Trace Gases in the Amazon, *Journal of Geophysical Research: Atmospheres*, 127, e2022JD037 265, <https://doi.org/https://doi.org/10.1029/2022JD037265>, <https://agupubs.onlinelibrary.wiley.com/doi/abs/10.1029/2022JD037265>, e2022JD037265 2022JD037265, 2022.
- 810 Bianchi, F., Kurtén, T., Riva, M., Mohr, C., Rissanen, M. P., Roldin, P., Berndt, T., Crounse, J. D., Wennberg, P. O., Mentel, T. F., Wildt, J., Junninen, H., Jokinen, T., Kulmala, M., Worsnop, D. R., Thornton, J. A., Donahue, N., Kjaergaard, H. G., and Ehn, M.: Highly Oxygenated Organic Molecules (HOM) from Gas-Phase Autoxidation Involving Peroxy Radicals: A Key Contributor to Atmospheric Aerosol, *Chemical Reviews*, 119, 3472–3509, <https://doi.org/10.1021/acs.chemrev.8b00395>, <https://doi.org/10.1021/acs.chemrev.8b00395>, 2019.
- 815 Clarke, A., Varner, J., Eisele, F., Mauldin, R., Tanner, D., and Litchy, M.: Particle production in the remote marine atmosphere: Cloud outflow and subsidence during ACE 1, *Journal of Geophysical Research: Atmospheres*, 103, 16 397–16 409, <https://doi.org/https://doi.org/10.1029/97JD02987>, 1998.
- Clarke, A., Eisele, F., Kapustin, V., Moore, K., Tanner, D., Mauldin, L., Litchy, M., Lienert, B., Carroll, M., and Albercook, G.: Nucleation in the equatorial free troposphere: Favorable environments during PEM-Tropics, *Journal of Geophysical Research: Atmospheres*, 104, 5735–5744, <https://doi.org/https://doi.org/10.1029/98JD02303>, 1999a.
- 820 Clarke, A., Kapustin, V., Eisele, F., Weber, R., and McMurry, P. H.: Particle production near marine clouds: Sulfuric acid and predictions from classical binary nucleation, *Geophysical Research Letters*, 26, 2425–2428, <https://doi.org/https://doi.org/10.1029/1999GL900438>, 1999b.

- Clarke, A. D. and Kapustin, V. N.: A Pacific aerosol survey. Part I: A decade of data on particle production, transport, evolu-
825 tion, and mixing in the troposphere, *Journal of the atmospheric sciences*, 59, 363–382, [https://doi.org/https://doi.org/10.1175/1520-0469\(2002\)059<0363:APASPI>2.0.CO;2](https://doi.org/https://doi.org/10.1175/1520-0469(2002)059<0363:APASPI>2.0.CO;2), 2002.
- Clarke, A. D., Freitag, S., Simpson, R. M. C., Hudson, J. G., Howell, S. G., Brekhovskikh, V. L., Campos, T., Kapustin, V. N., and Zhou, J.: Free troposphere as a major source of CCN for the equatorial pacific boundary layer: long-range transport and teleconnections, *Atmospheric Chemistry and Physics*, 13, 7511–7529, <https://doi.org/https://doi.org/10.5194/acp-13-7511-2013>, 2013.
- 830 Cofala, J., Amann, M., and Mechler, R.: Scenarios of World Anthropogenic Emissions of Air Pollutants and Methane up to 2030. International Institute for Applied Systems Analysis. Laxenburg, Austria, Tech. rep., International Institute for Applied Systems Analysis (IIASA), Laxenburg, Austria, 2005.
- Collow, A. B. M., Miller, M. A., and Trabachino, L. C.: Cloudiness over the Amazon rainforest: Meteorology and thermodynamics, *Journal of Geophysical Research: Atmospheres*, 121, 7990–8005, <https://doi.org/https://doi.org/10.1002/2016JD024848>, 2016.
- 835 Dal Maso, M., Kulmala, M., Lehtinen, K. E., Mäkelä, J., Aalto, P., and O’Dowd, C.: Condensation and coagulation sinks and formation of nucleation mode particles in coastal and boreal forest boundary layers, *Journal of Geophysical Research: Atmospheres*, 107, PAR–2, <https://doi.org/https://doi.org/10.1029/2001JD001053>, 2002.
- Derbyshire, S. H., Maidens, A. V., Milton, S. F., Stratton, R. A., and Willett, M. R.: Adaptive detrainment in a convective parametrization, *Quarterly Journal of the Royal Meteorological Society*, 137, 1856–1871, <https://doi.org/https://doi.org/10.1002/qj.875>, <https://rmets.onlinelibrary.wiley.com/doi/abs/10.1002/qj.875>, 2011.
- 840 Diehl, T., Heil, A., Chin, M., Pan, X., Streets, D., Schultz, M., and Kinne, S.: Anthropogenic, biomass burning, and volcanic emissions of black carbon, organic carbon, and SO₂ from 1980 to 2010 for hindcast model experiments, *Atmospheric Chemistry and Physics Discussions*, 12, 24 895–24 954, <https://doi.org/10.5194/acpd-12-24895-2012>, <https://acp.copernicus.org/preprints/12/24895/2012/>, 2012.
- Dunne, E. M., Gordon, H., Kürten, A., Almeida, J., Duplissy, J., Williamson, C., Ortega, I. K., Pringle, K. J., Adamov, A.,
845 Baltensperger, U., et al.: Global atmospheric particle formation from CERN CLOUD measurements, *Science*, 354, 1119–1124, <https://doi.org/10.1126/science.aaf2649>, 2016.
- Ehn, M., Thornton, J. A., Kleist, E., Sipilä, M., Junninen, H., Pullinen, I., Springer, M., Rubach, F., Tillmann, R., Lee, B., Lopez-Hilfiker, F., Andres, S., Acir, I.-H., Rissanen, M., Jokinen, T., Schobesberger, S., Kangasluoma, J., Kontkanen, J., Nieminen, T., Kurtén, T., Nielsen, L. B., Jørgensen, S., Kjaergaard, H. G., Canagaratna, M., Maso, M. D., Berndt, T., Petäjä, T., Wahner, A., Kerminen, V.-M., Kulmala,
850 M., Worsnop, D. R., Wildt, J., and Mentel, T. F.: A large source of low-volatility secondary organic aerosol, *Nature*, 506, 476–479, <https://doi.org/10.1038/nature13032>, <https://doi.org/10.1038/nature13032>, 2014.
- Ekman, A., Wang, C., Wilson, J., and Ström, J.: Explicit simulations of aerosol physics in a cloud-resolving model: A sensitivity study based on an observed convective cloud, *Atmospheric Chemistry and Physics*, 4, 773–791, <https://doi.org/https://doi.org/10.5194/acp-4-773-2004>, 2004.
- 855 Field, P. R., Hill, A., Shipway, B., Furtado, K., Wilkinson, J., Miltenberger, A., Gordon, H., Grosvenor, D. P., Stevens, R., and Van Weverberg, K.: Implementation of a Double Moment Cloud Microphysics Scheme in the UK Met Office Regional Numerical Weather Prediction Model, *Quarterly Journal of the Royal Meteorological Society*, n/a, <https://doi.org/https://doi.org/10.1002/qj.4414>, <https://rmets.onlinelibrary.wiley.com/doi/abs/10.1002/qj.4414>, 2023.
- Franco, M. A., Ditas, F., Kremper, L. A., Machado, L. A. T., Andreae, M. O., Araújo, A., Barbosa, H. M. J., de Brito, J. F., Carbone, S.,
860 Holanda, B. A., Morais, F. G., Nascimento, J. P., Pöhlker, M. L., Rizzo, L. V., Sá, M., Saturno, J., Walter, D., Wolff, S., Pöschl, U., Artaxo,

- P., and Pöhlker, C.: Occurrence and growth of sub-50 nm aerosol particles in the Amazonian boundary layer, *Atmospheric Chemistry and Physics*, 22, 3469–3492, <https://doi.org/10.5194/acp-22-3469-2022>, <https://acp.copernicus.org/articles/22/3469/2022/>, 2022.
- Fritsch, J. M. and Chappell, C. F.: Numerical Prediction of Convectively Driven Mesoscale Pressure Systems. Part I: Convective Parameterization, *Journal of Atmospheric Sciences*, 37, 1722 – 1733, [https://doi.org/10.1175/1520-0469\(1980\)037<1722:NPOCDM>2.0.CO;2](https://doi.org/10.1175/1520-0469(1980)037<1722:NPOCDM>2.0.CO;2),
865 https://journals.ametsoc.org/view/journals/atsc/37/8/1520-0469_1980_037_1722_npocdm_2_0_co_2.xml, 1980.
- Fuchs, N. and Sutugin, A.: High-dispersed aerosols, in: *Topics in Current Aerosol Research*, edited by Hidy, G. and Brock, J., International Reviews in Aerosol Physics and Chemistry, p. 1, Pergamon, <https://doi.org/https://doi.org/10.1016/B978-0-08-016674-2.50006-6>, <https://www.sciencedirect.com/science/article/pii/B9780080166742500066>, 1971.
- Gerken, T., Wei, D., Chase, R. J., Fuentes, J. D., Schumacher, C., Machado, L. A., Andreoli, R. V., Chamecki, M., de Souza, R. A. F., Freire,
870 L. S., et al.: Downward transport of ozone rich air and implications for atmospheric chemistry in the Amazon rainforest, *Atmospheric Environment*, 124, 64–76, <https://doi.org/https://doi.org/10.1016/j.atmosenv.2015.11.014>, 2016.
- Giangrande, S. E., Toto, T., Jensen, M. P., Bartholomew, M. J., Feng, Z., Protat, A., Williams, C. R., Schumacher, C., and Machado, L.: Convective cloud vertical velocity and mass-flux characteristics from radar wind profiler observations during GoAmazon2014/5, *Journal of Geophysical Research: Atmospheres*, 121, 12,891–12,913, <https://doi.org/https://doi.org/10.1002/2016JD025303>, <https://agupubs.onlinelibrary.wiley.com/doi/abs/10.1002/2016JD025303>, 2016.
875
- Gordon, H., Sengupta, K., Rap, A., Duplissy, J., Frege, C., Williamson, C., Heinritzi, M., Simon, M., Yan, C., Almeida, J., et al.: Reduced anthropogenic aerosol radiative forcing caused by biogenic new particle formation, *Proceedings of the National Academy of Sciences*, 113, 12 053–12 058, <https://doi.org/https://doi.org/10.1073/pnas.1602360113>, 2016.
- Gordon, H., Kirkby, J., Baltensperger, U., Bianchi, F., Breitenlechner, M., Curtius, J., Dias, A., Dommen, J., Donahue, N. M., Dunne, E. M.,
880 et al.: Causes and importance of new particle formation in the present-day and preindustrial atmospheres, *Journal of Geophysical Research: Atmospheres*, 122, 8739–8760, <https://doi.org/https://doi.org/10.1002/2017JD026844>, 2017.
- Gordon, H., Field, P. R., Abel, S. J., Dalvi, M., Grosvenor, D. P., Hill, A. A., Johnson, B. T., Miltenberger, A. K., Yoshioka, M., and Carslaw, K. S.: Large simulated radiative effects of smoke in the south-east Atlantic, *Atmospheric Chemistry and Physics*, 18, 15 261–15 289, <https://doi.org/https://doi.org/10.5194/acp-18-15261-2018>, 2018.
- 885 Gordon, H., Field, P. R., Abel, S. J., Barrett, P., Bower, K., Crawford, I., Cui, Z., Grosvenor, D. P., Hill, A. A., Taylor, J., et al.: Development of aerosol activation in the double-moment Unified Model and evaluation with CLARIFY measurements, *Atmospheric Chemistry and Physics*, 20, 10997–11 024, <https://doi.org/https://doi.org/10.5194/acp-20-10997-2020>, 2020.
- Granier, C., Bessagnet, B., Bond, T., D’Angiola, A., Denier van der Gon, H., Frost, G. J., Heil, A., Kaiser, J. W., Kinne, S., Klimont, Z., Kloster, S., Lamarque, J.-F., Lioussé, C., Masui, T., Meleux, F., Mieville, A., Ohara, T., Raut, J.-C., Riahi, K., Schultz, M. G., Smith, S. J.,
890 Thompson, A., van Aardenne, J., van der Werf, G. R., and van Vuuren, D. P.: Evolution of anthropogenic and biomass burning emissions of air pollutants at global and regional scales during the 1980–2010 period, *Climatic Change*, 109, 163, <https://doi.org/10.1007/s10584-011-0154-1>, <https://doi.org/10.1007/s10584-011-0154-1>, 2011.
- Gregory, D. and Rowntree, P. R.: A Mass Flux Convection Scheme with Representation of Cloud Ensemble Characteristics and Stability-Dependent Closure, *Monthly Weather Review*, 118, 1483 – 1506, [https://doi.org/10.1175/1520-0493\(1990\)118<1483:AMFCSW>2.0.CO;2](https://doi.org/10.1175/1520-0493(1990)118<1483:AMFCSW>2.0.CO;2),
895 https://journals.ametsoc.org/view/journals/mwre/118/7/1520-0493_1990_118_1483_amfcsw_2_0_co_2.xml, 1990.

- Grosvenor, D. P., Field, P. R., Hill, A. A., and Shipway, B. J.: The relative importance of macrophysical and cloud albedo changes for aerosol-induced radiative effects in closed-cell stratocumulus: insight from the modelling of a case study, *Atmospheric Chemistry and Physics*, 17, 5155–5183, <https://doi.org/https://doi.org/10.5194/acp-17-5155-2017>, 2017.
- 900 Guenther, A., Hewitt, C. N., Erickson, D., Fall, R., Geron, C., Graedel, T., Harley, P., Klinger, L., Lerdau, M., McKay, W. A., Pierce, T., Scholes, B., Steinbrecher, R., Tallamraju, R., Taylor, J., and Zimmerman, P.: A global model of natural volatile organic compound emissions, *Journal of Geophysical Research: Atmospheres*, 100, 8873–8892, <https://doi.org/https://doi.org/10.1029/94JD02950>, <https://agupubs.onlinelibrary.wiley.com/doi/abs/10.1029/94JD02950>, 1995.
- Halmer, M., Schmincke, H.-U., and Graf, H.-F.: The annual volcanic gas input into the atmosphere, in particular into the stratosphere: a global data set for the past 100 years, *Journal of Volcanology and Geothermal Research*, 115, 511–528, [https://doi.org/https://doi.org/10.1016/S0377-0273\(01\)00318-3](https://doi.org/https://doi.org/10.1016/S0377-0273(01)00318-3), <https://www.sciencedirect.com/science/article/pii/S0377027301003183>, 2002.
- 905 Heinritzi, M., Dada, L., Simon, M., Stolzenburg, D., Wagner, A. C., Fischer, L., Ahonen, L. R., Amanatidis, S., Baalbaki, R., Baccarini, A., et al.: Molecular understanding of the suppression of new-particle formation by isoprene, *Atmospheric Chemistry and Physics*, 20, 11 809–11 821, 2020.
- Hill, A., Shipway, B., and Boutle, I.: How sensitive are aerosol-precipitation interactions to the warm rain representation?, *Journal of Advances in Modeling Earth Systems*, 7, 987–1004, <https://doi.org/https://doi.org/10.1002/2014MS000422>, 2015.
- Kanakidou, M., Seinfeld, J., Pandis, S., Barnes, I., Dentener, F., Facchini, M., Dingenen, R. V., Ervens, B., Nenes, A., Nielsen, C., et al.: Organic aerosol and global climate modelling: a review, *Atmospheric Chemistry and Physics*, 5, 1053–1123, <https://doi.org/https://doi.org/10.5194/acp-5-1053-2005>, 2005.
- 915 Kazil, J., Stier, P., Zhang, K., Quaas, J., Kinne, S., O'Donnell, D., Rast, S., Esch, M., Ferrachat, S., Lohmann, U., and Feichter, J.: Aerosol nucleation and its role for clouds and Earth's radiative forcing in the aerosol-climate model ECHAM5-HAM, *Atmospheric Chemistry and Physics*, 10, 10 733–10 752, <https://doi.org/10.5194/acp-10-10733-2010>, <https://acp.copernicus.org/articles/10/10733/2010/>, 2010.
- Kazil, J., Wang, H., Feingold, G., Clarke, A., Snider, J. R., and Bandy, A.: Modeling chemical and aerosol processes in the transition from closed to open cells during VOCALS-REx, *Atmospheric Chemistry and Physics*, 11, 7491–7514, <https://doi.org/https://doi.org/10.5194/acp-11-7491-2011>, 2011.
- 920 Kerminen, V.-M. and Kulmala, M.: Analytical formulae connecting the “real” and the “apparent” nucleation rate and the nuclei number concentration for atmospheric nucleation events, *Journal of Aerosol Science*, 33, 609–622, [https://doi.org/https://doi.org/10.1016/S0021-8502\(01\)00194-X](https://doi.org/https://doi.org/10.1016/S0021-8502(01)00194-X), <https://www.sciencedirect.com/science/article/pii/S002185020100194X>, 2002.
- 925 Kipling, Z., Stier, P., Schwarz, J., Perring, A., Spackman, J., Mann, G., Johnson, C., and Telford, P.: Constraints on aerosol processes in climate models from vertically-resolved aircraft observations of black carbon, *Atmospheric Chemistry and Physics*, 13, 5969–5986, <https://doi.org/https://doi.org/10.5194/acp-13-5969-2013>, 2013.
- Kirkby, J., Curtius, J., Almeida, J., Dunne, E., Duplissy, J., Ehrhart, S., Franchin, A., Gagné, S., Ickes, L., Kürten, A., et al.: Role of sulphuric acid, ammonia and galactic cosmic rays in atmospheric aerosol nucleation, *Nature*, 476, 429, <https://doi.org/https://doi.org/10.1038/nature10343>, 2011.
- 930 Kirkby, J., Duplissy, J., Sengupta, K., Frege, C., Gordon, H., Williamson, C., Heinritzi, M., Simon, M., Yan, C., Almeida, J., et al.: Ion-induced nucleation of pure biogenic particles, *Nature*, 533, 521, <https://doi.org/https://doi.org/10.1038/nature17953>, 2016.
- Krejci, R., Ström, J., de Reus, M., Hoor, P., Williams, J., Fischer, H., and Hansson, H.-C.: Evolution of aerosol properties over the rain forest in Surinam, South America, observed from aircraft during the LBA-CLAIRE 98 experiment, *Journal of Geophysical*

- 935 Research: Atmospheres, 108, <https://doi.org/https://doi.org/10.1029/2001JD001375>, <https://agupubs.onlinelibrary.wiley.com/doi/abs/10.1029/2001JD001375>, 2003.
- Kuhn, U., Andreae, M. O., Ammann, C., Araújo, A., Brancaleoni, E., Ciccioli, P., Dindorf, T., Frattoni, M., Gatti, L. V., Ganzeveld, L., et al.: Isoprene and monoterpene fluxes from Central Amazonian rainforest inferred from tower-based and airborne measurements, and implications on the atmospheric chemistry and the local carbon budget, *Atmospheric Chemistry and Physics Discussions*, 7, 642–708, <https://doi.org/https://doi.org/10.5194/acp-7-2855-2007>, 2007.
- 940 Kulmala, M., Hämeri, K., Aalto, P. P., Mäkelä, J. M., Pirjola, L., Nilsson, E. D., Buzorius, G., Rannik, Ü., Maso, M. D., Seidl, W., Hoffman, T., Janson, R., Hansson, H.-C., Viisanen, Y., Laaksonen, A., and O’Dowd, C. D.: Overview of the international project on biogenic aerosol formation in the boreal forest (BIOFOR), *Tellus B*, 53, 324–343, <https://doi.org/https://doi.org/10.1034/j.1600-0889.2001.530402.x>, <https://onlinelibrary.wiley.com/doi/abs/10.1034/j.1600-0889.2001.530402.x>, 2001a.
- 945 Kulmala, M., Maso, M. D., Mäkelä, J. M., Pirjola, L., Väkevä, M., Aalto, P., Miikkulainen, P., Hämeri, K., and O’Dowd, C. D.: On the formation, growth and composition of nucleation mode particles, *Tellus B*, 53, 479–490, <https://doi.org/https://doi.org/10.1034/j.1600-0889.2001.530411.x>, <https://onlinelibrary.wiley.com/doi/abs/10.1034/j.1600-0889.2001.530411.x>, 2001b.
- Kulmala, M., Reissell, A., Sipilä, M., Bonn, B., Ruuskanen, T. M., Lehtinen, K. E., Kerminen, V.-M., and Ström, J.: Deep convective clouds as aerosol production engines: Role of insoluble organics, *Journal of Geophysical Research: Atmospheres*, 111, <https://doi.org/https://doi.org/10.1029/2005JD006963>, 2006.
- 950 Kwok, E. S. and Atkinson, R.: Estimation of hydroxyl radical reaction rate constants for gas-phase organic compounds using a structure-reactivity relationship: an update, *Atmospheric Environment*, 29, 1685–1695, [https://doi.org/https://doi.org/10.1016/1352-2310\(95\)00069-B](https://doi.org/https://doi.org/10.1016/1352-2310(95)00069-B), 1995.
- Lamarque, J.-F., Bond, T. C., Eyring, V., Granier, C., Heil, A., Klimont, Z., Lee, D., Liousse, C., Mieville, A., Owen, B., Schultz, M. G., Shindell, D., Smith, S. J., Stehfest, E., Van Aardenne, J., Cooper, O. R., Kainuma, M., Mahowald, N., McConnell, J. R., Naik, V., Riahi, K., and van Vuuren, D. P.: Historical (1850–2000) gridded anthropogenic and biomass burning emissions of reactive gases and aerosols: methodology and application, *Atmospheric Chemistry and Physics*, 10, 7017–7039, <https://doi.org/10.5194/acp-10-7017-2010>, <https://acp.copernicus.org/articles/10/7017/2010/>, 2010.
- 955 Lana, A., Bell, T. G., Simó, R., Vallina, S. M., Ballabrera-Poy, J., Kettle, A. J., Dachs, J., Bopp, L., Saltzman, E. S., Stefels, J., Johnson, J. E., and Liss, P. S.: An updated climatology of surface dimethylsulfide concentrations and emission fluxes in the global ocean, *Global Biogeochemical Cycles*, 25, <https://doi.org/https://doi.org/10.1029/2010GB003850>, <https://agupubs.onlinelibrary.wiley.com/doi/abs/10.1029/2010GB003850>, 2011.
- 960 Li, W. and Fu, R.: Transition of the Large-Scale Atmospheric and Land Surface Conditions from the Dry to the Wet Season over Amazonia as Diagnosed by the ECMWF Re-Analysis, *Journal of Climate*, 17, 2637 – 2651, [https://doi.org/10.1175/1520-0442\(2004\)017<2637:TOTLAA>2.0.CO;2](https://doi.org/10.1175/1520-0442(2004)017<2637:TOTLAA>2.0.CO;2), https://journals.ametsoc.org/view/journals/clim/17/13/1520-0442_2004_017_2637_totlaa_2.0.co_2.xml, 2004.
- 965 Li, Y., Pickering, K., Barth, M., Bela, M., Cummings, K., and Allen, D.: Evaluation of Parameterized Convective Transport of Trace Gases in Simulation of Storms Observed During the DC3 Field Campaign, *Journal of Geophysical Research: Atmospheres*, 123, 11–238, 2018.
- Machado, L. A. T., Franco, M. A., Kremper, L. A., Ditas, F., Andreae, M. O., Artaxo, P., Cecchini, M. A., Holanda, B. A., Pöhlker, M. L., Saraiva, I., Wolff, S., Pöschl, U., and Pöhlker, C.: How weather events modify aerosol particle size distributions in the Amazon boundary layer, *Atmospheric Chemistry and Physics*, 21, 18 065–18 086, <https://doi.org/10.5194/acp-21-18065-2021>, <https://acp.copernicus.org/articles/21/18065/2021/>, 2021.

- Mann, G., Carslaw, K., Spracklen, D., Ridley, D., Manktelow, P., Chipperfield, M., Pickering, S., and Johnson, C.: Description and evaluation of GLOMAP-mode: A modal global aerosol microphysics model for the UKCA composition-climate model, *Geoscientific Model Development*, 3, 519–551, <https://doi.org/https://doi.org/10.5194/gmd-3-519-2010>, 2010.
- Mann, G. W., Carslaw, K. S., Reddington, C. L., Pringle, K. J., Schulz, M., Asmi, A., Spracklen, D. V., Ridley, D. A., Woodhouse, M. T., Lee, L. A., et al.: Intercomparison and evaluation of global aerosol microphysical properties among AeroCom models of a range of complexity, *Atmospheric chemistry and physics*, 14, 4679–4713, <https://doi.org/https://doi.org/10.5194/acp-14-4679-2014>, 2014.
- Martin, S., Artaxo, P., Machado, L., Manzi, A., Souza, R., Schumacher, C., Wang, J., Andreae, M., Barbosa, H., Fan, J., et al.: Introduction: Observations and modeling of the green ocean Amazon (GoAmazon2014/5), *Atmospheric Chemistry and Physics*, 16, <https://doi.org/https://doi.org/10.5194/acp-16-4785-2016>, 2016.
- Merikanto, J., Spracklen, D., Mann, G., Pickering, S., and Carslaw, K.: Impact of nucleation on global CCN, *Atmospheric Chemistry and Physics*, 9, 8601–8616, <https://doi.org/https://doi.org/10.5194/acp-9-8601-2009>, 2009.
- Miltenberger, A. K., Field, P. R., Hill, A. A., Rosenberg, P., Shipway, B. J., Wilkinson, J. M., Scovell, R., and Blyth, A. M.: Aerosol–cloud interactions in mixed-phase convective clouds–Part 1: Aerosol perturbations, *Atmospheric Chemistry and Physics*, 18, 3119–3145, <https://doi.org/https://doi.org/10.5194/acp-18-3119-2018>, 2018.
- Pierce, J. and Adams, P.: Efficiency of cloud condensation nuclei formation from ultrafine particles, *Atmospheric Chemistry and Physics*, 7, 1367–1379, <https://doi.org/https://doi.org/10.5194/acp-7-1367-2007>, 2007.
- Planche, C., Mann, G. W., Carslaw, K. S., Dalvi, M., Marsham, J. H., and Field, P. R.: Spatial and temporal CCN variations in convection-permitting aerosol microphysics simulations in an idealised marine tropical domain, *Atmospheric Chemistry and Physics*, 17, 3371–3384, <https://doi.org/https://doi.org/10.5194/acp-17-3371-2017>, 2017.
- Pöhlker, M. L., Pöhlker, C., Ditas, F., Klimach, T., Hrabě de Angelis, I., Araújo, A., Brito, J., Carbone, S., Cheng, Y., Chi, X., Ditz, R., Gunthe, S. S., Kesselmeier, J., Könemann, T., Lavrič, J. V., Martin, S. T., Mikhailov, E., Moran-Zuloaga, D., Rose, D., Saturno, J., Su, H., Thalman, R., Walter, D., Wang, J., Wolff, S., Barbosa, H. M. J., Artaxo, P., Andreae, M. O., and Pöschl, U.: Long-term observations of cloud condensation nuclei in the Amazon rain forest – Part 1: Aerosol size distribution, hygroscopicity, and new model parametrizations for CCN prediction, *Atmospheric Chemistry and Physics*, 16, 15 709–15 740, <https://doi.org/10.5194/acp-16-15709-2016>, <https://acp.copernicus.org/articles/16/15709/2016/>, 2016.
- Pöhlker, M. L., Ditas, F., Saturno, J., Klimach, T., Hrabě de Angelis, I., Araújo, A. C., Brito, J., Carbone, S., Cheng, Y., Chi, X., et al.: Long-term observations of cloud condensation nuclei over the Amazon rain forest–Part 2: Variability and characteristics of biomass burning, long-range transport, and pristine rain forest aerosols, *Atmospheric Chemistry and Physics*, 18, 10 289–10 331, <https://doi.org/https://doi.org/10.5194/acp-18-10289-2018>, 2018.
- Rissler, J., Vestin, A., Swietlicki, E., Fisch, G., Zhou, J., Artaxo, P., and Andreae, M. O.: Size distribution and hygroscopic properties of aerosol particles from dry-season biomass burning in Amazonia, *Atmospheric Chemistry and Physics*, 6, 471–491, <https://doi.org/10.5194/acp-6-471-2006>, <https://acp.copernicus.org/articles/6/471/2006/>, 2006.
- Rizzo, L., Artaxo, P., Karl, T., Guenther, A., and Greenberg, J.: Aerosol properties, in-canopy gradients, turbulent fluxes and VOC concentrations at a pristine forest site in Amazonia, *Atmospheric Environment*, 44, 503–511, <https://doi.org/https://doi.org/10.1016/j.atmosenv.2009.11.002>, <https://www.sciencedirect.com/science/article/pii/S1352231009009327>, 2010.

- Rizzo, L. V., Roldin, P., Brito, J., Backman, J., Swietlicki, E., Krejci, R., Tunved, P., Petäjä, T., Kulmala, M., Artaxo, P., et al.: Multi-year statistical and modeling analysis of submicrometer aerosol number size distributions at a rain forest site in Amazonia, *Atmospheric Chemistry and Physics*, <https://doi.org/https://doi.org/10.5194/acp-18-10255-2018>, 2018.
- Ryu, J.-H. and Kang, S.-L.: Response of Moist Convection to the Spectral Feature of the Surface Flux Field at Model Resolution Across the Gray Zone, *Journal of Geophysical Research: Atmospheres*, 127, e2021JD035 869, <https://doi.org/https://doi.org/10.1029/2021JD035869>, <https://agupubs.onlinelibrary.wiley.com/doi/abs/10.1029/2021JD035869>, e2021JD035869 2021JD035869, 2022.
- Schulz, C., Schneider, J., Amorim Holanda, B., Appel, O., Costa, A., Sá, S. S. d., Dreiling, V., Fütterer, D., Jurkat-Witschas, T., Klimach, T., et al.: Aircraft-based observations of isoprene-epoxydiol-derived secondary organic aerosol (IEPOX-SOA) in the tropical upper troposphere over the Amazon region, *Atmospheric Chemistry and Physics*, 18, 14 979–15 001, <https://doi.org/https://doi.org/10.5194/acp-18-14979-2018>, 2018.
- Shipway, B. and Hill, A.: Diagnosis of systematic differences between multiple parametrizations of warm rain microphysics using a kinematic framework, *Quarterly Journal of the Royal Meteorological Society*, 138, 2196–2211, <https://doi.org/https://doi.org/10.1002/qj.1913>, 2012.
- Simon, M., Dada, L., Heinritzi, M., Scholz, W., Stolzenburg, D., Fischer, L., Wagner, A. C., Kürten, A., Rörup, B., He, X.-C., et al.: Molecular understanding of new-particle formation from α -pinene between- 50 and+ 25 ° C, *Atmospheric Chemistry and Physics*, 20, 9183–9207, <https://doi.org/https://doi.org/10.5194/acp-20-9183-2020>, 2020.
- Sindelarova, K., Granier, C., Bouarar, I., Guenther, A., Tilmes, S., Stavrakou, T., Müller, J.-F., Kuhn, U., Stefani, P., and Knorr, W.: Global data set of biogenic VOC emissions calculated by the MEGAN model over the last 30 years, *Atmospheric Chemistry and Physics*, 14, 9317–9341, <https://doi.org/10.5194/acp-14-9317-2014>, <https://acp.copernicus.org/articles/14/9317/2014/>, 2014.
- Spracklen, D., Carslaw, K., Kulmala, M., Kerminen, V.-M., Mann, G., and Sihto, S.-L.: The contribution of boundary layer nucleation events to total particle concentrations on regional and global scales, *Atmospheric Chemistry and Physics*, 6, 5631–5648, <https://doi.org/https://doi.org/10.5194/acp-6-5631-2006>, 2006.
- Stolzenburg, D., Fischer, L., Vogel, A. L., Heinritzi, M., Schervish, M., Simon, M., Wagner, A. C., Dada, L., Ahonen, L. R., Amorim, A., et al.: Rapid growth of organic aerosol nanoparticles over a wide tropospheric temperature range, *Proceedings of the National Academy of Sciences*, 115, 9122–9127, <https://doi.org/https://doi.org/10.1073/pnas.1807604115>, 2018.
- Stratton, R., Stirling, A., and Derbyshire, S.: Changes and developments to Convective Momentum Transport (CMT) parametrization based on analysis of CRM and SCM, *Met Office R&D Tech. Rep.*, 530, 2009.
- Sullivan, R. C., Crippa, P., Matsui, H., Leung, L. R., Zhao, C., Thota, A., and Pryor, S. C.: New particle formation leads to cloud dimming, *npj Climate and Atmospheric Science*, 1, 1–9, <https://doi.org/https://doi.org/10.1038/s41612-018-0019-7>, 2018.
- Tang, S., Xie, S., Zhang, Y., Zhang, M., Schumacher, C., Upton, H., Jensen, M. P., Johnson, K. L., Wang, M., Ahlgrim, M., Feng, Z., Minnis, P., and Thieman, M.: Large-scale vertical velocity, diabatic heating and drying profiles associated with seasonal and diurnal variations of convective systems observed in the GoAmazon2014/5 experiment, *Atmospheric Chemistry and Physics*, 16, 14 249–14 264, <https://doi.org/10.5194/acp-16-14249-2016>, <https://acp.copernicus.org/articles/16/14249/2016/>, 2016.
- Tröstl, J., Chuang, W. K., Gordon, H., Heinritzi, M., Yan, C., Molteni, U., Ahlm, L., Frege, C., Bianchi, F., Wagner, R., et al.: The role of low-volatility organic compounds in initial particle growth in the atmosphere, *Nature*, 533, 527, <https://doi.org/https://doi.org/10.1038/nature18271>, 2016.
- Twohy, C. H., Clement, C. F., Gandrud, B. W., Weinheimer, A. J., Campos, T. L., Baumgardner, D., Brune, W. H., Faloona, I., Sachse, G. W., Vay, S. A., and Tan, D.: Deep convection as a source of new particles in the midlatitude upper troposphere, *Journal of Geophysical*

- Research: Atmospheres, 107, AAC 6–1–AAC 6–10, <https://doi.org/https://doi.org/10.1029/2001JD000323>, <https://agupubs.onlinelibrary.wiley.com/doi/abs/10.1029/2001JD000323>, 2002.
- Van Der Werf, G. R., Randerson, J. T., Collatz, G. J., and Giglio, L.: Carbon emissions from fires in tropical and subtropical ecosystems, *Global Change Biology*, 9, 547–562, <https://doi.org/https://doi.org/10.1046/j.1365-2486.2003.00604.x>, 2003.
- 1050 van der Werf, G. R., Randerson, J. T., Giglio, L., Collatz, G. J., Kasibhatla, P. S., and Arellano Jr., A. F.: Interannual variability in global biomass burning emissions from 1997 to 2004, *Atmospheric Chemistry and Physics*, 6, 3423–3441, <https://doi.org/10.5194/acp-6-3423-2006>, <https://acp.copernicus.org/articles/6/3423/2006/>, 2006.
- Vehkamäki, H., Kulmala, M., Napari, I., Lehtinen, K. E., Timmreck, C., Noppel, M., and Laaksonen, A.: An improved parameterization for sulfuric acid–water nucleation rates for tropospheric and stratospheric conditions, *Journal of Geophysical Research: Atmospheres*, 107, <https://doi.org/https://doi.org/10.1029/2002JD002184>, 2002.
- 1055 Walters, D., Boutle, I., Brooks, M., Melvin, T., Stratton, R., Vosper, S., Wells, H., Williams, K., Wood, N., Allen, T., Bushell, A., Copsey, D., Earnshaw, P., Edwards, J., Gross, M., Hardiman, S., Harris, C., Heming, J., Klingaman, N., Levine, R., Manners, J., Martin, G., Milton, S., Mittermaier, M., Morcrette, C., Riddick, T., Roberts, M., Sanchez, C., Selwood, P., Stirling, A., Smith, C., Suri, D., Tennant, W., Vidale, P. L., Wilkinson, J., Willett, M., Woolnough, S., and Xavier, P.: The Met Office Unified Model Global Atmosphere 6.0/6.1 and JULES Global Land 6.0/6.1 configurations, *Geoscientific Model Development*, 10, 1487–1520, <https://doi.org/10.5194/gmd-10-1487-2017>, <https://gmd.copernicus.org/articles/10/1487/2017/>, 2017.
- 1060 Walters, D., Baran, A. J., Boutle, I., Brooks, M., Earnshaw, P., Edwards, J., Furtado, K., Hill, P., Lock, A., Manners, J., Morcrette, C., Mulcahy, J., Sanchez, C., Smith, C., Stratton, R., Tennant, W., Tomassini, L., Van Weverberg, K., Vosper, S., Willett, M., Browse, J., Bushell, A., Carslaw, K., Dalvi, M., Essery, R., Gedney, N., Hardiman, S., Johnson, B., Johnson, C., Jones, A., Jones, C., Mann, G., Milton, S., Rumbold, H., Sellar, A., Ujiie, M., Whitall, M., Williams, K., and Zerroukat, M.: The Met Office Unified Model Global Atmosphere 7.0/7.1 and JULES Global Land 7.0 configurations, *Geoscientific Model Development*, 12, 1909–1963, <https://doi.org/10.5194/gmd-12-1909-2019>, <https://gmd.copernicus.org/articles/12/1909/2019/>, 2019.
- 1065 Wang, J., Krejci, R., Giangrande, S., Kuang, C., Barbosa, H. M., Brito, J., Carbone, S., Chi, X., Comstock, J., Ditas, F., et al.: Amazon boundary layer aerosol concentration sustained by vertical transport during rainfall, *Nature*, 539, 416, <https://doi.org/https://doi.org/10.1038/nature19819>, 2016.
- 1070 Wang, M. and Penner, J. E.: Aerosol indirect forcing in a global model with particle nucleation, *Atmospheric Chemistry and Physics*, 9, 239–260, <https://doi.org/10.5194/acp-9-239-2009>, <https://acp.copernicus.org/articles/9/239/2009/>, 2009.
- Weber, R., McMurry, P., Eisele, F., and Tanner, D.: Measurement of expected nucleation precursor species and 3–500-nm diameter particles at Mauna Loa observatory, Hawaii, *Journal of Atmospheric Sciences*, 52, 2242–2257, [https://doi.org/https://doi.org/10.1175/1520-0469\(1995\)052<2242:MOENPS>2.0.CO;2](https://doi.org/https://doi.org/10.1175/1520-0469(1995)052<2242:MOENPS>2.0.CO;2), 1995.
- 1075 Weigel, R., Borrmann, S., Kazil, J., Minikin, A., Stohl, A., Wilson, J., Reeves, J., Kunkel, D., De Reus, M., Frey, W., et al.: In situ observations of new particle formation in the tropical upper troposphere: the role of clouds and the nucleation mechanism, *Atmospheric Chemistry and Physics*, 11, 9983–10010, <https://doi.org/https://doi.org/10.5194/acp-11-9983-2011>, 2011.
- Wendisch, M., Pöschl, U., Andreae, M. O., Machado, L. A., Albrecht, R., Schlager, H., Rosenfeld, D., Martin, S. T., Abdelmonem, A., Afchine, A., et al.: ACRIDICON–CHUVA campaign: Studying tropical deep convective clouds and precipitation over Amazonia using the new German research aircraft HALO, *Bulletin of the American Meteorological Society*, 97, 1885–1908, <https://doi.org/https://doi.org/10.1175/BAMS-D-14-00255.1>, 2016.
- 1080

- West, R. E. L., Stier, P., Jones, A., Johnson, C. E., Mann, G. W., Bellouin, N., Partridge, D. G., and Kipling, Z.: The importance of vertical velocity variability for estimates of the indirect aerosol effects, *Atmospheric Chemistry and Physics*, 14, 6369–6393, <https://doi.org/10.5194/acp-14-6369-2014>, <https://acp.copernicus.org/articles/14/6369/2014/>, 2014.
- Williamson, C. J., Kupc, A., Axisa, D., Bilsback, K. R., Bui, T., Campuzano-Jost, P., Dollner, M., Froyd, K. D., Hodshire, A. L., Jimenez, J. L., et al.: A large source of cloud condensation nuclei from new particle formation in the tropics, *Nature*, 574, 399–403, <https://doi.org/https://doi.org/10.1038/s41586-019-1638-9>, 2019.
- Wilson, D. R. and Ballard, S. P.: A microphysically based precipitation scheme for the UK meteorological office unified model, *Quarterly Journal of the Royal Meteorological Society*, 125, 1607–1636, <https://doi.org/https://doi.org/10.1002/qj.49712555707>, <https://rmets.onlinelibrary.wiley.com/doi/abs/10.1002/qj.49712555707>, 1999.
- Wimmer, D., Buenrostro Mazon, S., Manninen, H. E., Kangasluoma, J., Franchin, A., Nieminen, T., Backman, J., Wang, J., Kuang, C., Krejci, R., et al.: Ground-based observation of clusters and nucleation-mode particles in the Amazon, *Atmospheric Chemistry and Physics*, 18, 13 245–13 264, <https://doi.org/https://doi.org/10.5194/acp-18-13245-2018>, 2018.
- Wood, N., Staniforth, A., White, A., Allen, T., Diamantakis, M., Gross, M., Melvin, T., Smith, C., Vosper, S., Zerroukat, M., et al.: An inherently mass-conserving semi-implicit semi-Lagrangian discretization of the deep-atmosphere global non-hydrostatic equations, *Quarterly Journal of the Royal Meteorological Society*, 140, 1505–1520, 2014.
- Yáñez-Serrano, A. M., Nölscher, A. C., Bourtsoukidis, E., Alves, E. G., Ganzeveld, L., Bonn, B., Wolff, S., Sa, M., Yamasoe, M., Williams, J., et al.: Monoterpene chemical speciation in a tropical rainforest: variation with season, height, and time of day at the Amazon Tall Tower Observatory (ATTO), *Atmospheric Chemistry and Physics*, 18, 3401–3418, <https://doi.org/https://doi.org/10.5194/acp-18-3403-2018>, 2018.
- Yee, L. D., Isaacman-VanWertz, G., Wernis, R. A., Kreisberg, N. M., Glasius, M., Riva, M., Surratt, J. D., de Sá, S. S., Martin, S. T., Alexander, M. L., Palm, B. B., Hu, W., Campuzano-Jost, P., Day, D. A., Jimenez, J. L., Liu, Y., Misztal, P. K., Artaxo, P., Viegas, J., Manzi, A., de Souza, R. A. F., Edgerton, E. S., Baumann, K., and Goldstein, A. H.: Natural and Anthropogenically Influenced Isoprene Oxidation in Southeastern United States and Central Amazon, *Environmental Science & Technology*, 54, 5980–5991, <https://doi.org/10.1021/acs.est.0c00805>, <https://doi.org/10.1021/acs.est.0c00805>, 2020.
- Yin, Y., Carslaw, K., and Feingold, G.: Vertical transport and processing of aerosols in a mixed-phase convective cloud and the feedback on cloud development, *Quarterly Journal of the Royal Meteorological Society: A journal of the atmospheric sciences, applied meteorology and physical oceanography*, 131, 221–245, <https://doi.org/https://doi.org/10.1256/qj.03.186>, 2005.
- Yu, F., Luo, G., Nadykto, A. B., and Herb, J.: Impact of temperature dependence on the possible contribution of organics to new particle formation in the atmosphere, *Atmospheric Chemistry and Physics*, 17, 4997–5005, <https://doi.org/10.5194/acp-17-4997-2017>, <https://acp.copernicus.org/articles/17/4997/2017/>, 2017.
- Zannoni, N., Leppla, D., de Assis, P. I. L. S., Hoffmann, T., Sá, M., Araújo, A., and Williams, J.: Surprising chiral composition changes over the Amazon rainforest with height, time and season, *Communications Earth and Environment*, 1, 1–11, <https://doi.org/https://doi.org/10.1038/s43247-020-0007-9>, 2020.
- Zhao, B., Shrivastava, M., Donahue, N. M., Gordon, H., Schervish, M., Shilling, J. E., Zaveri, R. A., Wang, J., Andreae, M. O., Zhao, C., et al.: High concentration of ultrafine particles in the Amazon free troposphere produced by organic new particle formation, *Proceedings of the National Academy of Sciences*, 117, 25 344–25 351, <https://doi.org/https://doi.org/10.1073/pnas.2006716117>, 2020.

- 1120 Zhou, J., Swietlicki, E., Hansson, H. C., and Artaxo, P.: Submicrometer aerosol particle size distribution and hygroscopic growth measured in the Amazon rain forest during the wet season, *Journal of Geophysical Research: Atmospheres*, 107, LBA 22–1–LBA 22–10, <https://doi.org/https://doi.org/10.1029/2000JD000203>, <https://agupubs.onlinelibrary.wiley.com/doi/abs/10.1029/2000JD000203>, 2002.
- Zhu, J., Penner, J. E., Yu, F., Sillman, S., Andreae, M. O., and Coe, H.: Decrease in radiative forcing by organic aerosol nucleation, climate, and land use change, *Nature Communications*, 10, 1–7, <https://doi.org/https://doi.org/10.1038/s41467-019-08407-7>, 2019.