

# Aura/MLS observes, and SD-WACCM-X simulates the seasonality, quasi-biennial oscillation and El Nino Southern Oscillation of the migrating diurnal tide driving upper mesospheric CO primarily through vertical advection

5 Cornelius Csar Jude H. Salinas<sup>1,2</sup>, Dong L. Wu<sup>3</sup>, Jae N. Lee<sup>3,4</sup>, Loren C. Chang<sup>1,2</sup>, Liying Qian<sup>5</sup> and Hanli Liu<sup>5</sup>

<sup>1</sup>Department of Space Science and Engineering, National Central University, Taoyuan City, 32001, Taiwan

<sup>2</sup>Center for Astronautical Physics and Engineering, National Central University, Taoyuan City, 32001, Taiwan

<sup>3</sup>NASA Goddard Space Flight Center, Greenbelt, Maryland, 20771, USA

10 <sup>4</sup>Joint Center for Earth Systems Technology, University of Maryland, Baltimore County, Baltimore, Maryland, 21201, USA

<sup>5</sup>NCAR High Altitude Observatory, Boulder, Colorado, 80301, USA

*Correspondence to:* Cornelius Csar Jude H. Salinas (ccjsalinas@gmail.com)

**Abstract.** This work uses 17 years of upper mesospheric carbon monoxide (CO) and temperature observations by the Microwave Limb Sounder (MLS) on-board the Aura satellite to present and explain the seasonal and interannual variability of the migrating diurnal tide (DW1) component of upper mesospheric CO. This work then compares these observations to simulations by the Specified Dynamics – Whole Atmosphere Community Climate Model with Ionosphere/Thermosphere eXtension (SD-WACCM-X). Results show that, for all seasons, MLS CO ~~DW1~~local-time perturbations peaks above 85 km and has a latitude structure resembling the (1,1) mode in temperature. On the other hand, SD-WACCM-X DW1 also peaks above 85 km and has a latitude structure resembling the (1,1) mode but it simulates 2 local maximum of the (1,1) mode between 85 km and 92 km. Despite the differences in altitude structure, a tendency analysis and the adiabatic displacement method revealed that, on seasonal and interannual timescales, observed and modelled CO's (1,1) component can be reproduced solely using vertical advection. It was also found that both observed and modelled CO's (1,1) component contains interannual oscillations with periodicities close to that of the Quasi-biennial Oscillation and the El Nino Southern Oscillation. From these results, this work concludes that on seasonal and interannual timescales, the observed and modelled (1,1) mode affects the global structure of upper mesospheric CO primarily through vertical advection.

## 1 Introduction

The most dominant chemical reaction driving upper mesospheric Carbon Monoxide (CO) is the photo-dissociation of carbon dioxide (CO<sub>2</sub>) by solar ultraviolet (UV) radiation (Brasseur and Solomon, 2006):



30 This reaction makes [the timescales of the chemical reactions driving CO's photochemical lifetime variability \(hereafter referred to as chemical timescales\)](#) longer than dynamical timescales (Minschwaer et al, 2010). Thus, numerous studies have used CO as a dynamical tracer in the upper mesosphere particularly for the winter residual circulation (Allen et al, 1999; 2000; Manney et al, 2009; Lee et al, 2011; Garcia et al, 2014).

While numerous studies have used CO as a dynamical tracer for the winter residual circulation, nobody has used CO  
35 as a dynamical tracer for atmospheric tides. The upper mesosphere is a region where atmospheric tides reach significant amplitudes. The most dominant atmospheric tide is the migrating diurnal tide. For all latitudes and altitudes, the migrating diurnal tide manifests as a westward propagating planetary-scale wave with zonal wavenumber 1 and with a period of 24 hours. The common nomenclature for the migrating diurnal tide is DW1. D stands for diurnal or its 24-hour period, W stands for westward which is its propagation direction and the number 1 stands for its zonal-wavenumber. For semidiurnal tides, we  
40 replace D with S and for eastward propagating tides, we replace W with E. For example, the eastward propagating non-migrating semidiurnal tide with wavenumber 2 is written as SE2.

While the manifestation of DW1 at all latitudes and altitudes is the same in terms of longitudinal propagation direction, wavenumber, and period, they can differ in terms of tidal amplitude and phase. The altitude and latitude variation of a tide's amplitude and phase determines what global tidal mode is currently present in the atmosphere. Hough modes  
45 mathematically represents global tidal modes (Chapman and Lindzen, 1970; Forbes, 1995). Classical tidal theory derives the Hough modes (Chapman and Lindzen, 1970). The most dominant tidal mode behind the migrating diurnal tide in the upper mesosphere is the (1,1) Hough mode, a symmetric vertically propagating mode. This mode is generated by tropospheric water vapor and stratospheric ozone's absorption of solar radiation as well as by latent heat release from tropical convection (Grove, 1982a; Grove, 1982b; Hagan and Forbes, 2002). It then propagates from the lower atmosphere up to the mesosphere and lower  
50 thermosphere (MLT) region where its amplitude peaks before it breaks and dissipates.

Numerous observational studies have already shown that the DW1 component of temperature exhibits significant seasonal and interannual variability. A semi-annual oscillation with primary peaks in March equinox dominates their seasonal variability (Zhang et al, 2006; Forbes and Wu, 2006; Mukhtarov et al, 2009; Gan et al, 2014). Observations have also shown that the Quasi-Biennial Oscillation and the El Nino Southern Oscillation affects DW1 amplitudes ([Burrage et al., 1995;](#)  
55 [Lieberman, 1997;](#) [Vincent et al., 1998;](#) [McLandress, 2002a; 2002b;](#) [Gurubaran et al, 2005;](#) [Mayr & Mengel, 2005;](#) [Liebermann et al, 2007;](#) [Wu et al, 2008;](#) [Gurubaran et al., 2009;](#) [Mukhtarov et al, 2009;](#) [Pancheva et al, 2009;](#) [Xu et al., 2009;](#) [Pedatella et al, 2012;](#) [Pedatella et al, 2013;](#) [Gan et al, 2014;](#) [Liu et al, 2017;](#) [Zhou et al, 2018;](#) [Kogure et al, 2021;](#) [Pramitha et al, 2021;](#) [Cen et al, 2022](#)). On the other hand, minimal observational studies have analysed the seasonal and interannual variability of the DW1 component of other dynamical and chemical parameters because of the lack of long-term reliable observations. To the  
60 best of our knowledge, Wu et al (2008) is the only observational study to show that there is also a possible QBO variation in the DW1 component of horizontal winds. With regards tracers, previous studies have only shown that DW1 can affect the volume mixing ratio of tracers through transport processes (Akmaev et al, 1980; Angelats I Coll and Forbes, 1998; Marsh et al, 1999; Shepherd et al, 1995; Shepherd et al, 1997; Ward, 1999; Zhang et al, 1998; Marsh and Russell, 2000; Oberheide and

Forbes, 2008; Smith et al, 2010; Marsh, et al, 2011; Salinas et al, 2020; Salinas et al, 2022). However, no observational study  
65 has analysed the seasonal and interannual variabilities in a tracer’s DW1 component. Thus, our knowledge of DW1-induced  
tracer transport is terribly lacking. This hinders us from fully understanding atmosphere-ionosphere coupling in seasonal and  
interannual timescales which highly depends on the transport of tracers like atomic oxygen (Jones et al, 2014).

This work helps remedy this issue by taking advantage of 17 years of CO observations provided by the Microwave  
Limb Sounder (MLS) on-board the Aura satellite to analyse the seasonal and interannual variability of the DW1 component  
70 of upper mesospheric CO. This work then compares these observations to simulations by the Specified Dynamics – Whole  
Atmosphere Community Climate Model with Ionosphere/Thermosphere eXtension (SD-WACCM-X).

## 2. Satellite Datasets and Model

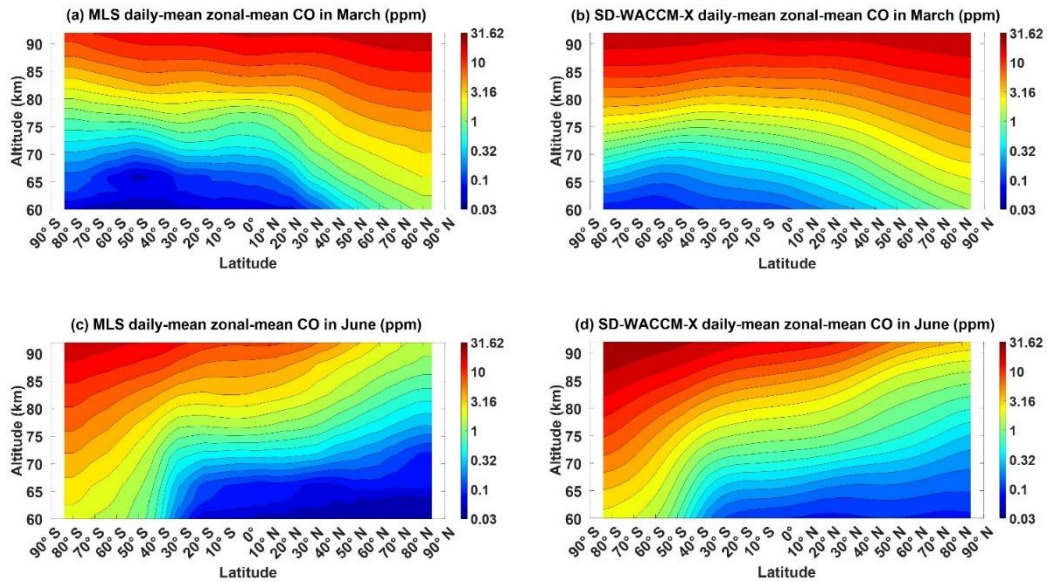
This work uses Aura MLS version 4.2x (V4.2x) carbon monoxide (CO) volume-mixing ratio and temperature vertical  
profile observations from 2004 to 2021 ([https://mls.jpl.nasa.gov/data/v4-2\\_data\\_quality\\_document.pdf](https://mls.jpl.nasa.gov/data/v4-2_data_quality_document.pdf)). The MLS CO profiles  
75 have a vertical resolution of 3-4 km in the stratosphere and lower mesosphere as well as 9 km in the upper mesosphere. With  
this vertical resolution, MLS CO vertical profiles have 37 data-points from the stratosphere to the upper mesosphere. The MLS  
temperature profiles have a vertical resolution of 4-6 km in the stratosphere and lower mesosphere as well as 8–13 km in the  
upper mesosphere. With this vertical resolution, MLS temperature vertical profiles have 55 data-points from the stratosphere  
to the upper mesosphere. This work uses these temperature observations to explain CO DW1. More details on this later. The  
80 ascending nodes of the Aura orbit, when the spacecraft is moving toward the north, cross the equator at 1:45±15 PM (short-  
handed to 2PM hereafter) local time. Similarly, the descending nodes, when the spacecraft is moving toward the south, cross  
the equator at 1:45±15 AM (short-handed to 2AM hereafter) local time (<https://aura.gsfc.nasa.gov/scinst.html>). This orbit  
allows MLS to supply near-global maps of 2AM and 2PM CO and temperature from the stratosphere to the upper mesosphere.  
Nguyen and Palo (2013) have shown that up to around latitude 50 degrees, the data-points of MLS are at either ~2 AM or ~2  
85 PM local-time. In our work, our calculations show that this can be extended up to latitudes ~80 degrees in both hemispheres  
although, the number of data-points aren’t as much as over the low-latitudes. We make sure to note this in the analysis. -This  
sampling hinders us from getting the exact amplitude and phase of any CO and temperature tidal component. However, this  
sampling still allows us to get the ~~DW1-induced~~ perturbations on CO (hereafter referred to as MLS CO  $\mu'$ ) and temperature  
(hereafter referred to as MLS  $T'$ ) that may predominantly be driven by the DW1 tide. To calculate the ~~se-DW1-induced~~  
90 ~~perturbations~~, we take the difference of the 2AM and 2PM zonal-mean profiles (Oberheide et al, 2003).

These observations are compared to simulations from SD-WACCM-X. WACCM-X is a first-principles Physics-  
based model that simulates the whole atmosphere from the surface to the Ionosphere/Thermosphere up to around 700 km  
depending on solar activity while accounting for the coupling of the atmosphere with the ocean, sea ice and land. It uses  
elements of both the Whole Atmosphere Community Climate Model and the Thermosphere Ionosphere Electrodynamics  
95 general circulation models (Liu, H.L. et al ,2018; Liu, J., et al, 2018). This work uses the Specified Dynamics mode of the  
model (SD-WACCM-X). SD-WACCM-X is a version of WACCM-X whose temperature and winds from the surface to the

stratosphere at  $\sim 50$  km is nudged by the Modern-Era Retrospective Analysis for Research and Applications (MERRA) Reanalysis dataset (Rienecker et al, 2011; Marsh et al, 2013). By nudging with MERRA, the model's dynamical variables become realistic from the surface to the stratosphere (Kunz et al, 2011). The run has a conventional latitude-longitude grid with horizontal resolution of  $1.9^\circ$  in latitude and  $2.5^\circ$  in longitude. The vertical resolution is 2 points per scale height below  $\sim 50$  km and increases to 4 points per scale height above  $\sim 50$  km.

Model parameters are output daily in hourly resolution. This work uses model outputs from 2004 to 2019. From these outputs, we calculate the monthly-means of dynamical and chemical parameters' the longitude-latitude-pressure-UT profiles. Then, from these 4-dimensional profiles, 2D least-squares fit is used to calculate their zonal-mean component as well as the DW1 amplitudes and phases (Wu et al, 1995). From these DW1 amplitudes and phases, we reconstruct the zonal-mean profiles of all the parameters at 2AM and 2PM local-times. Finally, the DW1-induced perturbations are calculated by taking the difference of these 2AM and 2PM zonal-mean profiles.

To analyse SD-WACCM-X CO's DW1 component, we first need to assess the model's simulations of CO's daily-mean zonal-mean component. This will specifically be important in assessing any differences and/or similarities between MLS and SD-WACCM-X CO  $\mu'$ . An estimate of the daily-mean zonal-mean profile of MLS CO (hereafter referred to as MLS CO  $\bar{\mu}$ ) is calculated by taking the average of the 2AM and 2PM zonal-mean profiles. As already mentioned above, the daily-mean zonal-mean profile of SD-WACCM-X CO (hereafter referred to as SD-WACCM-X CO  $\bar{\mu}$ ) is calculated using a 2D-least squares fit.



115 **Figure 1: Daily-mean zonal-mean component of (a) MLS CO in March equinox, (b) SD-WACCM-X CO in March equinox, (c) MLS CO in June solstice and (d) SD-WACCM-X CO in June solstice. All are in units of ppm.**

Figure 1 shows the CO  $\bar{\mu}$  averaged for all March equinox and for all June solstice as observed by MLS and as simulated by SD-WACCM-X. In both seasons and in both observations and model, CO  $\bar{\mu}$  shows interhemispheric asymmetry

120 with larger asymmetry during solstice seasons than during equinox seasons (September equinox and December solstice shown  
in figure A1). The interhemispheric asymmetry is characterized by larger CO over the winter (during solstice months) and/or  
spring (during equinox months) hemispheres than the summer and/or fall hemispheres, respectively. The latitudinal gradient  
over the winter hemisphere maximizes during solstice seasons. These seasonal morphologies are known to be driven by the  
seasonality of the residual circulation (Garcia et al, 2014). While these seasonal morphologies are similar in both observations  
125 and model, there are still notable differences between them. During equinox seasons, MLS CO  $\bar{\mu}$  above 80 km is larger over  
the equator than over the northern and southern low latitudes. Below 80 km, MLS CO  $\bar{\mu}$  is lower over the equator than over  
the northern and southern low latitudes. This isn't reproduced in the model. This may be attributed to the incomplete local-  
time sampling in MLS. With incomplete local-time sampling, the zonal-mean may have aliases from other tides, particularly  
the semidiurnal tides. During solstice seasons, the latitudinal (vertical gradient) gradient over the winter hemisphere is larger  
130 (weaker) in MLS CO than in SD-WACCM-X CO. This may be attributed to a weaker winter downwelling in the model than  
observed. These similarities and differences in MLS and SD-WACCM-X CO  $\bar{\mu}$  will be noted in the analyses that follow.

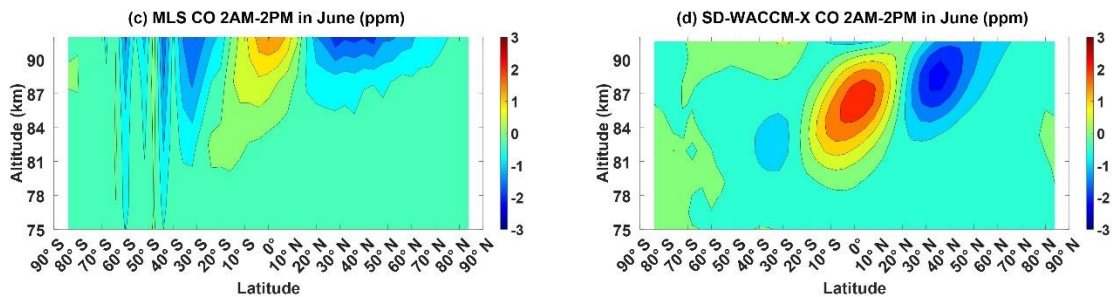
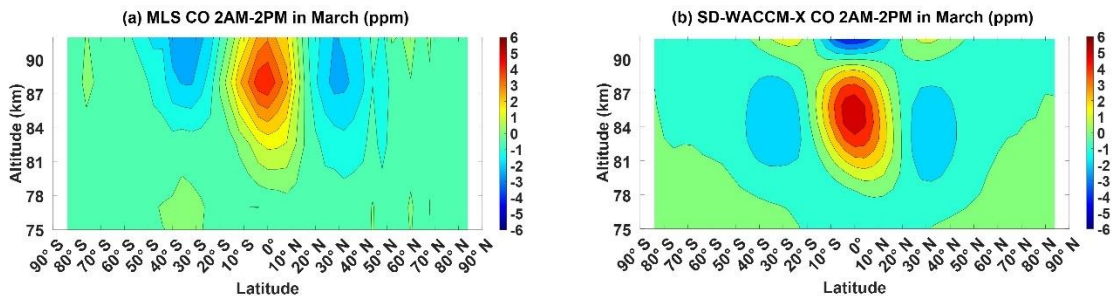
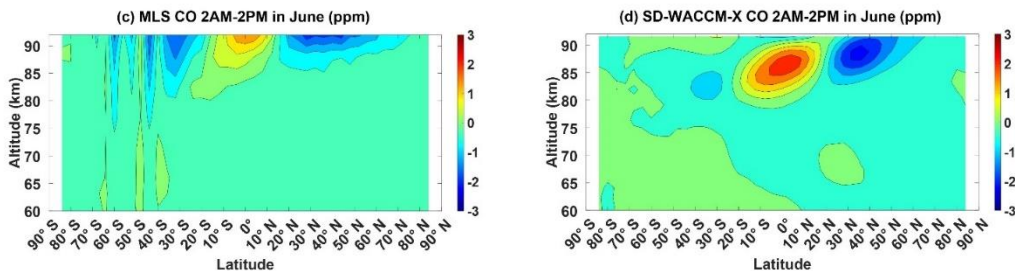
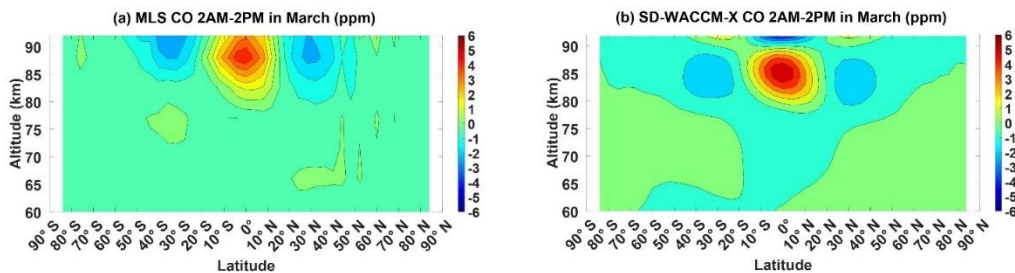
To determine potential issues related to the lack of full local-time sampling in MLS temperatures, this work utilizes  
temperature observations from the Sounding of the Atmosphere using Broadband Emission Radiometry (SABER) instrument  
onboard the Thermosphere Ionosphere Mesosphere Energetics and Dynamics satellite (Russell et al, 1999). This work  
135 specifically utilizes SABER v2.07 operational temperature profiles (Mertens et al, 2001; Kutepov et al, 2006; Garcia-Comas  
et al, 2008; Mertens et al, 2009; Dawkins et al, 2018). Salinas et al (2020) has pointed out that the assumption of no local-time  
variation in CO<sub>2</sub> may be problematic above 90 km, however, this work focuses on altitudes below 92 km where the CO<sub>2</sub>  
vertical gradient and thus local-time variations are negligible (Garcia et al, 2014). SABER has alternating latitudinal coverage  
of 82°N – 53°S and 53°N – 82°S that occur due to the spacecraft yaw cycle every ~60 days. The mission has an orbital period  
140 of ~1.6 hours and a local time precession of 12 minutes per day. This orbit allows SABER to achieve full diurnal coverage  
after 60 days (Zhang et al, 2006). From these SABER temperature observations, we take all the profiles within 30-days before  
and after the 15<sup>th</sup> of every month, then bin them into a 30-degree longitude, 5-degree latitude, 2-km altitude and 3-hour UT  
grid. We then use 2D least-squares fit to calculate SABER temperatures' zonal-mean and DW1 component from these grids.  
From these DW1 amplitudes and phases, we reconstruct 2AM and 2PM zonal-mean temperature profiles. Finally, we apply  
145 the same process as done on the MLS 2AM and 2PM zonal-mean temperature profiles to calculate the SABER DW1  
temperature components. However, we only show values between latitudes 50°S and 50°N because SABER's yaw cycle  
hinders full local-time coverage at higher latitudes.

### 3. Seasonality of the DW1 Component of CO

In this section, we present the seasonality of ~~CO  $\mu'$  and  $T'$  the DW1 component of CO and temperature~~ as observed  
150 by MLS and as simulated by SD-WACCM-X. To calculate the seasonality of MLS CO  $\mu'$  and  $T'$ , we first construct monthly  
mean 2AM and 2PM global zonal-mean profiles of CO and temperature. Each profile has a 4-degree latitude bin from latitude  
84°S to latitude 84°N. We then calculate the composite seasonal average of these 2AM and 2PM zonal-mean profiles. Finally,



155 we take the difference between the 2AM and 2PM zonal-mean profiles for each month. To calculate the seasonality of SD-WACCM-X CO  $\mu'$  and  $T'$ , we first calculate the monthly-means of their longitude-latitude-pressure-UT profiles. Then, from these 4-dimensional profiles, 2D least-squares fit is used to calculate their zonal-mean component as well as the DW1 amplitudes and phases. From these DW1 amplitudes and phases, we reconstruct their zonal-mean profiles at 2AM and 2PM local-times. Finally, we apply the same process as done on the MLS 2AM and 2PM zonal profiles to calculate their DW1 components.



160

**Figure 2: Migrating Diurnal Tide component of (a) MLS CO in March equinox, (b) SD-WACCM-X CO in March equinox, (c) MLS CO in June solstice and (d) SD-WACCM-X CO in June solstice. All are in units of ppm.**

165 Figure 2 shows CO  $\mu'$  in March equinox and in June solstice as observed by MLS and as simulated by SD-WACCM-X. For both equinox and solstice seasons, the largest MLS CO  $\mu'$  and SD-WACCM-X CO  $\mu'$  are found above 80 km (September equinox and December solstice shown in figure A2). When a dataset has full local-time coverage, figure 2 would come in the form of amplitude contour maps and it would be accompanied by a phase contour map. The amplitude map will then clearly indicate where exactly the tides are strongest. In contrast, figure 2 and the other figures showing  $\mu'$  cannot indicate  
170 where exactly the tidal amplitudes are strongest. It can only indicate where the tide significantly affects CO (tidal perturbations) but it cannot indicate the relative strength of this influence.

Figure 2a shows that in March equinox, the largest MLS CO  $\mu'$  are above 80 km and has peak positive perturbations of +6 ppm over the equator between 80 km and 92 km as well as peak negative perturbations of -4 ppm over the mid-latitudes. The latitude structure is consistent with the (1,1) mode in temperature; that is, peak positive anomalies of around +6 ppm  
175 over the low-latitudes and peak negative anomalies of around -4 ppm over the mid-latitudes (Forbes, 1995; Mukhartov et al, 2009). The peak negative perturbation over the southern mid-latitudes begins at around 87 km and extends above 92 km which is beyond MLS observation range. On the other hand, the peak negative perturbation over the northern mid-latitudes is located between 87 km and 92 km. Figure 2b shows that in March equinox, the largest SD-WACCM-X CO  $\mu'$  are also above 80 km and the latitude structure is also consistent with the (1,1) mode in temperature. has a peak positive perturbation of around +6  
180 ppm over the equator but it is found between 80 km and 90 km. Above 90 km, negative perturbations of around -6 ppm are found. Over the mid-latitudes, SD-WACCM-X CO  $\mu'$  has peak negative perturbations of around -4 ppm between 80 km and 90 km. Above 90 km, positive perturbations are found. SD-WACCM-X CO  $\mu'$  also exhibits a latitudinal structure consistent with the (1,1) mode of temperature. However, unlike MLS, SD-WACCM-X CO  $\mu'$  exhibits two local maximum (hereafter referred to as “pulse”) of the (1,1) mode. The first pulse centered at around 87 km and the second pulse appears to be centered  
185 above 92 km. The pulses exhibit opposite phases of the (1,1) mode.

Figure 2c shows that in June solstice, the largest MLS CO  $\mu'$  perturbations begin at around 85 km and extends beyond 92 km. MLS CO  $\mu'$  has peak positive perturbations of around +2 ppm over the low-latitudes with higher values over the northern low-latitudes than over the southern low-latitudes. Over the northern hemisphere, MLS CO  $\mu'$  has peak negative perturbations of around -3 ppm extending from latitude 30° N to latitude 50° N. Over the southern hemisphere, the  
190 perturbations begin as negative perturbations of around -1 ppm extending from latitude 20° S to latitude 40° S. Then, it alternates between positive and negative perturbations from latitude 40° S to latitude 60° S. Ignoring the features poleward of latitude 40° S, the latitude structure of MLS CO  $\mu'$  in June solstice is consistent with the latitude structure of temperature’s (1,1) mode “distorted” by the background atmosphere (Forbes, 1995; Mukhartov et al, 2009). By “distorted”, we hereafter mean the presence of other diurnal Hough modes.

195 Figure 2d shows that in June solstice, SD-WACCM-X CO  $\mu'$  also ~~has peak positive perturbations~~ has a latitude structure consistent with a “distorted” (1,1) mode but unlike MLS, the model exhibits two “pulses” of the “distorted” (1,1) mode. The first pulse is centred at around 87 km and the second pulse is centred above 92 km. The pulses have opposite phases. In addition, SD-WACCM-X does not simulate the alternating positive and negative perturbations over the winter hemisphere. ~~of around +3 ppm over the low latitudes with a similar asymmetry to that of MLS CO  $\mu'$  but only extends between 80 km and~~  
200 ~~90 km. Over the northern hemisphere, SD WACCM X CO  $\mu'$  also has peak negative perturbations of around -3 ppm extending between latitude 30° N and 50° N but its altitudinal extent appears to end at around 92 km. Over the southern hemisphere, SD-WACCM X CO  $\mu'$  has a negative perturbation but it is found at lower altitudes between 80 km and 85 km. This negative perturbation extends from latitude 20° S to latitude 60° S. SD WACCM X does not reproduce the alternating positive and negative perturbations from latitude 40° S to latitude 60° S that MLS observes. This could suggest that MLS observes mean-~~  
205 ~~flow changes affecting these structures that aren't simulated in the model. Above 85 km, SD WACCM X CO  $\mu'$  has a positive perturbation of around +0.5 ppm that also extends from latitudes 20S to latitude 60S. SD WACCM X CO  $\mu'$  in June solstice also shows a latitudinal structure consistent with a distorted (1,1) mode. However, unlike MLS, SD WACCM X CO  $\mu'$  exhibits two “pulses” of the distorted (1,1) mode. This is like the case in March equinox. The first pulse centred at around 87 km and the second pulse centred above 92 km. The pulses have opposite phases.~~

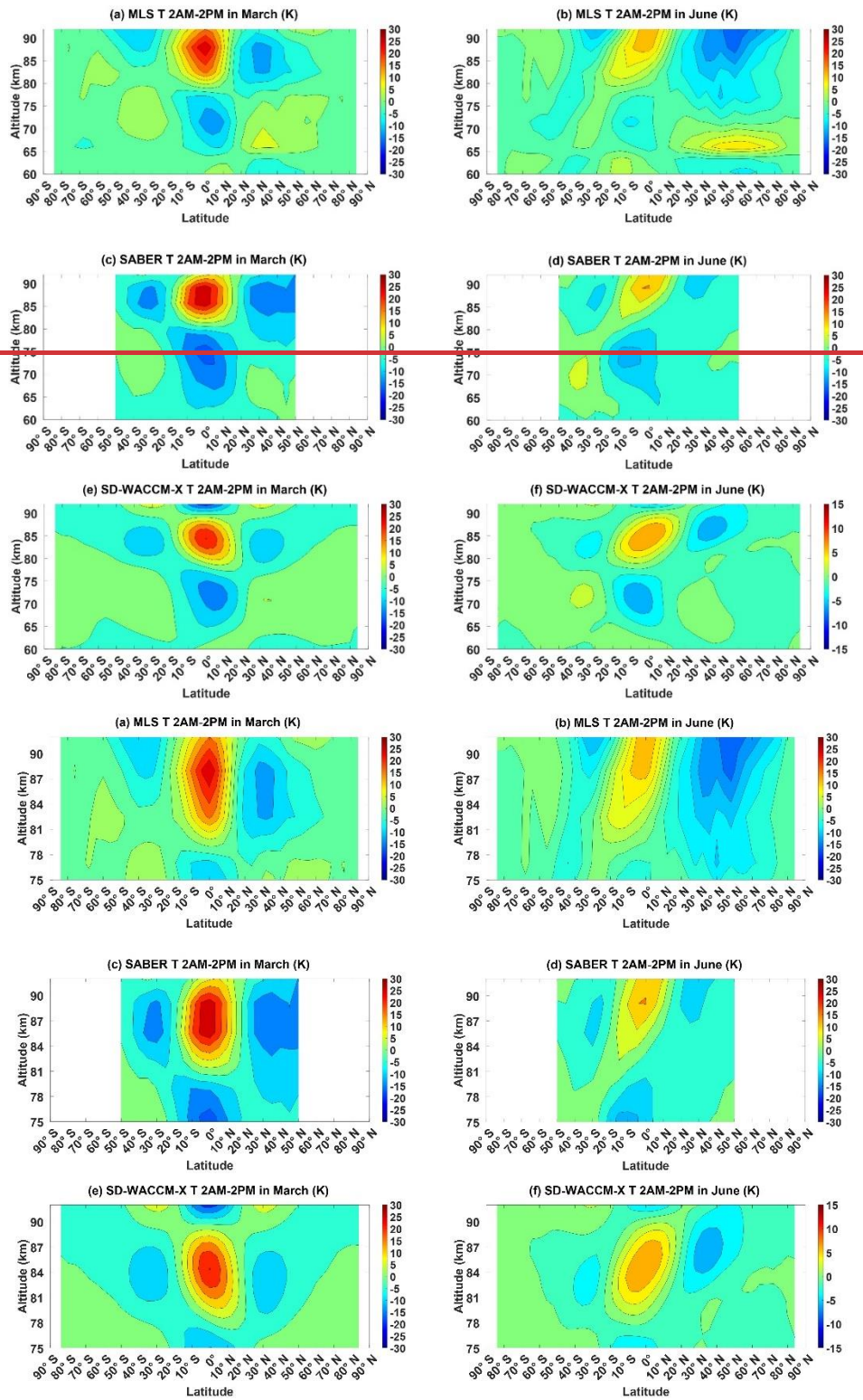
#### 210 4. DW1 Component of temperature

Although the latitude structure of DW1 MLS CO  $\mu'$  and SD-WACCM-X CO  $\mu'$  have similarities to the ~~(1,1) mode of DW1~~ temperature, it has never been proven that ~~the (1,1) mode or at least~~ the DW1 tide affects CO. To establish this, we first characterize the DW1 component of temperature in the region and later use this to prove that the DW1 and (1,1) tide affects CO.

215 Figure 3 shows  $T'$  in March equinox and in June solstice as observed by MLS and by SABER and as simulated by SD-WACCM-X (September equinox and December solstice shown in figure A3). Since we are focused on relating this to CO  $\mu'$ , we focus on features above 80 km where CO  $\mu'$  is largest for both seasons. Figure 3a shows that in March equinox, MLS  $T'$  has very similar latitude structure to MLS CO  $\mu'$ ; that is, it is consistent with the (1,1) mode. ~~peak positive perturbations of +25 K over the equator between 80 km and 92 km as well as peak negative perturbations of -15 K over the mid latitudes. The~~  
220 ~~peak negative perturbation over the southern mid latitudes begins at around 85 km and appears to extend above 92 km. On the other hand, the peak negative perturbation over the northern mid latitudes is found between 80 km and 90 km.~~ Figure 3c shows SABER  $T'$  also in March equinox. SABER  $T'$  has peak positive perturbations of around 30K over the equator which are larger than MLS  $T'$ 's. This difference may be attributed to aliasing of other tides on MLS  $T'$  particularly the migrating semidiurnal tides. It may also be attributed to differences in the instruments' vertical resolutions. SABER has a vertical resolution of ~2  
225 km while MLS has a vertical resolution of ~10 km (Remsberg et al., 2008; Livesey et al., 2011). Given that DW1 typically has a vertical wavelength of ~25-30 km, MLS' coarser vertical resolution can substantially reduce the amplitudes. SABER



$T'$ 's peak negative perturbations over the northern and southern mid-latitudes are both found between 80 km and 90 km unlike MLS  $T'$ . This difference may also be attributed to the uneven sampling of MLS over the middle to high latitudes and/or the vertical resolution differences. Both MLS  $T'$  and SABER  $T'$  exhibit features consistent with the (1,1) mode although there are clear differences in terms of their structure's hemispheric symmetry (Forbes, 1995; Mukhartov et al, 2009). MLS  $T'$ 's (1,1) mode appears tilted upward because its southern mid-latitude peak appears higher than its northern mid-latitude peak. SABER  $T'$ 's (1,1) mode's mid-latitude peaks occur in almost the same altitude, but the northern mid-latitude amplitudes are larger than the southern mid-latitude amplitudes. Figure 3e shows that in March equinox, SD-WACCM-X  $T'$  ~~also has a peak positive perturbation of around +25 K over the equator but it is found between 80 km and 90 km. Above 90 km, negative perturbations reaching -30 K is found over the equator. Over the mid-latitudes, SD-WACCM-X  $\mu'$  has peak negative perturbations of around -10 K between 80 km and 90 km. Above 90 km, positive perturbations are found over the mid-latitudes. Overall, SD-WACCM-X  $T'$  shows two pulses of the (1,1) mode. The first pulse is centred at around 87 km and the second pulse is centred above 92 km. The pulses have opposite phases~~ has a latitude structure very similar to that of SD-WACCM-X CO  $\mu'$ .



**Figure 3: Migrating Diurnal Tide component of (a) MLS temperature in March equinox, (b) MLS temperature in June solstice, (c) SABER temperature in March equinox, (d) SABER temperature in June solstice, (e) SD-WACCM-X temperature in March equinox and (f) SD-WACCM-X temperature in June solstice. All are in units of K.**

In March equinox, MLS  $T'$  and SABER  $T'$  observe only one pulse of the (1,1) mode between 80 km and 92 km while SD-WACCM-X  $T'$  simulates almost two pulses. This may be attributed to the model inaccurately simulating DW1's altitudinal variations. On the other hand, MLS  $T'$  and SABER  $T'$  are different over the mid-latitudes. This shows that the differences between MLS  $T'$  and SABER  $T'$  over the mid-latitudes may also be attributed to aliasing of ~~other tidal components—the migrating semidiurnal tide~~ into MLS  $T'$ .

Figure 3b shows that in June solstice, MLS  $T'$  ~~has~~ exhibits a latitude structure consistent with the “distorted” (1,1) mode (Forbes, 1995; McLandress, 1997; Mukhartov et al, 2009). It is very similar with MLS CO  $\mu'$ . One major difference is that the largest values in MLS CO  $\mu'$  are above 85 km. peak positive perturbations above 80 km over the low latitudes with higher values over the northern low latitudes than over the southern low latitudes. Peak positive perturbations reach +15 K. Over the summer hemisphere, MLS  $T'$  has peak negative perturbations of around -20 K extending from latitude 30° N to latitude 50° N. Over the winter hemisphere, there is a region of negative perturbations of around -15 K extending from latitude 20° S to latitude 40° S. Then, positive perturbations of around 5K are found poleward of latitude 40° S. These features are consistent with the presence of a (1,1) mode distorted by the winter residual circulation (Forbes, 1995; McLandress, 1997; Mukhartov et al, 2009). Figure 3d shows SABER  $T'$  also in June solstice. SABER  $T'$  also ~~has~~ peak positive perturbations over the low latitudes with higher values over the northern low latitudes than over the southern low latitudes. Peak positive perturbations also reach +15 K. Over the summer hemisphere, SABER  $T'$  also has peak negative perturbations extending from latitude 30N to latitude 50N but the magnitude is only around -7 K. Over the winter hemisphere, SABER  $T'$  has peak negative perturbations of around -7K from latitude 20S to latitude 50S. ~~exhibits features consistent with the “distorted” (1,1) mode.~~ These differences between MLS  $T'$  and SABER  $T'$  over the mid-latitudes may be a result of MLS inadequate sampling causing significant aliasing from other tides. Our approach in calculating the DW1 component with MLS is susceptible to aliasing from the migrating semidiurnal tide (Oberheide et al, 2003). In solstice, the migrating semidiurnal tide ~~as well as several non-migrating semidiurnal tides are~~ is known to be significant over the winter mid-latitudes (Zhang et al, 2006). These may all contribute to the aliasing in MLS  $T'$ . Like MLS  $T'$ , these features are also consistent with the presence of a ~~distorted (1,1)~~ “distorted” (1,1) mode. Figure 3f shows that in June solstice, ~~SD-WACCM X  $T'$  also has peak positive perturbations over the low latitudes with larger values over the northern low latitudes than over the southern low latitudes but only extends between 80 km and 90 km. Peak positive perturbations over the low latitudes only reach +10 K. Above 90 km, negative perturbations are found over the low latitudes. Over the summer hemisphere, SD-WACCM X  $T'$  also has peak negative perturbations of around -5 K extending between latitude 30° N and 50° N but its altitudinal extent ends at around 90 km. Above 90 km, positive perturbations appear. Over the winter hemisphere, SD-WACCM X  $T'$  has a negative perturbation but it is found at lower altitudes between 80 km and 85 km. This negative perturbation extends from latitude 20° S to latitude 60° S. Above 85 km, SD-WACCM X  $T'$  over the winter hemisphere has a positive perturbation of around +3 K that also extends~~

275 ~~from latitudes 20° S to latitude 60° S. Unlike~~ MLS  $T'$  and SABER  $T'$ , SD-WACCM-X  $T'$  shows two pulses of the ~~distorted~~  
(1,1) “distorted” (1,1) mode above 80 km.

In June solstice, MLS  $T'$  and SABER  $T'$  observe only one pulse of the ~~distorted~~ (1,1) “distorted” (1,1) mode between  
80 km and 92 km while SD-WACCM-X  $T'$  simulates almost two pulses. This is like the case in March equinox. This indicates  
that the model’s inaccuracies in simulating DW1’s altitudinal variations occur in all seasons.

280

## 5. Physical Mechanisms of CO DW1

Figures 2 and 3 clearly show that the latitude-altitude structure of CO  $\mu'$  and  $T'$  are remarkably similar when looking  
at either MLS observations or SD-WACCM-X simulations. Since the latitude-altitude structure of observed or simulated  $T'$  is  
285 already known to be predominantly driven by DW1, figures 2 and 3 suggest that the latitude-altitude structure of CO  $\mu'$  may  
also be driven by DW1. However, the mechanisms of how DW1 can affect CO  $\mu'$  have never been determined. In this section,  
we present the physical mechanisms of how DW1 affects CO. This section is divided into two sub-sections. One sub-section  
is about the physical mechanisms during March equinox while the other sub-section is about the mechanisms during June  
solstice.

### 290 5.1 March Equinox CO DW1

To determine the physical mechanisms, we took a two-step approach. Step 1 is a tendency analysis involving the  
continuity equation for a tracer given by (Brasseur and Solomon, 2006):

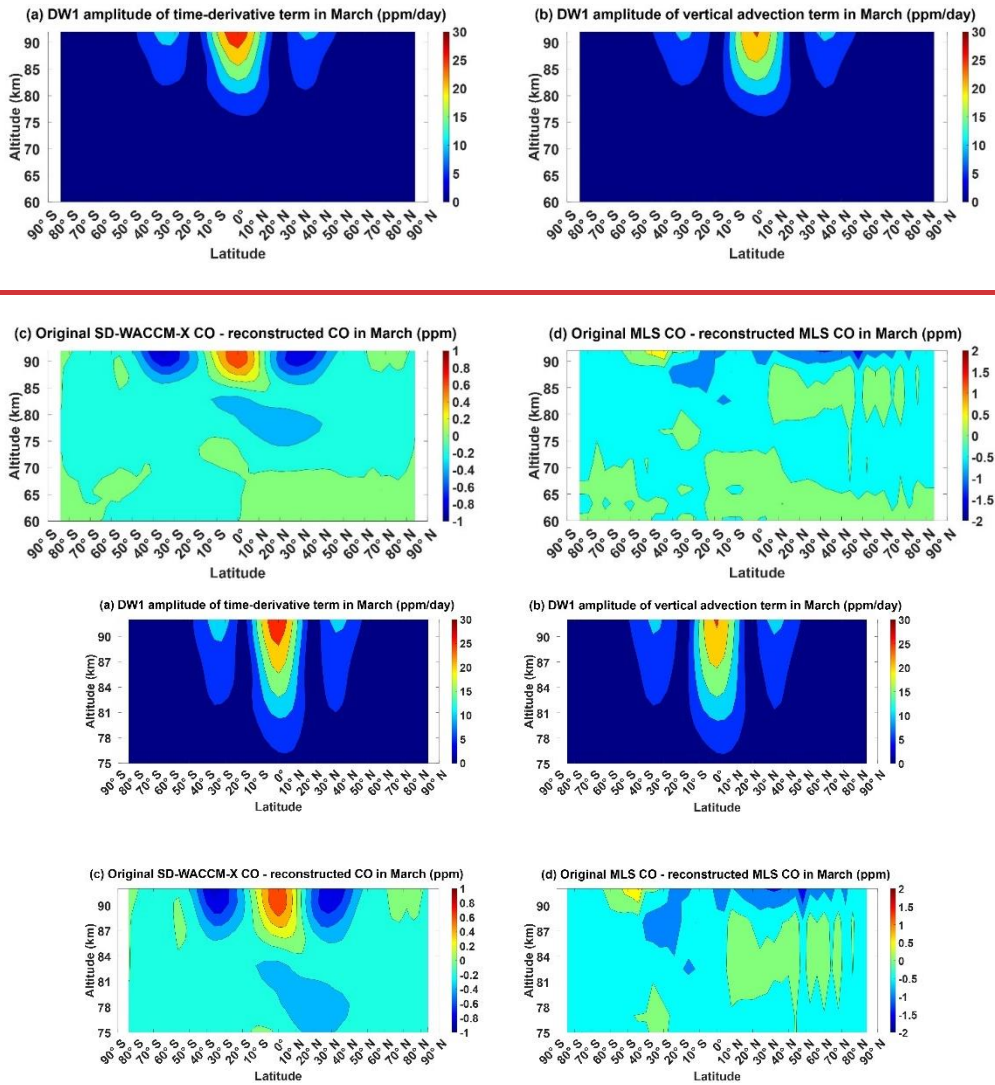
$$\frac{\partial \mu}{\partial t} + \left( \frac{u}{a \cos \phi} \right) \frac{\partial \mu}{\partial \lambda} + \left( \frac{v}{a} \right) \frac{\partial \mu}{\partial \phi} + w \frac{\partial \mu}{\partial z} - \frac{1}{\rho_0} \frac{\partial}{\partial z} \left( \rho_0 K_{zz} \frac{\partial \mu}{\partial z} \right) - \frac{1}{\rho_0} \frac{\partial}{\partial z} \left( \rho_0 D_\mu \frac{\partial \mu}{\partial z} \right) + \frac{1}{\rho_0} \frac{\partial}{\partial z} (\rho_0 \mu w_D) = P - L \quad (2)$$

where  $\mu$  is CO volume mixing ratio,  $t$  is time,  $\phi$  is latitude,  $\lambda$  is longitude and  $z$  is geopotential height. The variables  $u$ ,  $v$  and  
295  $w$  are the neutral zonal, meridional and vertical winds, respectively;  $K_{zz}$  is the eddy diffusion coefficient;  $D_\mu$  is the molecular  
diffusion coefficient and  $w_D$  is its corresponding diffusive separation velocity;  $P$  is the chemical production rate;  $L$  is the  
chemical loss rate;  $\rho_0$  is the atmospheric neutral density; and  $a$  is the radius of the Earth which is  $6.37 \times 10^6$  m. Note that the  
eddy diffusion coefficient is calculated from a gravity wave parameterization (Richter et al, 2010; Garcia et al, 2017). The  
molecular diffusion coefficient is as defined in Smith et al (2011). The DW1 component of each term is calculated by fitting  
300 the terms into the equation  $X(\lambda, t) = \bar{X} + \hat{X}_{n,s} \cos(\pi t/24 - (-1)\lambda - \hat{\psi}_{n,s})$  using 2D least-squares fit. is used to calculate the  
DW1 component of each term in equation 2. This determines the contributions of zonal advection, meridional advection,  
vertical advection, eddy diffusion, molecular diffusion and photochemical production to SD-WACCM-X CO  $\mu'$ 's DW1  
component. Comparing these terms will determine the main processes behind SD-WACCM-X CO  $\mu'$ . Salinas et al (2020)

recently used this to determine the mechanisms of lower thermospheric carbon dioxide's ( $\text{CO}_2$ ) local-time variations. The  
305 result of this analysis gives us SD-WACCM-X's suggested mechanisms for  $\mu'$ . This first method is clearly only applicable  
with model outputs because some of the required parameters cannot currently be observed.

Figure 4a, 4b and B1 shows the results of our tendency analysis for March equinox season. Figure 4a shows the DW1  
amplitude of the time-derivative term in the continuity equation. It can be characterized by a primary equatorial peak of around  
30 ppm/day between 85 km and 92 km as well as secondary mid-latitude peaks of around 12 ppm/day between similar altitudes.  
310 This latitude structure is consistent with that of the (1,1) mode. Figure 4b shows the DW1 amplitude of the vertical advection  
term in the continuity equation. It exhibits similar magnitude and latitude-altitude profile to figure 4a. Figure B1 shows the  
DW1 amplitudes of the other terms in the continuity equation. These figures show that in SD-WACCM-X, vertical advection  
in March equinox has the closest magnitude and latitude-altitude structure to the time-derivative term. Chemical production  
has a higher magnitude than vertical advection but because, as mentioned earlier, the chemical production timescale is slower  
315 than dynamical timescales, it's latitude-altitude structure isn't similar with the time-derivative term.





**Figure 4: Migrating Diurnal Tide component in March equinox of (a) CO's time-derivative term and (b) CO's vertical advection term. (c) Difference between SD-WACCM-X CO's DW1 component and SD-WACCM-X CO's DW1 component reconstructed using adiabatic displacement method. (d) Difference between MLS CO's DW1 component and MLS CO's DW1 component reconstructed using adiabatic displacement method. Units are specified in the plots.**

320

325

Now, we need to determine if the same mechanism holds for the observations. This is step 2. A tendency analysis is still currently impossible with observations because we do not have observations of all the needed parameters. However, we can use a method called the adiabatic displacement method to quantify the contributions of vertical advection on CO  $\mu'$  as observed by MLS and as simulated by SD-WACCM-X. The adiabatic displacement method involves calculating the perturbation on a tracer  $\mu_w'$  due to any tide-induced vertical advection using the equation (Eckermann et al., 1998):

$$\mu_w' = \frac{T'}{S} \frac{\partial \bar{\mu}}{\partial z} \quad (3)$$

$T'$  is the tidal perturbation of temperature.  $S = \left( \frac{\partial T}{\partial z} + \frac{g}{c_p} \right)$  is static stability.  $g$  is the acceleration due to gravity ( $9.8 \text{ m/s}^2$ ).  $c_p$

330 is the heat capacity of air at constant pressure ( $1004 \text{ J K}^{-1} \text{ kg}$ ).  $\frac{\partial \bar{\mu}}{\partial z}$  is the vertical gradient of a tracer's zonal-mean profile.

This equation is derived by first linearizing the continuity equation (equation 2). Then, we assume only the vertical advection term is important. Finally, we set all primed variables into the form  $e^{i(kx-\sigma t)}$  where  $k$  is the zonal wave number and  $\sigma$  is the tidal frequency. This gives us this equation:

$$i(k\bar{u} - \sigma)\mu'_w + \frac{\partial \bar{\mu}}{\partial z} w' = 0 \quad (4)$$

335 The same can be done to a form of the thermodynamic equation that assumes all temperature changes are due to adiabatic motion. This gives us this equation:

$$i(k\bar{u} - \sigma)T' + Sw' = 0 \quad (5)$$

Combining equations 4 and 5 give equation 3.

Comparing  $\text{CO } \mu'$  and  $\text{CO } \mu'_w$  will determine how much of  $\text{CO } \mu'$  is driven by vertical advection. If  $\text{CO } \mu'$  and  $\text{CO } \mu'_w$  are similar, then we can argue that vertical advection does primarily drive  $\text{CO } \mu'$ . Applying this method on the model outputs will assess the consistency of this method and the previous method with regards the role of vertical advection in  $\mu'$ . Forms of this method have already been applied on the analysis of the tidal or local-time variations of other tracers (Akmaev et al, 1980; Angelats I Coll and Forbes, 1998; Marsh et al, 1999; Shepherd et al, 1995; Shepherd et al, 1997; Ward, 1999; Zhang et al, 1998; Marsh and Russell, 2000; Oberheide and Forbes, 2008; Smith et al, 2010; Marsh, et al, 2011; Salinas et al, 345 2022)

Apart from proving that vertical advection primarily drives  $\text{CO } \mu'$ , equation 3 will also explain why the latitude and altitude structure of a tracer's DW1 component and temperature's DW1 component may be correlated. Equation 32 indicates that if vertical advection does primarily drive a tracer's DW1 component and since figure 1 has shown that zonal-mean  $\text{CO}'s$  if the vertical gradient of a tracer's daily-mean zonal-mean component is positive (the gradient increases with height),  $\text{CO } \mu'$  and  $T'$  are correlated. This also indicates that an increase in  $\mu'$  requires  $T' > 0$ , which under adiabatic conditions implies a net downwelling. Conversely, a decrease in  $\mu'$  implies  $T' < 0$ , and net adiabatic upwelling. On the other hand, if vertical advection does primarily drive a tracer's DW1 component and if the vertical gradient of a tracer's daily-mean zonal-mean component is negative (the gradient decreases with height),  $\text{CO } \mu'$  and  $T'$  are anti-correlated.

Equation 3 will also indicate whether the DW1 tide affects a tracer via net upwelling or net downwelling. We define net upwelling as either the absolute vertical wind velocity being positive or the DW1-induced change in vertical wind velocity causes the value to be more positive. We define net downwelling as the opposite of net upwelling. The reason we use these terms is because we note that our analysis won't know for certain what the exact condition of vertical wind is unless we have vertical wind observations. However, we can deduce possible vertical wind conditions. Equation 3 indicates that if vertical advection does primarily drive a tracer's DW1 component and if the vertical gradient of a tracer's daily-mean zonal-mean component is positive, positive perturbations denote a net downwelling while negative perturbations denote a net upwelling. 360

On the other hand, if vertical advection does primarily drive a tracer's DW1 component and if the vertical gradient of a tracer's daily mean zonal mean component is negative, positive perturbations denote a net downwelling while negative perturbations denote net upwelling.

Figure 4c shows the differences between SD-WACCM-X CO  $\mu'$  and SD-WACCM-X CO  $\mu'_w$ . The differences are within  $\pm 0.6$  ppm. Peak positive difference of around +0.6 ppm is found over the equator while peak negative difference of around -0.6 ppm is found over the mid-latitudes. These differences are an order of magnitude lower from the correct values which indicates that SD-WACCM-X CO  $\mu'_w$  is very similar to SD-WACCM-X CO  $\mu'$ . Thus, figure 4a, 4b and 4c indicate that in the model, CO  $\mu'$  and CO  $\mu'_w$  are very similar in March equinox. This explains the ~~good~~positive correlation between the latitude structure of SD-WACCM-X CO  $\mu'$  and SD-WACCM-X  $T'$  in March equinox. We now show MLS CO  $\mu' - \mu'_w$  in figure 4d. Figure 4d shows that the largest differences are above 90 km. Below 90 km, the average difference is around -0.5 ppm. This also indicates good similarity in March equinox between MLS CO  $\mu'$  and MLS CO  $\mu'_w$ . This explains the ~~good~~positive correlation between the latitude structure of MLS CO  $\mu'$  and MLS  $T'$  in March equinox. For both MLS CO  $\mu'$  and SD-WACCM-X CO  $\mu'$ , figures 4c and 4d indicate that the positive perturbations are driven by a relative downwelling due to the DW1 tide while the negative perturbations are driven by a relative upwelling.

## 375 5.2 June Solstice CO DW1

We now determine the physical mechanisms behind CO  $\mu'$  in June solstice. We first show the results of the tendency analysis in SD-WACCM-X. Figure 5a shows the DW1 amplitude of the time-derivative term in the continuity equation. It can be characterized by a primary low-latitude peak of around 8-12 ppm/day between 85 km and 95 km. Amplitudes are larger over the northern low-latitude than over the southern low-latitude. Mid-latitude peaks are also present but the northern mid-latitude peak of around 7 ppm/day is larger than the southern mid-latitude peak of around 3 ppm/day. Figure 5b shows the DW1 amplitude of the vertical advection term in the continuity equation. It shows similar magnitude and latitude-altitude profile to figure 5a. Figure B2 shows the DW1 amplitudes of the other terms in the continuity equation. These figures show that in SD-WACCM-X, vertical advection in June solstice has the closest magnitude and latitude-altitude structure to the time-derivative term. Like March equinox, the chemical production also has a higher magnitude than vertical advection but it's latitude-altitude structure also isn't similar with the time-derivative term.

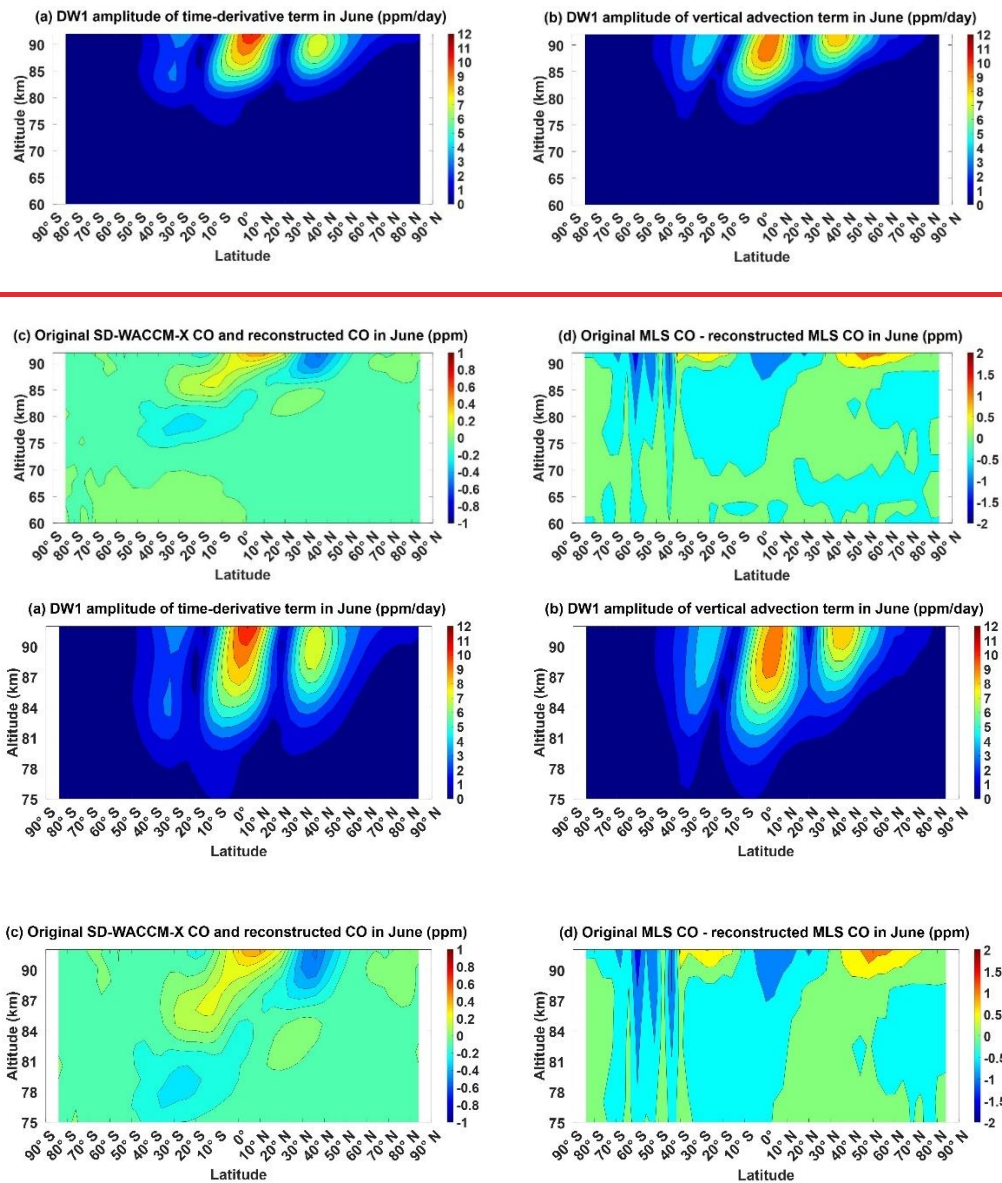


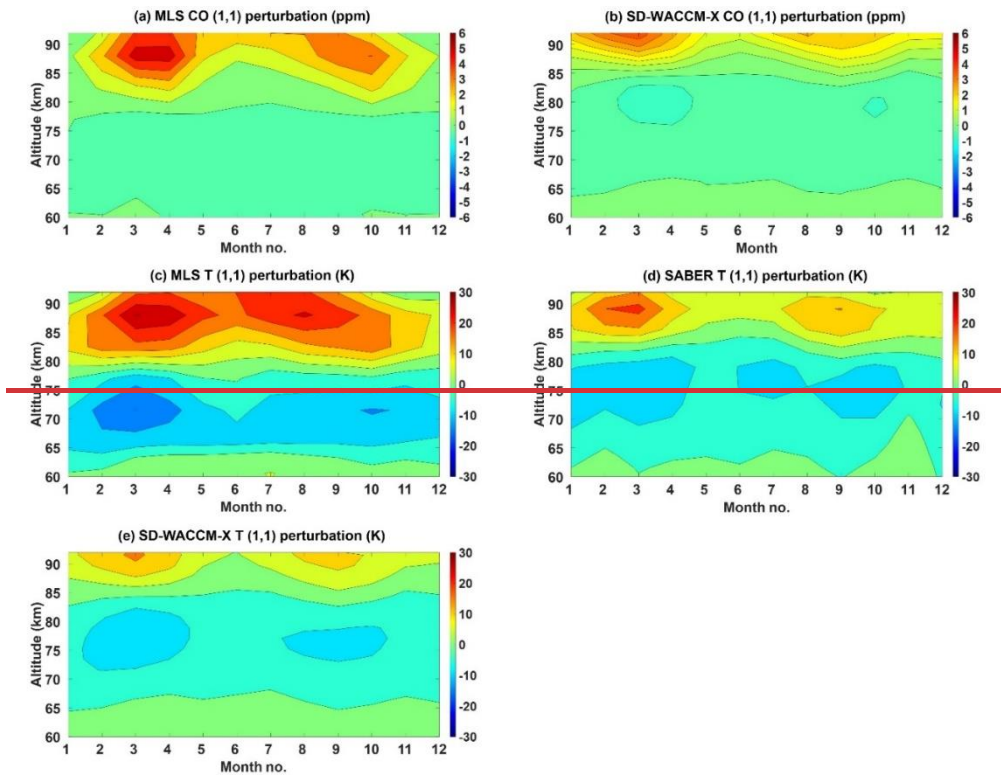
Figure 5: Same as figure 4 but for June solstice.

390 We now also use the adiabatic displacement method to quantify how much CO changes due to DW1-induced vertical  
 advection in June solstice. Figure 5c shows the differences between SD-WACCM-X CO  $\mu'$  and SD-WACCM-X CO  $\mu'_w$  for  
 June solstice. The differences are within  $\pm 0.5$  ppm. Peak positive difference of around +0.5 ppm is found over the equator  
 above 90 km while peak negative difference of around -0.4 ppm is found over the northern mid-latitudes. These differences  
 are also an order of magnitude lower from the correct values which indicates that SD-WACCM-X CO  $\mu'_w$  is very similar to  
 395 SD-WACCM-X CO  $\mu'$ . Thus, figure 5a, 5b and 5c indicate that in the model, CO  $\mu'$  and CO  $\mu'_w$  are remarkably similar in June

solstice. These figures indicate that for SD-WACCM-X in June solstice, the positive perturbations are driven by a relative downwelling due to the DW1 tide while the negative perturbations are driven by a relative upwelling.

We now show June solstice MLS CO  $\mu' - \mu'_w$  in figure 5d. Figure 5d shows that the largest differences between latitudes 30S and 60N are above 90 km. Below 90 km, the average difference is around -0.5 ppm. This also indicates good similarity between MLS CO  $\mu'$  and MLS CO  $\mu'_w$  in June solstice for regions less than 90 km between latitudes 30° S and 60° N. On the other hand, between latitudes 30° S and 60° S, largest differences are found between 80 km and 92 km. This also indicates that unlike in March equinox, MLS CO  $\mu'$  and MLS CO  $\mu'_w$  are not similar throughout all latitudes in June solstice. They are only similar between latitudes 30° S and 60° N. These figures indicate that for MLS in June solstice, not all positive perturbations are driven by a relative downwelling and not all negative perturbations are driven by a relative upwelling.

## 405 6. (1,1) Hough Mode component's seasonal and interannual variability





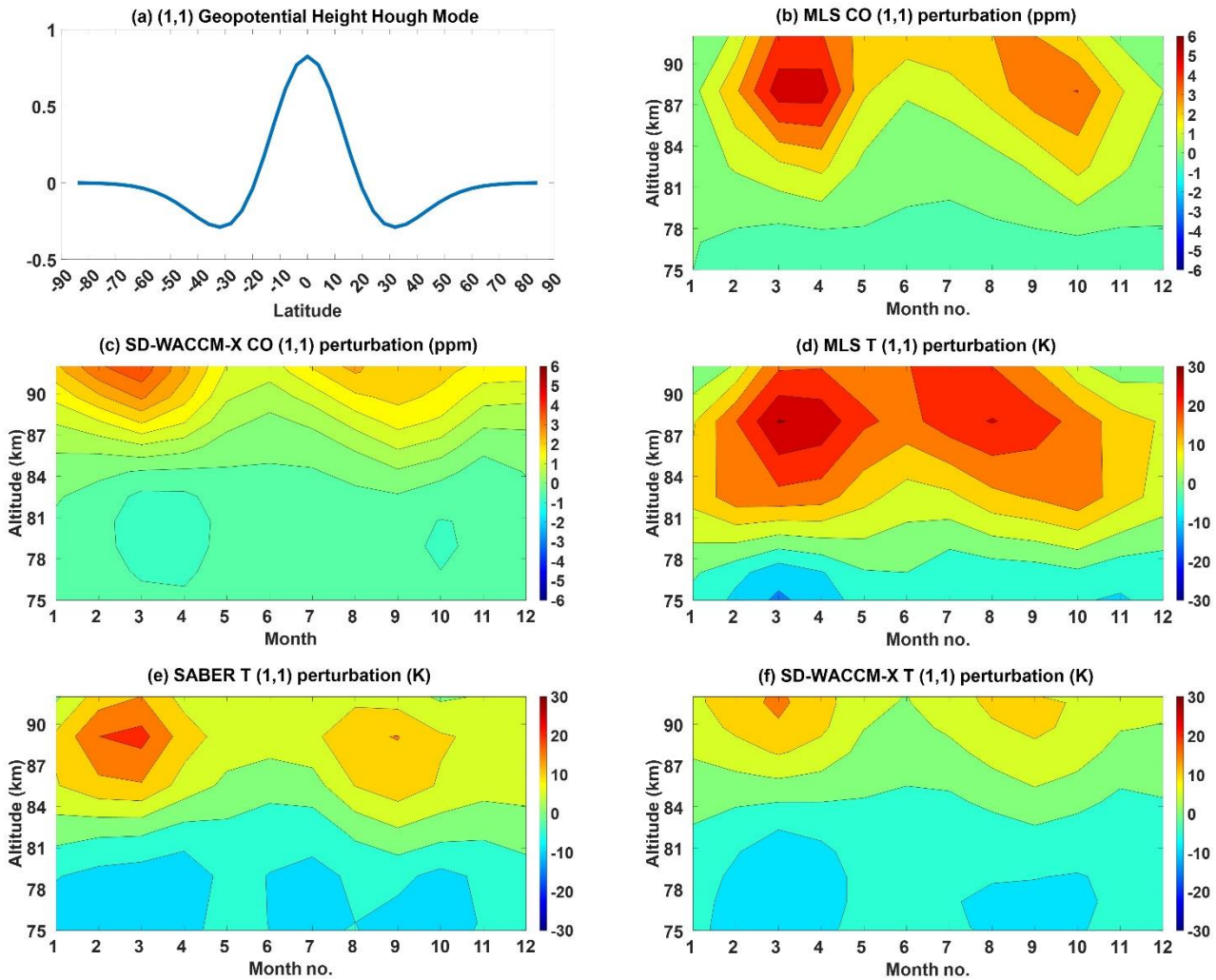


Figure 6: (a) (1,1) Hough mode for geopotential height. Seasonality of the (1,1) component of (ab) MLS CO, (bc) SD-WACCM-X CO, (cd) MLS temperature, (ed) SABER temperature and (fe) SD-WACCM-X temperature. Units are specified in the plots.

410

The previous sections have shown that for both observations and simulations, CO  $\mu'$  is predominantly very similar with CO  $\mu'_w$ . It is also shown that CO  $\mu'$ 's latitude-altitude structure appears predominantly comprised of the (1,1) mode. In this section, we probe deeper into the extent to which vertical advection drives CO  $\mu'$  by now focusing on determining vertical advection's impact on the seasonal and interannual variabilities of CO's (1,1) mode across seasonal and interannual timescales.

415

To calculate the (1,1) mode of CO  $\mu'$  (hereafter referred to as CO  $h'_\mu$ ), we regress project the latitude profiles at each altitude in CO  $\mu'$  with the (1,1) Hough mode profile (Forbes, 1995).

### 6.1 (1,1) Hough Mode component's seasonality

This sub-section will determine the seasonal and interannual variability of the (1,1) mode of CO. To explain it, we will first compare the (1,1) mode of CO with the (1,1) mode of temperature ( $h'_T$ ). Then, we will determine the role of vertical advection by ~~regressprojecting~~ the latitude profiles at each altitude of CO  $\mu'_w$  (presented in section 5) with the (1,1) Hough function profile. The corresponding ~~regressprojection~~ coefficients will be denoted CO  $h'_w$ .

Figure 6 first shows the seasonality of observed and modelled CO  $h'_\mu$  and  $h'_T$ . Figure 6a ~~shows the (1,1) mode. Figure 6b~~ shows the seasonality of MLS CO  $h'_\mu$ . The largest coefficients are above 80 km, and they are all positive ~~regressprojection~~ coefficients indicating that there is a positive correlation between a latitude profile of MLS CO  $\mu'$  and the (1,1) Hough mode between 80 km and 92 km. This is consistent with the features shown in figure 2a and figure 2c. Between 80 km and 90 km, the seasonality is characterized by a semi-annual oscillation with primary peak of around 4 ppm in March equinox and secondary peak of around 3 ppm in September equinox. Above 90 km, it appears as though the primary peak is moving towards June solstice. Figure 6cb shows the seasonality of SD-WACCM-X CO  $h'_\mu$ . The largest coefficients are above 85 km, and they are all also positive ~~regressprojection~~ coefficients. Between 85 km and 95 km, the seasonality is also characterized by a semi-annual oscillation with primary peak of around 6 ppm in March equinox and secondary peak of around 5 ppm in September equinox. Figure 6ba and 6cb shows that SD-WACCM-X does capture the observed semi-annual oscillation of the ~~regressprojection~~ coefficients. However, the altitudinal variations are different from observed. This is consistent with the differences in MLS CO  $\mu'$  and SD-WACCM-X CO  $\mu'$ . The coefficients of SD-WACCM-X CO  $h'_\mu$  are also higher than MLS.

Figure 6de shows the seasonality of MLS  $h'_T$ . Focusing on the coefficients above 80 km, we find that, like MLS CO, they are all positive ~~regressprojection~~ coefficients indicating that there is a positive correlation between MLS  $T'$  and the (1,1) Hough mode between 80 km and 92 km. Between 80 km and 90 km, it also has a semi-annual oscillation with primary peak coefficients of around 25 K during March equinox and secondary peak coefficients of around 20 K during September equinox. Above 90 km, the seasonality appears to shift into an annual oscillation with peak amplitudes in June solstice. Figure 6ed shows the seasonality of SABER  $h'_T$ . Between 80 km and 95 km, it also has a semi-annual oscillation with primary peak of around 20 K during March equinox and secondary peak of around 15 K during September equinox. Unlike MLS  $h'_T$ , its seasonality doesn't seem to change above 90 km. Figure 6fe shows the seasonality of SD-WACCM-X  $h'_T$ . Between 80 km and 95 km, it also has a semi-annual oscillation with primary peak of around 27 K during March equinox and secondary peak of around 20 K during September equinox. Unlike MLS  $h'_T$ , its seasonality doesn't also seem to change above 90 km. Also, SD-WACCM-X  $h'_T$  is consistently larger than SABER  $h'_T$  but its coefficients aren't too different from MLS  $h'_T$ .

Figures 6ba and 6de showed that the seasonality of MLS CO  $h'_\mu$  and MLS  $h'_T$  is similar. However, MLS  $h'_T$  and SABER  $h'_T$  in figure 6ed have differences. The seasonality of MLS  $h'_T$  changes slightly above 90 km while the seasonality of SABER  $h'_T$  doesn't. ~~Since SABER  $h'_T$  was estimated with full local time sampling, f~~Figures 6ba, 6de and 6ed shows that the seasonality of MLS CO  $h'_\mu$  may be affected by the incomplete local-time sampling of MLS ~~or its coarse vertical resolution~~. This would be consistent with the results shown in figures 2 and 3. Figures 2 and 3 showed that MLS CO  $\mu'$  and MLS  $T'$  may be affected by inadequate sampling over the mid-latitudes.

455 Figures 6ba and 6cb showed MLS CO  $h'_\mu$  is ~~weaker-stronger~~ than SD-WACCM-X CO  $h'_\mu$ . Figures 6ed and 6fe also showed that SABER  $h'_T$  is ~~weaker-stronger~~ than SD-WACCM-X  $h'_T$ . ~~These figures suggest that the weaker~~ A larger MLS CO  $h'_\mu$  ~~than simulated is consistent with may be attributed to a weaker-larger~~ realistic MLS or SABER  $h'_T$  than simulated. An ~~overestimation-underestimation~~ of SD-WACCM-X  $h'_T$  indicates inaccuracies in the simulated background atmosphere, tidal source or tidal dissipation mechanisms.

## 6.2 Role of Vertical Advection on the CO (1,1) Mode across Interannual timescales

460 Apart from these differences amongst the datasets, figures 6ba and 6de as well as figures 6cb and 6fe shows that CO  $h'_\mu$  and  $h'_T$  in MLS observations and SD-WACCM-X simulations have similarities in their seasonality. We now check whether this similarity is also found for all months and all years of MLS observations and SD-WACCM-X simulations. We will also check if CO  $h'_\mu$  is primarily driven by vertical advection across all months and years of observations and simulations. In this subsection, we determine the importance of vertical advection by ~~regressprojecting~~ the latitude profiles at each altitude of the previously calculated CO  $\mu'_w$  with the (1,1) Hough function profile. The corresponding ~~regressprojection~~ coefficients will be denoted CO  $h'_w$ .

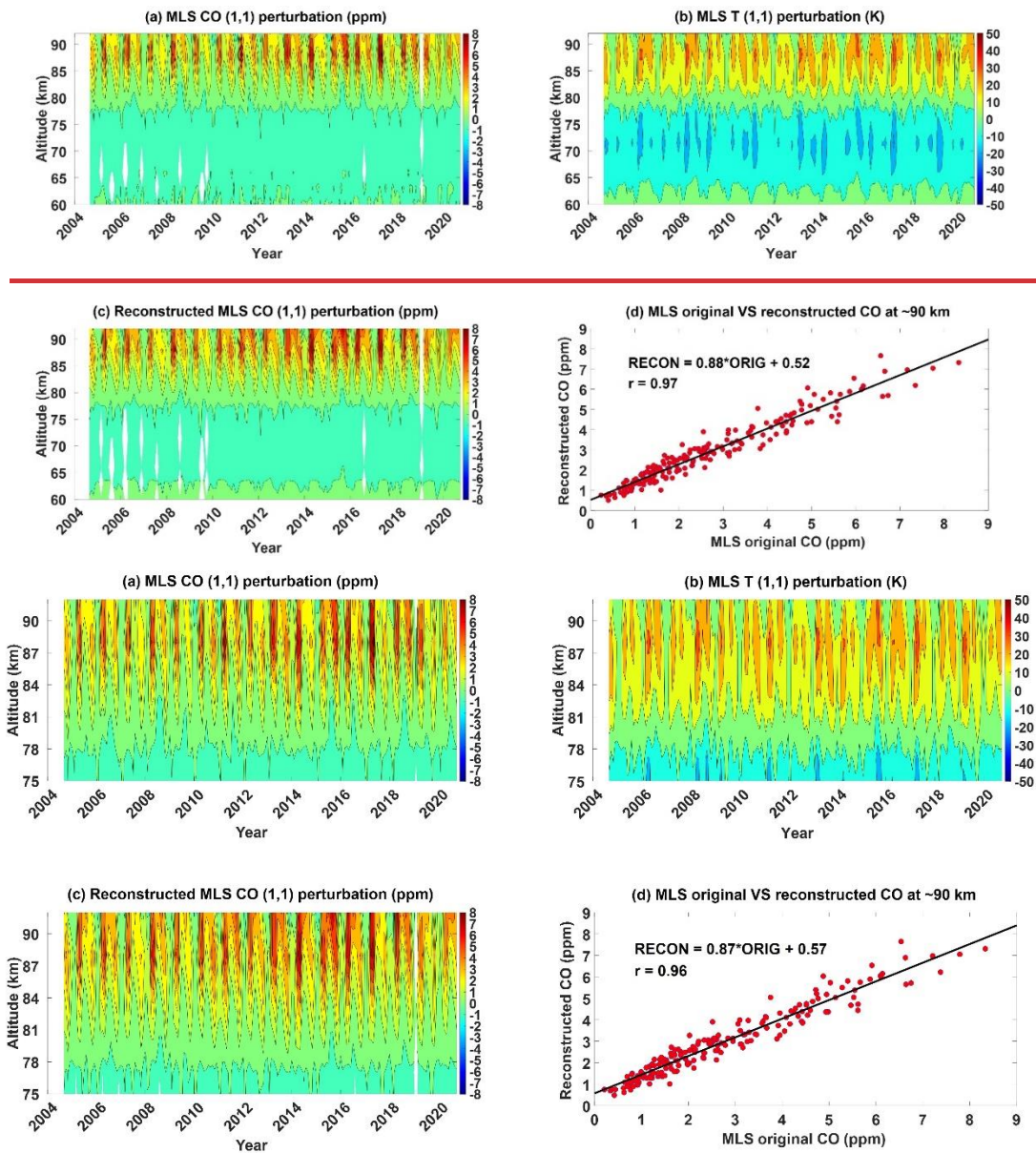


Figure 7: (1,1) component of (a) MLS CO, (b) MLS temperature and (c) MLS CO reconstructed using the adiabatic displacement method from 2004 till 2021. (d) Scatter plot between MLS CO's (1,1) component at ~90 km and that reconstructed using the adiabatic displacement method. Units are specified in the plots.

465

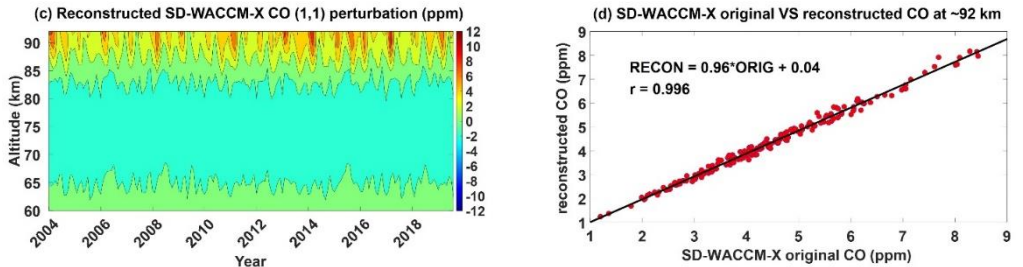
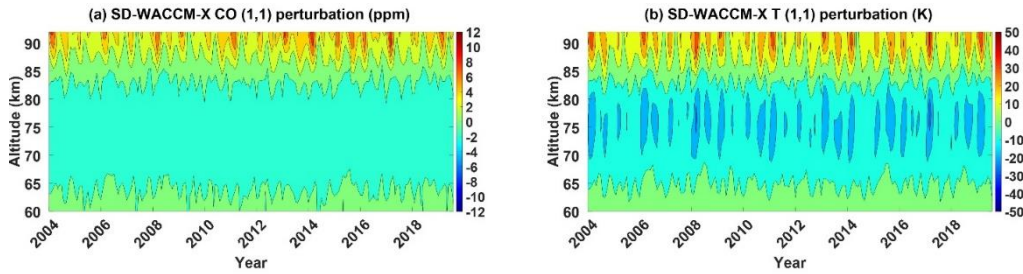
470

Figure 7a shows the MLS CO  $h'_\mu$  from 2004 till 2020. Figure 7b shows MLS CO  $h'_\tau$  from 2004 till 2020. Their overall morphology is similar; that is, for all years, there is a semi-annual oscillation with primary peak in March equinox and secondary peak in September equinox between 80 km and 90 km. Above 90 km, their seasonality shifts into having a primary peak close to June solstice. This could suggest that the latitude structure of DW1's phase during solstice (equinox) causes

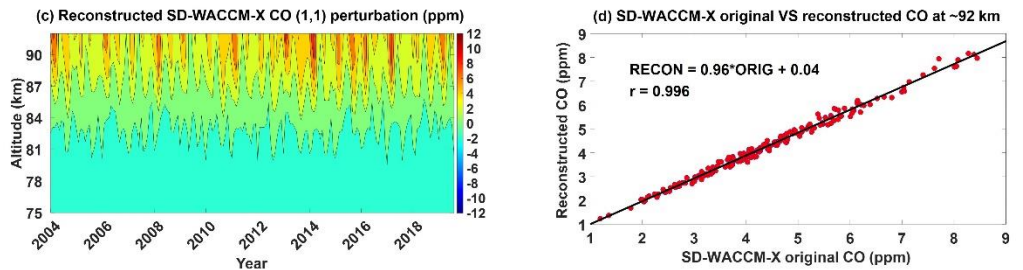
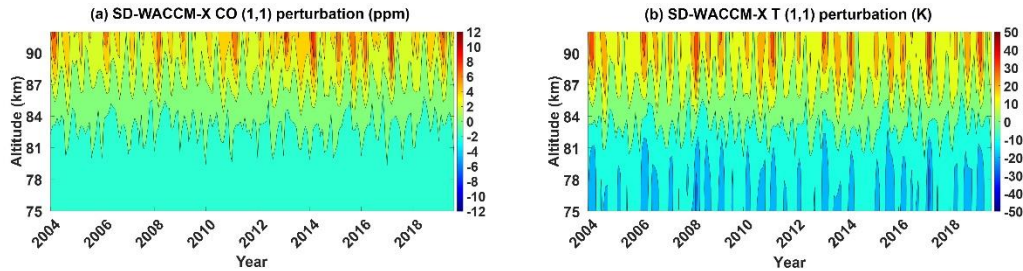


475

maximum (minimum) values when taking the difference of values at ~2 AM and at ~2 PM. This consequently enhances (reduces) MLS CO  $h'_\mu$ . This is difficult to validate with a very high degree of uncertainty though even with SABER data because of the differences in MLS and SABER's vertical resolution. Figure 7c shows the MLS CO  $h'_w$ . Comparing figure 7a and 7c shows that most of the seasonal features are indeed captured. Figure 7d shows a scatter plot between CO  $h'_\mu$  and CO  $h'_w$  at ~90 km which is the approximate altitude where these MLS parameters attain peak amplitudes. It shows a correlation of 0.97 indicating that the variations of  $h'_\mu$  and  $h'_w$  are very similar.



480





**Figure 8: (1,1) component of (a) SD-WACCM-X CO, (b) SD-WACCM-X temperature and (c) SD-WACCM-X CO reconstructed using the adiabatic displacement method from 2004 till 2021. (d) Scatter plot between SD-WACCM-X CO's (1,1) component at ~92 km and that reconstructed using the adiabatic displacement method. Units are specified in the plots.**

485

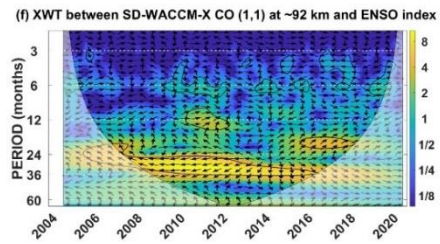
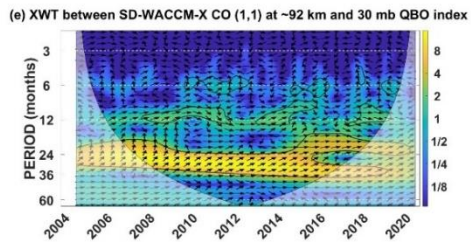
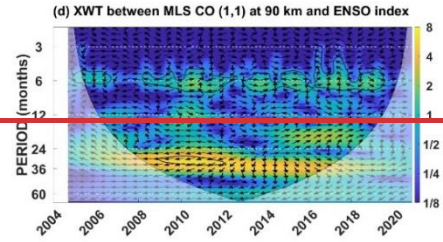
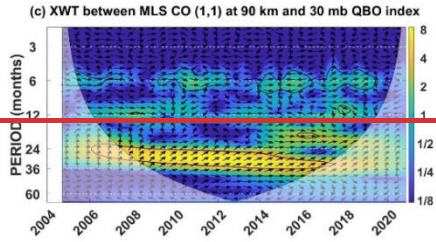
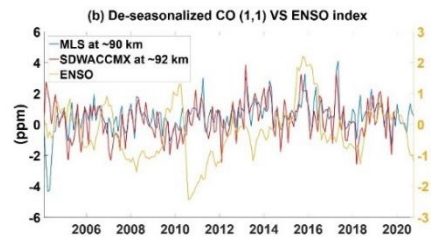
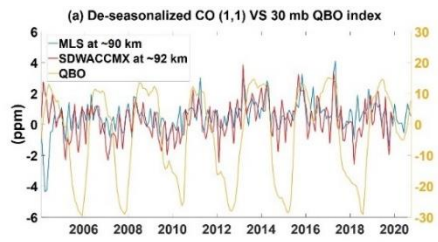
Figure 8a shows SD-WACCM-X CO  $h'_\mu$  from 2004 till 2020. Figure 8b shows SD-WACCM-X  $h'_T$  from 2004 till 2020. Their overall morphology is also similar; that is, for all years, there is a semi-annual oscillation with primary peak in March equinox and secondary peak in September equinox. We now calculate SD-WACCM-X CO  $h'_w$ . Figure 8c shows the SD-WACCM-X CO  $h'_w$ . Comparing figure 8a and 8c shows that most of the features are indeed captured. Figure 8d shows a scatter plot between SD-WACCM-X CO  $h'_\mu$  and SD-WACCM-X CO  $h'_w$  at ~92 km which is the approximate altitude where these SD-WACCM-X parameters reach peak amplitudes. It shows a correlation of 0.996 indicating that the variations of CO  $h'_\mu$  and CO  $h'_w$  are very similar. This correlation is higher than MLS CO  $h'_\mu$ . We suggest that this may be due to the aliasing over the mid-latitudes in MLS CO  $\mu'$ . Previous studies using this adiabatic displacement method only involved the analysis of tracer observations at one instance in time (Akmaev et al, 1980; Angelats I Coll and Forbes, 1998; Marsh et al, 1999; Shepherd et al, 1995; Shepherd et al, 1997; Ward, 1999; Zhang et al, 1998; Marsh and Russell, 2000; Oberheide and Forbes, 2008; Smith et al, 2010; Marsh, et al, 2011; Salinas et al, 2020; Salinas et al, 2022). ~~For example, Smith et al (2010) proved that upper mesospheric SABER atomic oxygen's local time variation is primarily driven by vertical advection, but their analysis only involved the use of 7 year climatological average of vernal equinox atomic oxygen. Salinas et al (2022) recently did something very similar but for mesospheric SABER water vapor.~~ Our work adds to these studies by presenting an approach involving the adiabatic displacement method that involves proving the importance of vertical advection at both seasonal and interannual timescales.

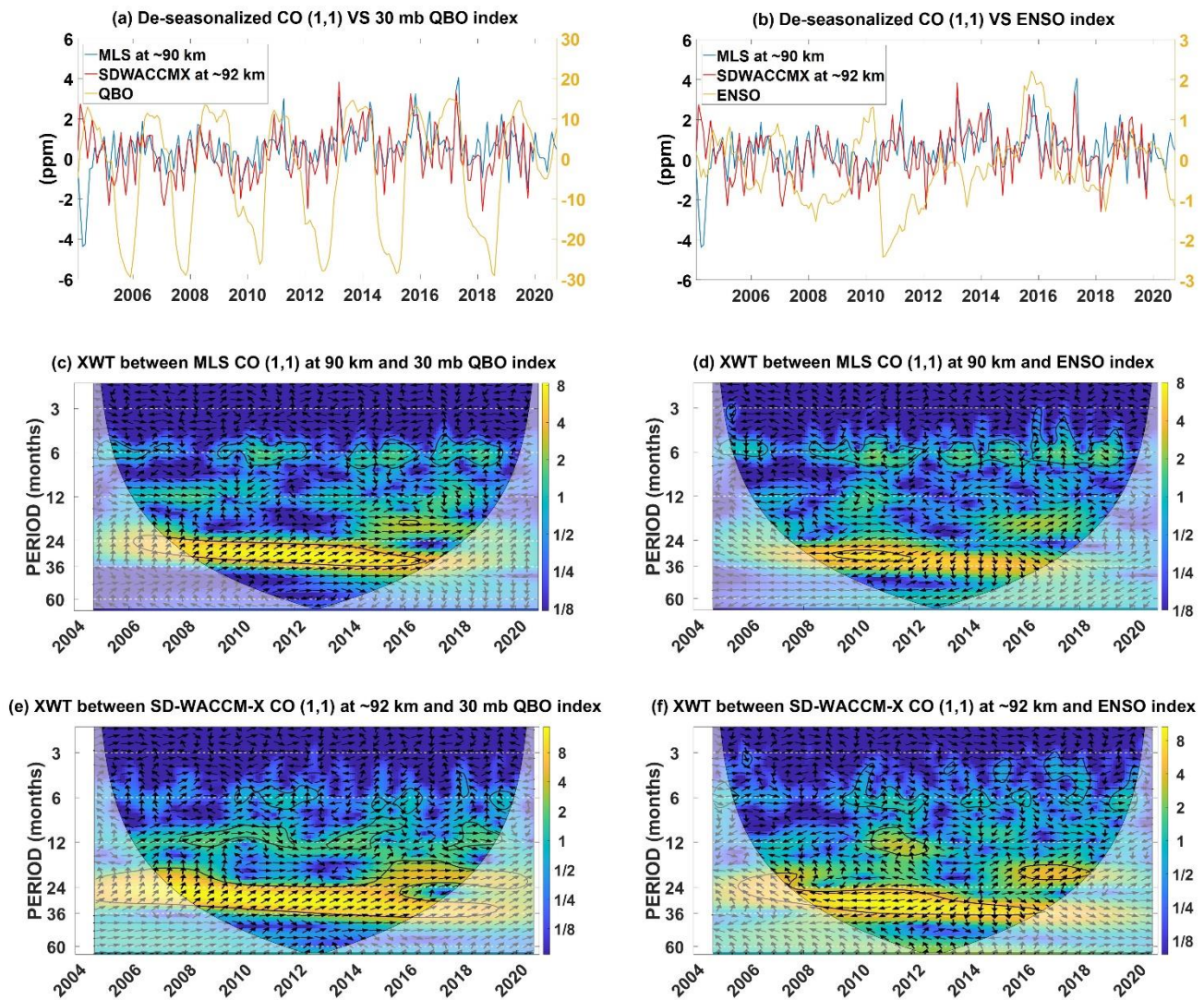
490

495

500

### 6.3 Cross-wavelet Analysis





505 **Figure 9:** (a) De-seasonalized time-series of MLS CO (1,1) at ~90 km, SD-WACCM-X CO (1,1) at ~92 km and the QBO index. (b) De-seasonalized time-series of MLS CO (1,1) at ~90 km, SD-WACCM-X CO (1,1) at ~92 km and the ENSO index. (c) Cross-wavelet (XWT) spectrum between MLS CO (1,1) at ~90 km and the QBO index. (d) Cross-wavelet spectrum between MLS CO (1,1) at ~90 km and the ENSO index. (e) Cross-wavelet spectrum between SD-WACCM-X CO (1,1) at ~92 km and the QBO index. (f) Cross-wavelet spectrum between SD-WACCM-X CO (1,1) at ~92 km and the ENSO index.

510

Figures 7 and 8 indicate that across interannual timescales, both observed and modelled CO  $h'_u$  and CO  $h'_w$  are highly correlated. In this sub-section, we identify the interannual phenomena in CO  $h'_u$  that can apparently also be seen in CO  $h'_w$  because they are both highly correlated. We focus on interannual phenomena that are known to already affect the (1,1) mode in temperature: the Quasi-biennial Oscillation and the El Nino Southern Oscillation (Lieberman, 1997; Vincent et al., 1998; McLandress, 2002a; 2002b; Gurubaran et al, 2005; Mayr & Mengel, 2005; Liebermann et al, 2007; Wu et al, 2008; Gurubaran et al., 2009; Mukhtarov et al, 2009; Pancheva et al, 2009; Xu et al., 2009; Pedatella et al, 2012; Pedatella et al, 2013; Gan et

al, 2014; Liu et al, 2017; Zhou et al, 2018; Kogure et al, 2021; Pramitha et al, 2021; Cen et al, 2022). We use a cross-wavelet analysis to determine the dominant oscillations in MLS CO  $h'_\mu$  or SD-WACCM-X CO  $h'_\mu$  that coincide with the 30 mb QBO index and Multi-variate El Nino Southern Oscillation index (MEI).

520 Figure 9 identifies interannual phenomena found in CO  $h'_\mu$ . Figure 9a shows the time-series of MLS CO  $h'_\mu$  at ~90 km, SD-WACCM-X CO  $h'_\mu$  at ~92 km and the QBO index. Figure 9b shows the time-series of MLS CO  $h'_\mu$  at ~90 km, SD-WACCM-X CO  $h'_\mu$  at ~92 km and the MEI index. Figure 9c shows the cross-wavelet spectrum between MLS CO  $h'_\mu$  and the QBO index. In this and the succeeding spectra, encircled regions with the high spectral amplitudes-power correspond to oscillations statistically significant in both time-series (Grinsted et al, 2004). The arrows indicate the phase relationship between the time-series. If the arrow points right, both time-series are in phase. If the arrow points left, both time-series are anti-phase. If the arrow points upward or downward, there is a lag between the time-series. In our case, upward arrow indicates that both time-series are in phase but the QBO or ENSO index time-series peaks later than the other time-series. Downward arrow indicates that both time-series are also in phase but the QBO or ENSO index time-series peaks ahead of the other time-series. Depending on the arrows, one can deduce the correlations between CO  $h'_\mu$  amplitude and QBO or ENSO. Consequently,  
530 the deduced correlation will imply whether CO  $h'_\mu$  increases or decreases during, for example, westerly QBO phase.

Figure 9c reveals that both MLS CO  $h'_\mu$  and the QBO index have a statistically significant oscillation with periods of around 24 months. It is statistically significant between 2005 and 2018. The arrows are pointed slightly upward which indicate that MLS CO  $h'_\mu$  peak slightly ahead of the QBO index. The arrows also indicate that MLS CO  $h'_\mu$  amplitude increases during the westerly phase of the QBO while it decreases during the easterly phase of the QBO. Remarkably similar features are found in the cross-spectrum between MLS  $h'_T$  and the QBO index (figure C1C). The QBO's impacts on the (1,1) mode of temperature is well-known (Lieberman, 1997; Vincent et al., 1998; McLandress, 2002; Mayr & Mengel, 2005; Wu et al, 2008; Gurubaran et al., 2009; Mukhtarov et al, 2009; Pancheva et al, 2009; Xu et al., 2009; Gan et al, 2014; Pramitha et al, 2021). These studies have shown that the (1,1) mode is enhanced during the westerly phase of the QBO while it is reduced during the easterly phase of the QBO. Our works adds to these previous studies by showing that MLS CO's (1,1) mode is also affected by the QBO in  
540 the same way.

Figure 9d shows the cross-wavelet spectrum between MLS CO  $h'_\mu$  and the MEI index. This spectrum reveals that both MLS CO  $h'_\mu$  and the MEI index have a statistically significant oscillation of around 30 months between 2008 and 2012. This does coincide with the strong 2010 – 2011 La Nina event. The arrows are pointed almost fully to the left which indicate that MLS CO  $h'_\mu$  and ENSO are anti-correlated during this event; that is, MLS CO  $h'_\mu$  amplitude increased during this La Nina event. The anti-correlation also indicates that, if we were to solely use this event as a basis, MLS CO  $h'_\mu$  should decrease during El Nino events. Very similar features are found in the cross-spectrum between MLS  $h'_T$  and the ENSO index (figure C1D). ENSO's impacts on the (1,1) mode of temperature-tide is well explored (Gurubaran et al, 2005; Liebermann et al, 2007; Pedatella et al, 2012; Pedatella et al, 2013; Liu et al, 2017; Zhou et al, 2018; Kogure et al, 2021; Cen et al, 2022). These studies



have shown that the general response is that (1,1) mode is reduced during El Nino although the reduction is modulated by secondary mechanisms like gravity waves (Cen et al, 2022).  
550

Figure 9e shows the cross-wavelet spectrum between SD-WACCM-X CO  $h'_\mu$  and the QBO index. This spectrum reveals that both SD-WACCM-X CO  $h'_\mu$  and the QBO index have a statistically significant oscillation with periods ranging from 20 to 30 months and the statistical significance is found throughout all years. From 2015 to 2020, both have a statistically significant oscillation with period around 15 to 20 months. Very similar features are found in the cross-spectrum between SD-WACCM-X  $h'_T$  and the QBO index (figure C1E). Like MLS CO  $h'_\mu$ , the arrows are pointed slightly upward which indicate that SD-WACCM-X CO  $h'_\mu$  peak slightly ahead of the QBO index and that SD-WACCM-X CO  $h'_\mu$  amplitude increases during the westerly phase of the QBO while it decreases during the easterly phase of the QBO. The differences between figure 9c and 9e could suggest that the model may be overestimating the impacts of the QBO during certain periods.  
555

Figure 9f shows the cross-wavelet spectrum between SD-WACCM-X CO  $h'_\mu$  and the MEI index. This spectrum reveals that both have a statistically significant oscillation with period of around 24 to 36 months. This period of statistical significance lasts from 2006 to 2016. Unlike MLS CO  $h'_\mu$ , the statistical significance for SD-WACCM-X CO  $h'_\mu$  includes both the 2010-2011 La Nina and the 2015-2016 El Nino event. The differences between figure 9d and 9f could suggest that the model may be overestimating the impacts of ENSO during certain periods. Very similar features are found in the cross-spectrum between SD-WACCM-X  $h'_T$  and the ENSO index (figure C1F). Like MLS  $h'_\mu$ , the arrows are pointed almost fully to the left between 2006 to 2013 which indicate that, for the 2010-2011 La Nina period, SD-WACCM-X CO  $h'_\mu$  also increased. However, between 2013 and 2016, the arrows are pointed almost downward which indicate that, for the 2015-2016 El Nino period, SD-WACCM-X CO  $h'_\mu$  increased. In addition, the arrows also indicate that ENSO peaks ahead of SD-WACCM-X CO  $h'_\mu$ . Most studies have found that the (1,1) mode should decrease during El Nino events. However, our results indicate that the effect of ENSO reversed during the 2015 El Nino. Kogure et al (2021) has explained this. Their work showed that the enhanced (1,1) tide in 2015 was a result of the overlapping occurrence of an easterly QBO phase and an El Nino event. Lieberman et al. (2007) also showed that the (1,1) mode increased during ENSO events because the climatological dry tongue disappears during the El Nino phase, leading to a more longitudinally uniform water vapor distribution, and therefore a stronger (1,1) forcing by water vapor heating. Our works adds to these previous studies by showing that MLS CO's (1,1) mode is also affected by ENSO in the same way.  
560  
565  
570

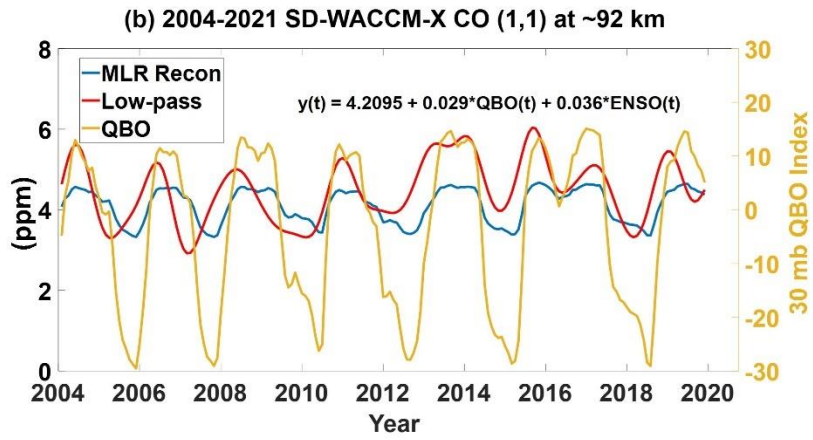
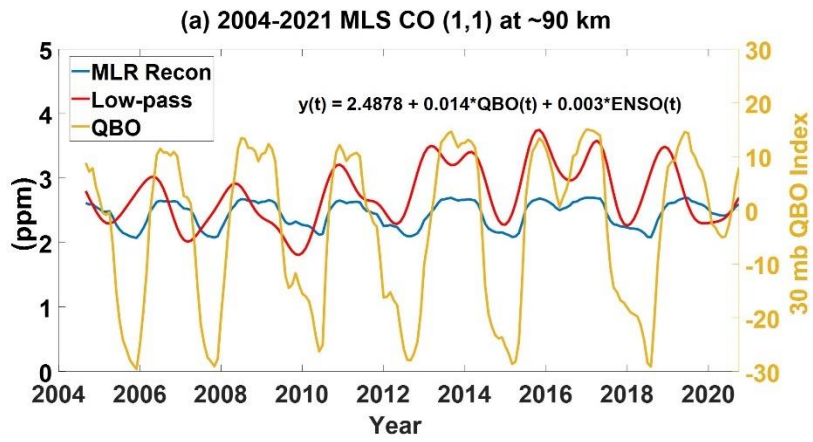
#### 575 6.4 Quantifying the QBO ~~and ENSO~~-response using multiple linear ~~regress~~projection analysis and a lowpass filter

The previous sub-section found that QBO and ENSO variabilities are present in both MLS CO  $h'_\mu$  and SD-WACCM-X CO  $h'_\mu$ . In this section, we quantify the changes in MLS CO  $h'_\mu$  or SD-WACCM-X CO  $h'_\mu$  due to QBO~~and ENSO~~. We don't quantify the changes due to ENSO because there were only a few events during our data-span. Hence, any estimated response may be biased. We use multiple linear ~~regress~~projection (MLR) to estimate the response of MLS CO  $h'_\mu$  or SD-WACCM-X



580 CO  $h'_\mu$  to the QBO ~~and ENSO~~. Finally, we use the same MLR to reconstruct the time-series with the QBO ~~and ENSO~~  
~~indices~~index and then compare this reconstruction with a lowpass filtered version of the time-series. Note that while an MLR  
analysis offers an estimate of the response of one parameter to another, the reconstructed time-series using these MLR  
coefficients constrains the fluctuations to either be in-phase or completely anti-phase of the other parameter. It also assumes  
that the amplitude fluctuations are the same as that of the other time-series. For example, in the case of MLS CO  $h'_\mu$  and the  
585 QBO index, the MLR reconstruction of MLS CO  $h'_\mu$  can only be a time-series that is either completely in-phase with the QBO  
index or completely anti-phase. The overall fluctuation of the reconstruction will also only be a multiple of the QBO index  
time-series. With the lowpass filtered time-series, we can reconstruct the time-series that accounts for non-in-phase or non-  
anti-degree phase differences. The lowpass filtered timeseries also accounts for the exact amplitude fluctuations as a function  
of time. Thus, in the case of MLS CO  $h'_\mu$  and the QBO index, the lowpass filtered MLS CO  $h'_\mu$  will reveal how dominant QBO  
590 periodicities are.

Figure 10 shows our MLR analysis and our low-pass filtering of MLS CO  $h'_\mu$  and SD-WACCM-X CO  $h'_\mu$  to quantify  
the responses of these parameters to QBO and ENSO. Figure 9 showed that the phase-relation between MLS CO  $h'_\mu$  or SD-  
WACCM-X CO  $h'_\mu$  and the QBO index were consistent for all years. However, the phase-relation between MLS CO  $h'_\mu$  or  
SD-WACCM-X CO  $h'_\mu$  and the QBO index changed. In this figure, we separate this analysis. Figure 10a and 10b focuses on  
595 the QBO response while figures 10c to 10f focuses on the ENSO response.



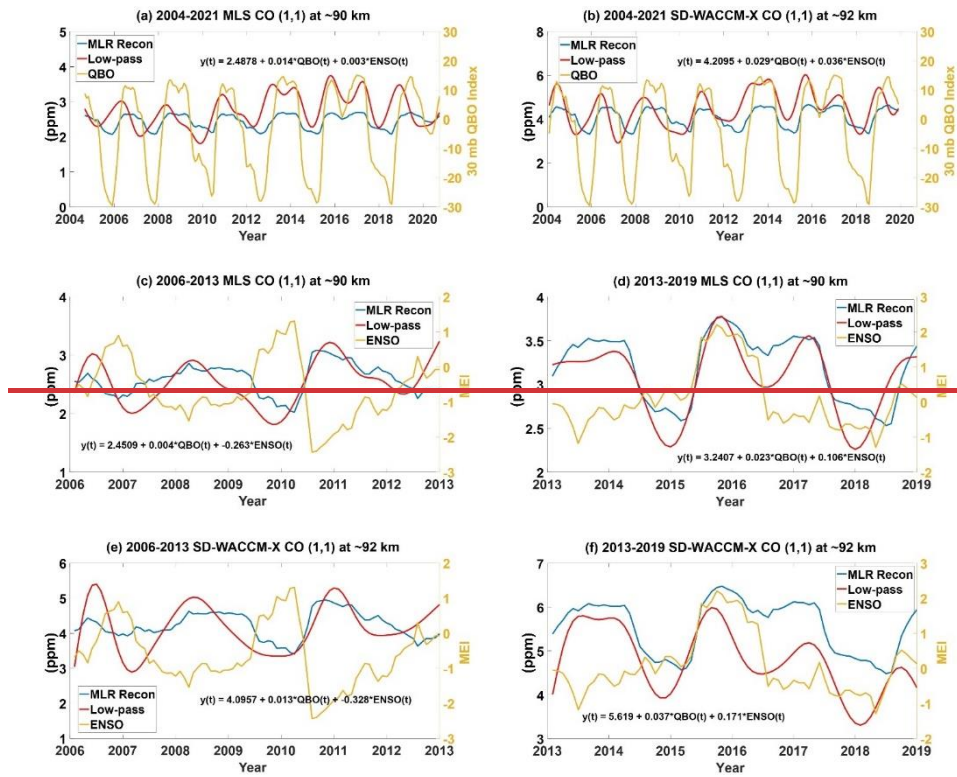


Figure 10: (a) MLS CO (1,1) at ~90 km reconstructed using multiple linear **regress**projection (MLR), low pass filtered and the 30 mb QBO index from 2004 till 2020. (b) Same as (a) but for SD-WACCM-X CO (1,1) at ~92 km. (c) **MLS CO (1,1) at ~90 km reconstructed using multiple linear regression, low pass filtered and the Multi-variate ENSO index from 2006 till 2013.** (d) **Same as (c) but for years 2013 till 2019.** (e) **SD-WACCM-X CO (1,1) at ~92 km reconstructed using multiple linear regression, low pass filtered and the Multi-variate ENSO index from 2006 till 2013.** (f) **Same as (e) but for years 2013 till 2019.** Equations within the subplots are the MLR fits.

Figures 10a shows the de-seasonalized MLS CO  $h'_\mu$  from 2004 till 2020 reconstructed using an MLR (hereafter MLR recon MLS CO  $h'_\mu$ ) and filtered with a 5<sup>th</sup> order low-pass filter with a cut-off period of 6-months (hereafter lowpass filtered MLS CO  $h'_\mu$ ). The equation within the plot shows the MLR coefficients between the de-seasonalized MLS CO  $h'_\mu$  and the QBO and ENSO indices. However, for this plot, we will ignore the coefficients for ENSO because, as mentioned above and as will be shown later, the phase relationship changes. Both reconstructions are overplotted with the QBO index. Figure 10b shows the same as figure 10a but for SD-WACCM-X CO  $h'_\mu$ . Figure 10a shows a QBO MLR coefficient of 0.014 for MLS CO  $h'_\mu$ . The MLR fit has p-value = 0.002 which is less than 0.05 indicating statistical significance. With this value, MLS CO  $h'_\mu$  increases by around 0.21 ppm or a +8% variation ( $\frac{100(0.21)}{2.49} = 8\%$  variation where 2.49 is the temporal mean included in the MLR equation) when the QBO index is at the typical peak westerly value of around + 15 m/s. On the other hand, MLS CO

$h'_\mu$  decreases by around -0.42 ppm or a -16% variation when the QBO index is at the typical peak easterly value of around -30 m/s. Figure 10a also shows that the lowpass filtered MLS CO  $h'_\mu$  is dominated by low frequency periodicities whose combination yields a timeseries that is dominated by QBO-like fluctuations. The time-series looks very similar to MLR recon MLS CO  $h'_\mu$  and the QBO index. Using the standard deviation of the lowpass filtered MLS CO  $h'_\mu$  as a measure of the variation, we calculate a variation of ~0.9 ppm which is slightly higher than the 0.63 ppm variation estimated with the MLR coefficients. Comparing the low pass filtered MLS CO  $h'_\mu$  and the QBO index further shows that peak westerly phase values in the QBO index occurs just after the local maximum values. This is consistent with the cross-wavelet spectrum arrows in figure 9c. Figure 10b shows a QBO MLR coefficient of 0.029 for SD-WACCM-X CO  $h'_\mu$ . The MLR fit has p-value less than 0.0001 indicating statistical significance (p-value < 0.05). With this value, SD-WACCM-X CO  $h'_\mu$  increases by around 0.44 ppm or a +10% variation when the QBO index is at the typical peak westerly value. SD-WACCM-X CO  $h'_\mu$  decreases by around 0.88 ppm or a -20% variation when the QBO index is at the typical peak easterly value.

Figure 10b also shows that the lowpass filtered SD-WACCM-X CO  $h'_\mu$  is also dominated by QBO-like fluctuations that are like the MLR recon SD-WACCM-X CO  $h'_\mu$  but slightly larger in variance at around 1.52 ppm and corrected for the phase differences determined by the cross-wavelet spectrum arrows in figure 9d.

~~Figure 10c shows the de-seasonalized MLS CO  $h'_\mu$  from 2006 till 2013 reconstructed using an MLR and filtered with a 5<sup>th</sup> order low pass filter with a cut-off period of 6 months. Both reconstructions are overplotted with the ENSO index. Figure 10d shows the de-seasonalized MLS CO  $h'_\mu$  from 2013 till 2019 reconstructed using an MLR and filtered with a 5<sup>th</sup> order low pass filter with a cut-off period of 6 months. Both reconstructions are overplotted with the ENSO index. Figure 10e and 10f is the same as figures 10c and 10d, respectively, but for SD-WACCM-X CO  $h'_\mu$ .~~

~~Figure 10e focuses on the 2010-2011 La Nina event. Figure 10e shows an ENSO MLR coefficient of -0.263 for MLS CO  $h'_\mu$  between years 2006 and 2013. The MLR fit has p value = 0.0053 indicating statistical significance (p value < 0.05). With this value, MLS CO  $h'_\mu$  increases by 0.526 ppm or an around +20% variation during the 2010-2011 La Nina event. Figure 10e also show that the lowpass filtered MLS CO  $h'_\mu$  is dominated by periodicities whose combination yields a timeseries that looks like the MLR recon MLS CO  $h'_\mu$ . The lowpass filtered timeseries also shows a clear anti phase relation with the MEI index. This is consistent with the cross wavelet spectrum arrows in figure 9d. Unlike the analysis involving the QBO index in figures 10a and 10b though, the variance of the lowpass filtered MLS CO  $h'_\mu$  and the MLR recon MLS CO  $h'_\mu$  in figure 10e is very similar.~~

~~Figure 10d focuses on the 2015-2016 El Nino event. Figure 10d shows an ENSO MLR coefficient of 0.106 for MLS CO  $h'_\mu$  between years 2013 and 2019. The MLR fit has p value = 0.0019 indicating statistical significance (p value < 0.05). With this value, MLS CO  $h'_\mu$  increased by 0.212 ppm or around +6% variation for during the El Nino event. The coefficients shown in figure 10c and 10d are consistent with the results of the cross-wavelet analysis.~~

Figure 10e shows an ENSO MLR coefficient of  $-0.328$  for  $SD\text{-}WACCM\text{-}X\text{-}CO\text{-}h_{\mu}^t$  between years 2006 and 2013. The MLR fit has  $p\text{-value} = 0.0009$  indicating statistical significance ( $p\text{-value} < 0.05$ ). With this value,  $SD\text{-}WACCM\text{-}X\text{-}CO\text{-}h_{\mu}^t$  increases by around  $0.656$  ppm or an around  $+16\%$  variation during the 2010-2011 La Nina event. Figure 10f shows an ENSO MLR coefficient of  $0.171$  for  $SD\text{-}WACCM\text{-}X\text{-}CO\text{-}h_{\mu}^t$  between years 2013 and 2019. The MLR fit has  $p\text{-value} = 0.0001$  indicating statistical significance ( $p\text{-value} < 0.05$ ). With this value,  $SD\text{-}WACCM\text{-}X\text{-}CO\text{-}h_{\mu}^t$  increases by around  $0.342$  ppm or around  $+6\%$  variation during the 2015-2016 El Nino event. Apart from the coefficients, the qualitative descriptions in figure 10e and 10f are very similar to that in figures 10c and 10d, respectively.

## 7. Summary and Conclusions

This work uses 17 years of CO observations provided by the Microwave Limb Sounder (MLS) on-board the Aura satellite to analyse the seasonal and interannual variability of the DW1 component of upper mesospheric CO. These were then compared to simulations by the Specified Dynamics – Whole Atmosphere Community Climate Model with Ionosphere/Thermosphere eXtension (SD-WACCM-X). Our results showed that the largest MLS CO  $\mu'$  and SD-WACCM-X CO  $\mu'$  are above 80 km. For MLS CO  $\mu'$ , its latitude structure in March equinox above 80 km resembles that of the (1,1) mode although there is an interhemispheric asymmetry with the location of their mid-latitude peaks. ~~The southern mid-latitude peaks are located higher than the northern mid-latitude peaks.~~ On the other hand, the latitude structure of MLS CO  $\mu'$  in June solstice above 80 km resembles that of the ~~distorted (1,1)~~ “distorted” (1,1) mode. For SD-WACCM-X CO  $\mu'$ , its latitude structure in March equinox above 80 km also resembles that of the (1,1) mode but there is negligible interhemispheric asymmetry with the location of their mid-latitude peaks. Also, SD-WACCM-X simulates two pulses of this (1,1) mode feature between 80 km and 95 km while MLS observes only one pulse. SD-WACCM-X CO  $\mu'$  in June solstice also resembles that of the ~~distorted (1,1)~~ “distorted” (1,1) mode but SD-WACCM-X simulates two pulses of this mode.

To explain MLS CO  $\mu'$  and SD-WACCM-X CO  $\mu'$ , we first looked at MLS  $T'$ , SABER  $T'$  and SD-WACCM-X  $T'$ . ~~MLS  $T'$ , SABER  $T'$  and SD-WACCM-X  $T'$  also~~ All three show the (1,1) mode in March equinox and the “distorted” (1,1) mode in June solstice. However, the (1,1) mode in March equinox for MLS  $T'$  shows more interhemispheric asymmetry in terms of the locations of the mid-latitude peaks. Also, SD-WACCM-X  $T'$  shows ~~eds~~ two pulses of the (1,1) mode and ~~distorted (1,1)~~ “distorted” (1,1) mode.

Comparing MLS CO  $\mu'$  and MLS  $T'$  in March equinox shows that MLS CO  $\mu'$  and MLS  $T'$  are closely correlated. However, MLS CO  $\mu'$  and MLS  $T'$  in June solstice shows that MLS CO  $\mu'$  and MLS  $T'$  are only closely correlated between latitudes  $30^{\circ}$  S and  $60^{\circ}$  N. On the other hand, SD-WACCM-X CO  $\mu'$  and SD-WACCM-X  $T'$  are closely correlated for both seasons and for all latitudes. These gave hints that the mechanisms driving CO  $\mu'$  may indeed be related to the mechanisms behind  $T'$ .

To determine what drives CO  $\mu'$  and how it relates to  $T'$ , we first did a tendency analysis involving the continuity equation. Our tendency analysis revealed that, in SD-WACCM-X, vertical advection in both March equinox and June solstice



has the closest magnitude and latitude-altitude structure to the time-derivative term. We then determined if the same mechanism holds for the observations by using the adiabatic displacement method. Our adiabatic displacement method determined that for March equinox, CO  $\mu'$  and CO  $\mu'_w$  in observations and simulations were very similar.

~~For June solstice, our tendency analysis showed that in SD-WACCM-X, vertical advection also has the closest magnitude and latitude-altitude structure to the time-derivative term. Our adiabatic displacement method then determined that for the model, CO  $\mu'$  and CO  $\mu'_w$  are very similar. On the other hand, However, for the observations, June solstice, MLS CO  $\mu'$  and CO  $\mu'_w$  are only similar between latitudes 30° S and 60° N. The simulations were very similar for all latitudes~~

After comparing CO  $\mu'$  and CO  $\mu'_w$  in observations and simulations, we probed deeper into CO's (1,1) mode. Our results showed that for seasonal and interannual timescales, the observed and simulated CO  $h'_\mu$  and CO  $h'_w$  are highly correlated with correlation coefficients of at least 0.97.

Finally, we characterized the interannual variability present in CO  $\mu'$ . A cross-wavelet, MLR analysis and lowpass filtering between MLS CO  $h'_\mu$  at ~90 km and the QBO index shows that MLS CO  $h'_\mu$  and QBO index both have statistically significant oscillations with periods of around ~24 months between years 2005 and 2018. The MLR analysis and lowpass filtering further indicate that MLS CO  $h'_\mu$  is enhanced by around 8% during the westerly phase of the QBO and is reduced by around 16% during the easterly phase of the QBO. ~~On the other hand, a cross-wavelet between SD-WACCM-X CO  $h'_\mu$  at ~92 km and the QBO index shows that SD-WACCM-X CO  $h'_\mu$  and QBO index both have statistically significant oscillations with periods between 20 to 30 months for all years. In addition, SD-WACCM-X CO  $h'_\mu$  and QBO index both have statistically significant oscillations with period of around between 15 to 20 months from 2015 to 2020. Despite these differences in the statistically significant periods, the MLR analysis and lowpass filtering indicate that SD-WACCM-X CO  $h'_\mu$  is also enhanced~~

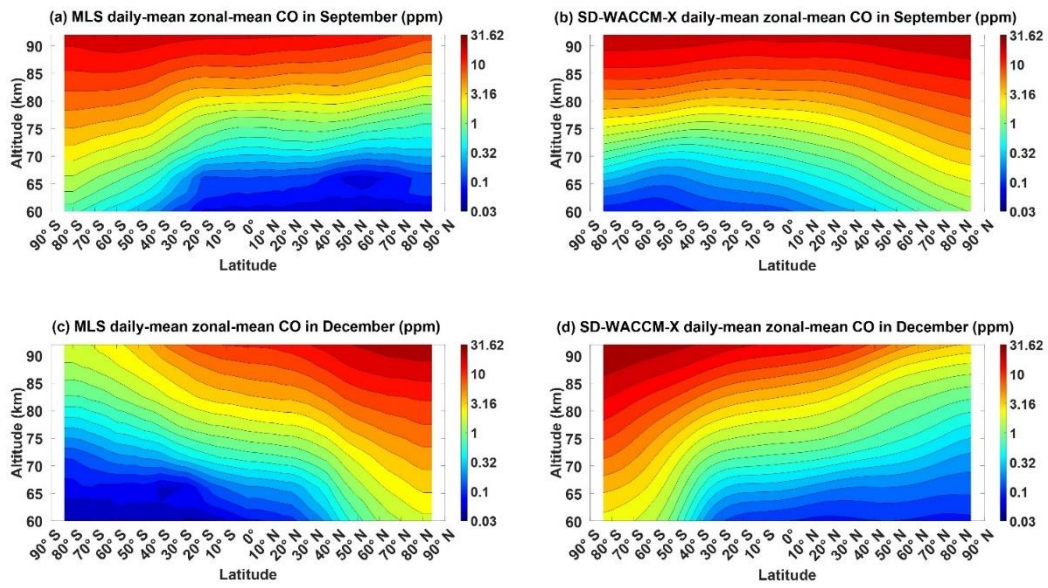
by around 10% during the westerly phase of the QBO and is also reduced by around 20% during the easterly phase of the QBO. ~~These indicate that though both MLS CO  $h'_\mu$  and SD-WACCM-X CO  $h'_\mu$  may be affected by the QBO and the correlation between the QBO phase and CO  $h'_\mu$  maybe similar, the temporal coverage of the influence differs between the observations and simulations.~~

A cross-wavelet between MLS CO  $h'_\mu$  at ~90 km and the ENSO index shows that MLS CO  $h'_\mu$  and ENSO index both have statistically significant oscillations with periods of around ~30 months between years 2008 and 2012. This coincides with the strong 2010-2011 La Nina event. ~~The MLR analysis and lowpass filtering indicates that MLS CO  $h'_\mu$  is enhanced by around 20% during this La Nina event.~~ On the other hand, a cross-wavelet between SD-WACCM-X CO  $h'_\mu$  at ~92 km and the ENSO index shows that SD-WACCM-X CO  $h'_\mu$  and ENSO index both have statistically significant oscillations with periods between 24 to 36 months from 2006 till 2016. This coincides with both the strong 2010-2011 La Nina event and the strong 2015-2016 El Nino event. ~~However, the lack of ENSO events indicate that these may just be coincidental. The MLR analysis and lowpass filtering indicates that SD-WACCM-X CO  $h'_\mu$  is enhanced by around 16% during the 2010-2011 La Nina event and by around 6% during the 2015-2016 El Nino event.~~

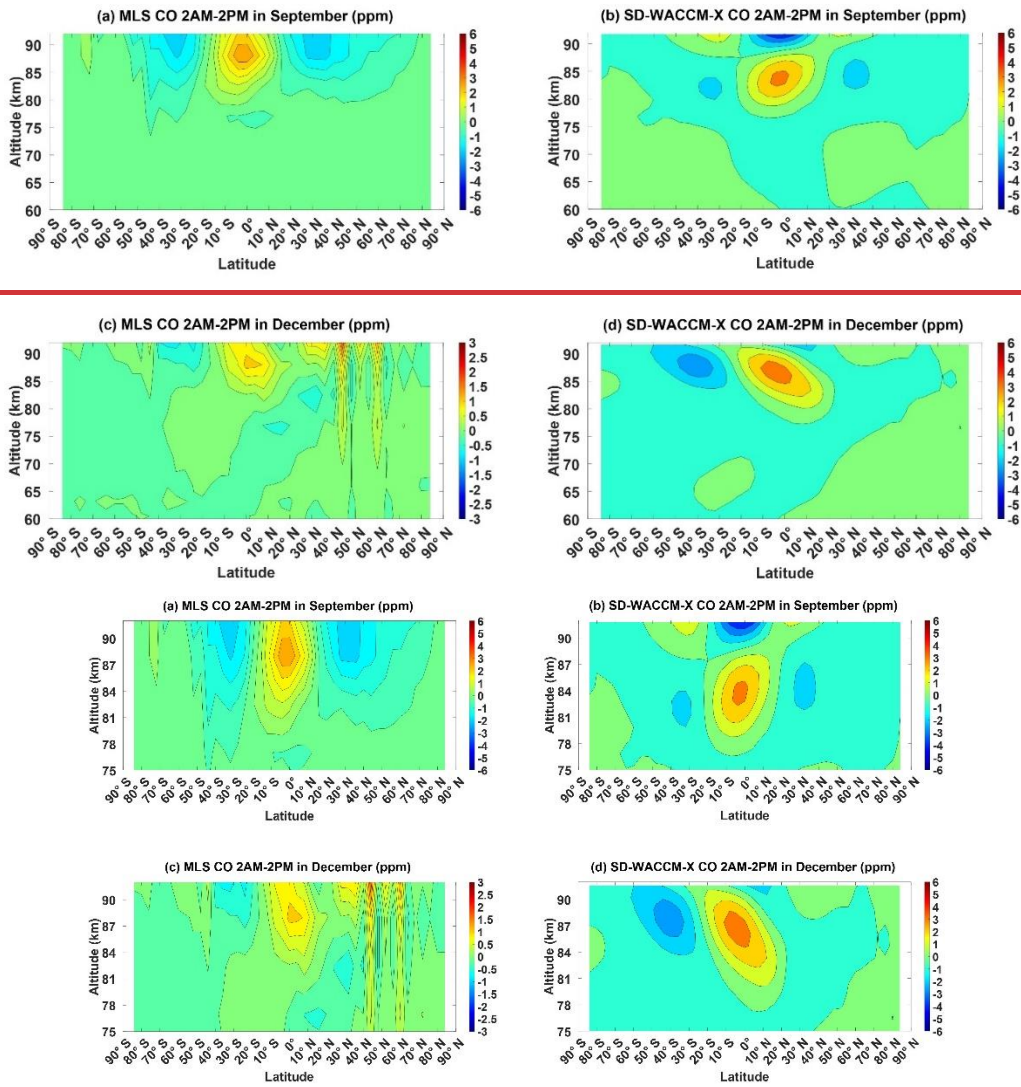
From these results, we can conclude that the global structure of upper mesospheric MLS CO's DW1 component is primarily driven by DW1-induced vertical advection over all latitudes during equinox seasons and over all latitudes except the winter middle to high latitudes during solstice seasons. ~~This could suggest that MLS CO's DW1 component over the winter middle to high latitudes may be driven by other mechanisms such as meridional advection, eddy diffusion and/or chemistry. It could also suggest that the data over the winter middle to high latitudes may be affected by inadequate sampling.~~ On the other hand, the global structure of upper mesospheric SD-WACCM-X CO's DW1 component is primarily driven by DW1-induced vertical advection over all latitudes for both equinox and solstice seasons. We also conclude that the dominant DW1 tidal mode in upper mesospheric MLS CO DW1 and SD-WACCM-X CO DW1 is the (1,1) mode, ~~and that for seasonal and interannual timescales, the (1,1) mode affects MLS CO DW1 and SD WACCM X CO DW1 primarily through vertical advection. However, MLS only observes one pulse of the (1,1) mode between 80 km and 95 km while SD WACCM X simulates two pulses. This could be due to MLS' limited vertical resolution, or it could be due to inaccuracies in SD WACCM X simulation of the background atmosphere and/or tidal vertical propagation.~~ In addition, we find that the interannual variability of MLS CO (1,1) and SD-WACCM-X CO (1,1) is primarily driven by the QBO and ENSO's effects on DW1-induced vertical advection. These conclusions suggest that we can use CO as a tracer for vertical advection due to the DW1 tide and the (1,1) mode on seasonal and interannual timescales.

#### **Appendix A: Daily-mean zonal-mean CO as well as the CO DW1 and temperature DW1 in September equinox and December solstice**

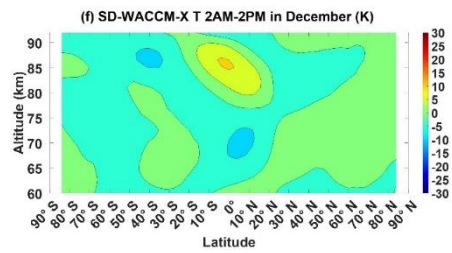
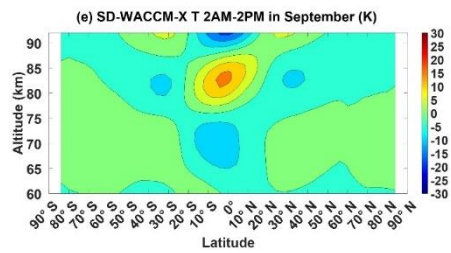
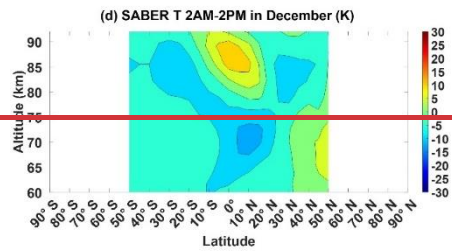
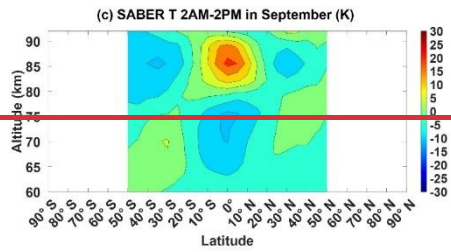
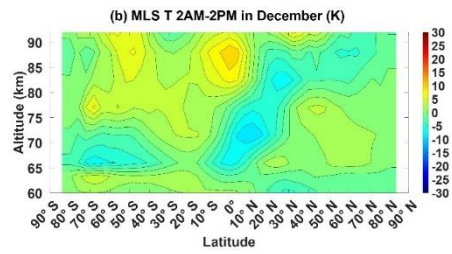
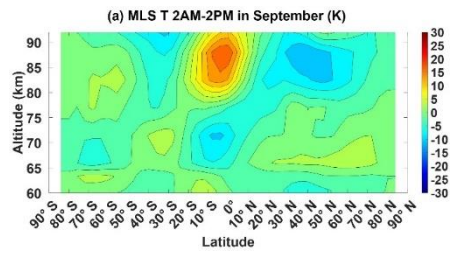
Figure A1 shows the CO  $\bar{\mu}$  averaged for all September equinox and for all December solstice as observed by MLS and as simulated by SD-WACCM-X. Figure A2 shows CO  $\mu'$  in September equinox and in December solstice as observed by MLS and as simulated by SD-WACCM-X. Figure A3 shows  $T'$  in September equinox and in December solstice as observed by MLS and SABER and as simulated by SD-WACCM-X. The similarities and differences of these parameters between September equinox and December solstice are the same as those in the comparison of these parameters between March equinox and June solstice.



735 **Figure A1: Daily-mean zonal-mean component of (a) MLS CO in September equinox, (b) SD-WACCM-X CO in September equinox, (c) MLS CO in December solstice and (d) SD-WACCM-X CO in December solstice. All are in units of ppm.**



740 **Figure A2: Migrating Diurnal Tide component of (a) MLS CO in September equinox, (b) SD-WACCM-X CO in September equinox, (c) MLS CO in December solstice and (d) SD-WACCM-X CO in December solstice. All are in units of ppm.**





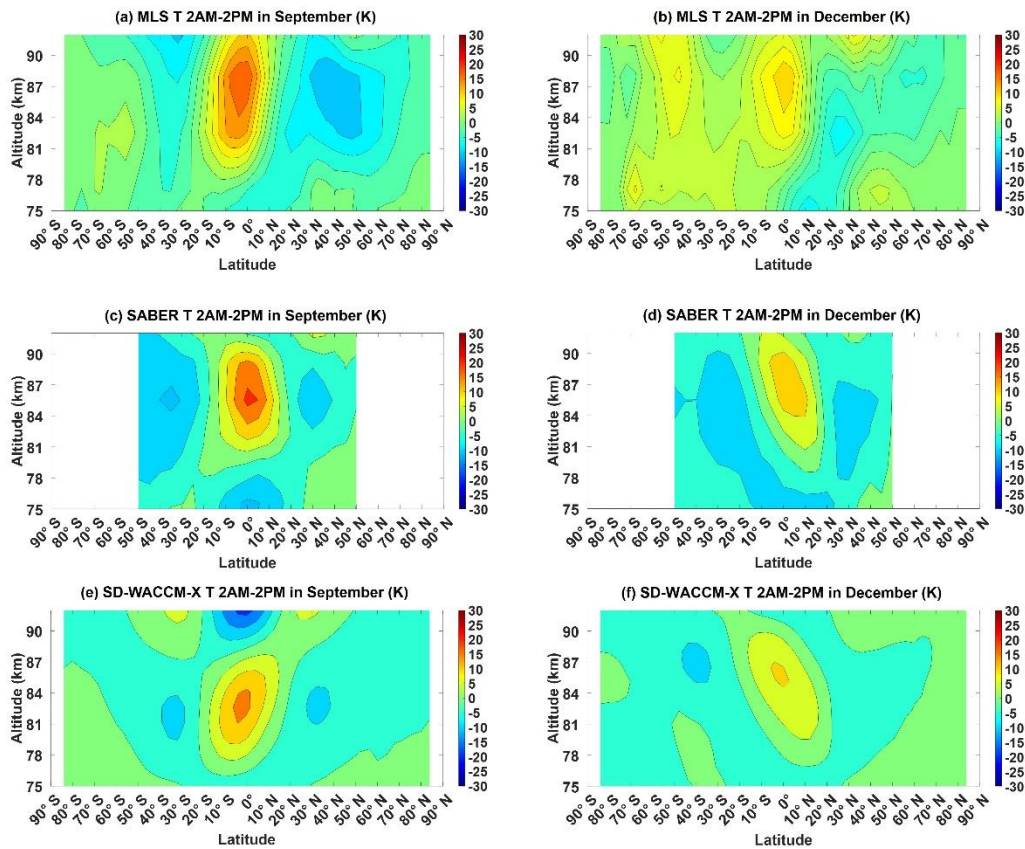
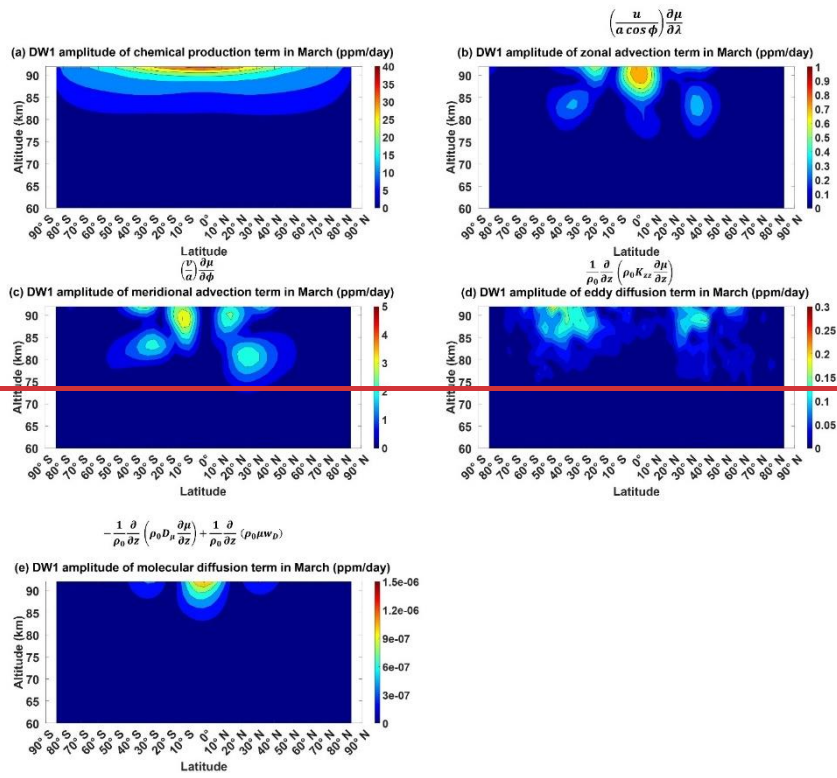
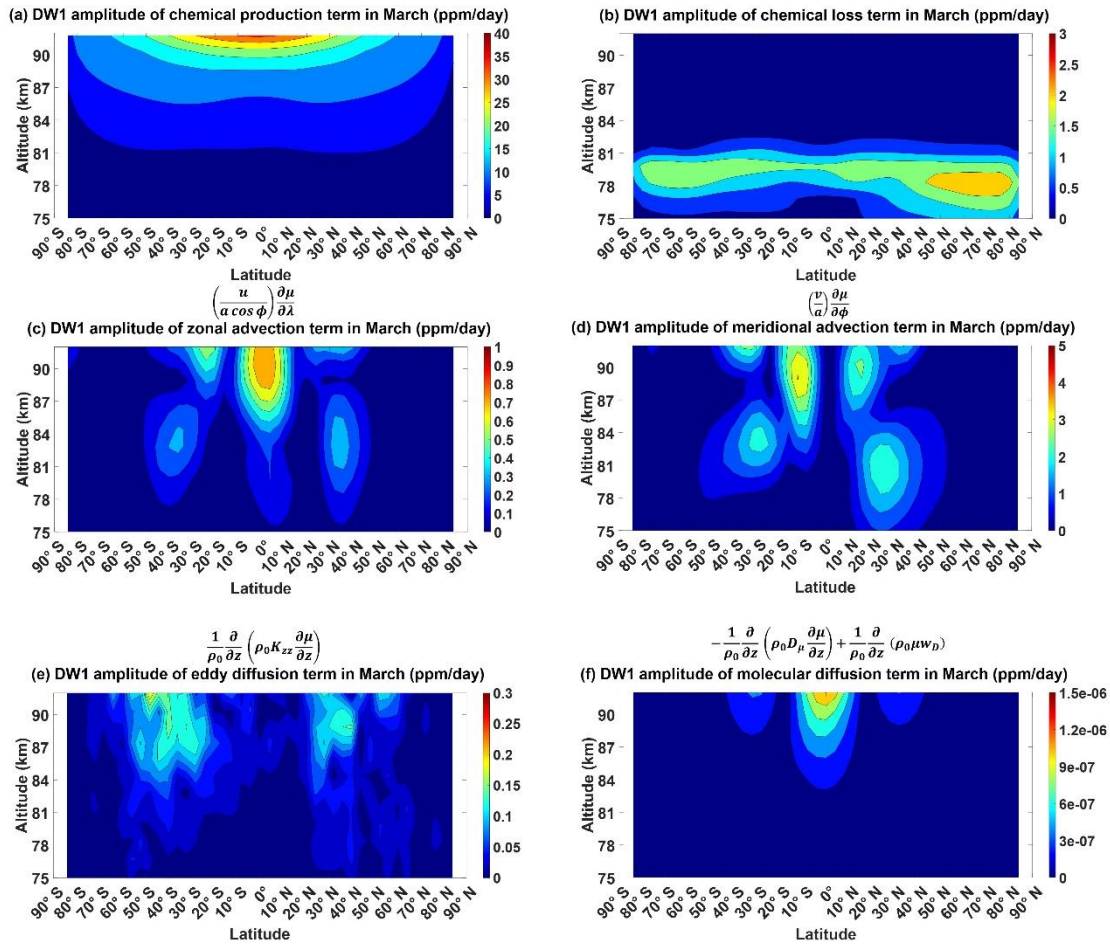


Figure A3: Migrating Diurnal Tide component of (a) MLS temperature in September equinox, (b) MLS temperature in December solstice, (c) SABER temperature in September equinox, (d) SABER temperature in December solstice, (e) SD-WACCM-X temperature in September equinox and (f) SD-WACCM-X temperature in December solstice. All are in units of K.

## Appendix B: Tendency Analysis terms

Figure B1 shows the chemical production term, [chemical loss term](#), [zonal advection term](#), meridional advection term, eddy diffusion term and molecular diffusion term of CO for March equinox. Figure B1A shows the chemical production term peaking to around 2 ppm/day over the equator above 90 km. [Figure B1B shows the chemical loss term peaking to around 2 ppm/day over the northern high latitudes below 80 km.](#) [Figure B1C shows the zonal advection term peaking to around 1 ppm/day over the equator above 85 km.](#) [Figure B1D-B1E](#) shows the meridional advection term peaking to around 4 ppm/day over the mid-latitudes above 90 km. [Figure B1C-B1E](#) shows the eddy diffusion term peaking to around 0.6 ppm/day over the low-latitudes above 90 km. [Figure B1D-B1F](#) shows the molecular diffusion term peaking to around 0.2 ppm/days also over the low-latitudes above 90 km. These values are all clearly significantly lower than the vertical advection term in figure 4B.



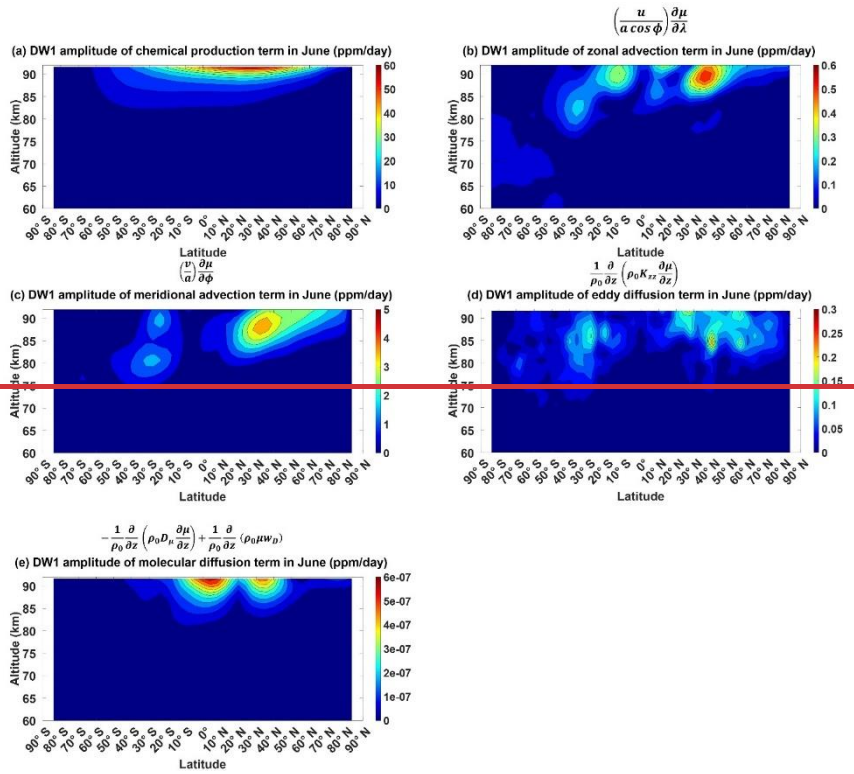


760 **Figure B1: Migrating Diurnal Tide component in March equinox of (a) CO's chemical production term, (b) CO's chemical loss term, (c) CO's zonal advection term, (d) CO's meridional advection term, (e) CO's eddy diffusion term and (f) CO's molecular diffusion term. All are in units of ppm/day.**

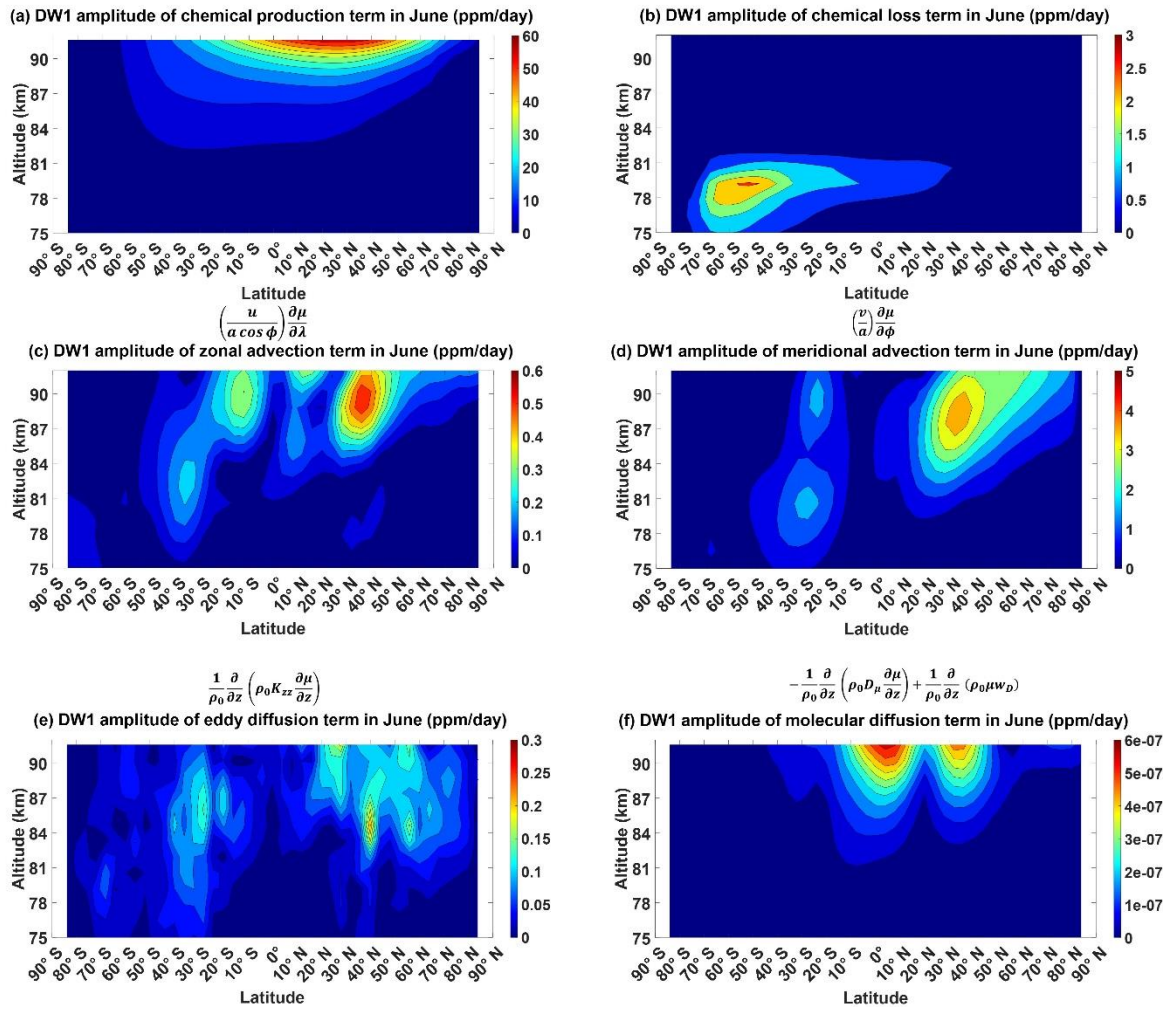
765 Figure B2 shows the chemical production term, chemical loss term, zonal advection term, meridional advection term, eddy diffusion term and molecular diffusion term of CO for June solstice. Figure B2A shows the chemical production term peaking to around 4 ppm/day also over northern high latitudes above 90 km. Figure B2B shows the chemical loss term peaking to around 3 ppm/day also over southern high latitudes below 80 km. Figure B2C shows the zonal advection term peaking to around 0.6 ppm/day over the northern mid-latitudes above 85 km. Figure B2B-B2D shows the meridional advection term peaking to around 4 ppm/day over the mid-latitudes above 80 km. Figure B2C-B2E shows the eddy diffusion term peaking to around 0.3 ppm/day over the northern low-latitudes above 90 km. Figure B2D-B2F shows the molecular diffusion term peaking to around 0.1 ppm/days also over the northern low-latitudes above 90 km. Unlike March equinox, there are regions where the chemical production term and meridional advection term are comparable to the vertical advection term. For the chemical production term, its values aren't too far from the vertical advection term over the northern high-latitudes above 90 km. For

770

the meridional advection term, its values aren't too far from vertical advection term over the northern mid-latitudes between 775 80 km and 90 km. These terms could function as secondary mechanisms over these regions.





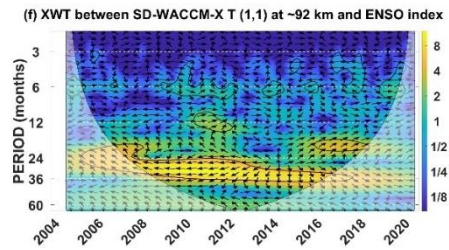
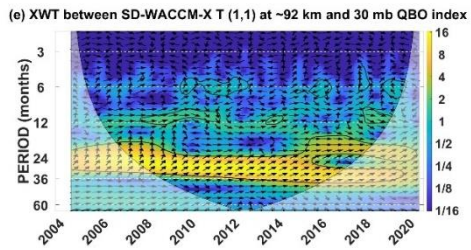
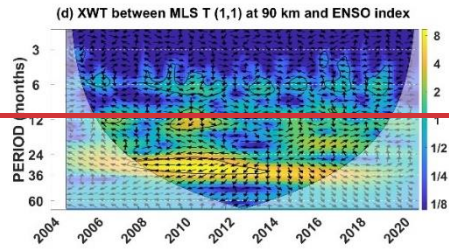
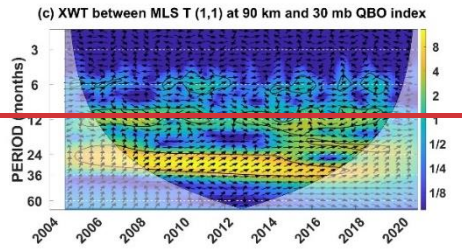
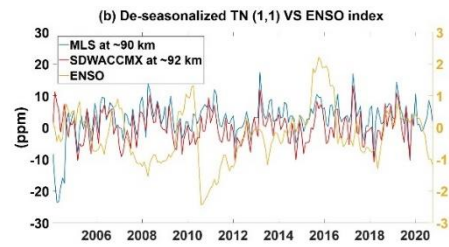
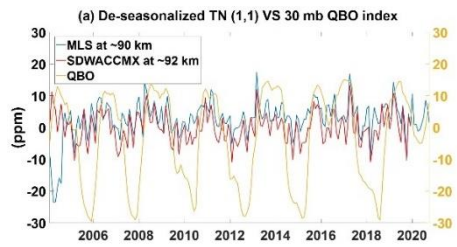


**Figure B2: Migrating Diurnal Tide component in June solstice of (a) CO's chemical production term, (b) CO's chemical loss term, (c) CO's zonal advection term, (d) CO's meridional advection term, (e) CO's eddy diffusion term and (f) CO's molecular diffusion term. All are in units of ppm/day.** Migrating Diurnal Tide component in June solstice of (a) CO's chemical production term, (b) CO's zonal advection term, (c) CO's meridional advection term, (d) CO's eddy diffusion term and (e) CO's molecular diffusion term. All are in units of ppm/day.

### Appendix C: Interannual phenomena in $T'$

Figure C1 identifies interannual phenomena found in  $h'_T$  and here we show that the features are very similar to that for  $h'_\mu$  in figure 9. Figure C1A shows the time-series of MLS  $h'_T$  at ~90 km, SD-WACCM-X  $h'_T$  at ~92 km and the QBO index. Figure C1B shows the time-series of MLS  $h'_T$  at ~90 km, SD-WACCM-X  $h'_T$  at ~92 km and the MEI index. Figure C1C shows the cross-wavelet spectrum between MLS  $h'_T$  and the QBO index. Figure C1C reveals that both MLS  $h'_T$  and the QBO index

790 have a statistically significant oscillation with periods of around 24 months. It is statistically significant between 2005 and 2018. The arrows are pointed slightly upward which indicate that MLS  $h'_T$  peak slightly ahead of the QBO index. The arrows also indicate that MLS  $h'_T$  increases during the westerly phase of the QBO while it decreases during the easterly phase of the QBO.



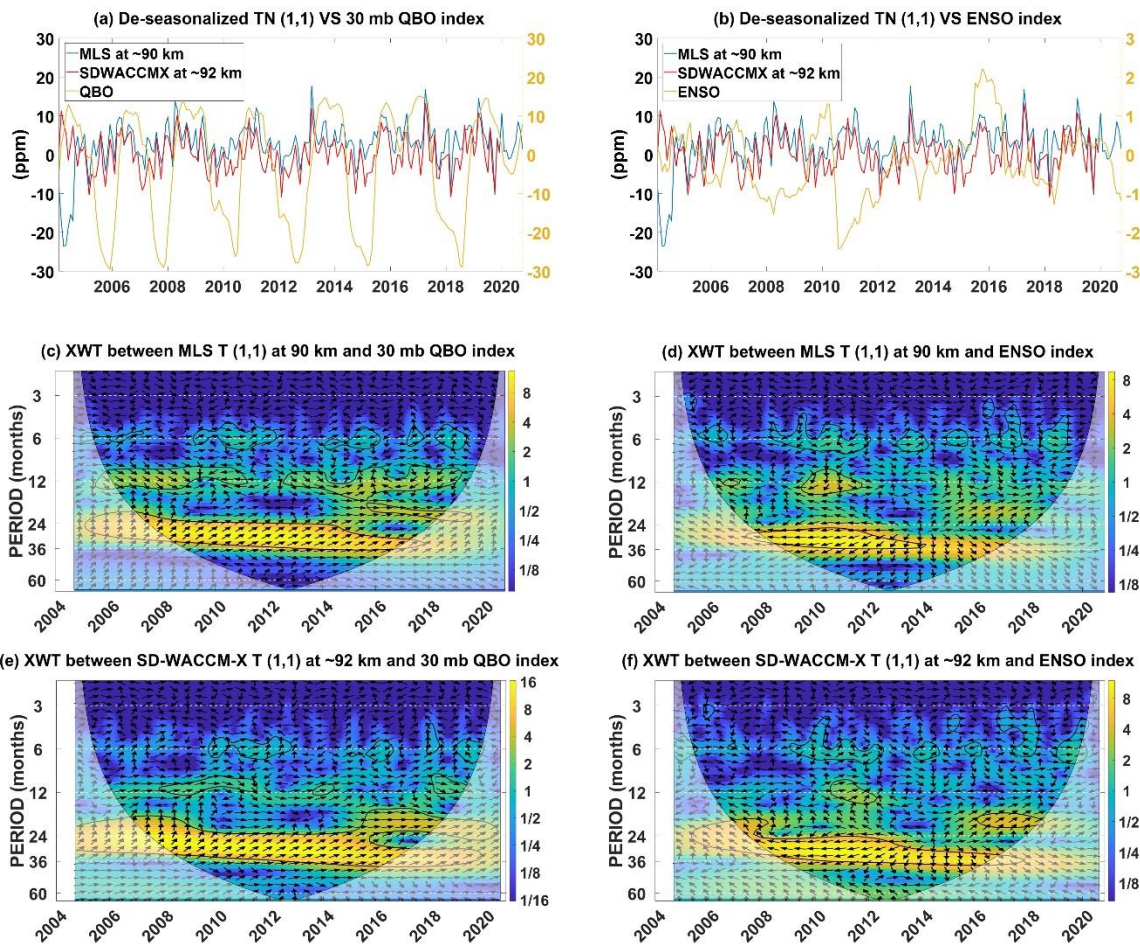


Figure C1: (a) De-seasonalized time-series of MLS temperature (1,1) at ~90 km, SD-WACCM-X temperature (1,1) at ~92 km and the QBO index. (b) De-seasonalized time-series of MLS temperature (1,1) at ~90 km, SD-WACCM-X temperature (1,1) at ~92 km and the ENSO index. (c) Cross-wavelet spectrum between MLS temperature (1,1) at ~90 km and the QBO index. (d) Cross-wavelet spectrum between MLS temperature (1,1) at ~90 km and the ENSO index. (e) Cross-wavelet spectrum between SD-WACCM-X temperature (1,1) at ~92 km and the QBO index. (f) Cross-wavelet spectrum between SD-WACCM-X temperature (1,1) at ~92 km and the ENSO index.

Figure C1D shows the cross-wavelet spectrum between MLS  $h_T^1$  and the MEI index. This spectrum reveals that both MLS  $h_T^1$  and the MEI index have a statistically significant oscillation of around 30 months between 2008 and 2012. This does coincide with a strong La Nina event. The arrows are pointed almost fully to the left which indicate that MLS  $h_T^1$  and ENSO are anti-correlated. MLS  $h_T^1$  increases during La Nina and it decreases during El Nino.

Figure C1E shows the cross-wavelet spectrum between SD-WACCM-X  $h_T^1$  and the QBO index. This spectrum reveals that both SD-WACCM-X  $h_T^1$  and the QBO index have a statistically significant oscillation with periods ranging from 20 to 30 months and the statistical significance is found throughout all years. From 2015 to 2020, both have a statistically



810 significant oscillation with period around 15 to 20 months. Like MLS  $h'_T$ , the arrows are pointed slightly upward which indicate that SD-WACCM-X  $h'_T$  peak slightly ahead of the QBO index and that SD-WACCM-X  $h'_T$  increases during the westerly phase of the QBO while it decreases during the easterly phase of the QBO.

Figure C1F shows the cross-wavelet spectrum between SD-WACCM-X  $h'_T$  and the MEI index. This spectrum reveals that both have a statistically significant oscillation with period of around 24 to 36 months. This period of statistical significance  
815 lasts from 2006 to 2016. Like MLS  $h'_T$ , the arrows are pointed almost fully to the left which indicate that SD-WACCM-X  $h'_T$  and ENSO are almost anti-correlated and that SD-WACCM-X  $h'_T$  increases during La Nina and it decreases during El Nino.

### **Code Availability**

As a component of the Community Earth System Model, WACCM-X source code are publicly available at <http://www.cesm.ucar.edu>.

### 820 **Data Availability**

The SABER dataset presented in this paper are accessible from the SABER website: <http://saber.gats-inc.com/data.php>. The MLS dataset presented in this paper are accessible from the MLS website: <https://aura.gsfc.nasa.gov/mls.html>. QBO index is accessible from <http://www.cpc.ncep.noaa.gov/data/indices/qbo.u30.index>. ENSO/MEI index is accessible from <https://psl.noaa.gov/enso/mei/>.

### 825 **Author contributions**

Conceptualization and investigation were done by CCJS, DLW and JNL. Formal Analysis and visualization were done by CCJS with help and supervision from DLW and JNL. Data curation on MLS data was done by JNL. Data curation on SABER data was done by CCJS. Access to SD-WACCM-X was provided by LQ and HL. SD-WACCM-X was run on Cheyenne (doi:10.5065/D6RX99HX) provided by NCAR's Computational and Information Systems Laboratory, sponsored by the  
830 National Science 510 Foundation. DLW, JNL and LCC provided funding acquisition. CCJS wrote the original draft of the manuscript with help from DLW and JNL. All authors reviewed and edited the manuscript.

### **Competing Interests**

The authors declare that they have no conflict of interest.

### **Acknowledgements**

835 CCJS and LCC acknowledge Taiwan National Science and Technology Council grants 111-2636-M-008-004, 107-2923-M-008-001-MY3, and 110-2923-M-008-005-MY3, as well as the Higher Education SPROUT grant to the Center for



Astronautical Physics and Engineering from the Taiwan Ministry of Education. The work of DLW and JNL was supported by NASA's TSIS Project and Sun-Climate research. LQ acknowledges support from the following NASA grants: 80NSSC19K0278, 80NSSC20K0189, NNH19ZDA001N-HGIO and NNH19ZDA001N-HSR. HL acknowledges support from  
840 NASA grant 80NSSC20K1323. National Center for Atmospheric Research is a major facility sponsored by the National Science Foundation under Cooperative Agreement No. 1852977.

## References

- Akmaev, R. A., & Shved, G. M. (1980). Modelling of the composition of the lower thermosphere taking account of the dynamics with applications to tidal variations of the [OI] 5577 Å airglow. *Journal of Atmospheric and Terrestrial  
845 Physics*, 42(8), 705-716.
- Allen, D. R., J. L. Stanford, M. A. Lopez-Valverde, N. Nakamura, D. J. Lary, A. R. Douglass, M. C. Cerniglia, J. J. Remedios, and F. W. Taylor (1999), Observations of middle atmosphere CO from the UARS ISAMS during the early northern winter 1991/1992, *J. Atmos. Sci.*, 56, 563–583.
- Allen, D. R., J. L. Stanford, N. Nakamura, M. A. Lopez-Valverde, M. Lopez-Puertas, F. W. Taylor, and J. J. Remedios (2000),  
850 Antarctic polar descent and planetary wave activity observed in ISAMS CO from April to July 1992, *Geophys. Res. Lett.*, 27(5), 665–668, doi:10.1029/1999GL010888
- Angelats i Coll, M., & Forbes, J. M. (1998). Dynamical influences on atomic oxygen and 5577 Å emission rates in the lower thermosphere. *Geophysical research letters*, 25(4), 461-464.
- Brasseur, G. P., & Solomon, S. (2006). *Aeronomy of the middle atmosphere: Chemistry and physics of the stratosphere and  
855 mesosphere* (Vol. 32). Springer Science & Business Media.
- [Burrage, M. D., Hagan, M. E., Skinner, W. R., Wu, D. L., and Hays, P. B., 1995. Long-term variability in the solar diurnal tide observed by HRDI and simulated by the GSWM. \*Geophys. Res. Lett.\*, 22,2641–2644, doi:10.1029/95GL02635, 1995.](#)
- Cen, Y., Yang, C., Li, T., Russell III, J. M., & Dou, X. (2022). Suppressed migrating diurnal tides in the mesosphere and lower  
860 thermosphere region during El Niño in northern winter and its possible mechanism. *Atmospheric Chemistry and Physics*, 22(12), 7861-7874.
- Chapman, S., & Lindzen, R. S. (1970). Atmospheric tides, 200 pp. *D. Reidel, Norwell, Mass.*
- Dawkins, E. C. M., Feofilov, A., Rezac, L., Kutepov, A. A., Janches, D., Höffner, J., ... & Russell III, J. (2018). Validation of SABER v2. 0 operational temperature data with ground-based lidars in the mesosphere-lower thermosphere region (75–105  
865 km). *Journal of Geophysical Research: Atmospheres*, 123(17), 9916-9934.
- Eckermann, S. D., Gibson-Wilde, D. E., & Bacmeister, J. T. (1998). Gravity wave perturbations of minor constituents: A parcel advection methodology. *Journal of the atmospheric sciences*, 55(24), 3521-3539.

- Forbes, J. M. (1995). Tidal and planetary waves. *The Upper Mesosphere and Lower Thermosphere: A Review of Experiment and Theory, Geophys. Monogr. Ser.*, 87, 67-87.
- 870 Forbes, J. M., & Wu, D. (2006). Solar tides as revealed by measurements of mesosphere temperature by the MLS experiment on UARS. *Journal of the Atmospheric Sciences*, 63(7), 1776-1797.
- Gan, Q., Du, J., Ward, W. E., Beagley, S. R., Fomichev, V. I., & Zhang, S. (2014). Climatology of the diurnal tides from eCMAM30 (1979 to 2010) and its comparison with SABER. *Earth, Planets and Space*, 66(1), 1-24.
- 875 Garcia, R. R., López-Puertas, M., Funke, B., Marsh, D. R., Kinnison, D. E., Smith, A. K., & González-Galindo, F. (2014). On the distribution of CO<sub>2</sub> and CO in the mesosphere and lower thermosphere. *Journal of Geophysical Research: Atmospheres*, 119(9), 5700-5718.
- Garcia, R. R., Smith, A. K., Kinnison, D. E., Cámara, Á. D. L., & Murphy, D. J. (2017). Modification of the gravity wave parameterization in the Whole Atmosphere Community Climate Model: Motivation and results. *Journal of the Atmospheric Sciences*, 74(1), 275-291.
- 880 García-Comas, M., López-Puertas, M., Marshall, B. T., Wintersteiner, P. P., Funke, B., Bermejo-Pantaleón, D., ... & Russell III, J. M. (2008). Errors in Sounding of the Atmosphere using Broadband Emission Radiometry (SABER) kinetic temperature caused by non-local-thermodynamic-equilibrium model parameters. *Journal of Geophysical Research: Atmospheres*, 113(D24).
- 885 Grinsted, A., Moore, J. C., & Jevrejeva, S. (2004). Application of the cross wavelet transform and wavelet coherence to geophysical time series. *Nonlinear processes in geophysics*, 11(5/6), 561-566.
- Groves, G. V. (1982a). Hough components of ozone heating. *Journal of Atmospheric and Terrestrial Physics*, 44(2), 111-121.
- Groves, G. V. (1982b). The vertical structure of atmospheric oscillations formulated by classical tidal theory. *Planetary and Space Science*, 30(3), 219-244.
- 890 Gurubaran, S., Rajaram, R., Nakamura, T., and Tsuda, T.: Interannual variability of diurnal tide in the tropical mesopause region: a signature of the El Niño-Southern Oscillation (ENSO), *Geophys. Res. Lett.*, 32, L13805, <https://doi.org/10.1029/2005gl022928>, 2005.
- Gurubaran, S., Rajaram, R., Nakamura, T., Tsuda, T., Riggan, D., & Vincent, R. A. (2009). Radar observations of the diurnal tide in the tropical mesosphere-lower thermosphere region: Longitudinal variabilities. *Earth, planets and space*, 61(4), 513-524.
- 895 Hagan, M. E., & Forbes, J. M. (2002). Migrating and nonmigrating diurnal tides in the middle and upper atmosphere excited by tropospheric latent heat release. *Journal of Geophysical Research: Atmospheres*, 107(D24).
- Jones Jr, M., Forbes, J. M., & Hagan, M. E. (2014). Tidal-induced net transport effects on the oxygen distribution in the thermosphere. *Geophysical Research Letters*, 41(14), 5272-5279.
- 900 Kogure, M. and Liu, H.: DW1 tidal enhancements in the equatorial MLT during 2015 El Niño: The relative role of tidal heating and propagation, *J. Geophys. Res.-Space Physics*, 126, e2021JA029342, <https://doi.org/10.1029/2021JA029342>, 2021.

- Kunz, A., Pan, L. L., Konopka, P., Kinnison, D. E., & Tilmes, S. (2011). Chemical and dynamical discontinuity at the extratropical tropopause based on START08 and WACCM analyses. *Journal of Geophysical Research: Atmospheres*, 116(D24).
- 905 Kutepov, A. A., Feofilov, A. G., Marshall, B. T., Gordley, L. L., Pesnell, W. D., Goldberg, R. A., & Russell III, J. M. (2006). SABER temperature observations in the summer polar mesosphere and lower thermosphere: Importance of accounting for the CO<sub>2</sub> v<sub>2</sub> quanta V–V exchange. *Geophysical Research Letters*, 33(21).
- Lee, J. N., Wu, D. L., Manney, G. L., Schwartz, M. J., Lambert, A., Livesey, N. J., ... & Read, W. G. (2011). Aura Microwave Limb Sounder observations of the polar middle atmosphere: Dynamics and transport of CO and H<sub>2</sub>O. *Journal of Geophysical Research: Atmospheres*, 116(D5).
- 910 Lieberman, R. S. (1997). Long-term variations of zonal mean winds and (1, 1) driving in the equatorial lower thermosphere. *Journal of Atmospheric and Solar-Terrestrial Physics*, 59(13), 1483-1490.
- Lieberman, R. S., Riggan, D. M., Ortland, D. A., Nesbitt, S. W., and Vincent, R. A.: Variability of mesospheric diurnal tides and tropospheric diurnal heating during 1997–1998, *J. Geophys. Res.-Atmos.*, 112, <https://doi.org/10.1029/2007jd008578>, 2007.
- 915 Liu, H. L., Bardeen, C. G., Foster, B. T., Lauritzen, P., Liu, J., Lu, G., ... & Qian, L. (2018). Development and Validation of the Whole Atmosphere Community Climate Model With Thermosphere and Ionosphere Extension (WACCM-X 2.0). *Journal of Advances in Modeling Earth Systems*, 10(2), 381-402.
- Liu, H., Sun, Y. Y., Miyoshi, Y., and Jin, H.: ENSO effects on MLT diurnal tides: A 21-year reanalysis data-driven GAIA model simulation, *J. Geophys. Res.-Space Phys.*, 122, 5539–5549, <https://doi.org/10.1002/2017JA024011>, 2017.
- 920 Liu, J., H.-L. Liu, W. Wang, A. G. Burns, Q. Wu, Q. Gan, S. C. Solomon, D. R. Marsh, L. Qian, G. Lu, N. M. Pedatella, J. M. McInerney, J. M. Russell III, and W. S. Schreiner (2018), First results from the ionospheric extension of WACCM-X during the deep solar minimum year of 2008, *J. Geophys. Res.*, 123, doi:10.1002/2017JA025010.
- [Livesey, N. J., Read, W. G., Froidevaux, L., Lambert, A., Manney, G. L., Pumphrey, H. C., ... & Wu, D. L. \(2011\). Version 3.3 Level 2 data quality and description document. \*JPL D-33509\*, 3\(2\), 4-1.](#)
- 925 Manney, G. L., Schwartz, M. J., Krüger, K., Santee, M. L., Pawson, S., Lee, J. N., ... & Livesey, N. J. (2009). Aura Microwave Limb Sounder observations of dynamics and transport during the record-breaking 2009 Arctic stratospheric major warming. *Geophysical Research Letters*, 36(12).
- Marsh, D. R. (2011). Chemical–dynamical coupling in the mesosphere and lower thermosphere. In *Aeronomy of the Earth's Atmosphere and Ionosphere* (pp. 3-17). Springer, Dordrecht.
- 930 Marsh, D. R., & Russell III, J. M. (2000). A tidal explanation for the sunrise/sunset anomaly in HALOE low-latitude nitric oxide observations. *Geophysical research letters*, 27(19), 3197-3200.
- Marsh, D. R., Mills, M. J., Kinnison, D. E., Lamarque, J. F., Calvo, N., & Polvani, L. M. (2013). Climate change from 1850 to 2005 simulated in CESM1 (WACCM). *Journal of climate*, 26(19), 7372-7391.

- Marsh, D. R., Skinner, W. R., & Yudin, V. A. (1999). Tidal influences on O<sub>2</sub> atmospheric band dayglow: HRDI observations vs. model simulations. *Geophysical research letters*, 26(10), 1369-1372.
- 935 Mayr, H. G., & Mengel, J. G. (2005). Interannual variations of the diurnal tide in the mesosphere generated by the quasi-biennial oscillation. *Journal of Geophysical Research: Atmospheres*, 110(D10).
- McLandress, C. (1997). Seasonal variability of the diurnal tide: Results from the Canadian middle atmosphere general circulation model. *Journal of Geophysical Research: Atmospheres*, 102(D25), 29747-29764.
- 940 McLandress, C. (1997). Seasonal variability of the diurnal tide: Results from the Canadian middle atmosphere general circulation model. *Journal of Geophysical Research: Atmospheres*, 102(D25), 29747-29764.
- McLandress, C. (2002a). The seasonal variation of the propagating diurnal tide in the mesosphere and lower thermosphere. Part I: The role of gravity waves and planetary waves. *Journal of the Atmospheric Sciences*, 59(5), 893-906.
- McLandress, C. (2002b). The seasonal variation of the propagating diurnal tide in the mesosphere and lower thermosphere. Part II: The role of tidal heating and zonal mean winds. *Journal of the Atmospheric Sciences*, 59(5), 907-922.
- 945 Mertens, C. J., Mlynczak, M. G., López-Puertas, M., Wintersteiner, P. P., Picard, R. H., Winick, J. R., ... & Russell III, J. M. (2001). Retrieval of mesospheric and lower thermospheric kinetic temperature from measurements of CO<sub>2</sub> 15 μm Earth Limb Emission under non-LTE conditions. *Geophysical Research Letters*, 28(7), 1391-1394.
- Mertens, C. J., Russell III, J. M., Mlynczak, M. G., She, C. Y., Schmidlin, F. J., Goldberg, R. A., ... & Xu, X. (2009). Kinetic temperature and carbon dioxide from broadband infrared limb emission measurements taken from the TIMED/SABER instrument. *Advances in Space Research*, 43(1), 15-27.
- 950 Minschwaner, K., et al. (2010), The photochemistry of carbon monoxide in the stratosphere and mesosphere evaluated from observations by the Microwave Limb Sounder on the Aura satellite, *J. Geophys. Res.*, 115, D13303, doi:10.1029/2009JD012654
- 955 Mukhtarov, P., Pancheva, D., & Andonov, B. (2009). Global structure and seasonal and interannual variability of the migrating diurnal tide seen in the SABER/TIMED temperatures between 20 and 120 km. *Journal of Geophysical Research: Space Physics*, 114(A2).
- Oberheide, J., & Forbes, J. M. (2008). Thermospheric nitric oxide variability induced by nonmigrating tides. *Geophysical Research Letters*, 35(16).
- 960 Oberheide, J., Hagan, M. E., & Roble, R. G. (2003). Tidal signatures and aliasing in temperature data from slowly precessing satellites. *Journal of Geophysical Research: Space Physics*, 108(A2).
- Pancheva, D., Mukhtarov, P., & Andonov, B. (2009, February). Global structure, seasonal and interannual variability of the migrating semidiurnal tide seen in the SABER/TIMED temperatures (2002-2007). In *Annales geophysicae: atmospheres, hydrospheres and space sciences* (Vol. 27, No. 2, p. 687).
- 965 Pedatella, N. M. and Liu, H. L.: Influence of the El Niño Southern Oscillation on the middle and upper atmosphere, *J. Geophys. Res.-Atmos.*, 118, 2744–2755, <https://doi.org/10.1002/Jgra.50286>, 2013.

- Pedatella, N. M. and Liu, H. L.: Tidal variability in the mesosphere and lower thermosphere due to the El Niño-Southern Oscillation, *Geophys. Res. Lett.*, 39, L19802, <https://doi.org/10.1029/2012gl053383>, 2012.
- Pramitha, M., Kumar, K. K., Ratnam, M. V., Praveen, M., & Bhaskara Rao, S. V. (2021). Stratospheric Quasi Biennial Oscillation Modulations of Migrating Diurnal Tide in the Mesosphere and Lower Thermosphere Over the Low and Equatorial Latitudes. *Journal of Geophysical Research: Space Physics*, 126(7), e2020JA028970.
- [Remsberg, E. E., Marshall, B. T., Garcia-Comas, M., Krueger, D., Lingenfelter, G. S., Martin-Torres, J., ... & Thompson, R. E. \(2008\). Assessment of the quality of the Version 1.07 temperature-versus-pressure profiles of the middle atmosphere from TIMED/SABER. \*Journal of Geophysical Research: Atmospheres\*, 113\(D17\).](#)
- 975 Richter, J. H., Sassi, F., & Garcia, R. R. (2010). Toward a physically based gravity wave source parameterization in a general circulation model. *Journal of the Atmospheric Sciences*, 67(1), 136-156.
- Rienecker, M. M., Suarez, M. J., Gelaro, R., Todling, R., Bacmeister, J., Liu, E., ... & Woollen, J. (2011). MERRA: NASA's modern-era retrospective analysis for research and applications. *Journal of climate*, 24(14), 3624-3648.
- Salinas, C. C. J. H., Chang, L. C., Liang, M. C., Yue, J., Qian, L., Gan, Q., ... & Mlynczak, M. (2020). Local-Time Variabilities of March Equinox Daytime SABER CO<sub>2</sub> in the Upper Mesosphere and Lower Thermosphere Region. *Journal of Geophysical Research: Space Physics*, 125(3), e2019JA027039.
- 980 Salinas, C. C. J. H., Chang, L. C., Yue, J., Qian, L., Gan, Q., Russell III, J., & Mlynczak, M. (2022). Estimating the Migrating Diurnal Tide Component of Mesospheric Water Vapor. *Journal of Geophysical Research: Space Physics*, e 2021JA030187.
- Shepherd, G. G., McLandress, C., & Solheim, B. H. (1995). Tidal influence on O (<sup>1</sup>S) Airglow emission rate distributions at the geographic equator as observed by WINDII. *Geophysical Research Letters*, 22(3), 275-278.
- 985 Shepherd, G. G., Roble, R. G., McLandress, C., & Ward, W. E. (1997). WINDII observations of the 558 nm emission in the lower thermosphere: the influence of dynamics on composition. *Journal of Atmospheric and Solar-Terrestrial Physics*, 59(6), 655-667.
- Smith, A. K., Marsh, D. R., Mlynczak, M. G., & Mast, J. C. (2010). Temporal variations of atomic oxygen in the upper mesosphere from SABER. *Journal of Geophysical Research: Atmospheres*, 115(D18).
- 990 Sun, Y. Y., Liu, H., Miyoshi, Y., Liu, L., & Chang, L. C. (2018). El Niño–Southern Oscillation effect on quasi-biennial oscillations of temperature diurnal tides in the mesosphere and lower thermosphere. *Earth, Planets and Space*, 70(1), 1-10.
- Vincent, R. A., Kovalam, S., Fritts, D. C., & Isler, J. R. (1998). Long-term MF radar observations of solar tides in the low-latitude mesosphere: Interannual variability and comparisons with the GSWM. *Journal of Geophysical Research: Atmospheres*, 103(D8), 8667-8683.
- 995 Ward, W. E. (1999). A simple model of diurnal variations in the mesospheric oxygen nightglow. *Geophysical research letters*, 26(23), 3565-3568.
- Waters, J. W., Froidevaux, L., Harwood, R. S., Jarnot, R. F., Pickett, H. M., Read, W. G., ... & Holden, J. R. (2006). The earth observing system microwave limb sounder (EOS MLS) on the Aura satellite. *IEEE Transactions on Geoscience and Remote Sensing*, 44(5), 1075-1092.
- 1000



- Wu, D. L., Hays, P. B., & Skinner, W. R. (1995). A least squares method for spectral analysis of space-time series. *Journal of Atmospheric Sciences*, 52(20), 3501-3511.
- Wu, Q., Ortland, D. A., Killeen, T. L., Roble, R. G., Hagan, M. E., Liu, H. L., ... & Niciejewski, R. J. (2008). Global distribution and interannual variations of mesospheric and lower thermospheric neutral wind diurnal tide: 1. Migrating tide. *Journal of Geophysical Research: Space Physics*, 113(A5).
- 1005 Xu, J., Smith, A. K., Liu, H. L., Yuan, W., Wu, Q., Jiang, G., ... & Franke, S. J. (2009). Seasonal and quasi-biennial variations in the migrating diurnal tide observed by Thermosphere, Ionosphere, Mesosphere, Energetics and Dynamics (TIMED). *Journal of Geophysical Research: Atmospheres*, 114(D13).
- Zhang, S. P., Wiens, R. H., Solheim, B. H., & Shepherd, G. G. (1998). Nightglow zenith emission rate variations in O (1 S) at  
1010 low latitudes from wind imaging interferometer (WINDII) observations. *Journal of Geophysical Research: Atmospheres*, 103(D6), 6251-6259.
- Zhang, X., Forbes, J. M., Hagan, M. E., Russell III, J. M., Palo, S. E., Mertens, C. J., & Mlynczak, M. G. (2006). Monthly tidal temperatures 20–120 km from TIMED/SABER. *Journal of Geophysical Research: Space Physics*, 111(A10).
- Zhou, X., Wan, W., Yu, Y., Ning, B., Hu, L., and Yue, X.: New approach to estimate tidal climatology from ground-and space-  
1015 based observations, *J. Geophys. Res.-Space Phys.*, 123, 5087–5101, <https://doi.org/10.1029/2017JA024967>, 2018.