

Aerosol deposition to the boreal forest in the vicinity of the Alberta Oil Sands

Timothy Jiang^{1*}, Mark Gordon¹, Paul A. Makar², Ralf M. Staebler², Michael Wheeler²

¹Earth and Space Science, York University, Toronto, M3J 1P3, Canada

5 ^{*}Now at School of Environmental Sciences, Guelph University, Guelph, N1G 2W1, Canada

²Air Quality Research Department, Environment and Climate Change Canada, Toronto, M3H 5T4, Canada

Correspondence to: Mark Gordon (mgordon@yorku.ca)

Abstract. Measurements of size-resolved aerosol concentration and fluxes were made in a forest in the Athabasca Oil Sands Region (AOSR) of Alberta, Canada in August 2021 with the aim of investigating a) particle size distributions from different sources, b) size-resolved particle deposition velocities, and c) the rate of vertical mixing in the canopy. Particle size distributions were attributed to different sources determined by wind direction. Air mixed with smokestack plumes from oil sands processing facilities had higher number concentrations with peak number at diameters near 70 nm. Aerosols from the direction of open-pit mine faces showed number concentration peaks near 150 nm and volume distribution peaks near 250 nm (with secondary peaks near 600 nm). Size-resolved deposition fluxes were calculated which show good agreement with previous measurements and a recent parameterization. There is a minimum deposition velocity of $v_d = 0.02 \text{ cm s}^{-1}$ for particles of 80 nm diameter; however, there is a large amount of variation in the measurements and this value is not significantly different from zero in the 68% confidence interval. Finally, gradient measurements of aerosol particles (with diameters $< 1 \mu\text{m}$) demonstrated nighttime decoupling of air within and above the forest canopy, with median lag times at night of up to 40 min, and lag times between 2 and 5 min during the day. Aerosol mass fluxes (diameters $< 1 \mu\text{m}$) determined using flux/gradient methods (with different diffusion parameterizations) underestimate the flux magnitude relative to eddy covariance flux measurements when averaged over the nearly 1-month measurement period. However, there is significant uncertainty in the averages determined using the flux/gradient method.

1 Introduction

25 Atmospheric aerosols are a strong influence on climate, affecting the radiation budget (both directly and indirectly) through radiative reflection, absorption, and influence on cloud formation. The net radiative effect is a large source of uncertainty in climate models (Boucher et al., 2013). Human exposure to particulate matter is linked to respiratory and cardiovascular disease and increased mortality, with some studies showing health effects even at very low concentration exposures (Kappos et al., 2004). Forests comprise 9% of the land surface on Earth (Adams, 2012) and 40% of the land surface of Canada (NRCan, 2021) and they are a net sink of aerosols due to dry deposition. Aerosol deposition to forests also affects the health

and growth of the forest (Matsuda, 2017). Hence, modeling deposition to forests is key to correctly modeling atmospheric aerosol concentrations.

35 The Athabasca Oil Sands Region (AOSR) in Alberta, Canada is the third largest oil deposit in the world. The activities associated with mining and bitumen processing in the region generate pollutants, greenhouse gases, and aerosols. The aerosols include sulphates, black carbon, primary organic aerosols (POA), dust, and secondary organic aerosols (SOA) (Liggio et al., 2016) with SOA formation rates comparable to large North American cities. Aerosols thus originate in both direct emissions (primary) and in-situ reactions of gases (secondary).

40 Several aircraft-based studies have characterized the composition and size of the oil sands aerosols in the region (Howell et al., 2014; Baibakov et al., 2021; Liggio et al., 2016) by flying through elevated plumes downwind of mines and upgrading facilities. Howell et al. characterised the aerosols as a mix of freshly nucleated sulfates and nitrates, possible fly ash, and dust from dirt roads and mining operations, while Baibakov et al. found that the plumes were associated with elevated concentrations of sulfates and ammonium. All three studies demonstrated the formation of organic aerosol within 10's of km of the sources, and Liggio et al. demonstrated that SOA formation rates are comparable to megacities such as Mexico City or Paris.

45 Surface loss of aerosols through dry deposition is primarily dependant on aerosol size and vegetation type. Extensive reviews of dry deposition of aerosols can be found in Hicks et al. (2016), Saylor et al. (2019), Farmer et al. (2020), and Emerson et al. (2020). The primary mechanism for the deposition of small particles < 100 nm in diameter is Brownian diffusion, which is more effective for smaller particles. The primary mechanism for the deposition of large particles > 300 nm in diameter is impaction and interception due to inertia. There is an intermediate size of particles for which both mechanisms are less effective, leading to the local minimum of deposition velocity of aerosols with respect to particle diameter, which is referred to in Hicks et al. (2016) as a "well" in deposition velocity of aerosols as a function of particle size. Emerson et al. (2020) demonstrated that previous parameterizations overestimate deposition for particles with diameters less than 500 nm and underestimate deposition for particles with diameters more than 2 μm . The overestimation can be as large as an order of magnitude.

55 The minimum in deposition velocity has been observed in a coniferous forest in Southern Finland by Mammarella et al. (2011); however, these deposition velocities were not determined using size-resolved eddy covariance measurements. Instead, flux measurements were made using total number concentrations for particle diameters between 10 nm and 1 μm , and then the size dependence is inferred using a particle deposition model. Using this methodology, the Mammarella et al. study suggests a local minima of aerosol deposition velocity at particle diameters of 90 nm and 150 nm. The location of the minimum "well" was recently demonstrated by size-resolved eddy-covariance aerosol flux measurements over a ponderosa pine forest by Emerson et al. (2020), who proposed a modification to the widely used Zhang et al. (2001) parameterization. Both the Emerson et al. and Zhang et al. parameterization have a single minimum value over at 0.01 μm to 100 μm range. The revised (Emerson et al.) parameterization locates the minimum deposition velocity near 70 nm in diameter (closer to the measured values), compared to the minimum located near 2 μm in diameter predicted by the Zhang et al. model.

65 The presence of the crown of a forest canopy leads to frequent decoupling between the sub-canopy space and the air above
the canopy. Only occasionally (an average of 4 hours per day) does the sub-canopy air exchange energy and matter with the
air above the canopy (Thomas and Foken, 2007), and mixing often does not occur for several hours at a time through the
night. The canopy is usually decoupled during calm conditions. Decoupling means that fluxes in and out of forests do not
70 happen continuously but are discrete events (Foken, 2008). This is typically accounted for in models which include
deposition by modifying the diffusion coefficient based on stability (e.g., Makar et al., 2017).

While forests are predominantly a sink for aerosols, forests can often be a source of aerosols to the atmosphere (e.g. Gordon
et al., 2011; Pryor et al., 2008) either by adding biogenic mass to anthropogenic aerosols or by aggregation of organic matter.
Furthermore, the influence of mixing and coupling on deposition is often significant where stagnant air in the understory can
act as a blocking layer between the canopy top and the surface (Schilperoort et al., 2020).

75 In spite of the abundance of aerosol deposition studies in forests, there has not yet been such a study in the AOSR. The three
primary goals of this study were to determine the sources of specific aerosol size distributions from oil sands operations at
ground level, to determine the size-resolved deposition rate of anthropogenic source aerosols into forests, and to study the
effect the forest has on the vertical mixing of aerosols. This paper is a companion paper to Gordon et al. (2022) and Zhang et
al. (2023) which respectively investigate SO₂ and ozone deposition at this site.

80 **2 Methods**

2.1 Site Location and Instrumentation

The YAJP tower was installed between Jul 2017 and Oct 2021 at 57.1225 N 111.4264 W. This work describes results from
three intensive field campaigns at the tower in 2017 (16 Jul – 1 Aug); 2018 (4 – 18 Jun); and 2021 (3 – 26 Aug). Size-
resolved aerosols measurements were made during all three campaigns, while eddy covariance fluxes were measured only in
85 the 2021 campaign. The results presented here focus on the Aug 2021 study only due to the availability of eddy covariance
fluxes during the latter period.

The tower was mounted within the forest and is accessed through an unimproved road originally used for reflection
seismology. The closest paved road is the East Athabasca Highway which is a private road with generally light traffic
approximately 650 m to the south of the tower. The site is surrounded by at least 10 km of boreal forest in all directions (Fig.
90 1) with oil sands open-pit mining, tailings, and processing facilities beyond that, predominately in the 135-270° and 305-45°
sectors. The Athabasca River valley runs west of the site in a varying north-south direction, which is an influence on local
wind direction. The village of Fort McKay is approximately 15 km to the NW of the site, and the town of Fort McMurray is
40 km south. Additionally, the Hammerstone limestone aggregate quarry is located 10 km NW of the tower.

The forest is mature jack pine (*Pinus banksiana*) and the ground is covered in reindeer moss (*Cladonia spp.*). The
95 undergrowth in the area is limited to some sparsely distributed blueberry bushes. The ground is sandy and well drained. The
forest's canopy height is approximated as 19 m (with the tallest trees in the area ranging from 16 m to 21 m in height). The

one-sided leaf area index (LAI) was measured as 1.17 (based on Gap Light Analyzer software, Frazer et al., 1999) with a stem density of approximately 320 trees ha⁻¹. A generator was located 90 m from the tower, at a wind angle of 50°. During the entire 4-year duration of the project, less than 4% of the wind was from the 40-60° direction.

100 The ultra-high sensitivity aerosol spectrometer (UHSAS, Droplet Measurement Technology Inc.) measures particle number concentration in 100 size ranges between 55 nm and 1 µm. Particles are sized and counted with 1054 nm laser light scattered onto two magnifiers (one for small particles and one for large ones) collected by photodiode. It sizes up to 3000 individual particles per second and size distributions for numbers higher than 3000 are scaled by total number count. Cai et al. (2008) have demonstrated that there is more than 50% loss for particles of size 55 - 60 nm, and an underestimation of the size of
105 particles on the smaller end of its range. We restrict our analysis to the 60 nm to 1 µm range. Size distributions were sampled at a 1 Hz frequency. The UHSAS was installed at the base of the tower and sampled from a height of 29 m through a 32 m length of 3/8" ID static-dissipative tubing. The measured flow rate of 15 L min⁻¹ results in a residence (delay) time of 9 s. The instrument response time (with the 32-m tubing length) was determined in lab tests by measuring step-changes in concentration and fitting the response to a sigmoid curve (Horst, 1997). This gave a response time of $\tau = 0.9$ s. Petroff et al.
110 (2018) determined a response time of 0.28 s for the UHSAS alone, suggesting that approximately 0.6 s of our measured response time is due to dissipation in the tubing.

A 3D sonic anemometer (Type A, Applied Technology Inc.) was co-mounted with the UHSAS inlet at 29 m. The anemometer faced approximately south (169°) and was mounted 0.7 m from the tower structure (which is an open triangular cross-section with 0.4 m sides). For the 2017 field study, a second anemometer was mounted at a height of 9 m within the
115 canopy. The anemometers sampled at a frequency of 10 Hz.

Two particle counters (DustTrak DRX 8533, TSI) were mounted at ground level (2 m) and at a height of approximately 20 m. The DustTrak particle counters sample 2-min averages of total particle mass for an approximate range of 0.1 to 15 µm. These measurements are size resolved into total mass for diameters less than 1 µm (PM1), 2.5 µm (PM2.5), 4 µm (PM4), and 10 µm (PM10). Here, we only used the PM1 (0.1 to 1µm) size range. The instruments were set to auto-zero every 15
120 min. Yun et al. (2015) found that the DustTraks require a correction factor of 0.29 for PM2.5. The DustTrak measurements were concurrent with the UHSAS particle concentration sampled at 29 m. This allowed a comparison of PM1 at heights of 20 m (DustTrak) and 29 m (UHSAS), both above the canopy height of $h_c = 19$ m. Assuming little variation in concentration between these two heights, and an average aerosol density of 1500 kg m⁻³, the measurements suggest a correction factor of 0.5 ($R^2 = 0.97$). This correction factor is applied to the DustTrak measurements, although the uncertainty due to the height
125 difference is discussed.

A CO₂ and H₂O gas analyzer (LI-7500, Licor Inc) mounted at a height of 29 m near the anemometer was used to measure latent heat flux to correct for density fluctuation (Webb et al., 1980).

2.2 Flux Calculation

Eddy covariance could not be calculated for the 2017 and 2018 studies due to an excessive residence time in the 32 m
130 sampling line. This was corrected for in the 2021 study by reducing the inlet tubing diameter and hence increasing the flow
rate. Fluxes were calculated in 30-min periods in each size bin following the eddy covariance method. The coordinate system
was rotated around the z and y axes to give $\bar{v} = \bar{w} = 0$ (overbar denotes 30-min average) following Wilczak et al., 2001. To
remove spikes in anemometer data caused by electronic noise and processing errors, three passes removed all data points
within each 30-min period more than 5 standard deviations from the mean. This removed less than 0.05% of the data. The
135 generator used to power the instrumentation was placed downwind of the prevailing wind direction. All data from the 40-60°
direction were removed to avoid contamination by the generator exhaust, resulting in a removal of approximately 5% of the
measurements during the 2021 measurement period. To remove conditions with low turbulent mixing, which are considered
unreliable for eddy covariance, periods with friction velocity of $u_* < 0.2 \text{ m s}^{-1}$ were removed, resulting in a further removal
of 17% of the measurements.

140 Fluxes were corrected for density fluctuations due to water vapour following Webb et al. (1980). No corrections were made
for fluctuations in density due to heat flux, as fluctuations of heat are assumed to be dissipated in the 32-m inlet tube (Rannik
et al., 1997). The average density correction was less than 6%. Finally, fluxes were also corrected for the attenuation of the
signal carried by frequencies $> 1.1 \text{ Hz}$ ($1/\tau$) due to the response time of the instrument, following Horst (1997), which
resulted in an average increase of 17%.

145 Due to the proximity of the aerosol sources, the aerosol measurements at the site vary considerably as changes in wind
direction shift the plume within 30-min periods. We apply linear detrending of each $N(t)$ 30-min time series to account for
variation in aerosol measurements through the 30-min period.

3 Results and Discussion

3.1 Source Characterization

150 The 30-min particle number concentration measurements are shown with wind direction in Figure 2. To focus on consistent
winds and to avoid recirculating wind patterns, all 30-min observations with greater than 20° difference relative to either the
preceding or following measurement are removed, resulting in a removal of approximately 30% of the data. Based on these
results, we identify five sectors of measurement of interest based on wind direction and concentration. These sectors are then
used to investigate differences in the size-resolved number and volume distributions of sub-micron aerosols and to attempt to
155 attribute these differences to anthropogenic emission sources. While we attempt to correlate these sectors in direction-
concentration space with the location of sources in the region, it is recognized that these sets are arbitrarily defined and there
is likely some overlap of multiple sources in the size-resolved number and volume distributions associated with each sector.
Although back-trajectory models such as Hysplit could offer a better indication of the source location than the wind direction

measured at the site, it has been demonstrated that the model wind fields do not have sufficient resolution to resolve local topography in this region such as the river valley (Yousif et al., 2022).

The five sectors correspond to: the location of the Shell Jackpine site (0 to 40°), a forested area (60° to 135°), the Suncor upgrading facility and mines (140° to 225°), the Syncrude upgrading facility and mines (225° to 280°), and a second forested area (280° to 315°). The sectors are shown in Figure 1. The Shell Jackpine site (Fig. 1) has an active mine face more than 10 km from the YAJP site between 10° and 25°. Suncor open-pit mining is upwind of the site between directions of 150° and 180° and the Suncor upgrading facility (and the main smokestack) is at an upwind direction of 192° relative to the YAJP site. Additionally, Fort McMurray is approximately 45 km south of the site and Highway 63 runs north of Fort McMurray along the river valley. Here we recognize that the north-south valley system will likely affect wind patterns and could turn prevailing SW winds into southerly directions. Hence, a 180° wind direction measurement at the YAJP site may correspond to a source direction of >180°. SO₂ measurements at YAJP shown in our companion paper, Gordon et al. (2022), demonstrate elevated SO₂ in the 160° to 250° range, which is a subset of the Suncor and Syncrude sectors shown in Fig. 2. Since SO₂ is primarily emitted from smokestacks (Zhang et al., 2018), this implies that these sources contain a mixture of both smokestack and open-pit mining emissions and that plume emissions from smokestacks cannot be completely isolated from open-pit sources for Suncor and Syncrude. The Syncrude upgrading facility (and the main smokestack) is at an upwind direction of 234° relative to the YAJP site. Active Syncrude open-pit mines range from 235° to 270°. For our analysis, the two forest areas are combined, since little difference was seen between observations from the two sectors. Observations from 315° to 360° are not defined as a sector for investigation because of the relatively small number of observations and the many potential sources, which include Shell Muskeg River, Syncrude Aurora, and the more distant CNRL sites.

Particles size distributions (PSDs) for the sectors defined above are shown for particle number (N) in Figure 3 and volume (V) in Figure 4. Since the PSDs show a strong dependence on the time of day, we separate the observations from each sector into 12 PSDs, each comprising observations within a 2-hour period. Since oil sands mining and processing is a 24-hour operation for all facilities (Liggio et al., 2016), we assume the diurnal variation is due to meteorology and particle dynamics. The number PSDs show two strong peaks near 70 nm and 150 nm, which vary in relative magnitude by time-of-day and by sector. The volume PSDs (Fig. 4) have a primary peak near 250 nm and weaker, secondary peak near 600 nm. The time-of-day variation in the volume PSDs is more consistent between sectors than the time-of-day variation in the number PSDs. For the industry sources (Shell, Suncor, and Syncrude), higher peak values are seen through the day (08:00 to 20:00), which could be due to higher winds providing faster transport from the source to the measurement location. Average hourly wind speeds vary from 3.6 to 4.8 m s⁻¹ between 11:00 and 18:00, compared to 3.0 ± 0.2 m s⁻¹ outside those hours. The Shell sector shows the strongest secondary peak (~600 nm), which could be associated with the relative proximity of the Shell mines (~10 km) versus the Syncrude and Suncor mines (~15 km) as these larger particles may have deposited over the longer upwind fetch.

The number PSDs (Fig. 3) do not demonstrate a consistent day/night difference across the different sectors. While morning concentrations (08:00 to 10:00) are generally highest for the three industry sources, the mode diameter of the PSDs from the

Shell and Syncrude sectors is near 150 nm, while from the Suncor sector it is near 70 nm. Peak number concentration for diameters near 70 nm suggests newly formed particles from upgrader stack emissions (Zhang et al., 2018).

195 Howell et al. (2014) measured PSDs for number and volume from an aircraft within a plume 10 km and 182 km downwind of the plume source. The particle diameter corresponding to the peak number density was approximately 15 nm at 10 km downwind and close to 60 nm at 182 km downwind. A smaller secondary peak similarly shifted from near 100 nm to 150 nm. Particle volume peaked between 100 and 200 nm at both 10 km and 182 km downwind of the source with a secondary peak at 182 km downwind near 70 nm. At the ground level approximately 15 km from the source, we observe a number peak
200 near 70 nm (smaller than the Howell et al. aircraft observations) and a volume peak near 250 nm (larger than the Howell et al. observations).

Baibakov et al. (2021) also measured PSD from an aircraft for two distinct plumes downwind of both the Syncrude and Suncor upgraders. One plume had significantly higher total number concentration by a factor of ~ 2 and a peak volume near 600 nm (similar to the smaller secondary peak seen in our measurements). The lower number concentration plume had a
205 peak volume near a diameter of 240 nm, with a volumetric PSD similar to the background (out-of-plume) PSD. Hence YAJP surface-based results demonstrate measured plume and background PSDs with a range of distributions that show significant difference from PSDs measured from aircraft in the region.

3.2 Flux Spectra

The flux spectra allow us to test that the instrument frequency is fast enough for flux covariance and that there is no
210 substantial dispersion or diffusion in the inlet lines. Specifically, evidence of an inertial subrange at high frequencies (a variation of covariance with frequency that follows a $-7/3$ power-law) demonstrates that the eddy-covariance measurement has captured the contributions of the energy-containing eddies (e.g., Foken, 2008). Normalized co-variance spectra of 30-min $\overline{w'N'}$ fluxes are shown in Figure 5, where N is the aerosol number concentration for sizes between 60 nm and 1 μm . These spectra were randomly selected from the 15–26 Aug period (the second half of the study when measurements were
215 more consistent through the day). The spectra are separated into two groups according to the slope of the inertial subrange (here defined as $f > 0.1$ Hz). The normalized co-spectra multiplied by frequency (fS_{wN}) should vary following a $-4/3$ power-law in the inertial subrange (Kaimal and Finnigan, 1994). The spectra shown in Fig. 5a are close to this ideal, although the slope can be near -1 in some cases, possibly due to a lower signal-to-noise ratio, which can affect the co-spectral shape. Heat and CO_2 fluxes measured at the site (not shown) demonstrate a power-law slope of $-4/3$ in the inertial
220 subrange for $f > 0.1$ Hz. For the sample periods shown in Fig. 5b, no inertial subrange is seen and the contribution from higher frequencies is comparable to the lower frequency contributions. This is likely due to the flux signal being small relative to the noise caused by the instrument or diffusion in the flow direction within the sampling tube, leading to a reduced system frequency response.

The presence of the inertial subrange is related to the strength of the flux. Using a least-squares fit to the spectra for $f > 0.1$
225 Hz, an inertial sub-range slope (S) is calculated for each spectrum. The average flux magnitude for flux spectra with slopes

$S < -2/3$ (69 30-min values) is $|\overline{w'N'}| = 1.47 \times 10^7 \text{ m}^{-2} \text{ s}^{-1}$, while the average flux magnitude for slopes $S > -2/3$ (596 30-min values) is $|\overline{w'N'}| = 5.3 \times 10^6 \text{ m}^{-2} \text{ s}^{-1}$ (a factor of 2.8 smaller). Similarly, the average number density is higher for the steeper slopes ($\overline{N} = 1.2 \times 10^9 \text{ m}^{-3}$ for $S < -2/3$ and $\overline{N} = 6.7 \times 10^8 \text{ m}^{-3}$ for $S > -2/3$). Approximately 83% of the spectra with $S < -2/3$ are measured during the daytime (between 07:00 and 17:00) when there is greater flux of aerosols into the canopy
230 (due to the increase in turbulent mixing during the day). This demonstrates that the presence of the inertial subrange is associated with fluxes that are greater in magnitude than the fluxes associated with flat inertial subranges ($S \sim 0$). Although the lack of an inertial subrange may indicate a significant noise to signal ratio, all the spectra (including those associated with lower flux and concentration values) are included in our analysis since removal of these data would introduce a daytime bias in the results.

235 3.3 Deposition Velocity

Figure 6 shows the size resolved deposition velocities, including average values with standard error (equivalent to 68% confidence interval), median and 25th and 75th percentile values. The size resolution is reduced to every third size bin to improve clarity and reduce noise (errors are averaged in quadrature). The substantial variation in the measurements is demonstrated by the 25th and 75th percentiles which span $\sim 2 \text{ cm s}^{-1}$ in the 60 to 215 nm size range. This demonstrates
240 substantial exchange of aerosols in both directions (into and out of the canopy) with a net deposition that is a small fraction of that variation. Within the 65 to 130 nm size range v_d values are not significantly different from zero in the 68% confidence interval (C.I.). For the 130 to 250 nm size range v_d values are significantly different from zero in the 68% C.I. but would not be significantly different from zero in the 95% C.I. (2 standard errors). A standard error based on the variance is used here based on the normal distribution of the measured v_d values (not shown). For sizes greater than 300 nm, there is
245 substantial variation in the values of v_d between neighbouring size bins and a consistent variation of v_d with size is not seen. The average values are compared to previously published Emerson et al. (2020) measurements and parameterization in Figure 7. Emerson et al. develop the parameterization shown in Figure 7 based on 126 measurement points as summarized by Hicks et al. (2016), Saylor et al. (2019), and Farmer et al. (2020). The factor of 5 parameterization bounding range used by Emerson et al. (2020) and shown in Figure 7 encloses 110 (87%) of these previously published data points. Emerson et al.
250 (2020) present recent size-resolved deposition velocity measurements (not included in the review papers) made using eddy covariance with a UHSAS instrument in a ponderosa pine forest. Theory predicts a minimum value in v_d , which Hicks et al. refers to as a “well” in the size distribution of v_d . The parameterization proposed by Emerson et al. (shown in Fig. 7) predicts a minimum value of $v_d = 0.12 \text{ cm s}^{-1}$ near a particle diameter of 62 nm.

The measurements of this study (shown as black squares in Figure 7) show good agreement within the range of previously
255 reported values of v_d for the measured size range of 60 nm to 1 μm , particularly with the Emerson et al. results over the same size range. A local minimum of $v_d = 0.02 \text{ cm s}^{-1}$ is observed at 80 nm. Based on the standard error of the measurements, this minimum deposition velocity, and many of the measurements for similar particle sizes, are not

significantly different from zero at the 68% C.I. (error bars extending below zero in Fig. 7). The minimum measured $v_d = 0.02 \text{ cm s}^{-1}$ is much less than the modeled minimum value of $v_d = 0.13 \text{ cm s}^{-1}$ from the Emerson v_d formulation and is very close to the lower limit of the parameterization bounding box, but this value is closer to the minimum measured value of Emerson et al. of $v_d = 0.05 \text{ cm s}^{-1}$ for a particle diameter near 86 nm.

3.4 Canopy Decoupling and Gradients

Time series measurements of particle mass concentration (PM1) made with the DustTraks at heights of 2 m and 20 m demonstrate a lag between the 20-m and 2-m measurements which is more pronounced during the night. This is indicative of the decoupling between the canopy-top and sub-canopy where changes in concentration due to advection above the canopy take longer to reach the sub-canopy during stable conditions (Thomas and Foken, 2007). Time lags on the order of 2 hours have been observed during the night for aerosols in other forests (Gordon et al., 2011; Whitehead et al., 2010). Investigation of this effect helps to improve deposition modeling by including the decoupling effect through stability parameterizations.

The lag is determined at the YAJP site as the time a change in concentration at 20 m takes to appear in the 2-m measurement time series. Figure 8 shows the lag binned by hour of day. The jack-pine boreal forest here is much less dense forest than the mixed forest of Gordon et al. (2011) or the tropical rainforest of Whitehead et al. (2010). Hence, the time lags are smaller, with peak median values near 40 min between 03:00 and 05:00. Through the afternoon, the median time lags range from 2 to 5 minutes.

The average aerosol total PM1 mass flux (integrated over the size range of 60 nm to 1 μm) determined by eddy covariance with UHSAS measurements assuming a particle density of 1200 kg m^{-3} (following Emerson et al., 2020) is $\overline{w'C'} = -10.8 \text{ ng m}^{-2} \text{ s}^{-1}$ (with a 68% C.I. of $5.3 \text{ ng m}^{-2} \text{ s}^{-1}$). By comparison, an average total mass flux (positive upwards) can be calculated from a 2-point flux/gradient relationship as

$$F = -K \frac{\Delta C}{\Delta z}, \quad (1)$$

where ΔC is the concentration difference between two heights separated by Δz , and K is the average diffusion coefficient between the two heights.

One approach is to parameterize K based on a measured 2-point wind gradient and momentum flux (You et al., 2021 and Gordon et al., 2022). Here Prandtl's mixing length model is adjusted for stability following Garratt (1996) to give

$$K = \frac{\kappa z_m u_*}{Sc \phi}, \quad (2)$$

where $\kappa = 0.4$ is the von-Karman constant, z_m is a representative flux measurement height, $Sc = 0.8$ is the turbulent Schmidt number (ratio of momentum diffusion to trace gas diffusion), u_* is the friction velocity, and ϕ is a stability parameter. The stability parameter (ϕ) is determined from the Obukhov length (L) following Garratt (1994) as

$$\phi = \begin{cases} (1 - 16(z/L))^{-1/4} & -5 < z/L < 0 \\ 1 + 5(z/L) & 0 < z/L < 1 \end{cases}, \quad (3)$$

In cases of closed canopies, flux/gradient relationships are not generally applicable inside the canopy due to counter-gradient fluxes and modified stability within the canopy (Thomas and Foken, 2007). Measurements at this forest tower site outlined
 290 in Gordon et al. (2022) demonstrate good agreement ($R^2 = 0.83$) between K determined by the measured flux and the gradient with a representative height of $z_m = 11$ m, which is roughly the middle of the canopy height ($h_c = 19$ m). This good agreement at this site may be due to the relative openness of the canopy (Fig. 1b).

Another approach specific to forest canopies uses a vertically varying diffusion coefficient following Raupach (1988) as $K(z) = \sigma_w^2 T_L$, where the Lagrangian timescale $T_L = 0.3 h_c \sigma_w^2 / u_*$ and σ_w^2 is the vertical velocity variance, which varies
 295 with height. If it is assumed that σ_w varies linearly from zero at the surface up to a value of $\sigma_w(z_m)$ at height z_m , then the average K over the height of the canopy is

$$K = 0.1 h_c \frac{\sigma_w^2(z_m)}{u_*}. \quad (4)$$

Makar et al. (2017) also propose a vertically varying $K(z)$ parameterization specific to forest canopies based on measurements from a number of studies (references therein). Here we vertically average this parameterization through the
 300 canopy height to give

$$K = u_* f\left(\frac{h_c}{L}\right), \quad (5)$$

where $f(h_c/L)$ is a function based on the Obukhov length (L). The function is nearly linear between $f = 2.35$ m at $h_c/L = -0.1$ and $f = 0.38$ m for $h_c/L = 0.9$ and is constant outside those limits.

Table 1 compares the flux calculated using the flux/gradient method using these three diffusion parameterizations (Eq. 2-4)
 305 against the average PM1 mass flux calculated with eddy covariance. The concentration difference ΔC is calculated using the PM1 mass concentration measured by the DustTraks (integrated from 0.1 to 1 μm) with the 0.5 correction factor discussed in Section 2.1. The values range are constantly smaller in magnitude than the eddy covariance flux by a factor ranging from 2 (Eq. 2) to 9 (Eq. 5). Due to the relatively small differences between the upper and lower concentrations, there is a large amount of noise in the gradient (dC/dz) and only two of the three flux/gradient averages are significantly different from
 310 zero at the 68% C.I.

These differences may be due to the oversimplification of the 2-point gradient approximation, which does not account for modification of in-canopy stability or counter-gradient fluxes. In addition to potential vertical variation in K , there may also be vertical variation in deposition resistance ($r = 1/v_d$) throughout the canopy. The 2-point gradient approximation only assumes deposition to the forest floor and not the tree and leaf surfaces. Any deposition which occurs within the canopy
 315 would likely reduce the concentration gradient and hence lead to an underestimation of K , which is here based on aerodynamic resistance only.

Regardless of the cause, this implies that the diffusion coefficients estimated using a 2-point gradient are likely underestimated. This also demonstrates the degree of uncertainty involved in parameterizing a diffusion coefficient through the vertical extent of the canopy since the 68% C.I. are close in magnitude to (or greater than) the average flux values.

320 4 Conclusions

YAJP surface-based results demonstrated measured plume and background PSDs with a range of distributions that show significant difference from PSDs measured from aircraft in the region. Measurements suggest that larger (> 500 nm diameter) particles are from open-pit mining to the north of the tower and smaller (< 100 nm diameter) particles are from stack sources from the west and south-west directions. Aerosols from the direction of mining and processing facilities showed number concentration peaks near 70 nm and 150 nm and volume distribution peaks near 250 nm (with secondary peaks near 600 nm).

Aerosol flux measurements on the tower demonstrate substantial exchange of aerosols in both directions (into and out of the canopy) when averaged to 30-min fluxes. The net deposition over the nearly month-long measurement period is a small fraction of that variation. Deposition results agree with previous studies measuring aerosol deposition over forests in the < 1 μm size range. A local minimum of $v_d = 0.02 \text{ cm s}^{-1}$ is observed at 80 nm, which is slightly less than the range suggested by the Emerson et al. (2020) parameterization, but not significantly different from this range (i.e., overlapping within the range of measurement uncertainty).

The local minimum of deposition velocity for sizes near 80 nm corresponds to the peak size (near 70 nm) of the number concentration PSD, presumably from smokestack emissions. This demonstrates the importance of correctly modeling deposition velocity in this range to accurately measure the number of particles depositing to forests. However, PSDs demonstrate that the bulk of mass (of sub-micron particles) is in the 150 to 400 nm range (or the 150 to 700 nm range for sources with open-pit mining emissions), so most of the aerosol mass deposited to the forest is likely due to impaction and interception by leaves and surfaces due to particle inertia.

Decoupling of the forest canopy is demonstrated at nighttime, with median lag times for concentration changes to be communicated from above the canopy to near the surface of up to 40 min. Median time lags during the day are between 2 and 5 min. The use of the flux/gradient method with the measured aerosol concentration gradient gives a size-integrated mass flux of PM₁ which is between a factor of 2 and 9 smaller in magnitude than the flux measured by eddy covariance, depending on the parametrization used for the diffusion coefficient, K . The uncertainties in the averages determined by the flux/gradient method are comparable in magnitude to the averages (at the 68% C.I.), which demonstrates the substantial uncertainty in determining an average flux using the flux/gradient method.

Based on these results, it is recommended to use a more detailed modeling approach, such as the high-resolution, 1-dimensional canopy model outlined in Zhang et al. (2023), to investigate the relationship between time lags in the canopy and the modeled diffusion coefficients. This could help to determine if parameterizations of $K(z)$ can accurately reproduce

the time lags seen in this and other studies and ensure that canopy decoupling can be accurately represented through
350 diffusion-based modeling. This could potentially improve the agreement between the flux/gradient estimations and the eddy
covariance measurements for PM1 at this location.

References

- Adams, E. E.: World Forest Area Still on the Decline. Earth Policy Institute
http://www.earthpolicy.org/indicators/C56/forests_2012, 2012
- 355 Allan, J. D., Alfarrá, M. R., Bower, K. N., Coe, H., Jayne, J. T., Worsnop, D. R., Aalto, P. P., Kulmala, M., Hyötyläinen, T.,
Cavalli, F., and Laaksonen, A.: Size and composition measurements of background aerosol and new particle growth in a
Finnish forest during QUEST 2 using an Aerodyne Aerosol Mass Spectrometer, *Atmos. Chem. Phys.*, 6, 315–327,
doi:10.5194/acp-6-315-2006, 2006.
- Baibakov, K., LeBlanc, S., Ranjbar, K., O'Neill, N. T., Wolde, M., Redemann, J., Pistone, K., Li, S.-M., Liggio, J., Hayden,
360 K., Chan, T. W., Wheeler, M. J., Nichman, L., Flynn, C., and Johnson, R.: Airborne and ground-based measurements of
aerosol optical depth of freshly emitted anthropogenic plumes in the Athabasca Oil Sands Region, *Atmos. Chem. Phys.*,
21, 10671–10687, doi:10.5194/acp-21-10671-2021, 2021.
- Boucher, O., Randall, D., Artaxo, P., Bretherton, C., Feingold, G., Forster, P., Kerminen, V.-M., Kondo, Y., Liao, H.,
Lohmann, U., Rasch, P., Satheesh, S. K., Sherwood, S., Stevens, B., and Zhang, X. Y.: Clouds and Aerosols, in: *Climate*
365 *Change 2013: The Physical Science Basis. Contribution of Working Group I to the Fifth Assessment Report of the*
Intergovernmental Panel on Climate Change, edited by: Stocker, T. F., Qin, D., Plattner, G.-K., Tignor, M., Allen, S. K.,
Boschung, J., Nauels, A., Xia, Y., Bex, V., and Midgley, P. M., Cambridge University Press, Cambridge, United Kingdom
and New York, NY, USA, 571–658, doi:10.1017/CBO9781107415324.016, 2013.
- Cai, Y; Montague, DC; Mooiweer-Bryan, W; Deshler, T: Performance characteristics of the ultra high sensitivity aerosol
370 spectrometer for particles between 55 and 800 nm: Laboratory and field studies. *Journal of Aerosol Science*, 39(9), 759-
769, doi:10.1016/j.jaerosci.2008.04.007, 2008.
- Davidson, C., Spink, D.: Alternate approaches for assessing impacts of oil sands development on air quality: A case study
using the First Nation Community of Fort McKay, *Journal of the Air & Waste Management Association*, 68:4, 308-328,
doi:10.1080/10962247.2017.1377648, 2018.
- 375 Emerson, E.W., Hodshire, A.L., DeBolt, H.M., Bilsback, K.R., Pierce, J.R., McMeeking, G.R., Farmer, D.K.: Revisiting
particle dry deposition and its role in radiative effect estimates, *Proc. Nat. Acad. Sci.*, 117 (42) 26076-26082,
doi:10.1073/pnas.2014761117, 2020.
- Farmer, D.K., Boedicker, E.K., DeBolt, H.M.: Dry Deposition of Atmospheric Aerosols: Approaches, Observations, and
Mechanisms, *Annual Review of Physical Chemistry*, 72:375–97, doi:10.1146/annurev-physchem-090519-034936, 2021.
- 380 Foken, T. *Micrometeorology*. Berlin: Springer, 2008.

- Frazer, G.W., Canham, C.D., and Lertzman, K.P. 1999. Gap Light Analyzer (GLA), Version 2.0: Imaging software to extract canopy structure and gap light transmission indices from true-colour fisheye photographs, users manual and program documentation. Copyright © 1999: Simon Fraser University, Burnaby, British Columbia, and the Institute of Ecosystem Studies, Millbrook, New York
- 385 Garratt, J.R., *The Atmospheric Boundary Layer*, Cambridge University Press, 1996.
- Gordon, M., Blanchard, D., Jiang, T., Makar, P.A., Staebler, R.M., Aherne, J., Mihele, C., Zhang, X: High sulphur dioxide deposition velocities measured with the flux/gradient technique in a boreal forest in the Alberta oil sands region. *Atmos. Chem. Phys. Discuss.* [preprint], <https://doi.org/10.5194/acp-2022-668>, in review, 2022.
- Gordon, M., Li, S.-M., Staebler, R., Darlington, A., Hayden, K., O'Brien, J., and Wolde, M.: Determining air pollutant emission rates based on mass balance using airborne measurement data over the Alberta oil sands operations, *Atmos. Meas. Tech.*, 8, 3745–3765, doi:10.5194/amt-8-3745-2015, 2015.
- 390 Gordon, M., Staebler, R.M., Liggio, J., Vlasenko, A., Li S.-M., Hayden, K.: Aerosol flux measurements above a mixed forest at Borden, Ontario. *Atmos. Chem. Phys.*, 11, 6773-6786, doi:10.5194/acp-11-6773-2011, 2011.
- Hayden, K., Li, S.-M., Makar, P., Liggio, J., Moussa, S. G., Akingunola, A., McLaren, R., Staebler, R. M., Darlington, A., O'Brien, J., Zhang, J., Wolde, M., and Zhang, L.: New methodology shows short atmospheric lifetimes of oxidized sulfur and nitrogen due to dry deposition, *Atmos. Chem. Phys.*, 21, 8377–8392, doi:10.5194/acp-21-8377-2021, 2021.
- 395 Hicks, B.B., Saylor, R.D., Baker, B.D.: Dry deposition of particles to canopies – A look back and the road forward. *J. Geophys. Res. Atmos.*, 121:14691-14707, doi:10.1002/2015JD024742, 2016.
- Horst, T. W.: A simple formula for attenuation of eddy fluxes measured with first-order-response scalar sensors, *Bound.-Lay. Meteorol.*, 82, 219–233, doi:10.1023/A:1000229130034, 1997.
- 400 Howell, S.G., Clarke, A.D., Freitag, S., McNaughton, C.S., Kapustin, V., Brekovskikh, V., Jimenez, J.-L., Cubison, M.J., An airborne assessment of atmospheric particulate emissions from the processing of Athabasca oil sands, *Atmos. Chem. Phys.*, 14, 5073-5087, doi:10.5194/acp-14-5073-2014, 2014.
- Kaimal, J.C., Finnigan, J.J.: *Atmospheric Boundary-Layer Flows: Their Structure and Measurement*, Oxford University Press, 1994.
- 405 Kappos, A.D., Bruckmann, P., Eikmann, T., Englert, N., Heinrich, U., Hoßpe, P., Koch, E., Krause, G.H.M., Kreyling, W.G., Rauchfuss, K., Rombout, P., Schulz-Klemp, V., Thiel, W.R., Wichmann, H.-E. Health Effects of Particles in Ambient Air, *Int. J. Hyg. Environ. Health*, 207, 399-407, doi:10.1078/1438-4639-00306, 2004.
- Liggio, J., Li, S.-M., Hayden, K., Taha, Y.M., Stroud, C., Darlington, A., Drollette, B.D., Gordon, M., Lee, P., Liu, P., Leithead, A., Moussa, S.G., Wang, D., O'Brien, J., Mittermeier, J.L., Brook, J.R., Lu, G., Staebler, R.M., Han, Y., Tokarek, T.W., Osthoff, H.D., Makar, P.A., Zhang, J., L. Plata, D., Gentner, D.R: Oil sands operations as a large source of secondary organic aerosols. *Nature*, 534(7605), 91-94, doi:10.1038/nature17646, 2016.
- 410

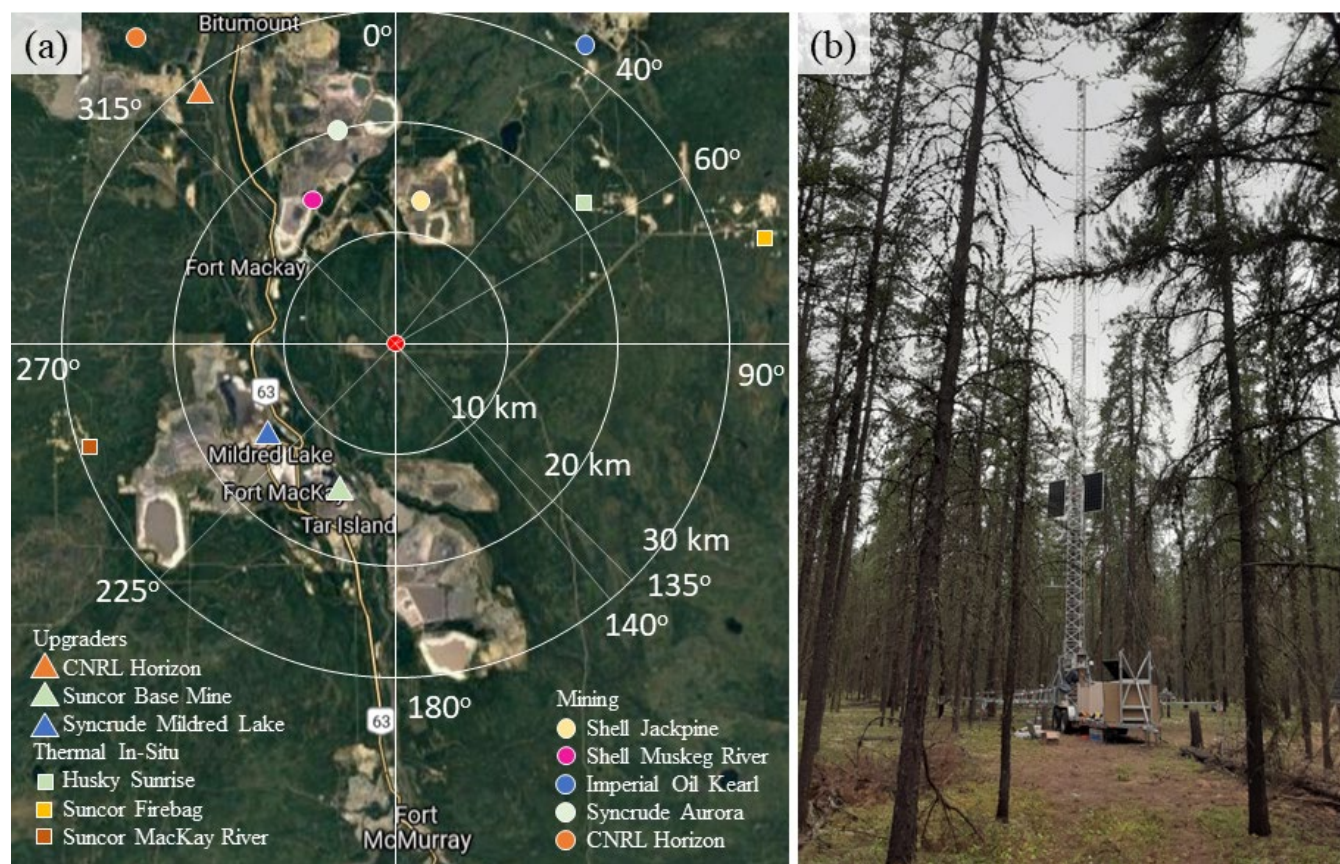
- Makar, P. A., Staebler, R. M., Akingunola, A., Zhang, J., Mclinden, C., Kharol, S. K., Pabla, B., Cheung, P., Zheng, Q.: The effects of forest canopy shading and turbulence on boundary layer ozone. *Nature Communications*, 8(1).
415 doi:10.1038/ncomms15243, 2017.
- Mammarella, I., Rannik, U; Aalto, P; Keronen, P; Vesala, T; Kulmala, M.: Long-term aerosol particle flux observations. Part II: Particle size statistics and deposition velocities. *Atmospheric Environment*, 45:3794-3805, doi:10.1016/j.atmosenv.2011.04.02, 2011.
- Matsuda, K.: Dry deposition of aerosols onto forest. In *Air Pollution Impacts on Plants in East Asia*, ed. T. Izuta, 309-322.
420 Tokyo: Springer, 2017.
- NRCan - Natural Resources Canada. The state of Canada's forests, annual report 2021. Natural Resources Canada, Canadian Forest Service, Ottawa, Canada. 2021.
- Nilsson, E. D., Rannik, U., Kulmala, M., Buzorius, G., O'Dowd, C.D.: Effects of continental boundary layer evolution, convection, turbulence and entrainment, on aerosol formation. *Tellus B: Chemical and Physical Meteorology*, 53(4), 441-
425 461, doi:10.3402/tellusb.v53i4.16617, 2001.
- Pryor, S.C., Barthelmie, R.J., Sørensen, L.L., Larsen, S.E., Semperviva, A.M., Groenholm, T., Rannik, U., Kulmala, M., and Vesala, T.: Upward fluxes of particles over forests: when, where, why?, *Tellus B: Chemical and Physical Meteorology*, 60, 372–380, doi:10.1111/j.1600-0889.2008.00341.x, 2008.
- Rannik, Ü., Vesala, T., Keskinen, R.: On the dampening of temperature fluctuations in a circular tube relevant to eddy
430 covariance measurement technique, *J. Geophys. Res.*, 102(D11), 12789–12794, doi:10.1029/97JD00362, 1997.
- Raupach, M. R.: Turbulent transfer in plant canopies, in *Plant Canopies—Their Growth, Form and Function*, edited by G. Russell, B. Marshall, and P. G. Jarvis, pp. 41– 61, Cambridge Univ. Press, New York, 1988.
- Saylor, R.D., Baker, B.D., Lee, P., Tong, D., Pan, L., Hicks, B.H.: The particle dry deposition component of total deposition from air quality models: right, wrong or uncertain?, *Tellus B: Chemical and Physical Meteorology*, 71:1, 1550324, doi:
435 10.1080/16000889.2018.1550324, 2019.
- Schilperoort, B., Coenders-Gerrits, M., Jiménez Rodríguez, C., van der Tol, C., van de Wiel, B., and Savenije, H.: Decoupling of a Douglas fir canopy: a look into the subcanopy with continuous vertical temperature profiles, *Biogeosciences*, 17, 6423–6439, doi:10.5194/bg-17-6423-2020, 2020.
- Thomas, C., Foken, T.: Flux contribution of coherent structures and its implications for the exchange of energy and matter in
440 a tall spruce canopy. *Boundary-Layer Meteorol.* 123:317-337, doi:10.1007/s10546-006-9144-7, 2007.
- You, Y., Staebler, R. M., Moussa, S. G., Beck, J., and Mittermeier, R. L. 2021. Methane emissions from an oil sands tailings pond: a quantitative comparison of fluxes derived by different methods, *Atmos. Meas. Tech.*, 14, 1879–1892, doi:10.5194/amt-14-1879-2021.
- Webb, E. K., Pearman, G., Leuning, R.: Correction of the flux measurements for density effects due to heat and water
445 vapour transfer. *Quarterly Journal of the Royal Meteorological Society*, 106:85-100, doi:10.1002/qj.49710644707, 1980.

- Whitehead, J. D., et al.: Aerosol fluxes and dynamics within and above a tropical rainforest in South-East Asia. *Atmos. Chem. Phys.* 10:9369-9382, doi:10.5194/acp-10-9369-2010, 2010.
- Wilczak, J. M., Oncley, S. P., and Stage, S.A.: Sonic anemometer tilt correction algorithms. *Boundary-Layer Meteorology*, 99(1), 127-150, doi:10.1023/A:1018966204465, 2001.
- 450 Yousif, M., Brook, J.R., Evans, G.J., Jeong, C.-H., Jiang, Z., Mihele, C., Lu, G., Staebler, R.M.: Source Apportionment of Volatile Organic Compounds in the Athabasca Oil Sands Region. Available at SSRN: <https://ssrn.com/abstract=4181135> or doi:10.2139/ssrn.4181135
- Yun, D.M., Kim, M.B., Lee, J.B., Kim, B.K., Lee, D.J., Lee, S.Y., Yu, S. and Kim, S.R.: Correction factors for outdoor concentrations of PM 2.5 measured with portable real-time monitors compared with gravimetric methods: Results from
- 455 South Korea. *Journal of Environmental Science International*, 24(12), pp.1559-1567, doi:10.5322/JESI.2015.24.12.1559, 2015.
- Zhang, J., Moran, M. D., Zheng, Q., Makar, P. A., Baratzadeh, P., Marson, G., Liu, P., and Li, S.-M.: Emissions preparation and analysis for multiscale air quality modeling over the Athabasca Oil Sands Region of Alberta, Canada, *Atmos. Chem. Phys.*, 18, 10459–10481, doi:10.5194/acp-18-10459-2018, 2018.
- 460 Zhang, L.M., Gong, S L, Padro, J., Barrie, L.: A size-segregated particle dry deposition scheme for an atmospheric aerosol module. *Atmospheric Environment*, 35(3), 549-560, doi:10.1016/S1352-2310(00)00326-5, 2001.
- Zhang, X., Gordon, M., Makar, P.A., Jiang, T, Davies, J., Tarasick, D.: Ozone in the boreal forest in the Alberta oil sands region, *Atmos. Chem. Phys. Discuss.*, doi:10.5194/acp-2023-26, 2023.

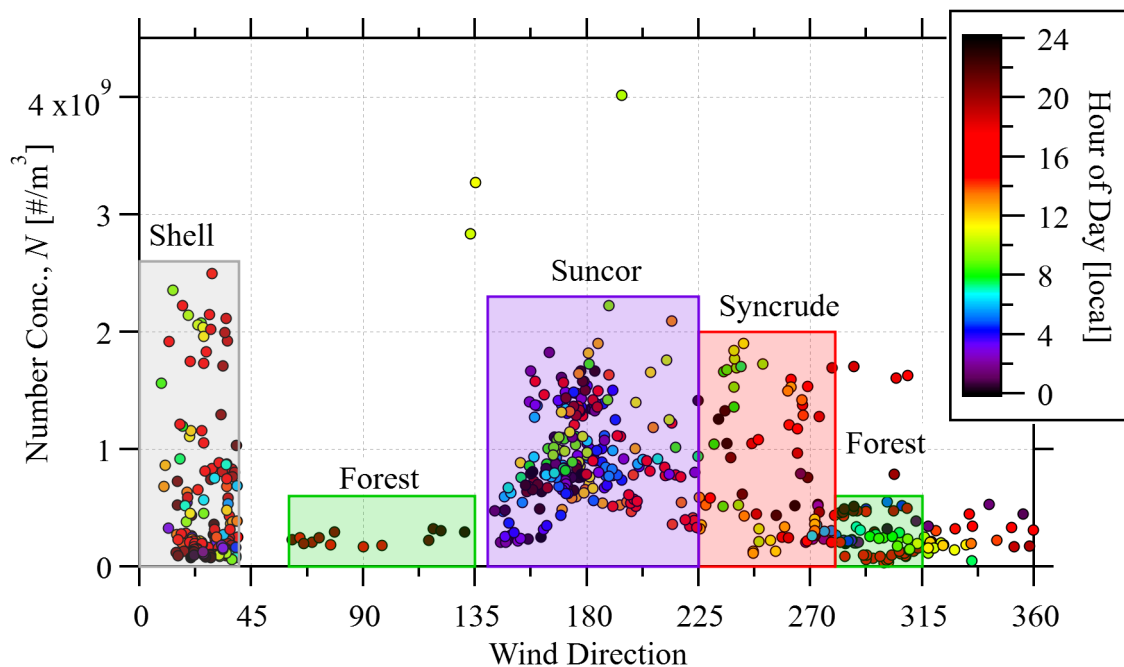
465 Table 1: Average PM1 mass flux measured by eddy covariance compared to the average mass flux from 2-point flux/gradient measurements using different K parameterizations. The confidence interval (C.I.) is given as the standard error of the mean. All units are $\text{ng m}^{-2} \text{s}^{-1}$.

Method	F	68% C.I.
Eddy Covariance	-10.8	5.3
Flux/Gradient (Eq. 2)	-5.7	6.3
Flux/Gradient (Eq. 3)	-3.9	3.7
Flux/Gradient (Eq. 4)	-1.2	2.5

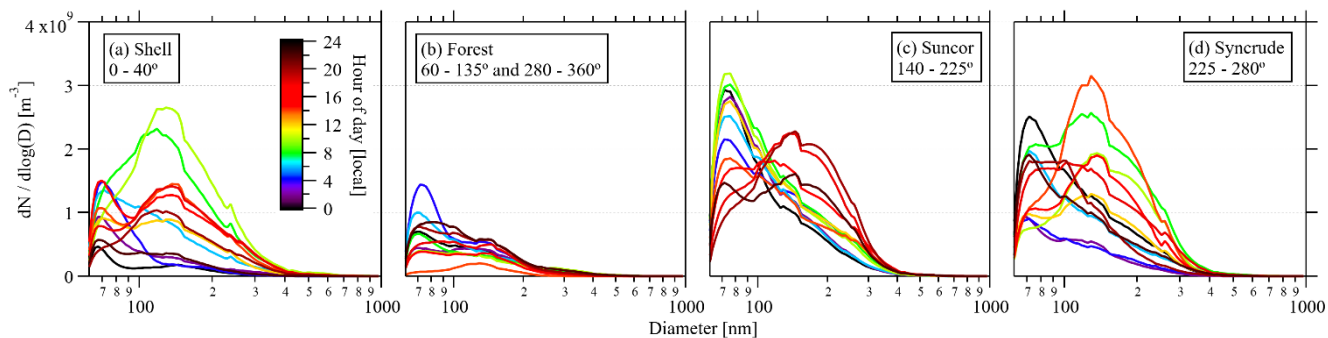
470



475 Figure 1: (a) YAJP tower site location (red circle) and surrounding area with 10, 20, and 30 km radius circles. Radial directions shown (0°, 40°, 60°, 135°, 140°, 225°, and 315°) are used to group observations by source. Image is © Google maps with upgrader and mine locations added from Davidson and Spink (2018). (b) The tower and the surrounding jack pine forest.

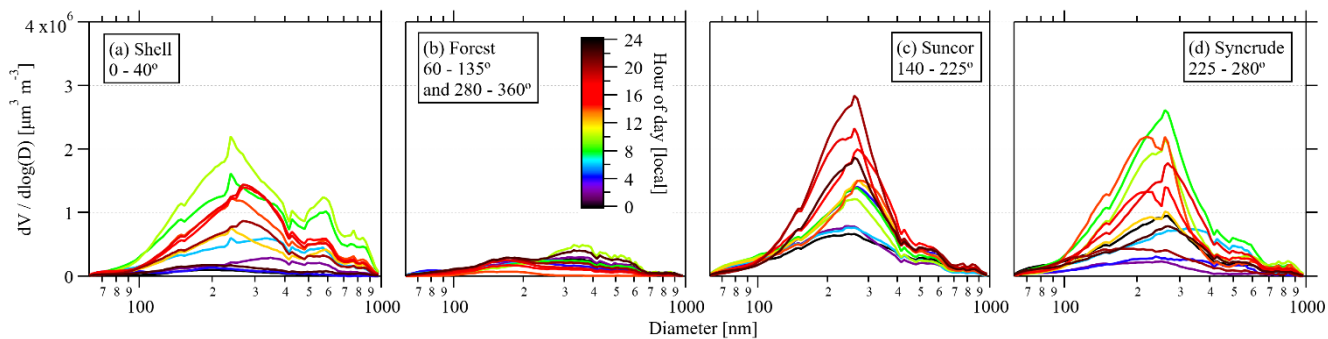


480 **Figure 2: Total particle number concentration, N (60 nm to 1 μm) with wind direction as 30-min averages. Markers are colored by the hour of day. To ensure consistent winds, only observations with less than 20° change in wind direction in the preceding and following 30-min measurements are used. 4 sets of measurements in wind direction-concentration space are identified for investigation.**



485

Figure 3: Number particle size distributions (PSDs) by time-of-day (averaged over 2-hours) for the four sectors identified in Fig. 2 (with the two forest sectors combined).



490

Figure 4: Volume particle size distributions (PSDs) by time-of-day (averaged over 2-hours) for the four sectors identified in Fig. 2 (with the two forest sectors combined).

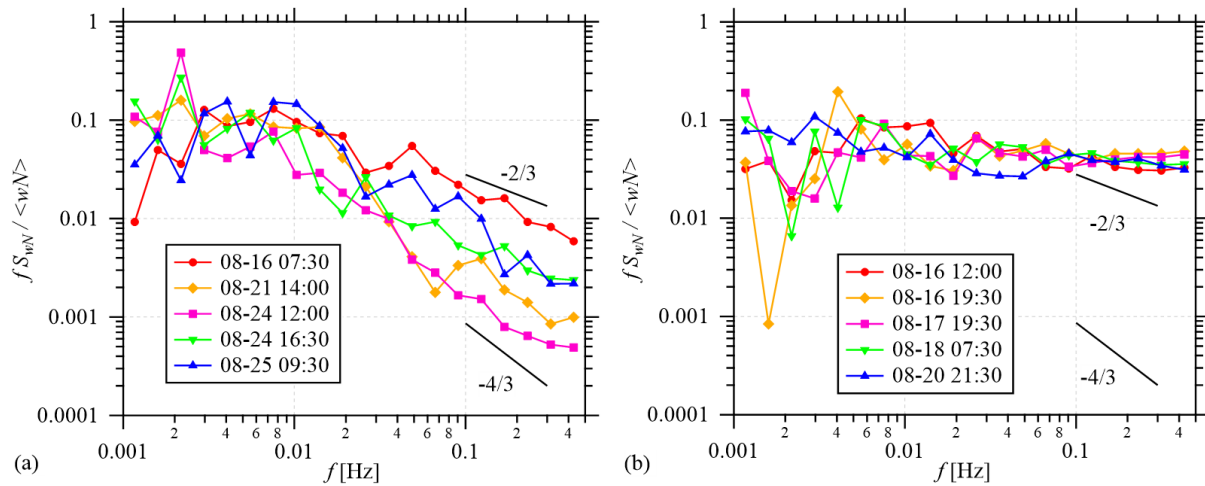


Figure 5: Select aerosol number flux spectra through the measurement period demonstrating spectra with (a) an identifiable inertial subrange and (b) an unresolved inertial subrange dominated by noise. N is the total number concentration (60 nm to 1 μm) and w is the vertical velocity. The power-law slopes of $-2/3$ and $-4/3$ are shown for comparison. The $-4/3$ slope is predicted by theory and the $-2/3$ slope is used for comparative purposes.

500

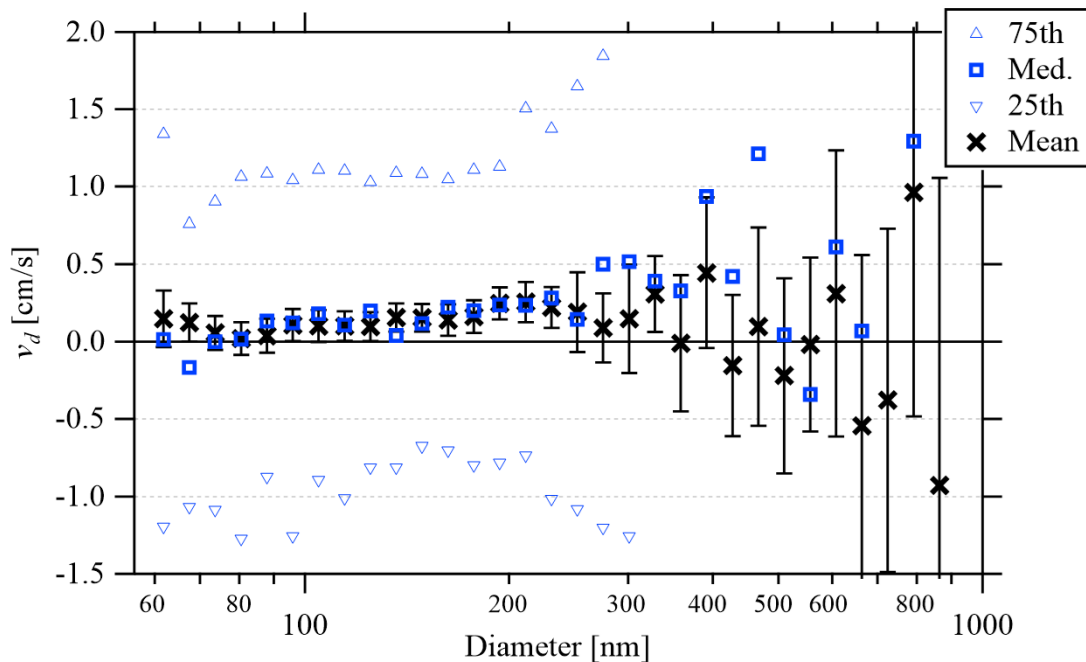
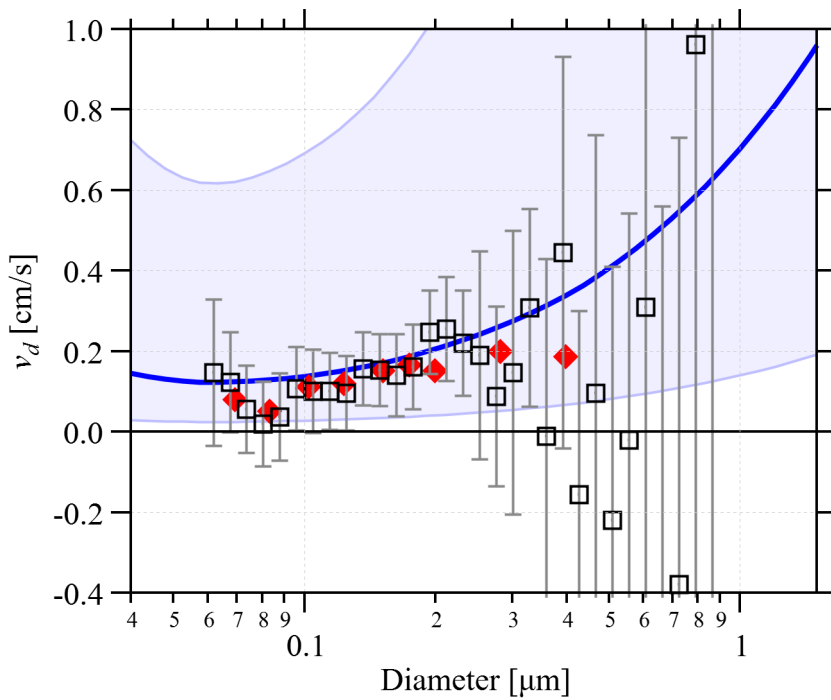
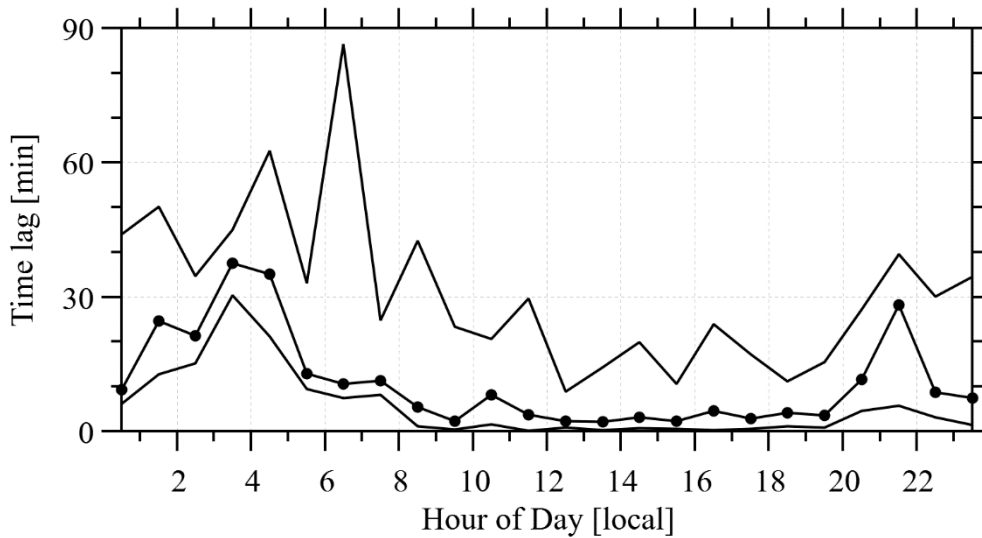


Figure 6: Average and median deposition velocity with particle size. Error bars show standard errors of the mean (68% confidence intervals) and the triangles show the 25th and 75th percentiles. Percentiles for diameters > 300 nm are beyond the range of the graph as shown.

505



510 **Figure 7: Size resolved deposition velocities from this study (black squares) with error bars showing standard errors (68% confidence interval). Data are overlaid on the Emerson et al., 2020 measurements (red diamonds) and parameterization (blue line with 5× bounding range). Emerson et al. measurements are over a ponderosa pine forest and the parameterization is for needleleaf forest (their Fig. 1).**



515 **Figure 8: Using the time series of TSI Dustraks the delay between changes in concentration at the canopy-top and identical changes near the surface can be determined and is here binned by hour of day. Medians, 10th, and 90th percentiles are shown.**