

Reply to anonymous Referee#2

We acknowledge anonymous referee#2 for his/her very useful comments, that helped us improve the manuscript. We tried to address all reviewer's comments. In the following, analytical replies are provided to each of the reviewer's comments. Reviewer's comments are written in bold font. Line numbers, when provided refer to the version with track changes.

The manuscript by Papachristopoulou et al., "Aerosol optical depth regime over Megacities of the world", presents a study to investigate the spatial and temporal variability of urban aerosol state of 81 cities with population over 5 million, relying on daily satellite-based aerosol optical depth data. The focus and objectives of this study were quite straightforward and, probably at least partly for that reason, no actual problem points or weaknesses could be found in the approach and analysis. Because of this, my comments are also general or specific but minor. But of course, it should be mentioned in favor of the manuscript that the description and analysis was quite thorough, and these results bring useful information about the spatial and temporal variability of aerosols in the context of Megacities. I consider the topic and results of this manuscript to fit the scope of ACP and think it could be published if the minor comments below are addressed.

Line 146, here you mention about the number of days or seasons required for seasonal or annual means. Nine days out of 30 or three seasons out of four sound like somewhat loose limit. In place where there is a strong seasonal variability, it likely has a significant impact in the monthly mean whether the nine days of the month are in the very beginning or in the end of the month. Could you describe how did you arrive at these limits, and whether you tested more strict ones and the influence of these in the results.

Reply

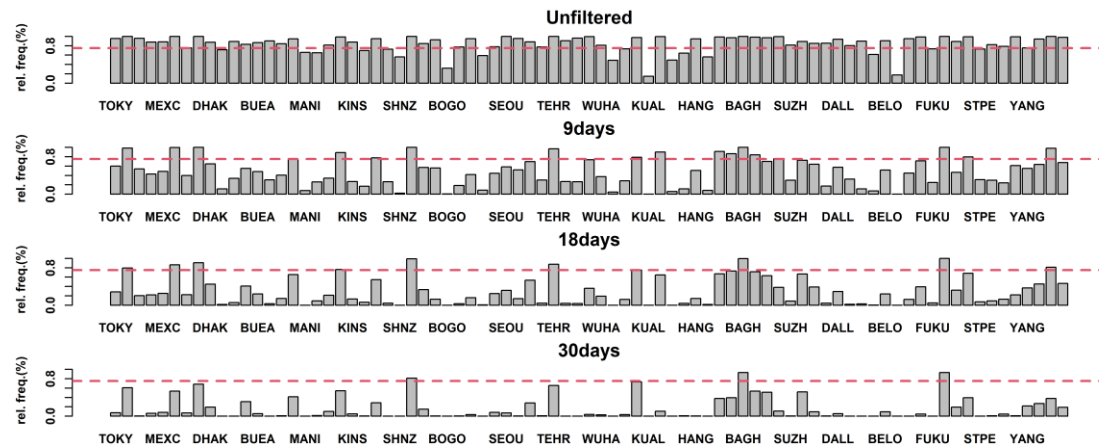
The choice of these limits for the number of available days and seasons is a compromise between representativeness and data availability to our target locations (only megacities). In the case of quantifying the aerosol loads using remote sensing techniques, the clouds presence is a limiting factor for the data availability, hence the statistics versus the variability within the month/season are always two fighting sides. For satellite remote sensing the data availability is limited also by the one measurement per day.

In order to arrive at these limits a sensitivity analysis has been performed testing different limits. By applying more strict results, substantially fewer cities left and for those left the results were alike with limits finally chosen.

Here, I am providing the results of the sensitivity tests by increasing the limit for the number of days.

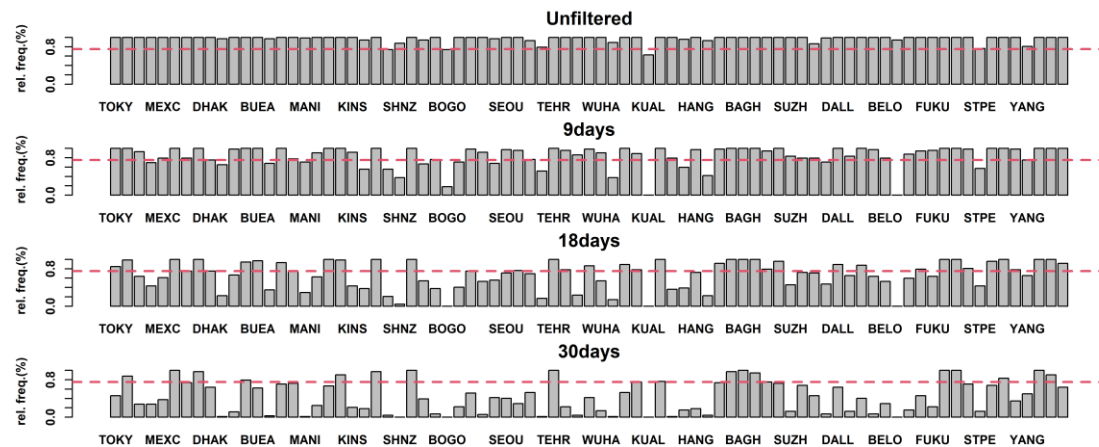
For domain statistics:

For this analysis, the data were at their original 0.1x0.1 spatial resolution. The following barplots are giving the availability of seasons (in relative frequency) for every city, for the different temporal criteria applied. The first test (upper panel) was for unfiltered values. But since it will be a problem if a seasonal mean value resulted from only one day, temporal filtering was applied. Applying at least 10% data availability (9 days per season or 3 per month), the availability of seasons is reduced substantially below 75%, and this reduction is even bigger for the more strict limits. Thus, 9days was the optimum limit and even with this limit significant spatial gaps resulted (e.g. Fig. 2 b, c for Tokyo megacity).

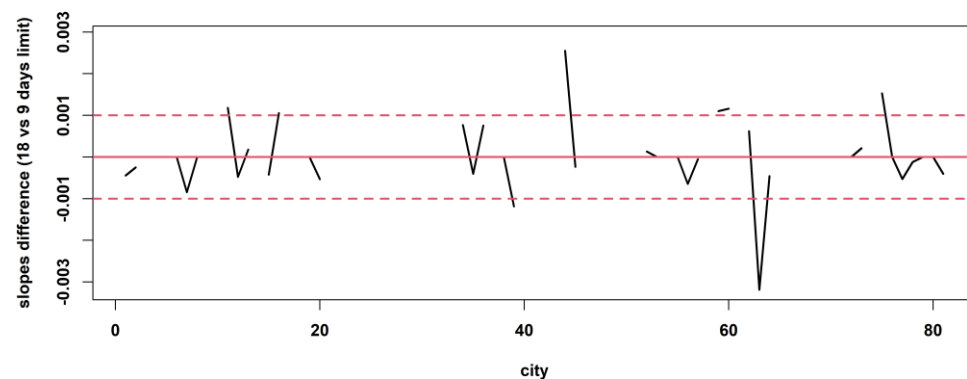


For urban domain trends:

By increasing the limit of 9days to 18days, from 11 cities that were finally excluded from the trend analysis due to limited data availability, it would be tripled (33 cities would be excluded).



Regarding the impact at the trends using the more strict limit of 18 days, this was negligible for the magnitude of the slope (at 3rd decimal point, next figure) and most importantly there were no difference at the sign of the trends.



In the revised version of the manuscript has been added that we arrived at those limits by conducting a sensitivity analysis (lines 159-160).

Line 287, you write "... revealed that the 4x4 pixels area is a domain well fitted ...". How it was "revealed", could you describe your analysis/conclusions in somewhat more detail.

Reply

More details were added to the subsection 3.1.1 of the revised manuscript (lines 261-269) of the analysis that led to the conclusion that the 4x4 pixel area is the domain that well represents the extend of urban agglomerations, namely the contiguous built up area for all cities.

Line 345, your finding that the city of Los Angeles resulted in different trend than overall western US was interesting. How about the results in the Figure 16, did they perhaps give a similar indication that also in the scale of city center vs surrounding area, a similar difference in the trend was found? Related to Los Angeles (LOSA), is there a reason why it was not included in the Figure C1b?

Reply

In general, individual geographical aspects of each city analyzed was difficult to be included in the manuscript due to the large number of included cities. Trying to group cities geographically was an aspect that does not describe all the individual details, as is the case of Los Angeles.

The fact that we found the sign of the trend for Los Angeles opposite to the sign that other studies report for the same area, but with coarser spatial resolution of the satellite retrievals, is indeed something interesting to mention and explain further.

Regarding Figure 16, it demonstrates the differences that were found for the trends in the scale of city center vs surrounding area, but the reported differences were only in magnitude. For no city there was difference in the sign of the trend between city center and the surrounding area.

In the Figure C1 and in general for the spatial (six sector) analysis (see Sect. 3.1.2.1) Major Metropolitan Areas (M.M.A.s), like Los Angeles, were excluded, along with the high altitudes cities (see also lines 118-119). Our choice was based on the fact that the results of the AOD gradients for those cities are affected by other factors. For example, Los Angeles it is actual the M.M.A. including Long Beach and Santa Ana (see Table A1). This means that up to sector 6 around Los Angeles city center are including other great cities, which is out of the scope of the six-sector analysis.

Line 410, I would think that the large interannual variability in North America, most notably in Atlanta is related to the significant impact by biogenic aerosols, discussed in many papers (one of the best known is Goldstein et al. 2009). Could you elaborate on this matter.

REFERENCES

Goldstein, A. H., Koven, C. D., Heald, C. L., and Fung, I. Y.: Biogenic carbon and anthropogenic pollutants combine to form a cooling haze over the southeastern United States, P. Natl. Acad. Sci. USA, 106, 8835–8840, 2009.

Reply

We are thankful to the reviewer for his comment and suggestion for this subject. The discussion about the impact of biogenic aerosols in the large intrannual variability in southeastern US was added in the revised version of the manuscript (lines 442-447).

Aerosol optical depth regime over Megacities of the world

Kyriakoula Papachristopoulou^{1,2,3,4}, Ioannis-Panagiotis Raptis¹, Antonis Gkikas², Ilias Fountoulakis², Akriti Masoom⁴, Stelios Kazadzis⁴

¹Laboratory of Climatology and Atmospheric Environment, Sector of Geography and Climatology, Department of Geology and Environment, National and Kapodistrian University of Athens, Athens, GR-15784, Greece

²Institute for Astronomy, Astrophysics, Space Applications and Remote Sensing, National Observatory of Athens, Athens, GR-15236, Greece

³Department of Physics, ETH Zurich, Zurich, CH-8093, Switzerland

⁴Physics and Meteorological Observatory Davos, World Radiation Center, Davos, CH-7260, Switzerland

10 *Correspondence to:* Kyriakoula Papachristopoulou (kpapachr@noa.gr)

Abstract. Currently, 55% of the world's population resides in urban areas and this number is projected to increase to 70% by 2050. Urban agglomerations with population over 10 million, characterized as Megacities, are expected to be more than 100 by 2100. Such large concentrations of population could boost creativity and economic progress but also raises several environmental challenges such as air quality degradation. In this study we investigate the spatial and temporal variability of urban aerosol state of 81 cities with population over 5 million, relying on daily satellite-based aerosol optical depth (AOD) retrievals, derived at fine spatial resolution ($0.1^\circ \times 0.1^\circ$), over an 18-year period spanning from 2003 to 2020.

According to our results, the lowest long-term mean AOD values worldwide were found in European and American cities (from 0.08 to 0.20). For almost all African and Asian cities, mean AOD ranged from 0.25 up to 0.90, but a considerable dust aerosol contribution (up to 70%) was found for some of them with associated mean Dust Optical Depth (DOD) values reaching up to 0.4. Mostly Chinese and Indian cities tend to have higher mean AOD values in the areas surrounding their centre, while the opposite was found for most of the cities in the rest of the world. High intra-annual AOD variability was revealed for the eastern American cities, while lower values were found in Chinese, eastern Indian and the eastern Mediterranean cities. During the study period, statistically significant negative AOD decadal trends were found for East Asian, European and North American cities with the greatest decrease of -0.1 to -0.3 per decade recorded for the Chinese cities, in which the maximum mean AODs (0.45-0.91) are observed. In most of the US cities, where low mean AOD <0.17 was recorded, considerable declining AOD trends were found (-30 to -50% per decade). For the rest Asian, African and South American cities statistically significant AOD increase was found, with the greatest values of +0.07 to +0.16 per decade recorded for Indian cities. In Bengaluru (India), it is reported the lowest mean AOD value (0.2) and the maximum AOD increase (+69%), which may be partially attributed to the population growth over the study period. The agreement of the satellite derived AOD trends against those obtained from ground-based AERONET measurements was examined. For ground-based stations within the geographical limits of the contiguous urban area of the examined cities, a 0.93 correlation for the long-term means of AOD was found and ~75% of the derived trends agreed in sign. It was found that the spatial homogeneity within the examined satellite domain and the location of the surface station were key factors that determined their agreement.

The present study highlights the vital and essential contribution of spaceborne products to monitor aerosol burden over megacities of the planet towards fulfilling the United Nations Sustainable Development Goal “Sustainable cities and communities”, dealing with urban air quality.

1 Introduction

Since 2018, about 55% of world’s population has been living in urban areas and the current projections suggest that this percentage will rise to 60% by 2030 and to 70% by 2050 (UN, 2019b). As a consequence, the population growth will impose difficulties in implementing the United Nations (UN) Agenda for Sustainable Development Goals (SDG), including SDG 11 related to “making cities and human settlements inclusive, safe, resilient and sustainable”. Megacities are defined as the cities with more than 10 million inhabitants. According to UN (2018a) there are 33 megacities worldwide and this number is expected to increase to 43 in 2030. Despite the fact that ~7% of the global population in 2018 resides in those megacities (UN, 2018a), their continuous increase both in size and number bring them in the spotlight, as they will accommodate an increase share of world’s population (projected to ~10% by 2030). This population growth of cities and especially those with more than 5 million inhabitants, raises urgent and critical environmental issues, like air quality (WHO, 2021). The worst pollutant affecting the megacities is the suspended particulate matter or aerosols. This is of particular concern, as high levels of aerosols are known to be related to increased morbidity and mortality rates, and in many of the megacities in developing countries health care for acute cases is less proficient than in developed countries. Particularly, in 2019, cities air pollution constituted the 4th leading risk factor for early death at a global scale (HEI, 2020).

Many countries worldwide have enforced policies in recent decades to reduce anthropogenic aerosol emissions in urban areas, towards mitigating the aerosol adverse health effects. These policies include the transition of thermal engines technologies, pollution fees on big industries and schemes for air quality control. The exact policies and the level of implementation largely differs between countries, but it is the main cause of decrease in aerosol concentration in some megacities. WHA69 (WHO, 2016) set a global roadmap and targets for reduction of air pollution related deaths, urban air quality and clean energy. In the United States (US), the first regulations were legislated in 1970, and Environmental Protection Agency (EPA) reported a drop of ~40% in aerosol related air pollution in major US cities in the last half century (DeMocker, 2003). In the European Union (EU) countries, a decrease of ~29% in aerosols has been reported since 1970, as a result of policy measures and technological improvements (Turnock et al., 2016). In South and Central American countries, a poor emission control has been reported, resulting in 150 million people living in urban areas with poor air quality (UNEP, 2016). Jin et al. (2016) summarized the policies and their implementation over the last three decades for China, and as a consequence the China’s anthropogenic emissions markedly declined in the last decade (Zheng et al., 2018). India launched in 2019 the National Clean Air Programme, with the objective to reduce in 2024 the particulate air pollution by 20-30% with respect to 2017 levels, in 122 cities (Ganguly et al., 2020). The regulations for air pollution for many African cities are weak or non-existent (Abera et al., 2020), which will be challenging for their future air quality, since many African cities have an unprecedented population growth. So, it is of vital

importance to understand the trends of aerosol loads and their spatial variability over those great population agglomerations, assessing that way the effectiveness of air pollution emission regulations.

Aerosol related air pollution can be quantified, in optical terms, through Aerosol Optical Depth (AOD), which is the most comprehensive variable for assessing the aerosol load of the atmospheric column. Ground-based sun-photometers have been
70 deployed during the last 20-25 years providing long term AOD measurements at established global/regional networks such as AERONET (Holben et al., 1998), GAW-PFR (Kazadzis et al., 2018) and SKYNET (Nakajima et al., 2020). Although, the most precise method for monitoring AOD is provided by surface sun-photometers, these measurements are scarce, lacking of full spatial and temporal coverage. On the contrary, satellite remote sensing is a powerful tool for monitoring AOD around the globe (Kaufman et al., 2002) at considerable accuracy, almost on daily basis and at relatively fine spatial resolution. Despite
75 that the quality of spaceborne AOD over urban surfaces depends strongly on the limitations of the retrieval algorithms (Gupta et al., 2016), yet it is an aerosol parameter worldwide available at high spatial and temporal resolution.

There is a large number of studies dealing with AOD trends at local (e.g. Raptis et al., 2020; Vohra et al., 2021), regional (e.g. Che et al., 2019; Cherian & Quaas, 2020; Zhao et al., 2017) and global scale (e.g. Buchholz et al., 2021; G. Gupta et al., 2022; Logothetis et al., 2021; Wei, Peng, Mahmood, et al., 2019). AOD trends (either from spaceborne or from ground-based
80 observations) in the last two decades indicate robust regional patterns, with decreasing aerosol loads over Europe and US since 2000 and reversed to decreasing since 2010 for East Asia and continuously increasing over southern Asia, which are also supported by in situ particulate concentration measurements (Gulev et al., 2021 and references therein). Nevertheless, limited studies have focused on aerosol regime over megacities, which are the major anthropogenic aerosol sources worldwide and hence studies focused on them provide the direct link between aerosol load and emissions variability. In order to conduct
85 studies like this, it is necessary to have available a dense surface based network or to take advantage of the satellite remote sensing coverage capabilities. Alpert et al. (2012) relying on spaceborne aerosol measurements (MODIS and MISR) investigated the AOD tendencies over the 189 largest world cities for the 8-year period between 2002-2010. According to his findings, increasing AOD trends were found for the largest cities in the Indian subcontinent, the Middle East and North China whereas opposite trends were evident in European, northeast US and southeast Asian megacities. The aim of this study is to
90 use up-to-date and state of the art spaceborne aerosol retrievals (AOD and Dust Optical Depth - DOD) to study local and transported aerosols that can affect air quality in large cities around the globe. Based on the idea of Alpert et al. (2012), we used a finer spatial resolution (0.1°) aerosol product, that is able to reveal aerosol air pollution disparities within megacities and will allow for a more detailed AOD spatial analysis at urban scale and a period from 2003 to 2020 in order to have more robust trends. Analyzing the aerosol spatiotemporal variability over megacities is of great importance for their air quality and
95 human health.

The present study aims to investigate the aerosol regime of megacities, by addressing the following scientific questions:

- What is the spatial variability of AOD in megacities at different geographical locations?
- What is the temporal variability?

- 100
- Are surfaceground-based AOD measuring stations adequate on reflecting the spatiotemporal changes of AOD in megacity scales?

2 Data and methods

2.1 Megacities information

105

Megacities are defined as cities with population of more than 10 million, but in our analysis, we include cities with population between 5 and 10 million as well, due to their potential to become megacities in the coming decades as estimated by UN projections (UN, 2018a). Table 1 summarizes the number of cities according to their population by 2018 and future projections. According to UN projections, 10 cities with population between 5 and 10 million are expected to become megacities in the near future. Here, we focus on 81 cities, with more than 5 million inhabitants as reported in 2018, which are listed in Table A1 (UN, 2018a, 2019a) and their geographical location is depicted in Fig. 1.

110

It should be mentioned that the utilized population data, extracted from the UN database, corresponds mostly (65%) to urban agglomerations, which are the areas with city’s boundaries the geographical limits of the contiguous urban area (or built-up area). A small part refers to the metropolitan areas (25%) and even smaller (10%) to the city proper. For a Major Metropolitan Area (MMA) more than one city are close together, in most of the cases with no distinct limits. For example, the Kinki MMA, with Osaka being the city with highest population, and the Los Angeles metropolitan area including Long Beach and Santa Ana population. There are 5 MMAs included in this study and they are denoted with different colour in Table A1. One last

115

remark concerning population data is about Guangzhou, Shenzhen, Hong Kong, Dongguan and Foshan (also differently marked in Table A1). They are all located in the Guangdong – Hong Kong – Macau Greater Bay Area. This area, which is confined in a domain narrower than 1° x 1°, also includes other 5 cities with population more than 1 million forming a megalopolis which is the largest urban agglomeration on the planet. The cities in this particular region and the MMAs will be exempted from the spatial gradient analysis.

120

Table 1. Number of cities according to their population (adopted by UN (2018a)).

	By 2018	Projection to 2030
Megacities (≥ 10 million)	33	43
	48	
5-10 million	(10 of those -20% - are projected to become megacities by 2030)	66
Total ≥ 5 million	81	109
1-5 million	467	597

	548	
≥ 1 million	28 of those -5% - are projected to cross the 5 million mark)	706
500,000 -1 million	598	710

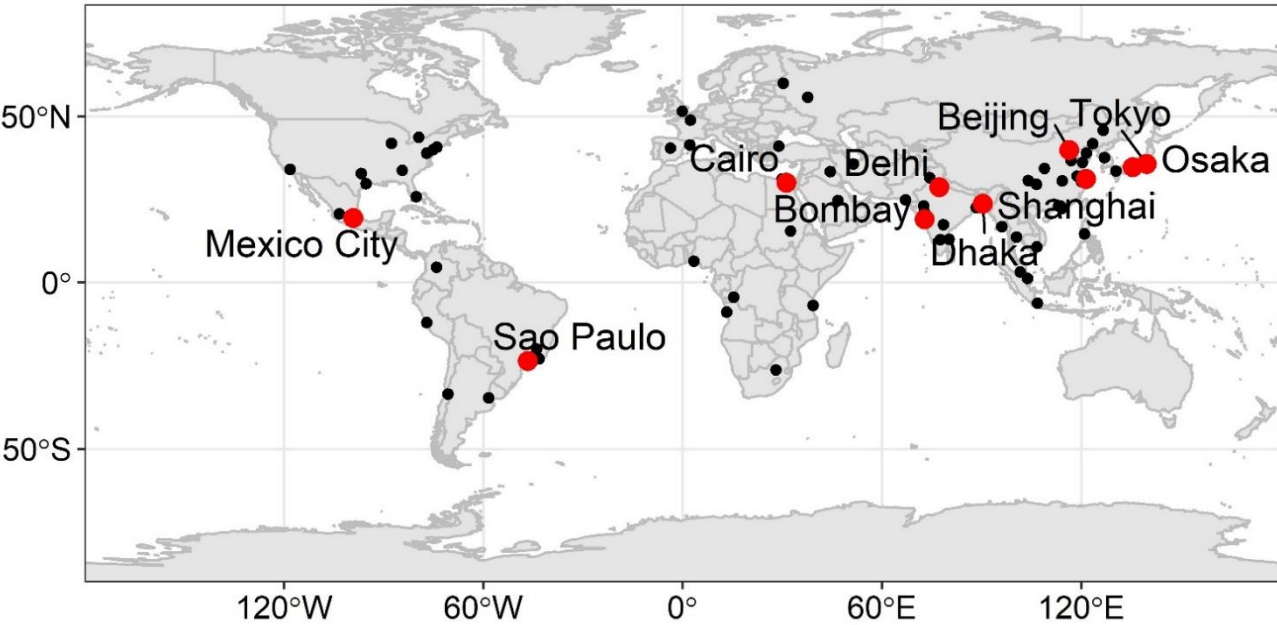


Figure 1. Map of the location of the 81 cities with population greater than 5 million (black circles). With red circle are denoted the 10 megacities with the highest population.

2.2 Spaceborne Aerosol Optical Depth (AOD) and Dust Optical Depth (DOD)

125

130

135

Daily retrievals of AOD at 550nm from the MODerate resolution Imaging Spectroradiometer onboard the Aqua satellite (MODIS-Aqua) were used for this analysis. Specifically, quality assured Collection 6.1 MODIS – Aqua Level 2 AOD retrievals (Levy et al., 2013; Wei et al., 2019b) from the Dark Target (DT) and Deep Blue (DB) retrieval algorithms were merged according to Sayer et al. (2014) to one dataset and presented by Gkikas et al. (2021). AOD values from DT retrieval algorithm above ocean and land and DB above land were selected based on Quality Assurance (QA) of the retrievals. Then, the AOD values from both retrieval algorithms were merged by applying additional quality filtering criteria (see Sect. 2.1 in Gkikas et al. (2021)) and stored in a scientific dataset. Based on this MODIS AOD combined product and on MERRA-2 (Randles et al., 2017; Gelaro et al., 2017) reanalysis data of Dust Optical Depth (DOD) to AOD ratio, the MIDAS (ModIs Dust AeroSol; Gkikas et al. (2021, 2022)) dataset was developed providing columnar mid-visible (550 nm) DOD and the corresponding AOD, on a daily basis, at fine spatial resolution (0.1°x0.1°) and at global scale over the period 2003-2020. Regarding the DOD uncertainties, there were assessed in Gkikas et al. (2021) by considering the AOD and Merra-2 dust

fraction uncertainties, as they were calculated using AERONET retrievals (Giles et al., 2019) and LIVAS database (Amiridis et al., 2015) as reference, respectively. ~~Daily retrievals of AOD at 550nm from the MODerate resolution Imaging Spectroradiometer onboard the Aqua satellite (MODIS Aqua) were used for this analysis. Specifically, quality assured Collection 6.1 MODIS Aqua Level 2 AOD retrievals from the Dark Target (DT) and Deep Blue (DB) were merged to one dataset and presented by Glikas et al. (2021). Based on those MODIS AOD retrievals and on MERRA-2 (Randles et al., 2017; Gelaro et al., 2017) reanalysis data, the MIDAS (ModIs Dust AeroSol; Glikas et al. (2021, 2022)) dataset was developed providing columnar mid visible (550 nm) AOD and Dust Optical Depth (DOD), on a daily basis, at fine spatial resolution (0.1°x0.1°) and at global scale over the period 2003-2020.~~

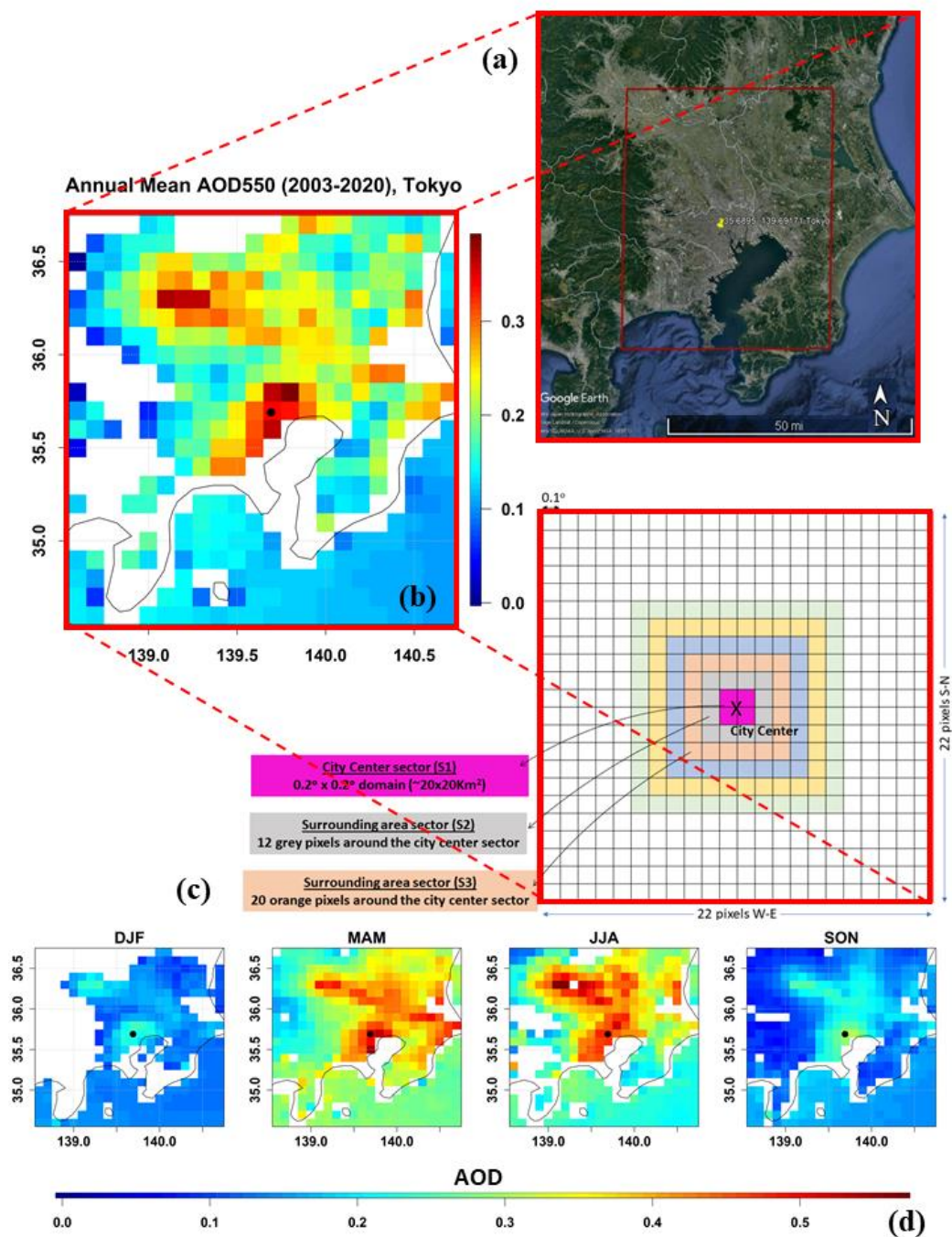
2.3 Ground-based (GB) measurements

AERONET ground-based measurements of AOD for cities that have available long-term time series in the 2003-2020 period were also analysed. The Level 2, Version 3 daily mean product of AOD at 500nm was collected for stations with at least 8 years of data within the study period. Using the Ångström exponent 440-870nm, the AOD values were interpolated at 550nm. Table B1 gives the details of the 27 AERONET stations utilized for the comparison. Statistics and trends of ~~surfaceground-~~ based measurements were calculated with the same methodology and data availability criteria applied to the satellite data (see Sect. 2.5 and 2.6).

2.4 Spatial features

Initially, the geographical distribution of long-term (2003-2020) mean annual and seasonal AOD was derived for a square area spanning of $\pm 1^\circ$ around the city centre (as defined at UN (2018b) database). The goal of this analysis was to investigate the AOD variability inside the urban areas, as retrieved by spaceborne data. In addition, visual inspection of aerosol distributions over $1^\circ \times 1^\circ$ areas and the identified patterns, was used for the first qualitative classification of megacities. The main advantage of the MIDAS AOD dataset is the high spatial resolution (of 0.1°) and the daily data availability. However, there were challenges during averaging regarding the data availability and for this reason temporal availability criteria were applied. Every seasonal mean value was calculated when at least 9 days were available (1st threshold applied), whereas the annual means were computed when at least three seasonal means were valid (2nd threshold applied). The choice of the 9 days has been decided after conducting a sensitivity analysis (not shown here) based on data availability limitations for calculating AOD trends.

Based on the filtered year-by-year seasonal and annual means their respective long-term averages were calculated. In Fig. 2, the geographical distributions of the annual (Fig. 2b) and seasonal (Fig. 2d) long-term averages are illustrated for the megacity of Tokyo. Comparing the AOD field $\pm 1^\circ$ around city's centre (black circle) with the corresponding Google Earth satellite map (Fig. 2a), higher values of mean AOD can be seen over the urban agglomeration of Tokyo, with respect to the surrounding area, throughout the year (Fig. 2b, d). The blank boxes are pixels that do not fulfill the applied criteria for data availability or there are not available data. This example case demonstrates the applied methodology as it will be explained in the following sections.



170 Figure 2. (a) Geographical limits of the study area for the megacity of Tokyo on Google Earth maps. (b) Geographical distribution of the long-term (2003-2020) annual averaged AOD for the broader area of Tokyo megacity. (c) Spatial representation equal lat/lon grid of AOD data and the sectors under investigation with different colours. (d) Geographical distribution of the seasonally averaged

AOD for the broader area of Tokyo megacity. Blanc pixels do not fulfil the data availability criteria. The black circle denotes the pixel of the megacity centre.

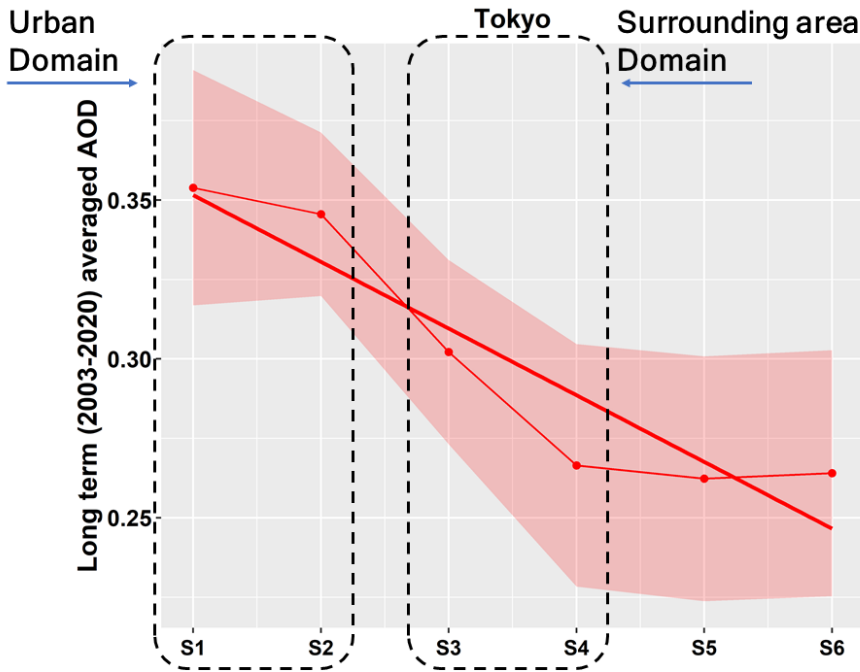
175

In order to investigate further the spatial AOD variability, we quantified the AOD gradients between city's centre and the surrounding areas. The square area at each city was divided into 6 different sectors (Fig. 2c). Sector 1 (or S1) is the 4-pixel area that encompasses the city center. The daily AOD time-series has been constructed by calculating the AOD median for each sector under investigation. Median was selected rather than mean for AOD aggregation, as a non-parametric statistic of central tendency, accounting for the not normally distributed AOD data at those spatial and temporal scales (Sayer and Knobelspiesse, 2019). This aggregation process increased the data availability compared to the single pixel approach. Following the previous procedure with filtered seasonal and annual means, the long-term average AOD for every sector was derived. An example for Tokyo is given in Fig. 3. For this megacity a mean AOD value ~ 0.35 was found over the city's center and decreasing mean AOD values moving towards the outer sections. Although, a uniform approach like this ignores the effect of topography (mainly mountains and sea), that breaks the symmetry around many cities, it could be considered an indicator of the spatial distribution of AOD. It should also be highlighted that the "city center" area could have different characteristics and be wider than the area assumed in this approach. These assumptions are used only to make the results comparable and studies focusing on a small number of cities, should make a specific division for each case. In order to give a single number that will describe the spatial gradient of AOD field from megacities center to the surrounding area, linear regression was performed to the sectoral annual AOD averages in order to calculate the AOD changes per 0.1° along with their statistical significance. The results then were expressed in $\Delta(\text{AOD})$ per 1° and finally were converted in $\Delta(\text{AOD})$ per 100km (see next paragraph) and were used for a categorization of the megacities.~~The results then are expressed in $\Delta(\text{AOD})$ per 1° and are used for a categorization of the megacities.~~

180

185

190



195 **Figure 3. The long-term average of AOD (red points) for Tokyo megacity for the 6 different sectors considered around every megacity centre. The shaded area denotes 1σ . The solid red line is the regression line resulted from the 6 points.**

Another source of uncertainty for the unified pixel-based approach that was followed for all cities would be the East-West (E-W) direction size of the pixel. While the pixel size in the North-South (N-S) direction is the same ($\sim 110\text{km}$ for 10 pixels = 1°), this is not the case in the E-W direction. More than 50% of the cities are located at absolute latitudes $125 - 45^\circ$ (left panel Fig. 4) with a median size of 10 pixels ($=1^\circ$) in E-W direction of 95km (central panel Fig. 4), and with majority of the cities (over 75%) within the $\pm 10\text{km}$ limit. Even for the high latitude cities ($\sim 60^\circ$) the E-W size of the 10 pixels ($=1^\circ$) is $\sim 65\text{km}$ ($\sim 2/3$ of the median). This difference for the high latitudes cities has been considered only in the subsequent 2-domain analysis (see Sect. 2.5), by including additional pixels in the analysis. For the 6 sector analysis, we expressed the single measure of the AOD gradients in terms of distance, in order to account for the difference in the east-west direction. We derived the equivalent distance of the 1° for every city by taking the mean of 110km size in the N-S direction and the distance in E-W direction (central panel Fig. 4) and subsequently we converted the single measure of the AOD gradients from $\Delta(\text{AOD})$ per 1° in terms of distance in $\Delta(\text{AOD})$ per 100km . Finally, t

200
205

The right panel of Fig. 4 shows the distribution of cities elevation, a parameter that has been also considered in the interpretation of the results.

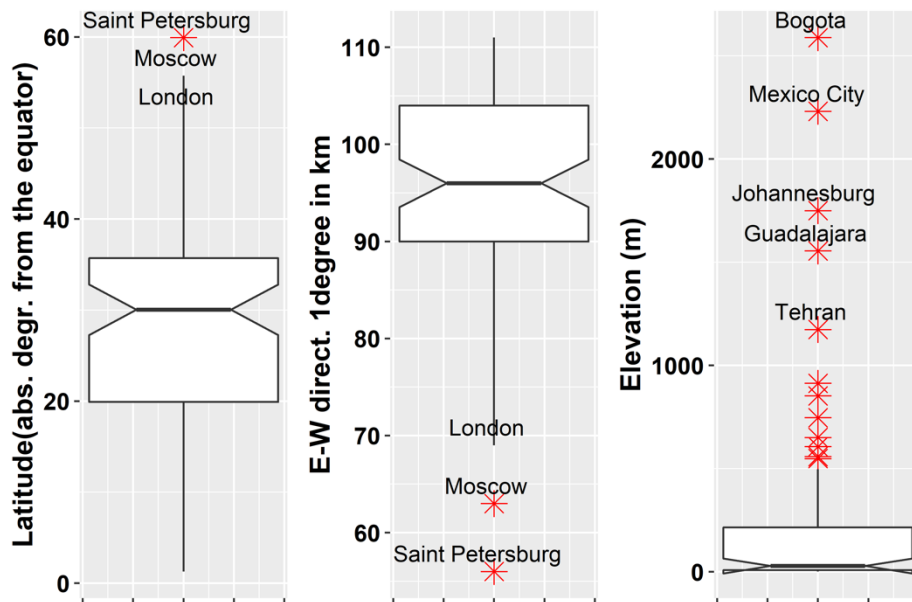


Figure 4. The distribution of the absolute values of megacities latitude (left panel). The distribution of the equivalent length of 1-degree East-West (E-W) direction in km (central panel). The distribution of megacities elevation in m (right panel).

2.5 Temporal variability and long-term averages

In order to investigate the temporal variability of AOD and derive the long-term mean values, an area of $0.4^\circ \times 0.4^\circ$ (4x4 pixels, S1 and S2 combined) was considered as representative of the urban agglomerations, denoted as urban domain hereafter (Fig. 5). In the same manner as in 6-sector analysis ([Sect. 2.4](#)), the daily AOD time-series has been constructed for the urban domain by calculating the AOD median. Filtered (the same temporal criteria as in Sect. 2.4) annual mean AOD values were calculated and based on them the long-term (2003-2020) annual mean values were derived for the urban domain. The AOD interannual variability and decadal trends for the urban domain were derived, and the methodological details are described in the following subsections. A 4x6 pixels area (instead of 4x4) was considered for high latitude cities (London, Moscow and Saint Petersburg), in order to have comparable areas for all cities. The differences in annual mean AOD were 1-5% compared to the same results without making this correction. Despite the small increase in data availability (~10%) when this correction was applied, the trend calculations remained stable. In general, the uncertainties introduced due to the pixel size are minor compared to those associated with the data availability.

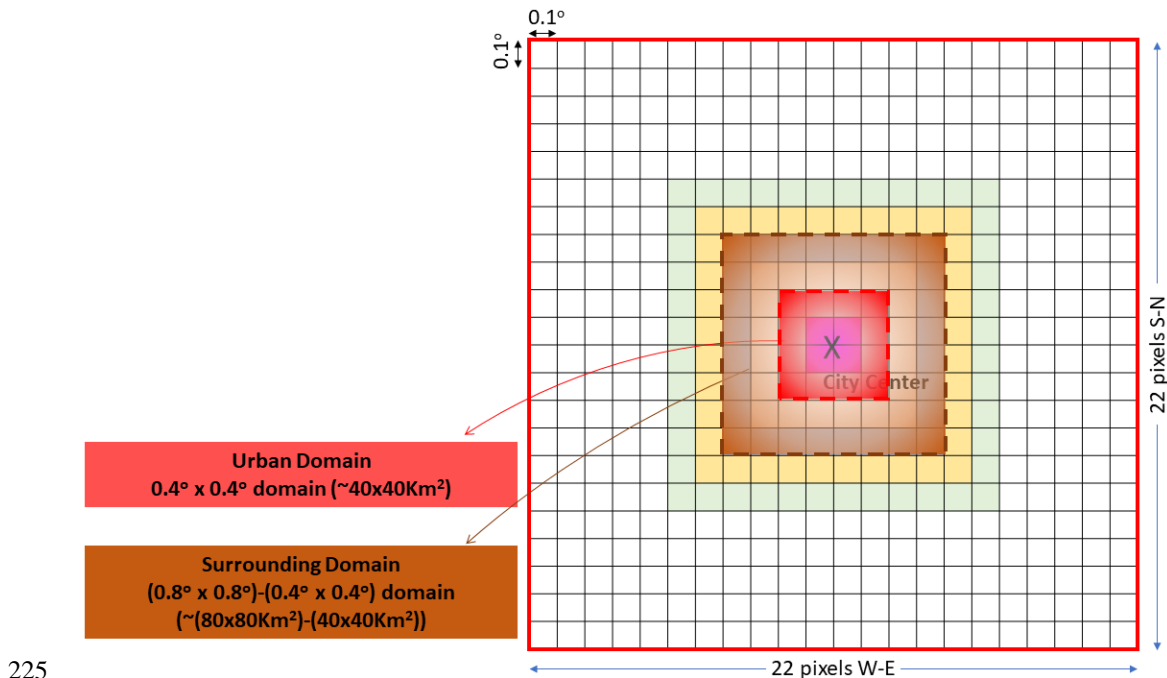


Figure 5. Spatial representation of equal lat/lon grid of the AOD data and the urban domain (red) and surrounding area domain (brown) under investigation.

2.6 AOD Interannual variability and trends

The linear trends were calculated by using simple linear regression for the filtered annual mean values, when at least 10 years (out of 18) were available. The statistical significance of the trends was assessed by performing the t-test. In Fig. 6 we are presenting an example for Tokyo. The red and brown curves correspond to the annual means for the urban and surrounding domains, respectively, the shaded areas represent the standard deviation and the same colored lines denote the calculated linear trends. For this interannual time-series, declining AOD trends are evident both for the urban and the surrounding domains of the Tokyo megacity.

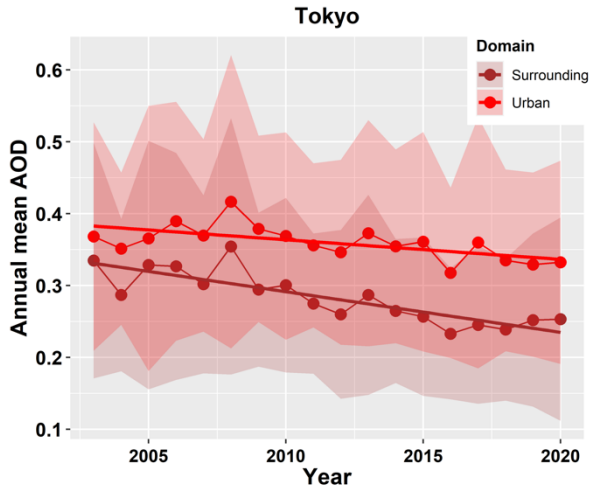


Figure 6. Annual mean AOD values for the Tokyo megacity (red points) and the surrounding area (brown points) and the corresponding standard deviations (shaded areas). The linear trends are depicted with the straight lines.

2.7 AOD intra-annual variability

Monthly mean AOD values were calculated when 3 days were available. From those filtered monthly AODs the long-term monthly mean AOD values were derived, in order to assess the intra-annual variability of aerosol loads for every cities' urban domain. As an example, the intra-annual variability for the megacity of Tokyo is given in Fig. 7. In order to give a single measure of this intra-annual variability of AOD, the temporal coefficient of variation (CV) was derived. The mean and the standard deviation (SD) were calculated for cities with at least 9 monthly values, in order to calculate the temporal CV using the following formula:

$$CV = \frac{SD}{mean} 100\% \quad (1)$$

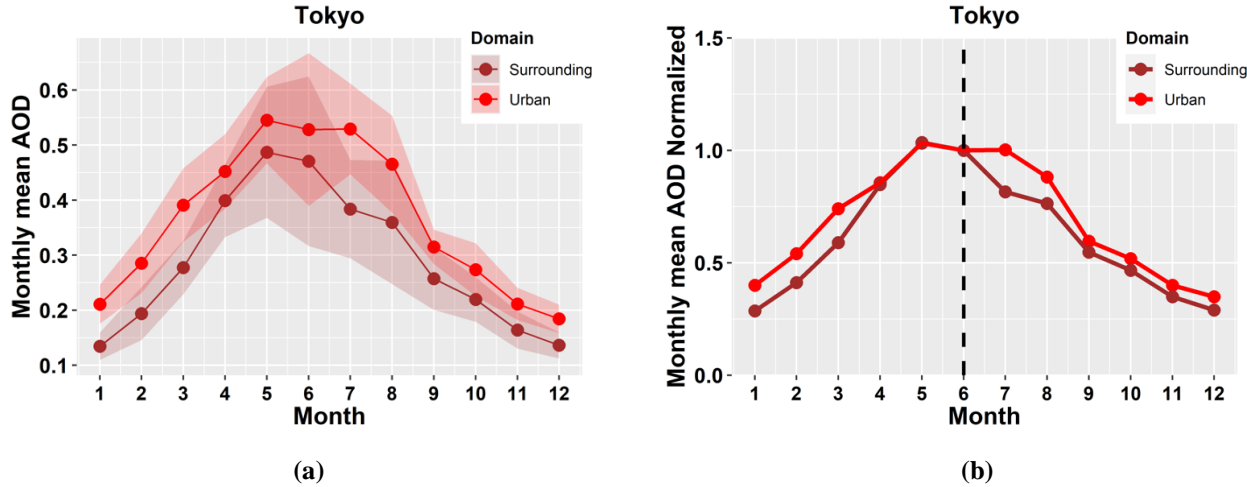


Figure 7. (a) AOD intra-annual variability for Tokyo megacity (red line) and the surrounded area (brown line). (b) Normalized monthly mean AOD values with respect to June mean AOD value.

250 2.86 Spatiotemporal variability

In order to investigate the spatiotemporal AOD variability, the long-term mean AOD values and the linear trends were also derived for a second domain corresponding to the surrounding area of the urban agglomerations (brownish cells in Fig. 5). This domain (surrounding domain hereafter, Fig.5) is the remainder from a broader 8x8 pixel domain around the city's center after eliminating the urban domain (4x4 pixels). Again, for high latitude cities extra pixels were considered (12x8 pixels) 255 adjusting for different pixel area, but even smaller differences were observed (1-4%), with respect to those found for the urban domain, considering this change.

3 Results and discussion

3.1 Megacities' spatial AOD characteristics

In this section, megacities' AOD spatial variability has been investigated and used as a proxy for cities classification.

260 3.1.1 Geographical distribution

As already mentioned in Sect. 2.4, the aim of deriving the geographical distribution of the 18-year period mean annual and seasonal AOD at the original spatial resolution (0.1°) of satellite retrievals over 1°x1° area around every cities center, was to investigate the AOD variability inside and around cities by the visual inspection of those geographical distributions. An example of the analysis performed is given for Tokyo megacity in Sect. 2.4. The same approach was followed for all the examined cities (not shown). The first important result of this analysis was that the comparison of the AOD fields ($\pm 1^\circ$ around cities' centre) with the corresponding Google Earth maps, confirm that the selection of the 4x4 urban domain is representative of cities' urban agglomerations and the remainder up to 8x8 pixel area representative of cities' surrounding area. Additionally, by examining the spatial AOD heterogeneities between the urban and surrounding domains for all megacities, interesting features were found, which led to their first qualitative classification. 265 ~~Analysis of the mean annual and seasonal AOD geographical distributions for the 18 year period, revealed spatial AOD heterogeneities between the urban and surrounding domains for all megacities, similar to those that have been already presented in the example for Tokyo (Fig. 2 b and d). Following the same approach for all the examined cities, some interesting features were found, which led to a first qualitative classification.~~ 270

275 Out of the 81 cities 53% are coastal and 47% are inland. This classification is important, as coastal cities are related with low data availability -due to satellite retrieval algorithm restrictions- and most cities that are not present in the following results are from this group, because they didn't fulfil the criteria of data availability. One group consists of high-elevated (> 2000m) cities such as the Mexico City and Bogota. Those cities are related with low data availability and for the available pixels the AOD values are very low, which is not consistent with the GB measurements (see Sect. 3.5), so they were excluded from the spatial

280 gradient analysis. Another group contains inland cities situated nearby large deserts, where dust is regularly dominating the aerosol mixture (Cairo, Tehran, Riyadh, Baghdad and Khartoum).

Cities with few blank pixels (<50%) within the defined limits, are clustered in three distinct groups. There are cities where the AOD fades from the central sector towards the surrounding area (~60% for coastal and ~35% for inland). This is always the case for the MMA group of megacities. For a number of cities (~40% for coastal and for inland), an opposite gradient is found
285 attributed to the higher anthropogenic activities (e.g., industrial zones) in the outer domain. Finally, in the third category are grouped only inland cities (~25%), where a uniform distribution of mean AOD exhibiting a weak variation in spatial terms. This is a qualitative classification and it is based on the more uncertain results (based on the data at the original spatial resolution at 0.1°). In order to give a quantitative measure of this spatial variability and with lower uncertainty compared to the single pixel approach, the six sector and two domain analysis was performed (see Sect. 3.1.2).

290 3.1.2 Long-term means and spatial variability

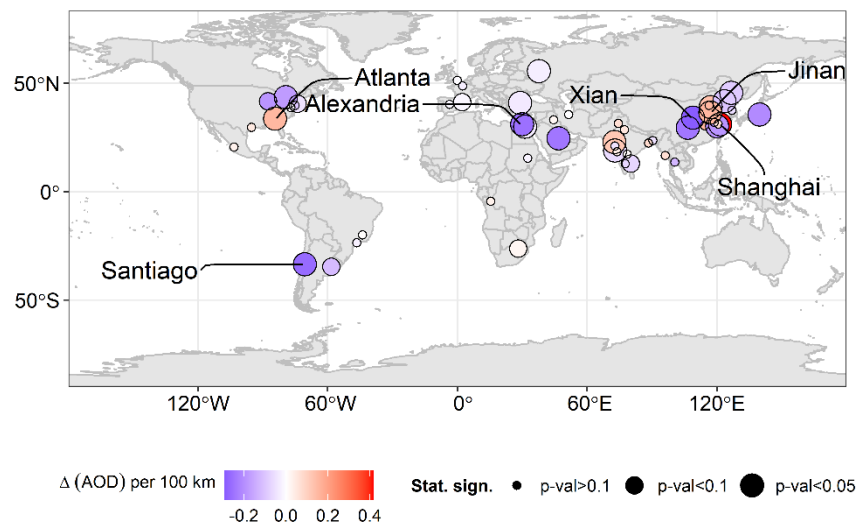
One of the objectives of this analysis was to take advantage of the high spatial resolution (0.1°) of MODIS AOD product in order to assess inequities in aerosol air pollution exposure levels within those high-risk communities. The aggregation of the AOD for the different sectors and domains that have been applied (see Sect. 2.4 and 2.5), increase the confidence in the results relative to the single pixel approach. It must be pointed out here that, the combination of the local topography and the location
295 of the anthropogenic activity outside the examined cities (industrial zones, nearby smaller cities) distorts the spatial AOD distribution, highlighting the possible non-homogeneity of the city sectors or domain of the surrounding area we have used.

3.1.2.1 Spatial (six sector) analysis

In order to give a single measure of the AOD gradients (i.e., sharp or smooth) in the vicinity of the megacities, a linear fit was applied to the 6 sectoral 18-year mean AOD values. The slopes are expressed as $\Delta(\text{AOD})$ per 100km^2 and along with their
300 statistical significance are presented in Fig. 8. Negative values indicate that greater values of AOD were found in the city centre and are denoted with blue colour. Positive values are related with higher AOD values moving away from cities centre and are denoted with red colour. Due to low data availability, 24 cities were discarded from the analysis. The MMAs and cities with high elevation (>2000m) were also excluded from this spatial gradient analysis. In Appendix C for every city the mean AOD values for six sectors are given, normalized with the 18-year mean value of S1 (Fig. C1).

305 For the majority of megacities (~ 65%), lower mean AOD values resulted for the surrounding areas with respect to the city's centre (i.e., negative $\Delta(\text{AOD})$). This percentage is raised to ~75% when only the statistically significant results are considered. The largest values of negative AOD gradients were found for Xian (China), Alexandria (Egypt) and Santiago (Chile), attributed to complex topography (high mountains and coastal areas). On the other hand, only 19 (~35%) cities have larger mean AOD values in the surrounding sectors (i.e., positive $\Delta(\text{AOD})$) and most of them are located in China and India. The reason that
310 higher AODs were recorded in the surrounding sectors for most of those cities is that they are enclosing smaller-scale cities (MMAs have been already excluded from the analysis), which, however, host significant sources of anthropogenic aerosols.

For example, Shanghai is the Chinese city with the largest positive AOD gradient attributed to the influence from the nearby megacity Suzhou at the west and the Pacific Ocean at the east part of the city.



315 **Figure 8. Spatial AOD gradients per 1-degree100 km ($\Delta(\text{AOD})$ per 100km²) from city center to surroundings. The circle radius is proportion statistical significance of the trends. Three cities with greatest negative AOD gradient are Xian, Alexandria and Santiago and the three cities with greatest positive AOD gradient are Shanghai, Jinan and Atlanta.**

3.1.2.2 Two domain spatial analysis

The geographical distribution analysis (Sect. 3.1.1) revealed that the 4x4 pixels area is a domain well fitted to the cities’ urban
 320 agglomeration (urban domain). The remainder between the urban domain and an area up to 8x8 pixels (surrounding domain) was found also to be representative for the surrounding area of all cities. The results for this two-domain analysis are presented in this section.

The geographical distribution of the long-term mean AOD values for the urban domain is presented in Fig. 9. Four cities (BOGO, HCMC, KUAL, SING) are not included, due to low data availability. Low mean AOD values were found for
 325 European and American cities in contrast to Asian and African cities. Specifically, the larger mean AOD values (>0.5) were recorded for Chinese cities, with Indian cities following, since both areas are densely populated and with high industrial activity. Many megacities (mostly Asian) lying in the proximity of great deserts are also influenced by natural aerosols of desert dust (Proestakis et al., 2018; Gkikas et al., 2022). In order to investigate further this feature and quantify this influence, the long – term mean DOD and the DOD to AOD ratio – as a metric of dust contribution in the aerosol mixture- were derived
 330 using the MIDAS DOD and AOD products and the obtained results are presented in Fig. 10. Significant dust contribution (~20-40%), was found for the western Chinese cities, with mean DOD values ranging from 0.1 to 0.2, that were influenced by the nearby arid and semi-arid regions (namely the great Gobi Desert and the Taklamakan Desert). For Indian and Pakistan

cities around the Thar Desert (India – Pakistan borders), even bigger dust contribution was found ~ 40-50% and mean DOD values ranging from 0.15 to 0.35. The greatest dust contribution (up to 60%) with significant mean DOD values up to ~0.4 was found for the African cities of Khartoum and Cairo and for all Middle East cities (Riyadh, Baghdad and Tehran) that are influenced by the great deserts of North Africa and Middle East.

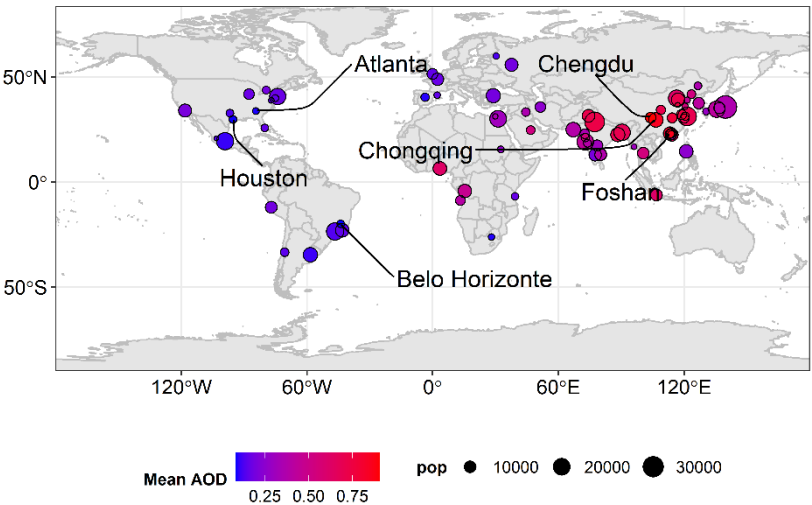


Figure 9. Long term (2003-2020) mean AOD for megacities urban domain (~40kmx40km around cities centre). The circle radius is proportion to cities population. Three cities with greatest mean AOD are those of Chengdu, Foshan and Chongqing and the three cities with lowest mean AOD values are those of Atlanta, Houston and Belo Horizonte.

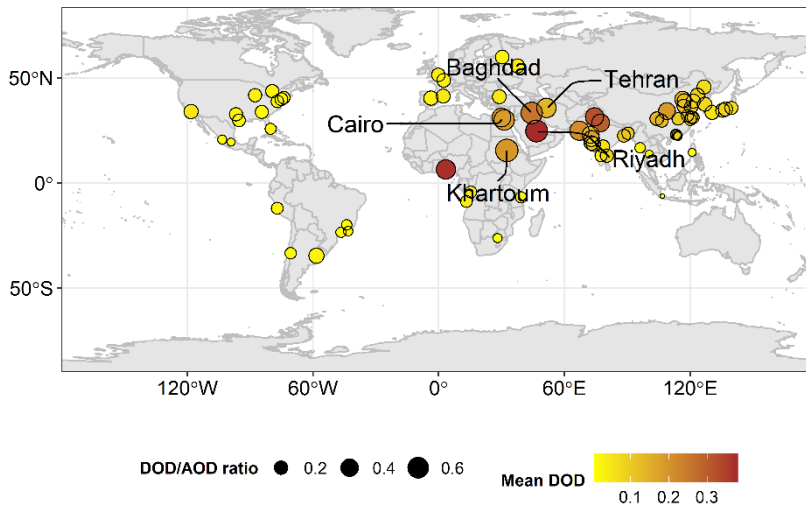


Figure 10. Long term (2003-2020) mean DOD for megacities urban domain (~40kmx40km around cities centre). The circle radius is proportion to DOD to AOD ratio. Five cities with greatest dust contribution (mean DOD/AOD ratio) are Khartoum, Riyadh, Baghdad, Cairo and Tehran.

345 In order to contrast the mean AODs for the urban domain against those of the surrounding area we have reproduced a global scatterplot with their matchups, presenting also ancillary information (i.e., continent, population, coastal/inland) (Fig. 11). Points residing on top of the one-by-one line indicate cities with homogeneous spatial AOD distributions (inside and surrounding area), whereas above/below the equality line AODs are higher in the surrounding and urban domain, respectively. Almost 60% of the cities have greater mean AOD values over the urban domain and 40% have greater values over the surrounding domain. There are more cities with differences exceeding 10% when higher values of AOD are recorded over the urban domain compared to the opposite case. In general, the obtained results are in line with those of spatial gradients (sectoral analysis, Fig. 8), while almost all cities (apart from 4) are included here, due to the greater data availability for the two-domain approach. Shenzhen, Osaka and Jakarta show the biggest decrease of 0.15-0.25 (~ 25-35%) in a range of few kilometres from their centre. On the other hand, Chinese cities (Shanghai, Suzhou and Qingdao) and Atlanta have greater mean AOD values in the area surrounding the centre.

350

355

Additionally, the classification of the cities according to their geographical location (in line with Fig. 9) came up, according to the obtained results for both domains. All European and American cities yield mean AODs ranging from 0.08 to 0.20, in contrast to African and Asian cities in which the corresponding levels range from 0.25 to 0.9 (apart from Bangalore (0.2), Dar es Salaam (0.17) and Johannesburg (0.09)).

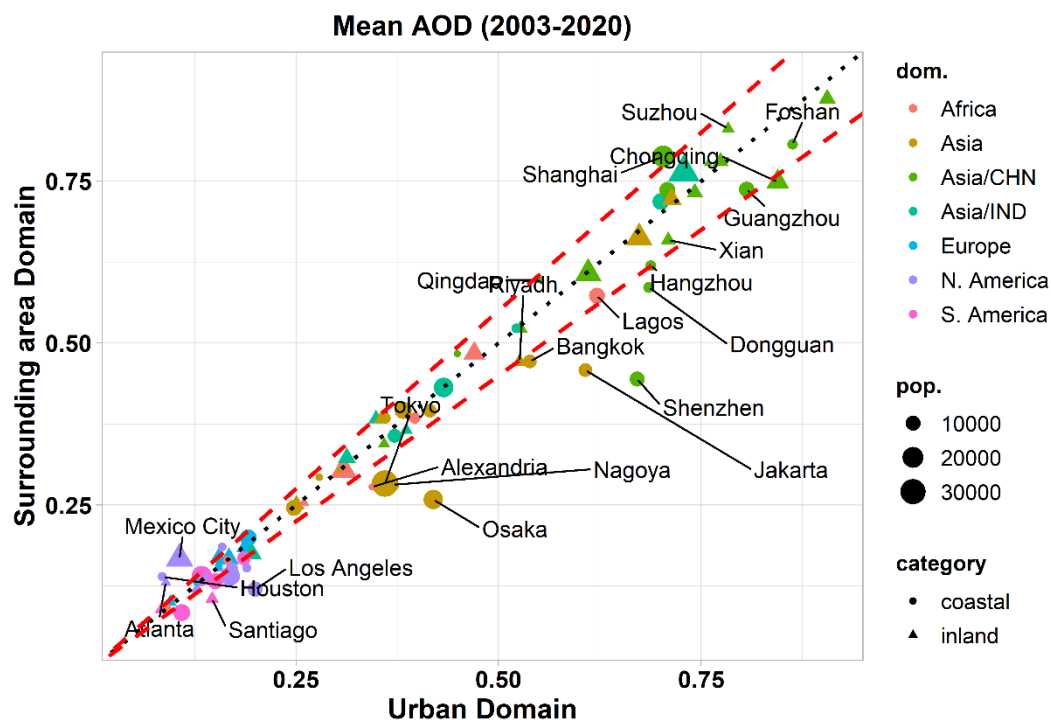


Figure 11. Long term (2003-2020) mean AOD for megacities' urban domain (~40kmx40km around cities centre) versus the surrounding area domain. The name of the cities with difference in mean AOD greater than ± 0.04 between the two domains is depicted. The dotted black line is the identity line and the dashed red lines denotes $\pm 10\%$ difference in mean AOD between the two domains.

3.2 Temporal variability

3.2.1 AOD trends

The geographical distribution of the AOD changes per decade (Fig. 12, after excluding eleven cities which didn't fulfil the temporal criteria) revealed pronounced regional features. The resulted AOD trends for the megacities are reflecting the changes in the anthropogenic emissions, associated with the air quality regulations implemented throughout the years, in the same manner that previous studies have shown the connection of the satellite observed AOD trends with the implemented mitigation policies in regional scales (Gupta et al., 2022; Zhao et al., 2017)

For all European and US/Canadian cities decreasing AOD values were found (up to ~ 0.03 and ~ 0.07 per decade, respectively), in accordance with the AOD decrease in the western Europe and Eastern North America that have already been reported in the literature and was associated with a series of air quality control measures that have been implemented (Gupta et al., 2022; Zhao et al., 2017). While negative trends have been found in this study for Los Angeles, other recent studies report small positive trends for the western United States of America that are associated with reduced precipitation and increased fire activity over the area (Gupta et al., 2022; Cherian and Quaas, 2020). However, the latter studies refer to much wider areas and not to the city of Los Angeles, which indicates that the trends in the city may be related to different mechanisms (i.e., reduction

of anthropogenic emissions dominates over the increase due to increasing dust and smoke events) relative to the trends over the wider region of the western US. Statistically significant negative AOD trends were derived for the Eastern Asian megacities, with the highest values (in absolute terms) up to ~ 0.3 per decade being evident for the Chinese megacities. This result (net negative AOD trend for the whole study period for Chinese cities) is in agreement with recent studies that reported AOD decrease for eastern China (Gupta et al., 2022), which was associated with the implemented emission control policies. Specifically, for China, while up to 2010 AOD was increasing (e.g. Hsu et al., 2012) due to the rapid economic and industrial development of the country, after 2011 declining AOD trends have been recorded for the central and eastern sectors of the country, related with the reduction in anthropogenic aerosol emissions due to the implementation of emission control measures (Zhao et al., 2017; Sogacheva et al., 2018). According to Sogacheva et al., (2018) the gradual AOD decline after 2011 is more prominent for the highly populated and industrialized southeast China regions being in agreement with our results.

On the contrary, strong positive AOD trends (ranging from 0.07 up to 0.16 per decade) were found for all megacities in the Indian subcontinent reflecting the increased industrial and financial development during this period and is in agreement with previous studies (e.g. Buchholz et al., 2021). In a recent study by Samset et al. (2019), they have shown that the climate implications of this dipole pattern of positive AOD trends over southern Asia and strong negative values over eastern Asia observed since 2010, might be strong not only on a regional scale, but also for areas away from the sources.

Positive AOD trends were also found for the Middle East megacities, ranging from 0.03 to 0.1 per decade. This finding is in line with the AOD trends that resulted from the analyses of retrievals from different satellite sensors (Che et al., 2019), although negative trends have been reported in the study of Gupta et al. (2022), who analysed AOD from CALIOP. For the Latin American megacities, the highest AOD trends are positive (~ 0.03 per decade for Buenos Aires and Lima), reflecting the poor emission control measures over this geographical domain. In recent studies (Gupta et al., 2022; Buchholz et al., 2021), a reduction in AOD was reported for South America, attributed to the decline in forest fires, which might explain the negative AOD trends for the rest Latin American cities. Sub-Saharan Africa is an area for which AOD decrease has been reported in previous studies, which is opposite to our findings ($+0.06$ per decade for Luanda and $+0.03$ per decade for Dar es Salaam). For this area, an increase in AOD was also found by the recent study of Gupta et al. (2022), which was associated with the increase in biomass burning of agricultural activity in the dry season over the area, but since our study is focused on megacities, our findings may reflect the increasing urbanization in combination with the limited air quality regulations over the area, but further investigation is needed here.

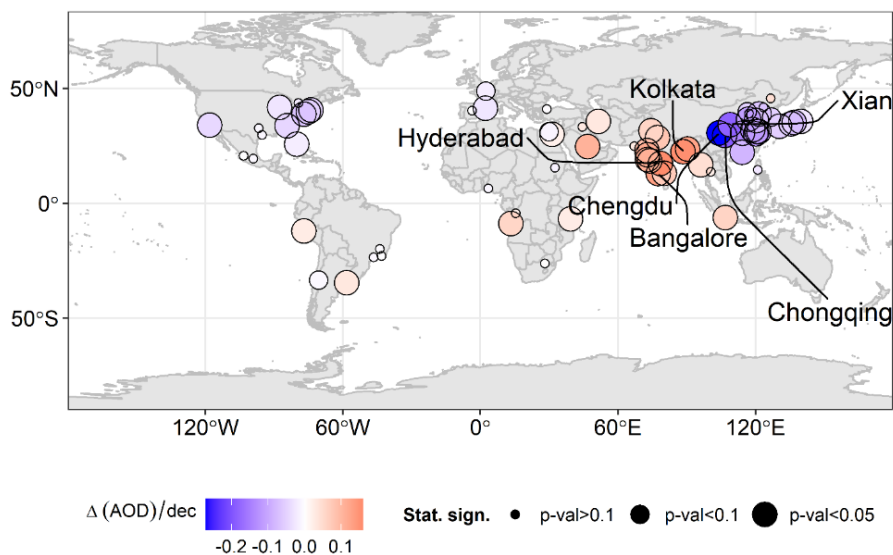


Figure 12. Linear trend of AOD per decade for urban domain (~40kmx40km around cities centre). The circle radius is proportion statistical significance of the trends. Three cities with greatest increase of AOD are Hyderabad, Kolkata and Bangalore and the three cities with greatest decrease of AOD are Chengdu, Chongqing and Xian.

410 The comparison of the AOD trends against the long term mean AOD of the urban domain revealed an interesting clustering of cities, according to their geographical location (Fig. 13). It has to be pointed out here that only the statistically significant trends were included in Fig. 13, thus ensuring robust and meaningful results.

In all European and North American cities low AOD climatological values and decreasing trends were found. Note that in some US cities like Atlanta, Washington, Philadelphia and New York, apart from their relatively low mean AOD values
415 (<0.17), considerable negative trends (ranging from -53% to -28%) were recorded.

All Indian cities result with positive AOD trends regardless of their mean AOD levels, which span from low to high values. Among them, Kolkata is the city where extremely high mean AODs (0.70) and large positive trends (+22% per decade, and the higher in absolute values +~0.16 per decade) were revealed. Of particular interest is Bangalore, which has relatively low mean AOD value (0.20) but the maximum positive AOD trend almost +69% per decade. Bangalore's population increased
420 from 6 million to 12 million during the last two decades, that is one of the biggest population increases for cities at this scale and thus it can explain at a large degree the extreme increase of AOD. Meanwhile, financial development in the area is linked more with new technologies and not heavy industry, which partially answers the relatively low mean.

All Chinese cities are subjected to AOD decrease (up to ~30%) while at the same time they have the highest mean AOD values ranging from 0.45 to 0.91. Chengdu is the city with the biggest mean AOD value along with the highest AOD decrease of
425 ~30% per decade (or ~0.3 per decade).

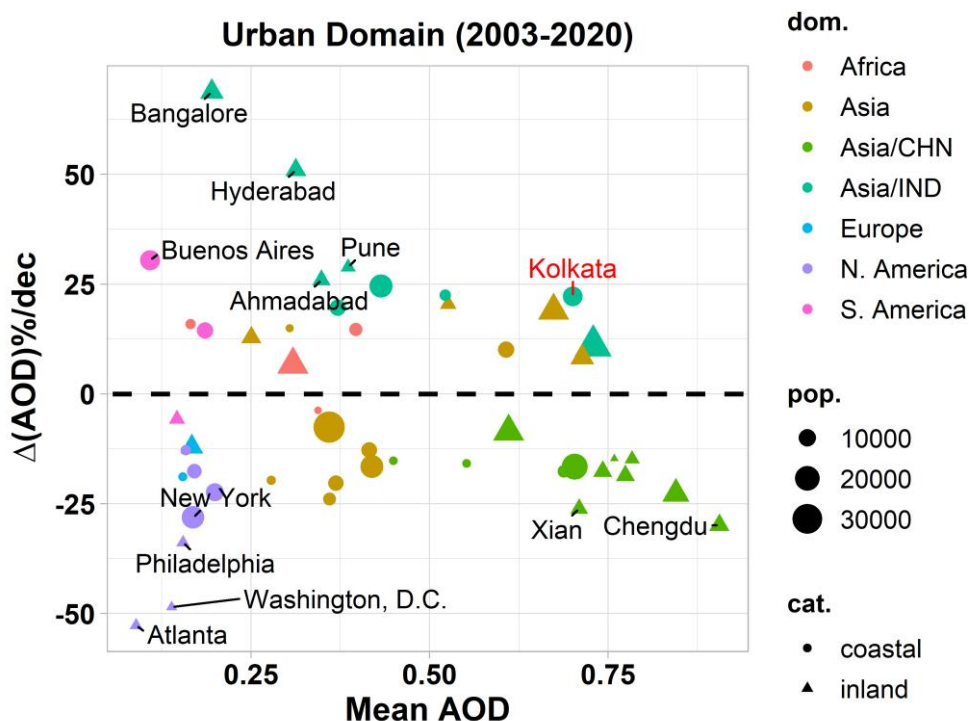


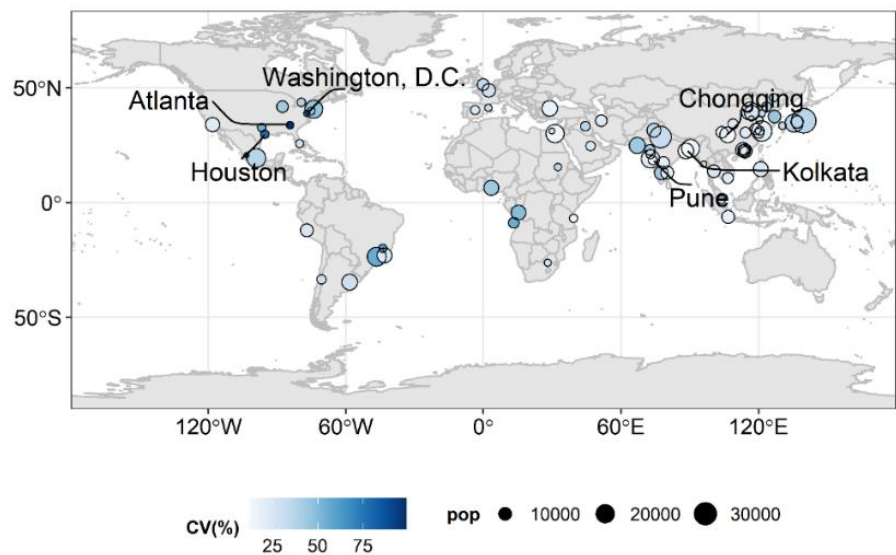
Figure 13. AOD decadal changes expressed in percentages ($\Delta(\text{AOD})\%$ per decade) versus the long-term mean AOD for the urban domain. Only statistically significant AOD trends are presented ($P < 0.1$). Cities with absolute values of $\Delta(\text{AOD})\%$ per decade greater than 25% are denoted in the figure.

3.2.2 Intra-annual variability

AOD exhibits strong intra-annual variability (Zhao et al., 2018), which is quite important to be analysed at megacities' scales in order to improve our understanding regarding the aerosol related health effects. The normalized (using as reference the mean AOD of June) monthly mean values for all cities are provided in the Appendix D, Fig. D1, classified for the different geographical domains. In order to investigate the intra-annual variability of AOD at city level, the temporal CV (Sect. 2.7.5) was calculated. The geographical distribution of temporal CV is illustrated in Fig. 14, only for cities complying with the defined temporal criteria (four cities were omitted). Low CV values ($< 20\%$) were found for the eastern India, most of the Chinese cities and for the eastern Mediterranean as well. The highest CV values $> 70\%$ were recorded for three US cities. In order to investigate further those results, the relationship between temporal CV and the long-term mean AOD values for the urban domain was examined (Fig. 15).

A non-linear relationship was found, with the gradual decrease of the mean AOD to be related with increasing CV levels. The CV values can reach at their maximum levels ($> 50\%$) only in the group of cities with low mean AOD values (< 0.25 , with only exception Luanda), and all are American cities at the East coasts. For North American cities, the monthly mean AOD values during the boreal winter are decreasing close to zero and maximized during summer, that resulted to this high intraannual variability (Fig. D1b), especially for southeastern US cities. These high values of intraannual variability for southeastern US

445 cities, and most notably in Atlanta, are explained by the high AOD values over the area during summer due to secondary aerosol formation by biogenic volatile organic compound (BVOC) oxidation (Goldstein et al., 2009). For most southern American cities rather stable values were found throughout the year (Fig. D1c). For North American cities, the monthly mean AOD values during the boreal winter are decreasing close to zero, that resulted to this high intraannual variability (Fig. D1b), while for the southern American cities rather stable values were found throughout the year (Fig. D1c). For moderate AOD levels (0.25-0.50), a limit of 50% was found for the CV values. For the cities with high aerosol loads (>0.50), which are mostly Chinese cities, the CV values are confined to the limit 10-40%.



455 **Figure 14. Temporal coefficient of variation (CV) of monthly mean AOD (intra-annual variability) expressed in percentages for megacities urban domain (~40kmx40km around cities centre). The circle radius is proportional to cities population. Three cities with the highest temporal CV are Atlanta, Houston and Washington, D.C. and the three cities with lowest values are Kolkata, Chongqing and Pune.**

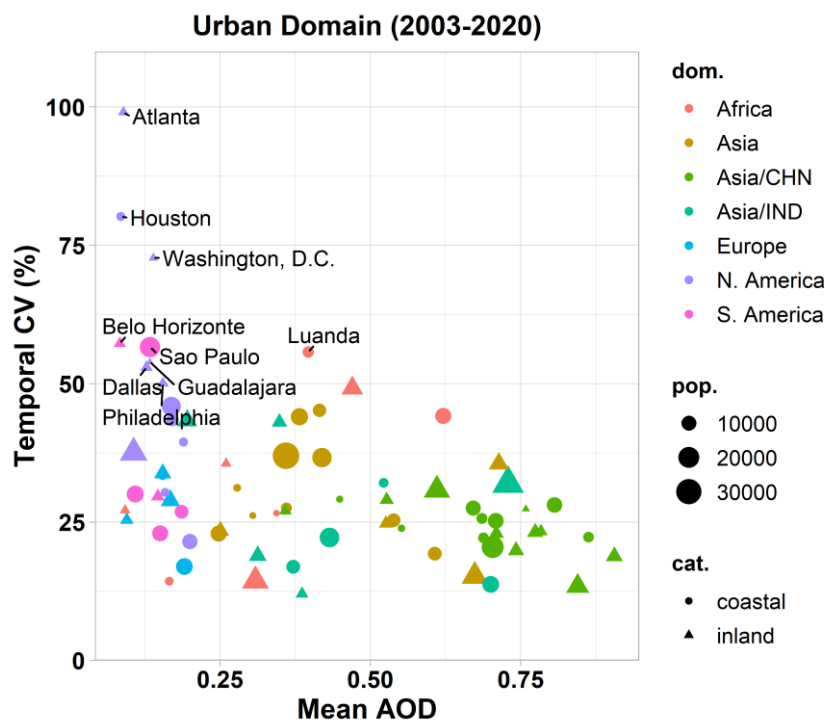
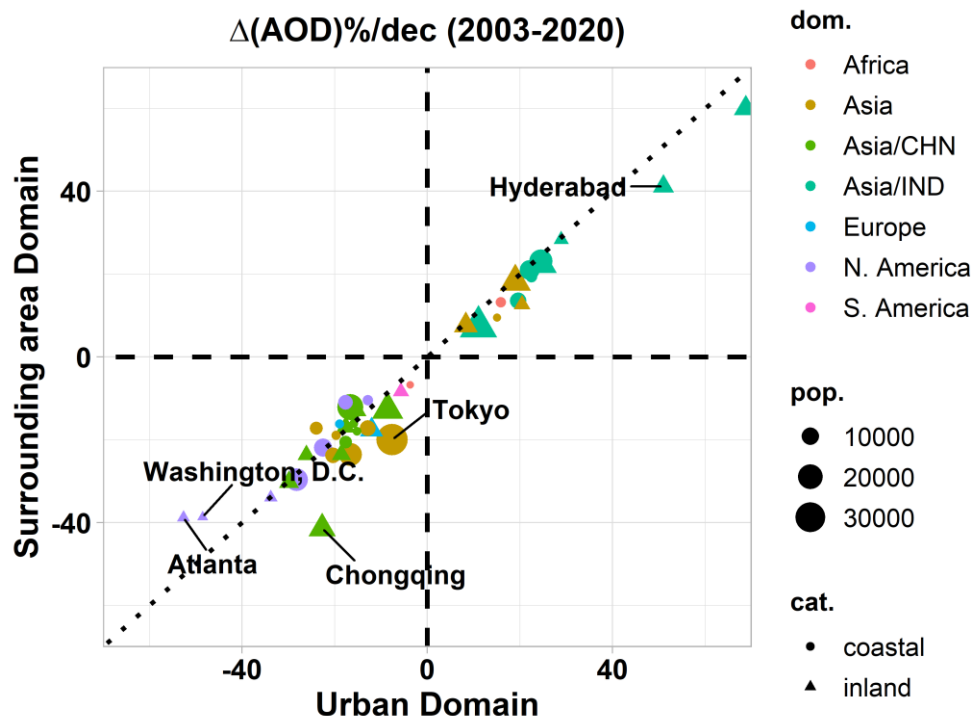


Figure 15. Temporal coefficient of variation expressed in percentages (CV%) against the long-term mean AOD for the urban domain. The size and the colour of the points denote cities' population and geographical domain, respectively. The shape of the points denotes costal or inland cities.

3.3 Spatiotemporal variability

Towards assessing the AOD spatiotemporal variability, the decadal AOD linear trends for the urban and the surrounding domains were compared (Fig. 16). We are presenting only the points in the scatterplot when the AOD trends are statistically significant ($p < 0.1$) both for the surrounding and urban domains (43 pairs). Points residing above/below the identity line correspond to AOD trend (negative or positive) that is higher in the surrounding/urban domain, respectively.

All cities in India exhibit an increase of AOD both in the urban and surrounding domains. The largest difference was found in Hyderabad, where AOD trend is 10% larger for the urban domain, indicating an increase of the anthropogenic activity within the boundaries of the urban agglomeration. For cities where AOD decreases was found, two groups are shaped. The first one, that has greater AOD decrease for the urban domain, consists mostly of East Asian cities. Chongqing is the Chinese megacity with the largest difference ($\sim 20\%$), reflecting the adaptation of effective measures towards reducing city's aerosols air pollution (Gao et al., 2021). The second group, which consists mostly of the North American cities, has greater AOD decrease for the surrounding domain.



475 Figure 16. AOD decadal changes expressed in percentages ($\Delta(\text{AOD})\%$ per decade) for the surrounding domain versus the urban domain. Only statistically significant AOD trends are presented ($P < 0.1$). The dotted line is the identity line. Cities with absolute differences of $\Delta(\text{AOD})\%$ per decade greater than 10% between the two domains are denoted in the figure.

3.4 Evaluation with Ground-Based (GB) measurements (AERONET)

For cities with available long-term time series of AOD from GB stations of the AERONET network, an evaluation of the satellite AOD averages and trends was performed. Table B1 summarizes the information of the AERONET stations utilized. This comparison is separated to the GB stations located within the 4x4 pixel area of the urban domain and those residing in the surrounding domain of a city. The daily averaged AOD product was used from the AERONET stations to derive long-term mean AOD and linear trends, using the same approach as followed with the satellite data. The diurnal AOD variability of the AERONET data wasn't considered and this may slightly affect the long term mean AOD (Smirnov et al., 2002), but it plays a minor role for the calculation of trends.

Regarding the long-term mean AOD (Fig. 17), for the urban domain there is a good agreement between the satellite derived and the GB values (correlation coefficient $R \sim 0.93$). The largest deviations (expressed in percentage terms) between spaceborne and ground-based AODs are recorded in general for weak-load cities, and those deviations are maximized in the high-altitude city ($>2000\text{m}$) of Mexico and OSAK (limited satellite data availability). For the surrounding domain the studied cases are few, so the R is not representative. The satellite derived mean AOD is overestimated, but in this case the area that was utilized to derive the satellite results is considerable large and it is unlikely that the point measurement statistics would coincide with satellite statistics.

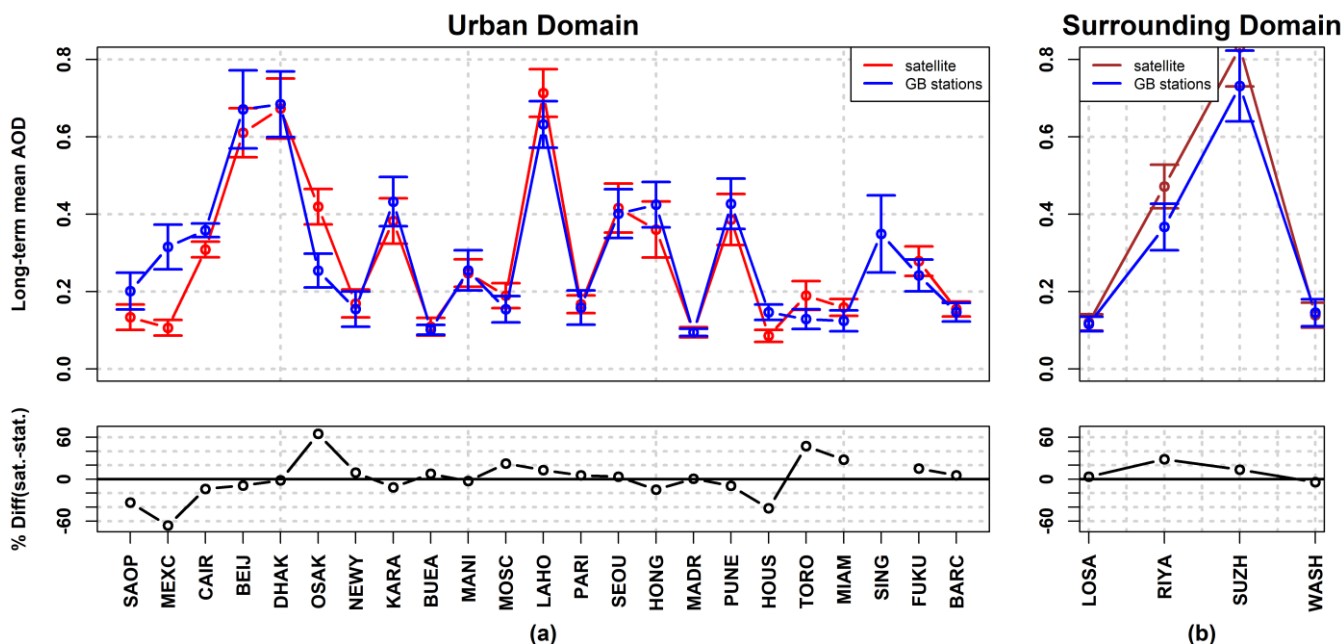


Figure 17. (a) Satellite derived (red line) and GB (blue line) long term mean AOD and their relative difference expressed in percentage (black line) for the urban domain of cities. (b) The same for the surrounding domain (brown line for the satellite derived values). Upper panels: Satellite derived (red line) and GB (blue) long term mean AOD for urban domain (left) and surrounding domain (right). Lower panel: Relative difference of mean AOD between satellite and GB measurements expressed in percentage for urban domain (left) and surrounding domain (right).

A relatively good agreement was also found for the decadal linear trends (Fig. 18), with $R \sim 0.79$ for the urban domain. For 75% of cases, GB and satellite derived trends have the same sign, for both domains. In Fig. 18 are presented the results only when both spaceborne and ground-based AOD trends are statistically significant. For the urban domain, all the statistically significant trends have the same sign. For the surrounding domain, the trends' signs differ only for LOSA. This difference can be attributed to the shorter time period of measurements at the LOSA AERONET station (8 years). Additionally, in a recent study (Wei et al., 2019c), western North America was found to be the area with fewer sites with the same signs between MODIS and AERONET derived AOD trends. Nevertheless, our analysis does not focus in a validation of satellite AOD against AERONET and thus not an exact collocation of the AERONET stations with satellite pixels was attained. In order to investigate further the obtained differences, the spatial CV was calculated for the urban and surrounding domain, as the ratio of standard deviation and mean values of the pixel long-term mean AODs derived in geographical domain analysis (see Sect. 2.4). The results are presented in the lower panel of Fig. 18 along with the percentage of the available pixels inside the domain under investigation. For LOSA, the greatest value of spatial CV was found ($>50\%$), which was anticipated, since the spatial extend of Los Angeles metropolitan area is high (including Long Beach and Santa Ana), highlighting the importance of the selection of the GB location.

An additional interesting feature is that the absolute values of all satellite derived statistically significant trends (Fig. 18) have lower magnitude compared to the GB results. This difference in magnitude could be attributed to the domain aggregated

satellite values compared to point derived results of the GB stations, which may smooth out the AOD fields. In a recent study by Logothetis et al. (2021), a sensitivity analysis was performed between coarse (1°) and fine (0.1°) spatial resolution of spaceborne AOD retrievals which revealed AOD trends of lower magnitude for the coarse-spatial-resolution data. Moreover, the daily satellite value, corresponding to satellite overpass, contains less information compared to the continuous monitoring during daytime of cloudless days of the ground-based photometers.

Hence, GB stations are representing the close area around their location and the representativeness of AERONET stations to characterize aerosol load/trends in megacities should be considered individually in each case, according to local conditions.

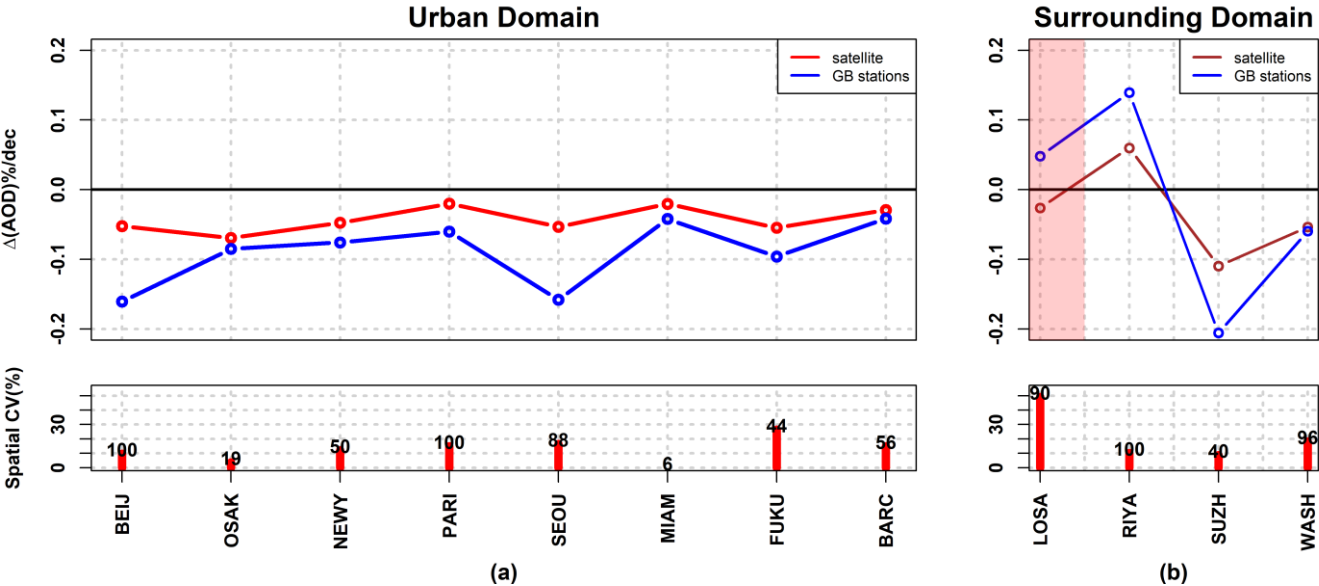


Figure 18. (a) Satellite derived (red line) and GB (blue line) statistically significant ($P<0.1$) AOD linear trends for the urban domain and the corresponding spatial CV (red bars) for every city and the numbers on top of the bars declare the pixel availability for the domain. (b) The same for the surrounding domain (brown line for the satellite derived values). Upper panels: Satellite derived (red line) and ground based (GB) (blue) statistically significant ($P<0.1$) AOD linear trends for urban domain (left) and surrounding domain (right). Lower panel: Spatial CV for every city and the numbers on top of the bars declare the pixel availability for the domain of interest urban (left) and surrounding (right).

4 Summary and conclusions

Motivated by the environmental challenges caused by the increasing urbanization and towards maximizing the use of spaceborne aerosol products, in this study, we investigate the aerosol regime over the megacities of the world using satellite aerosol retrievals. We are taking advantage of the global coverage, the high sampling frequency (daily values) and the relatively fine spatial resolution (0.1°x0.1° grid) of the eighteen years MODIS based AOD and DOD at 550nm products, in order to examine the spatiotemporal variability of aerosol loads for the largest 81 cities of the world.

For all European and American cities, mean AOD ranges mainly from 0.08 to 0.20. For all African and Asian cities but three (Bangalore (0.2), Dar es Salaam (0.17) and Johannesburg (0.09)), mean AOD ranges from 0.25 up to almost 0.90. There are

cities which lie in the proximity of deserts or in the path of transported mineral dust particles, which were found to have considerable dust contribution (up to 70%) and the associated mean DOD values (up to 0.4) can be considered as a constant background aerosol source for those megacities. Results of this contribution can be used by policy makers for defining the
540 legislations on air quality urban thresholds.

The majority of cities (~60%) have greater mean AOD values over their urban agglomeration domain. Mostly Chinese and Indian megacities tend to have higher AOD in the surrounding areas of the city centre. Shanghai is the city with the largest difference (13% greater mean AOD values for the surrounding domain), but in general for the cities grouped in this category the declinations between the two domains are lower compared to the first category, because of the high mean AOD values of
545 the urban domain. Finding inequities in the exposure at urban scales using satellite remote sensing, may be a useful tool for air pollution assessment and finally taking diverse reduction measures at community level. As AOD differences are also observed for different months/seasons during the year, AOD intra-annual variability at megacities' scale have been quantified. Low intra-annual variability (temporal CV 10-40%) was found for Chinese, eastern Indian and Eastern Mediterranean megacities, while high values (>50%) of temporal CV was recorded for eastern American megacities.

550 Although Chinese cities were found with the highest mean AOD values (up to ~0.90), they also exhibit the highest AOD decrease in absolute values up to ~0.3 per decade (or 30% per decade), in response to the rigorous emission control measures implemented in the country, especially after 2010. The effectiveness of those measures also reflects the fact that, for Chinese cities the AOD decrease was found to be higher for the urban domain (up to ~20%). Decreasing AOD values were also derived for US/Canadian and European megacities (up to ~0.07 and ~0.03 per decade) due to a series of air pollution control policies
555 in the last decades. The maximum worldwide negative AOD trends in relative terms ~30-55% per decade were derived for most US cities, which simultaneously have low mean AOD values (less than ~0.15). The highest AOD increase worldwide in absolute (up to ~0.16 per decade for Kolkata) and relative terms (~+70% per decade for Bangalore) was found for Indian megacities. Statistically significant positive AOD trends were found for all Indian cities reflecting the increasing urbanization and industrialization of the country. The AOD increase for Indian megacities was found to be greater (up to ~10%) for the
560 urban domain. Statistically significant AOD increase was also found for Middle East, South African and some Latin America megacities (up to ~ 0.1, 0.06 and 0.03 respectively).

For cities where long-term ground-based AERONET measurements of AOD were available, the extent at which those measurements can capture the spatial and temporal AOD variability, was investigated with respect to the spatial and temporal variability that were derived from satellite data. For GB stations within the urban agglomerations, a good agreement of the
565 long term mean AOD was found ($R \sim 0.93$) and with coincident sign on AOD trends in 75% of the selected stations. The resulted discrepancies are attributed, apart from the satellite retrievals related limitations (one overpass per day, high elevated pixels, low data availability etc.) and the GB retrieval limitations (large temporal gaps due to instrument issues/calibration, shorter operating time periods, etc.) to the point (GB) versus area averaged (satellite) comparison. It was found that for areas with non-homogeneous aerosol fields (great spatial CV, e.g. LOSA in our analysis) great differences (opposite signs) were recorded

570 between satellite and GB trends. Those findings highlight the importance of the GB station location selection for future planning of aerosol measuring sites, towards achieving representative AOD measurements for a specific city.

We acknowledge that the total column optical property of AOD, analysed in this study to describe aerosol load variability, is not always proportional to the surface Particulate Matter (PM) concentrations, which is a parameter describing better the cities air quality, that is monitored and regulated by the cities’ authorities and is related directly to health effects. However, PM

575 concentrations are derived by in situ measurements and a dense network of those measurements is needed to describe the PM distribution of a city. Although these ground air quality monitoring stations are valuable, there are relatively few and unevenly distributed networks within a city, around the world, especially in developing countries. One way to provide consistent PM data worldwide is by combining available PM measurements with satellite AOD observations and chemical transport models (e.g. HEI, 2020). Therefore, the use of satellite AOD is a very fitting source of information in order to have global coverage

580 and high spatiotemporal resolution of aerosol loads over urban areas, keeping in mind that the agreement between satellite columnar AOD and ground-based PM concentrations is determined at a large degree by the vertical structure of aerosol layers (e.g. Gkikas et al., 2016).

According to our findings long term, high resolution space-borne AOD retrievals can be utilized for detecting spatial and temporal aerosol variability at an urban scale, helping towards the current and future assessments of aerosol-related impacts

585 in megacities. The high resolution of MODIS aerosol product provides access to cities’ aerosol monitoring information which can serve as the basis for health-related and other prediction services. Future work linking the AOD changes with population and emission trends in these cities will reveal the linkage and will enhance the performance of the air quality projections for the next decades.

590 Appendix A.

Table A1 Analytical table of 81 cities with highest population up to 2018 (adopted by UN (2018a, 2019a)). The abbreviations of the statistical concept stands for City Proper (CP), Urban Agglomeration (UA) and Metropolitan Area (MA).

Urban Agglomerations	Short name	Country or area	2018 Population (thousands)	Statistical concept
Tokyo	TOKY	Japan	37468	MA
Delhi	DELH	India	28514	MA
Shanghai	SHAN	China	25582	CP
Sao Paulo	SAOP	Brazil	21650	MA
Mexico City	MEXC	Mexico	21581	MA
Cairo	CAIR	Egypt	20076	MA
Bombay	BOMB	India	19980	MA
Beijing	BEIJ	China	19618	UA
Dhaka	DHAK	Bangladesh	19578	MA
Kinki M.M.A. (Osaka)	OSAK	Japan	19281	MA
New York	NEWY	United States of America	18819	UA
Karachi	KARA	Pakistan	15400	UA

Buenos Aires	BUEA	Argentina	14967	UA
Chongqing	CHON	China	14838	UA
Istanbul	ISTA	Turkey	14751	UA
Kolkata	KOLK	India	14681	MA
Manila	MANI	Philippines	13482	MA
Lagos	LAGO	Nigeria	13463	UA
Rio de Janeiro	RIOD	Brazil	13293	MA
Tianjin	TIAN	China	13215	UA
Kinshasa	KINS	Democratic Republic of the Congo	13171	UA
Guangzhou, Guangdong	GUAN	China	12638	UA
Los Angeles-Long Beach-Santa Ana	LOSA	United States of America	12458	UA
Moscow	MOSC	Russian Federation	12410	CP
Shenzhen	SHNZ	China	11908	UA
Lahore	LAHO	Pakistan	11738	UA
Bangalore	BALO	India	11440	UA
Paris	PARI	France	10901	UA
Bogota	BOGO	Colombia	10574	UA
Jakarta	JAKA	Indonesia	10517	MA
Chennai	CHNA	India	10456	UA
Lima	LIMA	Peru	10391	MA
Bangkok	BANG	Thailand	10156	UA
Seoul	SEOU	Republic of Korea	9963	UA
Chukyo M.M.A. (Nagoya)	NAGO	Japan	9507	MA
Hyderabad	HYDE	India	9482	UA
London	LOND	United Kingdom	9046	UA
Tehran	TEHR	Iran (Islamic Republic of)	8896	CP
Chicago	CHIC	United States of America	8864	UA
Chengdu	CHGD	China	8813	UA
Nanjing, Jiangsu	NANJ	China	8245	UA
Wuhan	WUHA	China	8176	UA
Ho Chi Minh City	HCMC	Viet Nam	8145	UA
Luanda	LUAN	Angola	7774	UA
Ahmadabad	AHMA	India	7681	UA
Kuala Lumpur	KUAL	Malaysia	7564	MA
Xian, Shaanxi	XIAN	China	7444	UA
Hong Kong	HONG	China, Hong Kong SAR	7429	UA
Dongguan	DONG	China	7360	UA
Hangzhou	HANG	China	7236	UA
Foshan	FOSH	China	7196	UA
Shenyang	SHYA	China	6921	UA
Riyadh	RIYA	Saudi Arabia	6907	CP
Baghdad	BAGH	Iraq	6812	MA

Santiago	SANT	Chile	6680	UA
Surat	SURA	India	6564	UA
Madrid	MADR	Spain	6497	CP
Suzhou, Jiangsu	SUZH	China	6339	UA
Pune	PUNE	India	6276	UA
Haerbin	HAER	China	6115	UA
Houston	HOUS	United States of America	6115	UA
Dallas-Fort Worth	DALL	United States of America	6099	UA
Toronto	TORO	Canada	6082	MA
Dar es Salaam	DARE	United Republic of Tanzania	6048	UA
Miami	MIAM	United States of America	6036	UA
Belo Horizonte	BELO	Brazil	5972	MA
Singapore	SING	Singapore	5792	UA
Philadelphia	PHIL	United States of America	5695	UA
Atlanta	ATLA	United States of America	5572	UA
Kitakyushu-Fukuoka M.M.A.	FUKU	Japan	5551	MA
Khartoum	KHAR	Sudan	5534	UA
Barcelona	BARC	Spain	5494	CP
Johannesburg	JOHA	South Africa	5486	UA
Saint Petersburg	STPE	Russian Federation	5383	CP
Qingdao	QING	China	5381	UA
Dalian	DALI	China	5300	UA
Washington, D.C.	WASH	United States of America	5207	UA
Yangon	YANG	Myanmar	5157	UA
Alexandria	ALEX	Egypt	5086	CP
Jinan, Shandong	JINA	China	5052	UA
Guadalajara	GUAD	Mexico	5023	MA

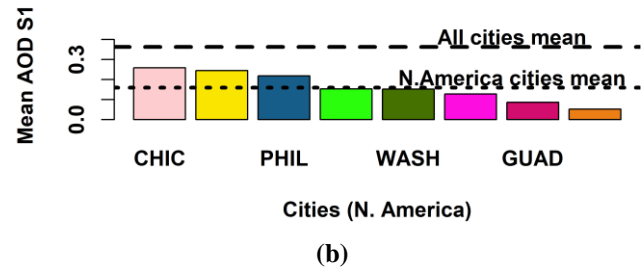
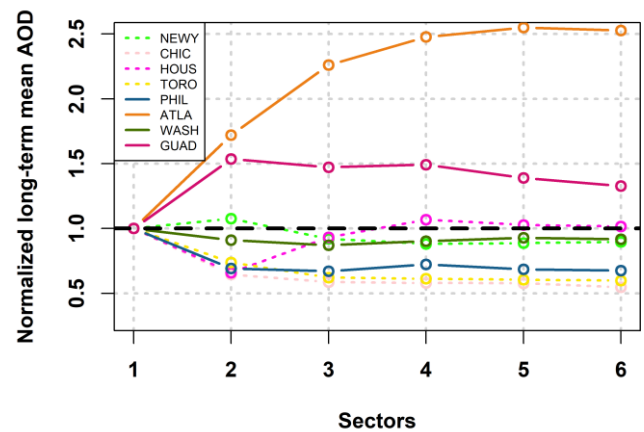
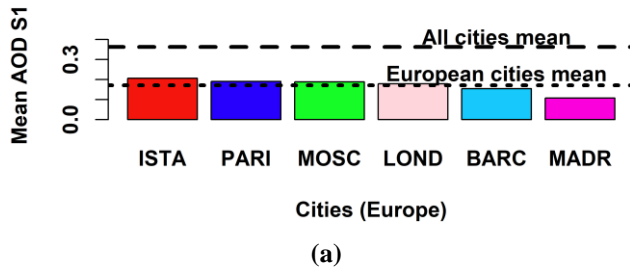
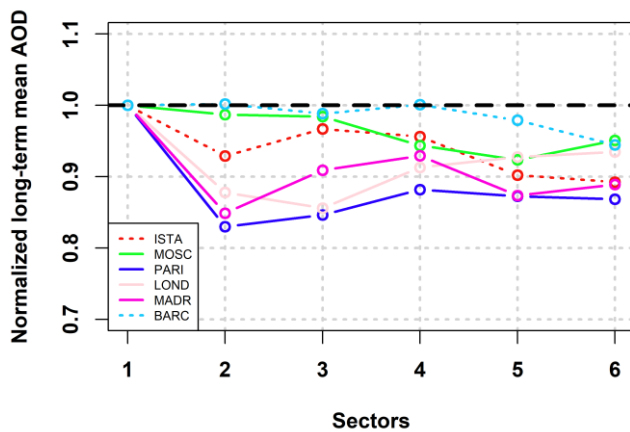
Appendix B.

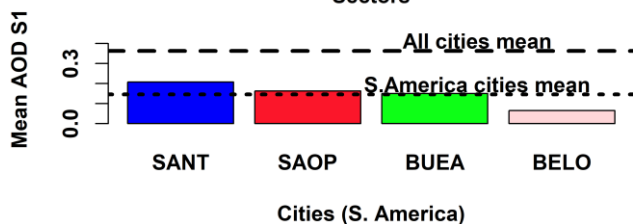
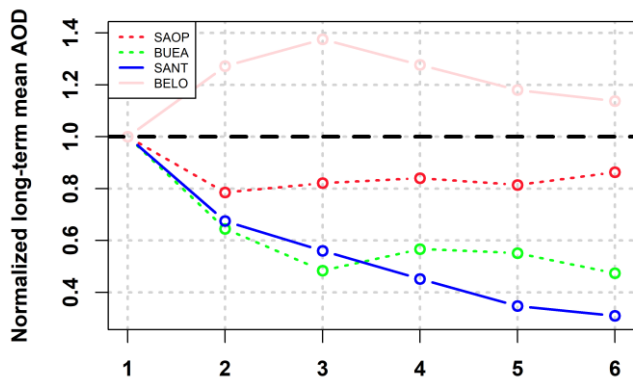
595 **Table B1. AERONET stations that have been used in the analysis and the corresponding urban agglomerations.**

AERONET station	Period	Urban Agglomerations	Short name	Country or area
Sao_Paulo	2003-2019	Sao Paulo	SAOP	Brazil
Mexico_City	2003-2018	Mexico City	MEXC	Mexico
Cairo_EMA_2	2010-2019	Cairo	CAIR	Egypt
Beijing	2003-2019	Beijing	CHN	China
Dhaka_University	2012-2020	Dhaka	BGD	Bangladesh
Osaka	2004-2020	Osaka	JPN	Japan
CCNY	2003-2020	New York	USA	United States of America
Karachi	2006-2020	Karachi	PAK	Pakistan
CEILAP-BA	2003-2019	Buenos Aires	ARG	Argentina
Manila_Observatory	2009-2020	Manila	MANI	Philippines

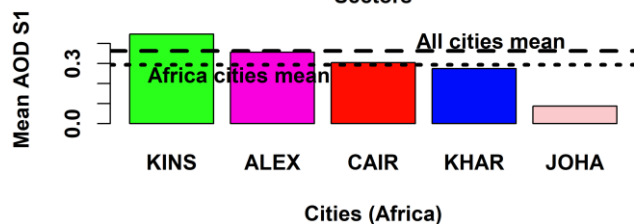
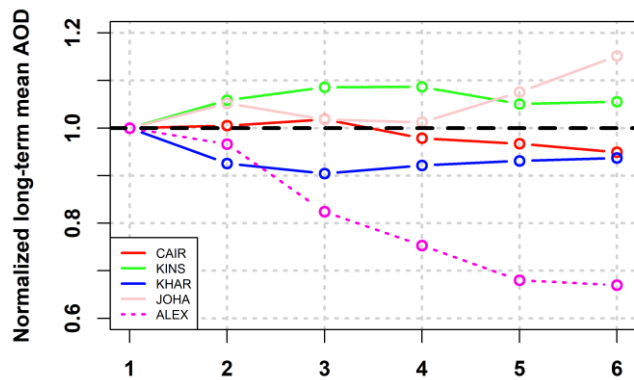
Santa_Monica_Colg	2013-2020	Los Angeles	LOSA	United States of America
Moscow_MSU_MO	2003-2020	Moscow	MOSC	Russian Federation
Lahore	2007-2020	Lahore	LAHO	Pakistan
Paris	2005-2020	Paris	PARI	France
Yonsei_University	2011-2020	Seoul	SEOU	Republic of Korea
Hong_Kong_PolyU	2006-2020	Hong Kong	HONG	China, Hong Kong SAR
Solar_Village	2003-2013	Riyadh	RIYA	Saudi Arabia
Madrid	2012-2020	Madrid	MADR	Spain
Taihu	2005-2016	Suzhou	SUZH	China
Pune	2005-2019	Pune	PUNE	India
Univ_of_Houston	2006-2020	Houston	HOUS	United States of America
Toronto	2004-2020	Toronto	TORO	Canada
Key_Biscayne	2007-2018	Miami	MIAM	United States of America
Singapore	2007-2020	Singapore	SING	Singapore
Fukuoka	2012-2020	Fukuoka	FUKU	Japan
Barcelona	2005-2020	Barcelona	BARC	Spain
GSFC	2003-2020	Washington, D.C.	WASH	United States of America

Appendix C.

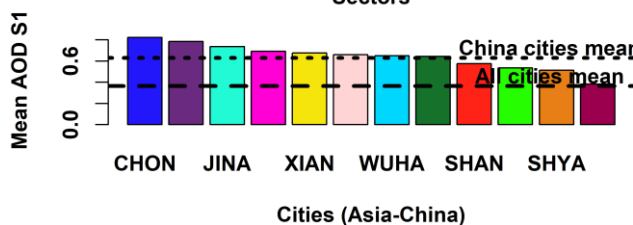
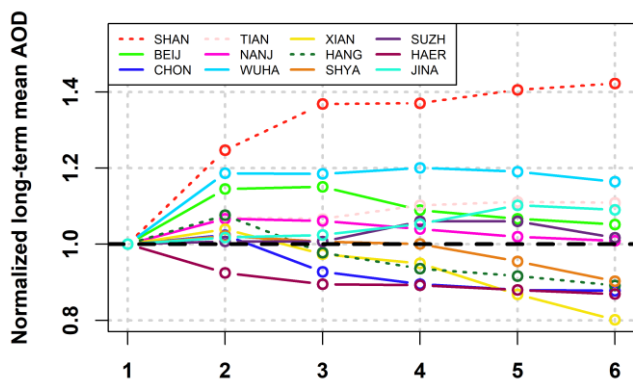




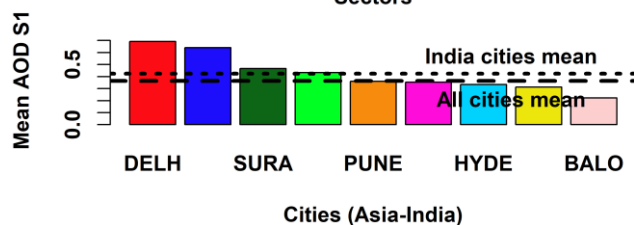
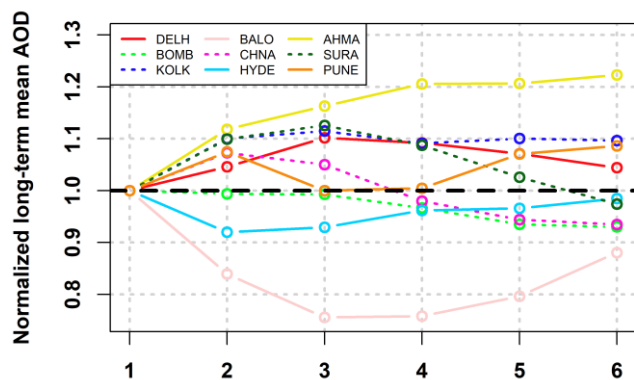
(c)



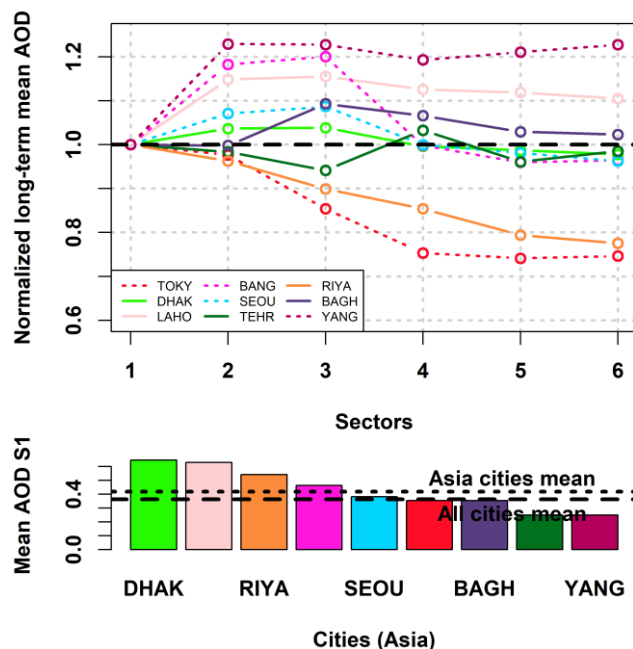
(d)



(e)



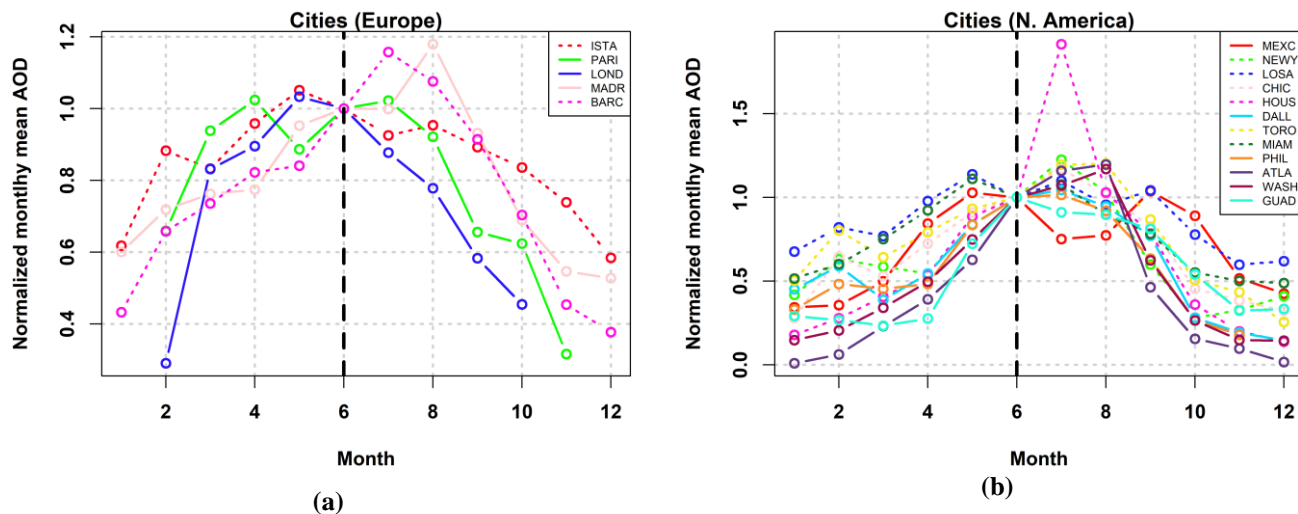
(f)

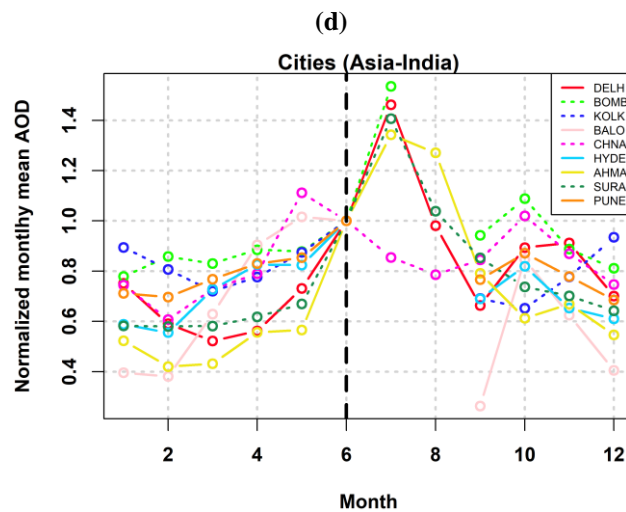
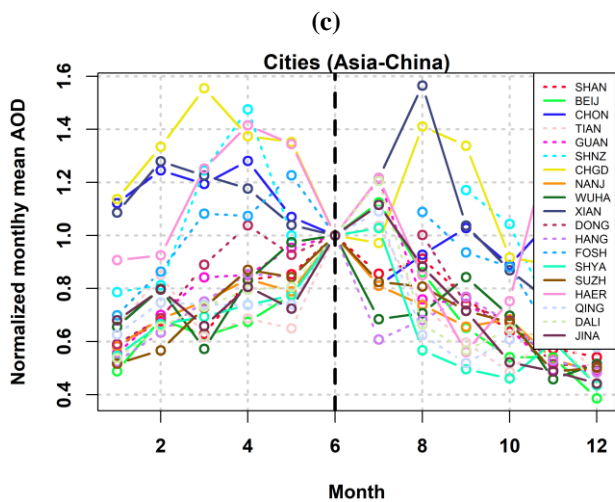
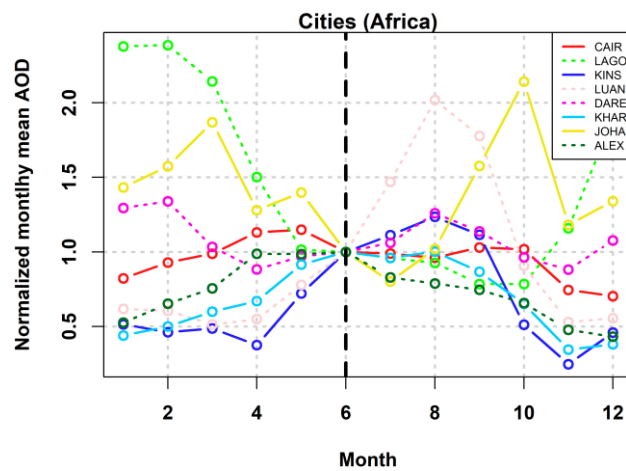
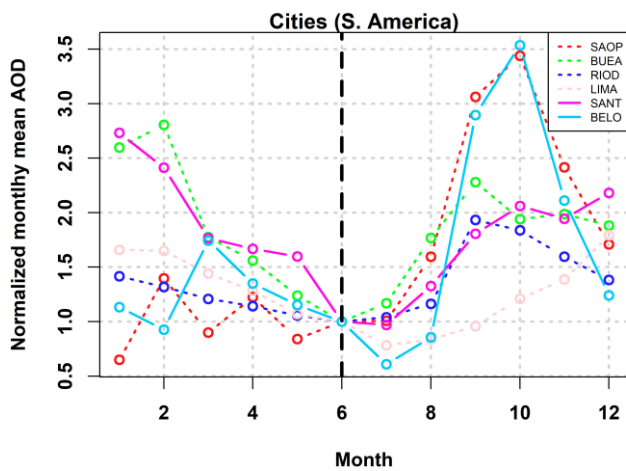


(g)

Figure C1. Subplots a-g corresponds to deferent geographical domains. For every subplot: Upper panel: Long term mean AOD for the 6 different sectors normalized with the mean value of sector 1 (S1). The different colors correspond to different cities. Solid/dashed lines denotes inland/coastal cities, respectively. Lower panel: Long term mean AOD of S1 for every city in the geographical domain, denoted with the same colour used in the upper panel. The dashed line corresponds to the mean from all cities, while dashed lines gives the mean AOD for the cities of the corresponding geographical domain.

Appendix D.





(e)

(f)

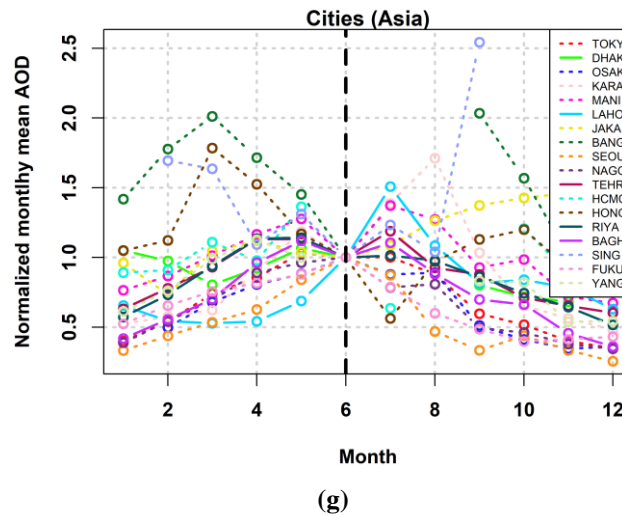


Figure D1. Long term monthly mean AOD values (intra-annual variability) normalized against the mean value of month June. The different colors correspond to different cities. Solid/dashed lines denotes inland/coastal cities, respectively.

Data availability. The MIDAS dataset (Gkikas et al., 2021, 2022) is available online at <https://doi.org/10.5281/zenodo.4244106>. AERONET observations were downloaded from the AERONET data base at <https://aeronet.gsfc.nasa.gov>. Population data are available online by the United Nations, Department of Economic and Social Affairs, Population Division at <https://population.un.org/wup/Download/>.

Author contributions. KP and SK designed the study and analysis. KP has analysed all satellite based AOD data and population data. IF and AG have contributed for the definition of the spatiotemporal use of the satellite data. AM and PR have performed the analysis of including the ground-based data. KP prepared the manuscript with contributions from all co-authors.

Acknowledgments. KP acknowledge support of this research by the Swiss Government Excellence Scholarship offered by the Swiss Government via the Federal Commission for Scholarships for Foreign Student FCS. SK, IF and KP would like to acknowledge the European Commission project EuroGEO e-shape (grant agreement No. 820852). AG was supported by the Hellenic Foundation for Research and Innovation (H.F.R.I.) under the "2nd Call for H.F.R.I. Research Projects to support Post-Doctoral Researchers" (project acronym: ATLANTAS, project number: 544). The MIDAS dataset has been developed in the framework of the DUST-GLASS project (grant No. 749461; European Union's Horizon 2020 Research and Innovation program under the Marie Skłodowska-Curie Actions). We acknowledge the data provided by AERONET and their continuous efforts in providing high-quality measurements and product.

625 Financial support. The publication of this article has been financed by the European Commission project EuroGEO e-shape (grant agreement No. 820852). This research has been supported by the Swiss Government Excellence Scholarship awarded to KP.

References

- Abera, A., Friberg, J., Isaxon, C., Jerrett, M., Malmqvist, E., Sjöström, C., Taj, T., and Vargas, A. M.: Air Quality in Africa: Public Health Implications, *Annu. Rev. Public Health*, 42, 193–210, <https://doi.org/10.1146/annurev-publhealth-100119-113802>, 2020.
- Alpert, P., Shvainshtein, O., and Kishcha, P.: AOD Trends over Megacities Based on Space Monitoring Using MODIS and MISR, *Am. J. Clim. Chang.*, 01, 117–131, <https://doi.org/10.4236/ajcc.2012.13010>, 2012.
- Amiridis, V., Marinou, E., Tsekeri, A., Wandinger, U., Schwarz, A., Giannakaki, E., Mamouri, R., Kokkalis, P., Biniotoglou, I., Solomos, S., Herekakis, T., Kazadzis, S., Gerasopoulos, E., Proestakis, E., Kottas, M., Balis, D., Papayannis, A., Kontoes, C., Kourtidis, K., Papagiannopoulos, N., Mona, L., Pappalardo, G., Le Rille, O., and Ansmann, A.: LIVAS: a 3-D multi-wavelength aerosol/cloud database based on CALIPSO and EARLINET, *Atmos. Chem. Phys.*, 15, 7127–7153, <https://doi.org/10.5194/acp-15-7127-2015>, 2015.
- Buchholz, R. R., Worden, H. M., Park, M., Francis, G., Deeter, M. N., Edwards, D. P., Emmons, L. K., Gaubert, B., Gille, J., Martínez-Alonso, S., Tang, W., Kumar, R., Drummond, J. R., Clerbaux, C., George, M., Coheur, P. F., Hurtmans, D., Bowman, K. W., Luo, M., Payne, V. H., Worden, J. R., Chin, M., Levy, R. C., Warner, J., Wei, Z., and Kulawik, S. S.: Air pollution trends measured from Terra: CO and AOD over industrial, fire-prone, and background regions, *Remote Sens. Environ.*, 256, <https://doi.org/10.1016/j.rse.2020.112275>, 2021.
- Che, H., Gui, K., Xia, X., Wang, Y., Holben, B. N., Goloub, P., Cuevas-Agulló, E., Wang, H., Zheng, Y., Zhao, H., and Zhang, X.: Large contribution of meteorological factors to inter-decadal changes in regional aerosol optical depth, *Atmos. Chem. Phys.*, 19, 10497–10523, <https://doi.org/10.5194/acp-19-10497-2019>, 2019.
- Cherian, R. and Quaas, J.: Trends in AOD, Clouds, and Cloud Radiative Effects in Satellite Data and CMIP5 and CMIP6 Model Simulations Over Aerosol Source Regions, *Geophys. Res. Lett.*, 47, <https://doi.org/10.1029/2020GL087132>, 2020.
- DeMocker, M. J.: Benefits and Costs of the Clean Air Act 1990–2020: Revised Analytical Plan For EPA’s Second Prospective Analysis, Ind. Econ. Inc. Cambridge, MA, 2003.
- Ganguly, T., Selvaraj, K. L., and Guttikunda, S. K.: National Clean Air Programme (NCAP) for Indian cities: Review and outlook of clean air action plans, *Atmos. Environ.* X, 8, <https://doi.org/10.1016/j.aeaoa.2020.100096>, 2020.
- Gao, H., Yang, W., Wang, J., and Zheng, X.: Analysis of the effectiveness of air pollution control policies based on historical evaluation and deep learning forecast: A case study of chengdu-chongqing region in china, *Sustain.*, 13, 1–28, <https://doi.org/10.3390/su13010206>, 2021.
- Gelaro, R., McCarty, W., Suárez, M. J., Todling, R., Molod, A., Takacs, L., Randles, C. A., Darmenov, A., Bosilovich, M. G.,

- Reichle, R., Wargan, K., Coy, L., Cullather, R., Draper, C., Akella, S., Buchard, V., Conaty, A., da Silva, A. M., Gu, W., Kim, G. K., Koster, R., Lucchesi, R., Merkova, D., Nielsen, J. E., Partyka, G., Pawson, S., Putman, W., Rienecker, M., Schubert, S. D., Sienkiewicz, M., and Zhao, B.: The modern-era retrospective analysis for research and applications, version 2 (MERRA-2), *J. Clim.*, 30, 5419–5454, <https://doi.org/10.1175/JCLI-D-16-0758.1>, 2017.
- Giles, D. M., Sinyuk, A., Sorokin, M. G., Schafer, J. S., Smirnov, A., Slutsker, I., Eck, T. F., Holben, B. N., Lewis, J. R., Campbell, J. R., Welton, E. J., Korkin, S. V., and Lyapustin, A. I.: Advancements in the Aerosol Robotic Network (AERONET) Version 3 database – automated near-real-time quality control algorithm with improved cloud screening for Sun photometer aerosol optical depth (AOD) measurements, *Atmos. Meas. Tech.*, 12, 169–209, <https://doi.org/10.5194/amt-12-169-2019>, 2019.
- Gkikas, A., Basart, S., Hatzianastassiou, N., Marinou, E., Amiridis, V., Kazadzis, S., Pey, J., Querol, X., Jorba, O., Gasso, S., and Baldasano, J. M.: Mediterranean intense desert dust outbreaks and their vertical structure based on remote sensing data, 8609–8642 pp., <https://doi.org/10.5194/acp-16-8609-2016>, 2016.
- Gkikas, A., Proestakis, E., Amiridis, V., Kazadzis, S., Di Tomaso, E., Tsekeri, A., Marinou, E., Hatzianastassiou, N., and Pérez García-Pando, C.: ModIs Dust AeroSol (MIDAS): A global fine-resolution dust optical depth data set, *Atmos. Meas. Tech.*, 14, 309–334, <https://doi.org/10.5194/amt-14-309-2021>, 2021.
- Gkikas, A., Proestakis, E., Amiridis, V., Kazadzis, S., Di Tomaso, E., Marinou, E., Hatzianastassiou, N., Kok, J. F., and García-Pando, C. P.: Quantification of the dust optical depth across spatiotemporal scales with the MIDAS global dataset (2003–2017), *Atmos. Chem. Phys.*, 22, 3553–3578, <https://doi.org/10.5194/acp-22-3553-2022>, 2022.
- Goldstein, A. H., Koven, C. D., Heald, C. L., and Fung, I. Y.: Biogenic carbon and anthropogenic pollutants combine to form a cooling haze over the southeastern United States, *Proc. Natl. Acad. Sci. U. S. A.*, 106, 8835–8840, <https://doi.org/10.1073/pnas.0904128106>, 2009.
- Gulev, S. K., Thorne, P. W., Ahn, J., Dentener, F. J., Domingues, C. M., Gerland, S., Gong, D., Kaufman, D. S., Nnamchi, H. C., and Quaas, J. et al.: Changing state of the climate system In *Climate Change 2021: The Physical Science Basis*. Contribution of Working Group I to the Sixth Assessment Report of the Intergovernmental Panel on Climate Change [Masson-Delmotte, V., P. Zhai, A. Pirani, S.L. C, <https://doi.org/10.1017/9781009157896.004>, 2021.
- Gupta, G., Venkat Ratnam, M., Madhavan, B. L., and Narayanamurthy, C. S.: Long-term trends in Aerosol Optical Depth obtained across the globe using multi-satellite measurements, *Atmos. Environ.*, 273, <https://doi.org/10.1016/j.atmosenv.2022.118953>, 2022.
- Gupta, P., Levy, R. C., Mattoo, S., Remer, L. A., and Munchak, L. A.: A surface reflectance scheme for retrieving aerosol optical depth over urban surfaces in MODIS Dark Target retrieval algorithm, *Atmos. Meas. Tech.*, 9, 3293–3308, <https://doi.org/10.5194/amt-9-3293-2016>, 2016.
- Health Effects Institute: State of Global Air 2020. Special Report. Boston, MA:Health Effects Institute., Boston, 2020.
- Holben, B. N., Eck, T. F., Slutsker, I., Tanré, D., Buis, J. P., Setzer, A., Vermote, E., Reagan, J. A., Kaufman, Y. J., Nakajima, T., Lavenu, F., Jankowiak, I., and Smirnov, A.: AERONET - A federated instrument network and data archive for aerosol

- characterization, *Remote Sens. Environ.*, 66, 1–16, [https://doi.org/10.1016/S0034-4257\(98\)00031-5](https://doi.org/10.1016/S0034-4257(98)00031-5), 1998.
- Hsu, N. C., Gautam, R., Sayer, A. M., Bettenhausen, C., Li, C., Jeong, M. J., Tsay, S. C., and Holben, B. N.: Global and regional trends of aerosol optical depth over land and ocean using SeaWiFS measurements from 1997 to 2010, *Atmos. Chem. Phys.*, 12, 8037–8053, <https://doi.org/10.5194/acp-12-8037-2012>, 2012.
- 695 Jin, Y., Andersson, H., and Zhang, S.: Air pollution control policies in China: A retrospective and prospects, *Int. J. Environ. Res. Public Health*, 13, <https://doi.org/10.3390/ijerph13121219>, 2016.
- Kaufman, Y. J., Tanré, D., and Boucher, O.: A satellite view of aerosols in the climate system, *Nature*, 419, 215–223, <https://doi.org/10.1038/nature01091>, 2002.
- Kazadzis, S., Kouremeti, N., Nyeki, S., Gröbner, J., and Wehrli, C.: The World Optical Depth Research and Calibration Center (WORCC) quality assurance and quality control of GAW-PFR AOD measurements, *Geosci. Instrumentation, Methods Data Syst.*, 7, 39–53, <https://doi.org/10.5194/gi-7-39-2018>, 2018.
- 700 [Levy, R. C., Mattoo, S., Munchak, L. A., Remer, L. A., Sayer, A. M., Patadia, F., and Hsu, N. C.: The Collection 6 MODIS aerosol products over land and ocean, *Atmos. Meas. Tech.*, 6, 2989–3034, <https://doi.org/10.5194/amt-6-2989-2013>, 2013.](#)
- Logothetis, S. A., Salamalikis, V., Gkikas, A., Kazadzis, S., Amiridis, V., and Kazantzidis, A.: 15-Year Variability of Desert Dust Optical Depth on Global and Regional Scales, *Atmos. Chem. Phys.*, 21, 16499–16529, [https://doi.org/10.5194/acp-21-](https://doi.org/10.5194/acp-21-16499-2021)
16499-2021, 2021.
- 705 Nakajima, T., Campanelli, M., Che, H., Estellés, V., Irie, H., Kim, S.-W., Kim, J., Liu, D., Nishizawa, T., Pandithurai, G., Soni, V. K., Thana, B., Tugjsurn, N.-U., Aoki, K., Hashimoto, M., Higurashi, A., Kazadzis, S., Khatri, P., Kouremeti, N., Kudo, R., Marengo, F., Momoi, M., Ningombam, S., Ryder, C., and Uchiyama, A.: An overview and issues of the sky radiometer technology and SKYNET, *Atmos. Meas. Tech. Discuss.*, 1–36, <https://doi.org/10.5194/amt-2020-72>, 2020.
- Proestakis, E., Amiridis, V., Marinou, E., Georgoulas, A. K., Solomos, S., Kazadzis, S., Chimot, J., Che, H., Alexandri, G., Biniotoglou, I., Daskalopoulou, V., Kourtidis, K. A., De Leeuw, G., and Van Der A, R. J.: Nine-year spatial and temporal evolution of desert dust aerosols over South and East Asia as revealed by CALIOP, *Atmos. Chem. Phys.*, 18, 1337–1362, <https://doi.org/10.5194/acp-18-1337-2018>, 2018.
- 715 Randles, C. A., da Silva, A. M., Buchard, V., Colarco, P. R., Darmenov, A., Govindaraju, R., Smirnov, A., Holben, B., Ferrare, R., Hair, J., Shinozuka, Y., and Flynn, C. J.: The MERRA-2 aerosol reanalysis, 1980 onward. Part I: System description and data assimilation evaluation, *J. Clim.*, 30, 6823–6850, <https://doi.org/10.1175/JCLI-D-16-0609.1>, 2017.
- Raptis, I. P., Kazadzis, S., Amiridis, V., Gkikas, A., Gerasopoulos, E., and Mihalopoulos, N.: A decade of aerosol optical properties measurements over athens, Greece, *Atmosphere (Basel)*, 11, 1–21, <https://doi.org/10.3390/atmos11020154>, 2020.
- 720 Samset, B. H., Lund, M. T., Bollasina, M., Myhre, G., and Wilcox, L.: Emerging Asian aerosol patterns, *Nat. Geosci.*, 12, 582–584, <https://doi.org/10.1038/s41561-019-0424-5>, 2019.
- [Sayer, A. M. and Knobelspiesse, K. D.: How should we aggregate data? Methods accounting for the numerical distributions, with an assessment of aerosol optical depth, *Atmos. Chem. Phys.*, 19, 15023–15048, \[https://doi.org/10.5194/acp-19-15023-\]\(https://doi.org/10.5194/acp-19-15023-2019\)2019, 2019.](#)

- 725 Sayer, A. M., Munchak, L. A., Hsu, N. C., Levy, R. C., Bettenhausen, C., and Jeong, M. J.: Modis collection 6 aerosol products: Comparison between aqua's e-deep blue, dark target, and "merged" data sets, and usage recommendations, *J. Geophys. Res.*, **119**, 13,965–13,989, <https://doi.org/10.1002/2014JD022453>, 2014.
- Smirnov, A., Holben, B. N., Eck, T. F., Slutsker, I., Chatenet, B., and Pinker, R. T.: Diurnal variability of aerosol optical depth observed at AERONET (Aerosol Robotic Network) sites, *Geophys. Res. Lett.*, **29**, 28–31, <https://doi.org/10.1029/2002GL016305>, 2002.
- 730 Sogacheva, L., Rodriguez, E., Kolmonen, P., Virtanen, T. H., Saponaro, G., De Leeuw, G., Georgoulas, A. K., Alexandri, G., Kourtidis, K., and Van Der, R. J. A.: Spatial and seasonal variations of aerosols over China from two decades of multi-satellite observations - Part 2: AOD time series for 1995–2017 combined from ATSR ADV and MODIS C6.1 and AOD tendency estimations, *Atmos. Chem. Phys.*, **18**, 16631–16652, <https://doi.org/10.5194/acp-18-16631-2018>, 2018.
- 735 Turnock, S. T., Butt, E. W., Richardson, T. B., Mann, G. W., Reddington, C. L., Forster, P. M., Haywood, J., Crippa, M., Janssens-Maenhout, G., Johnson, C. E., Bellouin, N., Carslaw, K. S., and Spracklen, D. V.: The impact of European legislative and technology measures to reduce air pollutants on air quality, human health and climate, *Environ. Res. Lett.*, **11**, <https://doi.org/10.1088/1748-9326/11/2/024010>, 2016.
- United Nations, Department of Economic and Social Affairs, P. D.: The World 's Cities in 2018 - Data Booklet, 2018a.
- 740 United Nations, Department of Economic and Social Affairs, P. D.: World Urbanization Prospects: The 2018 Revision, Online Edition., 2018b.
- United Nations, Department of Economic and Social Affairs, P. D.: World Urbanization Prospects 2018: Highlights, 2019a.
- United Nations, Department of Economic and Social Affairs, P. D.: World Urbanization Prospects 2018: The 2018 Revision, New York: United Nations., 2019b.
- 745 United Nations Environment Programme: Integrated assessment of short-lived climate pollutants in Latin America and the Caribbean: Summary for decision makers, United Nations Environment Programme, 2016.
- Vohra, K., Marais, E. A., Suckra, S., Kramer, L., Bloss, W. J., Sahu, R., Gaur, A., Tripathi, S. N., Van Damme, M., Clarisse, L., and Coheur, P. F.: Long-Term trends in air quality in major cities in the UK and India: A view from space, *Atmos. Chem. Phys.*, **21**, 6275–6296, <https://doi.org/10.5194/acp-21-6275-2021>, 2021.
- 750 Wei, J., Peng, Y., Mahmood, R., Sun, L., and Guo, J.: Intercomparison in spatial distributions and temporal trends derived from multi-source satellite aerosol products, *Atmos. Chem. Phys.*, **19**, 7183–7207, <https://doi.org/10.5194/acp-19-7183-2019>, 2019a.
- Wei, J., Li, Z., Peng, Y., and Sun, L.: MODIS Collection 6.1 aerosol optical depth products over land and ocean: validation and comparison, *Atmos. Environ.*, **201**, 428–440, <https://doi.org/10.1016/j.atmosenv.2018.12.004>, 2019b.
- 755 Wei, J., Peng, Y., Guo, J., and Sun, L.: Performance of MODIS Collection 6.1 Level 3 aerosol products in spatial-temporal variations over land, *Atmos. Environ.*, **206**, 30–44, <https://doi.org/10.1016/j.atmosenv.2019.03.001>, 2019c.
- WHO: Health and Environment: Draft road map for an enhanced global response to the adverse health effects of air pollution A69/18, Who, 7 pp., 2016.

- World Health Organization: WHO global air quality guidelines: particulate matter (PM_{2.5} and PM₁₀), ozone, nitrogen dioxide, sulfur dioxide and carbon monoxide, World Health Organization, Geneva PP - Geneva, 2021.
- Zhao, B., Jiang, J. H., Gu, Y., Diner, D., Worden, J., Liou, K. N., Su, H., Xing, J., Garay, M., and Huang, L.: Decadal-scale trends in regional aerosol particle properties and their linkage to emission changes, *Environ. Res. Lett.*, 12, <https://doi.org/10.1088/1748-9326/aa6cb2>, 2017.
- Zhao, B., Jiang, J. H., Diner, D. J., Su, H., Gu, Y., Liou, K. N., Jiang, Z., Huang, L., Takano, Y., Fan, X., and Omar, A. H.: Intra-annual variations of regional aerosol optical depth, vertical distribution, and particle types from multiple satellite and ground-based observational datasets, *Atmos. Chem. Phys.*, 18, 11247–11260, <https://doi.org/10.5194/acp-18-11247-2018>, 2018.
- Zheng, B., Tong, D., Li, M., Liu, F., Hong, C., Geng, G., Li, H., Li, X., Peng, L., Qi, J., Yan, L., Zhang, Y., Zhao, H., Zheng, Y., He, K., and Zhang, Q.: Trends in China's anthropogenic emissions since 2010 as the consequence of clean air actions, *Atmos. Chem. Phys.*, 18, 14095–14111, <https://doi.org/10.5194/acp-18-14095-2018>, 2018.