

# Composition and mixing state of Arctic aerosol and cloud residual particles from long-term single-particle observations at Zeppelin Observatory, Svalbard

5 Kouji Adachi<sup>1</sup>, Yutaka Tobo<sup>2,3</sup>, Makoto Koike<sup>4</sup>, Gabriel Freitas<sup>5</sup>, Paul Zieger<sup>5</sup>, Radovan Krejci<sup>5</sup>

<sup>1</sup> Department of Atmosphere, Ocean, and Earth System Modeling Research, Meteorological Research Institute, Tsukuba, 3050052, Japan

<sup>2</sup> National Institute of Polar Research, Tachikawa, 1908518, Japan

10 <sup>3</sup>Department of Polar Science, School of Multidisciplinary Sciences, The Graduate University for Advanced Studies, SOKENDAI, Tachikawa, 1908518, Japan

<sup>4</sup> Department of Earth and Planetary Science, Graduate School of Science, The University of Tokyo, Tokyo, 1130033, Japan

<sup>5</sup> Department of Environmental Science & Bolin Centre for Climate Research, Stockholm University, Stockholm, 10691, Sweden

15 *Correspondence to:* Kouji Adachi (adachik@mri-jma.go.jp)

**Abstract.** The Arctic region is sensitive to climate change and is warming faster than the global average. Aerosol particles change cloud properties by acting as cloud condensation nuclei and ice nucleating particles, thus influencing the Arctic climate system. Therefore, understanding the aerosol particle properties in the Arctic is needed to interpret and simulate their influences on climate. In this study, we collected ambient aerosol particles using whole-air and PM<sub>10</sub> inlets and residual particles of cloud droplets and ice crystals from Arctic low-level clouds (typically, all-liquid or mixed-phase clouds) using a counterflow virtual impactor inlet at the Zeppelin Observatory near Ny-Ålesund, Svalbard, within a time frame of 4 years. We measured the composition and mixing state of individual fine-mode particles [in 239 samples](#) using transmission electron microscopy. On the basis of their composition, the aerosol and cloud residual particles were classified [as into](#) mineral dust, sea salt, K-bearing, sulfate, and carbonaceous particles. The number fraction of aerosol particles showed seasonal changes, with sulfate dominating in summer and sea salt increasing in winter. There was no measurable difference in the fractions between ambient aerosol and cloud residual particles collected at ambient temperatures above 0°C. On the other hand, cloud residual samples collected at ambient temperatures below 0°C had several times more sea salt and mineral dust particles and fewer sulfates than ambient aerosol samples, suggesting that sea spray and mineral dust particles may influence the formation of cloud particles in Arctic mixed-phase clouds. We also found that 43% of mineral dust particles from cloud residual samples were mixed with sea salt, whereas only 18% of mineral dust particles in ambient aerosol samples were mixed with sea salt. This study highlights the variety [of in](#) aerosol compositions and mixing states that influence or are influenced by aerosol-cloud interactions in Arctic low-level clouds.

## 1 Introduction

Aerosol particles play important and multiple roles in the Arctic climate system (Schmale et al., 2021). They affect solar radiation by scattering and absorbing it and act as nuclei of cloud droplets or ice crystals. Deposition of light-absorbing particles, such as mineral dust and black carbon, reduces the surface albedo of snow and ice and accelerates their melting (Aoki et al., 2014). Information on aerosol properties such as compositions, size distributions, and atmospheric mass and number concentrations are widely monitored over the Arctic to understand their climatological contributions (e.g., Abbatt et al., 2019; Platt et al., 2022). Information on individual particle properties is also important to understand the fundamental chemical and physical processes of aerosol particles (e.g., Laskin et al., 2016; Buseck and Pósfai, 1999; Pósfai and Buseck, 2010; Adachi et al., 2010; Krieger et al., 2012). Such individual particle properties include (1) particle shape that affects light scattering and

absorption, (2) mixing state that indicates how different components mix within individual particles, and (3) compositions and structures of particle surfaces.

45 Microscopic analysis with a spectrometer reveals physical and chemical properties of individual particles, e.g., transmission and scanning electron microscopy coupled with an energy-dispersive X-ray spectrometer (TEM-EDS and SEM-EDS, respectively) and scanning transmission X-ray microscopy with near-edge X-ray absorption fine structure spectroscopy (Laskin et al., 2016; Li et al., 2016). These techniques have been applied to various Arctic aerosol particles, including those around Ny-Ålesund, the current observation site, using samples collected during intensive observation campaigns (Weinbruch et al., 2012; Moroni et al., 2017; Moroni et al., 2020; Behrenfeldt et al., 2008; Gen et al., 2010; Chi et al., 2015; Anderson et al., 1992; Hara et al., 2003).  
50 For example, Chi et al. (2015) found that sea salt particles with a range of coatings dominated fine particles in August, 2012 at Ny-Ålesund. Additionally, Gen et al. (2010) measured single-particle compositions of summertime aerosol particles in July, 2007 at Ny-Ålesund and found that reacted sea salt particles were abundant with particle sizes of 0.5–1.0 μm.

In the Arctic, there is a distinct seasonality in the concentration, composition, and sources of aerosol particles, primarily due to changes in available sunlight and air mass transport pathways (Tunved et al., 2013). Changes in available sunlight subsequently alter snow and sea ice coverages and affect aerosol emissions such as mineral dust and sea salt aerosol particles (Willis et al., 2018; Schmale et al., 2021; Schmeisser et al., 2018). Seasonal changes in available sunlight also determine the photochemistry and halogen cycles of aerosol particles (Arnold et al., 2016; Shaw, 1995; Willis et al., 2018). The Arctic atmosphere is heavily influenced by anthropogenic emissions from low- and mid-latitudes during winter and early spring. In contrast, the influence of long-range transport is weakened in summer. Thus, observations covering all seasons are needed to determine the influence of Arctic aerosol particles on climate.

Cloud phases (liquid, ice, and mixed phases) and sizes and concentrations of cloud droplets affect precipitation and solar radiation, influencing the air temperature (Cesana and Storelvmo, 2017; Baker, 1997). Cloud properties are, besides the governing meteorology, also influenced by aerosol particles that form cloud droplets (Fan et al., 2016). The hygroscopicity (i.e., particle composition and mixing state) and size of aerosol particles determine whether they can become cloud condensation nuclei (CCN) under certain ambient supersaturated conditions (Andreae and Rosenfeld, 2008). Conversely, the ability to become ice nucleating particles (INPs) is more complex than that of CCNs. In general, only one of the tens to thousands of all particles can act as INP (Kanji et al., 2017). For example, Koike et al. (2019) showed that above 0°C, the cloud droplet number concentration is simply controlled by the number concentration of aerosol particles larger than 70 nm.  
70 In contrast, below 0°C, the relationship becomes obscure because of the activation of heterogeneous ice nucleation involving a small fraction of aerosol particles. It is highly uncertain which particles become INPs, but solid particles with characteristic surface structures or compositions (e.g., feldspar and biogenic/organic materials) may be more likely to become INPs at higher temperatures than others (Atkinson et al., 2013; Creamean et al., 2013; Kanji et al., 2017).

Several techniques have been applied to measure the number concentration of INPs, including online continuous flow diffusion chambers and offline filter measurements (DeMott et al., 2017; Tobo et al., 2019). These methods measure the number of INPs by exposing samples to supersaturation or supercooled water droplets below 0°C in a chamber or cell. Meanwhile, measurements using a counterflow virtual impactor (CVI) inlet directly observe ambient clouds and collect cloud residual particles (Noone et al., 1988; Shingler et al., 2012). CVI inlets have been used in mountain sites and aircraft-based observations (Kamphus et al., 2010; Karlsson et al., 2021; Cziczo et al., 2004; Heintzenberg et al., 1996; Cziczo and Froyd, 2014).

80 The observations for this study were conducted at the Zeppelin Observatory near Ny-Ålesund, Svalbard, Norway. The observation site is designed to monitor the Arctic background air and has been operating since 1989 (Platt et al., 2021; Lee et al., 2020; Tunved et al., 2013; Karl et al., 2019; Dekhtyareva et al., 2018; Karlsson et al., 2021). Additionally, continuous CVI sampling of cloud particles has been conducted since November 2015 (Karlsson et al., 2021).

This study is based on aerosol particles and cloud residual particles collected from the Zeppelin Observatory from 2017 to 2021 using impactor samplers and the CVI inlet. This period overlapped with the campaigns of the Ny-Ålesund AeroSol Cloud Experiment (NASCENT) (Pasquier et al., 2022) and the Multidisciplinary drifting Observatory for the Study of Arctic Climate (MOSAIC) (Shupe et al., 2022). We focused on measuring individual particles using scanning TEM coupled with EDS (STEM-EDS). Previous studies have measured individual particle compositions at Ny-Ålesund using samples collected during short-term campaigns (e.g., Weinbruch et al., 2012). Instead, this study is the first attempt to provide a multiyear picture of aerosol and cloud residual particle properties and variability based on 239 TEM samples collected over a four-years observation period. We aim to determine the composition, mixing state, and number fraction of ambient aerosol and cloud residual particles during different seasons. We also explore the possibility of INP characterization from cloud residual particles collected below 0°C. Overall, we report observations on individual aerosol and cloud residual particles that provide essential information for understanding aerosol–cloud interactions and the influence of natural and anthropogenic sources on the Arctic climate.

## 2 Methods

### 2.1 Sampling

Sampling was conducted at the Zeppelin Observatory (78°54' N, 11°53' E) near Ny-Ålesund, Svalbard, Norway (Fig. 1a). The observatory is located on the ridge of Mt. Zeppelin (Fig. 1b), with an inlet height of 480 m a.s.l. (Platt et al., 2022). The station is representative of Arctic background conditions. The observatory is often covered by low-level clouds, making it suitable for studying aerosol–cloud interactions in the Arctic (Dekhtyareva et al., 2018; Platt et al., 2022; Koike et al., 2019; Turnved et al., 2013, Karlsson et al., 2021).

TEM samples were collected through three inlets (see Section 2.2 for inlet details) at the Zeppelin Observatory (Figs. 1c and S1) (Koike et al., 2019; Karlsson et al., 2021) using impactor samplers with rotation disks that load multiple TEM grids (AS-16W and AS-24W, Arios Inc., Tokyo, Japan). The AS-16W and AS-24W samplers have the same sampling conditions and cutoff sizes, except that the former loads 16 TEM samples and the latter loads 24 TEM samples on the rotation disks. The samplers have two impactor stages for fine and coarse mode aerosol particles. The fine mode stage has lower and upper 50% cutoff sizes with aerodynamic diameters of 0.1 and 0.7  $\mu\text{m}$ , respectively, with a flow rate of 1.0 L  $\text{m}^{-1}$ , and the coarse mode stage collects particles larger than 0.7  $\mu\text{m}$ . ~~This study focused on the fine mode samples. The AS-16W and AS-24W samplers have the same sampling conditions, except that the former has 16 TEM samples preset and the latter has 24 TEM samples preset.~~ The samplers are operated using a built-in timer or a computer that controls the sampling. The samplers have been used in various environments in our previous measurements (Adachi et al., 2019; 2020; 2021; 2022a). All aerosol and cloud residual particles were collected on a 200-mesh Cu grid with a formvar carbon substrate (U1007, EM-Japan, Tokyo, Japan) for both fine and coarse mode stages. This study focused on the fine-mode samples with aerodynamic diameters ranging from 0.1 to 0.7  $\mu\text{m}$  (50% cutoff sizes). Sampling times were mostly 30 or 60 min, depending on the concentration of atmospheric particles. The sampled air was not actively dried, but because of the high-temperature differences between the ambient air and the laboratory with the samplers, the sampled air had a low relative humidity (RH) when collected (mean RH value:  $13 \pm 7\%$ ; Karlsson et al., 2021).

### 2.2 Sampling categories based on inlets

TEM samples were classified into two subsets based on sampling type: (1) ambient aerosol samples and (2) cloud residual samples (Fig. S1). The sampling periods, sample numbers, and temperature range are shown in Table 1.

**Ambient aerosol samples:** A  $\text{PM}_{10}$  inlet and whole-air inlet were used to collect ambient aerosol samples. Aerosol particles passing through the  $\text{PM}_{10}$  inlet were collected intensively in eight campaign periods ranging from 3 days to 3 weeks (Table 1). Samples were collected at preset intervals (e.g., 1, 3, or 6 h, depending on campaigns) using a built-in timer. A splitter was

125 used to split and share sampled air with other instruments, such as an aerosol sampler for INP measurement and a filter-based  
absorption photometer (Ohata et al., 2019, 2021). Ambient aerosol samples were also collected through a whole-air inlet  
(Karlsson et al., 2021). The samplings were performed manually with a remote-control during cloud-free periods by the same  
TEM sampler used for cloud residual particle sampling. Sampling was timed to occur before and after cloud periods or during  
130 periods of interest based on online observation data (e.g., meteorology and particle concentrations). Sampling times were  
arbitrary; however, the ambient aerosol samples covered all months during the sampling periods except June.

In this study, the samples from the PM<sub>10</sub> and whole-air inlets are treated as ambient aerosol samples because they are essentially  
the same sample set and showed similar results. Although the upper particle sizes of these inlets are different, the difference  
in cutoff sizes of these inlets does not affect the results because the samplers have cutoff sizes (0.7 μm) that are much smaller  
than the cutoff sizes of these inlets (10 μm).

135 **Cloud residual samples:** Cloud residual samples were collected through a ground-based CVI inlet (Brechtel Manufacturing  
Inc., USA, Model 1205) (Karlsson et al., 2021). The CVI was activated during cloud periods of < 1 km visibility as measured  
using a visibility sensor. Cloud residual particles were remaining from dried cloud droplets or ice crystals after passing the  
CVI. These cloud residual samples were classified into three categories based on ambient air temperature: above 0°C, 0°C to  
-4°C, and below -4°C. All cloud residual particles above 0°C are liquid droplets, whereas those below 0°C are supercooled  
140 water droplets or ice crystals. Note that cloud droplets may have undergone colder temperatures than the sampling site, and  
the measured temperature may not be the same as the activated temperature for forming ice crystals (Carlsen and David, 2022).

### 2.3 CVI inlet

A CVI uses a counter flow toward the sample flow so that only large particles, i.e., cloud droplets and ice crystals, can pass  
through the impactor (Noone et al., 1988). Interstitial aerosol particles are not collected because they are transported along the  
145 streamline away from the impactor. In this study, the lower 50% cutoff size for cloud droplets and ice crystals is 6 to 7 μm  
aerodynamic diameter. Those larger than 40 μm are also lost because of the long evaporation time at the inlet (Karlsson et al.,  
2021). Cloud droplets and ice crystals are dried in dry counterflow air with a dew point of -40°C at the inlet. For further  
information on the CVI inlet used in this study, see Karlsson et al. (2021). Technical descriptions can be found in Shingler et  
al. (2012).

### 150 2.4 TEM analyses

All TEM samples were analyzed using the TEM and STEM modes of a transmission electron microscope (JEM-1400, JEOL,  
Japan) with an energy-dispersive X-ray spectrometer (EDS; X-Max 80 mm, Oxford instrument, Japan) (Adachi et al., 2022b).  
Particle composition and size (area equivalent diameter) were analyzed using STEM-EDS measurement at an acceleration  
voltage of 120 kV. TEM images were taken before and after STEM-EDS measurements. Twenty elements (C, N, O, Na, Mg,  
155 Al, Si, P, S, Cl, K, Ca, Ti, V, Cr, Mn, Fe, Ni, Zn, and I) were selected and measured in STEM-EDS measurements with an  
acquisition time of 20 s. The C and Cu signals in the spectra during EDS measurements can originate from the formvar carbon  
substrates and Cu-grids, respectively. Thus, we exclude Cu in our measurements, but we still show C weight % values that  
include C from both samples and substrate because they are important for identifying carbonaceous particles, which have  
stronger C signals than the substrate (Adachi et al. 2016). The detection limits of measured weight % were defined as the peak  
160 count intensity being less than the sigma value of the peak area and were generally <0.1 wt%. For the STEM-EDS  
measurements, the magnification was fixed to 6000×, and the minimum number of pixels for each particle at a magnification  
of 6000× in the STEM image was ~~set to~~ 100, resulting in the minimum particle size of 0.26 μm in area equivalent diameter.  
All particles larger than the cutoff size and having a stronger contrast than the background substrate in the analyzed area were  
measured. The area of each particle was determined by making a binary image from the histogram of image contrasts using a  
165 threshold value to distinguish between particles and the substrate in the STEM image (Adachi et al., 2019). Note that for

particles with a flat shape or low density, the area-equivalent diameter may be larger than the aerodynamic diameter because of differences in the definition of particle size. On average, approximately 170 particles were analyzed from each TEM sample, yielding 40,790 particles from 239 TEM samples.

## 2.5 Particle classification based on the compositions

170 The particles measured using STEM-EDS were classified into six categories based on key elements in the following aerosol species: mineral dust particle (Al > 1 wt% and Fe > 1 wt%), sea salt particle (Na > 1 wt%), K-bearing particle (K > 1 wt%), sulfate particle (S > 1 wt%), carbonaceous particle (C + O > 90wt%), and others (Fig. S2). In addition to the compositions, TEM and STEM images of all particles were checked to confirm the particle classification. Secondary aerosol species (e.g., sulfate and carbonaceous particles) easily condense on preexisting primary particles or aggregate with other particles. Thus, 175 many particles are a mixture of several components (e.g., sea salt + sulfate) (Figs. 2-6). The classification followed by the flow chart (Fig. S2) is sensitive to counting primary particles (mineral dust, sea salt, and K-bearing particles) and likely underestimates secondary aerosol species (e.g., sulfate and carbonaceous particles) when compared with a measurement based on mass fractions.

## 3 Results and discussions

### 180 3.1 Particle characterizations measured using TEM

The following sections describe the general characteristics of major aerosol species (mineral dust, sea salt, K-bearing, sulfate, and carbonaceous particles) based on TEM measurements. Additionally, the TEM results of iodine-bearing particles are shown in the Supplementary text (Fig. S3) in consideration of their importance for new particle formation in the Arctic (Baccarini et al., 2020; Allan et al., 2015; Sipilä et al., 2016).

#### 185 3.1.1 Mineral dust particles

Mineral dust particles originate from local sources in the Arctic (e.g., glacial outwash plains) and distant sources in low- and mid-latitudes (Tobo et al., 2019; Song et al., 2021; Moroni et al., 2016; Shi et al., 2022). Mineral dust particles detected in this study are primarily aluminosilicates (mainly Si and Al with Na, K, Ca, and others) aggregated with other mineral compounds containing Si, Fe, and Ca (Figs. 2-4a). They also have a relatively high amount of Na, Mg, S, and Cl, originating 190 from sea salt and sulfate attached to mineral dust particles (Fig. 2). As a result, they primarily consist of Al, Si, Fe, and O with minor amounts of other elements such as Na, Mg, S, Cl, K, and Ca (Table S1). They present crystal structures and irregular shapes and are relatively large (with an average area equivalent diameter of 0.56  $\mu\text{m}$ ) compared with other species (Fig. 4a).

#### 3.1.2 Sea salt particles

Sea salt particles originate from sea spray from the open sea and local leads, frost flowers, and blowing snow in the Arctic 195 (Domine et al., 2004; Hara et al., 2017). Sea salt particles are composed mainly of NaCl in their fresh state along- with others ~~from~~ seawater components such as Mg- and Ca-bearing salts (Fig. 4b). Sea salt particles with relatively small sizes (typically < 1  $\mu\text{m}$ ) commonly occurred on the substrate in a spherical form. The spherical shape indicates that they were hydrated at the time of collection (Fig. 3). Sea salt particles readily react with acidic substances (e.g., sulfate, nitrate, and organics) (Chi et al., 2015; Geng et al., 2010; Hara et al., 2002) to form sodium sulfate or nitrate, with Cl being released as HCl. In this study, 200 reactions between sea salt and sulfate are more active from spring to fall, i.e., individual sea salt particles are high in S and low in Cl (Fig. S4), possibly due to the abundance of sulfuric acid in the atmosphere (Beck et al., 2021). In contrast, many sea salt particles retain Cl in winter. -Large sea salt particles (> 1  $\mu\text{m}$ ) sometimes have Ca and Mg as sulfate or chloride forms around them (Fig. 4b). Since both  $\text{CaCl}_2$  and  $\text{MgCl}_2$  have low deliquescence RH values (<35% at 25°C) (Guo et al., 2019),

they could have deliquesced prior to NaCl and showed phase separations. Salter et al., (2016) showed that Ca enriches in sea spray particles with  $< 0.1\mu\text{m}$  in aerodynamic diameter, which is a lower limit of our samples, and thus we did not observe the Ca enrichment. Nitrate coatings were not observed in this study, although reactions between sea salt particles and nitrate have been reported at the Ny-Ålesund ground site in previous studies (Chi et al., 2015; Geng et al., 2010). Possible reasons are given in the Supplementary text.

### 3.1.3 K-bearing particles

K-bearing particles contain S, indicating that they are mostly potassium sulfate (Fig. 5). Biomass and biofuel burnings are known to be their major sources (Li et al., 2003; Andreae, 2019). Soot particles emitted from biomass burning are found in K-bearing particles (red arrows in Fig. 5b). When K is emitted from biomass burning, it takes sulfate or chloride forms. The latter reacts with sulfate in the smoke plume, forming potassium sulfates (Li et al., 2003). During TEM measurements, they were easily damaged because of exposure to electron beams (Fig. 5), similar to ammonium sulfate or ammonium bisulfate (Adachi et al., 2014).

### 3.1.4 Sulfate particles

In the Arctic, sulfates mainly originate from anthropogenic and natural (marine) sources (Udisti et al., 2016). The contributions of anthropogenic sources peak in spring, whereas those of marine sources increase in summer (Platt et al., 2022; Lee et al., 2020; Udisti et al., 2016). Sulfate particles from spring and summer present spherical or cocoon-like shapes (Figs. 6a and 6b), similar to those from other areas (Ueda et al., 2021). Some sulfate particles also have satellite structures (rings of small spots around the sulfate particles; Fig. 6b), indicating that they are less viscous at the time of collection (Kojima et al., 2004).

### 3.1.5 Carbonaceous particles

Carbonaceous particles include secondary and primary organic aerosols and soot particles. Of these, secondary organic aerosol particles dominate this category and have a weaker contrast in bright-field TEM images (gray particles or coatings) than sulfates (Fig. 6c). Particles with an amorphous structure (e.g., secondary organic aerosol particles) scatter electron beam less than those with a crystal structure (e.g., sulfate, mineral dust, and sea salt), resulting in a weaker contrast of organics in the TEM image. These secondary organic materials often have sulfate inclusions (sulfate cores in Fig. 6c). Primary organic particles, such as tarballs from biomass burning, have been observed in the Arctic atmosphere (Adachi et al., 2021; Moroni et al., 2017, 2020) but were not found in this study. Most of the soot particles were coated with sulfates (e.g., ammonium sulfate and potassium sulfate), and the number of bare (externally mixed) soot particles was small ( $< 0.1\%$  of this category). Note that the volatile or semivolatile organic fractions are lost during sampling, storage, and TEM measurements.

Previous studies suggest that biological materials attached to or emitted with sea spray and mineral dust particles may contribute to INP activity in high latitudes (Tobo et al., 2019; Hartmann et al., 2020; Rinaldi et al., 2021; Creamean et al., 2022; Xi et al., 2022; Yun et al., 2022). Although TEM can detect such primary biological particles if they are present (Adachi et al., 2020), no such biological materials were found in the current fine mode particles. Further studies on particles larger than  $\sim 1\mu\text{m}$  in aerodynamic diameter are required, as biological particles are generally abundant in coarse mode particles.

### 3.1.6 Others

This category includes particles enriched in Fe, Si, and Ca. Additionally, artifact particles, such as stainless particles detached from the CVI surface due to collision with ice crystals, have been reported in previous CVI studies (Cziczko et al., 2004) and can be included in this category. However, the cloud residual samples contained only a few stainless particles characterized by Fe and Cr, and their influence was negligible in our samples. The overall number fraction of this category is small ( $< 1\%$ ; Figs. 7 and S5) and will not be discussed further in this study.

### 3.2 Number fractions of ambient aerosol and cloud residual particles ~~and their seasonality~~

The number fractions and size distributions for each particle category are shown for ambient aerosol and cloud residual samples (Fig. 7). Sulfate and sea salt particles had the first- and second-largest number fractions. Together, they accounted for >80% of all measured particles (Figs. 7 and S5). The fraction of sea salt particles increased with increasing particle size. In contrast, the sulfate particle fraction increased with decreasing particle size for both ambient aerosol and cloud residual samples (Fig. 7). Carbonaceous particle fraction increased with decreasing particle size, whereas no clear size dependence was observed for K-bearing particle fraction. Mineral dust particle fractions were small on average (0.4% and 1.1% for ambient aerosol and cloud residual samples, respectively) and generally increased in large-size bins.

The abundance ratios of aerosol particles in different size bins were roughly consistent with previous measurements in the Arctic (Kirpes et al., 2018; Abbatt et al., 2019; Adachi et al., 2021). For example, Weinbruch et al. (2012) analyzed aerosol particles collected at the Zeppelin Observatory between July 2007 and December 2008 using SEM. They found that sea salt particles were most abundant in particles larger than 0.5  $\mu\text{m}$  and that secondary aerosol particles (mixtures of sulfate, nitrate, and organic material) were dominant in particles smaller than 0.5  $\mu\text{m}$ .

### 3.3 Seasonality of ambient aerosol and cloud residual particles

TEM samples were classified into four seasonal groups based on the month of collection: spring (March to May), summer (June to August), fall (September to November), and winter (December to February) (Figs. 8 and S5). Summer and winter mostly cover polar day and night periods, respectively, and spring and fall are the intermediate periods. Arctic haze builds up in winter and peaks in spring, whereas aerosol concentrations are the lowest in fall (Tunved et al., 2013). The average temperatures with standard deviations were  $-10^{\circ}\text{C} \pm 7$ ,  $2^{\circ}\text{C} \pm 4$ ,  $-4^{\circ}\text{C} \pm 5$ , and  $-11^{\circ}\text{C} \pm 6$  for spring, summer, fall, and winter, respectively (Table S2), which are generally consistent with a long-term climatological data from 1993 to 2011 at Ny-Ålesund (Maturilli et al., 2013).

Mineral dust particle fractions were generally small (<1%) for all seasons and all sampling categories, except for winter cloud residual samples (8%) (Fig. 8h). The sea salt fraction was relatively high in the winter ambient aerosol and winter cloud residual samples (28% and 64%, respectively) and low in the summer ambient aerosol samples (7%). The K-bearing particle fraction was relatively high in the spring samples. The sulfate fraction was relatively high in summer for samples from both sampling categories (66%–81%). The carbonaceous particle fraction showed no clear seasonal trends or differences between sampling categories.

These seasonal changes in the aerosol number fraction of ambient aerosol samples were generally consistent with other bulk observations of aerosol mass concentrations in the Arctic areas (e.g., Alert, Canada; Leaitch et al., 2018). For example, the mass concentrations of relatively large (accumulation mode) sulfate aerosol particles were high in the spring when long-range transport of anthropogenic pollutants and photochemical processes increased, whereas those smaller than 100 nm increased in summer when marine biogenic emissions were high (Croft et al., 2016; Willis et al., 2018; Leaitch et al., 2018; Udisti et al., 2016). Meanwhile, the sea salt fraction was high in winter and spring when strong winds produce sea salt from open water and blowing snow (Leaitch et al., 2018; Karl et al., 2019; Huang and Jaeglé et al., 2017; May et al., 2016) and significantly decreased in summer (Willis et al., 2018; Leaitch et al., 2018). Likewise, the K-bearing particle fraction is higher in spring and fall when long-range transports from biomass burning are enhanced (Yttri et al., 2014). Local dust particle emissions from the bare soil surface and glacial outwash plains can be high in summer (Tobo et al., 2019), but only a few mineral dust particles were observed (<1%) in our ambient aerosol samples in summer. This disparity is likely because mineral dust particles from local sources are larger (1  $\mu\text{m}$ ) than the cutoff size of our samples.

### 3.3.4 Comparison of ambient aerosol and cloud residual samples

Cloud residual particles include CCN, INPs, and materials that dissolved or aggregated with the cloud droplets (Cziczo et al., 2004). Investigations of cloud residuals provide information on what particles formed the cloud in the atmosphere. In particular, INPs are a key to understanding the formations of ice crystals in Arctic mixed-phase clouds (Kanji et al., 2017; Murray et al., 2021; Carlsen and David, 2022).

A comparison of the number fraction of each particle type between ambient aerosol and cloud residual samples showed that mineral dust particles in cloud residual samples were almost 18 times higher than ambient aerosol samples in winter (Fig. 9). Additionally, sea salt particles were approximately 2.3 times more abundant in cloud residual samples than in ambient aerosols in all seasons. In contrast, sulfate particles were less abundant in cloud residual samples than in ambient aerosol samples (~0.7 times). In spring, the number fractions of K-bearing and carbonaceous particles in cloud residual samples were higher than in ambient aerosol samples (1.8 and 1.5 times higher, respectively). In other seasons, the fractions showed opposite results.

To investigate the possible role of aerosol particles as CCN and INPs, cloud residual samples were classified according to atmospheric temperature, assuming that those collected below 0°C can contain residuals of ice crystals and supercooled cloud droplets (Figs. 10 and 11). Comparing the number fraction of cloud residual samples collected below 0°C with those above 0°C, mineral dust particles were higher in cloud residual samples below 0°C (2%; Fig. S5) than those above 0°C (0.1%). Cloud residual samples collected below 0°C had a higher sea salt particle fraction than those collected above 0°C (41% and 16%, respectively). Cloud residual samples collected below 0°C had less sulfate particle fractions than those collected above 0°C (42% and 72%, respectively; Fig. S5). There was no remarkable difference in K-bearing and carbonaceous particles between cloud residual samples collected below and above 0°C.

In addition to the average values through the entire campaign, ambient aerosol and cloud residual samples collected consecutively were analyzed (mostly within several hours) (Fig. 12). The comparison of these samples made it possible to measure differences in the composition of samples collected from nearly identical air parcels and aerosol sources (Fig. 12). The results indicated that the mineral dust particle fraction in cloud residual samples collected at temperatures below 0°C was 5.3 times higher than that in the ambient aerosol samples. Additionally, the mineral dust particle fraction in cloud residual samples increased with decreasing temperatures (Figs. 11 and 12). Sea salt particles were also abundant in the cloud residual samples, but there was no clear temperature dependence. The number fraction of K-bearing particles was higher in the ambient aerosol samples than in the cloud residual samples and increased in both samples below 0°C. The fractions of sulfate particles in cloud residual samples were mostly lower than those in the ambient aerosol samples at all temperatures.

On the basis of the results of this study, we hypothesized possible pathways for each aerosol particle to become a cloud droplet. ~~At temperatures above 0°C, this result suggests that most ambient aerosol particles, except those with low hygroscopicity, acted as CCN and were activated into cloud droplets because of their large sizes. This interpretation is supported by the result that~~ At temperatures above 0°C, the number fraction of ambient aerosol samples (Fig. S6) was similar to that of cloud residual samples (Figs. 10 and S5). ~~This result suggests that most ambient aerosol particles, except those with low hygroscopicity, acted as CCN and were activated into cloud droplets because of their large sizes.~~ At temperatures below 0°C, cloud particles are a mixture of supercooled droplets and ice crystals that were formed through various freezing processes (e.g., immersion freezing, contact freezing, condensation freezing, and deposition ice nucleation (Kanji et al., 2017)). Meanwhile, supercooled water in droplets transfers to ice crystals through the Wegener–Bergeron–Findeisen process, i.e., the saturation vapor pressure of water is higher than that of ice, increasing the ice crystal fraction.

Overall, the present study shows that mineral dust particles act efficiently as INPs as the number fraction of mineral dust particles in the residual samples increases at low temperatures (Figs. 12a and S5), ~~suggesting that mineral dust particles act efficiently as INPs. The fraction of sea salt particles was higher in the cloud residual samples below and above 0°C than in the ambient aerosol samples (Figs. 12b, S5, and S6). Sea salt will be discussed in more detail in the next section. It is unclear whether the observed cloud residuals consisting of sulfate, K-bearing, and carbonaceous particles were generated in cloud~~



325 droplets or ice crystals below 0°C. However, given their hygroscopic nature, these particles were likely water droplets in the temperature range of this study. The fraction of sea salt particles was higher in the cloud residual samples below and above 0°C than in the ambient aerosol samples (Figs. 12b, S5, and S6). Sea salt will be discussed in more detail in the next section.

### **3.4.5 Sea salt enrichment in cloud residual samples below 0°C**

330 Sea salt fractions in cloud residual samples collected below 0°C were higher than those in ambient aerosol samples and those above 0°C (Figs. 10 and S5). Additionally, the fraction of sea salt from cloud residual samples in summer, fall, and winter collected below 0°C was the highest among all particle groups. Here, three possible processes will be discussed that may contribute to the relatively high number of sea salt fractions in the cloud residual samples below 0°C.

335 First, sea salt particles in the ice crystals contribute to the fractions in the cloud residual samples below 0°C. Second, similar to the high sea salt fractions in winter ambient aerosol samples, sea salt emissions increase with high wind speeds and low temperatures (Huang and Jaeglé, 2017) (Figs. 8 and S5). The ambient aerosol samples also show a higher sea salt fraction in samples collected below 0°C (20 %) than in those above 0°C (6%) (Fig. S6) because of an increase in sea salt aerosol emissions below 0°C and a decrease in other aerosol emissions (e.g., fewer sulfate emissions because of weak biological activity in the ocean at a low temperature). Finally, sea salt reacts with sulfate in cloud droplets, forming sodium sulfate that increases the sea salt fractions in cloud residual samples compared with those in the ambient aerosol samples. This possibility is suggested  
340 by a result that the sea salt fraction in the cloud residual samples collected above 0°C was also higher than that in the ambient aerosol samples (16% and 6%, respectively; Figs. S5 and S6). These processes, more or less, could contribute to increased sea salt fractions in cloud residual samples below 0°C.

### **3.5.6 Characterization of mineral dust particles for an implication of their INP activity**

345 To further explore the role of mineral dust particles acting as potential INPs in cloud residual samples, we compared the composition of mineral dust particles from ambient aerosol samples with those from cloud residual samples collected below 0°C. The ternary ratios of Al, Si, and Fe are not significantly different between ambient aerosol and cloud residual samples (Fig. S7). Additionally, the average area equivalent diameters with standard deviations of mineral dust particles were  $0.5 \pm 0.5 \mu\text{m}$  for ambient aerosol samples and  $0.4 \pm 0.2 \mu\text{m}$  for cloud residual samples, showing no significant difference. These results indicate that the major composition and size of mineral dust particles in the ambient aerosol and cloud residual  
350 samples do not differ significantly.

The TEM measurements indicate that the substantial mineral dust particles are mixed with sea salt components (Fig. 2 and Table S1). Such mixing of mineral dust with sea salt has also been observed in samples collected from other Arctic campaigns (Adachi et al., 2021; Behrenfeldt et al., 2008; Geng et al., 2010). Therefore, using the characteristic elements of mineral dust and sea salt (Na, Mg, and Cl), we classified the mineral dust particles into two groups: with and without sea salt (Fig. 13). The  
355 ratios of Na, Mg, and Cl in these mineral dust particles are consistent with those of sea salt particles without mineral dust, confirming that these mineral dust particles are mixed with sea salt components. These plots also indicate that the mineral dust particles from cloud residual samples are mixed with sea salt more frequently than those from ambient aerosol samples, i.e.,  $43 \pm 7\%$  of mineral dust particles in cloud residual samples contain sea salt, whereas only  $18 \pm 5\%$  of the mineral dust particles in ambient aerosol samples contain sea salt.

360 When sea salt deliquesces at  $RH > \sim 75\%$ , depending on temperature (Wise et al., 2012), and acts as a CCN, it becomes a droplet and may coagulate with mineral dust particles to form mixed particles. Mixed particles of mineral dust and sea salt have been detected in cloud residuals from various environments in previous measurements (e.g., Twohy and Poellot, 2005; Cziczo et al., 2004; Eriksen Hammer et al., 2018). Such mixed particles of mineral dust and sea salt could form a water layer on the surface of mineral dust particles and help develop ice crystals on these particles by immersion freezing (Kanji et al., 2017).  
365 Contrary, sea salt can lower the freezing point of the water layer and may adversely affect the ice formation of mineral dust

particles. Further studies are required to confirm the hypothetical contribution of sea salt attached to mineral dust particles to INPs.

#### 4. Conclusions

370 The composition and mixing state of individual ambient aerosol and cloud residual particles were analyzed in fine mode using a whole-air inlet, a PM<sub>10</sub> inlet, and a ground-based CVI inlet installed at the Zeppelin Observatory near Ny-Ålesund, an Arctic site, from March 2017 to February 2021. The number fractions among mineral dust, sea salt, K-bearing particles, sulfate, and carbonaceous particles showed seasonal variations, e.g., sulfate dominated in summer; sea salts increased in winter; and K-bearing particles increased in spring. The composition of cloud residual samples collected above 0°C was similar to that of ambient aerosol particles, suggesting that fine-mode aerosol particles can commonly act as CCN in the Arctic low-level clouds.

375 On the other hand, cloud residual samples collected below 0°C have more mineral dust and sea salt particles and fewer sulfates than those collected above 0°C. Notably, the number fraction of mineral dust increased with decreasing temperature in cloud residual samples. These results suggest that the mineral dust particles act efficiently as INPs in the Arctic mixed-phase clouds. Sea salt particles may act as INPs or be present in supercooled water droplets. Sulfates may be less important for cloud seeds below 0°C than cloud seeds above 0°C. Nearly half of the mineral dust particles collected below 0°C were mixed with sea salt components. The influence of sea salt adhering to the surface of the mineral dust needs to be clarified. Further studies are recommended to (1) explore the contribution of coarse particles such as large mineral dust and biological particles, (2) quantitatively evaluate the increase in the abundance of sea salt fractions in cloud residual samples below 0°C, (3) confirm the effect of sea salt attached to mineral dust, and (4) directly compare cloud residual particles with concurrent cloud phase measurements.

385

#### Data availability

TEM data for all individual particles and sample average are available at <https://doi.org/10.5281/zenodo.7017936>. Meteorological data are available at <http://ebas-data.nilu.no>.

#### Author contributions

390 KA conducted the TEM analysis and data processing. KA, YT, KM, GF, PZ, and RK executed the TEM sampling and field observations. MK and RK supervised the observations. KA prepared the manuscript with contributions from all coauthors.

#### Competing interests

Some authors are members of the editorial board of *Atmospheric Chemistry and Physics*. The peer-review process was guided by an independent editor, and the authors have also no other competing interests to declare.

#### 395 Acknowledgments

We are indebted to the staff of the Norwegian Polar Institute and Ove Hermansen from NILU for their cooperation and support for the observation at the Zeppelin Observatory. We appreciate the meteorological data provided by NILU. This work was supported by the Environment Research and Technology Development Fund (JPMEERF20205001, JPMEERF20202003, JPMEERF20215003, and JPMEERF20172003) of the Environmental Restoration and Conservation Agency of Japan; the

400 Global Environmental Research Coordination System of the Ministry of the Environment of Japan (MLIT1753); the Arctic  
Challenge for Sustainability (ArCS) project (JPMXD1300000000) and ArCS II project (JPMXD1420318865) of the Ministry  
of Education, Culture, Sports, Science and Technology (MEXT) of Japan; and the Japan Society for the Promotion of Science  
(JSPS) KAKENHI (grant numbers JP19H01972, JP19K21905, 19H04236, and JP19H04259). We would like to also thank for  
405 financial support from Swedish Environmental Protection Agency (Naturvårdsverket), Knut and Alice Wallenberg Foundation  
(KWA) project “Arctic Climate Across Scales (ACAS),” and FORMAS funded project (# 2016-01427) “Interplay between  
water clouds and aerosols in the Arctic (IWCAA).”

## References

- Abbatt, J. P. D., Leaitch, W. R., Aliabadi, A. A., Bertram, A. K., Blanchet, J.-P., Boivin-Rioux, A., Bozem, H., Burkart, J.,  
Chang, R. Y. W., Charette, J., Chaubey, J. P., Christensen, R. J., Cirisan, A., Collins, D. B., Croft, B., Dionne, J.,  
410 Evans, G. J., Fletcher, C. G., Galí, M., Ghahremaninezhad, R., Girard, E., Gong, W., Gosselin, M., Gourdal, M.,  
Hanna, S. J., Hayashida, H., Herber, A. B., Hesaraki, S., Hoor, P., Huang, L., Hussherr, R., Irish, V. E., Keita, S. A.,  
Kodros, J. K., Köllner, F., Kolonjari, F., Kunkel, D., Ladino, L. A., Law, K., Levasseur, M., Libois, Q., Liggio, J.,  
Lizotte, M., Macdonald, K. M., Mahmood, R., Martin, R. V., Mason, R. H., Miller, L. A., Moravek, A., Mortenson,  
E., Mungall, E. L., Murphy, J. G., Namazi, M., Norman, A.-L., O’Neill, N. T., Pierce, J. R., Russell, L. M., Schneider,  
415 J., Schulz, H., Sharma, S., Si, M., Staebler, R. M., Steiner, N. S., Thomas, J. L., von Salzen, K., Wentzell, J. J. B.,  
Willis, M. D., Wentworth, G. R., Xu, J.-W., and Yakobi-Hancock, J. D.: Overview paper: New insights into aerosol  
and climate in the Arctic, *Atmos. Chem. Phys.*, **19**, 2527-2560, 10.5194/acp-19-2527-2019, 2019.
- Adachi, K., Chung, S. H., and Buseck, P. R.: Shapes of soot aerosol particles and implications for their effects on climate, *J.  
Geophys. Res.*, **115**, 10.1029/2009jd012868, 2010.
- 420 Adachi, K., Zaizen, Y., Kajino, M., and Igarashi, Y.: Mixing state of regionally transported soot particles and the coating effect  
on their size and shape at a mountain site in Japan, *J. Geophys. Res.*, **119**, 5386-5396, 10.1002/2013JD020880, 2014.
- [Adachi, K., Moteki, N., Kondo, Y., and Igarashi, Y.: Mixing states of light-absorbing particles measured using a transmission  
electron microscope and a single-particle soot photometer in Tokyo, Japan, \*J. Geophys. Res. Atmos.\*, \*\*121\*\*,  
10.1002/2016JD025153, 2016.](#)
- 425 Adachi, K., Sedlacek, A. J. III, Kleinman, L., Springston, S. R., Wang, J., Chand, D., Hubbe, J. M., Shilling, J. E., Onasch, T.  
B., Kinase, T., Sakata, K., Takahashi, Y., and Buseck, P. R.: Spherical tarball particles form through rapid chemical  
and physical changes of organic matter in biomass-burning smoke, *Proc. Natl. Acad. Sci. USA*, **116**, 19336-19341,  
10.1073/pnas.1900129116, 2019.
- Adachi, K., Oshima, N., Gong, Z., de Sá, S., Bateman, A. P., Martin, S. T., de Brito, J. F., Artaxo, P., Cirino, G. G., Sedlacek,  
430 A. J. III, and Buseck, P. R.: Mixing states of Amazon basin aerosol particles transported over long distances using  
transmission electron microscopy, *Atmos. Chem. Phys.*, **20**, 11923-11939, 10.5194/acp-20-11923-2020, 2020.
- Adachi, K., Oshima, N., Ohata, S., Yoshida, A., Moteki, N., and Koike, M.: Compositions and mixing states of aerosol particles  
by aircraft observations in the Arctic springtime, 2018, *Atmos. Chem. Phys.*, **21**, 3607-3626, 10.5194/acp-21-3607-  
2021, 2021.
- 435 Adachi, K., Dibb, J. E., Scheuer, E., Katich, J. M., Schwarz, J. P., Perring, A. E., Mediavilla, B., Guo, H., Campuzano-Jost,  
P., Jimenez, J. L., Crawford, J., Soja, A. J., Oshima, N., Kajino, M., Kinase, T., Kleinman, L., Sedlacek, A. J. III,  
Yokelson, R. J., and Buseck, P. R.: Fine ash-bearing particles as a major aerosol component in biomass burning smoke,  
*J. Geophys. Res.*, **127**, 10.1029/2021jd035657, 2022a.

- Adachi, K., Oshima, N., Takegawa, N., Moteki, N. Koike, M.: Meteoritic materials within sulfate aerosol particles in the troposphere are detected with transmission electron microscopy, *Commun. Earth Environ.*, **3**, 134, 10.1038/s43247-022-00469-8, 2022b.
- Allan, J. D., Williams, P. I., Najera, J., Whitehead, J. D., Flynn, M. J., Taylor, J. W., Liu, D., Darbyshire, E., Carpenter, L. J., Chance, R., Andrews, S. J., Hackenberg, S. C., and McFiggans, G.: Iodine observed in new particle formation events in the Arctic atmosphere during ACCACIA, *Atmos. Chem. Phys.*, **15**, 5599-5609, 10.5194/acp-15-5599-2015, 2015.
- Anderson, J. R., Buseck, P. R., Saucy, D. A., and Pacyna, J. M.: Characterization of individual fine-fraction particles from the Arctic aerosol at Spitsbergen, May–June 1987, *Atmos. Environ.*, **26**, 1747-1762, 10.1016/0960-1686(92)90072-S, 1992.
- Andreae, M. O., and Rosenfeld, D.: Aerosol–cloud–precipitation interactions. Part 1. The nature and sources of cloud-active aerosols, *Earth-Sci. Rev.*, **89**, 13-41, 10.1016/j.earscirev.2008.03.001, 2008.
- Andreae, M. O.: Emission of trace gases and aerosols from biomass burning – an updated assessment, *Atmos. Chem. Phys.*, **19**, 8523-8546, 10.5194/acp-19-8523-2019, 2019.
- Aoki, T., Matoba, S., Yamaguchi, S., Tanikawa, T., Niwano, M., Kuchiki, K., Adachi, K., Uetake, J., Motoyama, H., and Hori, M.: Light-absorbing snow impurity concentrations measured on Northwest Greenland ice sheet in 2011 and 2012, *Bull. Glaciol. Res.*, **32**, 21-31, 10.5331/bgr.32.21, 2014.
- Arnold, S. R., Law, K. S., Brock, C. A., Thomas, J. L., Starkweather, S. M., von Salzen, K., Stohl, A., Sharma, S., Lund, M. T., Flanner, M. G., Petäjä, T., Tanimoto, H., Gamble, J., Dibb, J. E., Melamed, M., Johnson, N., Fidel, M., Tynkkynen, V. P., Baklanov, A., Eckhardt, S., Monks, S. A., Browse, J., and Bozem, H.: Arctic air pollution: Challenges and opportunities for the next decade, *Elementa*, **4**, 000104, 10.12952/journal.elementa.000104, 2016.
- Atkinson, J. D., Murray, B. J., Woodhouse, M. T., Whale, T. F., Baustian, K. J., Carslaw, K. S., Dobbie, S., O’Sullivan, D., and Malkin, T. L.: The importance of feldspar for ice nucleation by mineral dust in mixed-phase clouds, *Nature*, **498**, 355-358, 10.1038/nature12278, 2013.
- Baccarini, A., Karlsson, L., Dommen, J., Duplessis, P., Vullers, J., Brooks, I. M., Saiz-Lopez, A., Salter, M., Tjernstrom, M., Baltensperger, U., Zieger, P., and Schmale, J.: Frequent new particle formation over the high Arctic pack ice by enhanced iodine emissions, *Nat. Commun.*, **11**, 4924, 10.1038/s41467-020-18551-0, 2020.
- Baker, M. B.: Cloud microphysics and climate, *Science*, **276**, 1072-1078, doi:10.1126/science.276.5315.1072, 1997.
- Beck, L. J., Sarnela, N., Junninen, H., Hoppe, C. J. M., Garmash, O., Bianchi, F., Riva, M., Rose, C., Peräkylä, O., Wimmer, D., Kausiala, O., Jokinen, T., Ahonen, L., Mikkilä, J., Hakala, J., He, X. C., Kontkanen, J., Wolf, K. K. E., Cappelletti, D., Mazzola, M., Traversi, R., Petroselli, C., Viola, A. P., Vitale, V., Lange, R., Massling, A., Nøjgaard, J. K., Krejci, R., Karlsson, L., Zieger, P., Jang, S., Lee, K., Vakkari, V., Lampilahti, J., Thakur, R. C., Leino, K., Kangasluoma, J., Duplissy, E. M., Siivola, E., Marbouti, M., Tham, Y. J., Saiz-Lopez, A., Petäjä, T., Ehn, M., Worsnop, D. R., Skov, H., Kulmala, M., Kerminen, V. M., and Sipilä, M.: Differing mechanisms of new particle formation at two Arctic sites, *Geophys. Res. Lett.*, **48**, 10.1029/2020gl091334, 2021.
- Behrenfeldt, U., Krejci, R., Ström, J., and Stohl, A.: Chemical properties of Arctic aerosol particles collected at the Zeppelin station during the aerosol transition period in May and June of 2004, *Tellus B*, **60**, 405-415, 10.1111/j.1600-0889.2008.00349.x, 2008.
- Buseck, P. R., and Pósfai, M.: Airborne minerals and related aerosol particles: Effects on climate and the environment, *Proc. Natl. Acad. Sci. USA*, **96**, 3372-3379, 10.1073/pnas.96.7.3372, 1999.
- Carlsen, T., and David, R. O.: Spaceborne evidence that ice-nucleating particles influence high-latitude cloud phase, *Geophys. Res. Lett.*, **49**, e2022GL098041, 2022.
- Cesana, G., and Storelvmo, T.: Improving climate projections by understanding how cloud phase affects radiation, *J. Geophys. Res.*, **122**, 4594-4599, 10.1002/2017jd026927, 2017.

- Chi, J. W., Li, W. J., Zhang, D. Z., Zhang, J. C., Lin, Y. T., Shen, X. J., Sun, J. Y., Chen, J. M., Zhang, X. Y., Zhang, Y. M., and Wang, W. X.: Sea salt aerosols as a reactive surface for inorganic and organic acidic gases in the Arctic troposphere, *Atmos. Chem. Phys.*, **15**, 11341-11353, 10.5194/acp-15-11341-2015, 2015.
- 485 Creamean, J. M., Barry, K., Hill, T. C. J., Hume, C., DeMott, P. J., Shupe, M. D., Dahlke, S., Willmes, S., Schmale, J., Beck, I., Hoppe, C. J. M., Fong, A., Chamberlain, E., Bowman, J., Scharien, R., and Persson, O.: Annual cycle observations of aerosols capable of ice formation in central Arctic clouds, *Nat. Commun.*, **13**, 3537, 10.1038/s41467-022-31182-x, 2022.
- 490 Creamean, J. M., Suski, K. J., Rosenfeld, D., Cazorla, A., DeMott, P. J., Sullivan, R. C., White, A. B., Ralph, F. M., Minnis, P., Comstock, J. M., Tomlinson, J. M., and Prather, K. A.: Dust and biological aerosols from the Sahara and Asia influence precipitation in the western U.S, *Science*, **339**, 1572-1578, 10.1126/science.1227279, 2013.
- Croft, B., Martin, R. V., Leaitch, W. R., Tunved, P., Breider, T. J., D'Andrea, S. D., and Pierce, J. R.: Processes controlling the annual cycle of Arctic aerosol number and size distributions, *Atmos. Chem. Phys.*, **16**, 3665-3682, 10.5194/acp-16-3665-2016, 2016.
- 495 Cziczo, D. J., Murphy, D. M., Hudson, P. K., and Thomson, D. S.: Single particle measurements of the chemical composition of cirrus ice residue during CRYSTAL-FACE, *J. Geophys. Res.*, **109**, 10.1029/2003jd004032, 2004.
- Cziczo, D. J., and Froyd, K. D.: Sampling the composition of cirrus ice residuals, *Atmos. Res.*, **142**, 15-31, 10.1016/j.atmosres.2013.06.012, 2014.
- 500 Dekhtyareva, A., Holmén, K., Maturilli, M., Hermansen, O., and Graversen, R.: Effect of seasonal mesoscale and microscale meteorological conditions in Ny-Ålesund on results of monitoring of long-range transported pollution, *Polar Res.*, **37**, 1508196, 10.1080/17518369.2018.1508196, 2018.
- DeMott, P. J., Hill, T. C. J., Petters, M. D., Bertram, A. K., Tobo, Y., Mason, R. H., Suski, K. J., McCluskey, C. S., Levin, E. J. T., Schill, G. P., Boose, Y., Rauker, A. M., Miller, A. J., Zaragoza, J., Rocci, K., Rothfuss, N. E., Taylor, H. P., Hader, J. D., Chou, C., Huffman, J. A., Pöschl, U., Prenni, A. J., and Kreidenweis, S. M.: Comparative measurements of ambient atmospheric concentrations of ice nucleating particles using multiple immersion freezing methods and a continuous flow diffusion chamber, *Atmos. Chem. Phys.*, **17**, 11227-11245, 10.5194/acp-17-11227-2017, 2017.
- 505 Domine, F., Sparapani, R., Ianniello, A., and Beine, H. J.: The origin of sea salt in snow on Arctic sea ice and in coastal regions, *Atmos. Chem. Phys.*, **4**, 2259-2271, 10.5194/acp-4-2259-2004, 2004.
- Eriksen Hammer, S., Mertes, S., Schneider, J., Ebert, M., Kandler, K., and Weinbruch, S.: Composition of ice particle residuals in mixed-phase clouds at Jungfrauoch (Switzerland): enrichment and depletion of particle groups relative to total aerosol, *Atmos. Chem. Phys.*, **18**, 13987-14003, 10.5194/acp-18-13987-2018, 2018.
- 510 Fan, J., Wang, Y., Rosenfeld, D., and Liu, X.: Review of aerosol–cloud interactions: Mechanisms, significance, and challenges, *J. Atmos. Sci.*, **73**, 4221-4252, 10.1175/jas-d-16-0037.1, 2016.
- Geng, H., Ryu, J., Jung, H.-J., Chung, H., Ahn, K.-H., and Ro, C.-U.: Single-particle characterization of summertime Arctic aerosols collected at Ny-Ålesund, Svalbard, *Environ. Sci. Technol.*, **44**, 2348-2353, 10.1021/es903268j, 2010.
- 515 Guo, L., Gu, W., Peng, C., Wang, W., Li, Y. J., Zong, T., Tang, Y., Wu, Z., Lin, Q., Ge, M., Zhang, G., Hu, M., Bi, X., Wang, X., and Tang, M.: A comprehensive study of hygroscopic properties of calcium- and magnesium-containing salts: implication for hygroscopicity of mineral dust and sea salt aerosols, *Atmos. Chem. Phys.*, **19**, 2115-2133, 10.5194/acp-19-2115-2019, 2019.
- 520 Hara, K., Yamagata, S., Yamanouchi, T., Sato, K., Herber, A., Iwasaka, Y., Nagatani, M., and Nakata, H.: Mixing states of individual aerosol particles in spring Arctic troposphere during ASTAR 2000 campaign, *J. Geophys. Res.*, **108**, 10.1029/2002jd002513, 2003.

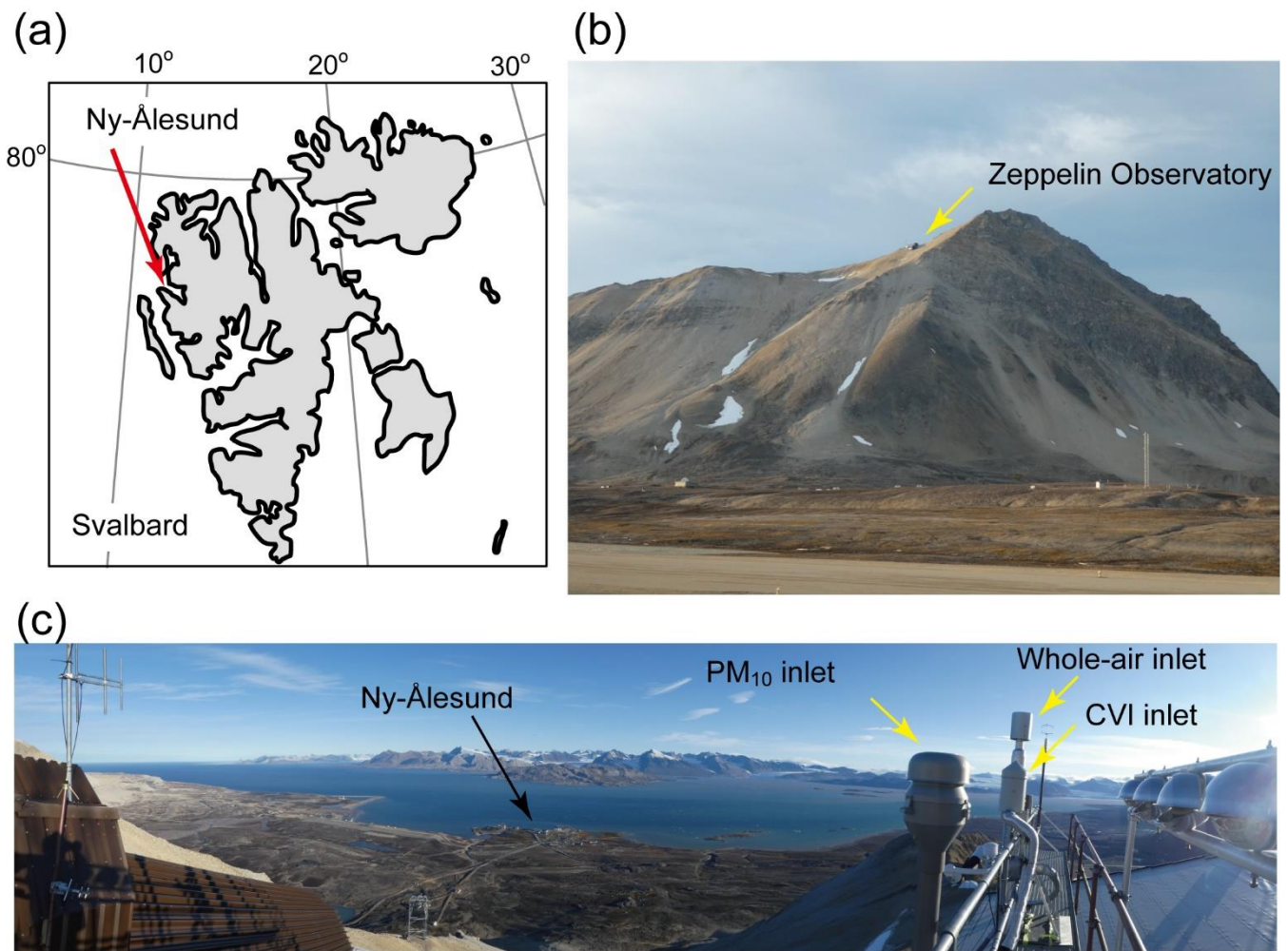
- Hara, K., Osada, K., Nishita, C., Yamagata, S., Yamanocuchi, T., Herber, A., Matsunaga, K., Iwasaka, Y., Nagatani, M., and Nakata, H.: Vertical variations of sea-salt modification in the boundary layer of spring Arctic during the ASTAR 2000 campaign, *Tellus*, **54B**, 361-376, 10.3402/tellusb.v54i4.16671, 2002.
- 525 Hara, K., Matoba, S., Hirabayashi, M., and Yamasaki, T.: Frost flowers and sea-salt aerosols over seasonal sea-ice areas in northwestern Greenland during winter–spring, *Atmos. Chem. Phys.*, **17**, 8577-8598, 10.5194/acp-17-8577-2017, 2017.
- Hartmann, M., Adachi, K., Eppers, O., Haas, C., Herber, A., Holzinger, R., Hünerbein, A., Jäkel, E., Jentsch, C., Pinxteren, M., Wex, H., Willmes, S., and Stratmann, F.: Wintertime airborne measurements of ice nucleating particles in the high Arctic: A hint to a marine, biogenic source for ice nucleating particles, *Geophys. Res. Lett.*, **47**, 10.1029/2020gl087770, 2020.
- 530 Heintzenberg, J., Okada, K., and Ström, J.: On the composition of non-volatile material in upper tropospheric aerosols and cirrus crystals, *Atmos. Res.*, **41**, 81-88, 1996.
- Huang, J., and Jaeglé, L.: Wintertime enhancements of sea salt aerosol in polar regions consistent with a sea ice source from blowing snow, *Atmos. Chem. Phys.*, **17**, 3699-3712, 10.5194/acp-17-3699-2017, 2017.
- 535 Kamphus, M., Ettner-Mahl, M., Klimach, T., Drewnick, F., Keller, L., Cziczó, D. J., Mertes, S., Borrmann, S., and Curtius, J.: Chemical composition of ambient aerosol, ice residues and cloud droplet residues in mixed-phase clouds: single particle analysis during the Cloud and Aerosol Characterization Experiment (CLACE 6), *Atmos. Chem. Phys.*, **10**, 8077-8095, 10.5194/acp-10-8077-2010, 2010.
- 540 Kanji, Z. A., Ladino, L. A., Wex, H., Boose, Y., Burkert-Kohn, M., Cziczó, D. J., and Krämer, M.: Overview of ice nucleating particles, *Meteorol. Monogr.*, **58**, 1.1-1.33, 10.1175/amsmonographs-d-16-0006.1, 2017.
- Karl, M., Leck, C., Mashayekhy Rad, F., Bäccklund, A., Lopez-Aparicio, S., and Heintzenberg, J.: New insights in sources of the sub-micrometre aerosol at Mt. Zeppelin observatory (Spitsbergen) in the year 2015, *Tellus B*, **71**, 1613143, 10.1080/16000889.2019.1613143, 2019.
- 545 Karlsson, L., Krejci, R., Koike, M., Ebell, K., and Zieger, P.: A long-term study of cloud residuals from low-level Arctic clouds, *Atmos. Chem. Phys.*, **21**, 8933-8959, 10.5194/acp-21-8933-2021, 2021.
- Kirpes, R. M., Bondy, A. L., Bonanno, D., Moffet, R. C., Wang, B., Laskin, A., Ault, A. P., and Pratt, K. A.: Secondary sulfate is internally mixed with sea spray aerosol and organic aerosol in the winter Arctic, *Atmos. Chem. Phys.*, **18**, 3937-3949, 10.5194/acp-18-3937-2018, 2018.
- 550 Koike, M., Ukita, J., Ström, J., Tunved, P., Shiobara, M., Vitale, V., Lupi, A., Baumgardner, D., Ritter, C., Hermansen, O., Yamada, K., and Pedersen, C. A.: Year-round in situ measurements of Arctic low-level clouds: Microphysical properties and their relationships with aerosols, *J. Geophys. Res.*, **124**, 1798-1822, 10.1029/2018jd029802, 2019.
- Kojima, T., Buseck, P. R., Wilson, J. C., Reeves, J. M., and Mahoney, M. J.: Aerosol particles from tropical convective systems: Cloud tops and cirrus anvils, *J. Geophys. Res.*, **109**, D12201, 10.1029/2003jd004504, 2004.
- 555 Krieger, U. K., Marcolli, C., and Reid, J. P.: Exploring the complexity of aerosol particle properties and processes using single particle techniques, *Chem. Soc. Rev.*, **41**, 6631-6662, 10.1039/c2cs35082c, 2012.
- Laskin, A., Gilles, M. K., Knopf, D. A., Wang, B., and China, S.: Progress in the analysis of complex atmospheric particles, *Annu. Rev. Anal. Chem.*, **9**, 117-143, 10.1146/annurev-anchem-071015-041521, 2016.
- Leaitch, W. R., Russell, L. M., Liu, J., Kolonjari, F., Toom, D., Huang, L., Sharma, S., Chivulescu, A., Veber, D., and Zhang, W.: Organic functional groups in the submicron aerosol at 82.5° N, 62.5° W from 2012 to 2014, *Atmos. Chem. Phys.*, **18**, 3269-3287, 10.5194/acp-18-3269-2018, 2018.
- 560 Lee, H., Lee, K., Lunder, C. R., Krejci, R., Aas, W., Park, J., Park, K.-T., Lee, B. Y., Yoon, Y. J., and Park, K.: Atmospheric new particle formation characteristics in the Arctic as measured at Mount Zeppelin, Svalbard, from 2016 to 2018, *Atmos. Chem. Phys.*, **20**, 13425-13441, 10.5194/acp-20-13425-2020, 2020.

- 565 Li, J., Pósfai, M., Hobbs, P. V., and Buseck, P. R.: Individual aerosol particles from biomass burning in southern Africa: 2, Compositions and aging of inorganic particles, *J. Geophys. Res.*, **108**, 10.1029/2002jd002310, 2003.
- Li, W., Shao, L., Zhang, D., Ro, C.-U., Hu, M., Bi, X., Geng, H., Matsuki, A., Niu, H., and Chen, J.: A review of single aerosol particle studies in the atmosphere of East Asia: morphology, mixing state, source, and heterogeneous reactions, *J. Clean. Prod.*, **112**, 1330-1349, 10.1016/j.jclepro.2015.04.050, 2016.
- 570 [Maturilli, M., Herber, A., and König-Langlo, G.: Climatology and time series of surface meteorology in Ny-Ålesund, Svalbard. \*Earth Syst. Sci. Data\*, \*\*5\*\*, 155–163, 10.5194/essd-5-155-2013, 2013.](#)
- May, N. W., Quinn, P. K., McNamara, S. M., and Pratt, K. A.: Multiyear study of the dependence of sea salt aerosol on wind speed and sea ice conditions in the coastal Arctic, *J. Geophys. Res.*, **121**, 9208-9219, 10.1002/2016JD025273, 2016.
- Moroni, B., Cappelletti, D., Ferrero, L., Crocchianti, S., Busetto, M., Mazzola, M., Becagli, S., Traversi, R., and Udisti, R.: 575 Local vs. long-range sources of aerosol particles upon Ny-Ålesund (Svalbard Islands): mineral chemistry and geochemical records, *Rend. Lincei*, **27**, 115-127, 10.1007/s12210-016-0533-7, 2016.
- Moroni, B., Cappelletti, D., Crocchianti, S., Becagli, S., Caiazza, L., Traversi, R., Udisti, R., Mazzola, M., Markowicz, K., Ritter, C., and Zielinski, T.: Morphochemical characteristics and mixing state of long range transported wildfire particles at Ny-Ålesund (Svalbard Islands), *Atmos. Environ.*, **156**, 135-145, 10.1016/j.atmosenv.2017.02.037, 2017.
- 580 Moroni, B., Ritter, C., Crocchianti, S., Markowicz, K., Mazzola, M., Becagli, S., Traversi, R., Krejci, R., Tunved, P., and Cappelletti, D.: Individual particle characteristics, optical properties and evolution of an extreme long-range transported biomass burning event in the European Arctic (Ny-Ålesund, Svalbard Islands), *J. Geophys. Res.*, **125**, 10.1029/2019jd031535, 2020.
- Murray, B. J., Carslaw, K. S., and Field, P. R.: Opinion: Cloud-phase climate feedback and the importance of ice-nucleating 585 particles, *Atmos. Chem. Phys.*, **21**, 665-679, 10.5194/acp-21-665-2021, 2021.
- Noone, K. J., Ogren, J. A., Heintzenberg, J., Charlson, R. J., and Covert, D. S.: Design and Calibration of a Counterflow Virtual Impactor for Sampling of Atmospheric Fog and Cloud Droplets, *Aerosol Sci. Technol.*, **8**, 235-244, 10.1080/02786828808959186, 1988.
- Ohata, S., Mori, T., Kondo, Y., Sharma, S., Hyvärinen, A., Andrews, E., Tunved, P., Asmi, E., Backman, J., Servomaa, H., 590 Veber, D., Eleftheriadis, K., Vratolis, S., Krejci, R., Zieger, P., Koike, M., Kanaya, Y., Yoshida, A., Moteki, N., Zhao, Y., Tobo, Y., Matsushita, J., and Oshima, N.: Estimates of mass absorption cross sections of black carbon for filter-based absorption photometers in the Arctic, *Atmos. Meas. Tech.*, **14**, 6723-6748, 10.5194/amt-14-6723-2021, 2021.
- Ohata, S., Kondo, Y., Moteki, N., Mori, T., Yoshida, A., Sinha, P. R., and Koike, M.: Accuracy of black carbon measurements by a filter-based absorption photometer with a heated inlet, *Aerosol Sci. Technol.*, **53**, 1079-1091, 595 10.1080/02786826.2019.1627283, 2019.
- Pasquier, J.T., David, R. O., Freitas, G., Gierens, R., Gramlich, Y., Haslett, S., Li, G., Schäfer, B., Siegel, K., Wieder, J., Adachi, K., Belosi, F., Carlsen, T., Decesari, S., Ebell, K., Gilardoni, S., Gysel-Beer, M., Henneberger, J., Inoue, J., Kanji, Z. A., Koike, M., Kondo, Y., Krejci, R., Lohmann, U., Maturilli, M., Mazzolla, M., Modini, R., Mohr, C., Motos, G., Nenes, A., Nicosia, A., Ohata, S., Paglione, M., Park, S., Pileci, R. E., Ramelli, F., Rinaldi, M., Ritter, C., 600 Sato, K., Storelvmo, T., Tobo, Y., Traversi, R., Viola, A., Zieger, P.: The Ny-Ålesund Aerosol Cloud Experiment (NASCENT): Overview and first results, *Bull. Amer. Meteor. Soc.*, 10.1175/bams-d-21-0034.1, 2022, accepted
- Platt, S. M., Hov, Ø., Berg, T., Breivik, K., Eckhardt, S., Eleftheriadis, K., Evangeliou, N., Fiebig, M., Fisher, R., Hansen, G., Hansson, H.-C., Heintzenberg, J., Hermansen, O., Heslin-Rees, D., Holmén, K., Hudson, S., Kallenborn, R., Krejci, R., Krognes, T., Larssen, S., Lowry, D., Lund Myhre, C., Lunder, C., Nisbet, E., Nizzetto, P. B., Park, K.-T., Pedersen, 605 C. A., Aspö Pfaffhuber, K., Röckmann, T., Schmidbauer, N., Solberg, S., Stohl, A., Ström, J., Svendby, T., Tunved, P., Tørnkvist, K., van der Veen, C., Vratolis, S., Yoon, Y. J., Yttri, K. E., Zieger, P., Aas, W., and Tørseth, K.:

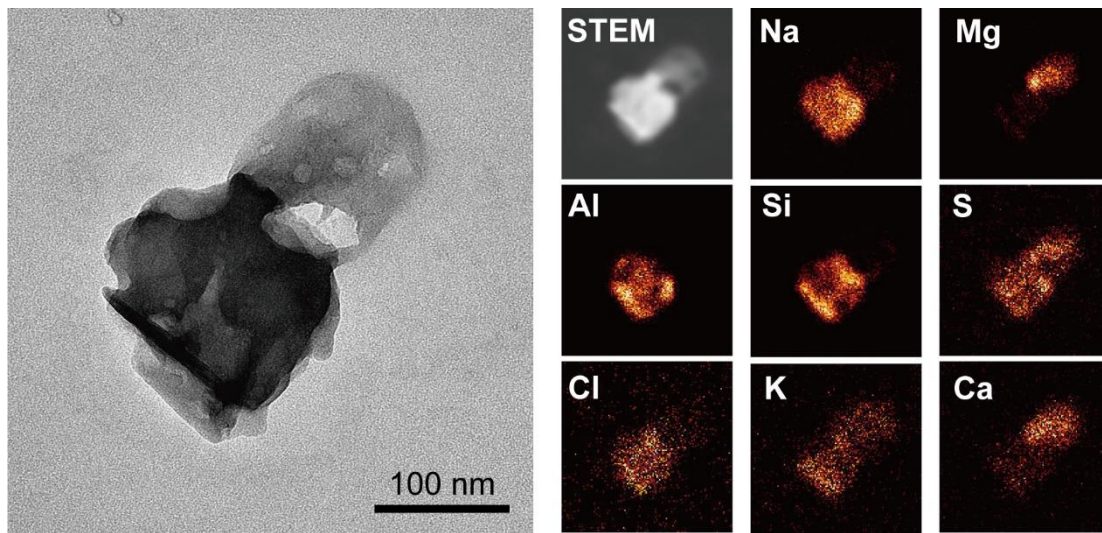
- Atmospheric composition in the European Arctic and 30 years of the Zeppelin Observatory, Ny-Ålesund, *Atmos. Chem. Phys.*, **22**, 3321-3369, 10.5194/acp-22-3321-2022, 2022.
- 610 Pósfai, M., and Buseck, P. R.: Nature and climate effects of individual tropospheric aerosol particles, *Annu. Rev. Earth Planet. Sci.*, **38**, 17-43, 10.1146/annurev.earth.031208.100032, 2010.
- Rinaldi, M., Hiranuma, N., Santachiara, G., Mazzola, M., Mansour, K., Paglione, M., Rodriguez, C. A., Traversi, R., Becagli, S., Cappelletti, D., and Belosi, F.: Ice-nucleating particle concentration measurements from Ny-Ålesund during the Arctic spring–summer in 2018, *Atmos. Chem. Phys.*, **21**, 14725-14748, 10.5194/acp-21-14725-2021, 2021.
- 615 Salter, M. E., Hamacher-Barth, E., Leck, C., Werner, J., Johnson, C. M., Riipinen, I., Nilsson, E. D., and Zieger, P.: Calcium enrichment in sea spray aerosol particles, *Geophys. Res. Lett.*, **43**, 8277-8285, 10.1002/2016gl070275, 2016.
- Schmale, J., Zieger, P., and Ekman, A. M. L.: Aerosols in current and future Arctic climate, *Nat. Clim. Change*, **11**, 95-105, 10.1038/s41558-020-00969-5, 2021.
- Schmeisser, L., Backman, J., Ogren, J. A., Andrews, E., Asmi, E., Starkweather, S., Uttal, T., Fiebig, M., Sharma, S., Eleftheriadis, K., Vratolis, S., Bergin, M., Tunved, P., and Jefferson, A.: Seasonality of aerosol optical properties in  
620 the Arctic, *Atmos. Chem. Phys.*, **18**, 11599-11622, 10.5194/acp-18-11599-2018, 2018.
- Shaw, G. E.: The Arctic haze phenomenon, *Bull. Amer. Meteor. Soc.*, **76**, 2403-2414, 1995.
- Shi, Y., Liu, X., Wu, M., Zhao, X., Ke, Z., and Brown, H.: Relative importance of high-latitude local and long-range-transported dust for Arctic ice-nucleating particles and impacts on Arctic mixed-phase clouds, *Atmos. Chem. Phys.*, **22**, 2909–2935, 10.5194/acp-22-2909-2022, 2022.
- 625 Shingler, T., Dey, S., Sorooshian, A., Brechtel, F. J., Wang, Z., Metcalf, A., Coggon, M., Mülmenstädt, J., Russell, L. M., Jonsson, H. H., and Seinfeld, J. H.: Characterisation and airborne deployment of a new counterflow virtual impactor inlet, *Atmos. Meas. Tech.*, **5**, 1259-1269, 10.5194/amt-5-1259-2012, 2012.
- Shupe, M. D., Rex, M., Blomquist, B., Persson, P. O. G., Schmale, J., Uttal, T., Althausen, D., Angot, H., Archer, S., Bariteau, L., Beck, I., Bilberry, J., Bucci, S., Buck, C., Boyer, M., Brasseur, Z., Brooks, I. M., Calmer, R., Cassano, J., Castro, V., Chu, D., Costa, D., Cox, C. J., Creamean, J., Crewell, S., Dahlke, S., Damm, E., de Boer, G., Deckelmann, H.,  
630 Dethloff, K., Dütsch, M., Ebell, K., Ehrlich, A., Ellis, J., Engelmann, R., Fong, A. A., Frey, M. M., Gallagher, M. R., Ganzeveld, L., Gradinger, R., Graeser, J., Greenamyre, V., Griesche, H., Griffiths, S., Hamilton, J., Heinemann, G., Helmig, D., Herber, A., Heuzé, C., Hofer, J., Houchens, T., Howard, D., Inoue, J., Jacobi, H.-W., Jaiser, R., Jokinen, T., Jourdan, O., Jozef, G., King, W., Kirchgassner, A., Klingebiel, M., Krassovski, M., Krumpfen, T., Lampert, A.,  
635 Landing, W., Laurila, T., Lawrence, D., Lonardi, M., Loose, B., Lüpkes, C., Maahn, M., Macke, A., Maslowski, W., Marsay, C., Maturilli, M., Mech, M., Morris, S., Moser, M., Nicolaus, M., Ortega, P., Osborn, J., Pätzold, F., Perovich, D. K., Petäjä, T., Pilz, C., Pirazzini, R., Posman, K., Powers, H., Pratt, K. A., Preußner, A., Quéléver, L., Radenz, M., Rabe, B., Rinke, A., Sachs, T., Schulz, A., Siebert, H., Silva, T., Solomon, A., Sommerfeld, A., Spreen, G., Stephens, M., Stohl, A., Svensson, G., Uin, J., Viegas, J., Voigt, C., von der Gathen, P., Wehner, B., Welker, J. M., Wendisch,  
640 M., Werner, M., Xie, Z., and Yue, F.: Overview of the MOSAiC expedition: Atmosphere, *Elementa*, **10**, 10.1525/elementa.2021.00060, 2022.
- Sipilä, M., Sarnela, N., Jokinen, T., Henschel, H., Junninen, H., Kontkanen, J., Richters, S., Kangasluoma, J., Franchin, A., Perakyla, O., Rissanen, M. P., Ehn, M., Vehkamäki, H., Kurten, T., Berndt, T., Petaja, T., Worsnop, D., Ceburnis, D., Kerminen, V. M., Kulmala, M., and O’Dowd, C.: Molecular-scale evidence of aerosol particle formation via  
645 sequential addition of HIO<sub>3</sub>, *Nature*, **537**, 532-534, 10.1038/nature19314, 2016.
- Song, C., Dall’Osto, M., Lupi, A., Mazzola, M., Traversi, R., Becagli, S., Gilardoni, S., Vratolis, S., Yttri, K. E., Beddows, D. C. S., Schmale, J., Brean, J., Kramawijaya, A. G., Harrison, R. M., and Shi, Z.: Differentiation of coarse-mode anthropogenic, marine and dust particles in the High Arctic islands of Svalbard, *Atmos. Chem. Phys.*, **21**, 11317-11335, 10.5194/acp-21-11317-2021, 2021.



- 650 Tobo, Y., Adachi, K., DeMott, P. J., Hill, T. C. J., Hamilton, D. S., Mahowald, N. M., Nagatsuka, N., Ohata, S., Uetake, J., Kondo, Y., and Koike, M.: Glacially sourced dust as a potentially significant source of ice nucleating particles, *Nat. Geosci.*, **12**, 253-258, 10.1038/s41561-019-0314-x, 2019.
- Tunved, P., Ström, J., and Krejci, R.: Arctic aerosol life cycle: linking aerosol size distributions observed between 2000 and 2010 with air mass transport and precipitation at Zeppelin station, Ny-Ålesund, Svalbard, *Atmos. Chem. Phys.*, **13**, 3643-3660, 10.5194/acp-13-3643-2013, 2013.
- 655 Twohy, C. H., and Poellot, M. R.: Chemical characteristics of ice residual nuclei in anvil cirrus clouds: evidence for homogeneous and heterogeneous ice formation, *Atmos. Chem. Phys.*, **5**, 2289-2297, 10.5194/acp-5-2289-2005, 2005.
- Udisti, R., Bazzano, A., Becagli, S., Bolzacchini, E., Caiazzo, L., Cappelletti, D., Ferrero, L., Frosini, D., Giardi, F., Grotti, M., Lupi, A., Malandrino, M., Mazzola, M., Moroni, B., Severi, M., Traversi, R., Viola, A., and Vitale, V.: Sulfate source apportionment in the Ny-Ålesund (Svalbard Islands) Arctic aerosol, *Rend. Lincei*, **27**, 85-94, 10.1007/s12210-016-0517-7, 2016.
- 660 Ueda, S.: Morphological change of solid ammonium sulfate particles below the deliquescence relative humidity: Experimental reproduction of atmospheric sulfate particle shapes, *Aerosol Sci. Technol.*, **55**, 423-437, 10.1080/02786826.2020.1864277, 2021.
- 665 Weinbruch, S., Wiesemann, D., Ebert, M., Schütze, K., Kallenborn, R., and Ström, J.: Chemical composition and sources of aerosol particles at Zeppelin Mountain (Ny Ålesund, Svalbard): An electron microscopy study, *Atmos. Environ.*, **49**, 142-150, 10.1016/j.atmosenv.2011.12.008, 2012.
- Willis, M. D., Leaitch, W. R., and Abbatt, J. P. D.: Processes controlling the composition and abundance of arctic aerosol, *Rev. Geophys.*, **56**, 621-671, 10.1029/2018rg000602, 2018.
- 670 Wise, M. E., Baustian, K. J., Koop, T., Freedman, M. A., Jensen, E. J., and Tolbert, M. A.: Depositional ice nucleation onto crystalline hydrated NaCl particles: a new mechanism for ice formation in the troposphere, *Atmos. Chem. Phys.*, **12**, 1121-1134, 10.5194/acp-12-1121-2012, 2012.
- Xi, Y., Xu, C., Downey, A., Stevens, R., Bachelder, J. O., King, J., Hayes, P. L., and Bertram, A. K.: Ice nucleating properties of airborne dust from an actively retreating glacier in Yukon, Canada, *Environ. Sci. Atmos.*, **2**, 714-726, 10.1039/d1ea00101a, 2022.
- 675 Yttri, K. E., Lund Myhre, C., Eckhardt, S., Fiebig, M., Dye, C., Hirdman, D., Ström, J., Klimont, Z., and Stohl, A.: Quantifying black carbon from biomass burning by means of levoglucosan – a one-year time series at the Arctic observatory Zeppelin, *Atmos. Chem. Phys.*, **14**, 6427-6442, 10.5194/acp-14-6427-2014, 2014.
- Yun, J., Evoy, E., Worthy, S. E., Fraser, M., Veber, D., Platt, A., Rawlings, K., Sharma, S., Leaitch, W. R., and Bertram, A.: 680 Ice nucleating particles in the Canadian High Arctic during the fall of 2018, *Environ. Sci. Atmos.*, **2**, 279-290, 10.1039/d1ea00068c, 2022.



685 **Figure 1. Locations of Ny-Ålesund and the Zeppelin Observatory. (a) Map showing Ny-Ålesund, Svalbard, Norway. (b) Photo of Zeppelin Observatory taken in September 2017. (c) Panoramic view of Zeppelin Observatory showing three inlets used in this study and Ny-Ålesund. The PM<sub>10</sub> and whole-air inlets were used for ambient aerosol particle sampling. The CVI inlet was used for cloud residual particle sampling.**



690 | Figure 2. TEM (left) and elemental mapping images (right) of a mineral dust particle mixed with sea salt. This particle was obtained from a cloud residual sample collected on November 12, 2018 (07:30).

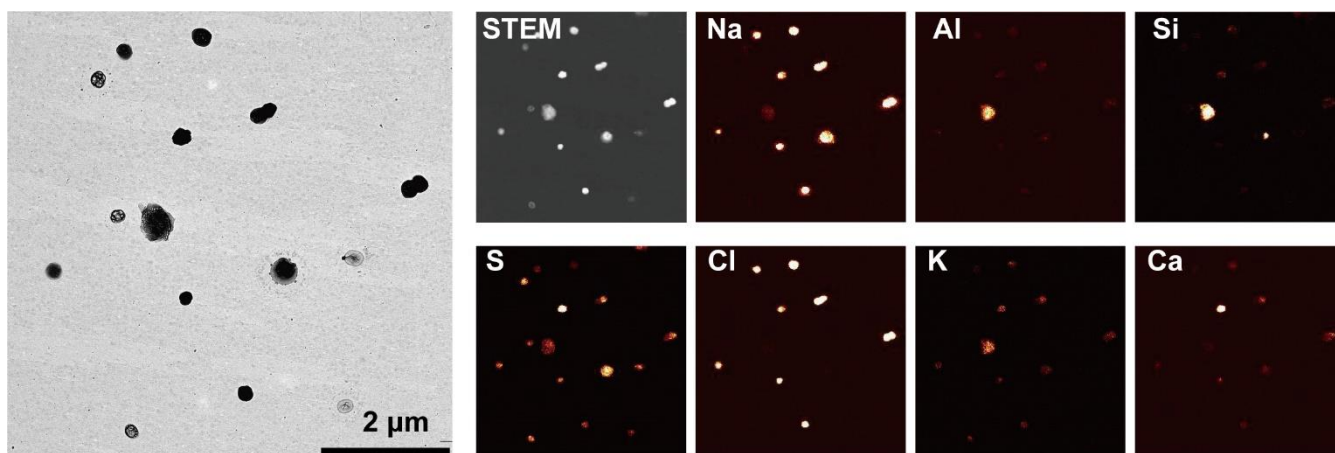
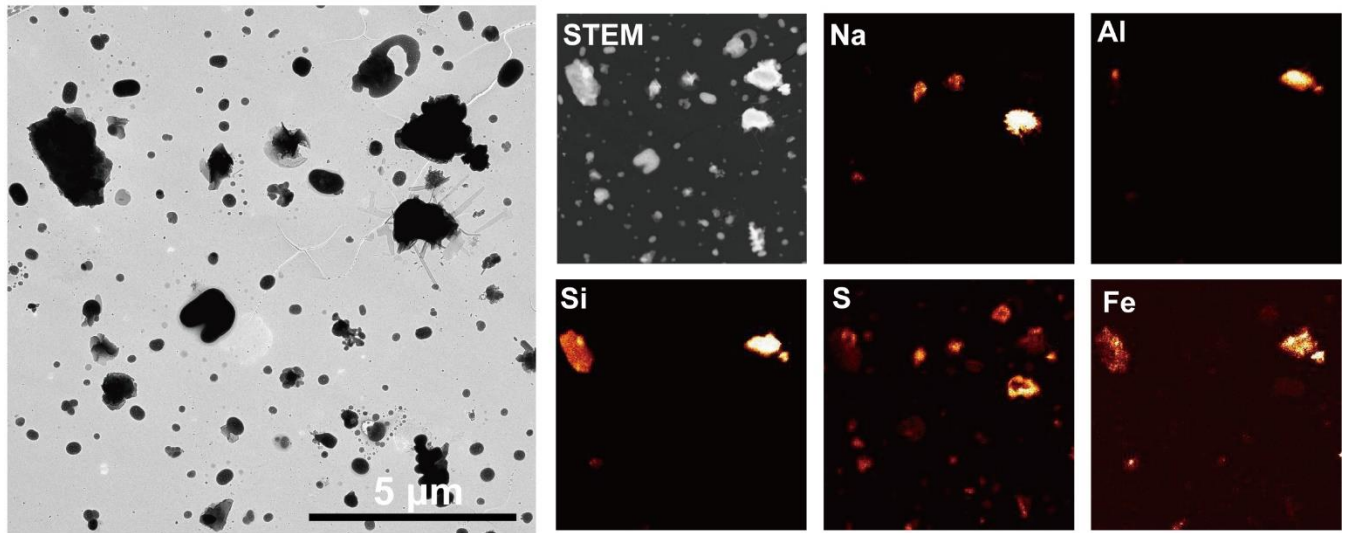


Figure 3. TEM (left) and elemental mapping images (right) of a cloud residual sample collected on November 12, 2018 (07:30). The sampling temperature was  $-12^{\circ}\text{C}$ .

695

(a)



(b)

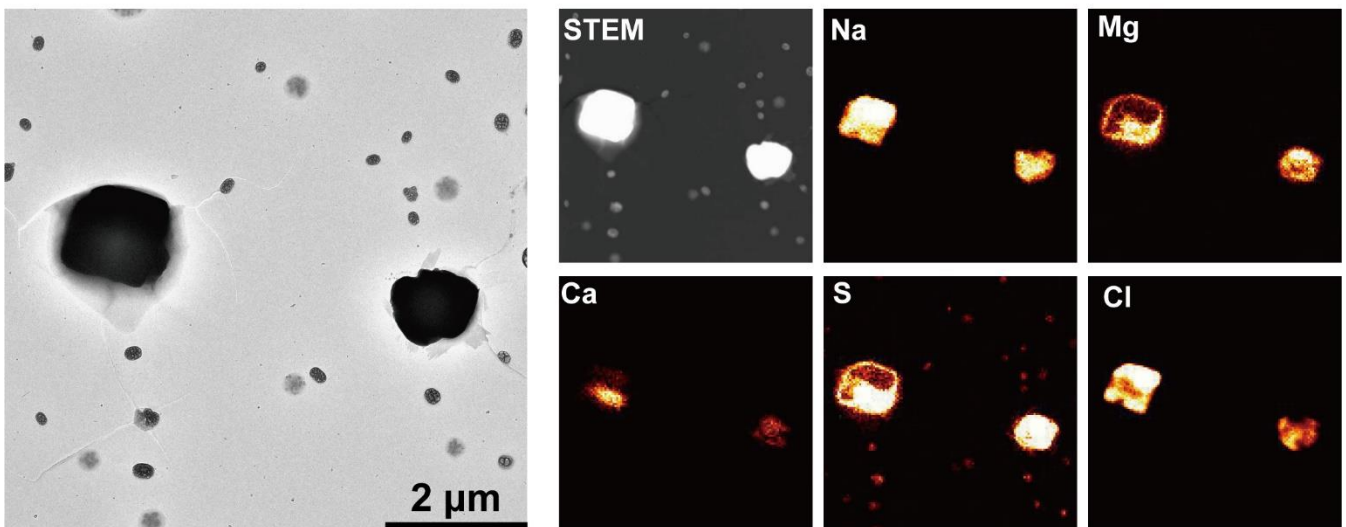
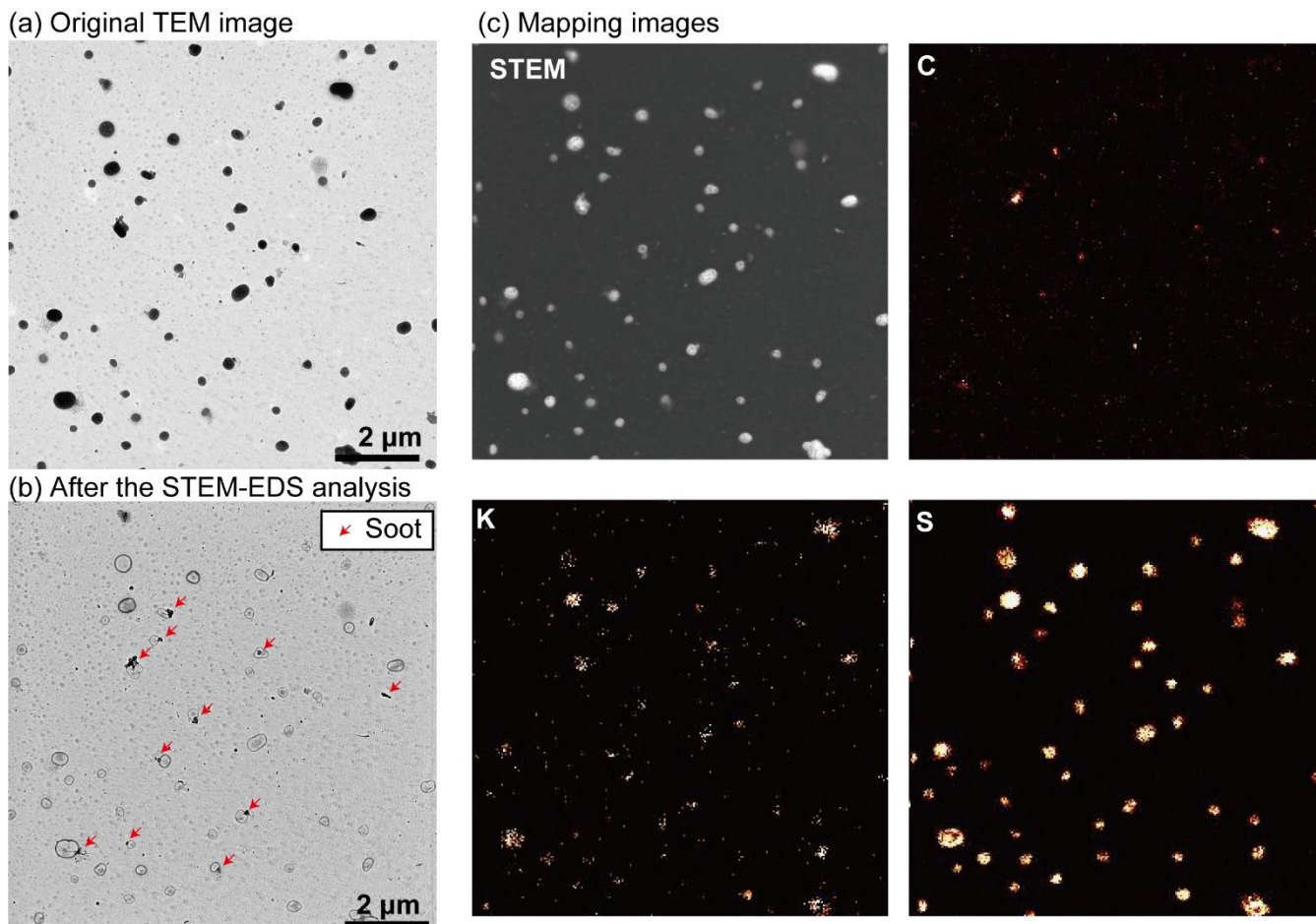


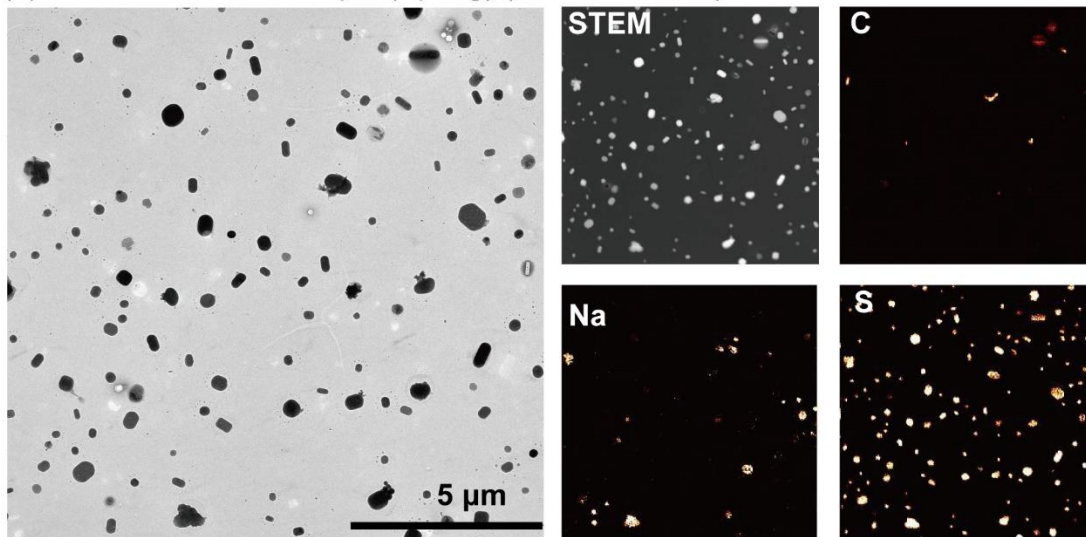
Figure 4. TEM (left) and elemental mapping images (right) of an ambient aerosol sample with a relatively high (a) mineral dust particle fraction (10%) and (b) sea salt particle fraction (52%). Samples (a) and (b) were collected on July 13, 2018 (19:30) and August 30, 2018 (18:51), respectively. Mineral dust particles mainly consist of Al, Si, and Fe. Sea salt particles mainly consist of Na and Cl, with Mg and S on their surfaces.

700

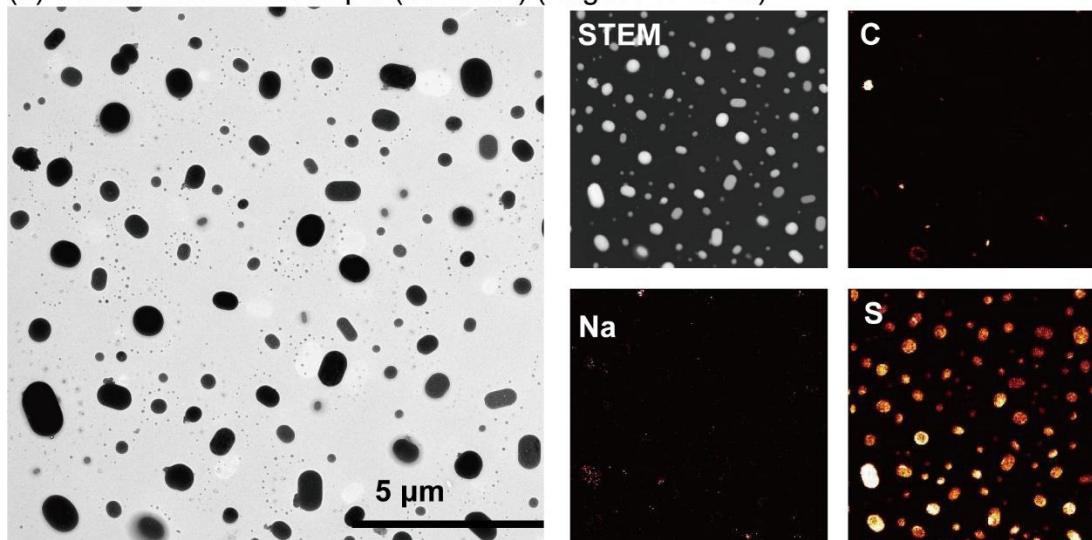


705 | **Figure 5. TEM (left) and elemental mapping images (right) of an ambient aerosol sample with a relatively high K-bearing particle fraction (58%). (a) The TEM image shows the shapes of original particles before STEM-EDS mapping analysis. (b) The TEM image shows the same area after the STEM-EDS measurement. After removing potassium sulfates, internally mixed soot particles became apparent (red arrows). (c) STEM and elemental mapping images of C, K, and S. The distribution of C corresponds to soot particles. The distribution of S represents sulfates with and without K. The sample was collected on April 29, 2019 (11:30).**

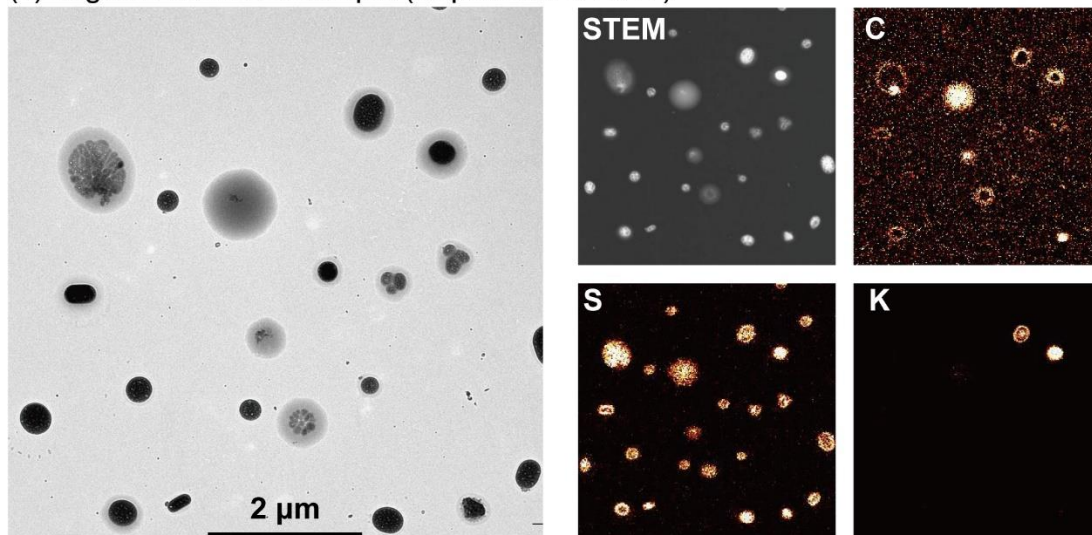
(a) Sulfate dominant sample (Spring) (March 15 2018)



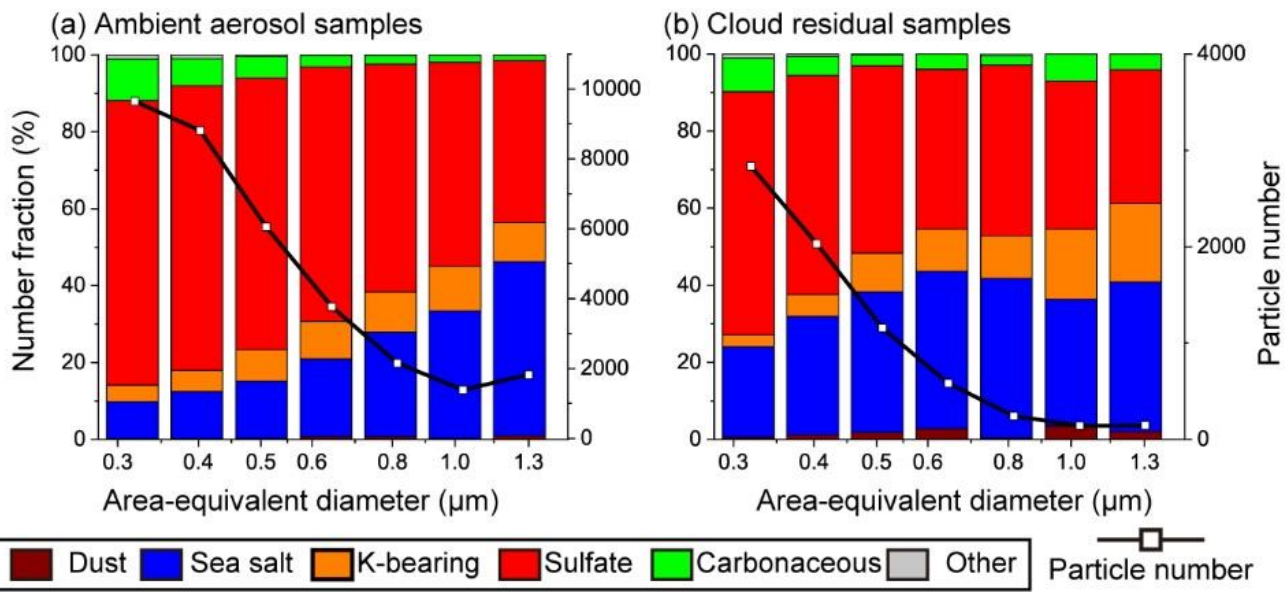
(b) Sulfate dominant sample (Summer) (August 10 2018)



(c) Organic dominant sample (September 8 2017)



710 | **Figure 6. TEM (left) and elemental mapping images (right) of ambient aerosol particles with relatively high sulfate particle fractions in (a) spring (76%), (b) summer (95%), and (c) particles with carbonaceous coatings. The samples were collected on (a) March 15, 2018 (12:00), (b) August 10, 2018 (12:00), and (c) September 8, 2017 (12:30). (a) and (b): Most particles are sulfate, with some containing Na and C (soot). (c): Organic matter has relatively low contrast (grey color) and coats sulfate particles (black). The distributions of C and S in the mapping images correspond to organic matter and sulfate particles, respectively.**

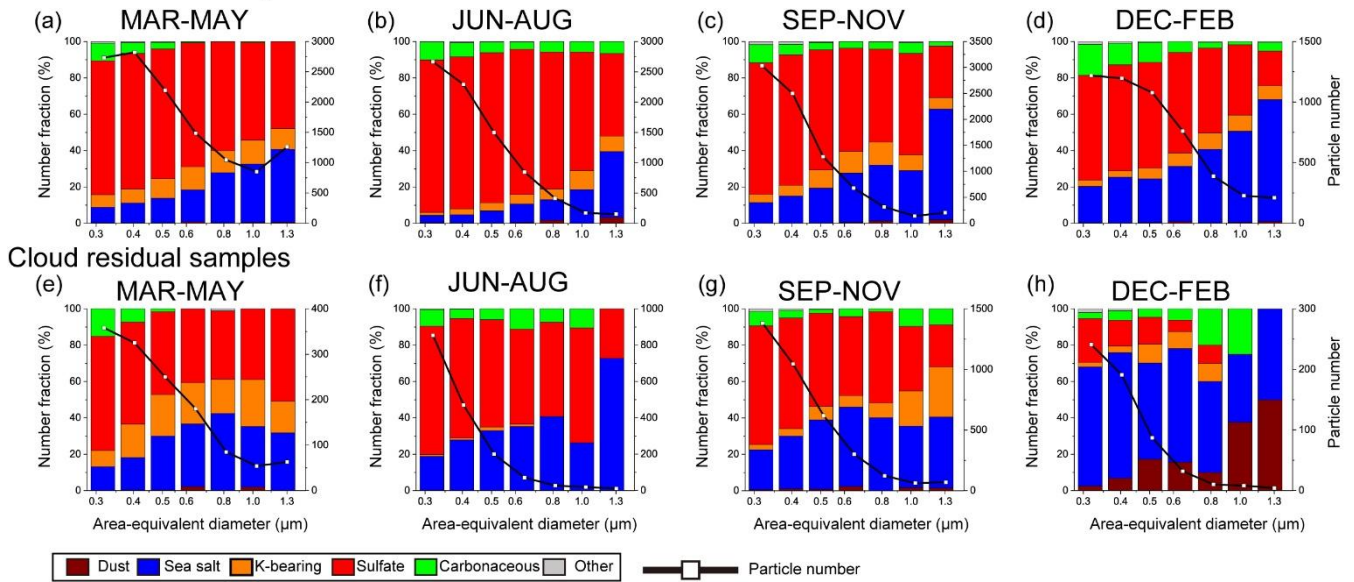


715

Figure 7. Size-dependent number fractions of ambient aerosol and cloud residual particles and their number distributions. (a) Ambient aerosol particles (N = 33,652) and (b) cloud residual particles (N = 7138). The TEM samples used in (a) and (b) are 194 and 45, respectively.



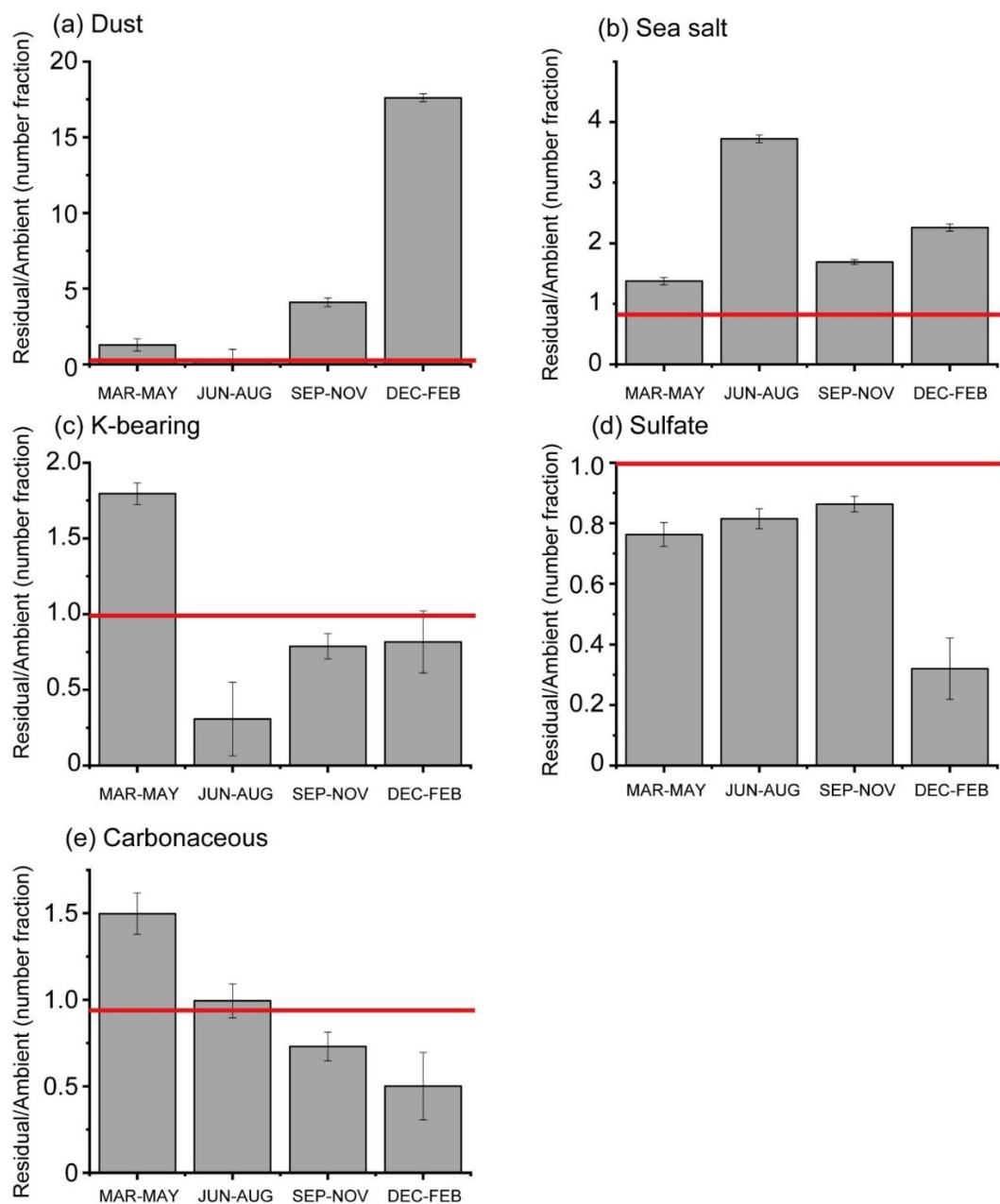
Ambient aerosol samples



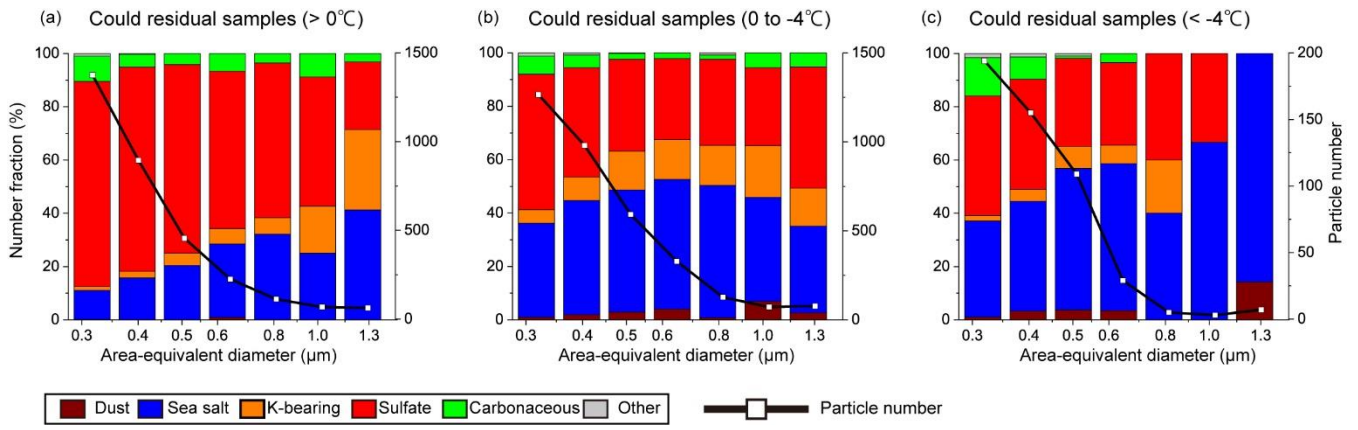
720

**Figure 8. Size-dependent number fractions and number distributions of ambient aerosol and cloud residual particles in each season. Ambient aerosol samples (a) from March to May, (b) from June to August, (c) from September to November, and (d) from December to February. Cloud residual samples (e) from March to May, (f) from June to August, (g) from September to November, and (h) from December to February. N = (a) 12,390, (b) 8037, (c) 8147, (d) 5078, (e) 1315, (f) 1652, (g) 3598, and (h) 573.**

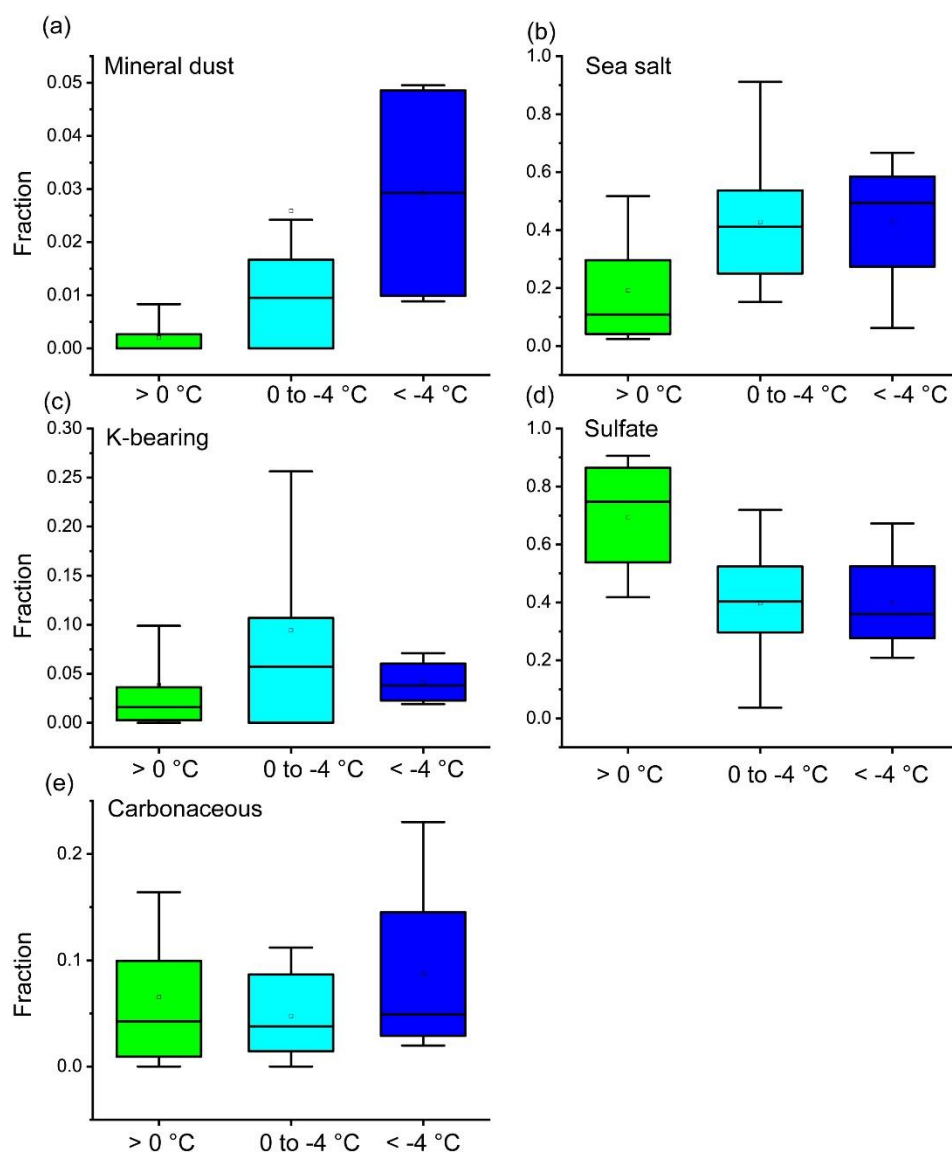
725



**Figure 9. Ratios of number fractions of each particle type between cloud residual and ambient aerosol samples for each season. (a) Mineral dust particles, (b) sea salt particles, (c) K-bearing particles, (d) sulfate particles, and (e) carbonaceous particles. Red lines indicate that the ratio is equal to 1. Errors are based on Poisson statistics.**



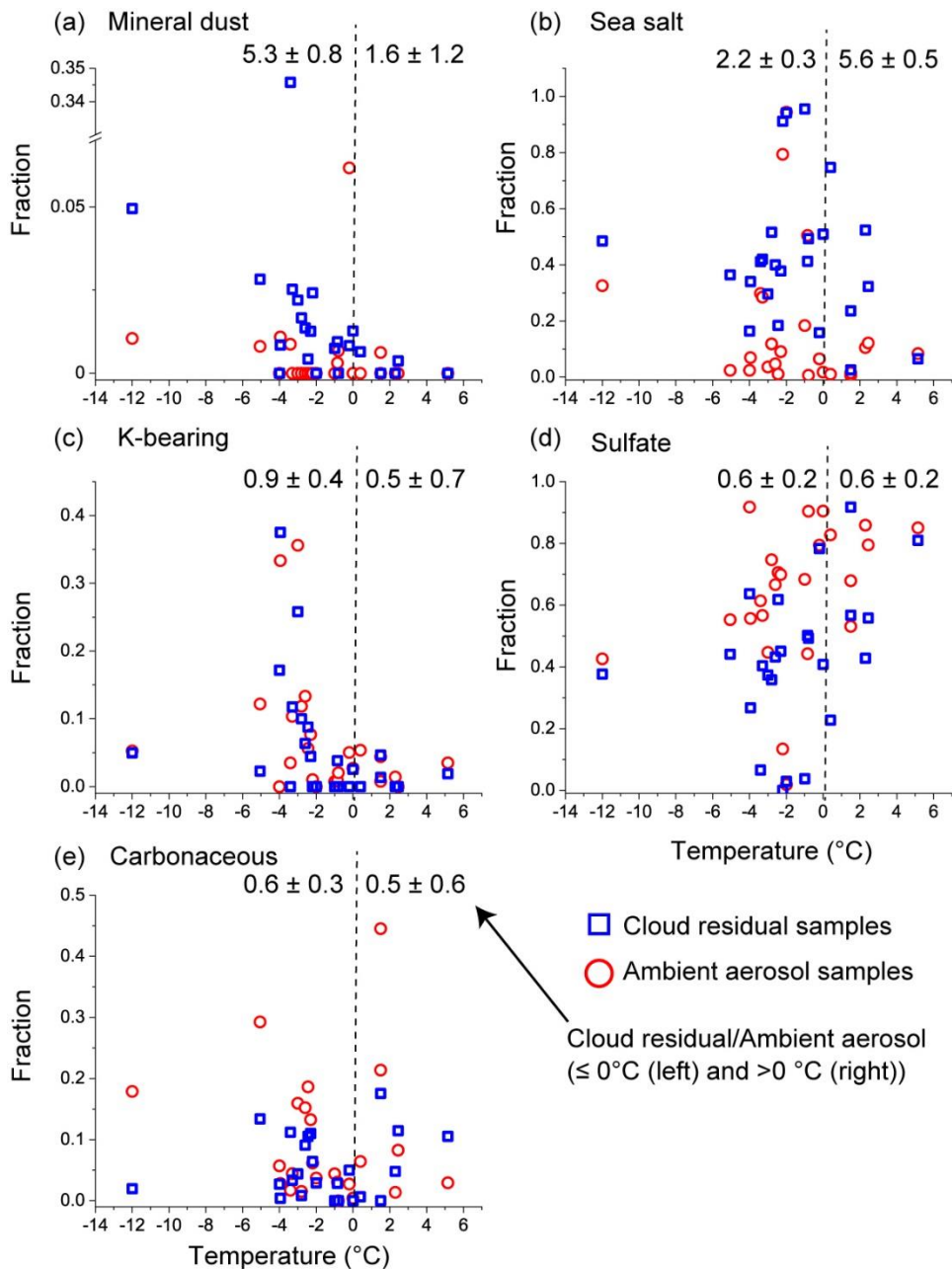
**Figure 10.** Size-dependent number fractions and number distributions for cloud residual samples collected at (a)  $>0^{\circ}\text{C}$ , (b)  $0^{\circ}\text{C}$  to  $-4^{\circ}\text{C}$ , and (c)  $<-4^{\circ}\text{C}$ .  $N =$  (a) 3193, (b) 3443, and (c) 502.



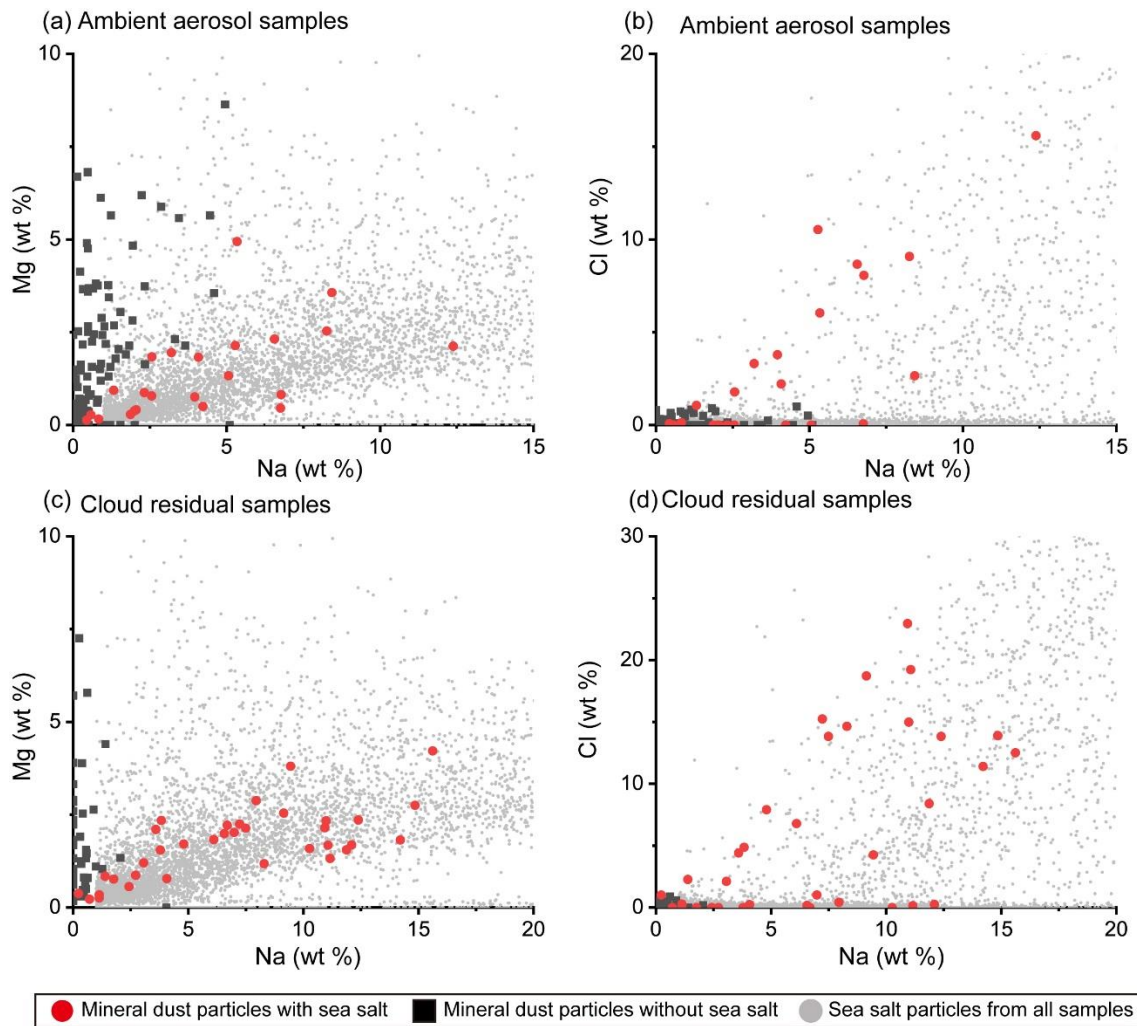
735

**Figure 11. Number fractions of each aerosol type in cloud residual particle samples collected at >0°C, 0°C to -4°C, and <-4°C. (a) Mineral dust particles, (b) sea salt particles, (c) K-bearing particles, (d) sulfate particles, and (e) carbonaceous particles. Sample numbers are 20, 25, and 4 for those collected at >0°C, 0°C to -4°C, and <-4°C, respectively. Wide boxes, whiskers, and squares indicate the 25<sup>th</sup>, 50<sup>th</sup>, and 75<sup>th</sup> percentile ranges; 10<sup>th</sup>-90<sup>th</sup> percentile ranges; and average values, respectively.**

740



745 **Figure 12.** Plots of number fractions of each aerosol particle type and the sampling temperature from 24 sets of ambient  
 750 aerosol and cloud residual samples that were collected simultaneously. (a) Mineral dust particle fraction, (b) sea salt  
 particle fractions, (c) K-bearing particle fraction, (d) sulfate particle fractions, and (e) carbonaceous particle fraction.  
 Each plot indicates the average value of one to three samples collected within 24 h. Cloud residual samples and ambient  
 aerosol samples are shown in blue squares and red circles, respectively. Values at the top of each panel indicate average  
 fractions among cloud residual samples divided by those of ambient aerosol samples below  $0^\circ\text{C}$  (left) and above  $0^\circ\text{C}$   
 (right) with standard errors. Values greater than 1 indicate higher components in cloud residual samples than in  
 ambient aerosol samples.



755 **Figure 13. Compositions of mineral dust particles with and without sea salt components in ambient aerosol and cloud residual**  
**samples. Plots of (a) Na and Mg and (b) Na and Cl (wt%) in mineral dust particles from ambient aerosol samples. Plots of (c) Na**  
**and Mg and (d) Na and Cl (wt%) in mineral dust particles from cloud residual samples. Red circles indicate mineral dust particles**  
**with sea salt components, defined as containing  $0.5 > \text{Mg/Na} > 0.05$ ,  $\text{Cl} > 1$  wt%, or both. Black squares indicate mineral dust**  
**particles without sea salt components. Gray dots indicate all sea salt particles ( $\text{Na} > 1$  wt%).  $N = 23$  and  $102$  for mineral dust particles**  
760 **with and without sea salt in ambient aerosol samples, respectively.  $N = 35$  and  $47$  for mineral dust particles with and without sea salt**  
**in cloud residual samples, respectively.  $N = 7697$  for all sea salt particles.**

**Table 1. Detailed information of all samples used in this study**

Sample classification	Sample subclassification	Sampling periods	No. of TEM samples	Analyzed particles	Temperature range (°C) (Highest/Lowest)
		MM/DD YYYY–MM/DD YYYY			
Ambient aerosol samples	PM <sub>10</sub> inlet	03/08 2017–03/28 2017	35	6231	-6/-24
	PM <sub>10</sub> inlet	09/08 2017–09/12 2017	7	1039	6/1
	PM <sub>10</sub> inlet	03/12 2018–03/22 2018	20	4495	-4/-16
	PM <sub>10</sub> inlet	08/02 2018–08/12 2018	16	2782	12/1
	PM <sub>10</sub> inlet	01/08 2019–01/13 2019	8	1559	-9/-17
	PM <sub>10</sub> inlet	03/11 2019–03/13 2019	4	589	-13/-16
	PM <sub>10</sub> inlet	07/29 2019–07/31 2019	4	887	8/3
	PM <sub>10</sub> inlet	11/10 2019–11/14 2019	6	655	-4/-14
	Whole-air inlet	09/09 2017–02/08 2021	94	15415	9/-20
	>0°C	09/09 2017–09/11 2020	20	3193	6/0
Cloud residual samples	0 to -4°C	09/19 2017–05/14 2019	21	3443	0/-4
	<-4°C	10/26 2017–11/12 2018	4	502	-4/-12
Total		03/08 2017–02/08 2021	239	40790	12/-24