

A full year of aerosol size distribution data from the central Arctic under an extreme positive Arctic Oscillation: Insights from the MOSAiC expedition

Matthew Boyer¹, Diego Aliaga¹, Jakob Boyd Pernov², H       Angot², Lauriane L. J. Qu        ¹, Lubna Dada^{2,13}, Benjamin Heutte², Manuel Dall'Osto³, David C. S. Beddows⁴, Zo   Brasseur¹, Ivo Beck², Silvia Bucci⁵, Marina Duetsch⁵, Andreas Stohl⁵, Tiia Laurila¹, Eija Asmi⁶, Andreas Massling⁷, Daniel Charles Thomas⁷, Jakob Klen   N  jgaard^{7,14}, Tak Chan⁸, Sangeeta Sharma⁸, Peter Tunved⁹, Radovan Krejci⁹, Hans Christen Hansson⁹, Federico Bianchi¹, Katrianne Lehtipalo¹, Alfred Weidensohler¹⁰, Kay Weinhold¹⁰, Markku Kulmala¹, Tuukka Pet    ¹, Mikko Sipil  ¹, Julia Schmale², Tuija Jokinen^{1,10}

¹Institute for Atmospheric and Earth System Research (INAR)/Physics, Faculty of Science, University of Helsinki, P.O. Box 64, Helsinki, 00014, Finland

²Extreme Environments Research Laboratory, Ecole Polytechnique F         de Lausanne (EPFL), Sion, 1951, Switzerland

³Institute of Marine Science, Consejo Superior de Investigaciones Cient  ficas (CSIC), Barcelona, Spain

⁴National Centre for Atmospheric Science, The School of Geography, Earth and Environmental Sciences, The University of Birmingham, Edgbaston, Birmingham, B15 2TT, United Kingdom

⁵Institute for Meteorology and Geophysics, University of Vienna

⁶Atmospheric Composition Research, Finnish Meteorological Institute, Helsinki, Finland

⁷Department of Environmental Science, iClimate, Arctic Research Center, Aarhus University, Roskilde, Denmark

⁸Environment and Climate Change Canada, Science and Technology Branch, Toronto, Canada

⁹Department of Applied Environmental Science (ITM), Stockholm University, 11418 Stockholm, Sweden

¹⁰Leibniz Institute for Tropospheric Research (TROPOS), 04318 Leipzig, Germany

¹⁰Climate & Atmosphere Research Centre (CARE-C), The Cyprus Institute, P.O. Box 27456, Nicosia, 1645, Cyprus

¹²The National Research Centre for the Working Environment, Copenhagen, Denmark

¹³Laboratory of Atmospheric Chemistry, Paul Scherrer Institute, 5232 Villigen, Switzerland

Correspondence to: Matthew Boyer (matthew.boyer@helsinki.fi); Julia Schmale (julia.schmale@epfl.ch)

Abstract. The Arctic environment is rapidly changing due to accelerated warming in the region. The warming trend is driving a decline in sea ice extent, which thereby enhances feedback loops in the surface energy budget in the Arctic. Arctic aerosols play an important role in the radiative balance, and hence the climate response, in the region; yet direct observations of aerosols over the Arctic Ocean are limited. In this study, we investigate the annual cycle in the aerosol particle number size distribution (PNSD), particle number concentration (PNC), and black carbon (BC) mass concentration in the central Arctic during the Multidisciplinary drifting Observatory for the Study of Arctic Climate (MOSAiC) expedition. This is the first continuous, year-long dataset of aerosol PNSD ever collected over the sea ice in the central Arctic Ocean. We use a k-means cluster analysis, FLEXPART simulations, and inverse modeling to evaluate seasonal patterns and the influence of different source regions on the Arctic aerosol population. Furthermore, we compare the aerosol observations to land-based sites across the Arctic, using both long-term measurements and observations during the year of the MOSAiC expedition (2019 – 2020), to

investigate interannual variability and to give context to the aerosol characteristics from within the central Arctic. Our analysis identifies that, overall, the central Arctic exhibits typical seasonal patterns of aerosols, including anthropogenic influence from Arctic Haze in winter and secondary aerosol processes in summer. The seasonal pattern corresponds with the global radiation, surface air temperature, and the timing of sea ice melting/freezing, which drives changes in transport patterns and secondary aerosol processes. In winter, the Norilsk region in Russia/Siberia was the dominant source of Arctic Haze signal in the PNSD and BC observations, which contributed to higher accumulation mode PNC and BC mass concentration in the central Arctic than at land-based observatories. We also show that the wintertime Arctic Oscillation (AO) phenomenon, which was reported to achieve a record-breaking positive phase during January – March 2020, explains the unusual timing and magnitude of Arctic Haze across the Arctic region compared to longer-term observations. In summer, the PNC of nucleation and Aitken mode aerosol is enhanced, but concentrations were notably lower in the central Arctic over the ice pack than at land-based sites further south. The analysis presented herein provides a current snapshot of Arctic aerosol processes in an environment that is characterized by rapid changes, which will be crucial for improving climate model predictions, understanding linkages between different environmental processes, and investigating the impacts of climate change in future Arctic aerosol studies.

1 Introduction

Atmospheric aerosols influence Earth's surface energy budget and have two distinct effects on the climate system. The direct effect describes the ability of aerosols themselves to scatter and absorb incoming solar radiation (Charlson et al., 1991), and the indirect effect describes the ability of aerosols to act as cloud condensation nuclei (CCN) and ice nucleating particles (INP) to form clouds, which are even more efficient at scattering radiation (Twomey et al., 1984). Additionally, clouds act as grey bodies that re-emit longwave radiation, an important effect over high albedo surfaces such as in the Arctic. Aerosol-cloud interactions comprise the largest source of uncertainty in our understanding of climate change globally (Boucher et al., 2013; IPCC, 2021), and the Arctic environment has been shown to be very sensitive to radiative forcing from aerosols and clouds (Sand et al., 2016), with large modeling uncertainties (Schmale et al., 2021). Thus, investigating climate-relevant aerosol processes in the Arctic is crucial.

The Arctic climate is warming 2-3 times faster than the global average due to Arctic Amplification, which is caused by various simultaneously acting feedback mechanisms such as the ice-albedo feedback and aerosol-cloud radiative forcing (Serreze and Barry, 2011; AMAP, 2021). Globally, aerosol and cloud processes lead to a net cooling that opposes greenhouse gas warming (e.g., IPCC, 2021), however, aerosol-cloud interactions in the Arctic can lead to a warming effect that is comparable in magnitude to the warming associated with greenhouse gases, depending on the season (Lubin and Vogelmann, 2006). These aerosol-cloud interactions are sensitive to the presence of aerosols, which are known to exhibit a strong seasonal dependence in the Arctic (e.g., Lange et al., 2018; Schmale et al., 2022; Pernov et al., 2022).

Several key seasonal characteristics of the Arctic aerosol population have been previously identified. In winter, Arctic Haze, i.e., the build-up of anthropogenic pollution from lower latitudes, is a frequent phenomenon over the Arctic region (Barrie, 1986; Leaitch et al., 1989). During the cold and dark winter months, low atmospheric moisture content and strong surface inversion layers limit aerosol depositional processes (Bradley et al., 1993; Shaw, 1995), and expansion of the polar dome permits transport from continental regions further south, particularly continental Europe and Asia (Eckhardt et al., 2003; Stohl 2006). Arctic Haze has been observed to occur during winter and persist through spring at several land-based sites across the Arctic (Heidam et al., 1999; [Quinn et al., 2002](#); Quinn et al., 2007; Tunved et al., 2013; Freud et al., 2017; Sharma et al., 2019). Previous observations of aerosol size distributions around the Arctic show that Arctic Haze is dominated by accumulation mode aerosol, or particles > 100 nm in diameter, while summer features a dominant Aitken mode and a Hoppel minimum, which indicates the strong effect of cloud processing on the aerosol population ([Quinn et al., 2002](#); Tunved et al., 2013; Croft et al., 2016; Asmi et al., 2016; Nguyen et al., 2016; Freud et al., 2017). ~~In addition At the same time, this demonstrates the importance of aerosol particles in cloud formation processes. Indeed,~~ previous research suggests that the anthropogenic pollution associated with Arctic Haze can enhance longwave radiation emission from Arctic clouds, leading to surface warming (Garrett and Zhao; 2006).

In the transition from spring to summer, transport patterns and meteorological conditions change such that the advection of particulate pollution to the Arctic boundary layer from lower latitudes is limited (Stohl, 2006; Bozem et al., 2019). As a result, anthropogenic pollution is less common, and natural aerosol sources become more prevalent (Moschos et al., 2022a; Moschos et al., 2022b). Regional secondary aerosol formation, or new particle formation (NPF), occurs readily in summer due to enhanced biological activity and the resulting gas-phase emissions coupled with increased photochemistry (Nguyen et al., 2016; Burkart et al., 2017; Collins et al., 2017; Dall'Osto et al., 2018; Croft et al., 2019; Beck et al., 2021; Nøjgaard et al., 2022). In the central Arctic, the exact processes leading to new particle formation remain mostly unresolved (Croft et al., 2019; Schmale and Baccarini, 2021). There is evidence to suggest that cloud formation is limited by the availability of CCN in summer, as aerosols acting as CCN can be so sparse at times during this season that cloud formation is even inhibited (Mauritsen et al., 2011). Even a modest increase in aerosol or CCN concentrations in a clean environment, such as the summertime Arctic atmosphere, can have a significant impact on aerosol climate-relevant effects (Murphy et al., 1998; Carslaw et al., 2013; Karlsson et al., 2022).

Considering the accelerated warming in the Arctic, changes in natural aerosol are expected due to the decline in sea ice coverage, a larger extent of boreal forest fires, and changes in ocean biology in response to [anthropogenic-induced](#) warming (Schmale et al., 2021 & 2022). These natural aerosol components, particularly organics, have been demonstrated to be as abundant in summer as anthropogenic organic components in winter (Moschos et al., 2022b). Hence, it is important to study the change in both anthropogenic and natural aerosol components throughout the year in the Arctic, whereby the latter are indicators of climate change feedback processes [from anthropogenic-induced warming](#). However, despite this knowledge,

105 there are few in-situ observations of Arctic aerosols, and many previous analyses are limited to short measurement periods (e.g., Chang et al., 2011), modeling studies (e.g., Croft et al., 2016), or land-based observations around the Arctic Ocean (e.g., Freud et al., 2017). There is a clear need for more comprehensive studies to resolve the climate-relevant aerosol processes that occur in the Arctic atmosphere throughout the year and during seasonal transitions (Schmale and Baccarini, 2021; Schmale et al., 2021).

110

To improve the understanding of aerosol processes in the central Arctic atmosphere, this study examines a continuous, year-long record of aerosol measurements obtained over the central Arctic Ocean during the Multidisciplinary drifting Observatory for the Study of Arctic Climate (MOSAiC) expedition (September 2019 – October 2020). This is the first continuous, year-long dataset of aerosol PNSD ever collected over the sea ice in the central Arctic Ocean, which will be useful for evaluating the seasonality of aerosol properties over the sea ice. We use ~~a targeted~~ monthly averages (medians) approach to characterize the seasonal changes in the aerosol particle number size distribution (PNSD), particle number concentration (PNC), black carbon (BC) mass concentration, and air mass source regions throughout the year. In addition, we compare the MOSAiC aerosol observations to long-term data records from land-based sites across the Arctic to provide context on interannual variability during the year of the MOSAiC campaign. This comparison allows us to gain new insights on aerosol properties across the Arctic region, including over the Arctic Ocean, during a full annual cycle. Furthermore, our analysis provides a snapshot of the processes that influence Arctic aerosols, which are subject to change in the rapidly warming Arctic. These results will be important for investigating the impacts of climate change in future Arctic aerosol studies.

120

2 Methods

The MOSAiC campaign was designed to address the scarcity of data available from the ~~central~~ Arctic Ocean region. In fact, the MOSAiC expedition was the most comprehensive expedition ~~to the central~~ in the Arctic Ocean in history, and researchers evaluated the ~~central~~ Arctic Ocean environment for an entire year from various perspectives, including oceanography, sea ice dynamics, biology, meteorology, and atmospheric physics and chemistry. The possible insights from the MOSAiC expedition are numerous, as the collocated measurements of various Arctic system processes allow for interdisciplinary analyses of interlinked environmental processes (Shupe et al., 2022; Nicolaus et al., 2022; Rabe et al., 2022).

125

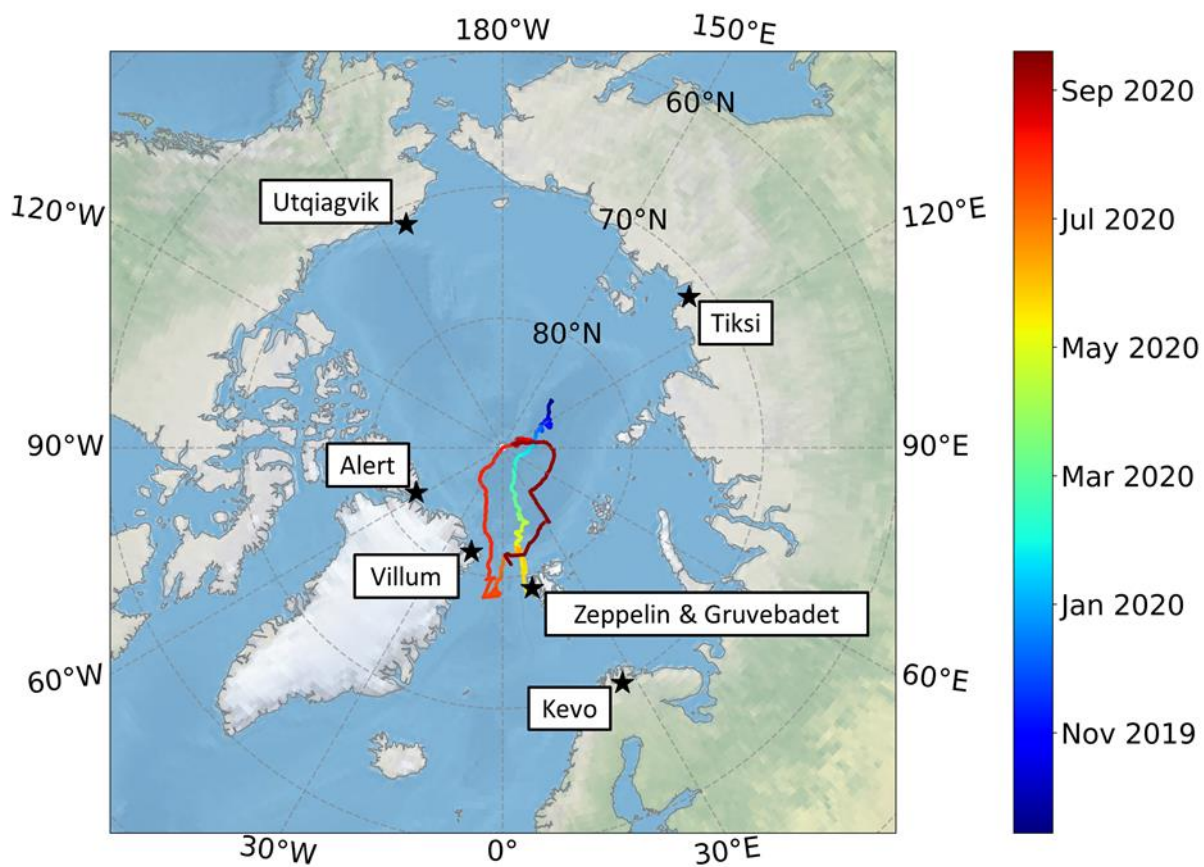
2.1 The MOSAiC drift

130

The main premise of the MOSAiC expedition was to collect a year-long record of data while drifting in the Arctic sea ice on board the research vessel *Polarstern*. A map of the drift path is given in Fig. 1. The drift started in early October 2019 at 85°N, 136°E when *Polarstern* anchored to a suitable ice floe (Krumpen et al., 2020). Throughout the following year, the ship drifted passively in the sea ice beside the selected ice floe, with a few exceptions. These exceptions include a short cruise to Svalbard, Norway for a crew exchange between mid-May and mid-June 2020 and a cruise to relocate the ship further north after the drift

135

resulted in the ship entering the marginal ice zone at the end of July 2020. It is worth noting that the instruments used in this study were installed on *Polarstern* and were operational during these cruises as well, except when *Polarstern* was in the territorial waters of Svalbard between June 3 – June 8. The measurements for the campaign concluded at the end of September 2020. Apart from the crew exchange in Svalbard and a brief period when the ship entered the marginal ice zone at the end of July, all these measurements were obtained in the central Arctic Ocean above 80°N within the pack ice, referred to hereafter as the central Arctic.



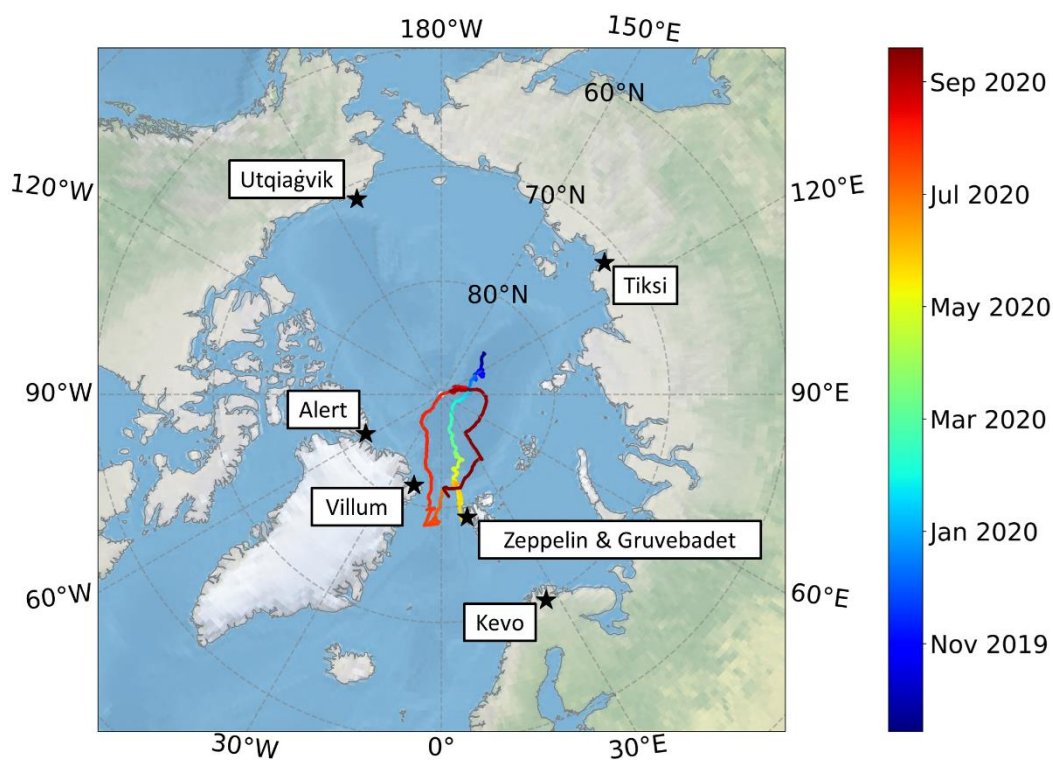


Figure 1: The drift track during MOSAiC. The color bar depicts the time of year. The black stars show the location of the land-based sites across the Arctic that are referred to in this study. Note that Zeppelin and Gruvebadet are both located in Ny-Ålesund, Svalbard, Norway, however, the two stations are located at different altitudes. Gruvebadet is ~50 m above sea level, whereas Zeppelin is ~500 m above sea level.

2.2 Aerosol size distribution and number concentration measurements

In this study, a commercial Scanning Mobility Particle Sizer (SMPS) (TSI, inc.) was used to measure the ambient PNSD during the MOSAiC campaign from 11 October 2019 to 1 October 2020. The ambient PNC was calculated by integrating over the PNSD, which was evaluated in three size categories in this study: 10 – 25 nm (nucleation mode), 25 – 100 nm (Aitken mode), and 100 - 500 nm (accumulation mode). The PNSD data was also used to calculate the condensation sink using the method described in equations 5 & 6 in Kulmala et al. (2012).

The SMPS was installed in the Aerosol Observing System (AOS) container that was operated as part of the United States Department of Energy Atmospheric Radiation Measurement (ARM) user facility onboard *Polarstern*. The ARM AOS is a standardized measurement container that contains a suite of aerosol measurement instrumentation. The AOS used during the

MOSAIC expedition was deployed as part of a larger ARM Mobile Facility (AMF) that was designed for ship-based deployments. The AOS was located on the port side of *Polarstern*'s bow and was equipped with a total aerosol inlet that was 5 m in length, which corresponds to an inlet height of approximately 18 m above the sea surface. The internal temperature of the AOS container was maintained between 18-22°C during the campaign. A brief description of the SMPS is provided here; a more thorough explanation of the ARM SMPS instruments and their operating principles can be found in Kuang (2016), and for a detailed description of the other aerosol instrumentation in operation inside of the AOS container, as well as an overview of the AOS measurement objectives, design, and deployment history, refer to Uin et al. (2019).

The SMPS consisted of an electrostatic classifier (TSI model 3082), a krypton aerosol neutralizer (TSI 3077a), a differential mobility analyzer (TSI model 3081), and a condensation particle counter (CPC) (TSI model 3772). An impactor with a diameter of 0.071 cm was placed in front of the inlet of the SMPS, corresponding to a cut-off diameter of ~720 nm. The ambient air sample was dried with a Nafion dryer (Perma Pure) prior to sampling. The SMPS was operated with an inlet flow rate of 1 lpm and a sheath flow rate of 5 lpm. Under these conditions, the SMPS was able to perform 5-minute scans for particles between 10 – 500 nm in diameter. To verify and maintain the operation of the SMPS, weekly zero tests were performed with a high-efficiency particulate air (HEPA) filter placed on the instrument inlet, the inlet flow rate was measured, and the impactor was cleaned.

For PNC closure analysis (not shown here), the SMPS integrated PNC was compared to the particle concentrations reported from a collocated standalone CPC (TSI 3772). This CPC, called the CPCF (CPC Fine), was operated with a lower limit cutoff diameter, D_{50} , of 10 nm. The concentration closure analysis identified that SMPS agreed within 15% of CPC PNC for 85% of the time during the campaign. The concentration data from the CPCF was also used to create the pollution mask that was applied to the SMPS size distribution data, as described below in Section 2.4. For more details on the CPCF, refer to Kuang (2016b).

PNSD data from other land-based sites across the Arctic (see Fig. 1) were evaluated to compare with the MOSAIC observations. These land-based sites and the corresponding time ranges include [the Dr. Neil Trivett Global Atmosphere Watch Observatory at Alert \(referred to hereafter as Alert\)](#), Nunavut, Canada (2011–2018); [the Tiksi International Hydrometeorological Observatory \(referred to hereafter as Tiksi\)](#), Russia (2010–2018); [the NOAA Barrow Atmospheric Baseline Observatory, near the village of Utqiaġvik, Utqiaġvik](#), Alaska, United States (referred to hereafter as [Utqiaġvik](#)) (2007–2015); [the Villum Research Station \(Villum\)](#), Greenland, Denmark (2010–2020); and [the Zeppelin observatory](#), Svalbard, Norway (2010–2020). Information on measurement sites, instrumentation, processing, and quality control is available for Alert (Croft et al., 2016; Freud et al., 2017), Tiksi (Asmi et al., 2016), [Utqiaġvik \(Kolesar-Freud et al., 2017\)](#), Villum (Nguyen et al., 2016), [and Zeppelin \(Tunved et al., 2013\)](#).

2.3 Black Carbon

The black carbon (BC) mass concentration was measured using an aethalometer (AE33, Magee Scientific, Berkeley, California, USA) at a wavelength of 880 nm. The instrument was installed in the *Swiss* container, which was located on the starboard side of the *Polarstern*'s bow, directly adjacent to the AOS container (refer to Fig. 3 in Shupe et al., 2022). The aethalometer sampled behind an automated valve, which switched hourly between a whole air inlet and an interstitial inlet with an upper cut-off size of 1 μm (Beck et al., 2022). The inlet flow was set to 2 lpm and was verified biweekly. The instrument collected mass concentration data at a time resolution of one second, which was then averaged to 10 minutes for further analysis. Outliers in the BC data of more than 3 times the standard deviation on an hourly moving window were removed. We used the standard mass absorption cross-section value of $7.77 \text{ m}^2 \text{ g}^{-1}$ and no Cref value (Drinovec et al., 2015). Note, we use the abbreviation BC throughout the manuscript, while properly this measurement ~~represents~~ should be referred to as equivalent BC (eBC).

BC and EC mass concentrations from other land-based sites across the Arctic spanning several decades are included for a comparison with the BC measurements from MOSAiC. These land-based sites and the corresponding time ranges include Alert, Nunavut, Canada (1989–2017, Aethalometer); ~~the~~ the Gruebadet Atmosphere Laboratory (Gruebadet), Svalbard (2010–2018, Particle Soot Absorption Photometer (PSAP), ~~<https://data.iadc.cnr.it/erddap/tabledap/ebe-2010-2020.html>~~); the Kevo Subarctic Research Station (Kevo), Finland (1964–2010, elemental carbon, thermal optical method); Tiksi, Russia (2009–2018, Aethalometer); Utqiagvik, ~~Utqiagvik~~, Alaska, United States ~~–~~ (1991–2020), PSAP, Continuous Light Absorption Photometer (CLAP), Aethalometer); Villum, Greenland (2009–2018, elemental carbon, thermal optical method); and Zeppelin, Svalbard, Norway (2001–2017, aethalometer). eBC data from Villum, Greenland between 2018 – 2020 were obtained using an Aethalometer, as detailed in Thomas et al. (2022). For details on the measurements of the eBC and elemental carbon mass, we refer to Schmale et al. (2022).

2.4 Pollution masking

One of the challenges associated with ship-based campaigns is contamination of the ambient sample by emissions from the ship stack or other local pollution sources ~~(Beck et al., 2022)~~. A pollution detection algorithm was applied to the CPCF particle concentration data, which was collocated in the ARM AOS container, to identify and remove pollution. The details of the pollution detection algorithm are discussed in Beck et al. (2022). As input parameters for the pollution detection algorithm, threshold parameters of $m=0.64$ and $a=0.5$ were used for the derivative filter, and a median time of 60 minutes was used with an interquartile range threshold of 1.3 (see Beck et al. (2022) for details on the parameters). The pollution mask for the CPCF was calculated at a time resolution of 1 minute. The CPCF pollution mask was then used to remove scans from the SMPS influenced by pollution. If any minute during the 5-minute SMPS scans was flagged as polluted according to the CPCF mask, the entire 5-minute scan was discarded. 42% of the annual aerosol size distribution dataset remained after the application of

the pollution detection algorithm. Refer to Fig. S1 in the Supplementary Information (SI) for an example of the pollution detection algorithm's use on the SMPS data and Fig. S2 for an overview of the data coverage during each month after pollution removal.

The BC mass concentrations were also masked using the pollution masking algorithm developed by Beck et al. (2022). Particle concentrations obtained from a CPC (TSI, model 3025) which was collocated with the BC instrument inside the *Swiss* Container were used for masking the BC data. Note that two different CPCs were used for pollution masking in various instruments due to the differences in instrument location during the campaign. The choice of CPC used for pollution detection corresponds with the location of the instruments in different measurement containers (the ARM AOS and *Swiss* container) with differing inlets such that the pollution masks are more representative of the measurements from the specific inlets of the two different containers.

2.5 FLEXPART simulations

Backward simulations with the Lagrangian particle dispersion model FLEXPART v10.4 (Pisso et al., 2019) were performed to determine the origins of the prevailing air masses and to evaluate the contribution from different source regions. The model has been driven with hourly meteorological data from the ERA5 reanalysis with 0.5° x 0.5° resolution. A cluster of 100,000 atmospheric particles was initialized every three hours along the ship track and traced backward in time up to 30 days. The simulations were computed for a passive air tracer without removal processes as well as for a black carbon (BC) tracer with wet and dry removal. The main output from FLEXPART consists of 3-dimensional fields of emission sensitivity, sometimes also referred to as “source-receptor relationship” (SRR) (e.g., Seibert and Frank, 2004), which describes the influence that a unit emission flux intercepted by atmospheric transport would have on a tracer concentration at the ship's location. We will focus for this paper on the emission sensitivity close to the surface (below 100 m, the lowest model output layer), also referred to as “Footprint Emission Sensitivity” (FES), as most emissions of the tracers that we are interested in occur at the surface. When multiplying the FES with emission flux data from an emission inventory, we also obtain source contribution maps (e.g., Fig. S11), and by spatial integration of the source contributions, we obtain the simulated concentration at the ship location (e.g., Fig. 8).

2.6 Source region identification using an inverse model

Inverse modeling (Seibert, 1998) was used in this study to identify—and derive the strengths of—potential source regions of emissions or their precursors based on in situ measured concentrations and the SRR matrix produced by the FLEXPART dispersion model simulations. The potential sources are identified by solving Eq. (1):

$$y = Ax + n , \tag{1}$$

where y is the measurement vector, x is the source term, A is the transport matrix—here the surface FLEXPART SRR—and n is the error.

Solving the equation for x is not trivial, and in this study, we overcome the difficulty by (1) reducing the dimensionality of the A matrix to 200 groups by clustering its cells based on the time series of their influence (Aliaga et al., 2021; Faletto and Bien, 2022), and (2) by imposing an elastic net regularization (similar methods are proposed by Martinez-Camara et al. (2014) and references therein) with iteratively relaxing constraints (36 iterations for the hyperparameters). The result of this procedure creates a set of 36 source region foot-print maps (e.g., Fig. S10) from which we chose an iteration that compromises between capturing most of the a priori known source areas while ignoring noisy regions. Finally, we can obtain a time series of potential influence from the identified source region polygons to provide insight into seasonal variation in the source regions.

2.7 Aerosol size distribution cluster analysis

The PNSD measurements provided by the SMPS from MOSAiC were aggregated into ~~hourly (4914 for MOSAiC) and~~ daily (297) arithmetic means. The daily PNSD measurements were then normalized to their vector length, and a cluster analysis was performed using k-means according to the Hartigan-Wong method (Hartigan and Wong, 1979), which is an established method for evaluating aerosol size distribution characteristics (Beddows et al., 2009; Beddows et al., 2014; Freud et al., 2017, Pernov et al. 2022). By normalizing the data to the vector length, the shape of the PNSD, rather than its magnitude, was clustered. Since the cluster analysis was performed on the daily PNSD measurements, the resulting clusters show the typical PNSD for a day, where each day of PNSD data is assigned to a single cluster. Note that we did not set exclusion criteria for the amount of 5-minute data available on a given day when calculating the daily average PNSDs, as exclusion criteria only served to limit the amount of data without any notable changes to the cluster definitions. The cluster analysis was carried out using 2 to 10 clusters, of which the 9-cluster output best described the data. The optimum number of clusters (9) was derived using the Dunn Index and Silhouette Width, as previously described in similar studies (Dall’Osto et al., 2017; 2019). The results of the PNSD cluster analysis are described in Sections 3.2 and 3.3.

2.8 Ancillary atmospheric measurements

Environmental variables of ancillary atmospheric measurements are included to provide context for the conditions in the ambient atmosphere during the MOSAiC campaign. These measurements include ambient air temperature and global radiation, or short-wave downwelling radiation. Ambient air temperature was measured using a Vaisala HMP155 located 29 m above the sea surface. Global radiation was measured using a Pyranometer (Kipp & Zonen, CM11) installed 34 m above the surface. Both sensors are part of the meteorological observatory installed onboard *Polarstern* that operates continuously during ship operation. Operation of the sensors was checked daily throughout the campaign, and the datasets were quality controlled to remove erroneous data points. Please see the section on data availability for DOIs to the specific datasets used herein.

3 Results and discussion

285 3.1 FLEXPART source region analysis

Figure 2 presents the FES of various source regions, including Europe, ocean, sea ice, North Asia, and North America, throughout the MOSAiC campaign using the FLEXPART simulation data. We present this analysis first, as it provides useful information for the aerosol measurements discussed in later sections. Overall, the ocean and sea ice regions had the most prevalent surface influence during the year. There is a clear seasonal cycle in the surface influence from the other source regions (Europe, North Asia, and North America). Most notably, the combined influence from these continental regions further south had relatively higher overall continental FES values from November - April, especially from North Asia. The combined influence ~~Much lower contributions from the~~ continental regions ~~was~~ observed to be much lower during May – July. The results then show an increase in the surface influence from the continental regions towards the end of the campaign in August and September.

295 These FES results are as expected and agree with previous analyses of air mass transport patterns in the Arctic. Transport times from southerly source regions in the central Arctic are substantially longer in summer than winter (Stohl, 2006). During summer, ~~a shrinking effect of~~ the polar dome, ~~or~~ a meteorological boundary region that varies in time and space around the Arctic, inhibits air mass advection, such that the horizontal transport of aerosol particles northward at the surface of the central Arctic is limited by regional meteorological characteristics (Bozem et al., 2019). The continental regions further south are characterized by anthropogenic influence, and hence the seasonality of these transport patterns is also consistent with previous observations of Arctic Haze (Tunved et al., 2013), as discussed in Sections 3.2.1 and 3.2.2 below. The enhancement in the surface contributions from continental regions in August and September may be explained according to the location of *Polarstern* during MOSAiC. In August and September, *Polarstern* transited further north and into the eastern sector of the central Arctic (Fig. 1), which may impact the influence of different source regions compared to the ship's location earlier in the summer due to changes in transport patterns between the two regions (Stohl, 2006).

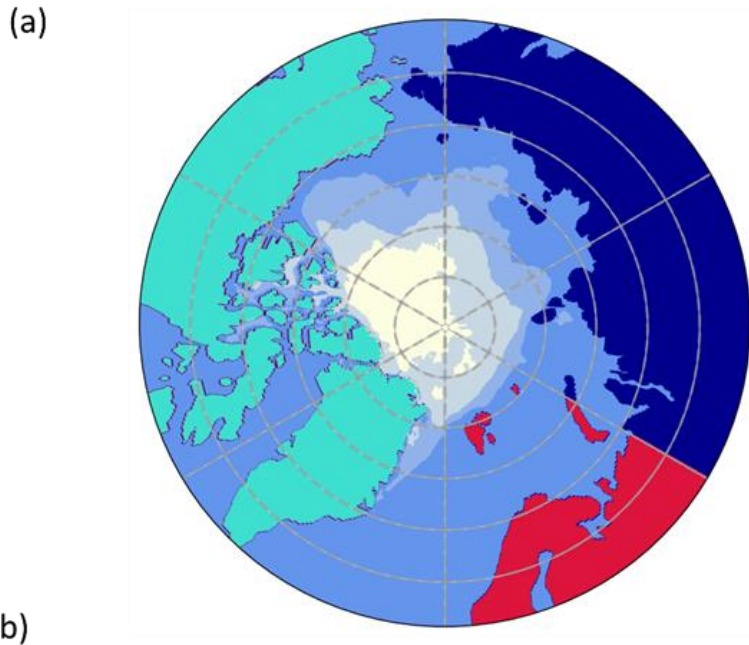


Figure 2: The seasonality of surface influence from air mass source regions using FLEXPART. A geographical mask (a) was applied to the FLEXPART air tracer data to quantify the FES associated with each geographical source region (b). The FES was determined from the FLEXPART air tracer data within the lowest 100 meters of the atmosphere and was used to identify the influence of different source regions on the observed aerosol throughout the year. The FLEXPART air tracer data within the lowest 100 meters of the atmosphere, or the FES, was used to identify the influence of different source regions on the observed aerosol throughout the year. The FES was quantified for each source region by applying a geographical mask (a) to the FLEXPART air tracer data.

315 **3.2 k-means aerosol size distribution cluster analysis results**

As previously mentioned, the k-means cluster output identified nine aerosol clusters, however, similar cluster types (accumulation mode and nucleation mode clusters) were further grouped manually to simplify interpretation. The result of the cluster analysis after manual grouping yields five clusters that broadly describe the Arctic aerosol population, as shown in Fig. 3. Each cluster is presented as the average of all days associated with each cluster type, and the clusters were named according to the characteristics of the average daily distributions. Refer to Fig. S3 for the average distributions of the nine aerosol clusters before manual grouping and to Fig. S4 for disaggregated hourly averages of the nine daily PNSD clusters. The grouped clusters include a nucleation mode cluster, an Aitken mode cluster, an accumulation mode cluster, a bimodal cluster, and a clean cluster. In the following, a brief description of the cluster characteristics is given. The nucleation mode cluster has peak concentrations below 25 nm, indicative of secondary aerosol processes and growth (Kecorius et al., 2019). The Aitken mode cluster has a diameter mode at 46.1 nm, which suggests aging of new particles (Lawler et al., 2021). The combined accumulation mode cluster is characterized by an average mode at 174.5 nm (modes of 181.1, 224.7, 174.7, and 117.6 nm for all accumulation mode clusters, see Fig. S3), and likely represents aerosols of anthropogenic origin (Lange et al., 2018). The bimodal cluster has a peak in both the Aitken and accumulation modes, with modal diameters of 46.1 and 135.8 nm, respectively, indicating that this cluster has possible contributions from natural as well as anthropogenic sources. The clean cluster has the lowest overall concentration compared to the other clusters and features two modal features that correspond to the nucleation and accumulation modes, which again suggests possible influence from natural and anthropogenic sources. These clusters are generally similar to previous cluster results from other Arctic stations (Dall'Osto et al., 2017; Pernov et al., 2022). The differences mainly arise from different periods, different size ranges, different temporal aggregation, and the fact that land-based stations are stationary while *Polarstern* drifted in the central Arctic Ocean. The occurrence of each cluster throughout the year is presented in the following section to supplement the analysis of the annual cycle in the PNSD.

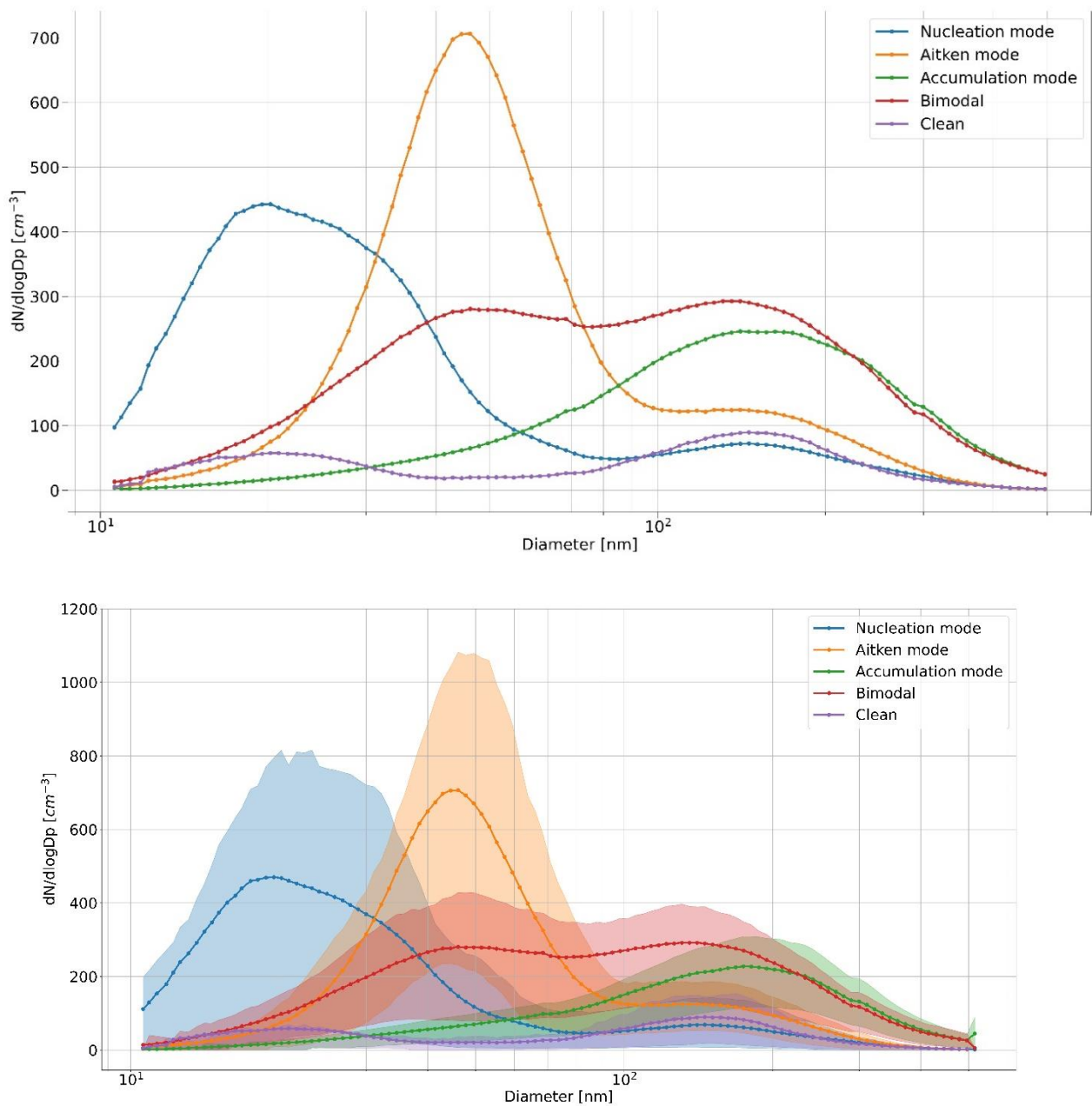


Figure 3: The average distributions of the PNSD clusters. The particle concentration in units of $dN/d\log D_p$ is presented for the average of all days in each cluster according to the particle size. The shaded regions show the interquartile range associated with the PNSD data for each cluster type. -Note that the nucleation and accumulation mode clusters presented here are the result of manually grouping the two nucleation mode clusters and four accumulation mode clusters into a single nucleation and accumulation mode cluster, respectively. Refer to Fig. S3 for the original 9 cluster output.

3.3 Annual cycle of the aerosol size distribution

The annual cycle of the PNSD collected during MOSAiC is presented as monthly median distributions together with the monthly air temperature in Fig. 4, and the fraction of occurrence of each grouped PNSD cluster is shown in Fig. 5. For further context, the annual cycle in the PNC according to different size modes is given in Fig. 6. Refer to Fig. S5 in the SI for the PNSD plot in daily resolution. Monthly representations of the size distributions are shown in Section 3.5 with the comparison to land-based aerosol observations. In general, the most pronounced differences in the PNSD occur between winter and summer, which can be explained according to seasonal transitions in the meteorology and atmospheric dynamics of the Arctic.

In this section, we present and discuss the changes in the PNSD according to the season.

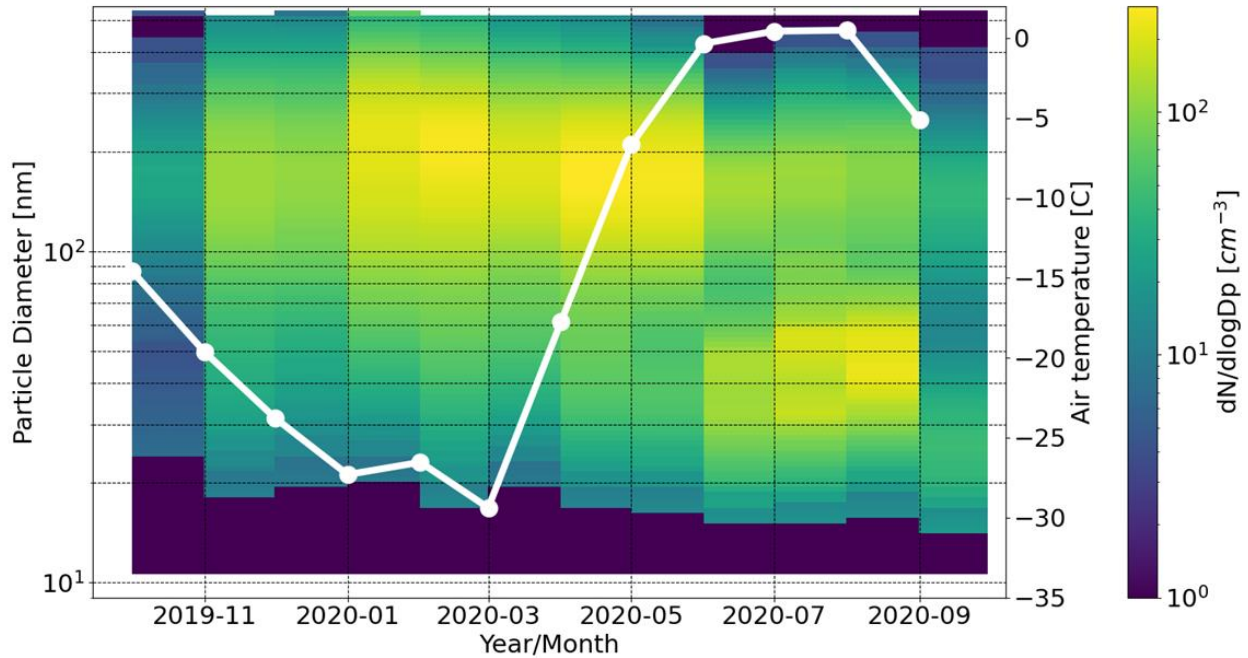


Figure 4: The annual aerosol size distribution and air temperature in the central Arctic during MOSAiC. The size distribution data are presented as monthly medians of the PNSD bins, where the concentration of the bins is represented by the color bar in units of $dN/d\log D_p$. The surface air temperature (in white), depicted as monthly averages, is included to give context to seasonal changes in the aerosol size distribution.

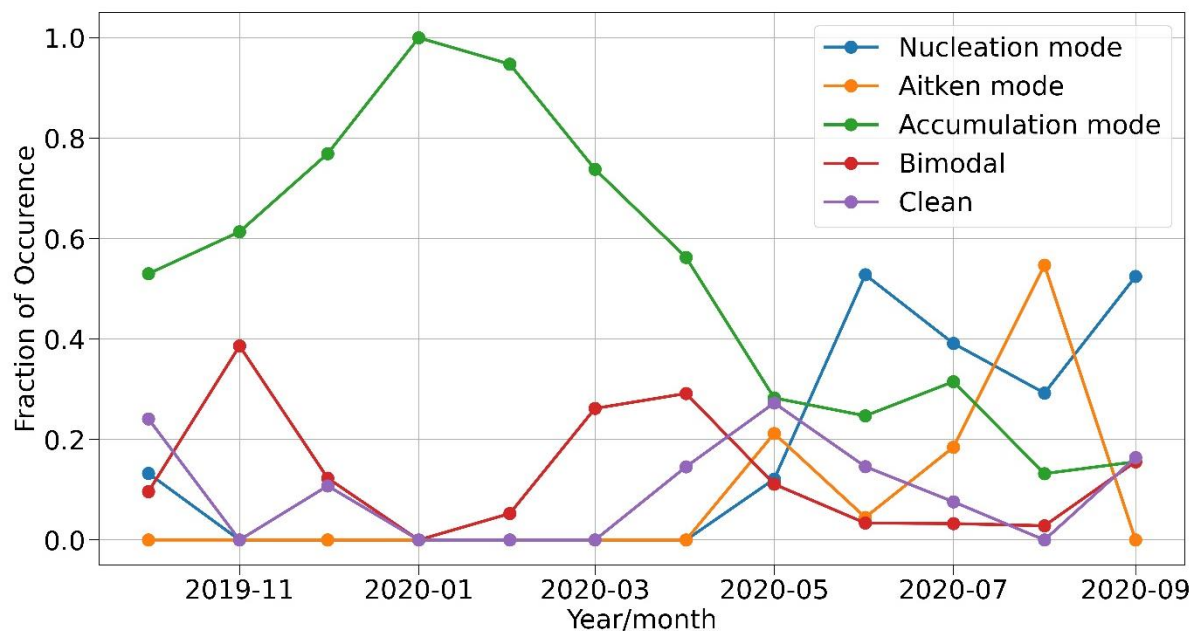


Figure 5: The monthly fraction of occurrence for the PNSD clusters. The fraction of occurrence shows the total number of days per month that each cluster is represented compared to all other PNSD clusters.

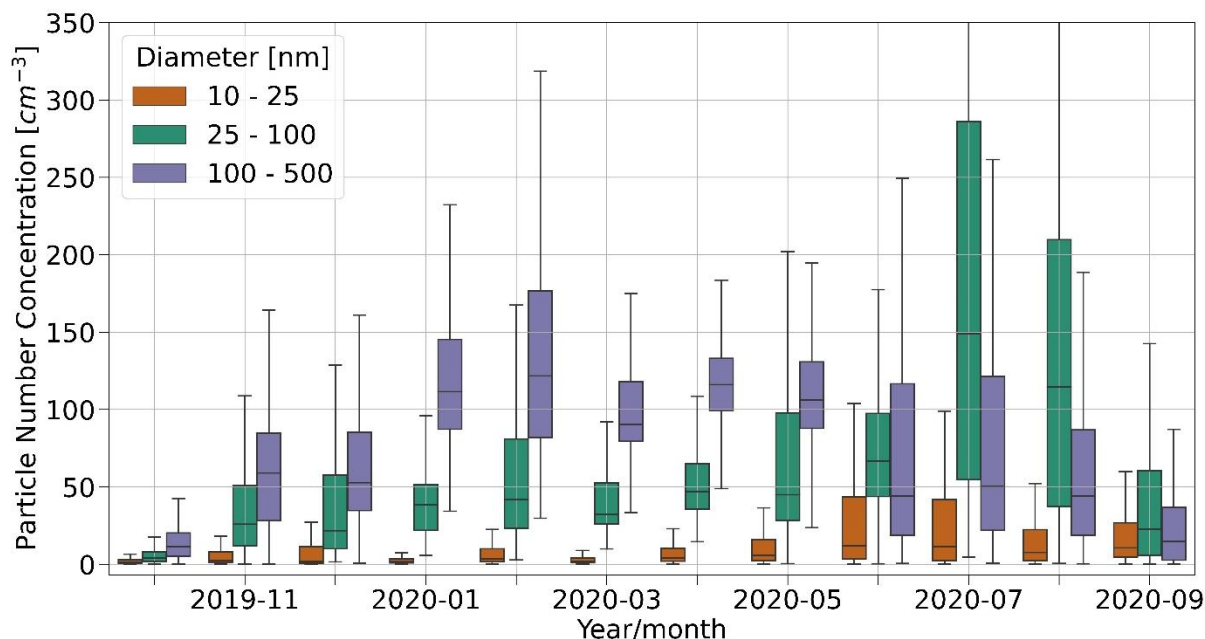


Figure 6: The annual cycle in the PNC during MOSAiC in different size ranges. The box plots represent the PNC as monthly medians of the integrated SMPS data after the removal of local pollution sources. The size ranges are defined as 10–25 nm (nucleation mode, orange), 25–100 nm (Aitken mode, green), and >100 nm (accumulation mode, purple).

3.3.1 Winter

365 Winter in the Arctic (December – February) is characterized by complete darkness, cold surface temperatures (average air
temperature during MOSAiC between December 2019 – February 2020 = $-26\text{ }^{\circ}\text{C}$, std = $5\text{ }^{\circ}\text{C}$), and relatively stable sea ice
conditions under a strong, dry surface atmospheric inversion layer typical for that season (Bradley et al., 1993). The dry and
stable atmospheric conditions create a situation where horizontal transport of aerosol from lower latitudes can occur due to
370 southerly, continental source regions, as previously discussed (Section 3.1, Fig. 2). These advected air masses arriving in the
central Arctic are often influenced by anthropogenic particulate pollution episodes, especially during the winter season,
commonly known as Arctic Haze (Quinn et al., 2007). The Arctic Haze season can extend also beyond the winter months,
from late fall through spring. As a result, the PNSD observed during the MOSAiC expedition is dominated by accumulation
mode particles with an average modal diameter of 186 nm (std = 23 nm) from November 2019 to May 2020. The k-means
375 cluster analysis of the PNSD data, as shown in Fig. 5, identifies that accumulation mode clusters occur 70% (std = 24%) of
the time during this period (November to May) on average, with a maximum during January (100%) and a minimum during
May (28%). The average monthly accumulation mode PNC (particle diameters $> 100\text{ nm}$) between November – May is 92 cm^{-3}
(std = 27 cm^{-3}), and we observed a maximum accumulation mode concentration of $\sim 120\text{ cm}^{-3}$ during February. Other
studies have observed that Arctic Haze peaks in April (Tunved et al., 2013; Freud et al., 2017), however, in this dataset, there
380 does not appear to be a significant change in the accumulation mode PNC between January – May (avg = 108 cm^{-3} , std = 9 cm^{-3}).
It is also noteworthy that the concentration of accumulation mode particles is less pronounced during late fall/early
winter after the sun has set and increases as winter progresses (Figs. 5 & 6). More specifically, the accumulation mode PNC
was $\sim 50\text{ cm}^{-3}$ in November and December, followed by stable concentrations twice the magnitude from January – May.

385 The FLEXPART FES analysis also identifies that the continental source regions, particularly North Asia, have a distinct
influence during this time of year (Fig. 2). The influence from North Asia is especially pronounced during January and
February. These regions are characterized by anthropogenic activities, and combined with the favorable transport conditions
during winter, this observation is consistent with the highest accumulation mode PNC observed during February.

3.3.2 Spring

390 Arctic haze persists during spring (March – May) because the conditions remain favorable for air mass transport from lower
latitudes, as previously discussed. Previous research has identified that air mass transport into the Arctic from lower latitudes
is more favorable in winter and spring than in summer due to regional atmospheric conditions, especially cold surface
temperatures (Stohl, 2006; Bozem et al., 2019). Our observations of ambient air temperature support these previous studies;
the mean monthly temperatures show a distinct pattern regarding the presence of Arctic Haze in the PNSD (Fig. 4). When the

395 surface temperatures are still significantly below freezing, including the period during the spring months after polar sunrise
(see Fig. S6 for the annual cycle of global radiation and Fig. S7 for ambient air temperature in native resolution), we continue
to see the occurrence of Arctic Haze. These cold air masses during this time of year have low moisture content, and the stability
of the atmosphere remains intact due to such low temperatures, which limits both wet and dry depositional processes (Shaw,
1995; Garrett et al., 2011). While we do not assess precipitation during transport in this study, others have shown that
400 precipitation amounts are higher in summer than in winter/spring during air mass transport from lower latitudes to the Arctic
(Barrie, 1986; Freud et al., 2017; Pernov et al., 2022). Therefore, transport of anthropogenic emissions from lower latitudes is
possible, as particulate pollution has longer lifetimes under cold, dry, and stable conditions (Bradley et al., 1993). It is important
to note that our observations reflect the aerosol measured within the boundary layer at the surface of the central Arctic and do
not represent processes occurring aloft in the atmosphere. However, recent studies have shown that Arctic Haze aerosol
405 originating from biomass burning and anthropogenic sources can also be transported aloft over the central Arctic Ocean during
spring (Quennehen et al., 2012; Ohneiser et al., 2021; Engelmann et al., 2021).

May ~~itself~~ represents the time when the Arctic aerosol processes undergo a seasonal transition; the occurrence of the
accumulation mode from Arctic Haze subsides, and the nucleation and clean PNSD clusters become more prevalent during
410 the month (Fig. 5). As the Arctic environment continues to change, these temperature-dependent transport processes may
influence the future seasonality and prevalence of anthropogenic pollution as well as the transition to natural aerosols in the
central Arctic (Browse et al., 2012), which can yield important implications for radiative processes in the Arctic atmosphere
(Shindell and Faluvegi, 2009).

3.3.3 Summer

415 The summertime central Arctic (June – August) experiences warmer surface temperatures than the rest of the year (average
between June – August 2020 = 0.2 °C, std = 1.5 °C). When the average monthly temperatures rise above freezing at the end
of May (Fig. 4) and the entire northern hemisphere has warmed, instability in the atmosphere is more pronounced and
convection readily occurs in air masses that are in transit to the central Arctic. Enhanced convection, combined with higher
atmospheric moisture, has been observed to lead to efficient wet deposition processes, which serves as an efficient sink for
420 transported aerosol particles (Browse et al., 2012). Thus, the conditions become less favorable for horizontal advection of
particulate pollution that originates over regions with anthropogenic emissions. This effect was also demonstrated by Freud et
al. (2017) who observed that enhanced precipitation along air mass trajectories leads to efficient aerosol removal in the Arctic
during summer. In addition, air mass transport from source regions characterized by anthropogenic influence reduces during
summer, as discussed in Section 3.1 (Fig. 2).

425

The results of reduced aerosol transport to the Arctic are two-fold; there is a lower condensation sink, or a lower loss rate of
condensable vapors onto pre-existing aerosol surfaces (Fig. S8), and natural aerosols sourced from regional processes within

the Arctic become more prominent. Therefore, particles sourced from secondary processes (in both the nucleation mode and Aitken mode) dominate the PNSD within the central Arctic boundary layer during summer, which is clearly visible in the marked changes in the PNSD (Fig. 4) and the PNSD cluster analysis (Fig. 5) from June through August 2020. The nucleation mode cluster is most prevalent in June and July and accounts for 40% (std = 11%) of the days between June – August on average. The summer months are also characterized by lower concentrations of accumulation mode aerosol and an increase in Aitken mode particles, i.e., particles between 25 – 100 nm in diameter (Fig. 6), which are relevant for CCN formation (Leaith et al., 2016). The Aitken mode cluster peaks at 55% during August. In addition, we see the highest total PNC of the year during the summer months, with a maximum monthly median PNC $>250 \text{ cm}^{-3}$ in July. These observations agree with other studies that have identified the onset of NPF in Svalbard during late/spring and summer due to enhanced biological activity (Tunved et al., 2013; Dall'Osto et al., 2019; Lee et al., 2020) and frequent NPF and growth of Arctic aerosol in summer that may contribute to CCN (e.g., Collins et al., 2017; Chang et al., 2022; Beck et al., 2021). Note that the annual cycle of precursor gases to aerosol formation will be presented in another paper, and the mechanism of NPF during the year will be evaluated in a separate study.

Another summertime feature of the monthly PNSD is the presence of a “Hoppel minimum” (Hoppel, 1994), defined as a minimum concentration between the Aitken and accumulation modes in the size distribution from July through August (Fig. 4), which suggests that cloud processing has had an influence on the measured PNSD. The “Hoppel minimum,” which is well known to describe cloud processing in the marine boundary layer (Hoppel 1994; Zheng et al., 2021), is centered around ~90 nm (std = 13 nm) in this dataset. It is important to note that cloud processing can have an important role on the aerosol and CCN populations (Hatzianastassiou et al., 1998; Flossmann and Wobrock, 2019; Karlsson et al., 2022). We do not evaluate the impact of cloud processing further in this work, however, a total and interstitial inlet system capable of resolving cloud processing was operated in the *Swiss* container during MOSAiC (Beck et al., 2022). Future work will be carried out to evaluate the influence of cloud droplet residuals on the PNSD in the central Arctic during MOSAiC.

3.3.4 Fall

Global radiation in the central Arctic decreases rapidly in fall (September – November) (Fig. S6). The surface temperature begins to drop and onsets freezing in the sea ice, which will remain frozen throughout winter. We observed that the freezing onset occurred between late August and early September, which corresponds to the drop in the average monthly air temperatures below the freezing point (-1.8°C for saltwater) in September (Fig. 4). Interestingly, we still see the dominance of NPF processes in the PNSD in September despite the onset of freezing, as the nucleation mode remains the dominant aerosol cluster, accounting for up to 52% of the days during that month (Fig. 5). This observation agrees with the results of Baccarini et al. (2020), who observed NPF from iodic acid during the sea ice refreezing period that coincides with the observations of enhanced iodic acid concentrations during the year, which will be discussed in a separate study on precursor gases to aerosol

460 formation. Pernov et al. (2022) also observed a nucleation cluster to occur most frequently during September at Villum, which suggests that NPF occurs across the entire Arctic region during the freezing onset.

There is also a clear decrease in the PNC that occurs in mid-fall after the freezing onset and drop in temperature. The PNC falls to the lowest observed values of the year in October, with a monthly median $< 20 \text{ cm}^{-3}$ (Fig. 6). The low concentrations
465 can be attributed to the decrease in solar radiation and biological activity from the marine ecosystem, and hence lower concentrations of gas-phase aerosol precursors and therefore less nucleation and Aitken mode particles sourced from secondary aerosol formation processes. Furthermore, previous studies have identified that meteorological conditions in fall are not yet favorable for the advection of aerosols from lower latitudes, combined with enhanced wet depositional processes during transport, yielding low aerosol concentrations in the Arctic (Croft et al., 2016; Freud et al., 2017). Our observations support
470 these previous results and provide further observational evidence of these aerosol processes during the seasonal transition to winter.

3.4 Annual cycle of black carbon

Figure 7 presents the annual cycle of BC mass concentrations measured during MOSAiC (black solid line) together with the inverse modeling results. BC mass concentrations from MOSAiC reach an annual maximum between January – May 2020,
475 with an average BC mass concentration of 71.0 ng m^{-3} (std = 34.1 ng m^{-3}) during this time. Notably, the highest BC concentrations were observed in January and February (109.2 and 106.7 ng m^{-3} , respectively). Then, we observed much lower BC concentrations from June – October (average = 8.3 ng m^{-3} , std = 6.0 ng m^{-3}), followed by increasing concentrations again in November and December. For BC mass concentrations at a 10 min resolution, see Fig. S9 in the SI.

480 The timing and magnitude of the BC mass concentrations provide further context to the PNSD and source region observations. The annual trend in the BC data is, in general, consistent with the timing of Arctic Haze in the PNSD and air mass transport from southern regions, as previously discussed. Notably, the BC mass concentrations correspond with the increased source contributions from North Asia (Fig. 2) and the highest incidence of accumulation mode aerosol in the PNSD in January and February (Figs. 4, 5, & 6).

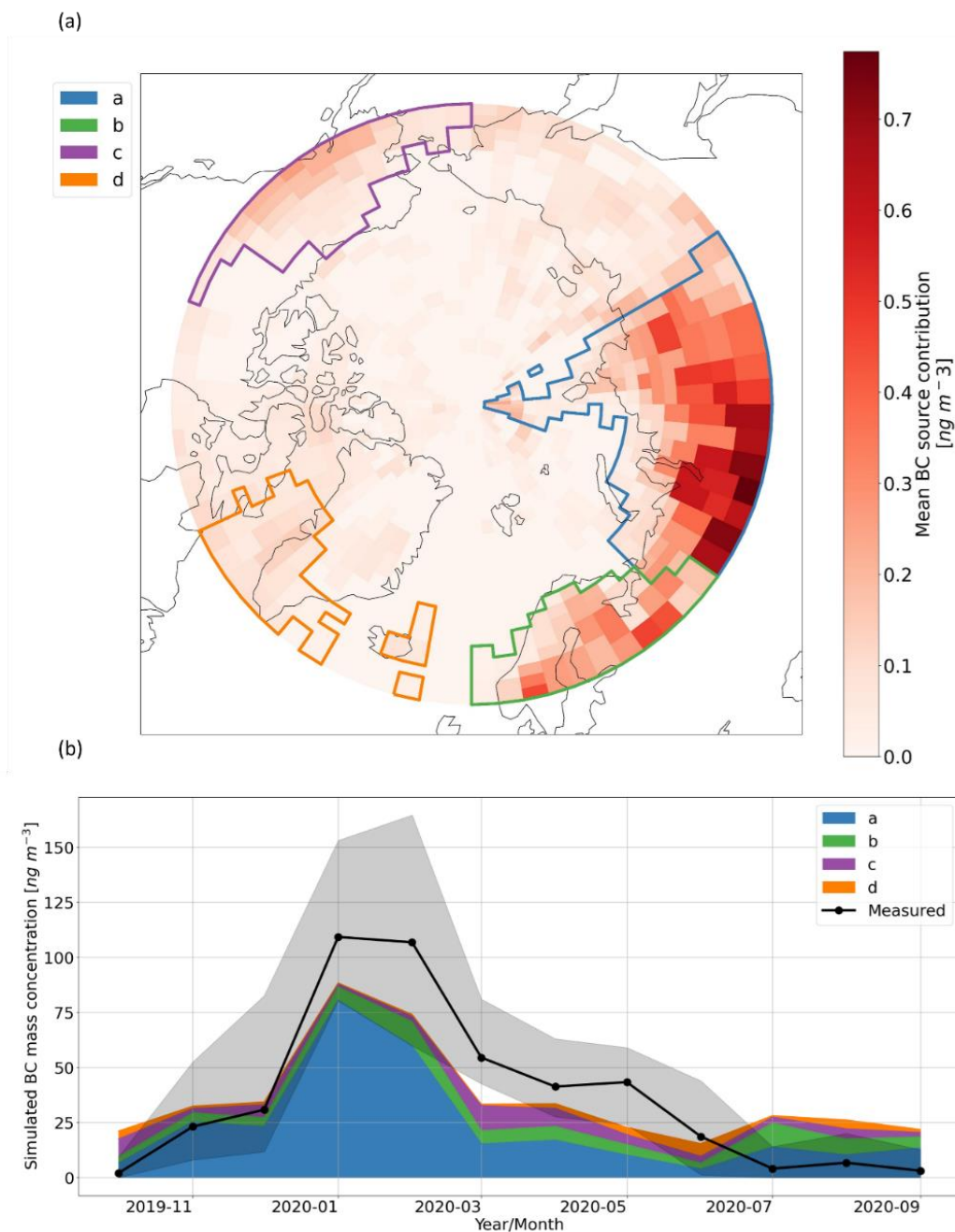


Figure 7: Annual cycle of BC mass concentrations and inverse model results. (a) The source contribution map for BC as simulated by the inverse model. The red color bar shows the annual average source contribution according to geographic location, determined using the FLEXPART air tracer data and the measured BC mass concentrations. The polygons on the map indicate the main source region clusters during the year, which were used to evaluate the simulated BC mass concentration time series. Polygon a, b, c, and d are generally characterized as Russia/Siberia, Europe, Alaska, and Greenland/Iceland, respectively. (b) The time series of source region cluster contributions to the simulated BC mass concentrations throughout the year. The BC mass concentrations measured during MOSAiC are included for reference, where the grey shaded region shows the interquartile range.

The inverse model was used to further identify the source regions contributing to BC during MOSAiC. The BC source region contribution map and simulated BC time series from the inverse model are presented in Fig 7. Refer to Fig. S10 for the maps showing the iterations of the hyperparameters using the elastic net regularization method used in the inverse model. According to the inverse model, source region polygon a (blue), which describes Russia/Siberia, is identified as the most significant contributor to BC mass during MOSAiC, especially during January and February. This region in Russia/Siberia encompasses Norilsk, which is known as a large source of anthropogenic pollution due to the prevalence of smelters. This outcome further agrees with the FLEXPART FES analysis, as well as the PNSD observations. A similar approach was used with the FLEXPART FES data and simulated anthropogenic BC emissions from the ECLIPSE v6b emission inventory, and the results agree very well with results from the inverse model, as shown in Fig. 8. The corresponding source contribution maps, showing the specific spatial distribution of the BC sources in the emission inventory, are given in Fig. S11. The results in Fig. 8 identify North Asia as the dominant anthropogenic source region of BC during the year, with a peak in BC mass during January. This is consistent with the inverse model and further highlights the influence of anthropogenic pollution from North Asia in the central Arctic during winter. In addition, the emission inventory source contribution maps (Fig. S11) show very similar trends in the spatial distribution of BC sources compared to the source regions identified by the inverse model, which provides further validation of these results.

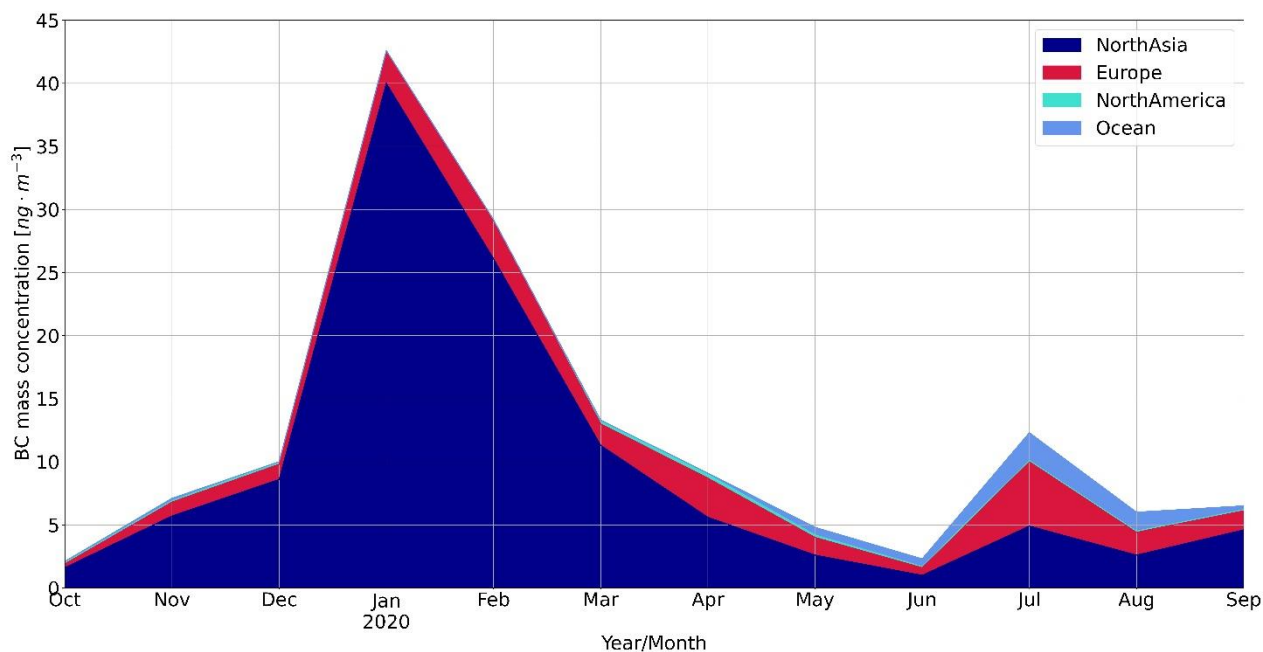
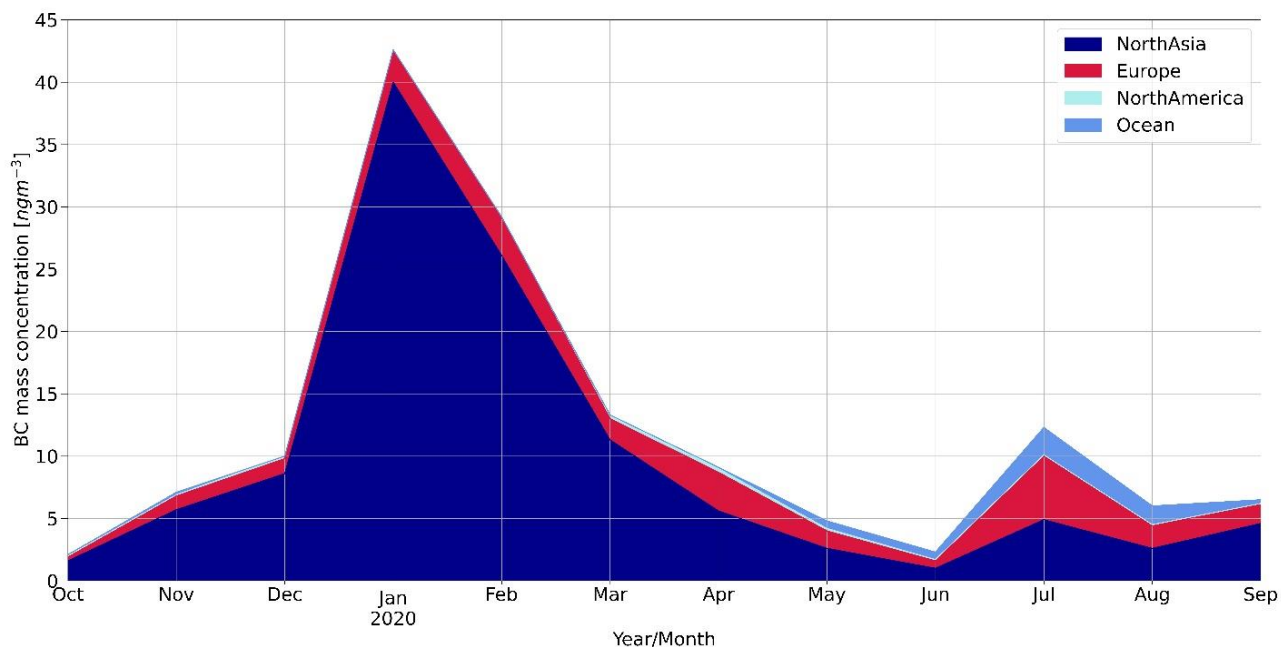


Figure 8: Simulated source regions of anthropogenic BC concentrations from the ECLIPSE emission inventory. The BC mass concentrations are presented as monthly averages for each of the source regions using the FLEXPART simulations and the ECLIPSE v6b emission inventory. The source region definitions correspond to the geographical source region mask as shown in Fig. 2.

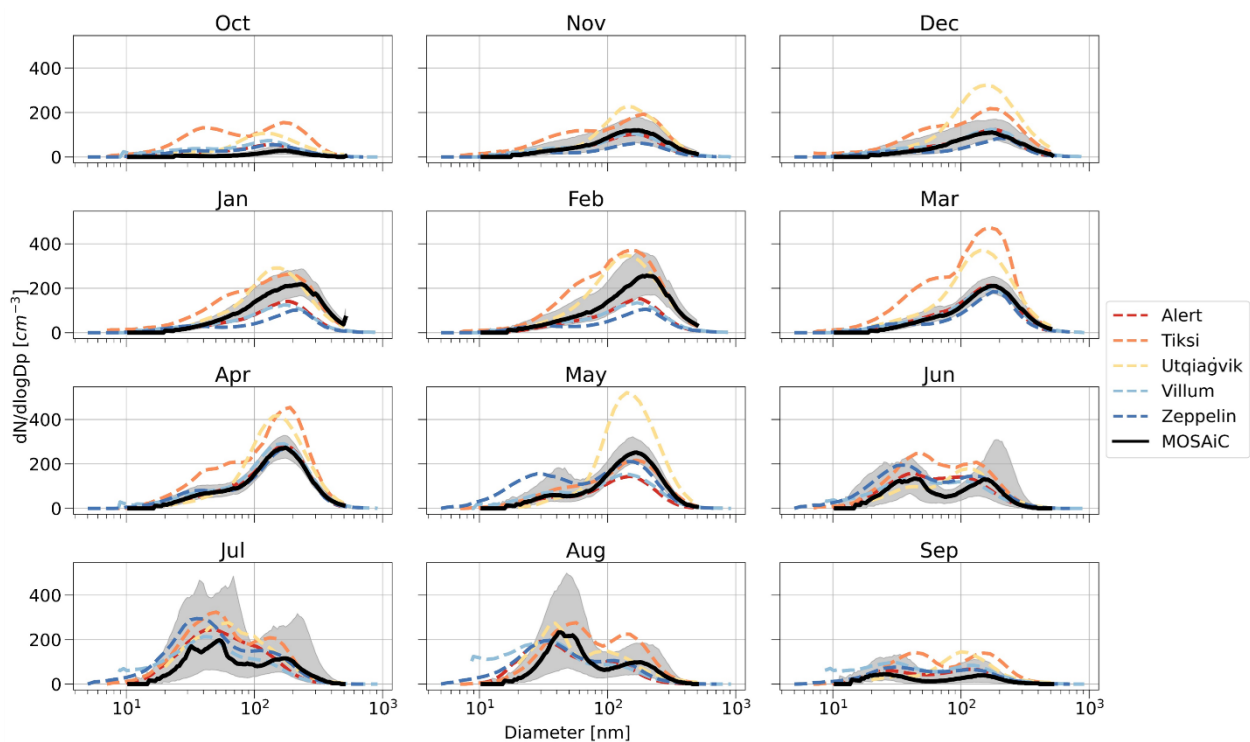
3.5 Comparing MOSAiC observations to land-based sites

515 To provide additional context to the MOSAiC aerosol data, we compared the PNSD, PNC, and BC data to several land-based sites across the Arctic (see Fig. 1 for the site locations). There were two complementary approaches for this comparison: (1) a comparison of MOSAiC with long-term measurements from the land-based sites spanning several decades and (2) a comparison between MOSAiC and the sites where data was available during 2019 – 2020 ([Alert](#), [Utqiaġvik](#), [Villum](#), and [Zeppelin](#)). Since the MOSAiC data is limited to a single year, these two comparison approaches provide insight into the effects of interannual variability on the observations during the year of the MOSAiC campaign.

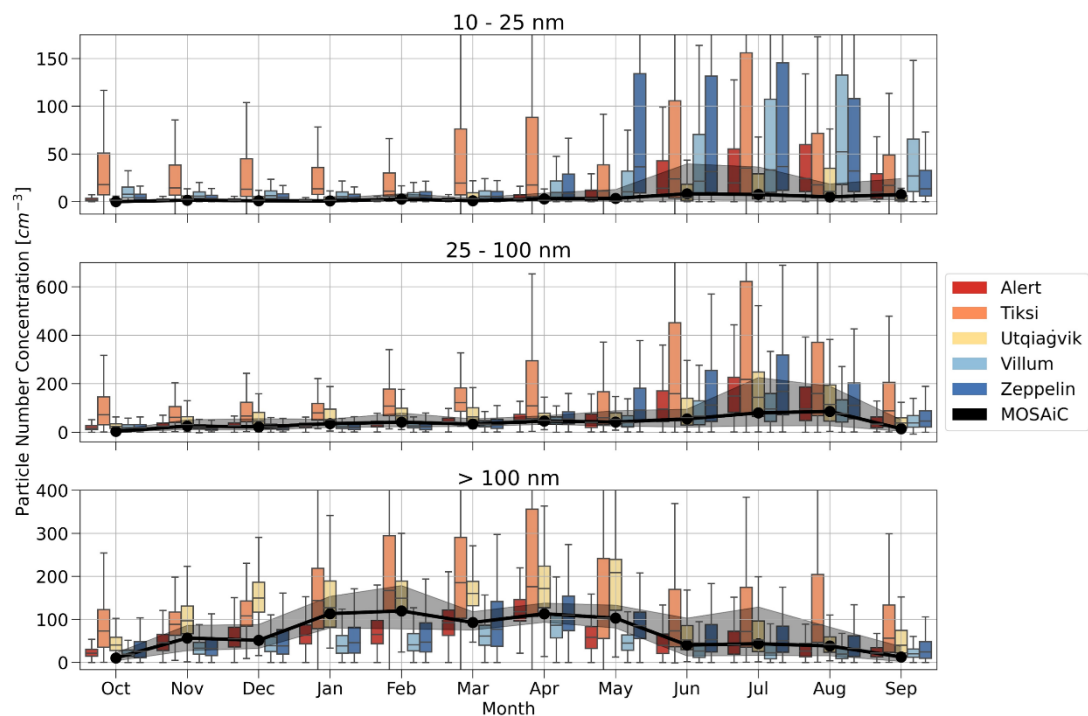
3.5.1 Comparison to long-term aerosol observations

Figure 9 presents the comparison of MOSAiC PNSD and PNC measurements with the long-term aerosol observations from the land-based sites, and Figure 10 shows a similar comparison for BC mass concentrations. Figure 9a shows similar features in the annual cycle of the PNSD at all land-based sites, including the buildup of Arctic Haze during winter and spring, secondary aerosol formation processes during summer contributing to particles in the smaller size bins, and the lowest aerosol concentrations of the year in the fall. Similar trends are also apparent in the PNC data for all sites (Fig. 9b), where the highest concentrations of smaller particles (in both 10 – 25 and 25 – 100 nm size ranges) are observed in summer and the accumulation mode particles (> 100 nm) dominate in the winter/spring. The same seasonal trend of Arctic Haze is observed in the BC data at all sites (Fig. 10). Such a result is not surprising, as aerosol observations from these sites have already been evaluated in detail (Freud et al., 2017; Schmale et al., 2022). The largest differences in the long-term observations among the land-based sites occur in Tiksi and Utqiaġvik, which typically have more variation in the shape of the PNSD and a higher PNC throughout the year. These differences are likely due to the proximity of these sites to large emission sources, [as well as their more southerly locations in the Arctic compared to the other sites, which makes them relatively more temperate.](#) ~~And~~ as a result, the data from Tiksi and Utqiaġvik may not be as representative of the baseline aerosol concentrations across the larger Arctic region as the other sites (Asmi et al., 2016; Gansch et al., 2017; Freud et al., 2017; Popovicheva et al., 2019).

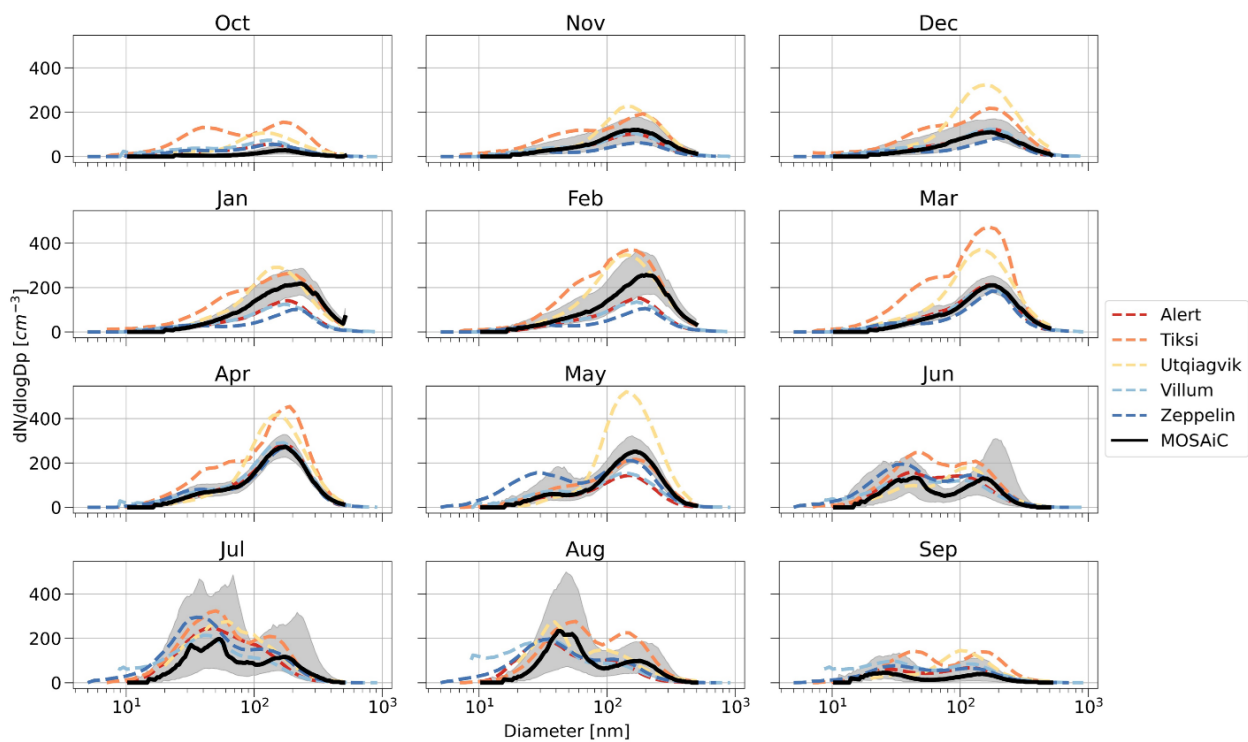
(a)



(b)



(a)



(b)

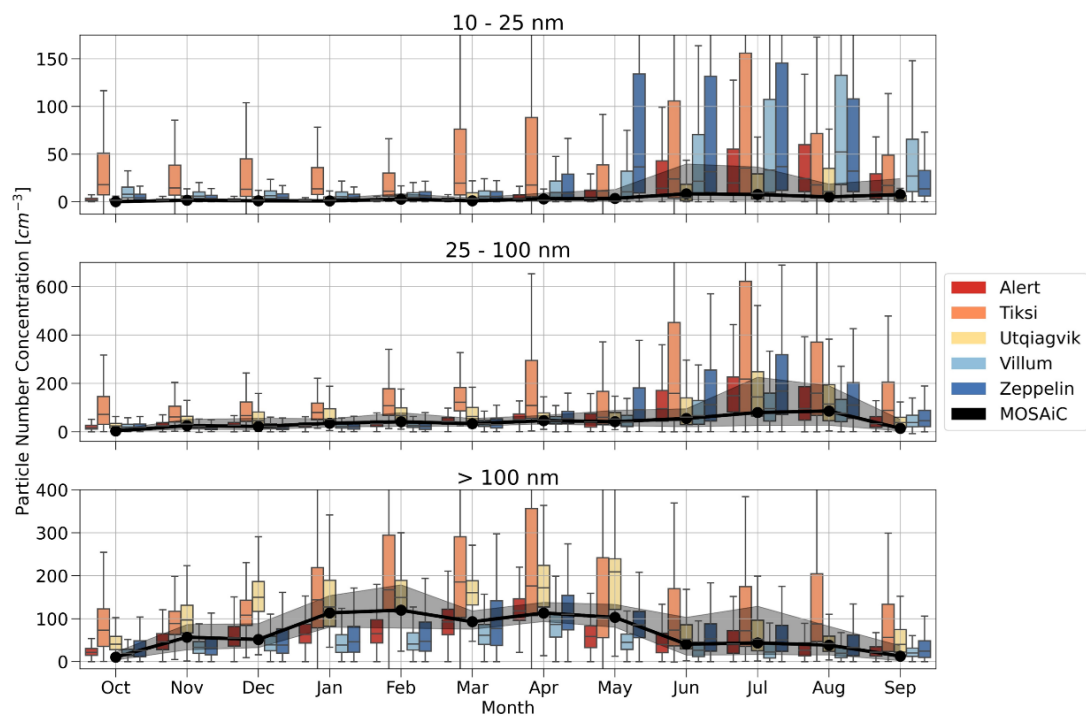


Figure 9: Comparison of (a) PNSD and (b) PNC between MOSAiC and the long-term record of aerosol observations from land-based sites across the Arctic. (a) The PNSD data for all sites is presented as monthly median values, and the shaded region indicates the interquartile range of the PNSD data from the MOSAiC campaign. (b) The box plots show the median monthly PNC and interquartile range at each site, where the particle concentrations are separated into three size modes (particle diameters of 10 – 25 nm, 25 – 100 nm, and > 100 nm). The MOSAiC data is presented as the solid black line, where the shaded region represents the interquartile range. The data from the land-based sites spans several decades, where the timespan varies depending on the site (Alert: 2011–2018, Tiksi: 2010–2018, Utqiaġvik: 2007–2015, Villum: 2010–2020, Zeppelin: 2010–2020).

In general, the annual cycle in the PNSD, PNC, and BC observations over the sea ice in the central Arctic during MOSAiC agrees well with the various land-based sites across the Arctic, but there are key differences as well. One interesting observation from our comparison is the lower concentrations of particles < 100 nm during summer in the central Arctic, as discussed further in section 3.5.3. ~~One of the most~~ Another notable differences between MOSAiC and the land-based sites is the timing of the peak in Arctic Haze. During MOSAiC, the accumulation mode PNC peaked during February, whereas the accumulation mode peaked in April for all land-based sites, except for Tiksi and Utqiaġvik. Accumulation mode aerosols peak in March and May at Tiksi and Utqiaġvik, respectively (Fig. 9a). In addition to the higher accumulation mode concentrations, the shape of the MOSAiC PNSD observations during January and February differs compared to the other sites, whereas the PNSDs and PNCs are remarkably similar in shape and magnitude between MOSAiC and the long-term aerosol averages at Alert, Villum, and Zeppelin during the rest of the Arctic Haze period (March – May). Furthermore, the BC mass concentrations for January and February during MOSAiC are higher than the long-term averages at Utqiaġvik, Villum, Zeppelin, and Gruvebadet (Fig. 10). The higher BC mass concentrations at Tiksi and Kevo may again be explained according to the sites' proximity to emission sources (Schmale et al., 2022), as also identified by the prevailing BC source regions in the inverse model. The particularly high BC mass concentrations observed at Kevo can be attributed to the length of the timeseries, which started in the 1960 when BC mass concentrations were much higher (Dutkiewicz et al., 2014; Schmale et al., 2022). Given that the MOSAiC dataset is only available for a single year, the different behavior in the accumulation mode aerosol and BC mass concentrations in January and February may be due to the interannual variability of Arctic Haze. We also must consider the ship's location, as the ship drifted from a location that may receive less aged pollution from Eurasia (Central Arctic Ocean) to one where the transport from polluted source regions takes longer (thus more dilution, i.e., Fram Strait) during the Arctic Haze season (Stohl, 2006).

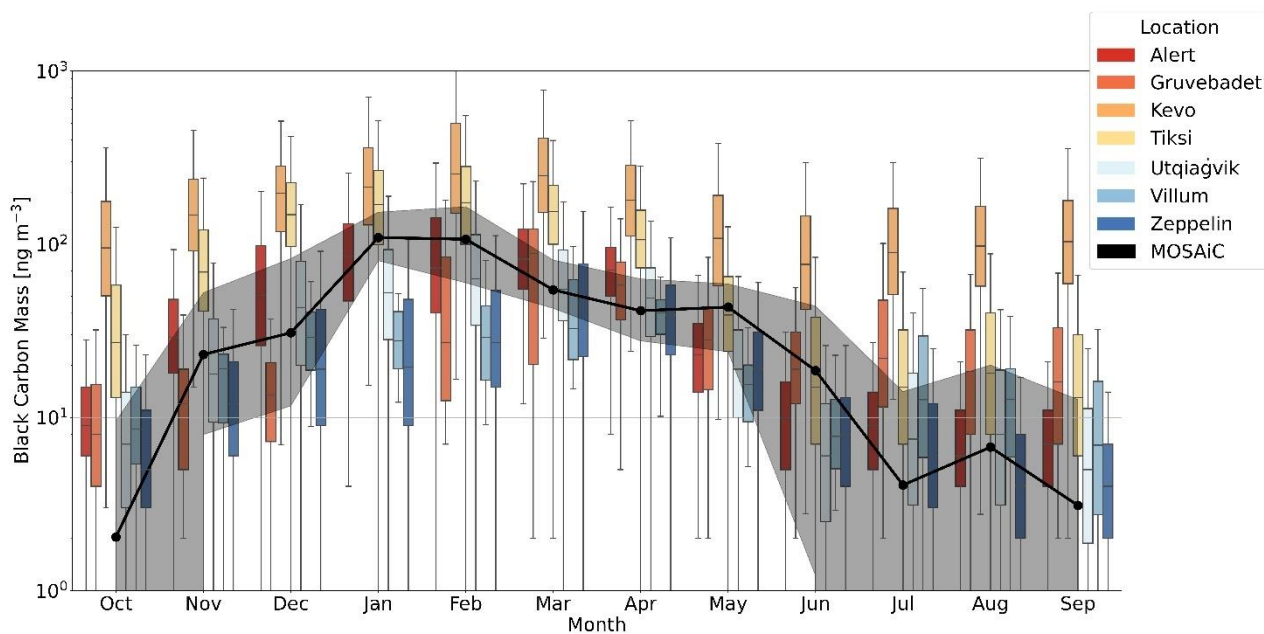
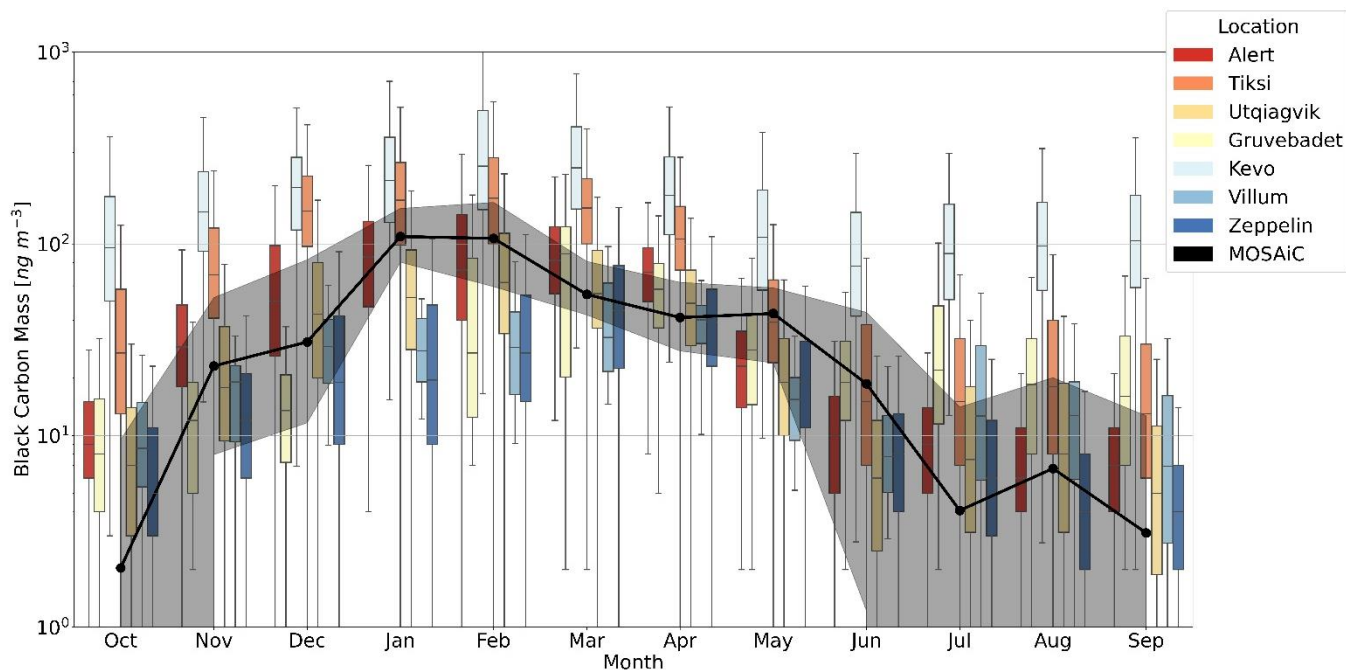


Figure 10: A comparison of BC mass concentrations in the Arctic between land-based observatories and MOSAiC. The MOSAiC BC mass concentrations (black line, Aethalometer) are displayed as monthly medians, and the shaded region shows the interquartile range. The boxes for the various sites represent BC and EC mass concentrations spanning several decades, where the time range varies by site (Alert: 1989–2017, Gruvebadet: 2010–2018, Kevo: 1964–2010, Tiksi: 2009–2018, Utqiagvik: 1991–2019, Villum: 2009–2018, Zeppelin: 1989–2017).

2001–2017). See Section 2.3 for details on the BC measurement methods, and refer the Schmale et al. (2022) for details on the long-term measurements from the land-based sites.

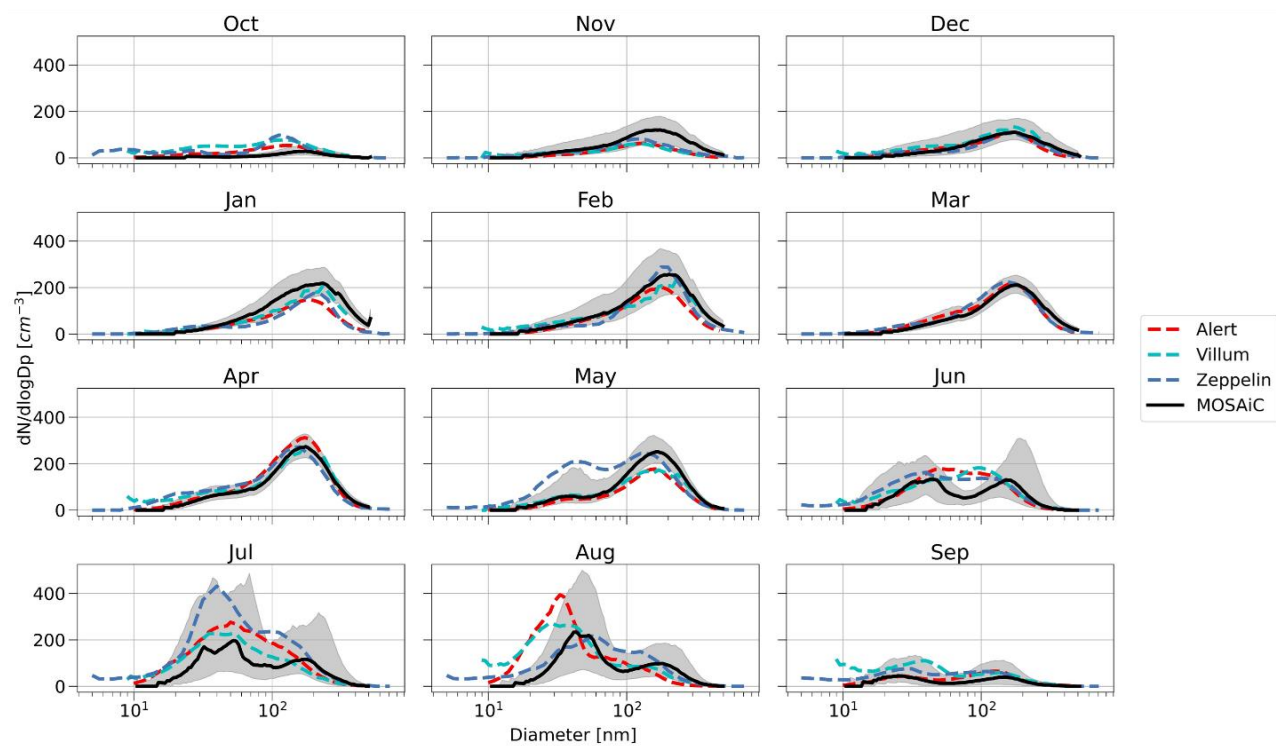
3.5.2 Comparison during the MOSAiC year

575 The comparison between the MOSAiC observations and the land-based sites during the year of the MOSAiC campaign (2019 – 2020) was used to further investigate and evaluate interannual variability (Fig. 11). At the time of this study, quality-controlled PNSD datasets from the land-based sites during this period were only available from Alert, Villum, and Zeppelin, and BC data was available from Utqiagvik and Villum. As noted in the comparison between MOSAiC and the long-term measurements, we also observed that the land-based sites in general have higher concentrations of sub-100 nm particles than the central Arctic in summer during the MOSAiC year, which is discussed further in section 3.5.3. The comparison also shows that the shape and magnitude of the PNSDs during the Arctic Haze season are much more similar than the comparison between MOSAiC and the climatological aerosol data in Fig. 9a, especially for January and February. The PNC comparison during the MOSAiC year in Fig. 11b also identifies that accumulation mode aerosol reached an annual maximum in February at Zeppelin, which is consistent with the MOSAiC observations. While the accumulation mode PNC does not achieve an annual maximum during February at Alert and Villum, there are indeed enhancements in the accumulation mode PNC at these sites during February 2020 compared to the long-term observations (Fig. 12). These results demonstrate that the differences in Arctic Haze between the MOSAiC measurements and the climatological aerosol data from the land-based sites are primarily due to interannual variability.

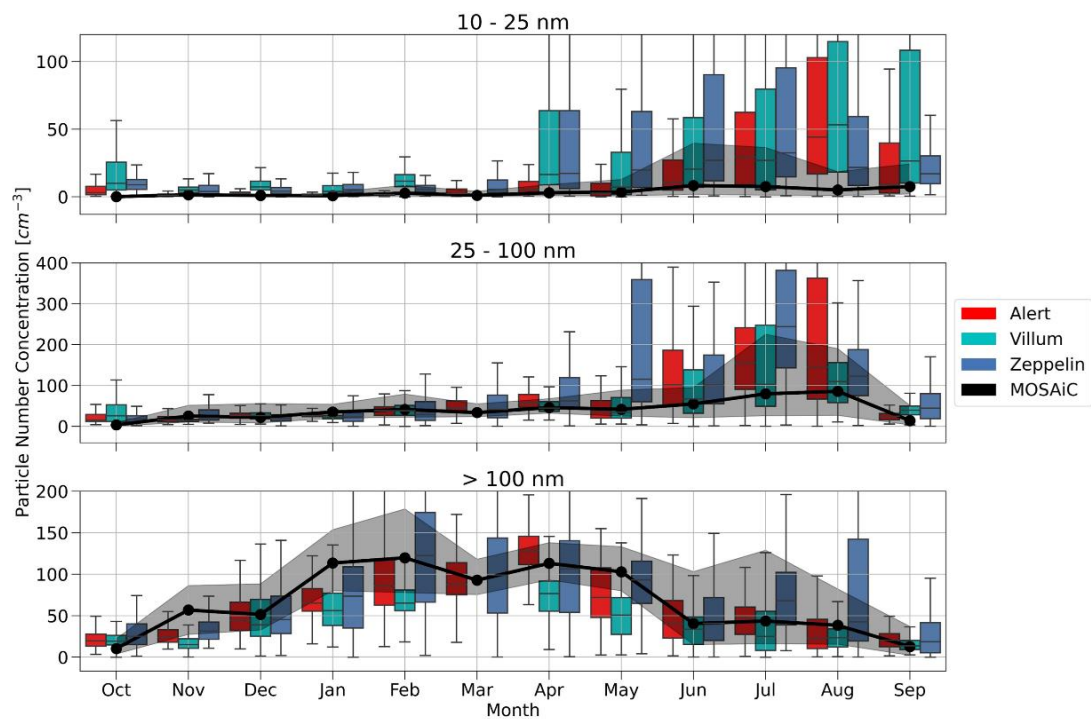
580

585

(a)



(b)



590 **Figure 11: Comparison of (a) PNSD and (b) PNC between MOSAiC and land-based sites during the year of the MOSAiC campaign.**
(a) the PNSD data is presented as monthly medians, and the shaded regions show the interquartile range of the MOSAiC data. (b) The box plots show the monthly median PNC data and interquartile range from the land-based sites for the three size modes (particle diameters of 10 – 25 nm, 25 – 100 nm, and > 100 nm). The MOSAiC data is presented as the solid black line, where the shaded region shows the interquartile range.

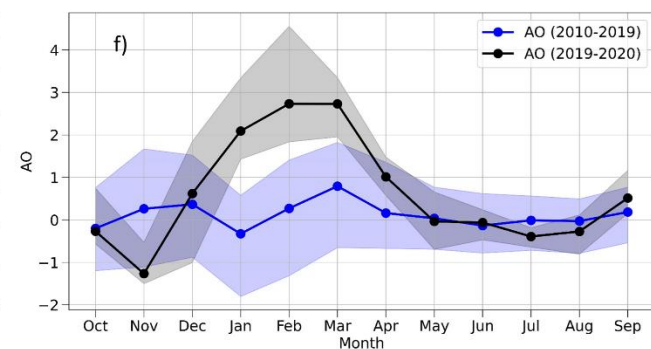
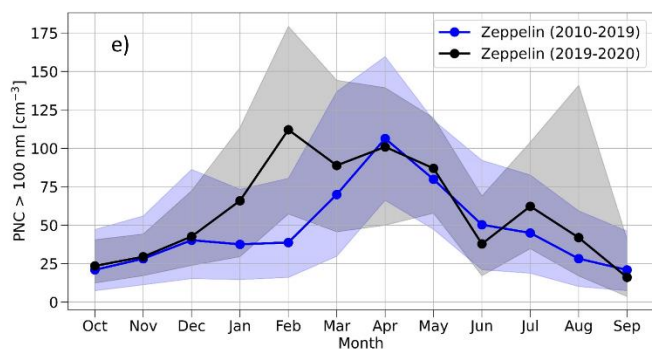
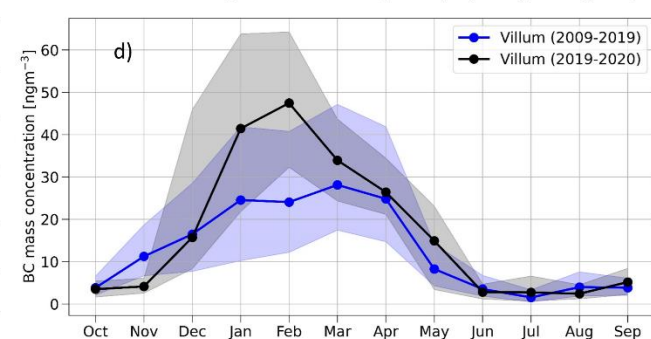
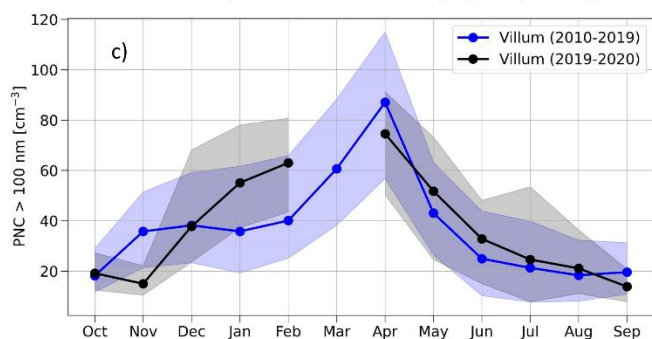
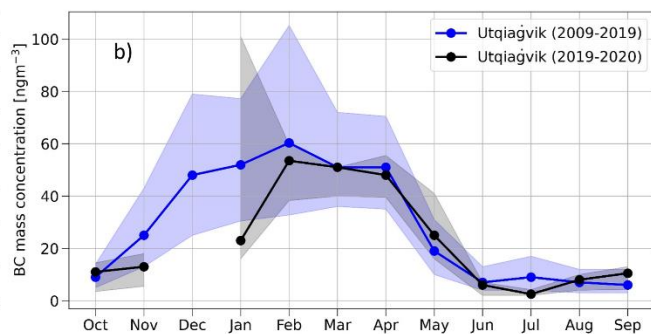
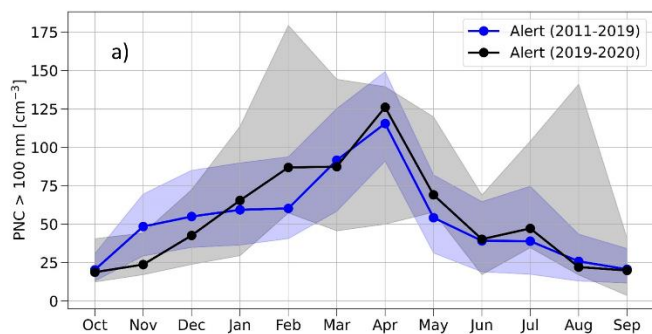
595

We can attribute much of the interannual variability in Arctic Haze during the MOSAiC year to the Arctic Oscillation (AO). The AO is a wintertime phenomenon that has two different phases, called the negative and positive phases. The negative phase is characterized by high-pressure anomalies in the central Arctic region, which facilitates air mass transport from the central Arctic to regions further south. In contrast, the positive phase exhibits low-pressure anomalies in the polar cap surrounded by a ring of high pressure in the midlatitudes, leading to potentially more efficient transport of air masses from lower latitudes into the Arctic. A record-breaking positive phase of the AO was observed during January – March 2020 (Lawrence et al., 2020). This record-breaking positive phase in the AO corresponds with the earlier timing and higher intensity of Arctic Haze during MOSAiC, as observed in the peak accumulation mode PNC and BC mass concentrations during January and February 2020.

605

To further investigate the influence of the record-breaking AO on observations across the Arctic, Fig. 12 shows a comparison between the averages from the MOSAiC year and the past decade for the AO, accumulation mode PNCs, and ~~BE~~C mass concentrations at Utqiagvik and Villum. In general, the concentrations from January – March are higher than the average over the past decade, which shows that the effect of the record-breaking AO was influential on the aerosol across a large part of the Arctic region. There is one notable exception in this analysis: Utqiagvik. As noted previously, Utqiagvik, while still located in the Arctic, is further south than the other sites in Fig. 12, which makes it more temperate and potentially less representative of the aerosol within the central Arctic region. The more southern location of Utqiagvik could also mean that it is not directly affected by enhanced pollution transport related to the AO, which is consistent with both the sea level pressure anomalies presented in Fig. 5a in Lawrence et al. (2020) and previous observations that pollution transport from Eurasia is favored during the Arctic Haze season (Stohl, 2006). The effect of the AO is also less pronounced at Alert presumably due to dilution, however, we still observed an increase in the median accumulation mode concentration in February (and the upper quartile range) compared to the previous 10 years, suggesting that the AO was indeed influential at Alert. Further support for the influence of the AO across the Arctic is demonstrated by BC observations during winter 2020 at Gruebadet and Zeppelin, which show peak BC mass concentrations during January and February (Fig. 3a in Pasquier et al., 2022). These results agree with previous studies that have also observed that the positive phase of the AO can yield elevated pollution transport into the Arctic during this time of year (Eckhardt et al., 2003; Duncan and Bey, 2004; Di Pierro et al., 2013). In addition, previous research suggests that the positive phase of the AO may increase in frequency in a warming climate (Shindell et al., 1999), potentially further enhancing pollution transport into the Arctic atmosphere in the future, which could counterbalance anticipated emission reductions.

620



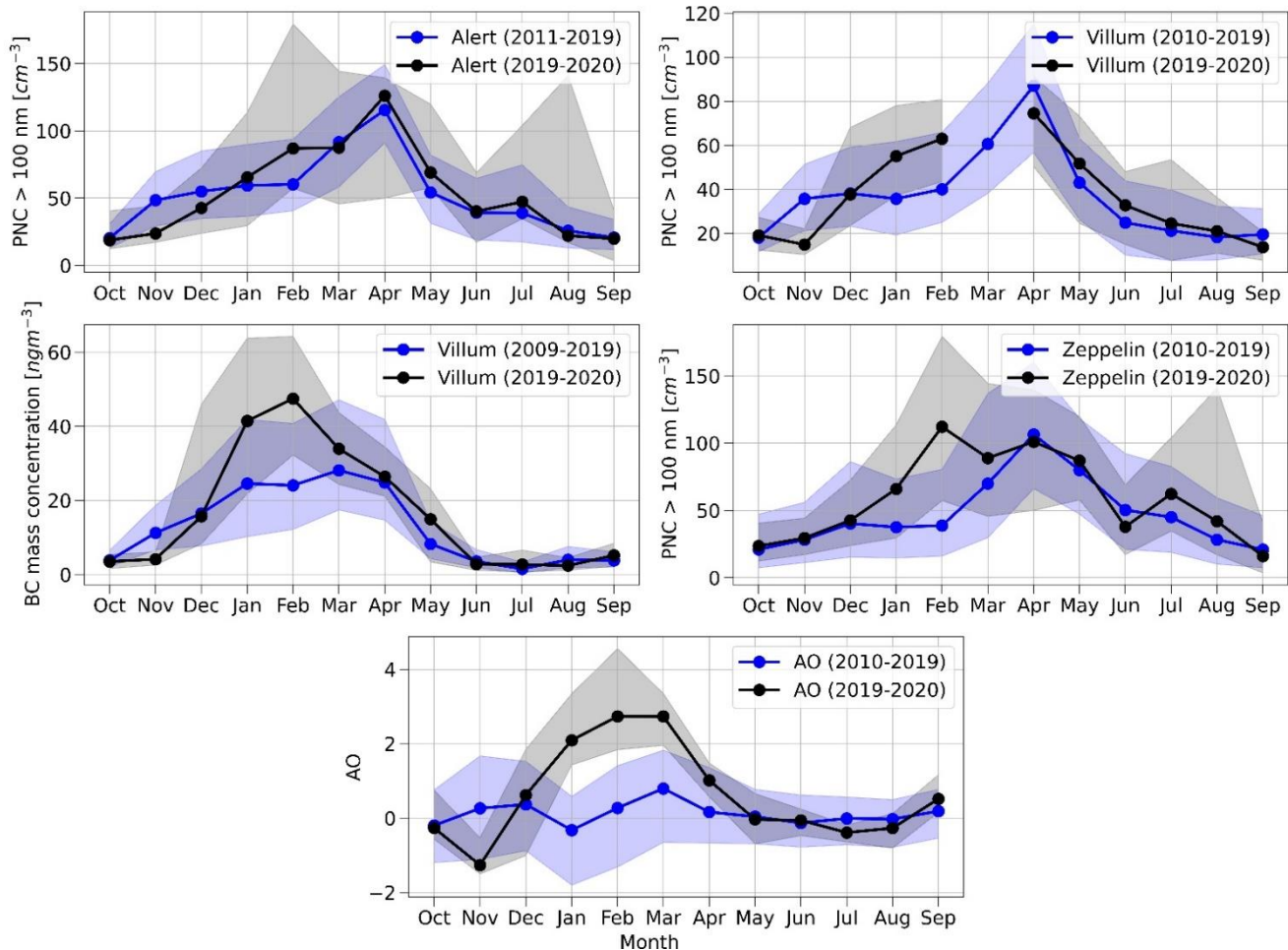


Figure 12: The influence of AO on aerosol observations during MOSAiC. The ~~five~~^{six} panels show the year of the MOSAiC campaign (2019 – 2020) compared to the trend over the past decade (2010 – 2019) for (a) the PNC > 100 nm at Alert, (b) BC mass concentration at Utqiaġvik, (c) the PNC > 100 nm at Villum, (d) ~~(e)~~ the BC mass concentration at Villum, ~~(e)~~ the PNC > 100 nm at Zeppelin, and (e) the AO index. The data is presented as the monthly medians, and the shaded regions show the interquartile range. It is important to note that AO is a wintertime phenomenon; the complete year is included in the plots for context.

3.5.3 Context for MOSAiC aerosol measurements

Given the large monetary and environmental costs associated with performing measurements over the central Arctic Ocean for a full year, it would be desirable to use the measurements from one of the long-term land-based sites to represent the aerosol over this region. Overall, the agreement between the PNSD data collected during MOSAiC and the land-based sites suggests that, at least for the current state of the Arctic, some of the land-based measurement sites may be able to generally estimate the aerosol over the larger central Arctic Ocean region. However, ~~one of~~ the main conclusions from Freud et al. (2017) and Schmeisser et al. (2018) ~~are~~ that one site is not able to represent the aerosol population over the Arctic as a whole, and therefore, this should be done with caution. Both Freud et al. (2017) studies observed site-specific differences that make each

640 site distinct beyond inter-annual variability, and these differences are based on the location of a site and particularly the proximity of a site to the Arctic Ocean. Furthermore, a recent study provides evidence that episodic events, such as warm air mass intrusions, may not be fully captured by land-based observatories (Dada et al., 2022), and which further highlights potential issues with extrapolating land-based data to the central Arctic Ocean.

645 Indeed, we also observed distinct differences in the PNSD data collected from within the sea-ice over the central Arctic Ocean during MOSAiC compared to the land-based sites. The most notable difference is the relative magnitude of particles in the different size modes during different seasons. In Figs. 9 & 11, we show that the summertime PNC in the nucleation and Aitken mode observations from the central Arctic Ocean is lower than both the long-term averages and the data from the MOSAiC year, while the concentration of accumulation mode particles trends higher in the winter. The same pattern is observed in the

650 BC mass concentrations presented in Fig 10. Since we are limited to a single year and the MOSAiC observations were collected on a mobile platform, we are unable to provide robust conclusions on the role of interannual variability and geographic location in these observations. However, these results present remarkable evidence that aerosol observations over the sea ice in the central Arctic are distinct from the land-based sites throughout the year. Therefore, due to the rapid rate of change in the Arctic environment and the trend of sea ice decline, it is possible that the processes controlling the PNSD may change due to changes

655 in meteorology and transport pathways (e.g., Heslin Rees et al., 2020, Pernov et al., 2022), and such changes may be most pronounced over the central Arctic Ocean, where secondary aerosol processes may become more prevalent due to enhanced biological activity (Levasseur, 2013).

4 Conclusions

In this study, we present the aerosol measurements from the central Arctic during the MOSAiC expedition (October 2019 –

660 September 2020) and compare these observations to land-based sites across the Arctic. These aerosol measurements represent the first continuous PNSD data collected over the sea ice in the central Arctic Ocean for an entire year, especially at such northern latitudes during winter. The analysis focuses on the annual cycle in the PNSD and uses FLEXPART simulations, inverse modeling, aerosol observations from land-based sites, and other environmental variables to provide context to the in-situ observations of aerosols over the sea ice.

665 In the central Arctic, the aerosol population that we observe throughout the year is a result of transport and secondary aerosol formation processes. It is important to note the influence of both anthropogenic and natural sources of aerosols over the central Arctic Ocean during the year. In general, the particles >100 nm in diameter originate from anthropogenic sources, where the secondary processes contribute to smaller particles. Overall, the annual cycle in the PNSD data presented here agrees with

670 previous studies of the seasonality of Arctic aerosol from land-based sites (Tunved et al., 2013; Freud et al., 2017; Croft et al., 2016; Pernov et al., 2022; Dall'Osto et al., 2018; Lange et al., 2018). In winter, we observed elevated accumulation mode

aerosol, or Arctic Haze, dominated by anthropogenic sources in Russia/Siberia, namely the Norilsk smelter region. The wintertime Arctic Haze signal in the PNSD is consistent with the seasonality of BC mass concentrations. In addition, we identify that an unusually early peak of Arctic haze (i.e., in January and February as opposed to March and April) can be attributed to a record-breaking positive phase of the AO, and the results show that the AO influences the timing of particulate pollution transport across the entire Arctic region. In summer, nucleation and Aitken mode aerosol are most prevalent in the PNSD. Although we do not explicitly explore the specifics further in this work, we conclude that the higher PNC of smaller particles results from enhanced secondary aerosol formation processes due to local gas-phase emissions from the ocean and ice combined with active photochemistry, as previously described in the literature (e.g., Willis et al., 2018 and references therein). The role of precursor gases and NPF processes during the MOSAiC campaign will be evaluated in separate studies.

Our data provide further observations from within the central Arctic over the sea ice, and for the current state of the Arctic environment, the land-based sites may be useful for estimating the aerosol population over the sea ice in the central Arctic. However, as different locations in the Arctic are sensitive to specific source regions and thus can have differing aerosol characteristics (Freud et al., 2017), this is likely to change as the Arctic environment continues to warm (Schmale et al., 2021). For the time being, the aerosol population in the central Arctic, as opposed to the land-based sites, is mainly dominated by long-range transport rather than local emissions or formation, except for the fall when locally new particle formation is a key process (Baccarini et al., 2020). However, the summertime sea ice extent is reaching record minimums, and the fraction of multi-year ice is declining, meaning that more local emissions, particularly from microbial activity, can become more important. Changes in these processes due to changes in the Arctic environment could lead to additional changes in Arctic aerosol, hence changes in cloud properties. In this context, aerosols can exert an important climate-forcing effect in the Arctic atmosphere. Clouds, which interact with radiation, can influence the climate system because they affect the surface energy budget. This influence is especially relevant for the Arctic climate considering Arctic Amplification, which is driven by sea ice-albedo feedback processes (Serreze and Barry, 2011; AMAP, 2021).

At the same time, anthropogenic activities are increasing in the Arctic (Ferrero et al., 2016; Schmale et al., 2018). Our results demonstrate that both anthropogenic activities and natural processes are influential on aerosol properties in the central Arctic throughout the year, and both processes are subject to change in a warmer Arctic. A process-level understanding of how these changes impact aerosol properties allows models to evaluate and predict interactions between climatic change, socio-economic change, and aerosols' impact on radiative forcing. Moreover, this study provides a snapshot of the current central Arctic environment with respect to aerosols, which is critical during this time of rapid environmental changes in the Arctic. There are few in-situ observations of aerosols in the Central Arctic. Therefore, the observations presented in this work can help serve the modeling community to understand current and future Arctic climate scenarios and their impacts on Earth's larger climate system.

705 Data availability

All datasets used in this work that were obtained during the MOSAiC campaign will be made publicly available by January 1, 2023 via Pangaea (<https://www.pangaea.de/>) or are already publicly available on the Department of Energy Atmospheric Radiation Measurement program (ARM) user facility data discovery tool (<https://adc.arm.gov/discovery/#/>).

Data from the Pangaea archive includes:

710

- Meteorological observations from *Polarstern*:
 - Schmithüsen, Holger (2021): Continuous meteorological surface measurement during POLARSTERN cruise PS122/1. Alfred Wegener Institute, Helmholtz Centre for Polar and Marine Research, Bremerhaven, PANGAEA, <https://doi.org/10.1594/PANGAEA.935221>
 - 715 ○ Schmithüsen, Holger (2021): Continuous meteorological surface measurement during POLARSTERN cruise PS122/2. Alfred Wegener Institute, Helmholtz Centre for Polar and Marine Research, Bremerhaven, PANGAEA, <https://doi.org/10.1594/PANGAEA.935222>
 - 720 ○ Schmithüsen, Holger (2021): Continuous meteorological surface measurement during POLARSTERN cruise PS122/3. Alfred Wegener Institute, Helmholtz Centre for Polar and Marine Research, Bremerhaven, PANGAEA, <https://doi.org/10.1594/PANGAEA.935223>
 - 725 ○ Schmithüsen, Holger (2021): Continuous meteorological surface measurement during POLARSTERN cruise PS122/4. Alfred Wegener Institute, Helmholtz Centre for Polar and Marine Research, Bremerhaven, PANGAEA, <https://doi.org/10.1594/PANGAEA.935224>
 - 730 ○ Schmithüsen, Holger (2021): Continuous meteorological surface measurement during POLARSTERN cruise PS122/5. Alfred Wegener Institute, Helmholtz Centre for Polar and Marine Research, Bremerhaven, PANGAEA, <https://doi.org/10.1594/PANGAEA.935225>
- Black carbon (BC): DOI coming soon.
- Particle number concentration (CPC3025):
 - 735 ○ Beck, Ivo; Quéléver, Lauriane; Laurila, Tiia; Jokinen, Tuija; Schmale, Julia (2022): Continuous corrected particle number concentration data in 10 sec resolution, measured in the Swiss aerosol container during MOSAiC 2019/2020. PANGAEA, <https://doi.org/10.1594/PANGAEA.941886>

The ARM data includes:

740

- Kuang, C., Singh, A., and Howie, J.: Scanning mobility particle sizer (AOSSMPS), <https://doi.org/10.5439/1476898>.
- Kuang, C., Salwen, C., Boyer, M., and Singh, A.: Condensation Particle Counter (AOSPCF), <https://doi.org/10.5439/1046184>.

745 The landbased PNSD data:

- Alert: Personal communication from Tak Chan and Sangeeta Sharma, 2022. For details, see Croft et al. (2016).
- Villum: Personal communication from Jakob Boyd Pernov, 2022. For details, see Nguyen et al. (2016).
- Zeppelin: Personal communication from Peter Tunved, 2022. For details, see Tunved et al. (2013).
- Tiksi: Personal communication from Eija Asmi, 2022. For details, see Asmi et al. (2016).
- Utqiaġvik: Freud, Eyal; Krejci, Radovan; Tunved, Peter; Leaitch, W Richard; Nguyen, Quynh T; Massling, Andreas; Skov, Henrik; Barrie, Leonard (2017): Hourly mean homogenised (dry diameter range 20 to 500 nm) observations of aerosol number size distributions from station Barrow, 2007-09-20 to 2015-07-09. PANGAEA, <https://doi.org/10.1594/PANGAEA.877329>

755 The land-based BC data:

- Villum: Personal communications from Daniel Thomas, [Jakob Klenø Nøjgaard](#), and Andreas Massling, 2022. For details, see Thomas et al. (2022).
- [NOAA Barrow Atmospheric Baseline Observatory \(Utqiaġvik\) during 2020: Personal communication from Elisabeth Andrews, 2022. For processing details, see Schmale et al. \(2022\).](#)
- [Gruebadet: The PSAP data is accessible on the Italian Arctic Data Center operated by the National Research Council of Italy: \[https://data.iadc.cnr.it/erddap/tabledap/ebc_2010_2020.html\]\(https://data.iadc.cnr.it/erddap/tabledap/ebc_2010_2020.html\).](#)
- All other BC datasets used in this work will be made publicly available on EBAS (<http://ebas-data.nilu.no/>). Refer to Schmale et al., 2022 for additional details.

765 The Arctic Oscillation (AO) data is publicly available from the NOAA and the National Weather Service: https://www.cpc.ncep.noaa.gov/products/precip/CWlink/daily_ao_index/ao.shtml.

An archive of the FLEXPART model output and quick looks for the whole campaign can be found at <https://img.univie.ac.at/webdata/mosaic>.

770 Author contributions

MB wrote the manuscript.

MB led the analysis, with conceptual contributions from JS, TJ, DA, JBP, and HA.

LQ, IB, JS, TJ, TL, MB, and ZB conducted field measurements reported in this work.

DA performed inversion modeling and source region identification work.

775 JS, JBP compiled datasets from land-based sites across the arctic and contributed to their analysis.

HA, LD, IB, JS, and BH provided and assisted with the interpretation of various datasets.

MDO and DB provided the PNSD cluster analysis results.

SB, MD, and AS performed the FLEXPART simulations and assisted with their interpretation.

EA, AM, DCT, TC, SS, PT, RK, [JKN](#), and HC provided quality-controlled data from the land-based sites.

780 MK, TP, JS, and MS provided funding for the campaign and data analysis.

All authors provided comments/revisions on the manuscript.

Competing interests

The authors declare that they have no conflict of interest.

Acknowledgments

785 We acknowledge funding from the Swiss National Sciences Foundation grant no. 188478 and the Swiss Polar Institute, the
US DOE grant No. DE-SC0022046, European Union's Horizon 2020 research and innovation program under grant agreement
No. 856612 and the Cyprus Government. JS holds the Ingvar Kamprad Chair, sponsored by Ferring Pharmaceuticals. Part of
this project was funded by ERC grant (GASPARCON) and the Academy of Finland Flagship funding (grant No. 337552). The
authors thank the Laboratory of Atmospheric Chemistry at the Paul Scherrer Institute for their support, and we thank Janne
790 Lampilahti, Markus Lampimäki, Tommy Chan, and the INAR technical staff for their assistance with measurement support
during the campaign. We also extend a special thank you to all personnel who made the expedition possible through the
operation of the R/V *Polarstern* during MOSAiC in 2019–2020 (AWI_PS122_00) (Nixdorf et al., 2021). For Utqiagvik and
Tiksi the authors would like to thank the operators for the care and feeding of chemical and optical instruments, the Arctic and
Antarctic Research Institute (AARI) for provision of Tiksi data, and Derek Hageman for his continued excellence in data
795 acquisition, processing, and archiving of data. Measurements and data evaluation for aerosol optical properties at- [NOAA's
Barrow Atmospheric Baseline Observatory near Utqiagvik](#) ~~Utqiagvik~~ are supported by Department of Energy/Atmospheric
Radiation Measurement User (ANL award no. 0F-60239), and Aethalometer measurements at Tiksi occurred through NOAA
cooperation with Roshydromet that ended in 2018. We thank the CNR Gruvebadet team around Stefania Gilardoni for sharing
the PSAP data. All other data used in this manuscript were produced, as part of the international Multidisciplinary drifting
800 Observatory for the Study of Arctic Climate (MOSAiC) with the tag MOSAiC20192020. A subset of data was obtained from
the Atmospheric Radiation Measurement (ARM) User Facility, a U.S. Department of Energy (DOE) Office of Science User
Facility Managed by the Biological and Environmental Research Program.

References

- Abbatt, J. P. D., Thomas, J. L., Abrahamsson, K., Boxe, C., Granfors, A., Jones, A. E., King, M. D., Saiz-Lopez, A., Shepson,
805 P. B., Sodeau, J., Toohey, D. W., Toubin, C., von Glasow, R., Wren, S. N., and Yang, X.: Halogen activation via interactions
with environmental ice and snow in the polar lower troposphere and other regions, 12, 6237–6271, <https://doi.org/10.5194/acp-12-6237-2012>, 2012.
- Aliaga, D., Sinclair, V. A., Andrade, M., Artaxo, P., Carbone, S., Kadantsev, E., Laj, P., Wiedensohler, A., Krejci, R., and
810 Bianchi, F.: Identifying source regions of air masses sampled at the tropical high-altitude site of Chacaltaya using WRF-
FLEXPART and cluster analysis, 21, 16453–16477, <https://doi.org/10.5194/acp-21-16453-2021>, 2021.

AMAP: Impacts of Short-lived Climate Forcers on Arctic Climate, Air Quality, and Human Health. Summary for Policy-makers, Arctic Monitoring and Assessment Programme (AMAP), Tromsø, Norway, 20 pp.,
815 <https://www.amap.no/documents/doc/impacts-of-short-lived-climate-forcers-on-arctic-climate-air-quality-and-human-health.-summary-for-policy-makers/3512>, 2021.

Asmi, E., Kondratyev, V., Brus, D., Laurila, T., Lihavainen, H., Backman, J., Vakkari, V., Aurela, M., Hatakka, J., Viisanen, Y., Uttal, T., Ivakhov, V., and Makshtas, A.: Aerosol size distribution seasonal characteristics measured in Tiksi, Russian
820 Arctic, 16, 1271–1287, <https://doi.org/10.5194/acp-16-1271-2016>, 2016.

Baccarini, A., Karlsson, L., Dommen, J., Duplessis, P., Vüllers, J., Brooks, I. M., Saiz-Lopez, A., Salter, M., Tjernström, M., Baltensperger, U., Zieger, P., and Schmale, J.: Frequent new particle formation over the high Arctic pack ice by enhanced iodine emissions, 11, <https://doi.org/10.1038/s41467-020-18551-0>, 2020.

825 Barrie, L. A.: Arctic air pollution: An overview of current knowledge, 20, 643–663, [https://doi.org/https://doi.org/10.1016/0004-6981\(86\)90180-0](https://doi.org/https://doi.org/10.1016/0004-6981(86)90180-0), 1986a.

~~Barrie, L. A.: Arctic air pollution: An overview of current knowledge, 20, 643–663, [https://doi.org/https://doi.org/10.1016/0004-6981\(86\)90180-0](https://doi.org/https://doi.org/10.1016/0004-6981(86)90180-0), 1986b.~~

830 ~~[https://doi.org/https://doi.org/10.1016/0004-6981\(86\)90180-0](https://doi.org/https://doi.org/10.1016/0004-6981(86)90180-0), 1986b.~~

Barrie, L. A., Bottenheim, J. W., Schnell, R. C., Crutzen, P. J., and Rasmussen, R. A.: Ozone destruction and photochemical reactions at polar sunrise in the lower Arctic atmosphere, *Nature*, 334, 138–141, <https://doi.org/10.1038/334138a0>, 1988.

835 Beck, L. J., Sarnela, N., Junninen, H., Hoppe, C. J. M., Garmash, O., Bianchi, F., Riva, M., Rose, C., Peräkylä, O., Wimmer, D., Kausiala, O., Jokinen, T., Ahonen, L., Mikkilä, J., Hakala, J., He, X. C., Kontkanen, J., Wolf, K. K. E., Cappelletti, D., Mazzola, M., Traversi, R., Petroselli, C., Viola, A. P., Vitale, V., Lange, R., Massling, A., Nøjgaard, J. K., Krejci, R., Karlsson, L., Zieger, P., Jang, S., Lee, K., Vakkari, V., Lampilahti, J., Thakur, R. C., Leino, K., Kangasluoma, J., Duplissy, E. M., Siivola, E., Marbouti, M., Tham, Y. J., Saiz-Lopez, A., Petäjä, T., Ehn, M., Worsnop, D. R., Skov, H., Kulmala, M., Kerminen,
840 V. M., and Sipilä, M.: Differing Mechanisms of New Particle Formation at Two Arctic Sites, <https://doi.org/10.1029/2020GL091334>, 28 February 2021.

Beck, I., Angot, H., Baccarini, A., Dada, L., Quéléver, L., Jokinen, T., Laurila, T., Lampimäki, M., Bukowiecki, N., Boyer, M., Gong, X., Gysel-Beer, M., Petäjä, T., Wang, J., and Schmale, J.: Automated identification of local contamination in remote
845 atmospheric composition time series, *Atmos. Meas. Tech.*, 15, 4195–4224, <https://doi.org/10.5194/amt-15-4195-2022>, 2022.

Beddows, D. C. S., Dall'Osto, M., and Harrison, R. M.: Cluster Analysis of Rural, Urban, and Curbside Atmospheric Particle Size Data, 43, 4694–4700, <https://doi.org/10.1021/es803121t>, 2009.

- 850 Beddows, D. C. S., Dall'Osto, M., Harrison, R. M., Kulmala, M., Asmi, A., Wiedensohler, A., Laj, P., Fjaeraa, A. M., Sellegri, K., Birmili, W., Bukowiecki, N., Weingartner, E., Baltensperger, U., Zdimal, V., Zikova, N., Putaud, J.-P., Marinoni, A., Tunved, P., Hansson, H.-C., Fiebig, M., Kivekäs, N., Swietlicki, E., Lihavainen, H., Asmi, E., Ulevicius, V., Aalto, P. P., Mihalopoulos, N., Kalivitis, N., Kalapov, I., Kiss, G., de Leeuw, G., Henzing, B., O'Dowd, C., Jennings, S. G., Flentje, H., Meinhardt, F., Ries, L., van der Gon, H. A. C., and Visschedijk, A. J. H.: Variations in tropospheric submicron particle size
855 distributions across the European continent 2008–2009, 14, 4327–4348, <https://doi.org/10.5194/acp-14-4327-2014>, 2014.

- Boucher, O., Randall, D., Artaxo, P., Bretherton, C., Feingold, G., Forster, P., Kerminen, V.-M., Kondo, Y., Liao, H., Lohmann, U., Rasch, P., Satheesh, S., Sherwood, S., Stevens, B., and Zhang, X.: Clouds and Aerosols, in: Climate Change 2013: The Physical Science Basis. Contribution of Working Group I to the Fifth Assessment Report of the Intergovernmental
860 Panel on Climate Change, edited by Stocker, T., Qin, D., Plattner, G.-K., Tignor, M., Allen, S., Boschung, J., Nauels, A., Xia, Y., Bex, V., and Midgley, P., chap. 7, pp. 571–658, Cambridge University Press, Cambridge, United Kingdom and New York, NY, USA, <https://doi.org/10.1017/CBO9781107415324.016>, 2013.

- Bozem, H., Hoor, P., Kunkel, D., Köllner, F., Schneider, J., Herber, A., Schulz, H., Leaitch, W. R., Aliabadi, A. A., Willis, M.
865 D., Burkart, J., and Abbatt, J. P. D.: Characterization of transport regimes and the polar dome during Arctic spring and summer using in situ aircraft measurements, 19, 15049–15071, <https://doi.org/10.5194/acp-19-15049-2019>, 2019.

- Bradley, R. S., Keimig, F. T., and Diaz, H. F.: Recent changes in the North American Arctic boundary layer in winter, 98, 8851–8858, <https://doi.org/https://doi.org/10.1029/93JD00311>, 1993.

- 870 Browse, J., Carslaw, K. S., Arnold, S. R., Pringle, K., and Boucher, O.: The scavenging processes controlling the seasonal cycle in Arctic sulphate and black carbon aerosol, 12, 6775–6798, <https://doi.org/10.5194/acp-12-6775-2012>, 2012.
Carslaw, K. S., Lee, L. A., Reddington, C. L., Pringle, K. J., Rap, A., Forster, P. M., Mann, G. W., Spracklen, D. v., Woodhouse, M. T., Regayre, L. A., and Pierce, J. R.: Large contribution of natural aerosols to uncertainty in indirect forcing, Nature, 503,
875 67–71, <https://doi.org/10.1038/nature12674>, 2013.

Celik, S., Drewnick, F., Fachinger, F., Brooks, J., Darbyshire, E., Coe, H., Paris, J.-D., Eger, P. G., Schuladen, J., Tadic, I., Friedrich, N., Dienhart, D., Hottmann, B., Fischer, H., Crowley, J. N., Harder, H., and Borrmann, S.: Influence of vessel characteristics and atmospheric processes on the gas and particle phase of ship emission plumes: in situ measurements in the

- 880 Mediterranean Sea and around the Arabian Peninsula, *Atmos. Chem. Phys.*, 20, 4713–4734, [https://doi.org/10.5194/acp-20-](https://doi.org/10.5194/acp-20-4713-2020)
4713-2020, 2020.
- Chang, R. Y. W., Leck, C., Graus, M., Müller, M., Paatero, J., Burkhart, J. F., Stohl, A., Orr, L. H., Hayden, K., Li, S. M.,
Hansel, A., Tjernström, M., Leaitch, W. R., and Abbatt, J. P. D.: Aerosol composition and sources in the central Arctic Ocean
885 during ASCOS, 11, 10619–10636, <https://doi.org/10.5194/acp-11-10619-2011>, 2011.
- Charlson, R. J., Langner, J., Rodhe, H., Leovy, C. B., and Warren, S. G.: Perturbation of the northern hemisphere radiative
balance by backscattering from anthropogenic sulfate aerosols, 43, 152–163, <https://doi.org/10.3402/tellusa.v43i4.11944>,
1991.
- 890 Collins, D. B., Burkart, J., Chang, R. Y. W., Lizotte, M., Boivin-Rioux, A., Blais, M., Mungall, E. L., Boyer, M., Irish, V. E.,
Massé, G., Kunkel, D., Tremblay, J. É., Papakyriakou, T., Bertram, A. K., Bozem, H., Gosselin, M., Levasseur, M., and Abbatt,
J. P. D.: Frequent ultrafine particle formation and growth in Canadian Arctic marine and coastal environments, 17, 13119–
13138, <https://doi.org/10.5194/acp-17-13119-2017>, 2017.
- 895 Corbett, J. J., Fischbeck, P. S., and Pandis, S. N.: Global nitrogen and sulfur inventories for oceangoing ships, 104, 3457–
3470, <https://doi.org/https://doi.org/10.1029/1998JD100040>, 1999.
- Croft, B., Martin, R. v., Leaitch, W. R., Tunved, P., Breider, T. J., D’Andrea, S. D., and Pierce, J. R.: Processes controlling the
900 annual cycle of Arctic aerosol number and size distributions, 16, 3665–3682, <https://doi.org/10.5194/acp-16-3665-2016>, 2016.
- Croft, B., Martin, R. v., Richard Leaitch, W., Burkart, J., Chang, R. Y. W., Collins, D. B., Hayes, P. L., Hodshire, A. L.,
Huang, L., Kodros, J. K., Moravek, A., Mungall, E. L., Murphy, J. G., Sharma, S., Tremblay, S., Wentworth, G. R., D Willis,
M., Abbatt, J. P. D., and Pierce, J. R.: Arctic marine secondary organic aerosol contributes significantly to summertime particle
905 size distributions in the Canadian Arctic Archipelago, 19, 2787–2812, <https://doi.org/10.5194/acp-19-2787-2019>, 2019.
- Dada, L., H. Angot, I. Beck, A. Baccarini, L.L.J. Quéléver, M. Boyer, T. Laurila, Z. Brasseur, G. Jozef, G. de Boer, S. Henning,
S. Bucci, M. Dütsch, A. Stohl, T. Petäjä, K.R. Daellenbach, T. Jokinen, and J. Schmale: A Central Arctic Extreme Aerosol
Event Triggered by a Warm Air-Mass Intrusion, *Nature Comm.*, [13\(1\), 5290, https://doi.org/10.1038/s41467-022-32872-2](https://doi.org/10.1038/s41467-022-32872-2)
910 [review, 2022.](#)

- Dall'Osto, M., Beddows, D. C. S., Tunved, P., Krejci, R., Ström, J., Hansson, H.-C., Yoon, Y. J., Park, K.-T., Becagli, S., Udisti, R., Onasch, T., O'Dowd, C. D., Simó, R., and Harrison, R. M.: Arctic sea ice melt leads to atmospheric new particle formation, 7, 3318, <https://doi.org/10.1038/s41598-017-03328-1>, 2017.
- 915 Dall'Osto, M., Geels, C., Beddows, D. C. S., Boertmann, D., Lange, R., Nøjgaard, J. K., Harrison, R. M., Simo, R., Skov, H., and Massling, A.: Regions of open water and melting sea ice drive new particle formation in North East Greenland, *Scientific Reports*, 8, 6109, <https://doi.org/10.1038/s41598-018-24426-8>, 2018.
- 920 Dall'Osto, M., Beddows, D. C. S., Tunved, P., Harrison, R. M., Lupi, A., Vitale, V., Becagli, S., Traversi, R., Park, K.-T., Yoon, Y. J., Massling, A., Skov, H., Lange, R., Strom, J., and Krejci, R.: Simultaneous measurements of aerosol size distributions at three sites in the European high Arctic, 19, 7377–7395, <https://doi.org/10.5194/acp-19-7377-2019>, 2019.
- Di Pierro, M., Jaeglé, L., Eloranta, E. W., and Sharma, S.: Spatial and seasonal distribution of Arctic aerosols observed by the CALIOP satellite instrument (2006–2012), *Atmos. Chem. Phys.*, 13, 7075–7095, <https://doi.org/10.5194/acp-13-7075-2013>,
925 2013.
- Drinovec, L., Močnik, G., Zotter, P., Prévôt, A. S. H., Ruckstuhl, C., Coz, E., Rupakheti, M., Sciare, J., Müller, T., Wiedensohler, A., and Hansen, A. D. A.: The "dual-spot" Aethalometer: an improved measurement of aerosol black carbon with real-time loading compensation, *Atmos. Meas. Tech.*, 8, 1965–1979, <https://doi.org/10.5194/amt-8-1965-2015>, 2015.
- 930 Duncan, B. N. and Bey, I.: A modeling study of the export pathways of pollution from Europe: Seasonal and interannual variations (1987–1997), *J. Geophys. Res.*, 109, D08301, doi:10.1029/2003JD004079, 2004.
- Dutkiewicz, V. A., DeJulio, A. M., Ahmed, T., Laing, J., Hopke, P. K., Skeie, R. B., Viisanen, Y., Paatero, J., and Husain, L.: Forty-seven years of weekly atmospheric black carbon measurements in the Finnish Arctic: Decrease in black carbon with
935 declining emissions, *J. Geophys. Res.-Atmos.*, 119, 7667–7683, <https://doi.org/10.1002/2014JD021790>, 2014.
- Eckhardt, S., Stohl, A., Beirle, S., Spichtinger, N., James, P., Forster, C., Junker, C., Wagner, T., Platt, U., and Jennings, S. G.: The North Atlantic Oscillation controls air pollution transport to the Arctic, 3, 1769–1778, <https://doi.org/10.5194/acp-3-1769-2003>, 2003.
- 940 Engelmann, R., Ansmann, A., Ohneiser, K., Griesche, H., Radenz, M., Hofer, J., Althausen, D., Dahlke, S., Maturilli, M., Veselovskii, I., Jimenez, C., Wiesen, R., Baars, H., Bühl, J., Gebauer, H., Haarig, M., Seifert, P., Wandinger, U., and Macke, A.: Wildfire smoke, Arctic haze, and aerosol effects on mixed-phase and cirrus clouds over the North Pole region during MOSAiC: an introduction, 21, 13397–13423, <https://doi.org/10.5194/acp-21-13397-2021>, 2021.
- 945 Faletto, G. and Bien, J.: Cluster Stability Selection, <https://doi.org/10.48550/ARXIV.2201.00494>, 2022.

- Ferrero, L., Cappelletti, D., Busetto, M., Mazzola, M., Lupi, A., Lanconelli, C., Becagli, S., Traversi, R., Caiazzo, L., Giardi, F., Moroni, B., Crocchianti, S., Fierz, M., Močnik, G., Sangiorgi, G., Perrone, M. G., Maturilli, M., Vitale, V., Udisti, R., and Bolzacchini, E.: Vertical profiles of aerosol and black carbon in the Arctic: a seasonal phenomenology along 2 years (2011–
950 2012) of field campaigns, *Atmos. Chem. Phys.*, 16, 12601–12629, <https://doi.org/10.5194/acp-16-12601-2016>, 2016.
- Flossmann, A. I. and Wobrock, W.: *Cloud Processing of Aerosol Particles in Marine Stratocumulus Clouds*, Atmosphere (Basel), 10, <https://doi.org/10.3390/atmos10090520>, 2019.
- Freud, E., Krejci, R., Tunved, P., Leaitch, R., Nguyen, Q. T., Massling, A., Skov, H., and Barrie, L.: Pan-Arctic aerosol number
955 size distributions: seasonality and transport patterns, 17, 8101–8128, <https://doi.org/10.5194/acp-17-8101-2017>, 2017.
- Garrett, T. J. and Zhao, C.: Increased Arctic cloud longwave emissivity associated with pollution from mid-latitudes, *Nature*, 440, 787–789, <https://doi.org/10.1038/nature04636>, 2006.
- 960 Garrett, T. J., Brattström, S., Sharma, S., Worthy, D. E. J., and Novelli, P.: The role of scavenging in the seasonal transport of black carbon and sulfate to the Arctic, 38, <https://doi.org/https://doi.org/10.1029/2011GL048221>, 2011.
- Gunsch, M. J., Kirpes, R. M., Kolesar, K. R., Barrett, T. E., China, S., Sheesley, R. J., Laskin, A., Wiedensohler, A., Tuch, T., and Pratt, K. A.: Contributions of transported Prudhoe Bay oil field emissions to the aerosol population in Utqiagvik, Alaska,
965 *Atmos. Chem. Phys.*, 17, 10879–10892, <https://doi.org/10.5194/acp-17-10879-2017>, 2017.
- Hartigan, J. A. and Wong, M. A.: A K-Means Clustering Algorithm, 28, 100–108, <https://doi.org/https://doi.org/10.2307/2346830>, 1979.
- 970 Hatzianastassiou, N., Wobrock, W., and Flossmann, A. I.: The effect of cloud-processing of aerosol particles on clouds and radiation, 50, 478–490, <https://doi.org/10.3402/tellusb.v50i5.16232>, 1998.
- Heidam, N. Z., Wåhlin, P., and Christensen, J. H.: Tropospheric Gases and Aerosols in Northeast Greenland, 56, 261–278, [https://doi.org/10.1175/1520-0469\(1999\)056<0261:Tgaain>2.0.Co;2](https://doi.org/10.1175/1520-0469(1999)056<0261:Tgaain>2.0.Co;2), 1999.
- 975 Heslin-Rees, D., Burgos, M., Hansson, H.-C., Krejci, R., Ström, J., Tunved, P., and Zieger, P.: From a polar to a marine environment: has the changing Arctic led to a shift in aerosol light scattering properties?, 20, 13671–13686, <https://doi.org/10.5194/acp-20-13671-2020>, 2020.

- 980 Hoppel, W. A., Frick, G., Fitzgerald, J., and Larson, R.: Marine boundary layer measurements of new particle formation and the effects nonprecipitating clouds have on aerosol size distribution, 991, 14443–14460, <https://doi.org/10.1029/94JD00797>, 1994.
- IPCC: Climate Change 2021: The Physical Science Basis. Contribution of Working Group I to the Sixth Assessment Report
 985 of the Intergovernmental Panel on Climate Change, edited by: Masson-Delmotte, V., Zhai, P., Pirani, A., Connors, S. L., Péan, C., Berger, S., Caud, N., Chen, Y., Goldfarb, L., Gomis, M. I., Huang, M., Leitzell, K., Lonnoy, E., Matthews, J. B. R., Maycock, T. K., Waterfield, T., Yelekçi, O., Yu, R., and Zhou, B., Tech. rep., Cambridge University Press, <https://www.ipcc.ch/report/ar6/wg1/#FullReport>, 2021.
- 990 Karlsson, L., Baccarini, A., Duplessis, P., Baumgardner, D., Brooks, I. M., Chang, R. Y.-W., Dada, L., Dällenbach, K. R., Heikkinen, L., Krejci, R., Leaitch, W. R., Leck, C., Partridge, D. G., Salter, M. E., Wernli, H., Wheeler, M. J., Schmale, J., and Zieger, P.: Physical and Chemical Properties of Cloud Droplet Residuals and Aerosol Particles During the Arctic Ocean 2018 Expedition, 127, e2021JD036383, <https://doi.org/https://doi.org/10.1029/2021JD036383>, 2022.
- 995 Kecorius, S., Vogl, T., Paasonen, P., Lampilahti, J., Rothenberg, D., Wex, H., Zeppenfeld, S., van Pinxteren, M., Hartmann, M., Henning, S., Gong, X., Welti, A., Kulmala, M., Stratmann, F., Herrmann, H., and Wiedensohler, A.: New particle formation and its effect on cloud condensation nuclei abundance in the summer Arctic: a case study in the Fram Strait and Barents Sea, *Atmos. Chem. Phys.*, 19, 14339–14364, <https://doi.org/10.5194/acp-19-14339-2019>, 2019.
- 1000 Klonecki, A., Hess, P., Emmons, L., Smith, L., Orlando, J., and Blake, D.: Seasonal changes in the transport of pollutants into the Arctic troposphere-model study, 108, <https://doi.org/https://doi.org/10.1029/2002JD002199>, 2003.
- Kolesar, K. R., Cellini, J., Peterson, P. K., Jefferson, A., Tuch, T., Birmili, W., Wiedensohler, A., and Pratt, K. A.: Effect of Prudhoe Bay emissions on atmospheric aerosol growth events observed in Utqiagvik (Barrow), Alaska, 152, 146–155,
 1005 <https://doi.org/10.1016/j.atmosenv.2016.12.019>, 2017.
- Kruppen, T., Birrien, F., Kauker, F., Rackow, T., von Albedyll, L., Angelopoulos, M., Belter, H. J., Bessonov, V., Damm, E., Dethloff, K., Haapala, J., Haas, C., Harris, C., Hendricks, S., Hoesemann, J., Hoppmann, M., Kaleschke, L., Karcher, M., Kolabutin, N., Lei, R., Lenz, J., Morgenstern, A., Nicolaus, M., Nixdorf, U., Petrovsky, T., Rabe, B., Rabenstein, L., Rex, M.,
 1010 Ricker, R., Rohde, J., Shimanchuk, E., Singha, S., Smolyanitsky, V., Sokolov, V., Stanton, T., Timofeeva, A., Tsamados, M., and Watkins, D.: The MOSAiC ice floe: sediment-laden survivor from the Siberian shelf, 14, 2173–2187, <https://doi.org/10.5194/tc-14-2173-2020>, 2020.

- 1015 Kuang, C.: Condensation particle counter (CPC) instrument handbook. ARM Tech. Rep. DOE/SC-ARM-TR-145, 22 pp., <https://doi.org/10.2172/1245983>, 2016a.
- Kuang, C.: TSI Model 3936 scanning mobility particle spectrometer instrument handbook. ARM Tech. Rep. DOE/SC-ARM-TR-147, 22 pp., <https://doi.org/10.2172/1245993>, 2016b.
- 1020 Kulmala, M., Petaja, T., Nieminen, T., Sipila, M., Manninen, H. E., Lehtipalo, K., Dal Maso, M., Aalto, P. P., Junninen, H., Paasonen, P., Riipinen, I., Lehtinen, K. E., Laaksonen, A., and Kerminen, V. M.: Measurement of the nucleation of atmospheric aerosol particles, *Nat. Protocol.*, 7, 1651–1667, <https://doi.org/10.1038/nprot.2012.091>, 2012.
- Lange, R., Dall’Osto, M., Skov, H., Nøjgaard, J. K., Nielsen, I. E., Beddows, D. C. S., Simo, R., Harrison, R. M., and Massling, A.: Characterization of distinct Arctic aerosol accumulation modes and their sources, *Atmos. Environ.*, 183, 1–10, 2018.
- 1025 Lawler, M. J., Saltzman, E. S., Karlsson, L., Zieger, P., Salter, M., Baccharini, A., Schmale, J., and Leck, C.: New Insights Into the Composition and Origins of Ultrafine Aerosol in the Summertime High Arctic, *Geophysical Research Letters*, 48, e2021GL094395, <https://doi.org/10.1029/2021GL094395>, 2021.
- 1030 Leaitch, W. R., Hoff, R. M., and MacPherson, J. I.: Airborne and lidar measurements of aerosol and cloud particles in the troposphere over Alert Canada in April 1986, 9, 187–211, 1989.
- Leaitch, W. R., Korolev, A., Aliabadi, A. A., Burkart, J., Willis, M. D., Abbatt, J. P. D., Bozem, H., Hoor, P., Köllner, F., Schneider, J., Herber, A., Konrad, C., and Brauner, R.: Effects of 20–100 nm particles on liquid clouds in the clean summertime Arctic, *Atmos. Chem. Phys.*, 16, 11107–11124, <https://doi.org/10.5194/acp-16-11107-2016>, 2016.
- 1035 Lee, H., Lee, K., Lunder, C. R., Krejci, R., Aas, W., Park, J., Park, K. T., Lee, B. Y., Yoon, Y. J., and Park, K.: Atmospheric new particle formation characteristics in the Arctic as measured at Mount Zeppelin, Svalbard, from 2016 to 2018, *Atmos. Chem. Phys.*, 20, 13425–13441, <https://doi.org/10.5194/acp-20-13425-2020>, 2020.
- 1040 Levasseur, M.: Impact of Arctic meltdown on the microbial cycling of sulphur, 6, 691–700, <https://doi.org/10.1038/ngeo1910>, 2013.
- 1045 Lubin, D. and Vogelmann, A. M.: A climatologically significant aerosol longwave indirect effect in the Arctic, *Nature*, 439, 453–456, <https://doi.org/10.1038/nature04449>, 2006.

- Martinez-Camara, M., Béjar Haro, B., Stohl, A., and Vetterli, M.: A robust method for inverse transport modeling of atmospheric emissions using blind outlier detection, 7, 2303–2311, <https://doi.org/10.5194/gmd-7-2303-2014>, 2014.
- 1050 Mauritsen, T., Sedlar, J., Tjernström, M., Leck, C., Martin, M., Shupe, M., Sjogren, S., Sierau, B., Persson, P. O. G., Brooks, I. M., and Swietlicki, E.: An Arctic CCN-limited cloud-aerosol regime, 11, 165–173, <https://doi.org/10.5194/acp-11-165-2011>, 2011.
- 1055 Moschos, V., Schmale, J., Aas, W., Becagli, S., Calzolari, G., Eleftheriadis, K., Moffett, C. E., Schnelle-Kreis, J., Severi, M., Sharma, S., Skov, H., Vestenius, M., Zhang, W., Hakola, H., Hellén, H., Huang, L., Jaffrezo, J.-L., Massling, A., Nøjgaard, J. K., Petäjä, T., Popovicheva, O., Sheesley, R. J., Traversi, R., Yttri, K. E., Prévôt, A. S. H., Baltensperger, U., and Haddad, I. el: Elucidating the present-day chemical composition, seasonality and source regions of climate-relevant aerosols across the Arctic land surface, 17, 34032, <https://doi.org/10.1088/1748-9326/ac444b>, 2022a.
- 1060 Moschos, V., Dzepina, K., Bhattu, D., Lamkaddam, H., Casotto, R., Daellenbach, K. R., Canonaco, F., Rai, P., Aas, W., Becagli, S., Calzolari, G., Eleftheriadis, K., Moffett, C. E., Schnelle-Kreis, J., Severi, M., Sharma, S., Skov, H., Vestenius, M., Zhang, W., Hakola, H., Hellén, H., Huang, L., Jaffrezo, J.-L., Massling, A., Nøjgaard, J. K., Petäjä, T., Popovicheva, O., Sheesley, R. J., Traversi, R., Yttri, K. E., Schmale, J., Prévôt, A. S. H., Baltensperger, U., and el Haddad, I.: Equal abundance
- 1065 of summertime natural and wintertime anthropogenic Arctic organic aerosols, 15, 196–202, <https://doi.org/10.1038/s41561-021-00891-1>, 2022b.
- Murphy, D. M., Anderson, J. R., Quinn, P. K., McInnes, L. M., Brechtel, F. J., Kreidenweis, S. M., Middlebrook, A. M., Pósfai, M., Thomson, D. S., and Buseck, P. R.: Influence of sea-salt on aerosol radiative properties in the Southern Ocean
- 1070 marine boundary layer, *Nature*, 392, 62–65, <https://doi.org/10.1038/32138>, 1998.
- Nguyen, Q. T., Glasius, M., Sorensen, L. L., Jensen, B., Skov, H., Birmili, W., Wiedensohler, A., Kristensson, A., Nøjgaard, J. K., and Massling, A.: Seasonal variation of atmospheric particle number concentrations, new particle formation and atmospheric oxidation capacity at the high Arctic site Villum Research Station, Station Nord, 16, 11319–11336, <https://doi.org/10.5194/acp-16-11319-2016>, 2016.
- 1075 Nicolaus, M., Perovich, D. K., Spreen, G., Granskog, M. A., von Albedyll, L., Angelopoulos, M., Anhaus, P., Arndt, S., Belter, H. J., Bessonov, V., Birnbaum, G., Brauchle, J., Calmer, R., Cardellach, E., Cheng, B., Clemens-Sewall, D., Dadic, R., Damm, E., de Boer, G., Demir, O., Dethloff, K., Divine, D. v, Fong, A. A., Fons, S., Frey, M. M., Fuchs, N., Gabarró, C., Gerland, S.,
- 1080 Goessling, H. F., Gradinger, R., Haapala, J., Haas, C., Hamilton, J., Hannula, H.-R., Hendricks, S., Herber, A., Heuzé, C., Hoppmann, M., Høyland, K. V., Huntemann, M., Hutchings, J. K., Hwang, B., Itkin, P., Jacobi, H.-W., Jaggi, M., Jutila, A.,

- Kaleschke, L., Katlein, C., Kolabutin, N., Krampe, D., Kristensen, S. S., Krumpen, T., Kurtz, N., Lampert, A., Lange, B. A., Lei, R., Light, B., Linhardt, F., Liston, G. E., Loose, B., Macfarlane, A. R., Mahmud, M., Matero, I. O., Maus, S., Morgenstern, A., Naderpour, R., Nandan, V., Niubom, A., Oggier, M., Oppelt, N., Pätzold, F., Perron, C., Petrovsky, T., Pirazzini, R.,
1085 Polashenski, C., Rabe, B., Raphael, I. A., Regnery, J., Rex, M., Ricker, R., Riemann-Campe, K., Rinke, A., Rohde, J., Salganik, E., Scharien, R. K., Schiller, M., Schneebei, M., Semmling, M., Shimanchuk, E., Shupe, M. D., Smith, M. M., Smolyanitsky, V., Sokolov, V., Stanton, T., Stroeve, J., Thielke, L., Timofeeva, A., Tonboe, R. T., Tavri, A., et al.: Overview of the MOSAiC expedition: Snow and sea ice, 10, 000046, <https://doi.org/10.1525/elementa.2021.000046>, 2022.
- 1090 Nixdorf, U., Dethloff, K., Rex, M., Shupe, M., Sommerfeld, A., Perovich, D. K., Nicolaus, M., Heuzé, C., Rabe, B., Loose, B., Damm, E., Gradinger, R., Fong, A., Maslowski, W., Rinke, A., Kwok, R., Spreen, G., Wendisch, M., Herber, A., Hirsekorn, M., Mohaupt, V., Frickenhaus, S., Immerz, A., Weiss-Tuider, K., König, B., Mengedocht, D., Regnery, J., Gerchow, P., Ransby, D., Krumpen, T., Morgenstern, A., Haas, C., Kanzow, T., Rack, F. R., Saitzev, V., Sokolov, V., Makarov, A., Schwarze, S., Wunderlich, T., Wurr, K., and Boetius, A.: MOSAiC Extended Acknowledgement, <https://doi.org/10.5281/zenodo.5541624>,
1095 September 2021.
- Nøjgaard, J. K., Peker, L., Pernov, J. B., Johnson, M. S., Bossi, R., Massling, A., Lange, R., Nielsen, I. E., Prevot, A. S. H., Eriksson, A. C., Canonaco, F., and Skov, H.: A local marine source of atmospheric particles in the High Arctic, *Atmospheric Environment*, 285, 119241, <https://doi.org/https://doi.org/10.1016/j.atmosenv.2022.119241>, 2022.
- 1100 Ohneiser, K., Ansmann, A., Chudnovsky, A., Engelmann, R., Ritter, C., Veselovskii, I., Baars, H., Gebauer, H., Griesche, H., Radenz, M., Hofer, J., Althausen, D., Dahlke, S., and Maturilli, M.: The unexpected smoke layer in the High Arctic winter stratosphere during MOSAiC 2019–2020, 21, 15783–15808, <https://doi.org/10.5194/acp-21-15783-2021>, 2021.
- 1105 Pasquier, J. T., David, R. O., Freitas, G., Gierens, R., Gramlich, Y., Haslett, S., Li, G., Schäfer, B., Siegel, K., Wieder, J., Adachi, K., Belosi, F., Carlsen, T., Decesari, S., Ebell, K., Gilardoni, S., Gysel-Beer, M., Henneberger, J., Inoue, J., Kanji, Z. A., Koike, M., Kondo, Y., Krejci, R., Lohmann, U., Maturilli, M., Mazzolla, M., Modini, R., Mohr, C., Motos, G., Nenes, A., Nicosia, A., Ohata, S., Paglione, M., Park, S., Pileci, R. E., Ramelli, F., Rinaldi, M., Ritter, C., Sato, K., Storelvmo, T., Tobo, Y., Traversi, R., Viola, A., and Zieger, P.: The Ny-Ålesund Aerosol Cloud Experiment (NASCENT): Overview and First
1110 Results, *Bull Am Meteorol Soc*, <https://doi.org/10.1175/BAMS-D-21-0034.1>, 2022.
- Pernov, J. B., Beddows, D., Thomas, D. C., Dall’Osto, M., Harrison, R. M., Schmale, J., Skov, H., and Massling, A.: Increased aerosol concentrations in the High Arctic attributable to changing atmospheric transport patterns, *npj Climate and Atmospheric Science*, 5, 62, <https://doi.org/10.1038/s41612-022-00286-y>, 2022.

- Popovicheva, O., Diapouli, E., Makshtas, A., Shonija, N., Manousakas, M., Saraga, D., Uttal, T., and Eleftheriadis, K.: East Siberian Arctic background and black carbon polluted aerosols at HMO Tiksi, *Science of The Total Environment*, 655, 924–938, <https://doi.org/10.1016/j.scitotenv.2018.11.165>, 2019.
- 1120 Quennehen, B., Schwarzenboeck, A., Matsuki, A., Burkhart, J. F., Stohl, A., Ancellet, G., and Law, K. S.: Anthropogenic and forest fire pollution aerosol transported to the Arctic: observations from the POLARCAT-France spring campaign, 12, 6437–6454, <https://doi.org/10.5194/acp-12-6437-2012>, 2012.
- 1125 Quinn, P. K., Miller, T. L., Bates, T. S., Ogren, J. A., Andrews, E., and Shaw, G. E.: A 3-year record of simultaneously measured aerosol chemical and optical properties at Barrow, Alaska, *J. Geophys. Res.*, 107, 4130, <https://doi.org/10.1029/2001JD001248>, 2002.
- Quinn, P. K., Shaw, G., Andrews, E., Dutton, E. G., Ruoho-Airola, T., and Gong, S. L.: Arctic haze: current trends and knowledge gaps, 59, 99–114, <https://doi.org/10.1111/j.1600-0889.2006.00236.x>, 2007.
- 1130 Rabe, B., Heuzé, C., Regnery, J., Aksenov, Y., Allerholt, J., Athanase, M., Bai, Y., Basque, C., Bauch, D., Baumann, T. M., Chen, D., Cole, S. T., Craw, L., Davies, A., Damm, E., Dethloff, K., Divine, D. v, Doglioni, F., Ebert, F., Fang, Y.-C., Fer, I., Fong, A. A., Gradinger, R., Granskog, M. A., Graupner, R., Haas, C., He, H., He, Y., Hoppmann, M., Janout, M., Kadko, D., Kanzow, T., Karam, S., Kawaguchi, Y., Koenig, Z., Kong, B., Krishfield, R. A., Krumpen, T., Kuhlmei, D., Kuznetsov, I.,
- 1135 Lan, M., Laukert, G., Lei, R., Li, T., Torres-Valdés, S., Lin, L., Lin, L., Liu, H., Liu, N., Loose, B., Ma, X., McKay, R., Mallet, M., Mallett, R. D. C., Maslowski, W., Mertens, C., Mohrholz, V., Mulwijk, M., Nicolaus, M., O’Brien, J. K., Perovich, D., Ren, J., Rex, M., Ribeiro, N., Rinke, A., Schaffer, J., Schuffenhauer, I., Schulz, K., Shupe, M. D., Shaw, W., Sokolov, V., Sommerfeld, A., Spreen, G., Stanton, T., Stephens, M., Su, J., Sukhikh, N., Sundfjord, A., Thomisch, K., Tippenhauer, S., Toole, J. M., Vredenburg, M., Walter, M., Wang, H., Wang, L., Wang, Y., Wendisch, M., Zhao, J., Zhou, M., and Zhu, J.:
- 1140 Overview of the MOSAiC expedition: Physical oceanography, 10, 00062, <https://doi.org/10.1525/elementa.2021.00062>, 2022.
- Sharma, S., Barrie, L. A., Magnusson, E., Brattström, G., Leaitch, W. R., Steffen, A., and Landsberger, S.: A Factor and Trends Analysis of Multidecadal Lower Tropospheric Observations of Arctic Aerosol Composition, Black Carbon, Ozone, and Mercury at Alert, Canada, 124, 14133–14161, <https://doi.org/10.1029/2019JD030844>, 2019.
- 1145 Schmale, J. and Baccarini, A.: Progress in Unraveling Atmospheric New Particle Formation and Growth Across the Arctic, 48, e2021GL094198, <https://doi.org/https://doi.org/10.1029/2021GL094198>, 2021.

- Schmale, J., Arnold, S. R., Law, K. S., Thorp, T., Anenberg, S., Simpson, W. R., Mao, J., and Pratt, K. A.: Local Arctic Air
 1150 Pollution: A Neglected but Serious Problem, 6, 1385–1412, <https://doi.org/https://doi.org/10.1029/2018EF000952>, 2018.
- Schmale, J., Zieger, P., and Ekman, A. M. L.: Aerosols in current and future Arctic climate, 11, 95–105,
<https://doi.org/10.1038/s41558-020-00969-5>, 2021.
- Schmale, J., Sharma, S., Decesari, S., Pernov, J., Massling, A., Hansson, H.-C., von Salzen, K., Skov, H., Andrews, E., Quinn,
 1155 P. K., Upchurch, L. M., Eleftheriadis, K., Traversi, R., Gilardoni, S., Mazzola, M., Laing, J., and Hopke, P.: Pan-Arctic
 seasonal cycles and long-term trends of aerosol properties from 10 observatories, 22, 3067–3096, <https://doi.org/10.5194/acp-22-3067-2022>, 2022.
- Schmeisser, L., Backman, J., Ogren, J. A., Andrews, E., Asmi, E., Starkweather, S., Uttal, T., Fiebig, M., Sharma, S.,
 1160 Eleftheriadis, K., Vratolis, S., Bergin, M., Tunved, P., and Jefferson, A.: Seasonality of aerosol optical properties in the Arctic,
 Atmos. Chem. Phys., 18, 11599–11622, <https://doi.org/10.5194/acp-18-11599-2018>, 2018.
- Seibert, P.: Inverse Dispersion Modelling Based on Trajectory-Derived Source-Receptor Relationships, in: Air Pollution
 Modeling and Its Application XII, edited by: Gryning Sven-Erik and Chaumerliac, N., Springer US, Boston, MA, 711–713,
 1165 https://doi.org/10.1007/978-1-4757-9128-0_80, 1998.
- Seibert, P. and Frank, A.: Source-receptor matrix calculation with a Lagrangian particle dispersion model in backward mode,
 Atmos. Chem. Phys., 4, 51–63, <https://doi.org/10.5194/acp-4-51-2004>, 2004.
- 1170 Serreze, M. C. and Barry, R. G.: Processes and impacts of Arctic amplification: A research synthesis, 77, 85–96,
<https://doi.org/https://doi.org/10.1016/j.gloplacha.2011.03.004>, 2011.
- Shaw, G. E.: The Arctic Haze Phenomenon, Bull Am Meteorol Soc, 76, 2403–2413, 1995.
- 1175 Shindell, D. T., Miller, R. L., Schmidt, G. A., and Pandolfo, L.: Simulation of recent northern winter climate trends by
 greenhouse-gas forcing, Nature, 399, 452–455, <https://doi.org/10.1038/20905>, 1999.
- Shindell, D. and Faluvegi, G.: Climate response to regional radiative forcing during the twentieth century, 2, 294–300,
<https://doi.org/10.1038/ngeo473>, 2009.
- 1180 Shupe, M. D., Rex, M., Blomquist, B., Persson, P. O. G., Schmale, J., Uttal, T., Althausen, D., Angot, H., Archer, S., Bariteau,
 L., Beck, I., Bilberry, J., Bucci, S., Buck, C., Boyer, M., Brasseur, Z., Brooks, I. M., Calmer, R., Cassano, J., Castro, V., Chu,

- D., Costa, D., Cox, C. J., Creamean, J., Crewell, S., Dahlke, S., Damm, E., de Boer, G., Deckelmann, H., Dethloff, K., Dütsch, M., Ebell, K., Ehrlich, A., Ellis, J., Engelmann, R., Fong, A. A., Frey, M. M., Gallagher, M. R., Ganzeveld, L., Gradinger, R.,
1185 Graeser, J., Greenamyre, V., Griesche, H., Griffiths, S., Hamilton, J., Heinemann, G., Helmig, D., Herber, A., Heuzé, C.,
Hofer, J., Houchens, T., Howard, D., Inoue, J., Jacobi, H.-W., Jaiser, R., Jokinen, T., Jourdan, O., Jozef, G., King, W.,
Kirchgaessner, A., Klingebiel, M., Krassovski, M., Krumpen, T., Lampert, A., Landing, W., Laurila, T., Lawrence, D.,
Lonardi, M., Loose, B., Lüpkes, C., Maahn, M., Macke, A., Maslowski, W., Marsay, C., Maturilli, M., Mech, M., Morris, S.,
1190 Moser, M., Nicolaus, M., Ortega, P., Osborn, J., Pätzold, F., Perovich, D. K., Petäjä, T., Pilz, C., Pirazzini, R., Posman, K.,
Powers, H., Pratt, K. A., Preußner, A., Quéléver, L., Radenz, M., Rabe, B., Rinke, A., Sachs, T., Schulz, A., Siebert, H., Silva,
T., Solomon, A., et al.: Overview of the MOSAiC expedition: Atmosphere, 10, 00060,
<https://doi.org/10.1525/elementa.2021.00060>, 2022.
- Stohl, A.: Characteristics of atmospheric transport into the Arctic troposphere, 111,
1195 <https://doi.org/https://doi.org/10.1029/2005JD006888>, 2006.
- Thomas, D. C., Christensen, J. H., Massling, A., Pernov, J. B., and Skov, H.: The effect of the 2020 COVID-19 lockdown on
atmospheric black carbon levels in northeastern Greenland, 269, 118853, <https://doi.org/10.1016/j.atmosenv.2021.118853>,
2022.
- 1200 Tunved, P., Ström, J., and Krejci, R.: Arctic aerosol life cycle: linking aerosol size distributions observed between 2000 and
2010 with air mass transport and precipitation at Zeppelin station, Ny-Ålesund, Svalbard, 13, 3643–3660,
<https://doi.org/10.5194/acp-13-3643-2013>, 2013.
- 1205 Twomey, S. A., Piepgrass, M., and Wolfe, T. L.: An assessment of the impact of pollution on global cloud albedo, 36B, 356–
366, <https://doi.org/https://doi.org/10.1111/j.1600-0889.1984.tb00254.x>, 1984.
- Uin, J., Aiken, A. C., Dubey, M. K., Kuang, C., Pekour, M., Salwen, C., Sedlacek, A. J., Senum, G., Smith, S., Wang, J.,
Watson, T. B., and Springston, S. R.: Atmospheric Radiation Measurement (ARM) Aerosol Observing Systems (AOS) for
1210 Surface-Based In Situ Atmospheric Aerosol and Trace Gas Measurements, 36, 2429–2447, <https://doi.org/10.1175/JTECH-D-19-0077.1>, 2019.
- Willis, M. D., Leaitch, W. R., and Abbatt, J. P. D.: Processes Controlling the Composition and Abundance of Arctic Aerosol,
Rev. Geophys., 56, 621–671, <https://doi.org/10.1029/2018rg000602>, 2018.
- 1215

Zheng, G., Wang, Y., Wood, R., Jensen, M. P., Kuang, C., McCoy, I. L., Matthews, A., Mei, F., Tomlinson, J. M., Shilling, J. E., Zawadowicz, M. A., Crosbie, E., Moore, R., Ziemba, L., Andreae, M. O., and Wang, J.: New particle formation in the remote marine boundary layer, 12, 527, <https://doi.org/10.1038/s41467-020-20773-1>, 2021.