

**Manuscript ID:** acp-2022-56

**Original title:** CALIPSO Retrieval of Instantaneous Faint Aerosol

**Revised title:** Retrieving Instantaneous Extinction of Aerosol Undetected by CALIPSO Layer Detection Algorithm

**General comment**

The authors present a methodology for converting CALIPSO L1 data to a 20 km averaged backscatter coefficient at 532 nm (k532) and compare that product to the L3 CALIPSO extinction coefficient product. The stark difference between the 2 products is the resolution: the L3 product is averaged over a month time period and averaged over  $5^\circ \times 20^\circ$  (latitude x longitude). The authors also compare their product to the SAGE III/ISS extinction coefficient at 520 nm (k520) for daytime and nighttime CALIPSO observations. Their k532 product agreed better with SAGE when the CALIPSO data were collected during the night and performed substantially worse for daytime observations. Overall, per their Fig. 5, it appears that the agreement between the 2 instruments is good.

While I believe there may be value in this methodology, the authors do not present a convincing case. Overall, the paper is poorly written in both organization and especially detail. In its current state it is challenging to understand what the authors did (and why) and the methodological details are insufficient to reproduce the work. Further, the authors do not make any attempt to explain how this methodology is different from previous work (they even cited these previous studies so it should be straight forward for them to explain how their method is different). They simply state that their product is below the  $0.01 \text{ km}^{-1}$  LOD threshold for the previously-published CALIPSO L2 products. However, I have to question whether this is a fair comparison (i.e., their L1-based product with the L2 product). I think that, as written, the paper does not present a novel approach that will produce a scientifically interesting product and there are some substantial technical issues at play as well. Finally, the authors list 3 main conclusions from this study. However, for reasons listed below, I find all 3 conclusions to be tenuous (or demonstrably wrong), which leave me questioning the scientific merit of this study. For these reasons, and those enumerated below, I cannot recommend this paper for publication at this time.

**Response:** Thank you for your careful review. We have made great efforts to address the issues you raised, and the manuscript has been largely improved. The main changes are as follows.

- (1) The title of the paper has been revised as “*Retrieving Instantaneous Extinction of Aerosol Undetected by CALIPSO Layer Detection Algorithm*” to highlight the

objectives of the study.

- (2) A new method to retrieve lidar ratios by using SAGE III/ISS products as a constraint has been added to the manuscript (see more details in Section 2.4). This study no longer uses the fixed lidar ratio (i.e. 28.75 sr) as in previous study of Kim et al. (2017). We also add a comparison of retrieved undetected aerosol extinction based on globally SAGE-constrained and fixed lidar ratios in Section 3.4 to highlight the effect of the lidar ratio we updated.
- (3) Uncertainties in the extinction coefficient retrieval were calculated to assess the reliability of the extinction results of undetected aerosol. The comparison shows good agreement with the independent SAGE III/ISS aerosol extinction ( $R=0.66$ ). Especially, the relative uncertainties of the retrieved extinction coefficients at  $10^{-3} \text{ km}^{-1}$  and  $10^{-4} \text{ km}^{-1}$  are 35% and 125%, respectively, while the minimum extinction of CALIPSO L2 product is  $0.01 \text{ km}^{-1}$  with 40% uncertainty (Kacenelenbogen et al., 2011; Toth et al., 2018; Winker et al., 2013; Winker et al., 2009).
- (4) The Raikoke eruption event is added to the comparison of instantaneously retrieved undetected aerosol extinction and Level 3 product in Section 3.3.
- (5) The results, discussion and conclusions were largely rewritten in the revised manuscript to highlight the significance of this study.

### Major issues

1. The paper requires major revisions in writing. Many sentences do not make sense, some references do not make sense within the context of the sentence, and some references do not support what the authors claim.

**Response:** Thank you for your comment. The results, discussion and conclusions were largely rewritten in the revision. Also, the English has been carefully polished and the references have been corrected.

2. The authors do not make it clear how their method is different from previous work, which leaves me questioning the scientific merit of this work.

**Response:** The method has been updated and is described in Section 2.4, as follows.

When using the Fernald method to retrieve aerosol extinction coefficients, the lidar ratio ( $S_p(r)$ ) is a key parameter (Fernald, 1984; Fernald et al., 1972), which is often set based on aerosol type or empirical values (Young et al., 2018; Kar et al., 2019). The backscattered signal of undetected aerosols is extremely weak to be detected and classified by the CALIPSO layer detection and classification algorithms (Kim et al., 2017; Toth et al., 2018). The extinction retrieval of undetected aerosols is

very sensitive to the lidar ratio (Kim et al., 2017). Therefore, to obtain the appropriate lidar ratio of undetected aerosol, we retrieve the lidar ratio by using SAGE III/ISS 521 nm AOD as a constraint, and the algorithm flow is shown in Figure 2.

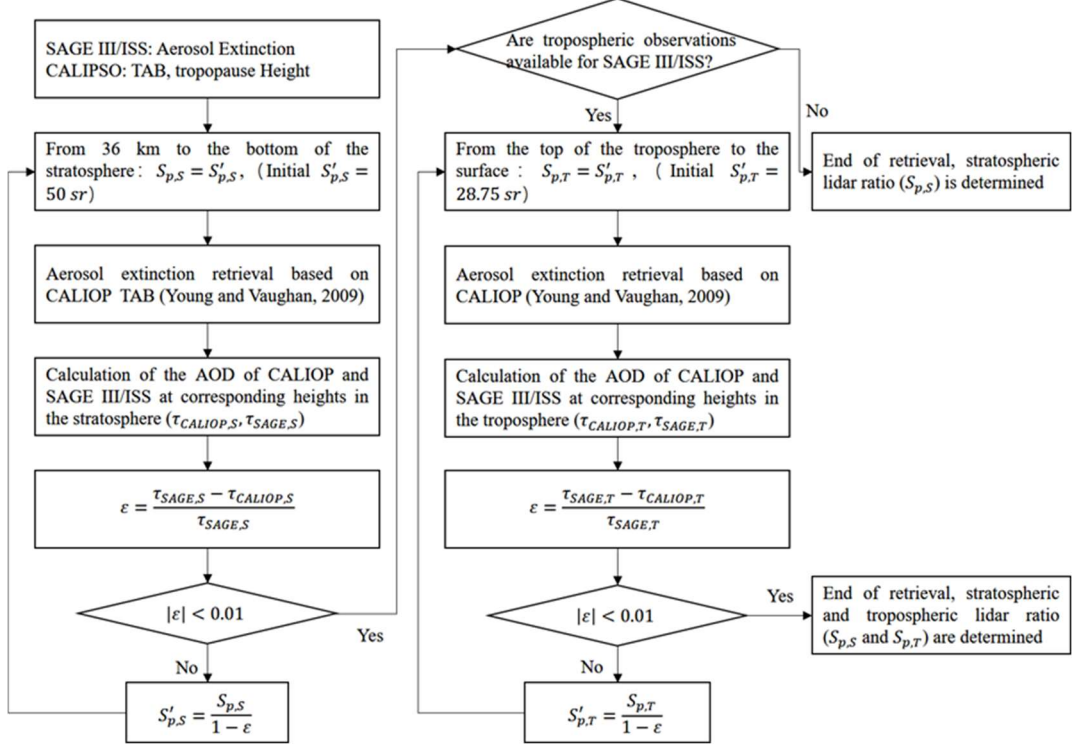


Figure 2. Flowchart for the retrieval of lidar ratio by using SAGE III/ISS AOD as a constraint.

We perform the retrieval of the lidar ratio separately because the aerosol compositions in the troposphere and stratosphere are different. For the stratosphere, the initial lidar ratio ( $S_{p,S}$ ) is set to 50 sr, which is widely assumed for stratosphere aerosol (Kar et al., 2019; Sakai et al., 2016; Khaykin et al., 2017), and the extinction retrieval is performed from 36 km to the bottom of the stratosphere. The AOD of CALIPSO and SAGE III/ISS ( $\tau_{CALIOP,S}$  and  $\tau_{SAGE,S}$ ) for the same altitude bins in the stratosphere and the deviation ( $\epsilon$ ) between them are calculated. The lidar ratio is iteratively modified and the extinction, and AOD of CALIPSO are recalculated until  $|\epsilon| < 0.01$ . The same procedure is performed in the troposphere; the difference between the retrieval altitude and using an initial lidar ratio ( $S_{p,T}$ ) of 28.75 sr refers to the estimate by Kim et al. (2017).

The tropospheric and stratospheric lidar ratios are retrieved globally based on matched SAGE III/ISS and CALIPSO profiles and counted at each  $20^\circ \times 20^\circ$  grid. When performing the extinction retrieval of CALIPSO,  $S_{p,S}$  and  $S_{p,T}$  can be selected depending on which grid the profile is located on. The constrained retrieval of the lidar ratio uses nighttime CALIPSO and daytime SAGE III/ISS

profiles given that daytime CALIPSO observations are affected by solar background noise and have a much lower SNR than nighttime observations (Hunt et al., 2009). The implicit assumption is that diurnal variations in undetected aerosols are ignored. To obtain a consistent lidar ratio retrieval dataset and validation dataset, we used data from the first two months of each quarter to derive the lidar ratio and those of the last month for validation. Thus, for three years from June 2017 to May 2020, 24 months of data are retrieved to determine the lidar ratio and 12 months of data for validation.

Therefore, we get the SAGE-constrained lidar ratio at stratosphere and troposphere in global, respectively, as shown in Figure 3.

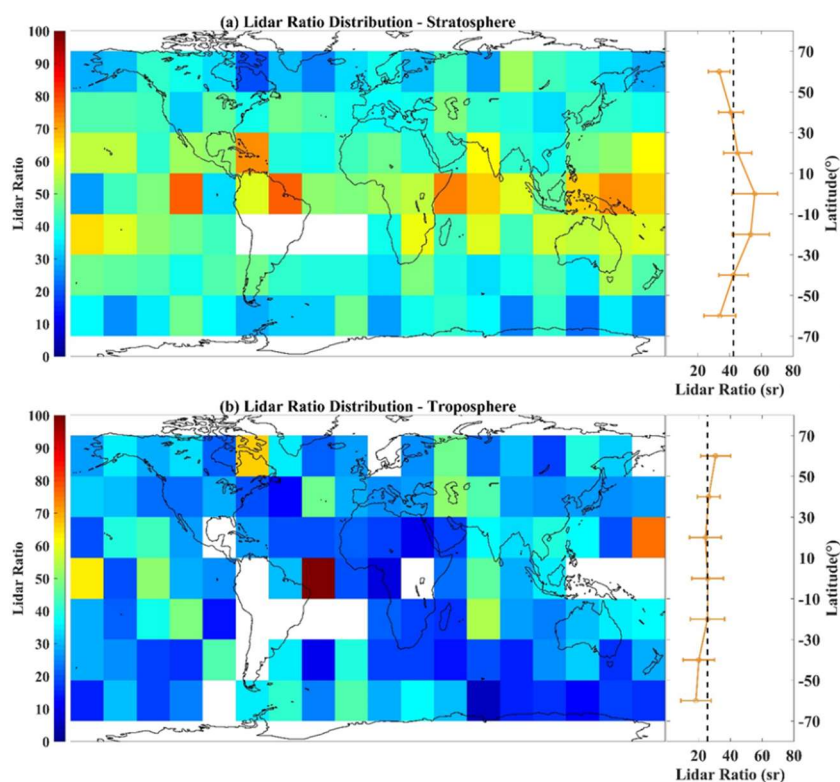


Figure 3. (a) Global stratospheric distribution of lidar ratios with a grid size of  $20^\circ \times 20^\circ$ . The color bar represents the lidar ratio value. The line on the right shows the median variation at  $20^\circ$  intervals from  $-70^\circ$  to  $70^\circ$  (latitude) globally, and the error bar represents the median absolute deviation. (b) Same as (a), but for the troposphere. A blank grid indicates that no data is available.

Figure 3 shows the global distribution of the median lidar ratios in  $20^\circ \times 20^\circ$  grids retrieved by CALIPSO under the SAGE III/ISS 521 nm products constraint. The median of the global stratospheric lidar ratio is 42.2 sr, whereas the lidar ratio is smaller at high latitudes than that near the equator (Figure 3a), which is consistent with the latitude-lidar ratio distribution in Kar et al. (2019). The median global

tropospheric lidar ratio is smaller (24.5 sr) and shows a different trend from that of the stratosphere, slightly decreasing from the northern to the southern hemisphere (Figure 3b). In the following, we retrieve the extinction of CALIPSO undetected aerosol with the median lidar ratios of the stratosphere and troposphere in the grid, where the CALIPSO profile is located on. In addition, the median absolute deviation of the lidar ratio in the grid is used to calculate the uncertainty of the extinction (Eq. (7)).

Additionally, uncertainties in the extinction coefficient retrieval were calculated to assess the reliability of the extinction of undetected aerosol.

The nighttime CALIPSO undetected aerosol extinction and SAGE III/ISS 521 nm aerosol extinction show good agreement for the 12-month validation dataset (Figure 5a), with the average retrieved aerosol extinction (black line) closing to the 1:1 line. The correlation coefficients (R) and normalized root mean square error (NRMSE) are 0.66 and 100.6% based on the independent 12-month SAGE validation dataset, respectively. ...

...The averaged black line in Figure 5b show the mean relative uncertainties of CALIPSO, specifically ~35% and ~125% for the retrieved extinction of  $10^{-3}$  and  $10^{-4}$   $\text{km}^{-1}$ , respectively.

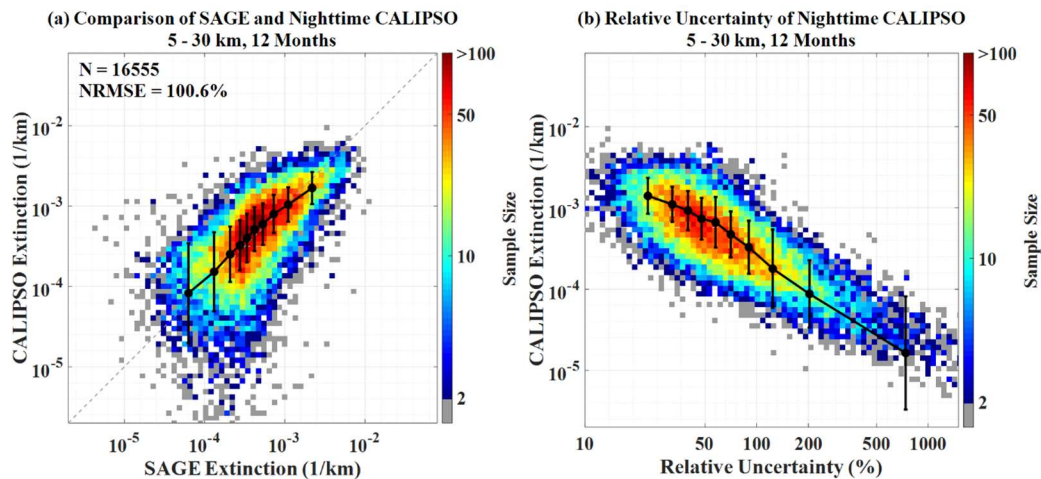


Figure 5. (a) Correlation plots of the retrieval within the matching grid of CALIPSO nighttime and SAGE III/ISS product from 5 km to 30 km for 12 months of validation. The color bar represents the sample size. The black bins represent the mean values of each 10% quantile (0-10%, 10-20%...and 90-100%) of SAGE III/ISS 521 nm aerosol product and corresponding CALIPSO retrieval. The I-type bars indicate the standard error of each 10% quantile CALIPSO retrieval. (b) The relative uncertainty of one-degree CALIPSO extinction.

3. This work is ultimately a statistical analysis and the authors are looking for faint

signal that, per their paper, is below the previously published limit of detection (LOD) for CALIPSO. Their retrieval requires an iterative process but do not attempt to propagate uncertainties through this process. Therefore, we have no way of determining whether their end product is significantly different from zero.

**Response:** Good suggestion! We have added the calculation of the extinction uncertainty for the retrieval as follows:

For the retrieved extinction of undetected aerosol, we calculated the uncertainty to assess the reliability of the results according to the algorithm of CALIPSO Level 2 aerosol product (Young et al., 2013), where the main equations are as follows:

$$\frac{\Delta\beta'_N(r)}{\beta'_N(r)} = \left\{ \left[ \frac{\Delta\beta'(0,r)}{\beta'(0,r)} \right]^2 + \left[ \frac{\Delta C_N(r_N)}{C_N(r_N)} \right]^2 \right\}^{1/2}, \quad (5)$$

$$\left( \Delta\beta_p(r) \right)^2 = \beta_T^2(r) \left[ \left( \frac{\Delta\beta'_N(r)}{\beta'_N(r)} \right)^2 + \left( \frac{\Delta T_M^2(r_N,r)}{T_M^2(r_N,r)} \right)^2 + \left( \frac{\Delta T_P^2(r_N,r)}{T_P^2(r_N,r)} \right)^2 \right] + \left( \Delta\beta_M(r) \right)^2, \quad (6)$$

$$\Delta\sigma_P(r) = \left[ \left( \frac{\Delta S_p}{S_p} \right)^2 + \left( \frac{\Delta\beta_p(r)}{\beta_p(r)} \right)^2 \right]^{1/2} \sigma_P(r), \quad (7)$$

where  $\Delta\beta_p(r)$  and  $\Delta\sigma_P(r)$  in Eqs (6) and (7) are the particle backscatter uncertainty and particle extinction uncertainty, respectively; they are the target parameters for the calculation. Eq. (5) is the formula for one of the terms of Eq. (6), where  $\Delta\beta'_N(r)$  is the uncertainty of the renormalized TAB,  $\Delta\beta'(0,r)$  is the uncertainty of the TAB, and  $\Delta C_N(r_N)$  is the uncertainty of renormalization. The error due to renormalization is negligible (Kim et al., 2017) because the starting altitude of retrieval ( $r_N = 36$  km) is consistent with the calibration region (36–39 km) for the CALIPSO Level 1B Version 4 product (Kar et al., 2018); therefore,  $\Delta C_N(r_N)$  is set to 0. The standard deviation of the TAB is used to approximate  $\Delta\beta'(0,r)$  because the TAB in this study was pre-processed.

Uncertainty is found in the calibration factor in  $\Delta\beta'(0,r)$ , which contains systematic and random components (Young et al., 2013), and this approximation neglects the systematic error in the calibration factor, producing a low bias in the uncertainty calculation. Fortunately, the calibration factor bias of the nighttime CALIPSO V4 product has been reduced to  $1.6\% \pm 2.4\%$  (Kar et al., 2018). Additionally, Kim et al. (2017) pointed out that the bias caused by the lidar ratio is dominated in the retrieval. Thus, we consider ignoring the calibration factor in the systematic error. The other terms in Eq. (6), total backscatter coefficient ( $\beta_T(r)$ ), molecular and particle two-way transmittance uncertainty ( $\Delta T_M^2(r_N,r)$  and  $\Delta T_P^2(r_N,r)$ ), and molecular backscatter uncertainty ( $\Delta\beta_M(r)$ ) are calculated in the same way as in Young et al. (2013) and are not repeated here.  $S_p$  and  $\Delta S_p$  in Eq.

(7) are selected from the median and median absolute deviation, respectively, in the retrieved  $20^\circ \times 20^\circ$  grid lidar ratio based on CALIPSO profile locations.

Also, we discuss the uncertainties corresponding to the different magnitudes of extinction in the retrieval, as follows:

...The averaged black line in Figure 5b show the mean relative uncertainties of CALIPSO, specifically  $\sim 35\%$  and  $\sim 125\%$  for the retrieved extinction of  $10^{-3}$  and  $10^{-4} \text{ km}^{-1}$ , respectively.

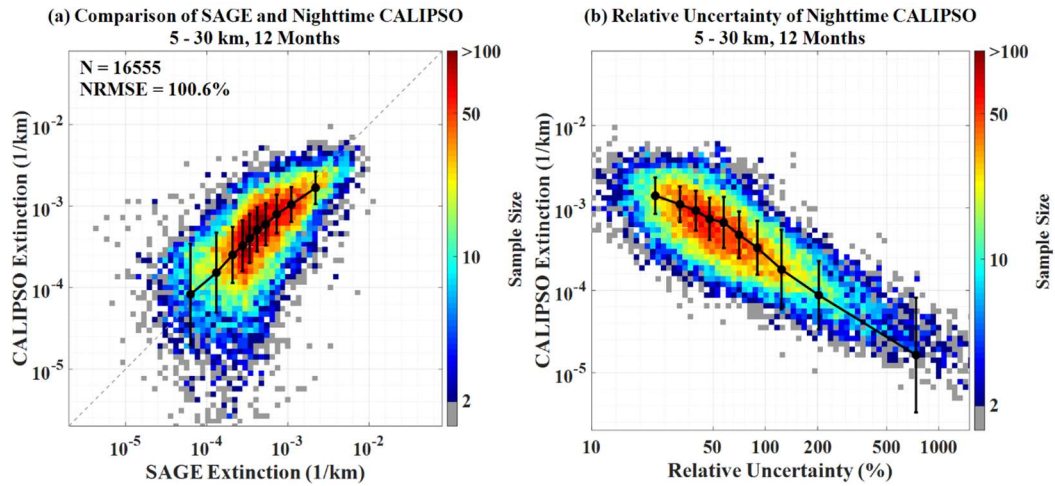


Figure 5. (a) Correlation plots of the retrieval within the matching grid of CALIPSO nighttime and SAGE III/ISS product from 5 km to 30 km for 12 months of validation. The color bar represents the sample size. The black bins represent the mean values of each 10% quantile (0-10%, 10-20%...and 90-100%) of SAGE III/ISS 521 nm aerosol product and corresponding CALIPSO retrieval. The I-type bars indicate the standard error of each 10% quantile CALIPSO retrieval. (b) The relative uncertainty of one-degree CALIPSO extinction.

4. One has to wonder how valid a comparison between an instantaneous product and a monthly average is (i.e., the authors L1 product and the standard CALIPSO L3 extinction product) per their Figure 7. Further, the faint aerosol layer they identify is at  $\approx 17.5$  km and they showed the L3 product at 15.2 km. The validity of this comparison is tenuous even when the altitude match, and much less so when the altitudes do not match.

**Response:** We have displayed the height of 17 km of the CALIPSO Level 3 product background aerosol, as in Figure 8. We do the comparison between our instantaneous retrieval and the monthly CALIPSO L3 product to qualitatively show that the aerosol enhancement at tropopause and stratosphere caused by the nature (i.e. volcanic eruption) (Kloss et al., 2021; Knepp et al., 2021). A background aerosol enhancement can generally persist for a long time, so that the

instantaneous retrieved aerosol by CALIPSO can be shown at the L3 monthly-average scale. The relative revised content is as follows:

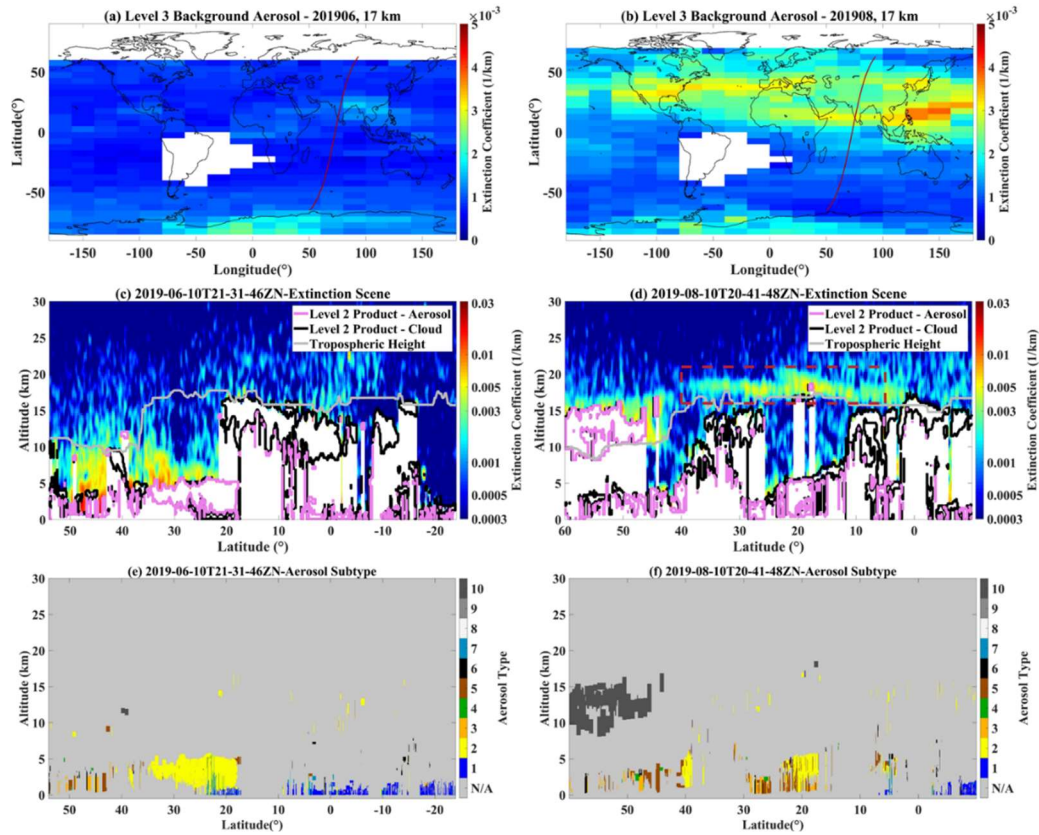


Figure 8. (a) and (b) are the stratospheric extinction distributions of CALIPSO Level 3 Stratospheric Aerosol Profile products at 17 km in June and August, respectively. (c) and (d) are the retrieved aerosol extinction scenes based on CALIPSO instantaneous data on June 10 and August 10, respectively, consistent with Figure 4a. The corresponding trajectories for the two scenes are shown as red lines in (a) and (b), and the corresponding aerosol subtypes are shown in (e) and (f), the same as in Figure 7c.

Figures 8a and 8b show the spatial distribution of aerosol extinction averaged in June and August 2019 at 17 km altitude from CALIPSO Level 3 monthly-averaged Stratospheric Aerosol Profile product with the resolution of  $5^{\circ} \times 20^{\circ}$  in latitude and longitude (Kar et al., 2019). A significant amount of aerosol enhancement was observed in the stratosphere in August in the northern hemisphere (Figure 8b), possibly due to the eruption of the Raikoke Volcano in June 2019 (Knepp et al., 2021; Kloss et al., 2021). We selected two CALIPSO tracks across aerosol enhancement areas in June and August (Figures 8c and 8d), respectively. The stratosphere at the northern hemisphere latitudes is clean, whereas natural dust aerosol prevails in the lower troposphere on June 10 when Raikko has not yet erupted (Figures 8c and 8e). The clean condition shown by our retrieval is



consistent with the CALIPSO Level 3 products that indicate the clean stratosphere at a monthly temporal scale.

Following the onset of volcanic eruptions, strong stratospheric aerosol layers are found in the stratosphere between 50°N and 60°N that are classified as sulfate by the VFM (Figure 8f). As shown in the red dash box of Figure 8d, aerosol extinction enhancement ( $\sim 0.005 \text{ km}^{-1}$ ) occurs around 17 km near 40°N to 5°N, which corresponds to the monthly average scale aerosol contamination in the stratosphere throughout the Northern Hemisphere in Figure 8b, but is not captured by CALIPSO Level 2 products (Figure 8f). Therefore, the retrieved undetected aerosol extinction can well capture the aerosol enhancement from special events at a horizontal resolution of 20 km (Figure 8d). The color ratios, particle depolarization ratios, and integrated attenuated backscatter are extracted manually for the red dashed region (16 km to 20 km, 40°N to 5°N) with an average of 0.17, 0.02 and  $0.00033 \text{ sr}^{-1}$ , respectively. Using these optical and non-optical properties (i.e., center height, temperature and latitude), aerosol subtypes can be determined by the CALIPSO Scene Classification Algorithms (Kim et al., 2018). The results show that the aerosol subtype in this region is sulfate, which supports that the aerosol enhancement is more likely to be from the eruption of the Raikoke Volcano.

5. It seems the authors are unaware of the 2019 Raikoke eruption, which is likely the source of aerosol in their Figs. 3, 4, 7. Instead, they attribute these layers to a single wildfire event in Siberia without providing any supportive evidence. The papers they cite in support of this claim do not, in fact, support their assertion. Ohneiser et al. 2021 claimed to see smoke up to 13 km from 50°N to 80°N. Kostrykin et al. 2021 did a modeling study wherein they claimed to trace smoke up to  $\approx 6$  km. The authors claim to see smoke from 10°N to 60°N at 15–20 km. This is in stark contrast to the finding of the 2 referenced works. The authors either need to support their assertion that smoke was present, and responsible for the faint aerosol layer they observed, or reconsider the source.

**Response:** You are right. We check the aerosol distribution at tropopause and stratosphere during the summer of 2019 based on CALIPSO L3 monthly-average data. The aerosol enhancements in August of 2019 are consistent with Raikoke volcanic eruption, as described in Major Comment 4. Further, we compare aerosol at 17 km in August of 2018 and 2019 (Figure R1) to confirm these aerosol enhancements are unique in 2019. The Raikoke volcanic eruption has been added to the interpretation of stratospheric aerosol enhancement in the Northern Hemisphere in August 2019.

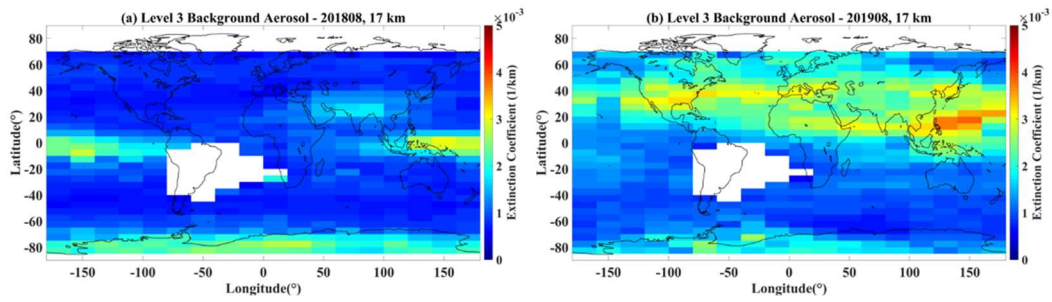


Figure R1 (a) and (b) are the stratospheric extinction distributions of CALIPSO Level 3 Stratospheric Aerosol Profile products at 17 km in August 2018 and August 2019, respectively.

6. Section 3.1: The authors claim these faint aerosol layers are the product of wildfire events (i.e., smoke). Smoke has a very different lidar ratio from  $50 \text{ sr}^{-1}$ . Did the authors use a lidar ratio of  $50 \text{ sr}^{-1}$  here? If so, how does this impact the interpretation of the results (e.g., do the faint aerosol layers disappear if the correct lidar ratio is used)?

**Response:** Yes, the lidar ratio is a crucial factor in extinction retrieval. In this study, a new method of lidar ratio in global is retrieval by using SAGE III/ISS AOD as a constraint, as described in Major Comment 2. Also, the significance of the lidar ratio obtained by this new method and the related bias are also discussed, as follows.

As mentioned in Section 2.4, the initial stratosphere and troposphere lidar ratios were derived from the empirical value ( $50 \text{ sr}$ ) of CALIPSO Level 3 stratospheric aerosol product (Kar et al., 2019) and the lidar ratio ( $28.75 \text{ sr}$ ) obtained by Kim et al. (2017), respectively. The latter is estimated from the retrieved CALIPSO column-integrated extinction with MODIS AOD constraints. As shown in Figure 9, the retrieved extinction using the fixed lidar ratio is higher than that using the SAGE-constrained lidar ratio because the median lidar ratio of the former ( $50$  and  $28.75 \text{ sr}$ ) is larger than the latter ( $42.2$  and  $24.5 \text{ sr}$ ). However, the NRMSE of retrieved extinction decreased by about 15% (from 120.2% to 105.6%) when changed the fixed lidar ratio to the SAGE-constrained lidar ratio in global. Particularly, when using the fixed lidar ratio of  $50 \text{ sr}$  in the high latitude stratosphere, it could result in a larger bias because the fixed lidar ratio is more different from the SAGE-constrained lidar ratio ( $\sim 35 \text{ sr}$ ) (Figure 3a). Therefore, these indicate a better accuracy of retrieved undetected aerosol extinction using the SAGE-constrained lidar ratio in global.

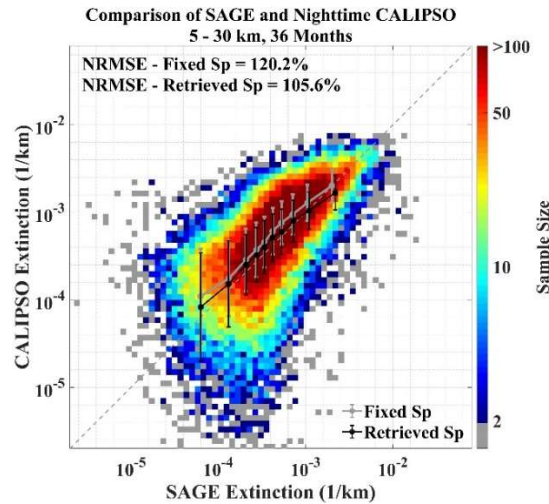


Figure 9. The colored scatter plot is the same as that in Figure 5a, but the CALIPSO extinction are retrieved using fixed lidar ratios of 50 and 28.75 sr in stratosphere and troposphere from June 2017 to May 2020, respectively. The gray and black lines are the mean value of of each 10% quantile (as in Figure 5a) of the CALIPSO retrieved extinction using the fixed and our retrieved lidar ratios, respectively.

Figure 7b illustrates a possibly missed smoke from a wildfire. Based on the SAGE-constrained lidar ratio (median 42.2 and 24.5 sr), we retrieved and see the undetected aerosol by CALIPSO Level 2 products, which connects with two strong aerosol layers. The lidar ratio for the smoke reported in the CALIPSO Level 2 Version 4 product is  $70 \pm 16$  sr (Young et al., 2018), which is very different from the SAGE-constrained lidar ratio for the troposphere at this location. Theoretically, a larger lidar ratio will derive a larger extinction in the retrieval. This indicates that the undetected aerosol extinction should be larger if using the smoke lidar ratio of  $70 \pm 16$  sr. However, so far, this bias cannot be avoided here because an automatic classification is impossible when we do not know the boundaries of those aerosols. Therefore, we have to treat the stratospheric (or tropospheric) undetected aerosols as a whole and assign the same lidar ratio regardless of the aerosol type in this study. Although the retrieved extinction in Figure 7 is biased, it demonstrated the importance of retrieving high spatial-temporal resolution undetected aerosol extinction. A solution to reduce this bias is to develop a more effective layer detection and classification algorithm, and our team is already working on it (Mao et al., 2021).

### Minor issues

1. The authors perform their coefficient correlation and RMSE calculations in logarithmic space. Why use logarithmic space when this effectively reduces the comparison to essentially how well the orders of magnitude agree.

**Response:** In the revised manuscript, we calculated the R and NRMSE (normalized root mean square error) under linear conditions as follows:

The correlation coefficients (R) and normalized root mean square error (NRMSE) are 0.66 and 100.6%...

2. How is “faint aerosol” defined? What qualifies as a “faint aerosol”?.

**Response:** Sorry for the confusion. In this study, faint aerosol refers to the aerosol undetected by CALIPSO Level 2 Layer Detection Algorithm. They are too weak to be detected by CALIPSO Level 2 products. We now clarify the definition of faint aerosols and give it directly in the revised title.

*Retrieving Instantaneous Extinction of Aerosol Undetected by CALIPSO Layer Detection Algorithm*

3. On lines 81–83 the sentence containing “...observed by the rays passing through the atmo-sphere...” does not make sense and this is not how SAGE quantifies extinction coefficient. I think, as written, this sentence is incorrect. Light passes through the atmosphere and is attenuated by some combination of scattering and absorption of molecules, particles, and clouds. The molecular number densities and extinction coefficients are then derived based on the recorded spectra.

**Response:** Modified according to your suggestions, as follows:

SAGE III conducts solar and lunar occultation measurements globally while orbiting the Earth on the International Space Station (ISS). Light passes through the atmosphere and is attenuated by some combination of scattering and absorption of molecules, particles, and clouds. The extinction coefficients are then derived based on the recorded spectra (Cisewski et al., 2014; Thomason et al., 2010).

4. Throughout the paper the authors refer to SAGE extinction, but do not specify wavelength. They stated within the text that they used the 521 nm channel, but it would help the reader if the wavelength is included in all subsequent references to SAGE extinction.

**Response:** Thank you for your suggestion, we have highlighted 521 nm in the manuscript where SAGE aerosol products are mentioned.

5. The authors used the SAGE III/ISS v5.1 product while the v5.2 product is available. Vertical smoothing for the extinction products was turned off for the v5.2 product, which effectively provides data at a higher vertical resolution. The authors are encouraged to use this data set since the higher resolution will make their comparisons more meaningful.

**Response:** Thank you for your suggestion. Here, we smoothed the CALIPSO data

in the vertical direction, and the SAGE III/ISS V5.1 data with the smoothing operation is appropriate for comparison and validation. Previous studies have shown the extinction coefficients of SAGE III had a low bias with an uncertainty of around 10% (Thomason et al., 2010). Also, we have added a correction to the bias within extinction coefficients of SAGE III/ISS aerosol product due to the ozone interference, as follows:

A low bias in the extinction coefficients of the SAGE III/ISS aerosol product is observed at 521 nm due to the ozone interference in the retrieval algorithm. This finding is more pronounced at mid-latitudes and altitudes between 20 and 25 km (Knepp et al., 2021). The following equation is therefore used to correct the extinction at 521 nm (Knepp et al., 2021):

$$\log \sigma_{521} = \frac{\log \left( \frac{\sigma_{450}}{\sigma_{755}} \right) \times \log \left( \frac{521}{755} \right)}{\log \left( \frac{450}{755} \right)} + \log (\sigma_{755}), \quad (1)$$

where  $\sigma$  is the extinction coefficient, and the numbers represent the wavelength. We removed the bins in the SAGE III/ISS aerosol extinction profile with color ratio (the ratio of the aerosol extinction at 521 and 1022 nm) in the range of 0.8 to 1.2 to avoid cloud contamination (Schoeberl et al., 2021).

Additionally, Due to the generally large coverage of undetected faint aerosols, the vertical resolution is enough to capture undetected faint aerosols as validation. Thus, considering the limited time to revise the paper, the SAGE III/ISS V5.1 data are still used in the current study, but we will test the V5.2 data in the future.

6. Line 95 What is the “vertical moving filtering” that was done? What kind of filter is this and what is it removing?

**Response:** The “vertical moving filtering” is moving average filtering on a TAB profile using a 5-point vertical window to reduce the random noise contained in the observation. In the revised manuscript, the description of the process was rephrased in Section 2.1, as follows:

- (3) The vertical resolution of the CALIPSO Level 1B TAB profiles varies with the height of 30, 60, 120, and 300 m for  $-0.5-8$ ,  $8-20.2$ ,  $20.2-30.1$ , and  $30.1-40$  km, respectively. Referring to Kim et al. (2017), the TAB profiles are reduced to a vertical resolution of 300 m by linear interpolation to improve the SNR, followed by a vertical moving mean filtering (with a 5-point window) and horizontal averaging to 20 km to retrieve the extinction of undetected aerosol.

7. Not all of the variables in equations 1-3 are defined within the text (some are defined within a figure, some within a figure caption, some within the text). Please

define all variables within the text.

**Response:** In the revised manuscript, we removed the flowchart (Figure 1 of the original manuscript) of the extinction retrieval algorithm, and chose to illustrate it in the text. All variables are now defined in the text, as follows:

In this study, the undetected aerosol extinction coefficient is retrieved by the Fernald method, similar to CALIPSO Level 2 and Level 3 aerosol products (Young and Vaughan, 2009; Kar et al., 2019; Young et al., 2018). Based on the pre-processed TAB (i.e.,  $\beta'(r)$ ), the particulate backscatter coefficient (i.e.,  $\beta_p(r)$ ) is solved by iterating Eqs. (2) and (3c) in the following equations:

$$\beta_p(r) = \frac{\beta'(r)}{T_m^2(r)T_{o_3}^2(r)T_p^2(r)} - \beta_m(r), \quad (2)$$

$$T_m^2(r) = \exp\left(-2 \int_0^r \alpha_m(r') dr'\right), \quad (3a)$$

$$T_{o_3}^2(r) = \exp\left(-2 \int_0^r \alpha_{o_3}(r') dr'\right), \quad (3b)$$

$$T_p^2(r) = \exp\left(-2\eta_p S_p \int_0^r \beta_p(r') dr'\right), \quad (3c)$$

$$\alpha_p(r) = S_p(r)\beta_p(r), \quad (4)$$

where  $T_m^2(r)$ ,  $T_{o_3}^2(r)$ , and  $T_p^2(r)$  represent the molecular, ozone, and particulate two-way transmittances, respectively. The molecular backscatter coefficients ( $\beta_m(r)$ ) and molecular and ozone two-way transmittances ( $T_m^2(r)$  and  $T_{o_3}^2(r)$ ) can be calculated from the molecular number density and ozone number density provided by CALIPSO Level 1B product, respectively. The  $\alpha_m(r)$ ,  $\alpha_{o_3}(r)$  and  $\alpha_p(r)$  represent the extinction coefficient of molecular, ozone, and particulate, respectively. The retrieval algorithm has several basic settings. The multiple scattering coefficient ( $\eta_p$ ) for undetected aerosol particles is set to 1 as considered in the retrieval of the CALIPSO Level 2 product (Young et al., 2018). Meanwhile, the bin at 36 km is considered aerosol-free (i.e.,  $\beta_p(0) = 0$ ,  $T_p^2(0) = 1$ ) (Kar et al., 2019).

8. Lines 120–121: Please provide reference for  $\beta(0) = 0$ ,  $T_p(0) = 1$

**Response:** Provided, as follows:

Meanwhile, the bin at 36 km is considered aerosol-free (i.e.,  $\beta_p(0) = 0$ ,  $T_p^2(0) = 1$ ) (Kar et al., 2019).

9. Line 124: What is meant by “same day”? Is this the same calendar date, or within 24 hours?

**Response:** Sorry for the confusion. The “same day” refers to the same calendar date, which has been noted in the manuscript now.

Since only daytime data from SAGE III/ISS are available, the CALIPSO orbits are spatially and temporally matched to the nearest SAGE III/ISS observations on the same calendar date with the consideration for a smaller temporal-spatial variation of faint aerosol comparing strong aerosol at the near-surface.

10. Line 125: You state the SAGE horizontal resolution is  $\approx 300$  km; please provide a reference for this value. This raises a greater point: the viewing geometries and sampling volumes of SAGE and CALIPSO are vastly different and may provide another source of uncertainty.

**Response:** This value (300 km) comes from the SAGE official website of [https://space.oscar.wmo.int/instruments/view/sage\\_iii](https://space.oscar.wmo.int/instruments/view/sage_iii). The  $2^\circ \times 1^\circ$  grid is used to match CALIPSO and SAGE III/ISS. All profiles of CALIPSO within a  $2^\circ \times 1^\circ$  grid are used for extinction retrieval averagely to minimize the uncertainty. The detail about how to match CALIPSO and SAGE III/ISS have been revised in Section 2.3, as follows:

Since only daytime data from SAGE III/ISS are available, the CALIPSO orbits are spatially and temporally matched to the nearest SAGE III/ISS observations on the same calendar date with the consideration for a smaller temporal-spatial variation of faint aerosol comparing strong aerosol at the near-surface. The horizontal resolution of SAGE III/ISS occultation observations is low with  $\sim 300$  km ([https://space.oscar.wmo.int/instruments/view/sage\\_iii](https://space.oscar.wmo.int/instruments/view/sage_iii)). Thus, we selected a  $2^\circ \times 1^\circ$  (longitude  $\times$  latitude) grid centered on the SAGE III/ISS observations to match CALIPSO instantaneous observation. To ensure enough CALIPSO profiles are included for each successfully matched sample, the CALIPSO track crossed the grid and have to exceed  $0.75^\circ$  latitude (Figure 1a). The  $2^\circ$  longitude is to obtain the successfully matched samples as soon as possible. Figure 1b shows the global distribution of nighttime CALIPSO and SAGE III/ISS match numbers in  $20^\circ \times 20^\circ$  grids for three years from June 2017 to May 2020. No successful match in the grids is found in the black boundary due to the removal of low-energy laser shots of CALIPSO in the SAA region. Finally, 1349 and 1325 profiles are successfully matched for CALIPSO nighttime and daytime data with SAGE, respectively.

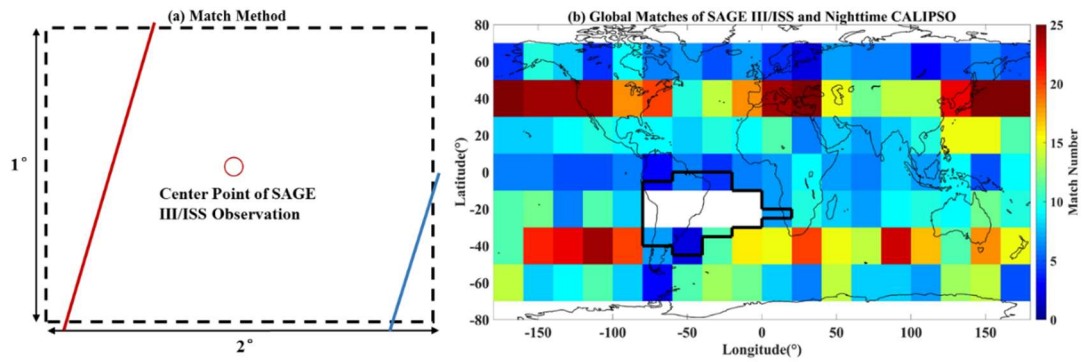


Figure 1. (a) Schematic of the CALIPSO match to the SAGE III/ISS. The red circle represents the center point of SAGE III/ISS observations. The red and blue lines represent cases of successful and failed (CALIPSO track is less than  $0.75^\circ$  in the grid) matches, respectively. (b) Global matches of nighttime CALIPSO and SAGE III/ISS from June 2017 to May 2020. The black boundary represents the South Atlantic Anomaly (SAA), where CALIPSO is experiencing an elevated frequency of low-energy laser shots. The color bar represents the number of matches in each  $20^\circ \times 20^\circ$  grid.

Also, the results in Section 3.2 show a case of the comparison after matching and averaging, as follows. It shows good agreement between CALIPSO and SAGE.

Figure 4a shows a case of the retrieved CALIPSO extinction at latitude  $33^\circ$  on August 26, 2019. An undetected faint aerosol layer (extinction coefficients around  $0.005 \text{ km}^{-1}$ ) is connected to the detected stratospheric aerosol layer provided by the CALIPSO Level 2 aerosol product at altitudes of 15 km to 20 km around  $10^\circ\text{N}$  to  $40^\circ\text{N}$  latitude. Figure 4b shows high-consistent extinctions of CALIPSO undetected aerosol and matched SAGE III/ISS 521 nm aerosol product (red dash line in Figure 4a) above 15 km. Additionally, this profile comparison demonstrates the feasibility of ignoring the diurnal variation of undetected aerosols.

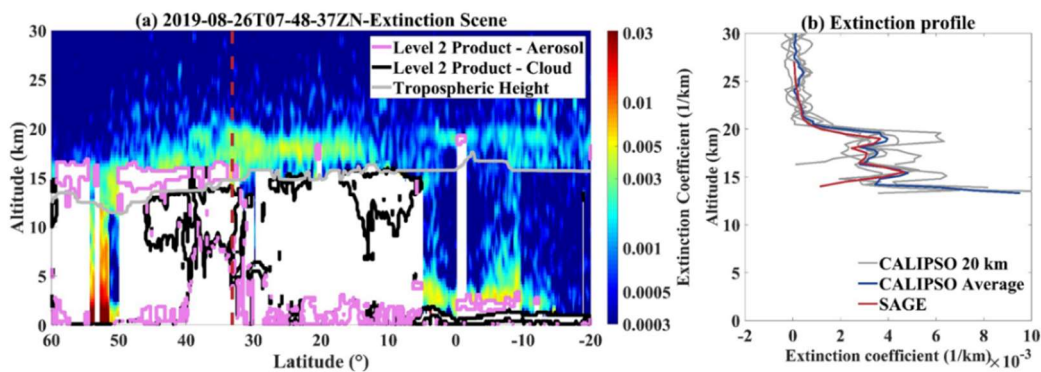


Figure 4. (a) Latitude-altitude undetected aerosol extinction based on CALIPSO nighttime data on August 26, 2019. The color represents the extinction coefficient ( $\text{km}^{-1}$ ). The purple and black boundary lines represent the detected aerosol and



cloud layers provided by CALIPSO Level 2 products, respectively. The gray line represents tropospheric height. The red dash line is the observation position of SAGE III/ISS. The white areas represent the removed data inside and below the detected layers. The retrieved faint aerosol at 20 km is shown after additional mean filtering ( $3 \times 3$  window) to highlight the faint aerosol area. (b) Comparison of faint aerosol extinction ( $\text{km}^{-1}$ ) profile for matched CALIPSO and SAGE III/ISS 521 nm aerosol product. The gray lines represent the undetected aerosol extinction of CALIPSO retrieval at a resolution of 20 km horizontally and 0.3 km vertically, and the blue line represents averaged gray lines. The red line represents the aerosol extinction from SAGE III/ISS.

11. Line 126: The reference to Adams et al. 2013 does not make sense here. Please include why this is relevant or remove the reference.

**Response:** This reference has been removed.

12. Line 127: What is meant by “...where the CALIPSO orbit exceeds  $0.75^\circ$  latitude...”? What is meant by  $0.75^\circ$ ? This is confusing, please clarify.

**Response:** Sorry for the confusion. The  $0.75^\circ$  represents the minimum length threshold of CALIPSO at a successfully matched sample. The sentence has been rephrased as described in in the response of Minor Comment 10.

13. Line 144: The authors refer to a “red dashed box” in Fig. 3 (a), but there is no such box in that figure. Please add the box.

**Response:** Modified, as follows.

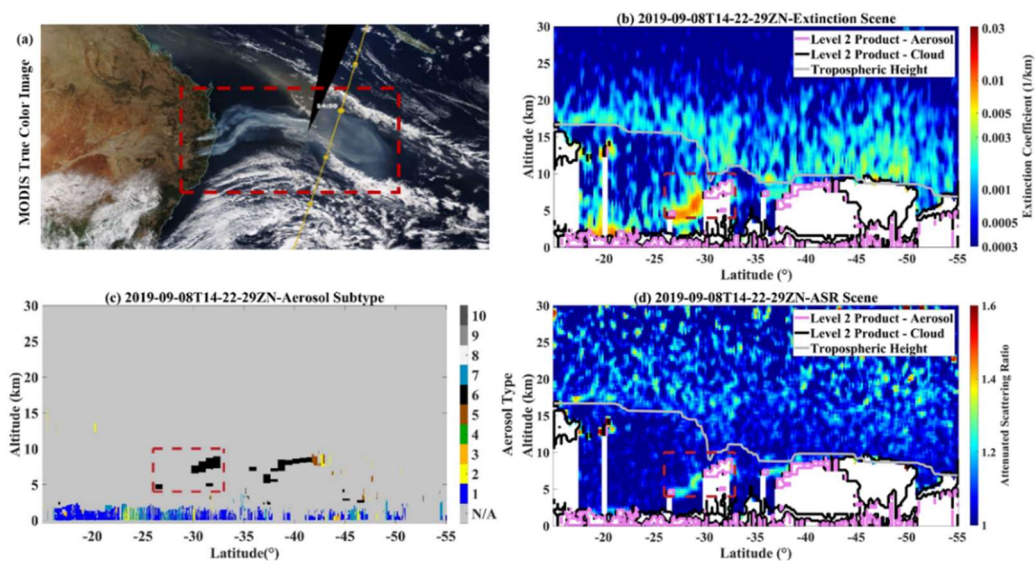


Figure 7. (a) MODIS Terra true-color image in the daytime and the passing CALIPSO track (yellow line) at night. (b) Latitude–altitude aerosol extinction of the corresponding nighttime CALIPSO track, same as in Figure 4a. The purple and

black boundary lines and extinction inside represent the detected aerosol and cloud layers provided by CALIPSO Level 2 products, respectively. (c) Aerosol subtypes in CALIPSO VFM product (N/A=not applicable, 1=marine, 2=dust, 3=polluted continental/smoke, 4=clean continental, 5=polluted dust, 6=elevated smoke, 7=dusty marine, 8=PSC aerosol, 9=volcanic ash, 10=sulfate/other). (d) Attenuated scattering ratio.

14. Lines 148–150: One has to ask, if these faint aerosol layers are visible within the ASR product, then why go to the trouble of calculating extinction coefficient? It seems that computing extinction coefficient introduces unnecessary uncertainties, so my 2 questions are: 1. why use the extinction coefficient?, 2. are the uncertainties that the extinction calculation introduced acceptable?

**Response:** Thank you for your questions.

(1) The ASR is a kind of lidar signal which is not a physical parameter that can be used directly in scientific research. For instance, the calculation of radiative effects of aerosols requires extinction as an input, not ASR.

(2) We have added the calculation of the extinction uncertainty for the retrieval as described in Major Comment 3. The comparison between CALIPSO and SAGE shows good agreement with the independent SAGE aerosol extinction ( $R=0.66$ ). Especially, the relative uncertainties of the retrieved extinction coefficients at  $10^{-3} \text{ km}^{-1}$  and  $10^{-4} \text{ km}^{-1}$  are 35% and 125%, respectively, while the minimum extinction of CALIPSO L2 is  $0.01 \text{ km}^{-1}$  with 40% uncertainty (Kacenelenbogen et al., 2011; Toth et al., 2018; Winker et al., 2013; Winker et al., 2009).

15. Line 156: It seems the authors are introducing an additional step in their processing algorithm (i.e., the 3x3 mean filtering window). This should be included in the main body of the text and explain what this is.

**Response:** The  $3 \times 3$  window filter is not used in the retrieval, which is only used to highlight the areas of aerosol enhancement in the mapping of the figure. We have rephrased the figure title.

16. Line 163: Perhaps the pdf did not build properly, but there is no red dash line in Fig. 4 (a) though there is a pink line.

**Response:** Modified, as described in the response of Minor Comment 15.

17. Figure 4: What is the vertical pink dashed line?

**Response:** The pink dashed line (red dashed line in the revised manuscript) indicates the location of the SAGE III/ISS observation, as described in the response

of Minor Comment 15.

18. Line 172 and Figure 5 (a): How were these averages calculated? There are 11 points on this line, but the SAGE data exists over a continuum, so there must have been some binning along the x-axis.

**Response:** You are right, there are some binning along the X-axis (SAGE III/ISS data). In the revised manuscript, the binning ranges are 0-10%, 10-20% ... 90-100%, for a total of 10 points, as follows.

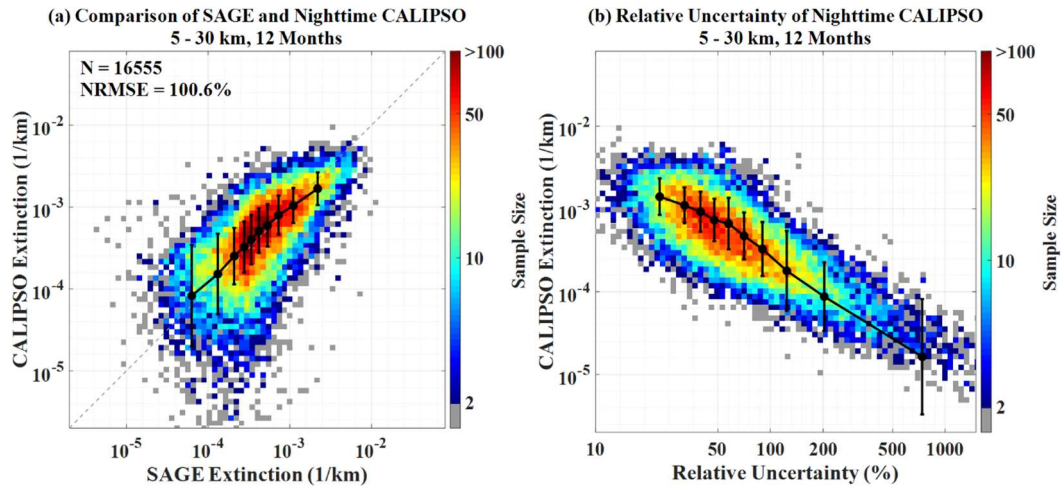


Figure 5. (a) Correlation plots of the retrieval within the matching grid of CALIPSO nighttime and SAGE III/ISS product from 5 km to 30 km for 12 months of validation. The color bar represents the sample size. The black bins represent the mean values of each 10% quantile (0-10%, 10-20%...and 90-100%) of SAGE III/ISS 521 nm aerosol product and corresponding CALIPSO retrieval. The I-type bars indicate the standard error of each 10% quantile CALIPSO retrieval. (b) The relative uncertainty of one-degree CALIPSO extinction.

19. Line 172 and Figure 5 (a): The authors refer to this as “faint aerosol extinction”, but does this really qualify as “faint” when the SAGE extinction coefficients exceed 1E-3 (even 1E-2!)?

**Response:** Thank you for the question. In this study, faint aerosol refers to the aerosol undetected by CALIPSO Layer Detection Algorithm. They are too weak to be detected by CALIPSO Level 2 products. We now clarify the definition of faint aerosols and give it directly in the revised title.

*Retrieving Instantaneous Extinction of Aerosol Undetected by CALIPSO Layer Detection Algorithm*

20. Line 173: The authors claim the CALIPSO retrieval has a low bias while their line of best fit falls just above the 1:1 line, indicating the CALIPSO retrieval has a high

bias. Can the authors explain what they mean by low bias and justify this designation?

**Response:** Sorry for the confusion. It has now been rephrased for Figure 5 as follows.

The nighttime CALIPSO undetected aerosol extinction and SAGE III/ISS 521 nm aerosol extinction show good agreement for the 12-month validation dataset (Figure 5a), with the average retrieved aerosol extinction (black line) closing to the 1:1 line. The correlation coefficients (R) and normalized root mean square error (NRMSE) are 0.66 and 100.6% based on the independent 12-month SAGE validation dataset, respectively. ...

...The averaged black line in Figure 5b show the mean relative uncertainties of CALIPSO, specifically ~35% and ~125% for the retrieved extinction of  $10^{-3}$  and  $10^{-4}$   $\text{km}^{-1}$ , respectively.

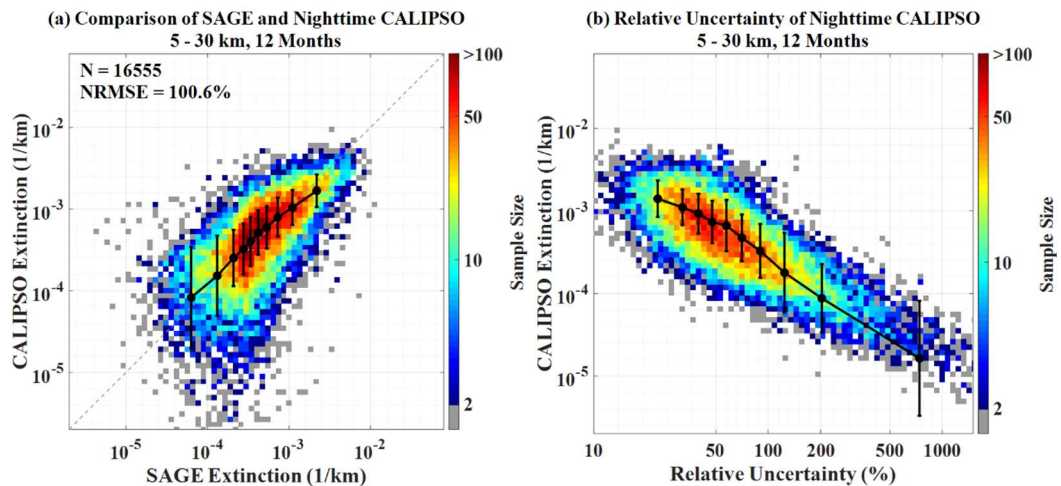


Figure 5. (a) Correlation plots of the retrieval within the matching grid of CALIPSO nighttime and SAGE III/ISS product from 5 km to 30 km for 12 months of validation. The color bar represents the sample size. The black bins represent the mean values of each 10% quantile (0-10%, 10-20%...and 90-100%) of SAGE III/ISS 521 nm aerosol product and corresponding CALIPSO retrieval. The I-type bars indicate the standard error of each 10% quantile CALIPSO retrieval. (b) The relative uncertainty of one-degree CALIPSO extinction.

21. Line 184: What is meant by “mean values of 5% quantiles”? It seems the authors have introduced another calculation that is not defined/explained within the text and is not readily understood by the reader. This should be explained within the text.

**Response:** Sorry for the confusion. The confusion has been removed as described in the response of Minor Comment 18.

22. Line 193: The authors state “...the CALIPSO retrievals in the troposphere should be more reliable [than SAGE]” While I agree about this statement to some degree, this is a blanket statement that is made without qualifier and is misleading. The authors need to explain what they mean here. Further, there are nuances that are important. In the troposphere you can have highly variable lidar ratios; how does this influence the “reliability”? You have to propagate your errors all the way through the stratosphere before hitting the troposphere; how does this influence reliability? Finally, the troposphere is often loaded with aerosol (as compared to the stratosphere), so how often do you expect to be below the  $0.01 \text{ km}^{-1}$  LOD (i.e., is your method still necessary at this point)? It seems like the discussion regarding the troposphere is misplaced within this paper.

**Response:** We are very grateful for your careful review. We have made the following revisions in response to this comment.

- (1) Removed the section of comparing the vertical distribution of CALIPSO and SAGE signal quality, because this is not the focus of our study.
- (2) Added the calculation and discussion about the uncertainty of CALIPSO extinction retrieval, as the response to Major Comment 3.
- (3) We redefine the faint aerosol as the undetected aerosol by CALIPSO Layer Detection Algorithm, as we answered in Minor Comment 19. And undetected aerosol also often exists in the troposphere, so our retrieval is still necessary for the troposphere.

23. Line 201: What is the purpose of the Kim et al 2017 reference here?

**Response:** This citation is intended to illustrate that the typical SNR ratio at 35 km of 20-km daytime CALIPSO data is less than 1 calculated by Kim et al. (2017), which is similar to our results. It has been removed from the revised manuscript due to the large revisions of this paper.

24. Section 3.3: The authors attribute the faint aerosol during this time period to the Siberian wildfires. As discussed above this is more likely the impact of the Raikoke eruption. It is strange that this was not mentioned here. Please see discussion above regarding this topic and address the issues stated therein.

**Response:** Sorry for the confusion. We check the aerosol distribution at tropopause and stratosphere during the summer of 2019 based on CALIPSO L3 monthly-average data. The aerosol enhancements in August of 2019 are consistent with Raikoke volcanic eruption, as described in the response of Major Comment 4. Further, we compare aerosol at 17 km in August of 2018 and 2019 (Figure R1) to confirm these aerosol enhancements are unique in 2019. The Raikoke volcanic

eruption has been added to the interpretation of stratospheric aerosol enhancement in the Northern Hemisphere in August 2019 (Kloss et al., 2021; Knepp et al., 2021), as described in the response of Major Comment 4.

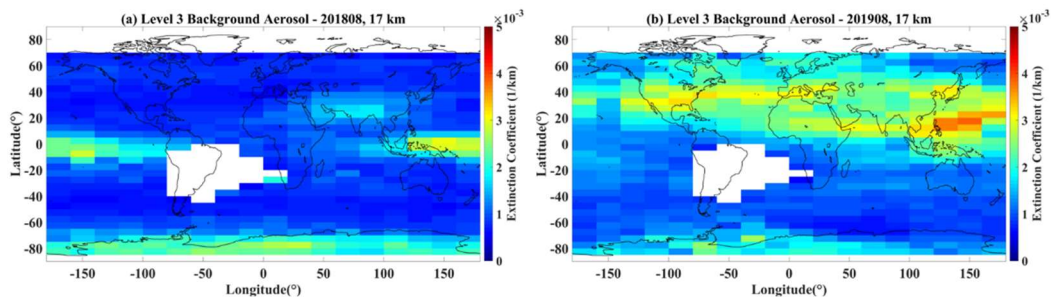


Figure R1 (a) and (b) are the stratospheric extinction distributions of CALIPSO Level 3 Stratospheric Aerosol Profile products at 17 km in August 2018 and August 2019, respectively.

25. Figure 7: It will help the reader if panels (a), (b), (c), and (d) all have the same colorbar scale and limits.

**Response:** Thank you for your suggestion. Figures 7c-7d (Figure 8c-8d in the revised manuscript) represent the undetected aerosol extinction of a CALIPSO track from surface to 30 km, with values varying over a wide range. If we use the same scale and limits of the colorbar in Figures 7a-b as in Figures 7c-d, we will lose lots of details. Particularly, Figures 7a will be all in blue.

26. Line 214: The Kostykin reference is not germane to this paper as they showed no indication of the Siberian wildfire smoke leaving the troposphere. They estimated a 5% chance of smoke making it to 6 km.

**Response:** Thank you for pointing out this problem, the reference has been removed.

27. Line 224: "...classified as elevated smoke by VFM). This is categorically wrong. The CALIPSO vertical feature mask identifies this plume as "sulfate/other" not smoke.

**Response:** You are right, it has been modified.

28. Lines 227–228 and Figure 7: It is difficult to compare a monthly average and an "instantaneous" measurement. However, the layer referenced in Fig. 7 (d) is not at the same altitude as what is shown in Fig. 7 (b). Going off Fig. 7 (b) alone, I would expect little (no?) enhancement at 15.2 km for most of the the NH. If we accept Fig. 7 in its current state we cannot draw a decisive conclusion (panels (b) and (d) contradict each other). However, if panels (a, b) were updated to mate the altitude of the layer in (d) this would significantly bolster your case.

**Response:** We have displayed the 17 km background aerosol of the CALIPSO Level 3 product, as shown in Figure 8. We do the comparison between our instantaneous retrieval and the monthly CALIPSO L3 product to qualitatively show that the aerosol enhancement at tropopause and stratosphere is caused by the nature (i.e. volcanic eruption) (Kloss et al., 2021; Knepp et al., 2021). A background aerosol enhancement can generally persist for a long time, so that the instantaneous retrieved aerosol by CALIPSO can be shown at the L3 monthly-average scale, as described in the response of Major Comment 4.

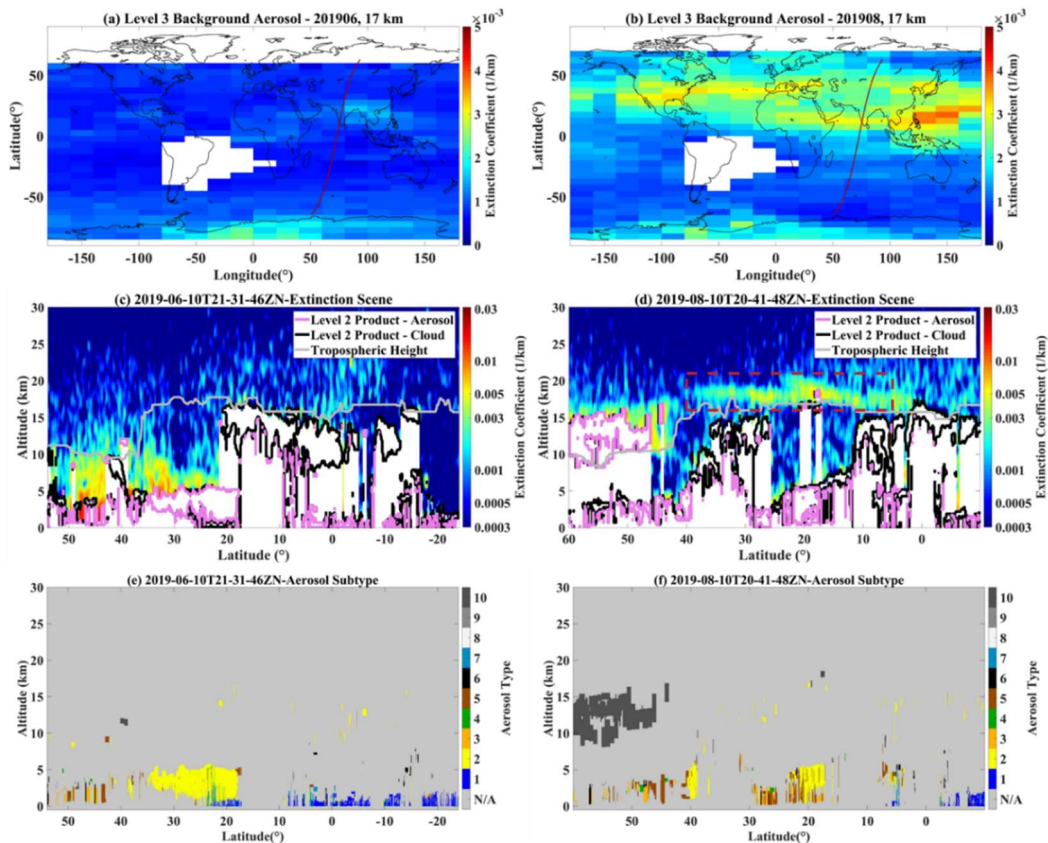


Figure 8. (a) and (b) are the stratospheric extinction distributions of CALIPSO Level 3 Stratospheric Aerosol Profile products at 17 km in June and August, respectively. (c) and (d) are the retrieved aerosol extinction scenes based on CALIPSO instantaneous data on June 10 and August 10, respectively, consistent with Figure 4a. The corresponding trajectories for the two scenes are shown as red lines in (a) and (b), and the corresponding aerosol subtypes are shown in (e) and (f), the same as in Figure 7c.

29. Line2 242–246, conclusion #1: As stated above, some of your fundamental assumptions will be different within the troposphere. Further, the discussion of tropospheric aerosols does not seem to fit within the context of this paper. Further, the authors failed to demonstrate that this method is novel from previous work.

Therefore I find this conclusion to be tenuous.

**Response:** Thank you for your comment. Based on the new methods, results and discussions in the revision, we rewrite the conclusions as follows:

- (1) The lidar ratio for the stratosphere and troposphere in global is derived based on CALIPSO instantaneous observations using SAGE III/ISS AOD as a constraint. The derived lidar ratio is significantly higher in the stratosphere (median 42.2 sr) than that in the troposphere (median 24.5 sr). The derived lidar ratio peak at the equator and decrease with latitude at the stratosphere, while the lidar ratio variations are small at the troposphere in global.
- (2) The retrieved undetected aerosol extinction based on CALIPSO nighttime instantaneous observations shows good agreement with the SAGE III/ISS product on a  $1^\circ$  average. The correlation (R) and NRMSE are 0.66 and 100.6% based on the independent 12-months SAGE III/ISS data, respectively. The uncertainties of retrieved extinction coefficients at  $10^{-3} \text{ km}^{-1}$  and  $10^{-4} \text{ km}^{-1}$  are  $\sim 35\%$  and  $125\%$  during nighttime, respectively.
- (3) The comparison of retrieved undetected aerosol extinction based on globally fixed and SAGE-constrained lidar ratios indicates the NRMSE decreased by about 15% (from 120.2% to 105.6%) during nighttime. Additionally, the CALIPSO retrieval during daytime has a positive bias and relatively low agreement with SAGE III/ISS; it exhibits R and NRMSE of 0.25 and 454.5%, respectively, due to the low signal-to-noise ratio caused by sunlight.
- (4) In the case of the Australian wildfire event, instantaneous retrieved extinction of missed aerosol from CALIPSO Level 2 products provides more details of aerosol distribution. In addition, compared with the CALIPSO Level 3 stratospheric aerosol product, the retrievals show consistent aerosol enhancement possibly due to the eruption of Raikoke Volcano, but at a higher spatial-temporal resolution.

30. Lines 247–248, conclusion #2: While the authors demonstrated this they were not the first to determine this so I do not view this as a significant finding/conclusion to be drawn from this paper.

**Response:** This conclusion has been removed.

31. Lines 249–252, conclusion #3: While the authors demonstrated a faint aerosol layer that extended from  $10^\circ\text{N}$  to  $60^\circ\text{N}$  (at 20 km) the wrongly classify this as smoke. Further, they claimed the corresponding  $k_{532}$  was significantly below the CALIPSO L2 LOD (LOD is  $0.01 \text{ km}^{-1}$ , their aerosol layer was  $\approx 0.003 \text{ km}^{-1}$ ) and they failed to account for the propagation of error in their extinction coefficient



retrieval. Therefore, we do not know if the layer they identified is significantly different from background. While I suspect this layer is real, it is difficult to interpret the significance of this conclusion without having this thorough statistical support.

**Response:** Thank you for your comment. We have added the calculation of the extinction uncertainty for the retrieval to support our conclusion, as described in the response of Major Comment 3.

### Working issues

1. Line 13: “ the susceptibility of clouds to aerosols is more pronounced when the aerosols are faint.” This sentence does not make sense. Please clarify meaning.

**Response:** The related sentences in the Abstract have been revised to remove confusion, as follows:

Particularly, the susceptibility of cloud and precipitation to aerosols are stronger when aerosols are faint, but tend to be saturated in polluted conditions. However, previous methodologies generally miss these faint aerosols based on instantaneous observations because they are extremely optically thin to be detected and thereby usually un-retrieved. This result in a large underestimation when quantifying aerosol climate impacts.

2. Line 39: What is the “undetected tenuous aerosol layer”? This needs defined.

**Response:** In this study, faint aerosol refers to the aerosol undetected by CALIPSO Layer Detection Algorithm. We now clarify the definition of faint aerosols and give it directly in the revised title.

*Retrieving Instantaneous Extinction of Aerosol Undetected by CALIPSO Layer Detection Algorithm*

3. Line 48: The word “tenuous” does not make sense here. Please rephrase.

**Response:** The “tenuous” have been revised to “faint”.

4. Lines 60–63: This sentence does not make sense. Are the “faint aerosols” composed of both background AND undetected aerosol layers? If so, what does it mean for a particle to be composed of undetected aerosol layers?

**Response:** Sorry for the confusion. In this study, faint aerosol refers to the aerosol undetected by CALIPSO Layer Detection Algorithm. We now clarify the definition of faint aerosols and give it directly in the revised title.

*Retrieving Instantaneous Extinction of Aerosol Undetected by CALIPSO Layer Detection Algorithm*

5. Lines 83–84: You discuss the extinction coefficient uncertainties of SAGE III/ISS and cite Thomason et al. 2010. The Thomason paper is in reference to SAGE III/METEOR (or SAGE III/M3M). Please indicate that this reference is for SAGE III/M3M and not SAGE III/ISS.

**Response:** Thanks for your suggestion. This paragraph has been reorganized and this sentence has been deleted.

6. Please update all “SAGE III-ISS” to “SAGE III/ISS”.

**Response:** Modified.

7. I had to read the first paragraph of section 2.3 several times before I understood your methodology. It will help the reader if you change the last sentence of this paragraph to: “To improve the signal to noise ratio (SNR) of the total attenuated backscatter (TAB) data, we performed the following pre-processing steps prior to running the data through the algorithm presented in Fig. 1:”

**Response:** Sorry for the confusion. For the methodology section we have reorganized, we put the data pre-processing steps in section 2.1 as follows.

## 2.1 CALIPSO data and pre-processing

The CALIPSO mission introduced new technology for retrieving aerosol profiles from space since April 2006, with a dual-wavelength backscattering lidar as the primary payload (Winker et al., 2010). The CALIPSO team has released different levels of products for different scientific objectives. Level 1 products are calibrated observations containing environmental parameters. Level 2 products are physical, chemical, and optical parameters of aerosol layers and cloud layers obtained according to a series of technical routes. The aerosol and cloud layers are firstly detected by the Selective Iterative Boundary Locator (SIBYL) (Vaughan et al., 2009), then classified by the Scene Classification Algorithms (SCA) (Kim et al., 2018), and finally the extinction coefficient is retrieved according to the Hybrid Extinction Retrieval Algorithm (Winker et al., 2010; Young et al., 2018). Level 3 products provide a monthly averaged gridded global distribution data of clouds and aerosols (Kar et al., 2019).

This study uses CALIPSO Level 1B for the extinction retrieval of the undetected aerosol by SIBYL from June 2017 to May 2020 (Table 1). In addition, the CALIPSO Level 3 monthly-averaged Stratospheric Aerosol Profile product with a resolution of  $5^{\circ} \times 20^{\circ}$  in latitude and longitude is compared with the retrieved extinction of undetected aerosol. To improve the signal-to-noise ratio (SNR) and avoid contamination by clouds and detected aerosols, the CALIPSO Level 1B total attenuated backscatter (TAB) data were pre-processed according to the following

steps:

- (1) We removed the affected CALIPSO observations according to Low Laser Energy Technical Advisory due to the effects of an elevated frequency of low-energy laser shots of CALIPSO within the South Atlantic Anomaly (SAA) ([https://www-calipso.larc.nasa.gov/resources/calipso\\_users\\_guide/advisory](https://www-calipso.larc.nasa.gov/resources/calipso_users_guide/advisory)).
- (2) The clouds and aerosol layer detected by the SIBYL and the data below them were removed. We used a threshold value of 0.5 in the attenuated color ratio (the ratio of the TAB at 1064 and 532 nm) to remove undetected tenuous cirrus clouds, similar to the data screening method of the CALIPSO Level 3 Stratospheric Aerosol Profile product (Kar et al., 2019).
- (3) The vertical resolution of the CALIPSO Level 1B TAB profiles varies with the height of 30, 60, 120, and 300 m for  $-0.5-8$ ,  $8-20.2$ ,  $20.2-30.1$ , and  $30.1-40$  km, respectively. Referring to Kim et al. (2017), the TAB profiles are reduced to a vertical resolution of 300 m by linear interpolation to improve the SNR, followed by a vertical moving mean filtering (with a 5-point window) and horizontal averaging to 20 km to retrieve the extinction of undetected aerosol.

And we put the extinction coefficient retrieval part into section 2.4, as follows:

#### 2.4 Retrieving instantaneous extinction of undetected aerosol under the constraint of SAGE III/ISS

In this study, the undetected aerosol extinction coefficient is retrieved by the Fernald method, similar to CALIPSO Level 2 and Level 3 aerosol products (Young and Vaughan, 2009; Kar et al., 2019; Young et al., 2018). Based on the pre-processed TAB (i.e.,  $\beta'(r)$ ), the particulate backscatter coefficient (i.e.,  $\beta_p(r)$ ) is solved by iterating Eqs. (2) and (3c) in the following equations.

$$\beta_p(r) = \frac{\beta'(r)}{T_m^2(r)T_{o_3}^2(r)T_p^2(r)} - \beta_m(r), \quad (2)$$

$$T_m^2(r) = \exp\left(-2 \int_0^r \alpha_m(r') dr'\right), \quad (3a)$$

$$T_{o_3}^2(r) = \exp\left(-2 \int_0^r \alpha_{o_3}(r') dr'\right), \quad (3b)$$

$$T_p^2(r) = \exp\left(-2\eta_p S_p \int_0^r \beta_p(r') dr'\right), \quad (3c)$$

$$\alpha_p(r) = S_p(r)\beta_p(r), \quad (4)$$

where  $T_m^2(r)$ ,  $T_{o_3}^2(r)$ , and  $T_p^2(r)$  represent the molecular, ozone, and particulate

two-way transmittances, respectively. The molecular backscatter coefficients ( $\beta_m(r)$ ) and molecular and ozone two-way transmittances ( $T_m^2(r)$  and  $T_{o_3}^2(r)$ ) can be calculated from the molecular number density and ozone number density provided by CALIPSO Level 1B product, respectively. The  $\alpha_m(r)$ ,  $\alpha_{o_3}(r)$  and  $\alpha_p(r)$  represent the extinction coefficient of molecular, ozone, and particulate, respectively. The retrieval algorithm has several basic settings. The multiple scattering coefficient ( $\eta_p$ ) for undetected aerosol particles is set to 1 as considered in the retrieval of the CALIPSO Level 2 product (Young et al., 2018). Meanwhile, the bin at 36 km is considered aerosol-free (i.e.,  $\beta_p(0) = 0$ ,  $T_p^2(0) = 1$ ) (Kar et al., 2019).

8. Line 102: “particle particulate multiple scattering factor” is called “multiple scattering coefficient” at other places in the manuscript. Please make this consistent throughout.

**Response:** Modified as you suggested.

9. Line 124: “diurnal variation of faint aerosols in SAGE III-ISS data” does not make sense. Perhaps you meant “...dirunal variation of faint aerosol within the stratosphere”?

**Response:** Modified, as follows:

Since only daytime data from SAGE III/ISS are available, the CALIPSO orbits are spatially and temporally matched to the nearest SAGE III/ISS observations on the same calendar date with the consideration for a smaller temporal-spatial variation of faint aerosol comparing strong aerosol at the near-surface.

10. Figure 5 caption: Much of this caption is difficult to understand and should be rewritten for clarity. Some information should be removed and put in the text and the authors should organize the caption in such a way as to explain what each panel is in a successive manner. In its current state the caption explains panels (a), (b), (c), then returns to discussion panel (a) without telling the reader what is going on.

**Response:** Thanks to your suggestion, Figure 5 has been redrawn in the revised manuscript and the caption has been rewritten as follows:

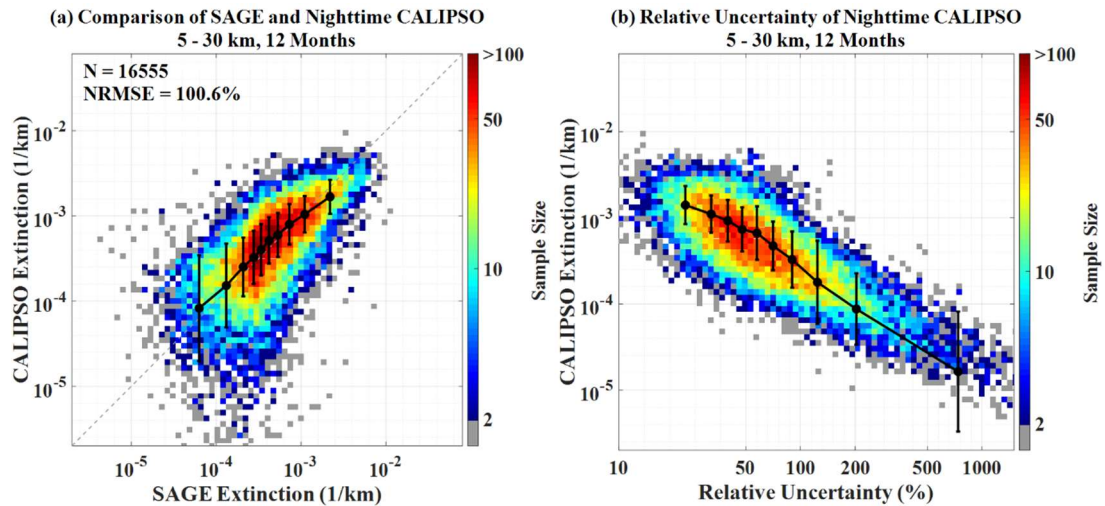


Figure 5. (a) Correlation plots of the retrieval within the matching grid of CALIPSO nighttime and SAGE III/ISS product from 5 km to 30 km for 12 months of validation. The color bar represents the sample size. The black bins represent the mean values of each 10% quantile (0-10%, 10-20%...and 90-100%) of SAGE III/ISS 521 nm aerosol product and corresponding CALIPSO retrieval. The I-type bars indicate the standard error of each 10% quantile CALIPSO retrieval. (b) The relative uncertainty of one-degree CALIPSO extinction.

11. Line 190: This sentence (“The number of matched points...”) does not make sense. Please reword this to better communicate what you did.

**Response:** Thanks for your suggestion but this paragraph has been reorganized and this sentence has been deleted.

12. Lines 194–195: This last sentence does not make sense (what is un-performed?). Please rewrite this to better communicate what you intend.

**Response:** Thanks for your suggestion but this paragraph has been reorganized and this sentence has been deleted.

13. Line 210: Please include the year (e.g., June and August 2019).

**Response:** Modified as you suggested.

14. Lines 229–230: This sentence is difficult to understand. What is a “propagation trajectory” and how can you estimate that based on a single CALIPSO granule? Please rewrite this sentence to better explain what you mean.

**Response:** Thank you for the suggestion, this sentence has been reworded, as follows:

Therefore, the retrieved undetected aerosol extinction can well capture the aerosol enhancement from special events at a horizontal resolution of 20 km (Figure 8d).

The color ratios, particle depolarization ratios, and integrated attenuated backscatter are extracted manually for the red dashed region (16 km to 20 km, 40°N to 5°N) with an average of 0.17, 0.02 and 0.00033 sr<sup>-1</sup>, respectively. Using these optical and non-optical properties (i.e., center height, temperature and latitude), aerosol subtypes can be determined by the CALIPSO Scene Classification Algorithms (Kim et al., 2018). The results show that the aerosol subtype in this region is sulfate, which supports that the aerosol enhancement is more likely to be from the eruption of the Raikoke Volcano.

15. Line 239: Perhaps the authors meant “...retrieved instantaneous extinction coefficients for faint aerosol layers based on...”?

**Response:** Modified as you suggested.

## References

Cisewski, M., Zawodny, J., Gasbarre, J., Eckman, R., Topiwala, N., Rodriguez-Alvarez, O., Cheek, D., and Hall, S.: The Stratospheric Aerosol and Gas Experiment (SAGE III) on the International Space Station (ISS) Mission, Sensors, Systems, and Next-Generation Satellites XVIII, 2014, 924107.

Fernald, F. G., Herman, B. M., and Reagan, J. A.: Determination of aerosol height distributions by lidar, *Journal of Applied Meteorology and Climatology*, 11, 482-489. 1972.

Fernald, F. G.: Analysis of atmospheric lidar observations: some comments, *Applied optics*, 23, 652-653. 1984.

Hunt, W. H., Winker, D. M., Vaughan, M. A., Powell, K. A., Lucker, P. L., and Weimer, C.: CALIPSO lidar description and performance assessment, *Journal of Atmospheric and Oceanic Technology*, 26, 1214-1228. doi:10.1175/2009JTECHA1223.1, 2009.

Kacenelenbogen, M., Vaughan, M., Redemann, J., Hoff, R., Rogers, R., Ferrare, R., Russell, P., Hostetler, C., Hair, J., and Holben, B.: An accuracy assessment of the CALIOP/CALIPSO version 2/version 3 daytime aerosol extinction product based on a detailed multi-sensor, multi-platform case study, *Atmospheric Chemistry and Physics*, 11, 3981-4000. doi:10.5194/acp-11-3981-2011, 2011.

Kar, J., Vaughan, M. A., Lee, K. P., Tackett, J. L., and Young, S. A.: CALIPSO lidar calibration at 532 nm: Version 4 nighttime algorithm, *Atmospheric Measurement Techniques*, 11, 1459-1479. 2018.

Kar, J., Lee, K.-P., Vaughan, M. A., Tackett, J. L., Trepte, C. R., Winker, D. M., Lucker, P. L., and Getzewich, B. J.: CALIPSO level 3 stratospheric aerosol profile product: version 1.00 algorithm description and initial assessment, *Atmospheric Measurement Techniques*, 12, 6173-6191. doi:10.5194/amt-12-6173-2019, 2019.

Khaykin, S. M., Godin-Beekmann, S., Keckhut, P., Hauchecorne, A., Jumelet, J., Vernier, J.-P., Bourassa, A., Degenstein, D. A., Rieger, L. A., and Bingen, C.: Variability and evolution of the midlatitude stratospheric aerosol budget from 22 years of ground-based lidar and satellite observations, *Atmospheric Chemistry and Physics*, 17, 1829-1845. doi:10.5194/acp-17-1829-2017, 2017.

Kim, M.-H., Omar, A. H., Tackett, J. L., Vaughan, M. A., Winker, D. M., Trepte, C. R., Hu, Y., Liu, Z., Poole, L. R., and Pitts, M. C.: The CALIPSO version 4 automated aerosol classification and lidar ratio selection algorithm, *Atmospheric measurement techniques*, 11, 6107-6135. 2018.

Kim, M. H., Omar, A. H., Vaughan, M. A., Winker, D. M., Trepte, C. R., Hu, Y., Liu, Z., and Kim, S. W.: Quantifying the low bias of CALIPSO's column aerosol optical

depth due to undetected aerosol layers, *Journal of Geophysical Research: Atmospheres*, 122, 1098-1113. doi:10.3390/rs13081496, 2017.

Kloss, C., Berthet, G., Sellitto, P., Ploeger, F., Taha, G., Tidiga, M., Eremenko, M., Bossolasco, A., Jegou, F., and Renard, J.-B.: Stratospheric aerosol layer perturbation caused by the 2019 Raikoke and Ulawun eruptions and their radiative forcing, *Atmospheric Chemistry and Physics*, 21, 535-560. 2021.

Knepp, T., Thomason, L., Kovilakam, M., Tackett, J., Kar, J., Damadeo, R., and Flittner, D.: Identification of Smoke and Sulfuric Acid Aerosol in SAGE III/ISS Extinction Spectra Following the 2019 Raikoke Eruption, *Atmospheric Measurement Techniques Discussions*, 1-30. 2021.

Mao, F., Liang, Z., Pan, Z., Gong, W., Sun, J., Zhang, T., Huang, X., Zang, L., Lu, X., and Hong, J.: A simple multiscale layer detection algorithm for CALIPSO measurements, *Remote Sensing of Environment*, 266, 112687. 2021.

Sakai, T., Uchino, O., Nagai, T., Liley, B., Morino, I., and Fujimoto, T.: Long - term variation of stratospheric aerosols observed with lidars over Tsukuba, Japan, from 1982 and Lauder, New Zealand, from 1992 to 2015, *Journal of Geophysical Research: Atmospheres*, 121, 10,283-210,293. doi:10.1002/2016JD025132, 2016.

Schoeberl, M., Jensen, E., Wang, T., Taha, G., Ueyama, R., Wang, Y., DeLand, M., and Dessler, A.: Cloud and Aerosol Distributions From SAGE III/ISS Observations, *Journal of Geophysical Research: Atmospheres*, 126, e2021JD035550. 2021.

Thomason, L., Moore, J., Pitts, M., Zawodny, J., and Chiou, E.: An evaluation of the SAGE III version 4 aerosol extinction coefficient and water vapor data products, *Atmospheric Chemistry and Physics*, 10, 2159-2173. doi:10.5194/acp-10-2159-2010, 2010.

Toth, T. D., Campbell, J. R., Reid, J. S., Tackett, J. L., Vaughan, M. A., Zhang, J., and Marquis, J. W.: Minimum aerosol layer detection sensitivities and their subsequent impacts on aerosol optical thickness retrievals in CALIPSO level 2 data products, *Atmospheric Measurement Techniques*, 11, 499-514. doi:10.5194/amt-11-499-2018, 2018.

Vaughan, M. A., Powell, K. A., Winker, D. M., Hostetler, C. A., Kuehn, R. E., Hunt, W. H., Getzewich, B. J., Young, S. A., Liu, Z., and McGill, M. J.: Fully automated detection of cloud and aerosol layers in the CALIPSO lidar measurements, *Journal of Atmospheric and Oceanic Technology*, 26, 2034-2050. 2009.

Winker, D., Pelon, J., Coakley Jr, J., Ackerman, S., Charlson, R., Colarco, P., Flamant, P., Fu, Q., Hoff, R., and Kittaka, C.: The CALIPSO mission: A global 3D view of aerosols and clouds, *Bulletin of the American Meteorological Society*, 91, 1211-1230.



doi:10.1175/2010BAMS3009.1, 2010.

Winker, D., Tackett, J., Getzewich, B., Liu, Z., Vaughan, M., and Rogers, R.: The global 3-D distribution of tropospheric aerosols as characterized by CALIOP, *Atmospheric Chemistry and Physics*, 13, 3345-3361. doi:10.5194/acp-13-3345-2013, 2013.

Winker, D. M., Vaughan, M. A., Omar, A., Hu, Y., Powell, K. A., Liu, Z., Hunt, W. H., and Young, S. A.: Overview of the CALIPSO mission and CALIOP data processing algorithms, *Journal of Atmospheric and Oceanic Technology*, 26, 2310-2323. 2009.

Young, S., and Vaughan, M. A.: The Retrieval of Profiles of Particulate Extinction from Cloud-Aerosol Lidar Infrared Pathfinder Satellite Observations (CALIPSO) Data: Algorithm Description, *Journal of Atmospheric & Oceanic Technology*, 26, 1105-1119. 2009.

Young, S. A., Vaughan, M. A., Kuehn, R. E., and Winker, D. M.: The retrieval of profiles of particulate extinction from Cloud–Aerosol Lidar and Infrared Pathfinder Satellite Observations (CALIPSO) data: Uncertainty and error sensitivity analyses, *Journal of Atmospheric and Oceanic Technology*, 30, 395-428. doi:10.1175/JTECH-D-12-00046.1, 2013.

Young, S. A., Vaughan, M. A., Garnier, A., Tackett, J. L., Lambeth, J. D., and Powell, K. A.: Extinction and optical depth retrievals for CALIPSO's Version 4 data release, *Atmospheric Measurement Techniques*, 11, 5701-5727. doi:10.5194/amt-11-5701-2018, 2018.