

# Surface-based observations of cold-air outbreak clouds during the COMBLE field campaign

5

Zackary Mages<sup>1</sup>, Pavlos Kollias<sup>1,2</sup>, Zeen Zhu<sup>2</sup>, Edward P. Luke<sup>2</sup>

10

<sup>1</sup>School of Marine and Atmospheric Sciences, Stony Brook, NY, USA

<sup>2</sup>Environmental and Climate Sciences Dept., Brookhaven National Laboratory, Upton, NY, USA

15

*Correspondence to:*

Zackary Mages

Email: [zackary.mages@stonybrook.edu](mailto:zackary.mages@stonybrook.edu)

20

## Abstract

Cold-air outbreaks (CAOs) are characterized by extreme air-sea energy exchanges and low-level convective clouds over large areas in the high latitude oceans. As such, CAOs are an important component of the Earth's climate system. The CAOs in the Marine Boundary Layer Experiment (COMBLE) deployment of the US Department of Energy Atmospheric Radiation Measurement (ARM) Mobile Facility (AMF) provided the first comprehensive view of CAOs using a suite of ground-based observations at the northern coast of Norway. Here, cloud and precipitation observations from 13 CAO cases during COMBLE are analysed. A vertical air motion retrieval technique is applied to the Ka-band ARM Zenith-pointing Radar (KAZR) observations. The CAO cumulus clouds are characterized by strong updrafts with magnitudes between  $2 - 8 \text{ m s}^{-1}$ , vertical extents of  $1 - 3 \text{ km}$ , and horizontal scales of  $0.25 - 3 \text{ km}$ . A strong relationship between our vertical air velocity retrievals and liquid water path (LWP) measurements is found. The LWP measurements exceed  $1 \text{ kg m}^{-2}$  in strong updraft areas, and the vertical extent of the updraft correlates well with the LWP values. The CAO cumulus clouds exhibit eddy dissipation rate values between  $10^{-3}$  and  $10^{-2} \text{ m}^2 \text{ s}^{-3}$  in the lowest two kilometres of the atmosphere, and using a radar Doppler spectra technique, evidence of secondary ice production is found during one of the cases.

## 1. Introduction

40 The Arctic is experiencing warming at the surface and throughout the troposphere at a rate faster than the rest of the world, a phenomenon known as Arctic amplification (AA; Previdi et al., 2021). The warming signal correlates in time and space with areas of significant sea-ice loss (Dai et al., 2019). Representing AA in climate simulations requires a comprehensive understanding of the different climate feedbacks and their impact on Arctic amplification, which include the Planck response and changes in water vapor plus  
45 temperature lapse rate, surface albedo, and clouds (Forster et al., 2021). Not surprisingly, the cloud feedback is particularly challenging to quantify (Zelinka et al., 2020). The latest Intergovernmental Panel on Climate Change (IPCC) assessment report found low confidence that the Arctic cloud feedback is positive, and it may even be slightly negative (Forster et al., 2021). Using reanalysis and satellite data, Zhang et al. (2018) indicated a large uncertainty in the sign of the Arctic cloud feedback. An improved  
50 understanding of high-latitude cloud systems, especially those over the open ocean such as cold-air outbreaks (CAOs) is needed since AA is connected to greater sea-ice loss.

CAOs occur when cold, dry air is transported over the relatively warmer ocean, where the ocean surface can then release large amounts of heat and moisture into the air (Pithan et al., 2018). Climatological  
55 studies have highlighted the frequency at which CAOs occur in the Northern Hemisphere (Kolstad et al., 2009; Kolstad, 2011; Fletcher et al., 2016a; Fletcher et al., 2016b; Smith and Sheridan, 2020), while others have focused on the Arctic region specifically. Papritz and Spengler (2017) found that a high frequency of CAOs occur in the Irminger and Nordic Seas while McCoy et al. (2017) found that December through February is the season of maximum occurrence for open mesoscale cellular clouds, typical of CAOs, in  
60 the Norwegian Sea. Brümmer and Pohlmann (2000) also found that, across ten winters, organized convection in CAO events occurs more than 50% of the time over the Greenland and Barents Sea regions. Most of these analyses are limited to reanalysis and satellite datasets, and more observational work is crucial to our understanding of CAOs.

65 Early observational analyses of CAOs have focused on aircraft and sounding data from various field  
campaigns around the globe (Lau and Lau, 1984; Hein and Brown, 1988; Chou and Ferguson, 1991;  
Brümmer, 1996; Brümmer, 1997; Brümmer, 1999; Renfrew and Moore, 1999). Recently, work has been  
done on data from the ACTIVATE (Aerosol Cloud meTeorology Interactions oVer the western ATlantic  
Experiment) and ACCACIA (Aerosol-Cloud Coupling And Climate Interactions in the Arctic) field  
70 campaigns that managed to capture some CAO events (Young et al., 2016; Seethala et al., 2021; Turnow  
et al., 2021), although studying CAOs was not the main goal of the campaigns. The MPACE (Mixed-  
Phase Arctic Cloud Experiment) field campaign also provided opportunity for ground-based observations  
of CAO events in Alaska (Shupe et al., 2008). However, there are other regions in the Northern  
Hemisphere where ground-based observations of CAOs are lacking. Despite the importance of CAO  
75 clouds, high resolution dynamical and microphysical observations, especially from surface-based remote  
sensing facilities in the regions of Greenland and the Norwegian Sea where models exhibit large  
inconsistencies, are not available (Pithan et al., 2014; Tomassini et al., 2017).

Here, analysis of surface-based observations from the Cold-Air Outbreaks in the Marine Boundary Layer  
80 Experiment (COMBLE) field campaign are presented. Initial work has been done using satellite data on  
two COMBLE cases (Wu and Ovchinnikov, 2022), and this study will also focus on measurements taken  
during the campaign. Using profiling Doppler cloud radar, lidar, and surface sensors, CAO events are  
identified, and the dynamical and microphysical properties of the shallow convective clouds during CAOs  
are described. Section 2 describes the COMBLE field campaign and the data used in this study. Section  
85 3 describes the various data analysis methodologies used, including the retrievals of vertical air motion,  
eddy dissipation rate, and the detection of secondary ice production. Finally, we present our results in  
Section 4 and our conclusions in Section 5.

## 2. Data

90 From 1 December 2019 to 31 May 2020, the U.S. Department of Energy deployed the Atmospheric  
Radiation Measurement (ARM) first mobile facility (AMF1) near the Norwegian Sea for the Cold-Air

Outbreaks in the Marine Boundary Layer Experiment (COMBLE) field campaign. The AMF1 was located on the northern coast of Scandinavia at a latitude of  $69.141^{\circ}$  N, a longitude of  $15.684^{\circ}$  E, and an altitude of 2 m above sea level while a smaller set of instruments were deployed at a latitude of  $75^{\circ}$  N on Bear Island. The main objective of the experiment was to quantify the properties of shallow convective clouds that develop as part of an air-mass transformation process when cold air advects over open water (Geerts et al., 2021). The two sites were located south of the Arctic ice edge, and the instruments successfully gathered comprehensive measurements of atmospheric conditions, clouds, precipitation, and aerosol that are used in this study.

100

The main instrument used in this study is the Ka-band ARM Zenith-pointing Radar (KAZR, Kollias et al., 2016), a zenith-pointing Doppler cloud radar operating at 35 GHz. The KAZR has a vertical resolution of 30 m and a temporal resolution of 2 s (Kollias et al., 2020). In this study, the radar reflectivity factor and mean Doppler velocity from the general mode are used. For polarimetry, we supplement our dataset with Doppler spectra observations from the collocated Ka-band ARM Scanning Cloud Radar (Ka-SACR, Kollias et al., 2014a) during times of vertically pointing operation. The Ka-SACR has a vertical resolution of 49.96 m and a temporal resolution of 2.97 s. Liquid water path (LWP) estimates were provided by a microwave radiometer (MWR) that operates at 23.8 GHz and 31.4 GHz to determine column-integrated water vapor and liquid water along the vertical line-of-sight path (Morris, 2019). The balloon-borne sounding system (SONDE), in which soundings are launched every six hours, and the Interpolated Sonde (INTERPSONDE) value-added product are used to retrieve profiles of atmospheric conditions over AMF1 (Holdridge, 2020; Toto and Jensen, 2016). The eddy dissipation rate (EDR; Borque et al., 2016) retrievals use the horizontal wind variables from INTERPSONDE as inputs, and the updraft width (chord length) calculations use the horizontal wind variables from SONDE. For the cloud base height (CBH) data, we use a Vaisala laser ceilometer, which sends a laser pulse at a 910 nm wavelength to detect light scattered by clouds and precipitation (Morris, 2016). Finally, to understand the type of precipitation reaching the surface at AMF1, we use a PARSIVEL2 laser disdrometer (Bartholomew, 2020). The PARSIVEL 1-min particle size distributions and fall velocities were used to characterize the precipitation type and intensity.

## 120      **3. Methodology**

### 3.1 CAO events selection

During the COMBLE field campaign, 34 CAO days were identified over the 6-month period for a total  
125 of 19% of the campaign (Geerts et al., 2022). Here, data from 13 of these days are used. All periods with  
prefrontal and frontal cloud systems are removed, and our analysis focuses on the dynamical and  
microphysical characteristics of the periods with shallow convective CAO clouds. The cases and time  
periods are listed in Table 1.

### 130      3.2 Vertical Air Motion Retrieval

The KAZR mean Doppler velocity ( $V_D$ ) contains contributions from the vertical air motion ( $V_{AIR}$ ) and  
the reflectivity-weighted particle sedimentation velocity ( $V_{SED}$ ). The estimation of  $V_{AIR}$  requires the  
removal of  $V_{SED}$  from the observed  $V_D$  (Kollias et al., 2022; Zhu et al., 2021). Well-established techniques  
135 applicable to profiling Doppler cloud radar observations (Protat and Williams, 2011; Kalesse and Kollias,  
2013) exist that can provide adaptive relationships between  $V_{SED}$  and radar reflectivity factor ( $Z$ ). These  
relationships have been evaluated in stratiform precipitation systems where the  $V_{AIR}$  is weak, and its mean  
value is near zero averaged over a 20 minute or longer period. Lamer et al. (2015) indicates that such  
relationships are challenging to develop in cumulus clouds due to the preferential presence of strong  
140 updraft motions. The presence of updrafts will bias low (reduce) the hydrometeor size distribution  $V_{SED}$   
and can, in many cases, result in positive (upward) hydrometeor motion. A preliminary visual inspection  
of the KAZR and MWR CAO observations indicated that strong updraft motions indicated by the positive  
KAZR Doppler velocity measurements ( $V_D > 2 \text{ m s}^{-1}$ ) are usually during periods when the MWR  
indicated the presence of high values of LWP. A LWP threshold of  $0.25 \text{ kg m}^{-2}$  was selected to identify  
145 these periods. The selected periods have very little sensitivity to the selected LWP threshold. Here, we  
use the apparent relationship between LWP and  $V_{AIR}$  by filtering out all KAZR observations when the  
LWP exceeded  $0.25 \text{ kg m}^{-2}$ . All other KAZR observations are used to estimate the relationship between

$V_{\text{SED}}$  and  $Z$  using the methodology proposed by Protat and Williams (2011). To confirm our choice of LWP threshold, we found the relationship between  $V_{\text{SED}}$  and  $Z$  below cloud base for all 13 cases in both  
150 the high ( $> 0.25 \text{ kg m}^{-2}$ ) and low ( $< 0.25 \text{ kg m}^{-2}$ ) LWP periods. The relationships were very similar (not shown), meaning similar types of particles are falling below cloud base in both regions.

First, the KAZR signal-to-noise ratio (SNR) values are used to identify the locations of hydrometeors using the Hildebrand and Sekhon (1974) threshold technique (Kollias et al., 2014). The KAZR  
155 observations during periods with  $\text{LWP} < 0.25 \text{ kg m}^{-2}$  are sorted into reflectivity bins with widths of 1.5 dB in the range of -20 to +20 dBZ. In each reflectivity bin, the corresponding  $V_{\text{D}}$  are used to estimate the median Doppler velocity. The median Doppler velocity is our best estimate (BE) of the  $V_{\text{SED, BE}}$  for the radar reflectivity values within a particular bin. Reflectivity bins that contain less than 1% of the KAZR observations are discarded due to their small sample size. The bin pairs of radar reflectivity and  
160 corresponding  $V_{\text{SED, BE}}$  create a look-up table (no fit is attempted), and this process is repeated for each CAO case. Figure 1a shows the Doppler velocity box plots for each reflectivity bin on 28 March; the other 12 CAO cases (not shown) exhibit a similar behaviour. Despite this, we do not create a global  $Z$ - $V_{\text{D}}$  look-up table; rather, each day's data is used to capture the smaller difference unique to the day. Sensitivity tests for these fits are performed using two other LWP thresholds of  $0.5 \text{ kg m}^{-2}$  and  $0.8 \text{ kg m}^{-2}$ , and we found that once we exceeded  $0.25 \text{ kg m}^{-2}$ , the convective updrafts began influencing the  $Z$ - $V_{\text{D}}$   
165 relationships, supporting this threshold's ability to isolate the convection. Figures S1c and S1e show the median  $V_{\text{D}}$  values in the higher reflectivity bins approaching and even exceeding zero. Also noteworthy is that the median  $V_{\text{D}}$  values in Figures S1a and S1b are similar, while the ones in Figures S1c and S1d and Figures S1e and S1f are not, reinforcing our choice of LWP threshold.

170

The  $V_{\text{SED, BE}}$  values in Figure 1a are between  $0.5 - 2 \text{ m s}^{-1}$ , which is consistent with the presence of frozen hydrometeors. The relationship between the  $V_{\text{SED, BE}}$  and KAZR radar reflectivity indicates a gradual increase in the sedimentation velocity with radar reflectivity. The joint distribution of the KAZR radar reflectivity and  $V_{\text{D}}$  for all 13 CAO cases is shown in Fig. 1b. The KAZR radar reflectivity shows a broad  
175 distribution with most echoes between  $\pm 20 \text{ dBZ}$ . The KAZR  $V_{\text{D}}$  distribution is centred at  $0.5 - 0.75 \text{ m s}^{-1}$

<sup>1</sup>. For each CAO event, the relationship between radar reflectivity and  $V_{SED,BE}$  is used to estimate the vertical air motion  $V_{AIR}$  using the following expression:

$$V_{AIR}(Z[t, h]) = V_D(Z[t, h]) - V_{SED,BE}(Z[t, h])$$

180

where  $t$  is time and  $h$  is height (range) of the KAZR observations. The uncertainty in the  $V_{AIR}$  estimates is controlled by the uncertainty of the  $V_{SED,BE}$  estimates since the primary measurement ( $V_D$ ) has negligible uncertainty (below  $0.15 \text{ m s}^{-1}$ ). The uncertainty of the  $V_{SED,BE}$  is controlled by the number of samples used in the estimation of the median  $V_D$  value within each radar reflectivity bin and the variability  
185 of the cloud microphysics during the sampling period. The  $V_{SED,BE}$  estimates for the same radar reflectivity bin differed very little from one CAO case to another ( $< 0.25 \text{ kg m}^{-2}$ ). The same uncertainty was found when shorter time periods were used. Using a fairly conservative approach, the uncertainty of the  $V_{SED,BE}$  is between  $0.3 - 0.4 \text{ m s}^{-1}$ .

190 During COMBLE, there were periods when the Ka-band Scanning ARM Cloud Radar (Ka-SACR, Kollias et al., 2014a,b) was pointing vertically. During these periods, the Ka-SACR recorded co- and cross-polar radar Doppler spectra, where the radar Doppler spectrum represents the frequency (velocity) distribution (spectral density,  $\text{mm}^6 \text{ m}^{-3} / \text{m s}^{-1}$ ) of the background radar signal at a particular range. In a vertically-pointing radar, the Doppler spectra provide the distribution of backscattered signal, and the  
195 backscattered signal's intensity is controlled by the hydrometeor's number concentration and size over a range of Doppler velocities. These velocities are dependent on the hydrometeor's sedimentation velocity and the vertical air motion fluctuations within the radar sampling volume. The cross-polar Doppler spectrum provides information about the location (velocity) of non-spherical particles. The recorded co- and cross-polar radar Doppler spectra can be used as input to a novel retrieval technique that identifies  
200 the presence of secondary ice production (SIP) in supercooled mixed-phase clouds (Luke et al., 2021).  $V_{AIR}$  is estimated from the radar Doppler spectra using the location (in  $\text{m s}^{-1}$ ) of the slower falling edge of the supercooled liquid spectral density's principal peak and is adjusted by a value of  $0.28 \text{ m s}^{-1}$  to compensate for turbulence broadening. The selected velocity adjustment for turbulence broadening of the



205 radar Doppler spectra is applicable only to radars operating with similar characteristics to the ARM  
 KAZRs. The value of the “climatological correction” is based on multi-year analysis of KAZR  
 observations in mixed-phase and liquid clouds (Luke et al., 2021; Zhu et al., 2022). Our primary  
 measurement in this analysis are linear depolarization ratio (LDR) determined by the ratio of the cross-  
 polarized to co-polarized spectral density, calibrated co-polarized spectral reflectivity normalized to units  
 of dBZ / m s<sup>-1</sup>, and spectral terminal fall speed computed as the difference between V<sub>AIR</sub> and spectral V<sub>D</sub>.

210

### 3.3 Eddy Dissipation Rate Retrieval

EDR is retrieved from the KAZR Doppler velocity and the INTERPSONDE sounding product using the  
 algorithm outlined by Borque et al. (2016). The INTERPSONDE sounding product is first interpolated to  
 215 2 s – 30 m resolution to be consistent with the KAZR observations. For clouds with durations less than  
 20 minutes, Doppler velocities for all the collected cloud profiles are used to generate the corresponding  
 velocity power spectrum (  $S(f)$  ) by performing an FFT. Assuming the turbulence to be homogeneous, in  
 the region of the inertial subrange, EDR can be estimated as:

$$220 \quad \varepsilon = \frac{2\pi}{V} \left\{ \frac{2}{3\alpha} \int_{f_1}^{f_2} S(f) df \right\} (f_1^{-1.5} - f_2^{-1.5})^{-1.5}$$

where  $\varepsilon$  is the retrieved EDR,  $V$  is the horizontal wind obtained from the sounding product,  $\alpha$  is the  
 Kolmogorov constant and is taken as 0.5, and  $f_1 - f_2$  is the lower and upper frequency limit in the inertial  
 subrange. It is apparent that the accuracy of the  $\varepsilon$  retrieval is highly dependent on the selection of the  
 225 inertial subrange, which is determined by the frequency interval ( $f_1 - f_2$ ). Here, we adapt the same  
 approach proposed by Borque et al. (2016) to confine the inertial subrange: 33 frequency pairs are  
 predefined for each selected frequency interval, a power law fitting is performed for the velocity spectrum  
 $S(f)$  and only the fitting slopes within  $-5/3 \pm 1/3$  are selected as “good inertial subranges” and used for  $\varepsilon$   
 estimation. Finally, the retrieved  $\varepsilon$  from all the “good intervals” are averaged to obtain the  $\varepsilon$  product.

230

### 3.4 Updraft Dimensions

The  $V_{\text{AIR}}$  retrievals are used to estimate properties of coherent updrafts in CAOs. A conditional threshold of  $V_{\text{AIR}} > 2 \text{ m s}^{-1}$  is used to identify spatially coherent updraft structures. The  $2 \text{ m s}^{-1}$  conditional velocity  
235 threshold is much higher than the  $V_{\text{AIR}}$  uncertainty ( $0.3 - 0.4 \text{ m s}^{-1}$ ). This will ensure that we detect the presence of an updraft. In addition, the  $2 \text{ m s}^{-1}$   $V_{\text{AIR}}$  threshold ensures we exceed the typical vertical air motion values observed in stratus and stratocumulus (Guibert et al., 2003; Peng et al., 2005; Guo et al., 2008; Ghate et al., 2010; Hudson and Noble, 2014). Using the algorithm outlined in Kollias et al., (2014b), a low-pass filter that is five vertical profiles wide and five range gates deep is applied to the  $V_{\text{AIR}}$  estimates  
240 three times. This allows for the identification of coherent updraft structures.

The coherent updraft structures are then analysed to estimate their depth (vertical extent), width (chord length), and range of magnitudes within the structure. The distance between the lowest and highest KAZR range gates that a coherent updraft occupies is used to estimate their vertical extent. A similar approach  
245 is used to estimate the temporal duration of the updraft structures. This duration value is then multiplied by the average horizontal wind speed in the lowest 5 km of the atmosphere from the nearest sounding in time to give the chord length of the updraft. Finally, the range of magnitudes is given by all the values within the same coherent updraft structure. A sensitivity analysis was performed to evaluate the impact of the selected threshold for determining coherent updraft structures. Using a conditional threshold of  
250  $V_{\text{AIR}} > 1 \text{ m s}^{-1}$ , we found negligible differences in the updraft statistics. Finally, due to a lack of soundings, 1 December only contributes to updraft vertical extent and magnitude results.

## 4. Results

An example three-hour period of CAO observations from 28 March 2020 is shown in Fig. 2. Several  
255 cumulus clouds were detected by the KAZR with cloud tops between 3.5 to 4.5 km. The surface temperature averaged  $0.76 \text{ }^{\circ}\text{C}$  for the period and never dropped below  $0 \text{ }^{\circ}\text{C}$ ; meanwhile, temperatures ranged from  $-44.6 \text{ }^{\circ}\text{C}$  to  $-37.5 \text{ }^{\circ}\text{C}$  near cloud top, where we took the cloud tops to be the last detectable

echoes in the KAZR columns. Within the region from the surface to the range of cloud tops, the lapse rate was about  $8.4\text{ }^{\circ}\text{C km}^{-1}$ , and the prevailing wind was predominantly from the northwest with at most  $8 - 9^{\circ}$  of wind shear. In COMBLE, the KAZR was operated only in co-polar mode. The lack of KAZR linear depolarization ratio observations prevents us from reliably using radar Doppler spectra techniques for a hydrometeor phase classification (Kalesse et al., 2016; Luke et al., 2021). No melting layer signature is detected in the KAZR radar reflectivity and mean Doppler velocity observations (Fig. 2b) throughout the observing period. The KAZR reflectivity exceeds  $+25\text{ dBZ}$  in the shallow convective cores, indicating the presence of large hydrometeors or a high number concentration. The retrieved  $V_{\text{AIR}}$  is shown in Fig 2c. Several deep updraft structures are observed within the same shallow convective cloud suggesting the presence of boundary layer organization. In particular, the cumulus cloud detected around 10 UTC/11 LT exhibits four distinct updrafts with  $V_{\text{AIR}}$  values higher than  $5\text{ m s}^{-1}$ . Similar coherent updraft structures are commonly observed throughout the COMBLE dataset. On the other hand, there are cumulus clouds with negligible or no updraft structures; this is a result of sampling clouds at different stages of their evolution. The MWR detected the presence of significant LWP (exceeding  $1\text{ kg m}^{-2}$ ) in the areas where updrafts were retrieved. The collocation of the updraft structures with the presence of supercooled liquid provided confidence in the  $V_{\text{AIR}}$  estimates. Finally, the shallow convective clouds exhibit high EDR estimates reaching values up to  $0.01\text{ m}^2\text{ s}^{-3}$ . Similarly with the presence of updrafts, the EDR values are higher in the areas of active shallow convective clouds (Fig. 2d).

#### 4.1 Updraft Structure Analysis

One of the main scientific drivers of the COMBLE field campaign is to better understand mixed-phase cloud processes and improve their representation in high resolution numerical models (Geerts et al., 2022). In-cloud updrafts are very important in microphysics. The observed distribution of updraft chord length from all CAO cases is shown in Fig. 3a. The distribution peaks at updraft chord lengths less than 500 m, and more than 80% of the observed updrafts have chord lengths less than 1 km. Similarly, the observed distribution of updraft vertical extent peaks at a value less than 500 m. About 5% of the observed updrafts have vertical extents higher than 1 km. The distribution of the range of updraft magnitudes (Fig.

3c) shows that most of the updrafts are defined by  $V_{\text{AIR}}$  values between 2 and 3  $\text{m s}^{-1}$ , but some have values as high as 8-9  $\text{m s}^{-1}$ . These values far exceed the ones found by Brümmer (1999) in aircraft data from the ARKTIS field campaign over the same region.

290 The observed scales of CAO cumulus updrafts are unresolved by current Global Cloud Resolving Models (Sato et al., 2019). Since the KAZR data has such a high temporal resolution, we transform the KAZR time-height data to horizontal distance-height data using the mean horizontal wind speed from the lowest 5 km of the atmosphere from the nearest soundings in time. This allows us to look at the updraft chord length and magnitude at different horizontal resolutions: 250 m in Figures 4a and 4c and 1 km in Figures  
295 4b and 4d. We take the median KAZR profile over each distance interval, and we run our low-pass filter only once. As the horizontal resolution becomes coarser, KAZR identifies fewer updrafts, and they are losing their impressive magnitudes. We also attempted a 3 km resolution, but none of the updrafts were resolved. The 250 m resolution distributions still closely resemble those seen in Fig. 3, so increasing a model's resolution beyond 250 m will hinder its ability to resolve the structures in CAOs.

300

We also examine the updraft magnitude profile as a function of normalized updraft depth. The observed updraft structures are classified into three categories of nearly equal size based on their vertical extent: those with depths less than 1 km (Fig. 5a), those with depths between 1 and 2 km (Fig. 5b), and those with depths greater than 2 km (Fig. 5c). In general, the deeper updrafts are associated with stronger  
305 vertical air motions. Throughout the normalized updraft depths, 55% of  $V_{\text{AIR}}$  values are greater than 3  $\text{m s}^{-1}$  in Fig. 5a, 66% of  $V_{\text{AIR}}$  values are greater than 3  $\text{m s}^{-1}$  in Fig. 5b, and 75% of  $V_{\text{AIR}}$  values are greater than 3  $\text{m s}^{-1}$  in Fig. 5c. Finally, the whiskers in Fig. 5c show the deepest updrafts have both the strongest and weakest  $V_{\text{AIR}}$  values.

## 310 4.2 EDR Analysis

The distribution of the EDR measurements as a function of height above the surface for all CAO cases is shown in Fig. 6. The highest EDR values ( $10^{-3} - 10^{-2} \text{ m}^2 \text{ s}^{-3}$ ) are observed near the surface. This is

consistent with the strong surface sensible heat fluxes that characterize CAO cloud systems. At higher  
315 altitudes, the EDR distribution is broader. Two modes appear, one where the EDR steadily decreases with  
height and another where EDR stays constant with height. Overall, the strongest turbulence in the  
distribution is concentrated in the lowest 2 km between values of  $10^{-3}$  and  $10^{-2} \text{ m}^2 \text{ s}^{-3}$ . The two stratiform  
EDR profiles shown in Borque et al. (2016) do not share these characteristics. One does not have as deep  
of a layer as shown here, and the other has values closer to  $10^{-4} \text{ m}^2 \text{ s}^{-3}$ , one order of magnitude less than  
320 shown here.

### 4.3 Relationship between LWP and updrafts

Visual inspection of Figure 2 suggests a correlation between the presence of liquid water and the coherent  
325 updraft structures. This relationship is further investigated using all the COMBLE observations (Fig. 7).  
Looking at the LWP measurements broadly, Figure 7a shows nearly 75% of the LWP data is near zero,  
while only about 1% of the LWP data is higher than  $2 \text{ kg m}^{-2}$ . Meanwhile, Figure 7b shows that as LWP  
in the column increases, so too does the maximum  $V_D$ , which reinforces the visual inspections we made  
and our use of LWP as a threshold for our vertical air motion retrieval. In general, the LWP correlates  
330 well with the square of the depth of the cloud (Wood, 2012; Fan et al., 2018). In Figure 7c, the measured  
LWP is plotted against the sum of  $V_{\text{AIR}}$  values in the updraft depth. Similarly, in Figure 7d, the LWP in  
the column is plotted against the maximum  $V_{\text{AIR}}$  value in the updraft depth. These two relationships  
exhibit a plausible agreement between two independent measurements, which further supports the good  
performance of the  $V_{\text{AIR}}$  retrieval technique.

335

### 4.4 Hydrometeor fraction profile

Here, the relationship between updrafts and hydrometeor fraction profile is investigated. First, the KAZR  
data are separated into hour-long periods, and the hydrometeor fraction is calculated at each range gate.  
340 The hydrometeor fraction is the fraction of KAZR significant meteorological detections over the total  
number of KAZR profiles during the one-hour period. In addition, the updraft fraction is estimated as the

fraction of retrieved  $V_{\text{AIR}} > 2 \text{ m s}^{-1}$  over the total number of KAZR significant meteorological detections during the one-hour period. The distribution of the hourly-estimated hydrometeor fraction as a function of normalized cloud height, where 0 represents cloud base and 1 represents cloud top, is shown in Fig. 8a. The maximum hydrometeor fraction gradually reduces towards the cloud top. The observed hydrometeor fraction profile suggests surface and cloud base conditions determine the overall cloud fraction in CAOs. No evidence of hydrometeor detrainment near the cloud top is observed, as it has been observed in the shallow oceanic convection (Lamer et al., 2015). The dataset is further classified into three CAO cloud thickness types by splitting it into three samples of nearly equal size: cloud top heights (CTHs) less than 3.5 km, CTHs between 3.5 and 4.5 km, and CTHs greater than 4.5 km (Fig. 8b). Despite their considerable differences in CTH, the hydrometeor fraction estimates near the cloud base are clustered around 0.52 – 0.6.

The updraft fraction profiles increase towards the cloud top (Fig. 8b). This is a combination of the updraft structures being vertically oriented and the overall hydrometeor fraction reduction with height above the cloud base. The mean updraft fraction near the cloud base for the three different CAO cloud top cases exhibit higher co-variability with CTH. The updraft fraction at the cloud base more than doubles between the shallow (CTH < 3.5 km) and the deep (CTH > 4.5 km) CAO cases. This further suggests that near cloud base, conditions are important for determining the vertical extent of the CAO cumulus field.

360

#### 4.5 Secondary Ice Production

The presence of strong updrafts and high supercooled liquid amounts within the temperature range of -3 to -8 °C suggests the possibility for secondary ice production (SIP) within the CAO cumulus clouds. Luke et al. (2021) presents a comprehensive observational study that utilizes polarimetric radar Doppler spectra to detect and quantify the occurrence of SIP. The KAZR did not collect polarimetric observations during COMBLE, but the collocated Ka-band Scanning ARM Cloud Radar (Ka-SACR; Kollias et al., 2014) spent time vertically pointing as part of its nominal sampling pattern. Using polarimetric radar Doppler spectra recorded by the Ka-SACR on 31 December 2019, we apply the method of Luke et al. (2021) to

370 detect and quantify the occurrence of secondary ice production in the temperature range of -3 to -8 °C. On that day, this temperature range extends from 500 to 1000 m in altitude (Fig. 9b). We detect the presence of Doppler spectra bin observations dominated by a columnar ice crystal habit by those having an LDR between -16 and -14 dB. We then aggregate these bins according to their terminal fall speed and divide their quantity by the total number of bins with a measurable LDR, aggregated in the same way by  
375 terminal fall speed. We require the copolarized and crosspolarized spectral energy density to both be at least 4 dB above their noise floor for LDR to be measurable. We then know the fraction of hydrometeors that can be attributed to a columnar ice crystal habit as a function of terminal fall speed. Figure 9c shows that this fraction is enhanced at the altitude corresponding to a temperature of -5 °C in the fall speed range of small needles. For comparison, we compute the fraction of Doppler spectra bins dominated by spherical  
380 hydrometeors as above by subsetting the numerator to observations having an LDR between -22 and -20 dB. As seen in Figure 9d, minimal enhancement occurs near -5 °C. Finally, following Luke et al. (2021), we determine the secondary ice multiplication factor of needle detections using the baseline detection threshold of -21 dBZ s m<sup>-1</sup>, which is shown in Fig. 9e. Occurrences of secondary ice multiplications from 10x to 100x are readily apparent, with additional occurrences in the range of 100x to 1000x.  
385 Unfortunately, the Ka-SACR operations in a vertically pointing mode were not regularly executed, thus limiting our ability to conduct a comprehensive study of SIP detection and occurrence. Nevertheless, the one case analysed clearly indicates the presence of SIP in CAOs.

## 5. Conclusions

390

The COMBLE observations provide the first systematic long-term, cloud-scale, ground-based remote sensing dataset of Arctic CAOs. Observations from a profiling cloud radar (KAZR), a ceilometer and a microwave radiometer (MWR) are used to study the cloud-scale dynamics of 13 CAO events. The KAZR  
395 observations are used to estimate CAO cumulus cloud properties such as hydrometeor fraction, cloud top height, vertical air motion, and EDR. The LWP measurements from the MWR and their relationship to cloud dynamics are investigated.

The CAO cellular shallow convective clouds observed at Andenes, Norway have typical cloud top heights  
400 between 3 and 5 km, and the average hydrometeor fraction is 50 – 60%. Owing to the large surface  
sensible heat flux, CAO cumulus clouds are characterized by strong updraft structures. The distribution  
of retrieved updraft magnitudes peaks at  $3 \text{ m s}^{-1}$ , but a considerable number of updrafts have vertical air  
motion values that exceed  $4 - 5 \text{ m s}^{-1}$ . On the other hand, the coherent updraft structures have narrow  
widths that peak at 250 m and vertical extents typically around 500 m. Representing these updraft  
405 structures in numerical models requires high resolution modeling at the scales of 100 – 200 m horizontal  
spacing. The LWP time series indicates the intermittent presence of liquid columns with LWP values in  
excess of  $1 - 2 \text{ kg m}^{-2}$ . Furthermore, the intermittent spikes in LWP amount correlate with the detection  
of coherent updraft structures and their vertical extent. The EDR retrieval confirms the turbulent nature  
of the CAO cumulus clouds with the highest values near cloud base ( $\sim 5 \times 10^{-3} \text{ m}^2 \text{ s}^{-3}$ ).

410

The CAO cumulus hydrometeor fraction profile peaks at the cloud base level (0.5 – 0.6) and gradually  
decreases with height above the cloud base. The cloud base hydrometeor fraction profile exhibits little  
relationship to the cumulus field cloud top height. On the other hand, the cumulus field cloud top height  
exhibits better covariance with the updraft fraction profile.

415

In addition, we show that secondary ice production is present during a cold-air outbreak with ice  
multiplication factors approaching three orders of magnitude. This is consistent with a growing body of  
evidence suggesting that updraft regions containing supercooled liquid are favourable for secondary ice  
production.

420

The presented work provides valuable information for model intercomparison studies that will attempt to  
understand mixed-phase cloud processes in CAOs, but there is a limitation. Our work examines the cumuli  
from a Eulerian perspective and is restricted to a two-dimensional view of the atmosphere; we cannot  
speak to the evolution of the clouds nor to their three-dimensional geometry and organization. Future  
425 work may begin by looking at data collected by the Norwegian weather radar network and Ka-SACR



during COMBLE, where one can analyse the mesoscale organization of the cumuli and their three-dimensional structure as they evolve in time.

**Data Availability:** The ARM observational datasets for COMBLE are available at the ARM Data Centre.  
430 The KAZR data (kazrge) can be accessed via <http://dx.doi.org/10.5439/1498936>. The Ka-SACR data (kasacrcfrvpt) can be accessed via <http://dx.doi.org/10.5439/1482713>. The ceilometer data (ceil) can be accessed via <http://dx.doi.org/10.5439/1181954>. The microwave radiometer data (mwrlos) can be accessed via <http://dx.doi.org/10.5439/1046211>. The sounding data (sondownpn) can be accessed via <http://dx.doi.org/10.5439/1595321>. The interpolated sounding data (interpolatedsonde) can be accessed  
435 via <http://dx.doi.org/10.5439/1095316>. The PARSIVEL data can be accessed via <http://dx.doi.org/10.5439/1779709>. The rest of the COMBLE observational datasets can be accessed via <https://adc.arm.gov/discovery/#!/results/iopShortName::amf2019comble>.

**Author Contributions:** Z.M. and P.K. designed the methodology, and Z.M. performed the analysis. Z.Z.  
440 performed the EDR retrieval, and Z.Z. and E.L. prepared the data. Z.M. and P.K. prepared the manuscript, with contributions from Z.Z. and E.L.

**Competing Interests:** The authors declare that they have no conflicts of interest.

445 **Acknowledgements:** We would like to acknowledge the data support provided by the Atmospheric Radiation Measurement (ARM) Program sponsored by the U.S. Department of Energy.

**Financial Support:** The contributions of P.K. and E.L. were supported by contract DE-SC0012704 with the U.S. Department of Energy (DOE).

The PARSIVEL2 disdrometer provides 1-min observations of hydrometeor size and fall velocity (Fig. A1a). The disdrometer observations have been successfully used in previous studies to classify the types (i.e. phase, density, size) of hydrometeors reaching the surface. Here, the PARSIVEL2-based hydrometeor identification developed by Friedrich et al. (2013a) and Friedrich et al. (2013b) and the size-velocity fits for unrimed particles in Locatelli and Hobbs (1974) are used to assess the hydrometeor typing in CAOs (Fig. A1b). Throughout the 13 cases, the rain hydrometeor type dominates, as it accounts for about 58% of the total particles detected by the disdrometer (Fig. A1a). Hail, graupel, and snow only account for 0.52%, 3.51%, and 0.06% of the total particles detected, respectively. The PARSIVEL2-based hydrometeor classification contradicts the KAZR observations. First, no noticeable attenuation is observed in the KAZR observations. Furthermore, the distribution of KAZR Doppler velocities at 300 m above the surface indicates that most of the values in the distribution are around  $1.5 \text{ m s}^{-1}$  (Fig. A1c). The KAZR Doppler velocity measurements were compared against those recorded by the Ka-SACR. The comparison shows excellent agreement between the two radars. The discrepancy between the KAZR and disdrometer observations suggests the possibility of i) artifacts in the disdrometer observations due to the orientation of the disdrometer and/or the near-surface wind magnitude and/or ii) the presence of numerous irregularly-shaped particles that are difficult to characterize using the disdrometer.

## References

- 470 Bartholomew, M.J.: Laser Disdrometer Instrument Handbook, Atmospheric Radiation Measurement,  
U.S. Department of Energy Office of Science, DOE/SC-ARM-TR-137, 2020.
- Borque, P., Luke, E., and Kollias, P.: On the unified estimation of turbulence eddy dissipation rate using  
Doppler cloud radars and lidars, *J. Geophys. Res.-Atmos.*, 120, 5972-5989, doi:10.1002/2015JD024543,  
475 2016.
- Brümmer, B.: Boundary-layer modification in wintertime cold-air outbreaks from the Arctic sea ice,  
*Boundary-Layer Meteorology*, 80, 109-125, <https://doi.org/10.1007/BF00119014>, 1996.
- 480 Brümmer, B.: Boundary Layer Mass, Water, and Heat Budgets in Wintertime Cold-Air Outbreaks from  
the Arctic Sea Ice, *Monthly Weather Review*, 125, 1824-1837, [https://doi.org/10.1175/1520-0493\(1997\)125<1824:BLMWAH>2.0.CO;2](https://doi.org/10.1175/1520-0493(1997)125<1824:BLMWAH>2.0.CO;2), 1997.
- Brümmer, B.: Roll and Cell Convection in Wintertime Arctic Cold-Air Outbreaks, *Journal of*  
485 *Atmospheric Sciences*, 56, 2613-2636, [https://doi.org/10.1175/1520-0469\(1999\)056<2613:RACCIW>2.0.CO;2](https://doi.org/10.1175/1520-0469(1999)056<2613:RACCIW>2.0.CO;2), 1999.
- Brümmer, B. and Pohlmann, S.: Wintertime roll and cell convection over Greenland and Barents Sea  
regions: A climatology, *Journal of Geophysical Research: Atmospheres*, 105, 15559-15566,  
490 <https://doi.org/10.1029/1999JD900841>, 2000.
- Cadeddu, M.: Microwave Radiometer (MWRLOS), ARM Mobile Facility (ANX) Andenes, Norway;  
AMF1 (main site for COMBLE), ARM Data Center [data set], <http://dx.doi.org/10.5439/1046211>, 2019.

495 Chou, S.H. and Ferguson, M.P.: Heat fluxes and roll circulations over the western Gulf Stream during an  
intense cold-air outbreak, *Boundary-Layer Meteorology*, 55, 255-281,  
<https://doi.org/10.1007/BF00122580>, 1991.

Crameri, F.: Scientific colour maps (7.0.1), Zenodo [code], <https://doi.org/10.5281/zenodo.5501399>,  
500 2021.

Dai, A., Luo, D., Song, M., and Liu, J.: Arctic amplification is caused by sea-ice loss under CO<sub>2</sub>, *Nature  
Communications*, 10, <https://doi.org/10.1038/s41467-018-07954-9>, 2019.

505 Fletcher, J.K., Mason, S., and Jakob, C.: The Climatology, Meteorology, and Boundary Layer Structure  
of Marine Cold Air Outbreaks in Both Hemispheres, *Journal of Climate*, 29, 1999-2014,  
<https://doi.org/10.1175/JCLI-D-15-0268.1>, 2016.

Fletcher, J.K., Mason, S., and Jakob, C.: A Climatology of Clouds in Marine Cold Air Outbreaks in Both  
510 Hemispheres, *Journal of Climate*, 29, 6677-6692, <https://doi.org/10.1175/JCLI-D-15-0783.1>, 2016.

Forster, P., Storelymo, T., Armour, K., Collins, W., Dufresne, J.L., Frame, D., Lunt, D.J., Mauritsen, T.,  
Palmer, M.D., Watanabe, M., Wild, M., and Zhang, H.: The Earth's Energy Budget, Climate Feedbacks,  
and Climate Sensitivity, in: *Climate Change 2021: The Physical Science Basis. Contribution of Working  
515 Group I to the Sixth Assessment Report of the Intergovernmental Panel on Climate Change*, edited by:  
Masson-Delmotte, V., Zhai, P., Pirani, A., Connors, S.L., Péan, C., Berger, S., Caud, N., Chen, Y.,  
Goldfarb, L., Gomis, M.I., Huang, M., Leitzell, K., Lonnoy, E., Matthews, J.B.R., Maycock, T.K.,  
Waterfield, T., Yelekçi, O., Yu, R., and Zhou, B., Cambridge University Press, 2021.

520 Friedrich, K., Kalina, E.A., Masters, F.J., and Lopez, C.R.: Drop-Size Distributions in Thunderstorms  
Measured by Optical Disdrometers during VORTEX2, *Monthly Weather Review*, 141, 1182-1203,  
<https://doi.org/10.1175/MWR-D-12-00116.1>, 2013.

Friedrich, K., Higgins, S., Masters, F.J., and Lopez, C.R.: Articulating and Stationary PARSIVEL  
525 Disdrometer Measurements in Conditions with Strong Winds and Heavy Rainfall, *Journal of Atmospheric  
and Oceanic Technology*, 30, 2063-2080, <https://doi.org/10.1175/JTECH-D-12-00254.1>, 2013.

Geerts, B., Giangrande, S.E., McFarquhar, G.M., Xue, L., Abel, S.J., Comstock, J.M., Crewell, S.,  
DeMott, P.J., Ebell, K., Field, P., Hill, T.C.J., Hunzinger, A., Jensen, M.P., Johnson, K.L., Juliano, T.W.,  
530 Kollias, P., Kosovic, B., Lackner, C., Luke, E., Lüpkes, C., Matthews, A.A., Neggers, R., Ovchinnikov,  
M., Powers, H., Shupe, M.D., Spengler, T., Swanson, B.E., Tjernström, M., Theisen, A.K., Wales, N.A.,  
Wang, Y., Wendisch, M., and Wu, P.: The COMBLE campaign: a study of marine boundary-layer clouds  
in Arctic cold-air outbreaks, *Bulletin of the American Meteorological Society* [preprint],  
<https://doi.org/10.1175/BAMS-D-21-0044.1>, 03 March 2022.

535

Geerts, B., McFarquhar, G., Xue, L., Jensen, M., Kollias, P., Ovchinnikov, M., Shupe, M., DeMott, P.,  
Wang, Y., Tjernström, M., Field, P., Abel, S., Spengler, T., Neggers, R., Crewell, S., Wendisch, M., and  
Lüpkes, C: Cold-Air Outbreaks in the Marine Boundary Layer Experiment (COMBLE) Field Campaign  
Report, Atmospheric Radiation Measurement, U.S. Department of Energy Office of Science, DOE/SC-  
540 ARM-21-001, 2021.

Ghate, V.P., Albrecht, B.A., and Kollias, P.: Vertical velocity structure of nonprecipitating continental  
boundary layer stratocumulus clouds, *Journal of Geophysical Research: Atmospheres*, 115,  
<https://doi.org/10.1029/209JD013091>, 2010.

545

Guibert, S., Snider, J.R., and Brenguier, J.: Aerosol activation in marine stratocumulus clouds: 1.  
Measurement validation for a closure study, *Journal of Geophysical Research: Atmospheres*, 108,  
<https://doi.org/10.1029/2002JD002678>, 2003.

550 Guo, H., Liu, Y., Daum, P.H., Senum, G.I., and Tao, W.: Characteristics of vertical velocity in marine stratocumulus: comparison of large eddy simulations with observations, *Environmental Research Letters*, 3, <https://doi.org/10.1088/1748-9326/3/4/045020>, 2008.

Hein, P.F. and Brown, R.A.: Observations of longitudinal roll vortices during arctic cold air outbreaks  
555 over open water, *Boundary-Layer Meteorology*, 45, 177-199, <https://doi.org/10.1007/BF00120822>, 1988.

Hildebrand, P. H. and Sekhon, R. S.: Objective Determination of the Noise Level in Doppler Spectra, *J. Appl. Meteorol.*, 13, 808-811, [https://doi.org/10.1175/1520-0450\(1974\)013<0808:ODOTNL>2.0.CO;2](https://doi.org/10.1175/1520-0450(1974)013<0808:ODOTNL>2.0.CO;2), 1974.

560

Holdridge, D.: Balloon-Borne Sounding System (SONDE) Instrument Handbook, Atmospheric Radiation Measurement, U.S. Department of Energy Office of Science, DOE/SC-ARM/TR-029, 2020.

Hudson, J.G., and Noble, S.: CCN and Vertical Velocity Influences on Droplet Concentrations and  
565 Supersaturations in Clean and Polluted Stratus Clouds, *Journal of the Atmospheric Sciences*, 71, 312-331, <https://doi.org/10.1175/JAS-D-13-086.1>, 2014.

Jensen, M., Giangrande, S., Fairless, T., and Zhou, A.: Interpolated Sonde (INTERPOLATEDSONDE), ARM Mobile Facility (ANX) Andenes, Norway; AMF1 (main site for COMBLE), ARM Data Center  
570 [data set], <http://dx.doi.org/10.5439/1095316>, 2019.

Kalesse, H. and Kollias, P.: Climatology of High Cloud Dynamics Using Profiling ARM Doppler Radar Observations, *Journal of Climate*, 26, 6340-6359, <https://doi.org/10.1175/JCLI-D-12-00695.1>, 2013.

575 Kalesse, H., Szyrmer, W., Kneifel, S., Kollias, P., and Luke, E.: Fingerprints of a riming event on cloud radar Doppler spectra: observations and modeling, *Atmospheric Chemistry and Physics*, 16, 2997-3012, <https://doi.org/10.5194/acp-16-2997-2016>, 2016.

Keeler, E., and Kyrouac, J.: Balloon-Borne Sounding System (SONDEWNP), ARM Mobile Facility  
580 (ANX) Andenes, Norway; AMF1 (main site for COMBLE), ARM Data Center [data set],  
<http://dx.doi.org/10.5439/1021460>, 2019.

Kollias, P., Bharadwaj, N., Widener, K., Jo, I., and Johnson, K.: Scanning ARM Cloud Radars. Part I:  
Operational Sampling Strategies, *Journal of Atmospheric and Oceanic Technology*, 31, 569-582,  
585 <https://doi.org/10.1175/JTECH-D-13-00044.1>, 2014.

Kollias, P., Jo, I., Borque, P., Tatarevic, A., Lamer, K., Bharadwaj, N., Widener, K., Johnson, K., and  
Clothiaux, E.E.: Scanning ARM Cloud Radars. Part II: Data Quality Control and Processing, *Journal of  
Atmospheric and Oceanic Technology*, 31, 583-598, <https://doi.org/10.1175/JTECH-D-13-00045.1>,  
590 2014.

Kollias, P., Clothiaux, E.E., Ackerman, T.P., Albrecht, B.A., Widener, K.B., Moran, K.P., Luke, E.P.,  
Johnson, K.L., Bharadwaj, N., Mead, J.B., Miller, M.A., Verlinde, J., Marchand, R.T., and Mace, G.G.:  
Development and Applications of ARM Millimeter-Wavelength Cloud Radars, *Meteorological  
595 Monographs*, 57, 17.1-17.19, <https://doi.org/10.1175/AMSMONOGRAPHS-D-15-0037.1>, 2016.

Kollias, P., Bharadwaj, N., Clothiaux, E.E., Lamer, K., Oue, M., Hardin, J., Isom, B., Lindenmaier, I.,  
Matthews, A., Luke, E.P., Giangrande, S.E., Johnson, K., Collis, S., Comstock, J., and Mather, J.H.: The  
ARM Radar Network: At the Leading Edge of Cloud and Precipitation Observations, *Bulletin of the  
600 American Meteorological Society*, 101, E588-E607, <https://doi.org/10.1175/BAMS-D-18-0288.1>, 2020.

Kollias, P., Battaglia, A., Lamer, K., Treserras, B.P., and Braun, S.A.: Mind the Gap – Part 3: Doppler  
Velocity Measurements From Space, *Frontiers in Remote Sensing*, doi:10.3389/frsen.2022.860284, 2022.

- 605 Kolstad, E.W.: A global climatology of favourable conditions for polar lows, *Quarterly Journal of the Royal Meteorological Society*, 137, 1749-1761, <https://doi.org/10.1002/qj.888>, 2011.
- Kolstad, E.W., Bracegirdle, T.J., and Seierstad, I.A.: Marine cold-air outbreaks in the North Atlantic: temporal distribution and associations with large-scale atmospheric circulation, *Climate Dynamics*, 33, 610 187-197, <https://doi.org/10.1007/s00382-008-0431-5>, 2009.
- Lamer, K., Kollias, P., and Nuijens, L.: Observations of the variability of shallow trade wind cumulus cloudiness and mass flux, *Journal of Geophysical Research: Atmospheres*, 120, 6161-6178, <https://doi.org/10.1002/2014JD022950>, 2015.
- 615 Lau, N. and Lau, K.: The Structure and Energetics of Midlatitude Disturbances Accompanying Cold-Air Outbreaks over East Asia, *Monthly Weather Review*, 112, 1309-1327, [https://doi.org/10.1175/1520-0493\(1984\)112<1309:TSAEOM>2.0.CO;2](https://doi.org/10.1175/1520-0493(1984)112<1309:TSAEOM>2.0.CO;2), 1984.
- 620 Lindenmaier, I., Feng, Y., Johnson, K., Nelson, D., Isom, B., Matthews, A., Wendler, T., and Castro, V.: Ka ARM Zenith Radar (KAZRCFRGE), ARM Mobile Facility (ANX) Andenes, Norway; AMF1 (main site for COMBLE), ARM Data Center [data set], <http://dx.doi.org/10.5439/1498936>, 2019.
- Lindenmaier, I., Johnson, K., Nelson, D., Isom, B., Matthews, A., Wendler, T., and Castro, V.: Ka-Band 625 Scanning ARM Cloud Radar (KASACRCFRVPT), ARM Mobile Facility (ANX) Andenes, Norway; AMF1 (main site for COMBLE), ARM Data Center [data set], <http://dx.doi.org/10.5439/1482713>, 2019.
- Locatelli, J.D. and Hobbs, P.V.: Fall speeds and masses of solid precipitation particles, *Journal of Geophysical Research*, 79, 2185-2197, <https://doi.org/10.1029/JC079i015p02185>, 1974.
- 630 Luke, E.P., Yang, F., Kollias, P., Vogelmann, A.M., and Maahn, M.: New insights into ice multiplication using remote-sensing observations of slightly supercooled mixed-phase clouds in the Arctic, *Proceedings*



of the National Academy of Sciences, 118, e2021387118, <https://doi.org/10.1073/pnas.2021387118>, 2021.

635

McCoy, I.L., Wood, R., and Fletcher, J.K.: Identifying Meteorological Controls on Open and Closed Mesoscale Cellular Convection Associated with Marine Cold Air Outbreaks, *Journal of Geophysical Research: Atmospheres*, 122, 11678-11702, <https://doi.org/10.1002/2017JD027031>, 2017.

640 Morris, V.R.: Ceilometer Instrument Handbook, Atmospheric Radiation Measurement, U.S. Department of Energy Office of Science, DOE/SC-ARM-TR-020, 2016.

Morris, V.R.: Microwave Radiometer Handbook, Atmospheric Radiation Measurement, U.S. Department of Energy Office of Science, DOE/SC-ARM-TR-016, 2019.

645

Morris, V., Zhang, D., and Ermold, B.: Ceilometer (CEIL), ARM Mobile Facility (ANX) Andenes, Norway; AMF1 (main site for COMBLE), ARM Data Center [data set], <http://dx.doi.org/10.5439/1181954>, 2019.

650 Papritz, L. and Spengler, T.: A Lagrangian Climatology of Wintertime Cold Air Outbreaks in the Irminger and Nordic Seas and Their Role in Shaping Air-Sea Heat Fluxes, *Journal of Climate*, 30, <https://doi.org/10.1175/JCLI-D-16-0605.1>, 2017.

Peng, Y., Lohmann, U., and Leitch, R.: Importance of vertical velocity variations in the cloud droplet  
655 nucleation process of marine stratus clouds, *Journal of Geophysical Research: Atmospheres*, 110, <https://doi.org/10.1029/2004JD004922>, 2005.

Pithan, F., Medeiros, B., and Mauritsen, T.: Mixed-phase clouds cause climate model biases in Arctic wintertime temperature inversions, *Climate Dynamics*, 43, 289-303, <https://doi.org/10.1007/s00382-013-1964-9>, 2014.  
660

Pithan, F., Svensson, G., Caballero, R., Chechin, D., Cronin, T.W., Ekman, A.M.L., Neggers, R., Shupe, M.D., Solomon, A., Tjernström, M., and Wendisch, M.: Role of air-mass transformations in exchange between the Arctic and mid-latitudes, *Nature Geoscience*, 11, 805-812, <https://doi.org/10.1038/s41561-018-0234-1>, 2018.

665

Previdi, M., Smith, K.L., and Polvani, L.M.: Arctic amplification of climate change: a review of underlying mechanisms, *Environmental Research Letters*, 16, <https://doi.org/10.1088/1748-9326/ac1c29>, 2021.

670

Protat, A. and Williams, C.R.: The Accuracy of Radar Estimates of Ice Terminal Fall Speed from Vertically Pointing Doppler Radar Measurements, *Journal of Applied Meteorology and Climatology*, 50, 2120-2138, <https://doi.org/10.1175/JAMC-D-10-05031.1>, 2011.

675 Renfrew, I.A. and Moore, G.W.: An Extreme Cold-Air Outbreak over the Labrador Sea: Roll Vortices and Air-Sea Interaction, *Monthly Weather Review*, 127, 2379-2394, [https://doi.org/10.1175/1520-0493\(1999\)127<2379:AECAOO>2.0.CO;2](https://doi.org/10.1175/1520-0493(1999)127<2379:AECAOO>2.0.CO;2), 1999.

Satoh, M., Stevens, B., Judt, F., Khairoutdinov, M., Lin, S.J., Putman, W.M., and Düben, P: Global Cloud-Resolving Models, *Current Climate Change Reports*, 5, 172-184, <https://doi.org/10.1007/s40641-019-00131-0>, 2019.

680

Seethala, C., Zuidema, P., Edson, J., Brunke, M., Chen, G., Li, X., Painemal, D., Robinson, C., Shingler, T., Shook, M., Sorooshian, A., Thornhill, L., Tornow, F., Wang, H., Zeng, X., and Ziemba, L.: On Assessing ERA5 and MERRA2 Representations of Cold-Air Outbreaks Across the Gulf Stream, *Geophysical Research Letters*, 48, <https://doi.org/10.1029/2021GL094364>, 2021.

685

Shupe, M.D., Daniel, J.S., de Boer, G., Eloranta, E.W., Kollias, P., Long, C.N., Luke, E.P., Turner, D.D., and Verlinde, J.: A Focus on Mixed-Phase Clouds, *Bulletin of the American Meteorological Society*, 89, 1549-1562, <https://doi.org/10.1175/2008BAMS2378.1>, 2008.

Smith, E.T. and Sheridan, S.C.: Where Do Cold Air Outbreaks Occur, and How Have They Changed Over Time?, *Geophysical Research Letters*, 47, <https://doi.org/10.1029/2020GL086983>, 2020.

695 Tomassini, L., Field, P.R., Honnert, R., Malardel, S., McTaggart-Cowan, R., Saitou, K., Noda, A.T., and Seifert, A.: The “Grey Zone” cold air outbreak global model intercomparison: A cross evaluation using large-eddy simulations, *Journal of Advances in Modeling Earth Systems*, 9, 39-64, <https://doi.org/10.1002/2016MS000822>, 2017.

700 Tornow, F., Ackerman, A.S., and Fridlind, A.M.: Preconditioning of overcast-to-broken cloud transitions by riming in marine cold air outbreaks, *Atmospheric Chemistry and Physics*, 21, 12049-12067, <https://doi.org/10.5194/acp-21-12049-2021>, 2021.

Toto, T. and Jensen, M.: Interpolated Sounding and Gridded Sounding Value-Added Products, Atmospheric Radiation Measurement, U.S. Department of Energy Office of Science, DOE/SC-ARM-TR-183, 2016.

710 Wang, D., Bartholomew, M., and Shi, Y.: Laser Disdrometer (LD), ARM Mobile Facility (ANX) Andenes, Norway; AMF1 (main site for COMBLE), ARM Data Center [data set], <http://dx.doi.org/10.5439/1779709>, 2019.

Wood, R.: Stratocumulus Clouds, *Monthly Weather Review*, 140, 2373-2423, <https://doi.org/10.1175/MWR-D-11-00121.1>, 2012.

715 Wu, P., and Ovchinnikov, M.: Cloud Morphology Evolution in Arctic Cold-Air Outbreak: Two Cases  
During COMBLE Period, *Journal of Geophysical Research: Atmospheres*, 127,  
<https://doi.org/10.1029/2021JD035966>, 2022.

Yang, F., Luke, E.P., Kollias, P., Kostinski, A.B., and Vogelmann, A.M.: Scaling of Drizzle Virga Depth  
720 With Cloud Thickness for Marine Stratocumulus Clouds, *Geophysical Research Letters*, 45, 3746-3753,  
<https://doi.org/10.1029/2018GL077145>, 2018.

Young, G., Jones, H.M., Choulaton, T.W., Crosier, J., Bower, K.N., Gallagher, M.W., Davies, R.S.,  
Renfrew, I.A., Elvidge, A.D., Darbyshire, E., Marengo, F., Brown, P.R.A., Ricketts, H.M.A., Connolly,  
725 P.J., Lloyd, G., Williams, P.I., Allan, J.D., Taylor, J.W., Liu, D., and Flynn, M.J.: Observed microphysical  
changes in Arctic mixed-phase clouds when transitioning from sea ice to open ocean, *Atmospheric  
Chemistry and Physics*, 16, 13945-13967, <https://doi.org/10.5194/acp-16-13945-2016>, 2016.

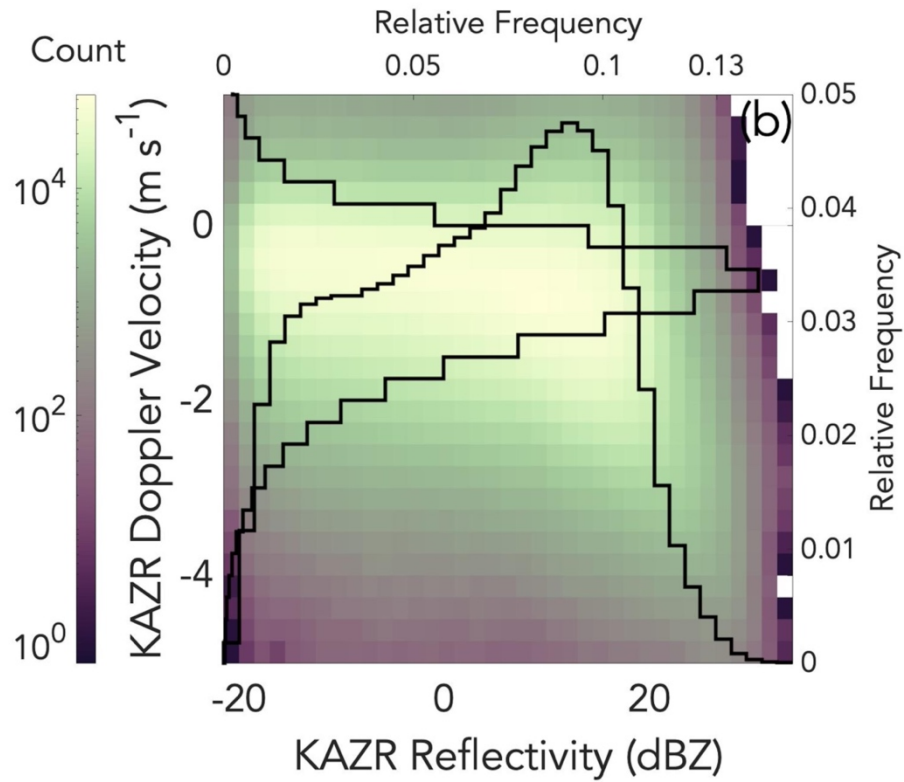
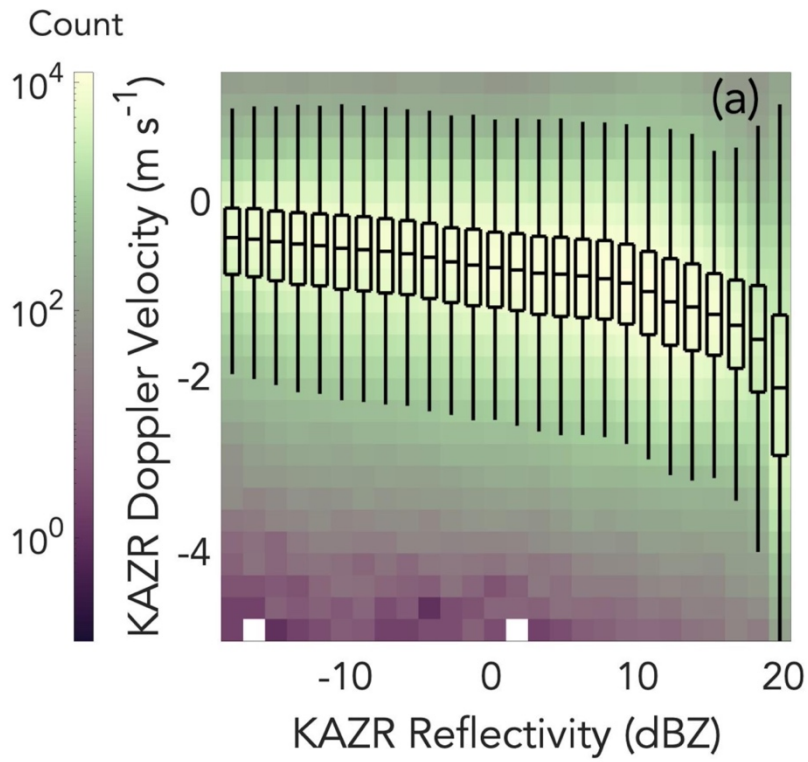
Zelinka, M.D., Myers, T.A., McCoy, D.T., Po-Chedley, S., Caldwell, P.M., Ceppi, P., Klein, S.A., and  
730 Taylor, K.E.: Causes of Higher Climate Sensitivity in CMIP6 Models, *Geophysical Research Letters*, 47,  
<https://doi.org/10.1029/2019GL085782>, 2020.

Zhang, R., Wang, H., Fu, Q., Pendergass, A.G., Wang, M., Yang, Y., Ma, P., and Rasch, P.J.: Local  
Radiative Feedbacks over the Arctic Based on Observed Short-Term Climate Variations, *Geophysical  
735 Research Letters*, 45, 5761-5770, <https://doi.org/10.1029/2018GL077852>, 2018.

Zhu, Z., Kollias, P., Yang, F., and Luke, E.: On the Estimation of In-Cloud Vertical Air Motion Using  
Radar Doppler Spectra, *Geophysical Research Letters*, 48, <https://doi.org/10.1029/2020GL090682>, 2020.

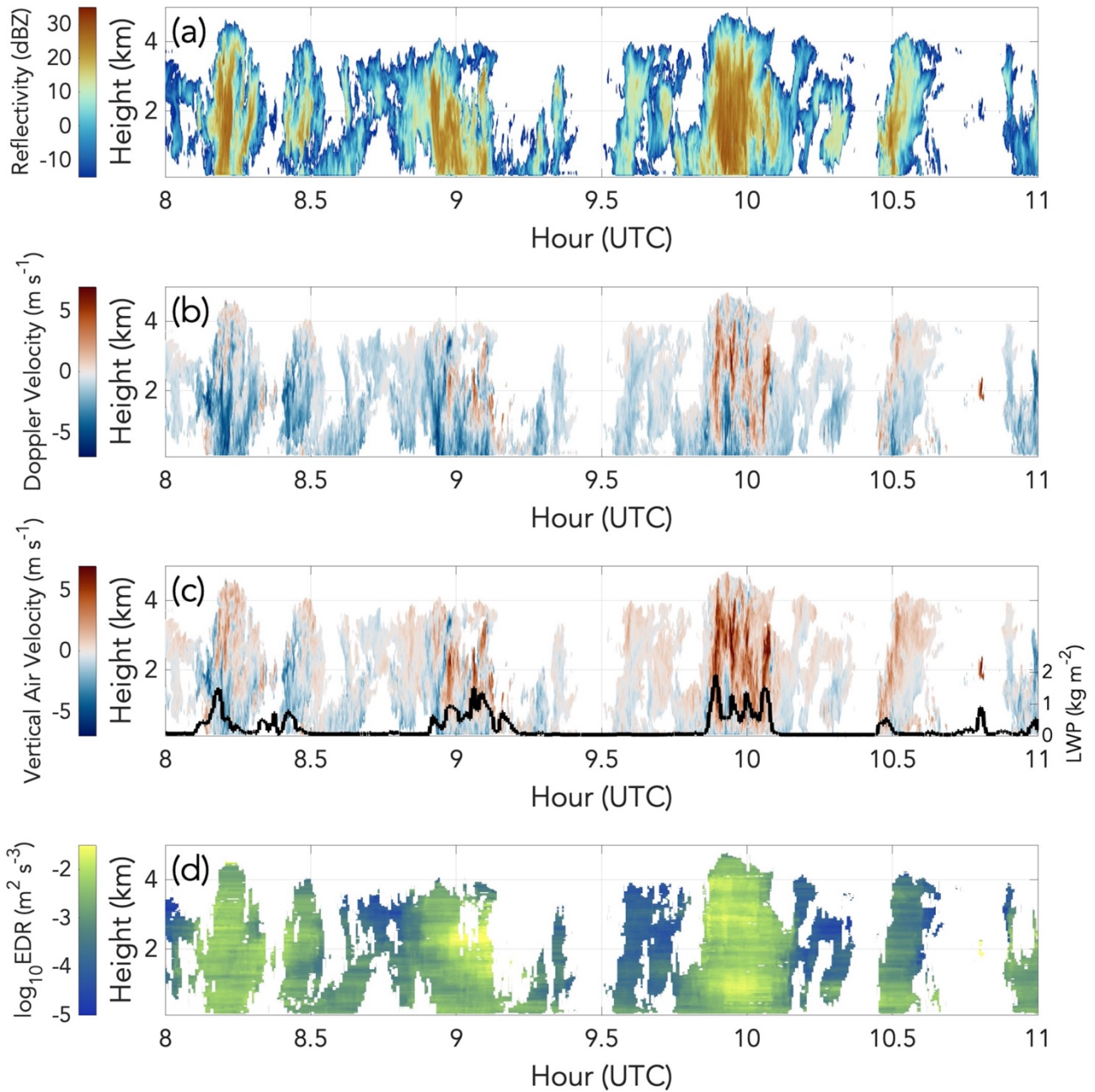
<b>Day</b>	<b>Hours (UTC)</b>
December 1 <sup>st</sup> , 2019	0:00-2:09; 20:18-24:00
December 2 <sup>nd</sup> , 2019	0:00-15:24
December 31 <sup>st</sup> , 2019	0:00-18:15
January 4 <sup>th</sup> , 2020	9:00-24:00
January 21 <sup>st</sup> , 2020	2:42-17:48
January 22 <sup>nd</sup> , 2020	4:42-16:00
February 2 <sup>nd</sup> , 2020	4:43-22:09
February 5 <sup>th</sup> , 2020	0:00-24:00
March 13 <sup>th</sup> , 2020	1:46-4:01; 8:12-24:00
March 27 <sup>th</sup> , 2020	0:00-4:36; 10:39-14:13
March 28 <sup>th</sup> , 2020	4:09-24:00
March 29 <sup>th</sup> , 2020	0:00-24:00
April 10 <sup>th</sup> , 2020	1:00-1:48; 7:04-15:04

**Table 1. Dates and times used from the COMBLE field experiment.**



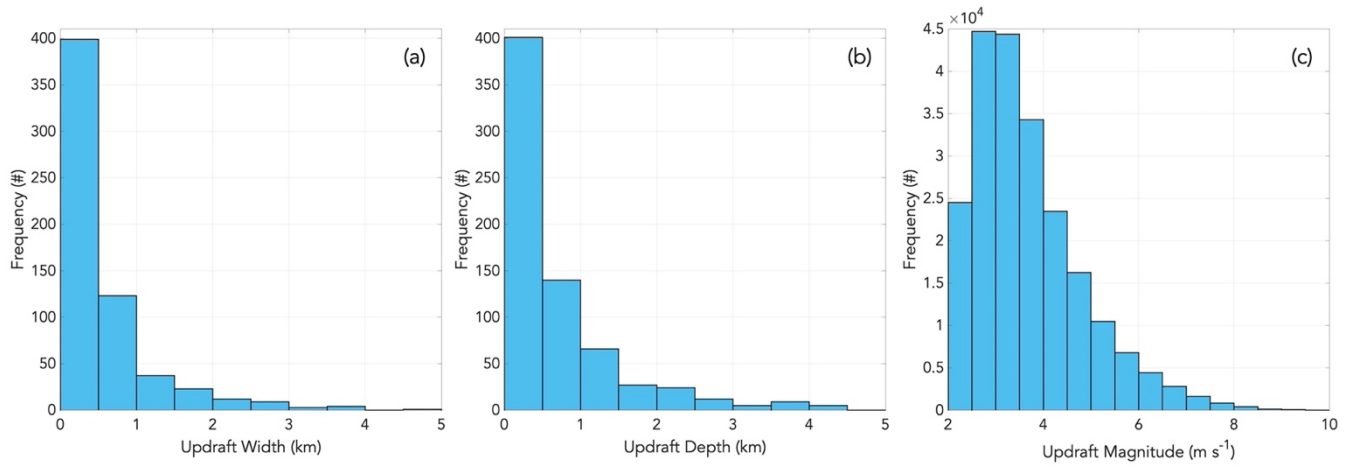
745 **Figure 1. (a) For March 28<sup>th</sup>, 2020, a joint PDF of KAZR reflectivity and Doppler velocity in the vertical profiles with a liquid water path (LWP) value less than 0.25 kg m<sup>-2</sup> and box-and-whisker plots showing the median Doppler velocity in every 1.5 dB reflectivity bin; (b) For all 13 COMBLE cases, a joint PDF of KAZR reflectivity and Doppler velocity in the vertical profiles with a LWP value less than 0.25 kg m<sup>-2</sup>, the relative frequency distribution of KAZR Doppler velocity in the same low LWP periods, and the relative frequency distribution of KAZR reflectivity in the same**

750 **low LWP periods.**



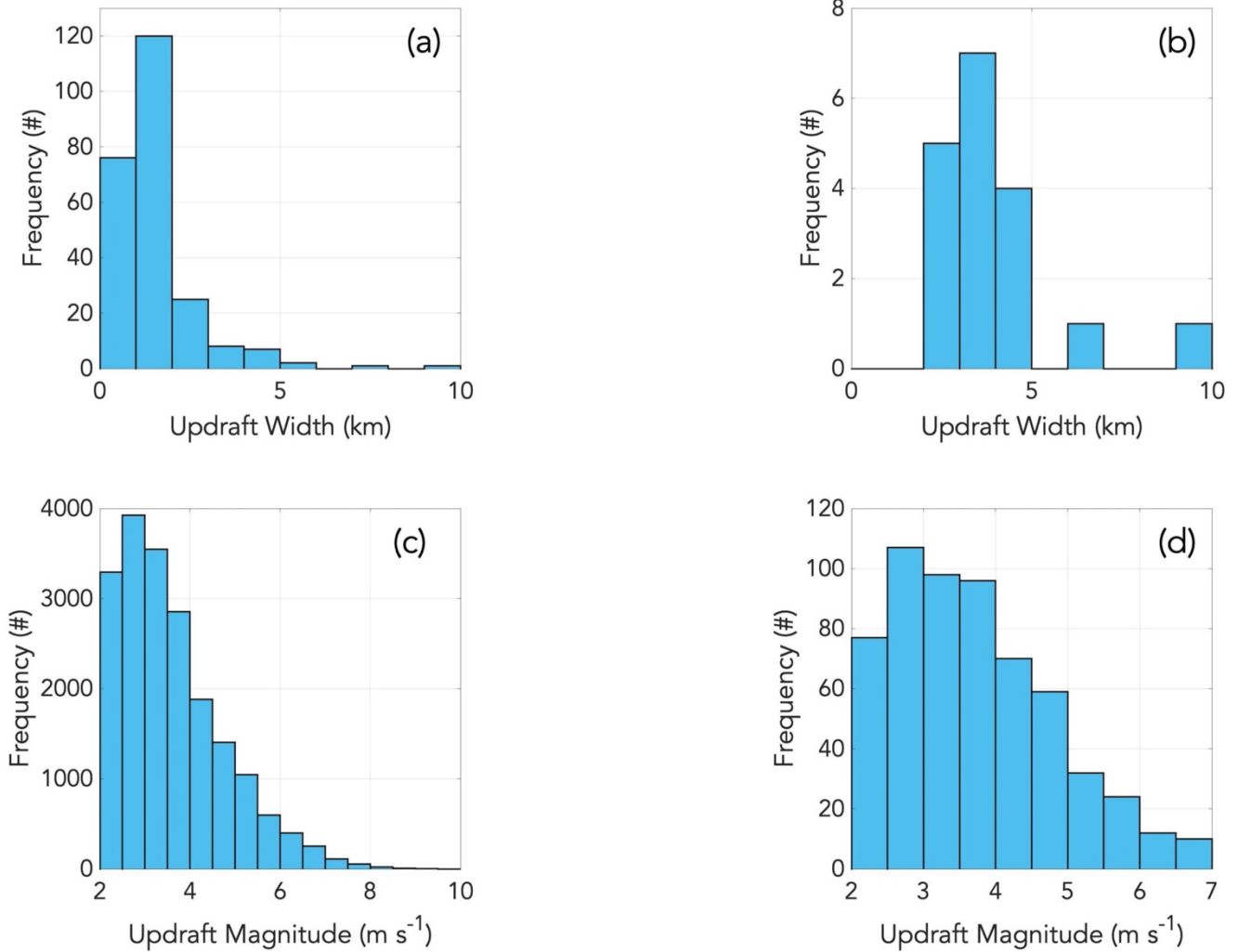
**Figure 2. Time-height mapping from 8-11 UTC on March 28<sup>th</sup>, 2020 of a) KAZR radar reflectivity, b) KAZR Doppler velocity, c) retrieved vertical air velocity and liquid water path, and (d) retrieved eddy dissipation rate.**



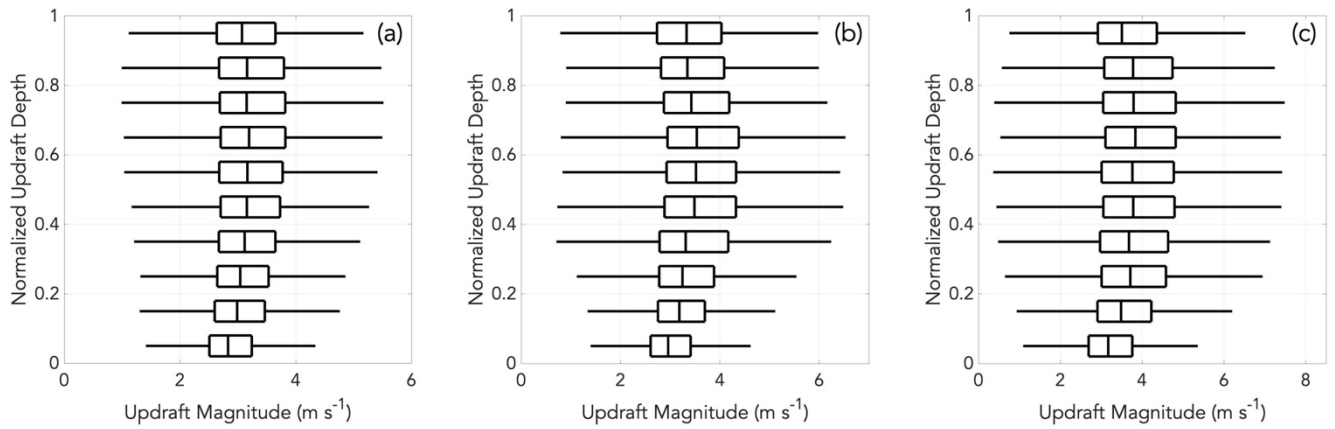


755

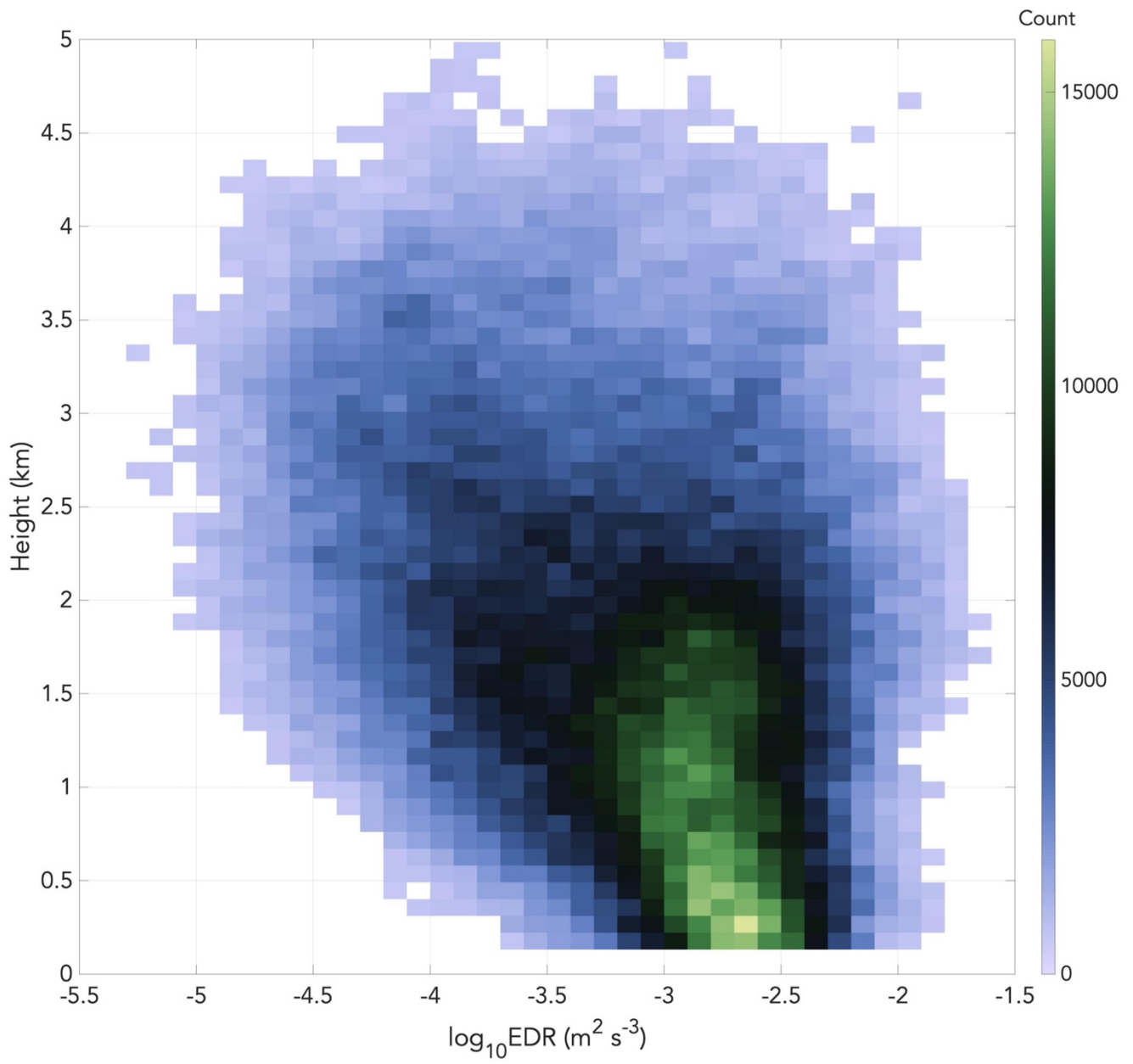
**Figure 3. For all 13 COMBLE cases, histograms of a) updraft chord length (width) in km, b) updraft vertical extent in km, and c) the range of magnitudes in the updraft in  $\text{m s}^{-1}$ .**



760 **Figure 4. From all 13 COMBLE cases, histograms of updraft chord length (width) in km and range of magnitudes in the updraft in  $\text{ms}^{-1}$  at a horizontal resolution of (a-b) 250 m and (b-d) 1 km.**

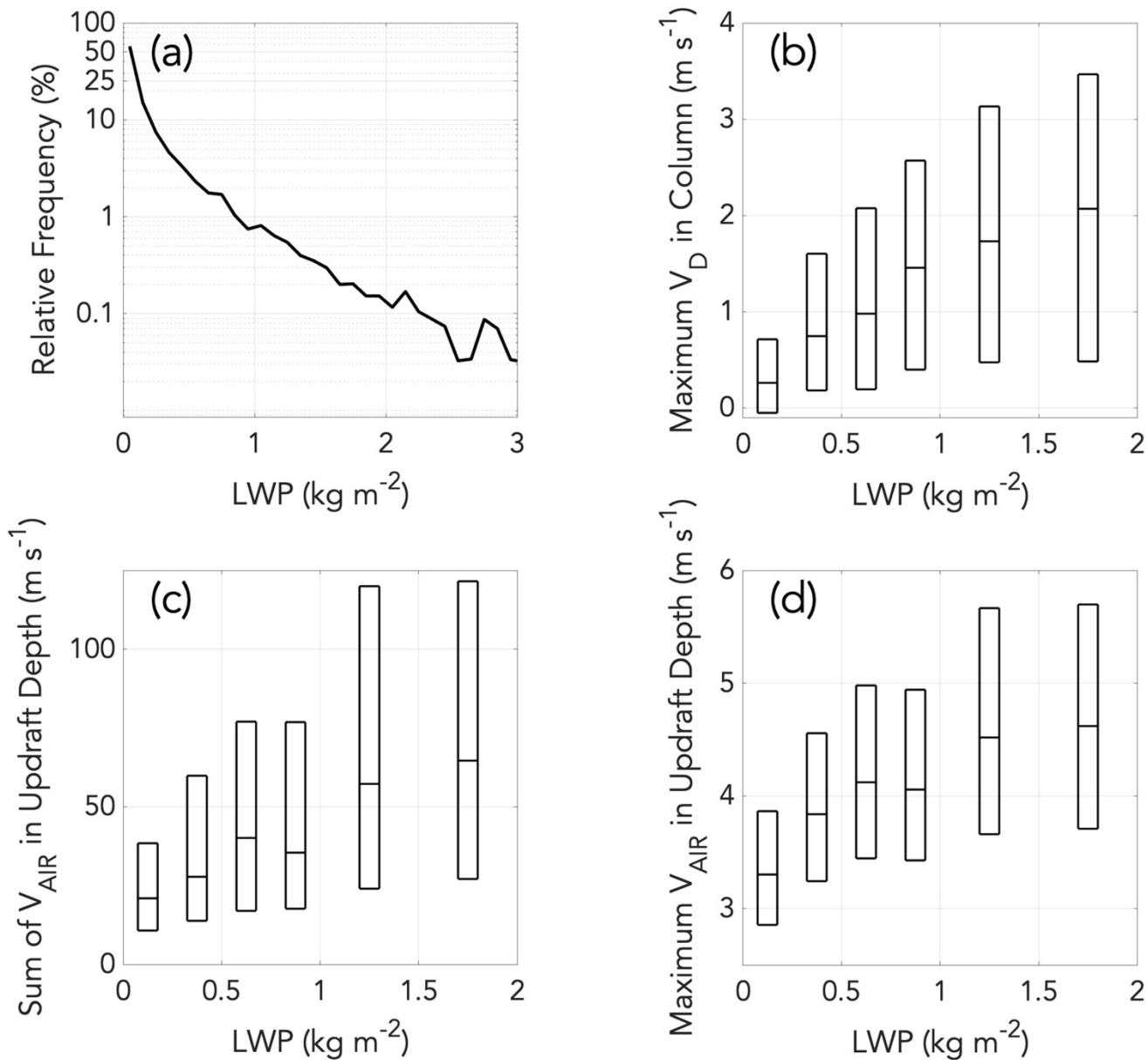


**Figure 5.** For all 13 COMBLE cases, box-and-whisker plots of updraft magnitude as a function of normalized updraft depth for (a) updrafts with a depth less than 1 km, (b) updrafts with a depth between 1 and 2 km, and (c) updrafts with a depth greater than 2 km.



765

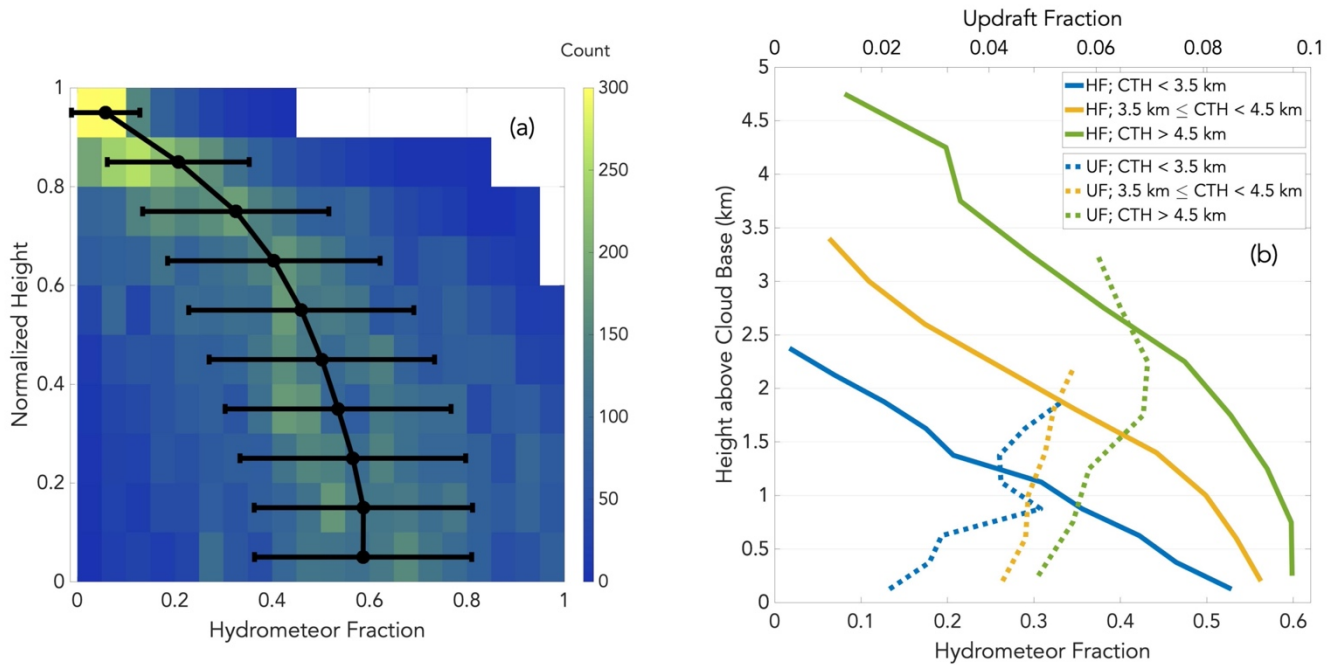
**Figure 6. For all 13 COMBLE cases, a joint PDF of eddy dissipation rate versus height.**



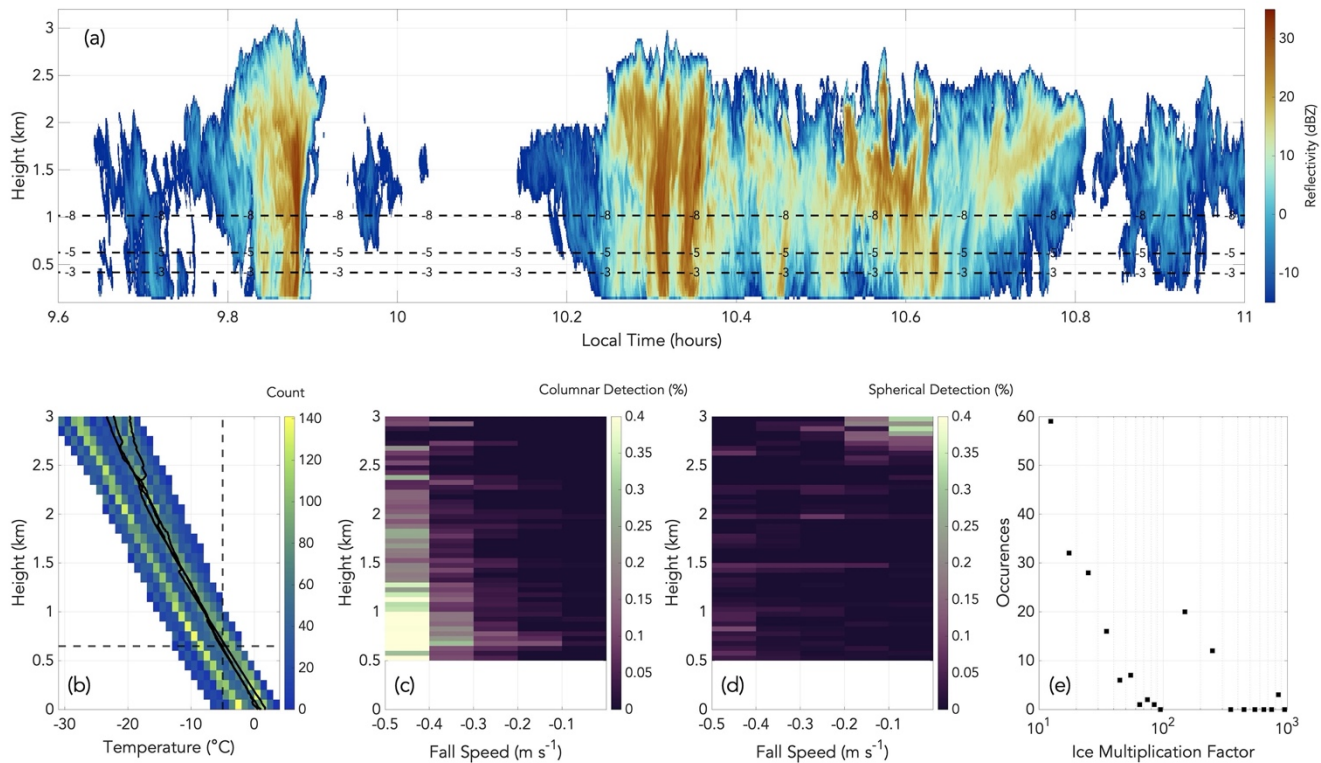
**Figure 7.** For all 13 COMBLE cases, (a) the relative frequency of liquid water path (LWP) in bins of width  $0.1 \text{ kg m}^{-2}$ , (b) the median, 25<sup>th</sup>, and 75<sup>th</sup> percentile of the maximum Doppler velocity ( $V_D$ ) in the atmospheric column for each LWP bin of width  $0.25 \text{ kg m}^{-2}$  or  $0.5 \text{ kg m}^{-2}$ , (c) the median, 25<sup>th</sup>, and 75<sup>th</sup> percentile of the sum of the vertical air velocity ( $V_{\text{AIR}}$ ) in the updraft depth for each

770

LWP bin of 0.25 or 0.5 kg m<sup>-2</sup>, and (d) the median, 25<sup>th</sup>, and 75<sup>th</sup> percentile of the maximum V<sub>AIR</sub> in the updraft depth for each LWP bin of width 0.25 or 0.5 kg m<sup>-2</sup>.



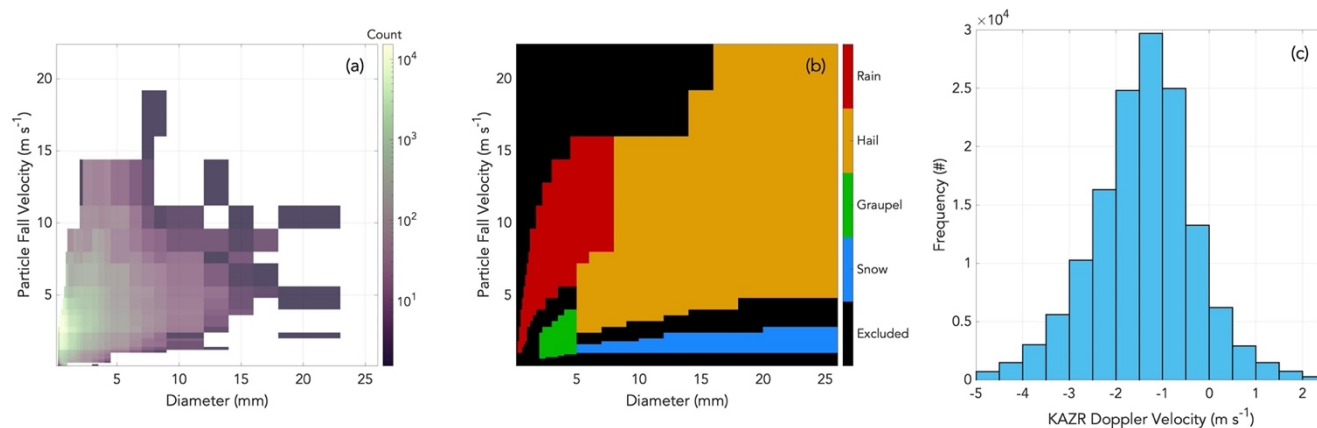
775 **Figure 8.** For all 13 COMBLE cases, (a) a joint pdf of hydrometeor fraction (HF) versus normalized height, along with a mean profile of HF as a function of normalized height and (b) mean profiles of HF (black) and updraft fraction (UF; blue) as a function of height above cloud base, with solid lines for cloud tops less than 3.5 km, dashed lines for cloud tops between 3.5 and 4.5 km, and dotted lines for cloud tops above 4.5 km.



780

**Figure 9.** For December 31<sup>st</sup>, 2019, (a) time-height mapping during 9:36-11 LT of KAZR radar reflectivity (colors) and INTERPSONDE isotherms (dashed black lines); (b) a joint PDF of temperature and height (colors) from 32 radiosondes launched during the 13 cases along with the three temperature profiles from December 31<sup>st</sup> (black); and the percentage of Doppler spectra with columnar detections (c) and spherical detections (d) in each fall speed-height bin during 0-18:15 LT.

785



790 **Figure A1. For all 13 COMBLE cases, (a) a joint PDF of disdrometer particle diameter and particle fall velocity, (b) a hydrometeor identification map used to categorize the precipitation type at the surface, and (c) a histogram of KAZR Doppler velocities at 300 m.**