

A global climatology of ice nucleating particles at cirrus conditions derived from model simulations with EMAC-MADE3

Christof G. Beer¹, Johannes Hendricks¹, and Mattia Righi¹

¹Deutsches Zentrum für Luft- und Raumfahrt (DLR), Institut für Physik der Atmosphäre, Oberpfaffenhofen, Germany

Correspondence: Christof Beer (christof.beer@dlr.de)

Abstract. Atmospheric aerosols can act as ice nucleating particles (INPs) and thereby influence the formation and the microphysical properties of cirrus clouds resulting in distinct climate effects. In addition to mineral dust and soot particles, laboratory experiments suggest crystalline ammonium sulfate and glassy organic particles as effective INPs in the cirrus regime. However, the impact of these new particle types on the global scale is still highly uncertain. Here, we present and analyse a global climatology of INPs derived from model simulations performed with a global aerosol–climate model coupled to a two-moment cloud microphysical scheme and a parametrization for aerosol-induced ice formation in cirrus clouds. This global INP-climatology comprises mineral dust and soot particles, as well as crystalline ammonium sulfate and glassy organics, including a simplified formulation of the particle phase state for the latter. By coupling the different INP-types to the microphysical cirrus cloud scheme, their ice nucleation potential at cirrus conditions is analysed, considering possible competition mechanisms between different INPs. The simulated INP concentrations in the range of about 1 to 100 L⁻¹ agree well with in situ observations and other global model studies. We show that INP concentrations of glassy organics and crystalline ammonium sulfate are strongly related to the ambient conditions which often inhibit the glassy or crystalline phase, respectively. Our model results suggest that glassy organic particles probably have only minor influence, as INP concentrations are mostly low in the cirrus regime. On the other hand, crystalline ammonium sulfate often shows large INP concentrations, has the potential to influence ice nucleation in cirrus clouds, and should be taken into account in future model applications.

1 Introduction

Atmospheric aerosol particles can exert important influences on the global climate system by directly changing the Earth’s energy budget via interactions with solar and terrestrial radiation (Boucher et al., 2013; Bellouin et al., 2020). Additionally, aerosol particles can act as cloud condensation nuclei and ice nucleating particles, consequently influencing the formation of cloud droplets and ice crystals and, in turn, leading to additional climate effects (Boucher et al., 2013; Mülmenstädt and Feingold, 2018). However, these aerosol-cloud interactions are still poorly understood and the subject of ongoing research activities (Mülmenstädt and Feingold, 2018; Bellouin et al., 2020; Murray et al., 2021). Especially INP-effects on cirrus clouds and their climatic impacts are highly uncertain (e.g. Kärcher, 2017; Kanji et al., 2017).

INPs can initiate heterogeneous nucleation of ice crystals at lower supersaturations with respect to ice compared to the homogeneous freezing of liquid aerosols (Koop et al., 2000; Hoose and Möhler, 2012). This competition mechanism between

heterogeneous and homogeneous nucleation for the available supersaturated water vapour crucially depends on the abundance of INPs and their freezing potential (Kärcher et al., 2006; Gasparini and Lohmann, 2016; McGraw et al., 2020). However, the atmospheric concentration of INPs and their global distribution is still poorly constrained, contributing a large part to the uncertainty in the quantification of the climatic impact of aerosol-cirrus interactions. A global analysis of INP-concentrations is challenging as in situ observations are scarce and mostly targeted the mixed-phase temperature regime (Rogers et al., 2001a; DeMott et al., 2010; Schrod et al., 2017), while measurements at cirrus conditions are very limited. Additionally, measurements are typically limited in space and time (e.g. Rogers et al., 1998), complicating interpretations on the global scale. In the past, modelling studies applying GCCMs (Global Chemistry Climate Models) have been performed to elucidate the global distribution of different INPs (e.g. Barahona et al., 2010; Hendricks et al., 2011; Penner et al., 2018). However, as the ice nucleating potential of INPs is continually reevaluated in laboratory measurements (Kanji et al., 2017) and new types of INP-species have been suggested to have important influences (e.g. Ladino et al., 2014; Ignatius et al., 2016; Wilbourn et al., 2020), an updated picture of the global INP-distribution is necessary.

Here we present results from global model simulations of ice nucleating aerosol particles and describe an up-to-date global climatology of INPs, including several major INP-types in the cirrus regime, i.e. mineral dust, soot, crystalline ammonium sulfate and glassy organics. We employ the atmospheric chemistry general circulation model EMAC (ECHAM/MESSy2 Atmospheric Chemistry model; Jöckel et al., 2010) including the MESSy (Modular Earth Submodel System) aerosol microphysics submodel MADE3 (Modal Aerosol Dynamics model for Europe, adapted for global applications, third generation; Kaiser et al., 2014; 2019). MADE3 is especially suited for the analysis of ice nucleating aerosol processes, as it is able to simulate different particle compositions and mixing states, which influence important ice nucleation properties of the INPs. For instance, insoluble particles with and without relevant soluble coatings can be distinguished in different size ranges. The MADE3 aerosol is coupled to (cirrus) clouds via a two-moment cloud scheme (Kuebbeler et al., 2014) as described in detail by Righi et al. (2020). This allows to analyse the ice nucleation potential of various INP-types at cirrus conditions, including possible competition mechanisms between different INPs.

Mineral dust and soot particles, which are typically considered as INPs in the cirrus regime (Möhler et al., 2006, 2008; Kulkarni et al., 2016), are represented in EMAC-MADE3 and coupled to the freezing scheme as described in Righi et al. (2020). This also includes the improved representation of mineral dust aerosol by employing an online calculation of wind-driven dust emissions (Tegen et al., 2002) as described in Beer et al. (2020). Furthermore, the model includes an additional tracer for tagging soot particles from specific sources, e.g. from aviation emissions (Righi et al., 2021), to analyse the global distribution of aviation soot INPs.

In addition to mineral dust and soot, other aerosol species have been reported to potentially nucleate ice in the cirrus regime. Several studies described the ice nucleation potential of glassy organic particles (Murray et al., 2010; Ladino et al., 2014; Ignatius et al., 2016; Wagner et al., 2017), often well below the homogeneous freezing threshold. Atmospheric secondary organic aerosol (SOA) particles can exist in a highly viscous, amorphous state, depending on ambient temperature and humidity (Reid et al., 2018). This glassy state was shown to be an essential requirement for a high freezing potential of organic particles (Ignatius et al., 2016). Typical biogenic SOA precursors are terpenes, a class of organic compounds emitted by various plants,

especially in boreal forest regions, e.g. the monoterpene pinene (Laaksonen et al., 2008). Another common SOA precursor is isoprene, mainly emitted, for instance, from tropical rainforests (Guenther et al., 1995, 2006). Besides glassy organics, crystalline ammonium sulfate ((NH₄)₂SO₄) has been reported as an effective INP at cirrus conditions (Abbatt et al., 2006; Wise et al., 2009; Baustian et al., 2010; Ladino et al., 2014). The phase state of ammonium sulfate particles is crucial for
65 their ice nucleation potential, as only crystalline particles were shown to initiate ice nucleation. Ammonium sulfate particles undergo phase transitions depending on the ambient temperature and humidity via a hysteresis process, i.e. the characteristic relative humidity of the transition from aqueous solution droplets to solid crystals, the efflorescence relative humidity (ERH), is different to that of the converse process. The deliquescence relative humidity (DRH) at which solid crystals dissociate and are transformed into solution droplets is typically larger than the ERH (Martin, 2000; Martin et al., 2003).

70 These new types of INPs, i.e. glassy organics and crystalline ammonium sulfate, have only rarely been considered in global modelling studies and their potential for cirrus cloud and climate modifications is still highly uncertain (e.g. Abbatt et al., 2006; Penner et al., 2018; Zhu and Penner, 2020). Here we include glassy organics and crystalline ammonium sulfate as INPs in the framework of EMAC-MADE3 including the representation of their phase state, i.e. glassy or crystalline, respectively, depending on the simulated ambient temperature and relative humidity. These model improvements allow us to investigate
75 the global distributions of a large suite of major INP types in the cirrus regime on a self-consistent climatological basis. The coupling of the applied aerosol submodel with a microphysical two-moment cloud scheme, including the major aerosol-induced cirrus formation pathways as well as their competition, allows to further assess the importance of these INP types in cirrus cloud formation. Based on these modelling capabilities new insights in aerosol-cirrus interaction mechanisms and their global variability are gained in this study.

80 The paper is organized as follows. In Sect. 2 we describe the modelling framework EMAC-MADE3 with a focus on the representation of crystalline ammonium sulfate and glassy organics and their corresponding phase characterization. The calculation of number concentrations of potential INPs is described in detail in Sect. 3. The simulated aerosol concentrations of mineral dust, (aviation) soot, ammonium sulfate and glassy organics are shown in Sect. 4. In Sect. 5 we analyse the global distribution of INP concentrations per species, as well as the concentrations of nucleated ice crystals. The main conclusions of
85 this study are highlighted in Sect. 6.

The work presented in this paper is in parts based on the PhD thesis by C. G. Beer (Beer, 2021) and some of the text appeared similarly therein.

2 Model description

2.1 EMAC-MADE3 model setup

90 The EMAC model is a global numerical chemistry and climate simulation system and includes various submodels that describe tropospheric and middle-atmosphere processes. It uses the second version of MESSy to connect multi-institutional computer codes. The core atmospheric model is the ECHAM5 (fifth-generation European Centre Hamburg) general circulation model (Roeckner et al., 2006). In this work we apply EMAC (ECHAM5 version 5.3.02, MESSy version 2.55) in the T63L31 configu-

ration with spherical truncation of T63 (corresponding to a horizontal resolution of about $1.9^\circ \times 1.9^\circ$) and 31 non-equidistant vertical layers from the surface to 10 hPa. The simulated time period covers the years 2009 to 2019, while the year 2009 is used as a spin-up and excluded from the evaluation. All simulations presented here are performed in nudged mode, i.e. model meteorology (temperature, winds and logarithm of the surface pressure) is relaxed towards the ERA5 reanalysis data (Hersbach et al., 2020) for the same time period.

The aerosol microphysics submodel MADE3 simulates different aerosol species in nine log-normal modes that represent different particle sizes and mixing states. A detailed description of MADE3 and its application and evaluation as part of EMAC can be found in Kaiser et al. (2014, 2019).

In this study, EMAC-MADE3 is employed in a coupled configuration which includes a two-moment cloud microphysical scheme based on Kuebbeler et al. (2014), employing a parametrization for aerosol-driven ice formation in cirrus clouds following Kärcher et al. (2006). The Kärcher et al. (2006) scheme considers the competition between various ice formation mechanisms for the available supersaturated water vapour, i.e. homogeneous freezing of solution droplets, deposition and immersion nucleation induced by INPs, and the growth of preexisting ice crystals. In each of the heterogeneous freezing modes the ice-nucleation properties of the INPs are represented by two parameters, namely the active fraction (f_{act}) of ice nucleating particles, which actually lead to the formation of ice crystals, and the critical supersaturation ratio with respect to ice (S_c), at which the freezing process is initiated. The model setup has been extensively tuned and evaluated with respect to various cloud and radiation variables by Righi et al. (2020) with further model improvements described in Righi et al. (2021).

In this study, ice nucleation induced by mineral dust (DU), black carbon (BC, in the form of soot particles) from all sources except aviation, BC from aviation (BCair), glassy organic particles (gIPOM), and crystalline ammonium sulfate (AmSu) is considered. The freezing properties of these INPs are summarized in Table 1. To our knowledge, there are only few studies that consider the specific phase state of ammonium sulfate and organic particles, i.e. crystalline or glassy, respectively. Here, we assume the corresponding freezing properties of crystalline ammonium sulfate and glassy organics according to Ladino et al. (2014) and Ignatius et al. (2016), respectively. Dust immersion freezing was also only rarely investigated in laboratory experiments. In the original Kuebbeler et al. (2014) scheme, a value of $S_c = 1.3$ for the onset of dust immersion freezing was assumed according to Möhler et al. (2008). Here, a slightly larger value of $S_c = 1.35$ is used according to Kulkarni et al. (2014), where the mixed-phase regime at $T = 238$ K and sulfuric acid coatings around dust particles are considered. Despite the mixed-phase temperature, this value is used as a more conservative assumption in the cirrus regime, as Möhler et al. (2008) only considered dust particles with organic coatings at very low temperatures ($205\text{ K} < T < 210\text{ K}$). For DU deposition freezing, following Kuebbeler et al. (2014), f_{act} is calculated depending on the supersaturation with respect to ice and the temperature. For BC, there exist numerous different studies investigating the freezing of soot particles from a variety of different sources. For example, Koehler et al. (2009) analysed various soot types, including soot resulting from burning aviation kerosene, and observed ice nucleation below the homogeneous freezing threshold. Kanji et al. (2011) measured onset S_c values between 1.3 and 1.5 for the ice nucleation on graphite soot, while Chou et al. (2013) and Kulkarni et al. (2016) reported the onset ice nucleation on fresh and aged diesel soot particles at S_c of around 1.4. Recently, the ice nucleation of BC at cirrus temperatures has been attributed to the pore condensation and freezing mechanism rather than deposition freezing (e.g., Marcolli, 2017;

Table 1. Freezing properties of ice nucleating particles in the cirrus regime assumed in this study, i.e. critical supersaturation S_c and activated fraction f_{act} at the freezing onset. S_i is the supersaturation with respect to ice. In addition to f_{act} values representative of the freezing onset, f_{act} values at about $S_i = 1.4$ are used in the analysis.

Freezing mode		S_c	f_{act} at onset S_c	f_{act} at $S_i = 1.4$	Reference
DU deposition	$T \leq 220$ K	1.10	$\exp[2(S_i - S_c)] - 1$	0.822	Möhler et al. (2006)
	$T > 220$ K	1.20	$\exp[0.5(S_i - S_c)] - 1$	0.105	
AmSu		1.25	0.001	0.02	Ladino et al. (2014)
glPOM		1.30	0.001	0.08	Ignatius et al. (2016)
DU immersion		1.35	0.01	0.1	Kulkarni et al. (2014)
BC aviation		1.40	0.001	0.001	e.g. Kulkarni et al. (2016)
BC other sources		1.40	0.001	0.001	e.g. Kulkarni et al. (2016)

Mahrt et al., 2018; David et al., 2019; Mahrt et al., 2020). Cloud processing of soot particles (e.g. in contrails) was shown to play a crucial role in this process, resulting in an enhancement of the freezing potential of soot by lowering the S_c (Mahrt et al., 2018, 2020). In this study, we assume a value of $S_c = 1.4$ for ice nucleation induced by BC (including BC from aviation) in accordance with the wide range of results from measurements.

The EMAC-MADE3 setup applied here is largely based on the setup described in Righi et al. (2021). We use the recent CMIP6 (Coupled Model Intercomparison Project, phase 6) emission inventory for anthropogenic and biomass burning emissions of aerosols and aerosol precursor species (van Marle et al., 2017; Hoesly et al., 2018) for the year 2014, to provide an emission setup close to present day conditions. Mineral dust emissions are calculated according to the online emission scheme of Tegen et al. (2002), as described and evaluated in Beer et al. (2020). We employ EMAC in the T63L31 resolution, in contrast to the T42L41 resolution in Righi et al. (2021), as this was shown to improve the simulated aerosol concentrations, especially for mineral dust, in the upper troposphere (Beer et al., 2020).

For this study, further developments of the model system were performed concerning the implementation of additional aerosol species that can act as ice nucleating particles, i.e. glassy organics and crystalline ammonium sulfate. The model representation of these new particle types is described in the following (Sect. 3.1–Sect. 3.3). The calculations of the number concentrations of potential INPs, i.e. glassy organics, crystalline ammonium sulfate, mineral dust, and black carbon are presented in Sect. 3.4.

3.1 Black carbon from aviation

As described in Righi et al. (2021), an additional black carbon tracer for tagging soot emissions from the aviation sector (BCair) is used. BCair is implemented as an additional MADE3 aerosol tracer and is distributed in the same six modes as the standard BC tracers, namely insoluble and mixed Aitken, accumulation, and coarse mode. Compared to the standard BC tracer, BCair
 150 has the same physical properties and is subject to the same processes in the model.

3.2 Glassy organics

Similar to BCair and in addition to the standard POM (Particulate Organic Matter) tracer, we include a MADE3 tracer for glassy organic particles (gIPOM), which considers emissions of natural SOA precursors (e.g. terpenes) according to Guenther et al. (1995). The precursor gases include isoprene, monoterpenes and other volatile organic compounds, which are mainly
 155 emitted from tropical woodlands, especially rainforests. In analogy to Kaiser et al. (2019), it is assumed that natural terpenes are transformed to SOA with a constant yield of 15 %, following Dentener et al. (2006). The resulting SOA species are assumed to irreversibly condense as particulate organic matter on preexisting aerosol particles. To track SOA from natural terpenes the condensed mass is assigned to the gIPOM tracer.

Importantly, atmospheric SOA particles can be transformed into an amorphous, glassy state, with extremely high viscosities
 160 $\eta > 10^{12}$ Pa s (Koop et al., 2011), facilitating their ice nucleating potential. This glass transition critically depends on the atmospheric conditions. If the ambient temperature decreases below a certain threshold temperature, namely the glass transition temperature (T_g), a liquid solution particle vitrifies and is transformed into a semi-solid, glassy state (Reid et al., 2018). For increasing temperatures, the reverse process, i.e. the glass-to-liquid transition, occurs at the same specific temperature. T_g depends on the composition of the organic compound and increases with decreasing relative humidity (RH). For small
 165 humidities (RH < 10 %), Koop et al. (2011) describe a T_g for a SOA estimate of around 270 K. Here, we use three different formulations for T_g depending on RH, assuming citric acid ($T_g^{(1)}$), glucose ($T_g^{(2)}$), and sucrose ($T_g^{(3)}$), which have been shown to be good proxies for atmospheric SOA (Baustian et al., 2013). T_g in units of Kelvin is given in Baustian et al. (2013) for relative humidities RH between 0 % and 100 % for the three SOA proxies:

$$T_g^{(1)}(\text{RH}) = 277.14 - 0.33\text{RH} - 0.01\text{RH}^2 \quad (1a)$$

$$170 \quad T_g^{(2)}(\text{RH}) = 293.26 + 0.12\text{RH} - 0.016\text{RH}^2 \quad (1b)$$

$$T_g^{(3)}(\text{RH}) = 333.94 - 0.3\text{RH} - 0.017\text{RH}^2 \quad (1c)$$

The three different $T_g(\text{RH})$ curves are shown in Fig. S1 in the Supplement. The reference case for the model simulations is $T_g^{(2)}(\text{RH})$, the other two estimates represent a lower and an upper boundary for T_g . For the gIPOM tracer we only consider those cases which fulfil the glassy condition $T < T_g$.

Crystalline ammonium sulfate, in contrast to gIPOM, requires the representation of a dedicated phase transition via a hysteresis process which depends on the relative humidity history. Efflorescence of aqueous ammonium sulfate particles occurs at a lower relative humidity (ERH) than the deliquescence of ammonium sulfate crystals (DRH). Due to the lack of a phase state characterization for MADE3 aerosol tracers, we represent crystalline ammonium sulfate as a passive aerosol tracer (AmSu) using the EMAC submodel PTRAC for prognostic or passive tracers (Jöckel et al., 2008). For each PTRAC tracer, geometric mean particle radius, density, and geometric standard deviation are fixed at predefined constant values. As the number concentration of INPs is the central quantity for ice nucleation processes, AmSu is implemented as a number density tracer, and is calculated from ammonium (NH_4) and sulfate (SO_4) input masses from MADE3 assuming characteristic particle sizes. To assess related uncertainties, we assume different representations of ammonium sulfate by defining three different PTRAC tracers:

AmSu_{mixS}: Crystalline ammonium sulfate particles with inclusions of other components and 100 nm particle radius, representing typical MADE3 accumulation mode sizes for polluted air. Only grid boxes where the fraction of NH_4 and SO_4 dominates the total aerosol dry mass ($> 50\%$) are considered.

AmSu_{mixL}: Similar to AmSu_{mixS}, but considering crystalline ammonium sulfate particles with inclusions of other components and 250 nm particle radius, representing larger accumulation mode particles. Again, only grid boxes dominated by NH_4 and SO_4 are considered.

AmSu_{ext}: Externally mixed crystalline ammonium sulfate (without inclusions) and 100 nm particle radius, representing a control estimate for the crystalline ammonium sulfate particle number concentration, independent of the MADE3 representation of the mixing state. Here, all available ammonium and sulfate mass in the accumulation mode is considered, without the restriction to NH_4 and SO_4 dominated cases.

These AmSu tracers are calculated according to NH_4 and SO_4 input masses from MADE3 soluble and mixed accumulation modes. As AmSu_{mixS} and AmSu_{mixL} have different particle diameters, the total soluble and mixed accumulation mode masses have to be separated into two fractions, depending on the intersection radius $R_{\text{inter}} = (R_{\text{AmSu}_{\text{mixS}}} + R_{\text{AmSu}_{\text{mixL}}}) / 2 = 175$ nm, in analogy to the MADE3 mode renaming operation described in Kaiser et al. (2014). The accumulation modes are most relevant for ice nucleation induced by crystalline ammonium sulfate. Aitken mode particles are too small to be efficient ice nuclei (e.g. Kanji et al., 2017), while coarse modes have only few particles. However, as large coarse mode particles can be highly efficient ice nuclei, we define two additional tracers for internally and externally mixed coarse ammonium sulfate (AmSu_{mix,coa} and AmSu_{ext,coa}), similar to the AmSu tracers described above, but with 1.75 μm and 1.0 μm particle radii, respectively. These sizes are chosen analogous to the accumulation mode tracers but are one order of magnitude larger, representing typical coarse mode sizes¹. The specific density of AmSu tracers is set to 1770 kg m^{-3} (Rumble, 2004). The geometric standard deviations are defined in analogy to the MADE3 accumulation and coarse modes, i.e. $\sigma_g = 2.0$ for the accumulation mode, and $\sigma_g = 2.2$ for the coarse mode, respectively (Kaiser et al., 2019). The calculations of AmSu tracers consider phase transitions depending

¹ For simplicity, only one mixed coarse mode AmSu tracer is considered, with a size in the middle between 1.0 μm and 2.5 μm , similar to the accumulation mode mixed tracers but one order of magnitude larger.

on the relative humidity, as well as changes of tracer concentrations due to removal processes in clouds and precipitation (dry deposition of AmSu is represented similarly to other aerosol tracers). The subroutines dealing with these calculations are part of the MADE3 submodel and are described in detail in the Supplement (Sect. S1).

210 3.4 Calculation of number concentrations of potential INPs

In order to realize ice nucleation induced by aerosol particles in the model, the corresponding aerosol tracers need to be coupled to the cloud parametrizations in the EMAC CLOUD module. There, the number concentrations of potential INPs are calculated for the different ice formation modes in the mixed-phase and the cirrus regime according to the procedure described in Righi et al. (2020). Potential INP numbers are multiplied with the respective ice-active fractions f_{act} to obtain the actual
215 INP concentrations used as input for the cirrus cloud parametrization. Here, the calculations described in Righi et al. (2020) are expanded to include the additional INPs considered in this study, i.e. gIPOM, AmSu and BCair. The calculation of INP concentrations available for freezing events is calculated for every MADE3 mode as described in detail in the Supplement (Sect. S2).

For the freezing of crystalline ammonium sulfate, the sum of AmSu_{mixS} and AmSu_{mixL} number concentrations is consid-
220 ered, as these tracers provide a more detailed and realistic representation compared to AmSu_{ext}. As the cloud scheme considers additional increases in relative humidity due to subgrid-scale updrafts, AmSu freezing is only considered if $S_c < \text{DRH}$, as the particles would otherwise not be in the crystalline phase. For this condition the supersaturation with respect to ice is converted to the value with respect to liquid water using the formulations described by Murphy and Koop (2005), depending on the ratio of the vapour pressures of liquid water and ice, respectively. As the the cloud scheme requires information about AmSu number
225 concentrations per MADE3 mode, AmSu numbers are separated according to NH₄ and SO₄ masses in MADE3 soluble and mixed modes. Additionally, possible inclusions in AmSu particles (e.g. DU) have to be subtracted from the corresponding concentration in other freezing modes.

Generally, in every mode where gIPOM is present, the number of gIPOM INPs is calculated first and subtracted from the number in the other freezing modes, as glassy organics are assumed to form a shell around other particles (e.g. Smith et al.,
230 2012, 2013; Schill et al., 2014; Saukko et al., 2015). This shell is then the relevant part of the particle for the ice nucleation processes. An alternative formulation for gIPOM freezing, considering gIPOM INPs only for grid boxes where the gIPOM mass-fraction (with respect to the total mass in the mode) exceeds certain thresholds (e.g. 0.3 or 0.5), resulted in negligible number concentrations of potential gIPOM INPs.

4 Atmospheric distribution of aerosols acting as ice nucleating particles

235 In this section we present the atmospheric distributions of the aerosol species that act as ice nucleating particles in the model, i.e. mineral dust, black carbon, glassy organic particles, and crystalline ammonium sulfate. These simulated aerosol concentrations are the input for the ice nucleation scheme where the actual number concentration of the potential INPs is calculated (see Sect. 3.4).

4.1 Mineral dust and black carbon

240 Figure 1 shows the dust, BC, and aviation BC mass concentrations as simulated by EMAC-MADE3 at 300 hPa (Fig. 1a, c, e), and the zonal-mean vertical distribution (Fig. 1b, d, f). As mineral dust is a primary aerosol, dust concentrations in the atmosphere are strongly connected to its emission regions (most prominently the Sahara and Arabian deserts). Concentrations of up to $0.5 \mu\text{g m}^{-3}$ are reached in the upper troposphere over parts of northern Africa, with a strong vertical gradient towards largest concentrations close to the surface. A more detailed description and evaluation of mineral dust in the EMAC-MADE3
245 model is presented in Beer et al. (2020).

Black carbon mass concentrations are shown in Fig. 1c, d. The highest BC concentrations occur in the Northern Hemisphere, where main sources of anthropogenic soot particles, produced from incomplete combustion of fossil fuels, are situated. Additionally, biomass burning is a source of atmospheric BC in remote regions of the Southern Hemisphere (e.g. in Africa and South America). Compared to dust mass concentrations, BC mass concentrations are much lower with peak values of up to
250 $0.01 \mu\text{g m}^{-3}$ in the upper troposphere.

Aviation BC is mostly concentrated in the Northern Hemisphere where the majority of the global air traffic is located. Largest concentrations in the upper troposphere at 300 hPa reach values of about $10^{-4} \mu\text{g m}^{-3}$ (Fig. 1e) and the vertical profile shows hotspots for BC_{air} concentrations at the typical flight altitudes (between 200 and 300 hPa) and close to the surface, due to BC emitted in the vicinity of airports (Fig. 1f). Further details on aviation soot in the EMAC-MADE3 model can be found in Righi
255 et al. (2021).

4.2 Glassy organics

In this section, model results concerning the atmospheric dispersion of glassy organic particles are presented. The newly implemented MADE3 tracer gIPOM represents organic particles formed from the condensation of natural precursors of organic aerosols, e.g. terpenes (see Sect. 3.2). Emissions occur mainly in regions with strong biogenic activity, e.g. tropical rainforests.
260 Only high-viscosity, glassy particles are considered according to the phase separation depending on the ambient temperature and the glass transition temperature T_g .

The glass transition temperature is strongly influenced by the relative humidity according to Eq. (1), with T_g increasing with decreasing RH. Only for $T < T_g$ glassy particles can occur. This condition is only rarely fulfilled near the surface. The highest mass concentrations (about $0.01 \mu\text{g m}^{-3}$) are reached around the 600 hPa niveau (Fig. 2a, b). There, the low ambient
265 temperatures favour the occurrence of the glassy phase. Additionally, dry environments with low RH and therefore high T_g lead to favourable conditions for glassy particles, e.g. the northern and southern midlatitudes around 600 hPa in addition to midlatitudes and polar regions in the upper troposphere above 200 hPa (Fig. 2c). This is in agreement with measurements of glassy SOA particles, which were observed to exist in an amorphous solid state at cirrus temperatures (e.g. Järvinen et al., 2016), while mostly liquid SOA particles were observed in humid tropical regions (e.g. Bateman et al., 2015).

270 The ratio T_g/T can be used as an indicator of the particle phase state (Fig. 2d). For $T_g/T \geq 1$ the particle behaves like a solid, while $T_g/T < 1$ indicates a semi-solid or liquid state (Shiraiwa et al., 2017). A comparison of the ratio T_g/T with model results

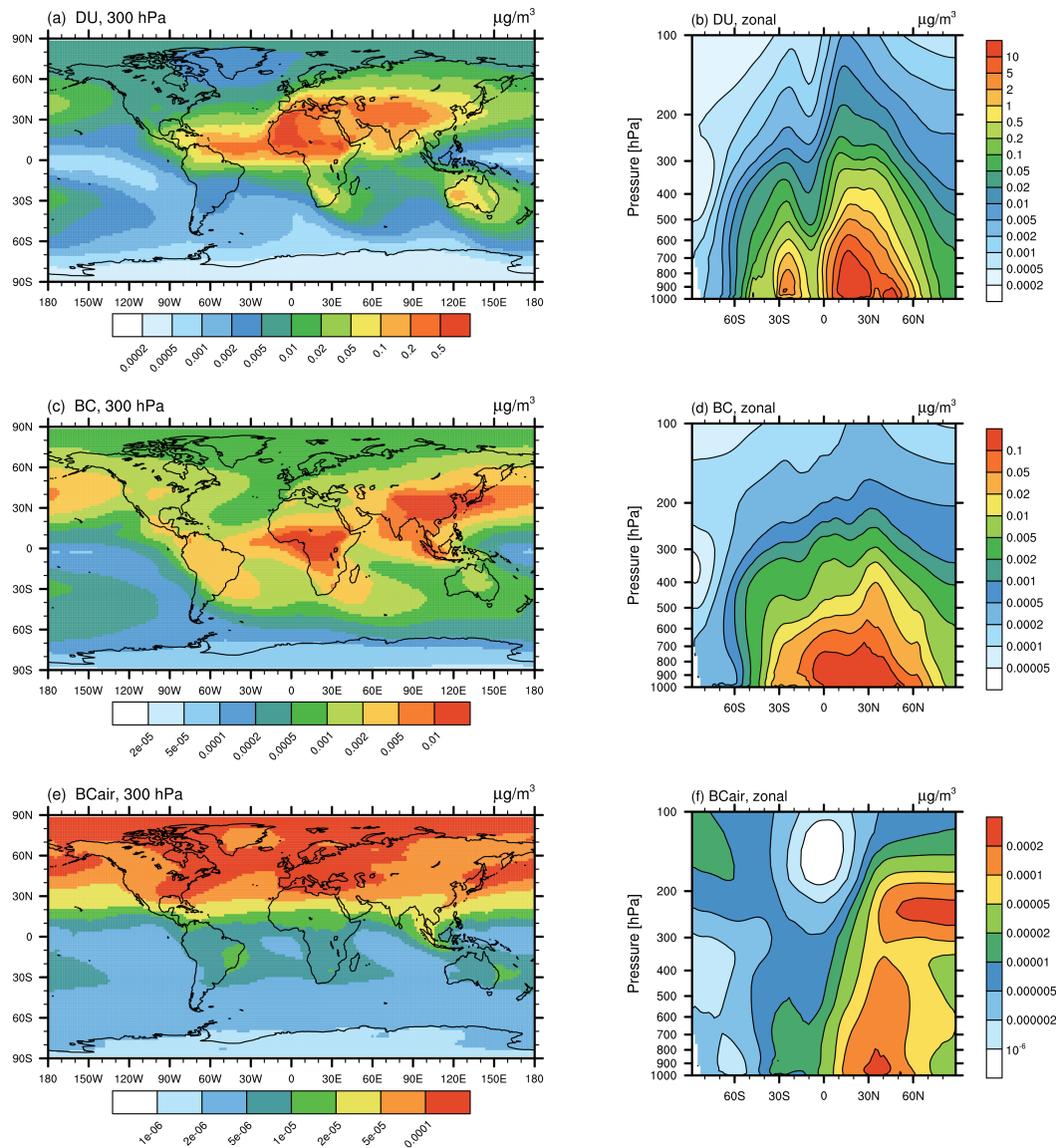


Figure 1. Global distribution of mass concentrations of mineral dust (DU; a, b), black carbon (BC; c, d), and black carbon from aviation emissions (BCair; e, f) in units of $\mu\text{g m}^{-3}$, simulated with EMAC-MADE3 considering the multi-year average over the simulated period (2010–2019). Panels (a), (c), and (e) show the global distribution at the 300 hPa pressure level, panels (b), (d), and (e) show zonal means. Note the different scales in each panel.

from Shiraiwa et al. (2017), also employing the global model EMAC, shows a good agreement. Above 500 hPa almost all SOA particles are transformed into a glassy solid state with T_g/T values above 1. Instead of the simple calculation depending on the relative humidity adopted here, Shiraiwa et al. (2017) employ the organic aerosol submodule ORACLE (Tsimpidi et al., 2014)

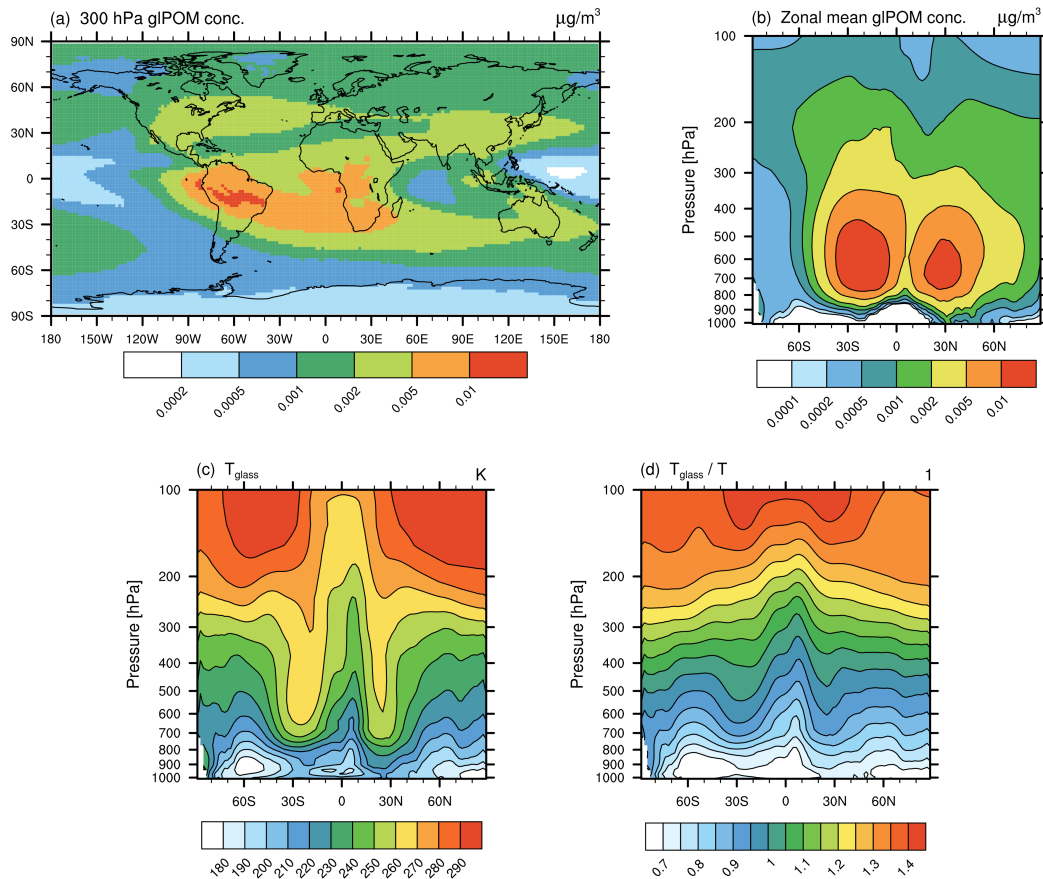


Figure 2. Global distribution of glassy organics (gIPOM) at the 300 hPa pressure level (a), and as zonal mean (b) in units of $\mu\text{g m}^{-3}$, as simulated with EMAC-MADE3. Panels (c) and (d) show the zonally averaged glass transition temperature T_g in units of K and the ratio T_g/T , respectively. All panels consider the multi-year average over the simulated period (2010–2019). Note the different scales in each panel.

275 to simulate the phase state of atmospheric SOA. Our implementation of gIPOM in the EMAC-MADE3 model represents a
 simplified approach to derive a first order estimate of the highly uncertain climate effects regarding cirrus cloud modifications
 due to glassy organic INPs. In a sensitivity experiment we analyse the effect of using different formulations for $T_g(\text{RH})$ (see
 Sect. 3.2 and Fig. S2 in the Supplement). Increased T_g values lead to larger gIPOM concentrations mainly at lower altitudes (up
 to 500 hPa), as conditions favourable for glassy particles are more frequently fulfilled. Above 300 hPa only small differences
 280 in gIPOM concentrations are visible.

4.3 Crystalline ammonium sulfate

In this section, model results concerning the newly implemented ammonium sulfate tracer (AmSu) are presented. A detailed description of related calculations and parametrizations of the life cycle of atmospheric ammonium sulfate particles in EMAC-MADE3 is given in Sect. 3.3. AmSu is implemented as a number density tracer and includes a formulation of phase transitions depending on the ambient relative humidity, i.e. only the crystalline phase is represented by this tracer. To analyse the sensitivity of modelled AmSu to different assumptions for its size and composition, different representations of AmSu tracers are used (see Sect. 3.3). AmSu_{mixS} and AmSu_{mixL} consider crystalline ammonium sulfate with smaller and larger particle diameters internally mixed with other components, while AmSu_{ext} assumes externally mixed pure ammonium sulfate crystals. Number concentrations of these three AmSu tracers near the surface, at the 300 hPa level, and as zonal-mean vertical distribution are shown in Fig. 3. These results represent averages over the whole simulated time period, which includes cases where ammonium sulfate occurs in its crystalline form but also cases where the environmental conditions exclude the presence of AmSu crystals and the respective AmSu tracer concentration is therefore zero.

The global patterns are similar for all three AmSu tracers. High number concentrations are simulated at ground level over the continents and in large parts of the middle and upper troposphere. AmSu_{mixL} shows the lowest concentration values, as these particles have a larger diameter, which leads to lower number concentrations in the mass-to-number conversion of the aerosol mass (Sect. 3.3 and Eq. S6 in the Supplement). Largest number concentrations are found for AmSu_{ext} (above 50 cm^{-3} near the surface). The sum of AmSu_{mixS} and AmSu_{mixL} concentrations is similar to that of AmSu_{ext} indicating a low sensitivity to the assumption of internally or externally mixed particles. Therefore, considering only one externally mixed ammonium sulfate tracer could be a reasonable simplification to include crystalline ammonium sulfate also in other model systems to further elucidate its impacts.

The global dispersion of crystalline ammonium sulfate is strongly related to the concentrations of NH_4 and SO_4 from which it is formed (see Fig. S3 in the Supplement, showing the global distribution of NH_4 and SO_4 mass concentrations). Sources of aerosol sulfate and ammonium are predominantly of anthropogenic origin, e.g. the combustion of sulfur-containing fossil fuels (like coal in power plants or bunker fuels in shipping) or the use of ammoniacal fertilizers, respectively, and are mostly situated on the Northern Hemisphere (e.g. Feng et al., 2020).

The global distribution of simulated AmSu concentrations is in good agreement with results from other model studies. Wang et al. (2008) analysed the distribution of solid and aqueous sulfate aerosols employing the GEOS-Chem chemical transport model (Martin et al., 2004; Park et al., 2004) and simulated a similar global distribution pattern of solid ammonium sulfate particles as shown in Fig. 3. Penner et al. (2018) used the CAM/IMPACT atmospheric model to simulate the aerosol effect on cirrus clouds, including a representation for solid ammonium sulfate in their model and found also similar global distribution patterns of ammonium sulfate particles compared with the ones presented here.

Importantly, the ambient environmental conditions have to fulfill the requirements for ammonium sulfate to reside in the solid phase. Only if the ambient RH is below the efflorescence relative humidity crystals can form. Zonal-mean profiles of RH and ERH are shown in Fig. 4d, e. These quantities are variable in time, i.e. the analysis of multi-year means allows only for

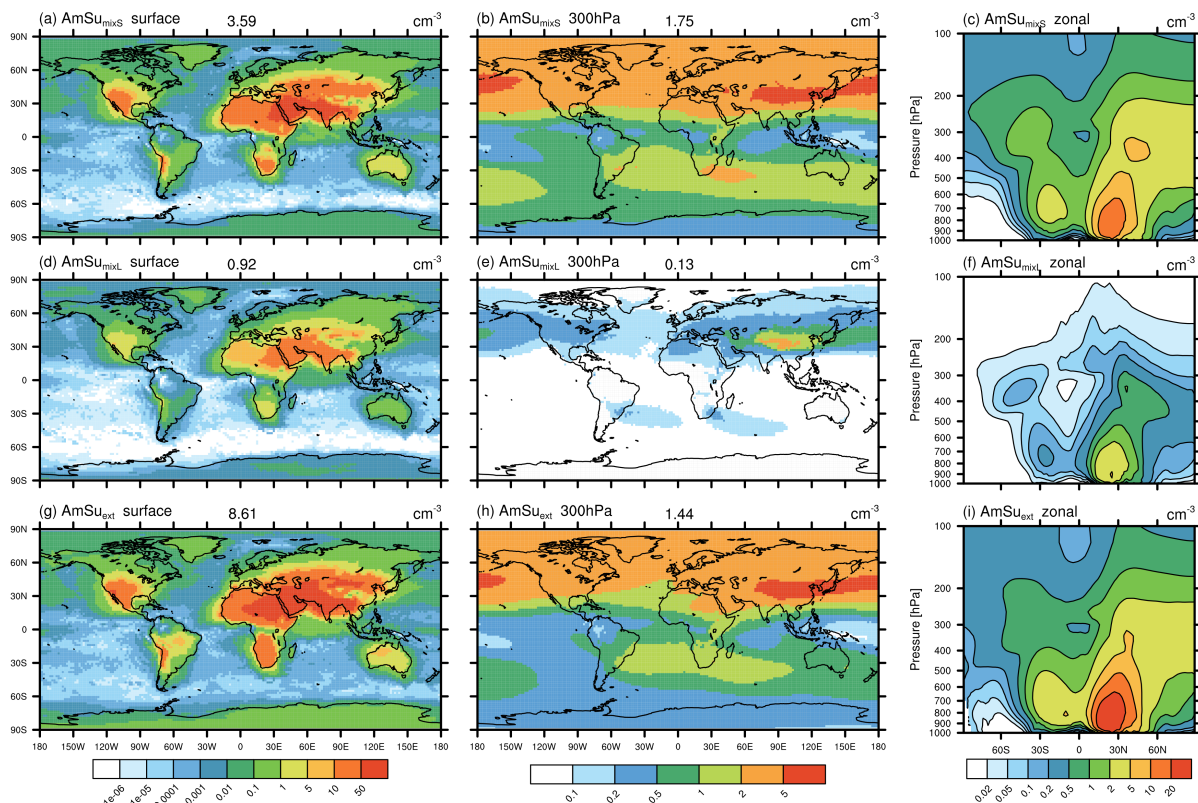


Figure 3. Global distribution of crystalline ammonium sulfate (AmSu) simulated with EMAC-MADE3, considering the multi-year average over the simulated period (2010–2019). Number concentrations in units of cm^{-3} are shown for different AmSu tracers, i.e. $\text{AmSu}_{\text{mixS}}$ (a, b, c), $\text{AmSu}_{\text{mixL}}$ (d, e, f), and AmSu_{ext} (g, h, i), respectively. Number concentrations are shown near the surface (a, d, g), at the 300 hPa level (b, e, h), and as zonal-means (c, f, i). Numbers above the map plots represent global averages at that respective pressure level. Note the different scales in each column.

315 rough estimates of the AmSu phase state. ERH is calculated depending on the ammonium-to-sulfate ratio according to Eq. S4 in the Supplement (see Sect. S1 in the Supplement for details). Upon rehydration ammonium sulfate crystals remain solid until the deliquescence relative humidity is reached, which is 80 % for ammonium sulfate (Martin, 2000).

320 Figures 4a-c show the simulated solid fractions of ammonium sulfate. Solid fractions increase with increasing altitude and show the largest values (close to 100 %) in the upper troposphere of the Northern Hemisphere. As crystallization depends on the ambient relative humidity and the efflorescence relative humidity (see Sect. 3.3), large solid fractions occur in regions with low RH and high ERH (see Fig. 4d, e). The simulated solid fractions shown in Fig. 4 are in good quantitative agreement with results from Wang et al. (2008) and also with Colberg et al. (2003), where a Lagrangian model is employed that calculates trajectories from ECMWF (European Centre for Medium-Range Weather Forecasts) analyses and takes the deliquescence/efflorescence hysteresis of ammonium sulfate into account.

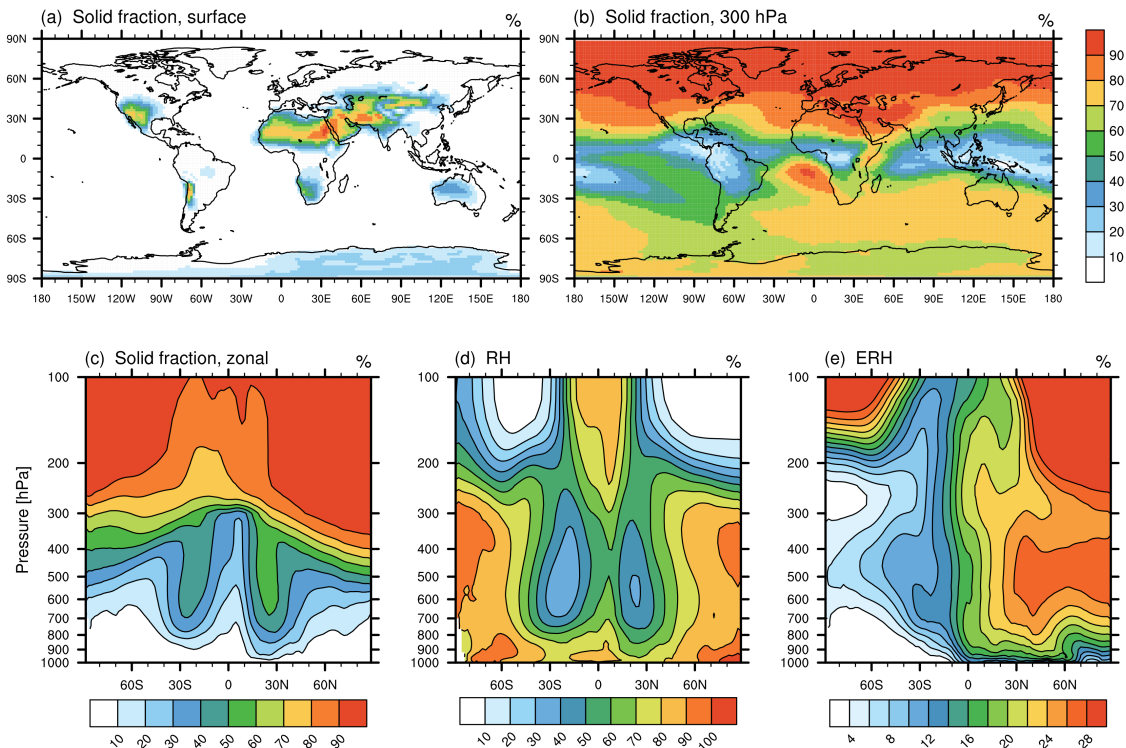


Figure 4. Simulated ammonium sulfate solid fractions in EMAC-MADE3, considering the multi-year average over the simulated period (2010–2019). (a-c) Fraction of solid ammonium sulfate particles near the surface, at 300 hPa, and as zonal-mean vertical distribution, (d) zonal-mean relative humidity, (e) zonal-mean efflorescence relative humidity. All quantities are dimensionless and shown in %. Note the different scales in panels (d) and (e).

325 5 Climatology of ice nucleating particles

In this section the global distribution of the different INPs simulated with EMAC-MADE3 is presented. Additionally, results concerning the number of pristine, i.e. newly formed ice crystals from heterogeneous freezing, as well as ice water content (i.e. ice mass per unit mass of air) per heterogeneous freezing mode are shown.

Global distributions of number concentrations of the INPs considered in this study (DU, BC, AmSu, glPOM, BCair) in the
 330 cirrus regime are depicted in Fig. 5 in terms of vertically averaged multi-annual means over the years 2010–2019. For this comparison the number concentrations of potential INPs (calculated as described in Sect. S2 in the Supplement) are multiplied by the ice-active fraction f_{act} provided by measurements (see Table 1), to obtain the actual concentrations of INPs. Here, values of f_{act} at a supersaturation ratio with respect to ice of $S_i = 1.4$ are chosen. At such a high S_i value near the homogeneous freezing threshold, all different INP-types are able to nucleate ice. This facilitates a direct comparison of INP number
 335 concentrations, as possible biases due to different freezing efficiencies are excluded. For this analysis only grid boxes inside cirrus clouds are considered, selected according to thresholds for simulated ambient temperature ($T < 238$ K) and ice water

content ($IWC > 0.5 \text{ mg kg}^{-1}$), using the original model output frequency of 11 h. The global distribution of the average cirrus cloud occurrence frequency calculated according to these threshold values is shown in Fig. S4 in the Supplement. An additional selection criterion is employed to filter out those cases where the crystal size exceeds a certain threshold ($R_{ice} > 1000 \text{ }\mu\text{m}$),
340 as such large crystals readily sediment and are removed from the cirrus niveau. This threshold value is chosen according to the analysis of crystal sizes of newly formed ice crystals (see Fig. S5 in the Supplement) to include most of the distribution of simulated R_{ice} values, while excluding very large crystals.

Peak INP number concentrations per species in Fig. 5 reach values of 50 to 100 L^{-1} for most INP types, while total INP number concentrations show values of up to 200 L^{-1} . Mineral dust INPs are mostly concentrated near strong dust emission regions
345 (e.g. the Sahara or Arabian Desert), but also in regions of enhanced dust transport (e.g. over the Atlantic Ocean). The INP-types BC, BCair and AmSu show a strong hemispheric gradient with high concentrations on the Northern Hemisphere, as these INPs are strongly related to anthropogenic activities (e.g. combustion of fossil fuels). For the case of BCair the main aviation flight corridors are clearly visible, which are dominated by air traffic over the Northern Atlantic Ocean. BCair number concentrations of up to 2 L^{-1} are generally smaller compared to other INP-types. However, this represents a conservative assumption and
350 BCair numbers could be larger, as aircraft soot could possibly be preactivated via processing in contrails (e.g., Mahrt et al., 2018; David et al., 2019; Nichman et al., 2019), while here the activated fraction of BCair ($f_{act} = 0.001$) is chosen according to the value for BC. Glassy organic INPs are more homogeneously distributed over the Northern and Southern Hemisphere with highest concentrations over regions of strong biogenic activity (e.g. tropical rainforests) with number concentrations mostly around 5 L^{-1} , distinctly smaller compared to most other INP-types. As stated earlier, glassy organics as well as crystalline
355 ammonium sulfate INPs occur only under specific conditions, as their phase state depends on the ambient temperature and humidity. Differences of the global distribution of INPs as seen in Fig. 5 compared to the respective aerosol concentrations shown in the previous sections are a result of the selection of cirrus conditions (i.e. $T < 238 \text{ K}$, $IWC > 0.5 \text{ mg kg}^{-1}$), but can also be related to the assumptions for the calculation of INP number concentrations as described in Sect. 3.4 and in the Supplement (Sect. S2).

360 A direct comparison of model results with in situ observations of INP number concentrations in cirrus clouds is challenging, as most measurements were performed at lower altitudes and focused on mixed-phase cloud temperatures. Moreover, in situ measurements of collected particle samples were often performed using diffusion chambers (e.g., Rogers et al., 2001b), where temperatures and supersaturations can be directly controlled but may not correspond to the actual ambient conditions at sample collection, e.g. temperatures below the homogeneous freezing threshold are often difficult to realize. Several studies describe in
365 situ observations of number concentrations of atmospheric INPs, mostly collected at low altitudes and analysed at temperatures above 238 K , ranging from concentrations below 0.1 L^{-1} to several 100 L^{-1} (e.g., Rogers et al., 1998, 2001a; DeMott et al., 2010; Schrod et al., 2017), in accordance with INP concentrations simulated here (Fig. 5).

In addition to the global distributions in Fig. 5, a more condensed analysis is presented in Fig. 6a. INP number concentrations for five different latitude regions are shown as a frequency distribution plot. Frequencies are drawn as shaded colours for every
370 INP-type and latitude region. Number concentrations of potential INPs are again multiplied with f_{act} at $S_i = 1.4$, and cirrus conditions are selected according to temperature and ice water content.

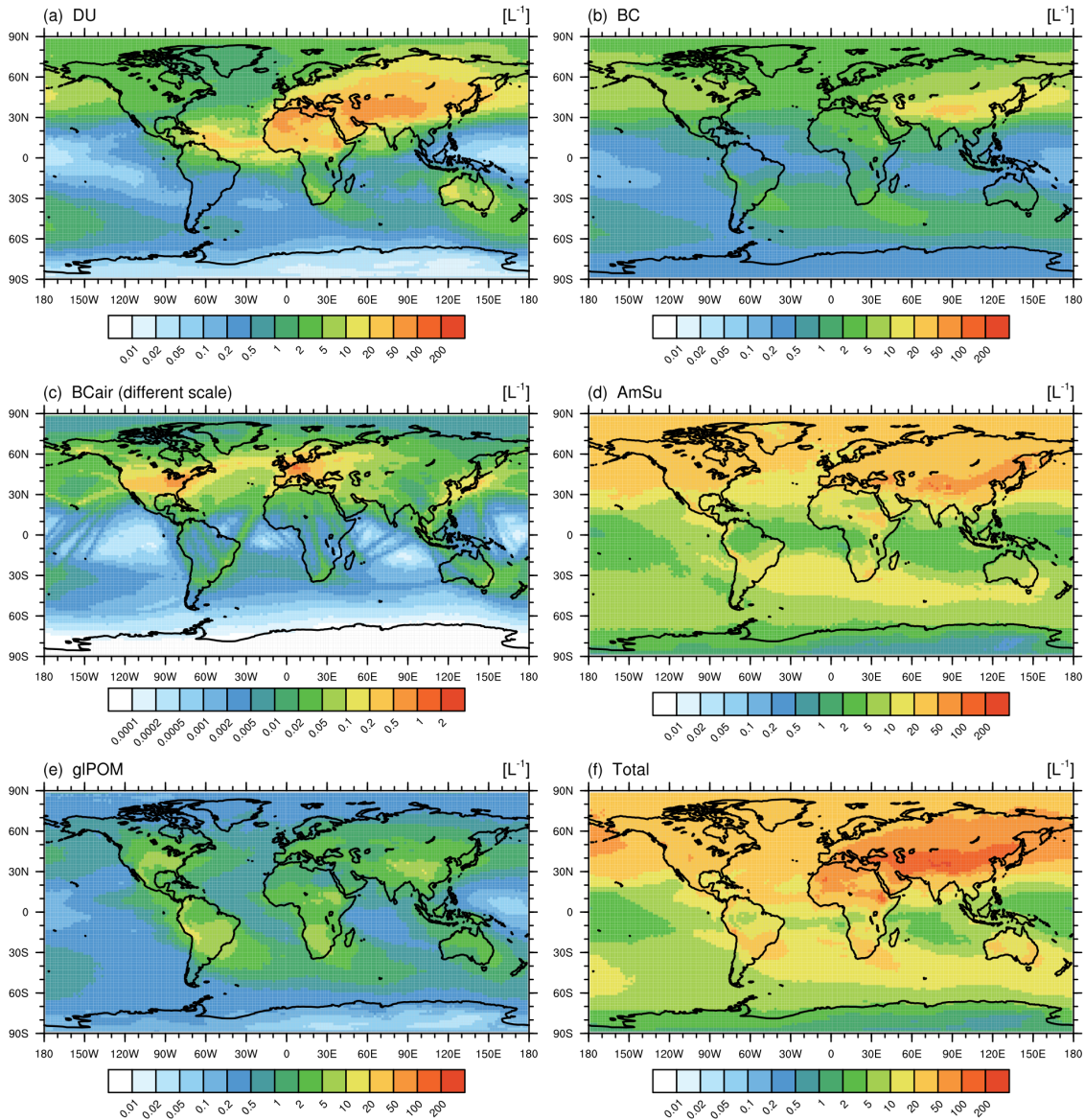


Figure 5. Global distribution of simulated number concentrations of different INPs (in units of L^{-1}) inside cirrus clouds (selecting only grid boxes with cirrus occurrence) considering the multi-year average over the simulated time period (2010–2019) and over all vertical levels. Shown are (a) mineral dust (DU), (b) black carbon (BC), (c) black carbon from aviation (BCair), (d) ammonium sulfate (AmSu), (e) glassy organics (gIPOM), and (f) total INP concentrations. Cirrus conditions are selected according to thresholds for simulated ambient temperature ($T < 238$ K) and ice water content ($IWC > 0.5$ mg kg^{-1}) in every grid box using the 11-h output frequency. Number concentrations of potential INPs (see calculations in Sect. 3.4) are weighted with ice-active fractions, f_{act} at ice supersaturations of $S_i = 1.4$, from laboratory measurements (see Table 1). Note the different scale in panel (c).

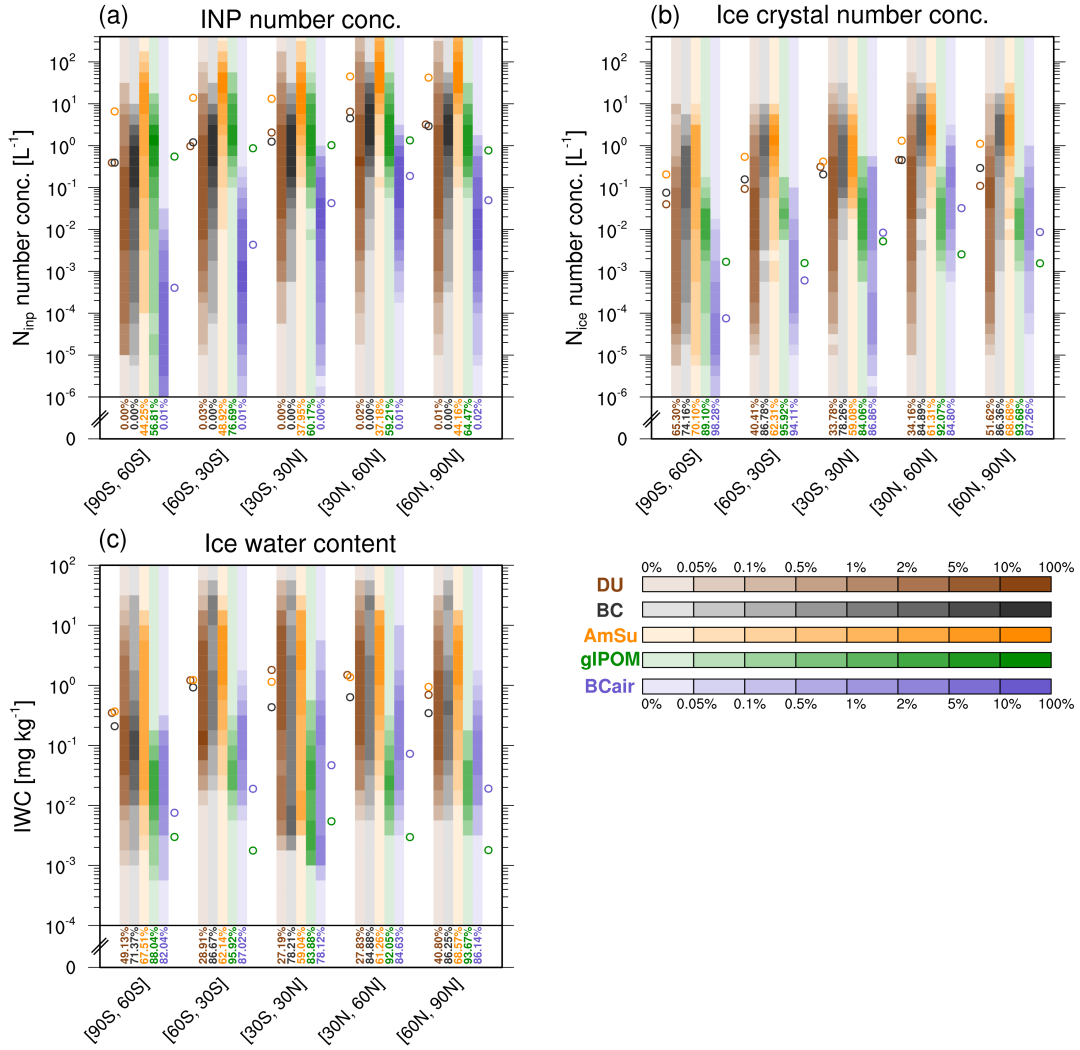


Figure 6. Frequency distributions of (a) simulated INP number concentrations in units of L^{-1} , (b) number concentrations (N_{ice} ; in units of L^{-1}) and (c) ice water content (IWC; in units of $mg\ kg^{-1}$) of pristine ice crystals inside cirrus clouds per freezing mode for five different latitude regions, calculated from 11-hour model output for the simulated period 2010–2019. Shaded colours represent the frequency of occurrence within specific bins for the respective variable considering four logarithmic bins per order of magnitude. The different colors refer to DU (brown), BC (black), AmSu (orange), gIPOM (green), BCair (purple). Frequencies in the bottom bin, including all values down to zero, are depicted as coloured text. Cirrus conditions are selected according to temperature ($T < 238\ K$) and ice water content ($IWC > 0.5\ mg\ kg^{-1}$) in every model grid box and time step. Additionally, only grid boxes with no contribution of ice-formation on preexisting ice crystals are selected ($N_{preex} < 10^{-23}\ L^{-1}$). Number concentrations of potential INPs are weighted with ice-active fractions from laboratory measurements (f_{act} at $S_i = 1.4$, see Table 1). Open circles to the left and right of every latitude region denote mean values for the different INP-species.

All INP-types except gIPOM show a marked difference between Northern and Southern Hemisphere with the highest concentrations at the northern latitudes. BC, BCair and AmSu are mostly concentrated in the region of 30° – 60° N as anthropogenic influences and emissions play a key role for these INP-types. Aircraft BC has notable concentrations almost only in this region with concentrations in the range of 10^{-3} to 1 L^{-1} showing the highest occurrence frequencies. In other regions BCair concentrations are generally much lower than those of other INP-types. Non-aircraft BC INPs frequently reach concentrations of up to 10 L^{-1} in those regions. AmSu INPs can show high concentrations of up to 100 L^{-1} , exceeding in most cases other INP concentrations. However, in many other cases AmSu concentrations are very low or zero (bottom bins occurring with probabilities of up to 49 %). These are mainly related to ambient conditions where ammonium sulfate does not occur in its crystalline state. Mineral dust INPs occur most frequently in the latitude region around the equator and 30° – 60° N, where dominant dust emission regions are situated (e.g. the Sahara, Arabian and Asian deserts). Glassy organic INPs are more evenly distributed over all latitudes, with concentrations mostly below 5 L^{-1} , lower compared to most other INP-types. Similar to AmSu, ambient conditions often do not favour the glassy state, which leads to large occurrence frequencies in the lowest concentration bin (up to 77 %). Additionally, we analyse the INP number concentrations for the three different representations of glass transition temperatures $T_g(\text{RH})$, considering the different SOA proxies citric acid, glucose, and sucrose, respectively (see Fig. S6 in the Supplement). Using different T_g representations results in an additional uncertainty in gIPOM INP number concentrations of up to one order of magnitude. Differences are largest between the SOA proxies citric acid and glucose but only slight between glucose and sucrose. Notably, the freezing efficiency of crystalline ammonium sulfate and glassy organic INPs is still uncertain, as only few laboratory studies investigated their ice nucleating abilities. A lower ice nucleating ability of crystalline ammonium sulfate, e.g. due to coatings of organic material (Ladino et al., 2014; Bertozzi et al., 2021), would reduce the impact of ammonium sulfate INPs. However, due to the large number of crystalline ammonium sulfate particles simulated here, they would probably still contribute a substantial fraction to the total INP number in large parts of the globe.

Figures 5 and 6a can help to identify regions on the globe where different INP-types are likely to compete with each other for the available supersaturated water vapour during the freezing process. On the Southern Hemisphere a competition between ammonium sulfate and glassy organics is possible, as these INPs are highly concentrated in southern regions while other INP-types show low concentrations. The Northern Atlantic is a possible competition region between AmSu, BC, and BCair INPs. Over most regions in Central Asia several different INP-types (DU, BC, AmSu) are present in relatively similar concentrations leading to possible competition mechanisms between these INPs.

By coupling the different INP-types to the microphysical cirrus cloud scheme, their ice nucleation potential at cirrus conditions can be analysed, including possible competition mechanisms between different INPs. Similar to INP concentrations, we show the number concentrations of pristine ice crystals formed via heterogeneous freezing induced by INPs and the corresponding ice water content (i.e. cloud ice mass per unit mass of air) in Fig. 6b, c for each heterogeneous freezing mode. The analysis of these quantities allows for an evaluation of the relative importance of the different INP-types in heterogeneous ice formation. Concentrations of newly formed ice crystals from the different freezing modes (Fig. 6b) are generally lower than INP number concentrations (on average about 1–2 orders of magnitude). Additionally, very small values (bottom bins in Fig. 6b) occur much more frequently. This clearly shows that only a fraction of the number of INPs actually nucleates and forms

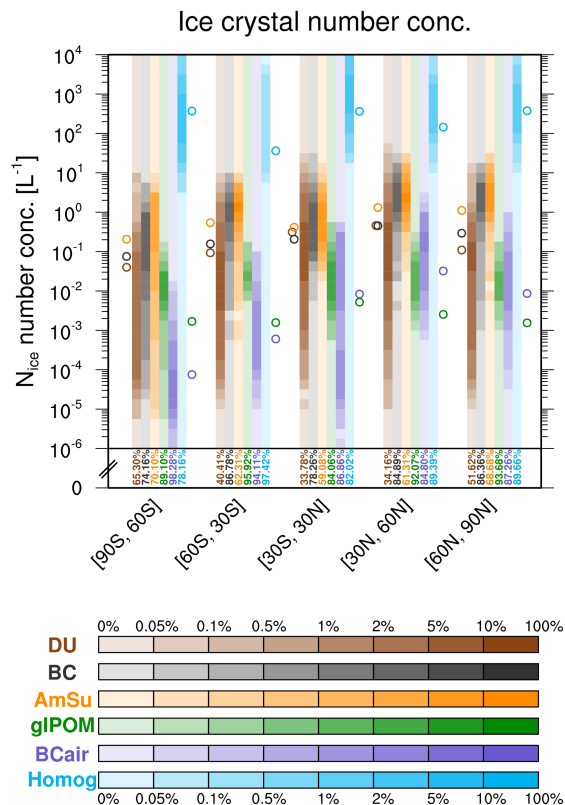


Figure 7. As in Fig. 6b, but additionally showing the frequency distribution of pristine ice crystals formed by homogeneous freezing (light blue).

ice crystals. Importantly, the bottom bins (i.e. very small values) for ice crystals from mineral dust freezing show often much lower frequencies compared to the other freezing modes. This indicates a pronounced competition mechanism between the different INPs. The most efficient INPs, i.e. mineral dust and also ammonium sulfate, rapidly deplete the available supersaturated water vapour and inhibit freezing induced by less ice-active INP-types.

In addition to N_{ice} from heterogeneous freezing modes, the number concentrations of homogeneously formed ice crystals are shown in Fig. 7. In all latitude regions, these are much larger than concentrations of heterogeneously formed ice crystals (up to 3–4 orders of magnitude). Occurrence frequencies in the lowest concentration bin are often very large (78–97%), indicating that heterogeneous freezing often prevents homogeneous ice nucleation. However, in those cases where homogeneous freezing takes place, it produces very large concentrations of ice crystals. This process was also described in detail in e.g. Kärcher and Lohmann (2002) and Kärcher et al. (2006). The extent of this attenuation effect and resulting cirrus and climate modifications have been shown recently for the case of the aviation soot–cirrus effect (Righi et al., 2021).

Figure 6c shows the ice water content for each heterogeneous freezing mode. The IWC of pristine ice crystals indicates how much ice mass accumulates on INPs during the freezing process, regarding the nucleation and growth of these crystals during

420 the first model time step of the existence of the respective cirrus cloud. INPs with a high freezing-efficiency initiate nucleation already at relatively low ice-supersaturations, resulting in ice crystals growing to larger sizes during the freezing process. Here, the highly efficient INPs, i.e. mineral dust and ammonium sulfate, often dominate the IWC in several regions with average values up to 2 mg kg^{-1} , and often show lower frequencies in the lowest concentration bin compared to the other INP-types. This indicates the large importance of these two INP-types. Especially the strong impact of crystalline ammonium sulfate INPs
425 is remarkable, as several previous studies reported mineral dust as the single most important INP type (e.g. Cziczo et al., 2013; Froyd et al., 2022). This implies the need for dedicated measurements on the ice nucleation of ammonium sulfate in the cirrus regime. Additionally, future modelling efforts should take crystalline ammonium sulfate into account to further evaluate its importance for aerosol-induced cirrus formation.

To evaluate the quality of the simulated INP numbers, they can be compared with in situ observations that, however, mostly
430 focused on the mixed-phase temperature regime. Rogers et al. (1998) described aircraft measurements performed over North America at high altitudes around 10 km but analysed samples at temperatures mostly above 243K in a flow diffusion chamber. They reported INP concentrations between ~ 0.1 and 500 L^{-1} , with larger concentrations at lower temperatures and higher supersaturations. This agrees well with our model results obtained for that region (Fig. 5f). Additionally, Rogers et al. (2001a) analysed aircraft measurements conducted in the Arctic for temperatures between 263K and 243K and humidities ranging
435 from ice saturation to water supersaturation. They observed an average INP-concentration of 16 L^{-1} with rare very high concentration values (hundreds per litre). This is in good accordance with the simulated INP concentrations in the region of 60° – 90° N of around 20 L^{-1} . DeMott et al. (2010) presented a parametrization of INP concentrations using a combination of data from several different aircraft campaigns. Measurements were mostly performed for temperatures above 239 K where INP concentrations ranging from 0.1 – 100 L^{-1} were observed, which corresponds to the range of simulated values shown in Fig. 6a.
440 Jensen et al. (2010, 2013) focused on cirrus clouds in the tropical tropopause layer, and predicted that measured ice crystal numbers and cloud optical properties are in accordance with INP concentrations below 20 L^{-1} . This is in agreement with our model results in the equatorial region presented here (Figs. 5, 6a). Additionally, Schrod et al. (2017) presented measurements performed with unmanned aircraft systems over the Eastern Mediterranean at altitudes below 2.5 km and reported INP peak concentrations of above 100 L^{-1} at 243 K, also confirming the model results presented in Fig. 5f.

445 In addition to observations, other global model studies have been performed to analyse the distribution of ice nucleating particles on the globe. Barahona et al. (2010) carried out simulations with the NASA Global Modeling Initiative chemical and transport model (Rotman et al., 2001; Liu et al., 2007), coupled to an analytical ice microphysics parametrization, considering DU, BC, and glassy organics as heterogeneous freezing nuclei. Their results show INP concentrations mostly around 5 L^{-1} in the equatorial region, which is in accordance with the results presented here (Fig. 6a). Hendricks et al. (2011) performed
450 a similar study to analyse the effect of INPs on cirrus clouds employing the ECHAM4 general circulation model (Roeckner et al., 1996), considering heterogeneous freezing on DU and BC in addition to homogeneous freezing. They report modelled ice crystal number concentrations formed via heterogeneous freezing between 0.01 and 0.1 L^{-1} in agreement with the range of N_{ice} values described in this section (Fig. 6b). However, N_{ice} from BC freezing in Hendricks et al. (2011) is about 10 times lower compared to the dust freezing mode. This difference between DU and BC is not visible in the results presented here.

455 Disparities with respect to Hendricks et al. (2011) could be due to differences in the representation of the atmospheric aerosol, the parametrization of the freezing processes, and different model dynamics due to the use of nudging.

6 Conclusions

In this paper we present a global climatology of ice nucleating particles by analysing global model simulations performed with EMAC-MADE3. This climatology comprises the main currently discussed INP-types at cirrus conditions. Despite mineral dust
460 and black carbon particles, which have been generally considered as INPs in many previous model studies, we additionally include crystalline ammonium sulfate and glassy organic INPs. These two novel INP-species have only rarely been considered in global models, despite several laboratory studies suggesting their pronounced ice-nucleating potential. Hence, their climate impact on a global scale is still highly uncertain.

We present atmospheric distributions of mineral dust and black carbon, including black carbon from aviation emissions,
465 as also analysed and evaluated in previous studies with EMAC-MADE3 (Beer et al., 2020; Righi et al., 2021). In addition, we describe the implementation of phase transitions of ammonium sulfate and organic particles in detail. The formulation of the phase state is very important for these particles, as only the crystalline phase of ammonium sulfate and the glassy phase of organic particles induce heterogeneous ice-nucleation. We present the atmospheric distributions of crystalline ammonium sulfate and glassy organics and compare their respective atmospheric concentrations with results from previous model studies,
470 showing overall good agreement with the results presented here.

We calculate the concentrations of potential ice nucleating particles from the simulated aerosol concentrations according to the scheme described in Righi et al. (2020), adapted to include the additional INP-types, i.e. crystalline ammonium sulfate and glassy organics. We present and analyse the resulting multi-annual mean climatology of INPs at cirrus formation conditions. Simulated INP number concentrations, in the range of about 1 to 100 L^{-1} , agree well with in situ observations (e.g., Rogers
475 et al., 1998, 2001a; DeMott et al., 2010; Schrod et al., 2017) and other global model studies (e.g., Barahona et al., 2010; Hendricks et al., 2011).

High dust INP concentrations (about 100 L^{-1}) are simulated over dust-dominated regions (e.g. the Sahara, Arabian, and Asian deserts). Black carbon and ammonium sulfate INPs show a distinct north-south gradient with largest concentrations on the Northern Hemisphere (up to 50 L^{-1} and 100 L^{-1} , respectively), probably dominated by anthropogenic influences. Importantly, crystalline ammonium sulfate INP concentrations are comparable or even exceed those of mineral dust in large parts
480 of the globe, e.g. the Southern Hemisphere and the high northern latitudes. Glassy organic INPs are concentrated in regions with strong biogenic activity mainly in the tropics and on the Southern Hemisphere, but have often much lower concentrations compared to most other INP-types, i.e. below 10 L^{-1} . The mean values for glassy organics and for ammonium sulfate include, however, also cases where these INPs are not glassy or crystalline, respectively, and larger concentrations are possible at specific times and locations. Aviation soot INPs show highest concentrations along typical aircraft flight routes, mainly between
485 Europe and North America (about 1 L^{-1}).

By coupling the different INP-types to the microphysical cirrus cloud scheme, their ice nucleation potential at cirrus conditions is analysed, including possible competition mechanisms between different INPs and considering regional, latitude-specific differences. Concentrations of freshly nucleated pristine ice crystals from heterogeneous freezing are typically one to
490 two orders of magnitude lower than respective INP number concentrations. In many cases, only a fraction of the available INPs can be activated due to low cooling rates. Owing to the comparably small number concentrations of INPs, the mean number concentrations of INP-induced ice crystals are also much lower than those of homogeneously formed crystals (up to 3–4 orders of magnitude). The most abundant INP-types, e.g. soot, dust, and ammonium sulfate often show the largest impact on the ice crystal number concentration of freshly nucleated crystals. The different INP-species compete with each other for the avail-
495 able supersaturated water vapour. The most efficient INPs, i.e. mineral dust and also ammonium sulfate, in many cases inhibit freezing induced by less ice-active INP-types, leading to frequently occurring very low pristine ice crystal concentrations for (aviation) soot and glassy organic INPs. The highly efficient dust and ammonium sulfate INPs also generate the largest ice mass and show a marked effect on the ice water content.

To conclude, the climatology of ice nucleating particles at cirrus formation presented in this study demonstrates the impor-
500 tance of including crystalline ammonium sulfate together with mineral dust and soot particles in global models. Glassy organic particles probably have only minor influences, as their INP concentrations in the upper troposphere are mostly small. The remarkable large importance of crystalline ammonium sulfate shown here should be further investigated in dedicated observation campaigns and modelling efforts.

The described results concerning INPs and their interaction with cirrus clouds are still subject to uncertainties. Most no-
505 tably, the cloud microphysics scheme mainly relies on calculations for the whole model grid box. Subgrid-scale processes are parametrized, e.g. the variability in the vertical velocity or the sedimentation of ice crystals (including the removal of embedded INPs; Kuebbeler et al., 2014; Righi et al., 2020). However, these parametrizations are limited and introduce additional uncertainties, which could lead to a misrepresentation of the impact of heterogeneous ice nucleation pathways. Additionally, the presented results are dependent on the freezing efficiency of the different INPs. For instance, Righi et al. (2021), employing
510 a similar model setup, found a strong dependency of the aviation soot–cirrus effect on the assumed ice nucleating properties of soot particles. This uncertainty could be further analysed in future studies by varying the ice nucleation thresholds of the different INPs.

The new insights achieved in the present study could be further deepened by additional model developments and analyses. Recent laboratory studies identified yet another type of ice nucleating particles at cirrus conditions, i.e. marine aerosol (e.g.
515 Wilbourn et al., 2020; Wagner et al., 2021). Potential influences of these marine particles on cirrus clouds could be evaluated by including them as INPs in the cirrus ice nucleation scheme. Additionally, the analysis of the simulated global distribution of different INPs could be further refined by applying machine learning clustering algorithms (e.g. k-means clustering; Hartigan and Wong, 1979) to identify regions dominated by specific INP-types or by possible competition mechanisms between different INPs. This technique has recently been demonstrated for the analysis of global aerosol simulations by Li et al. (2022).
520 Following the results presented in this study, cirrus cloud and resulting climate modifications induced by the ice nucleating particles described here could be analysed in order to provide further insight into these INP-induced climate effects.

Code and data availability. MESSy is continuously developed and applied by a consortium of institutions. The usage of MESSy, including MADE3, and access to the source code is licensed to all affiliates of institutions which are members of the MESSy Consortium. Institutions can become members of the MESSy Consortium by signing the MESSy Memorandum of Understanding. More information can be found on the MESSy Consortium Website (<http://www.messy-interface.org>, last access: 10 November 2022). The model configuration discussed in this paper has been developed based on version 2.55 and will be part of the next EMAC release (version 2.56). The exact code version used to produce the result of this paper is archived at the German Climate Computing Center (DKRZ) and can be made available to members of the MESSy community upon request. The model setup and the simulation data analysed in this work are available at <http://doi.org/10.5281/zenodo.6834299> (Beer, 2022).

530 *Author contributions.* CB conceived the study, implemented the model developments concerning new types of INPs, designed and performed the model simulations, analysed the data, evaluated and interpreted the results, and wrote the paper. JH contributed to conceiving the study and to the model developments, the model evaluation, the interpretation of the results, and to the text. MR assisted in preparing the simulation setup, helped designing the evaluation methods, and contributed to the model developments, the interpretation of the results and to the text.

Competing interests. The authors declare that they have no conflict of interest.

535 *Acknowledgements.* The model simulations and data analysis for this work used the resources of the Deutsches Klimarechenzentrum (DKRZ) granted by its Scientific Steering Committee (WLA) under project ID bd0080. We are grateful to Daniel Sauer (DLR, Germany) for his comments and suggestions on an earlier version of the manuscript, and to George Craig (LMU, Germany), Sabine Brinkop, Patrick Jöckel, Christopher Kaiser, Jingmin Li, Robert Sausen, and Helmut Ziereis (DLR, Germany) for helpful discussions. We are grateful for the support of the whole MESSy team of developers and maintainers.

540 This study was supported by the DLR transport programme (projects *DATAMOST*, *Global model studies on the effects of transport-induced aerosols on ice clouds and climate*, *VEU2*, and *TraK*), the DLR space research programme (projects *KliSAW* and *MABAK*), the German Federal Ministry for Economic Affairs and Climate Action – BMWK (project *DoEFS*; contract no. *20X1701B*), and the Initiative and Networking Fund of the Helmholtz Association (project *ESM*).

References

- 545 Abbatt, J. P. D., Benz, S., Cziczo, D. J., Kanji, Z., Lohmann, U., and Möhler, O.: Solid Ammonium Sulfate Aerosols as Ice Nuclei: A Pathway for Cirrus Cloud Formation, *Science*, 313, 1770–1773, <https://doi.org/10.1126/science.1129726>, 2006.
- Barahona, D., Rodriguez, J., and Nenes, A.: Sensitivity of the global distribution of cirrus ice crystal concentration to heterogeneous freezing, *J. Geophys. Res. Atmos.*, 115, D23 213, <https://doi.org/10.1029/2010JD014273>, 2010.
- Bateman, A. P., Gong, Z., Liu, P., Sato, B., Cirino, G., Zhang, Y., Artaxo, P., Bertram, A. K., Manzi, A. O., Rizzo, L. V., Souza, R. A. F.,
550 Zaveri, R. A., and Martin, S. T.: Sub-micrometre particulate matter is primarily in liquid form over Amazon rainforest, *Nat. Geosci.*, 9, 34–37, <https://doi.org/10.1038/ngeo2599>, 2015.
- Baustian, K., Wise, M., Jensen, E., Schill, G., Freedman, M., and Tolbert, M.: State transformations and ice nucleation in amorphous (semi-) solid organic aerosol, *Atmos. Chem. Phys.*, 13, 5615–5628, <https://doi.org/10.5194/acp-13-5615-2013>, 2013.
- Baustian, K. J., Wise, M. E., and Tolbert, M. A.: Depositional ice nucleation on solid ammonium sulfate and glutaric acid particles, *Atmos.*
555 *Chem. Phys.*, 10, 2307–2317, <https://doi.org/10.5194/acp-10-2307-2010>, 2010.
- Beer, C. G.: Global modelling of ice nucleating particles and their effects on cirrus clouds, Ph.D. thesis, Ludwig-Maximilians-Universität München, <https://doi.org/10.5282/edoc.28470>, 2021.
- Beer, C. G., Hendricks, J., Righi, M., Heinold, B., Tegen, I., Groß, S., Sauer, D., Walser, A., and Weinzierl, B.: Modelling mineral dust emissions and atmospheric dispersion with MADE3 in EMAC v2.54, *Geosci. Model Dev.*, 13, 4287–4303, <https://doi.org/10.5194/gmd-13-4287-2020>, 2020.
560
- Bellouin, N., Quaas, J., Gryspeerdt, E., Kinne, S., Stier, P., Watson-Parris, D., Boucher, O., Carslaw, K. S., Christensen, M., Daniau, A.-L., Dufresne, J.-L., Feingold, G., Fiedler, S., Forster, P., Gettelman, A., Haywood, J. M., Lohmann, U., Malavelle, F., Mauritsen, T., McCoy, D. T., Myhre, G., Mühlstädt, J., Neubauer, D., Possner, A., Rugenstein, M., Sato, Y., Schulz, M., Schwartz, S. E., Sourdeval, O., Storelvmo, T., Toll, V., Winker, D., and Stevens, B.: Bounding Global Aerosol Radiative Forcing of Climate Change, *Rev. Geophys.*, 58,
565 <https://doi.org/10.1029/2019rg000660>, 2020.
- Bertozzi, B., Wagner, R., Song, J., Höhler, K., Pfeifer, J., Saathoff, H., Leisner, T., and Möhler, O.: Ice nucleation ability of ammonium sulfate aerosol particles internally mixed with secondary organics, *Atmos. Chem. Phys.*, 21, 10 779–10 798, <https://doi.org/10.5194/acp-21-10779-2021>, 2021.
- Boucher, O., Randall, D., Artaxo, P., Bretherton, C., Feingold, G., Forster, P., Kerminen, V.-M., Kondo, Y., Liao, H., Lohmann, U., Rasch,
570 P., Satheesh, S., Sherwood, S., Stevens, B., and Zhang, X.-Y.: Clouds and aerosols, in: *Climate change 2013: the physical science basis. Contribution of Working Group I to the Fifth Assessment Report of the Intergovernmental Panel on Climate Change*, pp. 571–657, Cambridge University Press, <https://doi.org/10.1017/CBO9781107415324.016>, 2013.
- Chou, C., Kanji, Z. A., Stetzer, O., Tritscher, T., Chirico, R., Heringa, M. F., Weingartner, E., Prévôt, A. S. H., Baltensperger, U., and Lohmann, U.: Effect of photochemical ageing on the ice nucleation properties of diesel and wood burning particles, *Atmos. Chem. Phys.*,
575 13, 761–772, <https://doi.org/10.5194/acp-13-761-2013>, 2013.
- Colberg, C. A., Luo, B. P., Wernli, H., Koop, T., and Peter, T.: A novel model to predict the physical state of atmospheric H₂SO₄/NH₃/H₂O aerosol particles, *Atmos. Chem. Phys.*, 3, 909–924, <https://doi.org/10.5194/acp-3-909-2003>, 2003.
- Cziczo, D. J., Froyd, K. D., Hoose, C., Jensen, E. J., Diao, M., Zondlo, M. A., Smith, J. B., Twohy, C. H., and Murphy, D. M.: Clarifying the dominant sources and mechanisms of cirrus cloud formation, *Science*, 340, 1320–1324, <https://doi.org/10.1126/science.1234145>, 2013.

- 580 David, R. O., Marcolli, C., Fahrni, J., Qiu, Y., Perez Sirkin, Y. A., Molinero, V., Mahrt, F., Brühwiler, D., Lohmann, U., and Kanji, Z. A.: Pore condensation and freezing is responsible for ice formation below water saturation for porous particles, *Proc. Natl. Acad. Sci. US*, 116, 8184–8189, <https://doi.org/10.1073/pnas.1813647116>, 2019.
- DeMott, P. J., Prenni, A. J., Liu, X., Kreidenweis, S. M., Petters, M. D., Twohy, C. H., Richardson, M., Eidhammer, T., and Rogers, D.: Predicting global atmospheric ice nuclei distributions and their impacts on climate, *Proc. Natl. Acad. Sci.*, 107, 11 217–11 222, 585 <https://doi.org/10.1073/pnas.0910818107>, 2010.
- Dentener, F., Kinne, S., Bond, T., Boucher, O., Cofala, J., Generoso, S., Ginoux, P., Gong, S., Hoelzemann, J., Ito, A., et al.: Emissions of primary aerosol and precursor gases in the years 2000 and 1750 prescribed data-sets for AeroCom, *Atmos. Chem. Phys.*, 6, 4321–4344, <https://doi.org/10.5194/acp-6-4321-2006>, 2006.
- Feng, L., Smith, S. J., Braun, C., Crippa, M., Gidden, M. J., Hoesly, R., Klimont, Z., van Marle, M., van den Berg, M., and van der Werf, 590 G. R.: The generation of gridded emissions data for CMIP6, *Geosci. Model Dev.*, 13, 461–482, <https://doi.org/10.5194/gmd-13-461-2020>, 2020.
- Froyd, K. D., Yu, P., Schill, G. P., Brock, C. A., Kupc, A., Williamson, C. J., Jensen, E. J., Ray, E., Rosenlof, K. H., Bian, H., Darmenov, A. S., Colarco, P. R., Diskin, G. S., Bui, T., and Murphy, D. M.: Dominant role of mineral dust in cirrus cloud formation revealed by global-scale measurements, *Nat. Geosci.*, 15, 177–183, <https://doi.org/10.1038/s41561-022-00901-w>, 2022.
- 595 Gasparini, B. and Lohmann, U.: Why cirrus cloud seeding cannot substantially cool the planet, *J. Geophys. Res. Atmos.*, 121, 4877–4893, <https://doi.org/10.1002/2015JD024666>, 2016.
- Guenther, A., Hewitt, C. N., Erickson, D., Fall, R., Geron, C., Graedel, T., Harley, P., Klinger, L., Lerdau, M., Mckay, W. A., Pierce, T., Scholes, B., Steinbrecher, R., Tallamraju, R., Taylor, J., and Zimmerman, P.: A global model of natural volatile organic compound emissions, *J. Geophys. Res.*, 100, 8873–8892, <https://doi.org/10.1029/94JD02950>, 1995.
- 600 Guenther, A., Karl, T., Harley, P., Wiedinmyer, C., Palmer, P. I., and Geron, C.: Estimates of global terrestrial isoprene emissions using MEGAN (Model of Emissions of Gases and Aerosols from Nature), *Atmos. Chem. Phys.*, 6, 3181–3210, <https://doi.org/10.5194/acp-6-3181-2006>, 2006.
- Hartigan, J. A. and Wong, M. A.: Algorithm AS 136: A K-Means Clustering Algorithm, *Applied Statistics*, 28, 100, <https://doi.org/10.2307/2346830>, 1979.
- 605 Hendricks, J., Kärcher, B., and Lohmann, U.: Effects of ice nuclei on cirrus clouds in a global climate model, *J. Geophys. Res. Atmos.*, 116, D18 206, <https://doi.org/10.1029/2010JD015302>, 2011.
- Hersbach, H., Bell, B., Berrisford, P., Hirahara, S., Horányi, A., Muñoz-Sabater, J., Nicolas, J., Peubey, C., Radu, R., Schepers, D., Simmons, A., Soci, C., Abdalla, S., Abellan, X., Balsamo, G., Bechtold, P., Biavati, G., Bidlot, J., Bonavita, M., Chiara, G., Dahlgren, P., Dee, D., Diamantakis, M., Dragani, R., Flemming, J., Forbes, R., Fuentes, M., Geer, A., Haimberger, L., Healy, S., Hogan, R. J., Hólm, E., 610 Janisková, M., Keeley, S., Laloyaux, P., Lopez, P., Lupu, C., Radnoti, G., Rosnay, P., Rozum, I., Vamborg, F., Villaume, S., and Thépaut, J.-N.: The ERA5 global reanalysis, *Q. J. R. Meteorol. Soc.*, 146, 1999–2049, <https://doi.org/10.1002/qj.3803>, 2020.
- Hoesly, R. M., Smith, S. J., Feng, L., Klimont, Z., Janssens-Maenhout, G., Pitkanen, T., Seibert, J. J., Vu, L., Andres, R. J., Bolt, R. M., Bond, T. C., Dawidowski, L., Kholod, N., ichi Kurokawa, J., Li, M., Liu, L., Lu, Z., Moura, M. C. P., O'Rourke, P. R., and Zhang, Q.: Historical (1750–2014) anthropogenic emissions of reactive gases and aerosols from the Community Emissions Data System (CEDS), 615 *Geosci. Model Dev.*, 11, 369–408, <https://doi.org/10.5194/gmd-11-369-2018>, 2018.
- Hoose, C. and Möhler, O.: Heterogeneous ice nucleation on atmospheric aerosols: a review of results from laboratory experiments, *Atmos. Chem. Phys.*, 12, 9817–9854, <https://doi.org/10.5194/acp-12-9817-2012>, 2012.

- 620 Ignatius, K., Kristensen, T. B., Järvinen, E., Nichman, L., Fuchs, C., Gordon, H., Herenz, P., Hoyle, C. R., Duplissy, J., Garimella, S., Dias, A., Frege, C., Höppel, N., Tröstl, J., Wagner, R., Yan, C., Amorim, A., Baltensperger, U., Curtius, J., Donahue, N. M., Gallagher, M. W., Kirkby, J., Kulmala, M., Möhler, O., Saathoff, H., Schnaiter, M., Tomé, A., Virtanen, A., Worsnop, D., and Stratmann, F.: Heterogeneous ice nucleation of viscous secondary organic aerosol produced from ozonolysis of α -pinene, *Atmos. Chem. Phys.*, 16, 6495–6509, <https://doi.org/10.5194/acp-16-6495-2016>, 2016.
- 625 Järvinen, E., Ignatius, K., Nichman, L., Kristensen, T. B., Fuchs, C., Hoyle, C. R., Höppel, N., Corbin, J. C., Craven, J., Duplissy, J., Ehrhart, S., Haddad, I. E., Frege, C., Gordon, H., Jokinen, T., Kallinger, P., Kirkby, J., Kiselev, A., Naumann, K.-H., Petäjä, T., Pinterich, T., Prevot, A. S. H., Saathoff, H., Schiebel, T., Sengupta, K., Simon, M., Slowik, J. G., Tröstl, J., Virtanen, A., Vochezer, P., Vogt, S., Wagner, A. C., Wagner, R., Williamson, C., Winkler, P. M., Yan, C., Baltensperger, U., Donahue, N. M., Flagan, R. C., Gallagher, M., Hansel, A., Kulmala, M., Stratmann, F., Worsnop, D. R., Möhler, O., Leisner, T., and Schnaiter, M.: Observation of viscosity transition in alpha-pinene secondary organic aerosol, *Atmos. Chem. Phys.*, 16, 4423–4438, <https://doi.org/10.5194/acp-16-4423-2016>, 2016.
- 630 Jensen, E. J., Pfister, L., Bui, T.-P., Lawson, P., and Baumgardner, D.: Ice nucleation and cloud microphysical properties in tropical tropopause layer cirrus, *Atmos. Chem. Phys.*, 10, 1369–1384, <https://doi.org/10.5194/acp-10-1369-2010>, 2010.
- Jensen, E. J., Diskin, G., Lawson, R. P., Lance, S., Bui, T. P., Hlavka, D., McGill, M., Pfister, L., Toon, O. B., and Gao, R.: Ice nucleation and dehydration in the Tropical Tropopause Layer, *Proc. Natl. Acad. Sci.*, 110, 2041–2046, <https://doi.org/10.1073/pnas.1217104110>, 2013.
- Jöckel, P., Kerkweg, A., Buchholz-Dietsch, J., Tost, H., Sander, R., and Pozzer, A.: Technical Note: Coupling of chemical processes with the Modular Earth Submodel System (MESSy) submodel TRACER, *Atmos. Chem. Phys.*, 8, 1677–1687, [https://doi.org/10.5194/acp-8-](https://doi.org/10.5194/acp-8-1677-2008)
635 1677-2008, 2008.
- Jöckel, P., Kerkweg, A., Pozzer, A., Sander, R., Tost, H., Riede, H., Baumgaertner, A., Gromov, S., and Kern, B.: Development cycle 2 of the modular earth submodel system (MESSy2), *Geosci. Model Dev.*, 3, 717–752, <https://doi.org/10.5194/gmd-3-717-2010>, 2010.
- Kaiser, J. C., Hendricks, J., Righi, M., Riemer, N., Zaveri, R. A., Metzger, S., and Aquila, V.: The MESSy aerosol submodel MADE3 (v2.0b): description and a box model test, *Geosci. Model Dev.*, 7, 1137–1157, <https://doi.org/10.5194/gmd-7-1137-2014>, 2014.
- 640 Kaiser, J. C., Hendricks, J., Righi, M., Jöckel, P., Tost, H., Kandler, K., Weinzierl, B., Sauer, D., Heimerl, K., Schwarz, J. P., Perring, A. E., and Popp, T.: Global aerosol modeling with MADE3 (v3.0) in EMAC (based on v2.53): model description and evaluation, *Geosci. Model Dev.*, 12, 541–579, <https://doi.org/10.5194/gmd-12-541-2019>, 2019.
- Kanji, Z. A., DeMott, P. J., Möhler, O., and Abbatt, J. P. D.: Results from the University of Toronto continuous flow diffusion chamber at ICIS 2007: instrument intercomparison and ice onsets for different aerosol types, *Atmos. Chem. Phys.*, 11, 31–41, [https://doi.org/10.5194/acp-](https://doi.org/10.5194/acp-11-31-2011)
645 11-31-2011, 2011.
- Kanji, Z. A., Ladino, L. A., Wex, H., Boose, Y., Burkert-Kohn, M., Cziczo, D. J., and Krämer, M.: Overview of Ice Nucleating Particles, *Meteor. Monogr.*, 58, 1.1–1.33, <https://doi.org/10.1175/AMSMONOGRAPHS-D-16-0006.1>, 2017.
- Kärcher, B.: Cirrus clouds and their response to anthropogenic activities, *Curr. Clim. Change Rep.*, 3, 45–57, [https://doi.org/10.1007/s40641-](https://doi.org/10.1007/s40641-017-0060-3)
017-0060-3, 2017.
- 650 Kärcher, B. and Lohmann, U.: A parameterization of cirrus cloud formation: Homogeneous freezing of supercooled aerosols, *J. Geophys. Res. Atmos.*, 107, 4010, <https://doi.org/10.1029/2001JD000470>, 2002.
- Kärcher, B., Hendricks, J., and Lohmann, U.: Physically based parameterization of cirrus cloud formation for use in global atmospheric models, *J. Geophys. Res. Atmos.*, 111, D01 205, <https://doi.org/10.1029/2005JD006219>, 2006.

- 655 Koehler, K. A., DeMott, P. J., Kreidenweis, S. M., Popovicheva, O. B., Petters, M. D., Carrico, C. M., Kireeva, E. D., Khokhlova, T. D., and Shonija, N. K.: Cloud condensation nuclei and ice nucleation activity of hydrophobic and hydrophilic soot particles, *Phys. Chem. Chem. Phys.*, 11, 7906–7920, <https://doi.org/10.1039/B905334B>, 2009.
- Koop, T., Luo, B., Tsias, A., and Peter, T.: Water activity as the determinant for homogeneous ice nucleation in aqueous solutions, *Nature*, 406, 611, <https://doi.org/10.1038/35020537>, 2000.
- 660 Koop, T., Bookhold, J., Shiraiwa, M., and Pöschl, U.: Glass transition and phase state of organic compounds: dependency on molecular properties and implications for secondary organic aerosols in the atmosphere, *Phys. Chem. Chem. Phys.*, 13, 19238–19255, <https://doi.org/10.1039/c1cp22617g>, 2011.
- Kuebbeler, M., Lohmann, U., Hendricks, J., and Kärcher, B.: Dust ice nuclei effects on cirrus clouds, *Atmos. Chem. Phys.*, 14, 3027–3046, <https://doi.org/10.5194/acp-14-3027-2014>, 2014.
- Kulkarni, G., Sanders, C., Zhang, K., Liu, X., and Zhao, C.: Ice nucleation of bare and sulfuric acid-coated mineral dust particles and implication for cloud properties, *J. Geophys. Res. Atmos.*, 119, 9993–10011, <https://doi.org/10.1002/2014jd021567>, 2014.
- 665 Kulkarni, G., China, S., Liu, S., Nandasiri, M., Sharma, N., Wilson, J., Aiken, A. C., Chand, D., Laskin, A., Mazzoleni, C., Pekour, M., Shilling, J., Shutthanandan, V., Zelenyuk, A., and Zaveri, R. A.: Ice nucleation activity of diesel soot particles at cirrus relevant temperature conditions: Effects of hydration, secondary organics coating, soot morphology, and coagulation, *Geophys. Res. Lett.*, 43, 3580–3588, <https://doi.org/10.1002/2016GL068707>, 2016.
- 670 Laaksonen, A., Kulmala, M., O’Dowd, C. D., Joutsensaari, J., Vaattovaara, P., Mikkonen, S., Lehtinen, K. E. J., Sogacheva, L., Maso, M. D., Aalto, P., Petäjä, T., Sogachev, A., Yoon, Y. J., Lihavainen, H., Nilsson, D., Facchini, M. C., Cavalli, F., Fuzzi, S., Hoffmann, T., Arnold, F., Hanke, M., Sellegri, K., Umann, B., Junkermann, W., Coe, H., Allan, J. D., Alfarra, M. R., Worsnop, D. R., Riekkola, M. L., Hyötyläinen, T., and Viisanen, Y.: The role of VOC oxidation products in continental new particle formation, *Atmos. Chem. Phys.*, 8, 2657–2665, <https://doi.org/10.5194/acp-8-2657-2008>, 2008.
- 675 Ladino, L. A., Zhou, S., Yakobi-Hancock, J. D., Aljawhary, D., and Abbatt, J. P. D.: Factors controlling the ice nucleating abilities of α -pinene SOA particles, *J. Geophys. Res. Atmos.*, 119, 9041–9051, <https://doi.org/10.1002/2014JD021578>, 2014.
- Li, J., Hendricks, J., Righi, M., and Beer, C. G.: An aerosol classification scheme for global simulations using the K-means machine learning method, *Geosci. Model Dev.*, 15, 509–533, <https://doi.org/10.5194/gmd-15-509-2022>, 2022.
- 680 Liu, X., Penner, J. E., Das, B., Bergmann, D., Rodriguez, J. M., Strahan, S., Wang, M., and Feng, Y.: Uncertainties in global aerosol simulations: Assessment using three meteorological data sets, *J. Geophys. Res. Atmos.*, 112, D11 212, <https://doi.org/10.1029/2006JD008216>, 2007.
- Mahrt, F., Marcolli, C., David, R. O., Grönquist, P., Meier, E. J. B., Lohmann, U., and Kanji, Z. A.: Ice nucleation abilities of soot particles determined with the Horizontal Ice Nucleation Chamber, *Atmos. Chem. Phys.*, 18, 13363–13392, <https://doi.org/10.5194/acp-18-13363-2018>, 2018.
- 685 Mahrt, F., Kilchhofer, K., Marcolli, C., Grönquist, P., David, R. O., Rösch, M., Lohmann, U., and Kanji, Z. A.: The Impact of Cloud Processing on the Ice Nucleation Abilities of Soot Particles at Cirrus Temperatures, *J. Geophys. Res. Atmos.*, 125, <https://doi.org/10.1029/2019jd030922>, 2020.
- Marcolli, C.: Pre-activation of aerosol particles by ice preserved in pores, *Atmos. Chem. Phys.*, 17, 1595–1622, <https://doi.org/10.5194/acp-17-1595-2017>, 2017.
- 690 Martin, S. T.: Phase Transitions of Aqueous Atmospheric Particles, *Chem. Rev.*, 100, 3403–3454, <https://doi.org/10.1021/cr990034t>, 2000.

- Martin, S. T., Schlenker, J. C., Malinowski, A., Hung, H.-M., and Rudich, Y.: Crystallization of atmospheric sulfate-nitrate-ammonium particles, *Geophys. Res. Lett.*, 30, 1–6, <https://doi.org/10.1029/2003GL017930>, 2003.
- Martin, S. T., Hung, H.-M., Park, R. J., Jacob, D. J., Spurr, R. J. D., Chance, K. V., and Chin, M.: Effects of the physical state of tropospheric ammonium-sulfate-nitrate particles on global aerosol direct radiative forcing, *Atmos. Chem. Phys.*, 4, 183–214, <https://doi.org/10.5194/acp-4-183-2004>, 2004.
- 695 McGraw, Z., Storelvmo, T., Samset, B. H., and Stjern, C. W.: Global Radiative Impacts of Black Carbon Acting as Ice Nucleating Particles, *Geophys. Res. Lett.*, 47, e2020GL089056, <https://doi.org/https://doi.org/10.1029/2020GL089056>, 2020.
- Möhler, O., Field, P. R., Connolly, P., Benz, S., Saathoff, H., Schnaiter, M., Wagner, R., Cotton, R., Krämer, M., Mangold, A., and Heymsfield, A. J.: Efficiency of the deposition mode ice nucleation on mineral dust particles, *Atmos. Chem. Phys.*, 6, 3007–3021, <https://doi.org/10.5194/acp-6-3007-2006>, 2006.
- 700 Möhler, O., Benz, S., Saathoff, H., Schnaiter, M., Wagner, R., Schneider, J., Walter, S., Ebert, V., and Wagner, S.: The effect of organic coating on the heterogeneous ice nucleation efficiency of mineral dust aerosols, *Environ. Res. Lett.*, 3, 025007, <https://doi.org/10.1088/1748-9326/3/2/025007>, 2008.
- Mülmenstädt, J. and Feingold, G.: The Radiative Forcing of Aerosol–Cloud Interactions in Liquid Clouds: Wrestling and Embracing Uncertainty, *Curr. Clim. Change Rep.*, 4, 23–40, <https://doi.org/10.1007/s40641-018-0089-y>, 2018.
- Murphy, D. M. and Koop, T.: Review of the vapour pressures of ice and supercooled water for atmospheric applications, *Q.J.R. Meteorol. Soc.*, 131, 1539–1565, <https://doi.org/10.1256/qj.04.94>, 2005.
- Murray, B. J., Wilson, T. W., Dobbie, S., Cui, Z., Al-Jumur, S. M., Möhler, O., Schnaiter, M., Wagner, R., Benz, S., Niemand, M., Saathoff, H., Ebert, V., Wagner, S., and Kärcher, B.: Heterogeneous nucleation of ice particles on glassy aerosols under cirrus conditions, *Nat. Geosci.*, 3, 233–237, <https://doi.org/10.1038/NGEO817>, 2010.
- 710 Murray, B. J., Carslaw, K. S., and Field, P. R.: Opinion: Cloud-phase climate feedback and the importance of ice-nucleating particles, *Atmos. Chem. Phys.*, 21, 665–679, <https://doi.org/10.5194/acp-21-665-2021>, 2021.
- Nichman, L., Wolf, M., Davidovits, P., Onasch, T. B., Zhang, Y., Worsnop, D. R., Bhandari, J., Mazzoleni, C., and Cziczo, D. J.: Laboratory study of the heterogeneous ice nucleation on black-carbon-containing aerosol, *Atmos. Chem. Phys.*, 19, 12175–12194, <https://doi.org/10.5194/acp-19-12175-2019>, 2019.
- 715 Park, R. J., Jacob, D. J., Field, B. D., Yantosca, R. M., and Chin, M.: Natural and transboundary pollution influences on sulfate-nitrate-ammonium aerosols in the United States: Implications for policy, *J. Geophys. Res.*, 109, <https://doi.org/10.1029/2003jd004473>, 2004.
- Penner, J. E., Zhou, C., Garnier, A., and Mitchell, D. L.: Anthropogenic Aerosol Indirect Effects in Cirrus Clouds, *J. Geophys. Res. Atmos.*, 123, 11652–11677, <https://doi.org/10.1029/2018JD029204>, 2018.
- 720 Reid, J. P., Bertram, A. K., Topping, D. O., Laskin, A., Martin, S. T., Petters, M. D., Pope, F. D., and Rovelli, G.: The viscosity of atmospherically relevant organic particles, *Nat. Commun.*, 9, 956, <https://doi.org/10.1038/s41467-018-03027-z>, 2018.
- Righi, M., Hendricks, J., Lohmann, U., Beer, C. G., Hahn, V., Heinold, B., Heller, R., Krämer, M., Ponater, M., Rolf, C., Tegen, I., and Voigt, C.: Coupling aerosols to (cirrus) clouds in the global EMAC-MADE3 aerosol-climate model, *Geosci. Model Dev.*, 13, 1635–1661, <https://doi.org/10.5194/gmd-13-1635-2020>, 2020.
- 725 Righi, M., Hendricks, J., and Beer, C. G.: Exploring the uncertainties in the aviation soot–cirrus effect, *Atmos. Chem. Phys.*, 21, 17267–17289, <https://doi.org/10.5194/acp-21-17267-2021>, 2021.
- Roeckner, E., Arpe, K., Bengtsson, L., Christoph, M., Claussen, M., Dümenil, L., Esch, M., Giorgetta, M. A., Schlese, U., and Schulzweida, U.: The atmospheric general circulation model ECHAM-4: Model description and simulation of present-day climate, MPI Report, 1996.

- 730 Roeckner, E., Brokopf, R., Esch, M., Giorgetta, M., Hagemann, S., Kornbluh, L., Manzini, E., Schlese, U., and Schulzweida, U.: Sensitivity of Simulated Climate to Horizontal and Vertical Resolution in the ECHAM5 Atmosphere Model, *J. Clim.*, 19, 3771–3791, <https://doi.org/10.1175/JCLI3824.1>, 2006.
- Rogers, D. C., DeMott, P. J., Kreidenweis, S. M., and Chen, Y.: Measurements of ice nucleating aerosols during SUCCESS, *Geophys. Res. Lett.*, 25, 1383–1386, <https://doi.org/10.1029/97gl03478>, 1998.
- 735 Rogers, D. C., DeMott, P. J., and Kreidenweis, S. M.: Airborne measurements of tropospheric ice-nucleating aerosol particles in the Arctic spring, *J. Geophys. Res. Atmos.*, 106, 15 053–15 063, <https://doi.org/10.1029/2000jd900790>, 2001a.
- Rogers, D. C., DeMott, P. J., Kreidenweis, S. M., and Chen, Y.: A Continuous-Flow Diffusion Chamber for Airborne Measurements of Ice Nuclei, *J. Atmos. Oceanic Technol.*, 18, 725–741, [https://doi.org/10.1175/1520-0426\(2001\)018<0725:acfdcf>2.0.co;2](https://doi.org/10.1175/1520-0426(2001)018<0725:acfdcf>2.0.co;2), 2001b.
- 740 Rotman, D. A., Tannahill, J. R., Kinnison, D. E., Connell, P. S., Bergmann, D., Proctor, D., Rodriguez, J. M., Lin, S. J., Rood, R. B., Prather, M. J., Rasch, P. J., Considine, D. B., Ramarosan, R., and Kawa, S. R.: Global Modeling Initiative assessment model: Model description, integration, and testing of the transport shell, *J. Geophys. Res. Atmos.*, 106, 1669–1691, <https://doi.org/10.1029/2000jd900463>, 2001.
- Rumble, J. R.: CRC handbook of chemistry and physics, CRC press, 98 edn., 2004.
- Saukko, E., Zorn, S., Kuwata, M., Keskinen, J., and Virtanen, A.: Phase State and Deliquescence Hysteresis of Ammonium-Sulfate-Seeded Secondary Organic Aerosol, *Aerosol Sci. Technol.*, 49, 531–537, <https://doi.org/10.1080/02786826.2015.1050085>, 2015.
- Schill, G. P., De Haan, D. O., and Tolbert, M. A.: Heterogeneous ice nucleation on simulated secondary organic aerosol, *Environ. Sci. Technol.*, 48, 1675–1682, <https://doi.org/10.1021/es4046428>, 2014.
- 745 Schrod, J., Weber, D., Drücke, J., Keleshis, C., Pikridas, M., Ebert, M., Cvetković, B., Nickovic, S., Marinou, E., Baars, H., Ansmann, A., Vrekoussis, M., Mihalopoulos, N., Sciare, J., Curtius, J., and Bingemer, H. G.: Ice nucleating particles over the Eastern Mediterranean measured by unmanned aircraft systems, *Atmos. Chem. Phys.*, 17, 4817–4835, <https://doi.org/10.5194/acp-17-4817-2017>, 2017.
- Shiraiwa, M., Li, Y., Tsimpidi, A. P., Karydis, V. A., Berkemeier, T., Pandis, S. N., Lelieveld, J., Koop, T., and Pöschl, U.: Global distribution of particle phase state in atmospheric secondary organic aerosols, *Nat. Commun.*, 8, 15 002, <https://doi.org/10.1038/ncomms15002>, 2017.
- 750 Smith, M. L., Bertram, A. K., and Martin, S. T.: Deliquescence, efflorescence, and phase miscibility of mixed particles of ammonium sulfate and isoprene-derived secondary organic material, *Atmos. Chem. Phys.*, 12, 9613–9628, <https://doi.org/10.5194/acp-12-9613-2012>, 2012.
- Smith, M. L., You, Y., Kuwata, M., Bertram, A. K., and Martin, S. T.: Phase Transitions and Phase Miscibility of Mixed Particles of Ammonium Sulfate, Toluene-Derived Secondary Organic Material, and Water, *J. Phys. Chem. A*, 117, 8895–8906, <https://doi.org/10.1021/jp405095e>, 2013.
- 755 Tegen, I., Harrison, S. P., Kohfeld, K., Prentice, I. C., Coe, M., and Heimann, M.: Impact of vegetation and preferential source areas on global dust aerosol: Results from a model study, *J. Geophys. Res. Atmos.*, 107, 14–1–14–27, <https://doi.org/10.1029/2001JD000963>, 2002.
- Tsimpidi, A. P., Karydis, V. A., Pozzer, A., Pandis, S. N., and Lelieveld, J.: ORACLE (v1.0): module to simulate the organic aerosol composition and evolution in the atmosphere, *Geosci. Model Dev.*, 7, 3153–3172, <https://doi.org/10.5194/gmd-7-3153-2014>, 2014.
- 760 van Marle, M. J. E., Kloster, S., Magi, B. I., Marlon, J. R., Daniiau, A.-L., Field, R. D., Arneeth, A., Forrest, M., Hantson, S., Kehrwald, N. M., Knorr, W., Lasslop, G., Li, F., Mangeon, S., Yue, C., Kaiser, J. W., and van der Werf, G. R.: Historic global biomass burning emissions for CMIP6 (BB4CMIP) based on merging satellite observations with proxies and fire models (1750–2015), *Geosci. Model Dev.*, 10, 3329–3357, <https://doi.org/10.5194/gmd-10-3329-2017>, 2017.
- Wagner, R., Höhler, K., Huang, W., Kiselev, A., Möhler, O., Mohr, C., Pajunoja, A., Saathoff, H., Schiebel, T., Shen, X., and Virtanen, A.: Heterogeneous ice nucleation of α -pinene SOA particles before and after ice cloud processing, *J. Geophys. Res. Atmos.*, 122, 4924–4943, <https://doi.org/10.1002/2016JD026401>, 2017.

- Wagner, R., Ickes, L., Bertram, A. K., Els, N., Gorokhova, E., Möhler, O., Murray, B. J., Umo, N. S., and Salter, M. E.: Heterogeneous ice nucleation ability of aerosol particles generated from Arctic sea surface microlayer and surface seawater samples at cirrus temperatures, *Atmos. Chem. Phys.*, 21, 13 903–13 930, <https://doi.org/10.5194/acp-21-13903-2021>, 2021.
- 770 Wang, J., Hoffmann, A. A., Park, R. J., Jacob, D. J., and Martin, S. T.: Global distribution of solid and aqueous sulfate aerosols: Effect of the hysteresis of particle phase transitions, *J. Geophys. Res. Atmos.*, 113, D11 206, <https://doi.org/10.1029/2007JD009367>, 2008.
- Wilbourn, E. K., Thornton, D. C. O., Ott, C., Graff, J., Quinn, P. K., Bates, T. S., Betha, R., Russell, L. M., Behrenfeld, M. J., and Brooks, S. D.: Ice Nucleation by Marine Aerosols Over the North Atlantic Ocean in Late Spring, *J. Geophys. Res. Atmos.*, 125, <https://doi.org/10.1029/2019jd030913>, 2020.
- 775 Wise, M. E., Baustian, K. J., and Tolbert, M. A.: Laboratory studies of ice formation pathways from ammonium sulfate particles, *Atmos. Chem. Phys.*, 9, 1639–1646, <https://doi.org/10.5194/acp-9-1639-2009>, 2009.
- Zhu, J. and Penner, J. E.: Radiative forcing of anthropogenic aerosols on cirrus clouds using a hybrid ice nucleation scheme, *Atmos. Chem. Phys.*, 20, 7801–7827, <https://doi.org/10.5194/acp-20-7801-2020>, 2020.