

Heavy snowfall event over the Swiss Alps: Did wind shear impact secondary ice production?

Zane Dedekind^{*1}, Jacopo Grazioli^{*2}, Philip H. Austin¹, and Ulrike Lohmann³

¹Department of Earth, Ocean, and Atmospheric Sciences, University of British Columbia, Earth Sciences Building, 2207 Main Mall, Vancouver, BC, V6T 1Z4, Canada

²Environmental Remote Sensing Laboratory (LTE), École Polytechnique Fédérale de Lausanne (EPFL), Lausanne, Switzerland

³Institute of Atmospheric and Climate Science, ETH Zurich, Switzerland

*Equally contributing authors

Correspondence: Zane Dedekind (zane.dedekind@ubc.ca) and Jacopo Grazioli (jacopo.grazioli@epfl.ch)

Abstract. ~~Intense~~ The change in wind direction and speed with height, referred to as vertical wind shear, causes enhanced turbulence in the atmosphere. As a result, there are enhanced interactions between ice particles that break up during collisions in clouds which could cause heavy snowfall. For example, intense dual-polarization Doppler signatures in conjunction with strong vertical wind shear were observed by an X-band weather radar during a winter time ~~high~~ high-intensity precipitation event over the Swiss Alps. An enhancement of differential phase shift ($K_{dp} > 1 \text{ } ^\circ \text{ km}^{-1}$) around $-15 \text{ } ^\circ \text{ C}$ suggested that a large population of oblate ice particles was present in the atmosphere. Here, we ~~will~~ show that ice-graupel collisions are a likely origin of this population probably enhanced by turbulence. We perform sensitivity simulations that include ice-graupel collisions of a cold frontal passage to investigate whether these simulations can capture the event better and whether the vertical wind-shear had an impact on the secondary ice production (SIP) rate. The simulations are conducted with the Consortium for Small scale Modeling (COSMO), at a 1 km horizontal grid spacing in the Davos region in Switzerland. The rime-splintering simulations could not reproduce the high ice crystal number concentrations, produced too large ice particles and therefore overestimated the radar reflectivity. The collisional-breakup simulations reproduced both the measured horizontal reflectivity and the ground-based observations of hydrometeor number concentration more accurately ($\sim 20 \text{ L}^{-1}$). During 14:30-15:45 UTC the vertical wind shear strengthened by 60% within the region favorable for SIP. Calculation of the mutual information between the SIP rate and vertical wind shear and updraft velocity ~~suggested~~ suggests that the SIP rate is best predicted by the vertical wind shear rather than the updraft velocity. The ice-graupel simulations were insensitive to the ~~size restriction during~~ parameters in the model that controls the size threshold for the conversion from ice to graupel and snow to graupel.

1 Introduction

In clouds, ice particles play an important role for Earth's radiation budget and precipitation formation. Precipitation originates predominantly from mixed-phase clouds (MPCs) ~~and ice clouds~~ in the midlatitudes, especially over continental regions (Mül-

menstädt et al., 2015; Heymsfield et al., 2015, 2020). The formation of ice particles, therefore, needs to be described adequately if any attempt is made to understand the evolution of MPCs and ice clouds.

Ice formation can occur through primary and secondary ice production (SIP) processes. Primary ice production includes homogeneous freezing of supercooled liquid water at temperatures (T) $< \sim -38^\circ\text{C}$ and, while heterogeneous ice nucleation of supercooled liquid water dominates at warmer subzero temperatures ($T > \sim -38^\circ\text{C}$). After the first formation of ice particles, secondary ice processes may occur. In a narrow temperature range, $-3 \geq T \geq -8^\circ\text{C}$, rime splintering (Hallett and Mossop, 1974) can occur when supercooled liquid water collides with ice particles, freezes from the outside in and shatters as a result of internal pressure buildup. Rime splintering has been studied extensively in models but has been shown to be inadequate, having to capture SIP in wintertime orographic MPCs (Henneberg et al., 2017; Dedekind et al., 2021; Georgakaki et al., 2022). Ice-ice collisions have been more widely used in models in the last decade (Yano and Phillips, 2011; Phillips et al., 2017; Sullivan et al., 2018; Hoarau et al., 2018; Sotiropoulou et al., 2020; Zhao et al., 2021) since they were first studied in the laboratory about four decades ago (Vardiman, 1978; Takahashi et al., 1995). SIP as a result of ice-ice collisions was shown to contribute significantly to the ice crystal number concentrations and thereby explain the discrepancy between models and observations in the Arctic (Sotiropoulou et al., 2020; Zhao et al., 2021), Antarctic (Sotiropoulou et al., 2021b) and mid-latitudes (Sullivan et al., 2018; Dedekind et al., 2021; Georgakaki et al., 2022). The enhancement of smaller ice particles triggers an increase in the combined growth rates (riming and reduced riming due to the smaller ice crystals, but strong enhancement of deposition) of up to 33% resulting in larger latent heat release and stronger updraft velocities (Dedekind et al., 2021). When ice-ice collisions occur in wintertime orographic MPCs, the general tendency is for riming to decrease. Hence, the depositional growth rate dominates the growth rates of ice particles. Due to the stronger updrafts, ice particles are lofted to higher regions within the cloud reducing the local precipitation rates.

The impact of turbulence associated with baroclinic waves on cloud water and precipitation formation is well known (Baumgartner and Reichel, 1975; Houze and Medina, 2005; Medina and Houze, 2015). Updrafts on the scale of ~ 10 km from baroclinic waves have properties of shear-induced turbulence and it is these small cells of enhanced updraft and turbulence that drive orographic precipitation (Medina and Houze, 2015). In regions associated with mountainous terrain, strong shear layers at low-levels approaching a barrier were emphasized by Houze and Medina (2005) to set up turbulence which in turn aids in precipitation growth (by accretion) on the windward side of a mountain. Medina et al. (2005) showed in idealized simulations that a shear layer can develop as a response of flow to over the terrain, by which they concluded that this mechanism, in actual topography, caused turbulent overturning which enhanced precipitation formation. In their simulation, the precipitation formation was linked to enhanced accretion (see also Medina and Houze, 2015). The probability of interactions between cloud hydrometeors, whether through riming and/or aggregation, increases with increasing turbulence and aids in the rapid formation of precipitation regardless of whether the turbulence is associated with orographic flow regimes or in with warm conveyor belts (Houze and Medina, 2005; Gehring et al., 2020). These interactions are not limited to the accretion of cloud hydrometeors which causes them to grow but instead could also cause the fracturing of ice particles in ice-ice

collisions enhancing SIP. Dedekind et al. (2021) hypothesized that ice-graupel collisions ~~could also be~~ are sensitive to the rate at which graupel forms, which is a function of the ~~size of ice particle~~ ice particle size and the riming rate. In the Seifert and Beheng (SB 2006) two-moment cloud microphysics scheme (2M) used in this study, ice crystals or snow undergoing riming can only be converted to graupel once they reach a size of 200 μm .

60 Remote sensing from weather radars is used to study snowfall microphysics and hydrometeors' habit (e.g., shape, phase or hydrometeor type). Although radar observations do not provide direct information on SIP, a few studies leveraged the Doppler and/or dual-polarization capabilities of weather radars to identify the occurrence of SIP and to speculate case-by-case on the possible mechanisms behind its origin. Two ~~non-mutually-exclusive~~ approaches can be found in the literature. Zawadzki et al. (2001); Oue et al. (2015); Luke et al. (2021) exploited Doppler spectra collected by vertically-pointing radars to identify the
65 appearance of secondary populations of particles at given altitudes or temperature levels. Other approaches (Hogan et al., 2002; Andrić et al., 2013; Sinclair et al., 2016; Kumjian and Lombardo, 2017) focused on the interpretation of the signature of dual-polarization variables and their respective evolution over the vertical column of precipitation. This second approach, also used in this study, leverages the fact that dual-polarization variables are complementary and impacted differently by changes in number, shape, size and density of hydrometeors. Additional information (in-situ data, models, or a combination of more
70 radars) is typically needed to increase confidence in the retrievals collected.

In this paper, we propose that the vertical wind shear associated with a cold-front passage over the mountains of eastern Switzerland enhanced the formation of small and numerous oblate ice particles through ice-ice collisions. The ice-ice collisions explain the peculiar signatures in the data collected by a Doppler dual-polarization radar deployed in the region.. We address the following questions:

- 75 – Can these radar signatures be attributed to high ice crystal number concentrations linked to SIP other than rime splintering?
- By including ice-graupel collisions in the model, can we simulate the high ice crystal number concentrations that were observed?
- Was there a correlation between the vertical wind shear and SIP?
- 80 – How sensitive are SIP rates to the conversion rate of ice particles to graupel?

2 Methods

2.1 Weather radar and 2 dimensional video disdrometer (2DVD)

The principle of dual-polarization for weather radars relies on radars transmitting pulsed horizontally and vertically polarized waves (Field et al., 2016). The waves interact with precipitation and suspended condensate, looking at the differences in power and phase of the echoes in each polarization, information about the orientation, size, number concentration (and phase) of the
85 hydrometeors being sampled can be retrieved. Horizontal (vertical) reflectivity Z_H (Z_V) and differential reflectivity Z_{DR} are

variables that exploit the power intensity of the echoes. Z_H [dBz] increases as particles get larger and/or denser and/or more numerous. Z_{DR} [dB] is the difference $Z_H - Z_V$ and can be used to distinguish oblate particles ($Z_{DR} > 0$) from prolate ones ($Z_{DR} < 0$), while it has near-zero values for spherical particles. In an environment where preferentially-oriented anisotropic ice particles are dominant, Z_{DR} deviations from near-zero values are frequently observed (Bader et al., 1987; Kumjian et al., 2014). When ice particles form aggregates, and become larger and less oblate, Z_{DR} decreases while Z_H increases (Schneebeli et al., 2013; Kumjian et al., 2014; Grazioli et al., 2015a). The backscattered power is different for horizontal and vertical polarizations in the presence of anisotropic particles, as is the propagation speed of the waves.

The rate of change in phase shift between the horizontal and vertical polarized echoes is expressed by the specific differential phase shift K_{dp} [$^{\circ}\text{km}^{-1}$]. This variable is complementary and not redundant; it is in fact not affected by the absolute calibration of a radar and is less affected than Z_{DR} by the eventual presence of large isotropic particles within the sampling volume. For instance, local K_{dp} enhancements during snowfall have been documented (Schneebeli et al., 2013; Bechini et al., 2013) and in some cases been associated with SIP (e.g., Andrić et al., 2013; Grazioli et al., 2015a; Sinclair et al., 2016). Grazioli et al. (2015a) suggested in a case study that an increase of K_{dp} can be due to a very large number concentrations of rimed anisotropic ice crystals resulting from ice-ice collision collisions. A recent study (von Terzi et al., 2022) suggested that the K_{dp} enhancement was due to a combination of secondary ice production and an appropriate temperature range $T \approx -15^{\circ}\text{C}$ (where growth of planar crystals by vapor deposition, dendrites in particular, is maximized) can lead to this signature. Dendrites have very low densities, favor aggregation below (hence the increase of Z_H below K_{dp} Z_H below K_{dp} peaks) and can easily fracture on impact with other ice particles.

~~In this paper, we propose that the vertical wind shear associated with a cold front passage over the mountains of eastern Switzerland enhanced the formation of small and numerous oblate ice particles through ice-ice collisions. The ice-ice collisions explain the peculiar signatures in the data collected by a Doppler dual-polarization radar deployed in the region. We address the following questions:-~~

- ~~- Can these radar signatures be attributed to high ice number concentrations linked to SIP other than rime splintering?-~~
- ~~- By including ice-graupel collisions in the model, can we simulate the high ice number concentrations that were observed?-~~
- ~~- Was there a correlation between the vertical wind shear and SIP?-~~
- ~~- How sensitive are SIP rates to the conversion rate of ice particles to graupel?-~~

3 Methods

2.1 Weather radar and 2 dimensional video disdrometer (2DVD)

A X-band dual-polarization mobile Doppler weather radar (MXPOL) of the École Polytechnique Fédérale de Lausanne Environmental Remote Sensing Laboratory (EPFL-LTE) was set up at 2 133 m ~~a.s.l.~~ above mean sea level (amsl) on a ski slope

overseeing the valley of Davos (Schneebeili et al., 2013) from the southern side as shown in figure 1. Its exact location was 46.789° N and 9.843° E (see Sec 2.1). MXPoL is well suited for deployment in complex Alpine ~~terrains-terrain~~ or remote lo-
 120 cations (e.g. Schneebeili et al., 2013; Grazioli et al., 2015a, 2017) and ~~was~~ operated from September 2009 to July 2011. The radar was routinely scanning over the valley of Davos in a sequence including pseudo-horizontal scans (fixed elevation and variable azimuth) and 2D vertical cross-sections (fixed azimuth scans with elevation ranging from 0° to 90°, ~~better~~ known as Range Height Indicator or RHI scans). One RHI scan in particular, used as a data source of this study, was conducted every 5 minutes towards NE, at an azimuth of 22°. Only observations collected at elevation angles below 40° are used, in order to
 125 limit the effect of elevation dependencies on the polarimetric variables (Ryzhkov et al., 2005). MXPoL provides single (Z_H) and dual-polarization (Z_{DR} , K_{dp} , ρ_{HV}) measurements as well as Doppler data which have been proven useful in several snowfall microphysics studies (e.g. Schneebeili et al., 2013; Grazioli et al., 2015a; Kumjian and Lombardo, 2017; Oue et al., 2021). Additionally, retrieval algorithms adapted to polarimetric data allow ~~one-to-estimate-for-estimated~~ properties such as hydrometeor type (Grazioli et al., 2015b, as used in this work) or, under given assumptions, microphysical quantities such as ice ~~crystal~~
 130 number concentration N_t , median volume diameter \bar{D}_m or ice water content (IWC). The hydrometeor classification method discriminates between three ice-phase dominant hydrometeor types: individual ice crystals, aggregates and rimed particles.

The microphysical quantities can ~~instead~~ be estimated from ~~combinations-a combination~~ of Z_H , Z_{DR} , K_{dp} and the radar wavelength following Murphy et al. (2020):

$$IWC = 4 \times 10^{-3} \frac{K_{dp} \lambda}{1 - Z_{dr}^{-1}} \quad (1)$$

135

$$\log_{10}(N_t) = 0.1 Z_H - 2 \log_{10} \left(\frac{Z_{dp}}{K_{dp} \lambda} \right) - 1.11 \quad (2)$$

$$\bar{D}_m = -0.1 + 2 \left(\frac{Z_{dp}}{K_{dp} \lambda} \right)^{0.5} \quad (3)$$

In these equations, IWC is expressed in [g m^{-3}], N_t in [L^{-1}] and \bar{D}_m in [mm]. λ is the radar wavelength in [mm], $Z_{dr} =$
 140 $10^{0.1 Z_{DR}}$ is the differential reflectivity in linear units, $Z_{dp} = 10^{0.1 Z_H} - 10^{0.1 Z_V}$ is the reflectivity difference in linear units [$\text{mm}^6 \text{m}^{-3}$]. More details about the ~~derivation-of-the-derivations-of-these~~ equation can be found in Ryzhkov and Zrnich (2019); Murphy et al. (2020) ~~but it is worth to focus on the main assumptions and limitations~~. The main assumptions are:

- The equations are derived assuming to be in the Rayleigh regime (~~which may not be fulfilled~~) for the X-band ~~radar-for-wavelength and~~ large hydrometeors.
- 145 – The density and the size of the hydrometeors are assumed to be inversely proportional, ~~which is not fulfilled for hail~~.

The retrievals have shown to be most reliable at $T < -10^\circ\text{C}$, for low riming degrees and in regions where the K_{dp} and Z_{DR} signals are not close to 0. As recognized by Murphy et al. (2020), the errors may be large and in situ validation efforts are

needed to refine these techniques. As a final caveat, the equations developed ~~on-theoretical-basis~~ theoretically are in practice very sensitive to the accuracy of the polarimetric variables, which can be very noisy. K_{dp} in particular is an estimated variable affected by mean errors on the order of 30% (Grazioli et al., 2014a).

An additional ground-based source of information for this event is provided by a ~~2-dimensional~~ 2-dimensional video disdrometer, 2DVD (For more information about this instrument at this location see Grazioli et al., 2014b) which was deployed on the opposite side of the Davos valley with respect to MXPoI (46.830° N and 9.810° E, 2543 m. amsl). The 2DVD measures the size and fall velocity of hydrometeors captured within its measurement area of 11 cm × 11 cm. The 2DVD is used in this study as ground reference to quantify the number concentration of ~~snowfall-particles~~ snow flakes (larger than 0.2 mm in terms of maximum dimension, according to the sensitivity of the instrument itself) at a temporal resolution of 5 minutes.

2.1 Model setup

2.1.1 Spatial and temporal resolution

The Consortium for Small Scale Modelling (COSMO; Baldauf et al., 2011) non-hydrostatic model, version 5.4.1b, was used for this case study. COSMO has been used to study wintertime (Lohmann et al., 2016; Henneberg et al., 2017; Dedekind et al., 2021) and summertime (Dedekind, 2021; Eirund et al., 2021) orographic MPCs in the Swiss Alps. The model domain roughly covers a region of 500 km × 600 km (44.5 to 49.5° N and 4 to 13° E) at a horizontal grid spacing of 1.1 km × 1.1 km (Fig. 1). A height based hybrid smoothed level vertical coordinate system (Schär et al., 2002) with 80 levels is used and stretched from the surface to 22 km. For this study, we simulate the cold front passage between 11:00 and 18:00 UTC and analyze the results between 13:00 and 18:00 UTC on March 26, 2010. COSMO is forced with ~~hourly-initial-and-boundary-conditions~~ initial and hourly boundary conditions from re-analysis data at a horizontal resolution of 7 km × 7 km, supplied by MeteoSwiss. The model time step is 4 s with an output frequency every 15 min.

Simulations were conducted including several SIP processes, which consisted of ice-graupel collisions (as thoroughly discussed in section 2.2.2 below) and a control simulation, referred to as the rime splintering (RS) simulation, where only rime splintering was active. For each of these setups, 5 ensemble simulations are conducted by perturbing the initial temperature conditions at each grid point through the model domain with unbiased Gaussian noise at a zero mean and a standard deviation of 0.01 °C (Selz and Craig, 2015; Keil et al., 2019). ~~The model output was interpolated along the mean of three vertical cross-sectional paths,~~ To account for the uncertainty associated with simulating atmospheric processes in mountainous terrain, three cross-sections were interpolated from the model output (only the outer two cross-sections are shown in Fig. 1). Each cross-section, of which one cross-section cuts more or less through the location of the radar, is separated by 1.3 km wide, similar to direction of km which is similar to the model resolution. The direction of each of the cross-sections is similar to the direction of the generated RHI cross-section from the RHI cross-section conducted by the weather radar (Fig. 1). The three cross-sections of the simulations were averaged to create a mean cross-section which is then are then averaged and compared to the radar data. To generate the Hovmöller diagrams, we further took the mean along the length of the cross-section for both the simulations and the radar data.

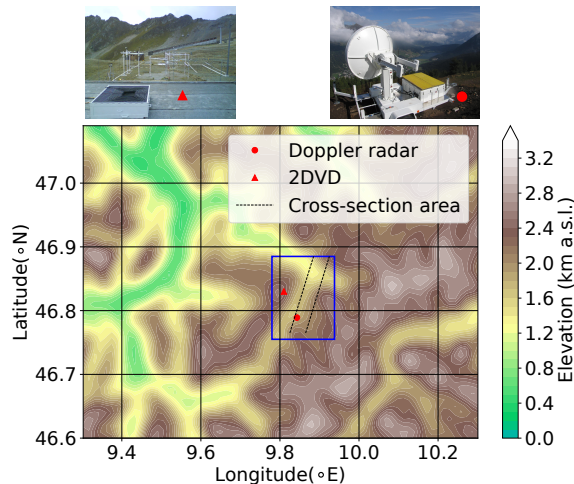


Figure 1. Overview of the model orography and the instrument location setup. The parallelogram (dashed black lines) is the domain of the flow-oriented vertical cross-section analysis in section 3.1 following the direction of the dual-polarized Doppler radar MXPoI (the red dot located at 46.789° N and 9.843° E) data. The blue box is the domain used for analysis in section 3.2 and 3.3. The red triangle is the location of the ground-based video disdrometer.

2.1.2 Cloud microphysics scheme

We use a detailed two-moment bulk cloud microphysics scheme within COSMO with six hydrometeor categories, including cloud droplets, rain, ice, snow, graupel and hail (Seifert and Beheng, 2006). The 2M scheme has been used extensively to study the evolution, lifetime, persistence and aerosol-cloud interactions of MPCs (Seifert et al., 2006; Baldauf et al., 2011; Lohmann et al., 2016; Possner et al., 2017; Henneberg, 2017; Glassmeier and Lohmann, 2018; Sullivan et al., 2018; Eirund et al., 2019, 2021). We refer to ice particles as any combination of the hail, graupel, snow or ice categories. Cloud droplet activation is based on an empirical activation spectrum which depends on the cloud-base vertical velocity and the prescribed number concentration of cloud condensation nuclei (Seifert and Beheng, 2006). The application is appropriate in atmospheric models with a horizontal grid size and time resolution of $\Delta x \leq 1$ km and $\Delta t < 10$ s respectively. The warm-phase autoconversion process from Seifert and Beheng (2001) was updated with the collision efficiencies from Pinsky et al. (2001) and also takes into account the decrease in terminal fall-velocity associated with an increase in air density. A better approximation of the collision rate between hydrometeors was also introduced by Seifert and Beheng (2006), which makes use of the Wisner-approximation (Wisner et al., 1972).

The primary Primary production of ice formation is described by the occurs via homogeneous and heterogeneous nucleation pathways. Homogeneous freezing of cloud droplets, parameterized from the homogeneous freezing rates of Cotton and Field (2002), is calculated for $0 > T \geq -50^\circ\text{C}$. At -38°C most cloud droplets will freeze given the enhanced homogeneous nucleation rates at colder temperatures. As a lower bound the homogeneous freezing of all cloud droplets occurs at $T = -50^\circ\text{C}$. The

homogeneous nucleation of solution droplets, typically associated with cirrus cloud formation follows Kärcher et al. (2006). Here, the number density and size of nucleated ice crystals is determined by the vertical wind speed, temperature and pre-existing cloud ice. Heterogeneous nucleation is empirically derived which depends on the chemical composition and surface area of multiple species of aerosols, namely organics, soot and dust (Phillips et al., 2008).

Secondary ice production through rime splintering ~~is, which is widely used in numerical weather prediction models, is~~ the only process that is included in the standard version of COSMO ~~which has been used extensively in other numerical weather models~~ (Blyth and Latham, 1997; Ovtchinnikov and Kogan, 2000; Phillips et al., 2006; Milbrandt and Morrison, 2016; Phillips et al., 2017). In COSMO, rime splintering occurs at $-3 \geq T \geq -8$ °C (Hallett and Mossop, 1974) when supercooled droplets and rain drops ($D_{c,r} \geq 25$ μm) collide with ice hydrometeors ($D_{i,s,g} \geq 100$ μm) (e.g Seifert and Beheng, 2006). A default value of 350 fragments per milligram of rime is used in the rime splintering parameterization. Another SIP process, collisional breakup, was added to COSMO and tested in several studies (Sullivan et al., 2018; Dedekind et al., 2021). ~~During collisional breakup graupel collides with~~ Generally, collisional breakup refers to the collision of any two frozen hydrometeors with different densities in which the collisional kinetic energy is sufficient that the collisional impact causes shattering. Here, collisional breakup is when either ice and/or snow particles ~~and fractures collide with graupel and fracture~~. This can increase the ice particles at temperatures warmer than -21 °C. ~~Several studies (e.g Sotiropoulou et al., 2021b; Dedekind et al., 2021) have considered reducing the effectiveness of the collisional breakup parameterization due to the discrepancies in the large hail particles and their corresponding fall velocities used in the laboratory study conducted by Takahashi et al. (1995). Because the parameterization from Sullivan et al. (2018) is based on experimental results by Takahashi et al. (1995), it is constrained to only ice-graupel collisions and may not be adequate when studying ice-ice collisions in winter-time MPCs consisting of mainly ice and snow crystals. The amount of fractures that can be generated in snow-ice collisions might, on the contrary, not be significant because of the low collision kinetic energy. Almost no empirical constraint, apart from Takahashi et al. (1995) who used collisions~~ between ~~unrimed particles~~ hail-sized particles, exists for the efficiency of any form of collisional breakup. The collisional kinetic energy and the density between hydrometeors are important parameters for this efficiency. In this study of the heavy snowfall event during which high K_{dp} values were ~~reoreded~~ recorded, we use the parameterizations for ice-graupel collisional breakup (BR) from Dedekind et al. (2021, BR28 and BR2.8T) and Sotiropoulou et al. (2021b, BR-Sot) in COSMO in different forms:

$$N_{BR} = \frac{F_{BR}}{\alpha} (T - 252)^{1.2} \exp \left[-(T - 252) / \gamma_{BR} \right], \quad \text{for BR28} \quad (F_{BR}, \alpha, \gamma_{BR}) = (280, 10, 2.5) \quad (4)$$

$$N_{BR} = \frac{F_{BR}}{\alpha} (T - 252)^{1.2} \exp \left[-(T - 252) / \gamma_{BR} \right], \quad \text{for BR2.8T} \quad (F_{BR}, \alpha, \gamma_{BR}) = (280, 100, 5) \quad (5)$$

$$N_{BR} = F_{BR} (T - 252)^{1.2} \exp \left[-(T - 252) / \gamma_{BR} \right] \frac{\bar{D}}{D_0}, \quad \text{for BR-Sot} \quad (F_{BR}, \bar{D}_0, \gamma_{BR}) = (280, 0.02, 5) \quad (6)$$

Table 1. Sensitivity settings for the collisional breakup (BR) parameterization. The conversion rate (conv) is the size, in μm , at which rimed ice crystals or snow flakes are converted to graupel, α is the scale factor, F_{BR} the fragments generated and γ_{BR} the decay rate of fragment number at warmer temperatures. When $\gamma_{\text{BR}} = 5$, as used in the Takahashi parameterization (Sullivan et al., 2018), then T is included in the simulation name.

<u>conv</u>	<u>α</u>	<u>F_{BR}/α</u>	<u>$\gamma_{\text{BR}} = 5$</u>	<u>$\gamma_{\text{BR}} = 2.5$</u>
<u>200</u>	<u>1</u>	<u>280</u>	<u>BR-Sot</u>	
<u>200</u>	<u>10</u>	<u>28</u>		<u>BR28</u>
<u>200</u>	<u>100</u>	<u>2.8</u>	<u>BR2.8T</u>	
<u>300</u>	<u>100</u>	<u>2.8</u>	<u>BR2.8T_300</u>	
<u>400</u>	<u>100</u>	<u>2.8</u>	<u>BR2.8T_400</u>	
<u>500</u>	<u>100</u>	<u>2.8</u>	<u>BR2.8T_500</u>	

230 where N_{BR} is the number of fragments generated per collision, α is the scale factor, F_{BR} is the leading coefficient, T is the temperature in Kelvin, γ_{BR} is the decay rate of the fragment number at warmer temperatures, \bar{D} is the diameter of ~~partiele~~ particles undergoing fracturing and \bar{D}_0 is the diameter of the hail particles used in Takahashi et al. (1995). ~~Only using ice-graupel collisions would limit the full description of SIP as a result of wind shear when graupel formation becomes restricted.~~ Because of the ~~above mentioned~~ inconsistency between the hail particles and their corresponding fall velocity used
235 in Takahashi et al. (1995), which is described in more detail in Dedekind et al. (2021), all the parameterizations (Eqs. 4, 5 and 6) have scaling factors. Equations 4 and 5 were applied in Dedekind et al. (2021) for the BR28 and BR2.8T simulations, respectively. Equation 4 is scaled by $\alpha = 10$ and has a slower decay rate of fragment number at warmer temperatures represented by $\gamma_{\text{BR}} = 2.5$ and equation 5 is scaled by 100 while using the same decay rate of fragment numbers of $\gamma_{\text{BR}} = 5$ as used
240 in Sotiropoulou et al. (2021b). They used a scaling parameter, \bar{D}/\bar{D}_0 , that was applied to the breakup parameterization from Sullivan et al. (2018) where $\bar{D}_0 = 0.02$ m.

Similar to Dedekind (2021), the ICNC in COSMO is limited to 2000 L^{-1} . Furthermore, Dedekind (2021) concluded that the conversion rate from ice crystals or snow to graupel, which is a function of the riming rate of ice crystals or snow with raindrops, may contribute to enhanced collisional breakup (Seifert et al., 2006). In eq. (70) of Seifert and Beheng (2006), they
245 specify that ice and snow crystals can only be converted to graupel once they reach $\bar{D}_{i,s} \geq 500 \mu\text{m}$. However, in the current version of the 2M scheme (as used in this study), ice and snow crystals are converted to graupel already once they exceed $\bar{D}_{i,s} \geq 200 \mu\text{m}$. Therefore, earlier graupel formation is promoted in the current version which should lead to enhanced SIP

though ice-graupel collisions. To test the model's sensitivity to these different thresholds for graupel formation, we set-up sensitivity studies with graupel formation at $\bar{D}_{i,s} \geq 300, 400$ and $500 \mu\text{m}$, respectively, to understand how the conversion rate
250 impacts SIP processes. To accomplish this we change the ice category conversion size requirement, $\bar{D}_{i,s}$, during riming from $200 \mu\text{m}$ (BR2.8T), to $300 \mu\text{m}$ (BR2.8T_300), to $400 \mu\text{m}$ (BR2.8T_400) and lastly to $500 \mu\text{m}$ (BR2.8T_500). [The results of these sensitivity simulations can be found in the Appendix C.](#)

To investigate the impact of vertical wind shear and updraft on SIP the probability density functions (PDFs) for the variables from the collisional breakup simulations are analyzed. Furthermore, the joint PDFs are calculated along with the mutual
255 information (MI, Shannon and Weaver, 1949) score which quantifies the strengths of dependencies between the SIP rate and cloud properties (e.g., Dawe and Austin, 2013). For this purpose a $10 \text{ km} \times 10 \text{ km}$ region was selected and masked by the levels in which SIP occurred ($T > -21^\circ \text{C}$, [blue box in Fig. 1](#)) from 15:15 to 16:30 UTC. This resulted in the 16 121 data points for which an expression from Hacine-Gharbi et al. (2013) was used for finding the optimal number of bins (17 bins in our case) to estimate the MI for continuous random variables.

260 3 Results

3.1 The case study

A synoptic system passed over Switzerland on 26 March 2010. ~~The cold front 2010 during which we analyze the evolution of a cold front from 13:00 to 17:30 UTC with intense precipitation from 15:00 to 17:30 UTC. Furthermore, the cold front was associated with a surface temperature drop of $\sim 7^\circ \text{C}$ (Fig. S1), a south-westerly wind flow at higher altitudes, the development of peculiar polarimetric radar signatures (e.g. an intense K_{dp}), vertical wind shear closer to the surface below 4 km amsl, a surface temperature drop of $\sim 7^\circ \text{C}$ (Fig. S1) and intense snowfall in the afternoon and the development of peculiar polarimetric radar signatures (e.g. an intense K_{dp}).~~ In particular K_{dp} reached values around $1.5^\circ \text{ km}^{-1}$ at certain height levels and towards the end of the event it was exceeding 2° km^{-1} (Fig. 3a). ~~K_{dp} scales with radar frequency.~~ A statistical analysis of K_{dp} in snowfall conducted with this radar and in this location over a long observation period (Schneebeli et al., 2013), showed that the
265 80% quantile of K_{dp} at every height level is lower than $0.5^\circ \text{ km}^{-1}$. Considering that the distribution of K_{dp} is very skewed, values above 1° km^{-1} in snow can be considered as unusually large.

Wind shear, observed by the dual-polarization Doppler radar, was visible between 2 and 5 km amsl (Fig. 2a). The wind velocity at lower altitudes shifted from southerly to a northerly which was captured in all simulations, albeit not as prominent as the observations (Figs. 2b-e). The wind shear and the associated updrafts may have contributed to an enhanced SIP rate
275 between 3 and 5 km in the collisional breakup simulations (Fig. 2b-ec-e). Here, the bulk Richardson number, which is a ratio of the buoyant energy to shear-kinetic energy, is determined to assess the dynamic stability of the air layer. An air layer becomes turbulent if the Richardson number is less than the critical Richardson number of 0.25 (e.g., Stull, 2016)(e.g., Stull, 2016). Figure 2b-e show where the air layer was turbulent with enhanced interactions between ice particles and could have caused enhanced ice-graupel collisions. Regions of enhanced updraft, where hydrometeors can grow to larger sizes, were mostly seen
280 immediately above the turbulent layer.

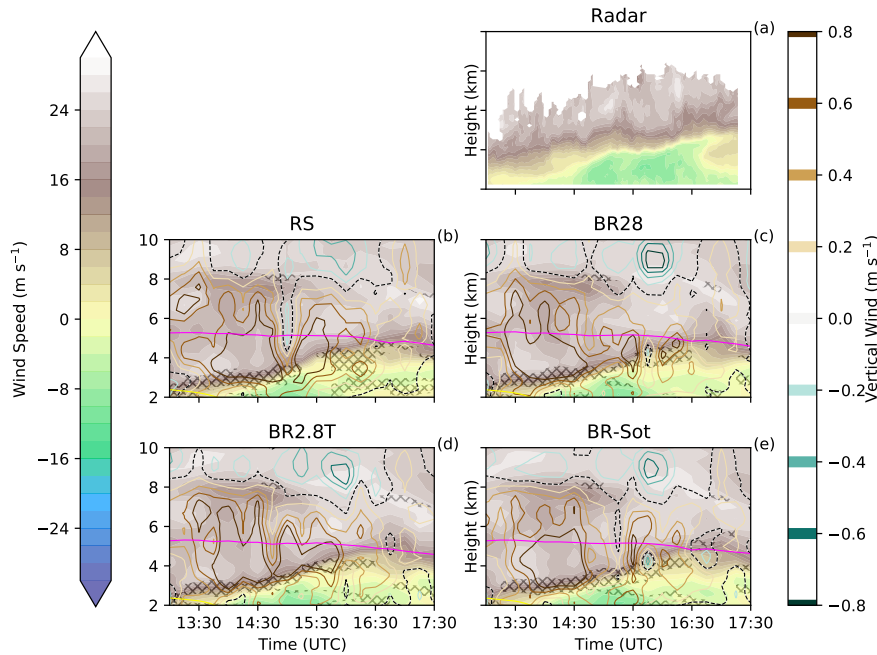


Figure 2. Hovmöller diagrams of wind speed and vertical velocity for panels (a) Doppler radar, (b) RS, (c) BR28, (d) BR2.8T and (e) BR-Sot between 13:00 and 17:30 UTC. The blue and red colors filled contours denote wind blowing towards (blue and green) and away (white and brown) from the radar respectively. The pink line is the $-21\text{ }^{\circ}\text{C}$ isotherm. At warmer temperatures collisional breakup occurs. The shaded gray area is Hatching denotes the cloud area fraction. The hatched is the region where the air layer is dynamically unstable determined by a bulk Richardson number of less than 0.25.

The sub-zero temperature in the region of enhanced K_{dp} was warmer than $-21\text{ }^{\circ}\text{C}$, which is in the temperature range favourable for ice-graupel collisions (Takahashi et al., 1995). We thus hypothesize that the in-situ cloud conditions together with the vertical wind shear could have triggered higher secondary ice production rates that can be reflected in radar measurements, as K_{dp} is only an indicator of number high a possible indicator of high number concentrations of oblate hydrometeors in the radar sampling volume (Kennedy and Rutledge, 2011; Bechini et al., 2013; Grazioli et al., 2015a; von Terzi et al., 2022).

3.2 Simulated vs observed radar reflectivity

3.2.1 Model and Doppler radar comparison

Horizontal reflectivity Z_H is used to compare the model to the observations throughout the cloud and to analyze the impact of secondary ice production on the simulated radar reflectivity. During the early afternoon, the median of Z_H remained mostly below 20 dBz. At around 15:15 UTC larger ice hydrometeors were present (either as a result of enhanced aggregation or depositional growth) between 4 and 6 km amsl which then started to sediment (Fig. 3c and d). A peak in Z_H at 3 km amsl

was observed in the fall streaks when the cloud droplets rimed onto the sedimenting ice hydrometeors. The RS simulation overestimated Z_H , by at least 8 dBz throughout the vertical profile at 15:30 UTC, while all the collisional breakup simulations captured Z_H more accurately, especially between 3 and 5 km amsl (Figs. 4 and 5a). The radar-derived hydrometeor classification
295 showed that much of the ice hydrometeor growth occurred through aggregation and riming. At 15:30 UTC, a very high median $K_{dp} > 1 \text{ }^\circ \text{ km}^{-1}$ and $Z_{DR} > 1 \text{ dB}$ were observed (Fig. 5eb). The vertical evolution of K_{dp} and Z_{DR} is similar, with a peak observed about 4 km amsl, which is 1 km above the peak in Z_H (Fig. 5db). The large and colocated values of Z_{DR} and K_{dp} suggest that a large population of oblate
~~particles were present at these heights. The increase in Z_H and colocated decrease of K_{dp} and Z_{DR} below suggest that larger (and/or denser) and more isotropic particles were forming. Aggregation and riming, not mutually~~
300 ~~exclusive, both explain this behavior.~~ rimed particles, without a significant presence of large isotropic hydrometeors, were present.

~~During the entire~~ Later, during the event (Fig. 3) the peak of Z_{DR} was more often above the peak of K_{dp} , suggesting that the population of particles in the areas of enhanced K_{dp} also included larger isotropic aggregates. The occurrence of peaks in polarimetric variables at certain heights above ground (K_{dp} in particular) has been observed during intense snowfall events (e.g.
305 Kennedy and Rutledge, 2011; Schneebeli et al., 2013; Grazioli et al., 2015a). The K_{dp} enhancement in particular has often been observed near the -15°C isotherm and has been interpreted as the signature of enhanced dendritic growth (Kennedy and Rutledge, 2011; Bechini et al., 2013) in combination with secondary ice production (von Terzi et al., 2022). Dendrites are prone to aggregation and therefore the K_{dp} peak disappears (and Z_H increases) as particles approach the ground level.

3.2.2 Modelled and measured cloud properties

310 Throughout the vertical profile below 6 km at 15:30 UTC, the ice crystal number concentration was at least an order of magnitude larger than expected from the RS simulation with a SIP rate in excess of $20 \text{ L}^{-1} \text{ s}^{-1}$ (Fig. 6). In both figures 6 and S2 the observed ice crystal number concentration recorded by the disdrometer ($\sim 20 \text{ L}^{-1}$) was remarkably well represented at the surface by the BR2.8T and BR-Sot simulations (similar results are shown in Dedekind et al., 2021). The ice crystal and snow number concentrations were orders of magnitudes larger for $\bar{D}_i < 0.4 \text{ mm}$ and $\bar{D}_s < 0.8 \text{ mm}$ respectively compared to the
315 RS simulation (Fig. 7a and b).

During the late stage of the snowfall event, at 17:00 UTC, the replenishment of graupel diminished rapidly (Figs. 8 and S2c) causing a substantial reduction in the SIP rate (Fig. S2). Less collisional breakup allowed the ice and snow crystals to grow to larger sizes, $\bar{D}_i \sim 1.2 \text{ mm}$ and $\bar{D}_s \sim 3.3 \text{ mm}$ respectively, primarily through deposition and/or aggregation (Fig. S3a, b). A lower Z_{DR} is consistent with less anisotropic particles produced by aggregation and/or riming. However, the enhanced concentration
320 of oblate particles (increase in K_{dp}) was in contrast to the simulations showing a reduction in cloud content as the cloud began to dissipate earlier than in the observations. None of the simulations was able to describe the high ice particle formation event that was most likely triggered through ice-ice collisions of aggregates of dendrites given the favorable temperature range.

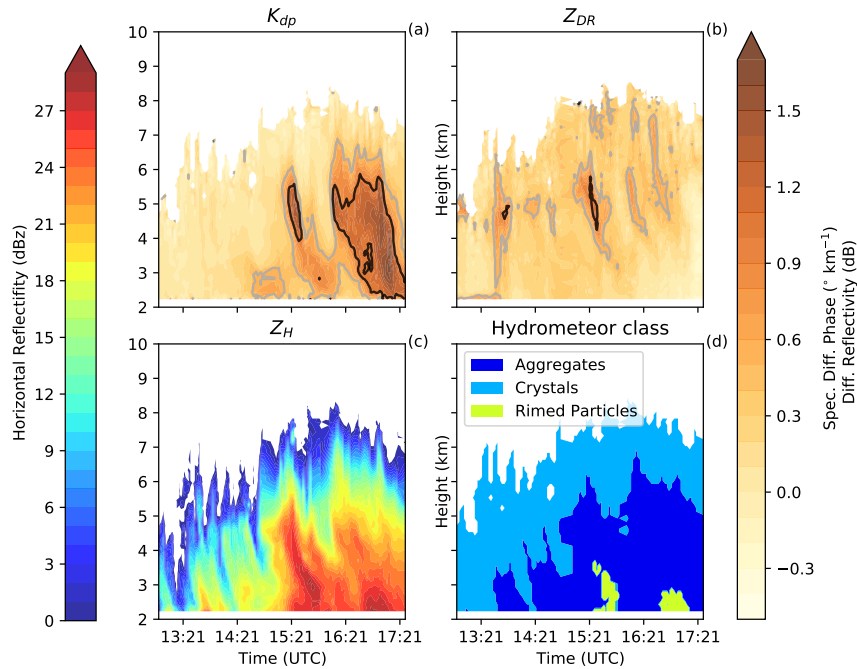


Figure 3. Hovmöller diagrams of the (a) spectral differential phase (K_{dp}), the (b) differential reflectivity (Z_{DR}), (c) the horizontal reflectivity (Z_H) and (d) the hydrometeor class categories derived from the Doppler radar between 13:00 and 17:30 UTC. The grey and black lines in panels (a) and (b) are where both K_{dp} and Z_{DR} are larger than 0.5 and 1, respectively.

3.2.3 Microphysical explanations

Z_H was significantly overestimated by the RS simulation between 13:00 and 17:30 UTC which most likely was a result of the following chain of events. 1) Insufficient droplets of size $25\ \mu\text{m}$ (Fig. 87d), within the narrow temperature range ($-3 \geq T \geq -8\ ^\circ\text{C}$), led to a limitation in ice particle growth by riming and therefore limited rime splintering (Fig. 22f6b). 2) Because rime splintering was not that active, typical for wintertime MPCs (e.g., Henneberg et al., 2017; Dedekind et al., 2021), the ice and snow crystals grew mainly by depositional growth and aggregation. 3) The ice and snow crystal size distributions widened substantially (Figs. 7a, b and S2aS3a, b). These categories both had number concentrations less than $100\ \text{L}^{-1}$ with particle diameters of up to 0.8 and 5.1 mm, respectively, at 15:30 UTC. 4) The larger ice and snow crystal diameters resulted in enhanced Z_H . These observation is consistent with other times during the day which showed even larger sized ice and snow crystals of 0.9 and 5.2 mm, respectively (Figs. S3a and S4a and S5a) as well as higher rain mass mixing ratios (e.g. Fig. 8a). There were single grid points where snow crystal flakes even reached diameters of 13 to 17 mm during the latter part of the day (not shown here). Additionally, excessive size sorting in the model most likely contributed to the overestimation in Z_H . Size sorting typically occurs within the sedimentation parameterization of 2M schemes in regions of vertical wind shear

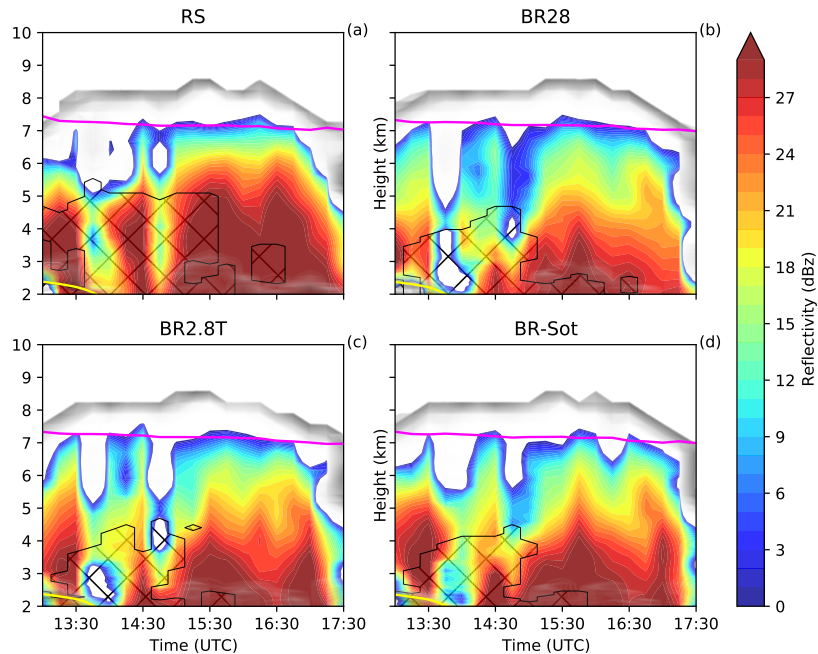


Figure 4. Hovmöller diagrams of the simulated reflectivity for panels (a) RS , (b) BR28, (c) BR2.8T and (d) BR-Sot between 13:00 and 17:30 UTC. The hatched area is defined as the MPC where the cloud droplet mass concentration and ice mass concentration is greater than 10 and 0.1 mg m^{-3} respectively. The pink line is the homogeneous freezing line at -38°C , and the shaded gray area is the cloud area fraction.

or updraft cores (Milbrandt and McTaggart-Cowan, 2010; Kumjian and Ryzhkov, 2012). All these factors contributed to the RS simulation overestimating Z_H by at least 8 dBz throughout the vertical profile compared to the observations (Fig. 5da).

Hovmöller diagrams of graupel and rain mixing ratio for panels (a) RS , (b) BR28, (c) BR2.8T and (d) BR-Sot between 13:00 and 17:30 UTC. The hatched area is defined as the MPC where the cloud droplet mass concentration and ice mass concentration is greater than 10 and 0.1 mg m^{-3} respectively. The pink line is the homogeneous freezing line at -38°C , and the shaded gray area is the cloud area fraction.

Particle size distribution over the number concentrations for panels (a) ice, (b) snow, (c) graupel and (d) raindrops for all the simulations at 15:30 UTC.

When collisional breakup was allowed to occur in the BR28, BR2.8T and BR-Sot simulations, the ice particles from the ice and snow crystals did not have time to grow as large compared to the RS simulation. Throughout the vertical profile below 6 km at 15:30 UTC, the ice number concentration was at least an order of magnitude larger than expected from the RS simulation with a SIP rate in excess of $20 \text{ L}^{-1}\text{s}^{-1}$ (Fig. 5c, f). In both figures 5 and S5 the observed ice crystal number concentration recorded by the disdrometer was remarkably well represented at the surface by the BR2.8T and BR-Sot simulations (similar results are shown in Dedek). The ice crystal and snow number concentrations were orders of magnitudes larger for $\bar{D}_i < 0.4 \text{ mm}$ and $\bar{D}_s < 0.8 \text{ mm}$ respectively compared to the RS simulation (Fig. 7a and b). The smaller ice particles caused a reduction in were associated with a

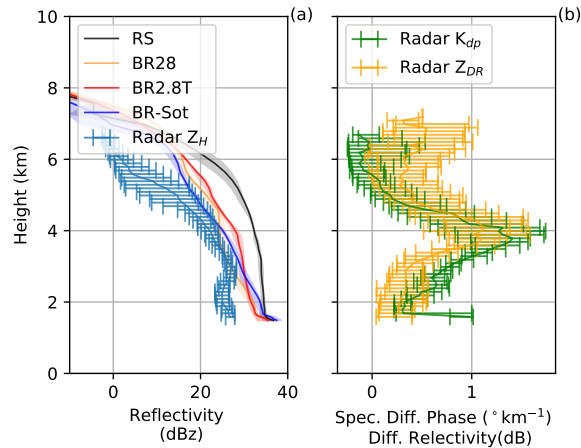


Figure 5. Vertical profiles of the (a) horizontal reflectivity (Z_H), (b) specific differential phase (K_{dp}) and differential reflectivity (Z_{DR}). The solid lines are the mean with shaded areas and errorbars showing the 10th and 90th percentiles for the model simulations and Doppler radar respectively, at 15:30 UTC.

reduced Z_H which compared better to the observations than for the RS simulations. It is also likely that the narrower ice crystal and snow size distributions meant that the excessive size sorting in 2M schemes may have not been as pronounced, which contributed to the lowering of Z_H .

During the late stage of the snowfall event, at 17:00 UTC, the replenishment of graupel diminished rapidly (Figs. 8 and S5e) causing a substantial reduction in the SIP rate (Fig. S5). Less collisional breakup allowed the ice and snow crystals to grow to larger sizes, $\bar{D}_i \sim 1.2 \text{ mm}$ and $\bar{D}_s \sim 3.3 \text{ mm}$ respectively, primarily through deposition and/or aggregation (Fig. S2a, b). A lower Z_{DR} is consistent with less anisotropic particles produced by aggregation and/or riming. However, the enhanced concentration of oblate particles (increase in K_{dp}) was in contrast to the simulations showing a reduction in cloud content as the cloud began to dissipate earlier than in the observations. None of the simulations were able to describe the high ice particle formation event that was most likely triggered through ice-ice collisions of dendrites given the favorable temperature range. In the event that snow (e.g., ice-snow collisions) would have also been considered as a collider species in the simulations (e.g., Sotiropoulou et al., 2021a), they might have been able to simulate higher ice particle formation rates as suggested in the high K_{dp} radar observations. The breakup simulations, in general, did simulate Z_H more accurately than the conventionally used rime-splintering scheme and did show to improve the ice crystal number concentration at the surface and in the vertical column.

(a) Ice water content (IWC), (b) liquid water content (LWC), (c) ice number concentration (NICE), (d) model and radar reflectivity, (e) Specific differential phase (K_{dp}), differential reflectivity (Z_{DR}), and (f) secondary ice production (SIP). The solid lines are the mean with shaded areas and errorbars showing the 10th and 90th percentiles for the model simulations and Doppler radar respectively at 15:30 UTC. The green triangle is the 2DVD surface observations for hydrometeors $D > 0.2 \text{ mm}$.

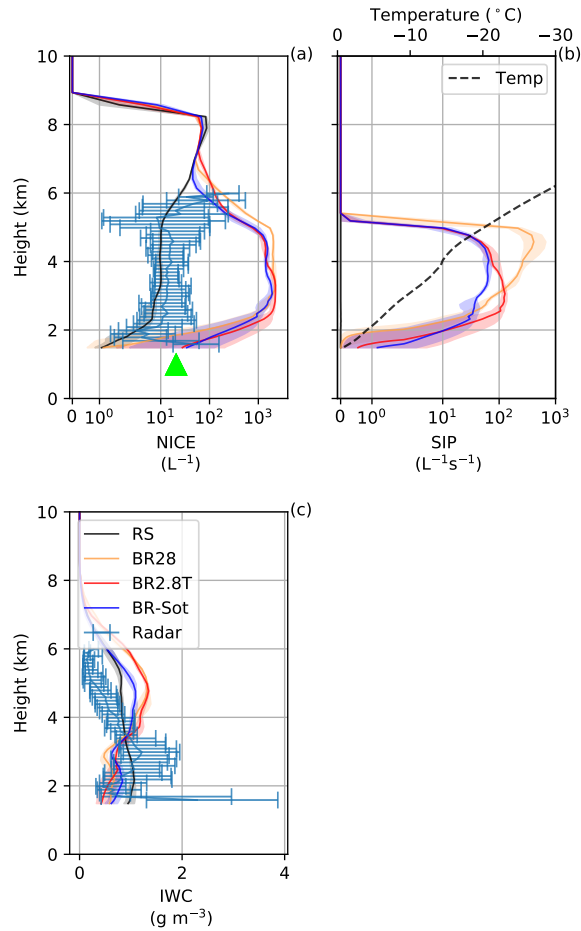


Figure 6. Vertical profiles for the (a) ice number concentration (NICE), (b) secondary ice production (SIP) and (c) ice water content (IWC). The solid lines are the mean with shaded areas and errorbars showing the 10th and 90th percentiles for the model simulations and Doppler radar, respectively, at 15:30 UTC. The green triangle is the 2DVD surface observations for hydrometeors $D > 0.2$ mm.

370 3.2.4 Differences in collisional breakup simulations

The parameterization for Comparing the collisional breakup simulations showed that the BR28 (Eq. 4) was set up such that more (less) ice fractures are generated at colder (warmer) temperatures than -10°C compared to the BR2.8T simulation (Eq. 5). Although the graupel number concentration, which is responsible for generating ice fractures upon colliding with other ice particles decreased with altitude (Fig. 8b,c and d), the BR28 simulation still generated 8 times more ice particles than the BR2.8T and BR-Sot simulations at 4 km amsl at $T \sim -15^{\circ}\text{C}$ (Fig. 5f6b). At temperatures of -10°C (3 km amsl), the SIP rate decreased rapidly from 100 to almost $0\text{L}^{-1}\text{s}^{-1}$ at the surface. As a result of the The lower SIP rates (less ice-graupel collisions) compared to the BR2.8T and BR-Sot simulations, there were had several implications: 1) ice crystals and snow

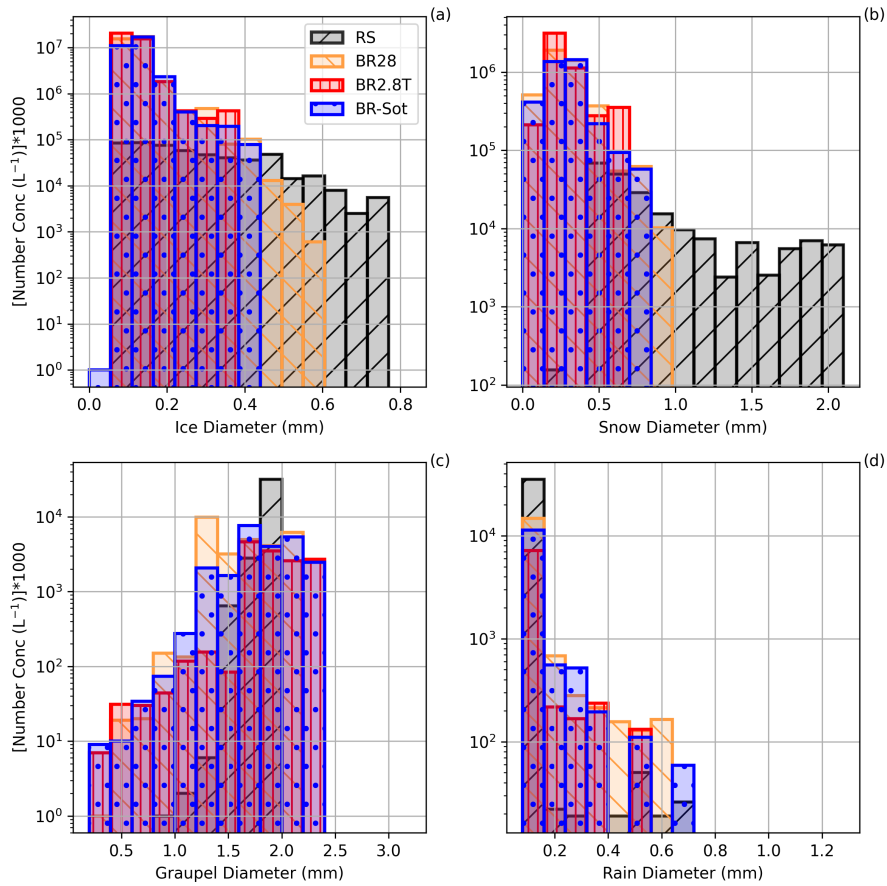


Figure 7. Particle size distribution for panels (a) ice, (b) snow, (c) graupel and (d) raindrops for all the simulations at 15:30 UTC.

particles had more time to grow to larger sizes as seen in the wider particle size distributions (Fig. 7); 2) the number of ice hydrometeors was an order of magnitude below (worst in the collisional-breakup simulations) the observed ground-based
380 video disdrometer observations of $\sim 20 \text{ L}^{-1}$ (for particles less than 0.2 mm) at 15:30 and 17:00 UTC (Figs. 5e and S5e6a and S2c) and; 3) interestingly, the simulated Z_H compared slightly better with the radar observations although the ice hydrometeors were underestimated-overestimated (Figs. 5d and S5d). It is not clear which one of the collisional-breakup simulations performed better in general because one performs better against one set of observations and then worse against another set of observations. However, ice-graupel collisions are important for representing the observed Z_H better. For instance, the breakup of fast-growing, low density, dendrites at $T \sim -15^\circ \text{C}$ reduces the ice particle size and therefore reduces the simulated Z_H .
385 Figure S5(d and f) showed a spike in the SIP rate at these temperatures resulting in a better agreement with the observed Z_H , 6a and S2d. Because the BR2.8T and BR-Sot simulations showed similar results, which were better than the BR28 simulation, only the BR2.8T simulation is used in the next section to link the simulated wind shear to SIP.

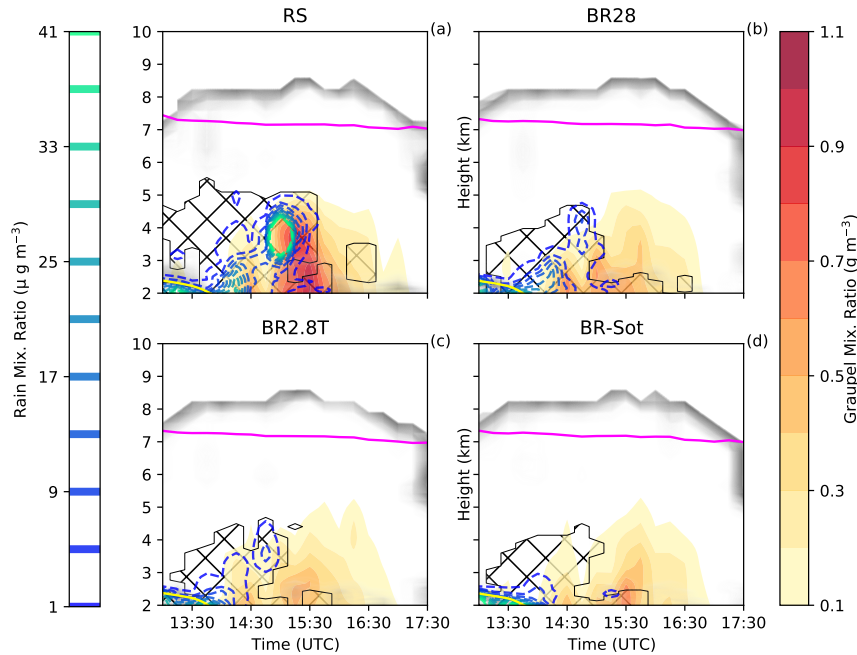


Figure 8. Hovmöller diagrams of graupel and rain mixing ratio for panels (a) RS , (b) BR28, (c) BR2.8T and (d) BR-Sot between 13:00 and 17:30 UTC. The hatched area is defined as the MPC where the cloud droplet mass concentration and ice mass concentration is greater than 10 and 0.1 mg m⁻³ respectively. The pink line is the homogeneous freezing line at -38 °C, and the shaded gray area is the cloud area fraction.

3.3 **Process-understanding** Linking simulated wind shear to SIP

390 In this section, the dependence of the SIP rate on wind patterns is examined over the region (blue box) depicted in figure 1 during three time periods; 13:00-14:15 UTC (early: Fig. S6), 14:30-15:45 UTC (middle: Fig. 9) and 16:00-17:15 UTC (late: Fig. S7). The early period was categorized with strong wind shear and a turbulent layer below 3 km (Fig. 2a-e). During the middle period, the turbulent layer extended to 4 km during which graupel increased in the MPC. The late period was categorized by less wind shear causing the dissipation of the turbulent layer. The cloud entered a glaciated state during this time. We analyzed
 395 the middle period because it was the most important period, according to the model, in terms of SIP and is therefore shown in Fig. 9. Regions in which SIP did not occur (e.g. $T < -21$ °C) were masked out for this analysis. ~~Because the BR2.8T and BR-Sot simulations showed similar results, only the probability density functions (PDFs) for the wind variables from the BR2.8T simulation were analyzed.~~

A strong shift between the early and middle period in the V-wind median and interquartile range occurred from 20.5 to
 400 -0.7 m s⁻¹ and 6.6 to 21.3 m s⁻¹, respectively compared to the U-wind (Table 2). In fact, the U-wind had a small variability between the early and middle periods (Table 2). As the afternoon progressed the median of the strongest V-wind shear extended

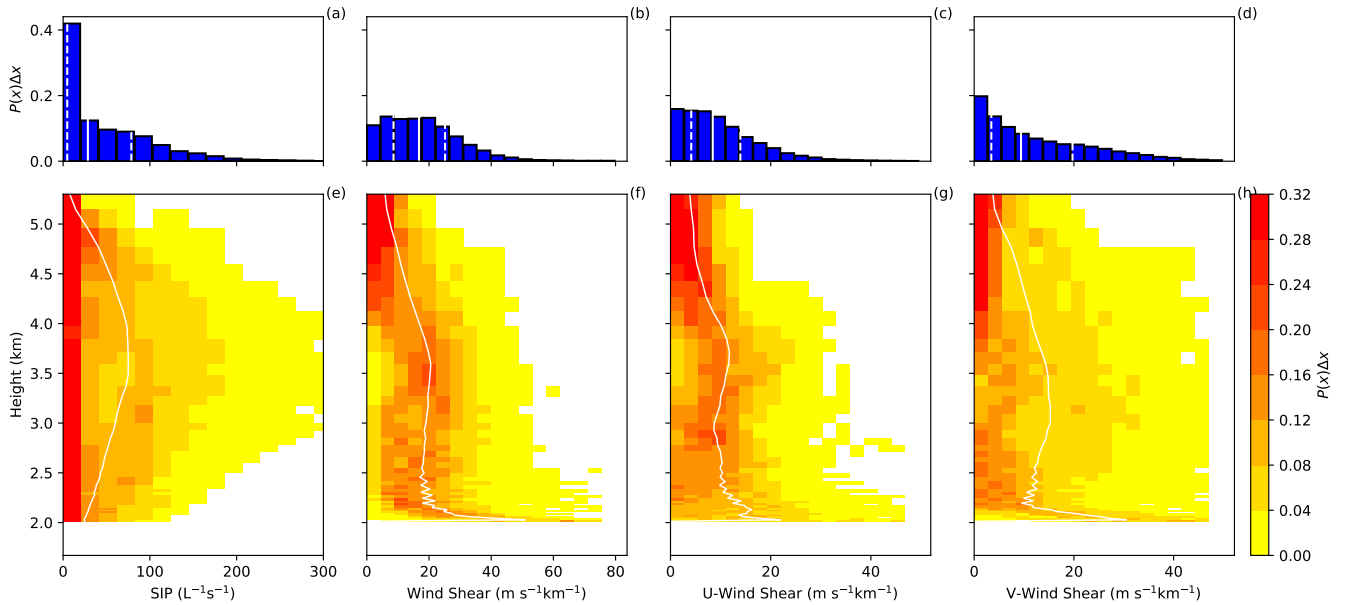


Figure 9. Probability density functions of different variables ($P(x)$) from the BR2.8T simulation from all model levels (top row) and at each model level (bottom row) for **(a, e)** Secondary Ice Production (SIP) rate, **(b, f)** Wind shear, **(c, g)** U-wind shear and **(d, h)** V-wind shear between 14:30-15:45 UTC. The solid and dashed white lines are the horizontal 50th percentile and the 25th and 75th percentiles respectively of each variable over the 10 km \times 10 km domain.

from near the surface at 14:30 to 5 km amsl at 16:30 (Figs. 9 and 2-2 and 9). Updraft cells developed above this level of strong vertical wind shear between 10 and 20 $\text{m s}^{-1} \text{ km}^{-1}$. Our observation is consistent with Houze and Medina (2005) and Medina and Houze (2015) who also showed that updraft cells occurred at times and locations where the shear was strongest (> $\sim 10 \text{ m s}^{-1} \text{ km}^{-1}$). During the middle time period, the variability in the V-wind shear was the largest with an interquartile range of 16.3 $\text{m s}^{-1} \text{ km}^{-1}$ which coincided with the highest SIP rate (Fig. 9d and Table 2). The joint PDF-probability density functions (PDF) ($P(\text{SIP rate, V-wind shear})$) illustrates that the median-of-correlation-correlation median between the V-wind shear and SIP rate peaked at 9 $\text{m s}^{-1} \text{ km}^{-1}$ and 80 $\text{L}^{-1}\text{s}^{-1}$ (Fig. 10e). This peak coincided with the region where the wind shifted from south-westerly to northerly (along the valley) between the early and middle period. This shift was a result of the change in the V-wind speed from negative to positive at 2.9 km amsl. The joint PDF between the V-wind and SIP (Fig. 10 b) was highest at this altitude. Here, the strong and variable V-wind shear co-varied the best with the strong overall wind shear. The V-wind shear was the most important determinant of SIP of all the variables an environment of stronger meridional wind shear tends to coincide with the environment for high secondary ice production (Fig. 10f and Table 2).

On the other hand, the contribution of the updraft velocity to SIP is not as clear. The increase (early to middle period) and decrease (middle to late period) of the median of the SIP rates poorly co-varied with the U-wind shear or updraft compared to the V-wind shear (Figure 11). It appears that the V-wind shear played the major role in the SIP.

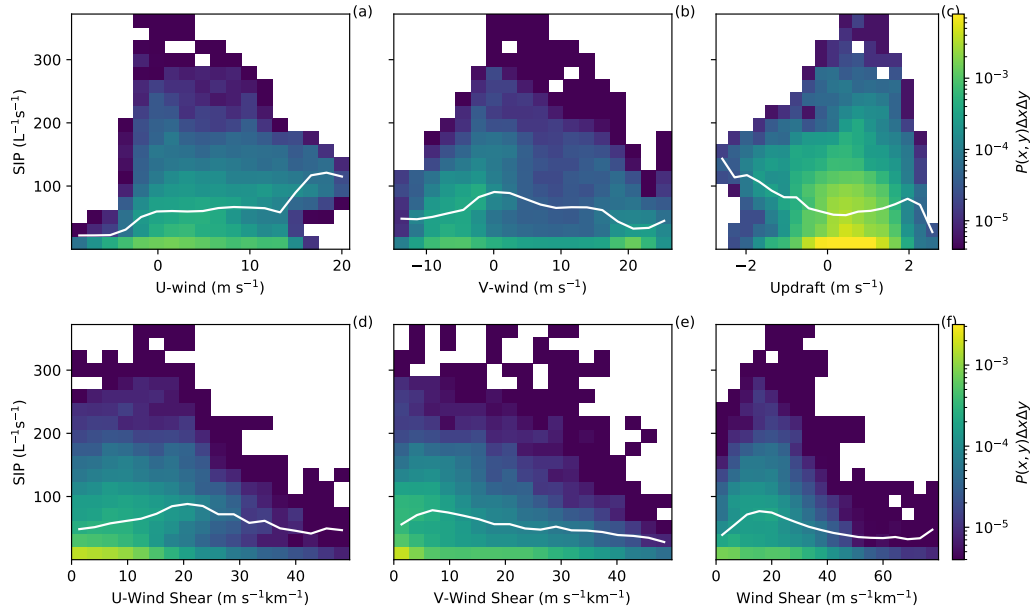


Figure 10. Joint probability density function multiplied by bin area ($P(x, y)\Delta x\Delta y$) for the model output of SIP versus (a) U-wind, (b) V-wind, (c) Updraft, (d) U-wind shear, (e) V-wind shear and (f) Wind shear for the BR2.8T simulation . White lines are the 50th percentile as a function of the x -axis variable.

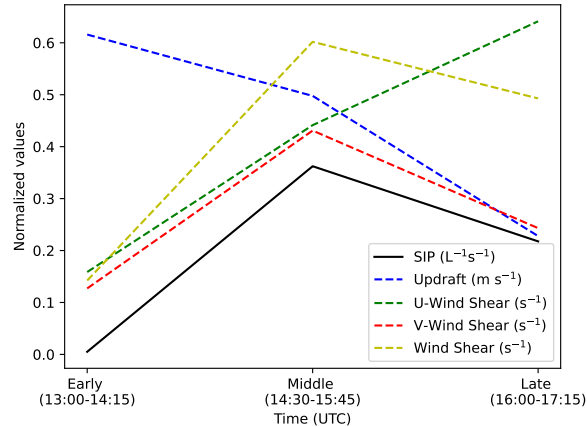


Figure 11. Normalized median values of the PDFs of the variables in Table 2 for the three different time periods for the BR2.8T simulation.

To further highlight this role, we calculated the mutual information shared between different sets of variables. The mutual information (MI: $I(X; Y)$) between variables X and Y was further analyzed for non-linear relationships (Shannon and Weaver, 1949) where $X \in [\text{SIP rate}]$ and $Y \in [\text{U-wind, V-wind, Updraft, U-wind shear, V-wind shear, Wind Shear}]$. $I(X; Y)$ of 0 bits

Table 2. The 25th, 50th and 75th percentiles and the interquartile range (IQR) between the 10th and 90th percentiles of the vertical profiles for the BR2.8T simulations.

Time (UTC)	Variable	25th perc.	50th perc.	75th perc.	IQR.
13:00-14:15	SIP rate ($L^{-1}s^{-1}$)	0.0	0.4	3.5	3.4
	U-Wind ($m s^{-1}$)	3.9	7.9	11.3	7.4
	V-Wind ($m s^{-1}$)	15.9	20.5	22.5	6.6
	Wind Speed ($m s^{-1}$)	16.3	22.9	24.8	8.5
	Updraft ($m s^{-1}$)	0.2	0.6	1.0	0.8
	U-Wind Shear ($m s^{-1} km^{-1}$)	2.0	4.3	7.4	5.5
	V-Wind Shear ($m s^{-1} km^{-1}$)	1.6	3.9	10.7	9.0
	Wind Shear ($m s^{-1} km^{-1}$)	4.1	7.1	14.8	10.7
14:30-15:45	SIP rate ($L^{-1}s^{-1}$)	4.7	28.5	78.7	73.9
	U-Wind ($m s^{-1}$)	0.8	4.2	8.6	7.8
	V-Wind ($m s^{-1}$)	-5.5	-0.7	15.8	21.3
	Wind Speed ($m s^{-1}$)	6.5	10.3	17.3	10.8
	Updraft ($m s^{-1}$)	0.1	0.5	0.9	0.8
	U-Wind Shear ($m s^{-1} km^{-1}$)	4.1	8.4	13.9	9.8
	V-Wind Shear ($m s^{-1} km^{-1}$)	3.4	9.4	19.7	16.3
	Wind Shear ($m s^{-1} km^{-1}$)	8.6	16.8	25.2	16.6
16:00-17:15	SIP rate ($L^{-1}s^{-1}$)	0.7	17.2	53.2	52.5
	U-Wind ($m s^{-1}$)	5.3	10.4	15.4	10.2
	V-Wind ($m s^{-1}$)	-2.2	-0.2	3.7	6.0
	Wind Speed ($m s^{-1}$)	7.4	12.8	16.6	9.2
	Updraft ($m s^{-1}$)	-0.0	0.2	0.5	0.5
	U-Wind Shear ($m s^{-1} km^{-1}$)	5.9	11.3	16.5	10.6
	V-Wind Shear ($m s^{-1} km^{-1}$)	3.1	6.1	9.8	6.8
	Wind Shear ($m s^{-1} km^{-1}$)	10.3	14.5	19.6	9.3

420 means no information is shared between X and Y and therefore Y cannot be inferred from X (Further information about MI can be found in Appendix A and also in Dawe and Austin (2013)). For instance, during the last period the relationship of I (SIP rate; Wind shear) weakened drastically to 0.021 bits to below the level of significance (Table 3) compared to earlier periods. This was expected because the diminishing cloud liquid water caused a reduction in the riming rates. Lower riming rates limited graupel formation which in turn reduced ice-graupel collisions.

425 The significantly higher MI score between I (SIP rate; Wind shear) during the early and middle period, was a result of the strengthening of the northerly valley winds during the early afternoon hours when the predominant wind aloft was south-westerly (generating the dominant V-wind shear). The development of the northerly winds could have been a result of low-

Table 3. Mutual information between SIP rate and wind properties of the vertical profiles for the BR2.8T simulations. The significance level is calculated by taking the maximum of 1000 Monte Carlo simulations of mutual information between a random permutation of SIP rates and each variable.

Time (UTC)	Variable	MI	Sig. level
13:00-14:15	$I(\text{SIP rate}; \text{U-Wind})$	0.025	0.009
	$I(\text{SIP rate}; \text{V-Wind})$	0.037	0.009
	$I(\text{SIP rate}; \text{Wind speed})$	0.029	0.009
	$I(\text{SIP rate}; \text{Updraft})$	0.027	0.009
	$I(\text{SIP rate}; \text{U-Wind Shear})$	0.008	0.011
	$I(\text{SIP rate}; \text{V-Wind Shear})$	0.015	0.011
	$I(\text{SIP rate}; \text{Wind Shear})$	0.011	0.009
14:30-15:45	$I(\text{SIP rate}; \text{U-Wind})$	0.091	0.018
	$I(\text{SIP rate}; \text{V-Wind})$	0.116	0.018
	$I(\text{SIP rate}; \text{Wind speed})$	0.112	0.018
	$I(\text{SIP rate}; \text{Updraft})$	0.035	0.018
	$I(\text{SIP rate}; \text{U-Wind Shear})$	0.039	0.022
	$I(\text{SIP rate}; \text{V-Wind Shear})$	0.043	0.021
	$I(\text{SIP rate}; \text{Wind Shear})$	0.048	0.015
16:00-17:15	$I(\text{SIP rate}; \text{U-Wind})$	0.105	0.054
	$I(\text{SIP rate}; \text{V-Wind})$	0.117	0.054
	$I(\text{SIP rate}; \text{Wind speed})$	0.103	0.054
	$I(\text{SIP rate}; \text{Updraft})$	0.095	0.054
	$I(\text{SIP rate}; \text{U-Wind Shear})$	0.014	0.067
	$I(\text{SIP rate}; \text{V-Wind Shear})$	0.029	0.067
	$I(\text{SIP rate}; \text{Wind Shear})$	0.021	0.055

level blocking that occurred-generating-generated the shear layer (Medina et al., 2005). The sharp change in the wind speed and direction enhanced the turbulent overturning and therefore promoted the riming of ice crystals and snow leading to the formation of graupel which in turn enhanced the SIP rates. We hypothesise that if ice-ice collisions were included in the model configuration, the simulations could well have captured the intense K_{dp} values in excess of 1.4°km^{-1} seen in Doppler observations after 16:40 UTC (Figs. 3a and S5e). Such a configuration may have even shown a better correlation between the vertical The higher MI score between $I(\text{SIP rate}; \text{Wind shear})$ implies there is a stronger relationship between wind shear and ice-ice collisions from 17:00 UTC on-wards. The diminishing graupel number concentration limited the duration of SIP in our results and revealed a shortcoming in describing ice number concentrations through ice-graupel collisions when clouds enter a glaciated state. SIP than the other variables analyzed here.

3.4 SIP sensitivity to conversion rates

In this section the sensitivity of SIP to the rate of graupel formation, which is dependent on ice or snow crystals being larger than a given size when riming occurs, is analyzed. Fig. C1 shows the PSD for the sensitivity studies during which the size restrictions are modified which could slow the conversion process of the ice crystals and snow particles to graupel. The PSD over the cross-section at 15:30 UTC showed little difference in the ice crystal number concentrations where we expected higher ice crystal number concentration for BR2.8T and consequently higher snow number concentrations due to enhanced aggregation (Fig. C1a and b). The largest differences from the BR2.8T_300 simulation were in the form of enhanced snow (for diameters: $0.14 < \bar{D}_s < 0.42$ mm) and graupel number concentrations (for diameters: $1.2 < \bar{D}_g < 2.2$ mm). However, at 15:30 UTC there is no clear signal beyond model variability showing that the slower conversion rates to graupel affect the simulations (Fig. C1b and c). We compared the probability distributions of the total number of ice hydrometeors (NISG), SIP rate, ice crystal and graupel number concentrations of the BR2.8T_500, BR2.8T_400 and BR2.8T_300 simulations, respectively, to that of the reference simulation, BR2.8T between 14:15 to 15:45 UTC (Fig. 8b). We chose this time period because the largest graupel concentrations were present. The Kullback-Leibler divergence ($D_{KL}(P \parallel Q)$), which measures how one probability distribution P is different from a second probability distribution, Q , shows little information loss between variables in Table C1, except for graupel. A value of 0 bits means that the probability distributions are the same (e.g., no information loss). The largest $D_{KL}(\text{BR2.8T}_{300} \parallel \text{BR2.8T})$ was 3.33 bits for the graupel distribution and was reflected in larger differences in the SIP rate of 1.07 bits and ice number concentration of 0.05 bits (Table C1 and Fig. C1c). If the SIP rate was sensitive to the conversion rate it is expected that the information loss would be the greatest between BR2.8T_500 and BR2.8T and not between BR2.8T_300 and BR2.8T (e.g., $D_{KL}(\text{BR2.8T}_{500} \parallel \text{BR2.8T}) > D_{KL}(\text{BR2.8T}_{400} \parallel \text{BR2.8T}) > D_{KL}(\text{BR2.8T}_{300} \parallel \text{BR2.8T})$). This result leads us to conclude that the different conversion rates from ice crystals and snow to graupel, used in the paper in conjunction with the collisional breakup parameterization, were not significant for SIP.

Particle size distribution over the number concentrations for panels (a) ice, (b) snow, (c) graupel, (d) cloud droplets and (e) raindrops for all the sensitivity simulations at 15:30 UTC. BR2.8T, BR2.8T_300, BR2.8T_400 and BR2.8T_500 represents the size restriction of 200, 300, 400 and 500 m respectively before ice crystals and snow can be converted to graupel.

The Kullback-Leibler divergence, $D_{KL}(P \parallel Q)$, between two probability distributions P and Q from 14:14 to 15:45 UTC. P (BR2.8T_300, BR2.8T_400 and BR2.8T_500) is the measured probability distribution against the reference probability distribution Q (BR2.8T). Each distribution consist of ~ 10800 grid points separated into 24 bins over the cross-section in Fig. 1. Variable P Q $D_{KL}(P \parallel Q)$ (bits) NISG BR2.8T_300 BR2.8T 0.06 BR2.8T_400 0.03 BR2.8T_500 0.03 SIP BR2.8T_300 BR2.8T 1.07 BR2.8T_400 0.06 BR2.8T_500 0.06 Ice BR2.8T_300 BR2.8T 0.05 BR2.8T_400 0.02 BR2.8T_500 0.03 Graupel BR2.8T_300 BR2.8T 3.33 BR2.8T_400 0.84 BR2.8T_500 0.61

4 Conclusions

A cold front passage on 26 March 2010, over the Swiss Alps, associated with strong vertical wind shear and intense polarimetric signatures was observed with a dual-polarization Doppler weather radar deployed at Davos. This study investigates the role of

470 vertical wind shear on the rate of SIP by making simulations of wintertime orographic MPCs with a non-hydrostatic, limited area model, COSMO, which has a two-moment bulk microphysics scheme with six hydrometeor categories, and two additional parameterizations for ice-graupel collisions (e.g., Sotiropoulou et al., 2020; Dedekind, 2021) based on Takahashi et al. (1995). To conclude, our main finding can be summarized as follows:

- 475 – Large values of $K_{dp} > 1 \text{ }^\circ \text{ km}^{-1}$ suggest that a large population of oblate particles was present, most likely originating from ice-ice collisions, at 4 km amsl. This level coincided with the -15°C isotherm. At -15°C dendritic growth is very fast causing low-density dendrites to fracture and aggregate. At this time, also Z_{DR} was positive, indicating that large isotropic particles were less present. At lower altitudes Z_H increased while K_{dp} (and Z_{DR}) decreased suggesting aggregation and/or riming were occurring.
- 480 – The rime splintering simulations overestimated the Z_H throughout the vertical profile and underestimated the disdrometers' number concentration of hydrometeors at the surface. Both shortcomings could be explained by omission of ice-graupel collisions.
- The breakup simulations (BR28, BR2.8T and BR-Sot) caused narrower ice crystal and snow distributions (enhanced number concentrations of smaller ice particles) resulting in a better representation of Z_H . The enhanced number concentrations of ice particles meant that these simulations, in particular BR2.8T and BR-Sot, captured the disdrometer observations of $\sim 20 \text{ L}^{-1}$ (considering the 0.2 mm observation limit) at 15:30 and 17:00 UTC.
- 485 – During the middle period, 14:30-15:45 UTC, the V-wind shear increased by 60% causing conditions favorable for accretion leading to enhanced graupel formation and SIP in the region favorable for SIP.
- Another time period with high K_{dp} , but low Z_{DR} was observed at 17:00 UTC which was not captured by the breakup simulations because the graupel mixing ratio was depleted. The breakup parameterization does not include ice-ice collisions and relies only on graupel as the collider specie. At this time the radar signatures suggested that ~~dendrite collisions~~ collisions of dendrites caused the formation of small oblate particles (increasing K_{dp}) but also the formation of a few, larger, isotropic aggregates (decreasing Z_{DR}).
- 490 – The mutual information between the SIP rate and other variables like vertical wind shear and updraft velocity suggested that the SIP rate is best predicted by the overall wind shear.
- 495 – The sensitivity of the ice-graupel simulations to the conversion rate size restriction was measured using the Kullback-Leibler divergence. ~~Ice and snow (with diameters of 300 m) that were converted to graupel showed the biggest deviation from the reference size of 200 m. However, the~~ The sensitivity simulations were not sensitive to the conversion rate size ~~restriction~~ thresholds.

500 Turbulent overturning, whether it is associated with baroclinic waves (Gehring et al., 2020) or low-level blocking (Medina et al., 2005; Houze and Medina, 2005; Medina and Houze, 2015), has been shown to play an important role in accreting

hydrometeors to form precipitation. Here, we considered that the interactions of ice hydrometeors can lead to ice-graupel collisions, causing enhanced small ice fragments, as opposed to only growing larger through aggregation. These smaller fragments fall slower against updraft and may decrease local precipitation rates enhancing precipitation downstream of the flow (Dedekind et al., 2021). Wind shear plays a significant role in ice-graupel collisions and may even be more important when all ice-ice collisions are considered in more physically robust collisional breakup parameterizations (Yano and Phillips, 2011; Phillips et al., 2017). By only considering ice-graupel collisions we are limited to mainly investigating collisional breakup in MPCs where riming can occur to form graupel. In the case where a cloud becomes glaciated and graupel cannot form through riming, our parameterization will not be able to simulate SIP, which may still prove to be very important.

5 Data availability

The COSMO model output, radar and 2DVD datasets used for our analysis are available at <https://doi.org/10.5281/zenodo.6609251> and the software to analyze the data can be found at <https://doi.org/10.5281/zenodo.6612296>

Appendix A: Derivation of the simulated radar reflectivity

Here we briefly show the calculation of the simulated Z_H (Appendix B, Seifert, 2002). Calculating Z_H from the two-moment cloud microphysics scheme would not be possible without approximations and assumptions. The following relationship for the radar reflectivity of drops (Z_w), using the Rayleigh approximation for the cross-section of drops (Eq. A1), results in:

$$\eta_w = \frac{\pi^5 |K_w|^2}{\lambda_R^4} \int_0^\infty D^6 f_w(D) dD \quad (\text{A1})$$

where D is the particle diameter, λ_R is the wavelength of radar radiation, η_w is the volumetric liquid water content, $f_w(D)$ is the number density distribution function for liquid water and $K_w^2 = 0.93$ the dielectric constant of liquid water. The reflectivity factor for cloud water is given by:

$$\tilde{Z}_w = \frac{\lambda_R^4}{\pi^5 |K_w|^2} \eta_w = \int_0^\infty D^6 f_w(D) dD = \left(\frac{6}{\pi \rho_w} \right)^2 \int_0^\infty x^2 f_w(x) dx = \left(\frac{6}{\pi \rho_w} \right)^2 Z_w \quad (\text{A2})$$

where ρ_w is the water density. Because of the backscatter behavior for the mass-equivalent diameter with regards to ρ_w and ρ_i (ice density), the same applies to graupel, which is described as a spherical ice particle

$$\eta_g = \frac{\pi^5 |K_i|^2}{\lambda_R^4} \left(\frac{6}{\pi \rho_i} \right)^2 \int_0^\infty x^2 f_g(x) dx \quad (\text{A3})$$

where x is the particle mass, $f_g(x)$ is the number density distribution function for graupel and $K_i^2 = 0.176$ is the dielectric constant of ice. The radar reflectivity factor for ice particles (e.g., graupel) is given by:

$$\tilde{Z}_g = \frac{\lambda_R^4}{\pi^5 |K_w|^2} \eta_g = \frac{|K_i|^2}{|K_w|^2} \left(\frac{6}{\pi \rho_i} \right)^2 \int_0^\infty x^2 f_g(x) dx = \frac{|K_i|^2}{|K_w|^2} \left(\frac{6}{\pi \rho_i} \right)^2 Z_g. \quad (\text{A4})$$

For melting ice particles, however, K_w must be used instead of K_i . In our study, the surface and in-situ cloud temperatures were below 0 °C. ~~Therefore, more~~ More information on the reflectivity calculations for melting ice particles can be found in Seifert (Appendix B, 2002). Finally, the radar reflectivity factor is given by:

$$530 \quad dBZ = \frac{10}{\ln 10} \ln \left[\frac{Z_{radar}}{\text{mm}^6 \text{ m}^{-3}} \right] \quad (\text{A5})$$

where Z_{radar} is the sum of the reflectivity calculated for each individual cloud particle category (e.g., cloud drops, raindrops, ice crystals, snow crystals, graupel and hail):

$$Z_{radar} = \left(\frac{6}{\pi \rho_w} \right)^2 \left[Z_c + Z_r + \frac{\rho_w^2}{\rho_i^2} \frac{|K_i^2|}{|K_w^2|} (Z_{ic} + Z_s + Z_g) \right]. \quad (\text{A6})$$

Appendix B: Mutual Information

535 The entropy H of the variable x 's probability density function $P(x)$ is defined by Shannon and Weaver (1949) to be:

$$H = - \int P(x) \ln(P(x)) dx \quad (\text{B1})$$

where x is the information content of a single measurement of $P(x) = -\ln P(x)$. The entropy is a measure of the amount of information that is required to represent the PDF. From here both the Kullback-Leibler divergence and the mutual information can be calculated.

540 The Kullback-Leibler divergence, also known as the relative entropy, measures the distance between two probability distributions, $P(x)$ and $Q(x)$ over a discrete random variable X . The Kullback-Leibler divergence is defined as follows:

$$D_{KL}(P \parallel Q) = \int P(x) \ln \left(\frac{P(x)}{Q(x)} \right) dx. \quad (\text{B2})$$

545 The mutual information (MI) is a measure of the mutual dependence between two random variable X and Y (e.g., the entropy of X subtracted from the entropy of X conditioned on Y):

$$I(X; Y) = H(X) - H(X|Y). \quad (\text{B3})$$

MI describes therefore how different the joint distribution of the pair (X, Y) is from the distribution of X and Y . Combining equations (B1) and (B3) yield:

$$I(X; Y) = \int [P(x) \ln(P(x)) - P(x, y) \ln(P(x|y))] dx dy \quad (\text{B4})$$

and because $P(x|y) = P(x, y)/P(y)$, equation (B5) can be reduced to:

$$I(X; Y) = - \int P(x, y) \ln \left(\frac{P(x, y)}{P(x)P(y)} \right) dx dy. \quad (\text{B5})$$

The range of the MI is described as follows:

$$\text{MI} = \begin{cases} 0, & \text{if } P(x, y) = P(x)P(y), & (X \text{ and } Y \text{ are completely independent}) \\ H(X), & \text{if } P(x, y) = P(x) = P(y), & (X \text{ and } Y \text{ are perfectly correlated}) \end{cases} \quad (\text{B6})$$

555 **Appendix C: SIP sensitivity to conversion rates**

In this section the sensitivity of SIP to the rate of graupel formation, which is dependent on ice or snow crystals being larger than a given size when riming occurs, is analyzed. Fig. C1 shows the PSD for the sensitivity studies during which the size restrictions are modified which could slow the conversion process of the ice crystals and snow particles to graupel. The PSD over the cross-section at 15:30 UTC showed little difference in the ice crystal number concentrations where we expected higher ice crystal number concentration for BR2.8T and consequently higher snow number concentrations due to enhanced aggregation (Fig. C1a and b). The largest differences from the BR2.8T_300 simulation were in the form of enhanced snow (for diameters: $0.14 < \bar{D}_s < 0.42$ mm) and graupel number concentrations (for diameters: $1.2 < \bar{D}_g < 2.2$ mm). However, at 15:30 UTC there is no clear signal beyond model variability showing that the slower conversion rates to graupel affect the simulations (Fig. C1b and c). We compared the probability distributions of the total number of ice hydrometeors (NISG), SIP rate, ice crystal and graupel number concentrations of the BR2.8T_500, BR2.8T_400 and BR2.8T_300 simulations, respectively, to that of the reference simulation, BR2.8T between 14:15 to 15:45 UTC (Fig. 8b). We chose this time period because the largest graupel concentrations were present. The Kullback-Leibler divergence ($D_{\text{KL}}(P||Q)$), which measures how one probability distribution P is different from a second probability distribution, Q , shows little information loss between variables in Table C1, except for graupel. A value of 0 bits means that the probability distributions are the same (e.g., no information loss). The largest $D_{\text{KL}}(\text{BR2.8T}_300 || \text{BR2.8T})$ was 3.33 bits for the graupel distribution and was reflected in larger differences in the SIP rate of 1.07 bits and ice number concentration of 0.05 bits (Table C1 and Fig. C1c). If the SIP rate was sensitive to the conversion rate it is expected that the information loss would be the greatest between BR2.8T_500 and BR2.8T and not between BR2.8T_300 and BR2.8T (e.g., $D_{\text{KL}}(\text{BR2.8T}_500 || \text{BR2.8T}) > D_{\text{KL}}(\text{BR2.8T}_400 || \text{BR2.8T}) > D_{\text{KL}}(\text{BR2.8T}_300 || \text{BR2.8T})$). This result leads us to conclude that the different conversion rate size thresholds from ice crystals and snow to graupel, used in the paper in conjunction with the collisional breakup parameterization, were not significant for SIP.

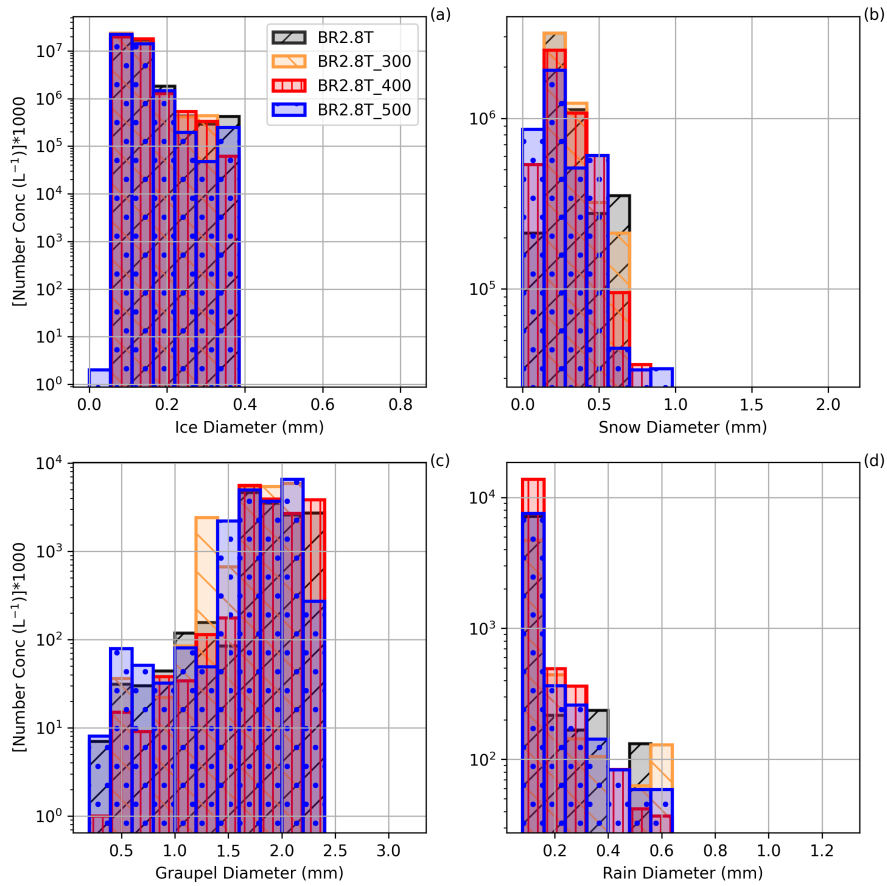


Figure C1. Particle size distribution over the number concentrations for panels (a) ice, (b) snow, (c) graupel, (d) cloud droplets and (e) raindrops for all the sensitivity simulations at 15:30 UTC. BR2.8T, BR2.8T_300, BR2.8T_400 and BR2.8T_500 represents the size restriction of 200, 300, 400 and 500 μm respectively before ice crystals and snow can be converted to graupel.

Author contributions. ZD conducted the simulations and JG post-processed on the radar data. ZD and JG were main authors of the paper and interpreted the data. PA and UL contributed to the interpretation and analysis techniques. ZD and JG contributed to the writing of the study.

Competing interests. The authors declare that they have no conflict of interest.

580 *Acknowledgements.* We would like to thank Alexis Berne for his valuable feedback on the interpretation of the radar data. All simulations were performed with the Consortium for Small-scale Modeling (COSMO) model. The simulations were performed and are stored at the Swiss

Table C1. The Kullback-Leibler divergence, $D_{\text{KL}}(P||Q)$, between two probability distributions P and Q from 14:14 to 15:45 UTC. P (BR2.8T_300, BR2.8T_400 and BR2.8T_500) is the measured probability distribution against the reference probability distribution Q (BR2.8T). Each distribution consist of ~ 10800 grid points separated into 24 bins over the cross-section in Fig. 1.

<u>Variable</u>	<u>P</u>	<u>Q</u>	<u>$D_{\text{KL}}(P Q)$ (bits)</u>
<u>NISG</u>	<u>BR2.8T_300</u>	<u>BR2.8T</u>	<u>0.06</u>
	<u>BR2.8T_400</u>		<u>0.03</u>
	<u>BR2.8T_500</u>		<u>0.03</u>
<u>SIP</u>	<u>BR2.8T_300</u>	<u>BR2.8T</u>	<u>1.07</u>
	<u>BR2.8T_400</u>		<u>0.06</u>
	<u>BR2.8T_500</u>		<u>0.06</u>
<u>Ice</u>	<u>BR2.8T_300</u>	<u>BR2.8T</u>	<u>0.05</u>
	<u>BR2.8T_400</u>		<u>0.02</u>
	<u>BR2.8T_500</u>		<u>0.03</u>
<u>Graupel</u>	<u>BR2.8T_300</u>	<u>BR2.8T</u>	<u>3.33</u>
	<u>BR2.8T_400</u>		<u>0.84</u>
	<u>BR2.8T_500</u>		<u>0.61</u>

National Supercomputing Center (CSCS) under project s1009. ZD and JG acknowledge funding from the Swiss National Science Foundation (SNSF), grant numbers 200021_175824 and 200020_175700, respectively. We sincerely thank the reviewers for their constructive feedback. Their suggestions and comments considerably improved the quality of the manuscript.

585 References

- Andrić, J., Kumjian, M. R., Zrnić, D. S., Straka, J. M., and Melnikov, V. M.: Polarimetric Signatures above the Melting Layer in Winter Storms: An Observational and Modeling Study, *Journal of Applied Meteorology and Climatology*, 52, 682–700, <https://doi.org/10.1175/JAMC-D-12-028.1>, publisher: American Meteorological Society Section: Journal of Applied Meteorology and Climatology, 2013.
- 590 Bader, M. J., Clough, S. A., and Cox, G. P.: Aircraft and dual polarization radar observations of hydrometeors in light stratiform precipitation, *Quarterly Journal of the Royal Meteorological Society*, 113, 491–515, <https://doi.org/10.1002/qj.49711347605>, _eprint: <https://onlinelibrary.wiley.com/doi/pdf/10.1002/qj.49711347605>, 1987.
- Baldauf, M., Seifert, A., Förstner, J., Majewski, D., Raschendorfer, M., and Reinhardt, T.: Operational Convective-Scale Numerical Weather Prediction with the COSMO Model: Description and Sensitivities, *Monthly Weather Review*, 139, 3887–3905, <https://doi.org/10.1175/MWR-D-10-05013.1>, 2011.
- 595 Baumgartner, A. and Reichel, E.: *The World Water Balance: Mean Annual Global, Continental and Maritime Precipitation, Evaporation and Run-off*, Elsevier Scientific Publishing Company, 1975.
- Bechini, R., Baldini, L., and Chandrasekar, V.: Polarimetric Radar Observations in the Ice Region of Precipitating Clouds at C-Band and X-Band Radar Frequencies, *Journal of Applied Meteorology and Climatology*, 52, 1147–1169, <https://doi.org/10.1175/JAMC-D-12-055.1>, publisher: American Meteorological Society Section: Journal of Applied Meteorology and Climatology, 2013.
- 600 Blyth, A. M. and Latham, J.: A multi-thermal model of cumulus glaciation via the hallett-Mossop process, *Quarterly Journal of the Royal Meteorological Society*, 123, 1185–1198, <https://doi.org/10.1002/qj.49712354104>, 1997.
- Cotton, R. J. and Field, P. R.: Ice nucleation characteristics of an isolated wave cloud, *Quarterly Journal of the Royal Meteorological Society*, 128, 2417–2437, <https://doi.org/10.1256/qj.01.150>, 2002.
- 605 Dawe, J. T. and Austin, P. H.: Direct entrainment and detrainment rate distributions of individual shallow cumulus clouds in an LES, *Atmospheric Chemistry and Physics*, 13, 7795–7811, <https://doi.org/10.5194/acp-13-7795-2013>, 2013.
- Dedekind, Z.: *The Impact of the Ice Phase on Orographic Mixed-phase Clouds and Surface Precipitation in the Swiss Alps*, Doctoral Thesis, ETH Zurich, <https://doi.org/10.3929/ethz-b-000511939>, 2021.
- Dedekind, Z., Lauber, A., Ferrachat, S., and Lohmann, U.: Sensitivity of precipitation formation to secondary ice production in winter orographic mixed-phase clouds, *Atmospheric Chemistry and Physics*, 21, 15 115–15 134, <https://doi.org/10.5194/acp-21-15115-2021>, 2021.
- 610 Eirund, G. K., Possner, A., and Lohmann, U.: Response of Arctic mixed-phase clouds to aerosol perturbations under different surface forcings, *Atmospheric Chemistry and Physics*, 19, 9847–9864, <https://doi.org/10.5194/acp-19-9847-2019>, 2019.
- Eirund, G. K., Drossaart van Dusseldorp, S., Brem, B. T., Dedekind, Z., Karrer, Y., Stoll, M., and Lohmann, U.: Aerosol–cloud–precipitation interactions during a Saharan dust event – A summertime case-study from the Alps, *Quarterly Journal of the Royal Meteorological Society*, <https://doi.org/10.1002/qj.4240>, 2021.
- 615 Field, P. R., Lawson, R. P., Brown, P. R. A., Lloyd, G., Westbrook, C., Moisseev, D., Miltenberger, A., Nenes, A., Blyth, A., Choulaton, T., Connolly, P., Buehl, J., Crosier, J., Cui, Z., Dearden, C., DeMott, P., Flossmann, A., Heymsfield, A., Huang, Y., Kalesse, H., Kanji, Z. A., Korolev, A., Kirchgaessner, A., Lasher-Trapp, S., Leisner, T., McFarquhar, G., Phillips, V., Stith, J., and Sullivan, S.: Secondary Ice Production: Current State of the Science and Recommendations for the Future, *Meteorological Monographs*, 58, 7.1–7.20, <https://doi.org/10.1175/AMSMONOGRAPHS-D-16-0014.1>, 2016.
- 620

- Gehring, J., Oertel, A., Vignon, , Jullien, N., Besic, N., and Berne, A.: Microphysics and dynamics of snowfall associated with a warm conveyor belt over Korea, *Atmospheric Chemistry and Physics*, 20, 7373–7392, <https://doi.org/10.5194/acp-20-7373-2020>, publisher: Copernicus GmbH, 2020.
- 625 Georgakaki, P., Sotiropoulou, G., Vignon, , Billault-Roux, A.-C., Berne, A., and Nenes, A.: Secondary ice production processes in wintertime alpine mixed-phase clouds, *Atmospheric Chemistry and Physics*, 22, 1965–1988, <https://doi.org/10.5194/acp-22-1965-2022>, publisher: Copernicus GmbH, 2022.
- Glassmeier, F. and Lohmann, U.: Precipitation Susceptibility and Aerosol Buffering of Warm- and Mixed-Phase Orographic Clouds in Idealized Simulations, *Journal of the Atmospheric Sciences*, 75, 1173–1194, <https://doi.org/10.1175/JAS-D-17-0254.1>, 2018.
- 630 Grazioli, J., Schneebeli, M., and Berne, A.: Accuracy of Phase-Based Algorithms for the Estimation of the Specific Differential Phase Shift Using Simulated Polarimetric Weather Radar Data, *IEEE Geoscience and Remote Sensing Letters*, 11, 763–767, <https://doi.org/10.1109/LGRS.2013.2278620>, conference Name: IEEE Geoscience and Remote Sensing Letters, 2014a.
- Grazioli, J., Tuia, D., Monhart, S., Schneebeli, M., Raupach, T., and Berne, A.: Hydrometeor classification from two-dimensional video disdrometer data, *Atmospheric Measurement Techniques*, 7, 2869–2882, <https://doi.org/10.5194/amt-7-2869-2014>, publisher: Copernicus
635 GmbH, 2014b.
- Grazioli, J., Lloyd, G., Panziera, L., Hoyle, C. R., Connolly, P. J., Henneberger, J., and Berne, A.: Polarimetric radar and in situ observations of riming and snowfall microphysics during CLACE 2014, *Atmospheric Chemistry and Physics*, 15, 13787–13802, <https://doi.org/10.5194/acp-15-13787-2015>, 2015a.
- Grazioli, J., Tuia, D., and Berne, A.: Hydrometeor classification from polarimetric radar measurements: a clustering approach, *Atmospheric
640 Measurement Techniques*, 8, 149–170, <https://doi.org/10.5194/amt-8-149-2015>, publisher: Copernicus GmbH, 2015b.
- Grazioli, J., Genthon, C., Boudevillain, B., Duran-Alarcon, C., Del Guasta, M., Madeleine, J.-B., and Berne, A.: Measurements of precipitation in Dumont d’Urville, Adélie Land, East Antarctica, *The Cryosphere*, 11, 1797–1811, <https://doi.org/10.5194/tc-11-1797-2017>, 2017.
- Hacine-Gharbi, A., Deriche, M., Ravier, P., Harba, R., and Mohamadi, T.: A new histogram-based estimation technique of entropy and mutual information using mean squared error minimization, *Computers & Electrical Engineering*, 39, 918–933, <https://doi.org/10.1016/j.compeleceng.2013.02.010>, 2013.
645
- Hallett, J. and Mossop, S. C.: Production of secondary ice particles during the riming process, *Nature*, 249, 26–28, <https://doi.org/10.1038/249026a0>, 1974.
- Henneberg, O.: Orographic Mixed-phase Clouds in the Swiss Alps - Occurrence, Persistence and Sensitivity, Doctoral Thesis, ETH Zurich, <https://doi.org/10.3929/ethz-b-000223156>, 2017.
650
- Henneberg, O., Henneberger, J., and Lohmann, U.: Formation and Development of Orographic Mixed-Phase Clouds, *Journal of the Atmospheric Sciences*, 74, 3703–3724, <https://doi.org/10.1175/JAS-D-16-0348.1>, 2017.
- Heymsfield, A. J., Bansemmer, A., Poellot, M. R., and Wood, N.: Observations of Ice Microphysics through the Melting Layer, *Journal of the Atmospheric Sciences*, 72, 2902–2928, <https://doi.org/10.1175/JAS-D-14-0363.1>, 2015.
- 655 Heymsfield, A. J., Schmitt, C., Chen, C.-C.-J., Bansemmer, A., Gettelman, A., Field, P. R., and Liu, C.: Contributions of the Liquid and Ice Phases to Global Surface Precipitation: Observations and Global Climate Modeling, *Journal of the Atmospheric Sciences*, 77, 2629–2648, <https://doi.org/10.1175/JAS-D-19-0352.1>, 2020.
- Hoarau, T., Pinty, J.-P., and Barthe, C.: A representation of the collisional ice break-up process in the two-moment microphysics LIMA v1.0 scheme of Meso-NH, *Geoscientific Model Development*, 11, 4269–4289, <https://doi.org/10.5194/gmd-11-4269-2018>, 2018.

- 660 Hogan, R. J., Field, P. R., Illingworth, A. J., Cotton, R. J., and Choullarton, T. W.: Properties of embedded convection in warm-frontal mixed-phase cloud from aircraft and polarimetric radar, *Quarterly Journal of the Royal Meteorological Society*, 128, 451–476, <https://doi.org/10.1256/003590002321042054>, eprint: <https://onlinelibrary.wiley.com/doi/pdf/10.1256/003590002321042054>, 2002.
- Houze, R. A. and Medina, S.: Turbulence as a Mechanism for Orographic Precipitation Enhancement, *Journal of the Atmospheric Sciences*, 62, 3599–3623, <https://doi.org/10.1175/JAS3555.1>, publisher: American Meteorological Society Section: *Journal of the Atmospheric*
665 *Sciences*, 2005.
- Keil, C., Baur, F., Bachmann, K., Rasp, S., Schneider, L., and Barthlott, C.: Relative contribution of soil moisture, boundary-layer and microphysical perturbations on convective predictability in different weather regimes, *Quarterly Journal of the Royal Meteorological Society*, 145, 3102–3115, <https://doi.org/10.1002/qj.3607>, 2019.
- Kennedy, P. C. and Rutledge, S. A.: S-Band Dual-Polarization Radar Observations of Winter Storms, *Journal of Applied Meteorology and*
670 *Climatology*, 50, 844–858, <https://www.jstor.org/stable/26174063>, publisher: American Meteorological Society, 2011.
- Kumjian, M. R. and Lombardo, K. A.: Insights into the Evolving Microphysical and Kinematic Structure of Northeastern U.S. Winter Storms from Dual-Polarization Doppler Radar, *Monthly Weather Review*, 145, 1033–1061, <https://doi.org/10.1175/MWR-D-15-0451.1>, publisher: American Meteorological Society Section: *Monthly Weather Review*, 2017.
- Kumjian, M. R. and Ryzhkov, A. V.: The Impact of Size Sorting on the Polarimetric Radar Variables, *Journal of the Atmospheric Sciences*, 69,
675 2042–2060, <https://doi.org/10.1175/JAS-D-11-0125.1>, publisher: American Meteorological Society Section: *Journal of the Atmospheric Sciences*, 2012.
- Kumjian, M. R., Rutledge, S. A., Rasmussen, R. M., Kennedy, P. C., and Dixon, M.: High-Resolution Polarimetric Radar Observations of Snow-Generating Cells, *Journal of Applied Meteorology and Climatology*, 53, 1636–1658, <https://doi.org/10.1175/JAMC-D-13-0312.1>, publisher: American Meteorological Society Section: *Journal of Applied Meteorology and Climatology*, 2014.
- 680 Kärcher, B., Hendricks, J., and Lohmann, U.: Physically based parameterization of cirrus cloud formation for use in global atmospheric models, *Journal of Geophysical Research: Atmospheres*, 111, 1–11, <https://doi.org/10.1029/2005JD006219>, 2006.
- Lohmann, U., Henneberger, J., Henneberg, O., Fugal, J. P., Bühl, J., and Kanji, Z. A.: Persistence of orographic mixed-phase clouds, *Geophysical Research Letters*, 43, 10,512–10,519, <https://doi.org/10.1002/2016GL071036>, 2016.
- Luke, E. P., Yang, F., Kollias, P., Vogelmann, A. M., and Maahn, M.: New insights into ice multiplication using remote-sensing
685 observations of slightly supercooled mixed-phase clouds in the Arctic, *Proceedings of the National Academy of Sciences*, 118, <https://doi.org/10.1073/pnas.2021387118>, 2021.
- Medina, S. and Houze, R. A.: Small-Scale Precipitation Elements in Midlatitude Cyclones Crossing the California Sierra Nevada, *Monthly Weather Review*, 143, 2842–2870, <https://doi.org/10.1175/MWR-D-14-00124.1>, publisher: American Meteorological Society Section: *Monthly Weather Review*, 2015.
- 690 Medina, S., Smull, B. F., Houze, R. A., and Steiner, M.: Cross-Barrier Flow during Orographic Precipitation Events: Results from MAP and IMPROVE, *Journal of the Atmospheric Sciences*, 62, 3580–3598, <https://doi.org/10.1175/JAS3554.1>, publisher: American Meteorological Society Section: *Journal of the Atmospheric Sciences*, 2005.
- Milbrandt, J. A. and McTaggart-Cowan, R.: Sedimentation-Induced Errors in Bulk Microphysics Schemes, *Journal of the Atmospheric Sciences*, 67, 3931–3948, <https://doi.org/10.1175/2010JAS3541.1>, 2010.
- 695 Milbrandt, J. A. and Morrison, H.: Parameterization of Cloud Microphysics Based on the Prediction of Bulk Ice Particle Properties. Part III: Introduction of Multiple Free Categories, *Journal of the Atmospheric Sciences*, 73, 975–995, <https://doi.org/10.1175/JAS-D-15-0204.1>, 2016.

- Murphy, A. M., Ryzhkov, A., and Zhang, P.: Columnar Vertical Profile (CVP) Methodology for Validating Polarimetric Radar Retrievals in Ice Using In Situ Aircraft Measurements, *Journal of Atmospheric and Oceanic Technology*, 37, 1623–1642, <https://doi.org/10.1175/JTECH-D-20-0011.1>, 2020.
- Mülmenstädt, J., Sourdeval, O., Delanoë, J., and Quaas, J.: Frequency of occurrence of rain from liquid-, mixed-, and ice-phase clouds derived from A-Train satellite retrievals, *Geophysical Research Letters*, 42, 6502–6509, <https://doi.org/10.1002/2015GL064604>, 2015.
- Oue, M., Kumjian, M. R., Lu, Y., Verlinde, J., Aydin, K., and Clothiaux, E. E.: Linear Depolarization Ratios of Columnar Ice Crystals in a Deep Precipitating System over the Arctic Observed by Zenith-Pointing Ka-Band Doppler Radar, *Journal of Applied Meteorology and Climatology*, 54, 1060–1068, <https://doi.org/10.1175/JAMC-D-15-0012.1>, publisher: American Meteorological Society Section: Journal of Applied Meteorology and Climatology, 2015.
- Oue, M., Kollias, P., Matrosov, S. Y., Battaglia, A., and Ryzhkov, A. V.: Analysis of the microphysical properties of snowfall using scanning polarimetric and vertically pointing multi-frequency Doppler radars, *Atmospheric Measurement Techniques*, 14, 4893–4913, <https://doi.org/10.5194/amt-14-4893-2021>, 2021.
- Ovtchinnikov, M. and Kogan, Y. L.: An Investigation of Ice Production Mechanisms in Small Cumuliform Clouds Using a 3D Model with Explicit Microphysics. Part I: Model Description, *Journal of the Atmospheric Sciences*, 57, 2989–3003, [https://doi.org/10.1175/1520-0469\(2000\)057<2989:AIOIPM>2.0.CO;2](https://doi.org/10.1175/1520-0469(2000)057<2989:AIOIPM>2.0.CO;2), 2000.
- Phillips, V. T. J., Blyth, A. M., Brown, P. R. A., Choullarton, T. W., and Latham, J.: The glaciation of a cumulus cloud over New Mexico, *Quarterly Journal of the Royal Meteorological Society*, 127, 1513–1534, <https://doi.org/10.1002/qj.49712757503>, 2006.
- Phillips, V. T. J., DeMott, P. J., and Andronache, C.: An Empirical Parameterization of Heterogeneous Ice Nucleation for Multiple Chemical Species of Aerosol, *Journal of the Atmospheric Sciences*, 65, 2757–2783, <https://doi.org/10.1175/2007JAS2546.1>, 2008.
- Phillips, V. T. J., Yano, J.-I., Formenton, M., Ilotoviz, E., Kanawade, V., Kudzotsa, I., Sun, J., Bansemer, A., Detwiler, A. G., Khain, A., and Tessendorf, S. A.: Ice Multiplication by Breakup in Ice–Ice Collisions. Part II: Numerical Simulations, *Journal of the Atmospheric Sciences*, 74, 2789–2811, <https://doi.org/10.1175/JAS-D-16-0223.1>, 2017.
- Pinsky, M., Khain, A., and Shapiro, M.: Collision Efficiency of Drops in a Wide Range of Reynolds Numbers: Effects of Pressure on Spectrum Evolution, *Journal of the Atmospheric Sciences*, 58, 742–764, [https://doi.org/10.1175/1520-0469\(2001\)058<0742:CEODIA>2.0.CO;2](https://doi.org/10.1175/1520-0469(2001)058<0742:CEODIA>2.0.CO;2), 2001.
- Possner, A., Ekman, A. M. L., and Lohmann, U.: Cloud response and feedback processes in stratiform mixed-phase clouds perturbed by ship exhaust, *Geophysical Research Letters*, 44, 1964–1972, <https://doi.org/10.1002/2016GL071358>, 2017.
- Ryzhkov, A. V. and Zrnica, D. S.: *Radar Polarimetry for Weather Observations*, Springer Atmospheric Sciences, Springer International Publishing, Cham, <https://doi.org/10.1007/978-3-030-05093-1>, 2019.
- Ryzhkov, A. V., Giangrande, S. E., Melnikov, V. M., and Schuur, T. J.: Calibration Issues of Dual-Polarization Radar Measurements, *Journal of Atmospheric and Oceanic Technology*, 22, 1138–1155, <https://doi.org/10.1175/JTECH1772.1>, publisher: American Meteorological Society Section: Journal of Atmospheric and Oceanic Technology, 2005.
- Schneebeli, M., Dawes, N., Lehning, M., and Berne, A.: High-Resolution Vertical Profiles of X-Band Polarimetric Radar Observables during Snowfall in the Swiss Alps, *Journal of Applied Meteorology and Climatology*, 52, 378–394, <https://doi.org/10.1175/JAMC-D-12-015.1>, 2013.
- Schär, C., Leuenberger, D., Fuhrer, O., Lüthi, D., and Girard, C.: A New Terrain-Following Vertical Coordinate Formulation for Atmospheric Prediction Models, *Monthly Weather Review*, 130, 2459–2480, [https://doi.org/10.1175/1520-0493\(2002\)130<2459:ANTFVC>2.0.CO;2](https://doi.org/10.1175/1520-0493(2002)130<2459:ANTFVC>2.0.CO;2), 2002.

- Seifert, A.: Parametrisierung wolkenmikrophysikalischer Prozesse und Simulation konvektiver Mischwolken, Doctoral Thesis, Universität Karlsruhe, Forschungszentrum Karlsruhe, https://www.imk-tro.kit.edu/4437_1388.php, 2002.
- Seifert, A. and Beheng, K. D.: A double-moment parameterization for simulating autoconversion, accretion and selfcollection, *Atmospheric Research*, 59-60, 265–281, [https://doi.org/10.1016/S0169-8095\(01\)00126-0](https://doi.org/10.1016/S0169-8095(01)00126-0), 2001.
- 740 Seifert, A. and Beheng, K. D.: two-moment cloud microphysics parameterization for mixed-phase clouds. Part 2: Maritime vs. continental deep convective storms, *Meteorology and Atmospheric Physics*, 92, 67–82, <https://doi.org/10.1007/s00703-005-0113-3>, 2006.
- Seifert, A., Khain, A., Pokrovsky, A., and Beheng, K. D.: A comparison of spectral bin and two-moment bulk mixed-phase cloud microphysics, *Atmospheric Research*, 80, 46–66, <https://doi.org/10.1016/j.atmosres.2005.06.009>, 2006.
- Selz, T. and Craig, G. C.: Upscale Error Growth in a High-Resolution Simulation of a Summertime Weather Event over Europe, *Monthly Weather Review*, 143, 813–827, <https://doi.org/10.1175/MWR-D-14-00140.1>, 2015.
- 745 Shannon, C. E. and Weaver, W.: *The Mathematical Theory of Communication*, University of Illinois Press, <https://www.press.uillinois.edu/books/?id=p725487>, 1949.
- Sinclair, V. A., Moisseev, D., and von Lerber, A.: How dual-polarization radar observations can be used to verify model representation of secondary ice, *Journal of Geophysical Research: Atmospheres*, 121, 10,954–10,970, <https://doi.org/10.1002/2016JD025381>, <https://onlinelibrary.wiley.com/doi/pdf/10.1002/2016JD025381>, 2016.
- 750 Sotiropoulou, G., Sullivan, S., Savre, J., Lloyd, G., Lachlan-Cope, T., Ekman, A. M. L., and Nenes, A.: The impact of secondary ice production on Arctic stratocumulus, *Atmospheric Chemistry and Physics*, 20, 1301–1316, <https://doi.org/10.5194/acp-20-1301-2020>, 2020.
- Sotiropoulou, G., Vignon, E., Young, G., Morrison, H., O’Shea, S. J., Lachlan-Cope, T., Berne, A., and Nenes, A.: Secondary ice production in summer clouds over the Antarctic coast: an underappreciated process in atmospheric models, *Atmospheric Chemistry and Physics*, 21, 755–771, <https://doi.org/10.5194/acp-21-755-2021>, 2021a.
- 755 Sotiropoulou, G., Vignon, , Young, G., Morrison, H., O’Shea, S. J., Lachlan-Cope, T., Berne, A., and Nenes, A.: Secondary ice production in summer clouds over the Antarctic coast: an underappreciated process in atmospheric models, *Atmospheric Chemistry and Physics*, 21, 755–771, <https://doi.org/10.5194/acp-21-755-2021>, 2021b.
- Stull, R.: *Practical Meteorology: An Algebra-based Survey of Atmospheric Science*, AVP International, University of British Columbia, google-Books-ID: xP2sDAEACAAJ, 2016.
- 760 Sullivan, S. C., Barthlott, C., Crosier, J., Zhukov, I., Nenes, A., and Hoose, C.: The effect of secondary ice production parameterization on the simulation of a cold frontal rainband, *Atmospheric Chemistry and Physics*, 18, 16 461–16 480, <https://doi.org/10.5194/acp-18-16461-2018>, 2018.
- Takahashi, T., Nagao, Y., and Kushiyama, Y.: Possible High Ice Particle Production during Graupel–Graupel Collisions, *Journal of the Atmospheric Sciences*, 52, 4523–4527, [https://doi.org/10.1175/1520-0469\(1995\)052<4523:PHIPPD>2.0.CO;2](https://doi.org/10.1175/1520-0469(1995)052<4523:PHIPPD>2.0.CO;2), 1995.
- 765 Vardiman, L.: The Generation of Secondary Ice Particles in Clouds by Crystal–Crystal Collision, *Journal of the Atmospheric Sciences*, 35, 2168–2180, [https://doi.org/10.1175/1520-0469\(1978\)035<2168:TGOSIP>2.0.CO;2](https://doi.org/10.1175/1520-0469(1978)035<2168:TGOSIP>2.0.CO;2), 1978.
- von Terzi, L., Dias Neto, J., Ori, D., Myagkov, A., and Kneifel, S.: Ice microphysical processes in the dendritic growth layer: A statistical analysis combining multi-frequency and polarimetric Doppler cloud radar observations, *Atmospheric Chemistry and Physics Discussions*, pp. 1–38, <https://doi.org/10.5194/acp-2022-263>, publisher: Copernicus GmbH, 2022.
- 770 Wisner, C., Orville, H. D., and Myers, C.: A Numerical Model of a Hail-Bearing Cloud, *Journal of the Atmospheric Sciences*, 29, 1160–1181, [https://doi.org/10.1175/1520-0469\(1972\)029<1160:ANMOAH>2.0.CO;2](https://doi.org/10.1175/1520-0469(1972)029<1160:ANMOAH>2.0.CO;2), 1972.

- Yano, J.-I. and Phillips, V. T. J.: Ice–Ice Collisions: An Ice Multiplication Process in Atmospheric Clouds, *Journal of the Atmospheric Sciences*, 68, 322–333, <https://doi.org/10.1175/2010JAS3607.1>, 2011.
- 775 Zawadzki, I., Fabry, F., and Szyrmer, W.: Observations of supercooled water and secondary ice generation by a vertically pointing X-band Doppler radar, *Atmospheric Research*, 59-60, 343–359, [https://doi.org/10.1016/S0169-8095\(01\)00124-7](https://doi.org/10.1016/S0169-8095(01)00124-7), 2001.
- Zhao, X., Liu, X., Phillips, V. T. J., and Patade, S.: Impacts of secondary ice production on Arctic mixed-phase clouds based on ARM observations and CAM6 single-column model simulations, *Atmospheric Chemistry and Physics*, 21, 5685–5703, <https://doi.org/10.5194/acp-21-5685-2021>, 2021.