

Figure S1 Same as Figure 2 but for ^{137}Cs .

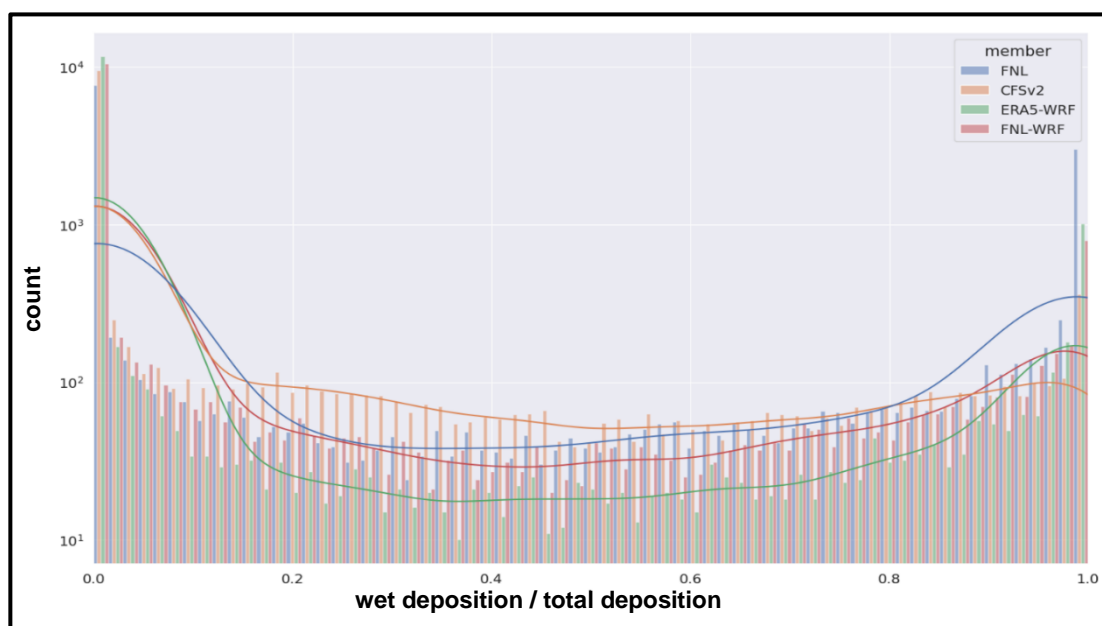


Figure S2 The distribution of the ratio of ^{137}Cs wet deposition to total ^{137}Cs deposition. Colors represent members and lines are the corresponding kernel density estimates of counts. Counts are on a logarithmic scale.

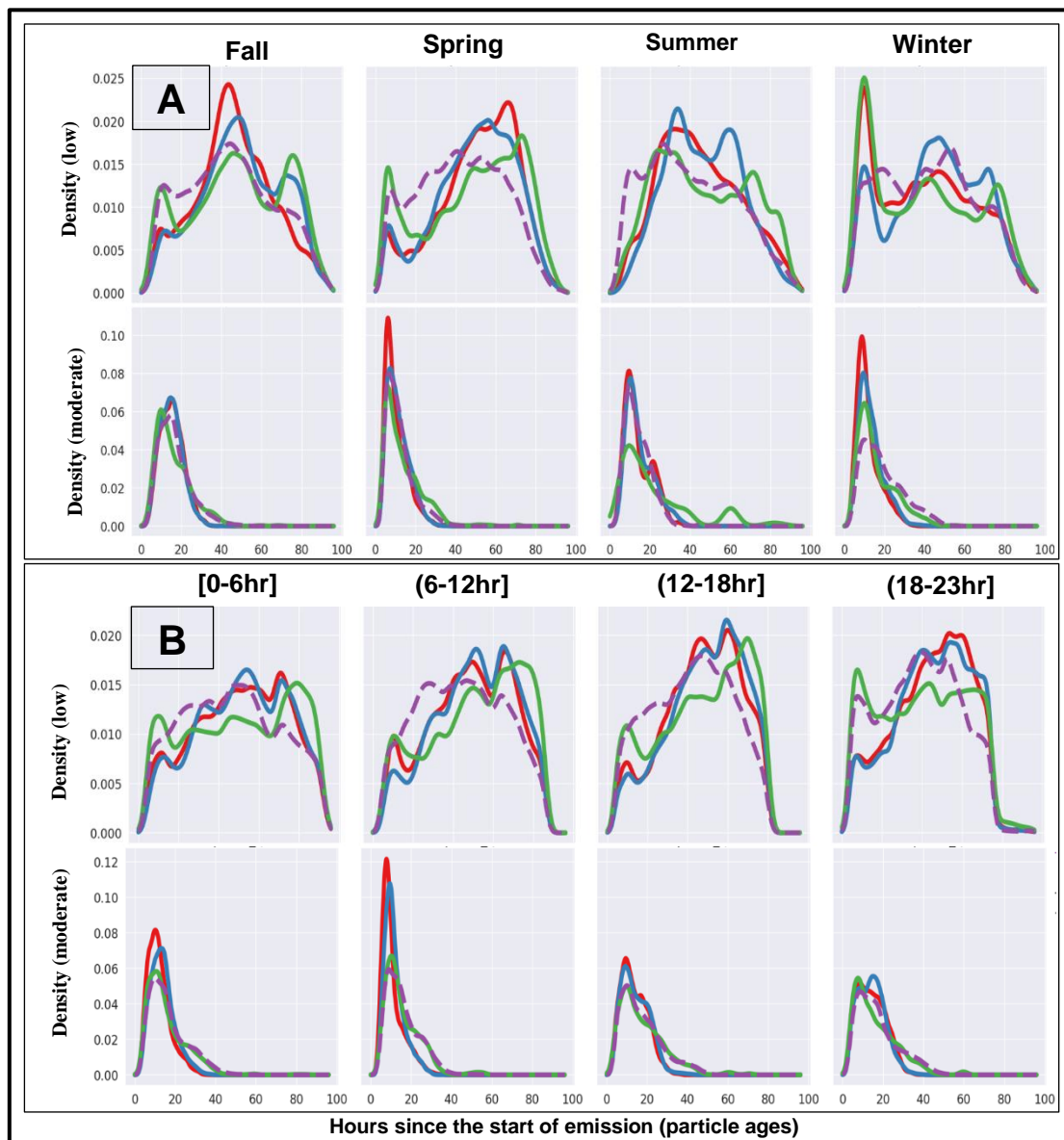


Figure S3 Same as Figure 2 but for the low and moderate concentrations of ^{131}I .

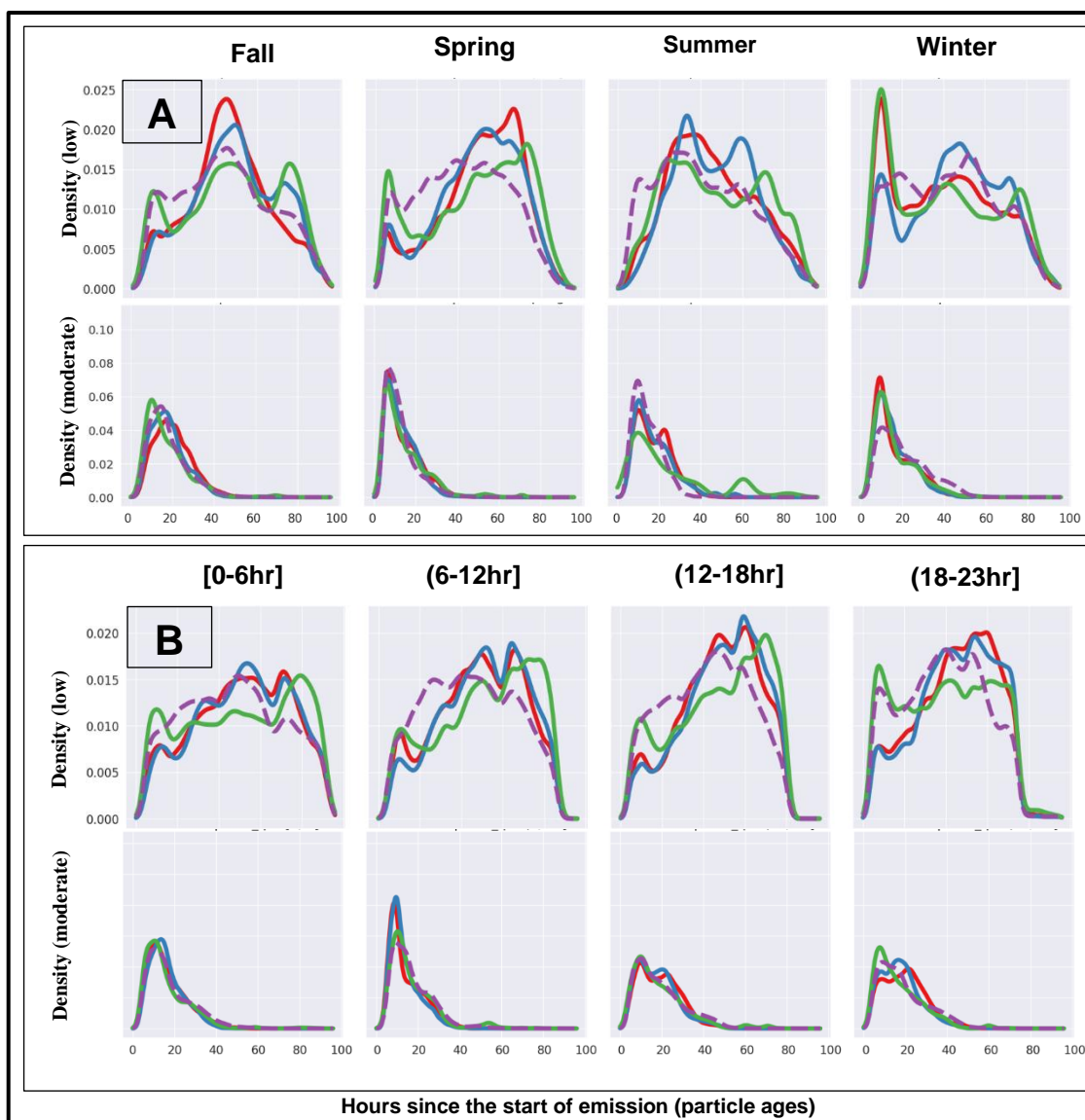


Figure S4 Same as Figure 2 but for the low and moderate concentrations of ^{137}Cs .

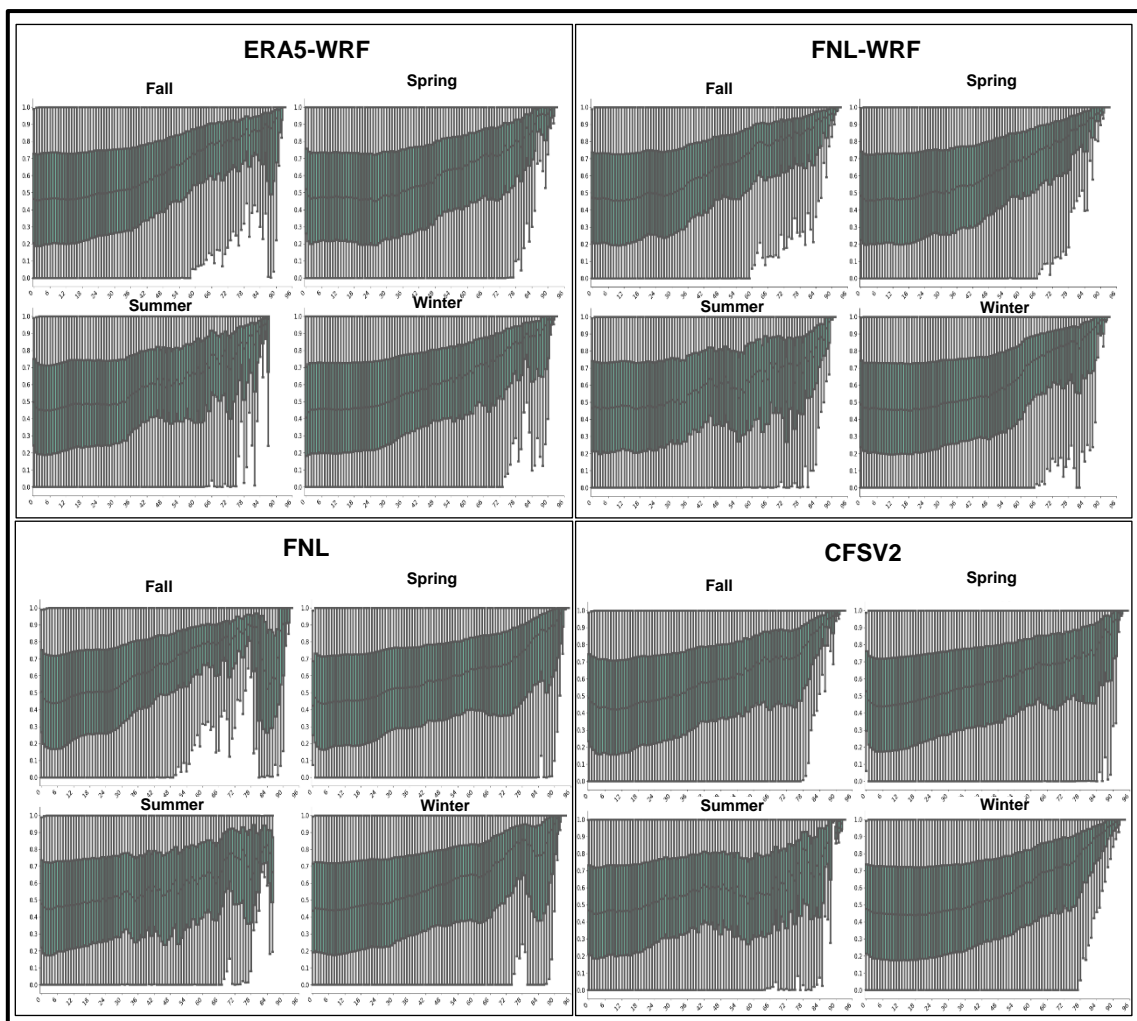


Figure S5 Same as Figure 3 but for all seasons.

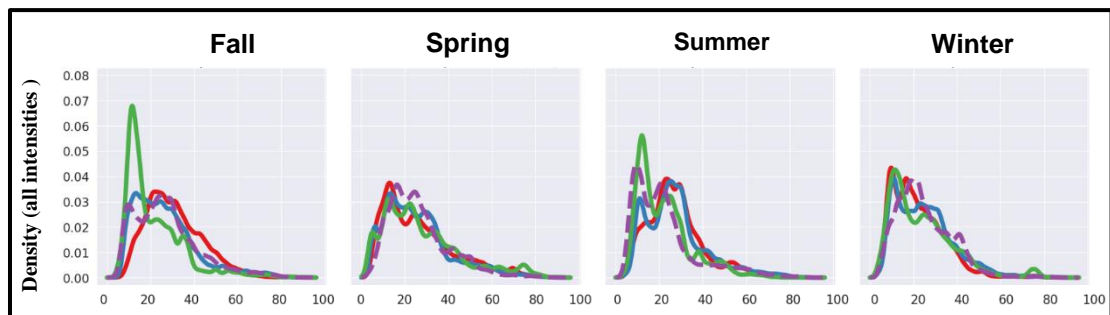


Figure S6 Same as the panel at the top in Figure 2 but for all intensities of ^{137}Cs depositions.

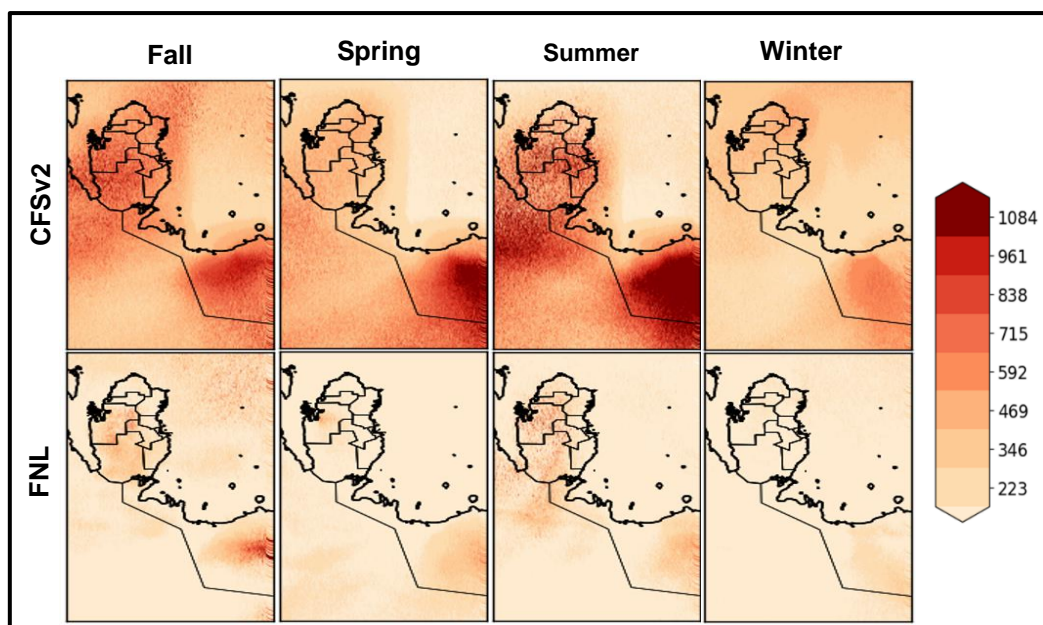
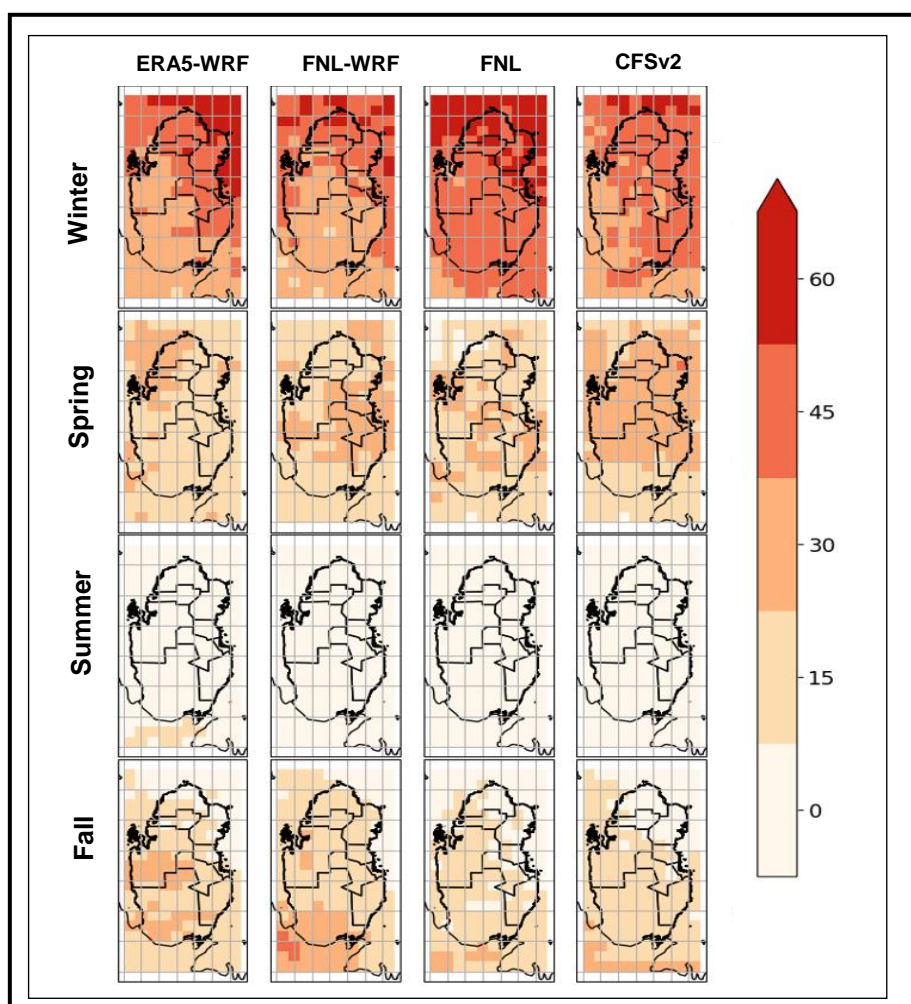


Figure S7 The seasonal median of boundary layer height (m) estimated based on CFSv2 (top row) and FNL (bottom row) inputs.



S8 Same as Figure 8-A but for ^{137}Cs column densities above respective 66th percentile.

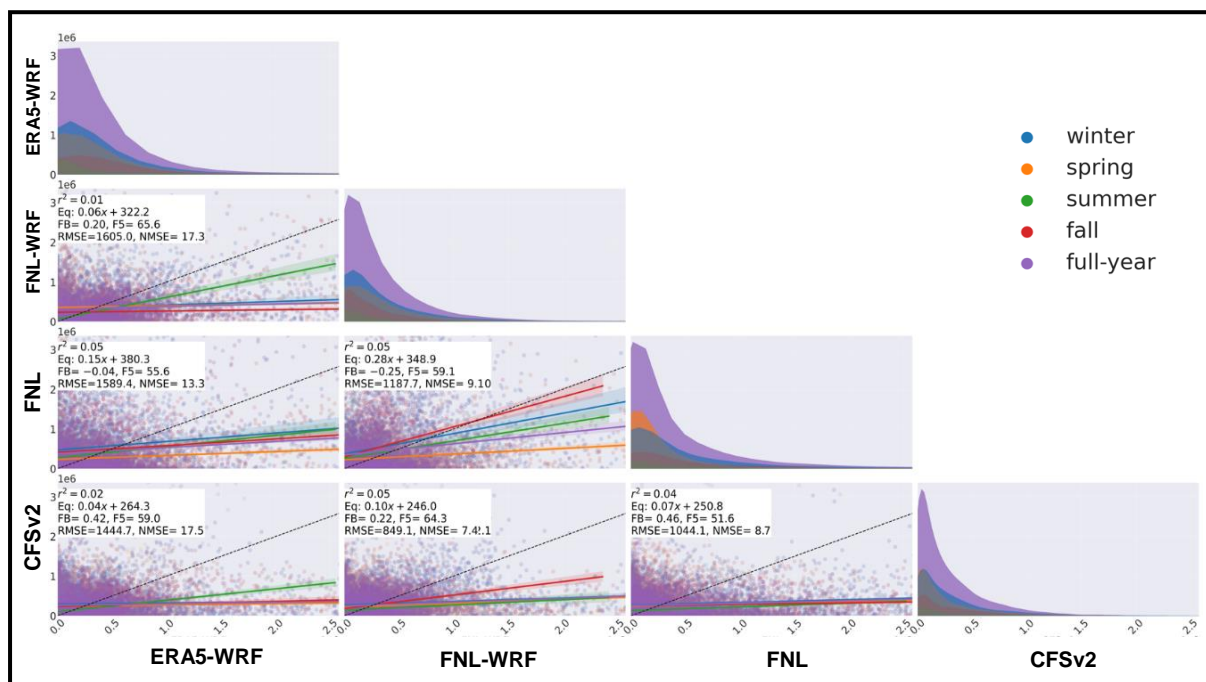
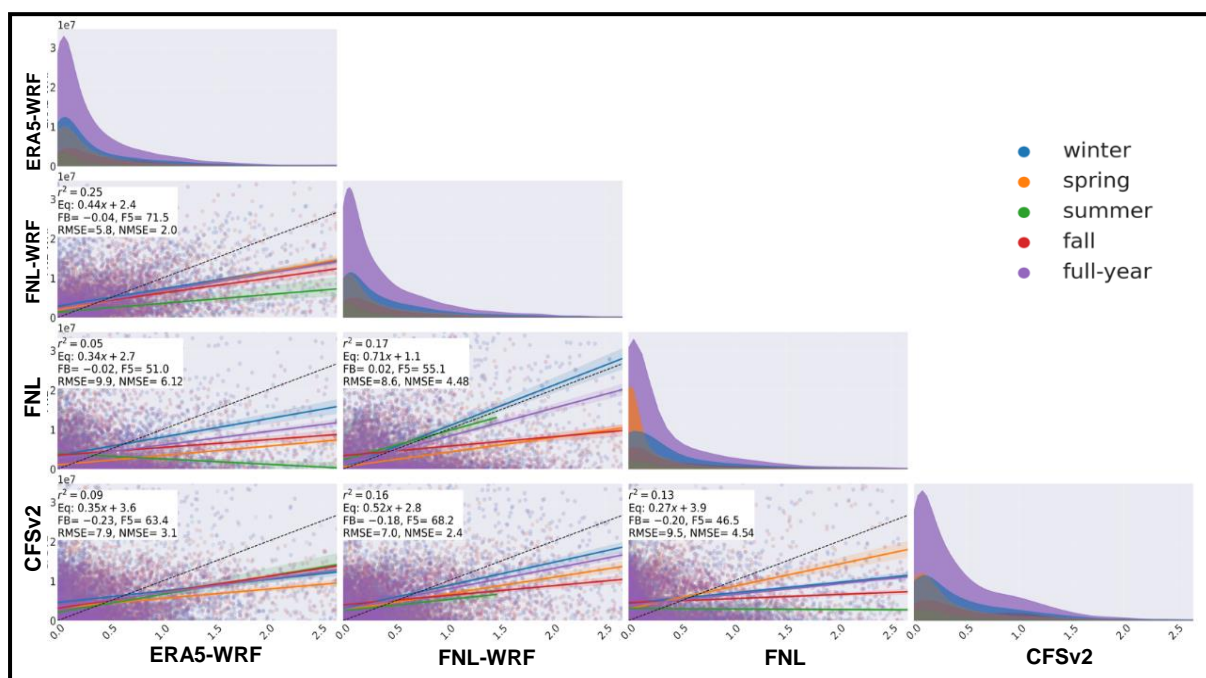


Figure 11 Same as Figure 10 but for ^{137}Cs deposition



S12 Same as Figure 10 but for ^{131}I depositions.