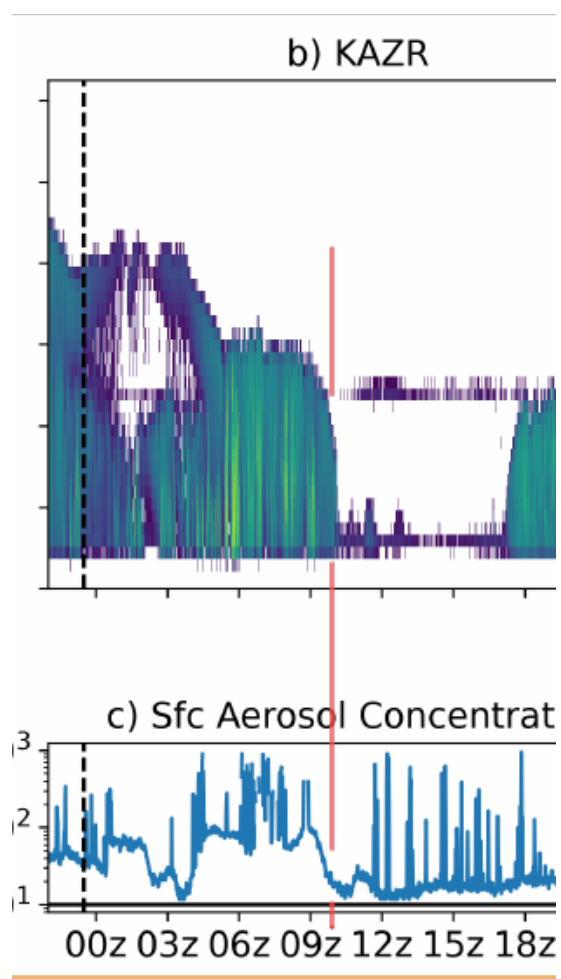


# **Response to RC1**

We thank the reviewer for their time and thoughtful feedback. Both reviews pointed out that more information was needed in the experimental setup section (sec. 2.3) and as such we have added more info and clarified details on the experiment setup that make the manuscript more easily understandable. Detailed responses to individual comments are posted below. A track-changes copy of the revised manuscript is provided at the end of this document.

## **Major Comment 1**

The causal relationship between the decrease in the aerosol concentrations and changes in changes in the properties of the clouds are expected. However, this paper goes an extra steps and claims that observed dissipation of clouds is most likely due to decrease in the aerosol concentrations. However, observations as described in the section 2.1 show only the correlation of these two events. Furthermore, figure 2.b and 2.c show that the cloud started dissipating while the aerosol concentrations were still high (please see the red line in the snapshot below).



Therefore, it is possible that the the causation could work the other way around: increased precipitation could possibly scavenge aerosols from the lower part of the boundary layer. Or it is also possible that both changes are caused by an advection of slightly different air mass. Unfortunately, I do not see this addressed discussed in the paper.

The reviewer is correct in their assessment of the interchangeability of correlation. It was not our goal to state with any degree certainty that any of the cases were the result of aerosol-limited dissipation, only to suggest that it was a possible mechanism. We did briefly mention a possible change of air mass (initial submission; lines 131-133) and that the OLI case specifically does not appear to be an example of aerosol limited dissipation (line 240) but the reviewer is correct that more attention needs to be given to alternate possible methods of dissipation that would result in the aerosol/radar signals we presented (such as the reviewer's suggestion of wet scavenging). We have made this more explicit in the manuscript such as in lines 127-136, 274, 299-302,

Furthermore, it leads to slightly misleading part of the title: "evidence from observations and idealized simulations". What we currently see in the paper is "evidence from idealized simulations motivated by observations."

The title has been changed to more accurately reflect the content of the paper to "Do Arctic mixed-phase clouds sometimes dissipate due to insufficient aerosol? Evidence from comparisons between observations and idealized simulations."

## Major Comment 2

The section "2.3 Experimental setup" is well written, yet clearly incomplete, which means that the study is in the current form not replicable.

The following properties of the setup of simulations are missing:

- radiation scheme: which radiation scheme is used? Is it coupled to the microphysics?
- surface conditions: considering that most of the simulations are during the day, the surface albedo might play a role. But its setting is not described.
- wind velocity: what is the initial profile of wind velocity, and is it derived from observations, or the reanalysis?
- meso-scale forcing: is the initial wind velocity maintained?
- upper boundary conditions: Do you use the Gravity wave radiation condition (Klemp and Durran, 1983), or something else?

This section does indeed require more detail and has been expanded to address the points from both reviewers. Section 2.3 has been expanded with more detail on the modeling setup used in this study.

Answering the specifics questions addressed here: The radiation scheme used is based on Harrington (1997), and accounts for all 7 hydrometeor types represented in the model. The surface type was set as ice and surface fluxes were turned off (since they are

expected to be near zero over ice, see e.g. Shupe et al. 2013a). There is no mesoscale forcing (or forcing of any kind, other than the temperature nudging). Periodic boundary conditions were employed, with the initial wind field provided by the radiosonde used to also initialize the temperature, pressure, and moisture profiles. The vertical boundary condition uses a Rayleigh friction absorbing layer which relaxes all three velocity components and potential temperature to their horizontally homogeneous reference state values.

Speaking further about the replicability, I was not able to find the case setups in any of the online repositories linked in the data statement. The case setup files are either missing, or are well hidden in somewhere deep within the directory tree. I would like to ask the authors to fix that as well before the submission of the review manuscript.

This was an oversight on our part. The RAMS namelists and initial sounding for each case have been added to the data repository at <https://doi.org/10.5281/zenodo.6502720>. Note that the ASCOS sounding is provided directly within the RAMSIN (namelist) file, whereas the soundings for OLI and SMT are provided in separate SOUND\_IN files.

## Major Comment 3

The paper omits discussing the dynamic effects of the boundary layer, and whether they are represented in the model.

- Dynamic effect in general: the cloud dissipation in OLI and SMT could be affected by wind shear driven entrainment. Unfortunately the data in the online repository do not show the wind velocity data, and the simulation setup is unclear (see last paragraph of Major Comment 2).

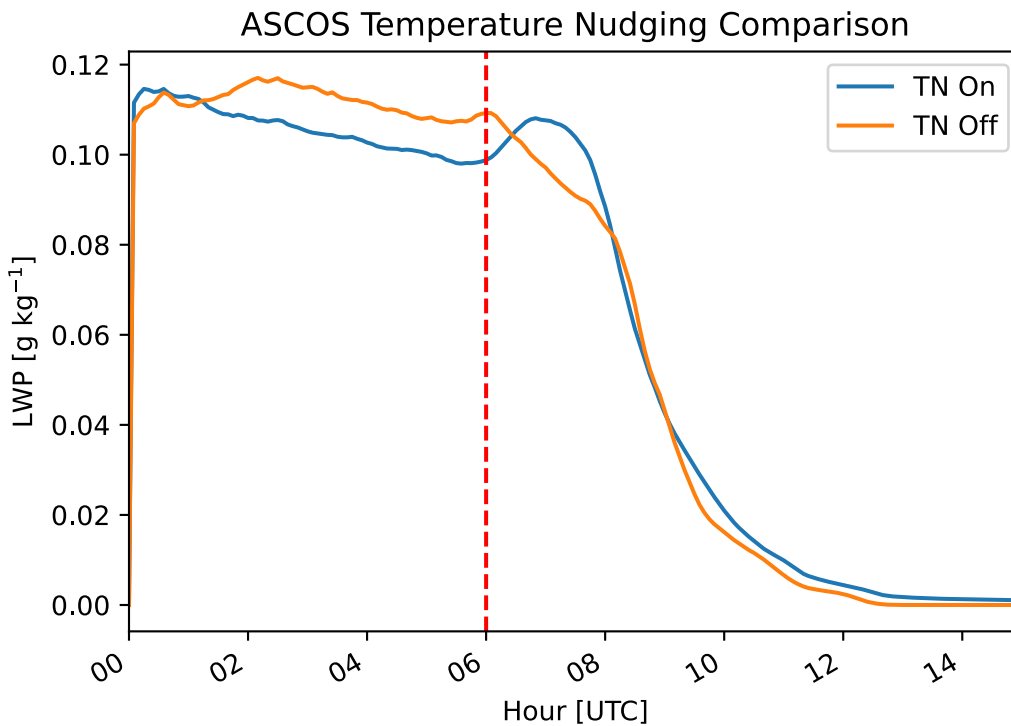
The model output in the repository contain U/V/W velocities, as do the soundings used to initialize the model. For clarity, we have added wind barbs to the soundings in plots 2-4. These soundings were used to initialize the model, and minimal wind shear is seen in OLI and SMT, with directional shear above the cloud layer observed in ASCOS (though wind speeds are relatively weak, approximately 5-10 knots).

- Dynamic effect in general II: How much does the increased precipitation effect the surface fluxes? (see Major Comment 2)

Surface fluxes are disabled in the model (see response to Major Comment 2)

- Dynamic in the model: The temperature nudging is usually applied above the boundary layer. However here it is applied within the boundary layer, which could be a serious issue. The whole cloud dissipation could be caused by the sudden removal of the cloud. Have you performed a sensitivity test for that? Have you also checked how it affects model spin-up?

With the lack of large-scale forcing (other than subsidence), the temperature nudging needed to be applied throughout the boundary layer as without it the cloud would slowly dissipate over the course of a few hours. In order to keep the cloud at near-observed conditions while the model spins up, the nudging was applied until aerosol were removed. The cloud dissipation that occurs without nudging is a slow enough process that we do not believe that keeping the nudging active until aerosol are removed has any significant effect on the results, as the dissipation due to the lack of CCN acts on a much faster timescale. Below is a figure of LWP in the ASCOS with temperature nudging turned on (as presented in the manuscript) in the blue line and with temperature nudging turned off throughout the simulation in orange. The response of LWP to aerosol removal occurs at near-identical rates between the two simulations, indicating that the nudging scheme had little effect on cloud dissipation post-removal.



- Dynamic limitations of the model: When the clouds disappear and some of the model levels remain supersaturated, is the dynamic core of the simulation still working correctly?

RAMS prognoses total water content (condensed water + vapor) as well as condensed water for each hydrometeor species. Water vapor (and supersaturation) is a diagnosed quantity. We have no reason to believe that the dynamic core is working improperly.

## Minor Comments

line 99: "ASL"

The abbreviation ASL should be defined. The default meaning of ASL is "Atmospheric Sciences Laboratory" or "American Sign Language".

We meant "above sea level". There is no specific guideline for this abbreviation in the ACP guidelines, but we changed ASL to the more standard format of "m a.s.l." (meters above sea level). We have also defined this acronym in the text when it first appears on line 99.

Figure 2:

The panels b, c, and d are very small. Expanding them the figure on the full width of the page would help.

We have shifted a few panels on this figure, which should make it more legible. We have also increased the figure width to span the entire page.

Figure 2, panel c:

- missing label of the axis y.

We have added a label of "Number [cm<sup>-3</sup>]" to the y-axis

- related to the point above, is there a specific meaning for "z" in 00z, 03z, 09z, or is it just a formatting issue?

"z" is commonly used in meteorology and aviation to denote UTC ("zulu") time in the USA. We have changed removed the "z" and changed the axis label to "Hour (UTC)" for clarity

Figure 2, panel d:

Adding longitude and latitude to axis would be nice, or at least adding some other geographical coordinates.

Lat/lons have been added to these figures

Line 109: "(CPC) (measuring particles 10-3000 μm"

Did the instrument only measure particles larger than 10 micrometer? That would mean that wast majority of aerosols was not recorded. Or do you mean "nm"?

The reviewer is correct – this is a typo and has been changed to nanometers

Figure 3:

Same issues as Figure 2

See response to figure 2 comments

Figure 3.a:

The potential temperature profile is missing, only relative humidity is shown. Please add it to the plot.

We apologize for leaving out this information. This was a mistake and has been corrected.

Figure 4:

Same issues as Figure 2

See response to figure 2 comments

Line 153: there is a dry layer at 400 m.

The panel 3.a shows only a very minor decrease in humidity.

This line has been removed

Line 177: "... aggregates, snow, hail, and graupel" Are aggregates a separate category from snow?

Yes, the RAMS model has a separate category for aggregate snowflakes

Lines 178–179:

The list of the microphysical processes is slightly confusing.

- It seems that sublimation is missing

This list has been reworded for better understandability

Figure 5:

Considering that three cases are compared with respect how fast the clouds dissipate, it would make more sense to show figures under each other.

The subplots have been reorganized vertically

Line 237–238: "all further discussion will be discussed"

It would be better to write "all features will be further discussed..." or "all events will be further discussed"

This sentence has been reworded for clarity

Figure 7, panel a:

The legend is confusing. The caption of the figure does not explain any of the terms there. Therefore reader can't know

- what is the difference between "Rain" and "Precip",

- what is the line "Cloud".

The figure captions for figures 7, 8, and 9 have been clarified to better define the plotted lines

Figure 7, panel b:

The legend is confusing here as well. The caption of the figure does not explain any of the terms. It seems that deposition is not considered in the ice budget and instead "Cond" is.

[See response to comment on figure 7, panel a](#)

Figure 8:

Same as figure 7

[See response to comment on figure 7, panel a](#)

Figure 9:

Same as figure 7

[See response to comment on figure 7, panel a](#)

Line 276: "about hours after" How many hours?

[This typo has been fixed; it should have read "about three hours after"](#)

Line 276: "in a fog layer near the surface"

This does not make sense. How could there form a fog layer when all aerosols were removed?

[The fog layer formed shortly before aerosol were removed from the model \(Fig 5b\)](#)

Line 281: "b y" by

[Typo has been fixed](#)

Line 293: growth budget in 2D (Fig. 8(d-e)) Does 2D refer to height and time?

[Yes, this has been clarified in the text \(line 327\) and in the figure caption \(Figs 7-9\)](#)

Line 293: "different than the other two" More fitting would be "different from"

[Fixed as requested](#)

Line 293: "...in SMT caused the relatively drier above-cloud air to be mixed and entrained into the cloud,"

This is a good point, but it is not shown in the result part.

We changed this line to "... in SMT may have caused ..."

Line 376–379: "We believe that, given the evidence from these three simulations, the microphysical balance state of the cloud is more important to determining the response to aerosol removal than boundary layer properties"

This is a very strong statement, and currently not supported by results.

The effect of other boundary layer properties (such as wind shear or surface forcing) is not compared in the results. This seems more like a proposal for a future research.

This line has been changed to more clearly represent it as a proposal for future work

Line 384: 6.1.22.

Insert a space between 22 and dot, so the link will work.

This link has been updated and fixed

Lines 400–401:

The title of the paper does not have to be in capitals.

This was an error with the journal's citation export utility and has been corrected

Line 530: Sterzinger, L.: Data for Sterzinger et al. (2022, in Prep) This should be in the data statement only, not in the References.

We are following the ACP Submission Guide, "Prepare your Assets" section (<https://www.atmospheric-chemistry-and-physics.net/submission.html#assets>). The "Data Sets" subsection states that these data citations also be included in the reference list:

"Authors are requested to follow our [data policy](#) including

- the deposit of research data (i.e. the material necessary to validate the research findings) that correspond to manuscripts, preprints, or journal articles in reliable FAIR-aligned data repositories that assign persistent identifiers (preferably digital object identifiers (DOIs)). Suitable repositories can be found at <https://www.re3data.org/>;
- the proper citation of data sets in the text and the [reference list](#) including the persistent identifier. For data sets hosted on GitHub, authors are kindly asked to [issue a DOI through Zenodo](#) and include this DOI in the reference list;"

Line 532: Sterzinger, L.: Plotting Scripts for Sterzinger et al (2022) (in Prep), This should be in the data statement only, not in the References.

The "Software and Model Code" subsection in the Submission Guide linked above states that these citations are also requested to be in the reference list:



“Authors are encouraged to deposit software, algorithms, and model code in FAIR-aligned repositories/archives whenever possible. These research outputs are then cited in the manuscript using the received DOI and included in the reference list.”

# ~~Arctic~~ Do arctic mixed-phase clouds sometimes dissipate due to insufficient aerosol: ~~evidence~~? Evidence from comparisons between observations and idealized simulations

Lucas Sterzinger<sup>1</sup>, Joseph Sedlar<sup>2,3</sup>, Heather Guy<sup>4,5</sup>, Ryan R. Neely III<sup>4,5</sup>, and Adele L. Igel<sup>1</sup>

<sup>1</sup>University of California, Davis, Davis, California

<sup>2</sup>Cooperative Institute for Research in Environmental Sciences, University of Colorado Boulder, Boulder, Colorado

<sup>3</sup>NOAA/Global Monitoring Laboratory, Boulder, Colorado

<sup>4</sup>National Centre for Atmospheric Science, Leeds, U.K.

<sup>5</sup>School of Earth and Environment, University of Leeds, Leeds, U.K.

**Correspondence:** Lucas Sterzinger (lsterzinger@ucdavis.edu)

**Abstract.** Mixed-phase clouds are ubiquitous in the Arctic. These clouds can persist for days and dissipate in a matter of hours. It is sometimes unknown what causes this sudden dissipation, but aerosol-cloud interactions may be involved. Arctic aerosol concentrations can be low enough to affect cloud formation and structure, and it has been hypothesized that, in some instances, concentrations can drop below some critical value needed to maintain a cloud.

- 5 We use observations from a Department of Energy ARM site on the north slope of Alaska at Oliktok Point (OLI), the ASCOS field campaign in the high Arctic Ocean, and the ICECAPS-ACE project at the NSF Summit Station in Greenland (SMT) to identify one case per site where Arctic boundary-layer clouds dissipated coincidentally with a decrease in surface aerosol concentrations. These cases are used to initialize idealized large eddy simulations (LES) in which aerosol concentrations are held constant until, at a specified time, all aerosols are removed instantaneously – effectively creating an extreme case of
- 10 aerosol-limited dissipation which represents the fastest a cloud could possibly dissipate via this process. These LES simulations are compared against the observed data to determine whether cases could, potentially, be dissipating due to insufficient aerosol. The OLI case’s observed liquid water path (LWP) dissipated faster than its simulation, indicating that other processes are likely the primary driver of the dissipation. The ASCOS and SMT observed LWP dissipated at similar rates to their respective simulations, suggesting that aerosol-limited dissipation may be occurring in these instances.
- 15 We also find that the microphysical response to this extreme aerosol forcing depends greatly on the specific case being simulated. Cases with drizzling liquid layers are simulated to dissipate by accelerating precipitation when aerosol is removed while the case with a non-drizzling liquid layer dissipates quickly, possibly glaciating via the Wegener-Bergeron-Findeisen (WBF) process. The non-drizzling case is also more sensitive to INP concentrations than the drizzling cases. Overall, the simulations suggest that aerosol-limited cloud dissipation in the Arctic is plausible and that there are at least two microphysical
- 20 pathways by which aerosol-limited dissipation can occur.

## 1 Introduction

The Arctic has been shown to be extremely sensitive to a warming climate, with data showing the Arctic warming anywhere from 1.5 - 4.5x the global mean warming rate (Holland and Bitz, 2003; Serreze and Barry, 2011; Cohen et al., 2014; Previdi et al., 2021). Clouds, in general, directly affect the surface energy budget and can act as net-warming or net-cooling influences, depending on their specific physical characteristics. Of particular note in the Arctic environment are low-level, boundary layer stratocumulus clouds which cover large fractions of the Arctic throughout the year (Shupe, 2011). They have been found to be a net-warming influence on the surface, except for a short period in the summer when they act as a net-cooling influence (Intrieri et al., 2002; Shupe and Intrieri, 2004; Sedlar et al., 2011). These clouds tend to be mixed-phase, meaning they simultaneously contain liquid and ice water. Shupe et al. (2006) found that mixed-phase clouds accounted for 59% of the clouds identified during a year-long campaign on an icepack in the Beaufort Sea, with the remaining 41% consisting of mostly ice-only clouds. Difficulties in parameterizing ice processes, the physical complexities and uncertainties involved with liquid and ice water coexisting, and a lack of observations in the Arctic make these clouds a known problem for numerical models of all scales (Sotiropoulou et al., 2016; Klein et al., 2009; Morrison et al., 2009, 2012, 2011); understanding the processes involved in the formation and dissipation of these clouds is essential to understanding the energy balance in the Arctic and for proper representation in models.

These Arctic mixed-phase boundary layer clouds often last for days at a time, and dissipate in a matter of hours (Shupe, 2011; Morrison et al., 2012). This persistence is surprising given the inherent microphysical instability of mixed-phase clouds, which can be affected by the Wegener-Bergeron-Findeisen (WBF) process (Wegener, 1911; Bergeron, 1935; Findeisen, 1938) in which, if the environmental vapor pressure is between the saturation vapor pressure of liquid and ice water, ice grows via deposition at the expense of liquid. Without processes maintaining high supersaturations with respect to water, the WBF process could glaciate (i.e. completely convert to ice) the cloud. The mechanisms behind Arctic mixed-phase clouds' persistence and rapid dissipation are not well known (Morrison et al., 2012). Mauritsen et al. (2011) hypothesized that the low cloud condensation nuclei (CCN, a subset of the available aerosol with radii generally between  $\sim 1$  nm - 0.5  $\mu\text{m}$ , required for cloud droplet formation) concentrations in the Arctic could have an effect on cloud dissipation, and coined the term "tenuous cloud regime" to describe clouds whose structures are limited by aerosol availability, and showed that aerosol concentrations over the central Arctic ice pack are often observed to be low enough to affect cloud formation.

Modeling studies (Birch et al., 2012; Stevens et al., 2018; Sotiropoulou et al., 2019) have supported the existence of the tenuous cloud regime, but none of these studies has focused directly on the role of limited aerosol on the dissipation of Arctic mixed-phase boundary layer clouds.

Morrison et al. (2012) presented an overview of the long-term persistence of mixed-phase Arctic clouds. These clouds are maintained by cloud-scale updrafts which, if strong enough, create conditions where the environment is supersaturated with respect to both liquid water and ice; in this situation, both liquid droplets and ice crystals will grow, and the WBF process is not active (Korolev, 2007). High concentrations of supercooled liquid water droplets at cloud-top will cool radiatively, creating a buoyant overturning circulation that can further enhance the cloud (Brooks et al., 2017). Moisture inversions are also very

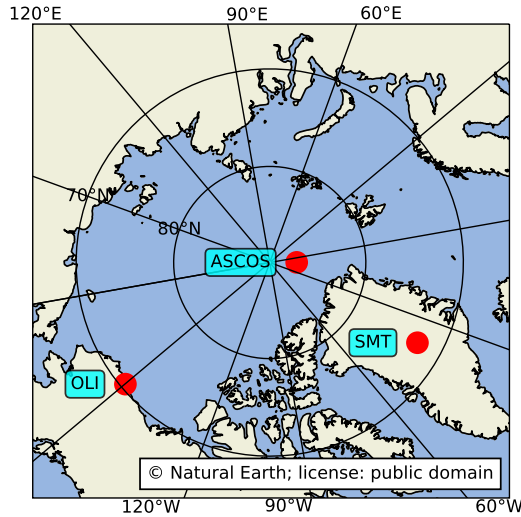
55 common at the top of the Arctic boundary layer, occurring upwards of 90% of the time in the winter months and 70-80% in the summer (Naakka et al., 2018; Egerer et al., 2020; Sedlar et al., 2012; Devasthale et al., 2011). The presence of a moisture inversion near cloud-top can act as a source of water vapor through cloud-top entrainment (Solomon et al., 2011; Sedlar et al., 2012; Sedlar and Tjernström, 2009). The combination of cloud-top moisture entrainment and a cloud-scale buoyant overturning circulation allow Arctic mixed-phase clouds to persist even with low surface heat and moisture fluxes; if the boundary layer is  
60 decoupled from the surface, the moisture inversion may be the only source of moisture for a cloud (Sedlar et al., 2012; Brooks et al., 2017).

Unlike low-level clouds at lower latitudes, Arctic boundary layer clouds generally warm the surface (Shupe and Intrieri, 2004). Low-level Arctic clouds have a similar albedo to the ice surface, which means that the shortwave cooling effect (whereby clouds act to cool the surface by reflecting a higher proportion of the incoming solar radiation) is negligible. In the summer  
65 months where more of the Arctic surface has melted from ice to open water or melt ponds, the surface albedo is lower and the shortwave cooling effect of the cloud dominates (Intrieri et al., 2002; Tjernström et al., 2014).

The availability of atmospheric aerosol, some of which serve as CCN, has direct affects on cloud properties. An increase in CCN concentration, while keeping the amount of precipitable water constant, increases cloud albedo by dividing the available water vapor between more activated CCN, resulting in more, but smaller, cloud droplets. This shift from fewer large droplets  
70 to more numerous small droplets results in a cloud that is more reflective to shortwave radiation, a phenomenon known as the Twomey effect (Twomey, 1977). The resulting reflectance of shortwave radiation causes increased surface cooling, but this effect competes with increased emissivity of the cloud also caused by the increase in CCN (for thin clouds not already emitting as a blackbody; less than  $\sim 40 \text{ g m}^{-2}$  LWP) (Garrett et al., 2002; Garrett and Zhao, 2006; Loewe et al., 2017).

While the effects of aerosols and CCN on cloud properties are a focus of much scientific investigation, outside of some  
75 recent studies (Mauritsen et al., 2011; Loewe et al., 2017; Stevens et al., 2018; Guy et al., 2021) little has been done to examine the effect of abnormally low aerosol concentrations on clouds. Mauritsen et al. (2011) proposed, through observation, the existence of a tenuous cloud regime where cloud structure is limited by CCN concentration (which, in lower latitudes, often ranges from  $100 - 1000 \text{ cm}^{-3}$ , but has been observed as low as  $1 \text{ cm}^{-3}$  in the Arctic, e.g. Jung et al. 2018). Chandrakar et al. (2017) performed a lab study with a cloud chamber in which aerosol were removed from a turbulent, cloudy environment.  
80 They found that after aerosol injection was turned off, the cloud did not appreciably change until ~~near the 1-hour mark~~one hour after. At this point, interstitial aerosol were sufficiently removed and cloud dissipation occurred rapidly within the following 30-40 minutes.

Sedlar et al. (2021) found that surface aerosol concentrations at Utqiagvik, Alaska were similar before and after cloud dissipation in the winter and spring months, and slightly higher after dissipation in the summer and fall months, when looking at  
85 statistics of instrument retrievals from 2014-2018, suggesting that limited aerosol is not a primary method of cloud dissipation. However, this study approached this question climatologically, and we believe that if aerosol-limited dissipation does occur, it is infrequent enough to be hidden in these types of analyses. Furthermore, Sedlar et al. (2021) focused solely on measurements from a single site (Utqiagvik) which may be more polluted than the rest of the Arctic due to increased human activity. At more remote locations, aerosol-limited dissipation may occur more frequently.



**Figure 1.** Map showing the locations of data taken from OLI, ASCOS, and SMT

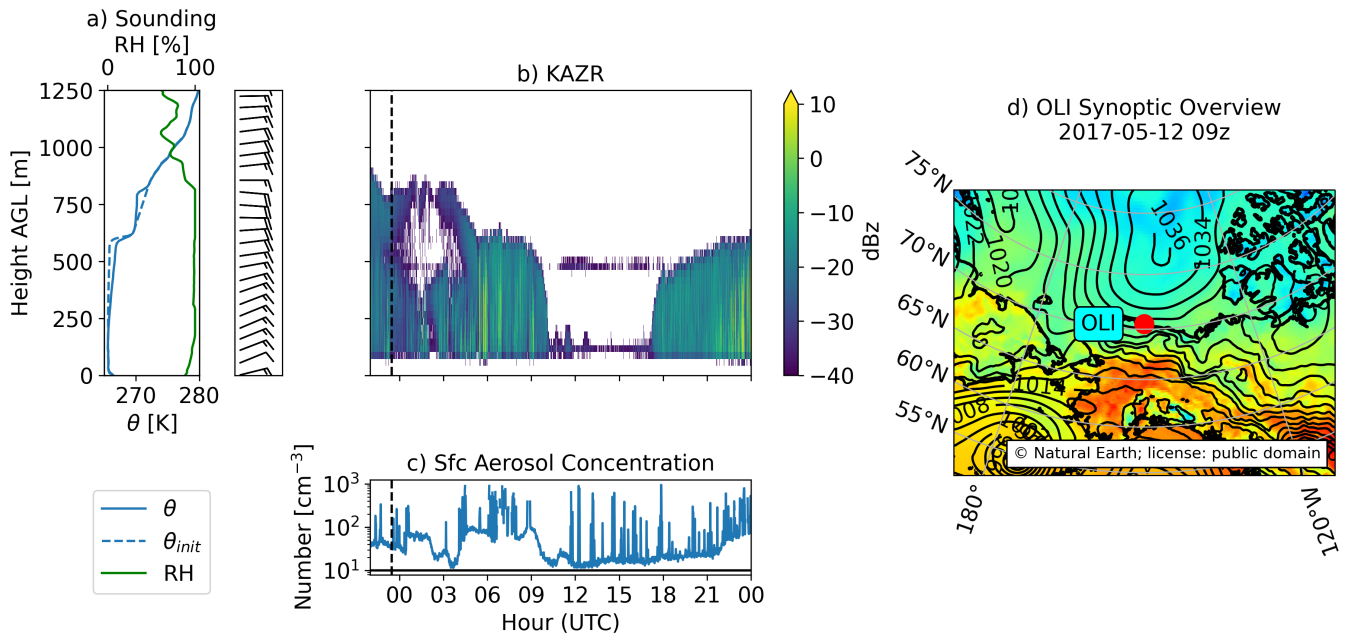
90 In this study, we investigate whether or not aerosol-limited dissipation occurs on a case-by-case basis. While likely infrequent, this method of cloud dissipation is worth examining in more detail because of how sensitive the Arctic environment is to low-level cloud cover, and the highly uncertain changes in Arctic aerosol concentration (both natural and anthropogenic) in a warming climate (e.g. Schmale et al., 2021). We examine three observed cases of potential aerosol-limited dissipation across three different environments (northern Alaskan coast, high Arctic pack ice, and the Greenland ice sheet) and use large eddy  
 95 simulations (LES) to simulate a “worst-case scenario” of aerosol-limited dissipation: immediately removing all aerosols from a simulated cloudy environment and comparing changes in cloud properties to observations, which should indicate whether or not these cases should continue to be investigated as examples of this phenomenon.

## 2 Methods

### 2.1 Case Overviews

100 Observations from the DOE ARM Site at Oliktok Point, Alaska (OLI; 71.32° N 156.61° W, 2 m [ASL](#)above sea level [a.s.l.]), the 2008 Arctic Summer Cloud Ocean Study campaign (ASCOS; 87.19° N 9.67° W, 0 m [ASL](#)a.s.l.), and the ICECAPS-ACE project at Summit Station in Greenland (SMT; 72.6° N, 38.5° W, 3250 m [ASL](#)a.s.l.) were used to identify cases where cloud dissipation was observed coincidentally with a decrease in surface aerosol concentration. For simplicity, we focus solely on

## Oliktok Pt 2017-05-12



**Figure 2.** Overview of observations for Oliktok Point, AK (OLI): **a)** potential temperature ( $\theta$ , blue) and relative humidity (green) and wind barbs from a sounding at 23:30 UTC on 2017-05-11, **b)** KAZR (radar) general mode reflectivity (dBz), **c)** surface aerosol concentration (CPC-fine), **d)** ERA5 reanalysis mean sea level pressure (contours) and 2 meter temperature (color shading) for 2017-05-12 at 09:00 UTC. Dashed vertical line on panels (b-c) represent the time at which the sounding was taken. Solid horizontal line on panel (c) represents a surface aerosol concentration of  $10 \text{ cm}^{-3}$ . For OLI alone,  $\theta_{init}$  in panel (a) represents the profile used for model initialization.

single-layer, low-level, boundary layer mixed-phase clouds. Figure 1 shows the three case locations on a map. Details of each case are summarized in Figures 2-4 and discussed briefly in the sections below.

### 2.1.1 Oliktok Point

From 2013-2021, the United States Department of Energy's Atmospheric Radiation Measurement (ARM) user facility operated a mobile facility at Oliktok Point, Alaska (henceforth OLI), located on the northern Alaskan coastline 260 km southeast of the permanent ARM facility in Utqiagvik. We analysed data from Oliktok Point between 2016-2019 to find periods in which surface aerosol concentrations via a condensation particle counter (CPC) (measuring particles 10-3000  $\mu\text{m}$ ; Kuang et al., 2016) (measuring particles 10-3000 nm; Kuang et al., 2016) were observed to decrease from  $> 50 \text{ cm}^{-3}$  to  $< 20 \text{ cm}^{-3}$  in a span of 4 hours. Many such periods exist, and the results were examined manually to select cases where this aerosol decrease occurred coincidentally with cloud dissipation seen via radar - signaling that aerosol-limited dissipation may have been a factor in transitioning from a cloudy to cloud-free environment.

115 One such case (Fig. 2) occurred on the 12th of May, 2017. At 09:00 UTC, the CPC measured a transition in aerosol concentration from  $\sim 100 \text{ cm}^{-3}$  to  $<10 \text{ cm}^{-3}$  in the span of about one hour (Fig. 2c). Aerosol data from OLI was particularly noisy, with a clear trend of concentrations  $\sim 100 \text{ cm}^{-3}$  but with intermittent spikes upwards of  $1000 - 10000 \text{ cm}^{-3}$  (not shown). To smooth out the data and best show what we consider to be a representative aerosol concentration timeseries, we filtered out values  $> 1000 \text{ cm}^{-3}$  and downsampled the result from one-second to one-minute averages. Data from the Ka-band ARM  
120 zenith radar (KAZR; Lindenmaier et al., 2015) show a cloud with a top around  $700 - 750 \text{ m}$  transition to clear skies at the same time (Fig. 2b). Around 18:00 UTC, aerosol concentrations begin to increase and a new cloud is visible on radar.

The sounding from OLI (Fig. 2a) shows a well-mixed, surface-coupled boundary layer with a capping inversion at  $600 \text{ m}$ . A second, smaller inversion can be seen at  $800 \text{ m}$ . However, since this balloon launch occurred approximately nine hours before cloud dissipation and the radar (Fig. 2b) indicates that the second, higher, cloud layer descends and merges with the lower  
125 layer, this second inversion is removed prior to model initialization ( $\theta_{init}$ ; Fig. 2a, dashed line). Relative humidity (RH) is high ( $> 90\%$ ) throughout the boundary layer, as well as up to  $200 \text{ m}$  above the cloud layer before it starts decreasing above  $800 \text{ m}$ . Aerosol concentrations fluctuate between the time of the sounding and the time of dissipation, so a value of  $80 \text{ cm}^{-3}$ , as a representative average of the pre-dissipation concentration, is used to initialize the simulation.

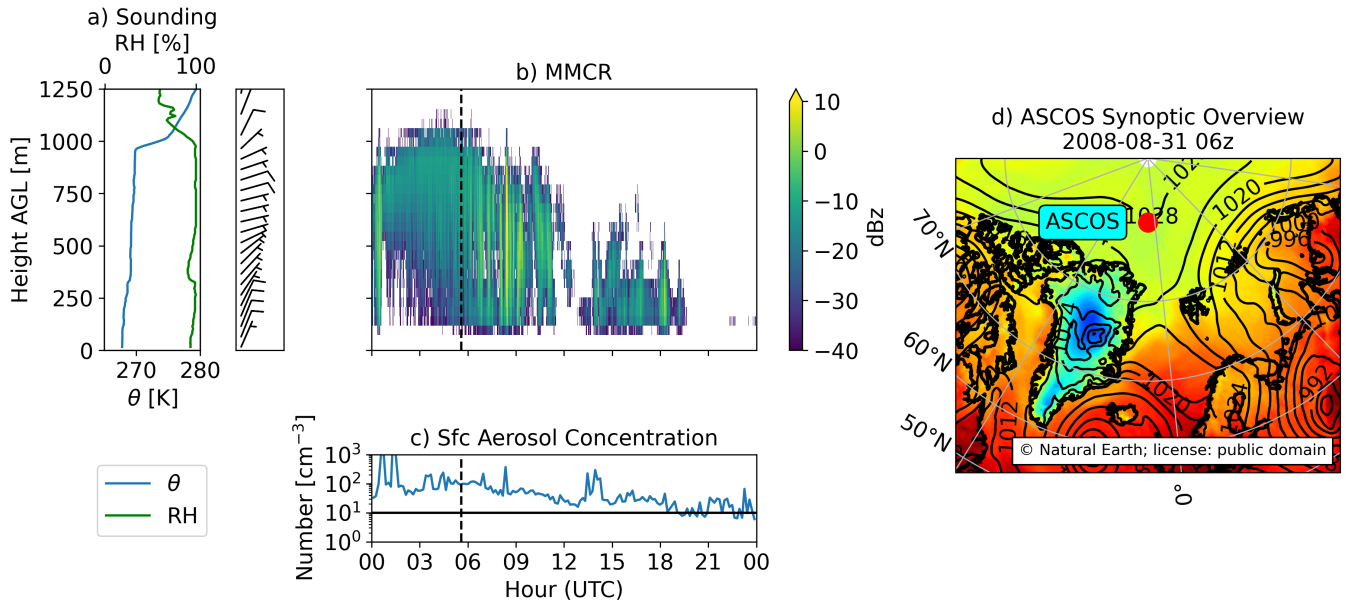
Surface analysis from ERA5 reanalysis (European Centre for Medium-Range Weather Forecasts, 2019) at 09:00 UTC on  
130 May 12, 2017 (Fig. 2d) depicts a high pressure system in the Beaufort Sea north of Oliktok Point and a stationary front situated along the Brooks Range of mountains more than  $200 \text{ km}$  inland. A weak ridge of high pressure extends from the high pressure system to Oliktok Point, with weak low pressure areas identified to the southeast and southwest of Oliktok Point. This pressure ridge is not present in analysis maps  $\pm 6 \text{ h}$  from 09:00 UTC. Analysis of pressure, temperature, and wind timeseries (not shown) at OLI suggests a weak frontal passage with a temperature drop and wind shift near the same time as  
135 cloud dissipation, and a constantly decreasing surface pressure throughout the entire  $24 \text{ h}$  period. It is possible that the change in airmass from a frontal passage was the primary cause of dissipation and surface aerosol concentration decrease. It is also possible that precipitation scavenged aerosol from the below-cloud boundary layer, which could explain the rapid decrease in surface aerosol concentrations.

### 2.1.2 ASCOS

140 The ASCOS field campaign (Tjernström et al., 2014) took place mostly during the month of August 2008 with a focus on observing and understanding Arctic low-level clouds and improving their representation in climate models. From 12 August through 1 September, the Swedish icebreaker *Oden* was purposefully trapped in (and drifted with) an ice floe in the high Arctic ocean ( $87^\circ \text{ N}$ ) north of the island of Svalbard (Fig. 1).

On the 31st of August, 2008, *Oden* was trapped in an ice floe at  $87.19^\circ \text{ N}$   $9.67^\circ \text{ W}$ . A sounding from this time (Fig. 3a)  
145 shows a slightly stable layer up to ~~400~~ 300  $\text{m}$  and a well-mixed layer from ~~400~~ 300  $\text{m}$  to cloud-top at  $1,000 \text{ m}$ . Like the OLI case, RH values are generally high throughout the boundary layer. A change in  $\theta$  and RH profiles at  $300 \text{ m}$  indicate that the subcloud layer is weakly decoupled from the surface.

# ASCOS 2008-08-31



**Figure 3.** Same as Figure 2 for the ASCOS case.

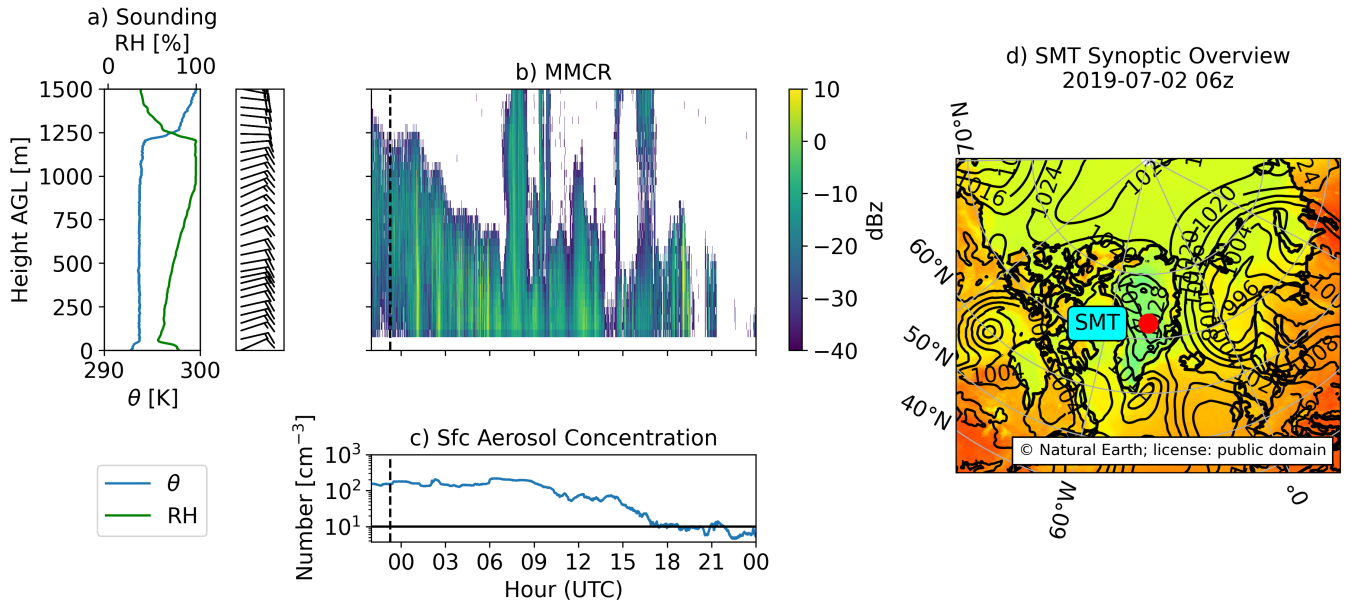
This case has previously been investigated as existing in a potentially tenuous regime (Mauritsen et al., 2011; Loewe et al., 2017; Stevens et al., 2018). Millimeter-wave cloud radar (Clothiaux et al., 2000) reflectivities show a low-level cloud layer (Fig. 3b), which had persisted for approximately 1 week prior, dissipated coincidentally with a decrease in surface aerosol concentration from  $>100 \text{ cm}^{-3}$  to  $<10 \text{ cm}^{-3}$  (Sedlar et al., 2011; Mauritsen et al., 2011; Sotiropoulou et al., 2014). aerosol- Aerosol concentrations were collected using a differential mobility particle sizer (DMPS; Birmili et al. 1999; Tjernström et al. 2014) measuring size distributions of particles between 3 nm - 10  $\mu\text{m}$ . Helicopter flights measuring aerosols during this time at 20:13 UTC (after the cloud dissipation) found that concentrations were below  $10 \text{ cm}^{-3}$  (for aerosols  $< 14 \text{ nm}$ ) for the entirety of the boundary layer (Stevens et al., 2018) during a flight in the dissipation period at 20:13 UTC.

After cloud dissipation, winds which were previously calm were observed to more consistently blow from the northeast (not shown). At the same time, surface temperature drops over  $6^\circ\text{C}$ , though it's unclear whether there was a change in airmass or if temperature dropped as cloud is no longer present as a warming influence on the surface. Surface pressure analysis (Fig. 3d) shows the extension of northern high pressure directly over the location of Oden at this time, suggesting a possible change in airmass.

Like the OLI case, RH values are generally high throughout the boundary layer. Unlike OLI, there is a dry layer at 400 m. A change in  $\theta$  and RH profiles at 400 m indicate weak decoupling at this level. This case has previously been investigated as existing in a potentially tenuous regime (Mauritsen et al., 2011; Loewe et al., 2017; Stevens et al., 2018; Tong, 2019).



## Summit Station 2019-07-02



**Figure 4.** Same as Figures 2-3 for the SMT case.

### 2.1.3 Greenland

165 A third case was observed on July 2nd, 2019 at the National Science Foundation Summit Station (henceforth SMT) during the ICECAPS-ACE project. ICECAPS-ACE (Integrated Characterization of Energy, Clouds, Atmospheric State, and Precipitation at Summit - Aerosol Cloud Experiment; Shupe et al., 2013b; Guy et al., 2021) consists of a suite of instruments for measuring atmospheric properties (including surface aerosol concentrations) at SMT (3250 m [ASL](#), 72.6N, 38.5 W).

Figure 4 shows an overview of this case, which was first reported in Guy et al. (2021) as an potential example of aerosol-limited dissipation. A well-mixed boundary layer topped with a single cloud layer approximately 200 m in thickness ~1200 m above the surface (~4400 m [ASL](#)) is observed with a balloon sounding the previous day (2019-07-01 at 23:16 UTC, Fig. 4a). Radar data (Fig. 4b) from a millimeter wave cloud radar (Bharadwaj, 2010) show the cloud top lowering before a transition to clear-sky as surface aerosol concentrations decrease (~~CPC-measured-particles >5-nm-in-diameter-in-1-minute intervals; Guy et al. 2020~~) from 200 cm<sup>-3</sup> to < 10 cm<sup>-3</sup> (Fig. 4c) in a period of 9 hours ([CPC measured particles >5 nm in diameter in 1-minute intervals; Guy et al. 2020](#)). Synoptic conditions at this time show that this case occurred during a period of anomalously low 500 hPa heights and above average winds from the southeast (Guy et al., 2021, not shown). A small inversion near the surface decouples the boundary layer from surface fluxes of heat and moisture. Unlike OLI and ASCOS, below-cloud RH decreases towards the surface, reaching ~50% directly above the surface inversion.

## 2.2 Model Description

180 The Colorado State University Regional Atmospheric Modeling System (RAMS; Cotton et al., 2003) was used to run large-eddy resolving simulations (LES) of each case. The RAMS model has been shown to perform well at LES scales (e.g. Cotton et al., 1992; Jiang et al., 2001; Jiang and Feingold, 2006). ~~Radiation parameterization is provided by the Harrington scheme (Harrington, 1997)~~ RAMS uses a two-stream radiation scheme based on Harrington (1997), and turbulence is parameterized by a Deardorff level 2.5 scheme, which parameterizes eddy viscosity as a function of turbulent kinetic energy (TKE).

185 RAMS uses a double-moment bulk microphysics scheme (Walko et al., 1995; Meyers et al., 1997; Saleeby and Cotton, 2004) that predicts the mass and number concentration of eight hydrometeor categories: cloud droplets, drizzle, rain, pristine ice, aggregates, snow, hail, and graupel. Each of these hydrometeor categories is represented by a generalized gamma distribution. The scheme simulates ~~nucleation (cloud and ice ), vapor deposition, evaporation, nucleation, liquid condensation/evaporation, ice deposition/sublimation,~~ collision-coalescence, ~~melting,~~ freezing, secondary ice production (via the Hallett-Mossop process),

190 and sedimentation. Cloud droplets are activated from aerosol particles using lookup tables (Saleeby and Cotton, 2004) built based on Köhler theory and cloud droplet growth equations formulated in Pruppacher and Klett (1997). Water vapor is depleted from the atmosphere upon activation by assuming that newly activated droplets have a diameter of 2  ~~$\mu\text{m}$~~   $\mu\text{m}$ .

Ice crystals are heterogeneously nucleated by the parameterization in DeMott et al. (2010), with the number of ice nuclei ( $L^{-1}$ ) given by:

195 
$$n_{in} = a(273.16 - T_k)^b (n)^{c(273.15 - T_k) + d} \quad (1)$$

Where  $n_{in}$  is the ice nuclei number concentration ( $L^{-1}$ ),  $T_k$  is the air temperature in Kelvin, and  $a, b, c, d$  are constants. The variable  $n$  in the original DeMott parameterization is the number concentration ( $\text{cm}^{-3}$  at standard temperature and pressure) of aerosol particles with diameters larger than 0.5  ~~$\mu\text{m}$~~   $\mu\text{m}$ , but in this study we have elected to use an option in RAMS to set a constant  $n$  at model runtime (values of  $n$  used are noted in Table 1).

## 200 2.3 Experiment Setup

The observations were used to generate an initial sounding and to specify aerosol concentration for each simulation. For each case, RAMS was run with a horizontal domain of  $6 \times 6 \text{ km}^2$  with a spacing of 62.5 meters and vertical spacing of 6.25 meters with a domain height of 1250 m (200 levels) for OLI and ASCOS, and 1600 m domain height (256 levels) for SMT (to accommodate the deeper boundary layer). Lateral cyclic boundary conditions are employed, allowing features that pass

205 through one side of the domain to emerge from the other. While soundings are available at all measurement sites, they do not contain information on the liquid water/ice content of the cloud. To properly initialize RAMS, liquid water was manually added to sounding data. In the absence of observed vertical profiles of liquid water content, a linear profile of water mass (zero at cloud base and maximum at cloud-top) was added, with a slope chosen such that integrating the liquid profile from cloud base to cloud-top yielded the observed liquid water path.

210 In all experiments the surface is set to ice; surface fluxes are disabled, as they are expected to be low over an icy surface (e.g. Shupe et al., 2013a). In addition to cloud liquid added as described above, model initial conditions are provided by

**Table 1.** Case names and abbreviations along with the initial aerosol concentration ( $n_{aer}$ ), ice nuclei concentration (IN), and aerosol removal time.

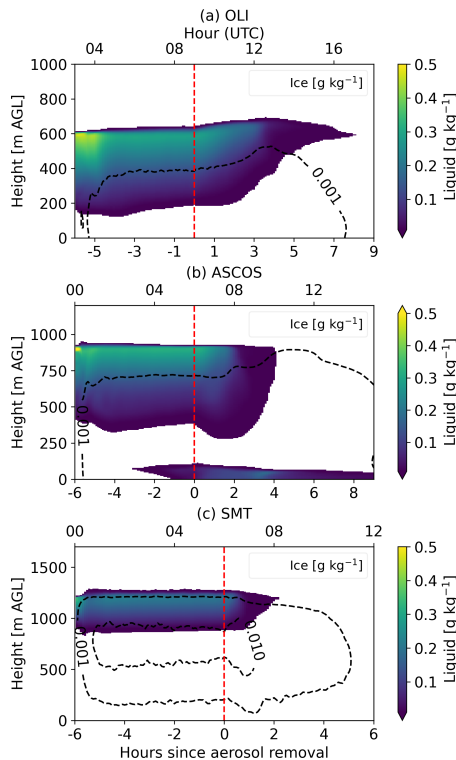
Name	Abbr.	$n_{aer}$	IN ( $n$ in eq. 1)	Aerosol Removal Time
Oliktok Point	OLI	$80 \text{ cm}^{-3}$	$5 \text{ L}^{-1}$	09:00 UTC
ASCOS	ASCOS	$89 \text{ cm}^{-3}$	$5 \text{ L}^{-1}$	06:00 UTC
Greenland Summit Station	SMT	$200 \text{ cm}^{-3}$	$0.1 \text{ L}^{-1}$	06:00 UTC

sounding height, pressure, potential temperature, humidity, and wind data. Apart from the temperature nudging and prescribed subsidence rate, no other forcings are present. The upper vertical boundary is provided by a Raleigh friction absorbing layer which relaxes horizontal and vertical velocity and potential temperature to their initial values.

215 We use a simplified aerosol treatment in which number concentrations are fixed to a single value throughout the domain. Aerosol are not depleted, rather the prescribed number concentration acts as an upper bound on the number of activated cloud droplets allowed in a given grid cell. For each of the cases, we performed simulations in which all aerosol are instantaneously and permanently removed from the environment. We do this in order to simulate the fastest possible cloud dissipation; if the observations show faster dissipation than we simulate, then we can conclude that the observed dissipation was not driven  
220 entirely by a lack of aerosol particles. ~~Prior to this aerosol removal time,~~

This aerosol removal only affects cloud droplet nucleation; the highly simplified ice nucleation scheme (as discussed in the section above) is not affected. Since the ice nucleation scheme does not consider different nucleation pathways, removing INP would shut off all ice nucleation, including ice that would have formed via immersion freezing - which has been shown to be the primary ice nucleation method for this type of clouds (Savre and Ekman, 2015). Realistically, INPs immersed within liquid  
225 droplets would persist in the presence of the large-scale aerosol decrease that we are modeling here. We ran simulations in which ice nucleation remained active post-aerosol removal and simulations in which ice nucleation was turned off by setting  $n = 0$  in Eq. 1 at the aerosol removal time. Both are discussed below, but the focus of the analysis is on the simulations in which ice nucleation remained active post-aerosol removal.

From model initiation to the aerosol removal time, a temperature nudging scheme is used to maintain a stable cloud. Without  
230 this nudging, the modeled cloud slowly dissipates (on a timescale of hours) in the absence of large-scale forcings due to gradual radiative cooling and glaciation. The nudging is applied to allow the model enough time to spin-up while maintaining a stable cloud. At each time step, each grid point is linearly nudged back to the initial temperature profile with a time scale  $\tau = 1$  h. Nudging values are computed based on the current domain-average temperature profile, so all grid points at a given height  $z$  are nudged the same amount. The result in all simulations is a cloud that is quasi-steady in thickness and water content.  
235 After the removal of aerosol from the model, the temperature nudging scheme is turned off ~~and the thermodynamics of the system are allowed to evolve naturally~~— this is done so that the post-aerosol thermodynamic environment is able to evolve naturally. That said, the choice to turn off temperature nudging has very little impact on the rate at which the liquid water path

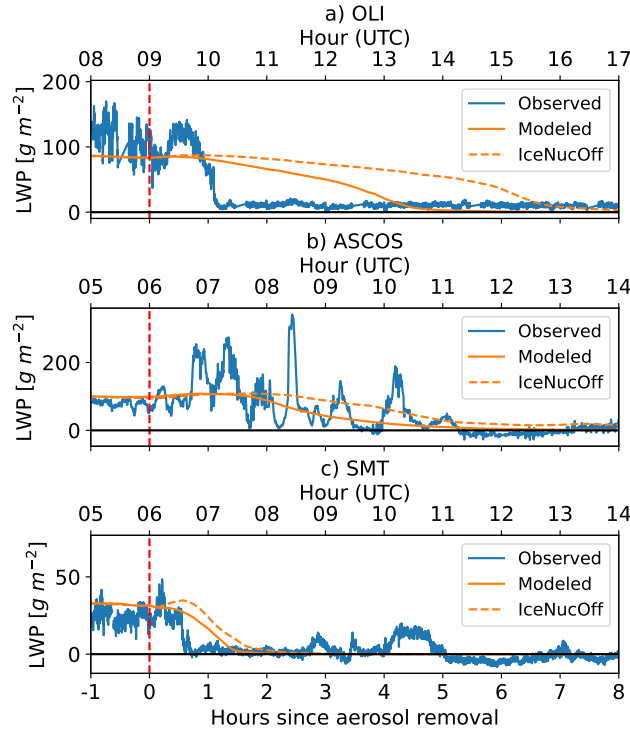


**Figure 5.** Contours for cloud water (color shading) and ice (dashed) (a) OLI, (b) ASCOS, and (c) SMT simulations. Ice is contoured at 0.01 and 0.001 g kg<sup>-1</sup> [the 0.01 g kg<sup>-1</sup> contour is only present in (c)].

[decase post-aerosol removal \(not shown\)](#). Large-scale subsidence is applied throughout the simulation by imposing a horizontal divergence of  $2 \times 10^{-6} \text{ s}^{-1}$  at every model level, with a boundary condition of  $w_{sub} = 0$  at the surface.

240 A list of experiments and initial aerosol/ice nuclei concentrations is found in Table 1. Measurements of surface aerosol concentrations were used to initialize the aerosol concentration for each simulation. For ice nuclei (IN) concentrations, we performed sensitivity tests to different values of the  $n$  in the IN parameterization (equation 1) and found that in OLI and ASCOS there was little change in the liquid water for  $n = 1, 5$ , or  $10 \text{ L}^{-1}$ . There were moderate differences in ice water content, and as there are ice water path (IWP) retrievals for both the OLI and ASCOS cases, we picked a value of  $n$  that yielded simulated

245 IWP values closest to observations. For the SMT case ~~no ice measurements were available. Both~~ simulated ice and liquid were sensitive to choice of  $n$ , so a value of  $0.1 \text{ L}^{-1}$  was used; this value is consistent with currently unpublished INP data from Summit Station (available upon request) and resulted in simulated liquid water path that was closest to observations.



**Figure 6.** Liquid water path evolution for observations (blue) and modeled domain-averages (orange) at (a) OLI, (b) ASCOS, and (c) SMT. The red dashed line denotes the time at which aerosol were removed from the simulations. LWP from simulations in which INP were also removed is shown as dashed orange lines.

### 3 Results

Figure 5 shows domain-averaged liquid water (color shading) and ice (dashed contours at  $0.01$  and  $0.001 \text{ g kg}^{-1}$ ) show typical Arctic mixed-phase clouds in which a layer of supercooled liquid water is situated at cloud top with ice precipitating below. In OLI and ASCOS, the liquid layer is well-above the ice layer ( $\sim 200 \text{ m}$  from cloud top to the  $0.001 \text{ g kg}^{-1}$  ice contour), whereas in SMT the ice extends nearly to cloud top.

Figure 6 shows the domain-mean liquid water path (LWP) for the OLI, ASCOS, and SMT simulations and the corresponding observed LWP. The dashed red line denotes the time aerosol were removed. Observed LWP data were taken from microwave radiometers at OLI (Gaustad, 2014), ASCOS (Westwater et al., 2001), and SMT (Cadeddu, 2010). This figure shows that, in all cases, the- The time at which aerosol were removed from the model was based on a subjective determination from the surface CPC data for each case. The solid orange lines show the LWP of the simulations in which ice nucleation was active past the aerosol removal time, whereas the dashed orange line (IceNucOff) shows the effect of turning off ice nucleation.

In the simulations that maintain ice nucleation (solid orange lines) the simulated LWP decreases to near-zero within hours of the aerosol removal time (09z in OLI, 06z in ASCOS and SMT). While the modeled and observed LWP may not line

up perfectly, we are concerned primarily with comparing the slopes of the modeled and observed LWP. Both the OLI and ASCOS simulations show a slow LWP response to aerosol removal, with LWP approaching  $0 \text{ g kg}^{-1}$  in about 4-5 hours. The SMT simulation, on the other hand, has a ~~very-pronounced-faster~~ LWP response to aerosol removal, with LWP approaching zero within 2 hours. With instantaneous aerosol removal, the simulations ~~should-theoretically~~ represent the fastest possible  
 265 dissipation of a cloud due to insufficient aerosol. Where this simulated LWP response is slower than observations - such as OLI - it is likely that a lack of aerosol is not in fact the primary driver of dissipation. Where the simulated LWP response is more similar to observations (ASCOS and SMT), it is more likely that these are indeed cases of aerosol-limited dissipation.

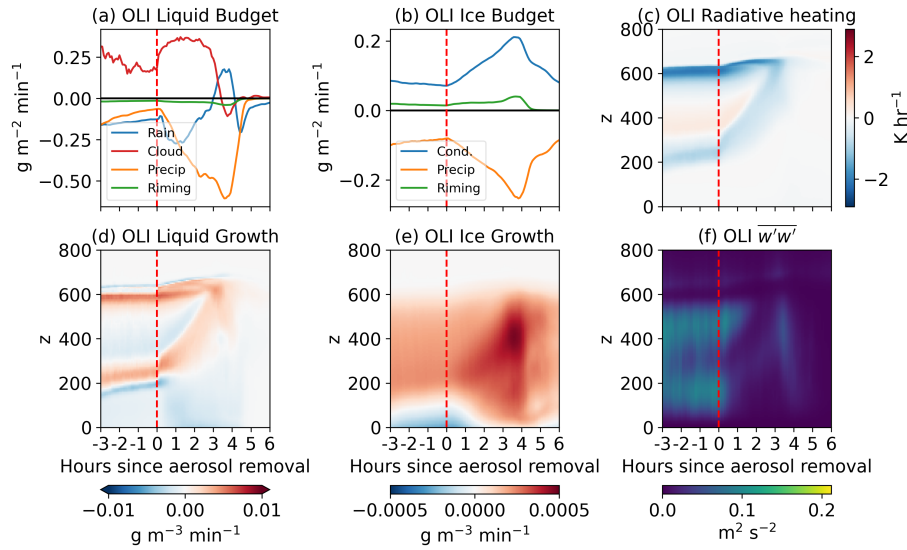
In all three simulations, turning off ice nucleation post-removal delays the LWP response by decreasing the amount of ice in the post-removal atmosphere - meaning liquid processes alone were left to remove available water vapor. However, in both  
 270 ASCOS and SMT simulations the resulting LWP decrease has approximately the same slope as the corresponding simulation where INP were kept active. OLI shows the largest difference in LWP response, an approximately 50% increase in the time needed to deplete the cloud of water. Despite this varying change in LWP response with deactivating ice nucleation we find post-removal liquid budgets for the two ice nucleation treatments show a similar balance between processes in all cases, though post-removal liquid growth was naturally larger in simulations without ice nucleation.

275 Each case will now be discussed in detail; ~~since~~. Since the time of aerosol removal was determined rather subjectively, and because the aim of this paper is not to compare directly with observations (~~but instead to compare timescales~~), all further discussion ~~will-be-discussed-of-our-results-will-be-done~~ in the context of hours before/after aerosol removal, instead of UTC, to better compare cases with one another. As stated in Sect. 2.3, we will present only the results where ice nucleation was kept active post-removal in an effort to retain immersion freezing in the simplified ice scheme.

### 280 3.1 OLI

It is evident from Figure 6a that the OLI cloud dissipation was not due to a lack of available aerosol. While the observed LWP decreased from  $100 \text{ g kg}^{-1}$  to  $<10 \text{ g kg}^{-1}$  in  $\sim 1$  hour, modeled LWP took 4-5x this time. The cause of this is unclear from available observations, but it might be related to a possible air mass change (outlined in Sect. 2.1.1). While the OLI case may not be a real-world example of aerosol-limited dissipation, examining its simulated response to aerosol removal when  
 285 compared to the different cases still yields valuable insights to this phenomenon.

Domain-average 2D and column-integrated liquid and ice budgets, radiative heating, and vertical momentum flux for OLI are shown in Figure 7. After a 1-hour spin-up period (not shown), the cloud settles to quasi-equilibrium with approximately constant liquid precipitation reaching the surface and consistently positive integrated cloud droplet growth by condensation, which occurs primarily at cloud base, where supersaturation is largest, and at cloud top. ~~In the cloud interior there is slight net~~  
 290 ~~liquid evaporation and net ice depositional growth due to an active WBF process.~~ The growth of ice and liquid are balanced by persistent precipitation of both liquid and ice hydrometeors throughout the pre-aerosol removal time period. Riming makes up only a small part of the liquid and ice budgets. Radiative cooling (Fig. 7c) is strongest at cloud top as expected, which drives the overturning circulation responsible for maintaining the cloud. Vertical momentum flux ( $\overline{w'w'}$ ; Fig. 7f) is strongest throughout the mixed portion of the boundary layer - from cloud top down to 100 m.



**Figure 7.** Vertically-integrated domain-average budgets for (a) condensational growth of liquid hydrometeors ('Rain' and 'Cloud'), surface precipitation ('Precip') and riming ('Riming'); (b) growth of all ice hydrometeors as well as domain-average species by condensation ('Cond'), riming ('Riming'), and surface precipitation ('Precip') along with 2D (time/height) (c) radiative heating/cooling, 2D-growth of (d) liquid and (e) ice, and (f) vertical momentum flux for OLI. Red line denotes time of aerosol removal. Liquid-budget (a) shows condensational growth of cloud and rain, and removal by precipitation (precip) and riming. Ice budget (b) shows growth of all ice species by condensation (eond), riming, and removal from precipitation (precip).

295 After the removal of aerosol, a large increase in liquid precipitation and a smaller relative increase in ice precipitation occur. Removing aerosol inhibits the nucleation of new cloud droplets, meaning that any supersaturation must be condensed onto existing droplets rather than being used to create new droplets for nucleation. This results in a rapid increase in droplet sizes (not shown) and an enhanced collision-coalescence process, leading to increased liquid precipitation. The precipitation generation is initially strongest near cloud base (not shown) and contributes to a rise in cloud base. Since new droplets are  
 300 unable to be nucleated (and available liquid to condense upon is being precipitated), supersaturation levels increase (not shown). Approximately three hours after aerosol removal, cloud condensation falls off sharply. Figure 7(d-e) show that, after aerosol removal, there is an increase in ice growth which maximizes after liquid is mostly removed (Fig. 6a). However, at this point the cloud top radiative cooling has ceased, circulations weaken, and the ice begins to slowly decay as well.

Figure 5a shows that, after aerosol removal, the OLI simulation dissipates with a rising cloud base, and a lesser rising of  
 305 the cloud top. However, radar observations (Fig. 2b) show a cloud that dissipates with a cloud top that is lowering. After aerosol removal (and temperature nudging is turned off) in the OLI simulation, the entire boundary layer cools and stabilizes (not shown). As a result of this stabilization, turbulence generated by cloud top cooling is not able to extend as far down as before, resulting in a rising cloud bottom. It is not clear what is causing the cloud top to lower in the observed case, but  
 ; this difference in the modeled versus observed cloud shape during dissipation - combined with the much faster observed



310 LWP response compared to simulations - indicates that the observed dissipation is likely due to larger-scale factors such as the possible weak frontal passage described in [section 2.1.1](#) [Sect. 2.1.1](#) or a [change in large-scale subsidence](#). We also speculate that the liquid water profile added to the model initialization results in cloud-top LWC high enough to produce stronger longwave cooling, which could cause a thermodynamic adjustment that raises the top of the boundary layer. [Better constrained large-scale subsidence rates \(as well as their temporal changes\), could potentially improve the representation of clouds in our modeling setup.](#)

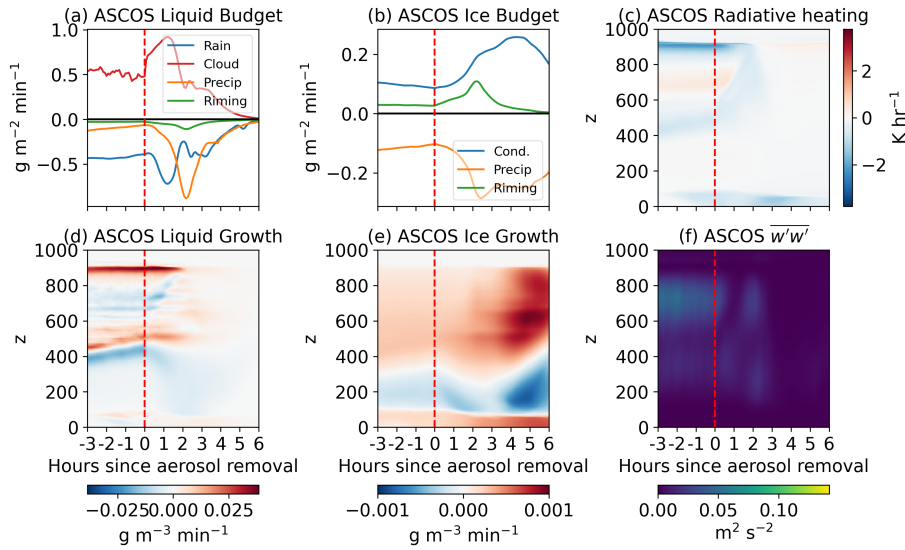
## 3.2 ASCOS

The simulated LWP response in ASCOS (Fig 6b) is much more in-line with observations than either of the other two simulations. While there is significant variation in observed LWP between 06:30-11:00 UTC, the modeled LWP fits the downwards trend of these variations quite closely. However, the simulations show that the main cloud layer dissipates almost entirely  
320 within about [three](#) hours after aerosol removal and thereafter most of the liquid is contained in a fog layer near the surface (Fig. 5b) [that developed prior to aerosol removal](#). This fog layer may be in line with observations; while not detected by radar, observers reported a fog bow forming in the later hours (UTC) of August 31st (Mauritsen et al., 2011). ~~Ice falls slowly out of the atmosphere.~~ The radar observations show that the cloud dissipated with a simultaneous drop in cloud top height. The cause is not clear, but it may be a result of ice slowly settling after the liquid is mostly removed, as seen in our simulations. It may  
325 also be associated with a change in the large-scale divergence and subsidence rate. Whatever the cause, the drop in cloud top height (as indicated ~~by~~ [by](#) the presence of either liquid or ice) in the simulations seems to occur much more rapidly. While the observations and simulation are not exactly the same, they seem similar enough that a lack of aerosol particles cannot be ruled out as a cause of the dissipation in the ASCOS case.

Figure 8 shows the budgets for ASCOS in the same fashion as OLI in Figure 7. The ASCOS and OLI cases are similar,  
330 both with constant liquid and ice precipitation reaching the surface throughout the pre-aerosol removal period, balancing the positive ice and liquid growth. Both simulations had uniform radiative cooling at cloud top and weak heating or cooling elsewhere. Unlike OLI, the ASCOS simulation was initialized with a sounding where the boundary layer was decoupled from the surface from a temperature inversion around ~~350~~ [300](#) m (Fig. 3a). As a result, the vertical turbulent momentum flux (Fig 8f) [is weaker and](#) does not extend as far below the cloud as in OLI (Fig. 7f).

335 Much like OLI, once aerosol are removed from the environment there is a sharp increase in cloud condensational growth, leading to a large amount of liquid precipitation and rain evaporation. Shortly after this rise in liquid condensation, ice growth rates almost triple at 09:00 UTC. Simultaneously, liquid growth drops sharply. While initially this may seem to indicate the WBF process glaciating a cloud, investigating the growth budget in 2D ([time/height](#) Fig. 8(d-e)) shows that there is typically net condensation of liquid in the cloud layer after aerosol removal. However, liquid growth (while remaining positive) is still  
340 decreased significantly in the location of maximal ice growth, so it appears that both liquid and ice processes are competing for available water vapor. As liquid droplets and ice crystals grow, collide, and fall out as precipitation, this moisture is removed from the atmosphere and eventually no supersaturation exists with which to grow any hydrometeors. Like OLI, precipitation processes seem to drive the liquid dissipation and the post-removal boundary layer cools throughout (not shown). However,





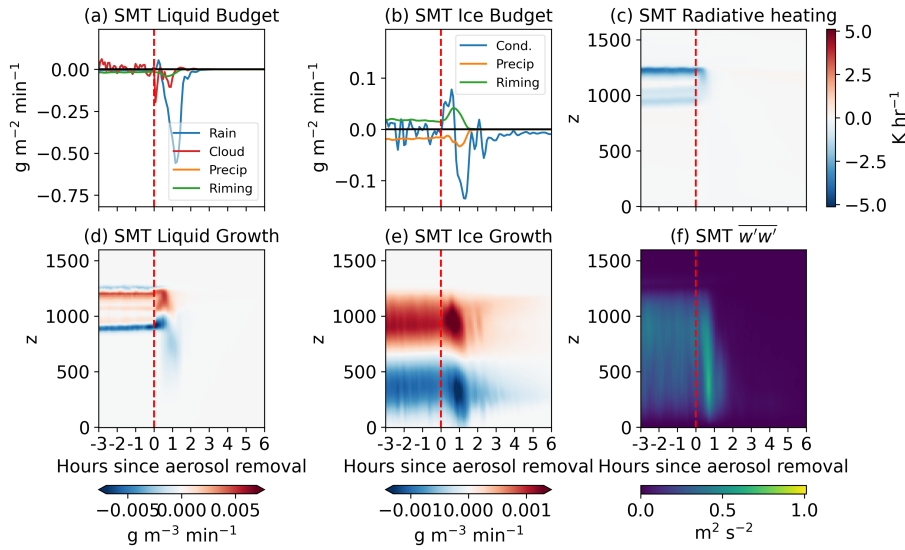
**Figure 8.** Same as Figure 7 for ASCOS.

due to the existing decoupled nature of the boundary layer, the effect of this stabilization on the turbulence of the cloud is weakened compared to OLI. As a result, while a slight cloud base rising is observable in, for example, Figure 8c it is not as pronounced as in OLI.

### 3.3 SMT

The SMT simulation is notably different ~~than from~~ the other two, with simulated LWP reaching near-zero values within only 2 hours of aerosol removal (Fig. 6c). Observed LWP ~~drops even faster, within 1 hour of the observed drop in aerosol concentration, similar to the observed LWP at Oliktok Point. Observed LWP~~ values are near-zero by 07:00 UTC, but radar returns are detected for the next several hours. Based on images taken from the measurement site and micropulse LIDAR depolarization ratios (not shown), it is likely that the radar returns detected after 07:00 are primarily due to near-surface ice fog and not to the presence of liquid water. LWP values are more variable after 09:00 UTC, but this is most likely due to higher-level liquid clouds passing overhead (which can also be seen on radar in Fig 4b). ~~See;~~ [see](#) Guy et al. (2021) for more analysis of these observations). Radar also shows a cloud whose top is lowering but Figure 5c shows little lowering of cloud top.

Figure 9 shows the liquid and ice budget, radiative heating rate, and vertical turbulent momentum flux for the SMT case. Radiative cooling at cloud top is about twice as strong ( $\sim 4 \text{ K h}^{-1}$ ) as in ASCOS or OLI ( $\sim 2 \text{ K h}^{-1}$ ). This is in agreement with previous studies which show that an increase in aerosol ( $200 \text{ cm}^{-3}$  in SMT versus  $80 \text{ cm}^{-3}$  and  $89 \text{ cm}^{-3}$  in OLI and ASCOS, respectively) leads to enhanced maximum cloud top cooling in Arctic clouds (e.g. Williams and Igel, 2021). The SMT sounding used to initialize RAMS (Fig. 4a) was well-mixed from cloud top to near the surface, so turbulent momentum fluxes



**Figure 9.** Same as Figures 7 and 8 for SMT.

are able to consistently extend down to about 200 m above the surface. As a result of the stronger cooling at cloud top, vertical momentum flux ( $\overline{w'w'}$ , Fig. 9f) at SMT is  $\sim 0.75 \text{ m}^2 \text{ s}^{-2}$  - approximately 10x stronger than seen in OLI or ASCOS.

Unlike the other two cases, the simulated SMT cloud reaches a different equilibrium pre-aerosol removal. Instead of a balance between cloud droplet/ice growth and precipitation, like in OLI and ASCOS (Figs 7 and 8), the SMT cloud is balanced by cloud droplet growth at cloud top and cloud base but cloud droplet evaporation in the interior and along the top and bottom edges (Fig. 9c). There was no liquid precipitation or rain evaporation prior to aerosol removal.

Similarly, column-integrated ice ~~deposition~~-growth fluctuates around zero prior to aerosol removal unlike in the other two simulated cases (Fig. 9b). While there is significant ice production and growth in-cloud (Fig. 9e), it is balanced out by a near-total sublimation below cloud (Fig. 9e), in part due to the much drier below-cloud boundary layer seen in SMT (Fig. 4a) compared to OLI and ASCOS (Figs. 2-3). While some ice precipitation did accumulate on the surface (Fig. 9b, orange line), that removal from precipitation mirrors the the addition of ice due to riming, with precipitation being slightly lower due to sublimation of the rimed ice while falling through the below-cloud atmosphere.

Another difference between OLI~~and~~/ASCOS and the SMT simulation is the location of the ice relative to the liquid layer. In OLI and ASCOS, there was a more distinct separation between the liquid layer and the ice precipitation below it (Fig. 5). In SMT, by contrast, ice is present throughout the liquid layer. This creates more competition between the liquid and ice phases in the cloud.

After aerosol removal there is a short period of rain/drizzle production, though most droplets evaporate or rime before reaching the surface; this increase in rain is not visible as precipitation but instead as rain evaporation in Figure 9a and riming in 9b. The areas of liquid evaporation shortly after 06:00 UTC at  $\sim 750 \text{ m}$  are coincident with strong ice growth (Fig. 9e), suggesting some role of the WBF process in dissipating the cloud. However, this is not necessarily the case. The enhanced

negative liquid growth in Fig. 9d occurs at and below cloud base. Cloud droplets grow in the net by condensation (Fig. 9a, red line) and rain evaporation becomes the largest sink of liquid water (blue line). This indicates that the removal of aerosol is promoting development of rain-sized liquid drops which are falling out but not actually reaching the surface (as there is no surface accumulation visible in Fig. 9a). After a very short amount of time ( $<1$  hour), the ice hydrometeors large enough to precipitate do so, and both ice and liquid evaporate. This is in contrast to the other two cases, where ice growth was always positive.

SMT also had less initial liquid water than the other two simulations ( $\sim 30 \text{ g m}^{-2}$  compared to  $\sim 100 \text{ g m}^{-2}$  in both OLI and ASCOS), which also may explain why this cloud dissipated faster as there was less than half the amount of liquid water that needed to be removed from the atmosphere. Post-removal, the boundary layer cools much like OLI and ASCOS (not shown). However, in contrast to those two cases, the boundary layer remained well-mixed for the first hour, and becomes more stable around 08:00 UTC - 2 h after aerosol removal and at which point the cloud has mostly dissipated. As a result, turbulent vertical motions extend quite far throughout the boundary layer (Fig. 9f). This combined with the stronger turbulence generated by enhanced cooling at cloud top and the drier atmosphere above and below cloud means that dry air is more readily entrained into the environment, and may have been a reason why dissipation occurred so much more quickly. The increased vertical momentum flux seen immediately after aerosol removal (Fig. 9f) may be due to drag from precipitating raindrops.

## 4 Discussion and Conclusions

We investigate the role of low aerosol concentrations on the dissipation of Arctic mixed-phase clouds by running LES simulations of three different cases in different locations (Alaska's northern coast ~~OLI~~(OLI), Arctic ocean ice floe ~~ASCOS~~(ASCOS), and Greenland's summit station ~~SMT~~(SMT)). Each LES simulation is initialized based on observations and aerosol concentrations are instantaneously forced to  $0 \text{ cm}^{-3}$  at a specified time. Comparing the simulated LWP to observations (Fig. 6), we are able to determine whether it is *possible* that each observed case dissipated due to a lack of aerosol. By removing all aerosol instantaneously and preventing the model from nucleating new hydrometeors, we effectively simulate the *fastest possible* response to a lack of aerosol. A case that is observed to dissipate faster than its simulation, in this setup, is likely to have other factors driving the dissipation. We find OLI to be one such case. Cases where the observed LWP response is similar to the modeled response are more likely to be actually caused by a lack of aerosol. The ASCOS and ~~to some extent~~, SMT cases fall into this category. While noisy, the observed ASCOS LWP trend lines up very well with the simulation. The SMT case is less certain and while the observed LWP decreases faster than the simulated values, some factors (such as less certain/accurate representativeness of this cloud setup in the model) may explain the difference. We argue that the ASCOS and SMT cases should be investigated further as possible cases of aerosol-limited dissipation. Avenues for further study include simulations with more realistic aerosol treatment, exploring the relative impact of above and below cloud aerosol on dissipation, and investigating the role of IN entrainment

Our simulations revealed two pre-aerosol removal equilibrium balance states which respond differently to aerosol removal. The first, seen in OLI and ASCOS, results in a continually precipitating cloud in both ice and liquid where droplet growth is

415 balanced by loss through collisions resulting in removal by precipitation. Conversely, the second balance state (seen in SMT) occurred in a thinner, colder cloud with no liquid precipitation and very little ice precipitation. Instead, liquid and ice coexist in a larger area in SMT (Fig. 5), creating more competition for the available water vapor. The stronger turbulent motions caused by enhanced cloud top cooling in SMT may have caused the relatively drier above-cloud air to be mixed and entrained into the cloud, also prohibiting the development of large enough supersaturations needed for constant growth.

420 In addition, we found little difference in microphysical response to aerosol removal between a coupled boundary layer (OLI) and a decoupled one (ASCOS). SMT and ASCOS both had decoupled boundary layers, and SMT showed a very different response to aerosol removal than both OLI or ASCOS. We believe that, given the evidence from these three simulations, the microphysical balance state of the cloud ~~is~~ may be more important to determining the response to aerosol removal than boundary layer properties. Future work on this subject could involve testing various boundary layer thermodynamic initial  
425 conditions (e.g. coupled/decoupled surface), surface fluxes, etc. and their effects on post-aerosol removal processes.

Understanding Arctic energy balances are paramount to studying the Earth's climate as a whole. Low-level mixed phase clouds have been shown be a large regulator on the Arctic climate, and understanding these clouds and their processes is important to furthering our understanding and modeling ability of weather and climate. While we believe aerosol-limited dissipation in the Arctic to be an uncommon (if not rare) event, understanding the impact of a pristine Arctic environment and  
430 how it might change in a more polluted future will be necessary steps in researching Earth's climate change and its impacts.

*Code and data availability.* Model source code is available at <https://doi.org/10.5281/zenodo.6418997> (Sterzinger, 2022a). Horizontally averaged model data from RAMS is available at <https://10.5281/zenodo.6502720> (Sterzinger, 2022b). Full 3D model data can be obtained by emailing the author at [lstertzinger@ucdavis.edu](mailto:lstertzinger@ucdavis.edu). Fully reproducible code for all figures is available at <https://doi.org/10.5281/zenodo.6502776> (Sterzinger, 2022c)

435 *Author contributions.* LS, AI, and JS conceptualized the study. LS and AI designed and performed the simulations. All authors contributed to data analysis. LS wrote the manuscript with input from all authors.

*Competing interests.* The authors declare that they have no competing interests.

*Acknowledgements.* This work was supported by United States Department of Energy Atmospheric System Research Grant #DE-SC0019073-0. ICECAPS-ACE was funded by NSFGE0-NERC grant 1801477. We would like to thank the technicians at Summit Station and the science  
440 support provided by Polar Field Services whose efforts were crucial to maintaining data quality and continuity at Summit.

## References

- Bergeron, T.: On the physics of clouds and precipitation, Proc. 5th Assembly U.G.G.I., Lisbon, Portugal, 1935, pp. 156–180, <https://ci.nii.ac.jp/naid/10024028214/>, 1935.
- Bharadwaj, N.: Millimeter Wavelength Cloud Radar (MMCRMOM), <https://doi.org/10.5439/1025228>, 2010.
- 445 Birch, C. E., Brooks, I. M., Tjernström, M., Shupe, M. D., Mauritsen, T., Sedlar, J., Lock, A. P., Earnshaw, P., Persson, P. O. G., Milton, S. F., and Leck, C.: Modelling atmospheric structure, cloud and their response to CCN in the central Arctic: ASCOS case studies, *Atmospheric Chemistry and Physics*, 12, 3419–3435, <https://doi.org/https://doi.org/10.5194/acp-12-3419-2012>, publisher: Copernicus GmbH, 2012.
- Birmili, W., Stratmann, F., and Wiedensohler, A.: ~~DESIGN OF A DMA-BASED SIZE SPECTROMETER FOR A LARGE PARTICLE SIZE RANGE AND STABLE OPERATION~~[Design of a DMA-based Size Spectrometer for a Large Particle Size Range and Stable Operation](#),  
450 *Journal of Aerosol Science*, 30, 549–553, [https://doi.org/10.1016/S0021-8502\(98\)00047-0](https://doi.org/10.1016/S0021-8502(98)00047-0), 1999.
- Brooks, I. M., Tjernström, M., Persson, P. O. G., Shupe, M. D., Atkinson, R. A., Canut, G., Birch, C. E., Mauritsen, T., Sedlar, J., and Brooks, B. J.: The Turbulent Structure of the Arctic Summer Boundary Layer During The Arctic Summer Cloud-Ocean Study, *Journal of Geophysical Research: Atmospheres*, 122, 9685–9704, <https://doi.org/10.1002/2017JD027234>, 2017.
- Cadeddu, M.: Microwave Radiometer (MWRLOS), <https://doi.org/10.5439/1046211>, 2010.
- 455 Chandrakar, K. K., Cantrell, W., Ciochetto, D., Karki, S., Kinney, G., and Shaw, R. A.: Aerosol Removal and Cloud Collapse Accelerated by Supersaturation Fluctuations in Turbulence, *Geophysical Research Letters*, 44, 4359–4367, <https://doi.org/10.1002/2017GL072762>, 2017.
- Clothiaux, E. E., Ackerman, T. P., Mace, G. G., Moran, K. P., Marchand, R. T., Miller, M. A., and Martner, B. E.: Objective Determination of Cloud Heights and Radar Reflectivities Using a Combination of Active Remote Sensors at the ARM CART Sites, *Journal of Applied Meteorology and Climatology*, 39, 645–665, [https://doi.org/10.1175/1520-0450\(2000\)039<0645:ODOCHA>2.0.CO;2](https://doi.org/10.1175/1520-0450(2000)039<0645:ODOCHA>2.0.CO;2), 2000.
- 460 Cohen, J., Screen, J. A., Furtado, J. C., Barlow, M., Whittleston, D., Coumou, D., Francis, J., Dethloff, K., Entekhabi, D., Overland, J., and Jones, J.: Recent Arctic amplification and extreme mid-latitude weather, *Nature Geoscience*, 7, 627–637, <https://doi.org/10.1038/NGEO2234>, place: Berlin Publisher: Nature Research WOS:000341635600009, 2014.
- Cotton, W. R., Stevens, B., Feingold, G., and Walko, R. L.: Large eddy simulation of marine stratocumulus cloud with explicit microphysics, in: proceedings of a workshop on parameterization of the cloud topped boundary layer. ECMWF, Reading RG29AX, UK, vol. 236, 1992.
- 465 Cotton, W. R., Pielke Sr., R. A., Walko, R. L., Liston, G. E., Tremback, C. J., Jiang, H., McAnelly, R. L., Harrington, J. Y., Nicholls, M. E., Carrio, G. G., and McFadden, J. P.: RAMS 2001: Current status and future directions, *Meteorology and Atmospheric Physics*, 82, 5–29, <https://doi.org/10.1007/s00703-001-0584-9>, 2003.
- DeMott, P. J., Prenni, A. J., Liu, X., Kreidenweis, S. M., Petters, M. D., Twohy, C. H., Richardson, M. S., Eidhammer, T., and Rogers, D. C.: Predicting global atmospheric ice nuclei distributions and their impacts on climate, *Proceedings of the National Academy of Sciences*, 107, 11 217–11 222, <https://doi.org/10.1073/pnas.0910818107>, publisher: National Academy of Sciences Section: Physical Sciences, 2010.
- 470 Devasthale, A., Sedlar, J., and Tjernström, M.: Characteristics of Water-Vapour Inversions Observed over the Arctic by Atmospheric Infrared Sounder (AIRS) and Radiosondes, *Atmospheric Chemistry and Physics*, 11, 9813–9823, <https://doi.org/10.5194/acp-11-9813-2011>, 2011.
- Egerer, U., Ehrlich, A., Gottschalk, M., Neggers, R. A. J., Siebert, H., and Wendisch, M.: Case study of a humidity layer above Arctic stratocumulus using balloon-borne turbulence and radiation measurements and large eddy simulations, *Atmospheric Chemistry and Physics Discussions*, pp. 1–27, <https://doi.org/10.5194/acp-2020-584>, publisher: Copernicus GmbH, 2020.
- European Centre for Medium-Range Weather Forecasts: ERA5 Reanalysis (0.25 Degree Latitude-Longitude Grid), 2019.
- Findeisen, W.: Kolloid-meteorologische Vorgänge bei Neiderschlags-bildung, *Meteor. Z.*, 55, 121–133, 1938.

- Garrett, T. J. and Zhao, C.: Increased Arctic cloud longwave emissivity associated with pollution from mid-latitudes, *Nature*, 440, 787–789, <https://doi.org/10.1038/nature04636>, iISBN: 1476-4687, 2006.
- 480 Garrett, T. J., Radke, L. F., and Hobbs, P. V.: Aerosol Effects on Cloud Emissivity and Surface Longwave Heating in the Arctic, *Journal of the Atmospheric Sciences*, 59, 769–778, [https://doi.org/10.1175/1520-0469\(2002\)059<0769:AEOCEA>2.0.CO;2](https://doi.org/10.1175/1520-0469(2002)059<0769:AEOCEA>2.0.CO;2), publisher: American Meteorological Society, 2002.
- Gaustad, K.: MWR Retrievals with MWRRET Version 2 (MWRRET2TURN), <https://doi.org/10.5439/1566156>, 2014.
- Guy, H., Neely III, R. R., and Brooks, I. M.: ICECAPS-ACE: Surface Aerosol Concentration Measurements (Condensation Nuclei > 5nm  
485 Diameter) Taken at Summit Station Greenland., <https://catalogue.ceda.ac.uk/uuid/f56980457ce240ccab5ac6d403c81e7a>, 2020.
- Guy, H., Brooks, I. M., Carslaw, K. S., Murray, B. J., Walden, V. P., Shupe, M. D., Pettersen, C., Turner, D. D., Cox, C. J., Neff, W. D., Bennartz, R., and Neely III, R. R.: Controls on Surface Aerosol Particle Number Concentrations and Aerosol-Limited Cloud Regimes over the Central Greenland Ice Sheet, *Atmospheric Chemistry and Physics*, 21, 15 351–15 374, [https://doi.org/10.5194/acp-21-15351-](https://doi.org/10.5194/acp-21-15351-2021)  
2021, 2021.
- 490 Harrington, J. Y.: The ~~effects of radiative and microphysical processes on simulated warm and transition season Arctic stratus~~[Effects of Radiative and Microphysical Processes on Simulated Warm and Transition Season Arctic Stratus](#), Ph.D. thesis, ~~Colorado State University~~, 1997.
- Holland, M. M. and Bitz, C. M.: Polar amplification of climate change in coupled models, *Climate Dynamics*, 21, 221–232, <https://doi.org/10.1007/s00382-003-0332-6>, 2003.
- 495 Intrieri, J. M., Fairall, C. W., Shupe, M. D., Persson, P. O. G., Andreas, E. L., Guest, P. S., and Moritz, R. E.: An Annual Cycle of Arctic Surface Cloud Forcing at SHEBA, *Journal of Geophysical Research: Oceans*, 107, SHE 13–1–SHE 13–14, <https://doi.org/10.1029/2000JC000439>, 2002.
- Jiang, H. and Feingold, G.: Effect of aerosol on warm convective clouds: Aerosol-cloud-surface flux feedbacks in a new coupled large eddy  
500 model, *Journal of Geophysical Research: Atmospheres*, 111, <https://doi.org/10.1029/2005JD006138>, 2006.
- Jiang, H., Feingold, G., Cotton, W. R., and Duynkerke, P. G.: Large-eddy simulations of entrainment of cloud condensation nuclei into the Arctic boundary layer: May 18, 1998, FIRE/SHEBA case study, *Journal of Geophysical Research: Atmospheres*, 106, 15 113–15 122, <https://doi.org/10.1029/2000JD900303>, \_eprint: <https://agupubs.onlinelibrary.wiley.com/doi/pdf/10.1029/2000JD900303>, 2001.
- Jung, C. H., Yoon, Y. J., Kang, H. J., Gim, Y., Lee, B. Y., Ström, J., Krejci, R., and Tunved, P.: The Seasonal Characteristics of  
505 Cloud Condensation Nuclei (CCN) in the Arctic Lower Troposphere, *Tellus B: Chemical and Physical Meteorology*, 70, 1–13, <https://doi.org/10.1080/16000889.2018.1513291>, 2018.
- Klein, S. A., McCoy, R. B., Morrison, H., Ackerman, A. S., Avramov, A., de Boer, G., Chen, M., Cole, J. N., del Genio, A. D., Falk, M., Foster, M. J., Fridlind, A., Golaz, J. C., Hashino, T., Harrington, J. Y., Hoose, C., Khairoutdinov, M. F., Larson, V. E., Liu, X., Luo, Y., McFarquhar, G. M., Menon, S., Neggers, R. A., Park, S., Poellot, M. R., Schmidt, J. M., Sednev, I., Shipway, B. J., Shupe, M. D.,  
510 Spangenberg, D. A., Sud, Y. C., Turner, D. D., Veron, D. E., von Salzen, K., Walker, G. K., Wang, Z., Wolf, A. B., Xie, S., Xu, K. M., Yang, F., and Zhang, G.: Intercomparison of model simulations of mixed-phase clouds observed during the ARM Mixed-Phase Arctic Cloud Experiment. I: Single-layer cloud, *Quarterly Journal of the Royal Meteorological Society*, 135, 979–1002, <https://doi.org/10.1002/qj.416>, iISBN: 1477-870X, 2009.
- Korolev, A.: Limitations of the Wegener–Bergeron–Findeisen Mechanism in the Evolution of Mixed-Phase Clouds, *Journal of the Atmo-  
515 spheric Sciences*, 64, 3372–3375, <https://doi.org/10.1175/JAS4035.1>, publisher: American Meteorological Society, 2007.

- Kuang, C., Salwen, C., Boyer, M., and Singh, A.: Condensation Particle Counter (AOSPCU), <https://doi.org/10.5439/1046186>, 2016.
- Lindenmaier, I. A., Bharadwaj, N., Johnson, K., Nelson, D., Isom, B., Hardin, J., Matthews, A., Wendler, T., and Castro, V.: Ka ARM Zenith Radar (KAZRGE), <https://doi.org/10.5439/1025214>, 2015.
- Loewe, K., Ekman, A. M. L., Paukert, M., Sedlar, J., Tjernström, M., and Hoose, C.: Modelling Micro- and Macrophysical Contributors to the Dissipation of an Arctic Mixed-Phase Cloud during the Arctic Summer Cloud Ocean Study (ASCOS), *Atmospheric Chemistry and Physics*, 17, 6693–6704, <https://doi.org/10.5194/acp-17-6693-2017>, 2017.
- Mauritsen, T., Sedlar, J., Tjernstrom, M., Leck, C., Martin, M., Shupe, M., Sjögren, S., Sierau, B., Persson, P. O. G., and Brooks, I. M.: An Arctic CCN-limited cloud-aerosol regime, *Atmospheric Chemistry and Physics*, 11, 165–173, <http://dx.doi.org/10.5194/acp-11-165-2011>, number: 1 Publisher: European Geosciences Union, 2011.
- Meyers, M. P., Walko, R. L., Harrington, J. Y., and Cotton, W. R.: New RAMS cloud microphysics parameterization. Part II: The two-moment scheme, *Atmospheric Research*, 45, 3–39, 1997.
- Morrison, H., McCoy, R. B., Klein, S. A., Xie, S., Luo, Y., Avramov, A., Chen, M., Cole, J. N. S., Falk, M., Foster, M. J., Del Genio, A. D., Harrington, J. Y., Hoose, C., Khairoutdinov, M. F., Larson, V. E., Liu, X., McFarquhar, G. M., Poellot, M. R., von Salzen, K., Shipway, B. J., Shupe, M. D., Sud, Y. C., Turner, D. D., Veron, D. E., Walker, G. K., Wang, Z., Wolf, A. B., Xu, K.-M., Yang, F., and Zhang, G.: Intercomparison of Model Simulations of Mixed-Phase Clouds Observed during the ARM Mixed-Phase Arctic Cloud Experiment. II: Multilayer Cloud, *Quarterly Journal of the Royal Meteorological Society*, 135, 1003–1019, <https://doi.org/10.1002/qj.415>, 2009.
- Morrison, H., Zuidema, P., Ackerman, A. S., Avramov, A., De Boer, G., Fan, J., Fridlind, A. M., Hashino, T., Harrington, J. Y., Luo, Y., Ovchinnikov, M., and Shipway, B.: Intercomparison of cloud model simulations of Arctic mixed-phase boundary layer clouds observed during SHEBA/FIRE-ACE, *Journal of Advances in Modeling Earth Systems*, 3, <https://doi.org/10.1029/2011MS000066>, publisher: Blackwell Publishing Ltd, 2011.
- Morrison, H., De Boer, G., Feingold, G., Harrington, J., Shupe, M. D., and Sulia, K.: Resilience of persistent Arctic mixed-phase clouds, *Nature Geoscience*, 5, 11–17, <https://doi.org/10.1038/ngeo1332>, publisher: Nature Publishing Group, 2012.
- Naakka, T., Nygård, T., and Vihma, T.: Arctic Humidity Inversions: Climatology and Processes, *Journal of Climate*, 31, 3765–3787, <https://doi.org/10.1175/JCLI-D-17-0497.1>, publisher: American Meteorological Society, 2018.
- Previdi, M., Smith, K. L., and Polvani, L. M.: Arctic Amplification of Climate Change: A Review of Underlying Mechanisms, *Environmental Research Letters*, 16, 093 003, <https://doi.org/10.1088/1748-9326/ac1c29>, 2021.
- Pruppacher, H. and Klett, J.: *Microphysics of Clouds and Precipitation*, Kluwer Academic Publishing, Dordrecht, 1997.
- Saleeby, S. M. and Cotton, W. R.: A Large-Droplet Mode and Prognostic Number Concentration of Cloud Droplets in the Colorado State University Regional Atmospheric Modeling System (RAMS). Part I: Module Descriptions and Supercell Test Simulations, *Journal of Applied Meteorology*, 43, 182–195, [https://doi.org/10.1175/1520-0450\(2004\)043<0182:ALMAPN>2.0.CO;2](https://doi.org/10.1175/1520-0450(2004)043<0182:ALMAPN>2.0.CO;2), publisher: American Meteorological Society, 2004.
- Savre, J. and Ekman, A. M. L.: A Theory-Based Parameterization for Heterogeneous Ice Nucleation and Implications for the Simulation of Ice Processes in Atmospheric Models: A CNT-BASED ICE NUCLEATION MODEL, *Journal of Geophysical Research: Atmospheres*, 120, 4937–4961, <https://doi.org/10.1002/2014JD023000>, 2015.
- Schmale, J., Zieger, P., and Ekman, A. M. L.: Aerosols in Current and Future Arctic Climate, *Nature Climate Change*, 11, 95–105, <https://doi.org/10.1038/s41558-020-00969-5>, 2021.
- Sedlar, J. and Tjernström, M.: Stratiform Cloud—Inversion Characterization During the Arctic Melt Season, *Boundary-Layer Meteorology*, 132, 455–474, <https://doi.org/10.1007/s10546-009-9407-1>, 2009.



- Sedlar, J., Tjernström, M., Mauritsen, T., Shupe, M. D., Brooks, I. M., Persson, P. O. G., Birch, C. E., Leck, C., Sirevaag, A., and Nicolaus, M.: A transitioning Arctic surface energy budget: The impacts of solar zenith angle, surface albedo and cloud radiative forcing, *Climate Dynamics*, 37, 1643–1660, <https://doi.org/10.1007/s00382-010-0937-5>, 2011.
- Sedlar, J., Shupe, M. D., and Tjernström, M.: On the Relationship between Thermodynamic Structure and Cloud Top, and Its Climate Significance in the Arctic, *Journal of Climate*, 25, 2374–2393, <https://doi.org/10.1175/JCLI-D-11-00186.1>, 2012.
- Sedlar, J., Igel, A., and Telg, H.: Processes Contributing to Cloud Dissipation and Formation Events on the North Slope of Alaska, *Atmospheric Chemistry and Physics*, 21, 4149–4167, <https://doi.org/10.5194/acp-21-4149-2021>, 2021.
- Serreze, M. C. and Barry, R. G.: Processes and impacts of Arctic amplification: A research synthesis, *Global and Planetary Change*, 77, 85–96, <https://doi.org/10.1016/j.gloplacha.2011.03.004>, place: Amsterdam Publisher: Elsevier WOS:000292360100009, 2011.
- Shupe, M. D.: Clouds at Arctic Atmospheric Observatories. Part II: Thermodynamic Phase Characteristics, *Journal of Applied Meteorology and Climatology*, 50, 645–661, <https://doi.org/10.1175/2010JAMC2468.1>, publisher: American Meteorological Society, 2011.
- Shupe, M. D. and Intrieri, J. M.: Cloud Radiative Forcing of the Arctic Surface: The Influence of Cloud Properties, Surface Albedo, and Solar Zenith Angle, *Journal of Climate*, 17, 616–628, [https://doi.org/10.1175/1520-0442\(2004\)017<0616:CRFOTA>2.0.CO;2](https://doi.org/10.1175/1520-0442(2004)017<0616:CRFOTA>2.0.CO;2), publisher: American Meteorological Society, 2004.
- Shupe, M. D., Matrosov, S. Y., and Uttal, T.: Arctic Mixed-Phase Cloud Properties Derived from Surface-Based Sensors at SHEBA, *Journal of the Atmospheric Sciences*, 63, 697–711, <https://doi.org/10.1175/JAS3659.1>, publisher: American Meteorological Society, 2006.
- Shupe, M. D., [Persson, P. O. G., Brooks, I. M., Tjernström, M., Sedlar, J., Mauritsen, T., Sjogren, S., and Leck, C.: Cloud and Boundary Layer Interactions over the Arctic Sea Ice in Late Summer, \*Atmospheric Chemistry and Physics\*, 13, 9379–9399, <https://doi.org/10.5194/acp-13-9379-2013>, 2013a.](#)
- [Shupe, M. D.,](#) Turner, D. D., Walden, V. P., Bennartz, R., Cadeddu, M. P., Castellani, B. B., Cox, C. J., Hudak, D. R., Kulie, M. S., Miller, N. B., Neely, R. R., Neff, W. D., and Rowe, P. M.: High and Dry: New Observations of Tropospheric and Cloud Properties above the Greenland Ice Sheet, *Bulletin of the American Meteorological Society*, 94, 169–186, <https://doi.org/10.1175/BAMS-D-11-00249.1>, ~~2013~~, 2013b.
- Solomon, A., Shupe, M. D., Persson, P. O. G., and Morrison, H.: Moisture and dynamical interactions maintaining decoupled Arctic mixed-phase stratocumulus in the presence of a humidity inversion, *Atmospheric Chemistry and Physics*, 11, 10 127–10 148, <https://doi.org/https://doi.org/10.5194/acp-11-10127-2011>, publisher: Copernicus GmbH, 2011.
- Sotiropoulou, G., Sedlar, J., Tjernström, M., Shupe, M. D., Brooks, I. M., and Persson, P. O.: The Thermodynamic Structure of Summer Arctic Stratocumulus and the Dynamic Coupling to the Surface, *Atmospheric Chemistry and Physics*, 14, 12 573–12 592, <https://doi.org/10.5194/acp-14-12573-2014>, 2014.
- Sotiropoulou, G., Sedlar, J., Forbes, R., and Tjernstrom, M.: Summer Arctic Clouds in the ECMWF Forecast Model: An Evaluation of Cloud Parametrization Schemes, *Quarterly Journal of the Royal Meteorological Society*, 142, 387–400, <https://doi.org/10.1002/qj.2658>, 2016.
- Sotiropoulou, G., Bossioli, E., and Tombrou, M.: Modeling Extreme Warm-Air Advection in the Arctic: The Role of Microphysical Treatment of Cloud Droplet Concentration, *Journal of Geophysical Research: Atmospheres*, 124, 3492–3519, <https://doi.org/10.1029/2018JD029252>, \_eprint: <https://agupubs.onlinelibrary.wiley.com/doi/pdf/10.1029/2018JD029252>, 2019.
- Sterzinger, L.: [Data-lsterzinger/Arctic-Rams-6.1.22: Publish on Zenodo, Zenodo, <https://doi.org/10.5281/zenodo.6418998>, 2022a.](#)



- [Sterzinger, L.: Model Data and Namelists](#) for Sterzinger et al. (2022, ~~in-Prep~~) - "[AretieDo Arctic Mixed-Phase Clouds Sometimes Dissipate Due to Insufficient Aerosol: ~~Evidence from~~? Evidence from Comparisons between Observations and Idealized Simulations](#)", <https://doi.org/10.5281/zenodo.6502720>, 2022b.
- 595 Sterzinger, L.: Plotting Scripts for Sterzinger et al (2022) (~~in-Prep~~) - "[Do Arctic Mixed-Phase Clouds Sometimes Dissipate Due to Insufficient Aerosol? Evidence from Comparisons between Observations and Idealized Simulations](#)", Zenodo, <https://doi.org/10.5281/ZENODO.6502776>, 2022c.
- Stevens, R. G., Loewe, K., Dearden, C., Dimitrellos, A., Possner, A., Eirund, G. K., Raatikainen, T., Hill, A. A., Shipway, B. J., Wilkinson, J., Romakkaniemi, S., Tonttila, J., Laaksonen, A., Korhonen, H., Connolly, P., Lohmann, U., Hoose, C., Ekman, A. M., Carslaw, K. S.,  
600 and Field, P. R.: A model intercomparison of CCN-limited tenuous clouds in the high Arctic, *Atmospheric Chemistry and Physics*, 18, 11 041–11 071, <https://doi.org/10.5194/acp-18-11041-2018>, iSBN: 1680-7316, 2018.
- Tjernström, M., Leck, C., Birch, C. E., Bottenheim, J. W., Brooks, B. J., Brooks, I. M., Bäcklin, L., Chang, R. Y., De Leeuw, G., Di Liberto, L., De La Rosa, S., Granath, E., Graus, M., Hansel, A., Heintzenberg, J., Held, A., Hind, A., Johnston, P., Knulst, J., Martin, M., Matrai, P. A., Mauritsen, T., Müller, M., Norris, S. J., Orellana, M. V., Orsini, D. A., Paatero, J., Persson, P. O., Gao, Q., Rauschenberg, C.,  
605 Ristovski, Z., Sedlar, J., Shupe, M. D., Sierau, B., Sirevaag, A., Sjogren, S., Stetzer, O., Swietlicki, E., Szczodrak, M., Vaattovaara, P., Wahlberg, N., Westberg, M., and Wheeler, C. R.: The Arctic Summer Cloud Ocean Study (ASCOS): Overview and Experimental Design, *Atmospheric Chemistry and Physics*, 14, 2823–2869, <https://doi.org/10.5194/acp-14-2823-2014>, 2014.
- Tong, S.: Impacts of Aerosol Concentration on the Dissipation of Arctic Mixed-Phase Clouds, Master's thesis, University of California, Davis, <https://search.proquest.com/dissertations/docview/2386391281/DC2BC7F1CA7A431BPQ/1>, proQuest Dissertations & Theses, 2019.
- 610 Twomey, S.: The Influence of Pollution on the Shortwave Albedo of Clouds, *Journal of the Atmospheric Sciences*, 34, 1149–1152, [https://doi.org/10.1175/1520-0469\(1977\)034<1149:TIOPOT>2.0.CO;2](https://doi.org/10.1175/1520-0469(1977)034<1149:TIOPOT>2.0.CO;2), publisher: American Meteorological Society, 1977.
- Walko, R., Cotton, W., Meyers, M., and Harrington, J.: New RAMS cloud microphysics parameterization part I: the single-moment scheme, *Atmospheric Research*, 38, 29–62, [https://doi.org/10.1016/0169-8095\(94\)00087-T](https://doi.org/10.1016/0169-8095(94)00087-T), 1995.
- Wegener, A.: *Thermodynamik der atmosphäre*, J. A. Barth, google-Books-ID: kWtUAAAAMAAJ, 1911.
- 615 Westwater, E. R., Han, Y., Shupe, M. D., and Matrosov, S. Y.: Analysis of Integrated Cloud Liquid and Precipitable Water Vapor Retrievals from Microwave Radiometers during the Surface Heat Budget of the Arctic Ocean Project, *Journal of Geophysical Research: Atmospheres*, 106, 32 019–32 030, <https://doi.org/10.1029/2000JD000055>, 2001.
- Williams, A. S. and Igel, A. L.: Cloud Top Radiative Cooling Rate Drives Non-Precipitating Stratiform Cloud Responses to Aerosol Concentration, *Geophysical Research Letters*, 48, e2021GL094 740, <https://doi.org/10.1029/2021GL094740>, 2021.