

Compare Results

Old File:

HAM_paper_Gohil et al (1).pdf

35 pages (17.19 MB)

6/6/2022 6:04:45 PM

versus

New File:

HAM_paper_Gohil et al_revised.pdf

36 pages (17.19 MB)

8/19/2022 8:12:57 PM

Total Changes

307

Text only comparison

Content

64 Replacements

126 Insertions

117 Deletions

Styling and Annotations

0 Styling

0 Annotations

[Go to First Change \(page 8\)](#)

Hybrid Water Adsorption and Solubility Partitioning for Aerosol Hygroscopicity and Droplet Growth

Kanishk Gohil¹, Chun-Ning Mao¹, Dewansh Rastogi¹, Chao Peng^{3,4}, Mingjin Tang^{3,4,5}, and Akua Asa-Awuku^{1,2}

¹Department of Chemical and Biomolecular Engineering, University of Maryland, College Park, MD 20742 USA

²Department of Chemistry and Biochemistry, University of Maryland, College Park, MD 20742 USA

³State Key Laboratory of Organic Geochemistry, Guangdong Key Laboratory of Environmental Protection and Resources Utilization, and Guangdong-Hong Kong-Macao Joint Laboratory for Environmental Pollution and Control, Guangzhou Institute of Geochemistry, Chinese Academy of Sciences, Guangzhou 510640, China

⁴CAS Center for Excellence in Deep Earth Science, Guangzhou 510640, China

⁵University of Chinese Academy of Sciences, Beijing 100049, China

Correspondence: Akua Asa-Awuku (asaawuku@umd.edu)

Abstract. In this work, we studied the Cloud Condensation Nuclei (CCN) activity and subsaturated droplet growth of phthalic acid (PTA), isophthalic acid, (IPTA) and terephthalic acid (TPTA), significant benzene polycarboxylic acids and structural isomers found in the atmosphere. Köhler Theory can be effectively applied for hygroscopicity analysis of PTA due to its higher aqueous solubility compared to IPTA and TPTA. As with other hygroscopicity studies of partially water-soluble and effectively water insoluble species, the supersaturated and subsaturated hygroscopicity derived from (KT) principles do not agree. To address the disparities in the sub- and supersaturated droplet growth, we developed a new analytical framework called the Hybrid Activity Model (HAM). HAM incorporates the aqueous solubility of a solute within an adsorption-based activation framework. Frenkel-Halsey-Hill (FHH)-Adsorption Theory (FHH-AT) was combined with the aqueous solubility of the compound to develop HAM. Analysis from HAM was validated using laboratory measurements of pure PTA, IPTA, TPTA and PTA-IPTA internal mixtures. Furthermore, the results generated using HAM were tested against traditional KT and FHHAT to compare their water uptake predictive capabilities. A single-hygroscopicity parameter was also developed based on the HAM framework. Results show that the HAM based hygroscopicity parameter based can successfully simulate the water uptake behavior of the pure and internally mixed samples. Results indicate that the HAM framework may be applied to atmospheric aerosols of varying chemical structures and aqueous solubility.

1 Introduction

Aerosols can affect the global radiative balance and climate by either absorption and scattering of radiation (direct effect of aerosols), or by acting as Cloud Condensation Nuclei (CCN) resulting in cloud formation (indirect effect of aerosols). While the direct effect is well-studied and understood, the indirect effect is still the most significant source of uncertainties in climate forcing. This is primarily attributed to the poor understanding of the CCN activity and hygroscopic properties of organic aerosols (Talley et al. (2013)). Organic aerosols are ubiquitous in the atmosphere. They contribute significantly to the

atmospheric aerosol mass burden and account for 20-90% of total tropospheric fine aerosol mass (Kanakidou et al. (2005)). Furthermore, organic aerosols can mix with other organic and inorganic species in the atmosphere to modify their the CCN activity and hygroscopic properties (e.g., but not limited to Schill et al. (2015); Vu et al. (2019); Gácita et al. (2017); Su et al. (2010); Padró et al. (2012); Baustian et al. (2012); Fofie et al. (2018)). Consequently, the CCN activity of organic aerosols
25 needs to be well-characterized to reduce uncertainties in the climate forcing due to indirect effect of aerosols.

Much of the CCN related research focuses on highly water-soluble and sparingly water-soluble compounds (e.g., but not limited to Jing et al. (2018); Samy et al. (2010); Asa-Awuku et al. (2010); Taylor et al. (2017)). For such compounds, Köhler Theory (KT) is traditionally applied to study their CCN activity and predict their hygroscopic properties. KT explains droplet growth by combining the water activity described using Raoult's law (solute effect) with the Kelvin effect (curvature effect)
30 (Köhler (1936)). KT is applied under the assumptions of infinite and spontaneous water solubility of the solute and an infinitely dilute water droplet solution (Asa-Awuku et al. (2010); Hartz et al. (2006); Kreidenweis and Asa-Awuku (2014); Barati et al. (2019); Dawson et al. (2020)). That is, if the aerosol instantaneously disassociates in water, traditional KT aptly explains the droplet growth driven by molar volume and droplet surface tension (Köhler (1936); Sullivan et al. (2009); Giordano et al. (2015)). These assumptions work well for many aerosols that are highly soluble ($> 10^{-1} \text{ m}^3 \text{ solute m}^{-3} \text{ water}$; Petters and
35 Kreidenweis (2007)) that form thermodynamically ideal solutions in water. Moreover, the water uptake characteristics of such highly water-soluble compounds can be predicted with a single KT hygroscopicity parameter (κ) (Petters and Kreidenweis (2007)). The κ parameter derived in this way is defined as the "intrinsic κ " of the aerosol.

However, there is an abundance of partially and effectively water insoluble organic compounds in the atmosphere. The CCN activity of such limited water solubility compounds has been predicted by incorporating the compound solubility in
40 traditional KT (Hartz et al. (2006); Petters and Kreidenweis (2008)). Riipinen et al. (2015) prescribed a "solubility partitioning" framework using the traditional KT for CCN analysis of pure and internally mixed aerosols in a large range of aqueous solubility. Furthermore, a modified κ parameter accounting for the water solubility of the aerosols can also be derived based on this solubility-modified KT framework (Petters and Kreidenweis (2008); Sullivan et al. (2009); Nakao (2017)). This modified hygroscopicity varies over the course of droplet growth and is dependent on the droplet size. Despite the modifications to
45 traditional KT, differences have been observed between the experimental κ with either the intrinsic or solubility modified κ of the aerosol (Sullivan et al. (2009); Kumar et al. (2009b)). Specifically, aerosols with solubility $< 5 \times 10^{-4} \text{ m}^3 \text{ m}^{-3}$ are "effectively insoluble" (Petters and Kreidenweis (2008)) and do not agree with the water uptake predictions using either traditional or solubility-modified KT.

Droplet growth can be explained for the effectively insoluble organic compounds using a water adsorption framework.
50 CCN activity from adsorption can be modeled by combining the water activity from an adsorption isotherm with the Kelvin effect (e.g., but not limited to Kumar et al. (2009a); Kumar et al. (2009b); Kumar et al. (2011a); Kumar et al. (2011b); Rahman and Al-Abadleh (2018); Malek et al. (2022); Tang et al. (2016); Henson (2007); Goodman et al. (2001); Hatch et al. (2012)). One such mathematical formulation accounts for adsorption using the Frenkel-Halsey-Hill (FHH) isotherm (Sorjamaa and Laaksonen (2007)). The FHH isotherm consists of 2 empirical parameters denoted as A_{FHH} and B_{FHH} . A_{FHH} explains the
55 interaction of the first adsorbed water layer and the particle surface, while B_{FHH} explains the interaction between subsequently

adsorbed water layers and the particle. The FHH isotherm combined with the Kelvin effect provides the FHH-Adsorption Theory (FHH-AT) for CCN activity analysis. Parameters specific to a given aerosol species can be experimentally determined by fitting FHH-AT through their CCN activity measurements. Studies have so far explored the application of the FHH-AT for CCN analysis of several water-insoluble compounds (e.g., but not limited to Kumar et al. (2009a); Kumar et al. (2009b); Kumar et al. (2011a); Kumar et al. (2011b); Hatch et al. (2014); Hatch et al. (2019); Dalirian et al. (2018); Laaksonen et al. (2016); Laaksonen et al. (2020)). FHH-AT consists of 2 empirical parameters as opposed to a single κ parameter in traditional or modified KT. Additionally, an important assumption in FHH-AT and other similar adsorption models is that the aerosols are treated as completely water insoluble. Only recently, in a companion paper (Mao et al. (2022), *submitted*) has FHH-AT been shown to work for insoluble particles with water-soluble and molecular level functionalized surfaces. Thus, there now exists a transitional regime from a soluble to water-insoluble models to correctly describe droplet growth.

The following paper probes several aspects of water uptake to develop a comprehensive model to describe droplet formation of effectively water insoluble to partially soluble organics. Specifically, a new CCN activity model is developed by combining the components of the solubility modified KT with the FHH isotherm. This work is a companion and extension to the single-parameter framework developed in Mao et al (2022) (*submitted*). Throughout this paper, this model will be referred to as the Hybrid Activity Model (HAM). Within the HAM framework, the aerosol particles are treated as completely water insoluble at the start of the droplet growth process. The particle continues to fractionally dissolve into the aqueous phase as droplet growth progresses. While the dissolved fraction of the aerosol contributes to droplet growth via Raoult's law, the undissolved fraction contributes to droplet growth via adsorption of water on the surface. Furthermore, this work discusses the development of a single κ parameter based on HAM to represent the effect of aqueous solubility on droplet growth for a compound that would be otherwise treated as effectively water insoluble.

The development and application of HAM is explained in this paper using the experimental droplet growth measurements of 3 low water solubility structural isomers of benzene di-carboxylic acid – Phthalic acid (PTA), Isophthalic acid (IPTA) and Terephthalic acid (TPTA). PTA, IPTA and TPTA are among some of the significant benzene polycarboxylic acids detected in the atmosphere (Haque et al. (2019); Meng et al. (2018); Liu et al. (2019); Yassine et al. (2020); Fu et al. (2009); Kanellopoulos et al. (2021); Singh et al. (2017); Kunwar et al. (2019)). PTA and its isomers are known to be tracers of benzanthracene, naphthalene-1 and methylnaphthalene-1, prominent emissions from combustion (Kleindienst et al. (2012); Al-Naiema et al. (2020); He et al. (2018)). PTA is also a byproduct of pre-ozonation of fulvic acid, another significant marker of biomass burning emissions (Zhong et al. (2017b); Zhong et al. (2017a)). IPTA and TPTA are also predominantly produced from biomass burning and emissions of automobile exhausts (Kawamura and Kaplan (1987); Mkoma and Kawamura (2013); Balla et al. (2018); Al-Naiema and Stone (2017)).

The hygroscopic properties of PTA, IPTA and TPTA have been studied in the past (e.g., but not limited to Petters and Kreidenweis (2007); Hartz et al. (2006); Wang et al. (2021)). However, a comprehensive comparison and discussion of the effects of structural isomers on the droplet growth of benzene-dicarboxylic acids does not exist. Vapor sorption measurements of bulk PTA indicate hygroscopic growth at high ambient relative humidity (> 90% RH) (Wang et al. (2021)). Hämeri et al. (2002) used Tandem Differential Mobility Analyzer (TDMA) technology and observed that PTA aerosol did not grow in sub-

saturated conditions. Other studies show PTA internal mixtures with inorganics can deliquesce under subsaturated conditions (Jing et al. (2016); Jing et al. (2018)). Furthermore, Hartz et al. (2006) showed that PTA could activate as CCN at 1% supersaturation. The activation was consistent with KT that assumed complete dissolution with no solubility considerations. Petters and Kreidenweis (2007) report the $\kappa = 0.059$ and 0.051 for PTA under sub- and supersaturated conditions, respectively. To our knowledge only one other paper has measured droplet growth of IPTA. Hartz et al. (2006) found that IPTA behaves as an insoluble compound and does not obey traditional KT. Few studies have measured hygroscopic properties of TPTA, but not in context of CCN (Diniz et al. (2017); Zhao et al. (2021)). To our knowledge, the application of adsorption models has not been studied for CCN analysis of PTA, IPTA or TPTA.

Overall, HAM is used in this paper to extensively study the hygroscopic properties of PTA, IPTA and TPTA that are not yet cogently known. In addition to the aforementioned pure compounds, the internal mixtures of PTA and IPTA are also studied. The compounds and their mixtures considered in this work are useful and help us understand the efficacy of different CCN models to describe the droplet growth associated with different organic CCN with varying aqueous solubilities. The experimental CCN measurements provide an efficient means to validate the application of the newly developed HAM. In the following sections, we first describe the experimental setup used in this study to obtain droplet growth data for PTA, IPTA and TPTA and PTA-IPTA internal mixtures. We then describe the theory and formulation of HAM based on KT and FHH-AT, and how it was implemented for droplet growth analysis of aerosols. We subsequently explain the derivation of the single κ parameter using the HAM framework, followed by the discussion of results and conclusions of this study.

2 Experimental Section

2.1 Compounds and Aerosol Generation

Phthalic acid (PTA, 1,2 – benzenedicarboxylic acid, >99.5%, Sigma-Aldrich®) and terephthalic acid (TPTA, 1,4 – benzenedicarboxylic acid, 98%, Sigma-Aldrich®) and Isophthalic acid (IPTA, 1,3 – benzenedicarboxylic acid, >99%, Fisher Scientific®) were used as representative compounds for the aromatic acid aerosols (AAAs, hereafter). The physical properties of PTA, IPTA and TPTA are summarized in Table 1. Aqueous solutions of PTA, IPTA and TPTA were formed by mixing 30 mg of acid in 500 ml of ultrapure water (Milli-Q or Millipore®, $18.2 \text{ M}\Omega \text{ cm}^{-1}$). Additionally, 3 internally mixed solutions of PTA and IPTA were also prepared by mixing 30 mg of dry acid mixture in 500 ml ultrapure water. The internally mixed solutions were prepared for 3 different mass fractions of PTA and IPTA (5:1, 1:1 and 1:5 wt/wt). To facilitate the dissolution of solute in aqueous solution, all the solutions were sonicated for 2 hours in a warm water bath maintained at $\sim 40 \text{ }^\circ\text{C}$ to create a uniform suspension. The solution was subsequently cooled and maintained at $20 \text{ }^\circ\text{C}$. Polydisperse aerosols were generated using a Collison Nebulizer (TSI Atomizer 3076). The wet aerosol particles were then passed through a series of 2 silica gel diffusion dryers (TSI 3062) to remove moisture (to $\text{RH} < 10\%$). The dry particles were then classified for supersaturated and subsaturated measurements.

2.2 CCNC Experiments for Supersaturated Measurements and Data Analysis

A continuous flow stream-wise thermal gradient Cloud Condensation Nuclei Counter (CCNC, Droplet Measurement Technologies (DMT) (Roberts and Nenes (2005)) - CCN 100) was used for the droplet activation measurements (e.g., but not limited to Engelhart et al. (2008); Moore et al. (2010); Tang et al. (2012); Barati et al. (2019); Vu et al. (2019)) of AAAs in supersaturated conditions. Briefly described here, polydisperse aerosol was generated and dried as described in Sect. 2.1. The electrical mobility aerosol size from 8 nm to 352 nm was measured with an electrostatic classifier (TSI 3936, DMA 3081, and CPC 3776) every 2.25 minutes. The size-selected aerosols exiting the DMA were then split into 2 streams. A Condensation Particle Counter (CPC, TSI 3776) samples the first stream at 0.3 L min⁻¹ to measure total dry particle concentration (C_{CN}), and the CCNC samples the second stream at 0.5 L min⁻¹ and constant supersaturation to measure activated particle (droplet) counts (C_{CCN}). A sheath flow rate of 8 L min⁻¹ was applied to maintain a sheath-to-sample ratio of 10:1 across the experimental setup. The measurements were repeated 10 times for each supersaturation. Furthermore, the measurements were performed over supersaturations ranging between 0.6% and 1.6%. CCNC supersaturations were calibrated using ammonium sulfate ((NH_4)₂SO₄, AS) aerosol (Sigma-Aldrich®, >99.9%). AS data used for CCN calibration is provided in the supplemental information (Section S1).

PyCAT 1.0 (Gohil and Asa-Awuku (2022)) was employed for data processing, analysis, and visualization of the CCN measurements. CCN size-resolved activation curves were generated at a fixed supersaturation (S) as ($\frac{C_{CCN}}{C_{CN}}$) across a range of dry particle diameters (D_{dry}). The volume equivalent diameters were used to represent particle sizes that were obtained by combining size-resolved particle dynamic shape factor (χ) with measured electrical mobility diameters (see supplemental Fig. S4). Multiple charging errors were removed from the size-resolved activation ratio following a combination of charge correction algorithms from Gunn (1956) and Wiedensohler (1988). Following this, a Boltzmann sigmoidal fit expressed as,

$$y = \frac{(A_1 - A_2)}{1 + e^{(x-x_0)/dx}} - A_2 \quad (1)$$

was applied to the size-resolved activation ratio curve. In Eq. (1), y is the dependent variable $\frac{C_{CCN}}{C_{CN}}$, A_1 and A_2 are the minimum and maximum of the sigmoid respectively, dx is the slope of the sigmoid, x_0 is the inflection point of the sigmoid (generally the midpoint of the sigmoid), and x is the independent variable (D_{dry}). The sigmoid fit is typically scaled over a range of 0.0 to 1.0, and so x_0 corresponds to the critical dry diameter ($D_{dry,c}$) at the instrument supersaturation and is physically defined as the size at which 50% of all particles are activated.

2.3 H-TDMA Experiments for Subsaturated Measurements

A Hygroscopicity Tandem Differential Mobility Analyzer (H-TDMA) measured droplet growth of AAAs in the subsaturated regime. The H-TDMA setup has been previously explained in detail (Rader and McMurry (1986); Cruz and Pandis (2000)) and only a brief description is provided here. Dried polydisperse aerosol were first charged with a Kr-85 bipolar aerosol neutralizer (TSI 3081). Monodisperse charged particles with a dry diameter (D_{dry}) were size selected using a Differential Mobility Analyzer (DMA 1). The sample and the sheath flow rates were maintained at 0.3 L min⁻¹ and 3.0 L min⁻¹ respectively (i.e.,

sheath-to-sample flow ratio = 10:1). The size-selected particles from DMA 1 were then exposed to $95 \pm 0.46\%$ RH using a nafion humidification membrane (PermaPure M.H series). The humidified aerosol stream was then passed through the second DMA (DMA 2) that was equilibrated to a constant RH. DMA 2 was coupled with a Condensation Particle Counter (CPC, TSI 3756) and operated in Scanning Mobility Particle Sizer (SMPS) mode. The median wet diameter (D_{wet}) of the size-resolved number concentration of the humidified aerosol stream from DMA 2 was reported. D_{wet} was used as the approximate final size to which the particles of size D_{dry} would grow under $95 \pm 0.46\%$ RH conditions. The hygroscopic growth factors (G_f) were obtained by taking the ratio of D_{wet} with respective D_{dry} ,

$$G_f = \frac{D_{wet}}{D_{dry}} \quad (2)$$

The RH of H-TDMA setup was calibrated using ammonium sulfate (see Figure S1; Taylor et al). ($(NH_4)_2SO_4$, AS) aerosol (Sigma-Aldrich ®, >99.9%). Calibration data is found in the supplemental information.

2.4 VSA Experiments for Subsaturated Measurements

A vapor sorption analyzer (VSA, TA Instruments New Castle, DE, USA) setup was used for the hygroscopicity measurements of bulk samples in the subsaturated regime. Mass change in AAAs as a function of RH (5-95%) was measured at 25 °C. The instrument setup for the VSA has been described in detail in literature (Gu et al. (2017)), and thus, experimental procedure is briefly explained here. During each experiment, bulk samples were first dried at <1% RH, then the RH was incremented up to 90% with a 10% step and followed by a 5% step from 90 to 95%. A high-precision balance was used in the VSA to measure the sample mass at different RHs with a stated sensitivity of <0.1 μ g. For every RH, a $\leq 0.1\%$ change in the sample mass was considered as the standard for stabilization. The initial dry mass of AAA samples used in this measurement was typically around 1.0 mg. For each sample, a minimum of 3 experiments were performed. At every RH, the sample mass (m) was normalized with respect to the initial mass of the dry sample (m_0). Subsequently, the mass-based growth factor was calculated as $\frac{m}{m_0}$.

3 Water Uptake and Hygroscopic Theory and Analysis

3.1 Köhler Theory (KT)

The equilibrium supersaturation (S) can be estimated over a droplet as a function of its size (D_p) as,

$$S = a_{w,KT} \cdot \exp\left(\frac{4\sigma_{s/a}M_w}{RT\rho_w D_p}\right) \quad (3)$$

where a_w is the water activity term, $\sigma_{s/a}$ is the droplet surface tension at the interface, M_w and ρ_w are respectively the molecular weight and density of water, R is the universal gas constant ($8.314 \text{ J mol}^{-1} \text{ K}^{-1}$), and T is the temperature. The water activity is mathematically expressed as $a_{w,KT} = \gamma_w x_w$, where γ_w and x_w are the activity coefficient and mole fraction of water in the droplet, respectively. In traditional Köhler Theory (KT), the water activity is approximated as $a_{w,KT} = x_w$

(Raoult's law), which assumes infinite dilution and complete dissolution of the solute. Furthermore, σ_s/a is the surface tension of a pure water droplet. The exponential quantity is the Kelvin term that describes the curvature effect. The solute effect and curvature effect are competing effects that describe droplet growth – the solute effect accounts for the water vapor pressure drop over the droplet due to the aerosol particle, and the curvature effect accounts for the water vapor rise over the droplet due to surface tension reduction.

3.2 Frenkel-Halsey-Hill (FHH) Adsorption Theory (FHH-AT)

Traditional KT, with or without the explicit treatment of aerosol solubility, can be effectively applied for highly soluble species. However, for partially or completely insoluble species Raoult's law is substituted with adsorption isotherms to model water uptake behavior. One such isotherm is the Frenkel-Halsey-Hill (FHH) adsorption isotherm that defines water activity through multilayer water adsorption as a function of relative surface coverage (θ , or the number of adsorbed water monomolecular layers). The FHH isotherm is expressed as (Sorjamaa and Laaksonen (2007)),

$$a_{w,FHH} = \exp(-A_{FHH}\theta^{-B_{FHH}}) \quad (4)$$

where A_{FHH} and B_{FHH} are FHH fit parameters that describe the intermolecular interactions responsible for the adsorption of water on particle surfaces. A_{FHH} describes the interactions between the particle surface and first adsorbed water monolayer. B_{FHH} describes the interactions between successively adsorbed monolayers. A_{FHH} and B_{FHH} regulate the amount of water adsorbed on the particle surface and the radial distance up to which attractive forces can contribute to adsorption of water, respectively. θ in Eq. (4) is expressed as $\frac{D_p - D_{dry}}{2 \cdot D_w}$ where D_p and D_{dry} have been previously defined, and D_w is the size of the water molecule. The mathematical representation for the FHH-AT is analogous to traditional KT, and combines the FHH isotherm with the Kelvin term (Sorjamaa and Laaksonen (2007); Kumar et al. (2009a)) such that,

$$S = a_{w,FHH} \cdot \exp\left(\frac{4\sigma_w M_w}{RT\rho_w D_p}\right) \quad (5)$$

The FHH parameters can be empirically determined for any aerosol species from their droplet growth measurements (Kumar et al. (2009a)). For measurements in supersaturated environments, A_{FHH} and B_{FHH} are determined from least square minimization of the experimental data with the maxima of the FHH-AT equilibrium curves (Kumar et al. (2009a); Kumar et al. (2009b); Kumar et al. (2011a); Kumar et al. (2011b)). A higher value of A_{FHH} implies a higher water adsorption, and a smaller value of B_{FHH} implies stronger attractive forces over larger distances. It has been observed that B_{FHH} has a larger influence on the shape of the adsorption isotherm, and hence strongly drives CCN activation using FHH-AT (Kumar et al. (2009a); Hatch et al. (2019)).

3.3 Hybrid Activity Model (HAM)

The assumptions of complete aqueous solubility or insolubility associated with KT and FHH-AT, respectively, represent two extreme possibilities of CCN activation and droplet growth. In this work, the two water activities were combined to develop a generalized “hybrid” water activity term. The droplet growth model thus obtained is called the Hybrid Activity Model,

or HAM. Previous studies have discussed several other mathematical models built upon the traditional Köhler theory under different conditions. One such example is that of the solubility-partitioned Köhler theory (Petters et al. (2009), Riipinen et al. (2015)) which explicitly includes the activity coefficient (γ_w) of the aerosol compounds to estimate the water activity. $\gamma_w \cong 1$ in the traditional Köhler theory only under the assumption of the infinite dilution of the aqueous phase of the droplet, which holds true for several highly soluble aerosol species. For limited water solubility compounds, γ_w is calculated by treating the aqueous solubility of the compound. However, even then the contribution of the undissolved fraction of the solute to the droplet growth is not treated. Another example of modified Köhler model is the ‘core-shell’ model Kumar et al. (2011b) that combines the FHH isotherm and Raoult’s law in a single framework to evaluate the contribution of the insoluble and soluble component of the mixture, respectively, on droplet growth. In the core-shell model, partial water solubility is not considered for any of the mixture components. HAM builds up on the concepts delineated by Kumar et al. (2011b) and Riipinen et al. (2015) and considers all particles as a ‘core-shell’ morphology, while also treating all the components as partially water-soluble. The general mathematical representation of HAM is as follows,

$$S = a_{w,HAM} \exp\left(\frac{4\sigma_w M_w}{RT \rho_w D_p}\right) \quad (6)$$

where $a_{w,HAM} = a_{w,KT} \cdot a_{w,FHH}$, and the definitions of $a_{w,KT}$ and $a_{w,FHH}$ are provided in subsections 3.1 and 3.2, respectively.

HAM sandwiches different phases of droplet growth for any given particle in three stages. In stage 1, HAM assumes that a particle suspended in humidified ambient conditions does not dissolve at the start of the activation process (time, $t \rightarrow 0$). That is, droplet growth at $t \rightarrow 0$ occurs entirely due to the adsorption of a water monolayer on the particle surface and can be explained using the FHH isotherm. In stage 1,

$$a_{w,HAM,1} = a_{w,FHH} = \exp(-A_{FHH} - B_{FHH}) \quad (6a)$$

The FHH parameters (A_{FHH} , B_{FHH}) for any given species are determined by fitting the FHH-AT to the experimental data and can be subsequently used in the HAM framework.

Stage 2 begins as the droplet continues to grow and more water accumulates in the aqueous phase. In this stage, the particle starts dissolving and enters the aqueous phase. The fraction of particle mass that dissolves or enters the aqueous phase depends on the solubility of the compound. Moreover, the dissolved fraction of the particle can be estimated at each step of droplet growth using the solubility partitioning concept introduced by Riipinen et al. (2015). Briefly described here – a droplet comprises of a bulk dry (undissolved) phase and an aqueous (dissolved) phase. The bulk phase can be composed of one or more internally mixed species with varying water solubility. This causes the composition and core size of the bulk phase to vary dynamically during droplet growth. The amount of water in the aqueous phase increases as the droplet grows, thereby increasing the concentration of the compounds in the aqueous phase. There is a competition for dissolution between the compounds in the bulk phase which is dependent on their solubilities. Considering a dry particle consisting of n species with limited solubility, the undissolved mass fraction of a species i (χ_i) during droplet growth is expressed as (Riipinen et al.

245 (2015)),

$$\chi_i = 1 - \frac{\gamma_i \chi_i Y_{i,dry} c_{i,pure} m_w}{m_{i,dry} \sum_i \chi_i Y_{i,dry}} \quad (6a-1)$$

where γ_i is the activity coefficient, c_i ($g\ gH_2O^{-1}$) is the solubility of the pure species, m_w is the mass of water in the droplet, $m_{i,dry}$ is the initial mass of the pure species in the dry particle, and $Y_{i,dry}$ is the initial mole fraction of the pure species in the dry particle. Eq. (6a-1) implies that the dissolved mass fraction of the species i in the aqueous phase is given as $1 - \chi_i$. A set of n coupled equations are simultaneously solved to obtain χ_i for all n species in the mixture. χ_i is then used to calculate the mole fraction of species i dissolved in the aqueous phase (x_i) at any point during droplet growth. Subsequently, the KT water activity can be given as $a_{w,KT} = x_w = \frac{n_s}{n_s + n_w}$, where n_s and n_w are respectively the number of moles of solute and water in the aqueous phase. In stage 2, the contribution of the dissolved fraction of the compound in the aqueous phase (through Raoult's law) can be combined with the undissolved fraction in the solid phase (through the FHH isotherm) to generate the overall water activity term,

$$a_{w,HAM,2} = a_{w,KT} \cdot a_{w,FHH} = x_w \cdot \exp(-A_{FHH} \theta^{-B_{FHH}}) \quad (6b)$$

Eq. (6b) highlights the main difference between the models presented by Kumar et al. (2009a) and Riipinen et al. (2015).

Stage 3 begins when the droplet is large enough to accommodate enough water in the aqueous phase and dissolve the particle mass entirely. This point onward, the droplet growth can be explained using traditional KT. In stage 3,

$$a_{w,HAM,3} = a_{w,KT} = x_w \quad (6c)$$

Eq. (6a), (6b) and (6c) were combined to describe the water activity through the three stages of droplet growth in the HAM framework. Thus HAM can effectively estimate the droplet growth across a wide range of aqueous solubilities. The HAM sandwiches 2 extremes represented by fully soluble and fully insoluble behavior in a single framework. Indeed one can consider it to be (H)AMbidextrous and apply the concept to improve upon the single hygroscopicity parameterization (κ).

265 3.4 Hygroscopicity Parameterization – Single-Hygroscopicity Parameter (κ)

Commonly, the CCN activity and water uptake tendencies of any given compound is expressed using a single hygroscopicity parameter (κ). A theoretical κ is derived using a simple parameterization of the solute water activity term in the droplet growth model. Additionally, critical dry particle sizes can be combined with their supersaturations to experimentally determine κ . In the following subsections, the κ parameter derived from different models are explained.

270 3.4.1 KT Hygroscopicity

A single hygroscopicity parameter (κ) has been developed using the KT framework. κ can be defined through its effect on the water activity in the droplet as follows,

$$a_w^{-1} = 1 + \kappa \frac{V_s}{V_w} \quad (7)$$

where V_s is the dry particulate (solute) volume, and V_w is the volume of water in the droplet. κ obtained from Eq. (7) is a parameterized quantity determined from the water activity based on the Raoult's law. Using κ -based parameterization of a_w , Eq. (3) can be modified for any D_{dry} as.

$$S = \left(\frac{D_p^3 - D_{dry}^3}{D_p^3 - (1 - \kappa) \cdot D_{dry}^3} \right) \cdot \exp \left(\frac{4\sigma_w M_w}{RT \rho_w D_p} \right) \quad (8)$$

For a given D_{dry} , the droplet size increases as the supersaturation above the droplet surface increases. Supersaturation increases until the point of activation, which is characterised using the critical wet droplet size ($D_{p,c}$). The supersaturation at the point of activation along with the corresponding D_{dry} and $D_{p,c}$ depend on the κ of the compound. κ of any compound in an aqueous phase is difficult to measure, but it can be theoretically approximated using the Raoult's law ($\kappa_{intrinsic}$). The $\kappa_{intrinsic}$ of any species (denoted using a subscript i) can be expressed as follows,

$$\kappa_{intrinsic,i} = \frac{\nu \rho_i M_w}{\rho_w M_i} \quad (9)$$

where ν is the Van't Hoff factor of the compound and is related to its aqueous dissociation, M_i and M_w are the molecular weights of the solute i and water, and ρ_i and ρ_w are the density of the solute i and water, respectively. $\kappa_{intrinsic,i}$ defined in Eq. (9) here is dependent only on solute composition and solvent (water) properties, and is independent of size. $\kappa_{intrinsic}$ of a mixture can be computed using a volume average mixing rule with the Zdanovskii-Stokes-Robinson (ZSR) approximation as follows (Petters and Kreidenweis (2007)),

$$\kappa_{intrinsic} = \sum_i \epsilon_i \kappa_{intrinsic,i} \quad (10)$$

where ϵ_i is the volume fraction of i^{th} component in the dry particle and $\kappa_{intrinsic,i}$ is the intrinsic hygroscopicity parameter of the i^{th} component. ϵ_i in an internal mixture of n components is estimated as $\epsilon_i = \frac{m_i/\rho_i}{\sum_i^n m_i/\rho_i}$, where m_i is the mass of the pure component i in the mixture. κ in Eq. (10) assumes complete aqueous solubility of the compound or mixture. Moreover, κ for a mixture in Eq. (10) can be applied to mixtures of soluble and insoluble compounds, where the κ of the insoluble species are considered to be 0. The hygroscopicity parameterization requires explicit treatment of aqueous solubility for compounds that are inherently insoluble or sparingly soluble but possess water uptake tendencies (Petters and Kreidenweis (2008); Sullivan et al. (2009)). In such cases, κ is mathematically expressed by modifying $\kappa_{intrinsic,i}$ of the mixture components ($\kappa_{solubility}$) as follows,

$$\kappa_{solubility} = \sum_i \epsilon_i \kappa_{intrinsic,i} H(x_i) \quad (11a)$$

$$x_i = \left(\frac{D_p^3}{D_{dry}^3} - 1 \right) \frac{C_i}{\epsilon_i} \quad (11b)$$

$$H(x_i) = \begin{cases} x_i & x_i < 1 \\ 1 & x_i > 1 \end{cases} \quad (11c)$$

where C_i is the water solubility of the i^{th} component of the dry particle (expressed as solute volume per volume of water), x_i is the fraction of i^{th} component dissolved in water, and $H(x_i)$ is the distribution function of the fraction of the i^{th} component dissolved in water. Eq. (11) (a)-(c) determines κ as a function of D_p . For unknown species with limited water solubility, some range of D_p corresponds to a volume of water which might not be sufficient to dissolve the volume of dry particle. Therefore,

305 experimental droplet growth data is required to determine particle hygroscopicity.

κ can also be determined if the supersaturation (S) and the critical dry diameter ($D_{dry,c}$) measured at S are experimentally known. The experimental κ derived using KT is denoted as κ_{KT} and expressed as follows,

$$\kappa_{KT} = \frac{4 \left(\frac{4\sigma_w M_w}{RT\rho_w} \right)^3}{27D_{dry,c}^3 \log^2(S)} \quad (12)$$

Eq. (12) also incorporates the same set of assumptions as Eq. (7)-(11) – dilute solution, and infinite and complete solubility of the compound.

3.4.2 FHH-AT Hygroscopicity

For the FHH-AT, a similar κ parameterization as KT can be developed by combining the water activity with the FHH isotherm using Eq. (7) (Mao et al, *submitted*),

$$a_{w,FHH} = \left[1 + \kappa_{FHH} \frac{V_s}{V_w} \right]^{-1} = \exp(-A_{FHH} \cdot \theta^{-B_{FHH}}) \quad (13)$$

315 which can be expanded to derive the FHH single hygroscopicity parameter (κ_{FHH}). The κ_{FHH} thus determined depends on the experimental data. The measured S and the corresponding $D_{dry,c}$ can be used to compute the $D_{p,c}$ using Eq. (5) and subsequently used to estimate κ_{FHH} as follows,

$$\kappa_{FHH} = \frac{6\theta D_w}{D_{dry,c}} \cdot \left[\frac{1}{\exp(-A_{FHH} \theta^{-B_{FHH}})} - 1 \right] \Rightarrow f(D_{dry,c}, D_{p,c}) \quad (14)$$

The hygroscopicity obtained using the FHH framework explains water uptake and droplet growth through adsorption. At the point of activation, the FHH hygroscopicity explicitly depends on the dry particle size and the corresponding critical wet diameter. That is, $\theta \rightarrow \theta_c = \frac{D_{p,c} - D_{dry,c}}{2D_w}$ at the point of activation. κ_{FHH} in Eq. (14) can be further simplified ($\kappa_{FHH,s}$) such that at the point of activation,

$$\kappa_{FHH,s} = \frac{6\theta_c D_w}{D_{dry,c}} \left(A_{FHH} \theta_c^{-B_{FHH} + 1} \right) \quad (15)$$

Eq. (15) can be constrained using the critical surface coverage. At the point of activation, the critical surface coverage is determined as follows,

$$\left. \frac{dS}{dD_p} \right|_c = 0 \Rightarrow 1 - \frac{2\theta_c D_w}{D_{dry,c}} - \left(\frac{2AD_w}{A_{FHH} B_{FHH} D_{dry,c}^2} \right)^{0.5} \cdot \theta_c^{\frac{B_{FHH} + 1}{2}} = 0 \quad (16)$$

θ_c from Eq. (16) is substituted in Eq. (15) such that $\kappa_{FHH,s} \equiv f(D_{dry,c})$, which essentially represents the theoretical κ_{FHH} . It is important to note that $\kappa_{FHH,s}$ is particle size-dependent as opposed to $\kappa_{intrinsic}$ (Eq. (9)), which is not.

3.4.3 HAM Hygroscopicity

330 Similar to KT or FHH-AT, a single hygroscopicity parameter was developed from the HAM framework (κ_{HAM}) using Eq. (7),

$$x_{w,HAM} = \left[1 + \kappa_{HAM} \frac{V_s}{V_w} \right]^{-1} = x_w \cdot \exp(-A_{FHH} \cdot \theta^{-B_{FHH}}) \quad (17)$$

The inclusion of the Raoult term (x_w) is the main difference between Eq. (13) and (17). κ_{HAM} is also dependent on the experimental information (S , or $D_{p,c}$ along with the corresponding $D_{dry,c}$) and so Eq. (17) can be accordingly rearranged to

335 obtain HAM single hygroscopicity parameter as follows,

$$\kappa_{HAM} = \frac{6\theta D_w}{D_{dry,c}} \cdot \left[\frac{1}{x_w \cdot \exp(-A_{FHH} \cdot \theta^{-B_{FHH}})} - 1 \right] \Rightarrow f(D_{dry,c}, D_{p,c}) \quad (18)$$

κ_{HAM} explains water uptake and droplet growth by combining the effects of aqueous solubility and water adsorption. At the point of activation, the HAM hygroscopicity depends on the dry particle size and the corresponding critical wet diameter. That is, $\theta \rightarrow \theta_c$ at the point of activation where $D_{p,c}$ can be computed using the generic Eq. (6) with the help of measured $D_{dry,c}$ vs. S . In Eq. (6), x_w is calculated using solubility partitioning as explained in section 3.3. Eq. (18) is the representation of experimental hygroscopicity of the particle based on the HAM framework. Eq. (18) can be further simplified ($\kappa_{HAM,s}$) such that at the point of activation,

$$\kappa_{HAM,s} = \frac{6\theta_c D_w}{D_{dry,c}} (1 - X_w (1 - A_{FHH} \cdot \theta_c^{-B_{FHH}})) \quad (19)$$

Eq. (19) is the theoretical hygroscopicity based on the HAM framework which is constrained using the surface coverage. The constraint at the point of activation is estimated from the Eq. (6) as given by the following expression,

$$\left. \frac{dS}{dD_p} \right|_c = 0 \Rightarrow \frac{d}{dD_p} \left(a_{w,HAM} \exp\left(\frac{4\sigma_s/a M_w}{RT\rho_w D_p}\right) \right) = 0 \quad (20)$$

Eq. (20) provides θ_c at the point of activation to substitute in Eq. (19) and hence $\kappa_{HAM,s} \equiv f(D_{dry,c})$. A_{FHH} and B_{FHH} are the empirically determined parameters from FHH-AT specific to the compound. Like κ_{FHH} and $\kappa_{FHH,s}$, κ_{HAM} and $\kappa_{HAM,s}$ are also size-dependent. However, the size-dependence in κ_{HAM} is variable and is controlled by the aqueous solubility of the compound. An extended derivation of κ_{HAM} is provided in the supplemental information (Section S2).

4 Results

4.1 Köhler theory application for pure and internally mixed AAAs

The critical dry diameters ($D_{dry,c}$) at supersaturations (S) in the range of 0.6% – 1.6% were calculated using PyCAT 1.0. At any given supersaturation, the $D_{dry,c}$ for each sample was calculated from the size-resolved activation ratio. The CCN measurements for pure AAAs over a range of supersaturations are shown in Figure S2 (Section S3; supplemental information). The activation diameters determined for every sample at applied supersaturations were corrected using their dynamic shape factor.

The experimental setup for shape factor measurements and the shape factor dataset for AAAs and PTA-IPTA internal mixtures are shown in Section S4.1 and S4.2 (supplemental information), respectively. The size-resolved shape factors were then used to transform the measured electrical mobility diameters to their respective volume equivalent diameters (Tavakoli and Olfert (2014); Yao et al. (2020); Gohil and Asa-Awuku (2022)). The volume equivalent diameters along with their corresponding supersaturations were then used to estimate the experimental hygroscopicity based on traditional KT (κ_{KT}), for all the AAA samples.

The activation properties of pure AAAs (PTA, IPTA and TPTA) along with their predicted $\kappa_{intrinsic}$ and κ_{KT} are summarized in Table 2. The S versus their corresponding $D_{dry,c}$ for the samples are plotted in Figure 2(a). The experimental data is represented using individual markers. The solid and dashed lines represent the KT fits using the theoretical $\kappa_{intrinsic}$. The R^2 scores are provided in Table 3. PTA is observed to have the best agreement with the KT prediction ($R^2 \approx 0.99$). IPTA and TPTA show poor agreement with traditional KT. The lack of agreement between measurements and traditional KT predictions for IPTA and TPTA can be attributed to their significantly low aqueous solubility compared to PTA (by an order of magnitude $\sim 10^2$). In addition to the predicted and measured AAA data, $(NH_4)_2SO_4$ is also shown in Figure 2 (a).

For compounds that are considered “sparingly soluble” or “effectively insoluble” (Petters and Kreidenweis (2008); Figure 3), an explicit treatment of the compound solubility can typically improve the agreement between predicted and measured activation properties. Based on this convention, PTA would also be considered “sparingly soluble”. However, our results suggest that an explicit treatment of PTA solubility is not required. Moreover, $\kappa_{intrinsic}$ is a good representation of PTA hygroscopicity. Figure 2(b) shows the traditional and solubility-limited KT fits for internal mixtures of PTA and IPTA using their $\kappa_{intrinsic}$. The traditional KT predicts the CCN activity of the mixture containing excess PTA (5:1 mass ratio). This suggests that the mixture dominated by PTA must have an aqueous solubility closer to pure PTA and a $\kappa_{intrinsic} \approx \kappa_{KT}$ that can be obtained using the ZSR approximation. The agreement between traditional KT fits and experimental data reduces as the mass fraction of IPTA increases in the mixture.

The application of solubility limited (modified) KT showed poor agreement with the pure AAAs and PTA-IPTA internal mixtures (Figure S4; supplemental information). Modified KT overpredicted the critical supersaturation for any given dry particle size for all 6 samples. Thus, the underprediction of AAAs CCN activity is attributed to significantly low water solubility (in the range of $10^{-5} - 10^{-3}$ vol/vol water). Furthermore, a significant droplet growth is required to facilitate $\kappa_{solubility} = \kappa_{intrinsic}$ when solubility dependence is included in the hygroscopicity analysis (Figure S5; supplemental information). The AAA solubilities are 3 or more orders of magnitude smaller compared to highly soluble species such as ammonium sulfate (0.42 vol/vol water) or sucrose (1.26 vol/vol water). Quantitatively, the AAA droplets should grow to about 6.5, 23 and 45 times the dry particle size of PTA, IPTA and TPTA, respectively, when $\kappa_{solubility} = \kappa_{intrinsic}$. The required droplet growth is significantly large compared to compounds like ammonium sulfate or sucrose for which the droplet growth is 1.2 and 1.5 times the initial particle size, respectively, when $\kappa_{solubility} = \kappa_{intrinsic}$ (Figure S6; supplemental information). All of this implies that the hygroscopicity and CCN activity of AAAs and PTA-IPTA internal mixtures is more likely a consequence of water adsorption, and not aqueous solubility.

4.2 FHH-AT application for pure and internally mixed AAAs

FHH Adsorption Theory (FHH-AT) was applied for the analysis of pure and internally mixed AAAs. Figure 3 shows the measured S vs. $D_{dry,c}$ data for pure AAAs and PTA-IPTA internal mixtures. The dashed lines represent FHH-AT fits for their respective CCN activity datasets. It should be noted that agreement for the FHH-AT can be obtained for every set of
395 CCN measurements since the FHH parameters are determined by applying power law fitting to the datasets. The empirically determined FHH parameters (A_{FHH}, B_{FHH}) for pure compounds and internal mixtures are summarized in Table 2.

The values of A_{FHH} and B_{FHH} can be used to qualitatively compare the water uptake properties of the pure and **internally** mixed species (Kumar et al., 2009b; Hatch et al., 2019). A_{FHH} dictates the attractive forces between the particle surface and the first adsorbed monolayer of water. A larger A_{FHH} implies a tendency to adsorb a higher amount of water on
400 the particle surface. For the pure compounds, A_{FHH} decreases in the order of PTA > IPTA > TPTA (Table 2). This suggests a declining tendency to adsorb water. Additionally, A_{FHH} for the pure PTA, IPTA and TPTA decrease like their aqueous solubilities (Table 1). For internal mixtures, A_{FHH} decreases with a decreasing PTA mass fraction (5:1 > 1:1 > 1:5). This also suggests a declining tendency to adsorb water with a decrease in PTA concentration.

B_{FHH} controls the attractive forces between the particle surface and subsequently adsorbed monolayers of water. Smaller
405 the value of B_{FHH} , stronger the attractive forces over a larger radial distance from the particle surface. For the pure compounds, B_{FHH} varies in the order of IPTA > TPTA > PTA (Table 2). This suggests that the attractive force across the adsorbed monolayers is lowest in case of the droplets formed on IPTA particles. For internal mixtures, B_{FHH} follows a similar trend as A_{FHH} and decreases with a decreasing PTA mass fraction (5:1 > 1:1 > 1:5). This suggests that the attractive force across the adsorbed monolayers become stronger with a decrease in PTA concentration.

It can be inferred that A_{FHH} follows the trends of solubility and is most likely controlled by functional groups and B_{FHH} drives overall droplet growth across different compositions and molar volumes. The results here are consistent with Mao et al. (submitted), that showed that the A_{FHH} values correlated with functionalized surfaces of aerosol with the same core (polystyrene latex; PSL). This suggests that the A_{FHH} values may play a more important role with compounds of similar molar volume and highlight the importance of functionalized groups and isomeric structures in determining overall droplet
415 growth.

4.3 Hybrid Activity Model (HAM) application for pure and internally mixed AAAs

One of the major factors affecting droplet growth studied in this work is the aqueous solubility of the compound. AAAs and their mixtures used in this work possess approximately equal molar mass and densities, and hence equal molar volumes. Nonetheless, they differ in terms of their water uptake. Analysis shows that the differences in their water uptake behavior could
420 arise due to the significant variation between their aqueous solubilities. Results in the previous subsection show that either KT or an adsorption theory (FHH-AT) can be applied for the CCN analysis of moderate and low aqueous solubility species, respectively. Alternatively, the Hybrid Activity Model (HAM) that sandwiches the FHH isotherm with the Raoult's law through solubility partitioning may agree well with the experimental data.

Figure 4 shows the S vs. $D_{dry,c}$ measurements for AAAs and PTA-IPTA internal mixtures plotted along with their HAM fits. The dot-dashed lines represent the HAM fits for the respective CCN dataset. The calculation of the water activity term for all the samples studied in this work was done following the method described in section 3.3. It was observed that KT, FHH-AT and HAM provided similar fits for samples with aqueous solubility of the order of $10^{-3} \text{ m}^3 \text{ m}^{-3}$. Thus similar fits for KT, FHH-AT and HAM was observed for the samples with higher PTA mass percentage (pure PTA and 5:1 PTA-IPTA mixture). The comparison of the goodness of fit between KT, FHH-AT and HAM can be made using the R^2 scores provided in Table 3. For pure PTA and 5:1 PTA-IPTA samples, all three models provided a goodness of fit. As the aqueous solubility of the sample was decreased (1:1 and 1:5 PTA-IPTA mixtures, pure IPTA and pure TPTA, in that order), HAM still provided an improved CCN activity prediction for the samples (R^2 scores of 0.92, 0.97, 0.94, 0.91, respectively; Table 3). FHH-AT and HAM provided similar and improved R^2 scores along the decline in the aqueous solubility of the species, whereas the R^2 scores corresponding to KT fits were found to decline with decreasing aqueous solubility of the samples. Moreover, the R^2 scores for HAM fittings were observed to be uniformly > 0.9 and generally higher than those obtained for FHH-AT.

4.4 Hygroscopicity parameterization for supersaturated conditions

The S vs. $D_{dry,c}$ of the AAA samples were transformed into a single hygroscopicity parameter (κ) based on KT, FHH-AT and HAM (Section 3.4). Figure 5 shows a closure plot between theoretical and experimental κ estimated for PTA, IPTA, TPTA and PTA-IPTA internal mixtures from KT, FHH-AT and HAM. The closure analysis provides a better understanding of the applicability of different CCN models. The shaded portion of the graph denotes a 95% confidence interval across a 1-1 agreement line (dashed, black).

The theoretical κ for KT has been represented using size-independent $\kappa_{intrinsic} = 0.172$ calculated using Eq. 4 and Eq. 5, respectively. κ_{KT} computed using S vs. $D_{dry,c}$ measurements are plotted for each compound. For KT (solid circles), the agreement between κ_{KT} and $\kappa_{intrinsic}$ decreases with a decreasing aqueous solubility of the solute. Specifically, the experimental κ lies within 95% confidence of the theoretical κ of pure PTA, 5:1 PTA-IPTA internal mixture, and 1:1 PTA-IPTA internal mixture. TPTA is the sample with the lowest aqueous solubility and hence the lowest agreement between κ_{KT} and $\kappa_{intrinsic}$.

The theoretical adsorption-based parameterization ($\kappa_{FHH,s}$) and κ_{FHH} computed from the experimental data using the FHH-AT framework are shown using solid diamond markers in Figure 5. The $\kappa_{FHH,s}$ and κ_{FHH} were estimated using Eq. (15) and (14), respectively. It was found that κ_{FHH} had a generally good agreement with their respective $\kappa_{FHH,s}$ (R^2 in the range of 0.91 to 0.99). The lowest agreement between FHH-AT κ was observed for PTA and the 5:1 PTA-IPTA internal mixture, as both they likely have the highest aqueous solubilities among the studied samples. Moreover, the κ_{FHH} and $\kappa_{FHH,s}$ values of IPTA and TPTA are highly consistent with each other.

The theoretical and experimental κ_{HAM} were computed using Eq. (19) and (18), respectively. The datapoints for κ_{HAM} and $\kappa_{HAM,s}$ are denoted using solid squares in Figure 5. The most important feature of the HAM-based κ framework is that it explicitly accounts for the compound solubility within the hygroscopicity parameterization. Accounting for the contribution from the solid organic phase and dissolved aqueous phase to the overall hygroscopicity of the solute generates the best

agreement between the κ_{HAM} and $\kappa_{HAM,s}$ values. Consequently, the R^2 scores observed between κ_{HAM} and $\kappa_{HAM,s}$ of the 6 AAA samples are > 0.97 . It is also important to note that κ values for AAA samples obtained from FHH-AT and HAM frameworks are smaller than those obtained using KT.

4.5 Droplet growth in subsaturated conditions

All the measurements shown in Figures 6 were performed at a 95% RH. Figure 6 (a-c) show the droplet sizes (D_{wet}) with respect to their initial dry sizes (D_{dry}) for pure PTA, IPTA and TPTA. Figure 6 (d-f) show the D_{wet} with respect to the D_{dry} for PTA-IPTA internal mixtures. The D_{wet} predictions based on the KT-Raoult term, FHH isotherm and hybrid water activity were derived from the parameters provided in Table 2. The Raoult model estimates (black dashed lines) for the pure and internally mixed samples were generated using their average hygroscopic growth factor (G_f ; Fig. 6, Eq. (7)). The supersaturated average κ of 0.17 for the AAA samples was used to obtain the theoretical D_{wet} and G_f at given dry sizes. The R^2 scores for the KT-Raoult model are summarized in Table 3. The KT-Raoult model agreed well for pure PTA and 5:1 PTA-IPTA mixture.

The red dashed lines in Figure 6 show the D_{wet} estimated using the FHH isotherm (Eq. (4)). The empirical FHH parameters used here were determined by fitting the FHH-AT to the supersaturated CCNC measurements (Section 4.2; Table 2). FHH noticeably underpredicts the hygroscopic behavior of the AAAs except for IPTA and TPTA in the subsaturated regime (R^2 estimates in Table 3). This implies that the insoluble behavior of IPTA and TPTA can be represented with high certainty in subsaturated as well as the supersaturated regime, using the FHH theory. Moreover, the KT and FHH models (that agreed for soluble compounds, PTA and 5:1 PTA-IPTA mixture) have different droplet growth predictions in the subsaturated regime.

The blue dashed lines in Figure 6 show the D_{wet} estimated using the comprehensive hybrid water activity expressions described in Section 3.3 (Eq. (6)). Again, the hybrid water activity requires the empirical FHH parameters obtained by fitting FHH-AT to the supersaturated CCNC measurements (Table 2) and the aqueous solubility of the compound to account for the dissolved fraction of solute (Table 1). The hybrid water activity replicated the subsaturated water uptake of all 6 of the AAAs with high certainty (R^2 estimates in Table 3). This is due to the explicit consideration of both compound solubility and water adsorption to describe the droplet growth process. Notably, the hybrid water activity is similar to either the KT-Raoult or the FHH isotherm depending on the compound solubility. For sparingly soluble samples (e.g., pure PTA), the KT-Raoult and hybrid water activity generated similar fits (R^2 of 0.938 and 0.948, respectively). For effectively insoluble samples (e.g., pure TPTA), the FHH isotherm and hybrid activity generated similar fits (R^2 of 0.998 and 0.999, respectively).

The sub- and supersaturated analyses are consistent with the equilibrium curves for the pure and internally mixed AAA samples. Figure 7 shows droplet growth predicted using KT, FHH-AT and HAM corresponding to one of the experimentally determined $D_{dry,c}$. The predicted critical supersaturations (S_c) are also shown in the plots. KT predicted S_c values deviate significantly ($> 10\%$) from the experimental S_c , as the aqueous solubility of the solute decreases. This is because KT for the structural isomers assumes similar droplet growth ($\kappa_{intrinsic}$ is ~ 0.17). However, FHH-AT and HAM require higher supersaturations and are less CCN active and therefore the points of activation are shifted upwards and to the left. At a given relative humidity (RH) $< 100\%$, the KT-derived D_{wet} is found to be larger than those predicted using either FHH-AT or HAM. This is consistent with the models and experimental data at 95% RH shown in Figure 6. KT-based D_{wet} was found to be close

to the experimental D_{wet} for pure PTA and 5:1 PTA-IPTA mixture, whereas D_{wet} from FHH-AT and HAM were found close to the experimental D_{wet} for the remaining solutes. After critical activation, there may be a jump from a water adsorption-driven droplet growth to one driven by complete dissolution of the solute (vertical jump in green line from blue to red). This is prominently seen in PTA but not in as evident in TPTA. Furthermore, multiple transitions are observed in internal mixtures.

VSA measured the water uptake of the three AAA compounds in the subsaturated regime. None of AAAs showed significant water uptake (with mass growth factors smaller than $<1\%$) even at high RH (95%) (Figure 8). It should be noted that the VSA measurement uses materials in the range of μm to mm . Thus, the observed κ_{HAM} in Eq. (19) decreases with increasing diameter and eventually approaches zero. The results across different particle measurement platforms are consistent with the hygroscopicity parameterization that is particle size-dependent.

It should be noted that in this work, we explicitly account for particle shape morphology (dynamic shape factor) and correct the electrical mobility diameters to volume equivalent diameters as described in Gohil and Asa-Awuku (2022). Shape factors were measured and computed for all samples studied (Figure S3). Over the mobility diameters of interest (from 50nm to 150nm), the dynamic shape factor values were found to range from 1.00 to 1.08, and were therefore within 10% of 1.00. This suggests that the AAA samples studied in this work are composed mainly of spherical particles. The application of the dynamic shape factor of aerosols composed of fractals/agglomerates such as black carbon to the transition from soluble to sparingly soluble activation must be considered in future work.

5 Summary and Implications

This paper presents the droplet growth analysis of AAAs using a new Hybrid Activity Model (HAM). HAM estimates the thermodynamics of the droplet growth by combining the aqueous solubility of the compound in an adsorption activation framework. HAM accounts for the contributions from undissolved as well as the dissolved fractions of the particle mass to predict droplet growth. Thus, HAM is able to predict critical properties (e.g., $D_{wet,c}$, S_c , G_f) for droplet growth in both the supersaturated and subsaturated regimes.

HAM also predicts the droplet growth of internal mixtures. The three PTA-IPTA internal mixtures (5:1, 1:1, and 1:5 with respect to PTA) show a clear transition from sparingly water soluble to effectively water insoluble mixtures (Petters and Kreidenweis, 2008). For a mixture containing two or more components, the water activity based on Raoult's law is computed using solubility partitioning (Riipinen et al., 2015). Moreover, a solubility limit of $\sim 8 \times 10^{-4}$ vol/vol water (corresponding to a 3:1 internal mixture with respect to PTA) was determined using solubility partitioning. Below this limit, the discrepancies in CCN activity will likely be $> 10\%$ for traditional KT. It is therefore reasonable to assume that the effect of adsorption on droplet growth would be more dominant in determining the growth of the pure and internally mixed AAAs as their solubilities are decreased below $\sim 8 \times 10^{-4}$ vol/vol water. Current literature considers the two paradigms separately and HAM provides a continuum to bridge and combine both mechanisms.

To do so, HAM requires three compound-specific parameters (C_i , A_{FHH} and B_{FHH}) and the use of the full HAM in cloud microphysical models may extend the computational burden to account for the aerosol chemistry. Therefore, a single

525 hygroscopicity parameter was also developed and exhibited an improved hygroscopicity parameterization for all solutes studied in this work. Raoult's law was generally overpredicts the hygroscopicity of effectively insoluble solutes. And the FHH isotherm generally underpredicts the hygroscopicity of sparingly soluble solutes. Combining the two droplet growth mechanisms in HAM provided a more robust approximation of the water uptake behavior in both subsaturated and supersaturated environments. Consequently, the experimental and simplified (theoretical) hygroscopicity estimates based on HAM (κ_{HAM} and $\kappa_{HAM,s}$) showed the best agreement and highest goodness of fits when applied to the experimental data.


Overall, HAM is a promising new droplet growth model that can be potentially used for the analysis of any type of atmospheric compound. HAM is effective because it combines the characteristic features of the traditional KT with solubility partitioning and FHH-AT. Additionally, HAM differs from previous analytical frameworks that are based on compound solubility in that for any species using HAM, the particles are treated as completely undissolved at the start of the activation process. This is vital because other solubility limiting approaches begin with instantaneous dissolution and add the element of reduced solubility along the course of droplet growth. Indeed the approach is congruous to the concept of earlier works that explored the impact of slow dissolution (e.g., Shulman et al. 1996; Asa-Awuku and Nenes 2007) and aligns with more current findings that describe the droplet growth of viscous, amorphous or glassy-like aerosols (e.g., Altaf et al. 2018; Tandon et al. 2019; Zobrist et al. 2008; Mikhailov et al. 2009; Peng et al. 2022).

540 In HAM, the contribution of the theorized undissolved fraction facilitates a surface until the particle fully dissolves, after which further droplet growth is controlled solely by the entire particle mass present in the aqueous phase. The HAM concept may have even more utility at lower temperatures and higher altitudes. In general the solubility of compounds in water will likely decrease at lower temperatures; thus the role of surface adsorption on the undissolved fraction will be important to droplet growth. Additionally, solute viscosity of atmospheric compounds has been shown to have more significant effects on droplet growth at lower temperatures in the subsaturated regime (Kasparoglu et al., 2021). Rather than considering complex morphological parameters (diffusivity, viscosity, rheology), HAM simplifies the concept by considering the presence (or lack thereof) of a surface. In addition to the factors considered in this work, surface tension can potentially play a role in both the water activity term and also in the solute partition, and should therefore be treated explicitly in the droplet growth process. Incorporation of surface tension in the analysis was beyond the scope of this work, and well-designed experiments will be required to observe whether surface tension has any contribution on the water uptake of the AAAs studied in paper. Furthermore, surface effects of a given species can be parameterized within the HAM framework and subsequently into the hygroscopicity to understand such effects for partially insoluble to effectively insoluble systems.

555 The next step is to evaluate the application of HAM for the CCN analysis of aerosol mixtures for a wider range in aerosol species and compositions. The shift from volume to surface based absorption principles maybe more appropriate for significantly water-insoluble compounds. Specifically, the application of HAM can be examined for the hygroscopic growth and water uptake on black carbon agglomerates. Furthermore, HAM developed in this work may improve our predictions of a wide variety of atmospherically relevant aerosols. For example, many atmospheric organic aerosols may vary significantly from each other in terms of their chemical structures and aqueous solubilities (Petters and Kreidenweis, 2008; Sullivan et al.,

2009). Therefore, HAM may potentially improve the representation of hygroscopicity of organic aerosols in large-scale Global
560 Climate Models (GCMs), hence reducing the uncertainties in the climate forcing due to the aerosol indirect effect.

Data availability. Data can be made available upon request.

 *Author contributions.* KG and AAA designed the analysis for the supersaturated and subsaturated experimental data. KG and DR performed
CCN and H-TDMA experiments to collect data. KG and CNM parameterized the FHH hygroscopicity. KG formulated HAM and parame-
565 terized the corresponding hygroscopicity. AAA conceived the idea for the study; designed and developed the experimental methodology. CP
and MT collected VSA data and performed VSA analysis. All authors contributed to the writing and preparation of the manuscript.

Competing interests. The authors declare that they have no conflict of interest.



Acknowledgements. This material is based upon work supported by the National Science Foundation under Grant No. NSF: CHEM-2003927
and NSF: CHEM-1708337.

References

- 570 Al-Naiema, I. M. and Stone, E. A.: Evaluation of anthropogenic secondary organic aerosol tracers from aromatic hydrocarbons, *Atmospheric Chemistry and Physics*, 17, 2053–2065, <https://doi.org/10.5194/acp-17-2053-2017>, 2017.
- Al-Naiema, I. M., Offenberg, J. H., Madler, C. J., Lewandowski, M., Kettler, J., Fang, T., and Stone, E. A.: Secondary organic aerosols from aromatic hydrocarbons and their contribution to fine particulate matter in Atlanta, Georgia, *Atmospheric Environment*, 223, 117 227, <https://doi.org/10.1016/j.atmosenv.2019.117227>, 2020.
- 575 Altaf, M. B., Dutcher, D. D., Raymond, T. M., and Freedman, M. A.: Effect of particle morphology on cloud condensation nuclei activity, *ACS Earth and Space Chemistry*, 2, 634–639, 2018.
- Asa-Awuku, A. and Nenes, A.: Effect of solute dissolution kinetics on cloud droplet formation: Extended Köhler theory, *Journal of Geophysical Research: Atmospheres*, 112, 2007.
- Asa-Awuku, A., Nenes, A., Gao, S., C, J. H. F. R., and Seinfeld: Water-soluble SOA from Alkene ozonolysis: composition and droplet activation kinetics inferences from analysis of CCN activity, *Atmos. Chem. Phys.*, 10, 1585, 2010.
- 580 Balla, D., Voutsas, D., and Samara, C.: Study of polar organic compounds in airborne particulate matter of a coastal urban city, *Environmental Science and Pollution Research*, 25, 12 191–12 205, <https://doi.org/10.1007/s11356-017-9993-2>, 2018.
- Barati, F., Yao, Q., and Asa-Awuku, A. A.: Insight into the Role of Water-Soluble Organic Solvents for the Cloud Condensation Nuclei Activation of Cholesterol, *ACS Earth Space Chem.*, 3, 1697–1705, 2019.
- 585 Baustian, K. J., Cziczo, D. J., Wise, M. E., Pratt, K. A., Kulkarni, G., Hallar, A. G., and Tolbert, M. A.: Importance of aerosol composition, mixing state, and morphology for heterogeneous ice nucleation: A combined field and laboratory approach, *J. Geophys. Res.*, 117, 2012.
- Cruz, C. N. and Pandis, S. N.: Deliquescence and hygroscopic growth of mixed inorganic- organic atmospheric aerosol, *Environmental Science & Technology*, 34, 4313–4319, 2000.
- Dalirian, M., Ylisirniä, A., Buchholz, A., Schlesinger, D., et al.: Cloud droplet activation of black carbon particles coated with organic compounds of varying solubility, 2018.
- 590 Dawson, J. N., Malek, K. A., Razafindrambinina, P. N., Raymond, T. M., Dutcher, D. D., Asa-Awuku, A. A., and Freedman, M. A.: Direct Comparison of the Submicron Aerosol Hygroscopicity of Water-Soluble Sugars, *ACS Earth and Space Chemistry*, 4, 2215–2226, <https://doi.org/10.1021/acsearthspacechem.0c00159>, 2020.
- Diniz, L. F., Carvalho, P. S., de Melo, C. C., and Ellena, J.: Reducing the Hygroscopicity of the Anti-Tuberculosis Drug (*S* , *S*)-Ethambutol Using Multicomponent Crystal Forms, *Crystal Growth Design*, 17, 2622–2630, <https://doi.org/10.1021/acs.cgd.7b00144>, 2017.
- 595 Engelhart, G., Asa-Awuku, A., Nenes, A., and Pandis, S.: CCN activity and droplet growth kinetics of fresh and aged monoterpene secondary organic aerosol, *Atmospheric Chemistry and Physics*, 8, 3937–3949, 2008.
- Fofie, E. A., Donahue, N. M., and Asa-Awuku, A.: Cloud condensation nuclei activity and droplet formation of primary and secondary organic aerosol mixtures, *Aerosol Science and Technology*, 52, 242–251, <https://doi.org/10.1080/02786826.2017.1392480>, 2018.
- 600 Fu, P., Kawamura, K., and Barrie, L. A.: Photochemical and Other Sources of Organic Compounds in the Canadian High Arctic Aerosol Pollution during Winter-Spring, *Environmental Science Technology*, 43, 286–292, <https://doi.org/10.1021/es803046q>, 2009.
- Giordano, M., Espinoza, C., and Asa-Awuku, A.: Experimentally measured morphology of biomass burning aerosol and its impacts on CCN ability, *Atmospheric Chemistry and Physics*, 15, 1807–1821, 2015.

- 605 Gohil, K. and Asa-Awuku, A. A.: Cloud condensation nuclei (CCN) activity analysis of low-hygroscopicity aerosols using the aerodynamic aerosol classifier (AAC), *Aerosol Measurement Techniques*, 15, 1007–1019, 2022.
- Goodman, A. L., Bernard, E. T., and Grassian, V. H.: Spectroscopic Study of Nitric Acid and Water Adsorption on Oxide Particles: Enhanced Nitric Acid Uptake Kinetics in the Presence of Adsorbed Water, *The Journal of Physical Chemistry A*, 105, 6443–6457, <https://doi.org/10.1021/jp0037221>, 2001.
- 610 Gu, W., Li, Y., Zhu, J., Jia, X., Lin, Q., Zhang, G., Ding, X., Song, W., Bi, X., Wang, X., et al.: Investigation of water adsorption and hygroscopicity of atmospherically relevant particles using a commercial vapor sorption analyzer, *Atmospheric Measurement Techniques*, 10, 3821–3832, 2017.
- Gunn, R.: The ratio of the positive and negative light ion conductivities within a neutral aerosol space, *Journal of Colloid Science*, 11, 661–696, 1956.
- 615 Gácita, M. S., Longo, K. M., Freire, J. L. M., Freitas, S. R., and Martin, S. T.: Impact of mixing state and hygroscopicity on CCN activity of biomass burning aerosol in Amazonia, *Atmos. Chem. Phys.*, 17, 2373–2392, 2017.
- Haque, M. M., Kawamura, K., Deshmukh, D. K., Fang, C., Song, W., Mengying, B., and Zhang, Y.-L.: Characterization of organic aerosols from a Chinese megacity during winter: predominance of fossil fuel combustion, *Atmospheric Chemistry and Physics*, 19, 5147–5164, <https://doi.org/10.5194/acp-19-5147-2019>, 2019.
- 620 Hartz, K. E. H., Tischuk, J. E., Chan, M. N., Chan, C. K., Donahue, N. M., and Pandis, S. N.: Cloud condensation nuclei activation of limited solubility organic aerosol, *Atmospheric Environment*, 40, 605–617, <https://doi.org/10.1016/j.atmosenv.2005.09.076>, 2006.
- Hatch, C. D., Wiese, J. S., Crane, C. C., Harris, K. J., Kloss, H. G., and Baltrusaitis, J.: Water Adsorption on Clay Minerals As a Function of Relative Humidity: Application of BET and Freundlich Adsorption Models, *Langmuir*, 28, 1790–1803, <https://doi.org/10.1021/la2042873>, 2012.
- 625 Hatch, C. D., Greenaway, A. L., Christie, M. J., and Baltrusaitis, J.: Water adsorption constrained Frenkel–Halsey–Hill adsorption activation theory: Montmorillonite and illite, *Atmospheric Environment*, 87, 26–33, <https://doi.org/10.1016/j.atmosenv.2013.12.040>, 2014.
- Hatch, C. D., Tumminello, P. R., A, A. L. C. M., Greenaway, Meredith, R., and Christie, M. J.: Technical note: Frenkel, Halsey and Hill analysis of water on clay minerals: toward closure between cloud condensation nuclei activity and water adsorption, *Atmospheric Chemistry and Physics*, 19, 13 581–13 589, 2019.
- 630 He, X., Huang, X. H. H., Chow, K. S., Wang, Q., Zhang, T., Wu, D., and Yu, J. Z.: Abundance and Sources of Phthalic Acids, **Benzene-Tricarboxylic** Acids, and Phenolic Acids in PM _{2.5} at Urban and Suburban Sites in Southern China, *ACS Earth and Space Chemistry*, 2, 147–158, <https://doi.org/10.1021/acsearthspacechem.7b00131>, 2018.
- Henson, B. F.: An adsorption model of insoluble particle activation: Application to black carbon, *Journal of Geophysical Research*, 112, D24S16, <https://doi.org/10.1029/2007JD008549>, 2007.
- 635 Hämeri, K., Charlson, R., and Hansson, H.-C.: Hygroscopic properties of mixed ammonium sulfate and carboxylic acids particles, *AIChE Journal*, 48, 1309–1316, <https://doi.org/10.1002/aic.690480617>, 2002.
- Jing, B., Tong, S., Liu, Q., Li, K., Wang, W., Zhang, Y., and Ge, M.: Hygroscopic behavior of multicomponent organic aerosols and their internal mixtures with ammonium sulfate, *Atmospheric Chemistry and Physics*, 16, 4101–4118, <https://doi.org/10.5194/acp-16-4101-2016>, 2016.
- 640 Jing, B., Wang, Z., Tan, F., Guo, Y., Tong, S., Wang, W., Zhang, Y., and Ge, M.: Hygroscopic behavior of atmospheric aerosols containing nitrate salts and water-soluble organic acids, *Atmospheric Chemistry and Physics*, 18, 5115–5127, <https://doi.org/10.5194/acp-18-5115-2018>, 2018.

- Kanakidou, M., Seinfeld, J. H., Pandis, S. N., Barnes, I., Dentener, F. J., Facchini, M. C., Dingenen, R. V., Ervens, B., Nenes, A., Nielsen, C. J., and Others: Organic aerosol and global climate modelling: a review, *Atmos. Chem. Phys.*, 5, 1053–1123, 2005.
- 645 Kanellopoulos, P. G., Verouti, E., Chrysochou, E., Koukoulakis, K., and Bakeas, E.: Primary and secondary organic aerosol in an **urban/industrial** site: Sources, health implications and the role of plastic enriched waste burning, *Journal of Environmental Sciences*, 99, 222–238, <https://doi.org/10.1016/j.jes.2020.06.012>, 2021.
- Kasparoglu, S., Li, Y., Shiraiwa, M., and Petters, M. D.: Toward closure between predicted and observed particle viscosity over a wide range of temperatures and relative humidity, *Atmospheric Chemistry and Physics*, 21, 1127–1141, 2021.
- 650 Kawamura, K. and Kaplan, I. R.: Motor exhaust emissions as a primary source for dicarboxylic acids in Los Angeles ambient air, *Environmental Science Technology*, 21, 105–110, <https://doi.org/10.1021/es00155a014>, 1987.
- Kleindienst, T. E., Jaoui, M., Lewandowski, M., Offenberg, J. H., and Docherty, K. S.: The formation of SOA and chemical tracer compounds from the photooxidation of naphthalene and its methyl analogs in the presence and absence of nitrogen oxides, *Atmospheric Chemistry and Physics*, 12, 8711–8726, <https://doi.org/10.5194/acp-12-8711-2012>, 2012.
- 655 Kreidenweis, S. and Asa-Awuku, A.: Aerosol hygroscopicity: Particle water content and its role in atmospheric processes, 2014.
- Kumar, P., Nenes, A., and Sokolik, I. N.: Importance of adsorption for CCN activity and hygroscopic properties of mineral dust aerosol, *Geophys. Res. Lett.*, 2009a.
- Kumar, P., Sokolik, I. N., and Nenes, A.: Parameterization of cloud droplet formation for global and regional models: including adsorption activation from insoluble CCN, *Atmospheric Chemistry and Physics*, 9, 2517–2532, <https://doi.org/10.5194/acp-9-2517-2009>, 2009b.
- 660 Kumar, P., Sokolik, I. N., and Nenes, A.: Cloud condensation nuclei activity and droplet activation kinetics of wet processed regional dust samples and minerals, *Atmospheric Chemistry*, 2011a.
- Kumar, P., Sokolik, I. N., and Nenes, A.: Measurements of cloud condensation nuclei activity and droplet activation kinetics of fresh **unprocessed** regional dust samples and minerals, *Atmos. Chem. Phys.*, 2011b.
- Kunwar, B., Kawamura, K., Fujiwara, S., Fu, P., Miyazaki, Y., and Pokhrel, A.: Dicarboxylic acids, oxocarboxylic acids and α -dicarbonyls in atmospheric aerosols from Mt. Fuji, Japan: Implication for primary emission versus secondary formation, *Atmospheric Research*, 221, 58–71, <https://doi.org/10.1016/j.atmosres.2019.01.021>, 2019.
- 665 Köhler, H.: The nucleus in and the growth of hygroscopic droplets, *Transactions of the Faraday Society*, 32, 1152–1161, 1936.
- Laaksonen, A., Malila, J., Nenes, A., Hung, H.-M., and Chen, J.-P.: Surface fractal dimension, water adsorption efficiency and cloud nucleation activity of insoluble aerosol, *Scientific Reports*, 6, 25 504, <https://doi.org/10.1038/srep25504>, 2016.
- 670 Laaksonen, A., Malila, J., and Nenes, A.: Heterogeneous nucleation of water vapor on different types of black carbon particles, *Atmospheric Chemistry and Physics*, 20, 13 579–13 589, <https://doi.org/10.5194/acp-20-13579-2020>, 2020.
- Liu, H., Kawamura, K., Kunwar, B., Cao, J., Zhang, J., Zhan, C., Zheng, J., Yao, R., Liu, T., and Xiao, W.: Dicarboxylic acids and related compounds in fine particulate matter aerosols in Huangshi, central China, *Journal of the Air Waste Management Association*, 69, 513–526, <https://doi.org/10.1080/10962247.2018.1557089>, 2019.
- 675 Malek, K. A., Gohil, K., Al-Abadleh, H. A., and Asa-Awuku, A. A.: Hygroscopicity of polycatechol and **polyguaiacol** secondary organic aerosol in sub- and supersaturated water vapor environments, *Environmental Science: Atmospheres*, <https://doi.org/10.1039/D1EA00063B>, 2022.
- Meng, J., Wang, G., Hou, Z., Liu, X., Wei, B., Wu, C., Cao, C., Wang, J., Li, J., Cao, J., Zhang, E., Dong, J., Liu, J., Ge, S., and Xie, Y.: Molecular distribution and stable carbon isotopic compositions of dicarboxylic acids and related SOA from biogenic sources in the summertime

- 680 atmosphere of Mt. Tai in the North China Plain, *Atmospheric Chemistry and Physics*, 18, 15 069–15 086, <https://doi.org/10.5194/acp-18-15069-2018>, 2018.
- Mikhailov, E., Vlasenko, S., Martin, S., Koop, T., and Pöschl, U.: Amorphous and crystalline aerosol particles interacting with water vapor: conceptual framework and experimental evidence for restructuring, phase transitions and kinetic limitations, *Atmospheric Chemistry and Physics*, 9, 9491–9522, 2009.
- 685 Mkoma, S. L. and Kawamura, K.: Molecular composition of dicarboxylic acids, ketocarboxylic acids, α -dicarbonyls and fatty acids in atmospheric aerosols from Tanzania, East Africa during wet and dry seasons, *Atmospheric Chemistry and Physics*, 13, 2235–2251, <https://doi.org/10.5194/acp-13-2235-2013>, 2013.
- Moore, R. H., Nenes, A., and Medina, J.: Scanning Mobility CCN Analysis—A Method for Fast Measurements of Size-Resolved CCN Distributions and Activation Kinetics, *Aerosol Sci. Technol.*, 44, 861–871, 2010.
- 690 Nakao, S.: Why would apparent κ linearly change with O/C? Assessing the role of volatility, solubility, and surface activity of organic aerosols, *Aerosol Science and Technology*, 51, 1377–1388, <https://doi.org/10.1080/02786826.2017.1352082>, 2017.
- Padró, L. T., Moore, R. H., Zhang, X., Rastogi, N., Weber, R. J., and Nenes, A.: Mixing state and compositional effects on CCN activity and droplet growth kinetics of size-resolved CCN in an urban environment, 2012.
- Peng, C., Malek, K. A., Rastogi, D., Zhang, Y., Wang, W., Ding, X., Asa-Awuku, A. A., Wang, X., and Tang, M.: Hygroscopicity and cloud condensation nucleation activities of hydroxyalkylsulfonates, *Science of The Total Environment*, 830, 154 767, 2022.
- 695 Petters, M., Wex, H., Carrico, C., Hallbauer, E., Massling, A., McMeeking, G., Poulain, L., Wu, Z., Kreidenweis, S., and Stratmann, F.: Towards closing the gap between hygroscopic growth and activation for secondary organic aerosol—Part 2: Theoretical approaches, *Atmospheric Chemistry and Physics*, 9, 3999–4009, 2009.
- Petters, M. D. and Kreidenweis, S. M.: A single parameter representation of hygroscopic growth and cloud condensation nucleus activity, *Atmospheric Chemistry and Physics*, 7, 1961–1971, <https://doi.org/10.5194/acp-7-1961-2007>, 2007.
- 700 Petters, M. D. and Kreidenweis, S. M.: A single parameter representation of hygroscopic growth and cloud condensation nucleus activity? Part 2: Including solubility, 2008.
- Rader, D. and McMurry, P.: Application of the tandem differential mobility analyzer to studies of droplet growth or evaporation, *Journal of Aerosol Science*, 17, 771–787, 1986.
- 705 Rahman, M. A. and Al-Abadleh, H. A.: Surface Water Structure and Hygroscopic Properties of Light Absorbing Secondary Organic Polymers of Atmospheric Relevance, *ACS Omega*, 3, 15 519–15 529, <https://doi.org/10.1021/acsomega.8b02066>, 2018.
- Riipinen, I., Rastak, N., and Pandis, S. N.: Connecting the solubility and CCN activation of complex organic aerosols: a theoretical study using solubility distributions, *Atmospheric Chemistry and Physics*, 15, 6305–6322, <https://doi.org/10.5194/acp-15-6305-2015>, 2015.
- Roberts, G. and Nenes, A.: A continuous-flow streamwise thermal-gradient CCN chamber for atmospheric measurements, *Aerosol Science and Technology*, 39, 206–221, 2005.
- 710 Samy, S., Mazzoleni, L. R., Mishra, S., Zielinska, B., and Hallar, A. G.: Water-soluble organic compounds at a mountain-top site in Colorado, USA, *Atmospheric Environment*, 44, 1663–1671, <https://doi.org/10.1016/j.atmosenv.2010.01.033>, 2010.
- Schill, S. R., Collins, D. B., Lee, C., Morris, H. S., Novak, G. A., Prather, K. A., Quinn, P. K., Sultana, C. M., V. K. T. A., Zimmermann, Cappa, C. D., and Bertram, T. H.: The Impact of Aerosol Particle Mixing State on the Hygroscopicity of Sea Spray Aerosol, *ACS Cent Sci*, 1, 132–141, 2015.
- 715 Shulman, M. L., Jacobson, M. C., Carlson, R. J., Synovec, R. E., and Young, T. E.: Dissolution behavior and surface tension effects of organic compounds in nucleating cloud droplets, *Geophysical Research Letters*, 23, 277–280, 1996.

- Singh, D. K., Kawamura, K., Yanase, A., and Barrie, L. A.: Distributions of Polycyclic Aromatic Hydrocarbons, Aromatic Ketones, Carboxylic Acids, and Trace Metals in Arctic Aerosols: Long-Range Atmospheric Transport, Photochemical Degradation/Production at Polar Sunrise, *Environmental Science Technology*, 51, 8992–9004, <https://doi.org/10.1021/acs.est.7b01644>, 2017.
- 720 Sorjamaa, R. and Laaksonen, A.: The effect of H₂O adsorption on cloud drop activation of insoluble particles: a theoretical framework, *Atmospheric Chemistry and Physics*, 7, 6175–6180, <https://doi.org/10.5194/acp-7-6175-2007>, 2007.
- Su, H., Rose, D., Cheng, Y. F., Gunthe, S. S., A, M. M., Stock, Wiedensohler, A., Andreae, M. O., and Pöschl, U.: Hygroscopicity distribution concept for measurement data analysis and modeling of aerosol particle mixing state with regard to hygroscopic growth and CCN activation, 2010.
- 725 Sullivan, R. C., Moore, M. J. K., Petters, M. D., Kreidenweis, S. M., Roberts, G. C., and Prather, K. A.: Effect of chemical mixing state on the hygroscopicity and cloud nucleation properties of calcium mineral dust particles, *Atmospheric Chemistry and Physics*, 9, 3303–3316, <https://doi.org/10.5194/acp-9-3303-2009>, 2009.
- Talley, L. D., Vaughan, D. G., Xie, S. P., Allen, M. R., Boucher, O., et al.: Climate Change 2013. The Physical Science Basis. Working Group I Contribution to the Fifth Assessment Report of the Intergovernmental Panel on Climate Change - Abstract for decision-makers, 2013.
- 730 Tandon, A., Rothfuss, N. E., and Petters, M. D.: The effect of hydrophobic glassy organic material on the cloud condensation nuclei activity of particles with different morphologies, *Atmospheric Chemistry and Physics*, 19, 3325–3339, 2019.
- Tang, M., Cziczo, D. J., and Grassian, V. H.: Interactions of Water with Mineral Dust Aerosol: Water Adsorption, Hygroscopicity, Cloud Condensation, and Ice Nucleation, *Chemical Reviews*, 116, 4205–4259, <https://doi.org/10.1021/acs.chemrev.5b00529>, 2016.
- 735 Tang, X., Cocker Iii, D., and Asa-Awuku, A.: Are sesquiterpenes a good source of secondary organic cloud condensation nuclei (CCN)? Revisiting β -caryophyllene CCN, *Atmospheric Chemistry and Physics*, 12, 8377–8388, 2012.
- Tavakoli, F. and Olfert, J. S.: Determination of particle mass, effective density, mass–mobility exponent, and dynamic shape factor using an aerodynamic aerosol classifier and a differential mobility analyzer in tandem, *Journal of aerosol science*, 75, 35–42, 2014.
- Taylor, N. F., Collins, D. R., Lowenthal, D. H., McCubbin, I. B., Hallar, A. G., Samburova, V., Zielinska, B., Kumar, N., and Mazzoleni, L.: Hygroscopic growth of water soluble organic carbon isolated from atmospheric aerosol collected at US national parks and Storm Peak Laboratory, *Atmos. Chem. Phys.*, 17, 2555, 2017.
- 740 Vu, D., Gao, S., Berte, T., Kacarab, M., et al.: External and internal cloud condensation nuclei (CCN) mixtures: controlled laboratory studies of varying mixing states, *Atmospheric*, 2019.
- Wang, W., Lei, T., Zuend, A., Su, H., Cheng, Y., Shi, Y., Ge, M., and Liu, M.: Effect of mixing structure on the water uptake of mixtures of ammonium sulfate and phthalic acid particles, *Atmospheric Chemistry and Physics*, 21, 2179–2190, <https://doi.org/10.5194/acp-21-2179-2021>, 2021.
- 745 Wiedensohler, A.: An approximation of the bipolar charge distribution for particles in the submicron size range, *Journal of aerosol science*, 19, 387–389, 1988.
- Yao, Q., Asa-Awuku, A., Zangmeister, C. D., and Radney, J. G.: Comparison of three essential sub-micrometer aerosol measurements: Mass, size and shape, *Aerosol Science and Technology*, 54, 1197–1209, 2020.
- 750 Yassine, M. M., Suski, M., and Dabek-Zlotorzynska, E.: Characterization of benzene polycarboxylic acids and polar nitroaromatic compounds in atmospheric aerosols using UPLC-MS/MS, *Journal of Chromatography A*, 1630, 461507, <https://doi.org/10.1016/j.chroma.2020.461507>, 2020.
- Zhao, H., Zhang, Z., Hou, H., and Zhang, J.: Hygroscopic salt-modulated UiO-66: Synthesis and its open adsorption performance, *Journal of Solid State Chemistry*, 301, 122304, <https://doi.org/10.1016/j.jssc.2021.122304>, 2021.
- 755

Zhong, X., Cui, C., and Yu, S.: Exploring the pathways of aromatic carboxylic acids in ozone solutions, *RSC Advances*, 7, 34 339–34 347, <https://doi.org/10.1039/C7RA03039H>, 2017a.

Zhong, X., Cui, C., and Yu, S.: The determination and fate of disinfection by-products from ozonation-chlorination of fulvic acid, *Environmental Science and Pollution Research*, 24, 6472–6480, <https://doi.org/10.1007/s11356-016-8350-1>, 2017b.

760 Zobrist, B., Marcolli, C., Pedernera, D., and Koop, T.: Do atmospheric aerosols form glasses?, *Atmospheric Chemistry and Physics*, 8, 5221–5244, 2008.

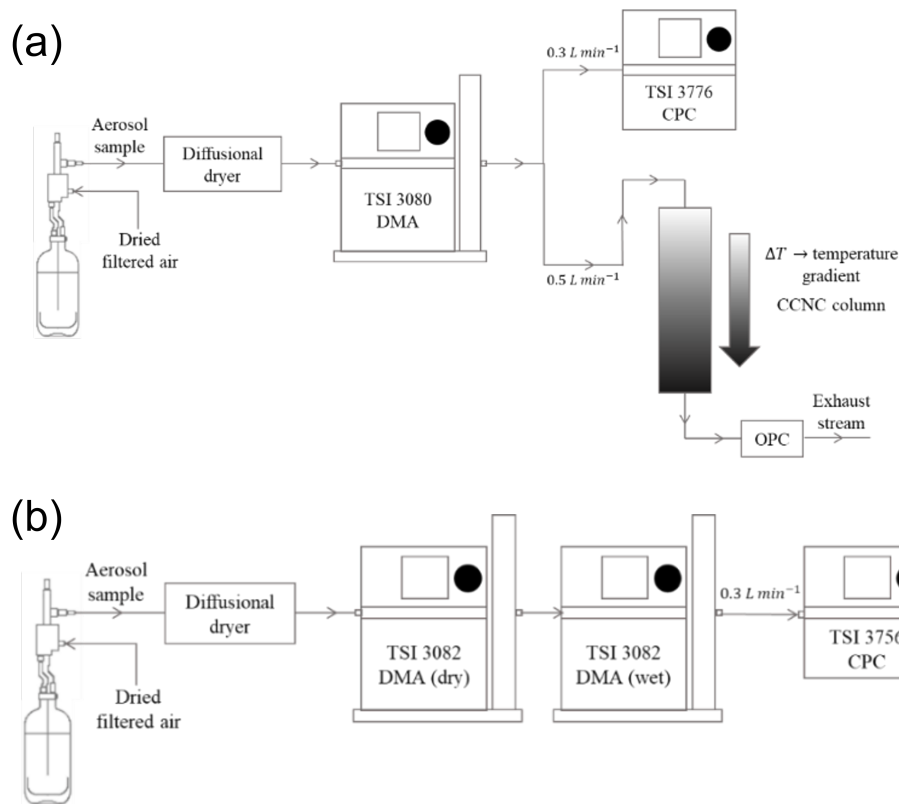


Fig. 1. (a) Schematic of a typical CCN measurements setup in supersaturated conditions. The DMA and the CPC collectively operate as an SMPS to obtain a distribution of dry particles. The CCNC is connected in parallel and provides the distribution of activated particles. (b) Schematic of a typical H-TDMA setup for subsaturated droplet growth measurements. The dry DMA (DMA 1) selects dry particles of a specified size. The classified particles are then humidified and passed through the wet DMA (DMA 2) and the CPC operating as an SMPS to generate the droplet distribution.

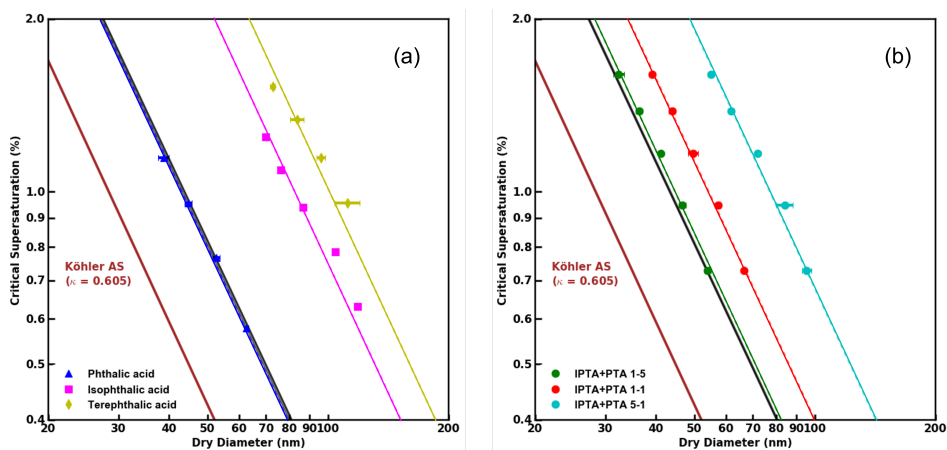


Fig. 2. (a) S vs $D_{dry,c}$ data obtained from supersaturated CCN measurements of pure Phthalic acid (PTA), Isophthalic acid (IPTA) and Terephthalic acid (TPTA). (b) S vs $D_{dry,c}$ data obtained from supersaturated CCN measurements of internal mixtures of PTA and IPTA.

The mixtures studied shown in this plot are 5:1, 1:1 and 1:5 by mass of PTA. The solid brown line in both subplots correspond to ammonium sulfate and was used for CCNC calibration. The solid black lines were generated using the ideal Köhler theory (KT) for the respective samples, and the dashed colored lines are the KT fits obtained using the measured CCN data of each sample.

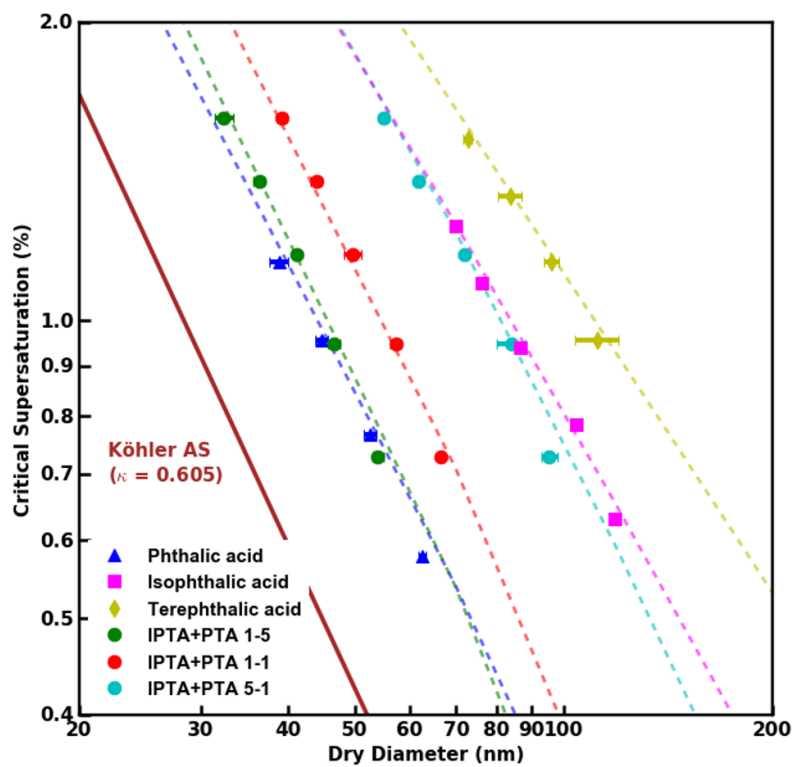


Fig. 3. S v/s $D_{dry,c}$ data obtained from supersaturated CCN measurements of pure and internally mixed AAA samples. FHH-AT fits applied to the experimental data are shown as dashed lines.

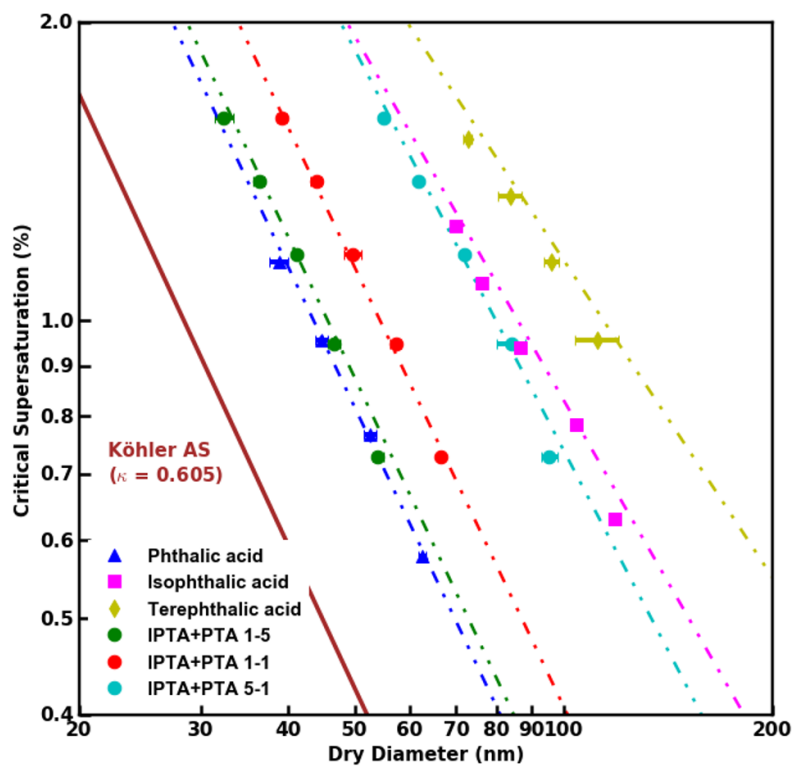


Fig. 4. S v/s $D_{dry,c}$ data obtained from supersaturated CCN measurements of pure and internally mixed AAA samples. HAM fits applied to the experimental data are shown as dot-dashed lines.

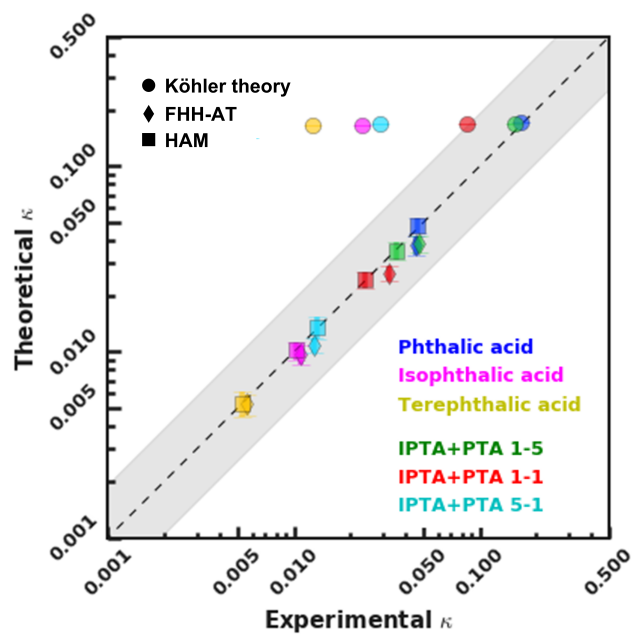


Fig. 5. Closure plot representing the experimental and theoretical single hygroscopicity parameters obtained using KT, FHH-AT and HAM CCN analysis frameworks. The goodness of fit was calculated for each compound and internal mixture.

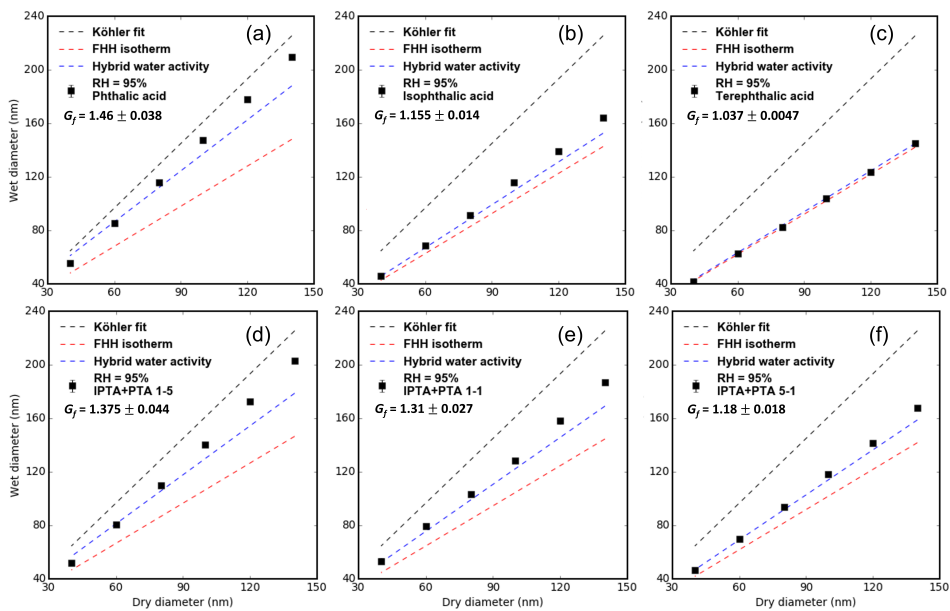


Fig. 6. Subsaturated measurements for pure AAA samples obtained using the H-TDMA setup are shown. (a), (b) and (c) show the D_{wet} vs. D_{dry} data along with model fits for pure PTA, IPTA and TPTA. (d), (e) and (f) show the D_{wet} vs. D_{dry} data along with model fits for PTA-IPTA internal mixtures. The Köhler-Raoult term, FHH isotherm and hybrid water activity fits are shown in black, red and blue, respectively overlaid with the experimental data. The hygroscopic growth factor (G_f) for all AAA samples are shown in their legends.

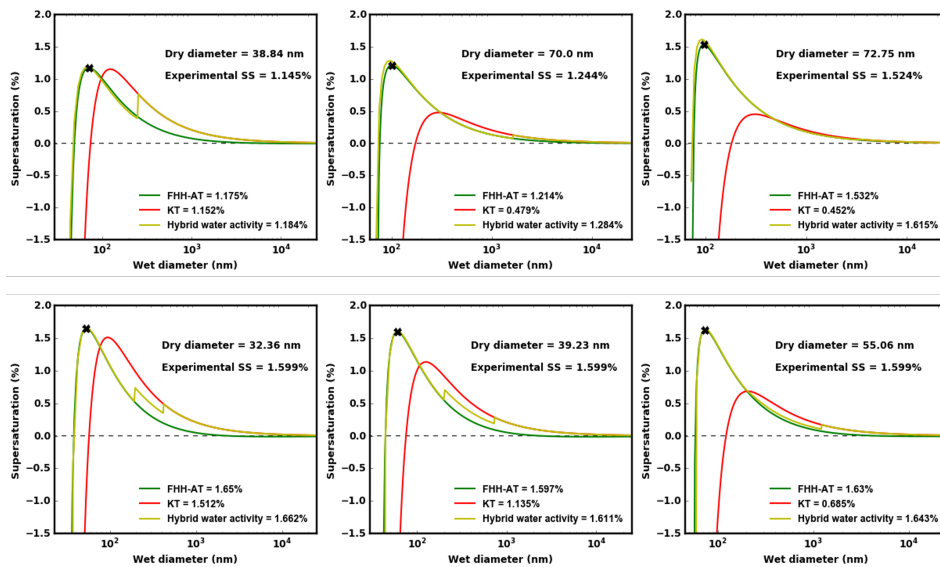


Fig. 7. Equilibrium droplet growth curves for PTA, IPTA, TPTA and PTA-IPTA internal mixtures are shown here. The figure header shows the solute for which the respective equilibrium curves. KT, FHH-AT and HAM lines are shown in red (solid), green (solid) and yellow (solid), respectively. An exemplary measured activation point for the respective solute is denoted using a solid red cross. The $D_{dry,c}$ and corresponding S used to generate this equilibrium curves are provided in Figure 2.

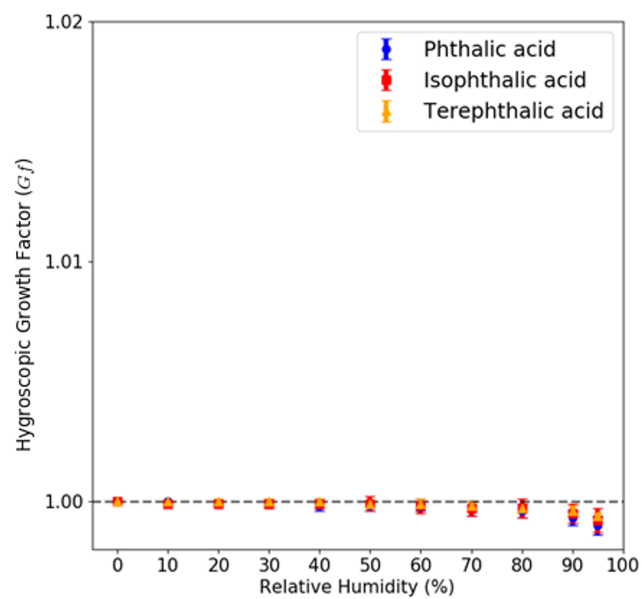


Fig. 8. Subsaturated measurements for pure AAA samples obtained using the VSA setup are shown. The mass hygroscopic growth factor is shown with respect to the relative humidity (RH). The measurements show that neither of PTA, IPTA or TPTA show any mass-based growth as the RH is increased from 5% to 95%.

Table 1. Physical and chemical properties of AAA compounds used for calculation throughout this paper.

Compound	Molecular weight ($M_s, g\ mol^{-1}$)	Density ($\rho_s, g\ cm^{-3}$)	Aqueous solubility ($C, m^3\ m^{-3}$)
Phthalic acid (PTA)	166.14	1.59	3.77×10^{-3}
Isophthalic acid (IPTA)	166.14	1.53	7.84×10^{-5}
Terephthalic acid (TPTA)	166.13	1.52	1.12×10^{-5}

Table 2. Intrinsic and experimental hygroscopicity parameter, and FHH empirical parameters used for FHH-AT and HAM analysis for pure and internally mixed AAA samples.

Sample	Intrinsic hygroscopicity $\left(\kappa_{intrinsic} = \frac{\nu M_s \rho_w}{M_w \rho_s}\right)^a$	Experimental hygroscopicity $\left(\kappa_{KT} = \frac{4 \left(\frac{4\sigma_w M_w}{RT \rho_w}\right)^3}{27 D_{dry,c}^3 \log^2(S)}\right)^b$	A_{FHH}^c	B_{FHH}^c
Phthalic acid (PTA)	0.172	0.169 ± 0.007	0.41	0.76
Isophthalic acid (IPTA)	0.168	0.023 ± 0.0027	0.39	0.87
Terephthalic acid (TPTA)	0.165	0.013 ± 0.0018	0.16	0.84
5:1 PTA-to-IPTA	0.171	0.159 ± 0.007	0.28	0.69
1:1 PTA-to-IPTA	0.169	0.085 ± 0.003	0.21	0.65
1:5 PTA-to-IPTA	0.168	0.029 ± 0.0024	0.11	0.61

a - $M_w = 18 \text{ g mol}^{-1}$, $\rho_w = 1 \text{ g cm}^{-3}$, $\nu = 1$

b - $\sigma_w = 0.072 \text{ J m}^{-2}$, $R = 8.314 \text{ J mol}^{-1} \text{ K}^{-1}$, measured $D_{dry,c}$ v/s S

$D_{dry,c}$ = Measured critical dry diameter

S = Supersaturation

c - Empirically determined FHH parameters from measured $D_{dry,c}$ v/s S data for the given samples

Table 3. Goodness of fit (R^2) scores for model fits applied to supersaturated and subsaturated measurements of pure and internally mixed samples.

Sample	Supersaturated R^2			Subsaturated R^2		
	KT	FHH-AT	HAM	KT	FHH-AT	HAM
Phthalic acid (PTA)	0.99	0.87	0.99	0.938	0.459	0.948
Isophthalic acid (IPTA)	-6.6	0.94	0.94	-0.147	0.894	0.975
Terephthalic acid (TPTA)	-17.4	0.9	0.91	-1.472	0.998	0.999
5:1 PTA-to-IPTA	0.71	0.91	0.91	0.869	0.549	0.933
1:1 PTA-to-IPTA	-1.5	0.89	0.92	0.604	0.667	0.957
1:5 PTA-to-IPTA	-5.86	0.94	0.97	0.007	0.894	0.987