

Regional Satellite remote sensing of regional and seasonal Arctic cooling by showing a multi-decadal trend towards brighter and more liquid clouds~~from satellite remote sensing~~

Luca Lelli^{1,2,3}, Marco Vountas¹, Narges Khosravi^{4,5}, and John P. Burrows¹

¹Institute of Environmental Physics and Remote Sensing, University of Bremen, Germany

²NASA Goddard Space Flight Center, Greenbelt, MD, USA

³Remote Sensing Technology Institute, German Aerospace Centre (DLR), Wessling, Germany

⁴Alfred-Wegener-Institut, Bremerhaven, Germany

⁵EUMETSAT, Darmstadt, Germany

Correspondence: Luca Lelli (luca@iup.physik.uni-bremen.de, luca.elli@dlr.de)

Abstract. Two decades of measurements of spectral reflectance of solar radiation at the top of the atmosphere and a complementary record of cloud properties from satellite passive remote sensing have been analyzed for their pan-Arctic, regional, and seasonal changes. The pan-Arctic loss of brightness, which is explained by the retreat of sea ice during the current warming period, is not compensated by a corresponding increase in cloud cover. A systematic change in the thermodynamic phase of clouds has taken place, shifting towards the liquid phase at the expense of the ice phase. Without significantly changing the total cloud optical thickness or the mass of condensed water in the atmosphere, liquid water content has increased, resulting in positive trends in liquid cloud optical thickness and albedo. This leads to a cooling trend by clouds being superimposed on top of the pan-Arctic amplified warming, induced by the anthropogenic release of greenhouse gases, the ice-albedo feedback, and related effects. Except over the permanent and parts of the marginal sea ice zone around the Arctic circle, the rate of surface cooling by clouds has increased, both in spring (-32% in total radiative forcing for the whole Arctic) and in summer (-14%). The magnitude of this effect depends on both the underlying surface type and changes in the regional Arctic climate.

1 Introduction

During the past four decades, near-surface Arctic temperatures have reached double (Södergren and McDonald, 2022) or greater (Rantanen et al., 2022) than that of the global average. This phenomenon is referred to as “Arctic Amplification” (Serreze and Francis, 2006). As a consequence, the most recent climate projections indicate that the Arctic may be free of sea ice by the summer of 2035 (Guarino et al., 2020; Notz and Community, 2020).

Clouds play an important role in determining the climate of the Arctic. Modeling the changing behavior of clouds with sufficient accuracy is identified as the most uncertain factor in the climate projections of greenhouse gas forcing (Zelinka et al., 2020). This is particularly the case in the Arctic, where the modulation of radiation by clouds in the shortwave (SW) and longwave (LW) spectral regions is not adequately simulated by state-of-the-art models. Changes in the temperature, water vapor, and the availability of condensation nuclei of liquid and ice cloud particles result in changes in the scattering and

absorption of both SW and LW radiation. Consequently, improved knowledge of the changes in optical and radiative properties of the Earth's surface and the clouds are needed to test and thereby improve the accuracy of climate model projections.

To achieve these objectives, synergistic measurements (Wendisch et al., 2019; Shupe et al., 2021; Wendisch et al., 2022) using on-ground, ship, and airborne sensors have been exploited. Another complementary source of knowledge is measurements by satellite sensors that provide synoptic coverage of the Arctic clouds over long time scales. Instruments aboard satellites measure radiation at the top-of-atmosphere (TOA) across the whole electromagnetic spectrum, both SW and LW. The former is scattered back to space by the Arctic surface as well as from atmospheric constituents, such as trace-gases, aerosols, and clouds (Serreze and Barry, 2014; Kokhanovsky and Tomasi, 2020). LW radiation ($\gtrsim 4 \mu\text{m}$) is emitted from both the Earth's surface and atmospheric gases and clouds (Kiehl and Trenberth, 1997; Stamnes et al., 2017).

Each form of radiation may be modulated by the properties and thermodynamic phase of surface and atmospheric matter. Ice, snow, and clouds amplify the scattering of incoming solar SW radiation, whilst open water results in increased absorption. However, LW radiation flux is most prominently affected by clouds, which may warm or cool both the TOA and the surface.

Cloud fractional cover (CFC) is the primary parameter modulating radiation and it is the only one that has been systematically studied from space for long periods of time over the Arctic. CFC may reach 70% throughout the year (Karlsson and Devasthale, 2018) and rather than having a latitudinal dependence, it appears to be dependent on the underlying surface type (He et al., 2019), topography, and meteorology (Hofer et al., 2017).

Changes in CFC have an impact on the Arctic climate. This is observed in the accelerated loss of ice mass in Greenland, which is attributed to a decrease in summer cloudiness and a corresponding increase in SW downwelling fluxes at the surface. This effect is then observed as a decrease of the albedo and spectral reflectance at TOA (R_{λ}^{TOA}). The factors contributing to variation in albedo at TOA may be categorized according to the changes occurring at the surface or in the atmosphere, respectively. While the majority of the variability is determined by surface reflection, 84% of the total Arctic albedo is due to atmospheric reflection (Sledd and L'Ecuyer, 2019). This finding is important when interpreting the behavior of a melting cryosphere, in which the changes in surface reflection are offset by changes in atmospheric reflection. The latter, although wavelength dependent, is dominated by the reflectance of clouds (Donohoe and Battisti, 2011). Consequently and as expected, the presence of clouds reduces the impact of changes in surface reflectance on the albedo at TOA (Sledd and L'Ecuyer, 2021a).

Distinctive patterns in CFC trends have been identified in the Arctic, having different signs and magnitudes. However, the interpretation of CFC data can vary greatly between different authors, despite the use of identical source data. For example, the study of Boccolari and Parmiggiani (2018), in which CFC data, derived from observations of AVHRR (see Tab. A1 for the meaning of all technical acronyms) over the Arctic between 1982 and 2009, disagrees unexpectedly with results from Schweiger (2004), Wang and Key (2005b), Boisvert and Stroeve (2015) and Devasthale et al. (2020), even though all research groups use the same set of radiances.

The influence of temperature on Arctic cloud formation and property changes has already been reported in early studies (e.g. Herman and Goody, 1976; Curry et al., 1996). As a result, clouds have been proposed to positively contribute to the amplified warming in the Arctic (Taylor et al., 2013), although disagreements about their impact remain. For example, Screen and Simmonds (2010) reported that changes in CFC do not strongly contribute to the Arctic Amplification despite their role

in “enhanced warming in the lower part of the atmosphere during summer and early autumn”. Conversely, Francis and Hunter (2006) relate the loss rate of the perennial sea ice floes to CFC and the downwelling LW during spring months.

Indeed, Curry et al. (1996) emphasize the impact of an underlying cold, bright surface, and frequent temperature inversions on the atmospheric radiation budget. The impact being driven by the formation of water condensate in the form of liquid and ice clouds as a function of the temperature profile. In a warming Arctic, it is expected that clouds will increase their liquid water content and thus reflect more SW radiation (Boisvert and Stroeve, 2015; Ceppi et al., 2016; Cesana and Storelvmo, 2017). The thermodynamic equilibrium between water vapor, liquid water, and ice is altered as a function of temperature. Correspondingly, this leads to a phase change of water within the cloud when aerosol particulate such as cloud condensation nuclei (CCN) and ice nucleating particles (INP) are also present. This affects cloud particle radii (r_{eff}) with liquid droplets typically being smaller than ice crystals (Mioche et al., 2017) and, eventually, changes the average optical thickness of clouds (COT, τ).

Regardless of changes in CFC, the optical properties of clouds, such COT and r_{eff} of droplets/crystals, and liquid/ice water path (LWP/IWP), regulate both the downwelling and upwelling LW radiation. Model projections show that Arctic clouds during summer are weakly influenced by sea ice variability. However, their response to sea ice loss is to become optically thicker, to have higher LWP, and to be more frequently in the liquid phase within the Arctic boundary layer (Morrison et al., 2019). In summary, the changes in τ and the thermodynamic phase of clouds enhance or suppress cloud radiative forcing (CRF) at the surface. This behavior has been identified through continuous surface measurements above the Beaufort and Chukchi Seas (Shupe and Intrieri, 2004), at Ny-Ålesund, Svalbard (Ebell et al., 2019), and in the data products retrieved from AVHRR (Francis and Hunter, 2006).

Thus, according to current knowledge of the changing conditions in the Arctic, we conclude that investigations of the R_{λ}^{TOA} and the cloud properties over the past two decades provide insights into the evolution of the Arctic climate. We have prepared a consolidated R_{λ}^{TOA} data set from 1995 to 2018 (<https://doi.pangaea.de/10.1594/PANGAEA.933905>). This data set from satellite sensors comprises backscattered radiation at TOA in the SW solar spectral range. Consequently, this study focuses on the months between April and September. The Arctic seasons considered are spring, defined for our purposes as April May June (AMJ), and summer, July August September (JAS).

The investigation of R_{λ}^{TOA} involved the determination of trends of twenty years of cloud properties from the observations of AVHRR, retrieved with the most recent algorithms (Stengel et al., 2020). They supersede older popular data sets, for which specific errors have been found (Zygmuntowska et al., 2012). We build on the heritage of the earlier studies describing the Arctic state and extend the trend analyses limited previously to 1982–1999 (Wang and Key, 2003, 2005b).

The objectives of this paper are fourfold. Firstly, we provide evidence that space-borne measured spectral R_{λ}^{TOA} is a valuable indicator of the changing atmospheric composition and surface properties of the Arctic (Section 2.1). Secondly, we determine R_{λ}^{TOA} trends at regional and seasonal scales and identify unexpected patterns of behavior (Section 3.1). Thirdly, we attribute the trends in R_{λ}^{TOA} above clouds to changes in the thermodynamic phase of clouds (Section 3.2). Lastly, we quantify the average cloud radiative forcing and its changes (Section 3.3). We relate the latter to the changes in the physical properties of clouds in response to climate change (Section 4). All technical solutions adopted for the harmonization of the time series, for the

detection of trends, their statistical significance and time of emergence, and the uncertainty propagation of cloud properties can be found in the Appendix.

2 Data and Methods

The study of the Arctic by remote sensing requires sensors having broad spectral coverage and sufficient spectral resolution to separate the spectral features of gases, surfaces, liquid water, and ice/snow. We define the spectral reflectance measured at TOA - R_{λ}^{TOA} - to be

$$R_{\lambda}^{\text{TOA}} = \frac{\pi I_{\lambda}}{\cos(\theta_0) E_{\lambda}^0}, \quad (1)$$

where I_{λ} is the Earthshine, i.e. the upwelling scalar radiance measured at TOA (units of photons \times s $^{-1}$ cm $^{-2}$ nm $^{-1}$ sr $^{-1}$), E_{λ}^0 the unpolarized downwelling solar irradiance (photons \times s $^{-1}$ cm $^{-2}$ nm $^{-1}$) and θ_0 the solar zenith angle in degrees.

Parameters of relevance for the R_{λ}^{TOA} analysis are shown in Fig. 1. The y-axis on the left of Fig. 1-a shows I_{λ} , E_{λ}^0 for a GOME measurement above the Kara Sea, whereas the y-axis on the right side shows modeled R_{λ}^{TOA} , in satellite perspective, representing the TOA signal for typical Arctic geophysical conditions. Fig. 1-b shows the wavelength dependence, at the GOME spectral resolution, of the spectral reflectance for different surface types. The almost flat Earthshine between 450 and 800 nm reveals the presence of a cloud deck or snow surface in the satellite field of view. Ten wavelength bands of spectral width 5-10 nm have been selected satisfying the following requirements: (1) they are chosen to be similar to those of sensor channels used in the literature for comparative purposes, (2) their coverage from the UV to the NIR provides differential sensitivity for the atmospheric constituents and surface types of the Arctic atmosphere-surface, and (3) they exclude spectral regions of strong absorption by atmospheric trace gases to avoid misinterpretation of the observed behavior. Two exceptions to the latter are the spectral regions of the broadband O₃ Chappuis band (525–675 nm) and the narrow O₂ A-band (centered at 760 nm). The former, even if smoothed at 5-10 nm resolution, still contains information about the total column of ozone and the structure of the upper troposphere and lower stratosphere. Well-mixed gases, such as oxygen, provide valuable diagnostics about the depth of the atmospheric column, as seen from space. The A-band is used to assess the surface topography in a cloud-free atmosphere (van Diedenhoven et al., 2005) and altitude, geometrical and optical depth of clouds over dark (Roazanov and Kokhanovsky, 2004; Lelli et al., 2012, 2014) and bright (Schludt et al., 2013) surfaces.

2.1 Reflectance data at TOA

To detect changes on daily, monthly, seasonal, and decadal scales several measurements per day at an adequate spatial resolution must be made over several decades. The polar-orbiting spectrometer suite comprising GOME, SCIAMACHY, and GOME-2 (Tab. A2 for their specifications) make measurements of R_{λ}^{TOA} at the same solar zenith angle and at several times per day as a result of their swath widths. They are a suitable choice, given the length and coverage of their records and their high spectral resolution, for the creation of the R_{λ}^{TOA} time series. Description of GOME can be found in Burrows et al. (1999), while

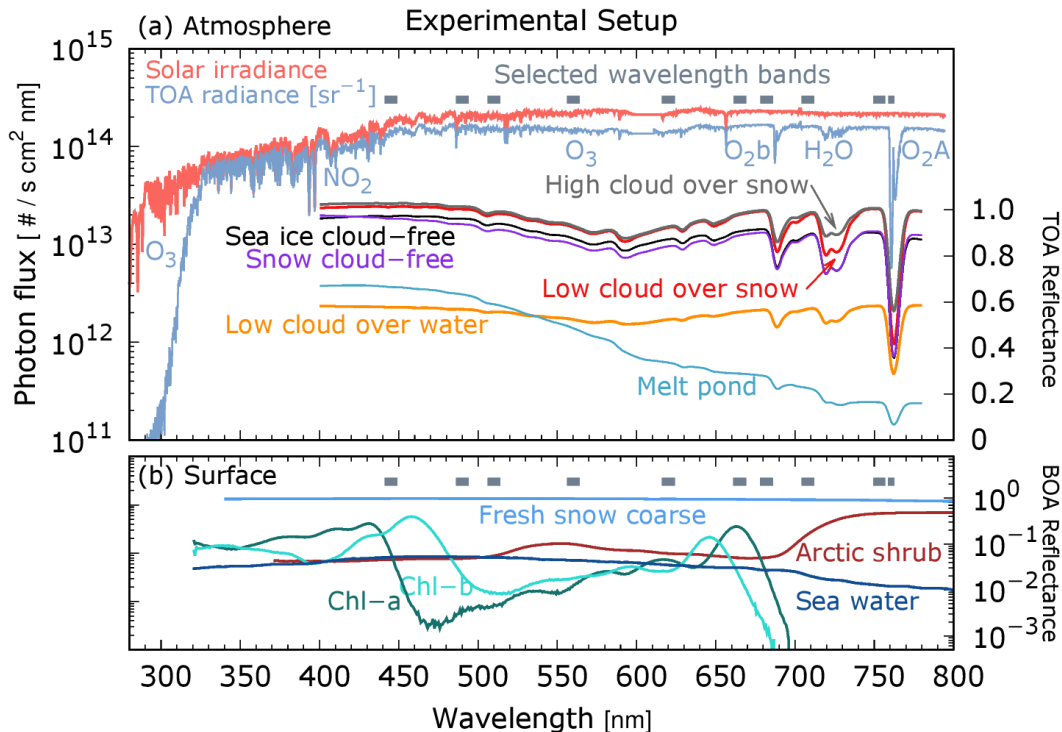


Figure 1. Plots of the solar irradiance, the radiance of a cloud (Earthshine), and reflectances at the top (TOA) and bottom (BOA) of the atmosphere as a function of wavelength from 280 nm to 800 nm. The cloud radiance was observed by GOME on May 15, 2001, over the Kara Sea (80.53°N, 75.99°E). Modeled R_{λ}^{TOA} (nadir, solar zenith 40°) displays a water cloud, placed at 3 km and optically dense 30, above sea water and snow, with cloud-free sea ice, snow, and melt pond spectrum. The lower panel shows the black sky hemispherical reflectance at the ground of relevant Arctic surface components. Chlorophyll absorption is taken from Clementson and Wojtasiewicz (2019) and plotted for a May 2016 concentration of 12 mg m⁻³ observed in the Bering Sea (Frey et al., 2018). Arctic shrub and coarse snow data are taken from the ECOSTRESS and ASTER spectral libraries (Meerdink et al., 2019; Baldrige et al., 2009). Melt pond and sea ice albedos are from Istomina et al. (2013).

SCIAMACHY and GOME-2 are respectively described in Burrows et al. (1995) and Munro et al. (2016). The detailed steps to harmonize R_{λ}^{TOA} measured by sensors of different technical specifications are given in the Appendix A.

125 While the measurement of solar radiation scattered back to the TOA by GOME, SCIAMACHY, or GOME-2 takes place only during daylight, radiation in the thermal infrared ($\lambda \gtrsim 4 \mu\text{m}$), required to record the thermal emission from the surface and the atmosphere, is not measured by these sensors. Because of the different sensors' swath widths, the R_{λ}^{TOA} measurements in the solar spectral range have a northern latitude boundary (or terminator). This boundary is illustrated by plotting the pan-Arctic annual cycle of R_{λ}^{TOA} in Fig. 2. At the three wavelengths 510, 560, and 760 nm, the seasonality shows that summer months have lower R_{λ}^{TOA} and higher otherwise. This darkening of the Arctic can also be seen by comparing the years at the beginning of the recording from 1996, with the most recent ones. However, this behavior occurs only between April and September. These

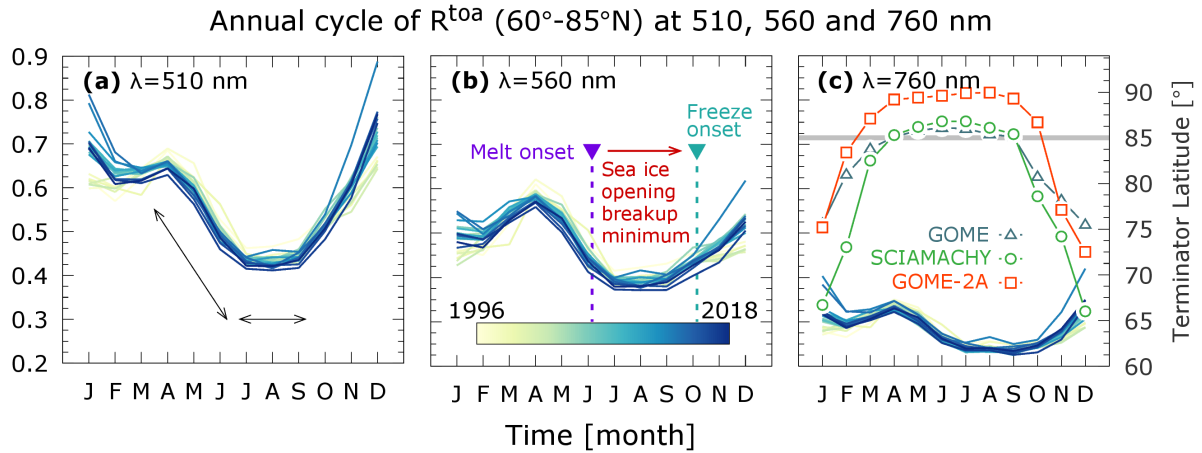


Figure 2. Annual cycle of spectral R^{TOA} at three wavelengths ($\lambda=510, 560, 760$ nm) for the full record from 1996 to 2018. All sets exhibit the demarcation between months of steep (Apr-May-Jun) and flat gradient of R^{TOA} (Jul-Aug-Sep). This shift leads by one month melt onset (6 Jun), followed by sea ice opening, breakup, minimum (16 Jul – Sep inclusive), and freeze onset (4 Oct) as observed with satellite brightness temperatures (Smith et al., 2020). On the rightmost panel the terminator location of the three sensors with the 85° N (grey line) common threshold used for monthly R^{TOA} aggregation.

130 are the months when the individual terminator of the three sensors reaches the latitude 85° N, this being the spatial threshold of common spatial coverage we set in the monthly average. As shown in Fig. 2, the other months (October to March inclusive) show that recent years are brighter (higher R_{λ}^{TOA}) than those at the beginning of the time series. This is because the individual terminators move further south (Fig. 2-c) and the coverage is considered insufficient for this to be studied further.

From Fig. 2 we identify two distinct behaviors of R_{λ}^{TOA} . The first is a period of steepest decrease, from April to June, and
 135 the second is a plateau of relatively flat R_{λ}^{TOA} , between July and September. The changes in surface reflectance between April and May are attributed to snow cover changes and those in June to sea ice changes (Smith et al., 2020). Over water, the timing of such transitions increasingly approaches the summer solstice, which is the day of strongest solar insolation, while it moves further away from it over land (Letterly et al., 2018). It is therefore reasonable to regard this day as a demarcation point between Arctic spring and summer.

140 In summary, we group April May June (AMJ) as Arctic spring and July August September (JAS) as Arctic summer. This distinction is explained by the sensors' measurement strategy and by the time-dependent physical processes leading to the transition from high-to-low Arctic reflectance in June to the minimum sea ice extent in September. We note that the definition of seasons is arbitrary and is determined by the breakpoints of the variable under consideration. In general, seasons can be astronomical, meteorological, or climatological. Ignoring the astronomical definition, the meteorological seasons are not suitable
 145 for our purposes because in May and June (respectively the last month of meteorological spring and the first of summer) multiple scattering between the surface and the atmosphere still prevails, thus coupling both radiatively. The definition of ad-hoc

Arctic seasons ensures that the computed trends describe only those changes of R_{λ}^{TOA} caused by distinct underlying processes, which in turn determine the breakpoints in the time series of R_{λ}^{TOA} shown in Fig. 2.

2.2 Cloud products

150 In our study, the R_{λ}^{TOA} data is complemented by a record of cloud properties and broadband fluxes at TOA and the surface (see Section 2.3). These are inferred from the afternoon orbit (PM) of AVHRR sensors onboard the POES missions. Despite the availability of the morning orbit (AM) AVHRR series, we found that only the AVHRR PM series fulfilled the calibration stability requirements which allows trend assessment to be made. Inspection of the time series of cloud properties and fluxes for the AM series shows that the drifts in local overpass time of the NOAA-12 platform before 2003 led to calibration offsets
155 and that the scan motor errors of the NOAA-15 platform led to data gaps (Cloud_CCI Working Group, 2020).

One good reason for choosing this AVHRR record is the number of studies using these data in the Arctic. Our choice is driven by the maturity of the AVHRR data set of measurements, its popularity, and by its successful use by the advanced, most recent, retrieval algorithm exploiting it. This AVHRR data set is in its 3rd reprocessing and the algorithm used to generate it has 15 years of development starting with ATSR-2 onboard ERS-2. While improvements and validation have been documented
160 in traceable documents (<https://climate.esa.int/en/projects/cloud/key-documents/>), the cloud and flux records are presented by Stengel et al. (2020, and references therein). Recently, Vinjamuri et al. (2023) compared CFC, COT, LWP, and CTH of this record with colocated measurements from four high-latitude stations across the Arctic and found no scale biases for the large majority of satellite-derived cloud products, except for the site located at Summit Greenland (72.59°N, 38.42°W).

Some features, that distinguish this data record from older AVHRR records, are as follows: **i(1)** the channels in the solar spectral range have been cross-calibrated with SCIAMACHY channels. SCIAMACHY is recognized for its accurate radiometric and spectral calibration. Because the part of our study dealing with R_{λ}^{TOA} is conceived in a way that the record is radiometrically coherent with SCIAMACHY (see App. A), this intra-band correction relates reflectance changes at visible wavelengths detected by SCIAMACHY to those by AVHRR, ingested in the cloud retrieval algorithm, which calculates τ and cloud albedo; **ii(2)** the cloud mask uses a neural network, trained on CALIOP data to take into account the extent of the underlying bright
170 Arctic surface; **iii(3)** CTH has been calibrated using CALIOP profiles to account for the penetration depth of radiation inside a cloud. This is needed because the retrievals of CTH from all infrared thermal channels are influenced by this effect and yield a radiative cloud top height, lower than the physical cloud top (Platnick, 2000; Rozanov and Kokhanovsky, 2005)

In this AVHRR satellite record, the cloud phase can be only liquid or ice. The input signal for AVHRR comes from the reflectances measured at 0.6, 0.8, and 3.7 μm . Given the different complex refractive indices of the water and ice phase
175 across the SWIR wavelengths, the method is effective in separating the two phases. It is worth noting that Arctic cloud tops are predominantly in the liquid phase, whereas the mixed phase occurs in the middle of the clouds. This is the outcome of four airborne measurement campaigns, totaling 18 flights, reported in Mioche et al. (2017). Nonetheless, the mixed-phase is not identified, despite its all-season occurrence (Morrison et al., 2012) and role in the Arctic climate (Tan and Storelmo, 2019). This is because the data set is a neural network trained on the CALIOP cloud phase, which does not natively provide
180 information on the mixed-phase in clouds.

The application of the cloud algorithm to MODIS measurements, which take place in the same wavelengths as the AVHRR channels, has shown that the retrieval scheme is well aligned with the reference standards of CloudSat and CALIPSO data for CFC, CTH, τ , and liquid thermodynamic phase. While agreeing on the sorting of cloud tops between water and ice phases, higher variability for IWP values lower than 50 g m^{-2} is found as compared to that in the reference DARDAR cloud data products (Delanoë and Hogan, 2010), but IWP histograms across the full range do not substantially differ (Stengel et al., 2015). Version 3 has improved version 2 in terms of precision, accuracy, and stability (Stengel et al., 2017). Even more relevant to our purpose is the scheme adopted to calculate broadband fluxes with the cloud properties described above.

2.3 Broadband flux products

The broadband fluxes in the solar and IR spectral regions are computed by solving the radiative transfer combining the two-stream approximation by Stephens et al. (2001) for the bulk bidirectional reflectance, transmission, and source terms within a plane-parallel atmospheric slab and the spectral band model by Fu and Liou (1992) for gaseous absorption. Six bands in the SW and 12 bands in the LW are calculated sequentially ingesting local properties of clouds retrieved with a Bayesian technique (Sus et al., 2018; McGarragh et al., 2018), which provides estimates of the individual uncertainty at pixel-level.

Specifically, effective radius and cloud optical thickness are the primary inputs for flux calculations together with solar zenith angle and ancillary data from MODIS climatologies of visible and near-infrared surface albedo, linearly interpolated to each spectral band center. Local vertical atmospheric profiles from ERA-interim account for the p-T variations, while a constant aerosol optical depth of 0.05 and concentrations of well-mixed gases are assumed, the latter being linearly interpolated for their time-dependent increase. The combination of the above factors yields an accuracy of $\pm 3 \text{ W m}^{-2}$ in outgoing LW radiation (OLR) when compared with observations by the broadband radiometer GERB onboard the MSG-2 platform (Christensen et al., 2016). This value is in line with the radiometric accuracy of GERB, which is 1% for clear-sky fluxes at TOA (Clerbaux et al., 2009) and with biases of $4\text{-}5 \text{ W m}^{-2}$ against CERES observations, when a similar algorithm for the derivation of broadband fluxes is applied to CloudSat, CALIPSO and MODIS measurements (Kay and L'Ecuyer, 2013). Specifically to the Arctic and for latitudes north of 66°N , winter OLR from AVHRR has been compared to the multi-model CMIP6 average (Linke et al., 2023). Based on their data we calculate an all-sky average bias of $\pm 3.59 \text{ W m}^{-2}$.

The physical boundaries of clouds are additionally required to correctly compute scattering and absorption along the vertical. From the retrieved CTH and effective radius, the bottom cloud layer is calculated assuming a subadiabatic variation of cloud water path, separately for the liquid and ice phases. While this approach is appropriate for the shallow case (Merk et al., 2016), the thickness of deeper clouds is computed by combining a variable increase of water content matching within-cloud temperature profiles. The nominal accuracy limit, in this case, is reached at temperatures less than 217 K (-56°C), which exceeds the yearly climatological range for the Arctic (-25°C February, $+2.5^\circ\text{C}$ July, Hersbach et al. (2020)), and AVHRR-derived cloud bottom height is found to be in good agreement within $\pm 369 \text{ m}$ against ceilometer observations (Meerkötter and Zinner, 2007).

Radiative transfer is solved twice. First, all-sky fluxes are calculated with retrieved cloud properties and then the clear-sky fluxes, assuming that the pixel is devoid of clouds. This approach is in contrast to that employed with the MODIS cloud record

215 and the CERES-EBAF radiation measurements at TOA, by which the interpolation of the measured clear-sky pixels serves
as gap filling of all-sky pixels for the monthly aggregation of fluxes at BOA (Kato et al., 2013). AVHRR-derived fluxes at
BOA have been validated by comparison with BSRN stations and the CERES-EBAF product (Stengel et al., 2020; Cloud_CCI
Working Group, 2020).

Given the standard notation (*all* = all-sky, *clr* = clear-sky, ⁺ = upwelling and ⁻ = downwelling fluxes), average compar-
220 isons with independent data show a good agreement for all downward fluxes and LW⁺. The average long-term relative bias of
AVHRR-derived fluxes against CERES ranges from +2.9% for SW_{all}⁺ to -2.7% for LW_{clr}⁺. Validation with BSRN measure-
ments in the period 2003–2016 shows that the bias (correlation) for SW^{+/-} in range [-6.16,+1.99] W m⁻² (0.93/0.99) and
[-3.02,+7.60] W m⁻² (0.99/0.99) for LW^{+/-}. The average AVHRR-based estimates tend to be biased high of ≈ 20 Wm⁻²
for SW⁺ < 100 W m⁻² while the opposite holds for SW⁺ > 250 W m⁻² with an average underestimation up to -50 Wm⁻².
225 In both ranges, the average relative bias amounts to $\approx 20\%$ (Stengel et al., 2020). This bias of higher spread can be due to the
surface heterogeneity around the validation site, which influences the comparison of SW⁺ because of the difference in spatial
scales between the satellite footprint and the BSRN effective point measurement.

The surface treatment in the satellite record is also a potential source of error because SW⁺ is equal to SW⁻ times the
surface albedo. While the actual sea ice extent is taken from measurements in the microwave (Henderson et al., 2013) a fixed
230 value of spectral surface albedo is assumed throughout the record. The albedo of snow- and ice-covered surfaces is set to
0.958 at wavelength 630 nm, 0.868 (910 nm), 0.0364 (1.6 μ m), and 0.0 (3.74 μ m). The albedo is additionally area-weighted
for fractional sea ice or snow cover scenes (Sus et al., 2018). Consequently, intra-annual variability and long-term changes
in surface reflectivity are not accounted for. This would lead to an underestimate of actual surface albedos in those months
having fresh snow and ice (spring) and overestimating during months of melting surface upper layers (summer). In the case of
235 underestimation of surface albedo (or sea ice extent), we expect an overestimation of CRF and thus warming by the clouds and
vice-versa.

We do not expect differences in BOA fluxes as a function of solar zenith angles because the instantaneous fluxes are corrected
for the diurnal cycle of solar illumination by adjusting the surface albedo and the atmospheric path lengths. The LW fluxes
have been also corrected by using a cosine function derived from measurements of the geostationary SEVIRI sensor. The final
240 aggregation is a good approximation to a true 24h average (Stengel et al., 2020), needed to determine the true climatological
mean of SW and LW fluxes and thus CRF. Consequently, also the seasonal averages (i.e. AMJ and JAS) are not expected to
exhibit variations induced by solar zenith angle and directionality of surface reflection.

Misclassified cloudy scenes especially over dynamically bright surfaces (i.e. marginal and fractional sea ice zones) impact
the calculation of broadband fluxes. This has been already noted in the first studies comparing ERBE and AVHRR cloud
245 radiative forcing derived with different scene classification schemes (Li and Leighton, 1991). The conversion of directional
radiance, measured at TOA, to irradiance, requires the knowledge of the angular light redistribution function of the surface and
atmospheric components. If this conversion is not accurately performed, the irradiance and SW_{clr}^{+/-} above reflecting surfaces
cannot optimally be calculated. Using the same data as that of our study, a low sensitivity of trends in cloud radiative forcing
to the biases in cloud properties over surfaces of changing brightness have been found (App. d in Philipp et al., 2020, p. 7499).

250 Specifically, Philipp et al. (2020) assessed possible uncertainties in CRF trends by analyzing CFC biases as a function of sea ice concentrations (SIC) for the seasons defined in section 2.1. For season AMJ, the bias is systematically flat from SIC 0% to SIC 100%. Given that our trend model is based on anomalies and not absolute values (see App. B), any additive component of the bias cancels out and the resulting trend is not affected by it. For season JAS, the bias is not flat and a multiplicative bias in CFC can propagate to CRF via SIC changes. However, the SIC bins of Philipp et al. (2020, Fig. A1) can also be regarded as
255 the SIC variance over one location in time, therefore this effect is relevant only for those locations with a large dynamic in SIC (e.g. the marginal sea ice zone). If the SIC anomalies over one location in the marginal sea ice zone are not equally distributed about zero, irrespective of any trend, but progressively change over time, their distribution is not Gaussian but skewed. This leads to the addition of the time-dependent component in the CRF trend via CFC. Looking at Philipp et al. (2020, Fig. 8) the SIC anomalies for the marginal sea ice zone of the enlarged Chukchi Sea are normally distributed. Upon regression, any
260 possible residual of a non-normal SIC distribution, reflected in CFC and propagating into CRF, would still be captured by the trend model (see App. B) which accounts for the length of the effective independent sample in the record.

3 Results

3.1 TOA spectral reflectance

The R_{λ}^{TOA} time series, measured by GOME, SCIAMACHY, and GOME-2A over the Arctic region (60–85°N), anomalies,
265 trends, and significance were harmonized (for more details see App. A and App. B). They are shown for wavelengths 510, 560, and 620 nm in Figs. 3 and 4. The R_{λ}^{TOA} retrieved from the sensors MERIS (on Envisat) and GOME-2B (on MetOp-B) confirm that the correction scheme is successful for the spring (AMJ) and summer (JAS) months. The discrepancy between MERIS and SCIAMACHY in the fall and winter months, as long as sunlight is available, can be tracked to the different swath widths of the respective sensors. MERIS has a swath of 1150 km whereas SCIAMACHY has a swath of 1000 km. This implies that with the
270 onset of the polar night at high latitudes, the western part of the scan of both sensors (which are polar orbiters in descending node) will include increasingly dark Arctic areas, the MERIS scan being more northward leaning. Therefore, any averages of MERIS measurements will include more dark scenes than those in an average calculated from SCIAMACHY measurements. For this reason, the MERIS reflectances in the fall and winter months are generally lower than those by SCIAMACHY.

A consistent and consolidated data set results from the measurements of the three instruments. Seasonality is the dominant
275 feature of Fig. 3. Maximum R_{λ}^{TOA} occurs in early AMJ when the Polar day results in the Arctic being fully illuminated and the ice extent is close to its maximum. Analogously, minimum R_{λ}^{TOA} occurs from August to September when the days are shortening and sea ice coverage is at its minimum. The observed seasonal cycle of R_{λ}^{TOA} agrees with that calculated by models as do the observations of sea ice extent over the Arctic (Holland et al., 2008). This provides evidence to confirm that one dominant parameter in R_{λ}^{TOA} variability is surface reflectance (Sledd and L'Ecuyer, 2019).

280 Figure 3 shows that the standard deviation of R_{λ}^{TOA} for GOME is smaller than the other sensors. GOME has a considerably coarser pixel size than the follow-on sensors (see Tab. A2). This leads to different mean R_{λ}^{TOA} and standard deviations because the integration time of acquiring onboard electronics for a coarser pixel is longer than for a finer pixel. This averages out

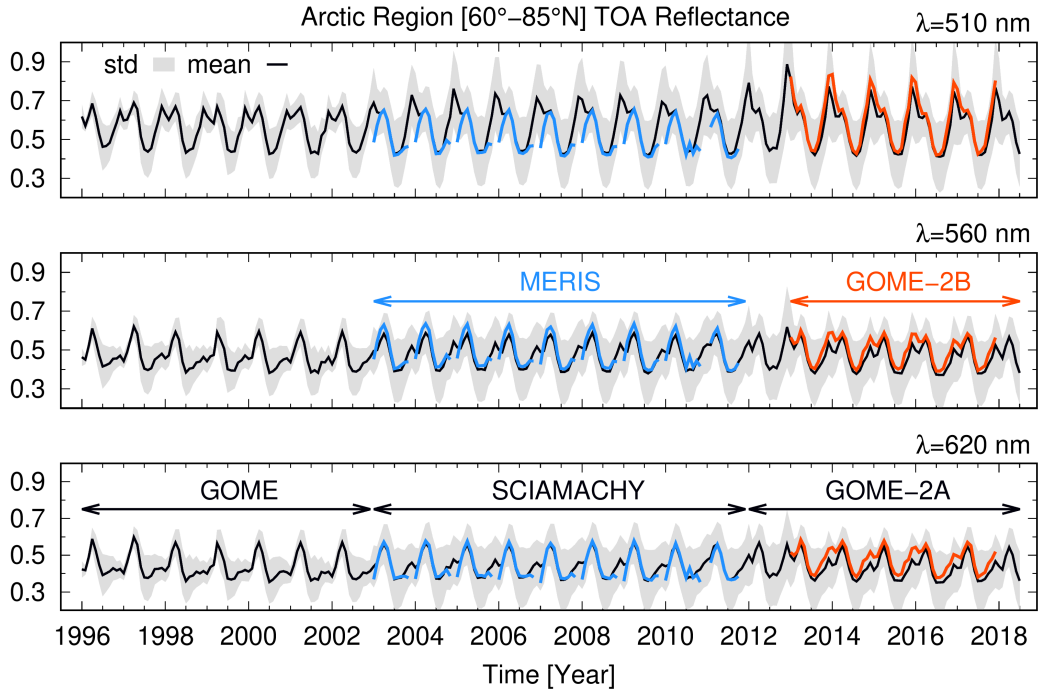


Figure 3. Time series of mean absolute R^{TOA} (red lines) and standard deviation (shaded grey) for the three wavelength bands 510, 560, and 620 nm derived from measurements of GOME, SCIAMACHY, and GOME-2A between 60° - 85°N . The companion sensors MERIS on board Envisat (blue) and GOME-2B onboard MetOp-B (green) have been superimposed for comparison.

sub-pixel heterogeneity differently. We account for this effect by assessing R_λ^{TOA} trends not from mean values but from anomalies (see App. B) instead. The anomalies are customarily normalized with the standard deviation as a common technique for the analysis of records which might be heterogenous in scale, without changing the underlying sample distribution because standardization of anomalies is a linear transformation (Wilks, 2020).

A negligible small and statistically insignificant downward trend of R_λ^{TOA} for the three wavelengths in the solar range is seen in the anomalies of Fig. 4. The anomaly of R_λ^{TOA} is the difference between the value of R_λ^{TOA} and the climatological average value of R_λ^{TOA} at the given time of the year t (see App. B). In a warming Arctic, a substantial decrease in reflectance would have been expected due to sea ice loss.

In Pistone et al. (2014), a downward trend of all-sky albedo across the Arctic is reported. This is not compensated by an opposite trend in albedo as a result of increased cloudiness, which thus levels the recent pan-Arctic reflectance trend. However, their analysis is limited to oceanic regions (for open and ice-covered regions) and additional uncertainties are caused by the conversion from clear-sky to all-sky albedo at the beginning of their record. As the clear-sky signal is derived from the sea ice record with sensors for which the atmosphere is almost entirely transparent, the all-sky albedo is computed with a post-hoc method adding the atmospheric part and is not the outcome of direct satellite measurements.

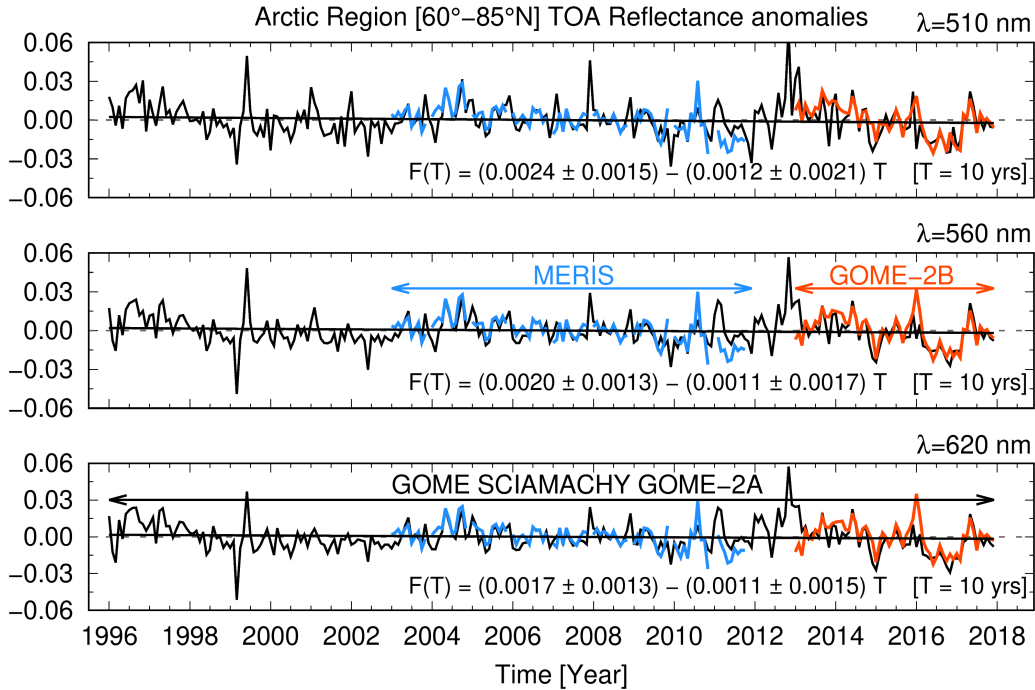


Figure 4. Time series of anomalies of R^{TOA} at $\lambda = 510, 560$ and 620 nm derived from the values of Fig. 3. The values are computed with a seasonal cycle on a sensor basis (see Eq. B1). The linear trend $F(T)$ is shown as a black line with the bootstrapped intervals at 95% confidence.

Moreover, Morrison et al. (2019) state that no significant relationship between CFC patterns and sea ice loss is observed during summer but some are identified in autumn months (Morrison et al., 2018). Such changes are not observable in the pan-Arctic R^{TOA} anomalies. Rather, the reduction in reflectance is small and not attributable to a specific season. As a consequence, we need to ask whether the loss of reflectance associated with sea ice reduction is compensated by increasing CFC or brighter clouds, at the pan-Arctic and regional scale as well, and which processes lead to the small pan-Arctic R^{TOA} trends.

To answer these questions in the following, we show the Arctic sea ice concentration (SIC) in 1996 and 2017 for AMJ and JAS in Fig. 5 and the R_{λ}^{TOA} trends for the wavelengths 510, 560, and 620 nm in Fig. 6. The mean seasonal sea ice extent (SIE) at 15% and 75% SIC is respectively coded in orange and red contours. While SIE is usually identified by a SIC threshold of 15%, a value of 75% better represents the geographical contours identified using R_{λ}^{TOA} . Moreover, Philipp et al. (2020) identify the 75% SIE threshold as the demarcation between two distinct regimes of accuracy in broadband fluxes, which depends on the misclassification of satellite-derived CFC above bright surfaces.

Similarly, Fig. 7 shows trends for the analyzed wavelengths for the 12 Arctic regions, that are defined using the geographical subdivision proposed by Serreze and Barry (2014) and Wang and Key (2005a) (see Fig. B1). Trends for AMJ are shown in green and the JAS trends for selected spectral bands are shown in blue. The red symbols show the absolute averages of the R_{λ}^{TOA} values at the beginning of the record for the respective seasons.

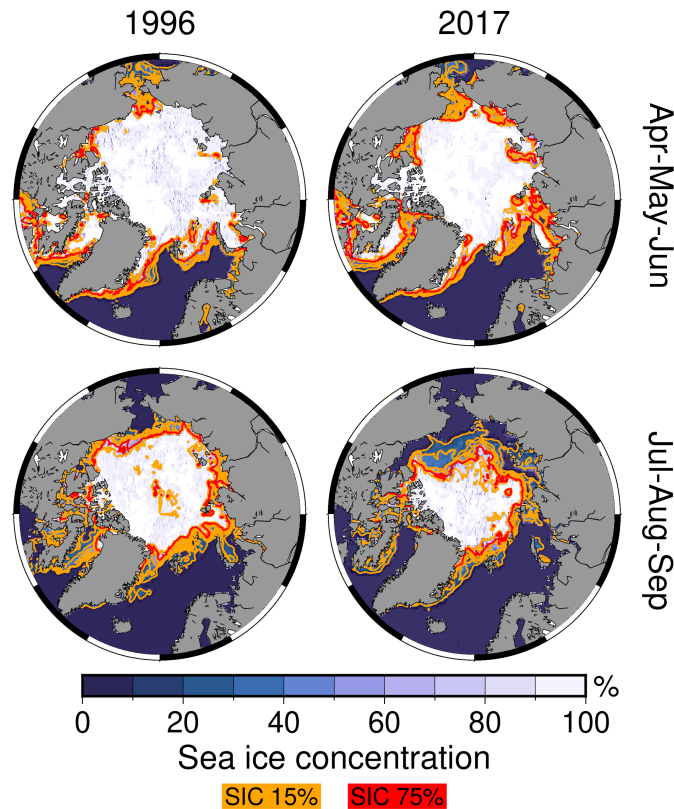


Figure 5. Sea ice concentration (SIC) for Arctic spring (top row) and Arctic summer (bottom row) for 1996 and 2017. Data from Walsh et al. (2019). The orange and red contours indicate SIC of 15% and 75%.

There are marked regional differences. Those that are statistically significant (at 95% confidence level) are shown with red crosses. For AMJ a significant negative trend over the Barents Sea is balanced by a positive R_{λ}^{TOA} trend at all three wavelength bands over Greenland, the Canadian Archipelago, and Western Arctic Seas, such that the pan-Arctic trend remains almost unchanged. In JAS, the negative trend shifts towards areas of the Kara, Laptev, and Chukchi Seas. These are Arctic areas having open oceans and are experiencing significant sea ice loss during the period of study (Fig. 5).

In general, the trends are negative and statistically significant in both seasons where sea ice retreats, such as in AMJ for the Barents Sea (Onarheim et al., 2018) and the perennial sea ice zone around the North Pole. For the remaining areas that cannot be directly explained by the difference in sea ice extent, we assume patchy residual sea ice concentrations below 50% closer to Eurasia and the occurrence of melt ponds on the sea ice pack. In both cases, open ocean areas and freshwater lower the albedo of the scene sensed by the satellites, as can be seen comparing the 15% and 75% SIC contours in Fig. 5. The areas that do not show statistical significance are generally above the perennial sea ice during AMJ. These months are characterized by a small standard deviation and by a non-existent SIC trend (not shown).

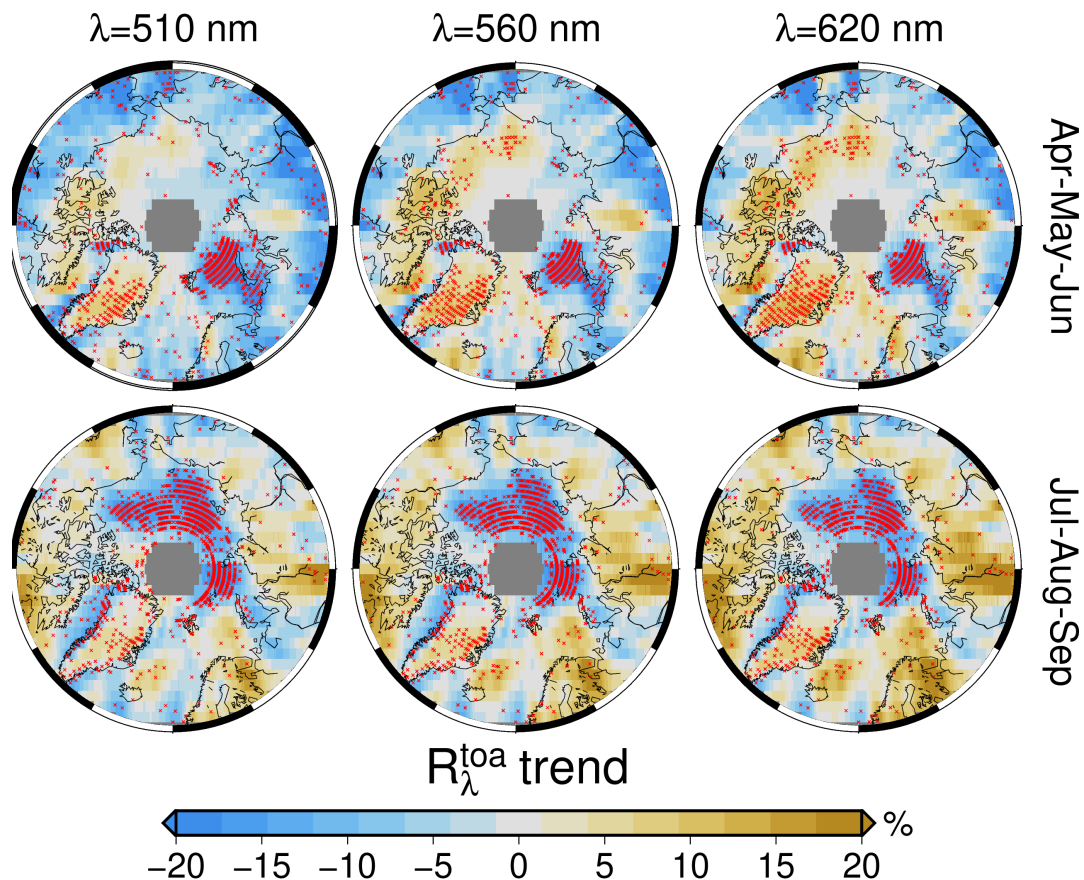


Figure 6. Seasonal R_{λ}^{TOA} trends for 1996–2018 at selected λ for Arctic spring (AMJ, top) and summer (JAS, bottom). The values are relative to the leading season of the record. Stippling in red indicates significant trends at 95% confidence. Sea ice extent (Walsh et al., 2019) for 1996 is outlined in green and for 2017 in purple.

The spectral dependence of the trends in Fig. 6 differs as a function of the sign. The negative trends are spectrally neutral in both magnitude and statistical significance. On the contrary, the areas of positive trends like the belt from the Canadian Archipelago, Beaufort, and Chukchi Seas in AMJ and, to a smaller extent, Greenland in both seasons, show an increase in values and spatial statistical significance from 510 to 620 nm.

While we cannot completely rule out the broadband influence of ozone trends (see App. D) on reflectances, the spectral patterns are coherent with an increase in some cloud properties conducive to snowfall and a brighter surface. Despite its proximity to the Canadian Archipelago, Baffin Bay has changes in R_{λ}^{TOA} trends that would more closely match the Eastern Arctic Seas region. Over Hudson Bay, the R_{λ}^{TOA} trends show unusual patterns. They are largely positive in JAS and relatively strongly negative in AMJ.

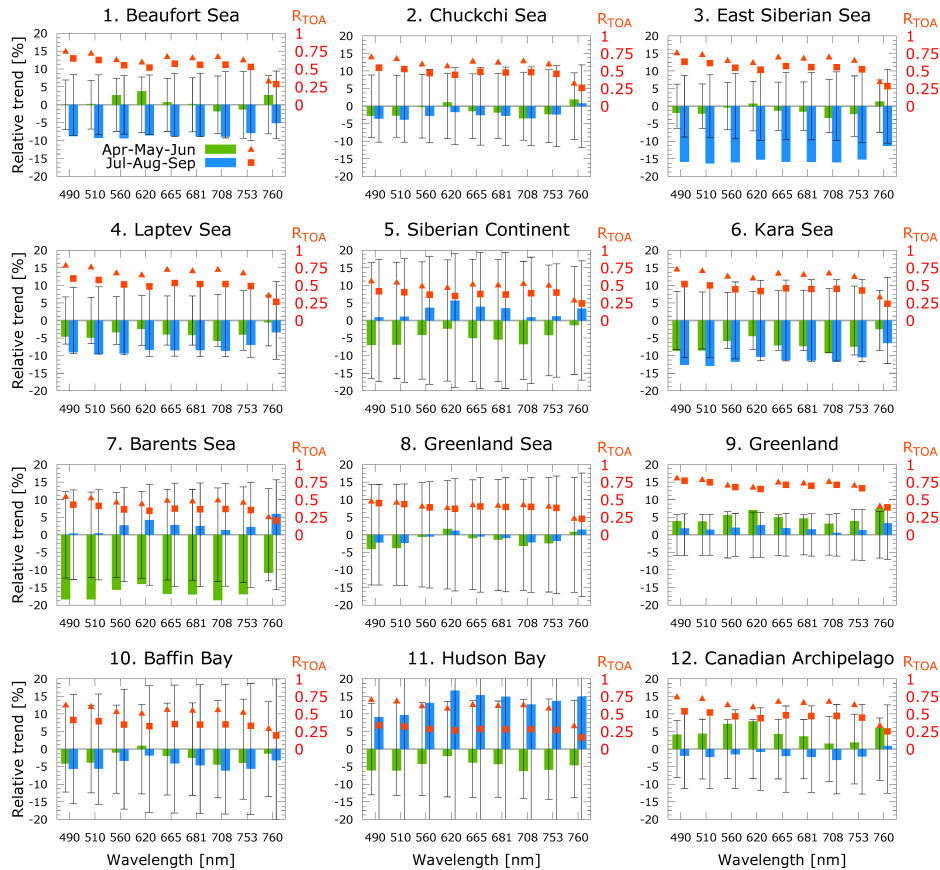


Figure 7. R_{λ}^{TOA} trends for the twelve regions defined in Fig. B1 for spring (AMJ, green bars) and summer (JAS, blue) months. The black bars represent the $2\text{-}\sigma$ standard deviation of the trend. The secondary y-axis displays the absolute mean values of reflectance for each Arctic sector. The trend values are relative to the respective lead season and express the total change throughout the record.

Although not of the same magnitude, almost all regions show a reflectance change at 760 nm. This wavelength is the only channel with a very strong gaseous absorption and is not in the broadband continuum like all other channels. 760 nm bears more information on light scattering aloft than at the surface, because of the strong columnar absorption of atmospheric oxygen largely extinguishing photons before they impinge on the ground. Oxygen absorption is modulated primarily by CTH and, to a lesser extent, by CFC and optical properties such as CA and τ . In this context, where a positive trend value of R_{λ}^{TOA} at 760 nm is observed, greater than the other channels, we deduce a clear change in the occurrence of clouds or one of their physical or scattering properties. This is the case for Greenland during AMJ and JAS, for the Canadian Archipelago and the Barents, Chukchi, and East Siberian Seas only in AMJ, for the Barents Sea the Hudson Bay, the Atlantic corridor and the Siberian continent only in JAS. Knowing that R^{TOA} is influenced by scattering and absorption in the atmosphere (Sledd and L'Ecuyer, 2019; Donohoe and Battisti, 2011) and that the atmospheric R^{TOA} can be additionally partitioned into the cloud,

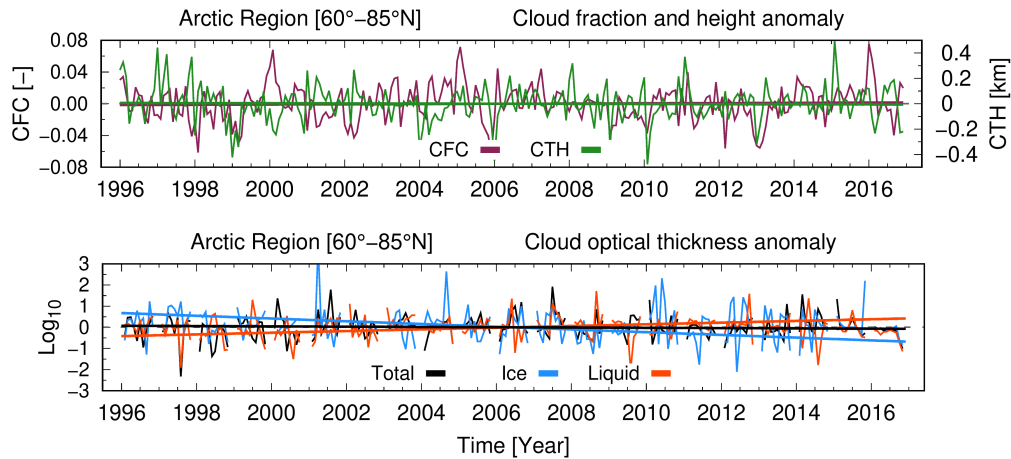


Figure 8. Pan-Arctic anomalies and linear trends of cloud fractional cover (CFC), top height (CTH), optical thickness (COT, τ) of all, liquid, and ice clouds.

aerosol, and gas contributions, this prompted us to examine changes in those cloud properties which directly influence the spectral R^{TOA} trends.

345 3.2 Cloud properties

The globally validated and consolidated cloud record (Stengel et al., 2020) has first been analyzed across the Arctic (60° – 85°N). The top panel of Fig. 8 shows the time series of CFC and CTH. Both parameters show small, statistically insignificant, trends over the last 20 years. CFC has slightly increased by about 0.001 ($+0.14\%$) decade^{-1} while cloud tops are lower by ≈ 6 m (-0.14%) decade^{-1} . This finding excludes an explanation that reflectance loss at visible wavelengths, due to shrinking sea ice extent, is offset by more CFC or that the loss of CFC reveals more bright underlying surfaces. However, the bottom plot of Fig. 8 shows that the temporal trend over two decades for τ of liquid clouds has the opposite sign of that of ice clouds. τ of liquid clouds increases, statistically significantly, by about 0.4 ($+2.85\%$) decade^{-1} while the ice-cloud τ decreases by 0.65 (-6.15%) decade^{-1} in the same period. Altogether, the total τ of clouds has not changed, meaning that clouds have experienced a net shift from the ice to the liquid phase without changing their total opacity. The mean values for 1996 and trends of the above cloud properties are given in Tab. 1.

Similar to the approach we used for the R_λ^{TOA} trends regionally and qualitatively, we map cloud parameters in the bottom panel of Fig. 9, adding also the albedo of clouds at $\lambda = 600$ nm. CFC trends are regionally partitioned and are seen to increase in the range of 5–20% where the greatest sea ice losses are observed. This occurs during AMJ and less extensively in JAS. Examples of this behavior are found in the Barents, the Kara, and Laptev Seas. On the contrary, large areas of a statistically significant decrease in the range of 2.5–10% are homogeneously observed across land masses circling the inner polar belt. This includes Greenland and the Atlantic corridor, confirming past results (Hofer et al., 2017). More pronounced trends of the different cloud parameters, irrespective of their sign, occur in AMJ rather than in JAS. Hudson Bay is one of the few

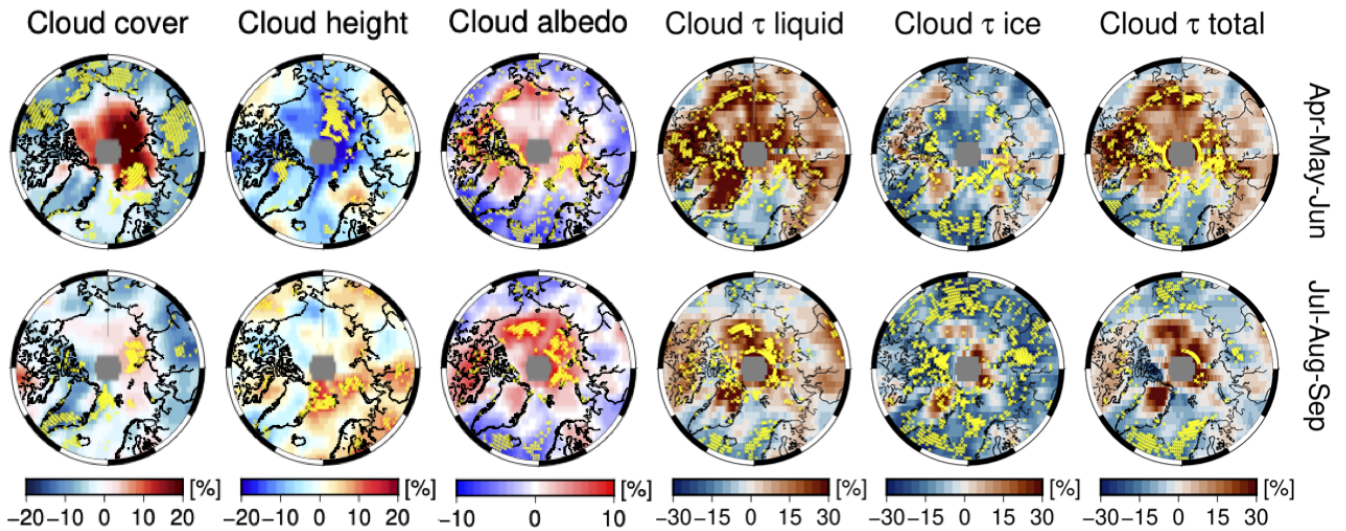


Figure 9. For cloud cover (CFC), height (CTH), cloud albedo (CA) at 600 nm, optical thickness (COT, τ) of all, liquid and ice clouds, the panels show their seasonal breakdown. The trend values in % are relative to the property value at the start year (1996) in the record. Stippling in yellow indicates statistical significance at 95% confidence.

Table 1. Pan-Arctic mean values in 1996, trend intercept, slope and bootstrapped 1- σ (given for 10 years time interval) for cloud fractional cover, top height and optical thickness τ of Fig. 8.

Cloud parameter	Mean 1996	Intercept	Slope
Fractional cover	0.695	-0.002 ± 0.003	$+0.001 \pm 0.007$
Top height [km]	4.395	$+0.006 \pm 0.022$	-0.006 ± 0.043
τ Total	12.554	$+0.070 \pm 0.889$	-0.067 ± 0.013
τ Liquid	14.056	-0.415 ± 0.177	$+0.398 \pm 0.348$
τ Ice	10.563	$+0.673 \pm 0.102$	$+0.645 \pm 0.201$

regions experiencing a seasonal trend reversal. The AMJ period is characterized by less cloudiness (-5%), whereas the JAS period exhibits an increase of the order of almost 10% over the last two decades. The resemblance to the trend reversal of all R^{TOA} channels (Fig. 7) indicates that CFC changes primarily modulate R_{λ}^{TOA} over Hudson Bay. This is inferred from the absence of a change in trend sign for those cloud parameters that influence the reflectance in the solar spectrum, such as τ of liquid water and ice clouds in Fig. 9.

CTH decreases, especially where statistically significant trends are observed, during AMJ across almost all sectors of permanent and marginal sea ice (Beaufort, Chukchi, East Siberian, Laptev, Kara Seas) and over Baffin Bay. In the last two decades, CTH in these regions has decreased by 10% on average. In JAS, however, CTH increases significantly from the Fram strait,

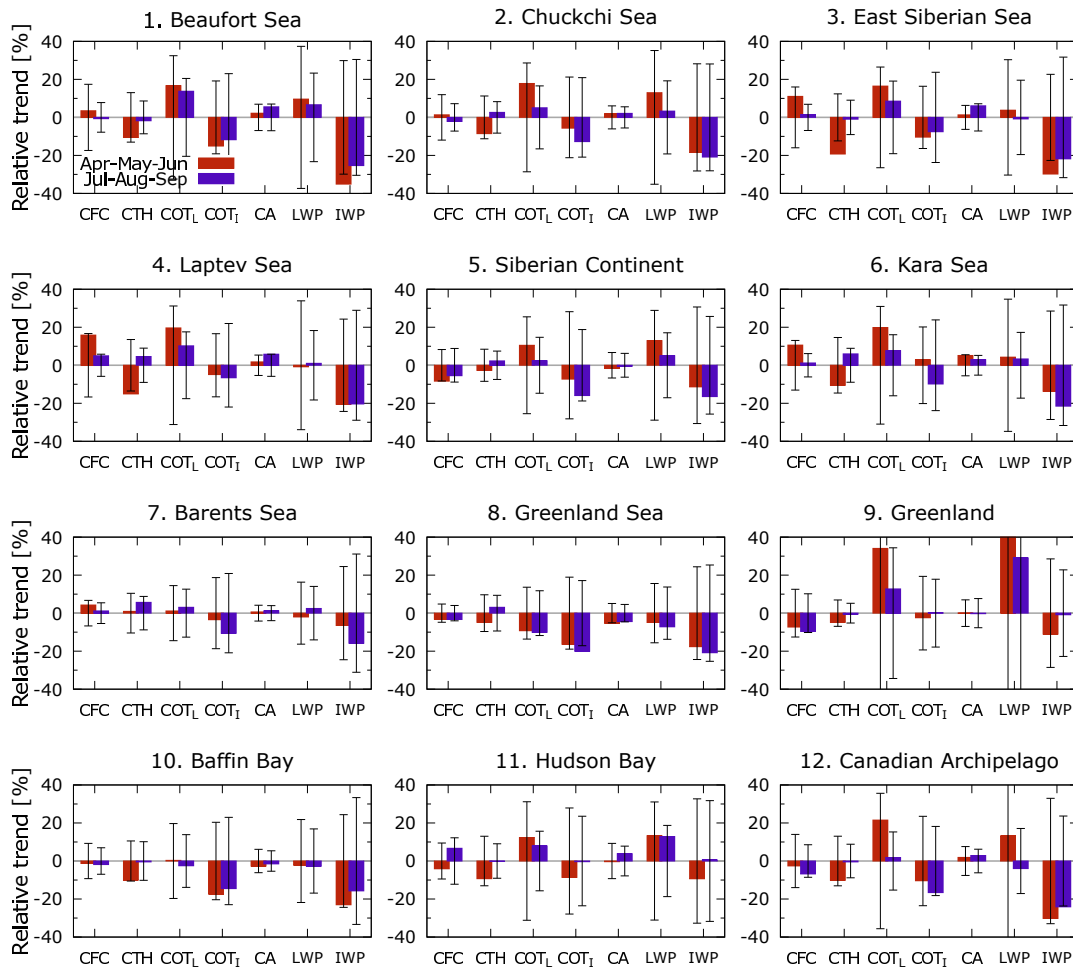


Figure 10. Trends (and $2\text{-}\sigma$ standard deviation) of cloud fractional cover (CFC), top height (CTH), the optical thickness of liquid (COT_L) and ice phase (COT_I), albedo (CA), liquid and ice water path (LWP and IWP) for the twelve sectors defined in Fig. B1 for spring (April - May - June, red bars) and summer (July - August - September, purple) months. The y-axis displays the change relative to the leading season in 1996 and expresses the total change throughout the full record.

throughout the Barents and Laptev Seas poleward, and western Siberia. This is coupled with a slightly negative trend for Greenland and the surrounding waters, the southern Baffin Bay (the Davis Strait), Beaufort, and the East Siberian Seas.

Total τ is split into liquid and solid cloud phases. The geographic distribution of the trends in Fig. 9 provides insight into which areas are responsible for the positive pan-Arctic trend in τ of liquid clouds (τ -liquid) and the negative trend for ice clouds (τ -ice). τ -liquid increases across the whole Arctic in AMJ except over the Atlantic sector and the southern part of Baffin Bay. The positive trend is maintained over northern Greenland, the Canadian Archipelago, around the North Pole, and part of the Eurasian continent also during JAS. A positive trend of τ -liquid is correlated with a trend of opposite sign for τ -ice: this holds for all regions of permanent and marginal sea ice, the Canadian Archipelago, and the Hudson Bay. Greenland, Baffin

Bay, and the Atlantic sector show a different behavior: there is a 34% increase in τ -liquid during AMJ and a 22% increase in
 380 JAS. Notwithstanding the increase over certain areas (e.g. north Greenland), mean τ -ice over the Arctic regions remains nearly
 unchanged in different seasons. The liquid phase of clouds does not increase across the Fram Strait, whereas the ice phase
 decreases by roughly 20% in both AMJ and JAS periods. Finally, the Atlantic sector (Greenland and the Norwegian Seas)
 shows decreases in the τ for both the liquid and solid cloud phases during AMJ and JAS.

The polar plots of seasonal trends in cloud albedo (CA) in Fig. 9 show that the magnitude of the positive trends in JAS
 385 is larger than those of AMJ but the spatial extent of the CA trend values are similar in both seasons. To a certain extent,
 the CA trends are geographically correlated with those of CFC and τ -liquid. Individual regions are grouped similarly to the
 R_{λ}^{TOA} polar plots: comparable distribution of CA are found over the most eastern and most western Arctic Seas (Beaufort
 and Chukchi, East Siberian, Laptev, and Kara Seas). Positive trends are almost invariably distributed over water masses, the
 Canadian Archipelago, and the northern part of Greenland, irrespective of the season. In contrast, clouds become less reflective
 390 at lower latitudes, southern Greenland, and the Atlantic sector. Over the Siberian land masses, this is not observed, and CA
 changes in the region are attributed to a competition between changes in CFC and τ -liquid. The loss of albedo due to cloud
 dissipation is compensated by the increment in albedo through increased τ -liquid.

Figure 10 shows the trends and the standard error (i.e. $2\text{-}\sigma$ standard deviation) of five cloud properties (CFC, CTH, τ of liquid
 and ice phase, CA) together with the trend of liquid (LWP) and ice water path (IWP), from the same cloud record (Stengel
 395 et al., 2020). Changes in R_{λ}^{TOA} depend in the first place on changes in cloudiness and τ (irrespective of the phase), which in
 turn is a function of LWP, droplet/crystal effective radius (r_{eff}) and air density ρ (i.e. $\tau = 3/2 \times \text{LWP} / \rho r_{\text{eff}}$). The sign of LWP
 and IWP trends confirm the τ trends. We infer that τ -liquid has increased as a result of the positive change of LWP.

3.3 Cloud radiative forcing

We compute the net radiative forcing derived only from clouds at the surface, or at the bottom-of-atmosphere (BOA), CRF^{boa} ,
 400 from the differences between the downward and upward fluxes of SW and LW for all-sky and clear-sky conditions as follows

$$\begin{aligned} \text{CRF}^{\text{boa}} = & (\text{SW}_{dn} - \text{SW}_{up} + \text{LW}_{dn} - \text{LW}_{up})_{\text{all-sky}}^{\text{boa}} \\ & - (\text{SW}_{dn} - \text{SW}_{up} + \text{LW}_{dn} - \text{LW}_{up})_{\text{clear-sky}}^{\text{boa}}. \end{aligned} \quad (2)$$

The multi-year mean and trends of SW^{boa} , LW^{boa} and total CRF^{boa} for AMJ and JAS are plotted in Fig. 11. The pan-Arctic and
 regional values are reported in Tab. 2 for AMJ and in Tab. 3 for JAS. Although not the focus of the current study because of the
 405 observational limitations of R_{λ}^{TOA} and the retrievals of optical cloud properties during the polar night, an annual perspective on
 mean CRF can be found in Fig. C1 and on CRF trends in Fig. C2, both at the surface and TOA.

The climatological annual pan-Arctic total CRF (see Fig. C1) is positive at the surface with the sole exception of the Green-
 land Sea. Minimum values are found over Baffin Bay and the Barents Sea. Over the Arctic Ocean, the total CRF is positive and
 amounts to $\sim 7.0 \text{ W m}^{-2}$, which is lower than the 10 W m^{-2} reported by Kay and L'Ecuyer (2013, KE-13 hereafter), while
 410 over land masses clouds warm the surface by $\sim 11 \text{ W m}^{-2}$. Our results are directly comparable to those of KE-13 because

the algorithm computing the broadband fluxes is based on the same radiative transfer (Henderson et al., 2013) and the CRF is inferred from the difference between the all-sky and clear-sky atmospheric state, as in Eq. 2.

Among the differences that may explain the bias in CRF between our results and those in KE-13, we consider differences in spatial coverage of the Arctic and the spectral albedo of ice- and snow-covered surfaces. KE-13 defines the Arctic as the region between 70° and 82°N, while in this study the Arctic is defined between 60° and 85°N. The spectral surface albedo in this AVHRR record is 6% higher for wavelengths in the visible and NIR (0.958 at 630 nm and 0.868 at 910 nm vs. 0.9/0.85 for the dry/melt months in KE-13), while it is lower for wavelengths in the SWIR (0.036 at 1.6 μm and 0.0 at 3.7 μm vs. 0.15/0.05 and 0.05/0.05 in KE-13). This means that the Arctic albedo in our record is indicative of dry and bright surfaces at shorter wavelengths but appropriate for melt and darker surfaces toward the infrared. This would lead to an overall underestimation of the (negative) CRF in the SW when compared to KE-13.

Having defined the Arctic as all those areas north of 60°N encompassing also low-latitude areas of the relatively dark surface, at a pan-Arctic scale clouds exert a negative SW radiative forcing in both AMJ and JAS, which is larger than the LW component by ~12 and ~18 W m⁻² in the same seasons (Tab. 2 and 3). However, the seasonal climatological mean CRF is highly variable across the Arctic and is regionally partitioned: clouds' total radiative forcing at the surface is positive over bright areas as a result of LW effects being larger than SW effects. For instance, this holds for the Beaufort, East Siberian, Laptev Seas, and over Greenland, where total CRF becomes positive in both seasons and that corresponds to those Arctic areas over which the SW and LW CRF are also the smallest.

The combined effect of the brighter surface and comparatively low τ (irrespective of the phase) over Greenland (τ -liquid ~8 in AMJ and ~7 in JAS) increases SW reflectivity and damps upwelling LW. Minimum values in mean total CRF are seen over Baffin Bay, the Atlantic corridor, and the Barents Sea in both AMJ and JAS. For the same seasons, darker surfaces of the Atlantic corridor and Baffin Bay imply the presence of open water masses, which have higher temperatures and, therefore, emit LW more effectively. However, SW offsets LW and total CRF turns negative owing to larger average values of τ -liquid over the Greenland Sea (τ -liquid ~15 in AMJ and ~16 in JAS) or the Baffin Bay (~15 in AMJ and ~13 in JAS) (see Tab. B1).

At low surface albedos, typically less than 0.2, SW CRF outweighs LW CRF for the great majority of clouds, irrespective of their water content, τ -liquid, and sun illumination. Typical values of solar zenith $>65^\circ$ correspond to latitudes north of 75°N, encompassing the Arctic Ocean both in AMJ and JAS. Resorting to Shupe and Intrieri (2004, Fig. 7), we obtain a lowest LWP threshold of ~20 g m⁻² at surface albedo 0.5 and ~250 g m⁻² at albedo 0.8. This means that with increasing surface albedo, SW radiative effects may offset those by LW only at specific values of LWP and sun illumination angles, thus making CRF more sensitive to changes in cloud τ -liquid. Consequently, the majority of clouds warm the Arctic surface, and our results are qualitatively consistent with the current knowledge (Zygmuntowska et al., 2012; Kay and L'Ecuyer, 2013; Intrieri et al., 2002). The maximum cloud warming at the surface occurs over Greenland and to a lesser extent above sea ice-covered regions in AMJ (East Siberian, Beaufort, and Laptev Seas) and JAS (East Siberian and Beaufort Seas). Otherwise, the other Arctic regions show a negative total CRF, from a minimum over the Greenland and Barents Seas in AMJ to a less negative over those regions influenced by the climate of the low latitudes (Baffin Bay, Greenland and Barents Seas). The Hudson Bay and Kara Sea in JAS, respectively, show a total negative CRF of similar magnitude.

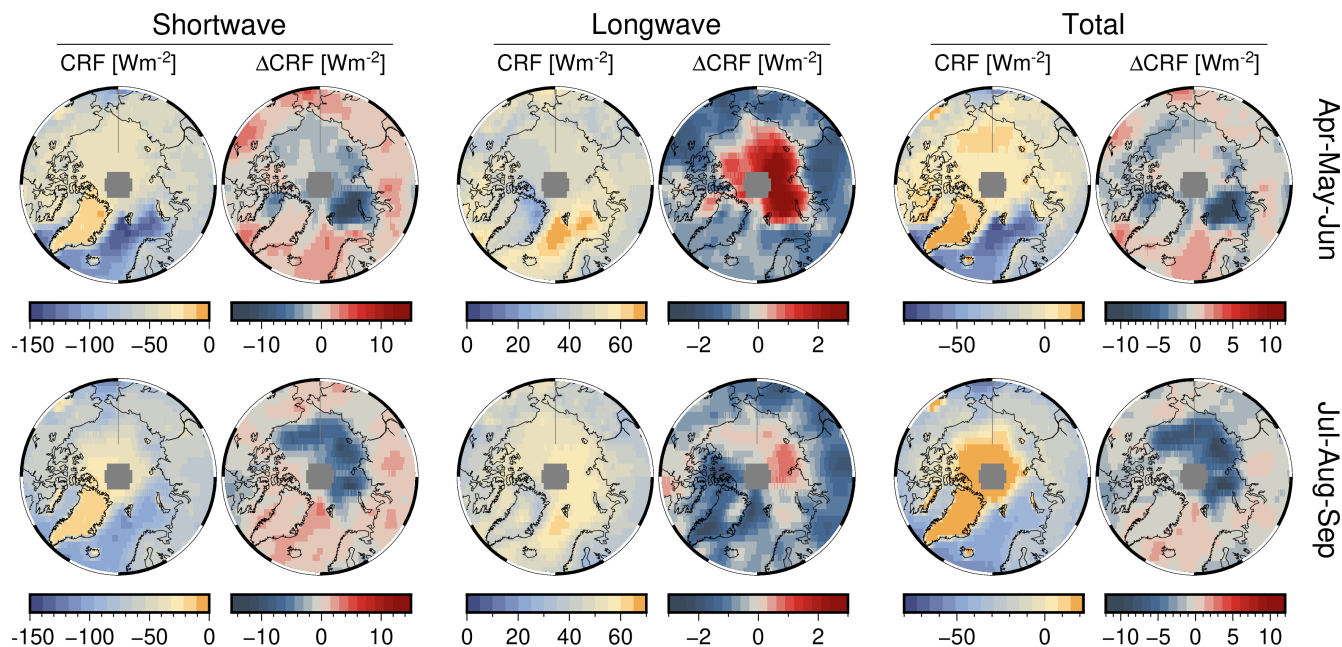


Figure 11. For Arctic spring (AMJ, top) and summer (JAS, bottom), the multiyear mean Cloud Radiative Forcing (CRF) and total change ΔCRF at the surface. None of the trends within the two decades of the record is statistically significant at 95% confidence. The time of trend emergence (ToE) for each spectral interval is plotted in Fig. B1 and the first year of seasonal ToE is reported in Tabs. 2 and 3 for the 12 Arctic regions of this study.

From the CRF trends of the last two decades (Fig. 11), clouds over the perennial sea ice zone increasingly cool TOA (see Fig. C2) and the surface (bottom-of-atmosphere, BOA) alike, while being neutral to positive over the Atlantic corridor and land masses at low latitudes. In AMJ months, maximal cooling trends at TOA (BOA) are for Kara and Laptev, and extend along the Polar circle up to the northern section of the Baffin Bay through the Chukchi Sea, albeit dropping in magnitude to -0.9 (-0.8) $\text{W m}^{-2} \text{ decade}^{-1}$. During AMJ, clouds have increasingly cooled the Siberian land masses and the marginal sea ice zones at an average rate, with the Barents Sea undergoing the strongest CRF drop by $2.5 \text{ W m}^{-2} \text{ decade}^{-1}$.

Otherwise, the CRF trend at TOA and BOA during JAS varies from slightly positive over land masses, such as Eurasia, over open waters in the Atlantic sector, the southernmost portion of Baffin Bay, and the Bering Strait. Cooling trends due to clouds are identified over Greenland for both seasons having a rate of $-0.5 \text{ W m}^{-2} \text{ decade}^{-1}$. The influence of changes in surface albedo is manifested in these results. Where surface albedo remains almost constant (land masses, Greenland, and the Atlantic corridor) then CRF trends are of lesser magnitude. Instead, where the surface experiences more substantial changes, both seasonally and over the long term, trends in CRF are amplified, due to a greater influence of SW over LW.

None of the trends in CRF in Fig. 11 are statistically significant at the 95% confidence over the 20-year time frame of this dataset. Thus, we estimate the time of emergence (ToE) in years for a trend to become statistically significant (see App. B, Fig. B1). The seasonal and regional ToE are reported in Tabs. 2 and 3.

Table 2. For Arctic spring (AMJ), the pan-Arctic and regional climatological mean (1996–2016) of Cloud Radiative Forcing (CRF in W m^{-2}) at the surface (BOA: bottom-of-atmosphere) and total trend (W m^{-2} over 20 years) with one standard deviation. In brackets, the time of emergence (in years) for the CRF trends to become statistically significant at 95% confidence.

Apr-May-Jun Region	Mean CRF ^{boa}			Trend CRF ^{boa}		
	SW	LW	Total	SW	LW	Total
Full Arctic	-58.7 ± 27.5	46.9 ± 7.5	-11.8 ± 22.8	-0.4 ± 2.6 (—)	-0.5 ± 1.0 (—)	-0.8 ± 1.9 (—)
1. Beaufort Sea	-37.4 ± 3.4	43.0 ± 1.5	5.7 ± 3.7	-1.7 ± 0.5 (42)	0.2 ± 0.7 (48)	-1.4 ± 1.1 (29)
2. Chukchi Sea	-53.7 ± 31.8	47.4 ± 9.4	-6.3 ± 24.1	-1.8 ± 3.2 (23)	0.1 ± 1.2 (27)	-1.8 ± 2.4 (24)
3. East Siberian Sea	-40.2 ± 3.4	47.1 ± 2.2	6.9 ± 2.5	-1.7 ± 0.8 (38)	1.1 ± 0.8 (35)	-0.6 ± 0.7 (37)
4. Laptev Sea	-45.8 ± 7.4	47.9 ± 2.0	2.1 ± 6.8	-3.0 ± 1.2 (37)	1.5 ± 0.9 (35)	-1.5 ± 1.1 (38)
5. Siberian Cont.	-58.3 ± 19.4	46.4 ± 5.5	-11.9 ± 17.5	0.6 ± 1.0 (23)	-1.0 ± 0.5 (28)	-0.4 ± 1.0 (48)
6. Kara Sea	-52.3 ± 9.2	49.7 ± 2.7	-2.6 ± 7.3	-5.4 ± 3.2 (23)	1.1 ± 1.0 (31)	-4.2 ± 2.7 (25)
7. Barents Sea	-100.0 ± 25.4	57.8 ± 6.1	-42.2 ± 21.1	-5.4 ± 5.8 (23)	0.4 ± 1.6 (27)	-5.0 ± 4.3 (24)
8. Greenland Sea	-107.4 ± 23.2	56.2 ± 6.6	-51.1 ± 19.2	1.3 ± 1.2 (41)	-0.6 ± 0.2 (28)	0.7 ± 1.1 (36)
9. Greenland	-21.3 ± 11.3	36.2 ± 8.3	14.9 ± 9.8	0.2 ± 0.9 (34)	-0.7 ± 0.3 (42)	-0.4 ± 0.7 (26)
10. Baffin Bay	-72.9 ± 33.6	50.0 ± 6.3	-23.0 ± 27.9	-0.3 ± 3.1 (35)	-0.3 ± 0.5 (45)	-0.6 ± 2.6 (30)
11. Hudson Bay	-45.4 ± 8.9	48.1 ± 3.4	2.7 ± 8.3	-0.9 ± 0.5 (64)	-0.4 ± 0.1 (59)	-1.3 ± 0.4 (48)
12. Canadian Arch.	-39.6 ± 6.9	44.7 ± 4.3	5.1 ± 5.1	-0.1 ± 0.7 (58)	-0.5 ± 0.4 (53)	-0.6 ± 0.8 (37)

4 Discussion

In the last two decades, the set of analyzed parameters provides a coherent geophysical picture: the Arctic R_{λ}^{TOA} has negligibly declined. This decline is less than that expected as a result of the loss of sea ice. We attribute the reason for the weak R_{λ}^{TOA} trend to a decrease in sea ice, compensated for by more liquid Arctic clouds and a concurrent simultaneous decreasing ice content in the clouds. Therefore, the thermodynamic phase separation of clouds manifests itself not only in the integral optical quantities (Figs. 8-9) but also in the water mass amount, considering Fig. 12.

To some extent, Wang and Key (2005b) anticipate the results of our work. The downward trend in the broadband albedo of $-1.40\% \text{ decade}^{-1}$ between 1982 – 1999 is confirmed by our weak all-sky R_{λ}^{TOA} trends, implying a sustained sea ice loss after 2000 and general darkening of the Arctic surface. However, the regional patterns in Wang and Key (2005b) match neither our results nor most recent knowledge (Hofer et al., 2017). The annual increase of 0.6% in CFC over the Canadian Archipelago, Chukchi Sea, and Siberia and, in JAS, over Greenland reported in Wang and Key (2005b) is probably explained by the limited length of the analyzed record. For instance, CFC trends over Greenland level out before 1995 but turn strongly negative afterward, contributing to a significant loss of the ice shield mass (Hofer et al., 2017). This might explain the nonexistent clouds' τ trend in Wang and Key (2005b), which is in contrast to the significant moistening across most of the Arctic of Figs. 8, 9 and 10.

Table 3. As in Table 2 but for Arctic summer (JAS).

Jul-Aug-Sep Region	Mean CRF ^{boa}			Trend CRF ^{boa}		
	SW	LW	Total	SW	LW	Total
Full Arctic	-63.8 ± 22.4	46.2 ± 6.8	-17.7 ± 22.2	-0.8 ± 2.6 (—)	-0.7 ± 0.6 (—)	-1.5 ± 2.2 (—)
1. Beaufort Sea	-45.1 ± 13.8	51.7 ± 2.8	6.5 ± 15.9	-3.7 ± 2.5 (22)	-0.3 ± 0.4 (35)	-3.9 ± 2.2 (24)
2. Chukchi Sea	-58.3 ± 25.0	50.3 ± 5.7	-8.0 ± 22.5	-1.7 ± 3.2 (21)	-0.6 ± 0.7 (22)	-2.2 ± 2.7 (24)
3. East Siberian Sea	-52.2 ± 10.6	52.5 ± 3.0	0.3 ± 12.7	-6.0 ± 1.8 (21)	0.1 ± 0.2 (54)	-5.9 ± 1.6 (24)
4. Laptev Sea	-60.3 ± 14.4	53.5 ± 3.1	-6.8 ± 15.7	-6.4 ± 2.5 (22)	0.4 ± 0.4 (44)	-6.0 ± 2.3 (25)
5. Siberian Cont.	-65.2 ± 14.9	42.5 ± 4.9	-22.6 ± 14.1	0.3 ± 1.1 (26)	-0.9 ± 0.5 (26)	-0.6 ± 0.8 (42)
6. Kara Sea	-72.8 ± 12.5	52.4 ± 4.2	-20.4 ± 13.2	-4.5 ± 4.0 (23)	-0.1 ± 0.5 (45)	-4.6 ± 3.6 (25)
7. Barents Sea	-88.2 ± 13.0	53.2 ± 5.8	-34.9 ± 10.7	-1.3 ± 2.0 (32)	-0.3 ± 0.3 (46)	-1.6 ± 1.9 (33)
8. Greenland Sea	-94.4 ± 15.8	51.1 ± 5.8	-43.4 ± 14.3	1.4 ± 0.9 (45)	-0.9 ± 0.5 (22)	0.5 ± 0.5 (70)
9. Greenland	-19.8 ± 9.4	43.3 ± 5.0	23.5 ± 10.7	0.8 ± 0.6 (26)	-1.3 ± 0.6 (26)	-0.5 ± 0.5 (46)
10. Baffin Bay	-83.3 ± 15.4	48.4 ± 3.4	-34.8 ± 14.2	0.2 ± 1.0 (60)	-0.8 ± 0.4 (34)	-0.6 ± 0.8 (61)
11. Hudson Bay	-70.8 ± 7.5	40.1 ± 2.1	-30.7 ± 8.3	-2.4 ± 0.7 (34)	0.1 ± 0.3 (66)	-2.3 ± 0.4 (38)
12. Canadian Arch.	-51.2 ± 8.7	49.5 ± 3.7	-1.7 ± 8.8	-0.1 ± 1.0 (46)	-1.2 ± 0.6 (32)	-1.3 ± 0.5 (50)

4.1 Cloud phase considerations

The cloud water path (CWP) is defined as the weighted sum of the two phases, whose relative occurrence is 0.54/0.46% in AMJ and 0.63/0.37% in JAS, for the liquid/ice clouds respectively. The seasonal correlation between CWP and its liquid/ice component is respectively 0.79/0.75 in AMJ and 0.57/0.84 in JAS, showing that the loss in ice water content is the main driver for the loss of total water condensate in clouds, more in summer than in spring. While highly variable at the pan-Arctic scale, the total change in CWP amounts to -0.51 ± 11.01 % in AMJ and -3.66 ± 7.29 % in JAS.

Notably, the majority of water path changes exceeding natural variability are those of LWP/IWP decrease over areas of sea ice loss and only partly of LWP increase over land masses, Canadian Archipelago, some spots over Greenland, and the Beaufort Sea in JAS. Additionally, from Fig. 12 it can be seen that only those CWP trends in both seasons are statistically significant where the LWP and IWP trends are statistically significant too. This holds for the Fram Strait, the northernmost area of the Canadian Archipelago, the Bering Strait, and the coastal area of the Siberian continent. Only in AMJ, do more statistically significant patterns of CWP trend emerge, these comprising areas from the Laptev, Kara, and throughout the northernmost part of the Barents Seas.

In light of the results presented so far regarding the optical thickness and separation of the two cloud phases, it is reasonable to assume that this trend will continue in the future, allowing more patterns of statistical significance to emerge even where they have not been detected with 20 years of data. Atmospheric moisture fluxes are increasing as a result of more open waters and transport (Boisvert and Stroeve, 2015; Rinke et al., 2019). Marked regionality and seasonality of R_{λ}^{TOA} , cloud properties, and

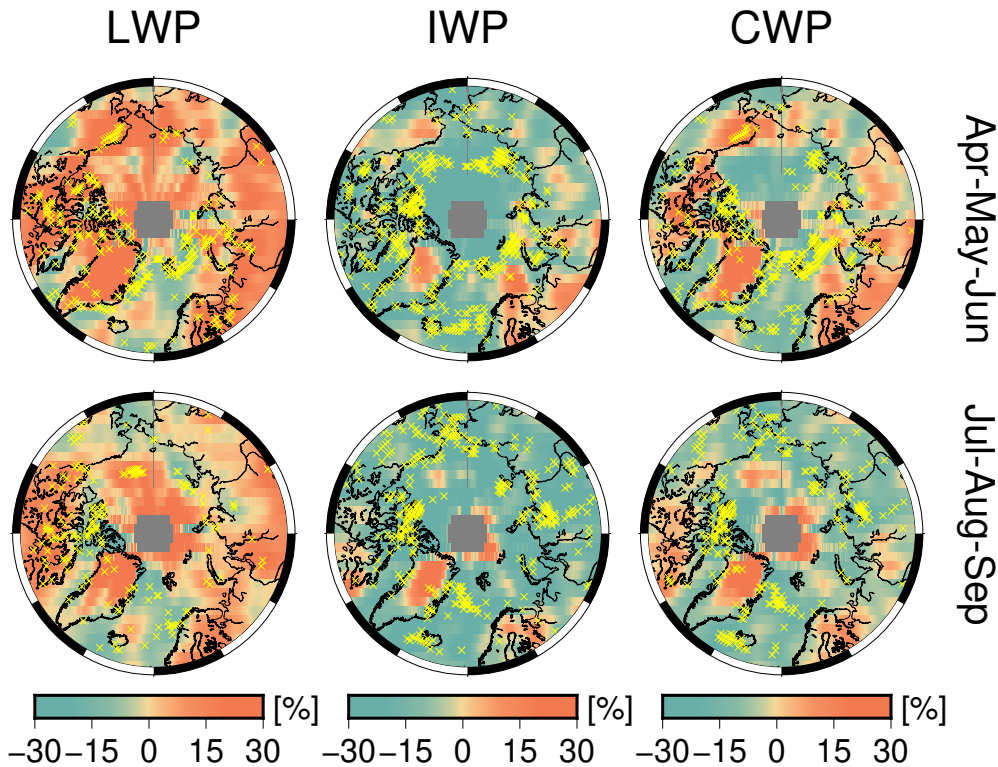


Figure 12. Seasonal total trend, from the first season in the record, of liquid, ice, and total cloud water path (CWP). Stippling in yellow indicates areas of statistical significance at 95%.

CRF across the Arctic are identified in four macro-regions, consistently exhibiting similar behavior: Greenland, the permanent and marginal sea ice areas, the Atlantic sector, and the land masses at lower latitudes.

495 Greenland has a unique behavior: R_{λ}^{TOA} trends at all wavelengths are positive, irrespective of the season (Fig. 7). The AMJ R_{λ}^{TOA} trends, up to 5%, are even larger than those for JAS. This result is particularly surprising, given the insignificant CFC trend at the pan-Arctic scale and the local negative CFC trend in both seasons (Fig. 9,10). Thus, these factors do not contribute to an increase in the overall reflectance. Therefore, we conclude that the increase in R_{λ}^{TOA} is due to the enhanced exposure of reflective surface in the southern part of Greenland, while a similar increase in the northern part is due to the simultaneous
500 increase of τ -total (Fig. 9) and CWP (Fig. 12).

Similar behavior is found in the Hudson Bay and Canadian Archipelago, which show an increase in reflectance, in contrast to a general darkening of the Arctic. The mechanism by which these regions increase R_{λ}^{TOA} lies in the link between LWP and CA, through τ -liquid. In fact, τ -liquid changes sustain the correlated R_{λ}^{TOA} changes because of the non-linear relationship of CA to τ -liquid via LWP. It follows that a R_{λ}^{TOA} loss is overcompensated by more liquid clouds in the northern sector and
505 by increased snowfall in the southern part of the Greenland continent. Cloud LWP has increased by 28-30% over Greenland

and by 14-16% over the Hudson Bay. The Canadian Archipelago also displays positive τ -liquid trends of 30%, 14%, and 22%, respectively. Notably, the seasonal behavior of τ -liquid, increasing over Greenland, is not associated with CFC loss and a positive CRF change in the last 20 years. In contrast, cloud dissipation, increased by anticyclonic activity and concurrent temperature inversion strengths, is responsible for enhanced insolation at the ground and its concurrent melting effects (Hofer et al., 2017). In addition to cloud loss (Figs. 10,9 and Hofer et al. (2019)), extensive ice melt in Greenland is also known to be enhanced by low altitude liquid water clouds that have sufficient opacity to enhance downward LW flux but are also optically thin enough to allow a significant amount of SW flux to pass through. This results in the surface being warmed (Bennartz et al., 2013). Such clouds occur in the LWP region between 10 g m^{-2} and 60 g m^{-2} .

Figure 10 shows that the increase in τ -liquid of clouds and LWP over Greenland in spring and summer is among the largest in the entire Arctic ($\Delta\text{LWP} > 20\text{-}40\%$). In both seasons, the cloud fraction decreases, and τ -liquid (as well as the LWP) increases spatially on average. Both effects impact upon the downward SW flux at BOA, but in the opposite direction, resulting in a small net positive change in SW CRF. For decreasing CFC over Greenland and in presence of an increase in near-surface temperatures, we expect a decreasing downward LW flux which might not be compensated by the LW enhancement by more liquid water in the clouds (Fig. 11, mid panel).

The changes in cloud properties and R_{λ}^{TOA} over Hudson Bay are exceptional. A 9% increase in τ -liquid and minimal CRF changes are correlated to the greatest R_{560}^{TOA} increase in the record in JAS. This area shows one of the largest CFC increases during summer months (Fig. 10), also corroborated by similar significant changes in AMJ and JAS observed in the reanalysis data (Fazel-Rastgar, 2020). The total CRF is -30.7 W m^{-2} while 2.7 W m^{-2} during AMJ. CRF trends point to a cloud cooling of the Hudson Bay at a rate of -2.9 (AMJ) and -1.3 (JAS) W m^{-2} over the last two decades.

4.2 Dependencies of cloud radiative forcing

Cloud forcing at the surface depends on cloud property changes. The behavior is summarised in the seasonal and regional charts of Fig. 13, in which mean value and trend of SW, LW, and total CRF are shown as a function of τ -liquid of clouds, LWP and CFC changes. The relationships between total CRF, τ , and LWP are more important in modulating radiation in JAS than in AMJ. This is the case when the underlying surface has still an albedo high enough to modulate CRF, as in spring months over regions with sea ice. With a decreasing surface albedo, as in summer months, SW CRF cooling dominates over LW CRF warming. As a consequence, Arctic regionality emerges from the clustering of the regions, especially in AMJ and to a lesser extent in JAS. We conclude that in the last two decades the net radiative effect of clouds on the surface is decreasing.

Those regions characterized by a darkening surface undergo a relative increase in SW reflection by more liquid clouds, leading to an increased cooling by clouds ($\Delta\text{CRF} < 0$). This takes place over the Barents Sea, a region characterized by early sea ice loss in AMJ and over the perennial sea ice zone (Beaufort, Laptev, and East Siberian Seas), where a CRF decrease at a rate of $-1\text{-}2 \text{ W m}^{-2}$ is associated with greater cloudiness in AMJ and increasing τ -liquid in JAS. From Fig. 13 we note that any positive τ -liquid trend corresponds to positive LWP changes for both seasons. Although not surprising, the AMJ changes in CRF do not correlate with either LWP or τ . In the JAS months, however, larger cloud optical densities and LWPs are matched by a decrease in CRF at the surface. This is the effect of darkening the surface that lowers the LWP value necessary for the CRF_{SW}

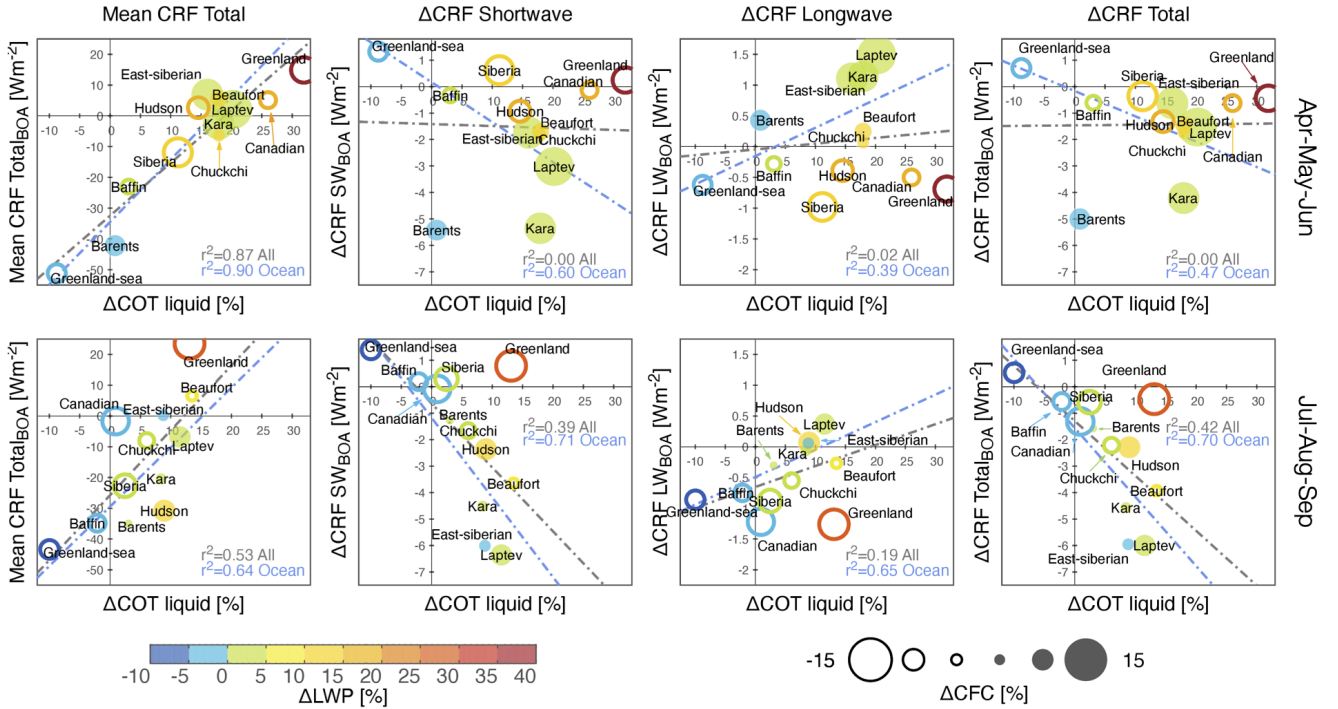


Figure 13. From left to right, regional and seasonal mean CRF, SW, LW, and total CRF trends at the surface as a function of τ trends for liquid clouds. The concurrent change in LWP is color coded while the increase (decrease) in cloudiness is given by a filled (outlined) circle.

540 to dominate CRF_{LW} . Excluding the Barents Sea, the variability of ΔCRF during AMJ is narrower (-4.2 to $+0.9 \text{ W m}^{-2}$) than during JAS (-6 to $+0.4 \text{ W m}^{-2}$). This is evidence of the importance of radiance from the underlying surface, which is larger in AMJ than in JAS. Overall, the radiative effect of CFC and τ is expected to be similar, provided that their changes in time agree in sign. Because CFC and τ change in opposite directions, the decreases in LW CRF and increases in SW CRF suggest a dominant influence of CFC rather than by water content in the clouds over Greenland. This CFC influence is still modulated,
 545 but not offset, by the changes in τ and CWP.

One exception is the East Siberian Sea in JAS where τ -liquid of clouds grows despite a lower content of liquid water. Notwithstanding the unexplained contribution of r_{eff} , we note that in JAS the East Siberian Sea has experienced a decrease in cloud altitude (see Fig. 10), which is a well-behaved parameter in the AVHRR record over most of the Arctic (Vinjamuri et al., 2023). Assuming that the cloud bases are unchanged, any change in CTH can influence the relationship $\tau = 3/2 \times \text{LWP}/(\rho r_{\text{eff}})$
 550 through changes in ρ .

Figure 13 shows also that CFC changes (i.e., outlined vs. filled circles) modulate mainly the LW portion of cloud radiation in both seasons. The seasonal coefficients of determination r^2 of SW CRF by CFC trends are comparable to those by τ -liquid trends. However, for the LW CRF, r^2 by CFC is higher than that by τ -liquid (CFC: AMJ 0.98 for both above ocean and all

areas; JAS 0.87 above the ocean and 0.94 above all areas. τ -liquid: AMJ 0.39/0.02 above ocean/all areas; JAS 0.65/0.19 above
555 ocean/all areas). This is the case when clouds become optically denser and hence more reflective.

Quantitatively, with values of $\Delta\text{CRF}_{\text{Total}} = -1.4 \text{ W m}^{-2}$ and $\Delta\text{CF} = 3.03 \%$, we obtain the total long-term sensitivity
 $\Delta\text{CRF}_{\text{Total}}/\Delta\text{CF} = -0.48 \text{ W m}^{-2} \%^{-1}$ over the Beaufort Sea in AMJ. The sensitivities of the SW and LW parts of CRF
amount to -0.56 and $+0.84 \text{ W m}^{-2} \%^{-1}$. Although averaged over one multi-year season only, our estimation is in line with
560 $\text{W m}^{-2} \%^{-1}$ was seen to offset the SW for most of the year (with $\partial\text{CRF}_{\text{SW}}/\partial\text{CF} \in [0, 1] \text{ W m}^{-2} \%^{-1}$), thereby warming the
surface while cloud cooling took place only in midsummer months with highest sun illumination and lowest surface albedo in
late summer (Shupe and Intrieri, 2004).

Accordingly, we report a net total (SW+LW) sensitivity of $-0.13 \text{ W m}^{-2} \%^{-1}$ in JAS, meaning that the SW cooling takes
over LW warming during the Arctic JAS in the record. The warming effect from increased CFC in AMJ over these regions
565 is directly linked to the retreat of sea ice, the onset of which is in late May (Smith et al., 2020), but also to the enhanced
convergence of atmospheric water content originating from open Arctic oceans during years with anomalously low sea ice
extent. Provided that the ocean can not be an appreciable source of water vapor in the Arctic boundary layer, Kapsch et al.
(2013) attribute an increased downwelling LW flux to the increased atmospheric opacity as a result of the convergence of
moisture, in form of clouds and/or water vapor (Rinke et al., 2019). Our results imply that this mechanism is evident in the
570 year-to-year variability of exceptional sea ice lows and is also a long-term component at decadal time scales, during which
atmosphere-ocean coupling effects are predominant.

4.3 Modelling considerations

From a modeling standpoint, we can validate past results (Morrison et al., 2019), for which the increase in cloud τ -liquid
and LWP are projected to extend well beyond the middle of the present century. Constraining the cloud microphysics and
575 thermodynamic phase will be crucial to project future Greenland melting (Hofer et al., 2019) and assess the sign and strengths
of total cloud feedbacks (Gettelman and Sherwood, 2016; Ceppi et al., 2016). Given the actual and future Arctic temperatures,
ice in the clouds will be increasingly depleted. Hence, τ -liquid and LWP will increasingly determine net cloud feedbacks
(Bjorndal et al., 2020).

When the cloud ice phase turns to liquid water negative feedback is expected due to the offsetting of LW by SW. This is
580 especially true in those months characterized by low surface albedo, under a stronger interaction with atmospheric radiation
by liquid cloud droplets rather than ice crystals. For the rest of the year when the surface albedo is high and sun illumination
is low or absent, the cloud feedback is expected to be more positive, which is a warming effect. If climate models do not
correctly capture this behavior, i.e they do not incorporate more supercooled liquid and mixed-phase clouds (Lohmann, 2002),
unrealistically large amounts of ice result, effectively contributing to the uncertainty in determining the sign of the net cloud
585 feedback.

We consider that this is one reason, which may explain in part the discrepancy between the atmospheric components (CAM)
of the Community Earth System Model (Gettelman et al., 2019, Fig. 2). While Huang et al. (2021) show that prescribing in

the CESM1-CAM5 weaker scavenging of supercooled liquid droplets by ice crystals in spring months leads to an increase in available atmospheric liquid water and a concurrent increase in downwelling LW flux at the surface, we note that the CAM5 positive cloud feedback at Arctic latitudes becomes negative in CESM2-CAM6 as a result of improved modeling of the cloud phase. Coherently, CAM6 projects increased rainfall rates within a warmer Arctic in JAS at the expense of snow precipitation (McCrystall et al., 2021), as the outcome of poleward moisture streams and more liquid Arctic clouds.

Nevertheless, an improved representation of supercooled liquid clouds in CAM6 models (McIlhattan et al., 2020) does not necessarily result in better accuracy in describing cloud feedback. Although there is consensus that clouds, twice as bright in CAM6 than in CAM5, increasingly reduce the amount of SW energy accumulated at the surface through optical thickness and phase feedbacks (Goosse et al., 2018), thereby slowing the Arctic sea ice albedo feedback by 5 years over oceans and 2 years over land (Sledd and L'Ecuyer, 2021a), there are indications that clouds might accelerate the albedo feedback in some CMIP6 models (Sledd and L'Ecuyer, 2021b). This holds in summer months when the atmospheric contribution to Arctic TOA albedo, dominated by cloud reflectance, is higher than that of the surface. While suboptimal prescribed co-variability of clouds with the underlying sea ice is not ruled out, Sledd and L'Ecuyer (2021b) indicate that future efforts should focus on understanding the parameterization of the cloud microphysics, especially for those models that show a decrease in atmospheric reflectance.

4.4 Observational advances

Advances in observational techniques and process-level research are needed to assess unambiguously the relative roles of temperature and atmospheric particulate matter in determining cloud thermodynamic changes. In the absence of a systematic, pan-Arctic, aerosol indirect effect due to decreasing trends of ice or cloud condensation nuclei (INP/CCN), higher condensation rates (i.e. positive LWP trends) of small-sized cloud droplets can only nucleate and grow by a combination of changes in Arctic boundary layer depth within a saturated air volume. Different temperature regimes influence cloud albedo by changing the $\tau - r_{\text{eff}} - \text{LWP}$ relationship (Tselioudis et al., 1992) and favor droplet growth over condensation rates and vice versa (Lohmann et al., 2000).

To this end, the role of r_{eff} remains the unexplained factor in the relationship between τ and the water path. r_{eff} size spectrum is modulated by the amount of water vapor and available particulate. While model and satellite data show a general moistening of the Arctic (Boisvert and Stroeve, 2015; Rinke et al., 2019), local on-ground (Graßl and Ritter, 2019; Schmale et al., 2022) evidence of a recent decrease in total aerosol burden is growing. However, INP/CCN can not be directly inferred from changes in column-integrated extinction of total aerosol load. Assuming a CCN decrease is in contradiction with the r_{eff} reduction via the Twomey effect. Alternatively, we speculate that the change in size spectrum or aerosol type might lead to optimal INP/CCN size and hygroscopicity (Heslin-Rees et al., 2020), although the total aerosol amount has decreased. This could be the case when anthropogenic aerosols decrease because of emission policy, but natural aerosols increase due to more frequent boreal forest fires, increased sea spray, and marine biogenetic activity as a result of more open waters (Schmale et al., 2021).

Satellite-derived single r_{eff} values, such as those in the record analyzed in this work, are only representative of the droplet/crystal population at a level of $\approx 1-\tau$ from the cloud top (Platnick, 2000). We recommend that the available and relevant spectral observations are exploited (Kokhanovsky and Rozanov, 2012; King and Vaughan, 2012) to generate a pan-Arctic picture of in-

cloud $r_{\text{eff}}(z)$ profiles, which would optimally complement surveys based on space-borne active techniques (Chan and Comiso, 2013; Matus and L'Ecuyer, 2017). $r_{\text{eff}}(z)$ profiles, together with aerosol speciation at high latitudes (Schmale et al., 2021) and cloud bases (Lelli and Vountas, 2018), are essential in two ways. First, they constrain INP/CCN activation, supersaturation, and cloud particle number concentrations (Zheng et al., 2015; Grosvenor et al., 2018). Second, cloud fields will be more accurately separated according to their phase (liquid, ice, and mixed-phase) and layering (low, mid, high-level, and multi-layered). We consider our results as upper bounds and more vertical resolution will improve our understanding of the evolution of clouds in the Arctic.

Finally, a better estimation of the cloud-free surface albedo would enable us to pinpoint the broadband radiative interactions between the surface and the clouds. Recent results suggest that the SW effects of clouds at the surface almost double even in the presence of sea ice and snow. As a result, the total cloud radiative forcing shifts from warming to neutral values already at the beginning of the melt season in mid June (Stapf et al., 2020). This would imply that the results presented here underestimate the cooling effect of clouds.

5 Summary and conclusions

In this paper, we focused initially on creating a record of spectral reflectance at the top of atmosphere R_{λ}^{TOA} in the solar spectral regions to investigate changes in Arctic albedo in the last two decades. The space-borne hyperspectral sensors employed in this work are now well equipped for this task because their record of radiances has been continuously calibrated and reprocessed, reaching the needed maturity to serve as an observational foundation for trend studies. Another advantage of this record of reflectances is that they are direct measurements, a realization and realizations of basic physical processes, and are not dependent that do not depend on algorithmic assumptions. Contrary to common knowledge, we grouped April May and June (AMJ) as Arctic spring and July August and September (JAS) as Arctic summer. Two distinct changes in spectral reflectance were observed, which could be explained by sea ice retreat, particularly in Arctic spring, and changes in cloudiness during summer. This choice was justified by looking at the annual cycle of reflectances, which indicates that R_{λ}^{TOA} is largely determined by two distinct processes: namely sea ice melting in AMJ, causing a high-to-low R_{λ}^{TOA} signal, and changing cloudiness in JAS, flattening the reflectances until September. The calculated trends shall reflect this distinction. led us to analyze clouds' macro-, microphysical, and optical properties, preparatory to understanding the radiative forcing of clouds at the surface.

Despite the retreating ice coverage, we find in spring and summer decreasing pan-Arctic trends of reflectance, which are smaller than what we expect for the reduction of the surface albedo averaged over the Arctic. Following this observation, we opted for a detailed regional-scale analysis, because numbers at the pan-Arctic scale conflate trends of different magnitude and sign and are less informative, owing to the range of geophysical features characterizing the Arctic environment. Trend analysis of the above quantities composed a consistent picture: due to sea ice retreat, the loss in Arctic albedo at the top of the

655 atmosphere was balanced by the increase in atmospheric reflectivity. This is explained by a statistically significant increase in the liquid phase of the clouds, balanced by a similar decrease in the ice phase. Since neither the total mass of condensed water in the clouds nor the cloud cover changed appreciably, it is inferred that the changes in Arctic atmospheric reflectance can be attributed to the increase in cloud reflectance due to the larger population of liquid droplets than ice crystals.

660 ~~However, this behavior does not always apply to the entire Arctic but is regional and seasonal.~~ The breakdown of R_{λ}^{TOA} trends ~~reveals regional clusters of behavior~~ the trends reveals common patterns. The perennial and marginal sea ice zones (from the Beaufort Sea until the Laptev Sea) have increasingly reflected less light in both ~~seasons~~ Arctic spring and summer, while in ~~JAS summer months~~ a generally greater R_{λ}^{TOA} ~~decrease~~ decrease in spectral reflectance is observed. The Barents Sea exhibits statistically significant losses already in AMJ spring and a moderate increase of reflectance in JAS summer, both indications of sea ice loss and subsequent change in cloud properties. Greenland showed a statistically significant increase in R_{λ}^{TOA} spectral
665 reflectance, irrespective of the season, which could not only be explained by greater exposure of glaciated ground upon loss in cloud cover.

~~We complemented the study of R_{λ}^{TOA} with that of available cloud data products from passive satellite remote sensing in the Arctic between 1996 and 2016. While cloud cover, height, and total optical thickness have not appreciably changed over the last two decades at the pan-Arctic scale, we found a statistically significant increase in the liquid phase of clouds, balanced by a similar decrease in the cloud ice phase. Therefore, the R_{λ}^{TOA} increase can be partly attributed to an increase in cloud reflectance due to the more reflective population of cloud liquid droplets than ice crystals. This holds especially in summer months when the atmosphere is radiatively decoupled from a relatively dark surface, i.e. multiple scattering between the atmosphere and the surface is not substantial. Similarly, the total mass of condensed water in clouds has not changed, but a net shift to the liquid phase took place at the expense of the ice phase. Regionally, the net change to more liquid clouds affected almost equally
670 Greenland, the marginal and perennial sea ice zones in both seasons, and the land masses at lower latitudes limited to AMJ. In contrast, the North Atlantic and the southern areas of the Barents Sea have seen a decrease in both the optical thickness and water path of both phases.~~

The resulting changes of total cloud radiative forcing at the surface indicate that over regions of marginal sea ice loss of transitional (high) albedo, the net effect is to increasingly cool the surface. This is the result of SW (cooling) effects offsetting
680 LW (warming) effects in both seasons, this is less pronounced in AMJ than in JAS Arctic spring than in summer. Locally, clouds have increasingly warmed the surface over the perennial sea ice pack, the North Atlantic, and the land masses at lower latitudes in both seasons, albeit at different rates, due to the relatively stable albedo of the surface. We have found a distinct relationship between trends in cloud radiative forcing and cloud properties. Cooling trends are attributed to the increase in cloud optical thickness, mostly driven by positive trends in liquid water path, over increasingly less reflective areas. At the same time, cloud
685 cover changes seem to regulate mostly LW effects than SW effects.

~~From an observational perspective, three aspects were not considered in this study. First, it was not possible to ascertain the role that variations in the effective radius of cloud droplets or ice crystals (r_{eff}) have in determining changes in optical thickness. This was due to both the lack of extensive validation of single-valued r_{eff} and the absence of space-borne datasets of aerosol components in the Arctic. These would be needed to better characterize both the long-term direct (Chen et al., 2022)~~

690 and indirect radiative effects specific to the Arctic (Curry, 1995). Second, it was also not possible to single out the occurrence
and radiative forcing of mixed-phase clouds, because the algorithm used to generate the record of cloud properties is not
capable of effectively detecting them. Last, a better estimation of the cloud-free surface albedo would enable to pinpoint the
broadband radiative interactions between the surface and the clouds. Recent results suggest that the SW effects of clouds at
the surface almost double even in the presence of sea ice and snow. As a result, the total cloud radiative forcing shifts from
695 warming to neutral values already at the beginning of the melt season in mid-June (Stapf et al., 2020). This would imply that
the results presented in this study underestimate the cooling effect of clouds.

Concluding, while the climatological effect of Arctic clouds over sea ice is to warm the near-surface air and positively
contribute to Arctic Amplification, clouds also largely explain the trends in R_{λ}^{TOA} spectral reflectance through changes in their
optical properties, which implies an increasing amount of supercooled cloud droplets. At the same time, also the occurrence
700 of cloud droplets at temperatures above the freezing point might increase, especially over regions where sea ice has retreated.
The higher reflectance of clouds results in a more negative radiative forcing at the surface, thereby locally dampening Arctic
Amplification, especially where sea ice retreats and most notably in summer. In this paper, we see a corresponding first sig-
nature of this tendency, which will become even more obvious and statistically significant in the future because the sea ice is
expected to decrease even further in the years to come.

705 However, cooling by clouds implies the strengthening of the meridional temperature gradient. This might lead to an increase
in the inflow of warmer and moister air masses from the lower latitudes into the Arctic climate. Even so, this has been shown to
occur only along the North Atlantic pathway but not along the North Pacific or the Siberian pathways (Mewes and Jacobi, 2019)
-Conversely, the strengthening of the jet streams as a result of an increased temperature gradient could also slow the meridional
exchange of air masses (Coumou et al., 2018). The combination of such mechanisms may then either further decrease Arctic
710 Amplification by generating more liquid-water clouds following the retreat of sea ice or possibly enhance Arctic Amplification
by the increased input of warmer air. Future model projections of the Arctic climate must account for these effects to accurately
predict the impact of anthropogenic emissions of greenhouse gases and short-lived climate pollutants.

Appendix A: Detailed description of reflectance data harmonization

Table A2 shows that overpass time, swath, and footprint size differ among the sensors used in this work. These sensors are
715 payloads on satellites that fly in sun-synchronous orbits having different equator crossing times. Errors in the R_{λ}^{TOA} in the Arctic
arising from the 30-minute time lag are considered negligible for averaged R_{λ}^{TOA} . Monthly aggregation leads to higher means
for finer spatially-resolved instruments than otherwise. Thus, intra-sensor radiometric R_{λ}^{TOA} harmonization is a prerequisite for
the creation of calibrated time series and the detection of trends.

Different application-dependent approaches have been already employed. Krijger et al. (2007) derives gain correction factors
720 based on the number of cloud-free scenes as a function of spatial resolution for maximization of usable trace-gas retrievals.
Tilstra et al. (2012) separates the influence of scattering geometry and cloud occurrence to correct SCIAMACHY reflectances
for the computation of the aerosol absorbing index at UV wavelengths. Both approaches are not suited to our goal. The former
aims at the removal of the influence of clouds, which are a primary component of the Arctic environment. The latter examines
instrumental performance in a spectral region that is not of direct interest as a result of potential radiometric degradation of
725 sensors and of higher sensitivity to aerosols, whose radiative effects are comparatively small in the troposphere.

Conversely, Hilboll et al. (2013) elaborate a method to explicitly take into account the difference in the ground pixel size and
spatial misalignment across sensors. This is achieved by projecting the orbit of one instrument onto that of a second instrument.
In our case, we select SCIAMACHY as the reference sensor due to its well-calibrated spectral behavior and because it overlaps
with both GOME and GOME-2A. A conservative area-weighted remapping scheme Jones (1999) is employed to derive the
730 factor matrix transforming GOME-2A reflectances as they were measured by SCIAMACHY. Due to the frequent overlaps at
high latitudes, only those GOME-2A orbits closest in time to SCIAMACHY are remapped. To extend the time series beyond
the loss of Envisat on April 8th, 2012, full SCIAMACHY geolocations, comprising 431 orbits per month, have been used as
target tessellation for the rest of the GOME-2A record.

The downside of mimicking SCIAMACHY orbits, due to its design of alternating nadir and limb swath states, is the reduction
735 of the GOME-2A sampling rate. This is compensated for in part by the inherently different cross-swath viewing geometries
and changes in illumination. GOME projection onto SCIAMACHY has not been implemented. Not only do the two sensors
overlap for a limited period of six months, but the relatively low sampling rate of GOME would have resulted in suboptimal
statistics, even at a monthly scale. Validation has shown that GOME R_{λ}^{TOA} are consistent with those of SCIAMACHY (see
Fig. 3 in the main text). Remaining intra-sensor inconsistencies that cannot be compensated for, such as changes due to the
740 dynamic radiometric response over dark-to-bright surfaces, will be eventually accounted for by the trend model.

We tested the assumption that bidirectional surface effects do not introduce error in the detection of the temporal trends
of R_{λ}^{TOA} by inspecting monthly distributions of the scattering angle throughout the record, separately for each sensor. This
is needed because R_{λ}^{TOA} is, by definition, a directional quantity and depends on the scattering geometry, that is on the phase
function of different surface types and the thermodynamic cloud phase. Across the Arctic, the mean value of the scattering
745 angle of 98.48° in 1996 shifts to 98.41° in 2018 for AMJ (-0.08%) and from 97.03° to 96.55° for JAS (-0.51%). These
shifts are due to a change in the configuration of GOME-2A on July 15, 2013, allowing tandem operation with GOME-2B.

The GOME-2A swath width of 1920 km has been reduced to 960 km, halving the across-track pixel size and, consequently, sampling differently the viewing zenith (Munro et al., 2016). However, these shifts are considered uncritical for this study and do not introduce artifacts in the record.

750 **Appendix B: Estimation of the trend, statistical significance, and time of emergence**

Trend detection is performed with the same technique for all the variables and parameters in this study. We illustrate the steps with reflectances. Dropping the subscript λ for readability, the R_{λ}^{TOA} , measured by sensor i and aggregated at month t , $Y(t, i)$, are modelled with

$$Y(t, i) = \mu_i C(t, i) + S(t, i) + \omega_i t + \delta U(t, i) + N(t, i). \quad (\text{B1})$$

755 The $\mu_i C(t, i)$ are the intercept of the regression line, $S(t, i)$ is the seasonal component of the time series, ω_i the desired trend value, and $N(t, i)$ the noise residuals embedded in the model after the regression is carried out. The term $\delta U(t, i)$ stands for the product of the level shift δ among the respective sensor records (Hilboll et al., 2013) with the step function $U(t, i)$ needed to concatenate the individual time series at time $T_i(t = 0)$ (Lelli et al., 2014). The seasonality $S(t, i)$ is accounted for by subtracting the average R_{λ}^{TOA} of each month from the respective monthly value. This method is similar to the harmonic
760 expansion in the Fourier series, in which the coefficients are derived in the least squares sense. Both methods are equivalent and the choice of one method rather than the other does not introduce significant errors (Mieruch, 2009). The term $\delta U(t, i)$ is embedded by calculating the seasonality separately for each instrument. Its function is to correct possible artifacts due to the different overpass times of the respective space-borne platforms.

While the offsets $\mu_i C(t)$, centered about their mean absolute value at the beginning of the time series, tend to zero upon the
765 anomaly calculation, the last unexplored portion of the data is the noise component $N(t, i)$, in which autocorrelative effects are buried. The R_{λ}^{TOA} time series are persistent in time and the autocorrelation $\rho \rightarrow 0$ for all Arctic regions after one lag. Thus, not all noise components of the record are random and cannot be treated as Gaussian. This limits the informative value of any significance test and hinders the detection of trends.

Block bootstrap resampling (Efron and Tibshirani, 1993), belonging to the group of nonparametric methods, does not require
770 prior knowledge of the analytical form of the underlying statistics of potentially non-normal data (Mudelsee, 2010). They rest on the block length of the effective independent random sample (Wilks, 1997, Eq. 19). An empirical sample distribution of the trend magnitude ω is then computed by scrambling n times the blocks of the original record. The resulting empirical distribution approximates the unknown ω probability density function. This allows finding the $2\text{-}\sigma_{\omega}$ interval needed for a confidence level at 95%. For all locations where the ratio $|\omega/\sigma_{\omega}| > 2$, the trend magnitude ω exceeds natural variability and is
775 termed statistically significant.

The CRF trends of Fig. 11 are not statistically significant within the 20 years of the record. Therefore, we estimate the time of trend emergence (ToE) by finding the time T (in years) needed for the measured trend $\hat{\omega}$ to become as twice as great as its standard deviation $\sigma_{\hat{\omega}}$. The results are plotted in Fig. B1, and the first year of ToE is reported in Tables 2-3 for the 12 Arctic

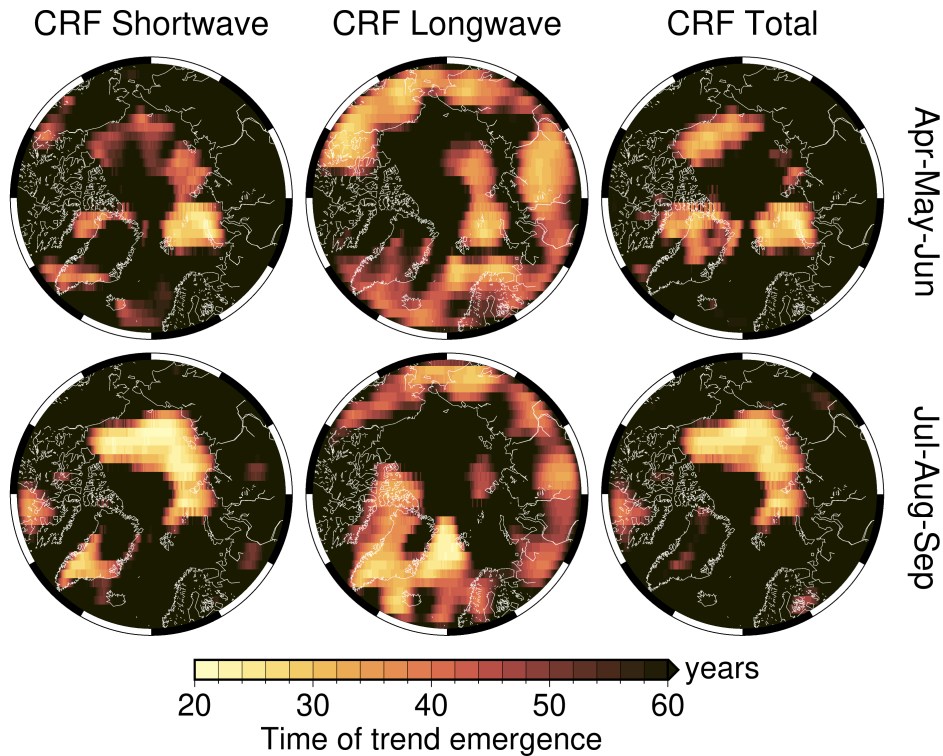


Figure B1. Time of emergence (ToE) of the trend to become statistically significant at 95%. The first year of trend emergence for each Arctic region is listed in Tabs. 2 and 3.

780 regions of Fig. B1. The $\sigma_{\hat{\omega}}$ is related to the standard deviation of the respective CRF time series σ_N , which can be regarded as the natural CRF variability, as follows (Weatherhead et al., 1998)

$$\sigma_{\hat{\omega}} \approx \sigma_N \left[\frac{12 dt}{T^3} \frac{1 + \phi}{1 - \phi} \right]^{\frac{1}{2}}. \quad (\text{B2})$$

In Eq. B2, we set $dt = 1$ because ToE is expressed in years and the autocorrelation $\phi = 0$ because we have measured the trend $\hat{\omega}$ from the independent sample of the record for which autocorrelative effects vanish already at the first lag of the monthly-sampled original time series.

785 Appendix C: Uncertainty propagation in the cloud record and sensitivity

The cloud data set is generated using an optimal estimation framework, which allows the propagation of random and systematic uncertainties into the pixel-based retrievals. Following Eqs. 2–5 in Stengel et al. (2017), for each location i at time t , we calculate the true variability $\sigma_{\text{true}}(i, t)$ and the uncertainty of the mean $\sigma_{\langle x \rangle}(i, t)$ for the cloud property x from the mean of the squared pixel-based uncertainties $\langle \sigma^2(i, t) \rangle$ and its standard deviation $\sigma_{\text{SD}}(i, t)$.

790 Further, aggregation into monthly averages requires the uncertainty correlation c , or heterogeneity, relating $\sigma_{\text{SD}}(i, t)$ to $\sigma_{\text{true}}(i, t)$. Because c is not known beforehand, setting it to a fixed value is an arbitrary choice that does not account for the spatial and temporal relationship of algorithmic errors at the pixel level throughout wide-scale cloud fields. Hence, we exploit the fact that $\sigma_{\text{SD}} \rightarrow \sigma_{\text{true}}$ when $c \rightarrow 1$. This holds when the spatial sampling is the highest, thus we scale the number of successful retrievals of the cloud property x to $c \in (0, 1]$ and compute the c -dependent $\sigma_{\text{true}}(i, t)$ and $\sigma_{\langle x \rangle}(i, t)$.

795 Temporally, both σ_{true} and $\sigma_{\langle x \rangle}$ change as function of c . Seasonal trends of c reveal an overall increase of a maximum of 3% in AMJ and 1.9% in JAS over the Barents throughout the East Siberian Sea, whereas c over Greenland, Hudson Bay, and the Canadian Archipelago exhibits a decrease of 0.6% in both seasons. This translates into a change of $\pm 0.5\%$ and $\pm 0.4\%$ in σ_{true} and $\sigma_{\langle x \rangle}$, respectively. With this approach, the clouds' heterogeneity of the monthly averages is related to retrieval errors predominantly in the spatial but not in the temporal dimension. Limited to an observational analysis of the cloud record, while
800 uncritical for trend assessments only, $\sigma_{\langle x \rangle}$ can be then successively used to label as meaningful those sensitivities of CRF to susceptible cloud property x , whose trend exceeds $\sigma_{\langle x \rangle}$.

Appendix D: Additional description of ozone trends

R^{TOA} trends at 560 and 620 nm capture the Chappuis ozone absorption band having a broadband maximum centered about 602 nm and two wings stretching between 525 and 675 nm (Gorshlev et al., 2014). Analyzing seasonal stratospheric and
805 total column ozone, we can determine an effective modulation of R^{TOA} trends by ozone. Ozone data in Fig. A1 are locally derived from GOME, SCIAMACHY, and GOME-2A (Coldewey-Egbers et al., 2005) for the total column values (Coldewey-Egbers et al., 2005) and with SCIAMACHY and the OMPS Limb Profiler measurements for the stratospheric column portion (Flittner et al., 2000; von Savigny et al., 2003; Arosio et al., 2019) in the time window 2003 – 2018. The tangent height of 41.3 km is selected due to its highest sensitivity to stratospheric ozone concentrations, which peaks at about that altitude.

810 Ozone is produced in the tropics and circulation patterns transport it poleward. It is usually located above the tropopause and its concentrations are higher during the winter months and lowest in the summer months. Despite its high variability through the year, total ozone trends are generally small in the order of $\pm 1\%$. Focusing on the Arctic, the average total ozone is 353 DU and also exhibits a distinct maximum in spring months and a minimum in summer months. The Arctic-wide trend of total ozone is positive by 3.9 DU ($+1.1\%$) decade⁻¹, in line with global values.

815 Greater significant positive trends, ranging from +4 to +10% decade⁻¹, are found in stratospheric ozone. They are centered above Greenland and stretch out along the 75°N parallel from the Greenland Sea through the Beaufort Sea in spring (AMJ) with a long tongue over the Siberian Continent in summer (JAS). Contrasting the total with the stratospheric column yields the influence of the tropospheric ozone only. For those locations where the trend in total ozone is absent but positive in the stratosphere, a negative tropospheric trend can be deduced. This mechanism is consistently found above 70°N from the
820 Canadian Archipelago through to the East Siberian Sea, irrespective of the season, together with the sustained positive trend above the Atlantic (the Greenland Sea), the neighboring Barents Sea, and the northern part of mainland Greenland (Gaudel et al., 2020). This reverses in a dipole fashion in JAS, when patterns of positive trends in total ozone are advected southward. In

summary, when analyzing R_{λ}^{TOA} trends at $\lambda = 620$ nm, and to a lesser extent 560 nm and 665 nm, changes in ozone contribute to those Arctic sectors affected by the meridional dynamics of air masses in which the stratospheric ozone is increasing. The most eastern Arctic sectors (East Siberian, Laptev, and Kara Seas) have a smaller contribution from ozone changes than the western sectors. This is consistent with a neutral ozone trend observed over these areas.

Finally, we speculate that a surface warming of the Arctic might inflate the tropopause, inducing the production of polar stratospheric clouds as a result of colder temperatures. Lower ozone would absorb less UV and visible radiation, cooling the stratosphere further and potentially accelerating further its depletion. Albeit within natural variability, Turner et al. (2009) held stratospheric ozone depletion responsible for a change in the wind flows and patterns across the South Pole, stimulating anti-correlated changes in sea ice extent of the Antarctic continent. This hypothesis could also be tested for the Arctic, using the results from this investigation.

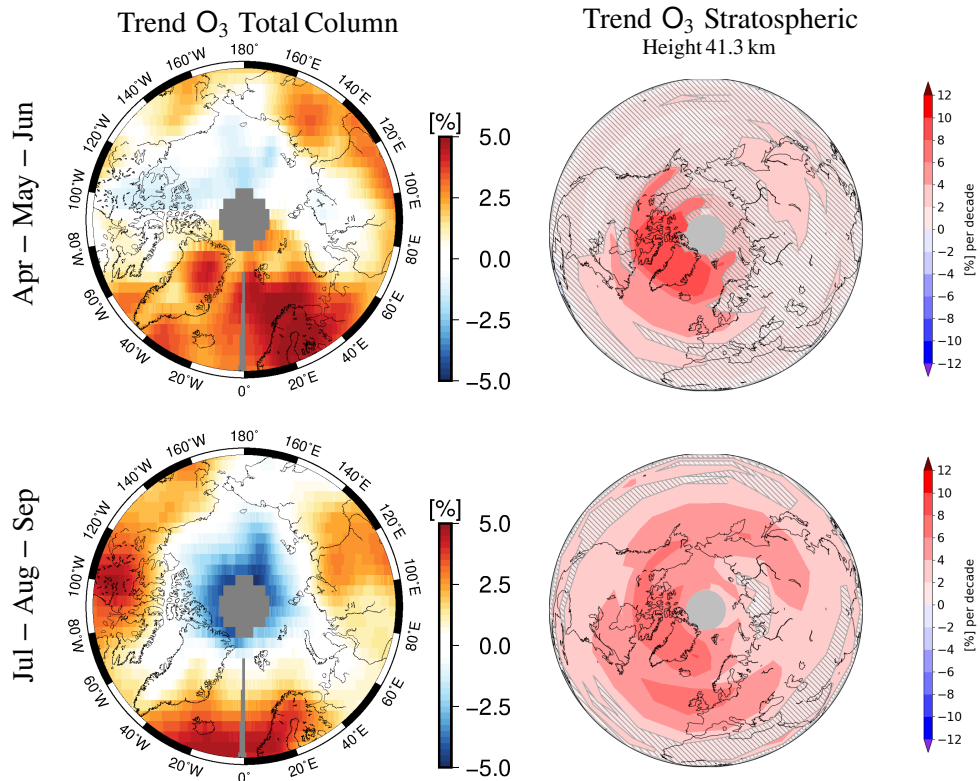
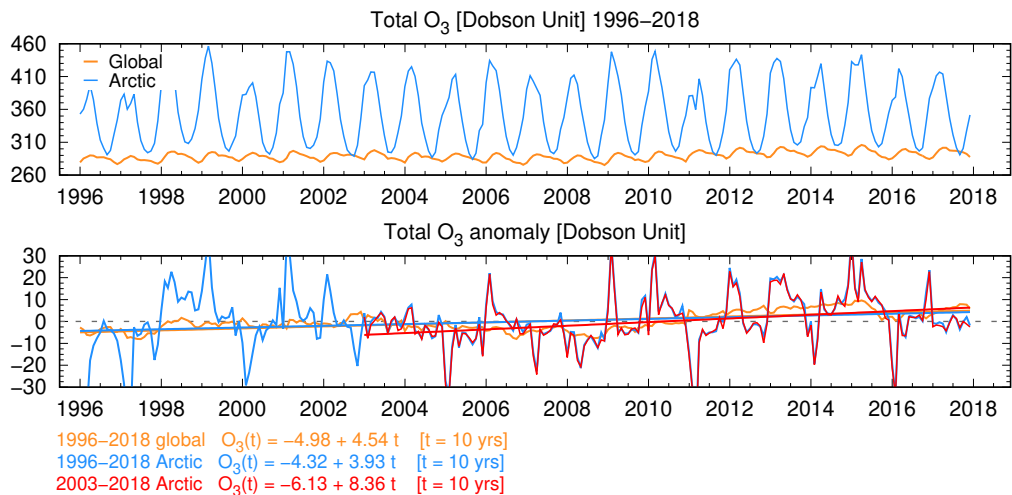


Figure A1. Top: global and Arctic record of total ozone with the respective anomalies and trends. The Arctic time series has been additionally shortened to match the length of the stratospheric ozone column. Bottom: trends (% decade⁻¹) of total (left) and stratospheric (right) ozone between 2003 and 2018 are plotted for spring (AMJ) and summer (JAS) months.

Table A1. List of abbreviations used in the main text.

Acronym	Meaning
AIRS	Atmospheric Infrared Sounder
ASTER	Advanced Spaceborne Thermal Emission and Reflection Radiometer
ATSR-2	Along Track Scanning Radiometer 2
AVHRR	Advanced Very-High-Resolution Radiometer
BRDF	Bidirectional Reflectance Distribution Function
BSRN	Baseline Surface Radiation Network
CALIPSO	Cloud-Aerosol Lidar and Infrared Pathfinder Satellite Observation
CALIOP	Cloud-Aerosol Lidar with Orthogonal Polarization
CERES	Clouds and the Earth's Radiant Energy System
CMIP	Coupled Model Intercomparison Project
DARDAR	raDAR liDAR combined cloud properties retrieval
EBAF	Energy balanced and filled
ENVISAT	Environmental Satellite
ERBE	Earth Radiation Budget Experiment
ERS-2	European Remote-Sensing Satellite 2
GERB	Geostationary Earth Radiation Budget
GOME	Global Ozone Monitoring Experiment
OMI	Ozone Measuring Instrument
MERIS	MEDium Resolution Imaging Spectrometer
MetOp	Meteorological Operational satellite
MODIS	Moderate Resolution Imaging Spectroradiometer
MSG-2	Meteosat Second Generation
OMPS	Ozone Mapping and Profiler Suite
POES	Polar Operational Environmental Satellite
SBUV	Solar Backscatter Ultraviolet
SCIAMACHY	Scanning Imaging Absorption Spectrometer for Atmospheric Chartography
SeaWiFS	Sea-Viewing Wide Field-of-View Sensor
SHEBA	Surface Heat Budget of the Arctic Ocean
TIROS	Television Infrared Observation Satellite
TOMS	Total Ozone Mapping Spectrometer
TOVS	TIROS Operational Vertical Sounder

Table A2. Specifications of the instruments and data set versions selected for this work.^aFull coverage until May 2003. ^bPayload switched off since July 2011. ^cLost contact on April 8, 2012. ^dNominal end of GOME-2C record. ^eGOME-2A configuration change for tandem mode with GOME-2B on July 15, 2013. Foreseen extended lifetimes: November 2021 (GOME-2A), 2025 (GOME-2B), 2031 (GOME-2C).

	GOME	SCIAMACHY	GOME-2
Data availability	1996 – 2011 ^{a,b}	2002 – 2012 ^c	2007 – 2023 ^{d,e}
Level 1 data processors	5.0	8.01	6.0
Equator crossing (LT)	10:30 AM	10:00 AM	9:30 AM
Global coverage [days]	3	6	1.5
Spectral coverage [nm]	237 – 794	240 – 2400	237 – 794
Spectral resolution [nm]	0.38	0.44	0.48
Pixel size at nadir [km ²]	320 × 40	60 × 30	80 × 40
Swath width [km]	960	1000	1920

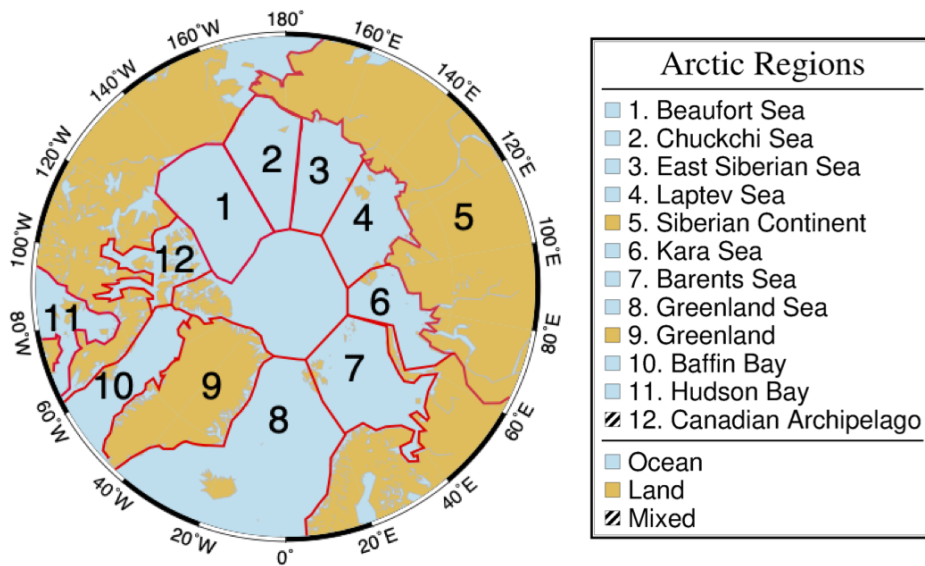


Figure B1. Definition of the Arctic climate zones, identified by distinct geophysical settings, that will be used in this study to derive local trends of R_{λ}^{TOA} , cloud properties, and forcing. The geographical subdivision follows that of Serreze and Barry (2014) and Wang and Key (2005a).

Table B1. Multiyear seasonal means (\pm standard deviation) of cloud properties for the full Arctic and 12 regions of Fig. B1.

Region	Cloud cover		Cloud height [km]		τ -liquid		τ -ice	
	Cloud albedo		r_{eff} [μm]		LWP [g m^{-2}]		IWP [g m^{-2}]	
	AMJ	JAS	AMJ	JAS	AMJ	JAS	AMJ	JAS
Full Arctic	0.70 ± 0.12	0.76 ± 0.10	3.67 ± 0.57	4.14 ± 0.52	13.71 ± 5.75	14.21 ± 3.78	10.34 ± 3.86	12.05 ± 3.80
	0.52 ± 0.05	0.55 ± 0.06	11.87 ± 1.83	12.57 ± 1.43	126.21 ± 64.63	131.56 ± 41.14	148.08 ± 68.71	166.70 ± 73.02
1. Beaufort Sea	0.62 ± 0.19	0.80 ± 0.11	2.82 ± 0.62	3.33 ± 0.48	18.32 ± 8.43	12.71 ± 4.45	12.08 ± 3.67	9.90 ± 3.87
	0.60 ± 0.07	0.58 ± 0.07	10.89 ± 1.83	11.89 ± 1.62	171.35 ± 91.52	111.93 ± 50.43	179.45 ± 81.74	137.50 ± 79.72
2. Chukchi Sea	0.68 ± 0.14	0.78 ± 0.10	3.30 ± 0.61	3.73 ± 0.50	15.69 ± 7.15	13.91 ± 4.00	10.63 ± 3.63	11.04 ± 3.80
	0.56 ± 0.06	0.58 ± 0.05	11.21 ± 1.91	11.97 ± 1.54	146.07 ± 85.95	123.31 ± 43.60	159.03 ± 73.16	151.06 ± 73.22
3. East Siberian Sea	0.68 ± 0.18	0.82 ± 0.09	2.94 ± 0.64	3.29 ± 0.48	17.43 ± 7.53	13.15 ± 4.13	11.77 ± 3.16	10.89 ± 3.85
	0.58 ± 0.06	0.58 ± 0.07	10.87 ± 1.91	11.96 ± 1.54	157.28 ± 79.00	112.23 ± 41.34	176.44 ± 65.94	153.52 ± 75.82
4. Laptev Sea	0.70 ± 0.18	0.83 ± 0.08	2.99 ± 0.61	3.34 ± 0.46	16.70 ± 7.37	14.77 ± 4.17	12.21 ± 3.34	12.07 ± 4.19
	0.59 ± 0.05	0.61 ± 0.06	10.37 ± 1.93	11.49 ± 1.54	145.73 ± 80.45	122.56 ± 41.38	179.37 ± 70.10	163.62 ± 81.67
5. Siberian Cont.	0.71 ± 0.10	0.74 ± 0.11	4.00 ± 0.55	4.47 ± 0.53	11.67 ± 5.00	15.02 ± 3.69	9.51 ± 4.28	13.02 ± 3.93
	0.47 ± 0.05	0.54 ± 0.06	12.31 ± 1.81	12.90 ± 1.34	106.21 ± 52.39	142.58 ± 40.23	136.00 ± 68.55	183.46 ± 74.40
6. Kara Sea	0.73 ± 0.16	0.82 ± 0.09	3.01 ± 0.62	3.39 ± 0.48	18.22 ± 7.77	16.69 ± 4.35	12.65 ± 3.72	12.80 ± 4.36
	0.59 ± 0.05	0.62 ± 0.05	10.08 ± 1.74	11.35 ± 1.55	151.44 ± 76.56	137.56 ± 38.87	187.25 ± 79.24	167.75 ± 79.36
7. Barents Sea	0.83 ± 0.10	0.84 ± 0.08	2.84 ± 0.47	3.38 ± 0.48	17.25 ± 4.68	17.46 ± 3.77	11.57 ± 3.65	13.31 ± 3.99
	0.59 ± 0.04	0.63 ± 0.04	10.96 ± 1.33	11.81 ± 1.67	141.73 ± 47.12	149.59 ± 36.13	152.60 ± 65.12	170.17 ± 72.77
8. Greenland Sea	0.84 ± 0.07	0.85 ± 0.06	3.18 ± 0.51	3.76 ± 0.59	14.53 ± 3.41	15.65 ± 3.30	10.81 ± 3.16	12.84 ± 3.60
	0.54 ± 0.05	0.58 ± 0.04	12.70 ± 1.31	13.23 ± 1.53	131.02 ± 34.18	147.43 ± 35.89	136.48 ± 51.25	165.13 ± 67.43
9. Greenland	0.51 ± 0.12	0.63 ± 0.11	5.32 ± 0.62	5.42 ± 0.46	8.40 ± 7.33	6.73 ± 3.47	5.97 ± 1.83	5.98 ± 1.83
	0.47 ± 0.05	0.48 ± 0.06	11.23 ± 2.42	11.30 ± 1.55	104.76 ± 134.88	73.46 ± 51.65	99.66 ± 44.58	93.83 ± 36.57
10. Baffin Bay	0.75 ± 0.12	0.78 ± 0.09	3.27 ± 0.60	3.88 ± 0.61	14.65 ± 5.29	13.36 ± 2.98	10.29 ± 3.41	11.64 ± 3.69
	0.52 ± 0.05	0.55 ± 0.05	11.55 ± 1.57	12.94 ± 1.41	129.63 ± 53.41	124.53 ± 32.97	144.34 ± 58.54	157.37 ± 68.47
11. Hudson Bay	0.73 ± 0.12	0.70 ± 0.13	3.33 ± 0.70	4.40 ± 0.64	12.93 ± 5.91	13.04 ± 3.42	9.61 ± 3.82	12.49 ± 4.52
	0.45 ± 0.06	0.51 ± 0.06	11.26 ± 1.84	13.41 ± 1.32	115.37 ± 57.56	123.51 ± 37.05	139.26 ± 62.42	176.42 ± 85.70
12. Canadian Arch.	0.65 ± 0.15	0.78 ± 0.12	3.15 ± 0.69	3.57 ± 0.55	17.24 ± 8.76	13.51 ± 4.15	11.98 ± 4.49	11.44 ± 3.97
	0.57 ± 0.07	0.57 ± 0.06	11.55 ± 1.98	12.52 ± 1.32	174.23 ± 107.76	123.08 ± 46.81	204.37 ± 105.59	162.03 ± 82.11

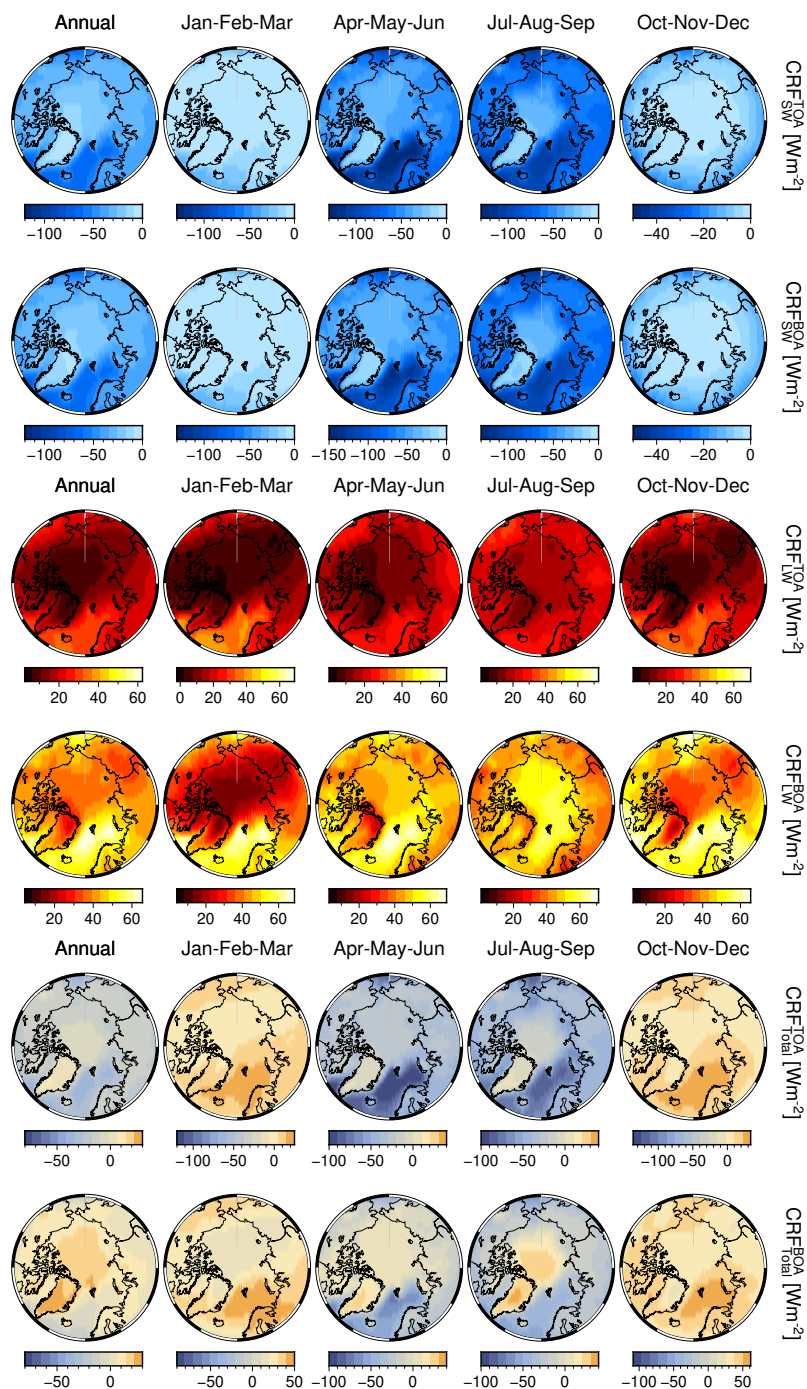


Figure C1. From left to right, annual and seasonal average values of SW (rows 1-2), LW (3-4), and total (5-6) cloud radiative forcing (CRF, W m^{-2}) at TOA and BOA, respectively. Note the different color scales to match the CRF ranges.

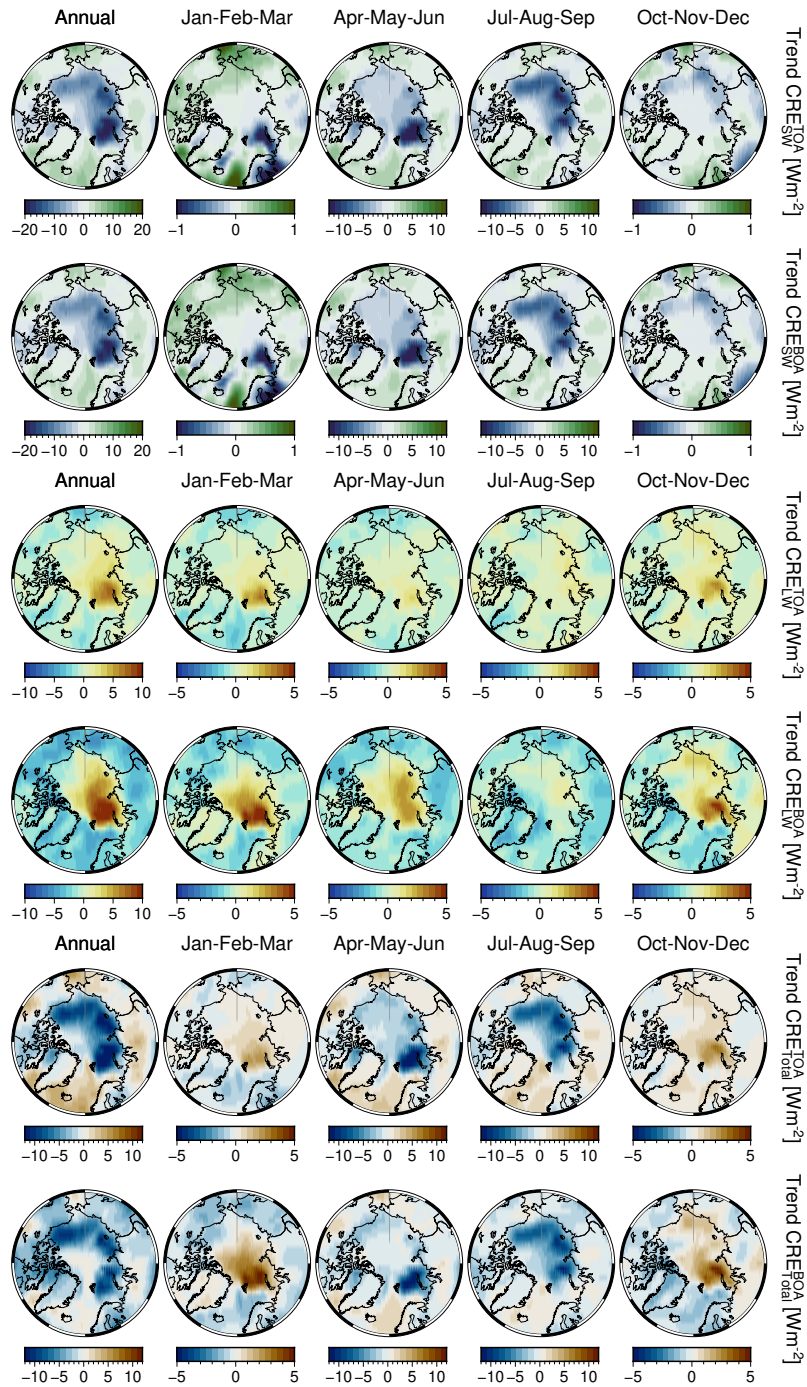


Figure C2. From left to right, annual and seasonal trends of SW (rows 1-2), LW (3-4), and total (5-6) cloud radiative effect (CRE, W m⁻²) at TOA and BOA.

Author contributions. L.L., M.V., J-P.B conceived the research. L.L. led code development, processed orbital reflectance data, analyzed all records, and wrote the manuscript. N.K., M.V. processed orbital reflectance data and analyzed the record. Funding acquisition by L.L., M.V.,
835 and J-P.B. All authors contributed to the interpretation of the results and the final drafting of the paper.

Competing interests. The authors declare that they have no competing interests.

Code availability. Perl and Bash code to extract, harmonize, grid, and analyze all data records is available from the first author upon request. Essential software such as Generic Mapping Tools (GMT) and Climate Data Operators (CDO) is available on the respective websites.

Data availability. Native L1 orbital data (versioned with total size) of spectral reflectance are available at <https://earth.esa.int/eogateway/catalog/> for GOME (v5.1, 2.47 TB), SCIAMACHY (v9.01, 16.98 TB) and MERIS (v8, 23.75 TB in Reduced Resolution). GOME-2A/B (v5.3 until June 2014, v6.x afterward, 58.28 TB each) have been accessed via EumetCast. We recommend users download the newly reprocessed GOME-2 Fundamental Data Record (FDR) v3 available at http://doi.org/10.15770/EUM_SEC_CLM_0039. The Arctic spectral subset (10 wavelength bands north of the 60°latitude, ≈13 TB) of L1 orbital data is available upon request. Due to obvious size limitations, we have prepared a monthly spectral reflectance data set available at <https://doi.pangaea.de/10.1594/PANGAEA.933905>. Cloud and flux data are
845 available at the DWD website https://doi.org/10.5676/DWD/ESA_Cloud_cci/AVHRR-PM/V003.

Acknowledgements. We thank Kamesh Vinjamuri (IUP Bremen) for the validation of AVHRR radiance and cloud optical properties; Carlo Arosio (IUP Bremen) for provision of stratospheric ozone data; Alessandra Cacciari (EUMETSAT) for the interpretation of GOME-2A sensing geometry. ESA Cloud CCI working group for processing the AVHRR data set. For valuable discussions, we acknowledge Ann Fridlind (NASA/GISS), Tido Semmler, Felix Pithan (AWI Bremerhaven), and especially Kerstin Ebell (Uni Cologne). This work has been
850 funded by the Deutsche Forschungsgemeinschaft (DFG, German Research Foundation) within the project “Arctic Amplification: Climate Relevant Atmospheric and SurfaCe Processes, and Feedback Mechanisms (AC)³” as Transregional Collaborative Research Center (TRR) 172, Project-ID 268020496. Luca Lelli, as visiting scientist within the NASA/Goddard Space Flight Center PACE (Plankton, Aerosol, Cloud, ocean Ecosystem) project, was supported by the Alexander von Humboldt Foundation through the Feodor-Lynen Fellowship 2020. Prof. Zhanqing Li (UMD - University of Maryland), Jeremy Werdell (OEL - Ocean Ecology Laboratory, NASA/GSFC) and Andrew Sayer
855 (NASA/GSFC and USRA - Universities Space Research Association) have been instrumental in the establishment of this cooperation. Luca Lelli thanks Theofanis Stamoulis for the initial steps with reflectances, which eventually evolved in this paper.

References

- Arosio, C., Rozanov, A., Malinina, E., Weber, M., and Burrows, J. P.: Merging of ozone profiles from SCIAMACHY, OMPS and SAGE II observations to study stratospheric ozone changes, *Atmospheric Measurement Techniques*, 12, 2423–2444, <https://doi.org/10.5194/amt-12-2423-2019>, 2019.
- Baldrige, A., Hook, S., Grove, C., and Rivera, G.: The ASTER spectral library version 2.0, *Remote Sensing of Environment*, 113, 711 – 715, <https://doi.org/10.1016/j.rse.2008.11.007>, 2009.
- Bennartz, R., Shupe, M., Turner, D., Walden, V., Steffen K., Cox, C., Kulie, M., Miller, N., and Pettersen, C.: Greenland melt extent enhanced by low-level liquid clouds, *Nature*, <https://doi.org/10.1038/nature12002>, 2013.
- Bjrdal, J., Storelvmo, T., Alterskjær, K., and Carlsen, T.: Equilibrium climate sensitivity above 5 C plausible due to state-dependent cloud feedback, *Nature Geoscience*, 13, 718–721, <https://doi.org/10.1038/s41561-020-00649-1>, 2020.
- Boccolari, M. and Parmiggiani, F.: Trends and variability of cloud fraction cover in the Arctic, 1982–2009, *Theoretical and Applied Climatology*, 132, 739–749, <https://doi.org/10.1007/s00704-017-2125-6>, 2018.
- Boisvert, L. N. and Stroeve, J. C.: The Arctic is becoming warmer and wetter as revealed by the Atmospheric Infrared Sounder, *Geophysical Research Letters*, 42, 4439–4446, <https://doi.org/10.1002/2015GL063775>, 2015.
- Burrows, J., Hölzle, E., Goede, A., Visser, H., and Fricker, W.: SCIAMACHY, Scanning Imaging Absorption spectroMeter for Atmospheric CHartographY, *Acta Astronautica*, 35, 445 – 451, [https://doi.org/10.1016/0094-5765\(94\)00278-T](https://doi.org/10.1016/0094-5765(94)00278-T), 1995.
- Burrows, J. P., Weber, M., Buchwitz, M., Rozanov, V., Ladstätter-Weissenmayer, A., Richter, A., DeBeek, R., Hoogen, R., Bramstedt, K., Eichmann, K.-U., Eisinger, M., and Perner, D.: The Global Ozone Monitoring Experiment (GOME): Mission Concept and First Scientific Results, *Journal of the Atmospheric Sciences*, 56, 151–175, [https://doi.org/10.1175/1520-0469\(1999\)056<0151:TGOMEG>2.0.CO;2](https://doi.org/10.1175/1520-0469(1999)056<0151:TGOMEG>2.0.CO;2), 1999.
- Ceppi, P., McCoy, D. T., and Hartmann, D. L.: Observational evidence for a negative shortwave cloud feedback in middle to high latitudes, *Geophysical Research Letters*, 43, 1331–1339, <https://doi.org/10.1002/2015GL067499>, 2016.
- Cesana, G. and Storelvmo, T.: Improving climate projections by understanding how cloud phase affects radiation, *Journal of Geophysical Research: Atmospheres*, 122, 4594–4599, <https://doi.org/10.1002/2017JD026927>, 2017.
- Chan, M. A. and Comiso, J. C.: Arctic Cloud Characteristics as Derived from MODIS, CALIPSO, and CloudSat, *Journal of Climate*, 26, 3285–3306, <https://doi.org/10.1175/JCLI-D-12-00204.1>, 2013.
- Chen, C., Dubovik, O., Schuster, G. L., Chin, M., Henze, D. K., Lapyonok, T., Li, Z., Derimian, Y., and Zhang, Y.: Multi-angular polarimetric remote sensing to pinpoint global aerosol absorption and direct radiative forcing, *Nature communications*, 13, 1–11, <https://doi.org/10.1038/s41467-022-35147-y>, 2022.
- Christensen, M., Poulsen, C., McGarragh, G., and Grainger, R.: Algorithm Theoretical Basis Document (ATBD) of the Community Code for CLimate (CC4CL) Broadband Radiative Flux Retrieval (CC4CL-TOAFLUX) module - Cloud_CCI Working Group, Tech. rep., European Space Agency, https://climate.esa.int/media/documents/Cloud_Algorithm-Theoretical-Baseline-Document-ATBD-CC4CL-TOAFLUX_v1.1.pdf, last access July 2019, 2016.
- Clementson, L. A. and Wojtasiewicz, B.: Dataset on the absorption characteristics of extracted phytoplankton pigments, *Data in Brief*, 24, 103 875, <https://doi.org/10.1016/j.dib.2019.103875>, 2019.

- Clerbaux, N., Russell, J., Dewitte, S., Bertrand, C., Caprion, D., De Paepe, B., Gonzalez Sotelino, L., Ipe, A., Bantges, R., and Brindley, H.: Comparison of GERB instantaneous radiance and flux products with CERES Edition-2 data, *Remote Sensing of Environment*, 113, 102–114, <https://doi.org/https://doi.org/10.1016/j.rse.2008.08.016>, 2009.
- 895 Cloud_CCI Working Group: Product Validation and Intercomparison Report (PVIR), Tech. rep., European Space Agency, https://climate.esa.int/media/documents/Cloud_Product-Validation-and-Intercomparison-Report-PVIR_v6.0.pdf, last access July 2020, 2020.
- Coldewey-Egbers, M., Weber, M., Lamsal, L. N., de Beek, R., Buchwitz, M., and Burrows, J. P.: Total ozone retrieval from GOME UV spectral data using the weighting function DOAS approach, *Atmospheric Chemistry and Physics*, 5, 1015–1025, <https://doi.org/10.5194/acp-5-1015-2005>, 2005.
- 900 Coumou, D., Di Capua, G., Vavrus, S., Wang, L., and Wang, S.: The influence of Arctic amplification on mid-latitude summer circulation, *Nature Communications*, 9, 1–12, <https://doi.org/10.1038/s41467-018-05256-8>, 2018.
- Curry, J. A.: Interactions among aerosols, clouds, and climate of the Arctic Ocean, *Science of the total environment*, 160, 777–791, [https://doi.org/10.1016/0048-9697\(95\)04411-S](https://doi.org/10.1016/0048-9697(95)04411-S), 1995.
- Curry, J. A., Schramm, J. L., Rossow, W. B., and Randall, D.: Overview of Arctic Cloud and Radiation Characteristics, *Journal of Climate*, 9, 1731 – 1764, [https://doi.org/10.1175/1520-0442\(1996\)009<1731:OOACAR>2.0.CO;2](https://doi.org/10.1175/1520-0442(1996)009<1731:OOACAR>2.0.CO;2), 1996.
- 905 Delanoë, J. and Hogan, R. J.: Combined CloudSat-CALIPSO-MODIS retrievals of the properties of ice clouds, *Journal of Geophysical Research: Atmospheres*, 115, <https://doi.org/10.1029/2009JD012346>, 2010.
- Devasthale, A., Sedlar, J., Tjernström, M., and Kokhanovsky, A.: A Climatological Overview of Arctic Clouds, pp. 331–360, Springer International Publishing, Cham, https://doi.org/10.1007/978-3-030-33566-3_5, 2020.
- 910 Donohoe, A. and Battisti, D. S.: Atmospheric and Surface Contributions to Planetary Albedo, *Journal of Climate*, 24, 4402–4418, <https://doi.org/10.1175/2011JCLI3946.1>, 2011.
- Ebell, K., Nomokonova, T., Maturilli, M., and Ritter, C.: Radiative Effect of Clouds at Ny-Ålesund, Svalbard, as Inferred from Ground-Based Remote Sensing Observations, *Journal of Applied Meteorology and Climatology*, 59, 3–22, <https://doi.org/10.1175/JAMC-D-19-0080.1>, 2019.
- 915 Efron, B. and Tibshirani, R. J.: *An Introduction to the Bootstrap*, Chapman & Hall, New York, <https://doi.org/10.1201/9780429246593>, 1993.
- Fazel-Rastgar, F.: Seasonal Analysis of Atmospheric Changes in Hudson Bay during 1998-2018, *American Journal of Climate Change*, 9, 100, <https://doi.org/10.4236/ajcc.2020.92008>, 2020.
- Flittner, D. E., Bhartia, P. K., and Herman, B. M.: O₃ profiles retrieved from limb scatter measurements: Theory, *Geophysical Research Letters*, 27, 2601–2604, <https://doi.org/10.1029/1999GL011343>, 2000.
- 920 Francis, J. A. and Hunter, E.: New insight into the disappearing Arctic sea ice, *Eos, Transactions American Geophysical Union*, 87, 509–511, <https://doi.org/10.1029/2006EO460001>, 2006.
- Frey, K. E., Comiso, J., Cooper, L. W., Grebmeier, J. M., and Stock, L. V.: Arctic Ocean primary productivity: The response of marine algae to climate warming and sea ice decline, in: *Arctic Report Card*, vol. 100, NOAA, <https://www.arctic.noaa.gov/Report-Card>, 2018.
- Fu, Q. and Liou, K. N.: On the Correlated k-Distribution Method for Radiative Transfer in Nonhomogeneous Atmospheres, *Journal of Atmospheric Sciences*, 49, 2139 – 2156, [https://doi.org/10.1175/1520-0469\(1992\)049<2139:OTCDMF>2.0.CO;2](https://doi.org/10.1175/1520-0469(1992)049<2139:OTCDMF>2.0.CO;2), 1992.
- 925 Gaudel, A., Cooper, O. R., Chang, K.-L., Bourgeois, I., Ziemke, J. R., Strode, S. A., Oman, L. D., Sellitto, P., Nédélec, P., Blot, R., Thouret, V., and Granier, C.: Aircraft observations since the 1990s reveal increases of tropospheric ozone at multiple locations across the Northern Hemisphere, *Science Advances*, 6, <https://doi.org/10.1126/sciadv.aba8272>, 2020.

- 930 Guttelman, A. and Sherwood, S.: Processes responsible for cloud feedback, *Current climate change reports*, 2, 179–189, <https://doi.org/10.1007/s40641-016-0052-8>, 2016.
- Guttelman, A., Hannay, C., Bacmeister, J. T., Neale, R. B., Pendergrass, A. G., Danabasoglu, G., Lamarque, J.-F., Fasullo, J. T., Bailey, D. A., Lawrence, D. M., and Mills, M. J.: High Climate Sensitivity in the Community Earth System Model Version 2 (CESM2), *Geophysical Research Letters*, 46, 8329–8337, <https://doi.org/10.1029/2019GL083978>, 2019.
- 935 Goosse, H., Kay, J. E., Armour, K. C., Bodas-Salcedo, A., Chepfer, H., Docquier, D., Jonko, A., Kushner, P. J., Lecomte, O., Massonnet, F., et al.: Quantifying climate feedbacks in polar regions, *Nature communications*, 9, 1–13, <https://doi.org/10.1038/s41467-018-04173-0>, 2018.
- Gorshelev, V., Serdyuchenko, A., Weber, M., Chehade, W., and Burrows, J. P.: High spectral resolution ozone absorption cross-sections. Part 1: Measurements, data analysis and comparison with previous measurements around 293 K, *Atmospheric Measurement Techniques*, 7, 609–624, <https://doi.org/10.5194/amt-7-609-2014>, 2014.
- 940 Graßl, S. and Ritter, C.: Properties of Arctic Aerosol Based on Sun Photometer Long-Term Measurements in Ny-Ålesund, Svalbard, *Remote Sensing*, 11, <https://doi.org/10.3390/rs11111362>, 2019.
- Grosvenor, D. P., Sourdeval, O., Zuidema, P., Ackerman, A., Alexandrov, M. D., Bennartz, R., Boers, R., Cairns, B., Chiu, J. C., Christensen, M., et al.: Remote sensing of droplet number concentration in warm clouds: A review of the current state of knowledge and perspectives, *Reviews of Geophysics*, 56, 409–453, <https://doi.org/10.1029/2017RG000593>, 2018.
- 945 Guarino, M.-V., Sime, L. C., Schröder, D., Malmierca-Vallet, I., Rosenblum, E., Ringer, M., Ridley, J., Feltham, D., Bitz, C., Steig, E. J., et al.: Sea-ice-free Arctic during the Last Interglacial supports fast future loss, *Nature Climate Change*, 10, 928–932, <https://doi.org/10.1038/s41558-020-0865-2>, 2020.
- He, M., Hu, Y., Chen, N., Wang, D., Huang, J., and Stamnes, K.: High cloud coverage over melted areas dominates the impact of clouds on the albedo feedback in the Arctic, *Scientific Reports*, 9, <https://doi.org/10.1038/s41598-019-44155-w>, 2019.
- 950 Henderson, D. S., L'Ecuyer, T., Stephens, G., Partain, P., and Sekiguchi, M.: A Multisensor Perspective on the Radiative Impacts of Clouds and Aerosols, *Journal of Applied Meteorology and Climatology*, 52, 853 – 871, <https://doi.org/10.1175/JAMC-D-12-025.1>, 2013.
- Herman, G. and Goody, R.: Formation and persistence of summertime Arctic stratus clouds, *Journal of the Atmospheric Sciences*, 33, 1537–1553, [https://doi.org/10.1175/1520-0469\(1976\)033<1537:FAPOSA>2.0.CO;2](https://doi.org/10.1175/1520-0469(1976)033<1537:FAPOSA>2.0.CO;2), 1976.
- Hersbach, H., Bell, B., Berrisford, P., Hirahara, S., Horányi, A., Muñoz-Sabater, J., Nicolas, J., Peubey, C., Radu, R., Schepers, D., Simons, A., Soci, C., Abdalla, S., Abellan, X., Balsamo, G., Bechtold, P., Biavati, G., Bidlot, J., Bonavita, M., De Chiara, G., Dahlgren, P., Dee, D., Diamantakis, M., Dragani, R., Flemming, J., Forbes, R., Fuentes, M., Geer, A., Haimberger, L., Healy, S., Hogan, R. J., Hólm, E., Janisková, M., Keeley, S., Laloyaux, P., Lopez, P., Lupu, C., Radnoti, G., de Rosnay, P., Rozum, I., Vamborg, F., Villaume, S., and Thépaut, J.-N.: The ERA5 global reanalysis, *Quarterly Journal of the Royal Meteorological Society*, 146, 1999–2049, <https://doi.org/10.1002/qj.3803>, 2020.
- 960 Heslin-Rees, D., Burgos, M., Hansson, H.-C., Krejci, R., Ström, J., Tunved, P., and Zieger, P.: From a polar to a marine environment: has the changing Arctic led to a shift in aerosol light scattering properties?, *Atmospheric Chemistry and Physics*, 20, 13 671–13 686, <https://doi.org/10.5194/acp-20-13671-2020>, 2020.
- Hilboll, A., Richter, A., and Burrows, J. P.: Long-term changes of tropospheric NO₂ over megacities derived from multiple satellite instruments, *Atmospheric Chemistry and Physics*, 13, 4145–4169, <https://doi.org/10.5194/acp-13-4145-2013>, 2013.
- 965 Hofer, S., Tedstone, A. J., Fettweis, X., and Bamber, J. L.: Decreasing cloud cover drives the recent mass loss on the Greenland Ice Sheet, *Science Advances*, 3, <https://doi.org/10.1126/sciadv.1700584>, 2017.

- Hofer, S., Tedstone, A. J., Fettweis, X., and Bamber, J. L.: Cloud microphysics and circulation anomalies control differences in future Greenland melt, *Nature Climate Change*, 9, 523–528, <https://doi.org/10.1038/s41558-019-0507-8>, 2019.
- Holland, M. M., Bitz, C. M., Tremblay, B., Bailey, D. A., et al.: The role of natural versus forced change in future rapid summer Arctic ice loss, *Arctic Sea Ice Decline: Observations, Projections, Mechanisms, and Implications*, Geophys. Monogr. Ser, 180, 133–150, <https://doi.org/10.1029/180GM10>, 2008.
- Huang, Y., Dong, X., Kay, J. E., Xi, B., and McIlhattan, E. A.: The climate response to increased cloud liquid water over the Arctic in CESM1: a sensitivity study of Wegener–Bergeron–Findeisen process, *Climate Dynamics*, 56, 3373–3394, <https://doi.org/10.1007/s00382-021-05648-5>, 2021.
- 975 Intrieri, J. M., Fairall, C. W., Shupe, M. D., Persson, P. O. G., Andreas, E. L., Guest, P. S., and Moritz, R. E.: An annual cycle of Arctic surface cloud forcing at SHEBA, *Journal of Geophysical Research: Oceans*, 107, SHE 13–1–SHE 13–14, <https://doi.org/10.1029/2000JC000439>, 2002.
- Istomina, L., Nicolaus, M., and Perovich, D. K.: Spectral albedo of sea ice and melt ponds measured during POLARSTERN cruise ARK-XXVII/3 (IceArc) in 2012, <https://doi.org/10.1594/PANGAEA.815111>, 2013.
- 980 Jones, P. W.: First-and second-order conservative remapping schemes for grids in spherical coordinates, *Monthly Weather Review*, 127, 2204–2210, [https://doi.org/10.1175/1520-0493\(1999\)127<2204:FASOCR>2.0.CO;2](https://doi.org/10.1175/1520-0493(1999)127<2204:FASOCR>2.0.CO;2), 1999.
- Kapsch, M.-L., Graversen, R. G., and Tjernström, M.: Springtime atmospheric energy transport and the control of Arctic summer sea-ice extent, *Nature Climate Change*, 3, 744–748, <https://doi.org/10.1038/NCLIMATE1884>, 2013.
- Karlsson, K.-G. and Devasthale, A.: Inter-comparison and evaluation of the four longest satellite-derived cloud climate data records: CLARA-A2, ESA Cloud CCI V3, ISCCP-HGM, and PATMOS-x, *Remote Sensing*, 10, 1567, <https://doi.org/10.3390/rs10101567>, 2018.
- 985 Kato, S., Loeb, N. G., Rose, F. G., Doelling, D. R., Rutan, D. A., Caldwell, T. E., Yu, L., and Weller, R. A.: Surface Irradiances Consistent with CERES-Derived Top-of-Atmosphere Shortwave and Longwave Irradiances, *Journal of Climate*, 26, 2719 – 2740, <https://doi.org/10.1175/JCLI-D-12-00436.1>, 2013.
- Kay, J. E. and L’Ecuyer, T.: Observational constraints on Arctic Ocean clouds and radiative fluxes during the early 21st century, *Journal of Geophysical Research: Atmospheres*, 118, 7219–7236, <https://doi.org/10.1002/jgrd.50489>, 2013.
- 990 Kiehl, J. T. and Trenberth, K. E.: Earth’s Annual Global Mean Energy Budget, *Bulletin of the American Meteorological Society*, 78, 197 – 208, [https://doi.org/10.1175/1520-0477\(1997\)078<0197:EAGMEB>2.0.CO;2](https://doi.org/10.1175/1520-0477(1997)078<0197:EAGMEB>2.0.CO;2), 1997.
- King, N. and Vaughan, G.: Using passive remote sensing to retrieve the vertical variation of cloud droplet size in marine stratocumulus: An assessment of information content and the potential for improved retrievals from hyperspectral measurements, *Journal of Geophysical Research: Atmospheres*, 117, <https://doi.org/10.1029/2012JD017896>, 2012.
- 995 Kokhanovsky, A. and Rozanov, V. V.: Droplet vertical sizing in warm clouds using passive optical measurements from a satellite, *Atmospheric Measurement Techniques*, 5, 517–528, <https://doi.org/10.5194/amt-5-517-2012>, 2012.
- Kokhanovsky, A. and Tomasi, C.: *Physics and Chemistry of the Arctic Atmosphere*, Springer, <https://doi.org/10.1007/978-3-030-33566-3>, 2020.
- 1000 Krijger, J. M., van Weele, M., Aben, I., and Frey, R.: Technical Note: The effect of sensor resolution on the number of cloud-free observations from space, *Atmospheric Chemistry and Physics*, 7, 2881–2891, <https://doi.org/10.5194/acp-7-2881-2007>, 2007.
- Lelli, L. and Vountas, M.: Chapter 5 - Aerosol and Cloud Bottom Altitude Covariations From Multisensor Spaceborne Measurements, in: *Remote Sensing of Aerosols, Clouds, and Precipitation*, edited by Islam, T., Hu, Y., Kokhanovsky, A., and Wang, J., pp. 109–127, Elsevier, <https://doi.org/10.1016/B978-0-12-810437-8.00005-0>, 2018.

- 1005 Lelli, L., Kokhanovsky, A. A., Rozanov, V. V., Vountas, M., Sayer, A. M., and Burrows, J. P.: Seven years of global retrieval of cloud properties using space-borne data of GOME, *Atmospheric Measurement Techniques*, 5, 1551–1570, <https://doi.org/10.5194/amt-5-1551-2012>, 2012.
- Lelli, L., Kokhanovsky, A. A., Rozanov, V. V., Vountas, M., and Burrows, J. P.: Linear trends in cloud top height from passive observations in the oxygen A-band, *Atmospheric Chemistry and Physics*, 14, 5679–5692, <https://doi.org/10.5194/acp-14-5679-2014>, 2014.
- 1010 Letterly, A., Key, J., and Liu, Y.: Arctic climate: changes in sea ice extent outweigh changes in snow cover, *The Cryosphere*, 12, 3373–3382, <https://doi.org/10.5194/tc-12-3373-2018>, 2018.
- Li, Z. and Leighton, H. G.: Scene identification and its effect on cloud radiative forcing in the Arctic, *Journal of Geophysical Research: Atmospheres*, 96, 9175–9188, <https://doi.org/10.1029/91JD00529>, 1991.
- Linke, O., Quaas, J., Baumer, F., Becker, S., Chylik, J., Dahlke, S., Ehrlich, A., Handorf, D., Jacobi, C., Kalesse-Los, H., Lelli, L., Mehrdad, S., Neggers, R. A. J., Riebold, J., Saavedra Garfias, P., Schnierstein, N., Shupe, M. D., Smith, C., Spreen, G., Verneuil, B., Vinjamuri, K. S., Vountas, M., and Wendisch, M.: Constraints on simulated past Arctic amplification and lapse-rate feedback from observations, *Atmospheric Chemistry and Physics Discussions*, 2023, 1–37, <https://doi.org/10.5194/acp-2022-836>, 2023.
- 1015 Lohmann, U.: A glaciation indirect aerosol effect caused by soot aerosols, *Geophysical Research Letters*, 29, 11–1–11–4, <https://doi.org/10.1029/2001GL014357>, 2002.
- 1020 Lohmann, U., Tselioudis, G., and Tyler, C.: Why is the cloud albedo–particle size relationship different in optically thick and optically thin clouds?, *Geophysical research letters*, 27, 1099–1102, <https://doi.org/10.1029/1999GL011098>, 2000.
- Matus, A. V. and L’Ecuyer, T. S.: The role of cloud phase in Earth’s radiation budget, *Journal of Geophysical Research: Atmospheres*, 122, 2559–2578, <https://doi.org/10.1002/2016JD025951>, 2017.
- McCrystall, M. R., Stroeve, J., Serreze, M., Forbes, B. C., and Screen, J. A.: New climate models reveal faster and larger increases in Arctic precipitation than previously projected, *Nature Communications*, 12, 1–12, <https://doi.org/10.1038/s41467-021-27031-y>, 2021.
- 1025 McGarragh, G. R., Poulsen, C. A., Thomas, G. E., Povey, A. C., Sus, O., Stapelberg, S., Schlundt, C., Proud, S., Christensen, M. W., Stengel, M., Hollmann, R., and Grainger, R. G.: The Community Cloud retrieval for CLimate (CC4CL) – Part 2: The optimal estimation approach, *Atmospheric Measurement Techniques*, 11, 3397–3431, <https://doi.org/10.5194/amt-11-3397-2018>, 2018.
- McIlhattan, E. A., Kay, J. E., and L’Ecuyer, T. S.: Arctic Clouds and Precipitation in the Community Earth System Model Version 2, *Journal of Geophysical Research: Atmospheres*, 125, e2020JD032 521, <https://doi.org/10.1029/2020JD032521>, e2020JD032521 10.1029/2020JD032521, 2020.
- 1030 Meerdink, S. K., Hook, S. J., Roberts, D. A., and Abbott, E. A.: The ECOSTRESS spectral library version 1.0, *Remote Sensing of Environment*, 230, 111 196, <https://doi.org/10.1016/j.rse.2019.05.015>, 2019.
- Meerkötter, R. and Zinner, T.: Satellite remote sensing of cloud base height for convective cloud fields: A case study, *Geophysical Research Letters*, 34, <https://doi.org/10.1029/2007GL030347>, 2007.
- 1035 Merk, D., Deneke, H., Pospichal, B., and Seifert, P.: Investigation of the adiabatic assumption for estimating cloud micro- and macrophysical properties from satellite and ground observations, *Atmospheric Chemistry and Physics*, 16, 933–952, <https://doi.org/10.5194/acp-16-933-2016>, 2016.
- Mewes, D. and Jacobi, C.: Heat transport pathways into the Arctic and their connections to surface air temperatures, *Atmospheric Chemistry and Physics*, 19, 3927–3937, <https://doi.org/10.5194/acp-19-3927-2019>, 2019.
- 1040 Mieruch, S.: Identification and statistical analysis of global water vapour trends based on satellite data, Ph.D. thesis, University of Bremen, <http://nbn-resolving.de/urn:nbn:de:gbv:46-diss000115889>, 2009.

- Mioche, G., Jourdan, O., Delanoë, J., Gourbeyre, C., Febvre, G., Dupuy, R., Monier, M., Szczap, F., Schwarzenboeck, A., and Gayet, J.-F.: Vertical distribution of microphysical properties of Arctic springtime low-level mixed-phase clouds over the Greenland and Norwegian seas, *Atmospheric Chemistry and Physics*, 17, 12 845–12 869, <https://doi.org/10.5194/acp-17-12845-2017>, 2017.
- 1045 Morrison, A. L., Kay, J. E., Chepfer, H., Guzman, R., and Yettella, V.: Isolating the Liquid Cloud Response to Recent Arctic Sea Ice Variability Using Spaceborne Lidar Observations, *Journal of Geophysical Research: Atmospheres*, 123, 473–490, <https://doi.org/10.1002/2017JD027248>, 2018.
- Morrison, A. L., Kay, J. E., Frey, W. R., Chepfer, H., and Guzman, R.: Cloud Response to Arctic Sea Ice Loss and Implications for Future Feedback in the CESM1 Climate Model, *Journal of Geophysical Research: Atmospheres*, 124, 1003–1020, <https://doi.org/10.1029/2018JD029142>, 2019.
- 1050 Morrison, H., De Boer, G., Feingold, G., Harrington, J., Shupe, M. D., and Sulia, K.: Resilience of persistent Arctic mixed-phase clouds, *Nature Geoscience*, 5, 11–17, <https://doi.org/10.1038/ngeo1332>, 2012.
- Mudelsee, M.: *Climate Time Series Analysis: Classical Statistical and Bootstrap Methods*, Atmospheric and Oceanographic Sciences Library, Vol. 42, Springer, Dordrecht Heidelberg London New York, <https://doi.org/10.1007/978-90-481-9482-7>, 2010.
- 1055 Munro, R., Lang, R., Klaes, D., Poli, G., Retscher, C., Lindstrot, R., Huckle, R., Lacan, A., Grzegorski, M., Holdak, A., Kokhanovsky, A., Livschitz, J., and Eisinger, M.: The GOME-2 instrument on the Metop series of satellites: instrument design, calibration, and level 1 data processing – an overview, *Atmospheric Measurement Techniques*, 9, 1279–1301, <https://doi.org/10.5194/amt-9-1279-2016>, 2016.
- Notz, D. and Community, S.: Arctic Sea Ice in CMIP6, *Geophysical Research Letters*, 47, e2019GL086 749, <https://doi.org/10.1029/2019GL086749>, e2019GL086749 10.1029/2019GL086749, 2020.
- 1060 Onarheim, I. H., Eldevik, T., Smedsrud, L. H., and Stroeve, J. C.: Seasonal and regional manifestation of Arctic sea ice loss, *Journal of Climate*, 31, 4917–4932, <https://doi.org/10.1175/JCLI-D-17-0427.1>, 2018.
- Philipp, D., Stengel, M., and Ahrens, B.: Analyzing the Arctic Feedback Mechanism between Sea Ice and Low-Level Clouds Using 34 Years of Satellite Observation, *Journal of Climate*, 33, 7479 – 7501, <https://doi.org/10.1175/JCLI-D-19-0895.1>, 2020.
- 1065 Pistone, K., Eisenman, I., and Ramanathan, V.: Observational determination of albedo decrease caused by vanishing Arctic sea ice, *Proceedings of the National Academy of Sciences*, 111, 3322–3326, <https://doi.org/10.1073/pnas.1318201111>, 2014.
- Platnick, S.: Vertical photon transport in cloud remote sensing problems, *Journal of Geophysical Research: Atmospheres*, 105, 22 919–22 935, <https://doi.org/10.1029/2000JD900333>, 2000.
- Rantanen, M., Karpechko, A. Y., Lipponen, A., Nordling, K., Hyvärinen, O., Ruosteenoja, K., Vihma, T., and Laaksonen, A.: The Arctic has warmed nearly four times faster than the globe since 1979, *Communications Earth & Environment*, 3, 1–10, <https://doi.org/10.1038/s43247-022-00498-3>, 2022.
- 1070 Rinke, A., Segger, B., Crewell, S., Maturilli, M., Naakka, T., Nygård, T., Vihma, T., Alshawaf, F., Dick, G., Wickert, J., et al.: Trends of vertically integrated water vapor over the Arctic during 1979–2016: Consistent moistening all over?, *Journal of Climate*, 32, 6097–6116, <https://doi.org/10.1175/JCLI-D-19-0092.1>, 2019.
- 1075 Rozanov, V. and Kokhanovsky, A.: The average number of photon scattering events in vertically inhomogeneous atmospheres, *Journal of Quantitative Spectroscopy and Radiative Transfer*, 96, 11–33, <https://doi.org/10.1016/j.jqsrt.2004.12.026>, 2005.
- Rozanov, V. V. and Kokhanovsky, A. A.: Semianalytical cloud retrieval algorithm as applied to the cloud top altitude and the cloud geometrical thickness determination from top-of-atmosphere reflectance measurements in the oxygen A band, *Journal of Geophysical Research: Atmospheres*, 109, <https://doi.org/10.1029/2003JD004104>, 2004.

- 1080 Schlundt, C., Kokhanovsky, A. A., Rozanov, V. V., and Burrows, J. P.: Determination of cloud optical thickness over snow using satellite measurements in the oxygen A-Band, *IEEE Geoscience and Remote Sensing Letters*, 10, 1162–1166, <https://doi.org/10.1109/LGRS.2012.2234720>, 2013.
- Schmale, J., Zieger, P., and Ekman, A. M.: Aerosols in current and future Arctic climate, *Nature Climate Change*, pp. 1–11, <https://doi.org/10.1038/s41558-020-00969-5>, 2021.
- 1085 Schmale, J., Sharma, S., Decesari, S., Pernov, J., Massling, A., Hansson, H.-C., von Salzen, K., Skov, H., Andrews, E., Quinn, P. K., Upchurch, L. M., Eleftheriadis, K., Traversi, R., Gilardoni, S., Mazzola, M., Laing, J., and Hopke, P.: Pan-Arctic seasonal cycles and long-term trends of aerosol properties from 10 observatories, *Atmospheric Chemistry and Physics*, 22, 3067–3096, <https://doi.org/10.5194/acp-22-3067-2022>, 2022.
- Schweiger, A. J.: Changes in seasonal cloud cover over the Arctic seas from satellite and surface observations, *Geophysical Research Letters*, 31, <https://doi.org/10.1029/2004GL020067>, 2004.
- 1090 Screen, J. A. and Simmonds, I.: The central role of diminishing sea ice in recent Arctic temperature amplification, *Nature*, 464, 1334–1337, <https://doi.org/10.1038/nature09051>, 2010.
- Serreze, M. C. and Barry, R. G.: *The Arctic Climate System*, Cambridge Atmospheric and Space Science Series, Cambridge University Press, 2 edn., <https://doi.org/10.1017/CBO9781139583817>, 2014.
- 1095 Serreze, M. C. and Francis, J. A.: The Arctic amplification debate, *Climatic change*, 76, 241–264, <https://doi.org/10.1007/s10584-005-9017-y>, 2006.
- Shupe, M. D. and Intrieri, J. M.: Cloud radiative forcing of the Arctic surface: The influence of cloud properties, surface albedo, and solar zenith angle, *Journal of Climate*, 17, 616–628, [https://doi.org/10.1175/1520-0442\(2004\)017<0616:CRFOTA>2.0.CO;2](https://doi.org/10.1175/1520-0442(2004)017<0616:CRFOTA>2.0.CO;2), 2004.
- Shupe, M. D., Rex, M., Dethloff, K., Damm, E., Fong, A. A., Gradinger, R., Heuze, C., Loose, B., Makarov, A., Maslowski, W., Nicolaus, M., Perovich, D., Rabe, B., Rinke, A., Sokolov, V., and Sommerfeld, A.: The MOSAiC Expedition: A Year Drifting with the Arctic Sea Ice, Arctic report card, <https://doi.org/10.25923/9g3v-xh92>, 2021.
- 1100 Sledd, A. and L'Ecuyer, T.: How Much Do Clouds Mask the Impacts of Arctic Sea Ice and Snow Cover Variations? Different Perspectives from Observations and Reanalyses, *Atmosphere*, 10, 12, <https://doi.org/10.3390/atmos10010012>, 2019.
- Sledd, A. and L'Ecuyer, T. S.: A Cloudier Picture of Ice-Albedo Feedback in CMIP6 Models, *Frontiers in Earth Science*, 9, <https://doi.org/10.3389/feart.2021.769844>, 2021b.
- 1105 Sledd, A. and L'Ecuyer, T. S.: Emerging Trends in Arctic Solar Absorption, *Geophysical Research Letters*, 48, e2021GL095813, <https://doi.org/10.1029/2021GL095813>, 2021a.
- Smith, A., Jahn, A., and Wang, M.: Seasonal transition dates can reveal biases in Arctic sea ice simulations, *The Cryosphere*, 14, 2977–2997, <https://doi.org/10.5194/tc-14-2977-2020>, 2020.
- 1110 Södergren, A. H. and McDonald, A. J.: Quantifying the Role of Atmospheric and Surface Albedo on Polar Amplification Using Satellite Observations and CMIP6 Model Output, *Journal of Geophysical Research: Atmospheres*, 127, e2021JD035058, <https://doi.org/10.1029/2021JD035058>, e2021JD035058 2021JD035058, 2022.
- Stamnes, K., Thomas, G. E., and Stamnes, J. J.: *The Role of Radiation in Climate*, pp. 278–346, Cambridge University Press, 2 edn., <https://doi.org/10.1017/9781316148549.008>, 2017.
- 1115 Stapf, J., Ehrlich, A., Jäkel, E., Lüpkes, C., and Wendisch, M.: Reassessment of shortwave surface cloud radiative forcing in the Arctic: consideration of surface-albedo–cloud interactions, *Atmospheric Chemistry and Physics*, 20, 9895–9914, <https://doi.org/10.5194/acp-20-9895-2020>, 2020.

- Stengel, M., Mieruch, S., Jerg, M., Karlsson, K.-G., Scheirer, R., Maddux, B., Meirink, J., Poulsen, C., Siddans, R., Walther, A., and Hollmann, R.: The Clouds Climate Change Initiative: Assessment of state-of-the-art cloud property retrieval schemes applied to AVHRR heritage measurements, *Remote Sensing of Environment*, 162, 363 – 379, <https://doi.org/10.1016/j.rse.2013.10.035>, 2015.
- 1120 Stengel, M., Stapelberg, S., Sus, O., Schlundt, C., Poulsen, C., Thomas, G., Christensen, M., Carbajal Henken, C., Preusker, R., Fischer, J., Devasthale, A., Willén, U., Karlsson, K.-G., McGarragh, G. R., Proud, S., Povey, A. C., Grainger, R. G., Meirink, J. F., Feofilov, A., Bennartz, R., Bojanowski, J. S., and Hollmann, R.: Cloud property datasets retrieved from AVHRR, MODIS, AATSR and MERIS in the framework of the Cloud_cci project, *Earth System Science Data*, 9, 881–904, <https://doi.org/10.5194/essd-9-881-2017>, 2017.
- 1125 Stengel, M., Stapelberg, S., Sus, O., Finkensieper, S., Würzler, B., Philipp, D., Hollmann, R., Poulsen, C., Christensen, M., and McGarragh, G.: Cloud_cci Advanced Very High Resolution Radiometer post meridiem (AVHRR-PM) dataset version 3: 35-year climatology of global cloud and radiation properties, *Earth System Science Data*, 12, 41–60, <https://doi.org/10.5194/essd-12-41-2020>, 2020.
- Stephens, G. L., Gabriel, P. M., and Partain, P. T.: Parameterization of Atmospheric Radiative Transfer. Part I: Validity of Simple Models, *Journal of the Atmospheric Sciences*, 58, 3391 – 3409, [https://doi.org/10.1175/1520-0469\(2001\)058<3391:POARTP>2.0.CO;2](https://doi.org/10.1175/1520-0469(2001)058<3391:POARTP>2.0.CO;2), 2001.
- 1130 Sus, O., Stengel, M., Stapelberg, S., McGarragh, G., Poulsen, C., Povey, A. C., Schlundt, C., Thomas, G., Christensen, M., Proud, S., Jerg, M., Grainger, R., and Hollmann, R.: The Community Cloud retrieval for CLimate (CC4CL) – Part 1: A framework applied to multiple satellite imaging sensors, *Atmospheric Measurement Techniques*, 11, 3373–3396, <https://doi.org/10.5194/amt-11-3373-2018>, 2018.
- Tan, I. and Storelvmo, T.: Evidence of Strong Contributions From Mixed-Phase Clouds to Arctic Climate Change, *Geophysical Research Letters*, 46, 2894–2902, <https://doi.org/https://doi.org/10.1029/2018GL081871>, 2019.
- 1135 Taylor, P. C., Cai, M., Hu, A., Meehl, J., Washington, W., and Zhang, G. J.: A decomposition of feedback contributions to polar warming amplification, *Journal of Climate*, 26, 7023–7043, <https://doi.org/10.1175/JCLI-D-12-00696.1>, 2013.
- Tilstra, L. G., de Graaf, M., Aben, I., and Stammes, P.: In-flight degradation correction of SCIAMACHY UV reflectances and Absorbing Aerosol Index, *Journal of Geophysical Research: Atmospheres*, 117, <https://doi.org/10.1029/2011JD016957>, 2012.
- Tselioudis, G., Rossow, W. B., and Rind, D.: Global patterns of cloud optical thickness variation with temperature, *Journal of climate*, 5, 1484–1495, [https://doi.org/10.1175/1520-0442\(1992\)005<1484:GPOCOT>2.0.CO;2](https://doi.org/10.1175/1520-0442(1992)005<1484:GPOCOT>2.0.CO;2), 1992.
- 1140 Turner, J., Comiso, J. C., Marshall, G. J., Lachlan-Cope, T. A., Bracegirdle, T., Maksym, T., Meredith, M. P., Wang, Z., and Orr, A.: Non-annular atmospheric circulation change induced by stratospheric ozone depletion and its role in the recent increase of Antarctic sea ice extent, *Geophysical Research Letters*, 36, <https://doi.org/10.1029/2009GL037524>, 2009.
- van Diedenhoven, B., Hasekamp, O. P., and Aben, I.: Surface pressure retrieval from SCIAMACHY measurements in the O₂ A Band: validation of the measurements and sensitivity on aerosols, *Atmospheric Chemistry and Physics*, 5, 2109–2120, <https://doi.org/10.5194/acp-5-2109-2005>, 2005.
- 1145 Vinjamuri, K. S., Vountas, M., Lelli, L., Stengel, M., Shupe, M. D., Ebell, K., and Burrows, J. P.: Validation of the Cloud_CCI cloud products in the Arctic, *Atmospheric Measurement Techniques Discussions*, pp. 1–24, <https://doi.org/10.5194/amt-2022-312>, 2023.
- von Savigny, C., Haley, C. S., Sioris, C. E., McDade, I. C., Llewellyn, E. J., Degenstein, D., Evans, W. F. J., Gattinger, R. L., Griffioen, E., 1150 Kyrölä, E., Lloyd, N. D., McConnell, J. C., McLinden, C. A., Mégie, G., Murtagh, D. P., Solheim, B., and Strong, K.: Stratospheric ozone profiles retrieved from limb scattered sunlight radiance spectra measured by the OSIRIS instrument on the Odin satellite, *Geophysical Research Letters*, 30, <https://doi.org/10.1029/2002GL016401>, 2003.
- Walsh, J. E., Chapman, W. L., Fetterer, F., and Stewart, J. S.: Gridded Monthly Sea Ice Extent and Concentration, 1850 Onward, Version 2. Boulder, Colorado USA. NSIDC: National Snow and Ice Data Center, <https://doi.org/10.7265/jj4s-tq79>, accessed May 2022, 2019.

- 1155 Wang, X. and Key, J. R.: Recent trends in Arctic surface, cloud, and radiation properties from space, *Science*, 299, 1725–1728, <https://doi.org/10.1126/science.1078065>, 2003.
- Wang, X. and Key, J. R.: Arctic Surface, Cloud, and Radiation Properties Based on the AVHRR Polar Pathfinder Dataset. Part I: Spatial and Temporal Characteristics, *Journal of Climate*, 18, 2558–2574, <https://doi.org/10.1175/JCLI3438.1>, 2005a.
- Wang, X. and Key, J. R.: Arctic Surface, Cloud, and Radiation Properties Based on the AVHRR Polar Pathfinder Dataset. Part II: Recent
1160 Trends, *Journal of Climate*, 18, 2575–2593, <https://doi.org/10.1175/JCLI3439.1>, 2005b.
- Weatherhead, E. C., Reinsel, G. C., Tiao, G. C., Meng, X.-L., Choi, D., Cheang, W.-K., Keller, T., DeLuisi, J., Wuebbles, D. J., Kerr, J. B., et al.: Factors affecting the detection of trends: Statistical considerations and applications to environmental data, *Journal of Geophysical Research: Atmospheres*, 103, 17 149–17 161, <https://doi.org/10.1029/98JD00995>, 1998.
- Wendisch, M., Macke, A., Ehrlich, A., Lüpkes, C., Mech, M., Chechin, D., Dethloff, K., Velasco, C. B., Bozem, H., Brückner, M., et al.:
1165 The Arctic Cloud Puzzle: Using ACLOUD/PASCAL Multiplatform Observations to Unravel the Role of Clouds and Aerosol Particles in Arctic Amplification, *Bulletin of the American Meteorological Society*, 100, 841 – 871, <https://doi.org/10.1175/BAMS-D-18-0072.1>, 2019.
- Wendisch, M., Brückner, M., Ehrlich, A., Notholt, J., Lüpkes, C., Macke, A., Burrows, J., Rinke, A., Quaas, J., et al.: Atmospheric and Surface Processes, and Feedback Mechanisms Determining Arctic Amplification: A Review of First Results and Prospects of the (AC)3
1170 Project, *Bulletin of the American Meteorological Society*, <https://doi.org/10.1175/BAMS-D-21-0218.1>, 2022.
- Wilks, D. S.: Resampling Hypothesis Tests for Autocorrelated Fields, *Journal of Climate*, 10, 65–82, [https://doi.org/10.1175/1520-0442\(1997\)010<0065:RHTFAF>2.0.CO;2](https://doi.org/10.1175/1520-0442(1997)010<0065:RHTFAF>2.0.CO;2), 1997.
- Wilks, D. S.: *Statistical methods in the atmospheric sciences*. 4th Edition., Elsevier, <https://doi.org/10.1016/C2017-0-03921-6>, 2020.
- Zelinka, M. D., Myers, T. A., McCoy, D. T., Po-Chedley, S., Caldwell, P. M., Ceppi, P., Klein, S. A., and Taylor, K. E.: Causes of higher
1175 climate sensitivity in CMIP6 models, *Geophysical Research Letters*, 47, e2019GL085 782, <https://doi.org/10.1029/2019GL085782>, 2020.
- Zheng, Y., Rosenfeld, D., and Li, Z.: Satellite inference of thermals and cloud-base updraft speeds based on retrieved surface and cloud-base temperatures, *Journal of Atmospheric Sciences*, 72, 2411–2428, <https://doi.org/10.1175/JAS-D-14-0283.1>, 2015.
- Zygmuntowska, M., Mauritsen, T., Quaas, J., and Kaleschke, L.: Arctic Clouds and Surface Radiation - a critical comparison of satellite retrievals and the ERA-Interim reanalysis, *Atmospheric Chemistry and Physics*, 12, 6667–6677, [https://doi.org/10.5194/acp-12-6667-](https://doi.org/10.5194/acp-12-6667-2012)
1180 2012, 2012.