

# Radical chemistry and ozone production at a UK coastal receptor site

Robert Woodward-Massey<sup>1</sup>, Roberto Sommariva<sup>2,4</sup>, Lisa K. Whalley<sup>1,3</sup>, Danny R. Cryer<sup>1</sup>, Trevor Ingham<sup>1</sup>, William J. Bloss<sup>4</sup>, Stephen M. Ball<sup>2</sup>, Sam Cox<sup>5,a</sup>, James D. Lee<sup>6,7</sup>, Chris P. Reed<sup>6,b</sup>, Leigh R. Crilley<sup>4,c</sup>, Louisa J. Kramer<sup>4,d</sup>, Brian J. Bandy<sup>8</sup>, Grant L. Forster<sup>9</sup>, Claire E. Reeves<sup>8</sup>, Paul S. Monks<sup>2</sup>, and  
5 Dwayne E. Heard<sup>1</sup>

<sup>1</sup>School of Chemistry, University of Leeds, Leeds, LS2 9JT, UK

<sup>2</sup>School of Chemistry, University of Leicester, University Road, Leicester, LE1 7RH, UK

<sup>3</sup>National Centre for Atmospheric Science, University of Leeds, Leeds, LS2 9JT, UK

10 <sup>4</sup>School of Geography, Earth and Environmental Sciences, University of Birmingham, Birmingham, B15 2TT, UK

<sup>5</sup>Research Software Engineering Team, University of Leicester, Leicester, LE1 7RH, UK

<sup>6</sup>Wolfson Atmospheric Chemistry Laboratories, Department of Chemistry, University of York, York, YO10 5DD, UK

<sup>7</sup>National Centre for Atmospheric Science, University of York, York, YO10 5DD, UK

<sup>8</sup>Centre for Ocean and Atmospheric Sciences, School of Environmental Sciences, University of East Anglia, Norwich, UK

15 <sup>9</sup>National Centre for Atmospheric Science, University of East Anglia, Norwich, NR4 7TJ, UK

<sup>a</sup>now at: Digital Research Service, University of Nottingham, Nottingham, NG7 2RD, UK

<sup>b</sup>now at: Faculty for Airborne Atmospheric Measurements, Cranfield University, Cranfield, MK43 0AL, UK

<sup>c</sup>now at: Department of Chemistry, York University, Toronto, M3J 1P3, Canada

<sup>d</sup>now at: Ricardo Energy & Environment, Harwell, Oxfordshire, OX11 0QR, UK

20

*Correspondence to:* Lisa K. Whalley (l.k.whalley@leeds.ac.uk) and Dwayne E. Heard (d.e.heard@leeds.ac.uk)

## Abstract

OH, HO<sub>2</sub>, total and partially-speciated RO<sub>2</sub>, and OH reactivity ( $k'_{\text{OH}}$ ) were measured during the July 2015 ICOZA (Integrated Chemistry of OZone in the Atmosphere) project that took place at a coastal site in North Norfolk, UK. Maximum measured  
25 daily OH, HO<sub>2</sub>, and total RO<sub>2</sub> radical concentrations were in the range  $2.6\text{--}17 \times 10^6$ ,  $0.75\text{--}4.2 \times 10^8$ , and  $2.3\text{--}8.0 \times 10^8$  molecule cm<sup>-3</sup>, respectively.  $k'_{\text{OH}}$  ranged from 1.7 to 17.6 s<sup>-1</sup> with a median value of 4.7 s<sup>-1</sup>. ICOZA data were split by wind direction to assess differences in the radical chemistry between air that had passed over the North Sea (NW–SE sectors) or major urban conurbations such as London (SW sector). A box model using MCMv3.3.1 chemistry was in reasonable agreement with the OH measurements, but it overpredicted HO<sub>2</sub> observations in NW–SE air in the afternoon by a factor of ~2–3, although slightly  
30 better agreement was found for HO<sub>2</sub> in SW air (factor of ~1.4–2.0 underprediction). The box model severely underpredicted total RO<sub>2</sub> observations in both NW–SE and SW air by factors of ~8–9 on average. Measured radical and  $k'_{\text{OH}}$  levels and measurement-to-model ratios displayed strong dependences on NO mixing ratios with the results suggesting that peroxy radical chemistry is not well understood under high NO<sub>x</sub> conditions. The simultaneous measurement of OH, HO<sub>2</sub>, total RO<sub>2</sub>, and  $k'_{\text{OH}}$  were used to derive experimental (i.e., observationally determined) budgets for all radical species as well as total RO<sub>x</sub> (= OH  
35 + HO<sub>2</sub> + RO<sub>2</sub>). In NW–SE air, the RO<sub>x</sub> budget could be closed during the daytime within experimental uncertainty but the rate of OH destruction exceeded the rate of OH production, and the rate of HO<sub>2</sub> production greatly exceeded the rate of HO<sub>2</sub>

destruction while the opposite was true for RO<sub>2</sub>. In SW air, the RO<sub>x</sub> budget analysis indicated missing daytime RO<sub>x</sub> sources but the OH budget was balanced, and the same imbalances were found with the HO<sub>2</sub> and RO<sub>2</sub> budgets as in NW–SE air. For HO<sub>2</sub> and RO<sub>2</sub>, the budget imbalances were most severe at high NO mixing ratios, and the best agreement between HO<sub>2</sub> and RO<sub>2</sub> rates of production and destruction rates was found when the RO<sub>2</sub> + NO rate coefficient was reduced by a factor of 5. A photostationary steady-state (PSS) calculation underpredicted daytime OH in NW–SE air by ~35%, whereas agreement (~15%) was found within instrumental uncertainty (~26% at 2σ) in SW air. The rate of *in situ* ozone production ( $P(O_x)$ ) was calculated from observations of RO<sub>x</sub>, NO, and NO<sub>2</sub> and compared to that calculated from MCM-modelled radical concentrations. The MCM-calculated  $P(O_x)$  significantly underpredicted the measurement-calculated  $P(O_x)$  in the morning, and the degree of underprediction was found to scale with NO.

## 1. Introduction

The removal of trace gases in the troposphere is dominated by reactions with the hydroxyl radical (OH) during the daytime. At semi-polluted locations, OH formation is mainly initiated by the photolysis of ozone (O<sub>3</sub>) and nitrous acid (HONO):



The OH oxidation of volatile organic compounds (VOCs) in the presence of oxygen results in the formation of organic peroxy radicals (RO<sub>2</sub>), for example via H-atom abstraction:



or via addition to unsaturated VOCs. RO<sub>2</sub> radicals may also be formed from the photolysis of oxygenated VOCs (OVOCs). In the presence of NO, RO<sub>2</sub> radicals produce hydroperoxyl radicals (HO<sub>2</sub>) and carbonyl species:



65

HO<sub>2</sub> also reacts with NO and also O<sub>3</sub> to reform OH:





70

thus completing the atmospheric reaction cycle known as the hydrogen oxide ( $\text{HO}_x = \text{OH} + \text{HO}_2$ ) cycle.  $\text{HO}_2$  is also formed by formaldehyde (HCHO) photolysis and by reaction of OH with CO and HCHO. Non-photolytic sources of radicals include nitrate radical ( $\text{NO}_3$ ) chemistry and the ozonolysis of alkenes. Chlorine atoms may also react with VOCs to generate  $\text{RO}_2$  radicals. The subsequent photolysis of  $\text{NO}_2$  formed in reactions (R4a) and (R5) results in the production of ozone in the troposphere:



80 The short lifetimes of OH,  $\text{HO}_2$ , and  $\text{RO}_2$ , collectively known as  $\text{RO}_x$ , make them ideal species to test our understanding of tropospheric oxidation chemistry, particularly when measurements of OH reactivity (the inverse of the OH lifetime,  $k'_{\text{OH}}$ ) are also available.

The marine boundary layer (MBL) accounts for a substantial fraction (71%) of the planetary boundary layer. Field measurements of OH and  $\text{HO}_2$  radicals in the MBL have shown that in general, models are capable of simulating the observed concentrations to within ~30% or better. The majority of these studies were characterised by clean air masses with very low to relatively low NO mixing ratios (Sommariva et al., 2004; Heard et al., 2006; Mao et al., 2009; Whalley et al., 2010; Beygi et al., 2011; Vaughan et al., 2012; Mallik et al., 2018), where observed OH and  $\text{HO}_2$  concentrations were generally in the range ~3–8 × 10<sup>6</sup> molecule cm<sup>-3</sup> and ~1–4 × 10<sup>8</sup> molecule cm<sup>-3</sup>, respectively. In the MBL,  $\text{HO}_x$  radical production is normally dominated by the reaction of  $\text{O}(^1\text{D})$  with water vapour (reaction (R1)), but HCHO photolysis to  $\text{HO}_2$  is often an important primary radical source (Ren et al., 2008; Stone et al., 2018). Similarly, owing to low primary VOC levels, OVOCs other than HCHO can account for a significant proportion of OH reactivity (Sommariva et al., 2006; Mao et al., 2009; Whalley et al., 2010; Stone et al., 2018), and their photolysis can also be important radical sources.  $\text{HO}_x$  chemistry was shown to be sensitive to halogen chemistry in some studies (Bloss et al., 2005b; Whalley et al., 2010; Stone et al., 2018), particularly with regard to the partitioning between OH and  $\text{HO}_2$  since BrO and IO radicals act to convert  $\text{HO}_2$  to OH (Sommariva et al., 2006). Heterogeneous uptake of  $\text{HO}_2$  on aerosols can be a significant  $\text{HO}_x$  loss route under low NO conditions (Sommariva et al., 2004; Sommariva et al., 2006; Whalley et al., 2010; Stone et al., 2018), but considerable uncertainty surrounds the treatment of heterogeneous processes such as the parameterisation of uptake coefficients ( $\gamma_{\text{HO}_2}$ ) (Song et al., 2020), which historically have sometimes been set to unrealistically high values to achieve measurement-model agreement.

To the authors' knowledge, there are no reported field campaigns in the MBL in which OH,  $\text{HO}_2$ ,  $\text{RO}_2$ , and  $k'_{\text{OH}}$  were all measured simultaneously. Similarly, there are only two studies (Novelli et al., 2014a; Mallik et al., 2018) in the MBL in which OH measurements made by laser-induced fluorescence (LIF) used a technique that allows for the discrimination of OH measurement interferences (Mao et al., 2012). In this work, we present interference-free measurements of OH (Woodward-

Massey et al., 2020) alongside HO<sub>2</sub>, total and partially-speciated RO<sub>2</sub>, and  $k'_{OH}$  from a field campaign at a UK coastal receptor site. This complete suite of RO<sub>x</sub> measurements allowed for more comprehensive testing of our understanding of MBL chemistry through comparisons to the predictions of a box model. The field campaign took place at a site subject to a variety of air mass types, at which previous field campaigns with (incomplete) RO<sub>x</sub> and/or  $k'_{OH}$  measurements were conducted in 1994–1995 (Forberich et al., 1999; Grenfell et al., 1999; Penkett et al., 1999), 2002 (Fleming et al., 2006; Green et al., 2006), and 2004 (Smith, 2007; Lee et al., 2009b). Recently Tan et al. (2019) showed that, provided RO<sub>x</sub> observations are available along with simultaneous supporting measurements (trace gas mixing ratios, photolysis rates, etc.), experimental budgets can be derived for all measured radical species, previously done for OH only. Budget imbalances can be identified with such an approach, and would indicate problems with experimental input data, such as radical concentrations and rate coefficients, and/or an incorrect chemical mechanism. Here we adopt the approach of Tan et al. (2019) and show that large imbalances exist between experimental radical production and destruction rates, and suggest explanations for such differences. In addition, we use the measured radical data to calculate *in situ* ozone production rates, and compare these to those calculated from modelled radical concentrations.

## 2. The Integrated Chemistry of Ozone in the Atmosphere (ICOZA) project

The ICOZA field campaign focussed on the chemistry surrounding the production of ozone, which is harmful to human health (Jerrett et al., 2009), damages vegetation (Krupa et al., 1998), and is a potent greenhouse gas (IPCC, 2023). The ICOZA campaign took place in June–July 2015 at the Weybourne Atmospheric Observatory (WAO), which is a Global Atmospheric Watch (GAW) regional station run by the University of East Anglia (UEA) on behalf of the National Centre for Atmospheric Science (<https://weybourne.uea.ac.uk/>). As shown in Figure S1 in the Supplementary Information, the site is located on the North Norfolk Coast, UK (52°57'02" N, 1°07'19"E), ~50 km NNW of Norwich and ~190 km NE of London. The site is situated 16 m above sea level and is surrounded by grass fields on three sides, with the fourth facing due north towards a gently-sloped pebble beach. The nearest major road is a rural road (A147) located ~800 m to the south.

As the site is situated on the North Sea coast, it is subject to clean air masses that have travelled over the North Sea and originating from polar regions, as well as more polluted air that has been influenced by emissions from major UK cities (e.g., London, Birmingham) ~12–24 h before arriving at the site (Lee et al., 2009b). Polluted continental air, containing aged (by up to 36 hours) anthropogenic emissions from continental Europe, may also be sampled (Lee et al., 2009b). In addition, the site is subject to emissions from local roads, as well as shipping influences (Cárdenas et al., 1998).

The campaign began on 1<sup>st</sup> July 2015, but radical measurements commenced on the afternoon of 29<sup>th</sup> June. The last radical observations were made during the early morning of 22<sup>nd</sup> July, before the campaign end date of 31<sup>st</sup> July.

## 2.1. Instrumentation

A list of the instrumentation involved in measurements of trace gases, aerosols, and photolysis frequencies during the ICOZA campaign is given in Table 1. Instruments sampled ambient air from a height of ~4 m from the roofs of individual shipping containers (Universities of Leeds and Leicester), a van (Birmingham), and from either the roof (~5 m) of the main WAO building directly, or via a common glass manifold (glass, ~15 cm ID) located on a tower that reached ~10 m above the roof. Comparisons of NO<sub>x</sub> observations, measured using multiple instruments, indicated no significant heterogeneity in the air sampled from different positions of the site.

### 2.1.1. The Leeds ground-based FAGE instrument

OH, HO<sub>2</sub>, and RO<sub>2</sub> radicals were measured using the fluorescence assay by gas expansion (FAGE) technique (Hard et al., 1984; Heard and Pilling, 2003). Only a brief description of the Leeds instrument is given here as it has been described in detail elsewhere (Creasey et al., 1997; Whalley et al., 2010; Whalley et al., 2013; Whalley et al., 2018; Woodward-Massey, 2018; Woodward-Massey et al., 2020) and was used to measure OH and HO<sub>2</sub> during a previous campaign at the WAO, namely the Tropospheric ORganic photoCHemistry experiment (TORCH) 2 campaign (Smith, 2007).

Ambient OH concentrations are measured using laser-induced fluorescence (LIF) spectroscopy. The inlet consists of a conical turret (4 cm length, 3.4 cm ID) with a 1.0 mm diameter pinhole through which ambient air is sampled at ~7 slm. The turret is mounted on top of a stainless steel fluorescence cell (HO<sub>x</sub> cell), which is held at ~1.5 Torr (~2 hPa) using a combination of a Roots blower (Leybold RUVAC WAU 10001) and a rotary pump (Leybold SOGEVAC SV2000). A wavelength tuneable solid-state laser (YAG pumped Ti Sapphire laser) with a pulse repetition frequency of 5 kHz is tuned to the OH A<sup>2</sup>Σ<sup>+</sup> (v' = 0) ← X<sup>2</sup>Π<sub>3/2</sub> (v'' = 0) electronic transition at λ = 308 nm. Approximately 10–20 mW of laser light is supplied to the fluorescence cell using an optical fibre. OH fluorescence near 308 nm is detected with a micro-channel plate photomultiplier (MCP, Photek PMT325/Q/BI/G with 10 mm diameter photocathode), which is used together with a 50 ns gating unit (Photek GM10-50) and a 2 GHz 20 dB gain amplifier (Photek PA200-10). Due to failures of the MCP detectors used during ICOZA, channel photomultiplier (CPM, Perkin Elmer 993P) detectors were sometimes used for the RO<sub>x</sub> fluorescence cell (see below). Fluorescence signals from the MCP/CPM detectors are analysed using gated photon counting.

HO<sub>2</sub> is detected after conversion to OH by the addition of NO (BOC, 99.8%) delivered using a mass flow controller (MFC, MKS Instruments 1179A series). An advantage for ICOZA relative to TORCH 2 and other previous field campaigns is the addition of instrumental capability for observations of RO<sub>2</sub> radicals, using the RO<sub>x</sub>LIF technique (Fuchs et al., 2008), as well as interference-free measurements of HO<sub>2</sub> (Fuchs et al., 2011; Whalley et al., 2013). The Leeds group first applied the RO<sub>x</sub>LIF method to ambient RO<sub>2</sub> observations in London (Whalley et al., 2018) and has since deployed this approach in Beijing (Slater et al., 2020; Whalley et al., 2021). The RO<sub>x</sub>LIF method relies on the reactions of RO<sub>2</sub> radicals with NO (BOC, 500 ppmv in N<sub>2</sub>) and CO (BOC, 5% in N<sub>2</sub>) in a flow tube held at ~30 Torr, which result in initial conversion of RO<sub>2</sub> to OH (RO<sub>2</sub> + NO → HO<sub>2</sub>, HO<sub>2</sub> + NO → OH) and then to HO<sub>2</sub> (OH + CO → HO<sub>2</sub>; very rapid conversion back to HO<sub>2</sub> results in minimal radical

165 wall losses) that is finally detected as OH via addition of NO inside a second FAGE cell (RO<sub>x</sub> cell) that the RO<sub>2</sub> flow tube is coupled to. During fieldwork, the two FAGE cells are used to make sequential measurements of OH, HO<sub>2</sub>, HO<sub>2</sub><sup>\*</sup> (HO<sub>2</sub> plus an interference from RO<sub>2</sub> radicals derived from long-chain alkanes and alkene and aromatic species; see Whalley et al. (2013) for full details), and total RO<sub>2</sub> in the following data acquisition cycle: (1) the first cell (HO<sub>x</sub>) measures OH while simultaneously the second cell (RO<sub>x</sub>) measures HO<sub>2</sub><sup>\*</sup> (high NO flow, 50 sccm; RO<sub>2</sub> interference maximised), (2) the HO<sub>x</sub> cell measures HO<sub>2</sub> (low NO flow, 5 sccm; RO<sub>2</sub> interference minimised) while the RO<sub>x</sub> cell measures total RO<sub>2</sub>. The RO<sub>x</sub>LIF method allows for 170 the speciation of total RO<sub>2</sub> into “complex” (cRO<sub>2</sub>) and “simple” (sRO<sub>2</sub>) RO<sub>2</sub> types (Whalley et al., 2013; Tan et al., 2017; Whalley et al., 2018). cRO<sub>2</sub> are those that readily convert to OH in HO<sub>2</sub><sup>\*</sup> mode (cRO<sub>2</sub> = HO<sub>2</sub><sup>\*</sup> – HO<sub>2</sub>; note that in other previous studies, cRO<sub>2</sub> have also been labelled as RO<sub>2</sub><sup>#</sup> or RO<sub>2</sub>i), and correspond to RO<sub>2</sub> radicals derived from alkenes, aromatics, and long-chain (> C<sub>3</sub>) alkanes. sRO<sub>2</sub> concentrations are derived from the difference between total RO<sub>2</sub> and cRO<sub>2</sub> and correspond to RO<sub>2</sub> radicals derived from small-chain (< C<sub>4</sub>) alkanes. For more details of the speciation of sRO<sub>2</sub> and cRO<sub>2</sub>, the reader is 175 referred to Whalley et al. (2013) and Whalley et al. (2018).

Background signals are normally obtained by scanning the laser wavelength to a position that is off-resonance from the OH transition line. In the case of OH, this yields the measurement referred to as OHwave (Mao et al., 2012). Alternatively, the OH background may be determined chemically, via addition of an OH scavenger (e.g., propane) prior to FAGE sampling, which results in an OH measurement known as OHchem (Mao et al., 2012). The recording of OHchem can be used to test for 180 the presence of interferences in conventional OHwave detection. Prior to the ICOZA campaign, an inlet pre-injector (IPI) module (Novelli et al., 2014a) was constructed to facilitate OHchem measurements in the Leeds FAGE system (Woodward-Massey et al., 2020). The IPI module was first deployed for ambient measurements of OHchem during ICOZA. To test for interferences, two IPI sampling periods were conducted in the middle of the campaign, separated by a few days (3<sup>rd</sup>–8<sup>th</sup> July and 12<sup>th</sup>–16<sup>th</sup> July). A comparison of OHwave (corrected for the small and well-characterised interference from O(<sup>1</sup>D) + H<sub>2</sub>O, 185 with O(<sup>1</sup>D) deriving from laser photolysis of O<sub>3</sub> (Woodward-Massey et al., 2020)) and OHchem measurements yielded a slope (OHwave versus OHchem) of 1.16 ± 0.06, with the non-unity value suggesting the presence of a small unknown OHwave interference during ICOZA on the order of 10–20%, which is smaller than the overall measurement accuracy of 26% at 2σ. The OH data presented in this work correspond to OHchem when such data were available, but OHwave otherwise, where all OHwave data have been corrected for the known interference from O<sub>3</sub>/H<sub>2</sub>O. No attempt has been made to correct the OHwave 190 data for the presence of other unknown interferences, which must be considered as an additional uncertainty in our analyses.

The Leeds FAGE instrument was calibrated by supplying known radical concentrations to the instrument inlets. Radicals were delivered in an excess flow (~40 slm) of humidified synthetic air (BOC, BTCA 178) using a turbulent flow tube. OH and HO<sub>2</sub> were generated in a 1:1 ratio (Fuchs et al., 2011) by the photolysis of water vapour at 184.9 nm using a Hg(Ar) pen-ray lamp (LOT LSP035). For RO<sub>2</sub> calibrations, CH<sub>4</sub> (BOC, CP grade 99.5%) was added to form HO<sub>2</sub> and CH<sub>3</sub>O<sub>2</sub> in a 1:1 ratio. 195 To enable the calculation of radical concentrations, N<sub>2</sub>O (BOC, medical grade 98%) chemical actinometry (Edwards et al., 2003; Faloon et al., 2004) was performed before and after the campaign in order to determine the product of the lamp flux at 184.9 nm and the photolysis time in the flow tube. Multipoint calibrations were performed for all radical species at regular

intervals during the campaign, approximately once per week. The calibration factors (i.e., sensitivities) obtained did vary somewhat due to instrumental issues, namely the need to switch between MCP/CPM detectors. One calibration factor was applied to periods in which an MCP was used, and one for periods in which a CPM was used, where both calibration factors were derived from the average sensitivities of multiple MCP or CPM calibrations. As a consequence of the detector changes, limits of detection (LODs) also varied over the course of ICOZA, with campaign-median 5 min LODs ( $\pm 1\sigma$ ) of  $(6.1 \pm 4.1) \times 10^5$ ,  $(4.0 \pm 2.7) \times 10^6$ , and  $(5.0 \pm 1.2) \times 10^7$  molecule  $\text{cm}^{-3}$  for OH, HO<sub>2</sub>, and total RO<sub>2</sub>, respectively, for a signal-to-noise ratio (SNR) of 2.

### 2.1.2. The Leeds OH reactivity instrument

The Leeds shipping container also housed an instrument used for the measurement of total OH reactivity,  $k'_{\text{OH}}$ . Full details may be found in Cryer (2016) and Stone et al. (2016) but the key features are described here. The instrument consists of an atmospheric pressure flow tube (85 cm length, 5 cm ID) coupled to an OH fluorescence cell, which was located on the roof of the Leeds container during the ICOZA field campaign. The low pressure in the fluorescence cell ( $\sim 2$  Torr) is provided by the same pumping system as the FAGE cells. The flow tube samples air (via  $\frac{1}{2}$ " PFA tubing) from close to the FAGE inlets at  $\sim 16$  slm using a vacuum pump (Agilent Technologies IDP-3 Dry Scroll Pump). The laser flash photolysis pump and probe technique is used here (Jeanneret et al., 2001; Sadanaga et al., 2004), which involves the 266 nm laser (Quantel USA CFR 200) photolysis (pump) of ambient O<sub>3</sub> to generate OH via the reaction of O(<sup>1</sup>D) with H<sub>2</sub>O. The OH signal decay is then observed in real time by LIF (the probe). Fitting of the first-order exponential obtained yields  $k'_{\text{OH}}$ , after subtraction of the physical decay rate controlled by non-chemical losses of OH (e.g., diffusion). 308 nm probe light is generated using the laser system described above. Previously, OH reactivity was measured at the WAO during TORCH 2 using a different method, the sliding injector technique with FAGE detection of OH (Ingham et al., 2009; Lee et al., 2009b).

### 2.1.3. Supporting measurements

Formaldehyde (HCHO) was measured using an LIF instrument developed in Leeds, full details of which may be found in Cryer (2016). The instrument is based on the design of Hottle et al. (2009) and uses a pulsed (300 kHz) tuneable fibre laser (TFL3000, Novawave) to generate UV radiation at 353.370 nm, which excites the HCHO  $5_{0,5} \leftarrow 5_{1,4}$  rotational transition of the  $4 A^1A_2 \leftarrow X^1A_1$  vibronic band. As with FAGE, gas is sampled into a low-pressure detection cell (110–120 Torr), but broadband fluorescence is collected at red-shifted wavelengths ( $\lambda \sim 390$ –550 nm). The fluorescence detected using a PMT (Sens-Tech P25PC photodetector module) and the signal recorded by gated photon counting (PMS400A, Becker and Hickl). The background is determined by moving the laser wavelength to an offline position ( $\lambda = 353.360$  nm). The compact HCHO instrument is housed in a shock-insulated 19" rack inside a plastic case, which was situated in the main WAO building during ICOZA and sampled air through the common glass manifold at a height of  $\sim 15$  m. HCHO was also measured using Hantzsch colourimetry (Nash, 1953), with reasonably good agreement between the two techniques as demonstrated by the fit  $[\text{HCHO}]_{\text{LIF}} = 1.2 \times [\text{HCHO}]_{\text{Hantzsch}} + 0.3$  ppbv ( $R^2 = 0.77$ ; data not shown).

230 Photolysis frequencies ( $J$ ) for a variety of species, including  $O_3 \rightarrow O(^1D)$ ,  $NO_2$ ,  $H_2O_2$ ,  $HONO$ ,  $HNO_3$ , and  $HCHO$ , were  
calculated using the actinic flux measured using a  $2\pi$  spectral radiometer and published absorption cross-sections and  
photodissociation quantum yields;  $J(O^1D)$  was also measured using a  $2\pi$  filter radiometer (Meteorologie Consult GmbH)  
(Bohn et al., 2008). A variety of other supporting instruments (Table 1) were brought to the WAO site. Observational data  
were also provided by instruments permanently located at WAO (e.g.,  $CO$ ,  $NO_x$ ,  $O_3$ ,  $SO_2$ ,  $VOCs$ , meteorological data; see  
235 Table 1).

## 2.2. Model description

In this work, radical concentrations were compared to the predictions of a zero-dimensional box model incorporating a kinetic  
and photochemical mechanism, the Master Chemical Mechanism (MCM, <http://mcm.leeds.ac.uk/MCM>)(Saunders et al., 1997;  
Jenkin et al., 2003; Saunders et al., 2003). The current version of the MCM was used, v3.3.1 (Jenkin et al., 2015). The MCM  
240 is a near-explicit chemical mechanism, which represents the oxidative degradation of methane and 142 primary emitted VOCs  
and incorporates ~17,000 reactions of ~6,700 closed shell and free radical species. A subset of the MCM with 4,258 species  
and 12,851 reactions was used instead of the full MCM, reflecting the suite of VOC measurements during ICOZA (Table 1),  
e.g., no measurements of  $> C_6$  alkanes, and limited BVOC observations (discussed below).

The MCM model simulations were conducted using AtChem2 (<https://github.com/AtChem/AtChem2>; (Sommariva et al.,  
245 2020)). Three model scenarios were used for the interpretation of radical observations: MCM-base, MCM-carb, and MCM-  
hox. The base model, MCM-base, was constrained to all measured trace gases listed in Table 1, with the exception of radical  
species (including  $NO_3$  radicals, due to limited measurement data for  $NO_3$ ), and OH reactivity,  $Cl_2$ ,  $HCHO$ , the sum of methyl  
vinyl ketone and methacrolein (MVK+MACR), xylenes, monoterpenes, and dimethyl sulphide (DMS). A constant mixing  
ratio of 1900 ppm was used for all model runs. MCM-carb was additionally constrained to measured carbonyl species ( $HCHO$ ,  
250 MVK+MACR), but was otherwise identical to the base model; MVK and MACR (both  $C_4H_6O$ , measured as a sum using  
proton transfer reaction–mass spectrometry (PTR–MS)) were assumed to be present in a 1:1 ratio. Similarly, MCM-hox was  
the same as the base model but was additionally constrained to FAGE-measured  $HO_2$ . In all simulations, the ratio of  
trimethylbenzene (TMB) isomers (i.e.,  $C_9$  aromatics, also indistinguishable by PTR–MS) was assumed to be 1:1:1. In all  
simulations,  $NO$  and  $NO_2$  were constrained as separate species rather than as total  $NO_x$ .

255 Temperature, pressure, and RH were also constrained in the MCM models, along with spectral radiometer measurements  
of photolysis frequencies:  $O_3 \rightarrow O(^1D)$ ,  $NO_2$ ,  $HONO$ ,  $HNO_3$ ,  $NO_3$ ,  $HCHO$ ,  $CHOCHO$ ,  $CH_3CHO$ ,  $CH_3COCH_3$ ,  $CH_3NO_3$ ,  
 $C_2H_5NO_3$ , 1- $C_3H_7NO_3$ , 2- $C_3H_7NO_3$ , and  $ClNO_2$ . For species with more than one photolytic decomposition channel, branching  
ratios were taken from the MCM, with the exception of  $CHOCHO$  (glyoxal, three channels) for which values were corrected  
with those used in the Tropospheric Ultraviolet and Visible (TUV) radiation model (Madronich, 1992). Photolysis frequencies  
260 that were not measured were calculated using the MCM parameterisation, scaled by a factor derived from measured and  
calculated  $J(NO_2)$  to account for cloud cover.



All measurement constraints were used at their original time resolution, as described in Sommariva et al. (2020). First-order physical losses of unmeasured, model-generated intermediates (e.g., unmeasured OVOCs, organic nitrates, peroxides, acids, and alcohols) through dry deposition were taken from Zhang et al. (2003), where an environment of deciduous trees and long grass/crops was assumed, representative of the immediate area around the WAO. The boundary layer height was estimated at 800 m and kept constant for the duration of the simulations. As examples, these constraints lead to deposition velocities of  $\sim 6.4$ ,  $\sim 2.8$ , and  $\sim 2.3$  cm s<sup>-1</sup>, corresponding to first-order deposition lifetimes of  $\sim 4$ ,  $\sim 10$ , and  $\sim 12$  h, for HNO<sub>3</sub>, H<sub>2</sub>O<sub>2</sub>, and HCHO, respectively. The lifetime of these model-generated secondary products was determined by their first-order loss rates of dry deposition, heterogeneous uptake (see below), and photolysis, and bimolecular reactions (e.g., with OH and Cl atoms).

In addition to dry deposition, physical losses to aerosols (i.e., heterogeneous uptake) were considered in all model scenarios, represented by the following first-order loss rate (Ravishankara, 1997):

$$k'_{\text{loss}} = \omega A \gamma / 4, \quad (\text{E1})$$

where  $\omega$  is the mean molecular speed of the species being taken up,  $A$  is the aerosol surface area measured using an aerodynamic particle sizer (APS, range: <0.5–20 μm), and  $\gamma$  is the aerosol uptake coefficient. Heterogeneous uptake was considered for the following species: O<sub>3</sub>, OH, HO<sub>2</sub>, H<sub>2</sub>O<sub>2</sub>, HO<sub>2</sub>NO<sub>2</sub>, NO, NO<sub>2</sub>, HONO, HNO<sub>3</sub>, NO<sub>3</sub>, N<sub>2</sub>O<sub>5</sub>, SO<sub>2</sub>, SO<sub>3</sub>, HCl, Cl, and ClNO<sub>2</sub>.  $\gamma_{\text{HO}_2}$  was set to a constant value of 0.1 in all model scenarios, the same value used in analyses of the Clean air for London (ClearfLo) campaign (Whalley et al., 2018).

The model was run for 48 hours (spin-up time) then reinitialised with the values of all species at the end of this period and rerun for the whole campaign. This allowed radical species and other reactive intermediates to reach steady-state levels but prevented the build-up of secondary products. The model output data were averaged to 15 min for the comparisons featured in this work.

OH concentrations can also be calculated using a photostationary steady-state (PSS) approach, which uses field measured quantities only, providing a check on (1) the internal consistency of OH, HO<sub>2</sub>, and  $k'_{\text{OH}}$  observations and (2) whether the OH budget can be balanced using measured quantities. PSS OH was calculated using the following equation:

$$[\text{OH}]_{\text{PSS}} = P_{\text{OH}} / k'_{\text{OH}}, \quad (\text{E2})$$

where  $k'_{\text{OH}}$  is obtained directly from measured OH reactivity;  $P_{\text{OH}}$  terms accounted for the photolysis of O<sub>3</sub> to O(<sup>1</sup>D) (R1a) and reaction with water vapour (R1b), photolysis of HONO (R2), reactions of HO<sub>2</sub> with NO (R5) and O<sub>3</sub> (R6), and alkene ozonolysis reactions (R8):



295

$$P_{\text{OH}} = 2J(\text{O}^1\text{D})[\text{O}_3]f + J(\text{HONO})[\text{HONO}] + k_5[\text{HO}_2][\text{NO}] + k_6[\text{HO}_2][\text{O}_3] + \sum^i k_{8i}[\text{O}_3][\text{ALK}_i]Y^{\text{OH}}_{\text{ALK}_i}, \quad (\text{E3})$$

where  $f$  is the fraction of  $\text{O}^1\text{D}$  atoms that react with  $\text{H}_2\text{O}$  to form  $\text{OH}$  (~10%, but dependent upon water vapour),  $J(\text{HONO})$  is the spectral radiometer-determined  $\text{HONO}$  photolysis rate, and the final term on the right-hand side accounts for the total  
 300  $\text{OH}$  formation from the ozonolysis of each measured alkene ( $\text{ALK}$ )  $i$  with yield  $Y^{\text{OH}}_{\text{ALK}_i}$ . Rate coefficients and yields were taken from MCMv3.3.1 (Saunders et al., 1997; Jenkin et al., 2003; Saunders et al., 2003; Bloss et al., 2005a; Jenkin et al., 2015).

### 2.3. Meteorological and chemical conditions encountered during ICOZA

The overall conditions encountered during the ICOZA campaign are summarised by the time series of meteorological (wind  
 305 speed and direction, temperature, RH, photolysis frequencies) and chemical (mixing ratios of  $\text{NO}$ ,  $\text{NO}_2$ ,  $\text{CO}$ ,  $\text{HCHO}$ , isoprene,  $\text{MVK}+\text{MACR}$ ,  $\text{O}_3$ ,  $\text{HONO}$ ) parameters shown in Figure 1, which includes all available measurements at 15 min time resolution for the period 29<sup>th</sup> June – 22<sup>nd</sup> July 2015. As shown in Figure S2, the predominant wind sectors were W, SW, and S (i.e., ~180°–270°). In terms of air mass back-trajectories (Cryer, 2016), during ICOZA the WAO site was generally under the influence of Atlantic air, which had been transported over the UK, likely encountering anthropogenic emissions from major  
 310 conurbations (e.g., Birmingham, London, Leicester; Figure S1). However, there were some exceptions to this on certain days of the campaign. For example, at the start of the campaign on 1<sup>st</sup> July, air that had spent a considerable amount of time over northern mainland Europe was sampled, which coincided with a heatwave (temperature of up to 30°C) and an event where high mixing ratios of ozone were encountered. Similarly, 11<sup>th</sup> and 16<sup>th</sup> July were characterised by a strong European influence, while on 9<sup>th</sup> July the site was subject to air masses originating from the North Sea.

315 During the ICOZA campaign, wind speeds were relatively strong, with a median of 5.5  $\text{m s}^{-1}$  and a maximum of 12.7  $\text{m s}^{-1}$ , and tended to drop slightly in the morning. Temperatures generally increased through the day from ~15°C before sunrise to ~20°C in the late afternoon, with a campaign maximum of 29.8°C during the heatwave on 1<sup>st</sup> July. RH varied between ~40–90% and was strongly anticorrelated with temperature. Based on Figure S2, and given that the SW sector corresponds to air that may have been transported over large urban areas (Figure S1), all ICOZA data (from 2<sup>nd</sup> July onwards) were split into two  
 320 categories according to wind direction – SW winds (180°–270°), and all other winds (NW–SE, <165° and >285°) – as shown in Table S1 and Figure S3. It can be seen that temperatures were generally higher (and conversely RH lower) in SW air. In addition, increased cloud cover in SW air is evident from the slightly lower average values of  $J(\text{O}^1\text{D})$ .

Overall, moderate levels of pollution were observed during the ICOZA campaign. For example, the campaign median  $\text{NO}$   
 mixing ratio, for periods of overlap with FAGE radical observations, was 160 pptv with a maximum of 4650 pptv (15 min).  
 325  $\text{NO}$  generally peaked in the morning, with median values of ~500–1500 pptv at 08:00–10:00 Universal Time Coordinated (UTC = GMT = BST – 1), ~100–400 pptv in the afternoon, and <100 pptv at night (Figure S3). On average,  $\text{NO}$  mixing ratios were almost a factor of 2 higher in SW air than in NW–SE air (Table S1).  $\text{NO}_2$  exhibited median and maximum levels of 2.2

and 10.4 ppbv, respectively, and followed an inverse diel profile to that of NO, peaking at night at ~3–4 ppbv with an afternoon minimum of ~1–1.5 ppbv. Both NO and NO<sub>2</sub> exhibited significant short-term variability (Figure 1).

330 The highest ozone mixing ratios of ~110 ppbv were observed on 1<sup>st</sup> July (Figure 1), which as mentioned above, coincided with elevated temperatures. It should be noted that this day, although interesting as a case study, was not characteristic of the general chemical conditions (particularly ozone levels) of the ICOZA campaign and was thus omitted from the wind sector analysis discussed in this paper. ); VOC measurements were also not available at this time. On average, ozone exhibits a classically-expected photochemical diel profile, with a minimum of ~25–30 ppbv around 06:00 UTC and a maximum of ~35–  
335 45 ppbv in the afternoon. Due to higher NO levels, O<sub>3</sub> mixing ratios were lower in SW air (Table S1 and Figure S3).

The diel profile of HCHO for SW air is similar to ozone (Figure S3), which is typical for an environment where HCHO production is largely driven by the photochemical oxidation of VOCs (Ayers et al., 1997; Cryer, 2016), with a diel minimum of ~800 pptv in the late morning and evening, and a maximum around 16:00 UTC in the range ~1000–1800 pptv. The diel profile of HCHO in NW–SE air is less pronounced, with lower mixing ratios indicating less integrated photochemical  
340 processing. The highest HCHO levels of 3990 pptv were observed during the late morning of 4<sup>th</sup> July, although unfortunately radical and other measurements are not available for this time, owing to instrumental issues caused by a power cut on the preceding night.

Levels of HONO were quite variable and reached a maximum of ~570 pptv during the night that followed the daytime ozone event discussed previously (1<sup>st</sup>–2<sup>nd</sup> July, Figure 1). In general, HONO mixing ratios tended to peak after sunset and  
345 midnight in NW–SE (~100 pptv) and SW air (~150 pptv), respectively (Figure S3). There is no obvious diel profile in CO measurements (Figure S3), and no clear difference between NW–SE and SW wind, with median levels of ~90–150 ppbv observed throughout the day but a few short-term spikes of up to ~420 ppbv. The flat diel profile observed for CO indicates that, for the most part, the WAO site was not strongly impacted by fresh anthropogenic combustion emissions during the ICOZA campaign.

350 Isoprene levels were low during ICOZA, with a campaign median mixing ratio of 24 pptv and a maximum of 450 pptv. Diel profiles of isoprene were similar between NW–SE and SW air, and bear slight resemblance to that expected from biogenic emissions with a maximum of ~50 pptv in the afternoon/early evening. The isoprene oxidation products MVK and MACR, measured as a sum using PTR–MS, exhibited significantly higher levels of ~80–200 pptv in SW air compared to ~20–60 pptv in NW–SE air. PM<sub>2.5</sub> levels exhibited no clear diel profile, with similar loadings between the two wind sector types.

355

## 2.4. Radical budget equations

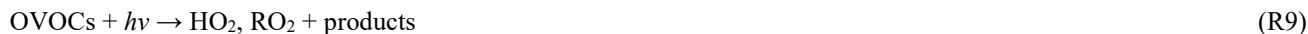
Experimental budget analyses for OH, HO<sub>2</sub>, and RO<sub>2</sub> as well as their sum, RO<sub>x</sub> were first described by Tan et al. (2019) for measurements made in the Pearl River Delta, China, although many previous studies have investigated the experimental budget of OH only (e.g., Whalley et al., 2011). Given the short lifetimes of OH, HO<sub>2</sub>, and RO<sub>2</sub> radicals (on the order of seconds to <  
360 1 min), we can assume that their concentrations are in steady-state (Geyer et al., 2004) and hence expect their production and destruction rates to be equal at a location such as the WAO where incoming air is homogeneous. In this section, we describe

the reactions involved in RO<sub>x</sub> initiation and termination as well as those that interconvert different RO<sub>x</sub> species (i.e., propagation). We then show how such reactions can be used to derive budget equations (i.e., production and destruction rates) for all radical species. All reaction rate coefficients and branching ratios were taken from the Master Chemical Mechanism, MCMv3.3.1 (<http://mcm.leeds.ac.uk/MCM/>; (Jenkin et al., 2003; Jenkin et al., 2015)).

#### 2.4.1. Budget for total RO<sub>x</sub> = OH + HO<sub>2</sub> + RO<sub>2</sub>

RO<sub>x</sub> production is driven by the photolysis of O<sub>3</sub> (R1), HONO (R2), and OVOCs (R9) as well as alkene ozonolysis reactions (R8):

370

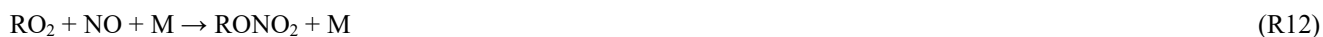


Other photolabile radical reservoir species, such as H<sub>2</sub>O<sub>2</sub>, ROOH, HNO<sub>3</sub>, and RONO<sub>2</sub> were not measured during ICOZA and therefore were not considered in RO<sub>x</sub> production. H<sub>2</sub>O<sub>2</sub> and CH<sub>3</sub>OOH, and some other peroxides have been measured at coastal locations. For example, mean concentrations of H<sub>2</sub>O<sub>2</sub> and CH<sub>3</sub>OOH at Mace Head were 0.23-1.58 ppbv and 0.1-0.15 ppbv, respectively (Morgan and Jackson 2002). At coastal locations peroxide photolysis was shown to be a minor source of OH or HO<sub>2</sub> (via CH<sub>3</sub>O) (Sommariva et al., 2004; 2006)). Specifically at Cape Grim, the rate of OH production from CH<sub>3</sub>OOH was less than 5% of the rate of production from O(<sup>1</sup>D)+H<sub>2</sub>O (Sommariva et al., 2004), and hence peroxides were not included in the radical budget analyses. The total RO<sub>x</sub> production rate may therefore be approximated using:

380

$$P_{\text{RO}_x} = 2J(\text{O}^1\text{D})[\text{O}_3]f + J(\text{HONO})[\text{HONO}] + \sum_i (J(\text{OVOC}_i)[\text{OVOC}_i](Y^{\text{HO}_2}_{\text{OVOC}_i} + Y^{\text{RO}_2}_{\text{OVOC}_i})) + \sum_j (k_8[\text{O}_3][\text{ALK}_j](Y^{\text{OH}}_{\text{ALK}_j} + Y^{\text{HO}_2}_{\text{ALK}_j} + Y^{\text{RO}_2}_{\text{ALK}_j})) \quad (\text{E4})$$

where  $f$  is the fraction of O(<sup>1</sup>D) atoms that react with H<sub>2</sub>O vapour to form OH,  $Y^{\text{HO}_2}_{\text{OVOC}_i}$  and  $Y^{\text{RO}_2}_{\text{OVOC}_i}$  are the HO<sub>2</sub> and RO<sub>2</sub> radical yields from the photolysis of OVOC  $i$ , respectively, and  $Y^{\text{OH}}_{\text{ALK}_j}$ ,  $Y^{\text{HO}_2}_{\text{ALK}_j}$ , and  $Y^{\text{RO}_2}_{\text{ALK}_j}$  are the radical yields from the ozonolysis of alkene (ALK)  $j$ . Of the OVOCs measured during ICOZA, those included in equation (E4) were formaldehyde (that photolyses to form HO<sub>2</sub>), acetaldehyde (HO<sub>2</sub> and RO<sub>2</sub>), and acetone (RO<sub>2</sub>). All measured alkenes were included in equation (E4). RO<sub>x</sub> termination is controlled by radical loss to NO<sub>x</sub> and the self- and cross-reactions of peroxy radicals:





The total  $\text{RO}_x$  destruction rate is thus given by:

$$D_{\text{RO}_x} = k_{10}[\text{NO}][\text{OH}] + k_{11}[\text{NO}_2][\text{OH}] + k_{12}[\text{NO}][\text{RO}_2] + 2(k_{13}[\text{HO}_2]^2 + k_{14}[\text{RO}_2]^2 + k_{15}[\text{RO}_2][\text{HO}_2]) \quad (\text{E5})$$

In this budget analysis,  $\text{RO}_2$  radicals are treated as a single species, with generalised rate coefficients taken from the MCMv3.3.1: at 298 K and 1 atm,  $k_{12} = \beta \times 9.0 \times 10^{-12} \text{ cm}^3 \text{ molecule}^{-1} \text{ s}^{-1}$ , where  $\beta$  is the  $\text{RONO}_2$  yield which we have assumed to be a constant 5% for all  $\text{RO}_2$  species (Orlando and Tyndall, 2012; Tan et al., 2019);  $k_{14} = 3.5 \times 10^{-13} \text{ cm}^3 \text{ molecule}^{-1} \text{ s}^{-1}$ ; and  $k_{15} = 2.3 \times 10^{-11} \text{ cm}^3 \text{ molecule}^{-1} \text{ s}^{-1}$ .

In line with Tan et al. (2019), we do not explicitly consider equilibrium reactions of the type  $\text{HO}_2 + \text{NO}_2 + \text{M} \rightleftharpoons \text{HO}_2\text{NO}_2 + \text{M}$  and  $\text{RO}_2 + \text{NO}_2 + \text{M} \rightleftharpoons \text{RO}_2\text{NO}_2 + \text{M}$  (e.g. peroxyacetyl nitrate (PAN) formation and decomposition) in the budget analyses, and assume these processes result in no net gain or loss of the radical species. The reaction of acyl peroxy radical with  $\text{NO}_2$  is the only way to form PAN in the MCM, and acyl peroxy constitutes 7-8% of the  $\text{RO}_2$  pool. For typical temperatures of the campaign  $\text{HO}_2\text{NO}_2$  and PAN (and other PANs) will be in equilibrium. Only at extremes in temperature would the equilibrium be skewed. For example at Hudson Bay in the Arctic, the formation of  $\text{HO}_2\text{NO}_2$  was identified as an important radical reservoir, reducing HOx concentrations during the day and enhancing them at night (Edwards et al, 2011).

#### 2.4.2. Budget for OH

OH production is described by equation (E3), and we do not consider the photolysis of hypohalous acids (HOX, e.g., HOI or HOBr) as a source of OH owing to the lack of IO or BrO measurements during ICOZA needed to quantify this. However, we expect the HOX source to only be very minor owing to the absence of exposed macroalgae and thus low inputs of I and Br. OH loss rates are obtained directly from measured  $[\text{OH}]$  and measured OH reactivity:

$$D_{\text{OH}} = [\text{OH}]k'_{\text{OH}} \quad (\text{E6})$$

#### 2.4.3. Budget for $\text{HO}_2$

As shown in Section 2.4.1, primary sources of  $\text{HO}_2$  are OVOC photolysis (of HCHO and  $\text{CH}_3\text{CHO}$ , reaction (R3)) and alkene ozonolysis (reaction (R4)). The reaction of OH with some VOCs can also lead to the prompt formation of  $\text{HO}_2$  (e.g. from isoprene and aromatics). The yield of  $\text{HO}_2$  from OH oxidation of these species is explicitly contained in the MCM mechanism and so prompt  $\text{HO}_2$  formation is included. For the Beijing AIRPRO field campaign the formation of  $\text{HO}_2$  from  $\text{VOC} + \text{OH} \rightarrow \text{HO}_2$  versus the formation of  $\text{RO}_2$  from  $\text{VOC} + \text{OH} \rightarrow \text{RO}_2$  was investigated (Whalley et al., 2021) – and  $\text{HO}_2$  production was

significant, owing to the presence of VOCs like isoprene and aromatics in the Beijing in summer. Secondary HO<sub>2</sub> sources are (R4a, b) and also:

430



The total HO<sub>2</sub> production rate may therefore be calculated as:

435

$$P_{\text{HO}_2} = \sum_i (J(\text{OVOC}_i) [\text{OVOC}_i] Y^{\text{HO}_2}_{\text{OVOC}_i}) + \sum_j (k'_8 [\text{O}_3] [\text{ALK}_j] Y^{\text{HO}_2}_{\text{ALK}_j}) + k_{16} [\text{OH}] [\text{CO}] + k_{17} [\text{OH}] [\text{HCHO}] + k_4 [\text{RO}_2] [\text{NO}] \quad (\text{E7})$$

440

where  $k_4 = \alpha \times 9.0 \times 10^{-12} \text{ cm}^3 \text{ molecule}^{-1} \text{ s}^{-1}$  at 298 K ( $\alpha$  is the HO<sub>2</sub> yield of the RO<sub>2</sub>+NO reaction which is assumed to be equal to 0.95 for all RO<sub>2</sub>). Prompt HO<sub>2</sub> sources as discussed above are not included in the budget analysis so P<sub>HO<sub>2</sub></sub> calculated using (E7) may be a lower estimate.

HO<sub>2</sub> is lost through reactions R5, R6 R13 and R15 (we do not consider the reactions of HO<sub>2</sub> with IO or BrO for reasons given in Section 2.4.2). Thus, the HO<sub>2</sub> destruction rate is given by:

445

$$D_{\text{HO}_2} = (2k_{13} [\text{HO}_2] + k_{15} [\text{RO}_2] + k_5 [\text{NO}] + k_6 [\text{O}_3]) [\text{HO}_2] \quad (\text{E8})$$

#### 2.4.4. Budget for RO<sub>2</sub>

Analogous to HO<sub>2</sub>, primary RO<sub>2</sub> sources are R8 and R9. The major secondary source of RO<sub>2</sub> radicals is the reaction of OH with VOCs and OVOCs:

450



455

The RO<sub>2</sub> production rate from reaction (R3) ( $P^{\text{sec}}_{\text{RO}_2}$ ) may be calculated using measured VOC and OVOC concentrations, multiplied by their OH reaction rate coefficients and [OH] (i.e.,  $P^{\text{sec}}_{\text{RO}_2} = [\text{OH}] \times \sum_i k_{\text{OH} + \text{VOC}_i} [\text{VOC}_i]$ ). Alternatively, we can calculate  $P^{\text{sec}}_{\text{RO}_2}$  from measured OH reactivity, after corrections for the contributions of inorganic reactants (i.e., NO<sub>x</sub>, CO, SO<sub>2</sub>, etc.) and organics that do not produce RO<sub>2</sub> (i.e., HCHO):

$$k'_{\text{OH, corrected}} = k'_{\text{OH}} - k'_{\text{OH, inorganic}} - k'_{\text{OH, HCHO}} \quad (\text{E9})$$

$$P^{\text{sec}}_{\text{RO}_2} = [\text{OH}] k'_{\text{OH, corrected}} \quad (\text{E10})$$

460

The total RO<sub>2</sub> production rate is then calculated as:

$$P_{\text{RO}_2} = \sum_i (J(\text{OVOC}_i)[\text{OVOC}_i]Y^{\text{RO}_2}_{\text{OVOC}_i}) + \sum_j (k'_8[\text{O}_3][\text{ALK}_j]Y^{\text{RO}_2}_{\text{ALK}_j}) + P^{\text{sec}}_{\text{RO}_2} \quad (\text{E11})$$

465 The reactions of the nitrate radical ( $\text{NO}_3$ ) and chlorine atoms (Cl) with VOCs and OVOCs could also constitute a source of  $\text{RO}_2$ .  $\text{NO}_3$  radical concentrations were measured during ICOZA but data coverage was poor; we have therefore omitted  $\text{NO}_3$  radical reactions in our budget analyses. We note that this limitation should only impact the nighttime results. The impact of Cl atom chemistry is discussed in Section 3.10.3.

470  $\text{RO}_2$  radicals are lost through reactions (R4a), (R12), (R14), and (R15). From these reactions, the total  $\text{RO}_2$  destruction rate may be derived as:

$$D_{\text{RO}_2} = ((k_{4a} + k_{12})[\text{NO}] + 2k_{14}[\text{RO}_2] + k_{15}[\text{HO}_2])[\text{RO}_2] \quad (\text{E12})$$

### 3. Results and discussion

#### 475 3.1. Radical and OH reactivity observations and comparison to model predictions

Figure 2 shows the full time series of OH,  $\text{HO}_2$ , and total  $\text{RO}_2$  radical concentrations as well as OH reactivity (15 min means) observed during ICOZA, covering the period 29<sup>th</sup> June – 21<sup>st</sup> July 2015. Also shown are the MCM-base model results for all radical species and  $k'_{\text{OH}}$  for periods in which measurements of all key species used to constrain the model were available, and the PSS calculated OH concentrations. The radical observations follow their expected photochemical diel profiles, with  
 480 maximum levels around solar noon (~12:00 UTC on cloud-free days) and low nighttime concentrations, approximately an order of magnitude smaller than during the daytime for OH and  $\text{HO}_2$ , and frequently scattered around zero. There was less of a day-night contrast for total  $\text{RO}_2$ , for which nighttime levels were almost always above the  $\text{RO}_2$  LOD ( $\sim 5 \times 10^7$  molecule  $\text{cm}^{-3}$  ( $\sim 2$  pptv)). Unlike radical concentrations, OH reactivity does not appear to show any diel pattern, with a median value of  $4.7 \text{ s}^{-1}$  but frequent spikes of up to  $\sim 10$ – $15 \text{ s}^{-1}$  (range =  $1.7$ – $17.6 \text{ s}^{-1}$ ). OH reactivity values were much higher at the start of the  
 485 campaign (i.e., 1<sup>st</sup>–2<sup>nd</sup> July 2015), due to the aforementioned heatwave event that coincided with the transport of pollution from northern continental Europe (Cryer, 2016).

Daily maximum OH concentrations were in the range  $2.6$ – $17 \times 10^6$  molecule  $\text{cm}^{-3}$  and  $1.8$ – $13 \times 10^6$  molecule  $\text{cm}^{-3}$  for observations and PSS calculations, respectively, based on the 90<sup>th</sup> percentile of the daytime concentrations with daytime defined as  $J(\text{O}^1\text{D}) > 5 \times 10^{-7} \text{ s}^{-1}$ . The MCM-base modelled OH ( $1.1$ – $14 \times 10^6$  molecule  $\text{cm}^{-3}$ ) is discussed in more detail  
 490 below. Similarly, daily maximum observed  $\text{HO}_2$  and total  $\text{RO}_2$  levels were in the range  $0.75$ – $4.2 \times 10^8$  molecule  $\text{cm}^{-3}$  and  $2.3$ – $8.0 \times 10^8$  molecule  $\text{cm}^{-3}$ , respectively, or  $1.0$ – $4.9 \times 10^8$  molecule  $\text{cm}^{-3}$  and  $0.53$ – $2.8 \times 10^8$  molecule  $\text{cm}^{-3}$  for MCM-base predictions. It is clear from these features that the PSS calculation can broadly capture the range in daily maximum OH levels, while the MCM-base model can generally reproduce peak  $\text{HO}_2$  but significantly underpredicts midday total  $\text{RO}_2$ . Observed

nighttime concentrations were on the order of  $1-3 \times 10^5$ ,  $2-3 \times 10^7$ , and  $1-2 \times 10^8$  molecule  $\text{cm}^{-3}$  for OH, HO<sub>2</sub>, and total RO<sub>2</sub>, respectively (see Figure 2).

On shorter timescales it can be seen (Figure 2) that the level of agreement is more variable. For example, the PSS calculation tracks OH observations very tightly for extended periods, but severe underpredictions are often found around midday, with smaller but still significant underpredictions on some mornings. The MCM-base predicted OH levels generally follow changes in the measurements, but with a tendency towards overprediction during the daytime (median ~10%, see below). Similar to the PSS model capture of OH measurements, MCM-base modelled HO<sub>2</sub> concentrations show excellent agreement with measurements for much of the campaign (median daytime overprediction of ~3%). For total RO<sub>2</sub> radicals, the level of agreement is poor (median daytime underprediction of ~80%), where, with a few exceptions (e.g., 14<sup>th</sup> July), the MCM-base model cannot reproduce temporal changes in RO<sub>2</sub> concentrations, and generally cannot capture their magnitudes with any reasonable degree of success, consistent with the discrepancy between the predicted and observed ranges in daily maxima. OH reactivity is almost always underpredicted (daytime median ~35%), with a few examples of short periods where the MCM-base model reactivity matches the observations.

Figure 3 shows the median diel profiles of observed and modelled radical concentrations and OH reactivity, split by wind direction. All radicals display their characteristic photochemical diel profiles, peaking around midday (albeit with strong day-to-day variability), and their qualitative features (i.e., overall shapes) are generally well-captured by the various model schemes. Smaller but still significant (i.e., above the LOD for each species) concentrations were observed at night that are generally larger than the model predictions.

Measured diel profiles of OH concentrations were similar in NW-SE and SW air, reaching  $\sim 2-4 \times 10^6$  molecule  $\text{cm}^{-3}$ , but with slight differences in the shape of their diel profiles. Overall, the models capture the observations reasonably well (i.e., generally within a factor of 2 during the daytime, although this is larger than the measurement uncertainty of 26% at  $2\sigma$ ), with the best agreement seen in SW air for the MCM-hox model (median difference ~15% during the daytime) and the PSS calculation (~20%). The PSS calculation underpredicts OH concentrations throughout the day in NW-SE air by ~35%, but tracks the measurements very tightly in SW air with a slight tendency towards underprediction, suggesting missing OH sources (see Equation (E2)). For OH, differences between the MCM-base and MCM-carb models are only minor (median difference NW-SE ~1%, SW ~2%), with a greater difference seen for the MCM-hox run.

Measured HO<sub>2</sub> levels and diel profiles were very similar between the two wind sector types, with peak levels of around  $\sim 1-1.5 \times 10^8$  molecule  $\text{cm}^{-3}$  in the afternoon and nighttime concentrations on the order of  $\sim 2 \times 10^7$  molecule  $\text{cm}^{-3}$ . However, the MCM models predict very different behaviour in NW-SE and SW air. In NW-SE air, HO<sub>2</sub> levels are significantly underpredicted in the evening by a factor of ~2, but overpredicted by about a factor of ~2-3 in the afternoon. For SW air, HO<sub>2</sub> is still significantly underpredicted in the evening but agreement throughout the daytime is fairly reasonable (median ~1% difference between measured HO<sub>2</sub> and MCM-carb), with less substantial afternoon disagreement. In either wind sector type, there are strong differences, both positive and negative, between the MCM-base and MCM-carb models (range: -50% to +70%).



Total RO<sub>2</sub> observations reached similar maximum concentrations of  $\sim 5 \times 10^8$  molecule cm<sup>-3</sup> in NW–SE and SW air, but exhibit different diel profiles. In NW–SE air, RO<sub>2</sub> levels peaked sharply just after midday, with concentrations of  $\sim 1\text{--}3 \times 10^8$  molecule cm<sup>-3</sup> in the morning and late afternoon. In SW air, the profile is broader, with concentrations of  $\sim 2\text{--}4 \times 10^8$  molecule cm<sup>-3</sup> sustained from mid-morning to the afternoon and maximum levels observed around 16:00 UTC. In contrast to OH and HO<sub>2</sub>, the level of measurement/model agreement for total RO<sub>2</sub> is poor at all times of day, as might be expected based on their time series comparison (Figure 2). For example, in NW–SE air, the measurement/MCM-base model ratios range from  $\sim 2\text{--}5$  in the afternoon to almost 40 in the early morning, with an average value of 8. Similar ratios are found in SW air, albeit with more substantial afternoon disagreement, with an average of 9. The models do capture the general shape of the diel profiles, not evident from the time series data in Figure 2, although, the models predict small secondary maxima in total RO<sub>2</sub> at night, which is not seen in the measurements; such behaviour was also found in London (Whalley et al., 2018). Constraining the model to the few measured carbonyls (MCM-carb) or HO<sub>2</sub> (MCM-hox) does little to improve the measurement-model agreement.

OH reactivity exhibits similar behaviour in the two wind sector types, with relatively flat diel profiles and levels of 3–6 s<sup>-1</sup>. In NW–SE air, the model reactivity roughly tracks temporal changes in the measured reactivity (e.g., the afternoon decrease), but the reactivity is underpredicted by  $\sim 34\%$  throughout the day (maximum  $\sim 49\%$ ). The contribution of model intermediates to model reactivity is  $\sim 35\%$  on average, with an afternoon maximum of  $\sim 63\%$ . In SW air, the measured OH reactivity profile is flatter but is also underpredicted throughout the day by  $\sim 37\%$  on average (maximum  $\sim 46\%$ ). Model intermediates were less important than in NW–SE air, but accounted for a slightly greater proportion of model reactivity in the afternoon and evening of up to  $\sim 30\text{--}40\%$ , compared to  $\sim 22\%$  on average.

Many aspects are fairly similar between the two wind sector types, for example measured OH, HO<sub>2</sub>, RO<sub>2</sub>, and OH reactivity levels. Perhaps the most striking difference between the two wind sector types is the model performance for OH and HO<sub>2</sub> (Figure 3). In NW–SE air, measured OH is underpredicted by the PSS calculation by  $\sim 35\%$  on average, but reasonable agreement is found in SW air (within 20% on average). Similarly, HO<sub>2</sub> is overpredicted by both the MCM-base and MCM-carb models by a factor of 2–3 during the afternoon in NW–SE air, but reasonable agreement is found between measured HO<sub>2</sub> and the MCM-carb model for daytime SW air. In contrast, the model underprediction of RO<sub>2</sub> is more severe in SW air compared to the NW–SE sector, suggesting that the good agreement found for HO<sub>2</sub> may be fortuitous (i.e., if the model was able to reproduce RO<sub>2</sub>, then  $\text{RO}_2 + \text{NO} \rightarrow \text{HO}_2$  reactions would likely lead to the model overpredicting HO<sub>2</sub>). The underprediction of OH and overprediction of HO<sub>2</sub> in NW–SE air, only occurs at low-NO<sub>x</sub> (Figure S7 and Figure 5). Possible reasons for these discrepancies are discussed in Section 4.4.

A comparison of measured and modelled concentrations of radical species and OH reactivity in previous coastal field campaigns can be found in Section S1 of the Supplementary Information, together with further discussion of the model results in Section S2.

560

### 3.2. RO<sub>2</sub> speciation

The RO<sub>x</sub>LIF technique allows for “simple” (sRO<sub>2</sub>) and “complex” (cRO<sub>2</sub>) organic peroxy radicals to be measured separately, as discussed in Section 2.1.1. RO<sub>x</sub>LIF observations of speciated RO<sub>2</sub> radicals are compared to MCM-base model predictions in Figure S4. On average, both observed and modelled sRO<sub>2</sub> account for ~60–100% of total RO<sub>2</sub> radicals. The overall levels of sRO<sub>2</sub> (~1–3 × 10<sup>8</sup> molecule cm<sup>-3</sup>) and cRO<sub>2</sub> (~0–1.5 × 10<sup>8</sup> molecule cm<sup>-3</sup>) are similar between each wind sector type. In NW–SE air, sRO<sub>2</sub> and cRO<sub>2</sub> display slightly different diel profile shapes, the latter being suppressed in the morning hours. sRO<sub>2</sub> are always significantly underpredicted by the model (average measurement/model ratio ~ 9), whereas there is agreement for cRO<sub>2</sub> around ~06:00 and ~18:00 UTC but disagreement overall (average ratio ~ 7). In SW air, both diel profiles are broader and the degree of underprediction in the afternoon is worse, with average values of ~10 and ~7 for sRO<sub>2</sub> and cRO<sub>2</sub>, respectively. Similar to NW–SE air, agreement is also seen for cRO<sub>2</sub> in the early morning in SW air.

Figure S5 shows the daytime breakdown of RO<sub>2</sub> species predicted by the MCM-base model, split according to wind direction. The model predicts that the dominant species in both wind sector types was methylperoxy (CH<sub>3</sub>O<sub>2</sub>), with contributions of ~58% and ~55% (daytime median) in NW–SE and SW air, respectively. In NW–SE air, the next most important species is HYPROPO<sub>2</sub> (CH<sub>2</sub>(OH)CH(CH<sub>3</sub>)O<sub>2</sub>, formed from OH addition to propene) with a contribution of ~9%, followed by acetylperoxy (CH<sub>3</sub>CO<sub>3</sub>, ~7%), BUTDBO<sub>2</sub> (CH<sub>2</sub>(OH)CH(O<sub>2</sub>)CH=CH<sub>2</sub>, formed from OH addition to 1,3-butadiene, ~2%), and HOCH<sub>2</sub>CH<sub>2</sub>O<sub>2</sub> (CH<sub>2</sub>(OH)CH<sub>2</sub>O<sub>2</sub>, formed from OH addition to ethene, ~2%). Other RO<sub>2</sub> radicals contribute ~22% in total. In SW air, the contributions are fairly similar: HYPROPO<sub>2</sub> ~6%, acetylperoxy ~8%, BUTDBO<sub>2</sub> ~2%, and HOCH<sub>2</sub>CH<sub>2</sub>O<sub>2</sub> ~2%. Other RO<sub>2</sub> radicals are slightly more important than in NW–SE air, with a total contribution of ~25%. Isoprene-derived peroxy radicals (with the most important being ISOPBO<sub>2</sub> and ISOPDO<sub>2</sub>) contribute only ~2% and ~5% in NW–SE and SW air, respectively.

### 3.3. Observed and modelled OH versus J(O<sup>1</sup>D)

The discussion of this can be found in Section S3 of the Supplementary Information, and includes Figure S6.

### 3.4. Observed and modelled RO<sub>2</sub> versus HO<sub>2</sub>

RO<sub>2</sub> is plotted against HO<sub>2</sub> in Figure 4 for both measurement and model results, with fit parameters summarised in Table S3. Observed RO<sub>2</sub> and HO<sub>2</sub> are strongly correlated, with a stronger correlation in SW air ( $R = 0.81$  versus  $R = 0.63$  in NW–SE air). For NW–SE air, the correlation is much stronger for sRO<sub>2</sub> versus HO<sub>2</sub> ( $R = 0.68$ ) than cRO<sub>2</sub> versus HO<sub>2</sub> ( $R = 0.37$ ) (data not shown). The fit slopes suggest that in NW–SE air RO<sub>2</sub> and HO<sub>2</sub> coexisted in approximately a 1:1 ratio, while this was closer to 2:1 for SW air. The non-negligible intercepts of ~1–2 × 10<sup>8</sup> molecule cm<sup>-3</sup> suggest that there are some RO<sub>2</sub> sources that do not result in the concomitant production of HO<sub>2</sub>, consistent with the time series data in Figure 2, which may be more relevant at night and possibly indicates a contribution from NO<sub>3</sub> chemistry. For the model results, the RO<sub>2</sub>:HO<sub>2</sub> ratio was closer to 1:2 in both NW–SE and SW air during the daytime, but much higher (~12:1) during nighttime. The different slopes for day

and nighttime data in the model cases are not seen in the observations. The increased slope for the model results during nighttime indicates slower  $\text{RO}_2 \rightarrow \text{HO}_2$  cycling due to lower NO levels compared to the daytime. However, small amounts of  $\text{RO}_2$  will be converted to  $\text{HO}_2$ , so a correlation still exists (either because there is a small amount of NO present or the  $\text{RO}_2 + \text{RO}_2$  self-reaction can form  $\text{HO}_2$ ). The nighttime modelling results might also be sensitive to the choice of boundary layer height, which was kept constant at 800 m in the model.

### 3.5 Observed and modelled OH, $\text{HO}_2$ , $\text{RO}_2$ , and $k'_{\text{OH}}$ versus NO

Radical levels are known to display a strong dependence on  $\text{NO}_x$  concentrations since radical propagation is promoted by NO, and radical loss is often dominated by the reactions of radicals with NO and  $\text{NO}_2$ . In recent studies utilising the  $\text{RO}_x\text{LIF}$  technique, it has become apparent that measurement-model ratios for  $\text{RO}_2$  are particularly sensitive to NO (Tan et al., 2017; Tan et al., 2018; Whalley et al., 2018; Slater et al., 2020; Whalley et al., 2021), which has implications for the calculation of ozone production rates. The dependence of daytime ( $J(\text{O}^1\text{D}) > 5 \times 10^{-7} \text{ s}^{-1}$ ) radical concentrations and OH reactivity values on NO mixing ratios is shown in Figure S7, split according to wind direction. For OH only, both measured and modelled concentrations were normalised to the campaign-average  $J(\text{O}^1\text{D})$  to remove the dependence on OH source strength (= OH\_Jnorm, e.g., (Tan et al., 2017)). This approach is justified by the almost linear dependence of OH on  $J(\text{O}^1\text{D})$  (Figure S6); similar trends were also found for un-normalised OH albeit with more scatter (data not shown).

In NW–SE air, observed OH\_Jnorm levels exhibit a classically-expected dependence on NO, increasing up to ~100 pptv NO before decreasing at higher NO (Figure S7). The MCM-base model reproduces the measured trend reasonably well. However, the PSS model significantly underpredicts the observations at low NO, yielding measurement-model ratios of ~2–3 below ~200 pptv NO (Figure 5), which is greater than the estimated combined measurement-model uncertainty (~50%). In SW air, measured OH\_Jnorm decreases with NO across the full NO range. The PSS model underpredicts the observations more severely at low NO (<300 pptv), yielding similar measurement-model ratios to those in NW–SE air. The MCM-base model slightly underpredicts the observations at low NO (by up to ~90%) but there is reasonable agreement (within ~40%) at moderate to high NO (>300 pptv).

Measured  $\text{HO}_2$  in NW–SE air exhibits a weak decreasing trend with NO, with levels of ~0.7–1.3  $\times 10^8 \text{ molecule cm}^{-3}$  below ~1 ppbv NO and ~0.3  $\times 10^8 \text{ molecule cm}^{-3}$  above this threshold. By contrast, the model dependence on NO is much stronger such that  $\text{HO}_2$  levels are overpredicted by up to a factor of ~3 at low NO, as seen in previous field campaigns, (Sommariva et al., 2004; Sommariva et al., 2006; Kanaya et al., 2007; Griffith et al., 2013; Whalley et al., 2018). Extremely low NO levels of < 3 pptv were observed during the Southern Ocean Photochemistry Experiment (SOAPEX-2), which took place at Cape Grim in austral summer 1999.  $\text{HO}_2$  observations were overpredicted by ~40%, but improved agreement could be found by inclusion of  $\text{HO}_2$  uptake with an uptake coefficient ( $\gamma_{\text{HO}_2}$ ) of unity (Sommariva et al., 2004).  $\text{HO}_2$  uptake was considered in the present work, using  $\gamma_{\text{HO}_2} = 0.1$ .  $\text{HO}_2$  measurements were overpredicted by a factor of 2 during NAMBLEX, for which the model analysis was performed for days with low  $\text{NO}_x$  levels (NO < 30 pptv) (Sommariva et al., 2006). Agreement was improved when the model was constrained to measured OVOCs (acetaldehyde, methanol, and acetone in the case of

625 NAMBLEX)). Additionally, at Mace Head, seaweed beds are exposed at low tide that represent a significant source of reactive halogen species such as  $I_2$  and  $CH_2I_2$  (Carpenter et al., 1999; Carpenter et al., 2003; McFiggans et al., 2004). Halogen oxides (XO, where X = Br, I) are able to convert  $HO_2$  to OH:



where hypohalous acids (HOX) may also undergo heterogeneous loss to aerosols. In a steady-state analysis, (Bloss et al., 2005b) found that up to 40% of  $HO_2$  could be lost to IO under low- $NO_x$  conditions, for measured IO levels of 0.8–4.0 pptv (Commane et al., 2011). In the full modelling study (Sommariva et al., 2006), constraining the model to BrO and IO resulted in similar decreases in model  $HO_2$ , depending on the uptake coefficients used for HOI and HOBr. Reactive iodine species were not measured during ICOZA, and their influence is expected to be negligible due to the lack of seaweed beds at the WAO site. However, it is possible that there was a source of reactive bromine through sea salt aerosol chemistry (Keene et al., 2009). We therefore speculate that inclusion of reactive halogens could simultaneously reduce the underprediction of OH and the overprediction of  $HO_2$  under low- $NO_x$  conditions in NW–SE air. To our knowledge there have been no measurements of  $I_2$ , BrO, or IO at the WAO (John Plane, personal communication).

OH and  $HO_2$  were measured at Rishiri Island, Japan, in September 2003 (Kanaya et al., 2007). Daytime  $HO_2$  levels were overpredicted by almost a factor of 2. In addition to halogen chemistry and  $HO_2$  uptake, the authors also considered the possibility that  $HO_2 + RO_2$  reactions were faster than previously thought. Increasing the rate of  $HO_2 + RO_2$  reactions would result in increased  $RO_2$  destruction rates, therefore worsening the agreement between  $RO_2$  destruction and production rates, which should be in balance. For this reason, we do not think that faster-than-expected  $HO_2 + RO_2$  reactions are the cause of the overprediction of  $HO_2$  levels under low- $NO_x$  conditions in NW–SE air during ICOZA. In fact, the value of the rate coefficient for the  $RO_2+HO_2$  reaction used in the budget analysis may already be too large, as discussed further in Section 3.7 below.

During the Clean air for London (ClearfLo) campaign in summer 2012,  $HO_2$  concentrations were overpredicted by a box model using MCMv3.2 by up to a factor of 10 at low NO ( $< 1$  ppbv) (Whalley et al., 2018). The model  $HO_2$  was somewhat reduced but the observations could still not be reconciled after inclusion of both  $HO_2$  aerosol uptake (using  $\gamma_{HO_2} = 1$ ) and autoxidation chemistry (Bianchi et al., 2019), which is now known to play a significant role in the gas phase oxidation of both BVOCs (e.g. Zha et al., 2017 and references therein) and anthropogenic VOCs (AVOCs) (Mehra et al., 2020 and references therein). Whalley et al. (2018) found that good agreement between the model and  $HO_2$  measurements could be found if the rate of  $RO_2 + NO \rightarrow HO_2$  propagation was reduced, in their case by increasing the branching ratio for alkyl nitrate formation.

In the highest NO bin, measured  $HO_2$  is underpredicted by a factor of  $\sim 2$ . In SW air, both measured and modelled  $HO_2$  decrease sharply with NO, from  $\sim 2 \times 10^8$  molecule  $cm^{-3}$  at  $\sim 100$  pptv NO to  $\sim 0.1\text{--}0.3 \times 10^8$  molecule  $cm^{-3}$  above 1 ppbv. For this wind direction, the measurements and model results are in agreement across the full NO range.

Overall, measured OH and HO<sub>2</sub> are in reasonable agreement with the PSS calculation and the MCM-base model prediction, respectively, at high NO. There is also good agreement between measured and MCM-base OH at moderate to high NO. However, RO<sub>2</sub> radicals are significantly underpredicted by the base model across all NO mixing ratios in both NW–SE and SW air. Observed and modelled RO<sub>2</sub> concentrations display a constant decrease with NO in either wind sector type. Comparing the two sets of observations, the dependence is steeper in SW air. In both wind sector types, the model NO dependence of RO<sub>2</sub> is steeper than the corresponding measurement NO dependence, such that the measurement-model ratio increases from ~2–3 for NO < 100 pptv to ~10–30 for NO > 1 ppbv (Figure 5). Such discrepancies likely relate to the model underprediction of OH reactivity, the degree of which also scaled with NO (Figure S7), since this indicates missing RO<sub>2</sub> sources from the OH oxidation of missing VOCs. Missing OH reactivity, i.e., the difference between measured and modelled OH reactivity, reached values of ~2–3 s<sup>-1</sup> for NO > 1 ppbv, or ~30–45% of measured reactivity.

The increasing underprediction of RO<sub>2</sub> radicals as NO increases has been seen in all previous field campaigns in which RO<sub>2</sub> (distinct from HO<sub>2</sub>) was measured using the RO<sub>x</sub>LIF technique (Fuchs et al., 2008; Whalley et al., 2013). RO<sub>2</sub> measurement-model ratios as a function of NO from these campaigns (Tan et al., 2017; Tan et al., 2018; Whalley et al., 2018; Slater et al., 2020; Whalley et al., 2021) are compared with ICOZA in Figure 6. It can be seen that the measurement-model discrepancy starts to appear at lower NO (i.e., <100 pptv) for ICOZA in comparison to the other campaigns, although the curves for ICOZA and AIRPRO summer display strong overlap in the ~100–600 pptv NO range. There is also some overlap between the curves for ICOZA and BEST-ONE (Tan et al., 2018), a winter campaign conducted at a suburban site near Beijing, at low/moderate NO (~100–200 pptv). Overall, the largest measurement-model ratios were found in London (Whalley et al., 2018) and central Beijing (Slater et al., 2020; Whalley et al., 2021), but at higher NO levels (>10 ppbv) than those seen in most other campaigns including ICOZA. Tan et al. (2017) found that an additional primary RO<sub>2</sub> source from chlorine chemistry could explain a small portion (10–20%) of the missing RO<sub>2</sub> in their study. Whalley et al. (2018) found that chlorine chemistry increased modelled RO<sub>2</sub> for the ClearfLo campaign by ~20% in the morning when NO<sub>x</sub> levels were high, in comparison to RO<sub>2</sub> underpredictions of greater than factor of 10. Since the major Cl atom precursor ClNO<sub>2</sub> was measured during ICOZA (Sommariva et al., 2018) and constrained in all model scenarios, ClNO<sub>2</sub> photolysis to form Cl atoms and the subsequent reactions of Cl with VOCs is not thought to be the source of the missing RO<sub>2</sub> in the present study. However, as the chlorine chemistry in MCMv3.3.1 is limited to reactions with alkanes, additional chlorine chemistry (e.g., reactions with alkenes, OVOCs, etc.) may be needed to fully assess the role of chlorine during ICOZA.

Since missing OH reactivity was also found at high NO<sub>x</sub> conditions, some of the missing RO<sub>2</sub> may be due to the reactions of OH with unmeasured VOCs. However, as discussed in Section 3.7 below, evidence is also found for missing RO<sub>2</sub> sources at high NO<sub>x</sub> using calculations constrained to measured OH reactivity. Thus the missing OH reactivity cannot fully explain the missing RO<sub>2</sub>. It is possible that the missing RO<sub>2</sub> found for ICOZA is not due to a missing RO<sub>2</sub> source, but an overestimated RO<sub>2</sub> sink, and this is explored further in Section 3.10.

Recently, Whalley et al. (2020) presented measurements of OH, HO<sub>2</sub>, RO<sub>2</sub>, and OH reactivity in summertime Beijing. RO<sub>2</sub> concentrations were underpredicted by a box model with MCMv3.3.1 chemistry, most severely at high NO<sub>x</sub>. Missing OH

reactivity was also identified. The measurement-model agreement for RO<sub>2</sub> was significantly improved after the model inclusion of an  $\alpha$ -pinene derived RO<sub>2</sub> radical, C96O2 (MCM nomenclature), formed at a rate set equal to the level of missing OH reactivity. This complex RO<sub>2</sub> species does not generate HO<sub>2</sub> directly from its reaction with NO, but instead the RO radical formed preferentially isomerises (via a H-shift) to form another RO<sub>2</sub> radical in the presence of O<sub>2</sub>, and undergoes multiple RO<sub>2</sub> + NO  $\rightarrow$  R'O<sub>2</sub> reactions before eventually forming HO<sub>2</sub>. Such autoxidation chemistry has the net effect of reducing the rate of RO<sub>2</sub>  $\rightarrow$  HO<sub>2</sub> propagation, and effectively extends the lifetime of RO<sub>2</sub> radicals, resulting in higher concentrations. Based on the results in the present work, it is possible that similar chemistry occurred during the ICOZA campaign, although it is unlikely that a BVOC was involved because of the low biogenic influence at the WAO site. However, aromatic species, more relevant to ICOZA, have also been shown to undergo autoxidation (Wang et al., 2017; Mehra et al., 2020). To further explore the RO<sub>2</sub> discrepancy found for ICOZA, the contribution of sRO<sub>2</sub> to total RO<sub>2</sub> is plotted as a function of NO for measurement and model results in Figure S8. For the measurements, the sRO<sub>2</sub> contribution increases with NO in both NW-SE and SW air from  $\sim$ 0.7 to values close to 1. In contrast, the model predicts a constant sRO<sub>2</sub> fraction of  $\sim$ 0.7, in accordance with the dominance of CH<sub>3</sub>O<sub>2</sub> (Figure S5). The reasons for the strong dependence of the measured sRO<sub>2</sub> fraction on NO are unclear, but may be due to the NO-mediated propagation of cRO<sub>2</sub> to sRO<sub>2</sub> as VOCs are increasingly fragmented into smaller and less complex RO<sub>2</sub> species. Alternatively, cRO<sub>2</sub> formation may be facilitated by low NO<sub>x</sub> levels, e.g., due to autoxidation chemistry (Crouse et al., 2013; Jokinen et al., 2014; Bianchi et al., 2019).

### 710 3.6. Missing $k'_{OH}$ versus OVOCs and temperature

Missing OH reactivity has been found in many previous field studies in which OH reactivity was measured and compared to calculated reactivity or model simulations (Kovacs et al., 2003; Ren et al., 2003; Di Carlo et al., 2004; Sinha et al., 2008; Lee et al., 2009b; Lou et al., 2010; Mao et al., 2012; Nolscher et al., 2012; Edwards et al., 2013; Brune et al., 2016; Whalley et al., 2016; Kumar et al., 2018). Missing OH reactivity is normally attributed to either unmeasured primary VOCs (e.g., BVOCs), or unmeasured VOC oxidation products (i.e., OVOCs). To test which was responsible for the missing reactivity observed for ICOZA, missing OH reactivity (measured – modelled) was binned against various chemical concentrations and temperature. These data are shown in Figure S9. It can be seen that missing reactivity exhibits strong correlations ( $R^2 \geq 0.83$ ) with several measured OVOCs, such as acetaldehyde, acetone, and methanol (all constrained in MCM-base). This finding suggests that the missing reactivity is due to unmeasured VOC oxidation products that were not well simulated by the base model. The only OVOCs measured and constrained in the base model were acetone, acetaldehyde, and methanol and as such many OVOCs were missing, e.g., the oxidation products of  $>C_2$  VOCs. Weaker correlations ( $R^2 \leq 0.7$ ) were found for isoprene (maximum = 418 pptv) and the PTR-MS measured sum of monoterpenes (maximum = 105 pptv), such that unmeasured primary BVOCs are unlikely to be the root of the missing reactivity. BVOC emissions are known to display an exponential dependence on temperature (Guenther et al., 1993). It is therefore expected that missing reactivity should scale exponentially with temperature if missing biogenic species are responsible (Di Carlo et al., 2004). As shown in Figure S9, this was not the case for ICOZA

and the dependence is clearly linear, albeit over a relatively small temperature range of  $\sim 12\text{--}24^\circ\text{C}$ . This is further evidence that the missing reactivity for ICOZA is due to OVOCs, not a primary biogenic species. It is hypothesised that the correlation with temperature is due to increased VOC oxidation rates at high temperature that results in greater OVOC production. Missing reactivity is also reasonably well correlated with toluene ( $R^2 = 0.84$ , data not shown), such that unmeasured aromatic VOCs could also be responsible, as suggested by Lee et al. (2009b).

When missing OH reactivity is calculated using the MCM-carb model, which is additionally constrained to measured HCHO and MVK+MACR, all the correlations in Figure S9 remain ( $R^2 \geq 0.83$ ), with the exception of temperature ( $R^2 = 0.61$ ). Therefore, species other than HCHO and MVK+MACR must be responsible for the missing OH reactivity. In recent years, OVOC emissions have increased in importance in the UK, with ethanol now the largest contributor to non-methane VOCs in terms of mass emissions (Lewis et al., 2020). More generally, alcohols are now the largest contributors to ozone production ( $\sim 30\%$ ) in terms of their photochemical ozone creation potentials (POCPs). It is therefore critical that in future field campaigns, alcohols such as ethanol and isopropanol are measured to evaluate their impacts on radical budgets and ozone production.

### 3.7. Experimental radical budget balance

#### 3.7.1. Budget for total $\text{RO}_x$

Figure 7 shows median diel profiles of the rates of  $\text{RO}_x$  production and destruction calculated using equations (E1–E2), split according to wind direction. In NW–SE air, which was encountered for  $\sim 40\%$  of the data, both  $P(\text{RO}_x)$  and  $D(\text{RO}_x)$  peak at  $\sim 0.7\text{--}0.8 \text{ ppbv h}^{-1}$  around 12:00 UTC with a fairly symmetrical profile either side of midday (solar noon  $\sim 12:00$  UTC based on cloud-free days). Within uncertainty,  $P(\text{RO}_x)$  and  $D(\text{RO}_x)$  are equal for much of the day, indicating budget closure, apart from around midnight. In SW air ( $\sim 60\%$  of the data),  $P(\text{RO}_x)$  and  $D(\text{RO}_x)$  peak at  $\sim 1.2\text{--}1.4 \text{ ppbv h}^{-1}$  around 10:00 UTC, where  $D(\text{RO}_x)$  displays a broader profile than that in NW–SE air.  $P(\text{RO}_x)$  is always smaller than  $D(\text{RO}_x)$ , by greater than the measurement uncertainty in the hours 06:00–09:00 UTC, late afternoon, and evening, suggesting missing  $\text{RO}_x$  sources in SW air on the order of  $\sim 0.2\text{--}0.6 \text{ ppbv h}^{-1}$  at these times. Alternatively, the rate coefficient for  $\text{RO}_2 + \text{HO}_2$  used in the budget analysis may be too large for the mix of  $\text{RO}_2$  present at the WAO. Since  $\text{NO}_3 + \text{VOC}$  reactions were omitted from the budget analysis, it is suggested that  $\text{NO}_3$  radical reactions, acting as a net  $\text{RO}_x$  source, would likely reduce the gap between  $P(\text{RO}_x)$  and  $D(\text{RO}_x)$  at night.

#### 3.7.2. Budget for OH

Figure 8 displays median diel profiles of OH rates of production and destruction calculated using equations (E3 and E6). In contrast to the  $\text{RO}_x$  budget, in which rates of production and destruction were in balance for most of the 24 h diel cycle in NW–SE air,  $P(\text{OH})$  is almost always smaller than  $D(\text{OH})$  in NW–SE air, which, since  $D(\text{OH})$  is calculated directly from measured OH reactivity, indicates missing OH sources of up to  $\sim 2\text{--}3 \text{ ppbv h}^{-1}$ . In addition,  $D(\text{OH})$  exhibits two diel peaks at

~10:00 UTC (~2.5 ppbv h<sup>-1</sup>) and ~16:00 UTC (~3.5 ppbv h<sup>-1</sup>), whereas  $P(\text{OH})$  peaks only once at ~1.5 ppbv h<sup>-1</sup> in the morning and then decreases through midday and over the course of the afternoon. It should be noted that the peak at ~16:00 UTC is the 1-hour median of many 15-minute data points, corresponding to different days, and is not driven by a single high value in the averaging. In SW air, OH rates of production and destruction are reasonably well balanced throughout the day, with  $P(\text{OH})$  slightly smaller than  $D(\text{OH})$  by ~0.2 ppbv h<sup>-1</sup> on average, but differences of up to ~1 ppbv h<sup>-1</sup> (~14:00 UTC) can be seen.

### 3.7.3. Budget for HO<sub>2</sub>

In contrast to the RO<sub>x</sub> and OH budgets, the HO<sub>2</sub> budgets calculated using equations (E7 and E8) (Figure 9) are out of balance throughout the daytime in both NW–SE and SW air, with HO<sub>2</sub> rates of production greatly exceeding rates of destruction by up to an order of magnitude in the morning.  $P(\text{HO}_2)$  peaks around ~10:00 UTC at ~8 and ~14 ppbv h<sup>-1</sup> in NW–SE and SW air, respectively. At this time, known HO<sub>2</sub> sinks amount only to ~1 ppbv h<sup>-1</sup>.  $D(\text{HO}_2)$  reaches diel maxima of only ~1 and ~2 ppbv h<sup>-1</sup> in NW–SE and SW air, respectively. The imbalance between  $P(\text{HO}_2)$  and  $D(\text{HO}_2)$  cannot be accounted for by the measurement uncertainty in  $D(\text{HO}_2)$  of ~44% (derived from calibration accuracy and reproducibility), and would imply the very rapid build-up of HO<sub>2</sub> to multi-ppbv levels, which was not observed.

### 3.7.4. Budget for RO<sub>2</sub>

The diel profiles of RO<sub>2</sub> rates of production and destruction calculated using equations (E7–E10) (Figure 10) bear close resemblance to those of HO<sub>2</sub> but with opposite sign imbalances, i.e., for RO<sub>2</sub>, destruction greatly exceeds known production processes. In NW–SE air,  $D(\text{RO}_2)$  peaks at ~7 ppbv h<sup>-1</sup> around ~10:00 UTC, at which time known RO<sub>2</sub> sources amount to only ~0.6 ppbv h<sup>-1</sup>. Maximum  $P(\text{RO}_2)$  occurs around midday at almost 1 ppbv h<sup>-1</sup>, which is a factor of three slower than  $D(\text{RO}_2)$  at the same time. RO<sub>2</sub> destruction is even faster in SW air, reaching ~13 ppbv h<sup>-1</sup> around 09:00–10:00 UTC, at which time  $P(\text{RO}_2)$  is only ~0.6–1.5 ppbv h<sup>-1</sup>. RO<sub>2</sub> production rates were almost twice as fast in SW air compared to NW–SE air, with a diel maximum of ~2 ppbv h<sup>-1</sup> around ~14:00 UTC.

## 3.8. Dependencies of radical budgets upon NO mixing ratios

To summarise thus far, in NW–SE air during daytime the total RO<sub>x</sub> budget is balanced but OH is missing a source, and HO<sub>2</sub> production rates greatly exceed HO<sub>2</sub> destruction rates while the opposite is true for RO<sub>2</sub>. In SW air, evidence for missing RO<sub>x</sub> sources is found in the morning and late afternoon, while the daytime OH budget is balanced, and the same problems with the HO<sub>2</sub> and RO<sub>2</sub> budgets in NW–SE air are also found (i.e., calculated RO<sub>2</sub> → HO<sub>2</sub> conversion is perhaps too fast in both wind sectors).



785 As radical levels and measurement-model ratios are strongly dependent on NO mixing ratios, it is expected that the budget imbalances may also have been influenced by NO. As shown in Figure S10, this was indeed the case, with the difference between the rate of destruction and the rate of production displaying a strong dependence on NO for RO<sub>x</sub>, HO<sub>2</sub>, and RO<sub>2</sub>.

$D(\text{RO}_x) - P(\text{RO}_x)$  increases with NO in NW-SE air, from virtually zero (i.e., budget balance) at <600 pptv NO to almost 1 ppbv h<sup>-1</sup> at ~2000-3000 pptv NO. This suggests missing RO<sub>x</sub> sources and/or overestimated RO<sub>x</sub> loss rates under high NO<sub>x</sub> conditions. However, in SW air, the difference between destruction and production rates exhibits a U-shaped dependence on NO.  $D(\text{RO}_x) - P(\text{RO}_x)$  is ~1 ppbv h<sup>-1</sup> at ~100-200 pptv NO, scattered around zero in the ~300-600 pptv NO region, and increases again to ~0.5 ppbv h<sup>-1</sup> at 1000-2000 pptv NO. This may suggest that in SW air, the radical chemistry is well-understood at moderate NO<sub>x</sub>, but that there are missing RO<sub>x</sub> sources and/or overestimated RO<sub>x</sub> loss rates at both low and high NO<sub>x</sub>. At low NO<sub>x</sub>, the choice of the rate coefficient used for the RO<sub>2</sub>+HO<sub>2</sub> reaction may be too high, causing  $D(\text{RO}_x)$  to be greater than  $P(\text{RO}_x)$ . It is unclear why the budget is balanced at low NO<sub>x</sub> in NW-SE air, but not SW air, but may relate to differences in VOC composition between the two wind sectors.

For OH, the rate of destruction minus the rate of production does not exhibit any obvious trend with NO level, with values of ~0-2 ppbv h<sup>-1</sup> across the entirety of NO space encountered during ICOZA, in both NW-SE and SW air. Since  $D(\text{OH})$  is constrained by measured OH reactivity, this suggests the presence of missing OH sources, which are independent of NO. One possibility is that OH radicals were formed from the reactions of HO<sub>2</sub> or RO<sub>2</sub> with species other than NO, discussed in further detail in Section 3.10. Although this contrasts with the lack of NO-dependence found for  $D(\text{OH}) - P(\text{OH})$ , their ratios  $D(\text{OH})/P(\text{OH})$  do show a decreasing trend with NO as shown in Figures 5 and S7, consistent with the presence of missing OH sources under low NO<sub>x</sub> conditions.

For the HO<sub>2</sub> and RO<sub>2</sub> budgets, the NO trends are the same in NW-SE and SW air.  $D(\text{HO}_2) - P(\text{HO}_2)$  is close to zero at low NO, but becomes more negative with increasing NO, reaching -(12-15) ppbv h<sup>-1</sup> at >1000 pptv NO. Similarly, for RO<sub>2</sub>, the budget is closed at low NO but  $D(\text{RO}_2) - P(\text{RO}_2)$  reaches up to +(13-16) ppbv h<sup>-1</sup> at high NO. Thus, the HO<sub>2</sub> and RO<sub>2</sub> budget balances show virtually the same trends with NO in magnitude, but with opposite sign. This is strong evidence that the rate of RO<sub>2</sub> → HO<sub>2</sub> propagation has been substantially overestimated and is discussed in further detail in Section 3.10.

The results of our work may be compared to those of Tan et al. (2019), who first used the experimental budget approach for a campaign in the Pearl River Delta (PRD), China. Pollution levels were much higher during the PRD campaign compared to those encountered at the WAO – for example much greater OH reactivities of up to 80 s<sup>-1</sup> were measured (c.f. 18 s<sup>-1</sup> for ICOZA), and NO mixing ratios were higher (diurnal maximum of ~4 ppbv versus ~0.8-1.4 ppbv for ICOZA). Despite this, measured radical concentrations were fairly similar, with maximum diel median concentrations of 4.5 × 10<sup>6</sup> molecule cm<sup>-3</sup> for OH (c.f. 2-4 × 10<sup>6</sup> molecule cm<sup>-3</sup> during ICOZA), 3 × 10<sup>8</sup> molecule cm<sup>-3</sup> for HO<sub>2</sub> (c.f. 1-1.5 × 10<sup>8</sup> molecule cm<sup>-3</sup>), and 2 × 10<sup>8</sup> molecule cm<sup>-3</sup> for RO<sub>2</sub> (c.f. ~5 × 10<sup>8</sup> molecule cm<sup>-3</sup>). In the PRD, maximum loss rates for OH, HO<sub>2</sub>, and RO<sub>2</sub> reached up to 10-15 ppbv h<sup>-1</sup>, similar to the loss rates observed for RO<sub>2</sub> in SW air during ICOZA (Figure 10). The loss rate of total RO<sub>x</sub> peaked at midday at ~3 ppbv h<sup>-1</sup>, compared with ~0.8-1.2 ppbv h<sup>-1</sup> for ICOZA (Figure 7), where the difference is likely due to the higher pollution levels found in the PRD (i.e., increased radical loss to NO<sub>x</sub>). Within experimental uncertainties, the RO<sub>x</sub>

budget was balanced, similar to that observed for ICOZA. Evidence for a missing afternoon OH source was presented (with an inferred source strength of 4–6 ppbv h<sup>-1</sup>), which was also the case for NW–SE air during ICOZA (up to ~2 ppbv h<sup>-1</sup>, Figure 8). However, in the PRD, the HO<sub>2</sub> budget was closed within experimental uncertainty, and the closure of the RO<sub>2</sub> budget could be greatly improved when the rate of RO<sub>2</sub> production was calculated from measured OH reactivity, although a missing afternoon RO<sub>2</sub> sink was still present. This is in contrast to our results, from which a significant missing HO<sub>2</sub> sink (Figure 9) and a missing RO<sub>2</sub> source (Figure 10) on the order of 10 ppbv h<sup>-1</sup> may be inferred. In the PRD, the strongest differences between calculated RO<sub>2</sub> production and destruction rates were found at low NO (<1 ppbv), with budget closure at high NO. However, during ICOZA, the difference between RO<sub>2</sub> (and HO<sub>2</sub>) production and destruction rates was most severe at high NO (Figure S10).

More recently, Whalley et al. (2020) also assessed the experimental radical budget for RO<sub>x</sub> and OH reactivity observations made in summertime Beijing. A missing OH source was identified under the low NO (<0.5 ppbv) conditions experienced in the afternoon, similar to that for ICOZA NW–SE air, but with a much higher inferred source strength on the order of ~15 ppbv h<sup>-1</sup>. Identical to ICOZA, their budget analysis indicated that the HO<sub>2</sub> and RO<sub>2</sub> budgets were both out of balance but with opposite sign, where the ratios of production to destruction rates displayed a strong dependence on NO concentration; under the highest NO (~100 ppbv) conditions,  $P(\text{HO}_2)$  exceeded  $D(\text{HO}_2)$  by ~50 ppbv h<sup>-1</sup> (cf. ~10–15 ppbv h<sup>-1</sup> for ICOZA at ~2 ppbv NO), whilst  $D(\text{RO}_2)$  exceeded  $P(\text{RO}_2)$  by the same magnitude. The agreement between experimental production and destruction rates for HO<sub>2</sub> and RO<sub>2</sub> was much improved after reducing the rate of RO<sub>2</sub> → HO<sub>2</sub> propagation (by reducing  $\alpha$  from 0.95 to 0.10), similar to our approach of reducing the RO<sub>2</sub> + NO rate coefficient (Figure S11). Whalley et al. (2020) suggested that some complex RO<sub>2</sub> species (e.g., from BVOC or aromatic VOC oxidation) do not directly generate HO<sub>2</sub> after reaction with NO, but instead the RO radicals formed autoxidise (via H-shifts) to form new RO<sub>2</sub> species that undergo further reaction with NO before eventually forming HO<sub>2</sub>. This type of chemistry serves to reduce the rate of RO<sub>2</sub> → HO<sub>2</sub> propagation and could help to explain the differences between experimental production and destruction rates of HO<sub>2</sub> and RO<sub>2</sub> found for ICOZA.

### 3.9. Radical sources and sinks

#### 3.9.1. RO<sub>x</sub> initiation and termination

Figure S15 in the Supplementary Information shows a time series of the experimentally determined radical budgets for the ICOZA campaign, which demonstrates the variability of the total rate of production and the total rate of destruction for OH, HO<sub>2</sub>, RO<sub>2</sub> and RO<sub>x</sub> (=sum of OH, HO<sub>2</sub> and RO<sub>2</sub>). Figure 11 displays average diel profiles of the contributions of known RO<sub>x</sub> sources and sinks, split according to wind direction. Table 2 summarises these data by presenting the median daytime (defined as  $J(\text{O}^1\text{D}) > 5 \times 10^{-7}$ ) percentage contributions of individual RO<sub>x</sub> sources and sinks in NW–SE and SW air. In NW–SE air, RO<sub>x</sub> initiation had roughly equal contributions from O<sup>1</sup>D + H<sub>2</sub>O and HONO photolysis (~37%) on average, where HONO photolysis dominated RO<sub>x</sub> initiation in the early morning (~05:00–08:00 UTC) but was less important over the rest of the day. In contrast, HONO photolysis was dominant (median 44% versus 29% for O<sup>1</sup>D + H<sub>2</sub>O) in the more polluted SW air throughout

the day. This might be expected based on the mixing ratios of HONO in each wind sector type, with median values of 52 and 97 pptv in NW–SE and SW air, respectively. The contributions from carbonyl (HCHO, acetaldehyde, and acetone) photolysis (~23–25%) and ozonolysis (~3%) were about the same in each wind sector type.

855 In terms of RO<sub>x</sub> termination, the main contributors in both wind sector types were calculated to be alkyl nitrate formation, RO<sub>2</sub> + HO<sub>2</sub> reactions, and the reaction of OH with NO<sub>2</sub> to yield HNO<sub>3</sub>. In NW–SE air, these three loss processes were of equal importance on average (~30%), with alkyl nitrate formation dominant around ~09:00 UTC and RO<sub>2</sub> + HO<sub>2</sub> reactions dominant in the afternoon. The contributions from HO<sub>2</sub> + HO<sub>2</sub>, RO<sub>2</sub> + RO<sub>2</sub>, and OH + NO were all small on average (<4%). The contributions from alkyl nitrate and HNO<sub>3</sub> formation were greater in SW air (almost 40% on average), whereas RO<sub>2</sub> + HO<sub>2</sub> reactions were less important (~14%), driven by differences in NO<sub>x</sub> levels between the two wind sectors. Again, alkyl nitrate formation was most important in the morning, but also contributed substantially throughout the afternoon. HO<sub>2</sub> + HO<sub>2</sub> and RO<sub>2</sub> + RO<sub>2</sub> reactions were almost negligible (~1%), but the contribution from OH + NO (~6%) was greater than in NW–SE air (~3%).

### 3.9.2. OH production and $k'_{OH}$

865 The breakdown of OH production and its comparison to measured OH destruction ( $[OH] \times k'_{OH}$ ) is given in Figure 12, again split by wind direction. These data are summarised in Table 3, which shows the median daytime contributions of the known OH sources. Similarly, Figure 13 gives the breakdown of OH reactivity and comparison to measured  $k'_{OH}$ , also summarised in Table 3.

OH production was dominated throughout the daytime by the secondary source HO<sub>2</sub> + NO in both NW–SE (~50% on average) and SW (~70%) air. In NW–SE air, the next most important OH sources were the primary sources O<sup>1</sup>D + H<sub>2</sub>O and HONO photolysis, with average contributions of ~23% each. Similar to the RO<sub>x</sub> budget (Section 3.9.1), HONO photolysis (~18%) was more important than O<sup>1</sup>D + H<sub>2</sub>O (~12%) as an OH source in the more polluted SW air. Radical recycling from HO<sub>2</sub> + O<sub>3</sub> (<3%) and radical initiation from ozonolysis (<1%) were of only minor importance in both wind sector types.

875 In terms of OH loss (Table 3), the most important OH reactant was CO (NW–SE daytime median: ~42% of calculated OH reactivity, SW: ~27%), followed by NO<sub>2</sub> (~20%, ~26%), reflecting the overall dominance of inorganic reactants to calculated OH reactivity. In terms of organic OH reactivity, methane (~10%, 12.5%, a constant mixing ratio of 1900 ppm was used) carbonyls (~13%, ~21%; mostly (~57%) HCHO) and alkenes and alkynes (~6–8%; mostly (~62%) propene) were the most important species. The dialkenes isoprene and 1,3-butadiene made small contributions to OH reactivity (~4–6%), whereas the contributions from aromatics, alkanes, and methanol were all minor (≤3%). Monoterpenes (MTs) were not included in the calculation of OH reactivity as their sum (measured using proton transfer reaction–mass spectrometry, PTR–MS) was generally below the LOD; if we use these data, the maximum contribution of MTs was only ~0.4 s<sup>-1</sup> (median 0.04 s<sup>-1</sup>, compared to measured  $k'_{OH} \sim 4.7$  s<sup>-1</sup>), using the rate coefficient for OH + limonene.

### 3.10. Attempts to balance the HO<sub>2</sub> and RO<sub>2</sub> radical budgets

Whalley et al., (2018) presented field measurements of HO<sub>2</sub> and RO<sub>2</sub> radicals in London. HO<sub>2</sub> levels were significantly overpredicted by an MCM model during the daytime, particularly in air that had passed over central London. It was found that HO<sub>2</sub> concentrations could be reasonably well simulated if the fraction of RO<sub>2</sub> radicals that propagated to HO<sub>2</sub> (i.e., the branching ratio  $\alpha$  in reactions (R12) and (R4)) was reduced. To achieve good agreement,  $\alpha$  was reduced to 0.15, compared to  $\alpha \sim 0.5$  in the base model, a factor of  $\sim 3$  reduction.

In the present work,  $\alpha$  was set to 0.95 based on literature values of the branching ratios for alkyl nitrate formation ( $\beta$ ) of  $\sim 5\%$  (Orlando and Tyndall, 2012; Tan et al., 2019). However, even with such a low RONO<sub>2</sub> branching ratio,  $P(\text{RONO}_2)$  values of up to  $\sim 0.7$  ppbv h<sup>-1</sup> (Figure S11) are already very high considering previous measurements of RONO<sub>2</sub> at Weybourne were on the order of tens of pptv (Worton et al., 2010). Therefore, it is not thought that changing the value of  $\alpha$  is appropriate for ICOZA. Instead, we have reduced the RO<sub>2</sub> + NO rate coefficient (originally  $9.0 \times 10^{-11}$  cm<sup>3</sup> molecule<sup>-1</sup> s<sup>-1</sup> as recommended by the MCM) by a factor of 5, with Figure S11 showing the impact on the HO<sub>2</sub> and RO<sub>2</sub> budgets. It can be seen that the HO<sub>2</sub> and RO<sub>2</sub> budgets are now reasonably well balanced in the afternoon, but still  $P(\text{HO}_2) > D(\text{HO}_2)$  and  $P(\text{RO}_2) < D(\text{RO}_2)$  by  $\sim 1-2$  ppbv h<sup>-1</sup> in the morning. It should be noted that no evidence exists for such small RO<sub>2</sub> + NO rate coefficients, with published  $k(298\text{ K})$  values in the range  $\sim 8-20 \times 10^{-12}$  cm<sup>3</sup> molecule<sup>-1</sup> s<sup>-1</sup> and associated uncertainties of  $\sim 15-35\%$  (Orlando and Tyndall, 2012), although the kinetics of relatively few RO<sub>2</sub> species with NO have been studied directly. It is therefore imperative that more laboratory studies are conducted to measure RO<sub>2</sub> + NO rate coefficients with a wide variety of RO<sub>2</sub> types.

We discuss the impact of heterogeneous chemistry and chlorine initiated oxidation chemistry on the experimental HO<sub>2</sub> budget in Sections S4 and S5, respectively in the Supplementary Information which includes Figures S12 and S13.

### 3.11. Ozone production

#### 3.11.1. Calculated $P(\text{O}_x)$ and comparison to MCM model predictions

The *in situ* ozone production rate,  $p(\text{O}_3)$ , may be defined in terms of the rate of net NO  $\rightarrow$  NO<sub>2</sub> conversion (Cazorla et al., 2012), i.e.,  $p(\text{O}_x)$  where  $\text{O}_x = \text{O}_3 + \text{NO}_2$ :

$$p(\text{O}_3) \approx p(\text{O}_x) = k_5[\text{HO}_2][\text{NO}] + ((k_{4a} + k_{12})[\text{RO}_2][\text{NO}]) \times \alpha \quad (\text{E14})$$

Here,  $\alpha$  is the branching ratio for the channel of the RO<sub>2</sub>+NO reaction generating HO<sub>2</sub> + NO<sub>2</sub> formation (reaction (R4)). The chemical loss rate of ozone,  $l(\text{O}_3)$ , may be derived from the rate of radical-NO<sub>x</sub> termination reactions and the loss of O<sub>3</sub> to HO<sub>2</sub>, approximated by:

$$l(\text{O}_3) \approx l(\text{O}_x) = k_{11}[\text{OH}][\text{NO}_2][\text{M}] + ((k_{4a} + k_{12})[\text{RO}_2][\text{NO}]) \times \beta + k_{12}[\text{HO}_2][\text{O}_3], \quad (\text{E15})$$

where  $\beta (= 1 - \alpha)$  is the branching ratio for RONO<sub>2</sub> formation (reaction (R12)). The net ozone production rate,  $P(O_3)$ , is then obtained from the difference between equations (E13) and (E14):

$$P(O_3) \approx P(O_x) = p(O_x) - l(O_x) \quad (E16)$$

920

Calculation of  $P(O_3)$  ( $\approx P(O_x)$ ) from FAGE observations of HO<sub>2</sub> and RO<sub>2</sub> radicals was one of the main aims of the ICOZA project.

Median diel profiles of the rate of net ozone production,  $P(O_x)$ , calculated from measured and modelled OH, HO<sub>2</sub>, and RO<sub>2</sub> radical concentrations are shown in Figure S14. Here,  $P(O_x)$  was calculated from equations (E12–E14) with the same values of  $k_{RO_2+NO}$  and  $\alpha (= 0.95)$  applied to both observations and model predicted concentrations of total RO<sub>2</sub> (i.e., model  $P(O_x)$  was not calculated from the rate coefficients and yields for individual RO<sub>2</sub> species).  $k_{RO_2+NO}$  was set to the generic value used in the MCM ( $k_{RO_2+NO} = 2.7 \times 10^{-12} \exp(360/T) = 9.0 \times 10^{-12} \text{ cm}^3 \text{ molecule}^{-1} \text{ s}^{-1}$  at 298 K; for reference,  $k_{CH_3O_2+NO} = 7.7 \times 10^{-12} \text{ cm}^3 \text{ molecule}^{-1} \text{ s}^{-1}$  at 298 K).

In NW–SE air,  $P(O_x)$  derived from measurements using the FAGE instrument peaks at  $\sim 16 \text{ ppbv h}^{-1}$  at 09:30 UTC when NO and peroxy radical levels are both high, before decreasing sharply in the afternoon to  $\sim 0.7\text{--}1.4 \text{ ppbv h}^{-1}$ . Model-calculated  $P(O_x)$  also peaks at 09:30 UTC but at a ten-fold lower value of  $\sim 1.6 \text{ ppbv h}^{-1}$ . The afternoon decrease is less severe than for FAGE-calculated  $P(O_x)$ , resulting in good agreement between FAGE- and model-calculated  $P(O_x)$  in the afternoon. In SW air, FAGE-calculated  $P(O_x)$  displays a broader morning peak in the hours  $\sim 07:00\text{--}10:00$  UTC of  $\sim 10\text{--}15 \text{ ppbv h}^{-1}$ . In comparison to NW–SE air, afternoon FAGE-calculated  $P(O_x)$  was greater with values of  $\sim 5\text{--}8 \text{ ppbv h}^{-1}$ . Daytime model-calculated  $P(O_x)$  is in the range  $0.3\text{--}2.3 \text{ ppbv h}^{-1}$ , peaking at 14:30 UTC, and underpredicts the observations throughout the daytime, in contrast to NW–SE air.  $P(O_x)$  will be impacted by a change in the rate coefficient for RO<sub>2</sub>+NO, owing to the change in RO<sub>2</sub> and HO<sub>2</sub> budgets, as shown Figure S11.

935

### 3.11.2. $P(O_x)$ dependence on NO mixing ratios

Figure 14 shows that both FAGE- and model-calculated  $P(O_x)$  are strongly dependent on NO, with similar trends in NW–SE and SW air. FAGE-calculated  $P(O_x)$  shows a consistent increase with NO in both NW–SE and SW air, with values of  $<1 \text{ ppbv h}^{-1}$  below 100 pptv NO and up to  $\sim 17 \text{ ppbv h}^{-1}$  at  $\sim 2\text{--}3 \text{ ppbv NO}$ . In contrast, model-calculated  $P(O_x)$  starts to fall off a little above 1 ppbv NO in NW–SE air, but generally increases with NO in SW air, but the latter is largely due to a single point at 2 ppbv NO. Below  $\sim 500$  pptv NO, FAGE- and model-calculated  $P(O_x)$  are in reasonable agreement within combined uncertainties. However, above this threshold, FAGE-calculated  $P(O_x)$  is much greater than model-calculated  $P(O_x)$ , with measurement-to-model ratios of up to  $\sim 5\text{--}15$  for NO  $\sim 2\text{--}3 \text{ ppbv}$ . NO<sub>x</sub> levels were not high enough to show any onset of a plateau in FAGE-calculated  $P(O_x)$ .

945

## 5. Conclusions

OH, HO<sub>2</sub>, and RO<sub>2</sub> radicals and OH reactivity ( $k'_{\text{OH}}$ ) were measured at a UK coastal receptor site during the July 2015 ICOZA intensive field campaign. Maximum measured daily OH, HO<sub>2</sub>, and total RO<sub>2</sub> radical concentrations were in the range 2.6–17 × 10<sup>6</sup>, 0.75–4.2 × 10<sup>8</sup>, and 2.3–8.0 × 10<sup>8</sup> molecule cm<sup>-3</sup>, respectively.  $k'_{\text{OH}}$  ranged from 1.7 to 17.6 s<sup>-1</sup> with a median value of 4.7 s<sup>-1</sup>. ICOZA data were split by wind direction to assess differences in the radical chemistry between air that had passed over the North Sea (NW–SE sectors) or over major urban conurbations such as London (SW sector). A photo-stationary state (PSS) calculation underpredicted daytime OH in NW–SE air by ~35% on average, whereas agreement was found within instrumental uncertainty (~26% at 2σ) in SW air. The OH levels predicted by a box model using MCM chemistry were in better agreement with the measurements. However, for HO<sub>2</sub>, the base MCM model overpredicted the observations in NW–SE air in the afternoon by a factor of ~2–3, whereas reasonable agreement was found for HO<sub>2</sub> in SW air when the model was constrained to measured carbonyls (HCHO, MVK+MACR). In contrast, for total RO<sub>2</sub>, the model severely underpredicted the observations in both NW–SE and SW air, with measurement/model ratios ranging from ~2–5 in the afternoon to almost 40 in the early morning. The model predicted that the dominant RO<sub>2</sub> species in both wind sector types was CH<sub>3</sub>O<sub>2</sub>.  $k'_{\text{OH}}$  observations were underpredicted by ~34% and ~37% in NW–SE and SW air, respectively. Good correlations were also observed between measured total RO<sub>2</sub> and measured HO<sub>2</sub>, and the fit slopes indicated that the RO<sub>2</sub>:HO<sub>2</sub> ratio was close to 1:1 in NW–SE air and ~2:1 in the more polluted SW air. The slopes of modelled RO<sub>2</sub> versus modelled HO<sub>2</sub> were different between day and nighttime data, which was not seen in the observations.

Measured radical and  $k'_{\text{OH}}$  levels and measurement-to-model ratios displayed strong dependences on NO mixing ratios. For OH, the PSS calculation could capture the observations at high NO (> 1 ppbv), but underpredicted the observations at low NO (< 200–300 pptv) by a factor of ~2–3, suggesting missing OH sources. The MCM-base model performed better in terms of reproducing the observed dependence of OH on NO but there was still a tendency towards underprediction at low NO. The MCM-base model overpredicted HO<sub>2</sub> concentrations at low NO in NW–SE air by a factor of ~3, whereas in SW air, the measurements and model results were in agreement across the full NO range. For RO<sub>2</sub>, measurement-to-model ratios scaled with NO, from ~2–3 for NO < 100 pptv to ~10–30 for NO > 1 ppbv, a trend found in all previous field campaigns in which RO<sub>2</sub> was measured using the RO<sub>x</sub>LIF technique. This suggests that peroxy radical chemistry is not well understood under high NO<sub>x</sub> conditions. Missing OH reactivity, i.e., the difference between measured and modelled  $k'_{\text{OH}}$ , also scaled with NO. The strong correlation of missing OH reactivity with several OVOCs suggests that the missing reactivity was due to unmeasured VOC oxidation products that were not well simulated by the model, rather than a primary VOC species (e.g., a BVOC).

The simultaneous measurement of OH, HO<sub>2</sub>, RO<sub>2</sub>, and  $k'_{\text{OH}}$  allowed for experimental (i.e., observationally determined) budgets to be derived for all radical species as well as total RO<sub>x</sub>. In NW–SE air, the RO<sub>x</sub> budget could be closed during the daytime within experimental uncertainty but OH destruction exceeded OH production by ~2–3 ppbv h<sup>-1</sup>, and HO<sub>2</sub> production

greatly exceeded HO<sub>2</sub> destruction while the opposite was true for RO<sub>2</sub>. In SW air, the RO<sub>x</sub> budget analysis indicated missing  
980 daytime RO<sub>x</sub> sources on the order of ~0.2–0.6 ppbv h<sup>-1</sup> but the OH budget was balanced, and the same behaviour was found  
with the HO<sub>2</sub> and RO<sub>2</sub> budgets as in NW–SE air. Differences between radical destruction and production rates were found to  
exhibit species-dependent trends with respect to NO mixing ratios; the budget imbalances were most severe for HO<sub>2</sub> and RO<sub>2</sub>  
at high NO (> 1000 pptv), with differences of –(12–15) ppbv h<sup>-1</sup> and +(13–16) ppbv h<sup>-1</sup>, respectively.

In NW–SE air, the dominant daytime RO<sub>x</sub> sources were O<sup>1</sup>D + H<sub>2</sub>O and HONO photolysis (~37% each) with significant  
985 contributions from carbonyl photolysis (~23%), while the major RO<sub>x</sub> sinks were the reactions RO<sub>2</sub> + NO → RONO<sub>2</sub> (~28%),  
RO<sub>2</sub> + HO<sub>2</sub> (~33%), and OH + NO<sub>2</sub> (~33%). The major OH source was the secondary source HO<sub>2</sub> + NO (~50%) with significant  
contributions from O<sup>1</sup>D + H<sub>2</sub>O and HONO photolysis (~23% each), while in terms of OH loss, the most important reactions  
were OH + CO (~42%) and OH + NO<sub>2</sub> (~20%). In the more polluted SW air, RO<sub>x</sub> initiation was dominated by HONO  
990 photolysis (~44%) with similar contributions from O<sup>1</sup>D + H<sub>2</sub>O (~29%) and carbonyl photolysis (~25%), while RO<sub>x</sub> termination  
was mainly controlled by the reactions RO<sub>2</sub> + NO → RONO<sub>2</sub> (~38%) and OH + NO<sub>2</sub> (~39%). The rate of OH production was  
dominated by HO<sub>2</sub> + NO (~70%), while OH loss was controlled by reactions with CO (~27%), NO<sub>2</sub> (~26%), and carbonyls  
(~21%).

The best agreement between HO<sub>2</sub> and RO<sub>2</sub> production and destruction rates was found when the RO<sub>2</sub> + NO rate coefficient  
was reduced by a factor of 5. However, if the RO<sub>2</sub> + HO<sub>2</sub> rate coefficient were reduced then the reduction in the RO<sub>2</sub>+NO rate  
995 coefficient necessary to explain the discrepancy in the budgets would in turn not need to be as much. It is therefore  
recommended that more studies are conducted to measure RO<sub>2</sub> + NO and RO<sub>2</sub>+HO<sub>2</sub> rate coefficients, in particular for more  
complex, functionalised RO<sub>2</sub>, and to explain a lower-than-expected RO<sub>2</sub>-to-HO<sub>2</sub> propagation rate. Further study of the fate of  
RO radicals is also recommended, particularly those which may be involved in autoxidation. The rate of *in situ* ozone  
production ( $P(O_x)$ ) was calculated from observations of RO<sub>x</sub>, NO, and NO<sub>2</sub> and compared to that calculated from MCM-  
1000 modelled radical concentrations. The MCM-calculated  $P(O_x)$  significantly underpredicted the measurement-calculated  $P(O_x)$   
in the morning by up to a factor of 10, and the degree of underprediction was found to scale with NO. The strong NO-  
dependences of the HO<sub>2</sub> and RO<sub>2</sub> budget imbalances reveal a systematic limitation to our understanding of peroxy radical  
cycling chemistry, which directly impacts our ability to calculate ozone production rates correctly. Future tropospheric ozone  
abatement strategies rely on the accurate simulation of ozone chemistry. It is therefore crucial that further studies seek to  
1005 explain the budget imbalances found in this work.

## Data availability

The data used in this study are available from the corresponding authors upon request (l.k.whalley@leeds.ac.uk and  
d.e.heard@leeds.ac.uk) and are also archived on CEDA (<https://archive.ceda.ac.uk/>).

1010

## Author contributions

WJB was the principal investigator of the ICOZA project and was responsible for organisation of the Weybourne field intensive. RWM, LKW, DRC, TI, and DEH were responsible for measurements of radicals, OH reactivity, HCHO, and photolysis frequencies (*J* values also provided by RS, SMB, and PSM). LRC, LJK, and WJB made measurements of HONO and aerosol surface area. RS, SMB, and PSM provided Cl<sub>2</sub> and ClNO<sub>2</sub> data. JL and CR measured NO, NO<sub>2</sub>, and HONO. BJB was responsible for the long-term operation of the Weybourne Atmospheric Observatory and provided O<sub>3</sub>, CO, and HCHO data. GLF was responsible for measurements of VOCs. RS and SC developed the AtChem modelling framework. RS conducted the MCM model simulations. RWM, LKW, and RS analysed the data. RWM wrote the manuscript with input from all co-authors.

1020

## Acknowledgements

We thank the science team of the ICOZA project. RWM and DRC are grateful to the NERC for funding PhD studentships. RWM, LKW, DRC, TI, and DEH would like to thank the University of Leeds electronic and mechanical workshops. RWM is grateful to Hans Osthoff (University of Calgary) for the provision of Igor functions, and to Chunxiang Ye (Peking University) and Samuel Seldon (University Of Leeds) for useful discussions. We thank Lloyd Hollis and Roland Leigh (University of Leicester) for assistance with the spectral radiometer and chemical ionization mass spectrometer. We thank Sam Cox for his help with the AtChem modelling framework.

1025

## Financial support

This research has been supported by the NERC (grant nos. NE/K012029/1, NE/K012169/1, and NE/K004069/1).

## References

1030

Ayers, G. P., Gillett, R. W., Granek, H., de Serves, C., and Cox, R. A.: Formaldehyde production in clean marine air, *Geophys Res Lett*, 24, 401-404, 10.1029/97gl00123, 1997.

Beygi, Z. H., Fischer, H., Harder, H. D., Martinez, M., Sander, R., Williams, J., Brookes, D. M., Monks, P. S., and Lelieveld, J.: Oxidation photochemistry in the Southern Atlantic boundary layer: unexpected deviations of photochemical steady state, *Atmos Chem Phys*, 11, 8497-8513, 10.5194/acp-11-8497-2011, 2011.

1035



- 1040 Bianchi, F., Kurtén, T., Riva, M., Mohr, C., Rissanen, M. P., Roldin, P., Berndt, T., Crouse, J. D., Wennberg, P. O., Mentel, T. F., Wildt, J., Junninen, H., Jokinen, T., Kulmala, M., Worsnop, D. R., Thornton, J. A., Donahue, N., Kjaergaard, H. G., and Ehn, M.: Highly Oxygenated Organic Molecules (HOM) from Gas-Phase Autoxidation Involving Peroxy Radicals: A Key Contributor to Atmospheric Aerosol, *Chemical Reviews*, 119, 3472-3509, 10.1021/acs.chemrev.8b00395, 2019.
- Bloss, C., Wagner, V., Jenkin, M. E., Volkamer, R., Bloss, W. J., Lee, J. D., Heard, D. E., Wirtz, K., Martin-Reviejo, M., Rea, G., Wenger, J. C., and Pilling, M. J.: Development of a detailed chemical mechanism (MCMv3.1) for the atmospheric oxidation of aromatic hydrocarbons, *Atmos Chem Phys*, 5, 641-664, DOI 10.5194/acp-5-641-2005, 2005a.
- 1045 Bloss, W. J., Lee, J. D., Johnson, G. P., Sommariva, R., Heard, D. E., Saiz-Lopez, A., Plane, J. M. C., McFiggans, G., Coe, H., Flynn, M., Williams, P., Rickard, A. R., and Fleming, Z. L.: Impact of halogen monoxide chemistry upon boundary layer OH and HO<sub>2</sub> concentrations at a coastal site, *Geophys Res Lett*, 32, L06814, Artn L06814 10.1029/2004gl022084, 2005b.
- Bohn, B., Heard, D. E., Mihalopoulos, N., Plass-Dülmer, C., Schmitt, R., and Whalley, L. K.: Characterisation and improvement of  $\text{O}(\text{sup}1\text{D})$  filter radiometers, *Atmos Meas Tech*, 9, 3455-3466, 10.5194/amt-9-3455-2016, 2016.
- 1050 Bohn, B., Corlett, G. K., Gillmann, M., Sanghavi, S., Stange, G., Tensing, E., Vrekoussis, M., Bloss, W. J., Clapp, L. J., Kortner, M., Dorn, H. P., Monks, P. S., Platt, U., Plass-Dulmer, C., Mihalopoulos, N., Heard, D. E., Clemitshaw, K. C., Meixner, F. X., Prevot, A. S. H., and Schmitt, R.: Photolysis frequency measurement techniques: results of a comparison within the ACCENT project, *Atmos Chem Phys*, 8, 5373-5391, DOI 10.5194/acp-8-5373-2008, 2008.
- 1055 Brune, W. H., Baier, B. C., Thomas, J., Ren, X., Cohen, R. C., Pusede, S. E., Browne, E. C., Goldstein, A. H., Gentner, D. R., Keutsch, F. N., Thornton, J. A., Harrold, S., Lopez-Hilfiker, F. D., and Wennberg, P. O.: Ozone production chemistry in the presence of urban plumes, *Faraday Discuss*, 189, 169-189, 10.1039/c5fd00204d, 2016.
- Cárdenas, L. M., Austin, J. F., Burgess, R. A., Clemitshaw, K. C., Dorling, S., Penkett, S. A., and Harrison, R. M.: Correlations between CO, NO<sub>y</sub>, O<sub>3</sub> and non-methane hydrocarbons and their relationships with meteorology during winter 1993 on the North Norfolk Coast, U.K, *Atmospheric Environment*, 32, 3339-3351, 10.1016/s1352-2310(97)00445-7, 1998.
- 1060 Carpenter, L. J., Liss, P. S., and Penkett, S. A.: Marine organohalogens in the atmosphere over the Atlantic and Southern Oceans, *J Geophys Res-Atmos*, 108, 4256, Artn 4256, 10.1029/2002jd002769, 2003.
- Carpenter, L. J., Sturges, W. T., Penkett, S. A., Liss, P. S., Alicke, B., Hebestreit, K., and Platt, U.: Short-lived alkyl iodides and bromides at Mace Head, Ireland: Links to biogenic sources and halogen oxide production, *J Geophys Res-Atmos*, 104, 1679-1689, Doi 10.1029/98jd02746, 1999.
- 1065 Cazorla, M., Brune, W. H., Ren, X., and Lefer, B.: Direct measurement of ozone production rates in Houston in 2009 and comparison with two estimation methods, *Atmos Chem Phys*, 12, 1203-1212, 10.5194/acp-12-1203-2012, 2012.

- 1070 Commane, R., Seitz, K., Bale, C. S. E., Bloss, W. J., Buxmann, J., Platt, U., Pohler, D., Heard, D. E.: Iodine monoxide at a clean marine coastal site: observations of high frequency variations and inhomogeneous distributions, *Atmos. Chem. Phys.*, 11, 6721-6733, 10.5194/acp-11-6721-2011, 2011.
- Crilley, L. R., Kramer, L. J., Pope, F. D., Reed, C., Lee, J. D., Carpenter, L. J., Hollis, L. D. J., Ball, S. M., and Bloss, W. J.: Is the ocean surface a source of nitrous acid (HONO) in the marine boundary layer?, *Atmos. Chem. Phys.*, 21, 18213-18225, 10.5194/acp-21-18213-2021, 2021.
- 1075 Crounse, J. D., Nielsen, L. B., Jorgensen, S., Kjaergaard, H. G., and Wennberg, P. O.: Autoxidation of Organic Compounds in the Atmosphere, *J Phys Chem Lett*, 4, 3513-3520, 10.1021/jz4019207, 2013.
- Cryer, D. R.: Measurements of hydroxyl radical reactivity and formaldehyde in the atmosphere, PhD thesis, School of Chemistry, University of Leeds, 2016.
- 1080 Di Carlo, P., Brune, W. H., Martinez, M., Harder, H., Leshner, R., Ren, X., Thornberry, T., Carroll, M. A., Young, V., Shepson, P. B., Riemer, D., Apel, E., and Campbell, C.: Missing OH reactivity in a forest: evidence for unknown reactive biogenic VOCs, *Science*, 304, 722-725, 10.1126/science.1094392, 2004.
- Edwards, P. M., Evans, M. J., Furneaux, K. L., Hopkins, J., Ingham, T., Jones, C., Lee, J. D., Lewis, A. C., Moller, S. J., Stone, D., Whalley, L. K., and Heard, D. E.: OH reactivity in a South East Asian tropical rainforest during the Oxidant and Particle Photochemical Processes (OP3) project, *Atmos Chem Phys*, 13, 9497-9514, 10.5194/acp-13-9497-2013, 2013.
- 1085 Edwards, P., et al. Hydrogen oxide photochemistry in the northern Canadian spring time boundary layer, *J. Geophys. Res.*, 116, D22306, doi:10.1029/2011JD016390, 2011.
- Edwards, G. D., Cantrell, C. A., Stephens, S., Hill, B., Goyea, O., Shetter, R. E., Mauldin, R. L., 3rd, Kosciuch, E., Tanner, D. J., and Eisele, F. L.: Chemical ionization mass spectrometer instrument for the measurement of tropospheric HO<sub>2</sub> and RO<sub>2</sub>, *Anal Chem*, 75, 5317-5327, 10.1021/ac034402b, 2003.
- 1090 Faloon, I. C., Tan, D., Leshner, R. L., Hazen, N. L., Frame, C. L., Simpas, J. B., Harder, H., Martinez, M., Di Carlo, P., Ren, X. R., and Brune, W. H.: A laser-induced fluorescence instrument for detecting tropospheric OH and HO<sub>2</sub>: Characteristics and calibration, *Journal of Atmospheric Chemistry*, 47, 139-167, DOI 10.1023/B:JOCH.0000021036.53185.0e, 2004.
- Fleming, Z. L., Monks, P. S., Rickard, A. R., Bandy, B. J., Brough, N., Green, T. J., Reeves, C. E., and Penkett, S. A.: Seasonal dependence of peroxy radical concentrations at a Northern hemisphere marine boundary layer site during summer and winter: evidence for radical activity in winter, *Atmos. Chem. Phys.*, 6, 5415-5433, 10.5194/acp-6-5415-2006, 2006.
- 1095 Forberich, O., Pfeiffer, T., Spiekermann, M., Walter, J., Comes, F. J., Grigonis, R., Clemitshaw, K. C., and Burgess, R. A.: Measurement of the Diurnal Variation of the OH Radical Concentration and Analysis of the Data by Modelling, *Journal of Atmospheric Chemistry*, 33, 155-181, 10.1023/A:1005973130335, 1999.
- 1100 Fuchs, H., Bohn, B., Hofzumahaus, A., Holland, F., Lu, K. D., Nehr, S., Rohrer, F., and Wahner, A.: Detection of HO<sub>2</sub> by laser-induced fluorescence: calibration and interferences from RO<sub>2</sub> radicals, *Atmos Meas Tech*, 4, 1209-1225, 10.5194/amt-4-1209-2011, 2011.

- Fuchs, H., Holland, F., and Hofzumahaus, A.: Measurement of tropospheric RO<sub>2</sub> and HO<sub>2</sub> radicals by a laser-induced fluorescence instrument, *Rev Sci Instrum*, 79, 084104, 10.1063/1.2968712, 2008.
- Geyer, A., and Stutz, J., The vertical structure of OH-HO<sub>2</sub>-RO<sub>2</sub> chemistry in the nocturnal boundary layer: A one-dimensional model study, *J. Geophys. Res.* 109, D16301, doi:10.1029/2003JD004425, 2004.
- 1105 Green, T. J., Reeves, C. E., Fleming, Z. L., Brough, N., Rickard, A. R., Bandy, B. J., Monks, P. S., and Penkett, S. A.: An improved dual channel PERCA instrument for atmospheric measurements of peroxy radicals, *Journal of environmental monitoring* : JEM, 8, 530-536, 10.1039/b514630e, 2006.
- Grenfell, J. L., Savage, N. H., Harrison, R. M., Penkett, S. A., Forberich, O., Comes, F. J., Clemitshaw, K. C., Burgess, R. A., Cárdenas, L. M., Davison, B., and McFadyen, G. G.: Tropospheric Box-Modelling and Analytical Studies of the Hydroxyl (OH) Radical and Related Species: Comparison with Observations, *Journal of Atmospheric Chemistry*, 33, 183-214, 10.1023/A:1006009901180, 1999.
- 1110 Griffith, S. M., Hansen, R. F., Dusanter, S., Stevens, P. S., Alaghmand, M., Bertman, S. B., Carroll, M. A., Erickson, M., Galloway, M., Grossberg, N., Hottle, J., Hou, J., Jobson, B. T., Kammrath, A., Keutsch, F. N., Lefter, B. L., Mielke, L. H., O'Brien, A., Shepson, P. B., Thurlow, M., Wallace, W., Zhang, N., and Zhou, X. L.: OH and HO<sub>2</sub> radical chemistry during PROPHET 2008 and CABINEX 2009-Part 1: Measurements and model comparison, *Atmos Chem Phys*, 13, 5403-5423, 10.5194/acp-13-5403-2013, 2013.
- 1115 Guenther, A. B., Zimmerman, P. R., Harley, P. C., Monson, R. K., and Fall, R.: Isoprene and Monoterpene Emission Rate Variability - Model Evaluations and Sensitivity Analyses, *J Geophys Res-Atmos*, 98, 12609-12617, Doi 10.1029/93jd00527, 1993.
- 1120 Hard, T. M., O'Brien, R. J., Chan, C. Y., and Mehrabzadeh, A. A.: Tropospheric Free-Radical Determination by Fage, *Environ Sci Technol*, 18, 768-777, DOI 10.1021/es00128a009, 1984.
- 1125 Heard, D. E., Read, K. A., Methven, J., Al-Haider, S., Bloss, W. J., Johnson, G. P., Pilling, M. J., Seakins, P. W., Smith, S. C., Sommariva, R., Stanton, J. C., Still, T. J., Ingham, T., Brooks, B., De Leeuw, G., Jackson, A. V., McQuaid, J. B., Morgan, R., Smith, M. H., Carpenter, L. J., Carslaw, N., Hamilton, J., Hopkins, J. R., Lee, J. D., Lewis, A. C., Purvis, R. M., Wevill, D. J., Brough, N., Green, T., Mills, G., Penkett, S. A., Plane, J. M. C., Saiz-Lopez, A., Worton, D., Monks, P. S., Fleming, Z., Rickard, A. R., Alfarra, M. R., Allan, J. D., Bower, K., Coe, H., Cubison, M., Flynn, M., McFiggans, G., Gallagher, M., Norton, E. G., O'Dowd, C. D., Shillito, J., Topping, D., Vaughan, G., Williams, P., Bitter, M., Ball, S. M., Jones, R. L., Povey, I. M., O'Doherty, S., Simmonds, P. G., Allen, A., Kinnersley, R. P., Beddows, D. C. S., Dall'Osto, M., Harrison, R. M., Donovan, R. J., Heal, M. R., Jennings, S. G., Noone, C., and Spain, G.: The North Atlantic Marine Boundary Layer Experiment (NAMBLEX). Overview of the campaign held at Mace Head, Ireland, in summer 2002, *Atmos Chem Phys*, 6, 2241-2272, DOI 10.5194/acp-6-2241-2006, 2006.
- 1130 Heard, D. E. and Pilling, M. J.: Measurement of OH and HO<sub>2</sub> in the troposphere, *Chem Rev*, 103, 5163-5198, 10.1021/cr020522s, 2003.
- 1135 Hottle, J. R., Huisman, A. J., DiGangi, J. P., Kammrath, A., Galloway, M. M., Coens, K. L., and Keutsch, F. N.: A laser induced fluorescence-based instrument for in-situ measurements of atmospheric formaldehyde, *Environ Sci Technol*, 43, 790-795, 10.1021/es801621f, 2009.

Ingham, T., Goddard, A., Whalley, L. K., Furneaux, K. L., Edwards, P. M., Seal, C. P., Self, D. E., Johnson, G. P., Read, K. A., Lee, J. D., and Heard, D. E.: A flow-tube based laser-induced fluorescence instrument to measure OH reactivity in the troposphere, *Atmos. Meas. Tech.*, 2, 465-477, 10.5194/amt-2-465-2009, 2009.

1140 I

Jeanneret, F., Kirchner, F., Clappier, A., van den Bergh, H., and Calpini, B.: Total VOC reactivity in the planetary boundary layer 1. Estimation by a pump and probe OH experiment, *J Geophys Res-Atmos*, 106, 3083-3093, Doi 10.1029/2000jd900602, 2001.

1145 Jenkin, M. E., Young, J. C., and Rickard, A. R.: The MCM v3.3.1 degradation scheme for isoprene, *Atmos Chem Phys*, 15, 11433-11459, 10.5194/acp-15-11433-2015, 2015.

Jenkin, M. E., Saunders, S. M., Wagner, V., and Pilling, M. J.: Protocol for the development of the Master Chemical Mechanism, MCM v3 (Part B): tropospheric degradation of aromatic volatile organic compounds, *Atmos Chem Phys*, 3, 181-193, DOI 10.5194/acp-3-181-2003, 2003.

1150 Jerrett, M., Burnett, R. T., Pope, C. A., 3rd, Ito, K., Thurston, G., Krewski, D., Shi, Y., Calle, E., and Thun, M.: Long-term ozone exposure and mortality, *N Engl J Med*, 360, 1085-1095, 10.1056/NEJMoa0803894, 2009.

Jokinen, T., Sipila, M., Richters, S., Kerminen, V. M., Paasonen, P., Stratmann, F., Worsnop, D., Kulmala, M., Ehn, M., Herrmann, H., and Berndt, T.: Rapid autoxidation forms highly oxidized RO<sub>2</sub> radicals in the atmosphere, *Angew Chem Int Ed Engl*, 53, 14596-14600, 10.1002/anie.201408566, 2014.

1155 Kanaya, Y. G., Cao, R. Q., Kato, S. G., Miyakawa, Y. K., Kajii, Y., Tanimoto, H., Yokouchi, Y., Mochida, M., Kawamura, K., and Akimoto, H.: Chemistry of OH and HO<sub>2</sub> radicals observed at Rishiri Island, Japan, in September 2003: Missing daytime sink of HO<sub>2</sub> and positive nighttime correlations with monoterpenes, *J Geophys Res-Atmos*, 112, D11308, ArtID11308 10.1029/2006jd007987, 2007.

Kebabian, P. L., Wood, E. C., Herndon, S. C., and Freedman, A.: A practical alternative to chemiluminescence-based detection of nitrogen dioxide: cavity attenuated phase shift spectroscopy, *Environ Sci Technol*, 42, 6040-6045, 10.1021/es703204j, 2008.

1160 Keene, W. C., Long, M. S., Pszenny, A. A. P., Sander, R., Maben, J. R., Wall, A. J., O'Halloran, T. L., Kerkweg, A., Fischer, E. V., and Schrems, O.: Latitudinal variation in the multiphase chemical processing of inorganic halogens and related species over the eastern North and South Atlantic Oceans, *Atmos Chem Phys*, 9, 7361-7385, DOI 10.5194/acp-9-7361-2009, 2009.

1165 Kovacs, T. A., Brune, W. H., Harder, H., Martinez, M., Simpas, J. B., Frost, G. J., Williams, E., Jobson, T., Stroud, C., Young, V., Fried, A., and Wert, B.: Direct measurements of urban OH reactivity during Nashville SOS in summer 1999, *Journal of environmental monitoring : JEM*, 5, 68-74, 10.1039/b204339d, 2003.

Krupa, S. V., Nosal, M., and Legge, A. H.: A numerical analysis of the combined open-top chamber data from the USA and Europe on ambient ozone and negative crop responses, *Environ Pollut*, 101, 157-160, [https://doi.org/10.1016/S0269-7491\(98\)00019-0](https://doi.org/10.1016/S0269-7491(98)00019-0), 1998.

- 1170 Kumar, V., Chandra, B. P., and Sinha, V.: Large unexplained suite of chemically reactive compounds present in ambient air due to biomass fires, *Sci Rep*, 8, 626, 10.1038/s41598-017-19139-3, 2018.
- Lee, J. D., Moller, S. J., Read, K. A., Lewis, A. C., Mendes, L., and Carpenter, L. J.: Year-round measurements of nitrogen oxides and ozone in the tropical North Atlantic marine boundary layer, *J Geophys Res-Atmos*, 114, Artn D21302 10.1029/2009jd011878, 2009a.
- 1175 Lee, J. D., Young, J. C., Read, K. A., Hamilton, J. F., Hopkins, J. R., Lewis, A. C., Bandy, B. J., Davey, J., Edwards, P., Ingham, T., Self, D. E., Smith, S. C., Pilling, M. J., and Heard, D. E.: Measurement and calculation of OH reactivity at a United Kingdom coastal site, *J Atmos Chem*, 64, 53-76, 10.1007/s10874-010-9171-0, 2009b.
- Lewis, A., Carslaw, D., and Moller, S.: Non-methane Volatile Organic Compounds in the UK, Air Quality Expert Group, Department for Environment, Food and Rural Affairs, [https://uk-air.defra.gov.uk/library/reports.php?report\\_id=1003](https://uk-air.defra.gov.uk/library/reports.php?report_id=1003), 2020.
- 1180 Lou, S., Holland, F., Rohrer, F., Lu, K., Bohn, B., Brauers, T., Chang, C. C., Fuchs, H., Haseler, R., Kita, K., Kondo, Y., Li, X., Shao, M., Zeng, L., Wahner, A., Zhang, Y., Wang, W., and Hofzumahaus, A.: Atmospheric OH reactivities in the Pearl River Delta - China in summer 2006: measurement and model results, *Atmos Chem Phys*, 10, 11243-11260, 10.5194/acp-10-11243-2010, 2010.
- Madronich, S.: Implications of recent total atmospheric ozone measurements for biologically active ultraviolet radiation reaching the Earth's surface, *Geophys Res Lett*, 19, 37-40, 10.1029/91gl02954, 1992.
- 1185 Mallik, C., Tomsche, L., Bourtsoukidis, E., Crowley, J. N., Derstroff, B., Fischer, H., Hafermann, S., Huser, I., Javed, U., Kessel, S., Lelieveld, J., Martinez, M., Meusel, H., Novelli, A., Phillips, G. J., Pozzer, A., Reiffs, A., Sander, R., Taraborrelli, D., Sauvage, C., Schuladen, J., Su, H., Williams, J., and Harder, H.: Oxidation processes in the eastern Mediterranean atmosphere: evidence from the modelling of HOx measurements over Cyprus, *Atmos Chem Phys*, 18, 10825-10847, 10.5194/acp-18-10825-2018, 2018.
- 1190 Mao, J., Ren, X., Zhang, L., Van Duin, D. M., Cohen, R. C., Park, J. H., Goldstein, A. H., Paulot, F., Beaver, M. R., Crouse, J. D., Wennberg, P. O., DiGangi, J. P., Henry, S. B., Keutsch, F. N., Park, C., Schade, G. W., Wolfe, G. M., Thornton, J. A., and Brune, W. H.: Insights into hydroxyl measurements and atmospheric oxidation in a California forest, *Atmos Chem Phys*, 12, 8009-8020, 10.5194/acp-12-8009-2012, 2012.
- 1195 Mao, J., Ren, X., Brune, W. H., Olson, J. R., Crawford, J. H., Fried, A., Huey, L. G., Cohen, R. C., Heikes, B., Singh, H. B., Blake, D. R., Sachse, G. W., Diskin, G. S., Hall, S. R., and Shetter, R. E.: Airborne measurement of OH reactivity during INTEX-B, *Atmos Chem Phys*, 9, 163-173, 10.5194/acp-9-163-2009, 2009.
- McFiggans, G., Coe, H., Burgess, R., Allan, J., Cubison, M., Alfarra, M. R., Saunders, R., Saiz-Lopez, A., Plane, J. M. C., Wevill, D., Carpenter, L., Rickard, A. R., and Monks, P. S.: Direct evidence for coastal iodine particles from *Laminaria* macroalgae – linkage to emissions of molecular iodine, *Atmos Chem Phys*, 4, 701-713, 10.5194/acp-4-701-2004, 2004.
- 1200 Mehra, A., Wang, Y., Krechmer, J. E., Lambe, A., Majluf, F., Morris, M. A., Priestley, M., Bannan, T. J., Bryant, D. J., Pereira, K. L., Hamilton, J. F., Rickard, A. R., Newland, M. J., Stark, H., Croteau, P., Jayne, J. T., Worsnop, D. R., Canagaratna, M. R., Wang, L., and Coe, H.: Evaluation of the Chemical Composition of Gas and Particle Phase Products of Aromatic Oxidation, *Atmos. Chem. Phys.*, 20, 9783–9803, 2020.

- 1205 Morgan, R. B., and A. V. Jackson, Measurements of gas-phase hydrogen peroxide and methyl hydroperoxide in the coastal environment during the PARFORCE project, *J. Geophys. Res.*, 107(D19), 8109, doi:10.1029/2000JD000257, 2002
- Murphy, J. G., Oram, D. E., and Reeves, C. E.: Measurements of volatile organic compounds over West Africa, *Atmos Chem Phys*, 10, 5281-5294, 10.5194/acp-10-5281-2010, 2010.
- Nash, T.: The colorimetric estimation of formaldehyde by means of the Hantzsch reaction, *Biochem J*, 55, 416-421, 1953.
- 1210 Nolscher, A. C., Williams, J., Sinha, V., Custer, T., Song, W., Johnson, A. M., Axinte, R., Bozem, H., Fischer, H., Pouvesle, N., Phillips, G., Crowley, J. N., Rantala, P., Rinne, J., Kulmala, M., Gonzales, D., Valverde-Canossa, J., Vogel, A., Hoffmann, T., Ouwersloot, H. G., de Arellano, J. V. G., and Lelieveld, J.: Summertime total OH reactivity measurements from boreal forest during HUMPPA-COPEC 2010, *Atmos Chem Phys*, 12, 8257-8270, 10.5194/acp-12-8257-2012, 2012.
- 1215 Novelli, A., Hens, K., Ernest, C. T., Kubistin, D., Regelin, E., Elste, T., Plass-Dulmer, C., Martinez, M., Lelieveld, J., and Harder, H.: Characterisation of an inlet pre-injector laser-induced fluorescence instrument for the measurement of atmospheric hydroxyl radicals, *Atmos Meas Tech*, 7, 3413-3430, 10.5194/amt-7-3413-2014, 2014a.
- Osthoff, H. D., Roberts, J. M., Ravishankara, A. R., Williams, E. J., Lerner, B. M., Sommariva, R., Bates, T. S., Coffman, D., Quinn, P. K., Dibb, J. E., Stark, H., Burkholder, J. B., Talukdar, R. K., Meagher, J., Fehsenfeld, F. C., and Brown, S. S.: High levels of nitryl chloride in the polluted subtropical marine boundary layer, *Nat Geosci*, 1, 324-328, 10.1038/ngeo177, 2008.
- 1220 Penkett, S. A., Clemitshaw, K. C., Savage, N. H., Burgess, R. A., Cardenas, L. M., Carpenter, L. J., McFadyen, G. G., and Cape, J. N.: Studies of oxidant production at the Weybourne Atmospheric Observatory in summer and winter conditions, *Journal of Atmospheric Chemistry*, 33, 111-128, Doi 10.1023/A:1005969204215, 1999.
- Ravishankara, A. R.: Heterogeneous and multiphase chemistry in the troposphere, *Science*, 276, 1058-1065, DOI 10.1126/science.276.5315.1058, 1997.
- 1225 Reed, C., Brumby, C. A., Crilley, L. R., Kramer, L. J., Bloss, W. J., Seakins, P. W., Lee, J. D., and Carpenter, L. J.: HONO measurement by differential photolysis, *Atmos Meas Tech*, 9, 2483-2495, 10.5194/amt-9-2483-2016, 2016.
- Ren, X. R., Harder, H., Martinez, M., Leshner, R. L., Olinger, A., Shirley, T., Adams, J., Simpas, J. B., and Brune, W. H.: HO<sub>x</sub> concentrations and OH reactivity observations in New York City during PMTACS-NY2001, *Atmospheric Environment*, 37, 3627-3637, 10.1016/S1352-2310(03)00460-6, 2003.
- 1230 Ren, X. R., Olson, J. R., Crawford, J. H., Brune, W. H., Mao, J. Q., Long, R. B., Chen, Z., Chen, G., Avery, M. A., Sachse, G. W., Barrick, J. D., Diskin, G. S., Huey, L. G., Fried, A., Cohen, R. C., Heikes, B., Wennberg, P. O., Singh, H. B., Blake, D. R., and Shetter, R. E.: HO<sub>x</sub> chemistry during INTEX-A 2004: Observation, model calculation, and comparison with previous studies, *J Geophys Res-Atmos*, 113, D05310, Artn D05310 10.1029/2007jd009166, 2008.
- 1235 Robbins, R. C., Borg, K. M., and Robinson, E.: Carbon monoxide in the atmosphere, *J Air Pollut Control Assoc*, 18, 106-110, 10.1080/00022470.1968.10469094, 1968.

- Sadanaga, Y., Yoshino, A., Watanabe, K., Yoshioka, A., Wakazono, Y., Kanaya, Y., and Kajii, Y.: Development of a measurement system of OH reactivity in the atmosphere by using a laser-induced pump and probe technique, *Review of Scientific Instruments*, 75, 2648-2655, 10.1063/1.1775311, 2004.
- 1240 Saunders, S. M., Jenkin, M. E., Derwent, R. G., and Pilling, M. J.: World Wide Web site of a Master Chemical Mechanism (MCM) for use in tropospheric chemistry models, *Atmospheric Environment*, 31, 1249-1249, Doi 10.1016/S1352-2310(97)85197-7, 1997.
- Saunders, S. M., Jenkin, M. E., Derwent, R. G., and Pilling, M. J.: Protocol for the development of the Master Chemical Mechanism, MCM v3 (Part A): tropospheric degradation of non-aromatic volatile organic compounds, *Atmos Chem Phys*, 3, 161-180, DOI 10.5194/acp-3-161-2003, 2003.
- 1245 Sinha, V., Williams, J., Crowley, J. N., and Lelieveld, J.: The comparative reactivity method - a new tool to measure total OH reactivity in ambient air, *Atmos Chem Phys*, 8, 2213-2227, DOI 10.5194/acp-8-2213-2008, 2008.
- Slater, E. J., Whalley, L. K., Woodward-Massey, R., Ye, C., Lee, J. D., Squires, F., Hopkins, J. R., Dunmore, R. E., Shaw, M., Hamilton, J. F., Lewis, A. C., Crilley, L. R., Kramer, L., Bloss, W., Vu, T., Sun, Y., Xu, W., Yue, S., Ren, L., Acton, W. J. F., Hewitt, C. N., Wang, X., Fu, P., and Heard, D. E.: Elevated levels of OH observed in haze events during wintertime in central Beijing, *Atmos. Chem. Phys.*, 20, 14847–14871, 2020.
- 1250 Smith, S. C.: Atmospheric measurements of OH and HO<sub>2</sub> using the FAGE technique: Instrument development and data analysis, PhD thesis, School of Chemistry, University of Leeds, 2007.
- Sommariva, R., Haggerstone, A.-L., Carpenter, L. J., Carslaw, N., Creasey, D. J., Heard, D. E., Lee, J. D., Lewis, A. C., Pilling, M. J., and Zádor, J.: OH and HO<sub>2</sub> chemistry in clean marine air during SOAPEX-2, *Atmos. Chem. Phys.*, 4, 839–856, <https://doi.org/10.5194/acp-4-839-2004>, 2004.
- 1255 Sommariva, R., Bloss, W. J., Brough, N., Carslaw, N., Flynn, M., Haggerstone, A. L., Heard, D. E., Hopkins, J. R., Lee, J. D., Lewis, A. C., McFiggans, G., Monks, P. S., Penkett, S. A., Pilling, M. J., Plane, J. M. C., Read, K. A., Saiz-Lopez, A., Rickard, A. R., and Williams, P. I.: OH and HO<sub>2</sub> chemistry during NAMBLEX: roles of oxygenates, halogen oxides and heterogeneous uptake, *Atmos Chem Phys*, 6, 1135-1153, DOI 10.5194/acp-6-1135-2006, 2006.
- 1260 Sommariva, R., Cox, S., Martin, C., Borońska, K., Young, J., Jimack, P. K., Pilling, M. J., Matthaios, V. N., Nelson, B. S., Newland, M. J., Panagi, M., Bloss, W. J., Monks, P. S., and Rickard, A. R.: AtChem (version 1), an open-source box model for the Master Chemical Mechanism, *Geosci. Model Dev.*, 13, 169-183, 10.5194/gmd-13-169-2020, 2020.
- 1265 Sommariva, R., Haggerstone, A. L., Carpenter, L. J., Carslaw, N., Creasey, D. J., Heard, D. E., Lee, J. D., Lewis, A. C., Pilling, M. J., and Zador, J.: OH and HO<sub>2</sub> chemistry in clean marine air during SOAPEX-2, *Atmos Chem Phys*, 4, 839-856, DOI 10.5194/acp-4-839-2004, 2004.
- Sommariva, R., Hollis, L., Sherwen, T., R Baker, A., M Ball, S., J Bandy, B., G Bell, T., N Chowdhury, M., Cordell, R., Evans, M., D Lee, J., Reed, C. E Reeves, C., M Roberts, J., Yang, M., and Monks, P.: Seasonal and geographical variability of nitryl chloride and its precursors in Northern Europe, e844 pp., 10.1002/asl.844, 2018.

- 1270 Song, H., Chen, X., Lu, K., Zou, Q., Tan, Z., Fuchs, H., Wiedensohler, A., Moon, D. R., Heard, D. E., Baeza-Romero, M. T., Zheng, M., Wahner, A., Kiendler-Scharr, A., and Zhang, Y.: Influence of aerosol copper on HO<sub>2</sub> uptake: a novel parameterized equation, *Atmos. Chem. Phys.*, 20, 15835-15850, 10.5194/acp-20-15835-2020, 2020.
- 1275 Stone, D., Sherwen, T., Evans, M. J., Vaughan, S., Ingham, T., Whalley, L. K., Edwards, P. M., Read, K. A., Lee, J. D., Moller, S. J., Carpenter, L. J., Lewis, A. C., and Heard, D. E.: Impacts of bromine and iodine chemistry on tropospheric OH and HO<sub>2</sub>: comparing observations with box and global model perspectives, *Atmos Chem Phys*, 18, 3541-3561, 10.5194/acp-18-3541-2018, 2018.
- Stone, D., Whalley, L. K., Ingham, T., Edwards, P. M., Cryer, D. R., Brumby, C. A., Seakins, P. W., and Heard, D. E.: Measurement of OH reactivity by laser flash photolysis coupled with laser-induced fluorescence spectroscopy, *Atmos Meas Tech*, 9, 2827-2844, 10.5194/amt-9-2827-2016, 2016.
- 1280 Tan, Z., Lu, K., Hofzumahaus, A., Fuchs, H., Bohn, B., Holland, F., Liu, Y., Rohrer, F., Shao, M., Sun, K., Wu, Y., Zeng, L., Zhang, Y., Zou, Q., Kiendler-Scharr, A., Wahner, A., and Zhang, Y.: Experimental budgets of OH, HO<sub>2</sub>, and RO<sub>2</sub> radicals and implications for ozone formation in the Pearl River Delta in China 2014, *Atmos. Chem. Phys.*, 19, 7129-7150, 10.5194/acp-19-7129-2019, 2019.
- 1285 Tan, Z. F., Rohrer, F., Lu, K. D., Ma, X. F., Bohn, B., Broch, S., Dong, H. B., Fuchs, H., Gkatzelis, G. I., Hofzumahaus, A., Holland, F., Li, X., Liu, Y., Liu, Y. H., Novelli, A., Shao, M., Wang, H. C., Wu, Y. S., Zeng, L. M., Hu, M., Kiendler-Scharr, A., Wahner, A., and Zhang, Y. H.: Wintertime photochemistry in Beijing: observations of RO<sub>x</sub> radical concentrations in the North China Plain during the BEST-ONE campaign, *Atmos Chem Phys*, 18, 12391-12411, 10.5194/acp-18-12391-2018, 2018.
- 1290 Tan, Z. F., Fuchs, H., Lu, K. D., Hofzumahaus, A., Bohn, B., Broch, S., Dong, H. B., Gomm, S., Haseler, R., He, L. Y., Holland, F., Li, X., Liu, Y., Lu, S. H., Rohrer, F., Shao, M., Wang, B. L., Wang, M., Wu, Y. S., Zeng, L. M., Zhang, Y. S., Wahner, A., and Zhang, Y. H.: Radical chemistry at a rural site (Wangdu) in the North China Plain: observation and model calculations of OH, HO<sub>2</sub> and RO<sub>2</sub> radicals, *Atmos Chem Phys*, 17, 663-690, 10.5194/acp-17-663-2017, 2017.
- Vaughan, S., Ingham, T., Whalley, L. K., Stone, D., Evans, M. J., Read, K. A., Lee, J. D., Moller, S. J., Carpenter, L. J., Lewis, A. C., Fleming, Z. L., and Heard, D. E.: Seasonal observations of OH and HO<sub>2</sub> in the remote tropical marine boundary layer, *Atmos Chem Phys*, 12, 2149-2172, 10.5194/acp-12-2149-2012, 2012.
- 1295 Wang, S., Wu, R., Berndt, T., Ehn, M., and Wang, L.: Formation of Highly Oxidized Radicals and Multifunctional Products from the Atmospheric Oxidation of Alkylbenzenes, *Environ Sci Technol*, 51, 8442-8449, 10.1021/acs.est.7b02374, 2017.
- Wang, Y., Mehra, A., Krechmer, J. E., Yang, G., Hu, X., Lu, Y., Lambe, A., Canagaratna, M., Chen, J., Worsnop, D., Coe, H., and Wang, L.: Oxygenated products formed from OH-initiated reactions of trimethylbenzene: Autoxidation and accretion, *Atmos. Chem. Phys.*, 20, 9563-9579, 2020.
- 1300 Whalley, L. K., Slater, E. J., Woodward-Massey, R., Ye, C., Lee, J. D., Squires, F., Hopkins, J. R., Dunmore, R. E., Shaw, M., Hamilton, J. F., Lewis, A. C., Mehra, A., Worrall, S. D., Bacak, A., Bannan, T. J., Coe, H., Ouyang, B., Jones, R. L., Crilley, L. R., Kramer, L. J., Bloss, W. J., Vu, T., Kotthaus, S., Grimmond, S., Sun, Y., Xu, W., Yue, S., Ren, L., Acton, W. J. F., Hewitt, C. N., Wang, X., Fu, P., and Heard, D. E.: Evaluating the sensitivity of radical chemistry and ozone formation to ambient VOCs and NO<sub>x</sub> in Beijing, *Atmos. Chem. Phys.*, 21, 2125-2147, 10.5194/acp-21-2125-2021, 2021.



- Whalley, L. K., Stone, D., Dunmore, R., Hamilton, J., Hopkins, J. R., Lee, J. D., Lewis, A. C., Williams, P., Kleffmann, J., Laufs, S., Woodward-Massey, R., and Heard, D. E.: Understanding in situ ozone production in the summertime through radical observations and modelling studies during the Clean air for London project (ClearLo), *Atmos Chem Phys*, 18, 2547-2571, 10.5194/acp-18-2547-2018, 2018.
- Whalley, L. K., Stone, D., Bandy, B., Dunmore, R., Hamilton, J. F., Hopkins, J., Lee, J. D., Lewis, A. C., and Heard, D. E.: Atmospheric OH reactivity in central London: observations, model predictions and estimates of in situ ozone production, *Atmos. Chem. Phys.*, 16, 2109-2122, 10.5194/acp-16-2109-2016, 2016.
- Whalley, L. K., Blitz, M. A., Desservettaz, M., Seakins, P. W., and Heard, D. E.: Reporting the sensitivity of laser-induced fluorescence instruments used for HO<sub>2</sub> detection to an interference from RO<sub>2</sub> radicals and introducing a novel approach that enables HO<sub>2</sub> and certain RO<sub>2</sub> types to be selectively measured, *Atmos Meas Tech*, 6, 3425-3440, 10.5194/amt-6-3425-2013, 2013.
- Whalley, L. K., Edwards, P. M., Furneaux, K. L., Goddard, A., Ingham, T., Evans, M. J., Stone, D., Hopkins, J. R., Jones, C. E., Karunaharan, A., Lee, J. D., Lewis, A. C., Monks, P. S., Moller, S. J., and Heard, D. E.: Quantifying the magnitude of a missing hydroxyl radical source in a tropical rainforest, *Atmos Chem Phys*, 11, 7223-7233, 10.5194/acp-11-7223-2011, 2011.
- Whalley, L. K., Furneaux, K. L., Goddard, A., Lee, J. D., Mahajan, A., Oetjen, H., Read, K. A., Kaaden, N., Carpenter, L. J., Lewis, A. C., Plane, J. M. C., Saltzman, E. S., Wiedensohler, A., and Heard, D. E.: The chemistry of OH and HO<sub>2</sub> radicals in the boundary layer over the tropical Atlantic Ocean, *Atmos Chem Phys*, 10, 1555-1576, 10.5194/acp-10-1555-2010, 2010.
- Woodward-Massey, R.: Observations of radicals in the atmosphere: measurement validation and model comparisons, PhD Thesis, School of Chemistry, University of Leeds, 2018.
- Woodward-Massey, R., Slater, E. J., Alen, J., Ingham, T., Cryer, D. R., Stimpson, L. M., Ye, C., Seakins, P. W., Whalley, L. K., and Heard, D. E.: Implementation of a chemical background method for atmospheric OH measurements by laser-induced fluorescence: characterisation and observations from the UK and China, *Atmos. Meas. Tech.*, 13, 3119-3146, 10.5194/amt-13-3119-2020, 2020.
- Worton, D. R., Reeves, C. E., Penkett, S. A., Sturges, W. T., Slemr, J., Oram, D. E., Bandy, B. J., Bloss, W. J., Carslaw, N., Davey, J., Emmerson, K. M., Gravestock, T. J., Hamilton, J. F., Heard, D. E., Hopkins, J. R., Hulse, A., Ingram, T., Jacob, M. J., Lee, J. D., Leigh, R. J., Lewis, A. C., Monks, P. S., and Smith, S. C.: Alkyl nitrate photochemistry during the tropospheric organic chemistry experiment, *Atmospheric Environment*, 44, 773-785, <https://doi.org/10.1016/j.atmosenv.2009.11.038>, 2010.
- Zha, Q., Yan, C., Junninen, H., Riva, M., Aalto, J., Quéléver, L., Schallhart, S., Dada, L., Heikkinen, L., Peräkylä, O., Zou, J., Rose, C., Wang, Y., Mammarella, I., Katul, G., Vesala, T., Worsnop, D. R., Kulmala, M., Petäjä, T., Bianchi, F., and Ehn, M.: Vertical characterization of Highly Oxygenated Molecules (HOMs) below and above a boreal forest canopy, *Atmos. Chem. Phys.*, 18, 17437–17450, 2018.
- Zhang, L., Brook, J. R., and Vet, R.: A revised parameterization for gaseous dry deposition in air-quality models, *Atmos Chem Phys*, 3, 2067-2082, DOI 10.5194/acp-3-2067-2003, 2003.

## Tables

**Table 1.** List of species observed and their corresponding measurement techniques for the ICOZA campaign. For descriptions of simple and complex RO<sub>2</sub>, see Section 2.1.2. For some species (e.g., NO, NO<sub>2</sub>, HONO, HCHO) more than one measurement technique was available.

Observation(s)	Technique	Sampling platform	Institution	Reference(s)
OH, HO <sub>2</sub> , total RO <sub>2</sub> , “simple” and “complex” RO <sub>2</sub>	Fluorescence assay by gas expansion (FAGE)	FAGE container roof	Leeds	Whalley et al. (2013); Whalley et al. (2018); Woodward-Massey et al. (2020)
OH reactivity	Laser flash photolysis–laser-induced fluorescence spectroscopy (LFP-LIF)	FAGE container roof	Leeds	Stone et al. (2016)
J(O <sup>1</sup> D)	Filter radiometry	FAGE container roof	Leeds	Bohn et al. (2016)
Photolysis frequencies	Spectral radiometry (two instruments)	FAGE and Leicester containers	Leeds/Leicester	Bohn et al. (2008)
HCHO	Laser-induced fluorescence (LIF)	WAO manifold	Leeds	Cryer (2016)
HONO	Long path absorption photometry (LOPAP)	Birmingham van roof	Birmingham	Heland et al. (2001); Crilley et al. (2021) <sup>d</sup>
Aerosol surface area	Aerodynamic particle sizer (APS)	Birmingham van roof	Birmingham	Chen et al. (1985)
Cl <sub>2</sub> /ClNO <sub>2</sub>	Chemical ionisation mass spectrometry	Leicester container roof	Leicester	Sommariva et al. (2018)
NO (NO <sub>2</sub> )	Chemiluminescence (LED NO <sub>2</sub> converter)	WAO roof	York	Lee et al. (2009a)
NO <sub>2</sub>	Cavity-attenuated phase-shift spectroscopy (CAPS)	WAO manifold	York	Kebabian et al. (2008)
HONO	Differential photolysis with chemiluminescence detection of NO	WAO roof	York	Reed et al. (2016)
O <sub>3</sub>	UV absorption	WAO manifold	UEA	-
CO	MgO reduction with UV detection	WAO manifold	UEA	Robbins et al. (1968)
HCHO	Hantzsch colourimetry	WAO manifold	UEA	Nash (1953)
VOCs (up to C <sub>6</sub> alkanes/alkenes, acetylene, benzene, toluene) <sup>c</sup>	Gas chromatography with flame ionisation detection (GC-FID)	WAO roof	UEA	-
VOCs (C <sub>8</sub> /C <sub>9</sub> aromatics, $\Sigma$ monoterpenes), OVOCs (methanol, acetaldehyde, acetone, acetic acid, MVK+MACR <sup>a</sup> , MEK <sup>b</sup> ), acetonitrile, DMS <sup>e</sup>	Proton transfer reaction–mass spectrometry (PTR-MS)	WAO roof	UEA	Murphy et al. (2010)

1345 <sup>a</sup>Sum of methyl vinyl ketone and methacrolein.

<sup>b</sup>Methyl ethyl ketone.

<sup>c</sup>Dimethyl sulfide.

<sup>d</sup>Used to constrain the MCM model

<sup>e</sup>A constant methane mixing ratio of 1900 ppm was used to constrain the MCM model and to calculate OH reactivity

**Table 2.** Median daytime (defined as  $J(\text{O}^1\text{D}) > 5 \times 10^{-7} \text{ s}^{-1}$ , approximately 06:00–18:00 UTC)  $\text{RO}_x$  source and sink contributions, split according to wind direction (NW–SE =  $<165^\circ$  and  $>285^\circ$ ; SW =  $180^\circ$ – $270^\circ$ ).

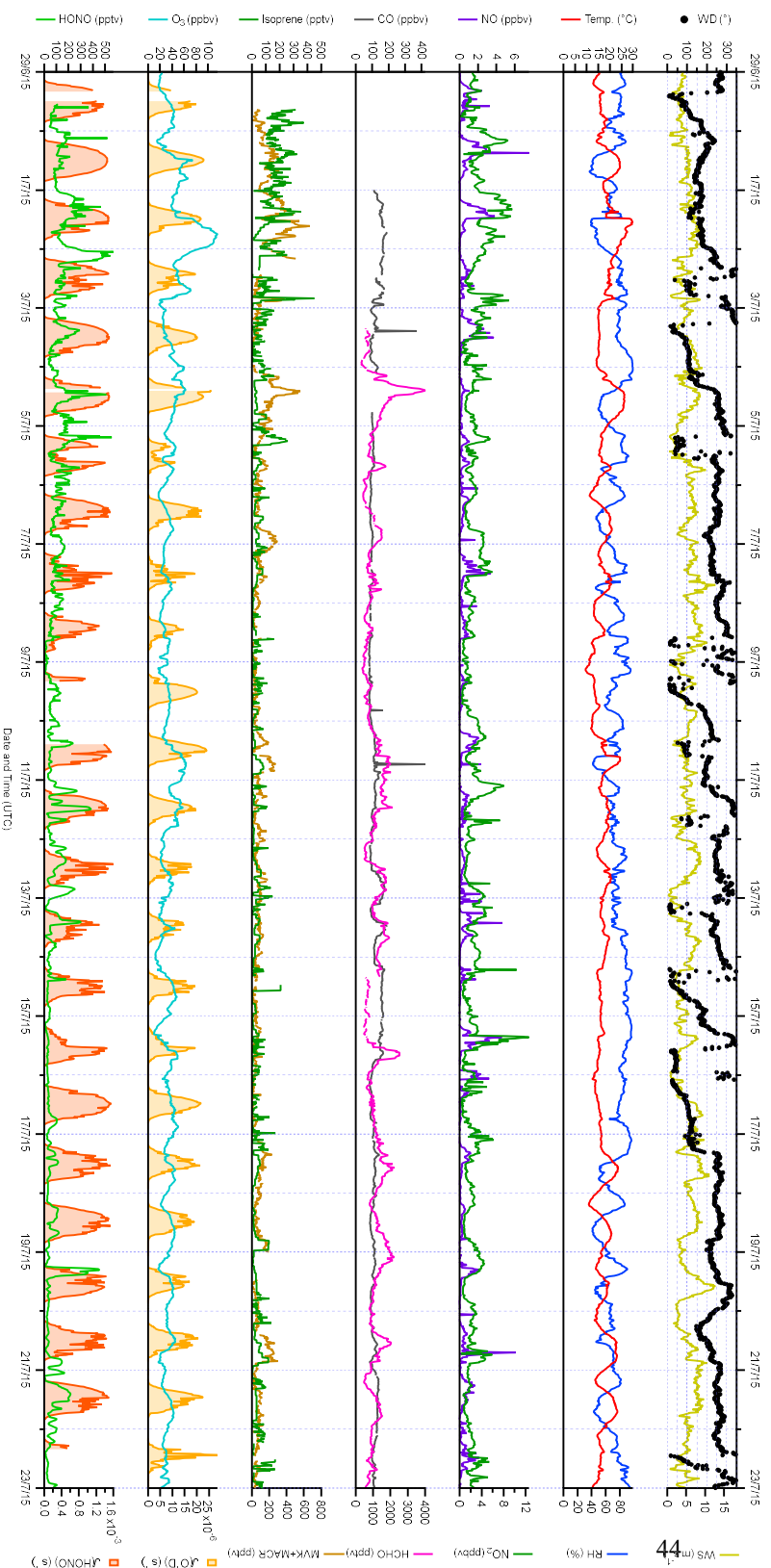
<i>RO<sub>x</sub> source</i>	NW–SE (%)	SW (%)	<i>RO<sub>x</sub> sink</i>	NW–SE (%)	SW (%)
Ozonolysis	3.1	2.8	$\text{RO}_2 + \text{NO} \rightarrow \text{RONO}_2$	28.1	38.2
$J_{\text{carbonyls}}$	22.9	24.5	$\text{HO}_2 + \text{HO}_2$	1.8	0.9
$J_{\text{HONO}}$	36.5	44.0	$\text{RO}_2 + \text{HO}_2$	32.6	14.2
$\text{O}^1\text{D} + \text{H}_2\text{O}$	37.5	28.7	$\text{RO}_2 + \text{RO}_2$	1.5	1.1
			$\text{OH} + \text{NO}_2$	32.6	39.4
			$\text{OH} + \text{NO}$	3.4	6.2

**Table 3.** Median daytime OH source and sink contributions, split according to wind direction. OH reactivity contributions are derived from calculated OH reactivity, not measured nor modelled using the MCM. OH sink groupings are based on MCM classifications.

<i>OH source</i>	NW–SE (%)	SW (%)	<i>OH sink</i>	NW–SE (%)	SW (%)
Ozonolysis	0.8	0.5	Aromatics <sup>a</sup>	0.4	0.3
$\text{O}^1\text{D} + \text{H}_2\text{O}$	23.2	11.5	HONO <sup>a</sup>	0.7	0.7
$J_{\text{HONO}}$	22.6	17.7	Methanol <sup>a</sup>	1.7	3.1
$\text{HO}_2 + \text{O}_3$	2.4	0.9	Alkanes <sup>a</sup>	2.5	1.6
$\text{HO}_2 + \text{NO}$	51.0	69.4	NO	2.7	4.5
			Unclassified <sup>a</sup>	2.7	1.8
			$\text{O}_3^c$	3.0	2.3
			Dialkenes (isoprene + 1,3-butadiene)	4.2	5.5
			Alkenes + alkynes	7.9	6.4
			Carbonyls	13.0	20.9
			$\text{NO}_2$	19.5	26.2
			CO	41.6	26.7
			$\text{CH}_4$	12.5	10.0

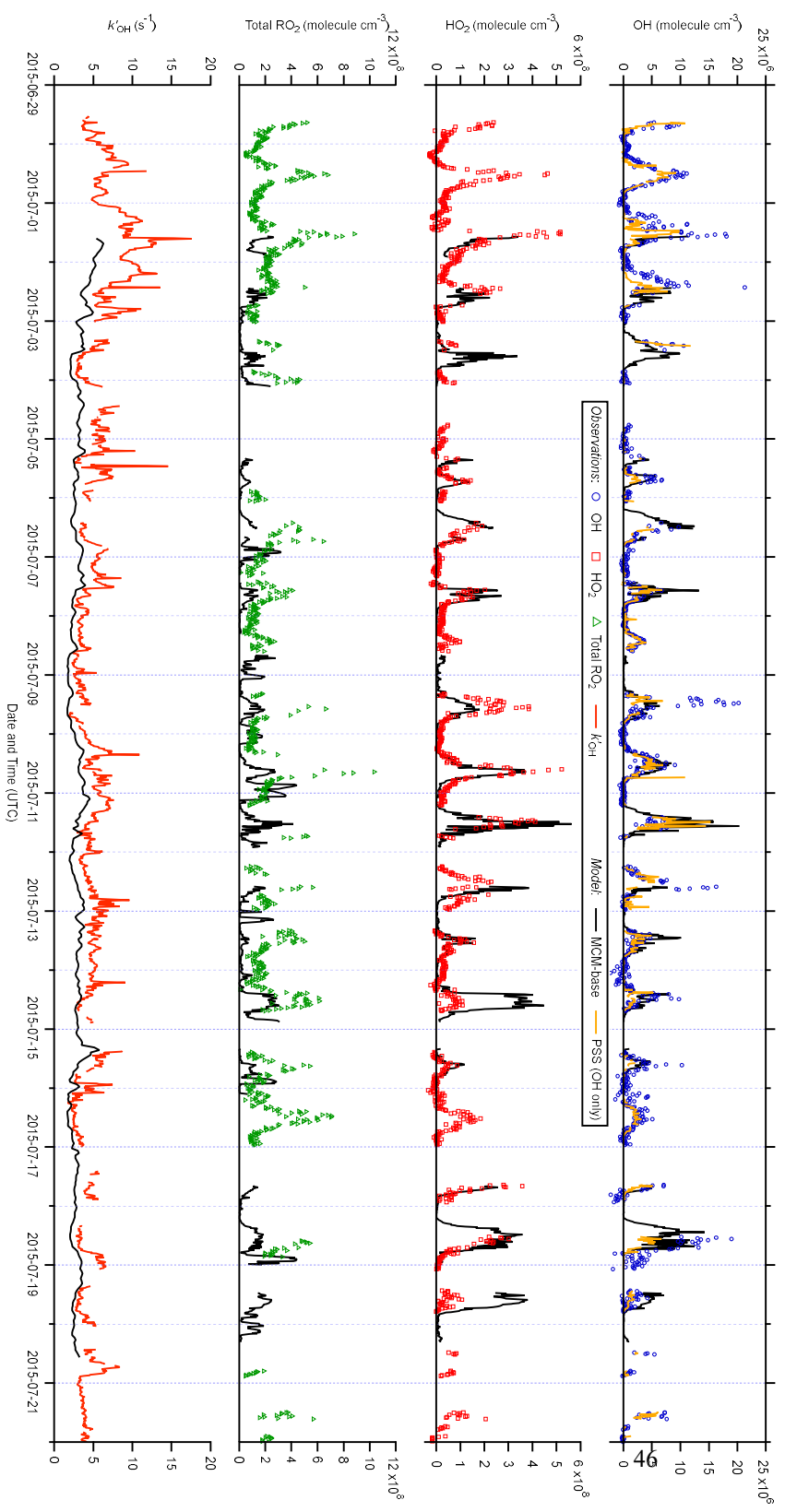
<sup>a</sup>Lumped together as “Other” in Figure 13.

**Figure 1.** Time series of meteorological parameters (wind speed and direction, temperature, RH, photolysis frequencies) and trace gases (NO<sub>2</sub>, CO, HCHO, isoprene, MVK+MACR, O<sub>3</sub>, HONO) measured during ICOZA (29<sup>th</sup> June – 23<sup>rd</sup> July 2015). All data presented are 15 min averages. UTC = Universal Time Coordinated.

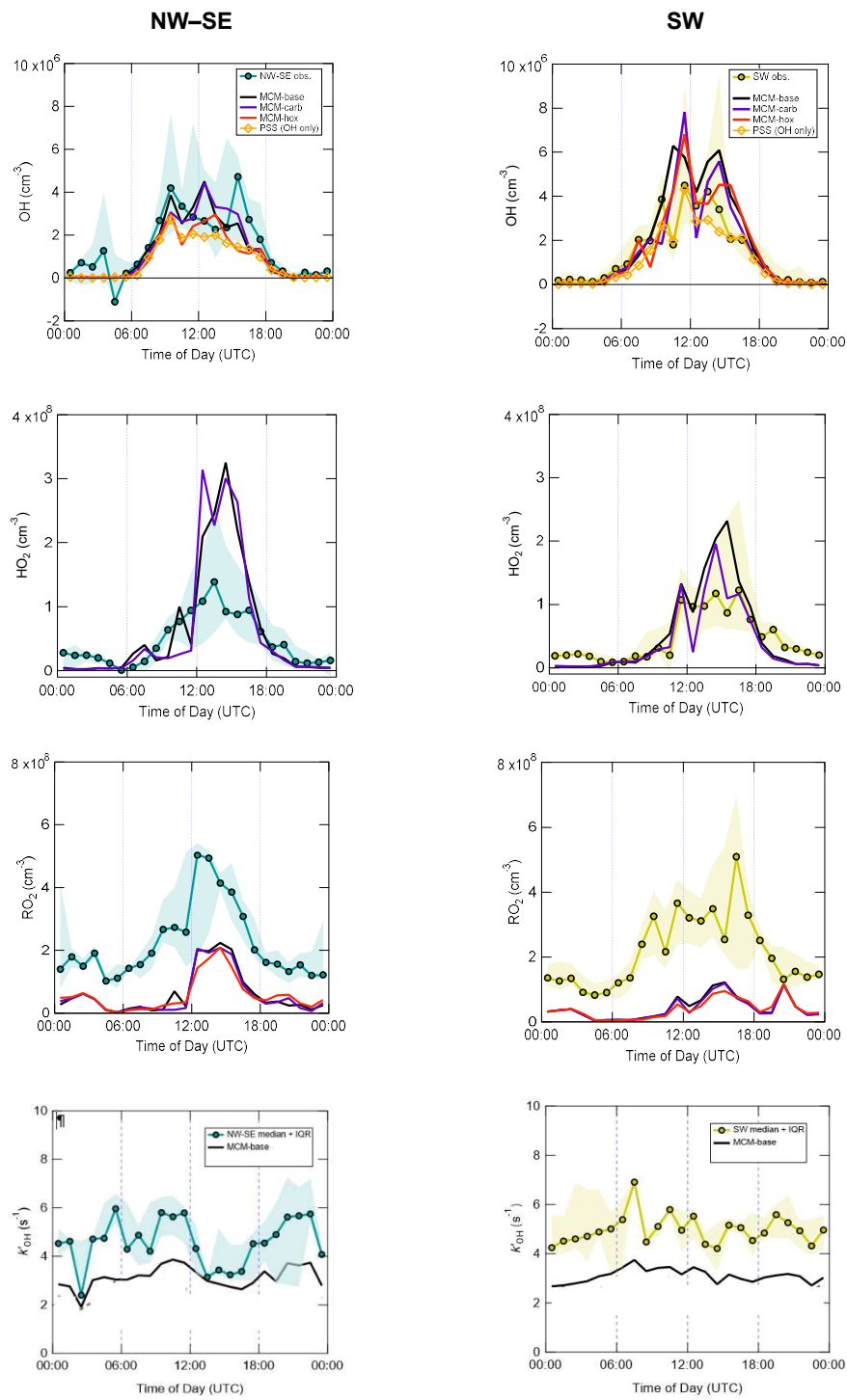


1365 **Figure 1.** Time series of meteorological parameters (wind speed and direction, temperature, RH, photolysis frequencies) and trace gases (NO, NO<sub>2</sub>, CO, HCHO, isoprene, MVK+MACR, O<sub>3</sub>, HONO) measured during ICOZA (29<sup>th</sup> June – 23<sup>rd</sup> July 2015). All data presented are 15 min averages. UTC = Universal Time Coordinated.

**Figure 2.** Time series of OH, HO<sub>2</sub>, and total RO<sub>2</sub> measurements and comparison to MCM-base model and photostationary steady state (PSS) predictions. All data are at 15 min time resolution except for model OH reactivity (1 h). Error bars omitted for clarity. See Figure 1 for the time-series of wind direction.

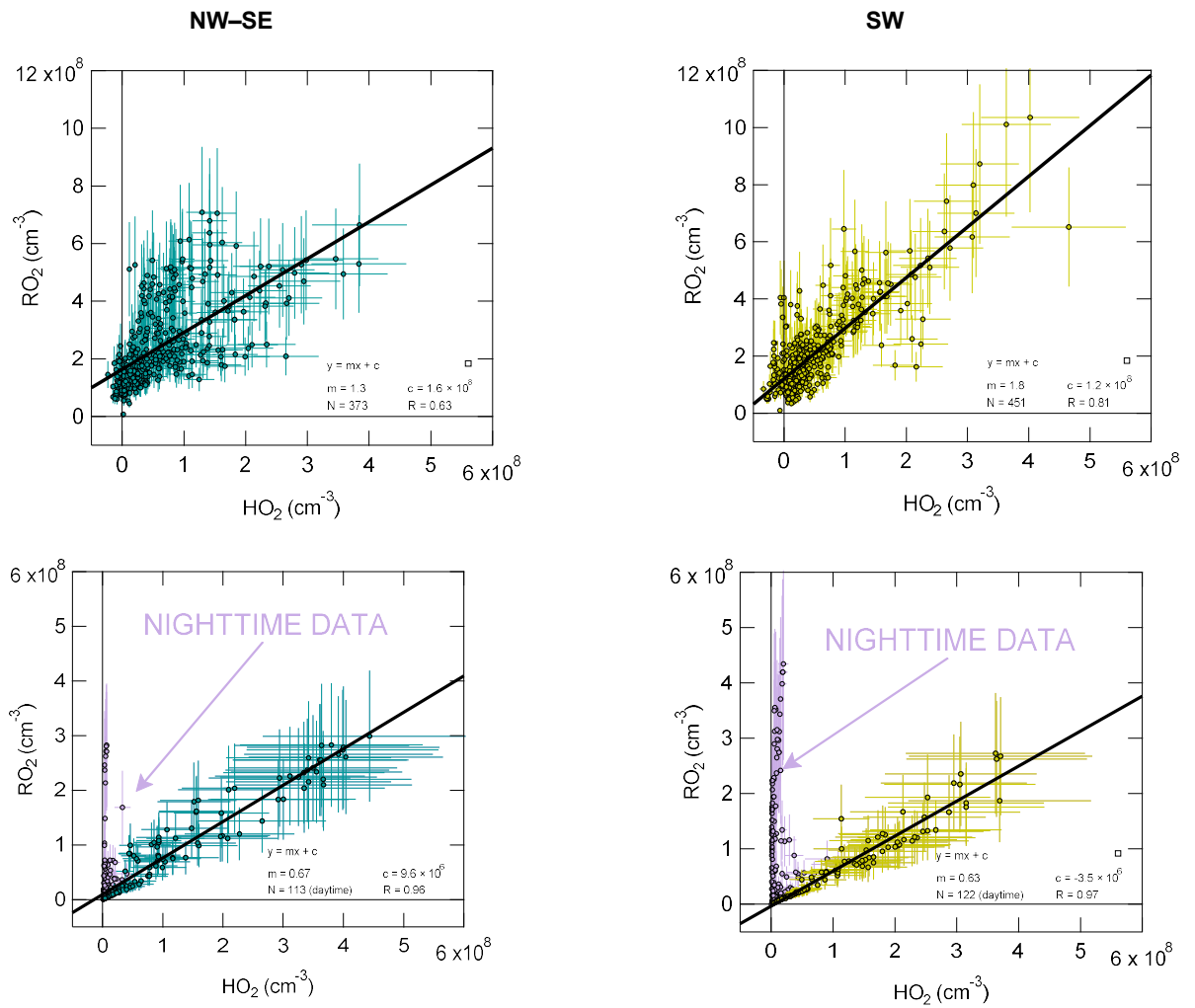


**Figure 2.** Time series of OH, HO<sub>2</sub>, and total RO<sub>2</sub> measurements and comparison to MCM-base model and photostationary steady state (PSS) predictions. All data are at 15 min time resolution except for model OH reactivity (1 h). Error bars omitted for clarity.

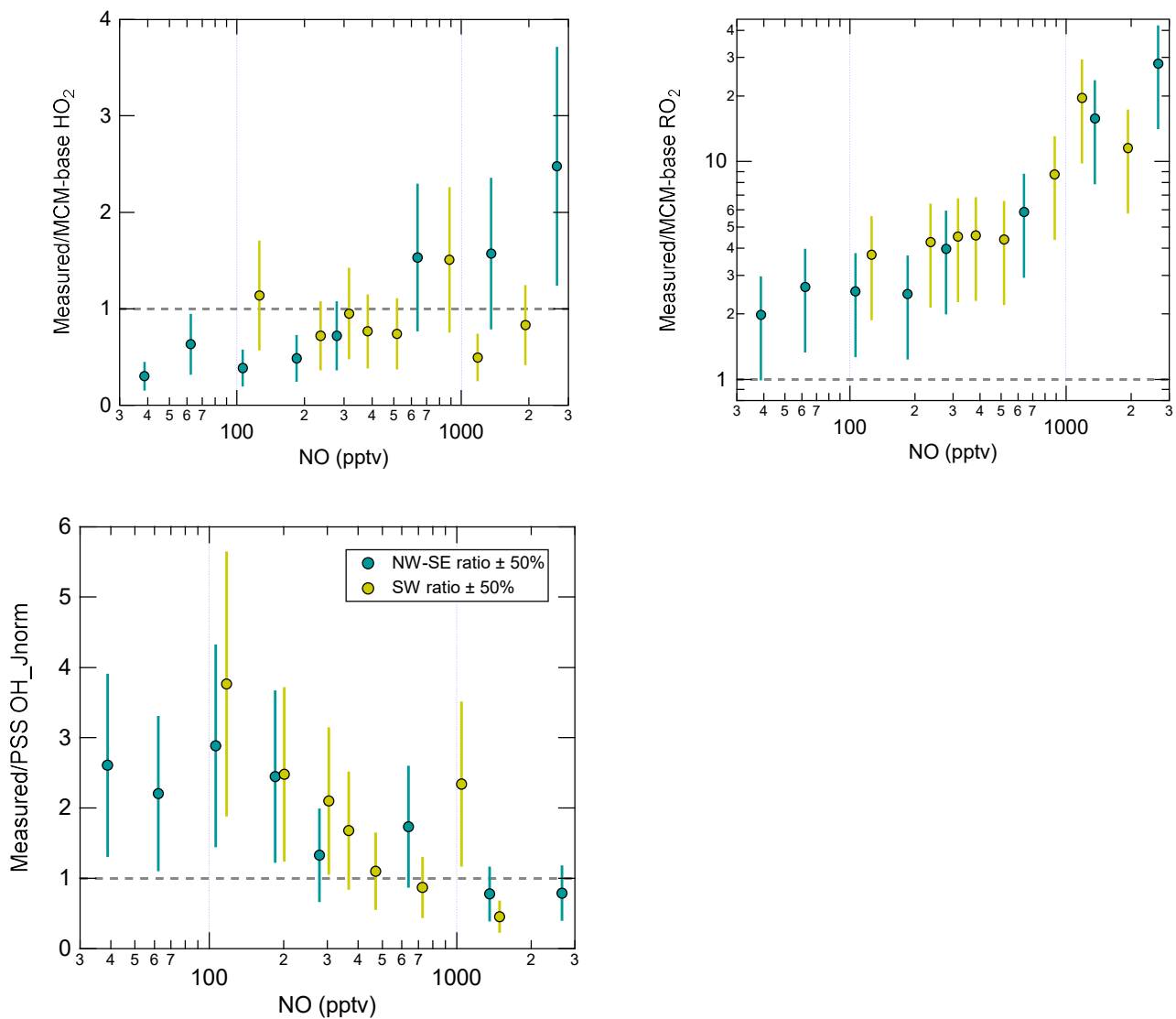


**Figure 3.** Hourly median diel profiles of OH, HO<sub>2</sub>, total RO<sub>2</sub>, and  $k'_{\text{OH}}$  and comparison to MCM-base and PSS model predictions, split according to wind direction (left NW–SE, right SW). Shaded areas correspond to 25<sup>th</sup> and 75<sup>th</sup> percentiles of the data in each time bin.

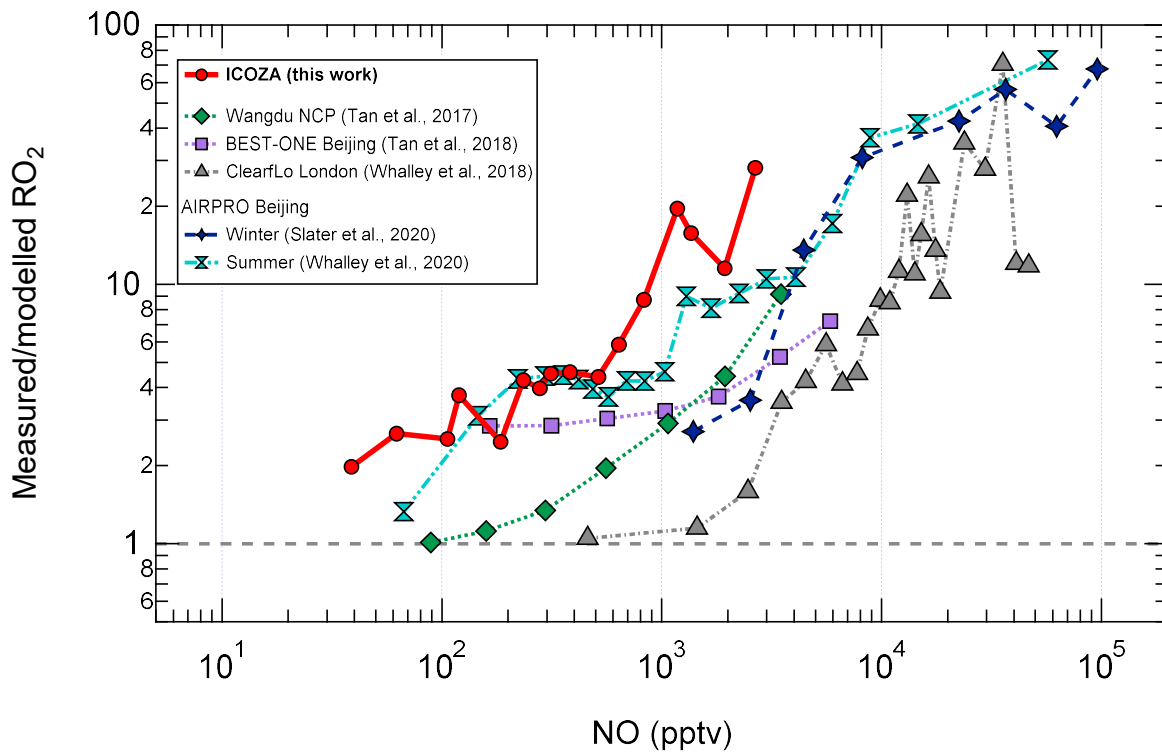




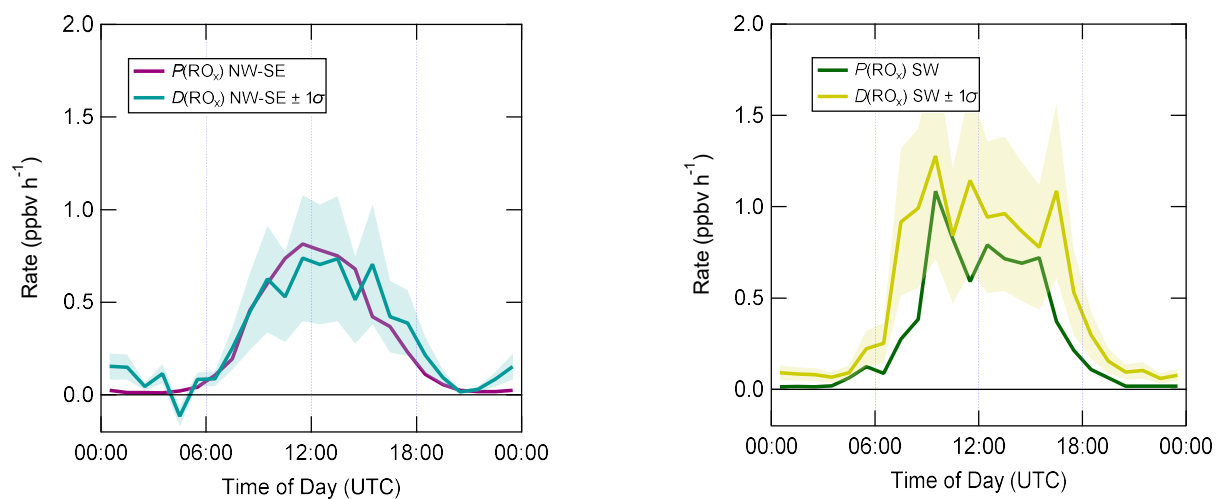
**Figure 4.** Observed total  $RO_2$  versus observed  $HO_2$  (top) and modelled total  $RO_2$  versus modelled  $HO_2$  (bottom), split according to wind direction (left NW-SE, right SW). Solid black lines correspond to linear least squares fits. For the model results, nighttime data exhibit a different  $RO_2$  versus  $HO_2$  slope (not observed in the observations), highlighted in purple; these data were not included in fits.



5 **Figure 5.** NO-dependence of the measurement-model ratios for radical species. Error bars correspond to an estimated combined measurement-model error of 50%. For OH, the reference model is the PSS calculation, and for HO<sub>2</sub> and RO<sub>2</sub> this is MCM-base. Note the y-log scale for RO<sub>2</sub>.

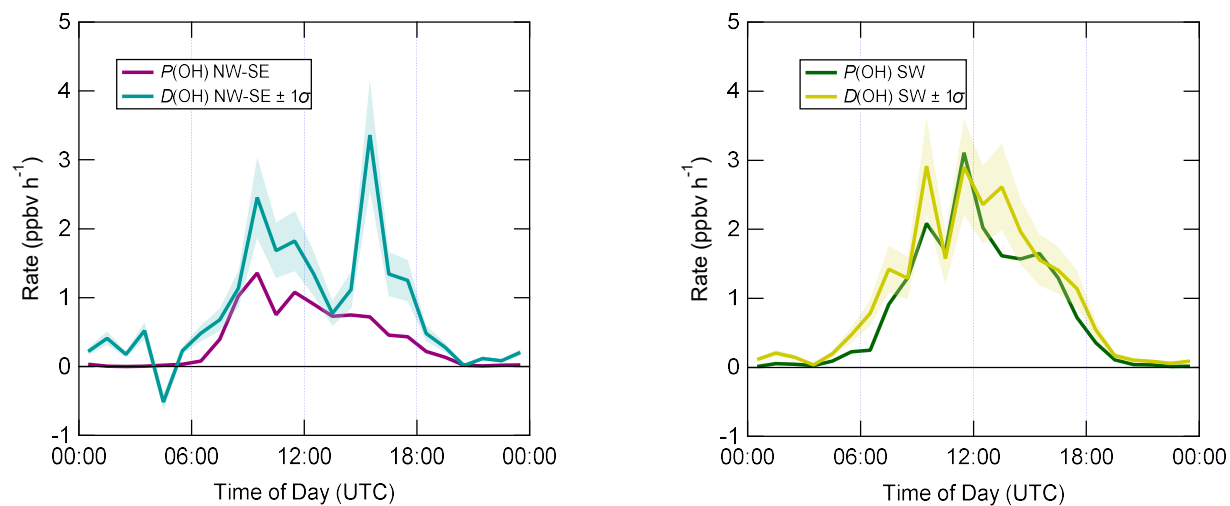


**Figure 6.** Comparison of  $RO_{xLIF}$ -measured  $RO_2$  measurement-model ratios as a function of NO.



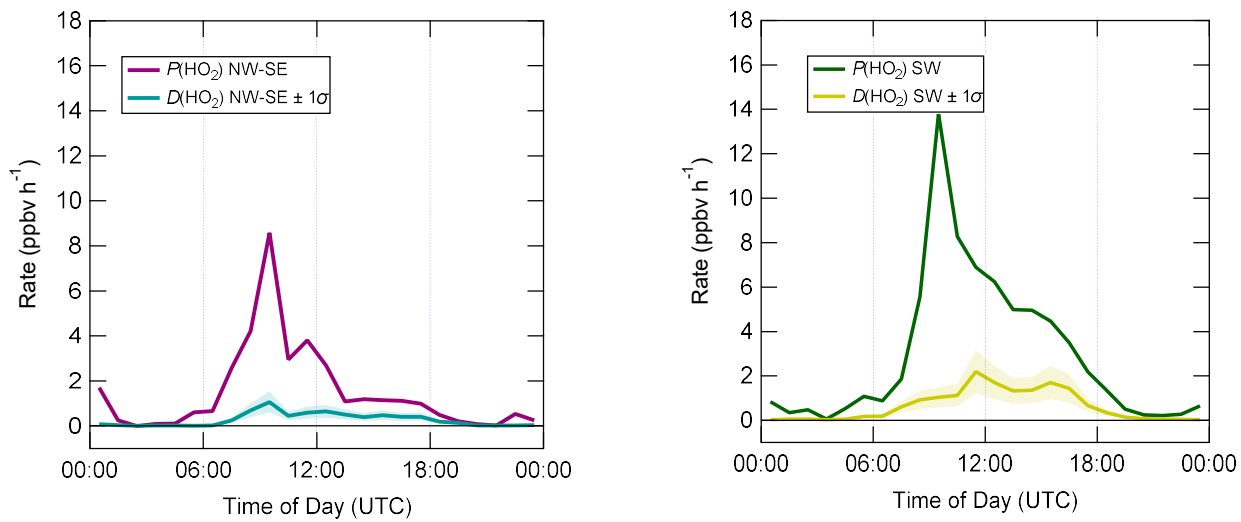
**Figure 7.** Median diel profiles of  $\text{RO}_x$  production and destruction, split according to wind direction (NW–SE =  $<165^\circ$  and  $>285^\circ$ ; SW =  $180^\circ$ – $270^\circ$ ). Shaded area on  $D(\text{RO}_x)$  corresponds to the estimated  $1\sigma$  uncertainty of 35% (derived from calibration accuracy and reproducibility), not shown for  $P(\text{RO}_x)$  for clarity.

5

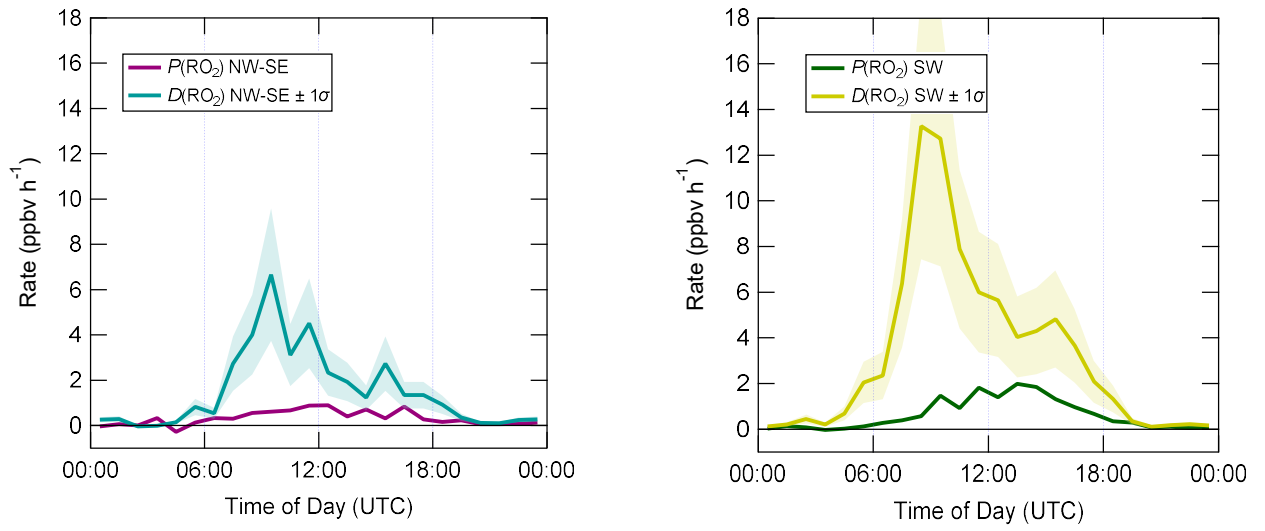


**Figure 8.** Median diel profiles of OH production and destruction, split according to wind direction. Shaded area on  $D(\text{OH})$  corresponds to the estimated  $1\sigma$  uncertainty of 24%, not shown for  $P(\text{OH})$  for clarity.

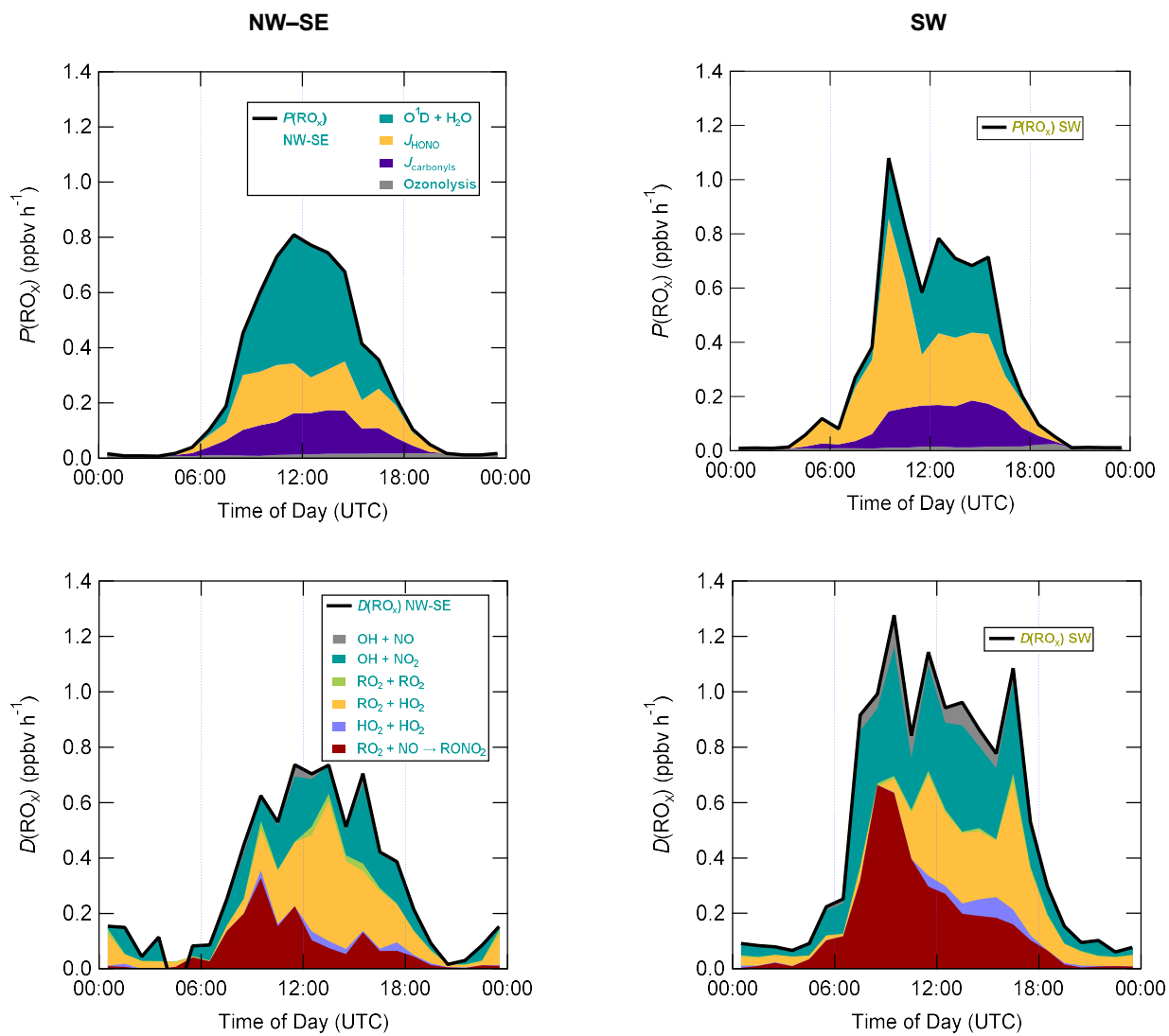
5



**Figure 9.** Median diel profiles of HO<sub>2</sub> production and destruction, split according to wind direction. Shaded area on  $D(\text{HO}_2)$  corresponds to the estimated  $1\sigma$  uncertainty of 32%, not shown for  $P(\text{HO}_2)$  for clarity.

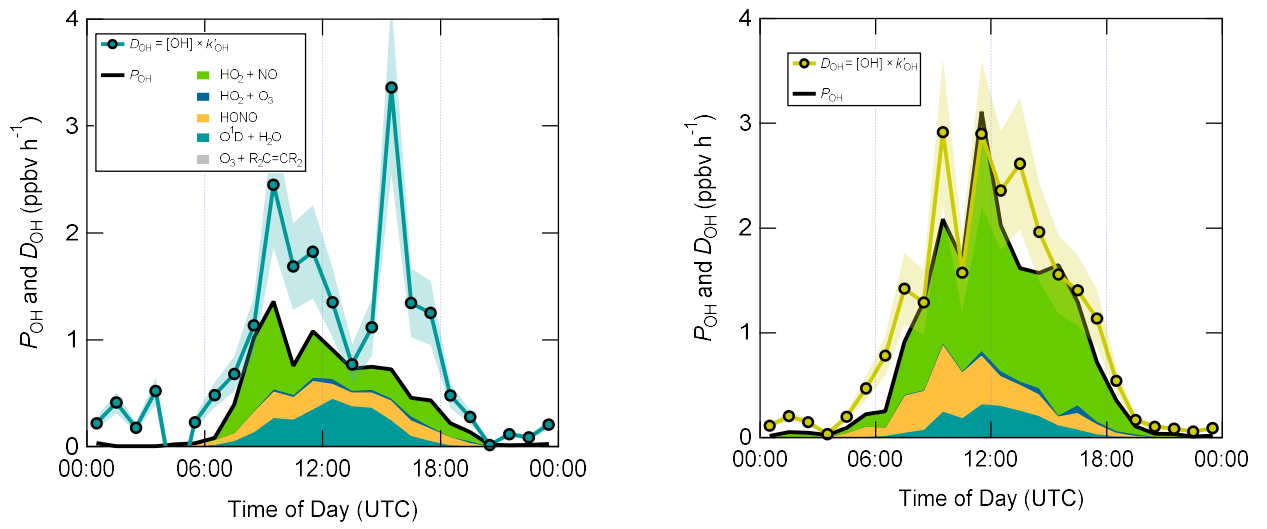


**Figure 10.** Median diel profiles of RO<sub>2</sub> production and destruction, split according to wind direction. Shaded area on  $D(\text{RO}_2)$  corresponds to the estimated  $1\sigma$  uncertainty of 32%, not shown for  $P(\text{RO}_2)$  for clarity.

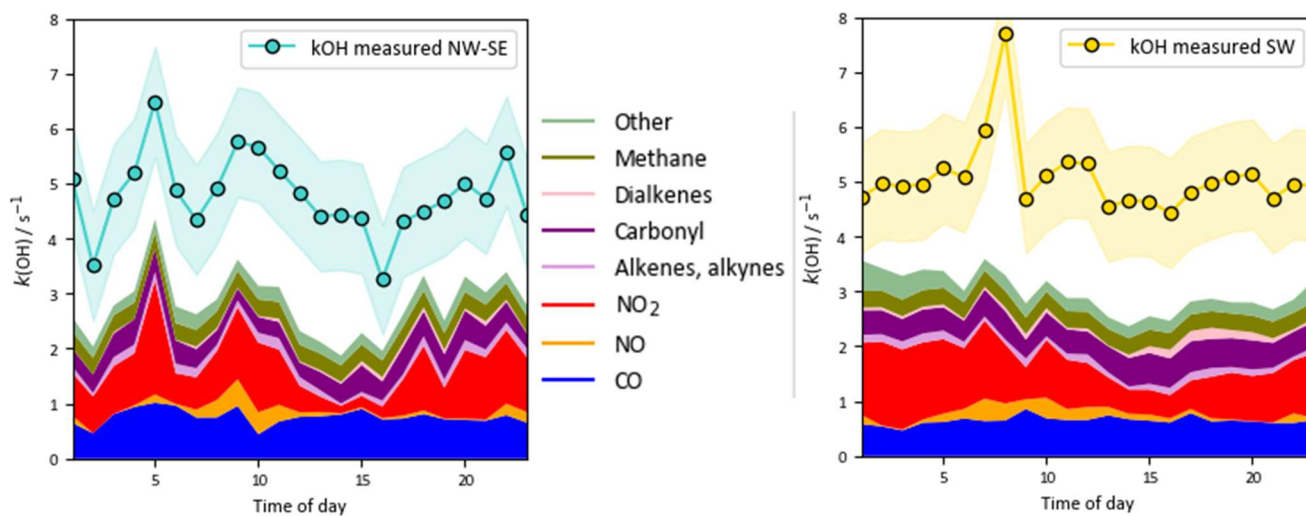


**Figure 11.** Median diel profiles of known  $\text{RO}_x$  sources (top) and sinks (bottom), split according to wind direction. Average daytime contributions are given in Table 2. For interpretation of colours, please see the figure legend.



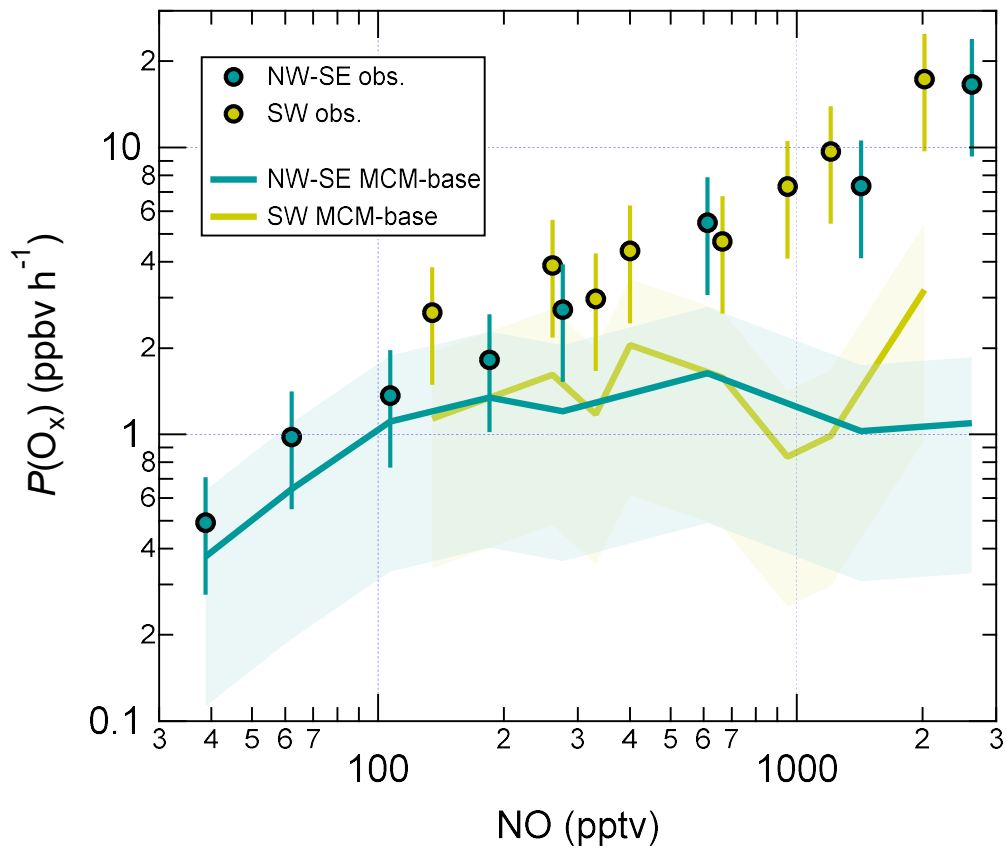


**Figure 12.** Median diel profiles of known OH sources and comparison to measured OH destruction, split according to wind direction (left: NW-SE, right: SW). Average daytime contributions are given in Table 3. For interpretation of colours, please see the figure legend.



15 **Figure 13.** Median diel profiles of the OH reactivity calculated from measured reactants and comparison to measured OH reactivity, split according to wind direction. Average daytime contributions are given in Table 3. For interpretation of colours, please see the figure legend. Reactants in the “Other” class are listed in Table 3. The shaded area on measured  $k'_{OH}$  corresponds to the  $1\sigma$  precision of  $\sim 1 \text{ s}^{-1}$ . Model intermediates are not included here but their contributions are discussed in the text.

20



**Figure 14.**  $P(O_x)$  as a function of NO for measured and MCM-base model HO<sub>2</sub> and RO<sub>2</sub>. Error bars and shaded areas correspond to estimated  $1\sigma$  uncertainties of 40% and 70% for measured and model  $P(O_x)$ , respectively. Note y- and x-log scales.  $P(O_x)$  will be impacted by a change in the rate coefficient for RO<sub>2</sub>+NO, owing to the change in RO<sub>2</sub> and HO<sub>2</sub> budgets, as shown Figure S11.

5