

1 **What caused the interdecadal shift of the ENSO impact**
2 **on dust mass concentration over northwestern South Asia?**

3

4 Lamei Shi ^{1,2}, Jiahua Zhang ^{1,2,*}, Fengmei Yao ², Da Zhang ^{1,2}, Jingwen Wang ^{1,2},
5 Xianglei Meng², Yuqin Liu³

6 ¹Key Laboratory of Digital Earth Science, Aerospace Information Research Institute, Chinese Academy
7 of Sciences, Beijing 100094, China

8 ²College of Earth and Planetary Sciences, University of Chinese Academy of Sciences, Beijing 101407,
9 China

10 ³Key Laboratory of Urban Environment and Health, Institute of Urban Environment, Chinese Academy
11 of Sciences, Xiamen 361021, China

12

13

14

15

16 *Correspondence to:* Jiahua Zhang (zhangjh@radi.ac.cn)

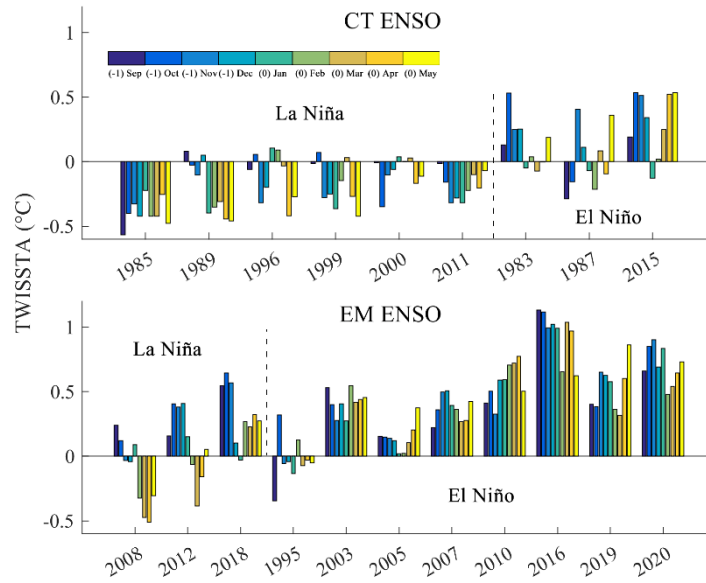
17

18

19

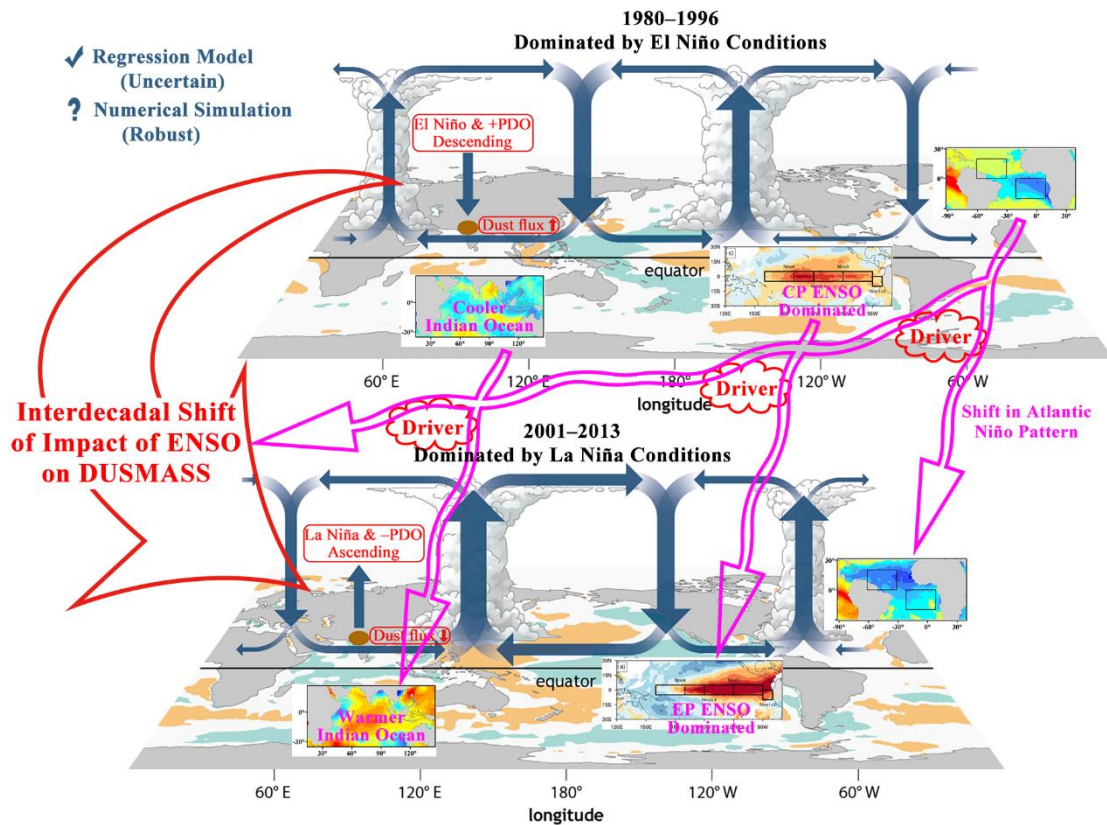
20

21



22
23 **Figure S1: Monthly ((-1) Sep.–(0) May) SSTA over tropical western Indian ocean separately for CT and EM**
24 **ENSO years.**

25



26
27 **Figure S2: Schematic diagram of the interdecadal shift of the impact of ENSO on DUSMASS and the**
28 **related drivers. The blue arrows represent the atmospheric circulation over the equator—the Walker**
29 **circulation. The shades over ocean represent SST. The brown ellipse depicts the study area. (The**
30 **background map was adopted from NOAA Climate.gov.)**

31