

Long-term Regional Trends of Nitrogen and Sulfur Deposition in the United States from 2002 to 2017

Sarah E. Benish^{1,2}, Jesse O. Bash², Kristen M. Foley², K. Wyatt Appel², Christian Hogrefe², Rob Gilliam², George Pouliot²

¹ Formerly Oak Ridge Institute for Science and Education (ORISE), US Environmental Protection Agency, Research Triangle Park, NC 27711, USA

² US Environmental Protection Agency, Research Triangle Park, NC 27711, USA

Correspondence to: Sarah E. Benish (benish.sarah@epa.gov) and Jesse O. Bash (bash.jesse@epa.gov)

Abstract. Atmospheric deposition of nitrogen (N) and sulfur (S) compounds from human activity has greatly declined in the United States (US) over the past several decades in response to emission controls set by the Clean Air Act. ~~While~~ While many observational studies have investigated the spatial and temporal trends of atmospheric deposition, modeling assessments can provide useful information over areas with sparse measurements, although usually have larger horizontal resolutions and are limited by input data availability. few assess dry deposition, incorporate a measurement-model fusion approach to improve wet deposition estimates, or focus on changes within specific US climate regions. In this analysis, we evaluate wet, dry, and total N and S deposition from multiyear simulations ~~across climatologically consistent regions~~ within the contiguous US (CONUS). Community Multiscale Air Quality (CMAQ) model estimates ~~from 2002 to 2017~~ from the EPA's Air Quality Time Series (EQUATES) project contain important model updates to atmospheric deposition algorithms compared to previous model data, including the new Surface Tiled Aerosol and Gaseous Exchange (STAGE) bidirectional deposition model which contains land use specific resistance parameterization and land use specific deposition estimates needed to estimate the differential impacts of N deposition to different land use types (Hood et al., 2021) and improvements to organic N chemistry. First, we evaluate model estimates of wet deposition and ambient concentrations, finding the model generally underestimates wet deposition of SO₄, NO₃, and NH₄ wet deposition compared to National Atmospheric Deposition Program observations and Comparisons to Clean Air Status and Trends network ambient concentrations show the model underestimates of NH₄ and SO₄ and overestimates of SO₂ and TNO₃ (HNO₃+NO₃) compared to the Clean Air Status and Trends (CASTNET) network ambient concentrations. ~~Second, a measurement-model fusion approach~~ employing a precipitation- and bias- correction to wet deposition estimates is found to reduce model bias and improve correlations compared to the unadjusted model values. ~~Comparisons to Clean Air Status and Trends network ambient concentrations show the model underestimates NH₄ and SO₄ and overestimates SO₂ and TNO₃.~~ Model agreement of wet deposition is poor over parts of the West and Northern Rockies, due to errors in precipitation estimates caused by complex terrain and uncertainty in emissions at the relatively coarse 12 km grid resolution used in this study. Next, we assess modeled N and S deposition trends across climatologically consistent regions in the CONUS. Total deposition of N and S in the eastern US is larger than the western US with a steeper decreasing trend from 2002-2017, i.e., total N declined at a rate of approximately -0.30 kg-N/ha/yr in the Northeast and Southeast and by $-$

Formatted: Subscript

Formatted: Subscript

0.026 kg-N/ha/yr in the Northwest and Southwest. Widespread increases in reduced N deposition across the Upper Midwest, Northern Rockies, and West indicate evolving atmospheric composition due to increased precipitation amounts over some areas, growing agricultural emissions, and regional NO_x/SO_x emission reductions, shifting gas-aerosol partitioning; these increases in reduced N deposition are generally masked by the larger decreasing oxidized N trend. We find larger average declining trends of total N and S deposition between 2002-2009 than 2010-2017, suggesting a slowdown of the rate of decline likely in response to smaller emission reductions. Finally, we document changes in the modeled total N and S deposition budgets. The average annual total N deposition budget over the CONUS decreases from 7.8 kg-N/ha in 2002 to 6.3 kg-N/ha in 2017 due to declines in oxidized N deposition from NO_x emission controls. Across the CONUS during the 2002-2017 time period, the average contribution of dry deposition to the total N deposition budget drops from 60% to 52%, whereas wet deposition dominates the S budget rising from 45% to 68%. Our analysis extends upon the literature documenting the growing contribution of reduced N to the total deposition budget, particularly in the Upper Midwest and Northern Rockies, and documents a slowdown of the declining oxidized N deposition trend, which may have consequences on vegetation diversity and productivity. ~~Future progress in decreasing the total N budget remains exceedingly difficult without new controls on ammonia emissions, including from agricultural sources as the demand for food grows and oxidized N emissions continue to decrease due to emission controls implemented to achieve the National Ambient Air Quality Standards.~~

1 Introduction

Human activity doubled the amount of reactive nitrogen (Nr) in the environment globally over the past century (Fowler et al., 2013). Major sources responsible for the increase include fossil fuel combustion from vehicles and electric utilities emitting nitrogen oxides (NO_x=NO+NO₂) and sulfur dioxide (SO₂), and agricultural activities releasing ammonia (NH₃) (Galloway et al., 2008). After entering the atmosphere, the major nitrogen (N) and sulfur (S) removal pathways occur by precipitation (wet deposition) or uptake by surfaces, such as terrestrial and aquatic vegetation (dry deposition). Consequences of deposition include risks to public health (Townsend et al., 2003) and damages to ecosystems, such as acidification of soil and waterways, changes to species composition (Bobbink et al., 2010), and massive cyanobacteria and algal blooms (Jaworski, 1990), which may cause physiological stress and compromise immune function among wildlife (Refsnider et al., 2021). Despite adverse effects of deposition to humans and the environment, the total (wet+dry) N and S budgets remain uncertain, particularly for sensitive ecosystems in critical regions due to observational gaps.

Deposition monitoring and assessment played a decisive role informing the United States (US) Clean Air Act Amendments (CAAA) of 1990 (United States Congress, 1990). Wet deposition, sampled weekly in rain or snow, is measured by the National Atmospheric Deposition Program (NADP) National Trends Network (NTN) ~~collecting samples weekly~~ since 1978. Dry deposition measurements are inferred by combining weekly measured concentrations from the Clean Air Status and Trends Network (CASTNET) and modeled deposition velocities from the Multilayer Model (MLM) (Meyers et al., 1998). Dry

65 deposition modeling is still uncertain, particularly for land use and dry deposition schemes in models and emissions data.
Despite providing critical deposition information, the limited number of NADP and CASTNET sites in essential locations,
such as areas with complex terrain, near urban centers, at high elevation, or in forest ecosystems, restrict a thorough
understanding on the amount and consequences of deposition. For instance, strong concentration gradients in N deposition
70 have been documented over urban areas such as Boston, MA (Rao et al., 2013) and near Baltimore, MD (Bettez et al., 2013),
and along coastlines like the Chesapeake Bay (Loughner et al., 2016) (Joyee et al., 2020). Additionally, networks are unable to
capture the full budget of Nr. For instance, organic N species are estimated to contribute ~25% to total Nr (Jickells et al.,
2013), but are not easily quantified by the NTN due to limitations in field and laboratory techniques (Walker et al., 2012).

Chemical transport models (CTMs) can be used to study deposition relationships and trends for locations without
75 measurements and compounds that are challenging to quantify (e.g., organic N). However, to provide reliable estimates, CTMs
estimates must first be evaluated with measurement data. Various studies have compared N and S wet deposition and
concentrations estimated by the Community Multiscale Air Quality (CMAQ) model (https://www.epa.gov/cmaq) with
observed values in the US (Xing et al., 2015; Zhang et al., 2018; Appel et al., 2011), providing a wide range of agreement with
measurements. Zhang et al. (2018) found adjusting CMAQv5.0.2 wet deposition estimates with observed precipitation results
80 in a larger negative normalized mean bias (NMB) than the original CMAQ estimates for TNO₃ (NO₃+HNO₃, (—31.6%
unadjusted vs —35.6% adjusted), NH_x (NH₃+NH₄, (—30.9% unadjusted vs —35.1% adjusted), and total S (—5.1%
unadjusted vs —10.5% adjusted). Similar model agreement were published using CMAQv4.7 (Appel et al., 2011) and
attributed to coarse grid resolution (36 km). In Europe, Theobald et al. (2019) characterized the model bias of wet deposition
of NO_x, NH_x, and SO_x from six CTMs between 1990 and 2010 to range from 30-40%. Biased model simulations may lead to
85 incorrect scientific conclusions, such as critical loads designations (Williams et al., 2017). Methods to fuse model estimates
with measured values can therefore be used to provide more reliable insights into “biogeochemical cycles and assessments of
ecosystems and human health effects” (World Meteorological Organization, 2017). As such, the NADP Total Deposition
Science Committee (TDepEP, see www.nadp.slh.wisc.edu/committees/tdep) advances methods to improve estimates of
atmospheric deposition from CMAQ (see Schwede and Lear (2014)). TDep products only employ a fusion approach to dry
90 deposition and currently use an older version of CMAQ, although efforts to update the model version and incorporate wet
deposition fusion described herein are ongoing, although no bias correction for wet deposition is currently employed in
products available to the public.

In this study, we assess deposition from the EPA’s Air QUALITY TimE Series (EQUATES) project
95 (<https://www.epa.gov/cmaq/equates>), which utilized the Community Multiscale Air Quality (CMAQ;
<https://www.epa.gov/cmaq>)-version 5.3.2 modeling platform. The EQUATES project used consistent methodology (e.g., input
data, processing methods, model versions) with deposition science updates compared to previous model versions, including
the new Surface Tiled Aerosol and Gaseous Exchange (STAGE) bidirectional deposition model and improvements to organic

Formatted: Subscript

Formatted: Subscript

Formatted: Subscript

Formatted: Subscript

N chemistry. Long-term air quality simulations like EQUATES are used by the scientific community in ecological and epidemiological assessments, including critical loads analyses. By employing these science updates in the model, consistent methodology, finer grid spacing (12 km), and a bias-adjustment to wet deposition, we evaluate our best understanding of simulated deposition trends in the US. We evaluate the model agreement with observations of wet deposition and concentrations used to infer dry deposition and describe a measurement-model fusion technique in Section 2. In Section 3, we focus on the modeled trend and budget of N and S deposition over nine climatologically consistent regions within the contiguous US (CONUS) over a period of large emission reductions designated by the CAAA. Section 4 ends with Conclusions.

2 Methods and Materials

2.1 EQUATES Model Configuration

The long-term EQUATES simulations from 2002-2017 were run using the CMAQ model version 5.3.2. Emissions were from different National Emission Inventories (NEIs) or used a base year NEI and estimated emissions for other years by creating scaling factors based on activity data and emission control information (Xing et al., 2013; Foley et al., 2020). A summary of recent CMAQ version 5.3 model updates and their impact on modeled concentrations is provided in Appel et al. (2021). ~~Modeled data cover the CONUS using 12 km grid spacing and the Northern Hemisphere using 108 km grid spacing.~~ The Weather Research and Forecasting version 4.1.1 (WRFv4.1.1) was used for meteorology. Lateral boundary conditions for the 12 km grid spacing CONUS domain used in this study were provided by a 108 km grid spacing Northern Hemispheric simulation. ~~Modeled data cover the CONUS using 12 km grid spacing and the Northern Hemisphere using 108 km grid spacing.~~ Hemispheric and North American emission inventories were specifically prepared for EQUATES to ensure consistent input data and methods across all years. The Surface Tiled Aerosol and Gaseous Deposition (STAGE) option in CMAQ v5.3.2 (Galmarini et al., 2021) was used to estimate atmospheric dry deposition rates. The STAGE dry deposition option generally performs similar to M3Dry (the other dry deposition option in CMAQ v5.3.2) when compared to network observations of ambient gaseous and aerosol pollutant concentrations (Appel et al., 2021) while providing additional land use specific deposition data useful for assessments of ecosystem exposure (Hood et al., 2021).

2.2 US Deposition Observations

We assess CMAQ's ability to reproduce annual accumulated wet deposition and ambient concentrations of N and S species measured by the NADP NTN and EPA's CASTNET networks (Figure 1). Since anthropogenic sources dominate deposition and their area of influence is largely regional (Paulot et al., 2013), we evaluate the agreement over CONUS climate regions from 2002-2017 following the NOAA definition defined by Karl and Koss (1984), although these groupings do not imply the regions are isolated from each other. The nine climate regions include the Northwest, West, Northern Rockies, Southwest, South, Ohio Valley, Southeast, and Northeast as shown in Figure 1.

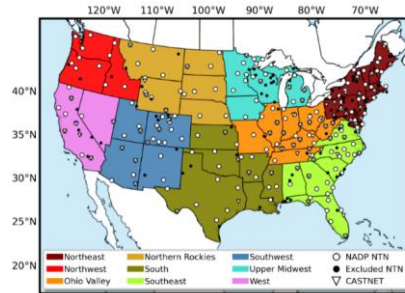


Figure 1. Site locations of the 200 National Atmospheric Deposition Program (NADP) National Trends Network (NTN, white circles) and 75 Clean Air Status and Trends Network (CASTNET, triangles) examined in this study. NADP NTN sites shown in black circles did not meet completeness criteria thresholds and therefore not included in this analysis. Color-coded US climate regions shown in this map are referred to throughout this analysis. The black-bordered white circles indicate NADP NTN sites that meet annual completeness criteria for 13 years of the timeseries and examined in the model evaluation presented in Section 3.1.

135

The NADP's NTN (<http://nadp.slh.wisc.edu>) currently collects weekly precipitation samples at 263 locations across the US. Samples are analyzed by ion chromatography or flow injection analysis to quantify wet deposition of nitrate (NO_3), ammonium (NH_4), and sulfate (SO_4), as well as several other compounds. First, modeled wet deposition of NO_3 , NH_4 , and SO_4 is calculated using the approach by Appel et al. (2011) that accounts for chemical transformations of several species in the aqueous phase.

140

Then, the model and observations are paired in time and space and annually accumulated. Following similar completeness criteria thresholds as in Zhang et al. (2019), NTN sites must be available for at least 13 of the 16 years simulated and have at least 60% annual coverage each year to be considered for analysis. Applying these criteria, 200 NTN sites meet the minimum requirements for our analysis (Table S1). The CASTNET measures concentrations and estimates dry deposition at 99 sites in the US (<https://www.epa.gov/castnet>). Weekly ambient concentrations of gases and particles are collected with an open-face

145

3-stage filter pack. Since the reported dry deposition values estimated by CASTNET are model derived, we instead evaluate the CMAQ performance simulating the ambient air concentrations of sulfur dioxide (SO_2), sulfate (SO_4), total nitrate ($\text{TNO}_3 = \text{NO}_3 + \text{HNO}_3$), and ammonium (NH_4). CASTNET sites available for at least 13 of the 16 years simulated with 75% annual coverage each year are included in this analysis, resulting in 75 valid sites meeting the minimum requirements (Table S2). The EQUATES simulations are evaluated by comparing with available monitoring data using several model performance

150

statistics (Simon et al., 2012).

2.3 Measurement-Model Fusion Technique

The modeled wet deposition fields are adjusted to account for input biases and uncertainty in the chemical and physical processes governing deposition, but not applied to dry deposition due to limited dry deposition measurements. Since model performance is improved for annual instead of seasonal values (Table S3, refer to Zhang et al. (2019) for detailed seasonal

155 [model evaluation](#)). We apply a measurement-model fusion technique previously described by Zhang et al. (2019) to adjust
the modeled [annual](#) wet deposition fields of inorganic N (NO₃+NH₄) and S, briefly described here [Zhang et al. \(2019\)](#). First,
the modeled wet deposition fields from EQUATES are adjusted using observation-based 4 km precipitation fields generated
by the Parameter-elevation Regressions on Independent Slopes Model (PRISM, <https://prism.oregonstate.edu/>), annually
accumulated and regridded to the 12 km CMAQ domain (EQUATES_{precip-adj}). [While wet deposition relies on the season and](#)
160 [precipitation rate](#) (Schichtel et al., 2019), [the relationship between precipitation and wet deposition is more linear when](#)
[annually accumulated](#). Since PRISM incorporates observed elevation and climatic factors to estimate precipitation, NTN and
TDEP maps also used these data to improve estimates of wet deposition over complex terrain (Schwede and Lear, 2014).
In each grid cell, the EQUATES modeled annual total wet deposition (WD_{mod}) is adjusted by the ratio of annually accumulated
precipitation from PRISM (Precip_{obs}) to the WRF estimated annual accumulated rainfall (Precip_{mod}) (Equation 1):

$$165 \text{ EQUATES}_{precip-adj} = \frac{\text{Precip}_{obs}}{\text{Precip}_{mod}} \times \text{WD}_{mod} \quad (1)$$

After adjusting simulated wet deposition by precipitation, an additional bias-adjustment (EQUATES_{bias-adj}) is applied using all
NTN observations that meet annual data completeness, [which varies year to year and includes sites of all classifications](#). For
each NTN site, the median ratio between the EQUATES_{precip-adj} wet deposition and the NTN observations is calculated for all
170 sites within a 300 km radius. Then, the median biases are interpolated using universal kriging with a linear trend in the spatial
coordinates and an exponential covariance structure using python's pykrige module ([https://github.com/GeoStat-
Framework/PyKriging](https://github.com/GeoStat-Framework/PyKriging)). A cross-validation analysis employing this measurement model fusion technique with CMAQv5.0.2 is
presented in Zhang et al. (2019). The final wet deposition bias-adjustment (Equation 2) is computed by multiplying the
precipitation-adjusted wet deposition by the inverse of the bias field, *b*:

$$175 \text{ EQUATES}_{bias-adj} = \frac{1}{b} \times \text{EQUATES}_{precip-adj} \quad (2)$$

3 Results and Discussion

3.1 Model Performance

In this section, we investigate the EQUATES model performance estimating wet deposition and ambient concentrations of N
and S compounds throughout the US. The impact of the precipitation and bias correction technique on reproducing 2002-2017
180 accumulated measured wet deposition of NH₄, NO₃ and SO₄ is shown in the Taylor Diagram in Figure 2 and summarized in
Table 1. In addition, since previous modeling studies demonstrated moderate skill simulating wet deposition (Appel et al.,
2011; Zhang et al., 2018), we also compare to an earlier timeseries utilizing CMAQv5.0.2 (ECODEP, 2002-2012 only). Little
difference was found between EQUATES and ECODEP simulated wet deposition statistics over the CONUS, although the
improvement in the EQUATES estimates is more noticeable over regions with improved precipitation estimates. For example,
185 a high precipitation bias in the WRFv3.4 meteorology used for ECODEP is reduced or eliminated in the WRFv4.1.1

Field Code Changed

Formatted: Font color: Auto

meteorology used for EQUATES. The decrease in bias is likely attributed to the implementation of a hybrid coordinate system in WRFv4.1.1 which has been found to improve precipitation estimates at high elevation sites in the western US (Beck et al., 2020), although the EQUATES precipitation is still biased low on average relative to PRISM, particularly in the Northwest (Figure S1). The close grouping of markers in Figure 2a compared to the other species presented in Figure 2 reflect the smaller standard deviation in the NH₄ wet deposition measurements (1.5 kg/ha), which are comparable and slightly underestimated among the various models and adjustments. Applying the precipitation-adjustment (EQUATES_{precip-adj}) reduces the underestimation of NH₄ and SO₄ wet deposition and increases the overestimation of NO₃ wet deposition compared to the unadjusted model output (Table 1). The bias-adjusted NH₄, NO₃, and SO₄ wet deposition estimates have a similar standard deviation as the observations (falling near the dashed arc), and also feature a lower root-mean square error (RMSE) (dotted semicircles) and higher correlation compared to the other estimates. Interannually, the bias-correction to EQUATES output reduces the NMB of NH₄ and SO₄ wet deposition by 10-30% and 5-20%, respectively, compared to the unadjusted model output, with the largest improvement occurring from 2010-2017 (Figure S24). Corrections applied to modeled NO₃ wet deposition reduce the NMB by ~20% in the beginning of the timeseries (2002-2009) and <10% at the end (2010-2017), possibly related to more uncertainty in emissions earlier in the earlier time period. The bias-corrections to NH₄ wet deposition are particularly noteworthy in the Upper Midwest, Northern Rockies, Ohio Valley, and South (Figure S32), improving the agreement between the modeled and observed standard deviation, increasing the correlation, and lowering the RMSE compared to the unadjusted model values. The bias-adjustment greatly improves the agreement of NO₃ and SO₄ wet deposition to observations in the Northeast, Northwest, and Ohio Valley by similarly improving the model performance metrics (Figures S43 and S54). Due to the large improvements in estimating wet deposition using the measurement model fusion approach, we use these corrections when assessing wet and total deposition throughout the rest of the analysis.

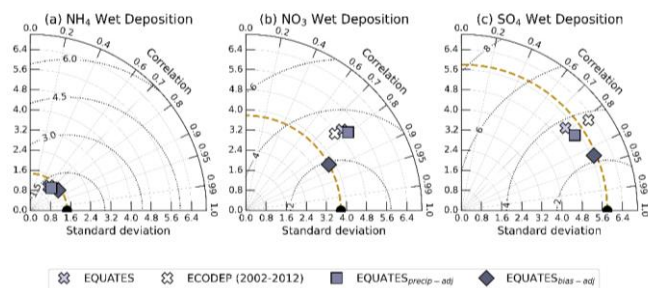


Figure 2. Taylor plot comparing annual accumulated wet deposition (kg/ha) of NH₄ (a), NO₃ (b), and SO₄ (c) collected at NTN sites (black circles, along x-axis) with model output. The symbols differentiate between the various models (EQUATES and ECODEP) and wet deposition corrections as described in the text. The azimuthal angle denotes the Pearson correlation coefficient (r^2), the gold dashed radial distance shows the standard deviation (kg/ha), and the dotted semicircles centered at the observation marker (black circle) denotes the root-mean-square error.

Table 1. EQUATES model performance metrics of annual (2002-2017) accumulated wet deposition of NH₄, NO₃, and SO₄, including the Pearson correlation coefficient (r²), mean bias (MB, kg/ha), and normalized mean bias (NMB, %).

Metric	Wet Deposition Correction	NH ₄	NO ₃	SO ₄
r ²	No adjustment	0.61	0.77	0.78
	Precipitation adjustment	0.68	0.79	0.83
	Bias adjustment	0.81	0.88	0.92
Mean Bias (MB, kg/ha)	No adjustment	-0.49	0.66	-0.92
	Precipitation adjustment	-0.37	1.18	-0.43
	Bias adjustment	-0.07	-0.03	-0.10
Normalized Mean Bias (NMB, %)	No adjustment	-19.9	9.564	-12.2
	Precipitation adjustment	-15.1	17.1	-5.73
	Bias adjustment	-2.83	-0.48	-1.31

Figure 3 provides an overall comparison between the bias-corrected EQUATES wet deposition and NTN observations, along with an evaluation of simulated and observed precipitation. Table 2 provides summary statistics of wet deposition and precipitation for each climate region. A slight negative bias of modeled precipitation and bias-corrected NH₄, NO₃, and SO₄ wet deposition is found for the entire CONUS, although agreement across the climate regions varies widely. The model generally exhibits better performance in the eastern climate regions, especially the Ohio Valley and Upper Midwest, compared to the rest of the CONUS. Agreement in the West, Northwest, and Northern Rockies is particularly poor, likely due to the errors simulating precipitation in the complex terrain (Table 2). In these western climate regions, precipitation is generally overestimated, consistent with previous model versions (Zhang et al., 2018).

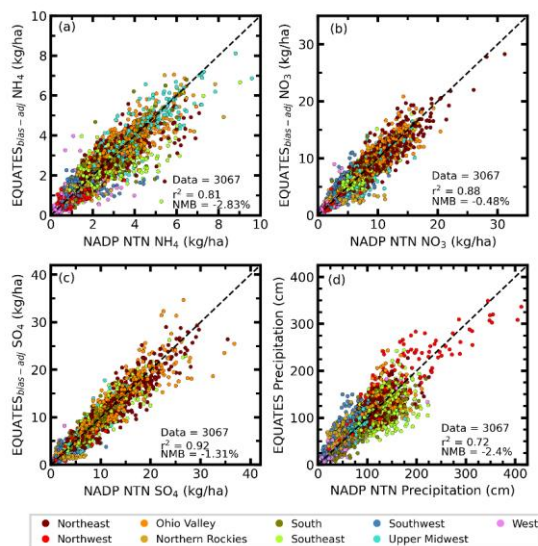


Figure 3. Scatter plots of annual accumulated bias-adjusted modeled and NTN observed wet deposition (kg/ha) of ammonium (a, NH₄), nitrate (b, NO₃), and sulfate (c, SO₄) from 2002 to 2017 colored by the climate region. Panel d shows NADP NTN observed and modeled precipitation (cm).

The 16-year ~~total~~annual accumulated -NH₄ wet deposition is highest in the Upper Midwest, seen in both the model and measurements, and lowest in the Northwest. The model generally underestimates NH₄ wet deposition for all regions except the Ohio Valley, with MB values ranging from 0.03 kg/ha in the Ohio Valley to -0.15 kg/ha in the Southeast. The correlation coefficients for wet NH₄ deposition are on average stronger in the northern ($r^2 > 0.66$) than southern US ($r^2 < 0.60$). The weaker correlation between the measured and modeled trends of NH₄ wet deposition ($r^2 = 0.43$) is impacted by the smaller magnitude of the observed and modeled NH₄ trends and reflects moderate model performance reproducing decreasing trends in many parts of the southern US and increasing trends in the northern US (Figure S6). The 16-year annual accumulated~~total~~ -NO₃ wet deposition is also highest in the Upper Midwest, but lowest in the West. The simulation overestimates NO₃ wet deposition in the West, South, Ohio Valley, and Southwest with MB values all approximately 0.10 kg/ha, while all other regions are underestimated with a MB ranging from -0.01 kg/ha in the Northwest to -0.39 kg/ha in the Northern Rockies. Correlation coefficients for NO₃ wet deposition are greater than 0.60 in all regions except the Southwest and Northern Rockies ($r^2 > 0.50$). Similar to NO₃ wet deposition, the 16-year annual accumulated~~total~~ wet SO₄ deposition is also highest in the Upper Midwest and lowest in the West. The simulation overestimates SO₄ wet deposition across most of the southern US, where the MB ranges

240 from 0.01 kg/ha (Southwest) to 0.16 kg/ha (West). Most other regions show an underestimation of SO₄ wet deposition with
 MB ranging from -0.03 kg/ha (Ohio Valley) to -0.32 kg/ha (Northeast). Correlation coefficients are strongest for SO₄ wet
 deposition than the other species, particularly in the northern US where r^2 values are generally greater than 0.80. Like NH₄ and
 NO₃ wet deposition, correlation coefficients for SO₄ wet deposition are weakest in the Southwest and West. The weaker
 correlation between the measured and modeled trends of NH₄ wet deposition ($r^2=0.43$) is impacted by the smaller magnitude
 of the observed and modeled NH₄ trends and reflects moderate model performance reproducing decreasing trends in many
 parts of the southern US and increasing trends in the northern US. The model also captures the clear downward trends of NO₃
 and SO₄ wet deposition ($r^2=0.79$ and 0.94 , respectively), although the magnitudes of the decreasing modeled trends are slightly
 underestimated (Figure S65). The weaker correlation between the measured and modeled trends of NH₄ wet deposition
 ($r^2=0.43$) is impacted by the smaller magnitude of the observed and modeled NH₄ trends and reflects moderate model
 performance reproducing decreasing trends in many parts of the southern US and increasing trends in the northern US.

Table 2. Evaluation of bias-adjusted SO₄, NO₃, and NH₄ wet deposition and precipitation compared to NTN measurements in the contiguous US and nine climate regions that meet the completeness criteria.

Climate Region	Sites (N)	SO ₄				NO ₃				NH ₄				Precipitation			
		Mean Obs/Mod (kg/ha)	MB (kg/ha)	NMB (%)	r^2	Mean Obs/Mod (kg/ha)	MB (kg/ha)	NMB (%)	r^2	Mean Obs/Mod (kg/ha)	MB (kg/ha)	NMB (%)	r^2	Mean Obs/Mod (cm)	MB (cm)	NMB (%)	r^2
United States	200 (3067)	7.50/7.40	-0.10	-1.31	0.92	6.90/6.87	-0.03	-0.48	0.88	2.43/2.36	-0.07	-2.83	0.81	96.7/94.4	-2.32	-2.40	0.72
Northeast	35 (531)	11.48/11.16	-0.32	-2.78	0.89	9.87/9.79	-0.08	-0.80	0.82	2.64/2.56	-0.08	-3.06	0.68	122.1/116.1	-6.05	-4.95	0.27
Northwest	12 (184)	2.53/2.45	-0.08	-3.26	0.81	2.51/2.50	-0.01	-0.39	0.82	0.82/0.73	-0.09	-10.6	0.52	124.5/136.5	12.0	9.62	0.87
Ohio Valley	27 (418)	13.1/13.1	-0.03	-0.25	0.82	10.33/10.44	0.11	1.02	0.67	3.57/3.59	0.03	0.76	0.66	116.9/118.2	1.32	1.13	0.36
Northern Rockies	19 (284)	2.71/2.48	-0.23	-8.37	0.61	4.07/3.68	-0.39	-9.49	0.54	2.13/2.02	-0.11	-5.17	0.89	57.4/64.8	7.40	12.9	0.42
South	21 (323)	7.82/7.89	0.07	0.87	0.87	6.91/7.01	0.09	1.37	0.86	2.82/2.74	-0.08	-2.69	0.64	97.0/82.6	-14.4	-14.9	0.76
Southeast	29 (447)	9.82/9.70	-0.11	-1.16	0.84	7.53/7.43	-0.10	-1.29	0.69	2.31/2.16	-0.15	-6.32	0.59	128.7/111.0	-17.7	-13.7	0.28
Southwest	26 (400)	2.22/2.23	0.01	0.46	0.47	3.70/3.86	0.16	4.27	0.52	1.20/1.16	-0.04	-2.93	0.45	49.2/58.7	9.45	19.2	0.65

Upper Midwest	24 (330)	6.65/6.53	=_0.14	=_1.74	0.86	8.00/7.83	=_0.18	=_2.24	0.75	3.82/3.76	=_0.06	=_1.45	0.77	82.0/83.2	1.22	1.49	0.50
West	10 (150)	1.16/1.32	0.16	14.1	0.56	1.80/1.91	0.14	6.01	0.60	0.87/0.81	=_0.07	=_7.72	0.34	53.2/50.6	=_2.64	=_4.97	0.81

-	Climatic Region	United States	Northeast	Northwest	Ohio Valley	North in Rockies	South	Southeast	Southwest	Upper Midwest	West
-	Sites (N)	200 (3076)	35 (531)	12 (184)	27 (418)	19 (284)	21 (323)	29 (447)	26 (400)	21 (330)	10 (150)
SO ₄	Mean Obs/Model (kg/ha)	7.50/7.40	11.48/11.16	2.53/2.45	13.1/13.1	2.71/2.48	7.82/7.89	9.82/9.70	2.22/2.23	6.65/6.53	1.16/1.32
	MB (kg/ha)	-0.10	-0.32	-0.08	-0.03	-0.23	0.07	-0.11	0.01	-0.11	0.16
	NMB (%)	-1.31	-2.78	-3.26	-0.25	-8.37	0.87	-1.16	0.46	-1.71	14.1
	r ²	0.92	0.89	0.81	0.82	0.61	0.87	0.84	0.47	0.86	0.56
NO ₃	Mean Obs/Model (kg/ha)	6.90/6.87	9.87/9.79	2.51/2.50	10.33/10.44	4.07/3.68	6.91/7.01	7.53/7.43	3.70/3.86	8.00/7.83	1.80/1.91
	MB (kg/ha)	-0.03	-0.08	-0.01	0.11	-0.39	0.09	-0.10	0.16	-0.18	0.11
	NMB (%)	-0.48	-0.80	-0.39	1.02	-9.49	1.37	-1.29	4.27	-2.24	6.01
	r ²	0.88	0.82	0.82	0.67	0.54	0.86	0.69	0.52	0.75	0.6
NH ₄	Mean Obs/Model (kg/ha)	2.43/2.36	2.64/2.56	0.82/0.73	3.57/3.59	2.13/2.02	2.82/2.74	2.31/2.16	1.20/1.16	3.82/3.76	0.87/0.81
	MB (kg/ha)	-0.07	-0.08	-0.09	0.03	-0.11	-0.08	-0.15	-0.04	-0.06	-0.07
	NMB (%)	-2.83	-3.06	-10.6	0.76	-5.17	-2.69	-6.32	-2.93	-1.45	-7.72
	r ²	0.81	0.68	0.52	0.66	0.89	0.64	0.59	0.45	0.77	0.34
Precipitation	Mean Obs/Model (cm)	96.7/94.4	122.1/116.1	124.5/116.5	116.9/118.2	57.4/64.8	97.0/82.6	128.7/111.0	49.2/58.7	82.0/83.2	53.2/50.6
	MB (cm)	-2.32	-6.05	12	1.32	7.4	-14.4	-17.7	9.45	1.22	-2.64
	NMB (%)	-2.40	-4.95	9.62	1.13	12.9	-14.9	-13.7	19.2	1.49	-4.97
	r ²	0.72	0.27	0.87	0.36	0.42	0.76	0.28	0.65	0.5	0.81

255 To indirectly evaluate the ability of the EQUATES simulations to reproduce dry deposition, we compare the model simulated annual average concentrations of SO₂, SO₄, TNO₃, and NH₄ with observations collected at CASTNET sites in Figure 4 and in Table 3. Correlations between measured and modeled mean concentrations show good agreement for NH₄ (r²=0.94), TNO₃ (r²=0.81), SO₂ (r²=0.90), and SO₄ (r²=0.96), TNO₃ (r²=0.81), and NH₄ (r²=0.94). Overall, the model shows positive biases for TNO₃ and SO₂ concentrations (2.8% and 26.0% respectively) and negative biases for NH₄ and SO₄ and NH₄ concentrations (260 (-17.4% and -15.4%, and -17.4% respectively) and positive biases for TNO₃ and SO₂ concentrations (2.8% and 26.0% respectively), but generally improved from CMAQv5.0 (Xing et al., 2015). The highest 16-year average concentrations for all species are found in the Upper Midwest for both the simulations and observations. The model underestimates concentrations of NH₄ across all regions, with MB ranging from -0.02 µg/m³ (Northern Rockies) to -0.22 µg/m³ (Ohio Valley). Correlation coefficients for NH₄ concentrations are generally strong (r²>0.80) everywhere, except the West and Southwest (r²=0.09 and 0.39, respectively). Average modeled TNO₃ concentrations are mostly overestimated in the northern US, with MB ranging from 0.02 µg/m³ (Northern Rockies) to 0.26 µg/m³ (Ohio Valley), and underestimated in the southern US, with MB ranging from -0.01 µg/m³ (Southwest) to -0.64 µg/m³ (West). Concentrations of SO₂ are generally overestimated except in the western regions (West, Southwest, and Northern Rockies) and strong correlations are found throughout all regions. The model underestimates concentrations of NH₄ across all regions, with MB ranging from -0.02 µg/m³ (Northern Rockies) to -0.22 µg/m³ (Ohio Valley). Correlation coefficients for NH₄ concentrations are generally strong (r²>0.80) everywhere, except the West and Southwest (r²=0.09 and 0.39, respectively). Similarly, the model underestimates SO₄ concentrations in most regions, with MB ranging from -0.08 µg/m³ (West) to -0.58 µg/m³ (Southeast), while overestimating in the Northern Rockies (MB=0.07 µg/m³) and Southwest (MB=0.01 µg/m³). Correlation coefficients for SO₄ are also generally strong (r²>0.80), with exceptions in the Southwest and West (r²=0.59 and 0.31, respectively). The EQUATES simulations reproduce the decreasing trend in observed concentrations with strong correlations (r²>0.79) (Figure S76), but overpredict trends of SO₂ and TNO₃ concentrations and underpredicts trends of NH₄ and SO₄ concentrations.

Formatted: Subscript

Figure 4. Scatter plots comparing 2002-2017 annual average concentrations ($\mu\text{g}/\text{m}^3$) of sulfur dioxide (a, SO_2), sulfate (b, SO_4), total nitrate (c, TNO_3), and ammonium (d, NH_4) between EQUATES output and CASTNET observations (N=1175). The marker color corresponds to the climate region. Data from CASTNET sites with at least 75% valid data available for each of the 13 years analyzed are included in the analysis shown.

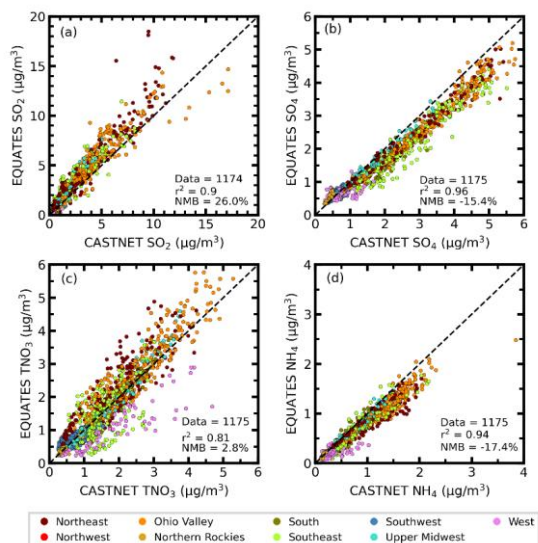


Table 3. Evaluation of EQUATES modeled average concentrations ($\mu\text{g}/\text{m}^3$) of SO_2 , SO_4 , TNO_3 , and NH_4 compared to CASTNET measurements in the CONUS and eight climate regions (no CASTNET data are available in the Northwest climate region).

Climate Region	Sites (N)	SO_4				SO_2				NH_4				TNO_3				
		Mean Obs/Mod ($\mu\text{g}/\text{m}^3$)	MB ($\mu\text{g}/\text{m}^3$)	NMB (%)	r^2	Mean Obs/Mod ($\mu\text{g}/\text{m}^3$)	MB ($\mu\text{g}/\text{m}^3$)	NMB (%)	r^2	Mean Obs/Mod ($\mu\text{g}/\text{m}^3$)	MB ($\mu\text{g}/\text{m}^3$)	NMB (%)	r^2	Mean Obs/Mod ($\mu\text{g}/\text{m}^3$)	MB ($\mu\text{g}/\text{m}^3$)	NMB (%)	r^2	
United States	75 (1175)	2.15	-	-15.4	0.7	2.23/2.81	0.58	26.0	0.7	0.78/0.64	-	-0.14	-	0.94	1.72/1.77	0.05	2.8	0.81

Formatted Table

		1.8 2	0. 33		9 6												
Northeast	15 (237)	2.4 0. 2.0 6	— = 0. 34	— = 14.3	0 7 9 7	3.38/ 4.40	4. 02	30.3	0 7 9 4	0.87/ 0.72	— = 0.15	— = 17. 8	0.9 4	1.77/ 2.04	0. 24	13.6	0. 79
Ohio Valley	18 (284)	3.1 6. 2.6 6	— = 0. 50	— = 15.9	0 7 9 3	3.81/ 4.69	0. 88	23.2	0 7 8 5	1.23/ 1.04	— = 0.22	— = 17. 8	0.9 2	2.52/ 2.79	0. 26	10.5	0. 86
Northern Rockies	5 (79)	0.5 5. 0.6 2	0. 07	12.8	0 8 2	0.47/ 0.44	— = 0. 03	— = 6.95	0 7 3 7	0.22/ 0.20	— = 0.02	— = 8.7 8	0.8 3	0.55/ 0.57	0. 02	4.23	0. 87
South	6 (94)	2.3 7. 1.8 6	— = 0. 50	— = 21.2	0 7 9 2	1.05/ 1.47	0. 41	39.3	0 7 7 8	0.74/ 0.63	— = 0.11	— = 14. 8	0.8 5	1.69/ 1.59	— = 0. 10	— = 5.98	0. 9
Southeast	12 (185)	2.7 3. 2.1 6	— = 0. 58	— = 21.1	0 7 9 3	2.10/ 2.68	0. 58	27.6	0 7 8 6	0.81/ 0.67	— = 0.14	— = 17. 4	0.9 2	1.56/ 1.48	— = 0. 07	— = 4.76	0. 4
Southwest	8 (126)	0.6 1. 0.6 4	0. 04	1.34	0 5 9	0.36/ 0.34	— = 0. 02	— = 5.61	0 7 6	0.22/ 0.18	— = 0.04	— = 18. 7	0.3 9	0.79/ 0.78	— = 0. 04	— = 1.35	0. 59
Upper Midwest	5 (78)	1.7 7. 1.6 4	— = 0. 13	— = 7.20	0 9 7	1.68/ 2.50	0. 82	49.1	0 9 6	0.83/ 0.75	— = 0.08	— = 10. 4	0.9 5	1.98/ 2.06	0. 09	4.34	0. 95
West	6 (92)	0.7 8. 0.7 0	— = 0. 08	— = 10.9	0 7 3 4	0.40/ 0.21	— = 0. 19	— = 47.3	0 7 0 9	0.31/ 0.19	— = 0.11	— = 37. 2	0.3 8	1.55/ 0.94	— = 0. 64	— = 41.6	0. 79

	Climate Region	United States	Northeast	Ohio Valley	Northern Rockies	South	Southeast	Southwest	Upper Midwest	West
-	Sites (N)	75 (1175)	15 (237)	18 (284)	5 (79)	6 (94)	12 (185)	8 (126)	5 (78)	6 (92)
SO ₄	Mean Obs/Mod (µg/m ³)	2.15/1.82	2.40/2.06	3.16/2.66	0.55/0.62	2.37/1.86	2.73/ 2.16	0.61/0.61	1.77/1.64	0.7 8/0 .70
	MB (µg/m ³)	-0.33	-0.34	-0.50	0.07	-0.50	-0.58	0.01	-0.13	0.0 8
	NMB (%)	-15.4	-14.3	-15.9	12.8	-21.2	-21.1	1.34	-7.20	10. 9
	r ²	0.96	0.97	0.93	0.82	0.92	0.93	0.59	0.97	0.3 1
SO ₂	Mean Obs/Mod (µg/m ³)	2.23/2.81	3.38/4.40	3.81/4.69	0.47/0.44	1.05/1.47	2.10/ 2.68	0.36/0.34	1.68/2.50	0.4 0/0 .21

	MB ($\mu\text{g}/\text{m}^3$)	0.58	1.02	0.88	-0.03	0.41	0.58	-0.02	0.82	-0.19
	NMB (%)	26	30.3	23.2	-6.95	39.3	27.6	-5.61	49.1	-47.3
	r²	0.9	0.91	0.85	0.37	0.78	0.86	0.76	0.96	0.09
NH₄	Mean Obs/Mod ($\mu\text{g}/\text{m}^3$)	0.78/0.64	0.87/0.72	1.23/1.01	0.22/0.20	0.74/0.63	0.81/0.67	0.22/0.18	0.83/0.75	0.31/0.19
	MB ($\mu\text{g}/\text{m}^3$)	-0.14	-0.15	-0.22	-0.02	-0.11	-0.14	-0.04	-0.08	-0.11
	NMB (%)	-17.4	-17.8	-17.8	-8.78	-14.8	-17.4	-18.7	-10.1	-37.2
	r²	0.94	0.91	0.92	0.83	0.85	0.92	0.39	0.95	0.38
	Mean Obs/Mod ($\mu\text{g}/\text{m}^3$)	1.72/1.77	1.77/2.01	2.52/2.79	0.55/0.57	1.69/1.59	1.56/1.48	0.79/0.78	1.98/2.06	1.55/0.91
	MB ($\mu\text{g}/\text{m}^3$)	0.05	0.24	0.26	0.02	-0.10	-0.07	-0.01	0.09	-0.64
TNO₃	NMB (%)	2.8	13.6	10.5	4.23	-5.98	-4.76	-1.35	4.34	-41.6
	r²	0.81	0.79	0.86	0.87	0.9	0.4	0.59	0.95	0.79

3.2 Trend Analysis

3.2.1 Total Deposition Trends

Figure 5 shows the spatial distribution and overall trend of modeled total deposition of N (i.e., the sum of oxidized and reduced N) and S between 2002 and 2017. For the trend analysis shown here and throughout, we calculate a linear least-squares regression with significance examined at the 95% confidence level using a Wald Test, with any insignificant trends ~~removed from the analysis set to zero~~. The eastern US has higher total N deposition amounts than the western US in both 2002 and 2017, particularly in parts of the Ohio Valley and Upper Midwest, regions associated with large N emissions from agriculture (Dammers et al., 2019) and energy consumption (Kim et al., 2006). The major N deposition ~~region hotspots~~ shifts from the eastern to the central US between 2002 and 2017, with highest deposition amounts found in parts of Iowa, North Carolina, and Indiana, a pattern consistent with N inventories compiled by Sabo et al. (2019) indicating an increase in agricultural fertilizer and livestock waste in the Midwest between 2002 and 2012. Increases in agricultural fertilizer have previously been linked to cropland expansion in the Great Plains (Lark et al., 2015; Wright et al., 2017) and increasing demand for domestically sourced biofuels (Donner and Kucharik, 2008). Urban regions in the central and eastern US indicate a substantial amount of N

deposition compared to nearby rural areas (Figure S8), consistent with previous findings that bulk N deposition in urban areas is twice as much as rural and remote sites (Decina et al., 2019).

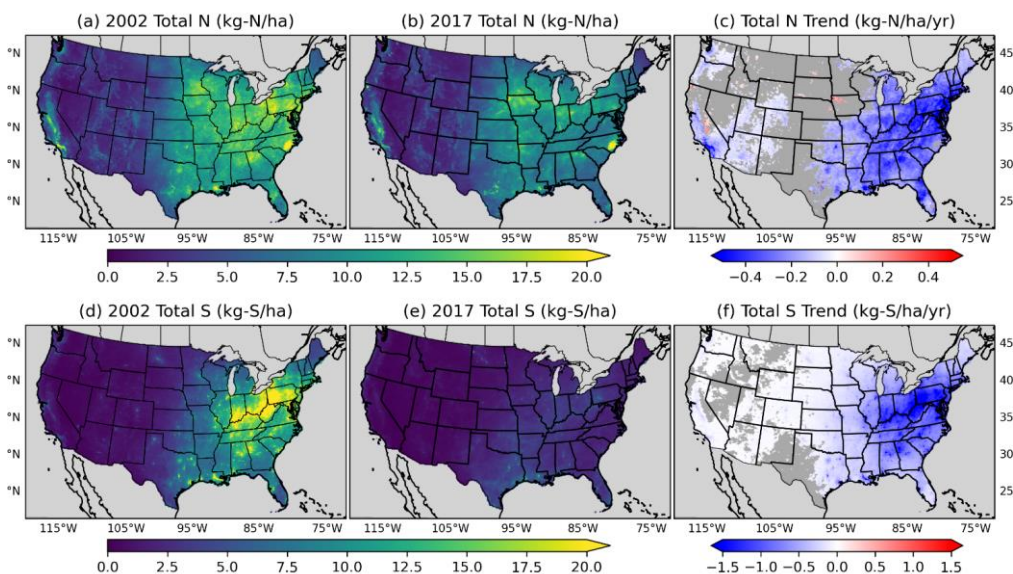


Figure 5. Spatial distribution of total N (top) and S (bottom) deposition in 2002 (a and d, kg/ha), 2017 (b and e, kg/ha), and the 2002-2017 annual trend (c and f, kg/ha/yr) with significance at the 95% confidence level. Grey areas in panels (c) and (f) indicate where the trend is unavailable due to lack of PRISM data or not significant (i.e., p-value of the Wald test is greater than 0.05).

Similar to total N deposition, total S deposition has a noticeable spatial gradient in the east compared to the west, particularly in the beginning of the timeseries, following larger changes in emissions in these regions (Aas et al., 2019; Holland et al., 1999). In 2002, total S deposition across the Southeast, Ohio Valley, and Northeast is broadly greater than 10 kg-S/ha, whereas S deposition for most of the western and central US climate regions is less than 5 kg-S/ha. By 2017, total S deposition continues to be highest in the eastern US, although total S deposition has decreased to less than 7.5 kg/ha on average. As the primary ion in acid deposition, S has been shown to reduce the biodiversity of natural ecosystems (Clark et al., 2019), but is also an essential macro-nutrient required for crop yield and health (Hinckley et al., 2020). Model projections spanning a range of future climate emission scenarios at the end of the century project global S deposition to agricultural soils to decrease by 70-90% compared to 2005-2009 (Feinberg et al., 2021). Consequences of declining S deposition under growing food demand include risk of S deficiencies unless mitigating fertilizer strategies are developed and implemented. The spatial changes in decreasing total N and S deposition tracks changes in SO₂ and NO_x emissions since 1970 (Nopmongcol et al., 2019), demonstrating the success

of air quality mitigation policies implemented to achieve the [National Ambient Air Quality Standards \(NAAQS\)](#) under the CAAA (United States Congress, 1990) in also reducing nutrient and acid deposition. Concentrations of SO₂, a primarily directly emitted compound, indicate greater decreasing trends than the secondary formed SO₄. The non-linear relationship between SO₂ and SO₄ trends is shown in both the measurements and model output, as well as noted in other studies using several global CTMs (Aas et al., 2019) and monitoring data (Sickles and Shadwick, 2015), which attributed the increasing oxidative capacity of the atmosphere more efficiently converting SO₂ to SO₄ (Sickles and Shadwick, 2015). As SO₂ emissions decline from coal burning power plants due to controls implemented to meet the [National Ambient Air Quality Standards \(NAAQS\)](#) (United States Congress, 1990), additional oxidants are available to oxidize SO₂. The decline in SO₂ emissions accompanied by near-constant NH₃ emissions results in less acidic cloud droplets (Redington et al., 2009; Pye et al., 2020), which increases the oxidation rate of SO₂ via the ozone pathway (Paulot et al., 2017). Lastly, the trends in wet deposition of SO₄ (Figure S65) are larger than the trends in concentration (Figure S76), as SO₄ is more efficiently scavenged by precipitation.

Figure 6 summarizes average total N and S trends across the climate regions and CONUS based on three different time bins: 2002-2017, 2002-2009, and 2010-2017. While there are significant regional deposition composition changes from 2002-2017, smaller changes in the overall deposition trends are observed for the CONUS. From 2002 to 2017, the largest average trend in decreasing total N deposition (-0.2749 to -0.31 kg-N/ha/yr) occurs in the [Upper Midwest, Ohio Valley, Northeast, South, and Southeast](#). Similarly, the [Ohio Valley, and Northeast, and Southeast](#) experience the fastest rate of total S deposition decline from 2002 to 2017 (-0.68 to -0.8680 kg-S/ha/yr), while the West, Northwest, Northern Rockies, and Southwest indicate near-zero (-0.035 kg-S/ha/yr) rates of decline. In [the Ohio Valley, Northeast, and Southeast many regions, especially the Northeast, Ohio Valley, and Southeast](#), a larger decreasing trend in total N and S deposition is found between 2002-2009 than 2010-2017, ~~however even the smaller decreasing trend in these regions between 2010-2017 is larger than the trend for other regions for all time bins.~~ The high amount of total N and S deposition found in these regions combined with the slower rate of decline in recent years suggests additional emission controls may be necessary to continue deposition declines. On the other hand, the [Upper Midwest and South](#) presents a [very](#) small increasing trend of -0.0140 kg-N/ha/yr of total N deposition with large variability from 2010-2017 and a larger declining trend of -0.0834 to -0.44 kg-N/ha/yr from 2002-2009. [Similarly, a large decreasing trend in total N deposition is found in the Midwest from 2002-2009, while the trend is near-zero from 2010-2017.](#) Fertilizer use in the Midwest has only grown modestly (~1.3 %/yr), so increases in total N deposition have been largely attributed to increasing reduced N deposition. [Growing reduced N deposition is a result of NH₃ emissions increasing exponentially with temperature \(except below freezing and where emissions are near 0\) \(Riddick et al., 2016\) caused by warming temperatures and by increasing the partitioning of NH₃ remaining in the gas phase due to NO_x and SO₂ emission reductions \(Warner et al., 2017\) and increasing importance of on-road mobile emissions of NH₃ \(Fenn et al., 2018\).](#) As the world's demand for food grows and NH₃ emissions from agriculture increase, models project increasing Nr deposition in many areas across the globe by 2050 (Paulot et al., 2013) and 2100 (Lamarque et al., 2011).

Formatted: Subscript

Formatted: Subscript

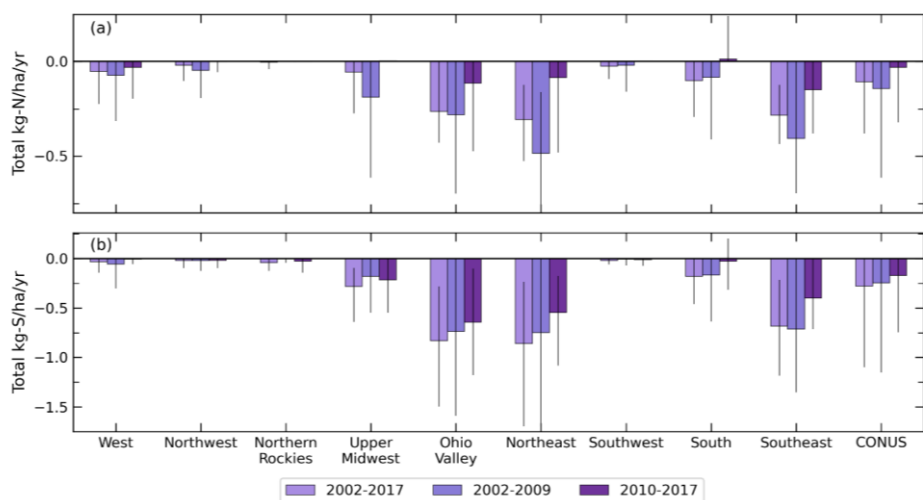
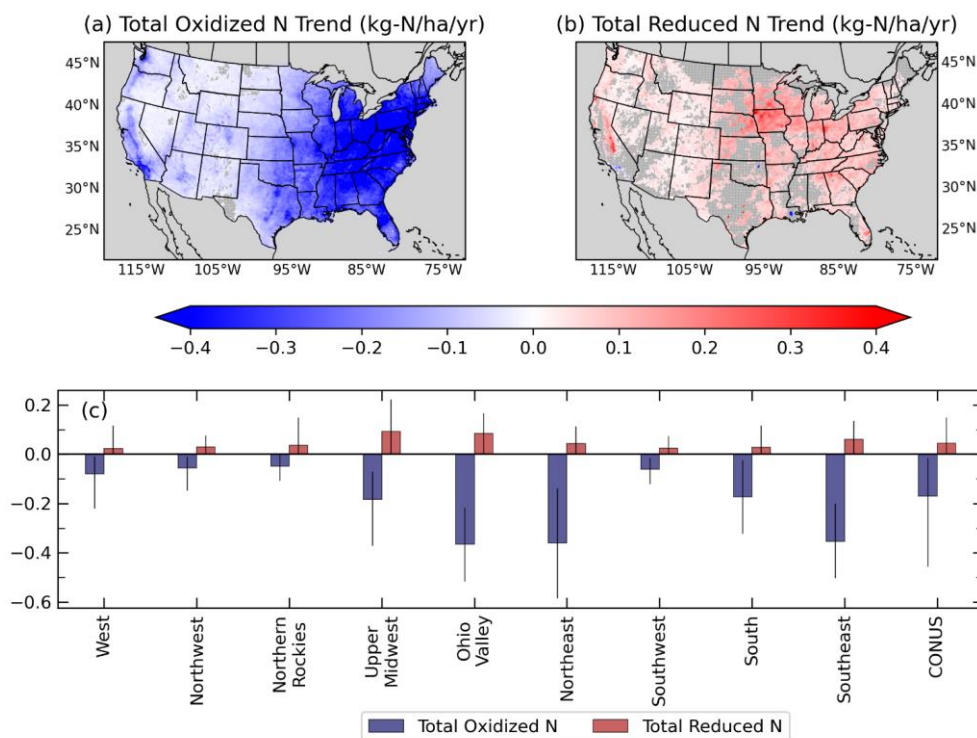


Figure 6. Comparison of mean total N (a) and total S (b) deposition trends in the nine CONUS climate regions from 2002-2017, 2002-2009, and 2010-2017. Lines on the bars extend to the 5th and 95th percentiles of the trends. Trends only include all grid cell locations (non-significant trends are set to 0 where significant with 95% confidence (i.e., p-value of the Wald's test is less than 0.05), data size is generally much greater than 1000 for all regions except the Northern Rockies where the data size is >250).

To elucidate the chemical drivers responsible for the varying changes in total N deposition across the US, we examine trends in total oxidized and reduced N in Figure 7. Overall, most regions show larger decreasing trends in oxidized N than increasing trends in reduced N. Regions with insignificant total trends (see grey areas in Figure 5) indicate similar magnitudes of oxidized and reduced N trends. The largest decreasing trends in total oxidized N are found in the eastern US and along the Pacific Coast.

The large declines in total oxidized N in the Upper Midwest, Ohio Valley, Northeast, and Southeast showcase both the coordinated application of emission controls in major contributing regions and increasingly lower amounts of NO_x transported from source to receptor areas (Lloret and Valiela, 2016). Unlike trends of total N deposition (Figure 5), statistically significant declining trends for total oxidized N are found throughout most of the CONUS, including the western US. No east-west spatial gradient is observed for trends in total reduced N deposition. Instead, reduced N deposition increases throughout most of the US, particularly in the Upper Midwest and Ohio Valley at an average rate of 0.0918 kg-N/ha/yr, but is masked by the larger decreasing oxidized N trends. Declines in total reduced N deposition are located in Los Angeles, CA, Tulsa, OK, and Baton Rouge, LA, suggesting decreases in NH₃ emissions near these cities. High NH₃ deposition in Baton Rouge (>10 kg/ha) has been attributed to ammonia plant operations in the area (Guo et al., 2018), while dairy farms (Nowak et al., 2012) and vehicles (Cao et al., 2021) are major sources of NH₃ in Los Angeles.

Formatted: Not Highlight



370

Figure 7. Maps of 2002-2017 trends of total oxidized (a) and reduced N deposition (kg-N/ha/yr) and comparison of average trends across nine CONUS climate regions (c). Lines in panel (c) show the 5th and 95th percentiles of trends for each region. Areas where the trend is significant with 95% confidence are included here (data size >3500 for oxidized and >2000 for reduced in all regions); Grey colors on the map indicate where the trend is unavailable or insignificant, and not included in panel (c).

375 3.2.2 Wet and Dry Deposition Trends

Figure 8 shows trends of the wet and dry components of oxidized and reduced N and S deposition. Average dry deposition of oxidized N is found to decline faster than average wet deposition of oxidized N for all climate regions, as oxidized N is more efficiently removed by dry deposition due to high deposition velocities (Zhang et al., 2012). Larger amounts of dry versus wet deposition across the eastern US in 2002 (Figure S97a and d) and more comparable amounts in 2017 (Figure S97b and e) suggest a shift over time in the contributions of oxidized wet and dry deposition, although the partitioning is highly dependent upon annual rainfall and changes to climate. The Southeast, Northeast, and Ohio Valley have the steepest simulated average dry and wet oxidized N deposition trends (approximately -0.3 kg-N/ha/yr and -0.1 kg-N/ha/yr, respectively), consistent

380

with the observed trends (Figure S108). The NTN sites with the highest mean NO₃ deposition, particularly those in the Northeast, experience the largest decreasing trends between 2002-2009 (-2.2 kg-N/ha/yr) compared to 2010-2017 (-1.0 kg-N/ha/yr), consistent with the trends shown in Figure 6.

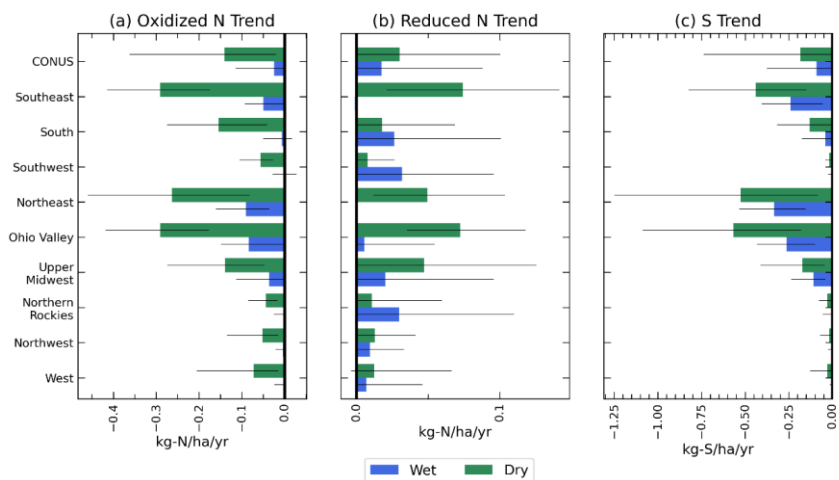


Figure 8. Annual average trend (2002-2017, kg/ha/yr) of wet (blue) and dry (green) oxidized nitrogen (a), reduced nitrogen (b), and sulfur (c) deposition throughout the CONUS and nine climate regions. Whiskers extend to the 5th and 95th percentiles of the trends. **Cells within each region are included if the annual trend is significant with 95% confidence.**

390 Trends of reduced N are increasing and overall smaller in magnitude compared to the oxidized N trends (Figure 7b). Regions of elevated Hotspots of wet and dry reduced N deposition have expanded and increased in magnitude across the CONUS (Figure S119) compared to oxidized N, also observed in the NTN NH₄ measurements. The increasing trends of NH₄ wet deposition accompany statistically significant increasing trends in annual precipitation predominantly over the Upper Midwest, Southwest, and Northern Rockies (Figure S129). Similar increasing trends of NH₄ wet deposition between 1989 and 2016 observed in the Midwest and Mid-Atlantic have also been linked to rising annual precipitation amounts (Feng et al., 2021). Similarly, The NTN sites in the Upper Midwest with the highest mean NH₄ wet deposition experience the largest increasing trends from 2002 to 2017 (especially in the Upper Midwest (0.11 kg-N/ha/yr, Figure S108). Similar statistically significant increases in NH₄ wet-precipitation concentrations have been reported, although increases are largest for the period prior to our model simulations (1985-1999) (Mchale et al., 2021). The wet component of the reduced N trend is generally larger than the dry, except in the Ohio Valley and Northeast. The decreasing reduced N deposition in the three urban centers discussed in Section 3.2.1 is present in the dry deposition trends but not in wet deposition. The Southeast and Northeast have a near-zero is the only region with a (small) decreasing trend in wet reduced N deposition, but and a relatively a larger increasing trend in dry

400

reduced N deposition. Parts of the Southeast, including southwest Florida, experience a decrease in precipitation across the entire period, which may partially explain the decreasing trend of wet reduced N deposition.

405

Decreasing trends in wet and dry S deposition are found across the CONUS, although the amount varies by climate region (Figure 8c, S13). Similar to the oxidized N trends, the Northeast, Southeast, and Ohio Valley experience the largest decreasing trend of approximately -0.5 kg-S/ha/yr for dry deposition and -0.3 kg-S/ha/yr for wet deposition, consistent with the NTN SO₄ observations (Figure S108). Sites with the largest mean SO₄ wet deposition in the Ohio Valley and Northeast also experience the largest decreasing trends in wet SO₄ deposition (-1.9 kg-S/ha/yr, Figure S108), consistent with monthly mean precipitation-weighted concentrations from NTN sites from 1985 to 2017 (Mchale et al., 2021). ~~From 2002 to 2017 there is a shift from dry deposition to wet deposition as the dominant deposition pathway for S in the eastern US (Figure S11).~~ Large decreasing trends in dry S deposition are clearly seen over large urban centers in the western US, while the eastern US experiences a significant declining trend everywhere in response to decreases in regional SO₂ emissions (Likens et al., 2001).

410

415 3.3 Total Nitrogen and Sulfur Deposition Budgets

The average N and S deposition budgets across all CONUS climate regions generally decrease from 2002 to 2017 (Figure 9). The average total N budget for the CONUS decreases from 7.8 kg-N/ha to 6.3 kg-N/ha between 2002 and 2017. The Upper Midwest, Ohio Valley, Northeast, and Southeast have the largest average total N, decreasing from 12 to-14 kg-N/ha in 2002 to 8 to-10 kg-N/ha in 2017. In contrast, the Northwest, West, and Southwest have the smallest average total N which decreases only slightly from 3.1 to-3.9 kg-N/ha to 2.8 to-3.5 kg-N/ha over the same time period. The decrease in total N deposition is largely due to reductions in oxidized N, particularly from dry deposition, and declines in NO_x emissions (Nopmongcol et al., 2019). The average wet oxidized N deposition for the CONUS decreases from 1.6 kg-N/ha in 2002 to 1.1 kg-N/ha in 2017, while the dry component decreases from 3.7 kg-N/ha to 1.7 kg-N/ha. Dry deposition constitutes most of the total N budget (slightly decreasing from 50-82% in 2002 to 42-76% in 2017 across the climate regions), with the largest average contributions found in the western US. Spatial differences in the dry N deposition flux, inferred using Ozone Monitoring Instrument (OMI) satellite observations of NO₂ and ground measurements from 2005 to 2014, indicate an increasing flux across the western US and decreasing flux over the eastern US due to reductions in NO_x and NH₃ emissions (Jia et al., 2016). Unlike oxidized N, the wet reduced N deposition is larger on average than the dry deposition for all regions except the West and Northwest, regions that typically experience less rainfall than the other regions. Similar to Du et al. (2014), we find an increasing contribution of wet reduced N deposition to the total across the CONUS from 19% to 30% across the time period (Figure S142).

420

425

430

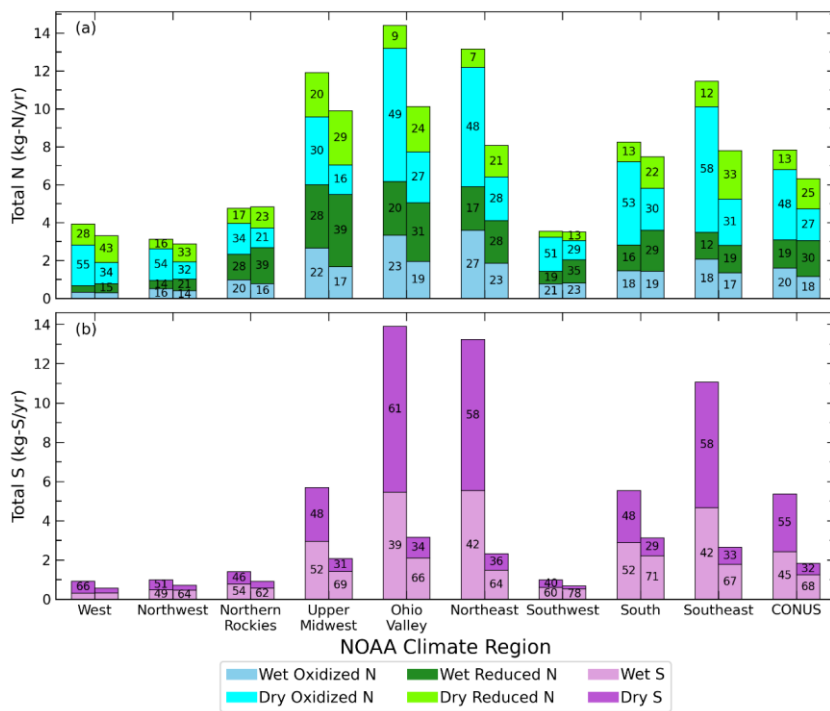


Figure 9. Average total (wet+dry) N (a) and S (b) deposition in 2002 (left bars) and 2017 (right bars) throughout the nine climate regions and CONUS and nine climate regions. Colors denote the wet and dry component of each species. The numbers in each bar denote the percentage contribution to the annual total.

435 The relative proportion of reduced N to the total budget has shifted over the 2002 to 2017 time period (Figure 10). On average
 across the CONUS, oxidized N deposition dominates the total budget until 2016 when reduced N comprises >50% of the total,
 consistent with previous studies (Du et al., 2014; Kanakidou et al., 2016; Ackerman et al., 2019; Li et al., 2016; Nopmongcol
 et al., 2019) and attributable to the absence of NH₃ emission controls from agricultural sources combined with the success of
 NO_x regulations. The reductions in NO_x and SO_x emissions due to policy controls result in less NH_x partitioning to the aerosol
 440 phase and more to the gas phase, favoring dry deposition closer to source regions. Despite spatial variations in agricultural
 NH₃ sources and lack of an emission trend during this study period over some locations, all climate regions indicate an
 increasing amount of reduced N to the total budget, agreeing with results from Nopmongcol et al. (2019). In order to protect

critical ecosystems within US national parks from future N deposition, Ellis et al. (2013) project at least a 50% reduction in anthropogenic NH₃ emissions is required relative to representative concentration pathway (RCP) projected emission scenario levels in 2050. The fraction of reduced N to the total is largest in regions with larger NH₃ emissions (Dammers et al., 2019; Behera et al., 2013), such as the Upper Midwest and Northern Rockies, throughout the time period studied here. These regions exceed 50% of reduced N as a fraction of the total budget as early as 2006 for the Upper Midwest and 2011 for the Northern Rockies. Approximately 80% of the total global NH₃ emissions in 2005 were attributable to agriculture, including animal feedlot operations, and are anticipated to increase in the US and globally (Behera et al., 2013). Present-day (2015) global simulations indicate substantial regional variation in the N_x budget reflecting the impact of regional activities and meteorology (Ge et al., 2022). The increasing importance of reduced N is likely to impact future N deposition budgets and the competitive nature among plants with varying affinities for the different forms of nitrogen (Choudhary et al., 2016; Kahmen et al., 2006).

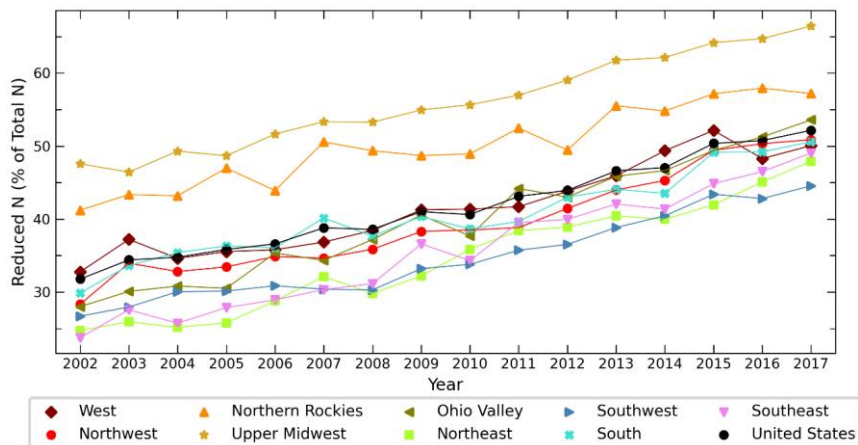


Figure 10. Changes in the percent of total N deposited as reduced nitrogen from 2002 to 2017 throughout the NOAA climate regions and CONUS.

The total S budget also decreases across the CONUS on average, falling from 5.3 kg-S/ha in 2002 to 1.8 kg-S/ha in 2017. Decreasing SO₂ emissions have been previously shown to be responsible for decreasing S deposition (Nopmongcol et al., 2019). Similar to the total N budget, the largest average amounts of total S are located in the Ohio Valley, Northeast, and Southeast, decreasing from 11-14 kg-S/ha in 2002 to 8-10 kg-S/ha in 2017. In the West, Ohio Valley, Northeast, and Southeast, dry deposition dominates the budget 2002, while transitioning wet deposition dominated by 2017. Wet deposition comprises a greater portion of the total S budget in 2017 across all climate regions. The primary driver behind the shift in the total S

Formatted: Subscript

budget may be emission reductions of SO₂ implemented to meet the NAAQS (leading to decreasing ambient concentrations of SO₂ and SO₄) that more efficiently decrease the dry component than the wet (Sickles and Shadwick, 2015).

465 **4 Conclusions**

In this study, we examine CMAQ model simulations from the EPA's Air QUALity TimE Series (EQUATES) project to investigate spatial and temporal trends of nitrogen (N) and sulfur (S) deposition over a period with substantial emission reductions implemented to meet requirements set by the Clean Air Act Amendments (CAAA). We assess changes in modeled dry deposition and precipitation- and bias- adjusted wet deposition across nine climatologically consistent regions within the US. EQUATES CMAQ simulations included important science updates to previous modeling studies, such as revised model
470 for bidirectional air-surface exchange of NH₃ and a mechanistic representation of organic N (Pye et al., 2015), necessary to improve modeling of Nr budgets. The measurement-model fusion technique for modeled wet deposition estimates reduce the model bias and improve correlations compared to the unadjusted model values, and can thus improve the accuracy of critical loads assessments based on model data. Comparisons to wet deposition observations from the NADP network indicate the
475 model generally underestimates wet deposition of NH₄, NO₃, and SO₄ across the CONUS. Agreement is poor in regions with complex terrain like the Northern Rockies and West, potentially due to errors constraining emissions and/or reproducing precipitation at 12km grid spacing, as sub-grid variability in precipitation estimates can differ from sub-grid variability in concentrations across the country. Similarly, the model underestimates ambient concentrations of NH₄ and SO₄ compared to CASTNET measurements across the CONUS, while SO₂ and TNO₃ concentrations are overestimated. Additional
480 measurements in regions with high bias, such as the West, Northwest, and Southwest, as well as model improvements to precipitation estimates, particularly in areas of complex terrain, could greatly improve agreement with the NADP network observations.

The modeled total N and S deposition amounts and trends are larger across the eastern than the western US, particularly in the
485 Northeast, Southeast, Ohio Valley, and Upper Midwest climate regions. While the average CONUS trend indicates a decrease of ~~-0.121~~ kg-N/ha/yr of total N deposition from 2002-2017, significant increasing trends are found in localized parts of the Upper Midwest, Northern Rockies, and West. Such increases in total N deposition are dominated by increases in reduced N that are detected across all climate regions, but are masked by the larger declining trends of oxidized N deposition as a result of policies targeting NO_x emissions enacted under the CAAA. The increasing trend in reduced N from 2002 to 2017 is a result
490 of growing agricultural emissions combined with NO_x/SO_x emission reductions and higher precipitation amounts over time concentrated in the Upper Midwest, Southwest, and Northern Rockies. Despite the overall average declining N trend from 2002 to 2017, the simulations indicate nearly twice as a larger average decreasing trend of total N and S at the beginning of the timeseries (2002 to 2009) than the end of the period (2010 to 2017). Total N trends in the Upper Midwest and South reveal a slight increasing trend (0.0145 kg-N/ha/yr) from 2010 to 2017, contrary to the larger declining trends found between 2002-

495 2009. The modeled slowing and slight increasing trend for total N across the climate regions in the EQUATES simulations
hint at future changes to the N budget that may impact plant biodiversity and productivity (Kahmen et al., 2006).

The average total N deposition budget over the CONUS has decreased from 7.8 kg-N/ha in 2002 to 6.3 kg-N/ha in 2017,
largely due to decreases in oxidized N deposition as a result of NO_x emission controls implemented under the CAAA. The
500 major contributor to the N budget is dry deposition, although the contribution across the climate regions has declined from 50-
82% in 2002 to 42-76% in 2017, in part due to changes in precipitation amounts. The regions with the largest average total N
deposition, including the Ohio Valley, Northeast, Upper Midwest, and South, also experience the largest reduction in total N
deposition. Similar to the total N budget, the average total S budget over the CONUS has declined from 5.3 kg-S/ha in 2002
to 1.8 kg-S/ha in 2017. The largest amount of total S occurs in the eastern US, where total deposition is more impacted by dry
505 deposition. By the end of the timeseries, wet deposition dominates the S budget for all climate regions, comprising 68% of the
total budget in the CONUS on average.

510 Our analysis, in addition to the analyses of many others (Zhang et al., 2018; Li et al., 2016; Du et al., 2014), highlights the
increasing contribution of reduced compounds to the N budget in all climate regions, particularly the Northern Rockies and
Upper Midwest. Both the model and observations indicate statistically significant increasing trends in NH₄ deposition across
the CONUS due to changes in precursor emissions. Reductions in NO_x and SO₂ emissions, and therefore their oxidation
products, due to policy controls result in less NH_x partitioning to the aerosol phase and more to the gas phase, favoring dry
515 deposition of NH₃ closer to source regions. Additionally, growth of NH₃ emissions from agricultural ~~ale~~ (Behera et al., 2013)
sources (Behera et al., 2013) allows for additional NH₄ aerosol formation in the atmosphere given sufficient NO_x and SO_x.
This study further confirms the growth of reduced N in recent years across all climate regions, and additionally suggests an
attenuation of the declining oxidized N deposition trend. ~~However, since N deposition over urban areas across the CONUS is
likely already underestimated (Rao et al., 2013), with increasing urbanization only expected to further increase N deposition
amounts (Joyce et al., 2020), addressing modeling uncertainty in emissions and chemistry at relevant spatial and temporal
resolutions is imperative. To regulate NH₃ emissions to protect human health and lower environmental risk, especially in the
agricultural sector, it is imperative to collect NH₃ data in areas exceeding the NAAQS for particulate matter and its gaseous
precursors. For instance, a~~ more robust characterization of dry deposition in the US, including low-cost dry
520 deposition and ambient measurement methods, is needed, particularly in agricultural areas and regions with transitions from
urban to rural environments, as well as species not routinely measured, such as organic compounds. ~~In this regard, additional
ambient NH₃ measurements are of critical importance for improving the modeling and analytical methods used in air quality
(and related ecosystem) management for particulate matter and N deposition.~~

Formatted: Tab stops: 5.05", Left

Formatted: Subscript

Data Availability

Data is available for download at <https://www.epa.gov/cmaq/equates>.

530 Author Contributions

KF and GP were the EQUATES project leads and responsible for project administration, methodology, validation, formal analysis, data curation, and visualization. RG conducted the meteorological runs and WA and CH performed the model simulations. RG, CH, WA, and JB provided methodology, formal analysis, and validation. SB performed the data analysis and created all figures and tables. SB wrote the paper with comments from all authors.

535 Disclaimer

The views expressed in this paper are those of the authors and do not necessarily represent the views or policies of the US Environmental Protection Agency.

Acknowledgements

The authors would like to thank Chris Allen, Michael Aldridge, Megan Beardsley, James Beidler, David Choi, Alison Eyth, 540 Caroline Farkas, Janice Godfrey, Barron Henderson, Shannon Koplitz, Rich Mason, Rohit Mathur, Chris Misenis, Norm Possiel, Havala Pye, Lara Reynolds, Matthew Roark, Sarah Roberts, Donna Schwede, Karl Seltzer, Darrell Sonntag, Kevin Talgo, Claudia Toro, and Jeff Vukovich for their contribution to the development of emissions and meteorology inputs for the EQUATES simulations used in this study. This research was supported in part by an appointment to the Research Participation Program at the US EPA, Office of Research and Development (ORD), administered by the Oak Ridge Institute for Science and Education (ORISE) through an interagency agreement between the US Department of Energy and the US EPA. 545

References

- Aas, W., Mortier, A., Bowersox, V., Cherian, R., Faluvegi, G., Fagerli, H., Hand, J. L., Klimont, Z., Galy-Lacaux, C., Lehmann, C. M. B., Myhre, C. L., Myhre, G., Olivie, D., Sato, K., Quaas, J., Rao, P. S. P., Schulz, M., Shindell, D. T., Skeie, R. B., Stein, A., Takemura, T., Tsyro, S., Vet, R., and Xu, X.: Global and regional trends of atmospheric sulfur, *Sci Rep*, 9, 953, 10.1038/s41598-018-37304-0, 2019.
- 550 Ackerman, D., Millet, D. B., and Chen, X.: Global Estimates of Inorganic Nitrogen Deposition Across Four Decades, *Global Biogeochemical Cycles*, 33, 100-107, 10.1029/2018gb005990, 2019.
- Appel, K. W., Foley, K. M., Bash, J. O., Pinder, R. W., Dennis, R. L., Allen, D. J., and Pickering, K. E.: A multi-resolution assessment of the Community Multiscale Air Quality (CMAQ) model v4.7 wet deposition estimates for 2002–2006, *Geoscientific Model Development*, 4, 357-371, 10.5194/gmd-4-357-2011, 2011.
- 555 Appel, K. W., Bash, J. O., Fahey, K. M., Foley, K. M., Gilliam, R. C., Hogrefe, C., Hutzell, W. T., Kang, D., Mathur, R., Murphy, B. N., Napelenok, S. L., Nolte, C. G., Pleim, J. E., Pouliot, G. A., Pye, H. O. T., Ran, L., Roselle, S. J., Sarwar, G., Schwede, D. B., Sidi, F. I., Spero, T. L., and Wong, D. C.: The Community Multiscale Air Quality (CMAQ) model versions 5.3 and 5.3.1: system updates and evaluation, *Geosci Model Dev*, 14, 2867-2897, 10.5194/gmd-14-2867-2021, 2021.

560 Beck, J., Brown, J., Dudhia, J., Gill, D., Hertnecky, T., Klemp, J., Wang, W., Williams, C., Hu, M., James, E., Kenyon, J., Smirnova, T., and Kim, J.-H.: An Evaluation of a Hybrid, Terrain-Following Vertical Coordinate in the WRF-Based RAP and HRRR Models, *Weather and Forecasting*, 35, 1081-1096, 10.1175/waf-d-19-0146.1, 2020.

565 Behera, S. N., Sharma, M., Aneja, V. P., and Balasubramanian, R.: Ammonia in the atmosphere: a review on emission sources, atmospheric chemistry and deposition on terrestrial bodies, *Environ Sci Pollut Res Int*, 20, 8092-8131, 10.1007/s11356-013-2051-9, 2013.

Bettez, N. D., Marino, R., Howarth, R. W., and Davidson, E. A.: Roads as nitrogen deposition hot spots, *Biogeochemistry*, 114, 149-163, 10.1007/s10533-013-9847-z, 2013.

570 Bobbink, R., Hicks, K., Galloway, J. N., Spranger, T., Alkemade, R., Ashmore, M., Bustamante, M., Cinderby, S., Davidson, E., Dentener, F., Emmett, B., Erisman, J. W., Fenn, M. E., GILLIAM, F. S., Nordin, A., Pardo, L. H., and De Vries, W.: Global assessment of nitrogen deposition effects on terrestrial plant diversity: a synthesis, *Ecological Applications*, 20, 30-59, <https://doi.org/10.1890/08-1140.1>, 2010.

575 Cao, H., Henze, D. K., Cady-Pereira, K., McDonald, B. C., Harkins, C., Sun, K., Bowman, K. W., Fu, T.-M., and Nawaz, M. O.: COVID-19 Lockdowns Afford the First Satellite-Based Confirmation That Vehicles Are an Under-recognized Source of Urban NH₃ Pollution in Los Angeles, *Environmental Science & Technology Letters*, 9, 3-9, 10.1021/acs.estlett.1c00730, 2021.

Choudhary, S., Blaud, A., Osborn, A. M., Press, M. C., and Phoenix, G. K.: Nitrogen accumulation and partitioning in a High Arctic tundra ecosystem from extreme atmospheric N deposition events, *Sci Total Environ*, 554-555, 303-310, 10.1016/j.scitotenv.2016.02.155, 2016.

580 Clark, C. M., Simkin, S. M., Allen, E. B., Bowman, W. D., Belnap, J., Brooks, M. L., Collins, S. L., Geiser, L. H., Gilliam, F. S., Jovan, S. E., Pardo, L. H., Schulz, B. K., Stevens, C. J., Suding, K. N., Throop, H. L., and Waller, D. M.: Potential vulnerability of 348 herbaceous species to atmospheric deposition of nitrogen and sulfur in the United States, *Nat Plants*, 5, 697-705, 10.1038/s41477-019-0442-8, 2019.

585 Dammers, E., McLinden, C. A., Griffin, D., Shephard, M. W., Van Der Graaf, S., Lutsch, E., Schaap, M., Gainairu-Matz, Y., Fioletov, V., Van Damme, M., Whitburn, S., Clarisse, L., Cady-Pereira, K., Clerbaux, C., Coheur, P. F., and Erisman, J. W.: NH₃ emissions from large point sources derived from CrIS and IASI satellite observations, *Atmospheric Chemistry and Physics*, 19, 12261-12293, 10.5194/acp-19-12261-2019, 2019.

Decina, S. M., Hutrya, L. R., and Templer, P. H.: Hotspots of nitrogen deposition in the world's urban areas: a global data synthesis, *Frontiers in Ecology and the Environment*, 18, 92-100, 10.1002/fee.2143, 2019.

Donner, S. D. and Kucharik, C. J.: Corn-based ethanol production compromises goal of reducing nitrogen export by the Mississippi River, *Proc Natl Acad Sci*, 105, 4513-4518, www.pnas.org/cgi/doi/10.1073/pnas.0708300105, 2008.

585 Du, E., De Vries, W., Galloway, J. N., Hu, X., and Fang, J.: Changes in wet nitrogen deposition in the United States between 1985 and 2012, *Environmental Research Letters*, 9, 2014.

Ellis, R. A., Jacob, D. J., Sulprizio, M. P., Zhang, L., Holmes, C. D., Schichtel, B. A., Blett, T., Porter, E., Pardo, L. H., and Lynch, J. A.: Present and future nitrogen deposition to national parks in the United States: critical load exceedances, *Atmospheric Chemistry and Physics*, 13, 9083-9095, 10.5194/acp-13-9083-2013, 2013.

590 Feinberg, A., Stenke, A., Peter, T., Hinckley, E.-L. S., Driscoll, C. T., and Winkel, L. H. E.: Reductions in the deposition of sulfur and selenium to agricultural soils pose risk of future nutrient deficiencies, *Communications Earth & Environment*, 2, 10.1038/s43247-021-00172-0, 2021.

Feng, J., Vet, R., Cole, A., Zhang, L., Cheng, I., O'Brien, J., and Macdonald, A.-M.: Inorganic chemical components in precipitation in the eastern U.S. and Eastern Canada during 1989–2016: Temporal and regional trends of wet concentration and wet deposition from the NADP and CAPMoN measurements, *Atmospheric Environment*, 254, 10.1016/j.atmosenv.2021.118367, 2021.

595 Fenn, M. E., Bytnerowicz, A., Schilling, S. L., Vallano, D. M., Zavaleta, E. S., Weiss, S. B., Morozumi, C., Geiser, L. H., and Hanks, K.: On-road emissions of ammonia: An underappreciated source of atmospheric nitrogen deposition, *Sci Total Environ*, 625, 909-919, 10.1016/j.scitotenv.2017.12.313, 2018.

600 Foley, K. M., Possiel, N., Aldridge, M., Allen, M., Bash, J. O., Beardsley, M., Beidler, J., Choi, D., Eder, B., Farkas, C., Gilliam, R., Godfrey, J., Henderson, B. H., Hogrefe, C., Koplitz, S. N., Mason, R., and Vukovich, J.: EQUATES: EPA's Air QUALity TimE Series Project, 19th Annual CMAS Conference, Virtual, October 28, 2020.

Fowler, D., Coyle, M., Skiba, U., Sutton, M. A., Cape, J. N., Reis, S., Sheppard, L. J., Jenkins, A., Grizzetti, B., Galloway, J. N., Vitousek, P., Leach, A., Bouwman, A. F., Butterbach-Bahl, K., Dentener, F., Stevenson, D., Amann, M., and Voss, M.: The global nitrogen cycle in the twenty-first century, *Philos Trans R Soc Lond B Biol Sci*, 368, 20130164, 10.1098/rstb.2013.0164, 2013.

605 Galloway, J. N., Townsend, A. R., Erisman, J. W., Bekunda, M., Cai, Z., Freney, J. R., Martinelli, L. A., Seitzinger, S. P., and Sutton, M. A.: Transformation of the Nitrogen Cycle: Recent Trends, Questions, and Potential Solutions, *Science*, 320, 889-892, 10.1126/science.1136674, 2008.

610 Galmarini, S., Makar, P., Clifton, O. E., Hogrefe, C., Bash, J. O., Bellasio, R., Bianconi, R., Bieser, J., Butler, T., Ducker, J., Flemming, J., Hodzic, A., Holmes, C. D., Kioutsioukis, I., Kranenburg, R., Lupascu, A., Perez-Camanyo, J. L., Pleim, J., Ryu, Y.-H., San Jose, R., Schwede, D., Silva, S., and Wolke, R.: Technical note: AQMEII4 Activity 1: evaluation of wet and dry deposition schemes as an integral part of regional-scale air quality models, *Atmospheric Chemistry and Physics*, 21, 15663-15697, 10.5194/acp-21-15663-2021, 2021.

Ge, Y., Vieno, M., Stevenson, D., Wind, P., and Heal, M.: A new assessment of global and regional budgets, fluxes and lifetimes of atmospheric reactive N and S gases and aerosols, *Atmos Chem Phys*, 10.5194/acp-2022-82, 2022.

- Guo, H., Han, F., Wang, Z., Pardue, J., and Zhang, H. L.: Deposition of sulfur and nitrogen components in Louisiana in August, 2011, *Sci Total Environ*, 636, 124-133, 10.1016/j.scitotenv.2018.04.258, 2018.
- 615 Hinckley, E. L. S., Crawford, J. T., Fakhraei, H., and Driscoll, C. T.: A shift in sulfur-cycle manipulation from atmospheric emissions to agricultural additions, *Nat Geosci*, 13, 597-604, 10.1038/s41561-020-0620-3, 2020.
- Holland, D. M., Principe, P. P., and Sickles, J. E.: Trends in atmospheric sulfur and nitrogen species in the eastern United States for 1989-1995, *Atmospheric Environment*, 33, 37-49, [https://doi.org/10.1016/S1352-2310\(98\)00123-X](https://doi.org/10.1016/S1352-2310(98)00123-X), 1999.
- 620 Hood, R. R., Shenk, G. W., Dixon, R. L., Smith, S. M. C., Ball, W. P., Bash, J. O., Batiuk, R. A., Boomer, K., Brady, D. C., Cerco, C., Claggett, P., de Mutser, K., Easton, Z. M., Elmore, A. J., Friedrichs, M. A. M., Harris, L. A., Ihde, T. F., Lacher, L., Li, L., Linker, L. C., Miller, A., Moriarty, J., Noe, G. B., Onyullo, G., Rose, K., Skalak, K., Tian, R., Veith, T. L., Wainger, L., Weller, D., and Zhang, Y. J.: The Chesapeake Bay Program Modeling System: Overview and Recommendations for Future Development, *Ecol Modell*, 465, 1-109635, 10.1016/j.ecolmodel.2021.109635, 2021.
- 625 Jia, Y., Yu, G., Gao, Y., He, N., Wang, Q., Jiao, C., and Zuo, Y.: Global inorganic nitrogen dry deposition inferred from ground- and space-based measurements, *Sci Rep*, 6, 19810, 10.1038/srep19810, 2016.
- Jickells, T., Baker, A. R., Cape, J. N., Cornell, S. E., and Nemitz, E.: The cycling of organic nitrogen through the atmosphere, *Philos Trans R Soc Lond B Biol Sci*, 368, 20130115, 10.1098/rstb.2013.0115, 2013.
- 630 Joyce, E. E., Walters, W. W., Le Roy, E., Clark, S. C., Schiebel, H., and Hastings, M. G.: Highly concentrated atmospheric inorganic nitrogen deposition in an urban, coastal region in the US, *Environmental Research Communications*, 2, 10.1088/2515-7620/aba637, 2020.
- Kahmen, A., Renker, C., Unsiker, S. B., and Buchmann, N.: Niche Complementarity for Nitrogen: An Explanation for the Biodiversity and Ecosystem Functioning Relationship?, *Ecology*, 87, 1244-1255, [https://doi.org/10.1890/0012-9658\(2006\)87\[1244:NCFNAE\]2.0.CO;2](https://doi.org/10.1890/0012-9658(2006)87[1244:NCFNAE]2.0.CO;2), 2006.
- 635 Kanakidou, M., Myriokefalitakis, S., Daskalakis, N., Fanourgakis, G., Nenes, A., Baker, A. R., Tsigaridis, K., and Mihalopoulos, N.: Past, Present and Future Atmospheric Nitrogen Deposition, *J Atmos Sci*, 73, 2039-2047, 10.1175/JAS-D-15-0278.1, 2016.
- Karl, T. R. and Koss, W. J.: Regional and National Monthly, Seasonal, and Annual Temperature Weighted by Area, 1895-1983, National Climatic Data Center, Asheville, NC, 1984.
- Kim, S. W., Heckel, A., McKeen, S. A., Frost, G. J., Hsie, E. Y., Trainer, M. K., Richter, A., Burrows, J. P., Peckham, S. E., and Grell, G. A.: Satellite-observed U.S. power plant NOx emission reductions and their impact on air quality, *Geophysical Research Letters*, 33, 10.1029/2006gl027749, 2006.
- 640 Lamarque, J.-F., Kyle, G. P., Meinshausen, M., Riahi, K., Smith, S. J., van Vuuren, D. P., Conley, A. J., and Vitt, F.: Global and regional evolution of short-lived radiatively-active gases and aerosols in the Representative Concentration Pathways, *Climatic Change*, 109, 191-212, 10.1007/s10584-011-0155-0, 2011.
- Lark, T. J., Meghan Salmon, J., and Gibbs, H. K.: Cropland expansion outpaces agricultural and biofuel policies in the United States, *Environmental Research Letters*, 10, 10.1088/1748-9326/10/4/044003, 2015.
- 645 Li, Y., Schichtel, B. A., Walker, J. T., Schwede, D. B., Chen, X., Lehmann, C. M. B., Puchalski, M. A., Gay, D. A., and Collett, J. L., Jr.: Increasing importance of deposition of reduced nitrogen in the United States, *Proc Natl Acad Sci*, 113, 5874-5879, 10.1073/pnas.1525736113, 2016.
- Likens, G. E., Butler, T. J., and Buso, D. C.: Long- and short-term changes in sulfate deposition: Effects of the 1990 Clean Air Act Amendments, *Biogeochemistry*, 52, 1-11, 2001.
- 650 Lloret, J. and Valiela, I.: Unprecedented decrease in deposition of nitrogen oxides over North America: the relative effects of emission controls and prevailing air-mass trajectories, *Biogeochemistry*, 129, 165-180, 10.1007/s10533-016-0225-5, 2016.
- Loughner, C. P., Tzortziou, M., Shroder, S., and Pickering, K. E.: Enhanced dry deposition of nitrogen pollution near coastlines: A case study covering the Chesapeake Bay estuary and Atlantic Ocean coastline, *Journal of Geophysical Research: Atmospheres*, 121, 14,221-214,238, 10.1002/2016jd025571, 2016.
- 655 McHale, M. R., Ludtke, A. S., Wetherbee, G. A., Burns, D. A., Nilles, M. A., and Finkelstein, J. S.: Trends in precipitation chemistry across the U.S. 1985-2017: Quantifying the benefits from 30 years of Clean Air Act amendment regulation, *Atmospheric Environment*, 247, 10.1016/j.atmosenv.2021.118219, 2021.
- Meyers, T. P., Finkelstein, P., Clarke, J., Ellestad, T. G., and Sims, P. F.: A multilayer model for inferring dry deposition using standard meteorological measurements, *Journal of Geophysical Research: Atmospheres*, 103, 22645-22661, 10.1029/98jd01564, 1998.
- 660 Nopmongcol, U., Beardsley, R., Kumar, N., Knipping, E., and Yarwood, G.: Changes in United States deposition of nitrogen and sulfur compounds over five decades from 1970 to 2020, *Atmospheric Environment*, 209, 144-151, 10.1016/j.atmosenv.2019.04.018, 2019.
- Nowak, J. B., Neuman, J. A., Bahreini, R., Middlebrook, A. M., Holloway, J. S., McKeen, S. A., Parrish, D. D., Ryerson, T. B., and Trainer, M.: Ammonia sources in the California South Coast Air Basin and their impact on ammonium nitrate formation, *Geophysical Research Letters*, 39, n/a-n/a, 10.1029/2012gl051197, 2012.
- 665 Paulot, F., Fan, S., and Horowitz, L. W.: Contrasting seasonal responses of sulfate aerosols to declining SO2 emissions in the Eastern U.S.: Implications for the efficacy of SO2 emission controls, *Geophysical Research Letters*, 44, 455-464, 10.1002/2016gl070695, 2017.

- Paulot, F., Jacob, D. J., and Henze, D. K.: Sources and processes contributing to nitrogen deposition: an adjoint model analysis applied to biodiversity hotspots worldwide, *Environ Sci Technol*, 47, 3226-3233, 10.1021/es3027727, 2013.
- 670 Pye, H. O., Luecken, D. J., Xu, L., Boyd, C. M., Ng, N. L., Baker, K. R., Ayres, B. R., Bash, J. O., Baumann, K., Carter, W. P. L., Edgerton, E. S., Fry, J. L., Hutzell, W. T., Schwede, D. B., and Shepson, P. B.: Modeling the Current and Future Roles of Particulate Organic Nitrates in the Southeastern United States, *Environ Sci Technol*, 49, 14195-14203, 10.1021/acs.est.5b03738, 2015.
- 675 Pye, H. O. T., Nenes, A., Alexander, B., Ault, A. P., Barth, M. C., Clegg, S. L., Collett Jr, J. L., Fahey, K. M., Hennigan, C. J., Herrmann, H., Kanakidou, M., Kelly, J. T., Ku, I. T., McNeill, V. F., Riemer, N., Schaefer, T., Shi, G., Tilgner, A., Walker, J. T., Wang, T., Weber, R., Xing, J., Zaveri, R. A., and Zuend, A.: The acidity of atmospheric particles and clouds, *Atmospheric Chemistry and Physics*, 20, 4809-4888, 10.5194/acp-20-4809-2020, 2020.
- Rao, P., Hutyra, L. R., Raciti, S. M., and Templer, P. H.: Atmospheric nitrogen inputs and losses along an urbanization gradient from Boston to Harvard Forest, MA, *Biogeochemistry*, 121, 229-245, 10.1007/s10533-013-9861-1, 2013.
- 680 Redington, A. L., Derwent, R. G., Witham, C. S., and Manning, A. J.: Sensitivity of modelled sulphate and nitrate aerosol to cloud, pH and ammonia emissions, *Atmospheric Environment*, 43, 3227-3234, 10.1016/j.atmosenv.2009.03.041, 2009.
- Refsnider, J. M., Garcia, J. A., Holliker, B., Hulbert, A. C., Nunez, A., and Streby, H. M.: Effects of harmful algal blooms on stress levels and immune functioning in wetland-associated songbirds and reptiles, *Sci Total Environ*, 788, 147790, 10.1016/j.scitotenv.2021.147790, 2021.
- 685 Riddick, S., Ward, D., Hess, P., Mahowald, N., Massad, R., and Holland, E.: Estimate of changes in agricultural terrestrial nitrogen pathways and ammonia emissions from 1850 to present in the Community Earth System Model, *Biogeosciences*, 13, 3397-3426, 10.5194/bg-13-3397-2016, 2016.
- Sabo, R. D., Clark, C. M., Bash, J., Sobota, D., Cooter, E., Dobrowolski, J. P., Houlton, B. Z., Rea, A., Schwede, D., Morford, S. L., and Compton, J. E.: Decadal Shift in Nitrogen Inputs and Fluxes Across the Contiguous United States: 2002–2012, *Journal of Geophysical Research: Biogeosciences*, 124, 3104-3124, 10.1029/2019jg005110, 2019.
- 690 Schichtel, B. A., Gebhart, K. A., Morris, K. H., Cheatham, J. R., Vimont, J., Larson, R. S., and Beachley, G.: Long-term trends of wet inorganic nitrogen deposition in Rocky Mountain National Park: Influence of missing data imputation methods and associated uncertainty, *Sci Total Environ*, 687, 817-826, 10.1016/j.scitotenv.2019.06.104, 2019.
- Schwede, D. B. and Lear, G. G.: A novel hybrid approach for estimating total deposition in the United States, *Atmospheric Environment*, 92, 207-220, 10.1016/j.atmosenv.2014.04.008, 2014.
- 695 Sickles, J. E. and Shadwick, D. S.: Air quality and atmospheric deposition in the eastern US: 20 years of change, *Atmospheric Chemistry and Physics*, 15, 173-197, 10.5194/acp-15-173-2015, 2015.
- Simon, H., Baker, K. R., and Phillips, S.: Compilation and interpretation of photochemical model performance statistics published between 2006 and 2012, *Atmospheric Environment*, 61, 124-139, 10.1016/j.atmosenv.2012.07.012, 2012.
- 700 Theobald, M. R., Vivanco, M. G., Aas, W., Andersson, C., Ciarelli, G., Couvidat, F., Cuvelier, K., Manders, A., Mircea, M., Pay, M.-T., Tsyro, S., Adani, M., Bergström, R., Bessagnet, B., Briganti, G., Cappelletti, A., D'Isidoro, M., Fagerli, H., Mar, K., Otero, N., Raffort, V., Roustan, Y., Schaap, M., Wind, P., and Colette, A.: An evaluation of European nitrogen and sulfur wet deposition and their trends estimated by six chemistry transport models for the period 1990–2010, *Atmospheric Chemistry and Physics*, 19, 379-405, 10.5194/acp-19-379-2019, 2019.
- 705 Townsend, A. R., Howarth, R. W., Bazzaz, F. A., Booth, M. S., Cleveland, C. C., Collinge, S. K., Dobson, A. P., Mallin, M. A., Rogers, C. A., Wayne, P., and Wolfe, A. H.: Human health effects of a changing global nitrogen cycle, *Frontiers in Ecology and the Environment*, 1, 240-246, [https://doi.org/10.1890/1540-9295\(2003\)001\[0240:HHEOAC\]2.0.CO;2](https://doi.org/10.1890/1540-9295(2003)001[0240:HHEOAC]2.0.CO;2), 2003.
- United States Congress: Clean Air Act Amendments of 1990, 1990.
- 710 Walker, J. T., Dombek, T. L., Green, L. A., Gartman, N., and Lehmann, C. M. B.: Stability of organic nitrogen in NADP wet deposition samples, *Atmospheric Environment*, 60, 573-582, 10.1016/j.atmosenv.2012.06.059, 2012.
- Warner, J., Dickerson, R. R., Wei, Z., Strow, L. L., Wang, Y., and Liang, Q.: Increased atmospheric ammonia over the world's major agricultural areas detected from space, *Geophys Res Lett*, 44, 2875-2884, 10.1002/2016GL072305, 2017.
- Williams, J. J., Chung, S. H., Johansen, A. M., Lamb, B. K., Vaughan, J. K., and Beutel, M.: Evaluation of atmospheric nitrogen deposition model performance in the context of U.S. critical load assessments, *Atmospheric Environment*, 150, 244-255, 10.1016/j.atmosenv.2016.11.051, 2017.
- 715 World Meteorological Organization: Global Atmosphere Watch Workshop on Measurement-Model Fusion for Global Total Atmospheric Deposition (MMF-GTAD), https://library.wmo.int/doc_num.php?explnum_id=3563, 2017.
- Wright, C. K., Larson, B., Lark, T. J., and Gibbs, H. K.: Recent grassland losses are concentrated around U.S. ethanol refinerie, *Environmental Research Letters*, 12, <https://doi.org/10.1088/1748-9326/aa6446>, 2017.
- 720 Xing, J., Pleim, J., Mathur, R., Pouliot, G., Hogrefe, C., Gan, C. M., and Wei, C.: Historical gaseous and primary aerosol emissions in the United States from 1990 to 2010, *Atmospheric Chemistry and Physics*, 13, 7531-7549, 10.5194/acp-13-7531-2013, 2013.
- Xing, J., Mathur, R., Pleim, J., Hogrefe, C., Gan, C.-M., Wong, D. C., Wei, C., Gilliam, R., and Pouliot, G.: Observations and modeling of air quality trends over 1990–2010 across the Northern Hemisphere: China, the United States and Europe, *Atmospheric Chemistry and Physics*, 15, 2723-2747, 10.5194/acp-15-2723-2015, 2015.

- 725 Zhang, L., Jacob, D. J., Knipping, E. M., Kumar, N., Munger, J. W., Carouge, C. C., van Donkelaar, A., Wang, Y. X., and Chen, D.: Nitrogen deposition to the United States: distribution, sources, and processes, *Atmospheric Chemistry and Physics*, 12, 4539–4554, 10.5194/acp-12-4539-2012, 2012.
- Zhang, Y., Foley, K. M., Schwede, D. B., Bash, J. O., Pinto, J. P., and Dennis, R. L.: A Measurement-Model Fusion Approach for Improved Wet Deposition Maps and Trends, *J Geophys Res Atmos*, 124, 4237–4251, 10.1029/2018JD029051, 2019.
- 730 Zhang, Y., Mathur, R., Bash, J. O., Hogrefe, C., Xing, J., and Roselle, S. J.: Long-term trends in total inorganic nitrogen and sulfur deposition in the U.S. from 1990 to 2010, *Atmospheric Chemistry and Physics*, 18, 9091–9106, 10.5194/acp-18-9091-2018, 2018.