

Biomass burning CO, PM and fuel consumption per unit burned area ~~measures-estimates~~ derived across Africa using geostationary SEVIRI Fire Radiative Power and Sentinel-5P CO data

Hannah M. Nguyen^{1,2}, Jiangping He^{1,3}, Martin J. Wooster^{1,2,3}

5 ¹Department of Geography, King's College London, London, WC2R 2ND, UK

²Leverhulme Centre for Wildfires, Environment and Society, UK

³National Centre for Earth Observation (NCEO), UK

Correspondence to: Hannah M. Nguyen (hannah.nguyen@kcl.ac.uk)

10 **Abstract:** We present the first top-down CO fire emissions inventory for Africa based on the direct relation between geostationary satellite-based Fire Radiative Power (FRP) ~~measures-observations~~ and polar orbiting satellite observations of Total Column Carbon Monoxide (TCCO). This work significantly extends the previous Fire Radiative Energy Emissions (FREM) approach that derived Total Particulate Matter (TPM) emission coefficients from FRP ~~measures~~ and Aerosol Optical Depth (AOD) observations. The use of satellite-based CO observations to derive CO emission coefficients, EC_{CO}^b , addresses

15 key uncertainties in the use of AOD observations to estimate fire-generated CO emissions including; the requirement for a smoke mass extinction coefficient in the AOD to TPM conversion; and the large variation in TPM emission factors - which are used to convert TPM emissions to CO emissions. We use the FREM-derived CO emission coefficients to produce a Pan-African CO fire emission inventory spanning 2004 to 2019. Regional CO emissions are in close agreement with the most recent version of GFED(v4.1s), despite the two inventories using completely different satellite datasets and methodologies.

20 Dry Matter Consumed (DMC) and DMC per unit burned area are generated from our CO emission inventory – the latter using the 20 m resolution Sentinel-2 FireCCI5FD burnt area (BA) product for 2019. We carry out an evaluation of our FREM-based CO emissions by using them as input in the WRF-CMAQ chemical transport model and comparing simulated TCCO fields to independent Sentinel-5P TROPOMI TCCO observations. The results of this evaluation show FREM CO emissions to generally be in good agreement with these independent measures - particularly in the case of individual fire-generated CO

25 plumes where modelled in-plume CO was within 5% of satellite observations with a coefficient of determination of 0.80. Modelled and observed total CO, aggregated over the full model domain, are within 4% of each other, though localised regions show an overestimation of modelled CO by up to 50%. When compared to other evaluations of current state-of-the-art fire emissions inventories, the FREM CO emission inventory derived in this work shows some of the best agreement with independent observations. Updates to previously published FREM TPM emissions coefficients based on this methodology are also provided, along with a similar evaluation as conducted for CO. The methodology described in this work is forming the

30 basis of a forthcoming near-real-time fire emissions product from Meteosat to be issued by the EUMETSAT LSA SAF (<https://landsaf.ipma.pt/en/>).

1 Introduction

The open burning of biomass in landscape fires is amongst the largest contributor of gaseous and particulate emissions to the atmosphere. In many regions such fires show significant interannual variability, and together global biomass burning generates a significant fraction of many atmospheric species, including for example the pollutants: total particulate matter (TPM) and carbon monoxide (CO) (Andreae and Merlet, 2001; Bowman et al., 2009; Forster et al., 2007). Landscape fire emission inventories are thus essential to many studies in Earth system science (Keywood et al., 2013; Langmann et al., 2009), and also to “real-time” decision-making applications such as air quality forecasting. Fire emissions inventories are often constructed using a ‘bottom-up’ approach in which estimates of dry matter consumed (DMC) are estimated from satellite-derived metrics of burned area (BA), or occasionally active fire (AF) counts, combined with information on pre-fire fuel load and combustion completeness (Seiler and Crutzen, 1980). The resulting DMC estimates are then multiplied by biome-specific emission factors (EFs) that relate each kilogram of burned biomass to the amount of a trace gas or aerosol species released. EFs are typically derived from small scale laboratory or ground-based field measurements (Akagi et al., 2011; Andreae, 2019; Andreae and Merlet, 2001), along with airborne sampling of fire plumes (Abel et al., 2003; Lavorel et al., 2007; Quennehen et al., 2012). The Global Fire Emissions Database (GFED) is the most widely-used ‘bottom-up’ fire emissions inventory (van der Werf et al., 2006, 2010, 2017), but the reliance on burned area and pre-fire fuel load information means it cannot provide near real-time information. The Global Fire Assimilation System (GFAS) (Kaiser et al., 2012) uses near-real time satellite observations of AFs to drive its DMC estimates, performing the conversion using a previously-derived calibration relationship between a given biome’s mean Fire Radiative Energy (FRE) and DMC totals from GFED over a specific period. The primary advantage of GFAS is the near real-time aspect, capable of delivering information suitable for driving atmospheric models in forecast mode. The main disadvantage is the fact that the relatively uncertain fuel load and combustion completeness assumptions, which introduce some of the most significant uncertainty to bottom-up fire emissions calculations, are also incorporated into GFAS via the calibration with GFED (Kaiser et al., 2012; Reid et al., 2009; Zhang et al., 2008). Other global fire emissions inventories such as FLAMBE (Reid et al., 2009) and FINN (Wiedinmyer et al., 2011) contain aspects of the same methodologies and thus suffer similar uncertainty sources.

Recently so-called ‘top-down’ fire emissions methodologies have evolved, partly in an attempt to remove the limitations induced by calibrating satellite-derived FRE ~~measures-observations~~ against DMC totals produced by e.g. GFED. These ‘top-down’ methodologies include the Fire Energetics and Emissions Research (FEER) approach of Ichoku and Ellison (2014) and Fire Radiative Energy Emissions (FREM; Mota and Wooster, 2018; Nguyen and Wooster, 2020). The FEER and FREM approaches derive landscape fire emissions estimates directly from satellite-derived FRE, thereby removing the step requiring calculation of DMC and thus the uncertainties inherent in that calculation. In each method, a scalar (a so-called “smoke emission coefficient”; EC_x^b in g.MJ^{-1}) is generated for each fire-affected biome, b , to capture the relationship between the rate of FRE emission (i.e. the fire radiative power [FRP] of the causal fire) and the associated emission rate of a particular trace gas or aerosol species, x . Importantly, because EC_x^b values derived from laboratory fire measurements (e.g. as per Freeborn et

al., 2008) may not be fully representative of all the effects relevant to satellite data of real landscape fires (Freeborn et al., 2008; Mota and Wooster, 2018), the FEER and FREM approaches instead used EC_x^b values derived from satellite datasets. Specifically, individual fire matchups where the fires' radiative energy emissions and its smoke plume observed from satellite

70 are used to generate the EC_x^b values. Thus far, both FEER and the FREM approaches have focused on smoke plume observations of aerosol optical depth (AOD), which are used to create in-plume values of total particulate matter (TPM) via application of a smoke aerosol mass extinction coefficient, β_e (in $\text{m}^2 \cdot \text{g}^{-1}$) - as described by Ichoku and Ellison (2014) and Nguyen and Wooster (2020). One key difference between the FEER and FREM approaches is that in FEER per pixel EC_x coefficients are generated from fire match ups within a 1x1 grid, whereas in FREM biome-specific emission coefficients are

75 generated [EC_x^b] where b denotes the biome. Once representative EC_{TPM}^b values are obtained using this matchup dataset, they can be applied to the FRP data of any fire to derive its rate of TPM emission – including from near real-time satellite data feeds. Although uncertainties in the DMC conversion step are removed in these top-down approaches, other uncertainties are introduced - primarily from uncertainties in the satellite-derived datasets, and in the case of EC_{TPM}^b , the use of the mass extinction coefficient, β_e , used in the conversion of AOD to TPM. The FEER approach of Ichoku and Ellison (2014) uses

80 polar orbiting MODIS data to provide the FRP records driving its TPM emissions estimates, whilst FREM uses the higher-temporal-resolution FRP data available from geostationary satellites. The latter provides the highest temporal frequency TPM emissions estimates currently available for Africa (Nguyen and Wooster, 2020), and this type of high frequency emission information has been shown useful for maximising the accuracy of smoke transport modelling (Baldassarre et al., 2015; Garcia-menendez et al., 2014). The use of geostationary FRP data with FREM also allows a simple temporal integration to be used to

85 calculate FRE (see Nguyen and Wooster (2020)), obviating the need for assumptions about the plume height, wind speed and wind direction as is used by FEER when deriving EC_{TPM} from individual MODIS FRP ~~measures-observations~~ (Ichoku and Ellison, 2014). A drawback of using geostationary AF data is that, at present, operational geostationary satellites have a lower spatial resolution than do polar-orbiting sensors, resulting in the under-detection of 'small' or low-FRP fires. This 'missing' contribution to the FRE can be accounted for using a so-called 'small fire correction' (discussed in more detail in Section 2.1).

90

The purpose of the current work is to adapt the FREM approach further to derive trace gas emissions estimates directly from FRP observations, without first estimating a EC_{TPM}^b emissions coefficients as a precursor. The Mota and Wooster (2018) and Nguyen and Wooster (2020) iterations of FREM both estimated emissions of a target trace gas, y (e.g. CO_2 , CH_4 or CO), from the biome-specific emissions coefficient, EC_y^b , which was itself derived via Equation 1 using the emission coefficient of a

95 reference species, x (thus far always TPM):

$$EC_y^b [g \cdot MJ^{-1}] = \frac{EF_y^b [g \cdot kg^{-1}]}{EF_x^b [g \cdot kg^{-1}]} \cdot EC_x^b [g \cdot MJ^{-1}] \quad [1]$$

Here, EC_y^b is the emissions coefficient for the target species y (e.g. CO) in biome, b , EF_y^b is the target species y emission factor in that biome, EF_x^b is the emission factor for the reference species, x , in that biome, and EC_x^b is the FREM-based emissions coefficient for the references species, x , in that biome.

100

Using Equation 1 to translate between emissions coefficients does introduce some uncertainty, mainly due to the emissions factors of the reference species used thus far (TPM) typically being far from constant even in a single biome, for example, EF_{TPM} is relatively poorly constrained in tropical forest and cultivated land (Akagi et al., 2011; Andreae, 2019). Here we aim to directly generate CO emissions coefficients [EC_{CO}^b] by replacing the matchup fire plume AOD information currently used by 105
FREM (Nguyen and Wooster, 2020) with that of total column CO (TCCO in mol.m^{-2}) from Sentinel-5P TROPOMI observations (Landgraf et al., 2016). CO concentrations in landscape fire plumes are higher than in the ambient atmosphere (e.g. Wooster et al., 2011), thus providing potential for distinct contrasts between a smoke plume and its background in the Sentinel-5P TCCO record. A further advantage of generating EC_{CO}^b values directly, rather than via Equation 1, is that it removes the requirement for the smoke aerosol mass extinction coefficient (β_e), used to generate TPM estimates from AOD measure. 110
The β_e coefficient itself is somewhat dependent on fuel type burned, smoke aging and atmospheric relative humidity (Chin et al., 2002; Formenti et al., 2003; Reid et al., 2005) therefore direct use of satellite TCCO retrievals to derive EC_{CO}^b removes this uncertainty source from FREM-derived estimates of trace gas emissions coming from the satellite FRP retrievals.

2 Methodology

2.1 FRP and CO Datasets

115 Africa is the most fire affected continent on the planet (van der Werf et al., 2017), and to derive EC_{CO}^b values we focused on obtaining matchup fires across Africa's fire-affected biomes as observed by the geostationary Meteosat SEVIRI instrument and by the polar-orbiting Sentinel-5P (S5P) TROPOMI sensor. The Meteosat FRP-PIXEL (FRP in MW) product is generated every 15-minutes from SEVIRI observations and is issued in near real-time by the EUMETSAT LSA SAF (<https://landsaf.ipma.pt/en/data/catalogue/>). The offline (OFFL) S5P total column carbon monoxide (TCCO in mol.m^{-2}) 120
product used in this work can be downloaded from Sentinel-5P Pre-Operations Data Hub (<https://scihub.copernicus.eu/>) and has a spatial resolution of 7×7 km until August 2019 after which the along-track resolution was increased to 5.5 km.

Under cloud-free conditions, which predominate during African fire seasons, the FRP-PIXEL product provides almost continuous landscape fire observations. The coarser pixel size of geostationary observations mean they have a higher minimum 125
FRP detection limit than do polar-orbiting FRP datasets such as those from MODIS and VIIRS (Roberts et al., 2005, 2015) and will therefore detect fewer 'small' AFs and hence measure less instantaneous FRP than these polar orbiting sensors. The AFs detectable in the geostationary FRP products still remain significantly smaller in terms of pixel area coverage (e.g. down to perhaps 0.01% of the pixel) than the minimum burned area detectable in the MODIS burned area products, however - these are the most common data source of bottom-up fire emission estimation approaches (Van Leeuwen et al., 2014; Reid et al., 130
2009; Vermote et al., 2009). A recent comparison between AFs detected by the 30 m spatial resolution Landsat-8 Operational

Land Imager (OLI) and Meteosat FRP-PIXEL data showed the geostationary product to have an 8% error of commission, 'false alarm rate' (Hall et al., 2019), very similar to that of the widely used MODIS AF products (Giglio et al., 2016). Prior comparisons between the SEVIRI FRP-PIXEL product and the 1 km MODIS MOD14 product have identified the FRP-PIXEL product's AF error of omission rate and rate of FRP underestimation compared to MODIS (Roberts et al., 2015; Wooster et al., 2015). Region-specific mean 'small fire' scaling factors were derived from comparisons of coincident and co-located aggregated FRP from the MODIS and SEVIRI active fire products. These were determined to be 1.67 and 1.46 for Northern and Southern Hemisphere Africa (NHAF and SHAF) respectively, and following Mota and Wooster (2018) these factors were applied to account for the average amount of FRP coming from fires burning below the SEVIRI sensor's minimum FRP detection limit. We also apply the cloud cover correction used in the LSA SAF Meteosat FRP-GRID product (Wooster et al., 2015), though the effect of this adjustment is limited due to sparse cloud cover during the African fire season. To aid identification of suitable fire matchups we also use visual band data from the Visible/Infra-red Imager and Radiometer Suite (VIIRS) onboard the Suomi-NPP (National Polar-orbiting Partnership) satellite. Suomi-NPP overpasses within 3.5 minutes of the Sentinel-5P overpass and provides 375 m and 750 m spatial resolution imagery that greatly benefits plume identification in the TROPOMI CO data. VIIRS imagery data were obtained from <https://ladsweb.modaps.eosdis.nasa.gov/>.

2.2 Top-down FREM-CO Methodology

As introduced in Section 1, the FREM methodology derives a biome-dependent 'smoke emission coefficient' for a reference species x [EC_x^b] from the relationship between the thermal energy a fire radiates (i.e. the FRE in MJ) and the mass of the reference compound x emitted (in kg or g) over the same time period. Focusing on CO, we derived EC_{CO}^b values from a set of matchup fires for which good observations of both FRE from the fire and TCCO from its plume exist. The derived EC_{CO}^b has units of g.MJ^{-1} or $\text{g.s}^{-1}.\text{MW}^{-1}$ and can be used to generate CO emission rates (or totals) for a fire when multiplied by the FRP (or FRE) estimate for that fire. Sentinel-5P TROPOMI (S5P) TCCO retrievals are available from May 2018 until the present day, and we gathered our matchup data from joint S5P TCCO, Meteosat FRP-PIXEL, and VIIRS RGB imagery covering July to December 2018 and the full year of 2020. We studied both Northern and Southern Hemisphere Africa (NHAF and SHAF), which have asynchronous fire seasons. We derived EC_{CO}^b values for the six 'fire biomes' of Africa mapped by Nguyen and Wooster (2020), with this mapping based on re-classification of a 2019 landcover dataset generated from 300 m spatial resolution MERIS and PROBA-V observations as part of the European Space Agency (ESA) Climate Change Initiative (CCI) (<https://cds.climate.copernicus.eu/cdsapp#!/dataset/satellite-land-cover>). To provide further biome discrimination for *woodland savanna/open forest*, we made use of percentage tree cover information (above 5 m height), taken from a 2015 map of Vegetation Continuous Fields (VCF) generated from 30 m Landsat data (<https://landsat.gsfc.nasa.gov/>). EC_{CO}^b values were generated for the resulting six "fire biomes" - *closed canopy forest, low-woodland savanna/open forest, high-woodland savanna/open forest, grassland, shrubland* and *managed land*.

Plume selection was carried out based on S5P TCCO observations (mol.m^{-2}) and near co-incident VIIRS imagery (**Figure 1**). Each match-up fire was selected and filtered by manually defining a polygon that encapsulated the smoke plume and responsible AF pixels. There were several criteria that match-ups had to comply with in order to be included for EC_{CO}^b derivation; cloud-free observations of the fire and plume throughout the lifetime of the fire, determined from the FRP-PIXEL Quality Product detailed in Wooster et al. (2015);

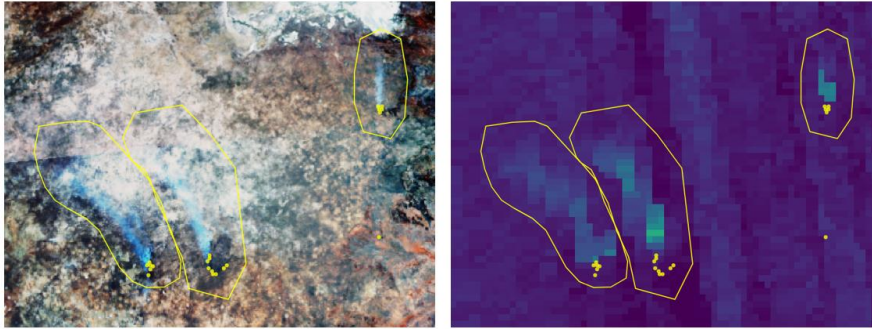
Formatted: Font: Bold

- a relatively short period since the start of the fire (mean of 3.4 hours since first AF detection) to minimise plume dispersion and thus maintain an optimal background TCCO to in-plume TCCO ratio for calculating the fire's TCCO anomaly, this temporal limit also reduced the opportunity for oxidation of CO to affect these data;
- no other fires being present in the area during the day/days preceding the match-up fire being identified;
- some wind-driven dispersion of the plume to minimise the chance of thick smoke generated by the fire covering the location of some of the AF pixels and causing the area containing FRP to be incorrectly masked as cloud;
- cloud free observations of the fire and plume throughout the lifetime of the fire, determined from the FRP-PIXEL Quality Product (3 km at nadir) detailed in Wooster et al. (2015) and the visible band VIIRS imagery (750 m at nadir);

The S5P TCCO product also includes a quality value (qa_value) indicating the potential presence of cloud in the total column of air from which a CO retrieval is made. When a threshold of qa_values > 0.5 was applied to the S5P data this resulted in an average difference of only 2.4% in the derived EC_{CO}^b values. Furthermore, the validation of the qa_values assigned in the S5P TCCO product was carried out in clear-sky only conditions (Borsdorff et al., 2014). The S5P qa_values were therefore not implemented in the EC_{CO}^b derivation detailed below, a full discussion of this is detailed in Appendix A. A buffer of pixels surrounding each plume was included in each manually defined polygon such that the buffer easily encapsulated the high TCCO value pixels of the plume, plus a series of pixels outside of the plume from which the 'background' CO amount relevant to each plume was calculated. Only match-up fires for which a single 'fire biome' represented more than 50% of the observed AF pixels in the fire were retained for use in EC_{CO}^b derivation.

For each fire in the final match-up set we calculated i) the total CO [g] contained in the plume from the S5P TCCO retrievals, and ii) the total FRE [MJ] released by the fire from Meteosat FRP-PIXEL data – integrating FRP from the time of the fires first AF pixel detection on that day to the moment of the S5P overpass. The minimum TCCO value (mol.m^{-2}) from each plume buffer was taken as the appropriate CO 'background' value for that plume and subtracted from all plume pixel TCCO values. The resulting 'excess' TCCO pixel values were then converted to units of grammes by multiplying by the molecular weight of CO and by the pixels' area calculated from their geographic corner coordinates (thus accounting for the change in the along-track spatial resolution of S5P data in 2019 and any view-angle dependent pixel area growth). Summing these values across

all plume pixels of a fire then yielded the total amount of fire-emitted CO in that plume, which was compared to the total amount of FRE the fire generated over the time that it released that CO. Each match-up fire FRE and total CO pair constitutes one datapoint on the relevant ‘fire biome’ scatterplot of [Figure 2](#). FRE and Total CO uncertainties were calculated from the uncertainty values provided within the FRP-PIXEL product and the TCCO product respectively, these are also plotted in the form of error bars on [Figure 2](#). In this work the choice was made to not to apply Fixed Mask De-stripping (FMD) to the S5P TCCO dataset used as is proposed by Borsdorff et al. (2019), this methodological choice is discussed in more detail in Appendix A.



205 **Figure 1.** Example data of a matchup fires used to develop the C_e^{CO} smoke emissions coefficients presented in [Figure 2](#). (a) VIIRS RGB image of three landscape fire smoke plumes, along with (b) the corresponding image of Sentinel-5P derived total column CO (TCCO). In both images, the AF pixel detections taken from the Meteosat FRP-PIXEL product are superimposed (yellow points) along with the bounding polygons used to delineate the fire plumes. Satellites data are from 11:24 and 11:30 UTC respectively, on September 9th over an area in norther Botswana.

210

2.3 Derivation of Carbon Monoxide Smoke Emission Coefficients [EC_{CO}^b]

Matchup data for each ‘fire biome’ are shown in [Figure 2](#) and were used to derive the set of biome-dependent CO smoke emission coefficients [EC_{CO}^b] listed in [Table 1](#). Zero-intercept ordinary least squares (OLS) regression was used for this, rather than the orthogonal distance regression (ODR) used by Nguyen and Wooster (2020) during derivation of TPM smoke emission coefficients [EC_{TPM}^b]. OLS was used in this work for two main reasons. Firstly, although the ODR method considers the uncertainty in each of the variables, these uncertainties are themselves rather poorly constrained, with the known uncertainties only representing part of the total uncertainty sources. There are contributions to the uncertainty of FRP that are not quantifiable, for example due to variations in the amount of interception of a fire’s FRP signal by any overlying tree canopy. We therefore deemed use of a regression method in which the slope is strongly driven by datapoint uncertainty to be unsuitable for use. Secondly, weighting based on uncertainty often resulted in undue weight being given to high value points

220

Formatted: Font: Bold

Formatted: Font: Bold

Formatted: Font: Bold

(e.g. match-ups with high FRE and high plume-species amounts) due to them typically having lower relative uncertainties (see Wooster et al., 2015). Due to their typically being very few high value datapoints in each ‘fire biome’ due to the heavy tailed nature of fire size distribution (Freeborn et al., 2009), these few large fires were potentially being too strongly weighted in the resulting calculation of EC_x^b . For these reasons, we opted to use OLS regression, and to ensure a consistent methodology for emission coefficient derivation we also applied the same approach to the Nguyen and Wooster (2020) dataset to re-derive their EC_{TPM}^b values using OLS regression (see [Appendix B](#)~~Appendix B~~). The updated EC_{TPM}^b for closed canopy forest, managed land, grassland, shrubland, low-woodland savanna and high-woodland savanna are 26.07 g.MJ⁻¹, 12.23 g.MJ⁻¹, 9.39 g.MJ⁻¹, 9.88 g.MJ⁻¹, 10.65 g.MJ⁻¹, and 14.18 g.MJ⁻¹ respectively. On average these new values are 14% lower than those reported in Nguyen and Wooster (2020) derived via ODR, and are the ones referred to and used hereafter. The WRF-CMAQ model-based approach to evaluating our final CO emissions rates and totals in Section 4 was also used to carry out an analogous evaluation of the TPM emissions generated from the updated EC_{TPM}^b values of [Appendix B](#)~~Appendix B~~ (see [Appendix D](#)~~Appendix D~~).

For each of the six fire biomes at least 12 matchup fires were identified for derivation of EC_{CO}^b , apart from for closed canopy forest. Tropical evergreen forests (the primary type of closed canopy forests in tropical regions) are generally not very susceptible to fire, except during periods of extreme drought, due to the high humidity and low windspeed within the dense forest canopy and the limited amount of surface fuel available due to rapid decomposition of surface litter in these environments (Marengo et al., 2011; Tomasella et al., 2013). Fires in such tropical forests are most often the result of human land-clearing activity and are typically small in size, unless heavy machinery is involved in land clearing (Van Leeuwen et al., 2014). Furthermore, FRP observations in closed canopy forest can be affected by tree canopy interception of surface emitted FRP (Roberts et al., 2018). These factors result in a lower number of observable and identifiable fire match-ups for tropical closed canopy forest areas. Smaller fire sizes and fewer match-up fires being acquired in closed canopy forests areas relative to other biomes was also observed during previous applications of the FREM approach (Mota & Wooster, 2018; Nguyen & Wooster 2020) and the FEER approach (Ichoku & Ellison, 2014), even when using 7 years’ worth of MODIS FRP and AOD data in the latter case. In this work the ability to identify small fires in closed canopy forest is further limited by i) the spatial resolution of the S5P TCCO observations which are at least 5 times lower resolution than the 1 km AOD product used in Nguyen & Wooster (2020) and ii) the limited availability of the S5P trace gas products which only became operational from mid-2018. An increased timeseries of S5P data and the exploitation of machine learning methods such as object recognition may aid in identifying a greater number of plumes in closed canopy forest - and this the subject of ongoing work.

Due to the FEER emission inventory exploiting a far larger dataset from which to identify fire match-ups (7 years of MODIS FRP and AOD) and it obtaining many more fire match-ups in tropical closed canopy forest (Ichoku and Ellison, 2014) we instead derive EC_{CO}^b for closed canopy forest from the ‘FEER-equivalent’ value. The method used to derive this is detailed in Nguyen and Wooster (2020), and essentially involves aggregating the FEER C_e^{TPM} emission coefficients of Ichoku and Ellison (2014) (<https://feer.gsfc.nasa.gov/data/emissions/>) to the relevant fire biome. Equation 1 was then applied to obtain a FEER-

255 equivalent EC_{CO}^b , which was calculated as 156.7 g.MJ^{-1} for the closed canopy forest fire biome. We generated FEER-
equivalent EC_{CO}^b for each of the other five fire biomes to compare these to our directly derived EC_{CO}^b values, and found
agreement within $\pm 34\%$ (see [Table 1](#)), somewhat justifying our use of the FEER-equivalent value in the closed canopy
forest biome where a directly derived EC_{CO}^b value was not achieved. Further, Nguyen and Wooster (2020) showed that mean
monthly FRE contribution from fires in closed canopy forests does not exceed 10% of the total monthly FRE coming from
260 African fires, and thus its total is of relatively low importance to continental-scale CO emissions totals.

Tests were carried out to determine the statistical significance of the EC_{CO}^b values derived in [Figure 2](#). Table 2 details
the resulting p-values and t-values for each pair of biomes and shows that only one pair of biomes (grassland and managed
land) have EC_{CO}^b values which are statistically different at the 95% confidence limit. Two additional biome pairs are
265 statistically distinct at the 85% confidence interval (grassland-low woodland savanna and managed land-shrubland). This
analysis indicates that in general, based on the current match-up dataset, different biomes do not have statistically significant
 EC_{CO}^b values i.e. the type of vegetation being burned does not result in a statistically different mass of CO being observed.
However, from what ~~we know~~ we know about emission factors (e.g. Akagi et al., 2011; Andreae, 2019) this is physically
unrealistic. ~~It is rather more likely that the sample size of the current work is not sufficiently large to enable statistically distinct~~
270 ~~EC_{CO}^b values to be derived.~~ The updated FREM EC_{TPM}^b values of [Appendix B](#) were similarly tested for statistical
significance and the emission coefficients generated from this much larger match-up dataset (primarily due to the higher spatial
resolution of the MCD19A1 AOD product allowing more plumes, particularly smaller plumes, to be identified) were overall
more statistically different. Of the fifteen biome pairs only four were not statistically significant at a 95% confidence threshold
and this reduced to 2 pairs at the 85% confidence limit. The fire-plume matchups used in EC_{CO}^b (and EC_{TPM}^b) derivation are
275 classified into one of six distinct ‘fire biome’ classes based on the fractional contribution of active fires in these different
biomes to the fire. As such, in most cases a smoke plume is not 100% generated by fire that burns vegetation of a single biome.
As detailed in Section 2.2, a filter is applied to ensure that the majority (>50%) of the active fire pixels responsible for a smoke
plume come from a single biome, and only if this condition is met is the fire-plume matchup included in the EC_{CO}^b derivation
for that biome. A larger plume dataset would allow the application of a more stringent classification condition (e.g. > 70% of
280 active fire pixels being from a single biome) whilst still maintaining a reasonable matchup sample size to generate EC_{CO}^b values
from for each biome. Having an increased number of matchup fire-plumes which have higher fractional coverage of one single
biome would likely result in EC_{CO}^b values that are more statistically distinct from one another. In the derivation of EC_{TPM}^b
described in Appendix B, the 1 km spatial resolution of the AOD product used allowed the inclusion of more small fire-plumes
to generate EC_{TPM}^b values. These smaller fire-plumes were generated by fires covering smaller areas, meaning that there were
285 more fires included in the matchup dataset which had a larger majority of their AF pixels coming from a single biome. Indeed,
resulting EC_{TPM}^b values generated by this dataset were more statistically distinct from one another (See Appendix B) than the

Formatted: Font: Times New Roman, 10 pt, Font color: A
Pattern: Clear

Formatted: Font: Times New Roman, 10 pt, Font color: A
Pattern: Clear

Formatted: Font: Times New Roman, 10 pt, Font color: A
Pattern: Clear

Formatted: Font: Times New Roman, 10 pt, Font color: A
Pattern: Clear

Formatted: Font: Times New Roman, 10 pt, Font color: A
Pattern: Clear

Formatted: Font: Times New Roman, 10 pt, Font color: A
Pattern: Clear

Formatted: Font: Times New Roman, 10 pt, Font color: A
Pattern: Clear

Formatted: Font: Times New Roman, 10 pt, Font color: A
Pattern: Clear

Formatted: Font: Times New Roman, 10 pt, Font color: A
Pattern: Clear

Formatted: Font: Times New Roman, 10 pt, Font color: A
Pattern: Clear

Formatted: Font: Times New Roman, 10 pt, Font color: A
Pattern: Clear

Formatted: Font: Times New Roman, 10 pt, Font color: A
Pattern: Clear

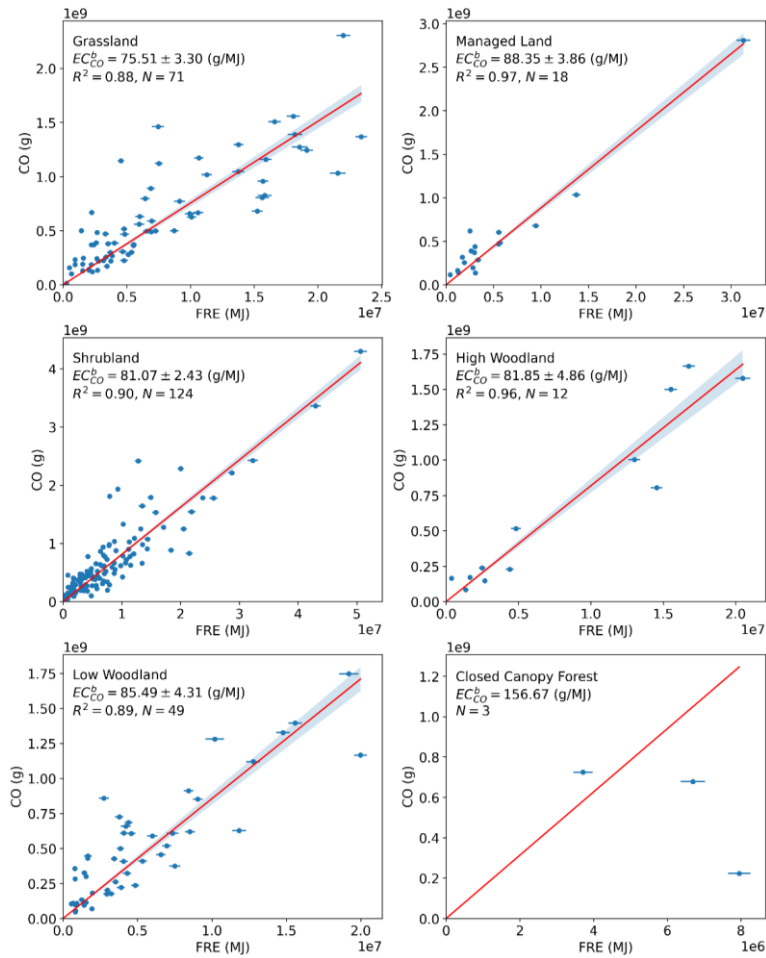
Formatted: Font: Times New Roman, 10 pt, Font color: A
Pattern: Clear

Formatted: Font: Times New Roman, 10 pt, Font color: A
Pattern: Clear

EC_{CO}^b values herein. The barriers to producing a larger sample size in this study have previously been discussed along with the future research focus needed to address this key issue.

290 For ease of future discussion, hereafter, we will refer to emissions inventories generated using the EC_{CO}^b coefficients of this Section as the FREM_bCO emissions inventory or FREMs_bCO when the small fire correction is applied. Any emissions inventory generated using the updated EC_{TPM}^b coefficients reported in **Table 1** and detailed in **Appendix B** will be referred to as FREM_bTPM hereafter. The b in both cases denotes the *base* or reference species used to produce emissions estimates.

Formatted: Font: Bold



295

Figure 2. Carbon monoxide smoke emission coefficients (EC_{CO}^b ; in g.MJ⁻¹) derived from matchup fires burning across the six fire-affected biomes shown mapped in Figure 8b across southern hemisphere Africa (note that the matchup fires here come from both African hemispheres). Each EC_{CO}^b is derived from the slope of an ordinary least squares (OLS) regression between the fire-emitted CO calculated from Sentinel-5P total column CO (TCCO) observations and the fire's matching FRE. The shaded grey area indicates the error of each slope. Error bars represent the uncertainty in both the FRE and total plume CO calculated from the uncertainty measures of the FRP-PIXEL product and the SSP TCCO product respectively. Closed canopy forest had insufficient matchup fires identified and so EC_{CO}^b for this biome was derived using the FEER-equivalent procedure detailed in Section 2.3 and in Nguyen and Wooster (2020). Datapoints from the three matchup fires that were identified in closed canopy forest are included in the plot.

300

305 Table 1. Biome-dependent CO smoke emission coefficients (EC_{CO}^b in $g.MJ^{-1}$) as derived from the data shown in Figure 2. Also
 shown are the matching values calculated using the updated FREM EC_{TPM}^b values from [Appendix B](#) and FEER-
 equivalent coefficient values produced from the FEER product of Ichoku & Ellison (2014), aggregated to the FREM biomes (see
 310 Nguyen and Wooster (2020) for full details). EC_{CO}^b values calculated via the updated FREM EC_{TPM}^b values shown in [Appendix
 B](#) are included to demonstrate the impact of using a different reference species and the associated EFs in Equation 1 to
 estimate EC_{CO}^b . *Figure 2 shows insufficient matchup fires were found for the closed canopy forest biome, so the FEER-equivalent
 value is reported instead and used hereafter.

Fire Affected Biome	Sentinel-5P TCCO-derived EC_{CO}^b (Section 2.2)	EC_{CO}^b calculated via updated FREM EC_{TPM}^b (see Appendix B)	FEER-equivalent (see Nguyen & Wooster, 2020)
Closed Canopy Forest	156.7*	248.7	156.7
Managed Land	88.4	72.1	100.7
Grassland	75.5	74.5	87.5
Shrubland	81.1	78.4	87.4
Low- woodland savanna	85.5	84.5	101.9
High- woodland savanna	81.9	112.5	110.1

315 **Table 2. Results detailing the statistical significance of the EC_{CO}^b values derived for each biome pair. P-values below 0.05 are coloured green, those below 0.15 are coloured yellow, while any biome pair with p-values above 0.15 are coloured red.**

Biome 1	Biome 2	p-value	t-value
grassland	managed land	0.013	2.53
grassland	shrubland	0.176	1.36
grassland	high woodland savanna	0.283	1.08
grassland	low woodland savanna	0.068	1.84
managed land	shrubland	0.112	1.60
managed land	high woodland savanna	0.304	1.05
managed land	low woodland savanna	0.622	0.49
shrubland	low woodland savanna	0.373	0.89
shrubland	high woodland savanna	0.886	0.14
high woodland savanna	low woodland savanna	0.577	0.56

3 FREM Fire Emission Inventory

3.1 CO Emissions

320 Following derivation of a EC_{CO}^b for each of the six fire biomes of NHAF and SHAF (Table 1 Table 1), a set of landscape fire emission rates and totals for these regions were derived via application of EC_{CO}^b values to the complete Meteosat FRP-PIXEL data record of 2004 to 2019 (Wooster et al., 2015). To account for possible changes in landcover, fire biome maps for 2005, 2010 and 2015 were produced in an analogous method to that used to generate the 2019 map (i.e., based on the CCI Landcover and Landsat VCF data products of these years). The Meteosat FRP-PIXEL record was combined with this set of biome maps and the EC_{CO}^b values of Table 1 to produce a 16 year record of African fire emissions. This FREMs_bCO inventory ('s' denoting the application of the small fire correction) is the highest spatio-temporal resolution fire emissions inventory for CO yet available over Africa (15 min, 3 km at the sub-satellite point). Monthly totals of FREMs_bCO emissions with cloud and small fire correction applied are shown in Figure 3 Figure 3 alongside those of the most current version of the Global Fire Emissions Database (GFEDv4.1s; van der Werf et al., 2017; www.globalfiredata.org/). GFED4.1s includes its own 'small fire' correction to account for bur scars undetected in the 500 m MODIS MCD64A1 burned area product. Mean annual CO emission 330 totals are detailed for both inventories with and without their respective small fire corrections applied in Table 3 Table 33.

Formatted: Font:

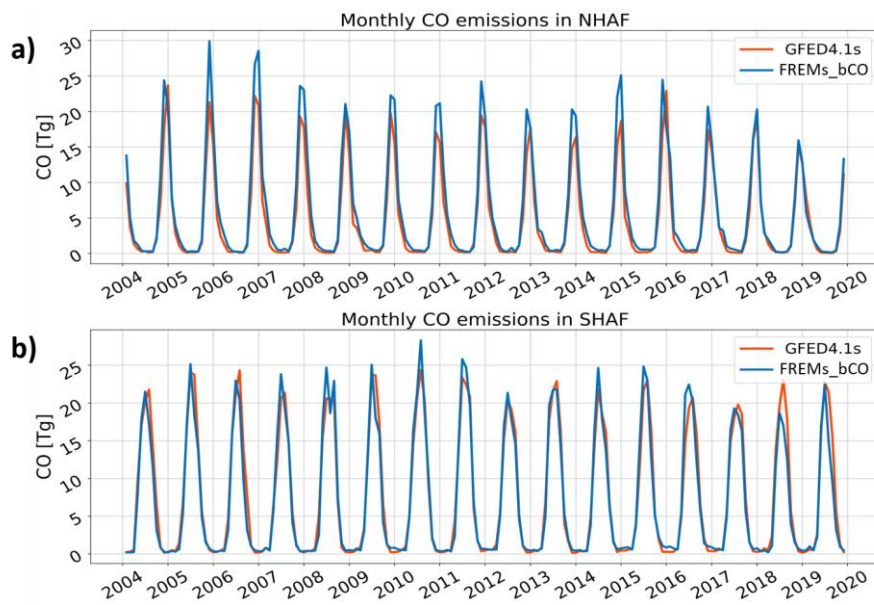


Figure 3. Monthly landscape fire CO emissions over a 16-year period for (a) northern and (b) southern hemisphere Africa, as derived in FREMs_bCO and GFED4.1s, both with their respective 'small fire correction' applied ("s" indicates its application)

Table 3. Mean annual CO fire emission totals for the period 2004 to 2019 as derived for northern and southern hemisphere Africa using the FREM methodology developed herein and reported alongside those of GFEDv4.1. Values are reported as those both with and without the relevant ‘small fire correction’ applied (“s” indicates its application), as well as the % difference made by this upward adjustment.

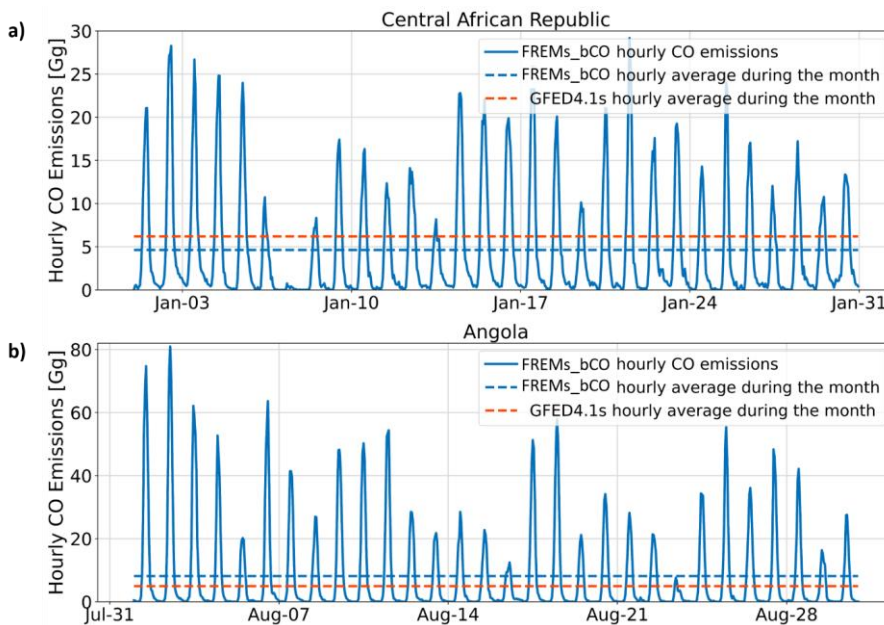
		NHAF Total CO Emissions [Tg]	SHAF Total CO Emissions [Tg]
Without small fire correction applied	FREM_bCO	46.6	64.4
	GFED4.1	40.5	67.5
With small fire correction applied	FREMs_bCO	70.1	87.2
	GFED4.1s	55.9	90.2
FREM_bCO	% effect of small fire correction	50.4	35.4
GFED4.1	% effect of small fire correction	38.0	36.7

The FREMs_bCO and GFEDv4.1s CO emissions time-series shown in [Figure 3](#) show very similar magnitudes, particularly in SHAF. [Table 3](#) confirms that the mean annual totals are also close, with FREMs_bCO 25% higher than that of GFED4.1s in NHAF, and 3% lower in SHAF. The small fire corrections of both inventories also increase the basic CO emissions calculated in each inventory by similar a magnitude, especially in SHAF. The closeness of these results is noteworthy when considering that these CO emissions estimates have been produced using completely different methodologies and with no input data, conversion variables or emissions factors in common. Figure 3 also shows similar annual temporal patterns between the two inventories, with annual peaks and minima generally occurring in the same years. However, as Mota and Wooster (2018) and Nguyen and Wooster (2020) noted for TPM emissions, the FREM methodology often predicts a slightly earlier peak in annual emissions in SHAF compared to GFED. This shifted peak agrees with findings showing that polar-orbiting based FRP observations also seem to peak in SHAF a month or so earlier than do BA ~~measures~~ observations, for example, in the work of Zheng et al., (2018) who compare GFED BA with GFAS FRP. The same work also suggests that measured CO emissions actually lag BA derived CO emissions in Africa, based on MOPITT CO observations. Zheng et al. (2018) attribute this lag in BA-based CO emissions and observed CO emissions to a shift from flaming to smoldering combustion over the continent which is not accounted in the emissions factors applied in the GFED procedure..

A more spatially detailed intercomparison is shown in [Figure 4](#) examining a month of FREMs_bCO hourly average CO emissions in two of the most fire affected countries in Africa - the Central African Republic (CAR) and Angola during

January and August 2012 respectively (typically their peak fire months). GFED hourly averages were calculated by dividing GFED4.1s monthly emissions totals by the number of hours in each month. Our mean hourly CO emissions for CAR in January are lower than those of GFED4.1s by 40%, whereas for Angola in August they are 60% higher. The very strong fire emissions diurnal cycle is highly resolved by the FREM inventory, demonstrating the data richness provided by the high temporal resolution of the geostationary FRP observations used. An additional benefit is that, unlike burned area data, FRP **measures observations** from geostationary satellites are available in near real-time and thus the FREM emissions of CO, TPM and other air pollutants are a potential source of data for air quality forecasting (Roberts et al., 2015).

The small differences seen between the FREMs_bCO and GFEDv4.1s CO emissions at the hemisphere scale (Figure 3) compared to the larger country-level differences (Figure 4) demonstrate how emissions inventories may be similar in magnitude at larger scales but can vary significantly more at the local scale. Zhang et al. (2014) compared modelled AOD fields generated from seven commonly used fire emissions inventories using an atmospheric transport model and demonstrated that the maximum variation between the modelled AOD averages of these inventories increased significantly when moving from regional to local scale in Northern Sub-Saharan Africa.

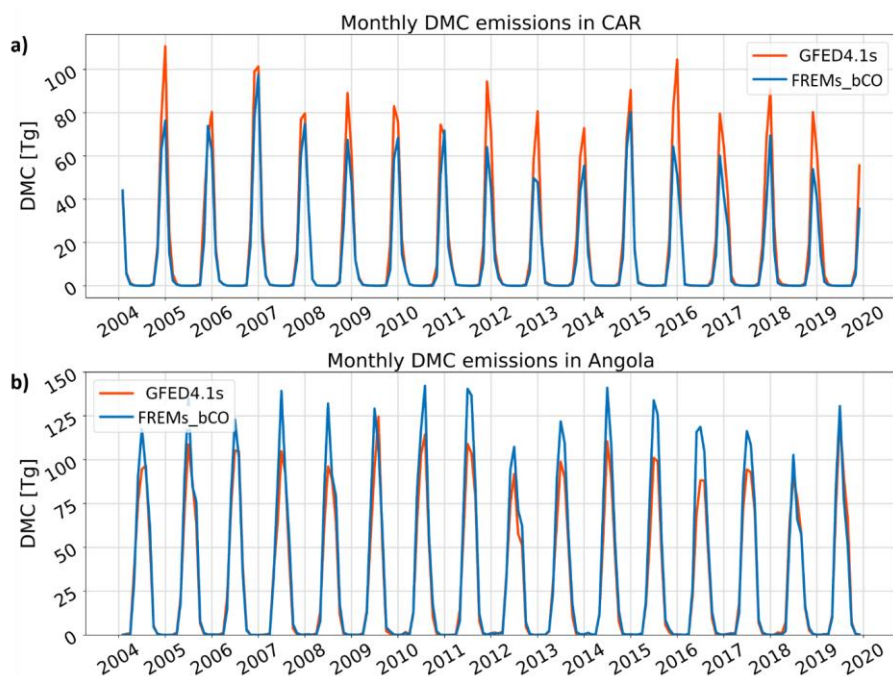


375 **Figure 4. Hourly FREMs_bCO emissions from landscape fires burning over a month-long period in 2012 during the peak fire season of (a) Central African Republic and (b) Angola. The monthly mean of this emission rate is also shown, along with that from GFEDv4.1s.**

380 Past comparisons made between modelled CO atmospheric concentrations driven by GFED, and CO observations coming from instruments such as MOPITT (Worden et al., 2010) suggest that GFEDv3 underestimated African CO emissions by up to 50% (Chevallier et al., 2009; Kopacz et al., 2010; Pechony et al., 2013). Since GFEDv3 and GFEDv4.1s CO emissions are similar both for NHAF and SHAF, this points to a possible continued underestimation of CO emissions by GFEDv4.1s over Africa. Each GFED version uses the 500 m MODIS MCD64A1 burned area product as their driving data, and recent studies have shown African burned area to be higher than MODIS estimates when mapped using 20 m Sentinel-2 MSI or 30 m Landsat imagery (Hawbaker et al., 2017; Roteta et al., 2019; Tsela et al., 2010). This underestimation by the MODIS BA product is 385 the theoretical basis for requiring the 'small fire correction' in GFEDv4.1 (Randerson et al., 2012; van der Werf et al., 2017). However, the relatively good agreement seen between GFEDv4.1s and the FREMs_bCO inventory compared herein (e.g. [Figure 3](#)) - which are developed from completely different datasets and approaches - could possibly suggest African CO emissions are not so underestimated as past CO observations have suggested when small fires are accounted for. Reconciling top-down and bottom-up derived CO fire emission inventories with observations of CO made from low-earth 390 orbit remains a continuing research focus.

3.2 Dry Matter Consumed

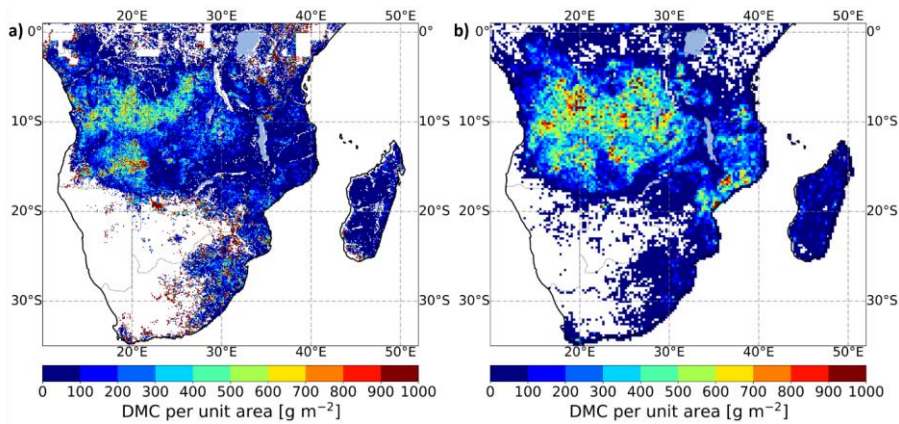
400 Unlike with bottom-up approaches, where DMC [kg] is calculated first and converted to species emissions estimates using estimates of fuel load, combustion completeness and species emissions factors (see Section 1), within the FREM approach fire emissions are estimated directly and DMC can then be calculated from these if required. In this case, DMC is estimated by dividing the emissions total by the species emissions factor, an approach first demonstrated by Mota and Wooster (2018) using TPM as the relevant species. CO is the second greatest emitted product from biomass burning, and the emissions factor of CO is more consistent and well constrained than that of TPM (Akagi et al., 2011; Andreae, 2019). Therefore, the FREM-derived CO emissions detailed in Section 0 can be related to DMC far more confidently and more consistently than those of TPM. Monthly FREM-derived DMC emissions generated from this approach for CAR and Angola are shown in [Figure 5](#) alongside those from GFED4.1s. The former are lower at the peak of the CAR fire season compared with those of GFEDv4.1s, but consistently higher at the Angolan fire season peak. Either side of these peaks there is very good agreement between the two.



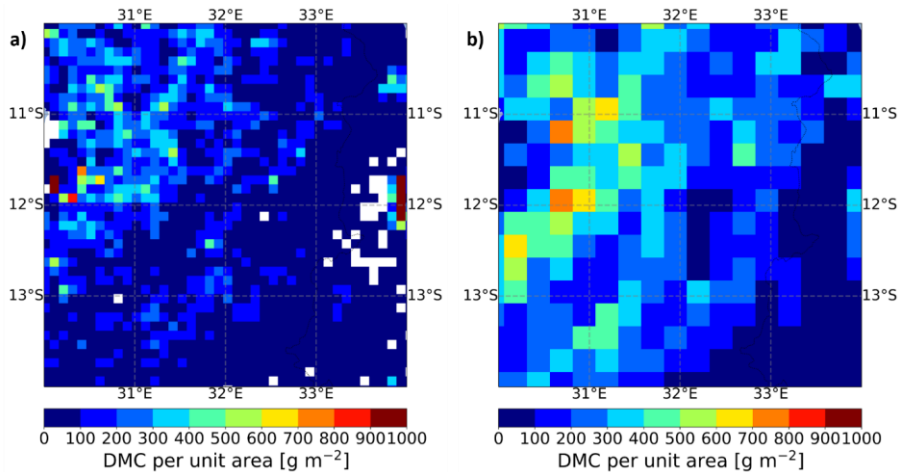
405 **Figure 5** Monthly dry matter consumed (DMC in g) for a 16-year period as derived from FREMs_bCO CO emissions and that of
 410 **GFED4.1s** for (a) Central African Republic (CAR) and (b) Angola.

Once calculated, DMC can be further combined with burned area information to generate DMC per unit burned area measures across the African region – the only observation based approach capable of doing this at present (Nguyen and Wooster, 2020).

410 We use FREM-derived DMC with the Sentinel-2 20 m spatial resolution FireCCI Small Fire Dataset (v2.0) for 2019 to calculate DMC per unit area at 0.1° resolution in that year. These observation-based DMC per unit burned area values are shown in [Figure 6](#) ~~Figure-6~~, alongside BA based values reported in GFED4.1s for 2019 at 0.25° resolution. Total carbon emissions can be easily calculated using the assumed carbon fraction of vegetation (taken typically as $50\pm 5\%$) (Andreae, 2019). Focusing in on a $4^\circ \times 4^\circ$ region of Zambia ([Figure 7](#) ~~Figure-7~~) demonstrates the higher spatial detail of the FREM-
 415 derived DMC per unit burned area data compared with that provided by the modelling used within GFED.



420 **Figure 6** Dry matter consumed (DMC) per unit area, mapped across southern hemisphere Africa for 2019. (a) as calculated in 0.1° grid cell resolution by dividing the FREMs_bCO CO values (with SF correction) by the 20m FireCCISFD burned area product generated from Sentinel-2 MSI observations, and (b) as reported in GFED4.1s at 0.25° grid cell resolution.



425 **Figure 7.** Mapped dry matter consumed (DMC) per unit area, calculated (a) at a 0.1° grid cell scale using the FREMs_bCO CO values (with SF correction) across a 4° x 4° region of Zambia for the year 2019 and (b) the same DMC per area values for GFED4.1s.

4 FREM-Derived CO Emissions Assessment

4.1 Evaluation Methodology

Beyond the comparisons to GFED4.1s detailed in Section 3, our FREMs_bCO emissions were further evaluated through their use in chemical transport model (CTM) simulations conducted with the Advanced Research Weather Research and Forecasting model (WRF-ARW v4.1.1; (Skamarock et al., 2019) and the Community Multiscale Air Quality model (CMAQ v5.3; EPA, (2019); <https://www.epa.gov/cmaq>). The resulting model output fields (that used FREMs_bCO emissions as input) were compared to Sentinel-5P TROPOMI TCCO observations that were completely independent of those used in the FREM emissions coefficient generation (i.e. those used within [Figure 2](#)).

WRF-CMAQ is commonly used in operational AQ systems (Kukkonen et al., 2012) and in research related to fire emissions and smoke-contaminated air (Cheng et al., 2014; Baldassarre et al., 2015; Hu et al., 2016; Vongruang et al., 2017; Koplitz et al., 2018; Choi et al., 2019). Model runs were conducted over the ~ 3000 km² region of SHAF shown in [Figure 8](#). Further regions of interest (ROIs) were used in comparisons between the WRF-CMAQ output and independent S5P TCCO observations. The WRF-CMAQ domain had a spatial resolution of 9 km, with 35 vertical model layers over a 347 × 319 grid. Model runs were conducted for the period 15th June to 29th August 2019 and were carried out in two separate simulations each initialised and fed with initial and boundary conditions from a global meteorological (FNL; <https://rda.ucar.edu/datasets/ds083.2/>) and chemistry (WACCM; <https://www2.acom.ucar.edu/gcm/waccm>) model. The first half of June was excluded due to a change in the version of the global meteorological model used as input. The second simulation was started from 29th July 2019 and both simulations featured a 24-hour spin-up time. The model configuration and set of physical schemes used in WRF were selected based on previous AQ simulations over SHAF using the WRF-Chem model (Kuik et al., 2015; Yang et al., 2013; Zhang et al., 2014). Details of the WRF-CMAQ configuration and setup are summarised in [Appendix C](#). Anthropogenic emissions were taken from the EDGAR-HTAPv2 inventory (https://edgar.jrc.ec.europa.eu/dataset_htap_v2), whilst biogenic and dust emissions were generated inline by the model. The FREMs_bCO biomass burning inventory was used as input for CO emissions and emission coefficients for all other gas species required by the CMAQ model were calculated through the application of Equation 1 using EC_{CO}^b values. These emission coefficients were then multiplied by hourly mean SEVIRI FRP to generate all the fire-emitted gas and particulate species emissions required as input in the model. Aerosol species emissions were generated through an analogous application of the updated FREM EC_{TSPM}^b emission coefficients of Nguyen & Wooster (2020) (see [Appendix B](#)).

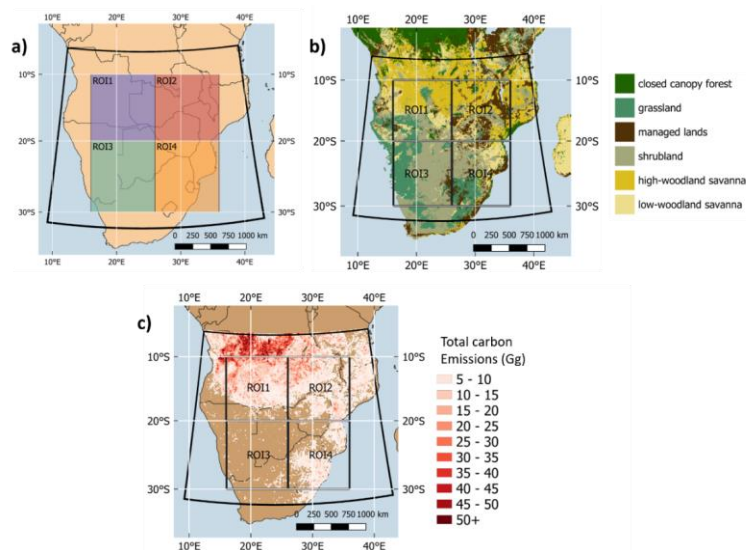
The CMAQ model produces a TCCO output (mol.m⁻²) that could be compared to Sentinel-5P TCCO (mol.m⁻²) measurement data from June to August 2019. None of the S5P observations used in this comparison were those deployed in the EC_{CO}^b derivation of Section 2.3. Prior to the intercomparison, both model and measurement datasets were converted to units of g.m⁻² via multiplication by the molecular mass of CO. S5P acquisitions over the model domain occur daily between 12:00 and

460 14:00 UTC, and the resulting TCCO retrievals were combined and compared with the mean CMAQ TCCO output from the
 same two-hour period. Both modelled and observed TCCO were mapped to a 0.1° grid and their degree of agreement quantified
 using the Pearson's correlation coefficient (r) and the normalised mean bias function (NMBF) described by (Yu et al., 2006).
 The NMBF has been specifically developed for comparing modelled and observed air pollutant concentrations, and it reduces
 the inflation in bias that may be caused by low values of the observed quantities (see Yu et al., 2006). NMBF is defined as:

465

$$NMBF = \frac{(\sum M - \sum O)}{|\sum M - \sum O|} \cdot \left[\exp\left(\left| \ln \frac{\sum M}{\sum O} \right|\right) - 1 \right] \quad [2]$$

where M and O are the modelled and observed TCCO. As defined above, a positive NMBF indicates an overestimation of the
 model by a factor of $1 + NMBF$, while a negative NMBF indicates that the model underestimates observations by a factor of
 470 $(1 - NMBF)$. Hence, a NMBF value of 0.10 is a 10% overestimation by the model, and -0.10 a 10% underestimation.



475 **Figure 8.** Southern hemisphere Africa (SHAF) model domain in WRF-CMAQ, fed with the FREM-derived landscape fire CO emissions inventory developed herein. Boxes indicate four smaller regions of interest (ROIs) used in comparisons of model output to satellite-derived CO observations. (a) Domain and ROIs, (b) spatial distribution of the six fire-affected biomes defined herein, and (c) spatial distribution of fire emitted total carbon released between 15th July and 29th August as estimated from the FREMs_bCO emissions inventory, calculated through the application of Equation 1 to obtain DMC and then carbon fraction. This FREMs_bCO inventory is used as input to the CMAQ model.

4.2 Evaluation Results

480 Mapped mean monthly TCCO ($\text{g}\cdot\text{m}^{-2}$) from the CMAQ model and S5P TCCO observations are shown in [Figure 9](#)~~Figure-9~~,
along with their percentage difference. In general, their spatial distribution agrees well - with the highest TCCO values in the
northwest of the domain – which is the area with greatest fire activity ([Figure 8](#)~~Figure-8c~~). The magnitude of TCCO over this
region in the CMAQ model output is however higher than that of the S5P observations, by around 50% in some areas in June
and July. Across the majority of the rest of the domain however, modelled TCCO is between 1% and 30% lower than observed
485 TCCO. An improved agreement is seen in August, with the degree of over and underestimation of CMAQ compared to S5P
generally reduced.

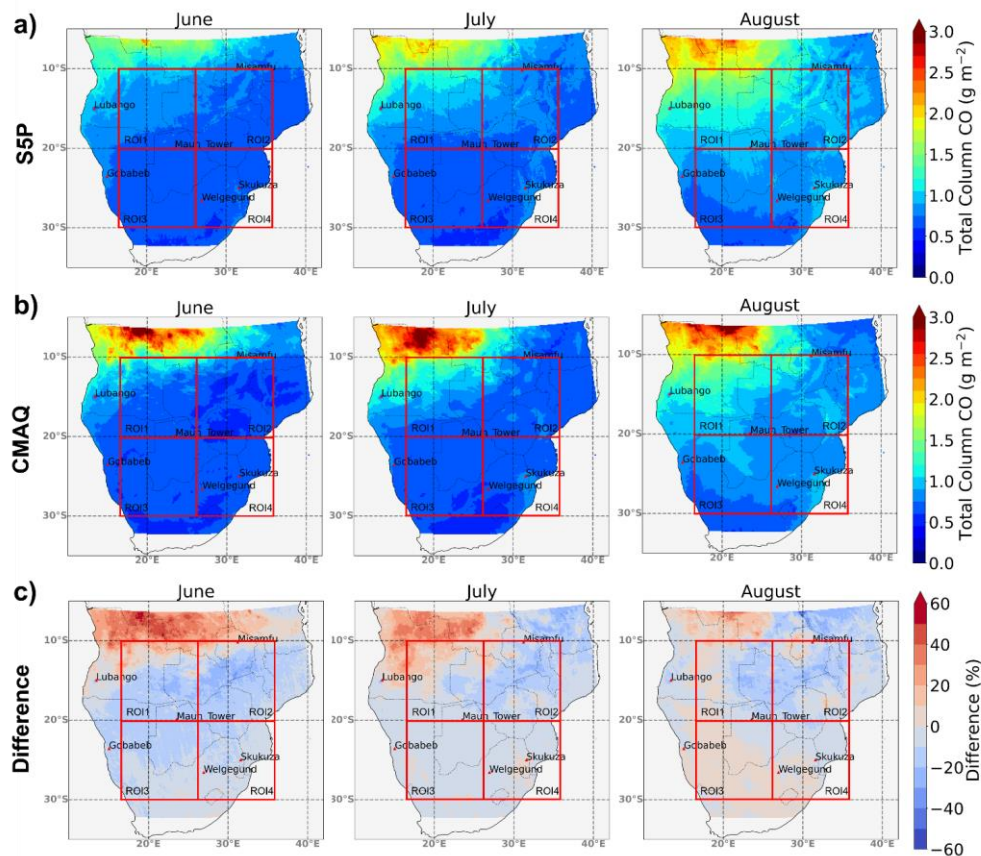
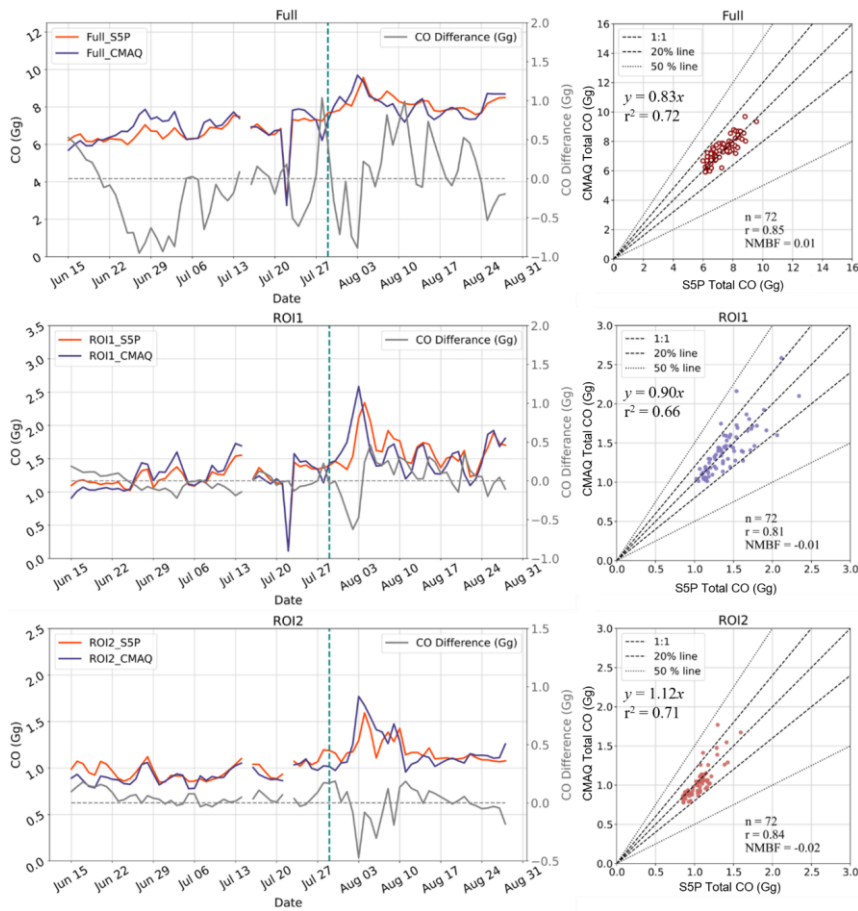


Figure 9. Mapped mean monthly total column carbon monoxide (TCCO) between 15th June and 29th August 2019, as determined by (a) S5P observations typically observed between 12:00 and 14:00 UTC and (b) CMAQ averaged model TCCO output between 12:00 and 14:00 UTC, the model is fed with the FREMs_bCO emissions inventory developed herein. Their percentage difference is shown in (c).

Area-aggregated CO totals (Gg) were calculated by multiplying both CMAQ and S5P TCCO by their $0.1^\circ \times 0.1^\circ$ grid cell areas to obtain a daily summed total CO timeseries (between 12:00 and 14:00 UTC) for the full domain extent and within ROI1 and ROI2 (labelled in Figure 8). These are shown in Figure 10, along with direct comparisons of these daily area-aggregated estimates. These CO totals show that temporal patterns observed by S5P are well replicated by the

CMAQ modelling driven by the FREM-derived CO emissions. This indicates that (i) temporal trends in active fires are being well captured in the SEVIRI FRP-PIXEL product and (ii) the meteorological fields of WRF, particularly wind, are representing the real conditions sufficiently well. In direct comparisons between daily area-aggregated total CO across the four ROIs ([Table 4Table 44](#)), ROI1 shows the best agreement between model and observations (NMBF = -0.01; a 1% underestimation by CMAQ compared to S5P). Daily total-area CO for each ROI in each month of the CMAQ simulation period are summarised in [Table 4Table 44](#), along with statistics for the comparisons made within each region and month. In the three other ROIs, NMBF lies between -0.02 and -0.09 for direct CMAQ-S5P comparisons, and both the full domain and all ROIs show a strong correlation between modelled and observed CO (all $r \geq 0.81$).

500



505

Figure 10. Results from the comparison of modelled (CMAQ) and observed (S5P) Area-aggregated Total CO within the full domain and two of the regions of interest (ROI) defined in Figure 8. (right-hand column) time series of daily Area-aggregated total CO over the full domain and the two ROIs as determined by CMAQ and S5P, with their difference represented by the solid grey line and the vertical dotted line at 29th July indicating the start of the second simulation (see main text). (left-hand column). Scatterplot comparing the daily Total CO in the right hand column plots from CMAQ and S5P. The Pearson's correlation and NMBF of the dataset are shown, along with dotted lines indicating the 1:1, $\pm 20\%$ and $\pm 50\%$ relationships. The NMBF of 0.04 indicates a mean 4% overestimation by the model compared to the observations. Results from the comparisons plotted here are summarised

510

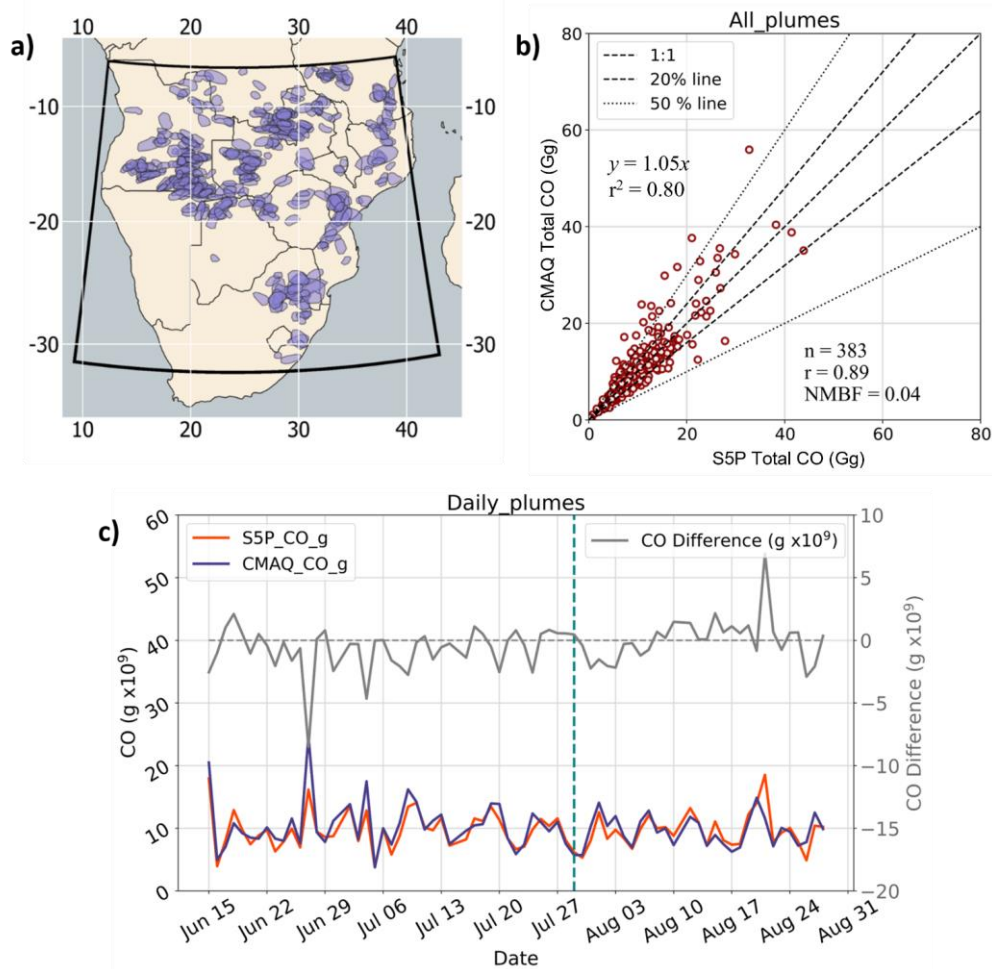
Table 4. Monthly mean summed TCCO (Gg), as derived across the SHAF domain of Figure 8 from S5P observations and from the CMAQ model output fed with the FREMs_bCO CO emissions. The same values for the four regions of interest (ROI) indicated in Figure 8 are also shown, along with the NMBF and Pearson's correlation coefficient metrics. An NMBF of e.g. 0.05 indicates a mean 5% overestimation of the modelled values compared to the observations.

515

	CMAQ Mean CO (Gg)	S5P Mean CO (Gg)	NMBF	Pearson's Correlation coefficient
Full Domain				
June	6.70	6.39	0.05	0.69
July	7.21	7.01	0.03	0.75
August	8.12	8.24	-0.01	0.70
All	7.44	7.35	0.01	0.85
ROI1				
June	1.14	1.16	-0.01	0.79
July	1.36	1.31	0.04	0.83
August	1.59	1.65	-0.04	0.67
All	1.40	1.41	-0.01	0.81
ROI2				
June	0.89	0.97	-0.09	0.72
July	0.95	0.99	-0.04	0.83
August	1.21	1.19	0.02	0.72
All	1.04	1.06	-0.02	0.84
ROI3				
June	0.88	0.97	-0.10	0.88
July	1.02	1.11	-0.09	0.89
August	1.24	1.33	-0.08	0.61
All	1.07	1.16	-0.09	0.77
ROI4				
June	0.73	0.78	-0.08	0.84
July	0.80	0.82	-0.04	0.85
August	0.92	0.94	-0.02	0.87
All	0.83	0.86	-0.03	0.90

CMAQ-modelled and S5P-observed area-aggregated total CO were also compared for individual smoke plumes. A total of 383 plumes (see [Figure 11](#)[Figure 11a](#)) were manually identified through visual inspection of the S5P TCCO product between 15th July and 29th August 2019 and defined using polygons which were then matched to the CMAQ model output at 0.1° resolution. In some cases the spatial distribution of individual plumes in the S5P TCCO product and the CMAQ TCCO output differed slightly – mainly due to differences in the modelled wind direction/speed and the real wind fields. Therefore, a 0.1° buffer was added around each validation plumes’ polygon to account for these variations. In the region of highest fire activity (in the north-west region of the model domain) relatively few CO plumes were identified, since the S5P TCCO [measures values](#) were consistently high across this region and individual plumes could not be easily distinguished in the S5P TCCO product. For all identified plumes, in-plume total CO was calculated for both model and observation, again by multiplying TCCO pixels ($\text{g}\cdot\text{m}^{-2}$) by their grid cell areas and summing these within the bounding polygon containing the plume.

[Figure 11](#)[Figure 11b](#) shows the relationship derived between the CMAQ-modelled and S5P-observed in-plume CO. Compared to daily Area-aggregated total CO over the full domain ([Figure 10](#)[Figure 10](#); NMBF = 0.01), in-plume NMBF is slightly higher at 0.04, i.e. a 4% overestimation of the modelled data compared to the observations, while the Pearson’s correlation increases from 0.85 to 0.89. The slope of the line-of-best fit for this data is 1.05 with an r^2 of 0.80. [Figure 11](#)[Figure 11b](#) shows that the plumes with the highest total CO values (in both the S5P product and in the CMAQ model) also tend to have a higher total CO in CMAQ than in S5P. This is less true for plumes with a total CO below 20 Mg - indicating that the appropriateness of the small fire correction applied, unsurprisingly, depends on the size of the fire i.e. – the FRP contribution from small fires undetected in the SEVIRI product. The time-series of daily mean in-plume CO ([Figure 11](#)[Figure 11c](#)) shows that the difference between these measures does not vary significantly by month.



540

Figure 11. Evaluation of FREM-derived CO emissions based on WRF-CMAQ modelling. (a) Model domain and the bounding polygons of 383 plumes identified in the S5P TCCO product between 15th June and 29th August 2019 used in the evaluation. (b) Relationship between modelled and observed total in-plume CO (for the individual smoke plumes identified in (a)). The Pearson's correlation and NMBF of the dataset are shown, along with dotted lines indicating the 1:1, $\pm 20\%$ and $\pm 50\%$ relationships. The NMBF of 0.04 indicates a 4% mean overestimation by the model compared to the observations. (c) Summed total CO from all plumes observed on each day of the simulation as determined by CMAQ (purple) and S5P (red), with their difference represented by the grey line (right hand side y-axis). The vertical dotted line on 29th July indicates the start of the second simulation period (see main text).

545

550 5 Summary and Conclusions

We have presented significant developments to the ‘Fire Radiative Energy Emissions’ (FREM) landscape fire emissions methodology of Mota and Wooster (2018) and Nguyen and Wooster (2020), namely the extension to directly relate CO emission rates to FRP observations using an emissions coefficient [EC_{CO}^b] derived from satellite total column CO (TCCO) observations and FRE ~~measures~~observations. Using 277 matchup fires distributed across northern and southern hemisphere Africa, we have generated EC_{CO}^b values [$g.MJ^{-1}$] for five fire-affected biomes which directly link emission rates of CO ($g.s^{-1}$) to FRP (MW). We have applied these coefficients to the geostationary FRP dataset of African landscape fires from 2004 to 2019 to generate the highest spatio-temporal resolution African CO fire emissions inventory currently available. We find our CO emissions totals to be similar to those of the most recent version of the ‘bottom-up’ Global Fire Emissions Database (GFEDv4.1s; van der Werf et al., 2017), particularly across SHAF where they are almost identical in magnitude, though featuring a slightly earlier peak in monthly CO emissions coming from FREM compared to GFED.

Since direct validation of large-scale fire emissions estimates remains unfeasible, we have conducted an evaluation of the FREM-derived CO emissions via their use within the WRF-CMAQ atmospheric chemical transport model across a southern African domain. The generated regional-scale total column CO (TCCO) ~~measures~~observations are then compared to independent TCCO observations coming from Sentinel-5P TROPOMI. Results of this evaluation indicate very good agreement between the modelled and observed TCCO values in general, and area-aggregated total CO comparisons show a bias of 0.01 and 0.04 (1% and 4% mean overestimation by the model compared to observations) over the full model domain and over individual fire plumes respectively. TCCO emissions are overestimated to a greater extent (by up to around 50%) in the north-west region of the domain where high fire activity is observed, and where CO from fires outside the domain may be being transported into the model domain. The slope of a linear best fit relationship between S5P total CO and CMAQ total CO within individual fire-generated plumes was 1.05 with an r^2 of 0.80. In comparison to the ~30% average difference observed between GFEDv3 CO emissions and MOPITT CO observations (Pechony et al., 2013) the results of the evaluation herein show good agreement and are well within the range of biases observed in similar evaluations of other fire emissions inventories (Chevallier et al., 2009; Ichoku and Ellison, 2014; Kaiser et al., 2012; Kopacz et al., 2010; Reddington et al., 2016). The FREM-derived CO emissions produced were used to calculate estimates of Dry Matter Consumed (DMC) and DMC per unit burned area for 2019. The former through use of CO emission factors and the latter through an inversion of the approach of Seiler and Crutzen (1980) in which BA data came from the Sentinel-2 20 m FireCCISFD product of (Roteta et al., 2019). DMC measures produced via FREM-derived CO emissions introduce less uncertainty than those produced from the FREM-TPM emissions of Nguyen and Wooster (2020) (updated in [Appendix B](#)Appendix B) due to CO emission factors being less variable than TPM emission factors in general, especially from fires in tropical forests and cultivated land (Akagi et al., 2011; Andreae, 2019).

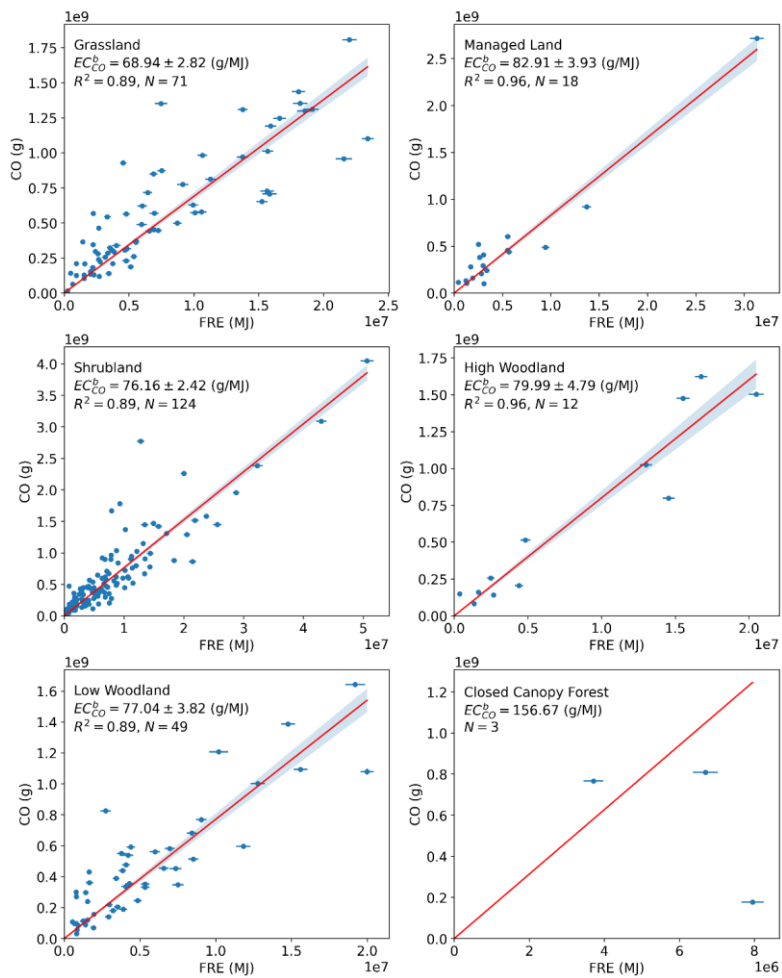
Future developments to the approach developed herein will include its application to FRP data from other geostationary satellites, for example those from Himawari (Xu et al., 2017), Meteosat Indian Ocean and GOES (Xu et al., 2010). Emissions of other gases can be derived from the ratio of their emissions factors to those of CO, and this overall approach forms the basis of a new fire emissions product to be delivered by the EUMETSAT Land Surface Analysis Satellite Application Facility (<http://landsaf.meteo.pt>).

6 Appendices

6.1 Appendix A

In the work of Borsdorff et al. (2019) a Fixed Mask De-striping (FMD) method is proposed to correct for the striping pattern observed in the operational OFFL S5P TCCO product. This same ‘corrected’ TCCO is now included as an auxiliary dataset in the operational S5P OFFL CO product (from July 2021). For S5P data prior to this date it is possible to re-create this FMD method and apply it retrospectively to S5P data. We chose not to apply this correction based on our understanding of the FMD method and the ‘validation’ carried out by Borsdorff et al. (2019), along with observations from our own tests of the impact of the de-striping on smoke plumes. Primarily, it is currently unclear whether the FMD method is appropriate in areas where very strong spatial CO gradients exist (i.e. within smoke plumes). The evaluation of the FMD method carried out by Borsdorff et al. (2019) involves comparisons of daily averaged de-striped S5P TCCO values against a TCCO measurement made by one of the Total Column Carbon Observation Network (TCCON) ground stations. Whilst the TCCON station was a single point observation, the S5P data were averaged over a collocation radius of 50 km and typically the CO values varied rather mildly across this 50 km region. This is not the case for our fire-generated smoke plumes where changes from ‘background’ to ‘high’ column CO occur across very small spatial scales. Further, no TCCON sites exist in Africa so any evaluation carried out could not have been geographically appropriate to our dataset. We therefore chose not to apply the FMD to our S5P TCCO data used in EC_{CO}^b derivation until more quantitative evidence of its appropriateness to such high CO gradient regions is published. For completeness however, we have calculated a set of ‘FMD applied’ EC_{CO}^b values for comparison, these were generated from the same S5P dataset used in the main EC_{CO}^b derivation of this work, but with the FMD applied. These are shown in Figure A1 and detailed in Table A1. The percentage difference between the EC_{CO}^b values generated from S5P data ‘with’ and ‘without’ the FMD applied is also listed.

S5P TCCO with FMD destripe



615 **Figure AB1.** CO Emissions coefficients [EC_{CO}^b] derived with FMD applied to the S5P TCCO data.

620 The S5P TCCO product is accompanied by a q_a value for each TCCO pixel which indicates the presence or absence of cloud in the total column of air that pixel covers. The q_a value assigned determines which averaging kernel is applied in the S5P TROPOMI retrieval of TCCO - i.e. the retrieval's sensitivity to CO at different levels of the atmosphere. A discussion of the vertical averaging kernels used in the TROPOMI TCCO algorithm can be found in Borsdorff et al. (2014). It can be seen in that work that at the typical altitudes at which the large smoke plumes from the types of fires used in our matchup process are observed (typically 800 m to 4000 m altitude), the weighting of the averaging kernel applied to pixels containing mid-level cloud (i.e. pixels with q_a values > 0.5 but < 1.0) differs by no more than 0.1 from the weighting of the averaging kernel applied to clear-sky pixels. In fact, of all altitudes, the sensitivity to TCCO is closest between pixels with q_a values > 0.5 & < 1.0 , and pixels with q_a value = 1.0 at the altitudes which the bulk of a fire's smoke plume is likely to be observed at after several hours of burning (approximately 1500-2000 m). We therefore hypothesise that a restriction on q_a values would have minimal impact on TCCO retrievals in our dataset, particularly as two higher resolution datasets were already used to remove cloud affected plumes (the FRP-PIXEL Quality Product and VIIRS visible imagery; 3 km and 750 m at nadir respectively). Similarly to the validation of the FMD procedure described above, S5P CO q_a values were evaluated using the TCCON ground-based solar FTIR monitoring networks, with this conducted by averaging the S5P CO product over 50 km² areas around each ground measurement site and comparing the TCCO values Borsdorff et al. (2014). None of these sites were located in Africa, and the validation was based on large area averaging of ambient-type total column CO data from clear-sky conditions (Borsdorff et al., 2014). Our matchup dataset features TCCO observations over far smaller areas with extremely elevated CO and strong spatial CO gradients. The application of the q_a values applied in Borsdorff et al. (2014) is therefore unlikely to be fully representative of our application, and we hence treat the q_a values assigned in the S5P data with caution and choose not to apply a q_a value threshold to the S5P data used to derive the EC_{CO}^b values of the main work. We have, however, calculated a set of EC_{CO}^b values from S5P data to which a q_a value > 0.5 threshold was applied and these are shown in Figure A2. These values are summarised in Table A1 along with the EC_{CO}^b values derived when the previously discussed Fixed Mask De-striping (FMD) is applied, and the respective percentage difference between these and the EC_{CO}^b values presented in the main text. The q_a values > 0.5 thresholding results in an average EC_{CO}^b value difference of only 2.4% across all five biomes (maximum difference is 5.9%) demonstrating that the impact of the mid-level cloud on the retrieval of TCCO in our study is rather minimal and well within the uncertainty bounds of the EC_{CO}^b values.

Formatted: Indent: Left: 0 cm, Space Before: 0 pt, After: 0 pt, Line spacing: 1.5 lines, Don't keep with next

Formatted

Formatted

Formatted

Formatted: Font color: Auto, Pattern: Clear

Formatted: Font color: Auto, Pattern: Clear

Formatted: Font: Times New Roman, 10 pt, Font color: Auto, Pattern: Clear

Formatted: Font: Times New Roman, 10 pt, Font color: Auto, Pattern: Clear

Formatted: Font: Times New Roman, 10 pt, Font color: Auto, Pattern: Clear

Formatted: Font: Times New Roman, 10 pt, Font color: Auto, Pattern: Clear

Formatted: Font: Times New Roman, 10 pt, Font color: Auto, Pattern: Clear

Formatted: Font: Times New Roman, 10 pt, Font color: Auto, Pattern: Clear

Formatted: Font: Times New Roman, 10 pt, Font color: Auto, Pattern: Clear

Formatted: Font: Times New Roman, 10 pt, Font color: Auto, Pattern: Clear

Formatted: Font: Times New Roman, 10 pt, Font color: Auto, Pattern: Clear

Formatted: Font: Times New Roman, 10 pt, Font color: Auto, Pattern: Clear

Formatted: Font: Times New Roman, 10 pt, Font color: Auto, Pattern: Clear

Formatted: Font: Times New Roman, 10 pt, Font color: Auto, Pattern: Clear

Formatted: Font: Times New Roman, 10 pt, Font color: Auto, Pattern: Clear

Formatted: Font: Times New Roman, 10 pt, Font color: Auto, Pattern: Clear

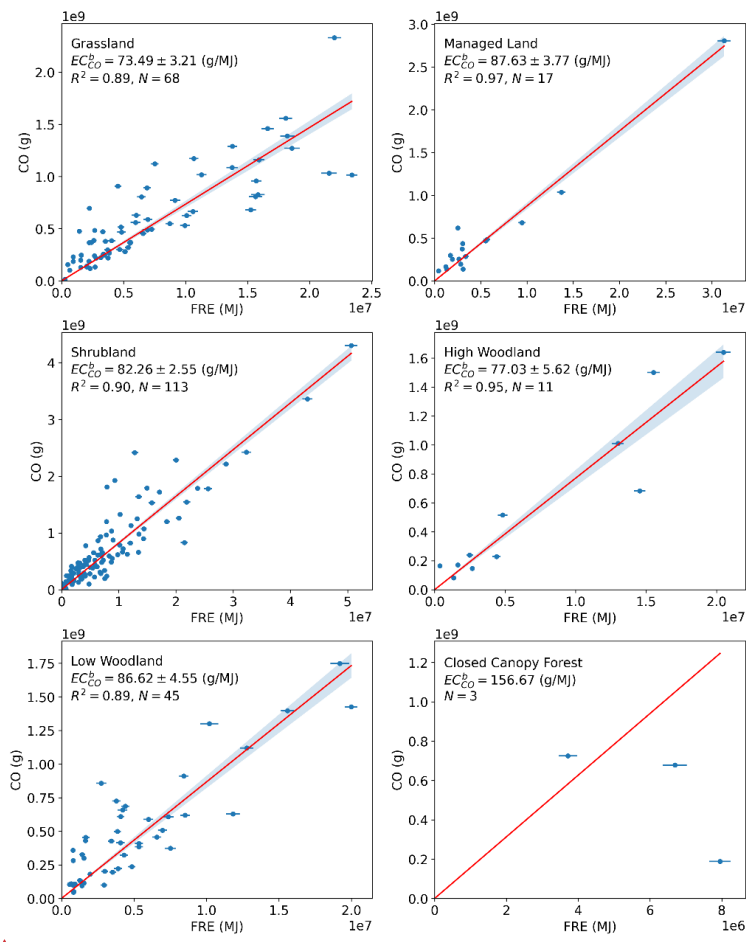


Figure A2. CO Emissions coefficients [EC_{CO}^b] derived with a qa value > 0.5 threshold applied to the S5P TCCO data.

645

Formatted: Check spelling and grammar, Pattern: Clear

Formatted: Centered

Formatted: Normal, Centered

Formatted: Normal

Formatted: Indent: Left: 0 cm, Space Before: 0 pt, After: 0 pt, Line spacing: 1.5 lines

650

Table A1: Comparison of smoke emission coefficients generated from standard SSP data (which has neither with and without the FMD procedure applied or a qa value threshold of > 0.5 applied) and those generated from SSP with both these adjustments applied. Percentage differences between the standard SSP data and these two variants of the SSP data are also detailed.

	SSP-without -FMD-applied	SSP-with FMD-applied	Percentage difference (%)
Grassland	75.51	68.94	-8.7
Shrubland	81.07	76.16	-6.1
Managed land	88.35	82.91	-6.2
High woodland savanna	81.85	79.99	-2.3
Low woodland savanna	85.49	77.04	-9.9

Formatted: Caption, Indent: Left: 0 cm, Space Before: 0 pt, After: 0 pt

	<i>SSP without FMD applied & including all qa values</i>	<i>SSP with FMD applied</i>	<i>Percentage difference (%)</i>	<i>SSP excluding qa value < 0.5</i>	<i>Percentage difference (%)</i>
<u>Grassland</u>	<u>75.51</u>	<u>68.94</u>	<u>-8.7</u>	<u>73.49</u>	<u>2.7</u>
<u>Shrubland</u>	<u>81.07</u>	<u>76.16</u>	<u>-6.1</u>	<u>82.26</u>	<u>-1.5</u>
<u>Managed land</u>	<u>88.35</u>	<u>82.91</u>	<u>-6.2</u>	<u>87.63</u>	<u>0.8</u>
<u>High-woodland savanna</u>	<u>81.85</u>	<u>79.99</u>	<u>-2.3</u>	<u>77.03</u>	<u>5.9</u>
<u>Low-woodland savanna</u>	<u>85.49</u>	<u>77.04</u>	<u>-9.9</u>	<u>86.62</u>	<u>-1.3</u>

Formatted: Font: (Default) +Body (Times New Roman)

Formatted: Font: (Default) +Body (Times New Roman), 1

Formatted Table

Formatted: Font: (Default) +Body (Times New Roman), 1

Formatted: Font: (Default) +Body (Times New Roman)

Formatted: Font: (Default) +Body (Times New Roman), 1

Formatted: Font: (Default) +Body (Times New Roman)

Formatted: Font: (Default) +Body (Times New Roman)

Formatted: Font: (Default) +Body (Times New Roman), 1

Formatted: Font: (Default) +Body (Times New Roman)

Formatted: Font: (Default) +Body (Times New Roman)

Formatted: Font: (Default) +Body (Times New Roman), 1

Formatted: Font: (Default) +Body (Times New Roman)

Formatted: Font: (Default) +Body (Times New Roman)

Formatted: Font: (Default) +Body (Times New Roman)

Formatted: Font: (Default) +Body (Times New Roman), 1

Formatted: Font: (Default) +Body (Times New Roman)

Formatted: Font: (Default) +Body (Times New Roman)

Formatted: Font: (Default) +Body (Times New Roman), 1

655

6.2 Appendix B

To maintain a consistent methodology between the FREM CO-based fire emissions inventory described in this work and the TPM-based version described in Nguyen and Wooster (2020) which was derived using Orthogonal Distance Regression

660 (ODR), the OLS regression approach used herein was re-applied to the fire-plume match-up dataset of Nguyen and Wooster (2020). Updated FREM TPM-based fire emissions coefficients [C_e^{TPM}] were generated from the nearly 1000 sample fires detailed in Nguyen and Wooster (2020). Each matchup consisted of a set of SEVIRI FRP-PIXEL product AF pixels for the target fire, along with the 1 km MCD19A1 MAIAC AOD product for that fire (see Nguyen and Wooster (2020) for details). Figure B1 shows the updated TPM emissions coefficients [C_e^{TPM}] for each of the six biomes defined herein, and these are
665 summarised in Table B1Table (Col 1) along with the previous ODR-derived values of Nguyen & Wooster (2020; Col 2) and various other forms of the same coefficients.

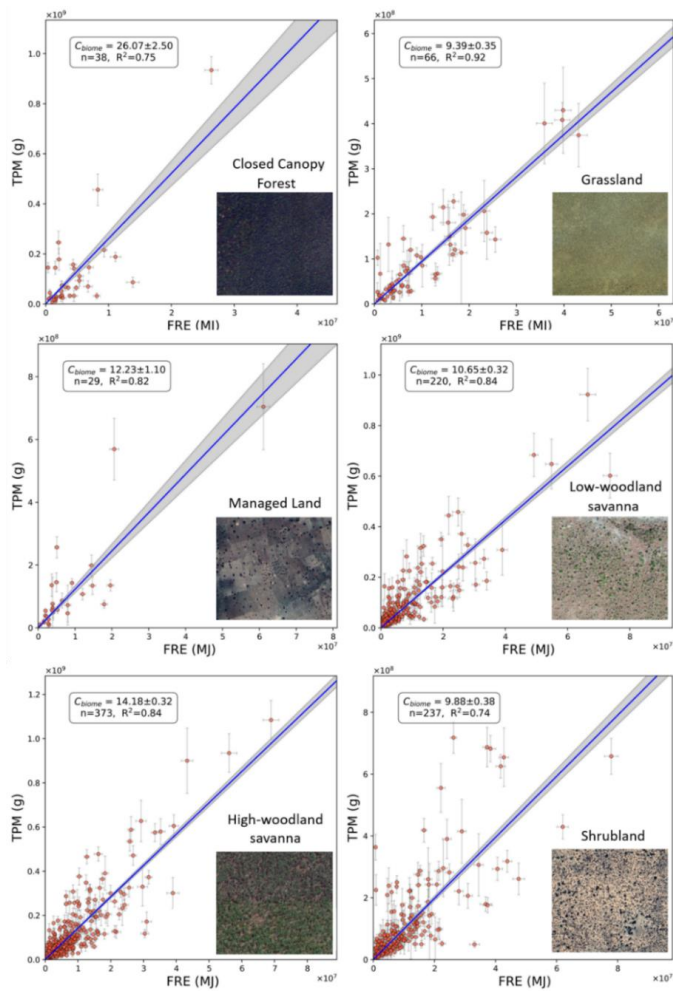


Figure B1. TPM Smoke emission coefficients (C_{slope}^{TPM} ; in g.MJ⁻¹) for the six African fire-affected biomes defined in the main manuscript, each derived from the slope of an ordinary least-squares (OLS) regression between data of fire-emitted total particulate matter (TPM) and matching fire radiative energy (FRE). The grey shaded area defines the 95% probability prediction interval of the OLS-derived slope. Each scatterplot is accompanied by an illustrative insert that depicts the typical landcover for the biome as seen in ©Google Earth (example locations are Closed Canopy Forest 10.359° S, 19.086° E; Grassland 21.180° S, 19.560° E; Managed Land 10.495° N, 7.586° E; Low-Woodland Savanna 7.085° N, 27.095° E, High-Woodland Savanna 12.523° S, 23.323° E and Shrubland 23.055° N, 22.242° E).

670

675 **Table B1. TPM emission coefficients from previous FREM versions and updates (in units of g.MJ⁻¹)**

	FREM C_e^{TPM} (OLS updated)	FREM C_e^{TPM} (ODR; Nguyen and Wooster, 2020)	FREM C_e^{TPM} (Mota & Wooster, 2018)	FREM C_e^{TPM} (from C_e^{CO} of Figure 2 and Equ 1)	FEER- Equivalent (see Nguyen and Wooster, 2020)
Closed canopy Forest	26.07	34.33	65.63	16.43	16.34
Managed land	12.23	13.98	15.62	15.00	15.80
Grassland	9.39	9.99	13.03	9.52	10.98
Shrubland	9.88	12.17	17.36	10.22	10.97
Low-woodland savanna	10.65	12.10	19.75	10.78	12.78
High-woodland savanna	14.18	16.43	19.75	10.32	13.81

Formatted: Font: (Default) +Body (Times New Roman)

Table B2. Results detailing the statistical significance of the EC_{TPM}^b values of each biome pair. P-values below 0.05 are coloured green, those below 0.15 are coloured yellow, while any biome pair with p-values about 0.15 are coloured red.

Biome 1	Biome 2	p-value	t-value
grassland	managed land	0.02	2.46
grassland	shrubland	0.34	0.95
grassland	high woodland savanna	0.00	10.10
grassland	low woodland savanna	0.01	2.66
grassland	closed canopy forest	0.00	6.61
managed land	shrubland	0.04	2.02
managed land	high woodland savanna	0.09	1.70
managed land	low woodland savanna	0.17	1.38
managed land	closed canopy forest	0.00	5.06
shrubland	high woodland savanna	0.00	8.66
shrubland	low woodland savanna	0.12	1.54
shrubland	closed canopy forest	0.04	2.01
high woodland savanna	low woodland savanna	0.00	7.80
high woodland savanna	closed canopy forest	0.00	8.65
low woodland savanna	closed canopy forest	0.00	6.11

680

6.3 Appendix C

Table C1. Summary of WRF-CMAQ model configuration

General features	
Domain extent	10°E - 44 °E, 5°S -32°S
Modelled time period	15 th June to 28 th July, and 29 st July to 29 st Aug 2019
Resolution	9 km × 9 km, 35 vertical levels (top layer at 5 kPa)
WRF configuration	
cloud microphysics	Lin et al.
radiation (shortwave)	Goddard
radiation (longwave)	Rapid Radiative Transfer Model (RRTM)
boundary layer physics	Mellor-Yamada-Janic (MYJ)
land surface processes	Noah LSM
cumulus convection	Grell 3-D
CMAQ configuration	
Chemistry mechanism	CB6r3
aerosol module	AERO7
Dust emissions	inline
Biogenic emissions	inline BEIS3
Initial and boundary conditions	
Metrology	NCEP FNL, 0.25° × 0.25°, 26 levels, 6 hour
Chemistry	WACCM, 0.9° × 1.25°, 88 levels, 3 hour

685

6.4 Appendix D

The updated TPM emissions coefficients [C_e^{TPM}] calculated in [Appendix BAppendix-B](#) (with the exception of the closed canopy forest value) were used to derive an emission inventory for aerosols that was then used as an input to a WRF-CMAQ simulation. These same simulations used gaseous emissions generated from the FREMs_bCO emissions coefficients described in the main article as input. To evaluate the TPM emissions values, the AOD fields produced by these CMAQ simulations were compared with independent ground based and satellite-based AOD metrics. The WRF-CMAQ model set-up and configuration are described in [Appendix CAppendix-C](#) and in the main article, while the results of the FREM-TPM emissions estimates evaluation are presented in here.

690

695 AERONET is a global network of ground-based sun photometers that provides retrievals of aerosol optical properties, including Angström exponent, aerosol refractive index, and aerosol optical depth (AOD) at different wavelengths (Holben et al., 2001). Data from AERONET sites within the CMAQ model domain were used in comparisons with CMAQ-generated AOD fields (at 381nm). The AERONET sites used were: Maun Tower (19.9°S, 23.55°E), Lubango (15.0°S, 13.4°E), Misamfu (10.2°S, 31.2°E), Gobabeb (23.6°S, 15.0°E), Welgegund (26.6°S, 26.9°E) and Skukuza (35.0°S, 31.6°E). AERONET AOD data is available for the full simulation period from each of these sites, with the exception of Misamfu and Welgegund that have data available from 15th June until 29th July and 13th August respectively. AERONET AOD observations at 380 nm are used in comparisons to WRF-CMAQ modelled AOD at 381 nm.

Figure D1 shows hourly mean AOD, averaged across all six AERONET sites, as determined by CMAQ and by the AERONET measurements. CMAQ AOD captures the temporal pattern of AOD rather well across these six sites, but in general tends to show higher values than the ground-based measures. Hourly modelled and observed AOD were compared in terms of their Pearson's correlation (r) and NMBF in each month as well as over the full simulation period, and these results are summarised in Table D1 along with monthly mean AOD for CMAQ and AERONET at each site. NMBF over the full simulation period at the six AERONET sites ranges between a 4% underestimation and 41% overestimation by CMAQ relative to AERONET, and the Pearson's correlation coefficient ranges between 0.36 and 0.72.

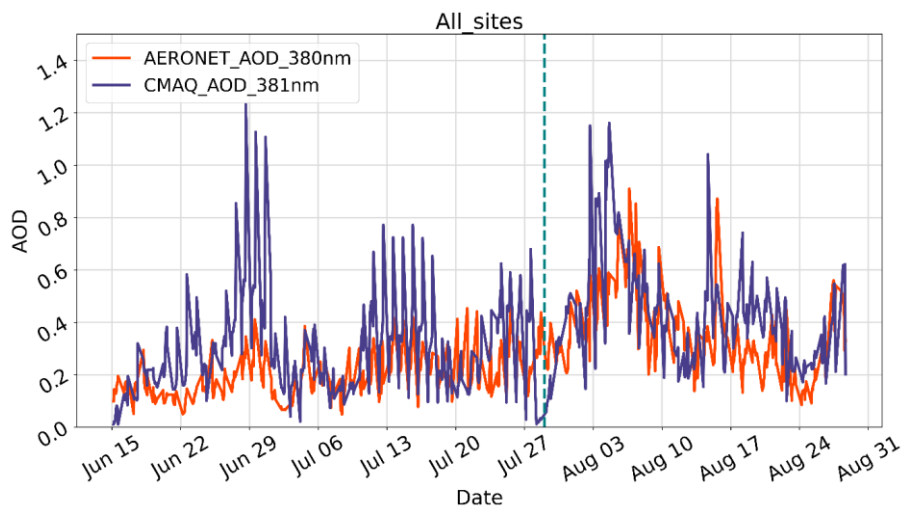


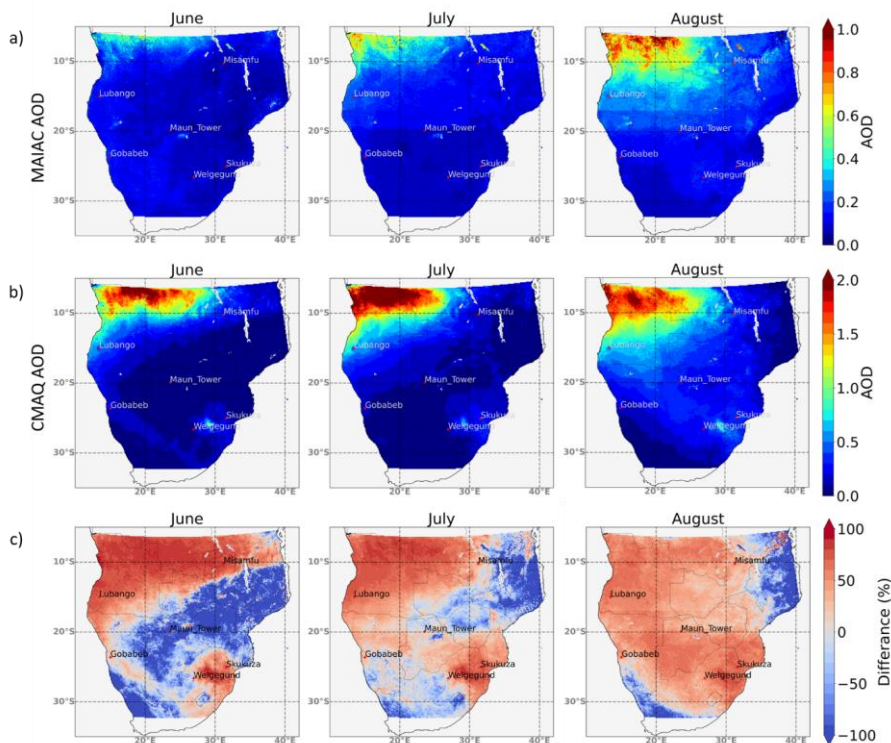
Figure D1. Hourly AOD averaged over all six AERONET sites, both from the CMAQ simulations and AERONET observations. A vertical dotted line on 29th July indicates the start of the second simulation.

715 **Table D1. Monthly mean of hourly CMAQ and AERONET AOD, the NMBF of hourly CMAQ AOD with respect to observations and the temporal Pearson's correlation coefficient of hourly AOD over each month and the whole modelled period (15th June to 29th August 2019).**

	Month	CMAQ Mean	AERONET Mean	NMBF	Pearson's Correlation (r)
Lubango	June	0.52	0.26	1.00	0.71
	July	0.68	0.49	0.65	0.70
	August	0.66	0.56	0.16	0.42
	All	0.64	0.45	0.41	0.50
Misamfu	June	0.41	0.13	2.08	0.72
	July	0.20	0.22	-0.70	0.16
	All	0.27	0.19	0.47	0.13
Gobabeb	June	0.22	0.17	0.34	0.75
	July	0.20	0.25	-0.30	0.60
	August	0.21	0.24	-0.11	0.13
	All	0.21	0.22	-0.03	0.45
Maun Tower	June	0.06	0.10	-0.55	0.57
	July	0.12	0.12	-0.04	0.69
	August	0.40	0.39	0.05	0.61
	All	0.21	0.22	0.00	0.72
Welgegund	June	0.13	0.12	0.10	0.57
	July	0.13	0.11	0.31	0.50
	August	0.52	0.45	0.14	0.29
	All	0.21	0.18	0.21	0.66
Skukuza	June	0.27	0.21	0.26	0.53
	July	0.36	0.25	0.43	0.19
	August	0.43	0.40	0.08	0.41
	All	0.37	0.29	0.27	0.39
All Sites	June	0.28	0.16	0.78	0.64
	July	0.28	0.22	0.27	0.33
	August	0.44	0.37	0.20	0.53
	All	0.34	0.26	0.31	0.59

In addition to this comparison to ground-based AOD data, CMAQ modelled AOD at 550 nm was compared to the MODIS MAIAC 550 nm 1 km product (Collection 6 MCD19A2; Lyapustin et al., 2018) - the same AOD product used in the derivation of FREMv2 TPM emissions coefficients ([Appendix B](#)~~Appendix B~~ and Nguyen and Wooster (2020)), though a completely different set of days were used in the generation of the matchup dataset. Daytime Aqua and Terra overpasses occurring between approximately 08:00 and 10:00 UTC daily over the CMAQ domain were compared to mean CMAQ AOD between 08:00 and 10:00 at 550 nm. Both modelled and observed AOD were remapped to a $0.1^{\circ} \times 0.1^{\circ}$ grid for ease of comparison.

The spatial distribution of monthly mean AOD in the MAIAC AOD product and CMAQ is shown in Figure C2. Most notable in Figure C2 is the large variation between under and over estimation by modelled AOD compared with MAIAC AOD, as can be seen in the difference plot of C2c. In the north west of the domain, where the highest fire activity occurs (See main article, [Figure 8](#)~~Figure 8~~ c), some areas feature CMAQ AOD that is close to 60% greater than MAIAC AOD, with the highest overestimation occurring in June. While in other regions of the of the domain, CMAQ underestimates observed AOD significantly. In these areas, however, AOD values are already low and hence, this supposed underestimation is not as significant in absolute terms, though it does indicate that - in its base state - the CMAQ model tends to underestimate AOD.



735 **Figure D2.** Mapped mean monthly AOD at 550 nm from a) the MAIAC satellite product and b) CMAQ simulations (note - colour
 740 scale differences between a) and b)) during the simulation period from 15th June to 29th August 2019. c) shows the percentage
 difference between MAIAC and CMAQ AOD

Daily modelled and observed AOD in each ROI (see main article Figure 8a) and in the full domain were used to generate mean
 740 monthly AOD during the simulation period (Table C2) and the NMBF and Pearson's correlation coefficient (r) between
 CMAQ and MAIAC daily AOD were also calculated. The results show that CMAQ AOD, in general, is significantly
 overestimated relative to MAIAC AOD, and this overestimation is greater than for the CMAQ TCCO comparisons to
 Sentinel-5P TCCO shown in the main manuscript (4). Daily mean CMAQ AOD in the domain for the full simulation period
 is 120% higher than MAIAC mean AOD, and when restricted to days in June this increases to 184%. Mean CMAQ AOD in
 745 ROI1 – which includes much of the area with the highest fire activity - shows the largest overestimation, ranging between

105% and 180% depending on the month. Conversely ROI2 and ROI3, in which there is generally lower fire activity, show lower NMBF values ranging from an underestimation of 30% to an overestimation of 77% by CMAQ AOD. The correlation between modelled and observed daily means varies by ROI and by month, but in most cases $r > 0.60$.

750 **Table D2. Monthly means of daily CMAQ and MAIAC AOD, in the full extent of the domain and the ROIs, the NMBF of daily CMAQ AOD with respect to observations and the temporal Pearson's correlation coefficient of daily AOD over each month and the whole modelled period are also included (15th June to 29th August 2019)**

		CMAQ	MAIAC	NMBF	Pearson's
		Mean AOD	Mean AOD		Correlation (r)
Full Domain	June	0.11	0.04	1.84	0.77
	July	0.13	0.05	1.37	0.63
	August	0.15	0.79	0.94	0.21
	All	0.13	0.06	1.2	0.5
ROI1	June	0.26	0.09	1.8	0.9
	July	0.37	0.15	1.42	0.73
	August	0.55	0.27	1.05	0.48
	All	0.41	0.18	1.21	0.64
ROI2	June	0.07	0.09	-0.3	0.44
	July	0.07	0.07	0.06	0.69
	August	0.21	0.11	1	0.63
	All	0.13	0.09	0.42	0.64
ROI3	June	0.07	0.04	0.77	0.8
	July	0.11	0.09	0.16	0.79
	August	0.22	0.16	0.39	0.59
	All	0.14	0.1	0.32	0.73
ROI4	June	0.07	0.05	0.56	0.69
	July	0.11	0.05	0.97	0.46
	August	0.17	0.07	1.41	0.71
	All	0.12	0.06	1.13	0.81

As with the evaluation conducted for the FREM-derived CO emissions (see main article Section 4), comparisons between CMAQ and MAIAC AOD were also conducted for individual smoke plumes identifiable in the MAIAC AOD product. Individual fire emitted plumes were identified in the MAIAC AOD product at its native 1 km spatial resolution. Polygons were used to define plume boundaries, and each plume was matched between modelled and observed AOD data. A 0.1° grid cell buffer was applied to account for variations in the spatial distributions of the plumes. Fire emitted AOD for CMAQ and MAIAC plumes were calculated via the method described in Nguyen & Wooster (2020).

Figure C3 shows the spatial distribution of the 415 individual smoke plumes used in comparisons and the relation between the fire emitted AOD fields of CMAQ and MAIAC for each of these plumes. There is a large spread in the data, and the Pearson's correlation is relatively low at 0.43. The NMBF indicates an overall underestimation of CMAQ AOD compared with MAIAC AOD, by 10%. This is drastically different from the 120% overestimation of daily AOD by CMAQ relative to MAIAC in the full domain comparisons. The impact of model error, and the more extensive spatial variability between the modelled and observed plumes, may significantly contribute to the large differences seen in the comparison made at large scales and those for individual plumes. The true accuracy of the FREM derived emission is likely somewhere in between.

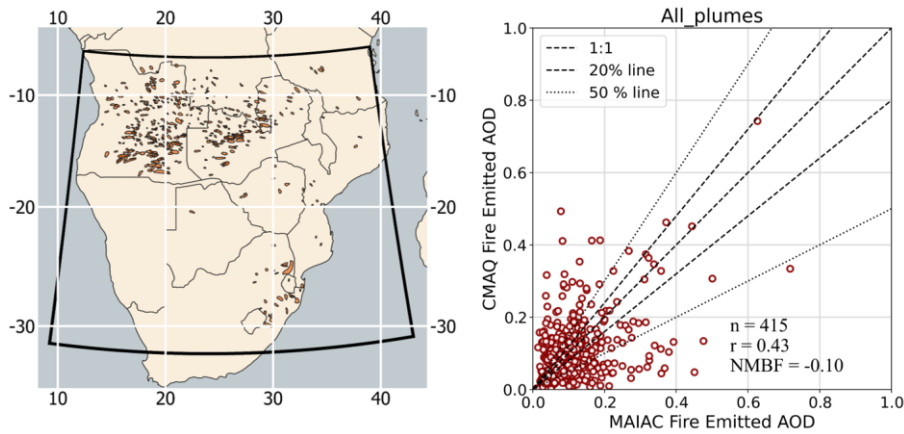


Figure D3. Location of smoke plumes identified in the MAIAC 1 km AOD product between 15th June and 29th August 2019 and the bounding polygons /used to define the area over these plumes (left). Relationship between fire-emitted CMAQ AOD and observed fire-emitted MAIAC AOD in these plumes (right), the Pearson's correlation and NMBF of the dataset is shown along with dotted lines indicating the 1:1, 20% and 50% lines.

7 Code availability

780 Code is available upon request to Hannah Nguyen (hannah.nguyen@kcl.ac.uk)

8 Data Availability

The fire emissions inventory presented will be available from the EUMETSAT Land Surface Analysis Satellite Application Facility (<http://landsaf.meteo.pt>) in the near future. Data can be provided upon request to Hannah Nguyen (hannah.nguyen@kcl.ac.uk) in the interim.

785 9 Author contributions

MW was responsible for conceptualization of methodology, and JP was responsible for the generation of the CO plume match-up dataset and emission coefficients. HN assisted on emissions methodology and was responsible for emission validation with WRF-CMAQ. MW and HN contributed to first draft and prepared initial visualisations. HN and MW were responsible for writing and editing the final manuscript.

790 10 Competing Interests

The contact author has declared that neither they nor their co-authors have any competing interests.

11 Acknowledgements

Sentinel-5P products are distributed freely by Copernicus Open Access Hub (<https://scihub.copernicus.eu/>), as is the SEVIRI FRP-PIXEL product of the EUMETSAT LAS SAF (<https://landsaf.ipma.pt/>) and VIIRS product of LAADS DAAC (<https://ladsweb.modaps.eosdis.nasa.gov/>). We would like to thank the LAS SAF and MODIS teams for the development and distribution of these products, as well as the developers and providers of FEER, GFAS, GFED, CCI Landcover, Landsat VCF and FireCCISFD11. Funding for this work was provided by EPSRC's Centre for Doctoral Training in Cross-Disciplinary Approaches to Non-Equilibrium Systems (CANES; [EP/L015854/1](https://ep.l015854/1)), NERC National Capability funding to NCEO ([NE/R016518/1](https://ne.r016518/1)), NERC Grant ([NE/S014004/1](https://ne.s014004/1)) and by EUMETSAT's Satellite Applications Facility Programme which supports the Land Surface Analysis Satellite Application Facility (<https://landsaf.ipma.pt/en/>), LSA SAF CDOP-4) where the Meteosat FRP-PIXEL and FRP-GRID products are generated. We also thank the anonymous reviewers for their comments which have helped improve the quality and content of this manuscript.

800

12 References

- 805 Abel, S. J., Haywood, J. M., Highwood, E. J., Li, J. and Buseck, P. R.: Evolution of biomass burning aerosol properties from an agricultural fire in southern Africa, *Geophys. Res. Lett.*, 30(15), 10–13, doi:10.1029/2003GL017342, 2003.
- Akagi, S. K., Yokelson, R. J., Wiedinmyer, C., Alvarado, M. J., Reid, J. S., Karl, T., Crounse, J. D. and Wennberg, P. O.: Emission factors for open and domestic biomass burning for use in atmospheric models, *Atmos. Chem. Phys.*, 11(9), 4039–4072, doi:10.5194/acp-11-4039-2011, 2011.
- 810 Andreae, M. O.: Emission of trace gases and aerosols from biomass burning - An updated assessment, *Atmos. Chem. Phys.*, 19(13), 8523–8546, doi:10.5194/acp-19-8523-2019, 2019.
- Andreae, M. O. and Merlet, P.: Emissions of trace gases and aerosols from biomass burning, *Global Biogeochem. Cycles*, 15(4), 955–966, doi:10.1029/2000GB001382, 2001.
- Baldassarre, G., Pozzoli, L., Schmidt, C. C., Unal, A., Kindap, T., Menzel, W. P., Whitburn, S., Coheur, P. F., Kavgaci, A. and Kaiser, J. W.: Using SEVIRI fire observations to drive smoke plumes in the CMAQ air quality model: the case of Antalya in 2008, *Atmos. Chem. Phys.*, 15, 8539–8558, doi:10.5194/acpd-15-1-2015, 2015.
- Borsdorff, T., Brugh, J. De, Schneider, A., Lorente, A., Birk, M. and Wagner, G.: Improving the TROPOMI CO data product : update of the spectroscopic database and destriping of single orbits, , 5443–5455, 2019.
- 820 [Borsdorff, T., Aan De Brugh, J., Hu, H., Hasekamp, O., Sussmann, R., Rettinger, M., Hase, F., Gross, J., Schneider, M., Garcia, O., Stremme, W., Grutter, M., Feist, Di. G., Arnold, S. G., de Mazière, M., Kumar Sha, M., Pollard, D. F., Kiel, M., Roehl, C., ... Landgraf, J.: Mapping carbon monoxide pollution from space down to city scales with daily global coverage. *Atmos. Meas. Tech.*, 11\(10\), 5507–5518. doi:10.5194/amt-11-5507-2018, 2018.](#)
- Bowman, D. M. J. S., Balch, J. K., Artaxo, P., Bond, W. J., Carlson, J. M., Cochrane, M. A., D’Antonio, C. M., DeFries, R. S., Doyle, J. C., Harrison, S. P., Johnston, F. H., Keeley, J. E., Krawchuk, M. A., Kull, C. A., Marston, J. B., Moritz, M. A.,
- 825 Prentice, I. C., Roos, C. I., Scott, A. C., Swetnam, T. W., van der Werf, G. R. and Pyne, S. J.: Fire in the earth system, *Science* (80-), 324(5926), 481–484, doi:10.1126/science.1163886, 2009.
- Cheng, Z., Wang, S., Fu, X., Watson, J. G., Jiang, J., Fu, Q., Chen, C., Xu, B., Yu, J., Chow, J. C. and Hao, J.: Impact of biomass burning on haze pollution in the Yangtze River delta, China: A case study in summer 2011, *Atmos. Chem. Phys.*, 14(9), 4573–4585, doi:10.5194/acp-14-4573-2014, 2014.
- 830 Chevallier, F., Fortems, A., Bousquet, P., Pison, I., Szopa, S., Devaux, M. and Hauglustaine, D. A.: African CO emissions between years 2000 and 2006 as estimated from MOPITT observations, *Biogeosciences*, 6(1), 103–111, doi:10.5194/bg-6-103-2009, 2009.
- Chin, M., Ginoux, P., Kinne, S., Torres, O., Holben, B., Duncan, B. N., Martin, R. V., Logan, J. A., Higurashi, A. and Nakajima, T.: Tropospheric Aerosol Optical Thickness from the GOCART Model and Comparisons with Satellite and Sun Photometer
- 835 Measurements, *J. Atmos. Sci.*, 59(3), 461–483, doi:10.1175/1520-0469(2002)059<0461:TAOTFT>2.0.CO;2, 2002.
- Choi, M. W., Lee, J. H., Woo, J. W., Kim, C. H. and Lee, S. H.: Comparison of PM2.5 chemical components over East Asia

Formatted: Widow/Orphan control, Adjust space between Latin and Asian text, Adjust space between Asian text and numbers

Formatted: Font: Not Italic

Formatted: Font: Not Italic

Formatted: English (United States)

- simulated by the WRF-Chem and WRF/CMAQ models: On the models' prediction inconsistency, *Atmosphere (Basel)*, 10(10), doi:10.3390/atmos10100618, 2019.
- 840 Formenti, P., Elbert, W., Maenhaut, W., Haywood, J. M., Osborne, S. and Andreae, M. O.: Inorganic and carbonaceous aerosols during the Southern African Regional Science Initiative (SAFARI 2000) experiment: Chemical characteristics, physical properties, and emission data or smoke from African biomass burning, *J. Geophys. Res. D Atmos.*, 108(13), 1–16, doi:10.1029/2002jd002408, 2003.
- Forster, P., Ramaswamy, V., Artaxo, P., Berntsen, T., Betts, R., Fahey, D. W., Haywood, J. M., Lean, J., Lowe, D. C., Myhre, G., Nganga, J., Prinn, R., Raga, G., Schulz, M. and Van Dorland, R.: Changes in Atmospheric Constituents and in Radiative Forcing (IPCC 2007), *Change*, 30(22), 129–234, doi:10.1103/PhysRevB.77.220407, 2007.
- 845 Freeborn, P. H., Wooster, M. J., Hao, W. M., Ryan, C. A., Nordgren, B. L., Baker, S. P. and Ichoku, C.: Relationships between energy release, fuel mass loss, and trace gas and aerosol emissions during laboratory biomass fires, 113, 1–17, doi:10.1029/2007JD008679, 2008.
- Freeborn, P. H., Wooster, M. J., Roberts, G., Malamud, B. D. and Xu, W.: Development of a virtual active fire product for Africa through a synthesis of geostationary and polar orbiting satellite data, *Remote Sens. Environ.*, 113(8), 1700–1711, doi:10.1016/j.rse.2009.03.013, 2009.
- Garcia-mendez, F., Hu, Y. and Odman, M. T.: Science of the Total Environment Simulating smoke transport from wildland fires with a regional-scale air quality model: Sensitivity to spatiotemporal allocation of fire emissions, *Sci. Total Environ.*, 493, 544–553, doi:10.1016/j.scitotenv.2014.05.108, 2014.
- 855 Giglio, L., Schroeder, W. and Justice, C. O.: The collection 6 MODIS active fire detection algorithm and fire products, *Remote Sens. Environ.*, 178, 31–41, doi:10.1016/j.rse.2016.02.054, 2016.
- Hall, J. V., Zhang, R., Schroeder, W., Huang, C. and Giglio, L.: Validation of GOES-16 ABI and MSG SEVIRI active fire products, *Int. J. Appl. Earth Obs. Geoinf.*, 83(August), 101928, doi:10.1016/j.jag.2019.101928, 2019.
- Hawbaker, T. J., Vanderhoof, M. K., Beal, Y. J., Takacs, J. D., Schmidt, G. L., Falgout, J. T., Williams, B., Fairaux, N. M., 860 Caldwell, M. K., Picotte, J. J., Howard, S. M., Stitt, S. and Dwyer, J. L.: Mapping burned areas using dense time-series of Landsat data, *Remote Sens. Environ.*, 198(September), 504–522, doi:10.1016/j.rse.2017.06.027, 2017.
- Holben, B., Tanre, D., Smirnov, A., Eck, T. F., Slutsker, I., Abuhassan, N., Newcomb, W. W., Schafer, J. S., Chatenet, B., Lavenu, F., Kaufman, Y., Castle, J. V., Setzer, A., Markham, B., Clark, D., Frouin, R., Halthore, R., Karneli, A. and O'Neill, N. T.: An Emerging Ground-based Aerosol Climatology: Aerosol Optical Depth from AERONET, *J. Geophys. Res.*, 106(D11), 12067–12097, 2001.
- 865 Hu, J., Chen, J., Ying, Q. and Zhang, H.: One-year simulation of ozone and particulate matter in China using WRF/CMAQ modeling system, *Atmos. Chem. Phys.*, 16(16), 10333–10350, doi:10.5194/acp-16-10333-2016, 2016.
- Ichoku, C. and Ellison, L.: Global top-down smoke-aerosol emissions estimation using satellite fire radiative power measurements, *Atmos. Chem. Phys.*, 14(13), 6643–6667, doi:10.5194/acp-14-6643-2014, 2014.
- 870 Kaiser, J. W., Heil, A., Andreae, M. O., Benedetti, A., Chubarova, N., Jones, L., Morcrette, J. J., Razinger, M., Schultz, M.

- G., Suttie, M. and van der Werf, G. R.: Biomass burning emissions estimated with a global fire assimilation system based on observed fire radiative power, *Biogeosciences*, 9(1), 527–554, doi:10.5194/bg-9-527-2012, 2012.
- Keyword, M., Kanakidou, M., Stohl, A., Dentener, F., Grassi, G., Meyer, C. P., Torseth, K., Edwards, D., Thompson, A. M., Lohmann, U. and Burrows, J.: Fire in the air: Biomass burning impacts in a changing climate, *Crit. Rev. Environ. Sci. Technol.*, 43(1), 40–83, doi:10.1080/10643389.2011.604248, 2013.
- 875 Kopacz, M., Jacob, D. J., Fisher, J. A., Logan, J. A., Zhang, L., Megretskaia, I. A., Yantosca, R. M., Singh, K., Henze, D. K., Burrows, J. P., Buchwitz, M., Khlystova, I., McMillan, W. W., Gille, J. C., Edwards, D. P., Eldering, A., Thouret, V. and Nedelec, P.: Global estimates of CO sources with high resolution by adjoint inversion of multiple satellite datasets (MOPITT, AIRS, SCIAMACHY, TES), *Atmos. Chem. Phys.*, 10(3), 855–876, doi:10.5194/acp-10-855-2010, 2010.
- 880 Koplitz, S. N., Nolte, C. G., Pouliot, G., Vukovich, J. M. and Beidler, J.: Influence of uncertainties in burned area estimates on modeled wildland fire PM_{2.5} and ozone pollution in the contiguous U.S., *Atmos. Environ.*, 191, 328–339, doi:10.1016/j.atmosenv.2018.08.020, 2018.
- Kuik, F., Lauer, A., Beukes, J. P., Van Zyl, P. G., Josipovic, M., Vakkari, V., Laakso, L. and Feig, G. T.: The anthropogenic contribution to atmospheric black carbon concentrations in southern Africa: A WRF-Chem modeling study, *Atmos. Chem. Phys.*, 15(15), 8809–8830, doi:10.5194/acp-15-8809-2015, 2015.
- 885 Kukkonen, J., Olsson, T., Schultz, D. M., Baklanov, A., Klein, T., Miranda, A. I., Monteiro, A., Hirtl, M., Tarvainen, V., Boy, M., Peuch, V. H., Poupkou, A., Kioutsioukis, I., Finardi, S., Sofiev, M., Sokhi, R., Lehtinen, K. E. J., Karatzas, K., San José, R., Astitha, M., Kallos, G., Schaap, M., Reimer, E., Jakobs, H. and Eben, K.: A review of operational, regional-scale, chemical weather forecasting models in Europe, *Atmos. Chem. Phys.*, 12(1), 1–87, doi:10.5194/acp-12-1-2012, 2012.
- 890 Landgraf, J., Aan de Brugh, J., Scheepmaker, R. A., Borsdorff, T., Hu, H., Houweling, S., Butz, A., Aben, I. and Hasekamp, O.: Carbon monoxide total column retrievals from TROPOMI shortwave infrared measurements, *Atmos. Meas. Tech.*, 9(10), 4955–4975, doi:10.5194/amt-9-4955-2016, 2016.
- Langmann, B., Duncan, B., Textor, C., Trentmann, J. and van der Werf, G. R.: Vegetation fire emissions and their impact on air pollution and climate, *Atmos. Environ.*, 43(1), 107–116, doi:10.1016/j.atmosenv.2008.09.047, 2009.
- 895 Lavorel, S., Flannigan, M. D., Lambin, E. F. and Scholes, M. C.: Vulnerability of land systems to fire: Interactions among humans, climate, the atmosphere, and ecosystems, *Mitig. Adapt. Strateg. Glob. Chang.*, 12(1), 33–53, doi:10.1007/s11027-006-9046-5, 2007.
- Van Leeuwen, T. T., van der Werf, G. R., Hoffmann, A. A., Detmers, R. G., Rücker, G., French, N. H. F., Archibald, S., Carvalho, J. A., Cook, G. D., de Groot, W. J., Hély, C., Kasischke, E. S., Kloster, S., McCarty, J. L., Pettinari, M. L., Savadogo, P., Alvarado, E. C., Boschetti, L., Manuri, S., Meyer, C. P., Siegert, F., Trollope, L. A. and Trollope, W. S. W.: Biomass burning fuel consumption rates: a field measurement database, *Biogeosciences Discuss.*, 11(6), 8115–8180, doi:10.5194/bgd-11-8115-2014, 2014.
- 900 Lyapustin, A., Wang, Y., Korkin, S. and Huang, D.: MODIS Collection 6 MAIAC algorithm, *Atmos. Meas. Tech.*, 11(10), 5741–5765, doi:10.5194/amt-11-5741-2018, 2018.

- 905 Marengo, J. A., Tomasella, J., Alves, L. M., Soares, W. R. and Rodriguez, D. A.: The drought of 2010 in the context of historical droughts in the Amazon region, *Geophys. Res. Lett.*, 38(12), 1–5, doi:10.1029/2011GL047436, 2011.
- Mota, B. and Wooster, M. J.: A new top-down approach for directly estimating biomass burning emissions and fuel consumption rates and totals from geostationary satellite fire radiative power (FRP), *Remote Sens. Environ.*, 206(February 2017), 45–62, doi:10.1016/j.rse.2017.12.016, 2018.
- 910 Nguyen, H. M. and Wooster, M. J.: Advances in the estimation of high Spatio-temporal resolution pan-African top-down biomass burning emissions made using geostationary fire radiative power (FRP) and MAIAC aerosol optical depth (AOD) data, *Remote Sens. Environ.*, 248(November 2019), 111971, doi:10.1016/j.rse.2020.111971, 2020.
- Pechony, O., Shindell, D. T. and Faluvegi, G.: Direct top-down estimates of biomass burning CO emissions using TES and MOPITT versus bottom-up GFED inventory, *J. Geophys. Res. Atmos.*, 118(14), 8054–8066, doi:10.1002/jgrd.50624, 2013.
- 915 Quennehen, B., Schwarzenboeck, A., Matsuki, A., Burkhart, J. F., Stohl, A., Ancellet, G. and Law, K. S.: Anthropogenic and forest fire pollution aerosol transported to the Arctic: Observations from the POLARCAT-France spring campaign, *Atmos. Chem. Phys.*, 12(14), 6437–6454, doi:10.5194/acp-12-6437-2012, 2012.
- Randerson, J. T., Chen, Y., van der Werf, G. R., Rogers, B. M. and Morton, D. C.: Global burned area and biomass burning emissions from small fires, *J. Geophys. Res. G Biogeosciences*, 117(4), doi:10.1029/2012JG002128, 2012.
- 920 Reddington, C. L., Spracklen, D. V., Artaxo, P., Ridley, D. A., Rizzo, L. V. and Arana, A.: Analysis of particulate emissions from tropical biomass burning using a global aerosol model and long-term surface observations, *Atmos. Chem. Phys.*, 16(17), 11083–11106, doi:10.5194/acp-16-11083-2016, 2016.
- Reid, J. S., Eck, T. F., Christopher, S. A., Koppmann, R., Dubovik, O., Eleuterio, D. P., Holben, B., Reid, E. A. and Zhang, J.: A review of biomass burning emissions part III: Intensive optical properties of biomass burning particles, *Atmos. Chem. Phys.*, 5(3), 827–849, doi:10.5194/acp-5-827-2005, 2005.
- 925 Reid, J. S., Hyer, E. J., Prins, E., Westphal, D. L., Zhang, J., Wang, J., Christopher, S. A., Curtis, C. A., Schmidt, C. C., Eleuterio, D. P., Richardson, K. A. and Hoffman, J.: Global monitoring and forecasting of biomass-burning smoke: Description of and lessons from the fire Locating and Modeling of Burning Emissions (FLAMBE) program, *IEEE J. Sel. Top. Appl. Earth Obs. Remote Sens.*, 2(3), 144–162, doi:10.1109/JSTARS.2009.2027443, 2009.
- 930 Roberts, G., Wooster, M. J., Perry, G. L. W., Drake, N., Rebelo, L. M. and Dipotso, F.: Retrieval of biomass combustion rates and totals from fire radiative power observations: Application to southern Africa using geostationary SEVIRI imagery, *J. Geophys. Res. Atmos.*, 110(21), 1–19, doi:10.1029/2005JD006018, 2005.
- Roberts, G., Wooster, M. J., Xu, W., Freeborn, P. H., Morcrette, J. J., Jones, L., Benedetti, A., He, J., Fisher, D. and Kaiser, J. W.: LSA SAF Meteorol FRP products-Part 2: Evaluation and demonstration for use in the Copernicus Atmosphere Monitoring Service (CAMS), *Atmos. Chem. Phys.*, 15(22), 13241–13267, doi:10.5194/acp-15-13241-2015, 2015.
- 935 Roberts, G., Wooster, M. J., Lauret, N., Gastellu-Etchegorry, J. P., Lynham, T. and McRae, D.: Investigating the impact of overlying vegetation canopy structures on fire radiative power (FRP) retrieval through simulation and measurement, *Remote Sens. Environ.*, 217(March), 158–171, doi:10.1016/j.rse.2018.08.015, 2018.

- Roteta, E., Bastarrika, A., Padilla, M., Storm, T. and Chuvieco, E.: Development of a Sentinel-2 burned area algorithm: Generation of a small fire database for sub-Saharan Africa, *Remote Sens. Environ.*, 222(March), 1–17, doi:10.1016/j.rse.2018.12.011, 2019.
- Seiler, W. and Crutzen, P. J.: Estimates of gross and net fluxes of carbon between the biosphere and the atmosphere from biomass burning, *Clim. Change*, 2(3), 207–247, doi:10.1007/BF00137988, 1980.
- Syrakov, D., Prodanova, M., Georgieva, E., Etropolska, I. and Slavov, K.: Simulation of European air quality by WRF-CMAQ models using AQMEII-2 infrastructure, *J. Comput. Appl. Math.*, 293, 232–245, doi:10.1016/j.cam.2015.01.032, 2016.
- Tomasella, J., Pinho, P. F., Borma, L. S., Marengo, J. A., Nobre, C. A., Bittencourt, O. R. F. O., Prado, M. C. R., Rodriguez, D. A. and Cuartas, L. A.: The droughts of 1997 and 2005 in Amazonia: Floodplain hydrology and its potential ecological and human impacts, *Clim. Change*, 116(3–4), 723–746, doi:10.1007/s10584-012-0508-3, 2013.
- Tsela, P. L., Van Helden, P., Frost, P., Wessels, K. and Archibald, S.: Validation of the modis burned-area products across different biomes in South Africa, *Int. Geosci. Remote Sens. Symp.*, (May 2016), 3652–3655, doi:10.1109/IGARSS.2010.5650253, 2010.
- Vermote, E., Ellicott, E., Dubovik, O., Lapyonok, T., Chin, M., Giglio, L. and Roberts, G.: An approach to estimate global biomass burning emissions of organic and black carbon from MODIS fire radiative power, *J. Geophys. Res. Atmos.*, 114(18), 1–22, doi:10.1029/2008JD011188, 2009.
- Vongruang, P., Wongwises, P. and Pimonsree, S.: Assessment of fire emission inventories for simulating particulate matter in Upper Southeast Asia using WRF-CMAQ, *Atmos. Pollut. Res.*, 8(5), 921–929, doi:10.1016/j.apr.2017.03.004, 2017.
- van der Werf, G. R., Randerson, J. T., Giglio, L., Collatz, G. J., Kasibhatla, P. S. and Arellano, A. F., J.: Interannual variability in global biomass burning emissions from 1997 to 2004, *Atmos. Chem. Phys.*, 6(11), 3423–3441, doi:10.5194/acpd-6-3175-2006, 2006.
- van der Werf, G. R., Randerson, J. T., Giglio, L., Collatz, G. J., Mu, M., Kasibhatla, P. S., Morton, D. C., Defries, R. S., Jin, Y. and Van Leeuwen, T. T.: Global fire emissions and the contribution of deforestation, savanna, forest, agricultural, and peat fires (1997-2009), *Atmos. Chem. Phys.*, 10(23), 11707–11735, doi:10.5194/acp-10-11707-2010, 2010.
- van der Werf, G. R., Randerson, J. T., Giglio, L., Van Leeuwen, T. T., Chen, Y., Rogers, B. M., Mu, M., van Marle, M. J. E., Morton, D. C., Collatz, G. J., Yokelson, R. J. and Kasibhatla, P. S.: Global fire emissions estimates during 1997-2016, *Earth Syst. Sci. Data Discuss.*, 1–43, doi:10.5194/essd-2016-62, 2017.
- Wiedinmyer, C., Akagi, S. K., Yokelson, R. J., Emmons, L. K., Al-Saadi, J. A., Orlando, J. J. and Soja, A. J.: The Fire INventory from NCAR (FINN): A high resolution global model to estimate the emissions from open burning, *Geosci. Model Dev.*, 4(3), 625–641, doi:10.5194/gmd-4-625-2011, 2011.
- Wooster, M. J., Freeborn, P. H., Archibald, S., Oppenheimer, C., Roberts, G., Smith, T. E. L., Govender, N., Burton, M. and Palumbo, I.: Field determination of biomass burning emission ratios and factors via open-path FTIR spectroscopy and fire radiative power assessment: Headfire, backfire and residual smouldering combustion in African savannahs, *Atmos. Chem. Phys.*, 11(22), 11591–11615, doi:10.5194/acp-11-11591-2011, 2011.

- 975 Wooster, M. J., Roberts, G., Freeborn, P. H., Xu, W., Govaerts, Y., Beeby, R., He, J., Lattanzio, A., Fisher, D. and Mullen, R.: LSA SAF Meteosat FRP products-Part 1: Algorithms, product contents, and analysis, *Atmos. Chem. Phys.*, 15(22), 13217–13239, doi:10.5194/acp-15-13217-2015, 2015.
- Worden, H. M., Deeter, M. N., Edwards, D. P., Gille, J. C., Drummond, J. R. and Nédélec, P.: Observations of near-surface carbon monoxide from space using MOPITT multispectral retrievals, *J. Geophys. Res. Atmos.*, 115(18), 1–12, doi:10.1029/2010JD014242, 2010.
- 980 Xu, W., Wooster, M. J., Roberts, G. and Freeborn, P. H.: New GOES imager algorithms for cloud and active fire detection and fire radiative power assessment across North, South and Central America, *Remote Sens. Environ.*, 114(9), 1876–1895, doi:10.1016/j.rse.2010.03.012, 2010.
- Xu, W., Wooster, M. J., Kaneko, T., He, J., Zhang, T. and Fisher, D.: Major advances in geostationary fire radiative power (FRP) retrieval over Asia and Australia stemming from use of Himawari-8 AHI, *Remote Sens. Environ.*, 193, 138–149, doi:10.1016/j.rse.2017.02.024, 2017.
- 985 Yang, Z., Wang, J., Ichoku, C., Hyer, E. J. and Zeng, J.: Mesoscale modeling and satellite observation of transport and mixing of smoke and dust particles over northern sub-Saharan African region, *J. Geophys. Res. Atmos.*, 118(21), 12139–12157, doi:10.1002/2013JD020644, 2013.
- Yu, S., Eder, B., Dennis, R., Chu, S.-H. and Schwartz, S. E.: New unbiased symmetric metrics for evaluation of air quality models, *Atmos. Sci. Lett.*, 7(1), 26–34, doi:10.1002/asl.125, 2006.
- 990 Zhang, F., Wang, J., Ichoku, C., Hyer, E. J., Yang, Z., Ge, C., Su, S., Zhang, X., Kondragunta, S., Kaiser, J. W., Wiedinmyer, C. and Da Silva, A.: Sensitivity of mesoscale modeling of smoke direct radiative effect to the emission inventory: A case study in northern sub-Saharan African region, *Environ. Res. Lett.*, 9(7), doi:10.1088/1748-9326/9/7/075002, 2014.
- Zhang, X., Kondragunta, S., Schmidt, C. and Kogan, F.: Near real time monitoring of biomass burning particulate emissions (PM_{2.5}) across contiguous United States using multiple satellite instruments, *Atmos. Environ.*, 42(29), 6959–6972, doi:10.1016/j.atmosenv.2008.04.060, 2008.
- 995 Zheng, B., Chevallier, F., Ciais, P., Yin, Y. and Wang, Y.: On the Role of the Flaming to Smoldering Transition in the Seasonal Cycle of African Fire Emissions, *Geophys. Res. Lett.*, 45(21), 11,998-12,007, doi:10.1029/2018GL079092, 2018.