

Retrieving CH₄ emission rate from coal mine ventilation shaft using UAV-based AirCore observations and the GA-IPPF model

Tianqi Shi¹, Zeyu Han², Ge Han³, Xin Ma^{1*}, Huilin Chen^{4,5*}, Truls Andersen⁵, Huiqin Mao⁶,
Cuihong Chen⁶, Haowei Zhang¹, Wei Gong^{1,7}

5 ¹ State Key Laboratory of Information Engineering in Surveying, Mapping and Remote Sensing,
Wuhan University, Luoyu Road No.129, Wuhan 430079, China;

²School of Mathematics and Statistics, Wuhan University, Luoyu Road No.129, Wuhan 430079,
China;

10 ³ School of Remote Sensing and Information Engineering, Wuhan University, Luoyu Road No.129,
Wuhan 430079, China;

⁴Joint International Research Laboratory of Atmospheric and Earth System Sciences, School of
Atmospheric Sciences, Nanjing University, Nanjing, China;

⁵Centre for Isotope Research, Energy and Sustainability Institute Groningen (ESRIG), University of
Groningen, Groningen, Netherlands;

15 ⁶Ministry of Ecology and Environment Center for Satellite Application on Ecology and Environment,
Beijing, China;

⁷ Electronic Information School, Wuhan University, Luoyu Road No.129, Wuhan 430079, China;

Correspondence to: Xin Ma (maxinwhu@whu.edu.cn); Huilin Chen (huilin.chen@rug.nl)

Abstract.

20 **There are plenty of monitoring methods to quantify gases emission rate based on gases concentration**
measurements **samples** around the strong sources. However, there is a lack of quantitative models to evaluate methane
emission rate from coal mines with less priori information. In this study, we develop a genetic algorithm–
interior point penalty function (GA-IPPF) model to calculate the emission rate of large point sources of
CH₄ based on concentration sample. This model can provide optimized dispersion parameters and self-
25 calibration, thus lowering the requirements for auxiliary data accuracy. During Carbon Dioxide and
Methane Mission (CoMet) pre-campaign, we retrieve CH₄ emission rates from a ventilation shaft in
Pniówek coal (Silesia coal mining region mine, Poland) based on the data collected by an UAV-based
AirCore system and GA-IPPF model. And the concerned CH₄-emission rates are variable even in a single
day, ranging from 621.3±19.8 to 1452.4±60.5 kg/hour on August 18, 2017 and from 348.4±12.1 to
30 1478.4±50.3 kg/hour on August 21, 2017. Results show that, CH₄ concentrations data reconstructed by
the retrieved parameters are highly consistent to the measured ones. Meanwhile, we demonstrate the
application of GA-IPPF in three gases control release experiments, and the accuracies of retrieved gases
emission rates are better than 95.0 %. This study indicates that GA-IPPF model can quantify CH₄
emission rate from strong point sources with high accuracy.

35 1.Introduction

The release of CH₄ into the atmosphere during coal mining is very concerning because it contributes to
increased atmospheric concentration of CH₄, one of the most important greenhouse gases and is a waste
of resources (Cardoso-Saldana and Allen, 2020; Zhang et al., 2020). However, CH₄ emissions during
coal mining are not always stable owing to different collection mode, manufacturing processes, weather
40 fluctuations, as well as terrain effects (Nathan et al., 2015b). Bottom-up inventories can provide us with
CH₄ emission rates from strong point sources or gridded CH₄ fluxes with different spatial resolutions,
which play a great role in statistical analysis. However, the low temporal resolution of inventory data

does not allow us to obtain emission intensity from target sources instantaneously (Pan et al., 2021; Liu et al., 2020). With the development of different atmospheric CH₄ concentration measurement techniques, like Fourier spectrometer, differential absorption Lidar, AirCore system, and in-situ sensors, CH₄ emission rates from strong emission sources can be quickly quantified by top-down methods with high accuracy.

Greenhouse gases observing satellite (GOSAT) and TROPospheric Monitoring Instrument (TROPOMI) are capable of obtaining the column concentration of CH₄ (XCH₄, ppb) with spatial resolution of 10 km×10 km and 5 km×7.5 km respectively. The regional CH₄ flux can be retrieved by assimilating the measured XCH₄ into an atmospheric dispersion model (Tu et al., 2022; Feng et al., 2016). Hyperspectral Precursor of the Application Mission (PRISMA) hyperspectral imaging satellite and GHGsat can detect increased CH₄ caused by strong emission sources with high spatial resolutions, and the comprehensive CH₄ emission can be quantified by integrated mass enhancement or cross-sectional flux method (Guanter et al., 2021; Varon et al., 2020). It plays a huge role in the analyzing methane emission rate from strong sources, but it has high requirements for satellites' detection track, that is, to monitor the methane distribution in the target area within coverage range (Schneising et al., 2020; Varon et al., 2019). Airborne sensors can fly at low altitudes to improve the acquisition of CH₄ concentration data and estimate CH₄ emission from strong sources by the cross-sectional flux method or the Gaussian dispersion method (Elder et al., 2020; Wolff et al., 2021a; Krautwurst et al., 2021). It enables repeated monitoring of emission sources in a large area in a short period of time, however, airborne experiments' cost is high and the flight tracks may be restricted by the aviation control policies. Ground-based eddy covariance sites can monitor agriculture and forestry ecology methane flux with high temporal resolution, such as mangrove ecosystem (Jha et al., 2014), larch forest in eastern Siberia (Nakai et al., 2020). Its accuracy is very high, but there is currently less monitoring of methane emissions from strong point sources using eddy covariance. When ground-based concentration sensors fixed in appropriate position, they have the advantage of continuously sampling gas concentration in downwind direction from the source. It will provide important dispersion data for methane emission quantification model at the enterprise level, but these sensors usually need to be carried on a vehicle platform to obtain methane concentration at different locations (Zhou et al., 2021; Robertson et al., 2017; Caulton et al., 2017). Ground-based differential absorption LIDAR can obtain the CH₄ profile concentration in different altitudes, whose data is suitable as the input of the emission-retrieval model (Shi et al., 2020a), but it has high requirements in terms of hardware performance and system stability (Shi et al., 2020b). An unmanned aerial vehicle (UAV) can reach any location rapidly around the CH₄ sources, which can sample CH₄ concentration with location information (Nathan et al., 2015b; Iwaszenko et al., 2021), when equipped with concentration sensors. It can acquire the distribution characteristics when sufficient concentration data are collected, which is beneficial to retrieving emission rate. The cost of UAV-based AirCore system is low and the ^{processing} ~~process~~ of its sample data is relatively simple, but the diffusion of methane emitted from strong sources may be sampled incompletely.

In 2017, we developed an UAV-based active AirCore system, which could sample spatial atmospheric CO₂, CH₄, and CO with high accuracy (Andersen et al., 2018), aiming to retrieve greenhouse gases emission from strong sources. The most urgent issue we need to address is developing an emission quantification model to make use of the advantage of AirCore, namely to collect data at different locations with a high degree of flexibility. This model should have less uncertainty in retrieved result and conform to the actual emission dispersion characteristics of the studied emission sources. Mass-balance method has been applied in determining CH₄ emissions based on UAV-based samples (Allen et al., 2018).

Emission rates calculated by this method contain large uncertainty because the main kernel is Kriging interpolation (Nathan et al., 2015a), which can cause obvious uncertainty in representing the actual feature of diffusion. The Gaussian dispersion model has also been applied in retrieving gas emission from strong sources (Shah et al., 2019; Ma and Zhang, 2016), and it is also used to model CH₄ diffusion in this study. However, existing emission-retrieval methods based on Gaussian dispersion model need priori information on key diffusion parameters (Nassar et al., 2021), which cannot be regarded as certain values in different circumstances. Moreover, the measurements accuracy of auxiliary meteorological data also has a great impact on CH₄ emission calculation.

To end this, we develop herein a model to overcome these shortcomings, named GA-IPPF, which combines the advantages of genetic algorithms (GA) and interior point penalty functions (IPPF). GA can model the fitness function as a process of biological evolution (Yuan and Qian, 2010), which can be used to calculate the potential solutions in Gaussian dispersion model. IPPF can find the minimum of the criteria in setting domain (Kuhlmann and Buskens, 2018), which can help us achieve global optimal solutions for concerned parameters. Finally, GA-IPPF can calculate the diffusion parameters without prior information and reduce the impact of meteorological data on the calculated CH₄-emission rate.

We introduce the structure of our developed GA-IPPF in detail in section 2. In section 3, we evaluate the performance of GA-IPPF in field campaign around a coal mine ventilation shaft by using AirCore system in 8 Flights. Then, we discuss the comparisons between different quantification methods for CH₄ emission, and evaluated the performance of GA-IPPF when the meteorological data are acquired from the fifth generation of ECMWF atmospheric reanalysis of the global climate (ERA5) database. In section 4, we validate the accuracy of GA-IPPF in Observing System Simulation Experiments (OSSE), and evaluate the uncertainty in retrieved emission rate of CH₄. Furthermore, we test the performance of GA-IPPF in quantifying emission rate based on three gases control release database.

2. Data and methods

2.1. Active AirCore System

The active AirCore system comprises a ~50 m coiled stainless-steel tube that works in conjunction with a micropump and a small pinhole orifice (45 μm) to sample air along the trajectory of a drone. If the pressure downstream of the orifice is more than half of that of the upstream (ambient) pressure, a critical flow through the orifice is obtained. This means that the flow rate depends only on two variables, namely, the air temperature and the upstream (ambient) pressure, both of which are monitored during the flight. After obtaining air samples during field campaigns, CO₂, CH₄ and CO collected by AirCore system would be analyzed by ground-based cavity ring down Spectrometer model G2401-m (Picarro). For CH₄, the accuracy of samples is ± 0.02 parts per million (ppm). The active AirCore system is controlled using an Arduino-built data logger, which records the temperature inside the carbon fiber housing. It also records the ambient temperature, ambient pressure, relative humidity, and pressure downstream of the pinhole orifice to ensure that critical flow is achieved. The data logger also logs the GPS coordinates. The weight of the active AirCore system is ~1 kg. The active AirCore system is attached to a DJI Inspire Pro 1, which is capable of providing flights of ~12 min.

2.2. Meteorological measurements

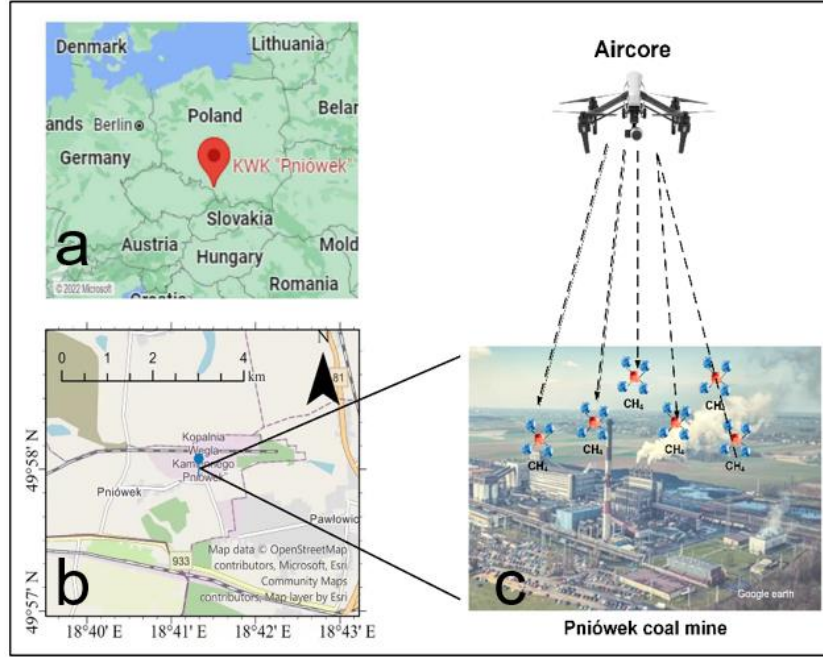
A radiosonde (Sparv Embedded AB, Sweden, model S1H2-R) measures ambient temperature, ambient pressure, ambient relative humidity, wind speed, and wind direction. The detection range of the temperature sensor is -40 °C to $+80$ °C, with an accuracy of 0.3 °C. The pressure sensor has a detection range of 300–1100 mbar, with an accuracy of 1 mbar. The relative humidity sensor measures in the range of 0%–100%, with an accuracy of approximately 2%. Owing to the good connection between the

radiosonde and satellites, we assume that the uncertainty in the wind direction is low. The wind speed can be estimated within a range of 0–150 m/s, with an uncertainty of approximately 5%. If the wind-speed reading is less than 4 m/s, a minimum uncertainty of 0.2 m/s is given. The radiosonde is lifted by a ~30 L helium-filled balloon and is tethered onto a fishing line for easier retrieval after making a vertical profile.

135

2.3. Measurement Site

The Pniówek coal mine (49.975° N, 18.735° E) is a large mine in Pniówek, Silesian Voivodeship, Poland, which is 190 km southwest of the capital Warsaw, see Fig.1. It has a large coal reserve estimated to be about 101.3 million tons and coal production is about 5.16 million tons per year.



140

Fig.1. Pniówek coal mine; a. red mark represent the location of Pniówek coal mine in Poland; b. the surrounding circumstance of Pniówek coal mine, blue mark represent Pniówek coal mine; c. detailed layout of Pniówek coal mine, deep mine with shaft.

2.4 Emission retrieve model

145

2.4.1. Gaussian dispersion model

The Gaussian dispersion model was used to analyze the CH₄ fugitive from the coal mine in this work. The location of emission source is regarded as the coordinate origin; X-axis is the direction of the downwind, Y-axis is cross-wind direction, and Z-axis is the altitude above the ground. Based on the established coordinate system, the Gaussian plume can be modeled by Equation 1:

150

$$C(x, y, z) = \frac{q}{2\pi u \sigma_y \sigma_z} \exp\left(-\frac{y^2}{2\sigma_y^2}\right) \left\{ \exp\left(-\frac{(z-H)^2}{2\sigma_z^2}\right) + \alpha \cdot \exp\left(-\frac{(z+H)^2}{2\sigma_z^2}\right) \right\} + B \quad (1)$$

$$\sigma_y = a \cdot x^b \quad (2)$$

$$\sigma_z = c \cdot x^d \quad (3)$$

155

Where C is the concentration of CH₄ (g/m³), q (g/s) is the emission rate of CH₄ from coal mine, u is the mean wind speed around the stack (m/s), H is the effective stack height, σ_y is the dispersion coefficient in the horizontal direction, σ_z is the dispersion coefficient in the vertical direction, u is the wind speed (m/s), and B is the background concentration of CH₄. Moreover, α is the reflection index of the measurement phenomenon; and x, y, and z are the positions of the samples in the determined coordinate

system.

2.4.2.GA-IPPF model.

160 First, the genetic algorithm (GA) kernel calculates Q and other dispersion parameters with a first guess (Liu and Michalski, 2016). It guarantees that the unknown parameters are retrieved through the global optimum solution, as shown in Fig.2. Then, the results calculated by GA serve as initial input parameters and constraints in the IPPF model, and actual values of the concerned parameters are retrieved by IPPF. Detailed information can be found in S1 (supplement).

165 Based on the Gaussian dispersion model, auxiliary meteorological data, location information, and CH₄ samples, we determine the unknown parameters in equations 1 to 3 by using GA, including q, H, a, b, c, d, and α , in logical range constrained by lower boundary and upper boundary. First, the locations and concentration of CH₄ samples and wind serve as the initial input of equation 1. Then, the fitness value evaluates the applicability of the calculated parameters in each step. We define the fitness value as

$$170 \quad F = \sum_{i=1}^n (C_m^i - C_s^i)^2 \quad (4)$$

$$C_s^i(x, y, z) = \sum_{i=1}^n \frac{q'}{2\pi u' \sigma_y' \sigma_z'} \exp\left(\frac{-(y')^2}{(\sigma_y')^2}\right) \left\{ \exp\left(\frac{-(z-H')^2}{(\sigma_z')^2}\right) + \alpha' \cdot \exp\left(\frac{-(z+H')^2}{(\sigma_z')^2}\right) \right\} + B' \quad (5)$$

Where F is the fitness value; n is the total amount of concentration samples; C_m^i is the sample CH₄ concentration; i is the number of samples; C_s^i is the simulated concentration of CH₄ in the location of samples calculated by equation 5; and q', u', σ_y' , σ_z' , H', α' , and B' are the calculated CH₄-emission rate, wind speed, diffusion parameters, emission height, reflect index, and background CH₄ concentration, respectively, acquired from the ‘Mutation’ in Fig.2. When f is less than the threshold value (1×10^{-5}) of the fitness value, the corresponding parameters are treated as the results of output.

IPPF rebuilds the inequality constraint conditions to the unconstrained solution process. It forces the start point to satisfy the constraints, as shown in equation 6.

$$180 \quad \min F(x, r_k) = f(x) + r_k B(x) \quad (6)$$

Where f(x) is the unconstrained equation, and r_k is the coefficient of the constrained equation B(x). When the solution parameters are out of the constraints, $r_k B(x)$ is large, thereby ensuring that the final solution is feasible under the inequality constraint conditions.

185 To obtain the inequality constraints, GA is repeated 10000 times, and the mean values of the calculated wind speed, wind direction, H, a, b, c, d, and α are treated as the initial input of IPPF model. The domains of H, a, b, c, d, and α are determined by two times the standard deviation of the corresponding results in GA. The constraint values of wind speed (W_s) and direction (W_d) are set according to the precision of actual measurements, $m \pm \sigma$, whereas m is the measured value of wind speed or wind direction, and σ is their measured precision. Actual B values are considered to be within 1800–2500 ppb. Then, the Pearson correlation coefficient (R) values of the actual samples and simulated values work as the criterion in the solution process of equation 7.

$$190 \quad R = \frac{\sum_{i=1}^n (C_s^i - \bar{C}_s)(C_m^i - \bar{C}_m)}{\sqrt{\sum_{i=1}^n (C_s^i - \bar{C}_s)^2} \sqrt{\sum_{i=1}^n (C_m^i - \bar{C}_m)^2}} \quad (7)$$

The results are treated as the final retrieved values of the concerned parameters when the R reaches the maximum.

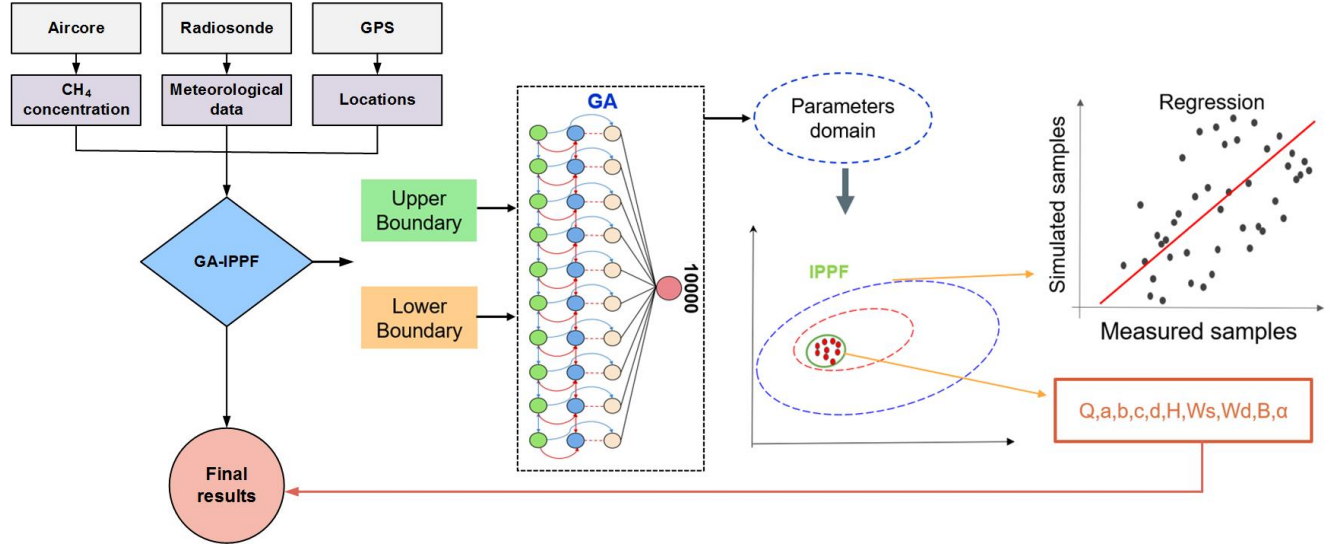


Fig.2. Flow chart of GA-IPPF model, including data inputs and process in each step.

Uncertainty Analyses

The GA-IPPF model will be calculated 1000 times repeatedly based on the collected samples of CH₄ concentration, then, the uncertainty and final retrieved emission rate could be defined by

$$\sigma = \sqrt{\frac{\sum_{i=1}^N (q_i - \bar{q})^2}{N}} \quad (8)$$

$$q_r = \bar{q} = \frac{1}{N} \sum_{i=1}^N q_i \quad (9)$$

σ is the uncertainty of retrieved emission rate; q_i is the i th retrieved emission rate, $i=1,2,3,\dots,1000$; \bar{q} is the mean value of the q_i ; N is 1000; q_r is regarded as the value of retrieved emission rate. The values of other parameters ($a, b, c, d, H, W_s, W_d, B, \alpha$) calculated by GA-IPPF are also defined in same principle.

3. Results

3.1. Actual experiments

As part of the Carbon Dioxide and Methane Mission (CoMet) pre-campaign, 15 active AirCore Flights successfully collected data around a ventilation shaft of Pniówek coal mine on August 18, 2017 and August 21, 2017. The sample data in Flight 6 (18/8/2017) and Flight 15 (21/8/2017) were used to evaluate the GA-IPPF model detailedly, as shown in Fig. 3. Retrieved results of data collected by other Flights are presented in S2 (supplement).

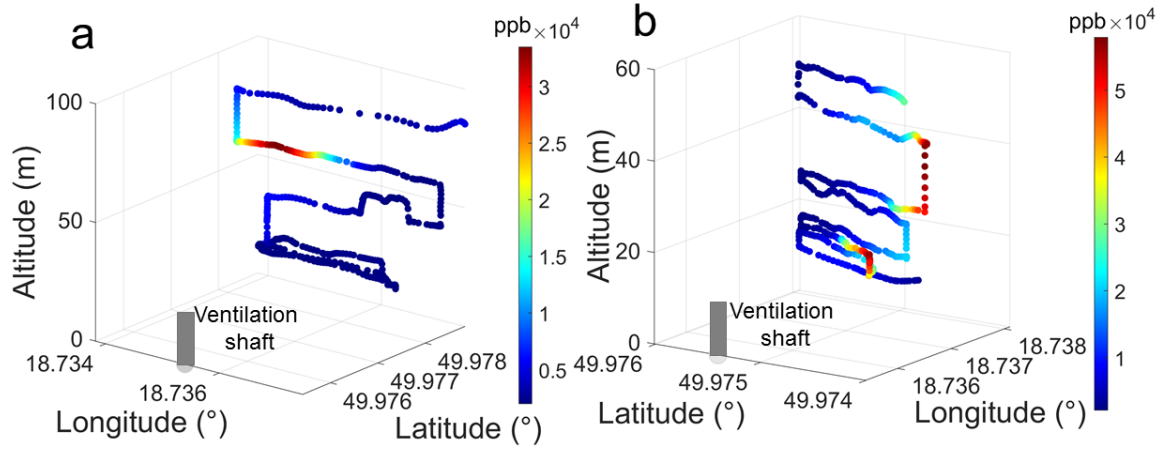


Fig. 3. Samples of CH₄ concentration in two Flights: (a) Flight 6 and (b) Flight 15.

In Flight 6, the AirCore system collected CH₄ from 0 m to 98 m around the ventilation shaft in a spiral pattern, with a total of 376 samples, ranging from 1980.1 ppb to 49 113.9 ppb, and a measurement period of 7 minutes. In Flight 15, the AirCore system collected CH₄ with a total of 400 samples, ranging from 2131.7 ppb to 57 265.3 ppb, and a measurement period of 9 minutes. Both Flights show high spatial variability in CH₄ exhaust from ventilation shaft. Subsequently, we inputted the wind speed, wind direction, location information, and CH₄ samples collected from Flights into the GA-IPPF model. To express the final retrieved emission (Q) in g/s, the dry-air mixing ratio of CH₄ (ppb) is transformed into mass concentration m (mg/m³) as follows:

$$m = C \cdot \frac{M_{CH_4}}{M_{Air}} \cdot 10^{-3} \quad (10)$$

Where M_{CH_4} is the molar mass of CH₄, and M_{air} is the molar mass of air.

The retrieved results are shown in Table 1, the uncertainty is presented in Discussion in detail. Notably, the emission height in Flight 15 was larger than that of Flight 6, which might be caused by the difference in thermal energy and vertical wind speed of the two flights. The background concentrations of CH₄ were 1.43 and 1.41 mg/m³ in Flights 6 and 15, respectively, which show little difference. The dates of the two Flights were very close, so the background concentration of CH₄ in two days had nearly the same seasonal characteristics. The exhaust gases of coal mine were emitted through the ventilation shaft with effective emission heights of 58.4 and 35.5 m, respectively.

To evaluate the rationality of the retrieved results, these parameters are used to simulate CH₄ diffusion from the ventilation shaft according to equation 1. The comparison between simulated CH₄ concentration data and actual samples in the same locations is shown in Fig.4.

Table 1. Results calculated by GA-IPPF model

Parameters	Flight 6	Flight 15
Initial wind speed (m/s)	2.8	3.2
Initial wind direction (°)	310	125.4
Emission intensity (kg/hour)	693.7±20.2	958.9±42.4
Wind speed (m/s)	2.83±0.2	2.4±0.3
Wind direction (°)	349.6°±1.2	128.1±0.8
a	0.60±0.01	0.31±0.01
b	0.73±0.02	0.95±0.01
c	0.2±0.01	0.08±0.01

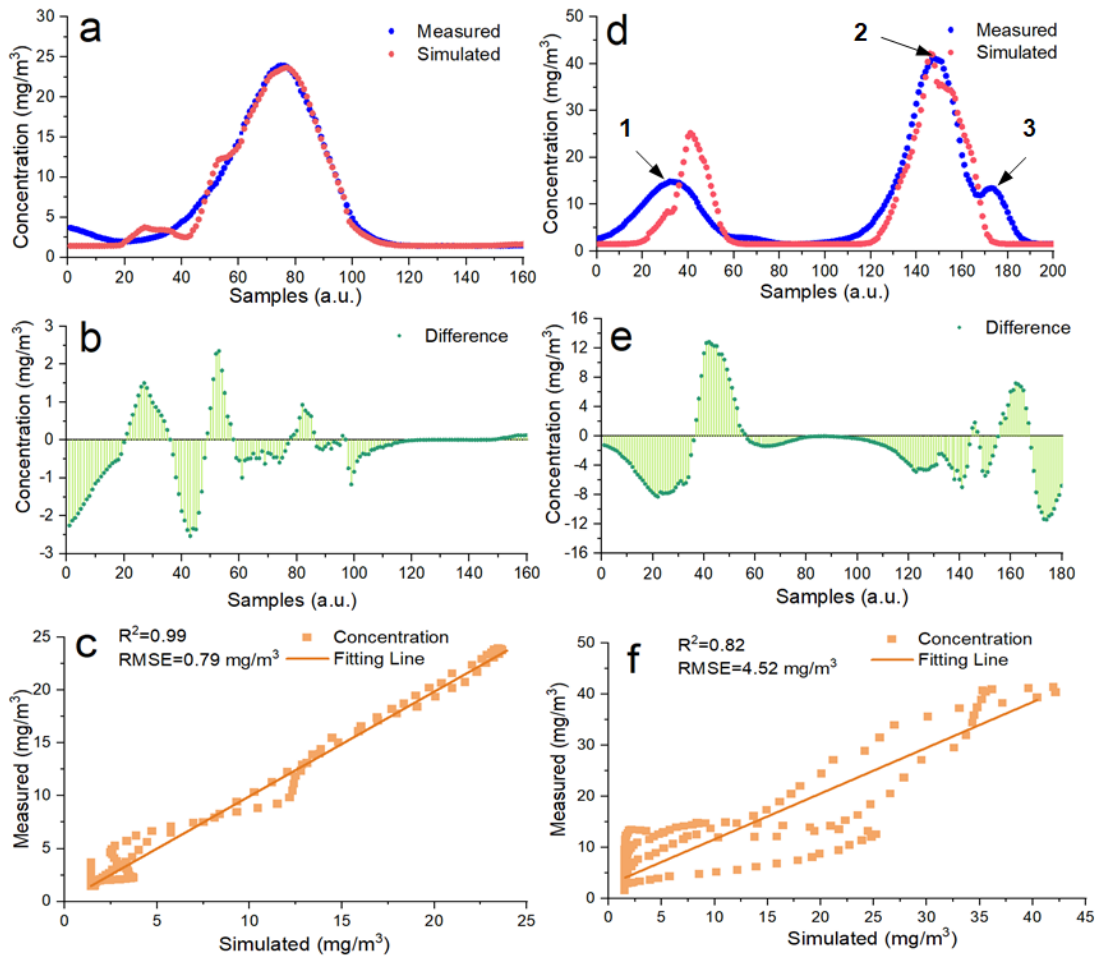
d	0.68±0.01	0.94±0.02
B (mg/m ³)	1.43±0.01	1.41±0.01
Emission height (m)	58.4±2.3	35.5±1.8
Reflection index	0.90±0.01	1.0±0.01

235

Then, we also calculate the difference between the actual measured samples and simulated ones as

$$D_c = C_s - C_m \quad (11)$$

Where D_c is the difference of CH₄ concentration data between actual measured and simulated ones, C_s is simulated CH₄ concentration (mg/m³), and C_m is measured CH₄ concentration (mg/m³).



240

Fig. 4. Comparison between the measured samples and the simulated ones based on the parameters in Table 1: (a). Flight 6 and (d) Flight 15. The difference of simulated CH₄ concentration data and actual measured ones: (b) Flight 6 and (e) Flight 15. Correlation Analysis: (c) Flight 6 and (f) Flight 15.

Fig 4 shows that the simulated CH₄ concentration is high consistent with actual sampled ones in two Flights.

245

In Flight 6, the largest value of sampled CH₄ concentration is 23.92 mg/m³, while the corresponding simulated one is 22.45 mg/m³, relative error is only 0.2 %. It is worth noting that there exist three peaks occurring

250

in Flight 15, mainly occur at the altitudes of about 16 m, 25 m and 40 m, see S3 in supplement. Fig.4 (d) shows the simulated CH₄ concentration data around the 1th and 3th peak are not better than that around the 2th peak. Because GA-IPPF method can assign more weights to the samples with higher concentration

(NO.120 to 180 in Flight 15) to get the global optimal solution of the unknown parameters, which leads to lower fitness to simulated CH₄ concentration around the 1th and 3th peaks. Values of D_c are ranging

1st, 2nd, 3rd, 4th - only th from number 4 onwards

from -2.50 to 2.35 mg/m³ in Flight 6, which are lower than that in Flight 15. R² between simulated CH₄ concentration and actual sampled ones are larger than 0.8 in two Flights, root mean square errors (RMSEs) are 0.79 mg/m³ and 4.52 mg/m³ respectively. The simulated CH₄ concentration in the other Flights are seen in S2. In summary, the tendency of the simulated CH₄ concentration data remains consistent with that of the actual samples in Flight.

3.2 Comparison with other methods

To investigate the difference between our proposed emission model and the others, three methods were applied to estimate CH₄ emission in all Flights, including mass-balance approach, nonlinear least square fit (NLSF), and facility emission.

Mass-balance approach quantifies CH₄ emission by calculating the cross-sectional flux perpendicular to the wind direction (Krings et al., 2018). First, a two-dimensional plane is selected according to the amount of CH₄ samples. Second, the two-dimensional plane is divided into a grid of equal spatial resolution. Third, CH₄ samples are regarded as original points to interpolate full grids defined by the Kriging interpolation scheme (Mays et al., 2009). Finally, the emission rate of the CH₄ source is calculated by

$$F_{(CH_4)} = \iint v \sin(\alpha) \cdot (C_{(x,z)} - C_{bg}) dx dz \quad (12)$$

Where v is the wind speed, α is the angle between wind direction and the two-dimensional plane, $C_{(x,z)}$ is the density of CH₄ in each grid, and C_{bg} is the background of CH₄ in each grid. The uncertainty analyses of this method are detailed in Nathan et al. (Nathan et al., 2015a).

NLSF and the combination of NLSF with Gaussian diffusion model are also extensively used for point-source emission retrieval (Zheng et al., 2020; Wolff et al., 2021b). In this study, NLSF is used to estimate Q in each Flight by fitting the unknown parameters in equation 1.

Andersen et al. also developed an inverse Gaussian approach to quantify CH₄ emissions from coal mine ventilation shaft based on the same Flights (Andersen et al., 2021). Firstly, the Gaussian dispersion is built as

$$C(x, y, z) = \frac{q}{2\pi u \sigma_y \sigma_z \cos(\theta)} \exp\left(-\frac{(y)^2}{2\sigma_y^2}\right) \left\{ \exp\left(-\frac{(z-H)^2}{2\sigma_z^2}\right) + \exp\left(-\frac{(z+H)^2}{2\sigma_z^2}\right) \right\} \quad (13)$$

Where θ is the angle between the wind direction and the perpendicular line of the flight trajectory. This model does not include the item of background of CH₄. Furthermore, σ_y and σ_z are treated as certain values in equation 11.

Facility-emission data and hourly CH₄ emission from shaft are calculated by measuring raw CH₄ concentration and air flux through the shafts, following the equation below

$$Q_{Inventory} = \frac{P \cdot V_{flow}}{R \cdot T} \rho \quad (14)$$

Where V_{flow} is the volumetric flow rate of CH₄ in m³ s⁻¹, given by the air flow rate (scaled by a constant factor of 0.95 to account for the ~5% additional air flow not coming from the ventilation shaft) multiplied by the CH₄ concentration, and P , R , T , ρ are the atmospheric pressure in Pa, the universal gas constant in J mol⁻¹ K⁻¹, the ambient temperature in K, and the molar density of CH₄ in g mol⁻¹ (16.043 g mol⁻¹), respectively.

CH₄ emission rates from ventilation shaft estimated by hourly facility-emission data for 18 August 2017 and 21 August 2017 are 1655.3 ± 479.45 and 913.2 ± 285.4 kg/hour, respectively, as shown in Fig. 5.

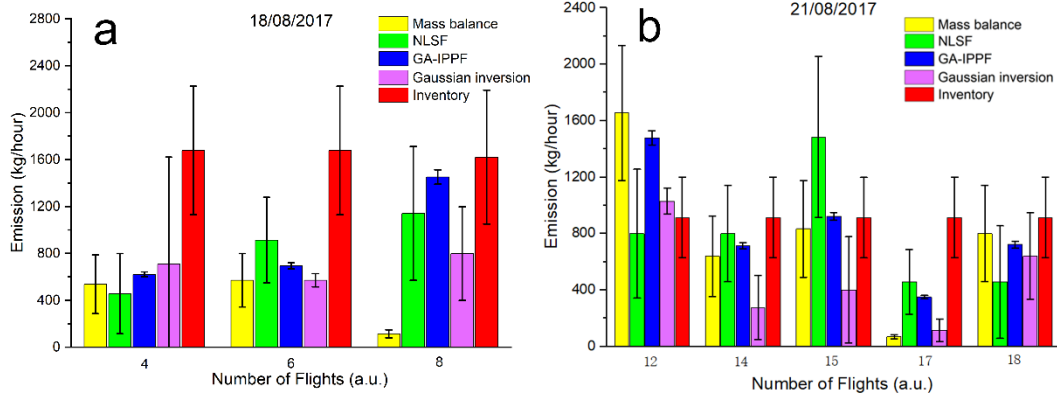


Fig. 5. Quantified CH₄ emission by different methods based on the collected data: (a) August 18, 2017 and (b) August 21, 2017. CH₄ emission rates from ventilation shaft calculated by Mass balance and Inverse Gaussian refer to Andersen et al.

As shown in Fig. 5, Flights 4, 6, and 8 were measured on 18 August 2017, whereas Flights 12, 14, 15, 17, and 18 were measured on 21 August 2017. Fig.5 (a) shows that the CH₄-emission rates calculated by mass balance are smaller than the inventory estimation in all Flights. In Flight 8, q retrieved by mass balance is extremely lower than those quantified by other methods, whereas q retrieved by GA-IPPF model (1478.4±50.3 kg/hour) shows only a slight difference from the inventory. As shown in Fig.5 (b), CH₄ emissions retrieved by mass balance, inverse Gaussian, and GA-IPPF model are overestimated compared with the inventory in Flight 12. Mass balance and inverse Gaussian method also show obviously underestimated q in Flight 17. Estimations of retrieved CH₄ emission in Flight 18 show consistency among methods of mass balance, GA-IPPF, and inverse Gaussian. The CH₄ emission rate of coal generally has significant variability in each measurement, even on the same day. Mass balance is very sensitive to the size settings of grids, and both height and length settings can affect the concentration distribution across the cross-section. NLSF has a high-accuracy requirement for wind measurements, and errors on these measurements have a linear influence on the final emission estimation. Notably, the standard errors of q quantified by GA-IPPF are always the least among these methods, indicating the stability of the model we developed. And we also simulated 2-D CH₄ plume from the ventilation shaft in Flight 6 and Flight 15 based on different methods, seen S4.

3.3 Application of Reanalysis meteorological database in GA-IPPF model

Wind speed and wind direction acquired by the radiosonde or weather station are two main parameters in GA-IPPF. However, additional sensors are bound to increase the cost and difficulty during actual CH₄-emission measurements. To explore the possibility of weather reanalysis data instead of actual wind measurement by sensors, we use 10 m U and V wind components from the ERA5 meteorological reanalysis database (spatial resolution is 0.1°×0.1°, and temporal resolution is 1 h) developed by the European Centre for Medium-range Weather Forecast (Hersbach et al., 2020) to evaluate GA-IPPF model. However, the wind directions from ERA obviously differed from the actual measurements during the Flights. Hence, we determine the wind direction by using the CH₄ samples, for example, the line between the shaft and the location of the maximum value of samples in the same heights was treated as the downwind direction, whose uncertainty was set as 50°. Wind speed from ERA is used for the CH₄-emission calculation, and the uncertainty was supposed as 2 m/s. Even if the initial wind speed and wind direction obviously differed between the two sources, the GA-IPPF model adjusted them into reasonable ranges. The results of q retrieved by two meteorological data sources during all Flights were evaluated, as shown in Table 2.

Table 2. CH₄ emission retrieved by two meteorological data sources

Flights	Measured (kg/hour)	ERA5 (kg/hour)
4	621.3±19.8	672.8±25.2
6	693.7±26.2	726.6±37.3
8	1452.4±60.5	1597.4±82.7
12	1478.4±50.3	1526.8±64.9
14	712.6±21.2	597.8±32.7
15	922.9±27.4	874.7±37.4
17	348.4±12.1	390.1±14.2
18	722.0±24.8	784.1±27.4

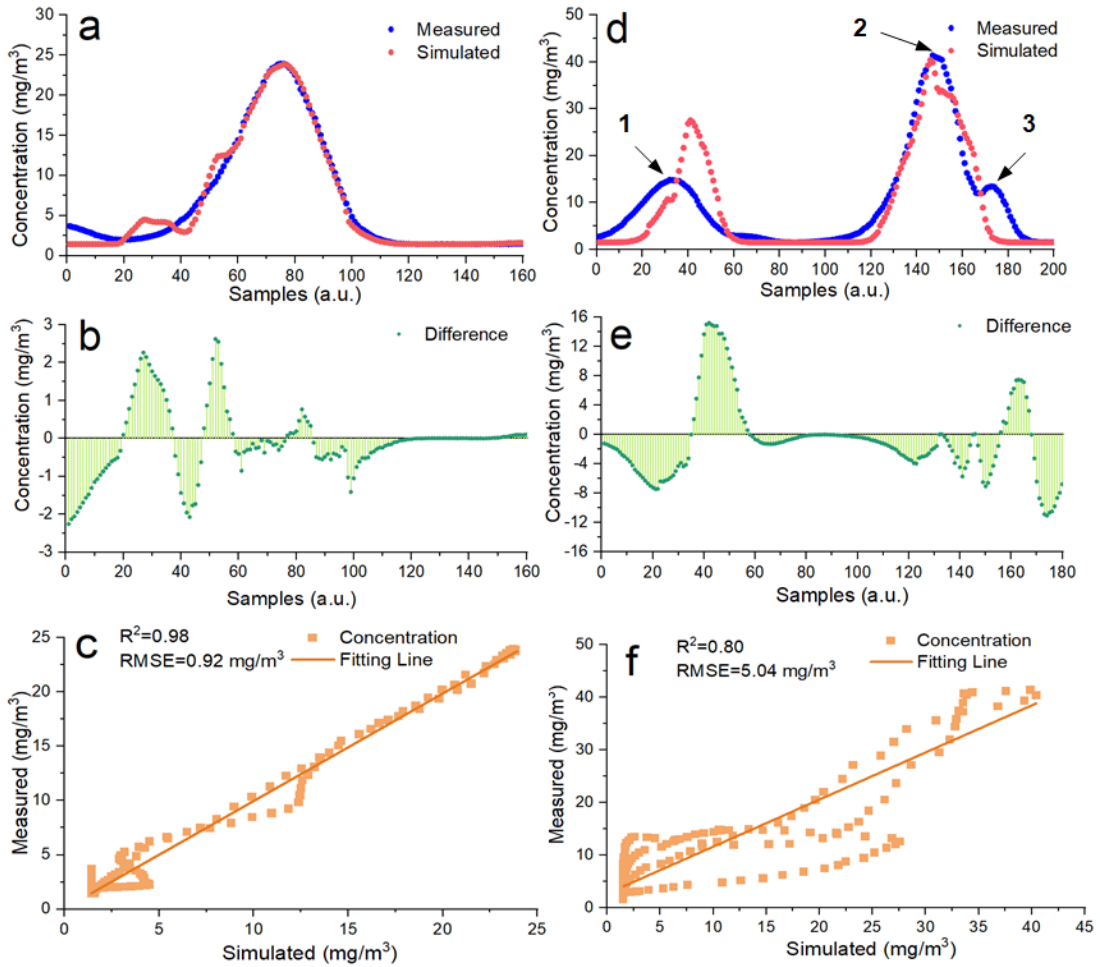
Table 2 shows that the values of quantified q between the two meteorological sources are within 20% in the same Flight. The standard errors of q retrieved by the ERA5 database are larger than those from actual measurements, wind data acquired from ERA5 database perhaps be treated as alternative input parameters in GA-IPPF model if no meteorological instruments are equipped in field experiments.

We also explore the reason that little difference of the calculated emission rates by the two different sources of meteorological data. The concerned parameters in Flight 6 and Flight 15 calculated based on ERA5 meteorological data are presented in Table 3.

Table 3. Parameters retrieved by GA-IPPF through ERA5 database

Parameters	Flight 6	Flight 15
Initial wind speed (m/s)	2.5	2.4
Initial wind direction (°)	300	120
Emission intensity (kt/hour)	726.6±37.3	898.7±52.1
Wind speed (m/s)	2.5±0.4	2.2±0.3
Wind direction (°)	349.4°±2.1	128.1±0.4
a	0.60±0.02	0.30±0.01
b	0.73±0.03	0.97±0.02
c	0.40±0.02	0.07±0.02
d	0.57±0.02	0.96±0.01
B (mg/m ³)	1.43±0.01	1.41±0.01
Emission height (m)	59.2±3.1	35.1±2.7
Reflection index	0.94±0.02	0.90±0.03

The initial wind speed and wind direction in Table 3 are obviously different from those in Table 1. However, the retrieved wind directions are nearly the same based on the two sources of meteorological data. Retrieved diffusion parameters and emission heights are also show less difference in two Tables (Table 1 and Table 3). It is worth noting that the wind speed and reflection index can be adjusted to reach the global solution by GA-IPPF model, which leads to little bias in retrieving emission rate.



340 **Fig. 6.** Comparison between the measured samples and the simulated ones based on the ERA5
 meteorological data: (a). Flight 6 and (d) Flight 15. The difference of simulated CH₄ concentration data
 and actual measured ones: (b) Flight 6 and (e) Flight 15. Correlation Analysis: (c) Flight 6 and (f) Flight
 15.

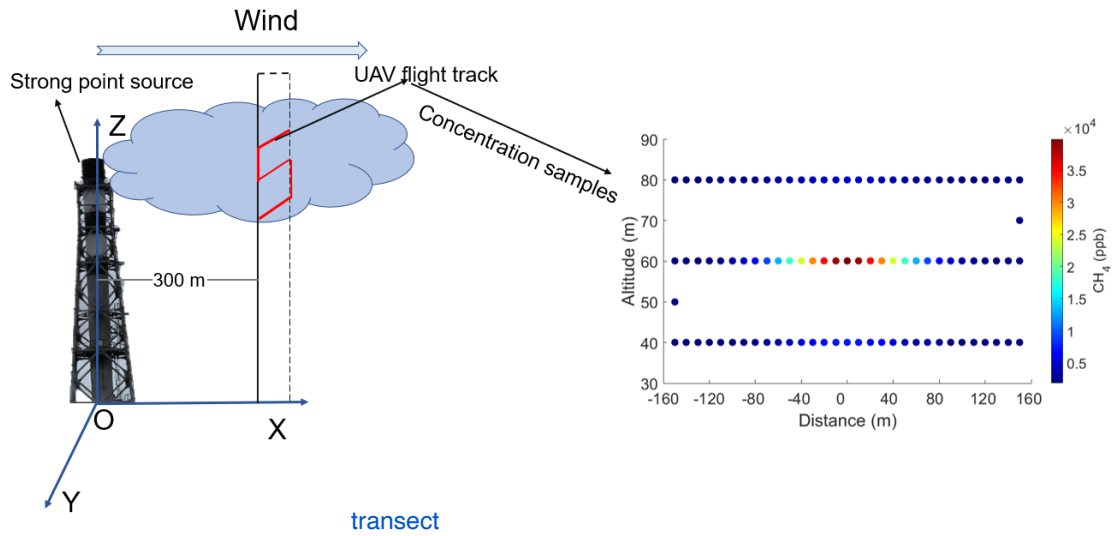
345 The tendency of simulated CH₄ concentration data in the two Flights are similar to that in Fig.4.
 What's more, both R² and RMSE between simulated CH₄ concentration data and actual measured ones
 in both Flights show less difference with that in Fig.4. Values of D_c shown in Fig.6 (b) are ranging from
 -2.25 to 2.62 mg/m³, which is nearly the same as the result in Fig.4 (b). Values of D_c shown in Fig.6 (e)
 are ranging from -11.04 to 15.21 mg/m³, while -11.3 to 12.85 mg/m³ in Fig.4 (e). Because the difference
 350 between actual measured wind speed and ERA 5 speed is 0.8 m/s in Flight 15, which is larger than that
 in Flight 6 (0.3 m/s). In summary, GA-IPPF can still simulated reasonable diffusion of CH₄ through
 ERA5 wind data.

4. Discussion

4.1. Validation of performance of GA-IPPF model through OSSEs

355 Firstly, the dispersion of CH₄ emission from a strong point source was simulated by equation 1 using the
 dispersion parameters shown in Table 4. To make the simulations close to the actual measurement
 scenarios, random errors were added to the CH₄ concentration samples (0.5 %), wind speed (± 0.3 m/s),
 and wind direction (± 20°). Then, the simulated flight track of UAV was conducted in crossing section
 (300 m to strong source), in Fig 7. The spatial resolution of the supposed samples is set as 10 m, and 99
 samples are selected from the simulated dispersion to represent the data acquired by the UAV-based

360 AirCore. Then, the concerned parameters are retrieved by the GA-IPPF method based on the above assumptions. Simulations are repeated 10 000 times, and the average values of the corresponding parameters were treated as the “Retrieved” results in Table 4.



365 **Fig. 7.** Rectangle represents **crossing section** perpendicular to wind direction, covering a distance of 300 m near the point source; Red line represents simulated flight track of UAV-based AirCore system; colored points represent the CH₄ concentration samples in OSSEs, totally 99.

Table 4. The parameters setting in dispersion simulation and the retrieved results by GA-IPPF

Parameters	Lower boundary	Upper boundary	Actual	Retrieved
Emission intensity (g/s)	0	100000	180	180.2±0.02
Wind speed (m/s)	0	100000	3	3±0.01
Wind direction (°)	70	110	90	90±0.10
a	0	1000	0.6	0.6±0.02
B	0	1000	0.7	0.7±0.02
c	0	1000	0.2	0.2±0.01
d	0	1000	0.6	0.6±0.01
B (ppb)	1700	2500	1900	1900±2.7
Emission height (m)	0	150	50	49.8±1.1
α	0	1	0.9	0.91±0.01

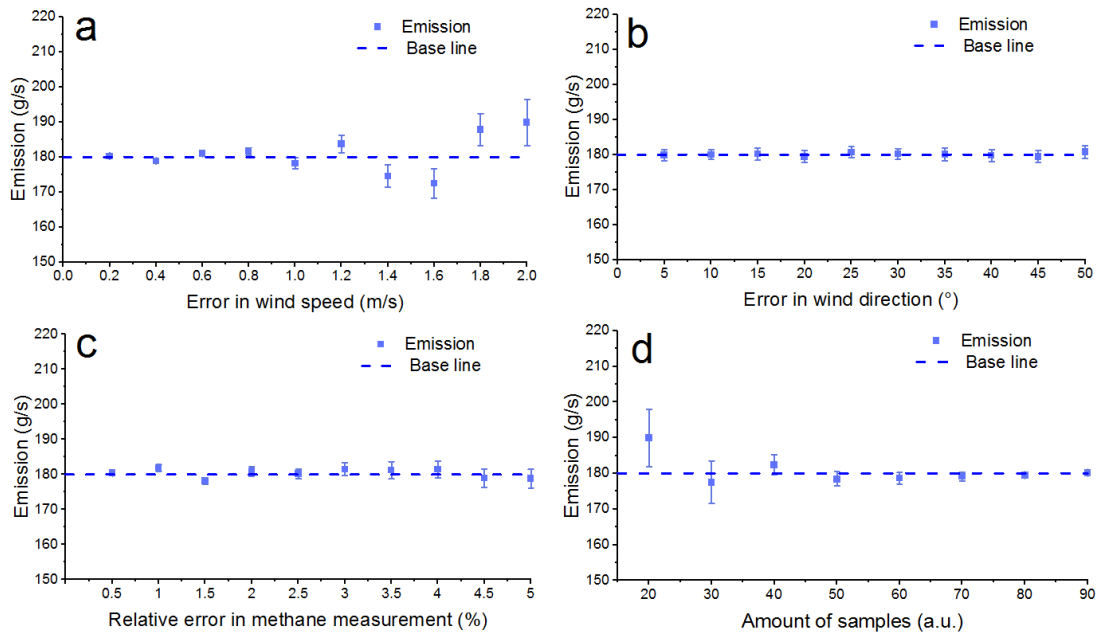
“Actual” means the set values of parameters, and “Retrieved” means the average values of parameters retrieved by GA-IPPF model through 10 000 times of simulation.

370 As shown in Table 1, q retrieved by GA-IPPF has only 0.11% bias compared with the set values. Emission height only has 0.2 m bias in terms of the set one, and the uncertainty is only 0.4% to 50 m. Other retrieved parameters also show high consistency with the original settings.

4.2. Stability analyses

375 The necessary input parameters in GA-IPPF contain meteorological data (wind speed and wind direction), accuracy of CH₄ samples, and amount of CH₄ samples. In equation 1, wind speed has a nearly linear relationship with the emission estimation. Wind speed is also an important factor that determines atmospheric stability according to the Pasquill–Gifford method (Venkatram, 1996) as it affects the diffusion parameters of σ_y and σ_z . The coordinate is built according to the wind direction, which is defined as the plane coordinates of CH₄ samples. According to equations 2 to 3, errors in wind-direction

380 measurement lead to wrong σ_y and σ_z on each position of samples. CH₄ samples are the most important factors to determine the Gaussian diffusion. The accuracy of samples influences the judgment of “fitness” in the GA process. More samples collected in different positions help rebuild the spatial-distribution characteristics of the plume, because this provides larger possibility for fitting process in IPPF and helps determine the optimum solution. To evaluate the influence of errors in the measurements of necessary parameters on the final retrieved results, the same settings in Table 4 are used as actual results. The performance of the GA-IPPF model with additional random errors in each parameter was simulated 10 000 times, as shown in Fig. 8.



390 **Fig. 8.** Influence of accuracy of parameters on retrieved emission results. The baseline represents the emission rate setting of CH₄, 300 g/s: (a) wind speed, with additional error ranging within 0.2–2 m/s and an interval of 0.1 m/s, (b) wind direction, with additional error ranging within 5°–50° and an interval of 5°, (c) accuracy of CH₄ samples, with additional error ranging within 0.5%–5.0% and an interval of 0.5%, and (d) amount of CH₄ samples, randomly selected as 20–90 among the defined 99 samples.

In Fig.8 (a), the mean value of q retrieved by GA-IPPF is nearly the same as the baseline if the error in wind speed is less than 0.4 m/s. It occurs to maximum retrieved emission bias (10.2 g/s) to the baseline when 2 m/s error in wind speed. Fluctuation of q occurs obviously if the error in wind speed exceeds 0.4 m/s. The standard errors of q are positively correlated with the values of errors in wind speed, indicating that the accuracy of wind-speed measurements largely influence the stability of the GA-IPPF model. This model has a self-adjustment function for wind speed; for example, when the initial wind speed is 3 m/s, the maximum standard error of q is only 6.6 g/s (3.7% to the 180.0 g/s) when the additional error of wind is 2.0 m/s (66.7% to 3.0 m/s).

The retrieved q shows less sensitivity to errors in wind direction (see Fig.8 (b)). When errors in wind direction are 5° to 40°, all biases of q are within 0.7 g/s and the standard errors are around 1.6 g/s. Wind direction determines the spatial location of the sampling point, and wrong location information leads to distinct errors in emission estimation. GA-IPPF shows highly accurate ability to obtain the global optimum solution in wind direction.

405 Sampling accuracy has small impact on the retrieved q within different settings in CH₄ samples’ accuracy, see Fig.8 (c). Standard deviation is positively correlated with errors in CH₄ measurements. The

standard deviation is 2.6 g/s when the measurement error reaches 5.0 %. Notably, the uncertainty of CH₄ samples measured by UAV-based AirCore system is far less than 5.0 %. The UAV-based AirCore system can acquire more than 99 CH₄ samples in actual feasible measurements, therefore, it is believed that accuracy of CH₄ samples (>95.0 %) collected by the AirCore system bring less influence in theory.

The number of measurement points obviously influences the final accuracy of q by the GA-IPPF model (see Fig.8 (d)). It has a bias of 9.7 g/s to 180.0 g/s when n is 20. The accuracy of q and the standard error are negatively correlated with n which provides the number of criterion for the fitting process in the retrieval model. Hence, n directly influences the retrieved results. The AirCore system has the advantage of continuous sampling during flight, which integrates the atmospheric signals along the flight path and helps reduce the uncertainty in the retrieved q. Besides, the smoothing of the atmospheric signal also reduces the spatial resolution of the measurements, which needs to be considered during the optimization.

IPPF can suitably solve the problem of inequality constraints, and the calculated solution guarantees the calculated parameters to be within the feasible region. In this section, the performance of the GA-IPPF model and the influence of the four key input parameters are discussed.

Suggestions for quantifying emission rate through UAV-based AirCore system

1. Meteorological instruments should be equipped when collecting concentration samples to acquire wind speed, wind direction, humidity and atmosphere pressure.
2. The wind speed should be greater than 2.0 m/s.
3. During actual experiments, after the stable wind speed and wind direction are measured, the UAV-based AirCore system will start its concentration collection, and the system should try to fly along the cross section perpendicular to the wind direction.

These criteria were used to select These criterions are also determined the analyzed 8 Flights from the total 15 Flights.

Application of GA-IPPF

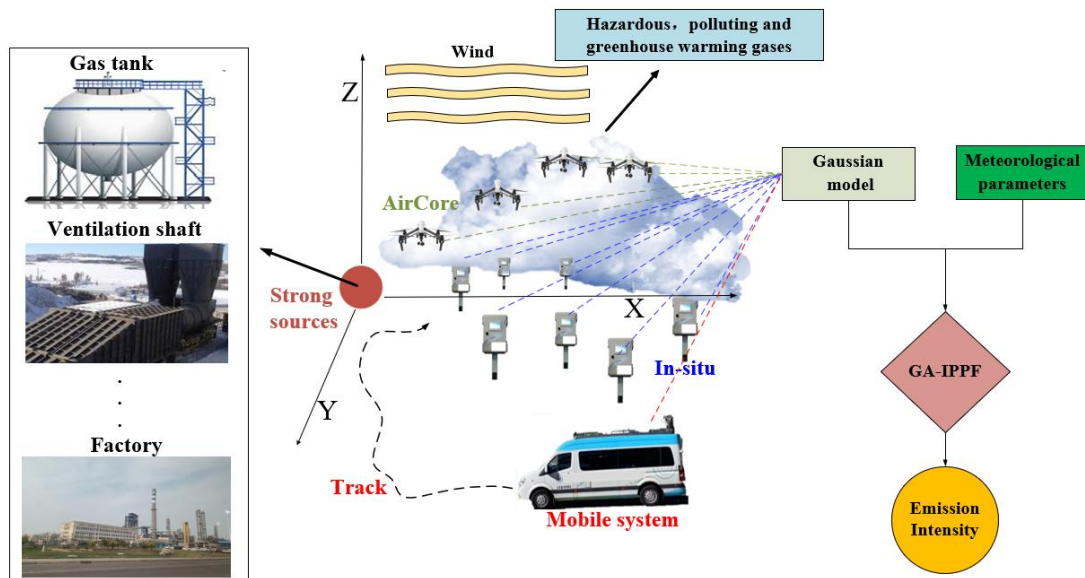


Fig.9. Application of GA-IPPF in quantifying emission source of gases through different sample systems, including UAV-based AirCore system, ground-based In-situ network and mobile collection system.

GA-IPPF, works as an emission gas quantification method, which can achieve rapid real-time monitoring of methane leakage caused by landfills, chemical plants and other strong sources. In theory, the recommended model is applicable not only to UAV-based AirCore system, but also to other sample systems which can measure gases concentration and location information. Each country's environmental

440 monitoring department may have built gases sample equipment based on different platforms, including UAV, vehicles, and ground-based in-situ stations. These systems may **not only** monitor greenhouse gases like CO₂ and CH₄, as well as polluting and harmful gases. Therefore, we demonstrate the application of GA-IPPF in quantifying gases emission based on different gases concentration **measurement collected** systems in actual experiments.

Emission Estimates in control release experiment

445 To evaluate the performance of GA-IPPF in control release experiments, we quantify the gases emission rates in release experiment through different gases sample systems, including UAV-based AirCore system, mobile sampling system and ground-based in-situ network. Detailed introduction of the concerned release experiment are as follows:

Agrar Hauser control release

450 This CH₄ release experiment was conducted on Agrar Hauser field near Dübendorf, Switzerland (Morales et al., 2022). The controlled CH₄ was **released** from an artificial source, 50 L high-pressure cylinder with a height of 1.5 m. Meteorological information were acquired by 3D anemometers around the emission source. UAV-based sample systems used in these release experiments contained two sensors, Quantum cascade laser spectrometer (QCLAS) and active AirCore. **It carried series active** measurements from 23 February to 14 March 2020. There was no other CH₄ source around Agrar Hauser field and the topography was flat. In this section, active AirCore CH₄ samples on 12 March 2020 (312_01) were chosen to use GA-IPPF to quantify methane release rate.

What does this Mean?

EPA methane control release

460 Environmental Protection Agency (EPA), USA developed OTM 33A method to quantify oil and gas leakage based on mobile measurement platforms (Brantley et al., 2014), which consisted CH₄ in-situ sensor (G1301-fc cavity ring-down spectrometer (Picarro)), a **co-located** compact weather station and a Hemisphere Crescent R100 Series GPS system. The accuracy of in-situ sample was within $\pm 5\%$, and in-situ sensor was implemented at height of 2.7 m based on vehicle. Weather station provided atmospheric temperature, pressure and humidity, as well as 3-D wind direction and wind speed. **A** 99.9% CH₄ high pressure **cylinder** **cylinders** was used as the gas supply to simulate the CH₄ leakage source. EPA published total 20 experiments of control releases to evaluate OTM 33A method.

Using 'A' means only 1 cylinder

Prairie Grass emission experiment

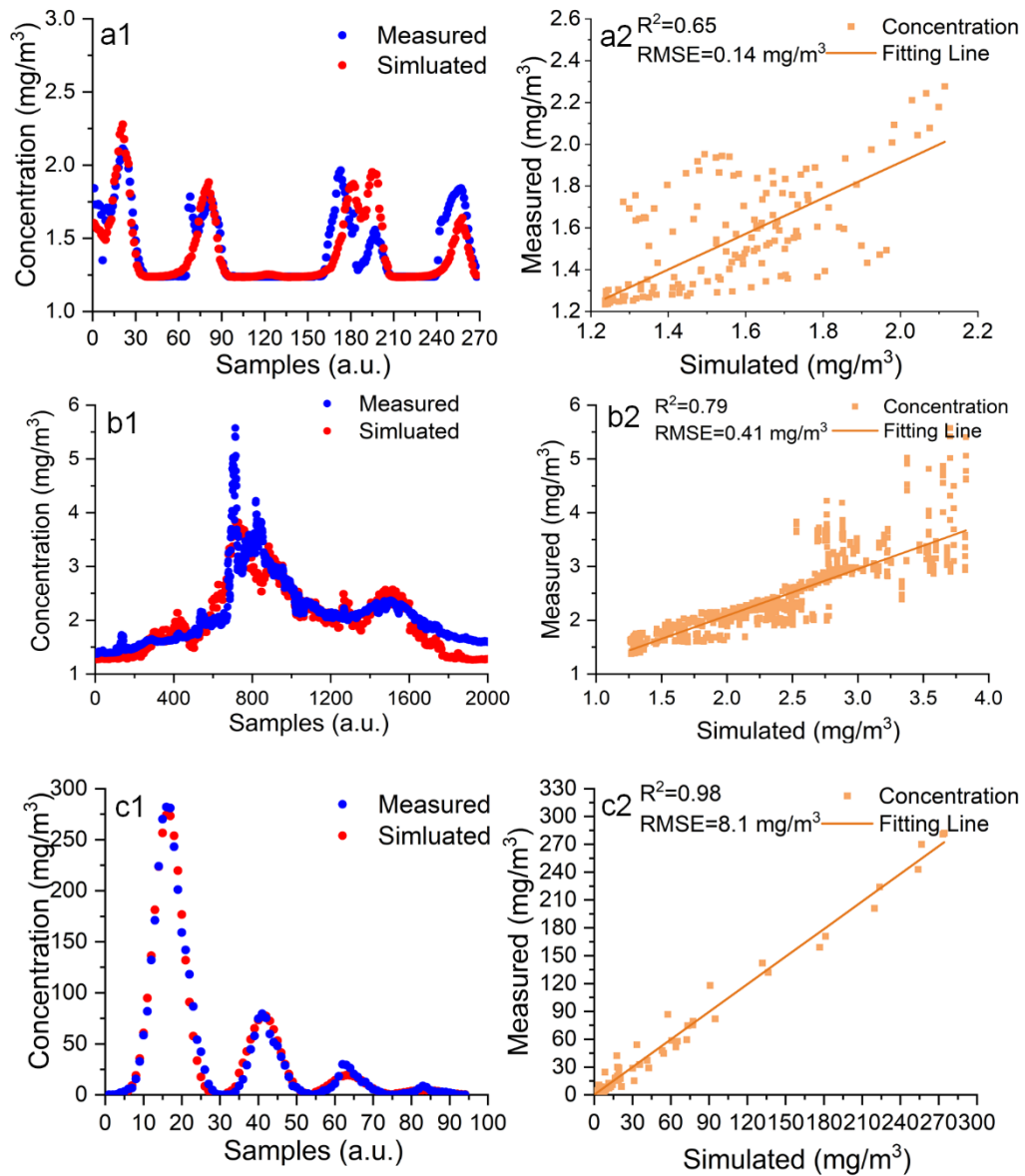
470 Prairie Grass emission experiment was mainly conducted to evaluate the diffusion of SO₂ from point source under different meteorological circumstances (Barad et al, 1958). The height of emission source was 0.46 m, and all in-situ sensors were set at heights of 1.5 m. SO₂ concentration was sampled by the in-situ network at the radius of 50 m, 100 m, 200 m, 400 m and 800 m around the source. Samples in R57 release (10-minute sampling periods), **totalling** 94, were selected to **quantify** SO₂ emission rate from release instrument. The reported emission rate of SO₂ in R57 was 105.1 g/s, and the samples collected at the radius of 800 m were neglected in this discussion because of their very small quantity. The reported wind speed was 4.85 \pm 1 m/s, wind direction was 184 \pm 10°.

Table 4 Performance of GA-IPPF model in different control release experiments

Database	Number	Gas	Release rates (g/s)	Retrieved by GA-IPPF (g/s)
Agrar Hauser	312_01	CH ₄	0.31 \pm 0.03	0.3 \pm 0.03
EPA	STR_6061411_01	CH ₄	0.60	0.57 \pm 0.04
Prairie Grass	57	SO ₂	101.5	104.7 \pm 3.7

Table 4 shows the emission rates and uncertainties through GA-IPPF in control release experiments, and the reported emission rates. The average difference between retrieved emission rates and reported

ones is 3.8 %, which indicates the high accuracy of GA-IPPF in quantification estimation.



480

Fig.10. The simulated gases diffusions based on retrieved parameters in control release experiments; a1 and a2 are comparisons between simulated diffusion and actual samples in Agrar Hauser; b1 and b2 are comparisons between simulated diffusion and actual samples in EPA control release; c1 and c2 are comparisons between simulated diffusion and actual samples in Prairie Grass experiment.

485

As shown in Fig.10, the gases diffusions simulated by GA-IPPF in the three control release experiments conform to logic. Simulated gases concentrations are in good agreement with actual samples (see Fig.10.a1, Fig.10.b1 and Fig.10.c1.), and each peak of the samples in control release experiments can be reconstructed. The correlations between simulated gases concentrations and actual samples are larger than 0.65, and the RMSE are within 2.7% (relative to the mean value of the selected samples' concentration).

490

In general, reconstructions of gases concentration based on both mobile-platform and UAV are worse than that based on in-situ network. Collected data by in-situ network is usually the mean value of a certain time, like 10 min in Prairie Grass emission experiment, which provides stable inputs data for GA-IPPF, especially concentration samples. While the concentrations sampled by mobile-platform and UAV-based

495 AirCore experiments are instantaneous, which may not capture the temporal variability of emissions
be inaccurate and exist fluctuations in collections. The advantages of vehicle-based and UAV-based sample systems are flexibility, that is, they can freely
acquire the distribution of gases around the target monitoring sources. In-situ network implementation is
500 complicated with a high cost, and the wind direction should be considered during deployment. But its
high stability and accuracy can help us to quantify emission source. Therefore, environmental protection
departments can choose detection systems according to actual emission monitoring needs.

5. Conclusion

In this study, we present a quantified model for strong point emission source based on concentration
sampling data, named GA-IPPF. During CoMet campaign in 2017, we successfully monitor methane
emissions from a ventilation shaft in Pniówek coal mine through the concentration data measured by
505 UAV-based AirCore system. Results show that CH₄ emissions rate from ventilation shaft are not
consistent even in a short time.

GA-IPPF can reconstruct the concentration dispersion around the point emission source, and the
largest R² between the measured CH₄ concentration and the reconstructed concentration in the selected
Flights around Pniówek coal mine can reach 0.99.

510 In Observing System Simulation Experiments (OSSE), we discussed the sensitivity analysis of
different parameters setting on final retrieved emission rate by GA-IPPF. We demonstrate that GA-IPPF
has self-adjust function to achieve an optimal solution on emission rate, which will reduce the
requirements for hardware performance in actual emission quantification experiment.

We also tested the performance of GA-IPPF in three control release experiments with different
515 sampling platforms devices, including vehicle-mounted in-situ system, UAV-based AirCore system and ground-
based in-situ network observation, and the biases between retrieved emission rates and reported ones
are within 5.0 %.

In future, GA-IPPF has great potential in the point-source quantitation based on mobile concentration
520 sampling system, which can help to renew and enrich the gases emission inventories on strong point
sources.

Author contributions. HC, XM, TS planned the campaign; TS, TA, HC, HM performed the
measurements; TS and ZH analyzed the data; GH and TS wrote the manuscript draft; CC, HZ, and WG
reviewed and edited the manuscript.

Competing interests. The authors declare that they have no conflict of interest.

525 **Acknowledgements.** This work was supported by the National Natural Science Foundation of China
(Grant No.41971283, 41801261, 41827801, 41901274, 41801282, 42171464), the National Key
Research and Development Program of China (2017YFC0212600), The Key Research and Development
Project of Hubei Province (2021BCA216), the Open Research Fund of National Earth Observation Data
Center (NODAOP2021005).

530 References

- Allen, G., Hollingsworth, P., Kabbabe, K., Pitt, J. R., Mead, M. I., Illingworth, S., Roberts, G., Bourn,
M., Shallcross, D. E., and Percival, C. J.: The development and trial of an unmanned aerial system for
the measurement of methane flux from landfill and greenhouse gas emission hotspots, Waste.Manage.,
87, 883–892, <https://doi.org/10.1016/j.wasman.2017.12.024>, 2019.
- 535 Andersen, T., Scheeren, B., Peters, W., and Chen, H. L.: A UAV-based active AirCore system for
measurements of greenhouse gases, Atmos.Meas.Tech., 11, 2683–2699, [https://doi.org/10.5194/amt-11-
2683-2018](https://doi.org/10.5194/amt-11-2683-2018), 2018.
- Andersen, T., Vinkovic, K., de Vries, M., Kers, B., Necki, J., Swolkien, J., Roiger, A., Peters,

- W., and Chen, H.: Quantifying methane emissions from coal mining ventilation shafts using an
540 unmanned aerial vehicle (UAV)-based active AirCore system, *Atmos. Environ.*, 12, 100135, <https://doi.org/10.1016/j.aeaoa.2021.100135>, 2021.
- Barad, Morton L. Project Prairie Grass, a Field Program in Diffusion. Volume 1. Air Force Cambridge
Research Labs Hanscom Afb MA, 1958.
- Brantley, H. L., Thoma, E. D., Squier, W. C., Guven, B. B., and Lyon, D.: Assessment of Methane
545 Emissions from Oil and Gas Production Pads using Mobile Measurements, *Environ. Sci. Technol.*, 48,
14508-14515, <https://doi.org/10.1021/es503070q>.
- Cardoso-Saldaña, F. J. and Allen, D. T.: Projecting the temporal evolution of methane emission
s from oil and gas production sites, *Environ.Sci.Technol.*, 54, 14172–14181, <https://doi.org/10.1021/acs.est.0c03049>, 2020.
- 550 Caulton, D. R., Qi, L., Bou-Zeid, E., Lu, J., Zondlo, M. A. J. A. C., and Physics: Improving Mobile
Platform Gaussian-Derived Emission Estimates Using Hierarchical Sampling and Large Eddy
Simulation, *Atmos. Chem. Phys. Discuss.*, 18, 15 145–68, <https://doi.org/10.5194/acp-2017-961>, 2017.
- Elder, C. D., Thompson, D. R., Thorpe, A. K., Hanke, P., Walter Anthony, K. M., and Miller, C. E.:
Airborne Mapping Reveals Emergent Power Law of Arctic Methane Emissions, *Geophys. Res. Lett.*, 47,
555 e2019GL085 707, <https://doi.org/10.1029/2019GL085707>, 2020.
- Feng, L., Palmer, P. I., B?Sch, H., Parker, R. J., Webb, A. J., Correia, C. S. C., Deutscher, N. M.,
Domingues, L. G., Feist, D. G., Gatti, L. V. J. A. C., and Physics: Consistent regional fluxes of CH₄ and
CO₂ inferred from GOSAT proxy XCH₄ : XCO₂ retrievals, 2010-2014, *Atmos. Chem.Phys.*, 17, 4781–
4797, <https://doi.org/10.5194/acp-17-4781-2017>, 2017.
- 560 Guanter, L., Irakulis-Loitxate, I., Gorrone, J., Sanchez-Garcia, E., Cusworth, D. H., Varon, D. J., Cogliati,
S., and Colombo, R.: Mapping methane point emissions with the PRISMA spaceborne imaging
spectrometer, *Remote. Sens. Environ.*, 265, 112 671, <https://doi.org/10.1016/j.rse.2021.112671>, 2021.
- Hersbach, H., Bell, B., Berrisford, P., Hirahara, S., Horanyi, A., Munoz-Sabater, J., Nicolas, J., Peubey,
C., Radu, R., Schepers, D., Simmons, A., Soci, C., Abdalla, S., Abellan, X., Balsamo, G., Bechtold, P.,
565 Biavati, G., Bidlot, J., Bonavita, M., De Chiara, G., Dahlgren, P., Dee, D., Diamantakis, M., Dragani, R.,
Flemming, J., Forbes, R., Fuentes, M., Geer, A., Haimberger, L., Healy, S., Hogan, R. J., Holm, E.,
Janiskova, M., Keeley, S., Laloyaux, P., Lopez, P., Lupu, C., Radnoti, G., de Rosnay, P., Rozum, I.,
Vamborg, F., Villaume, S., and Thepaut, J. N.: The ERA5 global reanalysis, *Quarterly Journal Of the
Royal Meteorological Society*, 146, 1999-2049, 10.1002/qj.3803, 2020.
- 570 Iwaszenko, S., Kalisz, P., Slota, M., and Rudzki, A.: Detection of Natural Gas Leakages Using a Laser-
Based Methane Sensor and UAV, *Remote.Sens-Basel.*, 13, 510, <https://doi.org/10.3390/rs13030510>,
2021.
- Jha, C. S., Rodda, S. R., Thumaty, K. C., Raha, A. K., and Dadhwal, V. K.: Eddy covariance based
methane flux in Sundarbans mangroves, India, *J.Earth.Syst.Sci.*, 123, 1089-1096,
575 <https://doi.org/10.1007/s12040-014-0451-y>.
- Krautwurst, S., Gerilowski, K., Borchardt, J., Wildmann, N., Galkowski, M., Swolkien, J., Marshall, J.,
Fiehn, A., Roiger, A., Ruhtz, T., Gerbig, C., Necki, J., Burrows, J. P., Fix, A., and Bovensmann, H.:
Quantification of CH₄ coal mining emissions in Upper Silesia by passive airborne remote sensing
observations with the Methane Airborne MAPper (MAMAP) instrument during the CO₂ and Methane
580 (CoMet) campaign, *Atmos. Chem.Phys.*, 21, <https://doi.org/10.5194/acp-21-17345-2021>.
- Krings, T., Neining, B., Gerilowski, K., Krautwurst, S., Buchwitz, M., Burrows, J. P., Lindem
ann, C., Ruhtz, T., Schuttemeyer, D., and Bovensmann, H.: Airborne remote sensing and in sit

- u measurements of atmospheric CO₂ to quantify point source emissions, *Atmos.Meas.Tech.*, 11, 721–739, <https://doi.org/10.5194/amt-11-721-2018>, 2018.
- 585 Kuhlmann, R. and Buskens, C.: A primal-dual augmented Lagrangian penalty-interior-point filter line search algorithm, *Math. Method. Oper. Res.*, 87, 451–483, <https://doi.org/10.1007/s00186-017-0625-x>, 2018.
- Liu, D. and Michalski, K. A.: Comparative study of bio-inspired optimization algorithms and their application to dielectric function fitting, *J.Electromagnet.Wave.*, 30, 1885–1894, <https://doi.org/10.1080/09205071.2016.1219277>, 2016.
- 590 Liu, F., Duncan, B. N., Krotkov, N. A., Lamsal, L. N., Beirle, S., Griffin, D., McLinden, C. A., Goldberg, D. L., and Lu, Z. F.: A methodology to constrain carbon dioxide emissions from coal-fired power plants using satellite observations of co-emitted nitrogen dioxide, *Atmos.Chem. Phys.*, 20, 99–116, <https://doi.org/10.5194/acp-20-99-2020>, 2020.12.
- 595 Ma, D. and Zhang, Z.: Contaminant dispersion prediction and source estimation with integrated Gaussian-machine learning network model for point source emission in atmosphere, *J. Hazard. Mater.*, 311, 237–245, <https://doi.org/10.1016/j.jhazmat.2016.03.022>, 2016.
- Mays, K. L., Shepson, P. B., Stirm, B. H., Karion, A., Sweeney, C., and Gurney, K. R.: Aircraft-Based Measurements of the Carbon Footprint of Indianapolis, *Environ. Sci. Technol.*, 43, 7816–7823, <https://doi.org/10.1021/es901326b>, 2009.
- 600 Morales, R., Ravelid, J., Vinkovic, K., Korbe, P., Tuzson, B., Emmenegger, L., Chen, H. L., Schmidt, M., Humbel, S., and Brunner, D.: Controlled-release experiment to investigate uncertainties in UAV-based emission quantification for methane point sources, *Atmos.Meas.Tech.*, 15, 2177–2198, <https://doi.org/10.5194/amt-15-2177-2022>.
- 605 Nakai, T., Hiyama, T., Petrov, R. E., Kotani, A., Ohta, T., and Maximov, T. C.: Application of an open-path eddy covariance methane flux measurement system to a larch forest in eastern Siberia, *Agric. For. Meteorol.*, 282, <https://doi.org/10.1016/j.agrformet.2019.107860>.
- Nassar, R., Mastrogiacomo, J. P., Bateman-Hemphill, W., McCracken, C., MacDonald, C. G., Hill, T., O'Dell, C. W., Kiel, M., and Crisp, D.: Advances in quantifying power plant CO₂ emissions with OCO-2, *Remote. Sens. Environ.*, 264, 112–125, <https://doi.org/10.1016/j.rse.2021.112579>, 2021.
- 610 Nathan, B. J., Golston, L. M., O'Brien, A. S., Ross, K., Harrison, W. A., Tao, L., Lary, D. J., Johnson, D. R., Covington, A. N., Clark, N. N., and Zondlo, M. A.: Near-Field Characterization of Methane Emission Variability from a Compressor Station Using a Model Aircraft, *Environ. Sci. Technol.*, 49, 7896–7903, <https://doi.org/10.1021/acs.est.5b00705>, 2015.
- 615 Pan, G., Xu, Y., and Huang, B.: Evaluating national and subnational CO₂ mitigation goals in China's thirteenth five-year plan from satellite observations, *Environ. Int.*, 156, 106–121, <https://doi.org/10.1016/j.envint.2021.106771>, 2021.
- Robertson, A. M., Edie, R., Snare, D., Soltis, J., Field, R. A., Burkhart, M. D., Bell, C. S., Zimmerle, D., and Murphy, S. M.: Variation in Methane Emission Rates from Well Pads in Four Oil and Gas Basins with Contrasting Production Volumes and Compositions, *Environ. Sci. Technol.*, 51, 8832–8840, <https://doi.org/10.1021/acs.est.7b00571>, 2017.
- 620 Schneising, O., Buchwitz, M., Reuter, M., Vanselow, S., Bovensmann, H., and Burrows, J. P.: Remote sensing of methane leakage from natural gas and petroleum systems revisited, *Atmos. Chem. Phys.*, 20, 9169–9182, <https://doi.org/10.5194/acp-20-9169-2020>, 2020.
- 625 Shah, A., Pitt, J. R., Ricketts, H., Leen, J. B., and Allen, G.: Testing the near-field Gaussian plume inversion flux quantification technique using unmanned aerial vehicle sampling, *Atmos. Meas. Tech.*, 13,

- 1467–1484, <https://doi.org/10.5194/amt-13-1467-2020>, 2020.
- Shi, T., Han, G., Ma, X., Zhang, M., Pei, Z., Xu, H., Qiu, R., Zhang, H., and Gong, W.: An inversion method for estimating strong point carbon dioxide emissions using a differential absorption Lidar, *J. Clean. Prod.*, 271, 122 434, <https://doi.org/10.1016/j.jclepro.2020.122434>, 2020a.
- 630 Shi, T. Q., Ma, X., Han, G., Xu, H., Qiu, R. N., He, B., and Gong, W.: Measurement of CO₂ rectifier effect during summer and winter using ground-based differential absorption LiDAR, *Atmos. Environ.*, 220, 117 097, <https://doi.org/10.1016/j.atmosenv.2019.117097>, 2020b.
- Tu, Q. S., Hase, F., Schneider, M., Garcia, O., Blumenstock, T., Borsdorff, T., Frey, M., Khosrawi, F., Lorente, A., Alberti, C., Bustos, J. J., Butz, A., Carreno, V., Cuevas, E., Curcoll, R., Diekmann, C. J., Dubravica, D., Ertl, B., Estruch, C., Leon-Luis, S. F., Marrero, C., Morgui, J. A., Ramos, R., Scharun, C., Schneider, C., Sepulveda, E., Toledano, C., and Torres, C.: Quantification of CH₄ emissions from waste disposal sites near the city of Madrid using ground- and space-based observations of COCCON, TROPOMI and IASI, *Atmos. Chem. Phys.*, 22, 295–317, <https://doi.org/10.5194/acp-22-295-2022>, 2022.
- 635 Varon, D. J., Jacob, D. J., Jervis, D., and McKeever, J.: Quantifying Time-Averaged Methane Emissions from Individual Coal Mine Vents with GHGSat-D Satellite Observations, *Environ. Sci. Technol.*, 54, 10 246–10 253, <https://doi.org/10.1021/acs.est.0c01213>, 2020.
- 640 Varon, D. J., McKeever, J., Jervis, D., Maasackers, J. D., Pandey, S., Houweling, S., Aben, I., Scarpelli, T., and Jacob, D. J.: Satellite Discovery of Anomalously Large Methane Point Sources From Oil/Gas Production, *Geophys. Res. Lett.*, 46, 13 507–13 516, <https://doi.org/10.1029/2019GL083798>, 2019.
- 645 Venkatram, A.: An examination of the Pasquill-Gifford-Turner dispersion scheme, *Atmos. Environ.*, 30, 1283-1290, [https://doi.org/10.1016/1352-2310\(95\)00367-3](https://doi.org/10.1016/1352-2310(95)00367-3), 1996.
- Wolff, S., Ehret, G., Kiemle, C., Amediek, A., Quatrevalet, M., Wirth, M., and Fix, A.: Determination of the emission rates of CO₂ point sources with airborne lidar, *Atmos. Meas. Tech.*, 14, 2717–2736, <https://doi.org/10.5194/amt-14-2717-2021>, 2021.
- 650 Yuan, Q. and Qian, F.: A hybrid genetic algorithm for twice continuously differentiable NLP problems, *Comput. Chem. Eng.*, 34, 36–41, <https://doi.org/10.1016/j.compchemeng.2009.09.006>, 2010.
- Zhang, Y., Gautam, R., Pandey, S., Omara, M., Maasackers, J. D., Sadavarte, P., Lyon, D., Nesser, H., Sulprizio, M. P., Varon, D. J., Zhang, R., Houweling, S., Zavala-Araiza, D., Alvarez, R. A., Lorente, A., Hamburg, S. P., Aben, I., and Jacob, D. J.: Quantifying methane emissions from the largest oil-producing basin in the United States from space, *Sci. Adv.*, 6, eaaz5120, <https://doi.10.1126/sciadv.aaz5120>.
- 655 Zheng, B., Chevallier, F., Ciais, P., Broquet, G., Wang, Y., Lian, J., and Zhao, Y.: Observing carbon dioxide emissions over China's cities and industrial areas with the Orbiting Carbon Observatory-2, *Atmos. Chem. Phys.*, 20, 8501–8510, <https://doi.org/10.5194/acp-20-8501-2020>, 2020.
- 660 Zhou, X. C., Yoon, S. J., Mara, S., Falk, M., Kuwayama, T., Tran, T., Cheadle, L., Nyarady, J., Croes, B., Scheehle, E., Herner, J. D., and Vijayan, A.: Mobile sampling of methane emissions from natural gas well pads in California, *Atmos. Environ.*, 244, 117 930, <https://doi.org/10.1016/j.atmosenv.2020.117930>, 2021.