

1 Estimation of surface ammonia concentrations and emissions in 2 China from the polar-orbiting Infrared Atmospheric Sounding 3 Interferometer and the FY-4A Geostationary Interferometric 4 Infrared Sounder

5 Pu Liu¹, Jia Ding¹, Lei Liu¹, Wen Xu², Xuejun Liu²

6 ¹ School of Earth and Environmental Sciences, Lanzhou University, Lanzhou, 730000, China

7 ² College of Resources and Environmental Sciences, Centre for Resources, Environment and Food Security, Key Lab of Plant-
8 Soil Interactions of MOE, China Agricultural University, Beijing 100193, China

9 Correspondence to: Lei Liu (liuleigeo@lzu.edu.cn)

10

11 Abstract

12 Ammonia (NH₃) is the most important alkaline gas in the atmosphere, which has negative effects on
13 biodiversity, ecosystems, soil acidification and human health. China has the largest NH₃ emissions
14 globally, mainly associated with agricultural sources including nitrogen fertilizer and livestock. However,
15 there is still a limited number of ground monitoring sites in China, hindering our understanding of both
16 surface NH₃ concentrations and emissions. In this study, using the polar-orbiting satellite (IASI) and
17 Fengyun-4 geostationary satellite (GIIRS), we analyzed the changes of hourly NH₃ concentrations, and
18 estimated surface NH₃ concentrations and NH₃ emissions in China. GIIRS-derived NH₃ concentrations
19 in the daytime were generally higher than that at night, with high values during 10:00-16:00. Satellite-
20 derived surface NH₃ concentrations were generally consistent with the ground observations with R-square

21 at 0.72 and slope equal to 1.03. Satellite-based NH₃ emissions ranged from 12.17-17.77 Tg N yr⁻¹ during
22 2008-2019. Spatially, high values of NH₃ emissions mainly occurred in the North China Plain, Northeast
23 China and Sichuan Basin, while low values were mainly distributed in western China (Qinghai-Tibet
24 Plateau). Our study shows a high predictive power of using satellite data to estimate surface NH₃
25 concentrations and NH₃ emissions over multiple temporal and spatial scales, which provides an important
26 reference for understanding NH₃ changes over China.

27 1 Introduction

28 Ammonia (NH₃) is a highly active gas in the atmosphere and the most important alkaline gas, playing an
29 important role in atmospheric chemistry (Fowler et al., 2013). NH₃ reacts with acid pollutants (SO₂ and
30 NO_x) to form fine particulate matters, such as PM_{2.5}, leading to haze pollution. In addition, the deposition
31 of NH₃ and NH₄⁺ could also cause environmental problems such as water eutrophication, biodiversity
32 loss and soil acidification (Paerl et al., 2014). China has become a major region for NH₃ emissions
33 globally, because of rapid growth of population and agricultural production (Zhang et al., 2017; Liu et al.,
34 2022). To provide a scientific basis for dealing with NH₃ pollution, it is urgent to accurately estimate both
35 surface NH₃ concentrations and emissions in China.

36
37 Surface NH₃ concentrations can be estimated by ground measurements and model simulations. Ground
38 measurements are considered to be the most accurate quantitative method. Current national NH₃
39 observation networks in China include the National Nitrogen Deposition Monitoring Network (NNDMN)
40 established by China Agricultural University (Xu et al., 2015) and the Ammonia Monitoring Network

41 (AMoN-China) established based on the Chinese Ecosystem Research Network (CERN) (Pan et al., 2018).
42 The NNDMN can measure ground NH₃ concentrations since 2010, while the AMoN-China only makes
43 the measurements in 2015-2016. The above two monitoring networks both monitor surface NH₃
44 concentrations on a monthly basis, and lack monitoring of the hourly NH₃ changes. Some studies have
45 conducted research on the intra-day/hourly changes of NH₃ concentrations based on ground observations.
46 Werner et al. (2017) measured hourly NH₃ concentration in 2012 at the Harwell site in the United
47 Kingdom, and found that high NH₃ concentration usually occurred in the afternoon. Similarly, Kutzner
48 et al. (2021) observed the hourly NH₃ concentration on the SIRTa Observatory in Paris and found NH₃
49 concentration was highest in the late afternoon. Pandolfi et al. (2012) studied the day-night cycle of NH₃
50 concentration at the two stations in Barcelona in summer, and found that the NH₃ concentration was
51 highly associated with local meteorology and traffic emissions. However, there are still a limited number
52 of monitoring sites on the hourly NH₃ changes in China.

53
54 Agricultural fertilizer and livestock production have led to a large amount of NH₃ emissions. China's
55 cultivated land area accounts for less than 10% of the world, but it consumes about 30% of the world's
56 nitrogen (N) fertilizer (Peng et al., 2002). Estimation of NH₃ emissions is mainly based on a bottom-up
57 method, using NH₃ source statistics (fertilization, animal husbandry, etc.) and emission factors. Zhou et
58 al. (2016) calculated the annual farmland NH₃ emission (3.96 ± 0.76 Tg N yr⁻¹) over China in 2008 based
59 on the bottom-up method, which was 40% higher than the emission in the Intergovernmental Panel on
60 Climate Change (IPCC) Tier 1 guidelines (2.89 Tg N yr⁻¹). Zhang et al. (2017) reassessed China's NH₃
61 emissions based on the mass balance method, and found NH₃ emissions increased from 12.1 ± 0.8 in 2000

62 to $15.6 \pm 0.9 \text{ Tg N yr}^{-1}$ in 2015, with an annual growth rate of 1.9% . Fu et al. (2020) estimated that
63 China's NH_3 emissions increased from 4.7 in 1980 to 11 Tg N yr^{-1} in 2016. Although many studies
64 regarding NH_3 emissions have been carried out in China, great uncertainties and large ranges (7-16 Tg N
65 yr^{-1}) still existed in the estimates of China's NH_3 emissions (Dong et al., 2010; Huang et al., 2012; Kang
66 et al., 2016).

67
68 Besides the bottom-up estimates, some studies used data assimilation methods by ground monitoring data
69 to constrain NH_3 emission estimates. Paulot et al. (2014) assimilated the GEOS-Chem with ground
70 observations of wet N_r deposition, and estimated China's NH_3 emission as 8.4 Tg N yr^{-1} in 2008 with
71 seasonal NH_3 emission peaked in summer. Gilliland et al. (2003) used the data assimilation method by
72 the air quality model (CMAQ) with the wet NH_4^+ concentration data from the USA National Atmospheric
73 Deposition Program Network, and found that obvious seasonal differences appeared in NH_3 emissions
74 linked to N fertilizer and temperature. Kong et al. (2019) carried out inversion through assimilating
75 surface AMoN NH_3 observation data, and improved the accuracy of temporal and spatial pattern of NH_3
76 emissions in China.

77
78 In recent years, atmospheric remote sensing has developed rapidly, which can monitor NH_3 at a global
79 scale including the polar-orbiting satellite instruments such as the Tropospheric Emission Spectrometer
80 (TES), Infrared Atmospheric Sounding Interferometer (IASI), Cross-track Infrared Sounder (CrIS),
81 Atmospheric Infrared Sounder (AIRS), and Greenhouse Gases Observing Satellite (GOSAT) (Someya et
82 al., 2020). Many studies have reported the effectiveness of using satellite data to study NH_3 dynamics.

83 Pinder et al. (2011) found that TES observation can capture spatial-temporal NH₃ patterns compared with
84 surface measurement; Van Damme et al. (2014) studied the seasonal and annual NH₃ changes in the
85 northern and southern hemisphere using the IASI NH₃ column data, and found that the seasonality in the
86 southern hemisphere is mainly related to biomass burning; Shephard and Cady-Pereira (2015) developed
87 the CrIS NH₃ inversion algorithms, and found that CrIS can capture the global spatial distribution of NH₃
88 concentration; Warner et al. (2016) identified the main hotspots of agricultural NH₃ regions using AIRS,
89 such as South Asia, China, the United States and some parts of Europe, and found that NH₃ concentrations
90 increased at these agricultural regions since 2003. Besides, some studies also used the satellite
91 measurements to improve the estimates of NH₃ emissions. Zhang et al. (2017) developed a top-down
92 inversion method using TES NH₃ observation to quantify China's NH₃ emission, and obtained annual
93 NH₃ emission as 11.7 Tg N yr⁻¹ in 2008. Marais et al. (2021) estimated NH₃ emissions in the UK based
94 on IASI and CrIS and found the relative errors of IASI-derived NH₃ emissions were 11-36% and 9-27%
95 respectively; Van Damme et al. (2018) used the high-resolution IASI NH₃ maps to identify, classify and
96 quantify NH₃ emission hotspots in the world, which was helpful to understand the man-made point NH₃
97 sources; Dammers et al. (2019) identified global 249 NH₃ emission point sources based on CrIS, whose
98 total emission was about 2.5 times higher than that reported in the HTAPv2 emissions.

99

100 Besides the polar-orbiting satellite, China's Geostationary Interferometric Infrared Sounder (GIIRS)
101 onboard the Chinese FY-4A satellite can measure hourly changes of atmospheric NH₃ almost all of Asia
102 per day, which provides great potential to study the diel cycle of NH₃. In this study, GIIRS is used to
103 study the NH₃ diel cycle (hourly changes), which is essential for understanding the differences between

different times in a day by the polar-orbiting satellites (such as IASI at 9:30 and CrIS at 13:30). Second, the surface NH_3 concentration in China is estimated based on both GIIRS and IASI, which is then compared with the NNDMN. Third, NH_3 emission in China is calculated based on satellite-derived surface NH_3 concentration and the feedback relationship between surface NH_3 concentration and emission by a chemistry transport model (GEOS-Chem). Finally, the spatial-temporal characteristics of satellite-derived surface NH_3 concentration and emission are analyzed, and the uncertainties are discussed.

2 Data and methods

2.1 Satellite GIIRS NH_3

The Geostationary Interferometric Infrared Sounder (GIIRS) onboard the Fengyun-4A geostationary satellite (FY-4A) launched by China in 2016 is the world's first hyperspectral atmospheric infrared sounder. The FY-4A GIIRS detected spectral range is $700\text{--}2250\text{ cm}^{-1}$, including 1648 spectral channels and 14 radiations imaging channels, covering visible light, short, medium and long wave infrared bands. The spatial resolutions of the detector are 2.0 km in the visible bands and 16 km in the infrared bands. It covers almost the whole of Asia and scans 10 times a day. The GIIRS can detect the temperature and humidity profiles and trace gases at high frequencies.

NH_3 has two large absorption characteristics in the long wave infrared (about 930 cm^{-1} and 965 cm^{-1}). The contribution of NH_3 to the brightness temperature of these two bands is between 2-4 K. The core of inversion algorithms is based on the so-called hyperspectral radiation index (HRI), which quantifies the spectral characteristics of NH_3 . The HRI index depends on whether the satellite instrument detects the

124 presence of NH₃. The average value of HRI is 0 with a standard deviation of 1, and the HRI range is [-
125 1,1]. The algorithm for estimating IASI NH₃ column concentration is to convert HRI into a column using
126 the so-called neural network (Clarisse et al., 2021).

127

128 In this study, we use hourly NH₃ concentrations during 2019-2020 (from November 2019 to October
129 2020) to study NH₃ diel cycle with a resolution of 0.5°. The original data is in H5 format, and the unit of
130 NH₃ is molecules cm⁻². The data is processed with MATLAB software. First, observations with
131 considerable uncertainties (relative error exceeds 50%) and high clouds (cloud cover exceeds 20%) are
132 removed (Fig. S1a). Secondly, the world standard time (UTC) by GIIRS is converted to local time, and
133 the data in H5 format is converted to TIFF data.

134 2.2 Satellite IASI NH₃

135 IASI instrument is on board the polar solar synchronous Metop-A platform. It has been running stably
136 since 2006 to measure the infrared radiation emitted by the earth (Van Damme et al., 2014). IASI can
137 measure the infrared radiation emitted by the earth's surface and atmosphere in the spectral range of 645-
138 2760 cm⁻¹. It can observe the world twice a day, and cross the equator at 9:30 and 21:30 local time, with
139 a spatial resolution of 12 km at nadir. However, only daytime satellite measurements are used, because
140 nighttime measurements usually have greater uncertainties related to thermal contrasts (Van Damme et
141 al., 2017).

142 The near-real time dataset of the total NH₃ column (ANNI-NH₃-v3) was used here. The properties of IASI
143 NH₃ data include NH₃ column concentration, longitude, latitude, measurement time, cloud cover,
144 uncertainty, solar zenith angle and other parameters. The daily NH₃ column from 2008 to 2019 was used.

145 The format of the original data is NC format, and the unit is mol cm^{-2} . The observation data with cloud
146 cover larger than 20% and the uncertainty above 50% were removed (Fig. S1b). We gridded the data to
147 0.1° by using the arithmetic average methods.

148 **2.3 Ground NH_3 measurements**

149 Surface NH_3 concentrations in the NNDMN were used to compare with the satellite estimates including
150 43 observation stations. The land types of the NNDMN sites cover cities, farmland, coastal areas, forests
151 and grasslands. Measurements during the period from January 2010 to December 2015 by the NNDMN
152 were used. Surface NH_3 concentrations were measured using an active DELTA (DENuder for Long-Term
153 Atmospheric sampling) (Flechard et al., 2011). For the hourly measurements, we collected the data from
154 the published papers including 5 sites (Table S1) including Xianghe (39.75°N , 116.96°E , 2017.12 -
155 2018.2) (He et al., 2020), Fudan University (31.30°N , 121.50°E , 2013.7.1-2014.9.30) (Wang et al.,
156 2015), Dianhushan (31.09°N , 120.98°E , 2014.3.1-2014.6.30) (Wang et al., 2015), Jinshan Chemical
157 Industry Park (30.73°N , 121.27°E , 2014.1.6-2014.6.30) (Wang et al., 2015), and Gucheng (39.15°N ,
158 115.73°E , 2016.3-2017.5) (Kuang et al., 2020). The Xianghe site in Hebei Province and Dianhushan site
159 in Shanghai represent rural environments; Jinshan Chemical Industry Park represents industrial
160 environments; Gucheng site in Hebei and the Fudan University site in Shanghai represent urban
161 environments.

162 **2.4 GEOS-Chem**

163 The GEOS-Chem model version 12.3.0 is a three-dimensional chemistry transport model developed by
164 Harvard University, which has been widely used in the field of atmospheric studies (Eastham et al., 2014).

165 The nested regional model in Asia was used in this study driven by assimilated GEOS-5 meteorological
 166 data at a horizontal resolution of $1/2^\circ \times 2/3^\circ$. Dry deposition calculation in GEOS-Chem follows a
 167 standard resistance-in-series model (Wesely, 2007), while wet deposition includes both convective
 168 updraft and large-scale precipitation scavenging (Jacob, 1999). The GEOS-Chem model here does not
 169 consider land-atmosphere bi-directional NH_3 exchange, and the NH_3 flux was parameterized as uncoupled
 170 emission and dry deposition processes. Anthropogenic emissions over China were from the Regional
 171 Emission in Asia (REAS-v2) inventory. The GEOS-Chem outputs of NH_3 concentrations include 47
 172 layers from the ground to the top of atmosphere, which were used to capture NH_3 vertical profiles. The
 173 feedback between surface NH_3 concentration and emissions was also calculated by GEOS-Chem.

174 **2.5 Satellite-based surface NH_3 estimates and emissions**

175 Surface NH_3 concentrations were estimated using the satellite NH_3 columns as well as NH_3 vertical
 176 profiles. To gain the continuous vertical NH_3 profile, the Gaussian function was used to fit the 47 layers'
 177 NH_3 concentrations. A three parameter Gaussian function was used to fit NH_3 vertical profiles at each
 178 grid box from GEOS-Chem according to previous studies (Liu et al., 2019).

$$179 \quad \rho(Z) = \sum_{i=1}^n \rho_{\max,i} e^{-\left(\frac{Z-Z_{0,i}}{\sigma_i}\right)^2}, \quad (1)$$

180 where Z is the height of a layer in the atmospheric chemical transport modeling (ACTM); ρ_{\max} , Z_0 and σ
 181 are the maximum of NH_3 concentration, the corresponding height with the maximum of NH_3
 182 concentration and the thickness of NH_3 concentration layer (one standard error of Gaussian function).

183

184 The satellite-derived NH_3 concentration at the height of h_G can be calculated as:

185

$$S_{G_NH_3} = S_{trop} \times \frac{\rho(h_G)}{\int_0^{h_{trop}} \rho(Z) dx} \times \frac{G_{ACTM}^{1-24}}{G_{ACTM}^{overpass}}, \quad (2)$$

186

where $\frac{\rho(h_G)}{\int_0^{h_{trop}} \rho(Z) dx}$ represents the ratio of NH_3 concentration at the height of h_G to total columns

187

$(\int_0^{h_{trop}} \rho(Z) dx)$; S_{trop} represents satellite-derived NH_3 columns; $\frac{G_{ACTM}^{1-24}}{G_{ACTM}^{overpass}}$ is the ratio of average surface

188

NH_3 concentration (G_{ACTM}^{1-24}) to that at satellite overpass time ($G_{ACTM}^{overpass}$) by an ACTM.

189

190

The mass balance method (Lamsal et al., 2011; Geddes and Martin, 2017; Cooper et al., 2017) was used

191

to exploit the feedback ratio of surface NH_3 concentrations and NH_3 emissions (Marais et al., 2021):

192

$$E_s = S_{G_NH_3} \times \left(\frac{E}{G_{G_NH_3}_m} \right), \quad (3)$$

193

where E_s is satellite-based NH_3 emissions; $S_{G_NH_3}$ is the satellite-derived surface NH_3 concentrations;

194

$\left(\frac{E}{G_{G_NH_3}_m} \right)$ is the ratio of surface NH_3 concentrations and NH_3 emissions simulated by the GEOS-Chem.

195

3 Results and discussions

196

3.1 GIIRS-based hourly NH_3 concentrations during 2019-2020

197

Fig. 1 shows the hourly NH_3 concentrations observed from GIIRS during 2019-2020. Daytime NH_3

198

columns were significantly higher than those at night. The intra-day hourly NH_3 columns showed an

199

overall increase first, then a decrease, with high values during 10:00-17:00. The increase in temperature

200

enhanced the volatilization of NH_3 , which may explain high values of NH_3 concentrations during the

201

daytime.

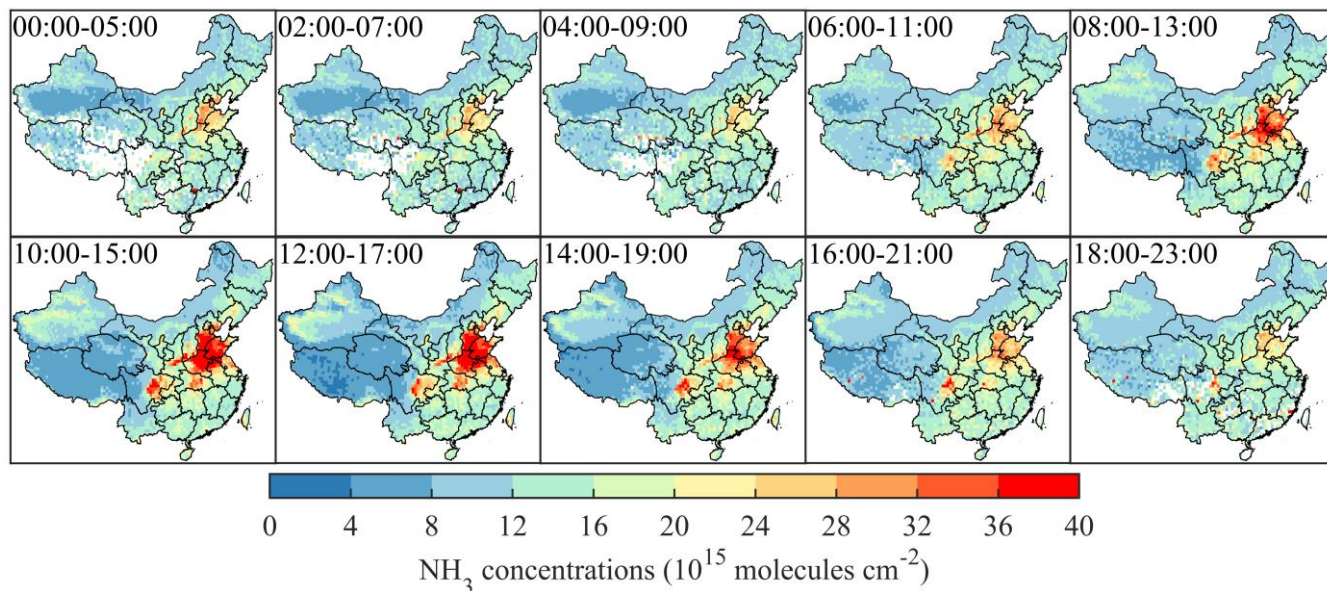


Figure 1. Monthly average NH_3 concentrations for each of the 10 GIIRS overpass time periods during 2019-2020.

Ground-based measurements of hourly NH_3 concentrations are very lacking, and the timespan may be different from GIIRS measurements. Here we only used them to show the hourly patterns of NH_3 concentrations (Fig. 2). The Xianghe site in Hebei Province and Dianhushan site in Shanghai represent rural environments; Jinshan Chemical Industry Park represents industrial environments; Gucheng site in Hebei and the Fudan University site in Shanghai represent urban environments.

NH_3 concentration in the rural environment basically shows a normal distribution, and high NH_3 concentration generally appears between 10:00-16:00, which may be related to agricultural activities and temperature. In the industrial environment (Jinshan Chemical Industry Park, JSP), NH_3 concentration fluctuates irregularly, and two peaks appear at 12:00 and 6:00-8:00, while NH_3 concentration tends to be stable at other times. In the urban environment, the changes in NH_3 concentration by satellite at the Gucheng site are more consistent with ground monitoring, showing a clear peak around 9:00-13:00; NH_3

216 concentration at the Fudan University site gradually decreases from the morning peak to the afternoon.

217 The evaporation of dew may drive the NH_3 increase from the morning to the noon (Wang et al., 2015).

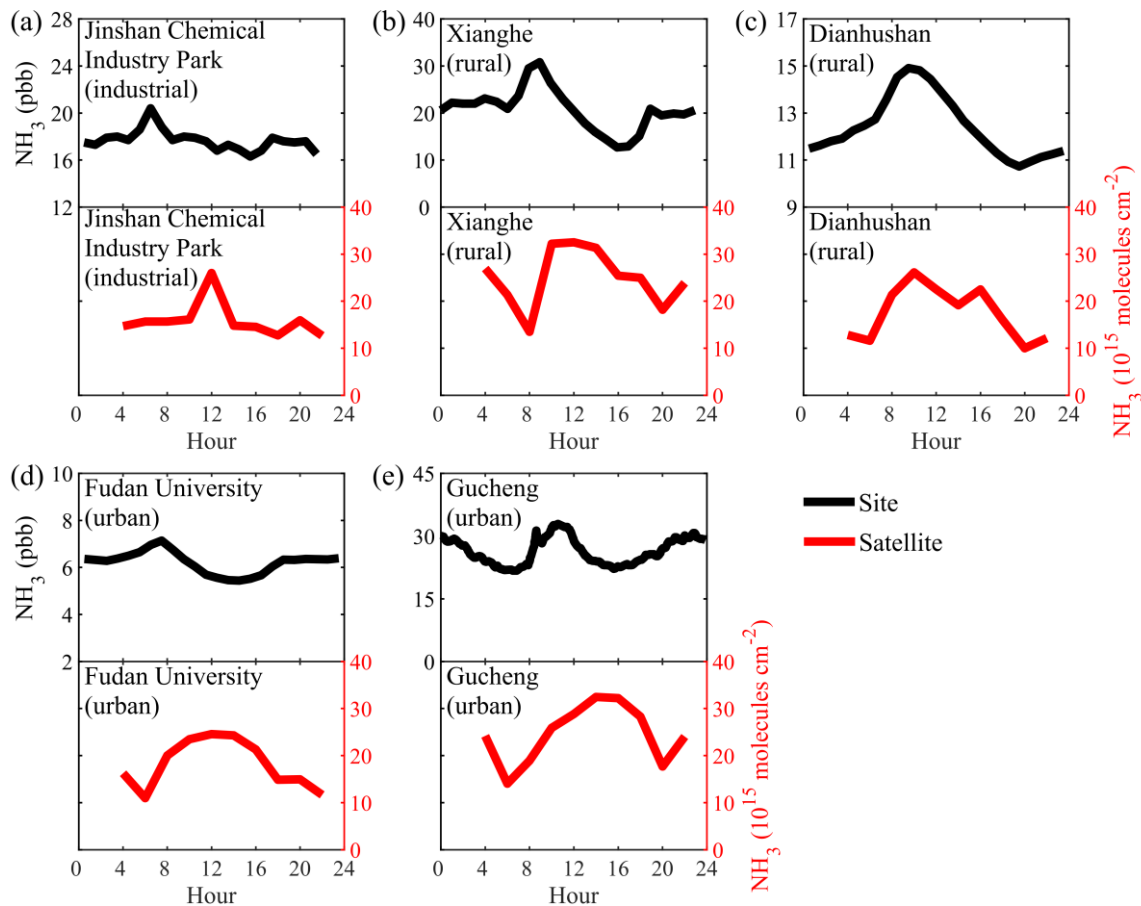
218 NH_3 concentration in cities (Gucheng and Fudan University) has double peaks between 6:00-8:00 and

219 18:00-19:00, which may also be related to traffic emissions. In summary, except for industrial sites, hourly

220 NH_3 in China has a large variability between day and night and the hourly NH_3 patterns are affected by

221 many factors, of which anthropogenic emissions and temperature seem to be the most important driving

222 factors.



224 **Figure 2.** GIIRS-based and measured hourly NH_3 concentrations at five sites including Jinshan Chemical

225 Industry Park (JSP, a), Xianghe (XH, b), Dianhushan (DSL, c), Fudan University (FDU, d) and Gucheng

(GC, e).

Spatial distribution of GIRS-based surface NH_3 concentrations across China had large variability. High surface NH_3 concentration ($>10 \mu\text{g N m}^{-3}$) is mainly concentrated in the North China Plain (NCP), followed by the Sichuan Basin, Northeast China and parts of Xinjiang, while low values ($<4 \mu\text{g N m}^{-3}$) are mainly concentrated in the Qinghai-Tibet Plateau. High surface NH_3 concentration ($126.85 \mu\text{g N m}^{-3}$) appears in July ($6.78 \mu\text{g N m}^{-3}$ as average), and the lowest value ($0.23 \mu\text{g N m}^{-3}$) appears in November ($3.25 \mu\text{g N m}^{-3}$ as average). There are obvious seasonal changes in surface NH_3 concentrations in the NCP with high values in summer, and low values in winter, related to both agricultural N fertilizer and higher temperature.

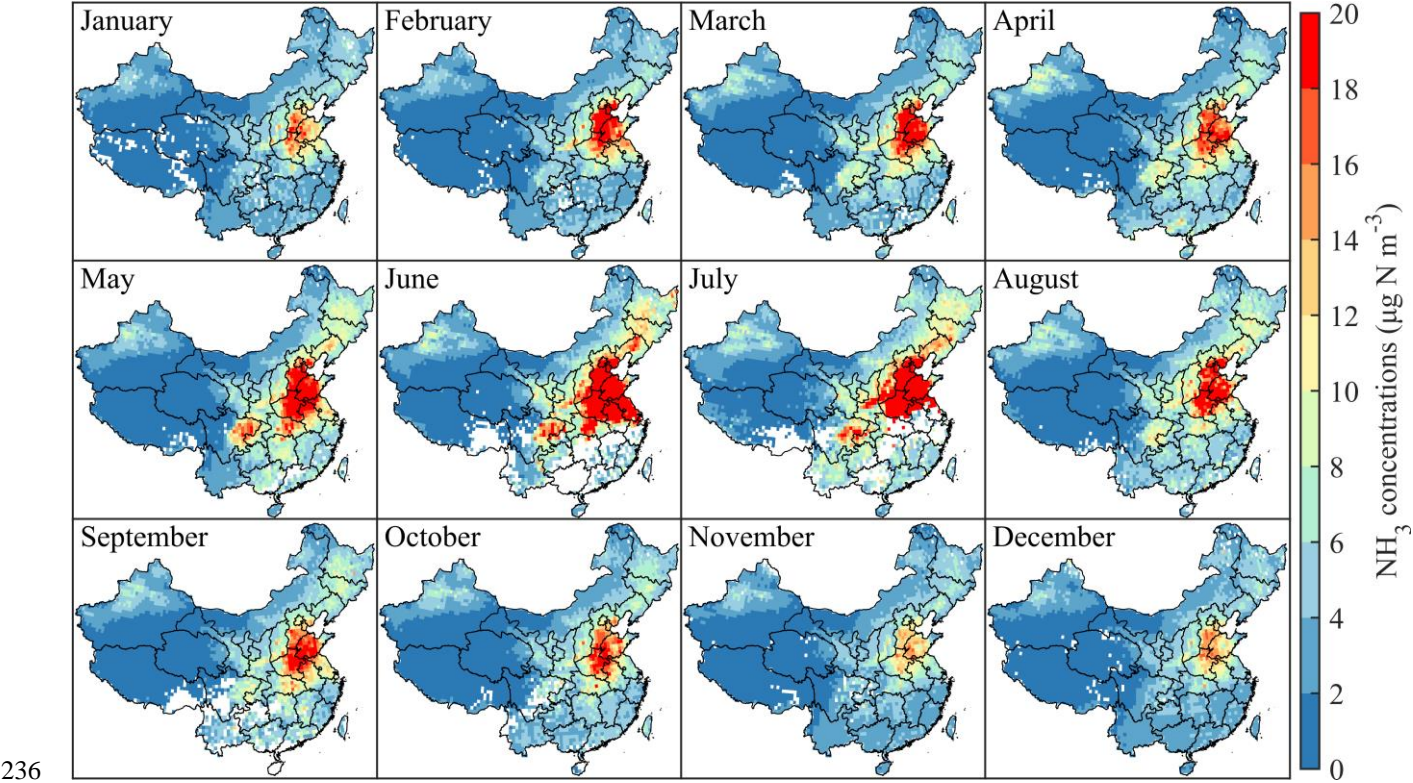
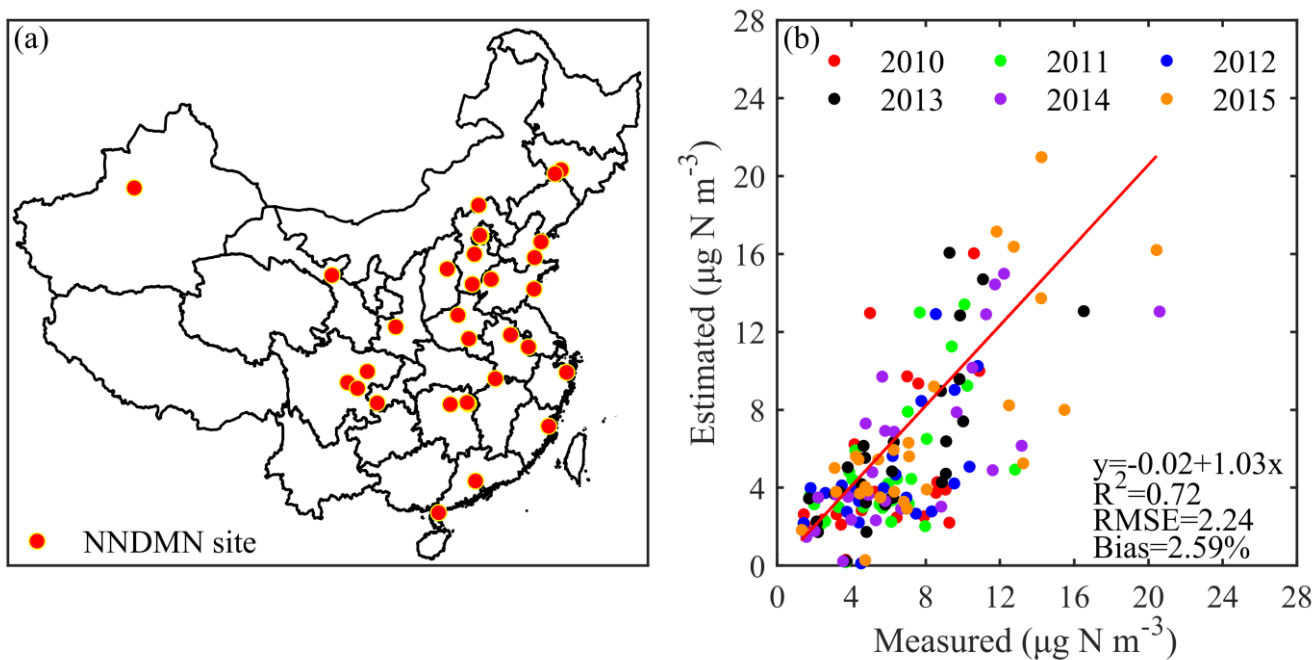


Figure 3. Spatial distribution of monthly surface NH_3 concentrations in China by GIRS in 2019-2020.

238 **3.2 IASI-based NH₃ surface concentrations**

239 The observation data of the NNDMN in China was collected to compare with IASI-derived surface NH₃
240 concentration. In general, a good consistency was found between measurements and satellite estimates
241 with the regression R² as 0.72 and the RMSE as 2.24 μg N m⁻³. The coefficient of the fitted line was
242 1.03≈1 and the bias was 2.59%.



243
244 **Figure 4.** Comparison of IASI surface NH₃ concentrations with NNDMN measurements. (a) The
245 locations of NNDMN; (b) the regression results between satellite-estimates and measurements.

246
247 Monthly regression R² between the satellite-derived NH₃ concentration and the measured NH₃ was 0.38-
248 0.84. The regression R² reached the higher value (>0.80) in July and August. The RMSE ranged from
249 2.29- 3.36 μg N m⁻³, which reached the maximum value of 3.36 μg N m⁻³ in July, and reached the smallest
250 in March (2.29 μg N m⁻³). The bias is basically less than 31% for all months, and reached the minimum

value of 0.67% in February, indicating that the monthly IASI-derived surface concentration obtained are consistent with measurements.

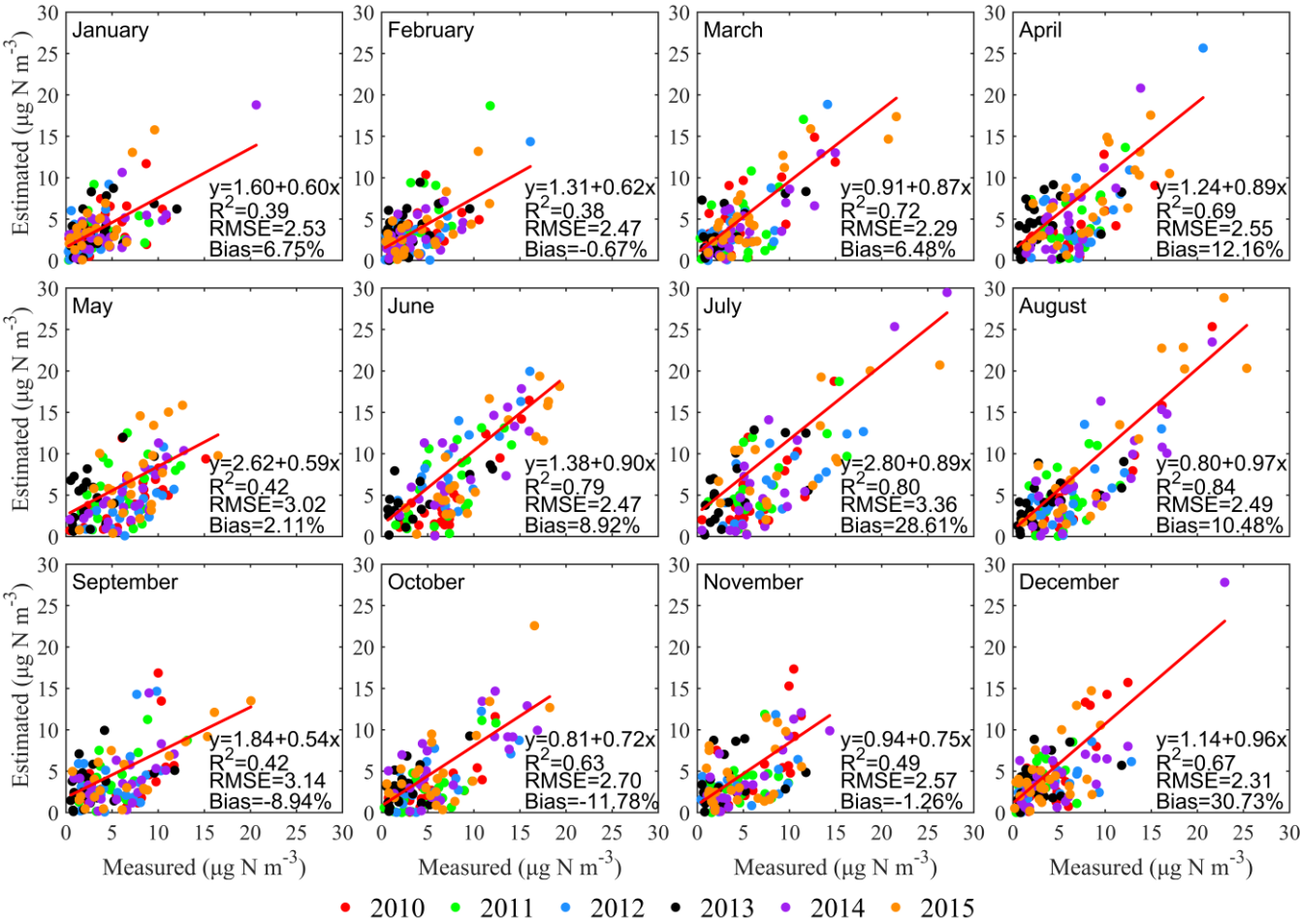
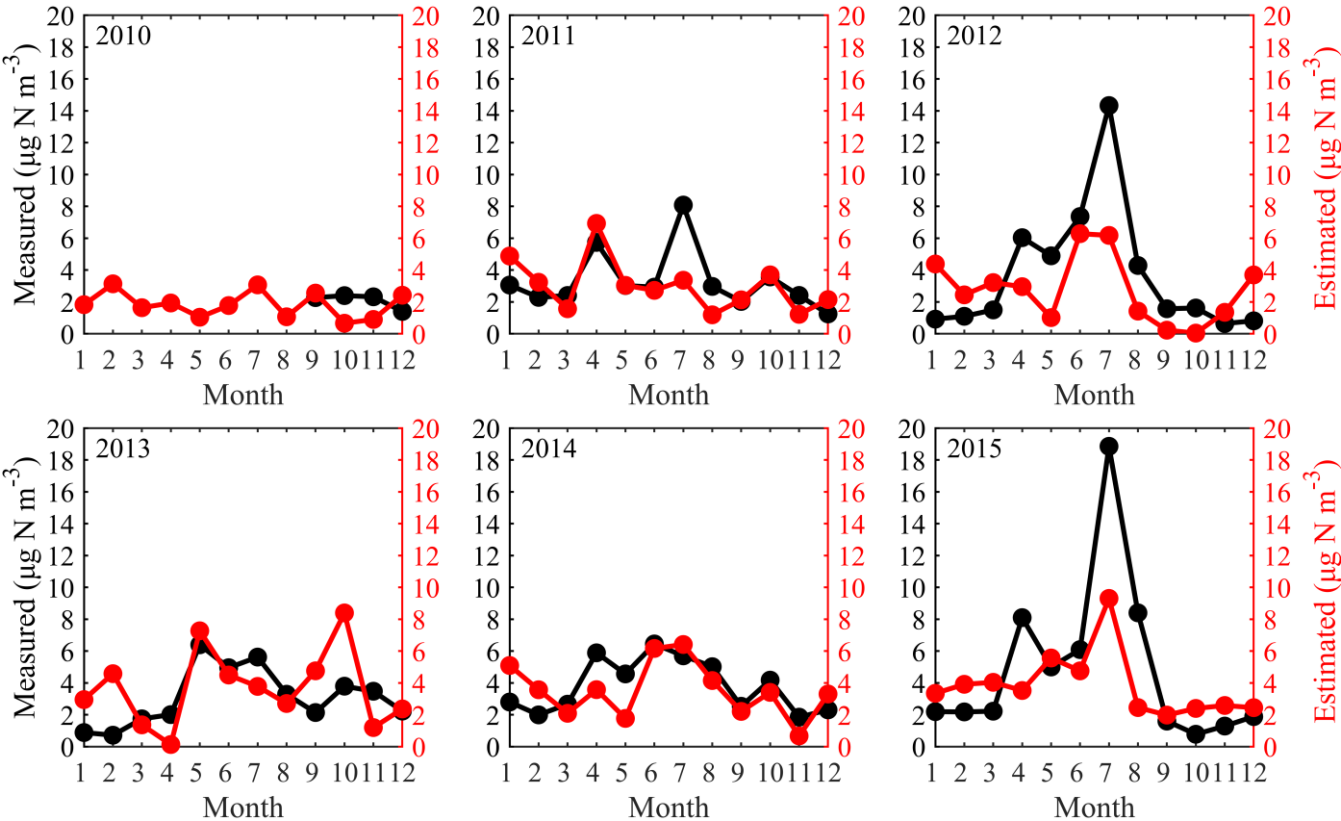


Figure 5. Comparison of monthly average values of IASI-derived and observed NH₃ surface concentrations in 2010-2015.

Fig. 6 shows the monthly changes of surface NH₃ concentrations in Huinong County in Ningxia from 2010 to 2015 for a total of 72 months. Surface NH₃ concentrations retrieved by IASI were compared with the observation data at Huinong. The highest value of each year basically appeared from June to August,

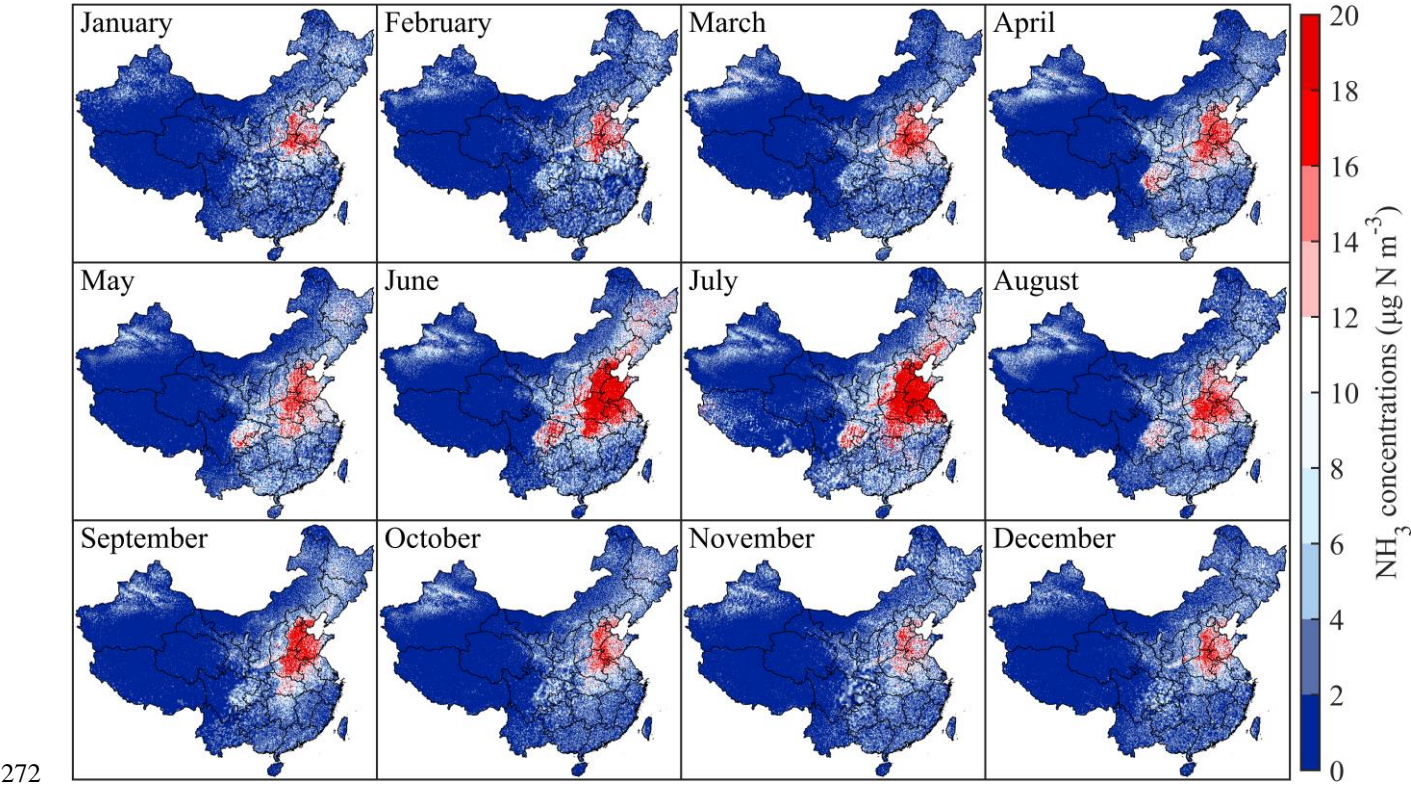
260 and the lowest values appeared from December to January. In the past 6 years, the maximum measured
 261 NH_3 concentration appeared in **June** 2015 ($18.9 \mu\text{g N m}^{-3}$), and the minimum appeared in November 2012
 262 ($0.6 \mu\text{g N m}^{-3}$). The observation data and satellite data have the same seasonal changes.



263
 264 **Figure 6.** Monthly changes of NH_3 concentrations in Huinong County in Ningxia from 2010 to 2015 for
 265 a total of 72 months during 2010-2015.

266
 267 Fig. 3 and Fig. 7 show the spatial distribution of GIIRS-derived and IASI-derived surface NH_3
 268 concentrations in 2019. The spatial distribution and gradients of surface NH_3 concentrations by the GIIRS
 269 and IASI have the same gradients from eastern to western regions. One notable difference occurred in the

270 middle and lower reaches of the Yangtze River in June and July since the GIRS observations are affected
271 by clouds and had missing data.



273 **Figure 7.** Spatial distribution of monthly surface NH₃ concentrations in China by IASI in 2019.

274

275 **3.3 IASI-derived NH₃ emissions**

276 Based on the top-down estimates, China’s NH₃ emissions ranged from 12.17-17.77 Tg N yr⁻¹ during
277 2008-2019. From 2008 to 2015, NH₃ emissions increased from 13.00 Tg N yr⁻¹ to 17.06 Tg N yr⁻¹. Since
278 2008, the temperature in China has risen steadily (Ding et al., 2007), promoting the volatilization of NH₃,
279 which partly explains the increase in NH₃ emissions from 2008 to 2015. After 2015, NH₃ emissions
280 fluctuated and changed slightly (16.08-17.77 Tg N yr⁻¹). Compared with other studies, the change in NH₃
281 emissions from 2008 to 2015 is consistent with previous estimates, and the overall NH₃ emissions show

282 an upward trend (Kang et al., 2016; Zhang et al., 2018; Ma, 2020; Fu et al., 2020; Zhang et al., 2021).
283 Our estimates are on the rise as a whole, but the calculated values are generally lower than those by Fu et
284 al. (2020) (around 15 Tg N yr⁻¹), but larger than those by EDGAR and Kang et al. (2016).

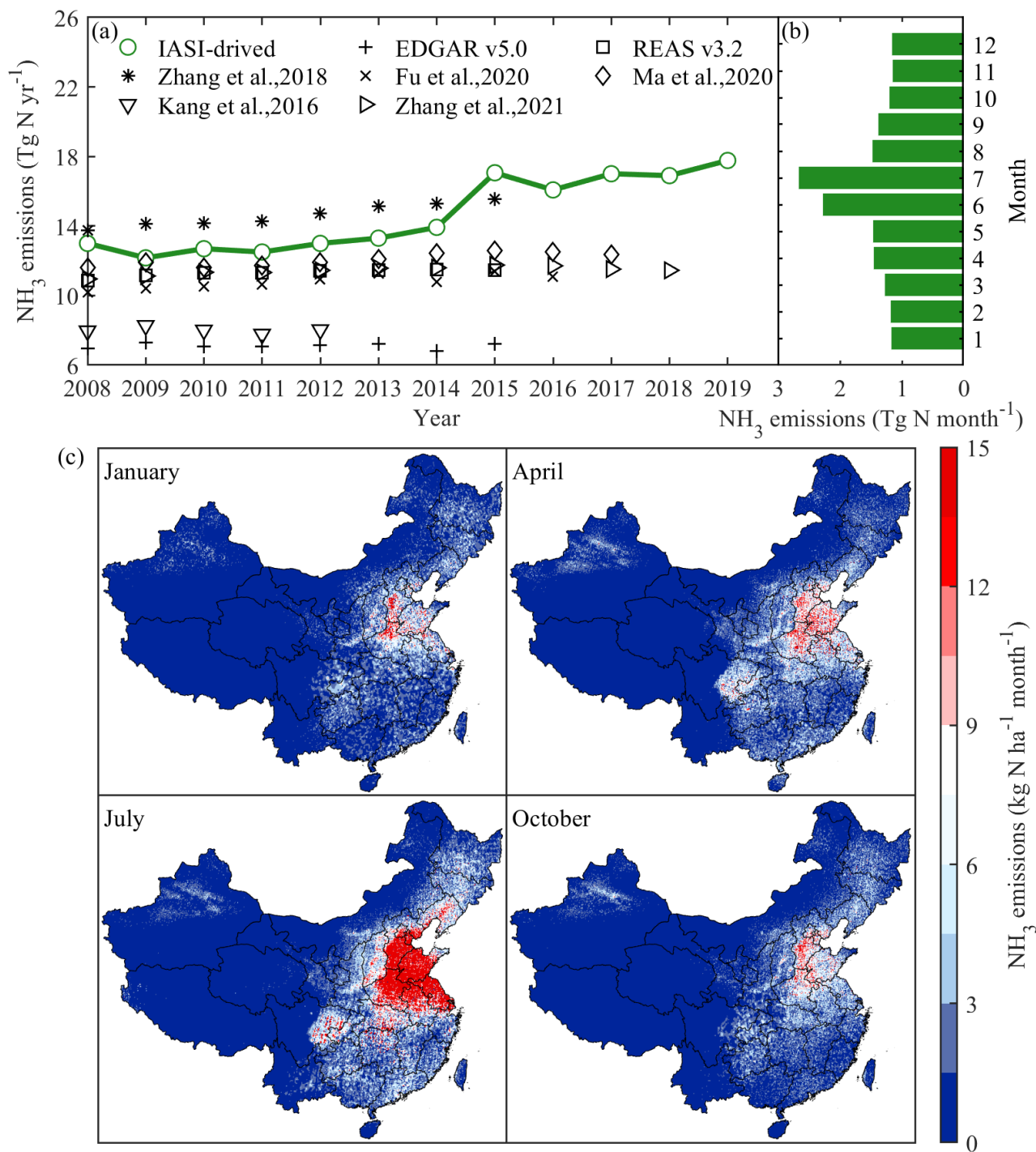
285

286 In terms of spatial distribution, high NH₃ emissions are generally distributed in the North China Plain,
287 Sichuan Basin, Northeast China and Xinjiang, while the low values are mainly distributed in the
288 Southwest China (especially Qinghai-Tibet Plateau). The North China Plain is China's granary, with
289 developed agriculture and animal husbandry, high population densities and strong human activities
290 (including vehicle emissions) (Zhang et al., 2006; Wang et al., 2020). In contrast, South China is rich in
291 rainfall, which promotes the deposition of NH₃ and suppresses its volatilization to a certain extent.

292

293 The spatial distribution of NH₃ emissions in January, April, July and October were selected to characterize
294 the seasonal variations. The average emissions for the four months were 1.15 kg N ha⁻¹, 1.31 kg N ha⁻¹,
295 2.31 kg N ha⁻¹ and 1.16 kg N ha⁻¹ in January, April, July and October, indicating that NH₃ emission is the
296 highest in summer and the lowest in winter. The annual average emission intensity of 2019 is 16.53 kg N
297 ha⁻¹ (0.09-313.47 kg N ha⁻¹). Fig. 8b shows the monthly changes in NH₃ emissions, which basically shows
298 a normal distribution. High values are generally distributed in June and July, and low values are generally
299 distributed in November and December. It reached the maximum monthly emission of 2.6 Tg N m⁻¹ in
300 July 2019 and reached the minimum monthly emission in November and December (1.1 Tg N m⁻¹).

301



302

303 **Figure 8.** Annual changes of NH₃ emissions (a), monthly changes of NH₃ emissions in 2019 (b) and

304 spatial distribution of NH₃ emissions by month in 2019 (c).

305 **4 Limitations and outlook**

306 This study developed satellite-based surface NH_3 concentration and emissions in China based on remote
307 sensing data (IASI and GIIRS). However, several limitations have been identified in this study. First, the
308 Fengyun geostationary satellite used in this study can achieve hourly NH_3 concentrations, but the time
309 series is still very short (2019.11-2020.10), and satellite observations are affected by clouds and
310 meteorological conditions, resulting in missing values in parts of the Yangtze River Basin.

311

312 Second, we used a relatively fixed average conversion ratio (Fig. S2) to estimate surface NH_3
313 concentrations and NH_3 emissions in China, ignoring the time-series variation of the ratio, due to the
314 temporal constraint of emission inventory. In this case, non-emission factors led to higher satellite
315 observed NH_3 column, for example, emission reductions of SO_2 and NO_2 led to increased NH_3 column
316 (Lachatre et al., 2019; Fu et al., 2020), which can introduce uncertainty into NH_3 emission calculations
317 using concentration as the main parameter.

318

319 Third, the spatial resolution of the NH_3 vertical profile simulated by the atmospheric model is relatively
320 coarse (0.5 degrees). In order to make it consistent with the spatial resolution of the remote sensing data,
321 the outputs of GEOS-Chem (vertical profiles and feedback ratio between emissions and surface NH_3
322 concentrations) were interpolated through resampling methods. Owing to the resolution limit, the ratio-
323 based mass balance approach to estimate NH_3 emissions neglected the effects of internal transport of NH_3
324 and displacement of emission sources within the fine grid.

325

326 Finally, there are some uncertainties and biases in the observed NH₃ column by satellite. Earlier versions
327 of the IASI NH₃ column product were 25-50% lower than ground-based measurements (Whitburn et al.,
328 2016; Dammers et al., 2017). However, the new version of IASI v3 lacks a comprehensive ground-based
329 measurement assessment, which has only been compared with limited aircraft observations (Guo et al.,
330 2021). Comparing IASI-derived surface NH₃ concentrations with measurements of ground sites
331 (NNDMN) generally shows consistency in this study. The further work is needed for the complete
332 assessment and error analysis.

333

334 At present, there are more and more satellite sensors (GOSAT, CrIS, AIRS, etc.) that can monitor NH₃
335 concentrations. This study only used IASI and GIIRS, and in the future, data from different satellites can
336 be merged to analyze NH₃ changes on multiple temporal and spatial scales.

337 **5 Conclusion**

338 We use GIIRS to study the NH₃ diel cycle, and estimate surface NH₃ concentrations and emissions based
339 on IASI in China. There are obvious hourly changes in NH₃ concentration in China using GIIRS. Overall,
340 NH₃ concentrations are larger in the daytime than at nighttime in China. Hourly NH₃ concentrations at
341 different land use show different patterns, but high values generally appear in 10:00-16:00. Comparing
342 IASI-derived and observed NH₃ surface concentrations by NNDMN from 2010 to 2015, the coefficient
343 of the fitted line is $1.03 \approx 1$, and the low bias is 2.59%, indicating satellite estimates have good consistency
344 with the measurements. IASI-derived China's NH₃ emissions range from 12.17-17.77 Tg N yr⁻¹ during
345 2008-2019, among which NH₃ emissions increase from 2008 to 2015. The emission intensity of NH₃ in

346 China presents a strong spatial heterogeneity, showing high in the eastern and low in the western. The
347 high values are mainly distributed in the North China Plain and Sichuan Basin. High values are generally
348 distributed in summer, and low values generally occur in winter. This study provides an important
349 reference basis for the formulation of NH₃ pollution prevention and control policy in China.

350 **Data availability**

351 IASI data were obtained from the <https://iasi.aeris-data.fr/nh3/>. The GHIRS data were obtained from
352 <https://zenodo.org/record/4540024>.

353 **Author contributions**

354 The study was conceived by LL, and data analysis were performed by JD. The paper was written by PL,
355 with editing from WX and XL. LL was involved in obtaining the project grant and supervised the study.

356 **Competing interests**

357 The contact author has declared that neither they nor their co-authors have any competing interests.

358 **Acknowledgements**

359 This study is supported by the National Natural Science Foundation of China (42001347, 41705130, and
360 41922037) and the Chinese State Key Research & Development Programme (2017YFC0210100,
361 2017YFD0200101). The analysis in this study is supported by the Supercomputing Center of Lanzhou
362 University.

- Clarisse, L., Van Damme, M., Hurtmans, D., Franco, B., Clerbaux, C., and Coheur, P. F.: The diel cycle of NH_3 observed from the FY-4A Geostationary Interferometric Infrared Sounder (GIIRS), *Geophys. Res. Lett.*, 48, e2021GL093010, <https://doi.org/10.1029/2021GL093010>, 2021.
- Cooper, M., Martin, R. V., Padmanabhan, A., and Henze, D. K.: Comparing mass balance and adjoint methods for inverse modeling of nitrogen dioxide columns for global nitrogen oxide emissions, *J. Geophys. Res.: Atmos.*, 122, 4718-4734, <https://doi.org/10.1002/2016JD025985>, 2017.
- Dammers, E., McLinden, C. A., Griffin, D., Shephard, M. W., Graaf, S. V. D., Lutsch, E., Schaap, M., Gainairu-Matz, Y., Fioletov, V., and Damme, M. V.: NH_3 emissions from large point sources derived from CrIS and IASI satellite observations, *Atmos. Chem. Phys.*, 19, 12261-12293, <https://doi.org/10.5194/acp-19-12261-2019>, 2019.
- Dammers, E., Shephard, M. W., Palm, M., Cady-Pereira, K., Capps, S., Lutsch, E., Strong, K., Hannigan, J. W., Ortega, I., Toon, G. C., Stremme, W., Grutter, M., Jones, N., Smale, D., Siemons, J., Hrpcek, K., Tremblay, D., Schaap, M., Notholt, J., and Erisman, J. W.: Validation of the CrIS fast physical NH_3 retrieval with ground-based FTIR, *Atmos. Meas. Tech.*, 10, 2645-2667, <https://doi.org/10.5194/amt-10-2645-2017>, 2017.
- Ding, Y. H., Ren, G. Y., Zhao, Z. C., Xu, Y., Luo, Y., Li, Q. P., and Zhang, J.: Detection, causes and projection of climate change over China: An overview of recent progress, *Adv. Atmos. Sci.*, 24, 954-971, <https://doi.org/10.1007/s00376-007-0954-4>, 2007.
- Dong, W., Xing, J., and Wang, S.: Temporal and spatial distribution of anthropogenic ammonia emissions in China: 1994-2006, *Huanjing Kexue*, 31, 1457-1463, 2010.
- Eastham, S. D., Weisenstein, D. K., and Barrett, S. R.: Development and evaluation of the unified tropospheric-stratospheric chemistry extension (UCX) for the global chemistry-transport model GEOS-Chem, *Atmos. Environ.*, 89, 52-63, <https://doi.org/10.1016/j.atmosenv.2014.02.001>, 2014.
- Flechard, C. R., Nemitz, E., Smith, R. I., Fowler, D., Vermeulen, A. T., Bleeker, A., Erisman, J. W., Simpson, D., Zhang, L., Tang, Y. S., and Sutton, M. A.: Dry deposition of reactive nitrogen to European ecosystems: a comparison of inferential models across the NitroEurope network, *Atmos. Chem. Phys.*, 11, 2703-2728, <https://doi.org/10.5194/acp-11-2703-2011>, 2011.
- Fowler, D., Coyle, M., Skiba, U., Sutton, M. A., Cape, J. N., Reis, S., Sheppard, L. J., Jenkins, A., Grizzetti, B., Galloway, J. N., Vitousek, P., Leach, A., Bouwman, A. F., Butterbach-Bahl, K., Dentener, F., Stevenson, D., Amann, M., and Voss, M.: The global nitrogen cycle in the twenty-first century, *Philos. Trans. R. Soc. B-Biol. Sci.*, 368, 13, <https://doi.org/10.1098/rstb.2013.0164>, 2013.
- Fu, H., Luo, Z., and Hu, S.: A temporal-spatial analysis and future trends of ammonia emissions in China, *Sci. Total Environ.*, 731, 138897, <https://doi.org/10.1016/j.scitotenv.2020.138897>, 2020.
- Geddes, J. A. and Martin, R. V.: Global deposition of total reactive nitrogen oxides from 1996 to 2014 constrained with satellite observations of NO_2 columns, *Atmos. Chem. Phys.*, 17, 10071-10091, <https://doi.org/10.5194/acp-17-10071-2017>, 2017.
- Gilliland, A. B., Dennis, R. L., Roselle, S. J., and Pierce, T. E.: Seasonal NH_3 emission estimates for the eastern United States based on ammonium wet concentrations and an inverse modeling method, *J Geophys Res-Atmos*, 108, <https://doi.org/10.1029/2002jd003063>, 2003.

403 Guo, X., Wang, R., Pan, D., Zondlo, M. A., Clarisse, L., Van Damme, M., Whitburn, S., Coheur, P. F.,
 404 Clerbaux, C., Franco, B., Golston, L. M., Wendt, L., Sun, K., Tao, L., Miller, D., Mikoviny, T., Müller,
 405 M., Wisthaler, A., Tevlin, A. G., Murphy, J. G., Nowak, J. B., Roscioli, J. R., Volkamer, R., Kille, N.,
 406 Neuman, J. A., Eilerman, S. J., Crawford, J. H., Yacovitch, T. I., Barrick, J. D., and Scarino, A. J.:
 407 Validation of IASI satellite ammonia observations at the pixel scale using in situ vertical profiles, *J*
 408 *Geophys Res-Atmos*, 126, e2020JD033475, <https://doi.org/10.1029/2020jd033475>, 2021.
 409 He, Y., Pan, Y., Zhang, G., Ji, D., Tian, S., Xu, X., Zhang, R., and Wang, Y.: Tracking ammonia morning
 410 peak, sources and transport with 1 Hz measurements at a rural site in North China Plain, *Atmos. Environ.*,
 411 235, 117630, <https://doi.org/10.1016/j.atmosenv.2020.117630>, 2020.
 412 Huang, X., Song, Y., Li, M., Li, J., Huo, Q., Cai, X., Zhu, T., Hu, M., and Zhang, H.: A high-resolution
 413 ammonia emission inventory in China, *Glob. Biogeochem. Cycle*, 26,
 414 <https://doi.org/10.1029/2011gb004161>, 2012.
 415 Jacob, D. J.: Introduction to atmospheric chemistry, Princeton University Press 1999.
 416 Kang, Y., Liu, M., Song, Y., Huang, X., Yao, H., Cai, X., Zhang, H., Kang, L., Liu, X., Yan, X., He, H.,
 417 Zhang, Q., Shao, M., and Zhu, T.: High-resolution ammonia emissions inventories in China from 1980
 418 to 2012, *Atmos. Chem. Phys.*, 16, 2043-2058, <https://doi.org/10.5194/acp-16-2043-2016>, 2016.
 419 Kong, L., Tang, X., Zhu, J., Wang, Z., Pan, Y., Wu, H., Wu, L., Wu, Q., He, Y., Tian, S., Xie, Y., Liu,
 420 Z., Sui, W., Han, L., and Carmichael, G.: Improved inversion of monthly ammonia emissions in China
 421 based on the Chinese ammonia monitoring network and ensemble Kalman filter, *Environ. Sci. Technol.*,
 422 53, 12529-12538, <https://doi.org/10.1021/acs.est.9b02701>, 2019.
 423 Kuang, Y., Xu, W., Lin, W., Meng, Z., Zhao, H., Ren, S., Zhang, G., Liang, L., and Xu, X.: Explosive
 424 morning growth phenomena of NH₃ on the North China Plain: Causes and potential impacts on aerosol
 425 formation, *Environ. Pollut.*, 257, 113621, <https://doi.org/10.1016/j.envpol.2019.113621>, 2020.
 426 Kutzner, R. D., Cuesta, J., Chelin, P., Petit, J.-E., Ray, M., Landsheere, X., Tournadre, B., Dupont, J.-C.,
 427 Rosso, A., Hase, F., Orphal, J., and Beekmann, M.: Diurnal evolution of total column and surface
 428 atmospheric ammonia in the megacity of Paris, France, during an intense springtime pollution episode,
 429 *Atmos. Chem. Phys.*, 21, 12091-12111, <https://doi.org/10.5194/acp-21-12091-2021>, 2021.
 430 Lachatre, M., Fortems-Cheiney, A., Foret, G., Siour, G., Dufour, G., Clarisse, L., Clerbaux, C., Coheur,
 431 P.-F., Van Damme, M., and Beekmann, M.: The unintended consequence of SO₂ and NO₂ regulations
 432 over China: increase of ammonia levels and impact on PM 2.5 concentrations, *Atmos. Chem. Phys.*, 19,
 433 6701-6716, <https://doi.org/10.5194/acp-19-6701-2019>, 2019.
 434 Lamsal, L., Martin, R., Padmanabhan, A., Van Donkelaar, A., Zhang, Q., Sioris, C., Chance, K., Kurosu,
 435 T., and Newchurch, M.: Application of satellite observations for timely updates to global anthropogenic
 436 NO_x emission inventories, *Geophys. Res. Lett.*, 38, <https://doi.org/10.1029/2010GL046476>, 2011.
 437 Liu, L., Xu, W., Lu, X., Zhong, B., Guo, Y., Lu, X., Zhao, Y., He, W., Wang, S., Zhang, X., Liu, X., and
 438 Vitousek, P.: Exploring global changes in agricultural ammonia emissions and their contribution to
 439 nitrogen deposition since 1980, *P. Natl. Acad. Sci. USA*, 119, e2121998119,
 440 <https://doi.org/10.1073/pnas.2121998119>, 2022.
 441 Liu, L., Zhang, X., Wong, A. Y., Xu, W., Liu, X., Li, Y., Mi, H., Lu, X., Zhao, L., Wang, Z., Wu, X., and
 442 Wei, J.: Estimating global surface ammonia concentrations inferred from satellite retrievals, *Atmos.*
 443 *Chem. Phys.*, 19, 12051-12066, <https://doi.org/10.5194/acp-19-12051-2019>, 2019.

444 Ma, S.: High-resolution assessment of ammonia emissions in China: Inventories, driving forces and
 445 mitigation, *Atmos. Environ.*, 229, 117458, <https://doi.org/10.1016/j.atmosenv.2020.117458>, 2020.

446 Marais, E. A., Pandey, A. K., Van Damme, M., Clarisse, L., Coheur, P. F., Shephard, M. W., Cady-
 447 Pereira, K. E., Misselbrook, T., Zhu, L., Luo, G., and Yu, F.: UK Ammonia Emissions Estimated With
 448 Satellite Observations and GEOS-Chem, *J Geophys Res-Atmos*, 126, e2021JD035237,
 449 <https://doi.org/10.1029/2021JD035237>, 2021.

450 Paerl, H. W., Gardner, W. S., McCarthy, M. J., Peierls, B. L., and Wilhelm, S. W.: Algal blooms:
 451 noteworthy nitrogen, *Science*, 346, 175-175, <https://doi.org/10.1126/science.346.6206.175-a>, 2014.

452 Pan, Y., Tian, S., Zhao, Y., Zhang, L., Zhu, X., Gao, J., Huang, W., Zhou, Y., Song, Y., and Zhang, Q.:
 453 Identifying ammonia hotspots in China using a national observation network, *Environ. Sci. Technol.*, 52,
 454 3926-3934, <https://doi.org/10.1021/acs.est.7b05235>, 2018.

455 Pandolfi, M., Amato, F., Reche, C., Alastuey, A., Otjes, R. P., Blom, M. J., and Querol, X.: Summer
 456 ammonia measurements in a densely populated Mediterranean city, *Atmos. Chem. Phys.*, 12, 7557-7575,
 457 <https://doi.org/10.5194/acp-12-7557-2012>, 2012.

458 Paulot, F., Jacob, D. J., Pinder, R. W., Bash, J. O., Travis, K., and Henze, D. K.: Ammonia emissions in
 459 the United States, European Union, and China derived by high-resolution inversion of ammonium wet
 460 deposition data: Interpretation with a new agricultural emissions inventory (MASAGE_NH3), *J. Geophys.*
 461 *Res.-Atmos.*, 119, 4343-4364, <https://doi.org/10.1002/2013jd021130>, 2014.

462 Peng, S., Huang, J., Zhong, X., Yang, J., Wang, G., Zou, Y., Zhang, F., Zhu, Q., Buresh, R., and Witt, C.:
 463 Challenge and opportunity in improving fertilizer-nitrogen use efficiency of irrigated rice in China, *Agric.*
 464 *Sci. China*, 1, 776-785, 2002.

465 Pinder, R. W., Walker, J. T., Bash, J. O., Cady-Pereira, K. E., Henze, D. K., Luo, M. Z., Osterman, G. B.,
 466 and Shephard, M. W.: Quantifying spatial and seasonal variability in atmospheric ammonia with in situ
 467 and space-based observations, *Geophys. Res. Lett.*, 38, 5, <https://doi.org/10.1029/2010gl046146>, 2011.

468 Shephard, M. W. and Cady-Pereira, K. E.: Cross-track Infrared Sounder (CrIS) satellite observations of
 469 tropospheric ammonia, *Atmos. Meas. Tech.*, 8, 1323-1336, <https://doi.org/10.5194/amt-8-1323-2015>,
 470 2015.

471 Someya, Y., Imasu, R., Shiomi, K., and Saitoh, N.: Atmospheric ammonia retrieval from the TANSO-
 472 FTS/GOSAT thermal infrared sounder, *Atmos. Meas. Tech.*, 13, 309-321, <https://doi.org/10.5194/amt-13-309-2020>, 2020.

474 Van Damme, M., Whitburn, S., Clarisse, L., Clerbaux, C., Hurtmans, D., and Coheur, P.-F.: Version 2 of
 475 the IASI NH₃ neural network retrieval algorithm: near-real-time and reanalysed datasets, *Atmos. Meas.*
 476 *Tech.*, 10, 4905-4914, <https://doi.org/10.5194/amt-10-4905-2017>, 2017.

477 Van Damme, M., Clarisse, L., Whitburn, S., Hadji-Lazaro, J., Hurtmans, D., Clerbaux, C., and Coheur,
 478 P. F.: Industrial and agricultural ammonia point sources exposed, *Nature*, 564, 99-103,
 479 <https://doi.org/10.1038/s41586-018-0747-1>, 2018.

480 Van Damme, M., Clarisse, L., Heald, C. L., Hurtmans, D., Ngadi, Y., Clerbaux, C., Dolman, A., Erisman,
 481 J. W., and Coheur, P.-F.: Global distributions, time series and error characterization of atmospheric
 482 ammonia (NH₃) from IASI satellite observations, *Atmos. Chem. Phys.*, 14, 2905-2922,
 483 <https://doi.org/10.5194/acp-14-2905-2014>, 2014.

484 Wang, S., Nan, J., Shi, C., Fu, Q., Gao, S., Wang, D., Cui, H., Saiz-Lopez, A., and Zhou, B.: Atmospheric
 485 ammonia and its impacts on regional air quality over the megacity of Shanghai, China, *Sci. Rep.-UK*, 5,
 486 1-13, <https://doi.org/10.1038/srep15842>, 2015.

487 Wang, Z., Zhang, X., Liu, L., Cheng, M., and Xu, J.: Spatial and seasonal patterns of atmospheric nitrogen
 488 deposition in North China, *Atmospheric and Oceanic Science Letters*, 13, 188-194,
 489 <https://doi.org/10.1080/16742834.2019.1701385>, 2020.

490 Warner, J. X., Wei, Z. G., Strow, L. L., Dickerson, R. R., and Nowak, J. B.: The global tropospheric
 491 ammonia distribution as seen in the 13-year AIRS measurement record, *Atmos. Chem. Phys.*, 16, 5467-
 492 5479, <https://doi.org/10.5194/acp-16-5467-2016>, 2016.

493 Werner, M., Kryza, M., Geels, C., Ellermann, T., and Skjøth, C. A.: Ammonia concentrations over
 494 Europe—application of the WRF-Chem model supported with dynamic emission, *Pol. J. Environ. Stud.*,
 495 26, 1323-1341, <https://doi.org/10.15244/pjoes/67340>, 2017.

496 Wesely, M.: Parameterization of surface resistances to gaseous dry deposition in regional-scale numerical
 497 models, *Atmos. Environ.*, 41, 52-63, <https://doi.org/10.1016/j.atmosenv.2007.10.058>, 2007.

498 Whitburn, S., Van Damme, M., Clarisse, L., Bauduin, S., Heald, C., Hadji-Lazaro, J., Hurtmans, D.,
 499 Zondlo, M. A., Clerbaux, C., and Coheur, P. F.: A flexible and robust neural network IASI-NH₃ retrieval
 500 algorithm, *J Geophys Res-Atmos*, 121, 6581-6599, <https://doi.org/10.1002/2016JD024828>, 2016.

501 Xu, W., Luo, X. S., Pan, Y. P., Zhang, L., Tang, A. H., Shen, J. L., Zhang, Y., Li, K. H., Wu, Q. H., Yang,
 502 D. W., Zhang, Y. Y., Xue, J., Li, W. Q., Li, Q. Q., Tang, L., Lu, S. H., Liang, T., Tong, Y. A., Liu, P.,
 503 Zhang, Q., Xiong, Z. Q., Shi, X. J., Wu, L. H., Shi, W. Q., Tian, K., Zhong, X. H., Shi, K., Tang, Q. Y.,
 504 Zhang, L. J., Huang, J. L., He, C. E., Kuang, F. H., Zhu, B., Liu, H., Jin, X., Xin, Y. J., Shi, X. K., Du, E.
 505 Z., Dore, A. J., Tang, S., Collett, J. L., Goulding, K., Sun, Y. X., Ren, J., Zhang, F. S., and Liu, X. J.:
 506 Quantifying atmospheric nitrogen deposition through a nationwide monitoring network across China,
 507 *Atmos. Chem. Phys.*, 15, 12345-12360, <https://doi.org/10.5194/acp-15-12345-2015>, 2015.

508 Zhang, L., Chen, Y. F., Zhao, Y. H., Henze, D. K., Zhu, L. Y., Song, Y., Paulot, F., Liu, X. J., Pan, Y. P.,
 509 Lin, Y., and Huang, B. X.: Agricultural ammonia emissions in China: reconciling bottom-up and top-
 510 down estimates, *Atmos. Chem. Phys.*, 18, 339-355, <https://doi.org/10.5194/acp-18-339-2018>, 2018.

511 Zhang, X., Wu, Y., Liu, X., Reis, S., Jin, J., Dragosits, U., Van Damme, M., Clarisse, L., Whitburn, S.,
 512 Coheur, P.-F. o., and Gu, B.: Ammonia emissions may be substantially underestimated in China, *Environ.*
 513 *Sci. Technol.*, 51, 12089-12096, <https://doi.org/10.1021/acs.est.7b02171>, 2017.

514 Zhang, X. M., Ren, C. C., Gu, B. J., and Chen, D. L.: Uncertainty of nitrogen budget in China, *Environ.*
 515 *Pollut.*, 286, 9, <https://doi.org/10.1016/j.envpol.2021.117216>, 2021.

516 Zhang, Y., Liu, X., Zhang, F., Ju, X., Zou, G., and Hu, K.: Spatial and temporal variation of atmospheric
 517 nitrogen deposition in the North China Plain, *Acta Ecologica Sinica*, 26, 1633-1638,
 518 [https://doi.org/10.1016/S1872-2032\(06\)60026-7](https://doi.org/10.1016/S1872-2032(06)60026-7), 2006.

519 Zhou, F., Ciais, P., Hayashi, K., Galloway, J., Kim, D.-G., Yang, C., Li, S., Liu, B., Shang, Z., and Gao,
 520 S.: Re-estimating NH₃ emissions from Chinese cropland by a new nonlinear model, *Environ. Sci.*
 521 *Technol.*, 50, 564-572, <https://doi.org/10.1021/acs.est.5b03156>, 2016.

522