

Supplement to “Comparisons between the distributions of dust and combustion aerosols in MERRA-2, FLEXPART and CALIPSO and implications for deposition freezing over wintertime Siberia”

Lauren M. Zamora^{1,2}, Ralph A. Kahn², Nikolaos Evangeliou³, and Christine D. Groot Zwaafink³

5 ¹Earth System Science Interdisciplinary Center, University of Maryland, College Park, College Park, Maryland, U.S.A.

²NASA Goddard Space Flight Center, Greenbelt, Maryland, U.S.A.

³Norwegian Institute for Air Research (NILU), Kjeller, Norway

Correspondence to: Lauren M. Zamora (lauren.m.zamora@nasa.gov)

Winter (DJF), 4 to 8 km asl

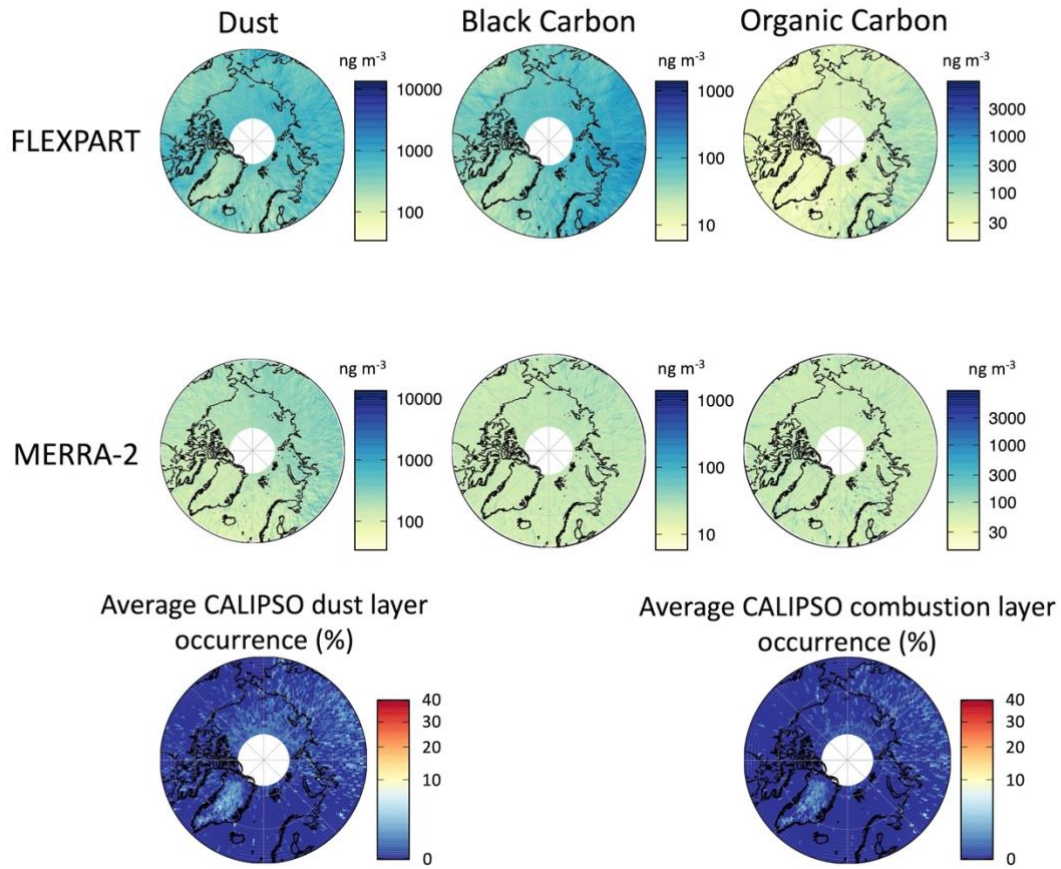


Figure S1: As in Figure 1, but for 4-8 km asl.

False negative rates (%), indicating where aerosols are underpredicted

False positive rates (%), indicating where aerosols are overpredicted

4 to 8 km

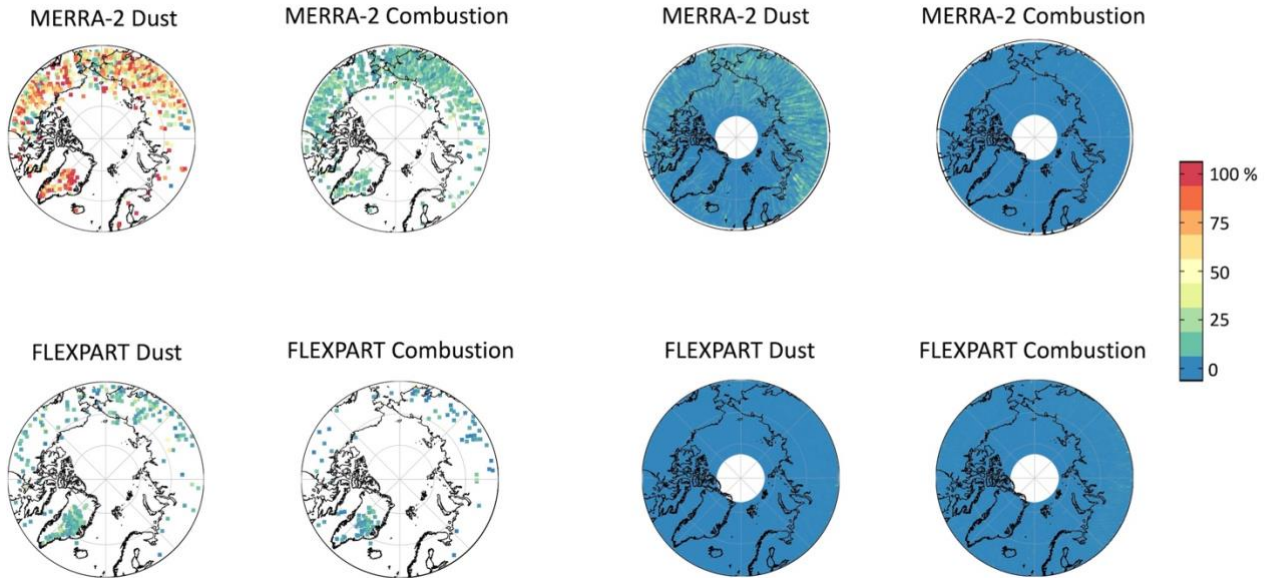


Figure S2: As in Figure 4, but for 4-8 km asl.