

Comparisons between the distributions of dust and combustion aerosols in MERRA-2, FLEXPART, and CALIPSO and implications for deposition freezing over wintertime Siberia

Lauren M. Zamora^{1,2}, Ralph A. Kahn², Nikolaos Evangeliou³, Christine D. Groot Zwaafink³, and Klaus B. Huebert⁴

¹Earth System Science Interdisciplinary Center, University of Maryland, College Park, College Park, Maryland, U.S.A.

²NASA Goddard Space Flight Center, Greenbelt, Maryland, U.S.A.

³Norwegian Institute for Air Research (NILU), Kjeller, Norway

⁴CSS, Inc., Fairfax, Virginia, U.S.A.

10 Correspondence to: Lauren M. Zamora (lauren.m.zamora@nasa.gov)

Abstract. Aerosol distributions have a potentially large influence on climate-relevant cloud properties but can be difficult to observe over the Arctic given pervasive cloudiness, long polar nights, data paucity over remote regions, and periodic diamond dust events that satellites can misclassify as aerosol. We compared Arctic 2008-2015 mineral dust and combustion aerosol distributions from the Cloud-Aerosol Lidar and Infrared Pathfinder Satellite Observation (CALIPSO) satellite, the Modern-Era Retrospective analysis for Research and Applications, Version 2 (MERRA-2) reanalysis products, and the FLEX-ible PARTicle (FLEXPART) dispersion model. Based on coincident, seasonal Atmospheric Infrared Sounder (AIRS) Arctic satellite meteorological data, diamond dust may occur up to 60% of the time in winter, but it hardly ever occurs in summer. In its absence, MERRA-2 and FLEXPART each predict the vertical and horizontal distribution of large-scale patterns in combustion aerosols with relatively high confidence (Kendall Tau rank correlation > 0.6), although a sizeable amount of variability is still unaccounted for. They do the same for dust, except in conditions conducive to diamond dust formation where CALIPSO is likely misclassifying diamond dust as mineral dust, and near the surface (< ~2 km) where FLEXPART may be overpredicting local dust emissions. Comparisons to ground data suggest that MERRA-2 Arctic dust concentrations can be improved by the addition of local dust sources. All three products predicted that wintertime dust and combustion aerosols occur most frequently over the same Siberian regions where diamond dust is most common in the winter. This suggests that aerosol impacts on ice phase processes may be particularly high over Siberia, although further wintertime model validation with non-CALIPSO observations is needed. This assessment paves the way for applying the model-based aerosol simulations to a range of regional-scale Arctic aerosol-cloud interaction studies.

Deleted: and

Formatted: Superscript

Formatted: Superscript

Deleted: , as does FLEXPART for mineral dust

Deleted: and satellite

Deleted: Apparent false negative rates compared to lidar were substantially higher in conditions favouring diamond dust formation for both MERRA-2 and FLEXPART, as would be expected if CALIPSO were misclassifying diamond dust as mineral dust aerosols. ...

1 Introduction

Aerosols have a potentially large influence on Arctic climate-relevant cloud properties such as cloud cover, cloud phase, and cloud particle size (Alterskjær et al., 2010; Gagné et al., 2017; Morrison et al., 2012; Schmale et al., 2021; Shindell and Faluvegi, 2009; Willis et al., 2018; Zamora et al., 2018). Mineral dust, for example, is thought to be a particularly efficient ice nucleating particle (INP) source, leading to enhanced freezing of liquid aerosol particles or potentially to depositional growth under favorable environmental conditions (Kanji et al., 2017). Marine aerosols are a source of both cloud condensation nuclei (CCN) and INPs (Willis et al., 2018). Combustion (anthropogenic pollution + biomass burning) aerosols are less efficient INPs (Kanji et al., 2017), but can readily form CCN, as can sulphate aerosols.

However, understanding the effects of aerosols on Arctic clouds is limited in large part by uncertainties in the distributions of aerosols and the contributions of each aerosol type to the CCN and INP budgets. Ground-based aerosol observations are sparse, and aerosol data from passive satellite instruments are unavailable during polar night (Duncan et al., 2020). Long-term, vertically resolved remote sensing information on Arctic aerosols, including aerosol subtype distributions from dust, smoke, and other sources are available from the Cloud-Aerosol Lidar and Infrared Pathfinder Satellite Observation (CALIPSO) satellite (Di Piero et al., 2013; Winker et al., 2013; Kim et al., 2018; Yang et al., 2021; Chen et al., 2021). However, CALIPSO can miss aerosols that are a) dilute (Kacenenbogen et al., 2014; Zamora et al., 2017; Di Piero et al., 2013; Winker et al., 2013; Rogers et al., 2014), b) very small (Hallen and Philbrick, 2018), including highly numerous marine biogenic aerosols (Burkart et al., 2017), c) in the 200 m immediately above the surface where local marine and terrestrial emission concentrations are highest (Winker et al., 2013), and d) below clouds. This latter issue is particularly challenging, as clouds occur in the Arctic at least half the time during winter, and up to 80% of the time over open ocean in summer (Zygmuntowska et al., 2012). Moreover, CALIPSO does not measure lidar ratios, and so periodic Arctic diamond dust events (i.e., ice crystal precipitation in clear sky conditions) can sometimes be misclassified as mineral dust aerosol, leading to overestimates of dust aerosol presence (Di Biagio et al., 2018).

Models are therefore critical for providing aerosol estimates, especially below and within clouds at all vertical levels. However, most aerosol models are poorly validated at high altitudes and latitudes (Arnold et al., 2016; Eckhardt et al., 2015). These combined remote sensing and model issues lead to large uncertainties in predictions of Arctic aerosol types, levels, and their resulting cloud impacts now and in the future.

In this paper, we aim to take advantage of the complementary information from model and reanalysis products and satellite data to a) understand the strengths and limitations of the model and reanalysis products and b) better identify those Arctic regions with the highest certainty and uncertainty in the distributions of dust and combustion aerosols. This information will enable improvements in the model and reanalysis products and will facilitate a range of Arctic aerosol-cloud interaction studies going forward, including targeted suborbital measurements. As one application of these products, we use the overlap between meteorological conditions conducive to deposition nucleation and elevated aerosol presence in CALIPSO, the Modern-Era

Deleted:

Deleted: -

Deleted: example

Retrospective analysis for Research and Applications, Version 2 (MERRA-2), and the FLEXPART (FLEX-ible PARTicle) Lagrangian particle dispersion model to show that this process may be more common during winter than previously thought.

2 Methods

75 This study focuses on the Arctic areas poleward of 60 °N between 2008 to 2015. In some cases, data were separated into terrestrial and oceanic regions, as defined by the ETOPO1 1 Arc-Minute Global Relief Model (Amante and Eakins, 2009)). We assess the commonalities and differences in dust and combustion aerosol distributions between CALIPSO, MERRA-2 reanalysis aerosol products, and aerosols in the FLEXPART model.

2.1 Data sources

80 2.1.1 CALIPSO data

Aerosol data, including aerosol layer base and top elevation, cloud-aerosol discrimination (CAD) score, and aerosol type, were obtained from the CALIPSO Lidar Level 2 5-km Merged Layer Data, V4-20 dataset (Winker, 2018), as were data on solar zenith angle (SZA). CALIPSO reports an aerosol vertical resolution of 30 m up to ~8.2 km above sea level (ASL), and 60 m above that up to 20.2 km ASL. Averaged aerosol horizontal resolution ranges between 5 and 80 km, with higher
85 resolution at higher aerosol concentrations, when signal-to-noise ratios are better (Vaughan et al., 2009). We focused on data above 200 m from the surface, to reduce the influence of blowing snow and ground contamination of the CALIPSO lidar (Winker et al., 2013) on the results.

For this analysis, CALIPSO aerosol data were used only from cloud-free profiles where CAD scores ranged between -100 and -30, to exclude clouds and very low-confidence aerosol layers. CALIPSO aerosol layer properties have higher
90 uncertainties during the daytime, especially over bright sea ice. As mentioned previously, CALIPSO may also miss dilute Arctic aerosols, even at night, when lidar sensitivity is higher (Zamora et al., 2017). Moreover, CALIPSO can be subject to other errors in aerosol subtype designation (Omar et al., 2009; Kim et al., 2018). In general, aerosol type is more difficult to discern in aerosol mixtures (Zeng et al., 2021). CALIPSO does not consider a marine aerosol category in over-land retrievals, but these aerosols may still be present, at least near coastal locations (Kanitz et al., 2014). Also, desiccated marine aerosols
95 might be misclassified as dust or polluted aerosol at relative humidity below 60-70% (Ferrare et al., 2020), and pollution aerosols can be misclassified as marine aerosols (Di Biagio et al., 2018). Furthermore, there is a risk that some layer classification results can be confounded by vertical averaging over layers of different aerosol types, such as dust lying over marine aerosol layers.

100 Evaluations of the previous CALIPSO aerosol type version 3 dataset mainly from subarctic data indicate agreement with aerosol type estimates from other data sources most of the time, with best results for mineral dust aerosols (Burton et al., 2013; Papagiannopoulos et al., 2016; Mielonen et al., 2013). However, in the Arctic, diamond dust can be misattributed to the CALIPSO dust aerosol subtype (Di Biagio et al., 2018), and so CALIPSO dust subtyping is likely less certain over this region.

Deleted: asl

Deleted: asl

Deleted: can be subject to other errors as well

Deleted: M

Deleted: s

Deleted: are not allowed

110 It also appears that polluted continental aerosols over the Arctic Ocean may be misattributed to clean marine conditions (Rogers et al., 2014; Di Biagio et al., 2018), although this may not matter at all locations, as the seasonality of the clean marine aerosol subtype seems to be in agreement with long-term observations at Svalbard (Di Biagio et al., 2018). In this study, we used the updated version 4 products for aerosol type classification (Kim et al., 2018), which may result in fewer uncertainties in CALIPSO aerosol type compared to previous studies. However, large-scale evaluations of CALIPSO version 4 aerosol subtype have not yet been conducted to our knowledge, and even for version 3, such evaluations are limited.

115 Any CALIPSO aerosol layer in cloud-free conditions that was classified as either “dust,” “polluted dust,” or “dusty marine” was included in a larger dust group for comparison to other datasets. Any CALIPSO aerosol layer classified as either “polluted continental/smoke”, “polluted dust,” or “elevated smoke” was included in a larger combustion aerosol group. “Polluted dust” was included in both the larger dust and pollution groupings, reflecting the fact that aerosols of both types can be mixed in the atmosphere. Polluted dust made up 45% of the dust cases, and 39% of the combustion cases, and so there is significant overlap between the two groups. We discuss how removing the “polluted dust” component of the combustion aerosol group effects the results in section 3.3.

120

Formatted: Indent: First line: 0.25"

2.1.2 AIRS data

CALIPSO profiles were matched with concurrent temperature (T) and relative humidity (RH) data from the Atmospheric Infrared Sounder (AIRS) L3 Daily Standard Physical Retrieval (AIRS+AMSU) 1° x 1° V007 (AIRX3STD 007) product (AIRS project, 2019) from both the ascending and descending orbits. These data are available in 12-hourly time slots for every 1° x 1° at pressure levels 1000, 925, 850, 700, 600, 500, 400, 300, 250, 200, 150, and 100 mb. The AIRS L3 data are useful under most conditions in the Arctic troposphere, but have fewer errors when there is no heavy precipitation. Data with RH values > 200% were discarded, following AIRS team recommendations (Tian et al., 2020). Seasonally averaged AIRS data during the study period were obtained separately using the Giovanni online data system (NASA GES DISC, Acker and Leptoukh (2007). For the seasonal data we used the ascending and descending orbits in the AIRX3STM 007 product.

125

130

Deleted: ,

Deleted: -

Table 1: Conditions under which diamond dust can form over the Arctic. Heterogeneous ice formation also requires the presence of ice nuclei.

Formation mechanism	T (°C)	RHi (%)
Homogeneous formation ^a	< -35 °C	> 140%
Heterogeneous formation: Deposition ice nucleation ^b	< 0 °C	> 100%
Heterogeneous formation: homogeneous freezing of preactivated water- containing aerosol pores ^{c,d}	< -38 °C	< 100%

a) Koop et al. (2000); b) Kanji et al. (2017); c, d) Marcolli, 2014, 2017)

140 Ice crystals, including diamond dust (Table 1), form and grow in the atmosphere differently depending on ambient ice
nuclei, temperature, and moisture levels. To identify locations where diamond dust is most likely to form in the presence of
aerosols, we follow a similar approach as in Sakai et al. (2003), based on the locations where the equilibrium relative humidity
over ice is exceeded (i.e., where ambient values of RH with respect to ice (RH_i) are supersaturated, or > 100%). RH_i values
were calculated from AIRS T and RH values following Murphy and Koop (2005). First, saturation vapor pressure over liquid
145 water (e_s) and saturation vapor pressure with respect to ice (e_{si}) were calculated from the AIRS T values based on the Murphy
and Koop equations 10 and 7, respectively. These equations are valid for 123 < T < 332 K and down to 110 K, respectively.
Then we estimated RH_i by multiplying this ratio by the relative humidity, following their equation 11:

$$RH_i = RH \frac{e_s}{e_{si}} \quad (1)$$

This approach could underestimate locations where diamond dust occurs, as it does not include, for example, locations with
150 homogeneous freezing of preactivated aerosol pore water at temperatures < -38 °C (Marcolli, 2014) (Table 1). Locations
where diamond dust forms from small-scale meteorological variations in supersaturation from factors such as vertical
velocity (Korolev and Mazin, 2003) and radiative cooling (Zeng, 2018) will also be underestimated with this method.

2.1.3 MERRA-2 output

155 Mineral dust, black carbon (BC), and organic carbon (OC) aerosol concentrations and model mid-layer height output
were obtained from MERRA-2 (Global Modeling and Assimilation Office (GMAO), 2015a, b), which has 3-hourly, 0.5 ° x
0.625 ° horizontal resolution. We obtained output at 72 different model levels above the surface, focusing mainly on the lower
29 levels (up to ~10.5 km ASL). MERRA-2 aerosol emissions datasets are described in Table 1 of Randles et al. (2017), and
do not include local Arctic mineral dust sources. Aerosols are assumed to be externally mixed with different components (e.g.,
BC, OC, sulfate aerosols) each contributing to total aerosol load. Aerosol loss processes include dry and wet deposition
160 (Randles et al., 2017), with precipitation-induced aerosol deposition based on merged precipitation observations and model

Deleted:

Deleted: asl

165 products in MERRA-2 (Reichle et al., 2017). MERRA-2 assimilates aerosol data when available. During the time period of this study, MERRA-2 assimilated aerosol information from the Aerosol Robotic Network (AERONET), Multi-angle Imaging SpectroRadiometer (MISR), and Moderate Resolution Imaging Spectroradiometer (MODIS) instruments (Randles et al., 2017). Data from these instruments were assimilated throughout the year in the subarctic, and a fraction of these aerosols was then transported into the Arctic. During the daytime, MERRA-2 also assimilates some limited Arctic aerosol data in non-cloudy conditions. However, those Arctic data sources are unavailable during polar night. As a result, MERRA-2 aerosol output is more model-driven during polar night. Uncertainties may be largest near the surface, which is more impacted by local sources, than in the middle and upper troposphere, which is more influenced by transported aerosols.

170 Mineral dust mass is modelled in five particle size bins with diameters between 0.2-2, 2-3.6, 3.6-6, 6-12, and 12-20 μm (Colarco et al., 2010). Dust emissions are wind-driven for each size bin (Randles et al., 2017), parameterized following Marticorena and Bergametti (1995). We used dust from the five size classes and grouped them together for comparison with FLEXPART dust aerosols. Note that as with many other dust models, particles with diameters $>20 \mu\text{m}$ are not assessed. Such larger dust particles are comparatively rare but are observed in the field (Weinzierl et al., 2017; Drakaki et al., 2022) and so their exclusion could lead to an underestimate of *in situ* dust concentrations, especially near local sources.

175 BC and OC are represented with two (hydrophobic and hydrophilic) mass tracers, which we added together. BC and OC emissions are based on biomass burning and anthropogenic emissions, including from ships (Randles et al., 2017). For reference, the single scattering albedos of BC and OC in MERRA-2 depend on RH, but the range for BC is around 0.3-0.4 at 180 $\sim 500\text{nm}$ (A. Darmenov, pers. comm.). These simulations did not include brown carbon (BrC), which is expected to more or less track the modelled OC from fires. Aerosol sulfate (SO_4^{2-}) data were available in MERRA-2 and contribute to combustion plumes from fires and Arctic haze. For example, within MERRA-2, the total aerosol optical depth (AOD) of a fresh smoke plume might roughly be driven by roughly $\sim 90\%$ OC, with the remaining $\sim 10\%$ partitioned between BC and SO_4^{2-} , with the portions changing over time as the plume ages. However, SO_4^{2-} aerosol data were not used in this study as additional tracers 185 for combustion aerosols because there are SO_4^{2-} contributions from other sources such as marine and volcanic emissions.

Only a few studies have evaluated MERRA-2 Arctic aerosol distributions, mainly using MODIS aerosol optical depth and ground-based observations (e.g., Wu et al. (2020), Lee et al. (2020) and Sitnov et al. (2020)). MERRA-2 BC and OC aerosols tend to be a bit high compared to observed aerosol concentrations, although they tend to follow the qualitative trends (Vinogradova et al., 2020; Zhuravleva et al., 2020). One study found that dust optical depth and dust extinction were similar 190 or a bit elevated compared to that of CALIPSO, but with large discrepancies in absolute concentrations (both over- and underpredicting concentrations) compared to two ground sites (Wu et al., 2020).

2.1.4 FLEXPART output

Separate simulations of mineral dust, BC, and OC were conducted using the FLEXPART version 10.4 Lagrangian particle dispersion model (Pisso et al., 2019). In the simulations presented here, the model was forced by ERA-Interim meteorological

Deleted: Although

Deleted: , its aerosol output is most likely model-driven during polar night. During daytime, some limited aerosol data may be assimilated in non-cloudy conditions, which during the time period of this study includes AERONET, MISR, and MODIS data (Randles et al., 2017).

Deleted: (

Deleted: 1

Deleted: 1

Deleted: 1

Deleted: 1.8

Deleted: 1.8

Deleted: 3

Deleted: 3

Deleted: 6

Deleted: 6

Deleted: 1

Deleted:)

Deleted: into two bins: submicron dust (bin 1) and dust from 1-10 microns (bins 2-5)

Formatted: Font: Italic

Deleted: in the range of

Deleted: Details of the MERRA-2 Arctic aerosol distributions have been discussed previously (Wu et al., 2020; Lee et al., 2020; Sitnov et al., 2020). Only a few studies have evaluated MERRA-2 aerosols over the Arctic.

220 fields from the European Centre for Medium-Range Weather Forecasts (ECMWF) at 1° x 1° spatial and 3-hourly temporal resolution. In addition to dry and wet deposition, FLEXPART accounts for turbulence (Cassiani et al., 2014), unresolved mesoscale motions (Stohl et al., 2005) and includes a deep convection scheme (Forster et al., 2007). Gravitational settling, dry deposition and in-cloud and below-cloud scavenging are also included (Grythe et al., 2017). The resulting daily output has 1° x 1° horizontal resolution with upper vertical layer boundaries at 10, 100, 250, 500, 750, 1000, 1500, 2000, 4000, 6000, 8000, 225 10,000, 15,000, and 20,000 m above ground level (AGL). For comparison with the other datasets, we converted the FLEXPART output to km ASL, using surface elevation data from ETOPO1 bedrock GMT4 data (Amante and Eakins, 2009).

Deleted: agl

Deleted: asl

Emissions of mineral dust include local Arctic sources and were calculated with the FLEXDUST emission model (Groot Zwaafink et al., 2016). Dust aerosols were split in 10 size classes in FLEXPART: 0.2, 0.5, 1, 1.5, 2.5, 5, 7.5, 12.5, 15, 20 μm diameter. Emitted dust is assumed to follow the Kok (2011) size distribution. Dust from the different size classes were then 230 grouped together for further analysis and comparison to MERRA-2 dust aerosols.

Deleted: into two bins: submicron dust (bins 1-3) and dust from 1-10 μm (bins 4-7)

Deleted: We did not analyse dust with sizes > 10 μm for easier comparison with MERRA-2, which only assessed particles up to this size.

As with MERRA-2, brown carbon was not modelled explicitly, and OC and BC are used as the main proxies for combustion aerosols. BC and OC were run separately, and do not chemically age over time or interact in the model. They were also assumed to be hydrophilic. BC and OC concentrations were calculated from both anthropogenic emissions (using ECLIPSEv6b) and biomass burning (GFED4.1s (Giglio et al., 2013)), following Klimont et al. (2017) but with updated 235 emissions factors (Z. Klimont, pers. comm.). The tracking of BC and OC particles includes gravitational settling for all spherical particles, and BC and OC aerosols have assumed mean diameters of 0.25 μm , a logarithmic standard deviation of 0.3, and a particle density of 1500 kg m^{-3} (Long et al., 2013). The BC and OC emissions datasets may not include some local sources of combustion aerosols.

Deleted:

Details on FLEXPART Arctic aerosol distributions have been discussed previously (Groot Zwaafink et al., 2016; Stohl, 240 2006; Eckhardt et al., 2015) and are further evaluated in section 3 below. For now, we just note that smoke and pollution transport in FLEXPART have been well validated over the Arctic, and various observations suggest that FLEXPART BC can be a proxy for strong, CALIPSO-detectable aerosol layers (Damoah et al., 2004; Eckhardt et al., 2015; Forster et al., 2001; Paris et al., 2009; Sodemann et al., 2011; Stohl et al., 2002, 2003, 2015; Zamora et al., 2017, 2018). In contrast, mineral dust aerosol validation data in the high Arctic are rare, and prior analysis suggests somewhat higher uncertainty in FLEXPART 245 dust aerosols (Groot Zwaafink et al., 2017, 2016).

2.2 Comparisons between MERRA-2, FLEXPART, and CALIPSO

250 We next compared dust and combustion aerosol products in MERRA-2, FLEXPART, and CALIPSO. Marine aerosols are another important aerosol source over the Arctic (Schmale et al., 2021). They are not included in this assessment because of uncertainties in detecting near-surface aerosols and small biogenic marine aerosols, as discussed in section 2.1.1.

260 It can be challenging to compare modelled aerosol concentrations to CALIPSO aerosol property information on a case-
by-case basis. Doing so requires speculative assumptions about the lidar ratio and the extinction cross section of particles that
are beyond the scope of this paper. Also, the amount of aerosol needed for CALIPSO to detect an aerosol layer is unknown
and may vary over time and space, and the same can be said for the thickness of a CALIPSO layer required to be comparable
with model aerosol concentrations. Therefore, our approach is instead to 1) assess how well large-scale Arctic CALIPSO
265 combustion and dust aerosols are related to those in MERRA-2/FLEXPART, and 2) find and discuss where the largest
discrepancies and similarities are between the products.

To begin, we assessed the correlation at different altitudes between mean CALIPSO aerosol layer fraction (the fraction of
CALIPSO aerosol layer of the subtype of interest - dust or combustion - overlapping with the vertical altitude bin of interest)
and MERRA-2/FLEXPART aerosol concentrations on cloud-free days. The robust Kendall Tau rank correlation metric was
270 chosen for this purpose. CALIPSO dust layer presence and MERRA-2/FLEXPART dust concentrations were averaged within
20° longitude × 6° latitude bins. Data were averaged either across the 8-year study period for one season (e.g., December
through February) or for daytime/nighttime samples, as stated in the text. Similarly, CALIPSO combustion aerosol presence
was compared with MERRA-2/FLEXPART BC and OC concentrations. The analysis was done at model vertical resolution
for FLEXPART (CALIPSO has much finer vertical resolution than either MERRA-2 or FLEXPART), and at 1 km vertical
275 resolution for MERRA-2. We excluded aerosol layers within 200 m of the surface in the lowest bin and bins with < 30
observations (collectively, < 1% of total data). To weight bins proportionally to their surface areas, the Kendall Tau metric
was estimated using a resampling/bootstrapping method, drawing 100,000 values with replacement from the original data set.

Sometimes CALIPSO had multiple overlapping layers of aerosol subtypes of interest (Thorsen et al., 2011). In those cases,
the fraction of the model bin that was filled by a CALIPSO aerosol layer was determined by the sum of only the portions of
280 each CALIPSO layer that did not overlap with the other CALIPSO aerosol layers and that fell completely within the MERRA-
2/FLEXPART bin, divided by the entire height of the MERRA-2/FLEXPART bin. We also focused primarily on
environmental conditions where the CALIPSO satellite product does best. These conditions include cloud-free, nighttime cases
when diamond dust does not occur, at altitudes > 200 m over the surface. However, for comparison, correlations were also
analysed separately during daytime (defined as when the solar zenith angle (SZA) is < 90°) when the lidar signal-to-noise ratio
285 is smaller, and when RHi is > 100%, when potential aerosol type errors from diamond dust might be highest.

Next, we wanted to better understand where aerosol distributions between MERRA-2/FLEXPART and CALIPSO have
the highest agreement. For this step, we assessed the difference in Z-scores (i.e., the standard deviations from their respective
means) between MERRA-2/FLEXPART concentrations and aerosol layer presence in CALIPSO. We focused on 5° longitude
× 2° latitude bins at 0.2 to 2 km, 2-4 km, and 4-8 km vertical resolution during the winter season (December to February).
290 Within those bins, we averaged MERRA-2/FLEXPART dust concentrations and CALIPSO dust aerosol presence across the
study period and assessed the difference in Z-scores between the two products. The closer the difference in Z-score is to zero,
the more agreement there is between the products. Similarly, we compared differences in Z-score between MERRA-

Formatted: Indent: First line: 0.25"

295 2/FLEXPART BC and OC and CALIPSO combustion aerosol layer fraction. One benefit of this approach is that we can compare similar numbers of aerosol events with CALIPSO for both models without assuming a priori which of the two models has more accurate absolute aerosol concentrations. This is helpful, given that there is a paucity of in situ validation data over the Arctic at higher latitudes and altitudes, and so it is possible that either MERRA-2 or FLEXPART aerosol concentrations could be biased high or low.

3 Results and Discussion

300 3.1 Lower troposphere wintertime aerosol distributions are elevated over Siberia

Figure 1 shows the average wintertime distribution of MERRA-2 and FLEXPART submicron dust, BC, and OC aerosols at different altitude levels below 4 km at the same locations where CALIPSO cloud-free profiles were available. MERRA-2 predicts higher mineral dust concentrations than FLEXPART, despite not including local dust sources (although wintertime local dust emissions are small when the soil is frozen or covered in snow). MERRA-2 also had slightly higher OC concentrations over North America but FLEXPART BC levels were elevated at most locations relative to MERRA-2. These differences in dust and combustion aerosols may be influenced by different assumptions in emitted particle size distribution and subsequent transport and deposition.

305 Wintertime CALIPSO aerosol presence in cloud-free profiles at the same altitude levels as the FLEXPART and MERRA-2 results is also shown in Figure 1. CALIPSO aerosol presence is not directly comparable to average MERRA-2 and FLEXPART aerosol concentrations, which for example, can be skewed by high concentrations during infrequent events. However, the general regional trends still provide information on where dust and combustion aerosols are most common. For example, based on Figure 1, CALIPSO dust aerosols are commonly observed below 4 km over Siberia during wintertime. High average dust concentrations are also predicted by MERRA-2 and FLEXPART in this region, providing confidence in elevated dust levels in the region. In contrast, there is some indication from CALIPSO and FLEXPART that dust sources over 315 the western hemisphere may also be slightly elevated, but below 2 km, there was disagreement on whether these sources are more elevated over the Canadian archipelago (FLEXPART) or over the Labrador Sea (CALIPSO). As there are no known major dust sources over this region, there are higher uncertainties in dust distributions over North America.

320 CALIPSO, MERRA-2 and FLEXPART also agree that wintertime combustion aerosols are elevated over the European and Asian portions of the Arctic, in line with other studies (e.g., Eckhardt et al. (2015); Di Piero et al. (2013)), and consistent with smoke sources from these locations. However, combustion aerosol layer distributions below 4 km are more sharply reduced over oceanic areas in CALIPSO than is predicted in the models. This observation is likely caused by a known CALIPSO aerosol subtyping artifact (Burton et al., 2013; Kanitz et al., 2014; Campbell et al., 2013; Papagiannopoulos et al., 2016; Zeng et al., 2021), as a) there are no known dramatic precipitation differences over the land vs. ocean over this large

Moved up [1]: The false negative (FN) rate is defined as:[†]

$$FN\ rate = \frac{n_{FN}}{n_p} * 100\% \quad (2)^{\dagger}$$

where n_p is the total number of CALIPSO observations with aerosols of that subtype (dust or combustion), and n_{FN} is subset of those data where modelled aerosol concentrations are less than the threshold in Table 2 for that aerosol subtype. The false positive (FP) rate is defined as:[†]

$$FP\ rate = \frac{n_{FP}}{n_c} * 100\% \quad (3)^{\dagger}$$

where n_c is the number of CALIPSO observations with no aerosol of that subtype, and n_{FP} is the subset of those data where modelled aerosol concentrations exceed the Table 2 threshold for that aerosol subtype. The FN and FP rates were calculated separately in each model bin for dust and combustion aerosols and are presented as averages across the 8-year study period. These rates tell us the

Moved (insertion) [1]

Deleted: In order to meet our goal of better understanding the strengths and limitations of MERRA-2 and FLEXPART dust and combustion aerosol products, we focused primarily on environmental conditions where the CALIPSO satellite product does best. These conditions include cloud-free, nighttime cases when diamond dust does not occur, at altitudes > 200 m over the surface. Note that marine aerosols are another very important aerosol source over the Arctic (Schmale et al., 2021). They are not included in this assessment because CALIPSO has uncertainties in detecting near-surface aerosols and small biogenic marine aerosols, as discussed in section 2.1.1. The false negative (FN) rate is defined as:[†]

$$FN\ rate = \frac{n_{FN}}{n_p} * 100\% \quad (2)^{\dagger}$$

where n_p is the total number of CALIPSO observations with aerosols of that subtype (dust or combustion), and n_{FN} is subset of those data where modelled aerosol concentrations are less than the threshold in Table 2 for that aerosol subtype. The false positive (FP) rate is defined as:[†]

$$FP\ rate = \frac{n_{FP}}{n_c} * 100\% \quad (3)^{\dagger}$$

where n_c is the number of CALIPSO observations with no aerosol of that subtype, and n_{FP} is the subset of those data where modelled aerosol concentrations exceed the Table 2 threshold for that aerosol subtype.[†]

Modelled aerosol concentrations are not directly comparable to CALIPSO direct backscatter and polarization observations and CALIPSO-inferred aerosol property or presence information. To derive a parameter such as aerosol concentration from CALIPSO, one would need to make speculative assumptions about the lidar ratio and the extinction cross section of particles, which is be... [1]

Deleted: FLEXPART

Deleted: MERRA-2

Deleted: which is consistent with its inclusion of

Deleted: FLEXPART BC levels were also elevated relative to MERRA-2, but

Deleted: impacted

Deleted: †

†

†

Deleted: We suspect that this

area to explain this phenomenon, b) aerosols are treated differently in the CALIPSO aerosol subtyping algorithm if they are taken over land and ocean (Kim et al., 2018), and c) others have found that polluted continental aerosols over the Arctic Ocean can be misattributed to clean marine conditions (Rogers et al., 2014; Di Biagio et al., 2018). The dust and combustion aerosol trends seen above 4 km are more difficult to discern (Fig. S1), given the inability of CALIPSO to detect very dilute aerosols.

465

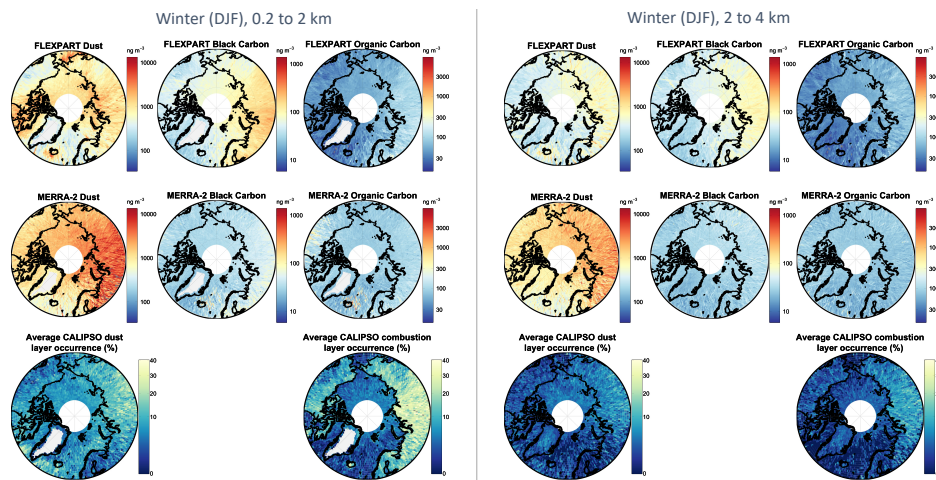


Figure 1: The percent of the time that CALIPSO dust and combustion aerosols occur in wintertime cloud-free profiles below 4 km at two different altitude levels, and the corresponding distributions of MERRA-2 and FLEXPART submicron mineral dust, black carbon, and organic carbon. There is agreement that dust (an efficient source of ice nucleating particles) is high over Siberia. Data at higher altitudes are shown in Fig. S1.

470

3.2 There is overlap between the distribution of aerosols and the meteorological conditions conducive to diamond dust formation

We next assessed the locations where diamond dust occurs, as these are known to lead to overestimation of dust in CALIPSO (Di Biagio et al., 2018). Table 1 shows the pathways through which diamond dust is most likely to form. Based on Table 1, the homogeneous and deposition ice nucleation pathways for diamond dust formation are most likely to occur when RH_i is $> 100\%$. In line with previous studies (Intrieri and Shupe, 2004; Maxwell, 1982), we do not expect diamond dust formed from the Table 1 pathways to be important during the summer (Figure 2b,d). There are some minor differences in RH_i above 4 km during the summer between ocean and land (Fig. 2b), which are likely due to stronger vertical mixing between more

475

moist surface air and colder stratospheric air over land versus ocean in the summer compared to winter (Stohl, 2006), but generally RH_i conditions are well below 100% during summer at most locations and altitudes.

However, conditions favourable for diamond dust formation from these pathways do occur frequently in some locations during the winter, although diamond dust may not always be present and detectable by CALIPSO when conditions are favourable for its formation. At 925 mb, we estimate that conditions favourable to diamond dust formation occur up to 60% of the time (Fig. 2a), especially in low-lying areas of the Canadian Archipelago and the Siberian interior and coast (Fig. 2c). These are extremely cold Arctic locations that also routinely experience moisture transport events (Dufour et al., 2016; Graham et al., 2017), and which are undersampled by ground-based observations in winter when diamond dust is most likely to occur. Diamond dust formation may also occur in the frigid conditions near the wintertime tropopause (Fig. 2b), and is particularly likely to occur very near the surface within the stable boundary layer (Intrieri and Shupe, 2004). This means that wintertime diamond dust is most likely to confound the dust-CALIPSO comparisons at these times and places (as is discussed further in section 3.3 and Figure S2 of the Supplement).

Deleted: wintertime diamond dust has the potential to confound the dust-CALIPSO comparisons

Deleted: Arctic

Deleted: also

Deleted: the

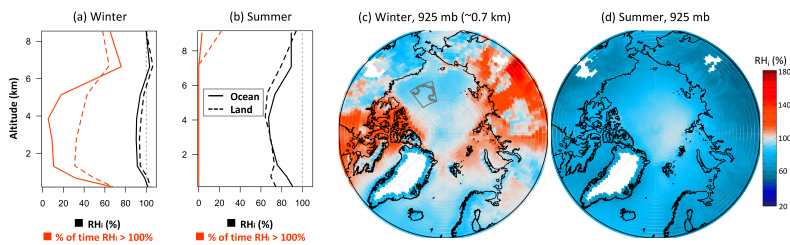


Figure 2: Diamond dust is unlikely to occur during the summer and is more likely to occur during winter, especially over the Canadian archipelago and over Siberia, based on seasonally averaged RH_i distributions for the winter (DJF) and summer (JJA) between 2008-2016. On the left are the vertical average RH_i profiles over the Arctic Ocean (solid lines, including areas covered by sea ice) and land regions (dashed lines) for a) winter, and b) summer. For reference, also shown are the percentages of these regions in which RH_i is > 100% (red lines). On the right are RH_i distributions at the 925 mb isobar for c) winter, and d) summer. Also shown in dark grey in c) is the SHEBA cruise track and the region surrounding it. Diamond dust is most likely to occur where RH_i values are > 100% (red regions).

Interestingly, around 1-1.5 km ASL over Siberia there is overlap between where both MERRA-2, and FLEXPART predict higher mineral dust and combustion aerosols and where high RH_i values also appear. We have some confidence that the dust levels really are elevated in this region because although CALIPSO may misattribute diamond dust to mineral dust at times, MERRA-2 and FLEXPART do not have this source of error. Therefore, based on the data shown in Figures 1 and 2c, we conclude that Arctic aerosol impacts on ice and mixed phase processes are particularly high over Siberia during winter.

Deleted: asl

Conditions are also favourable for diamond dust formation over the Canadian archipelago during winter. However, the presence of mineral dust in this region in FLEXPART (which includes local dust sources) but not in MERRA-2 (which does not include local dust sources) combined with the uncertainties in dust presence from CALIPSO under conditions favoring diamond dust formation make it harder to determine whether mineral dust aerosols could have a disproportionate impact on ice and mixed phase processes over this region, as is inferred over Siberia.

The locations where we estimate diamond dust formation occurs are consistent with ship-based observations. During the Surface Heat Budget of Arctic Ocean (SHEBA) ship campaign (1997-1998 in the Beaufort Sea), diamond dust was observed 23% of the time between December and February, mainly near the ocean surface (Intrieri and Shupe, 2004). The first wintertime AIRS data over that region were taken starting December 2002, and so are not directly comparable with the SHEBA data. However, based on AIRS data taken during the 2002-2003 winter at 1000 mb within a similar area (between 74.5 and 80.5 °N and -142 and -168 °E, Fig. 2), RH_i exceeded 100% about 26% of the time, which is comparable with how often diamond dust was observed during SHEBA five years prior. Conditions conducive to diamond dust formation are much less likely to occur in the mid-troposphere in this region (e.g., see distributions in Fig. 2), also in line with SHEBA observations of diamond dust forming predominantly near the surface.

It is important to note that the locations where AIRS RH_i values are > 100% may not capture every instance of diamond dust formation. Diamond dust could occur in locations that are estimated to be subsaturated with respect to ice if, for example, ice particles fall through subsaturated layers, or if the AIRS resolution (reported at 1° in the current study) is too coarse to observe smaller-scale supersaturations (Sakai et al., 2003). As previously mentioned, diamond dust may also occur in conditions favourable for freezing of preactivated water-containing aerosol pores at RH_i values < 100% (third line mechanism, Table 1). Such conditions are presumed less likely to occur during the summer due to the warmer average temperatures, but their impact during colder periods of the year is currently not well known.

3.3 Model aerosol evaluation

Next, we assess how well large-scale aerosol distributions in MERRA-2 and FLEXPART compare to those in CALIPSO. Figure 3 shows the MERRA-2 and FLEXPART Arctic area-averaged correlation with mean CALIPSO aerosol layer fraction during night and day (all data throughout the year where SZA is either > or < 90°, respectively). The Kendall Tau correlation metric used in Figure 3 is a nonparametric, rank-based alternative to R² that is robust to outliers, makes no assumptions about the data distributions, and is thus a better metric of correlation for many types of data (Shevlyakov & Oja 2016). Kendall Tau ranges from -1 for a perfect negative correlation to 0 for no correlation to +1 for a perfect positive correlation. In cases where the use of R² would be appropriate, the magnitude of Kendall Tau is a good estimator for R², with a maximum theoretical asymptotic difference < ±0.11 (Shevlyakov and Oja 2016). For reference, Figure S3 shows corresponding R² values.

Deleted: validation

Deleted: aerosol distributions

Deleted: false negative (FN) and false positive (FP) rates

Deleted: FP and FN rates

We primarily focus the subsequent discussion on times and locations when CALIPSO data are most trustworthy, i.e., during nighttime when $RH_i < 100\%$ with “polluted dust” contributing to the overall dust and combustion aerosol groups in CALIPSO (grey background, solid lines, left two columns in Figure 3). It is important to note that even for these carefully selected conditions, limitations in the number of aerosol species being modelled vs. observed can contribute to unexplained differences between MERRA-2/FLEXPART and CALIPSO. Real world CALIPSO aerosol layer mixtures contain additional species that may vary relative to the modeled constituents. For example, non-carbonaceous constituents in a combustion plume observed by CALIPSO can be present at high or low ratios relative to the modelled BC and OC and be mis-classified as carbonaceous. As another example, carbonaceous, biogenic, sulphate or maritime aerosols can be present in a dust plume. These constituents might lead to a bias in the MERRA-2/FLEXPART/CALIPSO comparisons at certain locations (e.g., over the open ocean surface downwind of a continental dust source).

Comparisons are shown for other conditions as well. For example, from Figure 3, it is immediately apparent that the relationship between MERRA-2/FLEXPART and CALIPSO dust diminishes substantially in the presence of diamond dust, likely due to CALIPSO misclassification of diamond dust as mineral dust. This hypothesis is supported by the fact that CALIPSO observed Arctic dust layers on average $61 \pm 11\%$ more frequently in wintertime air masses in conditions favourable for diamond dust formation ($RH_i > 100\%$) (Fig. S2). A similar trend is also observed to a smaller extent for combustion aerosols (Fig. 3).

However, outside of diamond dust conditions, nighttime MERRA-2 and FLEXPART aerosol concentrations and CALIPSO aerosol layer presence are moderately well correlated, based on the Kendall Tau rank correlation metric. MERRA-2 Kendall Tau rank correlations are > 0.6 for dust above 2 km and for BC/combustion aerosol layers between 1.5-7 km. FLEXPART rank correlations are > 0.6 above ~ 3 km for dust, and up to around 5 km for BC (and sometimes OC). These findings indicate that at these altitudes and scales MERRA-2 and FLEXPART dust and BC have similar large-scale patterns as CALIPSO dust and combustion aerosols, respectively, although a sizeable amount of variability is still unaccounted for.

Figure 3 also indicates that correlations between the MERRA-2 and CALIPSO dust are increasingly poor near the surface. This observation could be due either to the increasing influence of factors affecting aerosol optical properties not represented by dust concentrations alone (e.g., pollution or sea salt mixed with dust), or errors in CALIPSO or MERRA-2/FLEXPART at these altitudes. Figure 3 also shows how the correlations change if “polluted dust” is excluded from the CALIPSO dust and combustion aerosol classification. Removing polluted dust did not have a large effect on relationships with combustion aerosols, but it reduced nighttime dust correlations for both MERRA-2 and FLEXPART at most altitudes, and substantially so for MERRA-2 near the surface. We conclude that polluted dust is an important contributor to total dust loads during polar night.

Daytime MERRA-2 and FLEXPART dust (shown for comparison in Figure 3, white backgrounds) appear to be slightly less correlated with CALIPSO at some altitudes but similarly or maybe even slightly more correlated for combustion

aerosols. However, because CALIPSO detects fewer aerosol layers during the daytime, the remainder of our discussion is focused on nighttime data when the CALIPSO comparison data are of higher quality.

Figure 4 shows where MERRA-2/FLEXPART and CALIPSO agree most on aerosol distributions based on differences in Z-scores between the products. For combustion aerosols, 87% and 89% of the respective MERRA-2 and FLEXPART output have Z-score differences of < 1.0 based on BC levels (Fig. 4). However, relative to CALIPSO, MERRA-2 BC and OC concentrations have larger discrepancies than FLEXPART over the North Atlantic and Eurasia in the lower troposphere (0.2 to 2 km).

There is a notable discrepancy between MERRA-2 dust and CALIPSO dust layer presence over Europe that is not seen for FLEXPART (Fig. 4). Therefore, it is possible that MERRA-2 is overestimating long-range dust transport over Europe, which is contributing to the lower MERRA-2 correlation with CALIPSO dust at these altitudes (Fig. 3). In contrast, some locations with high local dust sources (such as Iceland and the Canadian Archipelago) seem to have high FLEXPART to CALIPSO dust discrepancies that are not observed for MERRA-2 (Fig. 4). These locations match tightly with local emissions in the FLEXPART model (see Figure 2 in Groot Zwaafink et al., 2016), suggesting that local dust contributions to the Arctic atmosphere may be too high, which might contribute to the similarly lower correlations for FLEXPART with CALIPSO at these lower altitudes (Fig. 3). However, it should be noted that if CALIPSO uniformly underestimates near-surface dust for some reason, that might produce similar patterns. Over Siberia between 0.2-2 km, where RH_i values tended to be high (Fig. 2), there was agreement between CALIPSO, MERRA-2 and FLEXPART that dust levels were elevated (Fig. 1). The Z-score differences in this area were generally < 1.5 (Fig. 4).

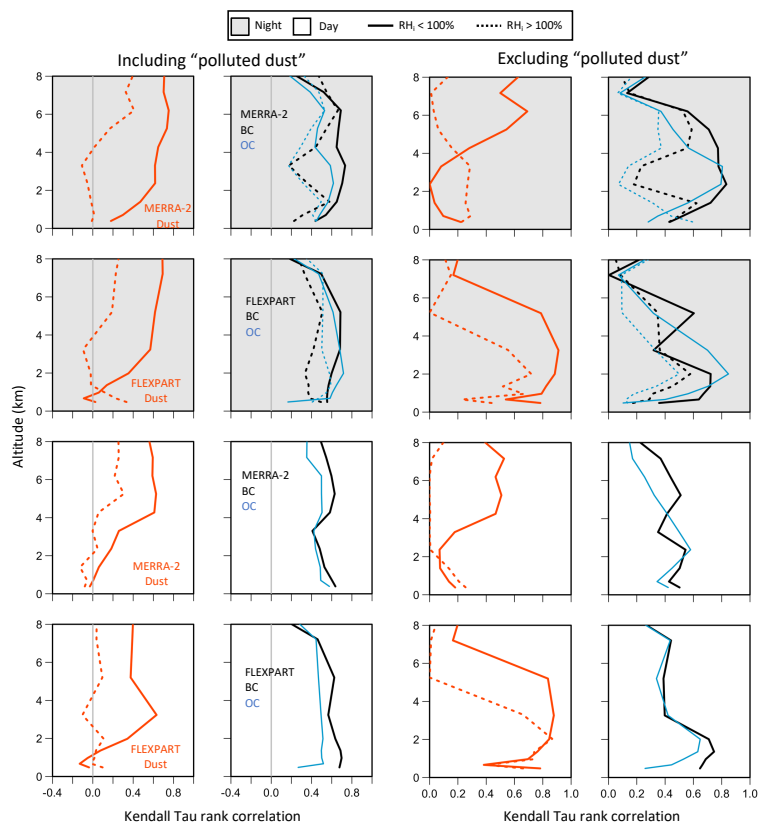


Figure 3: The Arctic area-averaged Kendall Tau rank correlation between mean CALIPSO aerosol layer fraction for dust (far left) and combustion aerosols (second column) with MERRA-2 and FLEXPART dust and black carbon (BC, black) and organic carbon (OC, blue) concentrations. The right two columns show the same information but with “polluted dust” excluded from both CALIPSO dust and combustion aerosol groups. Data are shown for nighttime ($SAZ > 90^\circ$) and daytime ($SAZ < 90^\circ$) conditions (grey and white backgrounds, respectively), and for conditions conducive to diamond dust formation (dashed lines). Model bins with < 30 observations were excluded in the averaging, which excludes $< 1\%$ of total model bins. Comparisons were made from 20×6 degree bin averages on cloud-free days with the goal of capturing large-scale features.

Deleted: We do not focus on daytime data because CALIPSO detects fewer aerosol layers during the day due to reduced sensitivity, which could cause FP rates to be biased high. These rates can also be biased high when RH is $> 100\%$ (dashed lines in Fig. 3), because CALIPSO can misclassify diamond dust as mineral dust. The peak vertical distribution of MERRA-2 dust concentration is inconsistent with where CALIPSO dust aerosols were observed in the vertical column. Based on the FN rate (top left plot in Fig. 3), MERRA-2 dust levels were dilute (defined as being below the 67th % quantile of modeled levels) nearly all of the time when CALIPSO observed dust, with the discrepancy higher closer to the surface. For comparison, based on the MERRA-2 dust FP rate (Fig. 3), dust-free CALIPSO observations were associated with the more concentrated MERRA-2 dust levels $\sim 17\%$ of the time at all altitudes, suggesting that most of the time MERRA-2 can predict dust-free concentrations, independent of altitude. We interpret this to mean that lower troposphere dust sources are underestimated in MERRA-2. FLEXPART, in contrast, showed no strong vertical bias in dust aerosols, with FP and FN rates of $< 20\%$ consistently throughout the vertical column, even in conditions conducive to diamond dust formation (Fig. 3). Combustion aerosol FP and FN rates were consistently $< 3\%$ and $< 20\%$ respectively throughout the vertical column, based on the 67-92.5% quantile of BC and OC concentrations in each model (Table 2). The low FP rates suggest that most of the time, dilute aerosol concentrations considered too low to be detected by CALIPSO really did correspond to a lack of CALIPSO aerosol identifications of that type. The low FN rates suggest that concentrated combustion aerosol levels in MERRA-2 and FLEXPART corresponded with actual CALIPSO combustion aerosol observations. From that information, [3]

Deleted: nighttime

Deleted: false negative (FN) and false positive (FP) rates in

Deleted:

Deleted: and

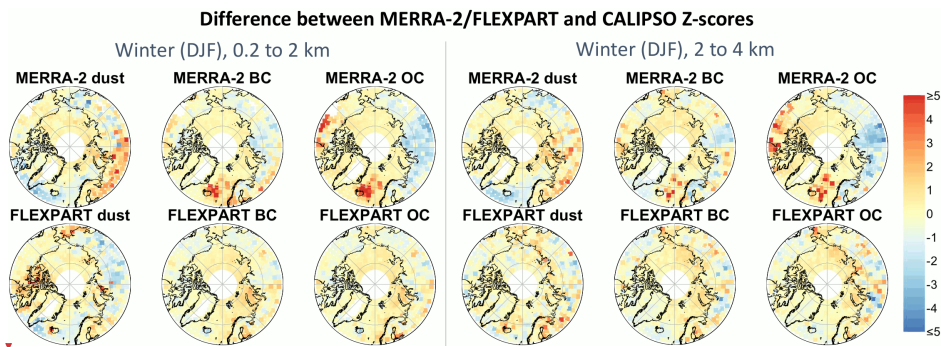
Deleted: on cloud-free days

Deleted: . The sensitivity ranges in estimated FN and FP rates (the pastel colours indicating interquartile range of the Latin hypercube analysis) are calculated from the combined ranges of assumptions shown in Table 2 for RHI conditions $< 100\%$. The median values for FN and FP rates in RHI conditions $< 100\%$ and $> 100\%$ (night only) are shown by the solid and dashed lines, respectively.

Deleted: 2

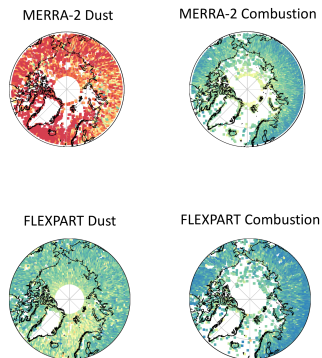
Deleted: 9

Deleted: Both models can predict the vertical distribution of combustion aerosols (blue) with confidence, and FLEXPART can predict dust aerosols (red) most of the time, with FP and FN rates of $< 10\%$, even in conditions conducive to diamond dust formation (dashed lines). Vertical distributions of dust in MERRA-2 are less trustworthy near the surface, overpredicting clean cases. This finding suggests that near-surface dust sources may be underestimated.

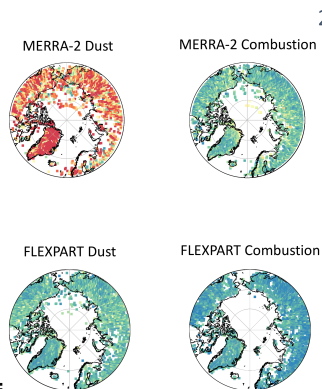


660 **Figure 4:** Left column: The difference in Z-scores (i.e., standard deviations from their respective means) between average MERRA-2/FLEXPART dust concentrations and CALIPSO dust aerosol layer presence below 4 km. The Z-score differences are shown for nighttime winter (DJF) periods in non-diamond-dust conditions. Middle and right columns: as in the left column, except CALIPSO combustion aerosols are compared to MERRA-2/FLEXPART black carbon (BC) and organic carbon (OC) concentrations. Because
 665 MERRA-2/FLEXPART and CALIPSO indicate aerosol presence in different units, they cannot be directly compared. The Z-scores help locate where the overall patterns agree best between the two products. For example, if at a given location, MERRA-2 aerosols were three standard deviations above the mean and CALIPSO aerosol layer presence was only one standard deviation above its mean, that would result in a Z-score difference of two. The closer the Z-score is to zero, the more agreement there is between the products. Locations with < 30 observations are excluded in the above plots. Data from higher altitudes are shown in Fig. S4.

False negative rates (%), indicating where aerosols are underpredicted



0.2 t



2 to

Deleted:

Deleted: ¶

Deleted: and

Deleted: combustion aerosol false negative and false positive rates (%)...Because MERRA-2/FLEXPART and CALIPSO indicate aerosol presence in different units, they cannot be directly compared. below 4 km relative to CALIPSO nighttime aerosol layer presence in conditions where diamond dust formation is unlikely (RH_i is < 100%). ...he Z-scores FN and FP rates ...elp locate whereindicate where...the overall patterns agree best between the two productsand how often aerosols are under- and overpredicted... Locations with < 15 observations are excluded in the above plots. Data from higher altitudes is shown in Fig. S2.

... [4]

3.4 The importance of local dust

There are only a few locations where Arctic dust aerosol concentrations have been directly measured over long time periods, but we know that local dust emissions can be important aerosol sources at specific sites, such as near receding glaciers (Bullard and Mockford, 2018; Gassó et al., 2018). In Figure 5, we compare long-term ground-based dust observations at Stórhöfði, Iceland (a site of large local dust emissions) from Prospero et al. (2012) to dust concentrations during the study period from MERRA-2 and FLEXPART. Observations were set up to study dust from remote sources and therefore samples were only taken during wind directions south to west, while this selection is not done in modelled data. One could therefore expect a better match with MERRA-2, which only includes remote sources, and overestimations by FLEXPART, which also includes local sources. Clearly both models leave something to be desired when it comes to matching the observations at this site. FLEXPART most of the time overestimates dust concentrations, in line with the CALIPSO observations from Figure 4. In contrast, MERRA-2 underestimates dust throughout the year. Generally, the mean MERRA-2 dust concentration is closer than FLEXPART to the observed mean from July through March. However, FLEXPART dust variability is high enough to include the occasional extreme dust event observed episodically at this site, i.e., when dust concentrations exceed $100 \mu\text{g dust m}^{-3}$ (Prospero et al., 2012). These events are most common in the spring when local emissions are highest. In contrast, a dust concentration of $100 \mu\text{g m}^{-3}$ is many standard deviations outside the mean of the MERRA-2 values at this site. As such, it appears that MERRA-2 is less able to capture dust extremes than FLEXPART at this site, likely because it currently does not account for local dust sources. Wu et al. (2020) showed similar data at Stórhöfði (Heimaey) for MERRA-2, and showed that ground dust observations at Alert, Greenland were also underpredicted. However, they found that MERRA-2 tended to overpredict dust aerosol optical depth in many remote regions of the Arctic compared to Arctic satellite dust optical depths from CALIPSO. The underprediction of dust at the Icelandic and Greenland sites despite a potential overprediction bias at most other sites further underscores the need to improve the relative spatial distributions of dust in the reanalysis product by adding local dust emission sources.

Deleted: and the fact that there was no bias in the modeled vertical distributions of these aerosols relative to CALIPSO, we conclude that MERRA-2 and FLEXPART are both able to predict the vertical distribution of combustion aerosols with moderate confidence.

Figure 4 shows the distribution of false negative and false positive rates below 4 km, where the majority of aerosols are located in the vertical column (Di Piero et al., 2013). There are more observations where no dust or combustion aerosols were observed in CALIPSO than when they were observed, and so there are more locations where FP rates could be determined than where FN rates could be determined. For FN rates, dust and combustion aerosols are generally distributed closer to the surface, which is why there are more CALIPSO FN data below 2 km than above 2 km over marine areas.

As shown in Figure 4, FP rates are generally small over most locations, but they indicate that high dust concentrations in MERRA-2 may be predicted too often over the eastern hemisphere. The red colors in the MERRA-2 dust FN rates indicate that the times and locations when MERRA-2 predicted high dust aerosols were not generally located at the same time and place as when CALIPSO observed dust, independent of spatial location. In FLEXPART, the lower FN rates indicated that the distributions of modeled high dust concentrations were much more likely to match with where CALIPSO observed dust aerosols. However, FLEXPART was more likely to miss dust events from 0.2 to 2 km over the Greenland ... [5]

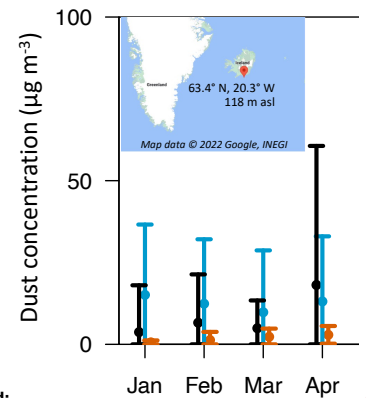
Deleted: Although FLEXPART tended to somewhat overestimate dust concentrations at this site, MERRA-2 substantially underestimated observed mineral dust concentrations, particularly in the spring when local emissions are highest.

Deleted: also

Deleted: also

Deleted: hus, t

Deleted: a



Deleted:

Stórhöfði, Iceland

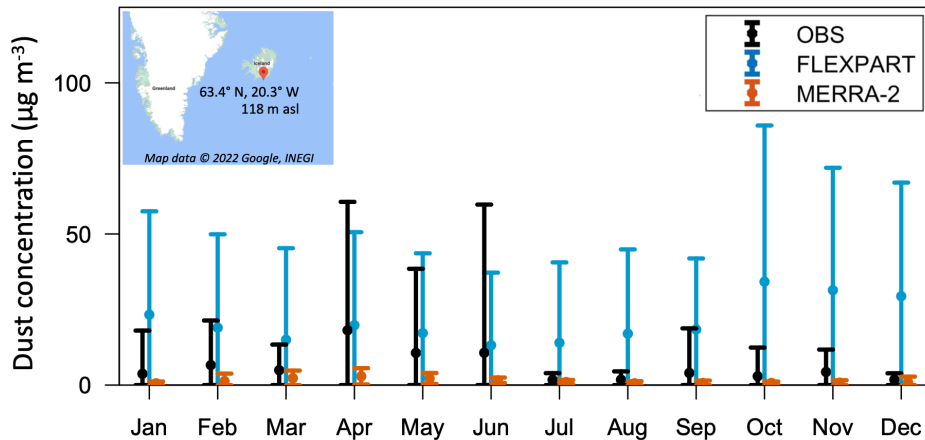


Figure 5: We compared long-term ground-based mineral dust observations at an Icelandic site with large local dust emissions (Stórhöfði, Heimaey) from Prospero et al. (2012) to dust concentrations during the 2008-2015 study period from MERRA-2 and FLEXPART. The whiskers show mean and standard deviation. MERRA-2 (brown) substantially underestimated observed mineral dust concentrations compared to observations (black), particularly in the spring when local emissions are highest. Adding local dust emission sources into MERRA-2 should improve the product.

4 Conclusions

795 Aerosol models are often used in aerosol-cloud interaction studies over the climatically sensitive Arctic region. Our goals in this study were to: 1) to better understand the strengths and limitations of the Arctic MERRA-2 and FLEXPART dust and combustion aerosol products and to suggest where they might be improved, and 2) to combine satellite, reanalysis, and model products (each with their own limitations and biases) to learn more about where there is high confidence in the concentrations of aerosols, and how that relates to meteorological conditions conducive to the formation of diamond dust.

800 To summarize the model validation portion of the study, we found that both MERRA-2 and FLEXPART can provide useful information for aerosol studies in the Arctic region at high altitudes, where clouds [and other factors](#) often make it difficult to observe aerosols [from space](#) and where *in situ* observations are scarce. They each predict the vertical distribution of combustion aerosols with relatively high confidence, despite some likely CALIPSO combustion aerosol subtyping artifacts over the Arctic Ocean. [They also provide useful information on large-scale patterns of dust above ~2 km, although a large](#)
805 [amount of variability is still unaccounted for, especially near the surface.](#)

When using the MERRA-2 product to estimate dust aerosols, it would be useful to keep in mind that CALIPSO overestimates dust concentrations substantially in conditions where diamond dust is present. This observation is supported by other studies (e.g., Di Biagio et al., 2018) and is evidenced by an ~60% increase in CALIPSO dust classifications in conditions conducive to diamond dust formation (i.e., where $RH_i > 100\%$) and a substantial drop in the correlation between CALIPSO dust layer presence and MERRA-2 and FLEXPART dust concentrations from ~0.6 at certain altitudes to near zero. Moreover, local dust sources in MERRA-2 are lacking, leading to underestimates in dust presence based on comparisons to CALIPSO and ground observations, especially in boreal spring. Adding local dust emission sources into MERRA-2 should improve the distribution of dust in the Arctic for this product. In contrast, FLEXPART includes local dust sources and may capture the high dust variability from local sources, but it appears to currently overestimate these contributions during winter.

To summarize the second part of the study, we provide evidence that the impacts of mineral dust and combustion aerosols on Arctic ice particle formation may be higher over Siberia than over other Arctic regions. CALIPSO, MERRA-2, and FLEXPART show agreement that Siberia has high wintertime mineral dust and combustion aerosol levels. Moreover, this region is very likely to experience conditions conducive to diamond dust formation frequently; during winter, conditions favourable to diamond dust formation occurred up to 60% of the time in the altitude ranges we assessed. Such conditions hardly ever occurred during summer and are not expected to contribute to CALIPSO dust aerosol uncertainties much during this season. This finding suggests that aerosol effects on clouds in a warming Arctic are changing, as the temporal window and locations where diamond dust and heterogeneous freezing can occur is shrinking, even as local mineral dust sources may be increasing due to retreating glaciers (Prospero et al., 2012).

The study also helps us identify several areas where future research is likely to be particularly fruitful or helpful.

1. Models can help identify where changing temperatures, moisture fluxes and aerosol types and concentrations are most likely to impact future aerosol homogeneous and deposition ice nucleation pathways.
2. Non-CALIPSO platforms (such as Raman lidar) can help better distinguish diamond dust from mineral dust aerosol over Siberia during winter, which will enable better validation of modelled wintertime aerosols, and better overall assessment of mineral dust and combustion aerosol impacts on freezing processes over this region.
3. Aircraft, ground, and ship data can help validate models of aerosols from different sources over remote Arctic locations, and can better assess their contributions to INP budgets. Based on our analysis, some regions of particular interest would be places where local dust emissions are thought to be strongest.
4. Laboratory, satellite, and aircraft data can help better assess the extent to which diamond dust forms through pre-activation processes, which will help elucidate how often diamond dust and ice nucleation actually occur at locations with RH_i values $< 100\%$.

Data availability

Deleted: combustion

Deleted:

Formatted: Subscript

Deleted: the lack of satellite data for assimilation at high latitudes during winter led to small but measurably higher uncertainties in combustion aerosols poleward of ~70 °N than elsewhere; a similar bias was not observed in the FLEXPART model. Also, near-surface

Deleted: ,

Deleted: which does

Deleted: ,

Deleted: is already able to predict the presence and absence of dust most of the time

Deleted: time

See AIRS project (2019) for the AIRS data, Winker (2018) for the CALIPSO data, Amante and Eakins (2009) for the ETOPO data, [Zamora et al. \(2022a, b, c\) for the FLEXPART output](#), and GMAO (Global Modeling and Assimilation Office (GMAO), 2015a, b) for the MERRA-2 output.

855

Author contributions

LZ, RK, and KH designed the experiments and LZ carried them out. NE and CGZ ran FLEXPART and provided simulation output. LZ prepared the manuscript with contributions from all co-authors.

860

Competing interests

The authors declare that they have no conflict of interest.

865 Acknowledgements

Resources supporting this work were provided by the NASA High-End Computing (HEC) Program through the NASA Center for Climate Simulation (NCCS) at Goddard Space Flight Center. Data from Figure 1 were produced with the Giovanni online data system, developed and maintained by the NASA GES DISC. LZ and RK would like to thank H. Bian, [J. Creamean](#), [A. Darnenov](#), [J. Lee](#) and the ARCSIX science writing team for helpful discussions. LZ and the contributions of RK were supported by the NASA Aerosol-Cloud Modeling and Analysis Program (Grant 80NSSC19K0978) under Richard Eckman. NE was supported by the COMBAT (Quantification of Global Ammonia Sources constrained by a Bayesian Inversion Technique) project funded by NFR's ROMFORSK – Program for romforskning of the Research Council of Norway (Project ID: 275407).

870

875 References

Acker, J. G. and Leptoukh, G.: Online Analysis Enhances Use of NASA Earth Science Data, 88, 14 and 17, 2007.

AIRS project: Aqua/AIRS L3 Daily Standard Physical Retrieval (AIRS+AMSU) 1 degree x 1 degree V7.0, Greenbelt, MD, USA, Goddard Earth Sciences Data and Information Services Center (GES DISC), Accessed: 21 October, 2020, doi: 10.5067/8XB4RU470FJV, 2019.

880 Alterskjær, K., Kristjánsson, J. E., and Hoose, C.: Do anthropogenic aerosols enhance or suppress the surface cloud forcing in the Arctic?, *J. Geophys. Res.*, 115, D22204, <https://doi.org/10.1029/2010JD014015>, 2010.

Deleted: Upon submission of this manuscript to ACPD, we will also submit the FLEXPART output for archiving at the NASA Earth Observing System Data and Information System (EOSDIS) data repository.

Deleted: If the manuscript is accepted at ACP, a link to those made available in the final manuscript.

Deleted: and

Deleted: K.B. Huebert,

- Amante, C. and Eakins, B. W.: ETOPO1 1 Arc-Minute Global Relief Model: Procedures, Data Sources and Analysis. NOAA Technical Memorandum NESDIS NGDC-24. National Geophysical Data Center, NOAA, <https://doi.org/10.7289/V5C8276M>, 2009.
- 895 Arnold, S. R., Law, K. S., Brock, C. A., Thomas, J. L., Starkweather, S. M., Salzen, K. von, Stohl, A., Sharma, S., Lund, M. T., Flanner, M. G., Petäjä, T., Tanimoto, H., Gamble, J., Dibb, J. E., Melamed, M., Johnson, N., Fidel, M., Tynkkynen, V.-P., Baklanov, A., Eckhardt, S., Monks, S. A., Browse, J., and Bozem, H.: Arctic air pollution: Challenges and opportunities for the next decade, 4, 000104, <https://doi.org/10.12952/journal.elementa.000104>, 2016.
- 900 Bullard, J. E. and Mockford, T.: Seasonal and decadal variability of dust observations in the Kangerlussuaq area, west Greenland, 50, S100011, <https://doi.org/10.1080/15230430.2017.1415854>, 2018.
- Burkart, J., Hodshire, A. L., Mungall, E. L., Pierce, J. R., Collins, D. B., Ladino, L. A., Lee, A. K. Y., Irish, V., Wentzell, J. J. B., Liggio, J., Papakyriakou, T., Murphy, J., and Abbatt, J.: Organic Condensation and Particle Growth to CCN Sizes in the Summertime Marine Arctic Is Driven by Materials More Semivolatile Than at Continental Sites, 44, 10,725-10,734, <https://doi.org/10.1002/2017GL075671>, 2017.
- 905 Burton, S. P., Ferrare, R. A., Vaughan, M. A., Omar, A. H., Rogers, R. R., Hostetler, C. A., and Hair, J. W.: Aerosol classification from airborne HSRL and comparisons with the CALIPSO vertical feature mask, *Atmos. Meas. Tech.*, 6, 1397–1412, <https://doi.org/10.5194/amt-6-1397-2013>, 2013.
- 910 [Campbell, J. R., Reid, J. S., Westphal, D. L., Zhang, J., Tackett, J. L., Chew, B. N., Welton, E. J., Shimizu, A., Sugimoto, N., Aoki, K., and Winker, D. M.: Characterizing the vertical profile of aerosol particle extinction and linear depolarization over Southeast Asia and the Maritime Continent: The 2007–2009 view from CALIOP. *Atmospheric Research*, 122, 520–543, <https://doi.org/10.1016/j.atmosres.2012.05.007>, 2013.](https://doi.org/10.1016/j.atmosres.2012.05.007)
- Cassiani, M., Stohl, A., and Brioude, J.: Lagrangian Stochastic Modelling of Dispersion in the Convective Boundary Layer with Skewed Turbulence Conditions and a Vertical Density Gradient: Formulation and Implementation in the FLEXPART Model, 154, 367–390, <https://doi.org/10.1007/s10546-014-9976-5>, 2014.
- 915 Chen, X., Kang, S., Yang, J., and Ji, Z.: Investigation of black carbon climate effects in the Arctic in winter and spring, *Science of The Total Environment*, 751, 142145, <https://doi.org/10.1016/j.scitotenv.2020.142145>, 2021.
- Colarco, P., Silva, A. da, Chin, M., and Diehl, T.: Online simulations of global aerosol distributions in the NASA GEOS-4 model and comparisons to satellite and ground-based aerosol optical depth, 115, <https://doi.org/10.1029/2009JD012820>, 2010.
- 920 Damoah, R., Spichtinger, N., Forster, C., James, P., Mattis, I., Wandinger, U., Beirle, S., Wagner, T., and Stohl, A.: Around the world in 17 days - hemispheric-scale transport of forest fire smoke from Russia in May 2003, *Atmos. Chem. Phys.*, 4, 1311–1321, <https://doi.org/10.5194/acp-4-1311-2004>, 2004.
- 925 Di Biagio, C., Pelon, J., Ancellet, G., Bazureau, A., and Mariage, V.: Sources, Load, Vertical Distribution, and Fate of Wintertime Aerosols North of Svalbard From Combined V4 CALIOP Data, Ground-Based IAOOS Lidar Observations and Trajectory Analysis, 123, 1363–1383, <https://doi.org/10.1002/2017JD027530>, 2018.
- Di Pierro, M., Jaeglé, L., Eloranta, E. W., and Sharma, S.: Spatial and seasonal distribution of Arctic aerosols observed by the CALIOP satellite instrument (2006–2012), *Atmos. Chem. Phys.*, 13, 7075–7095, <https://doi.org/10.5194/acp-13-7075-2013>, 2013.

- 930 [Drakaki, E., Amiridis, V., Tsekeri, A., Gkikas, A., Proestakis, E., Mallios, S., Solomos, S., Spyrou, C., Marinou, E., Ryder, C., Bouris, D., and Katsafados, P.: Modelling coarse and giant desert dust particles, 1–36, <https://doi.org/10.5194/acp-2022-94>, 2022.](#)
- Dufour, A., Zolina, O., and Gulev, S. K.: Atmospheric Moisture Transport to the Arctic: Assessment of Reanalyses and Analysis of Transport Components, 29, 5061–5081, <https://doi.org/10.1175/JCLI-D-15-0559.1>, 2016.
- 935 Duncan, B. N., Ott, L. E., Abshire, J. B., Brucker, L., Carroll, M. L., Carton, J., Comiso, J. C., Dinnat, E. P., Forbes, B. C., Gonsamo, A., Gregg, W. W., Hall, D. K., Ialongo, I., Jandt, R., Kahn, R. A., Karpechko, A., Kawa, S. R., Kato, S., Kumpula, T., Kyrölä, E., Loboda, T. V., McDonald, K. C., Montesano, P. M., Nassar, R., Neigh, C. S. R., Parkinson, C. L., Poulter, B., Pulliainen, J., Rautiainen, K., Rogers, B. M., Rousseaux, C. S., Soja, A. J., Steiner, N., Tamminen, J., Taylor, P. C., Tzortziou, M. A., Virta, H., Wang, J. S., Watts, J. D., Winker, D. M., and Wu, D. L.: Space-Based Observations for Understanding Changes in the Arctic-Boreal Zone, 58, e2019RG000652, <https://doi.org/10.1029/2019RG000652>, 2020.
- 940 Eckhardt, S., Quennehen, B., Olivié, D. J. L., Berntsen, T. K., Cherian, R., Christensen, J. H., Collins, W., Crepinsek, S., Daskalakis, N., Flanner, M., Herber, A., Heyes, C., Hodnebrog, Ø., Huang, L., Kanakidou, M., Klimont, Z., Langner, J., Law, K. S., Lund, M. T., Mahmood, R., Massling, A., Myriokefalitakis, S., Nielsen, I. E., Nøjgaard, J. K., Quaas, J., Quinn, P. K., Raut, J.-C., Rumbold, S. T., Schulz, M., Sharma, S., Skeie, R. B., Skov, H., Uttal, T., von Salzen, K., and Stohl, A.: Current model capabilities for simulating black carbon and sulfate concentrations in the Arctic atmosphere: a multi-model evaluation using a comprehensive measurement data set, *Atmos. Chem. Phys.*, 15, 9413–9433, <https://doi.org/10.5194/acp-15-9413-2015>, 2015.
- Ferrare, R. A., Hair, J. W., Hostetler, C. A., Harper, D. B., Seaman, S. T., Shingler, T. J., Fenn, M. A., Scarino, A. J., Burton, S. P., Cook, A. L., Vaughan, M., Liu, H., Zhang, B., Diskin, G. S., Zuidema, P., Chellappan, S., Moore, R., Crosbie, E. C., Ziemba, L. D., Thornhill, K. L., Robinson, C. E., Shook, M., Schlosser, J., and Sorooshian, A.: Airborne High Spectral Resolution Lidar-2 Measurements of Enhanced Depolarization in Marine Aerosols, in AGU Fall Meeting (AGU, 2020), 2020.
- 950 Forster, C., Wandinger, U., Wotawa, G., James, P., Mattis, I., Althausen, D., Simmonds, P., O’Doherty, S., Jennings, S. G., Kleefeld, C., Schneider, J., Trickl, T., Kreipl, S., Jäger, H., and Stohl, A.: Transport of boreal forest fire emissions from Canada to Europe, *J. Geophys. Res.*, 106, 22887–22906, <https://doi.org/10.1029/2001JD900115>, 2001.
- 955 Forster, C., Stohl, A., and Seibert, P.: Parameterization of convective transport in a Lagrangian particle dispersion model and its evaluation, 46, 403–422, <https://doi.org/10.1175/JAM2470.1>, 2007.
- Gagné, M.-È., Fyfe, J. C., Gillett, N. P., Polyakov, I. V., and Flato, G. M.: Aerosol-driven increase in Arctic sea ice over the middle of the 20th Century, *Geophys. Res. Lett.*, 2016GL071941, <https://doi.org/10.1002/2016GL071941>, 2017.
- 960 Gassó, S., Thorsteinsson, T., and McKenna-Neuman, C.: Assessing the Many Influences of High-Latitude Dust, 99, <https://doi.org/10.1029/2018EO090315>, 2018.
- Giglio, L., Randerson, J. T., and Werf, G. R.: Analysis of daily, monthly, and annual burned area using the fourth-generation global fire emissions database (GFED4), *Journal of Geophysical Research: Biogeosciences*, 118, 317–328, <https://doi.org/10.1002/jgrg.20042>, 2013.
- 965 Global Modeling and Assimilation Office (GMAO): MERRA-2 inst3_3d_aer_Nv: 3d,3-Hourly,Instantaneous,Model-Level,Assimilation,Aerosol Mixing Ratio V5.12.4, Greenbelt, MD, USA, Goddard Earth Sciences Data and Information Services Center (GES DISC), Accessed: 21 September, 2020, doi:10.5067/LTVB4GPCOTK2, 2015a.

- Global Modeling and Assimilation Office (GMAO): MERRA-2 inst3_3d_asm_Nv: 3d,3-Hourly,Instantaneous,Model-Level,Assimilation,Assimilated Meteorological Fields V5.12.4, Greenbelt, MD, USA, Goddard Earth Sciences Data and Information Services Center (GES DISC), Accessed: [Data Access Date], 10.5067/WWQSQ8IVFW8, 2015b.
- 970 Graham, R. M., Cohen, L., Petty, A. A., Boisvert, L. N., Rinke, A., Hudson, S. R., Nicolaus, M., and Granskog, M. A.: Increasing frequency and duration of Arctic winter warming events, 44, 6974–6983, <https://doi.org/10.1002/2017GL073395>, 2017.
- Groot Zwaafink, C. D., Grythe, H., Skov, H., and Stohl, A.: Substantial contribution of northern high-latitude sources to mineral dust in the Arctic, 121, 13,678–13,697, <https://doi.org/10.1002/2016JD025482>, 2016.
- 975 Groot Zwaafink, C. D., Arnalds, Ó., Dagsson-Waldhauserova, P., Eckhardt, S., Prospero, J. M., and Stohl, A.: Temporal and spatial variability of Icelandic dust emissions and atmospheric transport, 17, 10865–10878, <https://doi.org/10.5194/acp-17-10865-2017>, 2017.
- Grythe, H., Kristiansen, N. I., Groot Zwaafink, C. D., Eckhardt, S., Ström, J., Tunved, P., Krejci, R., and Stohl, A.: A new aerosol wet removal scheme for the Lagrangian particle model FLEXPART v10, 10, 1447–1466, <https://doi.org/10.5194/gmd-10-1447-2017>, 2017.
- 980 Hallen, H. D. and Philbrick, C. R.: Lidar detection of small aerosol size distribution, in: Laser Radar Technology and Applications XXIII, Laser Radar Technology and Applications XXIII, 106360J, <https://doi.org/10.1117/12.2304890>, 2018.
- Intrieri, J. M. and Shupe, M. D.: Characteristics and Radiative Effects of Diamond Dust over the Western Arctic Ocean Region, *J. Climate*, 17, 2953–2960, [https://doi.org/10.1175/1520-0442\(2004\)017<2953:CAREOD>2.0.CO;2](https://doi.org/10.1175/1520-0442(2004)017<2953:CAREOD>2.0.CO;2), 2004.
- 985 Kacenelenbogen, M., Redemann, J., Vaughan, M. A., Omar, A. H., Russell, P. B., Burton, S., Rogers, R. R., Ferrare, R. A., and Hostetler, C. A.: An evaluation of CALIOP/CALIPSO's aerosol-above-cloud detection and retrieval capability over North America, 119, 230–244, <https://doi.org/10.1002/2013JD020178>, 2014.
- Kanitz, T., Ansmann, A., Foth, A., Seifert, P., Wandinger, U., Engelmann, R., Baars, H., Althausen, D., Casiccia, C., and Zamorano, F.: Surface matters: limitations of CALIPSO V3 aerosol typing in coastal regions, 7, 2061–2072, <https://doi.org/10.5194/amt-7-2061-2014>, 2014.
- 990 Kanji, Z. A., Ladino, L. A., Wex, H., Boose, Y., Burkert-Kohn, M., Cziczo, D. J., and Krämer, M.: Overview of Ice Nucleating Particles, *Meteorological Monographs*, 58, 1.1-1.33, <https://doi.org/10.1175/AMSMONOGRAPHS-D-16-0006.1>, 2017.
- Kim, M.-H., Omar, A. H., Tackett, J. L., Vaughan, M. A., Winker, D. M., Trepte, C. R., Hu, Y., Liu, Z., Poole, L. R., Pitts, M. C., Kar, J., and Magill, B. E.: The CALIPSO version 4 automated aerosol classification and lidar ratio selection algorithm, 11, 6107–6135, <https://doi.org/10.5194/amt-11-6107-2018>, 2018.
- 995 Klimont, Z., Kupiainen, K., Heyes, C., Purohit, P., Cofala, J., Rafaj, P., Borken-Kleefeld, J., and Schöpp, W.: Global anthropogenic emissions of particulate matter including black carbon, 17, 8681–8723, <https://doi.org/10.5194/acp-17-8681-2017>, 2017.
- 1000 Kok, J. F.: A scaling theory for the size distribution of emitted dust aerosols suggests climate models underestimate the size of the global dust cycle, *PNAS*, 108, 1016–1021, <https://doi.org/10.1073/pnas.1014798108>, 2011.

- Koop, T., Luo, B., Tsias, A., and Peter, T.: Water activity as the determinant for homogeneous ice nucleation in aqueous solutions, *Nature*, 406, 611–614, <https://doi.org/10.1038/35020537>, 2000.
- 1005 Korolev, A. V. and Mazin, I. P.: Supersaturation of Water Vapor in Clouds, 60, 2957–2974, [https://doi.org/10.1175/1520-0469\(2003\)060<2957:SOWVIC>2.0.CO;2](https://doi.org/10.1175/1520-0469(2003)060<2957:SOWVIC>2.0.CO;2), 2003.
- Lee, S., Lee, M.-I., Song, C.-K., Kim, K.-M., and da Silva, A. M.: Interannual variation of the East Asia Jet Stream and its impact on the horizontal distribution of aerosol in boreal spring, *Atmospheric Environment*, 223, 117296, <https://doi.org/10.1016/j.atmosenv.2020.117296>, 2020.
- 1010 Long, C. M., Nascarella, M. A., and Valberg, P. A.: Carbon black vs. black carbon and other airborne materials containing elemental carbon: Physical and chemical distinctions, 181, 271–286, <https://doi.org/10.1016/j.envpol.2013.06.009>, 2013.
- Marcolli, C.: Deposition nucleation viewed as homogeneous or immersion freezing in pores and cavities, 14, 2071–2104, <https://doi.org/10.5194/acp-14-2071-2014>, 2014.
- Marcolli, C.: Pre-activation of aerosol particles by ice preserved in pores, 17, 1595–1622, <https://doi.org/10.5194/acp-17-1595-2017>, 2017.
- 1015 Marticorena, B. and Bergametti, G.: Modeling the atmospheric dust cycle: 1. Design of a soil-derived dust emission scheme, 100, 16415–16430, <https://doi.org/10.1029/95JD00690>, 1995.
- Maxwell, J. B.: *The Climate of the Canadian Arctic Islands and Adjacent Waters*, Ministry of Supply and Services, Canada, 589 pp., 1982.
- 1020 Mielonen, T., Aaltonen, V., Lihavainen, H., Hyvärinen, A.-P., Arola, A., Komppula, M., and Kivi, R.: Biomass Burning Aerosols Observed in Northern Finland during the 2010 Wildfires in Russia, 4, 17–34, <https://doi.org/10.3390/atmos4010017>, 2013.
- Morrison, H., de Boer, G., Feingold, G., Harrington, J., Shupe, M. D., and Sulia, K.: Resilience of persistent Arctic mixed-phase clouds, *Nature Geosci*, 5, 11–17, <https://doi.org/10.1038/ngeo1332>, 2012.
- 1025 Murphy, D. M. and Koop, T.: Review of the vapour pressures of ice and supercooled water for atmospheric applications, 131, 1539–1565, <https://doi.org/10.1256/qj.04.94>, 2005.
- Omar, A. H., Winker, D. M., Vaughan, M. A., Hu, Y., Trepte, C. R., Ferrare, R. A., Lee, K.-P., Hostetler, C. A., Kittaka, C., Rogers, R. R., Kuehn, R. E., and Liu, Z.: The CALIPSO automated aerosol classification and lidar ratio selection algorithm, 26, 1994–2014, 2009.
- 1030 Papagiannopoulos, N., Mona, L., Alados-Arboledas, L., Amiridis, V., Baars, H., Biniotoglou, I., Bortoli, D., D’Amico, G., Giunta, A., Guerrero-Rascado, J. L., Schwarz, A., Pereira, S., Spinelli, N., Wandinger, U., Wang, X., and Pappalardo, G.: CALIPSO climatological products: evaluation and suggestions from EARLINET, 16, 2341–2357, <https://doi.org/10.5194/acp-16-2341-2016>, 2016.
- 1035 Paris, J.-D., Stohl, A., Nédélec, P., Arshinov, M. Yu., Panchenko, M. V., Shmargunov, V. P., Law, K. S., Belan, B. D., and Ciais, P.: Wildfire smoke in the Siberian Arctic in summer: source characterization and plume evolution from airborne measurements, *Atmos. Chem. Phys.*, 9, 9315–9327, <https://doi.org/10.5194/acp-9-9315-2009>, 2009.

- Pisso, I., Sollum, E., Grythe, H., Kristiansen, N. I., Cassiani, M., Eckhardt, S., Arnold, D., Morton, D., Thompson, R. L., Groot Zwaaftink, C. D., Evangelou, N., Sodemann, H., Haimberger, L., Henne, S., Brunner, D., Burkhardt, J. F., Fouilloux, A., Brioude, J., Philipp, A., Seibert, P., and Stohl, A.: The Lagrangian particle dispersion model FLEXPART version 10.4, 12, 4955–4997, <https://doi.org/10.5194/gmd-12-4955-2019>, 2019.
- 1040 Prospero, J. M., Bullard, J. E., and Hodgkins, R.: High-Latitude Dust Over the North Atlantic: Inputs from Icelandic Proglacial Dust Storms, *Science*, 335, 1078–1082, <https://doi.org/10.1126/science.1217447>, 2012.
- Randles, C. A., da Silva, A. M., Buchard, V., Colarco, P. R., Darmenov, A., Govindaraju, R., Smirnov, A., Holben, B., Ferrare, R., Hair, J., Shinozuka, Y., and Flynn, C. J.: The MERRA-2 Aerosol Reanalysis, 1980 Onward. Part I: System Description and Data Assimilation Evaluation, *J. Climate*, 30, 6823–6850, <https://doi.org/10.1175/JCLI-D-16-0609.1>, 2017.
- 1045 Reichle, R. H., Liu, Q., Koster, R. D., Draper, C. S., Mahanama, S. P. P., and Partyka, G. S.: Land Surface Precipitation in MERRA-2, 30, 1643–1664, <https://doi.org/10.1175/JCLI-D-16-0570.1>, 2017.
- Rogers, R. R., Vaughan, M. A., Hostetler, C. A., Burton, S. P., Ferrare, R. A., Young, S. A., Hair, J. W., Obland, M. D., Harper, D. B., Cook, A. L., and Winker, D. M.: Looking through the haze: evaluating the CALIPSO level 2 aerosol optical depth using airborne high spectral resolution lidar data, *Atmos. Meas. Tech.*, 7, 4317–4340, <https://doi.org/10.5194/amt-7-4317-2014>, 2014.
- 1050 Sakai, T., Nagai, T., Nakazato, M., Mano, Y., and Matsumura, T.: Ice clouds and Asian dust studied with lidar measurements of particle extinction-to-backscatter ratio, particle depolarization, and water-vapor mixing ratio over Tsukuba, *Appl. Opt.*, AO, 42, 7103–7116, <https://doi.org/10.1364/AO.42.007103>, 2003.
- Schmale, J., Zieger, P., and Ekman, A.: Aerosols in current and future Arctic climate, 11, 95–105, <https://doi.org/10.1038/s41558-020-00969-5>, 2021.
- 1055 [Shevlyakov, G. L., and Oja, H. \(2016\). Robust correlation: theory and applications. Wiley.](#)
- Shindell, D. and Faluvegi, G.: Climate response to regional radiative forcing during the twentieth century, *Nature Geosci.*, 2, 294–300, <https://doi.org/10.1038/ngeo473>, 2009.
- 1060 Sitnov, S. A., Mikhov, I. I., and Likhoshesterova, A. A.: Exploring large-scale black-carbon air pollution over Northern Eurasia in summer 2016 using MERRA-2 reanalysis data, *Atmospheric Research*, 235, 104763, <https://doi.org/10.1016/j.atmosres.2019.104763>, 2020.
- 1065 Sodemann, H., Pommier, M., Arnold, S. R., Monks, S. A., Stebel, K., Burkhardt, J. F., Hair, J. W., Diskin, G. S., Clerbaux, C., Coheur, P.-F., Hurtmans, D., Schlager, H., Blechschmidt, A.-M., Kristjánsson, J. E., and Stohl, A.: Episodes of cross-polar transport in the Arctic troposphere during July 2008 as seen from models, satellite, and aircraft observations, *Atmos. Chem. Phys.*, 11, 3631–3651, <https://doi.org/10.5194/acp-11-3631-2011>, 2011.
- Stohl, A.: Characteristics of atmospheric transport into the Arctic troposphere, *J. Geophys. Res.*, 111, D11306, <https://doi.org/10.1029/2005JD006888>, 2006.
- Stohl, A., Eckhardt, S., Forster, C., James, P., and Spichtinger, N.: On the pathways and timescales of intercontinental air pollution transport, *J.-Geophys.-Res.*, 107, 4684, <https://doi.org/10.1029/2001JD001396>, 2002.

- 1070 Stohl, A., Forster, C., Eckhardt, S., Spichtinger, N., Huntrieser, H., Heland, J., Schlager, H., Wilhelm, S., Arnold, F., and Cooper, O.: A backward modeling study of intercontinental pollution transport using aircraft measurements, *J. Geophys. Res.*, 108, 4370, <https://doi.org/10.1029/2002JD002862>, 2003.
- Stohl, A., Forster, C., Frank, A., Seibert, P., and Wotawa, G.: Technical note: The Lagrangian particle dispersion model FLEXPART version 6.2, 5, 2461–2474, <https://doi.org/10.5194/acp-5-2461-2005>, 2005.
- 1075 Stohl, A., Aamaas, B., Amann, M., Baker, L. H., Bellouin, N., Berntsen, T. K., Boucher, O., Cherian, R., Collins, W., Daskalakis, N., Dusinska, M., Eckhardt, S., Fuglested, J. S., Harju, M., Heyes, C., Hodnebrog, Ø., Hao, J., Im, U., Kanakidou, M., Klimont, Z., Kupiainen, K., Law, K. S., Lund, M. T., Maas, R., MacIntosh, C. R., Myhre, G., Myriokefalitakis, S., Olivieri, D., Quaas, J., Quennehen, B., Raut, J.-C., Rumbold, S. T., Samsel, B. H., Schulz, M., Seland, Ø., Shine, K. P., Skeie, R. B., Wang, S., Yttri, K. E., and Zhu, T.: Evaluating the climate and air quality impacts of short-lived pollutants, *Atmos. Chem. Phys.*, 15, 10529–10566, <https://doi.org/10.5194/acp-15-10529-2015>, 2015.
- 1080 [Thorsen, T. J., Fu, Q., and Comstock, J.: Comparison of the CALIPSO satellite and ground-based observations of cirrus clouds at the ARM TWP sites. 116, https://doi.org/10.1029/2011JD015970, 2011.](https://doi.org/10.1029/2011JD015970)
- Tian, B., Manning, E., Roman, J., Thrastarson, H., Fetzer, E., and Monarrez, R.: AIRS Version 7 Level 3 Product User Guide, version 1.0, 2020.
- 1085 Vaughan, M. A., Powell, K. A., Winker, D. M., Hostetler, C. A., Kuehn, R. E., Hunt, W. H., Getzewich, B. J., Young, S. A., Liu, Z., and McGill, M. J.: Fully Automated Detection of Cloud and Aerosol Layers in the CALIPSO Lidar Measurements, *J. Atmos. Oceanic Technol.*, 26, 2034–2050, <https://doi.org/10.1175/2009JTECHA1228.1>, 2009.
- Vinogradova, A. A., Kopeikin, V. M., Vasileva, A. V., Smirnov, N. S., and Ivanova, Yu. A.: Concentration of Black Carbon in the Near-Surface Atmosphere in the Pechora-Ilych Natural Reserve: Measurements and Merra-2 Reanalysis, *Izv. Atmos. Ocean. Phys.*, 56, 1191–1201, <https://doi.org/10.1134/S0001433820100084>, 2020.
- 1090 [Weinzierl, B., Ansmann, A., Prospero, J. M., Althausen, D., Benker, N., Chouza, F., Dollner, M., Farrell, D., Fomba, W. K., Freudenthaler, V., Gasteiger, J., Groß, S., Haarig, M., Heinold, B., Kandler, K., Kristensen, T. B., Mayol-Bracero, O. L., Müller, T., Reitebuch, O., Sauer, D., Schäfler, A., Schepanski, K., Spanu, A., Tegen, I., Toledano, C., and Walser, A.: The Saharan Aerosol Long-Range Transport and Aerosol–Cloud-Interaction Experiment: Overview and Selected Highlights. 98, 1427–1451, https://doi.org/10.1175/BAMS-D-15-00142.1, 2017.](https://doi.org/10.1175/BAMS-D-15-00142.1)
- Willis, M. D., Leaitch, W. R., and Abbatt, J. P. D.: Processes Controlling the Composition and Abundance of Arctic Aerosol, *J. Geophys. Res.*, 113, 621–671, <https://doi.org/10.1029/2018RG000602>, 2018.
- Winker, D. M.: CALIPSO Lidar Level 2 5 km Aerosol Layer Data V4-20, NASA Langley Research Center Atmospheric Science Data Center DAAC, Accessed, November 2019, doi: 10.5067/CALIOP/CALIPSO/LID_L2_05kmALay-Standard-V4-20, https://doi.org/10.5067/CALIOP/CALIPSO/LID_L2_05kmALay-Standard-V4-20, 2018.
- 1100 Winker, D. M., Tackett, J. L., Getzewich, B. J., Liu, Z., Vaughan, M. A., and Rogers, R. R.: The global 3-D distribution of tropospheric aerosols as characterized by CALIOP, *Atmos. Chem. Phys.*, 13, 3345–3361, <https://doi.org/10.5194/acp-13-3345-2013>, 2013.
- Wu, M., Liu, X., Yu, H., Wang, H., Shi, Y., Yang, K., Darmenov, A., Wu, C., Wang, Z., Luo, T., Feng, Y., and Ke, Z.: Understanding processes that control dust spatial distributions with global climate models and satellite observations, *J. Geophys. Res.*, 115, 13835–13855, <https://doi.org/10.5194/acp-20-13835-2020>, 2020.
- 1105

- Yang, Y., Zhao, C., Wang, Q., Cong, Z., Yang, X., and Fan, H.: Aerosol characteristics at the three poles of the Earth as characterized by Cloud–Aerosol Lidar and Infrared Pathfinder Satellite Observations, 21, 4849–4868, <https://doi.org/10.5194/acp-21-4849-2021>, 2021.
- 1110 Zamora, L. M. and Kahn, R. A.: Saharan Dust Aerosols Change Deep Convective Cloud Prevalence, Possibly by Inhibiting Marine New Particle Formation, *J. Climate*, 33, 9467–9480, <https://doi.org/10.1175/JCLI-D-20-0083.1>, 2020.
- Zamora, L. M., Kahn, R. A., Eckhardt, S., McComiskey, A., Sawamura, P., Moore, R., and Stohl, A.: Aerosol indirect effects on the nighttime Arctic Ocean surface from thin, predominantly liquid clouds, *Atmos. Chem. Phys.*, 17, 7311–7332, <https://doi.org/10.5194/acp-17-7311-2017>, 2017.
- 1115 Zamora, L. M., Kahn, R. A., Huebert, K. B., Stohl, A., and Eckhardt, S.: A satellite-based estimate of combustion aerosol cloud microphysical effects over the Arctic Ocean, 18, 14949–14964, <https://doi.org/10.5194/acp-18-14949-2018>, 2018.
- [Zamora, L. M., Evangeliou, N., Groot Zwaafink, C. D., and Kahn, R. A.: FLEXPART black carbon aerosol L4 global daily 1 x 1 degrees, Goddard Earth Sciences Data and Information Services Center \(GES DISC\), Accessed: July 26, 2022, 10.5067/XZOC4FV8LV3A, 2022a.](https://doi.org/10.5067/XZOC4FV8LV3A)
- 1120 [Zamora, L. M., Groot Zwaafink, C. D., Evangeliou, N., and Kahn, R. A.: FLEXPART dust aerosol L4 global daily 1 x 1 degrees, Goddard Earth Sciences Data and Information Services Center \(GES DISC\), Accessed: July 26, 2022, 10.5067/3QGSHO836JHP, 2022b.](https://doi.org/10.5067/3QGSHO836JHP)
- [Zamora, L. M., Evangeliou, N., Groot Zwaafink, C. D., and Kahn, R. A.: FLEXPART organic carbon aerosol L4 global daily 1 x 1 degrees, Goddard Earth Sciences Data and Information Services Center \(GES DISC\), Accessed: July 26, 2022, 10.5067/LACD2D15VU2G, 2022c.](https://doi.org/10.5067/LACD2D15VU2G)
- 1125
- Zeng, S., Omar, A., Vaughan, M., Ortiz, M., Trepte, C., Tackett, J., Yagle, J., Lucker, P., Hu, Y., Winker, D., Rodier, S., and Getzewich, B.: Identifying Aerosol Subtypes from CALIPSO Lidar Profiles Using Deep Machine Learning, 12, 10, <https://doi.org/10.3390/atmos12010010>, 2021.
- Zeng, X.: Radiatively Induced Precipitation Formation in Diamond Dust, 10, 2300–2317, <https://doi.org/10.1029/2018MS001382>, 2018.
- 1130
- Zhuravleva, T. B., Artyushina, A. V., Vinogradova, A. A., and Voronina, Yu. V.: Black Carbon in the Near-Surface Atmosphere Far Away from Emission Sources: Comparison of Measurements and MERRA-2 Reanalysis Data, *Atmos Ocean Opt.*, 33, 591–601, <https://doi.org/10.1134/S1024856020060251>, 2020.
- Zygmuntowska, M., Mauritsen, T., Quaas, J., and Kaleschke, L.: Arctic Clouds and Surface Radiation – a critical comparison of satellite retrievals and the ERA-Interim reanalysis, *Atmos. Chem. Phys.*, 12, 6667–6677, <https://doi.org/10.5194/acp-12-6667-2012>, 2012.
- 1135

Page 9: [1] Deleted PM Zamora, Lauren M. (GSFC-613.0)[UNIVERSITY OF MARYLAND] 4/26/22 3:28:00

Page 9: [2] Deleted PM Zamora, Lauren M. (GSFC-613.0)[UNIVERSITY OF MARYLAND] 7/3/22 5:29:00

Page 15: [3] Deleted PM Zamora, Lauren M. (GSFC-613.0)[UNIVERSITY OF MARYLAND] 5/13/22 4:12:00

Page 16: [4] Deleted PM Zamora, Lauren M. (GSFC-613.0)[UNIVERSITY OF MARYLAND] 7/2/22 3:49:00

Page 16: [4] Deleted PM Zamora, Lauren M. (GSFC-613.0)[UNIVERSITY OF MARYLAND] 7/2/22 3:49:00

Page 16: [4] Deleted PM Zamora, Lauren M. (GSFC-613.0)[UNIVERSITY OF MARYLAND] 7/2/22 3:49:00

Page 16: [4] Deleted PM Zamora, Lauren M. (GSFC-613.0)[UNIVERSITY OF MARYLAND] 7/2/22 3:49:00

Page 16: [4] Deleted PM Zamora, Lauren M. (GSFC-613.0)[UNIVERSITY OF MARYLAND] 7/2/22 3:49:00

Page 16: [4] Deleted PM Zamora, Lauren M. (GSFC-613.0)[UNIVERSITY OF MARYLAND] 7/2/22 3:49:00

Page 17: [5] Deleted PM Zamora, Lauren M. (GSFC-613.0)[UNIVERSITY OF MARYLAND] 7/3/22 3:04:00