

# The roles of the Quasi-Biennial Oscillation and El Nino for entry stratospheric water vapour in observations and coupled chemistry-ocean CCM1 and CMIP6 models

Shlomi Ziskin Ziv <sup>1,2</sup>, Chaim I. Garfinkel <sup>3</sup>, Sean Davis <sup>4</sup>, and Antara Banerjee <sup>4,5</sup>

<sup>1</sup>Department of Physics, Ariel University, Ariel, Israel.

<sup>2</sup>Eastern R&D center, Ariel, Israel

<sup>3</sup>The Fredy and Nadine Herrmann Institute of Earth Sciences, Hebrew University of Jerusalem, Jerusalem, Israel

<sup>4</sup>NOAA Chemical Sciences Laboratory, Boulder, CO, USA

<sup>5</sup>Cooperative Institute for Research in Environmental Sciences, Boulder, CO, USA.

**Correspondence:** Shlomi Ziskin Ziv (shlomiziskin@gmail.com)

**Abstract.** The relative importance of two processes that help control the concentrations of stratospheric water vapor, the Quasi-Biennial Oscillation (QBO) and El Niño-Southern Oscillation (ENSO), are evaluated in observations and in comprehensive coupled ocean-atmosphere-chemistry models. The possibility of nonlinear interactions between these two is evaluated both using Multiple Linear Regression (MLR) and three additional advanced machine learning techniques. The QBO is found to be more important than ENSO, however nonlinear interactions are non-negligible, and even when ENSO, the QBO, and potential nonlinearities are included the fraction of entry water vapor variability explained is still substantially less than what is accounted for by cold point temperatures. While the advanced machine learning techniques perform better than an MLR in which nonlinearities are suppressed, adding nonlinear predictors to the MLR mostly closes the gap in performance with the advanced machine learning techniques. Comprehensive models suffer from too weak a connection between entry water and the QBO, however a notable improvement is found relative to previous generations of comprehensive models. Models with a stronger QBO in the lower stratosphere systematically simulate a more realistic connection with entry water.

## 1 Introduction

Water vapor (WV) provides most of the greenhouse effect in the atmosphere, and of the total water vapor feedback to increasing anthropogenic greenhouse gas emissions, roughly 10% is associated with water vapor in the stratosphere (Forster and Shine, 1999; Solomon et al., 2010; Dessler et al., 2013; Wang et al., 2017; Banerjee et al., 2019). The amount of water vapor that enters the stratosphere is also important for stratospheric chemistry and specifically the severity of ozone depletion (Solomon, 1999; Dvortsov and Solomon, 2001; Stenke and Grewe, 2005; Tian et al., 2009; Drdla and Müller, 2012; Robrecht et al., 2021). Hence, it is important to understand the factors that control the entry of water vapor into the stratosphere on all timescales, and to consider whether comprehensive models used for ozone and climate change assessments represent these factors correctly.

Most of the water vapor in the lower stratosphere transited from the tropical upper troposphere through the tropical tropopause, and therefore tropical temperatures near the cold point largely determine lower stratospheric water vapor concentrations (Mote

et al., 1996a; Zhou et al., 2004, 2001; Fueglistaler and Haynes, 2005b; Fueglistaler et al., 2009; Randel and Park, 2019). Many processes have been shown to modulate these cold point temperatures, and the goal of this work is to re-evaluate the influence of these processes, and in particular their nonlinear interactions, on entry water vapor. We then consider the ability of comprehensive models to represent this effect.

5 The QBO modulates water vapour mixing ratios in air entering the stratosphere through its influence on temperatures in the tropical tropopause region (Reid and Gage, 1985; Zhou et al., 2001; Niwano et al., 2003; Zhou et al., 2004; Fujiwara et al., 2010; Liang et al., 2011; Kawatani et al., 2014; Diallo et al., 2018). Specifically, warmer cold point temperatures during the QBO phase with westerlies near 50hPa (hereafter wQBO) lead to moistening, and colder temperatures during the QBO phase with easterlies near 50hPa (eQBO) lead to drying of the stratosphere. Comprehensive climate models typically struggle to  
10 capture the downward propagation of the QBO to the lower stratosphere (Rao et al., 2020a; Richter et al., 2020), and consistent with this Smalley et al. (2017) found that the Chemistry Climate Model Validation Activity 2 (CCMVal2) models and most of the the Chemistry-Climate Model Initiative (CCMI, Morgenstern et al., 2017) models they considered struggle to capture an influence of the QBO on entry water.

El Niño (EN), the ENSO phase with anomalous warming of the tropical Eastern Pacific, has been shown to lead to a cooler  
15 tropical lower stratosphere and warmer tropical troposphere (Free and Seidel, 2009; Randel et al., 2009; Calvo et al., 2010; Simpson et al., 2011). In addition, EN also forces a Rossby wave response that extends to the tropopause, whereby anomalously cold temperatures are present over the Central Pacific, and anomalously warm temperatures are present over the Indo-Pacific warm pool (Yulaeva and Wallace, 1994; Randel et al., 2000; Zhou et al., 2001; Scherllin-Pirscher et al., 2012; Domeisen et al., 2019). This zonal dipole in temperature has been shown to affect water vapor below the cold point: water vapor decreases in  
20 the region with cold anomalies and increases in the region with warm anomalies by  $\sim 25\%$  (Gettelman et al., 2001; Hatsushika and Yamazaki, 2003; Konopka et al., 2016).

The net effect of these temperature anomalies on tropical lower stratospheric water vapor is complex. While the lower stratosphere clearly was moister following the two largest EN events in the satellite era (in 1997/1998 and in 2015/2016) (Fueglistaler and Haynes, 2005a; Avery et al., 2017), moistening also was evident following two of the strongest La Nina  
25 events (in 1998/1999 and 1999/2000). The impact of more moderate events is less clear, and any net effect is not statistically significant considering the shortness of the data record (Garfinkel et al., 2018, 2021). Both La Nina and El Nino can lead to a moistening if the cold point moves zonally within the tropics (to the Central Pacific for El Nino, and to the far West Pacific for La Nina), and even though the lower stratospheric response is opposite for El Nino and La Nina, the cold point appears to have warmed for both strong El Nino and strong La Nina events, explaining the moistening in 1997/1998, 1998/1999, 1999/2000,  
30 and 2015/2016 (Garfinkel et al., 2018). There is no consensus among models as to the sign of the impact of ENSO on water vapor, with many models predicting a response opposite to that observed (Garfinkel et al., 2021).

Finally, the strength of Brewer Dobson circulation has been found to be important in determining entry water vapor, with a faster circulation associated with cooling of the cold point and dehydration (Randel et al., 2006; Dessler et al., 2013; Dessler et al., 2014; Ye et al., 2018).

The net response to these various forcings is often quantified using multiple linear regression (e.g. Dessler et al., 2013; Smalley et al., 2017), which implicitly assumes that the response to these forcings is linear, i.e. that the response to a given magnitude El Niño is equal and opposite to that of a La Niña event of equal magnitude. This technique also assumes that the response to e.g. ENSO and QBO is the sum of the linear responses to each individual forcing (Diallo et al., 2018; Brinkop et al., 2016). Recent work has pointed out two faults of such an assumption. First, Garfinkel et al. (2018) and Garfinkel et al. (2021) found that the response to ENSO is nonlinear in observations (and also in some models), and hence such a methodology may underestimate the impact of ENSO on stratospheric water vapor. Second, Yuan et al. (2014) find that the QBO has larger amplitude and longer period during La Niña conditions than during El Niño. Hence the difference between the warmer cold point temperatures (CPT) during wQBO and colder CPT during eQBO are larger during La Niña than during El Niño. This strengthens earlier findings that the greatest dehydration of air entering the stratosphere from the troposphere occurs during the winter under La Niña and easterly QBO conditions (Zhou et al., 2004; Liang et al., 2011). Specifically, Yuan et al. (2014) argue that the net effect of ENSO and the QBO is not just a linear superposition of their independent influences, but the net result of their mutual interaction.

The goal of this work is to reconsider the relative importance of the QBO and ENSO while taking into consideration the possibility for nonlinearity in the response, and to then consider whether the most-recent comprehensive models are capable of simulating the response. After introducing the data and methodology in Section 2, we evaluate the relative successes of a Multiple Linear Regression (MLR) and of more advanced machine learning (ML) techniques with ENSO, QBO, BDC, and mid-tropospheric temperature as predictors, in an attempt to find the factors that most succinctly explain observed interannual water vapor variability. We also consider the fraction of interannual entry water vapor variability that can be accounted for by variations of the cold point temperature as an upper bound on how much water vapor variability is predictable from large scale processes. We then add two nonlinear predictors to the MLR, and demonstrate that they are as important as e.g. a linear ENSO predictor. Finally, we consider the ability of comprehensive coupled ocean-atmosphere-chemistry models to simulate the connection between the QBO and entry water.

## 2 Data and methodology

### 2.1 Data

The **Stratospheric Water and OzOne Satellite Homogenized** data set (SWOOSH) (Davis et al., 2016) features a merged, gridded, homogenized and filled water vapor product from various limb sounding and solar occultation satellites over the previous ~30 years. The measurements are monthly means comprised of the following instruments: SAGE-II/III, UARS HALOE, UARS MLS, and Aura MLS. We use the zonal mean product (latitude, pressure) and the 3D (latitude, longitude, pressure) product as described in Table 1. The former has a high latitudinal resolution of  $2.5^\circ$  and extends to the HALOE period (1990s), while the latter has a horizontal resolution of  $20^\circ \times 5^\circ$  but relies on the high sampling rates available with AURA MLS since 2004. While the latter data set does include some data as early as 1994, there are many gaps and filling these gaps in a self-consistent way is out of the scope of this analysis. Both data sets have a pressure level range of 300 to 1 hPa though our focus is on entry

water at 82hPa and 68hPa. We use the zonal mean product when focusing on zonal mean entry water, and the 3D product when showing lat-lon maps of regression coefficients.

**Table 1.** Description of the target used in this analysis.

Target field	SWOOSH field name	SWOOSH file name	years used
zonal mean	combinedanomfillanomh2oq	swoosh-v02.6-198401-201912-latpress-2.5deg-L31	1994-2019
3D	combinedanomh2oq	swoosh-v02.6-198401-201912-lonlatpress-20deg-5deg-L31	2005-2019

We examine six models participating in the CCMI and five coupled chemistry-climate models participating in the sixth phase of the Coupled Model Intercomparison Project (CMIP6; Eyring et al., 2016). We only include CMIP6 models with interactive  
5 stratospheric chemistry as such a coupled chemistry-climate configuration has been shown to lead to more robust interannual variability of temperatures in the lower stratosphere as compared to models with fixed ozone (Yook et al., 2020). Note that most of the models nevertheless simulate a too-warm cold point and too-little interannual variability of entry water (Garfinkel et al., 2021).

CCMI phase 1 was jointly launched by the International Global Atmospheric Chemistry (IGAC) and the Stratosphere-  
10 troposphere Processes And their Role in Climate (SPARC) to better understand chemistry-climate interactions in the recent past and future climate (Eyring et al., 2013; Morgenstern et al., 2017). We analyze the Ref-C2 simulations, which span the period 1960-2100, impose ozone depleting substances as specified by the World Meteorological Organization (2011), and impose greenhouse gases other than ozone depleting substances as in Representative Concentration Pathway (RCP) 6.0 (Meinshausen et al., 2011). More details about these simulations are included in Eyring et al. (2013). We only consider CCMI models with  
15 a coupled ocean (though for some models, e.g. EMAC, the ocean state is taken from a different integration), and we compute statistics for all available ensemble members separately before computing the average response for each model. The CCMI-1 models used in this study are listed in Table 2. CCMI-2 models are instructed to nudge the QBO rather than spontaneously simulate it. While this nudging should lead to an improved ability to capture the temperature response to the QBO (as discussed in section 4), this improvement is not because the models themselves are necessarily better and nudging is known to interfere  
20 with the transport of trace gases (Orbe et al., 2017, 2018). Hence the water vapor variability in CCMI-2 models is outside the scope of this study. Note, however, that three of the CCMI-1 models considered here nudged the QBO: the NCAR models and EMAC. The fidelity of the QBO in these models will be discussed in section 4.

In addition to the CCMI-1 models, we also consider five Earth System models with coupled chemistry that are participating in CMIP6: CESM2-WACCM (Gettelman et al., 2019), GFDL-ESM4 (Dunne et al., 2019), CNRM-ESM2-1 (Séférian et al.,  
25 2019), MRI-ESM2-0 (Yukimoto et al., 2019), and UKESM1-0-LL (Sellar et al., 2019). The climatology and seasonal cycle of stratospheric water vapor in these models is documented in Keeble et al. (2020). All six models spontaneously represent the QBO (Rao et al., 2020a; Richter et al., 2020; Rao et al., 2020b) though as discussed in section 4 the quality of the simulation varies. For all CMIP6 models we focus on the historical integrations of the period 1850 to 2014. Note that standard CMIP6 output includes the 70hPa and 100hPa levels but unfortunately no level in-between, and so our ability to diagnose physical

Table 1: Data products used

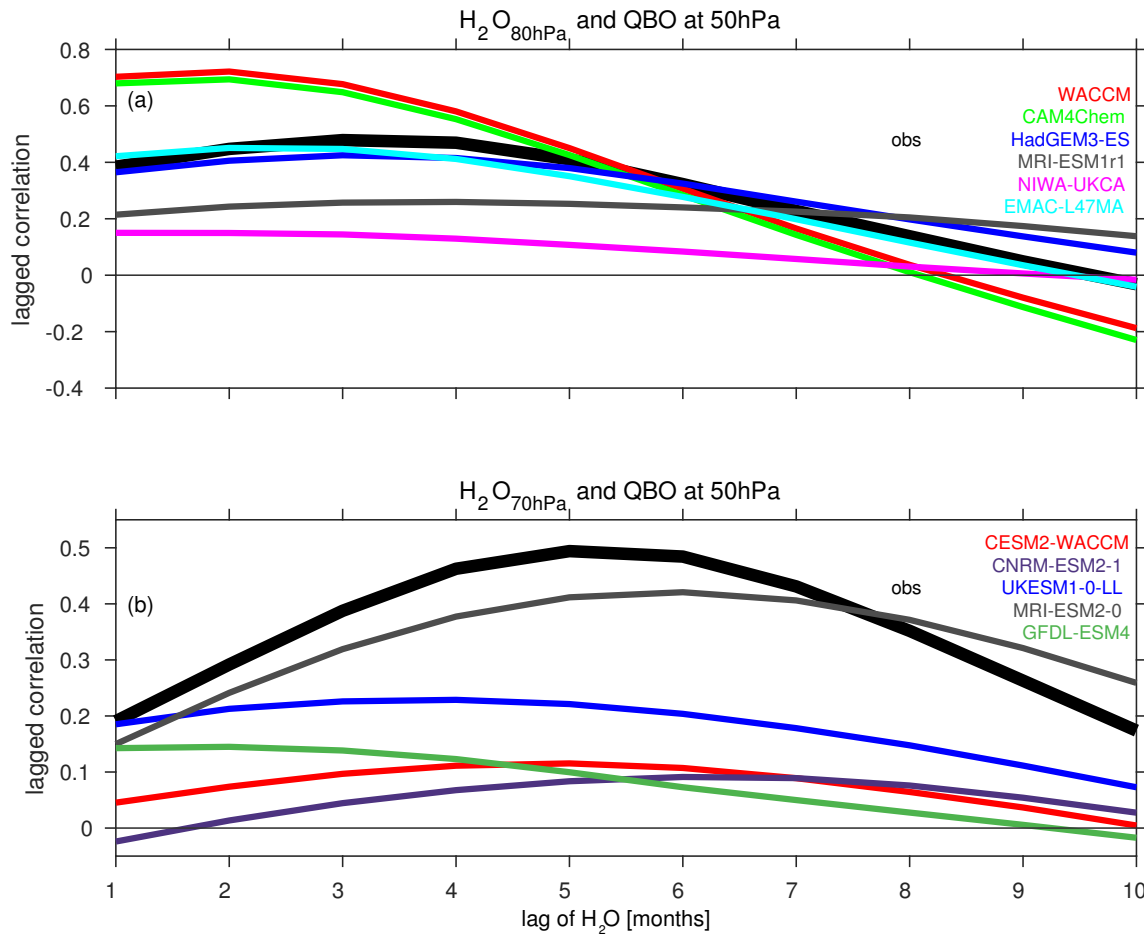
	data source	ensemble members	reference
obs	SWOOSH v2.6	1	Davis et al. (2016)
	ERA-5	1	Hersbach et al. (2020)
CCMI-1	NIWA-UKCA	5	Morgenstern et al. (2009)
	CESM1 WACCM	3	Garcia et al. (2017)
	CESM1 CAM4-chem	3	Tilmes et al. (2016)
	HadGEM3-ES	1	Hardiman et al. (2017)
	MRI-ESM1r1	1	Yukimoto et al. (2012)
	EMAC-L47MA	1	Jöckel et al. (2016)
CMIP6	CESM2-WACCM	1	Gettelman et al. (2019)
	GFDL-ESM4	1	Dunne et al. (2019)
	CNRM-ESM2-1	1	Séférian et al. (2019)
	MRI-ESM2-0	1	Yukimoto et al. (2019)
	UKESM1-0-LL	1	Sellar et al. (2019)

**Table 2.** The data sources used in this study. For CMIP6 models we focus on the historical integrations of the period 1850 to 2014, and for CCMI phase 1 the Ref-C2 simulations spanning the years 1960 to 2100. The CCMI-1 models CESM1 WACCM, CESM1 CAM4-chem, and EMAC-L47MA nudge the QBO; the rest spontaneously generate the QBO.

processes near the cold point is limited. (In contrast, CCMI output is available both near 80hPa and 90hPa.) All data are deseasonalized by subtracting the long term monthly means for that specific data product.

## 2.2 Target Variables and Indices

The target variable for all data sources is entry water, defined as water vapor at 82 hPa for SWOOSH, the closest archived level to 82hPa for CCMI (for nearly all models this is 80hPa), and 70hPa for CMIP6. The Quasi-Biennial Oscillation index is derived from the 50 mb zonal wind data in the NCEP/NCAR Reanalysis Climate Data Assimilation System (Climate Prediction Center, 2012). While including levels lower than 50hPa may lead to a slight improvement of the fit in observational data, many of the CCMI/CMIP6 models struggle to capture any remnant of the QBO below 50hPa (Rao et al., 2020a; Richter et al., 2020; Rao et al., 2020b) and hence we use 50hPa only throughout this paper. The lagged correlation of the QBO with near-82hPa entry water area averaged between 15S and 15N is shown in Figure 1a, and it is clear that a lag of 2 to 5 months maximizes the



**Figure 1.** Lagged correlation between the QBO at 50hPa and tropical water vapor at (a) 80hPa in CCMI models and (b) 70hPa in CMIP6 models (entry water is lagged after the QBO). The lagged correlation for observations (SWOOSH data) is also included in thick black. The combinedanomfillanomh2oq product of swoosh-v02.6-198401-201912-latpress-2.5deg-L31 is used for observations from 1994 to 2019. Note that the WACCM, CAM4Chem, and EMAC-L47MA models in panel (a) nudge the QBO; in all other models the QBO is spontaneously generated.

relationship in observations and in models. In Section 3 we use a lag of 5 months, and in Section 4 we use a lag of 2 months for CCMI and 5 months for CMIP6, though results are similar if the lag is changed by a few months. A later lag for the QBO is used for CMIP6 due to the difference in available pressure levels used to define entry water.

The El-Niño Southern Oscillation is tracked using the NINO3.4 index (5° North-5°South, 170°-120°West) sourced with 5 ERSSTv5 data with a 1981-2010 base period. The data is taken from NOAA (Climate Prediction Center, 2012).

The CCMI and CMIP6 integrations include both long-term changes due to climate change in addition to the interannual variability which is our focus. The analyses in section 4 therefore includes, in addition to the QBO regressor, a regressor

to track greenhouse gas concentrations (the equivalent CO<sub>2</sub> from the RCP6.0 scenario, and historical CO<sub>2</sub> concentrations for historical simulations, Meinshausen et al., 2011). For the observational analysis, we do not include a CO<sub>2</sub> regressor, but instead detrend all time-series, for two reasons: first, the regression coefficient for CO<sub>2</sub> in an MLR is extremely sensitive to whether we include the HALOE period or not, and, second, the ML methods are more stable when provided with fewer predictors on which to train the model. Both of these effects likely arise because of the short duration of the observational data-record.

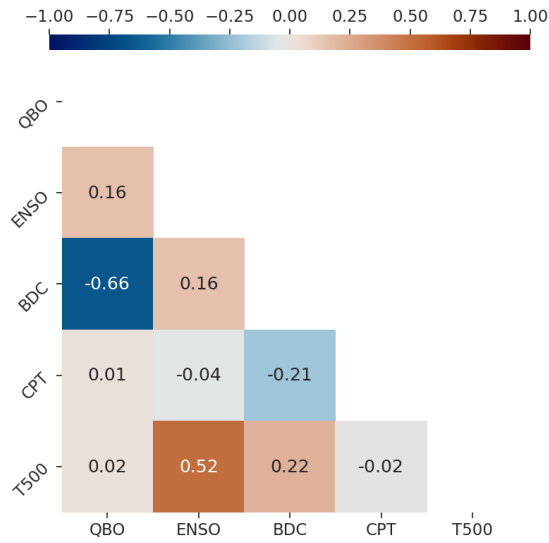
The T500 index is the air temperature at 500 hPa averaged over the tropics (20°S to 20°N) taken from the ERA5.1 reanalysis (Copernicus Climate Change Service, 2017; Hersbach et al., 2020). The BDC (Brewer–Dobson Circulation) index is the ERA5.1 variable "mean temperature tendency due to parametrisations" at 70 hPa averaged over the tropics (20°S to 20°N). In the deep tropics, the dominant contribution to the "mean temperature tendency due to parametrisations" is radiative heating.

The cold point temperature (CPT) index is calculated as in Randel and Park (2019), who use air temperature data from three equatorial radiosonde stations: Nairobi (1°S, 37°E), Manaus (3°S, 60°W), and Majuro (7°N, 171°E) sourced from the Integrated Global Radiosonde Archive (IGRA) (Durre et al., 2006). The radiosonde data was re-sampled to monthly means and its seasonal cycle was removed.

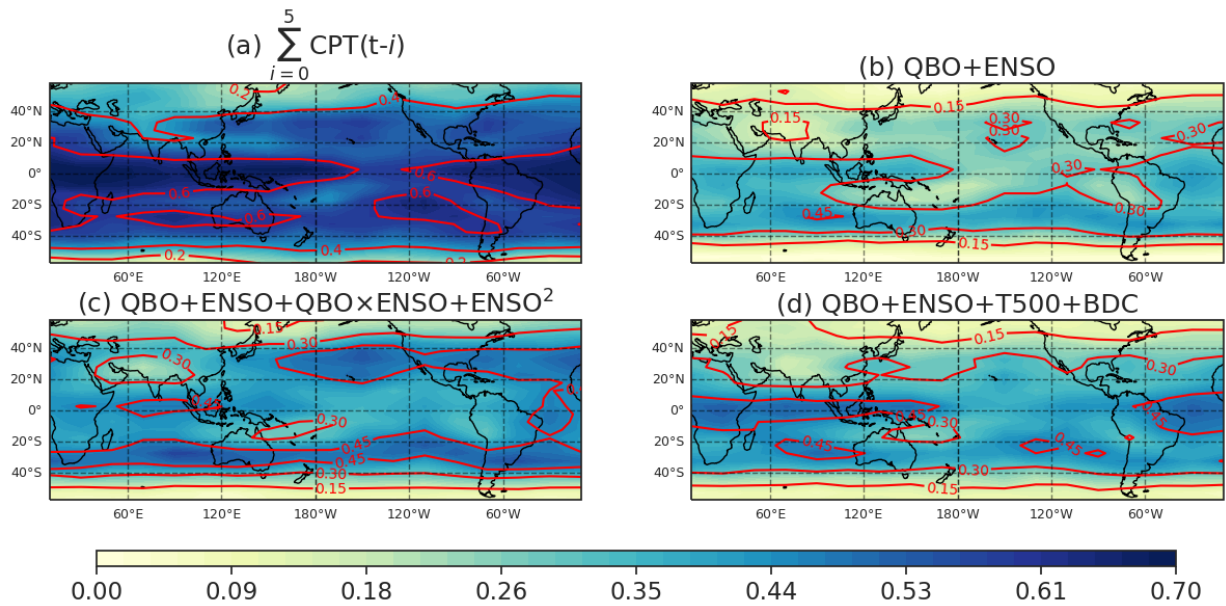
Note that the correlation of the BDC with the QBO is -0.66 (Figure 2), and hence including both in a single regression or ML model can lead to erroneous model interpretation. If the BDC is defined at 82hPa (instead of at 70hPa) the correlation with the QBO drops, but then the correlation of the BDC with cold point temperatures reaches -0.72 over the period since 2005. Hence there is again the potential for misleading results if both are included, and if only the BDC is included there is ambiguity as to whether a signal is due to the BDC or rather actually is associated with CPT but appears in the BDC regression coefficient because of the tight relationship between the CPT and BDC. Finally, the correlation between T500 and ENSO is 0.52, and if we high-pass filter the data to focus on interannual timescales the correlation increases further. Hence there is a similar risk of misleading results if both are included in a MLR, and similar ambiguity if only one is included.

All indices are deseasonalized by removing the long term monthly means. We do not consider seasonality in this work in order to maximize the degrees of freedom, though we certainly acknowledge that the regression coefficients for, say, ENSO change sign between midwinter and late spring (Garfinkel et al., 2018, 2021). For all of these predictor time series, we divide by the standard deviation before constructing a MLR or ML model.

As discussed in Randel and Park (2019), cold point temperatures are highly correlated with entry water vapor (correlation of  $\sim 0.8$  from 1993-2017 for 60S-60N averaged entry water vapor). This result is reproduced here over the period 2005-2019, but showing the latitude vs. longitude distribution, in Figure 3a. We allow the CPT to lead entry water vapor by up to five months. Correlations peak above 0.8, and more generally 75% (i.e. the maximum  $R^2$  on Figure 3a) of the cold point temperature and entry water variability are linearly related. We treat this 0.8 correlation as an upper bound on the effect that large scale, monthly mean dynamics can have on entry water vapor (with the remaining 25% due to processes on smaller spatial scales or shorter timescales). The aim of this paper is to understand the 75% of the variability that is due to large scale processes. In particular to what extent can this 75% of the variability in turn be explained by large scale processes remote to the cold point such as the QBO and ENSO?



**Figure 2.** A correlation heatmap for the predictors used in the analysis. The time-span is from 1994 to 2019.



**Figure 3.** The  $R^2$  of the MLR between water vapor anomalies at the 82.54 hPa level with the four groups of predictors: (a) cold point temperatures; (b) QBO and ENSO; (c) as in (b) but adding in ENSO<sup>2</sup> and QBO×ENSO; (d) as in (b) but adding in T500hPa and the BDC. This MLR spans from 2005 to 2019 and uses the 3D SWOOSH product. The regression is reconstructed directly from all predictors, i.e., in-sample.



### 2.3 Machine Learning (ML) models

As discussed in the introduction, the connection between the QBO, ENSO, and entry water is not necessarily linear. Accordingly, we pick three popular types of ML models which we use in a supervised learning regression: Support Vector Machines (SVM), Random Forest (RF) and Multi Layered Perceptron (MLP). These ML models are applied in Section 3 only. All the models here are implemented through the Scikit-Learn Python package (Pedregosa et al., 2011) and use an optimization scheme in order to reduce the error between the predicted and the observed target variable. However, each of the models' approach to the regression task is different.

The SVM model, in a classification task, uses a linear hyperplane in order to separate each sample class (Boser et al., 1992). By applying the kernel trick, the input variables are non-linearly transformed into a high dimensional space where the type of the kernel, e.g., radial basis function, can be determined by hyper parameter tuning (Vapnik et al., 1995). In regression tasks, now named SVR (Support Vector Regression), more flexibility is allowed where an error parameter is added ( $\epsilon$ ) which measures the constraint on the residuals. Let's consider the objective function in OLS (Ordinary Least Squares) which is used in MLRs:

$$\text{MIN} \sum_{i=1}^n (y_i - w_i \cdot x_i)^2, \quad (1)$$

Where  $y_i$  is the target,  $w_i$  is the coefficient and  $x_i$  is the predictor. The objective function in the SVR is used to minimize the coefficients (specifically the l2 norm) and not the squared error as in the OLS. The constraints handle the error term ( $\epsilon$ ) where it can be tuned to gain the desired accuracy of our model. Thus, SVR's objective function and constraints are as follows:

$$\text{MIN} \frac{1}{2} \|w\|^2 \quad (2)$$

$$|y_i - w_i \cdot x_i| \leq \epsilon \quad (3)$$

Other improvements to the SVR's objective function are added as additional hyper parameters, e.g., as to deal with points that reside beyond the margin defined by  $\epsilon$ .

The RF model operates very differently than SVM as it is based on an ensemble of decision trees which in our case solve a regression task. A regression tree algorithm is a way of splitting the dataset by selecting certain points that minimize the mean squared error defined as follows:

$$\text{MSE} = \frac{1}{n} \sum_{i=1}^n (y_i - \hat{y})^2 \quad (4)$$

Where  $y$  is the observation and  $\hat{y}$  is the prediction. These points are selected through an iterative process of calculating the MSE for all the splits and choosing the split that minimizes the MSE. Regression trees are prone to over-fitting, and while there are hyper parameters which can help with that, much better algorithms were developed on top of regression trees which address this issue adequately. One of these algorithms is the RF model (Breiman, 2001) which is outlined as follows:

1. Pick k data points at random from the training set.

2. Build a regression tree associated with these k data points.
3. Choose N trees to build and repeat steps 1 and 2.
4. For a new data point, iterate over the N built trees, evaluate their prediction for the data point and assign their mean prediction to this point.
- 5 Here, over-fitting is also an issue though a smaller one than individual regression tree and can be dealt with by adjusting the model complexity via the various hyper-parameters. .uses many independent decision trees on randomized selections of the trained data subsets. The final output is produced by averaging all of the individual decision tree outputs.

The MLP is an artificial neural network that includes multi layered nodes with weights (Hinton, 1990). Typically, the network architecture includes an input layer, any number of hidden layer and an output layer where each layer's nodes are connected via activation functions (a so-called feed-forward propagation). During the learning process, the weights are re-evaluated using the back-propagation iterative algorithm (Orr and Müller, 2003) in order to decrease the cost function. Typically, the number of hidden layers in the MLP architecture is determined in the hyper-parameters tuning step, and in our case was 1 hidden layer with 10 hidden units.

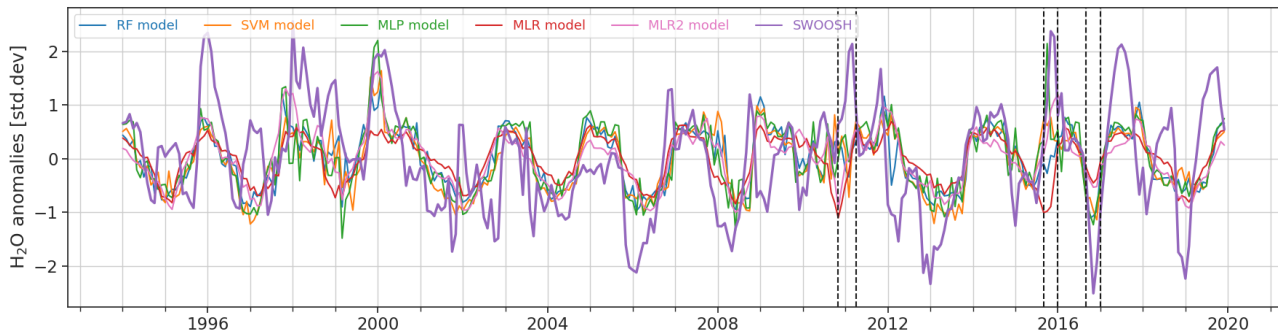
Finally, we use Multiple Linear Regression (MLR), a well-known and often-used technique in the field (e.g. Dessler et al., 2013; Diallo et al., 2018). When applied to lat-lon entry water vapor data, the model yields:

$$\chi_{H_2O}(t, \phi, \lambda) = \alpha(\phi, \lambda) + \beta_i(\phi, \lambda) \cdot \eta_i(t) + \epsilon(t, \phi, \lambda) \quad (5)$$

where  $\chi_{H_2O}$  is the reconstructed water vapor anomalies field and  $t, \phi, \lambda$  are the time, latitude, and longitude respectively.  $\alpha$  and  $\beta_i$  are the intercept and the beta coefficients of the MLR solution and  $\epsilon$  is the residual field.  $\eta$ 's are the predictors used in the analysis. Note that this MLR is computed separately for each grid cell using the 3D SWOOSH data since 2005. We also perform an MLR using the tropical mean entry water since 1994, where we average the latitude range between 15°S and 15°N, and the predictors are QBO and ENSO. Thus a much simpler linear model is formulated as follows:

$$\chi_{H_2O}(t) = \alpha + \beta_i \cdot \eta_i(t) + \epsilon(t) \quad (6)$$

The validation and testing procedures of the ML models is done in two stages using a 5 fold Cross Validation (CV) technique for each model separately. First, for the validation stage, we randomly select 80% of the samples and split them into 5 random groups called folds. Second, we train each model on 4 folds and test its performance ( $R^2$ ) on the remaining fold. Third, we repeat this process 5 times (hence 5 fold CV) while iterating over all the folds. These three steps are repeated for all possible combinations of the hyper-parameters, and we then choose best hyper-parameters which maximize the out-of-sample  $R^2$ . (This step is skipped for MLR since it does not have hyper parameters.) Then, for evaluating the models' performance, we traditionally would test the models once on the remaining data (i.e. the test set), however, since our dataset is quite short (312 samples at most), we would like to gain understanding of the models' performance distributions. Thus, we use a similar 5-fold CV on all the samples: we randomly divide the data in five, train each model on 4 folds, and test its performance ( $R^2$ ) on the



**Figure 4.** Out of sample model predictions of deseasonalized and standardized water vapor anomalies at 82.54 hPa averaged between 15°S and 15°N. The various models are RF (blue), SVM (orange), MLP (green), MLR (red) and MLR2 (pink). The MLR2 model is the same as the MLR model but with ENSO<sup>2</sup> and ENSO × QBO predictors. The observations are from SWOOSH (bold purple). Note the three forecast "busts": 2010-D-2011-JFM, 2015-OND and 2016-OND.

remaining fold; these steps are cycled through all five folds. This random division of the data into five folds and subsequent cycling is performed 20 times, and so we end up with 100 R<sup>2</sup> scores per each model.

In the spirit of reproducible science, we encourage the interested reader to explore the Python repository hosted on GitHub.com ([https://github.com/ZiskinZiv/Stratospheric\\_water\\_vapor\\_ML](https://github.com/ZiskinZiv/Stratospheric_water_vapor_ML)) that includes the processed data (except SWOOSH data sets)

5 and procedures of this paper's analysis.

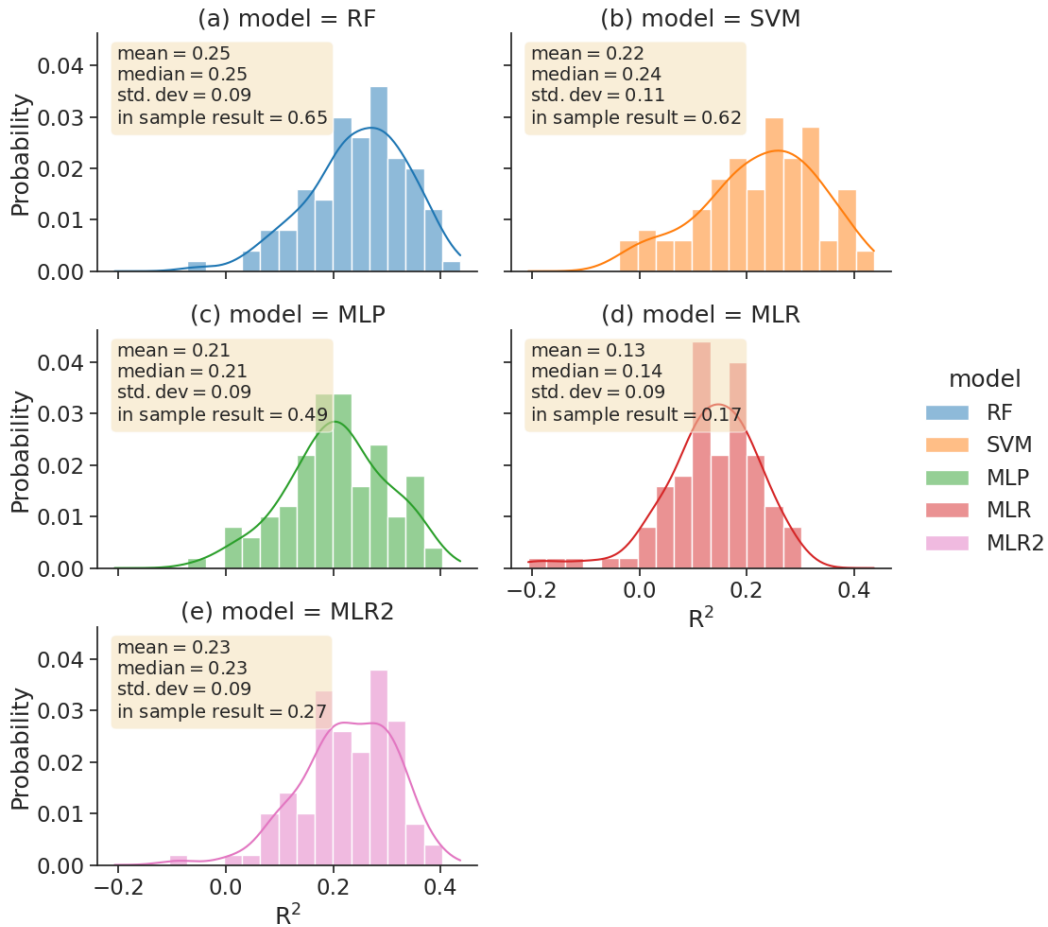
### 3 Re-evaluation of the importance of ENSO and the QBO in the observational record

We begin with the reconstructed entry water vapor timeseries in Figure 4 as computed by four different techniques with the QBO and ENSO used as predictors. As discussed in section 2.3, we use out-of-sample testing to reduce as much as possible overfitting. Specifically, Figure 4 shows the mean of the predicted out-of-sample water vapor from the 5-fold cross validation  
 10 scheme (see section 2).

All four methods capture much of the variability of entry water present, but there are noticeably more forecasts busts than if cold point temperatures are used as in Randel and Park (2019). Three examples of forecasts busts are evident in late 2010, late 2015, and late 2016 (indicated by vertical lines), when all four techniques struggle to account for the observed change <sup>1</sup>

The ability of each of the four techniques is quantified in Figure 5a-d, which shows a histogram of the R<sup>2</sup> between the  
 15 predicted and actual entry water vapor for each of the individual out-of-sample tests performed. Figure 5 also indicates the mean, median, and standard deviation of the histogram of out-of-sample tests, and also the R<sup>2</sup> if we compute the fit using all data instead of applying an out-of-sample test. For all four techniques, there is a wide range of R<sup>2</sup> values among the 100

<sup>1</sup>Note that the bust in late 2010 may be improved if the extension of the QBO to the lowermost stratosphere was taken into consideration (Davis et al., 2013), however the QBO in many CMIP models cannot be defined any lower than 50hPa.



**Figure 5.** Out of sample model performance and distribution of  $R^2$  scores of deseasonalized and standardized water vapor at 82 hPa averaged between  $15^\circ\text{S}$  and  $15^\circ\text{N}$ . The various models are RF (blue), SVM (orange), MLP (green) and MLR (red) and MLR2 (pink). The MLR2 model is the same as the MLR model but with  $\text{ENSO}^2$  and  $\text{ENSO} \times \text{QBO}$  predictors. The mean, median and standard deviation (std.dev) are noted for each distribution in a yellow text box, along with the in sample  $R^2$  score.

different out-of-sample tests, and the in-sample  $R^2$  always exceeds the median of the 100 out-of-sample tests. This highlights the need to perform an out-of-sample test to minimize overfitting. If the 3 ML techniques are compared to MLR, the MLR is the least successful both when applied in-sample and out-of-sample, and the three advanced ML techniques all are similarly skillful (with SVM slightly worse than MLP or RF).

- 5 This comparison of MLR in Figure 5d to the ML techniques in Figure 5a-c may lead to an underestimate of the abilities of MLR to account for entry water vapor, as the ML techniques allow for nonlinearity but MLR does not. As discussed in the introduction, there are at least two nonlinear processes that have been argued to exist when accounting for entry water vapor variability due to ENSO and the QBO:  $\text{ENSO}^2$  and a  $\text{ENSO} \times \text{QBO}$  predictor. We therefore add these two predictors to the

MLR, and repeat the calculation in Figure 5e. While the in-sample result is still lower than that of the ML techniques (likely because of additional nonlinear effects that are not included in the MLR), the out-of-sample results are now similar to those of the ML techniques. Further, the busts on Figure 4 are not any worse in MLR2 than in the ML techniques. In other words, adding these two nonlinear processes can explain most of the additional advantage of the ML techniques when the data is tested out-of-sample to mitigate over-fitting.

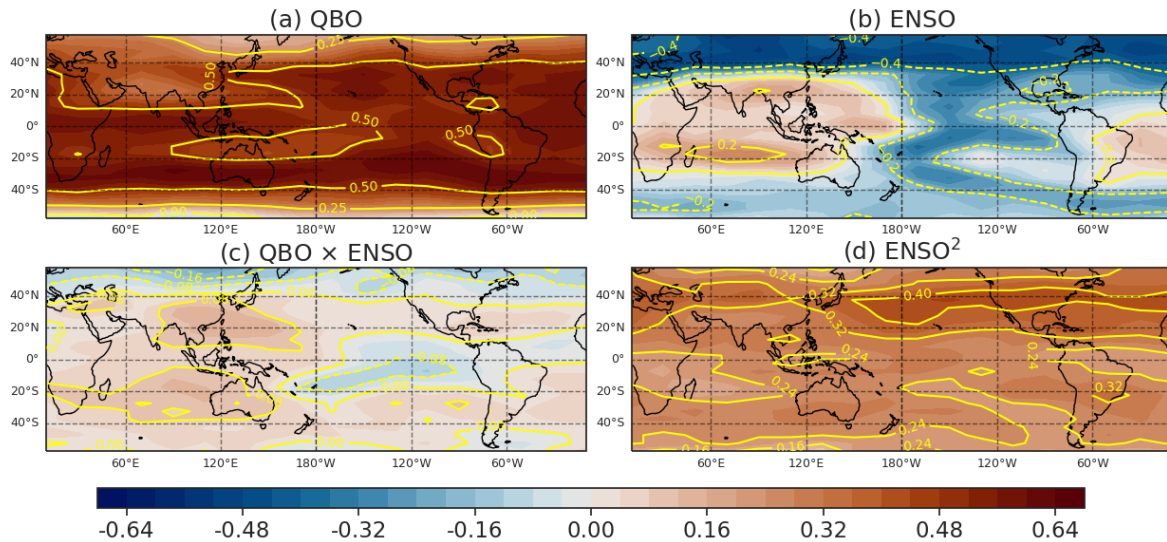
Even though these nonlinear processes help, the resulting  $R^2$  is still much less than that explained by CPT (Figure 3a). Specifically, Figure 3b shows that a MLR with just QBO and ENSO can lead to an  $R^2$  ranging around 0.3, however this is only half of the  $R^2$  when the actual cold point temperatures are included (Figure 3a). Adding the two nonlinear predictors (Figure 3c) leads to an increase of  $R^2$  by around 0.1 as compared to Figure 3b, but this is still much less than the  $R^2$  in Figure 3a.

At least two of the techniques considered allow for a clear diagnosis of the relative importance of ENSO vs the QBO: MLR and SHapley Additive exPlanations (SHAP) as employed on the RF model. The relative importance of each of the predictors in the MLR of Figure 5e is shown in Figure 6, which shows a latitude vs longitude map of the regression coefficients when the regression is performed for water vapor at each gridpoint separately (the MLR of Figure 5e is performed on the tropical mean water vapor.) The QBO is clearly more important than any of the other processes for accounting for entry water, and thus accounts for the biennial nature of the fit in Figure 4 with a peak-to-peak amplitude of around 0.4ppmv. Interestingly, the map for ENSO indicates a zonally asymmetric structure (Figure 6b), and as discussed in Yulaeva and Wallace (1994) and Garfinkel et al. (2013) the temperature structure of ENSO is characterized by zonal structure even in the lower stratosphere, with relatively warm temperatures in the Indian Ocean sector and colder temperatures in the Pacific sector. This zonal temperature dipole thus is apparently leading to a similar dipole in entry water, with moistening occurring in warm regions and drying in cold regions. The ENSO<sup>2</sup> predictor is more important than ENSO for zonal mean entry water vapor (Figure 6bd). The ENSO times QBO predictor is comparatively unimportant (Figure 6c).

The SHAP technique also allows for quantification of the relative impact of ENSO versus QBO. SHAP (Lundberg et al., 2020) implements a concept borrowed from game theory, where a prediction can be explained by assuming that each predictor's value of the instance is a "player" in a game where the prediction is the payout. The Shapley values (as computed by e.g., SHAP) indicate how to fairly distribute the "payout" among the predictors (Lundberg and Lee, 2017). The "payout" in our problem is the standardized entry water, thus the computed Shapley values are measuring the mean effect ENSO or QBO have on standardized H<sub>2</sub>O anomalies. For an in-depth explanation of the SHAP technique, we encourage the interested reader to explore the SHAP chapter of the online book on Explainable AI (Molnar, 2019) methods.

We calculated the mean SHAP values for the predictors as trained by the RF model. QBO has a mean effect of 0.42 std.dev on H<sub>2</sub>O anomalies while ENSO has a mean effect of -0.23 std.dev on H<sub>2</sub>O anomalies since it is negatively correlated with H<sub>2</sub>O. Only when considering spring entry water is ENSO positively correlated, (Garfinkel et al., 2018) though even in spring the QBO dominates. In absolute value, QBO is almost twice as important as ENSO for entry water as diagnosed by SHAP. The relative primacy of the QBO is consistent with Diallo et al. (2018) and Tian et al. (2019).

Additional evidence as to the importance of the ENSO<sup>2</sup> predictor is provided in Figure 7, where we form an MLR using QBO and ENSO but compute the ENSO regression coefficient separately for each ENSO phase. The important point is that the



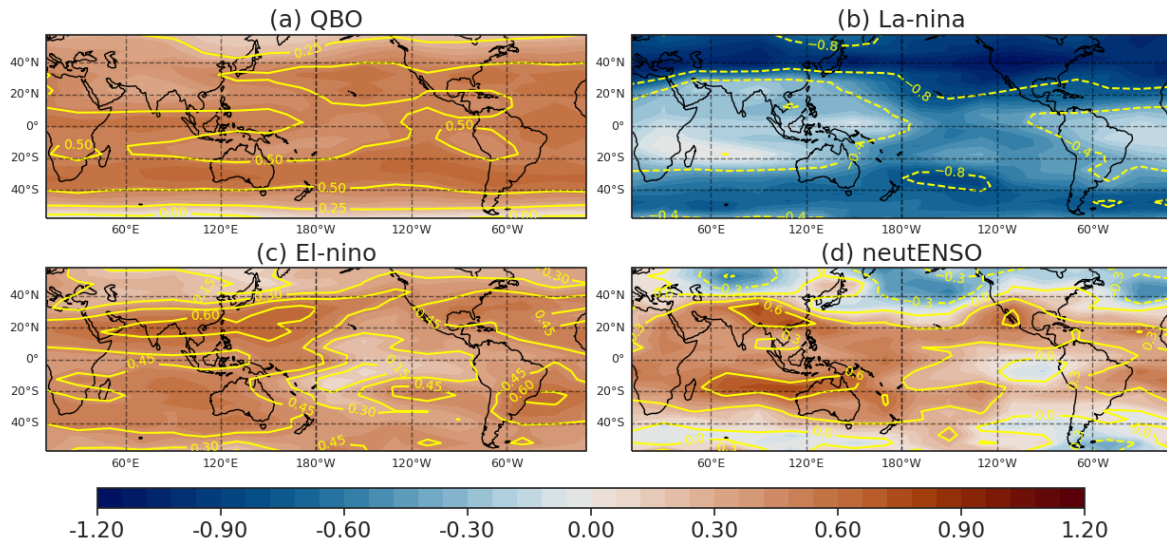
**Figure 6.** The in-sample  $\beta$  coefficients for the water vapor anomalies MLR analysis in the 82.54 hPa level at 2005 to 2019, performed using the 3D SWOOSH data.

regression coefficient changes sign between EN and LN (Figure 7b vs. Figure 7c); in other words, a more positive ENSO state during EN leads to more water vapor, but so does a more negative ENSO state during LN. A naive MLR misses this effect, and would imply a limited impact of ENSO on entry water vapor. Only upon considering nonlinear effects is the full impact of ENSO revealed.

- 5 Finally, some previous work has focused on using the BDC or mid-tropospheric temperatures as predictors in MLR models that attempt to explain entry water (e.g., Dessler et al., 2014). We show the  $R^2$  of an MLR with these predictors in Figure 3d. Adding T500 and the BDC clearly leads to an improved fit as compared to an MLR with only QBO and ENSO ( Figure 3b vs. Figure 3d), however the improvement is similar to the effect of the nonlinear regressors in Figure 3c. As discussed in section 2, there is a significant correlation between the BDC at 70hPa and the QBO at 50hPa, and hence including both in a ML
- 10 model does not lead to significant improvement. Including the BDC at 82hPa instead leads to a larger improvement, however the BDC at 82hPa is significantly correlated with the cold point temperatures, and hence there is ambiguity if the BDC is defined at 82hPa instead. There is some added value to using T500 as compared to ENSO, though as shown in Figure 6, an ENSO predictor is much less useful than an  $ENSO^2$  predictor in any event. That is, most of the improvement upon adding the nonlinear predictors comes about via the  $ENSO^2$  predictor (Garfinkel et al., 2018).

#### 15 4 Ability of CMIP6 and CCMI models to represent the QBO modulation

Section 3, and specifically Figure 6, indicated that the QBO is the most important single predictor of any considered in this paper barring the cold point temperatures themselves. We now consider the ability of CMIP6 and CCMI models to represent

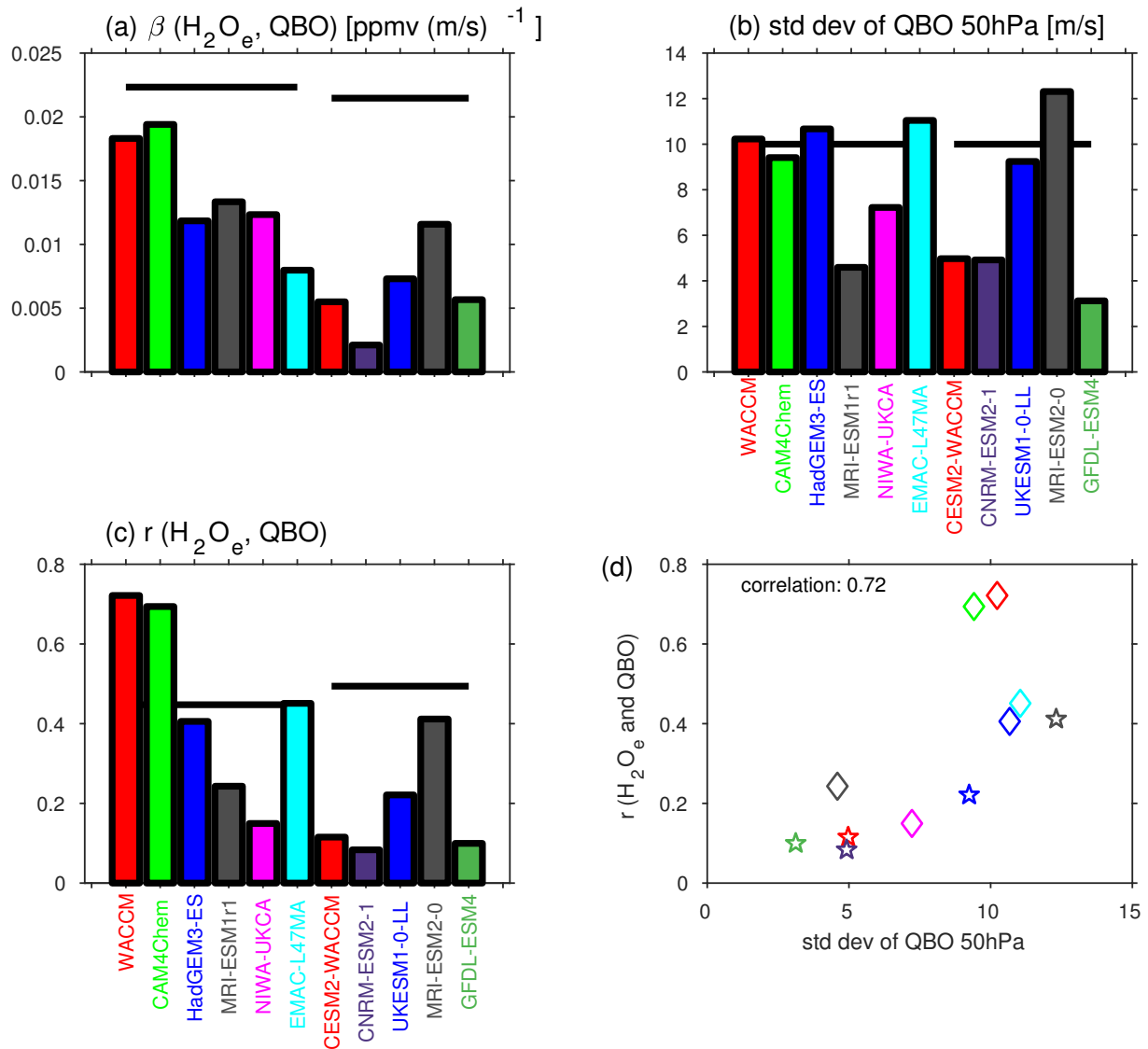


**Figure 7.** The in-sample  $\beta$  coefficients for the water vapor anomalies MLR analysis in the 82.54 hPa level at 2005 to 2019. The ENSO predictor was separated into 3 parts where EN represents the El-nino events ( $ENSO \geq 0.5$ ), LN represents the La-nina events ( $ENSO \leq -0.5$ ) and neutENSO the rest of the ENSO regressor.

this connection, and for simplicity we focus on a simple regression of the QBO with entry water. (The ability of these models to represent the connection between ENSO and entry water vapor was considered in Garfinkel et al. (2021) in detail.)

The lagged correlation of the QBO with entry water is shown in Figure 1a for the CCMI models, and in Figure 1b for the CMIP6 models. While all models capture the sign of the dependence of entry water on the QBO (an apparent improvement from Smalley et al., 2017), there is a wide range in the amplitude of the correlation. The two NCAR models in CCMI simulate the strongest relationship, but these models nudge their QBO, and the corresponding CMIP6 run with a spontaneous QBO simulates a weaker connection. Other models simulate a connection similar to (HadGEM3, EMAC-L47MA), or weaker than (NIWA-UKCA, MRI-ESM), that observed. Note that Smalley et al. (2017) considered these latter two CCMI models and also found a nearly non-existent connection between entry water and the QBO.

An alternate perspective on the ability of models to capture the relationship between the QBO and entry water is the regression coefficient from a MLR. Figure 8a shows these regression coefficients, and the observed regression coefficient is shown with a horizontal black line. The two NCAR models in CCMI (both of whom nudge the QBO) are the only models with a regression coefficient approaching that observed. The models which do not nudge uniformly underestimate the regression coefficients, and hence the relatively more realistic correlation coefficients from Figure 1 (which are repeated in Figure 8c) are due to biases either in the standard deviation of entry water vapor or in the standard deviation of the QBO itself. Garfinkel et al. (2021) already demonstrated that ten of these models (with NIWA the lone exception) underestimate entry water variability.



**Figure 8.** Relationship between the QBO and entry water vapor in CCMI and CMIP6 models. (a) regression coefficient; (b) standard deviation of the QBO at 50hPa; (c) correlation coefficient; (d) relationship between the correlation coefficient (panel c) and standard deviation (panel b), with the color of markers corresponding to the color used in panel (b) and (c). For (d), diamonds are CCMI models and stars are CMIP6 models. A solid black line in panels a-c is for reanalysis. Note that entry water is defined near 80hPa for CCMI models and at 70hPa for CMIP6 models, hence the solid black reanalysis line differs for each. Note that the WACCM, CAM4Chem, and EMAC-L47MA models included in CCMI (the first, second, and sixth models in panels a,b, and c; green, red, and cyan) nudge the QBO; in all other models the QBO is spontaneously generated.



For example, EMAC-L47MA, which nudges the QBO, simulates a reasonable correlation of entry water with the QBO but a severely deficient regression coefficient due to poor interannual variability of entry water.

The models which do not nudge the QBO also mostly underestimate variability of the QBO, as shown in Figure 8b. While e.g., the UK Met Office model does a good job at capturing the QBO (and recall the NCAR and EMAC-L47MA CCM1 models have a nudged QBO), most other models struggle. A notable improvement is evident from the MRI contribution to CCM1 to the MRI contribution to CMIP6. The net effect of too weak internal variability of the QBO or of entry water is that the regression coefficient of a model will be lower than that in observations, even if the correlation is generally realistic.

Do models with a better QBO perform better at capturing the relationship between entry water and the QBO? Figure 8d compares for each model the standard deviation of the QBO (x-axis) with the correlation between entry water and the QBO (y-axis), and it is evident that the two are linked. The correlation coefficient across all models is statistically significant at the 95% level. Hence, an improved QBO leads to an improved representation of interannual variability of entry water.

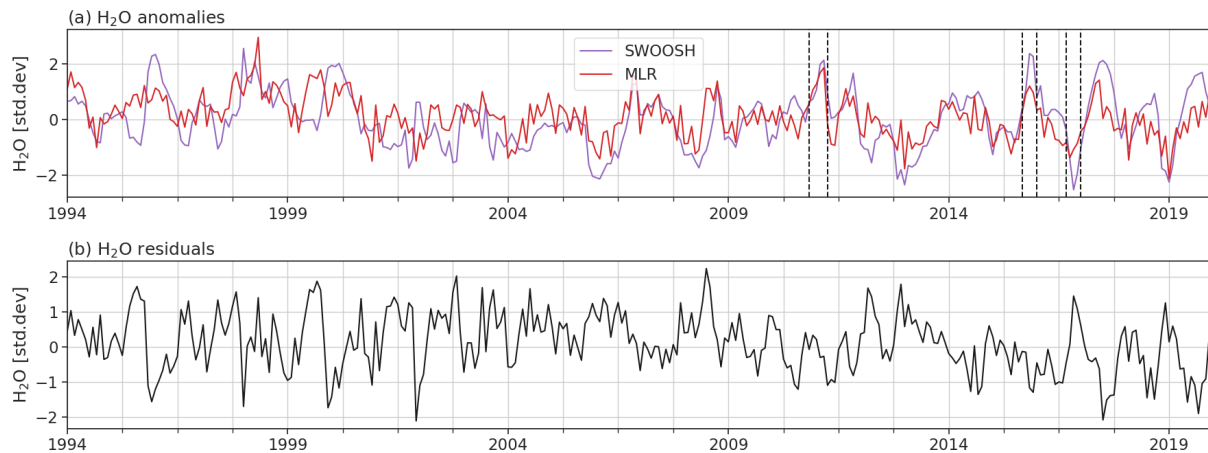
## 5 Discussion

Stratospheric water vapor plays a crucial role both as a greenhouse gas that modulates the Earth's radiative budget, and also as a trace gas that regulates the severity of ozone depletion (Solomon et al., 1986; Forster and Shine, 1999; Solomon et al., 2010; Dessler et al., 2013; Wang et al., 2017; Banerjee et al., 2019). This study aims to understand the importance of nonlinearity for two processes - ENSO and the QBO - that have been shown to regulate water vapor concentrations on interannual timescales, and to consider whether comprehensive models used for climate change assessments represent these factors correctly.

Both the QBO and ENSO are important for entry water vapor, however a simple linear perspective would lead to the mistaken conclusion that the effect of ENSO on zonal mean entry water vapor is minimal (Figure 6b). Rather, ENSO<sup>2</sup> is the more important contributor (Figure 6d), though even ENSO<sup>2</sup> is less important than the QBO (Figure 6a). A multiple linear regression model that includes ENSO and the QBO performs notably worse than machine learning techniques that do not assume linearity (Figure 5a-d), however adding an ENSO<sup>2</sup> predictor to a multiple linear regression model fills the gap in performance (Figure 5e), and the added value from the more complicated machine learning techniques is small. The physical motivation for such an ENSO<sup>2</sup> predictor was already presented in Garfinkel et al. (2018).

Most of the comprehensive models considered here underestimate the strength of the connection between the QBO and entry water vapor (Figure 1 and 8), with the only exception models which nudge the QBO rather than spontaneously generate it. While this result is disappointing, a notable improvement is evident from the CCMVal2 and the early CCM1 data analyzed by Smalley et al. (2017). We find that models in which the QBO reaches the lower stratosphere tend to perform better at capturing the relationship between entry water and the QBO (consistent with Geller et al., 2016), and QBO propagation into the lowermost stratosphere is crucial also for QBO teleconnections to the subtropical jet, to the Arctic stratosphere, and to tropical convection (Garfinkel and Hartmann, 2011; Garfinkel et al., 2012; Martin et al., 2021).

When considering the total variance of entry water vapor in Figure 5, the out-of-sample R<sup>2</sup> was always less than the in-sample R<sup>2</sup>. The importance of out-of-sample testing is further illustrated in Figure 9. Figure 9a shows the timeseries of zonal



**Figure 9.** a) Deseasonalized and standardized water vapor at 82.54 hPa averaged between 15°S and 15°N (purple) and their MLR reconstruction (red) and residuals, spanning from 1994 to 2019. This MLR analysis was carried out with the Randel and Park (2019) CPT as the only predictor but after detrending the data. The MLR model was trained on the MLS portion of SWOOSH (2005 to 2019, correlation=0.68) and was reconstructed on the full time span (1994-2019, correlation=0.59). b) The residuals from the MLR reconstruction.

mean water vapor from SWOOSH and the MLR reconstruction if the detrended Randel and Park (2019) CPT is used as the sole predictor for detrended entry water and the model is trained over the period 2005 to 2019 only. While the MLR model does a reasonable job of explaining the observed variability over the period used for training the MLR model, the MLR fails when applied out-of-sample to the pre-MLS period (Figure 9b), as reflected by the generally larger values of the residuals. In other words, the model is overfit to the training data, and is not generalizing well to out-of-sample data. This kind of overfitting can be minimized by appropriately tuning the hyperparameters for the ML techniques, though for MLR the only remedy is to perform out-of-sample testing. Hence we strongly recommend that future studies using MLR or similar techniques use some variant of out-of-sample testing to minimize over-fitting.

While the ENSO predictor is only weakly related to zonal mean entry water vapor, ENSO is associated with zonal structure in water vapor in the lower stratosphere. Figure 6b shows that water vapor is enhanced over the Indian Ocean sector, and reduced over the East Pacific sector (see also Figure 4 and 11 of Konopka et al. (2016) for a similar feature at  $\theta = 390\text{K}$ ). This zonal dipole resembles the zonal dipole of temperature in the TTL (e.g. Garfinkel et al., 2013, 2018), with locally warm TTL conditions associated with moistening and locally cold TTL conditions associated with drying. Note that higher in the stratosphere, this zonal dipole goes away. However this result suggests that up to 82hPa, horizontal motions are still not fast enough to fully homogenize tropical water vapor, as might be expected if the tape recorder mechanism was the only relevant mechanism (Mote et al., 1996b). Future work should consider whether other factors (e.g., SST patterns not related to ENSO) may also lead to zonal structure of water vapor in the lower stratosphere. Future work should also consider additional novel

means of interpreting the improvements of the ML fits as compared to MLR, in order to bridge the gap between an improved fit and an understanding of how and why the improvement came about.

Finally, cold point temperatures (CPT) control around 75% of the variance of entry water vapor over the historical record. None of the large scale predictors, neither individually nor in combination, come even close to explaining such a large fraction of the variance (Figure 3). This gap in explainable variance highlights the need to better understand CPT variability on interannual timescales, and perhaps even to build predictive models for the CPT itself.

*Code and data availability.* The CCMI model output was retrieved from the Centre for Environmental Data Analysis (CEDA), the Natural Environment Research Council's Data Repository for Atmospheric Science and Earth Observation (<https://data.ceda.ac.uk/badc/wcrp-ccmi/data/CCMI-1/output>) and NCAR's Climate Data Gateway (<https://www.earthsystemgrid.org/project/CCMI1.html>). All the non-linear ML models and the MLRs are implemented through the Scikit-Learn Python package (Pedregosa et al., 2011)

*Author contributions.* SZZ conceived of and performed the machine learning analysis, and led the analysis. CIG performed the CMIP6/CCMI analysis. AB provided feedback on the ML methods. SZZ and CIG wrote the paper jointly, and feedback was provided by SD and AB. SD also contributed the observational water vapor data.

*Competing interests.* The authors declare that they have no conflict of interest.

*Acknowledgements.* We thank the international modeling groups for making their simulations available for this analysis, the joint WCRP SPARC/IGAC CCMI for organizing and coordinating the model data analysis activity, and the British Atmospheric Data Centre (BADC) for collecting and archiving the CCMI model output. Correspondence should be addressed to Chaim I. Garfinkel (email: [chaim.garfinkel@mail.huji.ac.il](mailto:chaim.garfinkel@mail.huji.ac.il)).

## References

- Avery, M. A., Davis, S. M., Rosenlof, K. H., Ye, H., and Dessler, A.: Large anomalies in lower stratospheric water vapor and ice during the 2015-2016 El Niño, *Nature Geosciences*, 10, <https://doi.org/10.1038/ngeo2961>, 2017.
- Banerjee, A., Chiodo, G., Previdi, M., Ponater, M., Conley, A. J., and Polvani, L. M.: Stratospheric water vapor: an important climate  
5 feedback, *Climate Dynamics*, 53, 1697–1710, 2019.
- Boser, B. E., Guyon, I. M., and Vapnik, V. N.: A training algorithm for optimal margin classifiers, in: *Proceedings of the fifth annual workshop on Computational learning theory*, pp. 144–152, 1992.
- Breiman, L.: Random forests, *Machine learning*, 45, 5–32, 2001.
- Brinkop, S., Dameris, M., Jöckel, P., Garny, H., Lossow, S., and Stiller, G.: The millennium water vapour drop in chemistry–climate model  
10 simulations, *Atmospheric Chemistry and Physics*, 16, 8125–8140, 2016.
- Calvo, N., Garcia, R., Randel, W., and Marsh, D.: Dynamical mechanism for the increase in tropical upwelling in the lowermost tropical stratosphere during warm ENSO events, *Journal of the Atmospheric Sciences*, 67, 2331–2340, 2010.
- Climate Prediction Center, C.: Monitoring and data: current monthly atmospheric and sea surface temperatures index values, <https://www.cpc.ncep.noaa.gov/data/indices/>, 2012.
- 15 Copernicus Climate Change Service, C.: ERA5: Fifth generation of ECMWF atmospheric reanalyses of the global climate, Copernicus Climate Change Service Climate Data Store (CDS), <https://cds.climate.copernicus.eu/cdsapp#!/home>, 2017.
- Davis, S. M., Liang, C. K., and Rosenlof, K. H.: Interannual variability of tropical tropopause layer clouds, *Geophysical Research Letters*, 40, 2862–2866, 2013.
- Davis, S. M., Rosenlof, K. H., Hassler, B., Hurst, D. F., Read, W. G., Vömel, H., Selkirk, H., Fujiwara, M., and Damadeo, R.: The Strato-  
20 spheric Water and Ozone Satellite Homogenized (SWOOSH) database: a long-term database for climate studies, *Earth System Science Data*, 8, 461–490, <https://doi.org/10.5194/essd-8-461-2016>, 2016.
- Dessler, A., Schoeberl, M., Wang, T., Davis, S., Rosenlof, K., and Vernier, J.-P.: Variations of stratospheric water vapor over the past three decades, *Journal of Geophysical Research: Atmospheres*, 119, 12–588, 2014.
- Dessler, A. E., Schoeberl, M. R., Wang, T., Davis, S. M., and Rosenlof, K. H.: Stratospheric water vapor feedback, *Proceedings of the  
25 National Academy of Science*, 110, 18 087–18 091, <https://doi.org/10.1073/pnas.1310344110>, 2013.
- Diallo, M., Riese, M., Birner, T., Konopka, P., Müller, R., Hegglin, M. I., Santee, M. L., Baldwin, M., Legras, B., and Ploeger, F.: Response of stratospheric water vapor and ozone to the unusual timing of El Niño and the QBO disruption in 2015–2016, *Atmospheric Chemistry and Physics*, 18, 13 055–13 073, 2018.
- Domeisen, D. I., Garfinkel, C. I., and Butler, A. H.: The teleconnection of El Niño Southern Oscillation to the stratosphere, *Reviews of  
30 Geophysics*, 57, 5–47, 2019.
- Drdla, K. and Müller, R.: Temperature thresholds for chlorine activation and ozone loss in the polar stratosphere, in: *Annales geophysicae*, vol. 30, pp. 1055–1073, Copernicus GmbH, 2012.
- Dunne, J., Horowitz, L., Held, I., Krasting, J., John, J., Malyshev, S., Shevliakova, E., Adcroft, A., Dupuis, C., Ginoux, P., et al.: The GFDL  
Earth System Model version 4.1 (GFDL-ESM4. 1): Model description and simulation characteristics, *Journal of Advances in Modeling  
35 Earth Systems*, 11, 3167–3211, 2019.
- Durre, I., Vose, R. S., and Wuertz, D. B.: Overview of the integrated global radiosonde archive, *Journal of Climate*, 19, 53–68, 2006.

- Dvortsov, V. L. and Solomon, S.: Response of the stratospheric temperatures and ozone to past and future increases in stratospheric humidity, *Journal of Geophysical Research: Atmospheres*, 106, 7505–7514, 2001.
- Eyring, V., Arblaster, J., Cionni, I., Sedláček, J., Perlwitz, J., Young, P., Bekki, S., Bergmann, D., Cameron-Smith, P., Collins, W. J., et al.: Long-term ozone changes and associated climate impacts in CMIP5 simulations, *Journal of Geophysical Research: Atmospheres*, 118, 5029–5060, <https://doi.org/10.1002/jgrd.50316>, 2013.
- Eyring, V., Bony, S., Meehl, G. A., Senior, C. A., Stevens, B., Stouffer, R. J., and Taylor, K. E.: Overview of the Coupled Model Intercomparison Project Phase 6 (CMIP6) experimental design and organization, *Geoscientific Model Development*, 9, 1937–1958, 2016.
- Forster, P. M. and Shine, K. P.: Stratospheric water vapor changes as a possible contributor to observed stratospheric cooling, *Geophys. Res. Lett.*, 26, 3309–3312, <https://doi.org/10.1029/1999GL010487>, 1999.
- 10 Free, M. and Seidel, D. J.: Observed El Niño–Southern Oscillation temperature signal in the stratosphere, *J. Geophys. Res.*, 114, D23108, <https://doi.org/10.1029/2009JD012420>, 2009.
- Fueglistaler, S. and Haynes, P.: Control of interannual and longer-term variability of stratospheric water vapor, *Journal of geophysical research*, 110, D24 108, 2005a.
- Fueglistaler, S. and Haynes, P.: Control of interannual and longer-term variability of stratospheric water vapor, *Journal of Geophysical*
- 15 *Research: Atmospheres*, 110, 2005b.
- Fueglistaler, S., Dessler, A., Dunkerton, T., Folkins, I., Fu, Q., and Mote, P. W.: Tropical tropopause layer, *Reviews of Geophysics*, 47, 2009.
- Fujiwara, M., Vömel, H., Hasebe, F., Shiotani, M., Ogino, S.-Y., Iwasaki, S., Nishi, N., Shibata, T., Shimizu, K., Nishimoto, E., et al.: Seasonal to decadal variations of water vapor in the tropical lower stratosphere observed with balloon-borne cryogenic frost point hygrometers, *Journal of Geophysical Research: Atmospheres*, 115, 2010.
- 20 Garcia, R. R., Smith, A. K., Kinnison, D. E., Cámara, Á. d. I., and Murphy, D. J.: Modification of the Gravity Wave Parameterization in the Whole Atmosphere Community Climate Model: Motivation and Results, *Journal of the Atmospheric Sciences*, 74, 275–291, 2017.
- Garfinkel, C. I. and Hartmann, D. L.: The influence of the quasi-biennial oscillation on the troposphere in winter in a hierarchy of models. Part II: Perpetual winter WACCM runs, *Journal of the Atmospheric Sciences*, 68, 2026–2041, 2011.
- Garfinkel, C. I., Shaw, T. A., Hartmann, D. L., and Waugh, D. W.: Does the Holton–Tan mechanism explain how the quasi-biennial oscillation
- 25 modulates the Arctic polar vortex?, *Journal of Atmospheric Sciences*, 69, 1713–1733, 2012.
- Garfinkel, C. I., Hurwitz, M. M., Oman, L. D., and Waugh, D. W.: Contrasting effects of Central Pacific and Eastern Pacific El Niño on stratospheric water vapor, *Geophysical Research Letters*, 40, 4115–4120, 2013.
- Garfinkel, C. I., Gordon, A., Oman, L. D., Li, F., Davis, S., and Pawson, S.: Nonlinear response of tropical lower-stratospheric temperature and water vapor to ENSO, *Atmospheric chemistry and physics*, 18, 4597–4615, 2018.
- 30 Garfinkel, C. I., Harari, O., Ziskin Ziv, S., Rao, J., Morgenstern, O., Zeng, G., Tilmes, S., Kinnison, D., O’Connor, F. M., Butchart, N., et al.: Influence of the El Niño–Southern Oscillation on entry stratospheric water vapor in coupled chemistry–ocean CCM1 and CMIP6 models, *Atmospheric Chemistry and Physics*, 21, 3725–3740, 2021.
- Geller, M. A., Zhou, T., Shindell, D., Ruedy, R., Aleinov, I., Nazarenko, L., Tausnev, N., Kelley, M., Sun, S., Cheng, Y., et al.: Modeling the QBO—Improvements resulting from higher-model vertical resolution, *Journal of advances in modeling earth systems*, 8, 1092–1105,
- 35 2016.
- Gettelman, A., Randel, W., Massie, S., Wu, F., Read, W., and Russell III, J.: El Niño as a natural experiment for studying the tropical tropopause region, *Journal of climate*, 14, 3375–3392, 2001.

- Gottelman, A., Mills, M. J., Kinnison, D. E., Garcia, R. R., Smith, A. K., Marsh, D. R., Tilmes, S., Vitt, F., Bardeen, C. G., McInerny, J., Liu, H.-L., Solomon, S. C., Polvani, L. M., Emmons, L. K., Lamarque, J.-F., Richter, J. H., Glanville, A. S., Bacmeister, J. T., Phillips, A. S., Neale, R. B., Simpson, I. R., DuVivier, A. K., Hodzic, A., and Randel, W. J.: The Whole Atmosphere Community Climate Model Version 6 (WACCM6), *Journal of Geophysical Research: Atmospheres*, 124, 12 380–12 403, <https://doi.org/10.1029/2019JD030943>, <https://agupubs.onlinelibrary.wiley.com/doi/abs/10.1029/2019JD030943>, 2019.
- 5 <https://agupubs.onlinelibrary.wiley.com/doi/abs/10.1029/2019JD030943>, 2019.
- Hardiman, S. C., Butchart, N., O'Connor, F. M., and Rumbold, S. T.: The Met Office HadGEM3-ES chemistry–climate model: evaluation of stratospheric dynamics and its impact on ozone, *Geoscientific Model Development*, 10, 1209–1232, <https://doi.org/10.5194/gmd-10-1209-2017>, <https://www.geosci-model-dev.net/10/1209/2017/>, 2017.
- Hatsushika, H. and Yamazaki, K.: Stratospheric drain over Indonesia and dehydration within the tropical tropopause layer diagnosed by air parcel trajectories, *Journal of Geophysical Research: Atmospheres*, 108, 2003.
- Hersbach, H., Bell, B., Berrisford, P., Hirahara, S., Horányi, A., Muñoz-Sabater, J., Nicolas, J., Peubey, C., Radu, R., Schepers, D., Simmons, A., Soci, C., Abdalla, S., Abellan, X., Balsamo, G., Bechtold, P., Biavati, G., Bidlot, J., Bonavita, M., De Chiara, G., Dahlgren, P., Dee, D., Diamantakis, M., Dragani, R., Flemming, J., Forbes, R., Fuentes, M., Geer, A., Haimberger, L., Healy, S., Hogan, R. J., Hólm, E., Janisková, M., Keeley, S., Laloyaux, P., Lopez, P., Lupu, C., Radnoti, G., de Rosnay, P., Rozum, I., Vamborg, F., Villaume, S., and Thépaut, J.-N.: The ERA5 Global Reanalysis, *Quarterly Journal of the Royal Meteorological Society*, n/a, <https://doi.org/10.1002/qj.3803>, <https://rmets.onlinelibrary.wiley.com/doi/abs/10.1002/qj.3803>, 2020.
- 15 <https://rmets.onlinelibrary.wiley.com/doi/abs/10.1002/qj.3803>, 2020.
- Hinton, G. E.: Connectionist learning procedures, in: *Machine learning*, pp. 555–610, Elsevier, 1990.
- Jöckel, P., Tost, H., Pozzer, A., Kunze, M., Kirner, O., Brenninkmeijer, C. A. M., Brinkop, S., Cai, D. S., Dyroff, C., Eckstein, J., Frank, F., Garny, H., Gottschaldt, K.-D., Graf, P., Grewe, V., Kerkweg, A., Kern, B., Matthes, S., Mertens, M., Meul, S., Neumaier, M., Nützel, M., Oberländer-Hayn, S., Ruhnke, R., Runde, T., Sander, R., Scharffe, D., and Zahn, A.: Earth System Chemistry integrated Modelling (ESCiMo) with the Modular Earth Submodel System (MESSy) version 2.51, *Geoscientific Model Development*, 9, 1153–1200, <https://doi.org/10.5194/gmd-9-1153-2016>, <https://www.geosci-model-dev.net/9/1153/2016/>, 2016.
- 20 <https://doi.org/10.5194/gmd-9-1153-2016>, <https://www.geosci-model-dev.net/9/1153/2016/>, 2016.
- Kawatani, Y., Lee, J. N., and Hamilton, K.: Interannual Variations of Stratospheric Water Vapor in MLS Observations and Climate Model Simulations, *Journal of the Atmospheric Sciences*, 71, 4072–4085, <https://doi.org/10.1175/JAS-D-14-0164.1>, 2014.
- 25 Keeble, J., Hassler, B., Banerjee, A., Checa-Garcia, R., Chiodo, G., Davis, S., Eyring, V., Griffiths, P. T., Morgenstern, O., Nowack, P., et al.: Evaluating stratospheric ozone and water vapor changes in CMIP6 models from 1850–2100, *Atmospheric Chemistry and Physics Discussions*, pp. 1–68, 2020.
- Konopka, P., Ploeger, F., Tao, M., and Riese, M.: Zonally resolved impact of ENSO on the stratospheric circulation and water vapor entry values, *Journal of Geophysical Research: Atmospheres*, 121, 2016.
- 30 Liang, C., Eldering, A., Gottelman, A., Tian, B., Wong, S., Fetzer, E., and Liou, K.: Record of tropical interannual variability of temperature and water vapor from a combined AIRS-MLS data set, *Journal of Geophysical Research: Atmospheres*, 116, 2011.
- Lundberg, S. M. and Lee, S.-I.: A Unified Approach to Interpreting Model Predictions, in: *Advances in Neural Information Processing Systems 30*, edited by Guyon, I., Luxburg, U. V., Bengio, S., Wallach, H., Fergus, R., Vishwanathan, S., and Garnett, R., pp. 4765–4774, Curran Associates, Inc., <http://papers.nips.cc/paper/7062-a-unified-approach-to-interpreting-model-predictions.pdf>, 2017.
- 35 Lundberg, S. M., Erion, G., Chen, H., DeGrave, A., Prutkin, J. M., Nair, B., Katz, R., Himmelfarb, J., Bansal, N., and Lee, S.-I.: From local explanations to global understanding with explainable AI for trees, *Nature Machine Intelligence*, 2, 2522–5839, 2020.
- Martin, Z., Orbe, C., Wang, S., and Sobel, A.: The MJO–QBO Relationship in a GCM with Stratospheric Nudging, *Journal of Climate*, 34, 4603–4624, 2021.

- Meinshausen, M., Smith, S. J., Calvin, K., Daniel, J. S., Kainuma, M., Lamarque, J., Matsumoto, K., Montzka, S., Raper, S., Riahi, K., et al.: The RCP greenhouse gas concentrations and their extensions from 1765 to 2300, *Climatic change*, 109, 213–241, 2011.
- Molnar, C.: Interpretable Machine Learning, <https://christophm.github.io/interpretable-ml-book/shap.html>, 2019.
- 5 Morgenstern, O., Braesicke, P., O'Connor, F. M., Bushell, A. C., Johnson, C. E., Osprey, S. M., and Pyle, J. A.: Evaluation of the new UKCA climate-composition model – Part 1: The stratosphere, *Geoscientific Model Development*, 2, 43–57, <https://doi.org/10.5194/gmd-2-43-2009>, <https://www.geosci-model-dev.net/2/43/2009/>, 2009.
- Morgenstern, O., Hegglin, M. I., Rozanov, E., O'Connor, F. M., Abraham, N. L., Akiyoshi, H., Archibald, A. T., Bekki, S., Butchart, N., Chipperfield, M. P., Deushi, M., Dhomse, S. S., Garcia, R. R., Hardiman, S. C., Horowitz, L. W., Jöckel, P., Josse, B., Kinnison, D., Lin, M., Mancini, E., Manyin, M. E., Marchand, M., Marécal, V., Michou, M., Oman, L. D., Pitari, G., Plummer, D. A., Revell, L. E., 10 Saint-Martin, D., Schofield, R., Stenke, A., Stone, K., Sudo, K., Tanaka, T. Y., Tilmes, S., Yamashita, Y., Yoshida, K., and Zeng, G.: Review of the global models used within phase 1 of the Chemistry–Climate Model Initiative (CCMI), *Geoscientific Model Development*, 10, 639–671, <https://doi.org/10.5194/gmd-10-639-2017>, <https://www.geosci-model-dev.net/10/639/2017/>, 2017.
- Mote, P. W., Rosenlof, K. H., McIntyre, M. E., Carr, E. S., Gille, J. C., Holton, J. R., Kinnersley, J. S., Pumphrey, H. C., Russell III, J. M., and Waters, J. W.: An atmospheric tape recorder: The imprint of tropical tropopause temperatures on stratospheric water vapor, *Journal of* 15 *Geophysical Research: Atmospheres*, 101, 3989–4006, 1996a.
- Mote, P. W., Rosenlof, K. H., McIntyre, M. E., Carr, E. S., Gille, J. C., Holton, J. R., Kinnersley, J. S., Pumphrey, H. C., Russell III, J. M., and Waters, J. W.: An atmospheric tape recorder: The imprint of tropical tropopause temperatures on stratospheric water vapor, *Journal of Geophysical Research: Atmospheres*, 101, 3989–4006, 1996b.
- Niwano, M., Yamazaki, K., and Shiotani, M.: Seasonal and QBO variations of ascent rate in the tropical lower stratosphere as inferred from 20 UARS HALOE trace gas data, *Journal of Geophysical Research: Atmospheres*, 108, 2003.
- Orbe, C., Waugh, D. W., Yang, H., Lamarque, J.-F., Tilmes, S., and Kinnison, D. E.: Tropospheric transport differences between models using the same large-scale meteorological fields, *Geophysical Research Letters*, 44, 1068–1078, 2017.
- Orbe, C., Yang, H., Waugh, D. W., Zeng, G., Morgenstern, O., Kinnison, D. E., Lamarque, J.-F., Tilmes, S., Plummer, D. A., Scinocca, J. F., et al.: Large-scale tropospheric transport in the Chemistry–Climate Model Initiative (CCMI) simulations, *Atmospheric Chemistry and* 25 *Physics*, 18, 7217–7235, 2018.
- Orr, G. B. and Müller, K.-R.: *Neural networks: tricks of the trade*, Springer, 2003.
- Pedregosa, F., Varoquaux, G., Gramfort, A., Michel, V., Thirion, B., Grisel, O., Blondel, M., Prettenhofer, P., Weiss, R., Dubourg, V., Vanderplas, J., Passos, A., Cournapeau, D., Brucher, M., Perrot, M., and Duchesnay, E.: Scikit-learn: Machine Learning in Python, *Journal of Machine Learning Research*, 12, 2825–2830, 2011.
- 30 Randel, W. and Park, M.: Diagnosing observed stratospheric water vapor relationships to the cold point tropical tropopause, *Journal of Geophysical Research: Atmospheres*, 124, 7018–7033, 2019.
- Randel, W. J., Wu, F., and Gaffen, D. J.: Interannual variability of the tropical tropopause derived from radiosonde data and NCEP reanalyses, *Journal of Geophysical Research*, 105, 15–509, 2000.
- Randel, W. J., Wu, F., Voemel, H., Nedoluha, G. E., and Forster, P.: Decreases in stratospheric water vapor after 2001: Links to changes in 35 the tropical tropopause and the Brewer–Dobson circulation, *Journal of Geophysical Research: Atmospheres*, 111, 2006.
- Randel, W. J., Garcia, R. R., Calvo, N., and Marsh, D.: ENSO influence on zonal mean temperature and ozone in the tropical lower stratosphere, *Geophysical Research Letters*, 36, 2009.

- Rao, J., Garfinkel, C. I., and White, I. P.: Impact of the Quasi-Biennial Oscillation on the Northern Winter Stratospheric Polar Vortex in CMIP5/6 Models, *Journal of Climate*, 33, 4787–4813, <https://doi.org/10.1175/JCLI-D-19-0663.1>, <https://doi.org/10.1175/JCLI-D-19-0663.1>, 2020a.
- Rao, J., Garfinkel, C. I., and White, I. P.: How does the Quasi-Biennial Oscillation affect the boreal winter tropospheric circulation in CMIP5/6 models?, *Journal of Climate*, 33, 8975–8996, 2020b.
- Reid, G. C. and Gage, K. S.: Interannual variations in the height of the tropical tropopause, *Journal of Geophysical Research: Atmospheres*, 90, 5629–5635, 1985.
- Richter, J. H., Anstey, J. A., Butchart, N., Kawatani, Y., Meehl, G. A., Osprey, S., and Simpson, I. R.: Progress in Simulating the Quasi-Biennial Oscillation in CMIP Models, *Journal of Geophysical Research: Atmospheres*, 125, e2019JD032362, 2020.
- 10 Robrecht, S., Vogel, B., Tilmes, S., and Müller, R.: Potential of future stratospheric ozone loss in the midlatitudes under global warming and sulfate geoengineering, *Atmospheric Chemistry and Physics*, 21, 2427–2455, <https://doi.org/10.5194/acp-21-2427-2021>, <https://acp.copernicus.org/articles/21/2427/2021/>, 2021.
- Scherllin-Pirscher, B., Deser, C., Ho, S.-P., Chou, C., Randel, W., and Kuo, Y.-H.: The vertical and spatial structure of ENSO in the upper troposphere and lower stratosphere from GPS radio occultation measurements, *Geophysical Research Letters*, 39, n/a–n/a, <https://doi.org/10.1029/2012GL053071>, <http://dx.doi.org/10.1029/2012GL053071>, 2012.
- 15 Séférian, R., Nabat, P., Michou, M., Saint-Martin, D., Voldoire, A., Colin, J., Decharme, B., Delire, C., Berthet, S., Chevallier, M., et al.: Evaluation of CNRM Earth System Model, CNRM-ESM2-1: Role of Earth System Processes in Present-Day and Future Climate, *Journal of Advances in Modeling Earth Systems*, 11, 4182–4227, 2019.
- Sellar, A. A., Jones, C. G., Mulcahy, J. P., Tang, Y., Yool, A., Wiltshire, A., O'Connor, F. M., Stringer, M., Hill, R., Palmieri, J., Woodward, S., de Mora, L., Kuhlbrodt, T., Rumbold, S. T., Kelley, D. I., Ellis, R., Johnson, C. E., Walton, J., Abraham, N. L., Andrews, M. B., Andrews, T., Archibald, A. T., Berthou, S., Burke, E., Blockley, E., Carslaw, K., Dalvi, M., Edwards, J., Folberth, G. A., Gedney, N., Griffiths, P. T., Harper, A. B., Hendry, M. A., Hewitt, A. J., Johnson, B., Jones, A., Jones, C. D., Keeble, J., Liddicoat, S., Morgenstern, O., Parker, R. J., Predoi, V., Robertson, E., Siahann, A., Smith, R. S., Swaminathan, R., Woodhouse, M. T., Zeng, G., and Zerroukat, M.: UKESM1: Description and Evaluation of the U.K. Earth System Model, *Journal of Advances in Modeling Earth Systems*, 11, 4513–4558, <https://doi.org/10.1029/2019MS001739>, 2019.
- 25 Simpson, I. R., Shepherd, T. G., and Sigmond, M.: Dynamics of the lower stratospheric circulation response to ENSO, *Journal of the Atmospheric Sciences*, 68, 2537–2556, 2011.
- Smalley, K. M., Dessler, A. E., Bekki, S., Deushi, M., Marchand, M., Morgenstern, O., Plummer, D. A., Shibata, K., Yamashita, Y., and Zeng, G.: Contribution of different processes to changes in tropical lower-stratospheric water vapor in chemistry–climate models, *Atmospheric Chemistry and Physics*, 17, 8031–8044, 2017.
- 30 Solomon, S.: Stratospheric ozone depletion: A review of concepts and history, *Reviews of Geophysics*, 37, 275–316, 1999.
- Solomon, S., Garcia, R. R., Rowland, F. S., and Wuebbles, D. J.: On the depletion of Antarctic ozone, *nature*, 321, 755–758, <https://doi.org/10.1038/321755a0>, 1986.
- Solomon, S., Rosenlof, K. H., Portmann, R. W., Daniel, J. S., Davis, S. M., Sanford, T. J., and Plattner, G.-K.: Contributions of Stratospheric Water Vapor to Decadal Changes in the Rate of Global Warming, *Science*, 327, 1219–, <https://doi.org/10.1126/science.1182488>, 2010.
- Stenke, A. and Grewe, V.: Simulation of stratospheric water vapor trends: impact on stratospheric ozone chemistry, *Atmospheric Chemistry and Physics*, 5, 1257–1272, <https://doi.org/10.5194/acp-5-1257-2005>, <https://acp.copernicus.org/articles/5/1257/2005/>, 2005.



- Tian, E. W., Su, H., Tian, B., and Jiang, J. H.: Interannual variations of water vapor in the tropical upper troposphere and the lower and middle stratosphere and their connections to ENSO and QBO, *Atmospheric Chemistry and Physics*, 19, 9913–9926, 2019.
- Tian, W., Chipperfield, M. P., and Lü, D.: Impact of increasing stratospheric water vapor on ozone depletion and temperature change, *Advances in Atmospheric Sciences*, 26, 423–437, 2009.
- 5 Tilmes, S., Lamarque, J.-F., Emmons, L. K., Kinnison, D. E., Marsh, D., Garcia, R. R., Smith, A. K., Neely, R. R., Conley, A., Vitt, F., Val Martin, M., Tanimoto, H., Simpson, I., Blake, D. R., and Blake, N.: Representation of the Community Earth System Model (CESM1) CAM4-chem within the Chemistry-Climate Model Initiative (CCMI), *Geoscientific Model Development*, 9, 1853–1890, <https://doi.org/10.5194/gmd-9-1853-2016>, <https://www.geosci-model-dev.net/9/1853/2016/>, 2016.
- Vapnik, V., Guyon, I., and Hastie, T.: Support vector machines, *Mach. Learn.*, 20, 273–297, 1995.
- 10 Wang, Y., Su, H., Jiang, J. H., Livesey, N. J., Santee, M. L., Froidevaux, L., Read, W. G., and Anderson, J.: The linkage between stratospheric water vapor and surface temperature in an observation-constrained coupled general circulation model, *Climate dynamics*, 48, 2671–2683, 2017.
- World Meteorological Organization: Scientific Assessment of Ozone Depletion: 2010, Global Ozone Research and Monitoring Project Rep. No. 52, 2011.
- 15 Ye, H., Dessler, A. E., and Yu, W.: Effects of convective ice evaporation on interannual variability of tropical tropopause layer water vapor, *Atmospheric Chemistry and Physics*, 18, 4425–4437, 2018.
- Yook, S., Thompson, D. W. J., Solomon, S., and Kim, S.-Y.: The key role of coupled chemistry-climate interactions in tropical stratospheric temperature variability, *Journal of Climate*, <https://doi.org/10.1175/JCLI-D-20-0071.1>, <https://doi.org/10.1175/JCLI-D-20-0071.1>, 2020.
- Yuan, W., Geller, M. A., and Love, P. T.: ENSO influence on QBO modulations of the tropical tropopause, *Quarterly Journal of the Royal Meteorological Society*, 140, 1670–1676, <https://doi.org/10.1002/qj.2247>, <https://rmets.onlinelibrary.wiley.com/doi/abs/10.1002/qj.2247>, 2014.
- 20 Yukimoto, S., Adachi, Y., Hosaka, M., Sakami, T., Yoshimura, H., Hirabara, M., Tanaka, T. Y., Shindo, E., Tsujino, H., Deushi, M., et al.: A new global climate model of the Meteorological Research Institute: MRI-CGCM3—model description and basic performance—, *Journal of the Meteorological Society of Japan. Ser. II*, 90, 23–64, 2012.
- 25 Yukimoto, S., Kawai, H., Koshiro, T., Oshima, N., Yoshida, K., Urakawa, S., Tsujino, H., Deushi, M., Tanaka, T., Hosaka, M., et al.: The Meteorological Research Institute Earth System Model version 2.0, MRI-ESM2. 0: Description and basic evaluation of the physical component, *Journal of the Meteorological Society of Japan. Ser. II*, 2019.
- Yulaeva, E. and Wallace, J. M.: The signature of ENSO in global temperature and precipitation fields derived from the microwave sounding unit, *Journal of climate*, 7, 1719–1736, 1994.
- 30 Zhou, X. L., Geller, M. A., and Zhang, M. H.: Tropical cold point tropopause characteristics derived from ECMWF reanalyses and soundings, *Journal of climate*, 14, 1823–1838, 2001.
- Zhou, X. L., Geller, M. A., and Zhang, M.: Temperature fields in the tropical tropopause transition layer, *Journal of climate*, 17, 2901–2908, 2004.