

Differentiation of coarse-mode anthropogenic, marine and dust particles in the high Arctic Islands of Svalbard

Congbo Song¹, Manuel Dall'Osto², Angelo Lupi³, Mauro Mazzola³, Rita Traversi^{4,5}, Silvia Becagli^{4,5}, Stefania Gilardoni³, Stergios Vratolis⁶, Karl Espen Yttri⁷, David C. S. Beddows¹, Julia Schmale⁸, James Brean¹, Agung Ghani Kramawijaya¹, Roy M. Harrison^{1,a}, and Zongbo Shi¹

¹School of Geography Earth and Environment Sciences, University of Birmingham, Birmingham B15 2TT, UK

²Institute of Marine Science, Consejo Superior de Investigaciones Científicas (CSIC), Barcelona, Spain

³National Research Council of Italy, Institute of Polar Sciences (CNR-ISP), Via P. Gobetti 101, 40129 Bologna, Italy

⁴Department of Chemistry "Ugo Schiff", University of Florence, Via della Lastruccia 3, 50019 Sesto Fiorentino, Italy

⁵National Research Council of Italy, Institute of Polar Sciences (CNR-ISP), Via Torino 155, 30172 Venice-Mestre, Italy

⁶ERL, Institute of Nuclear & Radiological Sciences & Technology, Energy & Safety, National Centre of Scientific Research Demokritos, 15310 Ag. Paraskevi, Attiki, Greece

⁷NILU -Norwegian Institute for Air Research, P.O. Box 100, N-2027 Kjeller, Norway Kjeller, Norway

⁸School of Architecture, Civil and Environmental Engineering, École Polytechnique Fédérale de Lausanne, Lausanne, Switzerland

^aalso at: Department of Environmental Sciences/Center of Excellence in Environmental Studies, King Abdulaziz University, P.O. Box 80203, Jeddah, 21589, Saudi Arabia

Correspondence: Manuel Dall'Osto (dallosto@icm.csic.es) and Zongbo Shi (z.shi@bham.ac.uk)

Abstract. Understanding aerosol-cloud-climate interactions in the Arctic is key to predict the climate in this rapidly changing region. Whilst many studies have focused on submicron aerosol (diameter less than 1 μm), relatively little is known about the climate relevance of supermicron aerosol (diameter above 1 μm). Here, we present a cluster analysis of multiyear (2015-2019) aerodynamic volume size distributions with diameter ranging from 0.5 to 20 μm measured continuously at the Gruvebadet Observatory in the Svalbard archipelago. Together with aerosol chemical composition data from several online and offline measurements, we apportioned the occurrence of the coarse-mode aerosols ~~to~~ [during the study period \(mainly from March to October\)](#) to anthropogenic (two sources, 27%) and natural (three sources, 73%) origins. Specifically, two clusters are related to *Arctic haze* with high levels of black carbon, sulfate and accumulation mode (0.1-1 μm) aerosol. The first cluster (9%) is attributed to ammonium sulfate-rich *Arctic haze* particles, whereas the second one (18%) to larger-mode aerosol mixed with sea salt. The three natural aerosol clusters were: open ocean sea spray aerosol (34%), mineral dust (7%), and an unidentified source of sea spray-related aerosol (32%). The results suggest that sea spray-related aerosol in polar regions may be more complex than previously thought due to short/long-distance origins and mixtures with *Arctic haze*, biogenic and likely [snow-blowing blowing snow](#) aerosols. Studying supermicron natural aerosol in the Arctic is imperative for understanding the impacts of changing natural processes on Arctic aerosol.

The Arctic is one of the most sensitive regions of the world, and the Arctic environment is experiencing tremendous changes at a much faster pace than lower latitudes (Landrum and Holland, 2020). The rising temperature, sea ice melt and local air pollutant emissions (Schmale et al., 2018) in the Arctic all exert a broad range of impacts on natural and anthropogenic processes, thereby changing Arctic aerosol properties and consequently radiative forcing and cloud formation (Abbatt et al., 2019; Willis et al., 2018). A better knowledge of Arctic aerosol is an essential requisite for narrowing the uncertainty in assessing the impacts of aerosols on cloud formation and climate change (Schmale et al., 2021). It is known that aerosol-cloud-climate interactions depend upon aerosol properties, such as concentration, size distribution and chemical composition. In particular, the size distribution of aerosols is important as size dictates many of the direct and indirect climate forcing properties of aerosols, as well as indicating their sources and atmospheric lifetimes.

There are several studies that have investigated particle number size distributions at high Arctic sites (Dall'Osto et al., 2019; Freud et al., 2017; Asmi et al., 2016), but the spectra generally measured by Scanning Mobility Particle Sizers (SMPS) are usually limited to aerosol diameters of less than 1 μm , i.e., submicron aerosol. These studies are highly informative, but the measured submicron aerosols are unlikely to capture some important aerosol sources that are mainly present in the supermicron mode (i.e., above 1 μm diameter) decisive for the volume/mass concentration basis, notably sea spray and mineral dust (Quinn et al., 2015; Ricard et al., 2002; Porter and Clarke, 1997; Li and Winchester, 1990). Recently, a long-term trend analysis demonstrated that aerosol observed at the Zeppelin Observatory in Svalbard has become more dominated by coarse mode over time, most likely due the result of increases in the relative amount of sea spray aerosol (Heslin-Rees et al., 2020).

Sea spray aerosol (SSA) is primarily generated from the wave breaking process resulting in bubble bursting at the sea surface, and is a significant contributor to the Arctic aerosol mass burden (Quinn et al., 2002; Fitzgerald, 1991). SSA originate from film drops (fragment of the collapsed cap), jet drops (shot from the cavity formed after the bubble bursting) and spume drops (torn of the wave crest by sufficient high wind stress) (Feng et al., 2017; Quinn et al., 2015). The film drops are evaporated in the atmosphere and generate submicron SSA while the jet and spume drops can produce supermicron SSA (O'Dowd et al., 1997). According to size-resolved chemical composition of individual SSA reproduced in a laboratory facility, submicron SSA is overwhelmingly dominated by organic matter and sea salt mixed with organic matter while supermicron SSA mainly consists of sea salt and biological species (Prather et al., 2013). This suggests that understanding supermicron aerosol in the Arctic is of great value for understanding not only sea salt but also biological processes. Contrary to other global oceans, in the Arctic sea salt can be generated from open water, open leads in the sea ice (Kirpes et al., 2019; May et al., 2016) and salty blowing snow (Frey et al., 2020; Huang and Jaeglé, 2017). All sources can contribute significantly to the Arctic sea salt budget and they have different seasonality. With rapidly declining Arctic sea ice extent and snow coverage while increasing ocean areas, the chemical nature and size distribution of SSA in the Arctic are likely to change, which potentially alters cloud condensation nuclei (CCN) activity (Collins et al., 2013), ice nucleating capacity (Wilson et al., 2015; Russell, 2015) and radiative forcing (Struthers et al., 2011). Murphy et al. (2019) recently also reported a source of sea-salt aerosol over pack ice that is distinct from that over open water, stressing that sea spray aerosols in the Arctic regions may be more complex than previously assumed.

Mineral dust is important owing to its ability to affect the radiation balance of the atmosphere as well as the surface energy balance by its presence in layers over high albedo surfaces or deposited on snow and ice (Kylling et al., 2018; Stone et al., 2007) (Sanchez-Marroquin et al., 2020; Kylling et al., 2018; Stone et al., 2007). They can also serve as ice nucleating particles and thus altering the cloud properties and lifetime (Tobo et al., 2019). Sharma et al. (2019) found dust components in the Arctic to be most abundant in late summer/early autumn, whereas a less abundant but still significant peak was observed in spring. The atmospheric dust load in the Arctic is presumably influenced by high-latitude local dust emissions (Tobo et al., 2019; Bullard et al., 2016) and long-range transported windblown dust from low-mid latitudes (Sirois and Barrie, 1999). Mineral species in Arctic aerosol were reported to be mainly present in the supermicron mode with mean aerodynamic diameter at $\sim 5 \mu\text{m}$ on a volume/mass concentration basis (Ricard et al., 2002). The frequency of windblown dust events is projected to increase in the Arctic as a consequence of the rapid and widespread retreat of glaciers leading to more ice free terrain (proglacial fields or floodplains where fine glaciofluvial sediment deposits are exposed to wind) (Tobo et al., 2019; Bullard et al., 2016).

Measuring supermicron aerosol in the Arctic is important to understand the chemical nature of SSA and mineral dust, their potential sources as well as their impacts on aerosol-radiation and aerosol-cloud-interactions in the rapidly changing Arctic. Several studies have measured supermicron aerosol in the Arctic environment using multi-stage cascade impactors combined with offline chemical analysis (Ghahremaninezhad et al., 2016; May et al., 2016; Ricard et al., 2002; Li and Winchester, 1990), and by single-particle analysis (Tobo et al., 2019; Kirpes et al., 2019; Yu et al., 2019; Kirpes et al., 2018; Chi et al., 2015; Geng et al., 2010). These measurements were typically carried out for short periods in a particular season, serving specific research questions, providing limited understanding of the seasonal cycle of the supermicron aerosol in the Arctic. One exception is the multiyear (2006-2009) measurements of submicron and supermicron aerosols by May et al. (2016), who found that open leads contribute to local Arctic SSA emissions year-round. The aerosol size distribution, seasonal, and interannual variations of the supermicron aerosol remain open questions due to the low time resolution as well as the limited aerosol size bins.

To improve current understanding of the seasonal cycle and interannual variations of the submicron and supermicron aerosols, as well as the roles of natural and anthropogenic aerosols in the Arctic, in situ aerosol aerodynamic size distributions up to $20 \mu\text{m}$ were measured from 2015 to 2019 at an hourly time resolution at a background site in Svalbard, i.e. Gruvebadet. A *k*-means clustering technique was applied to the size distribution to separate major aerosol types (Lachlan-Cope et al., 2020; Dall'Osto et al., 2019; Freud et al., 2017; Beddows et al., 2014, 2009). In addition, the aerosol size distributions are complemented by aerosol chemical composition data from several online/offline measurements to distinguish anthropogenic and natural aerosol types as well as their potential sources. This study adds to our knowledge of supermicron aerosol in the rapidly changing Arctic, and it is a complement to the submicron aerosol number size distributions in the European Arctic presented by Dall'Osto et al. (2019). Future studies will look at receptor modelling of both aerosol size distributions and chemical composition in the Arctic.

80 2 Materials and Methods

2.1 Sampling and measurements

Five years (from 2015 to 2019) of aerosol sampling and measurements were carried out at the Gruevbadet (GVB) Observatory (78.918°N, 11.895°E; 61 m above mean sea level), located at about 800 m south-west from the village of Ny-Ålesund in the Svalbard archipelago. In the north-east direction towards the Ny-Ålesund research village, a clean area was established and motorized activity and other potentially contaminant activities were forbidden. The geographic location of GVB and the dominant winds ensure a minimal anthropogenic contamination from local emissions (Udisti et al., 2016), whilst being able to capture long-range transported pollution air masses.

The aerosol size distribution was measured by an Aerodynamic Particle Sizer (APS; TSI model 3321, 52 channels) (Traversi et al., 2020). The APS spectrometer provides real-time aerodynamic measurements of particles from 0.5 to 20 μm diameter. Typical single-channel uncertainty in aerosol number concentration measured by the APS is $\pm 10\%$ according to the specification sheets. The aerosol size distribution was usually measured from March to September (see Fig. 1), with approximately 21200 hourly observations in total from 2015 to 2019, corresponding to approximately 909 and 140 aerosol size distributions after averaging to daily and weekly observations, respectively. Aerosol light absorption was simultaneously measured at three wavelengths (i.e., 467 nm, 530 nm and 660 nm) by a Particle Soot Absorption Photometer (PSAP, Radiance Research) at a 1-minute time resolution and then averaged into hourly observations. The raw data from PASP were corrected according to Virkkula et al. (2005). Aerosol absorption coefficient is directly proportional to the concentration of equivalent black carbon (eBC) (Petzold et al., 2013), a marker of anthropogenic and wildfire emissions in the Arctic (Abbatt et al., 2019). Details regarding the PSAP and eBC measurements at the site are described by Gilardoni et al. (2020). The APS and PSAP are attached to a same inlet, which follows EUSAAR-ACRIS protocol since 2011 and runs about 4 m above the ground. Further information can be found elsewhere (Lupi et al., 2016).

Aerosol filter samples were collected daily from February 2015 to August 2018, using a Tecora SkyPost sequential sampler equipped with a PM_{10} sampling head, operating following the EN 12341 European protocol. PM_{10} was collected on Teflon filters (Pall Corp., 47 mm diameter, 2 μm porosity, collection efficiency 99.6%); 606 daily samples were analysed of which 570 samples overlapped with the aerosol size distribution measurements. Samples were handled in a clean room (class 10,000), under a laminar flow hood (class 100) to minimize contamination. One half of each filter sample was extracted in an ultrasonic bath (15 min) using ultrapure water (MilliQ, 18 $\text{M}\Omega$ cm, 12 mL) for subsequent analysis of inorganic anions (Cl^- , Br^- , NO_3^- and SO_4^{2-}) and cations (Na^+ , NH_4^+ , K^+ , Mg^{2+} and Ca^{2+}), and selected organic anions (methanesulfonate (MSA) and oxalate) on a three Dionex ion chromatography (IC) system, equipped with electrochemical-suppressed conductivity detectors. The configuration of the three IC-system is described by Giardi et al. (2016) and Udisti et al. (2016, 2012). Analytic uncertainty is typically below 5%.

Meteorological parameters, including wind speed, wind direction, relative humidity and ambient temperature, were recorded hourly by a Vaisala thermo-hygrometer model HMP45AC and a Young Marine wind sensor model Wind Monitor 05106 at

the height of 10 m (a.g.l.) on the Amundsen-Nobile Climate Change Tower (Mazzola et al., 2016) in the neighborhood of Gruevbadet observatory.

115 2.2 *k*-means cluster analysis

Cluster analysis is commonly used to interpret particle number size distribution measurements (Lachlan-Cope et al., 2020; Dall'Osto et al., 2019; Freud et al., 2017; Beddows et al., 2014, 2009). As we mainly focus on supermicron aerosol, we conduct cluster analysis of the aerosol volume size distribution rather than aerosol number size distribution using a *k*-means clustering algorithm following a standard procedure by Beddows et al. (2014). The underlying principle of the *k*-means clustering is to
 120 minimize the sum of squared Euclidean distances between each data point and the corresponding cluster centres (the average spectra of the subgroup). This allows for dividing the whole dataset into a predefined number of subgroups, which are as different as possible from each other, and as coincident as possible within themselves.

To cluster the spectra modes irrespective of the magnitude of the concentrations, the aerosol size distributions were pre-processed using min-max normalization:

$$125 \quad y_i = \frac{x_i - \min_{1 \leq j \leq n} \{x_j\}}{\max_{1 \leq j \leq n} \{x_j\} - \min_{1 \leq j \leq n} \{x_j\}} \quad (1)$$

where x and y are the absolute and normalized concentrations, respectively. The subscript i and j denoted size bins. n is the number of size bins. The normalized concentrations were then clustered using *k*-means.

2.3 Source apportionment of sulfate

Source apportionment of sulfate was carried out following Udusti et al. (2016) to understand potential sources of sulfate for the
 130 identified aerosol clusters. We first apportion Na^+ and Ca^{2+} to sea salt and non-sea salt fractions. In general, Na^+ and Ca^{2+} are considered as proxies for sea salt and mineral dust, respectively. However, a small amount of Na^+ -containing aerosol in remote regions could be brought in by non-sea salt sources and some fractions of Ca^{2+} -containing aerosol originate from sea spray (Salter et al., 2016; Bigler et al., 2006). Assuming a $\text{Ca}^{2+}/\text{Na}^+$ ratio (w/w) of 0.038 for sea water and 1.78 for mineral dust (Bowen et al., 1979), the measured total Na^+ and Ca^{2+} can be apportioned to a sea salt (ss) fraction and a non-sea salt
 135 (shortened to nss) fraction, calculated by:

$$ss\text{-Na}^+ = \text{Na}^+ - nss\text{-Ca}^{2+}/1.78 \quad (2)$$

$$nss\text{-Ca}^{2+} = \text{Ca}^{2+} - 0.038 \times ss\text{-Na}^+ \quad (3)$$

The sea-salt fraction of sulfate (ss-SO_4^{2-}) was calculated by multiplying the ss-Na^+ (as a sea spray marker) concentration by
 140 0.253 (indicating the $\text{SO}_4^{2-}/\text{Na}^+$ w/w ratio in sea water) (Bowen et al., 1979). The non-sea salt fraction of sulfate (nss-SO_4^{2-})

was calculated by subtracting the $ss\text{-SO}_4^{2-}$ contribution from the total SO_4^{2-} concentrations. The mineral fraction of sulfate (mineral- SO_4^{2-}) was estimated by multiplying the $nss\text{-Ca}^{2+}$ content by 0.59 ($\text{SO}_4^{2-}/\text{Ca}^{2+}$ w/w ratio in uppermost earth's crust) (Guerzoni and Chester, 1996). It is worth noting that Ca in high latitude dust may not be in the form of carbonate so not measurable as Ca^{2+} (McCutcheon et al., 2021; Baldo et al., 2020; Bachelder et al., 2020). Some studies also reported few Ca-containing high latitude dust (McCutcheon et al., 2021; Baldo et al., 2020; Bachelder et al., 2020). Thus, the $nss\text{-Ca}^{2+}$ is a conservative tracer for mineral dust. Sulfate formed by atmospheric oxidation of dimethylsulfide (DMS) from micro-algae, bio- SO_4^{2-} , was estimated by multiplying methanesulfonate (MSA) concentration by 3.0, which was derived from the relationship between MSA and SO_4^{2-} at the same site by Udisti et al. (2016). In their study, they used 136 PM_{10} samples from the spring-summer season of 2014 to establish the MSA and bio- SO_4^{2-} relationship. The anthropogenic fraction of sulfate (anthr- SO_4^{2-}) in each sample is then estimated by subtracting the sum of the $ss\text{-SO}_4^{2-}$, mineral- SO_4^{2-} , and bio- SO_4^{2-} fractions from the total SO_4^{2-} concentration.

2.4 Back trajectories and Potential source regions

The Hybrid Single Particle Lagrangian Integrated Trajectory (HYSPPLIT 5.0.0) model (Stein et al., 2016) was used to calculate hourly backward trajectories arriving at an altitude of 100 m (average mean sea level) at the GVB from 2015 to 2019. The determination of the length of the back trajectories is a compromise between the uncertainty in calculation, which increases with time, and the typical lifetime of aerosol in the Arctic, which is usually between 3 and 8 days for black carbon (Stohl, 2006) and up to 39 days during *Arctic haze* (Baskaran and E. Shaw, 2001). In the present study, a 7-day air mass backward trajectory was chosen.

The HYSPPLIT back trajectories provide a detailed history of the air parcels, including latitude, longitude, altitude, and height of the mixing layer (ML). The back trajectories are divided into above or below the mixing layer height. Daily surface types in the Northern Hemisphere were obtained from the National Ice Center's Interactive Multisensor Snow and Ice Mapping System (IMS) (NIC, 2008), National Snow & Ice Center (NISDC; <https://nsidc.org/>). The IMS map of the Northern Hemisphere classified each of 1024×1024 grid cells (24 km spatial resolution) as sea, land (without snow), sea ice or snow covered land (snow). The daily surface types are temporally allocated with the back trajectories. Each data point from the hourly back trajectories is labelled by: (1) sea, (2) sea ice, (3) snow, (4) land or (5) above ML.

The potential source contribution function (PSCF) values were calculated using the "openair" package in R (Carslaw and Ropkins, 2012) to identify the potential geographic origins of each aerosol cluster. The geographic region covered by the back trajectories was divided into $1^\circ \times 1^\circ$ grid. The PSCF value is calculated by:

$$PSCF_{i,j} = (m_{i,j}/n_{i,j})W_{i,j} \quad (4)$$

where $n_{i,j}$ is the total number of endpoints that fall in the i, j th cell, and $m_{i,j}$ is defined as the number of endpoints in the same cell that exceed the threshold criterion. In the present study, the 75th percentile of total volume concentration for each cluster was used as the criterion value. A higher ratio of $m_{i,j}/n_{i,j}$ indicates a higher probability of a particular grid through which a

175 passing air parcel would result in a higher concentration at the receptor (Zeng and Hopke, 1989). $W_{i,j}$ is an empirical weight function to reduce the uncertainty of $m_{i,j}/n_{i,j}$ for the cells with $n_{i,j}$ less than 2-times the grid average number of the trajectory endpoint ($2 \times n_{ave}$):

$$W_{i,j} = \begin{cases} 1.0, & n_{i,j} > 2n_{ave} \\ 0.75, & n_{ave} < n_{i,j} \leq 2n_{ave} \\ 0.5, & 0.5n_{ave} < n_{i,j} \leq n_{ave} \\ 0.15, & 0 < n_{i,j} \leq 0.5n_{ave} \end{cases} \quad (5)$$

3 Results

180 Figs. 1 and A1 show the monthly average aerosol volume and number size distributions from 2015 to 2019, respectively. The peaks of monthly average number size distributions all occurred in the accumulation mode and the number concentration (dN/dlogDp) of the peaks are usually below 10 cm^{-3} (Fig. A1). For volume size distribution, bimodal or trimodal size distributions are often observed throughout the years. The highest concentration was found at 2-4 μm diameter, regardless of season. A second peak was observed in the submicron mode at 0.6-0.8 μm diameter, more prominent from March to May.

3.1 Characterization of the *k*-means derived aerosol types

185 The *k*-means cluster analysis of aerosol volume size distributions was performed using 909 daily spectra collected from 2015 to 2019. The determination of the most appropriate number of clusters is critical. Here, the Dunn Index (DI) and Silhouette Width (SW) were calculated for cluster numbers ranging from 2 to 15 (see Fig. A2). DI is to identify sets of clusters that are compact, with a small variance between members of the cluster, and well separated, where the cluster centres are sufficiently far apart, as compared to the within cluster variance. A higher DI indicates better separated clustered. SW refers to a method of interpretation and validation of consistency within clusters of data. A high SW indicates that an individual spectrum is well matched to its own cluster and poorly matched to neighbouring clusters. For a given assignment of clusters, higher DI and SW values indicate better clustering results. According to the DI and SW values versus cluster numbers (Fig. A2), five- and seven-cluster solutions appear to be the two promising solutions. For the seven-cluster solution, we observed an obvious increase in the DI value but a decrease in the SW value compared to those from the five-cluster solution, suggesting the some of the clusters in the seven-cluster solution tend to be similar to neighbouring clusters. Fig. A3 illustrates that the C3 to C6 aerosol categories overlapped with each other and are not well separated, especially when taking into account the standard deviation. The five-cluster solution is able to overcome the overlapping issues and thus was chosen in the present study.

195

Note that the five clusters (C1, C2, C3, C4 and C5) were ranked by the main aerodynamic diameter of the peak concentration in the average spectrum, from small to large diameters for C1 to C5 (Fig. 2). Fig. 3 shows the daily temporal trends and the polar plots of the five aerosol clusters. The aerosol types are characterized as follows:

- 200 – C1: Occurring $9.3 \pm 5.1\%$ ($\mu \pm \sigma$, average from monthly occurrence frequency) of the time. C1 presents a bimodal size distribution with a dominant peak in the accumulation mode at $\sim 0.7 \mu\text{m}$ and a lower peak at $\sim 3 \mu\text{m}$ (2a-b and 3a). The predominant months were March (15.9%) and April (18.8%), i.e., in spring (Fig. 2c). The relative contribution from different regions to back-trajectory air parcels for C1 is similar to that in March and April, which is characterized by the highest fraction of historical air parcels above mixing layer height among the five clusters or all seasons (Fig. A4a).
- 205 – C2: Occurring $17.6 \pm 17.4\%$ of the time. C2 shows a bimodal size distribution with peaks at ~ 0.9 and $2\text{-}3 \mu\text{m}$ (2a-b and 3a). The concentration in the accumulation mode was lower but with a slightly larger diameter ($\sim 1 \mu\text{m}$) compared to C1. The predominant months are from January (43.2%) to March (32.2%), i.e., in winter and early spring (Fig. 2c). C2 has the second highest fraction of air masses above mixing layer height (Fig. A4a).
- 210 – C3: Occurring $34.2 \pm 8.2\%$ of the time. The size distribution is dominated by the coarse mode with a peak at $\sim 3 \mu\text{m}$ (2a-b and 3a). C3 occurred throughout all seasons, with a relative contribution ranging from 19.2% in October to 49.3% in November (Fig. 2c).
- C4: Occurring $32.0 \pm 18.7\%$ of the time. The size distribution is dominated by the coarse mode, with a peak diameter of $3\text{-}4 \mu\text{m}$ (2a-b and 3a). The average peak concentration for C4 is slightly higher and with a slightly larger diameter compared to C3. This cluster dominated over other clusters from June to November (Fig. 2c).
- 215 – C5: Occurring $6.9 \pm 5.5\%$ of the time. C5 shows a trimodal distribution with a peak in the accumulation mode at $\sim 0.7 \mu\text{m}$, and in the coarse mode at $3\text{-}4 \mu\text{m}$ and at $12\text{-}14 \mu\text{m}$ (2a-b and 3a). The predominant months are from June (8.9%) to October (15.0%) with warm temperature ~~and~~, low relative humidity and high wind speed (Fig. A5), i.e., in summer and early autumn. These months also received relatively high fractions of air parcels spent above lands (Fig. A4a-b).

The occurrence of the five clusters and the key chemical species associated with each cluster are summarized in Table 1. The interannual variations of fraction of occurrence from March to June are also shown in Fig. 2d-g. No clear interannual patterns were observed for the aerosol clusters identified. The polar plots show that high concentrations of the five clusters were typically found when wind speed was higher than 5 m s^{-1} (Fig. 3a), ~~indicating limited impact of local emissions on coarse-mode particles at the GVB station except for wind-lifted particles.~~ which is consistent with the probability density distribution of the wind speed for aerosol volume concentrations exceeded their 90-percentile values within each cluster (Fig. A5).

225 3.2 Relationship of aerosol clusters and chemical components

Fig. 4 and Fig. 5 present average concentrations of each chemical species and absorption coefficients for the identified clusters, respectively. Absorption coefficients (Fig. 5b), oxalate (Fig. 4j), total SO_4^{2-} (Fig. 4h) and NH_4^+ (Fig. 4f) were enhanced for C1. These components are also enriched in C2, along with Na^+ (Fig. 4d), Cl^- (Fig. 4e) and Br^- (Fig. 4i). Absorption coefficients were relatively low for C3-5 compared to C1 and C2 (see Fig. 5b). MSA (Fig. 4k), Na^+ (Fig. 4d) and Cl^- (Fig. 4e) were enriched in C3. C4 showed an enhanced concentration in MSA (Fig. 4k), Na^+ (Fig. 4d) and Cl^- (Fig. 4e), whereas C5 was characterized by lowest K^+ (Fig. 4a), NH_4^+ (Fig. 4f), NO_3^- (Fig. 4g) and SO_4^{2-} (Fig. 4h). The relationship between C1-5 and

the absorption coefficient is shown in Fig. 5b. Clearly, absorption coefficient for C1-2 was enhanced in comparison to that for C3-5. We will discuss these results in detail in section 4.

235 Na^+ and Ca^{2+} are usually apportioned to a sea salt and a non-sea salt fraction using characteristic ratios of Ca^{2+} and Na^+ in sea water and in the Earth's crust (Eq. 2-3). Fig. 6 shows a scatter plot of Ca^{2+} versus Na^+ for the clusters, including $\text{Ca}^{2+}/\text{Na}^+$ ratios for sea water (0.038, w/w) and the Earth's crust (1.78, w/w). The regression line of Na^+ and Ca^{2+} for C5 is close to the "mineral" ratio whereas it is closer to the sea water ratio for C2-4. Note that the Na^+ and Ca^{2+} regression line for C3 fits very well with that in sea water. The regression line for C1 is in the middle of the mineral ratio and the sea water ratio.

240 The apportioned ss-SO_4^{2-} , mineral-SO_4^{2-} , bio-SO_4^{2-} , anthr-SO_4^{2-} , and sea salt aerosol (Fig. 7) further improves our understanding of the aerosol clusters-associated sources. C2-4 was enhanced with respect to ss-SO_4^{2-} , ranging from 66.1 ng m^{-3} in C2 to 78.9 ng m^{-3} in C4, as well as SSA (ranging from 853.4 ng m^{-3} in C2 to 1019.2 ng m^{-3} in C4). A high bio-SO_4^{2-} fraction was observed in C3 (86.2 ng m^{-3}) and C4 (61.6 ng m^{-3}), whereas mineral-SO_4^{2-} are elevated in C1 (7.7 ng m^{-3}) and C5 (7.9 ng m^{-3}). The anthr-SO_4^{2-} level decreased from C1 (763.8 ng m^{-3}) to C5 (49.7 ng m^{-3}). Anthr-SO_4^{2-} contributes to 34.4% in C5 to 91.7% in C1.

245 3.3 Potential source-areas of the aerosol clusters

The PSCF probability map (Fig. 8) for C1 illustrates that air mass origin was mainly from North-eastern Russia ($\text{lat}>60^\circ$). Potential geographical source regions of C2 are more complex and likely distributed in northern Eurasia ($\text{lat}>60^\circ$), western and northern coast of Greenland, the Norwegian Sea, the Barents Sea and the North Sea ($\text{lat}>55^\circ$). In contrast to C1-2, several regions of elevated probability for C3 appear in open sea/ocean regions ($\text{lat}>55^\circ$), including the Norwegian Sea, the North Atlantic Ocean, the Barents Sea, the Kara Sea and the Baffin Bay. C4 is likely associated to both land/snow (e.g., Greenland, Northern Europe, north-western Russia) and sea/ocean regions (e.g., the Greenland Sea, the Norwegian Sea, the North Atlantic Ocean, the Barents Sea and the Baffin Bay). C5 exhibits high PSCF values near the western/northern coast of Greenland (e.g., Kangerlussuaq area), northern Eurasia and northern Alaska. For the whole aerosol population, high PSCF values were broadly observed in the surrounding sea/ocean regions and occasionally observed in land/snow regions (e.g., northern Eurasia and Greenland). Note that potentially local sources can not be captured by the back-trajectory analysis.

4 Discussion

4.1 Identification of potential Dominant sources of the aerosol clusters

260 The ~~potential sources of dominant source for each aerosol cluster that distinguishing~~ the aerosol clusters ~~were from each other was~~ identified based on (1) volume size distribution, (2) chemical components, (3) seasonality in occurrence of the clusters and (4) potential source maps. It is possible that each cluster does not represent a pure source but contain signals of other aerosol sources (). In the following contents, sources of aerosol clusters refer to the sources that distinguishing the aerosol clusters from each other.

4.1.1 C1: Anthropogenic Arctic haze

The distinct peaks of C1 are typical modes of *Arctic haze* (Radke et al., 1984). The high occurrence of C1 in March and April are consistent with typical months of springtime *Arctic haze* (Abbatt et al., 2019), which has the highest absorption coefficient (5a). C1 is characterized by the highest eBC (Fig. 5b), sulfate (total sulfate, particularly anthropogenic sulfate, Fig. 4h and Fig. 7d), ammonium (Fig. 4f) among the five clusters. These chemical species are usually abundant in *Arctic haze* (Law and Stohl, 2007; Quinn et al., 2007) (Adachi et al., 2021; Law and Stohl, 2007; Quinn et al., 2007) and found to be mainly related to the accumulation mode aerosol (Tunved et al., 2013; Porter and Clarke, 1997; Radke et al., 1984). This is supported by the highest concentrations in the accumulation mode of C1 compared to the other clusters (Fig. 2b). Thus, C1 is identified as dominated by anthropogenic *Arctic haze*.

4.1.2 C2: Anthropogenic wintertime Arctic haze

C2 shows a similar size distribution to that of C1 (Figs. 2a) but with a much lower concentration in the accumulation mode, which is still higher than those in the other clusters (Figs. 2b). Compared to the other clusters, C2 has intermediate concentrations of eBC (Fig. 5b), sulfate (particularly anthropogenic sulfate, Fig. 7d) and ammonium (Fig. 4f). The main differences relative to C1 are: a temporal trend towards colder January-March months (Fig. 2c) and abundance of sea salt. PSCF maps also point to the Greenland coast and Northern Europe as potential source regions (Fig. 8), likely associated with industrial activities. In summary, whilst C1 is mainly associated with the typical Arctic haze with sulfate and eBC-rich aerosols (9.3%), industrial activities may also be an important source of anthropogenic aerosols (17.6%) in winter in the Arctic. In addition, wintertime Arctic haze at the site is more likely mixed with SSA since the occurrence fraction of C2 is above twice that of C1.

4.1.3 C3: Sea spray aerosol

The average size distribution of C3 is similar to that of sea salt species (e.g., Na^+ , Cl^- and Mg^{2+}), which are generally dominated by a supermicron mode (Morawska et al., 1999; Porter and Clarke, 1997) with a peak at $\sim 4 \mu\text{m}$ in summer (Dall'Osto et al., 2006; Ricard et al., 2002; Wall et al., 1988) and a peak between 2 and 3 μm (more close to 3 μm) in the winter in the marine environment (Ricard et al., 2002). In addition, the average size distribution of C3 (Fig. 2a-b) agrees well with that of sea salt aerosol observed in Antarctic (Fan et al., 2021). High loadings of sea salt (Fig. 7e) and their associated species (Fig. 4c-e) and the average ratio of $\text{Na}^+/\text{Ca}^{2+}$ (Fig. 6) for C3 further indicate that C3 is associated with SSA. MSA and apportioned bio-SO_4^{2-} are also enriched in C3 (Fig. 4k and Fig. 7c).

Arctic MSA has been reported to be abundant in late spring and in summer (Becagli et al., 2019; Sharma et al., 2019), but the C3 does not show the same seasonality. This inconsistency might be due to the mixture of sea spray and biogenic sources. Ricard et al. (2002) reported that MSA has two submicron modes (~ 0.3 and $\sim 0.7 \mu\text{m}$) and one supermicron mode ($\sim 2 \mu\text{m}$) between 43 nm and 20 μm in summer of the marine environment. These modes are in agreement with those for wintertime sea salt aerosol (Ricard et al., 2002). The PSCF map also shows that C3 aerosols are likely coming from surrounding ocean

295 and sea ice (Fig. 8c), where sea salt and MSA are originated. In addition, the ~~probability density distribution of temperature~~
~~ambinet temperatures~~ for C3 ~~presents exceeded their 90-percentile value present~~ a bimodal pattern (Fig. A5) with two modes
of cold temperature at $\sim -10 \sim -5$ °C and warm temperature at ~ 5 °C, respectively. ~~The wind speeds for C3 exceeded their~~
~~90-percentile value have bimodal distribution with peaks around 2 m s⁻¹ and 10 m s⁻¹, which may suggest that local and~~
~~long-range transported sea spray aerosol are both important.~~ Thus, this cluster is associated with sea spray aerosols coming
300 from marine open ocean, likely co-existing with secondary MSA-containing biogenic aerosol.

4.1.4 C4: Unidentified sea spray-related aerosol

The average size distribution of C4 is quite similar to that of C3, but with an enhancement at larger diameters and a lower
average ratio of $\text{Na}^+/\text{Ca}^{2+}$ (Fig. 6). The main differences relative to C3 are: more sea salt mass (Fig. 2a and Fig. 7e), ~~and~~ more
source contribution from Greenland (Fig. 8d) ~~and less source contribution from the open ocean (Fig. 8d).~~ The PSCF map for
305 C4 is quite different compared to C3 (Fig. 8), suggesting that drivers of C4 might be different from those of C3. Specifically,
potential sources of C4 are in shorter distance than C3 and are observed largely from Greenland (Fig. 8), which is mostly
covered by snow throughout the year.

The ratio of $\text{Ca}^{2+}/\text{Na}^+$ suggests that C4 is more likely associated with SSA compared to mineral dust (Fig. 6). Note that a
few samples of C4 in Fig. 6 tend to be mineral dust, especially for samples with high concentration of Ca^{2+} . This may suggest
310 a possible source of uplifted snow with mineral dust that was deposited on the snow surface. C4 also shows a higher relative
abundance in the months of September-November (Fig. 2c). Therefore, C4 is considered as unidentified sea spray aerosol,
possibly short-distance sea spray or a mixture of sea spray and blowing snow. More research is needed to better understand the
potential sources of C4.

4.1.5 C5: Mineral dust

315 C5 has distinct peaks in the coarse modes (Fig. 2a-b) pointing towards dust sources (Denjean et al., 2016; Ricard et al., 2002;
Porter and Clarke, 1997). C5 occurs usually from June to October, which are the months with frequent dust emissions from
Svalbard and/or high-latitude sources (Tobo et al., 2019). The ratio of $\text{Ca}^{2+}/\text{Na}^+$ (Fig. 6) and the mineral fraction of sulfate
(Fig. 7b) for C5 further indicate a mineral dust source. According to the PSCF map (Fig. 8e), C5 is very likely originated from
typical dust sources at high-latitude ice free terrain (proglacial fields or floodplains where fine glaciofluvial sediment deposits
320 are exposed to wind), such as western/northern coast of Greenland (e.g., Kangerlussuaq area), northern Eurasia and coastal
Alaska (Tobo et al., 2019; Groot Zwaaftink et al., 2016; Bullard et al., 2016; Crusius et al., 2011). ~~Thus, Note that C5 has one~~
~~similar mode ($\sim 3\text{-}4$ μm diameter) as C3-4, which might suggest that C5 is identified as mineral dust - a mixture of mineral~~
~~dust and sea salt. The considerable fractions of air parcels spent over land and sea/sea ice for C5 (Fig. A4) further indicate the~~
~~possibility of mixture of mineral dust and sea salt, which has been reported by Geng et al. (2010).~~

325 4.2 Drivers of coarse-mode aerosols in the Arctic

In the present study, Arctic aerosol is characterized by prevalent *Arctic haze* between winter and late spring, biogenic aerosol and mineral dust during warm seasons and sea spray aerosol throughout all seasons. The seasonal cycle in the Arctic aerosol is driven by many aspects, such as the annual cycle in Arctic sea ice, temperature, radiation, atmospheric oxidants, cloud properties, seasonally varying transport and removal mechanisms (Abbatt et al., 2019; Willis et al., 2018). In this study, 330 potential drivers of the coarse-mode anthropogenic aerosol and natural aerosol are discussed in sections 4.2.1 and 4.2.2.

4.2.1 Coarse-mode anthropogenic aerosol

High occurrences of C1-2 in winter and early spring suggest that anthropogenic sources are a predominant contributor to *Arctic haze*, particularly for accumulation-mode aerosol (Fig. 2a-b). According to the chemical composition of C1-2, *Arctic haze* contains a large fraction of eBC (Fig. 5b), sulfate (particularly anthropogenic sulfate, Fig. 4h and Fig. 7d), ammonium 335 (Fig. 4f), oxalate (Fig. 4j), implying that both primary and secondary sources (including secondary inorganic and organic aerosols) contributed to the *Arctic haze*. On average, the contributions of anthropogenic sources to total sulfate were 91.7% for C1 and 84.1% for C2, which are almost twice as high as for the other clusters (ranging from 34.2% for C5 to 52.7% for C3) (Fig. 7). According to the PSCF maps of C1-2 (Fig. 8a-b), long-range transport from northern Eurasia to Arctic regions might be mainly responsible for the anthropogenic aerosol in winter and spring. [High contributions from air parcels above the](#) 340 [mixing layer for Cluster 1-2 also support the critical role of long-range transport \(Fig. A4a\)](#). It is suggested that meteorological conditions during the *Arctic haze* period are conducive to long-range transport from northern Eurasia to the Arctic (Willis et al., 2018; Law and Stohl, 2007). Furthermore, the polar front could extend to about 40°N in winter to include industrial emissions that can be transported into the high Arctic, thus leading to the presence of industrial sources in the wintertime Arctic aerosol (Law and Stohl, 2007).

345 However, C2 contains a sea salt fraction (Fig. 6-7). Prather et al. (2013) showed that submicron sea spray aerosol consists of two externally mixed particle types, sea salt mixed with organic carbon and organic aerosol without chloride, based on transmission electron microscopy with energy-dispersive X-ray analysis. Yu et al. (2019) found that sulfate and organic matter are often internally mixed based on individual particles (100 nm to 2 μm) collected in the Svalbard Archipelago in summer. Thus, the enrichment of eBC, sulfate, organic aerosol and sea salt in C2 is likely due to the chemical mixing state of the particle 350 size ranges, leading to a mixed anthropogenic and natural aerosol, which is a transition mode driven by both *Arctic haze* and sea spray.

4.2.2 Coarse-mode natural aerosol

The drivers of natural aerosol in the Arctic are even more complex than that of anthropogenic aerosol mainly because of various natural sources. Our analysis identified three main natural sources, including open ocean sea spray aerosol (Figs. 2a and 6 and 355 7e and 8c), unidentified source of sea spray-related aerosol (Figs. 2a and 6 and 7e and 8d) and mineral dust (Figs. 2a and 6 and 7 and 8e). These natural aerosols dominated the Arctic aerosol population with a fraction of >50% throughout all seasons, and

with a much higher fractions of >80% in summer and autumn than those during the *Arctic haze* period (Fig. 2b). Warm seasons facilitate the production of natural aerosols in many ways, such as enhanced marine primary production (Becagli et al., 2016), biogenic new particle formation and growth (Lange et al., 2019, 2018; Dall'Osto et al., 2018, 2017) as well as high-latitude dust source emissions (Tobo et al., 2019; Groot Zwaafink et al., 2016; Bullard et al., 2016). In addition, high fractions of air parcels spent over land and open ocean were observed in warm seasons (Fig. A4b), which could facilitate generation of mineral dust and sea spray aerosol.

Notably, C3-4 comprised the largest fraction of the aerosol population throughout all seasons (Fig. 2b), suggesting that SSA is ubiquitous in the high Arctic regardless of season. The production of sea salt has been attributed to various mechanical processes, such as wind-driven sea spray and bubble bursting from open ocean (Quinn et al., 2015) or leads (Kirpes et al., 2019; May et al., 2016) or wind-blown snow (Huang and Jaeglé, 2017). The prevalence of C3 in all seasons and the closest ratio of $\text{Ca}^{2+}/\text{Na}^{+}$ to sea water (Fig. 6) provide a compelling evidence that it is driven by open ocean emission. More studies are needed to elucidate the underlying drivers of the occurrence of C3 throughout all seasons.

MSA-containing biogenic aerosol was observed mainly in C3-4 (Fig. 4k and Fig. 7c). Lin et al. (2012) found that MSA constitutes a major fraction of total aerosol sulfate over the remote ocean by means of isotope analysis. However, their analysis was based on submicron-mode ($<1 \mu\text{m}$) aerosol. Our study suggests that a fraction of MSA could occur in the coarse mode and is not entirely in the submicron fraction. The fractions of biogenic sulfate in total sulfate for C3 ($\sim 24.6\%$) and C4 ($\sim 21.2\%$) were much higher than those for anthropogenic *Arctic haze* (i.e., $\sim 3.3\%$ for C1 and $\sim 3.4\%$ for C2), but were lower than that of anthropogenic sulfate (i.e., 53.7% for C3 and 50.3% for C4). The contributions of biogenic emissions to sulfate for C3-4 are consistent with Udisti et al. (2016) who reported that biogenic emissions contributed $\sim 35\%$ to sulfate in summertime Arctic, mainly because C3-4 predominated ($>80\%$) summertime Arctic aerosol. However, the biogenic sulfate fraction for C3 is less than half of that from anthropogenic sulfate. It means that long-range transported anthropogenic pollution still appears to be the largest source of sulfate in the Arctic, even for MSA-containing biogenic aerosol type.

Biogenic aerosol in the Arctic is likely to be mixed with SSA, which is consistent with Prather et al. (2013) which reported that supermicron marine biogenic aerosol is mixed with SSA based on the single particle chemical mixing state.

The seasonal variation in biogenic aerosol in the Arctic appears to be related to sea ice retreat, but the interannual trend in MSA concentration is likely to be driven by the extent of the ice-free marginal zone (Becagli et al., 2019, 2016).

Mineral dust was identified as another natural aerosol mainly in C5. Mineral dust aerosol appears to be originated from dust sources at high-latitude ice free terrain (Fig. 8e) in warm seasons (Fig. A5d). Unfortunately, geological minerals were not reconstructed in the present study due to lack of measurements of mineral elements. Measurements of metal elements at the station are urgently needed in future studies to better understand the mineral dust in the high Arctic (Becagli et al., 2020). (Becagli et al., 2020; Moroni et al., 2015). Furthermore, mineral dust is often mixed with sea salt in C5, which makes it difficult to quantify absolute contributions from mineral dust to C5.

5 Conclusions

390 In summary, we have reported relatively long-term (2015-2019) measurements of aerosol aerodynamic volume size distributions up to $20\mu\text{m}$ in the high Arctic for the first time. Our results provide insights into supermicron aerosol properties and their potential sources around at an Arctic site in Svalbard, particularly sea spray aerosol, MSA-containing biogenic aerosol and mineral dust. The study elucidated five main aerosol volume size distributions and their natural and anthropogenic sources in the high Arctic, which may help to better understand the complex interactions and feedbacks between aerosol, cloud, radiation
395 and air-sea dynamic exchange and biota (Abbatt et al., 2019; Willis et al., 2018; Browse et al., 2014). Our study shows that about two third of the coarse-mode aerosols are related to two sea spray-related aerosol clusters, indicating that sea spray aerosol - commonly assumed to be a known source from open ocean - may be more complex in the Arctic environment. Further studies - both ambient and laboratory based - are strongly needed to understand sea spray sources. ~~In addition, measurements~~
Measurements of metal elements up to coarse mode are encouraged in future studies to better understand local and transported
400 mineral dust as well as anthropogenic pollution (e.g., industrial activity and shipping emission) in the high Arctic. More advanced receptor modelling and observational data, such as insoluble particles (Tobo et al., 2019; Geng et al., 2010) are needed to address the ubiquitous mixing sources found in the k -means clusters.

Data availability. The APS data can be accessed from Traversi et al. (2020). The absorption coefficient data are available upon request from Gilardoni et al. (2020). Data supporting this publication can be accessed upon request from the corresponding authors.

405 *Author contributions.* MDO conceived the study and discussed the analysis and results. ZS supervised the project, discussed the analysis and results and funded this study. CS performed data analysis, data visualization, data interpretation and wrote the original draft. DCSB provided the raw R codes of k -means clustering. AL, MM, RT, SB and SG carried out the field measurements at the GVB station and chemical analysis of the offline samples and provided feedbacks on the draft. JS, KEY, MDO, ZS, JB and RMH participated in editing the manuscript. All the authors commented on the manuscript and approved the submission.

410 *Competing interests.* The authors declare that they have no competing interests.

Acknowledgements. This work is funded by UK Natural Environment Research Council (NE/S00579X/1). The authors acknowledge the staffs of the Arctic Station Dirigibile Italia of the National Research Council of Italy for their support in measurements at the GVB station. JS holds the Ingvar Kamprad Chair for Extreme Environment Research. The authors acknowledge the NOAA Air Resources Laboratory (ARL) for providing the HYSPLIT model to analyze the back trajectories.

415 References

- Abbatt, J. P. D., Leaitch, W. R., Aliabadi, A. A., Bertram, A. K., Blanchet, J.-P., Boivin-Rioux, A., Bozem, H., Burkart, J., Chang, R. Y. W., Charette, J., Chaubey, J. P., Christensen, R. J., Cirisan, A., Collins, D. B., Croft, B., Dionne, J., Evans, G. J., Fletcher, C. G., Galí, M., Ghahremaninezhad, R., Girard, E., Gong, W., Gosselin, M., Gourdal, M., Hanna, S. J., Hayashida, H., Herber, A. B., Hesarakı, S., Hoor, P., Huang, L., Husserr, R., Irish, V. E., Keita, S. A., Kodros, J. K., Köllner, F., Kolonjari, F., Kunkel, D., Ladino, L. A., Law, K.,
420 Levasseur, M., Libois, Q., Liggio, J., Lizotte, M., Macdonald, K. M., Mahmood, R., Martin, R. V., Mason, R. H., Miller, L. A., Moravek, A., Mortenson, E., Mungall, E. L., Murphy, J. G., Namazi, M., Norman, A.-L., O'Neill, N. T., Pierce, J. R., Russell, L. M., Schneider, J., Schulz, H., Sharma, S., Si, M., Staebler, R. M., Steiner, N. S., Thomas, J. L., von Salzen, K., Wentzell, J. J. B., Willis, M. D., Wentworth, G. R., Xu, J.-W., and Yakobi-Hancock, J. D.: Overview paper: New insights into aerosol and climate in the Arctic, *Atmospheric Chemistry and Physics*, 19, 2527–2560, <https://doi.org/10.5194/acp-19-2527-2019>, 2019.
- 425 Adachi, K., Oshima, N., Ohata, S., Yoshida, A., Moteki, N., and Koike, M.: Compositions and mixing states of aerosol particles by aircraft observations in the Arctic springtime, 2018, *Atmospheric Chemistry and Physics*, 21, 3607–3626, <https://doi.org/10.5194/acp-21-3607-2021>, 2021.
- Asmi, E., Kondratyev, V., Brus, D., Laurila, T., Lihavainen, H., Backman, J., Vakkari, V., Aurela, M., Hatakka, J., Viisanen, Y., Uttal, T., Ivakhov, V., and Makshtas, A.: Aerosol size distribution seasonal characteristics measured in Tiksi, Russian Arctic, *Atmospheric
430 Chemistry and Physics*, 16, 1271–1287, <https://doi.org/10.5194/acp-16-1271-2016>, 2016.
- Bachelder, J., Cadieux, M., Liu-Kang, C., Lambert, P., Filoche, A., Galhardi, J. A., Hadioui, M., Chaput, A., Bastien-Thibault, M.-P., Wilkinson, K. J., King, J., and Hayes, P. L.: Chemical and microphysical properties of wind-blown dust near an actively retreating glacier in Yukon, Canada, *Aerosol Science and Technology*, 54, 2–20, <https://doi.org/10.1080/02786826.2019.1676394>, 2020.
- Baldo, C., Formenti, P., Nowak, S., Chevaillier, S., Cazaunau, M., Pangui, E., Di Biagio, C., Doussin, J.-F., Ignatyev, K.,
435 Dagsson-Waldhauserova, P., Arnalds, O., MacKenzie, A. R., and Shi, Z.: Distinct chemical and mineralogical composition of Icelandic dust compared to northern African and Asian dust, *Atmospheric Chemistry and Physics*, 20, 13 521–13 539, <https://doi.org/10.5194/acp-20-13521-2020>, 2020.
- Baskaran, M. and E. Shaw, G.: Residence time of arctic haze aerosols using the concentrations and activity ratios of ^{210}Po , ^{210}Pb and ^7Be , *Journal of Aerosol Science*, 32, 443 – 452, [https://doi.org/10.1016/S0021-8502\(00\)00093-8](https://doi.org/10.1016/S0021-8502(00)00093-8), 2001.
- 440 Becagli, S., Lazzara, L., Marchese, C., Dayan, U., Ascanius, S., Cacciani, M., Caiazzo, L., Di Biagio, C., Di Iorio, T., di Sarra, A., Eriksen, P., Fani, F., Giardi, F., Meloni, D., Muscari, G., Pace, G., Severi, M., Traversi, R., and Udisti, R.: Relationships linking primary production, sea ice melting, and biogenic aerosol in the Arctic, *Atmospheric Environment*, 136, 1 – 15, <https://doi.org/10.1016/j.atmosenv.2016.04.002>, 2016.
- Becagli, S., Amore, A., Caiazzo, L., Iorio, T. D., Sarra, A. d., Lazzara, L., Marchese, C., Meloni, D., Mori, G., Muscari, G., and et al.:
445 Biogenic Aerosol in the Arctic from Eight Years of MSA Data from Ny Ålesund (Svalbard Islands) and Thule (Greenland), *Atmosphere*, 10, 349, <http://doi.org/10.3390/atmos10070349>, 2019.
- Becagli, S., Caiazzo, L., Di Iorio, T., di Sarra, A., Meloni, D., Muscari, G., Pace, G., Severi, M., and Traversi, R.: New insights on metals in the Arctic aerosol in a climate changing world, *Science of The Total Environment*, 741, 140 511, <https://doi.org/10.1016/j.scitotenv.2020.140511>, 2020.
- 450 Beddows, D. C. S., Dall'Osto, M., and Harrison, R. M.: Cluster Analysis of Rural, Urban, and Curbside Atmospheric Particle Size Data, *Environmental Science & Technology*, 43, 4694–4700, <https://doi.org/10.1021/es803121t>, 2009.

- Beddows, D. C. S., Dall'Osto, M., Harrison, R. M., Kulmala, M., Asmi, A., Wiedensohler, A., Laj, P., Fjaeraa, A. M., Sellegri, K., Birmili, W., Bukowiecki, N., Weingartner, E., Baltensperger, U., Zdimal, V., Zikova, N., Putaud, J.-P., Marinoni, A., Tunved, P., Hansson, H.-C., Fiebig, M., Kivekäs, N., Swietlicki, E., Lihavainen, H., Asmi, E., Ulevicius, V., Aalto, P. P., Mihalopoulos, N., Kalivitis, N., Kalapov, I., Kiss, G., de Leeuw, G., Henzing, B., O'Dowd, C., Jennings, S. G., Flentje, H., Meinhardt, F., Ries, L., Denier van der Gon, H. A. C., and Visschedijk, A. J. H.: Variations in tropospheric submicron particle size distributions across the European continent 2008–2009, *Atmospheric Chemistry and Physics*, 14, 4327–4348, <https://doi.org/10.5194/acp-14-4327-2014>, 2014.
- Bigler, M., Röthlisberger, R., Lambert, F., Stocker, T. F., and Wagenbach, D.: Aerosol deposited in East Antarctica over the last glacial cycle: Detailed apportionment of continental and sea-salt contributions, *Journal of Geophysical Research: Atmospheres*, 111, D08 205, <https://doi.org/10.1029/2005JD006469>, 2006.
- Bowen, H. J. M. et al.: *Environmental chemistry of the elements.*, Academic Press., 1979.
- Brewer, G.: Minor elements in seawater, *Chemical oceanography*, 1, 415–496, 1975.
- Browse, J., Carslaw, K. S., Mann, G. W., Birch, C. E., Arnold, S. R., and Leck, C.: The complex response of Arctic aerosol to sea-ice retreat, *Atmospheric Chemistry and Physics*, 14, 7543–7557, <https://doi.org/10.5194/acp-14-7543-2014>, 2014.
- Bullard, J. E., Baddock, M., Bradwell, T., Crusius, J., Darlington, E., Gaiero, D., Gassó, S., Gisladottir, G., Hodgkins, R., McCulloch, R., McKenna-Neuman, C., Mockford, T., Stewart, H., and Thorsteinsson, T.: High-latitude dust in the Earth system, *Reviews of Geophysics*, 54, 447–485, <https://doi.org/10.1002/2016RG000518>, 2016.
- Carslaw, D. C. and Ropkins, K.: openair — An R package for air quality data analysis, *Environmental Modelling & Software*, 27-28, 52 – 61, <https://doi.org/10.1016/j.envsoft.2011.09.008>, 2012.
- Chi, J. W., Li, W. J., Zhang, D. Z., Zhang, J. C., Lin, Y. T., Shen, X. J., Sun, J. Y., Chen, J. M., Zhang, X. Y., Zhang, Y. M., and Wang, W. X.: Sea salt aerosols as a reactive surface for inorganic and organic acidic gases in the Arctic troposphere, *Atmospheric Chemistry and Physics*, 15, 11 341–11 353, <https://doi.org/10.5194/acp-15-11341-2015>, 2015.
- Collins, D. B., Ault, A. P., Moffet, R. C., Ruppel, M. J., Cuadra-Rodriguez, L. A., Guasco, T. L., Corrigan, C. E., Pedler, B. E., Azam, F., Aluwihare, L. I., Bertram, T. H., Roberts, G. C., Grassian, V. H., and Prather, K. A.: Impact of marine biogeochemistry on the chemical mixing state and cloud forming ability of nascent sea spray aerosol, *Journal of Geophysical Research: Atmospheres*, 118, 8553–8565, <https://doi.org/10.1002/jgrd.50598>, 2013.
- Crusius, J., Schroth, A. W., Gassó, S., Moy, C. M., Levy, R. C., and Gatica, M.: Glacial flour dust storms in the Gulf of Alaska: Hydrologic and meteorological controls and their importance as a source of bioavailable iron, *Geophysical Research Letters*, 38, L06 602, <https://doi.org/10.1029/2010GL046573>, 2011.
- Dall'Osto, M., Harrison, R. M., Beddows, D. C. S., Frenay, E. J., Heal, M. R., and Donovan, R. J.: Single-Particle Detection Efficiencies of Aerosol Time-of-Flight Mass Spectrometry during the North Atlantic Marine Boundary Layer Experiment, *Environmental Science & Technology*, 40, 5029–5035, <https://doi.org/10.1021/es050951i>, 2006.
- Dall'Osto, M., Beddows, D. C. S., Tunved, P., Krejci, R., Ström, J., Hansson, H.-C., Yoon, Y. J., Park, K.-T., Becagli, S., Udisti, R., et al.: Arctic sea ice melt leads to atmospheric new particle formation, *Scientific reports*, 7, 1–10, <https://doi.org/10.1038/s41598-017-03328-1>, 2017.
- Dall'Osto, M., Geels, C., Beddows, D. C. S., Boertmann, D., Lange, R., Nøjgaard, J. K., Harrison, R. M., Simo, R., Skov, H., and Massling, A.: Regions of open water and melting sea ice drive new particle formation in North East Greenland, *Scientific reports*, 8, 1–10, <https://doi.org/10.1038/s41598-018-24426-8>, 2018.

- Dall'Osto, M., Beddows, D. C. S., Tunved, P., Harrison, R. M., Lupi, A., Vitale, V., Becagli, S., Traversi, R., Park, K.-T., Yoon, Y. J.,
490 Massling, A., Skov, H., Lange, R., Strom, J., and Krejci, R.: Simultaneous measurements of aerosol size distributions at three sites in the
European high Arctic, *Atmospheric Chemistry and Physics*, 19, 7377–7395, <https://doi.org/10.5194/acp-19-7377-2019>, 2019.
- Denjean, C., Cassola, F., Mazzino, A., Triquet, S., Chevaillier, S., Grand, N., Bourriane, T., Momboisse, G., Sellegri, K., Schwarzenbock,
A., Freney, E., Mallet, M., and Formenti, P.: Size distribution and optical properties of mineral dust aerosols transported in the western
Mediterranean, *Atmospheric Chemistry and Physics*, 16, 1081–1104, <https://doi.org/10.5194/acp-16-1081-2016>, 2016.
- 495 Fan, S., Gao, Y., Sherrell, R. M., Yu, S., and Bu, K.: Concentrations, particle-size distributions, and dry deposition fluxes of aerosol trace
elements over the Antarctic Peninsula in austral summer, *Atmospheric Chemistry and Physics*, 21, 2105–2124, <https://doi.org/10.5194/acp-21-2105-2021>, 2021.
- Feng, L., Shen, H., Zhu, Y., Gao, H., and Yao, X.: Insight into generation and evolution of sea-salt aerosols from field measurements in
diversified marine and coastal atmospheres, *Scientific reports*, 7, 41 260, <https://doi.org/10.1038/srep41260>, 2017.
- 500 Fitzgerald, J. W.: Marine aerosols: A review, *Atmospheric Environment. Part A. General Topics*, 25, 533 – 545, [https://doi.org/10.1016/0960-1686\(91\)90050-H](https://doi.org/10.1016/0960-1686(91)90050-H), 1991.
- Freud, E., Krejci, R., Tunved, P., Leaitch, R., Nguyen, Q. T., Massling, A., Skov, H., and Barrie, L.: Pan-Arctic aerosol number
size distributions: seasonality and transport patterns, *Atmospheric Chemistry and Physics*, 17, 8101–8128, <https://doi.org/10.5194/acp-17-8101-2017>, 2017.
- 505 Frey, M. M., Norris, S. J., Brooks, I. M., Anderson, P. S., Nishimura, K., Yang, X., Jones, A. E., Nerentorp Mastromonaco, M. G., Jones,
D. H., and Wolff, E. W.: First direct observation of sea salt aerosol production from blowing snow above sea ice, *Atmospheric Chemistry
and Physics*, 20, 2549–2578, <https://doi.org/10.5194/acp-20-2549-2020>, 2020.
- Geng, H., Ryu, J., Jung, H.-J., Chung, H., Ahn, K.-H., and Ro, C.-U.: Single-Particle Characterization of Summertime Arctic Aerosols
Collected at Ny-Ålesund, Svalbard, *Environmental Science & Technology*, 44, 2348–2353, <https://doi.org/10.1021/es903268j>, 2010.
- 510 Ghahremaninezhad, R., Norman, A.-L., Abbatt, J. P. D., Lévassieur, M., and Thomas, J. L.: Biogenic, anthropogenic and sea salt
sulfate size-segregated aerosols in the Arctic summer, *Atmospheric Chemistry and Physics*, 16, 5191–5202, <https://doi.org/10.5194/acp-16-5191-2016>, 2016.
- Giardi, F., Becagli, S., Traversi, R., Frosini, D., Severi, M., Caiazzo, L., Ancillotti, C., Cappelletti, D., Moroni, B., Grotti, M., et al.: Size
distribution and ion composition of aerosol collected at Ny-Ålesund in the spring–summer field campaign 2013, *Rendiconti Lincei*, 27,
515 47–58, <https://doi.org/10.1007/s12210-016-0529-3>, 2016.
- Gilardoni, S., Lupi, A., Mazzola, M., Cappelletti, D. M., Moroni, B., Ferrero, L., Markuszewski, P., Rozwadowska, A., Krejci, R., Zieger,
P., Tunved, P., Karlsson, L., Vratolis, S., Eleftheriadis, K., and Viola, A. P.: Atmospheric black carbon in Svalbard (ABC Svalbard):
In: Van den Heuvel et al. (eds): SESS report 2019, Svalbard Integrated Arctic Earth Observing System, Longyearbyen, pp. 200–201,
https://sios-svalbard.org/SESS_Issue2, 2020.
- 520 Groot Zwaafink, C. D., Grythe, H., Skov, H., and Stohl, A.: Substantial contribution of northern high-latitude sources to mineral dust in the
Arctic, *Journal of Geophysical Research: Atmospheres*, 121, 13,678–13,697, <https://doi.org/10.1002/2016JD025482>, 2016.
- Guerzoni, S. and Chester, R.: *The impact of desert dust across the Mediterranean*, vol. 11, Springer Science & Business Media, 1996.
- Heslin-Rees, D., Burgos, M., Hansson, H.-C., Krejci, R., Ström, J., Tunved, P., and Zieger, P.: From a polar to a marine environment:
has the changing Arctic led to a shift in aerosol light scattering properties?, *Atmospheric Chemistry and Physics*, 20, 13 671–13 686,
525 <https://doi.org/10.5194/acp-20-13671-2020>, 2020.

- Huang, J. and Jaeglé, L.: Wintertime enhancements of sea salt aerosol in polar regions consistent with a sea ice source from blowing snow, *Atmospheric Chemistry and Physics*, 17, 3699–3712, <https://doi.org/10.5194/acp-17-3699-2017>, 2017.
- Kerminen, V.-M., Teinilä, K., and Hillamo, R.: Chemistry of sea-salt particles in the summer Antarctic atmosphere, *Atmospheric Environment*, 34, 2817 – 2825, [https://doi.org/10.1016/S1352-2310\(00\)00089-3](https://doi.org/10.1016/S1352-2310(00)00089-3), 2000.
- 530 Kirpes, R. M., Bondy, A. L., Bonanno, D., Moffet, R. C., Wang, B., Laskin, A., Ault, A. P., and Pratt, K. A.: Secondary sulfate is internally mixed with sea spray aerosol and organic aerosol in the winter Arctic, *Atmospheric Chemistry and Physics*, 18, 3937–3949, <https://doi.org/10.5194/acp-18-3937-2018>, 2018.
- Kirpes, R. M., Bonanno, D., May, N. W., Fraund, M., Barget, A. J., Moffet, R. C., Ault, A. P., and Pratt, K. A.: Wintertime Arctic Sea Spray Aerosol Composition Controlled by Sea Ice Lead Microbiology, *ACS Central Science*, 5, 1760–1767, <https://doi.org/10.1021/acscentsci.9b00541>, 2019.
- 535 Kylling, A., Groot Zwaafink, C. D., and Stohl, A.: Mineral Dust Instantaneous Radiative Forcing in the Arctic, *Geophysical Research Letters*, 45, 4290–4298, <https://doi.org/10.1029/2018GL077346>, 2018.
- Lachlan-Cope, T., Beddows, D. C. S., Brough, N., Jones, A. E., Harrison, R. M., Lupi, A., Yoon, Y. J., Virkkula, A., and Dall’Osto, M.: On the annual variability of Antarctic aerosol size distributions at Halley Research Station, *Atmospheric Chemistry and Physics*, 20, 4461–4476, <https://doi.org/10.5194/acp-20-4461-2020>, 2020.
- 540 Landrum, L. and Holland, M. M.: Extremes become routine in an emerging new Arctic, *Nature Climate Change*, pp. 1–8, <https://doi.org/10.1038/s41558-020-0892-z>, 2020.
- Lange, R., Dall’Osto, M., Skov, H., Nøjgaard, J., Nielsen, I., Beddows, D., Simo, R., Harrison, R., and Massling, A.: Characterization of distinct Arctic aerosol accumulation modes and their sources, *Atmospheric Environment*, 183, 1 – 10, <https://doi.org/10.1016/j.atmosenv.2018.03.060>, 2018.
- 545 Lange, R., Dall’Osto, M., Wex, H., Skov, H., and Massling, A.: Large Summer Contribution of Organic Biogenic Aerosols to Arctic Cloud Condensation Nuclei, *Geophysical Research Letters*, 46, 11 500–11 509, <https://doi.org/10.1029/2019GL084142>, 2019.
- Law, K. S. and Stohl, A.: Arctic air pollution: Origins and impacts, *science*, 315, 1537–1540, <https://doi.org/10.1126/science.1137695>, 2007.
- Li, S.-M. and Winchester, J. W.: Particle size distribution and chemistry of late winter Arctic aerosols, *Journal of Geophysical Research: Atmospheres*, 95, 13 897–13 908, <https://doi.org/10.1029/JD095iD09p13897>, 1990.
- 550 Lin, C., Baker, A., Jickells, T., Kelly, S., and Lesworth, T.: An assessment of the significance of sulphate sources over the Atlantic Ocean based on sulphur isotope data, *Atmospheric Environment*, 62, 615 – 621, <https://doi.org/10.1016/j.atmosenv.2012.08.052>, 2012.
- Lupi, A., Busetto, M., Becagli, S., Giardi, F., Lanconelli, C., Mazzola, M., Udisti, R., Hansson, H.-C., Henning, T., Petkov, B., et al.: Multi-seasonal ultrafine aerosol particle number concentration measurements at the Gruebadet observatory, Ny-Ålesund, Svalbard Islands, *Rendiconti Lincei*, 27, 59–71, <https://doi.org/10.1007/s12210-016-0532-8>, 2016.
- 555 May, N. W., Quinn, P. K., McNamara, S. M., and Pratt, K. A.: Multiyear study of the dependence of sea salt aerosol on wind speed and sea ice conditions in the coastal Arctic, *Journal of Geophysical Research: Atmospheres*, 121, 9208–9219, <https://doi.org/10.1002/2016JD025273>, 2016.
- Mazzola, M., Viola, A. P., Lanconelli, C., and Vitale, V.: Atmospheric observations at the Amundsen-Nobile climate change tower in Ny-Ålesund, Svalbard, *Rendiconti Lincei*, 27, 7–18, <https://doi.org/10.1007/s12210-016-0540-8>, 2016.
- 560 McCutcheon, J., Lutz, S., Williamson, C., Cook, J. M., Tedstone, A. J., Vanderstraeten, A., Wilson, S. A., Stockdale, A., Bonneville, S., Anesio, A. M., et al.: Mineral phosphorus drives glacier algal blooms on the Greenland Ice Sheet, *Nature communications*, 12, 1–11, <https://doi.org/10.1038/s41467-020-20627-w>, 2021.

- Morawska, L., Thomas, S., Jamriska, M., and Johnson, G.: The modality of particle size distributions of environmental aerosols, *Atmospheric Environment*, 33, 4401–4411, [https://doi.org/10.1016/S1352-2310\(99\)00217-4](https://doi.org/10.1016/S1352-2310(99)00217-4), 1999.
- 565
- Moroni, B., Becagli, S., Bolzacchini, E., Busetto, M., Cappelletti, D., Crocchianti, S., Ferrero, L., Frosini, D., Lanconelli, C., Lupi, A., et al.: Vertical profiles and chemical properties of aerosol particles upon Ny-Ålesund (Svalbard islands), *Advances in Meteorology*, 2015, <https://doi.org/10.1155/2015/292081>, 2015.
- Murphy, D. M., Froyd, K. D., Bian, H., Brock, C. A., Dibb, J. E., DiGangi, J. P., Diskin, G., Dollner, M., Kupc, A., Scheuer, E. M., Schill, G. P., Weinzierl, B., Williamson, C. J., and Yu, P.: The distribution of sea-salt aerosol in the global troposphere, *Atmospheric Chemistry and Physics*, 19, 4093–4104, <https://doi.org/10.5194/acp-19-4093-2019>, 2019.
- 570
- NIC: IMS Daily Northern Hemisphere Snow and Ice Analysis at 1 km, 4 km, and 24 km Resolutions, Version 1, <https://nsidc.org/data/G02156/versions/1>, 2008.
- O'Dowd, C. D., Smith, M. H., Consterdine, I. E., and Lowe, J. A.: Marine aerosol, sea-salt, and the marine sulphur cycle: a short review, *Atmospheric Environment*, 31, 73–80, [https://doi.org/10.1016/S1352-2310\(96\)00106-9](https://doi.org/10.1016/S1352-2310(96)00106-9), 1997.
- 575
- Petzold, A., Ogren, J. A., Fiebig, M., Laj, P., Li, S.-M., Baltensperger, U., Holzer-Popp, T., Kinne, S., Pappalardo, G., Sugimoto, N., Wehrli, C., Wiedensohler, A., and Zhang, X.-Y.: Recommendations for reporting "black carbon" measurements, *Atmospheric Chemistry and Physics*, 13, 8365–8379, <https://doi.org/10.5194/acp-13-8365-2013>, 2013.
- Porter, J. N. and Clarke, A. D.: Aerosol size distribution models based on in situ measurements, *Journal of Geophysical Research: Atmospheres*, 102, 6035–6045, <https://doi.org/10.1029/96JD03403>, 1997.
- 580
- Prather, K. A., Bertram, T. H., Grassian, V. H., Deane, G. B., Stokes, M. D., DeMott, P. J., Aluwihare, L. I., Palenik, B. P., Azam, F., Seinfeld, J. H., Moffet, R. C., Molina, M. J., Cappa, C. D., Geiger, F. M., Roberts, G. C., Russell, L. M., Ault, A. P., Baltrusaitis, J., Collins, D. B., Corrigan, C. E., Cuadra-Rodriguez, L. A., Ebben, C. J., Forestieri, S. D., Guasco, T. L., Hersey, S. P., Kim, M. J., Lambert, W. F., Modini, R. L., Mui, W., Pedler, B. E., Ruppel, M. J., Ryder, O. S., Schoepp, N. G., Sullivan, R. C., and Zhao, D.: Bringing the ocean into the laboratory to probe the chemical complexity of sea spray aerosol, *Proceedings of the National Academy of Sciences*, 110, 7550–7555, <https://doi.org/10.1073/pnas.1300262110>, 2013.
- 585
- Quinn, P., Shaw, G., Andrews, E., Dutton, E., Ruoho-Airola, T., and Gong, S.: Arctic haze: current trends and knowledge gaps, *Tellus B: Chemical and Physical Meteorology*, 59, 99–114, <https://doi.org/10.1111/j.1600-0889.2006.00236.x>, 2007.
- Quinn, P. K., Miller, T. L., Bates, T. S., Ogren, J. A., Andrews, E., and Shaw, G. E.: A 3-year record of simultaneously measured aerosol chemical and optical properties at Barrow, Alaska, *Journal of Geophysical Research: Atmospheres*, 107, AAC 8–1–AAC 8–15, <https://doi.org/10.1029/2001JD001248>, 2002.
- 590
- Quinn, P. K., Collins, D. B., Grassian, V. H., Prather, K. A., and Bates, T. S.: Chemistry and related properties of freshly emitted sea spray aerosol, *Chemical reviews*, 115, 4383–4399, <https://doi.org/10.1021/cr500713g>, 2015.
- Radke, L. F., Lyons, J. H., Hegg, D. A., Hobbs, P. V., and Bailey, I. H.: Airborne observations of Arctic aerosols. I: Characteristics of Arctic haze, *Geophysical Research Letters*, 11, 393–396, <https://doi.org/10.1029/GL011i005p00393>, 1984.
- 595
- Ricard, V., Jaffrezo, J.-L., Kerminen, V.-M., Hillamo, R. E., Teinilä, K., and Maenhaut, W.: Size distributions and modal parameters of aerosol constituents in northern Finland during the European Arctic Aerosol Study, *Journal of Geophysical Research: Atmospheres*, 107, AAC 4–1–AAC 4–18, <http://doi.org/10.1029/2001JD001130>, 2002.
- Russell, L. M.: Sea-spray particles cause freezing in clouds, *Nature*, 525, 194–195, <https://doi.org/10.1038/525194a>, 2015.
- 600
- Salter, M. E., Hamacher-Barth, E., Leck, C., Werner, J., Johnson, C. M., Riipinen, I., Nilsson, E. D., and Zieger, P.: Calcium enrichment in sea spray aerosol particles, *Geophysical Research Letters*, 43, 8277–8285, <https://doi.org/10.1002/2016GL070275>, 2016.

- Sanchez-Marroquin, A., Arnalds, O., Baustian-Dorsi, K. J., Browse, J., Dagsson-Waldhauserova, P., Harrison, A. D., Maters, E. C., Pringle, K. J., Vergara-Temprado, J., Burke, I. T., McQuaid, J. B., Carslaw, K. S., and Murray, B. J.: Iceland is an episodic source of atmospheric ice-nucleating particles relevant for mixed-phase clouds, *Science Advances*, 6, <https://doi.org/10.1126/sciadv.aba8137>, 2020.
- 605 Schmale, J., Arnold, S. R., Law, K. S., Thorp, T., Anenberg, S., Simpson, W. R., Mao, J., and Pratt, K. A.: Local Arctic Air Pollution: A Neglected but Serious Problem, *Earth's Future*, 6, 1385–1412, <https://doi.org/10.1029/2018EF000952>, 2018.
- Schmale, J., Zieger, P., and Ekman, A. M.: Aerosols in current and future Arctic climate, *Nature Climate Change*, 11, 95–105, <https://doi.org/10.1038/s41558-020-00969-5>, 2021.
- Sharma, S., Barrie, L., Magnusson, E., Brattström, G., Leaitch, W., Steffen, A., and Landsberger, S.: A Factor and Trends Analysis of
610 Multidecadal Lower Tropospheric Observations of Arctic Aerosol Composition, Black Carbon, Ozone, and Mercury at Alert, Canada, *Journal of Geophysical Research: Atmospheres*, 124, 14 133–14 161, <https://doi.org/10.1029/2019JD030844>, 2019.
- Sirois, A. and Barrie, L. A.: Arctic lower tropospheric aerosol trends and composition at Alert, Canada: 1980–1995, *Journal of Geophysical Research: Atmospheres*, 104, 11 599–11 618, <https://doi.org/10.1029/1999JD900077>, 1999.
- Stein, A. F., Draxler, R. R., Rolph, G. D., Stunder, B. J. B., Cohen, M. D., and Ngan, F.: NOAA's HYSPLIT Atmospheric
615 Transport and Dispersion Modeling System, *Bulletin of the American Meteorological Society*, 96, 2059–2077, <https://doi.org/10.1175/BAMS-D-14-00110.1>, 2016.
- Stohl, A.: Characteristics of atmospheric transport into the Arctic troposphere, *Journal of Geophysical Research: Atmospheres*, 111, D11 306, <https://doi.org/10.1029/2005JD006888>, 2006.
- Stone, R. S., Anderson, G. P., Andrews, E., Dutton, E. G., Shettle, E. P., and Berk, A.: Incursions and radiative impact of Asian dust in
620 northern Alaska, *Geophysical Research Letters*, 34, L14 815, <https://doi.org/10.1029/2007GL029878>, 2007.
- Struthers, H., Ekman, A. M. L., Glantz, P., Iversen, T., Kirkevåg, A., Mårtensson, E. M., Seland, Ø., and Nilsson, E. D.: The effect of sea ice loss on sea salt aerosol concentrations and the radiative balance in the Arctic, *Atmospheric Chemistry and Physics*, 11, 3459–3477, <https://doi.org/10.5194/acp-11-3459-2011>, 2011.
- Tobo, Y., Adachi, K., DeMott, P. J., Hill, T. C., Hamilton, D. S., Mahowald, N. M., Nagatsuka, N., Ohata, S., Uetake, J., Kondo, Y., et al.:
625 Glacially sourced dust as a potentially significant source of ice nucleating particles, *Nature Geoscience*, 12, 253–258, <https://doi.org/10.1038/s41561-019-0314-x>, 2019.
- Traversi, R., Becagli, S., Mazzola, M., Lupi, A., and Vitale, V.: Aerosol large particles size distribution collected at Gruvebadet, Ny-Ålesund, Svalbard, <https://doi.org/10.5281/zenodo.3961473>, 2020.
- Tunved, P., Ström, J., and Krejci, R.: Arctic aerosol life cycle: linking aerosol size distributions observed between 2000 and 2010 with
630 air mass transport and precipitation at Zeppelin station, Ny-Ålesund, Svalbard, *Atmospheric Chemistry and Physics*, 13, 3643–3660, <https://doi.org/10.5194/acp-13-3643-2013>, 2013.
- Udisti, R., Dayan, U., Becagli, S., Busetto, M., Frosini, D., Legrand, M., Lucarelli, F., Preunkert, S., Severi, M., Traversi, R., and Vitale, V.: Sea spray aerosol in central Antarctica. Present atmospheric behaviour and implications for paleoclimatic reconstructions, *Atmospheric Environment*, 52, 109 – 120, <https://doi.org/10.1016/j.atmosenv.2011.10.018>, 2012.
- 635 Udisti, R., Bazzano, A., Becagli, S., Bolzacchini, E., Caiazzo, L., Cappelletti, D., Ferrero, L., Frosini, D., Giardi, F., Grotti, M., et al.: Sulfate source apportionment in the Ny-Ålesund (Svalbard Islands) Arctic aerosol, *Rendiconti Lincei*, 27, 85–94, <https://doi.org/10.1007/s12210-016-0517-7>, 2016.

- Virkkula, A., Ahlquist, N. C., Covert, D. S., Arnott, W. P., Sheridan, P. J., Quinn, P. K., and Coffman, D. J.: Modification, Calibration and a Field Test of an Instrument for Measuring Light Absorption by Particles, *Aerosol Science and Technology*, 39, 68–83, <https://doi.org/10.1080/027868290901963>, 2005.
- 640
- Wall, S. M., John, W., and Ondo, J. L.: Measurement of aerosol size distributions for nitrate and major ionic species, *Atmospheric Environment* (1967), 22, 1649 – 1656, [https://doi.org/10.1016/0004-6981\(88\)90392-7](https://doi.org/10.1016/0004-6981(88)90392-7), 1988.
- Willis, M. D., Leaitch, W. R., and Abbatt, J. P.: Processes Controlling the Composition and Abundance of Arctic Aerosol, *Reviews of Geophysics*, 56, 621–671, <https://doi.org/10.1029/2018RG000602>, 2018.
- 645
- Wilson, T. W., Ladino, L. A., Alpert, P. A., Breckels, M. N., Brooks, I. M., Browse, J., Burrows, S. M., Carslaw, K. S., Huffman, J. A., Judd, C., et al.: A marine biogenic source of atmospheric ice-nucleating particles, *Nature*, 525, 234–238, <https://doi.org/10.1038/nature14986>, 2015.
- Yu, H., Li, W., Zhang, Y., Tunved, P., Dall’Osto, M., Shen, X., Sun, J., Zhang, X., Zhang, J., and Shi, Z.: Organic coating on sulfate and soot particles during late summer in the Svalbard Archipelago, *Atmospheric Chemistry and Physics*, 19, 10 433–10 446, <https://doi.org/10.5194/acp-19-10433-2019>, 2019.
- 650
- Zeng, Y. and Hopke, P.: A study of the sources of acid precipitation in Ontario, Canada, *Atmospheric Environment* (1967), 23, 1499 – 1509, [https://doi.org/10.1016/0004-6981\(89\)90409-5](https://doi.org/10.1016/0004-6981(89)90409-5), 1989.

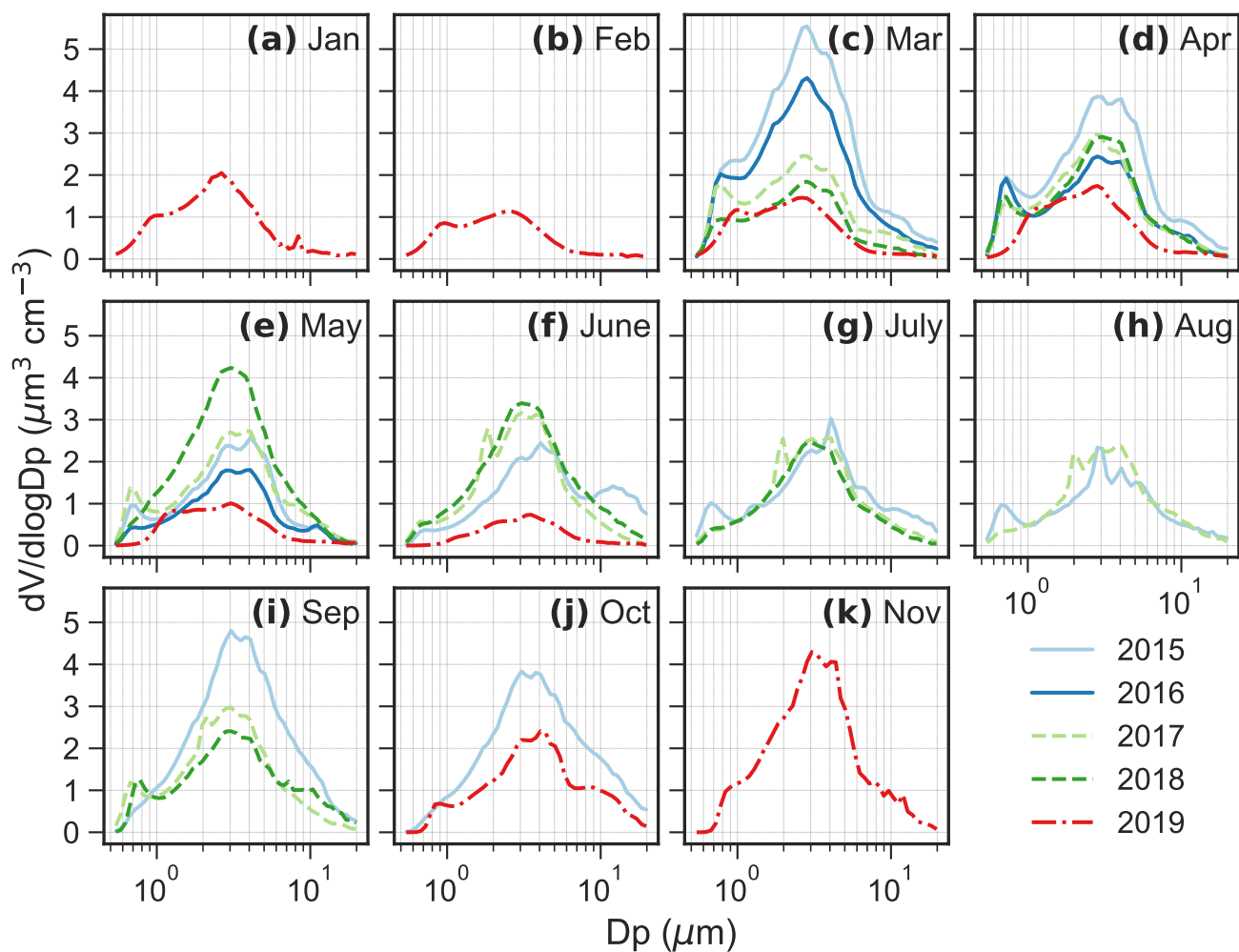


Figure 1. Monthly average aerosol volume size distribution from 2015 to 2019. Missing data in some months but good data coverage from March to June. No data available in December. Monthly average aerosol number size distribution measured by the APS during 2015-2019 is shown in Fig. A1.

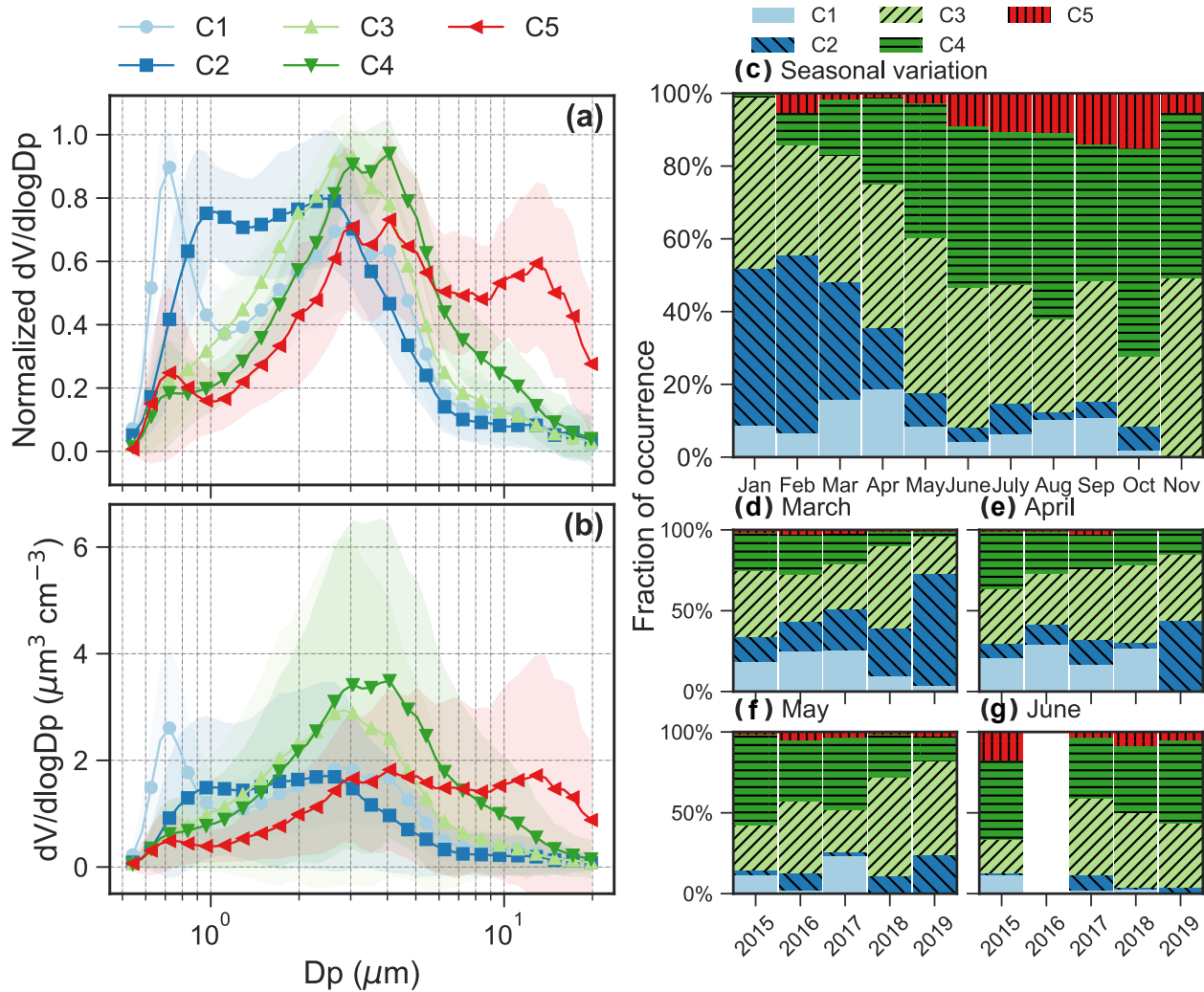


Figure 2. (a) Normalized and (b) absolute aerosol volume size distributions for the five clusters. Shaded area for the size distribution shows one standard deviation. (c) Seasonal variation in relative abundance of the five clusters. Interannual variation in the relative abundance from 2015 to 2019 in the months of (d) March, (e) April, (f) May and (g) June. We only show the interannual variation from March to June because these months have good data coverage in 2015-2019.

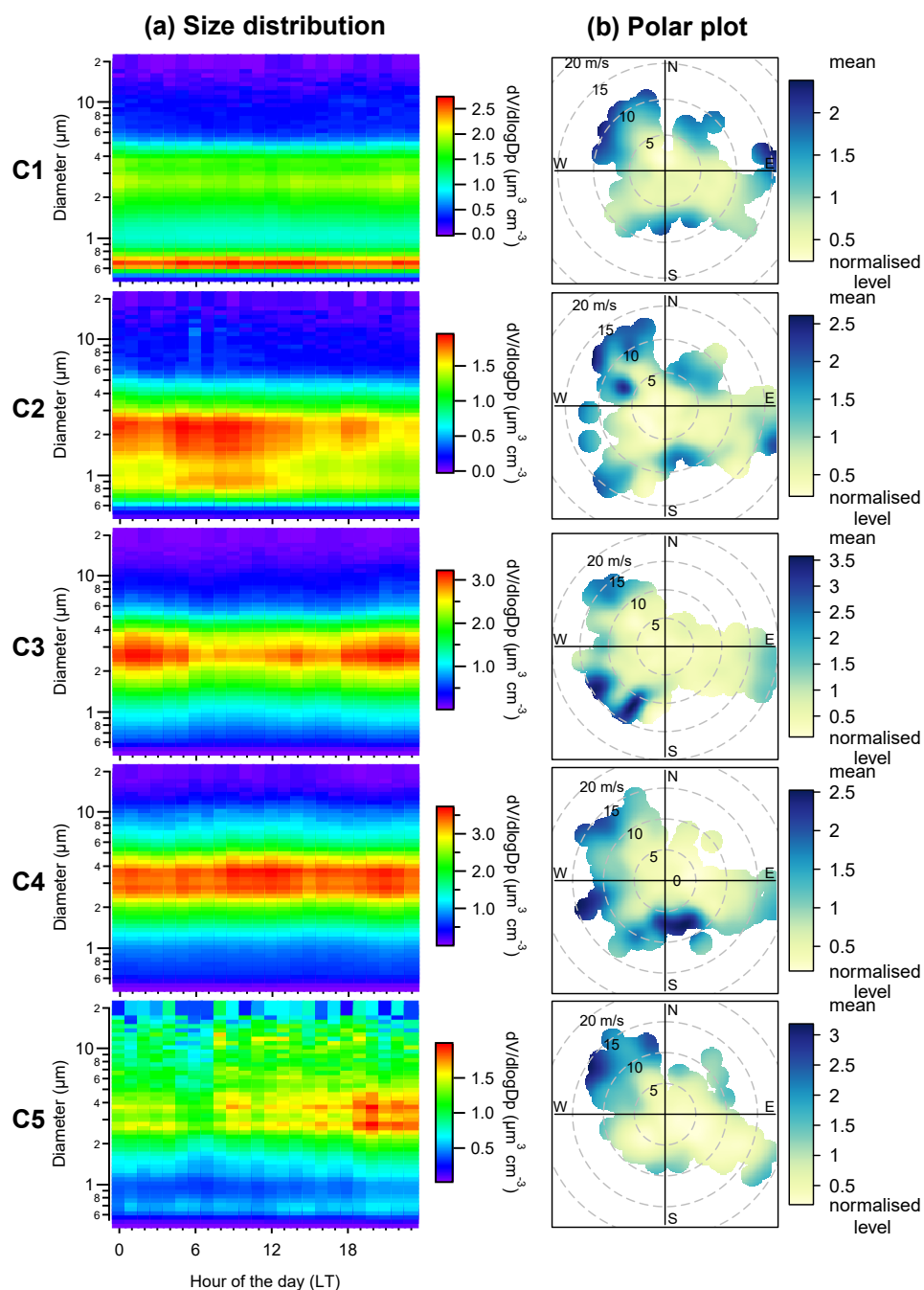


Figure 3. (a) Diurnal variation of the mean of the aerosol volume size distribution and (b) polar plots of total volume concentration for the five aerosol clusters. Polar plots: average concentrations are shown to vary by wind speed and wind direction. The color scale of the polar plot is the average concentration level normalized by dividing by the mean value from each cluster.

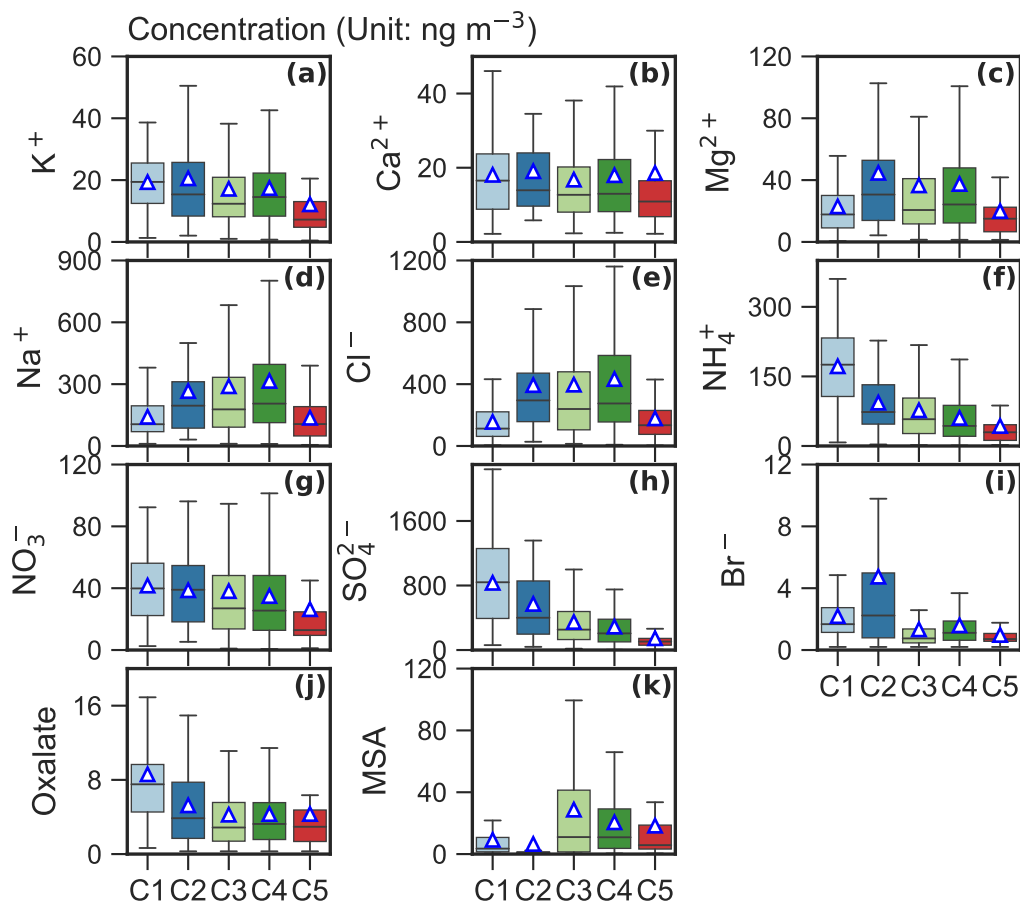


Figure 4. Box plot of mass concentration (unit: ng m^{-3}) of each chemical species for the identified clusters. The mean values are marked as triangles.

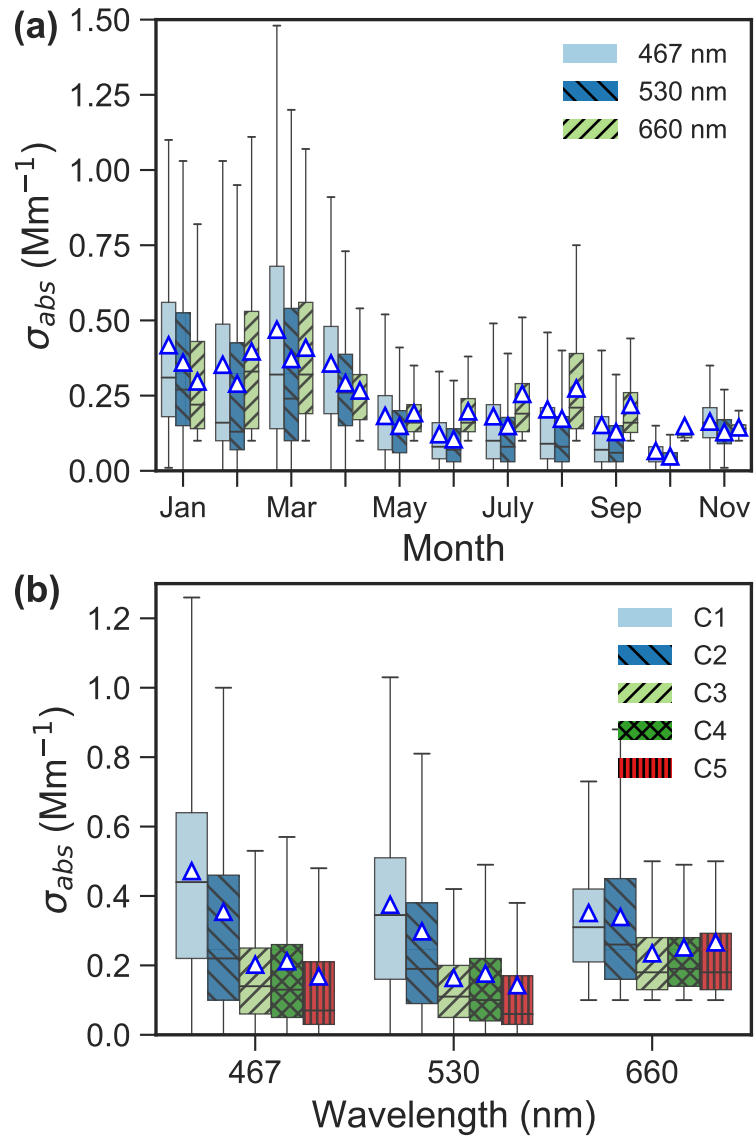


Figure 5. (a) Seasonal variation of absorption coefficient (σ_{abs}) at wavelengths of 467 nm, 530 nm and 660 nm in 2015-2019 and (b) boxplot of absorption coefficient at the three wavelengths for each cluster. The mean values are marked as triangles.

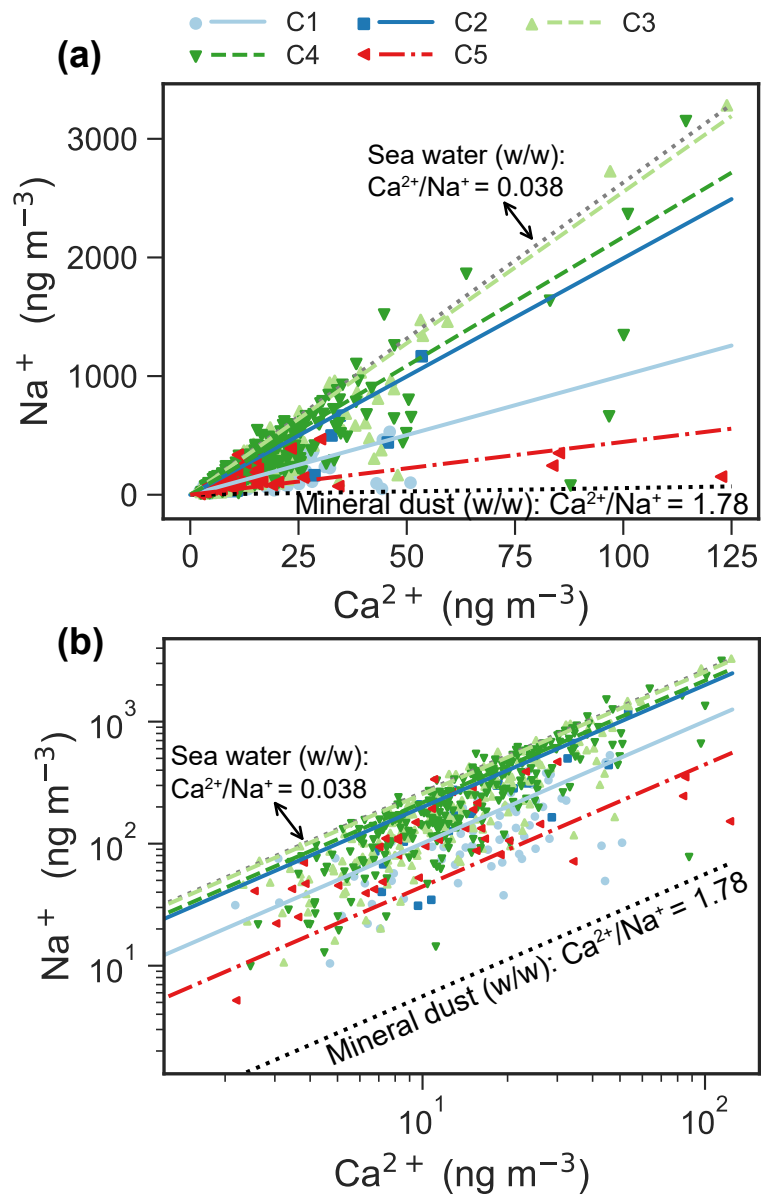


Figure 6. Scatter plot (a: linear scale, b: logscale) of daily Na^+ versus Ca^{2+} mass concentrations for each cluster. The ratios of $\text{Ca}^{2+}/\text{Na}^+$ from sea water and Earth's crust are denoted by dotted lines. The scatter points are usually in the ranges of ratios of sea water and Earth's crustal (Bowen et al., 1979). The reduced major axis (RMA) regression between Na^+ and Ca^{2+} for each cluster is superimposed on the figure. The parameters of the regressions are listed in Table A1.

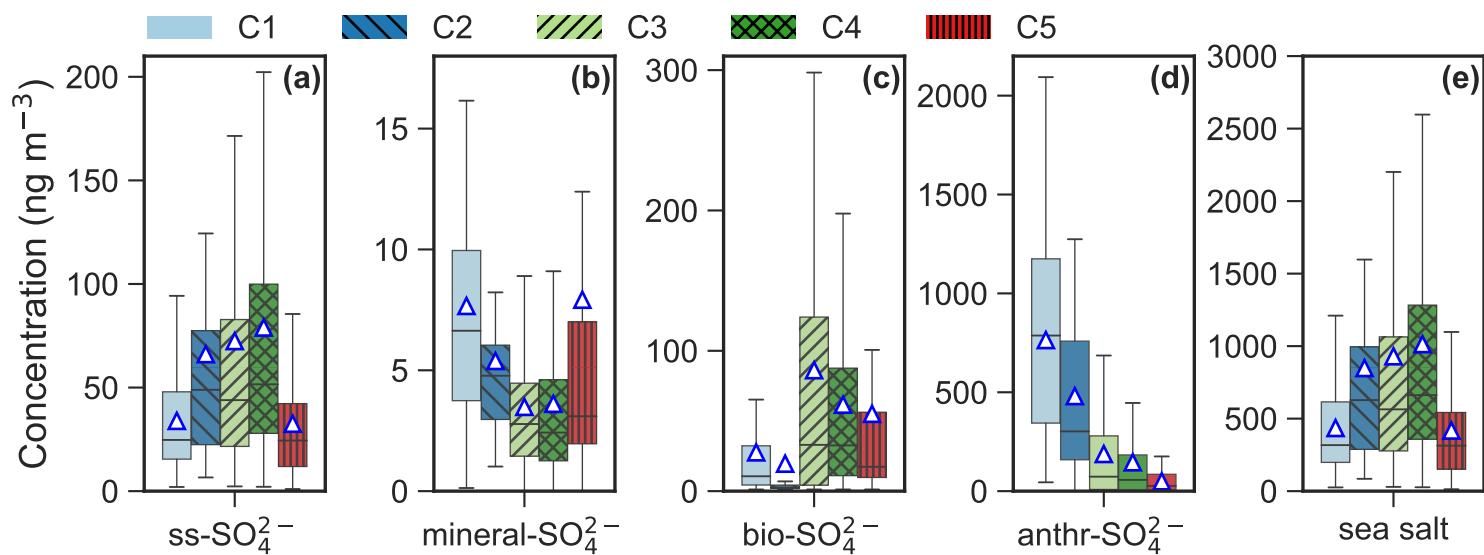


Figure 7. Box plot of (a) sea-salt SO_4^{2-} (ss-SO_4^{2-}), (b) mineral SO_4^{2-} (mineral-SO_4^{2-}), (c) biogenic SO_4^{2-} (bio-SO_4^{2-}), (d) anthropogenic SO_4^{2-} (anthr-SO_4^{2-}) and (e) sea salt for each cluster. The (e) sea salt aerosol is calculated by multiplying the ss-Na^+ by a factor of 3.248 (Kerminen et al., 2000; Brewer, 1975). The mean values are marked as triangles.

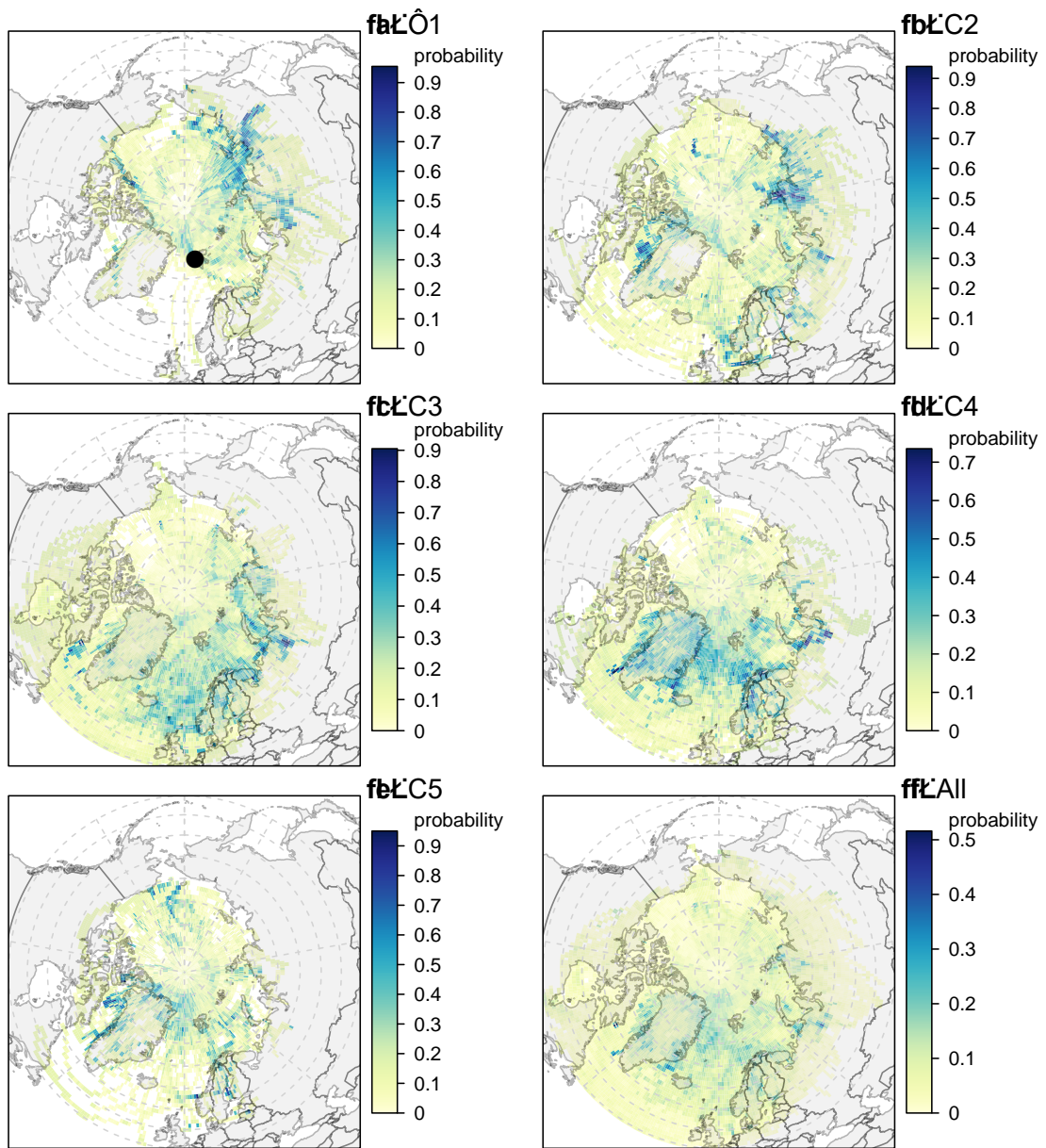


Figure 8. Potential source contribution function (PSCF) map for each cluster and all data. The GVB station is denoted as a black dot on the map.

Table 1. Occurrence and key species for the five clusters.

	Occurrence	Key species
C1	9.3±5.1%	eBC; Sulfate; Ammonium; Oxalate
C2	17.6±17.4%	eBC; Sulfate; Ammonium; Sea salt species*
C3	34.2±8.2%	Sea salt species*; MSA;
C4	32.0±18.7%	Sea salt species*; MSA
C5	6.9±5.5%	High ratio of Ca ²⁺ /Na ⁺

Note. *Sea salt species here refer to Na⁺, Cl⁻ and Mg²⁺.

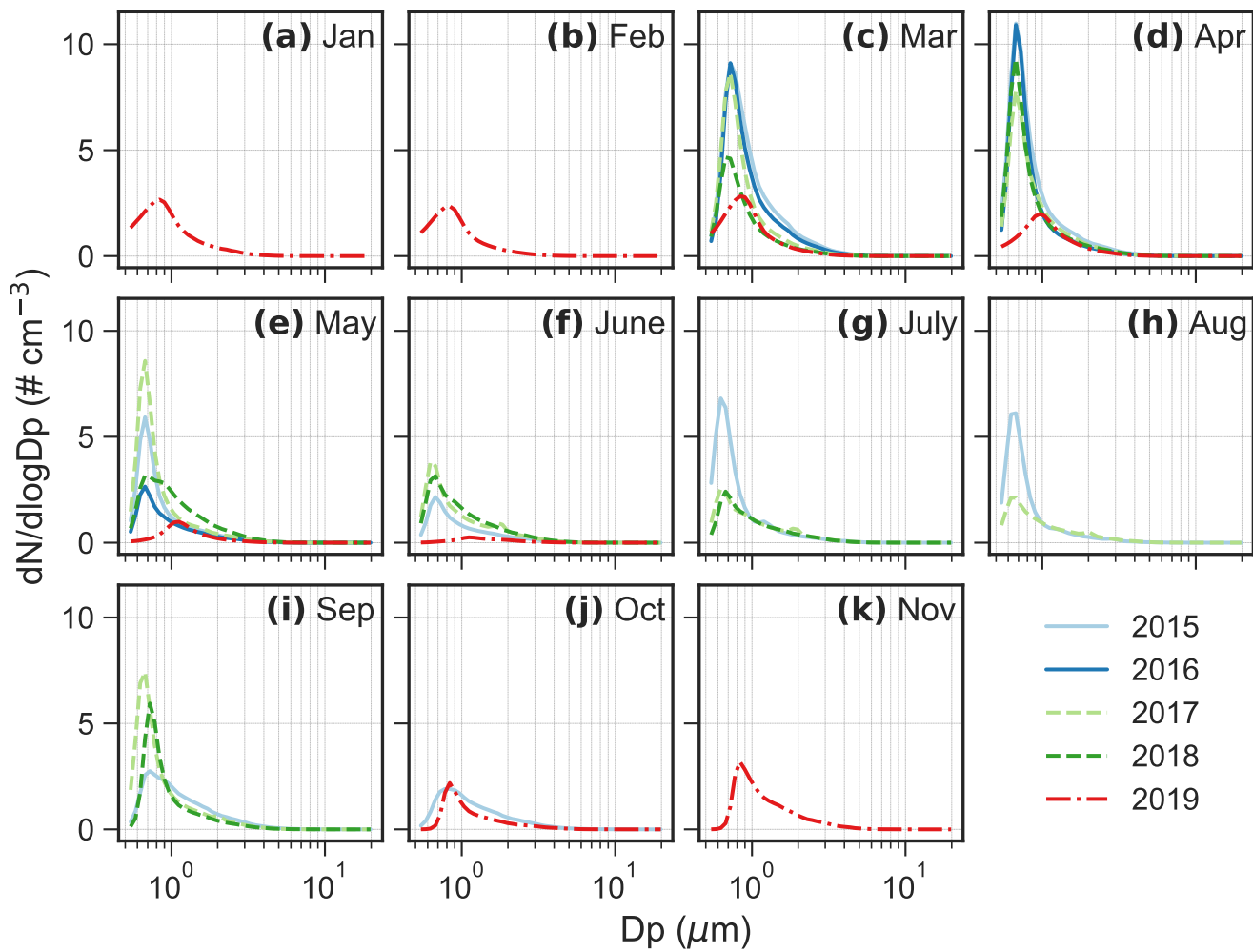


Figure A1. Monthly average aerosol number size distribution from 2015 to 2019. Missing data in some months but good data coverage from March to June. No data available in December.

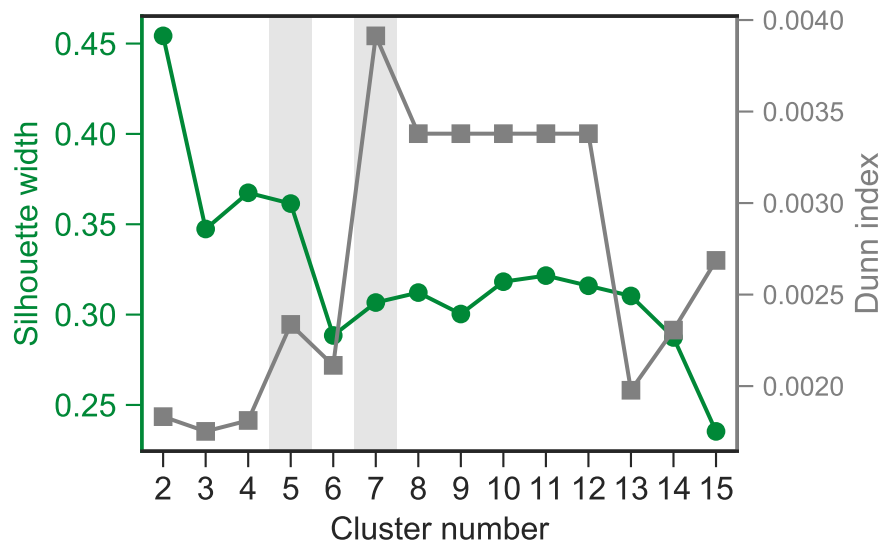


Figure A2. Silhouette width and Dunn index for cluster numbers ranging from 2 to 15.

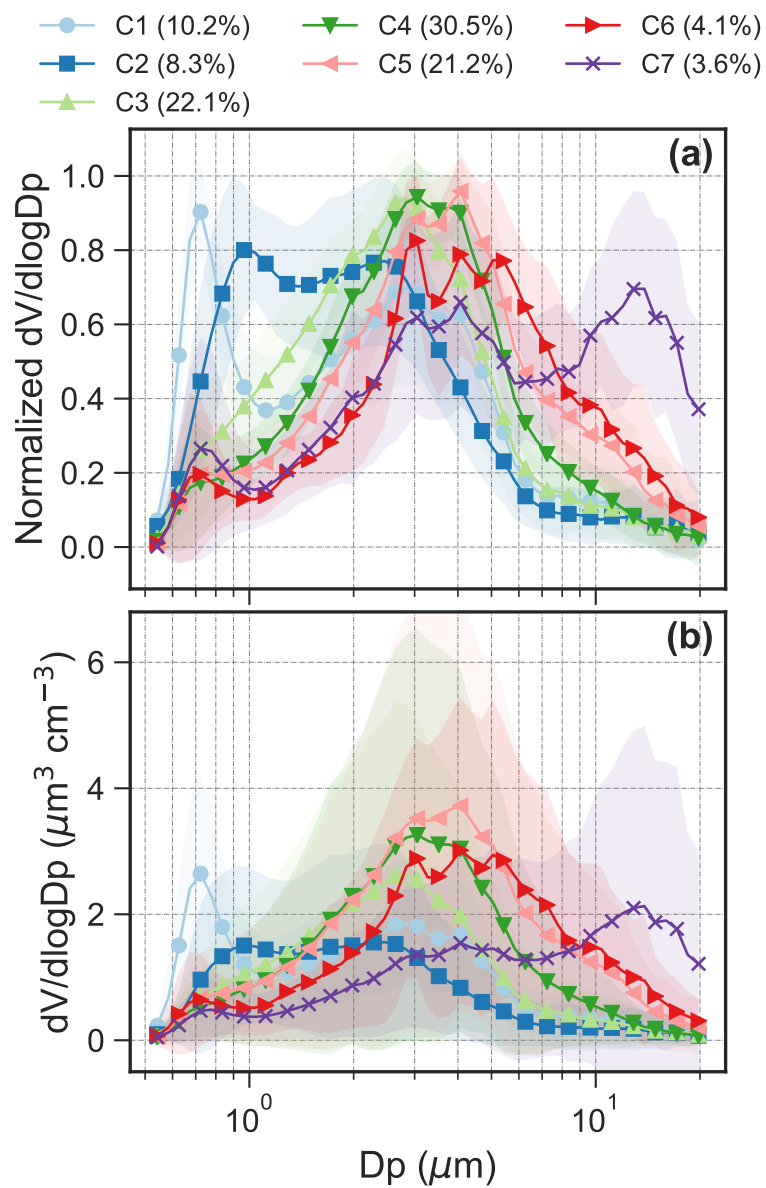


Figure A3. Average aerosol size distribution of the seven clusters using a seven-cluster solution.

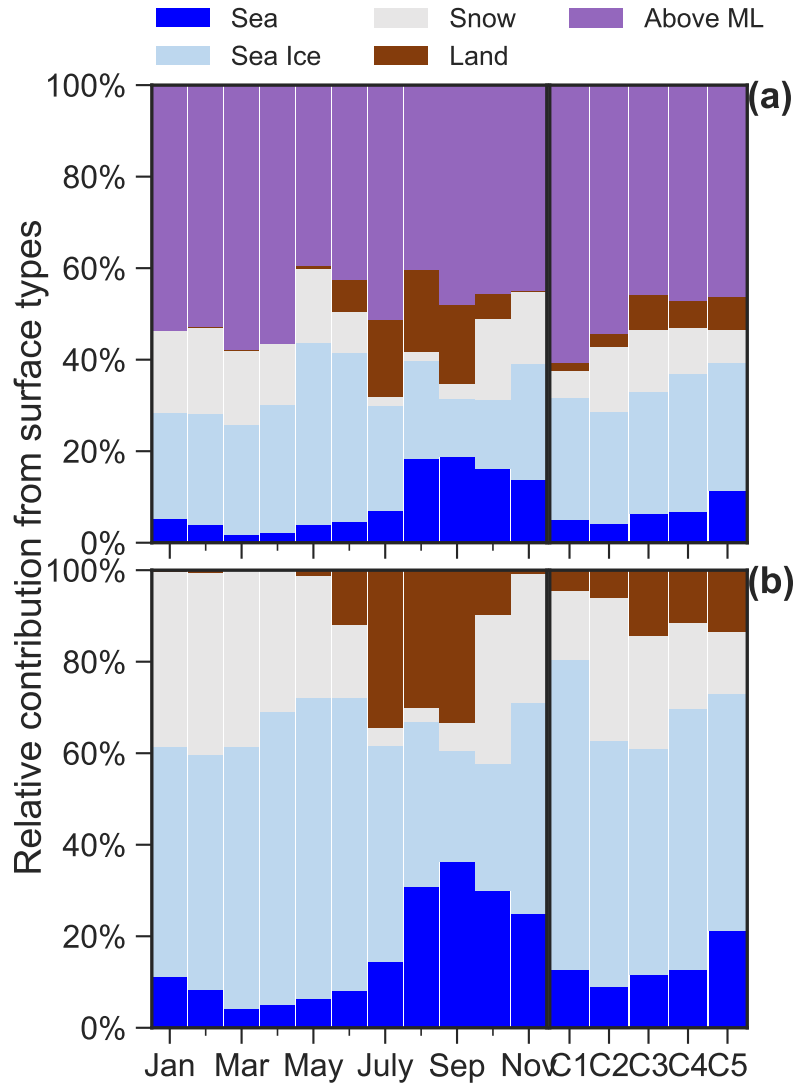


Figure A4. ~~Probability density distribution~~ (a) Relative contribution (%) of the ~~meteorological parameters accumulated time~~ for back-trajectory air parcels spent over sea, sea ice, snow, land and above mixing layer (ML) for each ~~identified month and each~~ cluster. (b) Relative contribution without considering back trajectories above mixing layer.

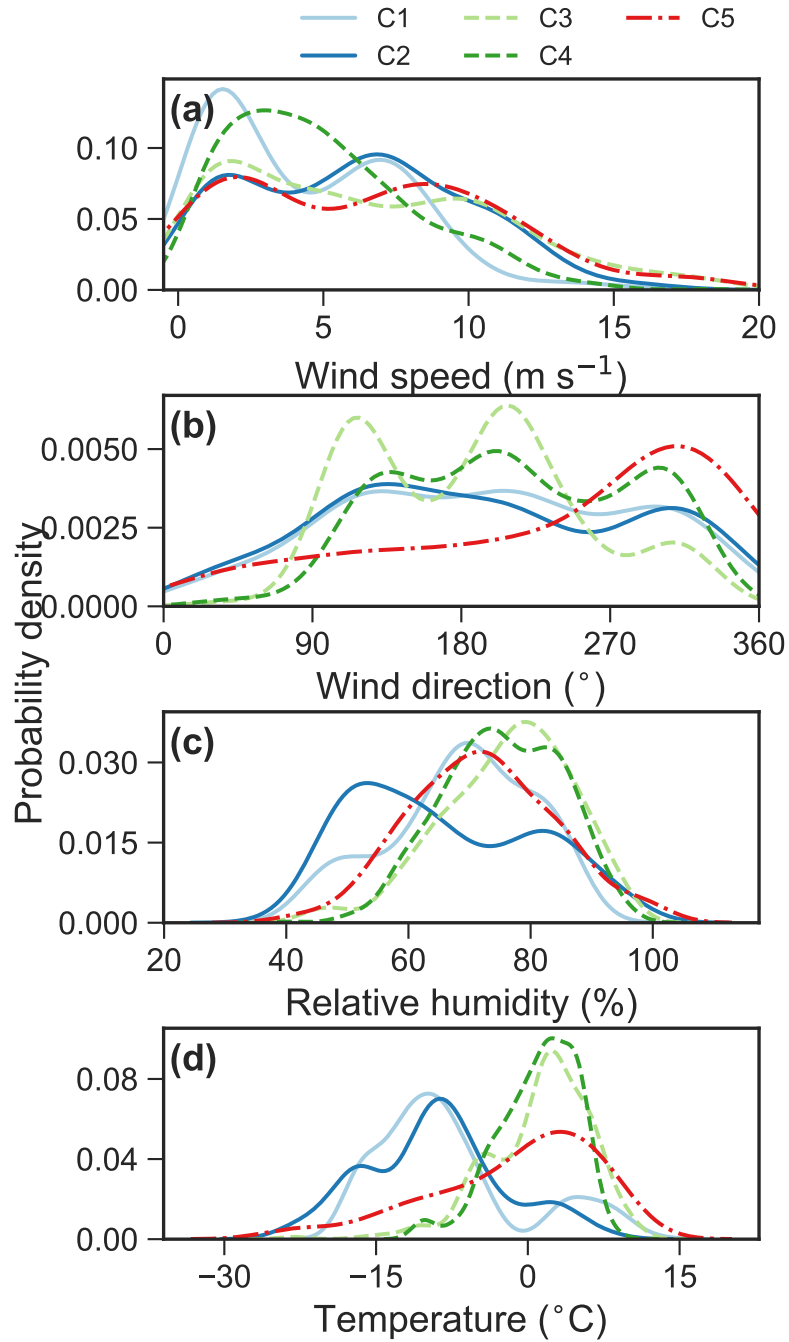


Figure A5. [Probability density distribution of the meteorological conditions for aerosol volume concentrations exceeded their 90-percentile values within each cluster.](#)

Table A1. Parameters for reduced major axis (RMA) regression between Na^+ and Ca^{2+} for the five clusters

	C1	C2	C3	C4	C5
n	68	22	185	256	39
r-square	0.33	0.78	0.84	0.7	0.16
Slope	10.1	19.9	25.5	21.7	4.5
2.5%-Slope	8.2	16.0	24.1	20.3	3.3
97.5%-Slope	12.3	24.8	27.1	23.2	6.0
Intercept	-40.5	-113.4	-139	-75.0	54.6
2.5%-Intercept	-80.8	-206.0	-164.8	-102.3	26.0
97.5%-Intercept	-7.6	-39.0	-114.6	-49.5	75.7