

Estimating Brewer-Dobson circulation trends from changes in stratospheric water vapour and methane

Liubov Poshyvailo-Strube^{1,2,3}, Rolf Müller¹, Stephan Fueglistaler^{4,5}, Michaela I. Hegglin⁶, Johannes C. Laube¹, C. Michael Volk⁷, and Felix Ploeger^{1,7}

¹Institute of Energy and Climate Research: Stratosphere (IEK-7), Forschungszentrum Jülich, Jülich, Germany

²Institute of Bio- and Geosciences: Agrosphere (IBG-3) Forschungszentrum Jülich, Jülich, Germany

³Centre for High-Performance Scientific Computing in Terrestrial Systems (HPSC TerrSys), Geoverbund ABC/J, Jülich, Germany

⁴Program in Atmospheric and Oceanic Sciences, Princeton University, Princeton, NJ, USA

⁵Department of Geosciences, Princeton University, Princeton, NJ, USA

⁶Department of Meteorology, University of Reading, Reading, UK

⁷University of Wuppertal, Institute for Atmospheric and Environmental Research, Wuppertal, Germany

Correspondence: Liubov Poshyvailo-Strube (l.poshyvailo@fz-juelich.de)

Abstract. The stratospheric meridional overturning circulation, also referred to as the Brewer-Dobson circulation (BDC), controls the composition of the stratosphere, which, in turn, affects radiation and climate. As the BDC cannot be directly measured, one has to infer its strength and trends indirectly. For instance, trace gas measurements allow the calculation of average transit times.

5 Satellite measurements provide information on the distributions of trace gases for the entire stratosphere, with measurements of particularly long ~~and dense temporal and dense spatial~~ coverage available for stratospheric water vapour (H₂O). Although chemical processes and boundary conditions confound interpretation, the influence of methane (CH₄) oxidation on H₂O in the stratosphere is relatively straightforward, and thus H₂O is an appealing tracer for transport analysis despite these caveats. In this work, we explore how mean age of air trends can be estimated from the combination of stratospheric H₂O and CH₄ data. ~~We~~
10 ~~carry out different sensitivity studies with~~, by carrying out a proof-of-concept within the model environment of the Chemical Lagrangian Model of the Stratosphere (CLaMS) ~~and focus on the analysis of the periods of 1990-2006 and 1990-2017~~. In particular, we assess the methodological uncertainties related to the two commonly-used approximations of (i) instantaneous stratospheric entry mixing ratio propagation, and (ii) constant correlation between mean age and the fractional release factor of ~~methane~~ CH₄. Performing various sensitivity studies with CLaMS, we test different methods of the mean age of air trend
15 estimation, and we aim to provide a simple and practical advice on the adjustment of the used approximations for obtaining more reliable mean age of air trend from the measurements of H₂O and CH₄.

Our results show that the estimated mean age of air trends from the combination of observed stratospheric H₂O and CH₄ changes may be significantly affected by the assumed approximations. Depending on the investigated stratospheric region and the considered period, the error in estimated mean age of air decadal trends can be large ~~the discrepancies are up to 10% per~~
20 ~~decade or even more at~~, especially in the lower stratosphere. For particular periods, the errors from the two approximations can lead to opposite effects, which may even cancel out. ~~Finally, we propose an improvement to~~ Finally, for a more reliable

estimate of the mean age of air trends, we propose to adjust the approximation method by using an idealised age spectrum to propagate stratospheric entry mixing ratios. The findings of this work can be used for ~~improving and~~ assessing the uncertainties in stratospheric BDC trend estimation from global satellite measurements.

25 1 Introduction

The stratospheric Brewer-Dobson circulation (BDC) affects the atmospheric distributions of radiatively active trace gases and is an important element in the climate system. This global-scale circulation transports air masses upwards in the tropics, polewards, and downwards in middle and high latitudes (e.g., Holton et al., 1995). A particularly important greenhouse gas affected by the BDC is stratospheric water vapour (H₂O), which induces cooling of the stratosphere and warming of the troposphere (e.g. Solomon et al., 2010; Maycock et al., 2011; Riese et al., 2012). The reliability of climate model predictions is significantly affected by the representation of the processes controlling the distribution of stratospheric H₂O. Although the BDC is such a crucial factor influencing stratospheric H₂O and Earth’s climate, its long-term trends and associated effects on transport and dynamics are not well understood. In particular, climate models predict a strengthening BDC in a future climate with increasing greenhouse gas levels (e.g., Butchart, 2014), whereas trace gas observations show only insignificant changes (Engel et al., 2017; Fritsch et al., 2020).

Because of the slowness of BDC transport (global transit times on the order of years) and its zonal mean character, direct measurements of related circulation velocities are not possible and the circulation must be inferred from temperature or trace gas observations. A commonly used diagnostic for BDC transport is the mean age of air (AoA), the average time scale for transport through the stratosphere. Garcia et al. (2011) pointed out that the AoA is difficult to estimate from sparse stratospheric observations. However, under some conditions, it is possible to infer AoA from trace gas concentrations (e.g., Hall and Plumb, 1994; Strunk et al., 2000; Engel et al., 2009). Suitable species are so-called “clock tracers” – trace gases with a linearly increasing source—, which can provide the first moment of the age spectrum, ~~the mean age of air namely~~ AoA (Waugh and Hall, 2002; Schoeberl et al., 2005). Two examples of such tracers are SF₆ or CO₂, and these are frequently used to infer stratospheric AoA (e.g., Stiller et al., 2017; Engel et al., 2017). However, the availability of suitable observations with global coverage and extending over sufficiently long time periods necessary for estimating trends is very limited. Also, there are other complications, for instance SF₆ has a strong mesospheric sink, and CO₂ has a seasonal cycle causing problems with inferring ~~mean ages~~ AoA. Hence, several recent and ongoing research activities focus on trace gas species other than SF₆ and CO₂, to infer stratospheric AoA and information on the BDC (e.g., Linz et al., 2017; Leedham Elvidge et al., 2018).

In particular, trace gas species with chemical sinks in the stratosphere provide information on the stratospheric circulation as the transport through the sink regions depends on the strength and depth of the circulation. For such long-lived species with stratospheric sinks, like N₂O, CH₄, or the chlorofluorocarbons (CFCs), the chemical loss can be described by a fractional release factor (FRF)

$$\alpha = 1 - \frac{\chi}{\chi_{[entry]}} , \tag{1}$$

where χ is the observed mixing ratio in the stratosphere and $\chi_{[entry]}$ the mixing ratio at the tropical tropopause where the air enters the stratosphere. Consequently, changes in the strength and pattern of the stratospheric circulation cause changes in α and, in general, FRF highly correlate with AoA. On the one hand, it is more complicated for chemically active species to disentangle the effects of chemistry and transport. On the other hand, atmospheric measurements may be of higher quality, more frequent, provide denser sampling, and cover longer time periods ~~for other than compared to~~ the canonical species SF₆ and CO₂, which are the ones commonly used to investigate the BDC.

As many long-lived species are only sparsely measured, stratospheric H₂O is particularly appealing as a tracer for estimating long-term trends, with a suite of measurements covering the past decades. The longest continuous in situ time series of stratospheric H₂O (starting in 1980) comes from the frost point hygrometer observations in Boulder, Colorado located at 40.0°N, 105.2°W. In addition, stratospheric H₂O observations from different satellite platforms exist since the mid-1980s, such as SAGE II (Satellite Aerosol and Gas Experiment, covering the period of 1984-2005; e.g., McCormick, 1987; Chu et al., 1993; Rind et al., 1993; Thomason et al., 1997), HALOE (Halogen Occultation Experiment, 1991-2005; e.g., Russell III et al., 1993), MIPAS Envisat (Michelson Interferometer for Passive Atmospheric Sounding, 2002-2012; e.g., von Clarmann and Stiller, 2003; Raspollini et al., 2006; Fischer et al., 2008), ACE-FTS (Atmospheric Chemistry Experiment-Fourier Transform Spectrometer, 2004-2012; e.g., Bernath et al., 2005; Bernath, 2017) and Aura MLS (Microwave Limb Sounder, 2004-present; e.g., Waters et al., 1999, 2004, 2006). The different satellite observations are merged into homogeneous global data sets of high value for analysing stratospheric variability and trends (e.g. Hegglin et al., 2014; Davis et al., 2017). To this end, Hegglin et al. (2014) estimated trends of AoA from a novel merged satellite H₂O data record, based on the conservation property of total water in the stratosphere (mainly the sum of H₂O and two times CH₄; for details see Sect. 2.2.3). They showed that decreasing H₂O mixing ratios in the lower stratosphere ~~(below about 10 hPa)~~, from the mid 1980s to 2010 and increasing H₂O mixing ratios above are related to an accelerating shallow branch of the BDC (decreasing AoA below about 10 hPa) and to a decelerating deep branch of the BDC (increasing AoA above). It is, however, not straightforward to accurately determine the AoA from stratospheric H₂O distributions due to ~~the~~ complex processes involved.

We consider that at a particular time and location of the stratosphere, H₂O mixing ratios are determined by the value of the stratospheric entry mixing ratio, the propagation of this entry value into the stratosphere, and the chemical source of stratospheric H₂O. This assumption does not hold in the lowermost stratosphere as convection and isentropic transport can cause multiple entry mixing ratios. ~~Also in our consideration is meant that there are no any significant source processes other than~~ The only significant source of H₂O considered in this work is CH₄ oxidation ~~(e.g., neglecting all other hydrocarbons and molecular hydrogen).~~

The chemical source of stratospheric H₂O from the oxidation of CH₄ is done by O(¹D), OH, and Cl radicals (e.g. Röckmann et al., 2004). The strength of the chemical source of H₂O depends on the transit time and the transit path of air since entering the stratosphere and is ~~thus~~, thus, related to AoA. The full complexity of these processes is very challenging to represent in the analysis of stratospheric H₂O. Consequently, stratospheric H₂O and CH₄ are used in combination for AoA estimation, and the assumptions of (i) an instantaneous propagation of stratospheric entry mixing ratios, and (ii) stationarity of the correlation between AoA and the fractional release factor of CH₄, are frequently assumed approximations (e.g. Schoeberl et al., 2000,

2005; Hegglin et al., 2014). Hegglin et al. (2014) ~~in-particular-particularly~~ point out that the assumption of stationarity is only
90 valid due to the lack of a trend in tropospheric CH₄ over the specific period they considered.

In this paper, we investigate the methodology to estimate AoA trends from stratospheric H₂O and CH₄. In particular, we address in detail the impact of the two frequently employed approximations described above, of (i) instantaneous entry mixing ratio propagation, and (ii) constant ~~FRF-AoA-AoA-FRF~~ correlation. For this purpose, we employ a closed model environment (the “model world”) in which the mean stratospheric AoA and its trend is known, which is not the case when atmospheric
95 measurements are analysed. In this way, the effect of each approximation on the calculated AoA trend and the associated temporal development of H₂O can be quantified (“proof of concept”). We aim for simple and practical advice on the approximate methods to estimate AoA trends from stratospheric measurements of H₂O and CH₄. Our results highlight the importance of assessing the robustness of observation-based methods against uncertainties in the underlying assumptions to test their validity and general applicability.

100 Section 2 introduces the ~~method, in-particular-methods,~~ describing the Chemical Lagrangian Model of the Stratosphere (CLaMS, McKenna et al., 2002a; Pommrich et al., 2014) which is employed here as the model framework ~~to simulate stratospheric AoA,~~ as well as the methods for estimating AoA trends from H₂O and CH₄. Section 3 presents the ~~results, main results on the impact of the used approximations on the resulting AoA trend, as well as introduces the adjustment to the approximations for an improved AoA trend estimation.~~ Sect. 4 contains the discussion, and Sect. 5 ~~contains~~ the overall conclusions.

105 2 Methods

2.1 The CLaMS model

This paper is based on a study performed within the “model world” using the Chemical Lagrangian Model of the Stratosphere (~~CLaMS McKenna et al., 2002a,b~~), CLaMS (McKenna et al., 2002a,b). The model set-up is described in detail elsewhere (~~Poshyvailo et al., 2018~~) (e.g., Poshyvailo et al., 2018). Briefly, CLaMS is a modular Lagrangian chemistry transport
110 model based on 3D-forward trajectories with ~~parametrisation-parameterisation~~ of small-scale mixing. CLaMS consists of several modules, such as Lagrangian advection (TRAJ), stratospheric mixing (MIX), sinks of H₂O (CIRRUS), stratospheric chemistry, and several other modules responsible for simulation of various physical and chemical processes. The modules act successively at each time step of 24 h. The boundary conditions at the surface are prescribed based on ground-based measurements in the lowest model level (below ≈ 4 km). CH₄ mixing ratios are taken from the zonally-symmetric NOAA/ESRL dataset (e.g., Masarie et al., 1991) from 1990 to 2011, and from zonally-resolved AIRS data (e.g., Xiong et al., 2008, 2013) for 2011-2017. The CH₄ boundary condition has been switched in 2011 to take advantage of the better sampling of AIRS data in comparison to NOAA, although accepting the apparent discontinuity. Because the results of the CLaMS model are internally consistent, the discontinuity has only negligible effects.

The CLaMS trajectory module TRAJ performs fully Lagrangian 3-dimensional advection of an ensemble of approximately
120 2 million air parcels. The position of each air parcel is defined in hybrid isentropic coordinates (Pommrich et al., 2014) and longitude-latitude space. Horizontal resolution is about 100 km, while the vertical resolution is defined via a critical aspect ratio,

of about 250 (Haynes and Anglade, 1997). The CLaMS simulations cover the atmosphere from the surface to the stratopause (2500 K or ≈ 60 km). The advection of forward trajectories in CLaMS is calculated using 6-hourly wind fields and total diabatic heating rates from meteorological ERA-Interim reanalysis (Dee et al., 2011). Wind fields are linearly interpolated from the adjacent grid points to the locations of the air parcels. The trajectory calculation advects air parcels to new positions within one model time step.

The ~~parametrization~~ parameterisation of small-scale mixing in the CLaMS mixing module is based on the deformation rate in the large-scale flow: air parcels may be merged, or new air parcels may be inserted at each time step, depending on the critical distances between the air parcels (McKenna et al., 2002a; Konopka et al., 2004). Note, that the mixing ~~parametrization~~ parameterisation affects both horizontal (associated with deformation in the horizontal flow) and vertical (related to the vertical shear) diffusivity (Konopka et al., 2004, 2005).

Dehydration in CLaMS is performed with the CIRRUS module (e.g., Poshyvailo et al., 2018). The calculation includes freeze-drying in regions of cold temperatures, mainly occurring around the tropical tropopause and in the Southern polar vortex. These cold temperatures cause formation and sedimentation of ice particles. If saturation along a CLaMS air parcel trajectory exceeds a critical saturation, then the H₂O amount in excess is instantaneously transformed to the ice phase and sediments out. The ~~parametrization~~ parameterisation of sedimentation is based on a mean ice particle radius, the characteristic sedimentation length and the corresponding fall speed. The fall distance of the ice particles is calculated from the fall speed and the computation time step. After comparison of the fallen path with a characteristic sedimentation length of the vertical grid size, a respective fraction of ice will be removed. If the parcel is sub-saturated and ice exists, the ice will be instantaneously evaporated to maintain saturation. For further details see Poshyvailo et al. (2018). CH₄ oxidation is included in CLaMS as a source of H₂O in the middle and upper stratosphere (for details see Pommrich et al., 2014). Note, that due to the simple ~~parametrization~~ parameterisation of ice microphysics and the omission of a ~~parametrization~~ parameterisation of convective processes, the simulated H₂O results are meaningful only above the tropopause.

2.2 Age spectrum calculated with CLaMS

In general, the mixing ratio of any long-lived trace gas $\chi(r, t)$ at a specific time and specific location in the stratosphere, with assumed absence of integrated loss, can be expressed as the following integral over all the past times (Hall and Plumb, 1994; Waugh and Hall, 2002)

$$\chi(r, t) = \int_0^{\infty} \chi(r_0, t-t') G(r, t | r_0, t-t') dt' \quad (2)$$

where t is the field time when the volume is sampled, t' is the transit time; $G(r, t | r_0, t-t')$ is the boundary propagator or Green's function of the transport operator. Here, G is interpreted as a transit time distribution (the "age spectrum"), and is the probability that the transit time of the air parcel travelling from the source r_0 to the sample point r is in the range between t' and $t' + dt'$. Moreover, the age spectrum fulfils the normalization condition that its integral over transit time is unity. The first moment The first momentum of the age spectrum is the mean age of air (AoA, denoted by the symbol $\bar{\Gamma}$ in the following). In

this way, the stratospheric tracer distribution can be described through the contributions of ~~their~~ the tropospheric evolution and
155 transport.

In our study, the age spectrum is computed with CLaMS driven by the ERA-Interim reanalysis, using the “Boundary Impulse (time-)Evolving” (BIER) method based on multiple tracer pulses (Ploeger and Birner, 2016). For the inert tracer χ with a pulse at the location r_0 , the field time t_0 , and the source time t_0^* , the time evolution of the source can be described with a δ -distribution as $\chi(r_0, t_0) = \delta(t_0 - t_0^*)$. Thus, Eq. 2 can be transformed to

$$160 \quad \chi(r, t' + t_0^*) = G(r, t' + t_0^* | r_0, t_0^*), \quad (3)$$

where $t' = t_0 - t_0^*$ is a transit time, $G(r, t' + t_0^* | r_0, t_0^*)$ is the boundary impulse response at location r to a δ -boundary condition at the location r_0 at source time t_0^* . Having N different tracers χ_i ($i = 1, \dots, N$) with pulses at the source location r_0 at times $t_{0[i]}$ provides the field time dependence of the propagator G . The age spectrum, may be constructed at each field time t and location r as $G(r, t | r_0, t - t'_{[i]}) = \chi_i(r, t)$. Hence, the N different tracers provide N pieces of information for the age spectrum at the
165 discrete transit times $t'_{[i]} = t - t_{0[i]}$.

Here, $N = 60$ different boundary pulse tracers were used. These pulses were released directly at the tropical tropopause between 30° S- 30° N. Precisely, the source region covers the potential temperature layer from 10 K below to 10 K above the WMO (lapse rate) tropopause. The particular tracer mixing ratio is set to 1 for each pulse for a period of 30 days at the location r_0 , and it is set to 0 in r_0 at other times. Pulses are launched every month. Consequently, to build the age spectrum for January
170 1990, the most recent tracer pulse has source times in January 1990, the second tracer pulse in December 1989, and so on. In our study, the original length of each age spectrum is 10 years (threshold transit time). The tail of the age spectrum is approximated with an exponential function when transit time exceeds 10 years (e.g., Ploeger and Birner, 2016). We used the exponential correction for the tail back to January 1979 for each age spectrum. ~~After this correction, the age spectrum was normalized to unity.~~

175 2.3 Contributions to H₂O changes

In this paper, we investigate the methodology to estimate AoA trends within a closed model environment of CLaMS in which the mean stratospheric H₂O and CH₄ and their ~~trend~~ trends are known. Trends in AoA can be calculated from trends in stratospheric H₂O mixing ratios by using the conservation property of total hydrogen in the stratosphere, namely that the sum of H₂O and two times CH₄ mixing ratios is approximately constant (e.g., Le Texier et al., 1988; Dessler et al., 1994). This
180 conservation property implies for the H₂O mixing ratio at a given location r and time t in the stratosphere

$$\text{H}_2\text{O}(r, t) = \text{H}_2\text{O}_{[\text{entry}]}(r, t) + 2\alpha(r, t) \text{CH}_4_{[\text{entry}]}(r, t), \quad (4)$$

where $\text{H}_2\text{O}_{[\text{entry}]}(r, t)$ and $\text{CH}_4_{[\text{entry}]}(r, t)$ are H₂O and CH₄ mixing ratios respectively at the specific location and time in the stratosphere, being transported from their entry location at the tropical tropopause without any chemical effects.

The time series of CLaMS H₂O and CH₄ at the entry to the stratosphere ~~(, averaged over the tropics at 30° S- 30° N and in~~
185 the potential temperature layer 390-400 K (approximately 80 hPa), chosen just above the cold tropical tropopause region ~~) is~~

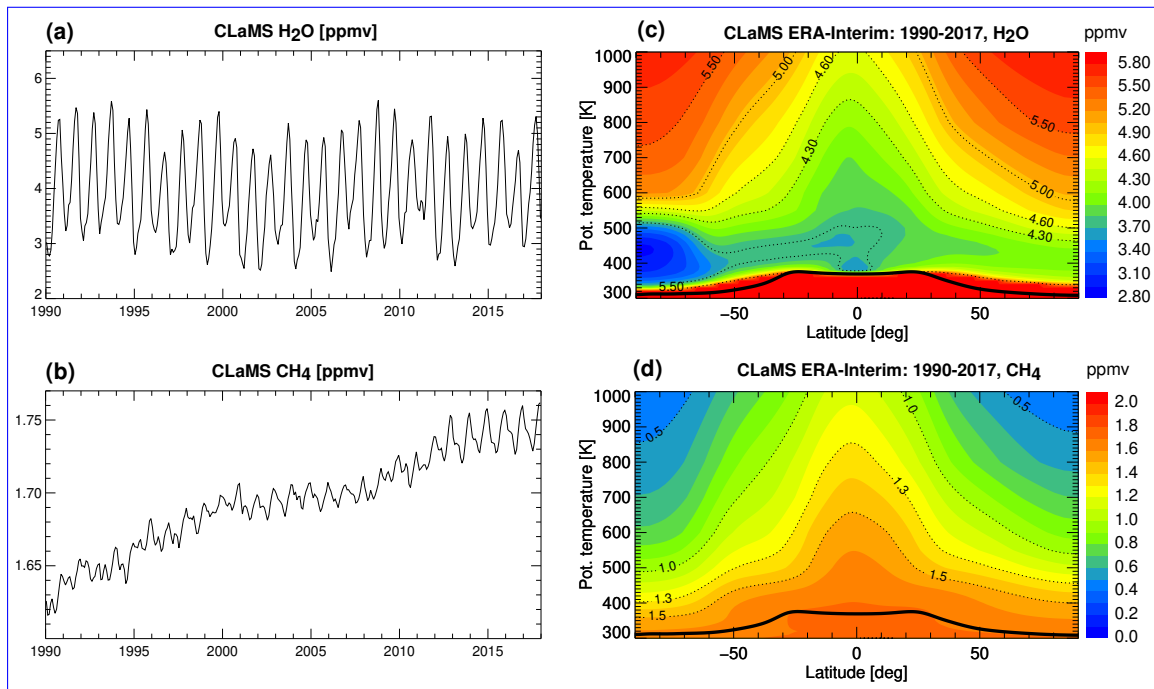


Figure 1. Time series of H₂O (a) and CH₄ (b) mixing ratios (in ppmv) for 1990-2017 averaged over the tropics at 30°S-30°N and in the potential temperature layer 390-400 K. Annual zonal mean H₂O distributions for H₂O (c) and CH₄ (d). Data shown is from the CLaMS simulation driven by ERA-Interim reanalysis.

are shown in Fig. 1a, b. While the CH₄ time series shows characteristics close to clock tracers, the H₂O time series is highly variable. Annual zonal mean of stratospheric H₂O and (Fig. 1a), while the CH₄ from CLaMS is shown in time series shows a clear positive trend (Fig. 1e, d. As already mentioned). Besides freeze-drying at the tropical tropopause and in the Antarctic polar vortex, stratospheric H₂O is controlled mainly by CH₄ oxidation in the middle and high stratosphere, while local freeze-drying dominates in the Antarctic polar vortex (Fig. 1c, d). Consequently, CH₄ mixing ratios generally decrease with increasing altitude, as it is gradually chemically transformed into H₂O.

The fractional release factor (FRF), α , describes the fraction of CH₄ which has been dissociated in the stratosphere (Solomon and Albritton, 1992), and it can be determined as is determined as

$$\alpha(r, t) = 1 - \text{CH}_4(r, t) / \text{CH}_{4[\text{entry}]}(r, t). \quad (5)$$

As CH₄ oxidation depends on the altitude in the stratosphere, the FRF is strongly affected by the vertical transport of the BDC. Hence, information on circulation trends (in particular on AoA) can be deduced from trends in α -FRF (Hegglin et al., 2014). Assuming long-term trends as small perturbations to the basic state, Eq. 4 can be rewritten as an equation for the

linear trend in stratospheric H₂O over a given time period

$$200 \quad \Delta\text{H}_2\text{O}(r, t) = \Delta\text{H}_2\text{O}_{[\text{entry}]}(r, t) + 2\alpha(r, t) \Delta\text{CH}_4_{[\text{entry}]}(r, t) + 2\text{CH}_4_{[\text{entry}]}(r, t) \Delta\alpha(r, t). \quad (6)$$

Here, $\Delta\text{H}_2\text{O}_{[\text{entry}]}(r, t)$ and $\Delta\text{CH}_4_{[\text{entry}]}(r, t)$ are the trends in water vapour and methane transported from their stratospheric entry location at the TTL (neglecting chemistry), and $\Delta\alpha(r, t)$ is the trend in FRF. Note that the sum of H₂O and two times CH₄ mixing ratios is not conserved around and below the tropopause and in the polar vortex, where dehydration causes loss of H₂O. Hence, the presented analysis does not apply at the lowermost stratosphere, below the tropopause and in the polar vortex or near its edges.

Using the above approach, it is possible to investigate the different contributions to stratospheric H₂O changes related to changes in stratospheric H₂O entry mixing ratio, changes in CH₄ entry mixing ratio, and changes in the FRF. ~~As the last term represents a change in stratospheric circulation (which, in turn is related to changes in the BDC), we can estimate the changes in the AoA from $\Delta\alpha$. In the next sections, we analyze in detail the AoA trend calculations based on H₂O changes within the CLaMS model world, which are affected by stratospheric circulation changes and can be converted to an AoA trend.~~

~~Time series of H₂O (a) and CH₄ (b) mixing ratios (in ppmv, see y-axis) for 1990-2017 averaged over the tropics at 30°S-30°N and in the potential temperature layer 390-400 K. Annual zonal mean H₂O distributions for H₂O (c) and CH₄ (d). Data shown is from the CLaMS simulation driven by ERA-Interim reanalysis. For CLaMS, the boundary conditions at the surface are prescribed based on ground-based measurements in the lowest model level (below ≈ 4 km). For CH₄ from 1990 to 2011 it is taken from the zonally-symmetric NOAA/ESRL dataset (e.g., Masarie et al., 1991), for 2011-2017 it is taken from zonally-resolved AIRS data (e.g., Xiong et al., 2008, 2013).~~

2.4 Methods of assessing AoA trends from H₂O changes

There are four methods of AoA trend calculation used in this study, depending on the assumed approximations of (i) an instantaneous propagation of stratospheric entry mixing ratios, and (ii) stationarity of the correlation between AoA and the FRF of CH₄. The summary of the different terms needed for AoA estimation with respect to the used ~~methods~~ method is shown in Table 1.

The full reconstruction method (FULL) includes the most detailed representation of the true atmospheric processes. In the FULL method, H₂O and CH₄ entry mixing ratios are propagated through the convolution of the TTL mixing ratios with the modelled age spectrum. ~~Also, the monthly varying FRF-AoA~~ The monthly varying AoA-FRF correlations are used for translating FRF into AoA changes, to include effects of the non-stationarity of the correlation. None of the approximations (i) or (ii) is used in the FULL method. Note, that for estimating AoA trend with the FULL method, the propagated entry H₂O mixing ratios are not ~~used~~ needed; the AoA trend is deduced from the FRF, which requires only propagated entry CH₄ mixing ratios.

The constant correlation method (C-CORR) includes the propagation of entry H₂O and CH₄ mixing ratios by the modelled age spectrum (same as for FULL), but the stationary relationship between FRF and modelled AoA is used (ii approximation). The difference between C-CORR and FULL is in the ~~used~~ correlation between AoA-FRF, ~~and the way of FRF calculation.~~

For C-CORR, a constant AoA-FRF was used, whereas for FULL a monthly varying correlation was used to include effects of

Table 1. Specification of the terms (first column of the table) required for AoA trends estimation from H₂O changes in different methods: full reconstruction (FULL), constant correlation (C-CORR), approximation (APPROX) and improved approximation (APPROX-improved) methods.

Term	FULL	C-CORR	APPROX	APPROX-improved
$\Delta H_2O_{[entry]}(r, t)$	Trend of H ₂ O propagated by monthly age spectrum, see Eq. 2	Trend of H ₂ O propagated by monthly age spectrum, see Eq. 2	Trend from H ₂ O timeseries averaged over 390-400 K and 30° S-30° N	Trend of H ₂ O monthly propagated by parameterised idealised age spectrum
$2\alpha(r, t) \Delta CH_4_{[entry]}(r, t)$	Trend of CH ₄ propagated by monthly age spectrum, see Eq. 2; FRF is defined from Eq. 5	Trend of CH ₄ propagated by monthly age spectrum, see Eq. 2; FRF is defined from Eq. 5	Trend from CH ₄ timeseries averaged over 390-400 K and 30° S-30° N; FRF is defined from approximated Eq. 5	Trend of CH ₄ monthly propagated by parameterised idealised age spectrum, see Eq. 2; FRF is defined from Eq. 5
$2CH_4_{[entry]}(r, t) \Delta\alpha(r, t)$	Trend of FRF defined from Eq. 5; used the climatological mean of CH ₄ propagated by monthly age spectrum	Trend of FRF is residual from Eq. 6; used the climatological mean of CH ₄ propagated by monthly age spectrum and trend of CLaMS H ₂ O	Trend of FRF is residual from Eq. 6; used CH ₄ averaged over 390-400 K and 30° S-30° N and trend of CLaMS H ₂ O	Trend of FRF is residual from Eq. 6; used the climatological mean of CH ₄ monthly propagated by parameterised idealised age spectrum and trend of CLaMS H ₂ O
ΔAoA	AoA trend is from recalculated AoA from FULL FRF: defined by the monthly varying correlation function f between FULL FRF and CLaMS AoA, where $AoA = f(\alpha)$	AoA trend is defined by the third-order polynomial constant in time empirical correlation function f , $\Delta AoA = f(\alpha + \Delta\alpha) - f(\alpha)$; note, that α is from APPROX <u>taken from APPROX for compatibility between the methods</u>	AoA trend is defined by the third-order polynomial constant in time empirical correlation function f , $\Delta AoA = f(\alpha + \Delta\alpha) - f(\alpha)$, used α ; <u>and $\Delta\alpha$ are</u> from this method	AoA trend is defined by the d-order polynomial constant in time empirical correlation function f , $\Delta AoA = f(\alpha + \Delta\alpha) - f(\alpha)$; note, that α is from APPROX <u>taken from APPROX for compatibility between the methods</u>

~~the non-stationarity of the correlation. The procedure of propagating entry mixing ratios in C-CORR and FULL is exactly the same, and the method of calculating FRF and its trend.~~

235 The method based on both approximations (i) and (ii) is named “approximation method” in the following, and is abbreviated APPROX. In fact, APPROX method is used in the literature, and we evaluate it in this paper in detail. Finally, we introduce an improvement to the approximation method: instead of using approximation (i), stratospheric entry H₂O and CH₄ mixing ratios are propagated with the parameterised idealised age spectrum.

3 Results

240 In the following we consider the consequences of the two major approximations (i) instantaneous propagation of stratospheric entry mixing ratios, and (ii) constant correlation (stationary relationship) between FRF and AoA. We evaluate the effects of these approximations on the AoA trends inferred from H₂O and CH₄ changes through comparison of the “true” AoA trend (actual modeled with CLaMS) and the AoA trends estimated with the different methods (see Sect. 2.4). First, we consider the extended 1990-2017 period and thereafter 1990-2006. The results of this work provide an estimate of the reliability of the
245 approximation method to deduce circulation trends from observed stratospheric H₂O and CH₄ mixing ratios.

3.1 Contributions to stratospheric H₂O trend

~~As described in Sect. 2.3, AoA trends can be estimated from the separation of H₂O changes into different contributions: three different contributions (see Eq. 6). In a first step, we estimate here each term of Eq. 6 using the full reconstruction method FULL through propagation of H₂O and CH₄ entry mixing ratios by the modelled age spectrum (for details see Table 1). The H₂O mixing ratio transported from the location of stratospheric entry at the tropical tropopause without chemical effects constitutes~~

250

~~We calculate the first term of this equation. Here, we estimate this term by propagating the tropopause mixing ratios (at r_0) to the stratospheric sampling location r and time t using Eq. 2, by convoluting the mixing ratio $\chi(r_0, t-t')$ by the convolution of H₂O mixing ratio at the tropical tropopause with the transport operator’s Green’s function $G(r, t; r_0, t-t')$ using Eq. 2.~~

255 The Green’s function G , or stratospheric age spectrum, has been simulated by CLaMS and is known over the considered period (for details on age spectrum calculation see Sec. 2.2). Hence, the propagation of boundary mixing ratios to each grid point in the stratosphere provides the full reconstructed stratospheric tracer field. The analogous calculation is applied to derive CH₄ mixing ratios in the stratosphere, transported without including chemical effects.

In our study, the entry time series of H₂O and CH₄ are taken from zonally averaged monthly mean data simulated with
260 CLaMS driven by ERA-Interim reanalysis (see Fig. 1a, b). The location of entry to the stratosphere is approximated as the 390-400 K layer between 30°S-30°N, which is located just above the cold point tropopause to avoid complications related to H₂O dehydration processes at the tropopause (see Fig. 1a, b). The propagation procedure yields zonally averaged stratospheric entry H₂O and CH₄ distributions with a monthly resolution on the latitude-potential temperature grid.

For deducing FRF, the relation from Eq. 5 is used, where $\text{CH}_4(r, t)$ is monthly mean CH_4 simulated with CLaMS driven by ERA-Interim reanalysis. The $\text{CH}_4_{[\text{entry}]}(r, t)$ is calculated as described above, through the convolution of the tropical entry mixing ratio time series with the age spectrum. Consequently, the resulting FRF has a monthly resolution.

Thus, we can estimate each contribution to the stratospheric H_2O mixing ratio. All trends are calculated through a linear regression which minimizes the standard deviation at each latitude-potential temperature grid. [The different contributions to the total stratospheric \$\text{H}_2\text{O}\$ change for 1990-2017 are shown in Fig. 2.](#) Note that in this study we applied the [boundary time-series propagation procedure with the CLaMS age spectra, propagation procedure](#) on the period [1990-2017, 1990-2017](#) because of the availability of the CLaMS data and the necessary age spectrum length. [The different contributions to the total stratospheric \$\text{H}_2\text{O}\$ change for 1990-2017 are shown in Fig. 2.](#)

Figures 2a, b represent the first two terms of Eq. 6, related to the entry H_2O and CH_4 mixing ratio trends, [respectively](#). Figure 2c shows the impact from circulation changes, in terms of the change in FRF. In general, the different contributions affect the stratospheric H_2O changes differently in different regions, consistent with the findings of Hegglin et al. (2014). The strongest regional pattern is apparent in the contribution related to the stratospheric circulation change (Fig. 2c).

For assessing the reliability of the method applied to estimate the different contributions, we compare the stratospheric H_2O trend reconstructed as the sum of the calculated contributions (in Fig. 2) with the actual trend of CLaMS simulated H_2O ([termed reference REF](#)). Figure 3a shows the “true” H_2O trend from the CLaMS simulation, while Fig. 3b shows the sum of the three terms from Fig. 2. Figure 3c shows the absolute difference between the true and reconstructed trends, indicating clear quantitative differences. Particularly large differences occur in the Antarctic region. This is expected due to the strong local dehydration occurring in that region, and the related failure of the total hydrogen conservation. Hence, the results of the reconstruction method should be interpreted with caution in the Southern polar region. [Also, the Further](#) disagreement between Fig. 3a and Fig. 3b is partly related to inaccuracies in the modelled age spectrum (monthly pulsing, limited spectrum length), and to inaccuracies in the boundary time-series (averaging in the layer of 390-400 K potential temperature and 30°S - 30°N). Note, that through the convolution of the age spectrum and the stratospheric entry time series it is possible to reconstruct mixing ratios only above the tropopause (or the level of the boundary time-series, if chosen differently). Outside of the Southern high-

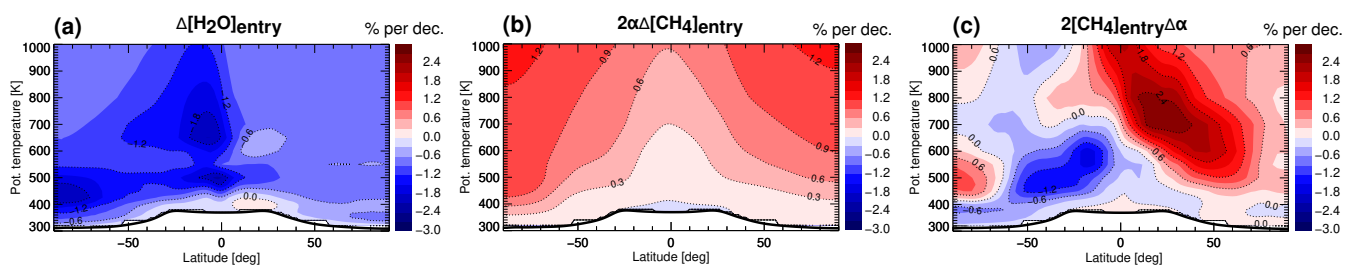


Figure 2. Contributions to stratospheric H_2O trends for 1990-2017 from (a) stratospheric H_2O entry mixing ratio changes, (b) stratospheric CH_4 entry mixing ratio changes, and (c) circulation changes. Stratospheric entry H_2O and CH_4 are derived through propagation of their stratospheric entry mixing ratios by convolution with the CLaMS modelled age spectrum. The data is from CLaMS simulations driven by ERA-Interim reanalysis, and is presented in percentage per decade, with relation to the climatological 1990-2017 stratospheric H_2O mixing ratios. The black line is the ([Hapse-lapse](#) rate) tropopause calculated from ERA-Interim using the WMO definition (WMO, 1957). [The white region below tropopause denotes the region, where the reconstruction method can not be applied.](#)

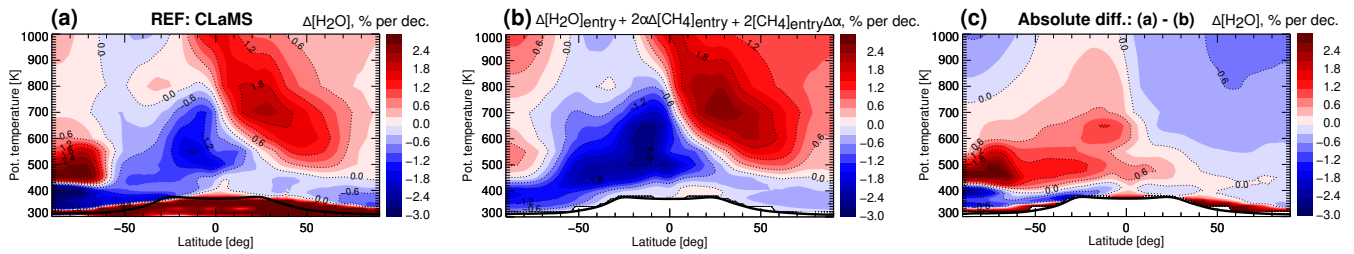


Figure 3. H₂O trends during 1990-2017 period and their reconstruction, shown in percentage per decade with respect to the 1990-2017 climatology. Sub-figure (a) represents the reference (REF) “true” stratospheric H₂O trend calculated from the CLaMS simulation driven by ERA-Interim reanalysis. (b) shows the reconstruction as sum of the different contributions (see from Fig. 2), including propagated stratospheric entry H₂O and CH₄ by the age spectrum and the change in FRF. (c) shows the absolute difference between (a) and (b). The black line is the tropopause calculated from ERA-Interim. Note, that due to the simple parametrization-parameterisation of ice microphysics and the omission of a parametrization-parameterisation of convective processes in CLaMS, the simulated H₂O results (see shown in (a)) are meaningful only above the tropopause.

290 latitude regions, the overall differences shown in Fig. 3c are small, and the propagation procedure provides a good estimate of stratospheric H₂O change and its contributions, at least regarding the large-scale patterns. Note that neither stratospheric entry H₂O (Fig. 2a) nor CH₄ changes (Fig. 2b) explain the pattern of the “true” H₂O trend (Fig. 3a). Instead, the circulation change term (Fig. 2c) includes the regional characteristics of the actual stratospheric H₂O trend.

3.2 AoA trends estimation using monthly AoA-FRF correlation in the full reconstruction method (FULL)

295 Accurate estimation of AoA from observed trace gas distributions is a complicated task. Even though, it is desirable to have a complete age spectrum for AoA calculations, it is very difficult to obtain it from measurements. Consequently, different approximations are often applied when deriving mean AoA from trace gases observation with non-linear increase, as well as assumptions are necessary about the age spectrum and its shape (e.g., Schoeberl et al., 2000, 2005; Ehhalt et al., 2007; Hegglin et al., 2014).

300 The changes in FRF can be translated into changes in AoA using the correlation between estimated FRF and beforehand known AoA, following the procedure described by Hegglin et al. (2014). In the full reconstruction method FULL (for details see Table 1), a monthly varying correlation between estimated FRF and CLaMS AoA is used, where $AoA = f(\alpha)$, and f is an empirically determined correlation function. In an example shown in (Fig. 4).

In an example for January, April and July of 1995 shown in Fig. 4a, the AoA-FRF correlation functions are unique for each month, because the differences in magnitude of the coefficients are greater than the standard error’s range. Moreover, monthly AoA-FRF correlation functions have a very small difference for relatively young air (< 4 years) and low FRF (< 0.4), but there are visible differences towards older AoA.

It is worth mentioning that the monthly AoA-FRF correlation functions are still a simplification and might introduce some bias in the reconstruction. In general, an accurate AoA-FRF correlation function depends not only on the considered time but

also on longitude, latitude and altitude. ~~As an example,~~ An example of the relationship between AoA and FRF with regard to different latitude ranges (30° S-40° S, 10° S-10° N, 30° N-40° N) is shown in Fig. 4b for January, 2000. The AoA-FRF correlation functions are unique for each latitude range, because the differences in the magnitude of coefficients are out of the standard error's range. And, for instance, at the same FRF level of 0.3, the air at the Northern tropics (30° N-40° N) is younger than at the Southern tropics (30° S-40° S) by almost half a year.

~~Thus, using the monthly varying AoA-FRF correlation function (as shown on the example in Fig. 4a), FRF can be translated into AoA. The~~ AoA trend is calculated from the resulting AoA applying a linear fit (minimizing the standard deviation) at each latitude-potential temperature grid point. The ~~resulting reference "true" AoA trend calculated in FULL method directly from CLaMS simulated AoA~~ is shown in Fig. 5ba, whereas the ~~reference "true" resulting AoA trend calculated directly from CLaMS simulated AoA in FULL method~~ is shown in Fig. 5ab. The estimated AoA trend with FULL ~~(using CH₄ propagated by modelled age spectrum, and monthly varying correlation between estimated FRF and CLaMS AoA)~~ is qualitatively and quantitatively highly reliable, when comparing to the reference CLaMS AoA trend. Note, that for estimating AoA trends with the FULL method, the propagated entry H₂O mixing ratios are not used; the AoA trend is deduced from the FRF, which requires only propagated entry CH₄ mixing ratios. Visible differences between Fig. 4a and Fig. 4b are related to approximations in the AoA-FRF correlation: monthly AoA-FRF correlation functions are still a simplification and might introduce some bias in the

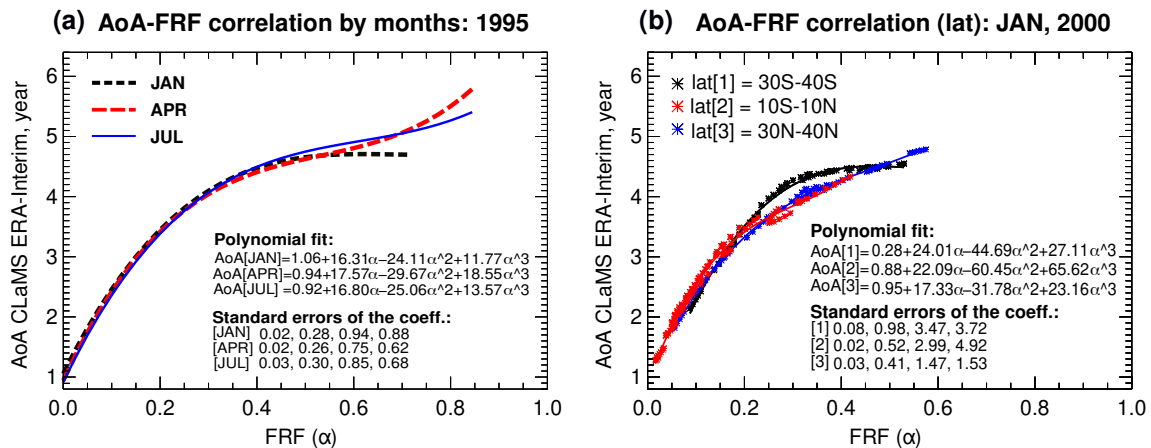


Figure 4. An example of relationship between estimated FRF (with FULL method) and CLaMS AoA. On sub-figure (a) are shown correlation functions for some three months of 1995: January (black dashed line), April (red dashed line) and July (blue solid line); FRF and CLaMS AoA are taken at the whole range of latitudes (90° S-90° N) for each correlation function in (a). On sub-figure (b) is are shown relationships between estimated FRF and CLaMS modelled-AoA for January 2000 for three intervals of latitudes: between 30° S and 40° S (black line and black star-dots), 10° S-10° N (red line and red star-dots), 30° N-40° N (blue line and blue star-dots). The estimated FRF and CLaMS AoA driven by ERA-Interim are (zonally averaged data) are taken between 450 K and 1000 K, where FRF has positive values due to the method, in both (a) and (b) sub-figures. The AoA-FRF relationships are shown by monthly fitting third-order polynomial function to the AoA-FRF distribution; in (a) the actual AoA-FRF distribution is not shown to avoid an overcrowded plot.

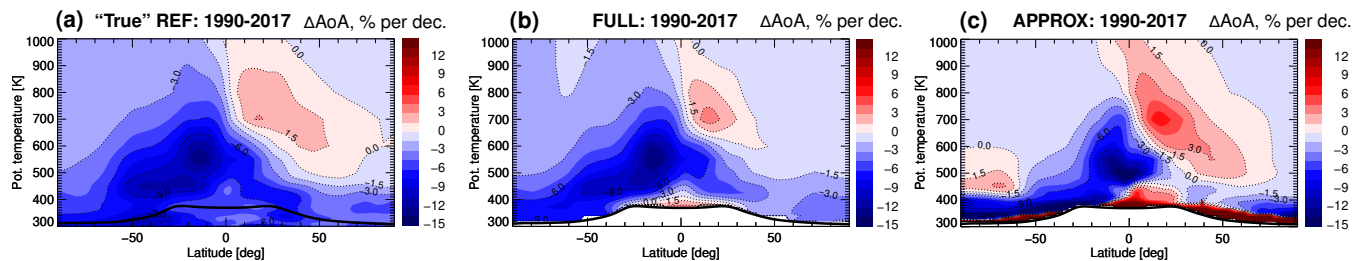


Figure 5. Decadal changes of AoA over 1990-2017: (a) “true” AoA changes from the CLaMS simulation driven by ERA-Interim reanalysis, (b) using CH₄ propagation by CLaMS age spectrum and monthly varying AoA-FRF correlation (FULL; ~~note, that stratospheric entry H₂O is not used for calculation AoA in this method~~), (c) AoA changes estimated with the approximation method (APPROX). The changes are presented in percentage per decade relatively to the AoA 1990-2017 climatologies (~~regarding the in each~~ used method of AoA calculation). The black line is the tropopause calculated from ERA-Interim. ~~The white region below tropopause denotes the region, where the approximation method can not be applied.~~

reconstruction. ~~Also, averaged CH₄ boundary mixing ratios are used for reconstruction~~ The averaged (between 390-400 K potential temperature, from 30° S to 30° N) ~~, which CH₄ boundary mixing ratios, which are used for the reconstruction,~~ could induce biases as well.

3.3 AoA trends estimation in the approximation method (APPROX)

330 Accurate estimation of AoA from observed trace gas distributions is a complicated task. Even though, it is desirable to have a complete age spectrum for AoA calculations, it is very difficult to obtain it from measurements. Consequently, different approximations are often applied when deriving AoA from trace gases observation with non-linear increase, as well as assumptions about the age spectrum and its shape (e.g., Schoeberl et al., 2000, 2005; Ehhalt et al., 2007; Hegglin et al., 2014). In the following, we further investigate the method of AoA trend estimation from combination of H₂O and CH₄ changes, applying the two major approximations introduced above: (i) instantaneous propagation of stratospheric entry mixing ratios, and
 335 (ii) constant correlation (stationary relationship) between FRF and modelled AoA. ~~The method based on these approximations will be termed “approximation method” (APPROX) in the following (see Table 1).~~

In the ~~APPROX method~~ approximation method APPROX, each term of Eq. 6 is approximated. The actual trend of strato-
 340 spheric H₂O (left side of the ~~equation Eq. 6~~) is assumed to be known beforehand. In our case it is the CLaMS simulated H₂O change over the considered period; ~~if the method is applied to observations it would be the observed H₂O change.~~ The ~~first and needed variables for the first and the~~ second term of Eq. 6 ~~refer to the changes in the stratospheric entry H₂O and CH₄ mixing ratios, respectively. These values~~ are obtained as a linear trend of the model entry mixing ratio time series ~~for the considered period. The time series are~~ averaged over the 390-400 K potential temperature layer (~~approximately 80 hPa~~) and 30° S-30° N:
 345 ~~Note again, that the region for averaging was chosen just above the cold tropical tropopause, important for the H₂O entry value estimation (see Sect. 3.1).~~ from the considered period (see Fig. 1). The FRF required for the second term is derived from Eq. 5. Therefore, following Hegglin et al. (2014) we use zonal mean ~~simulated stratospheric~~ CLaMS simulated CH₄(r, t)

mixing ratios averaged over 2005-2006, and we calculate $\text{CH}_4_{[\text{entry}]}$ as a mean mixing ratio between 390-400 K potential temperatures and 30°S - 30°N over 2002-2006. The impact of the circulation changes on stratospheric H_2O changes is described by the change in FRF (third term in Eq. 6). For APPROX, this term The third term is calculated as a residual between the actual CLaMS H_2O trend over the considered period (left side of Eq. 6) and the other two terms of Eq. 6. Dividing the residual third term by $2\text{CH}_4_{[\text{entry}]}$ yields the FRF changes, denoted as $\Delta\alpha$.

It is well known that FRF correlates with the AoA. Consequently, the changes in FRF can be translated into an AoA trend. In order to estimate the AoA trend induced by the changes in stratospheric H_2O , we define the relationship between FRF from APPROX and CLaMS modelled AoA (taken as 2005-2006 climatology ~~from CLaMS simulation in the~~ APPROX method). The correlation function is derived by fitting a third-order polynomial, as suggested by Hegglin et al. (2014). In our study, the empirical relationship between APPROX FRF and CLaMS AoA is described by the function $f(\alpha) = 0.85 + 16.49\alpha - 25.30\alpha^2 + 13.77\alpha^3$ (see Appendix A, Fig. A1). ~~As pointed out above, the~~ The approximation method assumes that the AoA-FRF relationship is stable in time (stationary). Note that by applying a constant AoA-FRF correlation function some atmospheric variability can be lost. Using the correlation function ~~$f(\alpha)$~~ we obtain the AoA changes trends from previously estimated FRF (α) and its changes ($\Delta\alpha$), as $\Delta\text{AoA} = f(\alpha + \Delta\alpha) - f(\alpha)$. A summary of on all terms defined within the APPROX method is provided in Table 1.

The resulting decadal AoA change trend for 1990-2017 estimated with the approximation method is shown in Fig. 5c, and can be compared to the “true” AoA trend from the reference CLaMS simulation, shown in Fig. 5a. There are visible quantitative differences between the “true” and the estimated trend of the AoA, especially in the Antarctic region. These differences are related to the dehydration processes occurring in that region. Also, the approximation method overestimates the AoA trend in the NH Northern hemispheric subtropical middle stratosphere. In the extratropical lowermost stratosphere (below about 380 K), AoA trends calculated with the approximation method are even opposite compared to the true trends, likely related to significant transport into this region across the subtropical tropopause (e.g., Hauck et al., 2019) which is not represented in the ~~simplified reconstruction here~~ APPROX. But overall, both ~~the estimated~~ APPROX and the “true” AoA trend show good agreement: decreasing AoA in the LSlower stratosphere, and increasing AoA in the NH Northern hemispheric middle stratosphere. Interestingly, for the 1990-2017 period AoA trends trend show clear differences between the NH and SH Northern and Southern hemispheres. The hemispheric differences might be related to the effect of mixing (e.g., Ploeger et al., 2015) and shifting stratospheric circulation patterns (Stiller et al., 2017), ~~and were also previously~~ found in long-term AoA trend derived from the observed stratospheric CH_4 (Remsberg, 2015). Overall, ~~the approximation method~~ APPROX provides a good estimate of the AoA trend for 1990-2017, corroborating the validity of the applicability of this method to H_2O observations over similar time periods (e.g., Hegglin et al., 2014).

To assess the general applicability of the approximation method APPROX, we consider another period of, 1990-2006. The “true” AoA trend for this period from the CLaMS simulation is presented in Fig. 6a, and the result from ~~the approximation method~~ APPROX is shown in Fig. 6c. In this case, the ~~AoA trend from the approximation method~~ AoA trend disagrees substantially when compared with the “true” CLaMS trend. Differences occur even in the sign of the AoA trend. Particularly clear differences occur in the strength of the AoA trend and its detailed pattern. Thus, the accuracy of the estimated

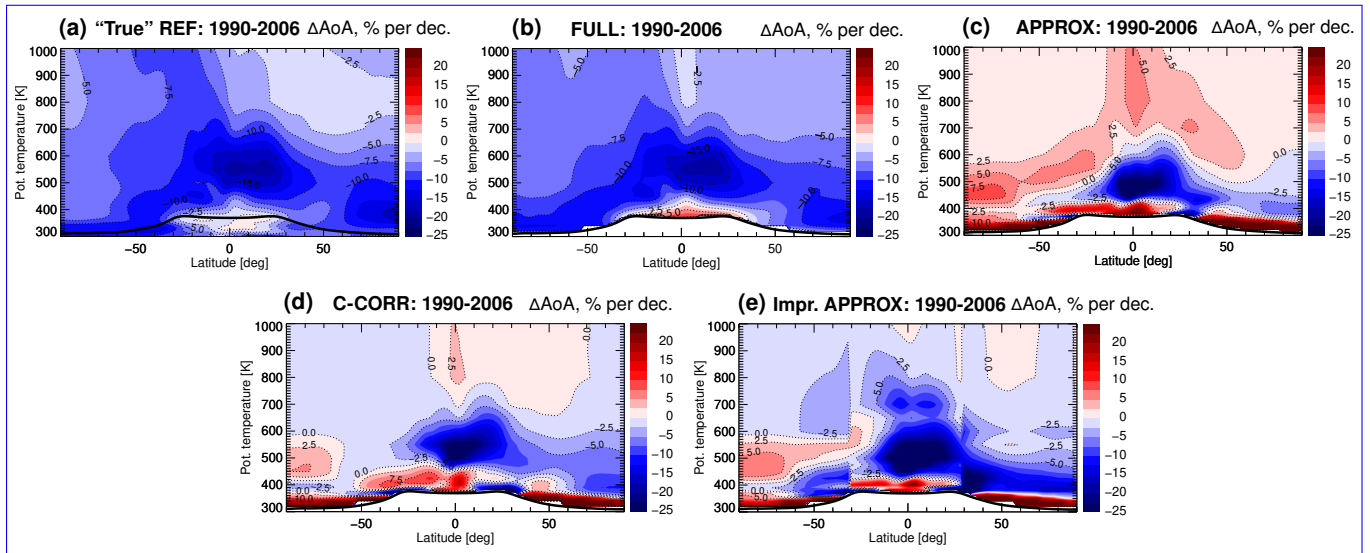


Figure 6. Comparison of decadal AoA trends for the 1990-2006 period, estimated using different methods: (a) “true” AoA trend from CLaMS simulation driven by ERA-Interim reanalysis, (b) FULL, (c) APPROX, (d) C-CORR (stratospheric entry H₂O and CH₄ propagation by CLaMS age spectrum and a constant AoA-FRF correlation), (e) improved approximation method (stratospheric entry H₂O and CH₄ propagation by the parameterised age-spectrum and a constant AoA-FRF correlation). The AoA trends are presented in percentage per decade with respect to the 1990-2006 AoA climatologies from the respective method. The black line is the climatological 1990-2006 tropopause calculated from ERA-Interim.

AoA changes from ~~the approximation method~~ APPROX largely depends on the considered period. In the following section, we further investigate the effects of the ~~approximations (instantaneous entry mixing ratio propagation; constant AoA-FRF correlation)~~ applied approximations and discuss their impact on the quality of the estimated AoA trend.

Comparison of decadal AoA trends for the 1990-2006 period, estimated using different methods: (a) “true” AoA trend from CLaMS simulation driven by ERA-Interim reanalysis, (b) using CH₄ propagation by CLaMS age spectrum and monthly varying AoA-FRF correlation (FULL; note, that stratospheric entry H₂O is not used for calculating AoA in this method), (c) AoA trend derived from the approximation method (APPROX, instantaneous stratospheric entry H₂O and CH₄ propagation and a constant AoA-FRF correlation), (d) using stratospheric entry H₂O and CH₄ propagation with the CLaMS age spectrum and a constant AoA-FRF correlation (C-CORR), (e) improved approximation method (stratospheric entry H₂O and CH₄ propagation by the parameterised age-spectrum and a constant AoA-FRF correlation). The AoA trends are presented in percentage per decade with respect to the 1990-2006 AoA climatologies from the respective method. The black line is the climatological 1990-2006 tropopause calculated from ERA-Interim. Below the tropopause, the white region indicates the areas, where the propagation procedure can not be applied.

3.4 Effect of the approximations: entry mixing ratio propagation and constant AoA-FRF correlation

Firstly, we evaluate the effect of approximation (i) of the instantaneous entry mixing ratio propagation. For this purpose, we perform an additional sensitivity study, where the stationary relationship between FRF and modelled AoA is kept, but entry H₂O and CH₄ mixing ratios are propagated through the convolution of the CLaMS ~~TTL~~-mixing ratios with the modelled age spectrum, ~~but with keeping the stationary relationship between FRF and modelled AoA~~. This method is termed as constant correlation method, C-CORR, in the following (see Table 1 for details). Note that in both methods, C-CORR and APPROX, the same FRF distribution (α) was is used, but the changes in circulation (namely $\Delta\alpha$) are different ~~depending on whether the stratospheric entry H₂O and CH₄ were propagated by the age spectrum or not~~.

The estimated AoA ~~trends~~ trend from C-CORR for 1990-2006 ~~are is~~ shown in Fig. 6d. The approximation of the instantaneous entry propagation largely affects the AoA trend, as evident from comparison of the resulting AoA trends from C-CORR ~~and APPROX, as well as~~, APPROX, and the CLaMS reference AoA trend (Fig. 6a, c, d). Including the entry H₂O and CH₄ propagation by the age spectrum in the method clearly improves the estimated AoA trend. When comparing C-CORR to APPROX the general trend patterns stay similar, but improvements are visible in the extratropical lower stratosphere and above about 600 K ~~(from comparison of C-CORR results with the true trend, see Fig. 6 d and a)~~.

~~Differences in AoA trends estimated with three methods (APPROX, C-CORR, and FULL) for the periods of 1990-2017 (a, b) and 1990-2006 (c, d). The black line is the climatological tropopause calculated from ERA-Interim for the considered period. The white region below the tropopause indicates the areas where the propagation procedure can not be applied.~~

For evaluating the effect of the approximation (ii) of a constant correlation between FRF and AoA, we compare the resulting AoA trends from C-CORR and FULL methods. ~~As a reminder, in FULL, the entry mixing ratios are propagated through the convolution of the TTL mixing ratios with the modelled age spectrum, and a monthly varying FRF-AoA correlation was used.~~ The difference between the AoA trend results from C-CORR and FULL methods stems from the ~~used correlation between differences in the~~ AoA-FRF correlations used in each method, and the explicit FRF ~~calculation~~ trend calculation (see Table 1). ~~Note that the propagated entry H₂O mixing ratios are not used for estimating the AoA trend in FULL method.~~

In C-CORR, the AoA trend ~~in FULL is deduced from the FRF, which requires only propagated entry CH₄ mixing ratios is~~ estimated from the residual circulation contribution (see Table 1).

~~Keeping the entry CH₄ propagation by using the age spectrum and, at the same time, including~~ Consequently, the monthly varying AoA-FRF correlation ~~in FULL (Fig. 6b) results in the best estimate of the AoA trend~~ improves the accuracy of the estimated AoA trend both qualitatively and quantitatively, when compared to the “true” CLaMS AoA trend ~~in stationary AoA-FRF correlation~~ (Fig. 6a). ~~Hence, the monthly varying AoA-FRF correlation improves the accuracy of the estimated AoA trend both qualitatively and quantitatively. As was discussed, b, d). It was mentioned earlier in the paper (see Sect. 2.3), that stratospheric H₂O is a highly variable tracer, and can lead to difficulties in estimating AoA trends. Hence, the good performance of the full reconstruction method FULL providing a reliable trend estimate is likely~~ FULL method can be related to the fact that stratospheric entry H₂O mixing ratios are not influencing the calculation.

430 For a more precise assessment of the effects of the two approximations, the differences among AoA trends estimated with
 different methods (APPROX, C-CORR, FULL) and for two different periods (1990-2017 and 1990-2006, are analysed (see
 Fig. 7)) are analysed. The difference between AoA trends from APPROX and C-CORR gives an estimate of the effect of the
 approximation (i) assuming instantaneous entry mixing ratio propagation, whereas the difference between C-CORR and FULL
 gives an estimate of the effect of the approximation (ii) using a constant FRF-AoA correlation-AoA-FRF correlation (Fig. 7).
 435

Figure 7a, b shows the differences in AoA trends for 1990-2017 between C-CORR and APPROX, and FULL and C-CORR.
 The differences are less than 5% per decade above 600 K. Below 600 K, the differences in AoA trends are higher, with the
 maximum at approximately 480 K. Interestingly, for 1990-2017 the larger differences in the lowest stratosphere directly above
 440 the tropopause should not be over-interpreted as the transit time resolution of used age spectra of 1 month is too coarse for a
 reliable reconstruction there. Interestingly, the effects of the first and second approximations are opposite in sign for 1990-2017
 (Fig. 7a, b). Consequently, the effects from both approximations cancel out to some extent, such that the APPROX method
 yields results remarkably close to the true CLaMS reference AoA trend (see Fig. 5). However, in general such cancellation can
 not be expected and the approximation method APPROX can produce misleading results.

445 Figure 7c, d shows the difference in AoA trends for 1990-2006. The difference above 600 K is around 5% per decade or less.
 A more complex structure is found below 600 K. The Generally, the instantaneous entry mixing ratio propagation causes an
 error in the estimated stratospheric entry H₂O and CH₄ contributions (see the discussion on contributions to stratospheric H₂O

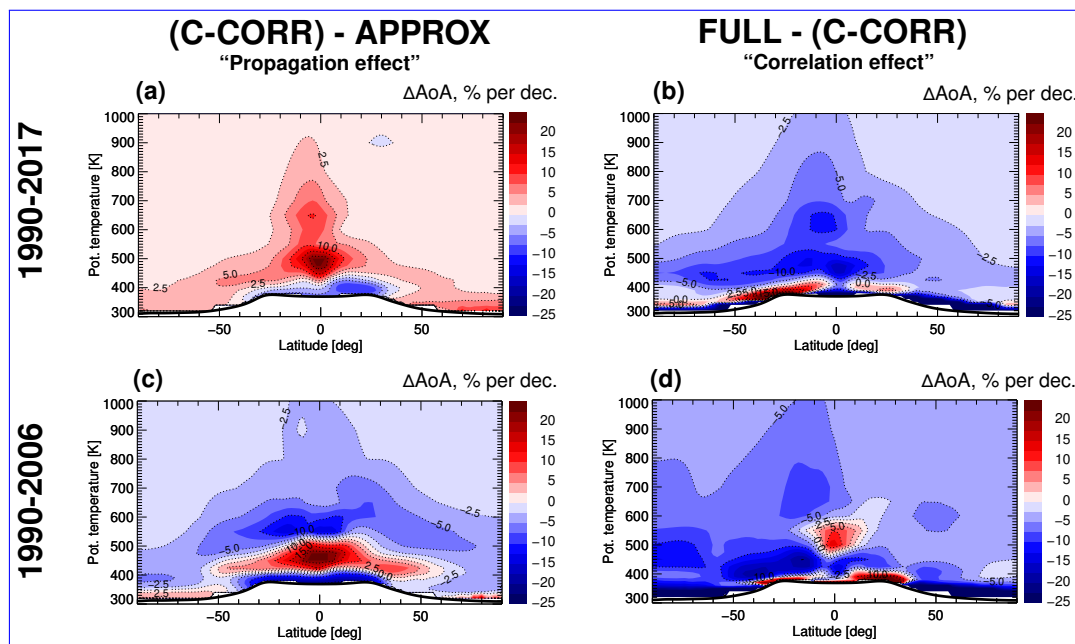


Figure 7. Differences in AoA trends estimated with three methods, APPROX, C-CORR, and FULL, for the periods of 1990-2017 (a, b) and 1990-2006 (c, d). The black line is the climatological tropopause calculated from ERA-Interim for the considered period.

in Sect. 4). This, in turn, causes an error in the derived ~~circulation impact, which translates through the constant AoA-FRF relationship into an error in residual circulation impact in C-CORR, which is further translated into~~ the estimated AoA trend
450 ~~error.~~

The above analysis shows that the effects of both approximations (instantaneous propagation of stratospheric H₂O and CH₄ entry mixing ratios, and a constant correlation between FRF and AoA) on the estimated AoA trend are comparable in magnitude, however they depend on the exact period considered. Interestingly, the effects of the approximations can be opposite in sign cancelling out each other to some extent. Consequently, the approximation method can lead to a reliable estimation of
455 AoA trends for certain periods, but this should not always be expected. A further improvement of the approximation method is proposed in the following Sect. 3.5.

3.5 Improved AoA trend estimate estimation using parameterised age spectra

~~As was mentioned above, for~~ For estimating AoA trends from H₂O and CH₄ observations, the approximations (i) instantaneous entry mixing ratio propagation, and (ii) constant ~~FRF-AoA-AoA-FRF~~ correlation are necessary ~~as the full AoA spectrum is not~~
460 ~~known in this case. However, the~~. ~~Nevertheless, the higher~~ reliability of AoA trends ~~estimated from H₂O observations~~ can be achieved if the used approximations are ~~improved adjusted~~. As a simple and practical improvement, we propose to use an analytical, parameterised age spectrum for propagating stratospheric entry H₂O and CH₄ mixing ratios. Note that for a further improvement of AoA trend estimates, a non-stationary ~~FRF-AoA-AoA-FRF~~ relationship in principle would be needed as well. But due to the sparseness of available stratospheric CH₄ measurements deducing such a relationship from observations is
465 challenging, and we refrain from including it in the methodological improvement.

In the following, we discuss the results of an additional sensitivity study with CLaMS stratospheric entry H₂O and CH₄ mixing ratios propagated by the parameterised idealised age spectrum, and using a constant ~~FRF-AoA-AoA-FRF~~ correlation. This method is hereinafter referred to as the “improved approximation method” (see Table 1 for details).

~~In the improved approximation~~ In this method we use an inverse Gaussian distribution (e.g., Newman et al., 2007; Bönisch
470 et al., 2009; Hauck et al., 2019) as a parameterised age spectrum (~~complete transit time distribution~~)-

$$G(t, \Gamma) = \sqrt{\frac{\Gamma^3}{4\pi\Delta^2 t^3}} \cdot \exp\left(-\frac{\Gamma \cdot (t - \Gamma)^2}{4\Delta^2 t}\right), \quad (7)$$

where Γ is the mean AoA and Δ is the width of the age spectrum. Here, we parameterise AoA in different zones or “regions” depending on the considered latitude, longitude and height. The finer the separation into different regions, the less pronounced the discontinuities at the edges of the regions are. ~~Here, we~~ For a simple and practical method without assuming a priori
475 knowledge of model age of air, we propose to divide the stratosphere into seven regions, prescribing one mean value of AoA for each region (see Appendix B). We apply the empirical relation between the age spectrum width and ~~mean~~-AoA proposed by Hall and Plumb (1994) and used in several other studies (e.g., Engel et al., 2002; Bönisch et al., 2009)

$$\frac{\Delta^2}{\Gamma} = C, \quad (8)$$

with the constant $C = 0.7$ years, although we note that recent work [of Hauck et al. \(2019\)](#) suggests a larger value (2.0 years)
480 for the lower stratosphere ([Hauck et al., 2019](#)).

The resulting AoA trend estimated with the improved approximation method for 1990-2006 is shown in Fig. 6e. There is a clear improvement in the AoA trend estimation when compared to the pure approximation method APPROX (Fig. 6c). Note, that in both methods the same FRF distribution (α) is used, but the ~~changes in circulation ($\Delta\alpha$) FRF changes~~ are different depending on the propagation [method](#) of stratospheric entry H_2O and CH_4 . The discrepancies in estimated AoA
485 trends between APPROX and the improved approximation method ~~are caused by the circulation component (third term in stem from the residual calculation of the third term of Eq. 6). In turn, the differences in the circulation components are caused by the discrepancies in the stratospheric entry H_2O and CH_4 mixing ratio contributions, $\text{CH}_{4[\text{entry}]}(r, t) \Delta\alpha(r, t)$, with the major impact of the stratospheric entry H_2O trend (see [Discussion in Sect. 4](#)). The propagation of stratospheric entry H_2O and CH_4 by the proposed parameterised idealised age spectrum results in AoA trends close to those from the C-CORR method
490 ([Fig. 6d, e](#)), which is the best estimate possible for the improved approximation method due to the usage of constant ~~FRF-AoA correlation. Thus, the improved approximation method results in a higher reliability of the estimated AoA trend, than method the approximation method APPROX.~~ [AoA-FRF correlation.](#)~~

Hence, we encourage [the](#) usage of the improved approximation method when estimating AoA from [the combination of \$\text{H}_2\text{O}\$ and \$\text{CH}_4\$](#) observational data. Stratospheric entry mixing ratio time series for H_2O and CH_4 (~~e.g., in the TTL~~) can be deduced
495 from satellite measurements, such as ACE-FTS, HALOE, MIPAS, or SCIAMACHY (e.g., Bernath, 2017; Russell III et al., 1993; Nassar et al., 2005; Raspollini et al., 2006; Scherer et al., 2008; Müller et al., 2016; Lossow et al., 2017; Noël et al., 2018). Due to the limited stratospheric CH_4 observations, the stratospheric entry CH_4 mixing ratio contribution can be kept as in APPROX (instantaneous propagation), because this term has only little effect on the resulting AoA trend (see [Discussion in Sect. 4](#)). ~~But the correct representation of the stratospheric entry H_2O mixing ratio is very important for a reliable estimation of AoA trends.~~ Our study shows that [the](#) usage of the ~~parameterized idealized~~ [parameterised idealised](#) age spectrum clearly
500 improves the representation of the stratospheric entry H_2O term, and hence the final AoA trend estimate.

4 Discussion

The contributions of stratospheric entry H_2O mixing ratio trends (~~corresponding to the first term on the right-hand side of $\Delta\text{H}_2\text{O}_{[\text{entry}]}(r, t)$ in Eq. 6~~) calculated with ~~the approximation method (APPROX)~~ [APPROX](#), improved approximation and ~~full reconstruction (FULL) methods~~ [FULL methods](#), as well as the “true” stratospheric H_2O trend from CLaMS simulation are
505 shown in Fig. [8a-d](#). Note that the stratospheric entry H_2O mixing ratio propagated by the CLaMS age spectrum ([Fig. 8d](#)) is shown here only for comparison and is not used for AoA trend calculations in FULL method.

~~The “true” stratospheric H_2O 1990-2006 trend calculated from CLaMS simulations driven by ERA-Interim reanalysis is shown in (a). Further plots represent contributions to H_2O trend calculated through different methods: from the approximation method (APPROX) is shown in (b, e, h), the improved approximation method (c, f, i), and the full reconstruction (FULL) method (d, g, j). The contributions from circulation changes are calculated as the residual in APPROX and improved approximation~~

methods (h, i), and as a linear trend in FULL (j). Note, that all sub-figures are presented in percentage per decade, with relation to the climatological mean 1990-2006 CLaMS stratospheric H₂O mixing ratio. The black line is the tropopause calculated from ERA-Interim.

515 The stratospheric entry H₂O mixing ratio trends from the approximate methods are evaluated against the respective trend from the full reconstruction FULL in Fig. 8 b-d. Comparison of Fig. 8b and Fig. 8d shows that APPROX overestimates the stratospheric entry H₂O mixing ratio trend by approximately 3% per decade, especially in the middle and upper stratosphere. The propagation of stratospheric entry H₂O by the parameterised idealised age spectrum improves the representation of stratospheric entry H₂O trend (see Fig. 8c, d), and thus leads to a more reliable AoA trend estimation.

520 The contributions from stratospheric entry CH₄ mixing ratio trends ($2\alpha(r, t) \Delta\text{CH}_4|_{\text{entry}}(r, t)$ in Eq. 6) are presented in Fig. 8e-g. The differences between the various stratospheric entry CH₄ trends are below 0.5% per decade. Although, the pattern of the stratospheric entry CH₄ mixing ratio trends is slightly improved when including propagation with the parameterised idealised age spectrum (Fig. 8f, g). But, overall, this term has only a weak effect on the circulation contribution and the
525 resulting AoA trend.

The circulation contributions ($2\text{CH}_4|_{\text{entry}}(r, t) \Delta\alpha(r, t)$ in Eq. 6) in the APPROX and improved approximation methods are calculated as the residual between CLaMS H₂O trend (see Fig. 8a) and the other two components. The resulting circulation terms are shown in Fig. 8h, i. The circulation change from FULL (using propagated entry CH₄ mixing ratio for FRF) is presented in Fig. 8j. As the full reconstruction As FULL is the most exact method, the circulation terms from the approximate methods are evaluated against it. The FRF trend ($\Delta\alpha$) in FULL is calculated as a linear trend at each latitude-potential
530 temperature grid.

Figure 8hand, j shows that the error in the estimated circulation contribution in APPROX is large, and the sign of the circulation contributions is even opposite in particular regions. Propagating stratospheric entry H₂O and CH₄ by the parameterised idealised age spectrum (Fig. 8i) improves the representation of circulation change significantly. From the comparison of Fig. 8i, j,
535 we conclude that calculating the circulation impact as a residual yields a reliable representation of the circulation contribution when an idealised parameterised age spectrum is used. Large discrepancies still occur in the Antarctic region where the reconstruction method is expected to fail because of local dehydration processes. The polar dehydration in the Antarctic region has a substantial drying effect, reaching 1 ppmv and even more below 600 K potential temperature in the Southern hemisphere (Poshyvailo, 2020). This dehydration effect induces discrepancies between the APPROX, improved approximation and FULL
540 methods. Thus, the AoA trend estimated from the circulation contribution as a residual (APPROX, improved approximation method, C-CORR), is not reliable in the Southern polar region. in methods with the residual circulation term. Furthermore, the circulation contribution calculated as a residual depends also on the accuracy of the used stratospheric H₂O trend (here, the stratospheric H₂O trend is calculated from CLaMS simulation driven by the ERA-Interim reanalysis, shown in Fig. 8a).

In summary To summarise, the differences in the circulation components in the between the residual circulation components
545 of APPROX and improved approximation methods are caused by the discrepancies in the stratospheric entry H₂O and CH₄ mixing ratio contributions, with the major impact from the stratospheric entry H₂O trend. The differences in the second term —contributions from stratospheric entry CH₄ mixing ratio trends— are small (Fig. 8e, f, g). Consequently, the correct repre-

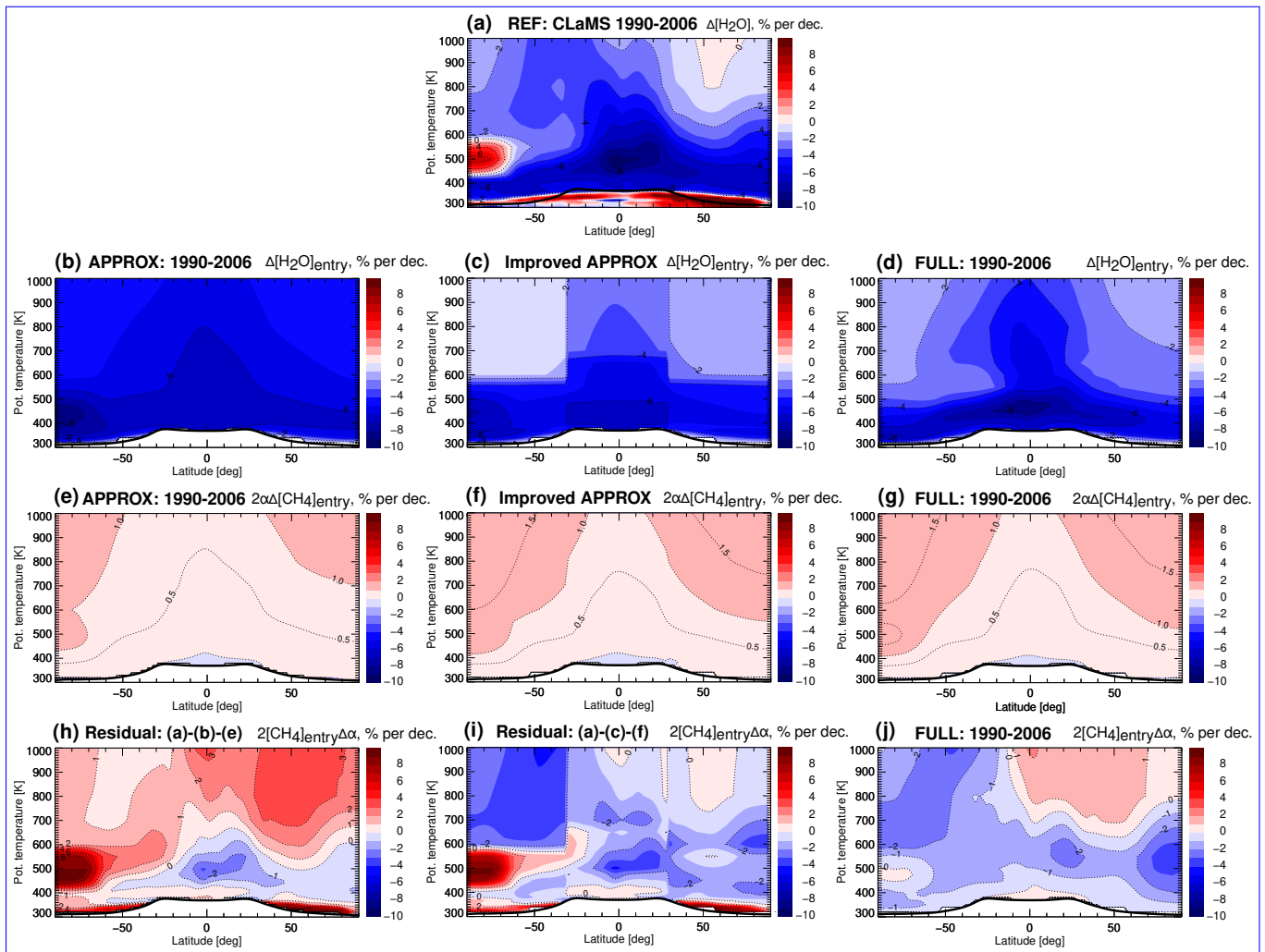


Figure 8. The “true” stratospheric H₂O 1990-2006 trend calculated from CLaMS simulations driven by ERA-Interim reanalysis is shown in (a). Further plots represent contributions to H₂O trend calculated through different methods: APPROX (b, e, h), the improved approximation (c, f, i), and FULL (d, g, j) methods. The contributions from circulation changes are calculated as the residual in APPROX and improved approximation methods (h, i), and as a linear trend in FULL (j). Note, that all sub-figures are presented in percentage per decade, with relation to the climatological mean 1990-2006 CLaMS stratospheric H₂O mixing ratio. The black line is the tropopause calculated from ERA-Interim.

presentation of the stratospheric entry H₂O mixing ratio trend is crucial for AoA trend estimation a reliable estimate of the AoA trend.

550 On the one hand, we showed that biases in AoA trends estimated from stratospheric H₂O can be large, questioning the usefulness of this approach. On the other hand, also age AoA estimates based on other trace gas species, like SF₆ or CO₂, show

substantial uncertainties ~~, resulting from the method to calculate mean age and from the behaviour of the employed trace gas as well~~ (e.g., Engel et al., 2009; Fritsch et al., 2020). An advantage of using H₂O is the existence of several long and homogenized records of satellite measurements of comparatively high quality. Furthermore, the significant bias reduction in estimated AoA trends, related to the relatively simple methodological improvement by using ~~an idealized a parameterised idealised~~ age spectrum for entry mixing ratio propagation, seems very promising. ~~We strongly recommend that such a refinement of the method should be used for future studies. Also, further~~ Further improvements could be realized by including a chemistry-dependent propagator instead of the ~~idealized-idealised~~ age spectrum (see Ostermüller et al., 2017), or by using an inversion algorithm for fitting the ~~parameterized-parameterised~~ age spectrum (e.g., Hauck et al., 2019).

560 5 Conclusions

We investigated the effects of two commonly used approximations ~~to estimate long-term Brewer-Dobson circulation changes from stratospheric H₂O by deducing mean age of air. For this reason, we designed a study within the “model world” of the Chemical Lagrangian Model of the Stratosphere (CLaMS), considering as case studies the 1990-2006 and 1990-2017 periods. Two approximations were considered:~~ (i) instantaneous stratospheric entry mixing ratio propagation ~~, and~~ (ii) stationary AoA-FRF correlation. ~~Suitable sensitivity studies were carried out to investigate the effects of these approximations, namely the approximation method (APPROX) which includes both approximations (i and ii), the constant correlation method C-CORR which includes~~ to estimate long-term BDC changes from the combination of stratospheric H₂O and CH₄ by deducing AoA trend. We carried out different sensitivity experiments within the CLaMS “model world”: including both above mentioned approximations (APPROX), only the constant correlation approximation (i) but representing the correct entry mixing ratio propagation (C-CORR), and a full reconstruction (FULL) which includes propagation of entry mixing ratios by the modelled age spectrum and the non-stationary AoA-FRF correlation. The sensitivity experiments were analyzed through comparison with the reference representing the non-stationarity of the correlation as well as the entry mixing ratio propagation (FULL). Estimated AoA trends were compared to the actual CLaMS AoA trend, representing the “true” change in the model world. We considered as case studies the 1990-2006 and 1990-2017 periods.

575 The results show that both approximations ~~(i) and (ii)~~ have an important impact effect on the calculated AoA trend. ~~These approximations strongly affect the estimated AoA trend, causing discrepancies of, leading to noticeable differences in the derived mean AoA trend compared to the “true” CLaMS AoA trend. The discrepancies in the AoA trends are up to 5 % per decade above 600 K, and higher discrepancies, more than 10 % per decade or even more, below 600 K. Thus, the APPROX method leads to noticeable differences in the derived mean AoA trend when compared with the “true” AoA trend from the CLaMS reference simulation. These differences are dependent on the considered period. For some periods, significant differences result in the strength and the detailed structure of estimated AoA trends. In specific regions of the stratosphere, the derived mean AoA trends from APPROX are even different in sign, resulting in a strong bias of estimated BDC changes due to the applied approximations.~~ Depending on the considered period, the effects from both approximations can also be opposite,

and may even cancel out to some extent, producing ~~an estimation~~, incidentally, an estimation of AoA trend remarkably close
585 to the “true” AoA trend.

In order to increase the reliability of the derived AoA trend, we propose ~~an improvement to the APPROX method: instead of instantaneous stratospheric entry mixing ratio propagation, the stratospheric entry mixing ratios are propagated with an idealised parameterised age spectrum. Such propagation of a simple and practical adjustment of the approximation (i) by propagating the~~ stratospheric entry H₂O and CH₄ by the mixing ratios using a parameterised idealised age spectrum ~~results in~~
590 a higher reliability of the estimated AoA trend compared to the APPROX method, especially by improving the representation of the stratospheric entry H₂O contribution. Moreover, we showed that the ~~instead of instantaneous propagation. This refinement of the method considerably improves the reconstructed~~ stratospheric entry H₂O contribution ~~has a major impact on AoA trends when the circulation contribution is calculated as a residual (e.g., in the APPROX method), while the discrepancies in stratospheric entry CH₄ contributions do not cause large effects on the resulting AoA trend. Consequently, the correct representation of stratospheric entry H₂O mixing ratios is crucial for AoA trend estimation in the approximation methods, and the usage of, at least a parameterised and idealised, age spectrum is beneficial, particularly when estimating AoA trends from H₂O and CH₄ observation data sets. The results from,~~ and, consequently, the derived AoA trend. The results of this article are of particular relevance for assessing the uncertainty in estimates of stratospheric circulation and BDC changes from global satellite measurements of stratospheric H₂O.

600 **Appendix A: Stationary correlation function between FRF and modelled AoA**

In order to estimate the AoA trend induced by the changes in stratospheric H₂O ~~on approximative methods~~, we define a stationary relationship between zonally averaged FRF and AoA from CLaMS simulations driven by ERA-Interim reanalysis, ~~the averaging is done over 2005-2006 following Hegglin et al. (2014).~~

605 ~~In the study of Hegglin et al. (2014),~~ We use CH₄ mixing ratios averaged over 2005-2006 ~~were used~~ for FRF calculations ~~–(see Eq. 5), following Hegglin et al. (2014).~~ This specific period is characterised by relatively constant tropospheric CH₄ values. Accordingly, the dependence of stratospheric CH₄ entry mixing ratios on transit time can be neglected, and CH₄ can be assumed constant over these years. ~~The air needs some years to be transported through the stratosphere, and~~ We assume that the stratospheric CH₄ during 2005-2006 was originated in the TTL-tropical tropopause layer during approximately 2002-2006.
610 ~~So, CH₄[entry] can be calculated as a mean over the~~ Thus, stratospheric entry CH₄ can be approximated as the mean CH₄ mixing ratio over 390-400 K and 30° S-30° N during 2002-2006 period. Consequently, FRF is stable in time and does not depend on the chosen period.

The correlation function of the CLaMS modelled AoA and estimated FRF function is presented in Fig. A1. It is derived by fitting a third-order polynomial to the AoA-FRF distribution, as suggested by Hegglin et al. (2014). ~~From the Fig. A1, the~~
615 The empirical relationship between the CLaMS AoA and the FRF is $f(\alpha) = 0.85 + 16.49\alpha - 25.30\alpha^2 + 13.77\alpha^3$. ~~As the approximation method assumes that the AoA-FRF relationship is stable in time, the~~ (see Fig. A1). The same relationship is applied for any investigated period, if the method implies a stationary AoA-FRF correlation function.

Appendix B: Parameterization Parameterisation of AoA for idealised age spectrum calculations

In the improved approximation method, we use parameterised idealised age spectrum ~~for specified values of AoA. For this, we~~
 620 ~~separated to propagate stratospheric entry H₂O and CH₄ mixing ratios for the AoA trend estimation. The idealised age spectrum~~
~~requires the width of the age spectrum that is defined from the empirical relation Eq. 8. Here, we make a simple parameterisation~~
~~of AoA (Γ) required for the idealised age spectrum. We separate~~ the stratosphere (up to 1000 K or approximately 37 km) in
 seven zones, see Fig. B1. However, further improvement by other zone divisions is, in principle, possible. A better spatial
 625 more zones or even by assigning different shape for zones (e.g. triangles).

In the latitudinal directions, the middle zone between 30° S to 30° N is associated with the tropical pipe region. In the height-
 direction at the units of potential temperature, the lowest AoA value of 1 year is located just above the FTL-tropical tropopause
layer between 400-500 K (or about 15-20 km). The mean value of AoA equaled to 2.5 years, we assign to three regions: in both

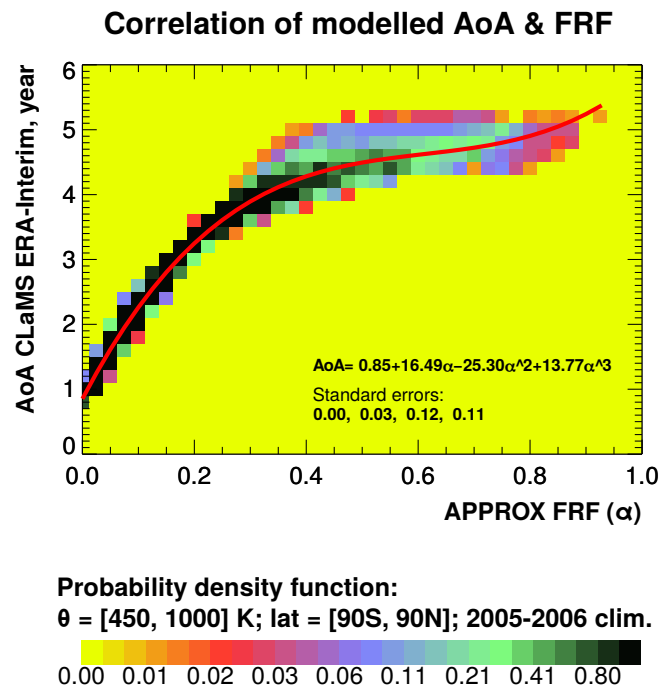


Figure A1. Relationship between CLaMS AoA-FRF and AoA for the methods of AoA trend estimation using stationary approximation. FRF is defined from the climatological 2005-2006 CLaMS simulated CH₄, ~~calculated with AoA is the approximation method climatological~~
~~2005-2006 from CLaMS simulations.~~ The considered correlated region is between 450-1000 K and 90° S-90° N. The colour bar represents
 the probability density function. The red line is ~~the a~~ third-order polynomial fitting function. ~~Note that due to the approximations in the~~
~~method, FRF is calculated from climatological 2005-2006 stratospheric CH₄. Thus here, FRF is correlated with climatological AoA from~~
~~the same 2005-2006 period.~~

hemispheres between 380-600 K (approx. 12-24 km), and between 500-700 K (approx. 20-28 km) at the tropics. The averaged
 630 AoA value ~~is of~~ 3.5 years ~~is~~ at the tropical middle stratosphere from 700 to 1000 K (approx. 28-37 km). ~~At~~ ~~The averaged~~
~~AoA value is different for both hemispheres at~~ the region between 600-1000 K (approx. 24-37 km) ~~the averaged AoA value is~~
~~different for both hemispheres:~~ 4.5 years for the Southern and 4.0 years for the Northern ~~hemisphere~~ ~~hemispheres~~. Such AoA
 asymmetry exists, since the deep branch of the circulation is stronger in the Northern hemisphere and thus ~~, causing~~ ~~causes~~
 younger AoA (Butchart, 2014; Konopka et al., 2015).

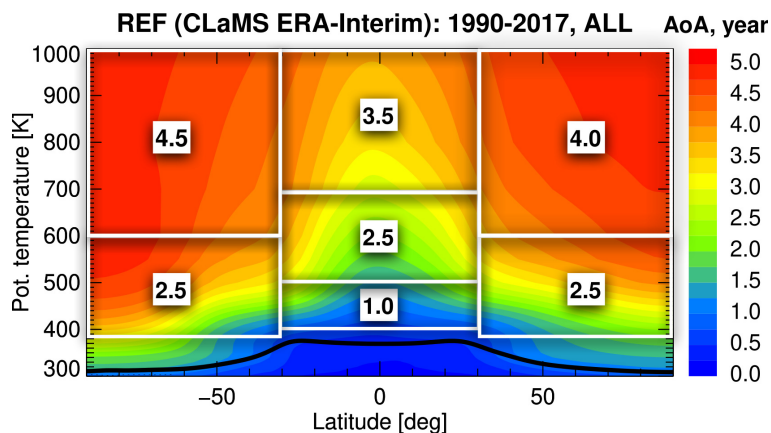


Figure B1. Zonal mean of AoA from CLaMS simulation driven by ERA-Interim reanalysis. Data shown are ~~climatologies~~ ~~climatology~~
 for 1990-2017 years. Regions defined with the white boxes are used for the ~~idealized age spectrum~~ ~~idealised age spectrum~~ calculations in
 the ~~APPROX-improved~~ ~~improved approximation~~ method. Values denoted in each box is an approximate averaged AoA value of the region
 bounded by white box.

635

Code and data availability. The CLaMS code used in this ~~paper~~ ~~article~~ is available on the GitLab server: <https://jugit.fz-juelich.de/clams/CLaMS>.

Author contributions. The study was designed by F.P. and L.P.-S. with contributions by S.F. and R.M.. L.P.-S. and F.P. conducted the model
 runs and analysed the results. Partially, the work is based on the original concept from the study of M.H.. L.P.-S. wrote the paper with further
 640 inputs from F.P. and R.M. All co-authors contributed to the interpretation of the results, active discussions, and the revision of the paper.

Competing interests. R.M. is an editor of ACP, otherwise there are no competing interests.

Acknowledgements. We thank Jens-Uwe Grooß, Paul Konopka and Mengchu Tao for helpful discussions. We are also very grateful to the ECMWF for providing the reanalysis data (ERA-Interim). In addition, we gratefully acknowledge the computing time granted on the supercomputer JURECA at Jülich Supercomputing Centre (JSC) under the VSRproject ID JICG11. This work was partly funded by the
645 German Ministry of Education and Research under grant no. 01LG1222A (ROMIC-TRIP), and partly by the Helmholtz Young Investigators Group A-SPECi (“Assessment of stratospheric processes and their effects on climate variability”) under grant no. VH-NG-1128. The study conducted at Princeton University during the exchange research stay of L. Poshyvailo-Strube was partially supported by the Helmholtz Graduate School for Energy and Climate Research (HITEC) of Forschungszentrum Jülich.

References

- 650 Bernath, P.: The Atmospheric Chemistry Experiment (ACE), *J. Quant. Spectr. Radiat. Transfer*, 186, 3–16, <https://doi.org/10.1016/j.jqsrt.2016.04.006>, 2017.
- Bernath, P. F., McElroy, C. T., Abrams, M. C., Boone, C. D., Butler, M., Camy-Peyret, C., Carleer, M., Clerbaux, C., Coheur, P.-F., Colin, R., DeCola, P., DeMazière, M., Drummond, J. R., Dufour, D., Evans, W. F. J., Fast, H., Fussen, D., Gilbert, K., Jennings, D. E., Llewellyn, E. J., Lowe, R. P., Mahieu, E., McConnell, J. C., McHugh, M., McLeod, S. D., Michaud, R., Midwinter, C., Nassar, R., Nichitiu, F.,
655 Nowlan, C., Rinsland, C. P., Rochon, Y. J., Rowlands, N., Semeniuk, K., Simon, P., Skelton, R., Sloan, J. J., Soucy, M.-A., Strong, K., Tremblay, P., Turnbull, D., Walker, K. A., Walkty, I., Wardle, D. A., Wehrle, V., Zander, R., and Zou, J.: Atmospheric Chemistry Experiment (ACE): Mission overview, *Geophys. Res. Lett.*, 32, L15S01, <https://doi.org/10.1029/2005GL022386>, 2005.
- Bönisch, H., Engel, A., Curtius, J., Birner, T., and Hoor, P.: Quantifying transport into the lowermost stratosphere using simultaneous in-situ measurements of SF₆ and CO₂, *Atmos. Chem. Phys.*, 9, 5905–5919, <https://doi.org/10.5194/acp-9-5905-2009>, 2009.
- 660 Butchart, N.: The Brewer-Dobson circulation, *Rev. Geophys.*, 52, 157–184, <https://doi.org/10.1002/2013RG000448>, 2014.
- Chu, W. P., Chiou, E. W., Larsen, J. C., Thomason, L. W., Rind, D., Buglia, J. J., Oltmans, S., McCormick, M. P., and McMaster, L. M.: Algorithms and sensitivity analyses for Stratospheric Aerosol and Gas Experiment II water vapor retrieval, *Journal of Geophysical Research: Atmospheres*, 98, 4857–4866, <https://doi.org/10.1029/92JD01628>, 1993.
- Davis, S. M., Hegglin, M. I., Fujiwara, M., Dragani, R., Harada, Y., Kobayashi, C., Long, C., Manney, G. L., Nash, E. R., Potter, G. L.,
665 Tegtmeier, S., Wang, T., Wargan, K., and Wright, J. S.: Assessment of upper tropospheric and stratospheric water vapor and ozone in reanalyses as part of S-RIP, *Atmospheric Chemistry and Physics*, 17, 12 743–12 778, <https://doi.org/10.5194/acp-17-12743-2017>, 2017.
- Dee, D. P., Uppala, S. M., Simmons, A. J., Berrisford, P., Poli, P., Kobayashi, S., Andrae, U., Balmaseda, M. A., Balsamo, G., Bauer, P., Bechtold, P., Beljaars, A. C. M., van de Berg, L., Bidlot, J., Bormann, N., Delsol, C., Dragani, R., Fuentes, M., Geer, A. J., Haimberger, L., Healy, S. B., Hersbach, H., Hólm, E. V., Isaksen, I., Kallberg, P., Köhler, M., Matricardi, M., McNally, A. P., Monge-Sanz, B. M., Morcrette, J.-J., Park, B.-K., Peubey, C., de Rosnay, P., Tavolato, C., Thépaut, J.-N., and Vitart, F.: The ERA-Interim reanalysis: configuration and performance of the data assimilation system, *Q. J. R. Meteorol. Soc.*, 137, 553–597, <https://doi.org/10.1002/qj.828>, 2011.
- 670 Dessler, A. E., Weinstock, E. M., Hints, E. J., Anderson, J. G., Webster, C. R., May, R. D., Elkins, J. W., and Dutton, G. S.: An examination of the total hydrogen budget of the lower stratosphere, *Geophys. Res. Lett.*, 21, 2563–2566, <https://doi.org/10.1029/94GL02283>, 1994.
- Ehhalt, D. H., Rohrer, F., Blake, D. R., Kinnison, D. E., and Konopka, P.: On the use of nonmethane hydrocarbons for the determination of age spectra in the lower stratosphere, *J. Geophys. Res.*, 112, D12208, <https://doi.org/10.1029/2006JD007686>, 2007.
- 675 Engel, A., Strunk, M., Müller, M., Haase, H., Poss, C., Levin, I., and Schmidt, U.: Temporal development of total chlorine in the high-latitude stratosphere based on reference distributions of mean age derived from CO₂ and SF₆, *J. Geophys. Res.*, 107, <https://doi.org/10.1029/2001JD000584>, 2002.
- Engel, A., Möbius, T., Bönisch, H., Schmidt, U., Heinz, R., Levin, I., Atlas, E., Aoki, S., Nakazawa, T., Sugawara, S., Moore, F., Hurst, D.,
680 Elkins, J., Schauffler, S., Andrews, A., and Boering, K.: Age of stratospheric air unchanged within uncertainties over the past 30 years, *Nature Geoscience*, 2, 28–31, <https://doi.org/10.1038/ngeo388>, 2009.
- Engel, A., Bönisch, H., Ullrich, M., Sitals, R., Membrive, O., Danis, F., and Crevoisier, C.: Mean age of stratospheric air derived from AirCore observations, *Atmospheric Chemistry and Physics*, 17, 6825–6838, <https://doi.org/10.5194/acp-17-6825-2017>, 2017.
- 685 Fischer, H., Birk, M., Blom, C., Carli, B., Carlotti, M., von Clarmann, T., Delbouille, L., Dudhia, A., Ehhalt, D., Endemann, M., Flaud, J. M., Gessner, R., Kleinert, A., Koopmann, R., Langen, J., López-Puertas, M., Mosner, P., Nett, H., Oelhaf, H., Perron, G., Reme-

- dios, J., Ridolfi, M., Stiller, G., , and Zander, R.: MIPAS: An instrument for atmospheric and climate research, *Atmos. Chem. Phys.*, 8, <https://doi.org/10.5194/acp-8-2151-2008>, 2008.
- Fritsch, F., Garny, H., Engel, A., Bönisch, H., and Eichinger, R.: Sensitivity of age of air trends to the derivation method for non-linear increasing inert SF₆, *Atmos. Chem. Phys.*, 20, 8709–8725, <https://doi.org/10.5194/acp-20-8709-2020>, 2020.
- 690 Garcia, R. R., Randel, W. J., and Kinnison, D. E.: On the Determination of Age of Air Trends from Atmospheric Trace Species, *J. Atmos. Sci.*, 68, 139–154, <https://doi.org/10.1175/2010JAS3527.1>, 2011.
- Hall, T. M. and Plumb, R. A.: Age as a diagnostic of stratospheric transport, *J. Geophys. Res.*, 99, 1059–1070, <https://doi.org/10.1029/93JD03192>, 1994.
- Hauck, M., Fritsch, F., Garny, H., and Engel, A.: Deriving stratospheric age of air spectra using an idealized set of chemically active trace
695 gases, *Atmospheric Chemistry and Physics*, 19, 5269–5291, <https://doi.org/10.5194/acp-19-5269-2019>, 2019.
- Haynes, P. and Anglade, J.: The vertical scale cascade in atmospheric tracers due to large-scale differential advection, *J. Atmos. Sci.*, 54, 1121–1136, [https://doi.org/10.1175/1520-0469\(1997\)054<1121:TVSCIA>2.0.CO;2](https://doi.org/10.1175/1520-0469(1997)054<1121:TVSCIA>2.0.CO;2), 1997.
- Hegglin, M. I., Plummer, D. A., Shepherd, T. G., Scinocca, J. F., Anderson, J., Froidevaux, L., Funke, B., Hurst, D., Rozanov, A., Urban, J.,
700 von Clarmann, T., A. Walker, K., Wang, H. J., Tegtmeier, S., and Weigel, K.: Vertical structure of stratospheric water vapour trends derived from merged satellite data, *Nature Geoscience*, 7, 768–776, <https://doi.org/10.1038/NGEO2236>, 2014.
- Holton, J. R., Haynes, P., McIntyre, M. E., Douglass, A. R., Rood, R. B., and Pfister, L.: Stratosphere-troposphere exchange, *Rev. Geophys.*, 33, 403–439, 1995.
- Konopka, P., Steinhorst, H.-M., Groß, J.-U., Günther, G., Müller, R., Elkins, J. W., Jost, H.-J., Richard, E., Schmidt, U., Toon, G., and
705 McKenna, D. S.: Mixing and Ozone Loss in the 1999–2000 Arctic Vortex: Simulations with the 3-dimensional Chemical Lagrangian Model of the Stratosphere (CLaMS), *J. Geophys. Res.*, 109, D02315, <https://doi.org/10.1029/2003JD003792>, 2004.
- Konopka, P., Günther, G., McKenna, D. S., Müller, R., Offermann, D., Spang, R., and Riese, M.: How homogeneous and isotropic is stratospheric mixing? Comparison of CRISTA-1 observations with transport studies based on the Chemical Lagrangian Model of the Stratosphere (CLaMS), *Q. J. R. Meteorol. Soc.*, 131, 565–579, <https://doi.org/10.1256/qj.04.47>, 2005.
- Konopka, P., Ploeger, F., Tao, M., Birner, T., and Riese, M.: Hemispheric asymmetries and seasonality of mean age of air
710 in the lower stratosphere: Deep versus shallow branch of the Brewer-Dobson circulation, *J. Geophys. Res.*, 120, 2053–2066, <https://doi.org/10.1002/2014JD022429>, 2015.
- Le Texier, H., Solomon, S., and Garcia, R. R.: The role of molecular hydrogen and methane oxidation in the water vapour budget of the stratosphere, *Quarterly Journal of the Royal Meteorological Society*, 114, 281–295, <https://doi.org/10.1002/qj.49711448002>, 1988.
- Leedham Elvidge, E., Bönisch, H., Brenninkmeijer, C. A. M., Engel, A., Fraser, P. J., Gallacher, E., Langenfelds, R., Mühle, J., Oram, D. E.,
715 Ray, E. A., Ridley, A. R., Röckmann, T., Sturges, W. T., Weiss, R. F., and Laube, J. C.: Evaluation of stratospheric age of air from CF₄, C₂F₆, C₃F₈, CHF₃, HFC-125, HFC-227ea and SF₆; implications for the calculations of halocarbon lifetimes, fractional release factors and ozone depletion potentials, *Atmospheric Chemistry and Physics*, 18, 3369–3385, <https://doi.org/10.5194/acp-18-3369-2018>, 2018.
- Linz, M., Plumb, R. A., Gerber, E. P., Haenel, F. J., Stiller, G., Kinnison, D., Ming, A., and Neu, J. L.: The strength of the meridional overturning circulation of the stratosphere, *Nature Geoscience*, 10, 663–667, <https://doi.org/10.1038/ngeo3013>, 2017.
- 720 Lossow, S., Khosrawi, F., Nedoluha, G. E., Azam, F., Bramstedt, K., Burrows, Dinelli, B. M., Eriksson, P., Espy, P. J., García-Comas, M., Gille, J. C., Kiefer, M., Noël, S., Raspollini, P., Read, W. G., Rosenlof, K. H., Rozanov, A., Sioris, C. E., Stiller, G. P., Walker, K. A., and Weigel, K.: The SPARC water vapour assessment II: comparison of annual, semi-annual and quasi-biennial variations in

- stratospheric and lower mesospheric water vapour observed from satellites, *Atmospheric Measurement Techniques*, 10, 1111–1137, <https://doi.org/10.5194/amt-10-1111-2017>, <https://amt.copernicus.org/articles/10/1111/2017/>, 2017.
- 725 Masarie et al., K.: A Rule-based Expert system for evaluating the quality of long-term, In Situ, Gas Chromatographic Measurements of atmospheric methane, NOAA Tech. Memo. ERL CMDL-3, NOAA Environ. Res. Lab, Boulder, Colorado, 1991.
- Maycock, A. C., Shine, K. P., and Joshi, M. M.: The temperature response to stratospheric water vapour changes, *Q. J. R. Meteorol. Soc.*, 137, 1070–1082, <https://doi.org/https://doi.org/10.1002/qj.822>, 2011.
- McCormick, M. P.: Sage II: An overview, *Advances in Space Research*, 7, 219–226, [https://doi.org/10.1016/0273-1177\(87\)90151-7](https://doi.org/10.1016/0273-1177(87)90151-7), 1987.
- 730 McKenna, D. S., Konopka, P., Grooß, J.-U., Günther, G., Müller, R., Spang, R., Offermann, D., and Orsolini, Y.: A new Chemical Lagrangian Model of the Stratosphere (CLaMS): 1. Formulation of advection and mixing, *J. Geophys. Res.*, 107, 4309, <https://doi.org/10.1029/2000JD000114>, 2002a.
- McKenna, D. S., Grooß, J.-U., Günther, G., Konopka, P., Müller, R., Carver, G., and Sasano, Y.: A new Chemical Lagrangian Model of the Stratosphere (CLaMS): 2. Formulation of chemistry scheme and initialization, *J. Geophys. Res.*, 107, 4256, <https://doi.org/10.1029/2000JD000113>, 2002b.
- 735 Müller, R., Kunz, A., Hurst, D. F., Rolf, C., Krämer, M., and Riese, M.: The need for accurate long-term water vapor measurements in the upper troposphere and lower stratosphere with global coverage, *Earth's Future*, 4, 25–32, <https://doi.org/10.1002/2015EF000321>, 2016.
- Nassar, R., Bernath, P. F., Boone, C. D., Manney, G. L., McLeod, S. D., Rinsland, C. P., Skelton, R., and Walker, K. A.: Stratospheric abundances of water and methane based on ACE-FTS measurements, *Geophys. Res. Lett.*, 32, <https://doi.org/https://doi.org/10.1029/2005GL022383>, <https://agupubs.onlinelibrary.wiley.com/doi/abs/10.1029/2005GL022383>, 2005.
- 740 Newman, P. A., Daniel, J. S., Waugh, D. W., and Nash, E. R.: A new formulation of equivalent effective stratospheric chlorine (EESC), *Atmospheric Chemistry and Physics*, 7, 4537–4552, <https://doi.org/10.5194/acp-7-4537-2007>, 2007.
- Noël, S., Weigel, K., Bramstedt, K., Rozanov, A., Weber, M., Bovensmann, H., and Burrows, J. P.: Water vapour and methane coupling in the stratosphere observed using SCIAMACHY solar occultation measurements, *Atmospheric Chemistry and Physics*, 18, 4463–4476, <https://doi.org/10.5194/acp-18-4463-2018>, <https://acp.copernicus.org/articles/18/4463/2018/>, 2018.
- Ostermöller, J., Bönisch, H., Jöckel, P., and Engel, A.: A new time-independent formulation of fractional release, *Atmospheric Chemistry and Physics*, 17, 3785–3797, <https://doi.org/10.5194/acp-17-3785-2017>, <https://www.atmos-chem-phys.net/17/3785/2017/>, 2017.
- Ploeger, F. and Birner, T.: Seasonal and inter-annual variability of lower stratospheric age of air spectra, *Atmospheric Chemistry and Physics*, 16, 10 195–10 213, <https://doi.org/10.5194/acp-16-10195-2016>, <https://www.atmos-chem-phys.net/16/10195/2016/>, 2016.
- 750 Ploeger, F., Abalos, M., Birner, T., Konopka, P., Legras, B., Müller, R., and Riese, M.: Quantifying the effects of mixing and residual circulation on trends of stratospheric mean age of air, *Geophys. Res. Lett.*, 42, 2047–2054, <https://doi.org/10.1002/2014GL062927>, 2015.
- Pommrich, R., Müller, R., Grooß, J.-U., Konopka, P., Ploeger, F., Vogel, B., Tao, M., Hoppe, C. M., Günther, G., Spelten, N., Hoffmann, L., Pumphrey, H.-C., Viciani, S., D'Amato, F., Volk, C. M., Hoor, P., Schlager, H., and Riese, M.: Tropical troposphere to stratosphere transport of carbon monoxide and long-lived trace species in the Chemical Lagrangian Model of the Stratosphere (CLaMS), *Geoscientific Model Development*, 7, 2895–2916, <https://doi.org/10.5194/gmd-7-2895-2014>, 2014.
- 755 Poshyvailo, L.: Lagrangian Simulation of Stratospheric Water Vapour: Impact of Large-Scale Circulation and Small-Scale Transport Processes, Ph.D. thesis, Universität Wuppertal, Jülich, <https://juser.fz-juelich.de/record/878378>, Universität Wuppertal, Diss., 2020.
- Poshyvailo, L., Müller, R., Konopka, P., Günther, G., Riese, M., Podglajen, A., and Ploeger, F.: Sensitivities of modelled water vapour in the lower stratosphere: temperature uncertainty, effects of horizontal transport and small-scale mixing, *Atmospheric Chemistry and Physics*, 18, 8505–8527, <https://doi.org/10.5194/acp-18-8505-2018>, 2018.
- 760

- Raspollini, P., Belotti, C., Burgess, A., Carli, B., Carlotti, M., Ceccherini, S., Dinelli, B. M., Dudhia, A., Flaud, J.-M., Funke, B., Höpfner, M., López-Puertas, M., Payne, V., Piccolo, C., Remedios, J. J., Ridolfi, M., and Spang, R.: MIPAS level 2 operational analysis, *Atmos. Chem. Phys.*, 6, 5605–5630, <https://doi.org/10.5194/acp-6-5605-2006>, 2006.
- 765 Remsberg, E. E.: Methane as a diagnostic tracer of changes in the Brewer–Dobson circulation of the stratosphere, *Atmospheric Chemistry and Physics*, 15, 3739–3754, <https://doi.org/10.5194/acp-15-3739-2015>, 2015.
- Riese, M., Ploeger, F., Rap, A., Vogel, B., Konopka, P., Dameris, M., and Forster, P.: Impact of uncertainties in atmospheric mixing on simulated UTLS composition and related radiative effects, *J. Geophys. Res.*, 117, D16305, <https://doi.org/10.1029/2012JD017751>, 2012.
- Rind, D., Chiou, E.-W., Chu, W., Oltmans, S., Lerner, J., Larsen, J., McCormick, M. P., and McMaster, L.: Overview of the Stratospheric Aerosol and Gas Experiment II water vapor observations: Method, validation, and data characteristics, *Journal of Geophysical Research: Atmospheres*, 98, 4835–4856, <https://doi.org/10.1029/92JD01174>, 1993.
- 770 Röckmann, T., Groöß, J.-U., and Müller, R.: The impact of anthropogenic chlorine emissions, stratospheric ozone change and chemical feedbacks on stratospheric water, *Atmos. Chem. Phys.*, 4, 693–699, <https://doi.org/10.5194/acp-4-693-2004>, 2004.
- Russell III, J. M., Gordley, L. L., Park, J. H., Drayson, S. R., Hesketh, W. D., Cicerone, R. J., Tuck, A. F., Frederick, J. E., Harries, J. E., and Crutzen, P. J.: The Halogen Occultation Experiment, *J. Geophys. Res.*, 98, 10 777–10 797, <https://doi.org/10.1029/93JD00799>, 1993.
- 775 Scherer, M., Vömel, H., Fueglistaler, S., Oltmans, S. J., and Staehelin, J.: Trends and variability of midlatitude stratospheric water vapour deduced from the re-evaluated Boulder balloon series and HALOE, *Atmospheric Chemistry and Physics*, 8, 1391–1402, <https://doi.org/10.5194/acp-8-1391-2008>, <https://acp.copernicus.org/articles/8/1391/2008/>, 2008.
- Schoeberl, M. R., Sparling, L. C., Jackman, C. H., and Fleming, E. L.: A Lagrangian view of stratospheric trace gas distributions, *J. Geophys. Res.*, 105, 1537–1552, <https://doi.org/10.1029/1999JD900787>, 2000.
- 780 Schoeberl, M. R., Douglass, A. R., Polansky, B., Boone, C., Walker, K. A., and Bernath, P.: Estimation of stratospheric age spectrum from chemical tracers, *Journal of Geophysical Research: Atmospheres*, 110, <https://doi.org/10.1029/2005JD006125>, 2005.
- Solomon, S. and Albritton, D. L.: Time-dependent ozone depletion potentials for short- and long-term forecasts, *Nature*, 357, 33–37, <https://doi.org/10.1038/357033a0>, 1992.
- Solomon, S., Rosenlof, K., Portmann, R., Daniel, J., Davis, S., Sanford, T., and Plattner, G.-K.: Contributions of stratospheric water vapor to decadal changes in the rate of global warming, *Science*, 327, 1219–1223, <https://doi.org/10.1126/science.1182488>, 2010.
- 785 Stiller, G. P., Fierli, F., Ploeger, F., Cagnazzo, C., Funke, B., Haedel, F. J., Reddmann, T., Riese, M., and von Clarmann, T.: Shift of subtropical transport barriers explains observed hemispheric asymmetry of decadal trends of age of air, *Atmos. Chem. Phys.*, 17, 11 177–11 192, <https://doi.org/10.5194/acp-17-11177-2017>, 2017.
- Strunk, M., Engel, A., Schmidt, U., Volk, C. M., Wetter, T., Levin, I., and Glatzel-Mattheier, H.: CO₂ and SF₆ as stratospheric age tracers: consistency and the effect of mesospheric SF₆ - loss, *grl*, 27, 341–344, <https://doi.org/10.1029/1999GL011044>, 2000.
- 790 Thomason, L. W., Poole, L. R., and Deshler, T.: A global climatology of stratospheric aerosol surface area density deduced from Stratospheric Aerosol and Gas Experiment II measurements: 1984-1994, *J. Geophys. Res.*, 102, 8967–8976, <https://doi.org/10.1029/96JD02962>, 1997.
- von Clarmann, T. and Stiller, G.: Das Michelson Interferometer für Passive Atmosphärische Sondierung (MIPAS) auf dem Umweltforschungssatelliten ENVISAT, *Nachrichten, Institut für Meteorologie und Klimaforschung AtmosphärischeSpurenstoffe und Fernerkundung am Forschungszentrum Karlsruhe*, 2003.
- 795 Waters, J., Froidevaux, L., Jarnot, R., Read, W., Pickett, H., Harwood, R., Cofield, R., Filipiak, M., Flower, D., Livesey, N., Manney, G., Pumphrey, H., Santee, M., Siegel, P., and Wu, D.: Earth Observing System (EOS) Microwave Limb Sounder (MLS). An overview of the EOS MLS experiment, Technical report, Jet Propulsion Laboratory, D-15745, 2004.

- 800 Waters, J. W., Read, W. G., Froidevaux, L., Jarnot, R. F., Cofield, R. E., Flower, D. A., Lau, G. K., Pickett, H. M., Santee, M. L., Wu, D. L., Boyles, M. A., Burke, J. R., Lay, R. R., Loo, M. S., Livesey, N. J., Lungu, T. A., Manney, G. L., Nakamura, L. L., Perun, V. S., Ridenoure, B. P., Shippony, Z., Siegel, P. H., Thurstans, R. P., Harwood, R. S., Pumphrey, H. C., and Filipiak, M. J.: The UARS and EOS Microwave Limb Sounder (MLS) Experiments, *Journal of the Atmospheric Sciences*, 56, 194–218, [https://doi.org/10.1175/1520-0469\(1999\)056<0194:TUAEML>2.0.CO;2](https://doi.org/10.1175/1520-0469(1999)056<0194:TUAEML>2.0.CO;2), 1999.
- 805 Waters, J. W., Froidevaux, L., Harwood, R. S., Jarnot, R. F., Pickett, H. M., Read, W. G., Siegel, P. H., Cofield, R. E., Filipiak, M. J., Flower, D. A., Holden, J. R., Lau, G. K., Livesey, N. J., Manney, G. L., Pumphrey, H. C., Santee, M. L., Wu, D. L., Cuddy, D. T., Lay, R. R., Loo, M. S., Perun, V. S., Schwartz, M. J., Stek, P. C., Thurstans, R. P., Boyles, M. A., Chandra, S., Chavez, M. C., Chen, G.-S., Chudasama, B. V., Dodge, R., Fuller, R. A., Girard, M. A., Jiang, J. H., Jiang, Y., Knosp, B. W., LaBelle, R. C., Lam, J. C., Lee, K. A., Miller, D., Oswald, J. E., Patel, N. C., Pukala, D. M., Quintero, O., Scaff, D. M., Snyder, W. V., Tope, M. C., Wagner, P. A., and Walch, M. J.: The Earth Observing System Microwave Limb Sounder (EOS MLS) on the Aura satellite, *IEEE Trans. Geosci. Remote Sens.*, 44, 1075–1092, 810 2006.
- Waugh, D. W. and Hall, T. M.: Age of stratospheric air: theory, observations, and models, *Reviews of Geophysics*, 40, 1–27, <https://doi.org/10.1029/2000RG000101>, 2002.
- WMO: Meteorology—A three-dimensional science, *WMO Bull.*, pp. 134–138, 1957.
- 815 Xiong, X., Barnet, C., Maddy, E., Sweeney, C., Liu, X., Zhou, L., and Goldberg, M.: Characterization and validation of methane products from the Atmospheric Infrared Sounder (AIRS), *Journal of Geophysical Research: Biogeosciences*, 113, <https://doi.org/10.1029/2007JG000500>, 2008.
- Xiong, X., Barnet, C., Maddy, E., Wofsy, S., Chen, L., Karion, A., and Sweeney, C.: Detection of methane depletion associated with stratospheric intrusion by atmospheric infrared sounder (AIRS), *Geophysical Research Letters*, 40, 2455–2459, <https://doi.org/10.1002/grl.50476>, 2013.