

A large-eddy simulation study of deep-convection initiation through the collision of two sea-breeze fronts

Shizuo Fu^{1,2}, Richard Rotunno³, ~~Huiwen Xue⁴~~, Jinghua ~~Chen⁵~~Chen⁴, Xin Deng⁵, and ~~Xin Deng⁶~~Huiwen Xue⁶

5 ¹Key Laboratory for Humid Subtropical Eco-Geographical Processes of the Ministry of Education, Fujian Normal University, Fuzhou, China

²School of Geographical Sciences, Fujian Normal University, Fuzhou, China

³National Center for Atmospheric Research, Boulder, Colorado

~~⁴Department of Atmospheric and Oceanic Sciences, School of Physics, Peking University, Beijing, China~~

10 ~~⁵Collaborative⁴Collaborative~~ Innovation Center on Forecast and Evaluation of Meteorological Disasters, and Key Laboratory for Aerosol–Cloud–Precipitation of the China Meteorological Administration, Nanjing University of Information Science and Technology, Nanjing, China

~~⁶College³College~~ of Agriculture, Fujian Agriculture and Forestry University, Fuzhou, Fujian, China

~~⁶Department of Atmospheric and Oceanic Sciences, School of Physics, Peking University, Beijing, China~~

15 *Correspondence to:* Shizuo Fu (fusz@fjnu.edu.cn)

Abstract. ~~Large~~Deep convection plays important roles in producing severe weather and regulating the large-scale circulation. However, deep-convection initiation (DCI), which determines when and where deep convection develops, has not yet been fully understood. Here, large-eddy simulations are performed to investigate the ~~process~~detailed processes of ~~deep convection initiation (DCI) over a peninsula. In each simulation, two sea-breeze circulations develop over the two coasts. The DCI, which~~ occurs through the collision of two sea-breeze fronts ~~move inland and collide, producing strong instability and strong updrafts near the centerline of the domain, and consequently leading to DCI developing over a peninsula.~~ In the simulation with a maximum total heat flux over land of 700 or 500 W m⁻², DCI is accomplished through the development of three generations of convection. The first generation of convection is randomly produced ~~through~~along the ~~collision of the~~colliding sea-breeze fronts. The second generation of convection ~~is produced mainly through the collision of the sea-breeze fronts, but~~ only develops in regions where no strong downdrafts are produced by the first generation of convection; ~~and is also mainly produced through~~ the collision of the sea-breeze fronts. The third generation of convection mainly develops from the intersection points of the cold pools produced by the second generation of convection; and is produced through the collision between ~~the~~the gust fronts and ~~the~~the sea-breeze fronts. ~~As~~Decreasing the maximum total heat flux ~~decreases~~ from 700 to 500 W m⁻², ~~both the height and strength of the sea breezes are reduced, inhibiting the forcing of the first two generations of convection. These two generations of convection therefore become weaker. The weaker second weakens each~~ generation of convection ~~produces shallower cold pools, reducing the forcing of the third generation, and consequently weakening the third generation of convection. As. Further~~ decreasing the maximum total heat flux ~~further decreases~~ to 300 W m⁻², leads to only one generation of shallow convection ~~is produced.~~

20
25
30

1 Introduction

35 Deep-convection initiation (DCI) is the process through which air parcels reach their level of free convection (LFC), and remain positively buoyant over a substantial vertical excursion (Markowski and Richardson, 2010, p. 183). DCI determines when and where deep convection forms. In terms of weather forecasting, DCI may lead to severe weather phenomena, such as strong winds, heavy precipitation, hail, and/or tornadoes (e.g., Bai et al., 2019; Zhang et al., 2019). In terms of climate projection, DCI affects the correct representation of the diurnal cycle of deep convection (Birch et al., 2015; Wang et al., 2015),
40 and hence affects the large-scale circulation (Marsham et al., 2013) and water budget (Birch et al., 2014).

DCI relies on the presence of certain conditions. Doswell et al. (1996) proposed three ingredients for DCI: first, the environmental temperature profile must be conditionally unstable; second, sufficient moisture must be available so the rising parcels can reach saturation; third, there must be some mechanism through which the parcels are lifted to their LFC. Although the three ingredients are necessary for DCI, they are not sufficient. Many studies have shown that deep convection failed to
45 develop despite the presence of the three ingredients (e.g., Crook, 1996; Ziegler and Rasmussen, 1998; Arnott et al., 2006; Markowski et al., 2006; Wakimoto and Murphey, 2010). Thus, ingredients other than those listed above need to be considered. Previous studies have identified a fourth ingredient, i.e., the cloud must be sufficiently large, so it is less diluted by entrainment and can reach higher levels (e.g., Khairoutdinov and Randall, 2006; ~~BoingB öng~~ et al., 2012; Schlemmer and Hohenegger, 2014; Feng et al., 2015). Cloud tracking shows that the cloud size near its base plays an important role in determining the cloud
50 size aloft (Dawe and Austin, 2012; Rousseau-Rizzi et al., 2017). We note that it is the size of the boundary-layer thermal that determines the cloud size near its base. In addition, Glenn and Krueger (2017) suggested that the merger of clouds also increases cloud size and hence invigorates the clouds.

Boundary-layer convergence zones can trigger deep convection (e.g., Wilson and Schreiber, 1986; Weckwerth and Parsons, 2006; Reif and Bluestein, 2017; Huang et al., 2019). The cold front is a type of boundary-layer convergence zone (Bluestein,
55 2008). Although the cold front is a synoptic-scale phenomenon, its effect can also be seen on much smaller scales. Geerts et al. (2006) found that the cold front behaves as a density current on the meso- γ scale, and produces strong updrafts near its leading edge. The dryline, which is the boundary separating the moist air from the dry air (American Meteorological Society, 2020), is another type of boundary-layer convergence zone (Bluestein, 2008). It promotes DCI by producing a deep moist layer and a deep updraft (Ziegler and Rasmussen, 1998; Miao and Geerts, 2007; Wakimoto and Murphey, 2010). The gust
60 front, which is the leading edge of the outflow (American Meteorological Society, 2020), is also a common type of boundary-layer convergence zone. Under suitable conditions, gust front can consecutively trigger new convection (Rotunno et al., 1988; Fu et al., 2017). In addition, compared to an isolated boundary-layer convergence zone, the synergy of multiple boundary-layer convergence zones is ~~especiallyeven more~~ favorable for DCI (e.g., Wakimoto et al., 2006).

When synoptic-scale forcing is weak, surface heterogeneity can produce boundary-layer convergence zones (Drobinski and
65 Dubos, 2009), and thereby trigger deep convection (e.g., Hanesiak et al., 2004; Frye and Mote, 2010; Taylor et al., 2011; Guillod et al., 2015). Previous modelling studies revealed that DCI tends to occur over the patch of surface with a stronger

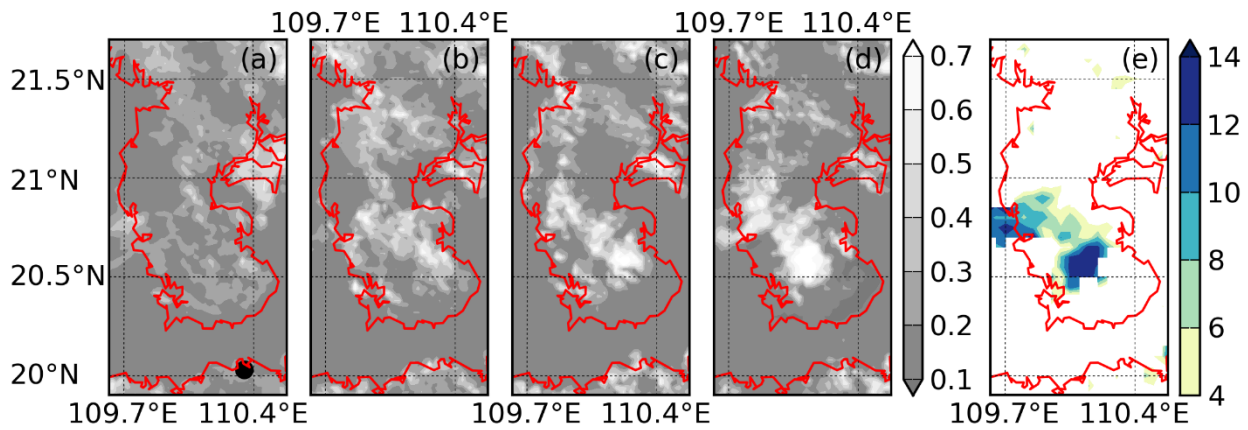
sensible heat flux because stronger updrafts and higher humidity coexist over this patch (Patton et al. 2005; van Heerwaarden and de Arellano 2008; Kang and Bryan, 2011; Garcia-Garreras et al., 2011). In an idealized modelling study by Rieck et al. (2014), it was found that although deep convection is able to develop in the absence of surface heterogeneity, it occurs later and is weaker than in the presence of surface heterogeneity.

Land-sea contrast is an important type of surface heterogeneity. It is capable of producing the sea-breeze circulation (Miller et al., 2003; Antonelli and Rotunno, 2007; Crosman and Horel, 2010). As a type of boundary-layer convergence zone, the sea-breeze front is also capable of triggering deep convection. A sea-breeze front can trigger deep convection on its own (Blanchard and Lopez, 1985). However, it mostly triggers deep convection by interacting with other boundary-layer convergence zones, such as horizontal convective rolls (Wakimoto and Atkins, 1994; Dailey and Fovell, 1999; Fovell, 2005), gust fronts (Kingsmill, 1995; Carbone et al., 2000), or river breezes (Laird et al., 1995).

In this study, we explore a special type of land-sea contrast, i.e., a peninsula. In this situation, two sea-breeze circulations develop, with their sea-breeze fronts moving toward each other. Both observational studies (Blanchard and Lopez, 1985; Carbone et al., 2000) and numerical studies (Nicholls et al., 1991; Zhu et al., 2017) showed that the oppositely-moving sea-breeze fronts over a peninsula can collide with each other and produce deep convection.

The processes involved in DCI occur at very small spatiotemporal scales (~ 1 km and ~ 1 min; Weckwerth, 2000; Wilson and Roberts, 2006; Soderholm et al., 2016). However, the grid interval is typically ~ 1 km in the aforementioned numerical studies (Nicholls et al., 1991; Zhu et al., 2017), and is not sufficient to resolve these processes. ~~In this study, DCI is simulated with large-eddy simulations (LESs)~~ Other studies have shown that large-eddy simulations (LESs) could realistically simulate the small-scale processes occurring in either a single sea-breeze circulation (Antonelli and Rotunno, 2007; Crosman and Horel, 2012) or two colliding sea-breeze circulations (Rizza et al., 2015). However, those studies did not investigate the processes of DCI. In this study, DCI is simulated with LES whose spatial resolution is 100 m and output frequency is 1 min. As shown below, simulations with such a high spatiotemporal resolution allow for a deeper understanding of DCI.

Section 2 presents the methods. Section 3 describes the general evolution of the simulated convection. Section 4 analyzes the environment before DCI. The process of DCI is presented in Sect. 5. In Sect. 6, the sensitivity to the total heat flux from the surface is discussed. Section 7 summarizes the major findings.

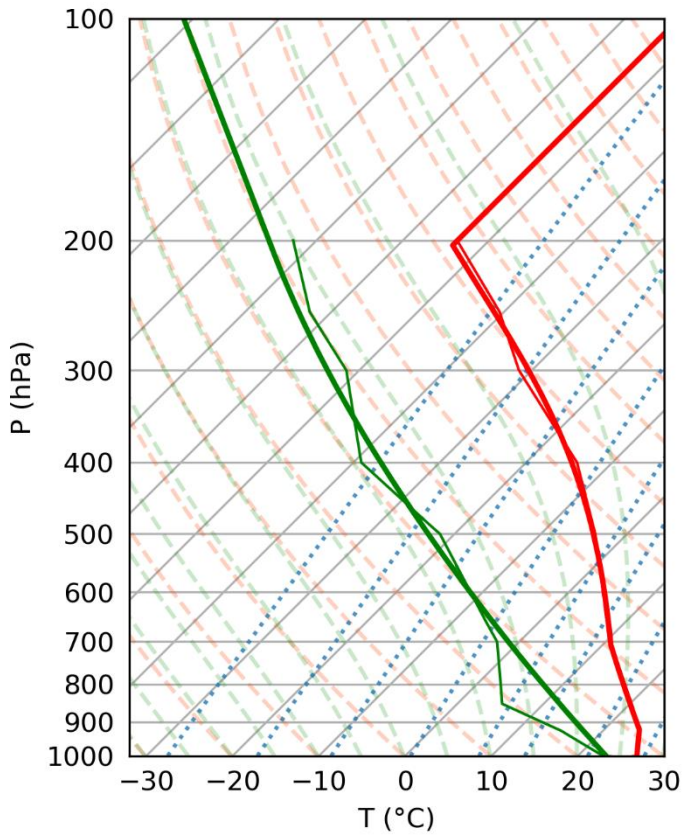


95 **Figure 1:** Observed albedo at the wavelength of $0.47 \mu\text{m}$ and at (a) 11:00, (b) 12:00, (c) 13:00, and (d) 14:00 LST, 25 September 25, 2018. (e) Retrieved cloud-top height (km) at 14:00 LST. The black dot in (a) indicates the location of Haikou station, where the sounding was obtained.

2 Methods

2.1 Case

100 Deep convection frequently occurs over Leizhou Peninsula (Bai et al., 2020), which is the southernmost part of mainland China. A deep-convection case on 25 September 2018 was chosen for this study. Figure 1 shows the albedo and cloud-top height observed by the geosynchronous Himawari-8 satellite. At 11:00 LST (local standard time; Fig. 1a), the clouds are weak and disorganized. As time goes by (Figs. 1b and 1c), the clouds become stronger and organize themselves along the centerline of the peninsula. At 14:00 LST (Fig. 1d), an even stronger cloud forms over the southern part of the peninsula. Figure 1e reveals that the cloud top is higher than 12 km at 14:00 LST, indicating that deep convection has formed.



105 **Figure 2: The thin lines show the observed sounding from Haikou station at 08:00 LST, 25 September 2018. The thick lines show the smoothed sounding used to initialize the simulations. The red lines show the temperature profile and the green lines show the dew point temperature profile.**

Figure 2 shows the sounding at Haikou station at 08:00 LST. The location of Haikou station (110.35 °E, 20.03 °N) is indicated by the black dot in Fig. 1a. The thick lines in Fig. 2 show the profiles used to initialize the simulations. The initial profiles are
 110 obtained by smoothing the observed profiles, which are shown with the thin lines. In the troposphere, the initial temperature profile has a three-layer structure. From the surface to 925 hPa, the temperature profile follows a moist adiabat. Such a layer is stable with respect to a dry adiabatic process but neutral with respect to a saturated, moist adiabatic process. This layer is probably the result of radiative cooling during the preceding night. From 925 hPa to 700 hPa, the temperature decreases with height slower than the dry adiabat but faster than the moist adiabat. Such a layer is stable with respect to a dry adiabatic process
 115 but unstable with respect to a saturated, moist adiabatic process. From 700 hPa to the top of the troposphere, the temperature profile again follows a moist adiabat. We analyzed several soundings from the same station, and found similar three-layer structures on days with deep convection. Similar three-layer structures are also seen in other studies (e.g., Beringer et al., 2001; Shepherd et al., 2001).

The environmental wind speed is generally less than 2 m s^{-1} below 700 hPa, and is approximately 4 m s^{-1} between 700 hPa and
 120 400 hPa (not shown). This is consistent with the known fact that sea-breeze circulation develops preferentially when the

environmental wind is sufficiently weak (Miller et al., 2003; Crosman and Horel, 2010). In this study, the environment wind is set to zero to simplify the analysis.

2.2 Model

The present simulations were conducted with release 19.7 of Cloud Model 1 (CM1; Bryan and Fritsch, 2002). CM1 solves the nonhydrostatic equations using the time splitting method, which explicitly calculates the acoustic term in the horizontal while implicitly ~~calculating~~calculates the acoustic term in the vertical (Skamarock and Klemp, 1994). In this study, CM1 is configured as an LES, where the subgrid-scale turbulence is parameterized with the turbulence kinetic energy (TKE) scheme (Deardorff, 1980). Cloud microphysics is represented with the one-moment Kessler scheme-, which predicts the cloud water mixing ratio and the rain water mixing ratio. A sensitivity test using the Morrison two-moment microphysics scheme is shown in Appendix A. The Coriolis factor is $0.5 \times 10^{-4} \text{ s}^{-1}$, which is the value at 20°N . Radiative transfer is not considered.

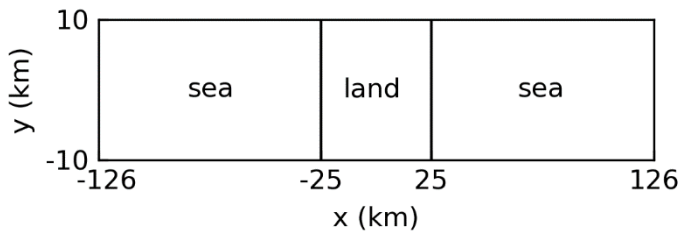


Figure 3: Domain configuration.

Figure 3 shows the domain configuration. A peninsula is located at the domain center. The sea is to the left and the right side of the peninsula. The width of the peninsula is 50 km, which is approximately the width of Leizhou Peninsula (Fig. 1). The domain is 252 km in the cross-coast direction (x -direction hereafter), 20 km in the along-coast direction (y -direction hereafter), and 17 km in the vertical direction (z -direction hereafter). In the x -direction, tests show that a length of ~ 250 km is sufficient to accommodate the sea-breeze circulations, i.e., the lateral “open” boundary conditions do not affect the simulated sea-breeze circulations. In the y -direction, tests show that a periodicity length of 20 km is large enough to capture the largest eddies because further increasing this length to 30 km produces similar results. The horizontal resolution is uniformly 100 m. The vertical resolution is 40 m from surface to 4 km, then gradually stretches to 200 m at 6.4 km, and then remains at 200 m up to the model top. ~~Note that the~~The vertical resolution in this study is even higher than that in Antonelli and Rotunno (2007), where the sea-breeze circulation is reasonably well simulated. A Rayleigh damping layer is used above 13 km to absorb gravity waves. An adaptive time step is used, and the longest time step is 2 s.

~~The prescription of the~~Idealized surface fluxes ~~is guided by~~are prescribed based on the ERA5 reanalysis data- (Hersbach et al., 2020). For the sea surface, the Bowen ratio is 0.1, and the total heat flux (which is the sum of sensible heat flux and latent heat flux) is constant at 100 W m^{-2} during the considered time. For the land surface, the Bowen ratio is 0.2, and the total heat flux displays a prominent diurnal cycle. Therefore, the total heat flux is prescribed as

$$THF = THF_m \sin\left(2\pi \frac{t}{1 \text{ day}}\right), (1)$$

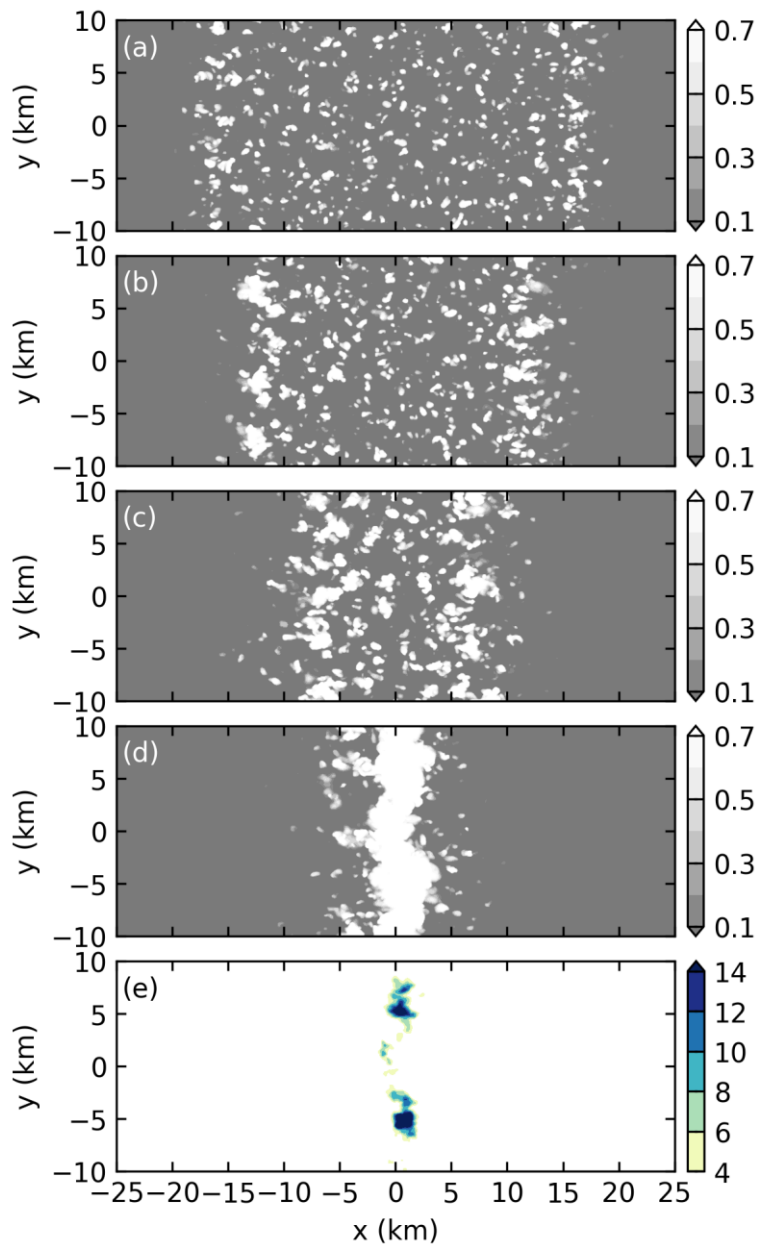
where THF_m is the maximum total heat flux, and t is time. On the chosen day, the maximum total heat flux over the peninsula is 480 W m^{-2} . However, during the whole of September of 2018, the maximum total heat flux varies between 700 and 300 W m^{-2} . Therefore, three values are tested here, i.e., 700 , 500 , and 300 W m^{-2} . Hereafter, the three simulations are respectively referred to as THF700, THF500, and THF300. In addition, the roughness length ~~of the surface~~ is set to 0.1 m for the land surface and $2 \times 10^{-4} \text{ m}$ for the sea surface (Wieringa, 1993).

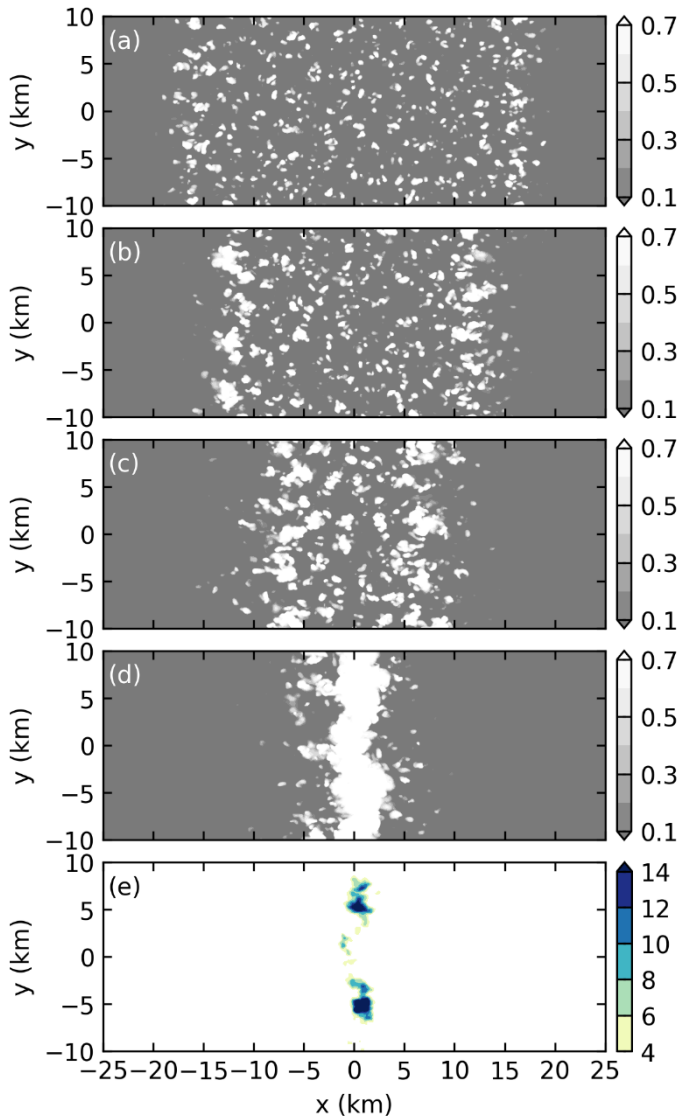
Each simulation is run from $t = 0$ to 12 h . The three-dimensional (3-D) fields were saved every 10 min . However, our initial analysis showed that the 10-min data could not resolve the DCI processes. Therefore, the model was restarted and the 3-D fields were saved every 1 min during the DCI period. In simulations THF700, THF500, and THF300, the 1-min data covers $t = 7.5$ to 9.5 h , $t = 8.5$ to 10.5 h , and $t = 10.5$ to 12 h .

Online Lagrangian parcels were used to investigate the processes of DCI. ~~Note that only the~~ The resolved-scale velocity is ~~considered in linearly interpolated to~~ the ~~calculation position~~ of the parcel ~~trajectory~~, and the ~~second-order Runge-Kutta method is used to update the position of the parcel. A similar method is used by Yang et al. (2015). Note that the~~ subgrid-scale velocity is not considered ~~in this calculation~~. Although including the subgrid-scale velocity may change the individual parcel trajectory (Weil et al. 2004; Yang et al. 2008), it does not change the statistics of a large number of parcel trajectories (Yang et al. 2008). The latter is the case in this study. Parcels were released at every grid point in the region of $-10 \text{ km} < x < 10 \text{ km}$, $-10 \text{ km} < y < 10 \text{ km}$, and $0 \text{ km} < z < 2 \text{ km}$. The total number of parcels is 2×10^6 . By restarting the simulations, we can release the parcels at different times. The release times will be mentioned in the appropriate sections.

3 General evolution of the convection

Figures 4a-d show the pseudo albedo at four times in simulation THF700. The pseudo albedo is the parameterized albedo of the simulated clouds. It is calculated in order to compare the simulated clouds with the satellite-observed clouds (Zhang et al., 2005). Note that the sun rises at $t = 0 \text{ h}$ in model time but at $6:00$ in LST, so model time $+ 6 \text{ h}$ is LST. The four times in Figs. 4a-d correspond to the four times of Figs. 1a-d. Clouds do not develop over the sea in our simulations (not shown); thus, only the land part is shown in Fig. 4. A comparison of Figs. 1 and 4 indicates that the simulation qualitatively reproduces the observed evolution of the convection. At $t = 5 \text{ h}$, Fig. 4a shows that the clouds are small and disorganized. As time goes by (Figs. 4b and 4c), the cloud field shrinks, and finally becomes a line of strong convective cells near the domain center (Fig. 4d). Figure 4e reveals that the cloud top of the strongest convective cell is higher than 12 km at $t = 8 \text{ h}$. Note that the cloud top is defined as the highest grid point with cloud water mixing ratio greater than 0.01 g kg^{-1} . In addition, Figs. 4a-c also indicate that the convective cells near the edges of the cloud field, which are actually the positions of the sea-breeze fronts, are bigger than those between the two edges. This point will be revisited in Sect. 4.1.





180 **Figure 4: Pseudo albedo in simulation THF700 at (a) $t = 5$ h, (b) $t = 6$ h, (c) $t = 7$ h, and (d) $t = 8$ h. (e) Cloud-top height (km) at $t = 8$ h. Note that only the land part is shown.**

The reanalysis data shows that the maximum total heat flux is 480 W m^{-2} on the chosen day. However, a maximum total heat flux of 700 W m^{-2} is required for the model to reproduce the observations-observed time of DCI. In simulations THF500 and THF300, the DCI is respectively delayed by 1 and 3 hours. Several reasons may explain the difference in DCI time between
 185 the simulations and the observations. For example, Miller et al. (2003) pointed out that the environmental wind increases the low-level convergence associated with the sea-breeze front. Therefore, the omission of environmental wind may produce weaker sea-breeze fronts, and hence postpone DCI. In addition, the omission of topography, the cyclic boundary condition in

the y -direction (i.e., the peninsula is infinite in the y -direction), and the simplification of coastline shape may all contribute to the difference in DCI time between the simulations and the observations.

190 **4 The preconvective environment**

It is found that the effect of sea-breeze circulation on the preconvective environment is similar in all three simulations. Thus, only simulation THF700 is presented. As shown later, the effect of the sea-breeze circulation is different before and after the collision of sea-breeze fronts. These two periods are therefore discussed separately.

4.1 Before the collision of sea-breeze fronts

195 Figure 5 shows the y -averaged cross-coast wind, along-coast wind, potential temperature, vapor mixing ratio, convective available potential energy (CAPE), and convective inhibition (CIN) at $t = 6$ h in simulation THF700. In this study, CAPE and CIN are calculated by lifting a parcel that possesses the mean properties of the lowest 0.2 km. Two sea-breeze circulations develop, with the left one around the left coast and the right one around the right coast (Fig. 5a). Weak mean winds also develop in the y -direction due to the Coriolis effect (Fig. 5b). At $t = 6$ h, the sea-breeze fronts have moved inland by 15 km
200 (Fig. 5a). As the sea breeze moves inland, the sensible heat flux increases its potential temperature (Fig. 5c), and the latent heat flux increases its vapor mixing ratio (Fig. 5d). Therefore, CAPE increases while CIN decreases from the coast to the sea-breeze front (Figs. 5e and 5f). Figure 5f also indicates that CIN maximizes near the coasts. As found by Cuxart et al. (2014), this is because the return flow has a downward component near the coast, which produces subsidence warming and thereby stabilizes the atmosphere.

205 Between the two sea-breeze fronts, Fig. 5c indicates that the potential temperature is higher than that in the sea breeze. For the air between the sea-breeze fronts, it is always heated by the stronger sensible heat flux from the land surface; while for the air in the sea breeze, it is first heated by the weaker sensible heat flux from the sea surface, and then heated by the stronger sensible heat flux from the land surface. Therefore, the air between the sea-breeze fronts receives more heat and is hence warmer than the air in the sea breeze. In addition, the large sensible heat flux between the sea-breeze fronts forces the boundary layer to
210 grow rapidly, entraining a significant amount of dry air into the boundary layer. Therefore, the vapor mixing ratio between the sea-breeze fronts slowly decreases with time (not shown). At $t = 6$ h, the vapor mixing ratio between the sea-breeze fronts is lower than that in the sea breeze (Fig. 5d). As a result, CAPE between the sea-breeze fronts is substantially smaller than that in the sea-breeze (Fig. 5e). Figure 5f shows that CIN has been completely removed between the sea-breeze fronts. It is worth mentioning that although CAPE is large and CIN is nearly zero over a large portion of the land, ~~no~~-deep convection
215 develops does not develop at this time.

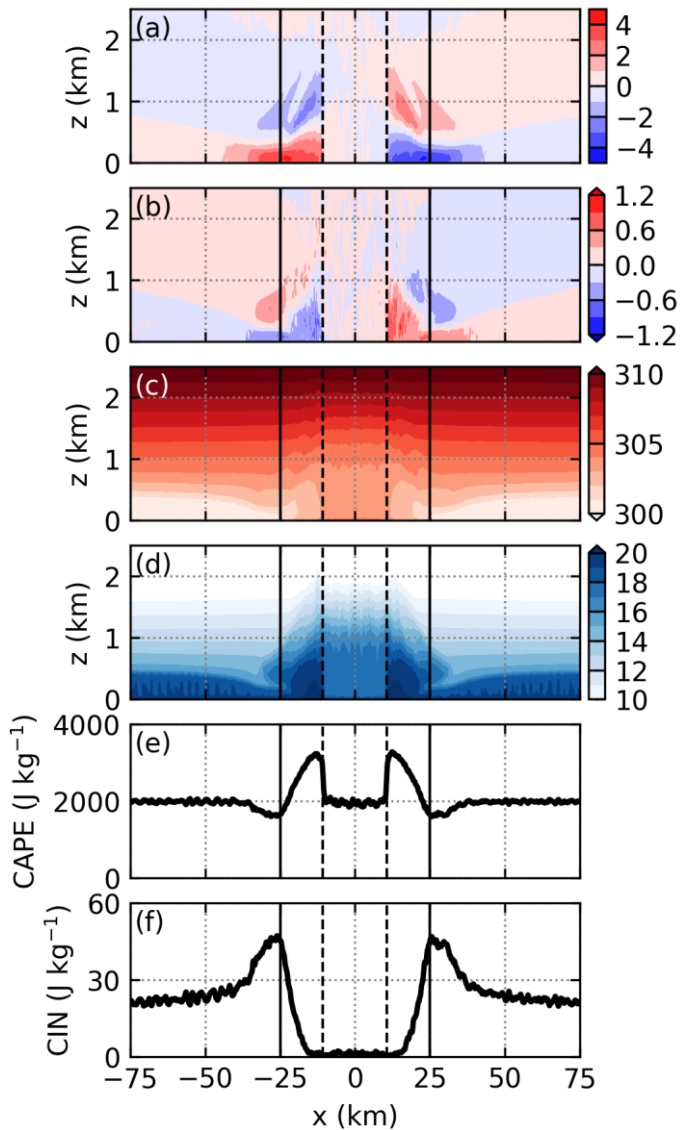
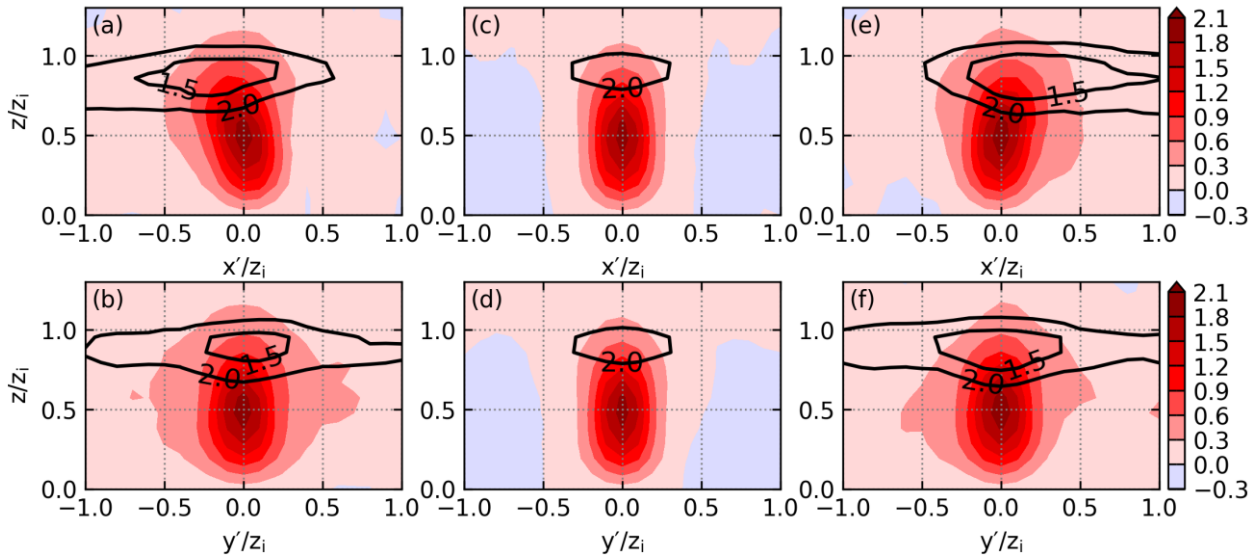


Figure 5: y -averaged (a) cross-coast wind (m s^{-1}), (b) along-coast wind (m s^{-1}), (c) potential temperature (K), (d) vapor mixing ratio (g kg^{-1}), (e) CAPE, and (f) CIN at $t = 6$ h in simulation THF700. The solid lines at $x = -25$ and 25 km denote the coasts. The dashed lines denote the identified positions of the sea-breeze fronts.

220 Thermal size plays an important role in determining DCI, as mentioned in Sect. 1. It is therefore interesting to investigate
 whether the thermal size is affected by the sea-breeze circulation. This is done by comparing the thermal sizes near the sea-
 breeze fronts to those between the sea-breeze fronts. The thermals within the sea breezes are small and weak (not shown), and
 are thus not analyzed. Due to the turbulent nature of the flow, it is probably not useful to investigate the size of individual
 thermals. Therefore, we respectively composite the thermals near the sea-breeze fronts and those between the sea-breeze fronts,
 225 and then compare the sizes of the composite thermals.

Here we briefly present the method of compositing. The details are given in Appendix [A.B](#). First, we define the positions of the sea-breeze fronts. Second, we identify thermals, and define the position of each thermal. Third, a thermal is defined as a “left-front thermal” if its distance from the left sea-breeze front is less than 1 km; a thermal is defined as a “right-front thermal” if its distance from the right sea-breeze front is less than 1 km; and a thermal is defined to be an “intermediate thermal” if it is
 230 between the two sea-breeze fronts and is more than 1 km away from each sea-breeze front. Fourth, a procedure similar to that used by Finnigan et al. (2009) and Schmidt and Schumann (1989) is used to composite the thermals at a given output time. Note that the three types of thermals are composited separately. Finally, the size and vertical velocity of the composite thermals are respectively nondimensionalized by the boundary layer height (z_i) and the convective velocity scale (w^*), and averaged over a period of time to give the mean composite thermal.



235 **Figure 6:** (a) x - z cross section and (b) y - z cross section of the composite left-front thermal averaged from $t = 5$ h 30 min to 6 h 30 min in simulation THF700. The filled contours indicate the nondimensionalized vertical velocity, and the black contours indicate the dew point depression (K). (c)-(d) are the same as (a)-(b) except for the composite intermediate thermal. (e)-(f) are the same as (a)-(b) except for the composite right-front thermal.

240 Figure 6 shows the mean composite left-front thermal, mean composite intermediate thermal, and mean composite right-front thermal averaged from $t = 5$ h 30 min to 6 h 30 min. Figure 6a indicates that the mean composite left-front thermal tilts to the left; and Fig. 6e indicates that the mean composite right-front thermal tilts to the right. This tilting is why we composite the left-front thermal and the right-front thermal separately. Due to the convergence near the sea-breeze fronts, Fig. 6 shows that the mean composite thermals near the sea-breeze fronts are substantially larger than the mean composite intermediate thermal.
 245 Furthermore, the mean composite thermals near the sea-breeze fronts are moister than the mean composite intermediate thermal. The larger and moister ~~left and right front~~ thermals near the sea-breeze fronts explain the fact that the horizontal scales of the clouds near the sea-breeze fronts are bigger than those between the two sea-breeze fronts (Fig. 4).

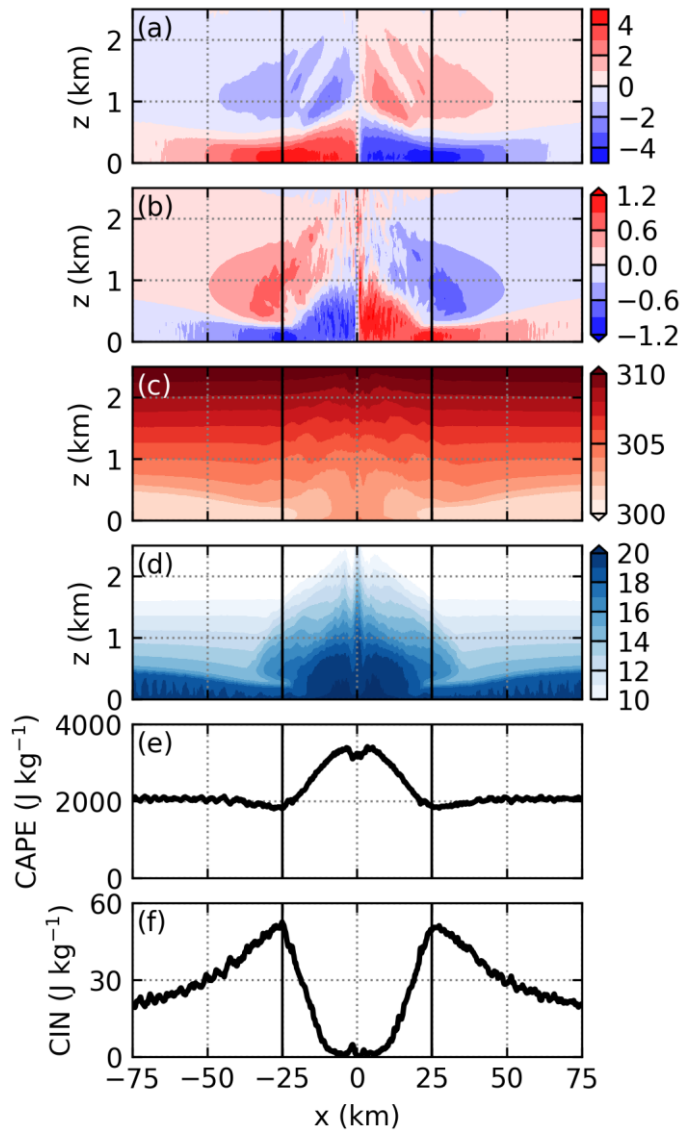


Figure 7: The same as Fig. 5, except at $t = 7$ h 50 min.

250 Interestingly, Fig. 6 also shows that the vertical velocity of the mean composite thermals near the sea-breeze fronts is similar to that of the mean composite intermediate thermal. This suggests that, in the present simulation, the effect of a sea-breeze front is to increase the size of the thermal but not to strengthen the updraft of the thermal. Many previous studies showed that the updraft near the front of a gravity current is strengthened (e.g., Iwai et al., 2011); however, several observational studies indicate that the magnitude of updraft is not changed by boundary-layer convergence zones (e.g., Kraus et al., 1990; Wood et al., 1999). Hence, further studies are required to understand the effect of sea-breeze fronts on the magnitude of the thermal updrafts.

255

4.2 After the collision of sea-breeze fronts

Figure 7 shows the y -averaged cross-coast wind, along-coast wind, potential temperature, vapor mixing ratio, CAPE, and CIN at $t = 7$ h 50 min in simulation THF700. Figure 7a shows that the two sea-breeze fronts have collided near the domain center. The potential temperature near the domain center is almost the same as that at $t = 6$ h (cf. Figs. 5c and 7c). Figure 7d shows that the vapor mixing ratio near the domain center is much higher than that at $t = 6$ h (cf. Figs. 5d and 7d) as a result of the sea breezes transporting vapor inland. Consequently, CAPE near the domain center becomes much higher than that at $t = 6$ h (cf. Figs. 5e and 7e), and is greater than 3000 J kg^{-1} (Fig. 7e). Figure 7f shows that the distribution of CIN at $t = 7$ h 50 min is similar to that at $t = 6$ h, except that the portion with near-zero CIN becomes smaller.

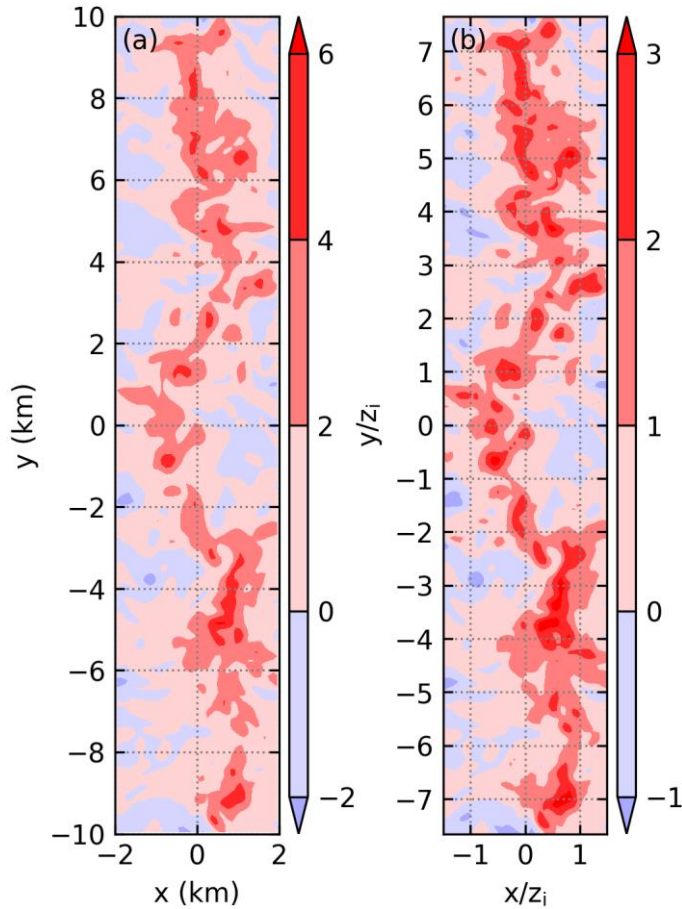


Figure 8: Horizontal cross section of (a) dimensional vertical velocity (m s^{-1}) and (b) nondimensional vertical velocity at $z = 0.66 \text{ km}$ and at $t = 7$ h 50 min in simulation THF700.

After the collision of sea-breeze fronts, deep convection quickly develops, which does not allow us to composite the thermals. Figure 8a shows the horizontal cross section of vertical velocity at $z = 0.5z_i$ and at $t = 7$ h 50 min, and indicates that updrafts exist along most of y -direction around $x = 0$ km. In order to compare the vertical velocity at $t = 7$ h 50 min to the mean

275 composite thermals, the length and the vertical velocity are respectively nondimensionalized by z_i and w^* and shown in Fig. 8b. At various places, the length of the nondimensional updraft is greater than 2 in the x -direction, comparable to the mean composite thermals near the sea-breeze fronts (cf. Fig. 6). In the y -direction, the length of the nondimensional updraft is much larger than that of the mean composite thermals near the sea-breeze fronts shown in Figs. 6b and 6f. Strictly speaking, the nondimensional updraft in Fig. 8b should not be compared to the mean composite thermals in Fig. 6 because the former is an instantaneous cross section while the latter is the mean of multiple thermals. Nevertheless, we think it is safe to conclude that the horizontal scale of the thermals after the collision is even larger than that before the collision. Thus, due to the higher CAPE and even bigger thermal, the environment after the collision of sea-breeze fronts is a more favorable environment for DCI.

280 **5 The processes of DCI**

As shown above, the deep convective cells align along the centerline of the domain, and are mostly confined between $x = -2$ and 2 km (Fig. 4d). Thus, the fields averaged from $x = -2$ to 2 km include the information of all convective cells. By analyzing the 1-min instantaneous fields averaged from $x = -2$ to 2 km; (see supplement), it is clearly seen that DCI is not a one-step process; instead, DCI is accomplished through the development of multiple generations of convection. Here, we define the first generation of convection as the convective cells initiated solely by the sea-breeze fronts, and the second generation of convection as the convective cells affected by the first generation of convection. Similarly, we can also define the third generation of convection. In simulations THF700 and THF500, three generations of convection can be identified. In simulation THF300, only one generation of convection develops. It is worth pointing out that each generation generally usually contains multiple convective cells, and these convective cells may not develop synchronously. Due to this complexity, subjectivity is unavoidable when identifying the different generations of convection. In this section, we use simulation THF700 to show the detailed processes involved in DCI.

285

290

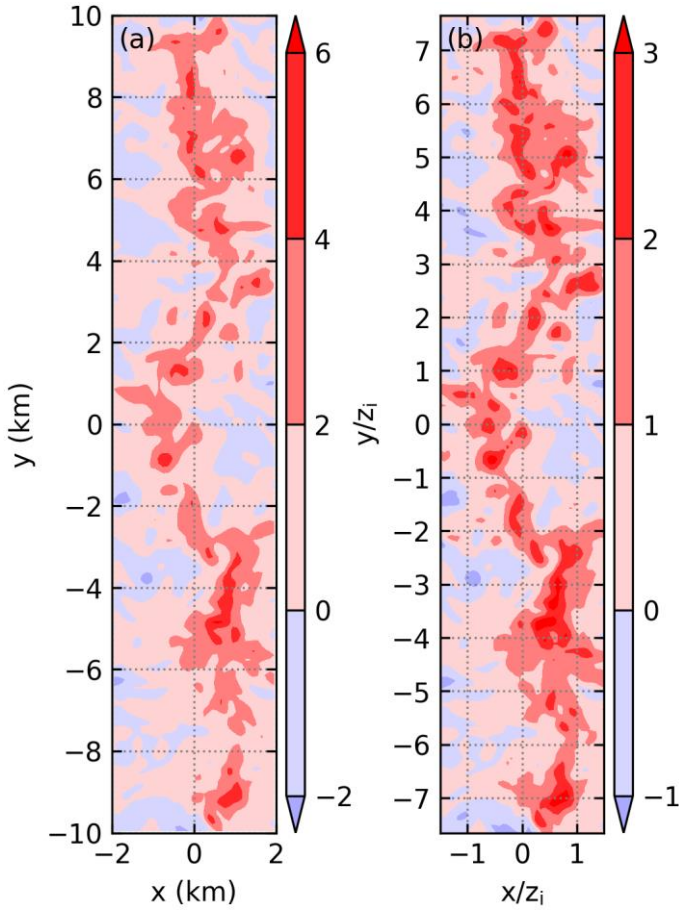


Figure 8: Horizontal cross section of (a) dimensional vertical velocity (m s^{-1}) and (b) nondimensional vertical velocity at $z = 0.66 \text{ km}$ and $t = 7 \text{ h } 50 \text{ min}$ in simulation THF700.

295 Some definitions that are frequently used in this section are presented here. For a parcel that is initially below the LFC, it must be lifted by some lifting mechanism before it can ascend to LFC (Sect. 1). A parcel is defined as “having been lifted” if it is below the LFC at time t_0 , above the LFC at time $t_0 + 1 \text{ min}$, and ascends by more than 0.12 km from time t_0 to $t_0 + 1 \text{ min}$ (corresponding to a mean vertical velocity of 2 m s^{-1}). We further define time t_0 as the time when the parcel is lifted, and the position of the parcel at t_0 as the position where the parcel is lifted.

300 We define a grid point to be within a cold pool if its surplus in density potential temperature (temperature surplus hereafter)

$$\Delta\theta_\rho = \theta_\rho - \bar{\theta}_\rho \text{ satisfies}$$

$$\Delta\theta_\rho < -1 \text{ K. (2)}$$

The density potential temperature $\theta_\rho = \theta \left[1 + \left(\frac{1}{\varepsilon} - 1 \right) q_v - q_c - q_r \right]$, where θ is potential temperature, q_v the vapor mixing ratio, q_c the cloud water mixing ratio, q_r the rain water mixing ratio, $\varepsilon = R_d/R_v$ with R_d and R_v respectively the gas constants

305 of dry air and vapor. The reference density potential temperature $\bar{\theta}_\rho$ is the θ_ρ averaged from $x = -10$ to 10 km and from $y = -$

10 to 10 km at the start of the 1-min output. A column is defined to be within the cold pool if its lowest grid point satisfies Eq. (2). We search upward along the column, and label the index of the first grid levelpoint not satisfying Eq. (2) as k , then the height of $(k-1)$ -th grid point is defined as the depth of the cold pool. The temperature surplus averaged over all the grid
points below the k -th grid point is defined as the mean temperature surplus of the column.

310 5.1 First generation of convection

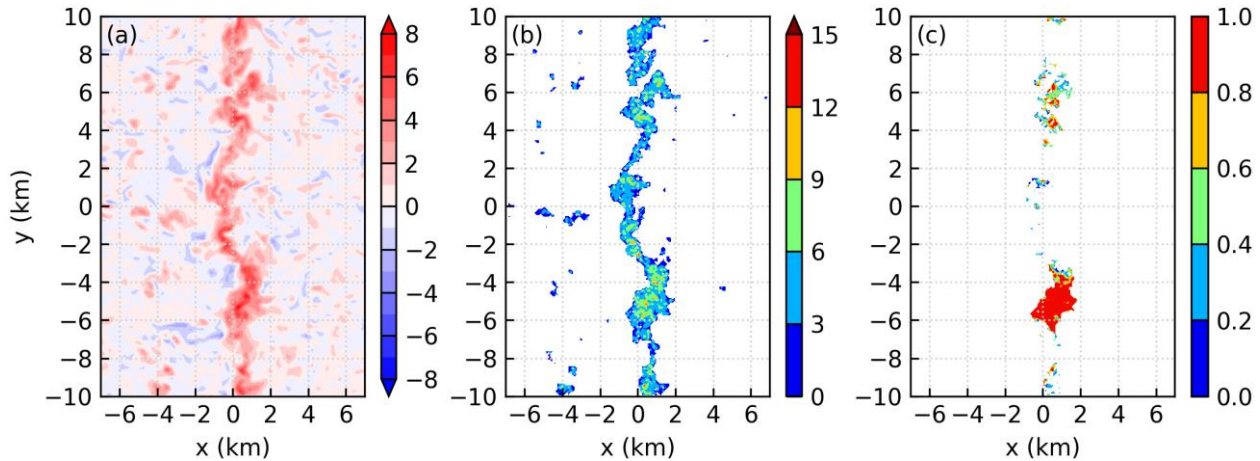


Figure 9: (a) The vertical velocity at $z = 0.88$ km. (b) The number of parcels that are lifted at each grid point. (c) The fraction of parcels that rises above 4 km in all parcels that are lifted. The parcels are released at $t = 7$ h 35 min and tracked forward for 20 min. The results are at $t = 7$ h 47 min of simulation THF700.

315 Figure 9a shows the vertical velocity at $z = 0.88$ km, which is the LFC averaged from $x = -1$ to 1 km and from $y = -10$ to 10 km right after the collision of sea-breeze fronts. Due to the collision of the oppositely-moving sea-breeze fronts, a quasi-linear updraft develops around $x = 0$ km (Fig. 9a). Parcels are released at $t = 7$ h 35 min and tracked forward for 20 min to investigate where the first generation of convection develops. Figure 9b shows the number of parcels that are lifted at $t = 7$ h 47 min at each grid point. Inspection of Figs. 9a and 9b shows that the positions where the parcels are lifted are almost the same as the
 320 positions where the vertical velocity is greater than 2 m s^{-1} . This is a direct result of the definition. Figure 9b also indicates that more parcels are lifted from regions with stronger updrafts (cf. Fig. 9a), similar to that found by Tang and Kirshbaum (2020).

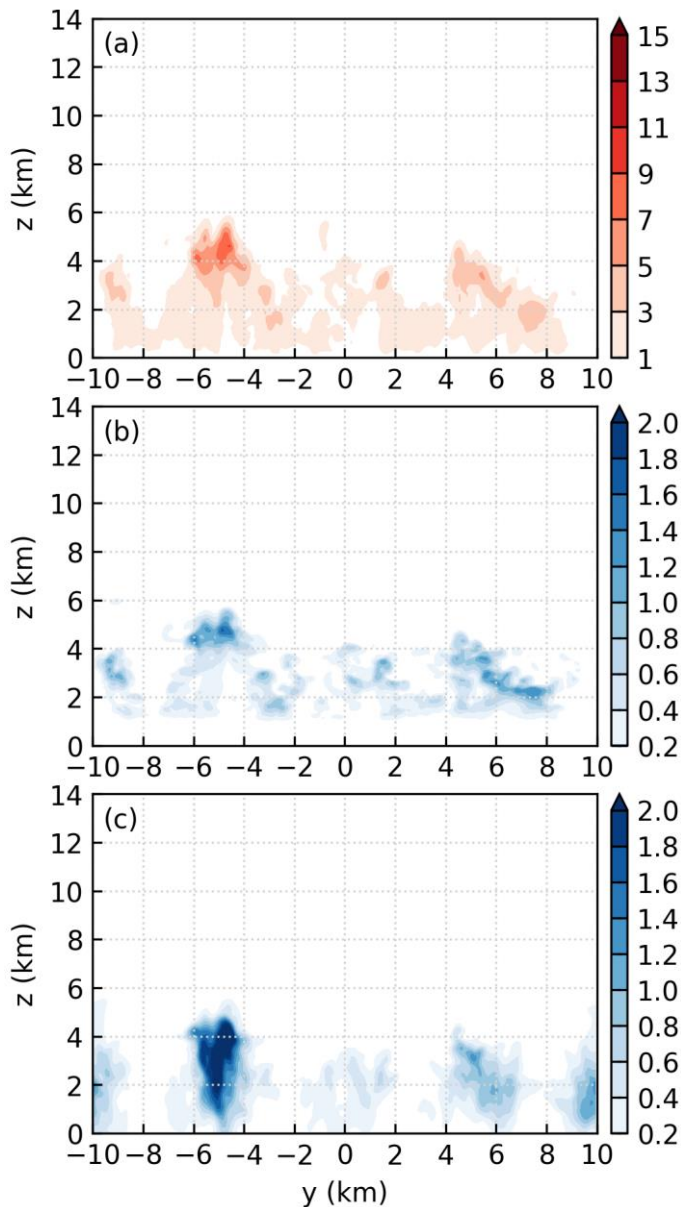


Figure 10: (a) Vertical velocity (m s^{-1}), (b) cloud water mixing ratio (g kg^{-1}), and (c) rain water mixing ratio (g kg^{-1}) averaged from $x = -2$ to 2 km at $t = 7$ h 56 min in simulation THF700.

325 A critical height is used to distinguish the parcels that rise to high levels from the parcels that do not rise to high levels. The maximum height reached by the first generation of convection is approximately 6 km, as shown below. We therefore set the critical height to be 4 km. Figure 9c shows the fraction of parcels that rise above 4 km in all the parcels that are lifted at $t = 7$ h 47 min. Not all the parcels that are lifted manage to rise above 4 km. Furthermore, the parcels that rise above 4 km are mainly lifted from the regions where the updrafts are wider in the x -direction. In this simulation, the updraft is nearly continuous in

330 the y -direction (Figs. 9a and 8). In this situation, the dimension in the y -direction is not an appropriate measure of the updraft size. ~~However, but~~ the dimension in the x -direction is an appropriate measure ~~of the updraft size.~~ Therefore, Fig. 9 ~~shows~~suggests that convective cells developing from larger updrafts rise to higher levels, consistent with previous studies (e.g., Dawe and Austin, 2012; Rousseau-Rizzi et al., 2017). It is worth mentioning that at the time of Fig. 9, the convective cells are still below $z = 4$ km (see supplement), so the wide updraft is mostly produced by the boundary-layer forcing, and has not been

335 substantially affected by the convective cell.

Figures 10a-c respectively show the vertical velocity, cloud water mixing ratio, and rain water mixing ratio averaged from $x = -2$ to 2 km at $t = 7$ h 56 min. ~~Note that the~~The mean vertical velocity is defined as $\bar{w} = \sum_{i=1}^N \frac{wf(w)}{N}$, where $f(w) = 1$ if $w > 0$ and $f(w) = 0$ if $w \leq 0$. N is the number of ~~grids averaged.~~grid points between $x = -2$ to 2 km, either with $w > 0$ or ≤ 0 , so the number of grid points going into the averaging procedure is fixed. The two convective cells around $y = -5$ and 5 km in Fig.

340 10a correspond to the two clusters of parcels that rise above 4 km (cf. Fig. 9c). They are produced directly through the collision of sea-breeze fronts, and hence belong to the first generation of convection. At this time, these two convective cells have reached their mature stages and the cloud tops are close to their maximum heights. Cloud water forms as a result of the strong updrafts (Fig. 10b). Through a series of cloud microphysical processes (Fu et al., 2019), rain water forms around $y = -5$ and 5 km (Fig. 10c).

345 The rain shafts around $y = -10, 0,$ and 10 km are produced by the earlier convective cells, which also belong to the first generation of convection but develop several minutes earlier than the convective cells around $y = -5$ and 5 km. In addition, it is found that the convective cell around $y = -5$ km is the strongest in the first generation of convection, and its position along the colliding sea-breeze fronts seems to be ~~randomly produced~~random. A detailed analysis indicates that the randomness is related to the variability of the sea-breeze fronts in the y -direction (not shown). We note that because of the cyclic boundary

350 condition in the y -direction, the rain shafts around $y = -10$ and 10 km are actually produced by the same convective cell. Similar caution should be used when interpreting other variables.

5.2 Second generation of convection

Figures 11a and 11b respectively show the depth and the temperature surplus of the cold pools at $t = 8$ h. Four cold pools can be identified, corresponding to the four rain shafts in Fig. 10c. At this time, the cold pools have not yet merged, and are

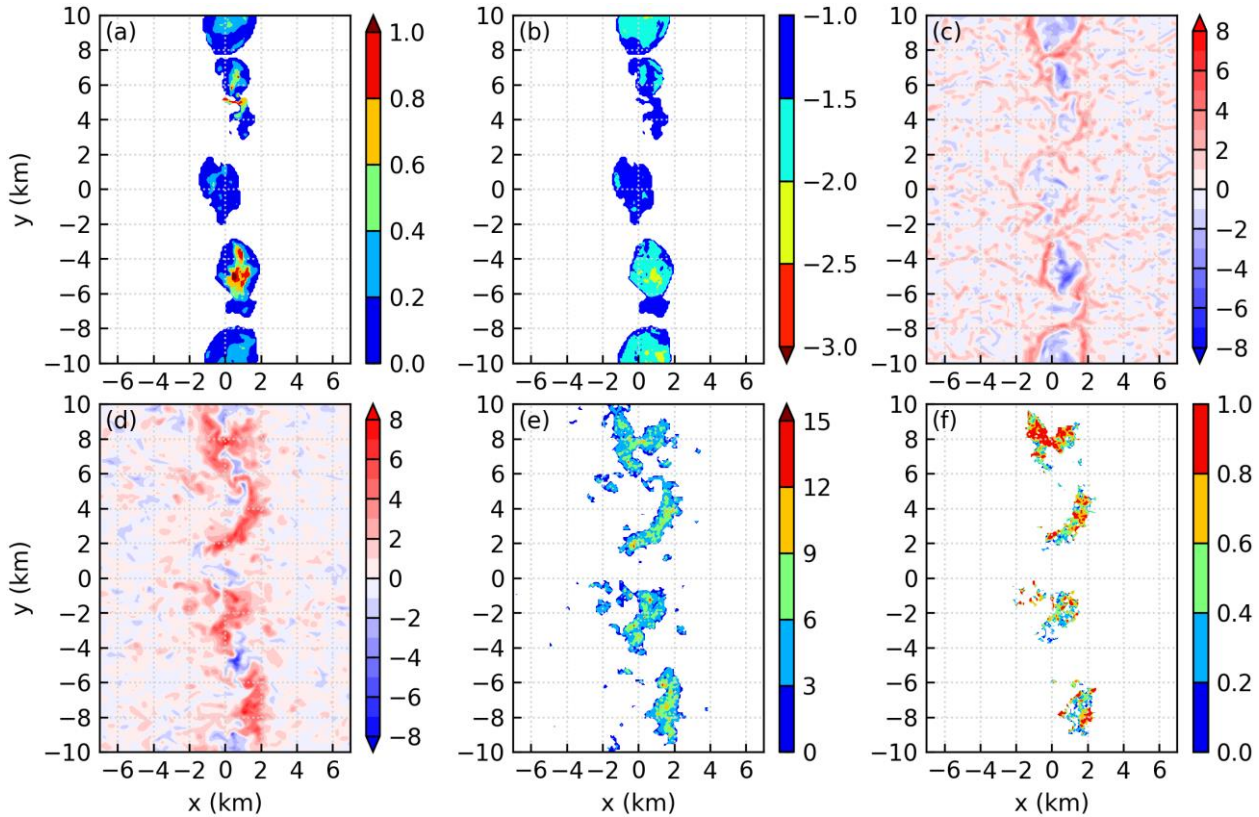
355 generally shallower than 0.2 km and warmer than -2 K near their edges.

Figures 11c and 11d respectively show the vertical velocity at $z = 0.2$ and 0.88 km. At $z = 0.2$ km, downdrafts exist in the interiors of the cold pools. Closed rings of updraft can be seen near the edges of the cold pools. At $z = 0.88$ km, downdrafts are also discernable at the centers of the cold pools. However, updrafts do not form closed rings; instead, four ~~updraft~~segmentsupdrafts are produced. Figure 11d also shows that the ~~updraft segments~~updrafts are separated by the downdrafts. A

360 comparison of Figs. 11c and 11d reveals that some updrafts are deep because they are seen at both $z = 0.2$ and 0.88 km, while the other updrafts are shallow because they are seen at $z = 0.2$ km but not at $z = 0.88$ km. The formation of deep and shallow

updrafts will be further explored below. Note that at the time for Fig. 11, the convective cells of the second generation are mostly below $z = 4$ km (see supplement), so the wide updrafts shown in Fig. 11d are also mostly produced by the boundary-layer forcing, and are not substantially affected by the convective cells, similar to the first generation of convection.

365 Parcels are released at $t = 7$ h 55 min and tracked forward for 25 min to investigate the development of the second generation of convection. Figure 11e shows that parcels are lifted from the regions with vertical velocity greater than 2 m s^{-1} (cf. Fig. 11d), similar to that observed in Fig. 9. The second generation of convection is stronger than the first generation, as seen below. We accordingly use a higher critical height, i.e., 6 km, to distinguish the parcels that rise to high levels from the parcels that do not rise to high levels. The fraction of parcels that rise above 6 km is shown in Fig. 11f. Each updraft-segment produces
 370 some parcels that rise above 6 km. At the time shown in Fig. 11f, the fraction of parcels that rise above 6 km is generally small for each updraft-segment. However, the fraction will increase to over 0.8 in the following 8 minutes (not shown).



375 **Figure 11:** (a) and (b) are respectively the depth (km) and temperature surplus (K) of the cold pools. (c) and (d) are respectively the vertical velocity at $z = 0.2$ and 0.88 km. (e) The number of parcels that are lifted at each grid point. (f) The fraction of parcels that rise above 6 km in all parcels that are lifted. The parcels are released at $t = 7$ h 55 min and tracked forward for 25 min. The results are at $t = 8$ h of simulation THF700.

Figures 12a and 12c respectively show the vertical cross section of cross-coast wind and vertical velocity at $y = -0.95$ km. The black contour indicates the edge of the cold pool. At this time, the cold pool spans from $x = -0.8$ to 0.8 km and is generally

shallower than 0.2 km. The sea breezes experience weak lifting when they encounter the shallow gust fronts (Fig. 12a). After being lifted, the sea breezes continue to move and collide with each other, producing a wide and deep updraft- (Fig. 12c). Obviously, the dominant forcing mechanism of the updraft is the collision of the sea-breeze fronts, rather than the collision between the gust fronts and the sea-breeze fronts. In fact, this vertical cross section is representative of all regions where deep updrafts are produced. In particular, at regions not covered by cold pools, the collision of sea-breeze fronts is the only forcing mechanism that produces the updraft.

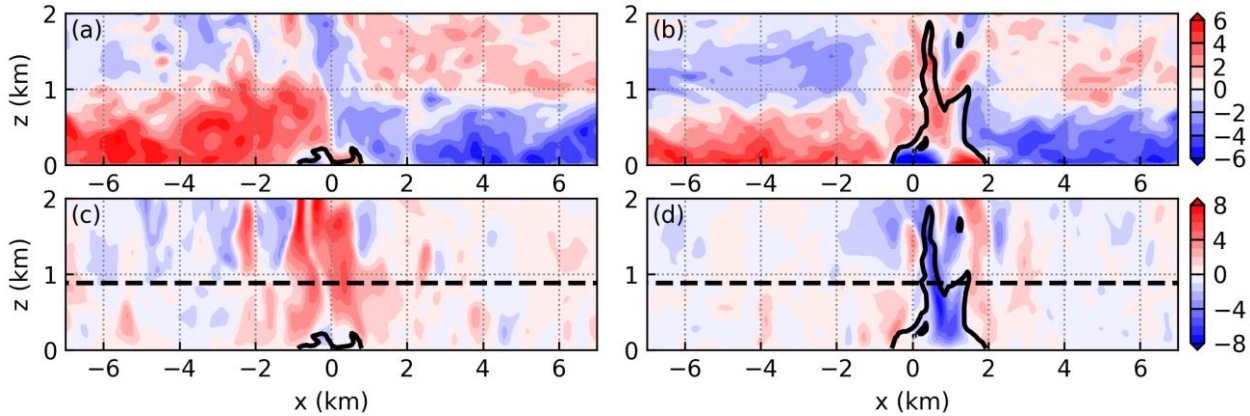


Figure 12: Vertical cross section of (a) cross-coast wind and (c) vertical velocity at $y = -0.95$ km. (b) and (d) are respectively the same as (a) and (c) except at $y = -4.95$ km. The black contour indicates the edge of the cold pool. The dashed line indicates the LFC. The results are at $t = 8$ h of simulation THF700.

Figures 12b and 12d show the vertical cross section at $y = -4.95$ km. This vertical cross section is representative of the regions where only shallow updrafts are produced. The cold pool is readily seen in Fig. 12b. The cold-pool depth near the edge is approximately 0.2 km, which is rather shallow. The updraft forced by ~~such a shallow~~the gust front is also shallow (Fig. 12d). More importantly, although the sea breezes that are lifted by the gust fronts continue to move toward each other and collide around $x = 1$ km (Fig. 12b), deep updraft ~~cannot be~~ produced. This is because the downdraft from aloft suppresses the development of updraft.

We can now summarize the processes through which the second generation of convection is produced. In the regions where downdrafts exist, deep updrafts cannot be produced because of the suppression effect exerted by the downdrafts produced by the first generation of convection. As a result, new convection does not develop in these regions. In the regions where downdrafts do not exist, the collision of sea-breeze fronts produces deep and wide updrafts. The second generation of convection therefore develops from these regions. ~~In addition~~

~~the updrafts that produce the second generation of convection are more organized, and are generally wider in the x direction than the updrafts that produce the first generation (cf. Figs. 9a and 11d), so the second generation of convection is stronger than the first generation.~~

405 Figures 13a-c respectively show the y - z plots of the vertical velocity, cloud water mixing ratio, and rain water mixing ratio averaged from $x = -2$ to 2 km at $t = 8$ h 13 min. Figure 13a reveals multiple convective cells, corresponding to the clusters of parcels that rise above 6 km (cf. Fig. 11f). The animation of y - z plots (~~not shown~~[see supplement](#)) reveals that the second generation of convection eventually rises above 10 km. These ~~deeper~~ convective cells produce more cloud water (Fig. 13b), and consequently more rain water (Fig. 13c) than the first generation of convection.

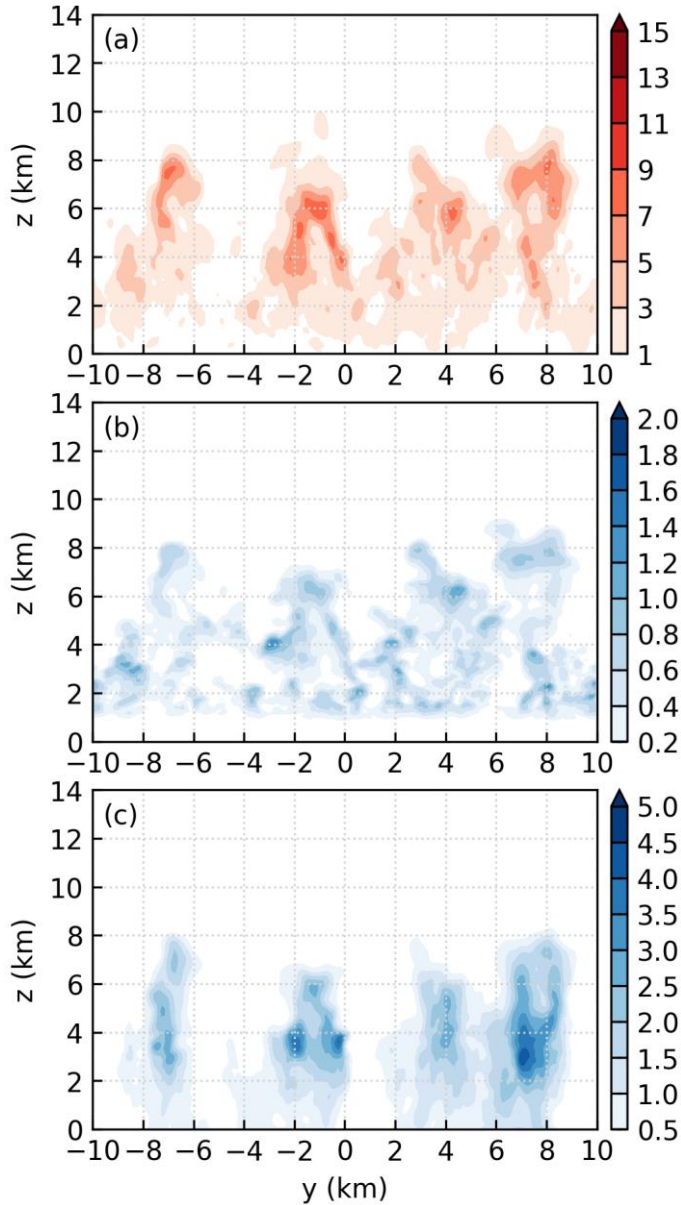
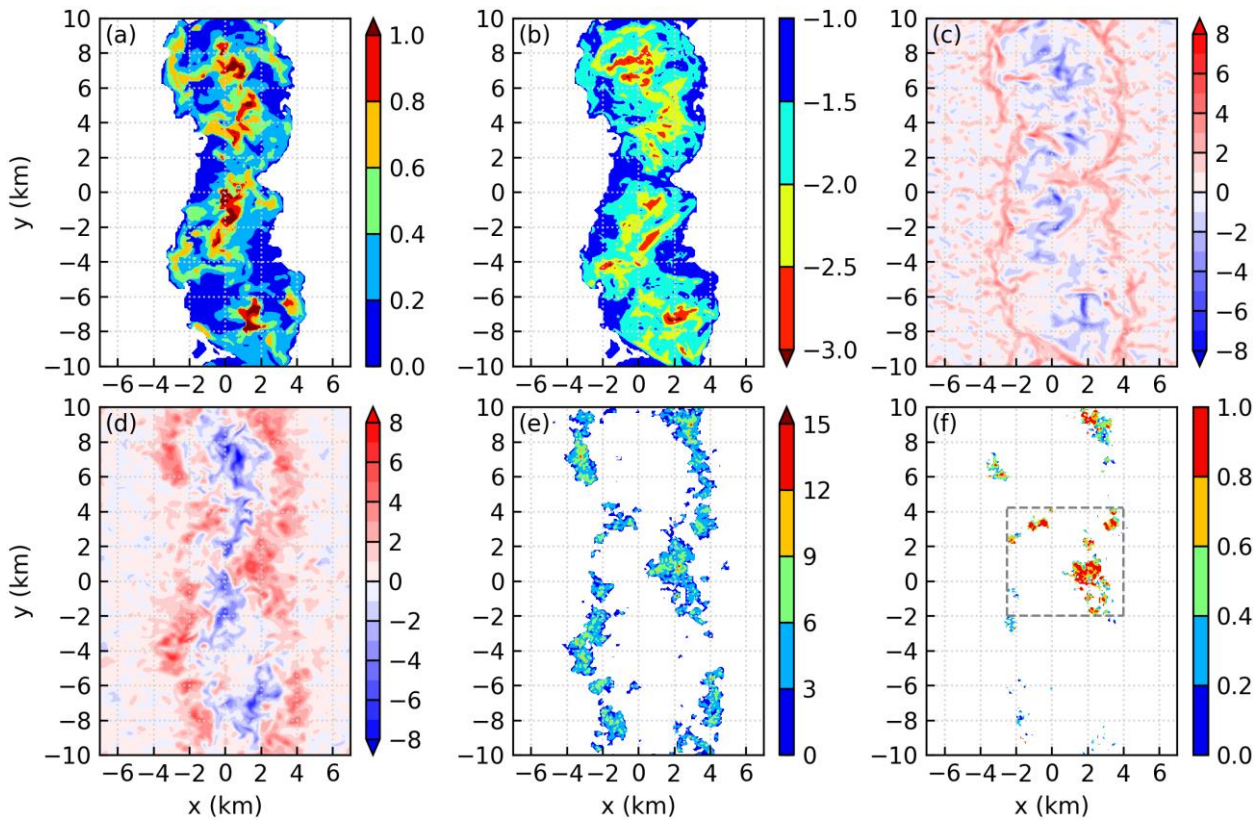


Figure 13: The same as Fig. 10, but at $t = 8$ h 13 min.

410 Three factors contribute to the result that the second generation of convection is deeper than the first generation of convection. First, the updrafts that produce the second generation of convection are more organized, and are generally wider in the x -direction than the updrafts that produce the first generation (cf. Figs. 9a and 11d). Second, the two convective cells between $x = 2$ and 10 km are very close to each other (Fig. 13a). They might invigorate each other by moistening the environment, as suggested by Böing et al. (2012). Third, the first generation of convection moistens the troposphere below $z = 6$ km. This
415 reduces the dilution of the subsequent convective cells, and hence tends to invigorate the second generation of convection. This point is supported by a sensitivity test, where the vapor mixing ratio of the non-cloudy grid points is strongly nudged to the mean vapor mixing ratio averaged from $x = -2$ to 2 km and from $y = -10$ to 10 km at 7 h 30 min. A grid point is defined as non-cloudy if its sum of cloud water and rain water mixing ratio is less than 0.01 g kg^{-1} . The nudging is applied only for $z > 2$ km. The sensitivity test (not shown) shows that the second generation of convection is only slightly stronger than the first
420 generation of convection.

5.3 Third generation of convection

~~Figures 14a and 14b show the depth and the temperature surplus of the cold pool at $t = 8 \text{ h } 17 \text{ min}$. It reveals a single cold pool that spans the whole y direction. This cold pool is generally deeper and colder than the cold pools at $t = 8 \text{ h}$ (cf. Figs. 11 and 14). A careful examination of Fig. 14b reveals that the cold pool is not homogeneous, but composed of two cold pools that are~~
425 ~~separated by the warmer regions (indicated by the blue color) around $y = 1$ and 10 km. This conclusion is further confirmed by the inspection of the evolution of cold pools (not shown). The collision of these two cold pools produce several intersection points. The most prominent intersection points are at $(x, y) = (2, 1)$ and $(2, 10)$ km.~~



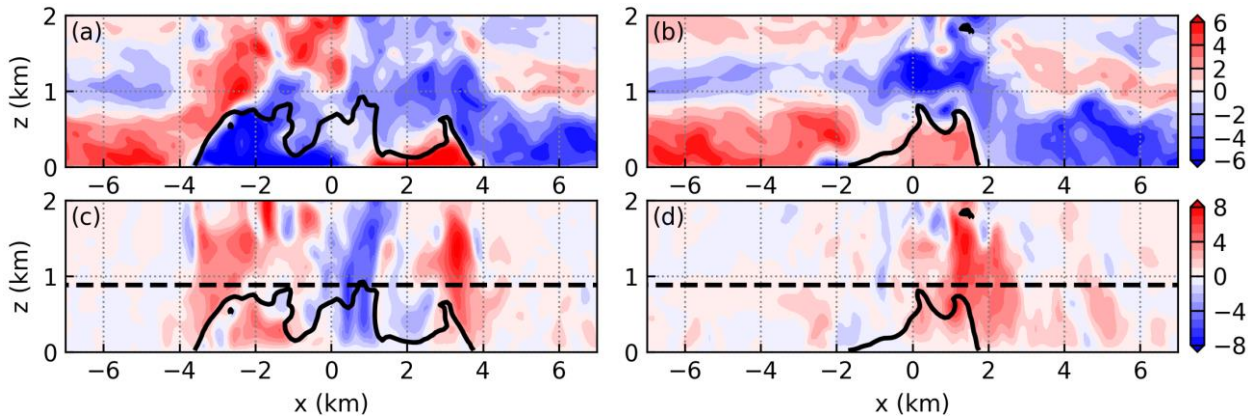
430 **Figure 14:** (a) and (b) are respectively the depth (km) and temperature surplus (K) of the cold pools. (c) and (d) are respectively the vertical velocity at $z = 0.2$ and 0.88 km. (e) The number of parcels that are lifted at each grid point. (f) The fraction of parcels that rises above 8 km in all parcels that are lifted. The grey rectangle encloses the parcel clusters that merge. The parcels are released at $t = 8$ h 5 min and tracked forward for 40 min. The results are at $t = 8$ h 17 min of simulation THF700.

435 Figures 14a and 14b respectively show the depth and the temperature surplus of the cold pool at $t = 8$ h 17 min, when the cloud top of the third generation is near $z = 4$ km (see supplement). It reveals a single cold pool that spans the whole y -direction. This cold pool is generally deeper and colder than the cold pools at $t = 8$ h (cf. Figs. 11 and 14). A careful examination of Fig. 14b reveals that the cold pool is not homogeneous, but composed of two cold pools that are separated by the warmer regions (indicated by the blue color) around $y = 1$ and 10 km. This conclusion is further confirmed by the inspection of the evolution of cold pools (see supplement). The collision of these two cold pools produce several intersection points. The most prominent intersection points are at $(x, y) = (2, 1)$ and $(2, 10)$ km.

440 Figures 14c and 14d respectively show the vertical velocity at $z = 0.2$ and 0.88 km. Downdrafts can be seen in the interiors of the cold pools, both at $z = 0.2$ and 0.88 km. At $z = 0.2$ km, updrafts are produced at the edges of the cold pools and are nearly continuous. However, the updrafts at $z = 0.88$ km are broken-at various places. This means that some updrafts are deep while the other updrafts are shallow, similar to what we have seen at $t = 8$ h. However, the mechanism that produces deep updrafts at $t = 8$ h 17 min is different from that at $t = 8$ h, as presented below. Furthermore, Fig. 14d reveals that the updrafts

445 at the intersection points are wider in the x -direction than the updrafts at other regions. This phenomenon is also seen in previous studies (e.g., Bai et al. 2019).

The parcels that are used to investigate the development of the third generation of convection are released at $t = 8$ h 5 min and tracked forward for 40 min. Figure 14e shows that parcels are lifted from the regions with vertical velocity greater than 2 m s^{-1} . For the third generation of convection, we use a critical height of 8 km to distinguish the parcels that rise to high levels from the parcels that do not rise to high levels. Figure 14f indicates that most of the parcels that rise above 8 km are lifted from the two intersection points; only a small number of parcels that rise above 8 km are lifted from regions other than the two intersection points.



455 **Figure 15: Vertical cross section of (a) cross-coast wind and (c) vertical velocity at $y = 6.55$ km. (b) and (d) are the same as (a) and (c) except at $y = 0.75$ km. The black contour indicates the edge of the cold pool. The dashed line indicates the LFC. The results are at $t = 8$ h 17 min of simulation THF700.**

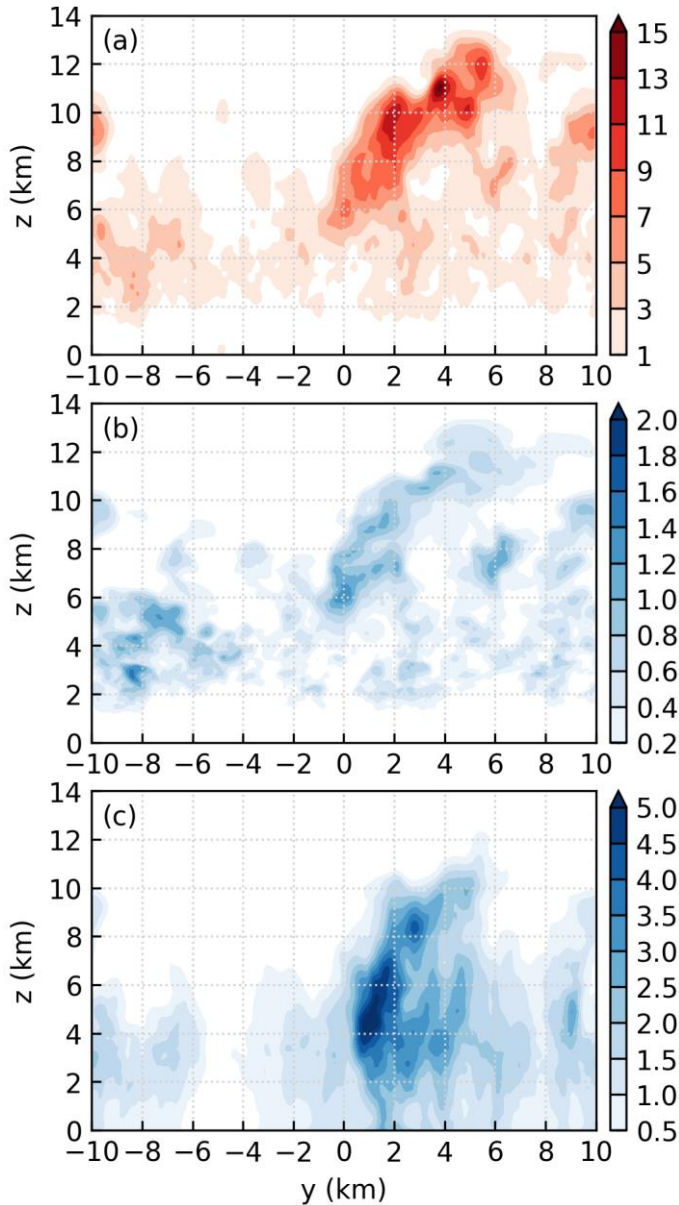
Figures 15a and 15c respectively show the vertical cross section of cross-coast wind and vertical velocity at $y = 6.55$ km at $t = 8$ h 17 min. Near their edges, the depths of the cold pool are comparable to those of the sea breezes. In this situation, it is the collisions between the gust fronts and the sea-breeze fronts (Fig. 15a), instead of the collision of the sea-breeze fronts (cf. 12a), that produce the deep updrafts (Fig. 15c). Actually, deep updrafts are produced near almost all edges where the cold pool is deeper than 0.4 km (cf. Figs. 14a, and 14d).

Figure 15c also shows that the left updraft is farther away from the downdraft than the right updraft. In the following 20 minutes, some of the parcels lifted by the left updraft do not encounter strong downdrafts (Fig. 14f), so the convective cells developing from the left updraft rise above 8 km. However, the parcels that are lifted from the right updraft are quickly entrained into the downdrafts (not shown), so the convective cells developing from the right updraft quickly dissipate.

465 Figures 15b and 15d show the vertical cross section at $y = 0.75$ km, which is close to the intersection point at $(x, y) = (2, 1)$ km. The cold pool depth is approximately 0.7 km near the right edge (Fig. 15b). A deep updraft is produced through the collision ~~of~~between the gust front and the sea-breeze front (Fig. 15d). Figure 15d also shows that the updraft at $y = 0.75$ km is much wider than that at $y = 6.55$ km (cf. Fig. 15c), as mentioned above. Furthermore, the updraft shown in Fig. 15d is away

470 ~~from any major downdrafts, so the~~ parcels lifted by ~~the deep updraft~~ do not encounter strong downdrafts in the following 20 minutes. Thus, the convective cells developing from the intersection points manage to rise above 8 km.

Another factor is found to invigorate the third generation of convection. ~~Figure~~In the regions enclosed by the grey rectangle (Fig. 14f ~~shows that~~), there are multiple clusters of parcels that rise above 8 km ~~in the regions enclosed by the grey rectangle~~, indicating that multiple convective cells are produced. Parcel trajectory analysis reveals that these convective cells merge with each other (not shown). As mentioned in Sect. 1, the merger of convective cells reduces the detrimental effect of entrainment,
475 so the convective cells that merge rise to higher levels than the convective cells that do not merge.

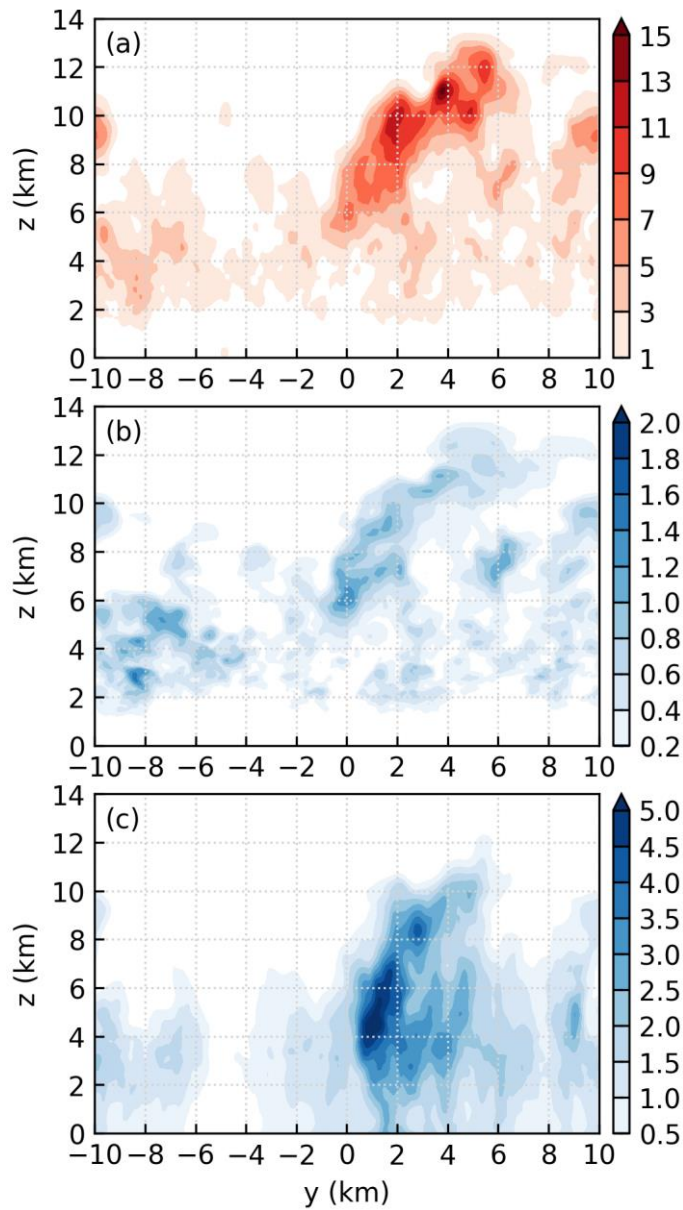


~~Figure 16: The same as Fig. 10, except at $t = 8$ h 35 min.~~

We now summarize the processes through which the third generation of convection is produced. Two cold pools are produced
480 by the second generation of convection. Near the intersection points of the cold pools, deep and wide updrafts are produced
through the collision between the gust front and the sea-breeze front. ~~Convective; and these updrafts are generally away from
the major downdrafts produced by the second generation of convection. Therefore, convective~~ cells develop from ~~the~~ ~~these~~
deep and wide updrafts ~~near~~. Besides, minor convective cells also develop from regions other than the intersection points, ~~as
well as from some other regions where the updrafts are deep and wide~~. Furthermore, the convective cells that are close to each
485 other merge, consequently producing a deep convective cell. ~~It has been shown that the updrafts producing the third generation
of deep convection are larger than those producing the second generation (cf. Figs. 11 and 14). As mentioned in Section 1,
clouds that are bigger at their bases rise to higher levels. Furthermore, the merger of convective cells further invigorates the
third generation of convection. As a result, the third generation of convection is stronger than the second generation.~~

Figures 16a-c respectively show the y - z plots of the vertical velocity, cloud water mixing ratio, and rain water mixing ratio
490 averaged from $x = -2$ to 2 km at $t = 8$ h 35 min. The cloud top has reached the height of 13 km. Such a strong convective cell
produces even more cloud water (Fig. 16b) and rain water (Fig. 16c) than the second generation of convection.

~~There are also three factors contributing to the result that the third generation of convection is stronger than the second
generation of convection. First, it has been shown that the updrafts producing the third generation of deep convection are wider
than those producing the second generation (cf. Figs. 11 and 14). Second, the merger of convective cells invigorates the third
495 generation of convection. Third, the moistening effect by the first two generations of convection further promotes the
development of the third generation of convection. In the sensitivity test where the vapor mixing ratio of the non-cloudy grid
points is strongly nudged, the third generation of convection is only slightly stronger than the second generation of convection,
which is only slightly stronger than the first generation of convection.~~



500 Figure 16: The same as Fig. 10, except at $t = 8$ h 35 min.

6 Sensitivity to total heat flux

~~Table 1: Boundary layer height (z_b) and the horizontal velocity scale (U).~~

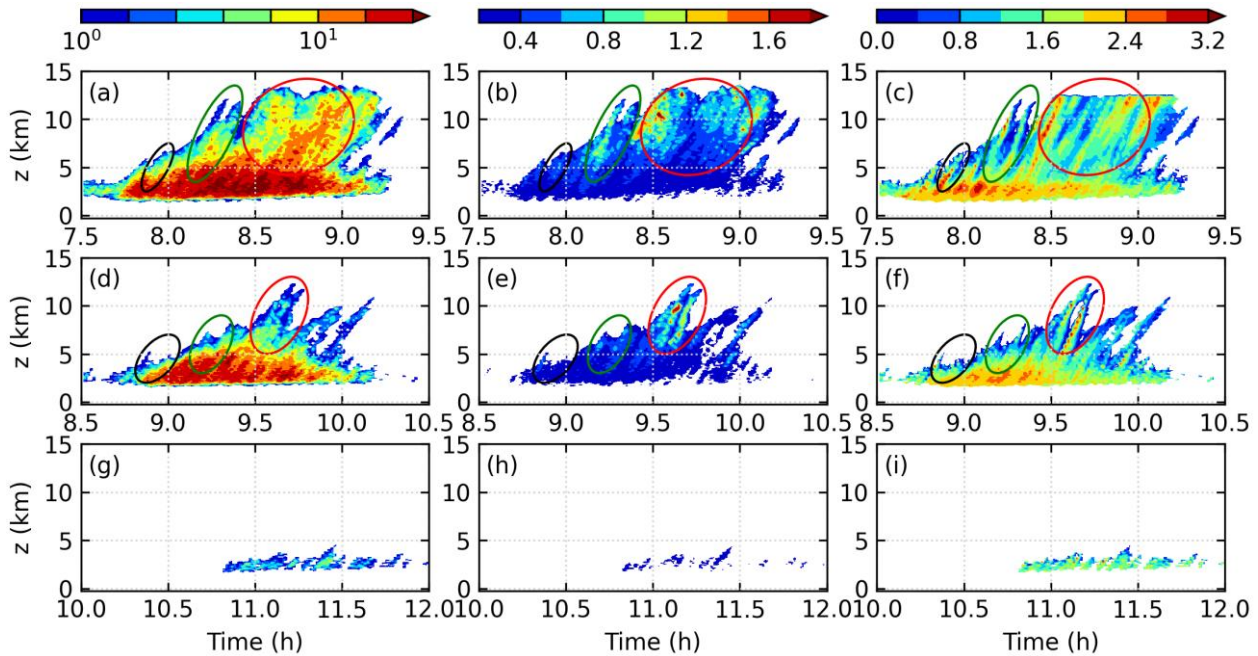
<u>Simulation</u>	<u>z_i (km)</u>	<u>U (m s⁻¹)</u>
<u>THF700</u>	<u>1.30</u>	<u>4.62</u>
<u>THF500</u>	<u>1.18</u>	<u>3.89</u>
<u>THF300</u>	<u>1.02</u>	<u>2.59</u>

Before discussing the difference among the three simulations, we tabulate two important parameters in Table 1, i.e., The first is z_i , which is known to scale with the depth of the sea breeze (Antonelli and Rotunno, 2007). The second is a horizontal velocity scale (U). Similar to Antonelli and Rotunno (2007), it is defined as $U = 0.5(U_l + U_r)$, where U_l and U_r are respectively the latter measures the maximum wind speed of the sea breeze. Note y -averaged cross-coast wind at the left and the right coast. We note that z_i and U are calculated at the last 10-min output time before the collision of sea-breeze fronts. Similar to Antonelli and Rotunno (2007), the horizontal velocity scale is defined as $U = 0.5(U_l - U_r)$, where U_l and U_r are respectively the maximum speed of the y averaged cross coast wind at the left and the right coast. As expected, Table 1 indicates that the sea breeze becomes shallower and slower as total heat flux decreases.

Table 1: Boundary layer height (z_i) and the horizontal velocity scale (U).

<u>Simulation</u>	<u>z_i (km)</u>	<u>U (m s⁻¹)</u>
<u>THF700</u>	<u>1.30</u>	<u>4.62</u>
<u>THF500</u>	<u>1.18</u>	<u>3.89</u>
<u>THF300</u>	<u>1.02</u>	<u>2.59</u>

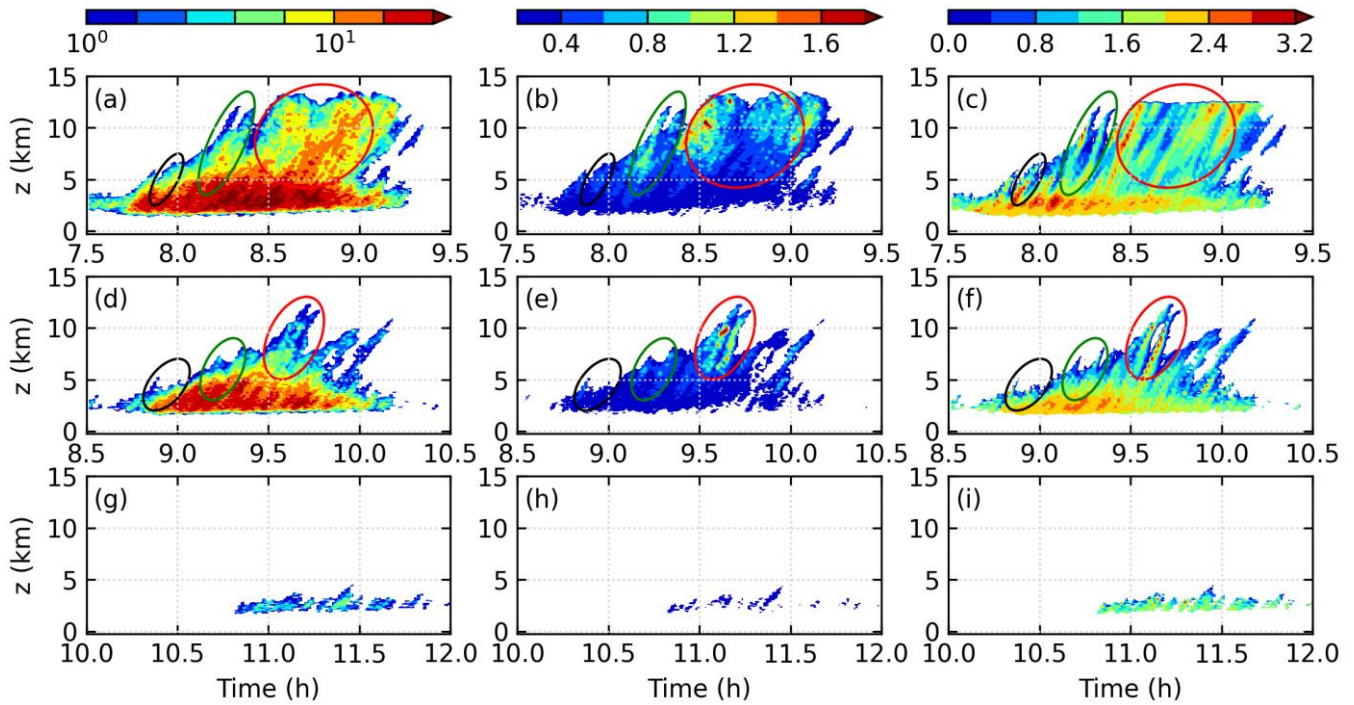
Figure 17 shows the number, mean horizontal size, and mean temperature surplus of the convective cells in each simulation. At each height, a grid point is defined as within a convective cell if its vertical velocity is greater than a threshold of 10 m s⁻¹. Tests show that using a threshold of 5 or 15 m s⁻¹ gives qualitatively the same results. These grid points are then four-connected to form clusters, and each cluster is defined as a convective cell. The size of the convective cell $D = \sqrt{A}$, where A is the area of the convective cell. Note that the mean size of the convective cells is the size averaged over all convective cells, while the mean temperature surplus is the temperature surplus averaged over all grid points identified as within the convective cells. In addition, the ellipses in Fig. 17 indicate different generations of convection.



520 **Figure 17:** (a) Number, (b) mean size (km), and (c) mean temperature surplus (K) of the convective cells in simulation THF700. Note that a logarithmic scale is used in (a). (d) (f) and (g) (i) are the same as (a) (c) except in simulation THF500 and THF300. The black, green, and red ellipses indicate the first, second, and third generation of convection, respectively.

In simulations THF700 and THF500, there are more than 10 convective cells below $z = 4$ km (Figs. 17a and 17d), and their mean size is less than 0.4 km (Figs. 17b and 17e). Above $z = 4$ km, the number of convective cells generally decreases with height (Figs. 17a and 17d), while the mean size of the convective cells is relatively constant generally increases with height (Figs. 17b and 17e). Two factors contribute to this phenomenon: first, the small convective cells dissipate during their ascent and only the big convective cells rise to high levels; second, mergers occur among some convective cells. In addition, the convective cells are always positively buoyant above $z = 4$ km (Figs. 17c and 17f), indicating that they are resistant to the detrimental effect of entrainment.

530 Figures 17a-c show that the later generation of convection is stronger than the earlier generation of convection in simulation THF700, as explained in Sect. 5. In simulation THF500, the development of the three generations of convection is generally similar to that in simulation THF700, so the later generation of convection is also stronger than the earlier generation of convection. However, because the sea breezes are shallower and slower (Table 1), the forcing of the first and the second generation of convection is weaker in simulation THF500. As a result, the first and second generation of convection in simulation THF500 are both weaker than their counterparts in simulation THF700. Furthermore, the weaker second generation of convection produces shallower cold pools. The forcing of the third generation of convection is therefore weaker. As a result, the third generation of convection in simulation THF500 is also weaker than in simulation THF700. In simulation THF300, the sea breezes are even weaker, so only a few weak convective cells are produced (Figs. 17g-i).



540 **Figure 17: (a) Number, (b) mean size (km), and (c) mean temperature surplus (K) of the convective cells in simulation THF700. Note that a logarithmic scale is used in (a). (d)-(f) and (g)-(i) are the same as (a)-(c) except for simulation THF500 and THF300. The black, green, and red ellipses indicate the first, second, and third generation of convection, respectively.**

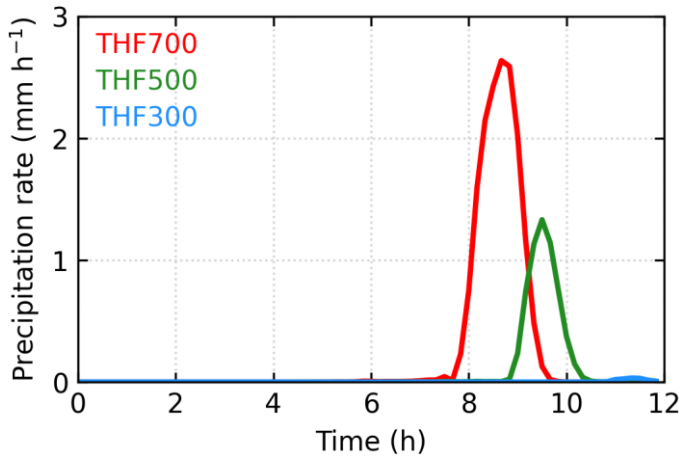


Figure 18: Mean surface precipitation rate over the land part.

545 Figure 18 shows the mean surface precipitation rates over the land part for the three simulations. In simulation THF700, the sea-breeze fronts collide at $t = 7$ h 50 min. Before the collision, negligible surface precipitation is produced; after the collision, a large surface precipitation rate is produced as a result of the successive developments of convection. In simulation THF500,

the two sea-breeze fronts collide at $t = 8$ h 50 min, which is one hour later than that in simulation THF700. This is because decreasing sensible heat flux reduces the propagation speed of the sea-breeze fronts (Antonelli and Rotunno, 2007). Due to the weaker convection, a smaller surface precipitation rate is produced in simulation THF500 than in simulation THF700. In simulation THF300, the sensible heat flux is even smaller, so the sea-breeze fronts move even more slowly and collide at $t = 10$ h 50 min. Negligible surface precipitation is produced in this simulation.

7 Summary

A series of large-eddy simulations are performed to investigate the processes involved in deep-convection initiation (DCI) over a peninsula. In each simulation, two sea-breeze circulations develop, with the two sea-breeze fronts moving inland. When the sea-breeze fronts collide near the centerline of the domain, CAPE is substantially increased due to the vapor transported by the sea breezes and the surface heating, and strong updrafts are produced due to the collision of sea-breeze fronts.

DCI occurs after the collision of sea-breeze fronts. In the simulations with a maximum total heat flux of 700 and 500 W m^{-2} , DCI occurs through the development of three generations of convection. The first generation of convection develops as a direct result of the sea-breeze-fronts collision, and the position of the first generation of convection along the colliding sea-breeze fronts is random. The second generation of convection is also produced mainly through the collision of sea-breeze fronts while, and the collision between the gust fronts and the sea-breeze fronts plays a minor role. The position of the second generation of convection is affected by the first generation of convection: the second generation of convection does not develop in regions where strong downdrafts are produced by the first generation of convection, but instead develops in regions where no strong downdrafts are produced. The third generation of convection mainly develops from the intersection points of the cold pools that are produced by the second generation of convection. Near the intersection points, the updrafts are deep and wide, and no major downdraft is present. Parcels lifted from regions other than the intersection points also play a minor role in producing the third generation of convection. In addition, merger occurs to convective cells that are close to each other, further invigorating the third generation of convection. A sensitivity test shows that the moistening effect by the earlier convection also promotes the development of the later convection.

As the total heat flux decreases from 700 to 500 W m^{-2} , both the height and speed of the sea breezes are reduced, so the forcing of the first and second generations of convection is reduced. These two generations of convection are therefore weaker. Furthermore, the weaker second generation of convection produces shallower cold pools, reducing the forcing of the third generation. Consequently, the third generation of convection is also weaker. As the total heat flux further decreases to 300 W m^{-2} , the sea breezes are even shallower and weaker. Only one generation of shallow convection is produced.

Appendix A

Simulation THF500 is rerun using the Morrison two-moment microphysics scheme. We perform a sensitivity test on simulation THF500 instead of THF700, because the maximum total heat flux over the peninsula is approximately 500 W m^{-2} on the chosen day. There are two major differences between the simulation using the Morrison scheme and that using the Kessler scheme. The first difference is that the peak strength of convection in the simulation using the Morrison scheme is stronger than that in the simulation using the Kessler scheme. This is due to the slower development of precipitation, which postpones the development of downdrafts; and the extra heating from the freezing processes, which increases the buoyancy of the clouds. The second difference is that there are only two generations of convection in the simulation using the Morrison scheme, while there are three generations of convection in the simulation using the Kessler scheme. This is probably because CAPE has been consumed by the end of the stronger second generation in the simulation using the Morrison scheme. Nevertheless, detailed analysis shows that the development of the two generations of convection in the simulation using the Morrison scheme is similar to the first two generations of convection in the simulation using the Kessler scheme.

Appendix B

Before performing the compositing, we need to define the positions of sea-breeze fronts. Because the simulation setup is nearly homogeneous in the y -direction, we only need to define the positions of sea-breeze fronts in the x -direction. First, the cross-coast wind at the lowest level ($z = 0.02 \text{ km}$) is averaged along the y -direction. Then, a running average is performed to remove the effects of turbulence. By trial and error, we find that performing the running average twice to the y -averaged cross-coast wind gives the best result. The window for running average is 5 km . Finally, the location having the maximum horizontal convergence in the left half of the domain is defined as the position of the left sea-breeze front; the location having the maximum horizontal convergence in the right half of the domain is defined as the position of the right sea-breeze front.

We also need to define the position of each thermal. Similarly, we only define the position of a thermal in the x -direction. On a reference horizontal plane at $z = 0.5z_i$, any grid point with vertical velocity greater than $1.5w^*$ is defined as within a thermal.

Here, the boundary layer height z_i is defined as the height of the lowest grid point with $\frac{d\bar{\theta}}{dz} > 3 \text{ K km}^{-1}$, where $\bar{\theta}$ is the potential temperature averaged from $x = -1$ to 1 km and $y = -10$ to 10 km . The convective velocity scale w^* is defined as

$$w^* = \left(\frac{g}{\bar{\theta}} z_i \overline{w'\theta'} \right)^{1/3}, \quad (\text{A1})$$

where g is the gravitational acceleration, and $\overline{w'\theta'}$ is the turbulent flux of potential temperature at the surface. All grid points that are identified as within a thermal are then four-connected in the horizontal plane to form clusters. Each cluster is defined as a thermal. The mean x -coordinate of all grid points within the thermal is defined as the position of the thermal. According to the distance between the thermal and the sea-breeze front, a thermal is further categorized as a left-front thermal, a right-front thermal, or an intermediate thermal, as described in Sect. 4.1.

A procedure similar to that used by Finnigan et al. (2009) and Schmidt and Schumann (1989) is used to composite the thermals at a given output time. As an example, we detail the procedure of compositing the left-front thermals. First, for each left-front thermal, we find the grid point having the maximum vertical velocity in the plane at $z = 0.5z_i$. The ~~position~~positions of these grid points ~~is~~are labeled as $(x_m, y_m)_i$, where i is the index of the left-front thermals. Note that each $(x_m, y_m)_i$ indicates a 3-D thermal. Then, all the left-front thermals are shifted horizontally so that all $(x_m, y_m)_i$ coincide. A new coordinate system is therefore established where the coincident (x_m, y_m) is at $(0, 0)$. Finally, ensemble averaging is performed over all the left-front thermals, giving rise to the composite left-front thermal at the output time. By repeating this procedure, we can obtain the composite left-front thermals at all output times.

We also need to average the composite left-front thermals over a certain period of time. Because the boundary layer is deepening, the thermal size tends to increase with time. In addition to the boundary layer height, the sensible heat flux is also evolving, so the updraft strength also varies with time. In this situation, the size and vertical velocity of the composite thermal are respectively nondimensionalized by z_i and w^* before they are averaged over time. The same procedure is used to calculate the mean composite right-front thermal and mean composite intermediate thermal.

Code and data availability

The CM1 model is publicly available at <https://www2.mmm.ucar.edu/people/bryan/cm1/getcode.html>. Please contact S. Fu for the model output data.

Supplement link:

The supplement can be accessed at <https://doi.org/10.17605/OSF.IO/JZETH>.

Author contribution

SF and RR designed the study. SF performed the simulations and analyzed the results. All authors commented on the results and co-wrote the paper.

Competing interests

The authors declare that they have no conflict of interest.

Acknowledgements

630 The research product of L1 gridded data (produced from Himawari-8) that was used in this paper was supplied by the P-Tree System, Japan Aerospace Exploration Agency (JAXA). The sounding data was downloaded from <http://weather.uwyo.edu/upperair/sounding.html>. ERA5 data was generated using Copernicus Climate Change Service Information [2019]. We thank George Bryan for providing and helping us with the CM1 model-, [and Edward Patton for useful comments](#). This project is supported by National Science Foundation of China (41930968, 42075067, and 42005059). The
635 visit of S. Fu to the National Center for Atmospheric Research is supported by China Scholarship Council. The National Center for Atmospheric Research is sponsored by the National Science Foundation.

References

- American Meteorological Society, 2020: Dryline. Glossary of Meteorology, <http://glossary.ametsoc.org/wiki/dryline>.
- American Meteorological Society, 2020: Gust front. Glossary of Meteorology, http://glossary.ametsoc.org/wiki/gust_front.
- 640 Antonelli, M. and Rotunno, R.: Large-eddy simulation of the onset of the sea breeze, *J. Atmos. Sci.*, 64, 4445–4457, doi:10.1175/2007jas2261.1, 2007.
- Arnott, N. R., Richardson, Y. P., Wurman, J. M. and Rasmussen, E. M.: Relationship between a weakening cold front, misocyclones, and cloud development on 10 June 2002 during IHOP, *Mon. Wea. Rev.*, 134, 311–335, doi:10.1175/MWR3065.1, 2006.
- 645 Bai, L., Meng, Z., Huang, Y., Zhang, Y., Niu, S. and Su, T.: Convection Initiation Resulting From the Interaction Between a Quasi-Stationary Dryline and Intersecting Gust Fronts: A Case Study, *J. Geophys. Res. Atmos.*, 124(5), 2379–2396, doi:10.1029/2018JD029832, 2019.
- Bai, L., Chen, G. and Huang, L.: Convection Initiation in Monsoon Coastal Areas (South China), *Geophys. Res. Lett.*, 47, 1–11, doi:10.1029/2020GL087035, 2020.
- 650 Beringer, J., Tapper, N. J. and Keenan, T. D.: Evolution of maritime continent thunderstorms under varying meteorological conditions over the Tiwi Islands, *Int. J. Climatol.*, 21, 1021–1036, doi:10.1002/joc.622, 2001.
- Birch, C. E., Parker, D. J., Marsham, J. H., Copsey, D. and Garcia-Carreras, L.: A seamless assessment of the role of convection in the water cycle of the west African Monsoon, *J. Geophys. Res.*, doi:10.1002/2013JD020887, 2014.
- Birch, C. E., Roberts, M. J., Garcia-Carreras, L., Ackerley, D., Reeder, M. J., Lock, A. P. and Schiemann, R.: Sea-breeze
655 dynamics and convection initiation: The influence of convective parameterization in weather and climate model biases, *J. Clim.*, 28, 8093–8108, doi:10.1175/JCLI-D-14-00850.1, 2015.
- Blanchard, D. O. and Lopez, R. E.: Spatial patterns of convection in South Florida, *Mon. Wea. Rev.*, 113, 1282–1299, doi:10.1175/1520-0493(1985)113<1282:SPOCIS>2.0.CO;2, 1985.
- Bluestein, H. B.: Surface Boundaries of the Southern Plains: Their Role in the Initiation of Convective Storms, in *Synoptic-Dynamic Meteorology and Weather Analysis and Forecasting*, vol. 33, pp. 5–33., 2008.
- 660

- Böing, S. J., Jonker, H. J. J., Siebesma, A. P. and Grabowski, W. W.: Influence of the subcloud layer on the development of a deep convective ensemble, *J. Atmos. Sci.*, 69, 2682–2698, doi:10.1175/JAS-D-11-0317.1, 2012.
- Bryan, G. H. and Fritsch, J. M.: A Benchmark Simulation for Moist Nonhydrostatic Numerical Models, *Mon. Wea. Rev.*, 130, 2917–2928, doi:10.1175/1520-0493(2002)130<2917:absfmm>2.0.co;2, 2002.
- 665 Carbone, R. E., Wilson, J. W., Keenan, T. D. and Hacker, J. M.: Tropical Island Convection in the Absence of Significant Topography. Part I: Life Cycle of Diurnally Forced Convection, *Mon. Wea. Rev.*, 128, 3459–3480, doi:10.1175/1520-0493(2000)128<3459:ticit>2.0.co;2, 2000.
- Crook, N. A.: Sensitivity of moist convection forced by boundary layer processes to low-level thermodynamic fields, *Mon. Wea. Rev.*, 124, 1767–1785, 1996.
- 670 Crosman, E. T. and Horel, J. D.: Sea and lake breezes: A review of numerical studies, *Boundary-Layer Meteorol.*, 137, 1–29, doi:10.1007/s10546-010-9517-9, 2010.
- [Crosman, E. T. and Horel, J. D.: Idealized Large-Eddy Simulations of Sea and Lake Breezes: Sensitivity to Lake Diameter, Heat Flux and Stability, *Boundary-Layer Meteorol.*, 144\(3\), 309–328, doi:10.1007/s10546-012-9721-x, 2012.](#)
- Cuxart, J., Jiménez, M. A., Prtenjak Telišman, M. and Grisogono, B.: Study of a sea-breeze case through momentum, temperature, and turbulence budgets, *J. Appl. Meteorol. Climatol.*, 53, 2589–2609, doi:10.1175/JAMC-D-14-0007.1, 2014.
- 675 Dailey, P. S. and Fovell, R. G.: Numerical Simulation of the Interaction between the Sea-Breeze Front and Horizontal Convective Rolls. Part I: Offshore Ambient Flow, *Mon. Wea. Rev.*, 127, 858–878, doi:10.1175/1520-0493(1999)127<0858:nsotib>2.0.co;2, 1999.
- Dawe, J. T. and Austin, P. H.: Statistical analysis of an les shallow cumulus cloud ensemble using a cloud tracking algorithm, *Atmos. Chem. Phys.*, 12, 1101–1119, doi:10.5194/acp-12-1101-2012, 2012.
- 680 Deardorff, J. W.: Stratocumulus-capped mixed layers derived from a three-dimensional model, *Boundary-Layer Meteorol.*, 18, 495–527, doi:10.1007/BF00119502, 1980.
- Doswell, C. A., Brooks, H. E. and Maddox, R. A.: Flash flood forecasting: An ingredients-based methodology, *Weather Forecast.*, 11, 560–581, doi:10.1175/1520-0434(1996)011<0560:FFFAIB>2.0.CO;2, 1996.
- 685 Drobinski, P. and Dubos, T.: Linear breeze scaling: from large-scale land/sea breezes to mesoscale inland breezes, *Q. J. R. Meteorol. Soc.*, 135, 1766–1775, doi:10.1002/qj.496, 2009.
- Feng, Z., Hagos, S., Rowe, A. K., Burleyson, C. D., Martini, M. N. and De Szoeki, S. P.: Mechanisms of convective cloud organization by cold pools over tropical warm ocean during the AMIE/DYNAMO field campaign, *J. Adv. Model. Earth Syst.*, doi:10.1002/2014MS000384, 2015.
- 690 Finnigan, J. J., Shaw, R. H. and Patton, E. G.: Turbulence structure above a vegetation canopy, *J. Fluid Mech.*, 637, 387–424, doi:10.1017/S0022112009990589, 2009.
- Fovell, R. G.: Convective initiation ahead of the sea-breeze front, *Mon. Wea. Rev.*, 133, 264–278, doi:10.1175/mwr-2852.1, 2005.

- Frye, J. D. and Mote, T. L.: Convection Initiation along Soil Moisture Boundaries in the Southern Great Plains, *Mon. Wea. Rev.*, 138, 1140–1151, doi:10.1175/2009MWR2865.1, 2010.
- 695 Fu, S., Deng, X., Li, Z. and Xue, H.: Radiative effect of black carbon aerosol on a squall line case in North China, *Atmos. Res.*, 197, 407–414, doi:10.1016/j.atmosres.2017.07.026, 2017.
- Fu, S., Rotunno, R. and Xue, H.: Response of orographic precipitation to subsaturated low-level layers, *J. Atmos. Sci.*, 76, 3753–3771, doi:10.1175/JAS-D-19-0115.1, 2019.
- 700 Garcia-Carreras, L., Parker, D. J. and Marsham, J. H.: What is the mechanism for the modification of convective cloud distributions by land surface–induced flows?, *J. Atmos. Sci.*, 68, 619–634, doi:10.1175/2010jas3604.1, 2011.
- Geerts, B., Damiani, R. and Haimov, S.: Finescale vertical structure of a cold front as revealed by an airborne Doppler radar, *Mon. Wea. Rev.*, 134, 251–271, doi:10.1175/MWR3056.1, 2006.
- Glenn, I. B. and Krueger, S. K.: Connections matter: Updraft merging in organized tropical deep convection, *Geophys. Res. Lett.*, 44, 7087–7094, doi:10.1002/2017GL074162, 2017.
- 705 Guillod, B. P., Orlowsky, B., Miralles, D. G., Teuling, A. J. and Seneviratne, S. I.: Reconciling spatial and temporal soil moisture effects on afternoon rainfall, *Nature Commun.*, 6, doi:10.1038/ncomms7443, 2015.
- Hanesiak, J. M., Raddatz, R. L. and Lobban, S.: Local initiation of deep convection on the Canadian prairie provinces, *Boundary-Layer Meteorol.*, 110, 455–470, doi:10.1023/B:BOUN.0000007242.89023.e5, 2004.
- 710 [Hersbach, H., Bell, B., Berrisford, P., Hirahara, S., Horányi, A., Muñoz-Sabater, J., Nicolas, J., Peubey, C., Radu, R., Schepers, D., Simmons, A., Soci, C., Abdalla, S., Abellan, X., Balsamo, G., Bechtold, P., Biavati, G., Bidlot, J., Bonavita, M., De Chiara, G., Dahlgren, P., Dee, D., Diamantakis, M., Dragani, R., Flemming, J., Forbes, R., Fuentes, M., Geer, A., Haimberger, L., Healy, S., Hogan, R. J., Hólm, E., Janisková, M., Keeley, S., Laloyaux, P., Lopez, P., Lupu, C., Radnoti, G., de Rosnay, P., Rozum, I., Vamborg, F., Villaume, S., and Thépaut, J.-N.: The ERA5 Global Reanalysis, *Q. J. Roy. Meteor. Soc.*, 146, 730, 1999–2049, <https://doi.org/10.1002/qj.3803>, 2020.](#)
- 715 van Heerwaarden, C. C. and de Arellano, J. V. G.: Relative humidity as an indicator for cloud formation over heterogeneous land surfaces, *J. Atmos. Sci.*, 65, 3263–3277, doi:10.1175/2008JAS2591.1, 2008.
- Huang, Y., Meng, Z., Li, W., Bai, L. and Meng, X.: General Features of Radar-Observed Boundary Layer Convergence Lines and Their Associated Convection Over a Sharp Vegetation-Contrast Area, *Geophys. Res. Lett.*, 46, 2865–2873, doi:10.1029/2018GL081714, 2019.
- 720 Iwai, H., Murayama, Y., Ishii, S., Mizutani, K., Ohno, Y. and Hashiguchi, T.: Strong Updraft at a Sea-Breeze Front and Associated Vertical Transport of Near-Surface Dense Aerosol Observed by Doppler Lidar and Ceilometer, *Boundary-Layer Meteorol.*, 141, 117–142, doi:10.1007/s10546-011-9635-z, 2011.
- Kang, S.-L. and Bryan, G. H.: A Large-Eddy Simulation Study of Moist Convection Initiation over Heterogeneous Surface Fluxes, *Mon. Wea. Rev.*, 139, 2901–2917, doi:10.1175/mwr-d-10-05037.1, 2011.
- 725 Khairoutdinov, M. and Randall, D.: High-resolution simulation of shallow-to-deep convection transition over land, *J. Atmos. Sci.*, 63, 3421–3436, doi:10.1175/JAS3810.1, 2006.

- Kingsmill, D. E.: Convection Initiation Associated with a Sea-Breeze Front, *Mon. Wea. Rev.*, 123, 2913–2933, 1995.
- 730 Kraus, H., Hacker, J. M. and Hartmann, J.: An observational aircraft-based study of sea-breeze frontogenesis, *Boundary-Layer Meteorol.*, 53, 223–265, doi:10.1007/BF00154443, 1990.
- Laird, N. F., Kristovich, D. A. R., Rauber, R. M., Ochs, H. T. and Miller, L. J.: The Cape Canaveral Sea and River Breezes: Kinematic Structure and Convective Initiation, *Mon. Wea. Rev.*, 123, 2942–2956, doi:10.1175/1520-0493(1995)123<2942:tccsar>2.0.co;2, 1995.
- Markowski, P. and Richardson, Y.: *Mesoscale Meteorology in Midlatitudes.*, 2010.
- 735 Markowski, P., Hannon, C. and Rasmussen, E.: Observations of convection initiation “failure” from the 12 June 2002 IHOP deployment, *Mon. Wea. Rev.*, 134, 375–405, doi:10.1175/MWR3059.1, 2006.
- Marshall, J. H., Dixon, N. S., Garcia-Carreras, L., Lister, G. M. S., Parker, D. J., Knippertz, P. and Birch, C. E.: The role of moist convection in the West African monsoon system: Insights from continental-scale convection-permitting simulations, *Geophys. Res. Lett.*, 40, 1843–1849, doi:10.1002/grl.50347, 2013.
- 740 Miao, Q. and Geerts, B.: Finescale vertical structure and dynamics of some dryline boundaries observed in IHOP, *Mon. Wea. Rev.*, 135, 4161–4184, doi:10.1175/2007MWR1982.1, 2007.
- Miller, S. T. K., Keim, B. D., Talbot, R. W. and Mao, H.: Sea breeze: Structure, forecasting, and impacts, *Rev. Geophys.*, 41, 1011, doi:10.1029/2003RG000124, 2003.
- Nicholls, M. E., Pielke, R. A. and Cotton, W. R.: A two-dimensional numerical investigation of the interaction between sea breezes and deep convection over the Florida Peninsula, *Mon. Wea. Rev.*, 119, 298–323, doi:10.1175/1520-0493(1991)119<0298:ATDNIO>2.0.CO;2, 1991.
- 745 Patton, E. G., Sullivan, P. P. and Moeng, C. H.: The influence of idealized heterogeneity on wet and dry planetary boundary layers coupled to the land surface, *J. Atmos. Sci.*, 62, 2078–2097, doi:10.1175/JAS3465.1, 2005.
- Reif, D. W. and Bluestein, H. B.: A 20-year climatology of nocturnal convection initiation over the Central and Southern Great Plains during the warm season, *Mon. Wea. Rev.*, 145, 1615–1639, doi:10.1175/mwr-d-16-0340.1, 2017.
- 750 Rieck, M., Hohenegger, C. and van Heerwaarden, C. C.: The influence of land surface heterogeneities on cloud size development, *Mon. Wea. Rev.*, 142, 3830–3846, doi:10.1175/mwr-d-13-00354.1, 2014.
- [Rizza, U., Miglietta, M. M., Anabor, V., Degrazia, G. A. and Maldaner, S.: Large-eddy simulation of sea breeze at an idealized peninsular site, *J. Mar. Syst.*, 148, 167–182, doi:10.1016/j.jmarsys.2015.03.001, 2015.](#)
- 755 Rotunno, R., Klemp, J. B. and Weisman, M. L.: A theory for strong, long-lived squall lines, *J. Atmos. Sci.*, 45, 463–485, doi:10.1175/1520-0469(1988)045<0463:ATFSSL>2.0.CO;2, 1988.
- Rousseau-Rizzi, R., Kirshbaum, D. J. and Yau, M. K.: Initiation of Deep Convection over an Idealized Mesoscale Convergence Line, *J. Atmos. Sci.*, 74, 835–853, doi:10.1175/JAS-D-16-0221.1, 2017.
- Schlemmer, L. and Hohenegger, C.: The formation of wider and deeper clouds as a result of cold-pool dynamics, *J. Atmos. Sci.*, 71, 2842–2858, doi:10.1175/JAS-D-13-0170.1, 2014.
- 760

- Schmidt, H. and Schumann, U.: Coherent structure of the convective boundary layer derived from large-eddy simulations, *J. Fluid Mech.*, 200, 511–562, doi:10.1017/S0022112089000753, 1989.
- Shepherd, J. M., Ferrier, B. S. and Ray, P. S.: Rainfall morphology in Florida convergence zones: A numerical study, *Mon. Wea. Rev.*, 129, 177–197, doi:10.1175/1520-0493(2001)129<0177:rmifcz>2.0.co;2, 2001.
- 765 Skamarock, W. C. and Klemp, J. B.: Efficiency and accuracy of the Klemp-Wilhelmson time-splitting technique, *Mon. Wea. Rev.*, 122, 2623–2630, doi:10.1175/1520-0493(1994)122<2623:EAAOTK>2.0.CO;2, 1994.
- Soderholm, J., McGowan, H., Richter, H., Walsh, K., Weckwerth, T. and Coleman, M.: The coastal convective interactions experiment (CCIE): Understanding the role of sea breezes for hailstorm hotspots in Eastern Australia, *Bull. Am. Meteorol. Soc.*, 97, 1687–1698, doi:10.1175/BAMS-D-14-00212.1, 2016.
- 770 Tang, S. L. and Kirshbaum, D. J.: On the sensitivity of deep-convection initiation to horizontal grid resolution, *Q. J. R. Meteorol. Soc.*, 146, 1085–1105, doi:10.1002/qj.3726, 2020.
- Taylor, C. M., Gounou, A., Guichard, F., Harris, P. P., Ellis, R. J., Couvreux, F. and De Kauwe, M.: Frequency of sahelian storm initiation enhanced over mesoscale soil-moisture patterns, *Nature Geosci.*, 4, 430–433, doi:10.1038/ngeo1173, 2011.
- 775 Wakimoto, R. M. and Atkins, N. T.: Observations of the sea-breeze front during CaPE. Part I: single- Doppler, satellite, and cloud photogrammetry analysis, *Mon. Wea. Rev.*, 122, 1092–1114, doi:10.1175/1520-0493(1994)122<1092:OOTSBF>2.0.CO;2, 1994.
- Wakimoto, R. M. and Murphey, H. V.: Analysis of convergence boundaries observed during IHOP_2002, *Mon. Wea. Rev.*, 138, 2737–2760, doi:10.1175/2010MWR3266.1, 2010.
- Wakimoto, R. M., Murphey, H. V., Browell, E. V. and Ismail, S.: The “triple point” on 24 May 2002 during IHOP. Part I: 780 Airborne Doppler and LASE analyses of the frontal boundaries and convection initiation, *Mon. Wea. Rev.*, 134, 231–250, doi:10.1175/MWR3066.1, 2006.
- Wang, Y. C., Pan, H. L. and Hsu, H. H.: Impacts of the triggering function of cumulus parameterization on warm-season diurnal rainfall cycles at the Atmospheric Radiation Measurement Southern Great Plains Site, *J. Geophys. Res.*, 120, 10,681–10,702, doi:10.1002/2015JD023337, 2015.
- 785 Weckwerth, T. M.: The Effect of Small-Scale Moisture Variability on Thunderstorm Initiation, *Mon. Wea. Rev.*, 128, 4017–4030, doi:10.1175/1520-0493(2000)129<4017:TEOSSM>2.0.CO;2, 2000.
- Weckwerth, T. M. and Parsons, D. B.: A Review of Convection Initiation and Motivation for IHOP_2002, *Mon. Wea. Rev.*, 134, 5–22, doi:10.1175/MWR3067.1, 2006.
- Weil, J. C., Sullivan, P. P. and Moeng, C. H.: The use of large-eddy simulations in Lagrangian particle dispersion models, *J. Atmos. Sci.*, 61, 2877–2887, doi:10.1175/JAS-3302.1, 2004.
- 790 Wieringa, J.: Representative roughness parameters for homogeneous terrain, *Boundary-Layer Meteorol.*, 63, 323–363, doi:10.1007/BF00705357, 1993.
- Wilson, J. W. and Roberts, R. D.: Summary of convective storm initiation and evolution during IHOP: Observational and modeling perspective, *Mon. Wea. Rev.*, 134, 23–47, doi:10.1175/MWR3069.1, 2006.

- 795 Wilson, J. W. and Schreiber, W. E.: Initiation of convective storms at Radar-Observed Boundary-Layer Convective lines, *Mon. Wea. Rev.*, 114, 2516–2536, 1986.
- Wood, R., Stromberg, I. M. and Jonas, P. R.: Aircraft observations of sea-breeze frontal structure, *Q. J. R. Meteorol. Soc.*, 125, 1959–1995, 1999.
- Yang, [F.](#), [Ovchinnikov, M.](#) and [Shaw, R. A.](#): [Long-lifetime ice particles in mixed-phase stratiform clouds: Quasi-steady and recycled growth](#), *J. Geophys. Res.*, 120, 11,617-11,635, doi:10.1002/2015JD023679, 2015.
- 800 [Yang, Y.](#), He, G. W. and Wang, L. P.: Effects of subgrid-scale modeling on Lagrangian statistics in large-eddy simulation, *J. Turbul.*, 9, 1–24, doi:10.1080/14685240801905360, 2008.
- Zhang, M., Meng, Z., Huang, Y. and Wang, D.: The mechanism and predictability of an elevated convection initiation event in a weak-lifting environment in central-eastern China, *Mon. Wea. Rev.*, 147, 1823–1841, doi:10.1175/MWR-D-18-0400.1,
- 805 2019.
- Zhang, Y., Stevens, B. and Ghil, M.: On the diurnal cycle and susceptibility to aerosol concentration in a stratocumulus-topped mixed layer, *Q. J. R. Meteorol. Soc.*, 131, 1567–1583, doi:10.1256/qj.04.103, 2005.
- Zhu, L., Meng, Z., Zhang, F. and Markowski, P. M.: The influence of sea- and land-breeze circulations on the diurnal variability in precipitation over a tropical island, *Atmos. Chem. Phys.*, 17, 13213–13232, doi:10.5194/acp-17-13213-2017, 2017.
- 810 Ziegler, C. L. and Rasmussen, E. N.: The initiation of moist convection at the dryline: Forecasting issues from a case study perspective, *Weather Forecast.*, 13, 1106–1131, doi:10.1175/1520-0434(1998)013<1106:tiomca>2.0.co;2, 1998.