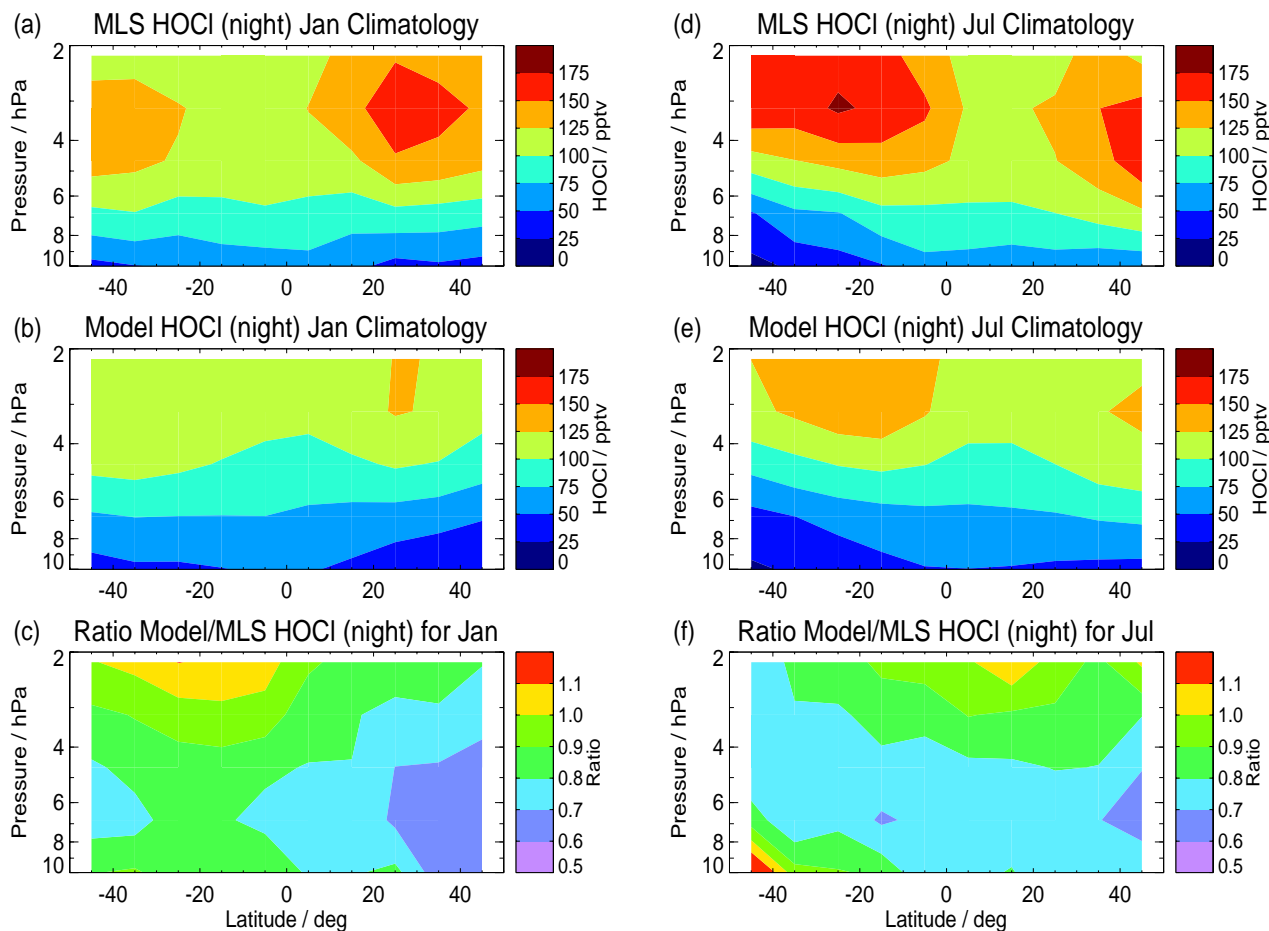


1 **Supplement** (to manuscript on ClO and HOCl trends by L. Froidevaux et al.)

2

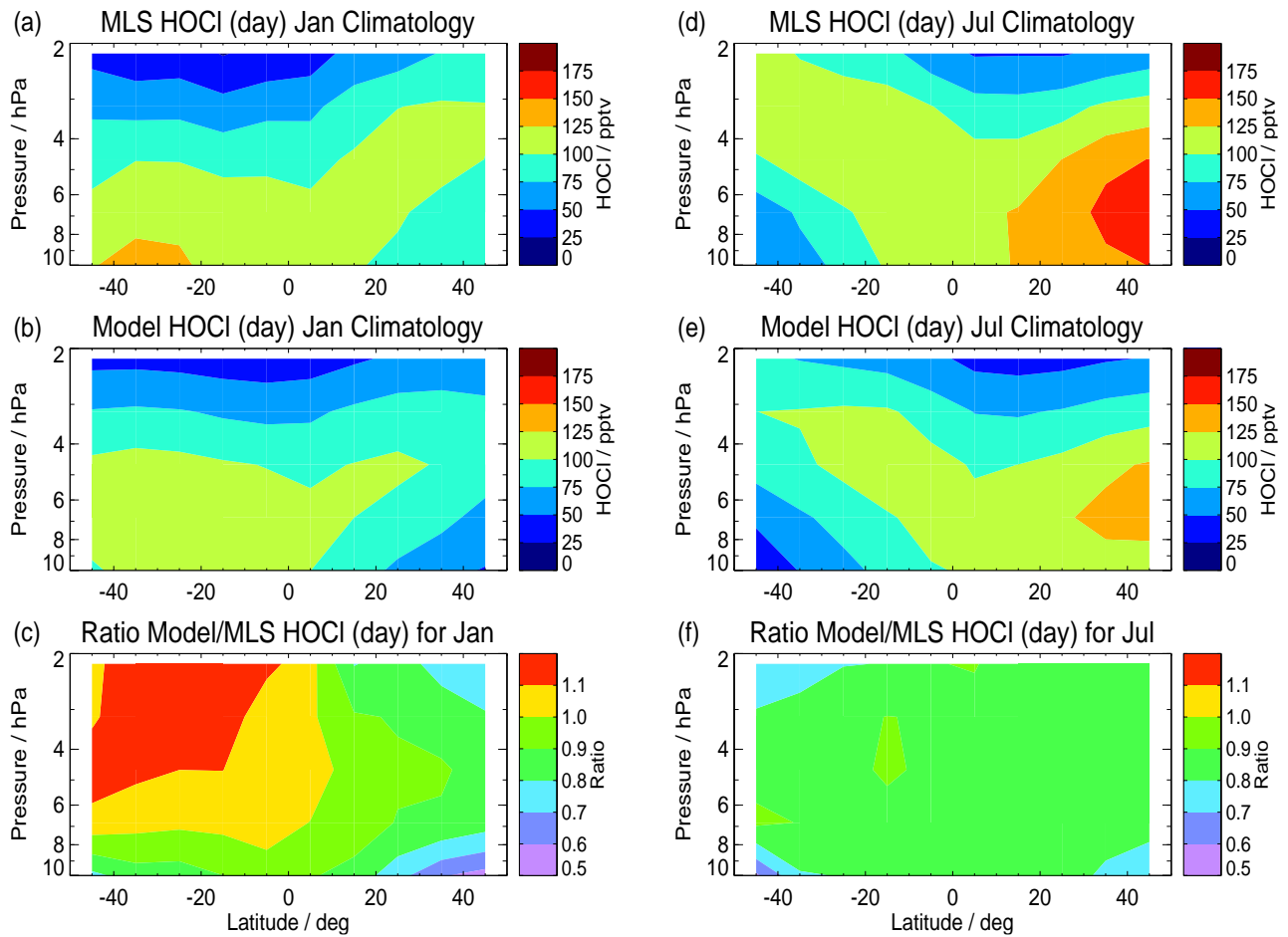
3



4

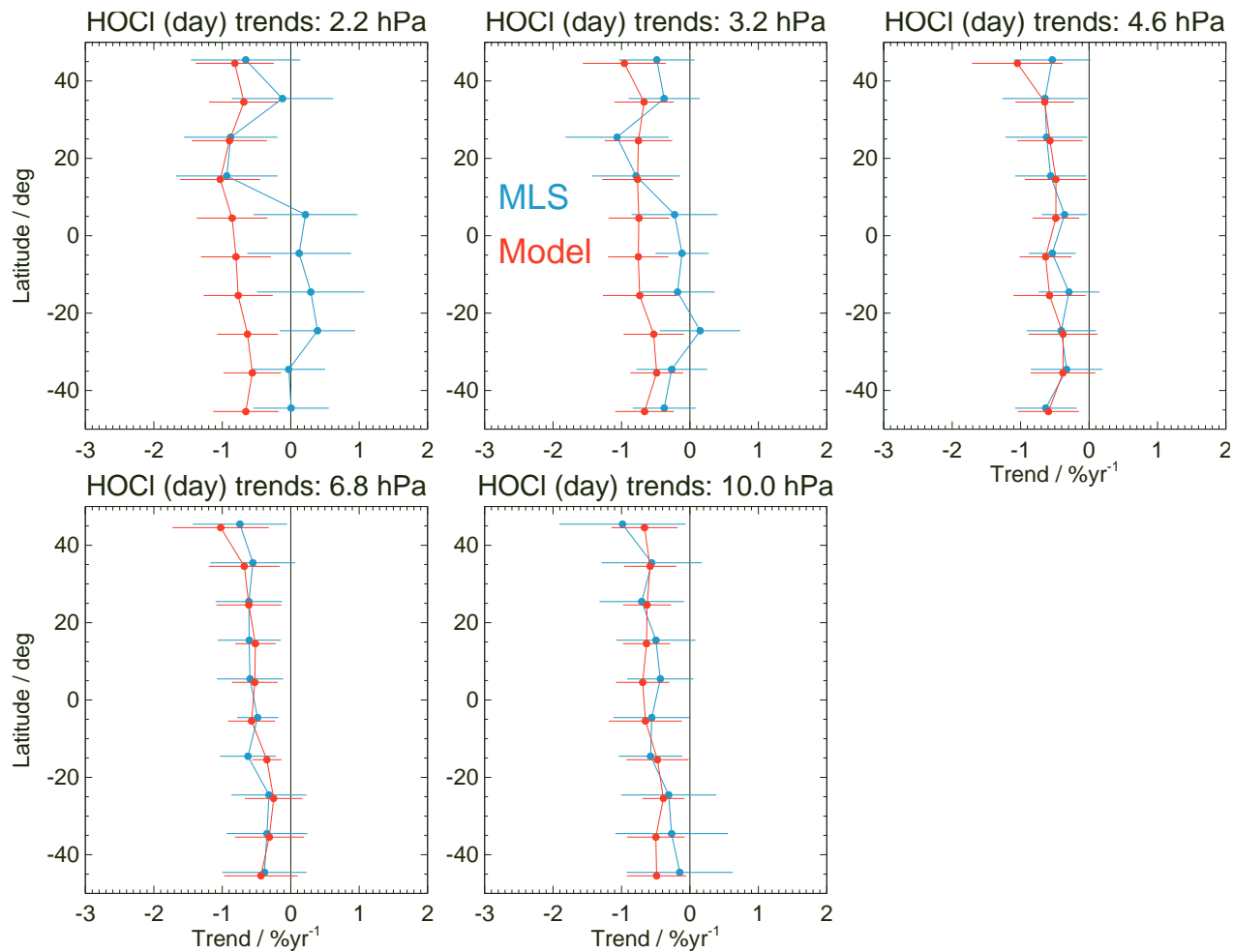
5

6 **Figure S1.** Same as Figure 6, except for nighttime climatological (2005–2020) HOCl values from MLS and model for January
7 and July, as well as the ratios of climatologies (model/MLS).



8
9
10
11

Figure S2. Same as Figure 6, except for climatological (2005–2020) HOCl daytime values from the MLS standard HOCl product (and for the same model as in Fig. 6).



12
13
14
15
16

Figure S3. Same as Figure 3 for ClO, but for HOCl (day) trends at different pressure levels versus latitude, as obtained from multiple regression analyses applied to monthly zonal mean series from MLS (blue) and the model (red).