

# Reducing future air pollution-related premature mortality over Europe by mitigating emissions from the energy sector: assessing an 80% renewable energies scenario

Patricia Tarín-Carrasco<sup>1</sup>, Ulas Im<sup>2</sup>, Camilla Geels<sup>2</sup>, Laura Palacios-Peña<sup>1,3</sup>, and Pedro Jiménez-Guerrero<sup>1,4</sup>

<sup>1</sup>Physics of the Earth, Regional Campus of International Excellence (CEIR) “Campus Mare Nostrum”, University of Murcia, Spain.

<sup>2</sup>Aarhus University, Department of Environmental Science, Frederiksborgvej 399, DK-4000, Roskilde, Denmark.

<sup>3</sup>Dept. of Meteorology, Meteored, Almedricos, Spain.

<sup>4</sup>Biomedical Research Institute of Murcia (IMIB-Arrixaca), Spain.

**Correspondence:** Pedro Jiménez-Guerrero (pedro.jimenezguerrero@um.es)

**Abstract.** ~~Worldwide~~ Overall, European air quality has worsened in the last decades as a consequence of increased anthropogenic emissions, in particular from the sector of power generation. The evidence of the effects of atmospheric pollution (and particularly fine particulate matter, PM<sub>2.5</sub>) on human health is unquestionable nowadays, producing mainly cardiovascular and respiratory diseases, morbidity and even mortality. These effects can even enhance in the future as a consequence of climate penalties and future changes in the population projected. Because of all these reasons, the main objective of this contribution is the estimation of annual excess premature deaths (PD) associated to PM<sub>2.5</sub> on present (1991-2010) and future (2031-2050) European population by using non-linear exposure-response functions. The endpoints included are Lung Cancer (LC), Chronic Obstructive Pulmonary Disease (COPD), Low Respiratory Infections (LRI), Ischemic Heart Disease (IHD), cerebrovascular disease (CEV) and other Non-Communicable Diseases (other NCD). PM<sub>2.5</sub> concentrations come from coupled chemistry-climate regional simulations under present and RCP8.5 future scenarios. The cases assessed include the estimation of the present incidence of PD (PRE-P2010), the quantification of the role of a changing climate on PD (FUT-P2010) and the importance of changes in the population projected for the year 2050 on the incidence of excess PD (FUT-P2050). Two additional cases (REN80-P2010 and REN80-P2050) evaluate the impact on premature mortality rates of a mitigation scenario in which the 80% of European energy production comes from renewables sources. The results indicate that PM<sub>2.5</sub> accounts for nearly 895,000 [95% confidence interval (95% CI) 725,000-1,056,000] annual excess PD over Europe, with IHD being the largest contributor to premature mortality associated to fine particles in both present and future scenarios. The case isolating the effects of climate penalty (FUT-P2010) estimates a variation +0.2% on mortality rates over the whole domain. However, under this scenario the incidence of PD over central Europe will benefit from a decrease of PM<sub>2.5</sub> (-2.2 PD/100,000 h.) while in ~~eastern~~ Eastern (+1.3 PD/100,000 h.) and ~~western~~ Western (+0.4 PD/100,000 h.) Europe PD will increase due to increased PM<sub>2.5</sub> levels. The changes in the projected population (FUT-P2050) will lead to a large increase of annual excess PD (1,540,000, 95% CI 1,247,000-1,818,000), +71.96% with respect to PRE-P2010 and +71.67% to FUT-P2010) due to the aging of the European population. Last, the mitigation scenario (REN80-P2050) demonstrates that the effects of a mitigation policy increasing the

ratio of renewable sources in the energy mix energy could lead to a decrease of over 60,000 (95% CI 48,500-70,900) annual PD for the year 2050 (a decrease of -4% in comparison with the no-mitigation scenario, FUT-P2050). In spite of the uncertainties inherent to future estimations, this contribution reveals the need of the governments and public entities to take action and bet for air pollution mitigation policies.

## 1 Introduction

Air pollution is nowadays a leading cause of global disease burden, especially in low- and middle-income countries (Balakrishnan et al., 2019), and is expected to greatly increase under future climate scenarios (e.g. Fang et al. (2013a); Tarín-Carrasco et al. (2019); Park et al. (2020), among others). Fine particulate matter (PM<sub>2.5</sub>) is a common air pollutant with important effects on human health. Exposure to this pollutant leads to cardiovascular or respiratory diseases, together with an increase in premature mortality (e.g. (Brook et al., 2010; Evans et al., 2013; Hamra et al., 2014; Ford and Heald, 2016; Im et al., 2018; Tarín-Carrasco et al., 2019), among others). Short- or long-term exposure to PM<sub>2.5</sub> can have different impacts on human health. The much larger effects of long-term ~~exposition~~ exposure may suggest that the effects on human health are not only due to increased pollution, but also to the progression of underlying diseases (World Health Organization, 2013).

In addition, over 90% of the population who lives in cities is exposed to ~~this pollutant~~ fine particles in concentrations exceeding the air quality guidelines ~~stablished~~ established by World Health Organization (WHO) (Prüss-Üstün et al., 2016). Lelieveld et al. (2013) estimate that 69% of the global population is exposed to an annual mean anthropogenic PM<sub>2.5</sub> concentration  $>10 \mu\text{g m}^{-3}$  (WHO air quality guideline); 33% to concentrations over  $25 \mu\text{g m}^{-3}$  (limit value of EU Directive 2008/50/CE); and 20% to concentrations  $>35 \mu\text{g m}^{-3}$ , the WHO Level 1 Interim Target (World Health Organization, 2013). Focussing on Europe for present scenarios, Lelieveld et al. (2013) calculate global respiratory mortality incidence associated to air pollution as 773,000 per year. ~~The same study provide a burden of 186,000 by premature deaths per year associated to lung cancer and a mortality incidence around 2,000,000 by cardiovascular disease caused cardiovascular diseases.~~ For Europe, Andersson et al. (2009) estimate the number of excess premature deaths (PD) ~~in as~~ 301,000 per year caused by ~~the same pollutant~~ PM<sub>2.5</sub>.

Nowadays, ~~the contribution of anthropogenic PM<sub>2.5</sub> to 70% of~~ the globally mortality ~~is around 70% attributable to air pollution is associated to PM<sub>2.5</sub>~~ (Silva et al., 2016a), with some hotspots in East Asia, India and Europe. However, mortality attributable to air pollution has changed over the last 25 years (Fang et al., 2013a; Silva et al., 2013; Cohen et al., 2017). Silva et al. (2013) attribute these increases in mortality to direct changes in anthropogenic emissions and estimates that 2.1 million of Chronic Obstructive Pulmonary Disease (COPD) and Lung Cancer (LC) premature deaths are related to PM<sub>2.5</sub>. In addition, these numbers are expected to increase under future climate scenarios as a consequence of the effect of the *climate penalty* on air quality (Silva et al., 2016b; Hong et al., 2020; Park et al., 2020). Climate change will modify air quality by altering physico-chemical processes and parameters such as temperature (and thus the oxidative capacity of the atmosphere), wet deposition or dynamical changes (Jacob and Winner, 2009; Jiménez-Guerrero et al., 2013a).

Despite fine particulate matter can travel long distances, provoking the increase of mortality in a global scale, Anenberg et al. (2014) estimate that 93%-97% of PD associated to air pollution occur within the source region. Therefore, the contribution

of anthropogenic emissions to air pollution is remarkable. As estimated by Fang et al. (2013a), the 95% of mortality from PM2.5 is driven by local emissions of short-lived air pollutants and their precursors. The main source of emissions responsible for these numbers differs among regions. ~~In Europe, despite~~ For instance, in Europe agriculture is the sector with a higher contribution to PM2.5 emissions (Lelieveld et al., 2015; Crippa et al., 2019). However, the sources responsible for the largest impact on PD linked to outdoor air pollution are not related to agriculture, but to land traffic and energy use (Lelieveld et al., 2015; Silva et al., 2016a).

Therefore, the implementation of mitigation controls and environmental policies that can help offsetting the effect of climate penalty become essential for reducing premature mortality over Europe (McConnell et al. (2006); Anenberg et al. (2014); Fang et al. (2013); Crippa et al. (2019), among others). Changes in future anthropogenic emissions will depend on different variables; such as socioeconomics, technology and developments, energy demand, demographic trends and land use change, as well as climate policies (Kirtman et al., 2013). In this sense, Silva et al. (2016a) suggested that specific actions targeting in residential and commercial sectors can control the emissions on PM2.5 and would benefit human health. Other works, as those of Anenberg et al. (2014) or Liang et al. (2018) showed that reducing anthropogenic emissions by 20% can substantially decrease the incidence of excess mortality. Under a business as usual scenario (no emission control), the contribution of outdoor pollution to PD could increase by 100% by the mid-century, doubling in 2050 (Lelieveld et al., 2015). In this line, Lelieveld et al. (2019) showed that replacing fossil fuels by renewable energy sources could improve the numbers related to the loss of life expectancy from air pollution. However, previous studies have shown that e.g. an aging population in the future, have the potential to counteract the effect of these emission reductions (Geels et al., 2015).

Hence, the objective of this study is to estimate the present (1991-2010) incidence of excess PD (PD per year) associated to fine particulate matter and their changes under several future scenarios for the years 2031-2050 that include climate penalty, projected population by 2050 and a mitigation scenario where the 80% of the European energy production comes from renewable sources. A number of different endpoints or causes of premature mortality as Lung Cancer (LC), Chronic Obstructive Pulmonary Disease (COPD), Low Respiratory Infections (LRI), Ischemic Heart Disease (IHD), cerebrovascular disease (CEV) and other Non-Communicable Diseases (other NCD) is included in this contribution.

## 2 Methodology and data

### 2.1 Premature mortality estimation by exposure-response functions

Future PD caused by several specific endpoints related to PM2.5 have been estimated using non-linear exposure-response functions, an analogous methodology as that previously implemented in Tarín-Carrasco et al. (2021). The health impact function in each grid has been applied (Equation 1) to estimate premature mortality:

$$\Delta M = y_0 \times \left[ \frac{RR - 1}{RR} \right] \times Population \quad (1)$$

This equation is based on epidemiological relationships between air pollution concentration and mortality in each grid cell, where  $\Delta M$  is premature mortality due to a specific disease,  $y_0$  is the baseline mortality rate,  $RR$  is the risk ratio and *Population* refers to the exposed population (in this contribution, adults are considered).  $y_0$  varies according to the mortality cause, age and European region (Figure SM1 in the Supplementary Material) and is estimated by the WHO for each sex and every year. Sex mixing values used in the present study account for both male and female dwellers during the year 2017 (the last available). Premature mortality and RRs has been estimated for each pathology and different group ages included in this contribution: 25-29, 30-34, 35-39, 40-44, 45-49, 50-54, 55-59, 60-64, 65-69, 70-74, 75-79, +80 and all ages.

Risk ratios were determined following the GEMM methodology developed by Burnett et al. (2018) (Equation 2):

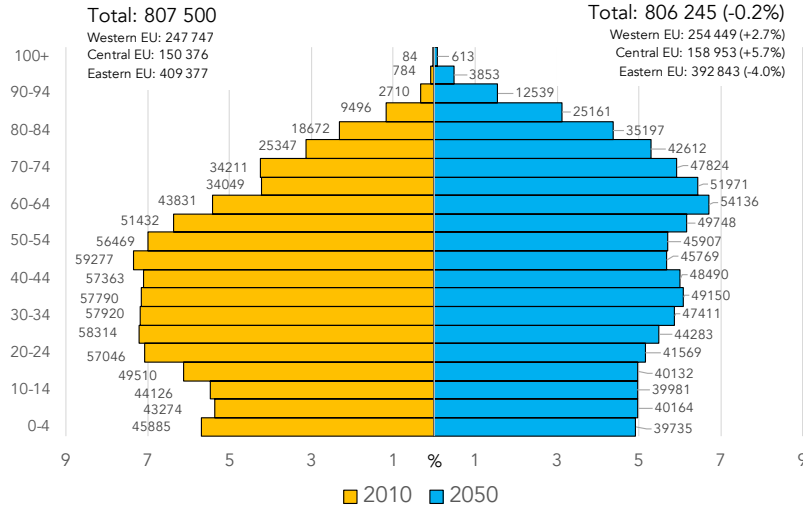
$$RR = \exp \left[ \theta \frac{\log \left[ \frac{z}{\alpha} + 1 \right]}{\left( 1 + \exp \left( -\frac{z - \mu}{\nu} \right) \right)} \right], \text{ where } z = \max(0, PM2.5 - 2.4 \mu gm^{-3}) \quad (2)$$

where  $\theta$ ,  $\alpha$ ,  $\mu$  and  $\nu$  are variables obtained from Burnett et al. (2018) for each pathology and  $z$  refers to the PM2.5 mean annual concentration. The pathologies included in this work are Lung Cancer (LC), Chronic Obstructive Pulmonary Disease (COPD), Lower Respiratory Infection (LRI), Cerebrovascular Disease (CEV), Ischemic Heart Disease (IHD) and non-accidental diseases (NCD+LRI). “Other NCD” is calculated as the subtraction of NCD+LRI and the rest of the categories. Uncertainty ranges are expressed as the 95% confidence intervals (95% CIs), adopted from Burnett et al. (2018).

## 100 2.2 Population data

Population data for Europe has been taken from the NASA SocioEconomic Data and Applications Center (2019) gridded dataset. These data provide the population density by age and gender for the year 2010 consistent with national censuses and population registers with a resolution of 5 km<sup>2</sup>. Population data were interpolated to the working grid to make it consistent with the gridded air pollution data (Figure SM2,top in the Supplementary Material).

105 With respect to the future population, a projection for the year 2050 has been estimated by using information from the Population Prospects from United Nations Organization (UN) Department of Economic and Social Affairs Population Dynamics (United Nations, 2020). This includes both a development of the total national numbers but also the age distribution. The relative variation of the population from this dataset between 2010 and 2050 for each European country and age range was calculated in order to obtain the ratio of population for the future scenario (2050) in this study (Figure SM2,bottom in the Supplementary Material). The population pyramid both for the year 2010 and 2050 is presented in Figure 1. This Figure indicates a very slight projected decrease (-0.2%) of the European population (807.5 M vs. 806.2 M dwellers both for present and future population, respectively), especially over Eastern Europe (-4.0%). Conversely, population in Western and Central Europe increases in the UN 2050 projections (+2.7% and +5.7%, respectively). In addition, the projected data includes a higher population density over many urban areas, and a clear aging of the European citizens. As an example, population over 80 years  
115 (80+) barely represents 4% of the total European population nowadays, while it is expected to increase to >9% in the projected UN 2050 estimations.



**Figure 1.** Population pyramid by age range for the year 2010 (orange, left) and 2050 projected by the UN (blue, right). Population data are shown in thousands. x-axis represents the percentage of the contribution of each age range to the total population.

### 2.3 Air quality data and scenarios

The availability of observed air pollution data for conducting studies on the impacts of air pollution on human health is scarce. The network of stations for measuring air pollutants is generally insufficient for health purposes due to their spatial misalign-  
 120 ment and low coverage (Vedal et al., 2017). This limitation leads to the use of modelling outputs for providing information about air pollution, especially if future air quality projections are needed (Tarín-Carrasco et al., 2019).

Here, air quality model data ([PM<sub>2.5</sub> dry aerosol mass](#)) from the WRF-Chem model (Grell et al., 2005) under the REPAIR initiative (Palacios-Peña et al., 2020) is used as input to Equation 2 in order to estimate the annual PD associated to different endpoints in both current and future climate change scenarios. The domain covers Europe with a horizontal resolution of  
 125 0.11° under the Euro-CORDEX requirements (Jacob et al., 2020). For future scenarios, climate forcing is derived from the RCP8.5 scenario, since RCP8.5 represents an upper limit to climate impacts (Moss et al., 2010). The reference periods span 1991-2010 for the present and 2031-2050 for the future projections ~~-([PM<sub>2.5</sub> concentrations are averaged together for each 20-year period](#)). [Climate-dependent natural emission sources include desert dust, sea salt aerosols and biogenic volatile organic compounds \(VOCs\)](#). In order to isolate the possible effects of climate change on pathologies only due to changes in atmospheric  
 130 pollutants, constant anthropogenic emissions ~~are assumed, for all present and future simulations are assumed. [Anthropogenic emissions are taken](#) from the ACCMIP database (Lamarque et al., 2010) ~~for the year 2000~~. This allows possible impacts to~~~~

be anticipated if mitigation strategies for regulatory pollutants are not carried out and characterizes the climatic penalty on air quality levels.

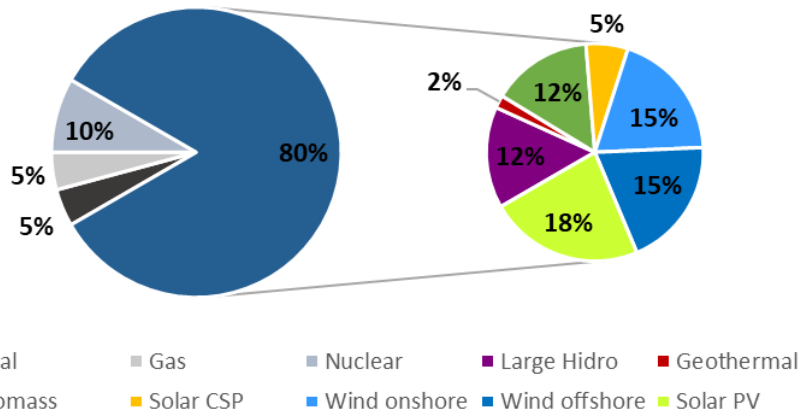
The parameterizations implemented in the WRF-Chem model ~~together with the model data used for these simulations, has been described and validated in detail in a number of previous contributions~~ are summarized in Table SM1 of the Supplementary Material. The robustness of this simulation for representing particulate matter or its chemical components was evaluated in other works, which rely on the same data and include the assessment of the integrations (e.g. ~~Tarín-Carraseo et al. (2019); Jerez et al. (2020) or Palacios-Peña et al. (2020);~~ Jerez et al. (2020); Palacios-Peña et al. (2020); Pravia-Sarabia et al. (2020); Jerez et al. (2020), among others). ~~This information is summarized in Table SM1 of the Supplementary Material~~ For instance, the validation of the modelling system used revealed negligible errors for PM<sub>2.5</sub> over large areas of Europe but a tendency underestimation, especially over northern Germany and the central and western Mediterranean (around -0.2 to -0.4  $\mu\text{g m}^{-3}$ ) when compared to stations belonging to the EMEP air sampling network (Jerez et al., 2013). In addition, Ratola and Jiménez-Guerrero (2016) found that the modelling system provided consistently mean fractional biases (MFB) and mean fractional errors (MFE) in the range of 20-30% and 30-60%, respectively, when evaluating a PM<sub>2.5</sub> component (BaP) against against EMEP stations in Europe. These results support the use of this modelling system as a good depiction of PM<sub>2.5</sub> air concentrations and as a valid tool to provide information for health studies, as those presented in Tarín-Carrasco et al. (2019); Tarín-Carrasco et al. (2021), which rely on these very simulations.

### 2.3.1 Emissions scenarios

As aforementioned, anthropogenic emissions come from the ACCMIP initiative (Lamarque et al., 2010) ~~for the year 2000~~. Taking those emissions as basis, a scenario where emissions from the energy sector in the future have been mitigated is defined, based on the *European 2050 Roadmap* (European Climate Foundation, 2010) of the European Climate Foundation (ECF). The ECF sets three possible scenarios in their strategy for the year 2050, which differ on the percentage of renewable energy production (40%, 60% and 80%) aimed in 2050. Despite complicated, the ECF indicates that the 80% scenario considered here is achievable if the power sector is assumed to implement essentially carbon-free technologies, and hence that emission scenario (from now on, denoted as REN80) has been implemented as a mitigation scenario in this contribution.

Present-day energy production has been estimated from data of the European Environment Agency (2020) with respect to gross electricity production by fuel (Table 1). For the REN80 scenario, energy production by different energy sectors like coal, gas and nuclear are taken into account as the 20% of non-renewable energies. The remaining 80% is expected to be produced from sources such as wind power (representing almost one third of the energy production in 2050 with a percentage of 30%); solar power (23%); biomass and hydropower (12% each); and geothermal, which presents the smallest contribution in 2050 (2%). Figure 2 shows the energy mix by sector for the year 2050 in REN80. For this scenario, the present and future power production in the target domain is presented in Table 1.

In order to estimate emissions from energy production, the emission factors were obtained from the EMEP/EEA air pollutant emission Inventory Guidebook – 2019 (European Environment Agency, 2019). The emission factors from coal (brown, coking, steam, sub-bituminous and hard), natural gas, gaseous fuel, residual oil and gas oil energy production were selected based on



**Figure 2.** Energy mix in the REN80 scenario for the year 2050.

**Table 1.** Annual energy production (in billion of GJ) over Europe from different sources and contribution to the energy mix in present and REN80 scenario.

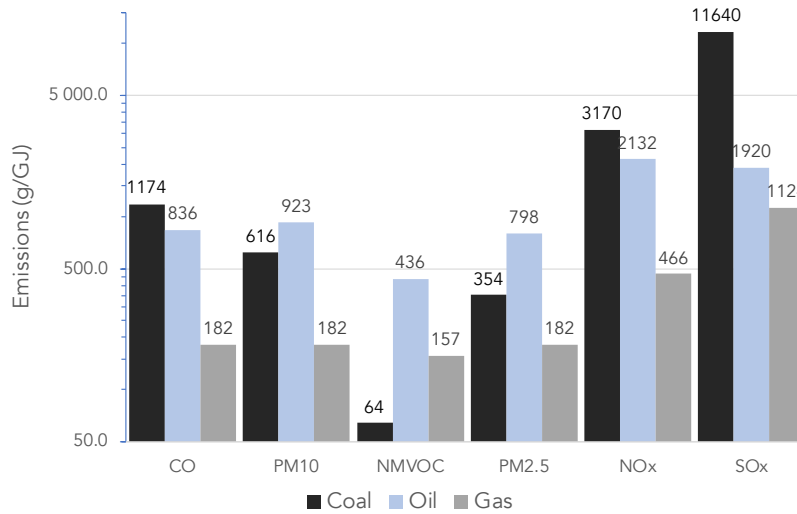
	Present	(1991-2010)	Future (2031-2050)	
	GJ × 10 <sup>9</sup>	%	GJ × 10 <sup>9</sup>	%
Renewables	5.15	29.23%	14.10	80.00%
Nuclear	4.54	25.80%	1.76	10.00%
Oil	0.32	1.83%	–	–
Coal	3.74	21.25%	0.88	5.00%
Gas	3.48	19.73%	0.88	5.00%
Other fuels	0.38	2.16%	–	–

the activity data from Tier 2 method in section 1.A.1.a “Public electricity and heat production” within the chapter 1.A.1. “SNAP 01 Combustion in energy and transformation industries” of “Part B: sectoral guidance chapters”. Figure 3 shows the emission factors for coal, oil and gas. The highest emission factors for CO, NO<sub>x</sub> and SO<sub>x</sub> are related to coal (1174 g/GJ; 3,170 g/GJ and 11,640 g/GJ, respectively), while oil is the most important contributor (per GJ of energy produced) in the case of particulate matter PM<sub>10</sub> and PM<sub>2.5</sub> (923 g/GJ and 798 g/GJ, in that order) and non-methane volatile organic compounds (436 g/GJ).

Finally, present and future emissions from the energy sector were estimated following the European Environment Agency (2019) methodology (Equation 3) from the energy produced by each type of fuel and the corresponding emission factor:

$$Emissions = Activity\ Factor(GJ) \times Emission\ Factor(g/GJ) \quad (3)$$

The annual mass of pollutants emitted by the different fuels included here (coal and lignite, oil and gas) is shown in Table 2. The estimations indicate that ~~60~~ 6 Mtons of emissions of pollutants are annually saved in the REN80 emission scenario



**Figure 3.** Emission factors (g/GJ) by different type of fuel.

compared to the baseline present emissions. Focusing on PM<sub>2.5</sub> (the main aim of this contribution), annual emissions decrease from 2.21 Mtons to 0.47-0.22 Mtons to 0.05 Mtons (reduction of around -79% in the REN80 scenario). Primary anthropogenic PM<sub>2.5</sub> (PPM<sub>2.5</sub>) emissions is speciated as follows: 7.5% of PPM<sub>2.5</sub> corresponds to black carbon; 55.6% to organic carbon and 36.5% to inert PPM<sub>2.5</sub>. Further information about PM emissions in Europe can be found in Im et al. (2015).

**Table 2.** Annual 2010 ACCMIP emissions of regulatory air pollutants produced by the energy sector used in the simulations (in Mtons) for the SNAP sector representing energy production in the present scenario and projected future emissions under a mitigation scenario taking ACCMIP present emissions as basis. Last column indicates the total emissions in the domain from all sectors.

	Present (1991-2010)	Future (2031-2050)	ΔEmissions	<u>All sectors (1991-2010)</u>
CO	<u>5.30-0.53</u>	<u>1.20-0.12</u>	-77.4%	<u>3.58</u>
NMVOC	<u>0.93-0.09</u>	<u>0.20-0.02</u>	-78.5%	<u>8.32</u>
NOx	<u>14.20-1.42</u>	<u>3.21-0.32</u>	-77.4%	<u>9.91</u>
PM10	<u>3.24-0.33</u>	<u>0.70-0.07</u>	-78.4%	<u>2.34</u>
PM2.5	<u>2.21-0.22</u>	<u>0.47-0.05</u>	-78.7%	<u>1.52</u>
SOx	<u>48.10-4.81</u>	<u>11.31-1.13</u>	-76.5%	<u>8.20</u>
TOTAL	<u>77.29-7.73</u>	<u>17.09-1.71</u>	-77.9%	<u>33.87</u>



### 180 2.3.2 Cases for the estimation of present and future premature deaths over Europe

Table 3 compiles the different cases that have been included in this contribution for the estimation of PD associated to PM2.5 in Europe. First, the PRE-P2010 case uses present day annual mean concentrations of PM2.5 (1991-2010) and population corresponding to the present period (2010) to estimate PD for baseline conditions. In order to isolate the climate penalty, the FUT-P2010 case uses future concentrations of PM2.5 under the RCP8.5 scenario, keeping population at 2010 levels. Introducing the UN 2050 population changes in the case FUT-P2050 allows estimating the variation of PD caused by modifications in the population pyramid over Europe. Last, REN80-P2010 and REN80-P2050 use the modelled PM2.5 concentrations of pollutants for the future RCP8.5 scenario using REN80 emissions and with population corresponding to the year 2010 and changes for 2050, respectively.

**Table 3.** Summary of cases considered for the estimation of premature deaths over Europe.

Acronym	Period	Forcing	Population	Emissions
PRE-P2010	1991-2010	MPI-M historical*	2010	ACCMIP
FUT-P2010	2031-2050	MPI-M CMIP5 rcp85**	2010	ACCMIP
FUT-P2050	2031-2050	MPI-M CMIP5 rcp85**	2050	ACCMIP
REN80-P2010	2031-2050	MPI-M CMIP5 rcp85**	2010	ACCMIP modified according REN80
REN80-P2050	2031-2050	MPI-M CMIP5 rcp85**	2050	ACCMIP modified according REN80

\*Giorgetta et al. (2012a); \*\*Giorgetta et al. (2012b)

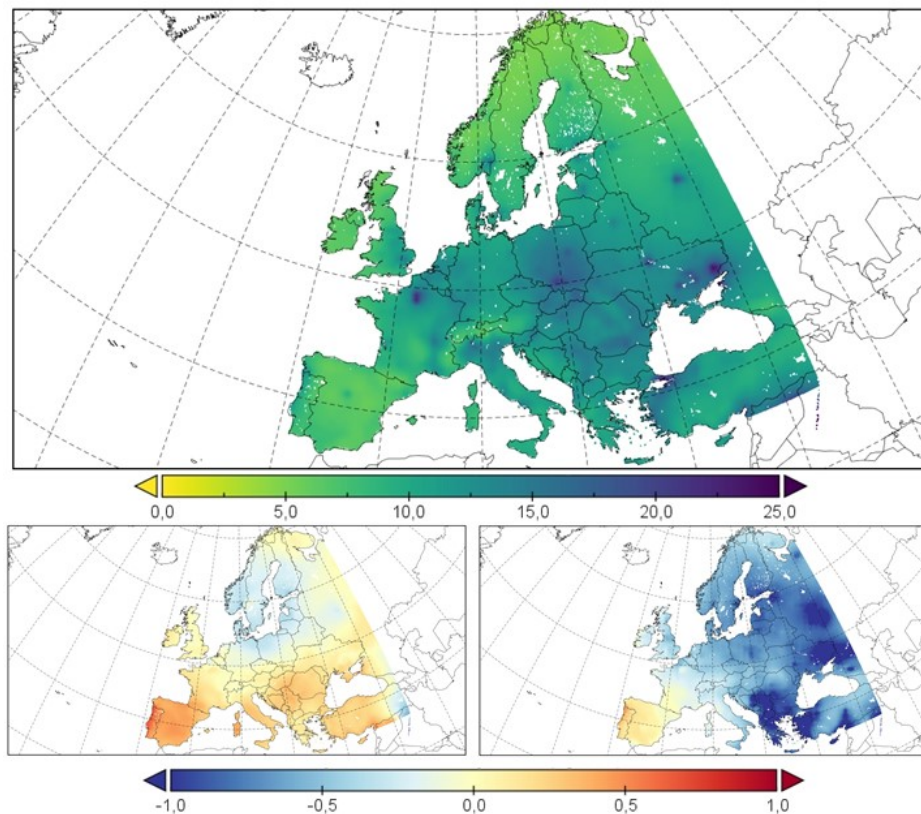
## 3 Results and discussion

190 The results presented in this section try to disentangle the impacts of PM2.5 levels over Europe on present and future premature mortality over Europe. For that purpose, a brief description of the changes in PM2.5 concentration as a consequence of the climate penalty are presented. Once these changes are established, the estimation of present PD (PRE-P2010 case) over three different areas of Europe (Western EU, Central EU and Eastern EU) are discussed. Next, the effect of climate penalty on PD is assessed for a future scenario (RCP8.5, 2031-2050) keeping the population constant at 2010 levels (FUT-P2010). The results for the future case considering also the change on the population for 2050 (FUT-P2050) have been studied and compared with FUT-P2010. Finally, the effects of a future mitigation scenario are quantified. That scenario includes the use of 80% of renewables sources to produce energy (REN80-P2010 and REN80-2050) and allows to isolate the effect of a future mitigation strategy based on energy production from renewable sources.

### 3.1 Levels of PM2.5 in present and future scenarios

200 Figure 4 shows the PM2.5 mean annual concentration over Europe for the present period (1991-2010) and the changes projected in the future scenario (2031-2050, RCP8.5) both with emissions from ACCMIP and in the mitigation scenario (2031-2050,

REN80). As also stated in previous works (Tarín-Carrasco et al., 2019; Tarín-Carrasco et al., 2021), the chemistry/climate simulations revealed the presence of some areas in Europe exceeding the annual PM2.5 limit value ( $25 \mu\text{g m}^{-3}$ ) established by the European Directive 2008/50/EC on ambient air quality and cleaner air for Europe. For the present period, ~~eastern~~ Eastern Europe and some large cities and conurbations have the highest concentrations of fine particles, with some cities ~~cities~~ as Paris (France), Krakow (Poland) or Moscow (Russia) presenting elevated levels and exceeding  $25 \mu\text{g m}^{-3}$ .



**Figure 4.** PM2.5 concentration over Europe for (top) present period (1991-2010); (bottom-left) difference with the future scenario (2031-2050, RCP8.5); and (bottom-right) difference with the future (2031-2050, RCP8.5)+80% renewables energies scenario (REN80). All units in  $\mu\text{g m}^{-3}$ .

The future changes in PM2.5 concentration attributable to GHG-induced climate change under the RCP8.5 scenario indicate a mean increase of  $0.7 \mu\text{g m}^{-3}$ , with higher increases over southern of Europe. These results are in agreement with those of Silva et al. (2017) and Park et al. (2020), among others, who show an overall increase in surface PM2.5 concentration over most land regions. On the other hand, slight decreases are projected mainly over the Scandinavian countries and some Baltic areas ( $-0.2 \mu\text{g m}^{-3}$ ). The ~~increase~~ decrease of PM2.5 over this area under the mitigation scenario (REN80) can be  $> 0.5 \mu\text{g m}^{-3}$ .

Although air quality improves overall in Europe; areas such as Paris, Krakow or Moscow will keep exceeding the European Directive threshold.

On the other hand, the REN80 scenario indicates an overall improvement of air pollution related to PM<sub>2.5</sub> in Europe, especially over ~~eastern~~ Eastern Europe. In that area, the effect of the REN80 largely counteracts the climate penalty (reductions of  $>-1.0 \mu\text{g m}^{-3}$  with respect to present concentrations and  $>-1.4 \mu\text{g m}^{-3}$  as average changes with respect to RCP8.5 scenario, reaching  $-2.5 \mu\text{g m}^{-3}$  over certain hotspots). The reason for that decrease over Eastern Europe is the high ratio of fossil fuels in the energy mix of countries in that area (European Environment Agency, 2020). Again, those results are in agreement with previous works found in the scientific literature. For instance Liang et al. (2018) obtain a reduction of almost  $-0.9 \mu\text{g m}^{-3}$  for a future scenario with a reduction of 20% in anthropogenic emissions due to power and industry sources.

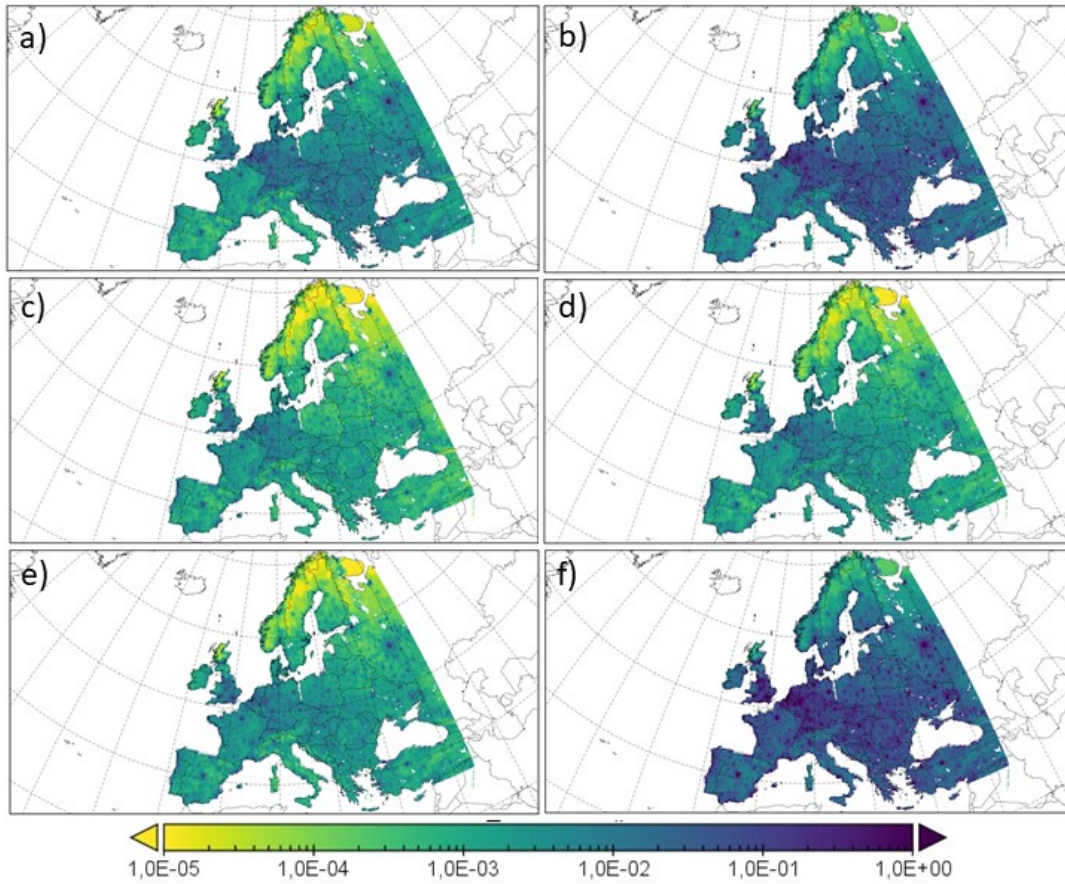
It is also noticeable that northern Europe will benefit both from the climate penalty and the mitigation scenarios. This benefit cannot be observed over southern Europe, where the benefits of mitigation strategies might not compensate the effect caused by climate change on PM<sub>2.5</sub> levels (fine particles will increase their concentrations in southern Europe as a consequence of decreasing precipitations and increased emissions from natural sources in this target area) (Jiménez-Guerrero et al., 2013b) (Figure 4).

### 3.2 Estimation of present premature deaths over Europe (PRE-P2010)

Figure 5 depicts the annual excess PD associated with present PM<sub>2.5</sub> pollution (PRE-P2010). For the present period (1991-2010), 895,000 (95% CI 725,000-1,056,000) annual PD are estimated over the European area, ~~in agreement with the results of Andersson et al. (2009) and Crippa et al. (2019).~~ This estimation is in agreement -although slightly higher- with that of Burnett et al. (2018) (647,000 PD), and exceeds that of Andersson et al. (2009) (546,000), who include only the contribution of primary PM<sub>2.5</sub> and secondary inorganic aerosols. Crippa et al. (2019) report 260,000 PD associated to PM<sub>2.5</sub>, but the differences in the number of annual PD has to be sought primarily in the domain covered in the simulations presented here. In this sense, the target domain in this contribution covers the most populated areas or Russia or Turkey, which is not included in the numbers reported for Europe in the aforementioned study.

The highest incidence of excess PD are estimated in this contribution for Eastern Europe (467,000 annual PD, 95% CI 378,200-551,100) (Table 4), while the highest incidence of normalized PD per 100,000 adult inhabitants are found over Central Europe (229.4 PD/100,000 habitats per year). This latter result is in ~~agreement with results by a good qualitative agreement with the estimation of~~ Silva et al. (2016a), who identify the Benelux as the European region with the highest excess mortality rates associated to air pollution.

When considering individual endpoints (Figure 6), the main cause of excess PD associated to PM<sub>2.5</sub> in the European domain is related to cardiovascular diseases (IHD+CEV), especially over Eastern Europe. Moreover, CEV and IHD are those causes of PD with the highest differences between each target area. The PD incidence over Eastern Europe is caused mainly by IHD+CEV, totalizing  $> 60\%$  of the premature mortality burden in Europe (Figure 6) because of (1) the higher population (51% of the total European population contemplated in this contribution) in comparison with Central (19% of European population) and Western Europe (30% of the European inhabitants); and (2) the higher PM<sub>2.5</sub> concentrations (as previously shown in Figure



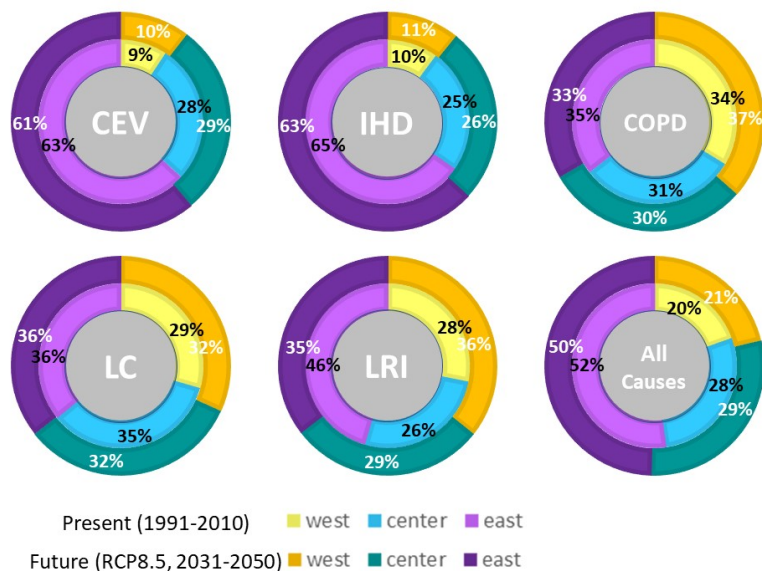
**Figure 5.** Estimation of PD over Europe for the PRE-P2010 case for different endpoints: (a) CEV, (b) IHD, (c) COPD, (d) LC, (e) LRI and (f) all. All units are PD/km<sup>2</sup> per year.

**Table 4.** Estimated incidence of excess premature deaths (PD, in thousands) and PD per 100,000 habitants for each European region in all scenarios covered. Numbers in parenthesis represent the 95% confidence interval.

	Present	PRE-P2010	RCP8.5	FUT-P2010	RCP8.5	REN80-P2010	RCP8.5	FUT-P2050	RCP8.5	REN80-P2050
	PD × 10 <sup>3</sup>	PD/100,000 h.	PD × 10 <sup>3</sup>	PD/100,000 h.	PD × 10 <sup>3</sup>	PD/100,000 h.	PD × 10 <sup>3</sup>	PD/100,000 h.	PD × 10 <sup>3</sup>	PD/100,000 h.
Western EU	174.9 (141.7-206.4)	98.0 (79.4-115.6)	177.2 (143.5-209.1)	99.3 (80.4-117.2)	172.4 (139.6-203.4)	96.5 (78.2-113.9)	327.2 (265.0-386.1)	168.5 (136.5-198.8)	318.2 (257.7-375.5)	163.8 (132.7-193.3)
Central EU	252.7 (204.7-298.2)	229.4 (185.8-270.7)	250.7 (203.1-295.8)	227.6 (184.4-268.6)	244.3 (197.9-288.3)	221.8 (179.7-261.7)	448.3 (363.0-528.9)	372.5 (301.7-439.6)	437.5 (354.4-516.3)	363.6 (294.5-429.0)
Eastern EU	466.7 (378.0-550.7)	167.3 (135.5-197.4)	467.9 (379.0-552.1)	167.7 (135.8-197.9)	444.8 (360.3-524.9)	159.5 (129.2-188.2)	759.9 (615.5-896.7)	262.0 (212.2-309.2)	723.6 (586.1-853.8)	249.4 (202.0-294.3)
EUROPE	894.3 (724.4-1,055.3)	167.5 (135.7-197.7)	895.8 (725.6-1,057.0)	157.8 (127.8-186.2)	861.5 (697.8-1,016.6)	151.8 (123.0-179.1)	1,535.4 (1,243.7-1,811.8)	253.9 (205.7-299.6)	1,479.3 (1,212.8-1,766.8)	244.7 (198.2-288.7)

(PRE-P2010): PD for the present case; (FUT-P2010): PD for the future scenario with population at 2010 levels; (REN80-P2010): PD for the future mitigation scenario with population at 2010 levels; (FUT-P2050): PD for the future scenario with population projections of UN for 2050; (REN80-P2050): PD for the future mitigation scenario with population projections of UN for 2050.

4). Those results are analogous for the total PD by all causes: PD are similar (with respect to their percentage) to the population held in the respective areas. In this sense, Eastern Europe represents more than 50% of mortality in Europe, while Central and Western Europe add around 20 and 30% of PD, proportional to their population.

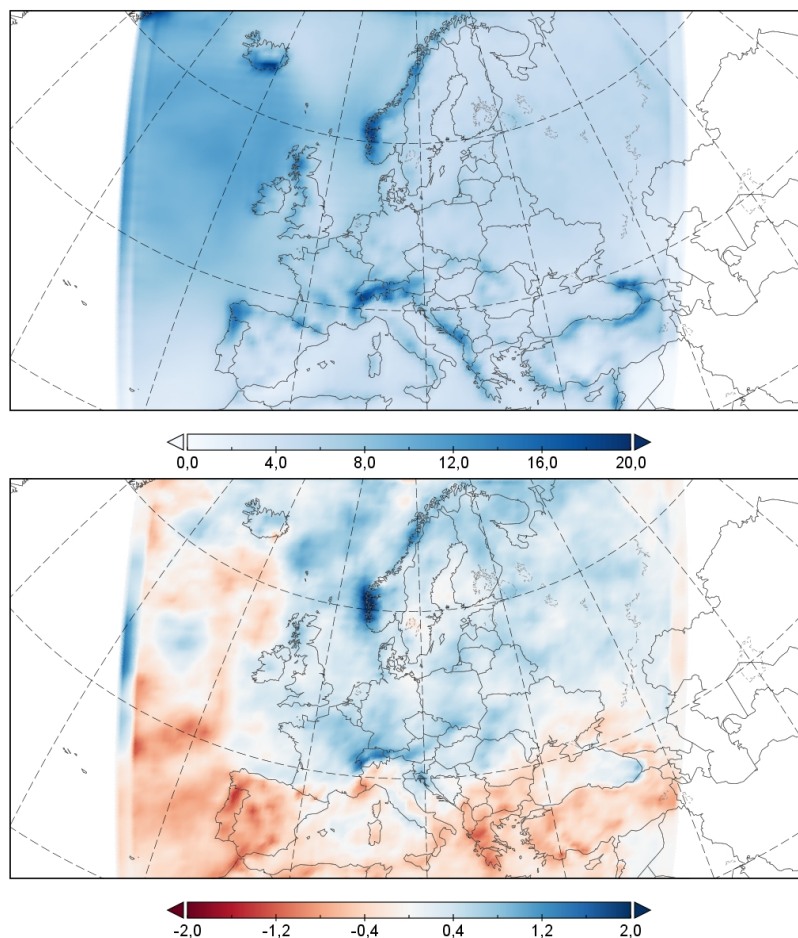


**Figure 6.** Relative contribution of each cause of PD by European region for the PRE-P2010 and the FUT-P2050.

It is noticeable that for COPD, LRI and LC, the three studied regions contribute with a similar percentage to total PD over Europe (around 30%), which is indicative that the COPD, LRI and LC ratios are much higher over Western Europe (30% of European population) and Central Europe (19% of total European population) than over Eastern Europe (51% of population).

### 3.3 Isolating the climate penalty effect over premature deaths over Europe (FUT-P2010)

In this Section the role of the climate penalty is assessed by comparing two simulations differing only in the radiative forcing (1991-2010 vs. RCP8.5 2031-2050) (hence the two model runs FUT-P2010 vs. PRE-2010). For that, population has been kept constant at 2010 levels. The results presented in Table 5 indicate that the climate penalty has a very limited impact on air pollution-related future premature deaths over Europe (Figure 8). When comparing the total incidence of PD in the PRE-P2010 and FUT-P2010 cases, only a +0.2% increase is projected in the future scenario. However, this increase is uneven among different regions of Europe. While total PD per 100,000 adults (Table 4) increase in Western Europe by nearly 2% and in Eastern Europe by 0.2%, the mortality decreases by -0.8% over Central Europe. These variations in the distribution of PM<sub>2.5</sub> in Europe, considering a future RCP8.5 scenario, is mainly due to changes in precipitation [\(Figure 7\)](#).



**Figure 7.** (Top) Present precipitation ( $\text{mm day}^{-1}$ ) for the 1991-2010 period. (Bottom) Differences ( $\text{mm day}^{-1}$ ) in future (RCP8.5, 2031-2050) minus present (1991-2010) precipitation.

The decrease in rainfall in southern Europe (e.g. Jiménez-Guerrero et al. (2012); Domínguez-Morueco et al. (2019)) and the increase in rainfall in northern and central Europe projected for this scenario (e.g. Jiménez-Guerrero et al. (2013b); Jacob et al. (2018)) affect the wet scavenging of particles  $\tau$  (with a neglected influence of a modified photochemistry in the levels of particles). Wet scavenging represents, in this sense, the fundamental process for the removal of particles from the atmosphere  
 265 (e.g. Ohata et al. (2016); de Bruine et al. (2018); Hou et al. (2018)).

It should be highlighted that the cause of premature mortality most sensitive to changes in PM<sub>2.5</sub> is CEV+IHD (Figure 8), as also found by previous studies (Pope et al., 2009, 2020). The spatial patterns of change of this latter endpoint condition the patterns of total variation of PD by all causes. IHD mortality rates increase by nearly 3% from 424,000 (95% CI 356,100-487,600) to 425,000 (95% CI 357,000-488,800) in the FUT-P2010 case. On the other hand, COPD, LC, LRI and Other NCD

**Table 5.** Estimated annual premature deaths ( $PD \times 10^3$ ) associated to fine particules for total population in all scenarios covered (in thousands).

	Present	PRE-P2010	RCP8.5	FUT-P2010	RCP8.5	REN80-P2010	RCP8.5	FUT-P2050	RCP8.5	REN80-P2050
	$PD \times 10^3$	PD/100,000 h.	$PD \times 10^3$	PD/100,000 h.	$PD \times 10^3$	PD/100,000 h.	$PD \times 10^3$	PD/100,000 h.	$PD \times 10^3$	PD/100,000 h.
COPD	27.7 (22.4-32.7)	4.9 (4.0-5.8)	27.8 (22.5-32.8)	4.9 (4.0-5.8)	26.5 (21.5-31.3)	4.7 (3.8-5.5)	52.2 (42.3-61.6)	8.6 (7.0-10.1)	49.8 (40.3-58.8)	8.2 (6.6-9.7)
LC	47.6 (40.0-54.7)	74.7 (62.7-85.9)	47.7 (40.1-54.9)	74.8 (62.8-86.0)	45.4 (38.1-52.2)	71.8 (60.3-82.6)	68.7 (57.7-79.0)	121.7 (102.1-139.8)	65.3 (54.9-75.1)	116.8 (98.1-134.3)
LRI	42.4 (35.6-48.8)	8.4 (7.1-9.7)	42.6 (35.8-49.0)	8.4 (7.1-9.7)	40.0 (33.6-46.0)	8.0 (6.7-9.2)	71.1 (59.7-81.8)	11.4 (9.6-13.1)	67.0 (56.3-77.1)	10.8 (9.1-12.4)
CEV	86.9 (73.0-99.9)	15.3 (12.9-17.6)	87.1 (73.2-100.2)	15.3 (12.9-17.6)	81.8 (68.7-94.1)	14.4 (12.1-16.6)	151.6 (127.3-174.3)	25.1 (21.1-28.9)	142.4 (119.6-163.8)	23.5 (19.7-27.0)
IHD	424.1 (356.2-487.7)	7.5 (6.3-8.6)	424.5 (356.5-488.1)	7.5 (6.3-8.6)	407.5 (342.3-468.6)	7.0 (5.9-8.1)	736.0 (618.2-846.4)	11.8 (9.9-13.6)	706.3 (593.3-812.2)	11.1 (9.3-12.8)
Other NCD	265.6 (140.8-329.3)	46.8 (24.8-58.0)	266.2 (141.1-330.1)	46.9 (24.9-58.2)	260.3 (138.0-322.8)	45.9 (24.3-56.9)	455.8 (241.6-565.2)	75.8 (40.2-94.0)	448.5 (237.7-556.1)	74.2 (39.3-92.0)
All endpoints	894.3 (724.4-1,055.3)	167.5 (135.7-197.7)	895.8 (725.6-1,057.0)	157.8 (127.8-186.2)	861.5 (697.8-1,016.6)	151.8 (123.0-179.1)	1,535.4 (1,243.7-1,811.8)	253.9 (205.7-299.6)	1,479.3 (1,212.8-1,766.8)	244.7 (198.2-288.7)

(PRE-P2010): PD for the present case; (FUT-P2010): PD for the future scenario with population at 2010 levels; (REN80-P2010): PD for the future mitigation scenario with population at 2010 levels; (FUT-P2050): PD for the future scenario with population projections of UN for 2050; (REN80-P2010): PD for the future mitigation scenario with population at 2010 levels; (REN80-P2050): PD for the future mitigation scenario with population projections of UN for 2050.

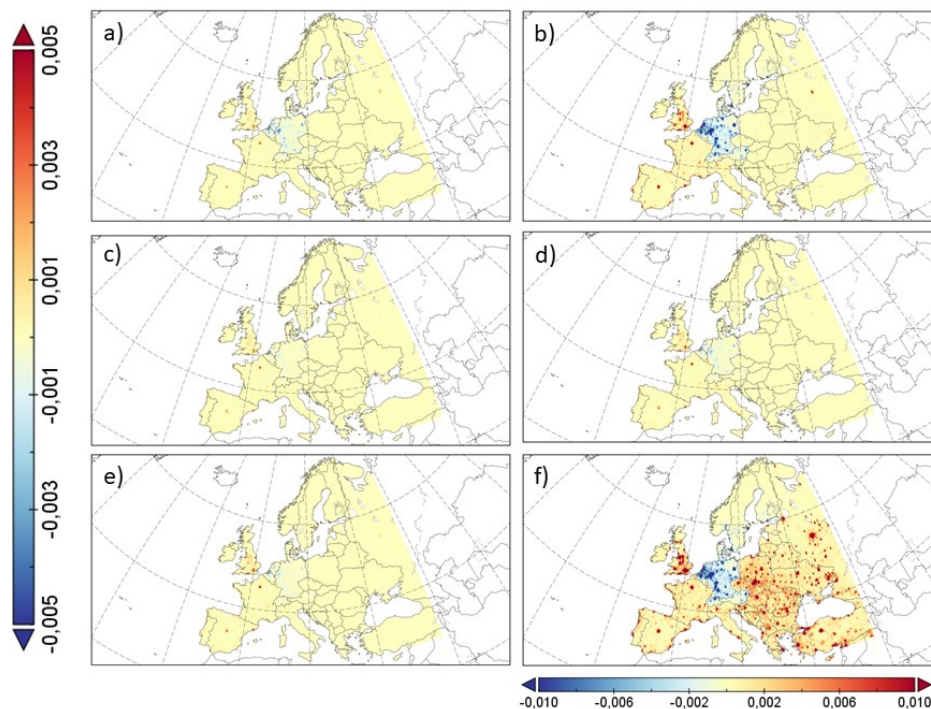
270 barely change, since these causes are not too much sensitive to PM<sub>2.5</sub> concentration as IHD, ~~as~~ (Figure 9), as also discussed in Tarín-Carrasco et al. (2021).

### 3.4 Estimation of future premature deaths over Europe with a projected population (FUT-P2050)

The previous Section analyzed the contribution of climate change alone (RCP8.5 scenario, keeping population constant) to PD over Europe. Here, the impact of projected changes in the population following UN2050 data is added to climate penalty. 275 This scenario is denoted as FUT-P2050. As shown in Figure 10 the highest mortality incidence in FUT-P2050 is related to IHD, which has an overspread spatial pattern in the target domain. For FUT-P2050, the projected PD incidence increases to 1,540,000 (95% CI 1,247,000-1,818,000), with Eastern Europe being the most affected region, with almost half of the excess mortality rate over Europe (Table 4).

The premature mortality burdens associated with exposure to ambient PM<sub>2.5</sub> in Europe are expected to increase by 72% in 280 the year 2050 when comparing the PRE-P2010 and FUT-P2050 simulations, from 894,000 (95% CI 723,900-1,055,400) PD per year in 1990-2010 to 1,540,000 (95% CI 1,247,000-1,818,000) PD per year in 2031-2050 (Table 5). The leading cause of PM<sub>2.5</sub>-related mortality is IHD for both present and future cases: 424,000 (95% CI 356,200-487,800) PD per year, which increases by 74%, to 736,000 (95% CI 618,200-846,400) PD per year in the FUT-P2050 case. IHD is followed by Other-NCD, with 265,600 (95% CI 140,800-329,300) PD per year increasing by 73%, to 458,400 (95% CI 243,000-568,400) PD per year 285 in the FUT-P2050 case.

When assessing the relative contribution of each endpoint to the total PD burden both in PRE-P2010 and FUT-P2050, Figure 6 indicates that future climate change and the modification of population by the year 2050 will barely change the relative percentage of each mortality cause by region, so discussion is analogous to that presented in Section 3.2. The only



**Figure 8.** Differences between PD over Europe for the FUT-PRE2010 and the PRE-P2010 case for different endpoints: (a) CEV, (b) IHD, (c) COPD, (d) LC, (e) LRI and (f) all endpoints. All units are PD/km<sup>2</sup>.

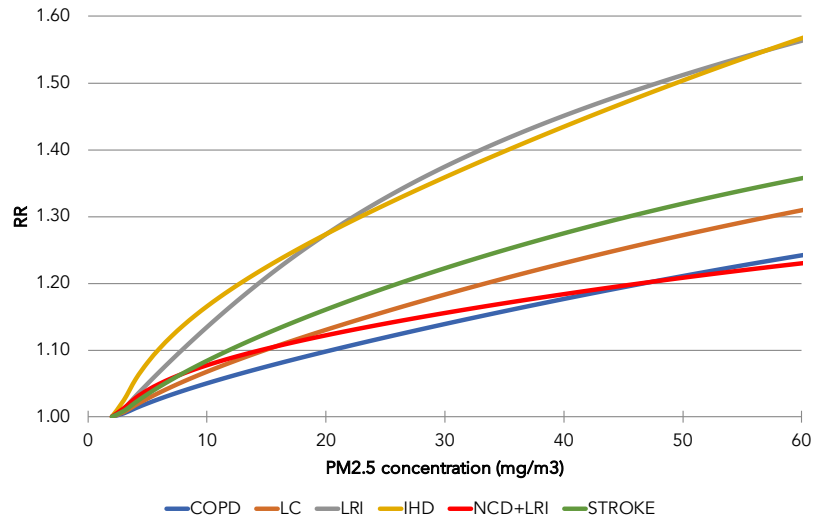
exception is for LRI, which experiences several important changes between PRE-P2010 and FUT-P2050 (increasing from a  
 290 28% contribution in Western Europe for the present to 36% over this same area in the FUT-P2050 case; and from 35% in  
 PRE-P2010 over Eastern Europa to 46% in FUT-P2050 over this same domain).

### 3.5 Effect of the future mitigation scenario (REN80-P2010 and REN80-P2050)

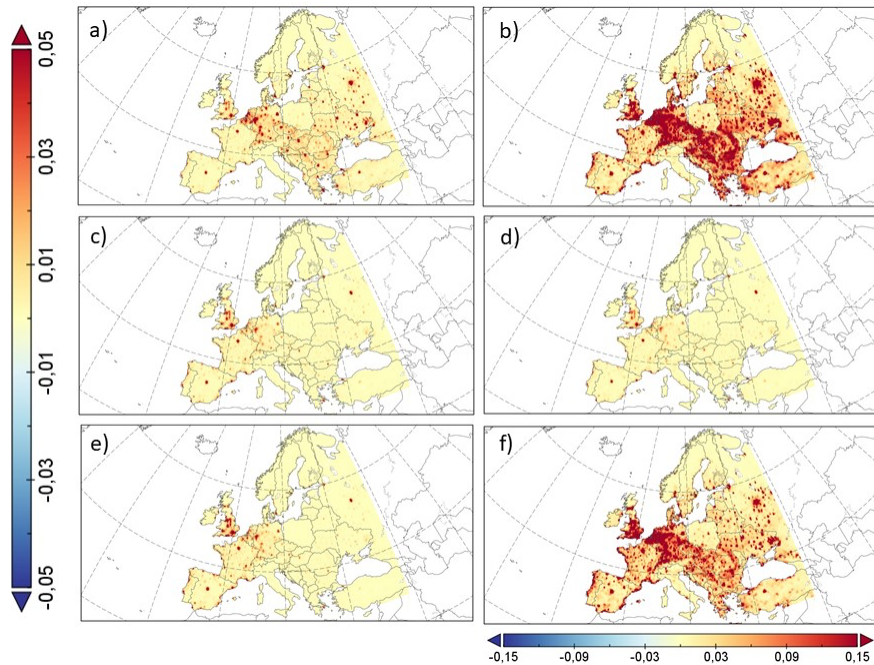
This case takes into account the climate change action (RCP8.5, 2031-2050) together with the emission scenario where it  
 is assumed that 80% energy production over Europe is provided by renewables sources (REN80). For the analysis of this  
 295 impact, a scenario where the population has been kept constant at 2010 levels (REN80-P2010) and a second scenario where  
 the population dynamics has been taken into account (REN80-P2050) is analyzed below.

Figure 11 shows that in REN80-P2010 the PD incidence will be lower than in the REN80-P2050 scenario, which considers  
 changes in the population, as previously discussed for the FUT-P2010 and ~~FUT-2050~~FUT-P2050. Large central-Europe cities  
 are the areas where the PD incidence will increase most with a changing population (increases in the density and age of  
 300 population, as previously shown in Figure 1). A summary of the excess mortality incidence in all scenarios is presented in  
 Table 4.



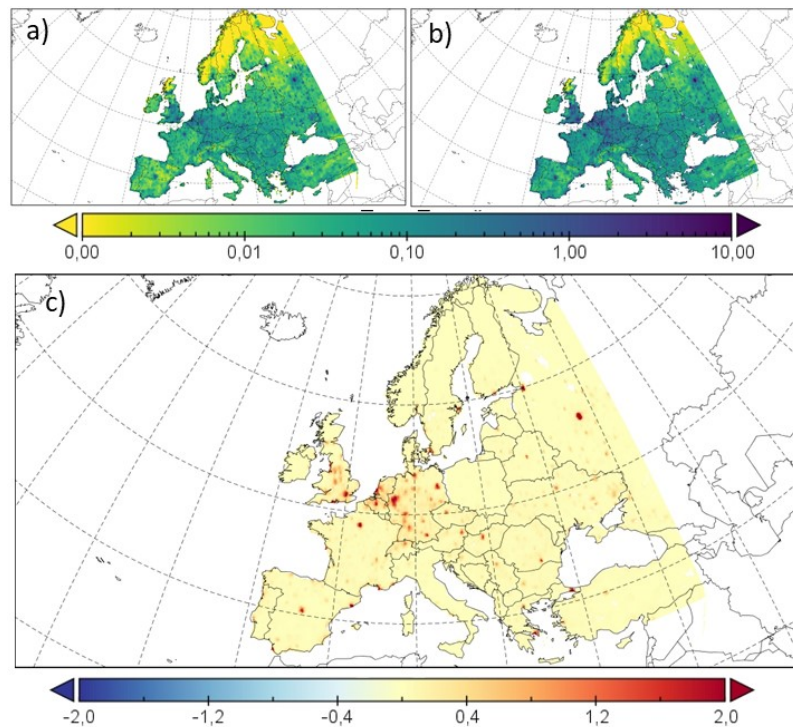


**Figure 9.** Shape of risk ratio functions for the target endpoints depending on PM<sub>2.5</sub> concentration ( $\mu\text{g m}^{-3}$ ).



**Figure 10.** Differences in future premature mortality for the future scenario considering the population dynamics for 2050 (FUT-P2050). Endpoints considered are (a) CEV, (b) IHD, (c) COPD, (d) LC, (e) LRI and (f) All endpoints. All units in PD/km<sup>2</sup>.

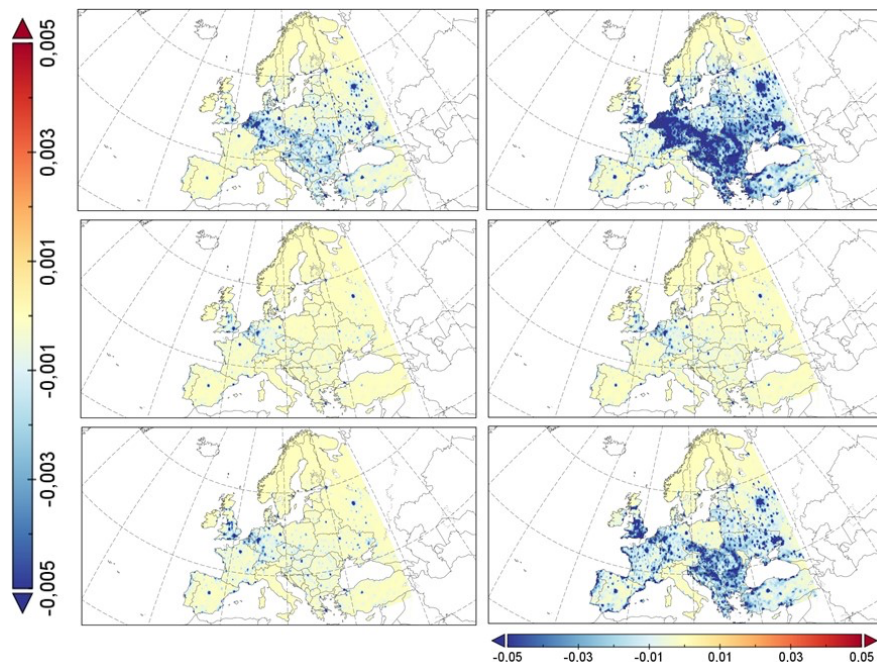
The incidence of all the mortality causes studied decreases in the future mitigation scenarios (REN80-P2010 and REN80-P2050) when compared to the corresponding FUT-P2010 and ~~FUT-2050~~ FUT-P2050 simulations, respectively, by 4%. This decrease is especially found in central and eastern regions regarding the number of total PD (Table 4). This is explained by the fact that an important part of the anthropogenic emissions of PM<sub>2.5</sub> over Europe is associated to power generation (Crippa et al., 2019). Precisely, this contribution is 15.1% here. Table 5 indicates that CEV and IHD present the largest relative reductions of the incidence ratio of PD in the REN80-P2050 scenario with respect to FUT-P2050 (-6% changes in annual PD). COPD and LRI show a -5% change between both scenarios, Figure 12), with around -4% cases less for the renewable scenario for LC. Other NCD decreases by -2% in the REN80 simulations. Other NCD and CEV are the endpoints experiencing the largest improvement in the mitigation scenario, with a decrease in annual excess PD of 30,000 (95% CI 15,900 - 37,200) and 10,000 (95% CI 5,300 - 12,400), respectively.



**Figure 11.** Future (2031-2050) premature deaths for (a) the mitigation scenario keeping constant the present population (REN80-P2010) and (b) mitigation scenario considering the population projections for 2050 (REN80-P2050). (c) Differences between both future scenarios (REN80-P2050 minus REN80-P2010). All units in PD/km<sup>2</sup>.

### 3.5.1 Effect of the projected population for 2050

Last, this section tries to shed some light on the effect of the changes in the population projected (mainly, the aging of the European population, since almost half all the PD over Europe occurs in the age group of 80+). A comparison of the mortality



**Figure 12.** Differences in future premature mortality for the future scenario [P2050-FUT-P2050](#) and the mitigation scenario (REN80-P2050), both considering the population projections for 2050. Endpoints considered are (a) CEV, (b) IHD, (c) COPD, (d) LC, (e) LRI and (f) All endpoints. All units in Premature Deaths (PD) per km<sup>2</sup>.

315 burden for each age group considered among the different future scenarios is shown in the Supplementary Material (Table SM2).

In particular, the effect of the aging of population is clearly noticeable when comparing the FUT-P2010 and the FUT-P2050 scenarios, differing only in the population taking as basis for the estimation of PD over Europe. While the number of PD decreases in FUT-P2050 for younger age ranges, it generally increases for people over 65 years. For instance, the number of PD per 100,000 habitants in the 65-69 age range increases from 237 to 248 deaths/100,000 habitants; and the same statistics moves from 1037 to 1044 in the 80+ age range. This fact could be ascribed to the increase in the number of population falling within this group in the UN 2050 projection (Figure 1). Conversely, for younger age ranges, mortality will decrease in the future as population does. For instance, the 30-34 age range moves from 14 PD/100,000 habitants in the FUT-P2010 case to 13 PD/100,000 habitants in FUT-P2050. Overall, the total number of premature deaths will increase from 158 to 254 PD/100,000 (+61%) as a consequence of the aging of the population, despite a global decrease of -0.2% in total population over Europe is projected by the UN for the year 2050.

With respect to individual endpoints, the PD incidence caused by LRI keeps a similar ratio until the group 80+, when the incidence increases considerably (Figure 13). Hence, LRI is not strongly sensitive to the aging of population, but to the modifications in the number of dwellers. LRI increases from 42,000 (95% CI 35,200-48,300) in PRE-P2010 to 71,000 (95%

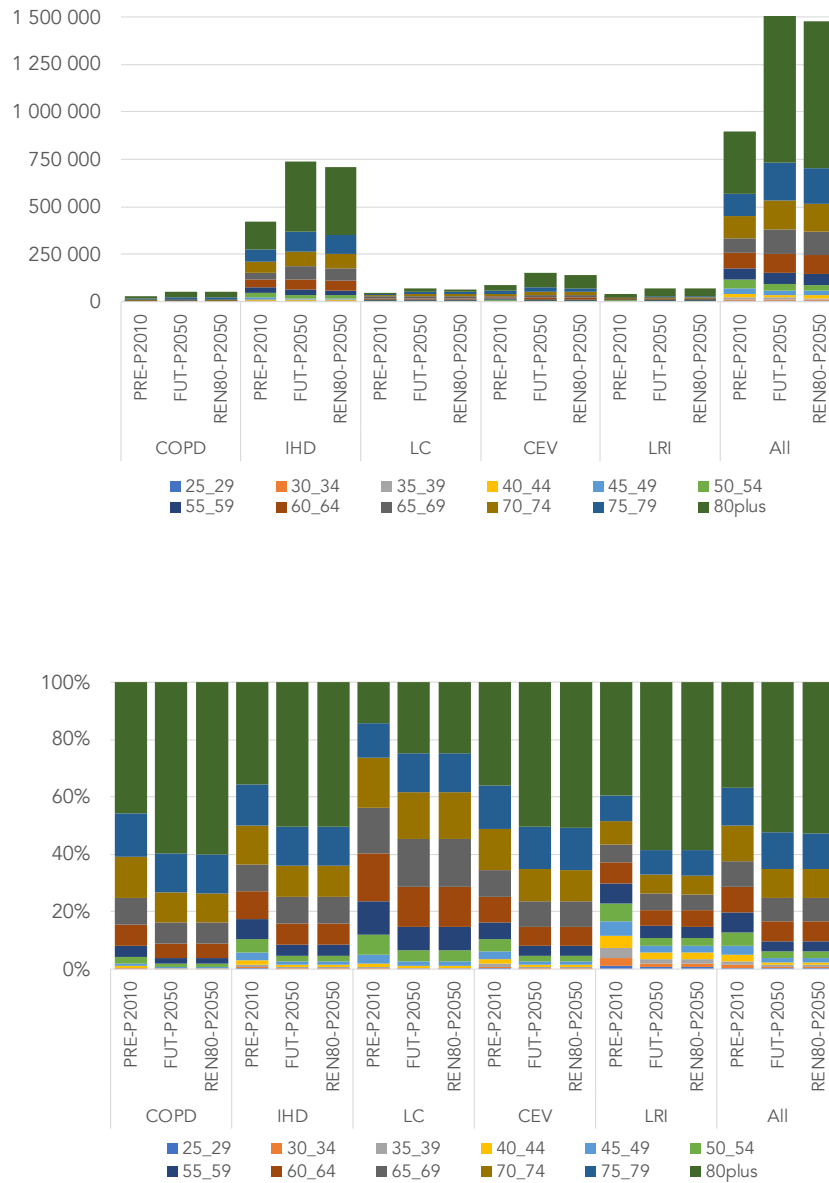
330 CI 59,500-81,700) PD per year in the FUT-P2050 case. Also, LC results are to be highlighted (48,000 PD per year, 95% CI  
40,300-55,200 in PRE-P2010 vs. 69,000 PD per year, 95% CI 57,900-79,400; associated to PM2.5 air pollution in the FUT-  
P2050 case). For this cause, the number of deaths increases with the age up to a maximum for the age range 70-74. From there,  
the number of deaths decreases again. ~~This fact could be ascribed to the fact that the impacts of lung cancer in mortality is not  
immediate, as in other endpoints covered such as IHD or CEV. Henceforth, people affected by lung cancer at such advanced~~  
335 ~~age may die from another cause instead of LC.~~ Finally, it is also noteworthy that PD in adults (25 until 60 years) decreases in  
the FUT-P2050 case for all the mortality causes studied. From 60 years and elder, PD increase in comparison with the present  
period due to the aging of the population in the future. For this reason, a higher incidence is estimated for aged people.

Hence, the differences between PRE-P2010 and FUT-P2010/P2050 must be sought in the differences among the risk ratios  
estimated by Equation 2. RRs are higher for younger age groups, with the incidence of PD higher for older groups. The baseline  
340 values ( $y_0$ ) in Equation 2 are much higher for advanced ages, since elder people presents higher baseline mortality rates than  
younger dwellers.

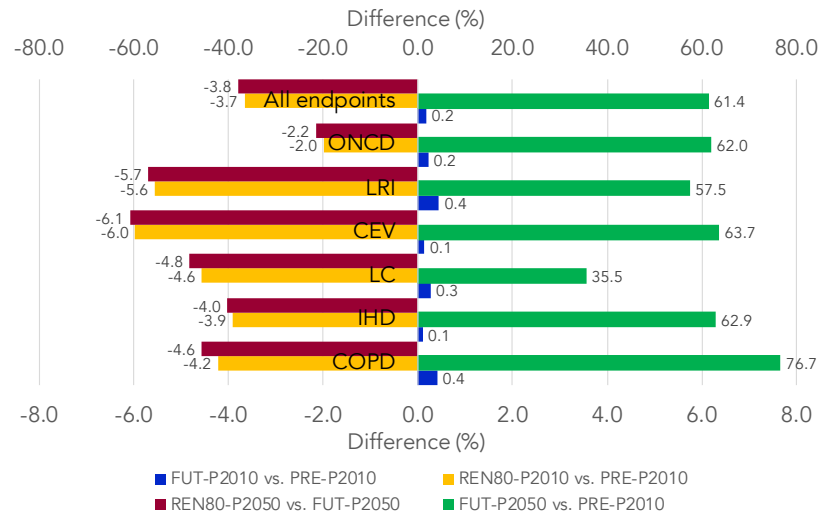
#### 4 Summary and Conclusions

This contribution has estimated the incidence of excess premature mortality associated to fine particulate matter for different  
present and future scenarios. The non-linear methodology employed depicted 894,000 (95% CI 723,900-1,055,400) annual  
345 premature deaths (PD) over Europe during the 1991-2010 period. The most important conclusions can be summarized as:

1. Effect of climate penalty: when the effect of climate penalty under the RCP8.5 scenario is isolated, the total prema-  
ture mortality could be increased by around 2,000 PD (+0.2% in the FUT-P2010 vs. PRE-P2010 case), increasing from  
894,000 (95% CI 723,900-1,055,400) to 896,000 (95% CI 725,500-1,057,800) over the target domain of Europe. Hence-  
forth, the effect of climate penalty is limited due to the compensating effects of increased mortality over Western (+1.3  
350 PD/100,000 h.) and Eastern Europe (+0.4 PD/100,000 h.), but a decrease over Central Europe (-2.2 PD/100,000 h.)  
(Figure 14) as a consequence of the reduced PM2.5 levels over this latter region under the RCP8.5 due to increased  
precipitation. In this sense, the domain of Central Europe (that includes northern and central areas of the continent)  
will benefit from the climatic effects, while the climate penalty will have an important effect in the domain of Western  
Europe, that includes southwestern European areas, where the concentrations of PM2.5 are projected to increase in the  
355 RCP8.5 scenario.
2. Impact of changes in the projected population: this modification, together with the climate penalty (FUT-P2050), leads  
to an excess premature mortality rate of 1,540,000 (95% CI 1,247,000-1,818,000), that is, an increase of 71.96% with  
respect to the present scenario and 71.67% to the future scenario in which only the climate penalty is considered. In  
contrast to the scenario in which population is kept constant (FUT-P2010), PD in central Europe in the future will  
360 increase because of the increase in the number of elderly population.



**Figure 13.** Present (PRE-P2010) and future (FUT-P2010/P2050) estimation of PD per pathology and age group over Europe (top, Total PD per year; bottom, %).



**Figure 14.** Relative differences for PD/100,000 inhabitants between the different scenarios for all the endpoints included in this work. FUT-P2010, FUT-P2050 and REN80-P2010 have been compared to the PRE-P2010 scenario, while the differences of the REN80-P2050 scenarios are estimated with respect to the FUT-P2050 scenario.

3. Impact of mitigation scenarios: The introduction of energy policies favoring renewable energies (80% of energy generated from renewable sources) could lead to a decrease of 60,000 (95% CI 48,600-70,900) annual PD in the year 2050 (1,480,000 PD per year, 95% CI 1,198,400-1,747,000, in the REN80-P2050 case, a decrease of -4%) in comparison with the FUT-P2050 case). So, mortality will importantly increase in the future scenario, but **trusting in renewable energy policies** establishing mitigation policies based in renewable energies could reduce the number of PD, being **easter Eastern** Europe the most benefited area.
- 365
4. Causes of premature mortality: With respect to the different endpoints, IHD is the most important cause of mortality over Europe (over 50% of total premature mortality), with ~ 424,000 (95% CI 356,200-487,800) annual PD in the present and the climate penalty scenario. When the change in 2050 population is considered, 736,000 (95% CI 618,200-846,400) annual PD are associated to this endpoint. This number reduces by 30,000 (95% CI 15,900 - 37,200) annual PD when the mitigation by renewables energy is considered. This results are caused by the high sensitivity of IHD to PM2.5. The second most important cause is CEV, with a ~ 10% contribution to the total premature mortality. LRI, LC and COPD represent a 5%, 4% and 3%, respectively, of the total premature mortality. Last, it should be highlighted that other NCD causes represents a 30% of the PD in Europe.
- 370

375 This study presents an added value with respect to previous contributions. For instance, different baseline information has been included depending on the area of Europe considered. In addition, the PD incidence by age-range has been detailed here, highlighting the increase in future mortality not only by climate penalty, but because of an aged European population projected for the year 2050. The aging of the population will increase the number of sensitive dwellers and thus, the PD burden over the European domain.

380 ~~Last~~, Despite the robust results obtained, a number of issues should be addressed in further contributions. For instance, the difficulty to estimate biomass burning emissions under future scenarios has led to neglected emissions from this sector, that can be an important source especially when PM<sub>2.5</sub> changes are less than 1.0  $\mu\text{g m}^{-3}$ .

Furthermore, it is important to bear in mind that these results are estimated for different future cases and scenarios. Henceforth, these estimations are associated to different variables that are sometimes difficult to project, such as the death rate; the levels of air pollution (which depend on emission scenarios and the human influence on emissions like traffic, power generation or agriculture); and the demographic trends (elderly population, urbanization processes). Some of these variables are hard to control, ~~but despite the uncertainties~~ and because of these difficulties the assumption of a constant baseline mortality rates ( $y_0$ ) has been taken into account for estimating present and future premature deaths. Despite the uncertainties and the limitations arising from a constant baseline mortality in all scenarios, it becomes clear from this contribution that governments and public entities must take project and clearly implement mitigation policies, which could improve air quality and therefore, the wellness of the European citizens.

*Data availability.* The data is available upon contacting the corresponding author (pedro.jimenezguerrero@um.es)

*Author contributions.* PT-C wrote the manuscript, with contributions from PJ-G. LP-P and PJ-G designed the air quality/climate experiments; P-TC conducted the numerical estimations of premature mortality, with the support of UI, PJ-G and CG. P-TC did the analysis, with the support of UI, CG, LP-P and PJ-G.

*Competing interests.* The authors declare no conflict of interest.

*Acknowledgements.* The authors are thankful to the WRF-Chem development community and the G-MAR research group at the University of Murcia for the fruitful scientific discussions.

*Financial support.* This study was supported by the Spanish Ministry of the Economy and Competitiveness/Agencia Estatal de Investigación and the European Regional Development Fund (ERDF/FEDER) through project ACEX-CGL2017-87921-R project. This work has

also received funding from the European Union's Horizon 2020 research and innovation programme under grant agreement No 820655 (EXHAUSTION). L. P.-P. was supported by the FPU14/05505 grant from the Spanish Ministry of Education, Culture and Sports.



## References

- Andersson, C., Bergstrom, R., and Johansson, C.: Population exposure and mortality due to regional background PM in Europe – Long-term simulations of source region and shipping contributions, *Atmospheric Environment*, 43, 3614 – 3620, <https://doi.org/10.1016/j.atmosenv.2009.03.040>, 2009.
- Anenberg, S. C., West, J. J., Yu, H., Chin, M., Schulz, M., Bergmann, D., Bey, I., Bian, H., Diehl, T., Fiore, A., Hess, P., Marmmer, E., Montanaro, V., Park, R., Shindell, D., Takemura, T., and Dentener, F.: Impacts of intercontinental transport of anthropogenic fine particulate matter on human mortality, *Air Quality, Atmosphere & Health*, 7, 369–379, <https://doi.org/10.1007/s11869-014-0248-9>, 2014.
- Balakrishnan, K., Dey, S., Gupta, T., Dhaliwal, R. S., Brauer, M., Cohen, A. J., Stanaway, J. D., Beig, G., Joshi, T. K., Aggarwal, A. N., Sabde, Y., Sadhu, H., Frostad, J., Causey, K., Godwin, W., Shukla, D. K., Kumar, G. A., Varghese, C. M., Muralaeddharan, P., Agrawal, A., Anjana, R. M., Bhansali, A., Bhardwaj, D., Burkart, K., Cercy, K., Chakma, J. K., Chowdhury, S., Christopher, D. J., Dutta, E., Furtado, M., Ghosh, S., Ghoshal, A. G., Glenn, S. D., Guleria, R., Gupta, R., Jeemon, P., Kant, R., Kant, S., Kaur, T., Koul, P. A., Krish, V., Krishna, B., Larson, S. L., Madhipatla, K., Mahesh, P. A., Mohan, V., Mukhopadhyay, S., Mutreja, P., Naik, N., Nair, S., Nguyen, G., Odell, C. M., Pandian, J. D., Prabhakaran, D., Prabhakaran, P., Roy, A., Salvi, S., Sambandam, S., Saraf, D., Sharma, M., Shrivastava, A., Singh, V., Tandon, N., Thomas, N. J., Torre, A., Xavier, D., Yadav, G., Singh, S., Shekhar, C., Vos, T., Dandona, R., Reddy, K. S., Lim, S. S., Murray, C. J. L., Venkatesh, S., and Dandona, L.: The impact of air pollution on deaths, disease burden, and life expectancy across the states of India: the Global Burden of Disease Study 2017, *The Lancet Planetary Health*, 3, e26–e39, [https://doi.org/10.1016/S2542-5196\(18\)30261-4](https://doi.org/10.1016/S2542-5196(18)30261-4), 2019.
- Brook, R. D., Rajagopalan, S., Pope, C. A., Brook, J. R., Bhatnagar, A., Diez-Roux, A. V., Holguin, F., Hong, Y., Luepker, R. V., Mittleman, M. A., Peters, A., Siscovick, D., Smith, S. C., Whitsel, L., and Kaufman, J. D.: Particulate Matter Air Pollution and Cardiovascular Disease, *Circulation*, 121, 2331–2378, <https://doi.org/10.1161/CIR.0b013e3181d8bec1>, 2010.
- Burnett, R., Chen, H., Szyszkowicz, M., Fann, N., Hubbell, B., Pope, C. A., Apte, J. S., Brauer, M., Cohen, A., Weichenthal, S., Coggins, J., Di, Q., Brunekreef, B., Frostad, J., Lim, S. S., Kan, H., Walker, K. D., Thurston, G. D., Hayes, R. B., Lim, C. C., Turner, M. C., Jerrett, M., Krewski, D., Gapstur, S. M., Diver, W. R., Ostro, B., Goldberg, D., Crouse, D. L., Martin, R. V., Peters, P., Pinault, L., Tjepkema, M., van Donkelaar, A., Villeneuve, P. J., Miller, A. B., Yin, P., Zhou, M., Wang, L., Janssen, N. A. H., Marra, M., Atkinson, R. W., Tsang, H., Quoc Thach, T., Cannon, J. B., Allen, R. T., Hart, J. E., Laden, F., Cesaroni, G., Forastiere, F., Weinmayr, G., Jaensch, A., Nagel, G., Concin, H., and Spadaro, J. V.: Global estimates of mortality associated with long-term exposure to outdoor fine particulate matter, *Proceedings of the National Academy of Sciences*, 115, 9592–9597, <https://doi.org/10.1073/pnas.1803222115>, 2018.
- Cohen, A. J., Brauer, M., Burnett, R., Anderson, H. R., Frostad, J., Estep, K., Balakrishnan, K., Brunekreef, B., Dandona, L., Dandona, R., Feigin, V., Freedman, G., Hubbell, B., Jobling, A., Kan, H., Knibbs, L., Liu, Y., Martin, R., Morawska, L., Pope, C. A., Shin, H., Straif, K., Shaddick, G., Thomas, M., van Dingenen, R., van Donkelaar, A., Vos, T., Murray, C. J. L., and Forouzanfar, M. H.: Estimates and 25-year trends of the global burden of disease attributable to ambient air pollution: an analysis of data from the Global Burden of Diseases Study 2015., *Lancet (London, England)*, 389, 1907–1918, [https://doi.org/10.1016/S0140-6736\(17\)30505-6](https://doi.org/10.1016/S0140-6736(17)30505-6), 2017.
- Crippa, M., Janssens-Maenhout, G., Guizzardi, D., Van Dingenen, R., and Dentener, F.: Contribution and uncertainty of sectorial and regional emissions to regional and global PM<sub>2.5</sub> health impacts, *Atmospheric Chemistry and Physics*, 19, 5165–5186, <https://doi.org/10.5194/acp-19-5165-2019>, 2019.
- de Bruine, M., Krol, M., van Noije, T., Le Sager, P., and Röckmann, T.: The impact of precipitation evaporation on the atmospheric aerosol distribution in EC-Earth v3.2.0, *Geoscientific Model Development*, 11, 1443–1465, <https://doi.org/10.5194/gmd-11-1443-2018>, <https://gmd.copernicus.org/articles/11/1443/2018/>, 2018.

- 440 Domínguez-Morueco, N., Ratola, N., Sierra, J., Nadal, M., and Jiménez-Guerrero, P.: Combining monitoring and modelling approaches for BaP characterization over a petrochemical area, *Science of The Total Environment*, 658, 424 – 438, <https://doi.org/10.1016/j.scitotenv.2018.12.202>, 2019.
- European Climate Foundation: Roadmap 2050: a practical guide to a prosperous, low-carbon Europe. Volume I. Technical and economic assessment, [www.roadmap2050.eu/project/roadmap-2050](http://www.roadmap2050.eu/project/roadmap-2050), 2010.
- 445 European Environment Agency: EMEP/EEA air pollutant emission Inventory Guidebook. Technical guidance to prepare national emission inventories. EEA Report No 13/2019, <https://doi.org/10.2800/293657>, <https://www.eea.europa.eu/publications/emep-eea-guidebook-2019>, 2019.
- European Environment Agency: Indicator assessment: Overview of electricity production and use in Europe, <https://www.eea.europa.eu/data-and-maps/indicators/overview-of-the-electricity-production-2/assessment-4>, 2020.
- 450 Evans, J., van Donkelaar, A., Martin, R. V., Burnett, R., Rainham, D. G., Birkett, N. J., and Krewski, D.: Estimates of global mortality attributable to particulate air pollution using satellite imagery, *Environmental Research*, 120, 33 – 42, <https://doi.org/https://doi.org/10.1016/j.envres.2012.08.005>, 2013.
- Fang, Y., Naik, V., Horowitz, L. W., and Mauzerall, D. L.: Air pollution and associated human mortality: the role of air pollutant emissions, climate change and methane concentration increases from the preindustrial period to present, *Atmospheric Chemistry and Physics*, 13, 1377–1394, <https://doi.org/10.5194/acp-13-1377-2013>, 2013.
- 455 Fang, Y., Mauzerall, D. L., Liu, J., Fiore, A. M., and Horowitz, L. W.: Impacts of 21st century climate change on global air pollution-related premature mortality, *Climatic Change*, 121, 239–253, <https://doi.org/10.1007/s10584-013-0847-8>, 2013a.
- Ford, B. and Heald, C. L.: Exploring the uncertainty associated with satellite-based estimates of premature mortality due to exposure to fine particulate matter, *Atmospheric Chemistry and Physics*, 16, 3499–3523, <https://doi.org/10.5194/acp-16-3499-2016>, 2016.
- 460 Geels, C., Andersson, C., Hänninen, O., Lansø, A., Schwarze, P., Skjøth, C., and Brandt, J.: Future Premature Mortality Due to O<sub>3</sub>, Secondary Inorganic Aerosols and Primary PM in Europe ? Sensitivity to Changes in Climate, Anthropogenic Emissions, Population and Building Stock, *International Journal of Environmental Research and Public Health*, 12, 2837–2869, <https://doi.org/10.3390/ijerph120302837>, <http://www.mdpi.com/1660-4601/12/3/2837>, 2015.
- Giorgetta, M., Jungclaus, J., Reick, C., Legutke, S., Brovkin, V., Crueger, T., Esch, M., Fieg, K., Glushak, K., Gayler, V., Haak, H., Hollweg, H.-D., Kinne, S., Kornbluh, L., Matei, D., Mauritsen, T., Mikolajewicz, U., Muller, U., Notz, D., Raddatz, T., Rast, S., Reckner, E., Salzmann, M., Schmidt, H., Schunur, R., Segsneider, J., Six, K., Stockhouse, M., Wegner, J., Widmann, H., Wieners, K.-H., Claussen, M., Marotzke, J., and Stevens, B.: Forcing data for Regional Climate Models based on the MPI-ESM-LR model of the Max Planck Institute for Meteorology (MPI-M): The CMIP5 historical experiment., World Data Center for Climate (WDCC) at DKRZ, [https://doi.org/10.1594/WDCC/RCM\\_CMIP5\\_historical-LR](https://doi.org/10.1594/WDCC/RCM_CMIP5_historical-LR), 2012a.
- 465 Giorgetta, M., Jungclaus, J., Reick, C., Legutke, S., Brovkin, V., Crueger, T., Esch, M., Fieg, K., Glushak, K., Gayler, V., Haak, H., Hollweg, H.-D., Kinne, S., Kornbluh, L., Matei, D., Mauritsen, T., Mikolajewicz, U., Muller, U., Notz, D., Raddatz, T., Rast, S., Roeckner, E., Salzmann, M., Schmidt, H., Schunur, R., Segsneider, J., Six, K., Stockhouse, M., Wegner, J., Widmann, H., Wieners, K.-H., Claussen, M., Marotzke, J., and Stevens, B.: Forcing data for Regional Climate Models based on the MPI-ESM-LR model of the Max Planck Institute for Meteorology (MPI-M): The CMIP5 rcp85 experiment., World Data Center for Climate (WDCC) at DKRZ, [https://doi.org/10.1594/WDCC/RCM\\_CMIP5\\_rcp85-LR](https://doi.org/10.1594/WDCC/RCM_CMIP5_rcp85-LR), 2012b.
- 470 Giorgetta, M., Jungclaus, J., Reick, C., Legutke, S., Brovkin, V., Crueger, T., Esch, M., Fieg, K., Glushak, K., Gayler, V., Haak, H., Hollweg, H.-D., Kinne, S., Kornbluh, L., Matei, D., Mauritsen, T., Mikolajewicz, U., Muller, U., Notz, D., Raddatz, T., Rast, S., Roeckner, E., Salzmann, M., Schmidt, H., Schunur, R., Segsneider, J., Six, K., Stockhouse, M., Wegner, J., Widmann, H., Wieners, K.-H., Claussen, M., Marotzke, J., and Stevens, B.: Forcing data for Regional Climate Models based on the MPI-ESM-LR model of the Max Planck Institute for Meteorology (MPI-M): The CMIP5 rcp85 experiment., World Data Center for Climate (WDCC) at DKRZ, [https://doi.org/10.1594/WDCC/RCM\\_CMIP5\\_rcp85-LR](https://doi.org/10.1594/WDCC/RCM_CMIP5_rcp85-LR), 2012b.
- 475 Grell, G. A., Peckham, S. E., Schmitz, R., McKeen, S. A., Frost, G., Skamarock, W. C., and Eder, B.: Fully coupled online chemistry within the WRF model, *Atmospheric Environment*, 39, 6957 – 6975, <https://doi.org/https://doi.org/10.1016/j.atmosenv.2005.04.027>, 2005.

- 480 Hamra, G. B., Guha, N., Cohen, A., Laden, F., Raaschou-Nielsen, O., Samet, J. M., Vineis, P., Forastiere, F., Saldiva, P., Yorifuji, T., and Loomis, D.: Outdoor particulate matter exposure and lung cancer: a systematic review and meta-analysis, *Environmental health perspectives*, 122, 906–911, <https://doi.org/10.1289/ehp/1408092>, 2014.
- Hong, C., Zhang, Q., Zhang, Y., Davis, S. J., Zhang, X., Tong, D., Guan, D., Liu, Z., and He, K.: Weakening aerosol direct radiative effects mitigate climate penalty on Chinese air quality, *Nature Climate Change*, 10, 845–850, <https://doi.org/10.1038/s41558-020-0840-y>, 2020.
- 485 Hou, P., Wu, S., McCarty, J. L., and Gao, Y.: Sensitivity of atmospheric aerosol scavenging to precipitation intensity and frequency in the context of global climate change, *Atmospheric Chemistry and Physics*, 18, 8173–8182, <https://doi.org/10.5194/acp-18-8173-2018>, <https://www.atmos-chem-phys.net/18/8173/2018/>, 2018.
- Im, U., Bianconi, R., Solazzo, E., Kioutsioukis, I., Badia, A., Balzarini, A., Baró, R., Bellasio, R., Brunner, D., Chemel, C., Curci, G., Denier van der Gon, H., Flemming, J., Forkel, R., Giordano, L., Jiménez-Guerrero, P., Hirtl, M., Hodzic, A., Honzak, L., Jorba, O., Knote, C., Makar, P. A., Manders-Groot, A., Neal, L., Pérez, J. L., Pirovano, G., Pouliot, G., San Jose, R., Savage, N., Schroder, W., Sokhi, R. S., Syrakov, D., Torian, A., Tuccella, P., Wang, K., Werhahn, J., Wolke, R., Zabkar, R., Zhang, Y., Zhang, J., Hogrefe, C., and Galmarini, S.: 490 Evaluation of operational online-coupled regional air quality models over Europe and North America in the context of AQMEII phase 2. Part II: Particulate matter, *Atmospheric Environment*, 115, 421–441, <https://doi.org/https://doi.org/10.1016/j.atmosenv.2014.08.072>, <https://www.sciencedirect.com/science/article/pii/S1352231014006839>, 2015.
- 495 Im, U., Brandt, J., Geels, C., Hansen, K. M., Christensen, J. H., Andersen, M. S., Solazzo, E., Kioutsioukis, I., Alyuz, U., Balzarini, A., Baro, R., Bellasio, R., Bianconi, R., Bieser, J., Colette, A., Curci, G., Farrow, A., Flemming, J., Fraser, A., Jimenez-Guerrero, P., Kitwiroon, N., Liang, C.-K., Nopmongcol, U., Pirovano, G., Pozzoli, L., Prank, M., Rose, R., Sokhi, R., Tuccella, P., Unal, A., Vivanco, M. G., West, J., Yarwood, G., Hogrefe, C., and Galmarini, S.: Assessment and economic valuation of air pollution impacts on human health over Europe and the United States as calculated by a multi-model ensemble in the framework of AQMEII3, *Atmospheric Chemistry and Physics*, 18, 5967–5989, <https://doi.org/10.5194/acp-18-5967-2018>, 2018.
- 500 Jacob, D., Kotova, L., Teichmann, C., Sobolowski, S. P., Vautard, R., Donnelly, C., Koutroulis, A. G., Grillakis, M. G., Tسانis, I. K., Damm, A., Sakalli, A., and van Vliet, M. T. H.: Climate Impacts in Europe Under +1.5°C Global Warming, *Earth’s Future*, 6, 264–285, <https://doi.org/10.1002/2017EF000710>, 2018.
- 505 Jacob, D., Teichmann, C., Sobolowski, S., Katragkou, E., Anders, I., Belda, M., Benestad, R., Boberg, F., Buonomo, E., Cardoso, R. M., Casanueva, A., Christensen, O. B., Christensen, J. H., Coppola, E., De Cruz, L., Davin, E. L., Dobler, A., Domínguez, M., Fealy, R., Fernandez, J., Gaertner, M. A., García-Díez, M., Giorgi, F., Gobiet, A., Goergen, K., Gómez-Navarro, J. J., Alemán, J. J. G., Gutiérrez, C., Gutiérrez, J. M., Guttler, I., Haensler, A., Halenka, T., Jerez, S., Jiménez-Guerrero, P., Jones, R. G., Keuler, K., Kjellström, E., Knist, S., Kotlarski, S., Maraun, D., van Meijgaard, E., Mercogliano, P., Montávez, J. P., Navarra, A., Nikulin, G., de Noblet-Ducoudré, N., Panitz, H.-J., Pfeifer, S., Piazza, M., Pichelli, E., Pietikäinen, J.-P., Prein, A. F., Preuschmann, S., Rechid, D., Rockel, B., Romera, R., Sánchez, E., Sieck, K., Soares, P. M. M., Somot, S., Srncic, L., Sørland, S. L., Termonia, P., Truhetz, H., Vautard, R., Warrach-Sagi, K., and Wulfmeyer, V.: Regional climate downscaling over Europe: perspectives from the EURO-CORDEX community, *Regional Environmental Change*, 20, 510 51, <https://doi.org/10.1007/s10113-020-01606-9>, 2020.
- Jacob, D. J. and Winner, D. A.: Effect of climate change on air quality, *Atmospheric Environment*, 43, 51 – 63, <https://doi.org/https://doi.org/10.1016/j.atmosenv.2008.09.051>, *atmospheric Environment - Fifty Years of Endeavour*, 2009.
- 515 Jerez, S., López-Romero, J. M., Turco, M., Lorente-Plazas, R., Gómez-Navarro, J. J., Jiménez-Guerrero, P., and Montávez, J. P.: On the Spin-Up Period in WRF Simulations Over Europe: Trade-Offs Between Length and Seasonality, *Journal of Advances in Modeling Earth Systems*, 12, e2019MS001945, <https://doi.org/10.1029/2019MS001945>, 2020.

- Jerez, S., Palacios-Peña, L., Gutiérrez, C., Jiménez-Guerrero, P., López-Romero, J. M., Pravia-Sarabia, E., and Montávez, J. P.: Sensitivity of surface solar radiation to aerosol–radiation and aerosol–cloud interactions over Europe in WRFv3.6.1 climatic runs with fully interactive aerosols, *Geophysical Model Developments*, 14, 1533–1551, <https://doi.org/doi:10.5194/gmd-14-1533-2021>, <https://gmd.copernicus.org/articles/14/1533/2021/>, 2021.
- 520 Jerez, S., Jiménez-Guerrero, P., Montávez, J. P., and Trigo, R. M.: Impact of the North Atlantic Oscillation on European aerosol ground levels through local processes: a seasonal model-based assessment using fixed anthropogenic emissions, *Atmospheric Chemistry and Physics*, 13, 11 195–11 207, <https://doi.org/doi:10.5194/acp-13-11195-2013>, 2013.
- Jiménez-Guerrero, P., Montávez, J. P., Gómez-Navarro, J. J., Jerez, S., and Lorente-Plazas, R.: Impacts of climate change on ground level gas-phase pollutants and aerosols in the Iberian Peninsula for the late XXI century, *Atmospheric Environment*, 55, 483 – 495, <https://doi.org/10.1016/j.atmosenv.2012.02.048>, 2012.
- 525 Jiménez-Guerrero, P., Gómez-Navarro, J. J., Baró, R., Lorente, R., Ratola, N., and Montávez, J. P.: Is there a common pattern of future gas-phase air pollution in Europe under diverse climate change scenarios?, *Climatic Change*, 121, 661–671, <https://doi.org/10.1007/s10584-013-0944-8>, 2013a.
- Jiménez-Guerrero, P., Jerez, S., Montávez, J. P., and Trigo, R. M.: Uncertainties in future ozone and PM10 projections over Europe from a regional climate multiphysics ensemble, *Geophysical Research Letters*, 40, 5764–5769, <https://doi.org/10.1002/2013GL057403>, 2013b.
- 530 Kirtman, B., Power, S. B., Adedoyin, A. J., Boer, G. J., Bojariu, R., Camilloni, I., Doblas-Reyes, F., Fiore, A. M., Kimoto, M., Meehl, G., Prather, M., Sarr, A., Schär, C., Sutton, R., van Oldenborgh, G. J., Vecchi, G., and Wang, H. J.: Near-term Climate Change: Projections and Predictability, in: *Climate Change 2013 - The Physical Science Basis*, edited by Intergovernmental Panel on Climate Change, vol. 9781107057, pp. 953–1028, Cambridge University Press, Cambridge, <https://doi.org/10.1017/CBO9781107415324.023>, [https://www.cambridge.org/core/product/identifier/CBO9781107415324A031/type/book/\\_part](https://www.cambridge.org/core/product/identifier/CBO9781107415324A031/type/book/_part), 2013.
- 535 Lamarque, J.-F., Bond, T. C., Eyring, V., Granier, C., Heil, A., Klimont, Z., Lee, D., Liou, S. C., Mieville, A., Owen, B., Schultz, M. G., Shindell, D., Smith, S. J., Stehfest, E., Van Aardenne, J., Cooper, O. R., Kainuma, M., Mahowald, N., McConnell, J. R., Naik, V., Riahi, K., and van Vuuren, D. P.: Historical (1850–2000) gridded anthropogenic and biomass burning emissions of reactive gases and aerosols: methodology and application, *Atmospheric Chemistry and Physics*, 10, 7017 – 7039, <https://doi.org/10.5194/acp-10-7017-2010>, 2010.
- 540 Lelieveld, J., Barlas, C., Giannadaki, D., and Pozzer, A.: Model calculated global, regional and megacity premature mortality due to air pollution, *Atmospheric Chemistry and Physics*, 13, 7023–7037, <https://doi.org/10.5194/acp-13-7023-2013>, 2013.
- Lelieveld, J., Evans, J. S., Fnais, M., Giannadaki, D., and Pozzer, A.: The contribution of outdoor air pollution sources to premature mortality on a global scale, *Nature*, 525, 367–371, <https://doi.org/10.1038/nature15371>, 2015.
- Lelieveld, J., Klingmüller, K., Pozzer, A., Pöschl, U., Fnais, M., Daiber, A., and Münzel, T.: Cardiovascular disease burden from ambient air pollution in Europe reassessed using novel hazard ratio functions, *European Heart Journal*, 40, 1590–1596, <https://doi.org/10.1093/eurheartj/ehz135>, 2019.
- 545 Liang, C.-K., West, J. J., Silva, R. A., Bian, H., Chin, M., Davila, Y., Dentener, F. J., Emmons, L., Flemming, J., Folberth, G., Henze, D., Im, U., Jonson, J. E., Keating, T. J., Kucsera, T., Lenzen, A., Lin, M., Lund, M. T., Pan, X., Park, R. J., Pierce, R. B., Sekiya, T., Sudo, K., and Takemura, T.: HTAP2 multi-model estimates of premature human mortality due to intercontinental transport of air pollution and emission sectors, *Atmospheric Chemistry and Physics*, 18, 10 497–10 520, <https://doi.org/10.5194/acp-18-10497-2018>, 2018.
- 550 López-Romero, J. M., Montávez, J. P., Jerez, S., Lorente-Plazas, R., Palacios-Peña, L., and Jiménez-Guerrero, P.: Precipitation response to aerosol–radiation and aerosol–cloud interactions in regional climate simulations over Europe, *Atmospheric Chemistry and Physics*, 21, 415–430, <https://doi.org/doi:10.5194/acp-21-415-2021>, <https://acp.copernicus.org/articles/21/415/2021/>, 2021.

- McConnell, R., Berhane, K., Yao, L., Jerrett, M., Lurmann, F., Gilliland, F., Künzli, N., Gauderman, J., Avol, E., Thomas, D., and Peters, J.:  
555 Traffic, susceptibility, and childhood asthma, *Environmental health perspectives*, 114, 766–772, <https://doi.org/10.1289/ehp.8594>, 2006.
- Moss, R. H., Edmonds, J. A., Hibbard, K. A., Manning, M. R., Rose, S. K., van Vuuren, D. P., Carter, T. R., Emori, S., Kainuma, M., Kram, T., Meehl, G. A., Mitchell, J. F. B., Nakicenovic, N., Riahi, K., Smith, S. J., Stouffer, R. J., Thomson, A. M., Weyant, J. P., and Wilbanks, T. J.: The next generation of scenarios for climate change research and assessment, *Nature*, 463, 747–756, <https://doi.org/https://doi.org/10.1038/nature08823>, 2010.
- 560 NASA SocioEconomic Data and Applications Center: Basic Demographic Characteristics, v4.11, <http://sedac.ciesin.columbia.edu>, 2019.
- Ohata, S., Moteki, N., Mori, T., Koike, M., and Kondo, Y.: A key process controlling the wet removal of aerosols: new observational evidence, *Scientific Reports*, 6, 34 113, <https://doi.org/10.1038/srep34113>, 2016.
- Palacios-Peña, L., Montávez, J. P., López-Romero, J. M., Jerez, S., Gómez-Navarro, J. J., Lorente-Plazas, R., Ruiz, J., and Jiménez-Guerrero, P.: Added value of aerosol-cloud interactions for representing aerosol optical depth in an online coupled climate-chemistry model over  
565 Europe, *Atmosphere*, 11(4), 360, <https://doi.org/https://doi.org/10.3390/atmos11040360>, 2020.
- Park, S., Allen, R. J., and Lim, C. H.: A likely increase in fine particulate matter and premature mortality under future climate change, *Air Quality, Atmosphere & Health*, 13, 143–151, <https://doi.org/10.1007/s11869-019-00785-7>, 2020.
- Pope, C. A., Burnett, R. T., Krewski, D., Jerrett, M., Shi, Y., Calle, E. E., and Thun, M. J.: Cardiovascular mortality and exposure to airborne fine particulate matter and cigarette smoke, *Circulation*, 120, 941–948, <https://doi.org/10.1161/CIRCULATIONAHA.109.857888>, 2009.
- 570 Pope, C. A., Coleman, N., Pond, Z. A., and Burnett, R. T.: Fine particulate air pollution and human mortality: 25+ years of cohort studies, *Environmental Research*, 183, 108 924, <https://doi.org/10.1016/j.envres.2019.108924>, 2020.
- Pravia-Sarabia, E., Gómez-Navarro, J. J., Jiménez-Guerrero, P., and Montávez, J. P.: TITAM (v1.0): the Time-Independent Tracking Algorithm for Medicanes, *Geophysical Model Developments*, 13, 6051–6075, <https://doi.org/doi:10.5194/gmd-13-6051-2020>, <https://gmd.copernicus.org/articles/13/6051/2020/>, 2020.
- 575 Prüss-Üstün, A., Wolf, J., Corvalán, C. F., Bos, R., and Neira, M. P.: Preventing disease through healthy environments: a global assessment of the burden of disease from environmental risks, World Health Organization, 2016.
- Ratola, N. and Jiménez-Guerrero, P.: Can biomonitors effectively detect airborne benzo[a]pyrene? An evaluation approach using modelling, *Atmospheric Chemistry and Physics*, 16, 4271–4282, <https://doi.org/doi:10.5194/acp-16-4271-2016>, 2016.
- Silva, R. A., West, J. J., Zhang, Y., Anenberg, S. C., Lamarque, J.-F., Shindell, D. T., Collins, W. J., Dalsoren, S., Faluvegi, G., Folberth, G.,  
580 Horowitz, L. W., Nagashima, T., Naik, V., Rumbold, S., Skeie, R., Sudo, K., Takemura, T., Bergmann, D., Cameron-Smith, P., Cionni, I., Doherty, R. M., Eyring, V., Josse, B., MacKenzie, I. A., Plummer, D., Righi, M., Stevenson, D. S., Strode, S., Szopa, S., and Zeng, G.: Global premature mortality due to anthropogenic outdoor air pollution and the contribution of past climate change, *Environmental Research Letters*, 8, 034 005, <https://doi.org/10.1088/1748-9326/8/3/034005>, 2013.
- Silva, R. A., Adelman, Z., Fry, M. M., and West, J. J.: The Impact of Individual Anthropogenic Emissions Sectors on the Global Burden of  
585 Human Mortality due to Ambient Air Pollution, *Environmental Health Perspectives*, 124, 1776–1784, <https://doi.org/10.1289/EHP177>, 2016a.
- Silva, R. A., West, J. J., Lamarque, J.-F., Shindell, D. T., Collins, W. J., Dalsoren, S., Faluvegi, G., Folberth, G., Horowitz, L. W., Nagashima, T., Naik, V., Rumbold, S. T., Sudo, K., Takemura, T., Bergmann, D., Cameron-Smith, P., Cionni, I., Doherty, R. M., Eyring, V., Josse, B., MacKenzie, I. A., Plummer, D., Righi, M., Stevenson, D. S., Strode, S., Szopa, S., and Zengast, G.: The effect of future ambient air  
590 pollution on human premature mortality to 2100 using output from the ACCMIP model ensemble, *Atmospheric Chemistry and Physics*, 16, 9847–9862, <https://doi.org/10.5194/acp-16-9847-2016>, 2016b.

- Silva, R. A., West, J. J., Lamarque, J.-F., Shindell, D. T., Collins, W. J., Faluvegi, G., Folberth, G. A., Horowitz, L. W., Nagashima, T., Naik, V., Rumbold, S. T., Sudo, K., Takemura, T., Bergmann, D., Cameron-Smith, P., Doherty, R. M., Josse, B., MacKenzie, I. A., Stevenson, D. S., and Zeng, G.: Future global mortality from changes in air pollution attributable to climate change, *Nature Climate Change*, 7, 647–651, <https://doi.org/10.1038/nclimate3354>, 2017.
- 595
- Tarín-Carrasco, P., Morales-Suárez-Varela, M., Im, U., Brandt, J., Palacios-Peña, L., and Jiménez-Guerrero, P.: Isolating the climate change impacts on air-pollution-related-pathologies over central and southern Europe – a modelling approach on cases and costs, *Atmospheric Chemistry and Physics*, 19, 9385–9398, <https://doi.org/10.5194/acp-19-9385-2019>, 2019.
- Tarín-Carrasco, P., Im, U., Geels, C., Palacios-Peña, L., and Jiménez-Guerrero, P.: Contribution of fine particulate matter to present and future premature mortality over Europe: A non-linear response, *Environment International*, 153, 106 517, <https://doi.org/doi:10.1016/j.envint.2021.106517>, <https://www.sciencedirect.com/science/article/pii/S0160412021001422>, 2021.
- 600
- United Nations: Department of Economic and Social Affairs Population Dynamics, <https://population.un.org/wpp/>, 2020.
- Vedal, S., Han, B., Xu, J., Szpiro, A., and Bai, Z.: Design of an air pollution monitoring campaign in beijing for application to cohort health studies, *International Journal of Environmental Research and Public Health*, 14, 1580, <https://doi.org/https://doi.org/10.3390/ijerph14121580>, 2017.
- 605
- World Health Organization: Review of evidence on health aspects of air pollution -REVIHAAP Project: Technical Report, World Health Organization, p. 301, <https://doi.org/10.1007/BF00379640>, <http://www.euro.who.int/pubrequesthttp://www.euro.who.int/en/health-topics/environment-and-health/air-quality/publications/2013/review-of-evidence-on-health-aspects-of-air-pollution-revihaap-project-final-technical-report>, 2013.