

Saccharide composition in atmospheric fine particulate matter during spring at the remote sites of Southwest China and estimates of source contributions

Zhenzhen Wang¹, Di Wu¹, Zhuoyu Li¹, Xiaona Shang¹, Qing Li¹, Xiang Li¹, Renjie Chen², Haidong Kan², Huiling Ouyang³, Xu Tang³, Jianmin Chen^{1,3,*}

¹ Shanghai Key Laboratory of Atmospheric Particle Pollution and Prevention (LAP3), Department of Environmental Science & Engineering, Fudan Tyndall Centre, Fudan University, Shanghai 200438, China

² School of Public Health, Key Lab of Public Health Safety of the Ministry of Education, NHC Key Laboratory of Health Technology Assessment, Fudan University, Shanghai 200032, China

³ IRDR International Center of Excellence on Risk Interconnectivity and Governance on Weather/Climate Extremes Impact and Public Health, Institute of Atmospheric Sciences, Fudan University, Shanghai 200438, China

*Corresponding author: jmchen (jmchen@fudan.edu.cn)

Phone/fax: (+86) 021-31242298/31242080

Address: Songhu Road 2005, Shanghai 200438, China

Abstract. Based on source-specific saccharide tracers, the characteristic of biomass burning (BB) and biogenic emissions to saccharides was investigated in three rural sites at Lincang, where covered with 65% of forest in the southwest border of China. The total saccharides accounted for $8.4\pm2.7\%$ of OC, and $1.6\pm0.6\%$ of $PM_{2.5}$. The measured anhydrosugars accounted for 48.5% of total saccharides, among which levoglucosan was the most dominant species. The high level of levoglucosan was both attributed to the local BB activities and biomass combustion smoke transported from the neighboring regions of Southeast Asia (Myanmar) and the northern Indian Peninsula. The measured mono (di) saccharides and sugar alcohols accounted for $24.9\pm8.3\%$ and $26.6\pm9.9\%$ of the total saccharides, respectively, were both proved to be mostly emitted by direct biogenic volatilization from plant materials/surface soils, rather than as byproducts of polysaccharides breakdown during BB processes. Five sources of saccharides were resolved by non-negative matrix factorization (NMF) analysis, including BB, soil microbiota, plant senescence, airborne pollen and plant detritus with the contribution of 34.0%, 16.0%, 21.0%, 23.7% and 5.3%, respectively. The results provide the information on the magnitude of levoglucosan and contributions of BB, as well as the characteristic of biogenic saccharides, at the remote sites of Southwest China, which can be further applied to regional source apportionment models and global climate models.

1 Introduction

Biomass burning (BB) and biogenic aerosols are thought to play important roles on air quality, human health and climate through direct or indirect effects (Jacobson et al., 2000; Christner et al., 2008; Pöschl et al., 2010; Després et al., 2012; Chen et al., 2017, Tang et al., 2019). Atmospheric saccharides components have been extensively reported to be originate from biomass burning (natural or anthropogenic), suspended soil or dust and primary biological aerosol particles (PBAPs) (e.g., fungal and fern spores, pollens, algae, fungi, bacteria, and plant debris), as well as biogenic secondary organic aerosol (SOA) (e.g., Rogge et al., 1993; Graham et al., 2003; Jaenicke, 2005; Medeiros et al., 2006; Elbert et al., 2007; Fu et al., 2013). As one of the major classes of water-soluble organic compounds, saccharides in atmospheric aerosols have been detected over urban areas, forests, mountains, and remote marine regions (Pashynska et al., 2002; Yttri et al., 2007; Fu et al., 2009; Burshtein et al., 2011; Jia and Fraser, 2011; Chen et al., 2013; Pietrogrande et al., 2014; Li et al., 2016a, b). It has been

reported that saccharides account for 13-26% of the total organic compound mass identified in continental aerosols, and as much as 63% in oceanic aerosols (Simoneit et al., 2004).

Levoglucosan and related anhydrosugar isomers (mannosan and galactosan), produced from pyrolysis of cellulose and hemicellulose, are considered to be relatively stable in the atmosphere (Schkolnik et al., 2005; Puxbaum et al., 2007), and thus have been recognized as specific molecular markers for BB source emissions (Simoneit et al., 1999, 2000; Fraser and Lakshmanan, 2000; Sullivan et al., 2014; Du et al., 2015). However, some studies have challenged this knowledge and proved that levoglucosan alone was not suitable to be a distinct marker for BB in various regions and periods. Because there were evidences that levoglucosan is also emitted from non-BB sources (Wu et al., 2021), such as coal burning (Rybicki et al., 2020; Yan et al., 2018), open waste burning (Kalogridis et al., 2018), incense burning (Tsai et al., 2010), and food cooking (Reyes-Villegas et al., 2018). It was reported that the levoglucosan emission contribution of BB sources ranged from 21.3 to 95.9% (Wu et al., 2021). The current studies in China have reported the value of 2.6-289.1 ng m⁻³ and 11.6-1803.1 ng m⁻³ respectively over Beijing and Wangdu in summer (Yan et al., 2019), 2.4-1064.1 ng m⁻³ over Shanghai all year round (Xiao et al., 2018), 15.6-472.9 ng m⁻³ over Guangzhou (Zhang et al., 2010), 21.1-91.5 ng m⁻³ over Hongkong (Sang et al., 2011), 60.2-481.9 ng m⁻³ over Xi 'an (Yang et al., 2012), 36.0-1820.9 ng m⁻³ over Chengdu (Yang et al., 2012) and 10.1-383.4 ng g⁻¹ dry weight in cryoconites over the Tibetan Plateau (Li et al., 2019). In north China, high concentrations of levoglucosan is a serious problem due to drastic enhancement of coal and BB for house heating in winter and autumn (Zhang et al., 2008; Zhu et al., 2016). The BB pollution might be exacerbated under unfavorable meteorological conditions, such as in the Sichuan basin (Chen and Xie, 2014). In general, BB is an important source of fine particulate matter and with notable contribution to OC in China (Zhang et al., 2008; Cheng et al., 2013; Chen et al., 2017), controls on BB could be an effective method to reduce pollutant emissions. Recently study reported that total levoglucosan emission of China exhibited a clear decreasing trend from 2014 (145.7 Gg) to 2018 (80.9 Gg) (Wu et al., 2021), suggesting BB activities might reduce in China.

Saccharide compounds including a variety of primary saccharides (monosaccharides and disaccharides) and sugar alcohols (reduced sugars) have been measured to estimate the contribution of biogenic aerosols, including fungi, viruses,

删除的内容: (Wu et al., 2020)

删除的内容: m

删除的内容: ³

删除的内容: Chengdu

删除的内容: BB activities have been reduced in China, because the

删除的内容: 2020

bacteria, pollen, and plant as well as animal debris (Simoneit et al., 2004; Jaenicke et al., 2007). For instance, arabitol and mannitol have been proposed as biomarkers for airborne fungal spores (Bauer et al., 2008; Zhang et al., 2010; Holden et al., 2011; Liang et al., 2013a, b), because both of them can function as storage or transport carbohydrates to regulate intracellular osmotic pressure (Bauer et al., 2008). Glucose and sucrose are thought to originate from natural biogenic detritus, including numerous microorganisms, plants, and animals (Simoneit et al., 2004; Tominaga et al., 2011). As the oxidation products of isoprene, methyltetrols (including 2-methylthreitol and 2-methylerythritol) have been suggested as tracers of isoprene-derived SOA (Claeys et al., 2004; Kleindienst et al., 2007; Ding et al., 2016). In the previous study, the contributions of fungal spores to OC were estimated to be $14.1 \pm 10.5\%$ and $7.3 \pm 3.3\%$ respectively at the rural and urban sites of Beijing (Liang et al., 2013b). Airborne pollen and fungal spores contributed 12-22% to the total OC in ambient aerosols collected in Toronto (Womiloju et al., 2003). Jaenicke (2005) found that PBAPs can comprise from 20 to 30% of the total atmospheric PM (>0.2 mm) from Lake Baikal (Russia) and Mainz (Germany). However, there is still a limited number of studies on quantifying the abovementioned biogenic aerosol contributions to ambient aerosol.

Lincang located in the southwest border of China is a traditional agricultural area of Yunnan province, where planting a large area of tea, sugar cane, rubber, macadamia nuts, etc. It is the largest production base of black tea and macadamia nut in China. Referring to the official website of Lincang Municipal People's Government, the forest coverage rate of Lincang reaches to 65%. It has a wide variety of plant species, and has 6 nature reserves covering an area of ~222,000 hectares, accounting for 8.56% of the total area. As a residential area for ethnic minorities, Lincang has unique culture, humanity and living habits. A high portion of houses with wood burning used for cooking in villages in proximity and a large area of Southeast Asia constitute, and forest fires were frequently happened in this area especially in the dry seasons (March-April). All implies that there are abundant biogenic aerosols in the area, and BB pollution may be an important potential source of air pollution. However, little information on the magnitude of biogenic and BB tracers in this area is available. The contributions of biogenic aerosol and BB, and BB types are poorly understood.

In this study, the sampling were conducted from March 8 to April 8, 2019 at three mountaintop sites of Lincang, where is an ideal site for investigating the BB emission

characteristics. BB tracers (including anhydrosugars and K^+) and biogenic aerosol tracers (primary saccharides and sugar alcohols) were measured to gain the information on source and contributions of BB and biogenic emissions in $PM_{2.5}$ over the rural Lincang. This study would be useful and valuable for provide reliable information on sources and magnitudes of saccharides involving rural BB and biological emissions in China.

2 Experimental section

2.1 Aerosol sampling

The $PM_{2.5}$ samples were simultaneously collected on three mountaintop sites, respectively of Datian (24.11° N, 100.13° E, 1960 m asl), Dashu (24.12° N, 100.11° E, 1840 m asl) and Yakoutian (24.12° N, 100.09° E, 1220 m asl), in Lincang, Yunnan Province, China, which are located ~300 km west to Kunming (the capital of Yunnan province) and ~120 km east from the Burma border (shown in Figure S1). These sites are surrounded by massive mountains and scattering villages without obvious nearby traffic or major industry emissions. Each sampling was performed over a 23.5 h period every day, and was collected on quartz by high-volume air samplers (Thermo) equipped with a size selective inlet to sample $PM_{2.5}$ at a flow rate of $1.13 \text{ m}^3 \text{ min}^{-1}$. Altogether, 91 samples were collected during 8 March to 9 April in 2019.

Quartz filters (Whatman, 8×10 in.) were prebaked at 550°C for 4 h in a muffle furnace to remove organic material, and were then stored in pre-baked aluminum foils. The samples were stored at about -20°C in a refrigerator until analysis. Field blanks were collected by mounting filters in the sampler without air flow to replicate the environmental exposure. The data reported were corrected by the blanks at the sampling sites.

2.2 Measurements

The concentrations of organic carbon (OC) and elemental carbon (EC) were measured using a Multiwavelength Carbon Analyzer (DRI Model 2015; Aerosol Inc., USA). Typically, a 0.58 cm^2 punch of the filter was placed on a boat inside the thermal desorption chamber of the analyzer, and then stepwise heating was applied. Carbon fractions were obtained following the Interagency Monitoring of Protected Visual Environments (IMPROVE-A) thermal/optical reflectance (TOR) protocol (Chow et al., 2007). Replicate analyses were conducted once every ten samples. Blank sample was also analyzed and used to correct the sample results.

删除的内容: Atmoslytic

A punch (4.7 cm²) of each quartz filter was ultrasonically extracted with 10.0 mL of de-ionized water (resistivity = 18.2 MU) for 40 min. The aqueous extracts were filtrated through syringe filters (PTFE, 0.22 µm) to remove insoluble materials. Ion chromatography (Metrohm, Switzerland) coupling with Metrosep C6-150 and A6-150 columns was used to detect water-soluble ions (Cl⁻, NO₃⁻, PO₄⁻, SO₄²⁻, Na⁺, NH₄⁺, K⁺, Mg²⁺, and Ca²⁺) with a detection limit (DL) range of 0.001-0.002 µg m⁻³.

Five saccharide alcohols (glycerol, erythritol, inositol, arabitol and mannitol) and five primary saccharides (fructose, glucose, mannose, sucrose and trehalose), together with three anhydrosugars (levoglucosan, mannosan and galactosan) were quantified by an improved high performance anion-exchange chromatography system coupled with a pulsed amperometric detector (HPAEC-PAD) (Engling et al., 2006; Caseiro et al., 2007; Zhang et al., 2013). This method developed by Engling et al. (2006) was validated to be a powerful method for the detection of carbohydrates without derivatization techniques, and has been successfully applied for the atmospheric tracers (e.g., Zhang et al., 2010; Holden et al., 2011; Liang et al., 2013a, b; Li et al., 2016a, b; Kalogridis et al., 2018; Yan et al., 2018). The separation of the saccharides was performed on an ion chromatograph (Metrohm, Switzerland) equipped with a Metrosep Carb 2-250 analytical column and a guard column. In the preliminary experiment, some co-elution problems were encountered when using the Metrohm sugar column. By changing the concentration of the eluent and the flow rate, the measurements of every saccharide were repeated many times to ensure that the relative deviation of retention time and peak area was less than 1% and the correlation between peak area and concentration value was more than 99.9%.

In this study, the aqueous eluent of sodium hydroxide and sodium acetate was pumped by a dual pump module at a flow rate of 0.4 mL min⁻¹. The low concentration of 50 mM sodium hydroxide and 10 mM sodium acetate (eluent A) was applied to pump 1, while the high concentration of 250 mM sodium hydroxide and 50 mM sodium acetate (eluent B) was applied to pump 2. The gradient generator was set as: 0-10 min, 100% of eluent A; 10-20 min, 50% of eluent A and 50% of eluent B; 20-50 min, 100% of eluent B; 50-60 min, 100% of eluent A for equilibration. The extraction efficiency of this analytical method was determined to be better than 90% based on analysis of quartz filters spiked with known amounts of mannitol. The method DL of the referred carbohydrate compounds were 0.005-0.01 mg L⁻¹. All carbohydrate species were below detection limits in the field blanks.

删除的内容: T

2.3 Other data

The meteorological parameters, including temperature (T), relative humidity (RH), solar irradiation (W m^{-2}), and rainfall (mm) were obtained from the Physical Sciences Laboratory of NOAA (<https://psl.noaa.gov>). The temporal changes in meteorological variables over the observation sites during the sampling periods are shown in Figure S2.

In order to characterize the origin and transport pathway of the air masses to the sampling sites, 72 h back-trajectories of the aerosol were calculated using Hybrid Single-Particle Lagrangian Integrated Trajectory (HYSPLIT) model developed by NOAA/ARL (Draxler and Hess, 1998) via NOAA ARL READY Website (<http://ready.arl.noaa.gov/HYSPLIT.php>) with an endpoint height of 1500 m. To investigate the influence of BB emissions, fire pixel counts were obtained from Moderate Resolution Imaging Spectroradiometer (MODIS) observations on NASA satellites (<https://earthdata.nasa.gov/>).

2.4 Statistical analysis

A Pearson's correlation test was performed using the Statistical Product and Service Solutions (SPSS) software for the dataset containing ambient concentrations of the measured saccharides, inorganic ions and solar irradiation. Non-negative matrix factorization (NMF) analysis was utilized to resolve potential emission source and estimate their contribution to atmospheric saccharides. NMF introduced by Lee and Seung (1999) was similar to positive matrix factorization (PMF). Both methods find two matrices (termed the contribution matrix of W and the source profile matrix of H) to reproduce the input data matrix (V) using the factorization approach ($V = WH$) as a positive constraint ($W \geq 0$ and $H \geq 0$). However, PMF forces the negative factors to be positive, but NMF method only retains nonnegative factors. NMF minimizes the conventional least-squares error and the generalized Kullback-Leibler divergence (Shang et al., 2018). Therefore, the results obtained from NMF are more responsive to the original characteristics of input data set and less number of factors will be extracted (Zhang et al., 2019). Half of the DL was used for the value below the detection limit. In this study, galactosan, mannose and inositol were excluded because their concentration was mostly below the DL. Concentrations of the other ten saccharide species for the total 91 samples were subjected for NMF analysis. The uncertainties in NMF analysis were estimated as 0.3 plus the analytical detection limit

删除的内容: S1

according to the method of Xie et al. (1999). The constant 0.3 corresponding to the log (Geometric Standard Deviation, GSD) was calculated from the normalized concentrations for all measured species, and was used to represent the variation of measurements.

3 Results and Discussion

3.1 Saccharides concentration and composition

The temporal variations of PM_{2.5} mass, OC, EC, and various saccharides measured in all samples are shown in Figure 1. A statistical summary of all the data are listed in Table S1. During the sampling periods, the PM_{2.5} mass concentrations ranged between 13.7-87.8 $\mu\text{g m}^{-3}$ with average values of 41.8 $\mu\text{g m}^{-3}$. The concentrations of OC and EC varied between 2.5-22.4 and 0.3-4.3 $\mu\text{g m}^{-3}$ with average values of 8.4 and 1.7 $\mu\text{g m}^{-3}$, respectively. OC accounted for 19.9 \pm 3.7% of total PM_{2.5} mass. The ambient concentrations of the total saccharides varied between 244.5-1291.6 ng m^{-3} with average values of 638.4 ng m^{-3} . The total saccharides quantified in PM_{2.5} accounted for 8.4 \pm 2.7% (range: 3.8%-20.6%) of the OC, and accounted for 1.6 \pm 0.6% (range: 0.6%-3.0%) of the PM_{2.5}. Figure 2 presents the mean concentration levels of 12 measured saccharide compounds, categorized into anhydrosugar, sugar and sugar alcohol, as well as the relative contribution of these saccharides for the all samples. The values for each site are shown in Figure S3.

3.1.1 Anhydrosugars

The mean concentrations of levoglucosan and mannosan were 287.7 and 31.6 ng m^{-3} , respectively with a range of 95.6-714.7 and 0-134.7 ng m^{-3} for all the 91 samples. Galactosan was only detected in 6 samples, with a range of 2.5-5.5 ng m^{-3} . The anhydrosugars accounted for 48.5% of total measured saccharides. Levoglucosan was the most dominant specie among all the saccharides. The mean levoglucosan concentration in this study was comparable to the value at urban Beijing collected in spring of 2012 (above 200 ng m^{-3}) (Liang et al., 2016) and at urban Xi'an collected in winter of 2015 (268.5 ng m^{-3}) (Wang et al., 2018). It was higher than the value at rural Tengchong mountain site (193.8 ng m^{-3}) (Sang et al., 2013), at urban Shanghai collected in spring of 2012 (66.0 ng m^{-3}) (Li et al., 2016) and at urban Hong Kong collected in spring of 2004 (36.0 ng m^{-3}) (Sang et al., 2011), as well as at urban Beijing collected in summer of 2013 (49.4 ng m^{-3}) (Yan et al., 2019), but was lower than that at a rural site of Xi'an (0.93 mg m^{-3}) (Zhu et al., 2017) and at a rural site in

删除的内容: S2

删除的内容: The absolute concentration and relative contribution of each saccharide displayed no distinct variation between the three sites.

eastern central India (2258 ng m^{-3}) (Nirmalkar et al., 2015). During the observation period, several instances of elevated levoglucosan occurred, peaked on March 8, 16, 23 and April 1. It was thought the ambient levoglucosan were primarily attributed to domestic biomass fuel burning, the high levoglucosan emission on these peak days might be from open BB events.

Regression analyses of levoglucosan and the other two anhydrosugars (mannosan, galactosan) are shown in Figure 3a. Levoglucosan was highly correlated with mannosan and galactosan, with coefficients of determination (R) of 0.81 ($P < 0.01$) and 0.89 ($P < 0.01$), respectively, indicating similar combustion sources of them. The ratios of levoglucosan to mannosan (L/M) and mannosan to galactosan (M/G) had been employed to identify the specific types of BB, although these ratios were quite variable (Fabbri et al., 2009; Sang et al., 2018). Previous studies suggested that L/M ratios for burning of softwood were 3-10, hardwood were 15-25, and those from crop residues were often above 40 (Cheng et al., 2013; Zhu et al., 2015; Kang et al., 2018). The average L/M and M/G ratios were statistically reported as 32.6 and 1.2 for crop residues combustion, 4.0 and 3.9 for softwood combustion, 21.5 and 1.5 for hardwood combustion, respectively (Sang et al., 2013; Shen et al., 2018). In this study, the ratios of L/M and M/G ranging from 4.7 to 16.1 (mean: 9.7, $n=91$) and from 3.9 to 6.1 (mean: 4.8, $n=6$), respectively, crudely indicating major contribution from softwood burning. The sample collected during 31 March-1 April and during 8-10 March respectively had considerably lower and higher concentrations of mannosan than predicted by the levoglucosan-mannosan regression model (Figure 3a). The results suggested that BB aerosols collected during 31 March-1 April ($L/M = 11.52 \pm 1.34$) and during 8-10 March ($L/M = 6.57 \pm 0.53$) have originated from different types of BB as compared with the remaining sampling periods ($L/M = 9.34 \pm 1.20$). Therefore, the high levoglucosan emission during 31 March-1 April and during 8-10 March might be from different open BB events, possibly an open agricultural waste burning event or a forest fire, whilst the BB of most sampling days originated from biomass fuel for domestic cooking and heating. It was worth noting that the peak days during 31 March-1 April ($L/M = 11.52 \pm 1.34$) neared the Qingming Festival. Therefore, another possibility of BB events was that people burned large quantities of ghost money, candles and firecrackers to sacrifice ancestor according to Chinese tradition. The main raw materials of ghost money are bamboo and wood.

Anhydrosugars and water-soluble potassium (K^+) have been both widely utilized as

删除的内容: se

删除的内容: . A

删除的内容: nother possibility of BB events was that people burned ghost money to sacrifice ancestor according to Chinese tradition.

删除的内容: S3

source tracers of BB emissions (e.g., Puxbaum et al., 2007; Wang et al., 2007; Zhang et al., 2008; Engling et al., 2011). The daily variation on concentrations of levoglucosan and K^+ are shown in Figure S4, the regression analysis of K^+ and three anhydrosugars is shown in Figure 3b. K^+ was weakly correlated with levoglucosan, mannosan, and galactosan, with R values of 0.33, 0.28, and 0.74, respectively. It could be explained by the additional emissions of K^+ from soil and sea water. Since Lincang is far from the coast, sea salt could be negligible. Because the inhomogeneity of crustal K^+ associated with soil types, it was difficult to fully account for crustal K^+ contributions from soil (Harrison et al., 2012; Cheng et al., 2013). The ratio of levoglucosan to K^+ (L/K^+) was also used to track possible sources of BB in the previous studies. The ratios of L/K^+ strongly depended on BB processes, namely smoldering and flaming. Studies suggested that relatively high L/K^+ ratios were obtained from smoldering combustion at low temperatures compared with flaming combustion (Schkolnik et al., 2005; Lee et al., 2010). Previous results showed the emissions from the combustion of crop residuals such as rice straw, wheat straw and corn straw exhibited comparable L/K^+ ratios, typically below 1.0. The averages of L/K^+ ratios in this study was 0.48 ± 0.20 , which was higher than the ratio for wheat straw (0.10 ± 0.00) and corn straw (0.21 ± 0.08), but was lower than the ratio for Asian rice straw (0.62 ± 0.32) (Cheng et al., 2013). In this study, higher L/K^+ ratios were observed during 8-10 March (1.20 ± 0.19) than those during 31 March-1 April (0.40 ± 0.13), which suggested that the open fire event during 8-10 March was more possibly due to smoldering combustion of residues at low temperatures.

Figure 3c and 3d show the scatter plots and regression analyses of K^+ versus $PM_{2.5}$, OC and EC, and levoglucosan versus $PM_{2.5}$, OC and EC, respectively. Linear regression of K^+ on $PM_{2.5}$, OC and EC resulted in R values of 0.64, 0.63 and 0.62, respectively, which were generally higher than those of levoglucosan on $PM_{2.5}$, OC and EC, with R values of 0.40, 0.54 and 0.48, respectively. It showed that K^+ is more highly correlated with $PM_{2.5}$, OC and EC. This can be explained by either the photo-oxidative decay of levoglucosan (Hennigan et al., 2010) and/or different types of BB processes (Schkolnik et al., 2005; Lee et al., 2010). Even so, the results supported that the BB posed great impact on fine aerosols. The ratio of levoglucosan to $PM_{2.5}$ ($L/PM_{2.5}$) is also helpful in distinguishing the contributions of different levoglucosan sources (Wu et al., 2021). The ratios of $L/PM_{2.5}$ in this study was 0.0041-0.0162 (mean: 0.0072), indicating that levoglucosan emission in the areas

删除的内容: 2020

might mainly come from woods (0.01-0.09) and crop straws (0.001-0.008), not excluding incense burning (0.001-0.007), ritual item burning (0.004-0.086), and meat cooking (0.005-0.06). However, it is certainly that it was not from corncob burning (0.0092-0.032), coal burning (0.0001-0.001) and waste incineration (0.0022).

An empirical ratio of levoglucosan to OC (8.2%), calculated from main types of Chinese cereal straw (rice, wheat and corn) based on combustion chamber experiments (Zhang et al., 2007), was used to estimate the BB-derived OC. The average mass concentration of BB-derived OC was 3534.4 ng m⁻³, whilst the contributions of BB to OC was 41.3%, with a large range of 19.1 to 81.3%. The contributions are higher than those previous reported, such as 6.5-11% in Hong Kong (Sang et al., 2011), 18-38% in Beijing (Zhang et al., 2008), 18.9-45.4% over southeastern Tibetan Plateau (Sang et al., 2013), 26.4-30.2% in Xi'an (Zhang et al., 2014). The large range of 19.1 to 73.9% revealed that the daily contribution of BB varied greatly, suggesting open BB event or forest fire happened occasionally. However, the contribution apportionment of primary BB might be underestimated due to the degradation of levoglucosan during atmospheric aging of BB influenced air mass after long-range transport (Hennigan et al., 2010; Mochida et al., 2010; Lai et al., 2014). Moreover, Wu et al (2020) have reported that the total levoglucosan emission of China exhibited a clear decreasing trend and biomass burning activities have been reduced in China. However, it is noteworthy that the mean concentration of levoglucosan (287.7 ng m⁻³) and the biomass burning contributions to OC (41.3%) at Lincang mountain site in this study are both higher than the values of 191.8 ng m⁻³ and 28.4% at Tengchong mountain site in 2004 spring (Sang et al., 2013). The result suggested no significant reduction in BB emissions in Southwest Yunnan Province to some extent.

3.1.2 Mono (di) saccharides

The total concentrations of five mono (di) saccharides, including glucose, fructose, mannose, sucrose and trehalose, were 25.2-373.7 ng m⁻³ (mean: 158.9 ng m⁻³), which contributed 24.9±8.3% of the total measured saccharides. The mean values of glucose, fructose, mannose, sucrose and trehalose were 31.2, 24.6, 2.7, 86.4 and 13.8 ng m⁻³, respectively. Sucrose was the dominant mono (di) saccharides. The results was consistent with the previous studies of Yttri et al. (2007), Jia et al. (2010), and Fu et al. (2012), which had found that sucrose was one of the dominate specie in spring fine

aerosols. The ruptured pollen may be an important source of sucrose in particular of spring blossom season (Yttri et al., 2007; Fu et al., 2012; Miyazaki et al., 2012). In spring and early summer, farmland tilling after the wheat harvest causes an enhanced exposure of soil containing wheat roots to the air, which is beneficial to the release of sucrose stored in the root (Medeiros et al., 2006), thus resulting in a sharply increased sucrose.

It was reported that sugars, such as glucose, sucrose and fructose, could be emitted from developing leaves (Graham et al., 2003). Glucose could be released from both soils and plant materials (e.g., pollen, fruits and their fragments) (Graham et al., 2003; Simoneit et al., 2004; Fu et al., 2012). Glucose and sucrose were rich in biologically active surface soils (Rogge et al., 2007). In this study, the positive correlations were found between sucrose and glucose ($R = 0.52$) (Table S2), suggesting a similar origin of glucose and sucrose in this study. Glucose and fructose have also been identified as a minor product of cellulose pyrolysis, because they were found to be enriched in BB emission (Nolte et al., 2001), and correlated well with K^+ (Graham et al., 2002) and levoglucosan (Kang et al., 2018). Herein, no significant correlation were found between K^+ , levoglucosan and these mono (di) saccharides. Therefore, the detected glucose, fructose and sucrose might mostly be emitted by direct volatilization from plant materials/surface soils, rather than as products of polysaccharides breakdown during BB processes. The high abundance of sucrose, as well as glucose and fructose were responsible for biogenic aerosols associated with developing leaves and flowers, and surface soil suspension.

Trehalose as a stress protectant of various microorganisms and plants (Medeiros et al., 2006; Jia and Fraser, 2011) was found to be abundant in the fine mode soil, and has been proposed as a marker compound for fugitive dust from biologically active surface soils (Simoneit et al., 2004; Medeiros et al., 2006; Rogge et al., 2007; Fu et al., 2012). Previous study found a positive correlation between trehalose and calcium (Nishikawa et al., 2000). In this study, there was no significant correlation between trehalose and calcium. Besides, mannose has been reported to be one of the major monosaccharide components in phytoplankton, which is originate from marine biological fragments (Tanoue and Handa, 1987). Mannose was detected in only a few samples and presented in low concentrations in this study.

3.1.3 Sugar alcohols

Five sugar alcohol compounds, including glycerol, threitol, mannitol, arabitol and inositol were detected in PM_{2.5}. These reduced sugars are often reported to be related with the plant senescence and decay by microorganisms (Simoneit et al., 2004; Tsai et al., 2013), and are produced by fungi, lichens, soil biota and algae (Elbert et al., 2007; Bauer et al., 2008). The average concentration of the total sugar alcohols were 159.9 ng m⁻³ with a range of 53.1-254.0 ng m⁻³, which contributed 26.6±9.9% of the total measured saccharides. Glycerol has been widely found in soil biota (Simoneit et al., 2004). Previous studies suggested that the sources of glycerol were not be specific to biological emissions, biomass combustion might increase atmospheric glycerol concentrations (Jia et al., 2010; Graham et al., 2002; Wang et al., 2011). Herein, glycerol was the second most abundant saccharide with an average concentration of 123.7 ng m⁻³, which comprised 5.1-44.6% (mean: 22.6%) of the total measured saccharides.

Mannitol and arabitol have been proposed as tracers for airborne fungal spores (Elbert et al., 2007; Bauer et al., 2008; Zhang et al., 2010; Burshtein et al., 2011). Mannitol and arabitol were detected with a concentration range of 0.0-38.6 ng m⁻³ (14.7 ng m⁻³) and 0.0-21.1 ng m⁻³ (5.8 ng m⁻³), respectively. The mean concentrations of mannitol and arabitol were comparable to those (mean 11.3 and 9.1 ng m⁻³) reported in the Beijing spring aerosols (Liang et al., 2013b), but were lower than those (mean 21.9 and 8.43 ng m⁻³) in the Mediterranean summer aerosols (Burshtein et al., 2011) and (30 and 24 ng m⁻³) at Hyytiälä, Finland in summer (Yttri et al., 2011). Poor correlations ($r = 0.38$) were found among mannitol and arabitol in this study. Nevertheless, a positive correlations was found between trehalose and mannitol ($r = 0.79$, $P < 0.05$) (Table S2).

In the previous studies, the total measured mannitol has been measured and used for estimating the contribution of fungal spores to organic carbon (Elbert et al., 2007; Bauer et al., 2008; Zhang et al., 2010). A factor of mannitol per spore (0.49 ± 0.20 pg) was used to calculate the number concentrations of fungal spores (Liang et al., 2013a), then the carbon content of fungal spores can be calculated using a conversion factor of 13 pg C per spore obtained earlier as the average carbon content of spores from nine airborne fungal species, with an uncertainty of 20% (Bauer et al., 2008). The diagnostic tracer ratio of mannitol to OC was calculated to be 0.0377 according to these researches (Bauer et al., 2008; Liang et al., 2013a), and then used to estimate the contribution of fungal spores to the OC. The contribution of fungal spores might be

underestimated because previous results had indicated that mannitol and arabitol were mainly associated with the coarse PM fraction (Samaké et al., 2019). The average mannitol concentrations were $14.7 \pm 11.2 \text{ ng m}^{-3}$ during the observation period. The average spore-derived OC was calculated to be $390.3 \text{ ng C m}^{-3}$, which contributed of 4.9% of the total OC.

Claeys et al. (2004) firstly identified two diastereoisomeric 2-methyltetrols as oxidation products of isoprene in the Amazonian rain forest aerosols. Henceforward, 2-methyltetrols has been used as tracers for isoprene-derived SOA (Liang et al., 2012; Fu et al., 2016; Yan et al., 2019). In the previous studies, erythritol was often quantified as surrogate of 2-methyltetrols (2-methylthreitol and 2-methylerythritol) due to lack of standards (Claeys et al., 2004; Ding et al., 2013; Ding et al., 2016). In this study, concentration ranges of erythritol were $0.4\text{--}19.8 \text{ ng m}^{-3}$ (mean 11.1 ng m^{-3}). The values of inositol ranged from 0.0 to 22.8 ng m^{-3} with average values of 5.8 ng m^{-3} . Moreover, the sugar alcohols not only originates from biological emissions, but also derives from BB (Wan and Yu, 2007; Jia et al., 2010). Different levels of glycerol, arabitol, mannitol, erythritol and inositol in fine particles have been found during burning of crop residues and fallen leaves as well as indoor biofuel usage for heating and cooking (Graham et al., 2002; Burshtein et al., 2011; Wang et al., 2011; Yang et al., 2012; Kang et al., 2018). Herein, only inositol exerted correlation with levoglucosan ($r = 0.42$), suggesting inositol may be linked to biomass combustion sources. Hence, the primarily source of sugar alcohols associated with fine particles was biogenic aerosols at observation sites.

3.2 Sources and transport

Since the distinct concentration of studied compounds was caused by different emission sources arising from different wind direction, the 72 h backward trajectories for the samples at Dashu site (24.12° N , 100.11° E) and the spatial distribution of the fire spots (March 8–April 8, 2019) were calculated to understand the source of saccharides in aerosol (Figure 4). The analysis of air mass backward trajectories suggested that the air mass over Lincang were almost from the westerlies during the sampling periods, and could be separated into two episodes of remote western source over 2000 meters and local western source below 2000 meters, as shown in wine red and green lines. 46.7% of air mass backward trajectories were generally over 2000 meters, while 53.3% of them were below 2000 meters.

删除的内容: The air masses over 2000 meters were mainly from the regions of South Asia, such as India and Myanmar. The air masses below 2000 meters were mainly attributed to the local air flows in the east of Hengduan Mountains.

Mean concentrations of saccharide compounds, as well as the contribution of them, for the episodes over and below 2000 meters are shown in Figure 5. The mean concentration of levoglucosan and mannosan for the below 2000 meters samples (327.4 and 35.6 ng m⁻³) were higher than those for the over 2000 meters samples (250.3 and 27.3 ng m⁻³). The anhydrosugars accounted for 49.2% and 36.9% of total saccharides, respectively for the below and above 2000 meters samples. It implied that the levoglucosan at the observation site was both attributed to the local BB activities and biomass burning smoke transported from the neighboring regions of Southeast Asia (Myanmar) and the northern Indian Peninsula. The southwest wind from the Indian Ocean prevailed at Lincang all the year round. In spring, the southwest wind was often affected by the low temperature downhill wind blowing from the snow-covered Hengduan Mountains. The weather alternated between hot and cold frequently, with unstable air pressure and strong wind. Therefore, the lower air could be diluted by the relatively clean cold air over the plateau. The upper air mainly came from the westerlies. These results were in agreement with the fact that residents across the Southeast Asia used to utilize woods as energy source to cook and generate heat.

While for glucose, fructose and sucrose, it was a little higher in the over 2000 meters samples (mean 33.5, 26.4 and 106.2 ng m⁻³) than that in the below 2000 meters samples (mean 29.2, 22.9 and 67.8 ng m⁻³). It implied that biogenic aerosols (such as ruptured pollen) carrying sugars could pass long distance, which was supported by previous study, which have observed long-range atmospheric transport of fine pollen from the Asian continent to the remote island Chichi-Jima under the influence of westerlies (Rousseau et al., 2008). Although the pollen are usually coarse with various shapes and hard shells, which results in the relatively short retention time in the atmosphere. Therefore, it could be concluded that, in addition to the local pollen, the concentration of sucrose in Lincang was also influenced by the transport of airborne pollen derived from South Asia areas.

3.3 Source apportionment of saccharides

Based on the compositional data of saccharides and key representative markers for difference sources, five factors associated to the emission sources of saccharides were finally resolved by NMF. As shown in Figure 6a, factor 1 was characterized by high level of levoglucosan (71.8%) and mannosan (78.7%), suggesting the source of BB

(Simoneit et al., 1999; Nolte et al., 2001). Factor 2 was characterized by trehalose (99.9%) and mannitol (100.0%), and was enriched in the other saccharides components, i.e., arabitol (44.1%), glucose (29.6%), erythritol (18.2%), glycerol (17.8%), levoglucosan (14.7%), and sucrose (8.6%). These saccharide compounds had all been detected in the suspended soil particles and associated microbiota (e.g., fungi, bacteria and algae) (Simoneit et al., 2004; Rogge et al., 2007). A recent study found that leaves were a major source of saccharides-associated microbial taxa in a rural area of France (Samaké et al., 2020). Hence, this factor was attributed to soil and leaves microbiota. Factor 3 has high levels of glycerol (71.4%) and erythritol (58.2%), and showed loadings of glucose (12.8%) and fructose (11.8%). Kang et al. (2018) reported that glycerol and erythritol presented larger amounts in winter and autumn, when the vegetation decomposed. This factor was thought as the sources from plant senescence and decay by microorganisms. Factor 4 exhibited a predominance of sucrose (78.7%), and showed loadings of glucose (17.2%), arabitol (11.8%). This factor was regarded as the source of airborne pollen, because pollen is the reproductive unit of plants and contains these saccharides and saccharide alcohols as nutritional components (Bieleski, 1995; Miguel et al., 2006; Fu et al., 2012). Factor 5 characterized by the dominance of fructose (88.2%) was resolved, and was enriched in glucose (38.2%) and arabitol (21.2%), thus it could be regarded as the source of plant detritus.

删除的内容: suspended soil dust and

The pie charts in Figure 6b shows the contribution of each source to total saccharides. BB of factor 1 (34.0%) was found as the dominant contributor to total saccharides. Factor 2-5 could all be labeled to a biogenic source accounting for a total contribution of 66.0%. The sources of soil microbiota (factor 2), plant senescence (factor 3), airborne pollen (factor 4) and plant detritus (factor 5) respectively contributed 16.0%, 21.0%, 23.7% and 5.3% to total saccharides. During the sampling periods, daily variations on proportion of the five factors are shown in Figure S5. Factor 2 soil microbiota emissions could be associated to soil reclamation and cultivation of farming periods. Factors 3 plant senescence and factor 5 plant detritus could be associated to harvesting of vegetation or crop. During the observation period of a month, along with the weather warming as sunshine enhanced, human left two obvious traces of cultivated soil during 9-17 March and 27 March-8 April and a trace of vegetation or crop harvest during 17-30 March. The stronger pollen discharge occurred in March, probably due to the flowering of certain plants. The BB emissions

删除的内容: S4

删除的内容: , and f

peaked on 9, 16 March, and 31 March-1 April were more prone to be open burnings. Therein, the BB during 31 March-1 April was probably from the burning of ghost money during the Qingming Festival.

删除的内容: The BB emissions peaked on 9, 16 March, and 1 April were more prone to be open burnings.

Since there is still some uncertainty of the factor apportionment, the proportion of sources are only relative and uncertain. It is still difficult to distinguish the contributions of microorganisms and plants to biogenic aerosols. Furthermore, all the above speculations about farming and harvesting periods are based on only one month's observation, and long-term observations are needed to obtain more accurate and effective information.

4 Conclusion

With the help of the various atmospheric saccharides, this study presents the characteristic of BB and various biogenic emissions to ambient aerosol in the rural sites of Southwest China. Levoglucosan was the most dominant specie among all the saccharides with the concentration of $287.7 \mu\text{g m}^{-3}$. The ratios of levoglucosan/OC were 1.9-8.9% (mean: 3.7%). BB contributed to 19.1-73.9% of OC (mean: 41.3%). The results indicated that domestic biomass fuel burning, open BB events, possibly open agricultural waste burning, forest fire, or sacrificial activity appeared to be significant during the spring in this area. The total concentrations of five mono (di) saccharides and five sugar alcohols respectively contributed $24.9 \pm 8.3\%$ and $26.6 \pm 9.9\%$ of the total measured saccharides. Based on the regression analysis, these mono (di) saccharides and sugar alcohols were mostly emitted by direct biogenic volatilization from plant materials/surface soils, rather than BB processes. The sampling sites suffered from both local emissions and BB via long-range transport from Southeast Asia (Myanmar, Bangladesh) and the northern Indian Peninsula. Five sources of saccharides were resolved by NMF analysis, including BB (34%), soil microbiota (16.0%), plant senescence (21.0%), airborne pollen (23.7%) and plant detritus (5.3%) at rural Lincang in spring.

删除的内容: μ

The data herein indicated that biofuel and open BB activities in the rural Southwest China and neighboring regions could have a significant impact on ambient aerosol levels. In addition to the residential biofuel usage, field burnings of agricultural residues and fallen leaves, as well as forest fire, were non-negligible. Some new technical measures of biomass resource utilization are urgently needed to improve the open burning emission scenario in rural areas, along with strict prohibition policy of

BB. Meanwhile, the characteristics analysis of saccharides in the region can serve as a valuable reference for future studies to evaluate temporal variations of biomass combustion and biogenic emission during modeling predictions and policy making.

ASSOCIATED CONTENT

Supporting Information

The location of the sampling sites was shown in Figure S1. Temporal variations of RH, temperature, solar irradiation and rainfall are shown in Figure S2. Mean concentrations of saccharide compounds and the contribution of them for the Datian, Dashu, and Yakoutian samples are shown in Figure S3. Daily variation on average concentrations of levoglucosan and K^+ (a), arabitol and mannitol (b), $PM_{2.5}$, Ca^{2+} and trehalose (c) at the three sites throughout the sampling period are shown in Figure S4. Figure S5 showed daily variations on proportion of the five factors to the total saccharides in $PM_{2.5}$ sampled at three sites during the sampling periods. Table S1 lists the concentrations of the carbonaceous components and soluble inorganic ions in $PM_{2.5}$ during the sampling periods of spring 2019. Correlation matrix for the dataset of the determined saccharides compounds in $PM_{2.5}$ samples is shown in Table S2.

删除的内容: S1

删除的内容: S2

删除的内容: S3

删除的内容: S4

删除的内容: S3

Acknowledgments

This work was supported by the National Natural Science Foundation of China (91843301, 91743202, 91843302).

Reference

- Bauer, H., Claeys, M., Vermeylen, R., Schueller, E., Weinke, G., Berger, A., and Puxbaum, H.: Arabitol and mannitol as tracers for the quantification of airborne fungal spores, *Atmos. Environ.*, 42, 588-593, 10.1016/j.atmosenv.2007.10.013, 2008.
- Bieleski, R.L.: Onset of phloem export from senescent petals of daylily, *Plant. Physiol.*, 109, 557-565, 10.1104/pp.109.2.557, 1995.
- Burshtein, N., Lang-Yona, N., and Rudich, Y.: Ergosterol, arabitol and mannitol as tracers for biogenic aerosols in the eastern Mediterranean, *Atmos. Chem. Phys.*, 11, 829-839, 10.5194/acp-11-829-2011, 2011.
- Caseiro, A., Marr, I. L., Claeys, M., Kasper-Giebl, A., Puxbaum, H., and Pio, C. A.:

Determination of saccharides in atmospheric aerosol using anion-exchange high-performance liquid chromatography and pulsed-amperometric detection, *J. Chromatogr. A*, 1171, 37-45, 10.1016/j.chroma.2007.09.038, 2007.

Chen, J., Kawamura, K., Liu, C.Q., and Fu, P.Q.: Long-term observations of saccharides in remote marine aerosols from the western North Pacific: a comparison between 1990-1993 and 2006-2009 periods, *Atmos. Environ.*, 67, 448-458, 10.1016/j.atmosenv.2012.11.014, 2013.

Chen, J.M., Li, C.L., Ristovski, Z., Milic, A., Gu, Y.T., Islam, M.S., Wang, S.X., Hao, J.M., Zhang, H.F., He, C.R., Guo, H., Fu, H.B., Miljevic, B., Morawska, L., Thai, P., Lam, Y.F., Pereira, G., Ding, A.J., Huang, X., and Dumka, U.C.: A review of biomass burning: emissions and impacts on air quality, health and climate in China, *Sci. Total Environ.*, 579, 1000-1034, 10.1016/j.scitotenv.2016.11.025, 2017.

Chen, Y., and Xie, S.: Characteristics and formation mechanism of a heavy air pollution episode caused by biomass burning in Chengdu, Southwest China, *Sci. Total Environ.*, 473-474 (3), 507-517, 10.1016/j.scitotenv.2013.12.069, 2014.

Cheng, Y., Engling, G., He, K.B., Duan, F.K., Ma, Y.L., Du, Z.Y., Liu, J.M., Zheng, M., and Weber, R.J.: Biomass burning contribution to Beijing aerosol, *Atmos. Chem. Phys.*, 13, 7765-7781, 10.5194/acp-13-7765-2013, 2013.

Chow, J.C., Watson, J.G., Chen, L.W.A., Chang, M.C.O., Robinson, N.F., Trimble, D., and Kohl, S.: The IMPROVE_A temperature protocol for thermal/ optical carbon analysis: maintaining consistency with a long-term database, *J. Air Waste Manag. Assoc.*, 57 (9), 1014-1023, 10.3155/1047-3289.57.9.1014, 2007.

Christner, B.C., Morris, C.E., Foreman, C.M., Cai, R., and Sands, D.C.: Ubiquity of biological ice nucleators in snowfall, *Science*, 319, 1214, 10.1126/science.1149757, 2008.

Claeys, M., Graham, B., Vas, G., Wang, W., Vermeylen, R., Pashynska, V., Cafmeyer, J., Guyon, P., Andreae, M. O., Artaxo, P., and Maenhaut, W.: Formation of secondary organic aerosols through photooxidation of isoprene, *Science*, 303, 1173-1176, 10.1126/science.1092805, 2004.

Després, V.R., Huffman, J.A., Burrows, S.M., Hoose, C., Safatov, A.S., Buryak, G.,

649 FroehlichNowoisky, J., Elbert, W., Andreae, M.O., Pöschl, U., and Jaenicke, R.:
650 Primary biological aerosol particles in the atmosphere: a review, *Tellus B*, 64
651 (15598), 1-58, 10.3402/tellusb.v64i0.15598 , 2012.

652 Ding, X., He, Q.F., Shen, R.Q., Yu, Q.Q., Zhang, Y.Q., Xin, J.Y., Wen, T.X., and Wang,
653 X.M.: Spatial and seasonal variations of isoprene secondary organic aerosol in
654 China: significant impact of biomass burning during winter, *Sci. Rep.*, 6, 20411,
655 10.1038/srep20411, 2016.

656 Ding, X., Wang, X. M., Xie, Z. Q., Zhang, X., and Sun, L. G.: Impacts of Siberian
657 biomass burning on organic aerosols over the North Pacific Ocean and the Arctic:
658 Primary and secondary organic tracers, *Environ. Sci. Technol.*, 47, 3149-3157,
659 10.1021/es3037093, 2013.

660 Draxler, R. R., and Hess, G.D.: An overview of the HYSPLIT-4 modelling system for
661 trajectories, dispersion and deposition, *Australian Meteorological Magazine*, 47,
662 295-308, 1998.

663 Elbert, W., Taylor, P.E., Andreae, M.O., and Pöschl, U.: Contribution of fungi to
664 primary biogenic aerosols in the atmosphere: wet and dry discharged spores,
665 carbohydrates, and inorganic ions, *Atmos. Chem. Phys.*, 7, 4569-4588,
666 10.5194/acp-7-4569-2007, 2007.

667 Engling, G., Carrico, C.M., Kreidenweis, S.M., Collet, J.L., Day, D.E., Malm, W.C.,
668 Lincoln, E., Hao, W.M., Iinuma, Y., and Herrmann, H.: Determination of
669 levoglucosan in biomass combustion aerosol by high-performance anion-exchange
670 chromatography with pulsed amperometric detection, *Atmos. Environ.*, 40,
671 S299-S311, 10.1016/j.atmosenv.2005.12.069, 2006.

672 Engling, G., Zhang, Y.N., Chan, C.Y., Sang, X. F., Lin, M., Ho, K.F., Li Y.S., Lin, C. Y.,
673 and Lee, J. J.: Characterization and sources of aerosol particles over the
674 southeastern Tibetan Plateau during the Southeast Asia biomass-burning season,
675 *Tellus B* 63, 117-128, 10.1111/j.1600-0889.2010.00512.x, 2011.

676 Fu, P. Q., Kawamura, K., and Barrie, L.A.: Photochemical and other sources of
677 organic compounds in the Canadian high Arctic aerosol pollution during
678 winter-spring, *Environ. Sci. Technol.*, 43, 286-292, 10.1021/es803046q, 2009.

679 Fu, P. Q., Kawamura, K., Chen, J., Charriere, B., and Sempere, R.: Organic molecular
 680 composition of marine aerosols over the Arctic Ocean in summer: contributions of
 681 primary emission and secondary aerosol formation, *Biogeosciences*, 10, 653-667,
 682 10.5194/bg-10-653-2013, 2013.
 683 Fu, P.Q., Kawamura, K., Kobayashi, M., and Simoneit, B.R.T.: Seasonal variations of
 684 sugars in atmospheric particulate matter from Gosan, Jeju Island: significant
 685 contributions of airborne pollen and Asian dust in spring, *Atmos. Environ.*, 55,
 686 234-239, 10.1016/j.atmosenv.2012.02.061, 2012.
 687 Fu, P. Q., Zhuang, G. S., Sun, Y. L., Wang, Q. Z., Chen, J., Ren, L.J., Yang, F., Wang,
 688 Z. F., Pan, X. L., Li, X. D., and Kawamura, K.: Molecular markers of biomass
 689 burning, fungal spores and biogenic SOA in the Taklimakan desert aerosols, *Atmos.*
 690 *Environ.*, 130, 64-73, 10.1016/j.atmosenv.2015.10.087, 2016.
 691 Fraser, M.P., and Lakshmanan, K.: Using levoglucosan as a molecular marker for the
 692 long-range transport of biomass combustion aerosols, *Environ. Sci. Technol.*, 34
 693 (21), 4560-4564, 10.1021/es991229l, 2000.
 694 Graham, B., Guyon, P., Taylor, P.E., Artaxo, P., Maenhaut, W., Glovsky, M.M., Flagan,
 695 R.C., and Andreae, M.O.: Organic compounds present in the natural Amazonian
 696 aerosol: characterization by gas chromatography-mass spectrometry, *J. Geophys.*
 697 *Res. Atmos.*, 108, D24, 10.1029/2003JD003990, 2003.
 698 Graham, B., Mayol-Bracero, O. L., Guyon, P., Robert, G. C., Decesari, S., Facchini,
 699 M. C., Artaxo, P., Maenhaut, W., P. K., and Andreae, M. O.: Water-soluble organic
 700 compounds in biomass burning aerosols over Amazonia: 1. Characterization by
 701 NMR and GC-MS, *J. Geophys. Res.*, 107, D20 (8047), 10.1029/2001JD000336,
 702 2002.
 703 Harrison, R.M., Beddows, D.C.S., Hu, L., and Yin, J.: Comparison of methods for
 704 evaluation of wood smoke and estimation of UK ambient concentrations, *Atmos.*
 705 *Chem. Phys.*, 12, 8271-8283, 10.5194/acp-12-8271-2012, 2012.
 706 Hennigan, C.J., Sullivan, A.P., Collett Jr., J.L., and Robinson, A.L.: Levoglucosan
 707 stability in biomass burning particles exposed to hydroxyl radicals, *Geophys. Res.*
 708 *Lett.*, 37, L09806, 10.1029/2010GL043088, 2010.

Holden, A.S., Sullivan, A.P., Munchak, L.A., Kreidenweis, S.M., Schichtel, B.A., Malm, W.C., and Collett Jr., J.L.: Determining contributions of biomass burning and other sources to fine particle contemporary carbon in the western United States, *Atmos. Environ.*, 45, 1986-1993, 10.1016/j.atmosenv.2011.01.021, 2011.

Jacobson, M.C., Hansson, H.C., Noone, K.J., and Charlson, R.J.: Organic atmospheric aerosols: review and state of science, *Rev. Geophys.*, 38, 267-294, 10.1029/1998RG000045, 2000.

Jaenicke, R.: Abundance of cellular material and proteins in the atmosphere, *Science*, 308, 73, 10.1126/science.1106335, 2005.

Jaenicke, R., Matthias-Maser, S., and Gruber, S.: Omnipresence of biological material in the atmosphere, *Environ. Chem.*, 4, 217-220, 10.1071/EN07021, 2007.

Jia, Y.L., Bhat, S.G., and Fraser, M.P.: Characterization of saccharides and other organic compounds in fine particles and the use of saccharides to track primary biologically derived carbon sources, *Atmos. Environ.*, 44, 724-732, 10.1016/j.atmosenv.2009.10.034, 2010.

Jia, Y.L., and Fraser, M.: Characterization of saccharides in size-fractionated ambient particulate matter and aerosol sources: the contribution of primary biological aerosol particles (PBAPs) and soil to ambient, *Environ. Sci. Technol.*, 45, 930-936, 10.1021/es103104e, 2011.

Kalogridis, A. C., Popovicheva, O. B., Engling, G., Diapouli, E., Kawamura, K., Tachibana, E., Ono, K., Kozlov, V. S., and Eleftheriadis, K.: Smoke aerosol chemistry and aging of Siberian biomass burning emissions in a large aerosol chamber, *Atmos. Environ.*, 185, 15- 28, 10.1016/j.atmosenv.2018.04.033, 2018.

Kang, M. J., Ren, L. J., Ren, H., Zhao, Y., Kawamura, K., Zhang, H. L., Wei L. F., Sun. Y. L., Wang, Z. F., and Fu, P. Q.: Primary biogenic and anthropogenic sources of organic aerosols in Beijing, China: Insights from saccharides and n-alkanes, *Environ. Pollut.*, 243, 1579-1587, 10.1016/j.envpol.2018.09.118, 2018.

Kleindienst, T. E., Jaoui, M., Lewandowski, M., Offenberg, J. H., Lewis, C. W., Bhawe, P. V., and Edney, E. O.: Estimates of the contributions of biogenic and anthropogenic hydrocarbons to secondary organic aerosol at a southeastern US

location, *Atmos. Environ.*, 41 (37), 8288-8300, 10.1016/j.atmosenv.2007.06.045,
2007.

Lai, C.Y., Liu, Y.C., Ma, J.Z., Ma, Q.X., and He, H.: Degradation kinetics of
levoglucosan initiated by hydroxyl radical under different environmental conditions,
Atmos. Environ., 91, 32-39, 10.1016/j.atmosenv.2014.03.054, 2014.

Lee, D. D., and Seung, H. S.: Learning the parts of objects by non-negative matrix
factorization, *Nature*, 401, 788-791, 1999.

Lee, T., Sullivan, A.P., Mack, L., Jimenez, J.L., Kreidenweis, S.M., Onasch, T.B.,
Worsnop, D.R., Malm, W., Wold, C.E., and Hao, W. M.: Chemical smoke marker
emissions during flaming and smoldering phases of laboratory open burning of
wildland fuels, *Aerosol Sci. Technol.*, 44, 1-5, 10.1080/ 02786826.2010.499884,
2010.

Li, Q. L., Wang, N. L., Barbante, C., Kang, S. C., Callegaro, A., Battistel, D.,
Argiriadis, E., Wan, X., Yao, P., Pu, T., Wu, X. B., Han, Y., and Huai, Y. P.: Biomass
burning source identification through molecular markers in cryoconites over the
Tibetan Plateau, *Environ. Pollut.*, 244, 209-217, 10.1016/j.envpol.2018.10.037,
2019.

Li, X., Chen, M.X., Le, H.P., Wang, F.W., Guo, Z.G., Iinuma, Y., Chen, J.M., and
Herrmann, H.: Atmospheric outflow of PM_{2.5} saccharides from megacity Shanghai
to East China Sea: Impact of biological and biomass burning sources, *Atmos.*
Environ., 143, 1-14, 10.1016/j.atmosenv.2016.08.039, 2016a.

Li, X., Jiang, L., Hoa, L.P., Lyu, Y., Xu, T.T., Yang, X., Iinuma, Y., Chen, J.M., and
Herrmann, H.: Size distribution of particle-phase sugar and nitrophenol tracers
during severe urban haze episodes in Shanghai, *Atmos. Environ.*, 145, 115-127,
10.1016/j.atmosenv.2016.09.030, 2016b.

Liang, L., Engling, G., Cheng, Y., Duan, F. K., Du, Z. Y., and He, K. B.: Rapid
detection and quantification of fungal spores in the urban atmosphere by flow
cytometry, *J. Aerosol Sci.*, 66, 179-186, 10.1016/j.jaerosci.2013.08.013, 2013a.

Liang, L.L., Engling, G., Du, Z.Y., Cheng, Y., Duan, F.K., Liu, X.Y., and He, K.B.:
Seasonal variations and source estimation of saccharides in atmospheric particulate

769 matter in Beijing, China, *Chemosphere*, 150, 365-377,
 770 10.1016/j.chemosphere.2016.02.002, 2016.
 771 Liang, L.L., Engling, G., Duan, F.K., Cheng, Y., and He, K.B.: Characteristics of
 772 2-methyltetrols in ambient aerosol in Beijing, China, *Atmos. Environ.*, 59, 376-381,
 773 10.1016/j.atmosenv.2012.05.052, 2012.
 774 Liang, L., Engling, G., He, K. B., Du, Z. Y., Cheng, Y., and Duan, F. K.: Evaluation of
 775 fungal spore characteristics in Beijing, China, based on molecular tracer
 776 measurements, *Environ. Res. Lett.*, 8, 014005, 10.1088/1748-9326/8/1/014005,
 777 2013b.
 778 Medeiros, P.M., Conte, M.H., Weber, J.C., and Simoneit, B.R.T.: Sugars as source
 779 indicators of biogenic organic carbon in aerosols collected above the Howland
 780 Experimental Forest, Maine. *Atmos. Environ.*, 40, 1694-1705,
 781 10.1016/j.atmosenv.2005.11.001, 2006.
 782 Miguel, A.G., Taylor, P.E., House, J., Glovsky, M.M., and Flagan, R.C.:
 783 Meteorological influences on respirable fragment release from Chinese elm pollen,
 784 *Aerosol Sci. Technol.*, 40, 690-696, 10.1080/02786820600798869, 2006.
 785 Miyazaki, Y., Fu, P.Q., Kawamura, K., Mizoguchi, Y., and Yamanoi, K.: Seasonal
 786 variations of stable carbon isotopic composition and biogenic tracer compounds of
 787 water-soluble organic aerosols in a deciduous forest, *Atmos. Chem. Phys.*, 12,
 788 1367-1376, 10.5194/acp-12-1367-2012, 2012.
 789 Mochida, M., Kawamura, K., Fu, P.Q., and Takemura, T.: Seasonal variation of
 790 levoglucosan in aerosols over the western North Pacific and its assessment as a
 791 biomass-burning tracer, *Atmos. Environ.*, 44, 3511-3518,
 792 10.1016/j.atmosenv.2010.06.017, 2010.
 793 Nishikawa, M., Hao, Q., and Morita, M.: Preparation and evaluation of certified
 794 reference materials from Asian mineral dust, *Glob. Environ. Res.*, 4, 103-113, 2000.
 795 Nolte, C.G., Schauer, J.J., Cass, G.R., and Simoneit, B.R.T.: Highly polar organic
 796 compounds present in wood smoke and in the ambient atmosphere, *Environ. Sci.*
 797 *Technol.*, 35 (10), 1912-1919, 10.1021/es001420r, 2001.
 798 Nirmalkar, J., Deshmukh, D.K., Deb, M.K., Tsai, Y.I., and Sopajaree, K.: Mass

loading and episodic variation of molecular markers in PM_{2.5} aerosols over a rural area in eastern central India, *Atmos. Environ.*, 117, 41-50, 10.1016/j.atmosenv.2015.07.003, 2015.

Pashynska, V., Vermeylen, R., Vas, G., Maenhaut, W., and Claeys, M.: Development of a gas chromatographic/ion trap mass spectrometric method for the determination of levoglucosan and saccharidic compounds in atmospheric aerosols, Application to urban aerosol, *J. Mass Spectrom.*, 37, 1249-1257, 10.1002/jms.391, 2002.

Pietrogrande, M.C., Bacco, D., Visentin, M., Ferrari, S., and Casali, P.: Polar organic marker compounds in atmospheric aerosol in the Po Valley during the Supersito campaigns-Part 2: Seasonal variations of sugars, *Atmos. Environ.*, 97, 215-225, 10.1016/j.atmosenv.2014.07.056, 2014.

Puxbaum, H., Caseiro, A., Sa'nchez-Ochoa, A., Kasper-Giebl, A., Claeys, M., Gelencse'r, A., Legrand, M., Preunkert, S., and Pio, C.: Levoglucosan levels at background sites in Europe for assessing the impact of biomass combustion on the European aerosol background, *J. Geophys. Res.*, 112, 10.1029/2006JD008114 D23S05, 2007.

Pöschl, U., Martin, S.T., Sinha, B., Chen, Q., Gunthe, S.S., Huffman, J.A., Borrmann, S., Farmer, D.K., Garland, R.M., Helas, G., Jimenez, J.L., King, S.M., Manzi, A., Mikhailov, E., Pauliquevis, T., Petters, M.D., Prenni, A.J., Roldin, P., Rose, D., Schneider, J., Su, H., Zorn, S.R., Artaxo, P., and Andreae, M.O.: Rainforest aerosols as biogenic nuclei of clouds and precipitation in the Amazon, *Science*, 329 (5998), 1513-1516, 10.1126/science.1191056, 2010.

Reyes-Villegas, E., Bannan, T., Le Breton, M., Mehra, A., Priestley, M., Percival, C., Coe, H., and Allan, J. D.: Online chemical characterization of food-cooking organic aerosols: Implications for source apportionment, *Environ. Sci. Technol.*, 52, 5308-5318, 10.1021/acs.est.7b06278, 2018.

Rogge, W.F., Hildemann, L.M., Mazurek, M.A., Cass, G.R., and Simoneit, B.R.T.: Sources of fine organic aerosol. 4. Particulate abrasion products from leaf surfaces of urban plants, *Environ. Sci. Technol.*, 27 (13), 2700-2711, 1993.

Rogge, W.F., Medeiros, P.M., and Simoneit, B.R.T.: Organic marker compounds in

surface soils of crop fields from the San Joaquin Valley fugitive dust
 characterization study, *Atmos. Environ.*, 41, 8183-8204,
 10.1016/j.atmosenv.2007.06.030, 2007.

Rousseau, D.D., Schevin, P., Ferrier, J., Jolly, D., Andreasen, T., Ascanius, S.E.,
 Hendriksen, S.E., and Poulsen, U.: Long-distance pollen transport from North
 America to Greenland in spring, *J. Geophys. Res.* 113, 10.1029/ 2007JG000456,
 2008.

Rybicki, M., Marynowski, L., and Simoneit, B. R. T.: Composition of organic
 compounds from low-temperature burning of lignite and their application as tracers
 in ambient air, *Chemosphere*, 249, 126087, 10.1016/j.chemosphere.2020.126087,
 2020.

Samaké, A., Bonin, A., Jaffrezo, J.-L., Taberlet, P., Weber, S., Uzu, G., Jacob, V., Conil,
S., and Martins, J. M. F.: High levels of primary biogenic organic aerosols are driven
by only a few plant-associated microbial taxa, *Atmos. Chem. Phys.*, 20, 5609-5628,
10.5194/acp-20-5609-2020, 2020.

Samaké, A., Jaffrezo, J.-L., Favez, O., Weber, S., Jacob, V., Albinet, A., Riffault, V.,
Perdrix, E., Waked, A., Golly, B., Salameh, D., Chevrier, F., Oliveira, D. M., Bonnaire,
N., Besombes, J.-L., Martins, J. M. F., Conil, S., Guillaud, G., Mesbah, B., Rocq, B.,
Robic, P.-Y., Hulin, A., Meur, S. L., Descheemaecker, M., Chretien, E., Marchand, N.,
and Uzu, G.: Polyols and glucose particulate species as tracers of primary biogenic
organic aerosols at 28 French sites, *Atmos. Chem. Phys.*, 19, 3357-3374,
10.5194/acp-19-3357-2019, 2019.

Sang, X.F., Chan, C.Y., Engling, G., Chan, L.Y., Wang, X.M., Zhang, Y.N., Shi, S.,
 Zhang, Z.S., Zhang, T., and Hu, M.: Levoglucosan enhancement in ambient aerosol
 during springtime transport events of biomass burning smoke to Southeast China,
Tellus B, 63 (1), 129-139, 10.1111/j.1600-0889.2010.00515.x, 2011.

Sang, X.F., Zhang, Z.S., Chan, C.Y., and Engling, G.: Source categories and
 contribution of biomass smoke to organic aerosol over the southeastern Tibetan
 Plateau, *Atmos. Environ.*, 78, 113-123, 10.1016/j.atmosenv.2012.12.012, 2013.

Schkolnik, G., Falkovich, A.H., Rudich, Y., Maenhaut, W., and Artaxo, P.: New

analytical method for the determination of levoglucosan, polyhydroxy compounds, and 2-methylerythritol and its application to smoke and rainwater samples, *Environ. Sci. Technol.*, 39, 2744-2752, 10.1021/es048363c, 2005.

Shang, X. N., Zhang, K., Meng, F., Wang, S., Lee, M., Suh, I., Kim, D., Jeon, K., Park, H., Wang, X. Z., and Zhao, Y. X.: Characteristics and source apportionment of fine haze aerosol in Beijing during the winter of 2013, *Atmos. Chem. Phys.*, 18, 2573-2584, 10.5194/acp-18-2573-2018, 2018.

Simoneit, B.R.T., Elias, V.O., Kobayashi, M., Kawamura, K., Rushdi, A.I., Medeiros, P.M., Rogge, W.F., and Didyk, B.M.: Sugars-Dominant water-soluble organic compounds in soils and characterization as tracers in atmospheric particulate matter, *Environ. Sci. Technol.*, 38, 5939-5949, 10.1021/es0403099, 2004.

Simoneit, B.R.T., Schauer, J.J., Nolte, C.G., Oros, D.R., Elias, V.O., Fraser, M.P., Rogge, W.F., and Cass, G.R.: Levoglucosan, a tracer for cellulose in biomass burning and atmospheric particles, *Atmos. Environ.*, 33, 173-182, 10.1016/S1352-2310(98)00145-9, 1999.

Sullivan, A.P., May, A.A., Lee, T., McMeeking, G.R., Kreidenweis, S.M., Akagi, S.K., Yokelson, R.J., Urbanski, S.P., and Collett Jr., J.L.: Airborne characterization of smoke marker ratios from prescribed burning, *Atmos. Chem. Phys.*, 14, 10535-10545, 10.5194/acp-14-10535-2014, 2014.

Tang, M. J., Gu, W. J., Ma, Q. X., Li, Y. J., Zhong, C., Li, S., Yin, X., Huang, R. J., He, H., and Wang, X. M.: Water adsorption and hygroscopic growth of six anemophilous pollen species: the effect of temperature, *Atmos. Chem. Phys.*, 19, 2247-2258, 10.5194/acp-19-2247-2019, 2019.

Tanoue, E., and Handa, N.: Monosaccharide composition of marine particles and sediments from the Bering Sea and Northern North Pacific, *Oceanol. Acta*, 10, 91-99, 1987.

Tominaga, S., Matsumoto, K., Kaneyasu, N., Shigihara, A., Katono, K., and Igawa, M.: Measurements of particulate sugars at urban and forested suburban sites, *Atmos. Environ.*, 45, 2335-2339, 10.1016/j.atmosenv.2010.09.056, 2011.

Tsai, Y.I., Sopajaree, K., Chotruksa, A., Wu, H.C., and Kuo, S.S.: Source indicators of

biomass burning associated with inorganic salts and carboxylates in dry season ambient aerosol in Chiang Mai Basin, Thailand, *Atmos. Environ.*, 78, 93-104, 10.1016/j.atmosenv.2012.09.040, 2013.

Tsai, Y. I., Wu, P. L., Hsu, Y. T., and Yang, C. R.: Anhydrosugar and sugar alcohol organic markers associated with carboxylic acids in particulate matter from incense burning, *Atmos. Environ.*, 44, 3708-3718, 10.1016/j.atmosenv.2010.06.030, 2010.

Wang, G., Chen, C., Li, J., Zhou, B., Xie, M., Hu, S., Kawamura, K., and Chen, Y.: Molecular composition and size distribution of sugars, sugar-alcohols and carboxylic acids in airborne particles during a severe urban haze event caused by wheat straw burning, *Atmos. Environ.*, 45, 2473-2479, 10.1016/j.atmosenv.2011.02.045, 2011.

Wang, Q.Q., Shao, M., Liu, Y., William, K., Paul, G., Li, X.H., Liu, Y.A., and Lu, S.H.: Impact of biomass burning on urban air quality estimated by organic tracers: Guangzhou and Beijing as cases, *Atmos. Environ.*, 41, 8380-8390, 10.1016/j.atmosenv.2007.06.048, 2007.

Wu, J., Kong, S. F., Zeng, X., Cheng, Y., Yan, Q., Zheng, H., Yan, Y. Y., Zheng, S. R., Liu, D. T., Zhang, X. Y., Fu, P. Q., Wang, S. X., and Qi, S. H.: First High-resolution emission inventory of levoglucosan for biomass burning and non-biomass burning sources in China, *Environ. Sci. Technol.*, 55, 1497-1507, 10.1021/acs.est.0c06675, 2021.

Wang, X., Shen, Z. X., Liu, F. B., Lu, D., Tao, J., Lei, Y. L., Zhang, Q., Zeng, Y. L., Xu, H. M., Wu, Y. F., Zhang, R. J., and Cao, J. J.: Saccharides in summer and winter PM_{2.5} over Xi'an, Northwestern China: Sources, and yearly variations of biomass burning contribution to PM_{2.5}, *Environ. Res.*, 214, 410-417, 10.1016/j.atmosres.2018.08.024, 2018.

Womiloju, T.O., Miller, J.D., Mayer, P.M., and Brook, J.R.: Methods to determine the biological composition of particulate matter collected from outdoor air, *Atmos. Environ.*, 37, 4335-4344, 10.1016/S1352-2310(03)00577-6, 2003.

Xiao, M.X., Wang, Q.Z., Qin, X.F., Yu, G.Y., and Deng, C.R.: Composition, sources, and distribution of PM_{2.5} saccharides in a coastal urban site of china, *Atmosphere*, 9,

274; doi: 10.3390/atmos9070274, 10.3390/atmos9070274, 2018.

Xie, Y. L., Hopke, P. K., Paatero, P., Barrie, L. A., and Li, S. M.: Identification of source nature and seasonal variations of Arctic aerosol by positive matrix factorization, *J. Atmos. Sci.*, 56, 249-260, 10.1175/1520-0469(1999)056<0249:IOSNAS>2.0.CO;2, 1999.

Yan, C. Q., Sullivan, A. P., Cheng, Y., Zheng, Mei., Zhang, Y. H., Zhu, T., and Collett Jr, J. L.: Characterization of saccharides and associated usage in determining biogenic and biomass burning aerosols in atmospheric fine particulate matter in the North China Plain, *Sci. Total Environ.*, 650, 2939-2950, 10.1016/j.scitotenv.2018.09.325, 2019.

Yang, Y., Chan, C.Y., Tao, J., Lin, M., Engling, G., Zhang, Z., Zhang, T., and Su, L.: Observation of elevated fungal tracers due to biomass burning in the Sichuan Basin at Chengdu City, China, *Sci. Total Environ.*, 431, 68-77, 10.1016/j.scitotenv.2012.05.033, 2012.

Yttri, K.E., Dye, C., and Kiss, G.: Ambient aerosol concentrations of sugars and sugar-alcohols at four different sites in Norway, *Atmos. Chem. Phys.*, 7, 4267-4279, 10.5194/acp-7-4267-2007, 2007.

Yttri, K.E., Simpson, D., Nøjgaard, J.K., Kristensen, K., Genberg, J., Stenström, K., Swietlicki, E., Hillamo, R., Aurela, M., Bauer, H., Offenberg, J.H., Jaoui, M., Dye, C., Eckhardt, S., Burkhardt, J.F., Stohl, A., and Glasius, M.: Sources apportionment of the summer time carbonaceous aerosol at Nordic rural background sites, *Atmos. Chem. Phys.*, 11, 13339-13357, 10.5194/acp-11-13339-2011, 2011.

Zhang, T., Cao, J.J., Chow, J.C., Shen, Z.X., Ho, K.F., Ho, S.S.H., Liu, S.X., Han, Y.M., Watson, J.G., Wang, G.H., and Huang, R.J.: Characterization and seasonal variations of levoglucosan in fine particulate matter in Xi'an, China, *J. Air Waste Manag. Assoc.*, 64 (11), 1317-1327, 10.1080/10962247.2014.944959, 2014.

Zhang, T., Claeys, M., Cachier, H., Dong, S.P., Wang, W., Maenhaut, W., and Liu, X.D.: Identification and estimation of the biomass burning contribution to Beijing aerosol using levoglucosan as a molecular marker, *Atmos. Environ.*, 42 (29), 7013-7021, 10.1016/j.atmosenv.2008.04.050, 2008.

949 Zhang, T., Engling, G., Chan, C.Y., Zhang, Y.N., Zhang, Z.S., Lin, M., Sang, X.F., Li,
950 Y.D., and Li, Y.S.: Contribution of fungal spores to particulate matter in a tropical
951 rainforest, *Environ. Res. Lett.*, 5, 10.1088/1748-9326/1085/1082/024010, 2010.

952 Zhang, K., Shang, X.N., Herrmann, H., Meng, F., Mo, Z. Y., Chen, J. H., and Lv, M.L.:
953 Approaches for identifying PM_{2.5} source types and source areas at a remote
954 background site of South China in spring, *Sci. Total Environ.*, 691, 1320-1327,
955 10.1016/j.scitotenv.2019.07.178, 2019.

956 Zhang, Y., Obrist, D., Zielinska, B., and Gertler, A.: Particulate emissions from
957 different types of biomass burning, *Atmos. Environ.*, 72, 27-35,
958 10.1016/j.atmosenv.2013.02.026, 2013.

959 Zhang, Y.L., Wei, Q., Zhou, C.P., Ding, M.J., and Liu, L.S.: Spatial and temporal
960 variability in the net primary production of alpine grassland on the Tibetan Plateau
961 since 1982, *J. Geogr. Sci.*, 24 (2), 269-287, 10.1007/s11442-014-1087-1, 2014.

962 Zhang, Y.X., Shao, M., Zhang, Y.H., Zeng, L.M., He, L.Y., Zhu, B., Wei, Y.J., and Zhu,
963 X.L.: Source profiles of particulate organic matters emitted from cereal straw
964 burnings, *J. Environ. Sci.*, 19, 167-175, 10.1016/S1001-0742(07)60027-8, 2007.

965 Zhu, C.S., Cao, J.J., Tsai, C.J., Zhang, Z.S., and Tao, J.: Biomass burning tracers in
966 rural and urban ultrafine particles in Xi'an China, *Atmos. Pollution Res.*, 8, 614-618,
967 10.1016/j.apr.2016.12.011, 2017.

968 Zhu, C., Kawamura, K., and Kunwar, B.: Effect of biomass burning over the western
969 North Pacific Rim: wintertime maxima of anhydrosugars in ambient aerosols from
970 Okinawa, *Atmos. Chem. Phys.*, 15, 1959-1973, 10.5194/acp-15-1959-2015, 2015.

971 Zhu, Y., Yang, L., Chen, J., Wang, X., Xue, L., Sui, X., Wen, L., Xu, C., Yao, L.,
972 Zhang, J., Shao, M., Lu, S., and Wang, W.: Characteristics of ambient volatile
973 organic compounds and the influence of biomass burning at a rural site in Northern
974 China during summer 2013, *Atmos. Environ.*, 124, 156-165,
975 10.1016/j.atmosenv.2015.08.097, 2016.

976

Captions of Figure and Table

Figure 1. Temporal variations of OC, EC, PM_{2.5} and total sugars at the three sites during the sampling periods.

Figure 2. The absolute concentration (bar chart) and the relative contribution (pie chart) of various saccharide compounds during the sampling periods.

Figure 3. Regression analyses of levoglucosan versus the other two anhydrosugars (a), K⁺ versus three anhydrosugars (b), levoglucosan versus PM_{2.5}, OC and EC (c), and K⁺ versus PM_{2.5}, OC and EC (d).

Figure 4. Spatial distribution of the fire spots observed by MODIS, as well as the corresponding 72 h backward air-mass trajectory clusters arriving at 1500 m above ground level during the sampling periods for the collected samples. The backward trajectories were separated into two episodes of remote western source over 2000 meters and local western source below 2000 meters, as shown in wine red and green lines.

Figure 5. Mean concentrations and contribution of saccharide compounds for the aerosol samples separated as over and below 2000 meters.

Figure 6. Factor profile obtained by NMF analysis (a). Source contribution of the five factors to the total saccharides in PM_{2.5} samples (b).

Figure 1

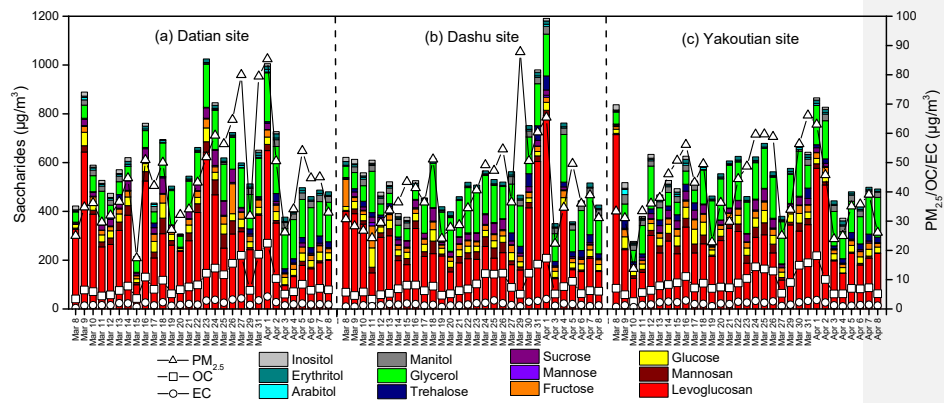


Figure 2

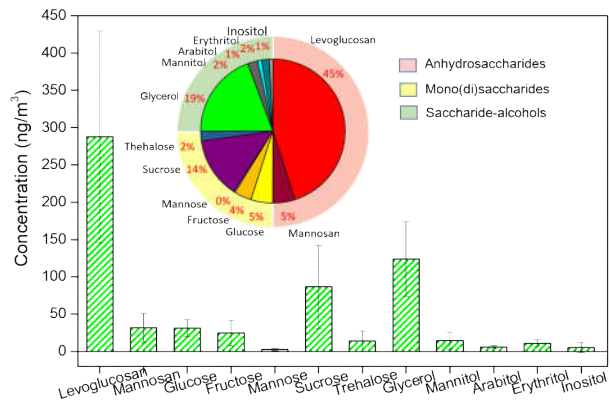


Figure 3

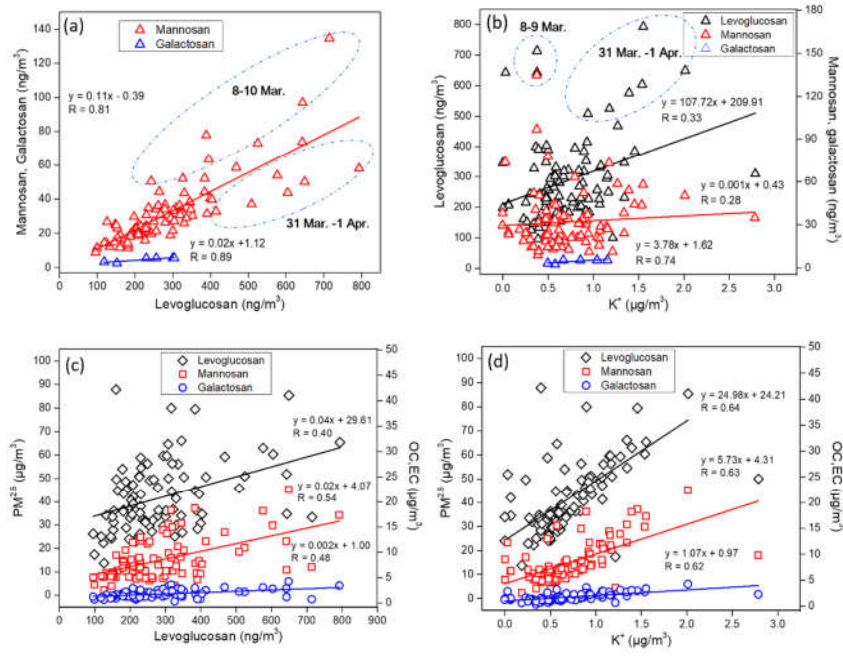


Figure 4

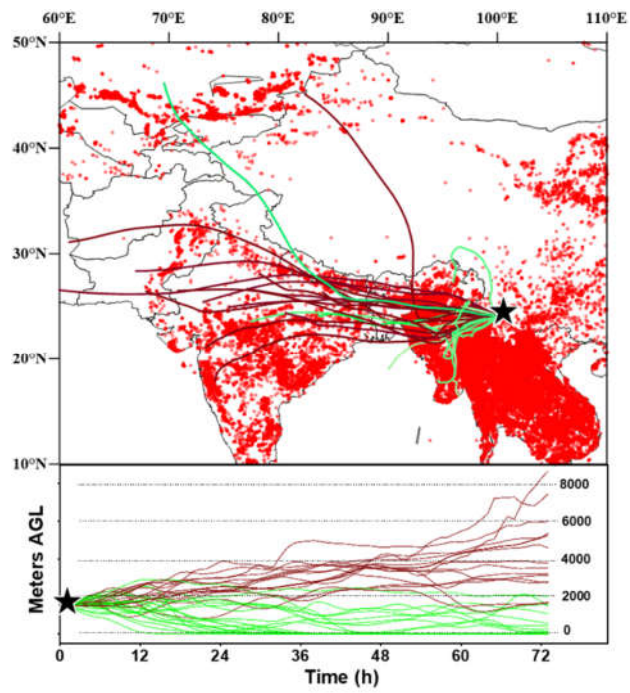


Figure 5

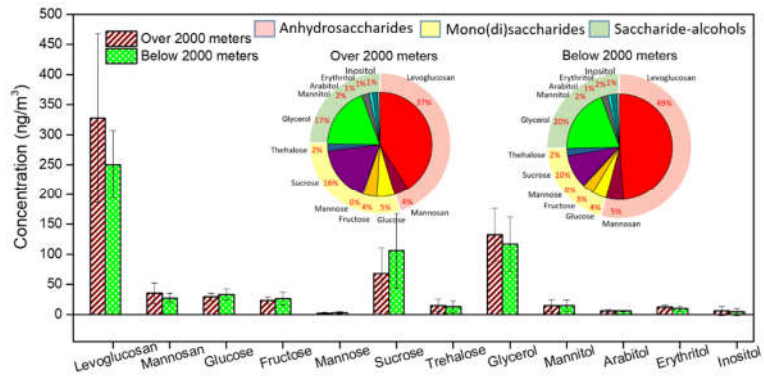
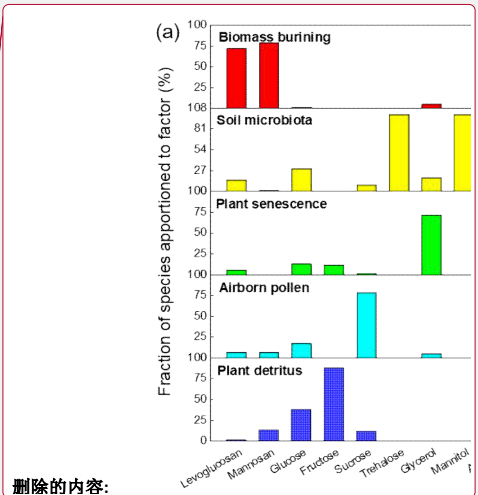
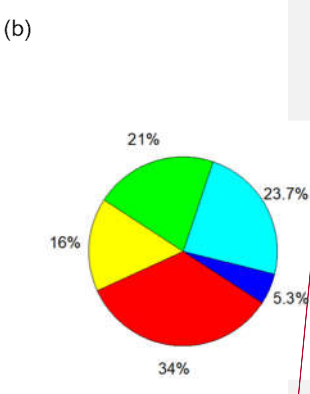
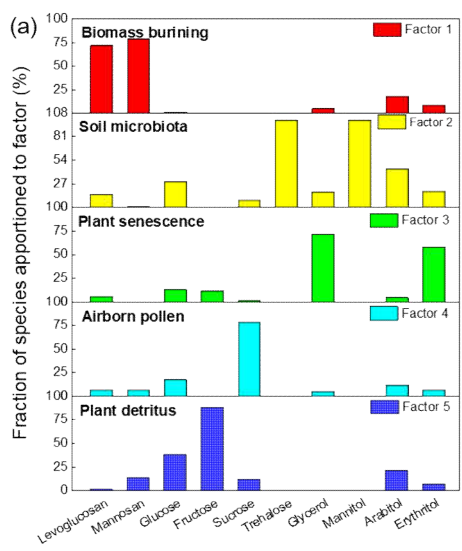


Figure 6



删除的内容: