



# Identifying Chemical Aerosol Signatures using Optical Suborbital Observations: How much can optical properties tell us about aerosol composition?

5 Meloë S. F. Kacenelenbogen<sup>1</sup>, Qian Tan<sup>1,2</sup>, Sharon P. Burton<sup>3</sup>, Otto P. Hasekamp<sup>4</sup>, Karl D. Froyd<sup>5</sup>, Yohei Shinozuka<sup>1,2</sup>, Andreas J. Beyersdorf<sup>6</sup>, Luke Ziemba<sup>3</sup>, Kenneth L. Thornhill<sup>3</sup>, Jack E. Dibb<sup>7</sup>, Taylor Shingler<sup>8</sup>, Armin Sorooshian<sup>8</sup>, Reed W. Espinosa<sup>9,10</sup>, Vanderlei Martins<sup>10</sup>, Jose L. Jimenez<sup>5</sup>, Pedro Campuzano-Jost<sup>5</sup>, Joshua P. Schwarz<sup>11</sup>, Matthew S. Johnson<sup>1</sup>, Jens Redemann<sup>12</sup>, Gregory L. Schuster<sup>3</sup>

10 <sup>1</sup>NASA Ames Research Center, Moffett Field, CA, 94035, USA

<sup>2</sup>Bay Area Environmental Research Institute (BAERI), Moffett Field, CA, 94035, USA

<sup>3</sup>NASA Langley Research Center, Hampton, VA, 23666, USA

<sup>4</sup>SRON, Netherlands Institute for Space Research, Utrecht, 3584, Netherlands

<sup>5</sup>Cooperative Institute for Research in Environmental Sciences (CIRES), University of Colorado, Boulder, CO, 80309, USA

15 <sup>6</sup>California State University, San Bernardino (CSUSB), San Bernardino, CA, 92407, USA

<sup>7</sup>University of New Hampshire, Durham, NH, 03824, USA

<sup>8</sup>University of Arizona, Tucson, AZ, 85721, USA

<sup>9</sup>NASA Goddard Space Flight Center, Greenbelt, MD, 20771, USA

<sup>10</sup>University of Maryland Baltimore County (UMBC), Baltimore, MD 21250, USA

20 <sup>11</sup>Chemical Sciences Division, NOAA Earth System Research Laboratory, Boulder, CO, USA

<sup>12</sup>University of Oklahoma, Norman, OK 73019, USA

Correspondence to: Meloë S.F. Kacenelenbogen (meloe.s.kacenelenbogen@nasa.gov)

25 **Abstract.** Improvements in air quality and Earth's climate predictions require improvements of the aerosol speciation in chemical transport models, using observational constraints. Aerosol speciation (e.g., organic aerosols, black carbon, sulfate, nitrate, ammonium, dust or sea salt) is typically determined using *in situ* instrumentation. Continuous, routine surface network aerosol composition measurements are not uniformly widespread over the globe. Satellites, on the other hand, can provide a maximum coverage of the horizontal and vertical atmosphere but observe aerosol optical properties (and not aerosol speciation)

30 based on remote sensing instrumentation. Combinations of satellite-derived aerosol optical properties can inform on air mass aerosol types (AMTs e.g., clean marine, dust, polluted continental). However, these AMTs are subjectively defined, might often be misclassified and are hard to relate to the critical parameters that need to be refined in models.

In this paper, we derive AMTs that are more directly related to sources and hence to speciation. They are

35 defined, characterized, and derived using simultaneous *in situ* gas-phase, chemical and optical instruments on the same aircraft during the Study of Emissions and Atmospheric Composition, Clouds, and Climate Coupling by Regional Surveys (SEAC<sup>4</sup>RS, US, summer of 2013). First, we prescribe well-informed AMTs that display distinct aerosol chemical and optical signatures to act as a training AMT



40 dataset. These *in situ* observations reduce the errors and ambiguities in the selection of the AMT training  
dataset. We also investigate the relative skill of various combinations of aerosol optical properties to  
define AMTs and how much these optical properties can capture dominant aerosol speciation.  
We find distinct optical signatures for biomass burning (from agricultural or wildfires), biogenic and dust-  
influence AMTs. Useful aerosol optical properties to characterize these signatures are the extinction  
45 angstrom exponent (EAE), the single scattering albedo, the difference of single scattering albedo in two  
wavelengths, the absorption coefficient, the absorption angstrom exponent (AAE), and the real part of the  
refractive index (RRI). We find that all four AMTs studied when prescribed using mostly airborne *in situ*  
gas measurements, can be successfully extracted from at least three combinations of airborne *in situ*  
aerosol optical properties (e.g., EAE, AAE and RRI) over the US during SEAC<sup>4</sup>RS. However, we find  
50 that the optically based classifications for BB from agricultural fires and polluted dust include a large  
percentage of misclassifications that limit the usefulness of results relating to those classes.  
The technique and results presented in this study are suitable to develop a representative, robust and  
diverse source-based AMT database. This database could then be used for widespread retrievals of AMTs  
using existing and future remote sensing suborbital instruments/networks. Ultimately, it has the potential  
to provide a much broader observational aerosol data set to evaluate chemical transport and air quality  
55 models than is currently available by direct *in situ* measurements.  
This study illustrates how essential it is to explore existing airborne datasets to bridge chemical and optical  
signatures of different AMTs, before the implementation of future spaceborne missions (e.g., the next  
generation of Earth Observing System (EOS) satellites addressing Aerosol, Cloud, Convection and  
Precipitation (ACCP) designated observables).

60

## 1 Introduction

Aerosols have an important yet uncertain impact on the Earth's radiation budget (e.g., Boucher et al.,  
2013) and human health (e.g., US EPA, 2011, 2016; Lim et al., 2012; Lanzi, 2016; Landrigan et al., 2018;  
Wu et al., 2020). In particular, aerosols impact human health by increasing the number of cases of  
65 emphysemas, lung cancers, diabetes, hypertension and premature deaths (e.g., Wichmann et al., 2000;  
Pope et al., 2002; Lim et al., 2012; Lelieveld et al., 2019, 2015; Stirnberg et al., 2020; Nault et al., 2021);  
this particularly holds true for specific species of aerosols with high oxidative potential (e.g., Daellenbach  
et al. 2020).

Chemical Transport Models (CTMs) and General Circulations Models (GCMs) derive aerosol optical  
70 properties and estimate the Radiative Forcing due to aerosol-radiation interactions (RFari), based on  
simulated water uptake, simulated aerosol mass concentrations, simplified aerosol size distributions and  
assumed aerosol refractive indices per species (Chin et al., 2002). RFari for individual aerosol species  
(e.g., sulfate, black carbon (BC), organic aerosol (OA, typically classified into primary, POA, and  
secondary organic aerosol, SOA), nitrate, biomass burning (BB)) are less certain than the total RFari  
75 (Boucher et al., 2013; Myhre et al., 2013). Myhre et al. (2013) present a large AeroCom Phase II inter-  
model spread in the Radiative Forcing (RF) of several aerosol species. BC, for example, had a 40%  
relative standard deviation in RFari. Inter-model diversity in estimates of RFari is caused in part by



80 different methods for estimating aerosol properties (e.g., emissions, transport, chemistry, deposition, optical properties (Loeb and Su, 2010)), and to a lesser extent by surface and cloud albedos, water vapor absorption, and radiative transfer schemes (e.g., Randles et al., 2013; Myhre et al., 2013; Stier et al., 2013; Thorsen et al., 2021).

In order to constrain model simulations, data assimilation techniques have been adopted using optimal estimation methods and observational constraints that we separate in four main groups. The first group of constraints consists in column-integrated aerosol optical properties from passive orbital and/or suborbital instruments (e.g., Collins et al., 2001; Yu et al., 2003; Generoso et al., 2007; Adhikary et al., 2008; Niu et al., 2008; Zhang et al., 2008; Benedetti et al., 2009; Schutgens et al., 2010; Kumar et al., 2019; Tsikerdekis et al., 2021). The second group consists in fine aerosol mass concentrations from airborne and/or ground-based instruments (e.g., Lin et al., 2008; Pagowski and Grell, 2012). The third group consists in a combination of *in situ* gas-phase measurements (e.g., SO<sub>2</sub>, NO<sub>2</sub>, O<sub>3</sub>, CO), fine aerosol mass concentrations from ground-based instruments and column-integrated aerosol optical properties from passive orbital instruments (e.g., Ma et al., 2019). The fourth group consists in surface (e.g., Kahnert, 2008, Yumimoto et al., 2008; Uno et al., 2008) and space-based aerosol lidar profiles (e.g., Sekiyama et al., 2010; Zhang et al., 2011), which are used to constrain aerosol mass and extinction. Constraining model-predicted aerosol mass concentrations with passive satellite total column-integrated aerosol properties has been shown to be useful to constrain model-predicted AOD. This is the case for the single-channel visible Aerosol Optical Depth (AOD) retrievals from the Moderate Resolution Imaging Spectroradiometer (MODIS) sensor (e.g., Yu et al., 2003; Zhang et al., 2008; Benedetti et al., 2009; Sessions et al., 2015; Buchard et al., 2017; Kumar et al., 2019; Ma et al., 2019). However, this process does not correct the uncertainty associated with the simulated vertical distribution of aerosols, nor can it derive aerosol chemical speciation. On the other hand, assimilation of satellite-derived optical properties related to particle size (e.g., Extinction Angstrom Exponent, EAE) and light absorption (e.g., Single Scattering Albedo, SSA) represents a step forward (e.g., Tsikerdekis et al., 2021). Another way to improve estimates of speciated R<sub>Fari</sub> would be to use satellite-derived total column speciated aerosol mass concentration to adjust the mass concentration of individual aerosol masses when applying data assimilation techniques in the model (and potentially the emission/chemistry/transport processes driving them). However, currently no satellite-derived retrievals of aerosol chemical speciation exist.

Let us note an important distinction between what is called aerosol speciation and aerosol type. On the one hand, we define aerosol speciation the inherent chemical composition of the aerosol (also called aerosol component), the chemical species that are represented in CTMs (e.g., BC, OA, brown carbon, sulfate, nitrate, ammonium, dust, sea salt). These are typically defined to match the operational quantities reported by in-situ instruments. On the other hand, the Air Mass Aerosol Type (AMT) is representative of typical aerosol mixes associated with certain seasons and geographical locations. It is a coarse definition (qualitative) of the aerosol size, shape and color that dominates an air mass (e.g., clean marine, dust, polluted continental, clean continental, polluted dust, smoke, and stratospheric in the case of CALIOP/ CALIPSO, Cloud-Aerosol Lidar with Orthogonal Polarization/ Cloud-Aerosol Lidar and Infrared Pathfinder Satellite Observation (Omar et al., 2009)).

On the one hand, recent techniques infer aerosol speciation from A-Train's POLDER (Polarization and Directionality of Earth's Reflectances) passive satellite observations on board the PARASOL platform



120 using an inverse modeling framework, which consists in fitting satellite observations to model estimates  
by adjusting aerosol emissions. POLDER measures polarized radiances in 14-16 viewing directions at  
443, 670 and 865 nm and retrieves aerosol optical properties over land (Deuzé et al., 2001) and over ocean  
(Herman et al., 2005) using its standard retrieval algorithm. In addition, two alternate POLDER retrieval  
125 algorithms from the SRON-Netherlands Institute for Space Research algorithm (Hasekamp et al., 2011,  
Fu et al., 2020) and generated by the GRASP (Generalized Retrieval of Atmosphere and Surface  
Properties) algorithm (Dubovik, 2014) make full use of multi-angle, multi-spectral polarimetric data. For  
example, Chen et al. (2018, 2019) use POLDER/GRASP spectral AOD and Aerosol Absorption Optical  
Depth (AAOD) to estimate emissions of desert dust, BC, and OC. Similarly, Tsikerdekis et al., (2021)  
130 use POLDER/SRON AOD, AAOD, EAE and SSA, but with a different model and assimilation technique,  
and to estimate the aerosol mass and number mixing ratio of specific aerosol species.

On the other hand, AMTs inferred by various techniques and using satellite remote sensing observations  
are useful to provide spatial context (e.g., regional, seasonal, annual trends) to support other observations  
of aerosols and clouds or evaluate other aerosol type classifications. These AMTs are also useful in  
evaluating models in simple cases where a single aerosol species is present (e.g., “pure dust”). For  
135 example, Johnson et al. (2012) demonstrated how CALIPSO mineral dust aerosol extinction retrievals  
were applied to improve dust emission and size distribution parameterizations in the global GEOS-Chem  
model, a global 3-D model of atmospheric chemistry driven by meteorological input from the Goddard  
Earth Observing System (GEOS).

We have inferred qualitative AMTs from passive POLDER/SRON remote-sensing retrievals of EAE  
140 between 491 and 863 nm, SSA at 491 nm, a difference in Single Scattering Albedo, dSSA between 863nm  
and 491 nm, a Real Refractive Index, RRI at 670 nm and a pre-Specified Clustering and Mahalanobis  
Classification method (SCMC) (Russell et al., 2014).

The SCMC method, based on the methodology developed by Burton et al. (2012), uses the Mahalanobis  
distance (Mahalanobis, 1936) analysis in multidimensional space to assign AMTs based on a suite of  
145 observed parameters. The number of parameters is adjustable, as are the nature of the parameters  
themselves. Similarly, the AMT definitions are flexible. However, a key requirement for the SCMC  
method is that reference values for each AMT must be defined (i.e., the mean, variances and covariances  
of the aerosol variables), typically using prescribed AMTs for a subset of observations. In practice, when  
applying SCMC to a new environment, a training data set is created by prescribing a set of air masses  
150 based on independent observations. Those pre-specified AMTs from Russell et al. (2014) are based on  
dominant aerosol types from AERosol RObotic NETwork (AERONET) stations at specific locations and  
times (Holben et al., 1998). In Russell et al. (2014), qualitative AMTs were derived over the island of  
Crete, Greece, during a 5-year period using the SCMC method and pre-specified AMTs from global  
AERONET observations.

155 In this paper, we have extended the methods of Russell et al. (2014) (i.e., over Greece) to the entire globe  
for the year 2006. On the one hand, the POLDER-derived AMTs presented reassuring features such as (i)  
dust over the Atlantic between the Saharan coast and Central to South America, predominant in MAM  
and JJA, (ii) urban industrial aerosols found near industrialized cities such as the East Coast of North  
160 America and over South East Asia, and (iii) two different types of Biomass Burning (BB) over the South  
East Atlantic (i.e., one illustrating more smoldering combustion and pre-specified using AERONET



stations located in South America and the other one illustrating more flaming combustion and using AERONET stations in Africa). We found darker BB (i.e., lower SSA) in August compared to September, due to an increase of POLDER-retrieved SSA during the season, reflecting either a change in BB aerosol composition (Eck et al., 2013) or a mix of AMTs (Bond et al., 2013).

165 On the other hand, many features such as marine aerosols over the Saharan Desert or urban industrial aerosol type in South America, were most likely misclassified. Ambiguities in POLDER-derived AMTs could result from a combination of four factors:

(i) Errors in POLDER reflectance/polarization measurements and aerosol retrievals (e.g., errors in POLDER retrievals get larger for smaller AOD and/ or smaller range of scattering angles),

(ii) A coarse spatial resolution of the gridded POLDER product (e.g.,  $2^\circ \times 2^\circ$ ),

(iii) Non-optimal AERONET-based pre-specified AMTs used as a training dataset (e.g., the AMT illustrating more flaming combustion is defined in locations, such as Mongu in Africa, where smoldering and flaming combustion might be occurring at the same time, together with other AMTs present in the atmospheric column) and/or

(iv) A restricted number of POLDER-derived aerosol optical parameters. That is, the relative AMT discriminatory power increases with the number and diversity of observed parameters.

180 Unlike in Russell et al. (2014), where we used total column remote sensing-inferred optical properties which are often representative of a mix of different AMTs, the AMTs in this study are defined, characterized, and derived using simultaneous gas-phase, chemical and optical instruments on the same aircraft. This reduces errors in measurements/retrievals and errors due to spatio-temporal collocation (i.e., i-ii). It also reduces ambiguities in the selection of the AMT training dataset (i.e., iii), and we specifically investigate the strengths and weaknesses of optical properties used as tools to define AMTs and how much these optical properties can capture dominant aerosol speciation (i.e., iv).

185 The objectives of this study are to:

- Prescribe well-informed AMTs that display distinct aerosol chemical and optical signatures to act as a training (i.e., reference) AMT dataset, and
- Evaluate the ability of airborne in-situ measured aerosol optical properties that are suitable to be retrieved from space to successfully extract these AMTs.

## 2. Data and Method

### 2.1 Method

195 We select NASA DC-8 airborne *in-situ* data collected during the Study of Emissions and Atmospheric Composition, Clouds, and Climate Coupling by Regional Surveys (SEAC<sup>4</sup>RS) project (Toon et al., 2016), which was carried out in August–September 2013 over North America with a strong focus on the Southeastern US (SEUS). Measurements are collected at the altitude of the aircraft and are not representative of the full column satellite retrieval. Although these airborne *in situ* observations lack the



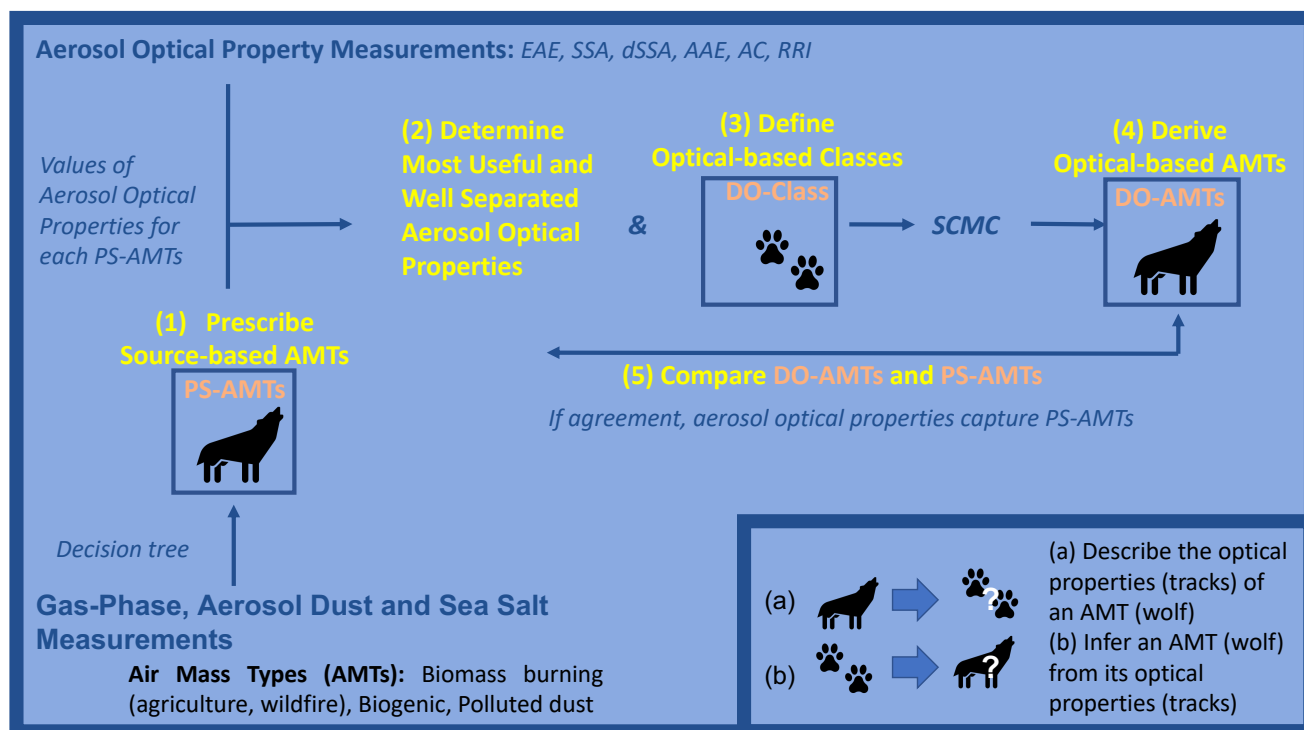
200 widespread coverage of surface networks or satellite retrievals, their benefits include measuring a wide  
variety of gas-phase species, aerosol types and aerosol optical properties (Toon et al., 2016).

Figure 1 illustrates the overall method in this study. We proceed as follows:

- 205 1. We use gas phase and aerosol chemical (not optical) measurements to prescribe source-based AMTs  
(called PS-AMTs) These measurements better characterize the aerosol properties in these AMTs  
compared to observations of aerosol optical properties,
2. We investigate a suite of measured aerosol optical parameters for each PS-AMT, and then determine  
the most useful and well separated aerosol optical properties,
- 210 3. We use the set of aerosol optical parameters defined in the second step above to define optical-based  
class definitions (called DO-Class), including means, variances and covariances. In other terms, in this  
step, we form the mathematical definitions of the classes,
4. We derive Optical-based AMTs (called DO-AMTs) using the set of aerosol optical properties defined  
in the second step above, the DO-Class defined in the third step above and the SCMC method for a set of  
observations that was not included in the training data sets,
- 215 5. We evaluate the ability of airborne aerosol optical properties to successfully extract PS-AMTs by  
comparing PS-AMTs and DO-AMTs.

In Fig. 1, we illustrate AMTs as wolves, and their optical properties as their tracks. The second and  
third step consist in describing the optical properties (or tracks) of each AMT (or wolf). The fourth step  
consists in inferring an AMT (or wolf) from its optical properties (or tracks). The fifth and last step  
consists in comparing the inferred to the initial AMT (or wolf).

220



225 **Figure 1: Overall method in this study; PS-AMTs, DO-Class and DO-AMTs are Prescribed Source-based Air Mass Types (AMTs), Defined Optical-based Class definitions and Derived Optical-based AMTs. EAE: Extinction Angstrom Exponent; SSA: Single Scattering Albedo; dSSA: difference in SSA; AAE: Absorption Angstrom Exponent; AC: absorption coefficient; RRI: real Refractive Index; SCMC: pre-Specified Clustering and Mahalanobis Classification. The concept of the wolf and its tracks is based on the dragon and its tracks in Bohren and Huffman (1983).**

230 In the first step of Fig.1, the PS-AMTs are defined using mostly gas measurements and a method based on Espinosa et al. (2018) and Shingler et al. (2016) (see Fig. 2 and section A.1.3 in the appendix for more information). Section 3.1 describes these PS-AMTs, their location and composition in further detail during SEAC<sup>4</sup>RS.



### **Polluted Dust (PollDust)?**

- Yes: dust fraction > 0.15 & total vol. >  $2\mu\text{m}^3\text{cm}^{-3}$
- No, **Marine?**
  - Yes: sea salt fraction > 0.15 & total volume >  $2\mu\text{m}^3\text{cm}^{-3}$
  - No, Biomass Burning (BB)?
    - Yes, if
      - acetonitrile >  $250 \times 10^{-3}$  ppbv or
      - acetonitrile >  $190 \times 10^{-3}$  ppbv & [acetonitrile/(isoprene + monoterpene) > 2.5] or
      - CO > 250 ppbv
    - **BB from Wildfire (BBWild.)?**
      - Yes, if Longitude <  $-95^\circ$
      - No, **BB from Agricultural fire (BBAg.)**
  - No, **Biogenic (Bio.)?**
    - Yes, if isoprene + monoterpene > 2 ppbv
    - No, **Urban?**
      - Yes, if altitude below 3km and  $\text{NO}_2 > 1\text{ppbv}$

235 **Figure 2: Classification scheme for pre-specifying Air Mass Types (PS-AMTs) using mostly gas measurements and a method based on Espinosa et al. (2018) and Shingler et al. (2016) and modified to include Marine and two different types of BB AMTs. See section A.1.3 in the appendix for more information.**

240 In the second step of Fig.1, once the PS-AMTs are defined, we test whether these PS-AMTs exhibit distinct aerosol optical properties and then, select the most useful and well separated aerosol optical properties. To select the most useful and well separated aerosol optical properties for each PS-AMT, we define a cluster in multi-dimensional parameter space, which is composed of all the data points (values of optical properties) in that PS-AMT category. Then, for each point in the data set, we calculate the nearest cluster using the Mahalanobis distance (Mahalanobis, 1936). If the nearest cluster to a point  
245 corresponds to the PS-AMT, then that point is “steady”. Let us note that this method was used in previous studies (e.g., Espinosa et al. (2018)) and is described in further detail in section A.1.4 in the appendix. Section 3.2 describes the results from this step i.e., the most useful and well separated aerosol optical properties in our study.

250 In the third step of Fig.1, the DO-Class use the first “steady” (i.e., well separated) half of all valid aerosol optical observations. Once the training (or reference) clusters DO-Class are defined, we use the Mahalanobis distance to filter outliers from our training dataset and further “purify” them. Similar to Russell et al. (2014), we delete points that have less than 1% probability of belonging to each pre-specified DO-Class. We also delete from a specified cluster any points that are closer (in terms of Mahalanobis  
255 distance) to a different cluster. Note that unlike in Russel et al. (2014), this additional filtering step (to the “steady” filtering step) has a minimal impact on the training dataset in our study.





260 In the fourth step of Fig.1, a test data set is analyzed and classified. This test data set is based on  
independent observations and must be of the same nature than the training dataset. In this study, our test  
dataset is composed of independent airborne in-situ optical properties. It is the other half of all valid  
aerosol optical observations (DO-Class are defined using the “steady” portion of the first half). We derive  
optical-based AMTs (DO-AMTs) to each test data point using the SCMC method and the DO-Class. This  
is achieved by assigning the test datapoint to the DO-Class that shows minimum Mahalanobis distance in  
a multi-dimensional space made of the best suited and most separable optical properties. We refer the  
reader to section 2 of Russell et al. (2014) or Burton et al. (2012) for a thorough description of the SCMC  
265 method. Section 3.3 describes the results from these steps i.e., the defined optical- and derived optical-  
based air mass types in our study.

270 In the fifth and last step of Fig. 1, we evaluate the ability of airborne aerosol optical properties to  
successfully extract PS-AMTs by comparing the PS-AMTs and DO-AMTs. Section 3.4. describes the  
results of this final step in our study.

## 2.2 Instruments and Observations

275 A major strength of our study is the use of *in situ* gas-phase, chemical and optical instruments on the same  
NASA DC-8 research aircraft during the SEAC<sup>4</sup>RS campaign. Table 1 lists the various airborne *in situ*  
instruments and products used in this study. It also shows the size of the aerosol sampled by each  
instrument, the way we use the products in our study (i.e., step 1 through 4 in Fig. 1) and important  
references for each instrument.

280 Note that instead of simply using the standardized SEAC<sup>4</sup>RS merged dataset, a lot of effort was dedicated  
to carefully collocate, combine (section A.1.2 in the appendix), cloud-screen, filter, humidify (i.e.,  
converted from dry to ambient conditions), compute and interpolate/extrapolate optical parameters to  
specific wavelengths (section A.1.1 in the appendix).



Instruments		Products	Sampled Aerosol Size	Usage	References
1	PTR-MS, DACOM, TD-LIF, NO <sub>y</sub> O <sub>3</sub>	Acetonitrile, isoprene, monoterpene, CO, NO <sub>2</sub>	-	(1)	PTR-MS (Mikoviny et al., 2010); DACOM (Fried et al., 2008); TD-LIF (Cleary et al., 2002); NO <sub>y</sub> O <sub>3</sub> (Ryerson et al., 2012)
2	PALMS	Internally mixed Sulfate/Organic/Nitrate (SON), Biomass Burning (BB), Sea salt, and Dust particle types	<5µm dry diameter	(1), (*)	Murphy et al., 2006 Froyd et al., 2019
3	SAGA	Cl, Br, NO <sub>3</sub> , SO <sub>4</sub> , C <sub>2</sub> O <sub>4</sub> , Na, NH <sub>4</sub> , K, Mg, Ca	<4µm dry diameter	(*)	Dibb et al., 2003
4	AMS	OA, sulfate, ammonium, nitrate	0.02 - 0.8 µm (trapezoidal transmission efficiency, D50 at 0.035 and 0.35 µm)	(*)	DeCarlo et al., 2006; Canagaratna et al., 2007; Hu et al., 2015; Guo et al., 2021
5	SP2	BC	0.1-0.5µm (BC component, only)	(*)	Perring et al., 2017
6	LARGE TSI and PSAP	Absorption, Scattering and Extinction Coefficient (AC, SC and EC) at 450, 550 and 700 nm	<5µm dry diameter for Dry Total Scattering Coefficients at 450, 550, and 700 nm (TSI Neph) and Total Absorption Coefficients at 467, 530 and 660 nm (PSAP)	(2-3-4)	Ziamba et al., 2013; McNaughton et al., 2007
7	DASH-SP	Real Refractive Index (RRI) at 532nm	0.18-0.40µm dry diameter	(2-3-4)	Sorooshian et al., 2008; Shingler et al., 2016
8	PI-Neph	Real Refractive Index (RRI) at 532 nm	<5 µm dry diameter	(2-3-4)	Dolgos and Martins, 2014; Espinosa, 2017, 2018
<p>Usage (see step 1-4 in Fig. 1):                      (1) Pre-specify PS-AMTs                      (*) Verify/ further define PS-AMTs                      (2-3-4) Derive DO-AMTs to assess ability of aerosol optical properties to observe PS-AMTs</p>					

285 **Table 1: Instruments, products, sampled aerosol size, usage and references relevant to this study. More information on the instruments during SEAC<sup>4</sup>RS can be found here: <https://espo.nasa.gov/home/seac4rs/content/Instruments>.**

290 The first step in Fig. 1 (i.e., prescribe source-based PS-AMTs) uses the gas-phase and aerosol instruments in line 1-2 of Table 1. The following steps in Fig. 1 (i.e., define the most useful and well separated optical



properties, define optical-based classes and derive optical-based AMTs) use the optical instruments in lines 6-8 of Table 1. Let us emphasize that the instruments in Table 1 sample different aerosol sizes. This is especially true for the DASH-SP instrument, which sampled particles with dry diameters between 180  
295 and 400 nm during SEAC<sup>4</sup>RS (Shingler et al., 2016). In contrast, the sampled air was provided to the PI-Neph instrument through the NASA LARGE shrouded diffuser inlet, which sampled isokinetically and is known to have a 50% passing efficiency at an aerodynamic diameter of at least 5  $\mu\text{m}$  at low altitude (McNaughton et al., 2007; Espinosa et al., 2017).

In this study, we use the sixteen aerosol optical parameters listed in Table 2 (i.e., six parameters at 3  
300 wavelengths and/or 3 combinations of wavelengths) and derived from the optical instruments in line 6-8 of Table 1. These optical parameters were computed from the initial measurements and using the equations listed in the second column of Table 2 (see section A.1.1 in the appendix for more information on these calculations).

305

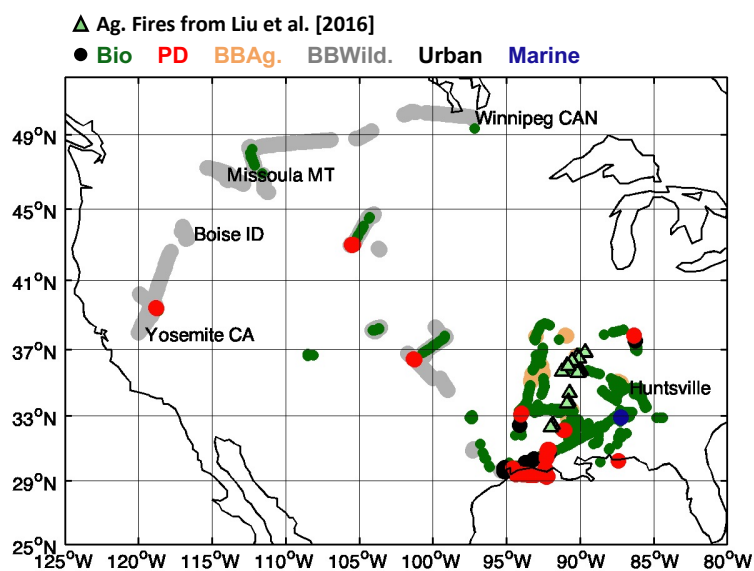
Aerosol Optical Parameters	Computed Using
Extinction Angstrom Exponent, EAE	LARGE EC and Eq. 7.1.1.a
Absorption Angstrom Exponent, AAE	LARGE AC and Eq. 7.1.1.c
Single Scattering Albedo, SSA	LARGE EC, SC and Eq. 7.1.1.b
Difference in SSA at two wavelengths, dSSA	LARGE EC, SC and Eq. 7.1.1.b
Absorption Coefficient, AC	LARGE EC, SC and Eq. 7.1.1.d
Real Refractive Index, RRI	PI-Neph or DASH-SP and LARGE

**Table 2:** EC, SC and AC stand for Extinction, Scattering and Absorption Coefficients i.e., *in situ* aerosol optical parameters provided at a given aircraft altitude in this study. Wavelengths are (i)  
310 450, 550 and 700 nm for SSA and AC and (ii) 450-550, 550-700 and 450-700 nm for EAE, AAE and dSSA.

### 3. Results

#### 3.1 Prescribe Source-based Air Mass Types (PS-AMTs)

Figure 3 shows the PS-AMTs pre-specified using mostly measured gas phase compounds and the  
315 method described in Fig. 2.



**Figure 3: Air mass types pre-specified (PS-AMT) using mostly gas measurements and methods based on Espinosa et al. (2018) and Shingler et al., (2016) (see Fig. 2). The number of data points assigned to each PS-AMTs are N=31 BBAg., N=382 BBWild., N=646 Bio. and N=46 PollDust PS-AMTs. PS-AMTs Marine and Urban were not analyzed in the remainder of this study due to their limited number of data points (Urban in black shows N=9 and Marine in blue shows N=7). Green triangles show the location of agricultural fires according to Liu et al. (2016).**

335 During SEAC<sup>4</sup>RS, according to Kim et al. (2015) and Wagner et al. (2015), the campaign-averaged  
aerosol mass was composed of mostly Organic Aerosol (OA) that is internally mixed with sulfate and  
nitrate at all altitudes over the southeastern U.S (SEUS) i.e., 55% OA and 25% sulfate mass on average  
according to ground-based filter-based PM<sub>2.5</sub> (Particulate Matter concentration with an aerodynamic  
340 diameter smaller than 2.5 μm) speciation measurements from EPA CSN sites. This is consistent with the  
findings of Edgerton et al. (2006), Hu et al. (2015), Xu et al. (2015) and Weber et al. (2007) which show  
that PM<sub>2.5</sub> is dominated by SOA and sulfate during the summer in SEUS. Aircraft data show that 60%  
of the aerosol column mass (i.e., mostly OA and sulfate) is contained within the mixing layer (Kim et al.,  
2015).

345 GEOS-Chem attributes OA mass as 60% from biogenic isoprene and monoterpenes sources (with a  
significant role of isoprene in accordance with Hu et al. (2015), Marais et al. (2016), Zhang et al. (2018),  
Jo et al. (2019), and Liao et al. (2015)), 30% from anthropogenic sources and 10% from open fires (Kim  
et al., 2015). Espinosa et al. (2018) confirms the domination of biogenic emissions in the SEUS (see their  
Fig. 2). Fig. 3, in agreement with these studies, shows a majority of biogenic PS-AMTs (in green, N=646),  
mostly in the SEUS during SEAC<sup>4</sup>RS.

350 During SEAC<sup>4</sup>RS, the air sampled by the DC8 was also affected by both long-range transport of wildfire  
from the west (Peterson et al., 2015; Saide et al., 2015; Forrister et al., 2015; Liu et al., 2017) and local  
agricultural fires mostly from the burning of rice straw along the Mississippi River Valley (Liu et al.,  
2016). Fig. 3, in agreement with these studies, shows BBWild PS-AMT in the West (in grey, N=382) and  
BBAg PS-AMT in the East (in salmon, N=31). Both agricultural and wildfire smoke is mainly composed  
355 of OA, which includes a substantial amount of light-absorbing brown carbon, BrC (Liu et al., 2017),  
produced mostly by smoldering combustion (Reid et al., 2005; Laskin et al., 2015).



Although Fig. 3 also shows Urban and Marine PS-AMTs in the SEUS, these PS-AMTs were not further analyzed in the remainder of this study due to their limited number of data points (Urban in black with N=9 and Marine in blue with N=7 data points).

360 Figure 4 describes the aerosol chemical signatures of the principal PS-AMTs using the PALMS, SAGA, AMS and SP2 instruments (see line 2-5 in Table 1 for more information on these instruments and their products). Note that some aerosol components (e.g., Organic, Sulfate, Nitrate) are very general chemical indicators and much less specific than the gas-phase chemistry they are trying to predict. These aerosol components are nonetheless directly comparable to aerosol chemical components simulated in chemical

365 transport (CTM) (e.g., GEOS-Chem, the Goddard Chemistry, Aerosol, Radiation, and Transport model, GOCART, the Weather Research and Forecasting model coupled with Chemistry, WRF-Chem) and air quality (AQ) models (e.g., the Community Multiscale Air Quality Modeling System, CMAQ).

370

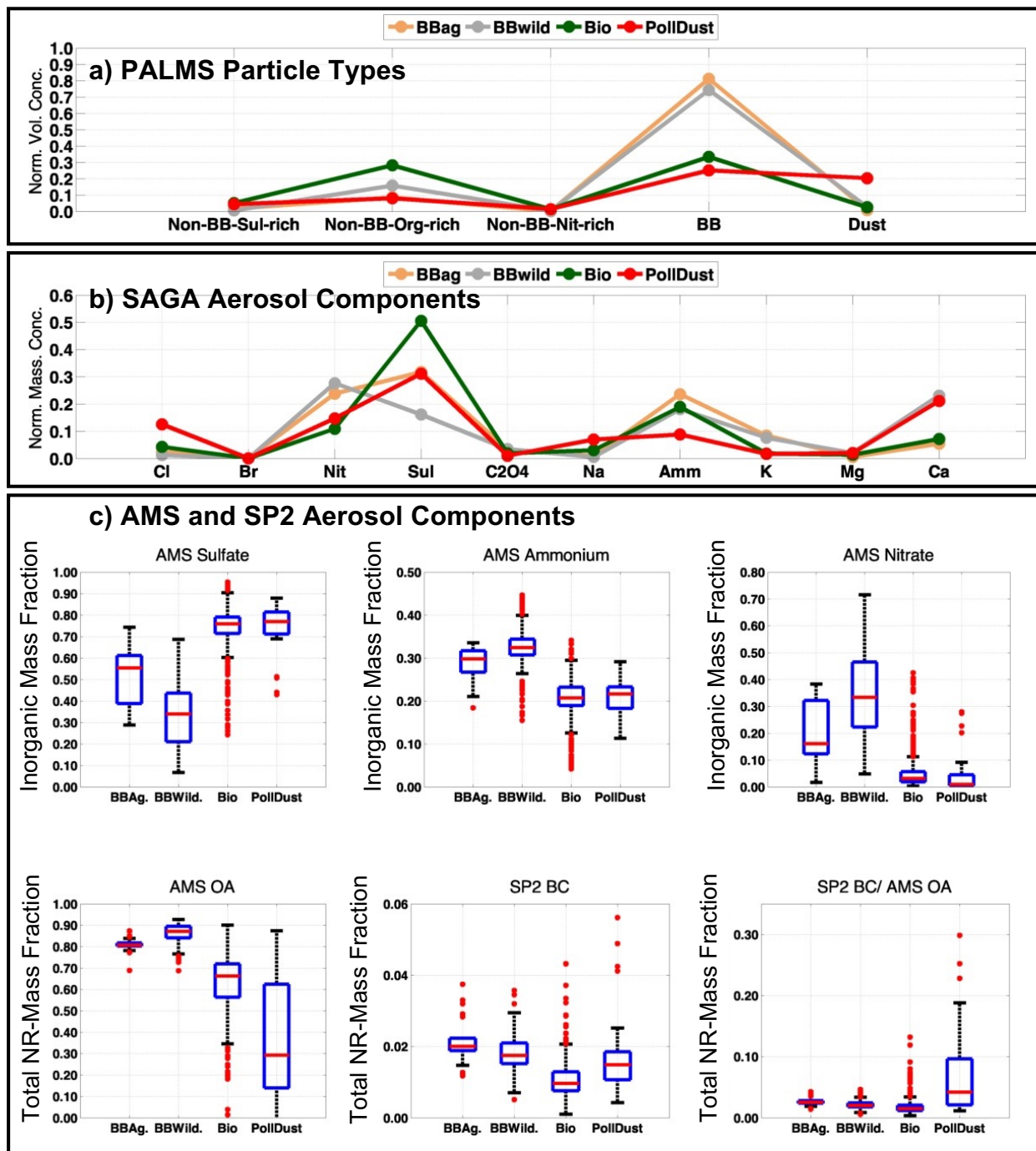


Figure 4: (a) Average PALMS normalized volume concentration per PS-AMT. PALMS normalization uses the sum of BB particles, sulfate-, organic- and nitrate-rich particles from non-BB sources, mineral dust, sulfate-organic-nitrate (SON) particles without a dominant sub-



375 **component, and sea-salt (the latter two PALMS aerosol types are not shown and constitute the**  
**remainder). (b) Averaged and normalized SAGA mass concentrations per PS-AMT; normalization**  
**uses the sum of all the SAGA components in the x-axis (c) Normalized mass fractions of AMS**  
380 **sulfate, ammonium, nitrate, OA, SP2 BC and ratio of SP2 BC and AMS OA per PS-AMT. The**  
**AMS inorganic mass fraction of sulfate, ammonium and nitrate are normalized to the sum of**  
**sulfate, ammonium, and nitrate. The AMS and SP2 total Non-Refractory NR-mass fraction of OA**  
**and BC are normalized to the sum of OA, BC, sulfate, ammonium, and nitrate. In each blue box,**  
**the red horizontal line indicates the median, and the bottom and top edges of the box indicate the**  
**25th and 75th percentiles, respectively. The black whiskers extend to the most extreme data points**  
385 **not considered outliers, and the outliers are plotted individually using red points. PS-AMTs Marine**  
**and Urban are not analyzed due to their limited number of data points (N=9 Urban and N=7 Marine**  
**PS-AMTs).**

Note that the four aerosol instruments in Fig. 4 measure different aerosol properties. For instance, AMS  
and SAGA measure bulk concentrations of chemical sub-components (e.g., sulfate) whereas  
390 PALMS classifies individual particles into several size-resolved types, including mineral dust, BB and  
several non-BB types that have varying amounts of internally mixed sulfate, organic, and nitrate.

The PS-AMTs on Fig. 4 show expected chemical features:

- The BB PS-AMTs (i.e., BBAg. and BBWild.) record high BB particle concentrations from  
395 PALMS in Fig. 4a, high nitrate (Nit), ammonium (Amm), calcium (Ca) and potassium (K) concentrations  
from SAGA in Fig. 4b, high OA (i.e., >0.8) from AMS and high BC mass fractions from SP2 in Fig. 4c,  
in agreement with many other studies (e.g., Cubison et al., (2011); Hecobian et al., (2011); Jolleys et al.,  
(2015), Guo et al. (2020)). The BB PS-AMTs also record higher AMS ammonium and nitrate, compared  
to Bio. and PollDust PS-AMTs in Fig. 4c. This is due to ammonium nitrate (NH<sub>4</sub>NO<sub>3</sub>) forming in fires  
400 by neutralization of freshly formed nitric acid from NO<sub>x</sub> oxidation with an excess of primary ammonia  
(e.g., Guo et al. (2020)).
- The Bio. PS-AMTs record higher non-BB organic-rich particles from PALMS in Fig. 4a, higher  
SAGA sulfate concentrations in Fig. 4b, smaller nitrate and ammonium (i.e., relatively acidic) and higher  
sulfate particle concentrations (from e.g., coal plants) from AMS in Fig. 4c, compared to the BB PS-  
405 AMTs. As such, the Bio. PS-AMTs in this study are typical of the SEUS region (e.g., (Kim et al., 2015  
and Hu 2015)). When using Positive Matrix Factorization (PMF) (Ulbrich et al., 2009) on the AMS  
measurements, most of the organic aerosols in the Bio. PS-AMTs is composed of biogenic SOA. The  
Bio. PS-AMTs also record significantly lower BC concentrations from the SP2 as well as BC to OA ratios  
from the AMS and SP2 in Fig. 4c, compared to the BB and PollDust PS-AMTs, in accordance with e.g.,  
410 Hodzic et al. (2020).
- The PollDust PS-AMTs record, as expected, high dust concentration from PALMS in Fig. 4a and  
high calcium (Ca) and magnesium (Mg) from SAGA in Fig. 4b. In addition, the PollDust PS-AMTs also  
include BB from PALMS in Fig. 4a and possibly a minor sea salt component (i.e., high Na and Cl) from  
SAGA in Fig. 4b as well as relatively high sulfate from SAGA and AMS in Fig. 4c. A compositional  
415 picture of the PollDust PS-AMTs from PALMS in section A.2.3 in the appendix shows dust



predominately in the coarse mode but also an accumulation mode that contains a variety of particle types, all of which contain sulfate and organic material.

420 The analysis in Fig. 4 confirms that the gas-phase-derived PS-AMTs indeed have distinct aerosol chemical properties. Therefore, we explore whether these PS-AMTs can be derived using only aerosol optical properties.

### 3.2 Determine Most Useful and Well Separated Aerosol Optical Properties

425 As described in section 2.1, we need to test if the PS-AMTs (from section 3.1) exhibit distinct aerosol optical properties. This is an essential first step to optimize the final prediction of AMTs using aerosol optical properties (DO-AMTs).

430 We start with the sixteen aerosol optical parameters in Table 2 (i.e., EAE, SSA, dSSA, AAE and AC at different combinations of 450, 550 and 700 nm and RRI at 532 nm). Section A.2.1 in the appendix illustrates the ranges of these sixteen aerosol optical parameters, classified by PS-AMTs. Given that many of these parameters have similar properties, we select six out of these sixteen aerosol optical parameters, to simplify the analysis and presentation of results. To do that, we first look at the percentage of points unambiguously retrieved or “steady” (i.e., points that are well separated from other clusters and, hence, remain in their initial clusters) when using different combinations of two out of sixteen aerosol optical parameters across all four PS-AMTs. We first select parameters AAE between 450 and 550nm and RRI at 532nm as they form the only combination of two parameters to achieve >65% “steady points” for all four PS-AMTs (see Fig. A5 in the appendix). The rest of the six optical parameters are either chosen at 550nm (i.e., closest wavelength to 532 nm) or between 450 and 550nm. As a result, the six parameters we choose for the remainder of this study are dSSA 450-550 nm, RRI 532 nm, EAE 450-550 nm, AAE 440 450-550 nm, SSA 550 nm and AC at 550nm. Among these parameters, the usefulness of parameters dSSA 450-550 nm, EAE 450-550 nm, SSA 550 nm and AC at 550nm only becomes apparent in a 3-D parameter space (see Fig. A6 and its orange boxes in the appendix, which record >65% “steady points” for many combinations of three parameters among these six selected aerosol optical parameters).

445 Figure 5 illustrates the range of these six aerosol optical properties for each PS-AMT. Fine particles (i.e., BBWild., BBAg. and Bio. PS-AMTs with higher EAE values) show mostly well-separated variability in RRI, AAE and dSSA. Coarse particles (i.e., PollDust PS-AMT with lower EAE values) is optically distinctive from the other PS-AMTs, particularly showing lower RRI, higher AAE and higher dSSA. In agreement with Selimovic et al. (2019; 2020) in Missoula, MT, we seem to also observe separate optical signatures, and more specifically different AAE ranges, for BBAg. and BBWild. PS-AMTs during SEAC<sup>4</sup>RS.

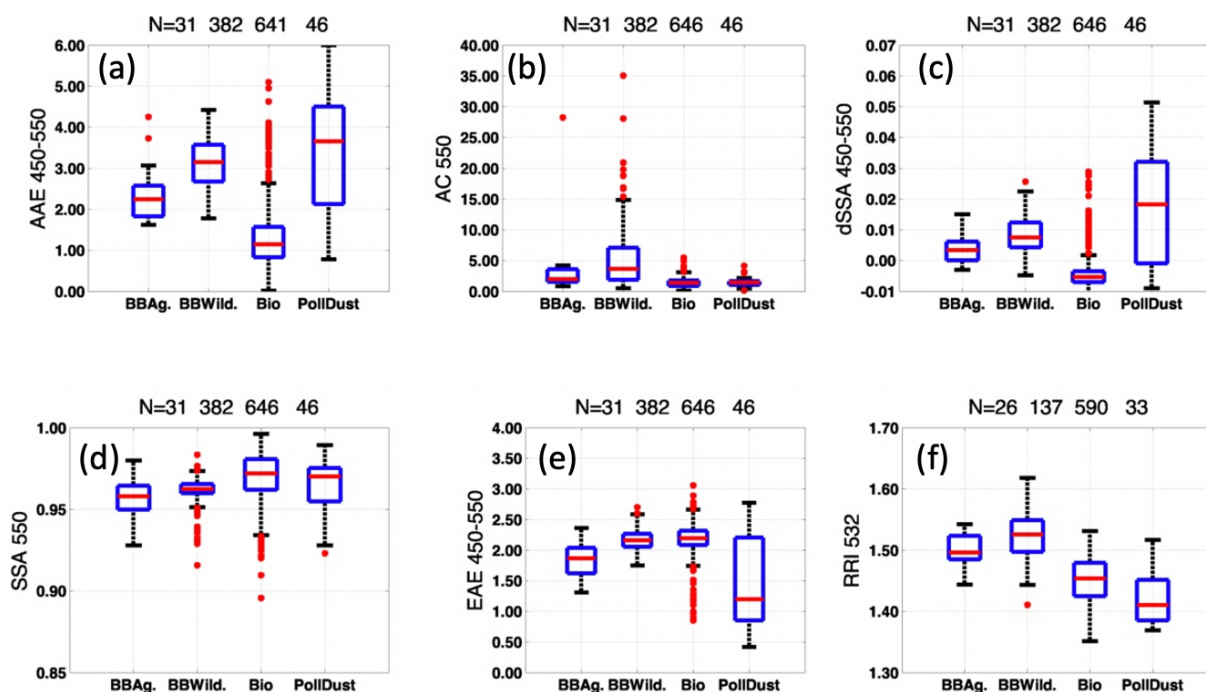
455 The aerosol optical properties of the PollDust PS-AMTs in this study differ from the ones of the “pure dust” AMT in Russel et al. (2014). The “pure dust” in Russel et al. (2014) is based on AERONET measurements in various dusty regions of the world. In this study, PollDust PS-AMT show a median EAE of ~1.3 between 450 and 550 nm and a median RRI of ~1.4 at 532 nm on Fig. 5, compared to respectively





~0 between 491 and 864 nm and 1.53 at 670 nm for AERONET-based “pure dust” in Russel et al. (2014). We show that the higher PollDust PS-AMT EAE values in our study are due to the presence of accumulation mode non-dust aerosols, which constitute a significant contribution to the total number and volume concentration of particles (see section A.2.3 in the appendix for a compositional picture of PollDust PS-AMT). Similarly, we also suggest that the low PollDust PS-AMT RRI values are due to its non-dust accumulation mode, which is generally more hygroscopic than pure dust and may have a larger contribution to the PollDust total Growth Factor (GF, see Eq. 7.1.1e). We refer the reader to section A.2.1 in the appendix for a closer look at RRI values in the case of PollDust PS-AMTs from the PI-Neph and DASH-SP instruments separately.

465



470 **Figure 5: Optical characterization of PS-AMTs using the LARGE, PI-Neph and DASH-SP instruments (see Table 1). In each blue box, the red horizontal line indicates the median, and the bottom and top edges of the box indicate the 25th and 75th percentiles, respectively. The black whiskers extend to the most extreme data points not considered outliers, and the outliers are plotted individually using red points. AAE: Absorption Angstrom Exponent, AC: Absorption Coefficient, dSSA: difference in Single Scattering Albedo, SSA: Single Scattering Albedo, EAE: Extinction Angstrom Exponent, RRI: Real Refractive Index. Numbers in the title correspond to the number of points behind each box-whisker for the respective BBAG, BBWild, Bio, and PollDust PS-AMTs.**

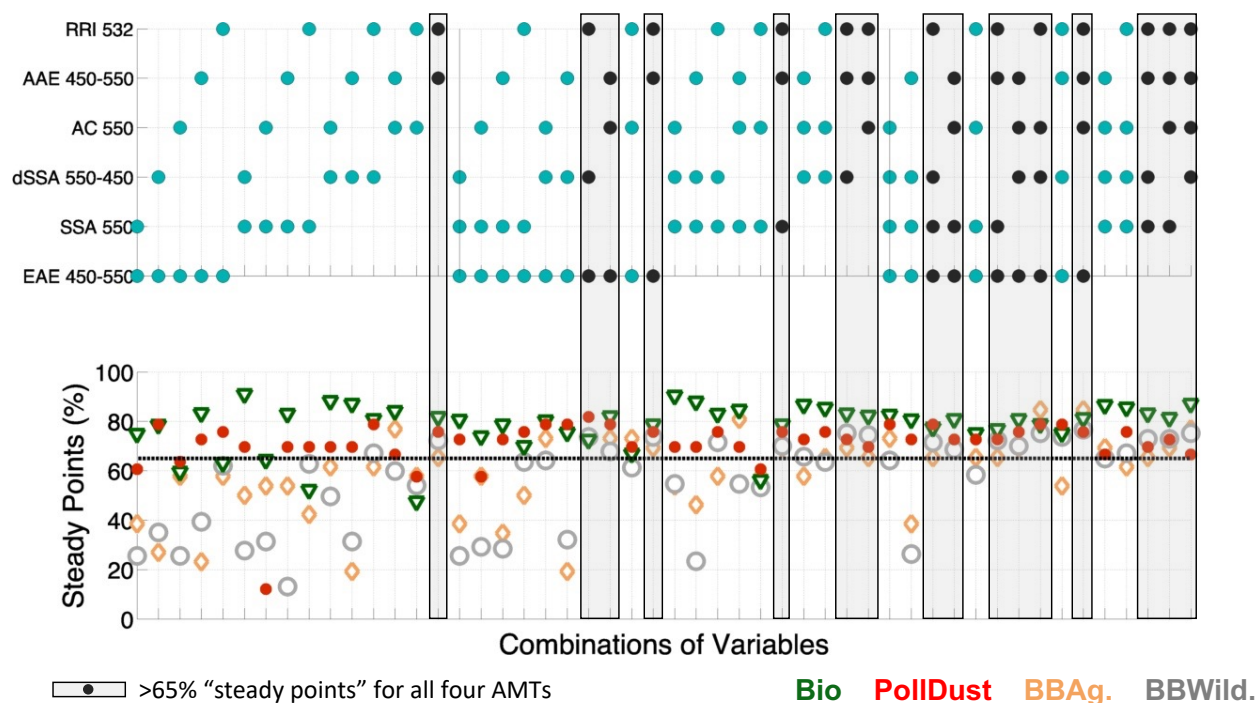
475

Figure 6 shows “steady” values (i.e., fraction of cases of a given type that are correctly identified; see section 2.1) for combinations of two, three and four optical parameters out of the six selected aerosol



480 optical parameters (see Fig. 5) and four AMTs (i.e., BBAg., BBWild., Bio. and PollDust). Moving forward, we select the sixteen combinations of optical parameters highlighted by grey boxes and black dots in Fig. 6, as they show > 65% “steady points” (i.e., successfully separate aerosol signatures) for PS-AMTs BBAg., BBWild., Bio. and PollDust. These combinations are shown as black squares in the table of Fig 8.

485



490 **Figure 6: Percentage of points “steady” (i.e., fraction of cases of a given type that are correctly identified; see section 2.1) in the lower panel when using different combinations of aerosol optical parameters in the upper panel for each PS-AMT. Grey boxes and black points depict combinations of optical parameters showing > 65% “steady points” for PS-AMTs BBAg., BBWild., Bio. and PollDust. RRI: Real Refractive Index, AAE: Absorption Angstrom Exponent, AC: Absorption Coefficient, dSSA: difference in Single Scattering Albedo, SSA: Single Scattering Albedo, EAE: Extinction Angstrom Exponent**

495 Let us note that for some cases, the fraction of “steady” points seems to decrease when adding classifying variables. These cases were investigated and are mostly due to fewer data points that are non- “steady” when adding classifying parameters, out of an already small total number of datapoints (e.g., a combination of EAE, dSSA, AAE and RRI show <65% “steady points” for BBAg. PS-AMT, compared to >65% “steady points” for a combination of EAE, AAE and RRI; this is due to 4 more “steady” points



500 (N=18) when using a combination of 3 parameters, compared to 4 parameters (N=14), out of a total of N=26 cases).

Moreover, we suggest that higher aerosol loadings within the air masses allow for more accurate identification by optical properties, due to higher accuracy of the aerosol optical properties themselves.  
505 For example, we have seen an increase from ~80% to 100% “steady” data points in the BBWild. PS-AMT when using EAE, AAE and RRI when extinction coefficients increased from 30-40  $\text{m}^{-1} \text{Mm}^{-1}$  to 60-70  $\text{Mm}^{-1}$  (number of data points between N=11 and N=20).

### 510 **3.3 Define Optical-based Class Definitions and Derive Optical-based Air Mass Types (DO-Class and DO-AMTs)**

Our goal in this section is to derive AMTs (DO-AMTs), followed by a comparison between DO-AMTs and the initial PS-AMTs to test the ability of aerosol optical properties alone to capture PS-AMTs. As described in section 2.1, to derive DO-AMTs using the SCMC method, we need (i) a combination of  
515 useful and well separated optical properties (e.g., EAE, AAE and RRI or combination #4 in Table of Fig. 8), (ii) a set of defined classes or clusters of reference (i.e., a training dataset that we call DO-Class) and (iii) the computation of the Mahalanobis distance between each observation we want to classify in a test data set and each of the clusters from the training dataset.

520 We introduce Table 3, which records the number of data points behind each step in our study.



Number of Data		BBAg	BBWild	Bio.	PollDust	Total	Major Steps (see Fig. 1)
1	PS-AMTs	31	382	646	46	1105	(1) Pre-specify Source-based PS-AMTs (see colored points in Fig. 3)
2	Valid AAE (Fig. 5a)	31	382	641	46	1100	(2) Determine most useful and well separated aerosol optical properties
3	Valid RRI (Fig. 5f)	26	137	590	33	786	
4	Valid EAE, AAE and RRI Observations (#4 in Fig. 8)	26	137	585	33	781	
5	"Steady" points (*)	18	101	460	25	604	(3) Define optical-based Classes, DO-Class; use "steady" portion of first ~half of observations
6	To define DO-Class	391					
7	DO-Class (*)	8	52	238	13	311	
8	To derive DO-AMTs	389					(4) Derive optical-based AMTs. DO-AMTs; apply SCMC method, using DO-Class, on second ~half of observations
9	Known DO-AMTs (*)	32	55	217	77	381	
10	Unknown DO-AMTs (*)	8					
11	PS-AMTs	13	68	292	16	389	(5) Compare DO-AMTs and PS-AMTs
12	DO-AMTs similar to PS-AMTs (*)	10	54	213	13	290	
13	DO-AMTs similar to PS-AMTs as a % of assigned DO-AMTs (19) (*)	31	98	98	17	-	
14	DO-AMTs similar to PS-AMTs as a % of PS-AMTs (111) (*)	77	79	73	81	-	

(\*) in the case of combination #4 in Fig. 8 i.e., EAE, AAE and RRI

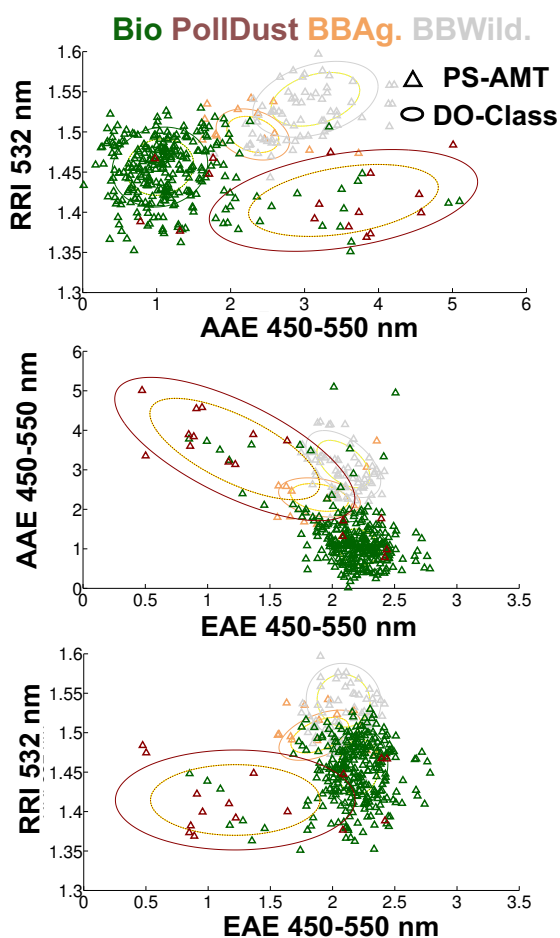
525 **Table 3: Number of data points per AMTs behind each step in our study. PS-AMTs Marine and Urban are not analyzed due to their limited number of data points (N=9 Urban and N=7 Marine PS-AMTs). EAE: Extinction Angstrom Exponent, AAE: Aerosol Absorption Exponent and RRI: Real Refractive Index.**

530 The first line of Table 3 shows the number of data points per PS-AMTs (see section 3.1). Then, it shows the valid number of data points behind AAE (Fig. 5a), RRI (Fig. f) and a combination of EAE, AAE and RRI (see respectively line 2, 3 and 4 of Table 3). It also shows the "steady" number of data points per PS-AMT in line 5 in the case of a combination of EAE, AAE and RRI (see Fig. 6).

535 To create the training data set DO-Class (line 7 in Table 3), we select the "steady" portion of half (every other sample) of the entire set of valid datapoints (line 6 of Table 3). The test data set that we want to classify as DO-AMTs is the other half of the entire set of valid datapoints (line 8 in Table 3). This DO-AMT dataset is made of "steady" and non- "steady" data points.



540 Figure 7 illustrates the separability of the DO-Class in the 3-D space made of aerosol optical parameters  
 EAE, AAE and RRI. The regions of the DO-Class are described by colored ellipses representing the mean,  
 variance, and covariance of the DO-Class training set. It also shows that most of the DO-Class represent  
 the original source-based PS-AMTs (represented by colored triangles on Fig. 7). However, let us note  
 that a distinct portion of the Bio. PS-AMTs (green triangles) seem to not be represented by the Bio. DO-  
 Class (green ellipse). These Bio. PS-AMTs show higher AAE and lower EAE values and mostly fall into  
 the PollDust DO-Class instead (red ellipse).  
 545



**Figure 7: DO-Class definition (solid and dashed ellipses colored by AMTs defining boundaries of the DO-Class clusters; no DO-Class data points are plotted) and prescribed source-based PS-AMTs (triangles colored by AMTs). 75% of the DO-Class are contained in the solid ellipses and 50% of the DO-Class are contained in the dashed ellipses. RRI: Real Refractive Index, AAE: Absorption Angstrom Exponent, EAE: Extinction Angstrom Exponent.**

Line 9 in Table 3 shows the number of DO-AMTs (correctly and incorrectly) classified as BBAg., BBWild., Bio. or PollDust AMTs using the combination of EAE, AAE and RRI as an example, the SCMC method and the DO-Class reference clusters. Most points from the test data set were assigned an AMT (see N=381 assigned DO-AMTs on line 9, compared to N=8 unknown on line 10 of Table 3). Unclassified/unknown DO-AMTs are those where the 3-D data point is outside the 99% probability surface for all four DO-Classes.

### 3.4 Compare Optical-based Compared to Source-based Air Mass Types (DO- vs. PS-AMTs)

575 Once we have derived DO-AMTs from optical properties (i.e., inferred our wolf based on its tracks in Fig. 1), we need to assess how many of the DO-AMTs agree with those originally assigned as PS-AMTs. Line 11 in Table 3 shows the number of prescribed PS-AMTs in each category when only looking at the test dataset to derive DO-AMTs on line 8 of Table 3 (N=389). Line 12 in Table 3 shows the number of DO-AMTs that are identical to PS-AMTs. Line 13 and 14 show the same result, but as a percentage of the respectively derived DO-AMTs or prescribed PS-AMTs in the same category. In Table 3, we find 77% BBAg., 79%

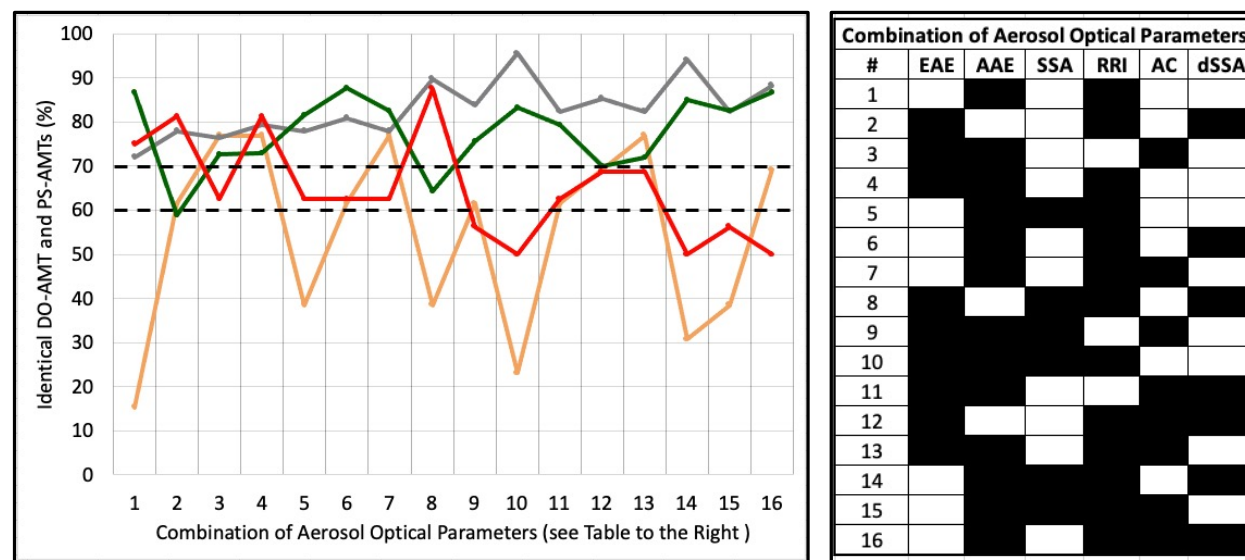


580

BBWild., 73% Bio. and 81% PollDust PS-AMTs are correctly reflected in the DO-AMTs. This result can also be seen for combination #4 in Fig. 8 (i.e., EAE, AAE and RRI).

Fig. 8 illustrates the percentage of identical DO-AMTs to PS-AMTs when using each of the 16 combinations of optical parameters illustrated by black squares in the table of Fig. 8. This percentage, like line 14 in Table 3, is computed as the number of DO-AMTs that agree with those originally assigned as PS-AMTs, compared to the total number of prescribed PS-AMTs in each category in our test dataset (e.g., line 11 in Table 3).

585



590

**Figure 8: Identical DO-AMT and PS-AMTs as a percentage of prescribed PS-AMTs in each category when using the different combinations of optical parameter listed in the table to the right (black squares show combination on each line) and for the four PS-AMTs BBAg. (salmon), BBWild. (grey), Bio. (green) and PollDust (red). Back horizontal dashed lines show 60% and 70% identical DO-AMT and PS-AMTs.**

595

According to Fig. 8, the entire sixteen combinations of aerosol optical properties EAE, AAE, SSA, RRI, AC and dSSA listed in the Table of Fig. 8 as black squares seem to capture both the Bio. and BBWild. PS-AMTs (>~60% identical DO-AMT and PS-AMTs in green and grey solid lines in Fig. 8). We remind the reader that these PS-AMTs are mostly based on gas measurements (see Fig. 2) and are dominated by different aerosol species (see Fig. 4).

600

On the other hand, fewer combinations of aerosol optical parameters seem to adequately capture the BBAg. and PollDust PS-AMTs. Further analysis shows that, in average, most DO-AMTs assigned to the BBAg. and PollDust categories are, in fact, misclassified and failing to capture the Bio. PS-AMTs. As shown earlier in Fig. 7, we suggest these DO-AMTs fail to capture the Bio. PS-AMTs because the Bio. DO-Class might not be entirely representative of the Bio. PS-AMTs (see green triangles outside of the green ellipses in Fig. 7).

Note that three combinations of aerosol optical parameters, namely #4 (EAE, AAE and RRI), #12 (EAE, RRI AC and dSSA) and #13 (EAE, AAE, RRI and AC) in Fig. 8, seem to capture all four PS-AMTs



605 particularly well (>~70% identical DO-AMT and PS-AMTs). Let us mention that results linked to the use  
of the absorption coefficient, AC, an extensive property that is dependent on aerosol loading, is likely to  
be unique to this study and might not be representative of any other field campaign.

#### 4. Conclusion

610 One desire of our scientific community is to ultimately translate the space-based “total atmospheric  
column effective” AMTs such as biomass burning, dust, urban industrial, and polluted marine into  
chemical species with defined emission source inventories and formation/aging chemistry such as sulfate,  
BC, OA, SOA, nitrate, dust, or sea salt to better improve models. Fully achieving that goal might not be  
feasible and progress can only be incremental. This study constitutes a first step (many steps remain)  
615 towards the goal of translating the space-based “total atmospheric column effective” aerosol optical  
properties and derived optical-based AMTs into source-based AMTs.

Current satellite derived AMTs inferred by various techniques are useful to provide spatial context to  
support other observations of aerosols and clouds or evaluate other aerosol type classifications. However,  
620 these satellite derived AMTs are subjectively/ambiguously defined and might often be misclassified.

The AMTs in this study are defined, characterized, and derived using gas-phase, chemical and optical  
instruments on the same aircraft. This reduces errors in measurements/retrievals, due to spatio-temporal  
colocation and ambiguities in the selection of the AMT training dataset. We also specifically investigate  
the strengths and weaknesses of various aerosol optical properties used as tools to define AMTs and how  
625 much these optical properties can capture dominant aerosol speciation.

We first define AMTs using mostly airborne gas-phase measurements during SEAC<sup>4</sup>RS. We find distinct  
optical signatures for biomass burning (from agricultural/ prescribed or wildfires), biogenic and dust-  
influence AMTs (Marine and Urban AMTs show too few data points to analyze). Useful aerosol optical  
630 properties to characterize these signatures are the extinction angstrom exponent between 450-550nm, the  
single scattering albedo at 550nm, the difference of single scattering albedo in two wavelengths between  
450-550nm, the absorption coefficient at 550nm, the absorption angstrom exponent between 450-550nm,  
and the real part of the refractive index at 532nm. We then use these aerosol optical properties, prescribe  
a well-separated AMT training dataset and use the pre-specified clustering and Mahalanobis classification  
635 method to derive optical-based AMTs during SEAC<sup>4</sup>RS. We find that by using any of sixteen  
combinations of these six optical parameters, over 65% of optical-based wildfire biomass burning and  
biogenic AMTs agree with their source-based analogue. We find that all four types studied (Biogenic, BB  
from wildfires, BB from agricultural fires, and polluted dust) when prescribed using mostly airborne  
in situ gas measurements, can be successfully extracted from at least three combinations of airborne *in situ*  
640 aerosol optical properties over the US during SEAC<sup>4</sup>RS, such that more than 70% of optical observations  
are typed consistently with source-based analog. However, we find that misclassifications are not evenly  
distributed across the classes, and specifically the optically based classifications for BB from agricultural



fires and polluted dust include a large percentage of misclassifications that limit the usefulness of results relating to those classes.

645

## 5. Discussion

We suggest a similar study should be performed using data from additional airborne field campaigns which have the necessary, or equivalent, gas-phase measurements to derive source based-AMTs and many of the critical optical properties to extract optical based-AMTs. First, this would provide more robust statistics e.g., particular attention should be given to revisit the BB from agricultural fires and polluted dust AMTs in this study. Second, this would provide more AMTs/sub-AMTs to analyze e.g., Urban and Marine AMTs should be visited during CAMP<sup>2</sup>EX (Clouds, Aerosol and Monsoon Processes-Philippines Experiment) or KORUS-AQ (An International Cooperative Air Quality Field Study in Korea) and other types of BB and at different aging stages should be visited during FIREX-AQ (Fire Influence on Regional to Global Environments and Air Quality). Finally, this would also help assess if these chemical and optical signatures are reproducible from one year to another.

In this study, we obtained *in situ* aerosol optical signatures. Another essential step should be to examine optical signatures from space-based passive remote sensor(s), which derive total column effective ambient aerosol optical properties (instead of properties measured at the altitude of the aircraft in this study). One way to answer this question would be to compare the defined optical-based classes (DO-Class) signatures (i.e., means, variances and covariances that define the classes) using collocated airborne *in situ* aerosol optical properties and total column aerosol optical properties measured or inferred by sunphotometry (e.g., airborne 4STAR, Spectrometers for Sky-Scanning Sun-Tracking Atmospheric Research (Dunagan et al., 2013) or ground-based AERONET). This DO-Class database could then be used as a optical-based training dataset to enable widespread derivation of optical-based AMTs (DO-AMTs) using existing and future orbital and suborbital remote sensing instruments and networks.

The space mission addressing the designated observable Aerosol, Cloud, Convection and Precipitation (ACCP) from the NASA decadal survey (National Academies of Sciences, Engineering, and Medicine, 2018) is currently designing its suborbital (airborne and ground-based) component to address science questions that cannot be addressed from space (e.g., bridging satellite-inferred aerosol optical properties and aerosol speciation). This study illustrates how essential it is to explore existing airborne datasets to bridge chemical and optical signatures of different AMTs, before the implementation of future spaceborne missions and their corresponding suborbital field campaign(s) (e.g., upcoming spaceborne polarimeters SPEXone (Hasekamp et al., 2019) and Hyper-Angular Rainbow Polarimeter HARP-2 onboard the NASA Plankton, Aerosol, Cloud, ocean Ecosystem (PACE) (Werdell et al., 2019) and the multi-viewing multi-channel multi-polarization imager (3MI) (Fougnie et al., 2018) to be launched in the next 3 years or the next generation of Earth Observing System (EOS) satellites addressing NASA's ACCP).

680





685 Most of the six optical properties in this study (i.e., extinction angstrom exponent, single scattering albedo, difference of single scattering albedo, absorption coefficient, absorption angstrom exponent, and real part of the refractive index) are routinely derived by *in situ* and remote sensing instrumentation/networks (see Table 4). Some optical properties are more likely to present a higher uncertainty when measured from suborbital field campaigns and/ or from satellites. The real part of the refractive index, for example, although generally more uncertain, is highly desirable in many combinations of optical parameter to capture both the BB from wildfires and biogenic AMTs in this study. We strongly suggest future airborne campaigns consider including *in situ* measurements of AAE and RRI (very few of the campaigns to date flew PI-Neph and/or DASH-SP instruments) and a special attention should be given to deriving these parameters accurately from space. Our analysis has the advantage of providing alternate combinations of optical parameters when one optical parameter is either not available or too uncertain.

High Medium Low

Aerosol Optical Parameter	Routinely Observed from Aircraft	Routinely Observed from Satellites	Importance as per this study
Extinction Angstrom Exponent, EAE	High	High	High
Single Scattering Albedo, SSA	Medium	Medium	High
Difference in SSA, dSSA	Medium	Medium	High
Absorption Coefficient, AC	Medium	Low	High
Aerosol Absorption Exponent, AAE	Medium	Medium	High
Real Refractive Index, RRI	Low	Low	High

695

**Table 4: Frequency at which the six aerosol optical parameters in our study are routinely derived from aircraft and current passive satellite sensors and importance of these optical parameters in our study. RRI: Real Refractive Index, AAE: Absorption Angstrom Exponent, AC: Absorption Coefficient, dSSA: difference in Single Scattering Albedo, SSA: Single Scattering Albedo, EAE: Extinction Angstrom Exponent**

700

705 Ultimately, this technique and its results has the potential to provide a much broader observational aerosol data set to evaluate global transport models than is currently available. Current satellite derived AMTs seem to marginally help models. One way to assess models would be to directly compare satellite derived



AMTs to AMTs derived from modeled optical properties (which are, in turn, computed from modeled chemical composition) using the same classification method (e.g., Taylor et al., 2015, Dawson et al. (2017), Nowottnick et al. (2015), Meskhidze et al. (2021)). However, it would be difficult to define the main source of errors in the case of a disagreement between model- and observation-based AMTs. 710 Potential causes of such a disagreement could be a combination of observation and method-specific errors or model-specific errors (e.g., the assumed model size distribution, dry refractive index, growth factor per specie, mass extinction efficiency per species, estimated mass per species, RH, transport, chemical processing, emissions, and other physiochemical variables). Let us emphasize that the technique and results in this study, alone, will not be able to fully explain any discrepancies between model and 715 observations. However, we suggest that the use of near-simultaneous gas-phase, chemical and optical instruments on the same aircraft restrict the causes of a disagreement between model- and observation-based AMTs to mostly model-specific errors. Moreover, as the AMTs in this study are less ambiguously defined (e.g., to each AMT corresponds an averaged distribution of aerosol chemical composition), we suggest that this may allow the assessment (and, by extension, improvement) of a few aerosol processes 720 simulated in CTMs.

## Appendix A

### A.1 Additional Information on Methods

#### A.1.1 Method to Cloud-screen, Filter, and Humidify Airborne Observations

725 This section describes the cloud-screening, filtering, humidification, and colocation involved in the computation of the final set of sixteen optical parameters (i.e., EAE, dSSA and AAE between 450-550, 550-700 and 450-700 nm, Absorption coefficient, SSA at 450, 550 and 700nm and the RRI at 532 nm) in this study.

730 The LARGE TSI nephelometer and PSAP instruments operate under dry conditions. The only measurement provided at ambient conditions is the extinction coefficient at 532nm. In this work, we need LARGE extinction and scattering coefficients at 450, 550 and 700nm at ambient conditions. To do that, we use the parameter “fRH550\_RH20to80” at 550 nm provided by the LARGE f(RH) system (different from the TSI or PSAP instruments) and an exponential curve to obtain the impact 735 of hygroscopic growth on the aerosol light scattering coefficient i.e., the scattering enhancement factor f(RH) at 450, 550 and 700 nm. f(RH) is defined as the ratio of scattering coefficients in ambient over dry conditions. Ambient scattering at 550 nm, for example, is computed as the product of dry scattering at 550 nm and f(RH) at 550nm.

740 We filter out any values of LARGE dry scattering coefficient at 450 nm  $\leq 10 \text{ Mm}^{-1}$  and LARGE ambient single scattering albedo coefficient (i.e., the ratio of scattering to extinction coefficient) at 863 nm  $\leq 0.7$ .



745 Let us emphasize that, in this work, we use LARGE airborne *in situ* optical properties at the altitude of the aircraft (see first column of Table A1). However, we choose parameter names closer to what would be measured by remote sensing instruments, and which would represent a total or partial atmospheric column (see the second column of Table A1).

In-situ optical parameters	What we call them in this study
Absorption Coefficient, AC	Absorption Coefficient, AC
Scattering Coefficient, SC	Scattering Coefficient, SC
Extinction Coefficient, EC	Extinction Coefficient, EC
Extinction Angstrom Coefficient, EAC	Extinction Angstrom Exponent, EAE
Scattering Angstrom Coefficient, SAC	Scattering Angstrom Exponent, SAE
Absorption Angstrom Coefficient, AAC	Absorption Angstrom Exponent, AAE
Single Scattering Albedo Coefficient, SSAC	Single Scattering Albedo, SSA

**Table A1** *In-situ* optical parameters are provided at a given aircraft altitude in this study. The way we call these parameters is similar to what would be observed from remote sensing instruments.

750

The Extinction Angstrom Coefficient (EAC) between wavelengths  $\lambda_1$  and  $\lambda_2$  is computed using the Extinction Coefficient (EC) as follows:

$$EAC_{\lambda_1, \lambda_2} = \ln(EC_{\lambda_2} - EC_{\lambda_1}) / \ln(\lambda_1) - \ln(\lambda_2) \quad (\text{Eq. A.1.1.a})$$

755

The Single Scattering Albedo Coefficient (SSAC) at wavelength  $\lambda_1$  is computed using the Scattering Coefficient (SC) and the Extinction Coefficient (EC) at  $\lambda_1$  as follows:

$$SSAC_{\lambda_1} = SC_{\lambda_1} / EC_{\lambda_1} \quad (\text{Eq. A.1.1.b})$$

760

The Absorption Angstrom Coefficient (AAC) between wavelengths  $\lambda_1$  and  $\lambda_2$  is computed using the Absorption Coefficient (AC) as follows:

$$AAC_{\lambda_1, \lambda_2} = \ln(AC_{\lambda_2} - AC_{\lambda_1}) / \ln(\lambda_1) - \ln(\lambda_2) \quad (\text{Eq. A.1.1.c})$$

And the Absorption Coefficient (AC) at wavelength  $\lambda_1$  is computed as follows:

$$AC = EC_{\lambda_1} - SC_{\lambda_1} \quad (\text{Eq. A.1.1.d})$$

765

DASH-SP provides measurements of Real Refractive Index at 532 nm (RRI),  $RRI_{\text{DASH-SP\_dry}}$ , information on the particle hygroscopicity,  $\kappa_{\text{DASH-SP\_dry}}$ , and the particle diameter,  $Dp_{\text{DASH-SP\_dry}}$ , in dry conditions. We compute DASH-SP RRI in ambient conditions,  $RRI_{\text{DASH-SP\_ambient}}$ , using  $RRI_{\text{DASH-SP\_dry}}$ ,  $\kappa_{\text{DASH-SP\_dry}}$ , and the ambient relative humidity and temperature measurements,  $RH_{\text{HSKP}}$  and  $T_{\text{HSKP}}$ , provided by the AIMMS-20 or 3D-winds instruments. First, we vary the Growth Factor,  $GF_{\text{var}}$ , from 1.02 to 1.5 by increments of 0.01 and compute the particle hygroscopicity,  $\kappa_{\text{var}}$ , for given  $RH_{\text{HSKP}}$ ,  $T_{\text{HSKP}}$  and  $Dp_{\text{DASH-SP\_dry}}$  measurements as follows:

770

$$\kappa_{\text{var}} = (GF_{\text{var}}^3 - 1) \times (1 - \kappa_a) / \kappa_a \quad (\text{Eq. A.1.1.e})$$

775

Where:



- $\kappa_a = (\text{RH}_{\text{HSKP}} / 100\%) / \exp(C_{\text{amb}} / (\text{GF}_{\text{var}} \times \text{Dp}_{\text{DASH-SP-dry}}))$
- $C_{\text{amb}} = (4 \times \sigma_{\text{sa}} \times M_w) / (R \times T_{\text{HSKP}} \times \rho_w)$
- $\sigma_{\text{sa}} = 0.0761 - 1.55 \times 10^{-4} \times (T_{\text{HSKP}} - 273)$ ;
- $M_w = 18.01528 / 1000 \text{ kg/mole}$
- 780 •  $R = 8.3144598$
- $\rho_w = 1000 \text{ kg/m}^3$

We select the growth factor,  $\text{GF}_{\text{var}}$ , that provides the closest  $\kappa_{\text{var}}$  value to the  $\kappa_{\text{DASH-SP-dry}}$  measurement. We call this growth factor  $\text{GF}_{\text{select}}$ . Finally, we compute the ambient RRI,  $\text{RRI}_{\text{DASH-SP-ambient}}$ , using  $\text{RRI}_{\text{DASH-SP-dry}}$  and  $\text{GF}_{\text{select}}$  obtained in the previous steps and equation 5 of Mallet et al. (2003) (based on Hänel (1976)) as follows:

$$\text{RRI}_{\text{DASH-SP-ambient}} = \text{RRI}_w + (\text{RRI}_{\text{DASH-SP-dry}} - \text{RRI}_w) \times (\text{GF}_{\text{select}})^{-3} \quad (\text{Eq. A.1.1f})$$

Where  $\text{RRI}_w = 1.33$

790 Let us note that Aldhaif et al. (2018) demonstrate the limitations of using the volume-weighted mixing rule approach above, especially in the presence of OA.

795 The PI-Neph provides measurements of dry phase function ( $P_{11}$ ) and the second element of the scattering phase matrix ( $P_{12}$ ) at three wavelengths over an angular range spanning  $>170^\circ$ . These measurements are fed into the GRASP (Dubovik et al., 2014)) algorithm to obtain retrieved values of spectral complex refractive index, a parameterized size distribution as well as derived optical properties like scattering coefficients. In this work we utilize these optical properties provided by PI-Neph in dry conditions: the scattering coefficients at 532 nm,  $\text{scat}_{\text{PI-Neph-dry}}$ , the dry size distribution,  $\text{dNdlr}_{\text{PI-Neph-dry}}$  and the  
800 Refractive Index,  $\text{RI}_{\text{PI-Neph-dry}}$ , composed of a real (RRI) and Imaginary part (IRI). First, we compute the “target” ambient scattering coefficient at 532 nm,  $\text{scat}_{\text{PI-Neph-target}}$ , as the product of  $\text{scat}_{\text{PI-Neph-dry}}$  and LARGE  $f(\text{RH})$  measurements at 550nm. Second, we compute the ambient scattering coefficient at 532 nm,  $\text{scat}_{\text{PI-Neph-ambient}}$ , corresponding to each  $\text{GF}_{\text{var}}$  from 1 to 1.5 by increments of 0.01 using (i) a Mie code (Mishchenko et al., 2002) and, as input to the Mie code, (ii) the ambient size distribution and  
805 corresponding radii, computed from  $\text{dNdlr}_{\text{PI-Neph-dry}}$  and  $\text{GF}_{\text{var}}$ , (iii) the ambient refractive index computed from  $\text{RI}_{\text{PI-Neph-dry}}$  and  $\text{GF}_{\text{var}}$  (see Eq. A.1.1f) and a prescribed geometric standard deviation (i.e.,  $\sim 1.12$ , which results in similar computed and provided  $\text{scat}_{\text{PI-Neph-dry}}$  values when using the same Mie code and initial parameters  $\text{dNdlr}_{\text{PI-Neph-dry}}$  and  $\text{RI}_{\text{PI-Neph-dry}}$ ). Third, we select  $\text{GF}_{\text{var}}$  (we call this growth factor,  $\text{GF}_{\text{select}}$ ) and corresponding  $\text{RRI}_{\text{PI-Neph-ambient}}$  that records the minimum difference between  $\text{scat}_{\text{PI-}}$   
810  $\text{Neph-ambient}$  and  $\text{scat}_{\text{PI-Neph-target}}$ .

We compute ambient AMS and SP2 mass concentrations using the parameter “stdPT-to-AMB\_Conversion\_AMS-60s” reported with the AMS data. SP2 Black Carbon (BC) standard concentration (referred to as “refractory black carbon”, and experimentally equivalent to elemental carbon  
815 at the 15% level (Petzold et al., 2013; Kondo et al., 2011; Perring et al., 2017)), originally in  $\text{ng.m}^{-3}$ , is converted into  $\mu\text{g.m}^{-3}$  and scaled upwards, on a flight-by-flight basis, to represent the entire accumulation



mode (on average by 1.14). The AMS sulfate, ammonium and nitrate are normalized to the sum of sulfate, ammonium, and nitrate (see first row of Fig. 4c). The AMS OA and SP2 BC are normalized to the sum of OA, BC, sulfate, ammonium, and nitrate (see second row of Fig. 4c).

820 In the case of SAGA, bromide and chloride are set to zero if under the detection limit of 0.0107 and 0.0391  $\mu\text{g}\cdot\text{m}^3$ .

In the case of PALMS, we use volume weighted products (Froyd et al., 2019). In this study, PALMS particle classes include mineral dust, sea salt, biomass burning, and sulfate-organic-nitrate mixtures (SON). The SON class was further refined into organic-rich, sulfate-rich, and nitrate-rich particle types, plus a remainder of SON particles that did not exhibit a dominant chemical sub-component. To define the Marine and Polluted Dust AMTs, PALMS composition was combined with aerosol size distribution data from LARGE to yield integrated volume fractions of mineral dust and sea-salt particle types from  $D=0.1-5 \mu\text{m}$  based on the method of Froyd et al. (2019). In Fig. 4 the average AMT chemical composition is determined as a raw number fraction of particles observed by PALMS.

830

### A.1.2 Method to Collocate Airborne Observations

All the airborne observations are cloud screened using wing-mounted cloud probes. Table A2 defines three datasets used in this study with its associated number of data points, called AIRBO<sub>1</sub>, AIRBO<sub>2</sub> and AIRBO<sub>3</sub> and their combination, AIRBO. In the AIRBO<sub>1,2,3</sub> and ultimately the AIRBO datasets, the LARGE data is first collocated to housekeeping (HSKP) data (i.e., select same “start\_utc” in seconds) and humidified/ filtered (see A.1.1).

In the AIRBO<sub>1</sub> dataset, we compute the mean HSKP and LARGE values in a  $\pm 30$  second range centered on each collocated AMS-PALMS-SP2 “start\_time” (i.e., the 1 min “merged” file). We then record LARGE averaged values if (i) the average is made of at least 20 points and (ii) the standard deviation of the LARGE EAE is below 30%.

In the AIRBO<sub>2</sub> dataset, we compute the mean HSKP and LARGE values between each DASH-SP “start\_utc” and “end\_utc”. DASH-SP measurements are then filtered and humidified using the dry DASH-SP and the averaged ambient HSKP measurements (see A.1.1). We record HSKP, LARGE and DASH-SP values if the following four parameters are below 30%: (i) the standard deviation of the LARGE EAE, (ii) the difference between  $\kappa_{\text{DASH-SP\_dry}}$  and  $\kappa_{\text{var}}$  (see A.1.1), (iii) the standard deviation of  $\text{RH}_{\text{HSKP}}$  and (iv) the standard deviation of  $T_{\text{HSKP}}$ .

In the AIRBO<sub>3</sub> dataset, we compute the mean HSKP and LARGE values between each PI-Neph “start\_utc” and “end\_utc”. PI-Neph measurements are then filtered and humidified using LARGE dry scattering coefficient and  $f(\text{RH})$  measurements (see section 6.1.3). We record HSKP, LARGE and PI-Neph values if the following four parameters are below 30%: (i) the standard deviation of the LARGE EAE, (ii) the standard deviation on  $\text{scat}_{\text{PI-Neph\_dry}}$ , (iii) the standard deviation on LARGE  $f(\text{RH})$ , and the difference between PI-Neph  $\text{scat}_{\text{PI-Neph\_target}}$  and  $\text{scat}_{\text{PI-Neph\_ambient}}$ .

855



Finally, we collocate the HSKP-LARGE-DASH-SP (HSKP-LARGE-PI-Neph) to the AMS-PALMS-SP2 datasets in the case of AIRBO<sub>2</sub> (AIRBO<sub>3</sub>). To do that, if there are multiple AMS-PALMS-SP2 data points between each HSKP-LARGE-DASH-SP (HSKP-LARGE-PI-Neph) averaged time stamp, we average all  
860 AMS-PALMS-SP2 data between the HSKP-LARGE-DASH-SP (HSKP-LARGE-PI-Neph) averaged time stamps. If there are no multiple AMS-PALMS-SP2 data points between the HSKP-LARGE-DASH-SP (HSKP-LARGE-PI-Neph) averaged time stamps, we select the closest AMS-PALMS-SP2 data in time to the HSKP-LARGE-DASH-SP (HSKP-LARGE-PI-Neph) averaged time stamps.

865 The dataset in this study, AIRBO, was obtained by first, selecting common 1 min UTC time stamps from all 3 datasets, and then arbitrarily selecting, in order of priority when present, AIRBO<sub>2</sub>, AIRBO<sub>1</sub> and AIRBO<sub>3</sub>.

Name of Dataset	Instruments (see Table 1)	Temporally Co-located Aerosol Optical Parameters (see Table 1, 2)	Valid Number of Data Points (*)
AIRBO <sub>1</sub>	LARGE	EAE, SSA, dSSA, AC, AAE	871
AIRBO <sub>2</sub>	LARGE, DASH-SP	EAE, SSA, dSSA, AC, AAE, RRI	716
AIRBO <sub>3</sub>	LARGE, PI-Neph	EAE, SSA, dSSA, AC, AAE, RRI	176
AIRBO (This study)	LARGE, DASH-SP, PI-Neph	EAE, SSA, dSSA, AC, AAE, RRI	781

870 **Table A2: Definition of three datasets (AIRBO<sub>1</sub>, AIRBO<sub>2</sub>, AIRBO<sub>3</sub>) and their combination, AIRBO (which is the dataset used in this study), the airborne instruments involved during SEAC<sup>4</sup>RS, the co-located parameters (EAE: Extinction Angstrom Exponent, SSA: Single Scattering Albedo, dSSA: difference in SSA at 2 wavelengths, AC: absorption Coefficient and AAE: Absorption Angstrom Exponent and RRI: Real Refractive Index) and the (\*) number of data points showing valid aerosol optical properties and one valid PS-AMT (among BBAg., BBWild., Bio. or PollDust)**  
875

### A.1.3 Method to Define Prescribed Source-based AMTs (PS-AMTs)

This section explains Fig. 2 (and step 1 in Fig. 1) in more details. We refer the reader to Table 1 for all the instruments in this section. First, we define Polluted Dust PS-AMT using PALMS dust number fraction (i.e., PALMS 'MineralFrac\_PALMS') above 0.15 and integrated the Dry Aerosol Volume Concentration by the APS (i.e., 'IntegV\_Daero-PSL\_APS\_LARGE' above 2 μm<sup>3</sup>cm<sup>-3</sup>; note that APS measurements sampled dry aerodynamic diameters ranging from 0.56 to 6.31 μm (Espinosa et al., 2018)).  
880 Similarly, we define Marine PS-AMTs when PALMS sea-salt number fraction > 0.15 and total volume > 2 μm<sup>3</sup> cm<sup>-3</sup>. The remaining observations may then be evaluated for Biomass Burning (BB) PS-AMTs if gas-phase measurements of acetonitrile, isoprene, monoterpene and CO (i.e., using PTRMS  
885 "Acetonitrile", WAS "Isoprene\_WAS", PTRMS "Isoprene-Furan", PTRMS "Monoterpenes", WAS "CO\_WAS" and DACOM "CO\_DACOM") meet certain prespecified thresholds. More specifically,

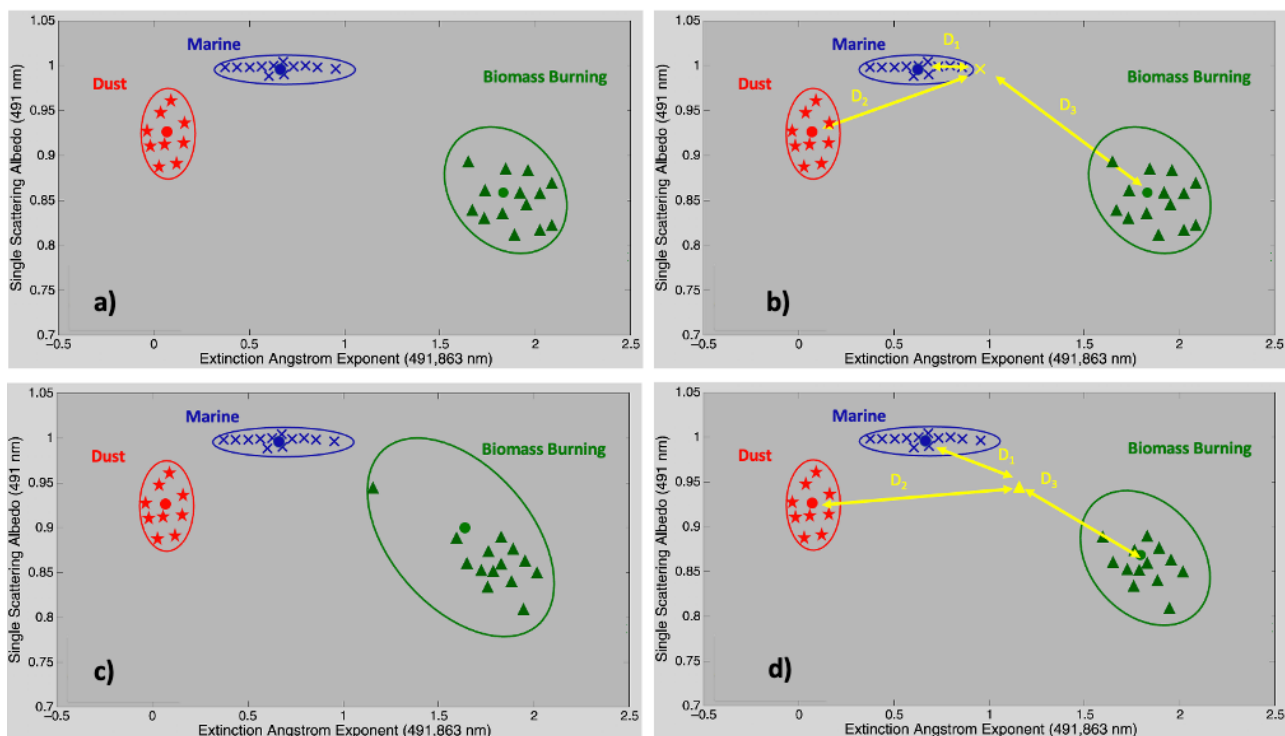


890 observations are classified as BB if (i) acetonitrile  $> 250 \times 10^{-3}$  ppbv, or (ii) (acetonitrile  $> 190 \times 10^{-3}$   
ppbv) & (acetonitrile/(isoprene + monoterpene) $>2.5$ ) or (iii)  $\text{CO}>250$  ppbv. BB PS-AMTs are further  
differentiated as coming from prescribed (agricultural) fires (called “BB Ag.”) if the longitude is east of  
-95° or from wildfires (called “BB wild.”) if the longitude is west of -95°. The -95° longitude threshold  
was selected according to Fig. 3 and the location of Ag. fires (green triangles) according to Liu et al.  
(2016). If observations are not classified as dust or BB, we classify them as biogenic if isoprene +  
monoterpene  $> 2$  ppbv. Finally, remaining observations are classified as urban if the altitude is below 3km  
895 and  $\text{NO}_2 > 1$  ppbv (i.e., using the NOAA Nitrogen Oxides and Ozone ( $\text{NO}_y/\text{O}_3$   $\text{NO}_2$  “ $\text{NO}_2\_ESRL$ ” or  
TDLIF “ $\text{NO}_2\_TDLIF$ ”).

#### A.1.4 Method to Select Most Useful and Well Separated Aerosol Optical Properties

900 This section explains step 2 of Fig. 1 in more details. Figure A1 is a simplified example to illustrate our  
method. It shows only two optical parameters (i.e., SSA and EAE) and three hypothetical PS-AMTs (e.g.,  
“pure” dust in red, marine in blue and BB in green) measured by one hypothetical optical instrument in  
two different environments (defined by different locations and times, Fig. A1 a-b vs. A1 c-d). Fig A1 a-  
b shows a smaller hypothetical range of EAE and SSA for the BB PS-AMT (green cluster), compared to  
Fig. A1 c-d.

905 To answer the questions “how well are these PS-AMTs (i.e., red, blue and green clusters in either Fig. A1  
a or A1 c) separated” i.e., “are the optical signatures of these PS-AMTs distinct?”, we (i) select each data  
point separately (e.g., yellow crosses on Fig A1 b and A1 d), (ii) recompute each PS-AMT cluster with  
the data point excluded (i.e., different blue PS-AMT on A1 b and green PS-AMT on A1 d compared to  
A1 a and A1 c) and calculate the Mahalanobis distance (Mahalanobis, 1936; Burton et al., 2012). The  
Mahalanobis distance is the distance between the data point in question (i.e., yellow crosses on Fig. A1 b  
910 or A1 d) and the position of each cluster center (i.e., red, blue, and green clusters on Fig. A1 b or A1 d),  
which depends on cluster center, tilt and width in a multi-parameter space. These distances are called  $D_1$ ,  
 $D_2$  and  $D_3$  on either Fig. A1 b or A1 d. In the case of the yellow cross on Fig. A1 b, distance  $D_1$  is the  
smallest and the test point is reassigned to its original cluster. The test point is by consequence well  
separated from other clusters and “steady”. On the other hand, distance  $D_1$  is also the smallest on Fig. A1  
915 d, which means the test point (yellow cross) on Fig. A1 d is not reassigned to its original cluster. The test  
point is by consequence not well separated from other clusters in this case and not “steady”. “Steady  
fraction” is the fraction of cases within each PS-AMT that are correctly identified. “Steady” fractions are  
used to assess separation between PS-AMTs. When including additional components (e.g., any other  
aerosol optical parameter from Table 2 in addition to SSA and EAE on Fig. A1), the additional number  
920 of “steady points” shows the component’s relative importance in separating the PS-AMTs. The yellow  
points that are “steady” on Figure A1 (i.e., correctly classified, or well separated) are used to define the  
most useful and well separated aerosol optical properties for each PS-AMT (i.e., step 2 in Fig. 2).



925 **Figure A1: Conceptual/ hypothetical illustration of how we quantify separation between different**  
**air mass types, select the most useful and well separated aerosol optical parameters. It shows three**  
**hypothetical PS-AMTs (e.g., dust in red, marine in blue and BB in green) measured by one**  
**hypothetical optical instrument (Fig. A1 a-b) in one environment and another (Fig. A1 c-d). The**  
930 **EAE and SSA values in this illustration are based on AERONET observations (Russell et al, 2014)**  
**and are representative of typical “pure” dust, marine and BB total column remote sensing inferred**  
**ground based EAE and SSA values. Note that it only shows two dimensions even though some**  
**calculations of Mahalanobis Distances (e.g.,  $D_1$ ,  $D_2$ ,  $D_3$ ) will be made using more dimensions in this**  
**study.**

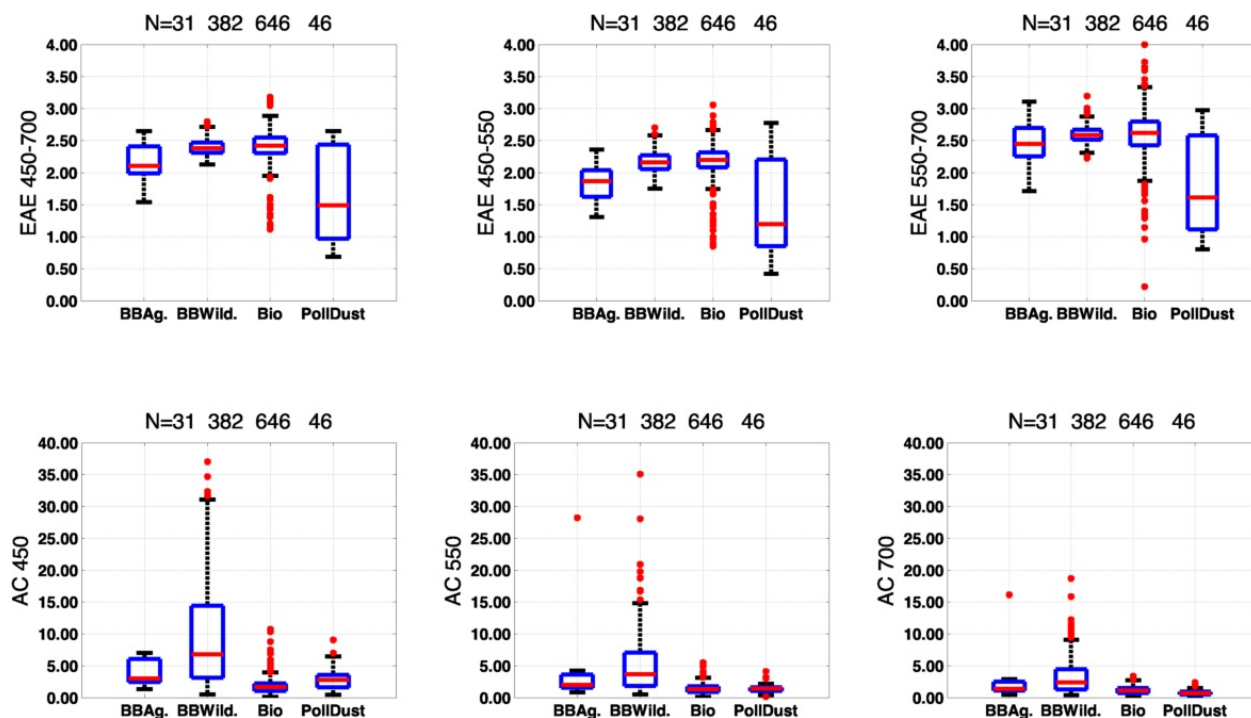
## 935 **A.2 Additional Information on Results**

### **A.2.1 Aerosol Optical Parameters classified by PS-AMT**

This section describes the ranges of the sixteen aerosol optical parameters (i.e., EAE, SSA, dSSA, AAE and AC at different combinations of 450, 550 and 700 nm and RRI at 532 nm from Table 2), classified by PS-AMTs in our study.

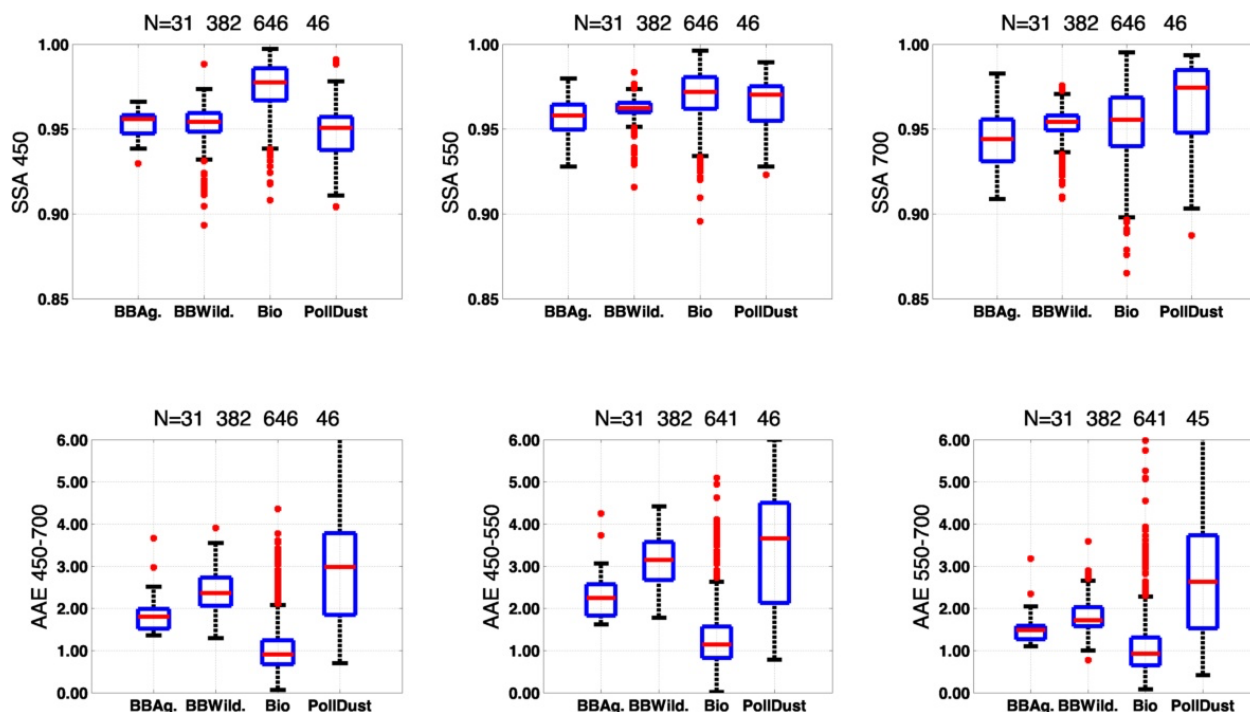
940



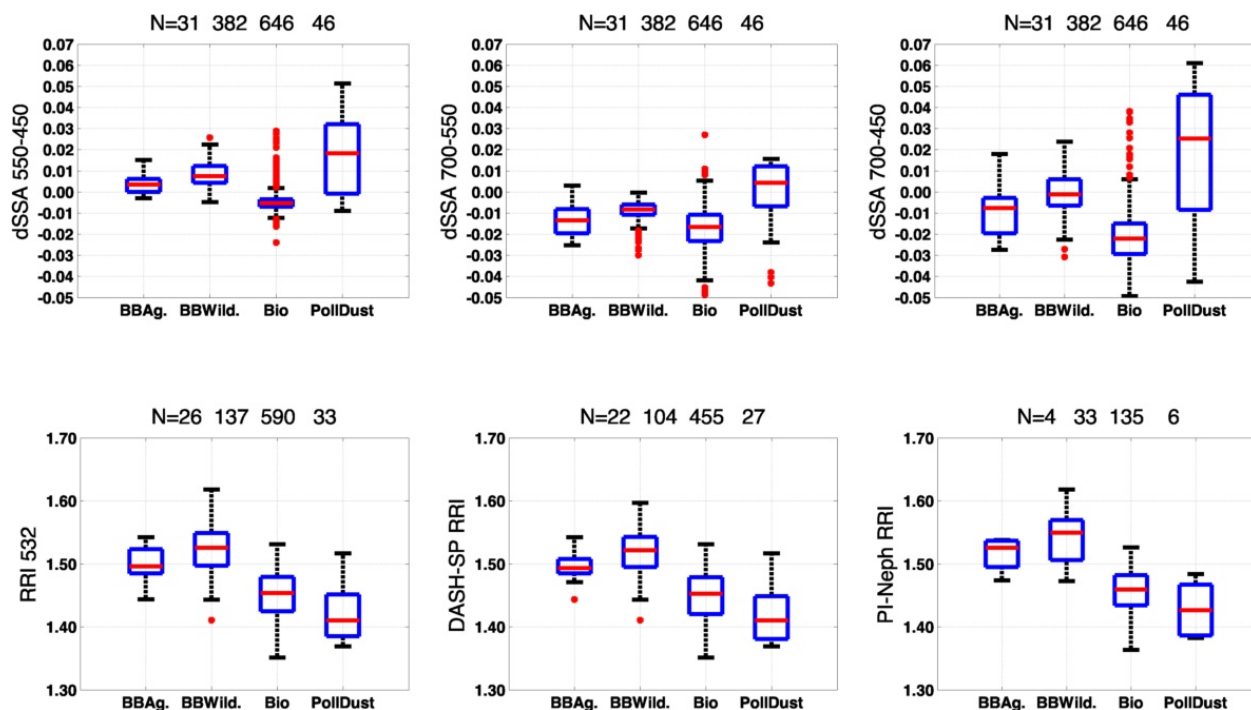


945 **Figure A2: EAE (450-700nm, 450-550nm, 550-700nm) and AC (450, 550 and 700nm) per PS-AMTs.** In each blue box, the red horizontal line indicates the median, and the bottom and top edges of the box indicate the 25th and 75th percentiles, respectively. The black whiskers extend to the most extreme data points not considered outliers, and the outliers are plotted individually using red points. Let us note that the LARGE EC measurements at 700 nm experienced issues during the latter half of SEAC4RS (Shinozuka et al., *pers. comm.*). AC: Absorption Coefficient, EAE: Extinction Angstrom Exponent. Numbers in the title correspond to the number of points behind each box-whisker for the respective BBAg., BBWild., Bio. and PollDust PS-AMTs.

950



955 **Figure A3: SSA (450, 550 and 700nm) and AAE (450-700nm, 450-550nm, 550-700nm) per PS-**  
**AMTs. In each blue box, the red horizontal line indicates the median, and the bottom and top edges**  
**of the box indicate the 25th and 75th percentiles, respectively. The black whiskers extend to the**  
**most extreme data points not considered outliers, and the outliers are plotted individually using red**  
**points. AAE: Absorption Angstrom Exponent, SSA: Single Scattering Albedo. Numbers in the title**  
**correspond to the number of points behind each box-whisker for the respective BBAg., BBWild.,**  
960 **Bio. and PollDust PS-AMTs.**



965

**Figure A4: dSSA (700-450nm, 550-450nm, 700-550nm), RRI (from DASH-SP and PI-Neph), RRI from DASH-SP and RRI from PI-Neph at 532 nm per PS-AMTs. In each blue box, the red horizontal line indicates the median, and the bottom and top edges of the box indicate the 25th and 75th percentiles, respectively. The black whiskers extend to the most extreme data points not considered outliers, and the outliers are plotted individually using red points. RRI: Real Refractive Index, dSSA: difference in Single Scattering Albedo. Numbers in the title correspond to the number of points behind each box-whisker for the respective BBAg., BBWild., Bio. and PollDust PS-AMTs.**

970

975

980

Note the slightly lower RRI values for DASH-SP, compared to PI-Neph (i.e., respectively 1.41 and 1.43 at 532nm in Fig. A4) in the case of PollDust PS-AMTs. We explain this difference in RRI values by different PollDust PS-AMT Growth Factor (GF) values. We obtain GF through two methods: (1) the values directly measured by DASH-SP for particles in the size range  $0.18 < d_{\text{dry}} < 0.40 \mu\text{m}$  and (2) through an iterative procedure matching the output of a Mie code with dry PI-Neph retrievals and  $f(\text{RH})$  measurements made by the LARGE group in parallel (see section A.1.1 for more details). We find a respective median PollDust PS-AMT GF value of  $\sim 1.3$  and  $\sim 1.2$  in the case of DASH-SP and PI-Neph, which we suggest is due to a smaller sampling size range for DASH-SP, compared to PI-Neph (see Table 1).



### A.2.2 Most Useful and Well Separated Aerosol Optical Properties – Sixteen Parameters

985 This section describes the percentage of points unambiguously retrieved or “steady” (i.e., points that are well separated from other clusters and, hence, reassigned to their initial clusters) when using different combinations of respectively two and three out of sixteen aerosol optical parameters across all four principal PS-AMTs (i.e., provides more details to section 3.2).

990

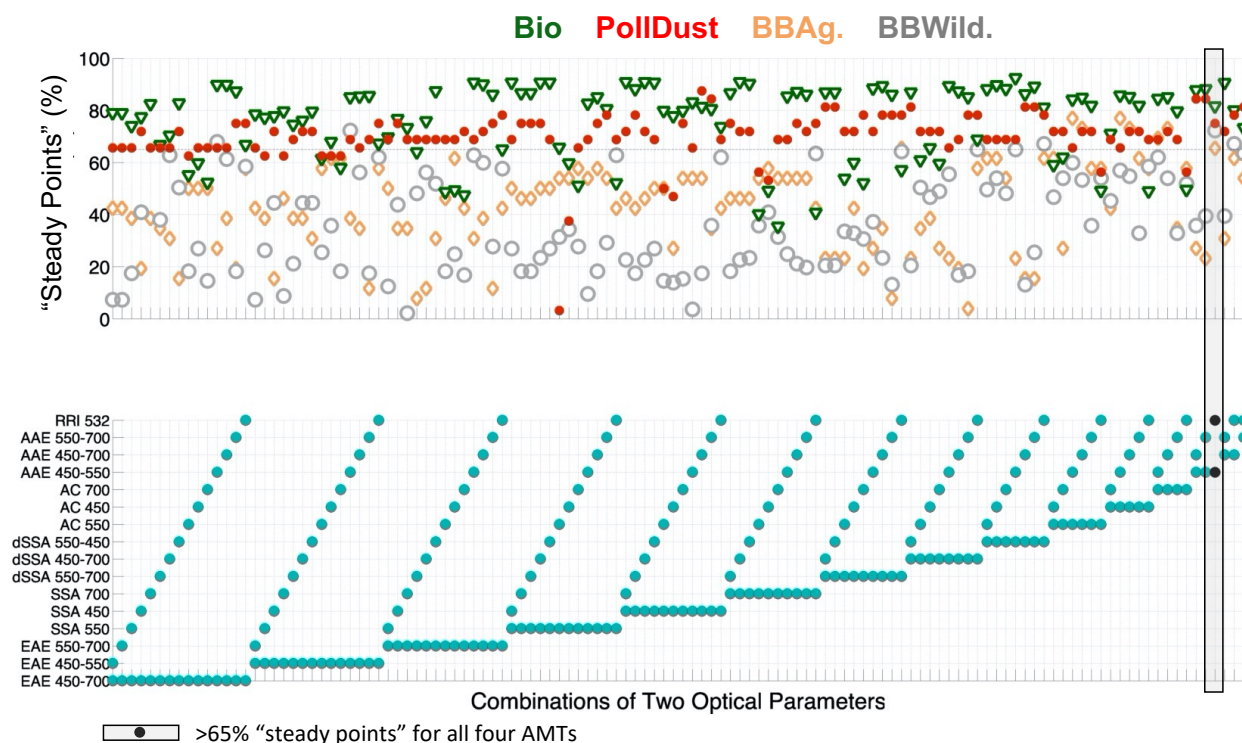


Fig.

995 **Figure A5: Percentage of points “steady” (i.e., fraction of cases of a given type that are correctly identified; see section 2.4 for more info) in the upper panel when using different combinations of two aerosol optical parameters in the lower panel for each PS-AMT. Grey box and black points are combinations of optical parameters showing > 65% “steady” for PS-AMTs BBAg., BBWild., Bio.and PollDust. RRI: Real Refractive Index, AAE: Absorption Angstrom Exponent, AC: Absorption Coefficient, dSSA: difference in Single Scattering Albedo, SSA: Single Scattering Albedo, EAE: Extinction Angstrom Exponent.**

000

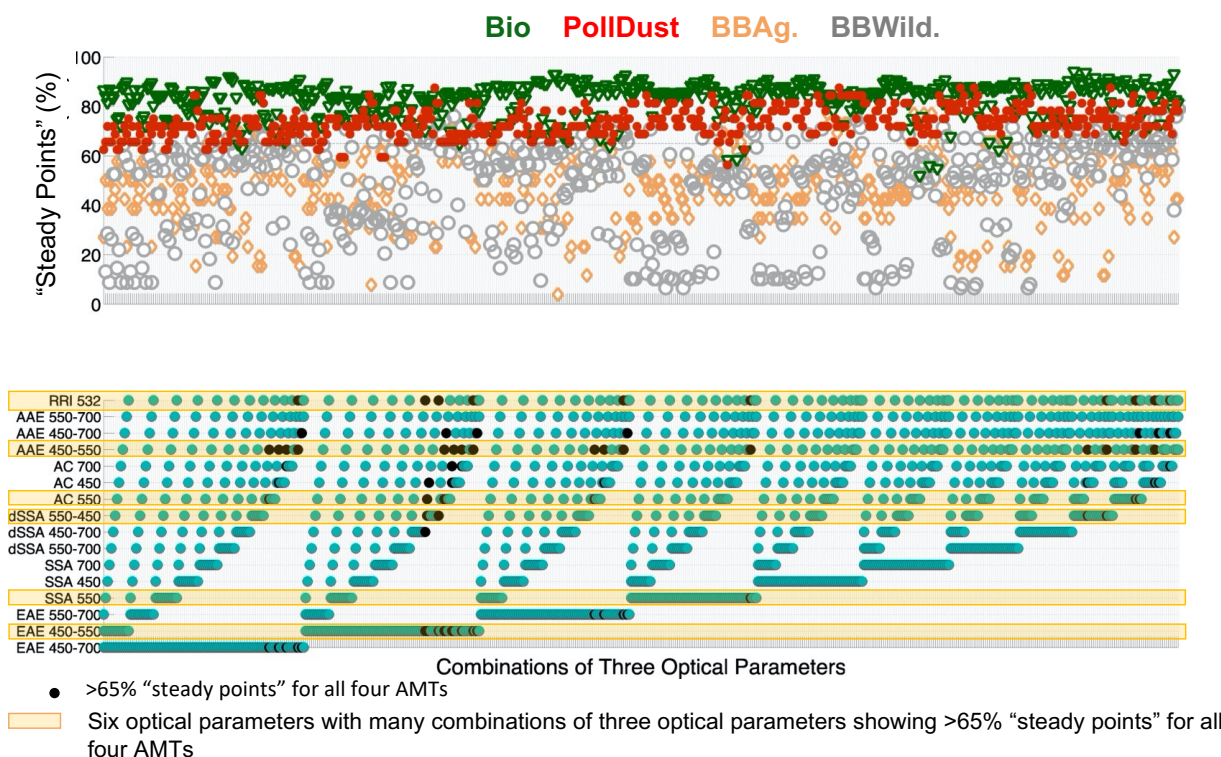


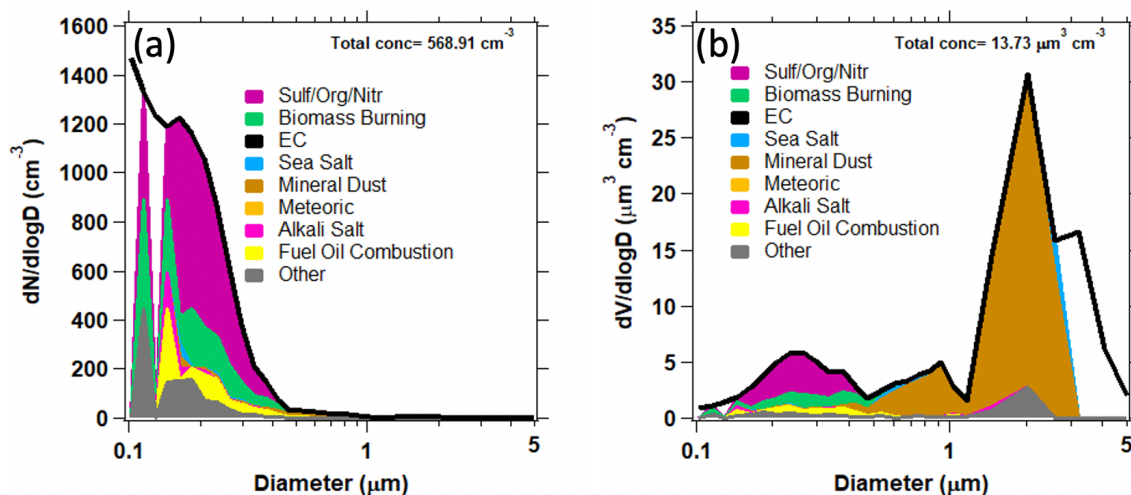
Fig.

005 **Figure A6: Percentage of points "steady" (i.e., fraction of cases of a given type that are correctly identified; see section 2.4 for more info) in the upper panel when using different combinations of three aerosol optical parameters in the lower panel for each PS-AMT. Black points are combinations of optical parameters showing > 65% "steady points" for PS-AMTs BBAg., BBWild., Bio. and PollDust. RRI: Real Refractive Index, AAE: Absorption Angstrom Exponent, AC: Absorption Coefficient, dSSA: difference in Single Scattering Albedo, SSA: Single Scattering Albedo, EAE: Extinction Angstrom Exponent. Horizontal orange boxes show the selection of our six aerosol optical parameters. Orange boxes show the six aerosol optical parameters that we have selected in the remainder of the study.**

010

### A.2.3 Composition of our Polluted Dust (PollDust) PS-AMT

015 This section shows a compositional picture of the PollDust PS-AMTs from PALMS (see Fig. A7). The accumulation mode is a mixture of particle types, all of which contain sulfate and organic material. Coarse mode dust particles account for most of the aerosol volume, whereas a non-dust accumulation mode contributes most to the total number concentration of particles.



020

**Figure A7: PALMS particle classes are mapped to the total number (a) and volume (b) size distribution from LARGE based on the method of Froyd et al. (2019). Data include flight segments representative of the Polluted Dust PS-AMT.**

025

### Data Availability

The SEAC<sup>4</sup>RS data used in this study are publicly available at the following link: <https://www-air.larc.nasa.gov/cgi-bin/ArcView/seac4rs?DC8=#top>

### 030 Author Contribution

The overarching research goals were formulated by MSK. Many co-authors influenced the evolution of these research goals. MSK and QT carried out the formal analyses. MSK carried out the investigations and visualizations and wrote the original draft. All coauthors have reviewed and edited the multiple drafts of the paper. The methodology behind the SCMC method was first developed by SPB and adapted to *in situ* data by MSK.

035

### Competing Interests

The authors declare that they have no conflict of interest, except for Dr Armin Sorooshian being an editor of ACP.



## Acknowledgements

040 This research was supported by the NASA Atmospheric Composition Modeling and Analysis Program (ACMAP) under grant NNH14ZDA001N-ACMAP. We thank Dr R. Eckmann for his support. We appreciate the efforts of all the SEAC<sup>4</sup>RS *in situ* instrument principal investigators involved in this study for obtaining, processing, documenting, and disseminating their respective datasets. We also appreciate the comments of the reviewers that have helped us to improve this article.

## 045 References

- Adhikary, B., S. Kulkarni, A. Dallura, Y. Tang, T. Chai, L. R. Leung, Y. Qian, C. E. Chung, V. Ramanathan, and G. R. Carmichael: A regional scale chemical transport modeling of Asian aerosols with data assimilation of AOD observations using optimal interpolation technique, *Atmos. Environ.*, 42(37), 8600–8615, 2008.
- 050 Aldhaif, A. M., Stahl, C., Braun, R. A., Moghaddam, M. A., Shingler, T., Crosbie, E., Sawamura, P., Dadashazar, H., Ziemba, L., Jimenez, J. L., Campuzano-Jost, P., and Sorooshian, A.: Characterization of the Real Part of Dry Aerosol Refractive Index Over North America From the Surface to 12 km, *J. Geophys. Res.-Atmos.*, 123, 8283–8300, <https://doi.org/10.1029/2018JD028504>, 2018.
- 055 Benedetti, A., Morcrette, J.J., Boucher, O., Dethof, A., Engelen, R.J., Fisher, M., Flentje, H., Huneeus, N., Jones, L., Kaiser, J.W. and Kinne, S.: Aerosol analysis and forecast in the European Centre for Medium-Range Weather Forecasts Integrated Forecast System: 2. Data assimilation, *J. Geophys. Res.-Atmos.*, 114 (D13), <https://doi.org/10.1029/2008JD011115>, 2009.
- 060 National Academies of Sciences, Engineering, and Medicine: Thriving on Our Changing Planet: A Decadal Strategy for Earth Observation from Space, The National Academies Press, Washington, D.C., 2018.
- 065 Bohren, C. F. and Huffman, D. R.: Absorption and Scattering of Light by Small Particles, John Wiley & Sons, 1983.
- Bond, T.C., Doherty, S.J., Fahey, D.W., Forster, P.M., Berntsen, T., DeAngelo, B.J., Flanner, M.G., Ghan, S., Kärcher, B., Koch, D. and Kinne, S.: Bounding the role of black carbon in the climate system: 070 A scientific assessment, *J. Geophys. Res.-Atmos.*, 118(11), <https://doi.org/10.1002/jgrd.50171>, 5380–5552, 2013.
- 075 Boucher, O., Randall, D., Artaxo, P., Bretherton, C., Feingold, G., Forster, P., Kerminen, V.-M., Kondo, Y., Liao, H., Lohmann, U., Rasch, P., Satheesh, S. K., Sherwood, S., Stevens, B., and Zhang, X. Y.: Clouds and aerosols, in: *Climate Change 2013: The Physical Science Basis. Contribution of Working Group I to the Fifth Assessment Report of the Intergovernmental Panel on Climate Change*, edited by:



- 080 Stocker, T. F., Qin, D., Plattner, G.-K., Tignor, M., Allen, S. K., Doschung, J., Nauels, A., Xia, Y., Bex, V., and Midgley, P. M.: Cambridge University Press, United Kingdom and New York USA, 571–657, doi:10.1017/CBO9781107415324.016, 2013.
- Buchard, V., Randles, C.A., Da Silva, A.M., Darmenov, A., Colarco, P.R., Govindaraju, R., Ferrare, R., Hair, J., Beyersdorf, A.J., Ziemba, L.D. and Yu, H.: The MERRA-2 aerosol reanalysis, 1980 onward. Part II: Evaluation and case studies, *J. Climate*, 30(17), 6851–6872, 2017.
- 085 Burton, S. P., Ferrare, R. A., Hostetler, C. A., Hair, J. W., Rogers, R. R., Obland, M. D., Butler, C. F., Cook, A. L., Harper, D. B., and Froyd, K. D.: Aerosol classification using airborne High Spectral Resolution Lidar measurements – methodology and examples, *Atmos. Meas. Tech.*, 5, 73–98, <https://doi.org/10.5194/amt-5-73-2012>, 2012.
- 090 Canagaratna, M. R., Jayne, J. T., Jimenez, J. L., Allan, J. D., Alfarra, M. R., Zhang, Q., Onasch, T. B., Drewnick, F., Coe, H., Middlebrook, A., Delia, A., Williams, L. R., Trimborn, A. M., Northway, M. J., DeCarlo, P. F., Kolb, C. E., Davidovits, P., and Worsnop, D. R.: Chemical and microphysical characterization of ambient aerosols with the aerodyne aerosol mass spectrometer, *Mass Spectrom. Rev.*, 26(2), 185–222, <https://doi.org/10.1002/mas.20115>, 2007.
- 095 Chen, C., Dubovik, O., Henze, D. K., Lapyonak, T., Chin, M., Ducos, F., Litvinov, P., Huang, X., and Li, L.: Retrieval of desert dust and carbonaceous aerosol emissions over Africa from POLDER/PARASOL products generated by the GRASP algorithm, *Atmos. Chem. Phys.*, 18, 12551–12580, <https://doi.org/10.5194/acp-18-12551-2018>, 2018
- 100 Chen, C., Dubovik, O., Henze, D. K., Chin, M., Lapyonok, T., Schuster, G. L., Ducos, F., Fuertes, D., Litvinov, P., Li, L., Lopatin, A., Hu, Q., and Torres, B.: Constraining global aerosol emissions using POLDER/PARASOL satellite remote sensing observations, *Atmos. Chem. Phys.*, 19, 14585–14606, <https://doi.org/10.5194/acp-19-14585-2019>, 2019.
- 105 Chin, M., Ginoux, P., Kinne, S., Torres, O., Holben, B., Duncan, B., Martin, R., Logan, J., Higurashi, A., and Nakajima, T.: Tropospheric aerosol optical thickness from the GOCART model and comparisons with satellite and sunphotometer measurements, *J. Atmos. Sci.*, 59(3), 461–483, 2002.
- 110 Cleary, P. A., Wooldridge, P. J., and Cohen, R. C.: Laser-induced fluorescence detection of atmospheric NO<sub>2</sub> using a commercial diode laser and a supersonic expansion, *Appl. Opt.*, 41, 6950–6956, 2002.
- Collins, W.D., Rasch, P.J., Eaton, B.E., Khattatov, B.V., Lamarque, J.F. and Zender, C.S.: Simulating aerosols using a chemical transport model with assimilation of satellite aerosol retrievals: Methodology for INDOEX, *J. Geophys. Res.-Atmos.*, 106(D7), 7313–7336, <https://doi.org/10.1029/2000JD900507>, 2001.





- 120 Cubison, M. J., Ortega, a. M., Hayes, P. L., Farmer, D. K., Day, D., Lechner, M. J., Brune, W. H., Apel, E., Diskin, G. S., Fisher, J. a., Fuelberg, H. E., Hecobian, A., Knapp, D. J., Mikoviny, T., Riemer, D., Sachse, G. W., Sessions, W., Weber, R. J., Weinheimer, a. J., Wisthaler, A., and Jimenez, J. L.: Effects of aging on organic aerosol from open biomass burning smoke in aircraft and laboratory studies, *Atmos. Chem. Phys.*, 11, 12049–12064, <https://doi.org/10.5194/acp-11-12049-2011>, 2011.
- 125 Daellenbach, K. R., Uzu, G., Jiang, J., Cassagnes, L.-E., Leni, Z., Vlachou, A., Stefenelli, G., Canonaco, F., Weber, S., Segers, A., Kuenen, J. J. P., Schaap, M., Favez, O., Albinet, A., Aksoyoglu, S., Dommen, J., Baltensperger, U., Geiser, M., El Haddad, I., Jaffrezo, J.-L., and Prévôt, A. S. H.: Sources of particulate-matter air pollution and its oxidative potential in Europe, *Nature*, 587, 414–419, <https://doi.org/10.1038/s41586-020-2902-8>, 2020.
- 130 Dawson, K.W., Meskhidze, N., Burton, S.P., Johnson, M.S., Kacenelenbogen, M.S., Hostetler, C.A. and Hu, Y.: Creating Aerosol Types from Chemistry (CATCH): A new algorithm to extend the link between remote sensing and models, *J. Geophys. Res.-Atmos.*, 122(22), 12-366, <https://doi.org/10.1002/2017JD026913>, 2017.
- 135 DeCarlo, P. F., Kimmel, J. R., Trimborn, A., Northway, M. J., Jayne, J. T., Aiken, A. C., Gonin, M., Fuhrer, K., Horvath, T., Docherty, K. S., Worsnop, D. R., and Jimenez, J. L.: Field-deployable, high-resolution, time-of-flight aerosol mass spectrometer, *Anal. Chem.*, 78, 8281–8289, 2006.
- 140 Deuzé, J.-L., Bréon, F.-M., Devaux, C., Goloub, P., Herman, M., Lafrance, B., Maignan, F., Marchand, A., Nadal, F., Perry, G., and Tanré, D.: Remote sensing of aerosols over land surfaces from POLDER-ADEOS-1 polarized measurements, *J. Geophys. Res.-Atmos.*, 106(D5), 4913–4926, <https://doi.org/10.1029/2000JD900364>, 2001.
- 145 Dibb, Jack E., Robert W. Talbot, Eric M. Scheuer, Garry Seid, Melody A. Avery, and Hanwant B. Singh: Aerosol chemical composition in Asian continental outflow during the TRACE-P campaign: Comparison with PEM-West B, *J. Geophys. Res.-Atmos.*, 108 (D21), <https://doi.org/10.1029/2002JD003111>, 2003.
- 150 Dolgos, G. and Martins, J. V.: Polarized Imaging Nephelometer for in situ airborne measurements of aerosol light scattering, *Opt. Express*, 22, 21972–21990, 2014.
- Dubovik, O., Lapyonok, T., Litvinov, P., Herman, M., Fuertes, D., Ducos, F., Lopatin, A., Chaikovsky, A., Torres, B., Derimian, Y., Xin Huang, Aspetsberger, M., and Federspiel, C.: GRASP: a versatile algorithm for characterizing the atmosphere, *SPIE Newsroom*, doi:10.1117/2.1201408.005558, 2014.
- 155 Dunagan, S. E., Johnson, R., Zavaleta, J., Russell, P. B., Schmid, B., Flynn, C., Redemann, J., Shinozuka, Y., Livingston, J., and Segal-Rosenhaimer, M.: Spectrometer for Sky-Scanning Sun-Tracking Atmospheric Research (4STAR): Instrument Technology, *Remote Sensing*, 5, 3872–3895, <https://doi.org/10.3390/rs5083872>, 2013.



- 160 Eck, T.F., Holben, B.N., Reid, J.S., Mukelabai, M.M., Piketh, S.J., Torres, O., Jethva, H.T., Hyer, E.J., Ward, D.E., Dubovik, O. and Sinyuk, A.: A seasonal trend of single scattering albedo in southern African biomass-burning particles: Implications for satellite products and estimates of emissions for the world's largest biomass-burning source, *J. Geophys. Res.-Atmos.*, 118(12), 6414-6432, <https://doi.org/10.1002/jgrd.50500>, 2013.
- 165 Edgerton, E. S., Hartsell, B. E., Saylor, R. D., Jansen, J. J., Hansen, D. A., and Hidy, G. M.: The Southeastern Aerosol Research and Characterization Study, Part 3: Continuous measurements of fine particulate matter mass and composition, *J. Air Waste Manage.*, 56, 1325–1341, 2006.
- 170 Espinosa, W. R., Remer, L. A., Dubovik, O., Ziemba, L., Beyersdorf, A., Orozco, D., Schuster, G., Lapyonok, T., Fuertes, D., and Martins, J. V.: Retrievals of aerosol optical and microphysical properties from Imaging Polar Nephelometer scattering measurements, *Atmos. Meas. Tech.*, 10, 811–824, <https://doi.org/10.5194/amt-10-811-2017>, 2017.
- 175 Espinosa, W. R., Martins, J. V., Remer, L. A., Puthukkudy, A., Orozco, D., & Dolgos, G: *In situ* measurements of angular-dependent light scattering by aerosols over the contiguous United States. *Atmos. Chem. Phys.*, 18, 3737-3754, <https://doi.org/10.5194/acp-18-3737-2018>, 2018.
- 180 Forrister, H., Liu, J., Scheuer, E., Dibb, J., Ziemba, L., Thornhill, K. L., Anderson, B., Diskin, G., Perring, A. E., Schwarz, J. P., Campuzano-Jost, P., Day, D. A., Palm, B. B., Jimenez, J. L., Nenes, A., and Weber, R. J.: Evolution of brown carbon in wildfire plumes, *Geophys. Res. Lett.*, 42, 4623–4630, <https://doi.org/10.1002/2015gl063897>, 2015.
- 185 Fougnie, B., Marbach, T., Lacan, A., Lang, R., Schlüssel, P., Poli, G., Munro, R., and Couto, A. B.: The multi-viewing multi-channel multi-polarisation imager – Overview of the 3MI polarimetric mission for aerosol and cloud characterization, *J. Quant. Spectrosc. Ra.*, 219, 23–32, <https://doi.org/10.1016/j.jqsrt.2018.07.008>, 2018.
- 190 Fried, A., Diskin, G., Weibring, P., Richter, D., Walega, J. G., Sachse, G., Slate, T., Rana, M., and Podolske, J.: Tunable infrared laser instruments for airborne atmospheric studies, *Appl. Phys. B*, 92(3), 409–417, 2008.
- 195 Froyd, K. D., Murphy, D. M., Brock, C. A., Campuzano-Jost, P., Dibb, J. E., Jimenez, J.-L., Kupc, A., Middlebrook, A. M., Schill, G. P., Thornhill, K. L., Williamson, C. J., Wilson, J. C., and Ziemba, L. D.: A new method to quantify mineral dust and other aerosol species from aircraft platforms using single-particle mass spectrometry, *Atmos. Meas. Tech.*, 12, 6209–6239, <https://doi.org/10.5194/amt-12-6209-2019>, 2019.
- 200 Fu, G., Hasekamp, O., Rietjens, J., Smit, M., Di Noia, A., Cairns, B., Wasilewski, A., Diner, D., Seidel, F., Xu, F., Knobelspiesse, K., Gao, M., da Silva, A., Burton, S., Hostetler, C., Hair, J., and Ferrare, R.:



- Aerosol retrievals from different polarimeters during the ACEPOL campaign using a common retrieval algorithm, *Atmos. Meas. Tech.*, 13, 553–573, <https://doi.org/10.5194/amt-13-553-2020>, 2020.
- 205 Generoso, S., F.-M. Bréon, F. Chevallier, Y. Balkanski, M. Schulz, and I. Bey, Assimilation of POLDER aerosol optical thickness into the LMDz-INCA model: Implications for the Arctic aerosol burden, *J. Geophys. Res.-Atmos.*, 112(D2), <https://doi.org/10.1029/2005JD006954>, 2007.
- 210 Guo H., Pedro Campuzano-Jost, Demetrios Pagonis, Melinda Schueneman, Doug A Day, Benjamin A Nault, Dongwook Kim, Wyatt Brown, Kyla S.A. Siemens, Jack E Dibb, Eric M Scheuer, Laura Tomsche, Felix Piel, John B Nowak, Armin Wisthaler, Lu Xu, Krystal Vasquez, John D Crouse, Paul O Wennberg, Pamela Rickly, Andrew W Rollins, Caroline Womack, Joseph M Katich, Anne Elizabeth Perring, Hannah S Halliday, Amber Jeanine Soja, Emily Marie Gargulinski, Elizabeth Brooke Wiggins, Jessica L McCarty, Glenn S Diskin, Thomas F Hanisco, Alexander Laskin and Jose L Jimenez, Submicron Particle Composition and Acidity in Fire Plumes during FIREX-AQ aircraft study, American Geosciences Union fall meeting, A232-10, December 2020.
- 215 Guo, H., Campuzano-Jost, P., Nault, B. A., Day, D. A., Schroder, J. C., Kim, D., Dibb, J. E., Dollner, M., Weinzierl, B., and Jimenez, J. L.: The importance of size ranges in aerosol instrument intercomparisons: a case study for the Atmospheric Tomography Mission, *Atmos. Meas. Tech.*, 14, 3631–3655, <https://doi.org/10.5194/amt-14-3631-2021>, 2021.
- 220 Hänel, G.: The properties of atmospheric aerosol particles as functions of the relative humidity at thermodynamic equilibrium with the surrounding moist air, *Adv. Geophys.*, 19, 73–188, 1976.
- 225 Hasekamp, O. P., P. Litvinov, and A. Butz, Aerosol properties over the ocean from PARASOL multiangle photopolarimetric measurements, *J. Geophys. Res.-Atmos.*, 116(D14), <https://doi.org/10.1029/2010JD015469>, 2011.
- 230 Hasekamp, O. P., Fu, G., Rusli, S. P., Wu, L., Di Noia, A., aan de Brugh, J., Landgraf, J., Smit, J. M., Rietjens, J., and van Amerongen, A.: Aerosol Measurements by SPEXone on the NASA PACE Mission: expected retrieval capabilities, *J. Quant. Spectrosc. Ra.*, 224, 474-511, 2019.
- 235 Hecobian, A., Liu, Z., Hennigan, C. J., Huey, L. G., Jimenez, J. L., Cubison, M. J., Vay, S., Diskin, G. S., Sachse, G. W., Wisthaler, A., Mikoviny, T., Weinheimer, a. J., Liao, J., Knapp, D. J., Wennberg, P. O., Kürten, A., Crouse, J. D., Clair, J. S., Wang, Y., and Weber, R. J.: Comparison of chemical characteristics of 495 biomass burning plumes intercepted by the NASA DC-8 aircraft during the ARCTAS/CARB-2008 field campaign, *Atmos. Chem. Phys.*, 11, 13325–13337, <https://doi.org/10.5194/acp-11-13325-2011>, 2011.
- 240 Herman, M., Deuzé, J.L., Marchand, A., Roger, B. and Lallart, P.: Aerosol remote sensing from POLDER/ADEOS over the ocean: Improved retrieval using a nonspherical particle model, *J. Geophys. Res.-Atmos.*, 110(D10), <https://doi.org/10.1029/2004JD004798>, 2005.



- 245 Hodzic, A., Campuzano-Jost, P., Bian, H., Chin, M., Colarco, P. R., Day, D. A., Froyd, K. D., Heinold, B., Jo, D. S., Katich, J. M., Kodros, J. K., Nault, B. A., Pierce, J. R., Ray, E., Schacht, J., Schill, G. P., Schroder, J. C., Schwarz, J. P., Sueper, D. T., Tegen, I., Tilmes, S., Tsigaridis, K., Yu, P., and Jimenez, J. L.: Characterization of organic aerosol across the global remote troposphere: a comparison of ATom measurements and global chemistry models, *Atmos. Chem. Phys.*, 20, 4607–4635, <https://doi.org/10.5194/acp-20-4607-2020>, 2020.
- 250 Holben, B. N., Eck, T. F., Slutsker, I., Tanre, D., Buis, J. P., Setzer, A., Vermote, E., Reagan, J. A., Kaufman, Y. J., Nakajima, T., Lavenu, F., Jankowiak, I., and Smirnov, A.: AERONET – A federated instrument network and data archive for aerosol characterization, *Remote Sens. Environ.*, 66, 1–16, doi:10.1016/S00344257(98)00031-5, 1998.
- 255 Hu, W. W., Campuzano-Jost, P., Palm, B. B., Day, D. A., Ortega, A. M., Hayes, P. L., Krechmer, J. E., Chen, Q., Kuwata, M., Liu, Y. J., de Sá, S. S., McKinney, K., Martin, S. T., Hu, M., Budisulistiorini, S. H., Riva, M., Surratt, J. D., St. Clair, J. M., Isaacman-Van Wertz, G., Yee, L. D., Goldstein, A. H., Carbone, S., Brito, J., Artaxo, P., de Gouw, J. A., Koss, A., Wisthaler, A., Mikoviny, T., Karl, T., Kaser, L., Jud, W., Hansel, A., Docherty, K. S., Alexander, M. L., Robinson, N. H., Coe, H., Allan, J. D., Canagaratna, M. R., Paulot, F., and Jimenez, J. L.: Characterization of a real-time tracer for isoprene epoxydiols-derived secondary organic aerosol (IEPOX-SOA) from aerosol mass spectrometer measurements, *Atmos. Chem. Phys.*, 15, 11807–11833, <https://doi.org/10.5194/acp-15-11807-2015>, 2015.
- 265 Jo, D. S., Hodzic, A., Emmons, L. K., Marais, E. A., Peng, Z., Nault, B. A., Hu, W., Campuzano-Jost, P., and Jimenez, J. L.: A simplified parameterization of isoprene-epoxydiol-derived secondary organic aerosol (IEPOX-SOA) for global chemistry and climate models: a case study with GEOS-Chem v11-02-rc, *Geosci. Model Dev.*, 12, 2983–3000, <https://doi.org/10.5194/gmd-12-2983-2019>, 2019.
- 270 Johnson, M. S., Meskhidze, N., and Kiliyanpilakkil, V. P.: A global comparison of GEOS-Chem-predicted and remotely-sensed mineral dust aerosol optical depth and extinction profiles, *J. Adv. Model. Earth Syst.*, 4, M07001, doi:10.1029/2011MS000109, 2012.
- 275 Jolleys, M. D., Coe, H., McFiggans, G., Taylor, J. W., O'Shea, S. J., Le Breton, M., Bauguitte, S. J.-B., Moller, S., Di Carlo, P., Aruffo, E., Palmer, P. I., Lee, J. D., Percival, C. J., and Gallagher, M. W.: Properties and evolution of biomass burning organic aerosol from Canadian boreal forest fires, *Atmos. Chem. Phys.*, 15, 3077–3095, <https://doi.org/10.5194/acp-15-3077-2015>, 2015.
- 280 Kahnert, M.: Variational data analysis of aerosol species in a regional CTM: background error covariance constraint and aerosol optical observation operators, *Tellus B*, 60, 753–770, doi:10.1111/j.1600-0889.2008.00377.x, 2008.



- 285 Kim, P. S., Jacob, D. J., Fisher, J. A., Travis, K., Yu, K., Zhu, L., Yantosca, R. M., Sulprizio, M. P.,  
Jimenez, J. L., Campuzano-Jost, P., Froyd, K. D., Liao, J., Hair, J. W., Fenn, M. A., Butler, C. F., Wagner,  
N. L., Gordon, T. D., Welti, A., Wennberg, P. O., Crounse, J. D., St. Clair, J. M., Teng, A. P., Millet, D.  
B., Schwarz, J. P., Markovic, M. Z., and Perring, A. E.: Sources, seasonality, and trends of southeast US  
290 aerosol: an integrated analysis of surface, aircraft, and satellite observations with the GEOS-Chem  
chemical transport model, *Atmos. Chem. Phys.*, 15, 10411–10433, [https://doi.org/10.5194/acp-15-10411-](https://doi.org/10.5194/acp-15-10411-2015)  
2015, 2015.
- Kondo, Y., Sahu, L., Moteki, N., Khan, F., Takegawa, N., Liu, X., Koike, M., and Miyakawa, T.:  
Consistency and traceability of black carbon measurements made by laser-induced incandescence,  
thermal-optical transmittance, and filter-based photoabsorption techniques, *Aerosol Sci. Technol.*, 45,  
295 295–312, doi:10.1080/02786826.2010.533215, 2011.
- Kumar, R., Delle Monache, L., Bresch, J., Saide, P.E., Tang, Y., Liu, Z., da Silva, A.M., Alessandrini, S.,  
Pfister, G., Edwards, D. and Lee, P.: Toward improving short-term predictions of fine particulate matter  
over the United States via assimilation of satellite aerosol optical depth retrievals, *J. Geophys. Res.-*  
300 *Atmos.*, 124(5), 2753–2773, <https://doi.org/10.1029/2018JD029009>, 2019.
- Landrigan, P. J., Fuller, R., Acosta, N. J. R., Adeyi, O., Arnold, R., Basu, N. (nil), Baldé, A. B., Bertollini,  
R., Bose-O'Reilly, S., Boufford, J. I., Breyse, P. N., Chiles, T., Mahidol, C., Coll-Seck, A. M., Cropper,  
M. L., Fobil, J., Fuster, V., Greenstone, M., Haines, A., Hanrahan, D., Hunter, D., Khare, M., Krupnick,  
305 A., Lanphear, B., Lohani, B., Martin, K., Mathiasen, K. V., McTeer, M. A., Murray, C. J. L.,  
Ndahimananjara, J. D., Perera, F., Potočnik, J., Preker, A. S., Ramesh, J., Rockström, J., Salinas, C.,  
Samson, L. D., Sandilya, K., Sly, P. D., Smith, K. R., Steiner, A., Stewart, R. B., Suk, W. A., van Schayck,  
O. C. P., Yadama, G. N., Yumkella, K., and Zhong, M.: The Lancet Commission on pollution and health,  
*The Lancet*, 391(10119), 462–512, 2018.  
310
- Lanzi, E.: *The Economic Consequences of Outdoor Air Pollution*. Organization for Economic  
Cooperation and Development (OECD) Publishing, Paris, <http://dx.doi.org/10.1787/9789264257474-en>,  
Retrieved from [https://www.oecd.org/environment/indicators-modelling-outlooks/Policy-Highlights-](https://www.oecd.org/environment/indicators-modelling-outlooks/Policy-Highlights-Economic-consequences-of-outdoor-air-pollution-web.pdf)  
315 [Economic-consequences-of-outdoor-air-pollution-web.pdf](https://www.oecd.org/environment/indicators-modelling-outlooks/Policy-Highlights-Economic-consequences-of-outdoor-air-pollution-web.pdf), 2016.
- Laskin, A., Laskin, J., and Nizkorodov, S. A.: Chemistry of Atmospheric Brown Carbon, *Chem. Rev.*,  
115, 4335–4382, 2015.
- Lelieveld, J., Evans, J.S., Fnais, M., Giannadaki, D. and Pozzer, A., The contribution of outdoor air  
320 pollution sources to premature mortality on a global scale, *Nature*, 525(7569), 367–371,  
<https://doi.org/10.1038/nature15371>, 2015.
- Lelieveld, J., Klingmüller, K., Pozzer, A., Pöschl, U., Fnais, M., Daiber, A., and Münzel, T.:  
Cardiovascular disease burden from ambient air pollution in Europe reassessed using novel hazard ratio  
325 functions, *Eur. Heart J.*, 40, 1590–1596, <https://doi.org/10.1093/eurheartj/ehz135>, 2019



- 330 Liao, J., Froyd, K. D., Murphy, D. M., Keutsch, F. N., Yu, G., Wennberg, P. O., St. Clair, J. M., Crounse, J. D., Wisthaler, A., Mikoviny, T., Jimenez, J. L., Campuzano-Jost, P., Day, D. A., Hu, W., Ryerson, T. B., Pollack, I. B., Peischl, J., Anderson, B. E., Ziemba, L. D., Blake, D. R., Meinardi, S., and Diskin, G.: Airborne measurements of organosulfates over the continental U. S., *J. Geophys. Res.-Atmos.*, 120(7), 2990–3005, <https://doi.org/10.1002/2014JD022378>, 2015.
- 335 Lim, S. S., Vos, T., Flaxman, A. D., Danaei, G., Shibuya, K., AdairRohani, H., AlMazroa, M. A., Amann, M., Anderson, H. R., Andrews, K. G., Aryee, M., Atkinson, C., Bacchus, L. J., Bahalim, A. N., Balakrishnan, K., Balmes, J., Barker-Collo, S., Baxter, A., Bell, M. L., Blore, J. D., Blyth, F., Bonner, C., Borges, G., Bourne, R., Boussinesq, M., Brauer, M., Brooks, P., Bruce, N. G., Brunekreef, B., Bryan-Hancock, C., Bucello, C., Buchbinder, R., Bull, F., Burnett, R. T., Byers, T. E., Calabria, B., Carapetis, J., Carnahan, E., Chafe, Z., Charlson, F., Chen, H., Chen, J. S., Cheng, A. T.-A., Child, J. C., Cohen, A., Colson, K. E., Cowie, B. C., Darby, S., Darling, S., Davis, A., Degenhardt, L., Dentener, F., Des Jarlais, D. C., Devries, K., Dherani, M., Ding, E. L., Dorsey, E. R., Driscoll, T., Edmond, K., Ali, S. E., Engell, R. E., Erwin, P. J., Fahimi, S., Falder, G., Farzadfar, F., Ferrari, A., Finucane, M. M., Flaxman, S., Fowkes, F. G. R., Freedman, G., Freeman, M. K., Gakidou, E., Ghosh, S., Giovannucci, E., Gmel, G., Graham, K., Grainger, R., Grant, B., Gunnell, D., Gutierrez, H. R., Hall, W., Hoek, H. W., Hogan, A., Hosgood, H. D., Hoy, D., Hu, H., Hubbell, B. J., Hutchings, S. J., Ibeanusi, S. E., Jacklyn, G. L., 345 Jasrasaria, R., Jonas, J. B., Kan, H., Kanis, J. A., Kassebaum, N., Kawakami, N., Khang, Y.-H., Khatibzadeh, S., Khoo, J.-P., et al.: A comparative risk assessment of burden of disease and injury attributable to 67 risk factors and risk factor clusters in 21 regions, 1990–2010: a systematic analysis for the Global Burden of Disease Study 2010, *The Lancet*, 380, 2224–2260, [https://doi.org/10.1016/S0140-6736\(12\)61766-8](https://doi.org/10.1016/S0140-6736(12)61766-8), 2012.
- 350 Lin, C., Wang, Z., and Zhu, J.: An Ensemble Kalman Filter for severe dust storm data assimilation over China, *Atmos. Chem. Phys.*, 8, 2975–2983, <https://doi.org/10.5194/acp-8-2975-2008>, 2008.
- 355 Liu, X., Zhang, Y., Huey, L.G., Yokelson, R.J., Wang, Y., Jimenez, J.L., Campuzano-Jost, P., Beyersdorf, A.J., Blake, D.R., Choi, Y. and St. Clair, J.M.: Agricultural fires in the southeastern U.S. during SEAC4RS: Emissions of trace gases and particles and evolution of ozone, reactive nitrogen, and organic aerosol, *J. Geophys. Res.-Atmos.*, 121(12), 7383–7414, <https://doi.org/10.1002/2016JD025040>, 2016.
- 360 Liu, X., Huey, L.G., Yokelson, R.J., Selimovic, V., Simpson, I.J., Müller, M., Jimenez, J.L., Campuzano-Jost, P., Beyersdorf, A.J., Blake, D.R. and Butterfield, Z.: Airborne measurements of western U.S. wildfire emissions: Comparison with prescribed burning and air quality implications, *J. Geophys. Res.-Atmos.*, 122, 6108–6129, <https://doi.org/10.1002/2016JD026315>, 2017.
- 365 Loeb, Norman G., and Wenying Su.: Direct aerosol radiative forcing uncertainty based on a radiative perturbation analysis, *J. Climate*, 23(19), 5288–5293, <https://doi.org/10.1175/2010JCLI3543.1>, 2010.



- 370 Ma, C., Wang, T., Mizzi, A.P., Anderson, J.L., Zhuang, B., Xie, M. and Wu, R.: Multiconstituent data assimilation with WRF-Chem/DART: Potential for adjusting anthropogenic emissions and improving air quality forecasts over eastern China, *J. Geophys. Res.-Atmos.*, 124(13), 7393-7412, <https://doi.org/10.1029/2019JD030421>, 2019.
- Mahalanobis, P. C.: On the generalized distance in statistics, *Proc. Natl. Inst. Sci. India*, 2, 49–55, 1936.
- 375 Mallet, M., Roger, J. C., Despiiau, S., Dubovik, O., and Putaud, J. P.: Microphysical and optical properties of aerosol particles in urban zone during ESCOMPTE, *Atmos. Res.*, 69, 73–97, 2003.
- 380 Marais, E. A., Jacob, D. J., Jimenez, J. L., Campuzano-Jost, P., Day, D. A., Hu, W., Krechmer, J., Zhu, L., Kim, P. S., Miller, C. C., Fisher, J. A., Travis, K., Yu, K., Hanisco, T. F., Wolfe, G. M., Arkinson, H. L., Pye, H. O. T., Froyd, K. D., Liao, J., and McNeill, V. F.: Aqueous-phase mechanism for secondary organic aerosol formation from isoprene: application to the southeast United States and co-benefit of SO<sub>2</sub> emission controls, *Atmos. Chem. Phys.*, 16, 1603–1618, <https://doi.org/10.5194/acp-16-1603-2016>, 2016.
- 385 McNaughton, C. S., Clarke, A. D., Howell, S. G., Pinkerton, M., Anderson, B., Thornhill, L., Hudgins, C., Winstead, E., Dibb, J. E., Scheuer, E., and Maring, H.: Results from the DC-8 Inlet Characterization Experiment (DICE): Airborne versus surface sampling of mineral dust and sea salt aerosols, *Aerosol Sci. Tech.*, 41, 136–159, doi:10.1080/02786820601118406, 2007.
- 390 Meskhidze, Nicholas, Bethany Sutherland, Xinyi Ling, Kyle Dawson, Matthew S. Johnson, Barron Henderson, Chris A. Hostetler, and Richard A. Ferrare: Improving estimates of PM<sub>2.5</sub> concentration and chemical composition by application of High Spectral Resolution Lidar (HSRL) and Creating Aerosol Types from chemistry (CATCH) algorithm, *Atmos. Environ.*, 250, 118250, 2021.
- 395 Mikoviny, T., Kaser, L., and Wisthaler, A.: Development and characterization of a High-Temperature Proton-Transfer-Reaction Mass Spectrometer (HT-PTR-MS), *Atmos. Meas. Tech.*, 3, 537–544, <https://doi.org/10.5194/amt-3-537-2010>, 2010.
- 400 Mischenko, M., Travis, L. D., and Lacis, A. A.: Scattering, absorption, and emission of light by small particles, Cambridge University Press, Cambridge, 2002.
- Murphy, D. M., Cziczo, D. J., Froyd, K. D., Hudson, P. K., Matthew, B. M., Middlebrook, A. M., Peltier, R. E., Sullivan, A., Thomson, D. S., and Weber, R. J.: Single-particle mass spectrometry of tropospheric aerosol particles, *J. Geophys. Res.-Atmos.*, 111, D23s32, <https://doi.org/10.1029/2006jd007340>, 2006.
- 405 Myhre, G., Samset, B. H., Schulz, M., Balkanski, Y., Bauer, S., Berntsen, T. K., Bian, H., Bellouin, N., Chin, M., Diehl, T., Easter, R. C., Feichter, J., Ghan, S. J., Hauglustaine, D., Iversen, T., Kinne, S., Kirkevåg, A., Lamarque, J.-F., Lin, G., Liu, X., Lund, M. T., Luo, G., Ma, X., van Noije, T., Penner, J. E., Rasch, P. J., Ruiz, A., Seland, Ø., Skeie, R. B., Stier, P., Takemura, T., Tsigaridis, K., Wang, P., Wang,



- 410 Z., Xu, L., Yu, H., Yu, F., Yoon, J.-H., Zhang, K., Zhang, H., and Zhou, C.: Radiative forcing of the direct aerosol effect from AeroCom Phase II simulations, *Atmos. Chem. Phys.*, 13, 1853–1877, <https://doi.org/10.5194/acp-13-1853-2013>, 2013.
- 415 Nault, B. A., Jo, D. S., McDonald, B. C., Campuzano-Jost, P., Day, D. A., Hu, W., Schroder, J. C., Allan, J., Blake, D. R., Canagaratna, M. R., Coe, H., Coggon, M. M., DeCarlo, P. F., Diskin, G. S., Dunmore, R., Flocke, F., Fried, A., Gilman, J. B., Gkatzelis, G., Hamilton, J. F., Hanisco, T. F., Hayes, P. L., Henze, D. K., Hodzic, A., Hopkins, J., Hu, M., Huey, L. G., Jobson, B. T., Kuster, W. C., Lewis, A., Li, M., Liao, J., Nawaz, M. O., Pollack, I. B., Peischl, J., Rappenglück, B., Reeves, C. E., Richter, D., Roberts, J. M., Ryerson, T. B., Shao, M., Sommers, J. M., Walega, J., Warneke, C., Weibring, P., Wolfe, G. M., Young, D. E., Yuan, B., Zhang, Q., de Gouw, J. A., and Jimenez, J. L.: Secondary organic aerosols from anthropogenic volatile organic compounds contribute substantially to air pollution mortality, *Atmos. Chem. Phys.*, 21, 11201–11224, <https://doi.org/10.5194/acp-21-11201-2021>, 2021
- 420
- 425 Niu, T., Gong, S. L., Zhu, G. F., Liu, H. L., Hu, X. Q., Zhou, C. H., and Wang, Y. Q.: Data assimilation of dust aerosol observations for the CUACE/dust forecasting system, *Atmos. Chem. Phys.*, 8, 3473–3482, <https://doi.org/10.5194/acp-8-3473-2008>, 2008.
- Nowottnick, E. P., Colarco, P. R., Welton, E. J., and da Silva, A.: Use of the CALIOP vertical feature mask for evaluating global aerosol models, *Atmos. Meas. Tech.*, 8, 3647–3669, <https://doi.org/10.5194/amt-8-3647-2015>, 2015.
- 430
- Omar, A. H., Winker, D. M., Kittaka, C., Vaughan, M. A., Liu, Z. Y., Hu, Y. X., Trepte, C. R., Rogers, R. R., Ferrare, R. A., Lee, K. P., Kuehn, R. E., and Hostetler, C. A.: The CALIPSO Automated Aerosol Classification and Lidar Ratio Selection Algorithm, *J. Atmos. Ocean. Tech.*, 26, 1994–2014, doi:10.1175/2009jtecha1231.1, 2009.
- 435
- Pagowski, M., and G. A. Grell: Experiments with the assimilation of fine aerosols using an ensemble Kalman filter, *J. Geophys. Res.-Atmos.*, 117(D21), <https://doi.org/10.1029/2012JD018333>, 2012.
- Peterson, D. A., Hyer, E. J., Campbell, J. R., Fromm, M. D., Hair, J. W., Butler, C. F., and Fenn, M. A.: The 2013 Rim Fire: Implications for Predicting Extreme Fire Spread, Pyroconvection, and Smoke Emissions, *B. Am. Meteorol. Soc.*, 96, 229–247, doi:10.1175/bams-d-14-00060.1, 2015.
- 440
- Perring, A.E., Schwarz, J.P., Markovic, M.Z., Fahey, D.W., Jimenez, J.L., Campuzano-Jost, P., Palm, B.D., Wisthaler, A., Mikoviny, T., Diskin, G. and Sachse, G., In situ measurements of water uptake by black carbon-containing aerosol in wildfire plumes, *J. Geophys. Res.-Atmos.*, 122(2), 1086–1097, <https://doi.org/10.1002/2016JD025688>, 2017.
- 445
- Petzold, A., Ogren, J. A., Fiebig, M., Laj, P., Li, S.-M., Baltensperger, U., Holzer-Popp, T., Kinne, S., Pappalardo, G., Sugimoto, N., Wehrli, C., Wiedensohler, A., and Zhang, X.-Y.: Recommendations for





- 450 reporting "black carbon" measurements, *Atmos. Chem. Phys.*, 13, 8365–8379,  
<https://doi.org/10.5194/acp-13-8365-2013>, 2013.
- Pope, C., Burnett, R., Thun, M., Calle, E., Krewski, D., Ito, K., and Thurston, G.: Lung cancer,  
cardiopulmonary mortality, and long-term exposure to fine particulate air pollution, *JAMA-J. Am. Med.*  
455 *Assoc.*, 287, 1132–1141, doi:10.1001/jama.287.9.1132, 2002.
- Randles, C. A., Kinne, S., Myhre, G., Schulz, M., Stier, P., Fischer, J., Doppler, L., Highwood, E., Ryder,  
C., Harris, B., Huttunen, J., Ma, Y., Pinker, R. T., Mayer, B., Neubauer, D., Hitzenberger, R., Oreopoulos,  
L., Lee, D., Pitari, G., Di Genova, G., Quaas, J., Rose, F. G., Kato, S., Rumbold, S. T., Vardavas, I.,  
460 Hatzianastassiou, N., Matsoukas, C., Yu, H., Zhang, F., Zhang, H., and Lu, P.: Intercomparison of  
shortwave radiative transfer schemes in global aerosol modeling: results from the AeroCom Radiative  
Transfer Experiment, *Atmos. Chem. Phys.*, 13, 2347–2379, <https://doi.org/10.5194/acp-13-2347-2013>,  
2013.
- 465 Reid, J. S., Koppmann, R., Eck, T. F., and Eleuterio, D. P.: A review of biomass burning emissions part  
II: intensive physical properties of biomass burning particles, *Atmos. Chem. Phys.*, 5, 799–825,  
<https://doi.org/10.5194/acp-5-799-2005>, 2005.
- Russell P. B., M. Kacenelenbogen, J. Livingston, O. Hasekamp, S. Burton, G. Schuster, M. Johnson, K.  
470 Knobelspiesse, J. Redemann, S. Ramchandran, and B. N. Holben, A Multi-Parameter Aerosol  
Classification Method and its Application to Retrievals from Spaceborne Polarimetry, *J. Geophys. Res.-  
Atmos.*, 119(16), 9838–9863, <https://doi.org/10.1002/2013JD021411>, 2014.
- Ryerson, T. B., Camilli, R., Kessler, J. D., Kujawinski, E. B., Reddy, C. M., Valentine, D. L., Atlas, E.,  
475 Blake, D. R., de Gouw, J., Meinardi, S., Parrish, D. D., Peischl, J., Seewald, J. S., and Warneke, C.:  
Chemical data quantify Deepwater Horizon hydrocarbon flow rate and environmental distribution, *P.*  
*Natl. Acad. Sci. USA*, 109, 20246–20253, 2012.
- Saide, P. E., Peterson, D. A., da Silva, A., Anderson, B., Ziemba, L. D., Diskin, G., Sachse, G., Hair, J.,  
480 Butler, C., Fenn, M., Jimenez, J. L., Campuzano-Jost, P., Perring, A. E., Schwarz, J. P., Markovic, M. Z.,  
Russell, P., Redemann, J., Shinozuka, Y., Streets, D. G., Yan, F., Dibb, J., Yokelson, R., Toon, O. B.,  
Hyer, E., and Carmichael, G. R.: Revealing important nocturnal and day-to-day variations in fire smoke  
emissions through a multiplatform inversion, *Geophys. Res. Lett.*, 42, 2015GL063737,  
<https://doi.org/10.1002/2015GL063737>, 2015.
- 485 Schutgens, N. A. J., Miyoshi, T., Takemura, T., and Nakajima, T.: Applying an ensemble Kalman filter  
to the assimilation of AERONET observations in a global aerosol transport model, *Atmos. Chem. Phys.*,  
10, 2561–2576, <https://doi.org/10.5194/acp-10-2561-2010>, 2010.



- 490 Selimovic, V., Yokelson, R. J., McMeeking, G. R., and Coefield, S.: In situ measurements of trace gases, PM, and aerosol optical properties during the 2017 NW US wildfire smoke event, *Atmos. Chem. Phys.*, 19, 3905–3926, <https://doi.org/10.5194/acp-19-3905-2019>, 2019.
- 495 Selimovic, V., Yokelson, R.J., McMeeking, G.R. and Coefield, S.: Aerosol mass and optical properties, smoke influence on O<sub>3</sub>, and high NO<sub>3</sub> production rates in a western US city impacted by wildfires, *J. Geophys. Res.-Atmos.*, 125(16), e2020JD032791. <https://doi.org/10.1029/2020JD032791>, 2020.
- 500 Sessions, W. R., Reid, J. S., Benedetti, A., Colarco, P. R., da Silva, A., Lu, S., Sekiyama, T., Tanaka, T. Y., Baldasano, J. M., Basart, S., Brooks, M. E., Eck, T. F., Iredell, M., Hansen, J. A., Jorba, O. C., Juang, H.-M. H., Lynch, P., Morcrette, J.-J., Moorthi, S., Mulcahy, J., Pradhan, Y., Razinger, M., Sampson, C. B., Wang, J., and Westphal, D. L.: Development towards a global operational aerosol consensus: basic climatological characteristics of the International Cooperative for Aerosol Prediction Multi-Model Ensemble (ICAP-MME), *Atmos. Chem. Phys.*, 15, 335–362, <https://doi.org/10.5194/acp-15-335-2015>, 2015.
- 505 Sekiyama, T. T., Tanaka, T. Y., Shimizu, A., and Miyoshi, T.: Data assimilation of CALIPSO aerosol observations, *Atmos. Chem. Phys.*, 10, 39–49, <https://doi.org/10.5194/acp-10-39-2010>, 2010.
- 510 Shingler, T., Crosbie, E., Ortega, A., Shiraiwa, M., Zuend, A., Beyersdorf, A., Ziemba, L., Anderson, B., Thornhill, L., Perring, A.E. and Schwarz, J.P.: Airborne characterization of subsaturated aerosol hygroscopicity and dry refractive index from the surface to 6.5 km during the SEAC4RS campaign, *J. Geophys. Res.-Atmos.*, 121(8), 4188–4210, <https://doi.org/10.1002/2015JD024498>, 2016.
- 515 Stier, P., Schutgens, N. A. J., Bellouin, N., Bian, H., Boucher, O., Chin, M., Ghan, S., Huneeus, N., Kinne, S., Lin, G., Ma, X., Myhre, G., Penner, J. E., Randles, C. A., Samset, B., Schulz, M., Takemura, T., Yu, F., Yu, H., and Zhou, C.: Host model uncertainties in aerosol radiative forcing estimates: results from the AeroCom Prescribed intercomparison study, *Atmos. Chem. Phys.*, 13, 3245–3270, <https://doi.org/10.5194/acp-13-3245-2013>, 2013.
- 520 Stirnberg, R., Cermak, J., Fuchs, J. and Andersen, H.: Mapping and understanding patterns of air quality using satellite data and machine learning. *J. Geophys. Res.-Atmos.*, 125(4), e2019JD031380, <https://doi.org/10.1029/2019JD031380>, 2020.
- 525 Sorooshian, A., Hersey, S., Brechtel, F. J., Corless, A., Flagan, R. C., and Seinfeld, J. H.: Rapid, size-resolved aerosol hygroscopic growth measurements: differential aerosol sizing and hygroscopicity spectrometer probe (DASH-SP), *Aerosol Sci. Technol.*, 42, 445–464, doi:10.1080/02786820802178506, 2008.
- 530 Taylor, M., S. Kazadzis, V. Amiridis, and R. A. Kahn: Global aerosol mixtures and their multiyear and seasonal characteristics, *Atmos. Environ.*, 116, 112–129, 2015



- Thorsen, Tyler J., David M. Winker, and Richard A. Ferrare: Uncertainty in observational estimates of the aerosol direct radiative effect and forcing, *J. Climate*, 34(1), 195-214, <https://doi.org/10.1175/JCLI-D-19-1009.1>, 2021.
- 535 Toon, O.B., Maring, H., Dibb, J., Ferrare, R., Jacob, D.J., Jensen, E.J., Luo, Z.J., Mace, G.G., Pan, L.L., Pfister, L. and Rosenlof, K.H.: Planning, implementation, and scientific goals of the Studies of Emissions and Atmospheric Composition, Clouds and Climate Coupling by Regional Surveys (SEAC4RS) field mission, *J. Geophys. Res.-Atmos.*, 121(9), 4967-5009, <https://doi.org/10.1002/2015JD024297>, 2016.
- 540 Tsikerdekis, A., Schutgens, N. A. J., and Hasekamp, O. P.: Assimilating aerosol optical properties related to size and absorption from POLDER/PARASOL with an ensemble data assimilation system, *Atmos. Chem. Phys.*, 21, 2637–2674, <https://doi.org/10.5194/acp-21-2637-2021>, 2021.
- 545 Ulbrich, I. M., Canagaratna, M. R., Zhang, Q., Worsnop, D. R., and Jimenez, J. L.: Interpretation of organic components from Positive Matrix Factorization of aerosol mass spectrometric data, *Atmos. Chem. Phys.*, 9, 2891–2918, <https://doi.org/10.5194/acp-9-2891-2009>, 2009.
- 550 Uno, I., Yumimoto, K., Shimizu, A., Hara, Y., Sugimoto, N., Wang, Z., Liu, Z., and Winker, D. M.: 3-D structure of Asian dust transport revealed by CALIPSO lidar and a 4DVAR dust model, *Geophys. Res. Lett.*, 35, L06803, doi:10.1029/2007GL032329, 2008.
- 555 US EPA, The Benefits and Costs of the Clean Air Act from 1990 to 2020, Final Report – Rev. A, U.S. Environmental Protection Agency, Office of Air and Radiation, April 2011, [https://www.epa.gov/sites/production/files/2015-07/documents/fullreport\\_rev\\_a.pdf](https://www.epa.gov/sites/production/files/2015-07/documents/fullreport_rev_a.pdf), 2011.
- US EPA, Our Nation’s Air: Status and Trends Through 2015, U.S. Environmental Protection Agency, <https://gispub.epa.gov/air/trendsreport/2016/>, 2016.
- 560 Wagner, N. L., Brock, C. A., Angevine, W. M., Beyersdorf, A., Campuzano-Jost, P., Day, D., de Gouw, J. A., Diskin, G. S., Gordon, T. D., Graus, M. G., Holloway, J. S., Huey, G., Jimenez, J. L., Lack, D. A., Liao, J., Liu, X., Markovic, M. Z., Middlebrook, A. M., Mikoviny, T., Peischl, J., Perring, A. E., Richardson, M. S., Ryerson, T. B., Schwarz, J. P., Warneke, C., Welti, A., Wisthaler, A., Ziemba, L. D., and Murphy, D. M.: In situ vertical profiles of aerosol extinction, mass, and composition over the southeast United States during SENEX and SEAC<sup>4</sup>RS: observations of a modest aerosol enhancement aloft, *Atmos. Chem. Phys.*, 15, 7085–7102, <https://doi.org/10.5194/acp-15-7085-2015>, 2015.
- 565 Weber, R. J., Sullivan, A. P., Peltier, R. E., Russell, A., Yan, B., Zheng, M., de Gouw, J., Warneke, C., Brock, C., Holloway, J. S., Atlas, E. L., and Edgerton, E.: A study of secondary organic aerosol formation in the anthropogenic-influenced southeastern United States, *J. Geophys. Res.-Atmos.*, 112(D13), <https://doi.org/10.1029/2007JD008408>, 2007.



- 575 Werdell, P. J., Behrenfeld, M. J., Bontempi, P. S., Boss, E., Cairns, B., Davis, G. T., Franz, B. A., Gliese, U. B., Gorman, E. T., and Hasekamp, O.: The plankton, aerosol, cloud, ocean ecosystem mission: status, science, advances, *B. Am. Meteorol. Soc.*, 100, 1775–1794, 2019.
- 580 Xu, L., Suresh, S., Guo, H., Weber, R. J., and Ng, N. L.: Aerosol characterization over the southeastern United States using high-resolution aerosol mass spectrometry: spatial and seasonal variation of aerosol composition and sources with a focus on organic nitrates, *Atmos. Chem. Phys.*, 15, 7307–7336, <https://doi.org/10.5194/acp-15-7307-2015>, 2015.
- 585 Yu, H., R. E. Dickinson, M. Chin, Y. J. Kaufman, B. N. Holben, I. V. Geogdzhayev, and M. I. Mishchenko: Annual cycle of global distributions of aerosol optical depth from integration of MODIS retrievals and GOCART model simulations, *J. Geophys. Res.-Atmos.*, 108(D3), <https://doi.org/10.1029/2002JD002717>, 2003.
- 590 Yumimoto, K., Uno, I., Sugimoto, N., Shimizu, A., Liu, Z., and Winker, D. M.: Adjoint inversion modeling of Asian dust emission using lidar observations, *Atmos. Chem. Phys.*, 8, 2869–2884, <https://doi.org/10.5194/acp-8-2869-2008>, 2008.
- Wichmann, H. E., Spix, C., Tuch, T., Wölke, G., Peters, A., and Heinrich, J.: Daily mortality and fine and ultrafine particles in Erfurt, Germany, part I: role of particle number and particle mass, *Res. Rep. Health Eff. Inst.*, 98, 5–94, 2000.
- 595 Wu, X., Braun, D., Schwartz, J., Kioumourtzoglou, M. A., and Dominici, F.: Evaluating the impact of long-term exposure to fine particulate matter on mortality among the elderly, *Sci. Adv.*, 6(29), eaba5692, doi: 10.1126/sciadv.aba5692, 2020.
- 600 Zhang, J., J. S. Reid, D. L. Westphal, N. L. Baker, and E. J. Hyer: A system for operational aerosol optical depth data assimilation over global oceans, *J. Geophys. Res.-Atmos.*, 113(D10), <https://doi.org/10.1029/2007JD009065>, 2008.
- 605 Zhang, J., Campbell, J. R., Reid, J. S., Westphal, D. L., Baker, N. L., Campbell, W. F., and Hyer, E. J.: Evaluating the impact of assimilating CALIOP-derived aerosol extinction profiles on a global mass transport model, *Geophys. Res. Lett.*, 38, L14801, doi:10.1029/2011GL047737, 2011.
- 610 Zhang, H., Yee, L. D., Lee, B. H., Curtis, M. P., Worton, D. R., Isaacman-VanWertz, G., Offenberg, J. H., Lewandowski, M., Kleindienst, T. E., Beaver, M. R., Holder, A. L., Lonneman, W. A., Docherty, K. S., Jaoui, M., Pye, H. O. T., Hu, W., Day, D. A., Campuzano-Jost, P., Jimenez, J. L., Guo, H., Weber, R. J., Gouw, J. de, Koss, A. R., Edgerton, E. S., Brune, W., Mohr, C., Lopez-Hilfiker, F. D., Lutz, A., Kreisberg, N. M., Spielman, S. R., Hering, S. V., Wilson, K. R., Thornton, J. A., and Goldstein, A. H.: Monoterpenes are the largest source of summertime organic aerosol in the southeastern United States, *P. Natl. Acad. Sci. USA*, 115, 2038–2043, <https://doi.org/10.1073/pnas.1717513115>, 2018.



- 615 Ziemba, L. D., Hudgins, C. H., Obland, M. D., Rogers, R. R., Scarino, A. J., Winstead, E. L., Anderson, B. E., Thornhill, K. L., Ferrare, R., Barrick, J., Beyersdorf, A. J., Chen, G., Crumeyrolle, S., Hair, J., and Hostetler, C. A.: Airborne observations of aerosol extinction by in-situ and remote-sensing techniques: Evaluation of particle hygroscopicity, *Geophys. Res. Lett.*, 40, 417–422, doi:10.1029/2012GL054428, 2013

620