

Support information

This file includes

Table S1

Fig. S1-S3

Table S1. Emissions in California based on EPA NEI in 2010, 2012, and 2014 (unit of 1000 tons).

Species	2010	2012	2014
CO	9601.807	3445.952	5607.007
NH ₃	1273.116	850.5079	510.4905
NO _x	851.5883	674.9153	585.4978
PM ₁₀	1198.705	469.3941	714.4845
PM _{2.5}	712.6443	200.5515	403.0768
SO ₂	75.54085	33.26507	47.19099
VOC	2202.771	842.6653	1471.331

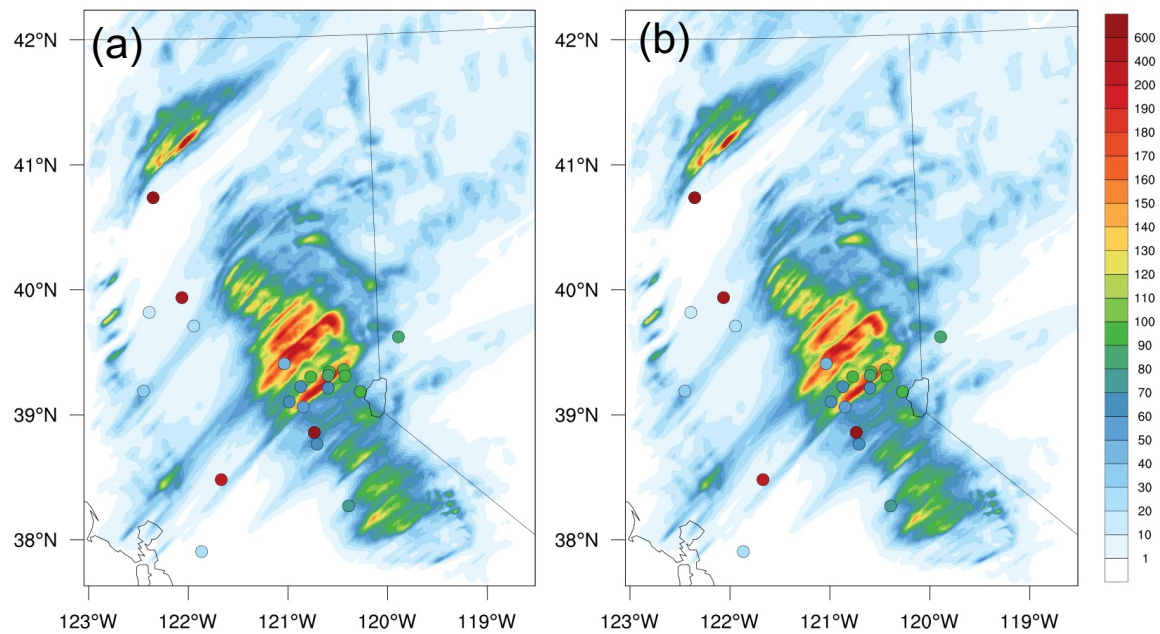


Figure S1. Modeled daily accumulated precipitation from (a) the simulation using WRF-Chem-SBM fully-coupled model and (b) the simulation using WRF-SBM with the aerosols hourly interpreted from a coarse resolution WRF-Chem simulation for 07 February during 00:00-23:00 UTC. The overlaid circles are the rain gauge measurements.

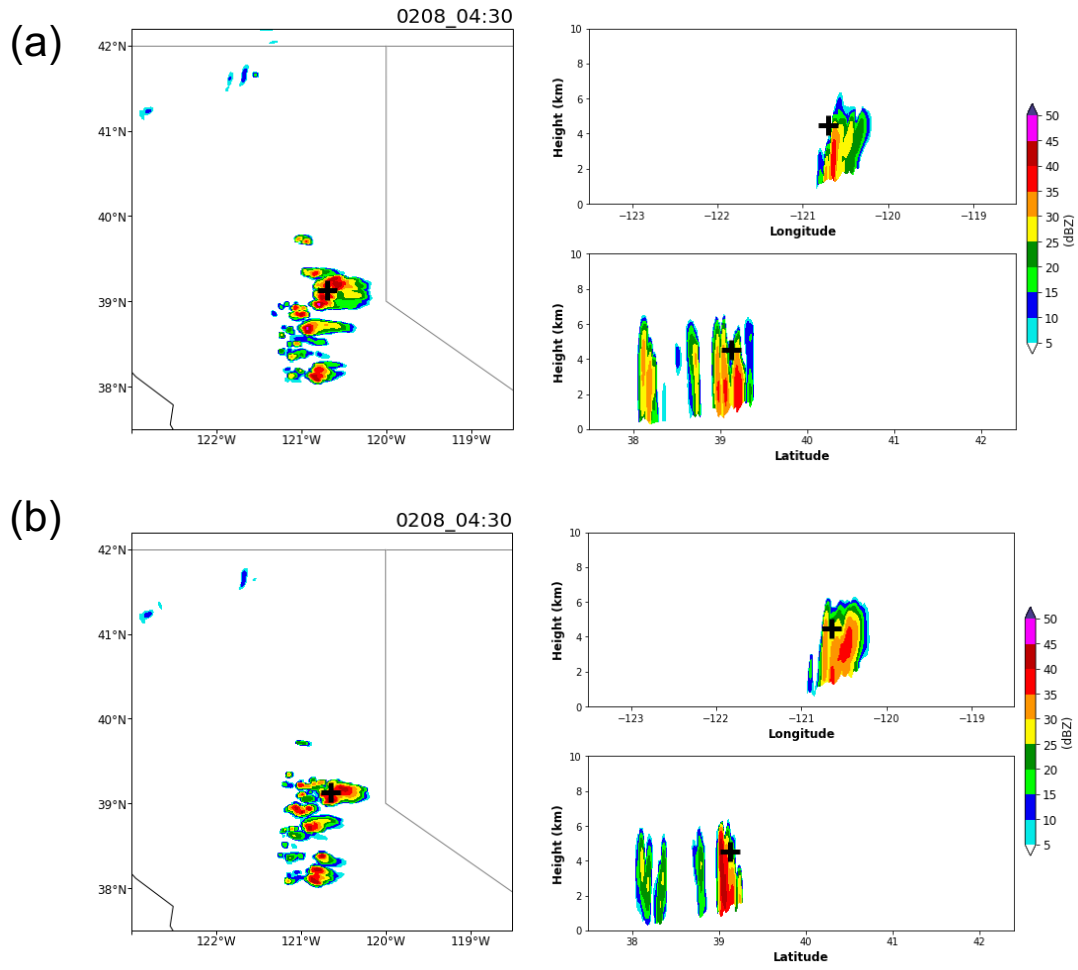


Figure S2. Same as Figure 4b, except for the simulations of (a) Bigg and (b) DM15.

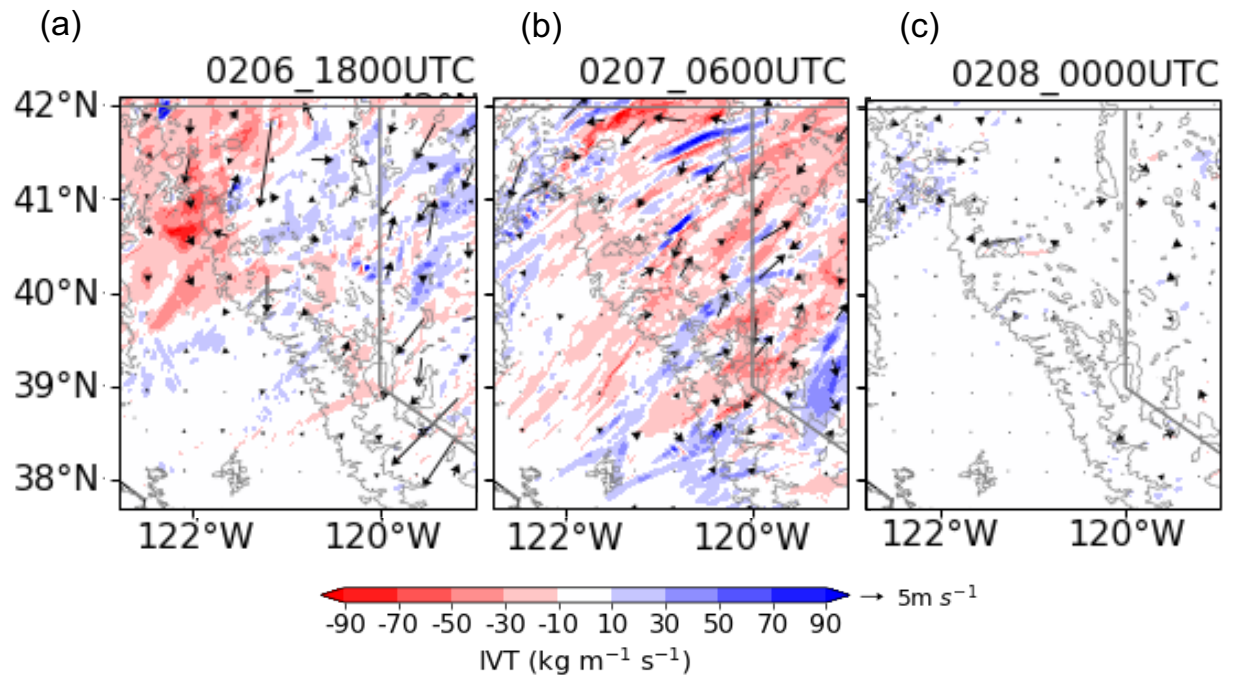


Figure S3. Differences of IVT (color) and wind (vector) between DM15+MC18 and DM15 at a time from the stages (a) before landfall, (b) after landfall, and (c) post-AR.