

# Biomass burning and marine aerosol processing over the southeast Atlantic Ocean: A TEM single particle analysis

Caroline Dang<sup>1,2</sup>, Michal Segal-Rozenhaimer<sup>3,4</sup>, Haochi Che<sup>3</sup>, Lu Zhang<sup>3</sup>, Paola Formenti<sup>5</sup>, Jonathan Taylor<sup>6</sup>, Amie Dobracki<sup>7</sup>, Sara Purdue<sup>7</sup>, Pui-Shan Wong<sup>8</sup>, Athanasios Nenes<sup>9,10</sup>, Arthur Sedlacek [III](#)<sup>11</sup>, Hugh Coe<sup>6</sup>, Jens Redemann<sup>12</sup>, Paquita Zuidema<sup>7</sup>, James Haywood<sup>13,14</sup>

Correspondence to: Caroline Dang ([CarolineVanDang@gmail.com](mailto:CarolineVanDang@gmail.com)) and Michal Segal-Rozenhaimer ([msegalro@tauex.tau.ac.il](mailto:msegalro@tauex.tau.ac.il))

<sup>1</sup>NASA Ames Research Center, Moffett Field, California, 94035, USA

<sup>2</sup>Universities Space Research Association, Columbia, Maryland, 21046, USA,

<sup>3</sup>Department of Geophysics, Porter School, Tel Aviv University, Tel Aviv, 69978, Israel

<sup>4</sup>Bay Area Environmental Research Institute, NASA Ames Research Center, Moffett Field, CA, USA

<sup>5</sup> Université de Paris and Univ Paris Est Creteil, CNRS, LISA, F-75013 Paris, France

<sup>6</sup>Department of Earth and Environmental Sciences, University of Manchester, Manchester, UK

<sup>7</sup>Rosenstiel School of ~~Marine and Atmospheric Sciences~~, University of Miami, Miami, FL, USA

<sup>8</sup>Mount Allison University, Sackville, New Brunswick, CA

<sup>9</sup>Laboratory of Atmospheric Processes and their Impacts, School of Architecture, Civil & Environmental Engineering, École Polytechnique Fédérale de Lausanne, Lausanne 1015, Switzerland

<sup>10</sup>Center for Studies of Air Quality and Climate Change, Institute of Chemical Engineering Sciences, Foundation for Research and Technology Hellas, Patras 26504, Greece

<sup>11</sup>Brookhaven National Laboratory, Brookhaven, NY, USA

<sup>12</sup>School of Meteorology, University of Oklahoma, Norman, OK, USA

<sup>13</sup>College of Engineering, Mathematics and Physical Science, University of Exeter, Exeter, UK

<sup>14</sup>Met Office, Exeter, EX1 3PB, UK

## Abstract

This study characterizes single particle aerosol composition from filters collected during the ObseRvations of Aerosols above CLouds and their intEractionS (ORACLES) and CLOUD–Aerosol–Radiation Interaction and Forcing: Year 2017 (CLARIFY-2017) campaigns. In particular the study describes aged biomass burning aerosol (BBA), its interaction with the marine boundary layer and the influence of biomass burning (BB) air on marine aerosol. The study finds evidence of BBA influenced by marine boundary layer processing as well as sea salt influenced by BB air. Secondary chloride aerosols were observed in clean marine air as well as in BB-influenced air in the free troposphere. Higher volatility organic aerosol appears to be associated with increased age of biomass burning plumes, and photolysis or oxidation may be a mechanism for the apparent increased volatility. Aqueous processing and interaction with the marine boundary layer air may be a mechanism for the presence of sodium on many aged potassium salts. By number, biomass burning potassium salts and modified sea salts are the most observed particles on filter samples. The most commonly observed BC coatings are inorganic salts. These results suggest that atmospheric processing such as photolysis, oxidation and cloud processing are key, rather than BB fuel type, has a major role drivers in the elemental composition and morphology of aged BBA. Fresh BBA inorganic salt content, as it has an important role in the particles' ability to uptake water, may be a key driver in how aqueous processing and atmospheric aging proceeds.

## 1. Introduction

45 With Africa producing almost a third of the Earth's biomass burning aerosol (BBA) (Roberts et al., 2009), two aircraft  
campaigns, ObseRvations of Aerosols above CLouds and their intEractionS (ORACLES) and CLOUD–Aerosol–  
Radiation Interaction and Forcing: Year 2017 (CLARIFY-2017) were focused on understanding African biomass  
burning aerosol interaction with clouds and radiation in the southeast Atlantic (Haywood et al., 2021; Redemann et  
al., 2021). The CLARIFY campaign was based near Ascension Island in 2017 and ORACLES was based offshore of  
50 Namibia in 2016-2018. CLARIFY findings detail a complex vertical structure ~~in aerosol which may be due to a  
temperature inversion which with a temperature structure inhibiting inhibits~~ mixing between layers (Haywood et al.  
2021). Over Africa, mixing is inhibited by stable layers at the top of the continental boundary layer (CBL) (Garstang  
et al., 1996), and over the southeast Atlantic the BBA in the residual CBL moves over the marine boundary layer  
(MBL) as the air is transported west (Haywood et al. 2021). However, BBA aerosol is more often affected by the  
55 MBL than previously accounted for, ~~with BBA~~ reaching the MBL through pathways that are not fully articulated  
(Zuidema et al., 2018), ~~and with~~ entrainment processes through the clouds potentially ~~affected altering~~ aerosol properties  
further. An example of this is the low single scattering albedo in the boundary layer compared to the free troposphere  
(Zuidema et al., 2018; Pistone et al., 2019). Both campaigns report that a more detailed aerosol process-level  
understanding including the properties of black carbon, organic carbon and inorganic compounds and how they vary  
60 as a function of mixing state and altitude is needed, as is knowledge of properties of the aerosol as they age from  
emission to deposition and the degree of mixing of BBA into the MBL (Haywood et al. 2021; Redemann et al. 2021).

While in-situ instruments provide data over large temporal and spatial scales, the instruments which analyzed chemical  
composition in the ORACLES and CLARIFY campaigns analyzed bulk aerosol; detailed off-line single particle  
65 analysis can offer valuable information to complement these online measurements. The principal in-situ instrument  
used in these campaigns to determine aerosol chemical composition is the Aerosol Mass Spectrometer (AMS). The  
AMS can detect organic and non-refractory inorganic mass at high time resolution. There are limitations on the size  
range of aerosols detected depending on the inlet system employed, with no detection above one micron and a  
decreasing efficiency above 700 nm. Salts do not vaporize easily and tend to recombine with oppositely charged ions  
70 and make quantification of salts in the mass spectra difficult, if not impossible (Nash et al., 2006). The mixing state  
of organic and inorganic constituents can only be determined with offline analysis of collected samples rather than in-  
situ bulk aerosol measurements. Transmission electron microscopy (TEM) coupled with energy dispersive X-ray  
(EDX) is suited to understand physical and chemical properties of individual particles including shape, elemental  
composition, mixing state, volatility and viscosity, and it is particularly useful for complex aerosol which have been  
75 processed (Signorell and Reid, 2011; Reid et al., 2018; Li et al., 2003). Therefore TEM-EDX is a useful method for  
understanding processes affecting aged BB aerosol as well as marine salts which are pervasive over the ocean.

Previous work of African BBA from [the Southern African Regional Science Initiative \(SAFARI-2000\)](#) showed that the aerosols were primarily composed of black carbon, potassium salts, and organic/sulfur (Liu et al. 2000; Pósfai et al. 2003; Li et al. 2003). The SAFARI campaign was mostly focused on BBA that were less aged than particles in CLARIFY and ORACLES. SAFARI results showed that KCl particles occur in young smoke more often while K<sub>2</sub>SO<sub>4</sub> and KNO<sub>3</sub> particles occur more in aged biomass burning aerosol (Li et al. 2003). This is due to gas phase oxidation of NO<sub>x</sub> and SO<sub>2</sub> and the displacement of HCl by the stronger acids HNO<sub>3</sub> and H<sub>2</sub>SO<sub>4</sub> during plume transport. The authors theorized that aging caused sulfate to accumulate on organic and soot particles due to the large amount of internally-mixed soot/sulfate and organic/sulfate in haze (Pósfai et al. 2003). Based on the location and composition of the particles, Pósfai et al. (2003) concluded that organic and soot particles were the main CCN constituents of BBA. [They determined that organic particles with inorganic inclusions likely contribute to the high cloud nucleating capability of biomass burning particles, and](#) [Semeniuk et al. \(2007\), using environmental TEM, found that the inorganic phases of SAFARI particles took up water while soot and tar balls did not; therefore they determined that the inorganic content of mixed organic-inorganic particles determined the hygroscopic properties of BBA.](#) SAFARI-2000 samples [were](#) taken in stratus clouds that capped the boundary layer, distinct from the BB haze layer in the FT, and these samples were dominated by sea salt particles (Pósfai et al. 2003). CLARIFY and ORACLES online observations also show an aerosol population dominated by coated black carbon (BC), organic, and sulfates, consistent with the SAFARI TEM findings of BBA. CLARIFY noted a thick inorganic or organic coating around BC (Taylor et al. 2020); while ORACLES noted a less thick coating around BC as well as a decreasing amount of coating with plume age (Sedlacek et al., [in prep-2021](#)). ORACLES AMS data also noted a decrease in organic with plume age (Dobracki et al., 2022). [As the single particle soot photometer, used to detect coatings on BC, does not differentiate between organic and inorganic material, TEM can help elucidate the type and source of coating on BC.](#)

Sea salt aerosol, generated through a bubble bursting process on the sea surface (Lewis and Schwartz, 2004), have implications for radiative effects (Murphy et al., 1998) and cloud condensation nuclei (CCN) activity (King et al., 2012). Sea salt aerosols are modified when they react with sulfate, nitrate, and organic acids, resulting in a Na-rich and Cl-depleted aerosol and emission of gaseous HCl (Gard et al., 1998). There have been studies on the interaction of urban and anthropogenic sources with marine aerosol (Adachi and Buseck 2015), but single particle studies of sea salt aerosol and variations due to mixing with BB air are scarce. Coastal areas near urban sites show sea salt particles being modified by anthropogenic sources. Adachi and Buseck found that sea salt particles were modified by H<sub>2</sub>SO<sub>4</sub> and HNO<sub>3</sub> by acid displacement of Cl (2015) and sea salt particles have also been shown to be Cl-depleted by organic acid displacement (Laskin et al., 2012; Kerminen et al., 1998). Pósfai et al. (1995) performed TEM analysis of marine aerosol as part of the Atlantic Stratocumulus Transition Experiment/ marine Aerosol and Gas Exchange (ASTEX/MAGE) campaign and found that polluted continental air affected sea salt aerosol processing, heterogeneity, and mixing with sulfates and nitrates.

With both biomass burning salts and marine salts being major contributors to aerosol in the southeast Atlantic region, a technique that can detect salts is important to accurately represent the aerosol in the region. Further, the plumes

115 sampled during the CLARIFY and ORACLES campaigns are ~~very aged~~ aged up to 15 and 7 days, respectively,  
according to back trajectories of filter sampling times. ~~This, which~~ is different from previous campaigns such as  
SAFARI-2000, which was deployed closer to the burning source, and so TEM results can provide information on  
processing of ~~very aged~~ (2-15 days from emission) BBA. This paper will describe the single particle analysis in context  
of the ancillary data including AMS measurements, back trajectories, cloud processing, time from source and time in  
120 the MBL. Our main questions are as follows: (1) what are the dominant aerosols in the region and do CLARIFY and  
ORACLES aerosol differ from each other based on differences in BB plume age, (2) what are the ~~are~~ differences  
observed between MBL and FT aerosol, and (3) ~~what are the mixing states of the aerosol,~~ (4) what are the proposed  
processes which have acted on the aerosol. We proceed with a description of filter sampling and analysis methods,  
describe the region's aerosol types during the two campaigns while comparing and contrasting between the two. Then,  
125 we compare aerosol composition and state in the MBL and FT, and discuss possible processing during transport.

## 2.0 Method

### 2.1 Filter Sampling

130 Aerosol sampling was performed with the NASA Ames Research Center (ARC) aerosol filter system (AFS), installed  
on the P3, and the filter system operated on the UK Bae-146 aircraft operated by the Facility of Airborne Atmospheric  
Measurement (FAAM). Holey-Lacey carbon TEM grids (Ted Pella, Inc. #01881) were attached to 400 nm hole size  
polycarbonate nucleopore 400 nm hole size (WhatmanTM WHA10417112) filters. The Bae-146 has been used for  
135 filter analysis for single particle analysis (Chou et al., 2008), as well as bulk analysis (Sanchez-Marroquin et al., 2019;  
Hand et al., 2010; Andreae et al., 2000). The AFS was composed of a filter holder manifold with five separate filters,  
connected to the aerosol in situ suite inlet during ORACLES 2017 and 2018. A vacuum pump connected to a flow  
meter to maintain flow of 30 liters per minute was used for sampling, with five manually controlled valves that were  
used to switch the sampling to filter holders. The filter manifold was pre-loaded before each flight with filters.  
140 Samples for both campaigns were deposited on TEM grids at the locations, sampling times, and total flow volumes  
listed in Table S1 of the Supplementary Material.

145 After sampling, the ORACLES 2017 and CLARIFY 2017 filters were sealed in polycarbonate filter holders and  
wrapped in parafilm paper and aluminum foil and transported together with ice packs in a cooler and placed in a  
designated freezer immediately at University of Manchester. The ORACLES 2018 filters were sealed in the same  
manner and transported with ice packs and stored in a designated freezer at Tel Aviv University. A preliminary set  
of TEM analysis was conducted on the ORACLES and CLARIFY 2017 filters at the University of Manchester, and  
then sealed and transported together with ice packs in a cooler for analysis at Tel Aviv University. Care was taken to  
150 maintain similar handling, storage, transport, and analysis of all filters in both campaigns. All data included in this  
study are from the Tel Aviv University analysis.

155 Size segregation was not performed during particle sampling. Most observed particles are in the submicron range. It is possible that morphologies or compositions were altered during collection, as in other aerosol TEM studies. For example compositions of hydrate sulfates have been suggested to change in the TEM chamber or during processing (Buseck and Pósfai, 1999), with acidic particles containing more water spreading more on a TEM grid than neutral species. Andreae et al. (1986) suggest that CaSO<sub>4</sub> observed on filters without sea salt ions in the marine atmosphere could be from breakup up sea salt particles containing a gypsum crystallite. A sodium chloride core and magnesium chloride coating has been suggested to be due to efflorescence of a particle after collection (Ault et al., 2013). Posfai et al. suggest that an interesting sulphate crystalline rod morphology may be due to water loss within the TEM chamber. Generally, the particles we observed were separated from other particles on the filter and so agglomeration and aggregation did not influence organic mixing with adjacent particles. Samples were collected, on average, for approximately ten minutes and in dry conditions, which may help to limit any chemical reactions the particles are subject to as the aircraft passes into new air masses.

## 165 **2.2 Transmission Electron Microscopy – Energy Dispersive X-Ray Analysis (TEM-EDX)**

170 A JEOL™ JEM-2010F FEG-TEM with a ThermoNoran™ energy dispersive X-ray detector (EDX) was used at Tel Aviv University's Exact Sciences' electron microscopy laboratory to analyze 14 filters from CLARIFY (2017) and 16 filters from the ORACLES (2017, 2018) campaigns. TEM analysis was performed at 200 KeV accelerating voltage, a take-off angle of 15.9 degrees for X-ray emission from the sample, with an electron beam dwell time of no more than 30 seconds and spot size 3. The filter was scanned visually and representative particles near the center of the TEM grid were analyzed. EDX spectra was collected for each particle and elemental weight percentage and atomic percentage were found per particle and normalized to 100% using NSS software with Cliff-Lorimer Absorbance correction method. C and O are considered semiquantitative due to the contribution from the Formvar film of C and O from the TEM grid. Ratios of elements such as Na/S and Na/Cl were found by obtaining the either the weight or atomic values for individual particles, finding the ratio of interest, and averaging the ratio per filter.

## 180 **2.3 Back-trajectory analysis**

185 Back trajectories of each sample were generated using the Hybrid Single-Particle Lagrangian Integrated Trajectory (HYSPLIT) model (Stein et al., 2015), with the time step set to one hour. Filter sampling lasted up to approximately ten minutes per filter, and back trajectories were calculated as an ensemble of each minute of filter sampling time. To improve the accuracy of the trajectory, we used the hourly high-resolution ERA5 reanalysis data (fifth-generation atmospheric reanalysis data) to drive the calculation. The ERA5 data is on 0.25° × 0.25° horizontal resolution and includes 37 pressure levels. We ~~collocate~~collocated the cloud liquid water content of ERA5 to the coordinates of trajectories, with a threshold of 0.001 g/kg to detect clouds on the trajectory. Two collocations were performed: one

190 with the 4-D coordinates of the trajectory (time, longitude, latitude, altitude) and another one with 3-D coordinates (time, longitude, latitude). Thus, the cloud liquid content points and profiles at the trajectory are provided, and the mean time of trajectory inside the cloud (cloud liquid water content >0.001 g/Kg), and under clear sky (no cloud liquid water above the trajectory) are calculated accordingly. For each sample, we calculated the back trajectories for 1, 2, 3, 5, 7 and 10 days, and the in-cloud and clear sky time correspondingly.

215 To determine fire locations, fire radiative power (FRP) data was measured by the spinning enhanced visible and infrared imager (SEVIRI) from the geostationary satellite Meteosat-8. The FRP is produced with a 15-min repeat cycle for pixels which contain active burning (Roberts et al., 2005); hourly data was used to match the time step of the trajectory. The age of the BB aerosol is then estimated as the time in days when the trajectory first intercepts the FRP points, similar to the method used by Vakkari et al. (2018). The BBA 7-day backtrajectory overlaid with MODIS  
200 landcover classifications is included in the Supplementary Material [Figure S1](#).

#### 2.4 Aerosol Mass Spectrometer ~~and~~ Single Particle Soot Photometer and Cloud Droplet Probe

205 The non-refractive chemical composition for submicron particles was measured using two Aerodyne Time-of-Flight Aerosol Mass Spectrometer (ToF-AMS, Aerodyne Research Inc.), a compact version (C-ToF-AMS) used in CLARIFY (Wu et al., 2020) and a high-resolution (HR-ToF-AMS) used during ORACLES (~~(Dobracki et al., 2022)~~[Dobracki et al. in prep](#); Redemann et al. 2021). The mass concentrations of organic, sulfate, nitrate, and ammonium were provided. Organic aerosol fractions including f43, ~~f44 and f60~~ and f44 were also derived from the mass spectra obtained during both campaigns. f43 is the fraction of the measured organic mass at m/z 43 relative to the total organic aerosol (OA) mass concentration and is indicative of ~~aliphatic carbon chains (C<sub>3</sub>H<sub>7</sub>+) and oxygenated fragments (C<sub>2</sub>H<sub>3</sub>O+)~~ non-acid oxygenates (Ng et al., 2011) common of fragments of aldehydes, ketones, and acid functionalities. Likewise f44 is the fraction of the measured organic mass present at mz44 relative to the total OA mass concentration. The m/z<sub>44</sub> mass ~~is particularly useful in AMS analysis since it is a result of thermal decomposition of the diacid and organic peroxides on the heater to form CO<sub>2</sub> + is due to acids or esters~~ (Ng et al., 2011).  
215 Since these compound classes are commonly associated with low volatility organic fractions, a high f44 has been associated with low volatility aerosol (Aiken et al., 2008).

220 The mass concentration of the refractory black carbon (rBC) of particles ranging from 80 – 650 nm was obtained in both campaigns by ~~the~~ single-particle soot photometer~~s~~ (SP2, Droplet Measurement Technologies, Boulder, CO) using laser-induced incandescence. Detailed information on SP2 measurements can be found in Taylor et al. (2020). Cloud droplet probes (CDP) (Droplet Measurement Technologies, Boulder, CO) was used in both campaigns to measure cloud droplet number concentration.

### 3.0 Results

225

### 3.1 Overview of observations

230 Table 1 shows the conditions in which the filters were collected along with ancillary indicators including latitude and longitude, collection above or below cloud, and AMS data including organic, SO<sub>4</sub> NO<sub>3</sub>, and NH<sub>4</sub> and BC mass and fraction of PM<sub>1</sub> as well as BC mass and number concentration. Time in-cloud in the 24 hours prior to filter collection and time from fire provide additional context for the sampled aerosols. The gaps in the AMS values are due to quality assurance checks which determined that the data for specific filters are unreliable. In the “time from fire” column, if back trajectory analysis did not show interception with fire but rather a marine source, “marine” is noted in the column. There are more samples taken above-cloud, and generally, BC mass values are higher in above-cloud samples. 6/14 CLARIFY filters and 3/16 ORACLES filters were sampled in the MBL, with the remainder sampled in the FT. The ORACLES 2017 and CLARIFY 2017 filters were sampled from mid-August to early September, while the ORACLES 2018 filters were collected late September through October. The ORACLES samples, in general, represents aged BBA and CLARIFY samples represent extremely aged BBA.

240 Figure 1 indicates the location of filter sampling as well as back-trajectories including altitude per filter. As shown by the back trajectories, the filter samples covered different BB sources such as savanna, forest and grasses, with fires focused around central and southern Africa. CLARIFY sampling was more centered around Ascension Island whereas ORACLES sampling was closer to the African coast with most filters, except for ~~two~~three, sampled during October 2018. Detailed information on ORACLES flight and sampling conditions, per flight can be found in Redemann et al (2021), which provides ancillary data such as CO which will show whether a plume was sampled, with models (Redemann et al. 2021) showing that plumes are often above-cloud.

### 3.2 Aerosol classifications

250 The TEM filters showed a heterogeneous aerosol population with variations in mixing for organic, NaCl salts, potassium salts, and black carbon. ~30-70 particles on each filter were analyzed to determine composition and particle type. The main particle types including potassium salts, sea salt, black carbon and organic aerosol will be described along with the main findings in the following sections.

#### 3.2.1 Organic Aerosol

260 The AMS data corresponding to filter collection times show that 35% to 70% of CLARIFY and 18% to 68% of ORACLES PM<sub>1</sub> is organic, by mass; therefore in-situ data indicates that a substantial amount of PM<sub>1</sub> aerosol is organic in both campaigns. While TEM results show organic aerosol for both CLARIFY and ORACLES filters, there is significantly more organic aerosol present on the ORACLES filters. We hypothesize that this is due to differences

in the volatility and viscosity of the organic material. Figure 2, left panel, shows a comparison of the fraction of particles, by number, with organic on each filter and the AMS organic fraction, by mass, for the corresponding filter.

265 The majority of CLARIFY filters do not have any particles with organic material, while the majority of ORACLES filters have some particles which contain organic material. This extends to any organic coatings as well; ORACLES organic coatings are largely more thick than organic coatings present on CLARIFY filters. As AMS data shows a significant amount of organic aerosol present in both campaigns (Wu et al. 2020; Redemann et al. 2021), the differences in visible organic material on filters can be attributed to loss of volatile organics in the TEM chamber. It is known that volatile species will be lost from particles in a TEM chamber (Pósfai et al. 2003; Hudson et al. 2004) and preferential loss of organic would indicate a comparatively volatile material.

275 For context, Figure 2, right panel, shows the f43 vs f44 space for the entire ORACLES and CLARIFY campaigns, with filter data overlaid and marked by filter collection below cloud as well as the CO values marked in the colorbar to denote whether the sample is from a BB plume. ORACLES filters (triangles) are 2-7 days and CLARIFY (squares) are 4-15 days aged. A CO cutoff value of over 120 ppbv is used to denote BB-influenced air, based on overall campaign data and Figure 17 in Haywood et al. (2021), which shows the Ascension Island CO frequency distribution and that 120 is at the upper end of the Gaussian distribution of the clean air data. Low volatility oxygenated organic aerosol will typically have a lower f43 and higher f44 than semi volatile oxygenated organic aerosol (SV-OOA) (Ng et al., 2010, 2011). ~~Both campaigns show a high f44 typical of highly aged organic aerosol, and the ORACLES data show a slightly lower f43 which is associated with low volatility oxygenated organic aerosol (LV-OOA), although the difference is quite small. Low volatility oxygenated organic aerosol will typically have a lower f43 and higher f44 than semi volatile oxygenated organic aerosol (SV-OOA) (Ng et al., 2010, 2011).~~ Most of the variation in filters sampled is in the ORACLES points with higher f44 than the CLARIFY data. As f44 is an indicator of low OOA fraction but not high volatility fraction, the higher ORACLES points with regard to f44 is consistent with TEM findings of lower volatility organic on ORACLES filters. The f43 spread is similar to differences in instrument baselines and therefore should not be over interpreted.

290 TEM has been used to differentiate ~~groups into high and contact angle and~~ low contact angle ~~groups-particles~~ where viscosity and volatility of each particle can be qualitatively determined from the particle image. While factors such as surface tension and adhesion forces influence particle shape, viscosity and volatility can still be qualitatively measured on a comparative basis by using electron microscopy images (Reid et al. 2018). Figure 3, top panel, shows a progression from left to right of increasingly volatile organic as imaged by the TEM. The presence of more rounded, viscous organic (Figure 3, top panel, left image) in ORACLES samples compared to CLARIFY's low contact angle organic (Figure 3, top panel, right image) on the filters is also indicative of relatively higher volatility of organic in CLARIFY filters. More than 80% of ORACLES organic has a rounded morphology, as shown in the left and center panels of Figure 3, top panel.



300 Figure 3, bottom panel, shows the reduction in Org/BC and Org44/BC mass ratios, based on AMS measurements, for both CLARIFY and ORACLES filters as age from biomass burning source is increased. Filters where backtrajectories did not indicate a BB source are included in the “marine” category. It appears that increased age reduces the organic to BC fraction, similar to the findings of Dobracki et al. (~~submitted2022~~) which found organic aerosol to black carbon mass ratios decreasing from 14 to 10 as the aerosol aged over the Atlantic, ~~indicating a loss in organic aerosol in the BB plumes with age.~~ UV exposure can work to break down oligomers and low-volatility components in organic (Wong et al., 2015; Lignell et al., 2014) and may account for lower amounts and/or higher volatility of organic present on CLARIFY filters. Photooxidation can also lead to fragmentation of organic chains and oxidation has been observed to change BBOA volatility in laboratory studies (Jahn et al., 2021) as well as physical properties (Jahl et al., 2021). Our results of less organic present for aged samples are consistent with (Dobracki et al., (2022) and Sedlacek II et al.’s (in prep) findings of loss of organic and organic coating with age, although TEM results are caveated by preferential loss of volatile organic.

Tar balls are a type of round organic aerosol unique to biomass aerosol and as of now, the only way to identify tar balls has been through microscopy. Tar balls are estimated to contribute up to ~30% of BB aerosol mass (Sedlacek III et al., 2018). They are highly spherical, high viscosity, and largely resistant to electron beam damage. SAFARI found a considerable number of tar balls (Pósfai et al., 2003) as well as the Biomass Burning Observation Project (BBOP) (Sedlacek III et al., 2018). Adachi et al. (2019) observed tarball formation, likely from primary organic particles, within three hours of emission, with the processing of tar balls possibly related to oligomerization of OA. We did not find many tar balls in the CLARIFY and ORACLES campaigns, with the exception of filters corresponding to RF10 and RF11, which were aged for 1 and 2 days, respectively. RF10 had very viscous aerosol but was mixed with considerable amounts of nitrogen and sulfur. This suggests a removal process, potentially through deep precipitation near the coast for tar balls in very aged BB plumes as they as tarballs are advected west over the ocean.

### 3.2.2 Potassium salts and black carbon

325 More than 60% of particles, by number, from the two campaigns were potassium salts, either externally or internally mixed. Only K-salts which appeared solid were counted in this number. If a particles was OA with K present, but without a visible K-salt inclusion, this would not be counted as a K-salt. If a particle was BC with a K-crystal attached, this would be counted as a BC-Ksalt internally mixed particle. (Jahn et al., 2020; Li et al., 2003; Gaudichet et al., 1995) This is consistent with findings from (Li et al., 2003) where organic particles and potassium salts were the predominant particle types in the smoke. The salts were often mixed with black carbon, organic, or sulfates. Inorganic salts in BBA can result from volatiles from the burning source depositing inorganics onto particles in the BB plume (Jahn et al., 2020; Li et al., 2003; Gaudichet et al., 1995). Different salts will indicate different processes; K-salts will form due to evaporation of potassium in the fire and subsequent near field condensation onto the BC; while this will occur with some S and N as well, co-emitted SO<sub>2</sub> and NO<sub>2</sub> can oxidize and condense and lead to additional coating in the far field. One ~~very~~ common particle type was potassium salt internally mixed with BC, where the K-salt

encapsulates the black carbon in a core-shell configuration. EDX analysis can ablate the salt and leave the refractory black carbon core intact. Another common particle type was organic aerosol with interstitial salts. These two common K-salt mixtures are shown in Figure 4. The coating of BC gives rise to absorption enhancements as discussed by Taylor et al. (2020), where they found universally thickly coated BC, and almost no externally mixed BC. The source of the coating is not described in that paper; ~~the, and~~ -TEM results show that a common coating type is a hygroscopic salt, with implications for both absorption enhancement and enhanced CCN capability of the particles.

The three common black carbon mixing states, BC with salt, BC with organic, and externally mixed BC are shown as a fractional amount that exists in each campaign and BL/FT in Table 2. Internal mixing refers to a particle which has two or more separate components, whereas externally mixed particles contain one component per particle. The predominant mixing state is BC internally mixed with salt, however, BC mixing with organic is likely underestimated due to volatilization of organic in the chamber. Table 2 shows a difference between BL and FT in all columns, with the sign of the differences being different in the two campaigns. It should be noted that of the three ORACLES filters collected in the BL, two have marine backtrajectories, so BB organic may be underrepresented here. For CLARIFY, cloud processing may remove the more hygroscopic BC containing particles as these are activated and removed by precipitation, and hence the organic/BC ratio is high relative to the FT, but this does not work for ORACLES. The main finding here is that BC with inorganic, as analyzed by TEM, is the most prevalent BC mixing state.

### 3.2.3 Marine aerosol

~~The predominant aerosol on CLARIFY filters are either marine salts or BBA which have been influenced in some manner by the marine atmosphere. The analysis here will focus on CLARIFY aerosol as they show more marine influence than ORACLES. Most CLARIFY filters have sea salt aerosols (SSAs) with Na and/or Cl present in varying ratios in the particles, as presented in Table 3. There are also minor amounts of Ca, Mg, K, as would be present in seawater.~~

CLARIFY and ORACLES aerosol were both influenced by the marine atmosphere. Most CLARIFY filters have sea salt aerosols (SSAs) with Na and/or Cl present in varying ratios in the particles, as presented in Table 3. There are also minor amounts of Ca, Mg, K, as would be present in seawater. Table 4 lists the ORACLES particle percents for Na and Cl as well as ratios. Both Table 3 and Table 4 list altitude, CO, and time from fire source to provide context as to whether the air mass is BB influenced. As a measure of aging and sea salt conversion, Tables 3 and 4 list Na:Cl and Na:S weight percent ratios for particles which have those elements present, averaged per filter. A comparison of Table 3 and Table 4 shows that for ORACLES filters, average Na and Cl wt% is less, per particle, and there is a larger variation in % particles per filter containing Na and/or Cl than in CLARIFY. In ORACLES, Na/Cl per filter is higher than CLARIFY due to the low Cl wt% particle average, and Na/S ratio is generally lower due to the lower Na wt%. However, Na and Cl in the sea salt aerosol rarely exist in a 1:1 atomic ratio, as would be expected from freshly emitted SSA, indicating that the particles have been processed. (Krueger et al., 2003)

375 A schematic of the SSA lifecycle, with representative particles from several CLARIFY filters and example mechanisms for Cl depletion, is provided in Figure 5. Briefly, freshly emitted sea salt, generated from ocean bubbles bursting, has Na and Cl present in a 0.86:1 atomic ratio. However, Na and Cl in the sea salt aerosol rarely are in a 0.86:1 ratio as would be expected from freshly emitted SSA, indicating that the particles have been processed. Natural variability can be present, with Krueger et al.(2003) finding that Cl/Na atomic ratio in sea salts increases with particle diameter. The aging timescale of sea salt also varies depending on the production of NO<sub>2</sub> and SO<sub>2</sub> and its conversion rate to H<sub>2</sub>SO<sub>4</sub> and HNO<sub>3</sub> since these acids displace the Cl, and these rates will vary by location. The aerosols are ~~quickly~~ processed in the atmosphere, ~~within the span of hours,~~ with nitrates and sulfates replacing Cl. S is removed from the atmosphere through oxidation of SO<sub>2</sub> in water associated with sea salt particles (Sievering et al., 1991; Miller et al., 1987) as well as cloud processing (Beilke and Gravenhorst, 1978), and N species like HNO<sub>3</sub> and NO<sub>2</sub> are also available for reactions with sea salt. Variations of Na:Cl, then, can help to determine ~~degree of relative~~ aging for SSA, as has been used for example in Kirpes et al. (2018), Hand et al. (2010) and Young et al. (2016). For context, Na and SO<sub>4</sub> weight percent in sea salt, based on the composition of sea water, are 60.31 and 7.68, respectively (Seinfeld and Pandis, 2012). Using the atomic weights of sulfur and oxygen, this leaves an expected Na:S ratio of approximately 16:1 in sea salt. A lower than 16:1 ratio indicates Cl displacement by S and is an indicator of aerosol aging, therefore based on the ratios in Table 3, our samples are aged sea salt. Prior work has shown variation of up to 13% in the atomic percent of S in fresh SSA (Ault et al., 2013).

~~4 details three filters consisting of Cl-rich aerosol. Both Table 3 and Table 4 list altitude, CO, and time from fire source to provide context as to whether the air mass is BB influenced. As a measure of aging and sea salt conversion, Table 3 lists Na:Cl and Na:S weight percent ratios for particles which have those elements present, averaged per filter. Table 4, as it is based on Cl aerosol without Na present, does not list these ratios. Table 3 also lists the percent of particles per filter which contain Na or Cl, as well as average weight percent of Na or Cl in the particles, averaged per filter. For context, Na and SO<sub>4</sub> weight percent in sea salt, based on the composition of sea water, are 60.31 and 7.68, respectively (Seinfeld and Pandis, 2012). Using the atomic weights of sulfur and oxygen, this leaves an expected Na:S ratio of approximately 16:1 in sea salt. A lower than 16:1 ratio indicates Cl displacement by S and is an indicator of aerosol aging, therefore based on the ratios in Table 3, our samples are, on average, very aged sea salt. (Ault et al., 2013)~~

~~All~~ For CLARIFY, all SSA ~~on in the~~ filters collected in the MBL have NaCl with varying levels of Cl depletion. The presence of Na colocated with Cl on all below-cloud filters and in only 2/7 of the above-cloud filters suggests the particles are less aged in the BL samples compared to the FT samples. Gold 23, a filter sampled in the FT, has a high Na:Cl ratio of 20.2 for particles with both Na and Cl, and this suggests that these salts are aged due to the Cl depletion. The other filter sampled above-cloud with Cl, Gold8, has mostly Cl-only particles and a also crystals of Na:Cl which appear freshly emitted with a cubic NaCl structure. Gold 8 has particles similar in morphology to Cl-rich particles present on filters Gold 14, 15, and 18 which will be described in a later section, the difference being that Gold 14,15

415 and 18 filters did not have any Na-containing particles present. Cl-only particles in the FT suggests mixing of the MBL and FT, as it shows that Cl ~~from the ocean~~ has reached the FT through turbulent mixing at the top of the MBL. ~~Unprocessed NaCl particles in the FT implies a rapid mixing (within hours as this is the average processing time of NaCl) of MBL and FT air associated with the Gold 8 samples.~~ Both Gold8 and Gold23 filters have backtrajectories which show airmasses from the continent which are entirely within the FT, ~~therefore supporting the top of BL mixing with FT hypothesis rather than sea salt being present due to air mass transport through the MBL.~~ As deep convection does not occur in this region, marine salts which are observed more than a few hundred meters above the BL height in the Ascension Island region of approximately 2250m (Haywood et al., 2021) may be brought in from outside the region.

420 In the above-cloud CLARIFY samples, all particles were subject to BB influenced air based on CO values, where we choose 120 ppbv as a CO level indicating BB influenced air above background levels. In the FT, Cl was mostly not present or depleted. ~~There was~~ BC often mixed with sodium sulfates, Cl, and nitrate, as well as K-salts mixed with NaSO<sub>4</sub>.

425 Filter Gold 24, interestingly, shows sodium nitrate mixed with black carbon. N can be difficult to detect in EDX spectra as it is between the C and O peaks and can be difficult to deconvolute; therefore the presence of N in the EDX spectra indicates that there is a substantial amount in the particles. Gold 24 was collected above-cloud and in highly BB-influenced air (331 ppbv of CO; 1.9 μg/cm<sup>-3</sup> NO<sub>3</sub>). Gold 9, also collected above-cloud in BB influenced air (329 ppbv of CO; 3.1 μg/cm<sup>-3</sup> NO<sub>3</sub>), also has sodium nitrate but to a lesser extent than Gold 24. As these are the two above-cloud CLARIFY filters with the highest CO levels, and are also the two filters which show some presence of sodium nitrate, this suggests that BB air may influence the sea salt conversion from NaCl to NaNO<sub>3</sub>. This is likely due to the significant amount emissions of NO<sub>x</sub> in ~~the initial~~ BB plumes (Jin et al., 2021) to form HNO<sub>3</sub> and drive Cl out of the sea salt aerosol. There is also an influence of marine air on BC. For example, the bottom center image in Figure 6 ~~e~~  
435 shows a black carbon particle mixed with sodium nitrate from the Gold 24 filter, collected in the FT. The presence of the Na in the FT suggests BB entrainment into the MBL and subsequent mixing of marine air into the FT, as alternate explanation, sea spray mixing into the FT with BC.

440 There were different morphologies and compositions of the marine salts due to different salt conversion processes: some large rounded NaCl over 1.5 micron in diameter and Ca, Mg, and Na sulfates and chlorides. Figure 6 shows a few examples of the many different morphologies of marine salts found on ~~the CLARIFY~~ filters. Figure 6 ~~image F~~ is from Gold 1 which was collected in the MBL, and the particle is BC encapsulated in sodium sulfate; this may be due to aqueous processing where sodium sulfate forms around a BC core. This suggests that while in the FT there is BC and K-salts mixed with sodium, BC, if entrained in the MBL, can also be significantly affected by sea salts and mixed  
445 with sodium nitrates and sulfates.

Na and Cl are collocated on individual particles in 5/13 above-cloud filters and 2/3 below-cloud filters. All below cloud filters had BC present. RF2\_1 BC is not mixed with Na or marine salts. RF5\_2 and RF7\_2 filters have BC mixed with salts containing Na,S and K. We did not observe clear crystalline sea-salt morphologies in either above-cloud or below-cloud samples as are observed in CLARIFY filters, and also did not observe Cl-dominant particles.

Three filters from CLARIFY, Gold 14, 15 and 18 were dominated by Cl particles which do not have Na present. Table 54 shows the three Cl dominant filters along with altitude at filter exposure, CO levels, and time from fire, and SI Figure 7-S2 provides ~~flight tracks including~~ altitude and particle counts during the filter exposure time. The Cl-rich filters are interesting because of the high spatial density as well as the uniformity of the particles on the filter. The uniform particle composition and morphology of the particles suggests that, per filter, the particles have been subject to similar atmospheric processing. Gold 14 was collected in the FT and backtrajectories show interception with biomass burning six days prior to filter collection. Backtrajectories for filters Gold 15 and 18, both collected in the MBL, show that they do not intercept with the fires and are not as influenced by BB air as Gold 14. The presence of the elements Si, K, Ca and Mg are hypothesized to be from SSA rather than biomass burning based on the unique morphology and composition of the particles on these filters. The atmospheric implications for the Cl-rich particles are not clear, although their ability to uptake water may be conducive to their ability to act as CCN.

Gold 14 was collected above-cloud, with 47/47 of the particles having strong Cl and N peaks, and some of the particles show very minor amounts of Si. Wu et al. (2020)'s analysis of the CLARIFY campaign noted an increase in nitrate mass concentration with increasing altitude, and found that the nitrate aerosol mostly existed as ammonium nitrate in the FT. They suggest that the increased levels of nitrate in the FT may be due to colder temperatures at high altitudes which would help partition the  $\text{HNO}_3\text{-NH}_3\text{-NH}_4\text{NO}_3$  system into the aerosol phase (Wu et al. 2020). Particle counts from the condensation particle counter (CPC) show a particle count average of 1437 particles/cm<sup>-3</sup> a large increase in particle numbers when the flight C042 increased in altitude from 2250m to 2800 m, which may signify an area of newly formed ammonium nitrate as the nitrate partitions into the aerosol phase. As ammonium nitrate is a ~~semi-volatile~~ hygroscopic inorganic salt which can dissolve into the aqueous aerosol phase, we hypothesize that the Cl aerosols are from HCl in the gas phase which partitions into the aerosol water and ammonium nitrate aerosol. Relative humidity at filter collection times according to backtrajectories is in the 60-70% range, which would ~~also help~~ the facilitate aerosol ~~deliquescence become aqueous~~ and the subsequent uptake of HCl. Previous work (Semeniuk et al., 2007; Jahn et al., 2021) has also shown BBA to uptake water in this RH range. Hydrochloric acid partitioning into aerosol water has also been inferred in urban atmospheres, where the highly water absorbing and soluble chloride in the aqueous phase enhances aerosol water uptake through co-condensation and particle growth, causing haze to form (Gunthe et al., 2021). The presence of ammonium in the FT and Cl in the samples, as well as strong Cl and N peaks in the EDX spectra suggest that these particles may be NH<sub>4</sub>Cl.

Gold 15 was collected below cloud at 329 meters and 21/21 of the analyzed particles were composed predominantly of carbon and chlorine with small amounts of silicon and potassium; the particles appeared ~~very~~ similar across the

485 filter so EDX on additional particles was not performed. These may be HCl gas uptake onto sea spray aerosol. Gold  
18 was collected below cloud at 332 meters. 32/32 particles sampled on the TEM filter were either CaCl<sub>2</sub> or MgCl<sub>2</sub>  
with silicon and may have formed through chlorine reacting with Ca and Mg in aerosolized sea water. [Prather et al.](#)  
(2013) [observed that long chain bioorganic species as well as Ca and Mg form stable collapsed structures as sol-gels,](#)  
[and potentially particles from Gold 15 and Gold 18 may be sol-gel with Ca and Mg dispersed within a sol gel structure.](#)  
490 [The lack of an observable counterion in the EDX spectra of Gold 15 particles may be due to a weaker N signal than](#)  
[in Gold 14, or potentially Cl dispersed within a sol-gel network.](#)

The high density of the chloride particles on the filters, compared to the other TEM filters, along with the uniform  
composition and morphology of these particles, suggests either condensation onto new particles formed in the FT or  
condensation onto marine particles formed from spray in the MBL. While the prevailing view is that new particle  
495 formation rarely occurs over open oceans, work by Zheng et al. (2021) shows new particle formation in the remote  
MBL occurs frequently after the passage of a cold front, with factors such as removal of existing particles by  
precipitation, vertical transport of reactive gases from the ocean and cold temperatures facilitating new particle  
formation. Iodine species can also form new particles in pristine regions (He et al., 2021). These conditions do not  
characterize our sample, however, these studies are part of a growing area of work which supports new particles  
500 formation in the remote MBL; if the newly formed particles are aqueous, they can support HCl uptake and may explain  
the Cl-dominant aerosol observed. [The particles could also originate from sea spray without additional processing,](#)  
[and as primary particles may be sol gel structures of bioorganics and as observed in Prather et al. \(2013\).](#)

The filters were collected in both above and below cloud conditions, which suggests a mixing of the MBL and FT, as  
505 Cl, either in the gas or aerosol phase, reached the FT after having being emitted from the ocean; air exchange at the  
top of the BL due to turbulent mixing may be for the cause of this, particularly as there is a transition from  
stratocumulus to cumulus near Ascension Island, and a corresponding increase in convection (Gordon et al., 2018).  
We hypothesize that Cl in the FT may be from HCl in the BL which gets taken up into cloud droplets, and on their  
evaporation at cloud top is re-released onto more neutral aerosol such as ammonium nitrate.

510

### 3.3 Marine boundary layer and aqueous phase processing

515

The MBL had a large effect on BB aerosols and as well as processing of sea salt aerosols. A comparison of cloud  
processing and time in the FT and MBL for the aerosol collected during the filter sampling time is provided in Figure  
[87](#). The filters are segregated by collection in the MBL and FT and the fractional time spent in each environment is  
shown in Panels B (collected in BL) and D (collected in FT). Panel D shows that aerosols collected in the FT,  
520 irrespective of campaign, have spent nearly all their time in the FT. Panel B shows that of filters sampled in the BL,

CLARIFY aerosols have spent more than 80% of the fractional time ~~spent~~ in the BL in the day before filter sampling compared to ORACLES' 45%.

The cloud processing intensity, which is the mean cloud liquid water content multiplied by the mean in-cloud time, in the days prior to the air mass reaching the downwind filter collection location is provided in Figure 8 Panel A. Cloud processing intensity is a metric described in detail in Che et al. (submitted). Aerosols collected in the MBL were subject to more cloud processing than those collected in the FT, as the aerosols would need to be entrained into BL. ORACLES aerosol, on average, spent slightly more time in-cloud and with clouds with a higher liquid water content than CLARIFY aerosol, particularly apparent for those filters collected in the MBL.

In sea salt, K weight percent is 1.1, assuming sea salt has the composition of seawater and ignoring atmospheric processing (Seinfeld and Pandis, 2012). The K-salt from BB has a significantly higher weight percent than the minor amounts of K found in seawater and sea salt. The fraction of K-salt mixed with sodium increases with age, as shown in Figure ~~78~~ Panel C. This implies that the K-salt from biomass burning is processed in a way which allows Na incorporation into the particle. As Na is not volatile at atmospheric pressures, we hypothesize that the mechanism is processing by particle mixing, either by cloud drop coalescence (Grabowski and Wang, 2013) or drizzle wash out of aerosol and evaporation.

The interaction of the MBL with BBA and the effect of BB air on marine aerosol has been shown in previous sections, and we hypothesize the mixing of Na salts with BBA to be due to aqueous processing and particle mixing through, for example, cloud drop coalescence. An aqueous K-salt particle from CLARIFY's Gold 9 filter is presented in Figure ~~98~~. It has varying Na:K ratios by weight percent, designated in the red circles, and there is no Cl in the particle. We assume that the Na present is from marine sources because the area with an 11:1 ratio has 13 wt% Na but only 1.2 wt% K; this is a higher Na wt% than would typically be expected from BBA. However, it should be noted that Na may also be from biomass burning, as sodium has been noted in BB fuel, with the type influencing the amount of Na in particles (Hudson et al., 2004). The image shows that Na mixes with K-salts, organic and sulfur in varying degrees throughout a single aqueous particle and therefore this is a potential mechanism for Na incorporation into existing K-salts.

Single particle structure and morphology is important as it affects aerosol optical properties and ability to act as cloud condensation nuclei. Figure ~~940~~ shows BC + K-salt (top panel) and BC + (organic/sulfur) mixtures as a function of time in cloud encountered one day before sampling. The spherical nodules are black carbon and the more reflective white areas in the bottom panel are the sulfur/organic mixture. Each particle ID shows the TEM image and associated time in cloud (hours) in the day before sampling, the mean liquid water content of the clouds (g/kg) in the day before sampling, and the weight percent of all elements other than carbon in the particle. From left to right, the time in-cloud increases. If the electron beam visibly altered the particle, an "after" image is shown along with an "before" image to indicate the particle's response to the electron beam. In each particle, the black carbon is insoluble and appears

560 unaffected by increased cloud processing; however, both the K-salts and the sulfur/organic appear affected by increased time in cloud. In the left most panel for Figure 10, top panel, the K-salt is completely unaffected by exposure to the electron beam. The other images in Figure 10 show electron beam damage, indicating that these K-salt structures are more susceptible to volatilization and degradation due to the electron beam; this may be due to degradation of the K-salt during cloud processing and the amorphization from hydration, dissolution, and recrystallization of the salt during processing- As an alternative explanation, nitrates and sulfates have been shown to be affected by electron beam exposure after exposure to acid gases or water vapor (Jahn et al., 2021; Hoffman et al., 2004). The K-salt particles on the right, which were subject to the most time in cloud, have a less distinct morphology which may indicate periods of water uptake and loss. In Figure 10, bottom panel, the sulfur-organic constituent of the aerosol which was subject to the least ~~about amount~~ of time in-cloud appears to have high viscosity, and was unaffected by the electron beam. After more time in cloud, the sulfur/organic on these particles appear to have a lower viscosity, to be more flat, and also to be more affected by the electron beam. Although these are only a few particles, the images imply that cloud processing can affect certain constituents of mixed aerosols more than others; the structure of the K-salt and the viscosity of the sulfur/organic mixture appear to be more affected by aqueous processing compared to BC.

### 3.4 Elemental mixing in individual particles

575 EDX of individual aerosol particles can provide information on elemental mixing across the entire ORACLES and CLARIFY sample sets. Figure 10 shows the elemental mixing of CLARIFY and ORACLES samples collected in the free troposphere and boundary layer, designated in separate columns, with each row of pie charts indicating whether a set of two elements are ~~co-located~~ co-located on individual particles for all particles of the specified particle set. All percentages are based on particle numbers rather than mass. The elements S, Na, Cl and K were chosen for elemental mixing analysis as they are the elements which most commonly appear in the EDX spectra. C and O are found in the spectra of almost all particles, and so these elements are not included in this analysis. Supplementary Information, Figures S3 and S4, also includes BL and FT Na-S-K and Na-S-Cl ternary diagrams for additional context, showing that there is more Na and Cl in the CLARIFY samples, particularly the BL.

585 BBA is more diluted on CLARIFY than ORACLES filters, and S/K particle fractions in the BL/FT suggest increased mixing due to detrainment and entrainment for CLARIFY samples. A higher fraction of ORACLES aerosol contains S, 80%, compared to CLARIFY's 40%. ~~Three quarters of CLARIFY particles which contain S also contain Na, while most ORACLES particles contain S without Na present.~~ S is mixed with K in 34% of CLARIFY and 73% of ORACLES aerosols. This suggests that ORACLES S is predominantly from biomass burning as it is ~~co-located~~ co-located with K, and potassium is frequently used as a marker for BBA, consistent with the high amounts of K-salts observed in TEM samples. 76% of ORACLES FT aerosol contain ~~co-located~~ co-located S + K, compared with 59% of ORACLES BL aerosol. In comparison, 35% and 33% of CLARIFY FT and BL aerosols have ~~co-located~~ co-located S+ K, respectively, implying a dilution of BBA in the CLARIFY aerosol population collected on filters; in comparison to ORACLES. The similar fraction of S/K particles in the FT and BL during CLARIFY as



595 compared to ORACLES may be due to the transition over the ocean and the increased entrainment and detrainment  
across the BL top. Higher fractions of S-containing particles in ORACLES may also be related to cloud processing  
(Ervens et al., 2018), and aqueous formation pathways for sulfate in cloud water are predicted to be faster than gas-  
phase formation pathways.

600 More CLARIFY than ORACLES particles show evidence of marine influence as evidenced by the presence of Na  
and Cl. 70% of CLARIFY aerosols and 33% of ORACLES aerosol contain some combination of Cl and/or Na. Of  
ORACLES aerosols containing Na, only ~~a minor fraction~~ 2% is mixed with Cl, compared with 20% of CLARIFY  
particles ~~containing both Na and Cl~~. Cl can be found in fluids of some vegetation and so can be present in BBA (Liu  
et al. 2000), thus while ORACLES Cl may be due to either biomass burning or a marine influence, it is likely that the  
605 high fraction of CLARIFY particles with Cl present, relative to the ORACLES population, is indicative of a marine  
influence for particles in the BL and lower altitudes in the FT. This is also supported by the difference in CLARIFY  
Cl in the BL (75% of particles) versus the FT (31% of particles), as well as CLARIFY filters Gold 14, 15 and 18  
which were dominated entirely by Cl particles.

610 Cl particle mixing differences between BL/FT dominate in CLARIFY aerosol, but not in ORACLES, as evidenced by  
K+Cl and S+Cl mixing. Cl is present in 6% and 47% of ORACLES and CLARIFY particles, respectively. K+Cl is  
present in 3% and 8% of ORACLES FT and BL particles, and 10% and 42% of CLARIFY FT and BL particles,  
respectively. S+Cl is present in 3% and 4% ORACLES FT and BL particles, and 8% and 27% of CLARIFY FT and  
BL particles, respectively. CLARIFY Cl is mixed with K or S three to four times more in the BL than in the FT, while  
615 the BL does not have as much of an influence on Cl mixing with K or S for ORACLES particles. The increased Cl  
mixing with S/K in the CLARIFY BL may be due to secondary processes which deposit Cl onto BBA, or a high  
fraction of primary SSA which also includes S and/or K.

~~81% of ORACLES and 54% of CLARIFY aerosols have K present. 22% of CLARIFY aerosol contain collocated K~~  
620 ~~and Cl, while Cl is present, with or without K, in only 3% of ORACLES aerosol. S mixed with Cl is present in 15%~~  
~~of CLARIFY and 3% of ORACLES aerosol. ORACLES aerosols contain a much lower fraction of Cl-containing~~  
~~particles than CLARIFY.~~

The reverse trend is observed for Na, with Na particle mixing differences between BL/FT more apparent in ORACLES  
625 than CLARIFY, as evidenced by K+Na and S+Na mixing. 44% of CLARIFY aerosol contains Na compared to 30%  
of ORACLES aerosol. K+Na is present in 22% and 50% of ORACLES FT and BL particles and 35% and 43% of  
CLARIFY FT and BL particles, respectively. S+Na is present in 24% and 46% of ORACLES FT and BL particles  
and 28% and 32% of CLARIFY FT and BL particles, respectively. Thus while Na is slightly more likely to be mixed  
with K or S in the CLARIFY BL compared to FT, Na is mixed with S or K about two times more in the ORACLES  
630 BL than FT. This may be due to increased BL/FT entrainment and detrainment for CLARIFY samples, and in-cloud  
aqueous processing and particle mixing for ORACLES samples which can deposit Na onto BBA in the BL.

635 ~~38% of CLARIFY aerosols have Na collocated with K, versus 26% of ORACLES particles. 56% and 17% of ORACLES and CLARIFY aerosols contain K but no Na, respectively. Following trends pointed out earlier, Na is present in relatively more CLARIFY aerosol than ORACLES. Three quarters of CLARIFY particles which contain S also contain Na, while most ORACLES particles contain S without Na present.~~

640 ~~The higher number of particles with S present in ORACLES samples, particularly the FT, may indicate a higher fraction of BBA (because it is collocated with K) compared to CLARIFY, or more sulfate aerosol formation via cloud processing. Studies have shown formation of sulfate to be related to cloud processing (Ervens et al., 2018), and ORACLES samples were subject to higher amounts of cloud processing than CLARIFY samples.~~

645 ~~The high amounts of Na and Cl, both separate and collocated in CLARIFY samples, particularly the BL, suggests a high amount of marine boundary layer influence and marine salts. While the majority of particles in both CLARIFY and ORACLES contain K, K largely exists independently of Cl in the ORACLES samples, while it is mixed with Cl for a substantial fraction of CLARIFY particles particularly in the BL where 42% of particles contain collocated K + Cl. Similarly, S exists largely without Cl in ORACLES particles but is collocated with Cl in 27% of CLARIFY particles. This implies gas phase Cl condensation onto BBA, particularly K salts, in CLARIFY aerosol. There is also a substantial difference in the amount of Na collocated with K in the FT and BL for both ORACLES and CLARIFY campaigns: CLARIFY FT 35%, BL 43%; ORACLES FT 22%, BL 50%. The majority (59%) of ORACLES FT particles contain S independent of Na; however, of the ORACLES samples collected in the BL, 46% of the particles contain S collocated with Na. This implies, again, a marine boundary layer influence in the increased Na containing particles in the BL for both campaigns. Assuming that BBA is in the FT and then becomes entrained in the BL, this transition could help facilitate aqueous processing and particle mixing through droplet coalescence in cloud and evaporation, which would incorporate Na onto the BBA.~~

650  
655

#### 4.0 Conclusions

660 ~~As CLARIFY sampled older smoke than ORACLES, this study, by comparing the two campaigns in the FT and BL, shows ways in which African BBA smoke is affected by SSA and the marine air, and reciprocally how SSAs may be affected by mixing with BB plumes.~~

665 ~~This work combines online field measurements and TEM analysis of two campaigns with disparate aging of BBA aerosol. Detailed ~~s~~Single particle analysis revealed considerable heterogeneity in the mixing and processing in the aerosol population of CLARIFY and ORACLES ~~filters in terms of mixing of elements and processing of individual particles~~aerosols. The main aerosols are BBA and SSA. We ~~find~~found similarities to the previous major campaign which analyzed African BBA, SAFARI-2000, in that we ~~find~~observed an abundance of potassium salts, black carbon, and organic carbon with interstitial potassium salts (Pósfai et al., 2003; Li et al., 2003). ~~While SAFARI noted an~~~~

670 ~~abundance of potassium salts, our TEM analysis shows for the first time in the region that a large fraction of BC is internally mixed with potassium salts. Posfai et al. (2003) as well as our analyses show considerable internal mixing between black carbon and salts; therefore, this suggests that the thick coating on CLARIFY and ORACLES BC as measured by the SP2 (Wu et al. 2020; Redemann et al 2021) is often due to inorganics rather than organics. This has implications for radiative effects due to lensing, as well as CCN capability due to the hygroscopicity of the salts the inorganic salts internally mixed with BC would increase the particle's hygroscopicity. This is important as it suggests that the salts formed in the fire via evaporation and recondensation drive the mixing of the carbon aerosol as the secondary inorganic condenses, and that the organic fraction is separate. This is consistent with findings regarding emissions of BC and K-salts and other salts in the flaming phase of a fire, while organic emissions occur during the pyrolysis or smoldering phases (Haslett et al., 2018). These findings are caveated due to the loss of organic in the TEM chamber, which would artificially increase the internally mixed and salt-BC fraction, particularly for CLARIFY samples.~~

675 While SAFARI analysis ~~found abundant~~ found a large number of KCl salts near source, both the CLARIFY and ORACLES campaigns ~~are in areas measuring much~~ sampled much more aged aerosol, ~~and did not find~~ and our results show many that KCl particles was not widely found. This is presumably because replacement of Cl by nitrates and sulfates has occurred prior to ORACLES and CLARIFY BBA sampling. ~~Near Ascension Island, Cl, likely from marine sources rather than biomass burning, was present on a large number of particles.~~ While the SAFARI campaign and other recent biomass burning campaigns ~~note a considerable amount of~~ found tar balls, our TEM analysis did ~~not observe~~ not find many tar balls other than on filters RF10 and RF11, which were aged for approximately 1 and 2 days, respectively. ~~ORACLES and CLARIFY aerosol are generally very aged, and so this finding implies a reduction in tar balls in aged African~~ very aged BB plumes.

685 SAFARI was near source and focused on BBA, and online AMS and SP2 analysis for CLARIFY and ORACLES was focused on nitrates, sulfates, organic, BC and ammonium. Our TEM analysis extends this data set through the finding of an abundance of marine salts with varying levels of processing. In general, ~~s~~There were differences observed between FT and BL aerosol. More BBA was found in the FT, and more SSA was found in the BL, as would be expected; as BBA aerosol aged, there was increased entrainment into the BL for the CLARIFY samples relative to the ORACLES samples. ~~SSA sea salt aerosol collected in the MBL were in the MBL was~~ less aged than those sampled in the FT, as measured evidenced by Cl depletion. ~~Cl was mostly, but not always, depleted in the FT compared to aerosols found in the MBL which had higher levels of Cl.~~ The presence of Cl and, on some filters, freshly emitted NaCl in the free troposphere suggests mixing-exchange of the MBL and FT in some regions, ~~likely through convection and through~~ turbulent mixing at the top of the BL. For ORACLES, S-containing and K-containing particles were much more likely to be mixed with Na in the BL as compared to the FT. These BL/FT differences with Na-S and Na-K particles were not as evident in CLARIFY. In CLARIFY, the largest composition changes between the FT and BL were that S-containing particles were more likely to be mixed with Cl in the BL as compared to the FT, and similarly, K-containing particles were more likely to be mixed with Cl in the in the BL compared to the FT. These Cl trends were not as clear

in ORACLES, and only a minor fraction of ORACLES particles contain Cl. This may suggest that for ORACLES, aqueous processing is a key driver in depositing Na onto BB particles, for example by droplet coalescence in clouds and drizzle evaporating before it reaches the surface. For CLARIFY, secondary processes may be important in depositing Cl onto BB particles.

710

We found evidence of BBA interaction with the MBL as well as marine salts affected by BB air, which has not been ~~as of now reported~~ reported to date in these campaigns. Mixing of marine air with BB air affects sea salts because of Cl replacement by nitrate, as ~~the~~ BB plumes ~~had~~ have elevated levels of NO<sub>x</sub> which replaces the to drive Cl ~~in~~ out of the SSA. Reciprocally, BBA was influenced through, for example BC mixing with sodium sulfates and sodium nitrates and the presence of Na and Cl on large number of BB particles. There is considerable mixing of Na with BBA through what we believe is aqueous processing of particles, through, for example either cloud drop coalescence or drizzle washout of aerosol and subsequent evaporation. Na and Cl were present in a higher fraction of particles in CLARIFY samples as compared to ORACLES. TEM particles show evidence of aqueous processing, with varying ratios of soluble components throughout a single particle. Particle morphology also show evidence of cloud processing, with soluble components more significantly affected by time in cloud than insoluble components such as black carbon.

715

720

725

~~We found high levels of Cl collocated with K and S in CLARIFY aerosol, particularly those collected in the MBL, and this suggests Cl gas species condensation or HCl uptake onto BB K salts.~~ The uniformity and ubiquity of Cl-containing aerosol particles on three CLARIFY filters suggests that particles on these filters have been uniformly processed and the existence of areas dominated by Cl aerosol. Further, the high density of Cl spatially on these filters implies HCl condensation onto existing particles which have been recently formed and processed uniformly. Another explanation may be that these are primary particles such as solgel organic particles with Ca, Mg and Cl dispersed. The presence of Cl rich particles are interesting as they may act as good CCN due to their ability to uptake water.

730

735

~~There is considerable mixing of Na with BBA through what we believe is aqueous processing of particles, through, for example either cloud drop coalescence or drizzle washout of aerosol and subsequent evaporation. TEM particles show evidence of aqueous processing, with varying ratios of soluble components throughout a single particle. Particle morphology also show evidence of cloud processing, with soluble components more significantly affected by time in cloud than insoluble components such as black carbon.~~

TEM analysis indicates either a loss of organic, including as an organic coating, with plume age, or an increase in organic aerosol/OA volatility with BB plume age. The reduced amount of organic observed in CLARIFY compared to ORACLES may be due to less organic being present, a more volatile organic which evaporated in the TEM chamber, or both, based on the higher fraction of organic which evaporated in the TEM chamber in CLARIFY compared to ORACLES. Che et al. (submitted) noted SOA formation in the first ~70 hours of BB aging for ORACLES; our results

740

745 suggest that the secondary organic which forms may be more volatile than the initial organic emitted from biomass  
burning. There have been different explanations for the vertical structure of single scattering albedo near Ascension  
Island, with Taylor et al. (2020) and Wu et al. (2020) suggesting a partitioning of inorganic ammonium nitrate onto  
existing particles at colder temperatures, and (Dobracki et al., (2022)) hypothesizing that the SSA-single scattering  
albedo differences are due to scattering organic material that is lost from BBA. Sedlacek et al. (2024-in prep) also  
750 found a loss of organic material coating BC with plume age in ORACLES; further the authors define different regimes  
for BBA where organic coating on black carbon increases in the first few hours after emission, the coating mass then  
plateaus after a several hours to several days when there are competing chemical physical processes such as  
photochemistry, SOA production, fragmentation and oxidation, and after several days of aging there is material loss  
due to cloud processing, volatility, and bleaching of brown carbon. While there are different explanations for the  
vertical structure of single scattering albedo near Ascension Island as well as mechanisms for organic loss with age,  
our results indicate that higher volatility organic is associated with aging; therefore we hypothesize that photolysis  
755 and fragmentation of carbon chains, either through photolysis or oxidation in-of the organic, is the predominant  
mechanism for the apparent higher volatility of aged organic. Our results are compatible with Dobracki et al.'s (2022)  
and Sedlacek et al.'s (submitted) findings of a loss of organic with age. Increasing oxidation of BB with age, as noted  
by Wu et al. (2020), and more volatile organic or loss of organic as observed with TEM results implies fragmentation  
of carbon chains.

760 ~~While studies on combustion types show differences in primary particle types in terms of mixing, amount of organic  
and elemental composition, for example for particles formed in the flaming and smoldering phase (Liu et al. 2017),  
these studies are for fresh particles, unlike the very aged combustion aerosol found in ORACLES and CLARIFY.~~  
Due to the considerable processing of changes in organic aerosol and the noted effects of the MBL on BBA, it appears  
765 that aqueous processing, oxidation, photolysis, evaporation, condensation, and interaction with the MBL are ~~the~~ key  
drivers in physical and chemical properties such as mixing state and elemental composition of ~~very~~ aged BBA, ~~rather~~  
~~than source.~~ Studies on combustion from different fuel and burn phases show differences in primary particle types in  
terms of mixing, amount of organic and elemental composition, for example for particles formed in the flaming and  
smoldering phase (Liu et al. 2017). Our results imply that due to the cloud and aqueous processing that African BBA  
770 is subject to, the salt phases present in the BBA will affect the ability of the particles to uptake water, act as CCN, and  
undergo aqueous and cloud processing. Therefore the inorganic salt content of fresh BBA, fuel type and burning  
conditions, as well as gas phase oxidation of NO<sub>x</sub> leading to formation of NO<sub>3</sub> as a significant pathway for further  
addition of inorganic salts, are key components for the atmospheric aging of BBA in these regions.

775

## Data Availability

780 Data are publicly available at the ORACLES and CLARIFY archives: <http://data.ceda.ac.uk/badc/faam/data/2017>  
and <https://espo.nasa.gov/oracles/archive/browse/oracles/id14>. Data not on ~~this~~-[these](#) websites can be provided by  
request.

### Author contribution

785 MS, H. Coe, and CD designed the research. JH, H. Coe, JR, PZ, AN are PIs of the campaigns. JT, MSR, PW, SP,  
PZ, AN performed field work or provided support for filter collection. CD performed laboratory analysis. CD and  
H. Che provided figures. CD, H. Che, MS and LZ analyzed data sets. CD led the paper writing, and all co-authors  
contributed to ideas and writing.

### Competing interests

790 The authors declare that they have no conflict of interest.

### Acknowledgements

795 The first author was supported by the NASA Postdoctoral Fellowship Grant. ORACLES is a NASA EARTH Venture  
Suborbital-2 investigation, funded by the US National Aeronautics and Space Administrations (NASA)'s Earth  
Science Division and managed through the Earth System Science Pathfinder Program Office (grant no.  
800 NNH13ZDA001N-EVS2). CLARIFY-2017 was a Natural Environment Research Council (NERC) Large Grant  
NE/L013584/1. PF is supported by the AErosols, RadiatiOn and CLOuds in southern Africa (AEROCLO-sA) project  
funded by the French National Research Agency under grant agreement n° ANR-15-CE01-0014-01, the French  
national programs LEFE/INSU and PNTS, the French National Agency for Space Studies (CNES), the European  
Union's 7th Framework Programme (FP7/2014-2018) under EUFAR2 contract n°312609, and the South African  
National Research Foundation (NRF) under grant UID 105958. [PZ acknowledges additional support from Department  
of Energy grant DE-SC0021250. We thank George Levi, instrument scientist at Tel Aviv University, for his expertise  
in TEM operation and analysis. Further we thank the manuscript reviewers for their time and comments.](#)

805 **References**

- Adachi, K., Sedlacek, A. J., Kleinman, L., Springston, S. R., Wang, J., Chand, D., Hubbe, J. M., Shilling, J. E., Onasch, T. B., Kinase, T., Sakata, K., Takahashi, Y., and Buseck, P. R.: Spherical tarball particles form through rapid chemical and physical changes of organic matter in biomass-burning smoke, *Proc. Natl. Acad. Sci.*, 116, 19336–19341, <https://doi.org/10.1073/pnas.1900129116>, 2019.
- 810 Aiken, A. C., DeCarlo, P. F., Kroll, J. H., Worsnop, D. R., Huffman, J. A., Docherty, K. S., Ulbrich, I. M., Mohr, C., Kimmel, J. R., Sueper, D., Sun, Y., Zhang, Q., Trimborn, A., Northway, M., Ziemann, P. J., Canagaratna, M. R., Onasch, T. B., Alfarra, M. R., Prevot, A. S. H., Dommen, J., Duplissy, J., Metzger, A., Baltensperger, U., and Jimenez, J. L.: O/C and OM/OC Ratios of Primary, Secondary, and Ambient Organic Aerosols with High-Resolution Time-of-Flight Aerosol Mass Spectrometry, *Environ. Sci. Technol.*, 42, 4478–4485, <https://doi.org/10.1021/es703009q>, 2008.
- 815 Andreae, M. O., Charlson, R. J., Bruynseels, F., Storms, H., VAN Grieken, R., and Maenhaut, W.: Internal mixture of sea salt, silicates, and excess sulfate in marine aerosols, *Science*, 232, 1620–1623, <https://doi.org/10.1126/science.232.4758.1620>, 1986.
- 820 Andreae, M. O., Elbert, W., Gabriel, R., Johnson, D. W., Osborne, S., and Wood, R.: Soluble ion chemistry of the atmospheric aerosol and SO<sub>2</sub> concentrations over the eastern North Atlantic during ACE-2, *Tellus B Chem. Phys. Meteorol.*, 52, 1066–1087, <https://doi.org/10.3402/tellusb.v52i4.17087>, 2000.
- Ault, A. P., Moffet, R. C., Baltrusaitis, J., Collins, D. B., Ruppel, M. J., Cuadra-Rodriguez, L. A., Zhao, D., Guasco, T. L., Ebben, C. J., Geiger, F. M., Bertram, T. H., Prather, K. A., and Grassian, V. H.: Size-Dependent Changes in Sea Spray Aerosol Composition and Properties with Different Seawater Conditions, *Environ. Sci. Technol.*, 47, 5603–5612, <https://doi.org/10.1021/es400416g>, 2013.
- 825 Beilke, S. and Gravenhorst, G.: HETEROGENEOUS SO<sub>2</sub>-OXIDATION IN THE DROPLET PHASE, in: *Sulfur in the Atmosphere*, edited by: Husar, R. B., Lodge, J. P., and Moore, D. J., Pergamon, 231–239, <https://doi.org/10.1016/B978-0-08-022932-4.50025-2>, 1978.
- 830 Buseck, P. R. and Pósfai, M.: Airborne minerals and related aerosol particles: Effects on climate and the environment, *Proc. Natl. Acad. Sci.*, 96, 3372–3379, <https://doi.org/10.1073/pnas.96.7.3372>, 1999.
- Che, H., Segal-Rozenhaimer, M. S., Zhang, L., Dang, C., Zuidema, P., Dobracki, A., Sedlacek III, A., Coe, H., Wu, H., Taylor, J., Redemann, J., Haywood, J.: Cloud Processing and Weeklong ageing significantly affect the biomass burning aerosol over the south-eastern Atlantic. submitted.
- 835 Chou, C., Formenti, P., Maille, M., Ausset, P., Helas, G., Harrison, M., and Osborne, S.: Size distribution, shape, and composition of mineral dust aerosols collected during the African Monsoon Multidisciplinary Analysis Special Observation Period 0: Dust and Biomass-Burning Experiment field campaign in Niger, January 2006, *J. Geophys. Res. Atmospheres*, 113, <https://doi.org/10.1029/2008JD009897>, 2008.
- 840 Dobracki, A., Zuidema, P., Howell, S., Saide, P., Freitag, S., Aiken, A. C., Burton, S. P., Sedlacek III, A. J., Redemann, J., and Wood, R.: Non-reversible aging can increase solar absorption in African biomass burning aerosol plumes of intermediate age, *Atmospheric Chem. Phys. Discuss.*, 1–42, <https://doi.org/10.5194/acp-2021-1081>, 2022.

845 Dzambo, A. M., Sy, O. O., McFarquhar, G. M., Poellot, M. R., Gupta, S., O'Brien, J. R., Nenes, A., Kacarab,  
M., Wong, J. P. S., Small-Griswold, J. D., Thornhill, K. L., Noone, D., Podolske, J. R., Schmidt, K. S.,  
Pilewskie, P., Chen, H., Cochrane, S. P., Sedlacek, A. J., Lang, T. J., Stith, E., Segal-Rozenhaimer, M.,  
Ferrare, R. A., Burton, S. P., Hostetler, C. A., Diner, D. J., Seidel, F. C., Platnick, S. E., Myers, J. S., Meyer, K.  
G., Spangenberg, D. A., Maring, H., and Gao, L.: An overview of the ORACLES (ObseRvations of Aerosols  
above CLouds and their intEractionS) project: aerosol–cloud–radiation interactions in the southeast  
850 Atlantic basin, *Atmospheric Chem. Phys.*, 21, 1507–1563, <https://doi.org/10.5194/acp-21-1507-2021>,  
2021.

Evens, B., Sorooshian, A., Aldhaif, A. M., Shingler, T., Crosbie, E., Ziemba, L., Campuzano-Jost, P.,  
Jimenez, J. L., and Wisthaler, A.: Is there an aerosol signature of chemical cloud processing?,  
*Atmospheric Chem. Phys.*, 18, 16099–16119, <https://doi.org/10.5194/acp-18-16099-2018>, 2018.

855 Gard, E. E., Kleeman, M. J., Gross, D. S., Hughes, L. S., Allen, J. O., Morrical, B. D., Fergenson, D. P.,  
Dienes, T., Gälli, M. E., Johnson, R. J., Cass, G. R., and Prather, K. A.: Direct Observation of  
Heterogeneous Chemistry in the Atmosphere, *Science*, 279, 1184–1187,  
<https://doi.org/10.1126/science.279.5354.1184>, 1998.

860 Garstang, M., Tyson, P. D., Swap, R., Edwards, M., Kållberg, P., and Lindesay, J. A.: Horizontal and vertical  
transport of air over southern Africa, *J. Geophys. Res. Atmospheres*, 101, 23721–23736,  
<https://doi.org/10.1029/95JD00844>, 1996.

Gaudichet, A., Echalar, F., Chatenet, B., Quisefit, J. P., Malingre, G., Cachier, H., Buat-Menard, P., Artaxo,  
P., and Maenhaut, W.: Trace elements in tropical African savanna biomass burning aerosols, *J.*  
*Atmospheric Chem.*, 22, 19–39, <https://doi.org/10.1007/BF00708179>, 1995.

865 Gordon, H., Field, P. R., Abel, S. J., Dalvi, M., Grosvenor, D. P., Hill, A. A., Johnson, B. T., Miltenberger, A.  
K., Yoshioka, M., and Carslaw, K. S.: Large simulated radiative effects of smoke in the south-east Atlantic,  
*Atmospheric Chem. Phys.*, 18, 15261–15289, <https://doi.org/10.5194/acp-18-15261-2018>, 2018.

Grabowski, W. W. and Wang, L.-P.: Growth of Cloud Droplets in a Turbulent Environment, *Annu. Rev.*  
*Fluid Mech.*, 45, 293–324, <https://doi.org/10.1146/annurev-fluid-011212-140750>, 2013.

870 Gunthe, S. S., Liu, P., Panda, U., Raj, S. S., Sharma, A., Darbyshire, E., Reyes-Villegas, E., Allan, J., Chen, Y.,  
Wang, X., Song, S., Pöhlker, M. L., Shi, L., Wang, Y., Kommula, S. M., Liu, T., Ravikrishna, R., McFiggans,  
G., Mickley, L. J., Martin, S. T., Pöschl, U., Andreae, M. O., and Coe, H.: Enhanced aerosol particle growth  
sustained by high continental chlorine emission in India, *Nat. Geosci.*, 14, 77–84,  
<https://doi.org/10.1038/s41561-020-00677-x>, 2021.

875 Hand, V. L., Capes, G., Vaughan, D. J., Formenti, P., Haywood, J. M., and Coe, H.: Evidence of internal  
mixing of African dust and biomass burning particles by individual particle analysis using electron beam  
techniques, *J. Geophys. Res. Atmospheres*, 115, <https://doi.org/10.1029/2009JD012938>, 2010.

880 Haslett, S. L., Thomas, J. C., Morgan, W. T., Hadden, R., Liu, D., Allan, J. D., Williams, P. I., Keita, S.,  
Liousse, C., and Coe, H.: Highly controlled, reproducible measurements of aerosol emissions from  
combustion of a common African biofuel source, *Atmospheric Chem. Phys.*, 18, 385–403,  
<https://doi.org/10.5194/acp-18-385-2018>, 2018.



- Haywood, J. M., Abel, S. J., Barrett, P. A., Bellouin, N., Blyth, A., Bower, K. N., Brooks, M., Carslaw, K., Che, H., Coe, H., Cotterell, M. I., Crawford, I., Cui, Z., Davies, N., Dingley, B., Field, P., Formenti, P., Gordon, H., de Graaf, M., Herbert, R., Johnson, B., Jones, A. C., Langridge, J. M., Malavelle, F., Partridge, D. G., Peers, F., Redemann, J., Stier, P., Szpek, K., Taylor, J. W., Watson-Parris, D., Wood, R., Wu, H., and Zuidema, P.: The CLoud–Aerosol–Radiation Interaction and Forcing: Year 2017 (CLARIFY-2017) measurement campaign, *Atmospheric Chem. Phys.*, 21, 1049–1084, <https://doi.org/10.5194/acp-21-1049-2021>, 2021.
- 885
- He, X.-C., Tham, Y. J., Dada, L., Wang, M., Finkenzeller, H., Stolzenburg, D., Iyer, S., Simon, M., Kürten, A., Shen, J., Rörup, B., Rissanen, M., Schobesberger, S., Baalbaki, R., Wang, D. S., Koenig, T. K., Jokinen, T., Sarnela, N., Beck, L. J., Almeida, J., Amanatidis, S., Amorim, A., Ataei, F., Baccharini, A., Bertozzi, B., Bianchi, F., Brilke, S., Caudillo, L., Chen, D., Chiu, R., Chu, B., Dias, A., Ding, A., Dommen, J., Duplissy, J., Haddad, I. E., Carracedo, L. G., Granzin, M., Hansel, A., Heinritzi, M., Hofbauer, V., Junninen, H., Kangasluoma, J., Kempainen, D., Kim, C., Kong, W., Krechmer, J. E., Kvashin, A., Laitinen, T., Lamkaddam, H., Lee, C. P., Lehtipalo, K., Leiminger, M., Li, Z., Makhmutov, V., Manninen, H. E., Marie, G., Marten, R., Mathot, S., Mauldin, R. L., Mentler, B., Möhler, O., Müller, T., Nie, W., Onnela, A., Petäjä, T., Pfeifer, J., Philippov, M., Ranjithkumar, A., Saiz-Lopez, A., Salma, I., Scholz, W., Schuchmann, S., Schulze, B., Steiner, G., Stozhkov, Y., Tauber, C., Tomé, A., Thakur, R. C., Väisänen, O., Vazquez-Pufleau, M., Wagner, A. C., Wang, Y., Weber, S. K., Winkler, P. M., Wu, Y., Xiao, M., Yan, C., Ye, Q., Ylisirniö, A., Zauner-Wieczorek, M., Zha, Q., Zhou, P., Flagan, R. C., Curtius, J., Baltensperger, U., Kulmala, M., Kerminen, V.-M., Kurtén, T., et al.: Role of iodine oxoacids in atmospheric aerosol nucleation, *Science*, 371, 589–595, <https://doi.org/10.1126/science.abe0298>, 2021.
- 890
- 905
- 900
- Hoffman, R. C., Laskin, A., and Finlayson-Pitts, B. J.: Sodium nitrate particles: physical and chemical properties during hydration and dehydration, and implications for aged sea salt aerosols, *J. Aerosol Sci.*, 35, 869–887, <https://doi.org/10.1016/j.jaerosci.2004.02.003>, 2004.
- 905
- Hudson, P. K., Murphy, D. M., Cziczo, D. J., Thomson, D. S., Gouw, J. A. de, Warneke, C., Holloway, J., Jost, H.-J., and Hübler, G.: Biomass-burning particle measurements: Characteristic composition and chemical processing, *J. Geophys. Res. Atmospheres*, 109, <https://doi.org/10.1029/2003JD004398>, 2004.
- Jahl, L. G., Brubaker, T. A., Polen, M. J., Jahn, L. G., Cain, K. P., Bowers, B. B., Fahy, W. D., Graves, S., and Sullivan, R. C.: Atmospheric aging enhances the ice nucleation ability of biomass-burning aerosol, *Sci. Adv.*, <https://doi.org/10.1126/sciadv.abd3440>, 2021.
- 910
- Jahn, L. G., Polen, M. J., Jahl, L. G., Brubaker, T. A., Somers, J., and Sullivan, R. C.: Biomass combustion produces ice-active minerals in biomass-burning aerosol and bottom ash, *Proc. Natl. Acad. Sci.*, 117, 21928–21937, <https://doi.org/10.1073/pnas.1922128117>, 2020.
- Jahn, L. G., Jahl, L. G., Bowers, B. B., and Sullivan, R. C.: Morphology of Organic Carbon Coatings on Biomass-Burning Particles and Their Role in Reactive Gas Uptake, *ACS Earth Space Chem.*, 5, 2184–2195, <https://doi.org/10.1021/acsearthspacechem.1c00237>, 2021.
- 915
- Jin, X., Zhu, Q., and Cohen, R. C.: Direct estimates of biomass burning NO<sub>x</sub> emissions and lifetimes using daily observations from TROPOMI, *Atmospheric Chem. Phys.*, 21, 15569–15587, <https://doi.org/10.5194/acp-21-15569-2021>, 2021.

- 920 Kerminen, V.-M., Teinilä, K., Hillamo, R., and Pakkanen, T.: Substitution of chloride in sea-salt particles by inorganic and organic anions, *J. Aerosol Sci.*, 29, 929–942, [https://doi.org/10.1016/S0021-8502\(98\)00002-0](https://doi.org/10.1016/S0021-8502(98)00002-0), 1998.
- King, S. M., Butcher, A. C., Rosenoern, T., Coz, E., Lieke, K. I., de Leeuw, G., Nilsson, E. D., and Bilde, M.: Investigating Primary Marine Aerosol Properties: CCN Activity of Sea Salt and Mixed Inorganic–Organic Particles, *Environ. Sci. Technol.*, 46, 10405–10412, <https://doi.org/10.1021/es300574u>, 2012.
- 925 Kirpes, R. M., Bondy, A. L., Bonanno, D., Moffet, R. C., Wang, B., Laskin, A., Ault, A. P., and Pratt, K. A.: Secondary sulfate is internally mixed with sea spray aerosol and organic aerosol in the winter Arctic, *Atmospheric Chem. Phys.*, 18, 3937–3949, <https://doi.org/10.5194/acp-18-3937-2018>, 2018.
- Krueger, B. J., Grassian, V. H., Iedema, M. J., Cowin, J. P., and Laskin, A.: Probing Heterogeneous Chemistry of Individual Atmospheric Particles Using Scanning Electron Microscopy and Energy-Dispersive X-ray Analysis, *Anal. Chem.*, 75, 5170–5179, <https://doi.org/10.1021/ac034455t>, 2003.
- 930 Laskin, A., Moffet, R. C., Gilles, M. K., Fast, J. D., Zaveri, R. A., Wang, B., Nigge, P., and Shutthanandan, J.: Tropospheric chemistry of internally mixed sea salt and organic particles: Surprising reactivity of NaCl with weak organic acids, *J. Geophys. Res. Atmospheres*, 117, <https://doi.org/10.1029/2012JD017743>, 2012.
- 935 Lewis, E. R. and Schwartz, S. E.: Sea Salt Aerosol Production: Mechanisms, Methods, Measurements, and Models- A Critical Review, American Geophysical Union (AGU), <https://doi.org/10.1002/9781118666050.ch1>, 2004.
- Li, J., Pósfai, M., Hobbs, P. V., and Buseck, P. R.: Individual aerosol particles from biomass burning in southern Africa: 2, Compositions and aging of inorganic particles, *J. Geophys. Res. Atmospheres*, 108, 8484, <https://doi.org/10.1029/2002JD002310>, 2003.
- 940 Lignell, H., Hinks, M. L., and Nizkorodov, S. A.: Exploring matrix effects on photochemistry of organic aerosols, *Proc. Natl. Acad. Sci.*, 111, 13780–13785, <https://doi.org/10.1073/pnas.1322106111>, 2014.
- Liu, L., Kong, S., Zhang, Y., Wang, Y., Xu, L., Yan, Q., Lingaswamy, A. P., Shi, Z., Lv, S., Niu, H., Shao, L., Hu, M., Zhang, D., Chen, J., Zhang, X., and Li, W.: Morphology, composition, and mixing state of primary particles from combustion sources — crop residue, wood, and solid waste, *Sci. Rep.*, 7, 5047, <https://doi.org/10.1038/s41598-017-05357-2>, 2017.
- 945 Liu, X., Van Espen, P., Adams, F., Cafmeyer, J., and Maenhaut, W.: Biomass Burning in Southern Africa: Individual Particle Characterization of Atmospheric Aerosols and Savanna Fire Samples, *J. Atmospheric Chem.*, 36, 135–155, <https://doi.org/10.1023/A:1006387031927>, 2000.
- 950 Miller, D. F., Lamb, D., and Gertler, A. W.: SO<sub>2</sub> oxidation in cloud drops containing NaCl or sea salt as condensation nuclei, *Atmospheric Environ.* 1967, 21, 991–993, [https://doi.org/10.1016/0004-6981\(87\)90096-5](https://doi.org/10.1016/0004-6981(87)90096-5), 1987.
- Murphy, D. M., Anderson, J. R., Quinn, P. K., McInnes, L. M., Brechtel, F. J., Kreidenweis, S. M., Middlebrook, A. M., Pósfai, M., Thomson, D. S., and Buseck, P. R.: Influence of sea-salt on aerosol radiative properties in the Southern Ocean marine boundary layer, *Nature*, 392, 62–65, <https://doi.org/10.1038/32138>, 1998.

- Nash, D. G., Baer, T., and Johnston, M. V.: Aerosol mass spectrometry: An introductory review, *Int. J. Mass Spectrom.*, 258, 2–12, <https://doi.org/10.1016/j.ijms.2006.09.017>, 2006.
- 960 Ng, N. L., Canagaratna, M. R., Zhang, Q., Jimenez, J. L., Tian, J., Ulbrich, I. M., Kroll, J. H., Docherty, K. S., Chhabra, P. S., Bahreini, R., Murphy, S. M., Seinfeld, J. H., Hildebrandt, L., Donahue, N. M., DeCarlo, P. F., Lanz, V. A., Prévôt, A. S. H., Dinar, E., Rudich, Y., and Worsnop, D. R.: Organic aerosol components observed in Northern Hemispheric datasets from Aerosol Mass Spectrometry, *Atmos Chem Phys*, 10, 4625–4641, <https://doi.org/10.5194/acp-10-4625-2010>, 2010.
- 965 Ng, N. L., Canagaratna, M. R., Jimenez, J. L., Chhabra, P. S., Seinfeld, J. H., and Worsnop, D. R.: Changes in organic aerosol composition with aging inferred from aerosol mass spectra, *Atmospheric Chem. Phys.*, 11, 6465–6474, <https://doi.org/10.5194/acp-11-6465-2011>, 2011.
- 970 Pistone, K., Redemann, J., Doherty, S., Zuidema, P., Burton, S., Cairns, B., Cochrane, S., Ferrare, R., Flynn, C., Freitag, S., Howell, S. G., Kacenelenbogen, M., LeBlanc, S., Liu, X., Schmidt, K. S., Sedlacek III, A. J., Segal-Rozenhaimer, M., Shinozuka, Y., Stamnes, S., van Dierenhoven, B., Van Harten, G., and Xu, F.: Intercomparison of biomass burning aerosol optical properties from in situ and remote-sensing instruments in ORACLES-2016, *Atmospheric Chem. Phys.*, 19, 9181–9208, <https://doi.org/10.5194/acp-19-9181-2019>, 2019.
- 975 Pósfai, M., Anderson, J. R., Buseck, P. R., and Sievering, H.: Compositional variations of sea-salt-mode aerosol particles from the North Atlantic, *J. Geophys. Res. Atmospheres*, 100, 23063–23074, <https://doi.org/10.1029/95JD01636>, 1995.
- Pósfai, M., Simonics, R., Li, J., Hobbs, P. V., and Buseck, P. R.: Individual aerosol particles from biomass burning in southern Africa: 1. Compositions and size distributions of carbonaceous particles, *J. Geophys. Res. Atmospheres*, 108, <https://doi.org/10.1029/2002JD002291>, 2003.
- 980 Prather, K. A., Bertram, T. H., Grassian, V. H., Deane, G. B., Stokes, M. D., DeMott, P. J., Aluwihare, L. I., Palenik, B. P., Azam, F., Seinfeld, J. H., Moffet, R. C., Molina, M. J., Cappa, C. D., Geiger, F. M., Roberts, G. C., Russell, L. M., Ault, A. P., Baltrusaitis, J., Collins, D. B., Corrigan, C. E., Cuadra-Rodriguez, L. A., Ebben, C. J., Forestieri, S. D., Guasco, T. L., Hersey, S. P., Kim, M. J., Lambert, W. F., Modini, R. L., Mui, W., Pedler, B. E., Ruppel, M. J., Ryder, O. S., Schoepp, N. G., Sullivan, R. C., and Zhao, D.: Bringing the ocean
- 985 into the laboratory to probe the chemical complexity of sea spray aerosol, *Proc. Natl. Acad. Sci.*, 110, 7550–7555, <https://doi.org/10.1073/pnas.1300262110>, 2013.
- 990 Redemann, J., Wood, R., Zuidema, P., Doherty, S. J., Luna, B., LeBlanc, S. E., Diamond, M. S., Shinozuka, Y., Chang, I. Y., Ueyama, R., Pfister, L., Ryoo, J., Dobracki, A. N., da Silva, A. M., Longo, K. M., Kacenelenbogen, M. S., Flynn, C. J., Pistone, K., Knox, N. M., Piketh, S. J., Haywood, J. M., Formenti, P., Mallet, M., Stier, P., Ackerman, A. S., Bauer, S. E., Fridlind, A. M., Carmichael, G. R., Saide, P. E., Ferrada, G. A., Howell, S. G., Freitag, S., Cairns, B., Holben, B. N., Knobelspiesse, K. D., Tanelli, S., L’Ecuyer, T. S., Dzambo, A. M., Sy, O. O., McFarquhar, G. M., Poellot, M. R., Gupta, S., O’Brien, J. R., Nenes, A., Kacarab, M., Wong, J. P. S., Small-Griswold, J. D., Thornhill, K. L., Noone, D., Podolske, J. R., Schmidt, K. S., Pilewskie, P., Chen, H., Cochrane, S. P., Sedlacek, A. J., Lang, T. J., Stith, E., Segal-Rozenhaimer, M.,
- 995 Ferrare, R. A., Burton, S. P., Hostetler, C. A., Diner, D. J., Seidel, F. C., Platnick, S. E., Myers, J. S., Meyer, K. G., Spangenberg, D. A., Maring, H., and Gao, L.: An overview of the ORACLES (ObSErvations of Aerosols above CLouds and their intERactionS) project: aerosol–cloud–radiation interactions in the southeast Atlantic basin, *Atmospheric Chem. Phys.*, 21, 1507–1563, <https://doi.org/10.5194/acp-21-1507-2021>, 2021.

- 1000 Reid, J. P., Bertram, A. K., Topping, D. O., Laskin, A., Martin, S. T., Petters, M. D., Pope, F. D., and Rovelli, G.: The viscosity of atmospherically relevant organic particles, *Nat. Commun.*, 9, 956, <https://doi.org/10.1038/s41467-018-03027-z>, 2018.
- Roberts, G., Wooster, M. J., Perry, G. L. W., Drake, N., Rebelo, L.-M., and Dipotso, F.: Retrieval of biomass combustion rates and totals from fire radiative power observations: Application to southern Africa using geostationary SEVIRI imagery, *J. Geophys. Res. Atmospheres*, 110, <https://doi.org/10.1029/2005JD006018>, 2005.
- 1005 Roberts, G., Wooster, M. J., and Lagoudakis, E.: Annual and diurnal african biomass burning temporal dynamics, *Biogeosciences*, 6, 849–866, <https://doi.org/10.5194/bg-6-849-2009>, 2009.
- Sanchez-Marroquin, A., Hedges, D. H. P., Hiscock, M., Parker, S. T., Rosenberg, P. D., Trembath, J., Walshaw, R., Burke, I. T., McQuaid, J. B., and Murray, B. J.: Characterisation of the filter inlet system on the FAAM BAe-146 research aircraft and its use for size-resolved aerosol composition measurements, *Atmospheric Meas. Tech.*, 12, 5741–5763, <https://doi.org/10.5194/amt-12-5741-2019>, 2019.
- 1010 Sedlacek III, A. J., Buseck, P. R., Adachi, K., Onasch, T. B., Springston, S. R., and Kleinman, L.: Formation and evolution of tar balls from northwestern US wildfires, *Atmospheric Chem. Phys.*, 18, 11289–11301, <https://doi.org/10.5194/acp-18-11289-2018>, 2018.
- 1015 Sedlacek III, A., Lewis, E. R., Onasch, T. B., Zuideman, P., Redemann, J., Jaffe, D., Kleinman, L. I.: Black Carbon Particle Mixing State Analysis Allows Classification of Biomass Burn Aerosol Lifecycle into Three Aging Regimes. in prep.
- Seinfeld, J. H. and Pandis, S. N.: *Atmospheric Chemistry and Physics: From Air Pollution to Climate Change*, John Wiley & Sons, 1119 pp., 2012.
- 1020 Semeniuk, T. A., Wise, M. E., Martin, S. T., Russell, L. M., and Buseck, P. R.: Hygroscopic behavior of aerosol particles from biomass fires using environmental transmission electron microscopy, *J. Atmospheric Chem.*, 56, 259–273, <https://doi.org/10.1007/s10874-006-9055-5>, 2007.
- Sievering, H., Boatman, J., Galloway, J., Keene, W., Kim, Y., Luria, M., and Ray, J.: Heterogeneous sulfur conversion in sea-salt aerosol particles: the role of aerosol water content and size distribution, *Atmospheric Environ. Part Gen. Top.*, 25, 1479–1487, [https://doi.org/10.1016/0960-1686\(91\)90007-T](https://doi.org/10.1016/0960-1686(91)90007-T), 1991.
- 1025 Signorell, R. and Reid, J. (Eds.): *Fundamentals and Applications in Aerosol Spectroscopy*, CRC Press, <https://doi.org/10.1201/b10417>, 2011.
- 1030 Stein, A. F., Draxler, R. R., Rolph, G. D., Stunder, B. J. B., Cohen, M. D., and Ngan, F.: NOAA’s HYSPLIT Atmospheric Transport and Dispersion Modeling System, *Bull. Am. Meteorol. Soc.*, 96, 2059–2077, <https://doi.org/10.1175/BAMS-D-14-00110.1>, 2015.
- Taylor, J. W., Wu, H., Szpek, K., Bower, K., Crawford, I., Flynn, M. J., Williams, P. I., Dorsey, J., Langridge, J. M., Cotterell, M. I., Fox, C., Davies, N. W., Haywood, J. M., and Coe, H.: Absorption closure in highly aged biomass burning smoke, *Atmospheric Chem. Phys.*, 20, 11201–11221, <https://doi.org/10.5194/acp-20-11201-2020>, 2020.
- 1035

Vakkari, V., Beukes, J. P., Dal Maso, M., Aurela, M., Josipovic, M., and van Zyl, P. G.: Major secondary aerosol formation in southern African open biomass burning plumes, *Nat. Geosci.*, 11, 580–583, <https://doi.org/10.1038/s41561-018-0170-0>, 2018.

1040 Wong, J. P. S., Zhou, S., and Abbatt, J. P. D.: Changes in Secondary Organic Aerosol Composition and Mass due to Photolysis: Relative Humidity Dependence, *J. Phys. Chem. A*, 119, 4309–4316, <https://doi.org/10.1021/jp506898c>, 2015.

1045 Wu, H., Taylor, J. W., Szpek, K., Langridge, J. M., Williams, P. I., Flynn, M., Allan, J. D., Abel, S. J., Pitt, J., Cotterell, M. I., Fox, C., Davies, N. W., Haywood, J., and Coe, H.: Vertical variability of the properties of highly aged biomass burning aerosol transported over the southeast Atlantic during CLARIFY-2017, *Atmospheric Chem. Phys.*, 20, 12697–12719, <https://doi.org/10.5194/acp-20-12697-2020>, 2020.

1050 Young, G., Jones, H. M., Darbyshire, E., Baustian, K. J., McQuaid, J. B., Bower, K. N., Connolly, P. J., Gallagher, M. W., and Choularton, T. W.: Size-segregated compositional analysis of aerosol particles collected in the European Arctic during the ACCACIA campaign, *Atmos Chem Phys*, 16, 4063–4079, <https://doi.org/10.5194/acp-16-4063-2016>, 2016.

Zheng, G., Wang, Y., Wood, R., Jensen, M. P., Kuang, C., McCoy, I. L., Matthews, A., Mei, F., Tomlinson, J. M., Shilling, J. E., Zawadowicz, M. A., Crosbie, E., Moore, R., Ziemba, L., Andreae, M. O., and Wang, J.: New particle formation in the remote marine boundary layer, *Nat. Commun.*, 12, 527, <https://doi.org/10.1038/s41467-020-20773-1>, 2021.

1055 Zuidema, P., Sedlacek III, A. J., Flynn, C., Springston, S., Delgado, R., Zhang, J., Aiken, A. C., Koontz, A., and Muradyan, P.: The Ascension Island boundary layer in the remote southeast Atlantic is often smoky, *Geophys. Res. Lett.*, 45, <https://doi.org/10.1002/2017GL076926>, 2018.

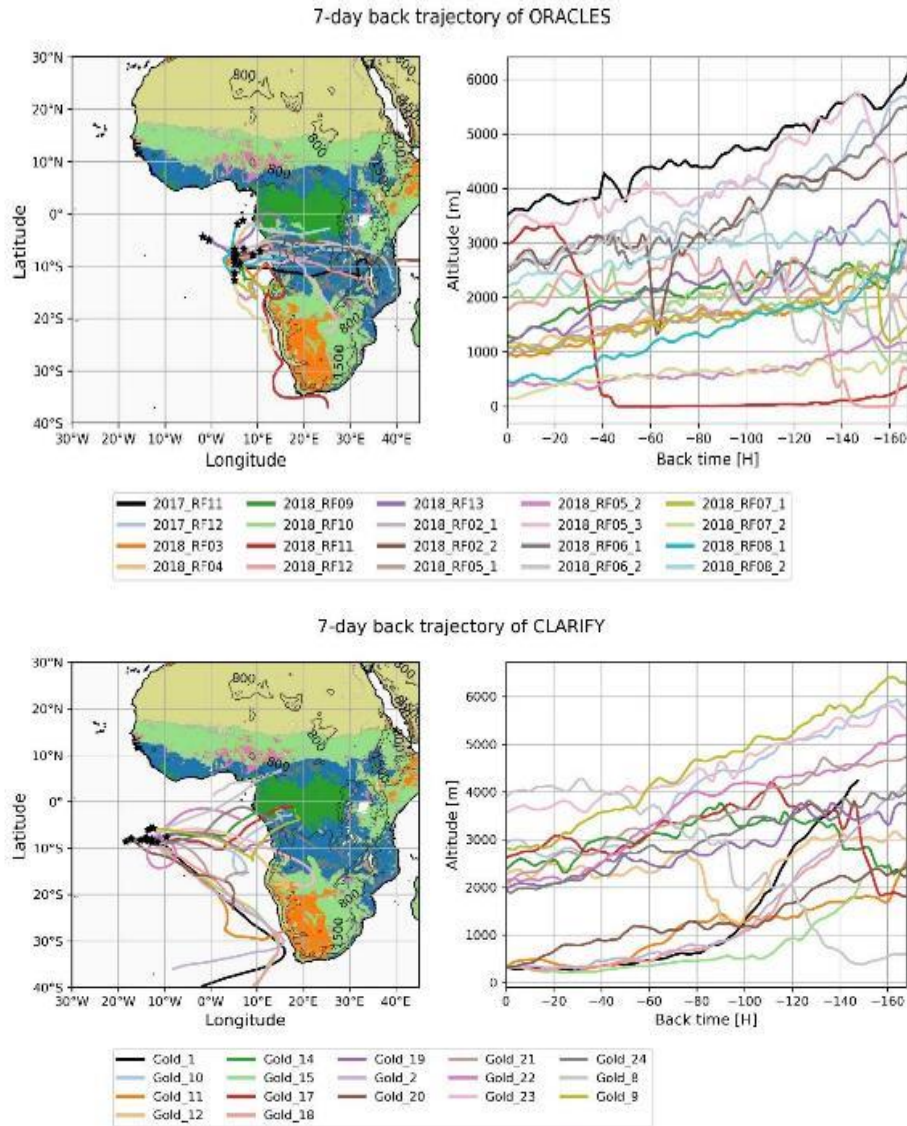
1060

1065

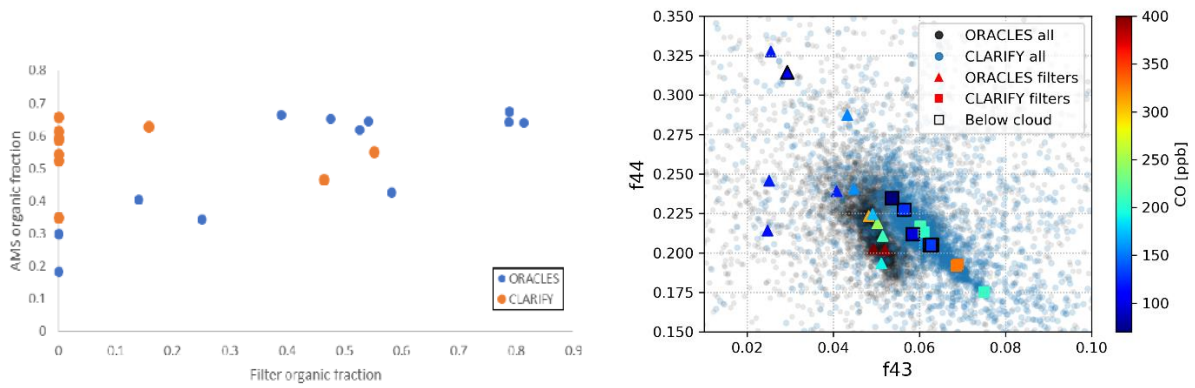
**Table 1 Filter IDs, ancillary online aerosol data, location, altitude, backtrajectory-based time from fire as detailed in the text, and in-cloud time over previous 24 hours**

Campaign and year	Filter	Date	Particles analyzed	Latitude (°)	Longitude (°)	Altitude (m)	Org ( $\mu\text{g}/\text{cm}^3$ )	SO4 ( $\mu\text{g}/\text{cm}^3$ )	NO3 ( $\mu\text{g}/\text{cm}^3$ )	NH4 ( $\mu\text{g}/\text{cm}^3$ )	BC ( $\mu\text{g}/\text{cm}^3$ )	BC (particles/ $\text{cm}^3$ )	CO (ppbv)	Cloud time in 24hrs (hours)	Above or Below cloud	Time from fire (days)	
ORACLES 2017	RF11Filter5	8/30/2017	47	-9.47	5	3505	20.5	1.5	3.1	1.3	3.8	1162	395	0	Above	2	
ORACLES 2018	RF02_1	9/30/2018	23	-7.64	5	894	1.1	0.5	0.1	0.1	0.2	56	110	9.35	Below	5	
	RF02_2	9/30/2018	35	-7.82	5.03	2606	6.6	0.9	0.3	0.2	0.9	273	210	6.55	Above	1	
	RF03	10/2/2018	59	-7.67	5.5	982						1.2	346	156	18.08	Above	6
	RF04	10/3/2018	65	-6.75	7	1195	0.5	0.4	0.0	0.1	0.3	117	120	6.58	Above	6	
	RF05_1	10/5/2018	55	-9.5	6.17	943	0.7	0.5	0.1	0.2	1	297	154	11.29	Above	6	
	RF05_2	10/5/2018	64	-9.5	6.21	378	0.2	0.2	0.0	0.1	0.5	119	106	8.42	Below	marine	
	RF05_3	10/5/2018	37	-9.5	6.11	3247	6.4	1.2	0.5	0.4	0.9	294	210	0	Above	1	
	RF06_1	10/7/2018	49	-8.91	5	2444	6	1.1	0.4	0.4	1.3	421	248	0	Above	2	
	RF06_2	10/7/2018	39	-6.86	5	2570	2.3	0.6	0.1	0.2	0.5	193	173	0	Above	2	
	RF07_1	10/10/2018	43	-12.77	5.01	1091	0.6	0.3	0.0	0.1	0.5	159	121	2.59	Above	6	
	RF07_2	10/10/2018	29	-7.39	5	159	0.3	0.2	0.0	0.0	0.4	108	123	0.18	Below	marine	
	RF09	10/15/2018	56	-11.35	5	1307	1.2	0.5	0.1	0.1	1	265	158	0.5	Above	7	
	RF10	10/17/2018	66	-7.18	10.5	1986	18.5	3	2.6	1.4	2.3	807	417	2.25	Above	1	
RF11	10/19/2018	62	-7.95	9	3027	3.7	0.6	0.3	0.2	0.9	292	190	0.08	Above	2		
RF13	10/23/2018	33	-5.01	-0.68	1127	0.1	0.1	0.0	0.0	0.1	42	118	6.94	Above	4		
CLARIFY 2017	Gold_1	8/17/2017	49	-8.8	-11.52	323	4.1	1.9	0.2	0.7	0.5	195	108	0	Below	marine	
	Gold_8	8/22/2017	27	-8.46	-13.43	3902	6.9	1.3	1.4	1.0	1.2	380	204	20.77	Above	7	
	Gold_9	8/23/2017	39	-5.67	-12.42	2813	18.8	2.9	3.1	2.0	3	934	329	0	Above	4	
	Gold_10	8/24/2017	42	-8.37	-15.24	2918	3.9	0.6	0.3	0.3	0.8	232	158	0	Above	5	
	Gold_11	8/24/2017	54	-7.7	-13.85	319	0.3	0.3	0.0	0.1	0.1	17	70	0	Below	15	
	Gold_14	8/28/2017	47	-8.26	-13.74	2845						683	262	0	Above	6	
	Gold_15	8/28/2017	22	-8.28	-13.66	329						1	287	158	0.3	Below	marine
	Gold_18	8/29/2017	32	-8.69	-12.47	332						0.5	174	119	0	Below	marine
	Gold_19	8/30/2017	57	-8	-17.08	1969	5.7	1.6	0.9	0.8	1.8	535	212	0.38	Above	7	
	Gold_20	8/30/2017	30	-8.03	-17.3	329	3.6	1.2	0.2	0.5	0.7	225	130	0	Below	marine	
	Gold_21	9/7/2017	43	-8.32	-18.48	2357						1.5	436	177	0	Above	6
	Gold_22	9/2/2017	43	-5.66	-13	2139	2.1	0.6	0.2	0.3	0.7	208	128	0	Below	9	
	Gold_23	9/2/2017	44	-6.14	-13.52	3500	12.2	1.3	2.4	1.3	2.5	750	273	0	Above	4	
Gold_24	9/4/2017	24	-7.91	-12.72	1950	13.4	2.3	1.9	1.4	3.6	968	331	7.84	Above	4		

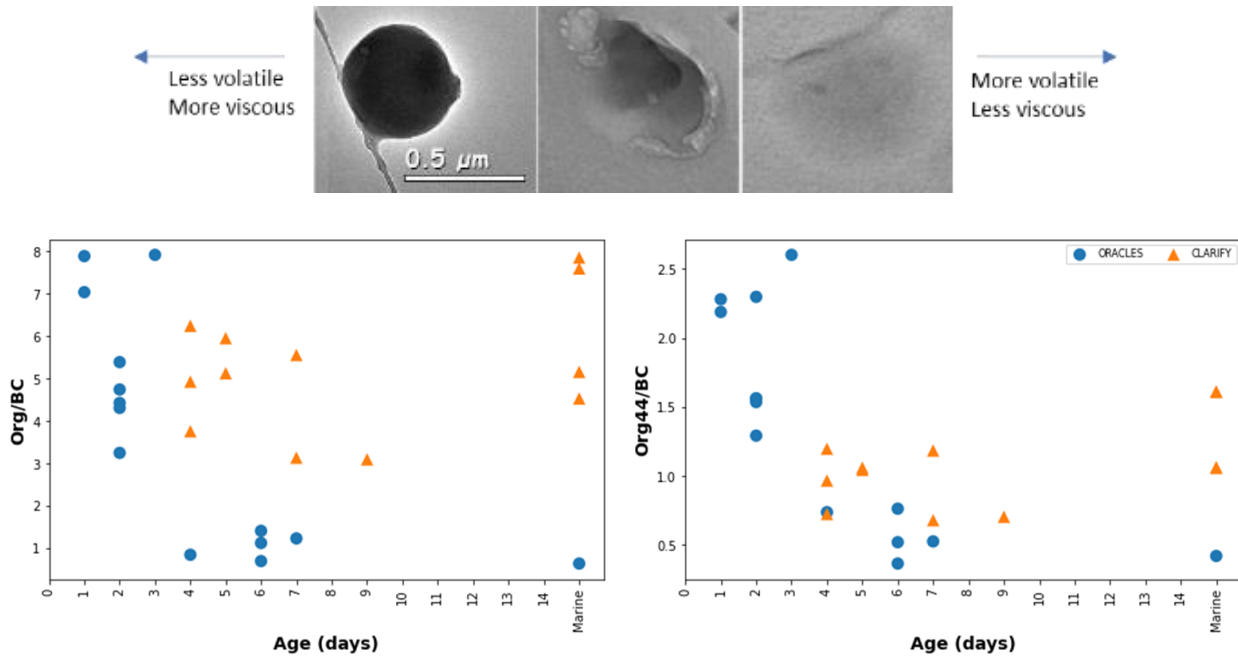
1070



1075 **Figure 1** The location of filter sampling and back trajectories related to each filter, including altitude for ORACLES 2017-18 (upper panel), and CLARIFY 2017 (lower panel). Map colors relate to MODIS land cover types.



1080 Figure 2 (left) AMS organic fraction vs filter organic fraction and (right) f44 vs f43 space for ORACLES and CLARIFY campaigns with filters marked as triangles for ORACLES and squares for CLARIFY. Colors of the marks denoting filter sampling represent CO concentration, as shown in the colorbar. Samples collected below-cloud are outlined with a black border.



1085 Example of different viscosity/volatility organic aerosol (top panel) showing more round and viscous particles for ORACLES (on the left), and more volatile for CLARIFY (middle and right top panels) and Org/BC and Org44/BC ratios with time from fire source (bottom panel)

1090



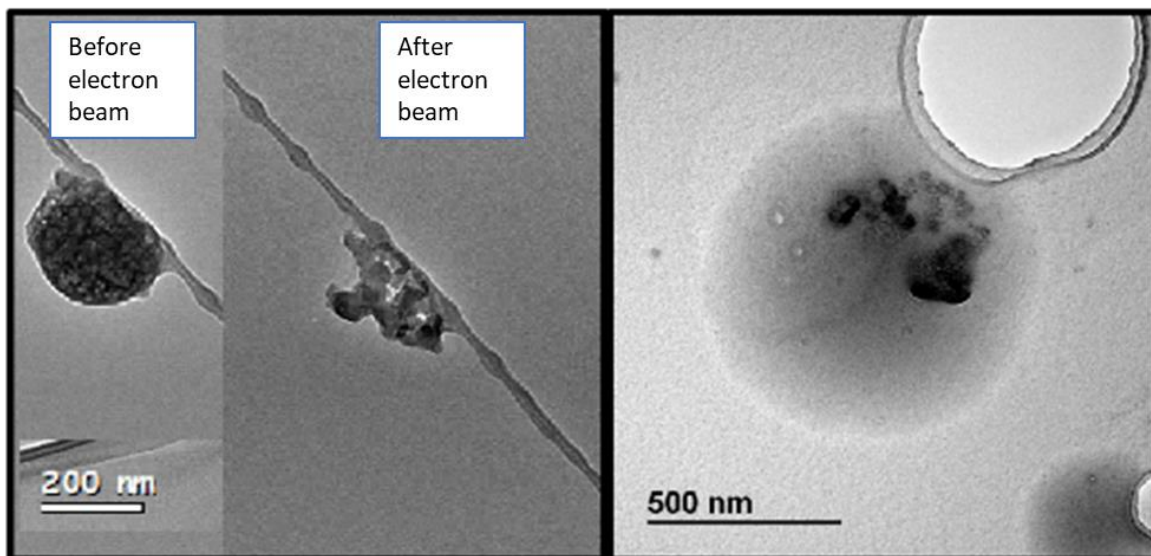
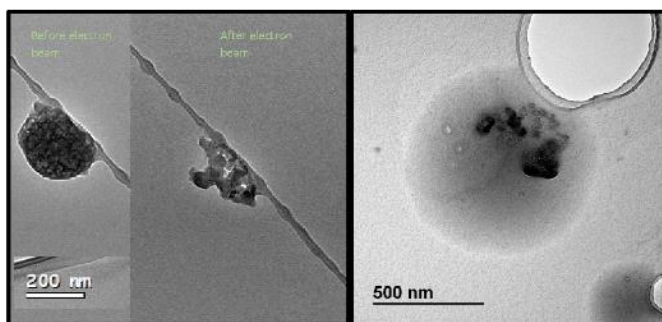
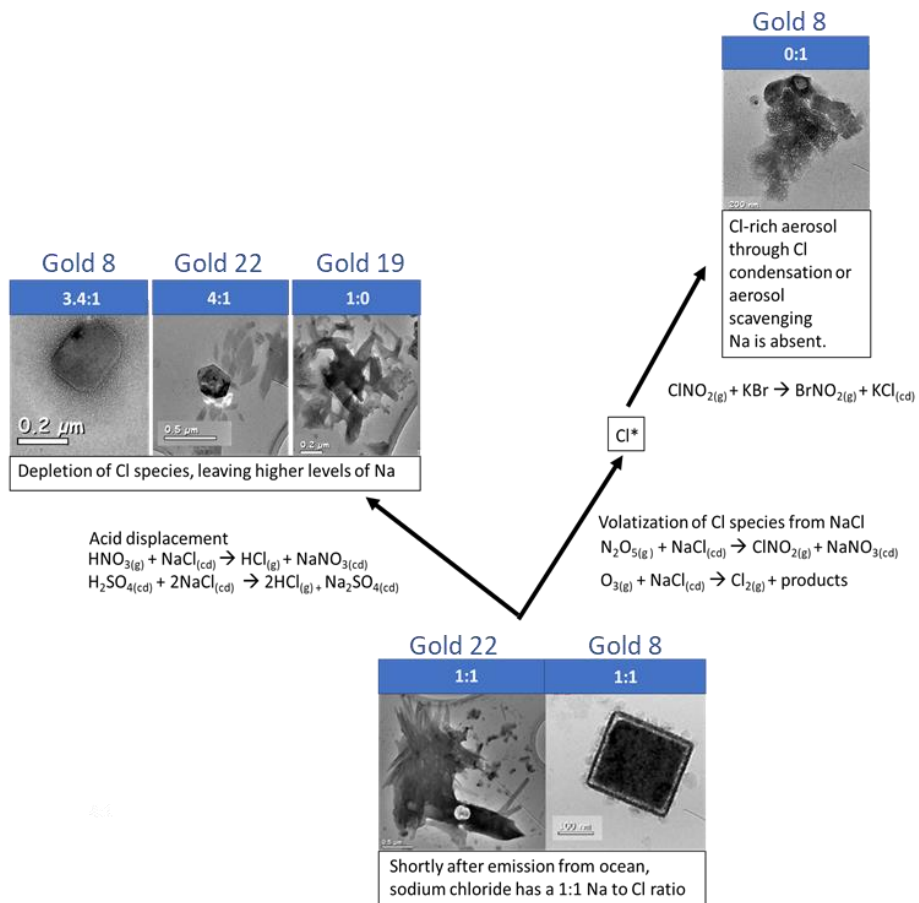


Figure 4 Potassium salt in a core-shell morphology around a refractory BC core (left) and organic with interstitial K-salt (right). Note the difference in scale between the two images.

1095

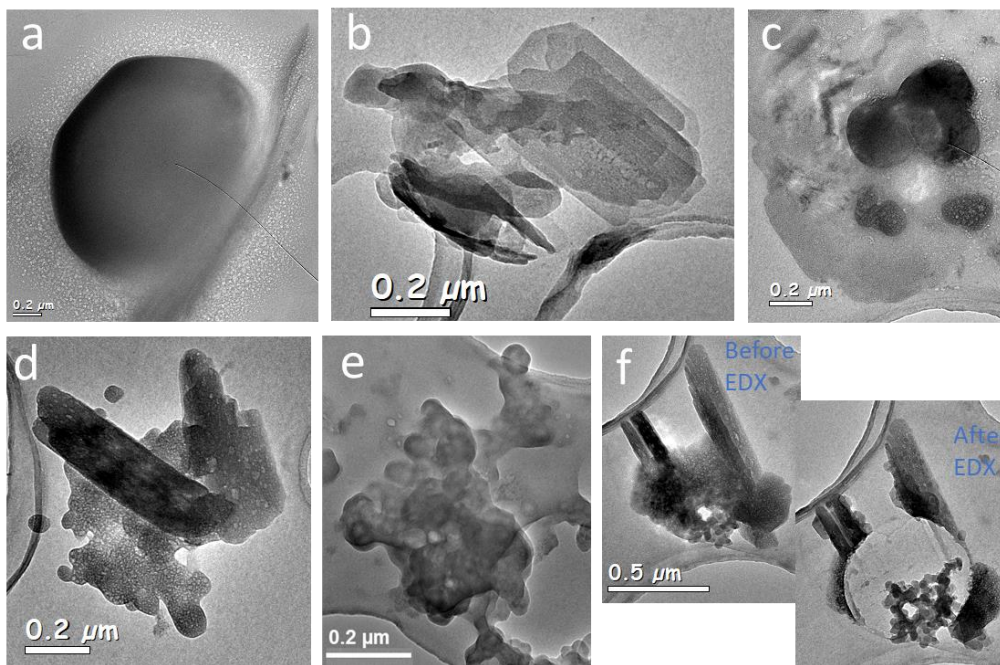
Table 2 Black Carbon Mixing State by campaign. FT/BL, BC-Salt and BC-Organic refer to internally mixed particles

	BC – Salt	BC – Organic	BC - external
ORACLES BL	0.78	0.00	0.22
ORACLES FT	0.53	0.31	0.16
CLARIFY BL	0.50	0.29	0.21
CLARIFY FT	0.67	0.07	0.26



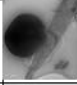
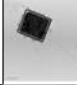
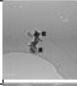

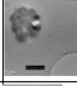

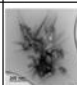


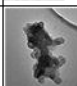
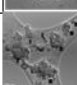
1100 **Figure 5 Schematic showing different stages of sea salt conversion with example mechanisms. The particles are from CLARIFY filters and range from sea salts which have been freshly emitted to Cl-depleted particles containing nitrates and**

sulfates. Cl aerosol formation is also shown. Na:Cl ratios showing depletion of Cl with sea salt conversion are shown in the bar above each particle image.



1105 **Figure 6 Assorted sea salt particles. (a) ~1.5 micron rounded NaCl; Gold 1 (b) CaSO<sub>4</sub>; Gold 1 (c) NaCl and Mg; Gold 1 (d) Na<sub>2</sub>SO<sub>4</sub> with K; Gold 1 (e) NaNO<sub>3</sub> mixed with BC; Gold 24 (f) BC encapsulated in Na<sub>2</sub>SO<sub>4</sub> with K ; Gold1**

**Table 3 Na dominant aerosols on CLARIFY filters with sampling location, CO levels, time ~~from~~-from source, and percentage of particles on the filter with either Na or Cl. The ratios represent the weight percent ratio per particle, averaged across all particles with the elements of interest on each filter.**

	Altitude (m)	Above/Below cloud	CO (ppbv)	Time from fire (days)	Particles with Na or Cl (%)	Avg Na wt%	Avg Cl wt%	Na/Cl	Na/S	Representative particle and filter summary
Gold_1	323	Below	108	marine	98	10.6	10.7	7.2	5.2	 Na and Cl with vary levels of Cl depletion; some Na with S; large NaCl particles; BC mixed with NaSO4
Gold_8	3902	Above	204	7	100	13.7	12.6	4.3	NA	 Mostly Cl particles without Na although some NaCl 1:1 crystals
Gold_9	2813	Above	329	4	37	5.8		NA	13.1	 No Cl present; Na mixed with BC and BB salts, sodium nitrate
Gold_10	2918	Above	158	5	74	5.4		NA	5.4	 No Cl present; sodium sulfate, BC mixed with Na
Gold_11	319	Below	70	15	80	19.2	4.7	6.1	8.1	 NaCl, ammonium chloride, sodium sulfate, Na with depleted Cl all present
Gold_19	1969	Above	212	7	29	3.7		NA	2.0	 Nasulfate, BC mixed with Na sulfate; no Cl, BC with Na, P, S, K, Ca
Gold_20	329	Below	130	marine	90	3.4	0.6	12.0	3.5	 BC mixed with Na; NaS crystals; NaCl but most particles Cl depleted
Gold_21	2357	Above	177	6	36	1.1		NA	0.8	 Trace amounts of sodium, no marine salts noted
Gold_22	2139	Below	128	9	77	12.5	8.7	3.9	3.3	 Na2SO4, NaCl
Gold_23	3500	Above	273	4	63	7.6	0.5	20.2	3.7	 Low levels of Cl, BC mixed with Na, S, K
Gold_24	1950	Above	331	4	77	2.3		NA	1.9	 Sodium nitrate mixed with BC

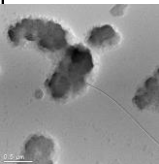
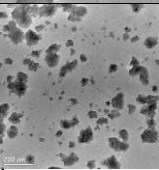
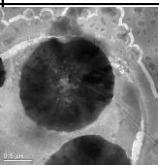
1110

1115

**Table 4 Na dominant aerosols on ORACLES filters with sampling location, CO levels, time from source, and percentage of particles on the filter with either Na or Cl. The ratios represent the weight percent ratio per particle, averaged across all particles containing the elements.**

	Altitude (m)	Above/Below cloud	CO (ppbv)	Time from fire (days)	Particles with Na or Cl (%)	Avg Na wt%	Avg Cl wt%	Na/Cl	Na/S	Representative particle and filter summary
RF11Filter5	3505	Above	395	2	45	2.2			1.1	
RF02_1	894	Below	110	5	22	0.4	0.7		0.3	 BC, K-salt, Ca bearing
RF02_2	2606	Above	210	1	49	1.1	0.5	2.0	0.8	 BC, Ca bearing
RF03	982	Above	156	6	0					 BC mixed with salts and sulfates
RF04	1195	Above	120	6	35	1.8	1.5	15.2	1.1	 BC with K-salt, K salts, sulfates
RF05_1	943	Above	154	6	75	3.4	0.6		2.3	 BC mixed with NaSK salts, Ca bearing, Silicates
RF05_2	378	Below	106	marine	76	2.7	0.3	23.5	1.6	 NaSK salts, often mixed with BC
RF05_3	3247	Above	210	1	39	0.7			0.2	 organic, sulfate mixed with BC
RF06_1	2444	Above	248	2	17	1.9	9.5	19.3	1.4	 organic, organic with KS inclusions
RF06_2	2570	Above	173	2	53	5.9	1.2	38.9	4.0	 organic, organic/salt mixtures
RF07_1	1091	Above	121	6	53	7.1	5.9	15.4	3.1	 BC with K salts, OM, salts
RF07_2	159	Below	123	marine	52	7.0	0.6	20.8	3.6	 BC with silicate, Ca bearing, Al silicates
RF09	1307	Above	158	7	11	1.2			0.2	 organic with NSK salts, BC in fractal pattern
RF10	1986	Above	417	1	0					 externally mixed BC, and internally mixed with viscous sulfur coating.
RF11	3027	Above	190	2	5	0.8	0.2		0.9	 ammonium sulphates, OM mixed with salts, externally mixed BC
RF13	1127	Above	118	4	13	1.9			0.3	 BC with K salt, OM, salts

Table 4-5 Cl dominant aerosol on CLARIFY filters

Filter ID	Altitude (m)	Above/ Below cloud	CO (ppbv)	Time from fire (days)	Particle image & description
Gold_14	2845	Above	262	6	 N and Cl dominant spectra; uniform particles across filter
Gold_15	329	Below	158	marine	 C and Cl particles with small amount of K; uniform particles across filter
Gold_18	332	Below	119	marine	 Ca and Mg with Cl; uniform particles across filter

1130

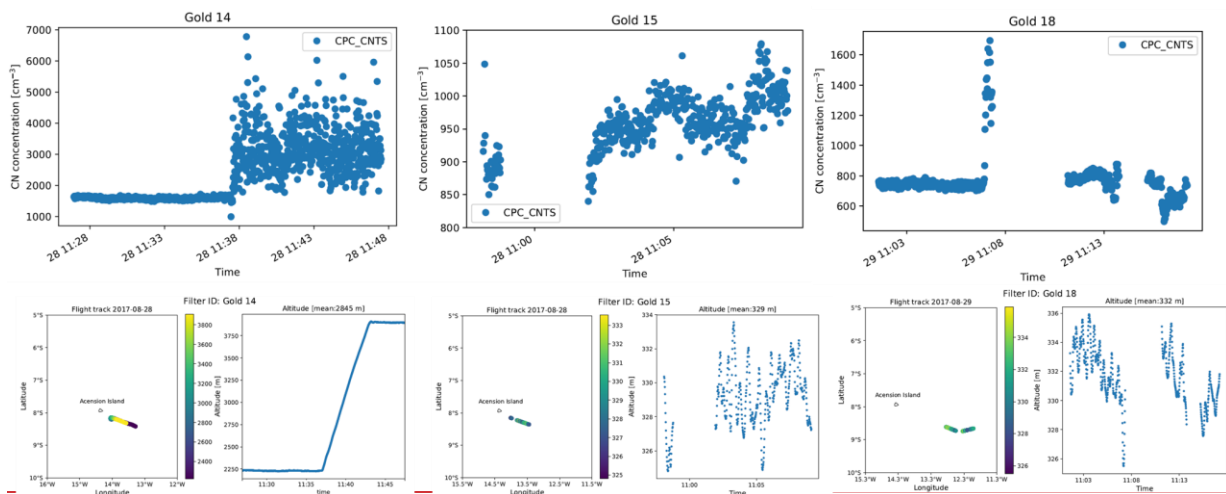
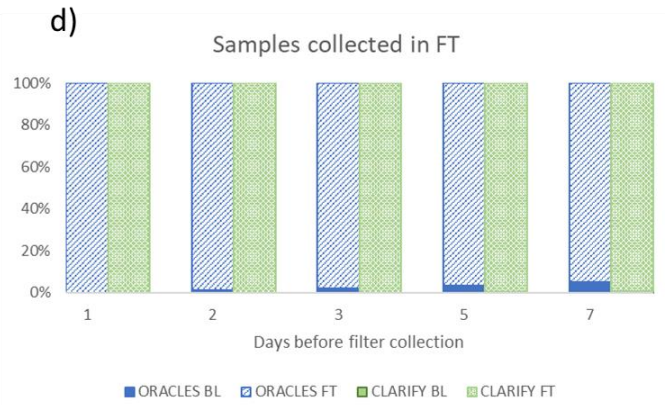
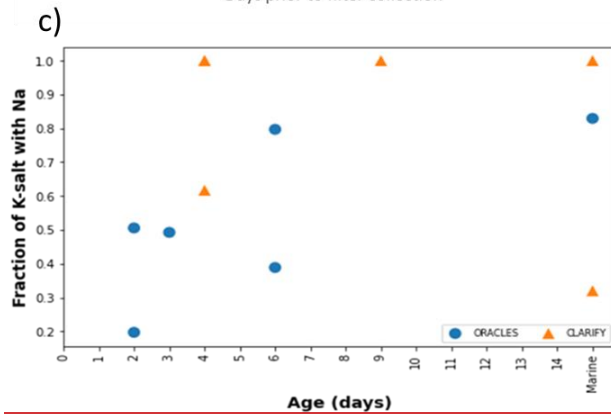
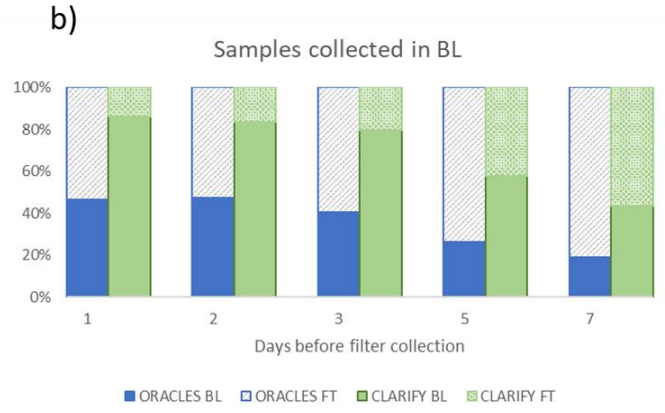
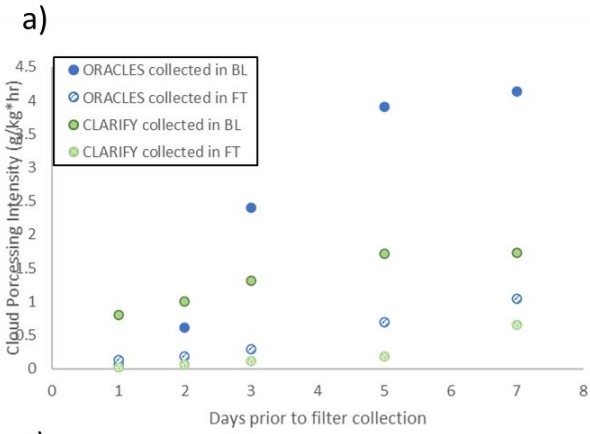
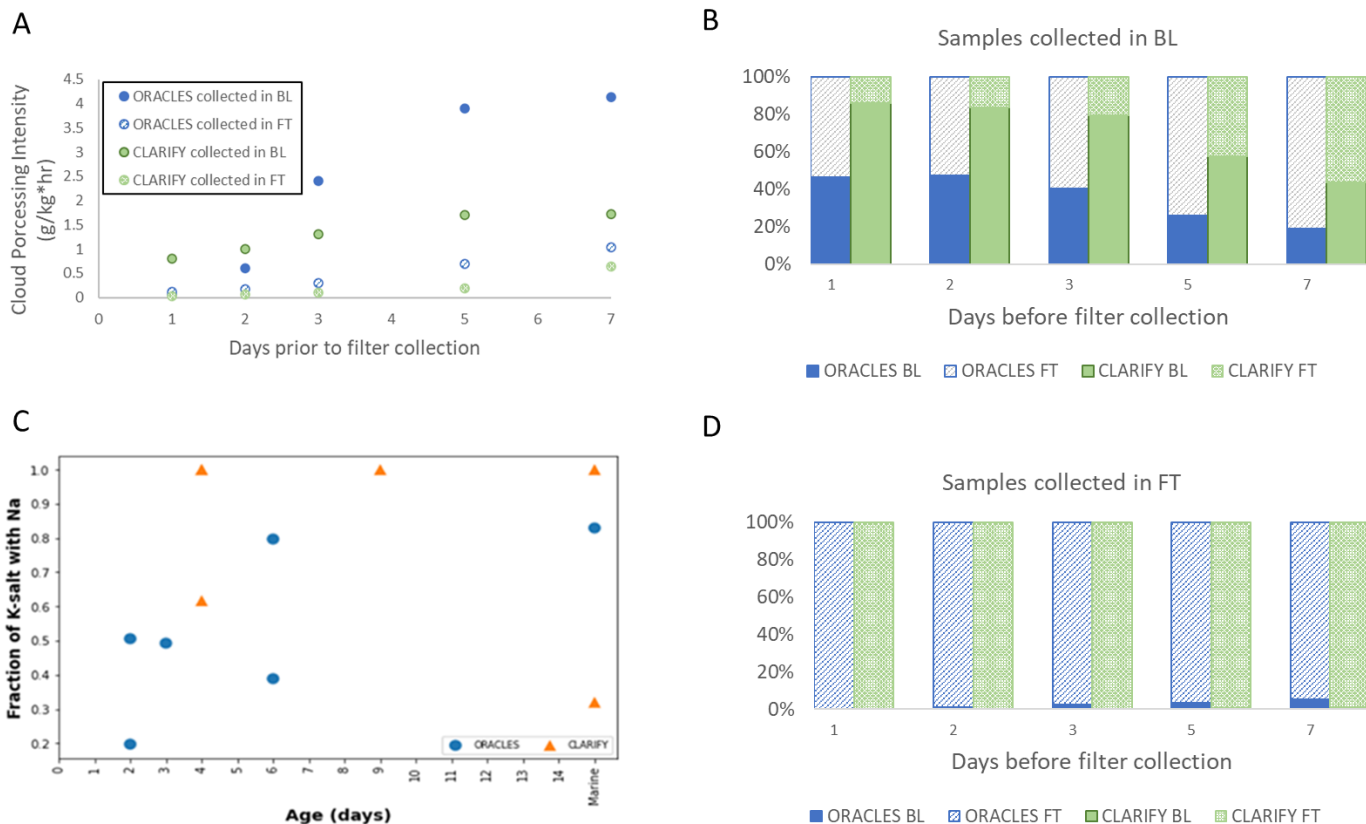


Figure 7 (upper panel) particle count concentration during filter collection time for the three Cl dominant filters, Gold14, Gold15, and Gold18, as detailed in Table 4, and (lower panel left column) flight track, and (lower panel right column) altitude

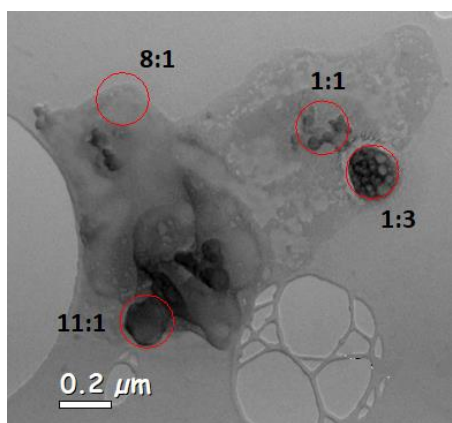
1135





1140

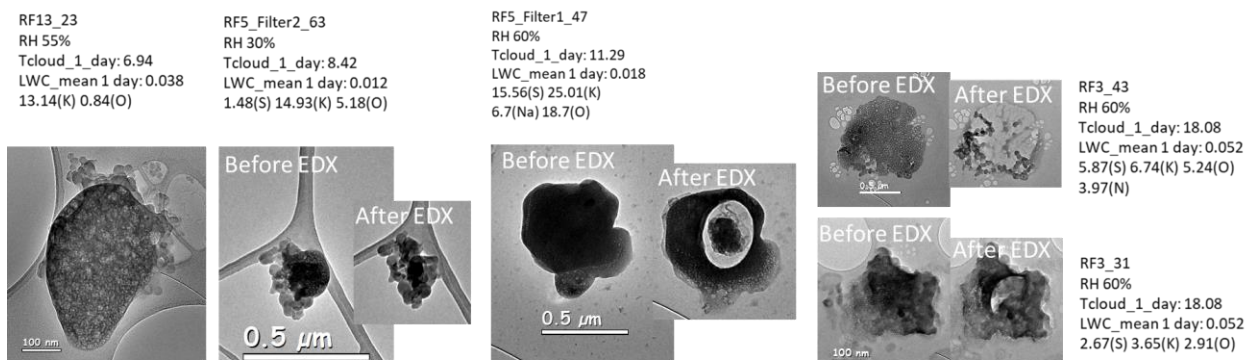
Figure 8-7 Panel A) BL and FT ORACLES and CLARIFY cloud processing intensity B) Time spent in BL and FT for samples collected in the BL in the days prior to filter collection C) Fraction of K-salt, per filter, mixed with Na D) Fractional time spent in BL and FT for samples collected in the FT in the days prior to filter collection



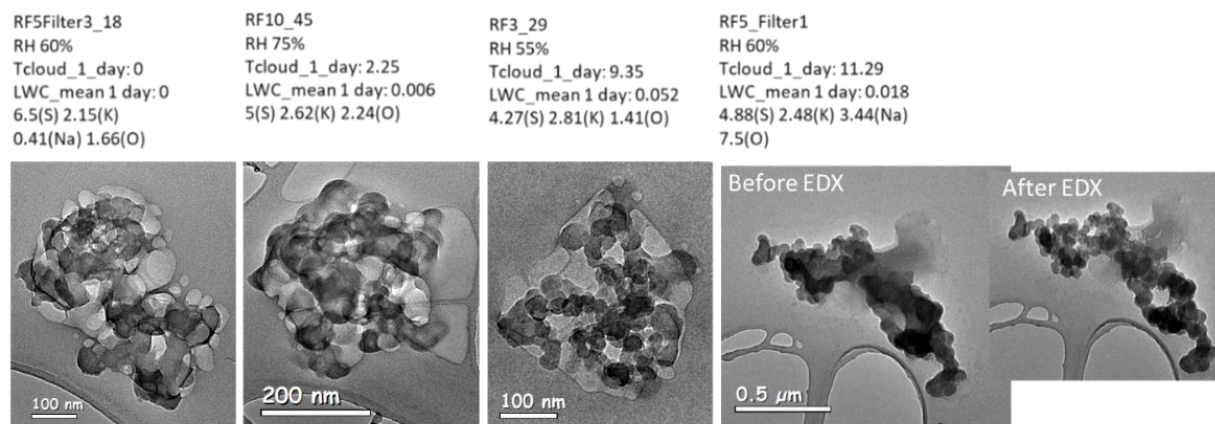
1145

Figure 9-8 Aqueous K-salt particle with varying levels of Na throughout particle, with Na:K weight ratio designated in red



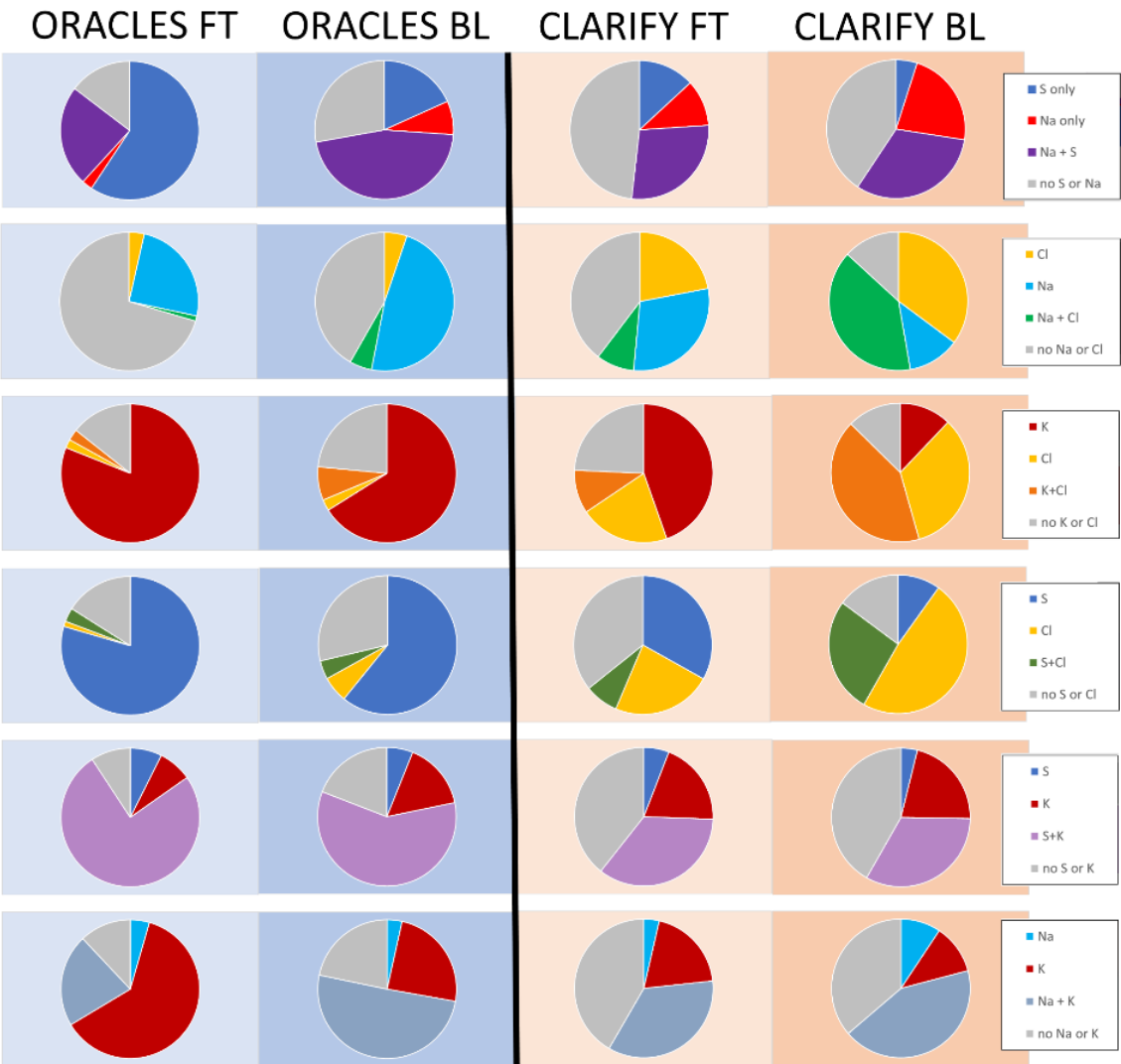


Time in cloud (1 day prior to filter collection)



Time in cloud (1 day prior to filter collection)

1150 **Figure 109** Potassium salt mixed with BC (top panel) and sulfur-organic and BC (bottom panel) as a function of time in cloud in the 24 hours prior to filter collection.



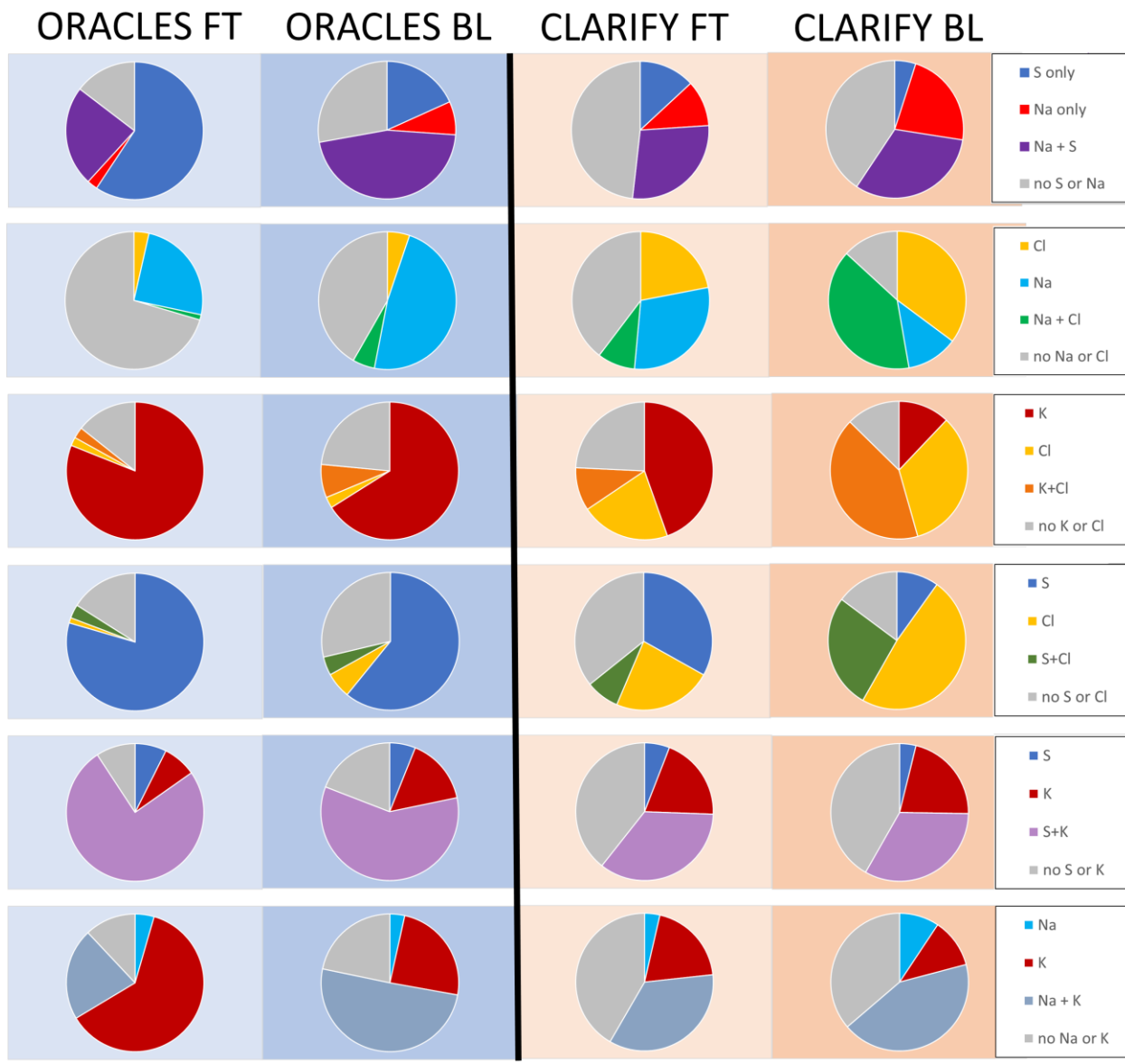


Figure 14-10 Elemental mixing states for select elemental pairs for **CLARIFY-ORACLES** (two left columns) and **ORACLES CLARIFY** (two right columns), separated by filter collection in the free troposphere and boundary layer

1155