

## **Responses to the reviewer comments on**

### **“Sources and processes of iron aerosols in a megacity of Eastern China” by Zhu et al.**

The authors would like to thank both reviewers for their constructive and good suggestions to improve our manuscript. We have carefully considered all the review comments and revised the manuscript. Below, we provide responses to the comments in **blue**, with changes made in the manuscript highlighted in **red**.

#### **Response to Reviewer 1:**

*This paper appears to be a data paper with litter data analysis of the beyond reporting the results. Although the authors try to explain the sources or atmospheric phenomena that lead to the changes of iron aerosols under different weather conditions, the discussion are too general. Additionally, the English language requires substantial improvement (both style and grammar) throughout the manuscript. Many sentences are not clearly written. The topic is certainly appropriate for Atmospheric Chemistry and Physics. However, there are quite a few major issues with the study that prevent me from recommending it for publication in the present format. It is possible that these issues could be addressed with a major revision. My specific concerns are addressed below.*

Response: We thank reviewer#1 for the helpful comments. Below, we address the comments and have revised the manuscript accordingly. We have significantly enhanced the discussions, including a detailed discussion on the assignment of factors. We revised the English language accordingly. For clarity, the reviewer’s comments are listed below in *black italics*, whereas our responses and changes in manuscript are shown in **blue** and **red**, respectively.

*1. Line 43: Change “having” to “have”.*

Response: We have changed “having” to “have” as follows:

**Although natural emissions have a high emission flux, their contribution to Fe solubility is less than 1% (Schroth et al., 2009).**

(Page 2, Line 45-46)

2. Line 49: *Fe solubility in some anthropogenic sources such as coal fly is very low, so here the statement “an increase ... from anthropogenic source cloud lead to the increase in Fe solubility” is not accurate.*

Response: We have changed the corresponding sentence as follows:

These results imply that an increase in relative amounts of aerosols from these mixed anthropogenic sources may be responsible for the increase in Fe solubility.

(Page 2, Line 50-52)

3. Line 55: *When the relative humidity is higher than 50%, some soluble inorganic components may begin to be hygroscopic, resulting in phase changes of particles, but some secondary organic components will not. For some aged aerosol particles after liquid-liquid phase separation, the organic coating also prevents inorganic components from contacting the atmosphere directly, which would affect the hygroscopic property of particles. Moreover, in the reference cited here, hygroscopic growth begins at 60% and 55% for haze particles. Therefore, the “50%” or “secondary aerosol particles” here are not appropriate, please consider rewording them. Additionally, what do the surfaces of secondary aerosol particles mean? You mean the secondary materials coat the primary particles, or the particles are secondarily formed? Please clarify.*

Response: We fully agree with the reviewer’s comments. When RH is higher than 60%, the surface of aerosol particles will change to wet or liquid state. Recently, one of our studies shows that more than half of secondary inorganic particles are not coated by organic coating (Li et al., 2021). The organic coating in liquid-liquid phase separated particles can prevent the water uptake. However, in this paper, we do not plan to discuss this in great detail. But to make it clear, we revised the corresponding sentences as follows:

When ambient RH is above 60%, aerosol particles can take up water and change the surface to wet or liquid state (with liquid-liquid separation or homogenous, depending on the composition and RH) (Sun et al., 2018; Liu et al., 2017).

(Page 2, Line 58-60)

Reference:

Li, W., Teng, X., Chen, X., Liu, L., Xu, L., Zhang, J., Wang, Y., Zhang, Y., and Shi, Z., Organic Coating Reduces Hygroscopic Growth of Phase-Separated Aerosol Particles, Environ. Sci. Technol., <https://pubs.acs.org/doi/10.1021/acs.est.1c05901>, 2021.

We also checked the threshold of particle surface changed to wet or liquid state throughout the manuscript as follows:

Under fog condition, RH was higher than 90%, which was much higher than the threshold (60%) of the particle surface changed to wet or liquid state (Sun et al., 2018; Liu et al., 2017).

(Page 13, Line 385-386)

When  $RH > 60\%$ , average aerosol acidity/total Fe was  $2.3 \mu\text{mol } \mu\text{mol}^{-1}$  and  $2.1 \mu\text{mol } \mu\text{mol}^{-1}$  in haze and clear days, respectively, which were similar with that in fog days ( $2.4 \mu\text{mol } \mu\text{mol}^{-1}$ ).

(Page 13, Line 387-389)

When  $RH < 60\%$ , Fe solubility in haze and clear days was lower than 3.9% and 2.3%, respectively, even when aerosol acidity/total Fe was high.

(Page 13, Line 392-393)

Our study indicated that wet surface of aerosol particles (when  $RH > 60\%$ ) may facilitate the update of acidic species and thereby promote Fe dissolution and increase Fe solubility.

(Page 13, Line 403-405)

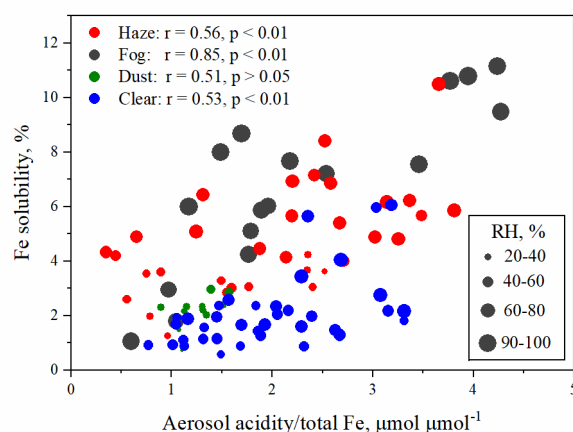


Figure 5. Correlations between Fe solubility and aerosol acidity/total Fe under different RH.

(Page 26)

4. Lines 62-64: *It is not a complete sentence.*

Response: We have changed the sentence as follows:

The two major contributors mentioned above (aerosol primary sources and atmospheric acidification processes) to Fe solubility are associated with weather conditions, which can change dispersion efficiency (such as boundary layer height, wind, and convection), dry/wet deposition, and chemical conversion loss rate (Leibensperger et al., 2008; Zhang et al., 2018), temperature, relative humidity, and solar radiation (Camalier et al., 2007).

(Page 3, Line 64-68)

5. Line 84: *The identification of fog samples: as described in Table S2, the threshold value of 10 km is too high for fog visibility. If the relative humidity during fog is not considered in the definition of weather conditions, in my opinion, it will lead to the misclassification of the fog samples. The authors do not mention the RH in the definition of fog. Please clarify.*

Response: This was a typo. The visibility in fog day is less than 1 km instead of 10 km. The relative humidity is higher than 90% in fog day. We should emphasize that our classification is the same as the Chinese Meteorological Administration (CMA) reports. We changed the threshold of fog visibility, and added the threshold of relative humidity in Table S2 in Supplemental Information as follows:

**Table S2. Definitions of haze, fog, dust, clear, and rain weather conditions.**

	<b>Definition</b>
Haze	The meteorological definition of haze is a kind of weather phenomenon in which a large number of tiny dust particles, smoke particles or salt particles suspended in the atmosphere, the relative humidity is less than 80%, and the horizontal visibility drops below 10 km.
Fog	The meteorological definition of fog is tiny water droplets suspended in the air, and horizontal visibility is less than 1 km, the relative humidity is higher than 90%.
Dust	Dust is a kind of natural meteorological phenomenon associated with strong cold front from Northwest China. The FLEXible PARTicle (FLEXPART) Lagrangian particle dispersion model shows that air mass backward trajectories of typical dust events crossed East Asia (Fig. S1).
Clear	Clear weather samples were collected when PM <sub>2.5</sub> concentration was less than 75 µg m <sup>-3</sup> , and visibility was greater than 10 km.
Rain	Rain refers to the liquid droplets falling to the ground from the above cloud. We collected PM <sub>2.5</sub> samples as rain samples when precipitation intensity < 10 mm d <sup>-1</sup> .

6. Line 89: *The daytime and nighttime samples are collected respectively. It is not quite clear how the sampling strategy was selected, and why the authors do not discuss the differences between daytime and nighttime samples.*

Response: The number of samples in fog and dust days is only 8 and 6 in the day, and 9 and 6 in the night, respectively. Such a small number of daytime and nighttime samples in fog and dust days is not enough to obtain accurate results of source identification and correlation analysis between Fe solubility and aerosol acidity, and between Fe solubility and liquid water content. In order to maintain consistency throughout the manuscript, we did not discuss the differences between daytime and nighttime samples.

7. Lines 88-103: *The PM<sub>2.5</sub> samples are used for the mass concentration analysis of total and dissolved Fe, but the particle size of the samples used for single particle analysis is not clearly indicated in this paper. Is there any difference in the cut point inlet between single-stage cascade impactor and TH-16A Intelligent sampler? The authors state that the collection efficiency is 50% for particles with an aerodynamic diameter of 0.1 µm and a density of 2 g cm<sup>-3</sup>, so the aerodynamic particle size of particles collected from single-stage cascade impactor is less than 100 nm? If so, I suspect that the collected particles have not yet grown.*

Response: The TH-16A Intelligent sampler can collect aerosol particles < 2.5 µm. The

collected PM<sub>2.5</sub> samples are used to analyze the mass concentrations of total Fe by Energy Dispersive X-Ray Fluorescence spectrometer and dissolved Fe by Ultraviolet-Visible spectrophotometer.

The single particle sampler can collect >100 nm aerosol particles with the collection efficiency at 50%. The statement *“the collection efficiency is 50% for particles with an aerodynamic diameter of 0.1 μm”* does not mean that the sampler could not collect ultrafine particles (< 100 nm) on the substrate. However, the collection efficiency of < 100 nm is much smaller than 50%. The collected single particle samples were used to analyze chemical composition, morphology characteristics, size distribution and mixing state of single particles by transmission electron microscope-energy-dispersive X-ray spectrometer (TEM-EDS).

Because TEM-EDS can measure the individual particle size, it is easy to know the size of the single particle being analyzed. Figure 6 shows that the size range of Fe-containing particles is 25-5000 nm. The different types of samplers are used to answer different questions – TH-16A for bulk composition, and single particle sampler for understanding the mixing state of individual particles.

8. *Line 155: A reference would be helpful.*

Response: As shown in comment 13, to avoid similar statements with positive matrix factorisation (PMF), the source results obtained by enrichment factor (EF) analysis were deleted. Therefore, references were not added.

9. *Line 226: Change “3.3.2” to “3.3.1”.*

Response: We have changed “3.3.2” to “3.3.1”.

(Page 8, Line 242)

10. *Lines 227-258: The authors applied Pearson correlation analysis between dissolved Fe and other elements to explore the primary of dissolved Fe. The elements do not consider the impact of atmospheric process, but the dissolved Fe is affected by the atmospheric process, so I am wondering whether the correlation analysis between the dissolved Fe and other elements can be used for source identification.*

Response: As mentioned in response to comment 13, the source results obtained by Pearson correlation analysis were deleted. Because PMF results can not only get the

source type, but also the contribution of each source, so the PMF result is retained.

11. Lines 241-243, 246-248, 252-253 and 256-258: *The authors state that EF values of Ca and Ti are less than 10, suggesting a potential contribution of coal combustion,...; Pb, Zn and K had EF > 10, indicating a potential contribution of coal combustion, ... These statements make no sense.*

Response: We agree with the reviewer's comments. We have deleted the source results based on EF values.

12. Lines 260-265: *I believe that the figures represented in supplement appear to be more important. While reading that authors have referred to supplementary figures too many times, I would suggest merging or re-plotting some of the figures to bring supplementary figures in main text.*

Response: We have migrated Figure S3 (source profiles deduced from PMF analysis (6 factors)) from supplement to manuscript. The descriptions about the sources represented by each factor and the explanations for why 6 factors were selected as final solution were also putted in the manuscript. Figure S2 (source profiles deduced from PMF analysis (5 factors)) and Figure S4 (source profiles deduced from PMF analysis (7 factors)) were still in the supplementary file.

13. Lines 267-273: *The Figure 3 has provided the contribution of each source in detail, so the authors do not need to describe them again. The similar situations appear many times in the text.*

Response: We have deleted the descriptions about Figure 3 in line 274-281. To avoid similar statements, the source results obtained by enrichment factor (EF) and Pearson correlation analysis were deleted. Now sources of dissolved Fe and total Fe in 3.3.1 part are as follows:

In order to identify sources of dissolved Fe and total Fe, a PMF model was used to apportion their sources. PMF was run for 5 (Fig. S3), 6 (Fig. 2), and 7 (Fig. S4) factors for the evaluation of factor profiles. In Figure S3, factor 1 of the 5-factor solution is represented by high contributions of secondary inorganic ions ( $\text{SO}_4^{2-}$ ,  $\text{NO}_3^-$ ,  $\text{NH}_4^+$ ), as well as other species from primary emissions such as Cr, Mn, Co, Cu, Sr, Ba, indicating an unresolved mixing factor. In Figure S4, factor 4 of the 7-factor

solution only contains relatively high contribution of EC and As, and this factor contributes insignificantly to either PM<sub>2.5</sub> or dissolved Fe, possibly suggesting a split of meaningful factor such as coal combustion or industrial emissions. Hence, 6 factors were selected as the final solution. The selection of the optimal solution in PMF analysis was also based on the following evaluation criteria: a good correlation coefficient ( $r^2$ ) between the observed and predicted concentrations of fitting species, which were mostly in the range of 0.70 ~ 0.99 in this work; bootstrapping on the 6-factor solution showed stable results with more than 95 out of 100 bootstrap mapped factors; factor chemical profiles between the base and the constrained runs showed no significant difference ( $p > 0.05$ ).

As shown in Figure 2, factor 1 was identified as dust, with relatively high loads of insoluble Fe, K, Ca, and Ti (Marsden et al., 2019). Factor 2 was identified as a source of combustion considering its high loading of EC (Hou et al., 2012). With no contribution of SO<sub>4</sub><sup>2-</sup> and less contribution of K and dust elements (such as Ca, Ti), factor 2 was not associated with coal and biomass burning, but associated with traffic emissions (such as petroleum and diesel combustion) (Du et al., 2018; Hao et al., 2019). Small contributions of traffic-related elements (such as Zn, Cu) suggested factor 2 represented non-exhaust traffic emissions (Lin et al., 2015). Factor 3 was represented by high loads of SO<sub>4</sub><sup>2-</sup>, NO<sub>3</sub><sup>-</sup> and NH<sub>4</sub><sup>+</sup>, suggesting secondary sources (Pakkanen et al., 2001; Yao et al., 2016). Factor 4 implied coal combustion, because it had high loads of SO<sub>4</sub><sup>2-</sup> and As (Cui et al., 2019; Vedantham et al., 2014). Factor 5 was characterized by high loads of Cr, Co, Ni, Cu, Sr, Ba, and Pb, indicating industrial emissions (Cai et al., 2017; Chang et al., 2018; Liu et al., 2019; Rai et al., 2020). High loads of Co and Ni, low load of EC and no OC indicated heavy oil refinery processes (Zhang et al., 2007; Rao et al., 2012; Guo et al., 2016; Yeletsky et al., 2020). Similar to factor 5, factor 6 was also observed with high loads of Cr, Cu, Pb, but it also had high contributions of Mn, Zn, and Se. Since factors 5 and 6 were not correlated in both time series and concentrations (Fig. S5 and S6), they represented two different industrial emissions. Mn, Zn, and Pb are representative elements for steel industry sources (Okuda et al., 2004; Chang et al., 2018), thus



factor 6 was associated with steel industry emissions.

As shown in Figure 3, traffic emissions contributed 10.6%, 5.8%, 18.9%, and 13.8% to dissolved Fe, and 12.7%, 7.4%, 8.1%, and 17.9% to total Fe in haze, fog, dust, and clear days, respectively. Although Fe solubility is as high as 51% in diesel exhaust and 75% in gasoline exhaust (Oakes et al., 2012), total Fe content from engine exhaust particles is extremely low. It is more than likely that Fe from the traffic emission is associated with non-exhaust particles, which should have relatively low Fe solubility. Since traffic emissions are urban sources, which are closer to the sampling site, there are less time for them to be chemically processed in the atmosphere. This may explain why their contribution to dissolved Fe is relatively low.

Figure 3 also shows that although industrial emissions (factor 5&6 or industrial emissions 1 + industrial emissions 2) contributed less than 20% to  $PM_{2.5}$  in haze, fog, dust, and clear days, they were the largest contributor to dissolved Fe in haze (65.4%), fog (72.4%), dust (44.5%), and clear (62.5%) days, and they also were the largest contributor to total Fe in haze (44.2%), fog (55.0%), and clear (39.1%) days except dust days. Industrial emissions 1 (factor 5) contributed similarly to dissolved Fe regardless of weather conditions (38.9% to 43.6%, except for dusty days), while it only contributed 11.6% to 13.9% to total Fe (except dusty days). Heavy oil combustion related aerosols have the highest Fe solubility (up to 78%) from all major Fe aerosol sources (Schroth et al., 2009; Ito et al., 2021). This may explain the much larger contribution of industrial emissions 1 to dissolved Fe than total Fe. As far as we know, there is no published data on Fe solubility in particulate matter from metal industrial emissions. Considering the dominance of iron and steel plants in total Fe emissions (Rathod et al., 2020) and the low Fe solubility in smelter ash from a steel plant (Li et al., 2017), it is difficult to understand why industrial emissions 2 (factor 6) contributes so much to dissolved Fe. Furthermore, PMF results indicated that secondary sources were the largest contributor to  $PM_{2.5}$  in haze (66.2%), fog (72.3%), and clear (31.2%) days except dust days. However, the contribution of secondary sources to dissolved Fe was relatively low: 16.1% in haze days, 16.5% in fog days, 3.1% in dust days, and 5.4% in clear days.

The likely reason for the high contribution of industrial emissions 2 and the relatively low contribution of secondary sources to dissolved Fe is that PMF is unable to completely separate secondary sources of dissolved Fe (i.e., dissolved from insoluble Fe due to atmospheric processing) from primary sources. This means that some of dissolved Fe due to atmospheric processing may still be assigned to its primary factors if there is a strong co-variation between dissolved Fe and primary tracers. This suggests that the contribution of secondary sources to dissolved Fe is likely higher than that indicated by the PMF. It should also be noted that industrial emissions are outside the city and thus particles from these sources undergo long-range transport before reaching the sampling site. This provides more time for chemical processing in the atmosphere, leading to Fe solubilisation. In the following, we further investigated the mixing of acidic species and Fe aerosols to provide further evidences for the Fe solubilisation from primary insoluble Fe aerosols.

(Page 9, Line 276-Page 12, Line 349)

*14. Lines 2677-283: Oakes et al. (2012) found that Fe solubility was 0.06% in coal fly, 46% in biomass burning, 51% in diesel exhaust and 75% in gasoline exhaust as the authors state in Lines 47-48. Here the industrial emission is the largest contributor to dissolved Fe in haze, fog, dust and clear days. Traffic emission is the secondary contributor. It warrants further discussion.*

Response: We appreciate your comments. We discussed the PMF results in greater detail and adjusted the factor assignment to sources. The revised Figure 3 is as follows:

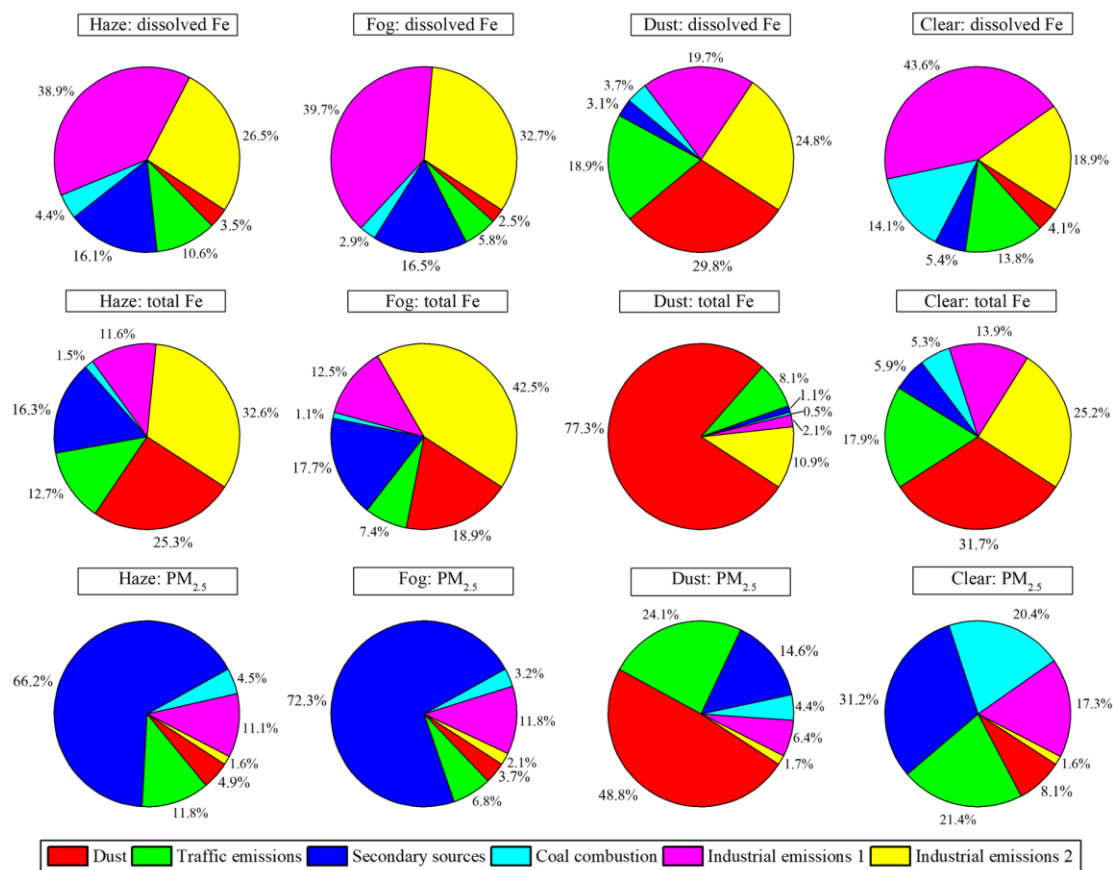


Figure 3. Contributions of identified sources to dissolved Fe, total Fe, and PM<sub>2.5</sub> in haze, fog, dust, and clear days by PMF model.

(Page 25)

We added discussions about industrial emissions are the largest contributor to dissolved iron in the manuscript as follows:

Figure 3 also shows that although industrial emissions (factor 5&6 or industrial emissions 1 + industrial emissions 2) contributed less than 20% to PM<sub>2.5</sub> in haze, fog, dust, and clear days, they were the largest contributor to dissolved Fe in haze (65.4%), fog (72.4%), dust (44.5%), and clear (62.5%) days, and they also were the largest contributor to total Fe in haze (44.2%), fog (55.0%), and clear (39.1%) days except dust days. Industrial emissions 1 (factor 5) contributed similarly to dissolved Fe regardless of weather conditions (38.9% to 43.6%, except for dusty days), while it only contributed 11.6% to 13.9% to total Fe (except dusty days). Heavy oil combustion related aerosols have the highest Fe solubility (up to 78%) from all major

Fe aerosol sources (Schroth et al., 2009; Ito et al., 2021). This may explain the much larger contribution of industrial emissions 1 to dissolved Fe than total Fe. As far as we know, there is no published data on Fe solubility in particulate matter from metal industrial emissions. Considering the dominance of iron and steel plants in total Fe emissions (Rathod et al., 2020) and the low Fe solubility in smelter ash from a steel plant (Li et al., 2017), it is difficult to understand why industrial emissions 2 (factor 6) contributes so much to dissolved Fe. Furthermore, PMF results indicated that secondary sources were the largest contributor to PM<sub>2.5</sub> in haze (66.2%), fog (72.3%), and clear (31.2%) days except dust days. However, the contribution of secondary sources to dissolved Fe was relatively low: 16.1% in haze days, 16.5% in fog days, 3.1% in dust days, and 5.4% in clear days.

The likely reason for the high contribution of industrial emissions 2 and the relatively low contribution of secondary sources to dissolved Fe is that PMF is unable to completely separate secondary sources of dissolved Fe (i.e., dissolved from insoluble Fe due to atmospheric processing) from primary sources. This means that some of dissolved Fe due to atmospheric processing may still be assigned to its primary factors if there is a strong co-variation between dissolved Fe and primary tracers. This suggests that the contribution of secondary sources to dissolved Fe is likely higher than that indicated by the PMF. It should also be noted that industrial emissions are outside the city and thus particles from these sources undergo long-range transport before reaching the sampling site. This provides more time for chemical processing in the atmosphere, leading to Fe solubilisation.

(Page 11, Line 325-347)

We also added discussions about the contribution of traffic emissions to dissolved Fe as follows:

As shown in Figure 3, traffic emissions contributed 10.6%, 5.8%, 18.9%, and 13.8% to dissolved Fe, and 12.7%, 7.4%, 8.1%, and 17.9% to total Fe in haze, fog, dust, and clear days, respectively. Although Fe solubility is as high as 51% in diesel exhaust and 75% in gasoline exhaust (Oakes et al., 2012), total Fe content from engine

exhaust particles is extremely low. It is more than likely that Fe from the traffic emission is associated with non-exhaust particles, which should have relatively low Fe solubility. Since traffic emissions are urban sources, which are closer to the sampling site, there are less time for them to be chemically processed in the atmosphere. This may explain why their contribution to dissolved Fe is relatively low. (Page 11, Line 318-323)

15. Lines 302-306: As shown in Figure 5, the size of S-Fe particles in haze samples is larger than that of fog samples. The relative humidity during fog is higher than haze. Thus particles during fog are more wet, and softer, so the projected area after impacting copper is generally larger than those during haze. How are the data interpreted?

Response: It is true that wet particles could have a larger projected area. Here the size of S-Fe particles in Figure 6 represents the dry state of individual particles on the substrate. We recognize that it is not easy to accurately measure the size of wet aerosol particles that are impacted on the substrate. The main purpose of this figure is to show acidic secondary aerosol species (e.g., sulfates and nitrate) increase the size of Fe particles. We did not intend to compare the size of S-Fe particles in different weather conditions. Therefore, we analyzed the dry state of individual particles using transmission electron microscope (TEM). We have added a description about the dry state of individual particles in the caption of Figure 6. As shown in comment 17, in order to illustrate the importance of S-Fe in Fe-containing particles in haze, fog, dust, and clear days, size distributions of Fe-rich and S-Fe particles in dust and clear were added.

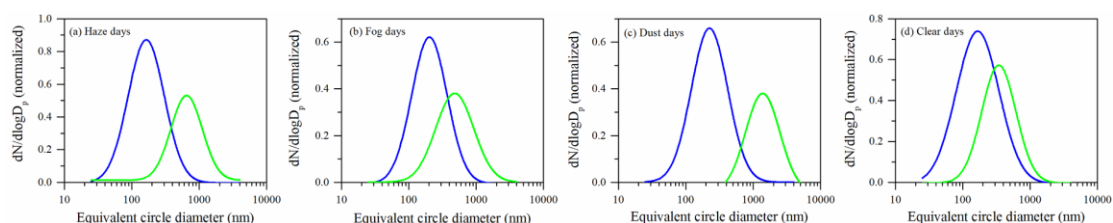


Figure 6. Size distributions of Fe-rich (blue line) and S-Fe (green line) particles under haze (a), fog (b), dust (c), and clear (d) days. Size of S-Fe particles represents the dry state of individual particles on the substrate. The distribution pattern is normalized.

(Page 27)

16. As can be seen in Figure 6, the relative humidity of several fog samples is ~75%. So, the average relative humidity during the sampling period is less than 80% and visibility is less than 10 km. According to the definition in Table S2, these samples should be haze samples.

Response: We have changed the definition of fog day in Table S2 in supplementary document. As shown in revised Table S2, in fog days, the visibility is less than 1 km, and the relative humidity is higher than 90%. We have reclassified the data according to the following criteria:

haze day: the relative humidity is less than 80%, and horizontal visibility drops below 10 km;

fog day: the relative humidity is higher than 90%, and horizontal visibility is less than 1 km.

The revised Figure 5 is as follows:

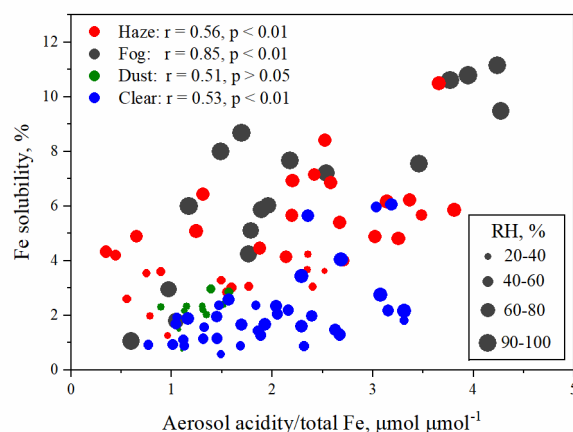


Figure 5. Correlations between Fe solubility and aerosol acidity/total Fe under different RH.

(Page 26)

17. 3.2: The authors use the data of TEM/EDS to interpret the secondary source, and regard S-Fe as an indicator of acid dissolution. The number contribution of S-Fe particles to Fe-containing particles are 76.3% and 87.1% in haze and fog days. It is not surprising. How about the clear and rain days? I speculate that the proportion of S-Fe particles have a similar contribution.

Response: Yes, the proportion of S-Fe particles in Fe-containing particles has a similar contribution in clear days with haze/fog days. The number contribution of S-Fe particles to Fe-containing particles is 81.8% in clear days. We have added corresponding descriptions in the manuscript. To avoid misunderstanding, the number contribution of S-Fe particles to Fe-containing particles in dust days is also added in the manuscript. In rain days, we didn't collect individual particle samples, so didn't discuss TEM results in rain days.

We have changed corresponding sentences as follows:

To further support this result, a total of 688, 404, 580, and 311 individual particles in haze, fog, dust, and clear days were analyzed by TEM/EDS, respectively. In rain days, individual particle samples were not collected.

(Page 12, Line 355-356)

We further calculated the number contribution of S-Fe particles to Fe-containing particles: 76.3% in haze days, 87.1% in fog days, 78.3% in dust days, and 81.8% in clear days.

(Page 12, Line 365-366)

*18. Line 312: Under fog condition, RH ranges from 71% to 99%. Again, what is the difference in RH between fog and haze samples?*

Response: In fog days, RH is higher than 90%. In haze days, RH is less than 80%. We have revised the definition of fog day in Table S2 as follows:

The meteorological definition of fog is tiny water droplets suspended in the air, and horizontal visibility is less than 1 km, the relative humidity is higher than 90%.

*19. Line 320: The authors use SO<sub>4</sub><sup>2-</sup> and NO<sub>3</sub><sup>-</sup> to indicate aerosol acidification. Why does NH<sub>4</sub><sup>+</sup> not be considered in aerosol acidification?*

Response: Yes, NH<sub>4</sub><sup>+</sup> can neutralize acids, so we have re-calculated the aerosol acidity. Several applications have been reported the performance of a thermodynamic equilibrium model (E-AIM model-II) (<http://www.aim.env.uea.ac.uk/aim/aim.php>) is accurate in evaluating the acidity nature of aerosol particles (Ansari and Pandis, 1999; Pathak et al., 2003; Yao et al., 2006; Zhou et al., 2012; Tao et al., 2019). So E-AIM model-II was selected to calculate aerosol acidity in this study. Here, aerosol acidity

was represented by in situ acidity. Because in situ acidity is a more accurate indicator of aerosol acidic nature (Pathak et al., 2009). The input data of E-AIM model-II include temperature, relative humidity, and the concentrations of  $\text{NH}_4^+$ ,  $\text{SO}_4^{2-}$ ,  $\text{NO}_3^-$ , and  $\text{H}^+$ . It was assumed that the concentration of  $\text{H}^+ \approx 2 \times [\text{SO}_4^{2-}] + [\text{NO}_3^-] - [\text{NH}_4^+]$ . We have added corresponding descriptions about E-AIM model-II in the manuscript as follows:

### 2.7 Aerosol acidity and liquid water content

A thermodynamic equilibrium model (E-AIM model-II) (Clegg et al., 1998) was used to calculate aerosol acidity (in situ acidity) and liquid water content, available at <http://www.aim.env.uea.ac.uk/aim/aim.php>. The input data include temperature, relative humidity, and the concentrations of  $\text{NH}_4^+$ ,  $\text{SO}_4^{2-}$ ,  $\text{NO}_3^-$ , and  $\text{H}^+$ . It was assumed that the concentration of  $\text{H}^+ \approx 2 \times [\text{SO}_4^{2-}] + [\text{NO}_3^-] - [\text{NH}_4^+]$ .

(Page 6, Line 161-165)

We have changed corresponding sentences as follows:

To further investigate the impact of aerosol acidification on Fe solubility, the correlation of aerosol acidity/total Fe with Fe solubility was calculated. Aerosol acidity was estimated by E-AIM model. As shown in Figure 5, aerosol acidity/total Fe and Fe solubility all show a good correlation in fog ( $r = 0.85$ ,  $p < 0.01$ ), haze ( $r = 0.56$ ,  $p < 0.01$ ), dust ( $r = 0.51$ ,  $p < 0.05$ ), and clear ( $r = 0.53$ ,  $p < 0.01$ ) days. These results further supported the above argument that the solubilisation of Fe aerosols by acids.

(Page 12, Line 367-371)



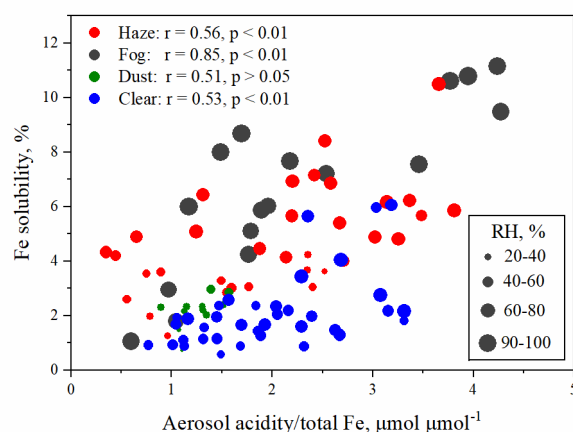


Figure 5. Correlations between Fe solubility and aerosol acidity/total Fe under different RH.

(Page 26)

#### References:

Ansari, A. S., and Pandis, S. N.: An analysis of four models predicting the partitioning of semivolatile inorganic aerosol components, *Aerosol Sci. Tech.*, 31, 129-153, <https://doi.org/10.1080/027868299304200>, 1999.

Pathak, R. K., Yao, X., Lau, A. K. H., and Chan, C. K.: Acidity and concentrations of ionic species of PM<sub>2.5</sub> in Hong Kong, *Atmos. Environ.*, 37, 1113-1124, [https://doi.org/10.1016/S1352-2310\(02\)00958-5](https://doi.org/10.1016/S1352-2310(02)00958-5), 2003.

Pathak, R. K., Wu, W. S., and Wang, T.: Summertime PM<sub>2.5</sub> ionic species in four major cities of China: nitrate formation in an ammonia-deficient atmosphere, *Atmos. Chem. Phys.*, 9, 1711-1722, <https://doi.org/10.5194/acp-9-1711-2009>, 2009.

Yao, X., Ling, T. Y., Fang, M., and Chan, C. K.: Comparison of thermodynamic predictions for in situ pH in PM<sub>2.5</sub>, *Atmos. Environ.*, 40, 2835-2844, <https://doi.org/10.1016/j.atmosenv.2006.01.006>, 2006.

Zhou, Y., Xue, L., Wang, T., Gao, X., Wang, Z., Wang, X., Zhang, J., Zhang, Q., and Wang, W.: Characterization of aerosol acidity at a high mountain site in central eastern China, *Atmos. Environ.*, 51, 11-20, <https://doi.org/10.1016/j.atmosenv.2012.01.061>, 2012.

Tao, Y., and Murphy, J. G.: The Mechanisms Responsible for the Interactions among Oxalate, pH, and Fe Dissolution in PM<sub>2.5</sub>, *ACS Earth Space Chem.*, 3, 2259-2265, <https://doi.org/10.1021/acsearthspacechem.9b00172>, 2019.

20. Line 327: Here the unit of  $(2SO_4^{2-}+NO_3^-)$  is mmol? What is the factor of 2 for?

Response: As shown in comment 19, we have re-calculated the aerosol acidity using E-AIM model-II instead of  $(2SO_4^{2-}+NO_3^-)$  as aerosol acidity.

21. Lines 327-330: The water content of the particles seem to be important. Is it possible to calculate the water content of the particles under different weather conditions, then do the correlation analyses between the dissolved Fe and water content?

Response: We used E-AIM II thermodynamic model (<http://www.aim.env.uea.ac.uk/aim/aim.php>) to calculate liquid water content. According to the suggestion in comment 17, the correlations between liquid water content and Fe solubility in haze, fog, dust, and clear days all are shown in Figure 7.

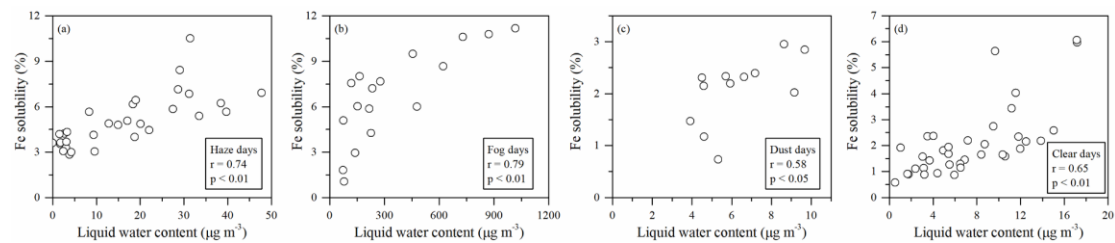


Figure 7. Correlations between Fe solubility and liquid water content in haze (a), fog (b), dust (c), and clear (d) days.

(Page 27)

We added descriptions about the correlation analyses between dissolved Fe and liquid water content in the manuscript as follows:

Furthermore, E-AIM model was also employed to estimate liquid water content. Lower correlation between Fe solubility and liquid water content in haze ( $r = 0.74$ ,  $p < 0.01$ ) and clear ( $r = 0.65$ ,  $p < 0.01$ ) days than that in fog days ( $r = 0.79$ ,  $p < 0.01$ ) further supported these results (Fig. 7).

(Page 13, Line 394-396)