

# The diurnal and seasonal variability of ice nucleating particles at the High Altitude Station Jungfraujoch (3580 m a.s.l.), Switzerland

Cyril Brunner<sup>1</sup>, Benjamin T. Brem<sup>2</sup>, Martine Collaud Coen<sup>3</sup>, Franz Conen<sup>4</sup>, Martin Steinbacher<sup>5</sup>, Martin Gysel-Beer<sup>2</sup>, and Zamin A. Kanji<sup>1</sup>

<sup>1</sup>Institute for Atmospheric and Climate Science, ETH, Zurich, CH-8092, Switzerland

<sup>2</sup>Laboratory of Atmospheric Chemistry, Paul Scherrer Institute, CH-5232 Villigen PSI, Switzerland

<sup>3</sup>Federal Office of Meteorology and Climatology, MeteoSwiss, CH-1530 Payerne, Switzerland

<sup>4</sup>Department of Environmental Sciences, University of Basel, CH-4056 Basel, Switzerland

<sup>5</sup>Laboratory for Air Pollution / Environmental Technology, Empa, Überlandstrasse 129, CH-8600 Dübendorf, Switzerland

**Correspondence:** C. Brunner (cyril.brunner@env.ethz.ch) and Z.A. Kanji (zamin.kanji@env.ethz.ch)

**Abstract.** Cloud radiative properties, cloud lifetime, and precipitation initiation are strongly influenced by the cloud phase. Between  $\sim 235$  and  $273$  K, ice nucleating particles (INPs) are responsible for the initial phase transition from the liquid to the ice phase in cloud hydrometeors. This study analyzes immersion-mode INP concentrations measured at  $243$  K at the High Altitude Research Station Jungfraujoch ( $3580$  m a.s.l.) between February 2020 and January 2021, thereby presenting  
5 the longest continuous, high-resolution ( $20$  min) data set of online INP measurements to date. The high time resolution and continuity allow to study the seasonal and the diurnal variability of INPs. After exclusion of special events, like Saharan dust events (SDEs), we found a seasonal cycle of INPs, highest in April (median in spring  $3.1$  INP  $\text{std L}^{-1}$ ), followed by summer (median:  $1.6$  INP  $\text{std L}^{-1}$ ) and lowest in fall and winter (median:  $0.5$  INP  $\text{std L}^{-1}$  and  $0.7$  INP  $\text{std L}^{-1}$ , respectively). Pollen or subpollen particles were deemed unlikely to be responsible for elevated INP concentrations in spring and summer, as  
10 periods with high pollen loads from nearby measurement stations do not coincide with the periods of high INP concentrations. Furthermore, for days when the site was purely in the free troposphere (FT), no diurnal cycle in INP concentrations was observed, while days with boundary layer intrusions (BLI) showed a diurnal cycle. The seasonal and diurnal variability of INPs during periods excluding SDEs is ~~with~~-within a factor of  $7$  and  $3.3$ , respectively, significantly lower than the overall variability observed in INP concentration including SDEs of more than three orders of magnitude, when peak values result  
15 from SDEs. The median INP concentration over the analyzed 12 months was  $1.2$  INP  $\text{std L}^{-1}$  for FT periods excluding SDEs, and  $1.4$  INP  $\text{std L}^{-1}$  for both FT and BLI, and incl. SDEs, reflecting that despite SDEs showing strong but comparatively brief INP signals, they have a minor impact on the observed annual median INP concentration.

## 1 Introduction

The ratio of ice crystals to liquid droplets in a cloud strongly determines its radiative properties, lifetime, and precipitation  
20 initiation (e.g., Lau and Wu, 2003; Lohmann and Feichter, 2005; Hoose and Möhler, 2012; Murray et al., 2012; Mülmenstädt et al., 2015; Heymsfield et al., 2020). For cloud hydrometers with a temperature between  $\sim 235$  and  $273$  K, the phase transition

from the metastable liquid phase to the ice phase is initially supported by ice nucleating particles (INPs, Pruppacher and Klett, 1997; Vali et al., 2015). However, ice nucleation on INPs remains insufficiently understood and quantified (Murray et al., 2021). Knowledge about a diurnal and seasonal variability can help to better understand the sources and sinks of atmospheric INPs, but has only been addressed in a handful of studies. Conen et al. (2015) analyzed the seasonal INP fluctuation at the High Altitude Research Station Jungfraujoch (JFJ) over a year (June 2012 - June 2013) with 24-hour filter samples and their subsequent analysis with immersion freezing assays. They evaluated INPs active at 265 K and observed highest INP concentrations during June, July and August ( $10^{-3}$  to  $10^{-4}$  L<sup>-1</sup>) and lowest between January and the beginning of April with  $10^{-5}$  to  $10^{-4}$  L<sup>-1</sup>, which correlated with ambient temperature. Wex et al. (2019) analyzed the seasonality in INP number concentrations at four different locations in the Arctic using filter samples, where each filter was collecting ambient particles over four days to two weeks. They found a seasonal trend, with INP concentrations lowest in winter and highest in spring. At 260 to 266 K, the seasonal cycle in INP number concentrations spread up to three orders of magnitude ( $\sim 10^{-5}$  to  $10^{-2}$  L<sup>-1</sup>). Schneider et al. (2021) studied the seasonal cycle of INPs in the boreal forest in Finland between March 2018 and May 2019, where the INPs were collected on a filter, which got replaced after 24 to 144 h, and analysed offline on a cold stage. At 252 K, they observed a minimum INP concentration in wintertime, on the order of 1 INP std L<sup>-1</sup>, and maxima in early and late summer of  $\sim 4$  INP std L<sup>-1</sup>. The trend was more pronounced at warmer temperatures, but visible across the entire investigated temperature spectrum (265 - 252 K). Tobo et al. (2020) studied seasonal INP concentrations with 72-hour filter samples taken on a building 458 m above ground in Tokyo between August 2016 and July 2017, followed by testing the particle collected on the filters for their ice nucleation activity on a cold stage. They found a weak seasonal cycle for INPs active below 253 K, with spikes during Asian dust events. For INPs active at warmer temperatures, specifically between 258 and 263 K, higher concentrations were recorded in the warm/wet season and lower concentrations in the cold/dry seasons. They attributed the seasonal trend to Asian dust events and seasonal variations in certain particles of biological origin linked to local meteorology. Schrod et al. (2020) analyzed the INP concentrations at four locations across the globe (the Amazon, Caribbean, central Europe and the Arctic) for almost 2-years (May 2015 - January 2017). Electrostatic aerosol samplers were used to collect ambient particles onto silicon wafers once every 2 days at noon for 50 min. The wafers were later exposed to a saturation ratio with respect to water of  $0.95 \leq S_w \leq 1.01$  at 253 K, 248 K, and 243 K and the number of formed ice crystals was used to deduce the mean INP concentration. They found average concentrations between sites to differ by less than a factor of 5. Short-term fluctuations dominated most of the total variability across all stations. To summarize, a seasonal dependence in INP concentrations was apparent in all these studies, where highest INP concentrations were observed in spring and summer. All these studies were performed using offline sampling techniques, where changes to the ice nucleation ability of particles cannot be excluded between sampling and the analysis. Besides, they typically provide INP number concentrations at temperatures  $\geq 250$  K, while online INP counters often struggle at temperatures  $\geq 250$  K with the low abundance of atmospheric INPs because of their instruments' limit of detection (Cziczo et al., 2017). As the INP concentrations increase with decreasing temperature (e.g., see DeMott et al., 2010) online INP counter can measure statistically robust data from  $\approx 250$  K down to 220 K and lower. Korolev et al. (2003) and Field et al. (2004) showed using in-situ measurements, that, depending on the measurement location, approximately only half of the clouds at 253 and 258 K contain the ice phase, while warmer clouds are often completely free of the ice phase. This suggests

that in these clouds only INPs active at temperatures below 258 K are numerous enough to impact the cloud phase. Therefore, we aim to expand our knowledge about the seasonality in INPs to INPs active at a temperature of 243 K. In addition, our measurement location at the JFJ allows us to draw conclusions about INPs in both, free tropospheric as well as boundary layer intruded air masses. In addition, offline techniques often require long sampling times resulting in too poor temporal resolution to capture diurnal variation within INP concentrations. Online measurement techniques provide the needed temporal resolution, yet required until 2019 an operator to be present at the site for the duration of the experiment to perform regular maintenance of the INP counters (Bi et al., 2019; Brunner and Kanji, 2021; Möhler et al., 2021). Therefore, there are only a few studies investigating the diurnal variability of INP concentrations (e.g., Isono et al., 1971; Rosinski et al., 1995), which, however, are based on measurements of less than ten days. Only more recently, Wieder et al. (2022, in prep.) studied the diurnal cycle of INPs on a mountain top (2693 m a.s.l.) in Switzerland and simultaneously in a nearby valley over a period of two months in early spring. They found a diurnal cycle of INPs at the mountain top, lowest in the morning and highest at the beginning of the night. The cycle was attributed to orographic lifting from low elevation upstream the measurement site. There was no diurnal cycle at the valley measurement site apparent.

Here, we used the automated horizontal ice nucleation continuous chamber (HINC-Auto, Brunner and Kanji, 2021) to measure the INP concentration at a center lamina temperature of  $T = 243.15$  K and  $S_w = 1.04$  at the JFJ between February 7, 2020 and January 31, 2021. The long duration, together with a sampling interval of 20 minutes allowed us to study the seasonal, and the diurnal variability of INP concentrations at the sampling site.

## 2 Materials and methods

The Sphinx observatory is located on the Jungfrauoch (JFJ, 46.330° N, 7.590° E), a saddle between Mt. Mönch and Mt. Jungfrau in the Swiss alps. The JFJ has a long track record of experimental field studies on atmospheric aerosols and their interaction with clouds (Bukowiecki et al., 2016). With an altitude of 3580 m a.s.l., it is often located in the free troposphere (FT). Occasionally, air masses from the planetary boundary layer (PBL) are lifted to or mixed in the ambient air present at JFJ. These boundary layer intrusions (BLI) are most frequently observed in summer and during day time (Collaud Coen et al., 2011). The method used to estimate the air mass type present at the site during measurements is discussed later in subsection 2.2. Furthermore, the remote location allows ~~to study~~ [the study of](#) background concentrations of atmospheric aerosol, like INPs. However, in 2020 and 2021 frequent construction work at Jungfrauoch caused intermittent episodes of local pollution (Bukowiecki et al., 2021), which made a subsequent filtering of the data for polluted episodes necessary (see section 2.1). The JFJ site is part of the Global Atmospheric Watch (GAW) program, the pan-European Aerosol, Clouds and Trace Gases Research Infrastructure (ACTRIS), the Swiss National Air Pollution Monitoring Network (NABEL), and the Swiss meteorological network (SwissMetNet). As such, a number of atmospheric measurements are continuously run at the JFJ, amongst others, the total particle number concentration (condensation particle counter (CPC), TSI 3772, lower cut-off size: 14 nm) and size distribution (scanning mobility particle sizer (SMPS), [mobility diameter scanning range: 17-594 nm](#); optical particle sizer (OPS), TSI 3300, [size range: 0.3 - 10.0  \$\mu\$ m](#); fine dust monitoring device, Fidas® 200), aerosol light absorption properties

90 (aethalometer, MAGEE scientific AE33), and aerosol light scattering and backscattering properties (nephelometer, Airphoton IN101) as well as meteorological standard parameters (e.g., ambient temperature, relative humidity, atmospheric pressure, wind speed and direction). Meteorological standard parameters for the JFJ, precipitation rates, and pollen concentrations for other stations were obtained from the IDAWEB interface of MeteoSwiss (<https://gate.meteoswiss.ch/idaweb>, last accessed April 27, 2021).

## 95 **2.1 INP measurements**

INP concentrations are measured using an automated continuous flow diffusion chamber, the automated Horizontal Ice Nucleation Chamber (HINC-Auto, Brunner and Kanji, 2021). HINC-Auto sampled ambient air and measured the INP concentration at a center lamina temperature of  $T = 243.15$  K and at a supersaturated saturation ratio with respect to water of  $S_w = 1.04$  between February 7, 2020 and January 31, 2021, in ~~unites~~-units of INP std L<sup>-1</sup> (per standard liter, normalized to  $T = 273.15$  K and an atmospheric pressure of  $p = 1013.25$  hPa). Ambient air was sampled via a heated ( $T = 293.15$  K) total aerosol inlet (Weingartner et al., 1999), which feeds also the other aerosol measurements at the JFJ. Before entering HINC-Auto, the sampled air is dried using a diffusion dryer ( $S_w \leq 0.008$  at 20 °C, filled with 4 Å-molecular sieve). The sampling volume rate was set to 0.283 std L min<sup>-1</sup>. The sampling interval was 20 min and consisted of sampling ambient air (15 min) and particle-free ambient air (5 min) between each measurement. In HINC-Auto, false-positive counts can arise due to frost breaking off the chamber walls. They are present during the measurement of ambient, as well as particle-free air. During the 5 min before and after an ambient air measurement, the number of false-positive frost particles are counted and time-proportionally subtracted from the ambient air measurement to yield the background-corrected ambient INP concentrations. Because of Poisson statistics it is likely that during the time-normalized particle-free measurements more or fewer false-positive counts arise than during the time-normalized ambient air measurement. This leads to a variable systematic bias of the background-corrected ambient INP concentrations for each sampling interval even if the true atmospheric INP concentration was to remain constant. The standard deviation of the resulting probability density function corresponds to the stated counting uncertainty of  $\pm 1 \sigma$ , provided after each stated INP concentration in this work, and is on median  $\pm 1.37$  INP std L<sup>-1</sup>. The bias in background correction can lead to negative reported values of background-corrected ambient INP concentrations whenever the true INP concentration is close to or below the chamber background. These negative readings are retained in the data set. In addition, applying a moving average over 3 measurements greatly reduces the number of reported negative INP concentrations. For HINC-Auto, the counting uncertainty is identical to the limit of detection (LOD). See Brunner and Kanji (2021) for a more detailed description of HINC-Auto and the derivation of the INP concentrations.

The measured INP concentrations are here statistically described by the median and 25<sup>th</sup> to 75<sup>th</sup> percentiles ( $Q_{25\%} - Q_{75\%}$ ). We assume atmospheric INP concentrations away from sources to be log-normally distributed, as proposed generally for atmospheric pollutants by Ott (1990) and supported by other studies (e.g., Welti et al., 2018; Schrod et al., 2020). Therefore, an adequate statistical description would be the log-mean and log-standard-deviation. However, measurements reporting a negative INP concentration don't allow to include all data when calculating the logarithm. For log-normally distributed data without any skewness, the log-mean is identical to the median. Hence, we chose to report the median.

Frequent construction work at the JFJ during the observation period caused intermittent interference from local pollution (Bukowiecki et al., 2021). Therefore, the INP measurements had to be filtered (75.5% remain after filtering). High frequency fluctuations in the total particle concentrations were observed during periods with pollution from the construction site. These fluctuations in the CPC and the  $\geq 0.3 \mu\text{m}$  - optical particle counter channel of HINC-Auto were used to obtain unpolluted INP measurements ( $N = 15843$ ). A more detailed description of the data filtering process can be found in Brunner et al. (2021, in review) Brunner et al. (2021).

## 130 2.2 Classification of air masses

### 2.2.1 Free tropospheric air masses and boundary layer intrusions

The distinction between undisturbed FT air masses and FT affected by boundary layer intrusions, hereafter simply referred to as BLI conditions, is made according to Brunner et al. (2021, in review) Brunner et al. (2021). It is based on a combined criterion considering both the  $^{222}\text{Rn}$  concentration ( $^{222}\text{Rn}$ , Griffiths et al., 2014, first factor in equation (1)) and the total number concentration of particles with diameters larger than  $d \geq 90 \text{ nm}$  ( $N_{90}$ , Herrmann et al., 2015, second factor in equation (1)). Subsequently, the probability ( $P_{\text{FT}}$ ) of the sampled air to represent undisturbed FT air mass is obtained using:

$$P_{\text{FT}} = \frac{\text{PDF}_{\text{FT}}(^{222}\text{Rn conc.})}{\text{PDF}_{\text{FT}}(^{222}\text{Rn conc.}) + \text{PDF}_{\text{BLI}}(^{222}\text{Rn conc.})} \frac{1}{1 + e^{k(N_{90} - N_{90,\text{TH}})}} \quad (1)$$

where  $\text{PDF}_{\text{FT}}$  and  $\text{PDF}_{\text{BLI}}$  are the probability density functions with FT or BLI log-normal fit parameters, respectively,  $k$  is the slope factor to capture the seasonality as discussed later, here  $k = 0.1$ , and  $N_{90,\text{TH}}$  is the  $N_{90}$  threshold midpoint, here  $N_{90,\text{TH}} = 120 \text{ cm}^{-3}$ .  $\text{PDF}_{\text{FT}}$  and  $\text{PDF}_{\text{BLI}}$  are inferred from long-term radon measurements at the JFJ between January 1, 2009 and December 31, 2020, where the frequency distribution of the logarithm of the  $^{222}\text{Rn}$  concentrations, has a bimodal shape with two discernible but overlapping modes. The two normal distributions were fitted to this frequency distribution, where the modes at lower and higher concentrations are assumed to represent undisturbed FT and BLI conditions, respectively. The resulting probability density functions for  $^{222}\text{Rn}$  concentrations of FT and BLI air masses are according to:

$$\text{PDF}_{\text{FT}}(^{222}\text{Rn conc.}) = \frac{1}{\sigma_{\text{FT}}\sqrt{2\pi}} e^{-\frac{1}{2}\left(\frac{\log_{10}(^{222}\text{Rn conc.}) - \mu_{\text{FT}}}{\sigma_{\text{FT}}}\right)^2} \quad (2)$$

where the log-normal fit parameters are  $\mu_{\text{FT}} = -0.139 \text{ Bq/std m}^3$ ,  $\sigma_{\text{FT}} = 0.239 \text{ Bq/std m}^3$  for  $\text{PDF}_{\text{FT}}$ , and  $\mu_{\text{BLI}} = 0.403 \text{ Bq/std m}^3$ ,  $\sigma_{\text{BLI}} = 0.238 \text{ Bq/std m}^3$  for  $\text{PDF}_{\text{BLI}}$ . Herrmann et al. (2015) showed, depending on the seasons at the JFJ, for values of  $N_{90} \geq 100 - 150 \text{ cm}^{-3}$  to be only present during BLI conditions.  $N_{90}$  values below this threshold do not exclude BLI conditions. Therefore, the second factor of equation (1) forces  $P_{\text{FT}}$  to low probabilities whenever  $N_{90}$  exceeds the defined threshold, while below the threshold  $P_{\text{FT}}$  becomes identical to using the first factor of equation (1) ( $^{222}\text{Rn}$  term) only. A more detailed description can be found in Brunner et al. (2021, in review) Brunner et al. (2021).  $^{222}\text{Rn}$  is measured at the JFJ according to Griffiths et al. (2014) and  $N_{90}$  retrieved from SMPS measurements. The temporal resolution of the  $^{222}\text{Rn}$  measurements is one every 30 min., and one every 6 min. for the  $N_{90}$  measurements.

## 2.2.2 Saharan dust events and background conditions

155 The JFJ is frequently influenced by Saharan dust events (SDEs; Collaud Coen et al., 2004). Between 2001 and 2017, 10 - 50 SDEs were reported each year with an annual total duration of 200 - 700 hours (Bader et al., 2021). To detect SDE periods the method of [Brunner et al. \(2021, in review\)](#) [Brunner et al. \(2021\)](#) is applied. It uses four tracers as indicators for SDEs: the single scattering albedo Ångström exponent, measured and retrieved from nephelometer and aethalometer measurements at the JFJ (Collaud Coen et al., 2004), the attenuated backscatter of the Lufft CHM15k-Nimbus ceilometer, operated by MeteoSwiss  
160 at Kleine Scheidegg (KSE, 46.547° N, 7.985° E, 2061 m a.s.l., Hervo et al., 2016), 4.4 km north of the JFJ and 1500 m lower in altitude, particle surface residence times over the Saharan desert of air parcels arriving at the JFJ, modelled using the Lagrangian particle dispersion model FLEXPART (Version 9.1\_EMPA, Stohl et al., 2005), and the satellite-retrieved dust mass concentrations from the Copernicus Atmosphere Monitoring Service (CAMS). If at least one tracer indicates a SDE, the period is labeled as SDE. This conservative approach aims at providing a clean subset of data set for non-SDE cases, whereas  
165 the subset with SDE label may include some non-SDE periods. SDEs can occur in FT or BLI conditions, denoted as FT<sub>SDE</sub> and BLI<sub>SDE</sub>, respectively. In the total period analyzed, 31 SDEs were recorded with a total duration of 55 days and 20 hours. Periods without a SDE signal are labeled as background periods (BG = total - SDE). BG periods are further divided into FT and BLI periods (FT<sub>BG</sub> and BLI<sub>BG</sub>, correspondingly). The conditions for a positive SDE-signal and further information can be found in [Brunner et al. \(2021, in review\)](#) [Brunner et al. \(2021\)](#).

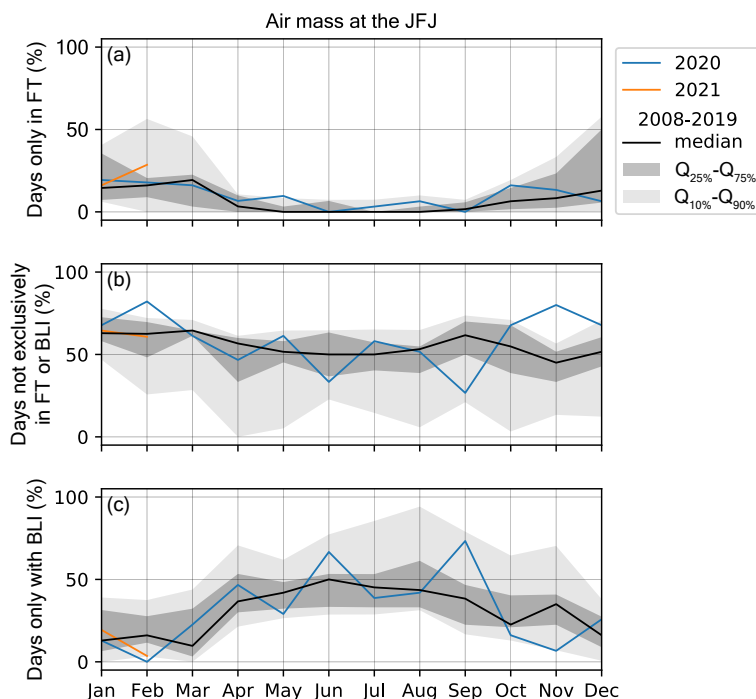
## 170 3 Results

The observed seasonal and diurnal variability of INP concentrations are discussed in the following sections. First, the total investigated period is brought ([see Figure A3a for individual INP measurement annual time series overview](#)) into context with previous seasons with regard to standard meteorological parameters and the type of air mass present at the site [throughout the year \(Figure A3b and A3c\)](#). Then, the seasonal signature of different air masses is analyzed. Finally, the observed diurnal  
175 variability is presented for different air masses.

### 3.1 The seasonal INP variability at the JFJ

During February 2020 - January 2021, the mean temperature at the JFJ was -5.9 °C, representing the warmest period on record since 1933 and 2.0 °C warmer than February 1933 - January 1971. On February 10, the storm "Sabine" led to wind speeds of up to 54 m/s, which corresponds to the 99.6<sup>th</sup> percentile of all daily maximum wind measurements at the JFJ. Yet, this is  
180 still well below the record wind velocity of 74 m/s, measured on January 6, 1998. The site was 40% less in clouds (where a relative humidity (RH) greater than 96% is considered as in-cloud) compared to previous years (2020-2021: 16.1% vs. 1970-2019: 26.6%). Note that the prevalence of in-cloud conditions based on RH is underestimating the true prevalence of in-cloud conditions, but relative changes are well captured (e.g., see Herrmann et al., 2015). There were two exceptionally dry [periods](#) in the end of March and the beginning of April (March 23 and April 4: RH = 2.2% in both cases at ambient temperatures

185 of  $-10.3\text{ }^{\circ}\text{C}$  and  $-8.5\text{ }^{\circ}\text{C}$ , respectively, resulting in dew points of  $-47.2$  and  $-48.8\text{ }^{\circ}\text{C}$ , respectively). Ozone concentrations implied no intrusion of stratospheric air masses (March 23 and April 4: ozone = 50.8 ppb and 61.0 ppb, respectively; stratospheric intrusions often go along with ozone concentrations  $>70$  ppb (Stohl et al., 2000)). During the late March/early April period, air masses were largely advected from high northern latitudes. With 38%, the JFJ experienced 5% more FT periods in relative terms than in the 2008-2019 period (36%). Figure 1 shows a more detailed representation of the air masses present during  
 190 the analyzed period compared to historic observations. The fractions of days purely in FT, of days with a mix of FT and BLI, and of days only in BLI air masses for February 2020 - Jan 2021 were overall representative for the fractions observed during previous years, as they rarely exceed the climatological  $Q_{25\%} - Q_{75\%}$  range. May and August 2020 had more days purely in the FT at the expense of days only with BLI for May. February and November 2020 showed a significantly higher fraction of mixed air masses while there were fewer days purely with BLI.

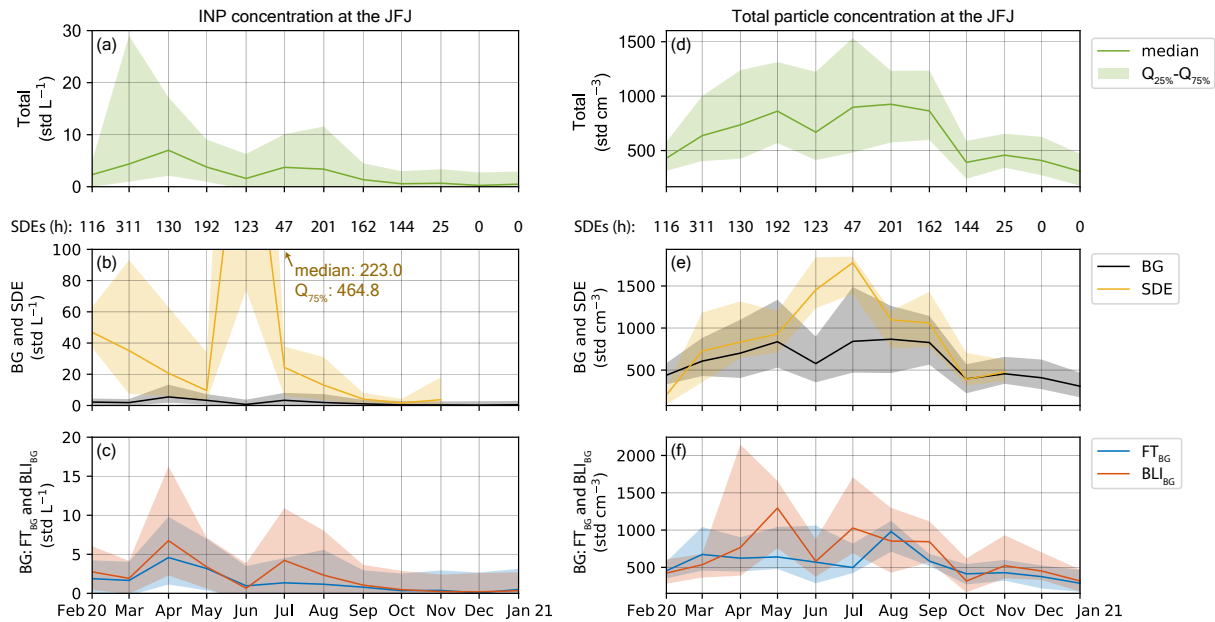


**Figure 1.** Fraction of days (a) entirely in FT air masses, (b) both in FT and BLI air masses, and (c) only in BLI air masses for 2020 (blue), Jan-Feb 2021 (orange) and 2008-2019 (gray).  $Q_{10\%}$ ,  $Q_{25\%}$ ,  $Q_{75\%}$ , and  $Q_{90\%}$  correspond to the historic 10<sup>th</sup>, 25<sup>th</sup>, 75<sup>th</sup>, and 90<sup>th</sup> percentiles between 2008 and 2019.

195 Figure 2a-c shows the monthly variation of the INP concentrations at the JFJ. The median INP concentrations are highest in April and July/August and lowest in December. Decomposing the data into periods with SDEs and BG conditions reveals for the high  $Q_{75\%}$ -concentrations in March to be a result of SDEs, as four SDEs cumulatively made up 42% of the available time in March. Overall, the monthly median INP concentration during SDEs always exceeded the  $Q_{75\%}$  of the BG concentrations. June had the most active SDE of the investigated period with a duration of ~~116~~ 123 h and a  $Q_{95\%}$  of 881.1 INP std  $\text{L}^{-1}$ .

200 Together with two more brief and less active SDEs, June had the highest monthly INP concentrations during SDEs (median = 223.0 INP std L<sup>-1</sup>, Q<sub>75%</sub> = 464.8 INP std L<sup>-1</sup>), two orders of magnitude higher than the corresponding BG concentrations, consistent with results from Chou et al. (2011). After June, February 2020 showed median highest INP concentrations during SDEs, followed by March (median = 46.9 INP std L<sup>-1</sup> and 35.1 INP std L<sup>-1</sup>, respectively). There were no recorded SDEs in December 2020 and January 2021. Overall Saharan dust contributed to 74.7 ± 0.2% of the total INPs observed at the  
205 sampling conditions at the JFJ [\(see Brunner et al., 2021, in review\)](#)[\(see Brunner et al., 2021\)](#). BG concentrations in June were lower compared to spring and July/August. Dividing BG periods into FT<sub>BG</sub> and BLI<sub>BG</sub> shows similar distributions in both cases for most of the investigated period [\(see Fig. 2c\)](#). Median and Q<sub>75%</sub> concentrations in April, July, and - to a lesser extent - in August were higher during BLI<sub>BG</sub> than in FT<sub>BG</sub> air masses. Independent of the air mass, April showed the highest BG INP concentrations. In contrast to observations of INP active at warmer temperatures (Conen et al., 2015; Schneider et al., 2021),  
210 no correlation between the ambient temperature and the INP concentrations is evident in our data (Spearman's rank correlation coefficient = 0.149, R<sup>2</sup> = 0.012). We hypothesize that because the investigated ice-activation temperature in our study (243 K) is distinctively colder than the ambient temperature (median: 267 K) in contrast to Conen et al. (2015, INP conc. at 265 K, median ambient temperature = 266.5 K), in the latter case a substantial fraction of the INPs can be removed from the air layers around the site when the INPs activate and the formed ice crystals sediment. However, the observations by Schneider et al.  
215 (2021) do not support this hypothesis (INP conc. at 257 K, median ambient temperature = 278 K). Comparing the observed seasonal pattern in total particle number concentrations (see Fig. 2d-f) with the observed seasonality in INP concentrations, both concentrations are highest in spring and summer and lowest in winter. However, while BG INP concentrations peaked in April for both, FT<sub>BG</sub> and BLI<sub>BG</sub>, only a peak in the 75<sup>th</sup> percentile is apparent in April for the total particle concentration [\(see Fig. 2f\)](#). While the drop in BG INP concentrations after the summer occurred continuously in August and September, total  
220 particle number concentrations remained at summer levels also in September [\(see Fig. 2d\)](#). The seasonal median BG total particle concentrations varied by a factor of ~3, while the corresponding INP concentrations varied by a factor of 22. On a more detailed level, April was the month with fifth highest total particle concentrations, with August and May being the months with the highest loading. During the exceptionally dry period (March 23 - April 4), INP concentrations were four times higher than before this period, but remained at the same level or increased further afterwards, suggesting for the high INP concentrations  
225 in April are not connected to the mentioned dry period. [In the absence of Saharan Dust, the peak INP concentrations observed in the spring and summer at JFJ was influenced by convectively and/or orographically transported aerosol. This observation is similar to that of Lacher et al. \(2018\) based on 9 field campaigns who observed relatively constant INP concentrations at 242 K during free tropospheric conditions \(absence of BLI\) at JFJ. A study by Conen et al. \(2015\) at the same site, but at 265 K also reported a seasonal cycle with higher concentrations in the summer, also in agreement with our study. In general, a seasonal cycle demonstrating high INP concentrations in the spring/early summer, and lowest INP concentrations in the winter across a wide temperature range \(260 - 251 K\) have also been observed at other locations such as the arctic \(Wex et al., 2019\) and boreal forest \(Schneider et al., 2021\) owing to increased aerosol transport during the spring season. However, the seasonal cycle can be caused by different types of transport \(long-range vs. convective uplift\) or different sources \(dust vs. regional and locally produced biogenic aerosol\).](#)



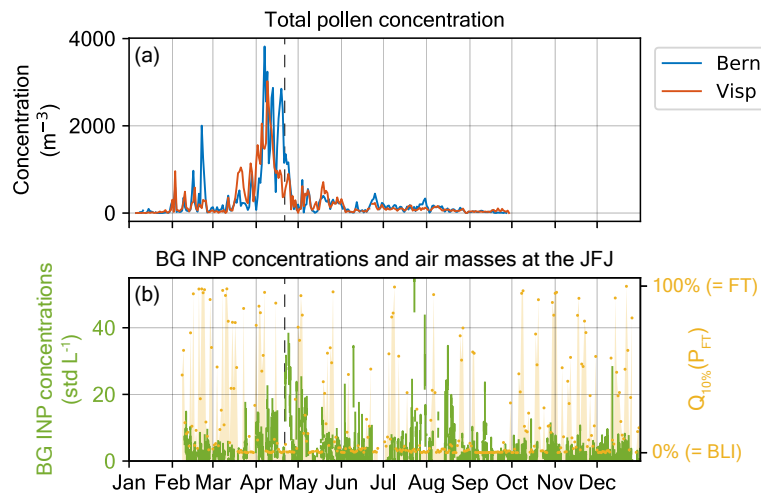


**Figure 2.** Monthly median and 25<sup>th</sup> to 75<sup>th</sup> percentiles ( $Q_{25\%} - Q_{75\%}$ ) of total INP concentrations (a), periods with Saharan Dust Events (SDE) or background (BG) conditions (b), and INP concentrations measured in free tropospheric background (FT<sub>BG</sub>) or boundary layer intruded background (BLI<sub>BG</sub>) air masses (c), and analogous for the total particle concentrations (d, e, and f, respectively) at the JFJ between February 2020 and January 2021. The number above (b) and (e) indicate the total hours of SDEs during each month. There were no SDEs in December 2020 and January 2021.

235 Multiple species of pollen and subpollen particles were found to be ice-active in previous laboratory studies, specifically birch, juniper, pine, orchard grass and redtop grass (e.g., Gute and Abbatt, 2020, and references in Table 1). Note, juniper belongs to the cypress family. Given their seasonality, could pollen or subpollen particles be responsible for the distinctively higher INP concentrations in April? Figure 3 (and Fig. A1 in more detail) shows the pollen concentration for two stations closest to the JFJ, Bern (60 km northeast, 540 m a.s.l.) and Visp (29 km south-southeast, 658 m a.s.l.), however, both of them are ground sites within the PBL. Pollen were sampled by MeteoSwiss on traps for one week on a rotating drum providing a daily data resolution (see Galán et al., 2014, for more information). We assess Bern to be representative for the pollen load in the Swiss plateau, which is directly north of the JFJ, while Visp is located in the Rhône-valley south of the JFJ. To compare, Figure 3b illustrates the INP concentrations in BG air masses (without SDEs) and the  $Q_{10\%}$  of  $P_{FT}$  of a given day. We chose the  $Q_{10\%}$  as proxy, as brief BLIs are ignored while longer periods of BLIs are accounted for. BLIs need to prevail cumulatively for 2.5 hours a day to show a BLI signal in  $Q_{10\%}$ . In the following, we discuss the median freezing temperature of the pollen wash water, containing the subpollen particles of each species, where D01 denotes Diehl et al. (2001), vB05 denotes von Blohn et al. (2005), P12 denotes Pummer et al. (2012), D17 denotes Dreischmeier et al. (2017), and G20 denotes Gute and Abbatt (2020).

240

245



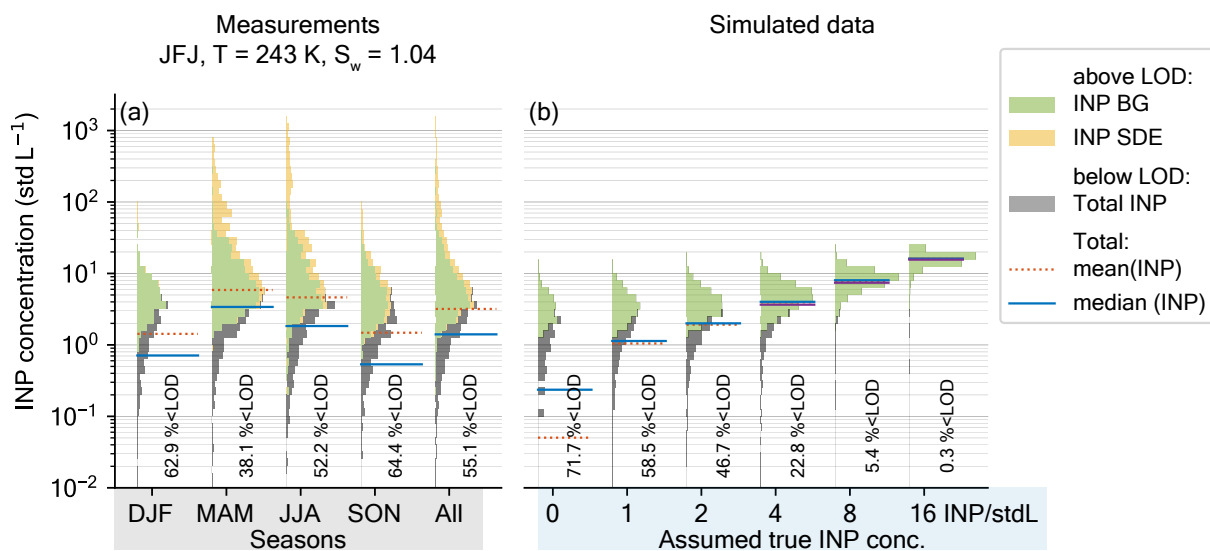
**Figure 3.** Timeline of the total pollen concentration at Bern and Visp (a), and the corresponding BG (= excl. SDE) INP concentration (high-resolution) at the JFJ with the  $Q_{10\%}$  of  $P_{FT}$  of a given day (b) between February 2020 and the end of December 2021. Dashed black line indicates the peak in INP concentrations in April. Pollen data are only available between early January until the end of September. Pollen data: courtesy of MeteoSwiss.

Pollen in the ambient air were detected between January 7 and the end of the sampling period on September 29, with a first  
 250 climax at the end of February, where yew (vB05: 250 K) dominated in Bern, but was almost inexistent at Visp. The remaining major fraction stemmed from alder (D17: 256 K, G20: 264.75 K) and hazel (P12: 249 K). A second maxima, resembling the absolute climax in pollen concentration, was between April 5 and 10. Between the end of March and mid-April, the overall pollen load in Visp was 12% higher than in Bern. It was dominated by birch (D01: 258 K, P12: 254 K, G20: 259 K) by 58% and 49% for Bern and Visp, respectively, followed by esch (Bern: 17%, Visp: 24%), poplar, and cypress (P12: 253 K, G20: 255 K).  
 255 In Bern, beech, oak (D01: 256 K, G20: 259 K), spruce, and sycamore (G20: 266 K) were mainly detected between mid-April and the end of April, while in Visp the overall pollen concentration was much lower and oak was the major constituent. Birch pollen were only found in small concentrations after April 20 in Visp and April 22 in Bern. Between June and September the dominating species were nettle (P12: 248 K) and hemp plants. All pollen, for which the ice nucleation activity was available in the literature, are active at the sampling temperature used in this study (243 K). Therefore, their subpollen particles should be  
 260 detected by HINC-Auto if transported to the JFJ. Intact pollen grains itself are above the upper size cut-off of  $d > 2.5 \mu\text{m}$  of HINC-Auto (see the [Brunner et al. \(2021, in review\)](#) [Brunner et al. \(2021\)](#) for a detailed description about the size-dependent particle transmission efficiency). Median BG INP concentrations during the first pollen climax on February 20 - 25 were  $1.4 \pm 1.2 \text{ INP std L}^{-1}$ , statistically indifferent with regard to INP concentrations 10 days before and after this period. However, the JFJ was mostly in the FT, rendering the transport of pollen or subpollen particles to the site unlikely. During the second  
 265 climax on April 4 - 11, when birch pollen were dominating, median BG INP concentrations were  $3.1 \pm 1.3 \text{ INP std L}^{-1}$ , and decreased to  $2.4 \pm 1.2 \text{ INP std L}^{-1}$  on April 15 - 20. The JFJ was exposed to BLI for most of this period. Between April 21 - 25, when pollen concentrations already mostly declined, the highest median INP concentrations were measured ( $20 \pm$

1.4 INP std L<sup>-1</sup>, see also Fig. A1). Based on these observations [and back trajectories \(not shown here\) arriving at JFJ during April 20 and 22](#), it is unlikely that fragmented pollen or subpollen particles [from Bern or Visp](#) are responsible for the observed  
270 high BG INP concentrations in April, however, because no pollen measurements were available for the JFJ, this needs to be verified in future work. [We note that sub pollen particles could have been transported to JFJ from other parts of Switzerland and Europe like from Italy to the south of JFJ or regions north-east of JFJ within Switzerland and as such their contributions can similarly not be ruled out, in particular because the timing of the bloom depends on the altitude and can also be mixed into the air masses from nearby hills and valleys as has been observed for INP transport to mountaintop sites \(Wieder et al., 2022\)](#)  
275 . The background-corrected maximum contribution of fragmented pollen or subpollen particles to the overall INP population at  $T = 243.15$  K and  $S_w = 1.04$  during peak periods (April 8 - 14) is 19.9 INP std L<sup>-1</sup>, with a median contribution of 5.8 INP std L<sup>-1</sup> during these peak periods (see also Fig. A1). If every pollen grain would be ice-active at 243 K, and the same pollen concentration were present at the JFJ as measured in Bern, i.e., the PBL was perfectly mixed and the JFJ was within the PBL, pollen would only contribute up to 3.6 INP std L<sup>-1</sup> (4 INP L<sup>-1</sup>), 5 times less than the Q<sub>95%</sub> INP concentration for BLI<sub>BG</sub>  
280 conditions during the same time period. This indicates that if the peaks of up to 19.9 INP std L<sup>-1</sup> result from pollen particles [from other regions \(excluding Bern and Visp\)](#), a fragmentation process needs to be involved, like the swelling of pollen, burst, and subsequent release of a great number of subpollen particles from every pollen grain, as predicted by laboratory experiments (Gute and Abbatt, 2020).

As with every instrument, HINC-Auto introduces artefacts based on the methodology used which reflect back in the data it  
285 provides. Because the measured INP concentrations are often close to or within the counting uncertainty, a simple model of the sampling method used in HINC-Auto was developed to assess the overall and seasonal BG INP concentration. In the model, all particle-free air measurements between February 7, 2020 and January 31, 2021 ( $N = 21614$ , 5 min each) were concatenated to a single vector. Using random 5-minutes samples from this vector (with replacement), 10000 artificial measurements were simulated with a prescribed, constant INP concentration. The frequency distributions of these synthetic measurements for  
290 prescribed, constant INP concentrations of 0, 1, 2, 4, 8, and 16 std L<sup>-1</sup> are shown in Figure 4, and compared to the seasonal and overall INP concentrations. For a prescribed concentration of 0 INP std L<sup>-1</sup>, the model estimates that HINC-Auto would record values of up to 10 INP std L<sup>-1</sup>, with a median and average close to 0 INP std L<sup>-1</sup>. The difference between the median and the average concentration corresponds to statistical noise and converges to 0 INP std L<sup>-1</sup> for an increasing number of artificial measurements. 71.7% of all artificial measurements are below the LOD, which deviates from the 84.1%, being the  
295 fraction expected for values following a symmetric Gaussian distribution without a kurtosis. For a prescribed concentration of 1 INP std L<sup>-1</sup>, the shown distribution using a log-scale does only change insignificantly compared to a prescribed concentration of 0 INP std L<sup>-1</sup>. The median and mean converge close to 1 INP std L<sup>-1</sup>, while the fraction below the LOD decreases. Also for artificial measurements with higher prescribed INP concentrations, the median and mean agree well with the set prescribed INP concentration, however, the shape of the distribution follows a normal and not a log-normal distribution. The seasonal and  
300 overall frequency distributions, in contrast, show a log-normal distribution, as expected by theory (Ott, 1990) and discussed more in [Brunner et al. \(2021, in review\)](#) [Brunner et al. \(2021\)](#). Comparing the artificial signals with the measurements, the total (SDE+BG) true median INP concentration in winter was likely between 0 and 1 INP std L<sup>-1</sup>. This is supported by the median

observed in the INP measurements ( $0.7 \text{ INP std L}^{-1}$ ), the fraction below the LOD as well as the shape of the distribution. The INP concentration in spring increased (median:  $3.1 \text{ INP std L}^{-1}$ ), with and without consideration of measurements during SDEs, and decreased in summer (median:  $1.6 \text{ INP std L}^{-1}$ ) and decreased further in fall (median:  $0.5 \text{ INP std L}^{-1}$ ). The total (including SDE and BG periods) median INP concentration between February 2020 and January 2021 is  $1.4 \text{ INP std L}^{-1}$ . The analysis with a model mimicking the instrument's methodology nicely shows how an instrument with given counting uncertainty can alter the frequency ~~distributing~~ distribution of INP concentrations, whereas the median remains robust. Thus, comparing the observed seasonal and total frequency distributions with the model output with known INP concentrations, e.g., with respect to the fraction of INP concentrations below the LOD and the relative location of the median to the frequency bins above  $0.01 \text{ INP std L}^{-1}$ , the model supports the reported median INP concentrations. Yet, it questions which fraction of the observed frequency distribution arises only because of the instrument bias, and subsequently, does not correspond to the true INP concentration within the atmosphere. This mainly concerns reported individual INP concentrations below  $10 \text{ INP std L}^{-1}$ , whereas for higher INP concentrations, the reported frequency distributions are robust, as the model shows less spread the higher the prescribed INP concentration.



**Figure 4.** (a) Frequency distributions of INP concentrations measured in winter (December 2020, January 2021, February 2020), spring (March - May 2020), summer (June - August 2020), fall (September - November 2020), and during the entire investigated period (February 2020 - January 2021); (b) frequency distributions of simulated artificial INP concentrations with a prescribed INP concentration of 0, 1, 2, 4, 8, and  $16 \text{ std L}^{-1}$ . Green indicates INP concentrations above the limit of detection (LOD) during BG conditions, yellow during SDE periods, grey INP concentrations below the LOD (independently of the air mass), red dashed lines indicate the overall mean INP concentration, and the blue line the overall median INP concentration. Because of the log-scale, only positive concentrations are shown. The stated percentages indicate the fraction of measurements below the LOD.

Disentangling the total observed INP concentration for the entire period in more detail, the median BG INP concentrations remains at  $1.4 \text{ INP std L}^{-1}$ , hinting to the small contribution of SDE periods to the median INP concentration, given the comparatively short total duration of all SDE periods (55 days 20 hours) within the entire period analyzed (359 days). A further division of all BG INP concentrations into periods with FT or BLI air masses reveals the median INP concentrations to be 20% lower in the FT ( $\text{FT}_{\text{BG}} = 1.2 \text{ INP std L}^{-1}$ ) and 7% higher during BLI ( $\text{BLI}_{\text{BG}} = 1.5 \text{ INP std L}^{-1}$ ).

Table 1 provides a more detailed overview of the seasons, including the 25<sup>th</sup>, 75<sup>th</sup> and 95<sup>th</sup> percentiles. In general, the concentrations found in the present work are lower compared to earlier work at the JFJ (Lacher et al., 2018), but consistent with studies at different locations (e.g., Schrod et al., 2020). Comparing the frequency distribution of the measurements from this work to Lacher et al. (2018) emphasises the difference in observed concentrations (see Fig. A2), and proves that the nine single field campaigns in the mentioned earlier work, all targeted to sample SDEs between mid-January and the beginning of March and between May and August in the years 2014-2017, were successful in probing an over-proportional fraction of SDEs. This is further supported by the INP frequency distributions, which for Lacher et al. (2018) are not log-normal as expected compared to those of the present work. Overall, the seasonality has a minor impact on the observed INP concentrations, which is consistent with other work (e.g., Tobo et al., 2020; Schrod et al., 2020). This statement holds for FT conditions, as well as within the PBL. The seasonal INP number concentrations vary by a factor of up to 7 for identical statistical metrics, e.g., when comparing the median concentrations, thus, well below the variation observed within all measurements or compared to SDEs.

**Table 1.** Seasonal statistics of INP concentrations measured at the JFJ at  $T = 243.15 \text{ K}$  and  $S_w = 1.04$  between February 7, February 7, 2020 and January 31, 2021.

INP concentration $\pm \sigma$ (std $\text{L}^{-1}$ )	$Q_{25\%}$ (INP)	Median(INP)	$Q_{75\%}$ (INP)	$Q_{95\%}$ (INP)	$P_{\text{FT}}$
<b>BG:</b>					
Overall:	$-0.9 \pm 1.0$	$1.4 \pm 1.0$	$4.7 \pm 1.2$	$15.1 \pm 1.6$	40.4%
$\text{FT}_{\text{BG}}$ :	$-1.0 \pm 1.0$	$1.2 \pm 1.0$	$4.2 \pm 1.1$	$11.7 \pm 1.4$	100.0%
$\text{BLI}_{\text{BG}}$ :	$-0.9 \pm 1.5$	$1.5 \pm 1.1$	$5.1 \pm 1.4$	$18.1 \pm 1.6$	0.0%
Spring (MAM):	$0.5 \pm 1.1$	$3.4 \pm 1.2$	$7.8 \pm 1.1$	$21.4 \pm 1.4$	48.4%
Summer (JJA):	$-0.7 \pm 0.8$	$1.8 \pm 1.1$	$6.3 \pm 1.4$	$22.3 \pm 1.6$	20.4%
Fall (SON):	$-1.0 \pm 1.1$	$0.5 \pm 1.1$	$2.9 \pm 1.1$	$9.7 \pm 1.4$	42.3%
Winter (DJF):	$-1.1 \pm 0.9$	$0.7 \pm 1.2$	$3.4 \pm 1.2$	$8.6 \pm 1.2$	47.3%
<b>SDE:</b>					
$\text{FT}_{\text{SDE}}$	$7.4 \pm 1.1$	$17.3 \pm 1.1$	$46.1 \pm 1.3$	$112.7 \pm 1.3$	100.0%
$\text{BLI}_{\text{SDE}}$	$7.4 \pm 1.2$	$23.7 \pm 1.5$	$74.6 \pm 1.5$	$354.9 \pm 1.5$	0.0%

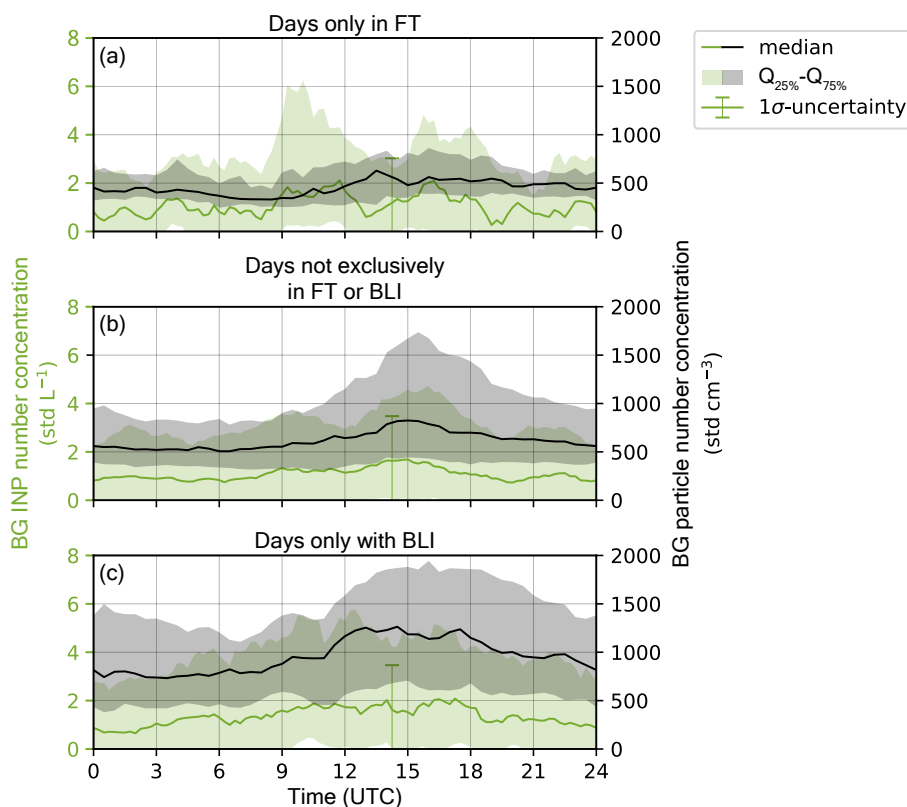
### 3.2 The diurnal INP variability at the JFJ

**Table 2.** Diurnal statistics of BG INP concentrations at  $T = 243.15$  K and  $S_w = 1.04$  and BG total particle number concentrations ( $\leq 14$  nm), for both the median of the phase-averaged concentrations measured at the JFJ between February 7, February 7, 2020 and January 31, 2021.

$Q_{50\%}$ INP concentration (std $L^{-1}$ )	Maximum	Time of maximum (UTC)	Minimum	Time of minimum (UTC)	No. days
BG:					
Days only in FT <sub>BG</sub> :	2.1	11:45 h	0.26	19:00 h	30
Days not exclusively in FT <sub>BG</sub> and BLI <sub>BG</sub> :	1.7	15:00 h	0.74	6:00 h	244
Days only with BLI <sub>BG</sub> :	2.1	16:30 h	0.64	2:00 h	91
$Q_{50\%}$ total particle number concentration (std $cm^{-3}$ )					
BG:					
Days only in FT <sub>BG</sub> :	629	13:00 h	330	8:30 h	30
Days not exclusively in FT <sub>BG</sub> and BLI <sub>BG</sub> :	824	15:00 h	506	6:00 h	244
Days only with BLI <sub>BG</sub> :	1263	14:30 h	732	3:30 h	91

To study the diurnal variability of INPs at the JFJ, phase-statistics of the BG INP concentrations with a cycle period of 24 h were calculated for the total investigated period, starting at midnight of each day [\(see Fig. 5\)](#). These phase-statistics were divided into periods when the full day was in FT air masses (30 days), days not exclusively in FT or BLI (244 days), or days only with BLI (91 days), as shown in Figure 5 [a-c, respectively](#), with statistics in Table 2. Phase-statistics of the total particle number concentrations during BG periods are superimposed (total particle concentrations from CPC measurements without SDE periods). For days only in the FT, there is no clear diurnal cycle in INP number concentrations evident [\(Fig. 5a, green trace\)](#), while the median BG particle concentration shows a weak diurnal cycle, with a maximum of 629 std  $cm^{-3}$  at 13 h UTC and a minimum of 330 std  $cm^{-3}$  at 8:30 h UTC [\(Fig. 5a, black trace\)](#). For days with a mix of FT and BLI air masses, the median BG INP and BG particle number concentrations follow a similar diurnal cycle, with maximum of 1.7 std  $L^{-1}$  and 824 std  $cm^{-3}$  [, respectively, \(Fig. 5b green and black trace, respectively\)](#) at 15 h UTC, and a minimum of 0.74 std  $L^{-1}$  and 506 std  $cm^{-3}$ , respectively, at 6 h UTC. The variation is less pronounced in BG particle concentrations (max/min vs. cycle median = +39%/-14%) compared to the observed variation in BG INP concentrations (max/min vs. cycle median = +70%/-26%; [Fig. 5b black and green shaded regions, respectively](#)). Also for days entirely with BLI a diurnal variability in BG INP concentrations

is apparent (Fig. 5c, green trace). The mean BG particle concentrations increase by 58% compared to mixed days, and double compared to days entirely in the FT, while median BG INP concentrations increase by 33%, and 32% for pure BLI days compared to mixed, and FT days, respectively. The maximum BG INP and BG particle number concentration is at 16:30 h UTC ( $2.1 \text{ std L}^{-1}$ ) and 14:30 h UTC ( $1263 \text{ std cm}^{-3}$ ), while the minimum was at 2 h UTC ( $0.64 \text{ std L}^{-1}$ ) and 3:30 h UTC ( $732 \text{ std cm}^{-3}$ ; Fig. 5c). As for days with FT and BLI, the relative variation for BG INP concentrations is more pronounced. The results suggest that the diurnal cycle of INPs is driven by convection and the expansion of the planetary boundary layer throughout the day, as discussed below.



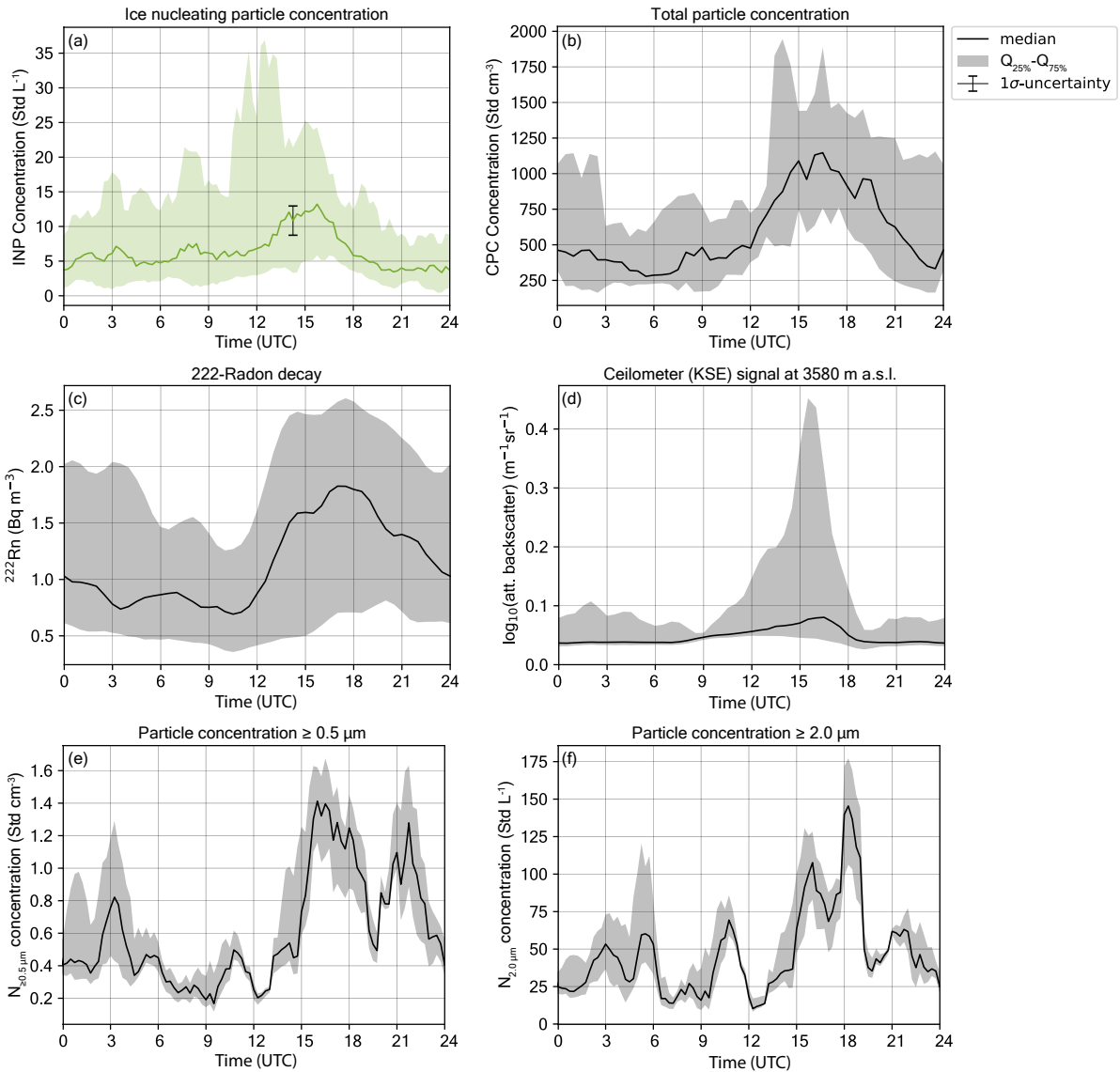
**Figure 5.** Median and quartiles of the BG INP concentrations (green) and BG particle number concentrations (grey), phase-averaged with a cycle period of 24 h, starting at 0 h UTC of each day between February 2020 and January 2021, for measurements from days only within the FT (a), for days not exclusively in FT or BLI (b), and for days only with BLI (c). Error bars show a  $\sigma$  counting uncertainty of the INP measurements.

Figure 6 illustrates a case study of the diurnal cycle during a convective period between March 22 - April 15, excluding SDE periods. On March 22, an anticyclone with its center over Sweden extended its influence to central Europe with prolonged fair weather. Between March 25 and 30, a SDE was recorded at the JFJ. On March 30, an occluded front passed the Alps from northwest within 24 h, followed by an increase in surface pressure. An anticyclone moved across Europe and shielded the Alps until April 16 from further frontal passages, however, on April 6 and 7, a second weak SDE was recorded at the JFJ. For the

period between March 22 - April 15, the INP concentration shows a diurnal cycle (Fig. 6a), with a median INP concentration between 4 and 5  $\text{std L}^{-1}$  throughout the night and peaking at 16 h UTC up to 14  $\text{std L}^{-1}$ . The  $Q_{75\%}$  concentrations peak earlier in the day, at noon with 35  $\text{std L}^{-1}$  (Fig. 6a, black shaded region). Compared to the total particle concentration (Fig. 6b), the median diurnal INP cycle is again less pronounced and declines sooner after peaking.  $^{222}\text{Rn}$  concentrations (Fig. 6c), a tracer for boundary layer intrusions, resemble the diurnal cycle in total particle concentrations well, and decline later after peaking compared to the median INP concentrations. In addition, both total particle concentrations and  $^{222}\text{Rn}$  concentrations decline steadily until the morning, while the INP concentrations remain fairly constant throughout the night. The ceilometer at Kleine Scheidegg reports an increased attenuated backscatter signal (Fig. 6d) in the afternoon for the same altitude as the JFJ (3580 m a.s.l.), indicating the rise of the PBL height and the formation of isolated convective clouds (see Fig. 6d). The signal drops quickly after peaking at 16 h UTC. Thus, it resembles more the trend seen in the INP concentrations than the one of the total particle concentrations or  $^{222}\text{Rn}$  concentrations. Concentrations of particles with a diameter larger than 0.5 and 2.0  $\mu\text{m}$  ( $N_{0.5\mu\text{m}}$  and  $N_{2.0\mu\text{m}}$ ; Fig. 6e and f, respectively) are often used as a predictor of INP concentrations, yet, they show a different diurnal cycle than the INP concentrations.  $N_{0.5\mu\text{m}}$  shows after a first peak at 16 h UTC a drop of more than 50%, followed by a second peak at 22 h UTC. Also  $N_{2.0\mu\text{m}}$  shows two peaks, one at 16 h UTC with 106  $\text{std L}^{-1}$  and a second, higher peak at 18:30 h UTC. The large particle concentrations continue to decrease between 9–12–21–24 h UTC, which does not correspond to the night-time trend seen in the INP concentrations. The large fluctuations in  $N_{0.5\mu\text{m}}$  and  $N_{2.0\mu\text{m}}$  are unexpected, but the quartiles indicate the signals to be robust and data is available without any gaps for the full period investigated. Overall, this strengthens the suggestion that BG INP concentrations follow the convective diurnal cycle at the JFJ, hence implying BLI to be a relevant source of INP at the JFJ during non-SDE periods. The influence of convectively lifted INPs to a mountain top site has also been reported for the Swiss Alps Davos region where the authors show INPs transported along the course of the day evolved to increase to the INP concentrations measured at a near by high valley site (Wieder et al., 2022). The observations suggest that the high valley site could act as a source of INPs for the mountain top site during favorable meteorological conditions, similar to our observations in this work, where favorable BLI led to a diurnal cycle.



Phased-averaged over 17 days (22.3.2020 - 15.04.2020, w/o 25.3.-30.3. and 6.4.-7.4.)



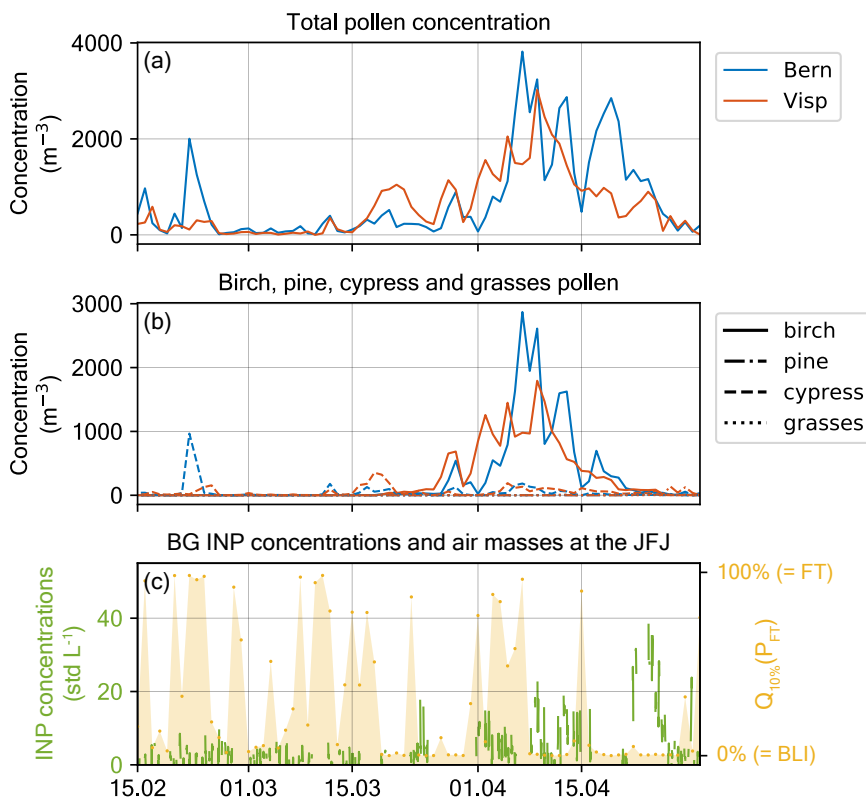
**Figure 6.** Median and quartiles of the INP concentrations (a), total particle concentration (b), <sup>222</sup>Rn decay rates (c), the attenuated backscatter signal at 3580 m a.s.l. of the ceilometer at the Kleine Scheidegg (KSE, d), particle concentration with a diameter larger than 0.5 μm (e), and particle concentration with a diameter larger than 2.0 μm (f). All data are phase-averaged with a cycle period of 24 h, starting at 0 h UTC of each day between March 22 and April 15, without the two SDEs (March 25 - 30, and April 6 - 7). All measurements except for the ceilometer are performed at the JFJ.

## 4 Conclusions

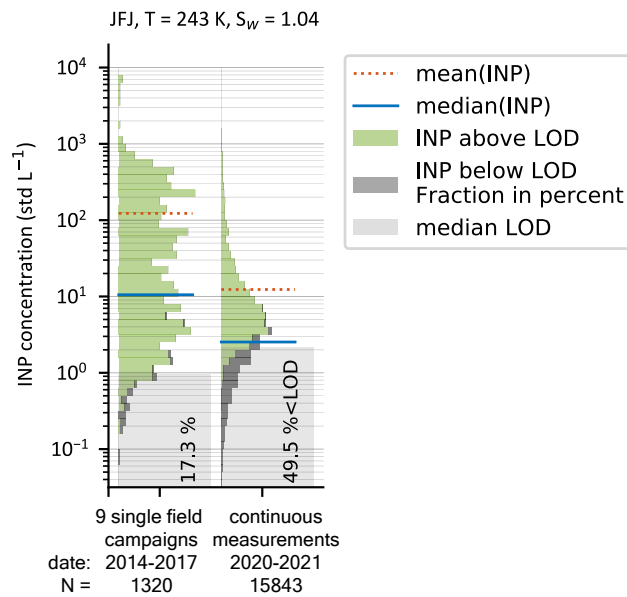
Continuous, sub-hourly measurements of the ambient INP concentration enable to statistically study the behavior of INPs during repeating meteorological events. Such long-term measurements were absent so far. In this work, continuous online INP measurements at  $T = 243.15$  K and  $S_w = 1.04$  at the JFJ between February 7, 2020 and January 31, 2021 were analyzed with regard to their seasonality and diurnal cycle. We found a seasonal cycle, highest in spring with a median of 3.1 INP std  $L^{-1}$ , followed by summer (median: 1.6 INP std  $L^{-1}$ ), and lowest in fall and winter (median: 0.5 std  $L^{-1}$  and 0.7 INP std  $L^{-1}$ , respectively), all in absence of SDEs. This is consistent with the seasonality observed in other studies at the same site (Conen et al., 2015; Lacher et al., 2018) and at different sites (Wex et al., 2019; Tobo et al., 2020; Schneider et al., 2021). Here, INP concentrations show a larger seasonal dependency than the total particle concentrations. We hypothesize this to be an effect of the different seasonality of the partitioning types of particles, e.g., mineral dust for INPs at 243 K vs. biological and anthropogenic particles for the total aerosol concentration. The seasonality in INP concentrations is therefore not surprising because potent INP such as mineral dust are seasonally transported to the JFJ. In addition, the INP concentrations did not always follow the changes observed in aerosol concentrations suggesting in some cases particularly in remote environments, aerosol size dependent number concentrations may not serve as effective variables for predicting INP concentrations (e.g., Li et al., 2022, in review). A positive correlation between ambient temperature and the INP concentrations was non-existent, in contrast to earlier studies for INPs active at warmer temperatures. Based on our observations, it is unlikely that pollen ~~or subpollen particles are~~ grains are directly responsible for the observed high background INP concentrations in April, although during peak periods ~~their contribution~~ the contribution of subpollen particles and pollen fragments from other regions in Europe or Switzerland (such as nearby hills or valleys) cannot be ruled out up to 19.9 INP std  $L^{-1}$  to the overall INP population at  $T = 243.15$  K and  $S_w = 1.04$ . In addition, we note that other sources of INPs at the JFJ have been identified by chemical composition analysis of single aerosol particles including, black carbon associated aerosol, marine and dust (Lacher et al., 2021), with dust being by far the major contributor to INPs observed at 243 K at JFJ (Brunner et al., 2021). The seasonal quartile concentrations vary by a factor of up to 7 for identical statistical metrics, which is much smaller than the observed variation due to special events, e.g., SDEs, which can cover three orders of magnitudes. No diurnal INP cycle was found for days purely in the FT, indicating that sinks and sources of INPs in the FT are either far away from the JFJ or do not follow a diurnal pattern. Atmospheric ageing, for example, which potentially makes atmospheric particles ice-active, is either a slow, (ultra violet-) light dependent process or happens only on local scale. For days with a mix of FT and BLI or for days entirely with BLI, a diurnal cycle similar to the diurnal cycle in total particle concentration was found, yet more pronounced in the case of the diurnal INP variability. This is in agreement with Wieder et al. (2022) who also found a diurnal cycle in INP concentrations at a Swiss Alpine mountain top site, Weissflujoch but not at a near by high valley, Wolfgangpass. Limitations were faced concerning the counting uncertainty of the instrument in combination with the low ambient INP concentrations, hindering the study of INP concentrations at warmer temperatures. By using an aerosol concentrator, future measurements can be extended to warmer sampling temperatures, e.g., for INPs active at 248 K. While this study covered almost a full year, future studies over multiple years to decades can help to fill knowledge gaps in spatiotemporal variability of INPs. The investigation

415 of the interannual variability and trends could, for example, provide some insight whether the observed seasonality is linked to other parameters or how the anthropogenic land-use change and desertification (Ginoux et al., 2012) affect the INP number concentrations in the atmosphere.

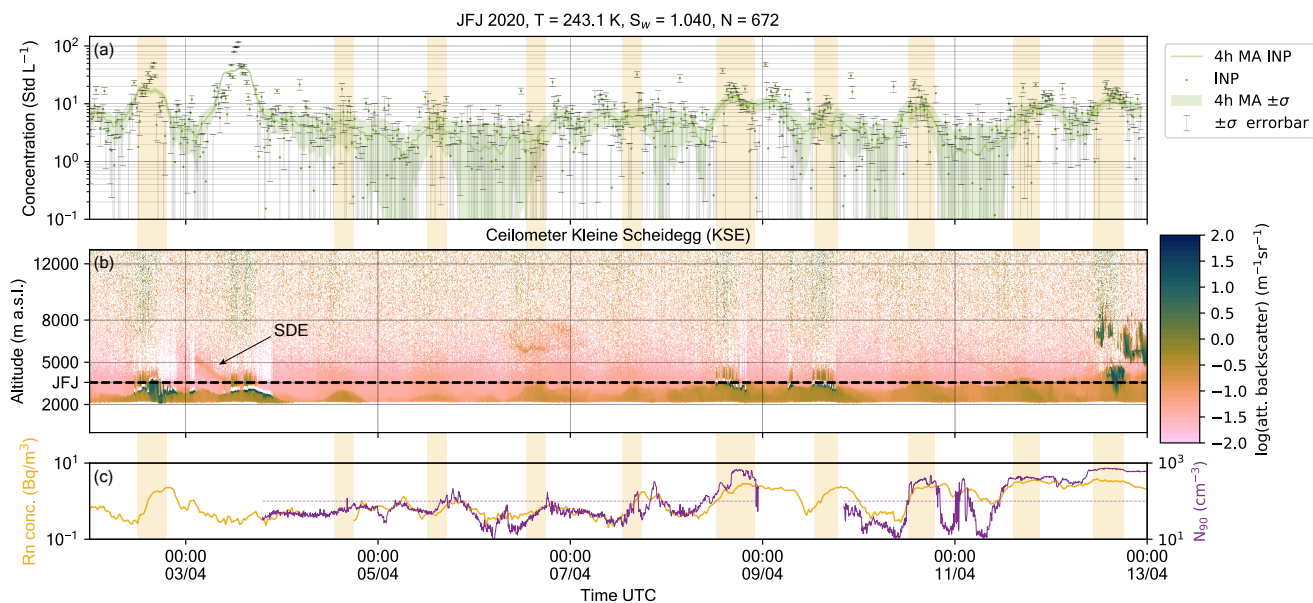
*Data availability.* The data presented in this publication will be made available at DOI: xx.xxxx/ethz. Note by authors: data will be made available upon publication



**Figure A1.** Timeline of the total pollen concentration at Bern and Visp (a), of the dominant species (b) and the corresponding high-resolution INP concentration at the JFJ and the  $Q_{10\%}$  of  $P_{\text{FT}}$  of a given day (c) between February 15 and May 1, 2020. Pollen data, courtesy of MeteoSwiss.



**Figure A2.** Total INP frequency distributions from 9 single field campaigns between 2014 and 2017 by Boose et al. (2016) and Lacher et al. (2018) and continuous measurements from the current work between February 2020 and January 2021, both sampled at the JFJ including SDE and BG periods.



**Figure A3.** INP concentrations at the JFJ, including a 4 hour moving average (MA) and a  $1\sigma$  counting uncertainty (a), attenuated backscatter from the ceilometer at the Kleine Scheidegg (b), and Radon and  $N_{90}$  concentrations (c) during a convective period between April 2 and 13, 2020. Note the peaks in INP concentrations coincide with the diurnal swelling of boundary layer air masses past the altitude of the JFJ, highlighted by the orange shading and indicated by the increase in backscatter from  $\leq 10^{-0.8}$  to  $\geq 10^{-0.5} \text{ m}^{-1} \text{ sr}^{-1}$ .

420 *Author contributions.* CB wrote the manuscript with input from BB, FC, MC, MS, MGB, and ZAK. ZAK conceived the field study. CB conducted all INP measurements and analyzed all INP, CAMS and ceilometer data. CB and ZAK interpreted the INP data and prepared the figures. BB and MGB contributed data aerosol particle concentrations,  $N_{90}$ , absorption and scattering coefficients. MC contributed data on the single scattering albedo. FC contributed data on the Radon concentration and developed the air mass classification (FT or BLI). MS contributed data on trace gases and PM. ZAK supervised the project and obtained funding.

425 *Competing interests.* The authors declare that they have no conflict of interest.

*Acknowledgements.* The authors gratefully acknowledge the Centre for Environmental Data Analysis (CEDA) for providing the ceilometer data, more specifically Maxime Hervo from MeteoSwiss, the Deutscher Wetterdienst, and Olivier Trollé from MétéoFrance. We also acknowledge MeteoSwiss for the pollen data, the Swiss contribution to ICOS (<https://www.icos-ri.eu>) for supporting the operation of the radon detector and the Alastair Williams group at ANSTO for the supply and support of the radon detection system, and the operation of the ceilometer at Kleine Scheidegg, and the Copernicus Atmosphere Monitoring Service is acknowledged for providing the CAMS data. In this work CAMS dust mass data is generated using Copernicus Atmosphere Monitoring Service information (2021). It is important

430

to note, that neither the European Commission nor ECMWF is responsible for any use that may be made of the Copernicus information or data it contains. We also thank Dr. Stephan Henne from the Swiss Federal Laboratories for Materials Science and Technology (Empa) for providing FLEXPART simulated particle surface residence times. This research was funded by the Global Atmospheric Watch, Switzerland  
435 (MeteoSwiss GAW-CH+ 2018–2021). We acknowledge that the International Foundation High Altitude Research Stations Jungfraujoch and Gornegrat (HFSJG), 3012 Bern, Switzerland, which made it possible for us to carry out our experiment(s) at the High Altitude Research Station at Jungfraujoch, with a special thanks to Claudine Frieden, Prof. Dr. Markus Leuenberger and the custodians Joan and Martin Fischer, Christine and Ruedi Käser, and Daniela Bissig and Erich Furrer. The radon observations at Jungfraujoch and the ceilometer observations at Kleine Scheidegg are supported by the Swiss National Science Foundation (SNSF) as a contribution to the pan-European Integrated Carbon  
440 Observation System (ICOS) Research Infrastructure. The continuous aerosol measurements at the Jungfraujoch site are supported by MeteoSwiss in the framework of the Swiss contributions (GAW-CH) to the Global Atmosphere Watch program of the World Meteorological Organization (WMO), and the ACTRIS research infrastructure funded by the Swiss State Secretariat for Education, Research and Innovation (SERI) and by the European Commission under the Horizon 2020 - Research and Innovation Framework Programme, H2020-INFRADEV-2019-2, Grant Agreement number: 871115 (ACTRIS IMP). We thank Prof. Dr. Ulrike Lohmann for her support and enthusiasm. We ac-  
445 knowledge Dr. Heike Wex, Jörg Wieder, Dr. Zane Dedekind, Dr. Larissa Lacher, Dr. Fabian Mahrt, Julie Pasquier, and Dr. Carolin Rösch for useful discussions. For technical support and fabrication, we would like to thank Dr. Michael Rösch and Marco Vecellio, whose expertise greatly helped to improve the instrumentation.

## References

- Bader, S., Collaud Coen, M., Duguay-Tetzlaff, A., Frei, C., Fukutome, S., Gehrig, R., Maillard Barras, E., Martucci, G., Romanens, G.,  
450 Scherrer, S., Schlegel, T., Spirig, C., Stübi, R., Vuilleumier, L., and Zubler, E.: Klimareport 2020, 2021.
- Bi, K., McMeeking, G. R., Ding, D. P., Levin, E. J., DeMott, P. J., Zhao, D. L., Wang, F., Liu, Q., Tian, P., Ma, X. C., Chen, Y. B., Huang,  
M. Y., Zhang, H. L., Gordon, T. D., and Chen, P.: Measurements of Ice Nucleating Particles in Beijing, China, *Journal of Geophysical  
Research: Atmospheres*, 124, 8065–8075, <https://doi.org/10.1029/2019JD030609>, 2019.
- Boose, Y., Kanji, Z. A., Kohn, M., Sierau, B., Zipori, A., Crawford, I., Lloyd, G., Bukowiecki, N., Herrmann, E., Kupiszewski, P., Steinbacher,  
455 M., and Lohmann, U.: Ice Nucleating Particle Measurements at 241 K during Winter Months at 3580 m MSL in the Swiss Alps, *Journal  
of the Atmospheric Sciences*, 73, 2203–2228, <https://doi.org/10.1175/JAS-D-15-0236.1>, 2016.
- Brunner, C. and Kanji, Z. A.: Continuous online monitoring of ice-nucleating particles: development of the automated Horizontal Ice Nucle-  
ation Chamber (HINC-Auto), *Atmospheric Measurement Techniques*, 14, 269–293, <https://doi.org/10.5194/amt-14-269-2021>, 2021.
- Brunner, C., Brem, B. T., Collaud Coen, M., Conen, F., Hervo, M., Henne, S., Steinbacher, M., Gysel-Beer, M., and Kanji, Z. A.: The contri-  
460 bution of Saharan dust to the ice-nucleating particle concentrations at the High Altitude Station Jungfraujoch (3580 m a.s.l.), Switzerland,  
*Atmospheric Chemistry and Physics*, 21, 18 029–18 053, <https://doi.org/10.5194/acp-21-18029-2021>, 2021.
- Bukowiecki, N., Weingartner, E., Gysel-Beer, M., Coen, M. C., Zieger, P., Herrmann, E., Steinbacher, M., Gäggeler, H. W., and Baltensperger,  
U.: A review of more than 20 years of aerosol observation at the high altitude research station Jungfraujoch, Switzerland (3580 m asl), 16,  
764–788, <https://doi.org/10.4209/aaqr.2015.05.0305>, 2016.
- 465 Bukowiecki, N., Brem, B., Wehrle, G., Močnik, G., Affolter, S., Leuenberger, M., Collaud Coen, M., Hervo, M., Baltensperger, U., and Gysel-  
Beer, M.: Elucidating local pollution and site representativeness at the Jungfraujoch, Switzerland through parallel aerosol measurements  
at an adjacent mountain ridge, *Environmental Research Communications*, <https://doi.org/10.1088/2515-7620/abe987>, 2021.
- Chou, C., Stetzer, O., Weingartner, E., Jurányi, Z., Kanji, Z. A., and Lohmann, U.: Ice nuclei properties within a Saharan dust event at the  
Jungfraujoch in the Swiss Alps, *Atmospheric Chemistry and Physics*, 11, 4725–4738, <https://doi.org/10.5194/acp-11-4725-2011>, 2011.
- 470 Collaud Coen, M., Weingartner, E., Schaub, D., Hueglin, C., Corrigan, C., Henning, S., Schwikowski, M., and Baltensperger, U.: Saharan dust  
events at the Jungfraujoch: detection by wavelength dependence of the single scattering albedo and first climatology analysis, *Atmospheric  
Chemistry and Physics*, 4, 2465–2480, <https://doi.org/10.5194/acp-4-2465-2004>, 2004.
- Collaud Coen, M., Weingartner, E., Furger, M., Nyeki, S., Prévôt, A. S., Steinbacher, M., and Baltensperger, U.: Aerosol climatology and  
planetary boundary influence at the Jungfraujoch analyzed by synoptic weather types, *Atmospheric Chemistry and Physics*, 11, 5931–  
475 5944, <https://doi.org/10.5194/acp-11-5931-2011>, 2011.
- Conen, F., Rodríguez, S., Hüglin, C., Henne, S., Herrmann, E., Bukowiecki, N., and Alewell, C.: Atmospheric ice nuclei at  
the high-altitude observatory Jungfraujoch, Switzerland, *Tellus, Series B: Chemical and Physical Meteorology*, 67, 25 014,  
<https://doi.org/10.3402/tellusb.v67.25014>, 2015.
- Cziczko, D. J., Ladino, L. A., Boose, Y., Kanji, Z. A., Kupiszewski, P., Lance, S., Mertes, S., and Wex, H.: Measurements of Ice Nucleat-  
480 ing Particles and Ice Residuals, *Meteorological Monographs*, 58, 8.1–8.13, <https://doi.org/10.1175/AMSMONOGRAPHS-D-16-0008.1>,  
2017.
- DeMott, P. J., Prenni, A. J., Liu, X., Kreidenweis, S. M., Petters, M. D., Twohy, C. H., Richardson, M. S., Eidhammer, T., and Rogers, D. C.:  
Predicting global atmospheric ice nuclei distributions and their impacts on climate, *Proceedings of the National Academy of Sciences*,  
107, 11 217–11 222, <https://doi.org/10.1073/pnas.0910818107>, 2010.

- 485 Diehl, K., Quick, C., Matthias-Maser, S., Mitra, S. K., and Jaenicke, R.: The ice nucleating ability of pollen Part I: Laboratory studies in deposition and condensation freezing modes, *Atmospheric Research*, 58, 75–87, [https://doi.org/10.1016/S0169-8095\(01\)00091-6](https://doi.org/10.1016/S0169-8095(01)00091-6), 2001.
- Dreischmeier, K., Budke, C., Wiehemeier, L., Kottke, T., and Koop, T.: Boreal pollen contain ice-nucleating as well as ice-binding 'antifreeze' polysaccharides, *Scientific Reports*, 7, <https://doi.org/10.1038/srep41890>, 2017.
- Field, P. R., Hogan, R. J., Brown, P. R., Illingworth, A. J., Choulaton, T. W., Kaye, P. H., Hirst, E., and Greenaway, R.: Simultaneous radar  
490 and aircraft observations of mixed-phase cloud at the 100 m scale, *Quarterly Journal of the Royal Meteorological Society*, 130, 1877–1904, <https://doi.org/10.1256/qj.03.102>, 2004.
- Galán, C., Smith, M., Thibaudon, M., Frenguelli, G., Oteros, J., Gehrig, R., Berger, U., Clot, B., Brandao, R., and Group, E. A. S. Q. C. W.: Pollen monitoring: minimum requirements and reproducibility of analysis, *Aerobiologia*, 30, 385–395, <https://doi.org/10.1007/s10453-014-9335-5>, 2014.
- 495 Ginoux, P., Prospero, J. M., Gill, T. E., Hsu, N. C., and Zhao, M.: Global-scale attribution of anthropogenic and natural dust sources and their emission rates based on MODIS Deep Blue aerosol products, *Reviews of Geophysics*, 50, <https://doi.org/10.1029/2012RG000388>, 2012.
- Griffiths, A. D., Conen, F., Weingartner, E., Zimmermann, L., Chambers, S. D., Williams, A. G., and Steinbacher, M.: Surface-to-mountaintop transport characterised by radon observations at the Jungfraujoch, *Atmospheric Chemistry and Physics*, 14, 12 763–12 779, <https://doi.org/10.5194/acp-14-12763-2014>, 2014.
- 500 Gute, E. and Abbatt, J. P.: Ice nucleating behavior of different tree pollen in the immersion mode, *Atmospheric Environment*, 231, 117 488, <https://doi.org/10.1016/j.atmosenv.2020.117488>, 2020.
- Herrmann, E., Weingartner, E., Henne, S., Vuilleumier, L., Bukowiecki, N., Steinbacher, M., Conen, F., Coen, M. C., Hammer, E., Jürányi, Z., Baltensperger, U., and Gysel-Beer, M.: Analysis of long-term aerosol size distribution data from Jungfraujoch with emphasis on free tropospheric conditions, cloud influence, and air mass transport, *Journal of Geophysical Research*, 120, 9459–9480,  
505 <https://doi.org/10.1002/2015JD023660>, 2015.
- Hervo, M., Poltera, Y., and Haeefe, A.: An empirical method to correct for temperature-dependent variations in the overlap function of CHM15k ceilometers, *Atmospheric Measurement Techniques*, 9, 2947–2959, <https://doi.org/10.5194/amt-9-2947-2016>, 2016.
- Heymsfield, A. J., Schmitt, C., Chen, C. C. J., Bansemmer, A., Gettelman, A., Field, P. R., and Liu, C.: Contributions of the Liquid and Ice Phases to Global Surface Precipitation: Observations and Global Climate Modeling, *Journal of the Atmospheric Sciences*, 77, 2629–2648,  
510 <https://doi.org/10.1175/JAS-D-19-0352.1>, 2020.
- Hoose, C. and Möhler, O.: Heterogeneous ice nucleation on atmospheric aerosols: A review of results from laboratory experiments, <https://doi.org/10.5194/acp-12-9817-2012>, 2012.
- Isono, K., Komabayasi, M., Takeda, T., Tanaka, T., Iwai, K., and Fujiwara, M.: Concentration and nature of ice nuclei in rim of the North Pacific Ocean, *Tellus*, 23, 40–59, <https://doi.org/10.3402/tellusa.v23i1.10292>, 1971.
- 515 Korolev, A., Isaac, G. A., Cober, S. G., Strapp, J. W., and Hallett, J.: Microphysical characterization of mixed-phase clouds, *Quarterly Journal of the Royal Meteorological Society*, 129, 39–65, <https://doi.org/10.1256/qj.01.204>, 2003.
- Lacher, L., DeMott, P. J., Levin, E. J. T., Suski, K. J., Boose, Y., Zipori, A., Herrmann, E., Bukowiecki, N., Steinbacher, M., Gute, E., Abbatt, J. P., Lohmann, U., and Kanji, Z. A.: Background free-tropospheric ice nucleating particle concentrations at mixed-phase cloud conditions, *Journal of Geophysical Research: Atmospheres*, 123, 10,506–10,525, <https://doi.org/10.1029/2018JD028338>, 2018.
- 520 Lacher, L., Clemen, H.-C., Shen, X., Mertes, S., Gysel-Beer, M., Moallemi, A., Steinbacher, M., Henne, S., Saathoff, H., Möhler, O., Höhler, K., Schiebel, T., Weber, D., Schrod, J., Schneider, J., and Kanji, Z. A.: Sources and nature of ice-nucleating particles in the



- free troposphere at Jungfraujoch in winter 2017, *Atmospheric Chemistry and Physics*, 21, 16 925–16 953, <https://doi.org/10.5194/acp-21-16925-2021>, 2021.
- 525 Lau, K. M. and Wu, H. T.: Warm rain processes over tropical oceans and climate implications, *Geophysical Research Letters*, 30, <https://doi.org/10.1029/2003GL018567>, 2003.
- Li, G., Wieder, J., Pasquier, J. T., Henneberger, J., and Kanji, Z. A.: Predicting atmospheric background number concentration of ice nucleating particles in the Arctic, *Atmospheric Chemistry and Physics Discussions*, 2022, 1–27, <https://doi.org/10.5194/acp-2022-21>, <https://acp.copernicus.org/preprints/acp-2022-21/>, in review, 2022.
- 530 Lohmann, U. and Feichter, J.: Global indirect aerosol effects: a review, *Atmospheric Chemistry and Physics*, 5, 715–737, <https://doi.org/10.5194/acp-5-715-2005>, 2005.
- Murray, B. J., O’Sullivan, D., Atkinson, J. D., and Webb, M. E.: Ice nucleation by particles immersed in supercooled cloud droplets, *Chemical Society Reviews*, 41, 6519–6554, <https://doi.org/10.1039/C2CS35200A>, 2012.
- Murray, B. J., Carslaw, K. S., and Field, P. R.: Opinion: Cloud-phase climate feedback and the importance of ice-nucleating particles, *Atmos. Chem. Phys.*, 21, 665–679, <https://doi.org/10.5194/acp-21-665-2021>, 2021.
- 535 Möhler, O., Adams, M., Lacher, L., Vogel, F., Nadolny, J., Ullrich, R., Boffo, C., Pfeuffer, T., Hobl, A., Weiss, M., Vepuri, H. S., Hiranuma, N., and Murray, B. J.: The Portable Ice Nucleation Experiment (PINE): A new online instrument for laboratory studies and automated long-term field observations of ice-nucleating particles, *Atmospheric Measurement Techniques*, 14, 1143–1166, <https://doi.org/10.5194/amt-14-1143-2021>, 2021.
- 540 Mülmenstädt, J., Sourdeval, O., Delanoë, J., and Quaas, J.: Frequency of occurrence of rain from liquid-, mixed-, and ice-phase clouds derived from A-Train satellite retrievals, *Geophysical Research Letters*, 42, 6502–6509, <https://doi.org/10.1002/2015GL064604>, 2015.
- Ott, W. R.: A physical explanation of the lognormality of pollutant concentrations, *Journal of the Air and Waste Management Association*, 40, 1378–1383, <https://doi.org/10.1080/10473289.1990.10466789>, 1990.
- Pruppacher, H. R. and Klett, J. D.: *Microphysics of Clouds and Precipitation*, Springer Netherlands, 2 edn., <https://doi.org/10.1007/978-0-306-48100-0>, 1997.
- 545 Pummer, B. G., Bauer, H., Bernardi, J., Bleicher, S., and Grothe, H.: Suspendable macromolecules are responsible for ice nucleation activity of birch and conifer pollen, *Atmospheric Chemistry and Physics*, 12, 2541–2550, <https://doi.org/10.5194/acp-12-2541-2012>, 2012.
- Rosinski, J., Nagamoto, C. T., and Zhou, M. Y.: Ice-forming nuclei over the East China Sea, *Atmospheric Research*, 36, 95–105, [https://doi.org/10.1016/0169-8095\(94\)00029-D](https://doi.org/10.1016/0169-8095(94)00029-D), 1995.
- 550 Schneider, J., Höhler, K., Heikkilä, P., Keskinen, J., Bertozzi, B., Bogert, P., Schorr, T., Umo, N. S., Vogel, F., Brasseur, Z., Wu, Y., Hakala, S., Duplissy, J., Moiseev, D., Kulmala, M., Adams, M. P., Murray, B. J., Korhonen, K., Hao, L., Thomson, E. S., Castarède, D., Leisner, T., Petäjä, T., and Möhler, O.: The seasonal cycle of ice-nucleating particles linked to the abundance of biogenic aerosol in boreal forests, *Atmospheric Chemistry and Physics*, 21, 3899–3918, <https://doi.org/10.5194/acp-21-3899-2021>, 2021.
- Schrod, J., Thomson, E. S., Weber, D., Kossmann, J., Pöhlker, C., Saturno, J., Ditas, F., Artaxo, P., Clouard, V., Saurel, J. M., Ebert, M., Curtius, J., and Bingemer, H. G.: Long-term deposition and condensation ice-nucleating particle measurements from four stations across the globe, *Atmospheric Chemistry and Physics*, 20, 15 983–16 006, <https://doi.org/10.5194/acp-20-15983-2020>, 2020.
- 555 Stohl, A., Spichtinger-Rakowsky, N., Bonasoni, P., Feldmann, H., Memmesheimer, M., Scheel, H. E., Trickl, T., Hübener, S., Ringer, W., and Mandl, M.: The influence of stratospheric intrusions on alpine ozone concentrations, *Atmospheric Environment*, 34, 1323–1354, [https://doi.org/https://doi.org/10.1016/S1352-2310\(99\)00320-9](https://doi.org/https://doi.org/10.1016/S1352-2310(99)00320-9), 2000.

- Stohl, A., Forster, C., Frank, A., Seibert, P., and Wotawa, G.: Technical note: The Lagrangian particle dispersion model FLEXPART version  
560 6.2, *Atmospheric Chemistry and Physics*, 5, 2461–2474, <https://doi.org/10.5194/acp-5-2461-2005>, 2005.
- Tobo, Y., Uetake, J., Matsui, H., Moteki, N., Uji, Y., Iwamoto, Y., Miura, K., and Misumi, R.: Seasonal Trends of Atmospheric Ice Nucleating  
Particles Over Tokyo, *Journal of Geophysical Research: Atmospheres*, 125, <https://doi.org/10.1029/2020JD033658>, 2020.
- Vali, G., DeMott, P. J., Möhler, O., and Whale, T. F.: Technical Note: A proposal for ice nucleation terminology, *Atmospheric Chemistry and  
Physics*, 15, 10263–10270, <https://doi.org/10.5194/acp-15-10263-2015>, 2015.
- 565 von Blohn, N., Mitra, S. K., Diehl, K., and Borrmann, S.: The ice nucleating ability of pollen: Part III: New labora-  
tory studies in immersion and contact freezing modes including more pollen types, *Atmospheric Research*, 78, 182–189,  
<https://doi.org/10.1016/j.atmosres.2005.03.008>, 2005.
- Weingartner, E., Nyeki, S., and Baltensperger, U.: Seasonal and diurnal variation of aerosol size distributions ( $10 < D < 750$   
nm) at a high-alpine site (Jungfrauoch 3580 m asl), *Journal of Geophysical Research Atmospheres*, 104, 26809–26820,  
570 <https://doi.org/10.1029/1999JD900170>, 1999.
- Welti, A., Müller, K., Fleming, Z. L., and Stratmann, F.: Concentration and variability of ice nuclei in the subtropical maritime boundary  
layer, *Atmos. Chem. Phys.*, 18, 5307–5320, <https://doi.org/10.5194/acp-18-5307-2018>, 2018.
- Wex, H., Huang, L., Zhang, W., Hung, H., Traversi, R., Becagli, S., Sheesley, R. J., Moffett, C. E., Barrett, T. E., Bossi, R., Skov, H.,  
Hünnerbein, A., Lubitz, J., Löffler, M., Linke, O., Hartmann, M., Herenz, P., and Stratmann, F.: Annual variability of ice-nucleating particle  
575 concentrations at different Arctic locations, *Atmospheric Chemistry and Physics*, 19, 5293–5311, <https://doi.org/10.5194/acp-19-5293-2019>, 2019.
- Wieder, J., Mignani, C., Schär, M., Roth, L., Sprenger, M., Henneberger, J., Lohmann, U., Brunner, C., and Kanji, Z. A.: Unveiling atmo-  
spheric transport and mixing mechanisms of ice nucleating particles over the Alps, *Atmospheric Chemistry and Physics*, 22, 3111–3130,  
<https://doi.org/10.5194/acp-22-3111-2022>, 2022.