

# Meteorological effects on PM<sub>2.5</sub> change over a receptor region in regional transport of air pollutants: observational study of recent year emission reduction in central China

Xiaoyun Sun<sup>1</sup>, Tianliang Zhao<sup>1</sup>, Yongqing Bai<sup>2</sup>, Shaofei Kong<sup>3</sup>, Huang Zheng<sup>3</sup>, Weiyang Hu<sup>1</sup>, Xiaodan Ma<sup>1</sup>, Jie Xiong<sup>2</sup>

<sup>1</sup>Collaborative Innovation Center on Forecast and Evaluation of Meteorological Disasters, Key Laboratory for Aerosol-Cloud-Precipitation of China Meteorological Administration, PREMIC, Nanjing University of Information Science and Technology, Nanjing, 210044, China

<sup>2</sup>Institute of Heavy Rain, China Meteorological Administration, Wuhan, 430205, China

<sup>3</sup>Department of Atmospheric Sciences, School of Environmental Studies, China University of Geosciences (Wuhan), Wuhan, 430074, China

*Correspondence to:* Tianliang Zhao ([tlzhao@nuist.edu.cn](mailto:tlzhao@nuist.edu.cn)); Yongqing Bai ([baiyq2007@126.com](mailto:baiyq2007@126.com))

**Abstract.** As an important issue in atmospheric environment, the contributions of anthropogenic emissions and meteorological conditions to air pollution have been few assessed over the receptor region in regional transport of air pollutants. In the present study of 5-year observations and modeling, we targeted the Twain-Hu Basin (THB), a large region of heavy PM<sub>2.5</sub> pollution over central China, to assess the meteorological effects on PM<sub>2.5</sub> change over a receptor region in regional transport of air pollutants. Based on observations of environment and meteorology over 2015–2019, the Kolmogorov–Zurbenko (KZ) filter was performed to decompose the PM<sub>2.5</sub> variations into multi-time scale components over the THB, where the short-term, seasonal and long-term components accounted for respectively 47.5 %, 41.4 % and 3.7 % to daily PM<sub>2.5</sub> changes. The short-term and seasonal components dominated the day-to-day PM<sub>2.5</sub> variations with long-term component determining the change trend of PM<sub>2.5</sub> concentrations over recent years. As the emission- and meteorology-related long-term PM<sub>2.5</sub> components over

the THB were identified, the meteorological contribution to PM<sub>2.5</sub> declining trend presented the distinct spatial pattern over the THB with northern positive rates up to 61.92 % and southern negative rates down to -24.93 %. The opposite effects of meteorology on PM<sub>2.5</sub> pollution could accelerate and offset the effects of emission reductions in the northern and southern THB, which is attributed to the upwind diffusion and downward accumulation of air pollutants over the receptor region in regional PM<sub>2.5</sub> transport. It is noteworthy that the increasing conversion efficiencies of SO<sub>2</sub> and NO<sub>2</sub> to sulfate and nitrate for secondary PM<sub>2.5</sub> could offset the effects of PM<sub>2.5</sub> emission reduction on air pollution in the THB during recent years, revealing the enhancing contribution of gaseous precursor emissions to PM<sub>2.5</sub> concentrations under controlling anthropogenic emissions of PM<sub>2.5</sub> and the gaseous precursors over the receptor region in regional transport of air pollutants. Our results highlight the effects of emission mitigation and meteorological changes on source-receptor relationship of region transport of air pollutants with the implication of long-range transport of air pollutants for regional and global environment changes.

## 1. Introduction

Haze pollution with high levels of PM<sub>2.5</sub> (fine particulate matters with aerodynamic diameters equal to or less than 2.5 μm) has been a serious problem in atmospheric environment (Peng et al., 2016; Wang et al., 2016) with adverse influences on air quality and human health (Cao et al., 2012; Crouse et al., 2012). In recent years, the large areas over central and eastern China (CEC) have undergone haze pollution with unprecedentedly high PM<sub>2.5</sub> levels in the regions covering North China Plain (NCP), Yangtze River Delta (YRD), Pearl River Delta (PRD) and Sichuan Basin (SB) (Zhang et al., 2012; Lin et al., 2018a; Guo et al., 2017). In order to improve air quality with reducing air pollutant emissions, Chinese government has implemented an Action Plan of controlling anthropogenic emissions since September 2013 ([http://www.gov.cn/xinwen/2018-02/01/content\\_5262720.htm](http://www.gov.cn/xinwen/2018-02/01/content_5262720.htm), last access: August 21, 2021). Surface PM<sub>2.5</sub> concentrations exhibited 30 %–40 % decreases in CEC over recent years (Xue et al., 2019; Zhang et al., 2019). However, the changes of air pollution are generally co-determined by air pollutant emissions and meteorological conditions. The contributions of changes in meteorology and anthropogenic emissions to the improvement of air quality need to be comprehensively investigated.

PM<sub>2.5</sub> includes primary particles emitted directly from various sources and secondary particles generated by homogeneous and heterogeneous chemical reactions of gaseous precursor in the atmosphere, depending on the emissions of primary PM<sub>2.5</sub> and PM<sub>2.5</sub>'s gaseous precursors (Lin et al., 2018b; Du et al., 2020).

In addition to the emissions of air pollutants, the meteorological conditions can alter the local accumulation, regional transport, chemical conversion, wet and dry depositions of air pollutants (Lu et al., 2017; Li et al., 2018). Severe haze pollution always occurs in the wintertime under the stagnant meteorological conditions with weak near-surface wind, strong temperature inversion, and high relative humidity in the atmospheric boundary layer, which are favorable for the accumulation of air pollutants to form air pollution (Li et al., 2018; Miao et al., 2015; Tang et al., 2016). Meteorological conditions are closely governed by synoptic circulation by modulating the atmospheric physical and chemical processes including regional transport of air pollutants (Miao et al., 2017; Ning et al., 2019). By regulating synoptic circulation patterns, the climate changes of East Asian monsoons largely influence the seasonal and interannual variations of aerosol concentrations for air pollution over China (Zhu et al., 2012; Jeong and Park, 2017).

Assessments on contributions of anthropogenic emissions and meteorological changes to air quality improvement are an important issue in environmental changes (Pearce et al., 2011; Zhang et al., 2018; Chen et al., 2019). The chemical transport models have been widely used to quantify the meteorological effects on PM<sub>2.5</sub> variations by a linear additive relationship between sensitivity and base simulations (Mueller and Mallard, 2011; Li et al., 2015b; Zhang et al., 2020). The contribution of meteorological changes to PM<sub>2.5</sub> decreases was estimated at the averages of 10 %–20 % with the interannual fluctuations of about 5 % in CEC from 2015 to 2019 through a model-based environmental meteorology index (Gong et al., 2021). The accuracy of modeling assessments can be influenced by the uncertainties in emission inventories and the incomplete chemical and physical mechanisms in air pollution simulation (Li et al., 2011). Based on statistical analysis on long-term observational data, it was quantified that the emission control could explain more of the variances in PM<sub>2.5</sub> than meteorology (Gui et al., 2019), and 12 % of the observed PM<sub>2.5</sub> decrease was attributed to meteorological drivers in China since 2013 (Zhai et al., 2019). However, the modeling and observational studies have mostly assessed the contribution of emissions and meteorology to regional PM<sub>2.5</sub> variations in the emission source regions with high anthropogenic emissions of air pollutants, and there have

70 been few assessments on multi-scale changes of atmospheric environment over the receptor region in regional transport of air pollutants.

The Twain-Hu Basin (THB), featuring the lower lands (mainly less than 200 m in a. s. l.) of two provinces Hubei and Hunan in central China (Fig. 1), is surrounded by the high air pollution regions NCP, YRD, PRD and SB. As such, it is a key receptor region in regional transport of air pollutants from the upstream region driven by East Asian monsoonal winds over CEC (Shen et al., 2020). Heavy air pollution in the THB with a unique “non-stagnation” atmospheric boundary layer is aggravated by regional  $PM_{2.5}$  transport over CEC (Zhong et al., 2019; Yu et al., 2020). By cohesion with the heavy pollution region of NCP through distinct transport channels, the regional transport from northern China to central China contributed 70.5 %  $PM_{2.5}$  concentrations to a wintertime heavy pollution episode in the THB (Hu et al., 2021). Thus, the contributions of air pollutant emissions and meteorological conditions to air quality change over this ~~air pollution~~ region in central China need to be specifically assessed with the long-term observations over recent years.

80 In this ~~observational~~ study, we investigated the multi-scale changes of  $PM_{2.5}$  concentrations over the THB, a key receptor region of regional  $PM_{2.5}$  transport over China from 2015 to 2019 by establishing the statistic model with Kolmogorov–Zurbenko (KZ) filter, and then evaluated the contributions of anthropogenic emissions and meteorological changes to the declining trends in  $PM_{2.5}$  concentrations over this receptor region in regional  $PM_{2.5}$  transport over CEC during the past 5-year emission control. The analysis of THB’s multi-scale air quality changes can improve the understanding of the effects of emission mitigation and meteorological changes on environmental change with regional transport of air pollutants.

## 2. Data and methods

### 2.1 Data

In order to analyze air quality changes in the THB, the observational data of hourly  $NO_2$ ,  $SO_2$  and  $PM_{2.5}$  concentrations from 2015 to 2019 were collected from the national air quality monitoring network (<http://www.mee.gov.cn/>, last access: August 21, 2021). The air quality observation data are under quality control, based on China’s national standard of air quality

observation.

The data of meteorological observations in the THB were sourced from the weather monitoring network of China Meteorological Administration (<http://data.cma.cn/>, last access: August 21, 2021), including air temperature (T), relative humidity (RH), sea level pressure (SLP), wind speed (WS) and precipitation (Pre) with temporal resolutions of 3 h.

## 2.2 KZ filter

To better understand the multi-time scale variations of  $PM_{2.5}$  and the relations to air pollutant emissions and meteorological drivers, KZ filter (Rao and Zurbenko, 1994; Seo et al., 2018) is used to separate the daily data into multi-scale components, based on an iterative moving average that removes high frequency variations in the data with the applications in study of air pollutants, especially  $O_3$  and  $PM_{2.5}$  variations (Chen et al., 2019; Ma et al., 2016; Seo et al., 2014; Zheng et al., 2020).

The KZ filter  $KZ_{m,p}$  with the length of moving average window  $m$  and the number of iterations  $p$ , can remove the high-frequency component of period smaller than the effective filter width  $N (\geq m \times p^{1/2})$ . The KZ filter is applicable to the time series with missing data owing to the iterative moving average process, which provides a high accuracy level to compare with the wavelet transform method (Eskridge et al., 1997). By comparing different sets of moving average  $m$  and number of iterations  $p$ , it was found that the decomposed time series using  $KZ_{15,5}$  filter exhibited no white noise (short-term component), and the trend of long-term component derived with  $KZ_{365,3}$  filter corresponded approximately to the interannual trend of the original data (Rao and Zurbenko, 1994; Eskridge et al., 1997). Based on the spectral decompositions of the daily observational data and three components, the power spectral-spectra of daily observational data in periods less than 33 days and longer than 632 days (1.7 years) have been well reproduced by short-term and long-term components, and seasonal component represents well the seasonal variations, i.e., periods between 33 days and 1.7 years (Seo et al., 2018). Thus we applied  $KZ_{15,5}$  and  $KZ_{365,3}$  filters to remove the variations with the periods shorter than 33 days and 1.7 years in this study.

A meteorological or environmental variable  $X(t)$  observed in time series  $t$  can be decomposed into the short-term component  $X_{ST}(t)$  and the baseline component  $X_{BL}(t)$  presenting as:

115

$$X(t) = X_{ST}(t) + X_{BL}(t). \quad (1)$$

The baseline component  $X_{BL}(t)$  is obtained by applying the  $KZ_{(15,5)}$  filter to  $X(t)$ , removing the short-term component  $X_{ST}(t)$  with the temporal period shorter than 33 days from the observed data, expressing with:

$$X_{BL}(t) = KZ_{(15,5)}[X(t)]. \quad (2)$$

120

The baseline component  $X_{BL}(t)$  also can be separated into the daily climatic averages  $X_{BL}^{clm}$  over the study period occupying most of the seasonality in  $X_{BL}(t)$  and the residual  $\varepsilon(t)$ :

$$\varepsilon(t) = X_{BL}(t) - X_{BL}^{clm}. \quad (3)$$

To obtain the long-term component  $X_{LT}(t)$  by removing the variations with the temporal period shorter than 1.7 years, the  $KZ_{365,3}$  filter is applied to  $\varepsilon(t)$  ~~expressed~~expressing as follows:

$$X_{LT}(t) = KZ_{(365,3)}[\varepsilon(t)] \quad (4)$$

125

with the short-term component

$$X_{ST}(t) = X(t) - X_{BL}(t) \quad (5)$$

and the seasonal component

$$X_{SN}(t) = X_{BL}(t) - X_{LT}(t). \quad (6)$$

130

The KZ filter was used to separate the daily surface  $PM_{2.5}$ ,  $NO_2$  and  $SO_2$  concentrations into short-term, seasonal and long-term components in this study. The short-term component presents a synoptic-scale variation of meteorological influences, which could control local accumulation and regional transport of air pollutants (Seo et al., 2017), partly associated with short-term fluctuations in air pollutant emissions (Russell et al., 2010). The seasonal and long-term components are attributable to the variations in air pollutant emissions related to human activities as well as the seasonal and interannual changes in meteorological conditions (Kim et al., 2018).

135

### 2.3 Multiple linear regression of air pollutant changes with meteorological variables

By altering the local accumulation, regional transport, chemical conversion, wet and dry depositions of air pollutants, the

meteorological factors such as wind, RH, ~~air temperature~~ $T$ , air pressure and ~~precipitation~~ $Pre$  could exert significant impacts on  $PM_{2.5}$  changes (Sun et al., 2013; Li et al., 2018; Chen et al., 2020b). Therefore, with the multiple factors of the baseline components of 10-m WS, 2-m RH, 2-m ~~air temperature~~ $T$ , SLP and ~~precipitation~~ $Pre$  calculated by Eq. (2), a multiple linear regression equation was stepwise established for the baseline component of  $PM_{2.5}$  as follows:

$$PM_{2.5BLMLR}(t) = a_0 + \sum_i a_i MET_{BLi}(t), \quad (7)$$

where  $MET_{BLi}(t)$  ( $i \in [1,5]$ ) is the baseline component of the meteorological variable  $i$  with  $i=1,2,3,4,5$  respectively for  $WS_{BL}(t)$ ,  $RH_{BL}(t)$ ,  $T_{BL}(t)$ ,  $SLP_{BL}(t)$ ,  $Pre_{BL}(t)$ . We fit the regression coefficient  $a_i$  for each meteorological variable and the intercept  $a_0$ . The residual  $\varepsilon_{PM_{2.5}}$  between  $PM_{2.5BL}$  and  $PM_{2.5BLMLR}$  regressed with the multiple linear equation (7) is given as:

$$\varepsilon_{PM_{2.5}}(t) = PM_{2.5BL}(t) - PM_{2.5BLMLR}(t). \quad (8)$$

$\varepsilon_{PM_{2.5}}$  contains not only the variability of  $PM_{2.5}$  related to long-term changes in air pollutant emissions but also the minor seasonal change of  $PM_{2.5}$  attributable to unconsidered meteorological influences in the multiple linear regression. By removing the minor seasonal change from  $\varepsilon_{PM_{2.5}}$  with the  $KZ_{365,3}$  filter, the emission-related long-term component  $PM_{2.5LT}^{emiss}(t)$  can be isolated as follows:

$$PM_{2.5LT}^{emiss}(t) = KZ_{(365,3)}[\varepsilon_{PM_{2.5}}(t)]. \quad (9)$$

Here the long-term component of surface  $PM_{2.5}$  concentrations can be further separated into the emission- and meteorology-related long-term components with Eqs. (9) and (4) (Seo et al., 2018). Similarly, the multi-time scale variations in  $SO_2$  and  $NO_2$  with long-term variations related to changes in air pollutant emissions and meteorological drivers are decomposed by KZ filter with multiple linear regression. Seo et al. (Seo et al., 2018) described the details of this method.

### 3. Results and discussion

#### 3.1 Verification of $PM_{2.5}$ decompositions in multi-scale variations

The daily  $PM_{2.5}$  concentrations observed in 14 sites over the THB (Fig. 1) were decomposed into short-term, seasonal and

long-term components with Eqs. (4), (5) and (6) of the KZ filter. To verify the decomposition results, the spatial distribution of total contributions of short-term, seasonal and long-term  $PM_{2.5}$  components to the total variances of observed daily changes in  $PM_{2.5}$  concentrations over 2015–2019 were shown in Figure 2a. The larger the total variance, the more independent the three components are of each other (Chen et al., 2019). The sum of the long-term, seasonal and short-term components contributed 91.4 %–94.4 % to the total variance with the regional averages of 92.7 % (Fig. 2), reflecting a satisfactory verification of the KZ filtering results.

Based on the  $PM_{2.5}$  decomposition results of KZ filter, the short-term, seasonal and long-term components respectively accounted for 34.8 %–53.8 %, 29.2 %–56.3 % and 0.2 %–9.8 % of the total variances of daily  $PM_{2.5}$  changes in the THB over recent years (Figs. 2b, 2c and 2d), reflecting the different patterns of multi-time scale variations of  $PM_{2.5}$  over this region in central China with diverse effects of emissions and meteorology. The regional contributions of short-term, seasonal and long-term components were averaged respectively with 47.5 %, 41.4 % and 3.7 % to daily  $PM_{2.5}$  changes over the THB (Fig. 2), which could be reasonably verified that the daily variation in atmospheric pollutant was generally dominated by short-term and seasonal components with long-term component determining the change trend (Ma et al., 2016; Yin et al., 2019a).

The short-term, seasonal and long-term  $PM_{2.5}$  components were averaged in 14 sites of the THB to characterize the temporal variations of three components in the THB for 2015–2019 (Fig. 3). The correlation coefficients of 0.05, 0.01 and 0.04 among the decomposed short-term, seasonal and long-term components were near zero, indicating the orthogonal decomposition of multi-time scale components (Eskridge et al., 1997). According to the decomposed long-term, seasonal and short-term components demonstrated in Fig. 3, the notable peaks of decomposed seasonal and short-term components were highly consistent with the peaks of  $PM_{2.5}$  concentrations in the original observed data, which further proved a reasonable decomposition of the multi-scale components of  $PM_{2.5}$  change over 2015–2019.

The observed daily  $PM_{2.5}$  exhibited a distinct daily variation, with an overlapping of high frequency variations, which could be caused by mesoscale and synoptic scale meteorological processes (Ma et al., 2016). The short-term component of  $PM_{2.5}$  fluctuated frequently with a significantly positive correlation to the daily change of  $PM_{2.5}$  ( $r = 0.68, p < 0.05$ ), indicating



an important role of the short-term component with the temporal period < 33 days in the day-to-day variations of PM<sub>2.5</sub> concentrations in the THB (Fig. 3a).

The notable peaks of PM<sub>2.5</sub> seasonal components emerged in winters were highly in keeping with the peaks of observed daily PM<sub>2.5</sub> concentrations (Fig. 3b). A close linkage with the significant correlation coefficient of 0.75 ( $p < 0.05$ ) was found between the changes of PM<sub>2.5</sub> seasonal components and daily PM<sub>2.5</sub> concentrations, which could reflect a significant modulation of the PM<sub>2.5</sub> seasonal oscillations to the day-to-day variations of PM<sub>2.5</sub>, driven by the seasonal shift of East Asian summer and winter monsoons as well as the seasonal change of anthropogenic emissions (Zhu et al., 2012; Jeong and Park, 2017). The change of long-term component of PM<sub>2.5</sub> exhibited a steadily declining trend over 2015–2019 (Fig. 3c), which was consistent with the interannual trend of observed PM<sub>2.5</sub> concentrations under the sustained impact of emission control (Zhang et al., 2019; Xu et al., 2020). The correlation coefficient ( $r = 0.24$ ,  $p < 0.05$ ) of long-term PM<sub>2.5</sub> components with the observed daily PM<sub>2.5</sub> change was much smaller than those of short-term and seasonal PM<sub>2.5</sub> components, implying less influence of emission reduction on the daily PM<sub>2.5</sub> change and air pollution frequency, although the declining trend in PM<sub>2.5</sub> was determined by anthropogenic emission reduction.

In previous studies, chemical transport models and statistical methods were both used to assess the changes in air pollution attributable to emissions and meteorology (Xiao et al., 2021). Significant declines in emission-related PM<sub>2.5</sub> concentrations occurred in central China (Wang et al., 2019; Chen et al., 2020a), and the meteorology offset the impact of emission reduction in typical years of unfavorable meteorological conditions (Xu et al., 2020; Gong et al., 2021). The regional averaged emission- and meteorology-related long-term components as well as the long-term component over the THB are displayed in Fig. S1a, implying the steadily declining trend of PM<sub>2.5</sub> and the ~~dominating~~ dominant impact of emission reduction on long-term PM<sub>2.5</sub> changes, which is consistent with the previous studies using multiple linear regression model for central China (Fig. S1b). The meteorology-related long-term component is positive value in certain periods, implying the significant ~~modulation~~ modulating effect of meteorology on PM<sub>2.5</sub> decline in the THB.

### 3.2 Multiple linear regressions of PM<sub>2.5</sub>, SO<sub>2</sub> and NO<sub>2</sub> with meteorological drivers

Since the short-term variations in meteorological variables were excluded, the correlations between baseline components of PM<sub>2.5</sub> and meteorological variables were only related to their seasonal and long-term components, affected by regional climate of East Asian monsoons rather than synoptic-scale meteorological processes. Based on our understanding of chemical and physical processes of diffusive transport, chemical transformation, emissions and depositions of PM<sub>2.5</sub> in the atmosphere, the dominant meteorological factors for changing PM<sub>2.5</sub> concentrations over china are wind speed, relative humidity, air temperature, atmospheric pressure and precipitation (Chen et al., 2020b). We examined the significant correlations between baseline components of air pollutant concentrations and selected a set of meteorological factors, including air temperature, wind speed, precipitation, relative humidity, and air pressure (Tables S1-S3). The meteorological parameters selected in this study are consistent with the previous studies (Chen et al., 2020b).

Generally, the baseline components of air pollutants were negatively correlated with baseline components of wind speed (WS<sub>BL</sub>) and positively correlated with baseline components of sea level pressure (SLP<sub>BL</sub>) (Tables S1–S3), which could be attributed to the ventilation effect of wind and stagnant condition of meteorology in high-pressure systems, restraining the horizontal and vertical dispersions of air pollutants (Hsu and Cheng, 2016; Wang et al., 2016; Miao et al., 2017). Although wind speed exerts a negative influence of on PM<sub>2.5</sub> concentrations over the emission source region, increasing wind speed might cause the accumulation of PM<sub>2.5</sub> concentrations over the downwind region of emission sources (Chen et al., 2020b), which led to the inconsistent influence of WS<sub>BL</sub> in the region of central China (Tables S1–S3). Under surface high air temperature conditions, there are strong thermal activities such as turbulence, making an accelerated dispersion of air pollutants (Yang et al., 2016b). The negative influence of RH<sub>BL</sub> and T<sub>BL</sub> on PM<sub>2.5BL</sub>, SO<sub>2BL</sub> and NO<sub>2BL</sub> mainly reflected the effect of seasonal cycle in East Asian winter and summer monsoons, whereas the influence of precipitation on air pollutants was more straightforward than other meteorological parameters, negatively influencing surface pollutant concentrations through the precipitation washout of air pollutants (Tables S1–S3).

To isolate emission-related long-term components from long-term components of PM<sub>2.5</sub>, NO<sub>2</sub> and SO<sub>2</sub>, the stepwise

230 multiple linear regressions of  $PM_{2.5BL}$ ,  $SO_{2BL}$  and  $NO_{2BL}$  respectively with baseline components of meteorological parameters ( $T_{BL}$ ,  $WS_{BL}$ ,  $RH_{BL}$ ,  $SLP_{BL}$  and  $Pre_{BL}$ ) were conducted with Eq. (7) in 14 sites, by adding and deleting meteorological variables based on the independent statistical significance to obtain the best model fit (Draper, 1998). We evaluated the  $PM_{2.5BL}$ ,  $SO_{2BL}$  and  $NO_{2BL}$  fitted by the multiple linear regression models with the KZ decomposition (Table 1). The multiple linear regressions explained  $PM_{2.5BL}$ ,  $SO_{2BL}$  and  $NO_{2BL}$  with adjusted determination coefficients (Adj.  $R^2$ ) of 0.5695–0.8093, 0.0630–0.4592 and 0.6304–0.8669 passing the confidence level of 99 % in all the THB sites, confirming the reasonable construct of multiple linear regressions. The Adj.  $R^2$  of multiple linear regression for  $SO_{2BL}$  were lower than those of  $PM_{2.5BL}$  and  $NO_{2BL}$ , which might be attributed to the larger impact of  $SO_2$  emission control on the seasonal and long-term  $SO_2$  variations. In general, the variations of meteorological drivers can well reproduce the meteorology-related seasonal and long-term variations of  $PM_{2.5}$ ,  $SO_2$  and  $NO_2$  in the THB (Table 1).

240

### 3.3 Interannual variations in air pollutants observed over the THB

$PM_{2.5}$  consists of chemical components generated in the complex physical and chemical processes (Li et al., 2015a). Primary particles are emitted directly from anthropogenic (e.g., industry, power plants, and vehicles) and natural (e.g., outdoor biomass burning and dust storms) sources. Secondary particles (e.g. sulfate and nitrate) are converted with chemical reactions of the precursor gases (e.g.,  $SO_2$  and  $NO_x$ ), which are mainly produced by human activities (Li et al., 2015a; Yang et al., 2016a). Therefore, in addition to the reductions in primary particulate emissions, control of the secondary aerosol precursor emissions is of great importance in mitigating air pollution.

The interannual variations of the ratios in annual mean  $PM_{2.5}$ ,  $SO_2$  and  $NO_2$  concentrations relative to the annual averages in 2015 over the THB are displayed in Figure 4. The declines of  $PM_{2.5}$  and  $SO_2$  in 2019 averaged over the THB were –26 % and –68 % relative to 2015, while the decrease ratio in  $NO_2$  was only –8 % over this region. The observed  $SO_2$  concentrations had a steeper decrease than  $PM_{2.5}$  and  $NO_2$ , possibly because the dominant source sectors (i.e., power and industry) of  $SO_2$  significantly reduced their emissions (Zheng et al., 2018). The power sector was the major contributor to emission reduction

250

but only accounted for one-third of NO<sub>x</sub> emissions and the contribution of transportation to NO<sub>x</sub> emissions was estimated to have increased over recent years (Zheng et al., 2018). The interannual variations in emissions for China were calculated from MEIC (Zheng et al., 2018), as well as the annual total emissions of SO<sub>2</sub> and NO<sub>x</sub>, PM in the THB region reported by National Bureau of Statistic of China (<http://www.stats.gov.cn/tjsj/ndsj/>, last access: January 17, 2022), presenting the rapid decline of SO<sub>2</sub> emissions in the THB than changes of PM<sub>2.5</sub> and NO<sub>x</sub> emissions (Fig. S2). The declining trend of anthropogenic emissions estimated from emission inventories can support the explanation of the changes in air pollutant concentrations.

Figure 5 shows the spatial distributions of 5-year averaged concentrations, the linear trends and the change rates in interannual variations of PM<sub>2.5</sub>, SO<sub>2</sub> and NO<sub>2</sub> observed in the THB over 2015–2019. The change rates (% yr<sup>-1</sup>) were calculated with the linear trends by dividing with temporal-mean concentrations of air pollutants at the observation sites for the analysis period in Figure 5. The 5-year averaged PM<sub>2.5</sub> concentrations over the THB exceeded the Chinese National secondary air quality standard of 35 μg m<sup>-3</sup> for annual mean PM<sub>2.5</sub> concentrations (Fig. 5a), while SO<sub>2</sub> and NO<sub>2</sub> concentrations reached the secondary standards of 60 μg m<sup>-3</sup> and 40 μg m<sup>-3</sup> in annual mean SO<sub>2</sub> and NO<sub>2</sub> concentrations at most sites over the THB (Figs. 5d and 5g). Specifically, the 5-year averaged NO<sub>2</sub> concentrations exceeded 40 μg m<sup>-3</sup> in WH (Wuhan), the mega-city in central China, that might be attributable to the large amounts of traffic transportation. From 2015 to 2019, both PM<sub>2.5</sub> and SO<sub>2</sub> decreased at all sites over the THB (Figs. 5b and 5e), whereas NO<sub>2</sub> trends were changed from mostly negative to positive in some sites (Fig. 5h), possibly due to the spatial disparity of NO<sub>x</sub> emissions in traffic sectors (Zheng et al., 2018). The comparison among the change rates of PM<sub>2.5</sub>, SO<sub>2</sub> and NO<sub>2</sub> in the THB presented the largest decreases of SO<sub>2</sub> with –20% – 40% yr<sup>-1</sup> over the five years (Figs. 5c, 5f and 5i), reflecting the effective control of SO<sub>2</sub> emissions in terms of primary gaseous pollutants.

There were obvious decreases in regional mean PM<sub>2.5</sub>, SO<sub>2</sub> and NO<sub>2</sub> concentrations over the THB (Fig. 4), while the declining degree of PM<sub>2.5</sub> and SO<sub>2</sub> varied from site to site over the THB and the change trends in NO<sub>2</sub> were weak negative and even positive in certain sites (Figs. 5c, 5f and 5i). These interannual changes of air pollutants in the THB over recent years were investigated with the emission- and meteorology-related long-term components of air pollutants in the next sections.

### 3.4 Effects of NO<sub>2</sub> and SO<sub>2</sub> emission reductions on PM<sub>2.5</sub> change trends

The declining trend of PM<sub>2.5</sub> in China could be partly attributed to the reduced NO<sub>x</sub> and SO<sub>2</sub> concentrations for producing the secondary aerosols (Zhang et al., 2018). The reduction rates of anthropogenic emissions have markedly accelerated after 2013, decreasing by 59% for SO<sub>2</sub>, 21% for NO<sub>x</sub> and 33% for PM<sub>2.5</sub> during 2013–2017 over ~~the THB region~~China (Zheng et al., 2018). In order to assess the effect of changing precursor pollutant emissions on PM<sub>2.5</sub> declines, we compared the linear trends of emission-related long-term components of PM<sub>2.5</sub>, NO<sub>2</sub> and SO<sub>2</sub> decomposed based on Eq. (9) over the THB for 2015–2019 (Fig. 6). The distinct declining trends of emission-related long-term PM<sub>2.5</sub> and SO<sub>2</sub> components as well as the variable trends of emission-related long-term NO<sub>2</sub> components were distributed basically consistent with the positive and negative trends in the interannual variations of air pollutant concentrations in the THB (Fig.5 (middle column); Fig. 6), demonstrating that the local emissions of air pollutants could spatially dominate the long-term variations of air pollutants in central China, especially the increasing trends in NO<sub>2</sub> at some THB sites.

PM<sub>2.5</sub> concentrations are changed by emissions of both primary PM<sub>2.5</sub> and PM<sub>2.5</sub>'s gaseous precursors. As major gaseous precursors, SO<sub>2</sub> and NO<sub>2</sub> can be oxidized to convert nitrate and sulfate for secondary PM<sub>2.5</sub> (Li et al., 2015a). To investigate the effects of emission reductions on the interannual variations of PM<sub>2.5</sub>, NO<sub>2</sub> and SO<sub>2</sub> over recent years, the ratios of change trends in long-term ( $k_{LT}$ ) and emission-related long-term ( $k_{emiss}$ ) components of PM<sub>2.5</sub>, SO<sub>2</sub> and NO<sub>2</sub>, in the THB over 2015–2019 were demonstrated in Figure 7, where the long-term and emission-related long-term components of PM<sub>2.5</sub>, SO<sub>2</sub> and NO<sub>2</sub> were calculated with Eqs. (4) and (9). The trend ratios  $k_{LT}/k_{emiss} < 1$  indicated the more obvious downward trend of emission-related long-term variations than the long-term trend of air pollutant concentrations, which might be attributed to the offsetting effect of meteorological conditions on emission reduction in air quality change, whereas the long-term trend of air pollutant concentrations was more significant than the emission-related long-term trend with  $k_{LT}/k_{emiss} > 1$ , reflecting the synchronous impacts of anthropogenic emissions and meteorology on the long-term trend in air pollutant change. In addition, the trend ratios  $k_{LT}/k_{emiss} > 1$  and  $k_{LT}/k_{emiss} < 1$  of PM<sub>2.5</sub>'s gaseous precursors SO<sub>2</sub> and NO<sub>2</sub> could reflect the high and weak

efficiencies of SO<sub>2</sub> and NO<sub>2</sub> converting to sulfate and nitrate in the production of secondary PM<sub>2.5</sub> during air pollutant emission  
300 reduction. The notable differences in Figure 7 were spatially distributed with the trend ratios  $k_{LT}/k_{emiss} > 1$  and  $k_{LT}/k_{emiss} < 1$  in PM<sub>2.5</sub>, SO<sub>2</sub> and NO<sub>2</sub> concentrations under the same meteorological conditions, indicating the different influences of  
emissions on the long-term variations of PM<sub>2.5</sub>, SO<sub>2</sub> and NO<sub>2</sub> in the THB during recent years. The reduction in PM<sub>2.5</sub> emissions  
was a primary cause for the long-term declines in PM<sub>2.5</sub> concentrations in the THB, even though the meteorological changes  
might offset the effects of emission reduction on air quality improvement over the southern THB (Figs. 6 and 7). It is  
305 noteworthy that the trend ratios  $k_{LT}/k_{emiss} < 1$  of PM<sub>2.5</sub> were accompanied with  $k_{LT}/k_{emiss} > 1$  of SO<sub>2</sub> and NO<sub>2</sub> at the  
downwind southern THB sites with both negative  $k_{LT}$  and  $k_{emiss}$  (Fig. 7, Table S4), which could imply the increasing  
conversion efficiency of SO<sub>2</sub> and NO<sub>2</sub> to sulfate and nitrate for secondary PM<sub>2.5</sub> during the reductions of air pollutant emissions  
over recent years. In the upwind northern THB sites, the  $k_{LT}/k_{emiss} > 1$  of PM<sub>2.5</sub> were accompanied with  $k_{LT}/k_{emiss} > 1$   
of SO<sub>2</sub> and NO<sub>2</sub> with obviously facilitating effect of meteorology on PM<sub>2.5</sub> decline (Fig. 7, Table S4), revealing the  
310 underlying effect of regional transport of air pollutants on the spatial distribution of conversion efficiency of gaseous precursor  
to secondary PM<sub>2.5</sub>.

In order to further assess the effect of gaseous precursor emissions on PM<sub>2.5</sub> declines during recent 5-year air pollution  
mitigation, we selected 7 and 9 sites in the THB with the decreasing trends of emission-related long-term SO<sub>2</sub> and NO<sub>2</sub>  
components below -0.5 and 0.0  $\mu\text{g m}^{-3} 100\text{d}^{-1}$  respectively (Table S4) to compare the trend ratios  $k_{LT}/k_{emiss}$  of PM<sub>2.5</sub>, NO<sub>2</sub>  
315 and SO<sub>2</sub> for 2015–2019 (Fig. 8). The significantly negative linear correlations between changes in  $k_{LT}/k_{emiss}$  of gaseous  
precursors (SO<sub>2</sub> and NO<sub>2</sub>) and PM<sub>2.5</sub> could present the connection of  $k_{LT}/k_{emiss} > 1$  for NO<sub>2</sub> and SO<sub>2</sub> with  $k_{LT}/k_{emiss} < 1$   
for PM<sub>2.5</sub>, which confirmed the fact that the high conversion efficiency of SO<sub>2</sub> and NO<sub>2</sub> to sulfate and nitrate could offset the  
role of PM<sub>2.5</sub> emission reduction in controlling PM<sub>2.5</sub> pollution. The decreasing emissions of gaseous precursors drove faster  
oxidation of NO<sub>2</sub> and SO<sub>2</sub> to nitrate and sulfate components of PM<sub>2.5</sub> in the source regions of air pollution in China (Zhai et  
320 al., 2021; Huang et al., 2021). This study identified the enhancing contribution of gaseous precursors emissions to PM<sub>2.5</sub>  
concentrations with reducing anthropogenic emissions of air pollutants over the receptor region in regional PM<sub>2.5</sub> transport.

There are a few sources of uncertainty in the discussion of chemical transformation, for example in the separation of emission- and meteorology-related long-term components and in the selection of observational sites. Our results point to better understand the offsetting effect of SO<sub>2</sub> and NO<sub>2</sub> oxidized to secondary particles on PM<sub>2.5</sub> mitigation during the emission reduction in the THB. The long-term changes in PM<sub>2.5</sub> are also caused by the emission variations of primary components like black and organic carbon, in addition to the chemical transformation of gaseous precursors. The difference in the emission of different primary pollutants may also lead to modifications in  $k_{LT}/k_{emiss}$  of PM<sub>2.5</sub>. However, due to the current lack of long-term observation of PM<sub>2.5</sub> components in the THB, the influence of emission variations of primary components on long-term changes in PM<sub>2.5</sub> concentrations is not assessed in our study. Further work with long-term observational data of PM<sub>2.5</sub> components like black and organic carbon could be conducted to quantify the influence of emissions of primary components and chemical transformation of gaseous precursors on PM<sub>2.5</sub> changes.

### 3.5 Meteorological contribution to PM<sub>2.5</sub> change trends

As the air pollutant change trend is assumed to generally consist of emission- and meteorology-related changes (Seo et al., 2018; Yin et al., 2019b), the meteorological contribution rate  $Con_{met}$  to long-term PM<sub>2.5</sub> change trend is calculated with the following equation:

$$Con_{met} = \frac{k_{LT} - k_{emiss}}{k_{LT}} \times 100\%. \quad (10)$$

Here,  $Con_{met}$  (in %) is estimated with the linear trends  $k_{LT}$  of long-term component  $PM_{2.5LT}(t)$  and  $k_{emiss}$  of emission-related long-term component  $PM_{2.5LT}^{emiss}(t)$ .  $PM_{2.5LT}(t)$  and  $PM_{2.5LT}^{emiss}(t)$  are respectively calculated with Eqs. (4) and (9).

To quantitatively assess the meteorological contributions to the PM<sub>2.5</sub> declining trends, the linear trends  $k_{LT}$  and  $k_{emiss}$  with the meteorological contribution rate  $Con_{met}$  in Eq. (10) were presented in Table S5 for 14 sites over the THB during 2015-2019. All the trends  $k_{LT}$  and  $k_{emiss}$  respectively in  $PM_{2.5LT}(t)$  and  $PM_{2.5LT}^{emiss}(t)$  were negative over the THB (Table S5), indicating the significant effect of emission reductions on PM<sub>2.5</sub> declining trends for improving regional air quality in central China. By comparing the PM<sub>2.5</sub> declining trends  $k_{emiss}$  and  $k_{LT}$  from site to site (Table S5), the positive and

345 negative contributions of meteorological variations to  $PM_{2.5}$  change trends over recent years were determined with the positive and negative differences between  $k_{emiss}$  and  $k_{LT}$  with the distinct meteorological influences on the change of THB's regional environment.

The spatial distribution of meteorological contribution rates  $Con_{met}$  to long-term  $PM_{2.5}$  declining trend presented the unique pattern of northern positive and southern negative values over the THB (Fig. 9), with ~~the~~ high positive contributions in northern sites XY (61.92 %) and EZ (37.31 %) as well as low negative contributions in southern sites CD (-24.93 %) and CS (-23.03 %). It is worth mentioning that the contribution rates of meteorological variations show great spatial disparities at a small scale, i.e., EZ, HG and HS, which seems not be induced by the variation in synoptic weather or meteorological conditions. The underlying surface conditions dominate the near-surface meteorological conditions in the atmospheric boundary layer at a small scale (Wang et al., 2017). The topography and land use of HG, HS, EZ and surrounding regions vary distinctly with underlying surface conditions of plain, lakes and hilly area. The underlying surface of observational sites with different near-surface meteorology effectively influence the local accumulation, chemical transformation, dry and wet depositions of air pollutants (Bai et al., 2022). Therefore, the heterogeneity of meteorological contribution to  $PM_{2.5}$  at such a small spatial scale might be attributed to the local meteorological conditions in the atmospheric boundary layer, which is largely affected by the underlying surface changes.

360 Comparing with the statistical studies using synthetic data of meteorological influence on regional  $PM_{2.5}$  changes in central China with the meteorological contribution from -45.5 % to 29.0 % over recent years (Gong et al., 2021; Chen et al., 2020a), the  $PM_{2.5}$  pollution over the THB was affected contrarily by meteorological drivers with the northern positive and southern negative contribution from 2015 to 2019 (Fig. 9). The meteorological change could accelerate and offset the effects of emission reductions on  $PM_{2.5}$  declining trends in the northern and southern THB, which might be attributed to regional transport of air pollutants conducive to the upwind diffusion and downward accumulation of air pollutants respectively over the northern and southern THB under the declining wind of East Asian monsoons over recent years (Hu et al., 2020; Zhong et al., 2019).



### 3.6 Meteorological contribution to PM<sub>2.5</sub> changes validated with WRF-Chem modeling

The above observational study investigated the meteorological influence on the changes in PM<sub>2.5</sub> concentrations in the

370 THB using KZ filter, with concluding the large impact of meteorology on the PM<sub>2.5</sub> changes over 2015–2019. To validate this conclusion of analyses with KZ filter, we designed three sets of modeling experiments CTRL, SENS-MET and SENS-EMI (Table S6) for December of 2015–2019, respectively driven with the changing meteorology and anthropogenic emissions over 2015–2019, the fixed meteorological conditions and anthropogenic emissions of 2015 with atmospheric chemical model WRF-Chem (Weather Research and Forecasting model with Chemistry). Air pollutant emission inventories, modeling configuration, 375 experiment design and modeling verification were described in the supplement. The modeling verification of experiments CTRL indicated that PM<sub>2.5</sub> and meteorology were reasonably reproduced by the WRF-Chem simulation (Figs.S4–S5, Table S7), and the designed three sets of modeling experiments CTRL, SENS-MET and SENS-EMI could be used in the further analyses of emission and meteorological impact on PM<sub>2.5</sub> change over 2015–2019 to confirm the results of KZ filter.

We derived the effect of meteorology by comparing the simulated PM<sub>2.5</sub> concentrations in three sets of experiments CTRL,

380 SENS-MET and SENS-EMI (Table S6). The relative contribution of meteorology to the interannual changes of PM<sub>2.5</sub> concentrations was calculated with a linear additive relationship of contributions of meteorology and emission in the following equations:

$$Con_{MET} = \frac{k_{MET}}{k_{CTRL}} \quad (11)$$

$$Con_{EMI} = \frac{k_{EMI}}{k_{CTRL}} \quad (12)$$

385

$$RCon_{MET} = \frac{Con_{MET}}{Con_{MET} + Con_{EMI}} \times 100\% \quad (13)$$

$k_{CTRL}$ ,  $k_{MET}$  and  $k_{EMI}$  represent the trends in interannual changes of PM<sub>2.5</sub> concentrations simulated by the experiments CTRL, SENS-MET and SENS-EMI, respectively.  $Con_{MET}$  and  $Con_{EMI}$  are the contribution of meteorology and emission, and  $RCon_{MET}$  is the contribution rate (%) of meteorology to interannual changes of PM<sub>2.5</sub> concentrations (Zhang et al., 2020).

Based on WRF-Chem modeling experiments, we assessed the impact of meteorological changes on interannual PM<sub>2.5</sub>

390 variations from 2015 to 2019 with *Eqs. (11–13)*. The relative contribution of meteorology to interannual PM<sub>2.5</sub> variations

displayed the regional pattern of northern positive and southern negative values over the THB (Fig. 10), confirming the impact of meteorological changes by accelerating and offsetting the effects of emission reductions on  $PM_{2.5}$  declining trends in the northern and southern THB, respectively. The general spatial distribution of meteorological contribution rates to  $PM_{2.5}$  declining trends from the WRF-Chem simulation was consistent with the results using KZ filter (Figs. 9 and 10), validating the results with KZ filter that meteorological drivers exerted a contrary impact of northern positive and southern negative contribution on long-term changes of  $PM_{2.5}$  concentrations in the THB.

#### 4. Conclusions

The meteorological effect on multi-scale changes of atmospheric environment has been few assessed for the receptor region in regional transport of air pollutants. In this study of observations and modeling, we targeted the THB, a large region of heavy  $PM_{2.5}$  pollution over central China, to assess the meteorological effects on  $PM_{2.5}$  changes over a receptor region in regional transport of air pollutants during recent five years. The study results provide insights in the effects of emission mitigation and meteorological changes on source-receptor relationship of long-range transport of air pollutants for regional and global environment changes.

This study decomposed the observed  $PM_{2.5}$  concentrations into multi-time scale components with a modified KZ filter, to better understand the  $PM_{2.5}$  variations with the short-term, seasonal and long-term components accounting for respectively 47.5 %, 41.4 % and 3.7 % to observed  $PM_{2.5}$  changes. The short-term and seasonal  $PM_{2.5}$  components dominated the daily  $PM_{2.5}$  changes and long-term component determined the trend of  $PM_{2.5}$  change over recent years. The long-term components of  $PM_{2.5}$ ,  $SO_2$  and  $NO_2$  were further isolated into emission- and meteorology-related long-term components with multiple linear regressions, to figure out the contributions of emission and meteorology to  $PM_{2.5}$  decline in the THB over 2015–2019. The reduction in anthropogenic emissions was the primary cause for long-term decline in  $PM_{2.5}$  concentrations and the meteorological changes moderated the  $PM_{2.5}$  variations in the THB. As the receptor region of regional  $PM_{2.5}$  transport, the impact of diverse meteorological conditions on long-term trend of  $PM_{2.5}$  changes displayed unique regional pattern of northern

positive rates up to 61.92 % and southern negative rates down to -24.93 %. The change of meteorological conditions could  
415 accelerate and offset the effects of emission reductions on PM<sub>2.5</sub> declining trends in the northern and southern THB, which  
could be attributed to the upwind diffusing and downward accumulating roles of regional transport pathway on air pollutants  
in the THB. In terms of gaseous precursor emissions, the increasing conversion efficiency of SO<sub>2</sub> and NO<sub>2</sub> to sulfate and nitrate  
for secondary PM<sub>2.5</sub> could offset the role of ~~PM<sub>2.5</sub>-emission~~ reduction in controlling air pollution, and the contribution of  
gaseous precursors ~~emissions~~ to secondary PM<sub>2.5</sub> enhanced with the reducing anthropogenic emissions of air pollutants over  
420 this receptor region.

This study exposed the impact of anthropogenic emissions and meteorological conditions on the PM<sub>2.5</sub> decline over a  
receptor region in regional transport of air pollutants in central China. The effect of regional transport on PM<sub>2.5</sub> pollution over  
the receptor region ~~was is~~ found differing from that over the source regions with high anthropogenic emissions. We took  
considered the uncertainties induced by statistical methods as systematic biases and explained the offsetting effect of enhancing  
425 oxidation of gaseous precursors to secondary particles on PM<sub>2.5</sub> decline during the stringent emission controls. The changes in  
data coverage and the meteorological parameter selection would largely influence the ~~final~~ quantitative estimation of  
contributions of meteorology and emissions. ~~Due to the limitation of the data coverage of observational data, f~~urther work  
could be desired with climate analyses of long-term data of fine meteorological and environmental observations and more  
comprehensively modeling of chemical and physical processes in the atmosphere to generalize the assessment on the effects  
430 of emission mitigation and meteorological changes on source-receptor relationship of region transport of air pollutants.

*Data availability.* Data used in this paper can be provided upon request from Xiaoyun Sun (sunxy6362@126.com) or Tianliang  
Zhao ([tlzhao@nuist.edu.cn](mailto:tlzhao@nuist.edu.cn)).

435 *Author contributions.* TZ and XS conceived the study. YB provided the observation data and analysis. XS designed the  
graphics and wrote the manuscript with help from TZ, YB and SK. HZ, WH, XM and JX were involved in the scientific

discussion. All authors commented on the paper.

*Competing interests.* The authors declare that they have no conflict of interest.

440

*Acknowledgement.* This research was financially funded by grants from National Natural Science Foundation of China (41830965; 42075186; 91744209) and the National Key R & D Program Pilot Projects of China (2016YFC0203304).

## References

445 Bai, Y., Zhao, T., Hu, W., Zhou, Y., Xiong, J., Wang, Y., Liu, L., Shen, L., Kong, S., Meng, K., and Zheng, H.: Meteorological mechanism of regional PM<sub>2.5</sub> transport building a receptor region for heavy air pollution over Central China, *Science of The Total Environment*, 808, 151951, 10.1016/j.scitotenv.2021.151951, 2022.

Cao, J. J., Wang, Q. Y., Chow, J. C., Watson, J. G., Tie, X. X., Shen, Z. X., Wang, P., and An, Z. S.: Impacts of aerosol compositions on visibility impairment in Xi'an, China, *Atmospheric Environment*, 59, 559-566, 2012.

450 Chen, L., Zhu, J., Liao, H., Yang, Y., and Yue, X.: Meteorological influences on PM<sub>2.5</sub> and O<sub>3</sub> trends and associated health burden since China's clean air actions, *Sci Total Environ*, 744, 140837, 10.1016/j.scitotenv.2020.140837, 2020a.

Chen, Z. Y., Chen, D. L., Kwan, M. P., Chen, B., Gao, B. B., Zhuang, Y., Li, R. Y., and Xu, B.: The control of anthropogenic emissions contributed to 80 % of the decrease in PM 2.5 concentrations in Beijing from 2013 to 2017, *Atmospheric Chemistry and Physics*, 19, 13519-13533, 2019.

455 Chen, Z. Y., Chen, D. L., Zhao, C. F., Kwan, M.-P., Cai, J., Zhuang, Y., Zhao, B., Wang, X. Y., Chen, B., and Yang, J.: Influence of meteorological conditions on PM<sub>2.5</sub> concentrations across China: A review of methodology and mechanism, *Environment International*, 139, 105558, 2020b.

Crouse, D. L., Peters, P. A., van Donkelaar, A., Goldberg, M. S., Villeneuve, P. J., Brion, O., Khan, S., Atari, D. O., Jerrett, M., and Pope III, C. A.: Risk of nonaccidental and cardiovascular mortality in relation to long-term exposure to low concentrations

- 460 of fine particulate matter: a Canadian national-level cohort study, *Environmental Health Perspectives*, 120, 708-714, 2012.
- Draper, N. R.: *Applied regression analysis*, *Technometrics*, 9, 182-183, 1998.
- Du, X., Shi, G., Zhao, T., Yang, F., Zheng, X., Zhang, Y., and Tan, Q.: Contribution of secondary particles to wintertime PM<sub>2.5</sub> during 2015–2018 in a major urban area of the Sichuan Basin, Southwest China, *Earth and Space Science*, 7, e2020EA001194, 2020.
- 465 Eskridge, R. E., Ku, J. Y., Rao, S. T., Porter, P. S., and Zurbenko, I. G.: Separating different scales of motion in time series of meteorological variables, *Bulletin of the American Meteorological Society*, 78, 1473-1484, 1997.
- Gong, S. L., Liu, H. L., Zhang, B. H., He, J. J., Zhang, H. D., Wang, Y. Q., Wang, S. X., Zhang, L., and Wang, J.: Assessment of meteorology vs. control measures in the China fine particular matter trend from 2013 to 2019 by an environmental meteorology index, *Atmospheric Chemistry and Physics*, 21, 2999-3013, 10.5194/acp-21-2999-2021, 2021.
- 470 Gui, K., Che, H. Z., Wang, Y. Q., Wang, H., Zhang, L., Zhao, H. J., Zheng, Y., Sun, T. Z., and Zhang, X. Y.: Satellite-derived PM<sub>2.5</sub> concentration trends over Eastern China from 1998 to 2016: Relationships to emissions and meteorological parameters, *Environmental Pollution*, 247, 1125-1133, 2019.
- Guo, H., Cheng, T. H., Gu, X. F., Wang, Y., Chen, H., Bao, F. W., Shi, S. Y., Xu, B. R., Wang, W. N., Zuo, X., Zhang, X. C., and Meng, C.: Assessment of PM<sub>2.5</sub> concentrations and exposure throughout China using ground observations, *Sci Total Environ*, 601-602, 1024-1030, 10.1016/j.scitotenv.2017.05.263, 2017.
- 475 Hsu, C.-H., and Cheng, F.-Y.: Classification of weather patterns to study the influence of meteorological characteristics on PM<sub>2.5</sub> concentrations in Yunlin County, Taiwan, *Atmospheric Environment*, 144, 397-408, 2016.
- Hu, W. Y., Zhao, T. L., Bai, Y. Q., Shen, L. J., Sun, X. Y., and Gu, Y.: Contribution of regional PM<sub>2.5</sub> transport to air pollution enhanced by sub-basin topography: A modeling case over central China, *Atmosphere*, 11, 1258, 2020.
- 480 Hu, W. Y., Zhao, T. L., Bai, Y. Q., Kong, S. F., Xiong, J., Sun, X. Y., Yang, Q. J., Gu, Y., and Lu, H. C.: Importance of regional PM<sub>2.5</sub> transport and precipitation washout in heavy air pollution in the Twain-Hu Basin over Central China: Observational analysis and WRF-Chem simulation, *Science of the Total Environment*, 758, 143710, 2021.

- Huang, X., Ding, A., Gao, J., Zheng, B., Zhou, D., Qi, X., Tang, R., Wang, J., Ren, C., and Nie, W.: Enhanced secondary pollution offset reduction of primary emissions during COVID-19 lockdown in China, *National Science Review*, 8, nwaal37, 485 2021.
- Jeong, J. I., and Park, R. J.: Winter monsoon variability and its impact on aerosol concentrations in East Asia, *Environ Pollut*, 221, 285-292, 10.1016/j.envpol.2016.11.075, 2017.
- Kim, Y. M., Seo, J. H., Kim, J. Y., Lee, J. Y., Kim, H. J., and Kim, B. M.: Characterization of PM 2.5 and identification of transported secondary and biomass burning contribution in Seoul, Korea, *Environmental Science and Pollution Research*, 25, 490 4330-4343, 2018.
- Li, G. H., Zavala, M., Lei, W., Tsimpidi, A. P., Karydis, V. A., Pandis, S. N., Canagaratna, M. R., and Molina, L. T.: Simulations of organic aerosol concentrations in Mexico City using the WRF-CHEM model during the MCMA-2006/MILAGRO campaign, *Atmospheric Chemistry and Physics*, 11, 3789-3809, 2011.
- Li, K., Liao, H., Cai, W. J., and Yang, Y.: Attribution of anthropogenic influence on atmospheric patterns conducive to recent 495 most severe haze over eastern China, *Geophysical Research Letters*, 45, 2072-2081, 2018.
- Li, S., Ren, A. L., Guo, B., Du, Z., Zhang, S., Tian, M., and Wang, S. S.: Influence of Meteorological Factors and VOCs on PM2. 5 during Severe Air Pollution Period in Shijiazhuang in Winter, 2015 2nd International Conference on Machinery, Materials Engineering, Chemical Engineering and Biotechnology, 2015a, 588-592.
- Li, X., Zhang, Q., Zhang, Y., Zheng, B., Wang, K., Chen, Y., Wallington, T. J., Han, W. J., Shen, W., and Zhang, X. Y.: Source 500 contributions of urban PM2. 5 in the Beijing–Tianjin–Hebei region: Changes between 2006 and 2013 and relative impacts of emissions and meteorology, *Atmospheric Environment*, 123, 229-239, 2015b.
- Lin, C. Q., Liu, G. H., Lau, A. K. H., Li, Y., Li, C. C., Fung, J. C. H., and Lao, X. Q.: High-resolution satellite remote sensing of provincial PM2. 5 trends in China from 2001 to 2015, *Atmospheric Environment*, 180, 110-116, 2018a.
- Lin, Y., Zou, J., Yang, W., and Li, C.-Q.: A review of recent advances in research on PM2. 5 in China, *International journal of environmental research and public health*, 15, 438, 2018b.

- Lu, M. M., Tang, X., Wang, Z. F., Gbaguidi, A., Liang, S. W., Hu, K., Wu, L., Wu, H. J., Huang, Z., and Shen, L. J.: Source tagging modeling study of heavy haze episodes under complex regional transport processes over Wuhan megacity, Central China, *Environmental Pollution*, 231, 612-621, 2017.
- Ma, Z. Q., Xu, J., Quan, W. J., Zhang, Z. Y., Lin, W. L., and Xu, X. B.: Significant increase of surface ozone at a rural site, north of eastern China, *Atmospheric Chemistry and Physics*, 16, 3969-3977, 2016.
- Miao, Y. C., Hu, X. M., Liu, S. H., Qian, T. T., Xue, M., Zheng, Y. J., and Wang, S.: Seasonal variation of local atmospheric circulations and boundary layer structure in the Beijing-Tianjin-Hebei region and implications for air quality, *Journal of Advances in Modeling Earth Systems*, 7, 1602-1626, 2015.
- Miao, Y. C., Guo, J. P., Liu, S. H., Liu, H., Li, Z. Q., Zhang, W. C., and Zhai, P. M.: Classification of summertime synoptic patterns in Beijing and their associations with boundary layer structure affecting aerosol pollution, *Atmospheric Chemistry and Physics*, 17, 3097-3110, 2017.
- Mueller, S. F., and Mallard, J. W.: Contributions of natural emissions to ozone and PM<sub>2.5</sub> as simulated by the community multiscale air quality (CMAQ) model, *Environmental science & technology*, 45, 4817-4823, 2011.
- Ning, G. C., Yim, S. H. L., Wang, S. G., Duan, B. L., Nie, C. Q., Yang, X., Wang, J. Y., and Shang, K. Z.: Synergistic effects of synoptic weather patterns and topography on air quality: a case of the Sichuan Basin of China, *Climate Dynamics*, 53, 6729-6744, 2019.
- Pearce, J. L., Beringer, J., Nicholls, N., Hyndman, R. J., and Tapper, N. J.: Quantifying the influence of local meteorology on air quality using generalized additive models, *Atmospheric Environment*, 45, 1328-1336, 2011.
- Peng, J., Chen, S., Lü, H. L., Liu, Y. X., and Wu, J. S.: Spatiotemporal patterns of remotely sensed PM<sub>2.5</sub> concentration in China from 1999 to 2011, *Remote Sensing of Environment*, 174, 109-121, 2016.
- Rao, S. T., and Zurbenko, I. G.: Detecting and tracking changes in ozone air quality, *Air & waste*, 44, 1089-1092, 1994.
- Russell, A. R., Valin, L. C., Bucsele, E. J., Wenig, M. O., and Cohen, R. C.: Space-based constraints on spatial and temporal patterns of NO<sub>x</sub> emissions in California, 2005–2008, *Environmental science & technology*, 44, 3608-3615, 2010.

- Seo, J., Youn, D., Kim, J. Y., and Lee, H.: Extensive spatiotemporal analyses of surface ozone and related meteorological variables in South Korea for the period 1999–2010, *Atmospheric Chemistry and Physics*, 14, 6395-6415, 2014.
- Seo, J., Kim, J. Y., Youn, D., Lee, J. Y., Kim, H., Lim, Y. B., Kim, Y., and Jin, H. C.: On the multiday haze in the Asian continental outflow: the important role of synoptic conditions combined with regional and local sources, *Atmospheric Chemistry and Physics*, 17, 9311-9332, 2017.
- Seo, J., Park, D. S. R., Kim, J. Y., Youn, D., Lim, Y. B., and Kim, Y.: Effects of meteorology and emissions on urban air quality: a quantitative statistical approach to long-term records (1999–2016) in Seoul, South Korea, *Atmospheric Chemistry and Physics*, 18, 16121-16137, 2018.
- Shen, L. J., Wang, H. L., Zhao, T. L., Liu, J., Bai, Y. Q., Kong, S. F., and Shu, Z. Z.: Characterizing regional aerosol pollution in central China based on 19 years of MODIS data: Spatiotemporal variation and aerosol type discrimination, *Environmental Pollution*, 263, 114556, 10.1016/j.envpol.2020.114556, 2020.
- Sun, Y., Song, T., Tang, G. Q., and Wang, Y. S.: The vertical distribution of PM<sub>2.5</sub> and boundary-layer structure during summer haze in Beijing, *Atmospheric Environment*, 74, 413-421, 2013.
- Tang, G. Q., Zhang, J. Q., Zhu, X. W., Song, T., Munkel, C., Hu, B., Schäfer, K., Liu, Z. R., Zhang, J. K., and Wang, L. L.: Mixing layer height and its implications for air pollution over Beijing, China, *Atmospheric Chemistry and Physics*, 16, 2459-2475, 2016.
- Wang, P., Guo, H., Hu, J., Kota, S. H., Ying, Q., and Zhang, H.: Responses of PM<sub>2.5</sub> and O<sub>3</sub> concentrations to changes of meteorology and emissions in China, *Sci Total Environ*, 662, 297-306, 10.1016/j.scitotenv.2019.01.227, 2019.
- Wang, X. Y., Wang, K. C., and Su, L. Y.: Contribution of atmospheric diffusion conditions to the recent improvement in air quality in China, *Scientific reports*, 6, 1-11, 2016.
- Wang, Y., Di Sabatino, S., Martilli, A., Li, Y., Wong, M. S., Gutiérrez, E., and Chan, P. W.: Impact of land surface heterogeneity on urban heat island circulation and sea-land breeze circulation in Hong Kong, *Journal of Geophysical Research: Atmospheres*, 122, 4332-4352, 10.1002/2017jd026702, 2017.



- Xiao, Q., Zheng, Y., Geng, G., Chen, C., Huang, X., Che, H., Zhang, X., He, K., and Zhang, Q.: Separating emission and meteorological contributions to long-term PM<sub>2.5</sub> trends over eastern China during 2000–2018, *Atmospheric Chemistry and Physics*, 21, 9475-9496, 10.5194/acp-21-9475-2021, 2021.
- 555 Xu, Y., Xue, W., Lei, Y., Huang, Q., Zhao, Y., Cheng, S., Ren, Z., and Wang, J.: Spatiotemporal variation in the impact of meteorological conditions on PM<sub>2.5</sub> pollution in China from 2000 to 2017, *Atmospheric Environment*, 223, 117215, 10.1016/j.atmosenv.2019.117215, 2020.
- Xue, T., Liu, J., Zhang, Q., Geng, G. N., Zheng, Y. X., Tong, D., Liu, Z., Guan, D. B., Bo, Y., and Zhu, T.: Rapid improvement of PM 2.5 pollution and associated health benefits in China during 2013–2017, *Science China Earth Sciences*, 62, 1847-1856, 560 2019.
- Yang, H., Chen, J., Wen, J., Tian, H., and Liu, X.: Composition and sources of PM<sub>2.5</sub> around the heating periods of 2013 and 2014 in Beijing: Implications for efficient mitigation measures, *Atmospheric Environment*, 124, 378-386, 10.1016/j.atmosenv.2015.05.015, 2016a.
- Yang, Y., Liao, H., and Lou, S.: Increase in winter haze over eastern China in recent decades: Roles of variations in 565 meteorological parameters and anthropogenic emissions, *Journal of Geophysical Research: Atmospheres*, 121, 13,050-013,065, 10.1002/2016jd025136, 2016b.
- Yin, C. Q., Deng, X. J., Zou, Y., Solmon, F., Li, F., and Deng, T.: Trend analysis of surface ozone at suburban Guangzhou, China, *Sci Total Environ*, 695, 133880, 10.1016/j.scitotenv.2019.133880, 2019a.
- Yin, C. Q., Deng, X. J., Zou, Y., Solmon, F., Li, F., and Deng, T.: Trend analysis of surface ozone at suburban Guangzhou, 570 China, *Science of The Total Environment*, 695, 133880, 2019b.
- Yu, C., Zhao, T. L., Bai, Y. Q., Zhang, L., Kong, S. F., Yu, X. N., He, J. H., Cui, C. G., Yang, J., and You, Y. C.: Heavy air pollution with a unique “non-stagnant” atmospheric boundary layer in the Yangtze River middle basin aggravated by regional transport of PM 2.5 over China, *Atmospheric Chemistry and Physics*, 20, 7217-7230, 2020.
- Zhai, S., Jacob, D. J., Wang, X., Shen, L., Li, K., Zhang, Y., Gui, K., Zhao, T., and Liao, H.: Fine particulate matter (PM<sub>2.5</sub>)

- 575 trends in China, 2013–2018: separating contributions from anthropogenic emissions and meteorology, *Atmospheric Chemistry and Physics*, 19, 11031-11041, 10.5194/acp-19-11031-2019, 2019.
- Zhai, S., Jacob, D. J., Wang, X., Liu, Z., Wen, T., Shah, V., Li, K., Moch, J. M., Bates, K. H., and Song, S.: Control of particulate nitrate air pollution in China, *Nature Geoscience*, 14, 389-395, 2021.
- Zhang, W. J., Wang, H., Zhang, X. Y., Peng, Y., Zhong, J. T., Wang, Y. Q., and Zhao, Y. F.: Evaluating the contributions of  
580 changed meteorological conditions and emission to substantial reductions of PM<sub>2.5</sub> concentration from winter 2016 to 2017 in Central and Eastern China, *Science of The Total Environment*, 716, 136892, 2020.
- Zhang, X. Y., Wang, Y. Q., Niu, T., Zhang, X. C., Gong, S. L., Zhang, Y. M., and Sun, J. Y.: Atmospheric aerosol compositions in China: spatial/temporal variability, chemical signature, regional haze distribution and comparisons with global aerosols, *Atmospheric Chemistry and Physics*, 12, 779-799, 2012.
- 585 Zhang, X. Y., Xu, X. D., Ding, Y. H., Liu, Y. J., Zhang, H. D., Wang, Y. Q., and Zhong, J. T.: The impact of meteorological changes from 2013 to 2017 on PM<sub>2.5</sub> mass reduction in key regions in China, *Science China Earth Sciences*, 62, 1885-1902, 2019.
- Zhang, Z., Ma, Z., and Kim, S.: Significant decrease of PM<sub>2.5</sub> in Beijing based on long-term records and Kolmogorov-Zurbenko filter approach, *Aerosol and Air Quality Research*, 18, 711-718, 2018.
- 590 Zheng, B., Tong, D., Li, M., Liu, F., Hong, C. P., Geng, G. N., Li, H. Y., Li, X., Peng, L. Q., and Qi, J.: Trends in China's anthropogenic emissions since 2010 as the consequence of clean air actions, *Atmospheric Chemistry and Physics*, 18, 14095-14111, 2018.
- Zheng, H., Kong, S. F., Zheng, M. M., Yan, Y. Y., Yao, L. Q., Zheng, S. R., Yan, Q., Wu, J., Cheng, Y., and Chen, N.: A 5.5-year observations of black carbon aerosol at a megacity in Central China: Levels, sources, and variation trends, *Atmospheric  
595 Environment*, 232, 117581, 2020.
- Zhong, J. T., Zhang, X. Y., Wang, Y. Q., Wang, J. Z., Shen, X. J., Zhang, H. S., Wang, T. J., Xie, Z. Q., Liu, C., and Zhang, H. D.: The two-way feedback mechanism between unfavorable meteorological conditions and cumulative aerosol pollution in

various haze regions of China, Atmospheric Chemistry and Physics, 19, 3287-3306, 2019.

Zhu, J. L., Liao, H., and Li, J. P.: Increases in aerosol concentrations over eastern China due to the decadal-scale weakening  
600 of the East Asian summer monsoon, Geophysical Research Letters, 39, 2012.

605

610

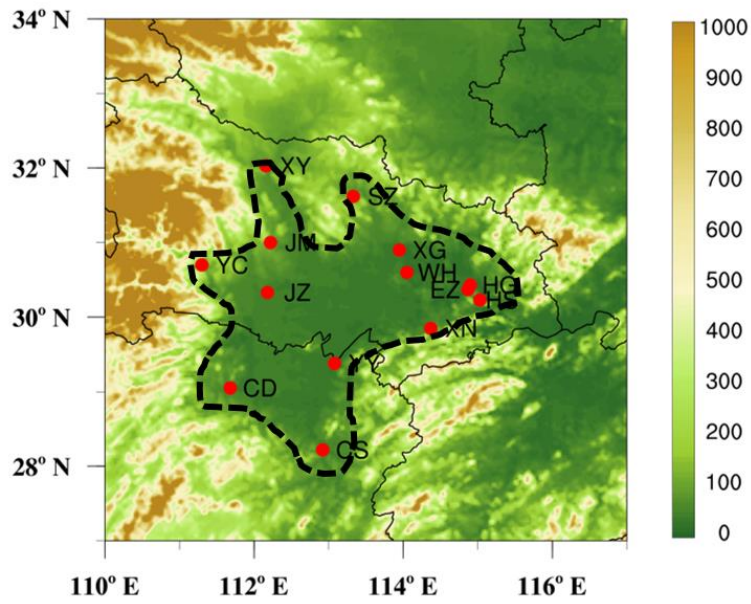
615 **Table 1** Adjusted determination coefficients (Adj. R<sup>2</sup>) between the baseline components decomposed by KZ filter and fitted  
with multiple linear regressions respectively for PM<sub>2.5BL</sub>, SO<sub>2BL</sub> and NO<sub>2BL</sub> in 14 sites over the THB. All Adj. R<sup>2</sup> passing the  
confidence level of 99%.

Sites	Adj. R <sup>2</sup> of multiple linear regressions		
	PM <sub>2.5BL</sub>	SO <sub>2BL</sub>	NO <sub>2BL</sub>

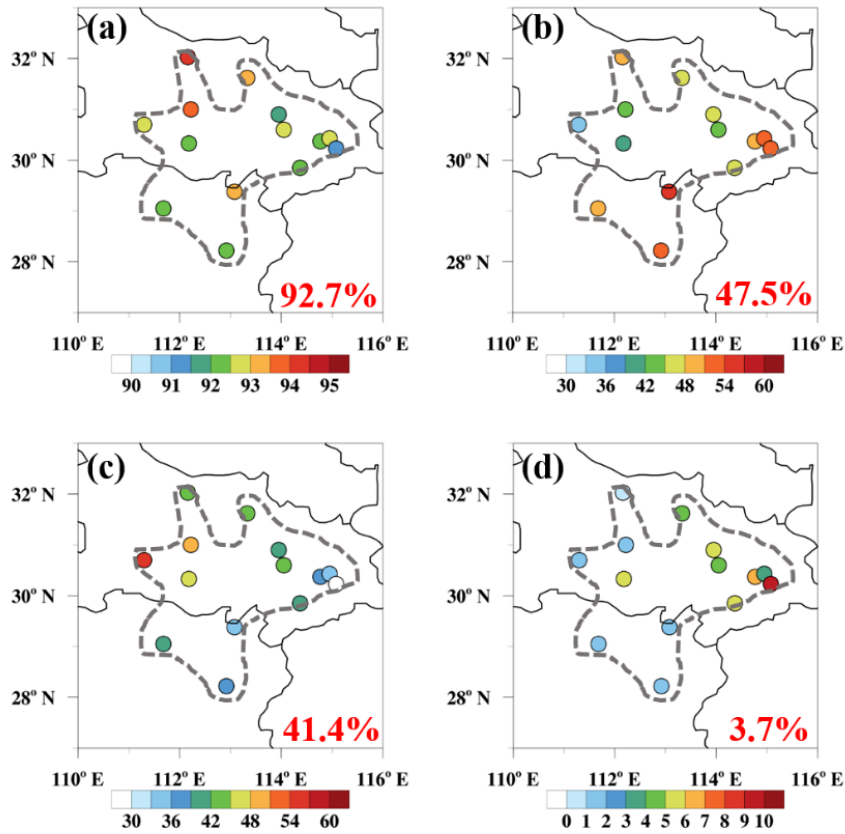
---

JZ	0.6776	0.4166	0.8358
XN	0.6899	0.0630	0.7408
XY	0.7971	0.6741	0.8181
JM	0.7872	0.3612	0.6480
YC	0.7168	0.2980	0.6304
SZ	0.7175	0.3612	0.8669
WH	0.7289	0.2718	0.6653
EZ	0.7162	0.4592	0.7523
HG	0.6937	0.1901	0.7220
HS	0.5695	0.2787	0.6952
CS	0.7307	0.1255	0.7012
YY	0.7501	0.1047	0.7592
XG	0.6755	0.4389	0.7692
CD	0.7017	0.1730	0.6937

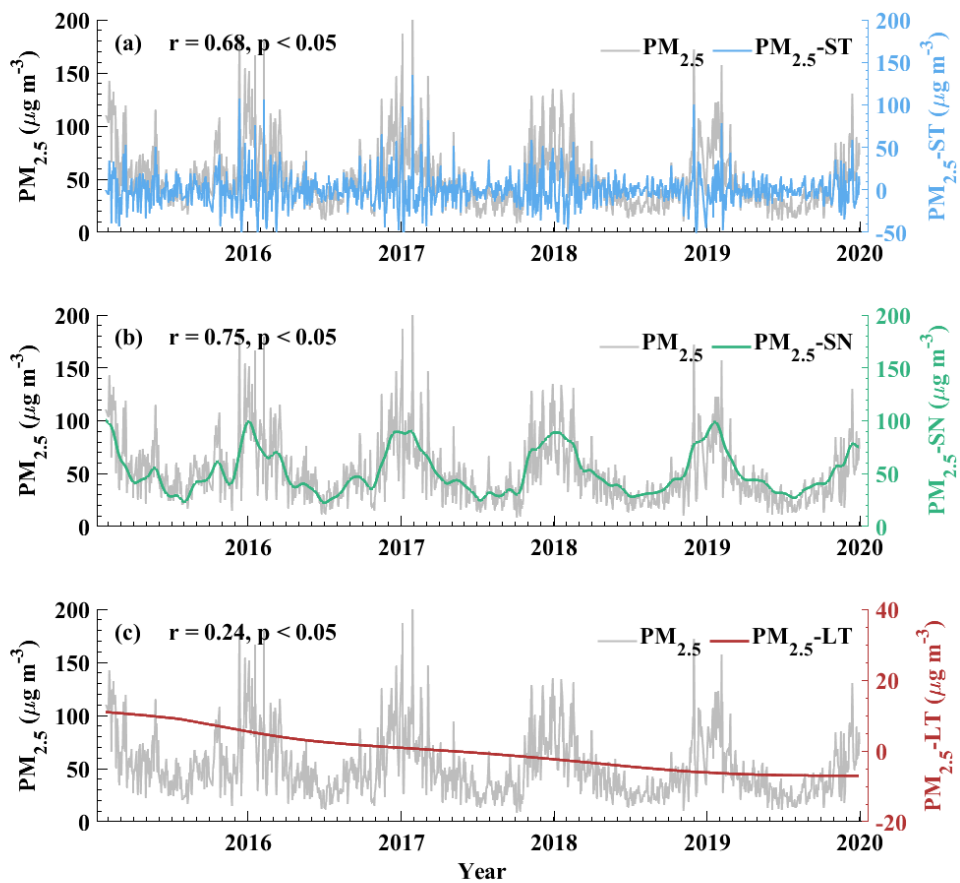
---



**Figure 1** Topographical height (color contours, m, in a. s. l.) over the THB (outlined with black dashed line) with the locations of 14 sites (red dots) and the surrounding regions in central China.

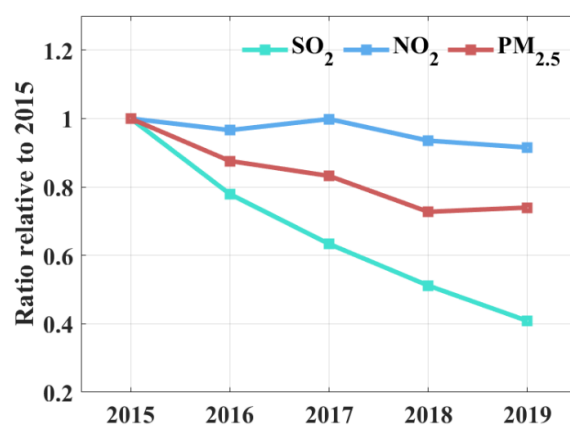


**Figure 2** Spatial distributions of the (a) total and relative contributions of (b) short-term, (c) seasonal and (d) long-term components to the total variances of daily  $PM_{2.5}$  changes observed at 14 sites in the THB with the regional averages of 92.7%, 47.5%, 41.4% and 3.7%.



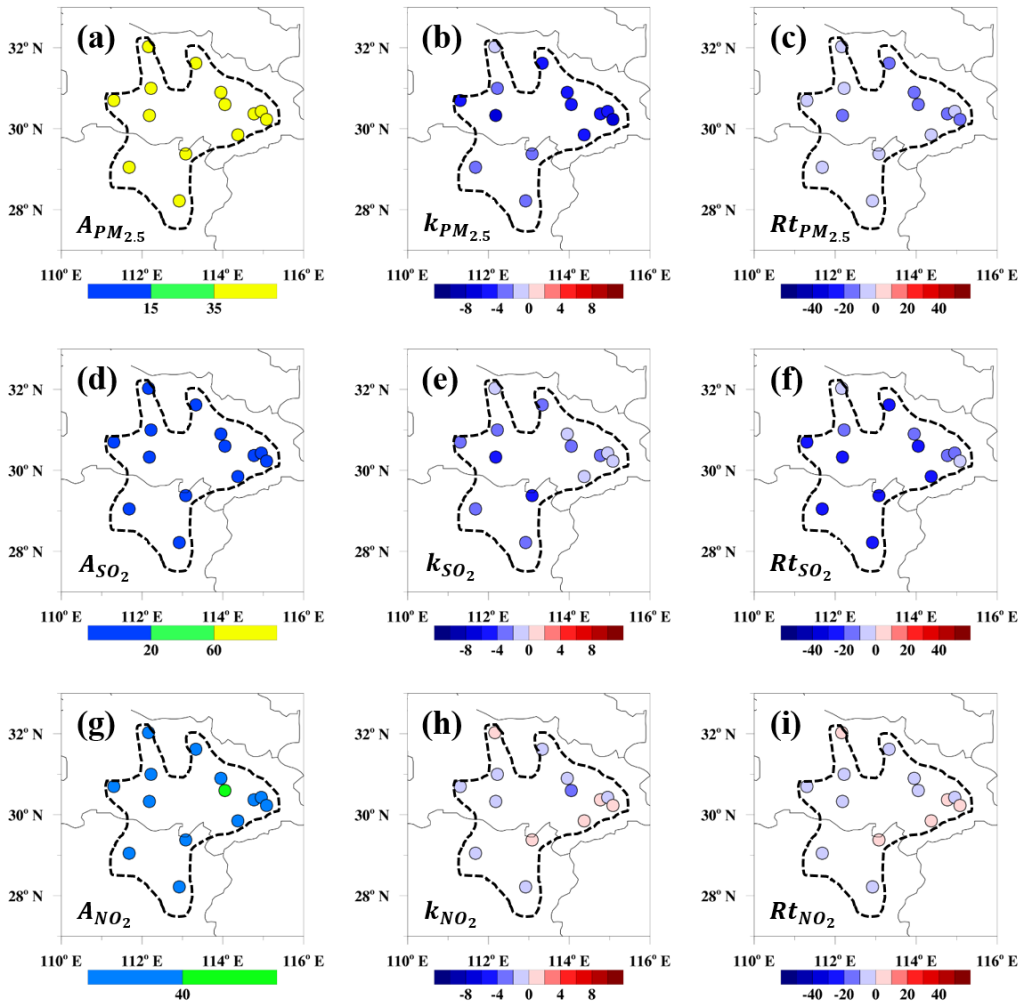
625

**Figure 3** The relations of regional averages of (a) short-term ( $PM_{2.5}$ -ST), (b) seasonal ( $PM_{2.5}$ -SN) and (c) long-term ( $PM_{2.5}$ -LT) components with the observed daily  $PM_{2.5}$  concentrations ( $PM_{2.5}$ ) over the THB from 2015 to 2019.

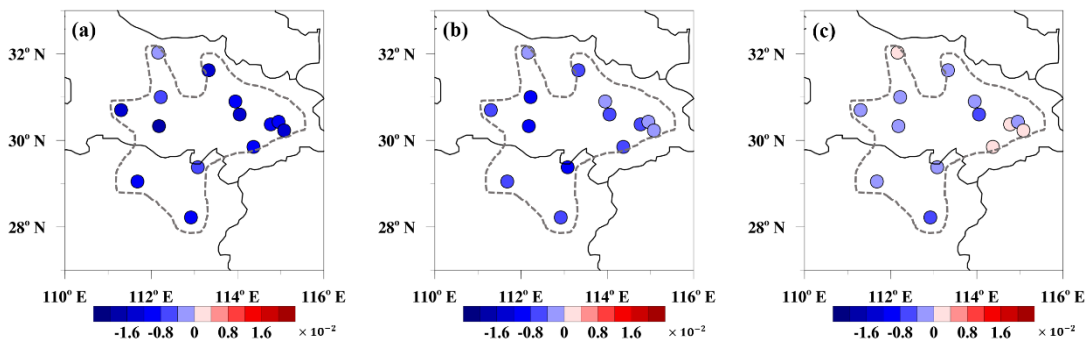


630

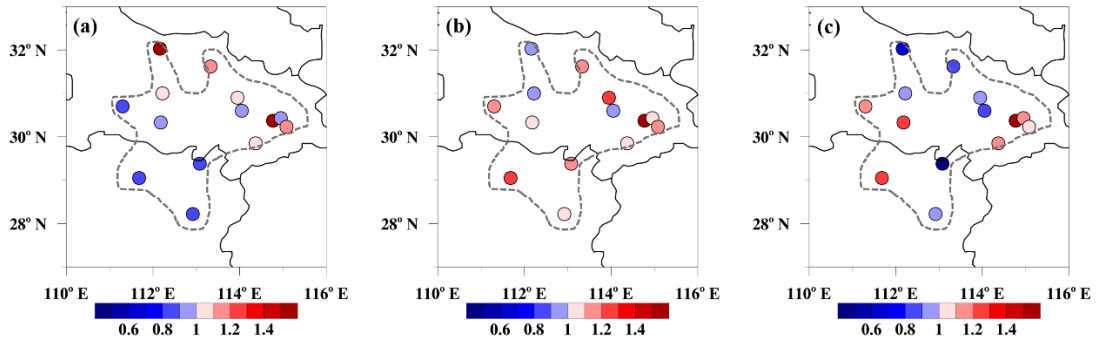
**Figure 4** Interannual variations in the ratios of observed annual mean concentrations of  $SO_2$ ,  $NO_2$  and  $PM_{2.5}$  relative to those in 2015 averaged over the THB.



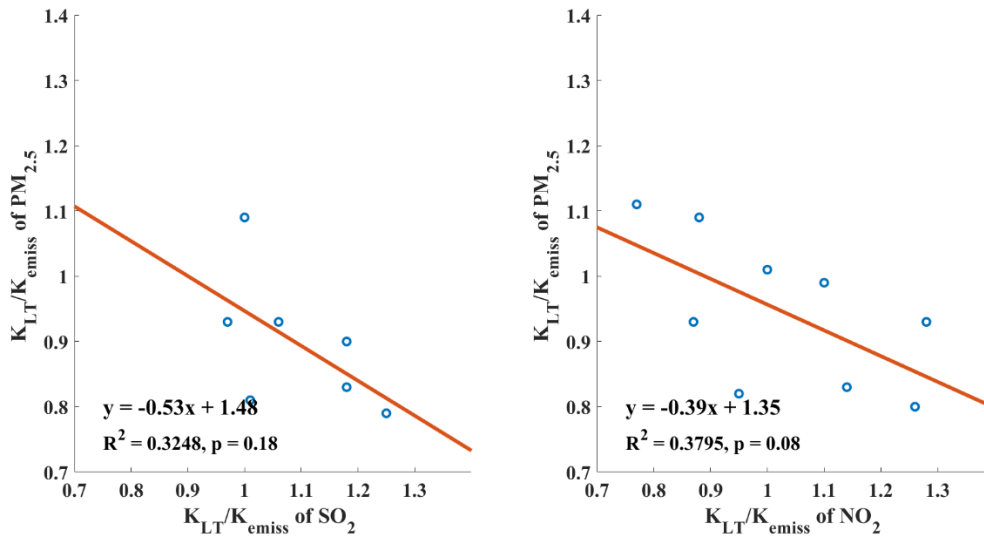
**Figure 5** Spatial distributions of (left column) 5-year averages of (a)  $PM_{2.5}$ , (d)  $SO_2$  and (g)  $NO_2$  concentrations ( $A$ , unit:  $\mu g m^{-3}$ ), (middle column) the linear trends in interannual variations of (b)  $PM_{2.5}$ , (e)  $SO_2$  and (h)  $NO_2$  ( $k$ , unit:  $\mu g m^{-3} yr^{-1}$ ), as well as (right column) the change rates ( $Rt=k/A$ , unit:  $\% yr^{-1}$ ) of (c)  $PM_{2.5}$ , (f)  $SO_2$  and (i)  $NO_2$  in the THB over 2015–2019.



**Figure 6** Spatial distributions of the linear trends in emission-related long-term components of (a)  $PM_{2.5}$ , (b)  $SO_2$  and (c)  $NO_2$  (unit:  $\mu g m^{-3} d^{-1}$ ) over 2015–2019 in the THB

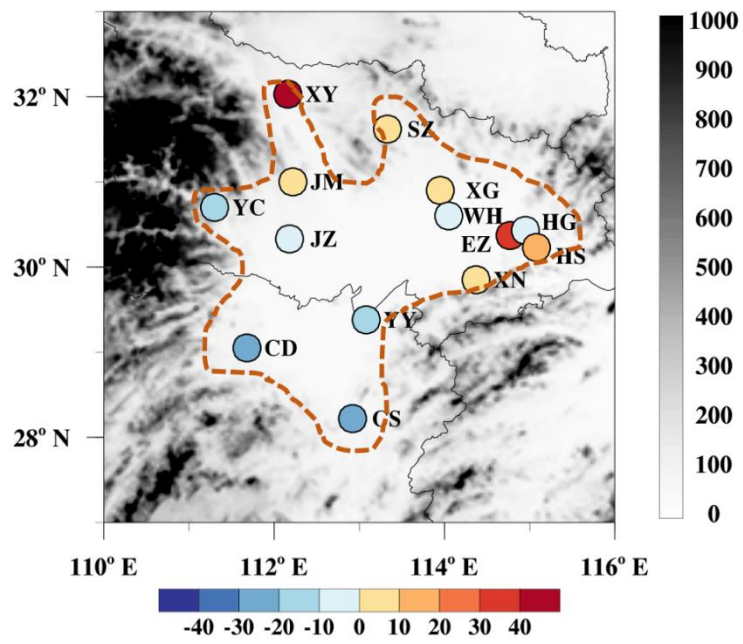


**Figure 7** Spatial distributions of the ratios of linear trends in long-term components ( $k_{LT}$ ) and emission-related long-term components ( $k_{emiss}$ ) of (a)  $PM_{2.5}$ , (b)  $SO_2$  and (c)  $NO_2$  at 14 sites in the THB over 2015–2019.

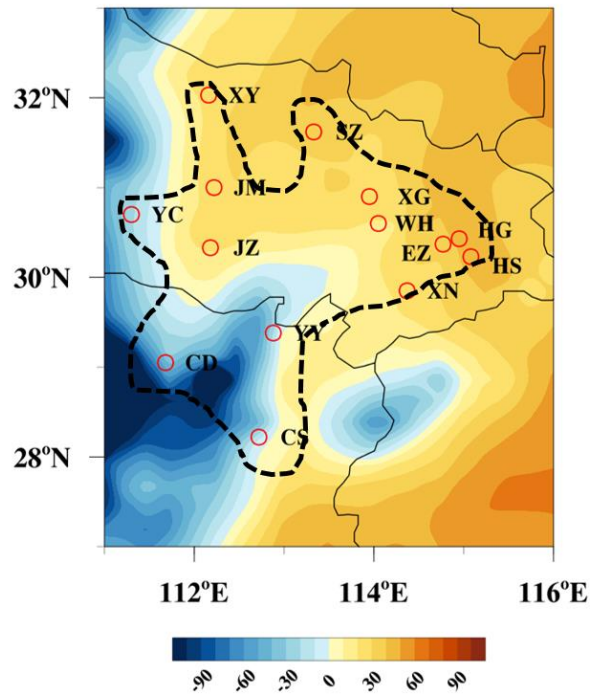


**Figure 8** Scatter plots of the ratios between  $k_{LT}$  and  $k_{emiss}$  of (a)  $SO_2$ , (b)  $NO_2$  and  $PM_{2.5}$  in the THB from 2015 to 2019 with red lines for the linear fitting equations.





650 **Figure 9** Spatial distribution of contribution rates (colored dots, unit: %) of meteorological variations to  $PM_{2.5}$  reductions with topographical height (color contours, m, in a. s. l.) in the THB (outlined with orange dashed line) and surrounding regions from 2015 to 2019.



655

**Figure 10** Spatial distribution of contribution rates of meteorological variations to PM<sub>2.5</sub> reductions based on WRF-Chem modeling experiments (contour, unit: %) in the THB outlined with black dashed line and surrounding regions for December of 2015–2019.