

**Supplementary material for “Potential limitations of using a modal aerosol approach for sulfate geoengineering applications in climate models”**

Daniele Visioni<sup>1</sup>, Simone Tilmes<sup>2</sup>, Charles Bardeen<sup>2</sup>, Michael Mills<sup>2</sup>, Douglas G. MacMartin<sup>1</sup>, Ben Kravitz<sup>3,4</sup>, and Jadwiga Richter<sup>5</sup>

<sup>1</sup>Sibley School of Mechanical and Aerospace Engineering, Cornell University, Ithaca, NY, USA

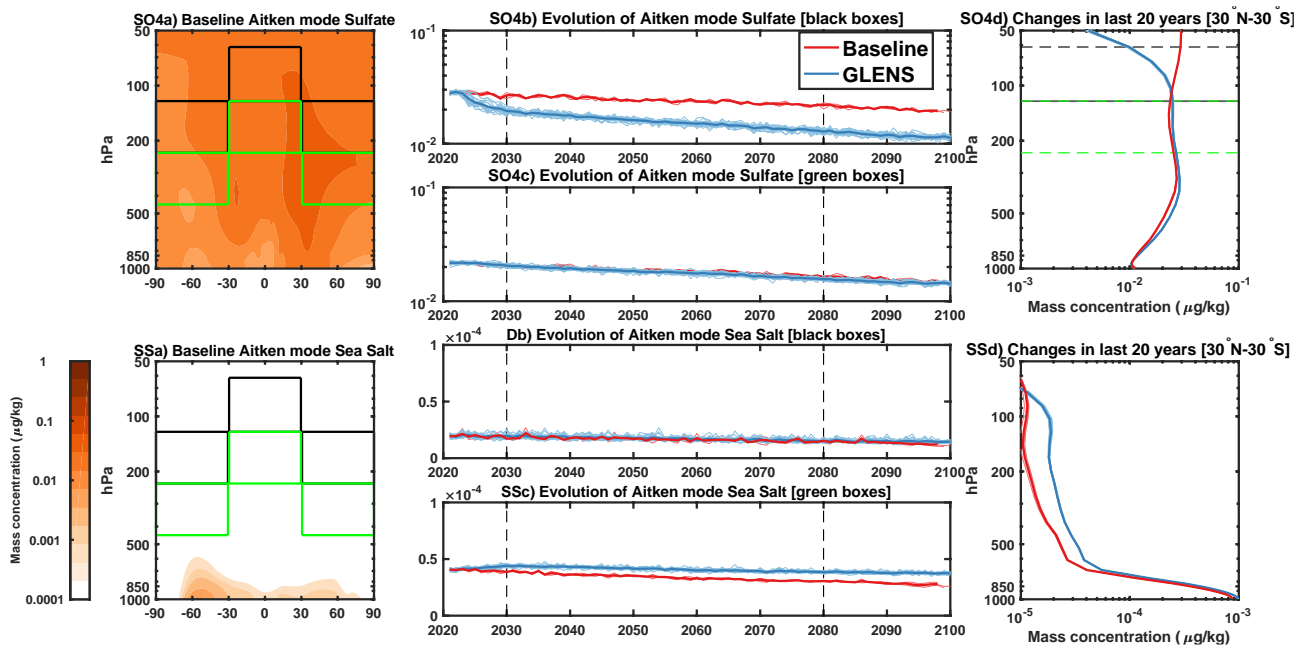
<sup>2</sup>Atmospheric Chemistry, Observations, and Modeling Laboratory, National Center for Atmospheric Research, Boulder CO, USA

<sup>3</sup>Department of Earth and Atmospheric Sciences, Indiana University, Bloomington, IN, USA

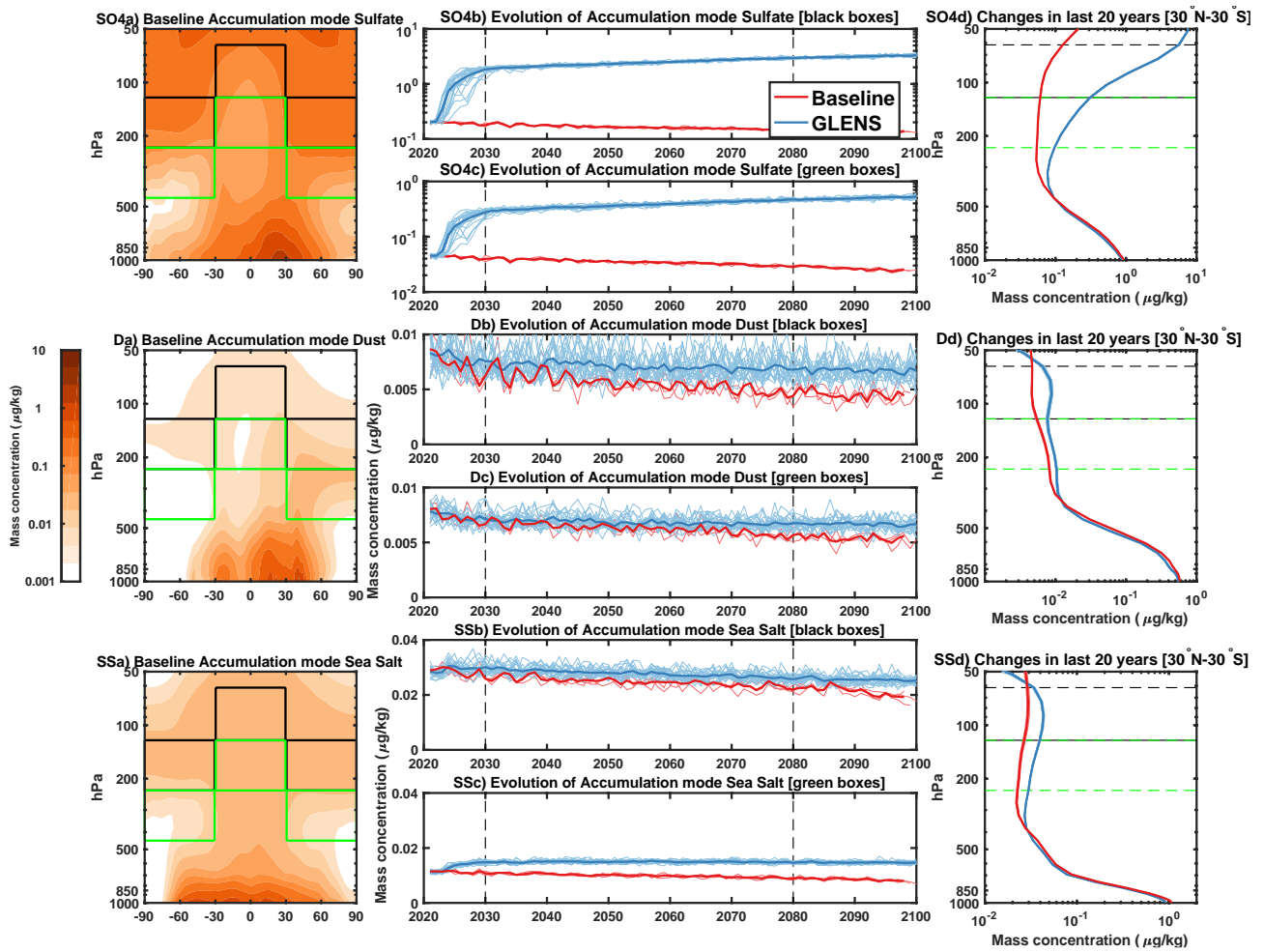
<sup>4</sup>Atmospheric Sciences and Global Change Division, Pacific Northwest National Laboratory, Richland, WA, USA

<sup>5</sup>Climate and Global Dynamics Laboratory, National Center for Atmospheric Research, Boulder CO, USA

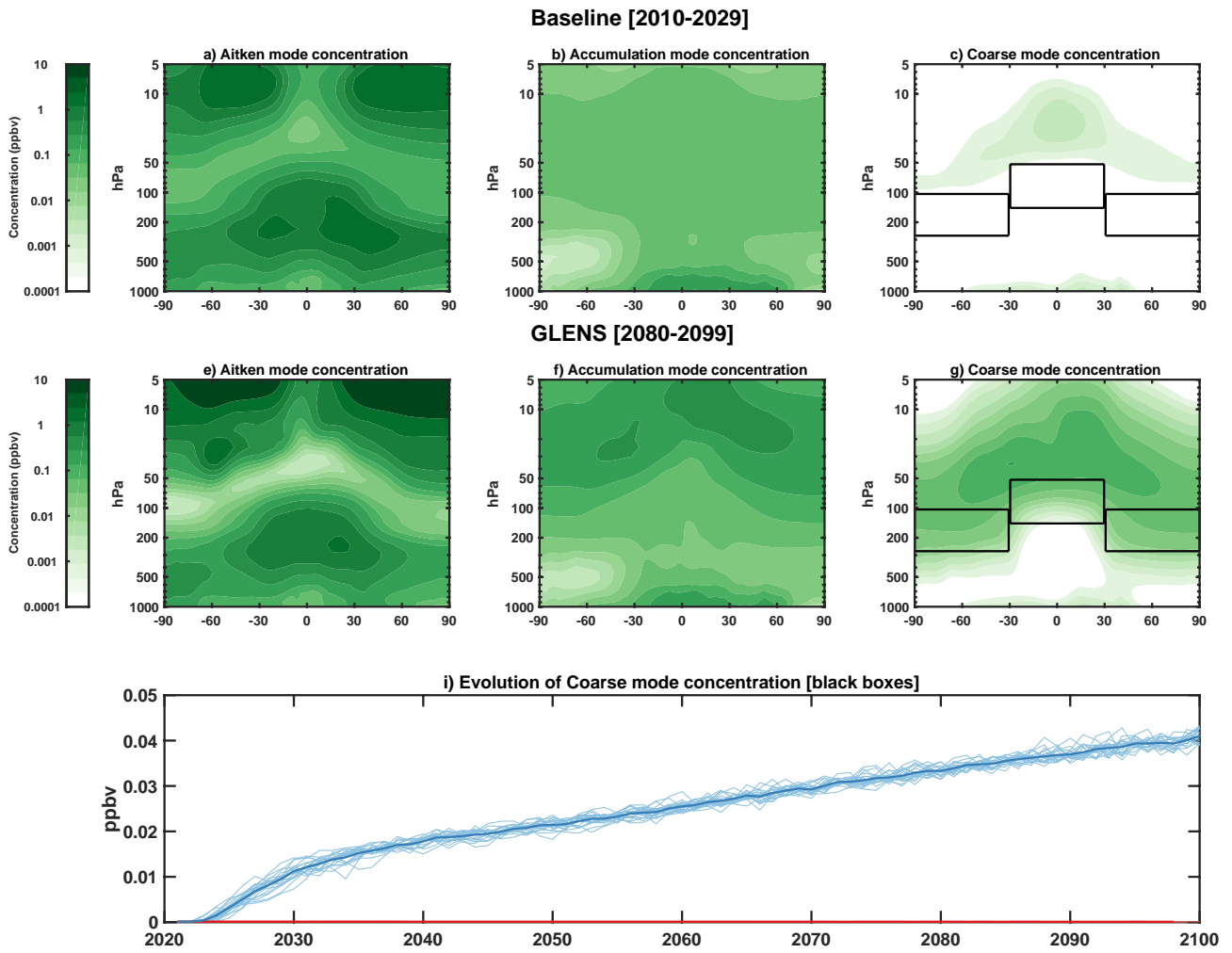
Correspondence: Daniele Visioni (daniele.visioni@cornell.edu)



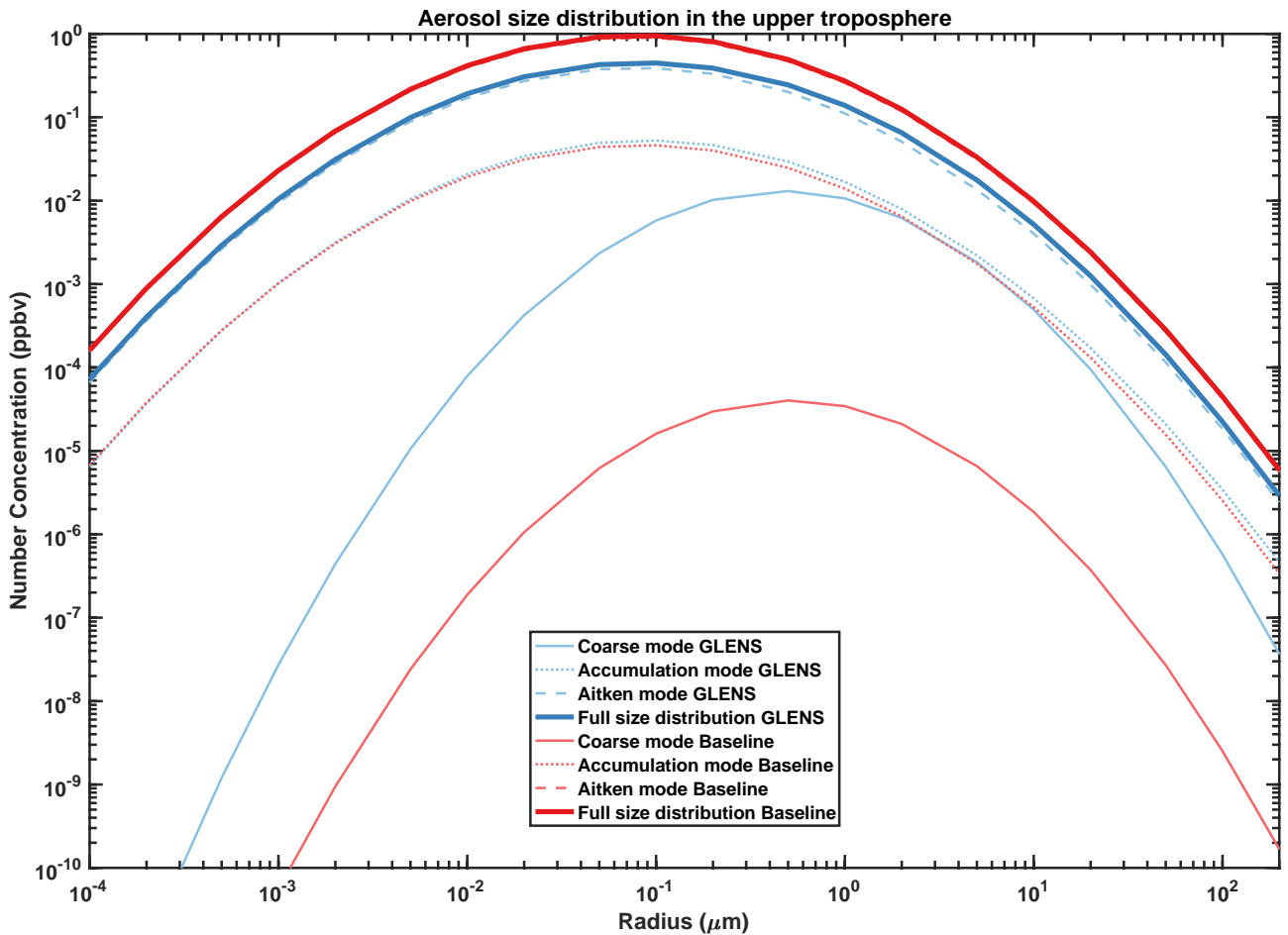
**Fig. S1** As Fig. 1, but for Aitken mode particles.



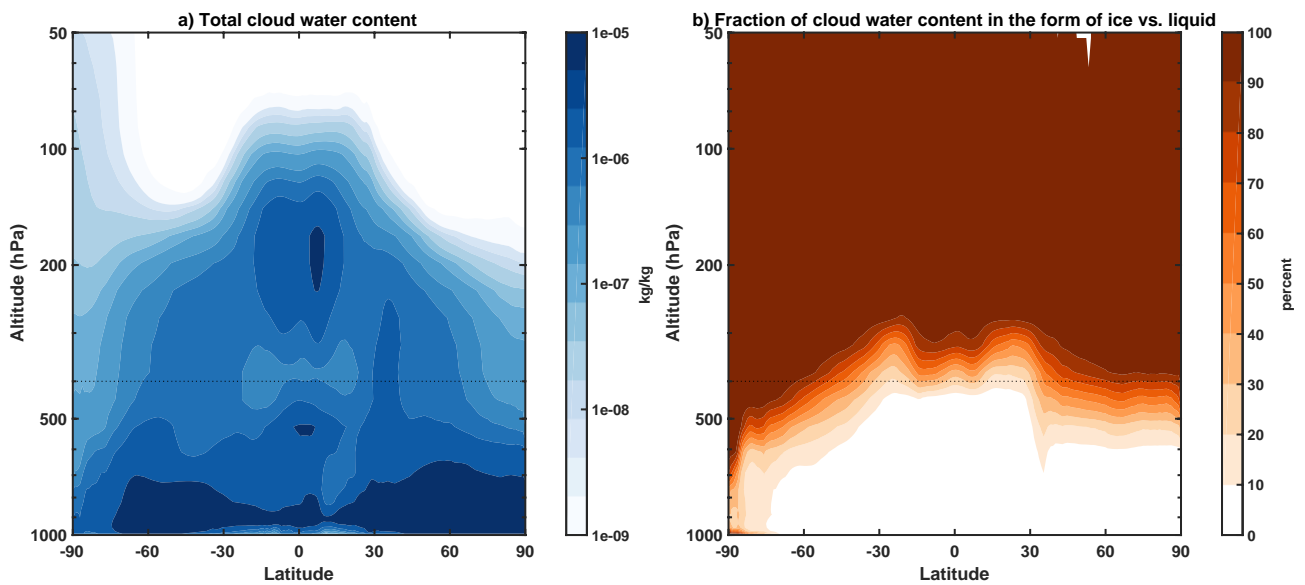
**Fig. S2** As Fig. 1, but for Accumulation mode particles.



**Fig. S3** As Fig. 4, but for particle concentration.



**Fig. S4** Size distribution of the aerosols in the upper troposphere in the three separate modes, and composite one of all three (thicker line) for Baseline (2010-2029) and GLENS (2080-2099). Standard deviation for the three modes (constant throughout the entire atmosphere)  $\sigma_p$  from Mills et al. (2016). Number concentrations and aerosol sizes calculated in the black boxes from Fig. 4.



**Fig. S5** a) Annual, zonal mean amount of water content (in liquid+ice form, kg for kg of air) in the Baseline case (2010-2029 average). b) Fraction of the water in panel a) that is in solid ice form.