

# Potential new tracers and their mass fraction in the emitted PM10 from the burning of household waste in stoves

András Hoffer<sup>1</sup>, Ádám Tóth<sup>2</sup>, Beatrix Jancsek-Turóczi<sup>2</sup>, Attila Machon<sup>3</sup>, Aida Meiramova<sup>2</sup>, Attila Nagy<sup>4</sup>, Luminita Marmureanu<sup>5</sup>, András Gelencsér<sup>1,2</sup>

<sup>1</sup>MTA-PE Air Chemistry Research Group, 8200, Veszprém, Hungary

<sup>2</sup>Air Chemistry Research Group, University of Pannonia, 8200, Veszprém, Hungary

<sup>3</sup>Hungarian Meteorological Service, 1181, Budapest, Hungary

<sup>4</sup>Wigner Research Centre for Physics, 1121 Budapest, Hungary

<sup>5</sup>Remote Sensing Department, National Institute of R&D for Optoelectronics, 409 Atomistilor Str., Măgurele, Ilfov, Romania

*Correspondence to:* András Hoffer (hoffer@almos.uni-pannon.hu)

**Abstract.** The production and use of plastics increases rapidly as they are widely used in packaging, construction materials, furniture, foils, etc. As a consequence of their widespread use and often disposable character, vast streams of plastic wastes are continuously generated, a considerable fraction of which are combusted in households worldwide. In this paper, various types of commonly used plastics (PE, PET, PP, PU, PVC, PS, ABS), as well as treated wood samples (LDF) and firewood were combusted separately in a test stove under controlled conditions. The particulates emitted during the combustion test were collected on filters, and potential tracers for each waste type were identified by GC-MS, and their relative abundances were determined. The emission factor of 1,3,5-triphenylbenzene was found to be higher for polymers containing aromatic rings in their structure. The application of terphenyls and quaterphenyls as tracer compounds has also been investigated. The trimer of styrene was found to be a potential tracer for the combustion of polystyrene and/or styrene containing copolymers. Novel tracers were proposed for the burning of PET and furniture plates (LDF), which are among the most widely used waste types burned in households.

## 1 Introduction

Air pollution derived from waste combustion affects human health and may also contribute to climate change (Manisalidis et al., 2020). According to a recent report by Eurostat in Europe, municipal wastes were produced at a rate of 483 kg capita<sup>-1</sup> in the year 2016, above the global average of 436 kg capita<sup>-1</sup> (Zaman, 2016). Each year increasing volumes of municipal waste are being generated globally, a considerable fraction of which (1–36%) is plastic-type (Hoorweg and Bhada-Tata, 2012). The amount of domestic waste burned in open fires was first estimated in a modelling study by Wiedenmyer et al. (2014) who found annual global waste production to be 2400 Tg, about 26% and 15% of which being burned openly in households and at dump sites, respectively. The fraction of municipal waste burned in households is difficult to assess, since—being an illegal activity in several countries of the world—it is neither regulated nor controlled, and most often goes undetected. Sporadic reports in the media as well as available surveys initiated by NGOs suggest that this practice may be widespread in poverty-stricken regions in many European countries, especially in Central-Eastern Europe. Emission studies are extremely scarce for burning municipal waste in households, the only comprehensive report on PM10 and PAHs emission factors (EFs) for indoor combustion of 12 common types of municipal solid waste has just recently

been published (Hoffer et al., 2020). This study has revealed that waste burning emits up to 40 times more PM10 and 800 times more PAHs than the combustion of dry firewood per mass basis. These findings have highlighted the urgent need for coordinated actions against illegal waste combustion and the extreme health hazard associated with it. Since neither PM10 nor PAHs are specific for burning municipal waste in households, the general assessment of the potential contribution of these activities to air pollution in different regions would require the detection of tracers that are highly specific for the burning of different types of municipal waste.

Although polychlorinated dibenzo-p-dioxins and -furans (PCDDs/Fs) as well as polychlorinated biphenyls (PCBs) are released from the burning of certain types of municipal waste (Ni et al., 2009, Ferré-Huguet et al. 2006), they may also be emitted by some high-temperature industrial processes (e.g. hot briquetting for non-ferrous recycling materials, sintering of recycled materials, Fiedler, 1996), and—perhaps more importantly—by residential wood burning and road transport (Lavric et al., 2004).

Phthalate esters are used as additives for softening and enhancing flexibility or elasticity of plastic products in e.g. polyvinylchloride resins, polyethylene terephthalate, polyvinyl acetates, and polyurethanes. These compounds can be released upon the combustion of these plastics, since they are not chemically bound to the polymers. However, as phthalate esters are abundant in many plastics, they are not specific, therefore it is difficult to avoid cross-contamination during sampling and analysis, and the high volatility of these compounds also affect particulate-phase measurements. Diphenyl-sulphone and dioctyl-adipate were also suggested as tracers for waste burning (Giri et al., 2013).

Terephthalic acid (1,4-benzenedicarboxylic acid, TPA) is an important additive in making polyester fibre and PET (polyethylene terephthalate). For the open-air burning of roadside litter and plastic bags Simoneit et al. (2005) found that its emission factor was in the range between 176 and 5033  $\mu\text{g g}^{-1} \text{PM}^{-1}$ . In a highly polluted city in India the mass concentrations of TPA were found in the range of 7.6–168  $\text{ng m}^{-3}$ , being the most abundant diacid near an open waste burning site (polyethylene, foam, paper, packaging material and clothes) (Kumar et al., 2015). Phthalic acid was also found in waste burning smoke in which it may be produced by photo-degradation of di-(2-ethylhexyl) phthalate (DEHP) and terephthalic acid (Kumar et al., 2015). However, phthalic acid was found in high abundance in the smoke of burning low-quality coal in China (He et al., 2018), and it was also found to be emitted from other (traffic-related or biomass burning) sources (Fraser et al., 2003, Fine et al., 2004, Al-Naiema and Stone, 2017), which challenges its use as a specific tracer.

Nitroarenes such as 1-nitropyrene, 1,3-dinitropyrene, 1,6-dinitropyrene, 1,8-dinitropyrene were also found in particulates from the burning different types of plastics (PVC, PET, PS, PE) in concentrations of 0.2–76.8  $\text{ng g}^{-1} \text{PM}^{-1}$  (Lee et al., 1995). However, they were also detected in the exhaust of diesel engines (Keyte et al., 2016).

Fu and Kawamura (2010) suggested that the open burning of plastics may be a significant source of bisphenol A in urban regions based on the significant correlation with the concentrations of other specific waste burning tracers (1,3,5-triphenylbenzene (135-TPB), and tris(2,4-di-tert-butyl-phenyl) phosphate (TBPP)).

135-TPB was proposed as a unique tracer for garbage burning emission (Simoneit et al., 2005). The formation of 135-TPB in smoke from the burning of plastics is linked to the self-condensation reaction of acetophenone which emerges from the styrene chain terminator added to formulations during ethylene polymerisation (Simoneit, 2015). Several authors determined the concentration of 135-TPB in particulate samples (Simoneit et al., 2015, and references therein). The atmospheric concentration of 135-TPB was found to be elevated (by a factor of 3–10) near a plant of electronic waste recycling applying high-temperature operations (Gu et al., 2010).

Organophosphate esters (OPEs) are produced in large quantities and used as flame retardants, plasticisers and anti-foaming agents in products such as furniture, textiles, cables, building and insulation materials, paints, floor polishes, and electronic equipment. Thus, combustion of mixed household wastes releases OPEs with the particulates (Liu and Mabury, 2018). Organophosphates are not found in smoke from other emission sources such as coal combustion, biomass burning or vehicular emission, so they may be considered to be specific tracers for thermoplastic combustion. Tris(2,4-di-tert-butylphenyl) phosphate (an oxidation product of the antioxidant Irgafos168) has been reported to occur at high concentrations in particulates from plastic combustion (Simoneit et al., 2005). It should be noted that Irgafos 168 and its oxidation product (TBPP) were also identified in the laboratory workplace which prevented the study of its leaching from plastics (Hermabessiere et al., 2020).

Our knowledge on the specific tracer compounds are still quite limited, since in spite of the fact that many compounds may be emitted during waste burning, most of them are not unique tracers for the process. Among them 135-TPB is used most commonly as a specific tracer for (mixed) waste burning, and even its emission factor was determined for the open burning of mixed waste (Simoneit et al., 2005), and more recently for the open burning of mixed waste, foil wrappers and plastics (Jayarathne et al., 2018) as well as for the co-burning of PET and PE with firewood in a residential boiler (Tomsej et al., 2018).

In our study, we combusted different types of plastic waste separately in a test stove under controlled conditions and collected the particulates emitted on filters. The samples were analysed by GC-MS for 135-TPB as well as for other known tracers, and their mass fraction in the emitted PM<sub>10</sub> (their relative emission factors) were also determined. The filter samples were also screened for potentially new and specific tracers with relative mass fractions that may help assess the contribution of waste burning to particulate (PM<sub>10</sub>) pollution in the atmosphere.

## 100 **2 Experimental**

### **2.1 Filter sampling**

The details for the laboratory waste burning experiment can be found in Hoffer et al., 2020. Briefly, 12 different waste types (7 plastic types: Acrylonitrile butadiene styrene (ABS), polyethylene (PE), polyethylene terephthalate (PET), polypropylene (PP), polystyrene (PS), polyurethane (PU), polyvinyl chloride (PVC), 2 types of treated wood: furniture panel made from low density fibreboard (LDF) and oriented strand board (OSB), and other waste types such as tire, paper (PAP), and different rags (RAG)) as well as firewood was burned in a stove used for residential heating. The stove used was a Servant S114 cast iron stove with a heating capacity of 5 kW. It is a commercially available, low cost heating appliance, with a simple stove design, thus it is readily available for the general public for heating their homes with firewood. The simple construction design of the stove also allows the users to combust different items of solid wastes in it. This type of stove is widely used in Central-Eastern Europe, and possibly elsewhere in Europe. Thus our experiments may be considered representative for the burning of small amounts of household waste in low capacity stoves used for domestic heating in Europe. A fraction of the produced PM<sub>10</sub> particles (after dilution with ambient air) was collected on quartz filters (Advantec QR-100 Ø150 mm) by a high volume sampler (Kalman Systems). The filters were weighted before and after the sampling to determine the collected PM<sub>10</sub> mass gravimetrically. These measurements were performed according to the European standard (MSZ EN 12341: 2014). To address the

differences of the stoves and/or the burning parameters used by the population, the burning experiments were performed by setting different air supply ratio at the stove. All samples (except the paper samples) were burned using the low and high air intake and also by the combination of these two air intake settings. Thus at least 3  
120 different samples were produced for a given waste type, except for the paper samples which were burned only in the combined air supply mode.

For each waste type, one blank sample was also collected. During the blank measurements only charcoal was burning. The sampling times of the blanks were comparable to those of the samples. The limit of quantification (expressed in ng compound/filter) was defined as the sum of the average of the blanks and 10 times the standard  
125 deviation of the blanks.

All the data reported here refer to the particular experimental setup as described in details in Hoffer et al., 2020, i.e. “average” burning conditions in terms of air supply and combustion temperature, dilution ratio, etc.. Measured concentrations of organic combustion tracers in particulates are highly sensitive to experimental conditions because they are formed in pyrolysis processes, and they are affected by condensation and  
130 volatilisation, and to some extent by thermochemical transformations. To minimise memory effects between the combustion tests, the stove and sampling line were heated up to about 700°C (measured at about 50 cm above the outlet of the stove).

The relative EF ( $\mu\text{g g}^{-1} \text{PM}^{-1}$ ) of the given compound was calculated from the amount of the compound (or that of its surrogate compound, see below) determined by GC-MS and from the mass of PM10 measured  
135 gravimetrically. The absolute EF ( $\text{mg kg}^{-1}$ ) for a given compound was calculated by taking into account the dilution factor in the sampling line and the mass of the waste burned (Hoffer et al., 2020). In the results section, the relative EF of the different components are discussed, but the absolute EFs are also given in the supplementary material (Table S2).

Ambient samples were collected in winter on 14, 17 and 25 February 2020 in Magurele (Atmosferei Street),  
140 Romania, located about 12 km from the Bucharest centre, in a suburban zone, surrounded by agricultural and residential areas. The PM10 samples were collected on quartz filters (Advantec QR-100) with Digital DHA-80 high volume samplers. The sampling time was 24 hours, starting from midnight for each sample. The meteorological situation was characterized by a high-pressure regime on 14 and 17 February, and with low pressure on 25 February. The temperature values were above 0 °C during the daytime, and were slightly below 0  
145 °C during the night.

## 2.2 GC-MS analysis

The concentration of organic tracer compounds in the collected aerosol samples was determined by GC-MS as follows. Known area of the exposed filter (452 or 904  $\text{mm}^2$ ) was spiked with 150  $\mu\text{L}$  recovery standard solution (p-terphenyl-d14, Sigma-Aldrich) and dried under nitrogen stream. The samples were then extracted in three  
150 steps with  $2 \times 4 \text{ mL}$  and  $1 \times 3 \text{ mL}$  dichloromethane– methanol mixture (2:1 v/v) using a Vortex agitator ( $3 \times 15 \text{ min}$ ,  $750 \text{ min}^{-1}$ ). The extracts were filtered by syringe filters (Millex-LCR, hydrophilic PTFE membrane, 0.45  $\mu\text{m}$  pore size, 13 mm diameter, Millipore), and they were dried under gentle stream of nitrogen in vials with a volume of 2 mL. The average recovery was found to be 93% (RSD=8%).

Before the GC-MS measurement of non-polar tracer components, the extracts were re-dissolved by adding 100  
155  $\mu\text{L}$  internal injection standard (ISTD) solution (chrysen-d12, 98 atom% D, Sigma-Aldrich) and 150  $\mu\text{L}$

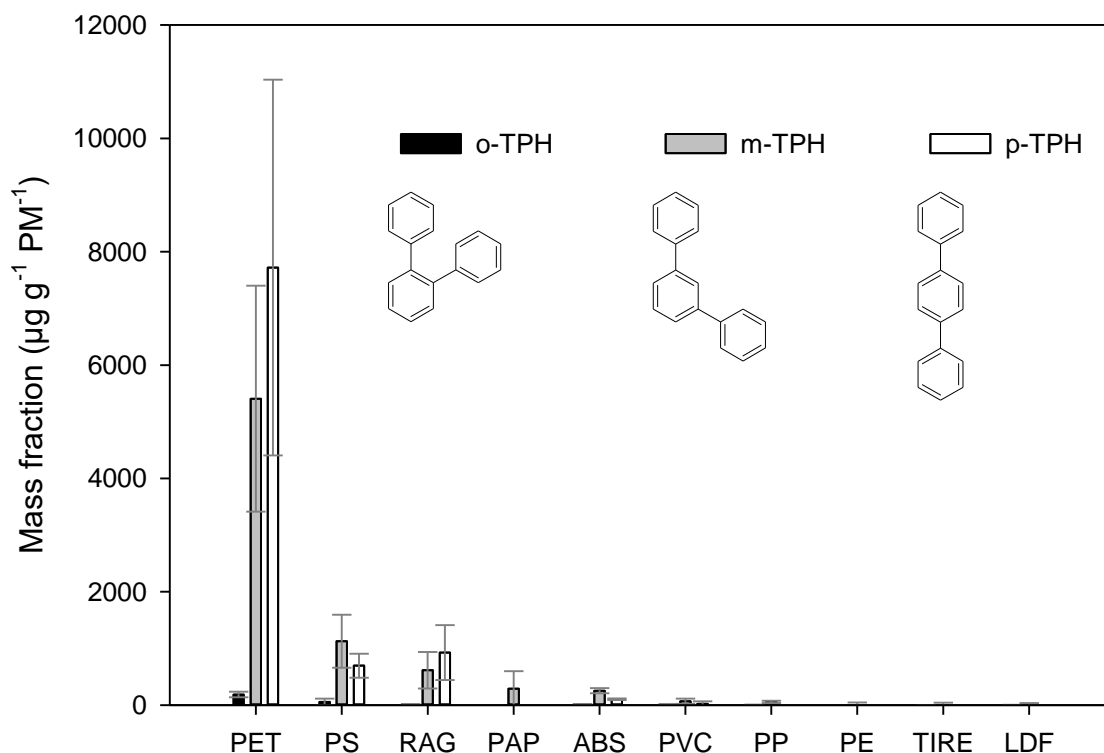
dichloromethane-methanol mixture (2:1 v/v). About 1  $\mu\text{L}$  of the samples was injected manually into the injector (temperature: 300  $^{\circ}\text{C}$ , splitless mode) of an Agilent 6890N gas chromatograph coupled to an Agilent 5973N mass spectrometer. The separation was performed on capillary column (DB-5MS UI, 30 m  $\times$  0.25 mm  $\times$  0.25  $\mu\text{m}$ , Agilent). The temperature program was adopted from Simoneit et al. (2005). The concentrations of the components were determined in SIM mode. After the measurements, a recovery standard (sedoheptulose anhydride monohydrate, Sigma-Aldrich) was added to selected samples and after drying they were derivatised with 100  $\mu\text{l}$  BSTFA-TMCS (N,O-bis(trimethylsilyl)trifluoroacetamide – trimethylchlorosilane, 99:1, Sigma-Aldrich) and 100  $\mu\text{L}$  pyridine (anhydrous, Merck) at 80  $^{\circ}\text{C}$  for 1 hour. About 1  $\mu\text{L}$  of the derivatised samples were injected manually into the injector (temperature: 280  $^{\circ}\text{C}$ , splitless mode) of GC-MS. The separation was performed on the same capillary column used for the non-polar components. During the measurements, the column was thermostated at 60  $^{\circ}\text{C}$  for 1 minute, then it was heated up to 300  $^{\circ}\text{C}$  with a temperature rate of 10  $^{\circ}\text{C min}^{-1}$  and it was maintained for a further 5 minutes. The measurement lasted for 30 minutes. For the quantitative analysis SIM mode was used. The calibration of the instrument was performed using available standards (p-terphenyl, 135-TPB, melamine, 2,4,6-triphenyl-1-hexen (SSS), terephthalic acid). Based on the recoveries and repeated measurements the estimated uncertainty of the analytical measurements is about 20%. The amounts of the o- and m-terphenyls were expressed in the amount of p-terphenyl, the amount of the 1,2,4-triphenyl benzene and the quaterphenyls as well as the 2-(benzoyloxy)ethyl vinyl terephthalate (2-BEVT) were expressed in 135-TPB, and the amount of the ABS pyrolysis compounds (2-methylene-4-phenylheptanedinitrile (ASA), the 2-methylene-4,6-diphenylhexanenitrile (ASS), the 4,6-diphenylhept-6-enenitrile (SSA), the 2-phenethyl-4-phenylpent-4-enenitrile (SAS) were expressed in SSS.

### 3 Results and discussions

#### 3.1 Potential new tracers for waste burning and their mass fraction in the emitted PM10

##### 3.1.1 Terphenyls

The 3 isomers of the terphenyls (ortho-, meta-, para) can be easily identified by their intense molecular ion ( $m/z=230$ ) and by the doubly charged ion at  $m/z=115$ . The obtained retention indices of these compounds compared with that in the literature are given in Table S1. Terphenyls were identified in particulates from the burning of several types of plastic waste, but they were found in higher relative concentrations from the burning plastics inherently containing aromatic structures (PET, PS, ABS) (see Figure 1).



185 **Figure 1** The mass fraction of terphenyls (in units of  $\mu\text{g g}^{-1} \text{PM}^{-1}$ ) in particulates from the burning of different waste types. The error bars represent the standard deviation of the EF data obtained for a given type of waste under different burning conditions.

190 The samples of textiles (RAG) also contained polyester (PET) beside cotton and polyamide accounting for the high relative emission factors (mass fraction) of terphenyls during their combustion ( $14, 610$  and  $920 \mu\text{g g}^{-1} \text{PM}^{-1}$  for the ortho-, meta-, para-terphenyl, respectively). The mass fraction of the terphenyls were found to be the highest for the combustion of PET bottles ( $190, 5400, 7700 \mu\text{g g}^{-1} \text{PM}^{-1}$  for the ortho-, meta-, and para isomer, respectively), the combustion of PS and ABS yields somewhat lower emission factors ( $18\text{--}56, 250\text{--}1100, 100\text{--}690 \mu\text{g g}^{-1} \text{PM}^{-1}$  for the ortho-, meta-, an para isomer, respectively).

195 Terphenyls have not been reported to be present in particulates released from wood burning (with the exception of liquid wood smoke, Guillén et al., 2000), but have been positively identified in particulates from one lignite combustion sample (Fabbri et al., 2009). Here we also note that the position of the aromatic ring in the polymer structure might determine the structure of the formed terphenyls during the burning (this can also be observed for the quaterphenyls, see below). Our results clearly showed that the p-terphenyl is emitted in the largest amount during PET burning. The aromatic ring in the PET polymer chain is bonded in the para-position (1-4 position), whereas in the other polymers (ABS, PS) it is bonded by a single C-C bond to the polymer chain. Since the ortho isomer is emitted in low amount during the burning, the ratio of the meta- and the para-isomer might be used to imply the major type of plastics burned. In the case of the PET and RAG burning, the concentration ratio of the emitted p-terphenyl to m-terphenyl varied between 1.1 and 1.7 (the average was 1.5), whereas this ratio was 0.5–0.8 (on average 0.6) and 0.4 for PS and ABS, respectively. For the other waste types only the meta isomer was identified and the concentration of the p-terphenyl was below the quantification limit (resulting in lower p-terphenyl to m-terphenyl ratio in ambient samples affected by the burning of PS and/or ABS). Since the

200

205

210 proposed aromatic compounds are not unique tracers for the burning of a given waste type, thus the application  
of their relative ratios in ambient particulate samples for emission source apportionment would require highly  
complex statistical calculations in combination with the use of highly specific tracers.

215 Since the contribution of other sources to the concentrations of terphenyls in atmospheric particulates is low,  
they may be used as atmospheric tracers for the combustion of plastic waste, in particular PET, PS, and ABS.  
The mass fraction of terphenyls in the emitted PM<sub>10</sub> for wood and wood-based waste burning (OSB and LDF)  
were below the limit of quantification.

### 3.1.2 2,4,6-Triphenyl-1-hexen (styrene trimer, SSS)

220 The 2,4,6-triphenyl-1-hexen (styrene trimer, SSS) has been positively identified and quantified in the filter  
samples by the GC-MS analysis of authentic standard (FUJIFILM Wako Chemicals). The presence of this  
compound was verified by the co-eluting fragment ions of 91, 117, 194, and 207. Tsuge et al. (2011) identified  
SSS by direct Py-GC-MS of PS and ABS, as well as in other styrene containing materials such as styrene-methyl  
acrylate copolymer, styrene-maleic anhydride copolymer, and styrene-divinylbenzene copolymer. In our  
experiments, the styrene trimer was found primarily in particulates from the combustion of polystyrene (Figure  
2). Its mass fraction showed variations between 56 and 1400  $\mu\text{g g}^{-1} \text{PM}^{-1}$ , depending on the conditions of  
combustion, the average being 2900  $\mu\text{g g}^{-1} \text{PM}^{-1}$ . SSS was also found in particulates from the combustion of  
225 LDF with relative EFs ranging from <LOQ to 1400  $\mu\text{g g}^{-1} \text{PM}^{-1}$  (on average 380  $\mu\text{g g}^{-1} \text{PM}^{-1}$ ). For paper  
burning, the EFs were 97 and 670  $\mu\text{g g}^{-1} \text{PM}^{-1}$ , and waxy, coated papers yielded the higher relative EFs for this  
compound. The direct Py-GC-MS study (Tsuge et al., 2011) on ABS found SSS only in small amount similarly  
to our study in which combustion of ABS samples yielded relative EF of SSS below the limit of quantification.  
It should be noted that traces of SSS have been detected in nearly all of the filter samples as well as in the blanks  
230 implying that it might be a ubiquitous contaminant, so precautions must be taken during its determination and  
quantification.

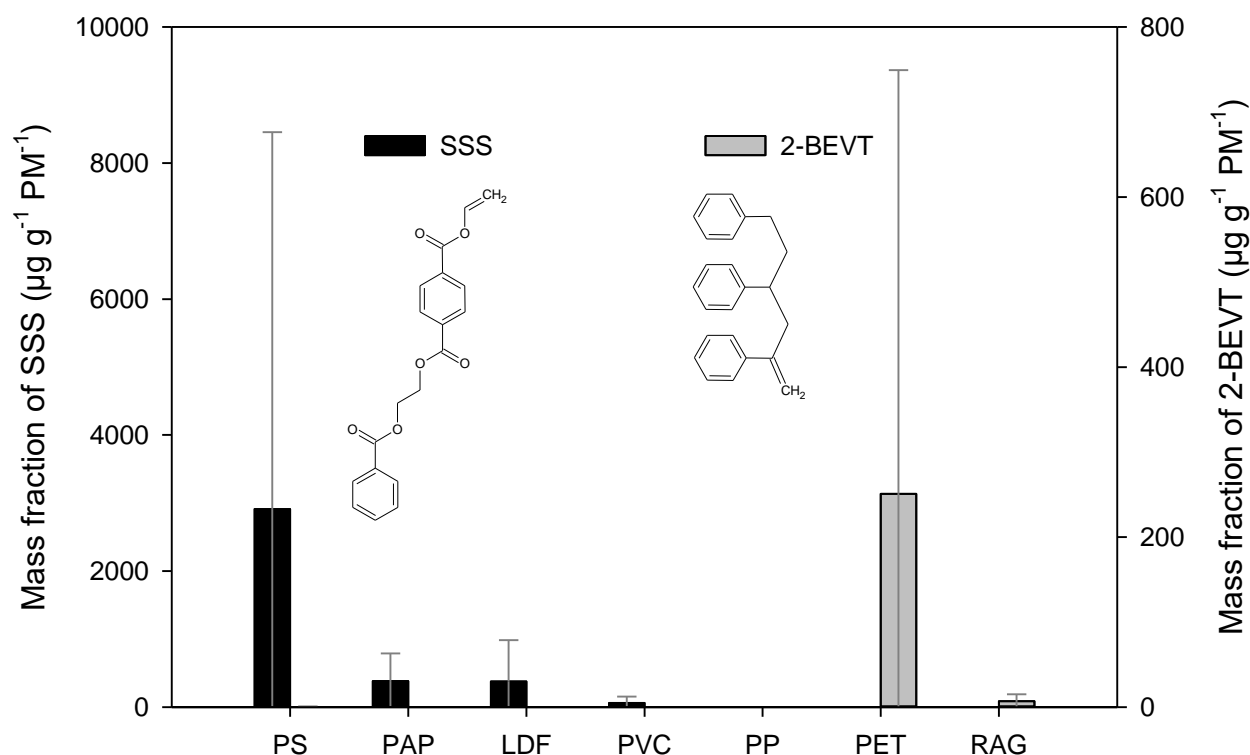


Figure 2 The mass fraction (in units of  $\mu\text{g g}^{-1} \text{PM}^{-1}$ ) of styrene trimer (SSS) and that of the 2-(benzoyloxy)ethyl vinyl terephthalate (2-BEVT) from the burning of different waste types. The error bars represent the standard deviation of the EF data obtained for a given type of waste under different burning conditions.

235

Taking into the fact that a typical ‘composite’ waste mix that is illegally burned in households in Europe include a large fraction of waste paper and LDFs due to their mass availability, high density and high calorific values, as well as PS due to its high volume and difficulties in its recycling and disposing, we suggest that the presence of SSS in atmospheric particulates may be a ubiquitous tracer for waste burning in Europe.

240

### 3.1.3 2-(Benzoyloxy)ethyl vinyl terephthalate (2-BEVT)

Pyrolysis of the PET polymer results in the formation of various compounds, of which 2-(benzoyloxy)ethyl vinyl terephthalate was identified in most PET containing samples (PET and RAG) (see Figure 2). The identification of this compound was based on the comparison of the mass spectra and the retention index reported in the literature (Tsuge et al., 2011) with the ones obtained during the measurements. The emission factor of this compound was exceptionally high ( $1000 \mu\text{g g}^{-1} \text{PM}^{-1}$ ) from one PET burning experiment during which the average temperature of the flue gas (measured 50 cm above the outlet of the stove when the burning of the waste pieces was started) was the lowest ( $\sim 185 \text{ }^\circ\text{C}$ ). On the other hand, this compound was not detected in PET samples collected by high air supply ratio and high flue gas temperature (around  $280 \text{ }^\circ\text{C}$ ). This clearly indicates that this compound forms during pyrolysis thus its EF highly depends on the burning conditions. In another PET sample when the air supply was set lower, but the temperature was higher, the EF of 2-BEVT was 2 orders of magnitude lower,  $4.2 \mu\text{g g}^{-1} \text{PM}^{-1}$ . The average relative EF of 2-BEVT for PET bottles was found to be  $250 \mu\text{g g}^{-1} \text{PM}^{-1}$ . Interestingly this compound was identified in all 3 RAG samples in which the EF was also closely

245

250



255 related to the settings of the air supply and/or the temperature of the burning. The EF of this compound in the rag samples varied between 0.36 and 16  $\mu\text{g g}^{-1} \text{PM}^{-1}$  (on average 6.9  $\mu\text{g g}^{-1} \text{PM}^{-1}$ ).

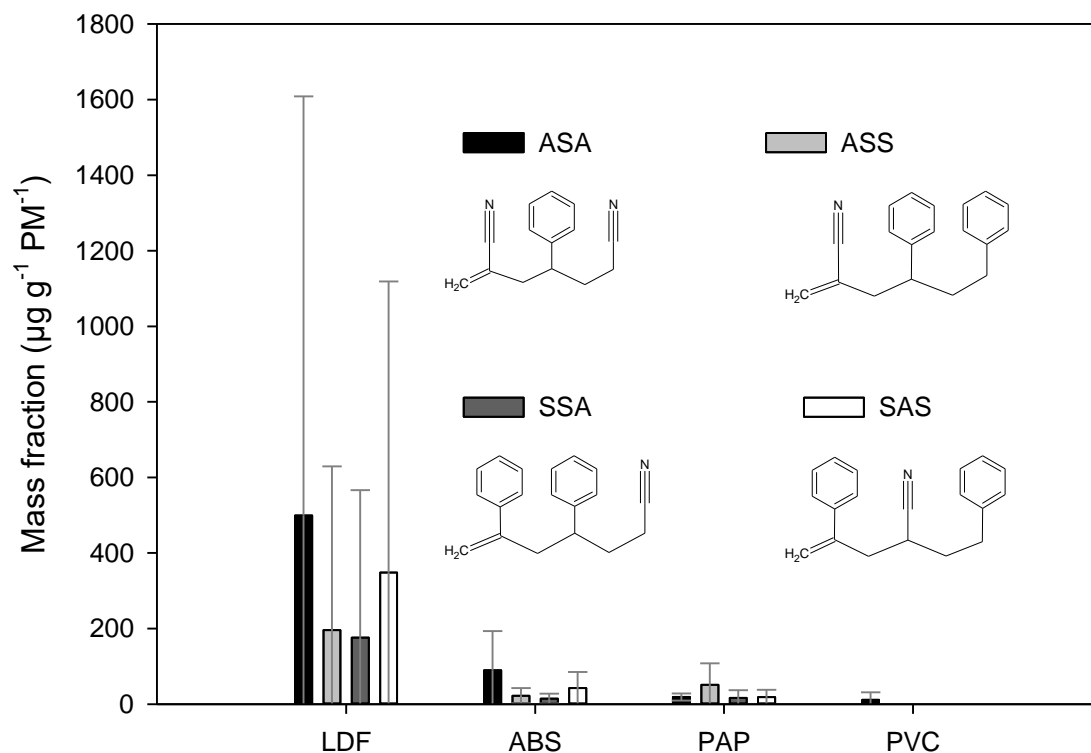
### 3.1.4 Melamine

Melamine ( $\text{C}_3\text{H}_6\text{N}_6$ , heterocyclic aromatic compound) is the component of the melamine-formaldehyde resin used mainly in the furniture industry for the surface coating of fibreboard plates, but laminate flooring and some other objects (e.g. kitchen tools) might also contain this polymer. The formation of melamine upon the pyrolysis of melamine-formaldehyde resins was proven by a direct Py-GC-MS study (Tsuge et al., 2011). Melamine was found almost exclusively in particulates from the combustion of LDF samples, with relative EFs in the range between ~50 and ~41,000  $\mu\text{g g}^{-1} \text{PM}^{-1}$  (on average ~19,000  $\mu\text{g g}^{-1} \text{PM}^{-1}$ ). In all other investigated samples, the levels of melamine were around that of the blanks (and below the detection limit). Although the long-term atmospheric stability of melamine is likely quite low since its molecule contains 3 reactive amine groups, if detected, it may still be a useful particulate tracer for local waste burning in wintertime. However, its quantitative application may be strongly limited due to its atmospheric instability and the wide variation in the melamine-formaldehyde resin contents of commercially available LDFs.

### 3.1.5 Specific tracers for burning of styrene copolymers

270 One of the styrene copolymer is the ABS (acrylonitrile butadiene styrene), which is prepared by the copolymerisation of acrylonitrile, butadiene and styrene. The ABS is used in automotive industries, but besides the housing of the electronic equipment and the edge foil of the furniture plates (LDF) are also frequently made from this material. In the direct pyrolysis of samples containing ABS, the following hybrid trimer compounds consisted of styrene and acrylonitrile units have been identified based on the mass spectra and the retention index reported by Tsuge et al. (2011) (see Table S1). The ASA, ASS, SSA and SAS have been identified in the samples of ABS, LDF and PAP (Figure 3).

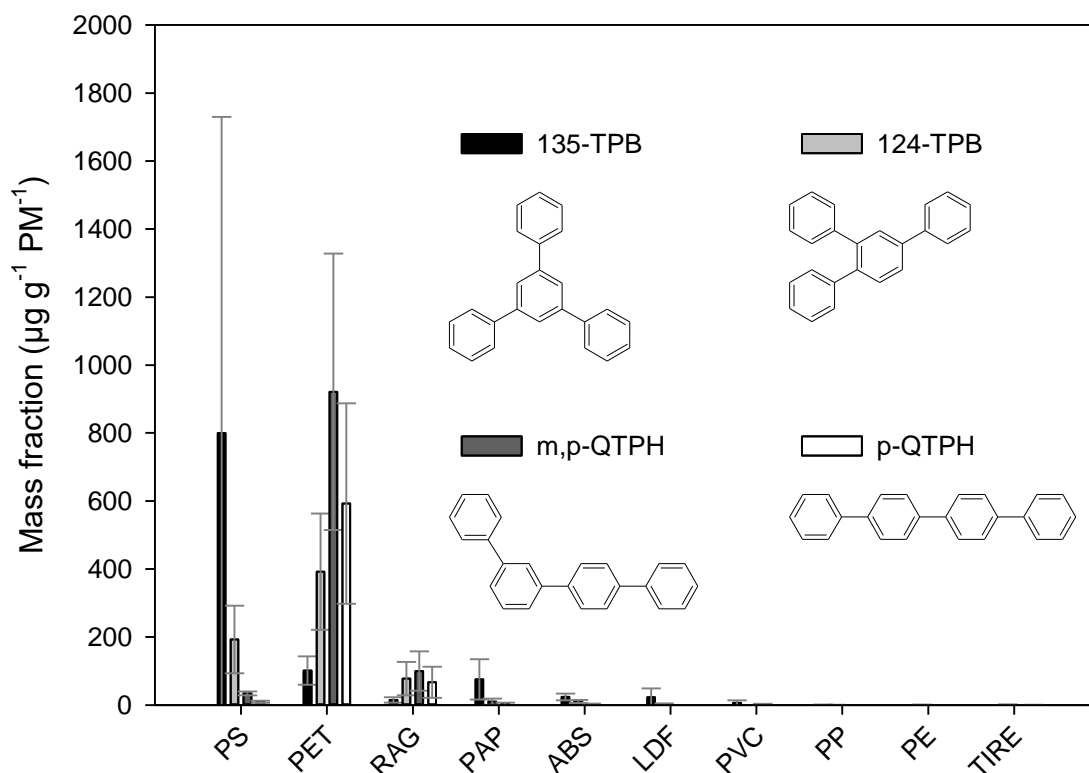
Among the samples collected during the ABS burning the EF of the ASA was the smallest in the sample collected with high air intake (its amount was below the LOQ), but on average the EF of ASA was the largest in the case of ABS burning (Figure 3). In the LDF samples the concentration of the ABS pyrolysis products was highly variable. They were below the LOQ in one sample (collected with low air intake setting), whereas in another LDF sample their relative EFs were among the largest, varied between about 870 and 2500  $\mu\text{g g}^{-1} \text{PM}^{-1}$ . The large variation of the EF of ABS pyrolysis product in the LDF samples is clearly caused by the inhomogeneity of the composition and ABS content of the burned materials. Similarly to the ABS in the case of the LDF burning the relative EF of the ASA was the largest followed by the SAS (Figure 3). In the samples from paper burning the EF of the ABS pyrolysis products was relatively low, for the individual components it varied between about 3 and 91  $\mu\text{g g}^{-1} \text{PM}^{-1}$ . In the paper industry, sizing is an important process during which the surface properties of the papers are altered. Sizing agent can be applied either by blending or on the surface. As sizing agents (polymers) often contain styrene, for example the styrene-butyl acrylate copolymer is the most common surface sizing agent (Hagiopol and Johnston, 2012). On the other hand, the binders used in paper industry (to bind the coating pigment together and these to the base paper surface) are emulsion of polymers which are the copolymers of several monomers: styrene, butadiene, acrylic esters, vinyl acetate, and acrylonitrile (Bajpai, 2015). This might explain why these compounds have been found in the paper samples.



295 **Figure 3** The mass fraction of the compounds (in units of  $\mu\text{g g}^{-1} \text{PM}^{-1}$ ) emitted during the burning of styrene containing copolymers. The error bars represent the standard deviation of the EF data obtained for a given type of waste under different burning conditions.

### 3.2 Previously identified tracer components and their isomers

300 Triphenylbenzenes and quaterphenyls are composed of 4 aromatic rings attached to each other by C-C bonds forming non-condensed structures. Their presence in the chromatograms can be identified by the intense molecular ion at  $m/z=306$ . In this study, the identification of quaterphenyls was based on comparison of their mass spectra and the calculated retention indices with literature data (see Table S1). The presence of the 135-TPB, 124-TPB and p-QTPH was identified by authentic standards. The mass fraction of 1,3,5-triphenylbenzene were determined for the combustion of all waste types (Figure 2). The highest emission factors were found for the materials containing aromatic rings in their polymeric chain ( $800$  and  $100 \mu\text{g g}^{-1} \text{PM}^{-1}$  for PS and PET, respectively), but for the PAP, LDF and ABS burning its emission is also not negligible (on average  $23\text{--}75 \mu\text{g g}^{-1} \text{PM}^{-1}$ ). Jayarathne et al. (2018) found similar results ( $12\text{--}51 \mu\text{g g}^{-1} \text{PM}^{-1}$ ) for the open burning of mixed waste (containing cardboard, chip bags, food waste, paper, plastic bags, clothes, diapers, and rubber shoes).  
 310 Tomsej et al. (2018) have studied the emission factor of 135-TPB from the co-combustion of PE plastics (shopping bags) and PET bottles with wood (beech logs) in a 20 kW boiler. The mass fraction of 135-TPB for the mixed PET burning was  $13 \mu\text{g g}^{-1} \text{PM}^{-1}$ , whereas for the PE burning it was  $3 \mu\text{g g}^{-1} \text{PM}^{-1}$ .



315 **Figure 4** The mass fraction (in units of  $\mu\text{g g}^{-1} \text{PM}^{-1}$ ) of triphenylbenzenes and quaterphenyls from the burning of different waste types. The error bars represent the standard deviation of the EF data obtained for a given type of waste under different burning conditions.

The quaterphenyls were emitted in largest amounts during the burning of PET containing wastes. Their emission factor varied between 33 and 1200  $\mu\text{g g}^{-1} \text{PM}^{-1}$  for individual samples, the average relative EF for the m,p-quaterphenyl being 920  $\mu\text{g g}^{-1} \text{PM}^{-1}$  and 100  $\mu\text{g g}^{-1} \text{PM}^{-1}$ , and that of the p-quaterphenyl 590  $\mu\text{g g}^{-1} \text{PM}^{-1}$  and 67  $\mu\text{g g}^{-1} \text{PM}^{-1}$  for the PET and RAG, respectively.

320 Similarly to the terphenyls (which contain 3 non-condensed aromatic rings) the ratio of the quaterphenyls and triphenylbenzenes (containing 4 non-condensed aromatic rings in linear and in branched structure, respectively) can also be used as an indication for the burning of different plastic types.

325 The average ratio of the m,p-quaterphenyl (m,p-QTPH) to 124-TPB was lower than 1 in the case of the ABS, PS and PAP (0.3, 0.2, 0.2, respectively). In the case of the samples collected during the burning of LDF (which also showed the presence of the styrene containing materials) only the 124-TPB was measured in higher amount than the LOQ in 3 out of 5 samples. In the samples collected during the PET and RAG burning, the average ratios of these two components were 2.3 and 1.3, respectively.

### 3.3 Estimation of the gas-to-particle partitioning of the newly suggested waste burning tracers

The gas-to-particle partitioning of the compounds were estimated using US EPA (2012). The estimated vapour pressures of the identified compounds are in the range between  $3.87 \times 10^{-11}$  mmHg at 25°C and  $1.64 \times 10^{-5}$  mmHg at 25°C, the latter is lower than that for e.g. the syringic aldehyde ( $6.49 \times 10^{-5}$  mmHg at 25°C) suggested as a

335 biomass burning tracer by Simoneit et al. (2002), and is comparable with that of terephthalic acid ( $1.19 \times 10^{-5}$  mmHg at 25°C). We also note here that the estimated vapour pressures of SSS and 2BEVT ( $3.34 \times 10^{-7}$  mmHg at 25°C and  $7.51 \times 10^{-7}$  mmHg at 25°C, respectively) are very close to that of levoglucosan ( $3.47 \times 10^{-7}$  mmHg at 25°C), the most widely used biomass burning tracer compound.

### 340 3.4 Identification of waste burning tracers in ambient PM10 samples

In order to verify the presence of the above tracer compounds in atmospheric particulates, PM10 samples collected in Bucharest (Romania) were also analysed. In the region of Bucharest illegal waste burning is an existing environmental problem, according to recent press reports (Reuters (2021), Romania Insider (2020)). The concentrations of the tracer compounds as well as the intensity ratios of the target and qualifier ions measured in the laboratory samples as well as in the ambient samples are shown in Table 1.

	Ambient concentration (ng m <sup>-3</sup> )			Target ion/Qualifier ion	Intensity ratio of target- and qualifier ions obtained for the stove samples (and for standards)	Ion intensity ratio		
	BUC/M-200214	BUC/M-200217	BUC/M-200225			BUC/M-200214	BUC/M-200217	BUC/M-200225
m-TPH	0.13	0.15	0.12	230/115	13.7	7.2	7.2	11.0
p-TPH	0.14	0.17	0.11	230/115	10.4 (10.9)	10.2	8.3	9.5
135-TPB	2.7	3.3	3.6	306/289	8.9 (9.4)	9.2	9.3	9.1
124-TPB	0.46	0.45	0.45	306/289	4.2 (4.1)	4.3	4.2	4.3
m,p-QTPH	0.080	0.11	0.091	306/289	14.6	12.3	16.2	15.0
p-QTPH	0.046	0.071	0.059	306/289	17.6 (16.5)	15.3	14.9	16.1
SSS	5.3	5.5	4.8	91/117	3.1 (3.3)	3.3	3.1	3.2
2-BEVT	0.16	0.10	0.17	297/149	3.2	3.5	3.2	3.1
ASA	3.6	3.9	4.8	144/91	3.4	2.3	3.5	3.5
ASS	1.9	0.96	2.6	117/91	0.4	0.3	0.4	0.3
SSA	0.39	0.47	1.3	144/91	2.8	1.2	1.9	2.2
SAS	1.5	0.99	2.6	170/91	1.1	0.8	0.9	1.0
Melamine-TMS	37	0.37	32	327/342	1.9	1.8	1.9	2.0
PM10 (µg m <sup>-3</sup> )	61.3	51.50	47.2					

350 **Table 1. Ambient concentrations and ion intensity ratios of different tracer compounds for waste burning identified and quantified in ambient PM10 samples collected in Bucharest.**

It can be seen that the intensity ratios of the target ion and the qualifier ion of a few tracer compounds (marked underlined and in italics in Table 1 for the m-terphenyl (m-TPH), SSA, and for the ASA in one sample) measured in the ambient samples differ considerably from those obtained in the laboratory experiments, but for the majority of the tracer compounds these ion ratios agree well, indicating that co-eluting components do not affect their detection. Here we note that in the mass spectra of compounds dominated by aromatic rings in their structure (e.g. terphenyls, quaterphenyls) the number and the intensity of the fragment ions are low, thus other components present in the complex matrix of environmental samples easily mask the ratio of the target ion to the qualifier ion.

360 The fact that all suggested tracers were positively identified in atmospheric PM10 samples indicates that in spite of uncertainties regarding their atmospheric stability they may be used for verifying the occurrence of waste burning in the region and providing a lower bound estimate for their contribution to PM10 concentrations, at least in winter.

## 4 Summary

365 Although burning of waste in households is strictly prohibited in all countries in Europe, there are ample  
evidences that many people regularly burn waste primarily for heating their homes. Since upon the burning of  
solid wastes in stoves exceptionally high amounts of PM10 and polycyclic aromatic hydrocarbons (PAHs) are  
emitted (Hoffer et al., 2020), the assessment of the contribution of illegal waste burning to ambient PM10  
concentration levels is vitally important. In this work, different types of plastics which are abundant in household  
370 waste were burned under controlled conditions in the laboratory with a view to identifying potentially specific  
tracer compounds and determining their emission factors. It was found that the mass fraction in the emitted  
PM10 (the relative emission factor) of the universal tracer compound (1,3,5-triphenylbenzene) previously  
suggested for waste burning (Simoneit et al., 2005) strongly depends on the type of the waste burned, being  
higher for plastics which contain aromatic ring in their structure. Besides 1,3,5-triphenylbenzene its structural  
375 isomers (1,2,4-TPB and quaterphenyls) were also identified in the samples. Their presence in ambient PM10 may  
also support the occurrence of waste burning activities. It was shown that the concentration ratio of  
triphenylbenzenes to quaterphenyls as well as quaterphenyls to terphenyls (especially m-terphenyl and p-  
terphenyl) might carry information on the type of plastics burned, for example upon burning of PET larger  
amounts of the linear quaterphenyls are emitted. New and highly specific tracers for the burning of certain types  
380 of plastics have been identified in the laboratory experiments. These compounds were previously reported as  
direct pyrolysis products of plastics but have never been suggested for use as potential tracers in atmospheric  
studies. These novel tracers include the trimer of styrene (SSS) which was emitted from the burning of  
polystyrene, but also from the burning of low density fibreboard and coated paper (newspaper). Another  
suggested new tracer is melamine that is released upon the burning of low density fibreboard as melamine-  
385 formaldehyde resin is often used for the production of this material. 2-(benzoyloxy)ethyl vinyl terephthalate (2-  
BEVT) was identified only in particulates from the burning of PET and rag, with highly variable emission  
factors. Although other criteria for potential tracer compounds have not been investigated, the fact that all the  
suggested compounds were also found in ambient particulate samples implies that they may be worth being  
considered as potential atmospheric tracers, at least indicatively. The most important criteria used in this work  
390 were the specificity and the confirmed presence of these compounds in ambient particulate samples. As a matter  
of course, further studies on their atmospheric stability and gas-to-particle partitioning are required to verify their  
applicability as waste burning tracers.

**Author contributions.** AH, AT and BJT collected the aerosol samples. AH, AT, BJT, AMe, AMa, performed  
and/or coordinated the analytical measurements and data evaluation. All authors were involved in the scientific  
395 interpretation and discussion of the results as well as in manuscript preparation. All co-authors commented on  
the paper.

**Competing interests.** The authors declare that they have no conflict of interest.

**Acknowledgement**

This work was supported by the “Analysing the effect of residential solid waste burning on ambient air quality in central and eastern Europe and potential mitigation measures” (no. 07.027737/2018/788206/SER/ENV.C.3) and the János Bolyai Research Scholarship of the Hungarian Academy of Sciences. The authors also thank for the support of the National Research, Development and Innovation Office, NKFIH-872, National Multidisciplinary Laboratory for Climate Change.

## References

- 405 Al-Naiema, I. M., and Stone, E. A.: Evaluation of anthropogenic secondary organic aerosol tracers from aromatic hydrocarbons, *Atmospheric Chemistry and Physics*, 17, 2053-2065, 10.5194/acp-17-2053-2017, 2017.
- Bajpai, P.: *Pulp and paper industry: Chemicals*, Elsevier, 2015
- Fabbri, D., Torri, C., Simonei, B. R. T., Marynowski, L., Rushdi, A. I., and Fabianska, M. J.: Levoglucosan and other cellulose and lignin markers in emissions from burning of Miocene lignites, *Atmospheric Environment*, 43, 2286-2295, 10.1016/j.atmosenv.2009.01.030, 2009.
- 410 Ferre-Huguet, N., Nadal, M., Schuhmacher, M., and Domingo, J. L.: Environmental impact and human health risks of polychlorinated dibenzo-p-dioxins and dibenzofurans in the vicinity of a new hazardous waste incinerator: A case study, *Environmental Science & Technology*, 40, 61-66, 10.1021/es051630+, 2006.
- Fiedler, H.: Sources of PCDD/PCDF and impact on the environment, *Chemosphere*, 32, 55-64, 10.1016/0045-415 6535(95)00228-6, 1996.
- Fine, P. M., Chakrabarti, B., Krudysz, M., Schauer, J. J., and Sioutas, C.: Diurnal variations of individual organic compound constituents of ultrafine and accumulation mode particulate matter in the Los Angeles basin, *Environmental Science & Technology*, 38, 1296-1304, 10.1021/es0348389, 2004.
- Fraser, M. P., Cass, G. R., and Simoneit, B. R. T.: Air quality model evaluation data for organics. 6. C-3-C-24 420 organic acids, *Environmental Science & Technology*, 37, 446-453, 10.1021/es0209262, 2003.
- Fu, P. Q., and Kawamura, K.: Ubiquity of bisphenol A in the atmosphere, *Environmental Pollution*, 158, 3138-3143, 10.1016/j.envpol.2010.06.040, 2010.
- Giri, B., Patel, K. S., Jaiswal, N. K., Sharma, S., Ambade, B., Wang, W. T., Simonich, S. L. M., and Simoneit, B. R. T.: Composition and sources of organic tracers in aerosol particles of industrial central India, *Atmospheric Research*, 120, 312-324, 10.1016/j.atmosres.2012.09.016, 2013.
- 425 Gu, Z. P., Feng, J. L., Han, W. L., Wu, M. H., Fu, J. M., and Sheng, G. Y.: Characteristics of organic matter in PM<sub>2.5</sub> from an e-waste dismantling area in Taizhou, China, *Chemosphere*, 80, 800-806, 10.1016/j.chemosphere.2010.04.078, 2010.
- Guillen, M. D., Sopelana, P., and Partearroyo, M. A.: Polycyclic aromatic hydrocarbons in liquid smoke 430 flavorings obtained from different types of wood. Effect of storage in polyethylene flasks on their concentrations, *Journal of Agricultural and Food Chemistry*, 48, 5083-5087, 10.1021/jf000371z, 2000.
- Hagiopol, C., Johnston, J. W.: *Chemistry of modern papermaking*. CRC Press, Taylor & Francis Group, 2012.

- 435 He, X., Huang, X. H. H., Chow, K. S., Wang, Q. Q., Zhang, T., Wu, D., and Yu, J. Z.: Abundance and Sources of Phthalic Acids, Benzene-Tricarboxylic Acids, and Phenolic Acids in PM<sub>2.5</sub> at Urban and Suburban Sites in Southern China, *Acs Earth and Space Chemistry*, 2, 147-158, 10.1021/acsearthspacechem.7b00131, 2018.
- Hermabessiere, L., Receveur, J., Himber, C., Mazurais, D., Huvet, A., Lagarde, F., Lambert, C., Paul-Pont, I., Dehaut, A., Jezequel, R., Soudant, P., and Duflos, G.: An Irgafos (R) 168 story: When the ubiquity of an additive prevents studying its leaching from plastics, *Science of the Total Environment*, 749, 10.1016/j.scitotenv.2020.141651, 2020.
- 440 Hoffer, A., Jancsek-Turóczi, B., Tóth, Á., Kiss, G., Naghiu, A., Levei, E. A., Marmureanu, L., Machon, A., and Gelencsér, A.: Emission factors for PM<sub>10</sub> and PAHs from illegal burning of different types of municipal waste in households, *Atmos. Chem. Phys. Discuss.*, <https://doi.org/10.5194/acp-2020-672>, in review, 2020.
- Hoorweg, D., Bhada-Tata, P.: What a Waste : A Global Review of Solid Waste Management. Urban development series;knowledge papers no. 15. World Bank, Washington, DC. © World Bank.  
445 <https://openknowledge.worldbank.org/handle/10986/17388> License: CC BY 3.0 IGO, 2012.
- Jayarathne, T., Stockwell, C. E., Bhave, P. V., Praveen, P. S., Rathnayake, C. M., Islam, M. R., Panday, A. K., Adhikari, S., Maharjan, R., Goetz, J. D., DeCarlo, P. F., Saikawa, E., Yokelson, R. J., and Stone, E. A.: Nepal Ambient Monitoring and Source Testing Experiment (NAMaSTE): emissions of particulate matter from wood- and dung-fueled cooking fires, garbage and crop residue burning, brick kilns, and other sources, *Atmospheric Chemistry and Physics*, 18, 2259-2286, 10.5194/acp-18-2259-2018, 2018.
- 450 Keyte, I. J., Albinet, A., and Harrison, R. M.: On-road traffic emissions of polycyclic aromatic hydrocarbons and their oxy- and nitro-derivative compounds measured in road tunnel environments, *Science of the Total Environment*, 566, 1131-1142, 10.1016/j.scitotenv.2016.05.152, 2016.
- Kumar, S., Aggarwal, S. G., Gupta, P. K., and Kawamura, K.: Investigation of the tracers for plastic-enriched waste burning aerosols, *Atmospheric Environment*, 108, 49-58, 10.1016/j.atmosenv.2015.02.066, 2015.
- 455 Lavric, E. D., Konnov, A. A., and De Ruyck, J.: Dioxin levels in wood combustion - a review, *Biomass & Bioenergy*, 26, 115-145, 10.1016/s0961-9534(03)00104-1, 2004.
- Lee, H., Wang, L., and Shih, J. F.: Mutagenicity of particulates from the laboratory combustion of plastics, *Mutation Research Letters*, 346, 135-144, 10.1016/0165-7992(95)90045-4, 1995.
- 460 Liu, R. Z., and Mabury, S. A.: Unexpectedly High Concentrations of a Newly Identified Organophosphate Ester, Tris(2,4-di-tert-butylphenyl) Phosphate, in Indoor Dust from Canada, *Environmental Science & Technology*, 52, 9677-9683, 10.1021/acs.est.8b03061, 2018.
- Manisalidis, I., Stavropoulou, E., Stavropoulos, A., and Bezirtzoglou, E.: Environmental and Health Impacts of Air Pollution: A Review, *Frontiers in Public Health*, 8, 10.3389/fpubh.2020.00014, 2020.
- 465 Ni, Y. W., Zhang, H. J., Fan, S., Zhang, X. P., Zhang, Q., and Chen, J. P.: Emissions of PCDD/Fs from municipal solid waste incinerators in China, *Chemosphere*, 75, 1153-1158, 10.1016/j.chemosphere.2009.02.051, 2009.

- Reuters 2021: <https://www.reuters.com/business/environment/crime-networks-suspected-burning-tech-waste-scrap-metal-romania-2021-04-16/> Last accessed: 21 June 2021.
- 470 Romania Insider 2020: <https://www.romania-insider.com/romania-waste-uk-pollution-bucharest> Last accessed 21 June 2021.
- Simoneit, B. R. T.: Biomass burning - A review of organic tracers for smoke from incomplete combustion, *Applied Geochemistry*, 17(3), 129–162, doi:10.1016/S0883-2927(01)00061-0, 2002.
- 475 Simoneit, B. R. T., Medeiros, P. M., and Didyk, B. M.: Combustion products of plastics as indicators for refuse burning in the atmosphere, *Environmental Science & Technology*, 39, 6961-6970, 10.1021/es050767x, 2005.
- Simoneit, B. R. T.: Triphenylbenzene in Urban Atmospheres, a New PAH Source Tracer, *Polycyclic Aromatic Compounds*, 35, 3-15, 10.1080/10406638.2014.883417, 2015.
- 480 Tomsej, T., Horak, J., Tomsejova, S., Krpec, K., Klanova, J., Dej, M., and Hopan, F.: The impact of co-combustion of polyethylene plastics and wood in a small residential boiler on emissions of gaseous pollutants, particulate matter, PAHs and 1,3,5-triphenylbenzene, *Chemosphere*, 196, 18-24, 10.1016/j.chemosphere.2017.12.127, 2018.
- Tsuge, S., H. Ohtani and C. Watanabe.: *Pyrolysis-GC/MS data book of synthetic polymers: pyrograms, thermograms and MS of pyrolyzates*, Elsevier, 2011.
- 485 US EPA Estimation Programs Interface Suite™ for Microsoft® Windows, v 4.11. United States Environmental Protection Agency, Washington, DC, USA, 2012.
- Wiedinmyer, C., Yokelson, R. J. and Gullett, B. K.: Global Emissions of Trace Gases, Particulate Matter, and Hazardous Air Pollutants from Open Burning of Domestic Waste, *Environ. Sci. & Technol.*, 48(16), 9523–9530, doi:10.1021/es502250z, 2014.
- 490 Zaman, A. U.: A comprehensive study of the environmental and economic benefits of resource recovery from global waste management systems, *Journal of Cleaner Production*, 124, 41-50, 10.1016/j.jclepro.2016.02.086, 2016.