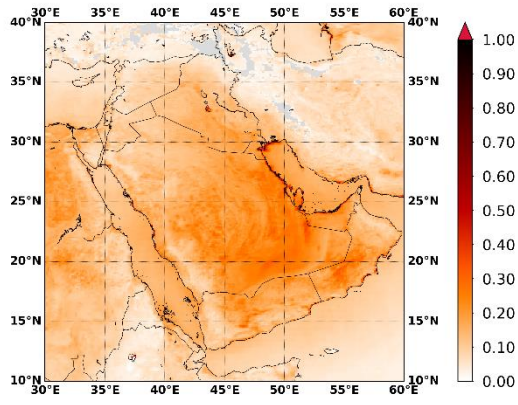


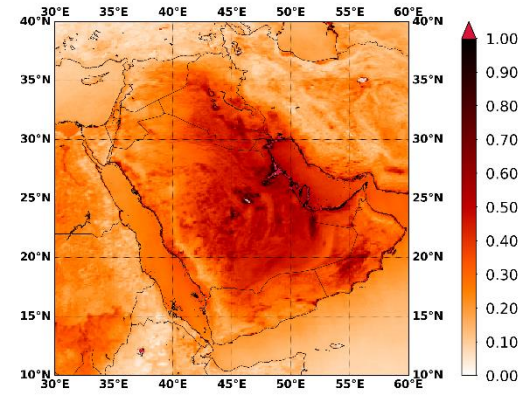
Figure S1: Seasonal geographical distributions of the MIDAS fine spatial resolution ($0.1^\circ \times 0.1^\circ$) DOD, across North Africa, the Tropical Atlantic Ocean and the broader Mediterranean basin, corresponding to: (i) December-January-February (DJF), (ii) March-April-May (MAM), (iii) June-July-August (JJA) and (iv) September-October-November (SON), averaged over the period 2003-2017. Grey color represents areas with absence of data.

MIDAS-DOD DJF [01_Jan_2003-31_Dec_2017]



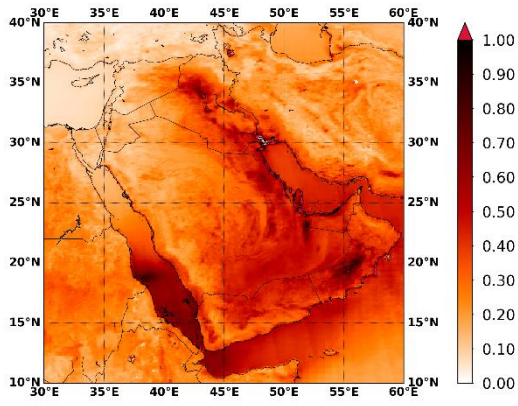
(i)

MIDAS-DOD MAM [01_Jan_2003-31_Dec_2017]



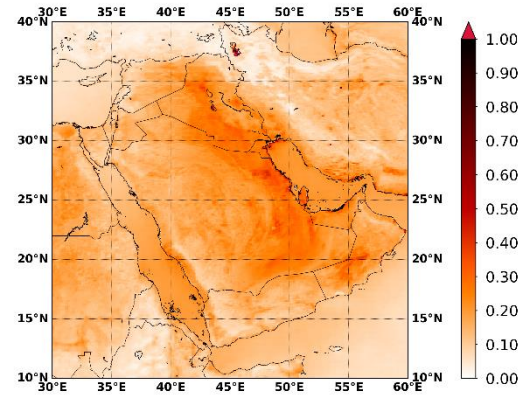
(ii)

MIDAS-DOD JJA [01_Jan_2003-31_Dec_2017]



(iii)

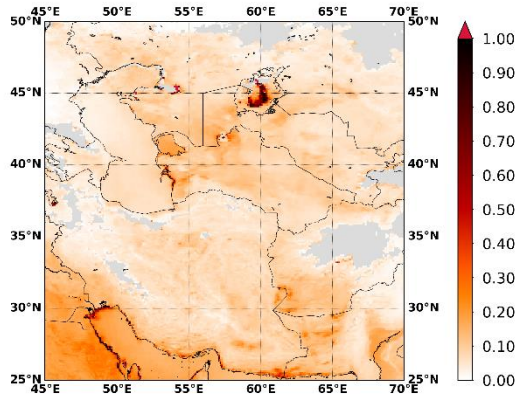
MIDAS-DOD SON [01_Jan_2003-31_Dec_2017]



(iv)

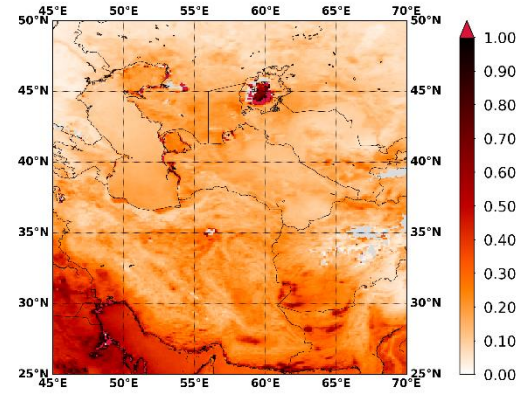
Figure S2: As in Figure S1 but for the Middle East.

MIDAS-DOD DJF [01_Jan_2003-31_Dec_2017]



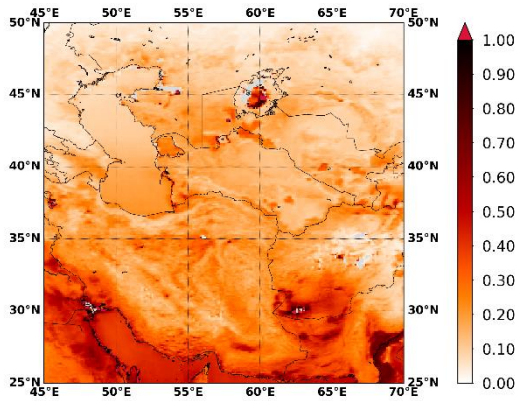
(i)

MIDAS-DOD MAM [01_Jan_2003-31_Dec_2017]



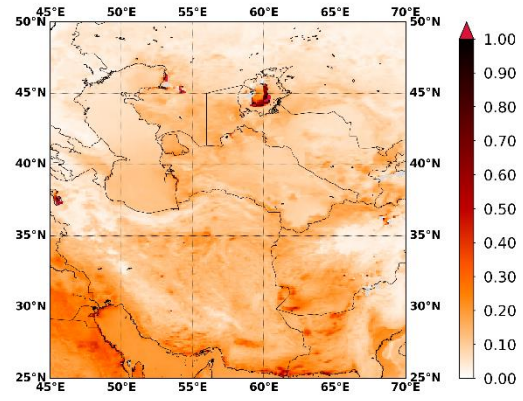
(ii)

MIDAS-DOD JJA [01_Jan_2003-31_Dec_2017]



(iii)

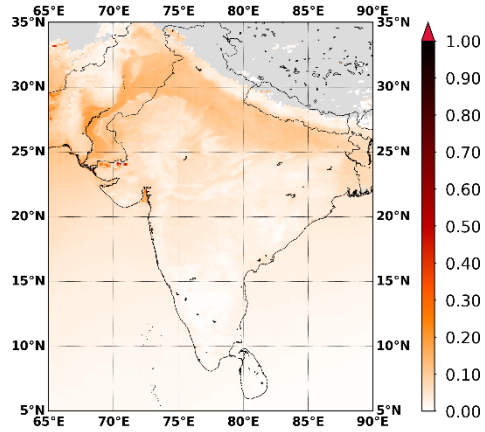
MIDAS-DOD SON [01_Jan_2003-31_Dec_2017]



(iv)

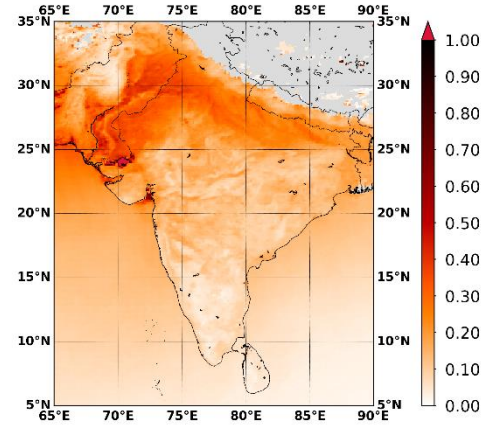
Figure S3: As in Figure S1 but for the central and southwest Asia.

MIDAS-DOD DJF [01_Jan_2003-31_Dec_2017]



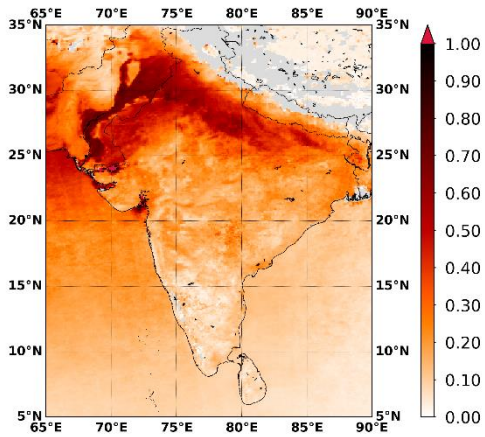
(i)

MIDAS-DOD MAM [01_Jan_2003-31_Dec_2017]



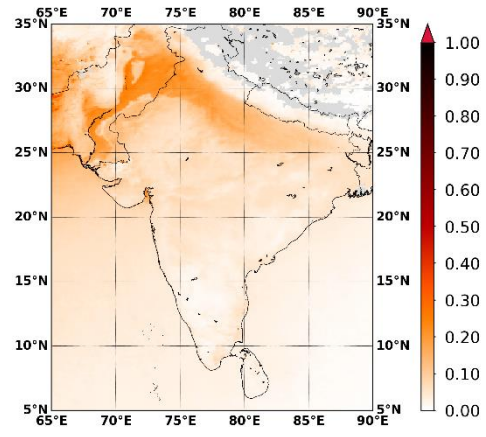
(ii)

MIDAS-DOD JJA [01_Jan_2003-31_Dec_2017]



(iii)

MIDAS-DOD SON [01_Jan_2003-31_Dec_2017]



(iv)

Figure S4: As in Figure S1 but for the Indian subcontinent.

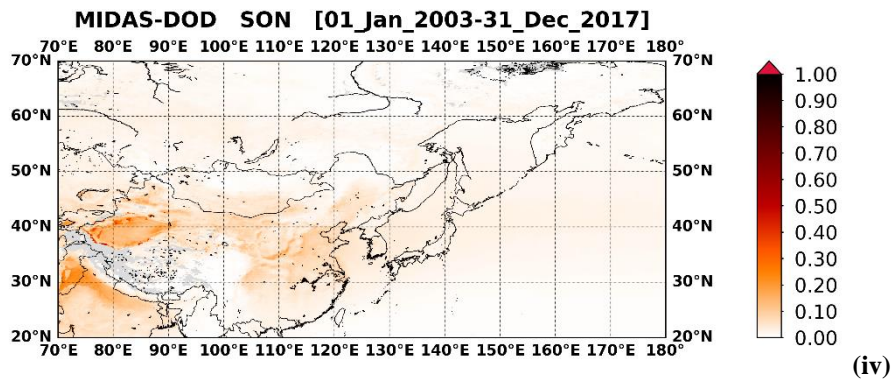
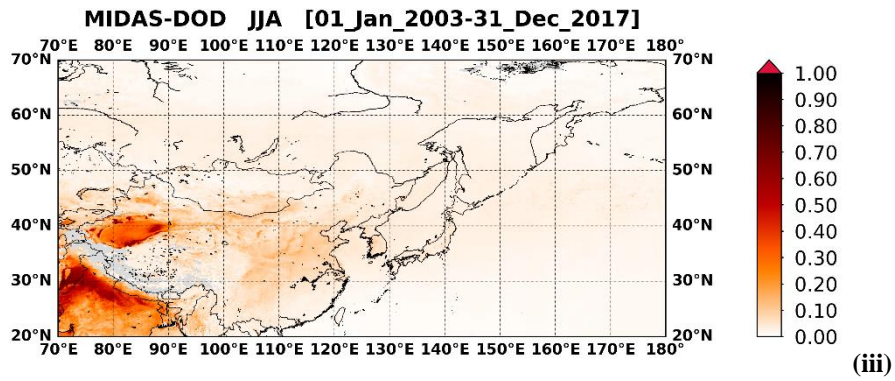
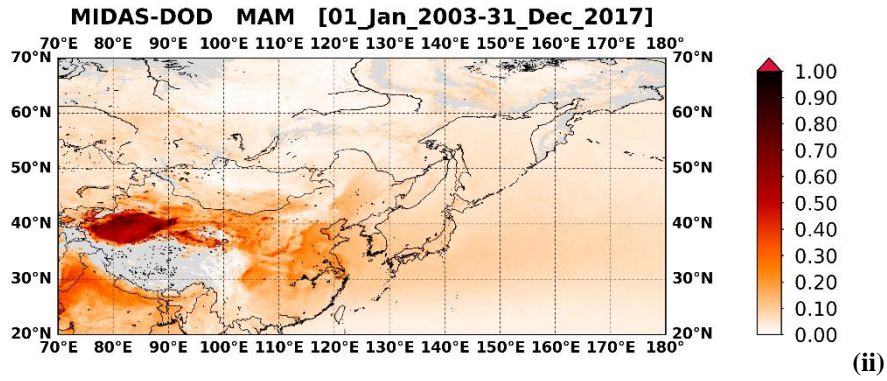
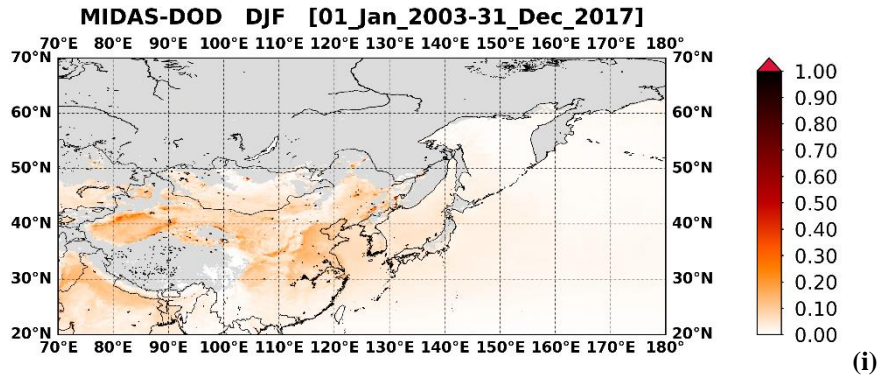
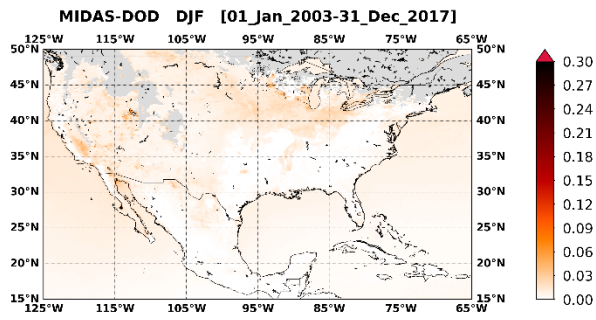
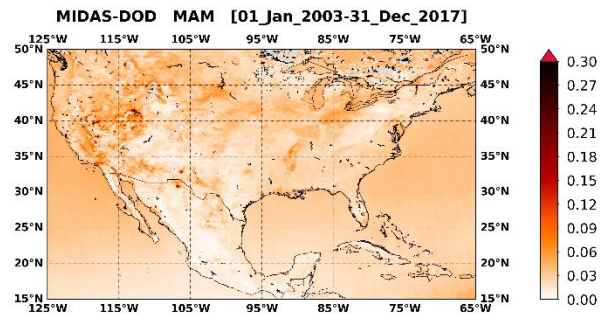


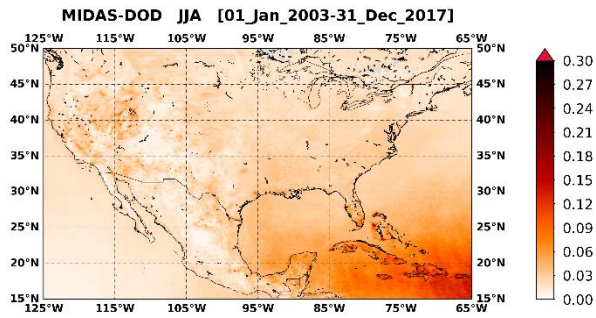
Figure S5: As in Figure S1 but for the East Asia and the Northern Pacific Ocean.



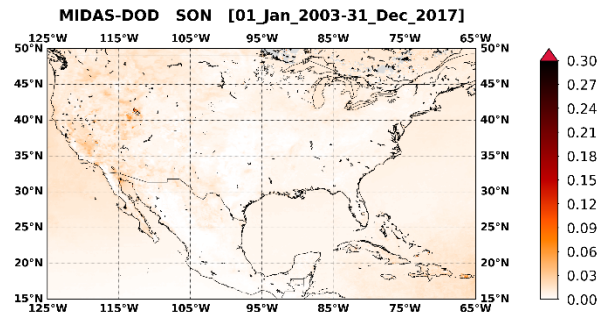
(i)



(ii)

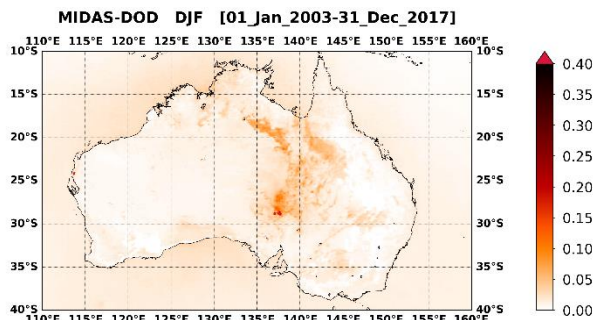


(iii)

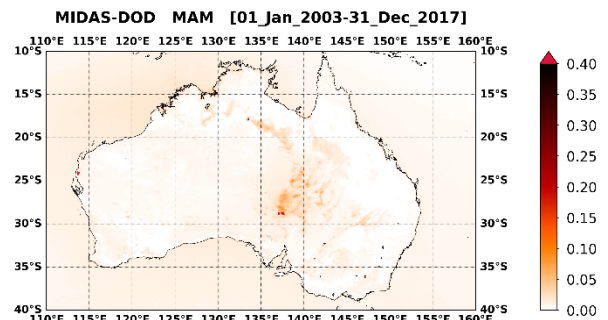


(iv)

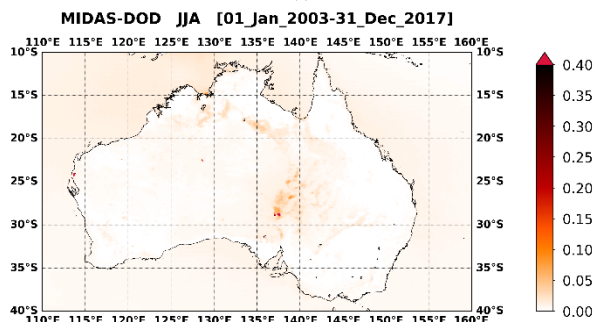
Figure S6: As in Figure S1 but for the North America.



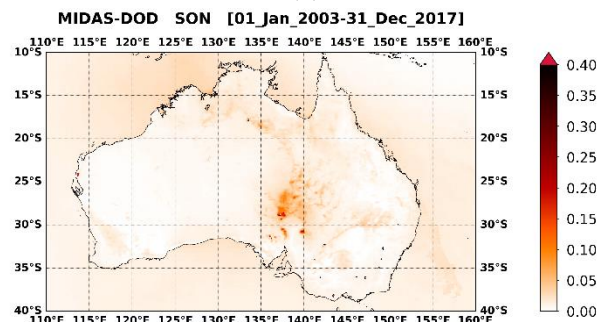
(i)



(ii)

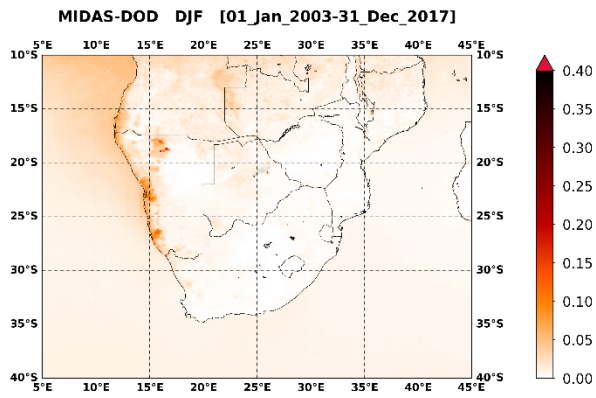


(iii)

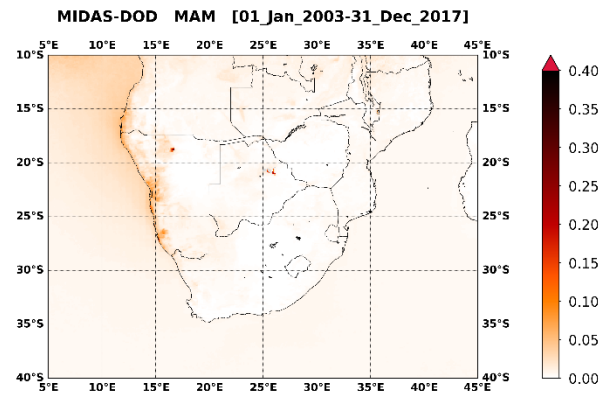


(iv)

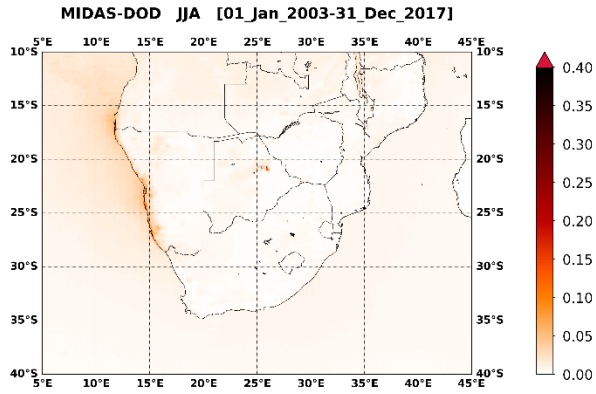
Figure S7: As in Figure S1 but for the Australia.



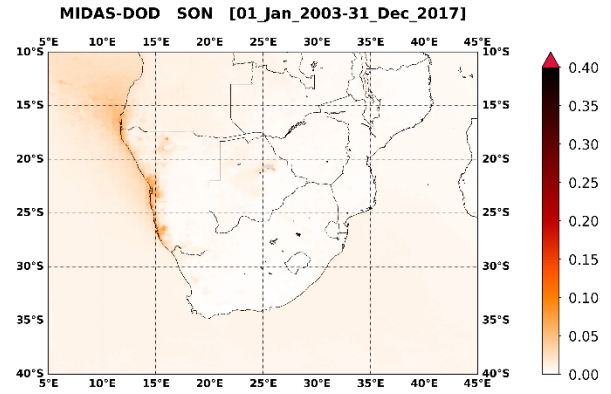
(i)



(ii)



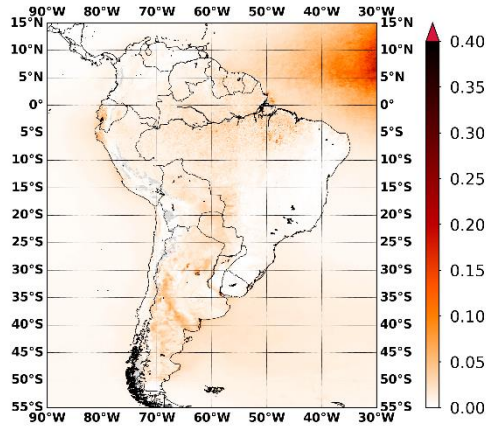
(iii)



(iv)

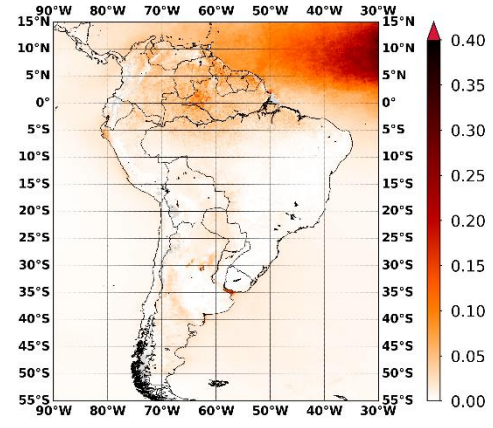
Figure S8: As in Figure S1 but for the South Africa.

MIDAS-DOD DJF [01_Jan_2003-31_Dec_2017]



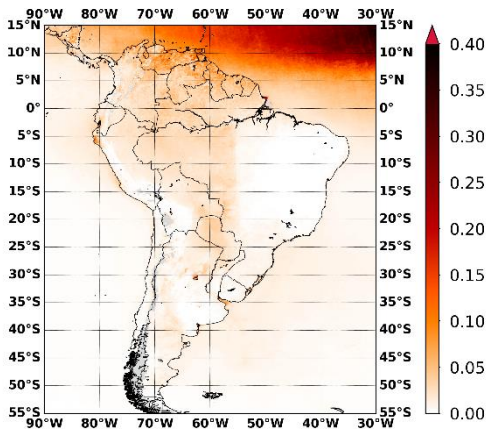
(i)

MIDAS-DOD MAM [01_Jan_2003-31_Dec_2017]



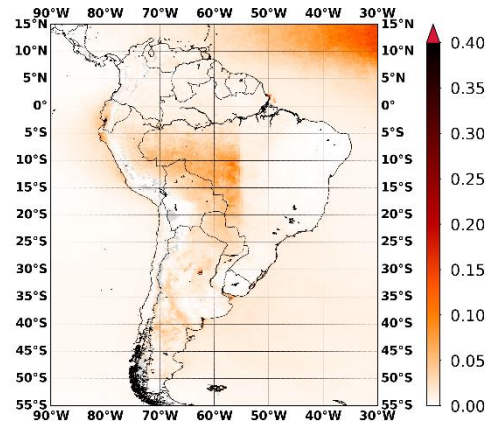
(ii)

MIDAS-DOD JJA [01_Jan_2003-31_Dec_2017]



(iii)

MIDAS-DOD SON [01_Jan_2003-31_Dec_2017]



(iv)

Figure S9: As in Figure S1 but for the South America.