

1  
2  
3  
4  
5  
6  
7  
8  
9  
10  
11  
12  
13  
14  
15  
16  
17  
18

**Supplementary Information**  
**Source-Resolved Variability of Fine Particulate Matter and**  
**Human Exposure in an Urban Area**

Pablo Garcia Rivera<sup>1</sup>, Brian T. Dinkelacker<sup>1</sup>, Ioannis Kioutsioukis<sup>2</sup>, Peter  
Adams<sup>3,4</sup>, and Spyros N. Pandis<sup>5,6</sup>

<sup>1</sup>Department of Chemical Engineering, Carnegie Mellon University, Pittsburgh, PA,  
15213

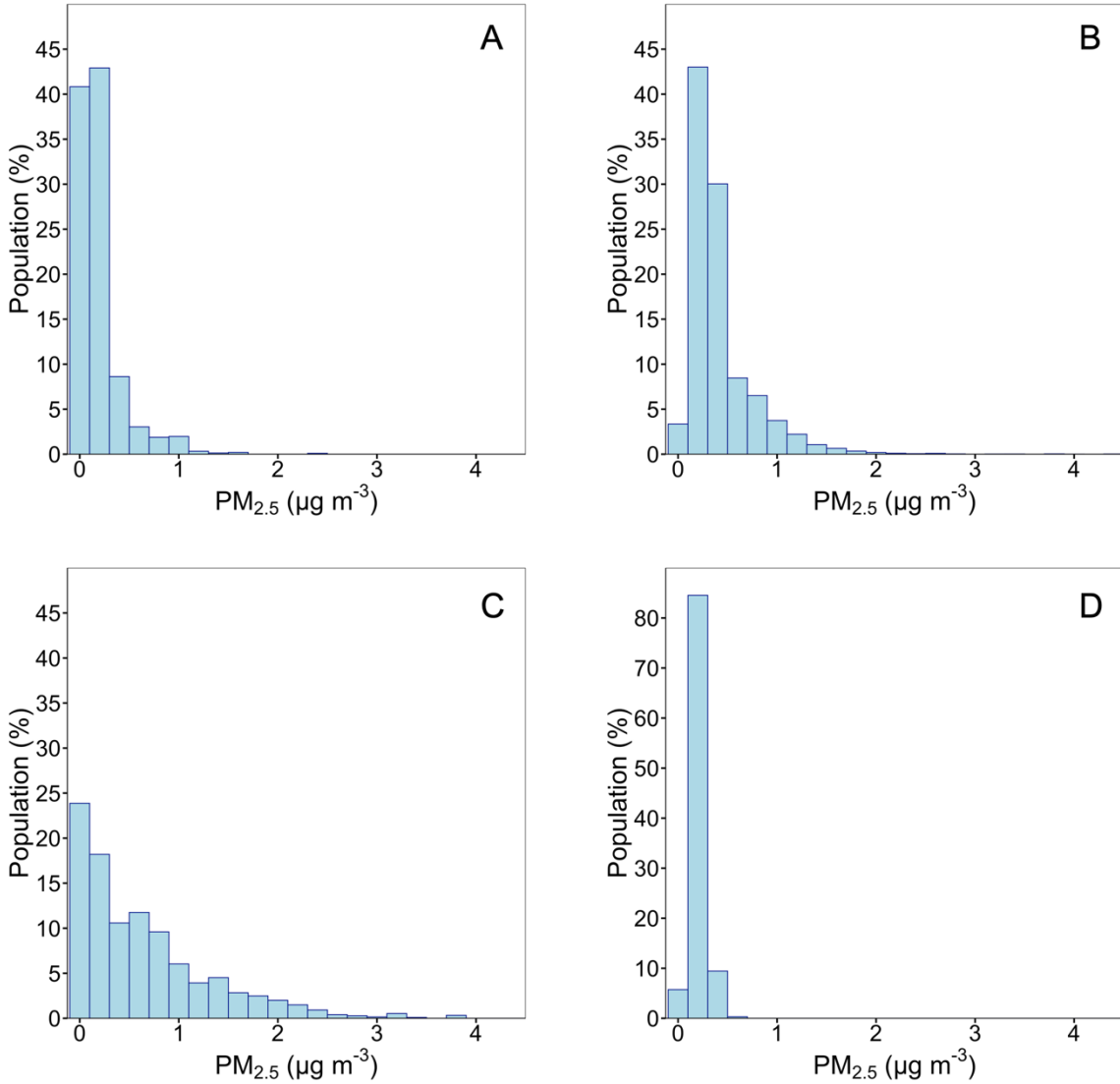
<sup>2</sup>Department of Physics, University of Patras, 26500, Patras, Greece

<sup>3</sup>Department of Civil and Environmental Engineering, Carnegie Mellon University,  
Pittsburgh, PA, 15213

<sup>4</sup>Department of Engineering and Public Policy, Carnegie Mellon University, Pittsburgh,  
PA, 15213

<sup>5</sup>Institute of Chemical Engineering Sciences (FORTH/ICE-HT), 26504, Patras, Greece

<sup>6</sup>Department of Chemical Engineering, University of Patras, 26500, Patras, Greece

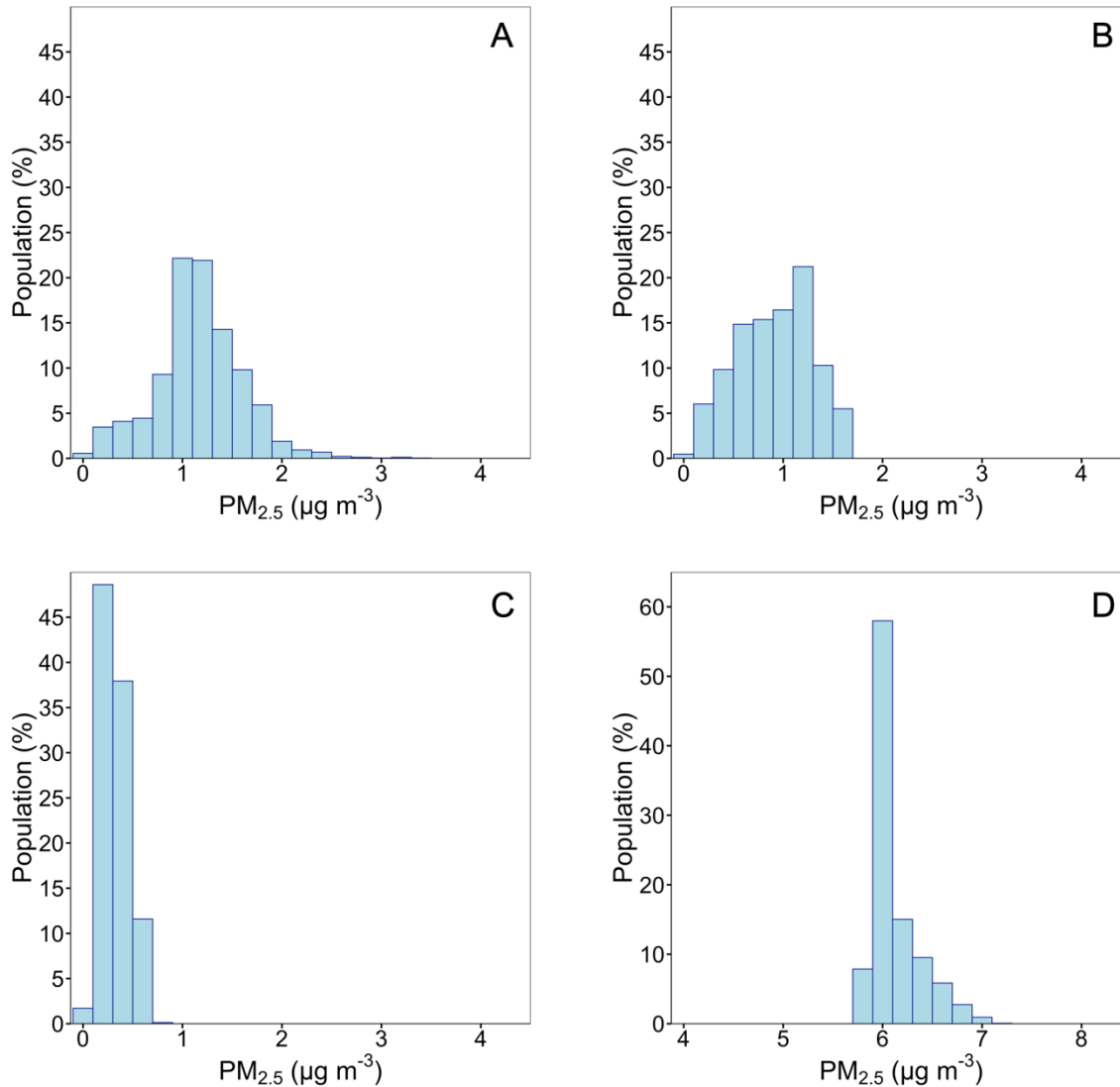


19

20

21 **Figure S1** Population exposure histograms of the contribution to PM<sub>2.5</sub> concentrations  
 22 from (A) commercial cooking, (B) industrial, (C) on-road traffic and (D) power generation  
 23 sources during February 2017. A different scale for population is used for the distribution  
 24 from power generation.

25

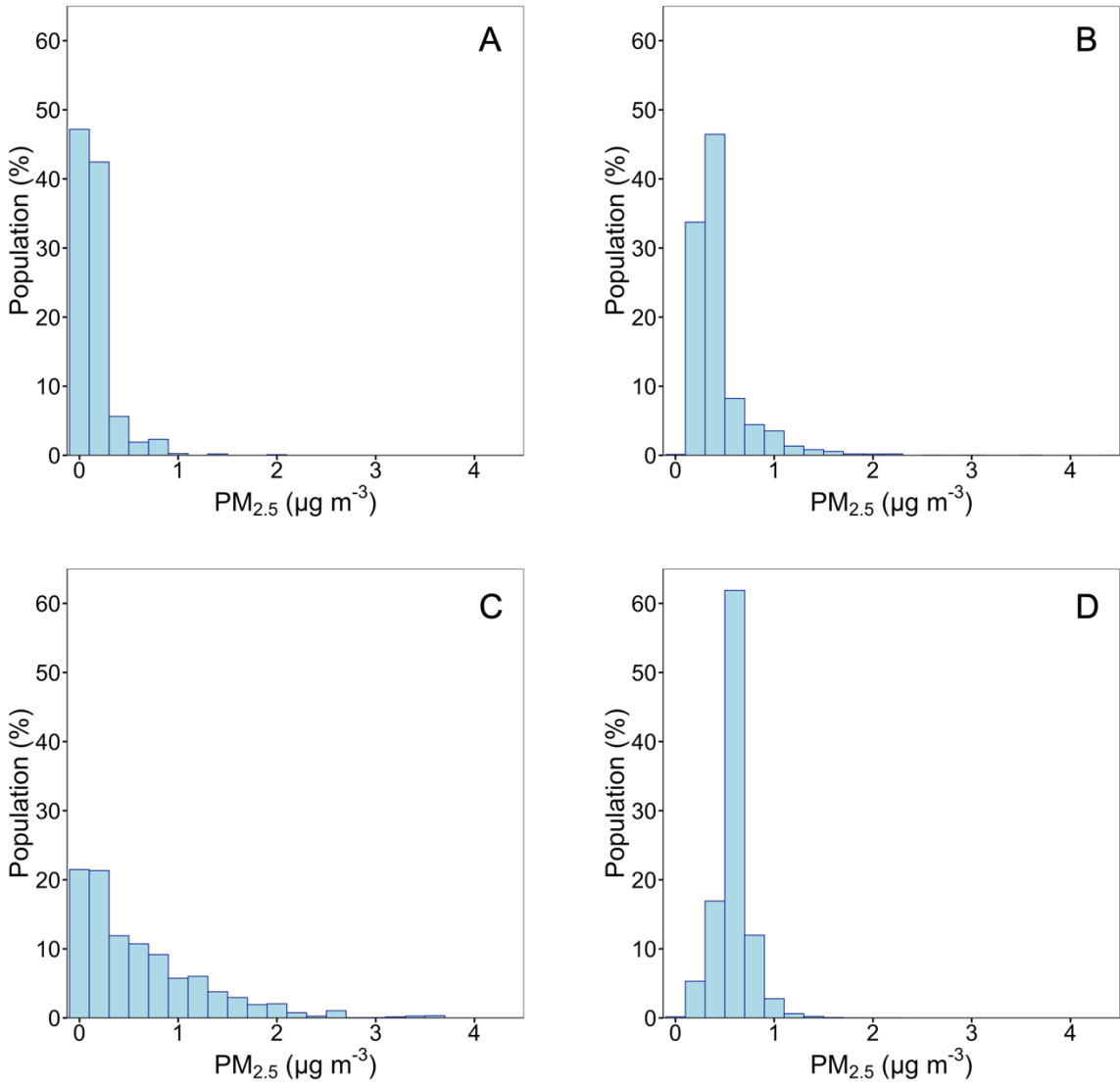


27

28

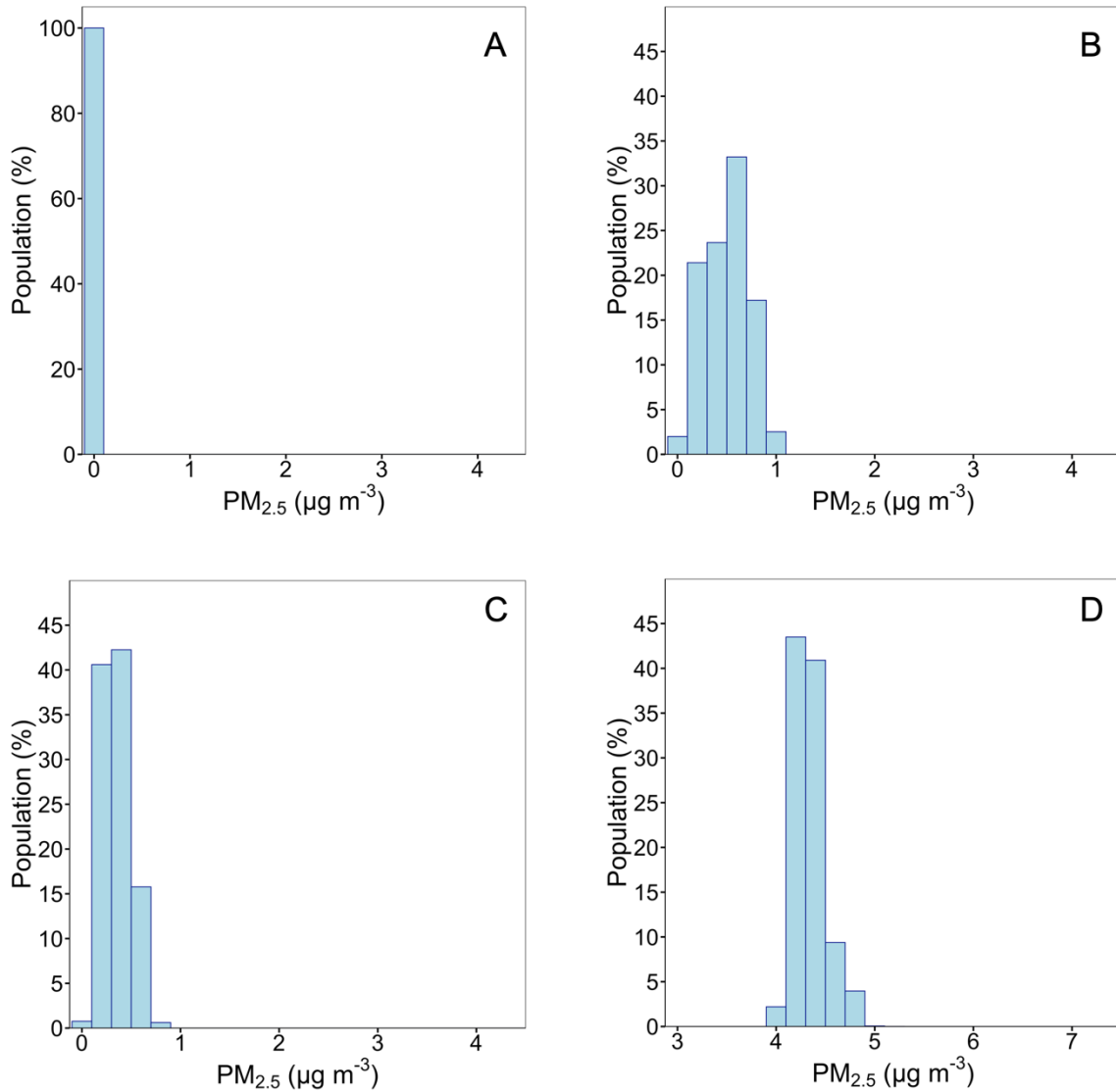
29 **Figure S2** Population exposure histograms of the contribution to PM<sub>2.5</sub> concentrations  
 30 from (A) biomass burning, (B) miscellaneous area sources and (C) all other sources during  
 31 February 2017. Contributions from long-range transport (D) are shown with a different  
 32 concentration scale.

33



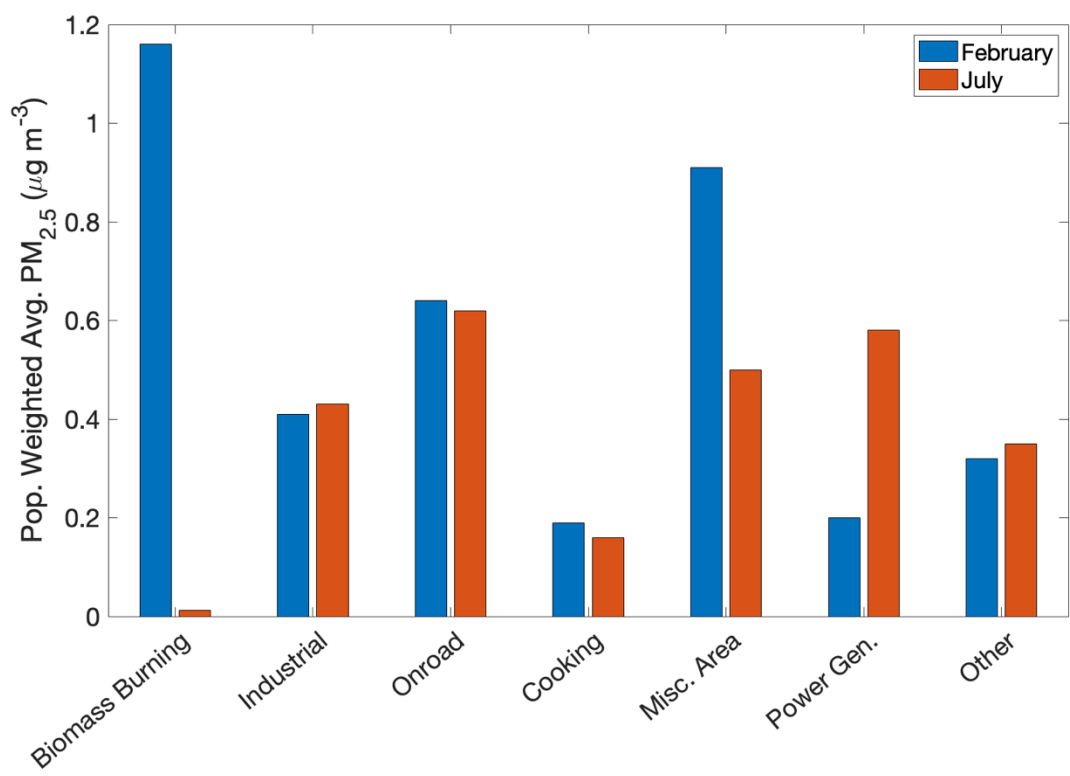
34  
 35  
 36  
 37  
 38  
 39

**Figure S3** Population exposure histograms of the contribution to PM<sub>2.5</sub> concentrations from (A) commercial cooking, (B) industrial, (C) on-road traffic and (D) power generation sources during July 2017.



41  
42  
43  
44  
45  
46  
47

**Figure S4** Population exposure histograms of the contribution to PM<sub>2.5</sub> concentrations from (A) biomass burning, (B) miscellaneous area sources and (C) all other sources during July 2017. Contributions from long-range transport (D) are shown with a different concentration scale.



48

49 **Figure S5** Absolute contributions from local sources to population weighted total PM<sub>2.5</sub>  
 50 concentration for February and July 2017

51

52