

## Response to reviewer #2's reply

MS no: ACP-2021-521

We thank the reviewer for the constructive feedback and suggestions. We have considered each comment carefully and revised the manuscript accordingly. This document outlines the reviewer's comments (in **bold-blue**), followed by the author's responses and changes made in the revised manuscript. A marked-up version of the manuscript showing the revisions is appended to this response file.

---

### **Comment:**

I reviewed the previous version of this manuscript, and recommended major revisions. In this version the authors have made numerous revisions, including additional analyses and various clarifications. These have strengthened the manuscript, and I appreciate the authors' efforts. The reason for not including additional aircraft information makes sense.

The paper is better but some aspects needs further clarification and possibly correction. Because of this, I recommend further revisions. I would be happy to review again if the Editor feels this would be useful. I expect the next revision is likely to be the final one before acceptance. It is an interesting study, just is still not quite up to ACP standards in my opinion. My comments on this version are as follows:

**Response:** We thank the reviewer for the positive comments and valuable feedback. As suggested, we have included more clarifications and additional information. These added results, we believe, have improved the manuscript further.

### **Comment:**

1. Page 2 line 8: I believe this should say top of atmosphere reflectance rather than albedo. This and the other applications (e.g. Wells, Seidel/Popp) used directional (radiance/reflectance) data rather than albedo. The authors should check the use of reflectance vs. albedo throughout as some instances refer to directional measurements (e.g. satellite measurements) while others are directionally integrated (e.g. CERES flux retrievals).

**Response:** Thank you for pointing out this difference between the TOA reflectance used in literature and the TOA albedo used in our work. We have gone through, checked, and corrected all instances of usage of reflectance and albedo in the manuscript.

**Comment:**

2. Looking at the revised paper and Supplement, I still have questions about the aerosol model used for SSA retrieval (section 3.2). That refers to tables S5, S6, and S7. Section 3.2 says “aerosol models from OPAC” (models being plural) but the Supplement seems to describe only one optical model. Is the same model used globally? Table S5 makes sense, but I do not think tables S6 and S7 are really phase function values (those would be a function of angle). I am not sure what ‘streams’ refers to here and am guessing these might be related to SBDART’s angular decomposition for the discrete ordinate method? In any case I would just give spectral extinction (as provided in Table S5) together with size distribution and refractive index (as well as perhaps further derived parameters like spectral SSA and asymmetry parameter) rather than providing spectral angular phase function. Or is perhaps the same spectral extinction used everywhere but SSA is manually varied in the calculation (in which case is e.g. phase function also varied)? These aspects remain unclear. So, as well as rewording section 3.2 to clarify if this is one model (manually varied SSAs) or multiple models (e.g. different size distributions and refractive indices forward propagated through Mie code), these tables should be corrected. The spectral dependence of Table S5 suggests to me that this is a fairly mixed fine/coarse aerosol model which implies potentially larger errors for fine-dominated or coarse-dominated aerosol plumes, but again it is not quite clear what is done.

**Response:** OPAC provides the user with facilities to generate their own set of aerosol models, as well as a set of default aerosol models (such as the clean ocean, polluted ocean, arid, clean land, polluted land, and highly polluted land). Details of these models are documented in OPAC literature (Hess et al., 1998); hence we had mentioned only the details of one of the models in the last revised manuscript. Also, since the default sets of models were used, not much emphasis was given to aerosol types in the manuscript.

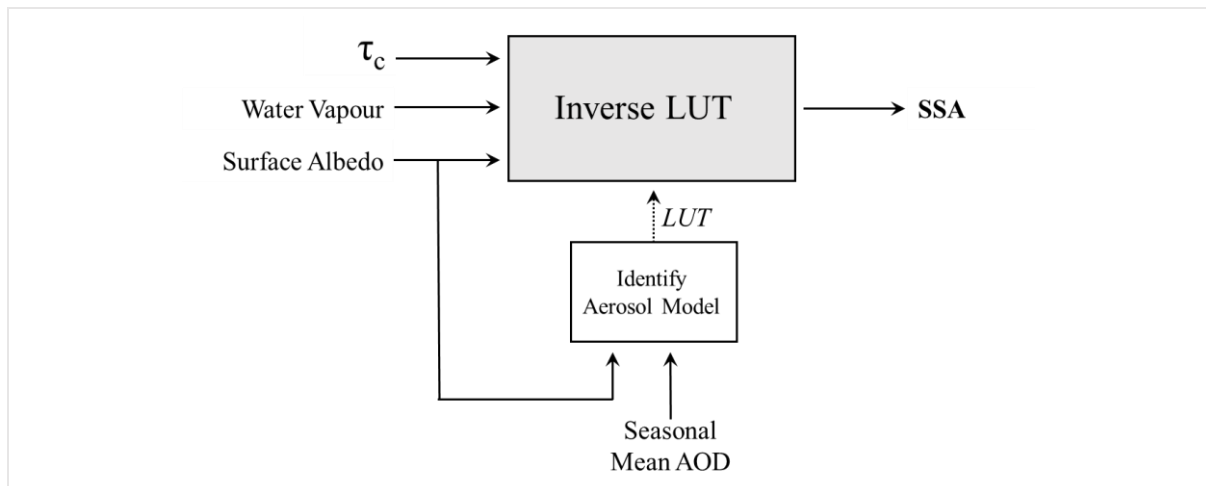
We completely agree that these points need further clarification. The following details, tables, and figures have been added to the supplementary file and mentioned in the manuscript:

## Additions to supplementary file:

### Details of aerosol models used

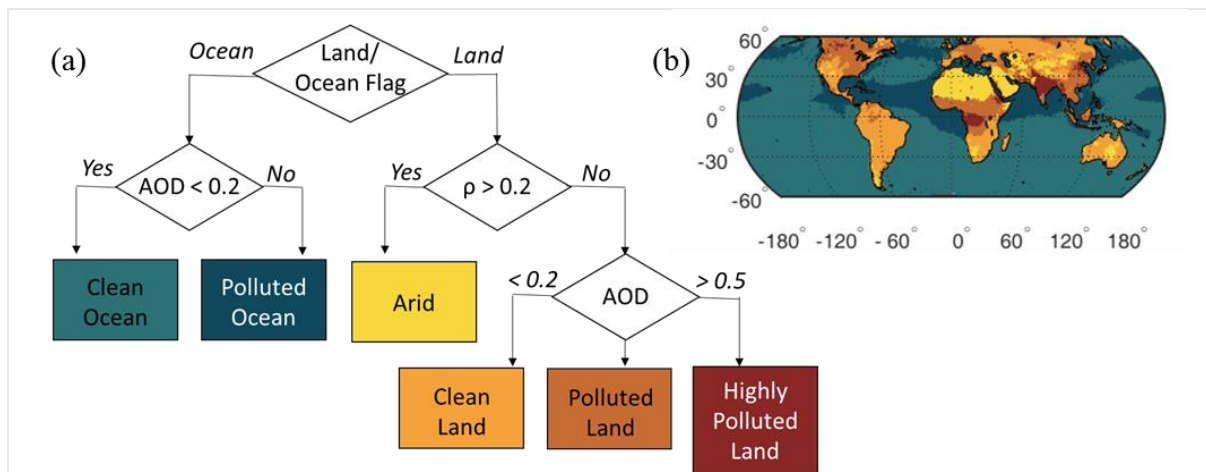
The aerosol models used are from OPAC (Optical Properties of Aerosols and Clouds), developed by Hess et al., (1998). The existing mixture of aerosol types in OPAC is used – clean ocean, polluted ocean, arid, clean land, polluted land, and highly polluted land.

A LUT is indexed by surface albedo, water vapour, and SSA. The LUT of the aerosol type selected for the pixel is used to compute SSA from  $\tau_c$ .



**Fig S4.** An inverse look-up is performed to compute SSA from  $\tau_c$ . Details of the “Identify Aerosol Model” block are shown in Fig S5.

The aerosol type is selected based on geographical location (Ocean/land, surface albedo) and aerosol loading (AOD).



**Fig S5.** (a) Decision tree for selecting the aerosol model. (b) Shows a sample map of the aerosol model used for a particular day 03 Jun 2017, following the color code used in the decision tree

**Table S5.** Components of the mixed aerosol types used

Aerosol Type	Components	Number density (1/cm <sup>3</sup> )	Number mixing ratio	Volume mixing ratio	Mass mixing ratio
clean ocean	waso	1.50E+03	9.87E-01	6.44E-02	7.05E-02
	ssam	2.00E+01	1.32E-02	9.15E-01	9.09E-01
	sscm	3.20E-03	2.11E-06	2.03E-02	2.01E-02
Polluted ocean	waso	3.80E+03	4.22E-01	1.47E-01	1.60E-01
	soot	5.18E+03	5.76E-01	8.53E-03	6.53E-03
	ssam	2.00E+01	2.22E-03	8.26E-01	8.15E-01
	sscm	3.20E-03	3.56E-07	1.83E-02	1.80E-02
Arid	waso	2.00E+03	8.70E-01	3.19E-02	1.77E-02
	minm	2.70E+02	1.17E-01	3.26E-02	3.31E-02
	miam	3.05E+01	1.33E-02	7.35E-01	7.46E-01
	micm	1.42E-01	6.17E-05	2.00E-01	2.03E-01
Clean land	inso	1.50E-01	5.77E-05	3.27E-01	4.07E-01
	waso	2.60E+03	1.00E+00	6.73E-01	5.93E-01
Polluted land	inso	4.00E-01	2.61E-05	3.15E-01	3.96E-01
	waso	7.00E+03	4.58E-01	6.53E-01	5.83E-01
	soot	8.30E+03	5.43E-01	3.29E-02	2.07E-02
Highly polluted land	inso	6.00E-01	1.20E-05	2.28E-01	2.99E-01
	waso	1.57E+04	3.14E-01	7.07E-01	6.58E-01
	soot	3.43E+04	6.86E-01	6.56E-02	4.31E-02
** <i>inso</i> – insoluble <i>waso</i> – water soluble <i>ssam</i> – sea salt (accumulation mode) <i>sscm</i> – sea salt (coarse mode) <i>minm</i> – mineral (nuclei mode) <i>miam</i> – mineral (accumulation mode) <i>micm</i> – mineral (coarse mode)					

\* More details such as refractive index and size distributions can be referred to in Hess et al 1998

**Table S6.** Normalized extinction coefficient for each aerosol type

Aerosol Type	Wavelength (microns)											
	0.25	0.35	0.45	0.55	0.65	0.75	0.90	1.25	2.00	3.00	3.39	4.00
Clean ocean	1.13	1.06	1.03	1.00	0.98	0.96	0.93	0.84	0.60	0.57	0.45	0.31
Polluted ocean	1.41	1.22	1.09	1.00	0.94	0.89	0.82	0.70	0.48	0.47	0.36	0.24
Arid	1.12	1.07	1.03	1.00	0.98	0.96	0.95	0.92	0.82	0.66	0.59	0.50
Clean land	2.27	1.70	1.29	1.00	0.79	0.64	0.48	0.29	0.13	0.17	0.08	0.07
Polluted land	2.29	1.71	1.30	1.00	0.79	0.64	0.48	0.29	0.13	0.17	0.09	0.07
Highly polluted land	2.33	1.74	1.30	1.00	0.79	0.64	0.49	0.30	0.14	0.16	0.09	0.07

**Table S7. Spectral SSA**

Aerosol Type	Wavelength (microns)											
	0.25	0.35	0.45	0.55	0.65	0.75	0.90	1.25	2.00	3.00	3.39	4.00
Clean ocean	0.96	0.99	1.00	1.00	1.00	1.00	1.00	0.99	0.99	0.45	0.88	0.97
Polluted ocean	0.90	0.95	0.96	0.96	0.97	0.97	0.97	0.97	0.97	0.42	0.87	0.95
Arid	0.68	0.75	0.83	0.88	0.91	0.92	0.93	0.93	0.93	0.77	0.86	0.94
Clean land	0.88	0.97	0.97	0.96	0.95	0.94	0.92	0.87	0.88	0.33	0.78	0.85
Polluted land	0.83	0.90	0.90	0.89	0.88	0.87	0.84	0.79	0.77	0.31	0.69	0.74
Highly polluted land	0.72	0.77	0.77	0.75	0.74	0.72	0.69	0.62	0.55	0.24	0.50	0.53

**Table S8. Asymmetry Parameter**

Aerosol Type	Wavelength (microns)											
	0.25	0.35	0.45	0.55	0.65	0.75	0.90	1.25	2.00	3.00	3.39	4.00
Clean ocean	0.77	0.76	0.75	0.76	0.76	0.76	0.77	0.78	0.78	0.75	0.71	0.71
Polluted ocean	0.75	0.74	0.73	0.74	0.74	0.74	0.75	0.76	0.78	0.74	0.71	0.71
Arid	0.82	0.79	0.75	0.73	0.71	0.70	0.70	0.69	0.69	0.71	0.70	0.68
Clean land	0.73	0.71	0.69	0.68	0.67	0.66	0.64	0.62	0.71	0.76	0.76	0.78
Polluted land	0.72	0.70	0.69	0.67	0.66	0.65	0.64	0.62	0.70	0.76	0.76	0.78
Highly polluted land	0.70	0.68	0.66	0.65	0.64	0.63	0.62	0.61	0.69	0.75	0.75	0.78

**Comment:**

**3. Page 11 lines 12-15 and page 12, line 2: I don't think this statement about POLDER is accurate. If the authors are using the GRASP POLDER product, the POLDER inversion is multispectral, multidirectional, and multi-polarisation so has good constraints on SSA across the visible. Plus, POLDER did not have any UV bands. It is not clear which POLDER product was used here (this should be stated). If it was not GRASP, then it ideally should have been, as this is to my knowledge the best one that is available at present. I also think more discussion should be given to the big offsets between the data sets over some land regions – the authors may be interested in the Chen et al (2020) paper which evaluates GRASP POLDER retrievals: <https://doi.org/10.5194/essd-12-3573-2020>**

**Response:** Yes, we have used the GRASP POLDER product. The lines mentioned were written with my limited experience with polarimetric aerosol datasets. We agree the UV band retrievals are only for OMI. Those lines have been changed.

The following lines have been added based on the results from Chen et al. (2020):

**Additions to manuscript:**

**Page 11, lines 15-19:** Large variations in SSA can be observed between CERES-MODIS and POLDER, especially over land where the aerosol loading is less. POLDER SSA retrievals are more accurate for higher aerosol loading. Chen et al. 2020 has shown that POLDER SSA (670 nm) comparison with AERONET significantly improves with correlation coefficient increasing from 0.321 to 0.814, and RMSE decreasing from 0.056 to 0.029 for AOD greater than 1.5.

**Reference:**

Chen, C., Dubovik, O., Fuertes, D., Litvinov, P., Lapyonok, T., Lopatin, A., Ducos, F., Derimian, Y., Herman, M., Tanré, D., Remer, L. A., Lyapustin, A., Sayer, A. M., Levy, R. C., Christina Hsu, N., Descloitres, J., Li, L., Torres, B., Karol, Y., Herrera, M., Herreras, M., Aspetsberger, M., Wanzenboeck, M., Bindreiter, L., Marth, D., Hangler, A., and Federspiel, C.: Validation of GRASP algorithm product from POLDER/PARASOL data and assessment of multi-angular polarimetry potential for aerosol monitoring, *Earth Syst. Sci. Data*, 12, 3573–3620, <https://doi.org/10.5194/ESSD-12-3573-2020>, 2020.

**Comment:**

**4. Section 5: a little more detail is needed here in order to understand what was done and how general these results are. Is the refractive index perturbation to the real part only or is something also done for the imaginary part? How many simulations were done for this (one case or thousands) and are the +/- numbers in the right column of the table the mean uncertainty, the range, or what? Finally, adding the terms on the right hand side in quadrature suggests a total uncertainty on SSA around 0.044, is that correct? I think this “total uncertainty” number should be quoted directly and given more prominence as it is important for the reader to understand expectations of this technique.**

**Response:** The mentioned points have been clarified. The total uncertainty has been quoted in the uncertainty analysis section, as well as in the abstract and conclusion.

**Additions to the manuscript (underlined):**

**From page 12, line 21:** Table 1 identifies the major sources of error in the retrieval and summarizes their individual contribution. Uncertainty in the retrieved SSA was estimated by calculating retrieval sensitivities to perturbations in the possible error sources. The range of perturbation was based on published literature or reasonable

assumptions for possible variations. Also, since SSA is computed from tauC which depends on the slope of the regression, uncertainties due to each error source was computed by perturbing them for different cases of SSA (0.8 to 1 in steps of 0.01). For example, uncertainties in surface albedo were calculated by perturbing it by  $\pm 0.01$  for different cases of surface albedo (dark to bright: 0.05 to 0.5 in steps of 0.05) and SSA (absorbing to scattering: 0.8 to 1 in steps of 0.01). The mean value of the uncertainties obtained from all these cases is shown as retrieval uncertainty in Table 1.

Uncertainty in shortwave integrated surface albedo from CERES results in the maximum uncertainty in SSA of  $\pm 0.03$ . MODIS retrieved aerosol optical depth contains considerable uncertainties due to assumed aerosol models (Jeong et al., 2005). The MODIS aerosol optical depth uncertainty is 20%  $\pm 0.05$  over land (Chu et al., 2002) and 5%  $\pm 0.03$  over the ocean (Remer et al., 2002). The corresponding error in our retrieval is  $\pm 0.02$ . For a typical variation of angstrom exponent ( $\pm 0.4$ ) and imaginary part of the refractive index ( $\pm 0.01$ ), the uncertainties vary depending on the surface albedo and are mostly around  $\pm 0.01$ .

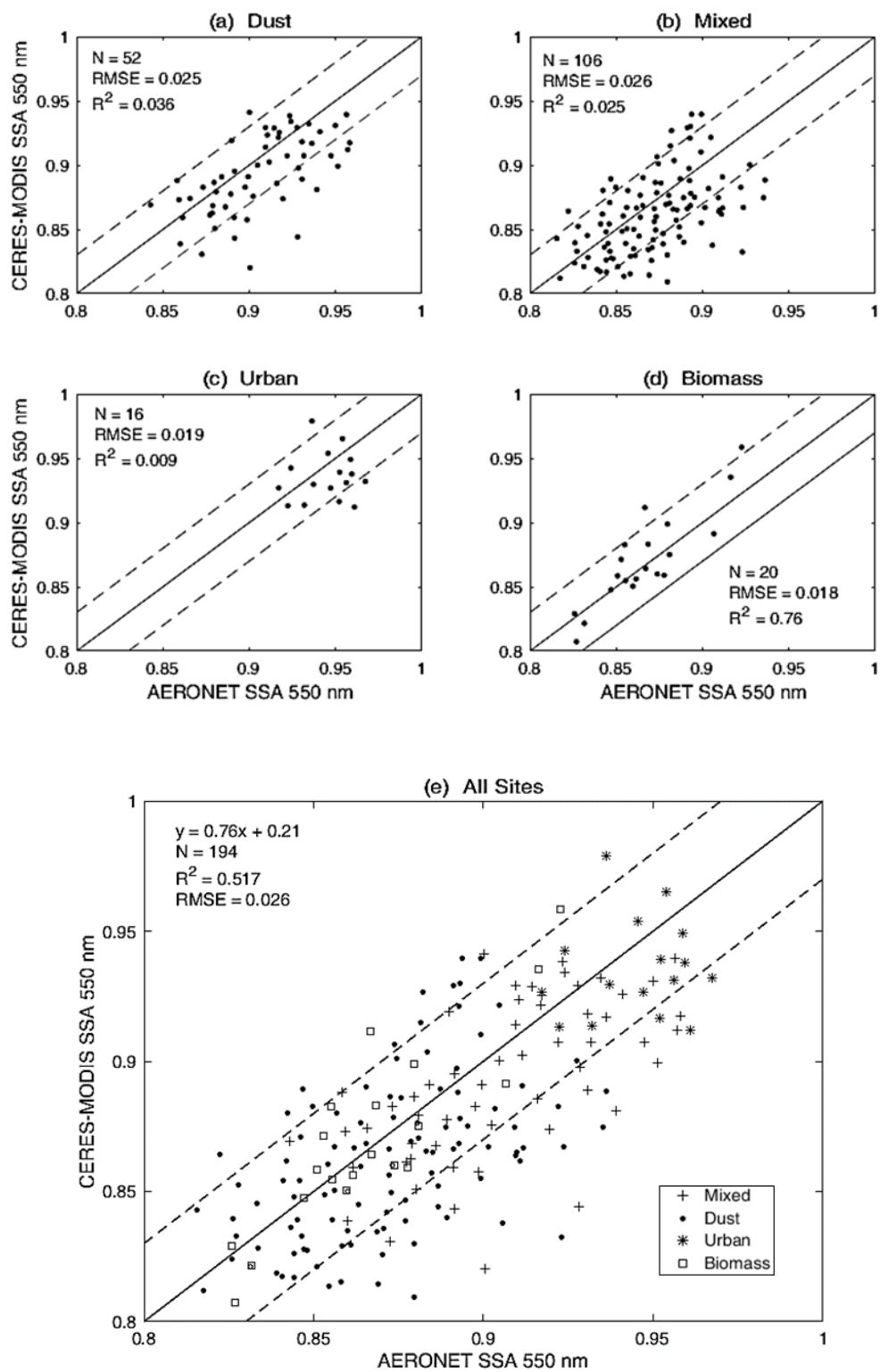
**Page 1, Lines 9-10 (Abstract):** Sensitivity analysis to various parameters indicates a mean uncertainty around  $\pm 0.044$  and shows maximum sensitivity to changes in surface albedo.

**Page 18, Lines 9-11 (Conclusion):** Sensitivity analysis to various parameters indicate a mean uncertainty around  $\pm 0.044$  and shows maximum sensitivity to changes in surface albedo.

**Comment:**

**5. Page 16 lines 11-12 and 20-21: the wavelength difference between 440 and 550 nm is indeed significant and important. Dust, for example, can have sharp gradients of SSA across the visible. Smoke is flatter but still not zero. It would be better to estimate the AERONET SSA at 550 nm, by interpolating between values for 440 nm and 675 nm. I recommend the authors do this. It will likely improve the comparison in Figure 7a and perhaps 7b.**

**Response:** Thank you very much for this suggestion. As mentioned by the reviewer, the comparisons have improved when CERES-MODIS data is compared with interpolated AERONET 550 nm data. The figure and text have been updated accordingly.



**Figure 7.** CERES-MODIS SSA (550 nm) vs. AERONET SSA (550 nm) for various AERONET sites classified based on the type of aerosols (Giles et al., 2012)



**Comment:**

**6. Section 8: I would prefer if this were written in paragraph form, which is more common, but that is more a decision for the Editor and journal style guide.**

**Response:** The conclusion section has been rewritten in paragraph form.

**Additions to revised manuscript:**

**8. Summary and Conclusions**

Global maps of aerosol absorptions were generated using the newly developed combined CERES-MODIS algorithm based on the concept of critical optical depth. The CERES-MODIS dataset was compared with OMI and POLDER SSA datasets. The retrieved SSA values were also compared with available aircraft measurements over India and surrounding oceanic regions, which showed that most retrieved SSA values are within  $\pm 0.03$ . We showed that the combined CERES-MODIS algorithm better captures the spatial and seasonal variations in aerosol absorption and the resultant maps provide an improved global SSA database with fewer data gaps. Global mean SSA was estimated to be 0.93 and 0.97 over land and ocean, respectively. The algorithm's sensitivity to various parameters has been studied, which shows maximum sensitivity to changes in surface albedo. The algorithm is shown to be the most effective over regions with large AOD variations and less surface albedo variations. Comparison with SSA from 15 AERONET sites showed an acceptable agreement between AERONET and CERES-MODIS SSA within their uncertainties. These global maps provide valuable input to models for assessing the aerosol-climate impacts on both regional and global scales.

**Comment:**

**7. Page 18 line 14: the authors claim “improved” accuracy over previous techniques to estimate SSA, but I do not see evidence that this is the case? I agree that there are fewer data gaps. The wording should be checked and either backed up with facts or removed (please do not exaggerate findings).**

**Response:** The sentence mentioned has been removed.

# Global maps of aerosol single scattering albedo using combined CERES-MODIS retrieval

Archana Devi<sup>1</sup>, Sreedharan K Satheesh<sup>1,2,3</sup>

<sup>1</sup> Centre for Atmospheric and Oceanic Sciences, Indian Institute of Science, Bengaluru, India

<sup>2</sup> Divecha Centre for Climate Change, Indian Institute of Science, Bengaluru, India

<sup>3</sup> DST Centre of Excellence in Climate Change, Indian Institute of Science, Bengaluru, India

Correspondence to: Archana Devi (archana.shiva13@gmail.com)

**Abstract.** Single Scattering Albedo (SSA) is a leading contributor to the uncertainty in aerosol radiative impact assessments. Therefore accurate information on aerosol absorption is required on a global scale. In this study, we have applied a multi-satellite algorithm to retrieve SSA (550 nm) using the concept of ‘critical optical depth.’ Global maps of SSA were generated following this approach using spatially and temporally collocated data from Clouds and the Earth’s Radiant Energy System (CERES) and Moderate Resolution Imaging Spectroradiometer (MODIS) sensors on board Terra and Aqua satellites. Limited comparisons against airborne observations over India and surrounding oceans were generally in agreement within  $\pm 0.03$ . Global mean SSA estimated over land and ocean is 0.93 and 0.97, respectively. Seasonal and spatial distribution of SSA over various regions are also presented. [Sensitivity analysis to various parameters indicate a mean uncertainty around  \$\pm 0.044\$  and shows maximum sensitivity to changes in surface albedo.](#) The global maps of SSA, thus derived with improved accuracy, provide important input to climate models for assessing the climatic impact of aerosols on regional and global scales.

## 1 Introduction

Atmospheric aerosols play a significant role in the Earth’s radiation budget (IPCC, 2013). The climatic impact of aerosols depends on their absorption and scattering properties, quantified by Single Scattering Albedo (SSA). Even a slight reduction in SSA can change the aerosol radiative forcing from cooling to warming, depending on the underlying surface albedo (Kaufman et al., 2001; Chand et al., 2009). However, the lack of an accurate global aerosol absorption database has led to SSA being the largest contributor to the total uncertainty in aerosol radiative impact assessment (IPCC, 2013).

The high spatio-temporal variability in aerosol properties entails the need for observations on a global scale (Dubovik et al., 2002; Levy et al., 2007; Remer et al., 2008; Hammer et al., 2018). Satellite data, despite its inherent limitation associated with an inverse problem, can provide the global perspective required in analysing spatio-temporal aerosol characteristics (Torres et al., 2002; Lenoble et al., 2013). However, it is difficult to quantify the absorption over bright surfaces (Kaufman and Joseph, 1982; Ahn et al., 2014; Jethva et al., 2018). Hence, quantifying the aerosol absorption over land regions using satellite-based remote sensing remains a challenge even now (Torres et al., 2013; Jethva and Torres, 2019).

Fraser and Kaufman., 1985 developed a critical surface reflectance method to retrieve SSA using satellite data. Their method is based on radiative transfer simulations, which showed a particular surface reflectance for which the top of atmosphere ~~reflectance~~ is independent of AOD. Upward ~~reflectance~~ between a clear and a hazy day over a varying surface reflectance region are used, along with radiative transfer simulations, to derive SSA. This method has been widely applied to data from various satellites to derive SSA over particular regions (Kaufman, 1987; Kaufman et al., 1990, 2001; Zhu et al., 2011; Wells et al., 2012). Seidel and Popp., 2012 have done extensive studies on the method's sensitivity to various parameters.

Various studies have ascertained the inadequacy of single-sensor data in the accurate retrieval of aerosol absorption (Kaufman et al., 2001; Zhu et al., 2011). Dawn of the A-Train satellite constellation (Anderson et al., 2005) with spatially and temporally near-collocated observations facilitates multi-satellite retrieval of aerosol absorption (Eswaran et al., 2019; Hsu et al., 2000; Hu et al., 2007, 2009; Jeong and Hsu, 2008; Narasimhan and Satheesh, 2013; Satheesh et al., 2009) However, all these multi-sensor retrievals are in the Ultra Violet (UV) wavelengths, and SSA is extrapolated to visible wavelengths using spectral dependence of assumed particle size distribution. Satheesh and Srinivasan (2005) defined the concept of "critical optical depth" ( $\tau_c$ ) and introduced a method to retrieve SSA in the visible region by combining ground-based and satellite measurements. The method was validated/demonstrated over many locations, including the desert location of Solar Village in Saudi Arabia, using Aerosol Robotic Network (AERONET) data.

In this paper, we have utilized the concept of  $\tau_c$  and further extended the methodology to develop the combined CERES-MODIS retrieval algorithm to derive regional and global maps of aerosol absorption (550 nm) using multi-satellite data. The "critical optical depth" method developed in this research paper shares a similar concept to the critical surface reflectance method (Fraser and Kaufman., 1985). For a particular parameter (such as surface reflectance or optical depth), there exists a critical value at which the top of atmosphere albedo/~~reflectance~~ can be

Deleted: albedo

Deleted: radiances

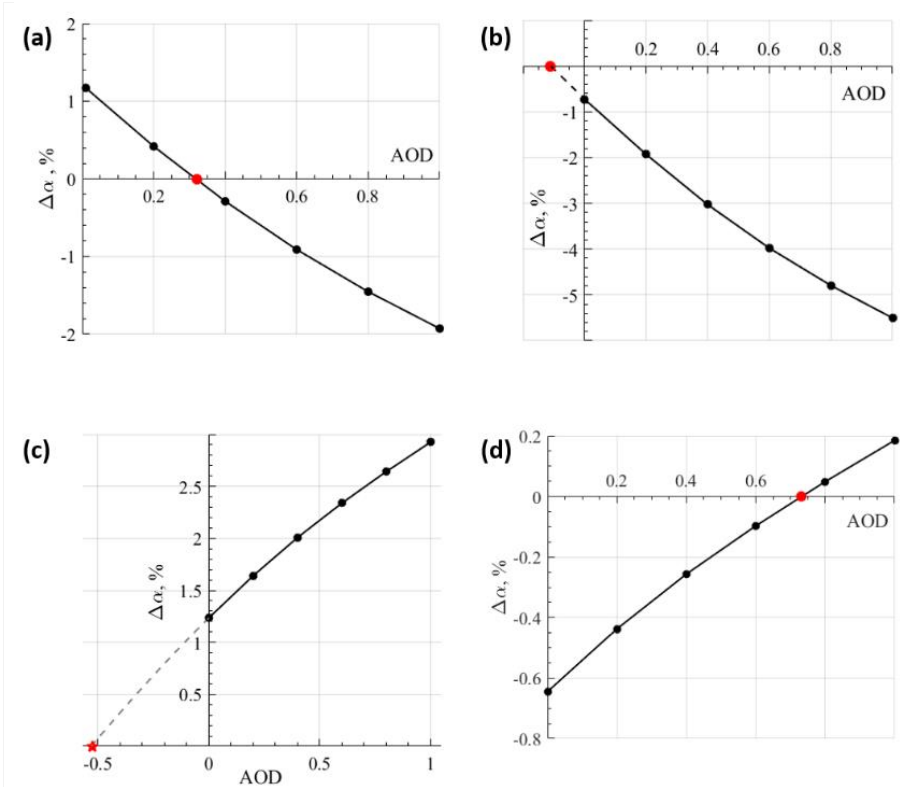
considered independent of variations in that parameter. Both the methods retrieve SSA by parameterizing the critical value as a function of SSA using radiative transfer simulations. The critical reflectance method requires two-days data and large variations in surface reflectance over the region. It's suitable for retrieving daily SSA for a particular region. Whereas the critical optical method developed in this paper is suitable for retrieving monthly or seasonal global maps of SSA.

The concept of  $\tau_c$ , which forms the scientific basis for the development of this retrieval algorithm is illustrated in Section 2. The various steps involved in the retrieval algorithm are detailed in the Section 3, data and methodology. Section 4 presents the results and comparison with other satellite datasets. Uncertainty analysis is studied in Section 5. Comparison with aircraft measurements from various field campaigns are shown in Section 6. Comparison with AERONET data from 15 sites are shown in section 7. Summary and conclusions are provided in Section 8.

## 2 Critical optical depth

Let  $\Delta\alpha$  be the difference between the top of the atmosphere (TOA) albedo and surface albedo. Then, for a particular location, with a given surface albedo,  $\Delta\alpha$  variations are only due to changes in TOA albedo. The presence of absorbing aerosols over a bright surface decreases the TOA albedo. In contrast, scattering aerosols over a dark surface increase the TOA albedo. Thus, the increase (decrease) in aerosol loading due to scattering (absorbing) type of aerosols leads to an increase (decrease) in  $\Delta\alpha$ . The rate of change in  $\Delta\alpha$  with aerosol loading is dependent on SSA.

Satheesh and Srinivasan (2005) utilized this concept to retrieve SSA in the case of absorbing aerosols over a bright surface. In a pristine atmosphere (Aerosol Optical Depth = 0) over a bright surface, the  $\Delta\alpha$  is positive for solar zenith angle (SZA) = 0. Here, when absorbing aerosols become dominant,  $\Delta\alpha$  decreases with an increase in aerosol optical depth (AOD) and eventually turns negative. The AOD at which  $\Delta\alpha$  equals zero is defined as  $\tau_c$ . For a given surface albedo,  $\tau_c$  is the AOD at which the scattering and absorbing effects of the aerosol cancel each other. The rate of decrease in  $\Delta\alpha$  with the increase in AOD is higher when SSA is high and consequently lowers the resulting values of  $\tau_c$ . A radiative transfer (RT) model was then used to calculate the SSA that reproduces the same  $\tau_c$ , given atmospheric conditions.



**Figure 1.** RT simulations (black dots) shows deriving  $\tau_c$  (red dot) for different cases of aerosols and surfaces. For pristine conditions (AOD = 0), diurnally-averaged  $\Delta\alpha$  is negative for bright surfaces and positive for dark surfaces. An increase in aerosol loading by absorbing (scattering) type of aerosol leads to decrease (increase) in TOA albedo. **(a)** Absorbing aerosols above a dark surface; **(b)** Absorbing aerosols above a bright surface; **(c)** Scattering aerosols above a dark surface; **(d)** Scattering aerosols above a bright surface.

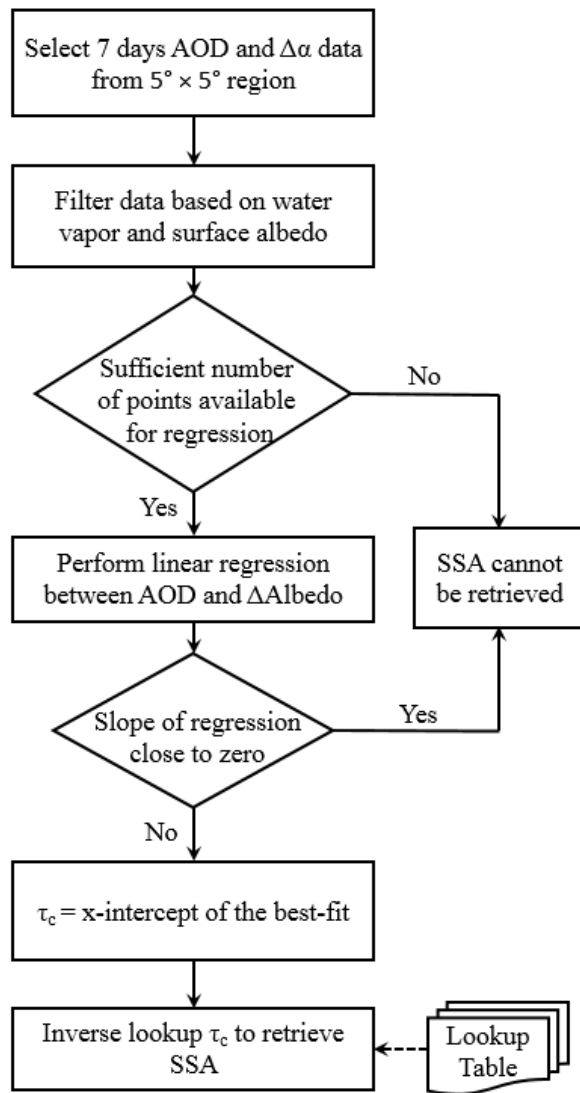
In this paper, the concept of  $\tau_c$  is extended to retrieve SSA for all scenarios of surfaces (dark and bright) and aerosols (absorbing and scattering). For AOD less than 1,  $\Delta\alpha$  is almost linearly dependent on AOD. Then  $\tau_c$  is mathematically the x-intercept when parameterizing the linear relationship.

- 5 Figure 1 shows the estimation of  $\tau_c$  for four different scenarios. Details of these RT simulations are given in Section 3.2. Unlike Satheesh and Srinivasan (2005), where simulations were carried out for  $SZA = 0$ , here the  $\Delta\alpha$  is diurnally averaged. Therefore, it is possible to have negative  $\Delta\alpha$  for AOD = 0 over relatively bright surfaces. It is difficult to retrieve SSA where the slope of regression line is close to zero.

### 3 Data and methodology

The Combined CERES-MODIS retrieval algorithm consists mainly of two steps: (1) determining  $\tau_c$  using MODIS and CERES data for a location, and (2) estimation of SSA that reproduces the same  $\tau_c$  for the associated atmospheric conditions and surface albedo of that particular location. Figure 2 shows the flowchart illustrating the combined CERES-MODIS retrieval algorithm.

TOA and surface fluxes, used to determine  $\Delta\alpha$ , are obtained from CERES SYN1deg-day (Edition 4.1) (Wielicki et al., 1996; Rutan et al., 2015). To avoid angular dependence of fluxes, the diurnally averaged flux data product from CERES is used, which is available only at  $1^\circ$  resolution. Hence, other satellite data sets in this study are also used at the same spatial resolution. AOD and total columnar water vapor are obtained from the MODIS Daily Global Product (MxD08\_D3 version 6.1). MODIS retrieves columnar AOD at 550 nm using two different types of algorithms – “Dark Target” (Levy et al., 2007, 2013) and “Deep Blue” (Hsu et al., 2004, 2006; Sayer et al., 2013). Dark target retrieves AOD over both land and ocean, whereas deep blue retrieves only over land. In this study, we have used a combined dark target and deep blue product.



**Figure 2.** Flowchart depicting the steps involved in combined CERES-MODIS retrieval of SSA for a particular location.

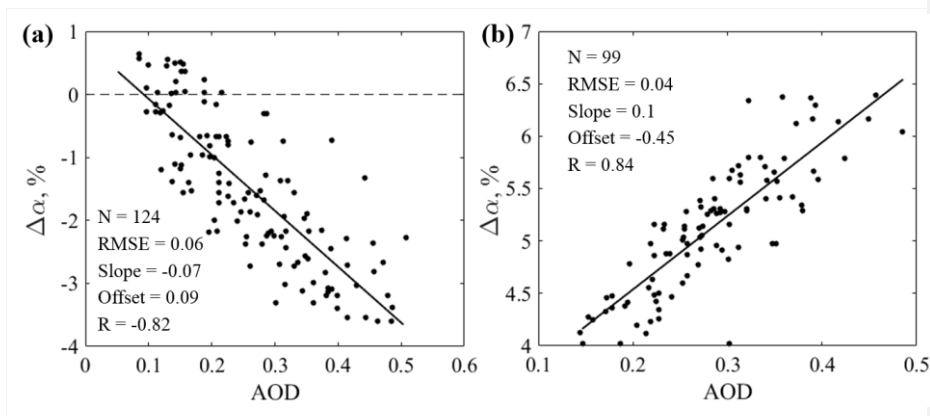
### 3.1 Determining the critical optical depth

The first step for retrieval is to determine  $\tau_c$  by linear regression analysis between  $\Delta\alpha$  vs. AOD as shown in Fig.

3. The x-intercept of the resultant line of best fit (i.e., the AOD at which  $\Delta\alpha = 0$ ) provides the value of  $\tau_c$ . CERES

and MODIS daily data are at  $1^\circ$  resolution, and SSA is retrieved for each  $1^\circ \times 1^\circ$  grid. In order to have adequate number of points for a meaningful regression analysis, it was required to use data over a larger interval (temporal and spatial) - whose extent is large enough to get a statistically significant fit but small enough to ensure insignificant variations in SSA. Thus, to determine  $\tau_c$  for a given pixel, seven days of data from its surrounding  $5^\circ \times 5^\circ$  region has been considered. This data is further constrained based on surface albedo and water vapor. Only those pixels in this region having surface albedo within  $\pm 0.025$  and water vapor within  $\pm 0.25$  cm of the given pixel are considered for regression analysis. These constraints ensure that the  $\tau_c$  determined from the best fit is dependent only on SSA and not affected by changes in surface albedo and water vapour. Figure 3a shows an example of regression with a positive correlation coefficient over the Arabian Sea. This can happen over regions of low surface albedo and the dominance of scattering aerosols. Figure 3b is an example of regression analysis with a negative correlation coefficient obtained over Sahara in the presence of dust aerosols.

The above procedure is repeated for all pixels, where data from the surrounding  $5^\circ \times 5^\circ$  region is used to determine  $\tau_c$  for each pixel. For the regression analysis, points which are outside one standard deviation are considered as outliers. Line of best fits with a slope close to zero yields extreme  $\tau_c$  values (very high positive/very low negative). In such cases, we did not attempt a retrieval. A significance test on the correlation coefficient between AOD and  $\Delta\text{Albedo}$  is performed with a 0.05 significance level. Only those  $\tau_c$  values obtained through regressions that are statistically significant at 95% confidence level are utilized further to retrieve SSA.



**Figure 3.** Sample scatterplots between MODIS AOD and CERES  $\Delta\alpha$ . The solid lines represent the best-fits for (a) absorbing aerosols above the Sahara and (b) scattering aerosols above the Arabian Sea.  $\tau_c$  (AOD at which  $\Delta\alpha$  is zero) is the x-intercept of the best-fit line.



The final product of this step is a  $360 \times 180$  matrix that stores  $\tau_c$  value corresponding to each  $1^\circ$  pixel. In these matrices, not all points would have a  $\tau_c$  value owing to the insufficient number of points available for regression, either due to cloud-masking or large variations in surface albedo over the land. At least seven days of data is required to perform a statistically significant fit to compute  $\tau_c$  and retrieve SSA. The next step in the procedure is to estimate SSA from these  $\tau_c$  values using an inverse lookup table (LUT) approach.

### 3.2 Retrieval of SSA

Since the objective of this study is to retrieve SSA globally, look-up-tables (LUTs) were developed to reduce the computation time and avoid repeated RT simulations. The aerosol models available in OPAC (Optical Properties of Aerosols and Clouds), developed by Hess et al., (1998), are given as input to SBDART (Santa Barbara DISORT Atmospheric Radiative Transfer) model (Ricchiazzi et al., 1998) to simulate TOA fluxes. Specifications of the models used are shown in Table S5, S6, S7 and S8.

The RT computations were carried out to obtain the diurnally averaged (SZA:  $0^\circ$  to  $84^\circ$ ) TOA and surface fluxes using 16 radiation streams and spectrally integrated over the shortwave region (0.3 to  $5 \mu\text{m}$ ). For a particular case of surface albedo, water vapor, and SSA, AOD is varied from 0 to 1 in steps of 0.2 to generate its corresponding diurnally averaged  $\Delta\alpha$ . Then a linear fit is performed between AOD and simulated  $\Delta\alpha$  to determine  $\tau_c$ . For each aerosol model a three-dimensional LUT that stores  $\tau_c$  for different combinations of surface albedo, water vapor, and SSA have been developed. The LUT is indexed by 11 values of surface albedo (0 to 0.5, increments of 0.05), 17 values of water vapour (0 to 8 cm, increments of 0.5 cm) and 10 values of SSA (0.8, 0.83, 0.85, 0.87, 0.9, 0.92, 0.95, 0.97, 0.99, and 1). A total of 89760 RT simulations were performed in the present study.

The next step is to estimate SSA from  $\tau_c$  using the LUT. For a given surface albedo and water vapor of that pixel, we find the SSA associated with its determined  $\tau_c$ . An inverse lookup operation is performed on LUT by linear interpolation between the nearest two indices. The aerosol model (LUT) selected for retrieval is based on geographic location (ocean/land, surface albedo) and aerosol loading. Details of aerosol model selection is shown in Fig S4 and S5. SSA is estimated for each available  $\tau_c$  values of a pixel and then averaged to compute the seasonal mean SSA.

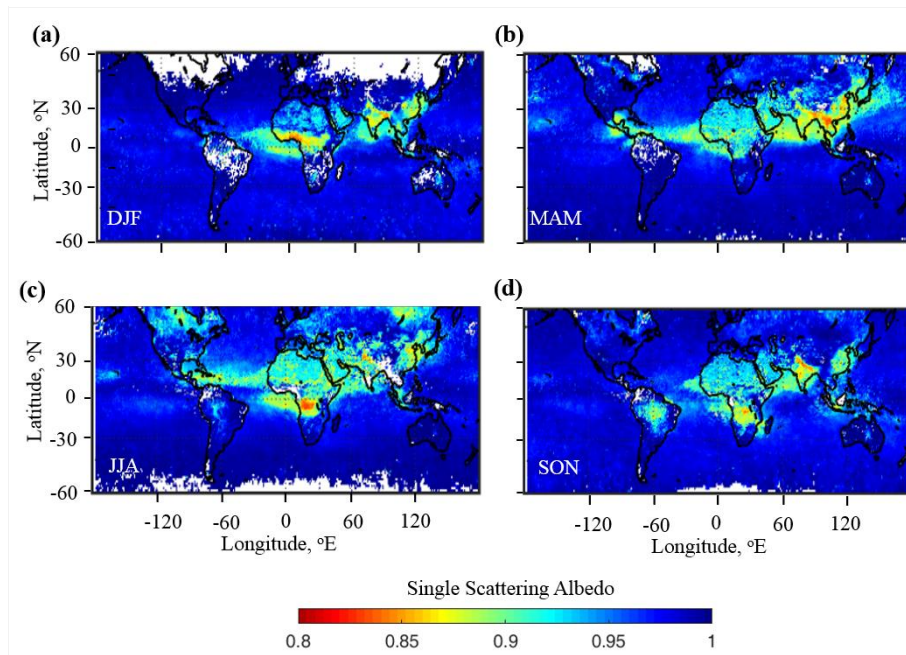
Deleted: from

Deleted: 7

Deleted: A

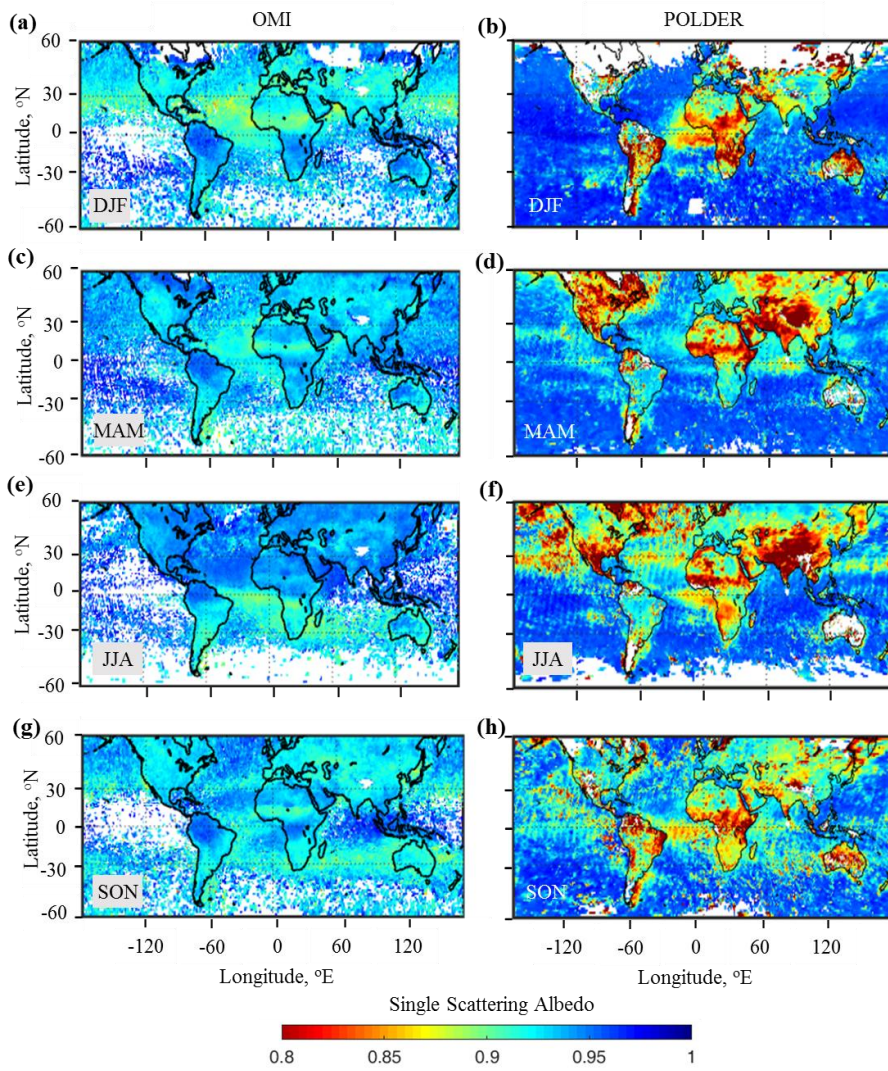
#### 4 Results and discussion

Fig. 4 shows the seasonal-mean global maps of SSA (550 nm) retrieved by the combined CERES-MODIS algorithm for the five years of 2014-2018. Data are averaged for different seasons: DJF (December-January-February), MAM (March-April-May), JJA (June-July-August), and SON (September-October-November).



**Figure 4.** Seasonal mean SSA maps for the period of 2014-18 retrieved by the combined CERES-MODIS.

- 5 The retrieved SSA dataset (500 nm) was compared with other widely used global SSA datasets – OMI SSA (500 nm) and climatological POLDER SSA (565 nm). OMAERUVd V3 (Torres et al., 2007; Torres et al., 2013; Ahn et al., 2014) for the corresponding period are shown in panels a, c, e, and g in Fig 5. And POLDER 1-2 Level 3 climatological seasonal mean SSA maps are shown in panels b, d, f, and h in Fig 5. For a generalized qualitative
- 10 comparison, we can assume that SSA does not vary much for the small 50 nm spectral difference between CERES-MODIS and OMI SSA. (Zhu et al., 2011; Jethva et al., 2014).



**Figure 5.** Seasonal mean SSA maps of OMI (500 nm) and POLDER (565 nm) in panels a,c,e,g and b,d,f,h respectively.

From a quick comparison between Fig 4 and Fig S2 SSA maps, the following points can be noted:

- Over the ocean, OMI retrieves SSA only for regions with high values of UVAI, leading to large data gaps. In comparison, we can notice that CERES-MODIS and POLDER have better data coverage on a global scale. In the CERES-MODIS maps, the absence of data is mostly due to the unavailability of MODIS AOD.

5

- The Global Ocean, a relatively dark surface covering more than 70% of the Earth's surface, plays a significant role in determining global aerosol radiative forcing effects. Therefore, the better data coverage over oceans by the CERES-MODIS and POLDER provides better input for radiative forcing calculations.

10

- CERES-MODIS maps capture a wider range of SSA values. Regions with very low SSA can easily be identified as the sources of absorbing aerosols. OMI SSA values are mostly above 0.9 and do not clearly capture the sources and transport of absorbing aerosols.

- OMI SSA values are more accurate in the UV wavelengths since SSA is primarily retrieved in the UV regions and extrapolated to visible wavelengths using aerosol models. Whereas CERES-MODIS retrieves SSA directly at 550 nm, hence is more accurate for SSA values in the visible wavelengths.

Deleted: Both POLDER and

15

- Large variations in SSA can be observed between CERES-MODIS and POLDER, especially over land where the aerosol loading is less. POLDER SSA retrievals are more accurate for higher aerosol loading. Chen et al. 2020 has shown that POLDER SSA (670 nm) comparison with AERONET significantly improves with correlation coefficient increasing from 0.321 to 0.814 and RMSE decreasing from 0.056 to 0.029 for AOD greater than 1.5.

20

- Over the land, POLDER shows very low SSA values (< 0.85), thus indicating the presence of highly absorbing aerosols even over less polluted regions. OMI values are around 0.9 over land and do not clearly identify the presence of absorbing aerosols. Whereas SSA values are within reasonable range over land as retrieved by the CERES-MODIS method – high SSA values over relatively pristine regions, lower SSA values over sources and transport of absorbing aerosols.

25

- Seasonal trends in forest fire can be noticed in POLDER maps and distinctly identifiable in CERES-MODIS SSA maps. Every year forest fires are common in specific seasons in Canadian and Russian Boreal forests (JJA), Amazon forest (SON) and South African forest (JJA and SON).

- The Indo-Gangetic plain (IGP) is a densely populated region spotted with several coal-based thermal power plants and seasonal stubble burning. Low SSA values are retrieved by both POLDER and CERES-MODIS over IGP. Whereas OMI shows values around 0.9 throughout the year. Similar pattern can be observed over Eastern China, one of the most highly polluted industrial region.

5 From the above points, we can draw conclusions about the advantages of each dataset. OMI, CERES, and MODIS instruments are still operational, whereas POLDER datasets are available only till 2013. OMI datasets are more suitable for UV wavelengths, whereas the CERES-MODIS SSA dataset provides more accurate SSA over visible wavelengths. OMI provides operational daily global SSA maps, whereas the CERES-MODIS algorithm is more suitable for obtaining monthly/seasonal global SSA maps. Over the ocean, the POLDER dataset has more coverage than OMI and identifies the transport of aerosols across the oceans. Hence, POLDER SSA and CERES-MODIS SSA can be used for studying SSA values over the ocean in the UV and visible wavelengths, respectively. Over the land, OMI retrieves high SSA values, whereas POLDER shows very low SSA values even over relatively pristine regions. Hence, the CERES-MODIS dataset retrieves reasonable SSA values over both polluted and less polluted regions for visible wavelengths.

Deleted: and POLDER SSA

15 Global mean SSA retrieved by combined CERES-MODIS over land and ocean is 0.93 and 0.97, respectively (OMI: 0.94 and 0.94). Accurate SSA estimations are also required over regions of interest such as deserts, oceans, biomass-burning forests, and highly polluted industrial areas. Hence, seasonal mean SSA values retrieved by the combined CERES-MODIS algorithm, OMI, and POLDER are reported, in table S2, for major regions of interest as shown in Fig S1 and Table S1.

## 20 5 Uncertainty Analysis

Table 1 identifies the major sources of error in the retrieval and summarizes their individual contribution. Uncertainty in the retrieved SSA was estimated by calculating retrieval sensitivities to perturbations in the possible error sources. The range of perturbation was based on published literature or reasonable assumptions for possible variations. Also, since SSA is computed from  $\tau_{C}$  which depends on the slope of the regression, uncertainties due to each error source was computed by perturbing them for different cases of SSA (0.8 to 1 in steps of 0.01). For example, uncertainties in surface albedo were calculated by perturbing it by  $\pm 0.01$  for different cases of surface albedo (dark to bright: 0.05 to 0.5 in steps of 0.05) and SSA (absorbing to scattering: 0.8 to 1 in steps of 0.01). The mean value of the uncertainties obtained from all these cases is shown as retrieval uncertainty in Table 1.

**Table 1.** Estimates of the uncertainty in retrieved SSA

Parameter	Input Uncertainty	Retrieval Uncertainty
Surface albedo	$\pm 0.01$	$\pm 0.03$
AOD	20% $\pm 0.05$ (land) 5% $\pm 0.03$ (ocean)	$\pm 0.02$
Angstrom exponent	$\pm 0.4$	$\pm 0.01$
Refractive index	$\pm 0.01$	$\pm 0.01$
Aerosol height	$\pm 1$ km	$\pm 0.01$
Aerosol type	Smoke vs dust	$\pm 0.01$
Residual of fit	$\pm 0.05$	$\pm 0.02$

Uncertainty in shortwave integrated surface albedo from CERES results in the maximum uncertainty in SSA of  $\pm 0.03$ . MODIS retrieved aerosol optical depth contains considerable uncertainties due to assumed aerosol models (Jeong et al., 2005). The MODIS aerosol optical depth uncertainty is 20%  $\pm 0.05$  over land (Chu et al., 2002) and 5%  $\pm 0.03$  over the ocean (Remer et al., 2002). The corresponding error in our retrieval is  $\pm 0.02$ . For a typical variation of angstrom exponent ( $\pm 0.4$ ) and [imaginary part of the refractive index](#) ( $\pm 0.01$ ), the uncertainties vary depending on the surface albedo and are mostly around  $\pm 0.01$ .

Changes in aerosol height can vary the TOA radiances due to Rayleigh scattering interactions, which depend on pressure. Sensitivity to aerosol height was estimated by conducting a synthetic retrieval of SSA over a range of aerosol height values and perturbations from those heights. The average uncertainty observed for an aerosol height variation of  $\pm 1$  km was  $\pm 0.01$ . Many methods have been developed for detecting aerosol type, especially smoke vs. dust, to improve the uncertainties of various AOD and SSA retrievals.

Uncertainties due to possible variations on scales of the regions used for linear fitting were estimated as residuals of the fit. The uncertainty on the linear intercept is spatially dependent and is mostly around  $\pm 0.02$ , with higher values for those combinations having a slope close to zero during the regression. For highly correlated cases (i.e., correlation coefficient  $|r| > 0.5$ ), the probability of obtaining a slope close to zero is  $\sim 20\%$  over the ocean and  $< 5\%$  over land. These cases are mostly formed over regions where AOD variations are less. Regions having large variations in AOD values have lower uncertainty due to residual fit. [Adding in quadrature the total uncertainty estimated for CERES-MODIS algorithm is around  \$\pm 0.044\$ .](#)

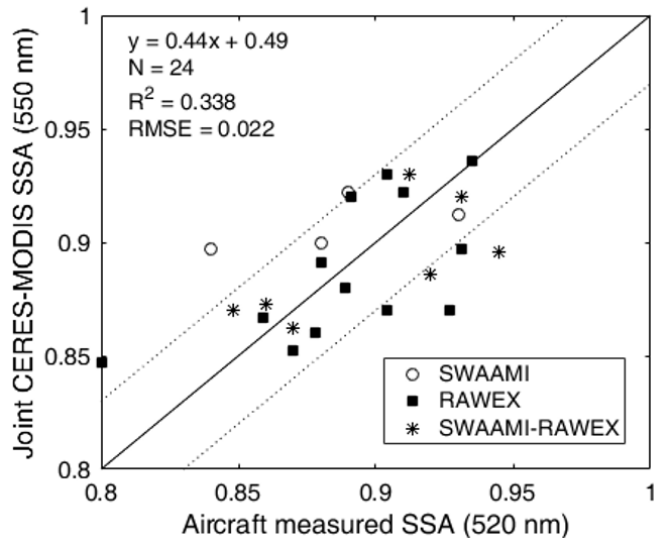
Overall, the algorithm is most sensitive to variations in surface albedo, followed by higher sensitivity towards AOD values used in the linear fit. Seasonal mean maps of surface albedo are shown in Fig S3. The uncertainties are higher for scattering aerosols over bright surfaces and absorbing aerosols above dark surfaces. Sensitivity to water vapor is almost negligible, except in very few cases where the uncertainty is  $\pm 0.008$ . The CERES-MODIS algorithm is most effective over regions with large AOD variations and less surface albedo variations.

## 6 Comparison with airborne observations

For the comparison of columnar SSA values thus retrieved, we have used aircraft-based measurements of SSA from three campaigns: South West Asian Aerosol Monsoon Interactions (SWAAMI), Regional Aerosol Warming Experiment (RAWEX), and SWAAMI-RAWEX, to obtain column-integrated SSA. Available data points over India and adjoining oceanic regions (Arabian Sea and Bay of Bengal) from these field campaigns were compared with the retrieved SSA.

Babu et al. (2016), as part of RAWEX (Moorthy et al., 2016), derived SSA at 520 nm from aircraft measurements of scattering and absorption coefficients over the Indo-Gangetic Plain (IGP) and Central India during winter 2012 and spring/pre-monsoon 2013. Various measurements of aerosol properties were carried out in an instrumented Beechcraft B200 aircraft of the National Remote Sensing Centre, India. Manoj et al. (2019) estimated vertical profiles of SSA during the SWAAMI campaign conducted during monsoon (June - July) 2016 over IGP, Arabian Sea, and Bay of Bengal. Aerosol scattering coefficients were measured aboard the Facility for Airborne Atmospheric Measurements (FAAM) BAe-146 aircraft. Vaishya et al. (2018) estimated vertical profiles of SSA (520 nm) using an instrumented aircraft, Beechcraft B200, during SWAAMI-RAWEX campaign (June 2016). Instrument design and calibration were based on Anderson et al., 1996 and its application for Indian field experiments was as described by Nair et al., 2009. Uncertainties in the scattering coefficient measurement by nephelometer are  $\sim\pm 10\%$ , as reported by Anderson et al., 1996. As stated by Babu et al., 2016 uncertainties in the columnar SSA values estimated from RAWEX aircraft measurements depend mainly on instrumental uncertainties, sampling errors, and large spatial averaging.

Retrieved SSA, for the same period as the campaign, over a  $2^\circ \times 2^\circ$  region around the campaign location was utilized for comparison. Figure 4 shows the comparison of collocated aircraft measurements and CERES-MODIS retrieved SSA. The ideal 1:1 case (solid line), the absolute difference of 0.03 (dotted lines), and regression coefficients are also provided.



**Figure 6.** Comparison of combined CERES-MODIS SSA with aircraft measurements during SWAAMI, RAWEX, and SWAAMI-RAWEX campaigns. The solid line shows the ideal 1:1 case and dotted lines represent the absolute difference of 0.03.

Most of the points were within the absolute difference of 0.03. However, there are few exceptions. SSA values over the Bay of Bengal during SWAAMI campaign were reported as  $0.84 \pm 0.07$  during June-July by Manoj et al. (2019), whereas CERES-MODIS retrieves a higher SSA of  $\sim 0.89$  for the same time period. This large variation could be due to frequent cloud cover during the monsoon season, leading to fewer SSA points retrieved over the ocean and land. SSA estimated over Nagpur in Central India during RAWEX is  $\sim 0.8$ , while CERES-MODIS retrieves  $\sim 0.85$ . This inconsistency is due to the large surface albedo variations (standard deviation  $> 0.05$ ) over Central India, which leads to fewer points available for retrieval. Except for few such cases, most of the other points lie within an absolute difference of 0.03.

10 For comparison purposes, many previous studies have used ground-level SSA data from AERONET obtained through inversion methods (Zhu et al., 2011; Jethva et al., 2014). Even in this study, only very few points were available for comparison due to the limited number of direct measurements of columnar SSA. Despite this limitation, this comparison exercise provided confidence to generate global maps of SSA following this method.



## 7 Comparison with AERONET data

The Aerosol Robotic Network is a ground-based worldwide federated network of Cimel Sun photometers that measure extinction AOD from direct Sun measurements (Holben et al., 1998). The spectral diffuse sky radiations measured at different angles are inverted in conjunction with direct Sun measurements to derive the spectral SSA (440, 675, 870, and 1020 nm) and size distribution (Dubovik and King., 2000). The estimated uncertainty in retrieved SSA is largely attributed to the uncertainties in instrument calibration and is within 0.03 for AOD (440 nm) larger than 0.4. (Dubovik et al., 2000,2002).

AERONET version 3, level 2.0 monthly average values from selected sites were compared with corresponding CERES-MODIS SSA data. Sites were chosen to represent various types of aerosols following that of Giles et al., 2012. The location of the sites is shown in Fig S2 and Table S3. Scatter plots of comparison of AERONET SSA and CERES-MODIS SSA are shown in Fig 7. AERONET SSA at 550 nm was estimated by interpolation between the values at 440 and 675 nm.

Most AERONET SSA values are above 0.85, even in case of biomass burning aerosols. For dust type of aerosols (sites: Capo\_Verde, Dakar, and Banizoumbaou), and mixed type of aerosol (sites: SEDE\_BOKER, Kanpur, Xiang He and Illorin) as shown in Fig 7a and 7b respectively, the AERONET and CERES-MODIS data shows good agreement. For urban (sites: GSFC, Mexico\_city, Shirahama, Ispra, and Moldova) and biomass (sites: Alta\_Floresta, Lake\_Argyle, and Mongu), only very few data were available during the study period of 2014-18 as shown in Fig 7 panels c and d. Data points combined from all the sites are plotted together in Fig 7e, showing a RMSE of 0.026. Overall, the resulting comparisons are agreeable within the uncertainties of both AERONET and CERES-MODIS datasets.

**Deleted:** (440 nm)

**Deleted:** (550 nm)

**Deleted:** ,

**Deleted:** have

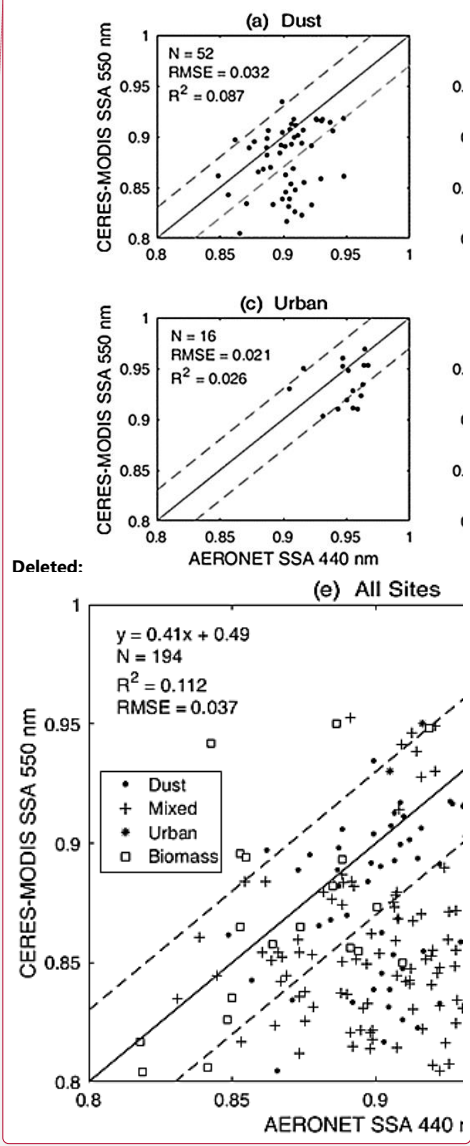
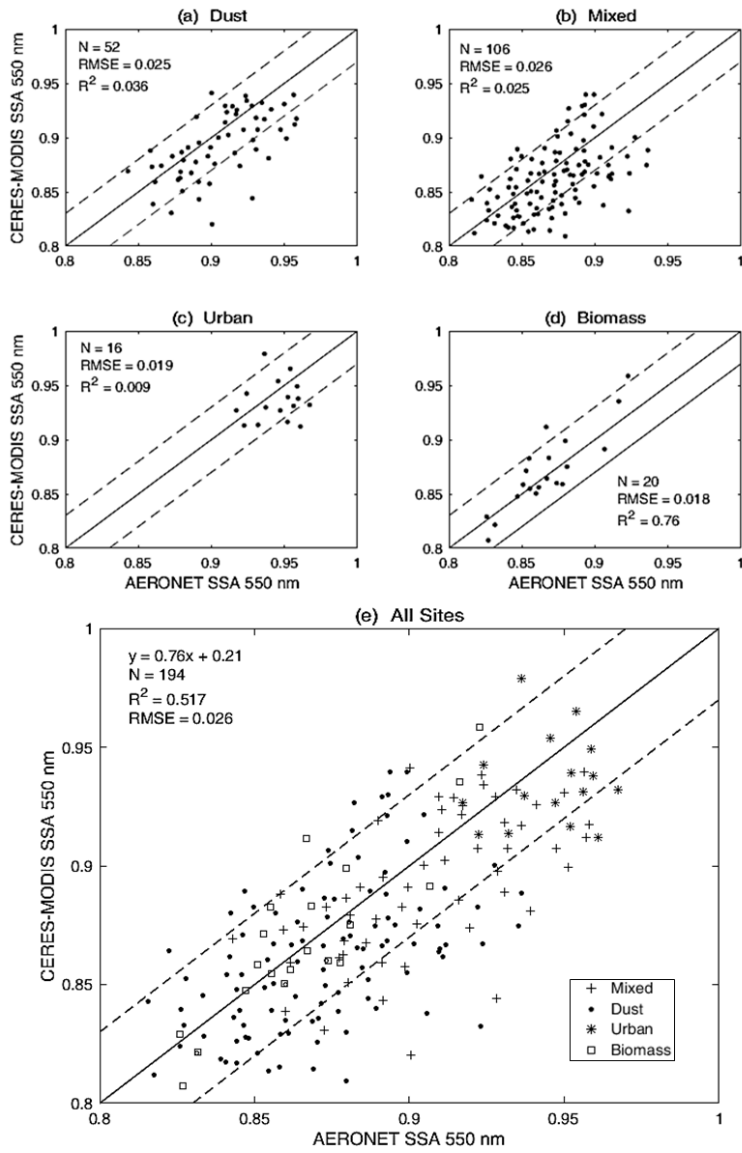
**Deleted:** better

**Deleted:** Whereas, in case of mixed type of aerosol (sites: SEDE\_BOKER, Kanpur, Xiang He and Illorin), most of the CERES-MODIS values are below 0.85, indicating highly absorbing type of aerosols (Fig 7b).

**Deleted:**

**Deleted:** 0.037

**Deleted:** The large difference between SSA wavelengths of AERONET (440 nm) and CERES-MODIS (550 nm) could contribute to the variations observed between these two datasets.



Deleted:

Deleted: 440

**Figure 7.** CERES-MODIS SSA (550 nm) vs. AERONET SSA (550 nm) for various AERONET sites classified based on the type of aerosols (Giles et al., 2012)

## 8. Summary and Conclusions

Global maps of aerosol absorptions were generated using the newly developed combined CERES-MODIS algorithm based on the concept of critical optical depth. The CERES-MODIS dataset was compared with OMI and POLDER SSA datasets. The retrieved SSA values were also compared with available aircraft measurements over India and surrounding oceanic regions, which showed that most retrieved SSA values are within  $\pm 0.03$ . We showed that the combined CERES-MODIS algorithm better captures the spatial and seasonal variations in aerosol absorption and the resultant maps provide an improved global SSA database with fewer data gaps. Global mean SSA was estimated to be 0.93 and 0.97 over land and ocean, respectively. Sensitivity analysis to various parameters indicate a mean uncertainty around  $\pm 0.044$  and shows maximum sensitivity to changes in surface albedo. The algorithm is shown to be the most effective over regions with large AOD variations and less surface albedo variations. Comparison with SSA from 15 AERONET sites showed an acceptable agreement between AERONET and CERES-MODIS SSA within their uncertainties. These global maps provide valuable input to models for assessing the aerosol-climate impacts on both regional and global scales.

### Deleted: ¶

Global maps of aerosol absorption have been generated following the concept of “critical optical depth”.¶  
The retrieved SSA values have been compared with available aircraft measurements. The limited comparison exercise shows that most of the retrieved SSA values are within  $\pm 0.03$ .¶  
We show that the combined CERES-MODIS algorithm better captures the spatial and seasonal variations in aerosol absorption and the resultant maps provide an improved global SSA database with fewer data gaps. Global mean SSA was estimated to be 0.93 and 0.97 over land and ocean, respectively.¶  
The algorithm’s sensitivity to various parameters have been studied, which shows maximum sensitivity to changes in surface albedo. The algorithm is shown to be the most effective over regions with large AOD variations and less surface albedo variations. ¶  
Comparison with SSA from 15 AERONET sites showed an acceptable agreement between AERONET and CERES-MODIS SSA, within their uncertainties.¶  
Overall, the combined CERES-MODIS algorithm provides global SSA maps with improved accuracy and better spatial coverage. These global maps provide valuable input for models to make assessment of aerosol-climate impacts on both regional and global scales.¶

Formatted: Font color: Auto

### Data Availability

MODIS and CERES data used in this study are available at <https://asdc.larc.nasa.gov/>. POLDER GRASP datasets are available at <https://www.grasp-open.com/products/>. AERONET station data were taken from <https://aeronet.gsfc.nasa.gov/>. The combined CERES-MODIS datasets are available upon request from the

5 corresponding author.

### Author Contributions

SKS conceptualized the method. AD developed the algorithm, carried out the simulations, and analyzed the data. AD wrote the manuscript with revisions from SKS.

### Competing interests

10 The authors declare they have no conflict of interest.

### Acknowledgment

The authors gratefully acknowledge the Atmospheric Science Data Center (ASDC) at NASA's Earth Observing System Data and Information System (EOSDIS) Distributed Active Archive Centers (DAACs) for providing MODIS, OMI, and CERES data products used in this study. The PARASOL/GRASP results are generated by

15 Laboratoire d'Optique Atmosphérique and Cloudflight Austria GmbH with the GRASP-OPEN software. We would like to thank the following principal investigators and their staff for maintaining the following sites: Phillipe Gouloub (Capo Verde), Didier Tanré (Dakar and Banizoumbou), Jean Louis Rajot (Banizoumbou), Arnon Karnieli (SEDE BOKER), Brent Holben (Kanpur, GSFC, Mexico City, Shirahama, Moldova, Alta Floresta and Mongu Inn), S N Tripathi (Kanpur), Pucai Wang and Xiangao Xia (XangHe), Rachel T Pinker (Ilorin), Itaru Sano

20 (Shirahama), Giuseppe Zibordi (Ispra), Alexander Aculinin (Moldova), Paulo Artaxo (Alta Floresta) and Ian Lau (Lake Argyle). In addition, one of the authors (S. K. Satheesh) acknowledges the JC Bose Fellowship awarded to him by SERB-Department of Science and Technology, New Delhi. This study is supported by "Tata Education and Development Trust." We thank the Editor and the two anonymous reviewers for their valuable feedback and suggestions that have vastly improved the manuscript.

25

## References

- Ahn, C., Torres, O. and Jethva, H.: Assessment of OMI near-UV aerosol optical depth over land, *J. Geophys. Res. Atmos.*, 119(5), 2457–2473, <https://doi.org/10.1002/2013JD020188>, 2014.
- Anderson, T. L., Charlson, R. J., Bellouin, N., Boucher, O., Chin, M., Christopher, S. A., Haywood, J., Kaufman, Y. J., Kinne, S., Ogren, J. A., Remer, L. A., Takemura, T., Tanré, D., Torres, O., Trepte, C. R., Wielicki, B. A., Winker, D. M. and Yu, H.: An “a-train” strategy for quantifying direct climate forcing by anthropogenic aerosols, *Bull. Am. Meteorol. Soc.*, 86(12), 1795–1809, doi:10.1175/BAMS-86-12-1795, 2005.
- Anderson, T. L., Covert, D. S., Marshall, S. F., Laucks, M. L., Charlson, R. J., Waggoner, A. P., Ogren, J. A., Caldow, R., Holm, R. L., Quant, F. R., Sem, G. J., Wiedensohler, A., Ahlquist, N. A., and Bates, T. S.: Performance Characteristics of a High-Sensitivity, Three-Wavelength, Total Scatter/Backscatter Nephelometer, *J. Atmos. Ocean. Technol.*, 13, 967–986, [https://doi.org/10.1175/1520-0426\(1996\)013](https://doi.org/10.1175/1520-0426(1996)013), 1996.
- Babu, S. S., Moorthy, K. K., Manchanda, R. K., Sinha, P. R., Satheesh, S. K., Vajja, D. P., Srinivasan, S. and Kumar, V. H. A.: Free tropospheric black carbon aerosol measurements using high altitude balloon: Do BC layers build “their own homes” up in the atmosphere?, *Geophys. Res. Lett.*, 38(8), doi:10.1029/2011GL046654, 2011.
- Babu, S. S., Nair, V. S., Gogoi, M. M. and Moorthy, K. K.: Seasonal variation of vertical distribution of aerosol single scattering albedo over Indian sub-continent: RAWEX aircraft observations, *Atmos. Environ.*, 125, 312–323, doi:10.1016/j.atmosenv.2015.09.041, 2016.
- Bergstrom, R. W., Pilewskie, P., Schmid, B. and Russell, P. B.: Estimates of the spectral aerosol single scattering albedo and aerosol radiative effects during SAFARI 2000, *J. Geophys. Res. Atmos.*, 108(D13), <https://doi.org/10.1029/2002JD002435>, 2003.
- IPCC – Intergovernmental Panel on Climate Change: The physical science basis: Contribution of Working Group I to the Fifth Assessment Report of the Intergovernmental Panel on Climate Change, in: *Climate Change (2013)*, edited by: Stocker, T. F., Qin, D., Plattner, G. K., Tignor, M., Allen, S. K., Boschung, J., Nauels, A., Xia, Y., Bex, V., and Midgley, P. M., Cambridge University, Press, Cambridge, UK and New York, NY, USA, 1535 pp., <https://doi.org/10.1017/CBO9781107415324>, 2013.
- Chand, D., Wood, R., Anderson, T. L., Satheesh, S. K., and Charlson, R. J.: Satellite-derived direct radiative effect of aerosols dependent on cloud cover, *Nat. Geosci.*, 2, 181–184, <https://doi.org/10.1038/ngeo437>, 2009.
- [Chen, C., Dubovik, O., Fuertes, D., Litvinov, P., Lapyonok, T., Lopatin, A., Ducos, F., Derimian, Y., Herman, M., Tanré, D., Remer, L. A., Lyapustin, A., Sayer, A. M., Levy, R. C., Christina Hsu, N., Descloitres, J., Li, L., Torres, B., Karol, Y., Herrera, M., Herreras, M., Aspetsberger, M., Wanzenboeck, M., Bindreiter, L., Marth, D., Hangler, A., and Federspiel, C.: Validation of GRASP algorithm product from POLDER/PARASOL data and assessment of multi-angular polarimetry potential for aerosol monitoring, \*Earth Syst. Sci. Data\*, 12, 3573–3620, <https://doi.org/10.5194/ESSD-12-3573-2020>, 2020.](https://doi.org/10.5194/ESSD-12-3573-2020)

- Chu, D. A., Kaufman, Y. J., Ichoku, C., Remer, L. A., Tanré, D., and Holben, B. N.: Validation of MODIS aerosol optical depth retrieval over land, *Geophys. Res. Lett.*, 29, MOD2-1, <https://doi.org/10.1029/2001GL013205>, 2002
- Deepshikha, S., Satheesh, S. K. and Srinivasan, J.: Regional distribution of absorbing efficiency of dust aerosols over India and adjacent continents inferred using satellite remote sensing, *Geophys. Res. Lett.*, 32(3), 1–4, doi:10.1029/2004GL022091, 2005.
- Dubovik, O., Holben, B., Eck, T. F., Smirnov, A., Kaufman, Y. J., King, M. D., Tanré, D., and Slutsker, I.: Variability of Absorption and Optical Properties of Key Aerosol Types Observed in Worldwide Locations. *Journal of the Atmospheric Sciences* 59, 3, 590-608, [https://doi.org/10.1175/1520-0469\(2002\)059<0590:VOAAOP>2.0.CO;2](https://doi.org/10.1175/1520-0469(2002)059<0590:VOAAOP>2.0.CO;2), 2002
- 10 Eswaran, K., Satheesh, S. K. and Srinivasan, J.: Multi-satellite retrieval of single scattering albedo using the OMI–MODIS algorithm, *Atmos. Chem. Phys.*, 19(5), 3307–3324, doi:10.5194/acp-19-3307-2019, 2019.
- Fraser, R. S. and Kaufman, Y. J., “The Relative Importance of Aerosol Scattering and Absorption in Remote Sensing,” in *IEEE Transactions on Geoscience and Remote Sensing*, vol. GE-23, no. 5, pp. 625-633, Sept. 1985, doi: 10.1109/TGRS.1985.289380.
- 15 Giles, D. M., Holben, B. N., Eck, T. F., Sinyuk, A., Smirnov, A., Slutsker, I., Dickerson, R. R., Thompson, A. M., and Schafer, J. S.: An analysis of AERONET aerosol absorption properties and classifications representative of aerosol source regions, *J. Geophys. Res. Atmos.*, 117, 17203, <https://doi.org/10.1029/2012JD018127>, 2012.
- Govardhan, G., Satheesh, S. K., Moorthy, K. K. and Nanjundiah, R.: Simulations of black carbon over the Indian region: improvements and implications of diurnality in emissions, *Atmos. Chem. Phys.*, 19(12), 8229–8241, doi:10.5194/acp-19-8229-2019, 2019.
- 20 Haywood, J. M., Francis, P. N., Glew, M. D. and Taylor, J. P.: Optical properties and direct radiative effect of Saharan dust: A case study of two Saharan dust outbreaks using aircraft data, *J. Geophys. Res. Atmos.*, 106(D16), 18417–18430, doi:10.1029/2000JD900319 @ 10.1002/ (ISSN)2169-8996.DUST1, 2001.
- Hammer, M. S., Martin, R. V., Li, C., Torres, O., Manning, M., and Boys, B. L.: Insight into global trends in aerosol composition from 2005 to 2015 inferred from the OMI Ultraviolet Aerosol Index, *Atmos. Chem. Phys.*, 18, 8097–8112, <https://doi.org/10.5194/acp-18-8097-2018>, 2018.
- 25 Hsu, N. C., Herman, J. R. and Weaver, C.: Determination of radiative forcing of Saharan dust using combined TOMS and ERBE data, *J. Geophys. Res. Atmos.*, 105(16), 20649–20661, doi:10.1029/2000jd900150, 2000.
- Hsu, N. C., Tsay, S. C., King, M. D. and Herman, J. R.: Aerosol properties over bright-reflecting source regions, *IEEE Trans. Geosci. Remote Sens.*, 42(3), 557–569, doi:10.1109/TGRS.2004.824067, 2004.
- 30 Hsu, N. C., Jeong, M. J., Bettenhausen, C., Sayer, A. M., Hansell, R., Seftor, C. S., Huang, J., and Tsay, S. C.: Enhanced Deep Blue aerosol retrieval algorithm: The second generation, *J. Geophys. Res. Atmos.*, 118, 9296–9315, <https://doi.org/10.1002/jgrd.50712>, 2013.

- Hu, R. -M., Martin, R. V. and Fairlie, T. D.: Global retrieval of columnar aerosol single scattering albedo from space-based observations, *J. Geophys. Res. Atmos.*, 112(D2), doi:10.1029/2005JD006832, 2007.
- Hu, R. M., Sokhi, R. S. and Fisher, B. E. A.: New algorithms and their application for satellite remote sensing of surface PM<sub>2.5</sub> and aerosol absorption, *J. Aerosol Sci.*, 40(5), 394–402, doi:10.1016/j.jaerosci.2009.01.005, 2009.
- 5 Jeong, M. J., Li, Z., Chu, D. A., and Tsay, S. C.: Quality and compatibility analyses of global aerosol products derived from the advanced very high resolution radiometer and Moderate Resolution Imaging Spectroradiometer, *J. Geophys. Res. Atmos.*, 110, 1–16, <https://doi.org/10.1029/2004JD004648>, 2005.
- Jeong, M. J. and Hsu, N. C.: Retrievals of aerosol single-scattering albedo and effective aerosol layer height for biomass-burning smoke: Synergy derived from “A-Train” sensors, *Geophys. Res. Lett.*, 35(24), L24801, doi:10.1029/2008GL036279, 2008.
- 10 Jethva, H., Torres, O., and Ahn, C.: A 12-year long global record of optical depth of absorbing aerosols above the clouds derived from the OMI/OMACA algorithm, *Atmos. Meas. Tech.*, 11, 5837–5864, <https://doi.org/10.5194/amt-11-5837-2018>, 2018.
- Jethva, H. and Torres, O.: A comparative evaluation of Aura-OMI and SKYNET near-UV single-scattering albedo products, *Atmos. Meas. Tech.*, 12(12), 6489–6503, <https://doi.org/10.5194/amt-12-6489-2019>, 2019.
- 15 Justice, C. O., Kendall, J. D., Dowty, P. R. and Scholes, R. J.: Satellite remote sensing of fires during the SAFARI campaign using NOAA Advanced Very High Resolution Radiometer data, *J. Geophys. Res. Atmos.*, 101(D19), 23851–23863, <https://doi.org/10.1029/95JD00623>, 1996.
- Kaufman, Y. J.: Satellite sensing of aerosol absorption., *J. Geophys. Res.*, 92(D4), 4307–4317, doi:10.1029/JD092iD04p04307, 1987.
- 20 Kaufman, Y. J. and Joseph, J. H.: Determination of surface albedos and aerosol extinction characteristics from satellite imagery., *J. Geophys. Res.*, 87(C2), 1287–1299, <https://doi.org/10.1029/JC087iC02p01287>, 1982.
- Kaufman, Y. J., Fraser, R. S., and Ferrare, R. A.: Satellite measurements of large-scale air pollution: methods, *J. Geophys. Res.*, 95, 9895–9909, <https://doi.org/10.1029/JD095iD07p09895>, 1990.
- 25 Kaufman, Y. J., Tanré, D., Dubovik, O., Karnieli, A., and Remer, L. A.: Absorption of sunlight by dust as inferred from satellite and ground-based remote sensing, *Geophys. Res. Lett.*, 28, 1479–1482, <https://doi.org/10.1029/2000GL012647>, 2001.
- Kaufman, Y. J., Tanré, D. and Boucher, O.: A satellite view of aerosols in the climate system, *Nature*, 419(6903), 215–223, <https://doi.org/10.1038/nature01091>, 2002.
- 30 Kaufman, Y. J., Tanré, D., Dubovik, O., Karnieli, A. and Remer, L. A.: Absorption of sunlight by dust as inferred from satellite and ground-based remote sensing, *Geophys. Res. Lett.*, 28(8), 1479–1482, doi:10.1029/2000GL012647, 2001.

Lenoble, J., Remer, L. and Tanre, D. eds.: Aerosol remote sensing. Springer Science & Business Media, 2013.

Levy, R. C., Remer, L. A., Mattoo, S., Vermote, E. F. and Kaufman, Y. J.: Second-generation operational algorithm: Retrieval of aerosol properties over land from inversion of Moderate Resolution Imaging Spectroradiometer spectral reflectance, *J. Geophys. Res. Atmos.*, 112(13), doi:10.1029/2006JD007811, 2007.

5 Levy, R. C., Remer, L. A., and Dubovik, O.: Global aerosol optical properties and application to Moderate Resolution Imaging Spectroradiometer aerosol retrieval over land, *J. Geophys. Res. Atmos.*, 112, 13210, <https://doi.org/10.1029/2006JD007815>, 2007. Levy, R. C., Mattoo, S., Munchak, L. A., Remer, L. A., Sayer, A. M., Patadia, F. and Hsu, N. C.: The Collection 6 MODIS aerosol products over land and ocean, *Atmos. Meas. Tech.*, 6(11), 2989–3034, doi:10.5194/amt-6-2989-2013, 2013.

10 Manoj, M. R., Satheesh, S. K., Moorthy, K. K. and Coe, H.: Vertical profiles of sub-micron aerosol single scattering albedo over Indian region immediately before monsoon onset and during its development: Research from the SWAAMI field campaign, *Atmos. Chem. Phys. Discuss.*, 1–29, doi:10.5194/acp-2019-657, 2019.

Moorthy, K. K., Satheesh, S. K. and Kotamarthi, V. R.: Evolution of aerosol research in India and the RAWEX–GVAX: an overview, *Curr. Sci.*, 111, 53–75, doi:10.2307/24910009, 2016.

15 Nair, V. S., Krishna Moorthy, K., Suresh Babu, S., and Satheesh, S. K.: Optical and Physical Properties of Atmospheric Aerosols over the Bay of Bengal during ICARB, *J. Atmos. Sci.*, 66, 2640–2658, <https://doi.org/10.1175/2009JAS3032.1>, 2009.

Narasimhan, D. and Satheesh, S. K.: Estimates of aerosol absorption over India using multi-satellite retrieval, *Ann. Geophys.*, 31(10), 1773–1778, doi:10.5194/angeo-31-1773-2013, 2013.

20 Remer, L. A., Tanré, D., Kaufman, Y. J., Ichoku, C., Mattoo, S., Levy, R., Chu, D. A., Holben, B., Dubovik, O., Smirnov, A., Martins, J. V., Li, R. R., and Ahmad, Z.: Validation of MODIS aerosol retrieval over ocean, *Geophys. Res. Lett.*, 29, MOD3-1, <https://doi.org/10.1029/2001GL013204>, 2002.

25 Remer, L. A., Kleidman, R. G., Levy, R. C., Kaufman, Y. J., Tanré, D., Mattoo, S., Martins, J. V., Ichoku, C., Koren, I., Yu, H., and Holben, B. N.: Global aerosol climatology from the MODIS satellite sensors, *J. Geophys. Res. Atmos.*, 113, 14–21, <https://doi.org/10.1029/2007JD009661>, 2008.

Rutan, D. A., Kato, S., Doelling, D. R., Rose, F. G., Nguyen, L. T., Caldwell, T. E. and Loeb, N. G.: CERES Synoptic Product: Methodology and Validation of Surface Radiant Flux, *J. Atmos. Ocean. Technol.*, 32(6), 1121–1143, doi:10.1175/JTECH-D-14-00165.1, 2015.

30 Satheesh, S. K. and Srinivasan, J.: A method to infer short wave absorption due to aerosols using satellite remote sensing, *Geophys. Res. Lett.*, 32(13), 1–4, doi:10.1029/2005GL023064, 2005.

Satheesh, S. K., Krishna Moorthy, K., Suresh Babu, S., Vinoj, V. and Dutt, C. B. S.: Climate implications of large warming by elevated aerosol over India, *Geophys. Res. Lett.*, 35(19), L19809, doi:10.1029/2008GL034944, 2008.



- Satheesh, S. K., Torres, O., Remer, L. A., Babu, S. S., Vinoj, V., Eck, T. F., Kleidman, R. G. and Holben, B. N.: Improved assessment of aerosol absorption using OMI-MODIS joint retrieval, *J. Geophys. Res. Atmos.*, 114(5), D05209, doi:10.1029/2008JD011024, 2009.
- 5 Sayer, A. M., Hsu, N. C., Bettenhausen, C. and Jeong, M. J.: Validation and uncertainty estimates for MODIS Collection 6 “deep Blue” aerosol data, *J. Geophys. Res. Atmos.*, 118(14), 7864–7872, doi:10.1002/jgrd.50600, 2013.
- Seidel, F. C. and Popp, C.: Critical surface albedo and its implications to aerosol remote sensing, *Atmos. Meas. Tech.*, 5, 1653–1665, <https://doi.org/10.5194/AMT-5-1653-2012>, 2012.
- 10 Stammes, K., Tsay, S.-C., Wiscombe, W. and Jayaweera, K.: Numerically stable algorithm for discrete-ordinate-method radiative transfer in multiple scattering and emitting layered media, *Appl. Opt.*, 27(12), 2502, doi:10.1364/ao.27.002502, 1988.
- Torres, O., Bhartia, P. K., Herman, J. R., Sinyuk, A., Ginoux, P. and Holben, B.: A long-term record of aerosol optical depth from TOMS observations and comparison to AERONET measurements, *J. Atmos. Sci.*, 59(3 PT 1), 398–413, [https://doi.org/10.1175/1520-0469\(2002\)059<0398:altroa>2.0.co;2](https://doi.org/10.1175/1520-0469(2002)059<0398:altroa>2.0.co;2), 2002.
- 15 Torres, O., Bhartia, P.K., Sinyuk, A., Welton, E.J. and Holben, B.: Total Ozone Mapping Spectrometer measurements of aerosol absorption from space: Comparison to SAFARI 2000 ground-based observations. *Journal of Geophysical Research: Atmospheres*, 110(D10), 2005.
- Torres, O., Tanskanen, A., Veihelmann, B., Ahn, C., Braak, R., Bhartia, P. K., Veefkind, P., and Levelt, P.: Aerosols and surface UV products from Ozone Monitoring Instrument observations: An overview, *J. Geophys. Res. Atmos.*, 112, [https://doi.org/10.1029/2007JD008809@10.1002/\(ISSN\)2169-8996.AURA1](https://doi.org/10.1029/2007JD008809@10.1002/(ISSN)2169-8996.AURA1), 2007.
- 20 Torres, O., Ahn, C. and Chen, Z.: Improvements to the OMI near-UV aerosol algorithm using A-train CALIOP and AIRS observations, *Atmos. Meas. Tech.*, 6(11), 3257–3270, <https://doi.org/10.5194/amt-6-3257-2013>, 2013.
- Vaishya, A., Babu, S. N. S., Jayachandran, V., Gogoi, M. M., Lakshmi, N. B., Moorthy, K. K. and Satheesh, S. K.: Large contrast in the vertical distribution of aerosol optical properties and radiative effects across the Indo-Gangetic Plain during the SWAAMI-RAWEX campaign, *Atmos. Chem. Phys.*, 18(23), 17669–17685, doi:10.5194/acp-18-17669-2018, 2018.
- 25 Wells, K. C., Martins, J. V., Remer, L. A., Kreidenweis, S. M., and Stephens, G. L.: Critical reflectance derived from MODIS: Application for the retrieval of aerosol absorption over desert regions, *J. Geophys. Res. Atmos.*, 117, 3202, <https://doi.org/10.1029/2011JD016891>, 2012.
- 30 Wielicki, B. A., Barkstrom, B. R., Harrison, E. F., Lee, R. B., Smith, G. L. and Cooper, J. E.: Clouds and the Earth’s Radiant Energy System (CERES): An Earth Observing System Experiment, *Bull. Am. Meteorol. Soc.*, 77(5), 853–868, doi:10.1175/1520-0477(1996)077<0853:CATERE>2.0.CO;2, 1996.
- Wooster, M. J.: Boreal forest fires burn less intensely in Russia than in North America, *Geophys. Res. Lett.*,

31(20), L20505, <https://doi.org/10.1029/2004GL020805>, 2004.

Zhu, L., Martins, J. V. and Remer, L. A.: Biomass burning aerosol absorption measurements with MODIS using the critical reflectance method, *J. Geophys. Res. Atmos.*, 116(7), D07202, doi:10.1029/2010JD015187, 2011.

## Supplementary Material

### Global maps of aerosol single scattering albedo using combined CERES-MODIS retrieval

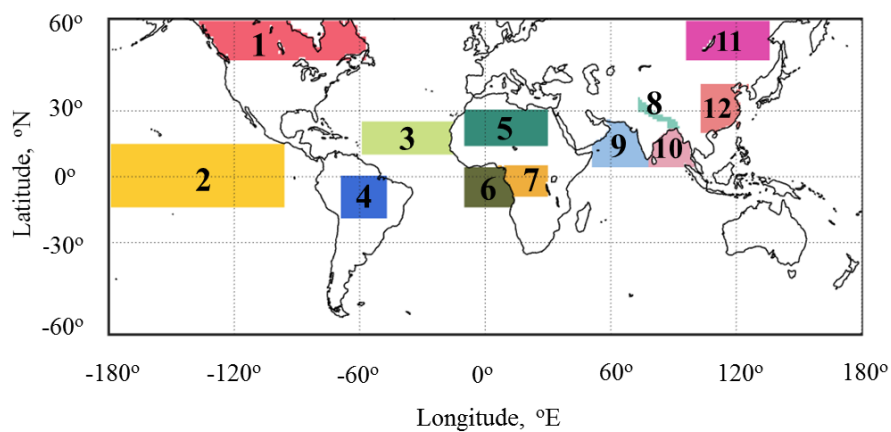
Archana Devi<sup>1</sup>, Sreedharan K Satheesh<sup>1,2,3</sup>

<sup>1</sup>Centre for Atmospheric and Oceanic Sciences, Indian Institute of Science, Bengaluru, India

<sup>2</sup>Divecha Centre for Climate Change, Indian Institute of Science, Bengaluru, India

<sup>3</sup>DST Centre of Excellence in Climate Change, Indian Institute of Science, Bengaluru, India

Correspondence to: Archana Devi (archana.shiva13@gmail.com)



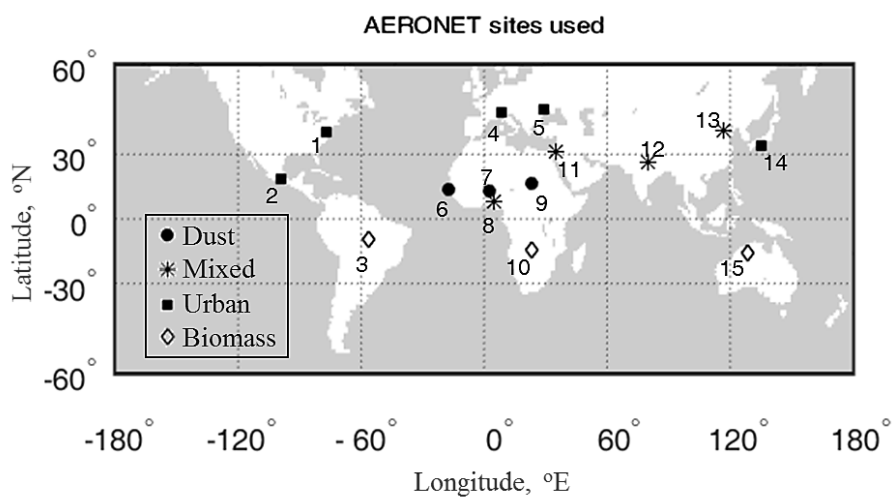
**Figure S1.** Regions of interest (ROI). Details of each region are provided in Table S1

**Table S1.** Details of the regions shown in Fig. S1

ROI No:	Region	General aerosol characteristics	Lat limit, °N	Lon limit, °E
1	Canadian Boreal Forest	Relatively pristine with seasonal biomass burning	48 to 60	-140 to -58
2	Eastern Pacific	Less polluted oceanic region	-15 to 15	-180 to -97
3	North East Atlantic	Highly polluted by dust transport and continental outflow from biomass burning	10 to 25	-60 to -10
4	Amazon	Relatively pristine with seasonal biomass burning	-20 to 0	-70 to -48
5	Sahara	Desert region with seasonal dust storms	14 to 30	-11 to 28
6	Southeast Atlantic	Highly polluted by dust transport and continental outflow from biomass burning	-15 to 4	-11 to 15
7	South African Forest	Relatively pristine with seasonal biomass burning	-10 to 5	3 to 29
8	Indo Gangetic Plain	A highly polluted industrial region with seasonal stubble burning and dust from the Thar desert	22 to 35	72 to 92
9	Arabian Sea	Continental outflow of pollution and dust	4 to 26	50 to 77
10	Bay of Bengal	Continental outflow of pollution	4 to 24	77 to 99
11	Russian Boreal Forest	Relatively pristine with seasonal biomass burning	48 to 60	95 to 135
12	Eastern China	A highly polluted industrial region	20 to 40	102 to 125

**Table S2.** Seasonal mean SSA over regions of interest from combined CERES-MODIS, OMI (given in round brackets) and POLDER (given in square brackets). Details of these regions are given in Table S1 and Fig. S1

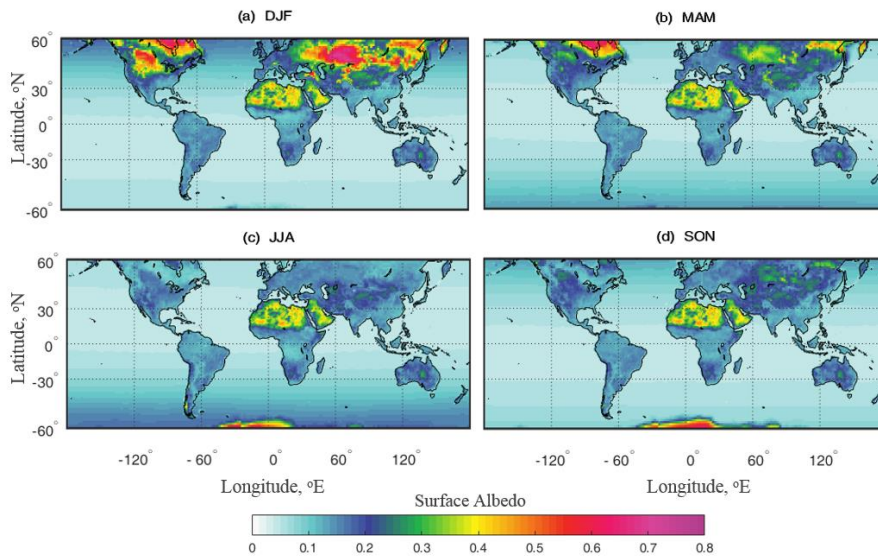
Region	CERES-MODIS SSA 550 nm (OMI SSA 500 nm) [POLDER SSA 565 nm]			
	DJF	MAM	JJA	SON
Canadian Boreal Forest	0.96 ± 0.02 (0.95 ± 0.02) [0.96 ± 0.04]	0.96 ± 0.02 (0.94 ± 0.01) [0.84 ± 0.05]	0.91 ± 0.02 (0.94 ± 0.01) [0.89 ± 0.04]	0.94 ± 0.02 (0.93 ± 0.01) [0.90 ± 0.05]
Russian Boreal Forest	0.91 ± 0.02 (0.95 ± 0.02) [0.81 ± 0.08]	0.92 ± 0.01 (0.94 ± 0.01) [0.89 ± 0.03]	0.83 ± 0.01 (0.94 ± 0.01) [0.91 ± 0.03]	0.90 ± 0.01 (0.93 ± 0.01) [0.89 ± 0.05]
South African Forest	0.96 ± 0.02 (0.93 ± 0.01) [0.84 ± 0.03]	0.98 ± 0.01 (0.94 ± 0.01) [0.90 ± 0.03]	0.97 ± 0.02 (0.93 ± 0.01) [0.88 ± 0.03]	0.89 ± 0.02 (0.94 ± 0.01) [0.85 ± 0.05]
Amazon Forest	0.96 ± 0.02 (0.95 ± 0.01) [0.84 ± 0.07]	0.98 ± 0.01 (0.95 ± 0.01) [0.91 ± 0.05]	0.97 ± 0.02 (0.93 ± 0.01) [0.92 ± 0.02]	0.89 ± 0.02 (0.94 ± 0.01) [0.87 ± 0.04]
North East Atlantic	0.96 ± 0.02 (0.90 ± 0.01) [0.94 ± 0.03]	0.94 ± 0.02 (0.92 ± 0.01) [0.93 ± 0.01]	0.92 ± 0.02 (0.95 ± 0.01) [0.93 ± 0.02]	0.93 ± 0.03 (0.94 ± 0.01) [0.94 ± 0.01]
South East Atlantic	0.92 ± 0.02 (0.92 ± 0.01) [0.88 ± 0.04]	0.94 ± 0.02 (0.92 ± 0.01) [0.94 ± 0.01]	0.89 ± 0.01 (0.91 ± 0.01) [0.88 ± 0.03]	0.92 ± 0.02 (0.94 ± 0.01) [0.89 ± 0.03]
Eastern Pacific	0.97 ± 0.01 (0.94 ± 0.02) [0.97 ± 0.01]	0.97 ± 0.01 (0.95 ± 0.02) [0.95 ± 0.02]	0.96 ± 0.01 (0.95 ± 0.02) [0.95 ± 0.02]	0.97 ± 0.01 (0.95 ± 0.02) [0.93 ± 0.03]
Sahara	0.93 ± 0.01 (0.92 ± 0.01) [0.90 ± 0.03]	0.93 ± 0.01 (0.93 ± 0.01) [0.88 ± 0.03]	0.91 ± 0.02 (0.94 ± 0.01) [0.87 ± 0.04]	0.92 ± 0.02 (0.93 ± 0.01) [0.90 ± 0.03]
Indo Gangetic Plain	0.88 ± 0.01 (0.92 ± 0.01) [0.89 ± 0.01]	0.87 ± 0.01 (0.92 ± 0.01) [0.83 ± 0.02]	0.85 ± 0.02 (0.95 ± 0.01) [0.77 ± 0.03]	0.83 ± 0.01 (0.92 ± 0.01) [0.89 ± 0.01]
Eastern China	0.92 ± 0.01 (0.92 ± 0.01) [0.91 ± 0.01]	0.90 ± 0.01 (0.94 ± 0.01) [0.87 ± 0.02]	0.87 ± 0.01 (0.95 ± 0.01) [0.84 ± 0.04]	0.88 ± 0.02 (0.93 ± 0.01) [0.91 ± 0.03]
Arabian Sea	0.92 ± 0.01 (0.91 ± 0.02) [0.94 ± 0.02]	0.89 ± 0.01 (0.93 ± 0.01) [0.92 ± 0.02]	0.91 ± 0.01 (0.96 ± 0.01) [0.94 ± 0.02]	0.89 ± 0.01 (0.93 ± 0.02) [0.93 ± 0.02]
Bay of Bengal	0.91 ± 0.01 (0.92 ± 0.01) [0.93 ± 0.02]	0.90 ± 0.01 (0.94 ± 0.01) [0.91 ± 0.02]	0.91 ± 0.02 (0.95 ± 0.01) [0.95 ± 0.02]	0.91 ± 0.02 (0.94 ± 0.02) [0.93 ± 0.03]



**Figure S2.** Map showing location of AERONET sites used in this study. The type of aerosols (dust, mixed, urban and biomass) were as defined in Giles et al., 2012

**Table S3:** Name of AERONET site as shown in Fig. S2

No.	Name	No.	Name	No.	Name
1	GSFC	6	Capo_Verde	11	SEDE_BOKER
2	Mexico_City	7	Dakar	12	Kanpur
3	Alta_Floresta	8	Illorin	13	XiangHe
4	Ispra	9	Banizoumbou	14	Shirahama
5	Moldova	10	Mongu	15	Lake_Argyle



**Figure S3.** Seasonal mean shortwave-integrated surface albedo from CERES

**Table S4.** Shortwave integrated seasonal mean surface albedo from CERES over regions of interest. Details of these regions are given in Table S1 and Fig. S1

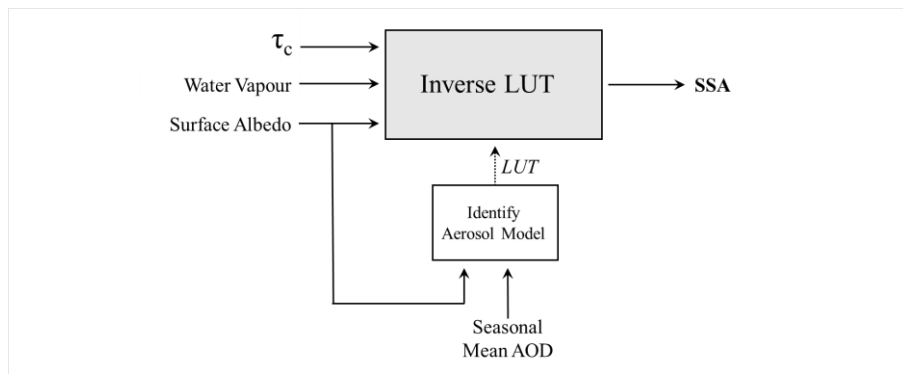
Region	Surface Albedo			
	DJF	MAM	JJA	SON
Canadian Boreal Forest	$0.36 \pm 0.13$	$0.30 \pm 0.12$	$0.12 \pm 0.03$	$0.16 \pm 0.05$
Russian Boreal Forest	$0.37 \pm 0.10$	$0.27 \pm 0.08$	$0.13 \pm 0.02$	$0.20 \pm 0.05$
South African Forest	$0.12 \pm 0.01$	$0.13 \pm 0.01$	$0.12 \pm 0.02$	$0.13 \pm 0.01$
Amazon Forest	$0.14 \pm 0.01$	$0.14 \pm 0.01$	$0.13 \pm 0.02$	$0.14 \pm 0.02$
North East Atlantic	$0.06 \pm 0.01$	$0.05 \pm 0.01$	$0.05 \pm 0.01$	$0.05 \pm 0.01$
South East Atlantic	$0.05 \pm 0.01$	$0.05 \pm 0.01$	$0.05 \pm 0.01$	$0.05 \pm 0.01$
Eastern Pacific	$0.05 \pm 0.01$	$0.05 \pm 0.00$	$0.05 \pm 0.01$	$0.05 \pm 0.00$
Sahara	$0.35 \pm 0.06$	$0.34 \pm 0.06$	$0.34 \pm 0.06$	$0.34 \pm 0.06$
Indo Gangetic Plain	$0.13 \pm 0.02$	$0.13 \pm 0.02$	$0.14 \pm 0.02$	$0.13 \pm 0.01$
Eastern China	$0.13 \pm 0.04$	$0.13 \pm 0.03$	$0.13 \pm 0.03$	$0.13 \pm 0.03$
Arabian Sea	$0.06 \pm 0.01$	$0.05 \pm 0.01$	$0.05 \pm 0.02$	$0.05 \pm 0.01$
Bay of Bengal	$0.05 \pm 0.01$	$0.05 \pm 0.01$	$0.05 \pm 0.01$	$0.05 \pm 0.01$

**Deleted: Table S5:** Normalized extinction coefficient of the aerosol model

## Details of aerosol models used

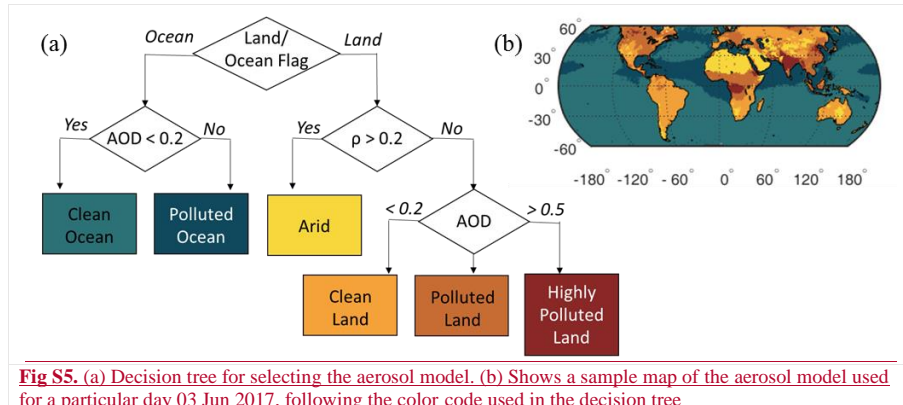
The aerosol models used are from OPAC (Optical Properties of Aerosols and Clouds), developed by Hess et al., (1998). The existing mixture of aerosol types in OPAC is used – clean ocean, polluted ocean, arid, clean land, polluted land, and highly polluted land.

A LUT is indexed by surface albedo, water vapour, and SSA. The LUT of the aerosol type selected for the pixel is used to compute SSA from  $\tau_c$ .



**Fig S4.** An inverse look-up is performed to computer SSA from  $\tau_c$ . Details of the “Identify Aerosol Model” block are shown in Fig S5.

The aerosol type is selected based on geographical location (Ocean/land, surface albedo) and aerosol loading (AOD).



**Fig S5.** (a) Decision tree for selecting the aerosol model. (b) Shows a sample map of the aerosol model used for a particular day 03 Jun 2017, following the color code used in the decision tree

**Deleted: Table S6:** Phase function of the aerosol model (continued into Table S7)

**Deleted: Table S7:** Phase function of aerosol model



**Table S5.** Components of the mixed aerosol types used

Aerosol Type	Components	Number density (1/cm <sup>3</sup> )	Number mixing ratio	Volume mixing ratio	Mass mixing ratio
clean ocean	waso	1.50E+03	9.87E-01	6.44E-02	7.05E-02
	ssam	2.00E+01	1.32E-02	9.15E-01	9.09E-01
	sscm	3.20E-03	2.11E-06	2.03E-02	2.01E-02
Polluted ocean	waso	3.80E+03	4.22E-01	1.47E-01	1.60E-01
	soot	5.18E+03	5.76E-01	8.53E-03	6.53E-03
	ssam	2.00E+01	2.22E-03	8.26E-01	8.15E-01
	sscm	3.20E-03	3.56E-07	1.83E-02	1.80E-02
Arid	waso	2.00E+03	8.70E-01	3.19E-02	1.77E-02
	minm	2.70E+02	1.17E-01	3.26E-02	3.31E-02
	miam	3.05E+01	1.33E-02	7.35E-01	7.46E-01
	micm	1.42E-01	6.17E-05	2.00E-01	2.03E-01
Clean land	inso	1.50E-01	5.77E-05	3.27E-01	4.07E-01
	waso	2.60E+03	1.00E+00	6.73E-01	5.93E-01
Polluted land	inso	4.00E-01	2.61E-05	3.15E-01	3.96E-01
	waso	7.00E+03	4.58E-01	6.53E-01	5.83E-01
	soot	8.30E+03	5.43E-01	3.29E-02	2.07E-02
Highly polluted land	inso	6.00E-01	1.20E-05	2.28E-01	2.99E-01
	waso	1.57E+04	3.14E-01	7.07E-01	6.58E-01
	soot	3.43E+04	6.86E-01	6.56E-02	4.31E-02
** inso – insoluble waso – water soluble ssam – sea salt (accumulation mode) sscm – sea salt (coarse mode) minm – mineral (nuclei mode) miam – mineral (accumulation mode) micm – mineral (coarse mode)					

\* More details such as refractive index and size distributions can be referred to in Hess et al 1998

**Table S6.** Normalized extinction coefficient for each aerosol type

Aerosol Type	Wavelength (microns)											
	0.25	0.35	0.45	0.55	0.65	0.75	0.90	1.25	2.00	3.00	3.39	4.00
Clean ocean	1.13	1.06	1.03	1.00	0.98	0.96	0.93	0.84	0.60	0.57	0.45	0.31
Polluted ocean	1.41	1.22	1.09	1.00	0.94	0.89	0.82	0.70	0.48	0.47	0.36	0.24
Arid	1.12	1.07	1.03	1.00	0.98	0.96	0.95	0.92	0.82	0.66	0.59	0.50
Clean land	2.27	1.70	1.29	1.00	0.79	0.64	0.48	0.29	0.13	0.17	0.08	0.07
Polluted land	2.29	1.71	1.30	1.00	0.79	0.64	0.48	0.29	0.13	0.17	0.09	0.07
Highly polluted land	2.33	1.74	1.30	1.00	0.79	0.64	0.49	0.30	0.14	0.16	0.09	0.07

**Table S7. Spectral SSA**

Aerosol Type	Wavelength (microns)											
	0.25	0.35	0.45	0.55	0.65	0.75	0.90	1.25	2.00	3.00	3.39	4.00
Clean ocean	0.96	0.99	1.00	1.00	1.00	1.00	1.00	0.99	0.99	0.45	0.88	0.97
Polluted ocean	0.90	0.95	0.96	0.96	0.97	0.97	0.97	0.97	0.97	0.42	0.87	0.95
Arid	0.68	0.75	0.83	0.88	0.91	0.92	0.93	0.93	0.93	0.77	0.86	0.94
Clean land	0.88	0.97	0.97	0.96	0.95	0.94	0.92	0.87	0.88	0.33	0.78	0.85
Polluted land	0.83	0.90	0.90	0.89	0.88	0.87	0.84	0.79	0.77	0.31	0.69	0.74
Highly polluted land	0.72	0.77	0.77	0.75	0.74	0.72	0.69	0.62	0.55	0.24	0.50	0.53

**Table S8. Asymmetry Parameter**

Aerosol Type	Wavelength (microns)											
	0.25	0.35	0.45	0.55	0.65	0.75	0.90	1.25	2.00	3.00	3.39	4.00
Clean ocean	0.77	0.76	0.75	0.76	0.76	0.76	0.77	0.78	0.78	0.75	0.71	0.71
Polluted ocean	0.75	0.74	0.73	0.74	0.74	0.74	0.75	0.76	0.78	0.74	0.71	0.71
Arid	0.82	0.79	0.75	0.73	0.71	0.70	0.70	0.69	0.69	0.71	0.70	0.68
Clean land	0.73	0.71	0.69	0.68	0.67	0.66	0.64	0.62	0.71	0.76	0.76	0.78
Polluted land	0.72	0.70	0.69	0.67	0.66	0.65	0.64	0.62	0.70	0.76	0.76	0.78
Highly polluted land	0.70	0.68	0.66	0.65	0.64	0.63	0.62	0.61	0.69	0.75	0.75	0.78