

Contrail formation within cirrus: ICON-LEM simulations of the impact of cirrus cloud properties on contrail formation

Pooja Verma^{1,2} and Ulrike Burkhardt¹

¹Deutsches Zentrum für Luft- und Raumfahrt, Institut für Physik der Atmosphäre, Oberpfaffenhofen, Germany

5 ²Formerly at Meteorologisches Institut, Ludwig-Maximilians-Universität, Munich, Germany

Correspondence to: Pooja Verma (Pooja.Verma@dlr.de) and Ulrike Burkhardt (Ulrike.Burkhardt@dlr.de)

Abstract. Contrail formation within natural cirrus introduces large perturbations in cirrus ice crystal number concentrations leading to modifications in cirrus microphysical and optical properties. The number of contrail ice crystals formed in an aircraft plume depends on the atmospheric state and aircraft and fuel properties. Our aim is to study contrail formation within cirrus and, in particular, the impact of pre-existing cirrus on the contrail formation processes. We ~~modify the parameterizations~~ implement a parameterization for contrail ice nucleation and the survival of contrail ice crystals within the vortex phase ~~in order to consider the impact of the preexisting cirrus~~ within the high-resolution ICON-LEM at a horizontal resolution of 625m over Germany- and modify the parameterizations in order to consider the impact of the preexisting cirrus. We then simulate contrail formation and analyze the change in ice nucleation and survival due to the presence of cirrus ice crystals.

15 We have selected two different synoptic situations sampling a large range of cirrus cloud properties representative of average thick in-situ formed cirrus and liquid origin, cirrus that are connected with a frontal system, ~~and down to~~ very thin cirrus within a high-pressure system. We find that contrail formation within cirrus mostly leads to increases in cirrus ice crystal numbers by a few orders of magnitude. Pre-existing cirrus has a discernible impact on the contrail ice formation threshold temperature and on contrail ice crystal number concentrations only if the cirrus ice water content is high and ice ~~number concentrations are high or contrail ice nucleation rates are~~ supersaturation is low. The ~~sublimation of the~~ cirrus ice crystals sucked into and subsequently sublimated within the aircraft's engine and the ice crystals mixed into the aircraft plume experiencing sublimation and later deposition ~~leads lead~~ most of the time to an increase in the contrail formation threshold temperature which can be as large as 2K. This increase is large when the ambient ice saturation ratio is close to one and when the ice water content of the pre-existing cirrus is large. In areas of high cirrus ice water content and ice crystal number concentrations, contrail ice nucleation rates can be significantly increased in particular at lower flight levels. Cirrus ice crystals can also lead to a reduction in ice nucleation but negative changes are significantly smaller and less common. After nucleation cirrus and contrail ice crystals compete for water vapor while the combined contrail and cirrus ice water mass grows. Once the aircraft plume gets trapped within the wake vortices and descends the ~~decrease in~~ plume relative humidity ~~leads to the sublimation of~~ decreases so that eventually both cirrus and contrail ice crystals sublimate. We find that ~~this the impact of cirrus ice crystals on the~~ contrail ice crystal loss ~~can be only seldomly slightly modified by the cirrus ice crystals. In particular, high concentrations of small ice crystals and large ice water content of within~~ the ~~pre-existing cirrus cloud or low contrail ice crystal numbers can be sometimes~~

~~associated with modest increases in the contrail ice crystal survival fractions. Cirrus ice crystals that get mixed into the plume can also lead to reduced ice descending vortices is negligible. Only for nucleation and survival rates several orders of magnitude lower than the soot number emission index can the impact be noticeable but negative changes are significantly smaller. the relevance of this impact is limited.~~

1 Introduction

Cirrus clouds are very common in the upper troposphere and have a large impact on radiative transfer and, therefore, on climate and weather (Liou, 1986). Cirrus cool the atmosphere by reflecting incoming short-wave (solar) radiation and absorb and re-emit outgoing long-wave (terrestrial) radiation which warms the atmosphere. The size of both the short-wave and long-wave cloud radiative forcing depends on the macro- and microphysical cirrus properties (Ramanathan et al., 1989; Zhang et al., 1999). Aviation has a significant impact on upper tropospheric cirrus cloudiness (Boucher, 2013) due to the formation of contrails and due to aviation aerosol cloud interactions. Of the known aviation related radiative forcing components contrail cirrus is estimated to be the largest (Burkhardt and Kärcher, 2011) but the associated uncertainty is large (Lee et al., 2021). This is not unexpected since in IPCC style double CO₂ climate change simulations uncertainties in cloud responses are the main source of uncertainty in the equilibrium climate sensitivity (Stevens and Bony, 2013). In assessments of aviation related climate change (Lee et al., 2021) contrail cirrus and the indirect aerosol effects involving aviation aerosol emissions are the most notoriously difficult to estimate and the most uncertain (e.g. Righi et al., 2013, Kapadia et al., 2016, Lee et al., 2021) with uncertainties caused to a large degree by incomplete knowledge about number and ice nucleating properties of emitted and subsequently ageing aviation aerosols.

Contrail cirrus have been studied in great detail in observations (e.g. Gayet et al., 1996, Schröder et al., 1999, Voigt et al., 2017, Schumann et al., 2017) and in modelling. Modelling the life cycle of contrail cirrus, just as modelling natural clouds, involves processes on a large range of scales, comprising microphysical processes as well as large scale dynamics. Different approaches have been used, ranging from simulating single contrails over parts or the whole life cycle in LES (e.g. Lewellen et al., 2014, Unterstrasser, 2014, Paoli and Shariff, 2016) or NWP (Gruber et al., 2018) to simulating the evolution, properties and the climate impact of a large number of contrails in low resolution models with a significantly simplified microphysical treatment (Burkhardt and Kärcher, 2011; Bock and Burkhardt, 2016a, 2016b, 2019; Bier et al., 2017; Chen and Gettelman, 2013; Schumann et al., 2015). While LES is ideally suited to resolving the flow field around the airplane and, therefore, the contrail evolution in the first few minutes, numerical weather prediction and climate models are suited to simulating the contrail evolution which depends on the evolving atmospheric conditions ~~controlled~~influenced by synoptic scale variability.

Despite those efforts understanding contrail cirrus processes, many uncertainties connected with contrail cirrus radiative forcing remain stemming from uncertainties in the background upper tropospheric water budget and cirrus cloud properties, the contrail cirrus schemes and the impact of contrail cirrus on radiative transfer (Lee et al., 2021). Furthermore, the interaction between contrail cirrus and natural cirrus add to the uncertainty. Upper tropospheric natural cloudiness has been shown to

decrease as a consequence of contrail formation and is, therefore, limiting the impact of contrail formation on climate
65 (Burkhardt and Kärcher, 2011; Schumann et al., 2015; Bickel et al., 2020). The strength of this cloud adjustment is very
uncertain. Furthermore, until now only contrail formation within a previously cloud-free air volume has been studied
extensively. The impact of contrail formation within pre-existing clouds is largely unknown because it was thought to be
secondary or even negligible. Contrail induced cloud perturbations within existing cirrus have recently been shown to lead to
changes in cloud optical depth that can be detected using satellite remote sensing (Tesche et al., 2016) which calls into question
70 the assumption that this effect is negligible.

Contrails form when relative humidity within the aircraft exhaust plume exceeds saturation relative to water as a consequence
of the mixing of the plume air with ambient air (Schumann, 1996). Contrail formation is subject to the atmospheric state and
aircraft and fuel parameters. The number of ice crystals nucleated during contrail formation depends on the thermodynamic
state of the ambient atmosphere and on aircraft and fuel parameters, in particular the number of aerosol particles released by
75 the engine (Kärcher et al., 2015) but also on aerosol properties (Kärcher et al., 1998), ~~their variability~~. Variability in aerosol
properties and inhomogeneities within the plume ~~leading lead~~ to successive nucleation of ice crystals ~~nucleating successively~~
which has an impact on plume relative humidity and acts to decrease ice nucleation (Lewellen, 2020). At cruise altitude in the
mid latitudes the atmospheric state is such that the number of emitted aerosol particles constrains the number of ice crystals
forming within the contrail's jet phase (Bier and Burkhardt, 2019). At lower latitudes or altitudes this is not necessarily the
80 case; here the thermodynamic state of the ambient atmosphere, which is responsible for the evolution of relative humidity in
the plume, often limits ice nucleation within contrails. Within the subsequent vortex phase, that lasts until a few minutes after
emission, the aircraft induced wake vortices travel downwards and many of the contrail's ice crystals that are trapped within
the vortices sublimate depending on the atmospheric state, aircraft parameters and the number of contrail ice crystals that
nucleated within the jet phase (Unterstrasser, 2016).

85 Both, ice nucleation in the jet phase and ice crystal survival during the vortex phase may be modified by the existence of ice
crystals from pre-existing clouds. Ice crystals from pre-existing cirrus that are sucked into the engine sublimate and lead to a
small increase in the water vapor content of the plume (Gierens, 2012). Furthermore, cirrus ice crystals that are mixed entrained
into the plume after emission may sublimate as long as the plume is ice subsaturated (Kärcher et al., 1998). Once the plume is
ice supersaturated water vapor may deposit on the entrained cirrus ice crystals (Gierens, 2012). The resulting change in the
90 plume water vapor mixing ratio can lead to changes in the contrail formation threshold (Kärcher et al., 1998) and in contrail
ice nucleation. The cirrus ice crystals that are mixed entrained into the aircraft plume, compete with the newly nucleated contrail
ice crystals for available water vapor and, once trapped within the descending vortices, both cirrus and contrail ice water
sublimates usually sublimate. The competition of cirrus and contrail ice crystals for water vapor leads to a lower increase, or
even a decrease, in the ice water mass associated with contrail ice than if no cirrus ice crystals were present which tends to
95 decrease survival fractions. ~~Within~~ Once the plume is subsaturated within the descending vortices, the sublimation of the cirrus
ice crystals increases the relative humidity and therefore limits the contrail ice sublimation as compared to the sublimation of
the same sized contrail ice crystals disregarding the impact of the cirrus ice crystals. Both processes together may lead to a

negative or positive change in the fraction of contrail ice crystals surviving the vortex phase. Any modification of the ice nucleation or survival during the vortex phase leading to changed ice crystal numbers after the vortex phase has an impact on contrail microphysical processes, contrail cirrus properties, optical depth and life time (Bier et al., 2017; Burkhardt et al., 2018). ~~On the one hand, increased ice crystal numbers lead to a stronger climate impact of contrail cirrus. On the other hand, changes in the contrail formation threshold can have large consequences in atmospheric conditions that are close to the formation threshold and decide between a small aircraft induced sublimation of cirrus ice crystals and a large increase in ice crystal concentrations.~~

105 Kärcher et al. (1998) discussed the impact of pre-existing ice crystals that is sublimated in the combustor and that is mixed into the aircraft plume after emission on the formation of an observed warm (237K) contrail. They note that a large number of ~~smallersmall~~ cirrus ice crystals would be needed so that the sublimation of cirrus ice can increase relative humidity so much that a contrail could form. Gierens (2012) discusses the impact of cirrus ice sublimation during combustion and the impact of water vapor deposition on cirrus ice crystals mixed into the plume ~~assuming, but excludes the sublimation of cirrus ice crystals~~

110 ~~mixed into the plume. Assuming~~ average cirrus cloud properties ~~and~~ he concludes that the effects are negligible.

We study here contrail formation within cirrus clouds as a first step towards evaluating the impact of cloud perturbations created by contrail formation within cirrus as observed by Tesche et al. (2016). We choose an approach in between LES and a global climate model, studying contrail formation in a numerical weather prediction setup at a resolution of a few hundred meters using parameterizations for contrail ice nucleation (Kärcher et al., 2015) and survival of contrail ice crystals in the

115 vortex phase (Unterstrasser, 2016). We consider a wide range of cirrus cloud properties as simulated by the high-resolution ICON-LEM in weather forecasting mode (Heinze et al., 2017), calculating changes in the contrail formation criterion and in the number of ice crystals nucleating during contrail formation and in the contrail ice crystal loss during the vortex phase. In section 2 we introduce the ICON model and describe the contrail related processes that are part of our contrail scheme. The scheme consists of a parameterization for ice nucleation and for the ice crystal loss in the contrail's vortex phase and additions

120 that consider the existence of pre-existing ice crystals from natural cirrus. We study contrail formation processes on two selected days that represent different synoptic situations over Germany and discuss the background natural cirrus cloud properties (Sect. 3.1). We analyze contrail ice nucleation within cirrus and the impact of pre-existing cirrus clouds on contrail formation threshold and ice nucleation (Sect. 3.2). In section 3.3 we estimate the fraction of contrail ice crystals surviving the vortex phase and analyze the impact of cirrus ice crystal on the vortex phase survival. We study the sensitivity of our results

125 to different soot number emission indices and to a change in the upper tropospheric stability. ~~Finally, in section 4 we present the changes in ice crystal number concentrations dependent on the cirrus ice crystal number concentrations without considering influences of aviation. In section 4 we summarize and compare our results to the existing literature and we conclude in section~~

5.

2 Methods and Simulations

130 We develop and implement a representation for contrail formation, based on parameterizations of ice nucleation in the jet
phase and ice crystal loss during the contrail's vortex phase, in the ICON (ICOsahedral Non-hydrostatic) – LEM (Large-eddy
model) (Zängl et al., 2014; Dipankar et al., 2015) that allows to study cirrus cloud modifications induced by contrail formation.
We use a model set up that simulates the synoptic development over a limited domain, Germany, at a horizontal resolution of
625m using initial and boundary data coming from an operational NWP (Numerical weather prediction) system, COSMO
135 (COnsortium for Small-scale MOdelling, Baldauf et al., 2011), at 2.8 km resolution. Instead of prescribing an air traffic
inventory, we prescribe air traffic everywhere in the upper troposphere studying the impact of pre-existing clouds on contrail
formation, the contrail formation temperature threshold, ice nucleation and ice crystal loss in the vortex phase, for a large range
of atmospheric states and cloud properties. We intentionally prescribe also air traffic at low altitudes down to about 7 km, that
are usually not thought of as main air traffic levels, as air space over Germany has become very tight in the last years and more
140 short distance flights have been moved to lower flight levels. Furthermore, vertical shifts in air traffic are being discussed in
connection with the mitigation of aviation climate impacts (Fichter et al., 2005, Matthes et al., 2021).

2.1 ICON-LEM

ICON-LEM is based on the ICON (ICOsahedral Non-hydrostatic) modelling framework developed by the German Weather
Service (DWD) and the Max-Planck Institute for Meteorology (Zängl et al., 2015, Dipankar et al., 2015). ICON solves a set
145 of equations on an unstructured triangular grid based on successive refinement of a spherical icosahedron (Wan et al., 2013,
Zängl et al., 2015). Time stepping is performed using a predictor-corrector scheme. A summary of the model configuration
and a description of the physics package are given in Heinze et al., (2017) and references therein.

We use ICON in a LEM (large-eddy modelling) mode over Germany with realistic orography at a resolution of 625m and a
time step of 3 seconds (Dipankar et al., 2015). The model has an option for 2 one-way nested domains. The model's high
150 horizontal resolution combined with a vertical resolution of around 150m in the upper troposphere allows resolving relevant
cloud processes, such as convection, while cloud microphysics, turbulence and radiation remain parameterized. Resolved cloud
scale dynamics lead to improvements in structure and distribution of clouds and precipitation (Stevens et al., 2021). The
heterogeneity in the cloud field and thus in the optical depth is largely resolved which enables a more realistic estimation of
the radiative forcing relative to coarser resolution models. The model is initialized at 00 UTC from operational COSMO-DE
155 analysis data (Baldauf et al., 2011) and relaxed at the lateral boundaries within a 20km nudging zone towards COSMO-DE
analysis which are updated hourly. The initial and boundary condition data are interpolated to the ICON grids by using a radial
basis function interpolation algorithm (Ruppert, 2007) and 3D variables are interpolated vertically during initialization. An
evaluation of the model simulations has been presented by Heinze et al., (2017) and Stevens et al., (2020). The benefit of the
high resolution of ICON-LEM or ICON-SRM (Storm Resolving Model) relative to lower resolution simulations was shown
160 to lead to improvements in precipitation patterns, their location, propagation and diurnal cycle, and cloud properties, in

particular the vertical structure and diurnal cycle (Stevens et al., 2020). In order to minimize computing time and disk space, we choose to run the model at 625m horizontal resolution. The benefit from increasing resolution from 625m to 156m was shown by Stevens et al., (2020) to be small.

2.1.1 Two moment cloud microphysics

165 The cloud microphysical scheme of ICON-LEM is based on Seifert and Beheng (2006) and includes microphysical processes in liquid, mixed phase and ice phase clouds. The microphysical two-moment scheme predicts mass mixing ratios and number concentrations for six hydrometeors, cloud droplets, rain, ice, hail, snow, and graupel. The cloud cover scheme is an all-or-nothing scheme disregarding subgrid variability of total water. The microphysical scheme describes droplet formation and ice nucleation, growth and conversion processes between different hydrometeors, precipitation, and sedimentation. The
170 parameterization for homogeneous and heterogeneous ice nucleation is based on Kärcher et al., (2006) and includes the competition between homogeneous and heterogeneous nucleation, and considers the impact of pre-existing ice crystals. Heterogeneous nucleation is induced by INPs (Ice nucleating particles) with mineral dust concentrations prescribed according to Hande et al., (2015). Activation of INPs for heterogeneous nucleation is parameterized based on the simulation of the aerosol conditions with the COSMO MultiScale Chemistry Aerosol Transport (COSMO-MUSCAT) model (Wolke et al., 2004, 2012).
175 A tracer is used to track the number of ice nuclei that have formed ice crystals and are therefore not available for ice nucleation anymore (Köhler and Seifert 2015).

2.2 Contrail scheme

We developed and implemented a contrail scheme within ICON-LEM, based on the parameterization of contrail ice nucleation (Kärcher et al., 2015) and ice crystal survival within the vortex phase (Unterstrasser, 2016), to study changes in cloud variables
180 due to contrail formation within cirrus. Contrail formation, dependent on atmospheric and aircraft and fuel parameters, is calculated and contrail ice nucleation (Sect. 2.2.1) and ice crystal loss in the contrail's vortex phase (Sect. 2.2.3) is estimated. We analyze contrail ice number concentrations after the contrail's vortex phase at a contrail age of ~5 minutes. If contrails form within a pre-existing cirrus, the cirrus may have an impact on the contrail formation threshold, contrail ice nucleation and contrail ice crystal survival during the vortex phase depending on the cirrus macro- and microphysical
185 properties. We consider the impact of the sublimation of natural cirrus ice crystals that are sucked into the combustor or mixedentrained into the aircraft plume and lead to changes in water vapor mixing ratio in the young plume and changes in the contrail formation threshold temperature and contrail ice nucleation (Sect. 2.2.2). After contrail ice nucleation, water vapor deposition on the contrail and cirrus ice crystals, that were mixedentrained into the plume, leads to a relaxation of ice supersaturation. While shortly after nucleation ice supersaturation is usually so high that both contrail and cirrus ice crystals
190 grow fast dependent on the size of their respective ice crystals, once ice supersaturation is very close to saturation large cirrus ice crystals may grow at the cost of smaller contrail ice crystals (Lewellen, 2012). The competition of cirrus and contrail ice

crystals for available water vapor leads to smaller contrail ice crystals ~~and, therefore, decreased, compared to the situation where cirrus ice crystals are not present, before vortex descent and, therefore, tends to decrease the~~ contrail ice crystal survival fraction. The sublimation of ice crystals from the pre-existing cirrus, that are caught in the descending wake vortices, increases relative humidity within the subsaturated vortices and tends to reduces the sublimation of contrail ice crystals. We analyze the combined impact of cirrus ice crystals during the diffusional growth phase and during vortex descent on the contrail ice crystal survival in Sect. 2.2.4.

In order to sample through a large number of atmospheric states with varying cloud properties without having to perform long simulations we pick two different synoptic situations with very different background conditions and cloud properties. Both situations are part of one-day long ICON-LEM simulations described in Heinze et al., (2017). For each of those situations we study contrail formation in the upper troposphere (above ~7 km) for only one timestep prescribing air traffic in each grid box of the simulation domain.

2.2.1 Parameterization of contrail formation and ice nucleation

Contrail formation depends on atmospheric conditions and fuel and aircraft dependent parameters and is described by the Schmidt-Appleman (SA)-criterion (Schumann, 1996). The temperature threshold for contrail formation depends on the slope of the mixing line, G , in a temperature-water vapor partial pressure diagram:

$$G = \frac{M_w c_p P_a}{0.622 Q (1 - \eta)}, \quad (1)$$

with M_w , c_p , P_a , Q and η are mass emission index of water vapor, specific heat capacity, atmospheric pressure, specific combustion heat and propulsion efficiency, respectively. We set the mass emission of water vapor to $1.25 \text{ kg (kg-fuel)}^{-1}$, specific combustion heat to $43.2 \text{ MJ (kg-fuel)}^{-1}$, and propulsion efficiency to 0.3 (Bock and Burkhardt, 2019). The temperature threshold of contrail formation, T_{sa} , is the ~~ambient~~ temperature ~~for at~~ which the mixing line with slope G touches the water saturation curve tangentially. T_{sa} is equal to G , the slope of the plume mixing line highest temperature at which contrails can form in a water saturated atmosphere. At ambient temperatures below that threshold, contrails will form if the ambient humidity is high enough. Contrails will only persist if ambient humidity is at least saturated relative to ice. At a given pressure level and for a given propulsion efficiency the slope of the mixing line depends on the ratio of emitted water vapor and combustion heat. An increase in water vapor emissions at constant combustion heat therefore leads to an increase in the slope of the mixing line and therefore to a higher temperature threshold of contrail formation.

Ice nucleation takes place within the first second after emission in the contrail's jet phase (Paoli and Shariff, 2016). The hot and moist air of the plume rapidly mixes with the cold and dry ambient air. If water saturation is exceeded within the plume, droplets form preferentially on emitted soot particles and background aerosols (Kärcher and Yu, 2009; Kärcher et al., 2015). The number of droplets that form within the contrail is dependent on the supersaturation and the size distribution and hygroscopicity of the aerosols. At current soot number emissions, volatile plume particles are generally too small to get

activated. Once droplets have formed in the plume they rapidly freeze into ice particles by homogeneous freezing when plume temperatures fall below the freezing temperature. If the contrail formation threshold temperature is close to the ambient temperature then the maximum attainable plume supersaturation (when neglecting the decrease in supersaturation due to droplet formation) will be low and, therefore, only few soot particles will activate into water droplets and subsequently freeze (Kärcher and Yu, 2009, Kärcher et al., 2015). Close to the temperature threshold the apparent emission index (AEI_i) of contrail ice crystals increases rapidly with decreasing ambient temperature, T_a . Contrail formation close to the contrail formation threshold occurs often at low air traffic altitudes where air is relatively warm or in tropical or subtropical areas (Bier and Burkhardt, 2019). When contrails form far below the contrail formation threshold, AEI_i is controlled by the soot number emission index. As ambient temperature decreases maximum attainable plume supersaturation increases and an increasing number of soot particles can activate and form ice crystals. The number of soot particles forming ice crystals is for temperatures 5K below the formation threshold close to the number of emitted soot particles (within approximately 25%). This means that in the ~~extratropie~~extratropics at typical cruise levels ice crystal numbers in young contrails are mostly limited by the number of emitted soot particles (Bier and Burkhardt, 2019).

We have implemented the parameterization of contrail ice nucleation based on Kärcher et al. (2015). The parameterization calculates the number of droplets that form and subsequently freeze within the contrail's jet phase. The number of droplets that form within the contrail is determined by calculating the number of droplets that can form at a given plume supersaturation and that lead to a decrease in relative humidity that balances the large increase in relative humidity due to the mixing of plume and environmental air. All aerosols are assumed to activate and form droplets at the same time, t_{act} , called the "activation-relaxation time" neglecting the fact that aerosols that activate slightly earlier due to differences in aerosol properties or plume inhomogeneities would have an impact on the plume relative humidity, and ice nucleation. This impact ~~can sometimes be~~ is large ~~in particular~~ only for large aerosol emissions of 10^{16} kg-fuel⁻¹ (Lewellen, 2020). Furthermore, we expect the impact of differences in aerosol properties to be reduced when forming contrails within cirrus since we can exclude entrainment of aerosols into the plume that preferentially form ice crystals. Few aerosols may be added to the plume due to the sublimation of ice crystals within the engine because the sulfuric acid droplets would evaporate while IN, such as soot or dust, may be released with unknown properties increasing the already high soot number emissions slightly.

We have calculated the apparent emission index of contrail ice crystals (AEI_i) prescribing a soot emission index (EI_s), assuming current day soot rich emissions of 2.5×10^{15} soot particles per kg-fuel (Bräuer et al., 2021), on model levels between 7 km to 13 km altitudes. Figure 1 shows the dependency of AEI_i on the difference between the ambient and the threshold temperature in the altitude range between 9.6 to 10.8 km for varying atmospheric conditions. Close to the formation threshold ($T_{sa} - T_a < 3K$) AEI_i rapidly increases with increasing difference between ambient temperature and the temperature threshold for contrail formation. At ambient temperature far below the temperature threshold a large percentage of the soot particles activate and form contrail ice crystals so that AEI_i approaches EI_s . The apparent emission index of ice varies for fixed difference between ambient and Schmidt-Appleman temperature since atmospheric conditions, i.e. pressure, water vapor mixing ratio and the Schmidt-Appleman temperature, are not constant.

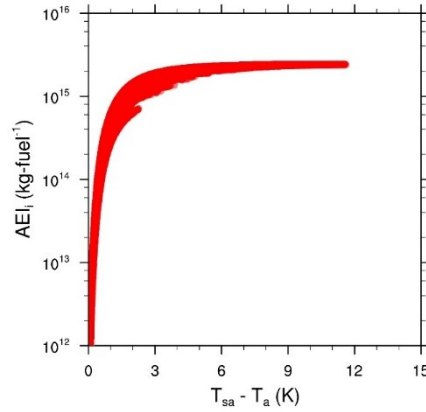


Figure 1: Apparent Emission Index, AEI_i versus the difference between ambient temperature, T_a , and Schmidt-Appleman temperature, T_{sa} , for the 26th April 2013 at altitudes between 9.6km to 10.8km for various combinations of atmospheric pressure, ice saturation ratio and temperature threshold for contrail formation.

2.2.2 Impact of natural cirrus on contrail formation and ice nucleation

260 The sublimation of cirrus ice crystals within the engine acts to increase water vapor emissions coming from fuel combustion and therefore changes the slope of the plume mixing line. Cirrus ice crystals that are ~~mixed~~entrained into the aircraft plume before nucleation (within the first second of the plume life time) sublimate partially as long as the plume is ice subsaturated and increase the plume water vapor mixing ratio. Once the plume is ice supersaturated deposition on the entrained cirrus ice crystals will take place, decreasing the water vapor mixing ration. Assuming a mass-based air to fuel mixing factor at engine outlet, N_o , of 70 kg-air kg-fuel⁻¹, we estimate the change in the plume's water vapor content per kg-fuel due to the presence of
265 cirrus ice crystals (with a mean mass ~~m~~m) at the time of aerosol activation (t_{act}), M_{cir} [kg kg-fuel⁻¹]:

$$M_{cir} = (q_{ci} * N_o) + \int_{t_0}^{t_{act}} \left(\left(\frac{dm}{dt} \right)_{sub} - \left(\frac{dm}{dt} \right)_{dep} \right) n_{ent} dt \quad (2)$$

270 with q_{ci} the ice water mass mixing ratio of cirrus [kg kg-air⁻¹], n_{ent} ~~is~~ the apparent ~~number~~ crystal numbers emission index for cirrus ice crystals entrained into the plume from the surrounding air [kg-fuel⁻¹] which increases with plume dilution. n_{ent} and the dilution are calculated using equation 18 and 12 of Kärcher et al. (2015). The sublimated water mass per cirrus ice crystal, $\left(\frac{dm}{dt} \right)_{sub}$, and deposited water mass on a cirrus ice crystal, $\left(\frac{dm}{dt} \right)_{dep}$, and their time integrated values are estimated as explained in Appendix A. The first term of equation 2 describes the cirrus ice water that is sublimated within the engine per kg fuel burned. The second term stands for the time integrated change in water vapor mixing ratio due to sublimation and deposition on cirrus ice crystals that are mixed into the plume after emission (t_0) and before aerosol activation (t_{act}), assuming

275 that we can neglect any changes in the time of aerosol activation that may be caused by the presence of cirrus ice crystals. The impact of cirrus ice crystals on the aviation induced plume water vapor content is discussed in section 3.2.

Sublimation and deposition on cirrus ice crystals lead to a deviation of the plume's water partial pressure away from the mixing line approximation, with variations largest shortly after emissions due to the plume's large subsaturation and high temperature. We approximate the evolution of the plume properties by a new mixing line, treating the change in the plume's water vapor
280 content from the sublimation and deposition as a change in the water vapor emission. When calculating the slope of the new mixing line we add the M_{cir} to the mass emission index of water vapor, M_w . The new slope for the mixing line G_{ci} is:

$$G_{ci} = \frac{(M_w + M_{cir})c_p P_a}{0.622Q(1-\eta)} \quad (3)$$

When calculating the slope of the time series of water partial pressure at the time of contrail ice nucleation we find deviations from the simple mixing line approximation (equation 3) of a few tenth of a percent. Only when assuming a very large cirrus
285 ice crystal number concentration of $5 \cdot 10^6 \text{ m}^{-3}$ the deviation from the mixing line slope at the time of aerosol activation can reach values of up to 1%. This agrees with Gierens (2012) who finds that for a plume age of 1 second, at typical cirrus ice crystal concentrations and typical atmospheric conditions, the deposition time scale is 2 to 3 orders of magnitude smaller than the dynamic jet timescale, which indicates that cirrus ice crystals grow too slowly to effectively reduce plume supersaturation production due to cooling.

290 If the slope of the mixing line, G_{ci} , is larger than the slope of the mixing line, that neglects the impact on the background cirrus ice crystals then the temperature threshold for contrail formation is increased. Plume supersaturation can occur earlier and the maximum attainable relative humidity, that is reached within the plume when neglecting the decrease in supersaturation due to aerosol activation and droplet formation, can be larger. Therefore, ice nucleation is increased.

2.2.3 Parameterization of ice crystal loss during vortex descent

295 After contrail ice nucleation the plume ice water mass grows and approximately ten seconds after the emission, the exhaust plume including the newly formed ice crystals gets trapped in a pair of counter rotating vortices (primary wake) that are created when the vorticity sheet originating from the pressure differences at the aircraft wings rolls up (Paoli and Shariff, 2016). The counter rotating vortices propagate downward depending on atmospheric stability and aircraft properties, such as weight, wing span and speed (Gerz et al., 1998). The density contrast between the air in the vortex, that descends through a stably stratified
300 atmosphere, and the surrounding creates vorticity that is shed upwards (secondary wake) and part of the exhaust, between 10% and 30% (Gerz et al., 1998), are detained into the secondary wake. The secondary wake stays close to the flight level. The primary wake often descends a few hundred meters. Many ice crystals within the primary downward propagating vortices sublimate due to adiabatic heating and the associated decrease in relative humidity, while the ice crystals in the secondary wake are more likely to survive. Survival of the ice crystals in the vortex regime depends on atmospheric temperature,

305 humidity, the number of nucleated ice crystals and the maximum vertical displacement of the vortices. After vortex descend most of the air that was forced downwards rises again creating a vertically extended contrail.

The parameterization for the impact of the vortex descent on contrail properties in ICON-LEM is based on the work of Unterstrasser (2016). He used LES to study for a number of different aircraft (with differences in weight and wing span) and varying conditions of the surrounding atmosphere, the vertical extent of the contrail and the survival fraction of ice crystals-
310 for contrails forming in cloud free air. The parameterization estimates (1) the maximum vertical displacement of the vortices in the atmosphere, (2) the vertical extent of the contrail which is given by the maximum vertical displacement of the vortices if ice crystals survive at the location of maximum displacement and smaller otherwise and (3) the survival fraction of the contrail ice crystals caused by the change in the relative humidity connected with adiabatic warming of air due to vortex descent-
315 while accounting for differences in ice crystal growth due to the Kelvin effect. The parameterization captures the dependence of the survival fraction on ice supersaturation, temperature, contrail ice crystal sizes and atmospheric stability. We use the parameterization assuming aircraft properties of medium sized aircraft (Aircraft type A350 or B767) (Unterstrasser,2016 table 1) to estimate the survival fraction of ice crystals and the vertical extent of the contrail after vortex descend. The contrail cross sectional area is given by the contrail vertical extent times the aircraft's wing span.

The survival fraction of nucleated contrail ice crystals is defined as:

$$320 \quad \textit{Survival fraction} = \frac{\textit{number of contrail ice crystal surviving vortex descent}}{\textit{total number of nucleated contrail ice crystal}} \quad (4)$$

A survival fraction of one means that all ice crystals survive the vortex descent and zero means all nucleated contrail ice crystals sublime.

2.2.4 Impact of cirrus ice crystals on growth of contrail ice crystals after nucleation and on sublimation of contrail ice crystals during vortex descent

325 When contrails form within cirrus the cirrus ice crystals entrained into the plume can have an impact on the growths of contrail ice crystals after nucleation and on the subsequent loss of contrail ice crystals during the contrail's vortex descent. Cirrus and contrail ice crystals together act to relax the plume's supersaturation towards the ice saturation value. We use the diffusional growth equation (e.g. Pruppacher and Klett, 1997, Paoli and Shariff, 2016, Lewellen, 2012, Appendix A) in order to estimate the temporal evolution of water deposition on the contrail and cirrus ice crystals for 9s after nucleation before vortices start to
330 descend. Once the plume's relative humidity approaches ice saturation the smaller contrail ice crystals may sublime while larger cirrus ice crystals may still grow due to the dependence of the saturation vapor pressure on the curvature of the ice crystals (Kelvin effect). In this situation the difference in ice crystal sizes between cirrus and contrail ice crystals increases. This behavior may be often found in contrails (Lewellen, 2012) and is largest in areas of low background relative humidity and large cirrus ice crystals. Since the presence of cirrus ice crystals limits the deposition on the contrail ice crystals, more

335 contrail ice crystals may be lost during vortex descent since their associated ice mass is lower- than it would have been in the absence of cirrus ice crystals.

When the plume gets trapped in the wake vortices and the vortices propagate downward, temperature increases and relative humidity decreases, ~~causing~~. As long as the plume air is slightly ice supersaturated contrail ~~and ice crystals may sublimate while~~ cirrus ice crystals ~~to~~ may still grow. Eventually cirrus ice crystals sublimate ~~as soon as air becomes subsaturated. The well~~ and the sublimation of both the cirrus and the contrail ice crystals moisten the air volume of the vortex. Therefore, the sublimation of cirrus ice crystals reduces the sublimation ~~fraction~~ of the contrail ice crystals by weakening the decrease in relative humidity within the vortex. ~~We~~ In order to be able to use the parameterization of Unterstrasser (2016), that does not include the impact of cirrus ice crystals on the survival fraction of contrail ice crystals, we adjust the water vapor ‘emissions’ of the air plane, which is an input in the parameterization. While the water vapor emission is usually given by the M_w coming from fuel combustion, in the context of contrail formation within cirrus, we use the ‘aviation induced increase in water vapor’ that includes the sum of the sublimation of and deposition on cirrus ice crystals that changes the water vapor content of the plume.

We first calculate contrail and entrained cirrus ice crystal growth in the time after nucleation and before vortex descent using the full diffusional growth equation. Then we roughly estimate how much cirrus ice water ~~sublimates~~ can sublimate in the time it takes to completely sublimate the contrail ice water within the descending vortices ~~using~~. For this calculation we use the diffusional growth equation, assuming spherical particles, and setting the saturation ratio to the slightly sub-saturated value of 0.98, a value that can be typically found in the descending vortices (personal communication Simon Unterstrasser), Naiman et al., 2011), and that is resulting from the decrease in relative humidity due to the temperature increase and from the moistening due to sublimation. ~~We roughly~~ Using those assumptions, we estimate the ratio of sublimated cirrus water mass, M_{cirrus} , and sublimated contrail water mass, M_{contrail} , dividing the diffusional growth equation for cirrus ice crystals by the one for contrail ice crystals and multiplying with the ratio of the number of ice crystals within the air volume:

$$\frac{dM_{\text{cirrus}}}{dM_{\text{contrail}}} \simeq \frac{dm_{\text{cirrus}}/dt}{dm_{\text{contrail}}/dt} * \frac{N_{\text{cirrus}}}{N_{\text{contrail}}} \quad (5)$$

~~Once we have roughly estimated the amount of cirrus ice water that sublimates during vortex descent while contrail ice water sublimates, we calculate the impact of the sublimated cirrus ice water on contrail ice crystal sublimation. We~~ (5) This equation allows us to roughly estimate the amount of cirrus ice water that can sublimate while the contrail ice crystals sublimate and using the diffusional growth equation for cirrus we can limit this cirrus ice sublimation to the vortex descent time scale. The vortex descent time scale we estimate conservatively from the vortex descent length scale, z_{desc} , and the vortex descent speed, w_0 , given by the parameterization and in table 1 of Unterstrasser (2016), respectively. The sum of the cirrus ice water sublimation calculated in this way and the deposition on cirrus ice crystals, that was happening before vortex descent, we feed into the parameterization of Unterstrasser (2016). Then we use the parameterization to estimate the contrail ice crystal

loss. In summary, we proceed in the following way: a. Estimate diffusional growth on contrail and entrained cirrus ice crystals before vortex descent. b. Estimate the cirrus ice water mass that sublimates within the time that contrail ice crystals sublimate which is either given by the time the vortex descends or by the time it takes to sublimate all contrail ice crystals. c. Adjust the plume relative humidity water vapor emission in the parameterization of Unterstrasser (2016) consistent with the sum of water vapor deposition on the cirrus ice crystals during the growth phase before vortex descent and the cirrus ice water mass sublimated during vortex descent. d. ~~We recalculate~~ Recalculate the number of contrail ice crystals that sublimate and the fraction that survives the vortex descent. This approach should give us a very rough estimate of the impact of cirrus ice crystals on the survival of contrail ice crystals within the vortex phase. We vary the growth time period before vortex descent (19s instead of 9s) in a sensitivity simulation since, on the one hand, the time until vortex descent is not well defined and, on the other hand, during the first few seconds of vortex descent relative humidity may be such that cirrus ice crystals could grow at the cost of contrail ice crystals.

In section 3.3 we will discuss the impact of cirrus ice crystals on the loss of contrail ice crystals during the vortex phase comparing it to the ice crystal loss that the contrail would have experienced in exactly the same situation except for the absence of cirrus ice crystals- and with a corresponding reduction in total water.

2.3 Simulations - analysis

We study contrail formation in a large variety of atmospheric states and cloud properties over Germany using ICON-LEM at a horizontal resolution of 625m and a vertical resolution of approx.150m. In order to sample many different atmospheric conditions, we prescribe air traffic within each grid box at altitudes of between 7km and 13km assuming an average fuel consumption of 6 kg-fuel/km which is typical for cruise conditions over Germany according to the Aviation Environmental Design Tool AEDT air traffic inventory (Wilkerson et al., 2010). Soot number emissions are set to 2.5×10^{15} kg-fuel⁻¹ in line with Bräuer et al., (2021). We study two different synoptic situations, the 24th April 2013 6am and the 26th April 2013 5pm (Sect. 3.1) starting our model with output from longer simulations with ICON-LEM that started on the respective days at midnight (Heinze et al., 2017). The success of the model simulating the large-scale synoptic situation and the associated cloud fields of those days is documented in Heinze et al., (2017). We calculate contrail ice nucleation within cirrus and the subsequent ice crystal loss in the vortex phase on the 24th April 6am in approximately 6 million cloudy grid boxes and on the 26th April 2013 5pm in approximately 5.5 million cloudy grid boxes between 7km and 13km with cloudy grid boxes defined as ice water content (IWC) > 10^{-11} kgm⁻³. For the calculation of ice crystal loss in the vortex phase we assume a fixed Brunt-Väisälä frequency of 0.012 s^{-1} and calculate the sensitivity to the assumed stability. Assuming a fixed Brunt-Väisälä frequency reduces the degrees of freedom in our calculations making it easier to isolate the impact of contrail formation on cirrus properties. When exploring the sensitivity of our results to the stability we assume a Brunt-Väisälä frequency of 0.005 s^{-1} . We furthermore study the sensitivity of the contrail ice crystal survival fraction on the soot number emissions, reducing the emission index of soot by up to 80%.

3 Impact of pre-existing cirrus on young contrail properties

400 We perform case studies for two different synoptic situations, a high-pressure system over central Europe on the 24th April and a frontal passage on the 26th April 2013. In section 3.1 we introduce the synoptic situation and the cirrus properties found at that time over Germany. We study contrail formation, contrail ice nucleation and survival and the impact of the pre-existing cirrus on contrail formation and ice nucleation (Sect. 3.2) and on the ice crystal loss in the vortex phase (Sect. 3.3).

3.1 Synoptic condition

405 We selected two days for our analysis, the 24th April and 26th April 2013. The days were part of the HOPE measurement campaign (Macke et al., 2017) that had the goal of evaluating the performance of the high-resolution ICON simulations. The synoptic situation on those two days was very different which allows us to study contrail formation within pre-existing cirrus in strongly varying synoptic settings leading to distinct cloud microphysical properties. On the 24th April a high-pressure system dominated over Germany with close to clear sky conditions in many areas and some thin in-situ formed cirrus. The
410 26th April saw a passage of a cold front over Germany moving towards the southeast connected with a conveyor belt that was supplying the upper troposphere with moist air. Cloudiness was rapidly increasing and strong frontal convection, geometrically thick clouds and precipitation could be found along the front. ~~Most of the~~The cirrus ~~clouds~~field on this day ~~had~~includes clouds with properties typical for average thick in-situ formed cirrus ~~and a~~. A small fraction of the cirrus had properties that are typical for liquid origin cirrus (Krämer et al., 2020).

415 The simulations for those days were part of the model evaluation performed by Heinze et al., (2017) and Stevens et al., (2020). Heinze et al., (2017) showed that the synoptic systems on those days were simulated well by ICON. The high resolution of the ICON-LEM simulations led to improvements e.g. in the vertical cloud structure and the diurnal cycle of clouds (Stevens et al., 2020). On the 24th April cloudiness in general may be overestimated in comparison with MODerate Resolution Imaging Spectroradiometer MODIS images over central Germany while cirrus clouds, for instance in the northwest of Germany, are
420 largely missed or are too thin in the simulations. Over the middle of Germany, a large thin cirrus cloud field with low ice water content and ice crystal number concentration is simulated in an ice saturated environment and persists for several hours. The cirrus field is spatially very homogeneous. On the 26th April, ICON simulates the frontal passage realistically and shows a slight underestimation of cloud fraction, with a good agreement regarding the cloud water path (Heinze et al., 2017). The cirrus is scattered and microphysical properties of the cirrus vary significantly. Lifting within the frontal zone ensures a
425 continues water vapor supply in some areas of the upper troposphere and provides ice supersaturated conditions within the relatively thick cirrus layer. The conditions are therefore favourable for contrail formation and ice crystal growth.

We have performed a CFAD (Cloud Frequency Altitude Diagram) analysis to examine the properties, in particular the ice crystal number concentration, the mean volume diameter of ice crystals and ice water content (IWC), of the cirrus clouds (Fig. 2). The CFAD diagram provides information about the frequency of occurrence (probability density) of the cloud properties
430 at different atmospheric temperatures. Figure 2 shows the frequency of occurrence of ice crystal number concentration (Fig. 2

b,e), the mean diameter of ice crystals (Fig. 2 c,f) and ice water content IWC (Fig. 2 a,d) at different temperatures in the cirrus cloud field over Germany for the 24th and 26th April 2013 at 6-7 am and 5-6 pm, respectively. On the morning of the 24th April the cirrus cloud over Germany is relatively homogeneous and the probability of cloudy areas reaching ice crystal number concentrations of roughly 10^5 m^{-3} at about 220K, a typical cruise level, is 0.01%. At the same time IWC is low and only in 0.01% of the cirrus at 220K values of $3 \cdot 10^{-3} \text{ gm}^{-3}$ are reached. On the evening of the 26th April, the distributions of ice crystal number concentration and IWC are much wider with 0.01% of cloudy areas reaching values of up to 10^8 m^{-3} and 0.5 gm^{-3} at 220K. Describing the width of the distribution by the values occurring with a probability of 0.01%, the diameter of the ice crystals varies strongly with temperature and ranges between $20 \mu\text{m}$ and $200 \mu\text{m}$ at temperature 210K and between $20 \mu\text{m}$ and $400 \mu\text{m}$ at temperature 230K on the 24th April 2013 and on the evening of the 26th April 2013 between less than $10 \mu\text{m}$ and $200 \mu\text{m}$ and between $15 \mu\text{m}$ and $600 \mu\text{m}$ at temperature 210K and 230K, respectively. The most striking difference between the cirrus properties on the two days are the large differences in ice number concentrations with extrema in ice number concentrations at 220K about 3 orders of magnitude higher on the 26th April than on the 24th April. At the same time extrema in IWC are about 1 order of magnitude larger on the 26th April and the probability of low ice crystal sizes is increased. Those high concentrations of small ice crystals on the 26th April are likely connected with homogeneous freezing events happening in the areas of high ice supersaturation caused by lifting in the conveyor belts and with the freezing of droplets lifted within convective systems along the front. The vertical line in the diameter diagram (Fig. 2c and f) is an artefact coming from the lateral boundary conditions supplied by COSMO which is run using a 1-moment microphysical scheme. When using COSMO data for the forcing fields, a diameter of $100 \mu\text{m}$ and associated ice crystal numbers are assumed (personal communication Axel Seifert, DWD) leading to an increased probability of ice crystals sizes of $100 \mu\text{m}$ particularly in areas close to the model edge.

450

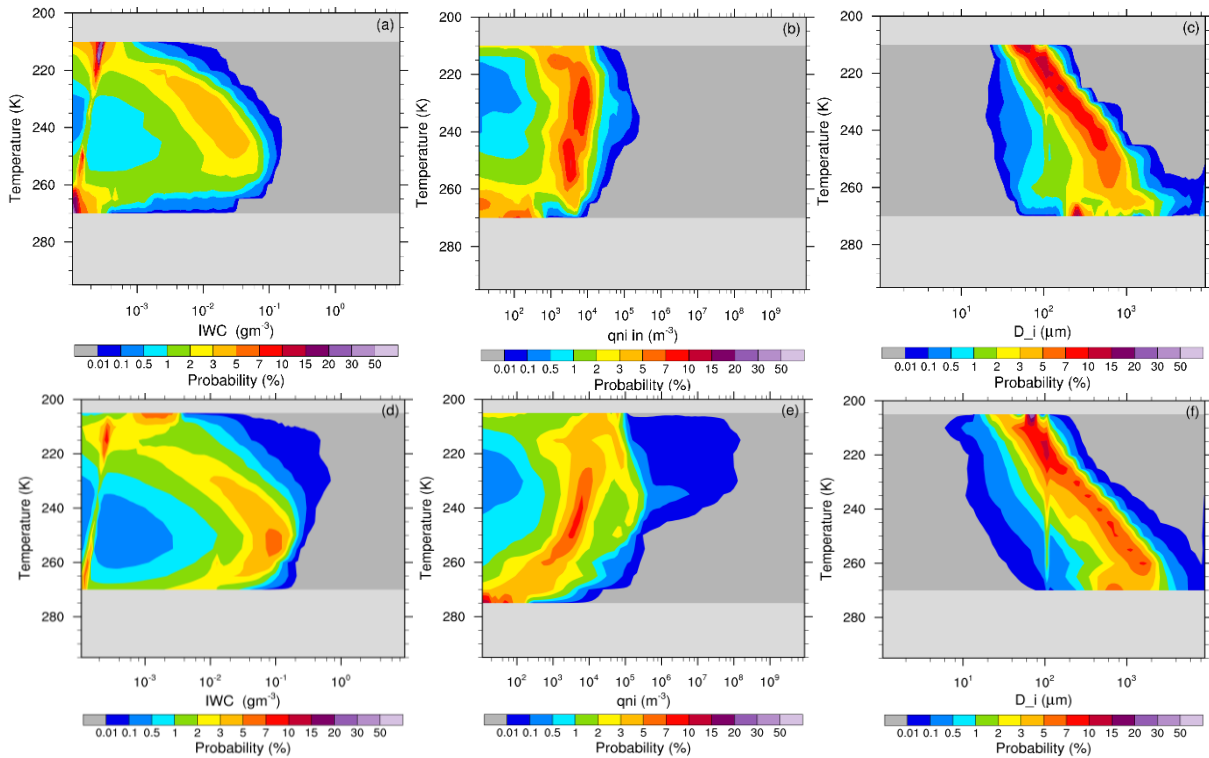


Figure 2: Frequency of occurrence of IWC (a, d), ice crystal number concentration (b, e), and mean volume diameter of ice crystals (c, f) on the (a,b,c) 24th April 2013 at 6 - 7 am and (d,e,f) 26th April at 5 – 6 pm. The frequencies of occurrence refer to individual temperature bins.

3.2 Impact of the pre-existing cirrus on contrail formation and ice nucleation

We study the impact of cirrus ice crystals, that are either sublimated within the combustor or mixed into the plume before ice nucleation, on the contrail formation threshold temperature and on ice nucleation. When aircraft fly through a cirrus cloud, air together with ice crystals get sucked through the engine inlet and sublimate. Furthermore, cirrus ice crystals get mixed into the plume causing sublimation or deposition depending on the plume's ice saturation ratio. The presence of cirrus ice crystals leads to a change in the total water vapor in the exhaust plume, usually increasing the water vapor content of the plume. **The increase is largest when the cirrus IWC is large.** In the following we will call the sum of the change in the water vapor content caused by the sublimation of cirrus ice crystals and by the deposition on the cirrus ice crystals while the plume is ice supersaturated together with the water vapor emissions due to the combustion of fuel the 'aviation induced increase in water vapor'. We estimate the increase in the aviation induced increase in water vapor for cirrus clouds that have properties as displayed in figure 2. The ratio of the change in plume water vapor concentration due to sublimation of or deposition on cirrus ice crystals and the aviation induced increase in water vapor is mostly small. The change connected with the presence of cirrus

ice crystals contributes often only a few thousands to a few hundreds of a percent to the aviation induced increase in water vapor (Fig. 3) in line with the fact that we consider clouds with as little as $10^{-11} \text{ kgm}^{-3}$. Maximum contributions reach values of half a percent on the 24th April 6am (probability of 10^{-4}) and of 10% on the 26th April 5pm (probability of $5 \cdot 10^{-2}$) and up to nearly 20% at a probability of 10^{-2} . The PDF of the changes only due to sublimation of cirrus ice crystals in the combustor only is simply shifted towards lower values. This is despite the fact that the change in the plume water vapor concentration due to the sublimation of and deposition on cirrus ice crystals that were mixed into the plume can also be negative.

470 The change due to the sublimation of cirrus ice within the combustor is roughly in agreement with the cirrus ice water content reaching values of 0.5 gm^{-3} at 220K (Fig. 2d). Assuming a pressure of 230 hPa the ice water mass mixing ratio can be estimated and prescribing an air to fuel mixing factor of 70 kg-air/kg-fuel the cirrus ice water mass sublimated in the engine per mass of fuel burned can be shown to agree with the ratio of sublimated cirrus ice water mass and aviation induced increase in water vapor (Fig. 3).

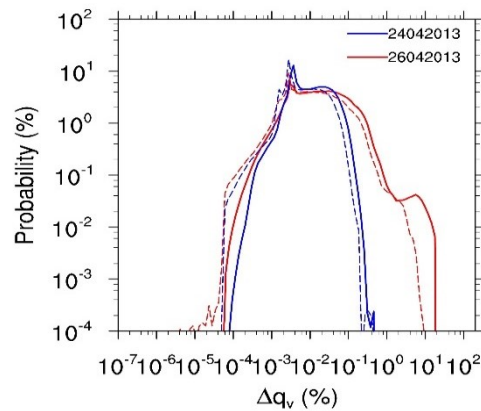


Figure 3: Probability distribution of the ratio of the change in water vapor concentration due to the impact of cirrus ice crystals and the aviation induced increase in the water vapor ‘ Δq_v ’ at aerosol activation, roughly 1 second after emission, for the 24th 6am (blue) and 26th April 2013 5pm (red) for areas with temperatures lower than 233.15K, ice saturation ratio larger than 1 and IWC larger than $10^{-11} \text{ kgm}^{-3}$. The water vapor emission index is set to 1.25. Cloud properties for the two days are displayed in figure 2. Dashed lines indicate the change in the aviation induced increase in water vapor due to the sublimation of cirrus ice crystals in the combustor only and solid lines indicate the change when also accounting for the sublimation of cirrus ice mixed into the plume and the deposition on cirrus ice once the plume is ice supersaturated.

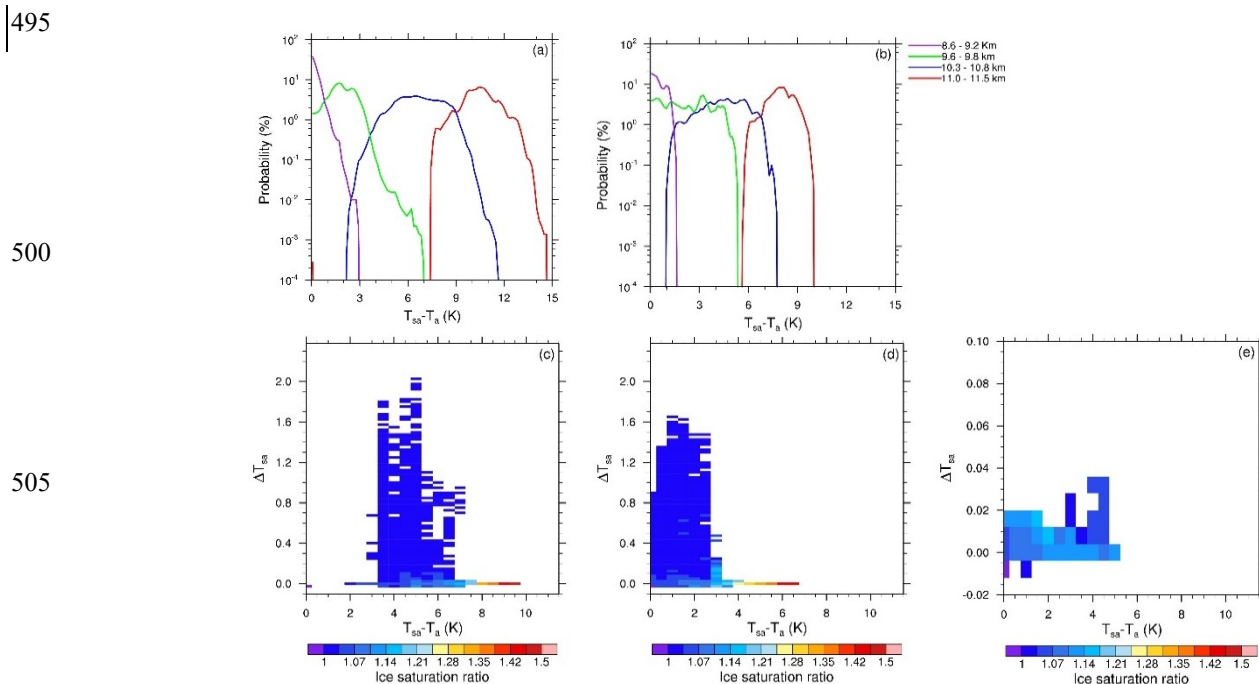
475

Temperature threshold for contrail formation

Even though the change in the water vapor concentration due to sublimation of/deposition on cirrus ice crystals has often only a small impact on the aviation induced water vapor increase, it can result in a significant change of the Schmidt-Appleman threshold temperature, T_{sa} , (Fig. 4 c,e). On the 26th April 2013 temperatures are usually between 4 K and 10 K and between 1.5 K and 7.5 K lower than the contrail formation threshold (Fig. 4 a,b) on the main flight levels between 10.3 km and 10.8 km and between 9.6km and 9.8km, respectively. On the 24th, at height levels between 9.6km 6 km and 9.8km 8 km i.e. at a pressure of around 270 hPa to 280 hPa, temperatures lie mostly up to 5k below the Schmidt-Appleman threshold temperature. The change in T_{sa} on the 24th is always very low, ranging between 0.04 K and -0.01 K, (Fig. 4e) consistent with the small impact

480

of cirrus ice crystals on the aviation induced water vapor increase (Fig. 3). On the 26th April, the change in the threshold
 485 temperature is often low but changes in T_{sa} can exceed values of 1.6 K in the lower and warmer atmospheric levels (between
 9.6 km and 9.8 km at ambient temperatures between 223 K and 227 K) (Fig. 4d) and 2K at higher atmospheric levels (between
 10.3 km and 10.8 km at ambient temperatures between 215 K and 221 K) (Fig. 4c). Negative changes of the contrail formation
 threshold can occur but are very small and relatively seldom. On the 26th April, large changes in the contrail formation
 temperature are mainly associated with low ambient relative humidity (Fig. 4 c,d). An ice saturation ratio of 1 within a cirrus
 490 cloud is can be often indicative of a large ice crystal density that leads to an efficient relaxation of relative humidity to the
 saturation value. It is exactly in those areas that changes in T_{sa} are high. The high saturation ratios i.e. ice saturation ratios of
 1.4 and 1.3, on the other hand, indicate low ice crystal concentrations and ice water content and are likely to be the areas in
 which homogeneous and/or heterogeneous nucleation may occur within the next few time steps. In areas of high ice saturation
 ratio, the change in T_{sa} is negligible. In the following we will explore the reasons for large changes in T_{sa} in more detail.



510 **Figure 4: Probability distribution of the difference between the Schmidt-Appleman temperature threshold of contrail formation (T_{sa}) and the ambient temperature (T_a) at 11 – 11.5 km (red), 10.3 – 10.8 km (blue), 9.6 – 9.8 km (green) and 8.6 – 9.2 km (purple) on the 26th April (a) and 24th April (b). Difference between the Schmidt-Appleman temperature threshold (T_{sa}) and the ambient temperature and change in T_{sa} due to impact of cirrus ice crystals on the 26th April 13 5pm at altitudes of 10.3 (~250 hPa) to 10.8km (~225 hPa) (c) and at 9.6 (~280 hPa) to 9.8km (~270 hPa) (d) and on 24th April 13 6am at altitudes of 9.6 (~280 hPa) to 9.8km (~270 hPa) (e). In all figures the difference of ambient air temperature and T_{sa} refers to the T_{sa} that is not modified due to the sublimation of pre-existing cirrus ice.**

515

Contrail ice nucleation

Large differences between the ambient temperature and the threshold temperature for contrail formation lead to high contrail ice nucleation rates (Fig. 1). Contrail ice nucleation within pre-existing cirrus leads to large perturbations in the ice crystal number concentration of the cirrus cloud field. On the 24th April 2013 cirrus ice crystal number concentrations at 220K reach values of about 10^5 m^{-3} with a probability of 0.01% (Fig. 2b) while contrail ice nucleation leads to ice crystal number concentrations of between 10^7 – 10^8 m^{-3} (Fig. 5b). On the 26th April 2013 the frontal system and the associated large moisture transport into the upper troposphere leads to localized nucleation events so that cirrus ice crystal number concentrations of up to 10^8 m^{-3} , the same order of magnitude as the contrail perturbations (Fig. 5a), occur with a probability of 0.01% (Fig. 2e). Ice crystal sizes grow fast and the smallest ice crystals have a diameter of close to 10 μm . This means that approximately 5 minutes after contrail ice nucleation the perturbation to cirrus cloud properties is so high that it can be only matched by relatively fresh nucleation events. Even if contrail formation is happening close to the temperature threshold, contrail formation can significantly alter cirrus properties.

Close to the contrail formation threshold (within $\sim 5\text{K}$) the number of ice crystals increases steeply with increasing distance from the threshold conditions (Fig. 1). This means that even though changes in temperatures are close to the temperature threshold for contrail formation are moderate (Fig. 4), amounting to a couple of degrees maximally, they can have a significant impact on contrail ice nucleation when causing a systematic increase in ice crystal numbers. At temperatures further away from the ambient temperature is close to the temperature threshold for contrail formation and when the cirrus IWC is large formation
535 threshold the increase in ice nucleation can be significant as well. Above 11 km, ambient temperatures are always more than 5K below the contrail formation threshold (Fig. 4a, b) and nucleation rates are often high so that a change in the formation threshold would often have relatively little impact on nucleation rates.

At typical cruise levels, between 10.3 km and 10.8 km, the ambient temperature lies often well below and occasionally close to the contrail formation threshold. Due to Wherever the smaller difference between ambient temperatures and the contrail formation threshold temperature, fewer is small, few ice crystals nucleate (Fig. 1; Fig. 5e, h; Fig. 6e, h). If all emitted soot particles would form an ice crystal then the grid box mean ice crystal number concentration would reach approximately $1.5 \cdot 10^8 \text{ m}^{-3}$. At typical cruise levels contrail ice nucleation leads commonly to grid box mean ice crystal concentrations of $1.2 \cdot 10^8$ and $1.3 \cdot 10^8 \text{ m}^{-3}$ on the 24th (Fig. 5b) and 26th of April 2013 (Fig. 5a), respectively, but on the 24th significantly lower nucleation rates are also fairly typical. The probability of changes in the contrail ice crystal concentration, Δn_i , is largest for values of Δn_i around 10^4 m^{-3} but changes can reach on the 26th values of close to 10^7 m^{-3} , that is close to 10% of the contrail ice crystal concentration when disregarding the impact of cirrus ice crystals. Changes in the ice nucleation can also be negative due the effect of sublimation and deposition on cirrus ice crystals mixed into the aircraft plume. We estimate that in about 22% and 14% of cloudy grid boxes nucleation rates are reduced on the 26th and 24th, respectively. Contrail ice number concentration concentrations are reduced by up to 10^4 m^{-3} , several orders of magnitude smaller than the maximum possible
550 increases in contrail ice number concentration. We will therefore but a large relative decrease given that on the 24th ice crystal

number concentrations reach roughly 10^5 m^{-3} at about 220K. We will discuss in the following mainly the increases in ice nucleation due to the presence of cirrus ice crystals.

At around 9.7 km height the ambient temperature lies mostly within 5K of the contrail formation threshold (Fig. 4 a, b) and contrail ice nucleation leads to ice number concentrations, that lie typically between 4.0×10^7 and $1.1 \times 10^8 \text{ m}^{-3}$ on the 26th April (Fig. 6a) and between close to 0 and $1.3 \times 10^8 \text{ m}^{-3}$ on the 24th April (Fig. 6b). Absolute and relative changes in contrail ice nucleation due to the impact of cirrus ice crystals sublimated in the combustor or mixed into the plume are significantly larger than at higher flight levels (Fig. 6a,b) because the cirrus IWC is on average significantly higher and the atmosphere is generally closer to the contrail formation threshold ~~and the cirrus IWC is on average higher (Fig. (Fig. 5c, e and 6c, e and 2a, d)~~. The probability for changes in the ice number concentrations is highest for values ranging between 10^4 and 10^6 m^{-3} but changes larger than 10^7 m^{-3} can also occur on the 26th, that is significantly larger than on the main cruise level. Negative changes in contrail ice number concentrations due the impact of cirrus ice crystals ~~are~~ less common than on the main flight level and can be found in about 7% of the grid boxes on both the 26th and 24th. This means that the change in contrail ice nucleation due to cirrus ice crystals can induce a change in the ice nucleation of ~~up to~~ maximally the same order of magnitude as the contrail ice nucleation when neglecting the impact of cirrus ice crystals. On the 24th April the change due to the impact of cirrus ice crystals remains significantly lower in line with the lower ice water content on that day.

On both the 26th and 24th of April 2013 large changes in the contrail ice number concentration are connected with large cirrus ice water content (Fig. 5c and 6c), a high number concentration of cirrus ice crystals (Fig. 5d and 6d) and with low ice saturation ratios (Fig. 5f and 6f). Large scale lifting appears to lead to the freezing of water droplets and/or to homogeneous or heterogeneous nucleation events. The resulting large ice crystal number concentrations lead to an efficient relaxation of ice supersaturation to saturation values. In areas of lower ice crystal number concentrations, ice supersaturation can be larger (Fig. 5 d, f and 6 d, f). The larger ice saturation ratio in those areas leads to high contrail ice nucleation rates and low corrections of this nucleation rate. On the 24th April 2013, contrail ice nucleation is lower than on the 26th due to the higher temperatures (Fig. 5h) and the change in ice nucleation is lower due to the cirrus clouds containing less ice water (Fig. 5g and figure 2) and fewer ice crystals.

~~Absolute changes in contrail ice nucleation may often be~~ Even relatively ~~small when compared~~ low contrail ice nucleation rates, lead to ice crystal number concentrations ~~within contrails that form further away from the formation threshold but they are still~~ are high when compared to naturally formed cirrus clouds. ~~Therefore, changing cirrus properties systematically.~~ Large changes in contrail ice nucleation ~~and the changes introduced~~ caused by the ~~sublimation~~ presence of cirrus ice ~~crystals~~ and the deposition on them have a significant impact on cirrus properties. ~~water are uncommon in our analysis. This is simply~~ caused by the fact that the minimum ice water content that we use as a cloud mask is $10^{-11} \text{ kg m}^{-3}$ which means that we are including subvisible cirrus in our analysis. The changes in ice nucleation are dependent on the cirrus ice water content and therefore the probability of large changes is a function of the minimum ice water content used for the cloud mask.

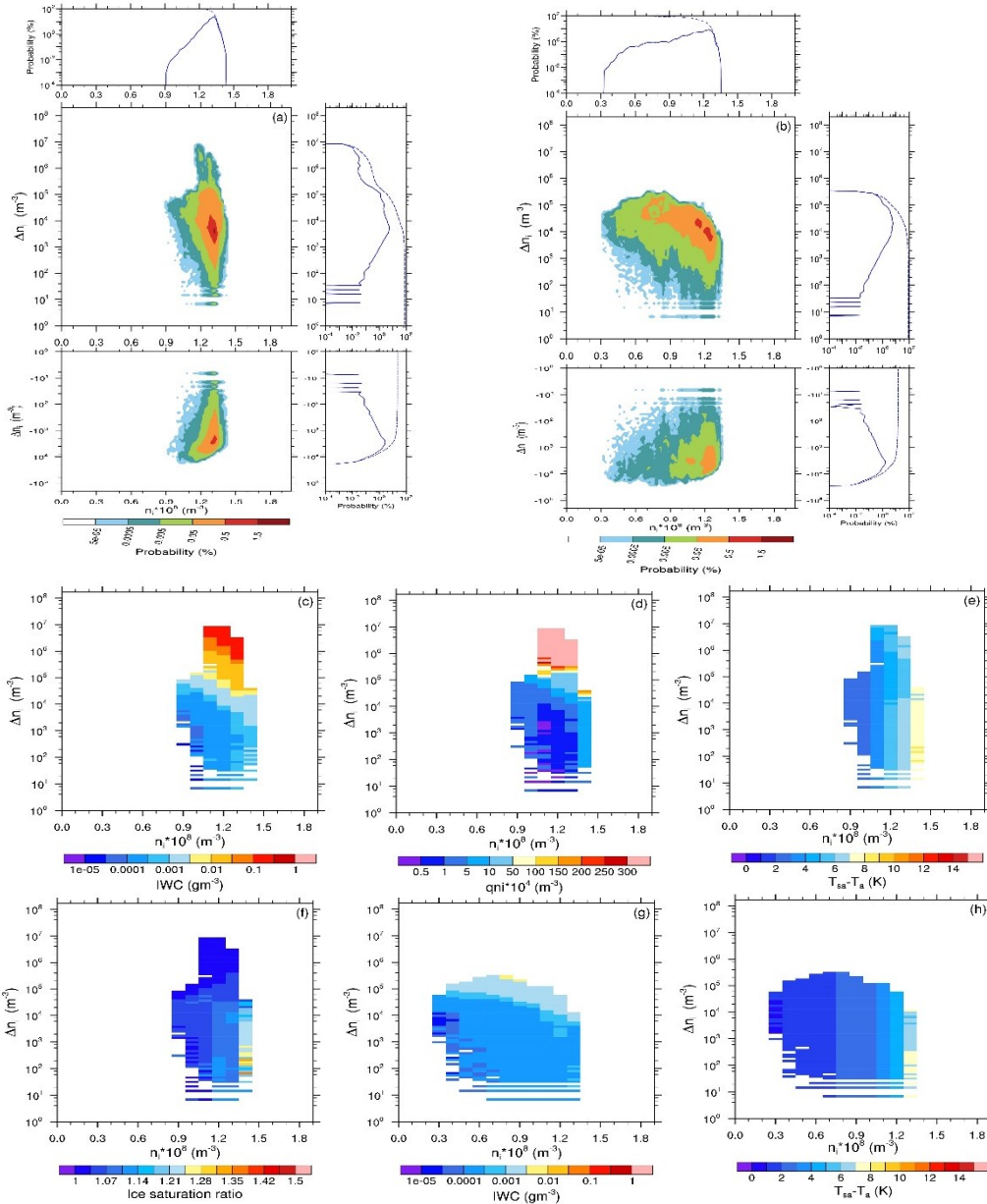


Figure 5: Joint probability distribution of grid mean ice crystal number concentration due to contrail ice nucleation, n_i , and its change due to the sublimation of and deposition on cirrus ice crystals, Δn_i , for current soot number emissions, $2.5 \cdot 10^{15} \text{ kg-fuel}^{-1}$, and for altitudes from 10.3km to 10.8km (250 hPa to 225 hPa) on the (a) 26th April and (b) 24th April 2013. Additionally, the PDF of ice nucleation (solid) and the associated cumulative PDF (dashed) when neglecting the impact of natural cirrus ice crystals (top) and its change due to the sublimation of cirrus ice crystals (right) is shown. Mean cirrus cloud properties for the combination of n_i and Δn_i (c,g) IWC, (d, g) qni, (e, g) difference between temperature formation threshold and ambient temperature and (f) ice saturation ratio. (c), (d), (e) and (f) for cirrus cloud properties on the 26th April 2013 6am and (g) and (h) for the 24th April 2013 5pm. Mean ice cloud properties are shown only for the more common positive changes in ice nucleation. If all emitted soot particles would form an ice crystal then the ice crystal number concentration within the grid box, n_i , would reach approximately $1.5 \cdot 10^8 \text{ m}^{-3}$. On the x-axis, n_i is the contrail ice nucleation when disregarding the impact of the cirrus ice crystals on nucleation.

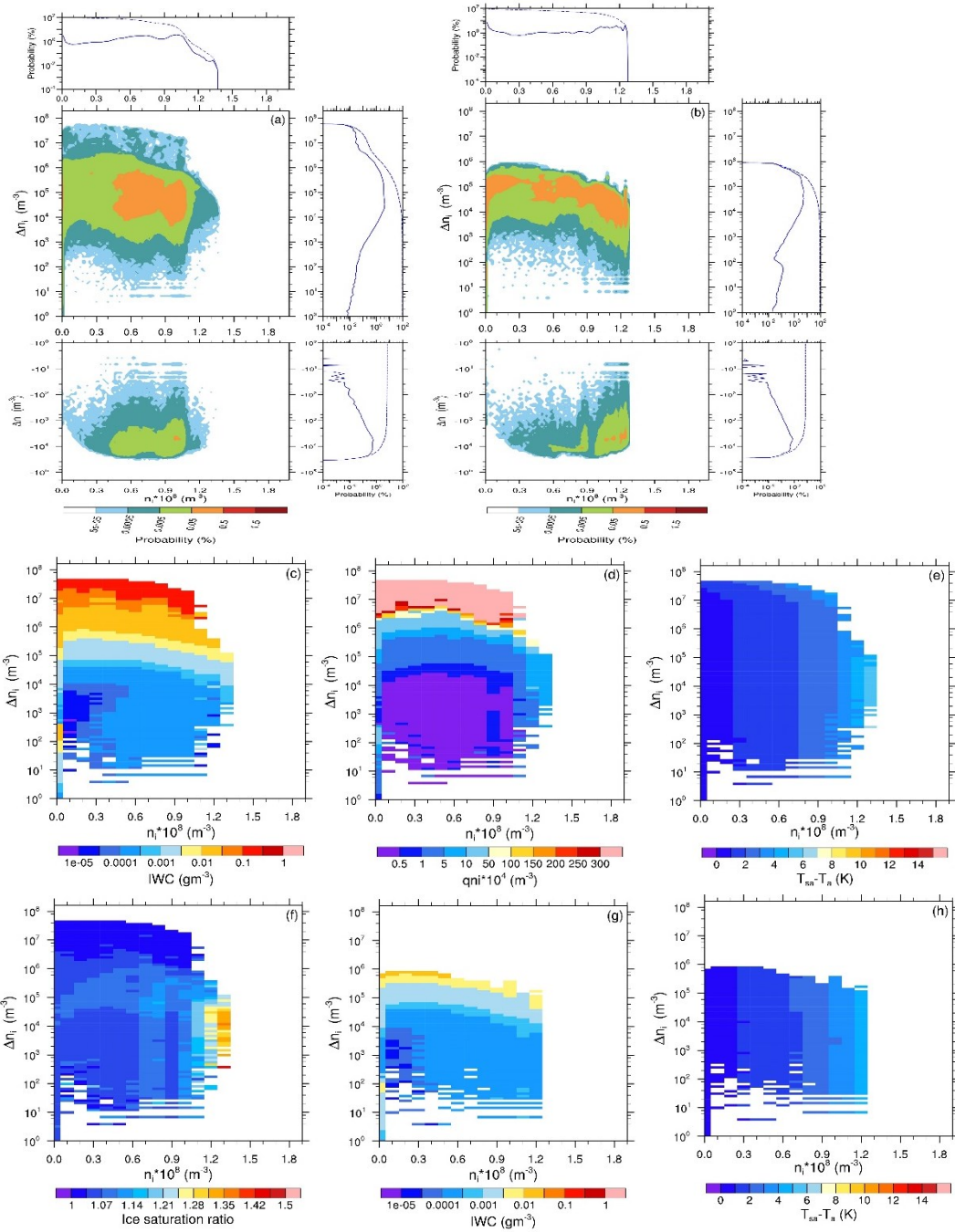


Figure 6: As figure 5 but for altitudes ranging from 9.6km (280 hPa) to 9.8 km (270 hPa).

3.3 Impact of the pre-existing cirrus on ice crystal loss during the vortex phase

Here we analyze the contrail ice crystal loss during the vortex phase and the impact of pre-existing cirrus ice crystals, that get mixed into the plume before vortex descent, on the ice crystal loss. Generally, we expect a low survival fraction since the saturation ratio within cirrus is often close to 1, in particular if cirrus ice crystal concentrations are high. As described in section 2.2.4, cirrus ice crystals can have an impact on contrail ice crystal survival due to the competition of cirrus and contrail ice crystals for water vapor deposition. The lower the water vapor mass that is deposited on contrail ice crystals the faster the contrail ice crystals may sublime completely during vortex descent. ~~Furthermore~~But, the sublimation of cirrus ice crystals ~~can increase the survival fraction of contrail ice crystals during vortex descent because cirrus ice crystals sublime together with the contrail ice crystals~~ in the mostly ice sub-saturated descending vortices, ~~thereby increasing~~ can increase the relative humidity. ~~This increase in relative humidity within the vortices can lead to a decrease in the ice- and thereby the contrail ice crystal loss and therefore an increase in the ice crystal survival fraction.~~

~~We have analyzed the impact of cirrus ice crystals on~~In the following we calculate the survival ~~of contrail ice crystals, connected with diffusional growth shortly after nucleation and with sublimation within the descending vortices, during the contrail's vortex phase separately~~fraction for contrails that form more than 5K below the temperature threshold ~~for contrail formation (Fig. 7) and for contrails that form closer to the formation threshold (Fig. 8).~~ ~~We calculate the survival fraction depending on the number of nucleated ice crystals which is itself dependent on the presence of cirrus ice crystals. We test the sensitivity of our results, varying the soot number emission index and the static stability, assuming an atmospheric stability of~~ 0.012s^{-1} a value that is slightly higher than the average in the upper troposphere.

3.3.1 Far below threshold case, and to the time at which the vortex starts descending.

On the 24th of April 2013, it is mainly the atmospheric levels above 11 km and a few hundred meters below where the temperature is more than 5K below the contrail formation threshold (Fig. 4b). At those levels the fraction of ice crystals surviving the vortex phase, when neglecting the impact of natural cirrus ice crystals, is very low and its change caused by the presence of natural cirrus ice crystals is practically zero (not shown). ~~Only in nearly 1% of grid boxes more than 20% of ice crystals survive (Fig. 7a) due to the low ambient ice supersaturation~~

On the 26th April, the temperature on the atmospheric levels above about 10 km is more than 5K below the contrail formation threshold (Fig. 4a). ~~At those levels ice~~Ice supersaturation and cirrus ice water content (Fig. 2) are significantly larger than on the 24th April ~~due to the large scale rising motion connected with the frontal system. Therefore~~and, therefore, ice crystal survival fractions and their change due to the impact of cirrus ice crystals are also larger (Fig. 7b). ~~When sampling all grid boxes that have temperatures more than 5K below the contrail formation threshold~~Nevertheless, the probability of low survival fractions of up to 10% is highest but survival fractions of nearly 75% can be also found. In about 1% of grid boxes survival fractions exceed ~~40~~30%. The impact of cirrus ice crystals on the survival fractions is very low, surpassing only very seldomly values of only 0.05%. ~~Negative changes in the survival fraction are even smaller. In the following we study the dependency~~

620 of the survival fraction and its change due to the impact of natural cirrus ice crystals on the various parameters discussed in Sect. 2.% or 0.1%.

Sensitivity to soot number emissions and static stability

625 A reduction in soot number emissions leads to fewer ice crystals nucleating within the aircraft plume (Kärcher et al., 2015). ~~A smaller number of contrail ice crystals within a plume with unchanged total water content leads to larger.)~~ so that contrail (and cirrus) ice crystals ~~and grow larger leading~~ to a larger fraction of contrail ice crystals surviving the vortex descent (Unterstrasser, 2016). This explains the increase in the probability of high survival fractions and in the maximum survival fraction on the 26th for the decrease in soot number emissions by ~~50% (Fig. 7e) and by 80% (Fig. 7d7c)~~. In 1% of grid boxes survival fractions exceed 65% and in 10% of grid boxes survival fractions exceed ~~30% at 80% reduced soot number emissions. Furthermore,~~
630 ~~the 25-30%. The~~ decrease in the soot number emissions affects the change in the survival fraction due to the natural cirrus ice crystals. The change in the ice crystal survival fraction increases ~~for decreasing soot number emissions~~ but stays nearly always below 0.5% ~~even%~~. On the 24th April 2013, survival fractions reach maximally 40% and in only 1% of grid boxes more than 20% of ice crystals survive for 80% reduced soot number emissions. Only for survival fractions of close to zero, is the change in survival fraction
635 emissions (Fig. 7a) due to the presence of cirrus ice crystals larger, reaching values of more than 1% in approximately 0.08% of grid boxes. On the 24th of April 2013, the low ambient ice supersaturation. The change in the survival fraction caused by the presence of natural cirrus ice crystals is close to zero even for 80% reduced soot emissions (Fig. (Fig. 7a) due to the low IWC within the very thin cirrus (Fig. 2). The change in the survival fraction due to cirrus ice crystals can be negative or positive with positive changes slightly larger. Since the change in survival fraction due to cirrus on 24th April 2013 is almost negligible Therefore, we do not show any further analysis for ~~this day~~ the 24th April.

640 The atmospheric stability determines the maximum vertical displacement of the wake vortices with high stability limiting the descent of the vortex. A low stability leads to a large descent of the vortex and therefore to a large decrease in relative humidity within the vortex and a decreased ice crystal survival fraction. We ~~have analyzed the effect of atmospheric stability on the survival fraction of contrail ice crystals by lowering the upper tropospheric Brunt-Väisälä frequency to a value of 0.005s^{-1} (Fig. 7e). A larger fraction of the contrail ice crystals sublimate during vortex descent in a weakly stable atmosphere (Unterstrasser,~~
645 ~~2016, Fig. 7e). The~~ find a slightly lower probability of high survival fractions of contrail ice crystals ~~decreases and the probability of large changes and an associated very slight increase~~ in the survival fraction due to the presence of natural cirrus ice crystals ~~increases very slightly. The probability of large changes in the survival fraction at survival fractions of close to zero is significantly reduced in a weakly stable atmosphere when lowering the upper tropospheric Brunt-Väisälä frequency to a value of 0.005s^{-1} (not shown).~~

650 Overall the impact of cirrus ice crystals on the survival of contrail ice crystals in the vortex phase is extremely limited. Only at survival fractions close to zero the impact can reach values of 1%. At those low survival fractions the uncertainty in the survival fraction is largest.

655 **Impact of cirrus cloud properties**

655 Since, on the one hand, the time until vortex descent is not well defined and, on the other hand, relative humidity may be such that cirrus ice crystals could grow at the cost of contrail ice crystals during the first few seconds of vortex descent, we vary the growth time period before vortex descent (19s instead of 9s) in a sensitivity simulation. We hardly find a difference in the resulting impact of cirrus ice crystals on contrail ice survival. Deposition and sublimation rates close to ice saturation are very
660 small and differences in cirrus and contrail ice crystal radius and cirrus ice crystal concentrations are not large enough to let cirrus ice crystals grow significantly at the cost of contrail ice crystals.

The strength of the impact of natural cirrus ice crystals on the fraction of contrail ice crystals surviving the vortex phase depends ~~not only on the number of contrail ice crystals forming and on the atmospheric static stability but also~~ additionally on the cirrus ~~properties, in particular the cirrus~~ ice crystal number concentration and ice crystal sizes (equation 5). Fig. ~~87f~~ shows
665 ~~the cirrus properties, IWC, ice crystal number concentration and sizes and in cloud ice supersaturation, for each set of known dependence of contrail ice crystal survival fraction of contrail ice crystals and its change due to the presence of natural cirrus ice crystals for the 26th April. A soot number emission of $0.5 \cdot 10^{15} \text{ kg fuel}^{-1}$ and a Brunt Väisälä frequency of 0.012 s^{-1} have been prescribed. As expected (see Sect. 2.2.3), the in-cloud on the ambient (in-cloud) saturation ratio with respect to ice affects the survival fraction of the contrail ice crystals with high ice supersaturation leading to high contrail ice crystal survival~~
670 ~~fractions (Fig. 8e (see Sect. 2.2.3)). If ambient air is close to saturated with respect to ice (saturation ratio close to 1.0) then the contrail ice crystals have only a low ice water mass and adiabatic warming in the descending vortices will lead to low survival fractions and so that only the ice crystals within the secondary vortex can survive. The pre-existing cirrus has the largest impact on the survival of contrail ice crystals within the vortex phase if the cirrus ice water content and the ice crystal number concentrations are relatively high (Sect. 2.2.4; Fig. 7 d,e) and resulting cirrus ice crystal sizes are small (Sect. 2.2.4; Fig. 8~~
675 ~~a,b,d). When not shown). Large cirrus ice crystals are small then crystal number concentrations lead, on the difference between the size of cirrus and one hand, to smaller contrail ice crystals is small leading to smaller differences before vortex descent and, on the other hand, to an increase in the diffusional growth of the ice crystals. Therefore, contrail ice crystals grow larger so that the cirrus ice sublimation of during vortex descend. At the time when the ice crystal growth rates are very high, which is right after nucleation, cirrus ice crystals crystal numbers within the descending vortices can have a larger impact on contrail~~
680 ~~ice crystal survival. Furthermore, the plume are much smaller than shortly before and during vortex descent. Therefore, a large number of cirrus ice crystals that is connected with a large ice water content can effectively moisten the descending vortex and often lead to reduced an increase in the contrail ice loss crystal survival rate. Large cirrus ice crystal number concentrations are commonly connected with relative humidity around that is relatively close to ice saturation. Therefore, areas with high cirrus ice crystal number concentrations are often areas where the contrail ice crystal survival fraction (when neglecting the impact of cirrus ice crystals) is low (Fig. 8b) and when they are connected with relatively high IWC (Fig. 8a, b), the pre-existing cirrus has a comparatively large impact on the contrail ice crystal survival fraction, relatively low (Fig. 7d). Once saturation ratios are very close to 1 and survival rates are close to zero the estimates have a high uncertainty. Survival fractions~~

of more than 50%, when neglecting the impact of cirrus ice, are usually connected with ice saturation ratios above around 1.25. In those areas high cirrus ice crystal numbers are relatively uncommon and hint at recent ice nucleation events presumably connected with the fast lifting of moist environmental air within the frontal system. In areas with survival fraction around 50%, high number concentrations of small cirrus ice crystals and a large IWC lead only occasionally to changes in the survival fraction of more than 0.2%–0.4%. Negative changes in the survival fraction are always connected with few large ice crystals. %.

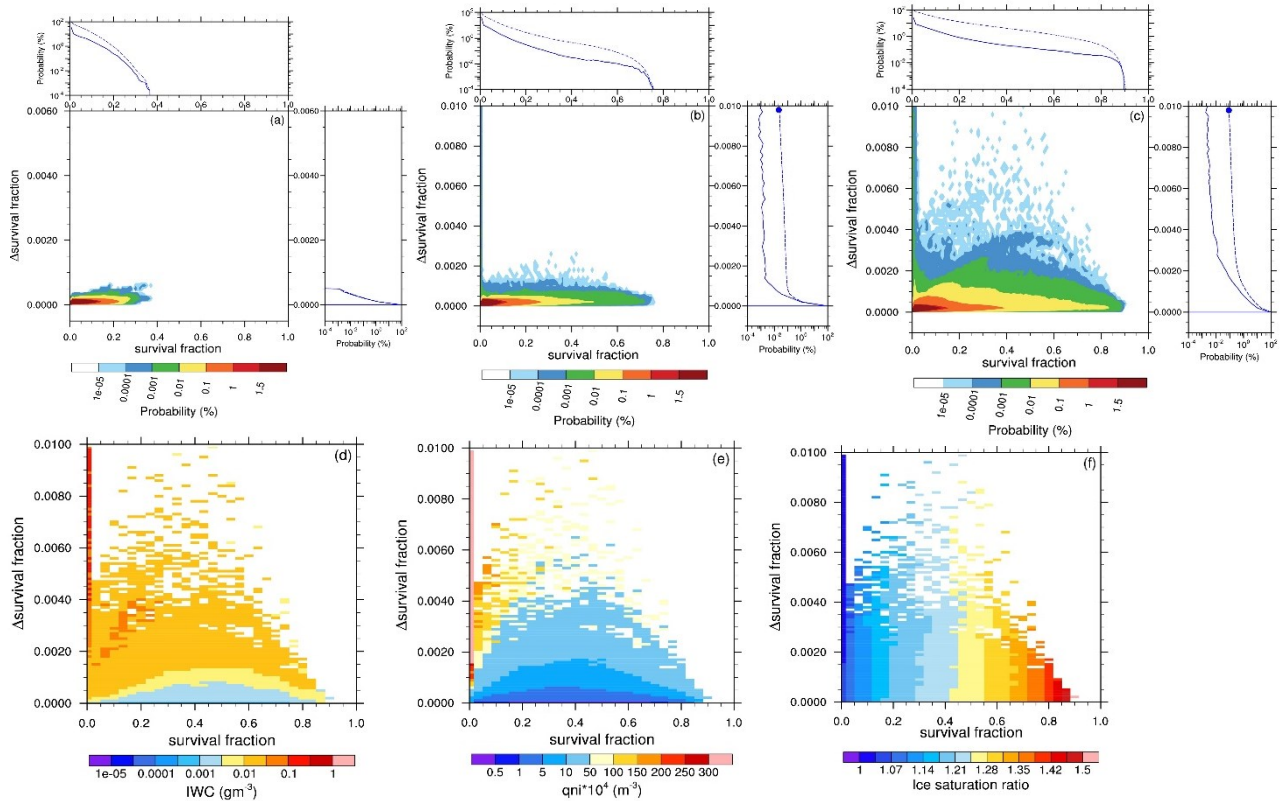


Figure 7: Joint probability distribution of contrail ice crystal survival fraction during the vortex phase when neglecting the impact of cirrus ice crystals (SF) and its change due to the presence of cirrus ice crystals (Δ SF) for (a) the 24th April for 80% reduced soot number emissions and for the 26th April 2013 for (b) current soot number emissions, $2.5 \cdot 10^{15}$ kg-fuel⁻¹, and (c) 80% reduced soot number emissions. Furthermore, cirrus properties for combinations of SF and Δ SF for the 26th April (d) ice water content ‘IWC’, (e) cirrus ice crystal number concentration ‘qni’ and (f) in-cloud ice saturation ratio. In (a) – (c) the PDF of the fraction of surviving ice crystals (solid) and the associated cumulative PDF (dashed) when neglecting the impact of natural cirrus ice crystals (top) and its change due to the presence of cirrus ice crystals (right) is additionally shown. The dot in the probability distribution of the change in survival fraction (c, right) indicates the probability of changes in the survival fraction that are larger than 1%. Analysis was restricted to areas where ambient temperature is at least 5K below the formation threshold temperature. A Brunt-Väisälä frequency of 0.012 s^{-1} (strong stability) has been assumed for all cases.

3.3.2 Close to threshold case

When contrails form close to the contrail formation threshold, ~~(within 5K), large survival fractions (of contrail ice crystals, when neglecting the impact of cirrus ice crystals) of contrail ice crystals,~~ are much more common than when contrails form at temperatures far below the contrail formation threshold (Fig. 7d, 9). ~~When temperatures are close to the formation threshold, in about 10% of the grid boxes not shown), with survival fractions are larger than 70% whereas in about 10% of the far from-threshold cases the same percentage of grid boxes exceeds survival fractions of only 30%.~~

~~The changes in the survival fraction, due to the impact of cirrus ice crystals, can be significantly larger than in the close to formation threshold cases. In 0.01% of cases the change in the survival fraction exceeds 2-3% but changes can also reach occasionally values of 5-10% but connected probabilities are extremely small. The probability of a reduction in the survival fraction of contrail ice crystals due to the presence of cirrus ice crystals is larger than in the far from threshold cases but the changes themselves remain small compared to the increases in the survival fraction.~~

~~Studying the reasons for the change in the survival fraction of contrail ice crystals due to cirrus ice crystals when contrails form close to the contrail formation threshold is complicated by the fact that the survival is additionally dependent on the number of nucleated contrail ice crystals which varies strongly depending on the atmospheric state. Assuming fixed soot number emissions, the ambient atmospheric state controls contrail ice nucleation while the survival of the ice crystals during the vortex phase is dependent on atmospheric variables and on the contrail ice nucleation.~~

~~High survival fractions are found in areas where the in-cloud ice saturation ratio is high (figure 10e) and/or where contrail formation occurs close to the formation threshold so that the number of nucleated contrail ice crystals is very low (figure 10d). Due to not shown). Connected with the low number of contrail ice crystals, the ice crystals are larger and the survival fraction within the vortex phase is increased, similar to the increased survival fractions when reducing soot number emissions. The fact that survival fractions can be high either when the ice supersaturation ratio is high or when it is average but very few contrail ice crystals were formed obscures the strong influence that ice supersaturation has on the survival of ice crystals (Fig. 10e). The changes in the survival fraction, due to the impact of cirrus ice crystals, can be significantly larger than in the close to formation threshold cases, but the uncertainty of these estimates is also significantly larger.~~

~~The change in the survival fraction is primarily a function of how close to the formation threshold contrails were formed and, therefore, of the AEL_i (Fig. 10d). The closer contrail formation happens to the formation threshold the fewer ice crystals are formed, so that the impact of the pre-existing cirrus on the survival fraction can be relatively large. Changes in the survival fraction of contrail ice crystals are practically zero for high AEL_i ($> 10^{13}$ kg fuel⁻¹). At high survival fractions (when neglecting the impact of cirrus ice crystals) changes in the survival fraction can be large only if the cirrus consists of very few ice crystals. When contrail ice survival fractions are close to zero, cirrus with many small ice crystals can lead to large changes in the contrail ice crystal survival fraction.~~

730 **4 Impact of contrail formation on ice crystal number concentrations**

735 Contrail formation within a cirrus cloud leads to changes in the microphysical properties which then have implications for the further development of the cirrus, for its life time and optical properties and, therefore, its impact on climate. In figure 11 we show the change in ice crystal numbers of the cirrus cloud field on the 26th April 2013 at around 10.5km and 9.7km in cases when contrail formation conditions were met, which is in both altitude ranges in about 60% of around 10^6 grid boxes in which contrail formation conditions are met. We estimate that in both altitude ranges at around 10.5km and 9.7km, in approximately 90% and 83% of cases the impact on the cirrus was to increase ice crystal number concentrations, respectively. Changes in ice crystal number concentrations approximately 5 minutes after emission are most likely to range between 10^6m^{-3} and 10^7m^{-3} irrespective of the cirrus ice crystal number concentration (figure 11). In lower levels changes are slightly lower than in upper levels. Changes in ice crystal number concentrations display a small shift towards larger changes for higher initial cirrus ice crystal number concentrations which is likely caused by the impact of the pre-existing ice crystals on contrail ice nucleation discussed in section 3. Cirrus ice crystal number concentrations range between 10^2m^{-3} and 10^5m^{-3} before air traffic and the formation of contrails within cirrus is most likely to change ice crystal number concentrations by 2–4 orders of magnitude. We do not estimate negative changes in ice crystal number concentrations mainly for two reasons. First, we do not simulate the impact of air traffic on cirrus properties when no contrails can form and, second, we find that negative changes in ice crystal number concentrations, caused by contrails forming but nearly all ice crystals sublimating within the vortex phase, are

740

745

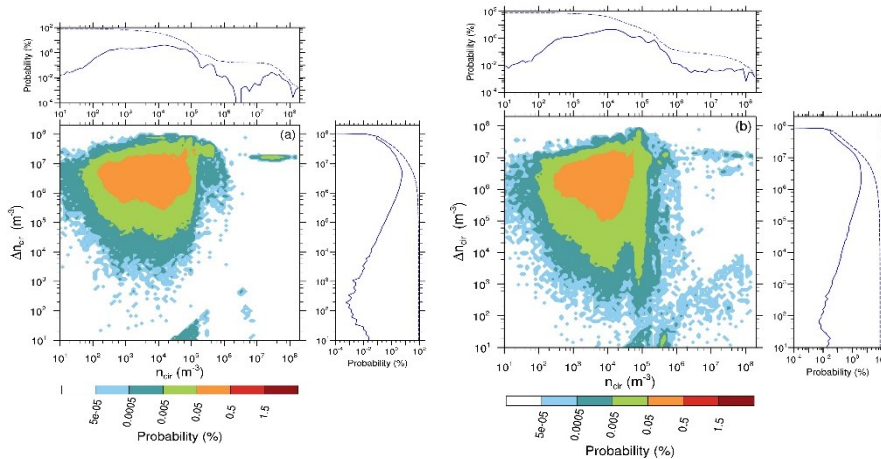


Figure 11: Joint probability of cirrus ice crystal number concentrations, n_{cir} , and the aviation-induced change in ice crystal numbers Δn_{cir} , for the cirrus cloud field on the 26th April 2013 for current soot number emissions, $2.5 \cdot 10^{15} \text{ kg fuel}^{-1}$, and (a) for altitudes from 10.3km to 10.8km ($\sim 250 \text{ hPa}$ to $\sim 225 \text{ hPa}$) and (b) for 9.6km to 9.8km ($\sim 280 \text{ hPa}$ to 270 hPa). Only 60% of cloudy grid boxes at the two altitude ranges are analysed in which the contrail formation conditions are met. Grid mean concentrations and their changes are displayed. Cumulative probabilities of Δn_{cir} reach values below 100% because we do not show negative changes here as they are lower and uncertainty in those simulated changes is high.

~~connected with a high uncertainty that may be of a similar order of magnitude as our estimates, which indicate decreases of maximally 10^3m^{-3} at a cirrus ice crystal number concentration of 10^4m^{-3} .~~

750 ~~5 Summary and comparison with literature~~

4 Summary and comparison with literature

The impact of pre-existing cirrus on the contrail formation criterion and on ice crystals survival in the vortex phase, has been discussed before by Gierens (2012). In agreement with Gierens (2012) we find that the sublimation of the ice crystals that get sucked into the aircraft's engine increase plume relative humidity only slightly. The impact of ice crystal sublimation within
755 the engine on the aviation induced change in humidity in the aircraft plume amounts to maximally a few percent in case of medium to thick cirrus and to less than 1% in the case of the very thin cirrus. This agrees with the 'order of percent' estimate of Gierens (2012). When additionally considering the impact of the cirrus ice crystals that are mixed into the plume after emission, the sublimation, as long as the plume is ice subsaturated, and deposition, when the plume is supersaturated, increases the ~~change in the~~ aviation induced portion of the water vapor content on average. Most of the time sublimation exceeds
760 deposition on ~~mixed in~~entrained cirrus ice crystals. Changes in the aviation induced water vapor content of the plume due to the impact of cirrus ice crystals one second after emission can ~~amount to be~~ maximally 10%-20%. Our estimate of the impact of cirrus on the aviation induced changes in water vapor, ~~including the impact of mixed in cirrus ice crystals,~~ are higher than the estimate of Gierens (2012) since he did not consider the additional impact of mixed-in cirrus ice crystals.

Consistent with us estimating a larger plume moistening effect due to the pre-existing cirrus ice crystals, our estimate of the
765 impact on the contrail formation threshold is also larger than in Gierens (2012). We estimate that the increase in the plume relative humidity leads to changes in the contrail formation threshold of up to 1.5 - 2 K as opposed to Gierens estimating that cirrus ice crystals have no significant impact: on the contrail formation threshold. Nevertheless, we agree that in large parts of the cirrus cloud field the presence of cirrus ice crystals does not impact the contrail formation criterion and contrail ice nucleation significantly. Furthermore, we agree with Gierens (2012) that the use of alternative fuels and the associated increase
770 in water vapor emissions, and in particular the associated decrease in soot number emissions, have significant implications for ice nucleation which is why they are regarded to be an important mitigation method (Burkhardt et al., 2018).

Ice nucleation is estimated to be significantly changed due to the impact of cirrus ice crystals ~~in particular~~ when the cirrus IWC and ice crystal number concentration is large. Changes can be positive (increasing contrail ice nucleation) or negative

(decreasing contrail ice nucleation) with positive changes significantly larger and more common. While for far-from-threshold cases changes can amount to nearly 10% of the maximum contrail ice crystal number concentration, at temperatures close to the formation threshold, contrail ice nucleation can be often lower and changes in contrail ice nucleation due to the impact of cirrus ice crystals larger. ~~This means that changes in contrail ice nucleation due to pre-existing cirrus are larger in lower flight levels and in the tropics because in those areas the IWC is usually larger and contrail ice nucleation lower (Bier and Burkhardt, 2019), because the IWC is usually larger.~~ We conclude that the sublimation of cirrus ice crystals in the engine and the impact of cirrus ice crystals mixed into the plume can have a significant impact on contrail formation. ~~Nevertheless, we agree with Gierens (2012) that the use of alternative fuels and the associated increase in water vapor emissions, and in particular the associated decrease in soot number emissions, have significant implications for ice nucleation which is why they are regarded to be an important mitigation method (Burkhardt et al., 2018). This sensitivity was not studied by Gierens (2012).~~

When analysing the impact of cirrus ice crystals on the survival of contrail ice crystals ~~brought about by changes to water vapor deposition on contrail ice crystals and to sublimation of contrail ice crystals in the descending vortices~~, we find that, for current day soot emissions, survival fractions are low and changes in the survival fraction are due to the impact of cirrus ice crystals may be of the order of only a few tenth of a percent when contrails form more than 5K below the formation threshold in a stably stratified atmosphere. ~~Changes in the survival fraction can be both positive or negative with positive changes slightly larger. They~~ Survival rates are largest when supersaturation is high or when only few contrail ice crystals form. Changes in the survival rate due to the impact of cirrus ice crystals are largest in cirrus that comprise large number concentrations of small cirrus ice crystals and a large ice water content or in cases of low contrail ice nucleation. When reductions in soot number emissions are introduced, e.g. caused by the introduction of alternative fuels, the larger contrail ice crystal sizes lead to larger survival fractions and to a larger change of the survival fraction due to the presence of cirrus ice crystals because contrail ice crystals are larger and the difference between the contrail and cirrus ice crystal sizes gets smaller. Even for 80% reduced soot number emissions changes in the survival fraction of ice crystals are ~~low reaching maximally 1% when otherwise contrail ice crystal survival would have been close to zero, very low (a few tenth of a percent).~~ When contrail formation happens close to the formation threshold, the change in the ice crystal loss can be larger than in far-from-threshold cases, but the probability of those large changes is very low and furthermore the uncertainty in those estimates is high. ~~Absolute changes in the survival fraction amount maximally to about 10% when assuming 80% reduced soot number emissions and a stably stratified atmosphere and are connected with low AEI_c, or with cirrus consisting of many small ice crystals.~~ Despite us using a very different measure for estimating the impact of cirrus ice crystals on the contrail ice crystal survival fraction than Gierens (2012), we agree that the impact is mostly extremely low. Changes in the survival fraction of contrail ice crystals due to the impact of cirrus ice crystals larger than a few percent are extremely uncommon and are mostly found in lower flight levels.

~~Contrail formation within slightly aged contrail cirrus may lead to larger changes. negligible~~
~~Percentages of the cirrus volume in which contrail formation is affected by pre-existing cirrus are very much dependent on the definition of a cirrus cloud. By including extremely thin cirrus in our analysis (using an IWC threshold of $10^{-11} \text{ kg m}^{-3}$) the~~

fraction of the cirrus volume with high IWC and, therefore, with a significant impact of the pre-existing cirrus, is low. Restricting our analysis to cirrus with larger IWC or larger optical depth, e.g. to only those cirrus that would be visible by eye from the ground, would lead to an increase in the likelihood with which pre-existing cirrus can have an impact on contrail formation.

We find that contrail ice nucleation within cirrus introduces a large change in the cirrus microphysical properties. When comparing cirrus ice crystal number concentrations before air traffic and the impact of air traffic approximately 5 minutes after emission, ice crystal number concentrations commonly increase by 2 to 4 orders of magnitude.

6

5 Conclusions

Contrail formation constitutes a significant perturbation to cirrus cloudiness. Until now it is mainly the impact of contrail formation in cloud free air that has been studied. Recently, satellite observations of cirrus perturbations caused by contrail formation within cirrus resulting in an increase of cirrus optical depth (Tesche et al., 2016) have led to increased interest in the topic. Here we present a contrail scheme, consisting of the estimation of contrail formation conditions and parameterizations for contrail ice nucleation and contrail ice crystal loss in the vortex phase, within ICON-LEM (Zängl et al., 2015). We adapt the scheme in order to study contrail formation within cirrus and study whether contrail formation is modified due to the impact of pre-existing cirrus ice crystals.

We find that contrail ice nucleation within cirrus often lead/leads to increases in local ice crystal number concentrations by 2 to 4 a few orders of magnitude even if survival rates of contrail ice crystals are often low. Pre-existing ice crystals can impact contrail ice nucleation and, therefore, ice crystal number concentrations significantly with positive and negative changes possible and positive ones larger and more common. The presence of pre-existing cirrus ice crystals leads oftencan lead to an increase in the contrail formation threshold temperature. Therefore, contrails may form and cause locally relatively high perturbations in cirrus ice crystal number concentrations when, in-judging only from the absence of the pre-existing ice crystals/relative humidity, no contrails would form so that only the sublimation of cirrus ice crystals in the engine and in the subsaturated plume would lead to a change in the ice crystal concentrations. In case of cirrus with a large IWC and at least medium high ice crystal number concentration, such as the cirrus that has properties representative of medium thick in-situ formed cirrus or fast rising liquid-origin cirrus (Krämer et al., 2020), contrail formation, in particular the contrail formation threshold and contrail ice nucleation, can be noticeably modified. Nevertheless, Positive and negative changes in ice crystal number concentrations are possible with positive changes significantly larger and more common. In large parts of the cloud field cirrus properties are such that the pre-existing cirrus ice crystals have in large parts of the cloud field a negligible impact on the contrail formation processes. We also find that the impact of pre-existing cirrus ice crystals on contrail ice crystal loss in the vortex phase is negligible.

The synoptic situation in which the impact is large, e.g. the outflow of a warm conveyor belt connected with frontal activity and the associated steady supply of moisture in the lifting zones, is exactly the synoptic situation in which contrails that form in cloud free air have a long-life time and a large climate impact. ~~The change in cirrus ice crystal numbers due to contrail formation may, therefore, have a long-lasting influence on cirrus optical depth, radiative fluxes and cirrus life times. The change in cirrus ice crystal numbers due to contrail formation may, therefore, be expected to have a significant influence on cirrus optical depth, radiative fluxes and cirrus life times. Our simulations do not allow the estimation of the climate impact of cirrus perturbations caused by contrail formation which depends on the optical depth perturbation and on the optical depth of the undisturbed cloud. Among others, Meerkötter et al. (1999) and Markowicz and Witek (2011) discuss the dependence of radiative forcing on optical depth and show a decrease in contrail warming once a certain optical depth is exceeded. Therefore, a large number of contrail ice crystals after the vortex phase may lead in an optically thin cloud to an enhanced warming and in an optically thicker cloud to a cooling relative to the undisturbed cloud with the overall impact depending on the balance of the two effects. Since corrections in ice nucleation are large in clouds with large ice water content which are likely connected with large optical depth, we speculate that disregarding the impact of cirrus on contrail formation may possibly underestimate the cooling of the contrail perturbations within optically thicker clouds. It should be noted that the cirrus optical depth at which a further increase in optical depth, caused by contrail formation, leads to a cooling is dependent on the cirrus ice crystal habit.~~

Many uncertainties remain in our estimates that are mainly caused by the simple two-moment microphysical scheme of ICON-LEM and by the assumptions made in the parameterizations that we are using. Since we do not resolve the size distribution of ice crystals we can only capture the differences in the diffusional growth of contrail or cirrus ice crystals depending on their mean ice crystal sizes. This means that we cannot ~~estimate~~calculate within ICON-LEM how many smaller cirrus ice crystals may be lost ~~with~~within the subsaturated plume. We also do not have any information on ice crystal shapes which would be important for estimating the diffusional growth in particular when cirrus ice crystal sizes are large. For small cirrus and contrail ice crystals the assumption of sphericity may be reasonably good. ~~The~~Furthermore, the parameterization for ice nucleation of Kärcher et al. (2015) assumes that all contrail ice crystals are formed at the same time and, therefore, does not consider successive ice nucleation which ~~would~~may have ~~an~~a significant impact on the temporal development of the plume relative humidity. Successive nucleation may result from ~~varying properties of ambient aerosols and from~~inhomogeneities of the plume, ~~which leads to reduction in ice nucleation in particular when soot number emission indices are very large ($>10^{15}$ kg-fuel⁻¹), and from the variability in aerosol properties which are themselves highly uncertain.~~ Estimates of soot number ~~emission emissions and ambient aerosol concentrations, their size distribution and their chemical composition and hygroscopicity~~ are highly variable; ~~and uncertain~~. But, within cirrus, ambient aerosols can be expected to have a small impact on contrail formation ~~within cirrus~~. Furthermore, contrail formation close to the formation threshold (~~within about 0.5K or 1K~~) is connected with a ~~larger~~large uncertainty ~~than contrail formation far away from the threshold~~ since details in the plume development may have a large impact, leading to varying ~~contrail~~ ice crystal numbers resulting from slightly different plume evolutions (Lewellen, 2020) ~~with cirrus ice crystals exerting a systematic influence on contrail ice nucleation.~~ The parameterization of ice crystal survival is connected with a large uncertainty in cases of very low AEI. ~~We~~Due to the large number of uncertainties we would

welcome studies using LES with a complex microphysical scheme as well as more observational data in particular on ambient and emitted aerosol properties that could shed more light onto these uncertainties. Such a model could potentially give valuable insights regarding impact of ice crystal size distributions, aerosol concentrations and properties and shape of ice crystals.

~~We have shown~~It is clear that the large perturbations induced by contrail formation within natural cirrus can lead to large modifications of cirrus microphysical properties. It would be important to study the life cycle of these disturbances and to estimate the associated changes in optical properties and, consequently, in radiative transfer that need to be included in aviation climate change assessments (Lee et al., 2021). Our study makes a first step in that direction by devising a contrail cirrus scheme with which contrail formation within clouds and their impact on cirrus properties and radiative forcing can be studied in models that do not resolve the plume processes. A complete picture of the climate impact of air traffic including all the climate forcing components together with their uncertainties is also crucially necessary for the evaluation of mitigation options that require calculating the tradeoffs between different climate forcing components. Finally, our work allows to improve the interpretation of cirrus observational data from flight campaigns and remote sensing and adds complexity to discussions about the importance of different ice nucleation pathways for cirrus properties. Contrail induced perturbations in cirrus properties may be important when evaluating models with in-situ measurements ~~or within a data assimilation context.~~

Appendix A: Impact of cirrus ice crystals mixed into the plume on the plume water vapor partial pressure before aerosol activation

The cirrus ice crystals, entrained into the plume during the rapid mixing of plume and ambient air immediately after emission, sublimate in the young, ice subsaturated plume ~~until the plume reaches ice saturation due to the mixing with environmental air.~~ At the beginning ~~of the mixing~~right after emission, the sublimation rate of an entrained ice ~~crystals~~crystal is large since the plume's relative humidity is low and temperature very high. ~~but the number of mixed in ice crystals is low.~~ Due to rapid mixing ~~in~~of the plume, the plume's temperature decreases and relative humidity ~~increases.~~ After and cirrus ice crystal concentrations increase. Close to ice saturation the sublimation rate is low while the number of entrained cirrus ice crystals is large. ~~saturation is reached and~~Once the plume is ice supersaturated, before aerosol activation, water vapor deposits on the cirrus ice crystals reducing the fast increase in the plume ice supersaturation. The entrainment of ice crystals can be calculated using equation 18 of Kärcher et al. (2015) with the entrainment rate of Kärcher (1999). The entrainment rate was shown by Kärcher (1999) to be a good fit to LES from Gerz et al (1998) after ~0.01s.

The rate of sublimation / deposition on an ice crystal can be calculated using the diffusional growth equation given in e.g. Pruppacher and Klett (1996) and Lewellen (2012) assuming spherical ice crystals:

$$\frac{dm}{dt} = \frac{4\pi r(S - e^{ak/r})}{L_s^2 K/R_v T^2 + R^v T/e_i(T)D} \quad (6)$$

Where, r is the radius of the ice crystal, S is the ice supersaturation ratio, D isthe diffusivity of water vapor, K isthe thermal conductivity of air and $e_s(T)$ isthe saturation vapor pressure at temperature T . Sublimation/Deposition depends mainly on the difference between the ambient vapor pressure and the saturation vapor pressure considering the dependence of the saturation vapor pressure on the ice crystal radius (Kelvin effect). In the curvature term we set the Kelvin radius ' a_k ' to 2×10^{-9} m, representative for cirrus-type conditions (Lewellen, 2012). The diffusivity of water vapor and thermal conductivity of air is calculated considering that the vapor density in moist air is not continuous right up to the surface of the ice crystal, using equations given in Pruppacher and Klett, 1996 (equations 13-14,13-20) setting the thermal accommodation coefficient to 0.7 and the mass accommodation coefficient to 0.5 (Kärcher, 2003). ~~We assume spherical particles since we do not have information on the habit of the ice crystals in our model which can lead to an underestimation of the growth of ice crystals. For contrail ice crystals~~

Here we calculate offline the temporal evolution of sublimation and deposition of cirrus ice crystals assuming a mean size which is given by the grid box ice water content and ice crystal number concentration. This means that we neglect the fact that when resolving the ice crystal size distribution, the smallest ice crystals ($< \sim 1.5 \mu\text{m}$) may completely sublimate when mixed into the plume at a time $t_{CS} = \frac{1}{2}(t_{Sat} - t_0)$ with t_0 the time of emission and t_{sat} the time at which ice saturation is reached. Assuming the smallest mean cirrus ice crystal sizes within our model simulations ($\sim 5 \mu\text{m}$) and a generalized gamma ice crystal size distribution of Seifert and Beheng (2006) we estimate that $\sim 10\%$ of the cirrus ice crystals have a size below $\sim 1.5 \mu\text{m}$ and may sublimate when mixed at time t_{cs} into the aircraft plume. The loss of cirrus ice crystals is likely to have a larger impact on our estimate of the deposition than of the sublimation and may accordingly lead to a conservative estimate for the plume water vapor increase due entrained cirrus ice crystals. Furthermore, we assume spherical particles, since we do not have information on the habit of the ice crystals in our model, which can lead to an underestimation of the growth/decay of ice crystals. For young contrail ice crystals or newly nucleated cirrus ice crystals (including newly frozen water droplets) sphericity should be a good assumption while for larger cirrus ice crystals this assumption is often not good. Nevertheless, the assumption of spherical particles in our study may often reasonably good since large changes in contrail ice nucleation and survival are caused by cirrus consisting of many small ice crystals and a large ice water content. That means that at times when we see the largest impacts the assumption of spherical particles is likely a reasonably good one.In order to reduce computing time we choose not to calculate the temporal evolution of the plume, including the sublimation and deposition on mixed-in cirrus ice crystals, within ICON-LEM. Instead, we estimate the change in the plume properties based on the plume properties at a time step in between emission and ice saturation.

~~Since we calculate contrail formation at a relatively high resolution in a large domain we cannot calculate the temporal evolution of the plume and of the sublimation and deposition on mixed in cirrus ice crystals within ICON-LEM. Therefore, we estimate the change in the plume properties based on the time integrated sublimation and deposition on cirrus ice crystals. As an example, we~~In table 1 we show an example calculation. We calculate for two contrail formation cases, one far from

940 threshold and one close to threshold case, the temporal evolution of cirrus ice crystal sublimation and deposition and the
resulting total ice water mass sublimated from entrained cirrus ice crystals in the subsaturated plume and the water vapor
deposited on the cirrus ice crystals once the plume is supersaturated using equation 6 and an equation for plume dilution
(Kärcher et al., 2015, equation 12). We then compare the result to the approximated overall sublimation and deposition
calculated at a time step in between emission and ice saturation and ice saturation and ice nucleation, respectively. We choose
945 two sets of ambient conditions and aircraft parameters as in Bier et al. (2021, their table 1; table 1) and specify cirrus properties
(table 1) and calculate the temporal evolution of the plume properties and the cirrus ice crystal number concentration and ice
water mass. High plume temperatures right after emission cause a large sublimation rate of entrained ice crystals while the
number of entrained cirrus ice crystals is low) and cirrus properties (table 1). ~~Close to ice saturation the sublimation rate is~~
~~low while the number of entrained cirrus ice crystals is large.~~ The resulting time integrated sublimated ice water mass and the
950 ice water mass deposited on the mixed in cirrus ice crystals is given in table 1.

We approximately estimate the sublimation of the cirrus ice water mass from the plume conditions at $t_{as} = (\frac{2}{3}(t_{sat} - t_0))$ with
 ~~t_0 the time of emission and t_{sat} the time at which ice saturation is reached. $t_{sat} - t_0$~~ . For both our example cases, the time
integrated sublimated ice water mass from entrained cirrus ice crystals is very close to the estimate when using plume
conditions at time t_{as} with deviations lower than 1% (table 1). The deposition of water vapor on cirrus ice crystals in the
955 supersaturated plume has been estimated from the plume atmospheric variables midway between ice saturation (t_{sat}) and aerosol
activation (t_{act}) at $t_{ad} = (\frac{1}{2}(t_{act} - t_{sat}))$. ~~Since we do not have any information from the ICON model on the size distribution~~
~~of the cirrus ice crystals we cannot estimate the number of ice crystals lost during sublimation within the subsaturated plume.~~
~~We assume here that 20% of cirrus ice crystals were lost until the plume reached ice saturation.)~~ with an assumed reduction
in cirrus ice crystal numbers of 20%. t_{act} is determined from the contrail ice nucleation parameterization of Kärcher et al. (2015)
960 assuming it to be unchanged by the sublimation and deposition. Table 1 shows that the time integrated deposition and the
estimates midway between ice saturation and aerosol activation agree reasonably well (table 1).

In order to estimate the range of errors that we make if we estimate connected with the estimates of deposition and sublimation
~~in the above way~~ we vary the background relative humidity, cirrus ice crystal numbers and ice water content and calculate ~~in~~
~~plumes (one far from the contrail formation threshold and one close to it) the time integrated and the approximated~~ sublimation
965 and deposition within the homogeneous plume when resolving the temporal evolution and when approximating the integrated
effect. We find that errors in estimating sublimation are mostly below 3% and in estimating deposition around 2%. Larger
errors in sublimation and/or deposition of up to 4-5% we find only for combinations of atmospheric variables that are unlikely
to occur such as high relative humidity combined with many cirrus ice crystals and a large ice water content or for many very
small ice crystals, with small ice water content and low supersaturation. ~~When estimating contrail formation within ICON we,~~
970 ~~therefore choose to estimate sublimation of cirrus ice crystals and water vapor deposition on cirrus ice crystals before aerosol~~
~~activation by approximating them based on the sublimation and deposition rates at t_{as} and t_{ad} , respectively.~~ In order to calculate

~~the deposition on cirrus ice crystals before aerosol activation we determine t_{act} by using the contrail ice nucleation parameterization of Kärcher et al. (2015) assuming t_{act} is unchanged by the sublimation and deposition.~~

975 Table 1: Sublimation of cirrus ice crystals and deposition on cirrus ice crystals mixed into a homogeneous aircraft
 plume after emission (starting at 0.01s after emission) and before ice nucleation prescribing an engine exit temperature
 of 580K and the air to fuel ratio $N_0 = 75$ and specifying cirrus ice crystal number concentration of $n_i = 2 \cdot 10^4 \text{ m}^{-3}$ and
 ice water content of $10^{-5} \text{ kg m}^{-3}$. The contrail formation threshold is 226.2K. In order to estimate deposition on cirrus
 980 ice crystals from the deposition rate at time t_{ad} we assume a reduction in cirrus ice crystal numbers due to the prior
 sublimation of 20%.

Estimating the sublimation and deposition within the plume before contrail formation				
Ambient conditions				
	Far from contrail formation threshold		Close to contrail formation threshold	
Contrail formation threshold temperature	226.2 K		226.2 K	
Temperature	220 K		225 K	
RH _i	120%		120%	
Pressure	240 hPa		240 hPa	
Sublimation of entrained cirrus ice crystals before contrail ice nucleation AEI (kg/kg-fuel) $\left(\frac{dm}{dt}\right)_{sub}$				
Time of reaching ice saturation ' t_{sat} '	0.19 s		0.271 s	
	Temporal evolution	based on sublimation rate at t_{as}	Temporal evolution	based on sublimation rate at t_{as}
Total sublimated ice water mass	8.81135×10^{-5}	8.88161×10^{-5} (+0.8659%)	3.71874×10^{-4}	3.75298×10^{-4} (0.92074%)
Deposition on entrained cirrus ice crystals before contrail ice nucleation (kg/kg-fuel) $\left(\frac{dm}{dt}\right)_{dep}$				
Time at aerosol activation ' t_{act} '	0.45 s		1.1 s	
	Temporal evolution	based on deposition rate at t_{ad}	Temporal evolution	based on deposition rate at t_{ad}
Total deposited ice water mass	8.083842×10^{-5}	8.28574×10^{-5} (2.49755%)	3.0446×10^{-4}	3.099979×10^{-4} (1.8189%)

Code Availability

The ICON model is distributed to institutions under an institutional license issued by the DWD. Two copies of the institutional license need to be signed and returned to the DWD. ICON can be then downloaded at <https://data.dwd.de>. To individuals, the
 985 ICON model is distributed under a personal non-commercial research license distributed by the MPI-M (Max Planck Institute for Meteorology). Every person receiving a copy of the ICON framework code accepts the ICON personal non-commercial research license by doing so. Or, as the license states, any use of the ICON software is conditional upon and therefore leads to

an implied acceptance of the terms of the Soft-ware License Agreement. To receive an individually licensed copy, please follow the instructions provided at https://code.mpimet.mpg.de/projects/iconpublic/wiki/Instructions_to_obtain_the_ICON_model_code_with_a_personal_non-commercial_research_license.

Data Availability

Data is used in the figures can be access from the given DOI: (Verma, 2021, <https://doi.org/10.5281/zenodo.63379815730287>)

995

Author contributions

PV and UB jointly designed the study. PV have performed simulations and analyzed the results. PV and UB jointly discussed scientific results and wrote the manuscript.

1000 Competing interests

The authors declare that they have no conflict of interest.

Acknowledgements

We gratefully acknowledge the High Definition Cloud and Precipitation HD(CP)² project that performed the ICON-LEM simulations on which our study is based. We thank Jan Frederik Engels from DKRZ for technical help implementing the contrail scheme and the air traffic inventory in ICON-LEM. We thank Klaus Gierens, Andreas Schäffler and Simon Unterstrasser from DLR and Axel Seifert and Daniel Reinert from DWD and the whole HD(CP)² community for valuable discussions. We thank Winfried Beer and Bastian Kern for their technical support at DLR. The paper was significantly improved by the reviews of David Lewellen and an anonymous reviewer and the comment of Bernd Kärcher.

Financial support

1010 This work is funded by the research program “High Definition of Clouds and Precipitation for Advancing Climate Prediction” (HD(CP)²) of the BMBF (German Federal Ministry of Education and Research) under grant 01LK1503C. The authors

gratefully acknowledge the computing time granted by the German Climate Computing Centre (Deutsches Klimarechenzentrum, DKRZ, Hamburg, Germany).

References

- 1015 Baldauf, M. and Brdar, S.: 3D diffusion in terrain-following coordinates: testing and stability of horizontally explicit, vertically implicit discretizations, *Quarterly Journal of the Royal Meteorological Society*, 142(698), 2087–2101, <https://doi.org/10.1002/qj.2805>, 2016.
- Bickel, M., Ponater, M., Bock, L., Burkhardt, U., and Reineke, S.: Estimating the Effective Radiative Forcing of Contrail
1020 Cirrus, *Journal of Climate*, 33(5), 1991–2005, <https://doi.org/10.1175/jcli-d-19-0467.1>, 2020.
- Bier, A., Unterstrasser, S., and Vancassel, X.: Box model trajectory studies of contrail formation using a particle-based cloud microphysics scheme, *Atmos. Chem. Phys. Discuss.* [preprint], <https://doi.org/10.5194/acp-2021-361>, in review, 2021.
- 1025 Bier, A. and Burkhardt, U.: Variability in Contrail Ice Nucleation and Its Dependence on Soot Number Emissions, *Journal of Geophysical Research: Atmospheres*, 124(6), 3384–3400, <https://doi.org/10.1029/2018jd029155>, 2019.
- Bier, A., Burkhardt, U., and Bock, L.: Synoptic Control of Contrail Cirrus Life Cycles and Their Modification Due to Reduced Soot Number Emissions, *Journal of Geophysical Research: Atmospheres*, 122(21), 11,584–11,603,
1030 <https://doi.org/10.1002/2017jd027011>, 2017.
- Bock, L. and Burkhardt, U.: Reassessing properties and radiative forcing of contrail cirrus using a climate model, *Journal of Geophysical Research: Atmospheres*, 121(16), 9717–9736, <https://doi.org/10.1002/2016jd025112>, 2016. a
- 1035 Bock, L. and Burkhardt, U.: The temporal evolution of a long-lived contrail cirrus cluster: Simulations with a global climate model, *Journal of Geophysical Research: Atmospheres*, 121(7), 3548–3565, <https://doi.org/10.1002/2015jd024475>, 2016. b
- Bock, L. and Burkhardt, U.: Contrail cirrus radiative forcing for future air traffic, *Atmospheric Chemistry and Physics*, 19(12), 8163–8174, <https://doi.org/10.5194/acp-19-8163-2019>, 2019.
- 1040 Boucher, O., D. Randall, P. Artaxo, C. Bretherton, G. Feingold, P. Forster, V.-M. Kerminen, Y. Kondo, H. Liao, U. Lohmann, P. Rasch, S.K. Satheesh, S. Sherwood, B. Stevens, and X.Y. Zhang, T.F. Stocker, D. Qin, G.-K. Plattner, M. Tignor, S.K. Allen, J. Doschung, A. Nauels, Y. Xia, V. Bex, and P.M. Midgley: Clouds and aerosols. In *Climate Change 2013: The Physical*

- Science Basis, Contribution of Working Group I to the Fifth Assessment Report of the Intergovernmental Panel on Climate Change, Eds. Cambridge University Press, pp. 571-657, <https://doi:10.1017/CBO9781107415324.016>, 2013.
- 1045
- Bräuer, T., Voigt, C., Sauer, D., Kaufmann, S., Hahn, V., Scheibe, M., Schlager, H., Diskin, G. S., Nowak, J. B., DiGangi, J. P., Huber, F., Moore, R. H., and Anderson, B. E.: Airborne Measurements of Contrail Ice Properties - Dependence on Temperature and Humidity, *Geophysical Research Letters*, 1, <https://doi.org/10.1029/2020gl092166>, 2021.
- 1050
- Burkhardt, U., Bock, L., and Bier, A.: Mitigating the contrail cirrus climate impact by reducing aircraft soot number emissions, *Npj Climate and Atmospheric Science*, 1(1), 37, <https://doi.org/10.1038/s41612-018-0046-4>, 2018.
- Burkhardt, U. and Kärcher, B.: Global radiative forcing from contrail cirrus, *Nature Climate Change*, 1(1), 54–58, <https://doi.org/10.1038/nclimate1068>, 2011.
- 1055
- Chen, C.-C. and Gettelman, A.: Simulated radiative forcing from contrails and contrail cirrus, *Atmospheric Chemistry and Physics*, 13(24), 12525–12536, <https://doi.org/10.5194/acp-13-12525-2013>, 2013.
- 1060
- Dipankar, A., Stevens, B., Heinze, R., Moseley, C., Zängl, G., Giorgetta, M., and Brdar, S.: Large eddy simulation using the general circulation model ICON, *Journal of Advances in Modeling Earth Systems*, 7(3), 963–986, <https://doi.org/10.1002/2015ms000431>, 2015.
- Fichter, C., Marquart, S., Sausen, R., and Lee, D. S.: The impact of cruise altitude on contrails and related radiative forcing, *Meteorologische Zeitschrift*, 14(4), 563–572, <https://doi.org/10.1127/0941-2948/2005/0048>, 2005.
- 1065
- Gayet, J.-F., Febvre, G., Brogniez, G., Chepfer, H., Renger, W., and Wendling, P.: Microphysical and Optical Properties of Cirrus and Contrails: Cloud Field Study on 13 October 1989, *Journal of the Atmospheric Sciences*, 53(1), 126–138, https://journals.ametsoc.org/view/journals/atsc/53/1/1520-0469_1996_053_0126_maopoc_2_0_co_2.xml, 1996.
- 1070
- Gerz, T., Dürbeck, T., and Konopka, P.: Transport and effective diffusion of aircraft emissions, *Journal of Geophysical Research: Atmospheres*, 103(D20), 25905–25913, <https://doi.org/10.1029/98jd02282>, 1998.
- Gierens, K.: Selected topics on the interaction between cirrus clouds and embedded contrails, *Atmospheric Chemistry and Physics*, 12(24), 11943–11949, <https://doi.org/10.5194/acp-12-11943-2012>, 2012.
- 1075

Gruber, S., Unterstrasser, S., Bechtold, J., Vogel, H., Jung, M., Pak, H., & Vogel, B.: Contrails and their impact on shortwave radiation and photovoltaic power production – a regional model study, *Atmospheric Chemistry and Physics*, 18(9), 6393–6411, <https://doi.org/10.5194/acp-18-6393-2018>, 2018.

1080

Hande, L. B., Engler, C., Hoose, C., and Tegen, I.: Parameterizing cloud condensation nuclei concentrations during HOPE, *Atmospheric Chemistry and Physics*, 16(18), 12059–12079, <https://doi.org/10.5194/acp-16-12059-2016>, 2016.

1085 Heinze, R., Dipankar, A., Henken, C. C., Moseley, C., Sourdeval, O., Trömel, S., Xie, X., Adamidis, P., Ament, F., Baars, H., Barthlott, C., Behrendt, A., Blahak, U., Bley, S., Brdar, S., Brueck, M., Crewell, S., Deneke, H., Di Girolamo, P., Evaristo, R., Fischer, J., Frank, C., Friederichs, P., Göcke, T., Gorges, K., Hande, L., Hanke, M., Hansen, A., Hege, H.-C., Hoose, C., Jahns, T., Kalthoff, N., Klocke, D., Kneifel, S., Knippertz, P., Kuhn, A., van Laar, T., Macke, A., Maurer, V., Mayer, B., Meyer, C. I., Muppa, S. K., Neggers, R. A. J., Orlandi, E., Pantillon, F., Pospichal, B., Röber, N., Scheck, L., Seifert, A., Seifert, P., Senf, F., Siligam, P., Simmer, C., Steinke, S., Stevens, B., Wapler, K., Weniger, M., Wulfmeyer, V., Zängl, G., Zhang, D., and
1090 Quaas, J.: Large-eddy simulations over Germany using ICON: a comprehensive evaluation, *Q. J. Roy. Meteor. Soc.*, 143, 69–100, <https://doi.org/10.1002/qj.2947>, 2017.

Kapadia, Z. Z., Spracklen, D. V., Arnold, S. R., Borman, D. J., Mann, G. W., Pringle, K. J., Monks, S. A., Reddington, C. L., Benduhn, F., Rap, A., Scott, C. E., Butt, E. W., and Yoshioka, M.: Impacts of aviation fuel sulfur content on climate and
1095 human health, *Atmospheric Chemistry and Physics*, 16(16), 10521–10541, <https://doi.org/10.5194/acp-16-10521-2016>, 2016.

Kärcher, B.: Physicochemistry of aircraft-generated liquid aerosols, soot, and ice particles: 1. Model description. *Journal of Geophysical Research: Atmospheres*, 103(D14), 17111–17128, <https://doi.org/10.1029/98jd01044>, 1998.

1100 [Kärcher, B.: Aviation-Produced Aerosols and Contrails. *Surveys in Geophysics*, 20\(2\), 113–167, https://doi.org/10.1023/a:1006600107117, 1999.](https://doi.org/10.1023/a:1006600107117)

[Kärcher, B.: Simulating gas-aerosol-cirrus interactions: Process-oriented microphysical model and applications. *Atmospheric Chemistry and Physics*, 3\(5\), 1645–1664, https://doi.org/10.5194/acp-3-1645-2003, 2003.](https://doi.org/10.5194/acp-3-1645-2003)

1105

Kärcher, B., Burkhardt, U., Bier, A., Bock, L., and Ford, I. J.: The microphysical pathway to contrail formation, *Journal of Geophysical Research: Atmospheres*, 120(15), 7893–7927, <https://doi.org/10.1002/2015jd023491>, 2015.

- 1110 Kärcher, B., Busen, R., Petzold, A., Schröder, F. P., Schumann, U., & Jensen, E. J.: Physicochemistry of aircraft-generated liquid aerosols, soot, and ice particles: 2. Comparison with observations and sensitivity studies. *Journal of Geophysical Research: Atmospheres*, 103(D14), 17129–17147. <https://doi.org/10.1029/98jd01045>, 1998.
- 1115 Kärcher, B., Hendricks, J., and Lohmann, U.: Physically based parameterization of cirrus cloud formation for use in global atmospheric models, *Journal of Geophysical Research*, 111(D1), 1, <https://doi.org/10.1029/2005jd006219>, 2006.
- Kärcher, B. and Yu, F.: Role of aircraft soot emissions in contrail formation. *Geophysical Research Letters*, 36(1), 1, <https://doi.org/10.1029/2008gl036649>, 2009.
- 1120 Köhler, C. G. and Seifert, A.: Identifying sensitivities for cirrus modelling using a two-moment two-mode bulk microphysics scheme, *Tellus B: Chemical and Physical Meteorology*, 67(1), 24494, <https://doi.org/10.3402/tellusb.v67.24494>, 2015.
- 1125 Krämer, M., Rolf, C., Spelten, N., Afchine, A., Fahey, D., Jensen, E., Khaykin, S., Kuhn, T., Lawson, P., Lykov, A., Pan, L. L., Riese, M., Rollins, A., Strohm, F., Thornberry, T., Wolf, V., Woods, S., Spichtinger, P., Quaas, J., & Sourdeval, O.: A microphysics guide to cirrus – Part 2: Climatologies of clouds and humidity from observations. *Atmospheric Chemistry and Physics*, 20(21), 12569–12608, <https://doi.org/10.5194/acp-20-12569-2020>, 2020.
- 1130 Lee, D. S., Fahey, D. W., Skowron, A., Allen, M. R., Burkhardt, U., Chen, Q., Doherty, S. J., Freeman, S., Forster, P. M., Fuglestad, J., Gettelman, A., De León, R. R., Lim, L. L., Lund, M. T., Millar, R. J., Owen, B., Penner, J. E., Pitari, G., Prather, M. J., Sausen, R., Wilcox, L. J.: The contribution of global aviation to anthropogenic climate forcing for 2000 to 2018, *Atmospheric Environment*, 244, 117834, <https://doi.org/10.1016/j.atmosenv.2020.117834>, 2021.
- 1135 Lewellen, D. C.: Analytic Solutions for Evolving Size Distributions of Spherical Crystals or Droplets Undergoing Diffusional Growth in Different Regimes. *Journal of the Atmospheric Sciences*, 69(2), 417–434, <https://doi.org/10.1175/jas-d-11-029.1>, 2012.
- Lewellen, D. C., Meza, O., and Huebsch, W. W.: Persistent Contrails and Contrail Cirrus. Part I: Large-Eddy Simulations from Inception to Demise, *Journal of the Atmospheric Sciences*, 71(12), 4399–4419, <https://doi.org/10.1175/jas-d-13-0316.1>, 2014.
- 1140 Lewellen, D. C. (2020). A Large-Eddy Simulation Study of Contrail Ice Number Formation. *Journal of the Atmospheric Sciences*, 77(7), 2585–2604, <https://doi.org/10.1175/jas-d-19-0322.1>, 2020.

Liou, K. N.: Influence of Cirrus Clouds on Weather and Climate Processes: A Global Perspective, *Monthly Weather Review*, 114(6), 1167–1199, [https://doi.org/10.1175/1520-0493\(1986\)114<1167:IOCCOW>2.0.CO;2](https://doi.org/10.1175/1520-0493(1986)114<1167:IOCCOW>2.0.CO;2), 1986.

1145 Macke, A., Seifert, P., Baars, H., Barthlott, C., Beekmans, C., Behrendt, A., Bohn, B., Brueck, M., Bühl, J., Crewell, S., Damian, T., Deneke, H., Düsing, S., Foth, A., Di Girolamo, P., Hammann, E., Heinze, R., Hirsikko, A., Kalisch, J., Kalthoff, N., Kinne, S., Kohler, M., Löhnert, U., Madhavan, B. L., Maurer, V., Muppa, S. K., Schween, J., Serikov, I., Siebert, H., Simmer, C., Späth, F., Steinke, S., Träumner, K., Trömel, S., Wehner, B., Wieser, A., Wulfmeyer, V., and Xie, X.: The HD(CP)² Observational Prototype Experiment (HOPE) – an overview, *Atmos. Chem. Phys.*, 17, 4887–4914, 1150 <https://doi.org/10.5194/acp-17-4887-2017>, 2017.

[Markowicz, K. M., & Witek, M. L.: Simulations of Contrail Optical Properties and Radiative Forcing for Various Crystal Shapes. *Journal of Applied Meteorology and Climatology*, 50\(8\), 1740–1755, https://doi.org/10.1175/2011jamc2618.1, 2011.](https://doi.org/10.1175/2011jamc2618.1)

1155 Matthes, S., Lim, L., Burkhardt, U., Dahlmann, K., Dietmüller, S., Grewe, V., Haslerud, A. S., Hendricks, J., Owen, B., Pitari, G., Righi, M., and Skowron, A.: Mitigation of Non-CO₂ Aviation’s Climate Impact by Changing Cruise Altitudes, *Aerospace*, 8(2), 36, <https://doi.org/10.3390/aerospace8020036>, 2021.

1160 [Meerkötter, R., Schumann, U., Doelling, D. R., Minnis, P., Nakajima, T., & Tsushima, Y.: Radiative forcing by contrails. *Annales Geophysicae*, 17\(8\), 1080–1094, https://doi.org/10.1007/s00585-999-1080-7, 1999.](https://doi.org/10.1007/s00585-999-1080-7)

1165 [Naiman, A. D., Lele, S. K., & Jacobson, M. Z.: Large eddy simulations of contrail development: Sensitivity to initial and ambient conditions over first twenty minutes. *Journal of Geophysical Research: Atmospheres*, 116\(D21\), https://doi.org/10.1029/2011jd015806, 2011.](https://doi.org/10.1029/2011jd015806)

Paoli, R. and Shariff, K.: Contrail Modeling and Simulation, *Annual Review of Fluid Mechanics*, 48(1), 393–427, <https://doi.org/10.1146/annurev-fluid-010814-013619>, 2016.

1170 Pruppacher, H. R. and Klett, J. D. (1996). *Microphysics of Clouds and Precipitation (Atmospheric and Oceanographic Sciences Library (18))* (2nd ed. 2010 ed.), Kluwer Academic Publishers, Dordrecht, the Netherlands, 1997.

1175 Ramanathan, V., Cess, R. D., Harrison, E. F., Minnis, P., Barkstrom, B. R., Ahmad, E., & Hartmann, D.: Cloud-Radiative Forcing and Climate: Results from the Earth Radiation Budget Experiment, *Science*, 243(4887), 57–63, <https://doi.org/10.1126/science.243.4887.57>, 1989.

- Righi, M., Hendricks, J., and Sausen, R.: The global impact of the transport sectors on atmospheric aerosol: simulations for year 2000 emissions, *Atmospheric Chemistry and Physics*, 13(19), 9939–9970, <https://doi.org/10.5194/acp-13-9939-2013>, 2013.
- 1180 Ruppert T.: Vector field reconstruction by radial basis functions, Master’s thesis. Department of Mathematics, Technical University Darmstadt: Darmstadt., 2007.
- Schröder, F., Kärcher, B., Duroure, C., Ström, J., Petzold, A., Gayet, J.-F., Strauss, B., Wendling, P., and Borrmann, S.: On the Transition of Contrails into Cirrus Clouds, *Journal of the Atmospheric Sciences*, 57(4), 464–480, http://www.pa.op.dlr.de/~BerndKaercher/JAS57_464-480_2000.pdf., 2000.
- 1185 Schumann, U.: On conditions for contrail formation from aircraft exhausts, *Meteorologische Zeitschrift*, 5(1), 4–23. <https://doi.org/10.1127/metz/5/1996/4>, 1996.
- 1190 Schumann, U. and Heymsfield, A. J.: On the Life Cycle of Individual Contrails and Contrail Cirrus, *Meteorological Monographs*, 58, 3.1-3.24, <https://doi.org/10.1175/amsmonographs-d-16-0005.1>, 2017.
- Schumann, U., Penner, J. E., Chen, Y., Zhou, C., and Graf, K.: Dehydration effects from contrails in a coupled contrail–climate model, *Atmospheric Chemistry and Physics*, 15(19), 11179–11199, <https://doi.org/10.5194/acp-15-11179-2015>, 2015.
- 1195 Seifert, A. and Beheng, K. D.: A two-moment cloud microphysics parameterization for mixed-phase clouds. Part 1: Model description, *Meteorology and Atmospheric Physics*, 92(1–2), 45–66, <https://doi.org/10.1007/s00703-005-0112-4>, 2006.
- 1200 Stevens, B., and Bony, S.: What Are Climate Models Missing? *Science*, 340(6136), 1053–1054, <https://doi.org/10.1126/science.1237554>, 2013.
- Stevens, B., Acquistapace, C., Hansen, A., Heinze, R., Klinger, C., Klocke, D., Rybka, H., Schubotz, W., Windmiller, J., Adamidis, P., Arka, I., Barlakas, V., Biercamp, J., Brueck, M., Brune, S., Buehler, S. A., Burkhardt, U., Cioni, G., Costa-Surós, M., Crewell, S., Crüger, T., Deneke, H., Friederichs, P., Henken, C. C., Hohenegger, C., Jacob, M., Jakub, F., Kalthoff, N., Köhler, M., van Laar, T. W., Li, P., Löhnert, U., Macke, A., Madenach, N., Mayer, B., Nam, C., Naumann, A. K., Peters, K., Poll, S., Quaas, J., Röber, N., Rochetin, N., Scheck, L., Schemann, V., Schnitt, S., Seifert, A., Senf, F., Shapkalijevski, M., Simmer, C., Singh, S., Sourdeval, O., Spickermann, D., Strandgren, J., Tessiot, O., Vercauteren, N., Vial, J., Voigt, A., and Zängl, G.: The Added Value of Large-Eddy and Storm-Resolving Models for Simulating Clouds and Precipitation, *J. Meteorol. Soc. Jpn.*, 98, 395–435, <https://doi.org/10.2151/jmsj.2020-021>, 2020.

1210

Tesche, M., Achtert, P., Glantz, P., and Noone, K. J.: Aviation effects on already-existing cirrus clouds, *Nature Communications*, 7(1), 1, <https://doi.org/10.1038/ncomms12016>, 2016.

1215 Unterstrasser, S.: Large-eddy simulation study of contrail microphysics and geometry during the vortex phase and consequences on contrail-to-cirrus transition, *Journal of Geophysical Research: Atmospheres*, 119(12), 7537–7555, <https://doi.org/10.1002/2013jd021418>, 2014.

Unterstrasser, S.: Properties of young contrails – a parametrisation based on large-eddy simulations, *Atmospheric Chemistry and Physics*, 16(4), 2059–2082, <https://doi.org/10.5194/acp-16-2059-2016>, 2016.

1220

Voigt, C., Schumann, U., Minikin, A., Abdelmonem, A., Afchine, A., Borrmann, S., Boettcher, M., Buchholz, B., Bugliaro, L., Costa, A., Curtius, J., Dollner, M., Dörnbrack, A., Dreiling, V., Ebert, V., Ehrlich, A., Fix, A., Forster, L., Frank, F., Fütterer, D., Giez, A., Graf, K., Groß, J.-U., Groß, S., Heimerl, K., Heinold, B., Hüneke, T., Järvinen, E., Jurkat, T., Kaufmann, S., Kenntner, M., Klingebiel, M., Klimach, T., Kohl, R., Krämer, M., Krisna, T. C., Luebke, A., Mayer, B., Mertes, 1225 S., Molleker, S., Petzold, A., Pfeilsticker, K., Port, M., Rapp, M., Reutter, P., Rolf, C., Rose, D., Sauer, D., Schäfler, A., Schlage, R., Schnaiter, M., Schneider, J., Spelten, N., Spichtinger, P., Stock, P., Walser, A., Weigel, R., Weinzierl, B., Wendisch, M., Werner, F., Wernli, H., Wirth, M., Zahn, A., Ziereis, H., and Zöger, M.: ML-CIRRUS – The airborne experiment on natural cirrus and contrail cirrus with the high-altitude long-range research aircraft HALO, *B. Am. Meteorol. Soc.*, 98, 271–288, <https://doi.org/10.1175/BAMS-D-15-00213.1>, 2017.

1230

Wan, H., Giorgetta, M. A., Zängl, G., Restelli, M., Majewski, D., Bonaventura, L., Fröhlich, K., Reinert, D., Rípodas, P., Kornblueh, L., and Förstner, J.: The ICON-1.2 hydrostatic atmospheric dynamical core on triangular grids – Part 1: Formulation and performance of the baseline version, *Geoscientific Model Development*, 6(3), 735–763, <https://doi.org/10.5194/gmd-6-735-2013>, 2013.

1235

Wilkerson, J. T., Jacobson, M. Z., Malwitz, A., Balasubramanian, S., Wayson, R., Fleming, G., Naiman, A. D., and Lele, S. K.: Analysis of emission data from global commercial aviation: 2004 and 2006, *Atmospheric Chemistry and Physics*, 10(13), 6391–6408, <https://doi.org/10.5194/acp-10-6391-2010>, 2010.

1240 Wolke, R., Knoth, O., Hellmuth, O., Schröder, W., and Renner, E.: The parallel model system LM-MUSCAT for chemistry-transport simulations: Coupling scheme, parallelization and applications, *Advances in Parallel Computing*, 363–369, [https://doi.org/10.1016/s0927-5452\(04\)80048-0](https://doi.org/10.1016/s0927-5452(04)80048-0), 2004.

1245 Wolke, R., Schröder, W., Schrödner, R., and Renner, E.: Influence of grid resolution and meteorological forcing on simulated
European air quality: A sensitivity study with the modeling system COSMO–MUSCAT, *Atmospheric Environment*, 53, 110–
130, <https://doi.org/10.1016/j.atmosenv.2012.02.085>, 2012.

1250 Zängl, G., Reinert, D., Rípodas, P., & Baldauf, M.: The ICON (ICOsahedral Non-hydrostatic) modelling framework of DWD
and MPI-M: Description of the non-hydrostatic dynamical core, *Quarterly Journal of the Royal Meteorological Society*,
141(687), 563–579, <https://doi.org/10.1002/qj.2378>, 2014.

Zhang, Y., Macke, A., & Albers, F.: Effect of crystal size spectrum and crystal shape on stratiform cirrus radiative forcing,
Atmospheric Research, 52(1–2), 59–75, [https://doi.org/10.1016/s0169-8095\(99\)00026-5](https://doi.org/10.1016/s0169-8095(99)00026-5), 1999.

1255